

**Spatial resolution
and regionalization of
airborne flux
measurements**

S. Metzger et al.

This discussion paper is/has been under review for the journal Biogeosciences (BG).
Please refer to the corresponding final paper in BG if available.

Spatial resolution and regionalization of airborne flux measurements using environmental response functions

S. Metzger^{1,2,*,**}, **W. Junkermann**¹, **M. Mauder**¹, **K. Butterbach-Bahl**¹,
B. Trancón y Widemann^{3,6,***}, **F. Neidl**¹, **K. Schäfer**¹, **S. Wieneke**⁴, **X. H. Zheng**²,
H. P. Schmid¹, and **T. Foken**^{5,6}

¹Karlsruhe Institute of Technology, Institute for Meteorology and Climate Research, Atmospheric Environmental Research Division, Garmisch-Partenkirchen, Germany

²Chinese Academy of Sciences, Institute of Atmospheric Physics, State Key Laboratory of Atmospheric Boundary Layer Physics and Atmospheric Chemistry, Beijing, China

³University of Bayreuth, Chair of Ecological Modelling, Bayreuth, Germany

⁴University of Cologne, Institute of Geophysics and Meteorology, Cologne, Germany

⁵University of Bayreuth, Department of Micrometeorology, Bayreuth, Germany

⁶Member of Bayreuth Centre of Ecology and Ecosystem Research, Bayreuth, Germany

* now at: National Ecological Observatory Network, Fundamental Instrument Unit, Boulder, USA

** now at: University of Colorado, Institute of Arctic and Alpine Research, Boulder, USA

*** now at: Technical University of Ilmenau, Programming Languages and Compilers, Ilmenau, Germany

Title Page

Abstract

Introduction

Conclusions

References

Tables

Figures



Back

Close

Full Screen / Esc

Printer-friendly Version

Interactive Discussion



Received: 1 October 2012 – Accepted: 11 October 2012 – Published: 14 November 2012

Correspondence to: S. Metzger (smetzger@neoninc.org)

Published by Copernicus Publications on behalf of the European Geosciences Union.

BGD

9, 15937–16003, 2012

**Spatial resolution
and regionalization of
airborne flux
measurements**

S. Metzger et al.

Title Page

Abstract

Introduction

Conclusions

References

Tables

Figures



Back

Close

Full Screen / Esc

Printer-friendly Version

Interactive Discussion

Abstract

The goal of this study is to characterize the sensible (H) and latent (LE) heat exchange for different land covers in the heterogeneous steppe landscape of the Xilin River Catchment, Inner Mongolia, China. Eddy-covariance flux measurements at 50–100 m above ground were conducted in July 2009 using a weight-shift microlight aircraft. Wavelet decomposition of the turbulence data enables a spatial discretization of 90 m of the flux measurements. For a total of 8446 flux observations during 12 flights, MODIS land surface temperature (LST) and enhanced vegetation index (EVI) in each flux footprint are determined. Boosted regression trees are then used to infer an environmental response function (ERF) between all flux observations (H , LE) and biophysical- (LST, EVI) and meteorological drivers. Numerical tests show that ERF predictions covering the entire Xilin River Catchment ($\approx 3670 \text{ km}^2$) are accurate to $\leq 18\%$. The predictions are then summarized for each land cover type, providing individual estimates of source strength ($36 \text{ W m}^{-2} < H < 364 \text{ W m}^{-2}$, $46 \text{ W m}^{-2} < \text{LE} < 425 \text{ W m}^{-2}$) and spatial variability ($11 \text{ W m}^{-2} < \sigma_H < 169 \text{ W m}^{-2}$, $14 \text{ W m}^{-2} < \sigma_{\text{LE}} < 152 \text{ W m}^{-2}$) to a precision of $\leq 5\%$. Lastly, ERF predictions of land cover specific Bowen ratios are compared between subsequent flights at different locations in the Xilin River Catchment. Agreement of the land cover specific Bowen ratios to within $12 \pm 9\%$ emphasizes the robustness of the presented approach. This study indicates the potential of ERFs for (i) extending airborne flux measurements to the catchment scale, (ii) assessing the spatial representativeness of long-term tower flux measurements, and (iii) designing, constraining and evaluating flux algorithms for remote sensing and numerical modelling applications.

1 Introduction

Measurements of the exchange of heat and moisture between the land surface and the atmosphere are critical to our understanding of the role of terrestrial ecosystems

BGD

9, 15937–16003, 2012

Spatial resolution and regionalization of airborne flux measurements

S. Metzger et al.

Title Page

Abstract

Introduction

Conclusions

References

Tables

Figures

⏪

⏩

◀

▶

Back

Close

Full Screen / Esc

Printer-friendly Version

Interactive Discussion



in the global climate system. Ground-based eddy-covariance (EC, a summary of all notation is provided in Appendix A) measurements are suited to continuously monitor selected sites for long periods and enable the integration in time (Baldocchi et al., 2001). However these results might only represent small areas around the immediate measurement locations (e.g. Kaharabata et al., 1997; Schuepp et al., 1992). On the other hand aircraft-based measurements can provide flux information at regional scales (e.g. Desjardins et al., 1995), but are restricted to short periods of time. Thus the temporal and spatial characteristics of ground-based and airborne measurements complement each other (Gioli et al., 2004; Mauder et al., 2007). It is desirable to integrate both approaches in an effort to provide suitable datasets for the design, constraint, and evaluation of mass and energy exchange models at site as well as at regional scales (Chen et al., 1999; Desjardins et al., 1997). In the following we briefly review the requirements for spatial scaling of airborne EC measurements, and the applicability of airborne EC measurements over complex terrain.

Aggregation approaches enable estimating the exchange over entire landscapes, provided fluxes for characteristic land cover features or domains are known (Beyrich et al., 2006). Flight path segmentation can be a useful tool to directly relate airborne EC measurements to landscape units (e.g. Desjardins et al., 1994; Vellinga et al., 2010). It is also possible to functionally relate these measurements to land cover properties, which then reflect the effects of vegetation, climate, soil and topography on the flux strength. E.g. Kirby et al. (2008) propose a method for discerning individual fluxes in a heterogeneous landscape based on subsets of “pure” flux fragments. Another approach is to utilize quantitative information about the EC measurement’s spatial context, on which basis environmental response functions (ERF, Desjardins et al., 1994) can be derived. The general idea of ERFs is to establish a relationship between spatially or temporally resolved flux observations (responses) and corresponding environmental drivers. Hence ERFs are a quantitative mechanism to extract relationships from, and to condense the information content in a dataset. If sufficiently accurate, the extracted relationships can then be used to, e.g. bridge observational scales or to adjust

Spatial resolution and regionalization of airborne flux measurements

S. Metzger et al.

Title Page

Abstract

Introduction

Conclusions

References

Tables

Figures



Back

Close

Full Screen / Esc

Printer-friendly Version

Interactive Discussion



Spatial resolution and regionalization of airborne flux measurements

S. Metzger et al.

Title Page

Abstract

Introduction

Conclusions

References

Tables

Figures



Back

Close

Full Screen / Esc

Printer-friendly Version

Interactive Discussion

the spatial representativeness of ground-based flux measurements. In addition, current methods to spatially resolve surface fluxes are mainly focused on remote sensing algorithms (e.g. Fan et al., 2007) and process-based land surface models (e.g. Vetter et al., 2012). These procedures often demand far-reaching assumptions, such as the closure of the energy and water balances (e.g. Anderson et al., 2012), or are challenging with respect to the required data basis (e.g. Kaminski et al., 2012; Ziehn et al., 2011). In contrast, accurate ERFs enable inferring high-resolution surface flux maps directly from observational data with minimal, quantifiable assumptions. In this way ERF might also be used to design, constrain and to evaluate flux algorithms for remote sensing and numerical modelling applications.

The forenamed applications require the relation of the airborne measured fluxes to land cover properties. To enable this requirement an aircraft is bound to measure close to the surface, where characteristic fluxes from different land covers are not yet fully homogenized (or blended, Mason, 1988; Wood and Mason, 1991). Moreover the flux must be measured at a constant altitude above ground, so as to avoid artificial flux contributions through altitude fluctuations along vertical gradients (Vickers and Mahrt, 1997). However investigation areas are seldom ideally flat, and topography can vary significantly throughout a domain. To safely follow terrain contours at a low and constant altitude above ground, the aircraft must possess a low ratio of true airspeed to climb rate. Only a few airborne platforms fulfil this requirement (e.g. Bange et al., 2006; Gioli et al., 2004; Thomas et al., 2012), with the weight-shift microlight aircraft (WSMA) being one of them (Metzger et al., 2011, 2012). In forenamed studies we describe a WSMA that enables airborne EC flux measurements in remote settings at reasonable cost and minimal infrastructural demand. The objectives of the present study are to investigate the possibilities of (i) deriving meaningful EC fluxes from WSMA measurements over complex terrain, and (ii) scaling the results to a domain of interest.

We applied the WSMA over the undulating steppe of the Xilin River Catchment (XRC), Inner Mongolia, China (Fig. 1). On 21 days in the summer of 2009 flights along line transects were conducted at 50–100 m a.g.l. From boundary layer scaling it is found

Spatial resolution and regionalization of airborne flux measurements

S. Metzger et al.

Title Page

Abstract

Introduction

Conclusions

References

Tables

Figures



Back

Close

Full Screen / Esc

Printer-friendly Version

Interactive Discussion



that the vertical flux gradients below the flight level satisfy the surface layer definition (constant within $\pm 5\text{--}10\%$). Hence measured sensible- (H) and latent heat flux (LE) can be interpreted as surface fluxes (Sect. 3.1). Because of its climate and management practices typical for semiarid grasslands of China (Butterbach-Bahl et al., 2011), intensive ecological research has commenced in the XRC from the late 1970s (Jiang, 1985). Besides Tibet, Inner Mongolia is China's most important province for grassland based livestock production, and desertification due to overgrazing is a major problem for extensive areas (Meurer and Jiang, 2001). In addition the land cover in the investigation area varies distinctly in space and time (Ketzner et al., 2008; Schaffrath et al., 2011). We hypothesize that airborne EC flux measurement is a promising tool to gain new insights in the spatial variability of heat and moisture exchange across the XRC.

In the present paper we firstly introduce the WSMA and the on-board measurements, and give an overview of the climate and physical composition of the study area (Sects. 2.1, 2.2). We then describe a measurement strategy (Sect. 2.3) which is linked to a novel data processing approach (Sect. 2.4). A wavelet transformation allows us to resolve fluxes above each overflown cell of a 90 m land cover raster without neglecting flux contributions on much larger scales. In combination with footprint modelling and a non-parametric machine learning technique, an ERF is computed between the airborne flux observations and meteorological and land surface drivers. In Sect. 3 we present the results of this functional relationship and evaluate its potential to explain the spatial distribution of the heat and moisture exchange along the flight lines. We interpret the results in the context of blending scales and statistical errors, and discuss the uncertainty associated with using the ERF to predict fluxes to freely selectable domains in the XRC (Sect. 3.2.4). Lastly, we give an outlook on potential applications of WSMA flux measurements and future improvements of the presented methodology (Sect. 4).

2 Materials and methods

2.1 The weight-shift microlight aircraft

The structure of a WSMA differs from common fixed-wing aircraft: it consists of two distinct parts, the wing and the trike, which hangs below the wing and contains pilot, engine and the majority of the scientific equipment. This particular structure provides the WSMA with exceptional transportability and climb rate, which qualifies it for applications in inaccessible and topographically structured terrain. A detailed description of the physical properties of the WSMA used in this study as well as characteristics and manufacturers of sensors and data acquisition is given in Metzger et al. (2011, 2012). In short: most variables are sampled at 100 Hz and are block-averaged and stored at 10 Hz, yielding a horizontal resolution of approximately 2.5 m. In this study, we use the 10 Hz measurements of the three dimensional wind speed ($\sigma_w = 0.04 \text{ m s}^{-1}$ precision), temperature ($\sigma = 0.04 \text{ K}$), humidity ($\sigma = 0.005 \text{ g m}^{-3}$), and the height a.g.l. ($\sigma = 0.04 \text{ m}$). From error propagation it was found that changes in friction velocity (u_*), H and LE of 0.02 m s^{-1} , 5 W m^{-2} , and 3 W m^{-2} , respectively, can be reliably distinguished (Metzger et al., 2012). In addition, we use for this study slow measurements ($\leq 0.1 \text{ Hz}$) of humidity (TP3 dew point mirror, Meteolabor AG, Wetzikon, Switzerland), surface temperature (CT infrared thermometer, Optris GmbH, Berlin, Germany), and down-welling short wave radiation (LI-200 SZ, LI-COR Inc., Lincoln, Nebraska, 400–1100 nm, within an error of 5 % equal to pyranometer measurements, 300–3000 nm).

2.2 Study area

Airborne EC flux measurements were performed in the XRC from 23 June to 4 August 2009. The hilly investigation area lies south of the provincial capital Xilinhot, Inner Mongolia, China (43.1–43.9° N, 116.0–117.2° E, 1000–1500 m a.s.l., Fig. 2). The XRC covers an area of $\approx 3670 \text{ km}^2$ and is characterized by temperate continental monsoon climate, with cold and dry winters and warm and wet summers. From data of the years

BGD

9, 15937–16003, 2012

Spatial resolution and regionalization of airborne flux measurements

S. Metzger et al.

Title Page

Abstract

Introduction

Conclusions

References

Tables

Figures

⏪

⏩

◀

▶

Back

Close

Full Screen / Esc

Printer-friendly Version

Interactive Discussion



Spatial resolution and regionalization of airborne flux measurements

S. Metzger et al.

1982–2005 at the Inner Mongolia Grassland Ecosystem Research Station (IMGERS, 43.63° N, 116.70° E, 1187 m a.s.l., Fig. 2) the monthly mean air temperature ranges from -21°C in January to $+19^{\circ}\text{C}$ in July, with an annual mean of $+1^{\circ}\text{C}$ (Liu et al., 2008). Variability in total annual precipitation is high (166–507 mm) with a mean annual sum of 335 mm. Typically 60–80 % of the rainfall occurs from June to August (Chen, 1988). June 2009 (57 mm) and August 2009 (60 mm) were in the usual range, but July 2009 (35 mm) only received half of the long-term average rainfall. Detailed information on the meteorological conditions during the flight campaign is provided in Appendix B. Chestnut soils are the main zonal soil types, with a land cover dominated by *Stipa grandis*, *S. krylowii*, *Artemisia* and *Leymus chinensis* steppe. Throughout the XRC the abundance of C4 species in the steppe composition is relatively homogeneous (15–25 %, Auerswald et al., 2009). The growing season usually lasts from the end of May to late September (Liang et al., 2001).

Land cover in the XRC had been classified on the basis of a Landsat 7 Thematic Mapper image of 17 August, 2005 (Wiesmeier et al., 2011). In recent years however the development of settlements sprawled, and irrigated agriculture is gaining popularity (Qi et al., 2007). The Bowen ratio B_o of the latter is distinctly different from the land cover classes that already exist in the classification of Wiesmeier et al. (2011). This land cover classification was thus updated and extended by visual reclassification of Advanced Spaceborne Thermal and Reflection Radiometer (ASTER) images of 7 and 28 April, 2009. The result is a land cover map with a resolution of 90 m, which is dominated by generic steppe (71 % coverage), intersected by a dune belt (10 %, Fig. 2). The coverage of bare soil, mountain meadow, marshland and rainfed agriculture is each $\approx 5\%$, and the coverage of water bodies, settlements and irrigated agriculture is sub-per cent. In the context of this study the land cover classification represents the longer-term effects of vegetation, climate, soil and topography.

The spatial variation of temperature and precipitation in the XRC follows altitudinal and latitudinal trends (Auerswald et al., 2009; Wittmer et al., 2010). To resolve the effective state of biophysical surface properties over time we use Moderate Resolution

[Title Page](#)[Abstract](#)[Introduction](#)[Conclusions](#)[References](#)[Tables](#)[Figures](#)[⏪](#)[⏩](#)[◀](#)[▶](#)[Back](#)[Close](#)[Full Screen / Esc](#)[Printer-friendly Version](#)[Interactive Discussion](#)

Imaging Spectroradiometer (MODIS) data. We chose 8-day composites of the land surface temperature (LST, MOD11A2.5, 1 km resolution), and 16-day composites of the enhanced vegetation index (EVI, MOD13Q1, MYD13Q1, 250 m resolution) for this purpose. Due to an 8-day overlap of the EVI data products by the MODIS Terra and Aqua missions, LST and EVI datasets could both be acquired for 4, 12, 20, 28 July, and 5 August 2009. The LST and EVI datasets were bi-linearly interpolated to the 90 m resolution of the land cover classification, and linearly interpolated in time to yield an individual map for each flight day. The spatial gradients in temperature and precipitation throughout the XRC are clearly reproduced by the greenness of the vegetation (Fig. 2). The spatio-temporal resolution of the MODIS data enables assessing the actual state of the biophysical conditions at the land surface. LST and EVI vary significantly throughout the study period, but also between the different land cover types (Fig. 3). All land cover types follow a similar temporal trend, with LST and EVI peaking mid-July and end-July, respectively. While open water is the coolest surface, LST as well as greenness increase from mountain meadow over marshland to irrigated agriculture, which are likely strong sources of evapotranspiration. The reverse relationship (increasing LST and decreasing EVI) is found for settlements, rainfed agriculture, dunes, steppe and bare soil, which are likely strong sources of H .

A ceilometer (LD40 – Vaisala Oy, Helsinki, Finland) was deployed at IMGERS and provided vertical profiles of the atmospheric laser radiation backscatter intensity (Mini light detection and ranging, originally applied for the detection of the cloud base height). The depth of the convective boundary layer (CBL) was inferred from 10 min means of these data, in combination with semi-daily radiosonde ascends in nearby Xilin Hot (World Meteorological Organization station 54102, <http://weather.uwyo.edu/upperair/sounding.html>). For this purpose the maximum gradient method is used, which enables the detection of up to five lifted inversions (Emeis et al., 2008; Helmis et al., 2012; Münkel and Roininen, 2010). It is assumed that the aerosol number concentration, size distribution, shape and chemical composition (refractive index, absorption) adapt rapidly to the CBL structure. If there was more than one maximum or layer detected,

BGD

9, 15937–16003, 2012

Spatial resolution and regionalization of airborne flux measurements

S. Metzger et al.

Title Page

Abstract

Introduction

Conclusions

References

Tables

Figures

⏪

⏩

◀

▶

Back

Close

Full Screen / Esc

Printer-friendly Version

Interactive Discussion

the lowest one is taken as the CBL depth. The CBL depth is used in Sect. 2.4.1 for the calculation of atmospheric length scales and in Sect. 2.4.3 for the calculation of the airborne flux measurements' source areas. In addition the cloud cover during the flight periods were monitored by ground personnel at IMGERS.

2.3 Measurement strategy

Advancing into more complex terrain, a flight strategy needs to be derived that considers (i) pilot safety, (ii) vertical flux gradients, (iii) orographic-induced local circulations, (iv) statistical errors, and (v) the land cover distribution. Such flight strategy was derived for the XRC study region using the geographic information system ArcMap 9.2 (Environmental Systems Research Institute, Redlands, USA). (i) A minimum flight level of 50 m above ground was found to provide the pilot with sufficient clearance for safe flight even under buoyancy driven turbulence. (ii) Fluxes remain interpretable when measured at approximately constant height above terrain. Consequently the flight paths should follow the terrain contours. (iii) We use a digital elevation model (Shuttle Radar Topography Mission, Tile 60_04, data version 4.1, Jarvis et al., 2008) to calculate slope angles. In an effort to avoid immediate orographic-induced local circulations all locations within 500 m radius around slopes exceeding 6° were masked. This radius approximately equals five times the standard deviation (SD) of the terrain elevation. (iv) To reduce the statistical errors the flight path should be long and perpendicular to the mean wind direction. Thus we aligned straight flight lines along four wind axes in the areas which were not masked in the previous step. (v) Of the flight lines that were frequently perpendicular to the mean wind direction, those that best represented the land cover distribution in the XRC were covered on multiple flight days. This strategy results in a terrain-following flight patterns, with typical altitude gradients of 100 m vertical on 10 km horizontal. The climb angles of the aircraft rarely exceeds $\pm 5^\circ$, and on average the height above ground is constant to within 12 m (Table 1). Each flight line was repeated until a minimum of 40 km of data was acquired.

Spatial resolution and regionalization of airborne flux measurements

S. Metzger et al.

Title Page

Abstract

Introduction

Conclusions

References

Tables

Figures



Back

Close

Full Screen / Esc

Printer-friendly Version

Interactive Discussion



Spatial resolution and regionalization of airborne flux measurements

S. Metzger et al.

Title Page

Abstract

Introduction

Conclusions

References

Tables

Figures

⏪

⏩

◀

▶

Back

Close

Full Screen / Esc

Printer-friendly Version

Interactive Discussion



The aircraft was operated from IMGERS (Fig. 2). For the present study we use data from six days in July 2009 (Table 1), which were selected according to the availability of auxiliary datasets and homogeneity of the down-welling shortwave radiation S_{\downarrow} along the flight tracks (Table B1). On each day measurements were carried out along pairs of approximately parallel flight lines at a nominal airspeed of 27 m s^{-1} , with eight individual flight lines in total. Each pair is located across or along the humidity and temperature gradients in the XRC (Fig. 2). This strategy provides two independent datasets for each flight day, and covers the fundamental climatic gradients in this area.

The land cover type most frequently observed below all flight lines is steppe (Table 1). Flight lines with significant surface coverage of marshland or irrigation tend to be greener (higher EVI) compared to flight lines with significant coverage of dunes or bare soil. In the following, we investigate whether spatially resolved land cover information can be used as predictor for H and LE measured along the flight lines. At this we hypothesize that LST and EVI are representative proxies for heat and moisture sources on the surface, respectively (e.g. Glenn et al., 2008; Lyons and Halldin, 2004; Nagler et al., 2007). Because aircraft measurements cover a broad state space, the resulting observations are particularly suited to infer ERFs.

2.4 Data processing

An analysis package for the processing of the airborne EC data was developed in GNU R version 2.13 (R Development Core Team, 2012). The analysis package is described in detail in Metzger et al. (2012) and is available upon request. Relevant processing steps are (i) the raw data is screened for spikes; (ii) humidity from fast response and slow reference sensors are merged using a complementary filter; (iii) the WSMA temperature and densities are transformed to potential quantities at the mean flight altitude of each flight line; (iv) the time delay due to separation between the vertical wind measurement and the temperature and humidity measurements is corrected by maximising their lagged correlation; (v) the WPL correction according to Webb et al. (1980) is used to correct LE for density fluctuations; (vi) correction for spectral artefacts ($-1 \pm 1 \%$,

–2 ± 1 %, and –6 ± 2 % for the SDs in the wind components along, transverse and vertical to the aircraft coordinate system, respectively) and cospectral artefacts (–4 ± 4 %, 0 ± 1 %, and 0 ± 2 % for u_* , H and LE, respectively) after Metzger et al. (2012); (vii) calculation of random and systematic statistical errors after Lenschow and Stankov (1986), Lenschow et al. (1994).

2.4.1 Horizontal mixing between surface and flight level

Horizontal mixing between the surface and the flight level results in the spatial integration of fluxes above heterogeneous terrain, a process also referred to as “blending” (e.g. Mason, 1988). Working toward an ERF between surface properties (driver) and flux measurement (response), we will test three hypotheses related to horizontal mixing. At flight level (i) the turbulence is in approximate equilibrium with the land surface in the flux footprint; (ii) the measured turbulence statistics are representative of the mechanical setting upwind; (iii) changes in the turbulent flux can be resolved at the horizontal scale of surface heterogeneities.

Several analytical formulations have been developed to characterize a mixing regime (e.g. Mahrt, 2000; Raupach and Finnigan, 1995; Wood and Mason, 1991). Such formulations are usually based on the comparison of characteristic length scales for surface heterogeneity and CBL mixing. Here we use the autocorrelation function to estimate the typical horizontal scale of surface heterogeneity L_H . For this purpose we integrate the autocorrelation function of the WSMA measured surface temperature T_s at distance d along a flight line from zero lag to the first crossing with zero at lag c_0 :

$$L_H = \int_0^{c_0} \frac{\overline{T'_s(d)T'_s(d+c)}}{\overline{T'_s(d)^2}} dr, \quad (1)$$

where overbars denote the mean along a flight line, and primes denote the deviations from this mean. L_H can be interpreted as the spatial coherence of surface features

BGD

9, 15937–16003, 2012

Spatial resolution and regionalization of airborne flux measurements

S. Metzger et al.

Title Page

Abstract

Introduction

Conclusions

References

Tables

Figures

⏪

⏩

◀

▶

Back

Close

Full Screen / Esc

Printer-friendly Version

Interactive Discussion



along the flight path (e.g. Strunin et al., 2004). In the following we assume that L_H is isotropic within the flux footprint, i.e. also representative perpendicular to the flight path.

In order to further characterize the mixing regime, L_H can be compared to atmospheric length scales. These length scales inter-relate the transport strengths in the horizontal and vertical directions, and correspond to the along wind distance after which the air mass below a reference level is approximately homogenized. Formulations for atmospheric length scales mainly differ in their use of (i) the measures of transport strengths, and (ii) the vertical or horizontal reference scale. Raupach and Finnigan (1995) proposed a length scale L_R (now also referred to as Raupach length), which characterizes the mixing regime throughout the entire CBL:

$$L_R = 0.8z_i \frac{\bar{u}}{w_*}, \quad (2)$$

with CBL depth z_i , average (bulk) horizontal transport velocity u , and convective velocity w_* . Because u cannot be measured directly, it is substituted in Eq. (2) and in the following investigations with the measured horizontal wind speed at flight altitude. The influence of surface heterogeneities with spatial scales L_H that are small compared to L_R is confined below the CBL top. In this case the concept of a “blending height” within the CBL arises. The blending height corresponds to a vertical level at which the turbulent flow field over heterogeneous terrain approaches equilibrium with the local vertical gradient. If the blending height is confined within the surface layer, Monin-Obukhov similarity can be applied above the blending height (Mahrt, 2000). Wood and Mason (1991) define the thermal blending height for unstable stratification,

$$z_{TB1} = L_H \frac{\overline{w'\theta'_{0,v}}}{\bar{u} \theta_{0,v}} \cdot 323, \quad (3)$$

with the buoyancy heat flux from the virtual potential temperature $\theta_{0,v}$, and the horizontal wind speed u at the blending height. This thermal blending height can be rearranged

BGD

9, 15937–16003, 2012

Spatial resolution and regionalization of airborne flux measurements

S. Metzger et al.

Title Page

Abstract

Introduction

Conclusions

References

Tables

Figures

⏪

⏩

◀

▶

Back

Close

Full Screen / Esc

Printer-friendly Version

Interactive Discussion



as thermal blending length,

$$L_{TB1} = \bar{z} \frac{\overline{\bar{u} \theta_{0,v}}}{w' \theta'_{0,v}} \cdot 3.1 \cdot 10^{-3}, \quad (4)$$

now representing the smallest scale of surface heterogeneity that significantly influences the turbulent flow at flight level z above ground. An improved version of the thermal blending length was proposed by Mahrt (2000),

$$L_{TB2} = L_R \frac{\overline{\theta_{0,v}}}{\sigma_{T_s}} \cdot 4.3 \cdot 10^{-3}, \quad (5)$$

which considers the SD of T_s as measure for the amplitude of surface heterogeneity. The numeral factors in Eqs. (3)–(5) were estimated from observations by Mahrt (2000). In Sect. 3.1 the results of above formulations are used to test the initial hypotheses related to horizontal mixing.

2.4.2 Wavelet cross-scalogram

The differentiation of land cover types is at odds with the classical time-domain EC method, which assumes homogeneous terrain. However, Parseval's Theorem implies that the covariance of signals may be studied not only in the time domain, but equivalently in the frequency domain. There, we have the wavelet transform family of methods at our disposal, which are particularly suited for the spectral analysis of non-stationary signals.

A wavelet is a signal that is localized in both time and frequency. Different localizations of the same basic shape (daughter wavelets) are constructed as a function of time t by defining

$$\psi_{a,b}(t) = \frac{1}{\sqrt{|a|}} \psi \left(\frac{t-b}{a} \right) = \frac{1}{\sqrt{|a|}} \psi(q), \quad (6)$$

15950

BGD

9, 15937–16003, 2012

Spatial resolution and regionalization of airborne flux measurements

S. Metzger et al.

Title Page

Abstract

Introduction

Conclusions

References

Tables

Figures

⏪

⏩

◀

▶

Back

Close

Full Screen / Esc

Printer-friendly Version

Interactive Discussion



Spatial resolution and regionalization of airborne flux measurements

S. Metzger et al.

Title Page

Abstract

Introduction

Conclusions

References

Tables

Figures

◀

▶

◀

▶

Back

Close

Full Screen / Esc

Printer-friendly Version

Interactive Discussion



where ψ is a suitable mother wavelet, a is a scale parameter (in frequency domain), b is a location parameter (in time domain), and $q = (t - b)/a$ is a dimensionless coordinate (in time-frequency space). The convolution $\int x(t)\psi_{a,b}(t)dt$ of a signal x with a daughter wavelet $\psi_{a,b}$ yields a wavelet coefficient $W_x(a,b)$, a wavelet transform being a collection of such coefficients. We follow the procedure of Torrence and Compo (1998), using the continuous wavelet transform approximation for discrete input. The chosen mother wavelet is the Morlet wavelet $\psi(q) = \pi^{-1/4} e^{i\omega_0 q} e^{-q^2/2}$ with the frequency parameter $\omega_0 = 6$. The relevant parameters are spaced exponentially in frequency and uniformly in time, respectively: $a_j = a_0 2^{j\delta_j}$ for $j = 0, \dots, J$ and $b_n = n\delta t$ for $n = 0, \dots, N - 1$, with length of the data set N , initial scale parameter $a_0(\delta t, \psi)$ and number of scale increments $J(a_0, \delta j, \delta t, N, \psi)$. a_0 and J are chosen such that the extreme wavelet scales match the period of the Nyquist frequency, here 0.2 s, and the duration of the dataset, respectively. The unit of increment in the time domain, δt , is given by the sampling period of the time series, here 0.1 s. The unit of increment in frequency domain, δj , can be set to different values, with smaller values increasing both resolution and redundancy. For the present data, the results of the wavelet analyses were insensitive to the choice of δj in the range $0.0625 < \delta j < 0.25$. Hence we follow the example of Torrence and Compo (1998) and use $\delta j = 0.125$. The wavelet scalogram of a signal x is defined as the matrix of $|W_x(a,b)|^2$ for all admissible a, b . Likewise, the wavelet cross-scalogram of two signals x, y is the matrix of $W_x(a,b)W_y(a,b)^*$, where $*$ denotes the complex conjugate. The global covariance of x and y can be estimated by weighted averaging

$$\text{cov}_{a,b} = \frac{\delta j \delta t}{C_\delta N} \sum_{j=0}^J \sum_{n=0}^{N-1} \frac{W_x(a_j, b_n) W_y(a_j, b_n)^*}{a_j} \quad (7)$$

where C_δ is a reconstruction factor specific to each mother wavelet, here 0.776 for the Morlet wavelet. The covariance can also be estimated locally for a subinterval of either j or n . This is a useful feature for dealing with changes in land cover: the

continuous wavelet transform is highly redundant, with high correlation between adjacent low-frequency coefficients. Therefore, the covariance for a subinterval in time can be estimated without neglecting low-frequency, large-scale contributions. The downside of the large support of low-frequency wavelets is that edge effects due to the finite overall data set increase with scale. Torrence and Compo (1998) define the cone of influence (COI) as the boundary where the power of edge-related artefacts is damped by a factor of e^{-2} . Integration over all scales yields results close to the time-domain EC method (here, -7 to -3% median differences), but also includes less reliable estimates above the COI (e.g. Strunin and Hiyama, 2004). Considering only scales below the COI rejects those less reliable estimates (e.g. Mauder et al., 2007). However, because part of the scale range is excluded, such procedure also systematically increases the discrepancy between Wavelet and time-domain EC methods (here, -22 to -7% median differences). Moreover, the COI tapers toward the centre of the dataset (Fig. 4). Different scales would be included when estimating the covariance for subintervals, depending on the position along the flight path. Hence, for the localization of flux contributions in space we (i) integrate over all scales of a subinterval, and (ii) use a correction factor for each individual flight path to compensate the difference between Wavelet and time-domain EC methods. Such procedure is suited for the derivation of ERFs, because (i) it enables localization in space, (ii) it considers contributions to the local flux from scales that are larger than the subinterval, (iii) it is not biased with respect to the global time-domain covariance, and (iv) uncertainty arising from edge-effects is propagated in the ERF and included in the final uncertainty metric (Sect. 2.4.4).

Computations were performed with a continuous wavelet transform package written in GNU R (R Development Core Team, 2012), partially based on the published code of Torrence and Compo (1998) available from <http://atoc.colorado.edu/research/wavelets>. u_* , H , LE (and analogously the SDs of the wind components) are calculated for overlapping subintervals of 1000 m length. The subintervals are centred above each cell of the land cover/LST/EVI grids that was overflowed by the WSMA, principally yielding

BGD

9, 15937–16003, 2012

Spatial resolution and regionalization of airborne flux measurements

S. Metzger et al.

Title Page

Abstract

Introduction

Conclusions

References

Tables

Figures

⏪

⏩

◀

▶

Back

Close

Full Screen / Esc

Printer-friendly Version

Interactive Discussion

one flux observation every 90 m. The resulting sample size for all 12 flights in Table 1 is $N = 8446$.

2.4.3 Footprint modelling

The footprint- or source weight function quantifies the spatial contributions to each measurement (Schmid, 2002; Vesala et al., 2008). For this purpose we use the footprint model of Kljun et al. (2004, KL04), which is a parameterisation of the backward Lagrangian model of Kljun et al. (2002) in the range $-200 \leq z/L \leq 1$, $u_* \geq 0.2 \text{ ms}^{-1}$, and $1 \text{ m} \leq z \leq z_j$. The parameterisation depends upon u_* , measurement height z , SD of the vertical wind σ_w and the aerodynamic roughness length z_0 , of which u_* , z and σ_w are measured directly by the WSMA. The roughness length is inferred using the logarithmic wind profile with the integrated universal function for momentum exchange after Businger et al. (1971) in the form of Högström (1988). The KL04 is a cross-wind integrated footprint model, i.e. it does not resolve the distribution perpendicular to the main wind direction. In order to account for cross-wind dispersion the KL04 was combined with a Gaussian cross-wind distribution function (Kljun et al., 2012; Metzger et al., 2012). In addition to above variables the SD of the crosswind from WSMA measurements and the depth of the CBL z_j from ceilometer measurements (Sect. 2.2) are used. The combination of KL04 with this cross-wind distribution results in a computationally fast footprint parameterisation which considers 3-D dispersion and is not constrained to applications in the surface layer. In the following we refer to this model as KL04+.

Turbulence statistics for a 1000 m long subinterval over the wavelet scalograms (Sect. 2.4.2) are used to evaluate the KL04+. One evaluation is carried out for each overflown cell of the land cover, LST and EVI grids (i.e. every 90 m along the flight path). With the overflown grid cell as base point, the footprint weights w_{xy} ($\sum w_{xy} = 1$) are calculated for each grid cell with position x , y , relative to the base point. From here

BGD

9, 15937–16003, 2012

Spatial resolution and regionalization of airborne flux measurements

S. Metzger et al.

Title Page

Abstract

Introduction

Conclusions

References

Tables

Figures

⏪

⏩

◀

▶

Back

Close

Full Screen / Esc

Printer-friendly Version

Interactive Discussion

the footprint composition is calculated,

$$LST = \sum_x \sum_y w_{xy} \cdot LST_{xy}, \quad (8)$$

$$EVI = \sum_x \sum_y w_{xy} \cdot EVI_{xy}, \quad (9)$$

with the land surface temperature and enhanced vegetation index for each grid cell, LST_{xy} and EVI_{xy} , respectively. For graphical representation all evaluations of KL04+ along a flight line are superimposed and normalized to a sum of unity. Additional information and references regarding footprint calculations along line transects can be found in Hutjes et al. (2010) and Meijninger et al. (2006).

2.4.4 Environmental response function

We base the development of a catchment-specific ERF on the works of Chen et al. (1999), Hutjes et al. (2010) and Ogunjemiyo et al. (2003). The general idea is to establish a functional relationship between spatially or temporally resolved flux observations (responses) and corresponding environmental drivers. Thus far, a suitable number of flux observations was obtained by either shortening the time-domain EC averaging interval (Chen et al., 1999; Ogunjemiyo et al., 2003), or by stratifying repeated observation along the same flight line on different days (Hutjes et al., 2010). The inherent drawbacks are the neglect of either long wavelength contributions to the flux measurement, or inter-day variability of ecosystem drivers. Both are overcome using the wavelet cross-scalogram technique (Sect. 2.4.2).

Previously, the development of ERFs has solely focused on drivers in the footprint of the flux observations, namely discrete land cover classifications. This procedure ignores within-class variability across a catchment, e.g. along climatic or altitudinal gradients, which can be overcome by using continuous variables such as LST and EVI instead. In addition, the present approach considers the meteorological drivers

Spatial resolution and regionalization of airborne flux measurements

S. Metzger et al.

Title Page

Abstract

Introduction

Conclusions

References

Tables

Figures



Back

Close

Full Screen / Esc

Printer-friendly Version

Interactive Discussion



S_d , mixing ratio (MR), and potential temperature (θ). This avoids the need to stratify or pre-select data, and enables constructing a single ERF that is valid for the entire observation period and, within in range of the measured variables, throughout a catchment of interest.

Hitherto, ERFs were determined as the inverse of a linear mixing matrix, using either numerical (Chen et al., 1999) or regression methods (Hutjes et al., 2010; Ogunjemiyo et al., 2003). Such procedure assumes a linear relationship between drivers and responses, which is subject of on-going discussion and research (e.g. Raupach and Finnigan, 1995). Instead, the present approach uses boosted regression trees (BRT), a non-parametric machine learning technique, to establish an ERF between drivers and responses. In contrast to parametric approaches, BRT does not assume a predetermined form of the response, but constructs an ERF according to information in the data. BRT can fit complex nonlinear relationships, automatically handle interactions between drivers, and provide predictive performance that is superior to most traditional modelling methods (e.g. Hu et al., 2010). Here we use the BRT work package by Elith et al. (2008), which builds upon the GBM library by Ridgeway (2012). To identify the optimal choice of parameters and variables for the BRT, a sensitivity analysis was conducted using the cross-validation procedure described in Elith et al. (2008). During cross validation all available data is divided into 10 random combinations of training (90 %) and evaluation (10 %) fractions, which allows assessing and optimising model performance. The parameter setting that minimized predictive deviance for the present dataset were found to be, respectively; absolute (Laplace) error structure, bag fraction (0.7), tree complexity (5), learning rate (0.1), and number of trees (10^4). The initial set of variables also included time of the day, MODIS albedo, atmospheric pressure, land cover, z , z_j , u , u_* , z_0 , virtual potential temperature, as well as elevation, topographic wetness index, aspect, and slope of the footprint modelled source area. Using the variable dropping algorithm of Elith et al. (2008), a compromise between predictive deviance and model parsimony was sought. The final BRT model is fitting an ERF to H and LE as function of only the five most important variables (LST, EVI,

BGD

9, 15937–16003, 2012

Spatial resolution and regionalization of airborne flux measurements

S. Metzger et al.

Title Page

Abstract

Introduction

Conclusions

References

Tables

Figures

⏪

⏩

◀

▶

Back

Close

Full Screen / Esc

Printer-friendly Version

Interactive Discussion

S_{\downarrow} , MR, and θ). This BRT is then used to predict H and LE throughout the XRC, as a function of LST and EVI for each grid cell, and the median S_{\downarrow} , MR, and θ for the duration of a flight.

In the following we will use the term LTFM, referring to the overall procedure consisting of Low level flights, Time-frequency-, Footprint-, and Machine learning analyses.

2.5 Uncertainty

Throughout the present study, we use the median and the median absolute deviation as preferred measure of location and scale, respectively (Croux and Rousseeuw, 1992; Rousseeuw and Verboven, 2002). For the purpose of detecting systematic differences between observations and predictions, we use the maximum-likelihood fitting of a functional relationship (MLFR, Ripley and Thompson, 1987). This method assigns a weight to each data couple in the relationship, which is inversely proportional to its error variances. In our case, the squared random flux errors in the observations, and the residuals in the BRT cross validation ensemble are used. This appreciates reliable data and depreciates uncertain data couples. The errors in the MLFR coefficients are determined from a jack-knife estimator (Quenouille, 1956; Tukey, 1958). If the regression intercepts were not significant, the relationships were forced through the origin, and confidence intervals were determined from the slope error. The coefficient of determination R^2 was calculated in analogy to weighted least-squares regression (Kvalseth, 1985; Willett and Singer, 1988). It is the proportion of variation in the weighted dependent variable that can be accounted for by the weighted independent variable.

Uncertainty in the LTFM up-scaling procedure originates from different sources during measurement and data analysis. Part of these uncertainty terms exhibit random characteristics, i.e. they tend to cease with sample size. Another part however will systematically bias the results, independent of sample size. An uncertainty budget for the random and systematic uncertainties in the LTFM procedure will consist of uncertainty terms for (i) instrumentation and hardware, (ii) turbulence sampling, (iii) spatio-temporal analysis, (iv) BRT residuals, (v) BRT response function, and (vi) BRT state variables.

Spatial resolution and regionalization of airborne flux measurements

S. Metzger et al.

Title Page

Abstract

Introduction

Conclusions

References

Tables

Figures

⏪

⏩

◀

▶

Back

Close

Full Screen / Esc

Printer-friendly Version

Interactive Discussion



While uncertainty terms (i), (ii), and (iv) can be quantified with readily available procedures (Sects. 2.4, 3.3), we will describe several techniques to assess terms (iii), (v) and (vi) in the following.

2.5.1 Spatio-temporal analysis in heterogeneous terrain

5 Under the umbrella of spatio-temporal analysis we quantify in the following the uncertainty contribution from Wavelet analysis, footprint modelling, and the assumption of linear mixing. The fluxes derived from the wavelet cross-scalogram were adjusted to match the leg-averaged fluxes from time-series EC, which avoids bias between both techniques. Also areas above the wavelet cross-scalogram COI were used in the flux
10 calculation to ensure including all scales of turbulent transport along the entire transect. However, values above the COI are potentially distorted due to edge effects, in particular close to the beginning and the end of each transect. These artefacts propagate in the resulting variances and fluxes, and consequently into the footprint estimates. Additional spatial uncertainty terms result from the use of an “offline” footprint model
15 that does not consider the actual flow field, as well as from the MODIS EVI and LST data. The use of BRT does not expect a linear response between the state variables and the flux signal. However, LTFM still assumes the linear mixing of the flux signal with respect to the contributing surface patches with different biophysical properties and source strengths.

20 To quantify the error inherent to above analysis steps, we compare maps of LTFM predicted fluxes to airborne flux observations. (a) The BRT is trained with all available observations ($N = 8466$), (b) using the median state variables along each flight leg ($N = 42$), the BRT response function is used to predict a similar number of flux maps (Fig. 10), (c) the LTFM footprints are superimposed over these flux maps, (d) for each
25 flux observation a predicted flux is calculated as the footprint-weighted average of all contributing cells, and (e) predictions and observations are compared.

BGD

9, 15937–16003, 2012

Spatial resolution and regionalization of airborne flux measurements

S. Metzger et al.

Title Page

Abstract

Introduction

Conclusions

References

Tables

Figures

⏪

⏩

◀

▶

Back

Close

Full Screen / Esc

Printer-friendly Version

Interactive Discussion

2.5.2 Response function

BRTs are a non-parametric machine learning technique in which a response function is constructed according to the coherencies in the training data. As a direct consequence the predictive performance of BRT depends on how complete the combinations of state variables in the evaluation data are represented in the training data. Here we assess the susceptibility of the BRT response function and predictive performance to missing state variable combinations in the training data. For this purpose, 12 incomplete training data sets are created, each of which omitting a different flight out of the total of 12 flights in Table 1. For each incomplete training data set, (a) the BRT is trained, (b) the resulting response function is used with the state variables along the omitted flight for prediction, and (c) predictions and observations are compared.

2.5.3 State variables

Here, we consider the uncertainty resulting from disregarding part of the natural variability in the state variables that are used for spatially and temporally explicit BRT predictions. For this purpose we quantify the disregarded parts of the natural variability in each state variable and propagate it through the full BRT model. While explicit in time, the meteorological variables measured by the aircraft are not continuous in space throughout the entire catchment. We estimate a measure of spatial variability from all subsequent pairs of flights that are located in different areas of the catchment (Table 1, Fig. 2). The median differences throughout the catchment for $S\downarrow$ ($-6 \pm 12 \text{ W m}^{-2}$), θ ($-1.1 \pm 1.1 \text{ K}$), and MR ($-0.5 \pm 0.3 \text{ K}$) are not significant (Wilcoxon rank-sum test, $p \geq 0.18$). On the contrary, MODIS EVI and LST are explicit in space, but not continuous in time. The 8-day trends from one scene to the next are accounted for in the BRT procedure through temporal interpolation between the MODIS scenes (Sect. 2.2). However, processes of shorter duration, such as frequent events of small-scale convective precipitation, go unaccounted. Hence we estimate a measure of the natural variability between two MODIS scenes. For this purpose we calculate the median change

BGD

9, 15937–16003, 2012

Spatial resolution and regionalization of airborne flux measurements

S. Metzger et al.

Title Page

Abstract

Introduction

Conclusions

References

Tables

Figures

⏪

⏩

◀

▶

Back

Close

Full Screen / Esc

Printer-friendly Version

Interactive Discussion

of all grid cells between all subsequent MODIS scenes, amounting to 0.01 ± 0.05 for EVI and -0.5 ± 6.2 K for LST. The random part of EVI and LST natural variability by far exceeds the MODIS data product uncertainty of ≈ 0.015 (Xiang et al., 2003) and ≈ 1 K (Wan and Li, 2008), respectively. Hence MODIS data product uncertainty was not considered separately.

The correlation matrix between the state variables was calculated using all 8446 aircraft observations. A variance-covariance matrix was calculated from this correlation matrix and the random part of the state variables' natural variability. Preserving the variance-covariance relationship, 1000 samples were drawn from a multivariate normal distribution with zero mean. These represent 1000 combinations of co-existing natural variability in the state space of the BRT model. The propagation through the BRT model was performed individually for each combination by (a) superimposing the estimated natural variability over the measured state variables of all 8446 observations, (b) performing a BRT prediction, and (c) comparing the results to the undisturbed predictions.

3 Results and discussion

In the first part of this section we assess the surface-atmosphere mixing regimes. From there wavelet analysis, footprint modelling and BRTs are used to infer ERFs between land surface properties and the flux measurements. Lastly, uncertainties in the LTFM up-scaling procedure are analysed and discussed.

3.1 Horizontal mixing between surface and flight level

On spatial average energy conservation requires that the vertical profiles of H and LE approach their respective entrainment flux at the top of the CBL (e.g. Deardorff, 1974; Sorbjan, 2006). The linear vertical flux gradient of H throughout the CBL was calculated ($-0.21 \text{ W m}^{-2} \text{ m}^{-1} - -0.06 \text{ W m}^{-2} \text{ m}^{-1}$), assuming that H ceases at the statically stable entrainment zone around 0.8 CBL. However, the entrainment flux of E is unknown.

BGD

9, 15937–16003, 2012

Spatial resolution and regionalization of airborne flux measurements

S. Metzger et al.

Title Page

Abstract

Introduction

Conclusions

References

Tables

Figures

⏪

⏩

◀

▶

Back

Close

Full Screen / Esc

Printer-friendly Version

Interactive Discussion



Hence we cannot estimate the vertical flux gradient of E , but assume a comparable order of magnitude as for H . The resulting effect of the vertical flux gradient below the flight level is $-5 \pm 2\%$ of H , which falls well within the surface layer definition (e.g. Raupach and Finnigan, 1995; Stull, 1988, flux constant within $|5-10\%|$). Thus, it is feasible to assume that H and E measured at flight level are representative of surface fluxes.

The characteristic length scale of surface heterogeneity is in the order of several hundred to thousand meters, with an average of $L_H = 1012 \pm 715$ m (Table 2). Along identical flight paths L_H is comparable between days with different meteorological settings (e.g. 15 and 17 July 2009, 26 and 30 July 2009). This confirms the usefulness of the surface temperature measurement as proxy for surface heterogeneity. Only the longer flight paths C1, C2 cross the dune belt in the centre of the catchment (Fig. 2). The dune belt is the largest continuous land cover following steppe, and consequently the autocorrelation function of T_s estimates large values of L_H (1458–2615 m). During all flights, L_H was small compared to the Raupach length ($L_R = 1532-5214$ m), and thus the influence of the surface heterogeneity is confined within the CBL ($z_i = 1100-2500$ m). Here we use the thermal blending height ($z_{TB1} = 40 \pm 29$ m) as an estimate for the vertical level where quasi-equilibrium of the turbulent exchange between land surface and atmosphere is reached. At all times the flight level ($z = 48-102$ m) is above z_{TB1} and below $\approx 10\%$ of the CBL depth, a common estimate for the depth of the atmospheric surface layer (e.g. Raupach and Finnigan, 1995; Stull, 1988). Hence it is feasible to assume that the turbulence measurement at flight level is representative for the land surface in the flux footprint. The blending length formulations L_{TB1} (1660 ± 723), L_{TB2} (957 ± 441) are used to assess the minimum size of surface heterogeneity that significantly influences the flow at flight level. Here we use $255 \text{ m} < L_{TB2} < 1852$ m as a guideline, because L_{TB2} is also representative of the magnitude of surface heterogeneity. The native resolution of the EVI data (230 m) and the land cover data (90 m) is equal or better than L_{TB2} , and thus sufficient to reproduce the variability of the land

BGD

9, 15937–16003, 2012

Spatial resolution and regionalization of airborne flux measurements

S. Metzger et al.

Title Page

Abstract

Introduction

Conclusions

References

Tables

Figures

⏪

⏩

◀

▶

Back

Close

Full Screen / Esc

Printer-friendly Version

Interactive Discussion

cover. In comparison, the native resolution of the LST data (1000 m) is coarse, potentially leading to an attenuation of the ERFs.

Using the wavelet cross-scalogram, long wavelength contributions to the flux do not constrain the spatial resolution of the flux computation along the flight path. Nevertheless, the random flux error is inversely proportional to the square root of the averaging length (e.g. Lenschow and Stankov, 1986), and propagates directly into the computation of the ERFs. Hence, we consider a trade-off between random error (high resolution) and smearing (low resolution) of the resulting flux estimates. The upwind distance (perpendicular to the WSMA flight path) where 80 % of the flux contributions are included in the footprint, $L_{80\%} = 1171 \pm 314$ m, is comparable in magnitude to L_H . Thus, a flight path length of similar extent (1000 m) is a physically meaningful window for the computation of turbulence statistics and fluxes because (i) changes in the turbulent flux (response) are resolved at the same spatial scale as the characteristic surface heterogeneity (driver); (ii) the turbulence statistics used for footprint calculations are representative on the same spatial scale as the upwind extent; and (iii) the random error for each flux estimate decreases by $\approx -70\%$ compared to a window length of 90 m.

The (aerodynamic) roughness length is usually below 1 m, with exception of the low wind speed situation on 17 July 2009, pattern O11, and the higher flight levels ($z \geq 97$ m) on 26 July 2009 (Table 2).

3.2 Flux un-mixing

The presentation of the flux un-mixing results follows the sequence of LTFM analysis steps. In Sect. 3.2.1 the spatially resolved flux observations from the wavelet cross-scalogram are illustrated. Subsequently, footprint modelling is used to infer the biophysical surface properties in the source area of each flux observation (Sect. 3.2.2). In Sect. 3.2.3 the ERF between flux observations and meteorological and land surface drivers is established. This ERF is then used to predict the surface fluxes throughout the XRC, which are finally summarized for different land covers (Sect. 3.2.4).

Spatial resolution and regionalization of airborne flux measurements

S. Metzger et al.

Title Page

Abstract

Introduction

Conclusions

References

Tables

Figures



Back

Close

Full Screen / Esc

Printer-friendly Version

Interactive Discussion



3.2.1 Spatially resolved flux measurement

Here and in the following we use a flight along pattern O12 for illustration, which follows a shallow elevation gradient (Fig. 4 bottom panel). This flight pattern is particularly suitable for this purpose because of its marked land cover changes over a relatively short distance. The wavelet cross-scalogram allows a high spatial discretization of turbulent flux measurements without neglecting flux contributions from long wavelength (Fig. 4). The resulting high number of flux observations along a flight line leads to previously unachievable resolution and coverage of the state space. Spatially coherent flux contributions are detected on transport scales (eddy sizes) of 500–2000 m, that is of similar size as the extent of homogeneous surface patches L_H . Strong local flux contributions are confined to scales < 500 m, and approximately decay within the lower threshold of the observed blending lengths L_{TB1} , L_{TB2} . This confirms a close coupling between atmospheric turbulence structures with surface patchiness, and consolidates the interpretation of the length scale approach. The less certain flux contributions above the wavelet COI are small (-15 to -4% median differences for all flights). In the present example the COI is confined to relatively small scales (≤ 4 km), which is a direct result of the comparatively short flight. In general, more certain flux contributions below the COI include transport scales up to $\approx 1/3$ of the flight length, and can reach ≈ 16 km for flight patterns C1 and C2. However, this also implies that the maximum considered transport scale differs between the flight patterns, just as it would be the case for the time-domain EC method. The wavelet cross-scalogram reveals strong turbulent transport in the second and fourth quarter of the flight for H , and in the first and third quarter for LE (Fig. 4). When integrated over all transport scales for each overflown 90 m cell of the land cover grid, these patterns correspond to strong upward fluxes.

3.2.2 Land cover

In Sect. 3.2.1, turbulence statistics and fluxes were integrated for each overflown 90 m cell of the land cover grid. In the following we expand the integration window

BGD

9, 15937–16003, 2012

Spatial resolution and regionalization of airborne flux measurements

S. Metzger et al.

Title Page

Abstract

Introduction

Conclusions

References

Tables

Figures

⏪

⏩

◀

▶

Back

Close

Full Screen / Esc

Printer-friendly Version

Interactive Discussion



to overlapping subintervals of 1000 m length, while retaining a spatial discretisation of 90 m. Such procedure significantly reduces the random sampling uncertainty (Sect. 3.1), though at the cost of decreasing the number of resulting observations by one window size ($dN \approx 10$). The resulting turbulence statistics are used to calculate the source area of each individual flux observation along the flight line, which are superimposed over the land cover grids. Figure 5 shows that in general LST and EVI follow the land cover patterns, e.g. lower temperature and higher greenness for irrigated agriculture and marshland. However, it is also evident that the static land cover classification cannot reflect the current surface conditions. E.g. the marshland in the north-western quadrant appears dried-out (high LST and low EVI), while the steppe area in the North-Eastern quadrant shows large variations in LST. Hence, biophysical surface properties also vary significantly within the land cover classes. This is likely a function of geomorphological properties such as aspect, slope and soil type, but also due to the large variability of convective rainfall events across the study area (e.g. Schaffrath et al., 2011).

Following superimposition of the footprints over the land cover data, the spatial contributions of different surface properties to each flux observation can be quantified (Fig. 6). It is evident that measured B_o changes in correspondence with the dominating land cover, i.e. low B_o for marshland and irrigated agriculture, and high B_o for bare soil and steppe. LST and EVI are stratified between the land covers, although in different sequence compared to the regional average (Fig. 3). The variability of LST and EVI within the land cover classes is equal or larger compared to the between-class variability, in particular for marshland, irrigated- and rainfed agriculture. While LST and EVI behave inversely for all natural land covers ($-0.78 < r < -0.10$), the contrary is true for irrigated- ($r = 0.92$) and rainfed ($r = 0.30$) agriculture. This finding is indicative for the cultivation of crops that are not adapted to the semiarid climate, such as potatoes. The albedo of these densely vegetated crops can be lower compared to the sparsely vegetated steppe land cover ($\alpha \approx 0.2$, Ketzner et al., 2008), resulting in higher foliage temperatures.

Spatial resolution and regionalization of airborne flux measurements

S. Metzger et al.

[Title Page](#)[Abstract](#)[Introduction](#)[Conclusions](#)[References](#)[Tables](#)[Figures](#)[⏪](#)[⏩](#)[◀](#)[▶](#)[Back](#)[Close](#)[Full Screen / Esc](#)[Printer-friendly Version](#)[Interactive Discussion](#)

In Fig. 7 H and LE observations along the flight line are shown together with the LST and EVI in the respective source area. Because of the 1000 m integration window over the wavelet cross-scalogram the results appear smoother compared to Fig. 4, where a 90 m integration window is used. It is apparent that H and LE both systematically change with LST ($r_H = 0.64$, $r_{LE} = -0.84$) and EVI ($r_H = -0.62$, $r_{LE} = 0.73$). However, peaks in H (3 km and 9 km in Fig. 7) and in LE (0 km and 7 km) don't manifest when their respective land surface drivers in the footprint are maximal. Instead they seem to follow a trade-off function between LST and EVI.

3.2.3 Environmental response functions

Thus far our findings indicate that the interactions between land surface and atmosphere are multi-facetted and potentially non-linear. Hence we use LST and EVI as topical, spatio-temporal proxies for the source strength of H and LE, rather than using the land cover classification directly. In comparison to earlier flux un-mixing studies (Chen et al., 1999; Hutjes et al., 2010; Ogunjemiyo et al., 2003) this has the benefit of (i) providing individual source strength representations for the effects of surface moisture and temperature, and (ii) representing the land surface by continuous (LST, EVI) rather than discrete variables (land cover classes), thus enabling the use of more advanced scaling algorithms.

Here, we use BRTs to extract the relationships between all ($N = 8446$) flux observations and land cover (LST, EVI) and meteorological (S_{\downarrow} , MR, and θ) variables. While BRTs are capable of reproducing complex interactions through multi-layered branching, the fitted function can be summarized, e.g. as partial dependence plots (Fig. 8). These show the effect of each individual variable on the response after (i) subtraction of the offset ($H_0 = 161 \text{ W m}^{-2}$, $LE_0 = 176 \text{ W m}^{-2}$), and (ii) accounting for the average effects of all other variables in the model. The partial dependence plots in Fig. 8 are sorted in order of the relative importance of the response variables (Friedman, 2001). The most important responses of H are non-linear (LST, θ), followed by linear responses (S_{\downarrow} , MR, and EVI). With the exception of MR and EVI the individual responses are

Spatial resolution and regionalization of airborne flux measurements

S. Metzger et al.

Title Page

Abstract

Introduction

Conclusions

References

Tables

Figures



Back

Close

Full Screen / Esc

Printer-friendly Version

Interactive Discussion



positive in sign. The order of the responses for LE is partially different (MR, LST, θ , S_{\downarrow} , and EVI), and only the responses on S_{\downarrow} and EVI are approximately linear (not shown). With exception of MR (concave, maximal response around 10 g/kg) and LST (convex, minimal response around ≈ 310 K), the signs of the responses for LE are positive.

In Fig. 9 MLFRs are established between BRT fitted values for H and LE and the observed fluxes ($N = 8446$). Here we use the BRT cross-validation residuals and the random sampling errors in the observations to determine the MLFR weights of each data point. For both, H and LE the agreement between the BRT fitted values and the observed fluxes is excellent. Contrary to our initial anticipation, the ERFs are not attenuated by the relatively coarse MODIS LST resolution, as indicated by approximately zero MLFR offset and unity slope. The median absolute deviation in the residuals is small ($\leq 1\%$). However, several outliers are found for moderate to high fluxes of H ($N = 41$) and LE ($N = 133$), for which the BRTs underestimate the observed value by -150 W m^{-2} or more. The majority of these cases occur during the flights O8 on 13 July 2009 and C1 on 26 July 2009, respectively. On both dates the outliers concur with highly intermittent solar irradiance ($200 < S_{\downarrow} < 1200 \text{ W m}^{-2}$) along a short section of the flight paths. For instance an intermittent cloud cover can disrupt the functional relation between the irradiance (driver) and the flux (response) observations because (i) at a flight level of 50–100 m a.g.l., the aircraft irradiance measurement does not represent S_{\downarrow} in the source areas of H and LE, and (ii) the plant physiological response can vary substantially on spatio-temporal scales that are small compared to atmospheric transport processes between the land surface and the aircraft.

3.2.4 Extrapolation and summarization

For the duration of each flight pattern, the trained BRT models are used to extrapolate H and LE throughout the XRC. For this purpose the median meteorological state variables during each flight pattern as well as topical grids of MODIS LST and EVI data are used. Grid cells that exceed the state space of the BRT training data set ($N = 8446$) are excluded from extrapolation. Fig. 10 shows the resulting flux grids for three different

BGD

9, 15937–16003, 2012

Spatial resolution and regionalization of airborne flux measurements

S. Metzger et al.

Title Page

Abstract

Introduction

Conclusions

References

Tables

Figures

⏪

⏩

◀

▶

Back

Close

Full Screen / Esc

Printer-friendly Version

Interactive Discussion



days, with a spatial coverage of $\geq 92\%$. Because of the identical state space ranges for BRT training and prediction, also the ranges of the extrapolated turbulent fluxes are within limits of the observations. Despite the land cover classification was never used during the extrapolation process, several landscape units are clearly recognizable in the flux maps. For instance both, the Xilin river valley, as well as the mountainous headwater area to the east display low H and LE. On the contrary, the non-vegetated basin on the Northern tip shows consistently low evapotranspiration.

For a given meteorological boundary condition (MR, θ , S_{\downarrow}), the heat fluxes within several hours of solar zenith can be expressed as a function of LST and EVI (Fig. 8). In turn, these biophysical surface properties are characteristic within a land cover class (Fig. 3). Here, we aggregate all grid cells of the flux maps according to land cover class, resulting in sample distributions of H and LE. This allows a formal transition from a mosaic- to a tile representation of H and LE over the XRC for the duration of each flight pattern (Mengelkamp et al., 2006). These sample distributions then enable the analysis of land cover specific source strengths ($36 \text{ W m}^{-2} < H < 364 \text{ W m}^{-2}$, $46 \text{ W m}^{-2} < LE < 425 \text{ W m}^{-2}$), as well as the spatial variability within a land cover ($11 \text{ W m}^{-2} < \sigma_H < 169 \text{ W m}^{-2}$, $14 \text{ W m}^{-2} < \sigma_{LE} < 152 \text{ W m}^{-2}$). Table 3 gives an overview of the median land cover specific H and LE over all flight patterns, and their median spatial variability. In comparison, the flight-line average heat fluxes are in the range of $71 \text{ W m}^{-2} < H < 310 \text{ W m}^{-2}$ and $46 \text{ W m}^{-2} < LE < 300 \text{ W m}^{-2}$ (Table B2).

However, the magnitudes of H and LE are not only functions of land cover, but also proportional to the available energy. The available energy changes within, but in particular between flight days (Table 1). To alleviate this effect and to enable the comparison between different flights, we calculate the Bowen ratio $Bo = H/LE$ between the sample distributions. Despite differences in the meteorological drivers (MR, θ , S_{\downarrow}) the median land cover specific Bo agrees well between subsequent flight patterns on all measurement days (Fig. 11). During the afternoon flights $12 \pm 9\%$ higher Bo values are observed compared to the morning flights, as expected from a land surface that desiccates in the course of the day. Nevertheless the 99.9% confidence interval includes

Spatial resolution and regionalization of airborne flux measurements

S. Metzger et al.

[Title Page](#)[Abstract](#)[Introduction](#)[Conclusions](#)[References](#)[Tables](#)[Figures](#)[⏪](#)[⏩](#)[◀](#)[▶](#)[Back](#)[Close](#)[Full Screen / Esc](#)[Printer-friendly Version](#)[Interactive Discussion](#)

unity slope. Hence, for several hours within solar zenith B_o does not change significantly, and can be interpreted as a characteristic land surface property. On this basis we summarize the regional flux estimates for the duration of the flight campaign as time series of land cover specific B_o ratios (Fig. 11). The order of B_o between the land covers largely follows the order of the land cover specific EVI, while the temporal pattern follows the pattern of the land cover specific LST (Fig. 3). High B_o values until mid-campaign indicate that the land surface dries out. This trend is reversed toward the end of the campaign, when the approach of humid air masses leads to considerable precipitation. The median daily natural variability of B_o within the land covers ranges from 48 % (rainfed agriculture) to 79 % (marshland). Water absorbs strongly in the near infrared, leading to negative EVI values that are not indicative of vegetation greenness. Hence EVI values for water surfaces are discarded, and the land cover “Water” cannot be modelled by the present ERF.

3.3 Uncertainty

Metzger et al. (2012) have shown that turbulent flux measurements with the WSMA platform and instrumentation are unbiased, and precise to within 8 %. Uncertainty due to the limited sampling size of turbulent eddies is estimated using the methods of Lenschow and Stankov (1986); Lenschow et al. (1994). Details on the implementation can be found in Metzger et al. (2012). For a single flux measurement the systematic (and random) components of this sampling uncertainty range from < 1 % (57 %) for H to < 1 % (121 %) for LE. Table 4 summarizes above uncertainty sources, as well as additional sources which are treated in the following.

In order to assess the uncertainty arising from the spatio-temporal analyses (Sect. 2.5.1), we compare the median observed and predicted fluxes along all flight legs (Fig. 12). The LTFM predictions slightly overestimate the observed fluxes ($H = 5 %$, $LE = 5 %$), but in both cases the 99.9 % confidence intervals include unity slope. The median differences of $dH = 2 %$ (40 %), and $dLE = 4 %$ (47 %) agree marginally closer.

Spatial resolution and regionalization of airborne flux measurements

S. Metzger et al.

Title Page

Abstract

Introduction

Conclusions

References

Tables

Figures



Back

Close

Full Screen / Esc

Printer-friendly Version

Interactive Discussion



Moreover, the median residuals between fitted and observed values emphasize that the BRT fitting technique is unbiased (Table 4).

Subsequently, we assess the predictive performance of the BRT response function in the light of missing state variable combinations in the training data. For this purpose one flight at a time was omitted from the training data, and the incompletely trained BRT model was used to predict the missing data. The resulting median differences amount to 11 % (69 %, $N = 7311$) for H and 18 % (77 %, $N = 7265$) for LE. During prediction, cases where one or more state variables exceed their respective range during training were excluded. As a consequence the sample size is ≈ 14 % smaller than the total number of observations ($N = 8466$).

Lastly, we consider the uncertainty resulting from disregarding part of the spatio-temporal variability in the state variables during BRT predictions. For this purpose we quantify the disregarded parts of the natural variability, and propagate it through the full BRT model. The resulting median differences amount to 13 % (77 %), and 14 % (75 %) for H , and LE, respectively, and are dominated by the effect of LST natural variability ($r = 0.81$, and -0.69). Because the response of the BRT predictions on LST is non-linear (Fig. 8), deviations of similar magnitude but opposite sign in LST do not cancel out in the predictions. This can lead to a systematic overestimation as a function of the specific state variable combination in each prediction, and is hence dependent on the catchment composition. However, in all test cases the 99.9 % confidence intervals between observed and predicted fluxes include unity slope. Hence we go without introducing a non-linearity response factor, but assign an accuracy of ≤ 20 % to the LTFM method.

Assuming normal distribution and independence, the random parts of all uncertainty terms (in parenthesis, Table 4) can be combined to their Gaussian sum. Then, the ensemble random uncertainty σ_{ens} considers the reduction of the random uncertainty with sample size (e.g. Mahrt, 1998);

$$\sigma_{\text{ens}} = \frac{\sigma_{\text{ran}}}{\sqrt{N}}, \quad (10)$$

**Spatial resolution
and regionalization of
airborne flux
measurements**

S. Metzger et al.

Title Page

Abstract

Introduction

Conclusions

References

Tables

Figures

⏪

⏩

◀

▶

Back

Close

Full Screen / Esc

Printer-friendly Version

Interactive Discussion



with zero expected value σ_{ens} and the SD σ_{ran} of the population with size N . While σ_{ran} is a measure for the average dispersion of a single observation or grid cell, σ_{ens} quantifies the level of confidence we can expect from aggregating multiple observations or grid cells. The resulting ensemble random uncertainty for land cover specific flux estimates throughout the XRC ranges from $< 1\%$ for steppe to 5% for settlements and irrigated agriculture (Table 3).

4 Conclusions

The overarching goal of airborne EC flux measurements is to bridge the gap between observations and data assimilation approaches on different spatial scales. This study develops the LTFM procedure to characterize the exchange of sensible and latent heat for different land covers in a heterogeneous steppe landscape. The procedure “mines” the information content of EC flux observations and extracts quantitative relationships with environmental drivers. In the process LTFM maximises objectivity and data use efficiency – all available observations are considered. The subsequent steps of LTFM are (i) low level EC flux flights, (ii) time-frequency analysis of the flux observations, (iii) source area modelling of continuous biophysical surface properties, and (iv) inferring ERFs from non-parametric machine learning.

1. The use of a weight-shift microlight aircraft with low airspeed and high climb rate enables low level flights at constant height even above topographically structured terrain.
2. Wavelet decomposition of the turbulence data yields unprecedented spatial resolution of the flux observations. However, due to edge effects flux observations close to the start or end of a dataset can contain spectral artefacts. Using alternative techniques such as empirical mode decomposition (Barnhart et al., 2012a,b) might help to further improve the results.

Spatial resolution and regionalization of airborne flux measurements

S. Metzger et al.

Title Page

Abstract

Introduction

Conclusions

References

Tables

Figures



Back

Close

Full Screen / Esc

Printer-friendly Version

Interactive Discussion



Spatial resolution and regionalization of airborne flux measurements

S. Metzger et al.

3. An “offline” footprint parameterization considering 3-D dispersion is suitable to map the differences in surface properties encountered by a flux aircraft. However, when adapting LTFM, e.g. to ground-based measurements, the range of surface properties is likely to shrink significantly. In order to improve the deteriorated signal to noise ratio it might become important to also consider the local flow field, especially when measuring at greater heights. E.g. closure models with terrain-following coordinates (Hsieh and Katul, 2009; Sogachev and Lloyd, 2004) or “on-line” Lagrangian dispersion modelling (Markkanen et al., 2010; Matross et al., 2011; Wang and Rotach, 2010; Weil et al., 2012) could be useful for such purpose.

4. In spite of a static and discrete land cover classification, the LTFM method uses spatio-temporally continuous and topical information of biophysical surface properties. Only the continuous nature of MODIS land surface data enabled the use of the BRT machine learning technique. In this combination the climatic and altitudinal gradients throughout the XRC are successfully reproduced. In the interest of further advancing LTFM, it is desirable to also consider the uncertainty in the observations during machine learning, and to explore alternative machine learning techniques such as support vector machines (e.g. Yang et al., 2007).

The ERFs resulting from LTFM can aid bridging observational scales by, e.g. isolating and quantifying relevant land-atmosphere exchange processes, estimating land cover specific emission factors, extending flux measurements to the catchment scale, assessing the spatial representativeness of EC flux measurements etc. Analogously applying LTFM to ground-based EC measurements could aid, e.g. advancing the treatment of location bias from diagnostic assessment (e.g. Chen et al., 2012) to prognostic transfer functions, constraining local to regional water budgets, distinguishing anthropogenic and natural sources/sinks in urban environments and substantiating process-studies.

[Title Page](#)[Abstract](#)[Introduction](#)[Conclusions](#)[References](#)[Tables](#)[Figures](#)[Back](#)[Close](#)[Full Screen / Esc](#)[Printer-friendly Version](#)[Interactive Discussion](#)

Appendix A

Notation

A1 Abbreviations

3-D	Three-dimensional
a.g.l.	Above ground level
a.s.l.	Above sea level
Arable	Rainfed agriculture
ASTER	Advanced Spaceborne Thermal and Reflection Radiometer
Bare	Bare soil
BRT	Boosted regression trees
CBL	Convective boundary layer
COI	Cone of influence
CST	Chinese standard time (CST = Coordinated universal time + 8)
DFG	German Research Foundation
EC	Eddy covariance
ERF	Environmental response function
IMGERS	Inner Mongolia Grassland Ecosystem Research Station
Irrigated	Irrigated agriculture
KL04	Footprint parameterisation of Kljun et al. (2004)
KL04+	Footprint parameterisation of Kljun et al. (2004) with superimposed cross-wind dispersion function
LTFM	Low level flights, Time-frequency-, Footprint-, and Machine learning analyses
MAGIM	Matter fluxes in grasslands of Inner Mongolia as influenced by stocking rate
Marsh	Marshland
MLFR	Maximum likelihood functional relationship

Spatial resolution and regionalization of airborne flux measurements

S. Metzger et al.

Title Page

Abstract

Introduction

Conclusions

References

Tables

Figures



Back

Close

Full Screen / Esc

Printer-friendly Version

Interactive Discussion



DIR	Wind direction (°)
δj	Wavelet frequency increment (–)
δt	Wavelet time increment (s)
e	Euler's number ≈ 2.71828 (–)
EVI	Enhanced vegetation index (–)
H	Sensible heat flux (Wm^{-2})
i	Imaginary unit $i^2 = -1$ (–)
ID	Flight identifier (–)
j	Running index (–)
J	Number of wavelet scale increments (–)
l	Length of flight line (km)
L	Monin-Obukhov length (m)
$L_{80\%}$	Upwind distance where 80 % of the flux contributions are included in the footprint (m)
LC	Land cover class coverage (%)
LE	Latent heat flux (Wm^{-2})
LST	Land surface temperature (K)
L_H	Horizontal scale of surface heterogeneity (m)
L_R	Raupach length (m)
L_{TB1}	Thermal blending length (m)
L_{TB2}	Improved thermal blending length (m)
MR	Mixing ratio (gkg^{-1})
n	Running index (–)
N	Sample size (–)
p	Probability of test statistic (–)
P	Cumulated precipitation in a 10 day trailing window (mm)
q	Dimensionless wavelet coordinate (–)
r	Pearson correlation coefficient (–)

Spatial resolution and regionalization of airborne flux measurements

S. Metzger et al.

Title Page

Abstract

Introduction

Conclusions

References

Tables

Figures

⏪

⏩

◀

▶

Back

Close

Full Screen / Esc

Printer-friendly Version

Interactive Discussion



rep	Repetitions (–)
S_{\downarrow}	Down-welling shortwave radiation ($W m^{-2}$)
t	Time (s)
T_s	Surface temperature (K)
θ	Potential temperature (K)
$\theta_{0,v}$	Virtual potential temperature (K)
u	Horizontal wind speed ($m s^{-1}$)
u_*	Friction velocity ($m s^{-1}$)
w	Footprint weight (–)
W	Wavelet coefficient (–)
w_*	Convective velocity ($m s^{-1}$)
x	Wildcard for a signal (–)
y	Wildcard for a signal (–)
z	Measurement height (m)
z_0	Aerodynamic roughness length (m)
ω_0	Wavelet frequency parameter (–)
z_i	Convective boundary layer depth (m)
z_{TB1}	Thermal blending height (m)

A4 Subscripts

In general, subscripts follow the parameter and variable definitions in Appendix A3. Instances with differing use of subscripts are defined in the following.

ens	Ensemble
ran	Random
w	Vertical wind component
x	Longitudinal coordinate
y	Latitudinal coordinate

15974

Spatial resolution and regionalization of airborne flux measurements

S. Metzger et al.

Title Page

Abstract

Introduction

Conclusions

References

Tables

Figures



Back

Close

Full Screen / Esc

Printer-friendly Version

Interactive Discussion



Meteorological conditions

The midday flights are usually accompanied by a thin layer of cirrus clouds, interspersed with local convective cumuli, resulting in a cloud cover between 4/8 and 7/8 (Table B1). The down-welling shortwave radiation is decreasing over the duration of the campaign, with minima on 17 and 30 July 2009. These minima coincide with the advection of comparatively moist air, as evident from the higher mixing ratios. $S\downarrow$ also correlates with the precipitation history (Table 1, $r = -0.40$). The wind speed at flight level decays from up to 8.3 ms^{-1} at the beginning down to 2.7 ms^{-1} towards the last quarter of the flight campaign. All wind sectors with the exception of northerlies occur. Both, the virtual potential air temperature and the surface temperature peak during the middle of the flight campaign. As a result of several convective precipitation events the mixing ratio increases over the flight campaign, accompanied by a dampening of the surface temperature variability.

The range of the flight line average turbulent fluxes are $0.3 < u_* < 0.5 \text{ ms}^{-1}$, $71 \text{ W m}^{-2} < H < 310 \text{ W m}^{-2}$ and $46 \text{ W m}^{-2} < \text{LE} < 300 \text{ W m}^{-2}$ (Table B2). The friction velocity peaks during flights under high wind speeds. While H dominates the heat exchange during the middle of the campaign, LE peaks at the beginning and end of the campaign. The Bowen ratio throughout the campaign correlates ($r = -0.67$) with precipitation history (Table 1), i.e. the moisture available for evapotranspiration. Moreover H clearly correlates with $S\downarrow$ ($r = 0.68$), while no such relationship was found for LE ($r = 0.02$). The atmospheric stratification was unstable throughout all flights (Monin-Obukhov length $L_v = -34 \pm 20 \text{ m}$), with corresponding high values of the SD of the vertical wind $\sigma_w = 0.88 \pm 0.11 \text{ ms}^{-1}$ and convective velocity $w_* = 2.21 \pm 0.39 \text{ ms}^{-1}$.

Spatial resolution and regionalization of airborne flux measurements

S. Metzger et al.

Title Page

Abstract

Introduction

Conclusions

References

Tables

Figures

⏪

⏩

◀

▶

Back

Close

Full Screen / Esc

Printer-friendly Version

Interactive Discussion



Spatial resolution and regionalization of airborne flux measurements

S. Metzger et al.

Title Page

Abstract

Introduction

Conclusions

References

Tables

Figures



Back

Close

Full Screen / Esc

Printer-friendly Version

Interactive Discussion



Acknowledgements. We wish to thank Henry Loescher and Jeffrey Taylor at the National Ecological Observatory Network, Fundamental Instrument Unit, for their continued support and statistical advice. The National Ecological Observatory Network is a project sponsored by the National Science Foundation and managed under cooperative agreement by NEON, Inc. This material is based upon work supported by the National Science Foundation under the grant DBI-0752017. Any opinions, findings, and conclusions or recommendations expressed in this material are those of the author(s) and do not necessarily reflect the views of the National Science Foundation. Thanks go to Matthias Reiche at the Leibniz Centre for Agricultural Landscape Research, Institute of Soil Landscape Research, who provided the ASTER imagery used in this study. Recognition has to be given to Benjamin Blank, formerly Justus-Liebig-University Giessen, Institute of Landscape Ecology and Resources Management, who prepared the overview Fig. 1. The MODIS data were obtained through the online Data Pool at the NASA Land Processes Distributed Active Archive Centre, USGS/Earth Resources Observation and Science Centre (https://lpdaac.usgs.gov/get_data). The flight campaign in Inner Mongolia was funded by the German Research Foundation, research group FOR 536 MAGIM, “Matter fluxes in grasslands of Inner Mongolia as influenced by stocking rate”, and the National Natural Science Foundation of China, grant number 41021004. Stipend funding by the German Academic Exchange Service, Helmholtz Association of German Research Centres, China Scholarship Council and the European Union under the Science and Technology Fellowship China is acknowledged.

The service charges for this open access publication have been covered by a Research Centre of the Helmholtz Association.

References

- Anderson, M. C., Kustas, W. P., Alfieri, J. G., Gao, F., Hain, C., Prueger, J. H., Evett, S., Colaizzi, P., Howell, T., and Chávez, J. L.: Mapping daily evapotranspiration at Landsat spatial scales during the BEAREX'08 field campaign, *Adv. Water Res.*, in press, doi:10.1016/j.advwatres.2012.06.005, 2012.
- Auerswald, K., Wittmer, M. H. O. M., Männel, T. T., Bai, Y. F., Schäufele, R., and Schnyder, H.: Large regional-scale variation in C3/C4 distribution pattern of Inner Mongolia steppe is revealed by grazer wool carbon isotope composition, *Biogeosciences*, 6, 795–805, doi:10.5194/bg-6-795-2009, 2009.
- Baldocchi, D., Falge, E., Gu, L., Olson, R., Hollinger, D., Running, S., Anthoni, P., Bernhofer, C., Davis, K., Evans, R., Fuentes, J., Goldstein, A., Katul, G., Law, B., Lee, X., Malhi, Y., Meyers, T., Munger, W., Oechel, W., U., K., Pilegaard, K., Schmid, H., Valentini, R., Verma, S., Vesala, T., Wilson, K., and Wofsy, S.: FLUXNET: A new tool to study the temporal and spatial variability of ecosystem-scale carbon dioxide, water vapor, and energy flux densities, *Bull. Am. Meteorol. Soc.*, 82, 2415–2434, doi:10.1175/1520-0477(2001)082<2415:FANTTS>2.3.CO;2, 2001.
- Bange, J., Spiess, T., Herold, M., Beyrich, F., and Hennemuth, B.: Turbulent fluxes from Helipod flights above quasi-homogeneous patches within the LITFASS area, *Bound.-Lay. Meteorol.*, 121, 127–151, doi:10.1007/s10546-006-9106-0, 2006.
- Barnhart, B. L., Eichinger, W. E., and Prueger, J. H.: Introducing an Ogive method for discontinuous data, *Agr. Forest. Meteorol.*, 162–163, 58–62, doi:10.1016/j.agrformet.2012.04.003, 2012a.
- Barnhart, B. L., Eichinger, W. E., and Prueger, J. H.: A new eddy-covariance method using empirical mode decomposition, *Bound.-Lay. Meteorol.*, 145, 369–382, doi:10.1007/s10546-012-9741-6, 2012b.
- Beyrich, F., Leps, J. P., Mauder, M., Bange, J., Foken, T., Huneke, S., Lohse, H., Ludi, A., Meijninger, W. M. L., Mironov, D., Weisensee, U., and Zittel, P.: Area-averaged surface fluxes over the LITFASS region based on eddy-covariance measurements, *Bound.-Lay. Meteorol.*, 121, 33–65, doi:10.1007/s10546-006-9052-x, 2006.
- Businger, J. A., Wyngaard, J. C., Izumi, Y., and Bradley, E. F.: Flux-profile relationships in the atmospheric surface layer, *J. Atmos. Sci.*, 28, 181–189, doi:10.1175/1520-0469(1971)028<0181:FPRITA>2.0.CO;2, 1971.

Spatial resolution and regionalization of airborne flux measurements

S. Metzger et al.

Title Page

Abstract

Introduction

Conclusions

References

Tables

Figures

◀

▶

◀

▶

Back

Close

Full Screen / Esc

Printer-friendly Version

Interactive Discussion



Spatial resolution and regionalization of airborne flux measurements

S. Metzger et al.

Title Page

Abstract

Introduction

Conclusions

References

Tables

Figures

⏪

⏩

◀

▶

Back

Close

Full Screen / Esc

Printer-friendly Version

Interactive Discussion

- Butterbach-Bahl, K., Kögel-Knabner, I., and Han, X.: Steppe ecosystems and climate and land-use changes – vulnerability, feedbacks and possibilities for adaptation, *Plant Soil*, 340, 1–6, doi:10.1007/s11104-010-0651-4, 2011.
- Chen, B., Coops, N. C., Fu, D., Margolis, H. A., Amiro, B. D., Black, T. A., Arain, M. A., Barr, A. G., Bourque, C. P. A., Flanagan, L. B., Lafleur, P. M., McCaughey, J. H., and Wofsy, S. C.: Characterizing spatial representativeness of flux tower eddy-covariance measurements across the Canadian Carbon Program Network using remote sensing and footprint analysis, *Remote Sens. Environ.*, 124, 742–755, doi:10.1016/j.rse.2012.06.007, 2012.
- Chen, J. M., Leblanc, S. G., Cihlar, J., Desjardins, R. L., and MacPherson, J. I.: Extending aircraft- and tower-based CO₂ flux measurements to a boreal region using a Landsat thematic mapper land cover map, *J. Geophys. Res. Atmos.*, 104, 16859–16877, doi:10.1029/1999JD900129, 1999.
- Chen, Z. Z.: Topography and climate of the Xilin river basin, *Research on grassland ecosystem*, 3, 13–22, 1988.
- Croux, C. and Rousseeuw, P. J.: Time-efficient algorithms for two highly robust estimators of scale, *Computation. Stat.*, 1, 411–428, 1992.
- Deardorff, J. W.: Three-dimensional numerical study of turbulence in an entraining mixed layer, *Bound.-Lay. Meteorol.*, 7, 199–226, doi:10.1007/bf00227913, 1974.
- Desjardins, R. L., MacPherson, J. I., Schuepp, P. H., and Hayhoe, H. N.: Airborne flux measurements of CO₂, sensible, and latent heat over the Hudson Bay lowland, *J. Geophys. Res. Atmos.*, 99, 1551–1561, doi:10.1029/93JD01296, 1994.
- Desjardins, R. L., Macpherson, J. I., Neumann, H., Den Hartog, G., and Schuepp, P. H.: Flux estimates of latent and sensible heat, carbon dioxide, and ozone using an aircraft-tower combination, *Atmos. Environ.*, 29, 3147–3158, doi:10.1016/1352-2310(95)00007-L, 1995.
- Desjardins, R. L., MacPherson, J. I., Mahrt, L., Schuepp, P., Pattey, E., Neumann, H., Baldocchi, D., Wofsy, S., Fitzjarrald, D., McCaughey, H., and Joiner, D. W.: Scaling up flux measurements for the boreal forest using aircraft-tower combinations, *J. Geophys. Res. Atmos.*, 102, 29125–29133, doi:10.1029/97JD00278, 1997.
- Elith, J., Leathwick, J. R., and Hastie, T.: A working guide to boosted regression trees, *Journal of Animal Ecology*, 77, 802–813, doi:10.1111/j.1365-2656.2008.01390.x, 2008.
- Emeis, S., Schäfer, K., and Münkel, C.: Surface-based remote sensing of the mixing-layer height – a review, *Meteorol. Z.*, 17, 621–630, doi:10.1127/0941-2948/2008/0312, 2008.

Spatial resolution and regionalization of airborne flux measurements

S. Metzger et al.

Title Page

Abstract

Introduction

Conclusions

References

Tables

Figures

⏪

⏩

◀

▶

Back

Close

Full Screen / Esc

Printer-friendly Version

Interactive Discussion



- Fan, L., Liu, S., Bernhofer, C., Liu, H., and Berger, F. H.: Regional land surface energy fluxes by satellite remote sensing in the Upper Xilin River Watershed (Inner Mongolia, China), *Theor. Appl. Climatol.*, 88, 231–245, doi:10.1007/s00704-006-0241-9, 2007.
- Friedman, J. H.: Greedy function approximation: A gradient boosting machine, *Ann. Stat.*, 29, 1189–1232, doi:10.1214/aos/1013203451, 2001.
- Gioli, B., Miglietta, F., De Martino, B., Hutjes, R. W. A., Dolman, H. A. J., Lindroth, A., Schumacher, M., Sanz, M. J., Manca, G., Peressotti, A., and Dumas, E. J.: Comparison between tower and aircraft-based eddy covariance fluxes in five European regions, *Agr. Forest. Meteorol.*, 127, 1–16, doi:10.1016/j.agrformet.2004.08.004, 2004.
- Glenn, E. P., Huete, A. R., Nagler, P. L., and Nelson, S. G.: Relationship between remotely-sensed vegetation indices, canopy attributes and plant physiological processes: what vegetation indices can and cannot tell us about the landscape, *Sensors*, 8, 2136–2160, doi:10.3390/s8042136, 2008.
- Helmis, C., Sgouros, G., Tombrou, M., Schäfer, K., Munkel, C., Bossioli, E., and Dandou, A.: A comparative study and evaluation of mixing-height estimation based on SODAR-RASS, ceilometer data and numerical model simulations, *Bound.-Lay. Meteorol.*, 145, 507–526, doi:10.1007/s10546-012-9743-4, 2012.
- Högström, U.: Non-dimensional wind and temperature profiles in the atmospheric surface layer: a re-evaluation, *Bound.-Lay. Meteorol.*, 42, 55–78, doi:10.1007/BF00119875, 1988.
- Hsieh, C.-I. and Katul, G.: The Lagrangian stochastic model for estimating footprint and water vapor fluxes over inhomogeneous surfaces, *Int. J. Biometeorol.*, 53, 87–100, doi:10.1007/s00484-008-0193-0, 2009.
- Hu, F. S., Higuera, P. E., Walsh, J. E., Chapman, W. L., Duffy, P. A., Brubaker, L. B., and Chipman, M. L.: Tundra burning in Alaska: linkages to climatic change and sea ice retreat, *J. Geophys. Res.*, 115, G04002, doi:10.1029/2009jg001270, 2010.
- Hutjes, R. W. A., Vellinga, O. S., Gioli, B., and Miglietta, F.: Dis-aggregation of airborne flux measurements using footprint analysis, *Agr. Forest. Meteorol.*, 150, 966–983, doi:10.1016/j.agrformet.2010.03.004, 2010.
- Jiang, S.: An introduction to the Inner Mongolia Grassland Ecosystem Research Station, *Research on grassland ecosystem*, 1, 1–11, 1985.
- Kaharabata, S. K., Schuepp, P. H., Ogunjemiyo, S., Shen, S., Leclerc, M. Y., Desjardins, R. L., and MacPherson, J. I.: Footprint considerations in BOREAS, *J. Geophys. Res. Atmos.*, 102, 29113–29124, doi:10.1029/97JD02559, 1997.

Spatial resolution and regionalization of airborne flux measurements

S. Metzger et al.

Title Page

Abstract

Introduction

Conclusions

References

Tables

Figures

⏪

⏩

◀

▶

Back

Close

Full Screen / Esc

Printer-friendly Version

Interactive Discussion



Kaminski, T., Rayner, P. J., Voßbeck, M., Scholze, M., and Koffi, E.: Observing the continental-scale carbon balance: assessment of sampling complementarity and redundancy in a terrestrial assimilation system by means of quantitative network design, *Atmos. Chem. Phys.*, 12, 7867–7879, doi:10.5194/acp-12-7867-2012, 2012.

5 Ketzer, B., Liu, H., and Bernhofer, C.: Surface characteristics of grasslands in Inner Mongolia as detected by micrometeorological measurements, *Int. J. Biometeorol.*, 52, 563–574, doi:10.1007/s00484-008-0148-5, 2008.

Kirby, S., Dobosy, R., Williamson, D., and Dumas, E.: An aircraft-based data analysis method for discerning individual fluxes in a heterogeneous agricultural landscape, *Agr. Forest. Meteorol.*, 148, 481–489, doi:10.1016/j.agrformet.2007.10.011, 2008.

10 Kljun, N., Rotach, M. W., and Schmid, H. P.: A three-dimensional backward lagrangian footprint model for a wide range of boundary-layer stratifications, *Bound.-Lay. Meteorol.*, 103, 205–226, doi:10.1023/A:1014556300021, 2002.

Kljun, N., Calanca, P., Rotach, M. W., and Schmid, H. P.: A simple parameterisation for flux footprint predictions, *Bound.-Lay. Meteorol.*, 112, 503–523, 2004.

Kljun, N., Rotach, M. W., and Schmid, H. P.: A simple parameterisation for two-dimensional flux footprints, in preparation, 2012.

Kvalseth, T. O.: Cautionary note about R^2 , *Am. Stat.*, 39, 279–285, 1985.

15 Lenschow, D. H. and Stankov, B. B.: Length scales in the convective boundary layer, *J. Atmos. Sci.*, 43, 1198–1209, doi:10.1175/1520-0469(1986)043<1198:LSITCB>2.0.CO;2, 1986.

Lenschow, D. H., Mann, J., and Kristensen, L.: How long is long enough when measuring fluxes and other turbulence statistics?, *J. Atmos. Oceanic Technol.*, 11, 661–673, doi:10.1175/1520-0426(1994)011<0661:HLILEW>2.0.CO;2, 1994.

20 Liang, E., Shao, X., Hu, Y., and Lin, J.: Dendroclimatic evaluation of climate-growth relationships of Meyer spruce (*Picea meyeri*) on a sandy substrate in semi-arid grassland, North China, *Trees-Struct. Funct.*, 15, 230–235, doi:10.1007/s004680100097, 2001.

Liu, C., Holst, J., Brüggemann, N., Butterbach-Bahl, K., Yao, Z., Han, S., Han, X., and Zheng, X.: Effects of irrigation on nitrous oxide, methane and carbon dioxide fluxes in an Inner Mongolian steppe, *Adv. Atmos. Sci.*, 25, 748–756, doi:10.1007/s00376-008-0748-3, 2008.

30 Lyons, T. J. and Halldin, S.: Surface heterogeneity and the spatial variation of fluxes, *Agr. Forest. Meteorol.*, 121, 153–165, doi:10.1016/j.agrformet.2003.08.031, 2004.

Mahrt, L.: Flux sampling errors for aircraft and towers, *J. Atmos. Oceanic Technol.*, 15, 416–429, doi:10.1175/1520-0426(1998)015<0416:FSEFAA>2.0.CO;2, 1998.

Spatial resolution and regionalization of airborne flux measurements

S. Metzger et al.

Title Page

Abstract

Introduction

Conclusions

References

Tables

Figures

◀

▶

◀

▶

Back

Close

Full Screen / Esc

Printer-friendly Version

Interactive Discussion



- Mahrt, L.: Surface heterogeneity and vertical structure of the boundary layer, *Bound.-Lay. Meteorol.*, 96, 33–62, doi:10.1023/a:1002482332477, 2000.
- Markkanen, T., Steinfeld, G., Kljun, N., Raasch, S., and Foken, T.: A numerical case study on footprint model performance under inhomogeneous flow conditions, *Meteorol. Z.*, 19, 539–547, doi:10.1127/0941-2948/2010/0488, 2010.
- Mason, P. J.: The formation of areally-averaged roughness lengths, *Q. J. R. Meteorolog. Soc.*, 114, 399–420, doi:10.1002/qj.49711448007, 1988.
- Matross, D. M., Andrews, A., Pathmathevan, M., Gerbig, C., Lin, J. C., Wofsy, S. C., Daube, B. C., Gottlieb, E. W., Chow, V. Y., Lee, J. T., Zhao, C., Bakwin, P. S., Munger, J. W., and Hollinger, D. Y.: Estimating regional carbon exchange in New England and Quebec by combining atmospheric, ground-based and satellite data, *Tellus B*, 58, 344–358, doi:10.1111/j.1600-0889.2006.00206.x, 2011.
- Mauder, M., Desjardins, R. L., and MacPherson, I.: Scale analysis of airborne flux measurements over heterogeneous terrain in a boreal ecosystem, *J. Geophys. Res. Atmos.*, 112, D13112, doi:10.1029/2006JD008133, 2007.
- Meijninger, W. M. L., Beyrich, F., Lüdi, A., Kohsiek, W., and De Bruin, H. A. R.: Scintillometer-based turbulent fluxes of sensible and latent heat over a heterogeneous land surface – a contribution to LITFASS-2003, *Bound.-Lay. Meteorol.*, 121, 89–110, doi:10.1007/s10546-005-9022-8, 2006.
- Mengelkamp, H. T., Beyrich, F., Heinemann, G., Ament, F., Bange, J., Berger, F., Bosenberg, J., Foken, T., Hennemuth, B., Heret, C., Huneke, S., Johnsen, K. P., Kerschgens, M., Kohsiek, W., Leps, J. P., Liebethal, C., Lohse, H., Mauder, M., Meijninger, W., Raasch, S., Simmer, C., Spiess, T., Tittebrand, A., Uhlenbrock, J., and Zittel, R.: Evaporation over a heterogeneous land surface – the EVA-GRIPS project, *Bull. Am. Meteorol. Soc.*, 87, 775–786, doi:10.1175/BAMS-87-6-775, 2006.
- Metzger, S., Junkermann, W., Butterbach-Bahl, K., Schmid, H. P., and Foken, T.: Measuring the 3-D wind vector with a weight-shift microlight aircraft, *Atmos. Meas. Tech.*, 4, 1421–1444, doi:10.5194/amt-4-1421-2011, 2011.
- Metzger, S., Junkermann, W., Mauder, M., Beyrich, F., Butterbach-Bahl, K., Schmid, H. P., and Foken, T.: Eddy-covariance flux measurements with a weight-shift microlight aircraft, *Atmos. Meas. Tech.*, 5, 1699–1717, doi:10.5194/amt-5-1699-2012, 2012.
- Meurer, M. and Jiang, Y.: Die Steppen Nordchinas und ihre Belastung durch weide- und landwirtschaftliche Landnutzung, *Geographische Rundschau*, 53, 48–52, 2001.

Spatial resolution and regionalization of airborne flux measurements

S. Metzger et al.

Title Page

Abstract

Introduction

Conclusions

References

Tables

Figures

◀

▶

◀

▶

Back

Close

Full Screen / Esc

Printer-friendly Version

Interactive Discussion

- Münkel, C. and Roininen, R.: Automatic monitoring of boundary layer structures and depth with ceilometer using a novel robust algorithm, International Symposium for the Advancement of Boundary Layer Remote Sensing, Paris, France, 2010.
- Nagler, P. L., Glenn, E. P., Kim, H., Emmerich, W., Scott, R. L., Huxman, T. E., and Huete, A. R.: Relationship between evapotranspiration and precipitation pulses in a semiarid rangeland estimated by moisture flux towers and MODIS vegetation indices, *J. Arid. Environ.*, 70, 443–462, doi:10.1016/j.jaridenv.2006.12.026, 2007.
- Ogunjemiyo, S. O., Kaharabata, S. K., Schuepp, P. H., MacPherson, I. J., Desjardins, R. L., and Roberts, D. A.: Methods of estimating CO₂, latent heat and sensible heat fluxes from estimates of land cover fractions in the flux footprint, *Agr. Forest. Meteorol.*, 117, 125–144, doi:10.1016/S0168-1923(03)00061-3, 2003.
- Qi, Y.-C., Dong, Y.-S., Liu, J.-Y., Domroes, M., Geng, Y.-B., Liu, L.-X., Liu, X.-R., and Xiao, H. Y.: Effect of the conversion of grassland to spring wheat field on the CO₂ emission characteristics in Inner Mongolia, China, *Soil Tillage Res.*, 94, 310–320, doi:10.1016/j.still.2006.08.008, 2007.
- Quenouille, M. H.: Notes on bias in estimation, *Biometrika*, 43, 353–360, doi:10.1093/biomet/43.3-4.353, 1956.
- R Development Core Team: R: A language and environment for statistical computing, R Foundation for Statistical Computing, Vienna, Austria, 2012.
- Raupach, M. R. and Finnigan, J. J.: Scale issues in boundary-layer meteorology: Surface energy balances in heterogeneous terrain, *Hydrol. Processes*, 9, 589–612, doi:10.1002/hyp.3360090509, 1995.
- Ridgeway, G.: gbm V1.6-3.2 – Generalized boosted regression models, available under: <http://cran.r-project.org/web/packages/gbm/>, 2012.
- Ripley, B. D. and Thompson, M.: Regression techniques for the detection of analytical bias, *Analyst*, 112, 377–383, doi:10.1039/an9871200377, 1987.
- Rousseeuw, P. J. and Verboven, S.: Robust estimation in very small samples, *Computation. Stat. Data An.*, 40, 741–758, doi:10.1016/S0167-9473(02)00078-6, 2002.
- Schaffrath, D., Barthold, F., and Bernhofer, C.: Spatiotemporal variability of grassland vegetation cover in a catchment in Inner Mongolia, China, derived from MODIS data products, *Plant Soil*, 340, 181–198, doi:10.1007/s11104-010-0465-4, 2011.

Spatial resolution and regionalization of airborne flux measurements

S. Metzger et al.

Title Page

Abstract

Introduction

Conclusions

References

Tables

Figures

⏪

⏩

◀

▶

Back

Close

Full Screen / Esc

Printer-friendly Version

Interactive Discussion



Schmid, H. P.: Footprint modeling for vegetation atmosphere exchange studies: a review and perspective, *Agr. Forest. Meteorol.*, 113, 159–183, doi:10.1016/S0168-1923(02)00107-7, 2002.

Schuepp, P. H., MacPherson, J. I., and Desjardins, R. L.: Adjustment of footprint correction for airborne flux mapping over the FIFE site, *J. Geophys. Res. Atmos.*, 97, 18455–18466, doi:10.1029/92JD00884, 1992.

Sogachev, A. and Lloyd, J.: Using a one-and-a-half order closure model of the atmospheric boundary layer for surface flux footprint estimation, *Bound.-Lay. Meteorol.*, 112, 467–502, 2004.

Sorbjan, Z.: Statistics of scalar fields in the atmospheric boundary layer based on large-eddy simulations. Part 2: forced convection, *Bound.-Lay. Meteorol.*, 119, 57–79, doi:10.1007/s10546-005-9014-8, 2006.

Steffens, M., Kölbl, A., Totsche, K. U., and Kögel-Knabner, I.: Grazing effects on soil chemical and physical properties in a semiarid steppe of Inner Mongolia (China), *Geoderma*, 143, 63–72, doi:10.1016/j.geoderma.2007.09.004, 2008.

Strunin, M. A. and Hiyama, T.: Applying wavelet transforms to analyse aircraft-measured turbulence and turbulent fluxes in the atmospheric boundary layer over Eastern Siberia, *Hydrol. Process.*, 18, 3081–3098, doi:10.1002/hyp.5750, 2004.

Strunin, M. A., Hiyama, T., Asanuma, J., and Ohata, T.: Aircraft observations of the development of thermal internal boundary layers and scaling of the convective boundary layer over non-homogeneous land surfaces, *Bound.-Lay. Meteorol.*, 111, 491–522, 2004.

Stull, R. B.: *An Introduction to Boundary Layer Meteorology*, Kluwer Academic Publishers, Dordrecht, 670 pp., 1988.

Thomas, R. M., Lehmann, K., Nguyen, H., Jackson, D. L., Wolfe, D., and Ramanathan, V.: Measurement of turbulent water vapor fluxes using a lightweight unmanned aerial vehicle system, *Atmos. Meas. Tech.*, 5, 243–257, doi:10.5194/amt-5-243-2012, 2012.

Torrence, C. and Compo, G. P.: A practical guide to wavelet analysis, *Bull. Am. Meteorol. Soc.*, 79, 61–78, doi:10.1175/1520-0477(1998)079<0061:apgtwa>2.0.co;2, 1998.

Tukey, J. W.: Bias and confidence in not-quite large samples, *Ann. Math. Stat.*, 29, 614, 1958.

Vellinga, O. S., Gioli, B., Elbers, J. A., Holtslag, A. A. M., Kabat, P., and Hutjes, R. W. A.: Regional carbon dioxide and energy fluxes from airborne observations using flight-path segmentation based on landscape characteristics, *Biogeosciences*, 7, 1307–1321, doi:10.5194/bg-7-1307-2010, 2010.

Spatial resolution and regionalization of airborne flux measurements

S. Metzger et al.

[Title Page](#)
[Abstract](#)
[Introduction](#)
[Conclusions](#)
[References](#)
[Tables](#)
[Figures](#)
[⏪](#)
[⏩](#)
[◀](#)
[▶](#)
[Back](#)
[Close](#)
[Full Screen / Esc](#)
[Printer-friendly Version](#)
[Interactive Discussion](#)


- Vesala, T., Kljun, N., Rannik, U., Rinne, J., Sogachev, A., Markkanen, T., Sabelfeld, K., Foken, T., and Leclerc, M. Y.: Flux and concentration footprint modelling: state of the art, *Environ. Pollut.*, 152, 653–666, doi:10.1016/j.envpol.2007.06.070, 2008.
- Vetter, S., Schaffrath, D., and Bernhofer, C.: Spatial simulation of evapotranspiration of semi-arid Inner Mongolian grassland based on MODIS and eddy covariance data, *Environmental Earth Sciences*, 65, 1567–1574, doi:10.1007/s12665-011-1187-5, 2012.
- Vickers, D. and Mahrt, L.: Quality control and flux sampling problems for tower and aircraft data, *J. Atmos. Oceanic Technol.*, 14, 512–526, doi:10.1175/1520-0426(1997)014<0512:QCAFSP>2.0.CO;2, 1997.
- Wan, Z. and Li, Z. L.: Radiance-based validation of the V5 MODIS land-surface temperature product, *Int. J. Remote Sens.*, 29, 5373–5395, doi:10.1080/01431160802036565, 2008.
- Wang, W. and Rotach, M. W.: Flux footprints over an undulating surface, *Bound.-Lay. Meteorol.*, 136, 325–340, doi:10.1007/s10546-010-9498-8, 2010.
- Webb, E. K., Pearman, G. I., and Leuning, R.: Correction of flux measurements for density effects due to heat and water vapour transfer, *Q. J. R. Meteorolog. Soc.*, 106, 85–100, doi:10.1002/qj.49710644707, 1980.
- Weil, J., Sullivan, P., Patton, E., and Moeng, C.-H.: Statistical variability of dispersion in the convective boundary layer: ensembles of simulations and observations, *Bound.-Lay. Meteorol.*, 145, 185–210, doi:10.1007/s10546-012-9704-y, 2012.
- Wiesmeier, M., Barthold, F., Blank, B., and Kögel-Knabner, I.: Digital mapping of soil organic matter stocks using random forest modeling in a semi-arid steppe ecosystem, *Plant Soil*, 340, 7–24, doi:10.1007/s11104-010-0425-z, 2011.
- Willett, J. B. and Singer, J. D.: Another cautionary note about R^2 : Its use in weighted least-squares regression analysis, *Am. Stat.*, 42, 236–238, 1988.
- Wittmer, M. H. O. M., Auerswald, K., Bai, Y., Schäufele, R., and Schnyder, H.: Changes in the abundance of C3/C4 species of Inner Mongolia grassland: Evidence from isotopic composition of soil and vegetation, *Global Change Biol.*, 16, 605–616, doi:10.1111/j.1365-2486.2009.02033.x, 2010.
- Wood, N. and Mason, P.: The influence of static stability on the effective roughness lengths for momentum and heat transfer, *Q. J. R. Meteorolog. Soc.*, 117, 1025–1056, doi:10.1002/qj.49711750108, 1991.

Spatial resolution and regionalization of airborne flux measurements

S. Metzger et al.

Title Page

Abstract

Introduction

Conclusions

References

Tables

Figures

◀

▶

◀

▶

Back

Close

Full Screen / Esc

Printer-friendly Version

Interactive Discussion



Xiang, G., Huete, A. R., and Didan, K.: Multisensor comparisons and validation of MODIS vegetation indices at the semiarid Jornada experimental range, *IEEE Trans. Geosci. Remote Sens.*, 41, 2368–2381, doi:10.1109/tgrs.2003.813840, 2003.

5 Yang, F., Ichii, K., White, M. A., Hashimoto, H., Michaelis, A. R., Votava, P., Zhu, A. X., Huete, A., Running, S. W., and Nemani, R. R.: Developing a continental-scale measure of gross primary production by combining MODIS and AmeriFlux data through support vector machine approach, *Remote Sens. Environ.*, 110, 109–122, doi:10.1016/j.rse.2007.02.016, 2007.

10 Ziehn, T., Knorr, W., and Scholze, M.: Investigating spatial differentiation of model parameters in a carbon cycle data assimilation system, *Global Biogeochem. Cy.*, 25, GB2021, doi:10.1029/2010gb003886, 2011.

Table 1. Summary of the WSMA flights selected for analysis and related surface conditions. Shown are date, Chinese standard time (CST = Coordinated universal time + 8), flight identifier (ID), length of each flight line l , repetitions rep, cumulated precipitation in a 10 day trailing window P , most frequently occurring land cover classes LC1–LC3, and the enhanced vegetation index EVI immediately below the flight lines. A legend with colour codes for LC and EVI is provided at the bottom. The LC colour code and corresponding abbreviations are identical with Fig. 2.

Date	Time CST	ID	l [km]	rep	P [mm]	LC1	LC2	LC3	EVI
8 Jul 2009	10:20–10:50	O10	15	3	1.4	54%	35%	6%	35 ± 13%
	12:00–12:50	O12	13	6		32%	30%	21%	35 ± 18%
13 Jul 2009	11:30–12:10	O8	30	2	5.0	59%	15%	11%	32 ± 10%
	12:40–13:10	O3	21	2		70%	17%	13%	25 ± 6%
15 Jul 2009	11:30–12:20	O11	11	6	5.0	48%	42%	10%	33 ± 9%
	12:30–13:00	O7	11	4		79%	16%	4%	21 ± 6%
17 Jul 2009	11:00–11:30	O11	11	4	5.2	54%	40%	4%	36 ± 12%
	12:20–13:00	O7	11	5		82%	10%	5%	21 ± 8%
26 Jul 2009	12:50–15:30	C1	60	2	13.4	51%	24%	20%	25 ± 7%
	13:10–15:10	C2	63	2		73%	10%	9%	27 ± 9%
30 Jul 2009	11:00–13:30	C1	60	2	14.3	52%	24%	18%	25 ± 7%
	11:10–13:20	C2	63	2		74%	10%	8%	26 ± 8%

LC	Arable	Bare	Dunes	Irrigated	Marsh	Steppe
EVI	> 20%–25%	> 25%–30%	> 30%–35%	> 35%		

Spatial resolution and regionalization of airborne flux measurements

S. Metzger et al.

Title Page

Abstract

Introduction

Conclusions

References

Tables

Figures

⏪

⏩

◀

▶

Back

Close

Full Screen / Esc

Printer-friendly Version

Interactive Discussion



Spatial resolution and regionalization of airborne flux measurements

S. Metzger et al.

Table 2. Mean length scales \pm SD between repetitions during the WSMA flights selected for analysis. Shown are CBL depth z_i , aerodynamic roughness length z_0 , flight altitude z , thermal blending height z_{TB1} , length scale of surface heterogeneity L_H , Raupach length L_R , the thermal blending lengths L_{TB1} , L_{TB2} , and the upwind distance from the WSMA $L_{80\%}$, where 80 % of the flux contributions are included in the flux footprint.

Date	Time CST	ID	z_i (m)	z_0 (m)	z (m)	z_{TB1} (m)	L_H (m)	L_R (m)	L_{TB1} (m)	L_{TB2} (m)	$L_{80\%}$ (m)
8 Jul 2009	10:20–10:50	O10	1100	0.21 ± 0.13	59 ± 4	45 ± 7	802 ± 192	1532 ± 105	1046 ± 171	255 ± 5	931 ± 52
	12:00–12:50	O12	1800	0.07 ± 0.05	72 ± 6	24 ± 2	700 ± 58	4093 ± 164	2160 ± 263	628 ± 39	1574 ± 147
13 Jul 2009	11:30–12:10	O8	1900	0.04 ± 0.05	51 ± 0	41 ± 4	1055 ± 5	4770 ± 3	1330 ± 122	999 ± 12	1440 ± 127
	12:40–13:10	O3	2100	0.05 ± 0.07	51 ± 2	38 ± 5	858 ± 95	4292 ± 236	1134 ± 45	1108 ± 220	1305 ± 64
15 Jul 2009	11:30–12:20	O11	2200	0.06 ± 0.04	55 ± 4	11 ± 2	370 ± 54	5214 ± 508	1950 ± 223	1368 ± 304	1470 ± 168
	12:30–13:00	O7	2100	0.26 ± 0.19	57 ± 7	17 ± 6	298 ± 76	3507 ± 82	984 ± 117	1207 ± 132	1081 ± 128
17 Jul 2009	11:00–11:30	O11	1400	1.13 ± 0.81	48 ± 1	22 ± 0	366 ± 37	1589 ± 65	788 ± 74	440 ± 28	720 ± 74
	12:20–13:00	O7	1400	0.05 ± 0.06	52 ± 2	19 ± 8	507 ± 219	3136 ± 169	1381 ± 54	950 ± 159	1296 ± 150
26 Jul 2009	12:50–15:30	C1	2500	1.75 ± 1.91	97 ± 4	85 ± 68	1458 ± 913	2626 ± 284	1974 ± 562	752 ± 196	991 ± 331
	13:10–15:10	C2	2500	2.30 ± 2.12	102 ± 5	83 ± 51	1459 ± 632	2430 ± 382	1921 ± 325	916 ± 310	945 ± 191
30 Jul 2009	11:00–13:30	C1	1600	0.48 ± 0.34	56 ± 3	46 ± 21	1653 ± 161	3097 ± 340	2403 ± 1438	1015 ± 22	1042 ± 100
	11:10–13:20	C2	1600	0.11 ± 0.01	54 ± 0	51 ± 13	2615 ± 84	3798 ± 735	2853 ± 601	1852 ± 51	1206 ± 0

[Title Page](#)
[Abstract](#)
[Introduction](#)
[Conclusions](#)
[References](#)
[Tables](#)
[Figures](#)
[Back](#)
[Close](#)
[Full Screen / Esc](#)
[Printer-friendly Version](#)
[Interactive Discussion](#)


Spatial resolution and regionalization of airborne flux measurements

S. Metzger et al.

Table 3. Median land cover specific flux estimates of H and LE from the LTFM procedure over all flight patterns \pm median spatial variability within the respective land cover. Also shown are the corresponding median ensemble random uncertainties $\sigma_{\text{ens}}(H)$, $\sigma_{\text{ens}}(\text{LE})$ and land cover specific sample size N .

Land cover	H (W m^{-2})	LE (W m^{-2})	$\sigma_{\text{ens}}(H)$	$\sigma_{\text{ens}}(\text{LE})$	N
Bare soil	193 ± 32	136 ± 38	1 %	1 %	22049
Sand dunes	188 ± 37	144 ± 55	1 %	1 %	43424
Marshland	125 ± 55	230 ± 59	1 %	1 %	20722
Steppe	202 ± 40	138 ± 46	< 1 %	< 1 %	321956
Mountain meadow	114 ± 47	260 ± 69	1 %	1 %	25175
Settlements	172 ± 40	155 ± 46	3 %	5 %	1404
Rainfed agriculture	183 ± 35	147 ± 40	1 %	1 %	17024
Irrigated agriculture	116 ± 32	224 ± 41	5 %	5 %	1068

Title Page

Abstract

Introduction

Conclusions

References

Tables

Figures

⏪

⏩

◀

▶

Back

Close

Full Screen / Esc

Printer-friendly Version

Interactive Discussion

Spatial resolution and regionalization of airborne flux measurements

S. Metzger et al.

Title Page

Abstract

Introduction

Conclusions

References

Tables

Figures

⏪

⏩

◀

▶

Back

Close

Full Screen / Esc

Printer-friendly Version

Interactive Discussion



Table 4. Median systematic- and random uncertainty terms (in parenthesis) for a single flux observation or grid cell throughout the LTFM procedure.

Source	<i>H</i>	LE
Instrumentation and hardware	0% (8%)	0% (7%)
Turbulence sampling	0% (57%)	0% (121%)
Spatio-temporal analysis	2% (40%)	4% (47%)
BRT residuals	0% (5%)	0% (6%)
BRT response function	11% (69%)	18% (77%)
BRT state variables	13% (77%)	14% (75%)

Spatial resolution and regionalization of airborne flux measurements

S. Metzger et al.

Table B1. Mean meteorological conditions \pm SD between repetitions during the WSMA flights selected for analysis. Shown are cloud cover CC, shortwave down-welling radiation S_{\downarrow} , mixing ratio MR, horizontal wind speed u , wind direction DIR, virtual potential temperature θ_v , surface temperature T_s , and the SD of the surface temperature σ_{T_s} .

Date	Time CST	ID	CC	S_{\downarrow} (W m^{-2})	MR (g kg^{-1})	u (ms^{-1})	DIR ($^{\circ}$)	θ_v (K)	T_s ($^{\circ}\text{C}$)	σ_{T_s} (K)
8 Jul 2009	10:20–10:50	O10	7/8	842 ± 55	6.4 ± 0.0	3.2 ± 0.3	221 ± 12	312.0 ± 0.4	40.8 ± 1.2	8.1 ± 0.4
	12:00–12:50	O12	7/8	773 ± 53	5.9 ± 0.2	6.5 ± 0.3	320 ± 2	313.7 ± 0.3	39.8 ± 1.0	8.8 ± 0.4
13 Jul 2009	11:30–12:10	O8	4/8	810 ± 16	9.3 ± 0.1	8.3 ± 0.4	291 ± 6	309.7 ± 0.1	41.9 ± 0.3	6.4 ± 0.1
	12:40–13:10	O3	4/8	838 ± 6	8.6 ± 0.1	6.9 ± 0.6	297 ± 6	311.2 ± 0.3	45.8 ± 0.2	5.3 ± 0.8
15 Jul 2009	11:30–12:20	O11	7/8	796 ± 72	7.1 ± 0.1	7.0 ± 0.8	253 ± 9	315.3 ± 0.2	42.1 ± 1.1	5.3 ± 0.7
	12:30–13:00	O7	7/8	843 ± 56	6.8 ± 0.0	5.8 ± 0.2	255 ± 8	316.7 ± 0.2	50.8 ± 0.7	4.0 ± 0.5
17 Jul 2009	11:00–11:30	O11	7/8	589 ± 39	9.4 ± 0.1	2.7 ± 0.2	102 ± 5	309.3 ± 0.2	35.9 ± 0.5	4.8 ± 0.3
	12:20–13:00	O7	7/8	682 ± 122	11.2 ± 0.2	5.9 ± 0.4	144 ± 4	310.4 ± 0.1	40.3 ± 2.5	4.5 ± 0.9
26 Jul 2009	12:50–15:30	C1	7/8	668 ± 46	9.6 ± 0.3	2.9 ± 0.1	174 ± 5	312.8 ± 0.5	36.4 ± 1.2	4.8 ± 0.7
	13:10–15:10	C2	7/8	747 ± 67	9.1 ± 0.1	2.7 ± 0.3	178 ± 23	313.0 ± 0.4	36.5 ± 0.5	3.7 ± 0.7
30 Jul 2009	11:00–13:30	C1	7/8	715 ± 82	11.6 ± 0.3	4.3 ± 0.7	159 ± 15	311.8 ± 0.9	34.6 ± 5.1	4.1 ± 0.5
	11:10–13:20	C2	7/8	567 ± 11	11.6 ± 0.0	4.9 ± 0.9	154 ± 9	311.3 ± 1.2	32.8 ± 1.0	2.7 ± 0.5

Title Page

Abstract Introduction

Conclusions References

Tables Figures

⏪ ⏩

◀ ▶

Back Close

Full Screen / Esc

Printer-friendly Version

Interactive Discussion



Spatial resolution and regionalization of airborne flux measurements

S. Metzger et al.

Table B2. Mean turbulence statistics \pm SD between repetitions during the WSMA flights selected for analysis: friction velocity u_* , sensible heat flux H , and latent heat flux LE, Monin-Obukhov length L_v , SD of vertical wind σ_w , and convective velocity w_* .

Date	Time CST	ID	u_* (ms ⁻¹)	H (Wm ⁻²)	LE (Wm ⁻²)	L_v (m)	σ_w (ms ⁻¹)	w_* (ms ⁻¹)
8 Jul 2009	10:20–10:50	O10	0.31 \pm 0.03	154 \pm 20	194 \pm 45	-14 \pm 3	0.88 \pm 0.03	1.82 \pm 0.08
	12:00–12:50	O12	0.46 \pm 0.07	199 \pm 14	110 \pm 36	-38 \pm 16	0.97 \pm 0.04	2.29 \pm 0.05
13 Jul 2009	11:30–12:10	O8	0.52 \pm 0.09	290 \pm 47	196 \pm 43	-40 \pm 24	0.99 \pm 0.05	2.65 \pm 0.13
	12:40–13:10	O3	0.42 \pm 0.12	288 \pm 18	86 \pm 51	-23 \pm 19	0.95 \pm 0.01	2.70 \pm 0.07
15 Jul 2009	11:30–12:20	O11	0.47 \pm 0.07	176 \pm 17	138 \pm 30	-46 \pm 23	0.83 \pm 0.05	2.36 \pm 0.07
	12:30–13:00	O7	0.52 \pm 0.12	310 \pm 28	65 \pm 12	-38 \pm 19	1.07 \pm 0.11	2.77 \pm 0.08
17 Jul 2009	11:00–11:30	O11	0.39 \pm 0.07	156 \pm 26	46 \pm 67	-30 \pm 15	0.79 \pm 0.04	1.93 \pm 0.09
	12:20–13:00	O7	0.41 \pm 0.07	206 \pm 18	48 \pm 45	-27 \pm 13	0.83 \pm 0.06	2.11 \pm 0.07
26 Jul 2009	12:50–15:30	C1	0.33 \pm 0.09	120 \pm 33	300 \pm 76	-20 \pm 10	0.94 \pm 0.11	2.25 \pm 0.21
	13:10–15:10	C2	0.37 \pm 0.05	117 \pm 11	227 \pm 2	-29 \pm 8	0.94 \pm 0.04	2.22 \pm 0.06
30 Jul 2009	11:00–13:30	C1	0.43 \pm 0.13	107 \pm 76	194 \pm 27	-57 \pm 14	0.75 \pm 0.12	1.78 \pm 0.41
	11:10–13:20	C2	0.38 \pm 0.05	71 \pm 4	223 \pm 11	-50 \pm 19	0.68 \pm 0.04	1.65 \pm 0.02

Title Page

Abstract

Introduction

Conclusions

References

Tables

Figures

⏪

⏩

◀

▶

Back

Close

Full Screen / Esc

Printer-friendly Version

Interactive Discussion



Fig. 1. Location of the Xilin River Catchment in the Inner Mongolia Autonomous Region, China (modified after Steffens et al., 2008).

Spatial resolution and regionalization of airborne flux measurements

S. Metzger et al.

Title Page

Abstract Introduction

Conclusions References

Tables Figures

⏪ ⏩

◀ ▶

Back Close

Full Screen / Esc

Printer-friendly Version

Interactive Discussion

Spatial resolution and regionalization of airborne flux measurements

S. Metzger et al.

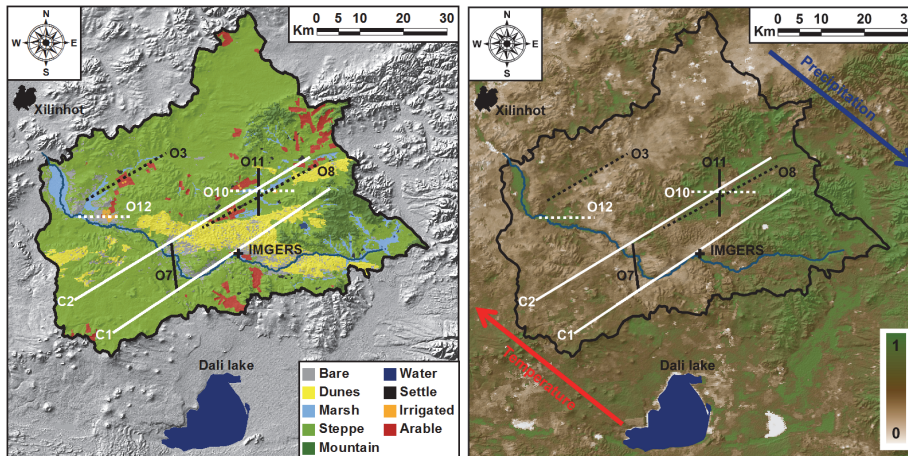


Fig. 2. Maps of the Xilin River Catchment (black boundary), with the IMGERS research station and pairs of flight lines. Left: land cover classification (modified after Wiesmeier et al., 2011) over a digital elevation model (Shuttle Radar Topography Mission, Tile 60_04, data version 4.1, Jarvis et al., 2008). The colour codes are abbreviated for bare soil (Bare), marshland (Marsh), generic steppe (Steppe), mountain meadow (Mountain), settlements (Settle), irrigated agriculture (Irrigated), and rainfed agriculture (Arable). Right: MODIS enhanced vegetation index of 20 July 2009.

[Title Page](#)
[Abstract](#)
[Introduction](#)
[Conclusions](#)
[References](#)
[Tables](#)
[Figures](#)
[⏪](#)
[⏩](#)
[◀](#)
[▶](#)
[Back](#)
[Close](#)
[Full Screen / Esc](#)
[Printer-friendly Version](#)
[Interactive Discussion](#)

Spatial resolution and regionalization of airborne flux measurements

S. Metzger et al.

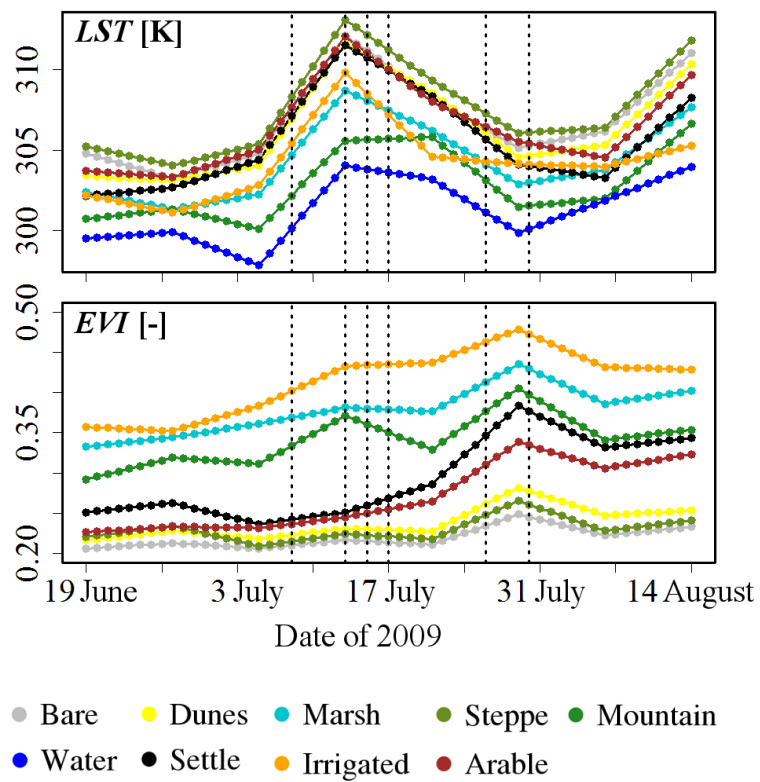


Fig. 3. Change of land surface temperature (top) and enhanced vegetation index (bottom) for each land cover class throughout the study period. The land cover colour code and corresponding abbreviations are identical with Fig. 2. The land cover “Water” is not present for the EVI, because water absorbs strongly in the near infrared, leading to negative EVI values that are not indicative of vegetation greenness.

Title Page

Abstract Introduction

Conclusions References

Tables Figures

◀ ▶

◀ ▶

Back Close

Full Screen / Esc

Printer-friendly Version

Interactive Discussion



Spatial resolution and regionalization of airborne flux measurements

S. Metzger et al.

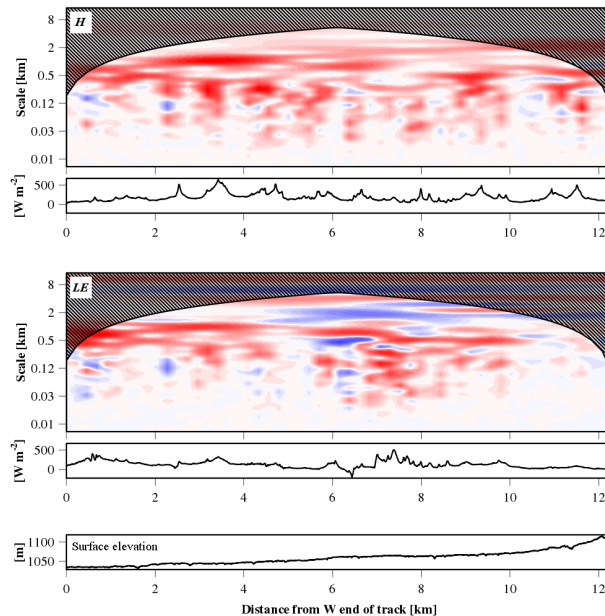


Fig. 4. Wavelet cross-scalograms for the sensible heat flux (top panel) and the latent heat flux (centre panel) along flight pattern O12 on 8 July 2009, 12:16–12:24 CST. The colour palette changes from blue (downward fluxes) over white (neutral) to red (upward fluxes). The shaded areas identify the cone of influence. Beneath the cross-scalograms the integrated flux over all scales is shown for each overflowed 90 m cell of the land cover grid. The surface elevation along the flight pattern is displayed in the bottom panel.

[Title Page](#)[Abstract](#)[Introduction](#)[Conclusions](#)[References](#)[Tables](#)[Figures](#)[⏪](#)[⏩](#)[◀](#)[▶](#)[Back](#)[Close](#)[Full Screen / Esc](#)[Printer-friendly Version](#)[Interactive Discussion](#)

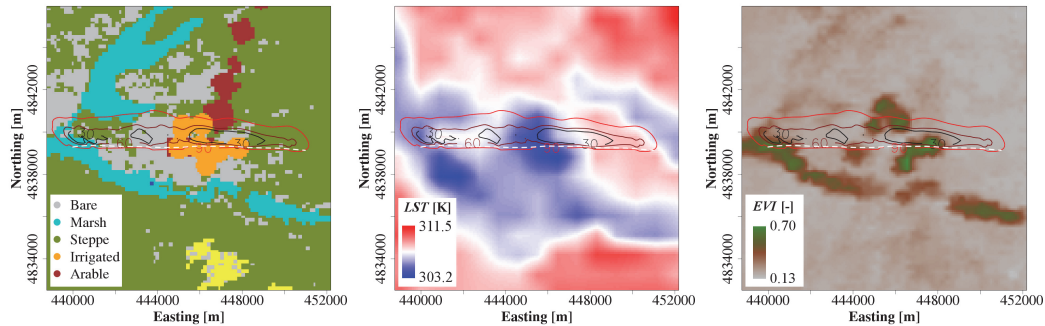


Fig. 5. Flight along pattern O12 on 8 July 2009, 12:16–12:24 CST (white dashed line). The composite flux footprint along the flight line (30 %, 60 %, 90 % contour lines) is superimposed over maps of land cover (left panel), land surface temperature (LST, center panel), and enhanced vegetation index (EVI, right panel). The land cover colour code and corresponding abbreviations are identical with Fig. 2.

Spatial resolution and regionalization of airborne flux measurements

S. Metzger et al.

Title Page

Abstract Introduction

Conclusions References

Tables Figures

◀ ▶

◀ ▶

Back Close

Full Screen / Esc

Printer-friendly Version

Interactive Discussion



Spatial resolution and regionalization of airborne flux measurements

S. Metzger et al.

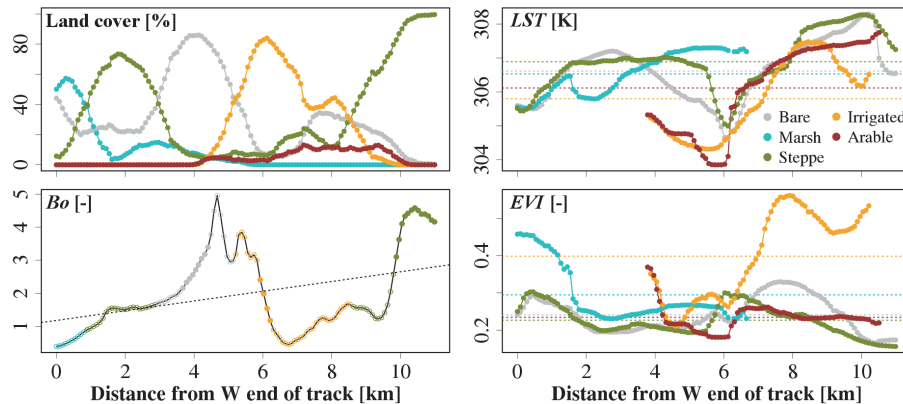


Fig. 6. Biophysical surface properties in the footprint of each observation ($N = 124$) along the flight pattern O12 on 8 July 2009, 12:16–12:24 CST, summarized by land cover. Shown are (clockwise from top right panel) land surface temperature, enhanced vegetation index, Bowen ratio, and the land cover fraction in the footprint. The dashed lines are land cover averages for LST and EVI, and the spatial trend for Bo. The land cover colour code and corresponding abbreviations are identical with Fig. 2.

Title Page

Abstract

Introduction

Conclusions

References

Tables

Figures

◀

▶

◀

▶

Back

Close

Full Screen / Esc

Printer-friendly Version

Interactive Discussion

Spatial resolution and regionalization of airborne flux measurements

S. Metzger et al.

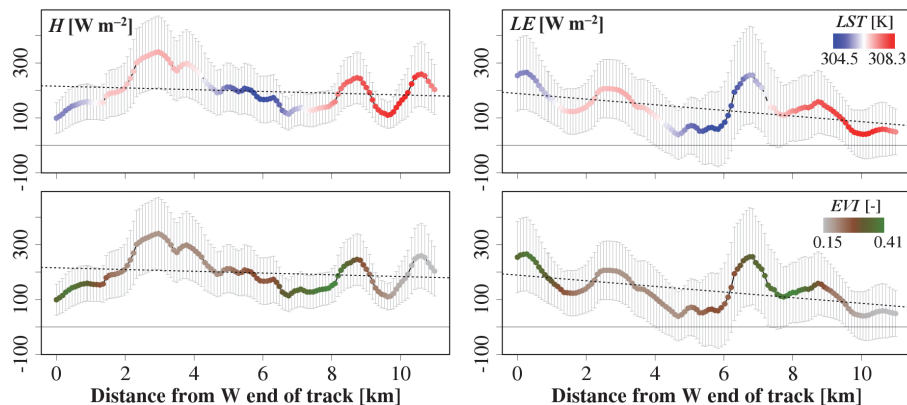


Fig. 7. Sensible heat flux (left panels) and latent heat flux (right panels) along the flight pattern O12 on 8 July 2009, 12:16–12:24 CST. Also shown is the random sampling error (error bars) for each observation ($N = 124$), and the spatial trend (dashed line). The top and bottom panels show the land surface temperature and the enhanced vegetation index in the footprint of each observation, respectively.

Spatial resolution and regionalization of airborne flux measurements

S. Metzger et al.

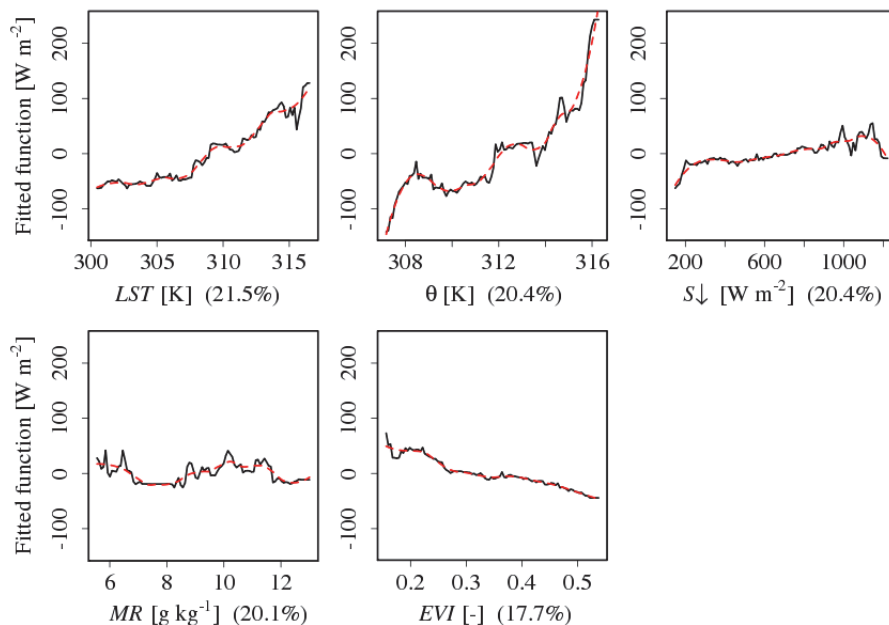


Fig. 8. Boosted regression tree partial response plots of H for all five state variables in order of their relative importance (in braces). The fitted function (black) shows the variable response of the BRT over the range of one individual state variable, while the remaining state variables are held at an average, constant value. The red dashed line is a smoothed representation of the fitted function (locally weighted polynomial regression).

[Title Page](#)
[Abstract](#)
[Introduction](#)
[Conclusions](#)
[References](#)
[Tables](#)
[Figures](#)
[⏪](#)
[⏩](#)
[◀](#)
[▶](#)
[Back](#)
[Close](#)
[Full Screen / Esc](#)
[Printer-friendly Version](#)
[Interactive Discussion](#)

Spatial resolution and regionalization of airborne flux measurements

S. Metzger et al.

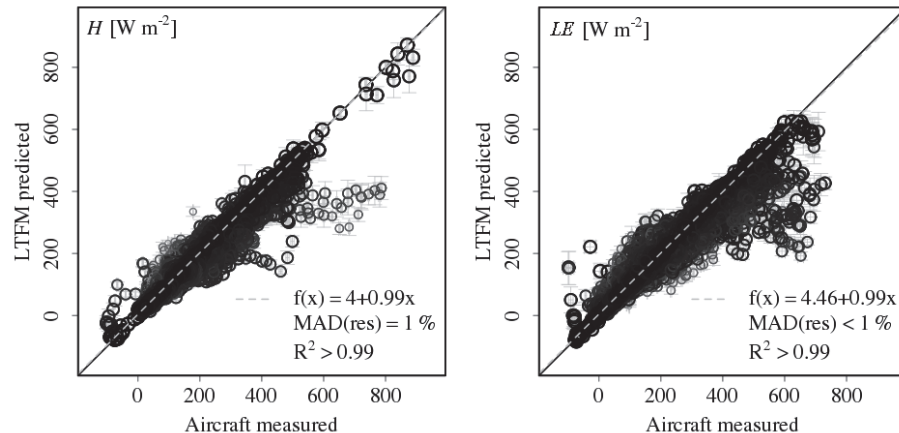


Fig. 9. Maximum likelihood functional relationships between $N = 8446$ aircraft observation and LTFM predictions of sensible heat flux (left) and latent heat flux (right). The error bars show the cross-validation residuals for the LTFM predictions, and the ensemble random sampling error for the aircraft measurement. The 99.9% confidence intervals are too narrow to be displayed properly.

[Title Page](#)
[Abstract](#)
[Introduction](#)
[Conclusions](#)
[References](#)
[Tables](#)
[Figures](#)
[⏪](#)
[⏩](#)
[◀](#)
[▶](#)
[Back](#)
[Close](#)
[Full Screen / Esc](#)
[Printer-friendly Version](#)
[Interactive Discussion](#)

Spatial resolution and regionalization of airborne flux measurements

S. Metzger et al.

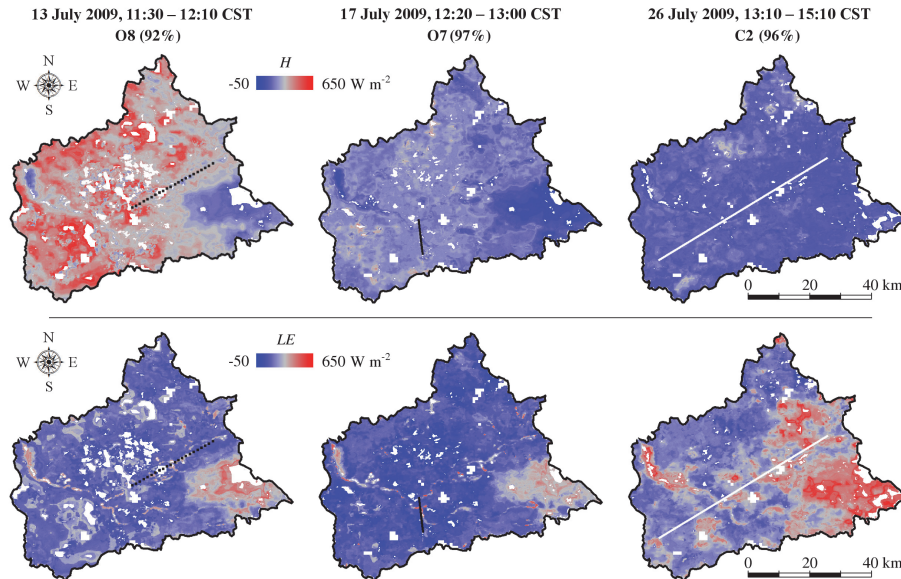


Fig. 10. Maps of LTFM predicted fluxes of sensible heat (H , top) and latent heat (LE , bottom) on 13, 17 and 26 July 2009 (left to right). The colour gradient from blue over grey to red represents values that are lower, equal to, or greater than the average of the values, respectively (see legend). Percentages in braces after the flight ID indicate the spatial coverage of the prediction throughout the catchment. Meteorological state variables from the superimposed flight lines are used in the respective LTFM prediction (illustration identical with Fig. 2).

[Title Page](#)
[Abstract](#)
[Introduction](#)
[Conclusions](#)
[References](#)
[Tables](#)
[Figures](#)
[⏪](#)
[⏩](#)
[◀](#)
[▶](#)
[Back](#)
[Close](#)
[Full Screen / Esc](#)
[Printer-friendly Version](#)
[Interactive Discussion](#)

Spatial resolution and regionalization of airborne flux measurements

S. Metzger et al.

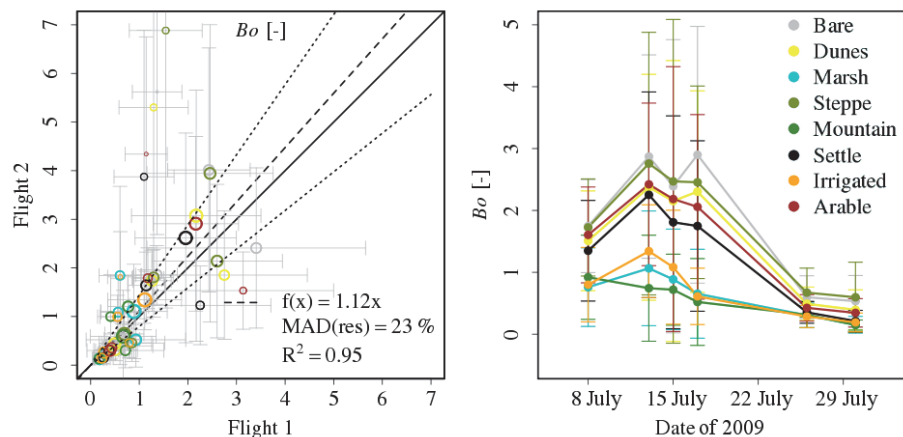


Fig. 11. Comparison of Bowen ratio between the first and the second flight pattern on every measurement day (left), and time series of B_o for different land covers throughout the measurement campaign (right). The error bars represent the Gaussian sum of the natural variability in each land cover class and the ensemble random error in the LTFM procedure. The land cover colour code and corresponding abbreviations are identical with Fig. 2.

Title Page

Abstract Introduction

Conclusions References

Tables Figures

⏪ ⏩

◀ ▶

Back Close

Full Screen / Esc

Printer-friendly Version

Interactive Discussion



Spatial resolution and regionalization of airborne flux measurements

S. Metzger et al.

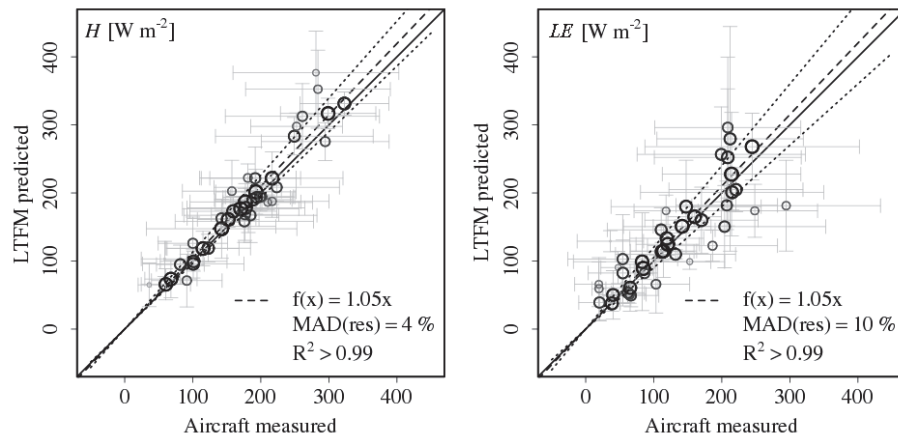


Fig. 12. MLFRs of median observed and predicted fluxes along 42 flight lines. The error bars correspond to the variability of the fluxes along the flight line.

Title Page

Abstract Introduction

Conclusions References

Tables Figures

⏪ ⏩

◀ ▶

Back Close

Full Screen / Esc

Printer-friendly Version

Interactive Discussion

