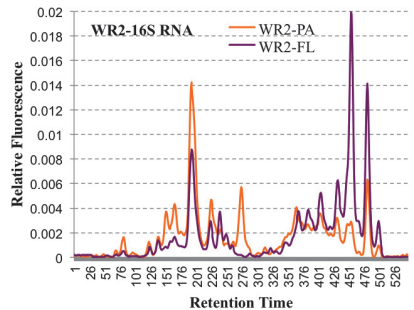
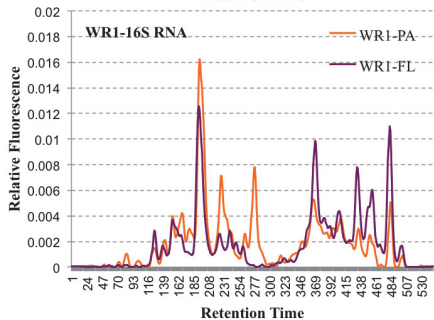
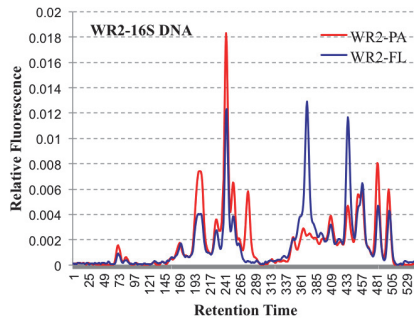
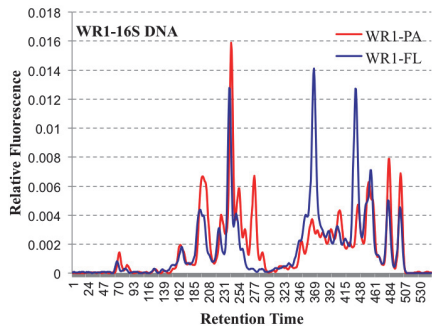


Suppl Table 1. Correspondence between station names in the general MALINA sampling grid and names presented in this study

Coordinates	MALINA	Present Study	Coordinates	MALINA	Present Study
71.571N/133.940W	320	ES1	69.534N/133.424W	398	EC5
71.330N/132.565W	345	ES2	70.704N/139.609W	620	WS1
70.397N/133.607W	380	ES3	69.798N/138.441W	670	WS2
70.095N/133.539W	391	ES4	69.387N/137.792W	691	WC1
70.012N/133.522W	392	ES5	69.342N/137.594W	692	WC2
69.929N/133.506W	393	ES6	69.296N/137.398W	693	WC3
69.846N/133.490W	394	EC1	69.251N/137.202W	694	WC4
69.763N/133.474W	395	EC2	69.204N/137.006W	695	WC5
69.680N/133.458W	396	EC3	69.158N/136.812W	696	WR1
69.597N/133.442W	397	EC4	69.125N/136.681W	697	WR2

Suppl. Fig. 1: CE_SSCP electropherograms for 16sDNA (upper panels) and 16sRNA (bottom panels) in the river samples.



Suppl. Fig. 2: Rarefaction curves of the different samples as assessed by 454 tag-pyrosequencing.

