

This discussion paper is/has been under review for the journal Biogeosciences (BG).
Please refer to the corresponding final paper in BG if available.

Bioavailability of sinking organic matter in the Blanes canyon and the adjacent open slope (NW Mediterranean Sea)

**P. Lopez-Fernandez¹, S. Bianchelli², A. Pusceddu², A. Calafat¹,
A. Sanchez-Vidal¹, and R. Danovaro²**

¹GRC Geociències Marines, Dept. d'Estratigrafia, Paleontologia i Geociències Marines, Universitat de Barcelona, 08028 Barcelona, Spain

²Dipartimento di Scienze della Vita e dell'Ambiente, Università Politecnica delle Marche, Via Brecce Bianche 60131 Ancona, Italy

Received: 30 November 2012 – Accepted: 30 November 2012
– Published: 17 December 2012

Correspondence to: A. Calafat (antonicalafat@ub.edu)

Published by Copernicus Publications on behalf of the European Geosciences Union.

BGD

9, 18295–18330, 2012

Bioavailability of sinking organic matter

P. Lopez-Fernandez et al.

Title Page

Abstract

Introduction

Conclusions

References

Tables

Figures

◀

▶

◀

▶

Back

Close

Full Screen / Esc

Printer-friendly Version

Interactive Discussion



Abstract

Submarine canyons are sites of intense energy and material exchange between the shelf and the deep adjacent basins. To test the hypothesis that active submarine canyons represent preferential conduits of available food for the deep-sea benthos, two mooring lines were deployed at 1200 m depth from November 2008 to November 2009 inside the Blanes canyon and on the adjacent open slope (Catalan Margin, NW Mediterranean Sea). We investigated the fluxes, biochemical composition and food quality of sinking organic carbon (OC). OC fluxes in the canyon and the open slope varied among sampling periods, though not consistently in the two sites. In particular, while in the open slope the highest OC fluxes were observed in August 2009, in the canyon the highest OC fluxes occurred in April–May 2009. For almost the entire study period, the OC fluxes in the canyon were significantly higher than those in the open slope, whereas OC contents of sinking particles collected in the open slope were consistently higher than those in the canyon. This result confirms that submarine canyons are effective conveyors of OC to the deep sea, particles transferred are predominantly of inorganic origin, significantly higher than that reaching the open slope at a similar water depth. Using multivariate statistical tests, two major clusters of sampling periods were identified: one in the canyon that grouped trap samples collected in December 2008, concurrently with the occurrence of a major storm at the sea surface, and associated with increased fluxes of nutritionally available particles from the upper shelf. Another cluster grouped samples from both the canyon and the open slope collected in March 2009, concurrently with the occurrence of the seasonal phytoplankton bloom at the sea surface, and associated with increased fluxes of total phytopigments. Our results confirm the key ecological role of submarine canyons for the functioning of deep-sea ecosystems, and highlight the importance of canyons in linking episodic storms and primary production occurring at the sea surface to the deep sea floor.

BGD

9, 18295–18330, 2012

Bioavailability of sinking organic matter

P. Lopez-Fernandez et al.

Title Page

Abstract

Introduction

Conclusions

References

Tables

Figures

◀

▶

◀

▶

Back

Close

Full Screen / Esc

Printer-friendly Version

Interactive Discussion



1 Introduction

Continental margins are the edges of continents and represent a zone of strong interactions between the continent, the open ocean, and the atmosphere (Weaver et al., 2004). These interactions drive margin's hydrodynamic conditions, which in turn control the dispersal of particulate matter fluxes on the shelf and towards the open sea (Levin and Dayton, 2009). Many previous investigations have shown that continental margins may represent a reservoir of particulate organic matter, often derived from river discharge, which, while transported downslope, represent a key food source for the benthos (Walsh, 1991). Organic carbon (OC) transport to the deep sea is mediated through vertical fluxes of particles, which, in turn, are influenced by the general climate (Smith et al., 2009), local hydrodynamic conditions (Bonnin et al., 2008) and the presence of different benthic habitats (Pusceddu et al., 2010a). Among these, the submarine canyons indent the continental margins all over the world (Harris and White-way, 2011) and, representing the more intense zone of exchange between the upper continental slope and bathyal-to-hadal depths, may act as a major forced conduit of material to the deep sea (Canals et al., 2006).

A recent investigation carried out along the Mediterranean Sea pinpointed that not all submarine canyons are active conveyors of material to the deep adjacent basin nor are characterized by significant differences in sedimentary organic matter content and biochemical composition when compared with the adjacent open slopes at similar depths (Pusceddu et al., 2010a). Basically, such lack of consistency can be ascribed to a recurrently missing temporal (seasonal) replication of the data. It is indeed most likely that the input of particulate organic material to the ocean's interior through canyons can be seasonal (e.g., Fabres et al., 2008), with the highest peaks associated with phytoplankton blooms in the upper layers of the water column (Pasqual et al., 2011) or with episodic events, including storms (Palanques et al., 2008; Sanchez-Vidal et al., 2012) and dense shelf water cascading (Tesi et al., 2008; Pasqual et al., 2010; Pusceddu et al., 2010b). In addition, the chemical composition of organic particles changes during

BGD

9, 18295–18330, 2012

Bioavailability of sinking organic matter

P. Lopez-Fernandez et al.

Title Page

Abstract

Introduction

Conclusions

References

Tables

Figures

◀

▶

◀

▶

Back

Close

Full Screen / Esc

Printer-friendly Version

Interactive Discussion



sinking because of the consumption by heterotrophic plankton (including prokaryotes) (Hedges et al., 2001). It has been indeed estimated that about 10 % of the primary production falls to a depth of 400 m, whereas only about 1 % reaches 5000 m (Murray, 1992). This, traditionally, has led most deep-sea ecologists to conceive the deep sea as an “in diet” environment, missing local primary productivity and being fuelled by very low amounts of nutritionally poor organic particles (Gage and Tyler, 1991; Druffel and Robinson, 1999).

In recent years, the debate about the food limitation of the deep-sea benthos has continued and led to less conservative positions (Smith et al., 2008; Soetaert et al., 2010; Glover et al., 2010). This has been mostly due to the fact that several studies have pointed out that the total amount of organic matter or OC are not fully representative of the food quality of particles (Pusceddu et al., 2009; Harriague et al., 2007; Misic et al., 2008). Total OC is indeed composed of a biopolymeric fraction (Fabiano and Pusceddu, 1998), made of biopolymers (including protein, carbohydrate and lipids) of relevance for heterotrophic nutrition and a complex/geo-polymeric fraction, adhered to inorganic particles and mostly refractory to consumption (Pusceddu et al., 2009). Moreover, not the whole biopolymeric fraction of suspended particles can be rapidly digested by metazoan consumers, with generally less than 15–50 % of particular OC being composed of enzymatically digestible molecules (Fabiano and Pusceddu, 1998; Pusceddu et al., 2003; Dell’Anno et al., 2012). To our best knowledge, information about the digestible fraction of sinking organic particles towards the deep sea is practically not existent. Indirect estimates have been made based on sedimentary data (Dell’Anno et al., 2000), but direct measures on trap samples are not available, yet.

In this study, we investigated fluxes and sedimentary content, biochemical composition and for the first time we determined the bioavailability of particulate organic matter settling down along the water column to gather information on the temporal and bathymetric change in. To do this a one year-long (November 2008–November 2009) intensive sampling (weekly) was conducted inside the Blanes canyon and on its adjacent open slope (Catalan Margin, NW Mediterranean Sea).

Bioavailability of sinking organic matter

P. Lopez-Fernandez et al.

[Title Page](#)[Abstract](#)[Introduction](#)[Conclusions](#)[References](#)[Tables](#)[Figures](#)[Back](#)[Close](#)[Full Screen / Esc](#)[Printer-friendly Version](#)[Interactive Discussion](#)

2 Material and methods

2.1 The study area

The Blanes canyon (Fig. 1) is oriented in N–S direction and located in the northern Catalan margin (NW Mediterranean Sea). The Catalan margin is characterized by a very complicated seafloor topography, showing a narrow continental shelf deeply incised by other canyons (Amblas et al., 2006). The head of Blanes canyon is less than 4 km from the coast, at 60 m depth. Near the head canyon is located the Tordera River mouth that occasionally, which main discharge corresponds to short-lived episodic floods (Rovira and Batalla, 2006). The canyon has a V-shaped cross section in the shoreward region characterized by a strong erosion, and a U-shaped cross section collecting sediment deposition from upper areas more offshore (Lastras et al., 2011; Fig. 1). Currents inside the canyon are strongly influenced by the topography of the canyon walls, with a highly variable flow in the smooth wall at the East and a unidirectional offshore flow over the western wall forced by its shallow and sharp topography (Zuñiga et al., 2009).

2.2 Sampling of sinking particles

Two mooring lines were deployed for a year (November 2008–November 2009) at two locations located at 1200 m depth. Each line was equipped with sediment trap-current meter pairs, positioned at 25 m above the sea bottom. Sediment traps (Technicap PPS3) were equipped with 12 receiving cups with a cylindrical-conical shape with a height/diameter ratio of 2.5 and a collecting area of 0.125 m². The traps were programmed with an interval of 7 to 8 days, which resulted in 48 sequential samples per station till the end of the monitoring period. Prior to the deployment, in the laboratory, the rotator collector was cleaned with detergent and rinsed several times with distilled water. Receiving cups were filled with a sodium borate buffered 5 % formaldehyde solution in 0.45 µm pre-filtered sea water to avoid degradation of the collected particles.

BGD

9, 18295–18330, 2012

Bioavailability of sinking organic matter

P. Lopez-Fernandez et al.

Title Page

Abstract

Introduction

Conclusions

References

Tables

Figures

◀

▶

◀

▶

Back

Close

Full Screen / Esc

Printer-friendly Version

Interactive Discussion



In long term sediment traps, the use of preservative in the collecting cups is required to minimize microbial influence (Gardner, 1983). This may cause some analytical problems with the determination of some classes of organic compounds, but previous works demonstrated that the use of formaldehyde as preservative does not affect the determination of protein, carbohydrate and lipid contents when compared to untreated samples (Wakeham, 1993; Dell'Anno et al., 2002). The only possible problem is the lethal effect of the preservative on zooplankton that can lead to collections which do not represent vertical fluxes. For this reason larger swimmers were removed before the analyses. After recovering, samples were stored in the dark at 2–4 °C until they were processed in the laboratory. Once in the laboratory, the samples were visually checked and the supernatant removed. Swimmers were removed by wet sieving (using sea water) on a 1-mm nylon mesh and hand-picking under a dissecting microscope. A high precision peristaltic pump was then used to obtain subsamples through repeated splitting of the rinsed raw samples. After that, formaldehyde and salt in excess were removed using centrifugation with cold Milli-Q water to avoid organic matter explosion, and were then freeze dried and stored at 4 °C in the dark until further analysis. After ground to a fine powder, samples were weighed and the total mass flux calculated using the dry weight, the trap collecting area and the sampling interval. TMF were normalized to $\text{mg m}^{-2} \text{d}^{-1}$.

2.3 Biochemical composition and bioavailability of POM

OC concentrations in the sinking particles were measured using an elemental analyzer (EA Flash series 1112 and NA2100). OC was obtained by acid digestion with HCl 6M of the total carbon.

Biogenic silica (opal) was analyzed using two segmented step extractions with 0.5 M Na_2CO_3 , according to Fabres et al. (2000). Si and Al were measured in an Inductive Couple Plasma Atomic Emission Spectrometer (ICP-AES).

Chlorophyll-*a* and phaeopigment analyses were carried out according to Lorenzen and Jeffrey (1980). Pigments were extracted (12 h at 4 °C in the dark) from triplicate sub-aliquots of the trap material (about 10 mg of freeze dried material) and the

Bioavailability of sinking organic matter

P. Lopez-Fernandez et al.

Title Page

Abstract

Introduction

Conclusions

References

Tables

Figures



Back

Close

Full Screen / Esc

Printer-friendly Version

Interactive Discussion



sediment (10–20 mg lyophilized sediment), using 3–5 mL of 90 % acetone as extractant. Extracts were analyzed fluorometrically as such to estimate chlorophyll *a*, and, after acidification with 200 μ L 0.1 N HCl, to estimate phaeopigments. Different methods for assessing chlorophyll *a* concentrations in marine particles can provide different under- or over- estimates (Pinckney et al., 1994), also because of the relative importance of the chlorophylls' degradation products, particularly abundant in deep-sea sediments or particles sunk into traps (Szymczak-Żyła and Kowalewska, 2007). For this reason, we summed up chlorophyll *a* and phaeopigment concentrations (i.e. total phytopigments) (Pusceddu et al., 2010b).

Protein, carbohydrate and lipid particle contents were analyzed spectrophotometrically according to Pusceddu et al. (2009) and concentrations expressed as bovine serum albumin (BSA), glucose and tripalmitine equivalents, respectively. The fractions of protein and carbohydrate enzymatically digestible were assessed according to Danovaro (2010), after modifications, and reported as BSA and glucose equivalents, respectively.

Total carbohydrate, protein and lipid contents were converted into carbon equivalents (mg C mg^{-1}) using the conversion factors of 0.40, 0.49 and 0.75, respectively, and their sum defined as the biopolymeric organic carbon (BPC) (Fabiano et al., 1995). Bioavailable organic carbon (BAOC) concentration was calculated as the sum of digestible proteins and carbohydrates converted into carbon equivalents by using the same factors as for their total pools (Danovaro et al., 2001; Pusceddu et al., 2003). The algal contribution to BPC was calculated as the percentage of total phytopigments to BPC concentrations, after converting phytopigment concentration into carbon equivalents using a mean value of 40 $\mu\text{g C } \mu\text{g}^{-1}$ phytopigment (Witbaard et al., 2000; Van Oevelen et al., 2011).

According to Pusceddu et al. (2010), we used the contribution of phytopigment to BPC as a gross descriptor of freshness of organic particles, respectively (Pusceddu et al., 2000, 2009, 2010). The percentage fraction of BAOC over BPC was used as

BGD

9, 18295–18330, 2012

Bioavailability of sinking organic matter

P. Lopez-Fernandez et al.

Title Page

Abstract

Introduction

Conclusions

References

Tables

Figures

◀

▶

◀

▶

Back

Close

Full Screen / Esc

Printer-friendly Version

Interactive Discussion



a descriptor of organic matter food availability for consumers (Pusceddu et al., 2003; Danovaro et al., 2001).

2.4 Statistical analyses

To test for temporal variations in the rates of fluxes, biochemical composition and bioavailability of sinking particulate organic matter in the Blanes canyon and the adjacent open slope we used 2-way permutational analyses of variance (PERMANOVA; Anderson, 2001; McArdle and Anderson, 2001). The design included two orthogonal factors: seabed morphology (2 fixed levels: canyon vs. slope) and sampling time (44 fixed levels, each corresponding to about one week of particle collection by the trap). The analyses were carried out for each variable separately under unrestricted permutation of raw data (999 permutations), after calculation of Euclidean distances of normalized data. When significant differences were observed, pairwise comparison tests were carried out to assess the direction of differences between the two morphologies at each sampling time/period and among sampling periods/times, separately for each seabed morphology. The same designs and tests were used to assess temporal variations in the composition of sinking organic matter across the canyon and the adjacent open slope. The analysis was conducted including phytopigment, total and hydrolysable protein, total and hydrolysable carbohydrate and total lipid contents and using 999 permutation of residuals under the reduced model. Further, to visualize patterns of variability in the biochemical composition of sinking material bi-plot representations after a canonical analysis of principal coordinates (CAP) were also produced. All statistical tests (PERMANOVA and the associated pairwise comparisons, CAP and the bi-plots) were carried out using the PRIMER6+ software, using the PERMANOVA and CAP routines.

BGD

9, 18295–18330, 2012

Bioavailability of sinking organic matter

P. Lopez-Fernandez et al.

Title Page

Abstract

Introduction

Conclusions

References

Tables

Figures

◀

▶

◀

▶

Back

Close

Full Screen / Esc

Printer-friendly Version

Interactive Discussion



3 Results

3.1 Environmental conditions

Details on atmospheric assets during the study period are described elsewhere (Lopez-Fernandez et al., 2012). Here, we report the overall meteorological conditions occurred during the study period in the Catalan margin. During the sampling period, several sequential storms affected the study area in autumn 2008–winter 2009. A cold front entered the Gulf of Lions from the North-East, provoking an increase in the atmospheric instability that lead to moderate-to-intense rainfall and strong alteration of the sea conditions (Fig. 2a–b). At the end of December 2008 a high pressure system was installed in the northeast of Europe producing a flow of cold air from the north and causing the appearance of a cyclone in the northwestern Mediterranean basin (Sanchez-Vidal et al., 2012). As a consequence of this situation, easterly winds blowing over the Catalan coast generated the strongest storm recorded over the last 25 yr in the study area, which was accompanied by a sudden increase in wave height (significant wave height up to 4.5 m). The Tordera River was an average discharge, for the study period, of $3 \text{ m}^3 \text{ s}^{-1}$. During the storms, rainfall was intense and the Tordera River discharge increase up to $50 \text{ m}^3 \text{ s}^{-1}$.

Between March and May 2009, data from the oceanographic mooring deployed in the open slope recorded the intrusion of Western Mediterranean Deep Waters (WMDW) (data not shown). This water intrusion was originated in the Gulf of Lions and travelled on the slope, following the stream to the north. Such plume was not recorded by the mooring deployed in the canyon.

Inside the Blanes canyon, near-bottom currents were generally strongly constrained by its topography, oriented along the canyon axis in both the up and down directions. Slope currents, in contrast, did not show specific trends (Lopez-Fernandez et al., 2012). Maximum current speed was registered at the canyon mooring (up to 45.5 cm s^{-1} in January 2009). The maximum current speed on the slope (26.4 cm s^{-1}) was observed in March 2009 (Fig. 2c–d).

Bioavailability of sinking organic matter

P. Lopez-Fernandez et al.

Title Page

Abstract

Introduction

Conclusions

References

Tables

Figures



Back

Close

Full Screen / Esc

Printer-friendly Version

Interactive Discussion



3.2 Total mass, OC and opal flux

Total mass flux (TMF), OC and opal percentage contributions to TMF in Blanes canyon and the adjacent open slope are summarized in Table 1 and have been previously discussed by Lopez-Fernandez et al. (2012). Throughout the present paper, these data are provided as a general framework for particle fluxes and major biogenic constituents. TMF and the OC and opal percentage contributions to TMF yielded highly contrasting values amongst the canyon and open slope. The mean mass flux in the canyon was consistently up to one order of magnitude higher than that in the adjacent open slope. Despite the differences in the mass flux mean values and in variation ranges, the two stations show similar variation coefficients (0.80 and 0.88, respectively; Fig. 3a).

In the open slope TMF increased from November 2008 ($1.44 \text{ g m}^{-2} \text{ d}^{-1}$) until mid-December 2008 ($5.37 \text{ g m}^{-2} \text{ d}^{-1}$). In the beginning of January 2009 TMF decreased until $1.54 \text{ g m}^{-2} \text{ d}^{-1}$ to increase again in the middle of the same month (reaching the maximum peak of $7.36 \text{ g m}^{-2} \text{ d}^{-1}$) to decrease again in February 2009. In March 2009 TMF increased up to a relative maximum of $7.08 \text{ g m}^{-2} \text{ d}^{-1}$. From the end of April 2009 the TMF decreased continuously until $0.31 \text{ g m}^{-2} \text{ d}^{-1}$, showing the minimum value at the end of June 2009 (Fig. 3a).

In the Blanes canyon the fluxes increased substantially during winter. In November 2009 TMF was around $35.23 \text{ g m}^{-2} \text{ d}^{-1}$ and then increased up to the maximum values of $101.10 \text{ g m}^{-2} \text{ d}^{-1}$ in December 2008. Then the TMF decreased to the minimum value at the beginning of February ($0.05 \text{ g m}^{-2} \text{ d}^{-1}$). At mid-February TMF increased again up to a relative peak in March 2009 ($55.20 \text{ g m}^{-2} \text{ d}^{-1}$). After this, the TMF decreased again to a relative minimum of and $8.78 \text{ g m}^{-2} \text{ d}^{-1}$ recorded at mid-May 2009 and increased again up to 29.81 in June 2009. Later on, TMF decreased until September 2009 ($7.46 \text{ g m}^{-2} \text{ d}^{-1}$) and increased again to similar values as June in October 2009 (Fig. 3a).

OC contribution to TMF in the open slope was consistently higher than in the canyon, with four relevant peaks in November 2008, and January, April and August 2009 (2.2,

BGD

9, 18295–18330, 2012

Bioavailability of sinking organic matter

P. Lopez-Fernandez et al.

Title Page

Abstract

Introduction

Conclusions

References

Tables

Figures

◀

▶

◀

▶

Back

Close

Full Screen / Esc

Printer-friendly Version

Interactive Discussion



2.3, 2.4 and 3.5 %, respectively). OC contribution to TMF in the canyon was relatively stable throughout the study period (range 0.7–1.4 %) with two apparent peaks at the end of March and end of April (1.36 % and 1.26 %, respectively; Fig. 3b). Opal contribution to TMF in the open slope co-varied with the OC contents, showing four relevant peaks in November 2008 (2.5 %), January (3.7 %), April (7.2 %) and August (5.7 %) 2009. In the Blanes canyon the opal content of TMF showed three relevant peaks in November 2008 (3.0 %), January (4.7 %) and October (4.9 %) 2009 (Fig. 3c).

3.3 Biochemical composition and bioavailability of OM

Phytopigment, protein, carbohydrate, lipid, BPC and BAOC contents of sinking particles in the study area are reported in Table 1. The 2-way univariate ANOVAs revealed that the contents of all investigated variables in sinking particulate material were significantly affected by the interaction between the two tested factors (Time × spatial; Table 2).

3.3.1 Open slope

In the open slope, the contents of almost all organic compounds show wide and significant temporal variations, characterized by an increase from March to April 2009, a decrease from May to July 2009, and a maximum peak in August 2009 (Fig. 4). Only total phytopigment and protein contents peaked early (in February 2009 and May 2009, respectively). Total carbohydrate concentrations ranged from 3.8 to 23.7 mg g⁻¹ and displayed significant temporal variations with significant peaks in April 2009 (11.7 mg g⁻¹) and August 2009 (23.7 mg g⁻¹). Overall, the digestible fraction of carbohydrates was about 24 % of the total carbohydrate pool, with a peak (65 %) in February 2009 (corresponding to 2.48 mg labile carbohydrates g⁻¹). Total protein concentrations ranged from 0.02 to 7.09 mg g⁻¹, and displayed three significant peaks at the end of January (7.09 mg g⁻¹), in April (3.51 mg g⁻¹) and at the end of July 2009 (3.45 mg g⁻¹). Labile proteins represent on average about 12 % of the total protein pool, with a maximum

BGD

9, 18295–18330, 2012

Bioavailability of sinking organic matter

P. Lopez-Fernandez et al.

Title Page

Abstract

Introduction

Conclusions

References

Tables

Figures

◀

▶

◀

▶

Back

Close

Full Screen / Esc

Printer-friendly Version

Interactive Discussion



value of 54 % (corresponding to a concentration of 0.9 mg g^{-1}) in December 2008. Total lipid concentrations follow the same temporal pattern as the one observed for total carbohydrates, ranged from 1.4 to 7.58 mg g^{-1} with significant peaks in April 2009 (6.34 mg g^{-1}), and August 2009 (7.58 mg g^{-1}). Overall, total particulate carbohydrates were the dominant class of organic compounds with an average contribution to the BPC around 46 %, followed by lipids (33 %) and proteins (21 %). BPC represents about 35 % of the total OC flux in the open slope (range 1–51 % with a 36 % of variation on an annual basis). A minor fraction (on average 16 %, range 6–50 %) of BPC reaching the sea bottom in the slope was enzymatically digestible. Total phytopigment concentrations explained only 23 % of BPC variance (Type-I regression, $n = 144$, $p < 0.05$), with the remaining 67 % of BPC reaching the open slope sediments being associated with non-algal sources. BPC and BAOC covary significantly in the open slope, with about 72 % of BPC variance being explained by variations in BAOC contents (Type-I regression, $n = 144$, $p < 0.001$).

3.3.2 Canyon

In the canyon, the contents of almost all organic compounds show wide and significant temporal variations, most of them were characterized by an increase from March to May 2009, with a maximum peak in May 2009, and a decrease from June 2009 (Fig. 5). Total carbohydrate contents ranged from 1.5 to 5.1 mg g^{-1} and peaked in May 2009 (5.1 mg g^{-1}), when the highest peak in labile carbohydrate content (2.87 mg g^{-1}) was also observed. Overall, enzymatically digestible carbohydrates in the fluxes of the Blanes canyon were about 58 % of the total carbohydrate pool. Total protein concentrations do not display any significant peak, though generally higher protein contents were observed in April–May 2009 and ranged from 0.6 to 4.9 mg g^{-1} . Overall, labile protein represented on average about 17 % of the total protein pool, with a relative peak in April 2009 (48 %), corresponding to 1.11 mg of labile protein g^{-1} . Total lipid ranged from 1.02 to 3.45 mg g^{-1} and followed the same temporal pattern as the one

BGD

9, 18295–18330, 2012

Bioavailability of sinking organic matter

P. Lopez-Fernandez et al.

Title Page

Abstract

Introduction

Conclusions

References

Tables

Figures

◀

▶

◀

▶

Back

Close

Full Screen / Esc

Printer-friendly Version

Interactive Discussion



observed for total carbohydrate contents with higher values in March–April 2009 (up to 3.45 mg g^{-1}). In the Blanes canyon, protein, carbohydrate and lipid contributed, on annual average, almost equally (almost 33% each) to the BPC flux. In the canyon, BPC represents, on annual average, about 33% of the total OC flux (range 20–49%, with a 17% of variation on an annual basis). About 24% (range 11–43%) of BPC reaching the sea bottom in the canyon was enzymatically digestible. Total phytopigment concentrations explained about 64% of BPC variance (Type-I regression, $n = 144$, $p < 0.05$), with the remaining 36% of BPC reaching the canyon sediments being associated with non-algal sources. BPC and BAOC covary significantly also in the canyon, with about 85% of BPC variance being explained by variations in BAOC contents (Type-I regression, $n = 144$, $p < 0.001$).

3.3.3 Comparison between fluxes in the open slope and the canyon

Pairwise comparison tests revealed that, for almost the entire study period, fluxes of all investigated variables and the labile fractions of protein and carbohydrate pools were significantly higher in the canyon than in the open slope (Fig. 6). The same tests carried out on organic matter contents (data not shown) reveal different patterns for each investigated variable, with contents in the open slope higher than in the canyon being more frequently observed. The PERMANOVA tests (Table 2) revealed that the biochemical composition of sinking particulate matter varied between the canyon and the slope and, in both sites, varied significantly with sampling time. The bi-plot produced after the CAP analysis reveals that, during the study period, the biochemical composition of fluxes in the canyon fluctuated more widely than in the open slope. Two major clusters were identified: one in the canyon in December 2008 concurrently with the major storm and associated with increased fluxes of nutritionally important molecules (i.e., total and labile proteins and labile carbohydrates). Another cluster included samples collected in the canyon and the open slope in March 2009, concurrent with the early phases of the phytoplankton bloom and associated with increased fluxes of total phytopigments (Fig. 7).

Bioavailability of sinking organic matter

P. Lopez-Fernandez et al.

Title Page

Abstract

Introduction

Conclusions

References

Tables

Figures



Back

Close

Full Screen / Esc

Printer-friendly Version

Interactive Discussion



4 Discussion

4.1 Trophic significance of mass fluxes in the Blanes canyon and in the adjacent open slope

While several studies on continental margins differentiated between particle fluxes in and out of submarine canyons (Puig and Palanques, 1998; Monaco et al., 1999, Martin et al., 2006), there have been only few studies simultaneously assessing both seasonal and spatial changes in the biochemical characteristics of settling organic matter in the canyons of the Mediterranean Sea (Tesi et al., 2008; Pasqual et al., 2011; Sanchez-Vidal et al., 2009). Also, information on the readily degradable fraction of sinking organic particles is practically not existent. Thence, the present study constitutes the first report considering synoptically seasonal and spatial changes in the characteristics of the settling organic matter, including the digestible fraction, in a Mediterranean submarine canyon and its adjacent open slope.

We report here that during the entire year of the study, the mass fluxes in the axis of the canyon were consistently one order of magnitude higher than those in the adjacent open slope at equal depth. Such striking difference has been already described in the Blanes canyon (Zuñiga et al., 2008; Lopez-Fernandez et al., 2012) and also for other canyons nearby the Blanes one (e.g. La Fonera, Lacaze-Duthiers and Cap de Creus canyons; Martin et al., 2006; Pasqual et al., 2010, respectively). This difference in mass flux was accentuated during storm periods. The repeated action of high waves increased the shelf water density by resuspension and caused down-canyon current promoting the transport of the suspended loads through Blanes submarine canyon (Palanques et al., 2006; Sanchez-Vidal et al., 2012).

The TMF for all the above mentioned canyons, including the Blanes one, is typically dominated by a lithogenic fraction. As a result, the OC contribution to the TMF in the Blanes canyon and the adjacent open slope is very low (ranging 0.73–1.41 % and 1.12–3.51 %, respectively), in concordance with studies carried out in other Mediterranean continental margins indented by submarine canyons (Martin et al., 2006; Pasqual et

Bioavailability of sinking organic matter

P. Lopez-Fernandez et al.

Title Page

Abstract

Introduction

Conclusions

References

Tables

Figures



Back

Close

Full Screen / Esc

Printer-friendly Version

Interactive Discussion



al., 2010). The large dominance of the lithogenic fraction in settling particles from both the canyon and its adjacent open slope is indicative of the presence of a conspicuous input of material entering the trap either from terrigenous inputs or sediment resuspension. This hypothesis is corroborated by the presence of relatively high concentrations of carbohydrates in the trap samples, which represented on average 0.3 % and 0.7 % of TMF in the canyon and open slope, respectively and 28.7 % and 44.5 %, respectively of OC. Carbohydrates represent the most refractory fraction of organic compounds and, with exception of the periods of input of fresh material associated with phytoplankton particles sinking from the upper water column (Danovaro et al., 1999, 2000), are typically dominant in deep-sea sediments (Pusceddu et al., 2009). The carbohydrate fraction in trap samples can also increase considerably during resuspension events in the deep sea, thus determining a depletion of the nutritional quality of food particles (Danovaro et al., 2000). In addition, complex and structural carbohydrates of plant origin (like lignin) are particularly abundant in the presence of inputs of terrigenous origin (Tesi et al., 2007).

The biological material was recognizable in both habitats during the entire study period and, in some cases, especially in the open slope, contributed significantly to the particle downward fluxes. The OC contribution to the TMF generally decreased with increasing TMF, confirming a preeminent dilution of organic inputs with terrigenous and/or resuspended material, which was even more accentuated inside the canyon. At the same time, during this study, the organic fraction of the TMF is generally higher in the open slope than in the canyon axis. This result would indicate that, despite the large input of inorganic material reaching the sediments, heterotrophic consumers in the open slope sediments may profit of a concentration of food particles consistently larger than that available in the canyon at equal depths. Nevertheless, our results also show that the slope site was mainly characterized by a remarkable seasonal variability in the food quality of sinking particles, with major peaks associated to the seasonal cycle of biological production in the euphotic zone, whereas the canyon site showed a more pronounced temporal variability in the quantity of sinking particles. This striking

Bioavailability of sinking organic matter

P. Lopez-Fernandez et al.

Title Page

Abstract

Introduction

Conclusions

References

Tables

Figures



Back

Close

Full Screen / Esc

Printer-friendly Version

Interactive Discussion



5 difference in the quantity/quality of particles sinking in the canyon axis and the adjacent
open slope is likely to have conceivable consequences for the nutrition of the deep-sea
benthos inhabiting the two different habitats. A certain benthic organism living inside
the Blanes canyon would indeed need to ingest more particles to fulfill its food require-
ments than another one living in the adjacent slope, where the OC fraction of sinking
10 particles is consistently and almost constantly higher than in the canyon. Nevertheless,
our data indicate also that the labile (enzymatically digestible) fraction of organic matter
reaching the benthos in the canyon is generally higher than that in the open slope. This
result indicates that deep-sea benthos in the canyon is generally exposed to a rain of
preeminently inorganic material. Our results also showed that the benthos inhabiting
15 deep-sea sediments in the canyon, although received lower concentration of organic
particles, had a large availability of labile organic matter. In fact, it can be roughly calcu-
lated that an animal in the canyon exposed to a mass unit of sinking material can profit
of about 1 % OC, which is about half the amount that an animal in the slope receives.
However, the dilution of OC in a preeminently inorganic matrix in the canyon is partly
20 counterbalanced by a higher organic matter bioavailability (8 % of OC is enzymatically
digestible) than in the open slope (5 %).

The pathway of organic and inorganic matter is not solely driven by vertical settling
from the sea surface to the deep ocean, as a large proportions of particulate matter
25 is transported by lateral advection before final deposition on the deep seafloor. Lopez-
Fernandez et al. (2012), shows as Blanes canyon is mainly influenced by lateral par-
ticle inputs, while the slope, is more influenced by the pelagic contributions (vertical
transport). Lateral transport is recognized as an important way to transport OC to the
deep sea and across Western Mediterranean continental margins (Martin et al., 2006;
Palanques et al., 2012; Pasqual et al., 2010). Most of the material moving vertically
was biogenic in origin (for example, diatom frustules, and fecal pellets), requiring days
to months for particles to settle to the seabed if not advected off-shelf. Currents inside
the canyon peaks up to 45 cm s^{-1} significantly higher than speed current in the slope
(maximum peak of 26 cm s^{-1}), so fresh material transported through the canyon from

**Bioavailability of
sinking organic
matter**P. Lopez-Fernandez et al.

Title Page

Abstract

Introduction

Conclusions

References

Tables

Figures

◀

▶

◀

▶

Back

Close

Full Screen / Esc

Printer-friendly Version

Interactive Discussion



continental margin should take less time to arrive to the depth of middle canyon than a particle traveling to the same depth at the open slope sites. The particle transport from the continental shelf to the deep basin is faster and more efficient inside the canyon than at the open slope. So differences in lability of the OC this may be due to the difference in the transport rate of particles that reach the bottom between the canyon (faster) and the open slope (slower).

According to the optimal foraging theory (Shoener, 1971; Pyke et al., 1977), this suggests that, although an heterotrophic organism living in the canyon should spend more energy in “searching” for OC, once acquired that OC is more labile than that more easily accessed by an animal living on the open slope. This result indicates that organisms facing particle transport from the canyon are penalized by the mostly inorganic flux, but can counterbalance this, profiting inputs of more labile organic particles.

The results of this study, thence, provide new insights on the differential modalities that deep sea benthos inhabiting largely different habitats (e.g., canyon vs. open slope) may experience to survive in a generally food depleted environment. Our results confirm recent studies showing that elevated organic matter inputs in canyons may favor the faunal contribution to carbon processing and create hotspots of faunal biomass and carbon processing along the continental shelf (Van Oevelen et al., 2011). However, whether these inputs have always a positive effect on deep-sea benthos depends also on the rates of sinking and the overall amount of sediment deposited on the deep-sea floor.

By rapidly conveying the organic material produced in the upper water column, submarine canyons are able to often sustain more biomass and biodiversity than the nearby open slope areas (Bianchelli et al., 2008). Moreover, differences in biodiversity between canyons and open slopes are generally larger in terms of faunal community structure (i.e., beta diversity) than in terms of species richness (Danovaro et al., 2009). These differences are mostly explained by the availability of food particles in the sediment (Danovaro et al., 2009), which in turn reflect the nature, origin and food quality of inputs from the upper water column (Danovaro et al., 1999). Thus, our results allow

BGD

9, 18295–18330, 2012

Bioavailability of sinking organic matter

P. Lopez-Fernandez et al.

Title Page

Abstract

Introduction

Conclusions

References

Tables

Figures



Back

Close

Full Screen / Esc

Printer-friendly Version

Interactive Discussion



hypothesizing that that faunal difference between soft bottom sediments of canyons and neighboring open slopes are the result of community adaptations to different combinations of food quantity and quality in the two different habitats.

4.2 Hydrodynamic and climatic controls of bioavailable organic matter inputs to deep sea ecosystems.

Whether the behavior of mass fluxes in the Blanes canyon can be extrapolated to other submarine canyons along Mediterranean margins remains an open question. In fact, several Mediterranean submarine canyons have been defined as major conduits for OC to the deep-sea basin due to local hydrodynamics conditions (Martin et al., 2006; Palanques et al., 2008; Zuñiga et al., 2009). Nevertheless, recent studies have also demonstrated that different (even adjacent) canyons may show large differences in the quantitative and qualitative characteristics of sedimentary organic matter, and that these differences are not only related to the different morphological features of different canyons, but can also depend on the timing of sampling (Puseddu et al., 2010). In fact, canyons are often episodic event-dominated systems (Palanques et al., 2012), which means that the inputs of particles reaching the interior of canyons are largely (sometimes stochastically) influenced by local climate anomalies, involving river flood events, wind dust inputs and high energy hydrodynamic processes as sea-storms, dense shelf water cascading and deep ocean convection (Canals et al., 2006; Sanchez-Vidal et al., 2012; Palanques et al., 2012), but also by primary production at the surface (Danovaro et al., 2001). In this regard, in fact, it must be considered that the sediment transport through submarine canyons is neither constant nor unidirectional, rather has a pulse-like behavior (Palanques et al., 2012). One of the most dramatic examples of pulsation processes driving the transport of large amounts of sediment and organic matter to the deep sea occurs during severe coastal storms which can be highly efficient in transporting OC from shallow waters on the shelf down to deep waters (Sanchez-Vidal et al., 2012).

Bioavailability of sinking organic matter

P. Lopez-Fernandez et al.

Title Page

Abstract

Introduction

Conclusions

References

Tables

Figures

◀

▶

◀

▶

Back

Close

Full Screen / Esc

Printer-friendly Version

Interactive Discussion



Variations in the biochemical composition of sinking particles observed in this study during the storm partially resemble the consequences of dense shelf water cascading and severe coastal storms on the availability of organic OC for the deep-sea benthos (Sanchez-Vidal et al., 2012). Biochemical composition present temporal variation during all the sampling period highlights the different sources of the organic material arriving to the 1200 m deep. During the autumn-winter storms period our data present an increase in total protein and labile contribution to the BPC and low values of lipids, this behavior is not observed during other seasons. In spring and summer, the hydrodynamic conditions are less rough than in storm period, these two seasons are marked by an increase in lipids. Differences in biochemical composition highlight the different structure in the communities on the water column. Lipids are more readily available to consumers than proteins (Taylor et al., 1986), so we could point out that a large amount of labile particles arriving during storms period, against an overwhelming quantity of sediment transported, come by sediment resuspension from the continental shelf and are redistributed towards the deep sea.

The possible advantage of a more labile food for the deep-sea benthos receiving inputs forced by climate anomalies at the sea surface could be however counterbalanced and even canceled by the physical and mechanical disturbance generated by the gravity flow of inorganic particles, possibly suffocating the sea bottom (Pusceddu et al., 2010), so our results indicate that severe coastal storms can have important and almost immediate consequences on the functioning of the whole system down to the deep seafloor (Sanchez-Vidal et al., 2012).

In this study we show that the organic matter collected by sediment traps in spring had a higher nutritional value than in late autumn-winter, and this feature was shared by both the canyon and the adjacent open slope (Figs. 5, 6). This difference is likely to be due to the typical spring plankton bloom described by several authors in the study area (Estrada et al., 1996; Rossi et al., 2003). During this period the biochemical composition of BPC was characterized by increasing lipid contributions compared with those observed during the storm period, characterized by higher protein contents. Along with

Bioavailability of sinking organic matter

P. Lopez-Fernandez et al.

[Title Page](#)[Abstract](#)[Introduction](#)[Conclusions](#)[References](#)[Tables](#)[Figures](#)[Back](#)[Close](#)[Full Screen / Esc](#)[Printer-friendly Version](#)[Interactive Discussion](#)

proteins, lipids can represent a preferential source of energy for benthic feeders (Medernach et al., 2001; Grémare et al., 1997). In the slope (more influenced by pelagic sedimentation), this increase in the nutritional value of the sampled particles is magnified by the effect of the deep-sea convection, that lead the injection of nutrients up into the surface water.

In summer, sediment trap samples showed an increase in the nutritional value of the sediment comparable to the increase during the spring bloom. Lopez-Fernandez et al. (2012) pointed out during this period an input of Sahara dust in the area. Fertilization process by wind dust and a consequent increase in the sinking flux have been previously described by several authors in the North-western Mediterranean (Zuñiga et al., 2008; Pasqual et al., 2011; Lee et al., 2009). This dust brings new nutrients such as inorganic phosphorous and iron to the surface waters and could increase autotrophic production, and hence the efficiency of the biological C pump in oligotrophic oceans (Pulido-Villena et al., 2008). The entrance of nutrients is more accentuated in the open slope where the pelagic processes are more clearly recorded.

Overall, our results confirm that in both habitats (the submarine canyon and the open-slope), bioavailable organic matter delivery towards deep-sea ecosystems are preferentially controlled by hydrodynamic processes (sea-storms, dense-shelf water cascading and offshore convection) in front of annual bio-climatic controls (winter-spring primary production bloom).

Acknowledgements. We thank all people on board R/V *García del Cid* for their help and dedication during the PROMETEO cruises. This work has been undertaken in the framework of PROMETEO (CTM2007-66316-C02-01/MAR), DOS MARES (CTM2010-21810-C03-01), and Consolider Ingenio 2010 GRACCIE (CSD2007-00067) RTD projects funded by the Spanish Government, and HERMIONE (226354-HERMIONE) RTD project funded by the European Commission, and the excellence research groups grant 2009-SGR-1305 by the government of Catalonia. P. Lopez-Fernandez benefit from the Spanish FPI Grant (BES-2008-009374).

BGD

9, 18295–18330, 2012

Bioavailability of sinking organic matter

P. Lopez-Fernandez et al.

Title Page

Abstract

Introduction

Conclusions

References

Tables

Figures

◀

▶

◀

▶

Back

Close

Full Screen / Esc

Printer-friendly Version

Interactive Discussion



References

- Amblas, D., Canals, M., Urgeles, R., Lastras, G., Liqueste, C., Hughes-Clarke, J., Casamor, J. L., and Calafat, A. M.: Morphogenetic mesoscale analysis of the northeastern Iberian margin, NW Mediterranean Basin, *Mar. Geol.*, 234, 3–20, 2006.
- 5 Anderson, M. J.: A new method for non-parametric multivariate analysis of variance, *Austral. Ecol.*, 26, 32–46, 2001.
- Bianchelli, S., Gambi, C., Pusceddu, A., and Danovaro, R.: Trophic conditions of sediments in a deep sea canyon in the Adriatic Sea, *Chem. Ecol.*, 24, 101–109, 2008.
- Bonnin, J., Heussner, S., Calafat, A., Fabres, J., Palanques, A., Durrieu de Madron, X., Canals, M., Puig, P., Avril, J., and Delsaut N.: Comparison of horizontal and downward particle fluxes across canyons of the Gulf of Lions (NW Mediterranean): Meteorological and hydrodynamical forcing, *Cont. Shelf Res.*, 28, 1957–1970, 2008.
- 10 Canals, M., Puig, P., Durrieu de Madron, X., Heussner, S., Palanques, A., and Fabres, J.: Flushing submarine canyons, *Nature*, 444, 354–357, 2006.
- 15 Danovaro, R.: *Methods for the Study of Deep-Sea Sediments, Their Functioning and Biodiversity*, CRC Press, Boca Raton, US, 428 pp., 2010.
- Danovaro, R., Dinet, A., Duineveld, G., and Tselepidis, A.: Benthic response to particulate fluxes in different trophic environments: a comparison between the Gulf of Lions-Catalan Sea (western-Mediterranean) and the Cretan Sea (eastern-Mediterranean), *Progr. Oceanogr.*, 44, 287–312, 1999.
- 20 Danovaro, R., Della Croce, N., Dell'Anno, A., Fabiano, M., Marrale, D., and Martorano, D.: Seasonal changes and biochemical composition of the labile organic matter flux in the Cretan Sea, *Progr. Oceanogr.*, 46, 259–278, 2000.
- Danovaro, R., Dell'Anno, A., Fabiano, M., Pusceddu, A. and Tselepidis, A.: Deep-sea ecosystem response to climate changes: the eastern Mediterranean case study, *Trends Ecol. Evol.*, 25, 16, 505–510, 2001
- Danovaro, R., Bianchelli, S., Gambi, C., Mea, M., and Zeppilli, D.: α -, β -, γ -, δ - and ε -diversity of deep-sea nematodes in canyons and open slopes of Northeast Atlantic and Mediterranean margins, *Mar. Ecol.-Prog. Ser.*, 396, 197–209, 2009.
- 30 Dell'Anno, A., Fabiano, M., Mei, M. L., and Danovaro, R.: Enzymatically hydrolysed 496 protein and carbohydrates pools in deep-sea sediments: estimates of the bioavailable fraction and methodological considerations, *Mar. Ecol.-Prog. Ser.*, 196, 15–23, 2000.

Bioavailability of sinking organic matter

P. Lopez-Fernandez et al.

Title Page

Abstract

Introduction

Conclusions

References

Tables

Figures



Back

Close

Full Screen / Esc

Printer-friendly Version

Interactive Discussion



Bioavailability of sinking organic matter

P. Lopez-Fernandez et al.

Title Page

Abstract

Introduction

Conclusions

References

Tables

Figures

◀

▶

◀

▶

Back

Close

Full Screen / Esc

Printer-friendly Version

Interactive Discussion



- biochemical composition and nutritional value of the particulate organic matter available to surface deposit feeders: a 2-year study, *Mar. Ecol.-Prog. Ser.*, 150, 195–206, 1997.
- Harriague, A. C., Mistic, C., Petrillo, M., and Albertelli, G.: Stressors affecting the macrobenthic community in Rapallo Harbour (Ligurian Sea, Italy), *Sci. Mar.*, 71, 705–714., 2007.
- 5 Harris, P. T. and Whiteway, T.: Global distribution of large submarine canyons: Geomorphic differences between active and passive continental margins, *Mar. Geol.*, 285, 69–86, 2011.
- Hedges, J. I., Baldock, J. A., Gélinas, Y., Lee, C., Peterson, M., and Wakeham, S. G.: Evidence for non selective preservation of organic matter in sinking marine particles, *Nature*, 409, 801–804, 2001.
- 10 Lastras, G., Canals, M., Amblas, D., Lavoie, C., Church, I., De Mol, B., Duran, R., Calafat, A. M., Hughes-Clarke, J. E., Smith, C. J., and Heussner, S.: Understanding sediment dynamics of two large submarine valleys from seafloor data: Blanes and La Fonera canyons, north-western Mediterranean Sea, *Mar. Geol.*, 280, 20–39, 2011.
- Lee, I. H., Lien, R. C., Liu, J. T., and Chuang, W. :Turbulent mixing and internal tides in Gaoping (Kaoping) Submarine Canyon, Taiwan, *J. Marine Syst.*, 76, 383–396, 2009.
- 15 Levin, L. A. and Dayton, P. K.: Ecological theory and continental margins: where shallow meets deep, *Trends Ecol. Evol.*, 24, 606–617, 2009.
- López-Fernández, P., Calafat, A. M., Sanchez-Vidal, A. S., Cateura, J., Company, J. B., Flexas, M. M., and Canals, M.: Particle fluxes in the bathyal zone of the North Catalan margin: Blanes submarine canyon and adjacent slope, *Prog. Oceanogr.*, submitted, 2012.
- 20 Lorenzen, C. J. and Jeffrey, S. W.: Determination of chlorophyll in seawater: report of intercalibration tests, *UNESCO Technical Papers in Marine Science*, 35, 1–20, 1980.
- Martín, J., Palanques, A., and Puig, P.: Composition and variability of downward particulate matter fluxes in the Palamós submarine canyon (NW Mediterranean), *J. Marine Syst.*, 60, 75–97, 2006.
- 25 McArdle, B. H. and Anderson, M. J.: Fitting multivariate models to community data: a comment on distance-based redundancy analysis, *Ecology*, 82, 290–297, 2001.
- Medernach, L. M., Grémare, A., Amouroux, J. M., Colomines, J. C., and Vétion, G.: Temporal changes in the amino acid contents of particulate organic matter sedimenting in the Bay of Banyuls-sur-Mer (northwestern Mediterranean), *Mar. Ecol.-Prog. Ser.*, 214, 55–65, 2001.
- 30 Mistic, C. and Harriague, A. C.: Organic matter recycling in a shallow coastal zone (NW Mediterranean): The influence of local and global climatic forcing and organic matter lability on hydrolytic enzyme activity, *Cont. Shelf Res.*, 28, 2725–2735, 2008.

**Bioavailability of
sinking organic
matter**

P. Lopez-Fernandez et al.

[Title Page](#)[Abstract](#)[Introduction](#)[Conclusions](#)[References](#)[Tables](#)[Figures](#)[◀](#)[▶](#)[◀](#)[▶](#)[Back](#)[Close](#)[Full Screen / Esc](#)[Printer-friendly Version](#)[Interactive Discussion](#)

Monaco, A., Durrieu de Madron, X., Radakovitch, O., Heussner, S., and Carbonne, J.: Origin and variability of downward biogeochemical fluxes on the Rhone continental margin (NW mediterranean), *Deep-Sea Res. Part I*, 46, 1483–1511, 1999.

Murray, J. W.: *The oceans*, International Geophysics, 50, 175–211, 1992.

5 Palanques, A., Durrieu de Madron, X., Puig, P., Fabres, J., Guilleén, J., Calafat, A., Canals, M., and Bonnín, J.: Suspended sediment fluxes and transport processes in the Gulf of Lions submarine canyons, The role of storms and dense water cascading, *Mar. Geol.*, 234, 43–61, 2006.

10 Palanques, A., Guillén, J., Puig, P., and Durrieu de Madron, X.: Storm-driven shelf-to-canyon suspended sediment transport at the southwestern Gulf of Lions, *Cont. Shelf Res.*, 28, 1947–1956, 2008.

Palanques, A., Puig, P., Durrieu de Madron, X., Sanchez-Vidal, A., Pasqual, C., Martin, J., Calafat, A., Heussner, S., and Canals, M.: Sediment transport to the deep canyons and open-slope of the Western Gulf of Lions during the 2006 intense cascading and open-sea convection period, *Prog. Oceanogr.*, in press, 2012.

15 Pasqual, C., Sanchez-Vidal, A., Zúñiga, D., Calafat, A., Canals, M., Durrieu de Madron, X., Puig, P., Heussner, S., Palanques, A., and Delsaut, N.: Flux and composition of settling particles across the continental margin of the Gulf of Lion: the role of dense shelf water cascading, *Biogeosciences*, 7, 217–231, doi:10.5194/bg-7-217-2010, 2010.

20 Pasqual, C., Lee, C., Goñi, M., Tesi, T., Sanchez-Vidal, A., Calafat, A., Canals, M., and Heussner, S.: Use of organic biomarkers to trace the transport of marine and terrigenous organic matter through the southwestern canyons of the Gulf of Lion, *Mar. Chem.*, 126, 1–12, 2011.

Pinckney, J., Papa, R., and Zingmark, R.: Comparison of high-performance liquid chromatographic, spectrophotometric, and fluorometric methods for determining chlorophyll a concentrations in estuarine sediments, *J. Microbiol. Meth.*, 19, 59–66, 1994.

25 Puig, P. and Palanques, A.: Temporal variability and composition of settling particle fluxes on the Barcelona continental margin (northwestern Mediterranean). *J. Mar. Res.* 56, 639–654, 1998.

30 Pulido-Villena, E., Wagener, T., and Guieu, C.: Bacterial response to dust pulses in the western Mediterranean: Implications for carbon cycling in the oligotrophic ocean, *Global Biogeochem. Cy.*, 22, GB1020, 2008.

Pusceddu, A., Dell’Anno, A., and Fabiano, M.: Organic matter composition in coastal sediments at Terra Nova Bay (Ross Sea) during summer 1995, *Polar Biol.*, 23, 288–293, 2000.

Bioavailability of sinking organic matter

P. Lopez-Fernandez et al.

Title Page

Abstract

Introduction

Conclusions

References

Tables

Figures

◀

▶

◀

▶

Back

Close

Full Screen / Esc

Printer-friendly Version

Interactive Discussion



- Pusceddu, A., Dell'Anno, A., Danovaro, R., Manini, E., Sarà, G., and Fabiano, M.: Enzymatically hydrolyzable protein and carbohydrate sedimentary pools as indicators of the trophic state of detritus sink' systems: a case study in a Mediterranean coastal lagoon, *Estuaries*, 26, 641–650, 2003.
- 5 Pusceddu, A., Dell'Anno, A., Fabiano, M., and Danovaro, R.: Quantity, biochemical composition and bioavailability of sediment organic matter as complementary signatures of benthic trophic status, *Mar. Ecol.-Prog. Ser.*, 375, 41–52, 2009.
- Pusceddu, A., Bianchelli, S., Canals, M., Sanchez-Vidal, A., Durrieu De Madron, X., Heussner, S., Lykousis, V., de Stigter, H., Trincardi, F., and Danovaro, R.: Organic matter in sediments of canyons and open slopes of the Portuguese, Catalan, Southern Adriatic and Cretan Sea margins, *Deep-Sea Res. Part I*, 57, 441–457, 2010a.
- 10 Pusceddu, A., Mea, M., Gambi, C., Bianchelli, S., Canals, M., Sanchez-Vidal, A., Calafat, A., Heussner, S., Durrieu De Madron, X., Avril, J., Thomsen, L., Garcia, R., and Danovaro R.: Ecosystem effects of dense water formation on deep Mediterranean ecosystems: an overview, *Adv. Oceanogr. Limnol.*, 1, 67–84, 2010b.
- Pyke, G. H., Pulliam, H. R., and Charnov, E. L.: Optimal foraging: a selective review of theory and tests, *Q. Rev. Biol.*, 52, 137–154, 1977.
- Rossi, S., Grémare, A., Gili, J., Amouroux, J., Jordana, E., and Vétion, G.: Biochemical characteristics of settling particulate organic matter at two north-western Mediterranean sites: a seasonal comparison, *Estuar. Coast. Shelf S.*, 58, 423–434, 2003.
- 20 Rovira, A. and Batalla, R. J.: Temporal distribution of suspended sediment transport in a Mediterranean basin: The lower Tordera (NE SPAIN), *Geomorphology*, 79, 58–71, 2006
- Sanchez-Vidal, A., Pasqual, C., Kerherve, P., Heussner, S., Calafat, A., Palanques, A., Durrieu de Madron, X., Canals, M., and Puig, P.: Across margin export of organic matter by cascading events traced by stable isotopes, northwestern Mediterranean Sea, *Limnol. Oceanogr.*, 54, 1488–1500, 2009.
- 25 Sanchez-Vidal, A., Canals, M., Calafat, A. M., Lastras, G., Pedrosa-Pàmies, R., Menéndez, M., Medina, R., Company, J. B., Hereu, B., Romero, J., and Alcovero, T.: Impacts on the deep-sea ecosystem by a severe coastal storm, *PLoS ONE* 7, e30395, 2012.
- 30 Shoener, T. W.: Theory of feeding strategies, *Ann. Rev. Ecol. Syst.*, 11, 369–404, 1971.
- Smith, C. R., De Leo, F. C., Bernardino, A. F., Sweetman, A. K., and Martinez Arbizu, P.: Abyssal food limitation, ecosystem structure and climate change, *Trends Ecol. Evol.*, 23, 518–528, 2008.

Bioavailability of sinking organic matter

P. Lopez-Fernandez et al.

Title Page

Abstract

Introduction

Conclusions

References

Tables

Figures

◀

▶

◀

▶

Back

Close

Full Screen / Esc

Printer-friendly Version

Interactive Discussion



Smith, K. L., Ruhl, H. A., Bett, B. J., Billett, D. S. M., Lampitt, R. S., and Kaufmann, R. S.: Climate, carbon cycling and deep-ocean ecosystems, *Proc. Natl. Acad. Sci.*, 106, 19211–19218, 2009.

Soetaert, K. and Van Oevelen, D.: Modeling Food Web Interactions in Benthic Deep-Sea Ecosystems, *Oceanography*, 22, 1, 128–143, 2010.

Szymczak-Zyla, M. and Kowalewska, G.: Chloropigments ad in the Gulf of Gdansk (Baltic Sea) as markers of the state of this environment, *Mar. Pollut. Bull.*, 55, 512–528, 2007.

Taylor, G. T., Karl, D. M., and Pace, M. L.: Impact of bacteria and zooflagellates on the composition of sinking particles: an in situ experiment, *Mar. Ecol.-Prog. Ser.*, 29, 141–155. 1986.

Tesi, T., Miserocchi, S., Goñi, M. A., and Langone, L.: Source, transport and fate of terrestrial organic carbon on the western Mediterranean Sea, Gulf of Lions, France, *Mar. Chem.* 105, 101–117, 2007.

Tesi, T., Langone, L., Goñi, M. A., Turchetto, M., Miserocchi, S., and Boldrin, A.: Source and composition of organic matter in the Bari canyon (Italy): dense water cascading versus particulate export from the upper ocean, *Deep-Sea Res. Part I*, 55, 813–831, 2008.

Van Oevelen, D., Soetaert, K., Novoa, R. G., de Stigter, H., Cunha, M. R., Pusceddu, A., and Danovaro, R.: Canyon conditions impact carbon flows in food webs of three sections of the Nazare canyon, *Deep-Sea Res. Part II*, 58, 2461–2476, 2011.

Wakeham, S. G., Freeman, K. H., Pease, T. K., and Hayes, J. M.: A photoautotrophic source for lycopane in marine water columns, *Geochim. Cosmochim. Ac.*, 57, 159–165, 1993.

Walsh, J. J.: Importance of continental margins in the marine biogeochemical cycling of carbon and nitrogen, *Nature*, 350, 53–55, 1991.

Weaver, P., Billett, D. S. M., Boetius, A., Danovaro, R., Freiwald, A., and Sibuet, M.: Hotspot ecosystem Research on the Margins of European Seas, *Oceanography*, 17, 132–144, 2004.

Witbaard, R., Duineveld, G. C. A., Van der Weele, J. A., Berghuis, E. M., and Reyss, J. P.: The benthic response to the seasonal deposition of phytopigments at the Porcupine Abyssal Plain in the North East Atlantic, *Prog. Oceanogr.*, 43, 15–31, 2000.

Zúñiga, D., Calafat, A., Heussner, S., Miserocchi, S., Sanchez-Vidal, A., Garcia-Orellana, J., Canals, M., Sanchez-Cabeza, J. A., Carbonne, J., Delsaut, N., and Saragoni, G.: Compositional and temporal evolution of particle fluxes in the open Algero-Balearic basin (Western Mediterranean), *J. Marine Syst.*, 70, 2008, 196–214, 2008.

Zuñiga, D., Flexas, M. M., Sanchez-Vidal, A., Coenjaerts, J., Calafat, A., Jordi, G., García-Orellana, J., Puigdefábregas, J., Canals, M., Espino, M., Sardá, F., and Company, J. B.:

BGD

9, 18295–18330, 2012

**Bioavailability of
sinking organic
matter**

P. Lopez-Fernandez et al.

Title Page

Abstract

Introduction

Conclusions

References

Tables

Figures



Back

Close

Full Screen / Esc

Printer-friendly Version

Interactive Discussion



Bioavailability of sinking organic matter

P. Lopez-Fernandez et al.

Table 1. Statistical parameters of total mass flux and biochemical composition of fluxes (Phytopigment, protein, carbohydrate, lipid, labile protein and carbohydrate, biopolymeric and bioavailable carbon contents) from sediment traps located in the Blanes canyon and the adjacent open slope. “S.D.” refers to standard deviation.

Station		Mass flux g m ⁻² d ⁻¹	% OC %	% Opal %	CPE μg g ⁻¹	Total Protein mg g ⁻¹	Labile Protein %	Total Carbohydrate mg g ⁻¹	Labile Carbohydrate %	Total Lipid mg g ⁻¹	Biopolymeric C mg C g ⁻¹	Bioavailable C %
Blanes canyon	Average	22.90	1.1	1.1	49.27	2.43	17.1	2.85	55.1	1.62	3.55	23.5
	Max.	101.09	1.4	4.9	157.09	4.93	48.0	5.10	100.0	3.45	6.91	43.2
	Min.	0.05	0.7	0.0	18.29	0.66	1.2	1.04	6.9	1.02	1.75	11.6
	S.D.	18.34	0.1	1.3	31.52	1.04	13.0	0.89	24.2	0.49	0.96	6.9
	Total	1099.11	1.0	1.0	2217.24	116.56	17.1	136.90	55.1	78.00	170.37	23.5
	N	44	44	44	44	44	44	44	44	44	44	44
Open slope	Average	2.10	1.6	2.0	140.56	2.50	11.9	7.20	23.8	2.77	6.18	13.5
	Max.	7.36	3.5	7.2	572.97	7.09	54.5	23.69	64.6	7.58	16.46	50.5
	Min.	0.00	1.1	0.1	1.17	0.02	0.5	0.29	1.4	0.01	0.20	6.5
	S.D.	2.01	0.5	1.4	138.64	1.78	11.3	4.52	12.7	1.62	3.35	9.4
	Total	98.85	1.6	2.0	6606.14	117.32	11.9	338.26	23.8	130.08	290.35	13.5
	N	44	44	44	44	44	44	44	44	44	44	44

Title Page

Abstract Introduction

Conclusions References

Tables Figures

⏪ ⏩

◀ ▶

Back Close

Full Screen / Esc

Printer-friendly Version

Interactive Discussion



Table 2. Results of univariate and multivariate analyses of variance testing for habitat and temporal variability in fluxes and biochemical composition of fluxes in the Blanes canyon and the adjacent open slope. *** = $P < 0.001$; ns = not significant.

Variable	Contrast	df	MS	F	P
Phytopigment	Canyon vs. Slope (M)	1	54.298	34.17	***
	Sampling Time (T)	43	3.253	1151.90	***
	M × T	43	1.589	562.63	***
	Residuals	176	0.003		
Algal fraction of BPC	Canyon vs. Slope (M)	1	32.796	32.23	***
	Sampling Time (T)	43	4.254	213.11	***
	M × T	43	1.018	50.97	***
	Residuals	176	0.020		
Total protein	Canyon vs. Slope (M)	1	0.775	0.23	ns
	Sampling Time (T)	43	2.239	20.11	***
	M × T	43	3.403	30.56	***
	Residuals	176	0.111		
Labile protein	Canyon vs. Slope (M)	1	5.560	1.73	ns
	Sampling Time (T)	43	2.567	49.19	***
	M × T	43	3.207	61.44	***
	Residuals	176	0.052		
Labile protein fraction	Canyon vs. Slope (M)	1	2.487	0.70	ns
	Sampling Time (T)	43	2.372	74.95	***
	M × T	43	3.557	112.41	***
	Residuals	176	0.032		
Total carbohydrate	Canyon vs. Slope (M)	1	117.630	62.19	***
	Sampling Time (T)	43	1.421	85.57	***
	M × T	43	1.892	113.88	***
	Residuals	176	0.017		
Labile carbohydrate	Canyon vs. Slope (M)	1	8.289	2.70	ns
	Sampling Time (T)	43	2.335	18.25	***
	M × T	43	3.065	23.96	***
	Residuals	176	0.128		
Labile carbohydrate fraction	Canyon vs. Slope (M)	1	104.580	49.01	***
	Sampling Time (T)	43	1.381	33.40	***
	M × T	43	2.134	51.60	***
	Residuals	176	0.041		
Total lipid	Canyon vs. Slope (M)	1	85.979	49.41	***
	Sampling Time (T)	43	2.190	47.95	***
	M × T	43	1.740	38.11	***
	Residuals	176	0.046		
Biopolymeric C	Canyon vs. Slope (M)	1	70.291	35.58	***
	Sampling Time (T)	43	2.223	32.18	***
	M × T	43	1.976	28.60	***
	Residuals	176	0.069		
Bioavailable C	Canyon vs. Slope (M)	1	1.405	0.42	ns
	Sampling Time (T)	43	2.053	13.03	***
	M × T	43	3.386	21.49	***
	Residuals	176	0.158		
Bioavailable fraction of BPC	Canyon vs. Slope (M)	1	102.520	57.99	***
	Sampling Time (T)	43	1.720	28.85	***
	M × T	43	1.768	29.65	***
	Residuals	176	0.060		
Biochemical composition	Canyon vs. Slope (M)	1	515.170	55.70	***
	Sampling Time (T)	43	14.716	80.18	***
	M × T	43	9.249	50.39	***
	Residuals	176	0.184		

Bioavailability of sinking organic matter

P. Lopez-Fernandez et al.

Title Page

Abstract

Introduction

Conclusions

References

Tables

Figures



Back

Close

Full Screen / Esc

Printer-friendly Version

Interactive Discussion



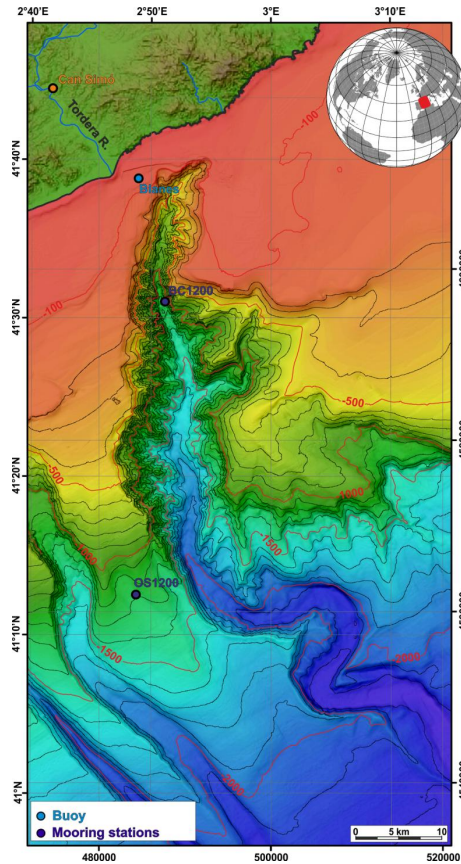


Fig. 1. Bathymetric map of Blanes canyon showing the location of mooring station in Blanes canyon axis (BC1200) and in the adjacent southern open slope (OS1200). The location of Tordera River and the meteorological buoy is also shown. Depth in meters.

**Bioavailability of
sinking organic
matter**

P. Lopez-Fernandez et al.

Title Page

Abstract

Introduction

Conclusions

References

Tables

Figures

◀

▶

◀

▶

Back

Close

Full Screen / Esc

Printer-friendly Version

Interactive Discussion



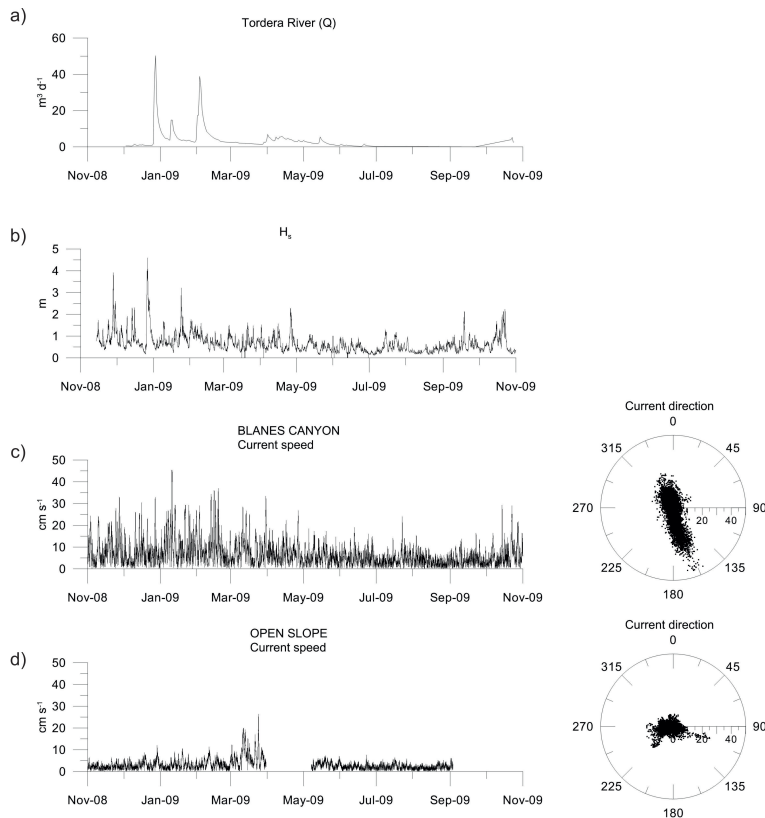


Fig. 2. (a) Daily Tordera River discharge ($\text{m}^3 \text{s}^{-1}$) in the gauging station situated at Fogars de la Selva, see location in Fig. 1. **(b)** Significant wave height H_s (m) recorded at the Blanes buoy, see location in Fig. 1. **(c)** Current speed and direction plots at 23 mab in Blanes canyon station and **(d)** open slope. Radial axes in current direction polar plots are equivalent to the y-axis of current speed plots (cm s^{-1}).

Bioavailability of sinking organic matter

P. Lopez-Fernandez et al.

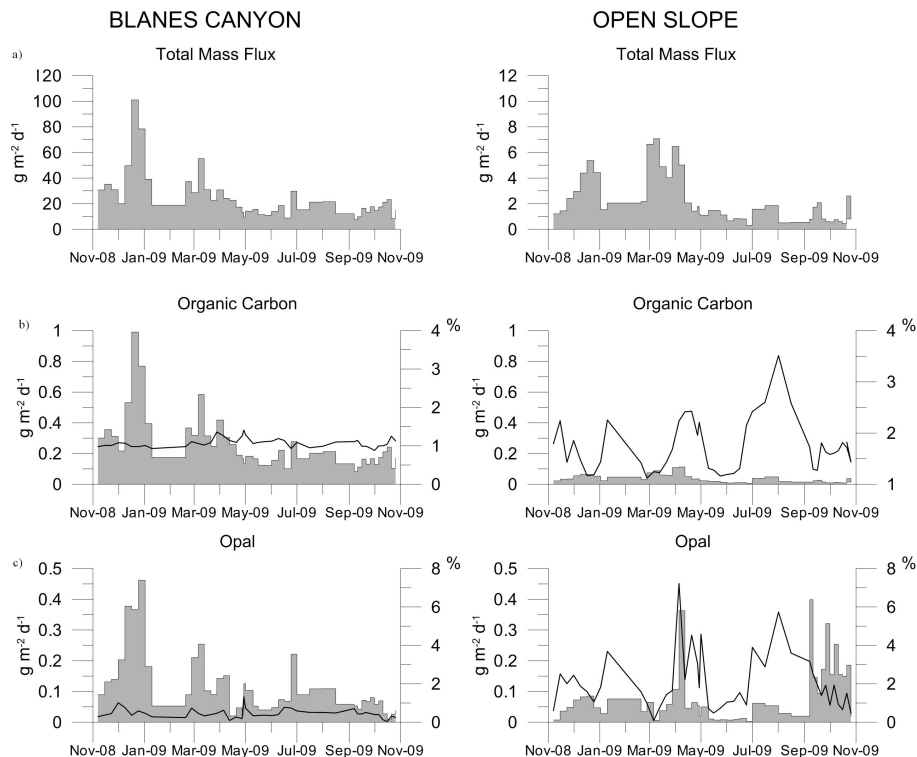


Fig. 3. Time-series of total mass, organic carbon and opal fluxes ($\text{mg m}^{-2} \text{d}^{-1}$) and relative organic carbon and opal contribution (black line represents the %) from the sediment traps in the Blanes canyon and the adjacent open slope at 1200 m depth.

Bioavailability of sinking organic matter

P. Lopez-Fernandez et al.

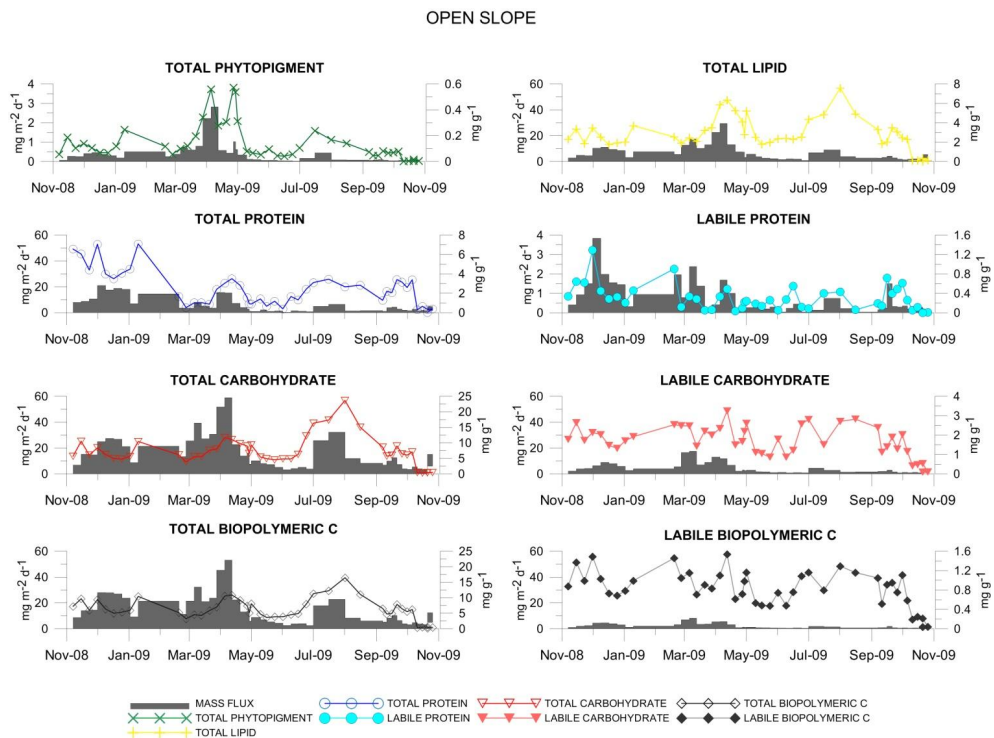


Fig. 4. Time-series of organic compounds fluxes ($\text{mg m}^{-2} \text{d}^{-1}$) and organic compounds contents in the open slope (line represents the mg g^{-1}) from the sediment traps at 1200 m depth.

Bioavailability of sinking organic matter

P. Lopez-Fernandez et al.

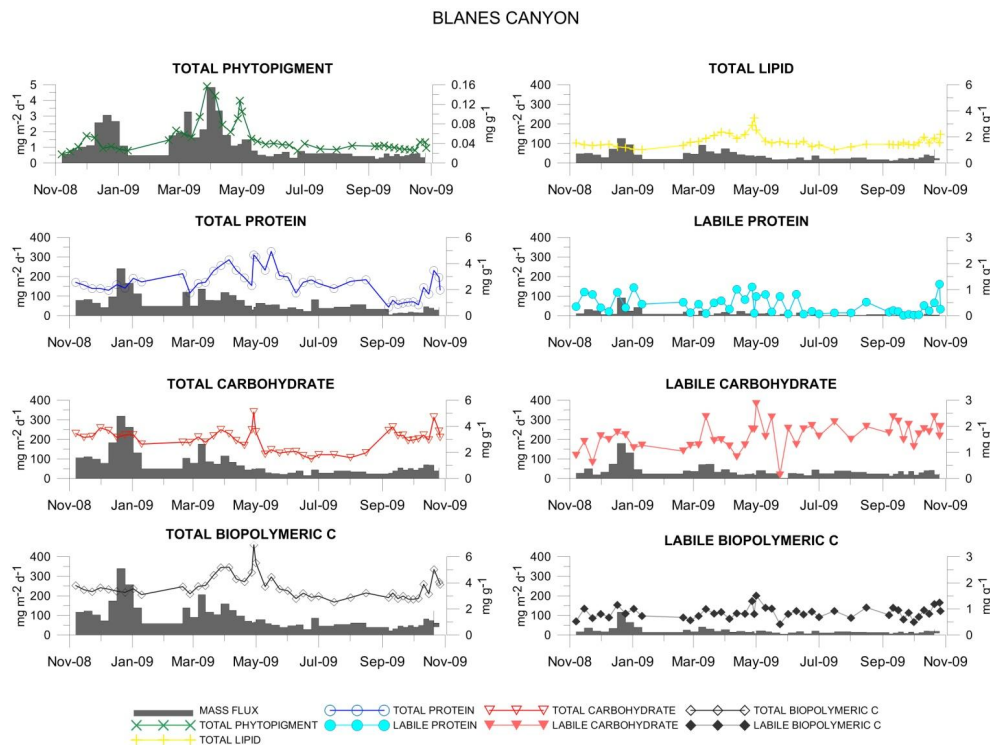


Fig. 5. Time-series of organic compounds fluxes ($\text{mg m}^{-2} \text{d}^{-1}$) and organic compounds contents in the Blanes canyon (line represents the mg g^{-1}) from the sediment traps at 1200 m depth.

Title Page

Abstract

Introduction

Conclusions

References

Tables

Figures

◀

▶

◀

▶

Back

Close

Full Screen / Esc

Printer-friendly Version

Interactive Discussion



Bioavailability of sinking organic matter

P. Lopez-Fernandez et al.

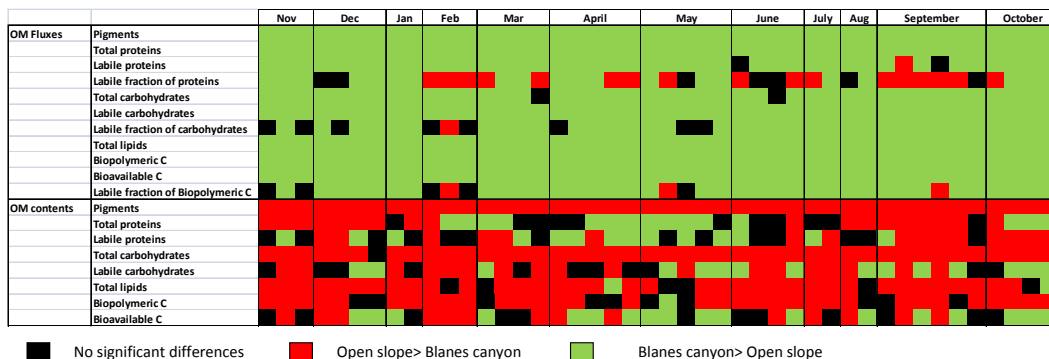


Fig. 6. Pairwise of organic matter fluxes and compound between the two morphologies at each sampling time/period and among sampling periods/times, separately for each seabed morphology.

Title Page

Abstract

Introduction

Conclusions

References

Tables

Figures

◀

▶

◀

▶

Back

Close

Full Screen / Esc

Printer-friendly Version

Interactive Discussion



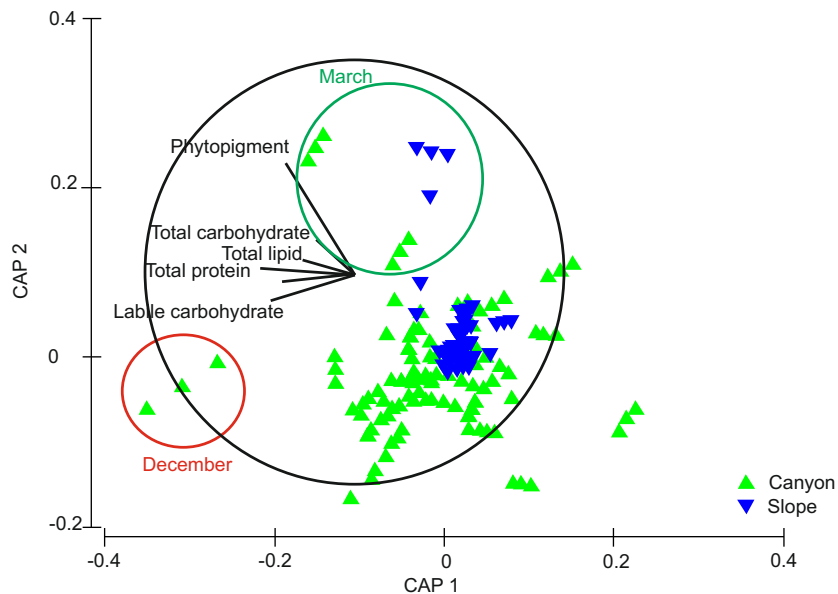


Fig. 7. Bi-plot representations after a canonical analysis of principal coordinates (CAP). Samples from the Blanes canyon and the adjacent open slope have been differentiated.

Bioavailability of sinking organic matter

P. Lopez-Fernandez et al.

Title Page

Abstract

Introduction

Conclusions

References

Tables

Figures

◀

▶

◀

▶

Back

Close

Full Screen / Esc

Printer-friendly Version

Interactive Discussion

