

Abstract

The relative roles of fire and climate in determining canopy species composition and aboveground carbon stocks were investigated. Measurements were made along a transect extending from the dark taiga zone of Central Siberia, where *Picea* and *Abies* dominate the canopy, into the *Larix* zone of Eastern Siberia. We test the hypotheses that the change in canopy species composition is based (1) on climate-driven performance only, (2) on fire only, or (3) on fire-performance interactions. We show that the evergreen conifers *Picea obovata* and *Abies sibirica* are the natural late-successional species both in Central and Eastern Siberia, provided there has been no fire for an extended period of time. There are no changes in the climate-driven performance of the observed species. Fire appears to be the main factor explaining the dominance of *Larix*. Of lesser influence were longitude, hydrology and active-layer thickness.

Stand-replacing fires decreased from 300 to 50 yr between the Yenisei Ridge and the upper Tunguska. Repeated non-stand-replacing surface fires eliminated the regeneration of *Abies* and *Picea*. With every 100 yr since the last fire, the percentage of *Larix* decreased by 20 %.

Biomass of stems of single trees did not show signs of age-related decline. Relative diameter increment was $0.41 \pm 0.20\%$ at breast height and stem volume increased linearly over time with a rate of about $0.36 \text{ t C ha}^{-1} \text{ yr}^{-1}$ independent of age class and species. Stand volumes reached about 130 t C ha^{-1} (equivalent to about $520 \text{ m}^3 \text{ ha}^{-1}$). Individual trees of *Larix* were older than 600 yr. The maximum age and biomass seemed to be limited by fungal rot of heart wood. 60 % of old *Larix* and *Picea* and 30 % of *Pinus sibirica* trees were affected by stem rot. Implications for the future role of fire and of plant diseases are discussed.

BGD

9, 21–62, 2012

Larch forests of eastern Siberia

E.-D. Schulze et al.

Title Page

Abstract

Introduction

Conclusions

References

Tables

Figures

◀

▶

◀

▶

Back

Close

Full Screen / Esc

Printer-friendly Version

Interactive Discussion



1 Introduction

Siberia is characterized by evergreen forests of spruce, pine and fir in Western Siberia and along the Yenisei Ridge, but by deciduous forest of larch in Central and Eastern Siberia, and in the arctic zone. The border between these two functional types is mechanistically not understood and currently prescribed by bioclimatic limits. For example, the widely used LPJ-model generates the dominance of larch (*Larix*) in Eastern Siberia by using a minimum annual temperature range of 43 °C. (Sitch et al., 2003). This parameterization was fit to match the current distribution of *Larix* in Far East Siberia. The same parameters are used in several other global dynamic vegetation models such as ORCHIDEE (Krinner et al., 2005) or SEIB-DGVM (Sato et al., 2007). Similarly, the FAREAST model allows for a very low growing season length for *Larix* compared to other Siberian conifers (Xiaodong and Shugart, 2005; Shuman et al., 2011). However, larch has many additional features which promote its existence under the harsh conditions in Eastern and Northern Siberia such as the growth of adventitious roots along the main stem above the hypocotyl (Schulze et al., 2002) which is of advantage on permafrost and bogs. This feature has been implemented in LPJ by allowing the plant functional type of boreal needle-leaved summergreen trees (i.e. *Larix* sp.) to adjust its fine root layer to the dynamics of the active layer thus additionally increasing its drought tolerance (Beer et al., 2007). It has also been suggested that the deciduous foliage may be of advantage at extreme winter temperatures and during periods of frost drought (Schulze, 1982). Given these diverse adaptations, it has been suggested that larch dominates in Eastern Siberia, because it is the only tree species capable of enduring the harsh climatic conditions (Sugimoto et al., 2002).

However, the separation between deciduous and evergreen regions may not be as clear as many vegetation maps imply. Distribution maps of tree species show that coniferous evergreen species also persist in Eastern Siberia. The Siberian spruce (*Picea obovata*) and the Siberian stone pine (*Pinus sibirica*) can grow on permafrost, although they dominate only along water flows where the active layer tends to be deeper (Nikolov

BGD

9, 21–62, 2012

Larch forests of eastern Siberia

E.-D. Schulze et al.

Title Page

Abstract

Introduction

Conclusions

References

Tables

Figures

◀

▶

◀

▶

Back

Close

Full Screen / Esc

Printer-friendly Version

Interactive Discussion



and Halmisaari, 1992), and Scots pine (*Pinus sylvestris*) occupies dry habitats throughout Siberia (Walter, 1974). Thus, besides temperature and the associated length of growing season, and permafrost, there seem to be additional factors which determine the distribution and abundance of evergreen and deciduous conifers in Siberia.

5 Fire is an additional important factor controlling species composition and carbon stocks in pine and spruce forests (Mollicone, 2002; Schulze et al., 2005). Typically in the Northern Siberian taiga, forest stands become established only after a major stand-replacing fire event. In addition, Siberian forests will experience a number of repeated surface fires during their life cycle, yet boreal tree species differ greatly in their susceptibility to fire damage. Beyond a certain size threshold Siberian “light taiga” *Larix* 10 species typically become fire-resistant through the development of a thick bark and by shedding low-reaching branches that otherwise would serve as a fuel-ladder (Wirth, 2005). The typical evergreen “dark taiga” species, Siberian spruce (*Picea obovata*), Siberian fir (*Abies sibirica*) and Siberian stone pine (*Pinus sibirica*), do not show these morphological adaptations and are killed even by low intensity surface fires. Fire tolerance makes *Larix* species distinct not only in Siberian forests but also in comparisons with the boreal forests of Alaska (Bond-Lamberti et al., 2007). These differences in fire tolerance are neither depicted in the baseline version of LPJ (Sitch et al., 2003) nor in the improved LPJ fire module SPITFIRE where the boreal summergreen conifers 20 are parameterized to have thinner bark and thus lower fire tolerance than wintergreen conifers (Thonicke et al., 2010).

With this paper we explore the relative roles of fire and climate-driven differences in tree performance in determining canopy species composition and carbon stocks along a large-scale transect extending from the dark taiga zone of Central Siberia into the *Larix* zone of Eastern Siberia. We test hypotheses based on the following three scenarios: 25

1. “Performance only”: If there were a physiological or morphological basis for the dominance of *Larix* in Eastern Siberia this would be reflected by an increase in performance of *Larix* (growth rates, regeneration) relative to the dark taiga

BGD

9, 21–62, 2012

Larch forests of eastern Siberia

E.-D. Schulze et al.

Title Page

Abstract

Introduction

Conclusions

References

Tables

Figures

◀

▶

◀

▶

Back

Close

Full Screen / Esc

Printer-friendly Version

Interactive Discussion



Larch forests of eastern Siberia

E.-D. Schulze et al.

[Title Page](#)[Abstract](#)[Introduction](#)[Conclusions](#)[References](#)[Tables](#)[Figures](#)[◀](#)[▶](#)[◀](#)[▶](#)[Back](#)[Close](#)[Full Screen / Esc](#)[Printer-friendly Version](#)[Interactive Discussion](#)

species towards the east. Stand composition would not be related to fire history but only to climatic and edaphic factors. In this context it remains unclear which climatic factor controls biogeography. Here we use longitude as surrogate for “continentality” which includes changes in temperature and rainfall regime. The local microtopography was described by a hydrology index.

2. “Fire only”: If the dominance of *Larix* were driven by differences in fire regime and differential fire effects on mortality the relative abundance (or biomass) of *Larix* would be inversely related to the time since the last fire, implying that in the absence of fire dark taiga species can take over even inside the *Larix* zone. Under this scenario, we would not expect to find changes in performance of the species along the gradient and the progressive dominance of *Larix* towards the east should be associated with a concurrent shortening of the fire cycle. Fires include natural and anthropogenic events (Mollicone et al., 2006).
3. “Interaction”: Both factors interact along the transect inducing a gradual shift in species composition from dark taiga to *Larix*-dominated forest vegetation.

To test these hypotheses, we focus on comparing mainly old-growth stands, which are considered to be in equilibrium with the soils and climatic conditions along the whole longitudinal transect. These old-growth stands will have experienced different fire frequencies and different lengths of time since the last ground-fire. We specifically investigate stand composition (deciduous versus evergreen conifers) and associated carbon stocks in the biomass and the organic layer. These variables change in the transition zone between evergreen dark taiga and deciduous light taiga east of the River Yenisei that runs from the Yenisei Ridge through the Siberian Plateau. The Yenisei Ridge (Shibistov and Schulze, 2007) is the first mountain range east of the West Siberian Depression, which increases the rainfall from about 530 mm in the West Siberian Plain (Schulze et al., 2002) to about 730 mm on the rise of the mountain ridge. Rainfall decreases again to below 500 mm east of the mountain range on the Siberian Plateau. The Yenisei Ridge is covered by Siberian dark taiga (Mollicone et al., 2002).

Towards the east various *Larix* species become dominant, although patches of mixed and evergreen forest persist. In this paper we investigate species composition, and carbon stocks and accumulation on 16 study plots following the River Podkamennaya Tunguska (61 to 64° N, 90 to 107° E) which is a very remote area of study.

This study is complementary to previous investigations in which we studied the effects of fire on pure *Larix gmelinii* forest in Yakutsk (Schulze et al., 1995), on *Pinus sylvestris* forests in Western Siberia (Wirth et al., 1999) and on the dark taiga vegetation of the Central Siberian Plateau (Schulze et al., 2005). The study also contributes to our understanding of the carbon cycle of Siberian forest and the performance of old-growth stands of Siberian *Larix*.

2 Study area

The study area (Fig. 1) reaches from the settlement of Vanavara (60.33° N, 102.27° E) in the east, about 700 km east of the River Yenisei, to the central part of the mountain range 100 to 300 km east of the Yenisei along the River Podkamennaya Tunguska (60 to 63° N, 90 to 103° E). The longitudinal transect covers a total distance of about 600 km with a focus on forest vegetation along the east slope of the mountain range. The study region is difficult to reach. There is no road-system and there are only two airports (Vanavara, Bajkit). The only access is by boat along the River Tunguska and then by foot. Locally, the region is becoming increasingly developed due to mining for oil and gas.

The River Tunguska runs parallel to the southern border of the continuous permafrost zone, which in this region is characterized by patches of frozen and non-frozen ground (Kondrotiva, 1986). The river then cuts through the mid-Siberian mountain ridge at Bajkit to merge with the Yenisei. The vegetation of the Yenisei Ridge is characterized by dark taiga forest dominated by *Abies sibirica* Lebed., *Picea obovata* Lebed. and *Pinus sibirica* DuTour, which follow an early successional stage of *Betula ssp.* and *Populus tremula* L. after stand-replacing fire (Schulze et al., 2005). Beyond the main divide,

BGD

9, 21–62, 2012

Larch forests of eastern Siberia

E.-D. Schulze et al.

Title Page

Abstract

Introduction

Conclusions

References

Tables

Figures

◀

▶

◀

▶

Back

Close

Full Screen / Esc

Printer-friendly Version

Interactive Discussion



the dark taiga is increasingly replaced by *Larix*, which may form a large monotypic forest. *Larix* forests extend from Central Siberia to the far eastern edge of Siberia. Fire frequency is expected to be higher east of the Yenisei Ridge (Kharuk et al., 2005b), and will be quantified in this study.

Our study is based on an intensive survey of Landsat images (Mollicone, 2002; Mollicone et al., 2002) which indicated that patches of evergreen forests exist within the *Larix*-dominated region. These patches appeared to represent old-growth stands at the eastern end of our study zone where *Larix*-forests dominate.

In this study we refer to *Larix* as a group of species that can only be distinguished by their cones. *Larix gmelinii* (Rupr.) Kunzen is a species dominating the far east of Siberia. *Larix sibirica* Lebed. is a species forming the western and arctic range of *Larix*, and *Larix czekanowskii* Sukacz.&Lamak. is a hybrid between these two main species found along River Tunguska. Also birch (*Betula*) is represented by two species, where *Betula pendula* Roth. replaces *Betula pubescens* Ehrh. east of Bajkit (Nikolov and Halmisaari, 1992).

There are only few weather stations in the study region, and some of these have only operated for a short period of time (e.g., Poligus and Kuzmovaka). We refer to Vanavara, Bajkit, and Velmo (Table 1). Velmo is located in the middle of the Central Siberian Plateau, 70 km south of the River Tunguska on a north-south running tributary. The station may be in the rain-shadow of the western mountain ridge, possibly leading to an underestimation of the regional rainfall. Poligus and Kuzmovaka, that are settlements near the River Tunguska, have only short runs of precipitation data. Total rainfall decreased from 600 mm in the west to 400 mm in the east, even though summer rainfall appears to be surprisingly similar for all sites. The higher annual rainfall over the mountain range is mainly snow, which may run off at snow melt on frozen soil (Kelliher et al., 1997). There is also no significant trend in temperature or precipitation in the annual record from 1932 to 1999 (not shown).

Soils were generally cambisols with varying thicknesses of the active layer. None of the studied cambisols had signs of podsolization or reduced iron-oxides. Bedrock was

BGD

9, 21–62, 2012

Larch forests of eastern Siberia

E.-D. Schulze et al.

Title Page

Abstract

Introduction

Conclusions

References

Tables

Figures

◀

▶

◀

▶

Back

Close

Full Screen / Esc

Printer-friendly Version

Interactive Discussion



basalt at a depth below 70 cm. The thickness of the organic layer varied between 3 and 16 cm.

Our main study regions and sites are, from east to west (Fig. 1, Table 2):

Vanavara: Located about 18 km west of the Vanavara settlement in the Meteorite National Park. Wetlands and rivers saved this area even from the regional wind-throw generated by the Tunguska meteorite in 1908. Soils are wet cambisols with ice formation (permafrost) in layers at 40 cm depth. Total soil formation was deeper than the layers containing ice.

Bajkit: The main settlement before the River Tunguska cuts through the Central Siberian Plateau. The study site is located on top of an old riverbank along the winter road leading to the east. Sites with variable contribution of deciduous and evergreen canopy trees were studied in this region. *Larix czekanowskii* dominates these forests. Soils were cambisols with ice layers at 60 cm depth.

Tunguska Canyon: The river cuts a canyon-like path through the Yenisei Ridge (site: Tunguska 1 to 6). Going from west to east, there is a transition from evergreen conifers towards *Larix sibirica*-dominated forest. Soils were cambisols with ice layers at 70 to 80 cm depth.

3 Site selection

Testing our hypotheses required the study of tree species performance, stand composition and fire regime along the transect. At each of the sites along the transect stands covering the regional spectrum of tree species composition and fire regimes were identified. This was comparatively easy at the Tunguska site where evergreen and *Larix* forest occurred in approximately equal proportions. Towards the east (Bajkit, Vanavara), stands dominated by evergreen forest became increasingly rare and identifying them required a prior analysis of remote sensing imagery.

A set of 24 Landsat ETM+ scenes (from path 142 to 147 and from raw 16 to 17) were used to explore and analyze the study area. These satellite images were acquired

BGD

9, 21–62, 2012

Larch forests of eastern Siberia

E.-D. Schulze et al.

Title Page

Abstract

Introduction

Conclusions

References

Tables

Figures

◀

▶

◀

▶

Back

Close

Full Screen / Esc

Printer-friendly Version

Interactive Discussion



between 2001 and 2003. For each scene two acquisition dates were selected one during the forest growing season (summer) and the other during winter time when the ground is covered by snow. In addition to Landsat ETM+ data also a summer mosaic image created from the multi-temporal SPOTVGT data (Bartalev et al., 2003; Isaev, 1990) was used. This mosaic is cloud-free and keeps most of the spectral information of the single 10-d composite products. The mosaic available at <http://terranorte.iki.rssi.ru> provides a comprehensive and harmonized view of the forest patterns over all the extension of the study area.

The satellite data, in particular the information contained in the Landsat ETM+ spectral bands number 3, 4 and 5 were combined with forest field data (forest inventory plots and forest description points) that were collected in 2002 during an earlier expedition from Bajkit to Bor and also with data collected along the Yenisei Ridge during three field expeditions in the summer of year 1999 and the spring and summer of year 2000.

The images acquired during the growing seasons were elaborated to generate forest-type maps. These maps were obtained through a digital supervised classification process based on a “maximum likelihood model”. In this classification approach the pixels (satellite data) are assigned to the classes of highest probability that are characterized through the spectral properties assessment of the “training sites” (known forest areas, e.g. forest area with field plots of information points).

The spectral properties differences between the *Larix* dominated canopies and the coniferous evergreen canopies allow a clear delineation of the current patches of evergreen forests existing within the *Larix*-dominated region (see Fig. 1).

Based on this survey, areas of evergreen forest surrounded by *Larix* forest were identified before the main expedition started in 2004. In addition, local forest authorities were consulted. They identified areas which, according to their records, had not been affected by fire. This information was compared with our map derived from satellite data. In this way, we were able to identify clusters of stands covering a wide range in composition and historical fire regime. The evergreen forest patches in the *Larix* region

BGD

9, 21–62, 2012

Larch forests of eastern Siberia

E.-D. Schulze et al.

Title Page

Abstract

Introduction

Conclusions

References

Tables

Figures

◀

▶

◀

▶

Back

Close

Full Screen / Esc

Printer-friendly Version

Interactive Discussion



had variable sizes ranging from a few hectares to square kilometers. Plots representing mature forest were selected randomly within and outside forests containing a large fraction of evergreen conifers, but being within a manageable distance to the river. Bogs, topographic depressions and steep slopes were avoided, such that plots were on gentle slopes and on mineral soils. The soils were classified after a plot had been set.

Table 2 shows that the selected study plots experienced up to seven fire events, including the stand-replacing fire of the main canopy generation (for the method of fire dating, see below). All fires since the stand-replacing event were surface fires, which do not destroy the main canopy. There were sites with a long time since the last fire (> 250 yr) in the mountain range of the Tunguska canyon, which may be due to the low human population density, the dominance of indigenous people, and the fact that *Pinus sibirica* is used as cash crop for its nuts. Thus, the only site that had had no detectable fire for more than 300 yr was found in the mountain range.

4 Methods

All analyses refer to inventory data that were collected on circular plots with 20 m radius (in total about 1000 trees). Measurements included stand composition, tree position, tree height and diameter at breast height (DBH) for all trees with a DBH >7 cm. Seedlings and saplings were counted on a transect of 10 × 1 m starting at the centre of the inventory circle and running west. Soils were investigated using a soil pit to a depth of at least 50 cm. For each plot the topographic variables slope and exposition were recorded. A vegetation survey (4 × 4 m) was conducted in the centre of the plot. The organic layer thickness and the depth to the permafrost were determined from five systematically placed soil pits per plot. One deep soil pit was excavated in each of the three study regions and the soil profile described.

Five sample trees of each species were harvested at each site covering the range of DBH, resulting in 293 sample trees which were dated based on stem disc taken

BGD

9, 21–62, 2012

Larch forests of eastern Siberia

E.-D. Schulze et al.

Title Page

Abstract

Introduction

Conclusions

References

Tables

Figures

◀

▶

◀

▶

Back

Close

Full Screen / Esc

Printer-friendly Version

Interactive Discussion



at the base and at breast height of each of the harvested trees. In addition, cores of additional 223 trees were taken at breast height.

The fire history was reconstructed using two complementary standard methods: (1) Fire scars of harvested trees were dated. Especially important were stem discs of old “witness” trees which had survived the stand-replacing fire initiating regeneration of the dominant cohort and which also recorded subsequent surface fires. (2) In addition, fire events were inferred from the age distribution of *Larix* cohorts. This method is based on the knowledge that *Larix* germinates primarily on bare ground after fire (Nikolov and Halmisaari, 1992). Neighboring plots may have experienced different numbers of ground fires as shown for instance by VA1, VA2 and VA3 in Table 2.

For aging and growth measurements, tree-ring width was measured using a dissecting microscope mounted on a table to measure radial displacement (LinTab III,500: Rinntech, Heidelberg, Germany). All tree-ring data were compiled by von Lüpke (2006) and cross-dated with the program COFECHA (Grissino-Mayer, 2001). The age of three old trees was extrapolated based on the age relation of relative growth rates of old trees and the tree diameter. The age difference between the hypocotyl and the breast height was determined for a few sample trees. It was relatively small for *Larix* (15 to 30 yr), but it could be higher for evergreen sub-canopy trees (Schulze et al., 2005).

Separately for each species, and based on the distribution of breast height diameter, a range of trees were cut for wood volume determination. The diameter-stem volume relationships were compared with those of a wide range of model trees used for the establishment of generic species-specific biomass functions for Central Siberia (C. Wirth and V. Usoltsev, unpublished). Given that there were no significant differences, the generic biomass functions were used to calculate stand-level biomass for all species by adding the compartment biomasses (root, stem, branches, leaves – not reported separately here). Both fitting (for all species and compartments) and prediction was carried out simultaneously using a Monte-Carlo-Markov-Chain (MCMC) algorithm implemented in WinBUGS (Lunn et al., 2000). We used the basic allometric model

$$w_i = \beta_{0,i} d^{\beta_{1,i}} \quad (1)$$

BGD

9, 21–62, 2012

Larch forests of eastern Siberia

E.-D. Schulze et al.

Title Page

Abstract

Introduction

Conclusions

References

Tables

Figures

◀

▶

◀

▶

Back

Close

Full Screen / Esc

Printer-friendly Version

Interactive Discussion



where w = dry weight (kg) and d = diameter at breast-height (cm), i = the individual tree, and j indicates the compartment. We assumed that the data were normally distributed around the mean prediction with a heteroscedastic variance, which was modelled as a power function of the diameter ($\sigma_i = \beta_{2,i} d^{\beta_{3,i}}$). Mean and variance of plot-level sums of species and compartments were calculated and monitored for 50 000 iterations after the MCMC had converged (Table 3).

Performance of tree species along the transect was compared based on the following five variables reflecting the growth and stature of the regenerating and mature trees which were harvested or cored during this expedition: (1) relative radial increment at DBH of 30 cm (RI_{30}) = instantaneous growth rate of mature trees; (2) DBH at an age 200 yr (D_{200}) = lifetime growth rate of mature trees; (3) relative radial increment of young trees at 20 % of light (RI_y) = regeneration growth in understorey light conditions, (4) height at DBH 15 cm (H_{15}) = slenderness of young trees; (5) height at DBH 40 cm (H_{40}) = slenderness of old trees. To facilitate the comparison all estimates are given in the form of mean predictions of fitted functions at a standard size, age or light level, respectively. The functions were fitted with MCMC in WinBUGS as above. The mean predictions and their inter-specific differences per site were monitored. Differences whose 95 % credible intervals exclude zero are reported as significant. The underlying data and functions for the performance variables are the following:

RI_{30} : The relative radial increment (RI) measured on stem discs or additional tree cores ($n = 259$) was regressed against DBH for tree j of species i at site k using

$$RI_{ijk} = \beta_{0,ik} + \beta_{1,ik} DBH_{ijk}. \quad (2)$$

The species- and site-specific parameters $\beta_{0,i}$ and $\beta_{1,i}$, intercept and slope, respectively, were used to predict RI of a mature tree with a DBH of 30 cm which corresponds to performance variable (1), RI_{30} .

D_{200} : Using the dated age of the same set of harvested trees and tree cores ($n = 259$), DBH was regressed against age A for tree j of species i at site k using

$$DBH_{ijk} = \beta_{0,ik} + \beta_{1,ik} A_{ijk}. \quad (3)$$

Larch forests of eastern Siberia

E.-D. Schulze et al.

Title Page	
Abstract	Introduction
Conclusions	References
Tables	Figures
◀	▶
◀	▶
Back	Close
Full Screen / Esc	
Printer-friendly Version	
Interactive Discussion	



to give the predicted DBH of species j at site k at an age of 200 yr, performance variable (2), D_{200} .

RI_y: Relative radial increment of young trees was estimated based on radial increments measured on randomly selected individuals ($n = 100$) of the understorey regeneration ranging in DBH from 1 to 6 cm. Sample sizes ranged from 5 to 23 per species depending on their availability in the plot. Radial increment was measured along four radii at a height of 10 cm above ground. RI_y was calculated as the mean ring width of the years 1999 to 2003 divided by the mean radius. Since growth rates of understorey regeneration are highly sensitive to light conditions, hemispherical canopy pictures were taken on top of each harvested individual and the percentage of available light relative to incident light above the canopy (L) was calculated using the software GLA (Canham, 1988). A linear model with subscripts in Eq. (1)

$$RI_{r,ij} = \beta_{0,i} + \beta_{1,i}L_{ij}, \quad (4)$$

was used for testing differences in RI_r. Prior to the analysis, L was normalized by subtracting the mean value of L . Light and light-species interactions (separate β'_1 s) were included in the overall model if significant. Predictions of RI_r at a light level of 20% (representing the mean understorey light conditions) were used as a basis of comparison.

H₁₅ and H₄₀: Based on all inventoried plot trees with a DBH > 7 cm ($n = 424$) tree height H was regressed against DBH using the equation

$$H_{ijk} = 1.3 + \beta_{0,jk} \left(1 - e^{-\frac{\beta_{1,jk}}{\beta_{0,jk}} DBH_{ijk}} \right), \quad (5)$$

where β_0 is the asymptote and β_1 the initial slope and the subscripts are defined as in Eq. (1). The intercept of 1.3 m represents the height at which the diameters were measured. The parameters were estimated for the three most common species (*Larix gmelinii*, *Picea obovata* and *Pinus sibirica*) only. The predicted heights at a DBH of 15 cm and 40 cm correspond to performance variables (4) and (5).

Larch forests of eastern Siberia

E.-D. Schulze et al.

Title Page

Abstract

Introduction

Conclusions

References

Tables

Figures

◀

▶

◀

▶

Back

Close

Full Screen / Esc

Printer-friendly Version

Interactive Discussion



5 Statistical analysis at the stand level

We used general linear models and backward selection based on the Akaike Information Criterion (*step* procedure in R) to explore the relative importance of different factors (climate, topography, fire regime, soil condition) on stand composition, biomass and forest floor carbon stocks. For the dependent variables original values were used for biomass, carbon stocks and abundances. Stand composition (i.e. percentage basal area of dark taiga species versus *Larix*) was arcsine-transformed to ensure normality. To avoid over-fitting in face of the limited number of stands ($n = 16$) we restricted the number of predictors in the full model to seven (including the intercept). The correlation matrix of stand-level predictors (Table 3) shows a strong correlation of annual precipitation and temperature with longitude. Therefore, we used only the latter as predictor representing the continental gradient along the transect. The time since the last fire was used as the predictor characterizing the fire regime. Edaphic site conditions were represented by the active-layer depth at the time of the measurement, the slope, and an ordinal hydrology index ranging from 1 = very dry to 5 = very wet. Finally, we introduced the distance from the river as a predictor which we believe to reflect the differences in local climate due to the proximity of the water body as well as edaphic differences. All predictor variables were z-transformed (mean = zero, standard deviation = 1). Therefore the coefficients as listed in Table 3 reflect the relative importance of the predictors within the models. The intercept represents the value at the mean of all predictors. Dependent variables given in units of percentage were arcsine-transformed prior to the analysis. The selection procedure based on AIC may lead to models with marginally non-significant predictors.

The original data are available at <http://www.bgc-jena.mpg.de/Schulze/data>.

BGD

9, 21–62, 2012

Larch forests of eastern Siberia

E.-D. Schulze et al.

Title Page

Abstract

Introduction

Conclusions

References

Tables

Figures

◀

▶

◀

▶

Back

Close

Full Screen / Esc

Printer-friendly Version

Interactive Discussion



6 Results

6.1 Tree growth

The annual increments of the basal area of *Larix* trees representing different age classes did not show any climate related trend over the past 350 yr (Fig. 2). Older trees were growing faster than younger trees. Trees which are presently 150 to 200 yr old grow as fast as 300 yr old trees did when they were younger. Growth “dips” and “humps” are related to fire events where surviving trees exhibit larger growth rates until the regenerating forest becomes competitive for water and nutrients. There was no sign of an age-related decline in growth of individual trees, even if repeated surface fires occurred and fire scars were present at the stem base.

6.2 Fire regime and stand structure

The dating of fire events is crucial in the present study. The timing of fires was determined from the tree-ring analysis of cohorts of *Larix* differing in age (Fig. 3). Fires were numbered starting from stand-replacing fires of the present canopy (fire event 1). Tree rings of survivors of the last stand-replacing fire (fire event –1) were the best indicator for dating the stand-replacing event (event 1) using tree rings at fire scars on stem discs of harvested trees as a distinct marker.

At Vanavara (Fig. 3a) plot VA2 may serve as an example for a stand replacing fire 260 yr ago (fire event 1) which was survived by a tree that established after a fire 350 yr ago (fire event –1). The stand replacing fire event 1 was followed by ground fires initiating regeneration (fires events 2, 3 and 4). Few *Picea* and *Pinus sibirica* trees survived the fire event 4. The regeneration of fire event 4 has not yet reached breast height.

Most inventory plots contained populations of dark taiga species that were not even-aged (Fig. 3b,c). Thus, some individuals of dark taiga species survive ground fires, depending on the patchiness of the regeneration. The site which experienced a single

BGD

9, 21–62, 2012

Larch forests of eastern Siberia

E.-D. Schulze et al.

Title Page

Abstract

Introduction

Conclusions

References

Tables

Figures

◀

▶

◀

▶

Back

Close

Full Screen / Esc

Printer-friendly Version

Interactive Discussion



fire event about 250 yr ago (Fig. 3d) contained only a single *Larix* tree as a remnant, and an understory of dark taiga species that were not even-aged.

Ground fires may follow a stand-replacing fire (Fig. 3b) as soon as *Larix* reached a thicket stage, which is vulnerable to fire. Only the tallest trees of a thicket survive.

Thus, for *Larix*, surface fires act as a thinning agent. Fire may even enhance growth of the survivors.

Pinus sibirica regenerated together with *Larix* after fire near the Yenisei Ridge (Fig. 3d). *Pinus sibirica* cones are distributed by the Siberian Jay, which prefers open habitats to bury cones. Thus, *Pinus sibirica* is not a typical late-successional species but participates in the early succession. *Abies* and *Picea* follow with a delay of about 50 yr.

On average, stand-replacing fires occurred about every 229 ± 52 yr, time since the last fire was 147 ± 99 yr, and mean fire return frequency was 100 ± 92 yr. These fire intervals may be biased towards longer periods compared to a regional average, due to our selection of old-growth stands. Irrespective of the age of the last surface fire, tree diameters of the sample trees increased exponentially with age (Fig. 3). Largest breast height diameter reached 70 to 80 cm.

Fire frequency and the time elapsed since the last surface fire determine species composition and stand density (Fig. 4). Surface fires (Fig. 4a,e) generally eradicated the dark taiga species and thin the main canopy. Following a surface fire (< 50 yr of elapsed time) the stand was characterized by a very dense young population of *Larix*, which may become thinned in a repeated surface fire. Several “waves” of *Larix* populations resulted from repeated surface-fire events (Fig. 4c,d). With increasing time elapsed since the latest surface fire (old surface-fires), *Picea* became a sub-dominant species while *Larix* persisted with few canopy species and lacking regeneration (Fig. 4g). With more than 250 yr since the last surface fires the forest was dominated by *Pinus sibirica* (Fig. 4h). *Picea* regenerated as ground-vegetation.

The devastating effect of fire on dark taiga species and on accompanying deciduous broadleaved species, such as *Betula* and the shrub-like *Duschekia (Alnus) fruticosa*

BGD

9, 21–62, 2012

Larch forests of eastern Siberia

E.-D. Schulze et al.

Title Page

Abstract

Introduction

Conclusions

References

Tables

Figures

◀

▶

◀

▶

Back

Close

Full Screen / Esc

Printer-friendly Version

Interactive Discussion



(Rupr.) Pouzar, became obvious from two neighboring sites, one unburnt (Fig. 5a), the other recently burnt (Fig. 5b). At the unburnt site *Betula* and *Duschekia* formed a thicket with stems below 7 cm DBH underneath a *Larix* canopy with 35 to 50 cm DBH. *Pinus sibirica* formed a second tree layer (30 to 40 cm DBH) followed by a continuous regeneration of *Picea*. *Abies* was present at a lower density at the unburnt site. After fire (Fig. 5b) only the *Larix* canopy and few *Pinus sibirica* individuals remained. At this site the stand-replacing fire had occurred about 220 yr ago with regeneration of *Larix* and *Pinus sibirica* and a delayed regeneration of *Picea* (Fig. 5c). A surface fire (180 yr ago) initiated a second cohort of *Larix*. The *Duschekia* thicket was of a lower age (100 yr, Fig. 5c), but the rootstocks of the coppice-like bushes may be older. *Duschekia* will regenerate from rootstocks. *Larix* regeneration was still below 7 cm DBH and thus not apparent in Fig. 5.

A special situation exists on alluvial loams near the river, where *Picea* may form monotypic stands (Fig. 5d,c). In this case only *Picea* regenerated on the fresh alluvial material. Although the size distribution suggested several cohorts of *Picea*, the tree age-distribution indicated that this was a single flood event. It remained unclear, why *Larix* did not germinate on the fresh alluvial material (Eutric Fluvisol).

6.3 Stature and growth performance along the transect

Species differences in relative radial increment of mature trees, RI_{30} , were generally negligible within sites and hardly varied along the transect (Fig. 6a). There was a slight tendency of reduced growth of *Larix* towards the east, and no consistent longitudinal trend in any of the evergreen conifers. D_{200} – a proxy for the lifetime growth rate – showed a consistent pattern within sites (Fig. 6b). At the Tunguska site *Larix* reached the largest DBH within 200 yr, followed by *Pinus*. *Abies* and *Picea* show the lowest values. D_{200} generally decreased from Tunguska to Bajkit, but there were no significant differences between Bajkit and Vanavara for either species. The relative radial increment of understorey trees, RI_y , was similar for all tree species in Tunguska (Fig. 6c), but increased for *Larix* and decreased for *Picea* and *Pinus* towards the east. As a

BGD

9, 21–62, 2012

Larch forests of eastern Siberia

E.-D. Schulze et al.

Title Page

Abstract

Introduction

Conclusions

References

Tables

Figures

◀

▶

◀

▶

Back

Close

Full Screen / Esc

Printer-friendly Version

Interactive Discussion



consequence, at Vanavara, RI_y of *Larix* was more than twice that of *Picea* and *Pinus*. There were significant changes in stem form along the transect. In the west at Tunguska the height at a DBH of 15 cm, H_{15} , was lower in *Larix* than in *Picea* and *Pinus* indicating a more slender stem form in the evergreen conifers (Fig. 6d) which may be caused by competition for light in denser stands of the western sites independent of species rather than being an effect of climate.

Towards the east, H_{15} of *Picea* remained constant, increased for *Larix* and decreased for *Pinus*. The apparent regional differences in H_{15} appeared to be a result of competition in dense or fire-thinned regrowth. Solitary grown trees generally had reduced H_{15} . For the shape of large, mature trees, as quantified by H_{40} , the picture was comparable (Fig. 6e). *Larix* grew taller towards the east (29 m in Vanavara versus 26 m in Tunguska) and *Pinus* grew stouter, while no consistent pattern was visible for *Picea*. This again could also be the result of competition during regeneration. In summary, indicators of growth performance of mature trees (RI_{30} , D_{200}) did not show dramatic changes along the longitudinal transect, while a differentiation in juvenile growth was visible, resulting from possible regional effects and from competition during regrowth.

6.4 Controls on species composition and carbon stocks

Total aboveground biomass varied between about 50 and 130 t C ha⁻¹ in mature stands irrespective of the species composition (Table 4). Aboveground biomass carbon (model 3) was most strongly controlled by the time elapsed since the last surface fire (TSF) as reflected by its high standardized regression coefficient (2.17) (Table 5). Additional factors determining biomass were in decreasing order of influence, the site hydrology (significant with $p < 0.05$), active-layer thickness and the distance to the river – all of them with a negative sign. Time-since-fire was consistently the most important predictor for all dependent variables related to the species composition (models 4 and 5: biomass fractions for adults > 7 cm DBH and models 6 and 7: absolute abundances for saplings).

BGD

9, 21–62, 2012

Larch forests of eastern Siberia

E.-D. Schulze et al.

Title Page

Abstract

Introduction

Conclusions

References

Tables

Figures

◀

▶

◀

▶

Back

Close

Full Screen / Esc

Printer-friendly Version

Interactive Discussion



Larch forests of eastern Siberia

E.-D. Schulze et al.

Title Page

Abstract

Introduction

Conclusions

References

Tables

Figures

◀

▶

◀

▶

Back

Close

Full Screen / Esc

Printer-friendly Version

Interactive Discussion



There was a strong influence of water availability on the organic layer thickness (model 1, Table 5). Beyond that there was positive influence of the distance to the river and of time-since-fire as well as a negative influence of the active-layer thickness. The overall model 1 explained 90 % of the variation. In contrast, the carbon content in the organic layer (model 2) was neither related to water availability nor to time-since-fire, but only to the distance from the river and the active-layer depth. The site TG2-P1, which was positioned on a river island, was removed from the organic layer analysis because regular spring floods had removed the forest floor material entirely.

When relating fire events to climate, it appears that while precipitation decreased from 600 mm to 400 mm from west to east (Fig. 7a), the mean fire return interval decreased also from 300 yr to about 50 yr (Fig. 7b). Associated with an increase in the time-since-fire was an increase in stand basal area (Fig. 7c), while there was no consistent change in organic-layer thickness (Fig. 7d). However, the fraction of dark taiga species (*Picea obovata*, *Abies sibirica*, *Pinus sibirica*) increased with time-since-fire and decreased for *Larix* (Fig. 7e). In addition, species composition was influenced by longitude, which we consider a proxy for an increasingly continental climate. At a given time-since-fire, fractional biomass of adult dark taiga species decreased towards the east, while it increased for *Larix*. In Vanavara the maximum percentage biomass of the dark taiga species reached 37 %, whereas in Tunguska it reached 100 % in three plots. The models 4 and 5 for adult species composition with respect to the fraction of dark taiga conifers and *Larix*, respectively, explained about 75 % of the variance. The dependence of *Larix* sapling abundance on time-since-fire was strongly non-linear. *Larix* saplings were virtually absent in stands older than 100 yr (Fig. 7f).

6.5 Integrated stand growth and biomass during a fire cycle

In a comparison of all sites (Fig. 8) stand volume increased linearly over time with a rate of about $0.36 \text{ tC ha}^{-1} \text{ yr}^{-1}$ despite the different fire histories and dramatic changes in species composition. Stem volume reached about 130 tC ha^{-1} 350 yr after a stand-replacing fire. In the first phase of growth (up to 100 yr) *Picea* co-dominated with *Larix*,

but due to the repeated surface fires, 150 to 200 yr-old stands were almost pure *Larix* stands. 200 yr after a stand-replacing fire the contribution of *Larix* to total biomass decreases if there were no additional surface fire which would promote new *Larix* re-generation. *Larix* disappears at the plot scale if there was no surface fire for 350 yr.

5 *Pinus sibirica* and *Picea* became increasingly dominant with a smaller fraction of *Abies* as the time without a surface fire increases. Single *Larix* trees may reach an age of more than 600 yr. These trees survived the last stand-replacing fire and served as additional witnesses of the last major fire event. Thus, the change in species composition 200 to 300 yr after fire was due to competitive interaction between species, which were
10 far below the maximum age of *Larix*. The change in species composition was related to the frequency and time since the last surface fire. The variation in stem biomass was particularly large in the transition phase 250 yr after fire.

The question remains, if this increase in biomass may continue “forever”. We doubt that biomass increases much beyond 130 tC ha^{-1} in this region. There is a biological
15 reason that terminates biomass accumulation: fungal stem rot increased with age in all species (Table 6). The healthiest species was *Picea obovata*, closely followed by *Pinus sibirica*, with *Larix* being the most affected species. Averaged over the whole tree population about one third of the trees were affected by fungal rot. In the absence of fire, fungal rot of the heartwood would cause a turnover of the main canopy over
20 time and limit biomass accumulation with *Larix* being most affected. Since *Pinus* and *Picea* regenerated continually under the main canopy, this would result in a constant biomass, with the age of the main canopy probably not exceeding 350 to 400 yr.

7 Discussion

25 The aim of our study was to explore the relative roles of fire on growth performance of trees in determining the transition from the dark taiga in Central Siberia to the *Larix*-dominated forests of Eastern Siberia. Our results suggest that the evergreen conifers, *Abies sibirica* and *Picea obovata*, are the natural late-successional species both in

BGD

9, 21–62, 2012

Larch forests of eastern Siberia

E.-D. Schulze et al.

Title Page

Abstract

Introduction

Conclusions

References

Tables

Figures

◀

▶

◀

▶

Back

Close

Full Screen / Esc

Printer-friendly Version

Interactive Discussion



Central and Eastern Siberia. Irrespective of longitudinal changes in climate and the presence of permafrost. They can grow and form dense and productive “dark taiga” stands far to the east of their present main distribution, provided there has been no fire for an extended period of time. We did not observe dramatic changes in indicators of adult growth performance. Juvenile growth of *Larix* was clearly higher in the eastern most site. This, however, may also be caused by lower stand density.

While the patterns we observe seemed to be strong and consistent, we are well aware of the limitations of our data set. To be able to test the “performance only” hypothesis it was necessary to harvest and core a large number of mature and regenerating trees. Testing the “fire only” hypothesis made it necessary to quantify a range of environmental covariates (active-layer depth, topography, hydrology status derived from vegetation surveys, etc.). This high sampling intensity per stand and the difficulty to reach sites in this region limited the number of stands that could be surveyed during our expedition ($n = 16$). In addition, old-growth stands are rare east of the Jenisei Ridge. Given these operational and natural limitations, it was important to locate mature stands covering a wide range of compositional differences and fire histories within walking distance of each other and the river. This was achieved by carrying out an in-depth analysis of remote sensing imagery and by consulting local experts.

The satellite imagery revealed that isolated old-growth forest areas, like the Vanavara site, with a high proportion of evergreen dark taiga species, are present among the *Larix*-dominated forest of the Central-East Siberian Plateau. Close inspection of these stands in the field showed that they were neither edaphically nor topographically different from the surrounding *Larix* forest. For example, the two “dark taiga” stands in Vanavara (VA1-P2, VA1-P3) had an active-layer thickness of only 60 cm and yet reached a canopy height of 27–30 m, not much lower than the highly productive dark taiga sites along the River Yenisei (Schulze et al., 2005). These trees were still actively growing and had not reached their maximum height. If there were a physiological or morphological basis for the dominance of *Larix* in Eastern Siberia and the disappearance of evergreen conifers this would be reflected by a decrease in performance of the

BGD

9, 21–62, 2012

Larch forests of eastern Siberia

E.-D. Schulze et al.

Title Page

Abstract

Introduction

Conclusions

References

Tables

Figures

◀

▶

◀

▶

Back

Close

Full Screen / Esc

Printer-friendly Version

Interactive Discussion



latter relative to *Larix* towards the east. Our analysis of growth performance revealed that there were hardly any shifts in the performance rank for adult trees. The standardized relative radial increment (RI_{30}) even decreased for *Larix* towards the east, while it remained constant or showed no consistent pattern for the evergreen conifers.

As expected for a light-demanding pioneer species, *Larix* attained large diameters within 200 yr (D_{200}). However, it grew faster in all sites and no substantial shifts in the ranking were observed along the transect. Only the absolute growth rates across all species decreased towards the east. These findings with respect to mature trees lend little support to Hypothesis 1 (“performance only”).

However, for the relative radial increment of young trees (RI_y), we did find a trend for a relative advantage of *Larix* towards the east, but this may also be due to enhanced height growth with competition in the regeneration phase.

Growth rates are only one component of performance. Recruitment and mortality are two additional processes controlling a species’ success in a community (Pacala et al., 1996). Quantifying these processes usually requires repeated inventories. Snapshot inventories like ours can only yield proxies. Mortality rates were approximated for the evergreen conifers as the percentage of dead individuals in the pole stage, which was highly variable ($29 \pm 28\%$) and did not show any longitudinal trend. Recruitment rates, approximated simply as the sapling density, also did not change along the transect and were on average a factor five higher for the evergreen conifers as compared to *Larix*. In summary, there is little evidence that performance of evergreen conifers as quantified in mature forests decreases to an extent that would not allow them to successfully compete towards the east of the transect.

Why is it then, that *Larix* is the dominating species towards the east? The most important predictor of the percentage of dark taiga conifers in mature stands is the time since the last fire. The longer the time since the last fire, the higher the fraction of dark taiga species with the opposite being the case for the fraction of *Larix*. It is important to note that edaphic factors did not explain the composition, or only to a minor extent. This indicates that the “dark taiga” forests in Bajkit and Vanavara cannot be explained by

Larch forests of eastern Siberia

E.-D. Schulze et al.

[Title Page](#)[Abstract](#)[Introduction](#)[Conclusions](#)[References](#)[Tables](#)[Figures](#)[◀](#)[▶](#)[◀](#)[▶](#)[Back](#)[Close](#)[Full Screen / Esc](#)[Printer-friendly Version](#)[Interactive Discussion](#)

edaphic/topographic peculiarities, such as steep southern slopes or the vicinity of rivers with deeper active layers. The reason for the negative effect of fire on the occurrence of evergreen conifers is their low fire tolerance. Wirth (2005) distinguished between fire sensitive and fire tolerant boreal species, with *Larix* and *Pinus sylvestris* being fire tolerant. These species regenerate after fire in dense cohorts. Therefore they shed their lower branches at an early stage and do not provide a “fuel-ladder” for surface fires to reach the crown. The most sensitive stages are the thickets of regeneration. In these thickets fire acts as thinning agent. In contrast, *Abies* and *Picea* do not shed the lower branches. Thus fire can climb into the crown along this “fuel-ladder” and cause the devastating effects of a hot crown fire. In addition, they lack thick insulating bark that protects the cambium of *Larix* and *Pinus sylvestris* against heat damage. The natural frequency of stand-replacing fires appears to be fairly low in the study region (130 yr) compared to eastern *Larix*-dominated forest (Achard et al., 2006). This confirms the observations made by Kharuk et al. (2005a) in the Northern Tunguska and in other remote areas (Achard et al., 2008; Mollicone et al., 2006).

There is an increased chance of a second fire, following a stand-replacing event, after 40 to 50 yr when the fire succession has reached its highest density for a *Larix* dominated thicket. This second fire has a thinning effect and it thus may in fact enhance stand growth. One stand-replacing fire every 100 to 200 yr would maintain a *Larix*-dominated vegetation. Only if the mean fire frequency increases beyond 300 yr as in the mountains of the Yenisei Ridge (Mollicone et al., 2002; Schulze et al., 2002) there is a chance for dark taiga species to become dominant at a regional level (Figs. 2g, 3f, 7e). Thus, fire (Hypothesis 1) appears to be the main driver for *Larix* dominance and the suppression of evergreen conifers.

However, there are additional factors determining the extent of the evergreen contribution. Longitude appeared to be another predictor of the fraction of dark taiga species. In contrast to Lloyd et al. (2011) we did not observe a latitudinal effect. At a given time-since-fire, the Vanavara sites show a significantly lower fraction of evergreen conifers. In fact, there are no pure dark taiga forests in Vanavara, but rather mixtures of *Picea*,

BGD

9, 21–62, 2012

Larch forests of eastern Siberia

E.-D. Schulze et al.

Title Page

Abstract

Introduction

Conclusions

References

Tables

Figures

◀

▶

◀

▶

Back

Close

Full Screen / Esc

Printer-friendly Version

Interactive Discussion



Pinus and *Larix*. However, this could also be an indirect consequence of fire, such as seed limitation. This needs further investigation.

The mean fire-return interval is related to longitude (Fig. 7b), but not to the time since the last fire. Human-induced fires (Mollicone et al., 2006) could uncouple fire frequency from climate, and human induced fires would promote the fire-tolerant species beyond climatic drought limits. Table 5 shows that the biomass fraction of dark and light taiga species were stronger correlated with the time since the last fire than with climate as expressed by latitude.

Despite an observed increase in precipitation in northern latitudes of Siberia (Kharuk et al., 2005b) we think that the effect on conifer distribution will be compensated by an expected increase in anthropogenic fires (Mollicone et al., 2006). In the present study the time for fire-returns emerges as the controlling factor explaining the fraction of light versus dark taiga, even though an interaction with climate exists through “continental-ity”. Periods of hydrological drought would promote fires more than temperature.

Thornley and Cannell (2004) predicted that increasing fire frequency may reduce NPP. However, our data do not indicate such a change in productivity with fire frequency. We do not observe an age-related decline in the productivity of unburnt stands. Net biomass increase is constant (about $0.4 \text{ t C ha}^{-1} \text{ yr}^{-1}$) over 350 yr of observed stand ages. Also at the single-tree level, there is no clear sign of an age-related decline of old trees (Luyssaert et al., 2008), which is in contrast to observations in age-class forests (Mencuccini et al., 2005). Young trees do not grow faster than old trees did when they were young, i.e. there was no sign of higher growth of young stands at the stand level. Our inventory data cannot detect effects of recent temperature change.

The upper age and biomass of old-growth Siberian forest seem to be set neither by fire frequency nor by climate change, but by fungal rot of heartwood in old trees. All species were affected by fungal rot eventually and it appears that wood-decomposing fungi set the upper limit for the accumulation of biomass. *Larix* was affected the most by fungal rot and thus fails in old stands in absence of fire induced regeneration. In natural stands, the decay of single canopy trees due to fungal rot of the main stem

BGD

9, 21–62, 2012

Larch forests of eastern Siberia

E.-D. Schulze et al.

Title Page

Abstract

Introduction

Conclusions

References

Tables

Figures

◀

▶

◀

▶

Back

Close

Full Screen / Esc

Printer-friendly Version

Interactive Discussion



would not affect productivity due to the permanent regeneration of evergreen species in the sub-canopy.

The change from deciduous to evergreen species takes place not at the end of the life-expectancy of *Larix*, but much earlier. Apparently it is mainly determined by the regeneration requirements of the different species, and *Larix* has a serious disadvantage for regeneration if there is no fire for more than 100 yr. With respect to global change, climate seems to be of lesser importance than landuse in determining the deciduous-evergreen boundary in future, because fire frequency is increasingly determined by anthropogenic activities.

8 Conclusions

- Tree performance could not explain the longitudinal gradient in forest composition.
- Fire appears as the main factor controlling the deciduous to evergreen ratio.
- Dark taiga species can persist far to the east of their natural main distribution, provided there is no fire. It is most likely, that human-induced fires will expand the region of fire-tolerant light taiga species (*Larix spec.* and *Pinus sylvestris*).
- There is a constant net biomass increase over 350 yr and no age-related decline of single trees or of forest stands. The upper limit of accumulated biomass is set by wood-decomposing fungi.

Acknowledgements. We thank Annett Börner for her help with the artwork, and Dominik Hesenmöller for his help during data processing. We also thank Inge Schulze for all her support during the fieldwork. The data processing was supported by the Russian “Megagrant” to E. D. Schulze.

The service charges for this open access publication have been covered by the Max Planck Society.

BGD

9, 21–62, 2012

Larch forests of eastern Siberia

E.-D. Schulze et al.

Title Page

Abstract

Introduction

Conclusions

References

Tables

Figures

◀

▶

◀

▶

Back

Close

Full Screen / Esc

Printer-friendly Version

Interactive Discussion



References

- Achard, F., Mollicone, D., and Stibig, H. J.: Areas of rapid forest-cover change in boreal Eurasia, *Forest Ecol. Manag.*, 237, 322–334, 2006.
- Achard, F., Eva, H. D., Mollicone, D., and Beuchle, R.: The effect of climate anomalies and human ignition factor on wildfires in Russian boreal forests, *Philos. T. Roy. Soc. B*, 363, 2331–2339, 2008.
- Bartalev, S., Erchov D., Isaev, A., and Belward A.: A new SPOT4-Vegetation derived land cover map of Northern Eurasia, *Int. J. Remote Sens.*, 24, 1977–1982, 2003
- Beer, C., Lucht, W., Gerten, D., Thonicke, K., and Schimmler, C.: Effects of soil freezing and thawing on vegetation carbon density in Siberia: a modeling analysis with the Lund-Potsdam-Jena Dynamic Global Vegetation Model (LPJ-DVGM), *Global Biogeochem. Cy.*, 21(GB1012), 1–14, 2007.
- Bond-Lamberty, B., Peckham, S. D., Ahl, D. E., and Gower, S. T.: Fire as the dominant driver of Central Canadian boreal forest carbon balance, *Nature*, 450, 89–92, 2007.
- Canham, C. D.: An index for understory light levels in and around canopy gaps, *Ecology*, 69, 1634–1638, 1988.
- Grissino-Mayer, H. D.: Evaluating crossdating accuracy: a manual and tutorial for the computer program COFECHA, *Tree-Ring Res.*, 57, 205–221, 2001.
- Isaev, A. S.: Forest map of USSR, 1:2.5 Mill., State committee of the USSR, Moscow, 1990.
- Kelliher, F. M., Hollinger, D. Y., and Schulze, E. D.: Evaporation from an Eastern Siberian larch forest, *Agr. Forest Meteorol.*, 85, 135–147, 1997.
- Kharuk, V. I., Dvinskaya, M. L., and Ranson, K. J.: The spatiotemporal pattern of fires in northern taiga larch forests of Central Siberia, *Russ. J. Ecol.*, 36, 302–311, 2005a.
- Kharuk, V. I., Dvinskaya, M. L., Ranson, K. J., and Im, S. T.: Expansion of evergreen conifers to the larch-dominated zone and climatic trends, *Russ. J. Ecol.*, 36, 164–170, 2005b.
- Kondrotiva, K. A.: Thickness of Permafrost in the USSR. *Kryogeographic maps of Russia, 1 : 2.5 Million, Leningrad, 1986.*
- Krinner, G., Viovy, N., de Noblet-Ducoudré, N., Ogée, J., Plocher, J., Friedlingstein, P., Ciais, P., Sitch, S., and Prentice, I. C.: A dynamic global vegetation model for studies of the coupled atmosphere-biosphere system, *Global Biogeochem. Cy.*, 19, GB1015, 1–33, 2005
- Lloyd, A. H., Bunn, A. G., Berner, L.: A latitudinal gradient in tree growth response to climate warming in the Siberian taiga, *Global Change Biol.*, 17, 1935–1945, 2011.

BGD

9, 21–62, 2012

Larch forests of eastern Siberia

E.-D. Schulze et al.

Title Page

Abstract

Introduction

Conclusions

References

Tables

Figures

◀

▶

◀

▶

Back

Close

Full Screen / Esc

Printer-friendly Version

Interactive Discussion



Larch forests of eastern Siberia

E.-D. Schulze et al.

Title Page

Abstract

Introduction

Conclusions

References

Tables

Figures

◀

▶

◀

▶

Back

Close

Full Screen / Esc

Printer-friendly Version

Interactive Discussion



- Lunn, D. J., Thomas, A., Best, N., and Spiegelhalter, D.: WinBUGS – a bayesian modelling framework: concepts, structure, and extensibility, *Stat. Comput.*, 10, 325–337, 2000.
- von Lüpke, N.: The reasons for the change of vegetation of Siberian larch and spruce forests using tree ring analysis, Thesis, University of Göttingen, 61 pp., 2006.
- 5 Luysaert, S., Schulze, E. D., and Boerner, A.: Old-growth forests as global carbon sinks, *Nature*, 455, 213–215, 2008.
- Mencuccini, M., Martínez-Vilalta, J., Vanderklein, D., Hamid, H. A., Korakaki, E., Lee, S., and Michiels, B.: Size-mediated ageing reduces vigour in trees, *Ecol. Lett.*, 8, 1183–1190, 2005.
- Mollicone, D.: A new remote sensing based methodology to determine fire frequency and forest succession in the boreal forest, unpublished Ph.D., University of Padova, 2002.
- 10 Mollicone, D., Achard, F., and Marchesini, L. B.: A remote sensing based approach to determine forest fire cycle: case study of the Yenisei ridge dark taiga, *Tellus B*, 54, 688–695, 2002.
- Mollicone, D., Eva, H. D., and Achard, F.: Ecology: human role in Russian wild fires, *Nature*, 440, 436–437, 2006.
- 15 Nikolov, N. and Halmisaari, H.: Silvics of the circumpolar boreal tree species, in: *A Systems Analysis of the Global Boreal Forest*, edited by: Shugrat, H. H., Leemans, R., Bonan, G. B., Cambridge University Press, Cambridge, 13–84, 1992.
- Pacala, S. W., Canham, C. D., Saponara, J., Silander Jr, J. A., Kobe, R. K., and Ribbens, E.: Forest models defined by field measurements: estimation, error analysis and dynamics, *Ecol. Monogr.*, 66, 1–43, 1996.
- 20 Sato, H., Itoh, A., and Kohyama, T.: SEIB-DCVM: a new dynamic global vegetation model using a spatially explicit individual-based approach, *Ecol. Model.*, 200, 279–307, 2007.
- Schulze, E. D.: Plant life forms and their carbon, water and nutrient relations, in: *Encyclopedia of Plant Physiology, Physiological Plant Ecology II. Vol. 12B, Water relations and photosynthetic productivity*, edited by: Lange, O. L., Nobel, P. S., Osmond, C. B., and Ziegler, H., Springer, Berlin, 615–676, 1982.
- 25 Schulze, E. D., Schulze, W., and Kelliher, F. M.: Aboveground biomass and nitrogen nutrition in a chronosequence of pristine Dahurian *Larix* stands in Eastern Siberia, *Can. J. Forest Res.*, 25, 943–960, 1995.
- 30 Schulze, E. D., Prokuschkin, A., Arneth, A., Knorre, N., and Vaganov, E. A.: Net ecosystem productivity and peat accumulation in a Siberian Aapa mire, *Tellus B*, 54, 531–536, 2002.
- Schulze, E. D., Wirth, C., Mollicone, D., and Ziegler, W.: Succession after stand replacing disturbances by fire, wind throw, and insects in the dark taiga of Central Siberia, *Oecologia*,

146, 77–88, 2005.

Shibistov, B. and Schulze, E. D.: Geology and landscapes of the Central Siberia, Museum of Geology of Central Siberia, Krasnoyarsk, 181 pp., 2007.

Shuman, J. K., Shugart, H. H., and O'Halloran, T. L.: Sensitivity of Siberian larch forests to climate change, *Global Change Biol.*, doi:10.1111/j.1365-2486.2011.02417.x, 2011.

Sitch, S., Smith, B., and Prentice, I. C.: Evaluation of ecosystem dynamics, plant geography and terrestrial carbon cycling in the LPJ dynamic global vegetation model, *Global Change Biol.*, 9, 161–185, 2003.

Sugimoto, A., Yanagisawa, N., Naito, D., Fujita, N., and Maximov, T. C.: Importance of permafrost as a source of water for plants in East Siberian taiga, *Ecol. Res.*, 17, 493–503, 2002.

Thonicke, K., Spessa, A., Prentice, I. C., Harrison, S. P., Dong, L., and Carmona-Moreno, C.: The influence of vegetation, fire spread and fire behaviour on biomass burning and trace gas emissions: results from a process-based model, *Biogeosciences*, 7, 1991–2011, doi:10.5194/bg-7-1991-2010, 2010.

Thornley, J. H. M. and Cannell, M. G. R.: Long-term effects of fire frequency on carbon storage and productivity of boreal forests: a modeling study, *Tree Physiol.*, 24, 765–773, 2004.

Walter, H.: *Die Vegetation Osteuropas, Nord- und Zentralaasiens*, Gustav Fischer Verlag, Stuttgart, 452 pp., 1974.

Wirth, C.: Fire regime and tree diversity in boreal forests: implications for the carbon cycle, in: *Forest Diversity and Function*, edited by: Scherer-Lorenzen, M., Körner, C., and Schulze, E.-D., Springer, Berlin Heidelberg, 309–344, 2005.

Wirth, C., Schulze, E. D., and von Stünzner-Karbe, D.: Above-ground biomass and structure of pristine Siberian Scots pine forests as controlled by competition and fire, *Oecologia*, 121, 66–80, 1999.

Xiaodong, Y. and Shugrat, H. H.: FAREAST: a forest gap model to simulate dynamics and patterns of Eastern European forests, *J. Biogeogr.*, 32, 1641–1658, 2005.

BGD

9, 21–62, 2012

Larch forests of eastern Siberia

E.-D. Schulze et al.

Title Page

Abstract

Introduction

Conclusions

References

Tables

Figures

◀

▶

◀

▶

Back

Close

Full Screen / Esc

Printer-friendly Version

Interactive Discussion



Larch forests of eastern Siberia

E.-D. Schulze et al.

Table 1. Long-term averages of precipitation (*P*) and temperature (*T*) along the River Tunguska.

Location	Longitude	Latitude	Elevation (m)	Precipitation (mm) 1932–1999		Temperature (°C) 1932–1999		Remark
				annual	summer	annual	summer	
Vanavara	102°16.2′	60°19.8′	248	407 ± 71	163 ± 51	-13.37 ± -12.00	6.73 ± 7.55	no trend in <i>P</i> summer <i>T</i> above av. last 15 yr
Bajkit	96°22.2′	61°40.2′	441	490 ± 72	177 ± 45	-12.52 ± -11.12	7.92 ± 5.58	no trend in <i>P</i> summer <i>T</i> above av. last 15 yr
Velmo, Poligus, Kuzmovka	93°25.2′ 94°37.9′ 92°07.0′	61°01.2′ 61°59.1′ 62°18.5′	133	407 ± 71 567–594 663–806	163 ± 51 181–224 130–302	No data	No data	decrease in <i>P</i>

Discussion Paper | Discussion Paper | Discussion Paper | Discussion Paper | Discussion Paper

Title Page

Abstract Introduction

Conclusions References

Tables Figures

◀ ▶

◀ ▶

Back Close

Full Screen / Esc

Printer-friendly Version

Interactive Discussion



Larch forests of
eastern Siberia

E.-D. Schulze et al.

Table 2. Summary of stand locations, canopy species, stand density and canopy height of the study plots. *Picea obovata* is indicated as *Picea*, and *Abies sibirica* as *Abies*.

Plot no	Plot identifier	Location	Longitude	Latitude	Canopy species	Density (trees ha ⁻¹)	Canopy height (m)	Age of main canopy	No. of fires incl. stand replacement	Time since last fire
1	VA1-P1	Vanavara, plateau	101°56.025'	60°25.014'	<i>Larix</i>	973	33.5	240	5	160
2	VA1-P2	Vanavara, plateau	101°56.049'	60°24.970'	<i>Larix</i> , <i>Picea</i>	951	27.1	240	3	210
3	VA1-P3	Vanavara, plateau	101°56.140'	60°24.874'	<i>Larix</i> , <i>Picea</i> , <i>Pinus sibirica</i> , <i>Pinus sylvestris</i>	1337	30.5	240	2	240
4	VA2-P1	Vanavara, N-slope	101°59.005'	60°20.251'	<i>Larix</i> , <i>Alnus</i> , <i>Pinus sibirica</i>	597	30.1	170	3	100
5	VA2-P2	Vanavara, N-slope	102°04.016'	60°19.756'	<i>Larix</i> after fire, 3 generations	594	30.5	270	7	15
6	BK1-P1	Bajkit winter road, plateau	96°30.224'	61°42.539'	<i>Larix</i> , <i>Pinus sibirica</i>	920	28.2	250	4	140
7	BK1-P2	Bajkit, winter road, plateau	96°30.089'	61°42.586'	<i>Larix</i> , <i>Picea</i> , <i>Abies</i> , <i>Pinus sibirica</i>	849		250	3	210
8	BK2-P1	Bajkit-west, S-slope	96°17.635'	61°38.119'	<i>Larix</i> , 3 generations	1304	25.8	230	4	140
9	TG1-P1	Tunguska, S-slope	95°57.354'	61°43.553'	<i>Larix</i> after fire	796	20.5	150	3	10
10	TG2-P1	Tunguska, river bank	95°53.830'	61°46.918'	<i>Picea</i>	1496	28.2	120	0	Unknown
11	TG3-P1	Tunguska, S-slope, slope	95°53.796'	61°47.407'	<i>Larix</i> , <i>Picea</i>	1083	23.4	290	3	10
12	TG4-P1	Tunguska, S-slope	95°32.604'	61°51.261'	<i>Larix</i> after fire	191	32.2	240	3	15
13	TG4-P2	Tunguska, S-slope	95°32.445'	61°51.253'	<i>Larix</i> unburnt	906	34.2	240	2	160
14	TG5-P1	Tunguska, Table Mtn, E-slope	93°44.809'	61°54.495'	<i>Larix</i> , <i>Picea</i>	1304	30.5	250	0	250
15	TG5-P2	Tunguska, Table Mtn, E-slope	93°44.390'	61°54.719'	<i>Pinus sibirica</i> , <i>Abies</i> , <i>Picea</i>	1751	29.3	255	0	250
16	TG6-P1	Tunguska, N-slope	93°24.893'	61°49.711'	<i>Pinus sibirica</i>	692	31.5	330	0	330

Title Page

Abstract

Introduction

Conclusions

References

Tables

Figures

◀

▶

◀

▶

Back

Close

Full Screen / Esc

Printer-friendly Version

Interactive Discussion



Larch forests of eastern Siberia

E.-D. Schulze et al.

Table 3. Correlation matrix of stand-level predictors and compositional attributes. Colours range from dark red (strong negative correlation) to green (strong positive correlation). **Long** = longitude, **mat** = Mean annual temperature, **age** = stand age, **tsf** = time-since-fire, **nofire** = number of fires during stand development, **mri** = mean fire return interval calculated as “age/(1 + nofire)”, **water** = ordinal water index from 1 very dry to 5 very wet, **sloimax** = maximum slope, **soildepth** = depth of soil until bed rock, **alt** = active-layer depth, **olt** = organic layer depth, **ba.dt** = basal area of dark taiga species (*Picea*, *Abies*, *Pinus sibirica*), **ba.lar** = basal area of *Larix*, **ba.brl** = basal area of broadleaved species (*Betula*, *Populus*, *Alnus*), **ba.tot** = total basal area, **bar.dt** = percentage basal area of dark taiga species, **bar.lar** = percentage basal area of *Larix*, **bar.brl** = percentage basal area of broadleaved species.

	precip	mat	age	tsf	nofire	mri	water	sloimax	soildepth	alt	olt	ba.dt	ba.lar	ba.brl	ba.tot	bar.dt	bar.brl	bar.lar	
long	-0.94	-0.73	-0.15	-0.19	0.64	-0.62	-0.32	-0.52	-0.02	-0.32	-0.04	-0.56	0.12	0.76	-0.08	-0.62	0.19	0.58	
precip		0.90	0.01	-0.02	-0.63	0.52	0.40	0.67	0.07	0.49	-0.12	0.46	-0.20	-0.72	-0.03	0.52	-0.28	-0.46	
mat			-0.03	-0.05	-0.65	0.55	0.34	0.72	0.10	0.57	-0.28	0.40	-0.25	-0.55	0.04	0.38	-0.32	-0.32	
age				0.36	0.08	0.39	-0.47	0.27	-0.26	-0.12	0.18	0.20	0.10	-0.07	0.22	0.21	0.09	-0.22	
tsf					-0.59	0.70	0.01	-0.22	-0.19	-0.32	0.36	0.68	0.41	-0.33	0.70	0.59	0.37	-0.64	
nofire						-0.78	-0.33	-0.26	-0.01	-0.30	0.05	-0.72	-0.05	0.66	-0.42	-0.68	0.00	0.68	
mri							0.06	0.18	0.08	0.07	0.00	0.77	-0.09	-0.52	0.59	0.64	-0.13	-0.62	
water								-0.14	0.15	-0.19	0.44	0.22	-0.04	-0.50	-0.15	0.30	-0.03	-0.29	
sloimax									0.73	-0.28	0.05	0.05	-0.24	-0.15	0.10	-0.07	-0.07	-0.08	
soildepth										0.20	-0.34	0.05	-0.24	-0.07	-0.01	0.06	-0.28	-0.03	
alt											-0.53	-0.19	0.05	-0.04	-0.29	-0.11	-0.07	0.12	
olt												0.04	0.29	-0.10	-0.01	0.05	0.27	-0.08	
ba.dt													-0.07	-0.70	0.76	0.93	-0.14	-0.90	
ba.lar														-0.02	-0.02	0.05	0.93	-0.17	
ba.brl															-0.07	-0.82	-0.09	0.83	
ba.tot																0.56	-0.18	-0.53	
bar.dt																	-0.01	-0.99	
bar.brl																			-0.14

Title Page

Abstract

Introduction

Conclusions

References

Tables

Figures

◀

▶

◀

▶

Back

Close

Full Screen / Esc

Printer-friendly Version

Interactive Discussion



Larch forests of eastern Siberia

E.-D. Schulze et al.

Table 4. Biomass carbon stocks including roots [tC ha⁻¹] in the investigated plots. Dark taiga conifers include *Picea obovata*, *Abies sibirica*, and *Pinus sibirica*, light-taiga conifers include *Larix* sp. and *Pinus sylvestris* (These are the only two stand containing the light taiga species *Pinus sylvestris* as a minor component next to *Larix* [4.6 and 5.4 tC ha⁻¹]); broadleaved trees include *Betula* sp. , *Populus tremula*, and *Duschekia fruticosa*. sd = standard deviation of biomass prediction.

[tC ha ⁻¹]	Dark Taiga conifers		Light Taiga conifers		Broadleaved		Total	Total
	mean	sd	mean	sd	mean	sd	mean	sd
VA1-P1	28.94	0.78	93.00	2.72	2.27	0.04	124.20	2.82
VA1-P2	11.66	0.42	29.29	0.72	8.76	0.18	49.72	0.85
VA1-P3	44.42	1.45	70.35	1.98	4.78	0.12	119.55	2.44
VA2-P1	0.53	0.03	85.02	2.03	1.04	0.02	86.60	2.03
VA2-P2	–	–	78.80	1.67	–	–	78.80	1.67
BK1-P1	52.47	1.20	23.22	0.59	4.04	0.10	79.70	1.34
BK1-P2	35.24	0.74	21.27	0.62	4.97	0.10	61.45	0.96
BK2-P1	23.44	0.85	40.21	0.87	3.44	0.06	67.10	1.22
TG1-P1	2.53	0.09	22.85	0.34	–	–	25.38	0.35
TG2-P1	96.40	3.36	–	–	–	–	96.40	3.36
TG3-P1	24.85	0.79	14.36	0.22	–	–	39.21	0.82
TG4-P1	1.55	0.07	61.45	1.91	–	–	63.00	1.92
TG4-P2	64.45	1.66	20.39	0.62	10.17	0.23	95.00	1.78
TG5-P1	37.07	0.98	47.32	1.67	7.70	0.18	92.10	1.94
TG5-P2	27.33	4.11	–	–	–	–	127.35	4.11

Title Page

Abstract Introduction

Conclusions References

Tables Figures

◀ ▶

◀ ▶

Back Close

Full Screen / Esc

Printer-friendly Version

Interactive Discussion



Larch forests of eastern Siberia

E.-D. Schulze et al.

Table 5. Best candidate models for selected variables representing stand composition, biomass and organic layer carbon; standard error of estimates in brackets. Because all predictors were z-transformed prior to analysis the magnitude of the coefficients reflects the relative importance of the respective variables. Significance indicators: * $p < 0.05$, ** $p < 0.01$. Indicators for overall model significance based on the F -statistic are shown together with R_a^2 .

Model number	Parameter	Intercept	Longitude (°)	Distance to River (m)	Active Layer Depth (cm)	Time since last Fire (yr)	Slope (°)	Hydrology Index	Adjusted R_a^2	Residual Standard Error	Degree freedom
1	Aboveground tree biomass (kg C m ⁻²)	8.36** (0.56)	–	–0.86 (0.67)	–0.92 (0.69)	2.17** (0.61)	–	–1.41* (0.61)	0.49 (**)	2.27	11
2	Biomass of dark taiga species (%) ²	42.8** (3.73)	–13.7** (3.97)	–	–	18.5** (3.97)	–	–	0.74 (**)	14.9	13
3	Biomass of <i>Larix</i> (%) ²	44.7** (3.5)	10.9* (4.87)	–	8.36 (5.29)	–19.9** (4.34)	–8.3 (6.37)	–	0.76 (**)	14.0	11
4	Dark taiga regeneration ³ (trees ha ⁻¹)	896** (220)	813* (319)	–	–	758* (267)	–	306 (254)	0.38	805	9
5	<i>Larix</i> regeneration ³ (trees ha ⁻¹)	18.0** (5.10)	–	–12.3 (6.30)	–	–25.7** (6.68)	–	6.69 (5.23)	0.664 (**)	18.7	10
6	Organic layer Thickness (cm) ¹	9.94** (0.34)	–	1.34** (0.39)	–0.92* (0.404)	1.01* (0.42)	–	3.02** (0.37)	0.90 (*)	1.29	10
7	Organic layer carbon ¹ (kg C m ²)	2.97** (0.15)	–	0.52* (0.17)	–0.53** (0.17)	–	–	–	0.71 (**)	0.58	12

¹ Stand TG2-P1 was omitted, because it was subject to periodic floods removing the organic layer regularly.

² Model is based on arcsine-transformed data.

³ Only advance regeneration (> 1.3 m height and < 7 cm DBH).

Title Page

Abstract

Introduction

Conclusions

References

Tables

Figures

◀

▶

◀

▶

Back

Close

Full Screen / Esc

Printer-friendly Version

Interactive Discussion



Larch forests of eastern Siberia

E.-D. Schulze et al.

Discussion Paper | Discussion Paper | Discussion Paper | Discussion Paper | Discussion Paper

Title Page

Abstract Introduction

Conclusions References

Tables Figures

◀ ▶

◀ ▶

Back Close

Full Screen / Esc

Printer-friendly Version

Interactive Discussion

Table 6. The fraction of trees affected by fungal wood rot as related to tree species and tree dimensions.

	<i>Larix</i>			<i>Picea</i>			<i>Pinus</i>			<i>Abies</i>		
	<i>n</i>	healthy %	rot	<i>n</i>	healthy %	rot	<i>n</i>	healthy %	rot	<i>n</i>	healthy %	rot
DBH < 20 cm	9	89	11	17	89	11	14	57	43	12	67	33
BH 20–40 cm	24	50	50	20	55	45	21	62	38	6	67	33
BH > 40 cm	5	40	60	5	40	60	14	58	42			
Total	38	58	42	42	67	33	49	62	38	18	67	33



Larch forests of
eastern Siberia

E.-D. Schulze et al.

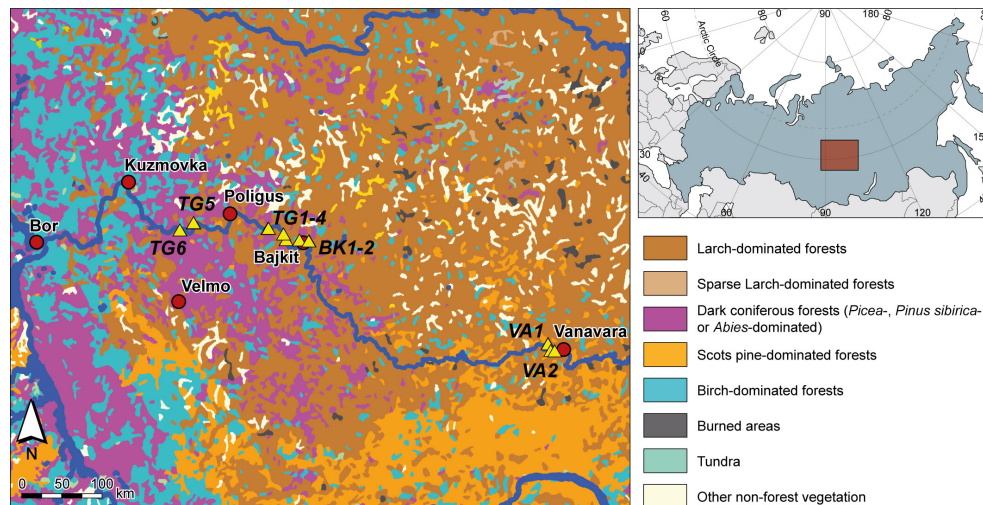


Fig. 1. Vegetation map and study sites at 60° N and east of 90° E as determined from satellite images (see site; chapter site selection). The main settlements are Bor, Kuzmovka, Veimo, Poligus, Baykit and Vanavara. The latter 4 settlements also served meteorological stations (see Table 1). The study sites are indicated as VA (Vanavara), BK (Baikit) and TG (Tunguska).

Title Page

Abstract

Introduction

Conclusions

References

Tables

Figures

I◀

▶I

◀

▶

Back

Close

Full Screen / Esc

Printer-friendly Version

Interactive Discussion



Larch forests of eastern Siberia

E.-D. Schulze et al.

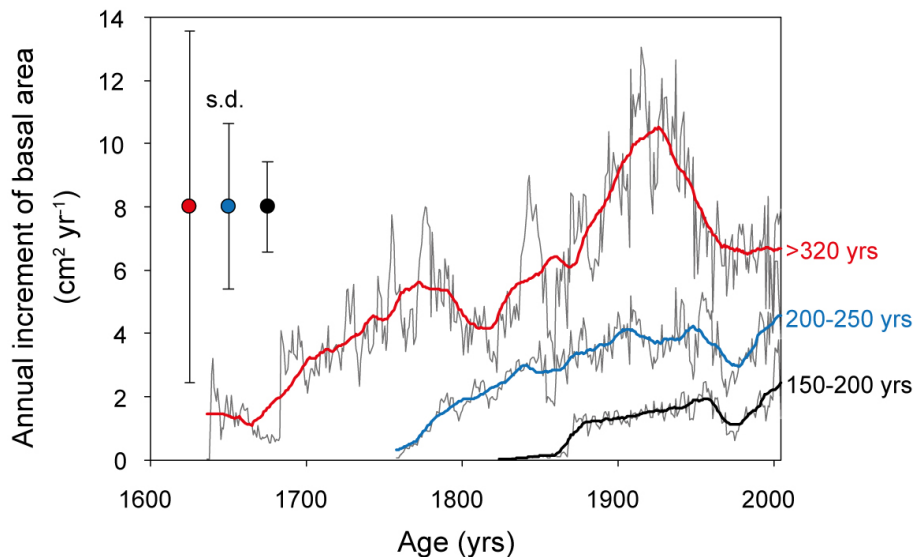


Fig. 2. Annual increment of trees as related to time before present for tree individuals older than 320 yr ($n = 9$), of individuals between 200 and 250 yr ($n = 29$), and of individuals between 150 and 200 yr ($n = 8$). Depicted are averages of annual rates (thin black lines) and a smoothed line of running average over about 10 yr, depending on the number of samples (thick red line for > 320 yr, blue line for 200 to 250 yr and black line for 150 to 200 yr).

Title Page

Abstract

Introduction

Conclusions

References

Tables

Figures

I◀

▶I

◀

▶

Back

Close

Full Screen / Esc

Printer-friendly Version

Interactive Discussion



Larch forests of eastern Siberia

E.-D. Schulze et al.

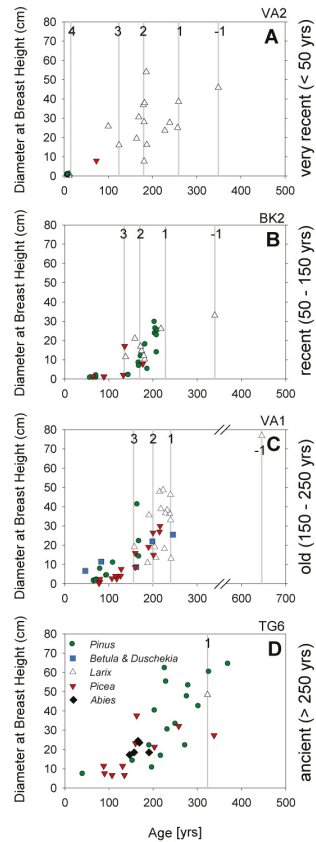


Fig. 3. Diameter at breast height as related to tree age along the Tunguska transect.

Title Page

Abstract Introduction

Conclusions References

Tables Figures

◀ ▶

◀ ▶

Back Close

Full Screen / Esc

Printer-friendly Version

Interactive Discussion



Larch forests of eastern Siberia

E.-D. Schulze et al.

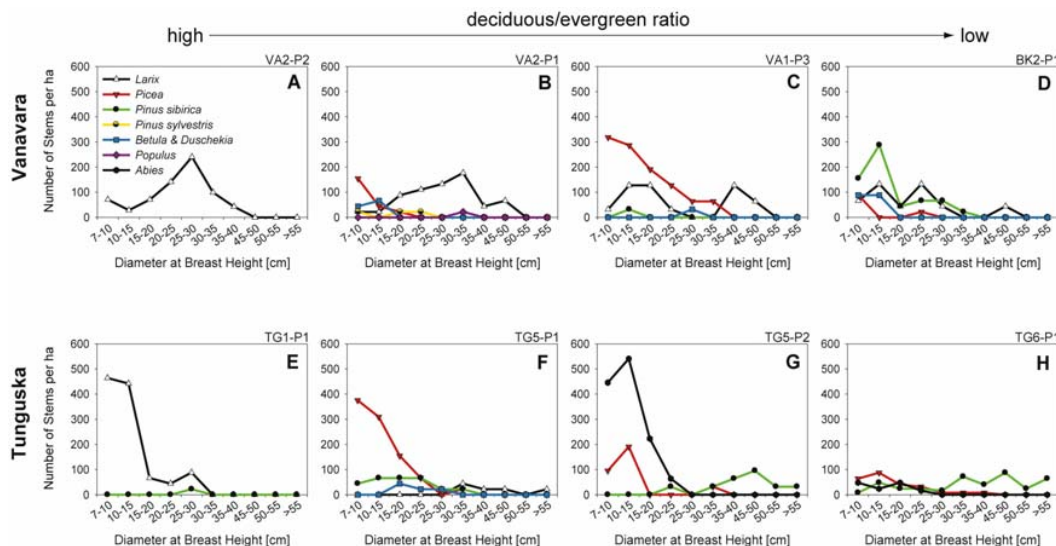


Fig. 4. Stand density (number of stems per area) as related to diameter at breast height of selected plots representing an increasing ratio of deciduous to evergreen stems for the Vanavara-Bajkit region (A–D) and the Tunguska canyon (E–H).

Title Page

Abstract

Introduction

Conclusions

References

Tables

Figures

◀

▶

◀

▶

Back

Close

Full Screen / Esc

Printer-friendly Version

Interactive Discussion



Larch forests of
eastern Siberia

E.-D. Schulze et al.

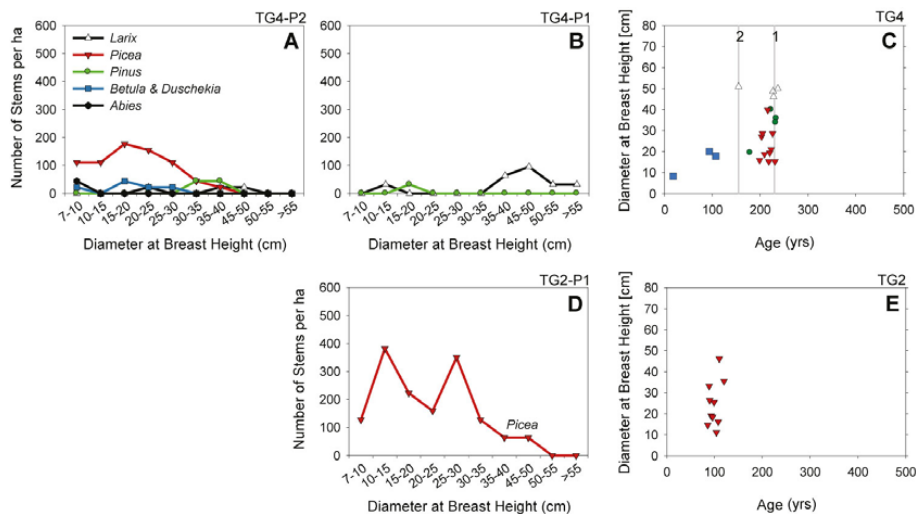


Fig. 5. Diameter at breast height of tree species growing on adjacent sites without **(A)** and with **(B)** a recent surface fire, and the relation between diameter at breast height and tree age **(C)**, and density of trees as related to breast height diameter **(D)** and age **(E)** in a pure stand of *Picea obovata* which regenerated on alluvial loam. Symbols are explained in **(A)**.

Title Page

Abstract

Introduction

Conclusions

References

Tables

Figures

I◀

▶I

◀

▶

Back

Close

Full Screen / Esc

Printer-friendly Version

Interactive Discussion



Larch forests of eastern Siberia

E.-D. Schulze et al.

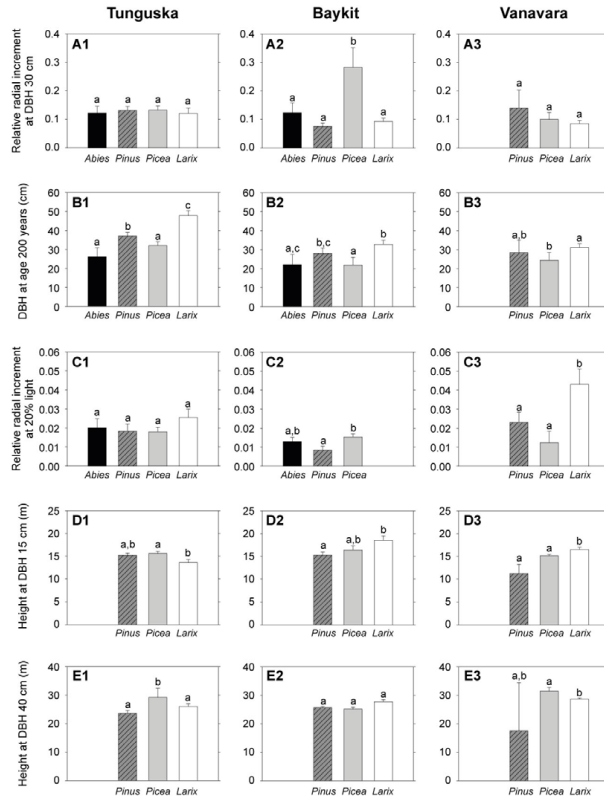


Fig. 6. Relative radial increment, DBH at age of 200 yr, relative radial increment at 20 % light, height at DBH 15 cm, and height at DBH 40 cm for *Abies*, *Pinus*, *Picea* and *Larix* at the Tunguska, the Bajkit and the Vanavara sites. Different small letters indicate significant differences between columns.

Title Page

Abstract

Introduction

Conclusions

References

Tables

Figures

◀

▶

◀

▶

Back

Close

Full Screen / Esc

Printer-friendly Version

Interactive Discussion



Larch forests of
eastern Siberia

E.-D. Schulze et al.

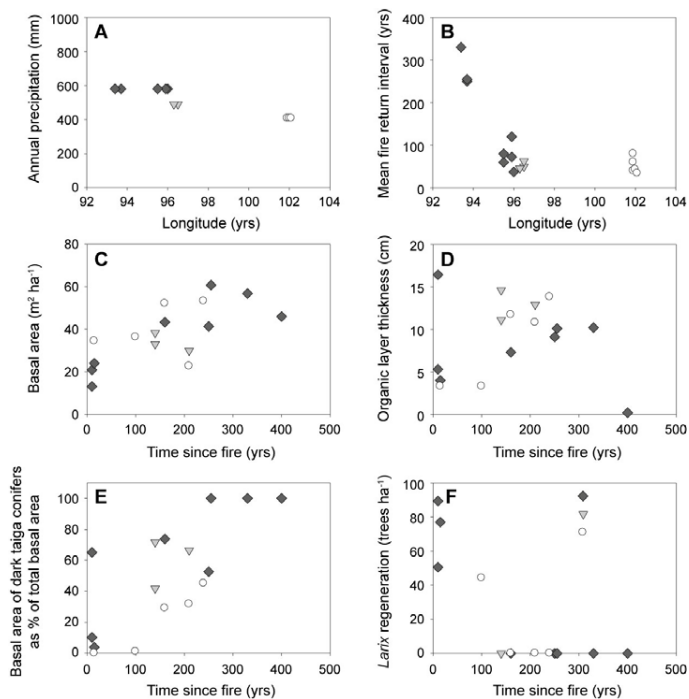


Fig. 7. Annual precipitation (A) and mean fire return interval (B) as related to longitude, basal area (C) and organic-layer thickness (D), and relative fraction of basal area of dark taiga conifers (E) and *Larix* regeneration (F) as related to time-since-fire.

Title Page

Abstract

Introduction

Conclusions

References

Tables

Figures

◀

▶

◀

▶

Back

Close

Full Screen / Esc

Printer-friendly Version

Interactive Discussion



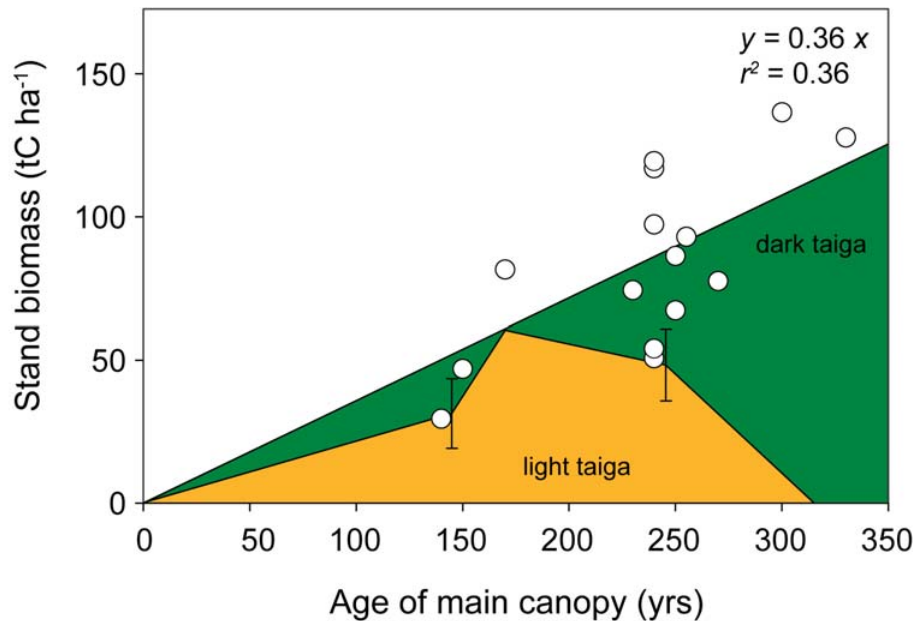


Fig. 8. Stem volume per unit area as related to stand age. The shaded area indicates the proportion of light and dark taiga species on total stem biomass. Dark taiga species may also contribute a significant fraction in young stands until the first surface fire eradicates these individuals. Only a next generation can become dominant, if there is no further fire.

Larch forests of eastern Siberia

E.-D. Schulze et al.

Title Page	
Abstract	Introduction
Conclusions	References
Tables	Figures
◀	▶
◀	▶
Back	Close
Full Screen / Esc	
Printer-friendly Version	
Interactive Discussion	

