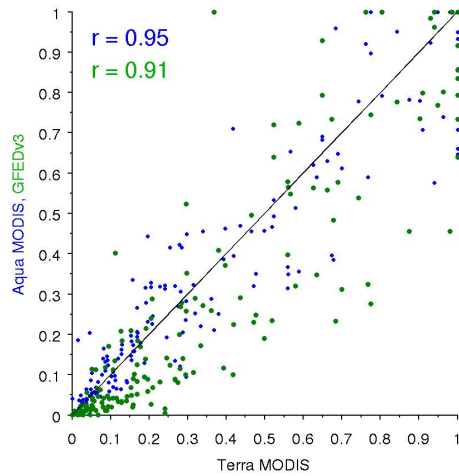


1 **Supplemental Figures**

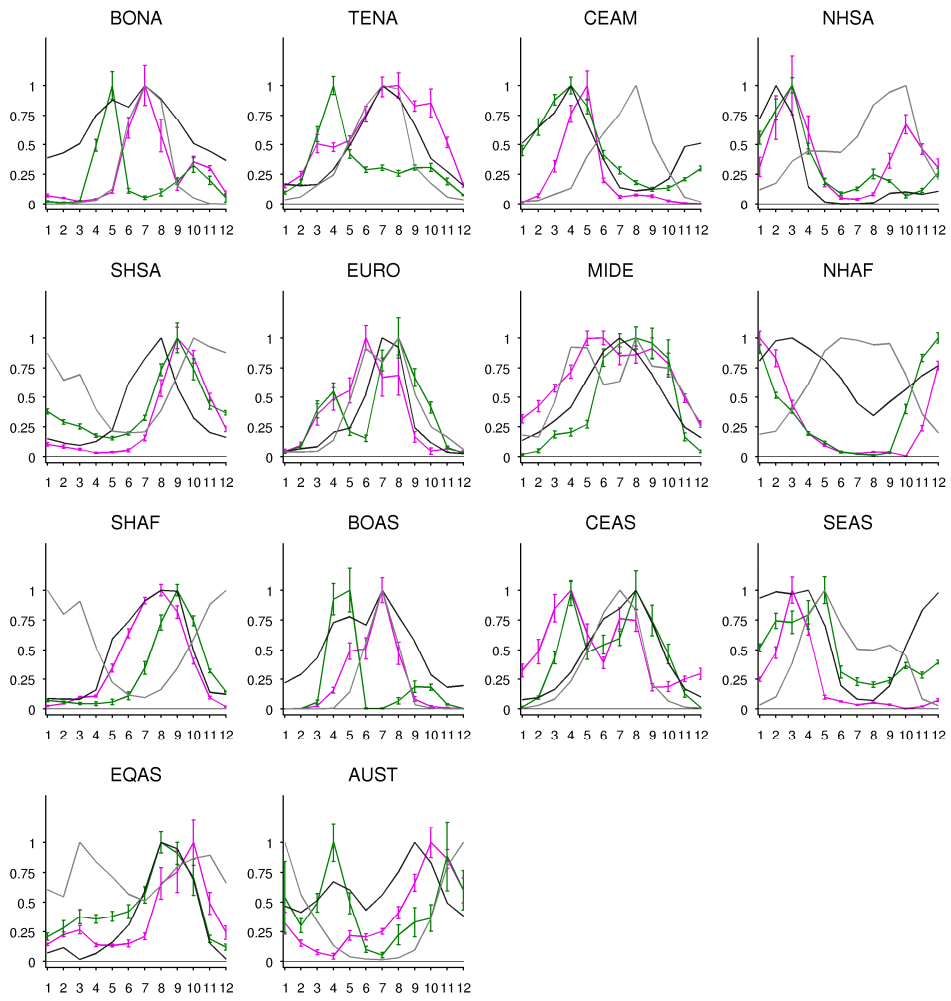
2



3

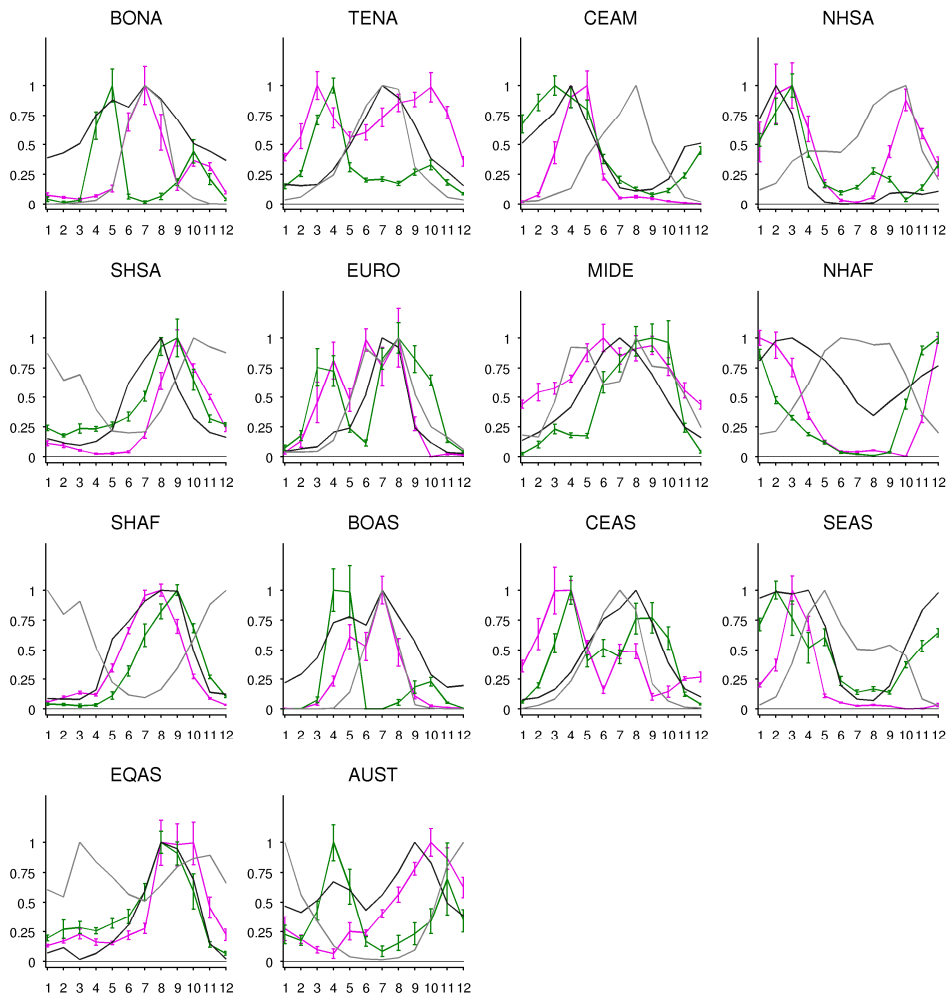
4 Figure S1. Correlation of fire counts from Terra MODIS with fire counts from Aqua MODIS
5 (blue) and burned area from GFED (green). Each data point represents a comparison between
6 the Terra MODIS values in Figure 2 and the Aqua MODIS and GFED values in Figure 2. There
7 are 12 months for each of the 14 regions and therefore a total of 168 blue points and 168 green
8 points in the scatterplot. The line represents a one-to-one ratio between the data on the X and Y
9 axes.

10



1
2
3
4

Figure S2. Per Figure 3, but \bar{F}_a and \bar{F}_n are derived from Terra MODIS fire counts.



1

2 Figure S3. Per Figure 3, but \bar{F}_a and \bar{F}_n are derived from Aqua MODIS fire counts.

3