

This discussion paper is/has been under review for the journal Biogeosciences (BG).
Please refer to the corresponding final paper in BG if available.

Stratigraphy and paleoenvironments of the early to middle Holocene Chipalamawamba Beds (Malawi Basin, Africa)

B. Van Bocxlaer^{1,2}, W. Salenbien¹, N. Praet¹, and J. Verniers¹

¹Research Unit Palaeontology, Department of Geology and Soil Science, Ghent University, Krijgslaan 281 (S8), 9000 Ghent, Belgium

²Department of Paleobiology, Department of Invertebrate Zoology, National Museum of Natural History, Smithsonian Institution, 10th and Constitution NW, Washington, DC 20560, USA

Received: 18 March 2012 – Accepted: 18 April 2012 – Published: 21 May 2012

Correspondence to: B. Van Bocxlaer (vanbocxlaerb@si.edu; bert.vanbocxlaer@ugent.be)

Published by Copernicus Publications on behalf of the European Geosciences Union.

BGD

9, 5793–5822, 2012

Stratigraphy and paleoenvironments of the Chipalamawamba Beds

B. Van Bocxlaer et al.

Title Page

Abstract

Introduction

Conclusions

References

Tables

Figures

⏪

⏩

◀

▶

Back

Close

Full Screen / Esc

Printer-friendly Version

Interactive Discussion

Abstract

We describe the Chipalamawamba Beds, early to middle Holocene deposits at the southern margin of long-lived Lake Malawi. The beds are exposed because of downcutting of the upper Shire River. The Chipalamawamba sediments are medium to coarse, yellow to brown sands deposited in lenses varying in horizontal extent from a few meters to several hundreds of meters. Four units are recognized; the first three mainly contain lacustrine sediments deposited during lake high-stands about 10.6–9.7 cal ka BP (Unit 1), 7.6–6.5 cal ka BP (Unit 2) and 5.9–5.3 cal ka BP. Sediments of Unit 4 top units 1 to 3, are coarser and display regular foresets and oblique-bedding, suggesting deposition in riverine environments after installation of the Shire River (~ 5.0ka BP). Freshwater mollusk assemblages and bioturbations regularly occur in the lacustrine sediments, but are largely absent from Unit 4. Diverse and often contradicting hypotheses on the lake levels of Lake Malawi have been proposed for the early and middle Holocene. The Chipalamawamba Beds allow straight-forward recognition of water levels and provide strong evidence for oscillating lake levels during this period, rather than continuous high or low levels. Sedimentation rates have been high and individual shell beds have typically been deposited during a few decades. Because the Chipalamawamba Beds contain a sequence of mollusk assemblages with intervals between subsequent shell beds ranging from a century to a few millennia, they enable paleontological analysis of the fauna with unusually high temporal resolution. That some mollusk lineages inhabiting Lake Malawi are in the early stages of diversification and radiation increases the paleobiological relevance of these beds.

1 Introduction

In this paper we describe a sedimentary sequence in the Mangochi Province of Malawi that was deposited in long-lived Lake Malawi during the early to middle Holocene. These sediments were first visited for scientific purposes in 1992 by Albrecht Gorthner

Stratigraphy and paleoenvironments of the Chipalamawamba Beds

B. Van Bocxlaer et al.

Title Page

Abstract

Introduction

Conclusions

References

Tables

Figures



Back

Close

Full Screen / Esc

Printer-friendly Version

Interactive Discussion



as collaborator of the paleontological and paleoantropological Hominid Corridor Research Project under direction of Friedemann Schrenk. Although Gorthner touched upon the beds in the scientific literature (Gorthner, 1994), hardly any information he collected during his single day of fieldwork in the area was published, apart from an abbreviated overview of the freshwater mollusk fossils. A preliminary draft on some stratigraphic and sedimentological aspects of the beds was composed, but never published (Gorthner, personal communication).

We visited the region again in 2008 and in 2010, during which we dug new trenches, found additional outcrops and collected sufficient data on the sediments as well as their fossil content for a detailed description of the stratigraphy of the beds, their depositional paleoenvironment and paleoecology. Moreover, we outline some paleolimnological implications of the data collected and indicate the potential these sediments offer to study organismal diversification events in long-lived Lake Malawi.

1.1 General setting

The Chipalamawamba Beds crop out some 10 km south of Lake Malawi along the shores of the upper Shire River, just north of the shallow Lake Malombe located farther south (Fig. 1). The main outcrops are located on the western shore nearby the fisherman villages Chipalamawamba and Kwitambo at the eroding side of a bend in the Shire River, but also on the eastern bank of the next curve in the river farther upstream, nearby the poorly accessible village Kazembe. Currently no other outcrops have been discovered along the upper Shire River, but the beds cover a wider geographical area, as suggested by the topography and bathymetry of the Malawi Basin in the south (Scholz and Rosendahl, 1988). We encountered sediments and mollusks belonging to Chipalamawamba strata nearby a graveyard of Chipalamawamba, ~ 600 m inland and north of the village centre (Fig. 1c). On the central plaza sediments were brought to the surface recently (2009) during the construction of a new water hole, but they appear to have been discarded by the project leaders. However, the old, more southwards located water hole exposed sediments of the Chipalamawamba Beds. These

Stratigraphy and paleoenvironments of the Chipalamawamba Beds

B. Van Bocxlaer et al.

Title Page

Abstract

Introduction

Conclusions

References

Tables

Figures



Back

Close

Full Screen / Esc

Printer-friendly Version

Interactive Discussion



findings indicate that the sediments directly beneath the modern soil on which Chipalamawamba and the more southwards located village Kwitambo are build belong to the formation of the Chipalamawamba Beds.

Our descriptions of the Chipalamawamba Beds here are based on detailed studies of the main sections on the western shore of the Shire River along Chipalamawamba and Kwitambo. These outcrops cover a horizontal distance of ~ 1200m, and crop out from the water level up to ~ 5.0m higher. On the eastern shore of the Shire at Kazembe outcrops are present over a distance of ~ 170m and have a smaller vertical elevation (from the water level up to ~ 3.0m above it). These latter outcrops are not treated in detail here because no sections were made through them and their stratigraphy has not been studied as extensively.

2 Material and methods

2.1 Field methods

During fieldwork in 2008 we mainly aimed to collect fossils from outcrops and to characterize the depositional environments in which fossil bearing strata were formed. Because of the considerable lateral variation observed in the beds, it soon became clear that the data collected during this short visit were insufficient to study fossil material in chronological sequence using time series analyses. Therefore, we decided to do a more intensive field campaign in 2010 to elucidate the stratigraphy, to characterize the sedimentology and to elaborate our sampling of fossil material.

We dug step-like trenches through the Chipalamawamba Beds to enable detailed stratigraphical and sedimentological descriptions and to measure and record the characteristics of individual beds. For each section a lithostratigraphic profile was constructed. Due to the proximity of the highly populated villages and the regular visits people make to the waterside, we dug trenches at dawn, fully documented and sampled them over the day to close them again before dark. Vertical positions of trench

BGD

9, 5793–5822, 2012

Stratigraphy and paleoenvironments of the Chipalamawamba Beds

B. Van Bocxlaer et al.

Title Page

Abstract

Introduction

Conclusions

References

Tables

Figures

⏪

⏩

◀

▶

Back

Close

Full Screen / Esc

Printer-friendly Version

Interactive Discussion



sediment profile was taken as well, but as this method proved suboptimal (and highly time-consuming) in the loosely aggregated sandy sediments at Chipalamawamba, it was not performed for other trenches.

Shell beds, when present, were sampled individually in a qualitative and/or quantitative way (by weighing the sample and subsequently sieving it using mesh sizes of 2 mm and 710 µm). Taphonomic features were recorded. A few poorly preserved and/or scattered shell beds were not sampled, though their position is indicated in the profile drawings, with summary indications as to their content. *In situ* samples of fossils were collected during the digging of the trenches only if the exact stratigraphical position could be established. However, fossils of uncertain positions were screened and when they displayed interesting or unusual features, they were bagged as *ex situ*. Otherwise, material was only collected during the cleaning and profile-drawing phases. Quantitative samples were sieved after dark and profiles were re-drawn and correlated with earlier profiles. If required or desirable, additional semi-trenches were dug the next day to verify physical correlations or other aspects that proved ambiguous in the re-drawing phase.

2.2 Lab methods

2.2.1 Sedimentology and stratigraphy

Re-drawn sediment profiles were digitized primarily using SedLog v2.1.4. (Zervas et al., 2009), after which the result was imported in Adobe Illustrator CS5 to make the initial digitization result more condensed and accurate, e.g., by expanding the in SedLog available set of stratigraphical contacts, by not just indicating the fossil content of a bed, but placing symbols at their exact vertical position of occurrence in the profile, and by designing swatches that indicate minimal and maximal grain sizes, and therefore the degree of sortedness in a sediment layer. Also, MS measurements were compiled and plotted in profiles using Excel. These values were compared on a profile to profile base (not shown). Google Earth was also used to prepare the figures.

Stratigraphy and paleoenvironments of the Chipalamawamba Beds

B. Van Bocxlaer et al.

Title Page

Abstract

Introduction

Conclusions

References

Tables

Figures

⏪

⏩

◀

▶

Back

Close

Full Screen / Esc

Printer-friendly Version

Interactive Discussion



Stratigraphy and paleoenvironments of the Chipalamawamba Beds

B. Van Bocxlaer et al.

Title Page

Abstract

Introduction

Conclusions

References

Tables

Figures

⏪

⏩

◀

▶

Back

Close

Full Screen / Esc

Printer-friendly Version

Interactive Discussion



To create overview figures, digitized individual profiles were downsized and compiled in two graphs, one for the northern and one for the southern part of the outcrops on the western shore of the Shire River. Subsequently, correlations were synthesized and information on erosional phases was added. Several arguments for correlations exist; some are based on observed physical continuation of beds, other correlations are based on geographical proximity and similarities in the mollusk composition of fossil assemblages and the taphonomy of the shell beds, others are deduced by similarities in grain size, sediment color and peaks in the MS values, and finally some correlations are based on ages as measured via radiocarbon dating. The symbols used and the diverse types of correlations made in these overview figures are summarized in Fig. 2.

2.2.2 Radiocarbon dating

Radiocarbon dates were performed on fossil freshwater mollusks. Therefore, calibration requires taking account of the reservoir effect in mollusk shells caused by sources of fossil carbon in the Malawi Basin. Dating sub-recent bulk organic material, Brown et al. (2007) found a reservoir effect of ~ 400 yr. This corresponds well to the offset of ~ 450 yr obtained by comparison of dates on bulk organic material and varve counting ages of Holocene sediments (Barry, 2001). However, comparisons between bulk organic material and woody material (mid-Holocene) or charcoal (Last Glacial Maximum) suggests a larger effect of reworked carbon (770 ± 100 and 680 ± 110 yr; Barry et al., 2002). Because the origin of bulk organic material is obscure, it is difficult to interpret the obtained differences. Brown et al. (2007) adopted a constant reservoir effect of 450 yr during the Holocene. Their assumption that the reservoir effect remained fairly constant over the Holocene seems reasonable given the geological brevity, the limited tectonic changes in the Malawi Basin over this period, and the long flushing times of the lake (~ 750 yr; Bootsma and Hecky, 1993). However, as the reservoir effect in bulk organic material can hardly be related to those recorded in other sources of datable material, we dated an early 20th century shell from Lake Malawi to allow calibration of our other radiocarbon dates. This specimen was obtained from the Royal Museum for

Central Africa (Tervuren, Belgium; MRAC 58430, Bequaert 1927). Calibrations were performed using the “Fairbanks 0107” calibration curve (Fairbanks et al., 2005).

2.2.3 Fossils

The content of most fossil samples (98%) has been identified to the lowest possible taxonomic rank. Freshwater mollusks are overwhelmingly dominant and we identified these using Mandahl-Barth (1972) and Brown (1994). Identifications and specimen counts were compiled in an excel database.

3 Results

3.1 Sedimentological characteristics

In total, 20 large trenches and 10 smaller trenches (L6 C & D, L8C, L9 B & C, L10 C, L14 B, L15 B-D) were made. The smaller ones were necessary to investigate the lateral continuity of stratigraphic contacts (locations indicated in Fig. 1). General sedimentological and stratigraphical overviews of the Chipalamawamba Beds are presented in Fig. 3 for the northern part and in Fig. 4 for the southern part. Most beds contain medium, coarse and very coarse sandy sediments that regularly contain larger granules, i.e. pebbles with diameters of 3–9 mm and very occasionally up to 20–25 mm. Overall, sediments have been deposited rapidly (see below) in moderate to high energy environments. A few beds with large granules and rolled shells reflect very high energy conditions. The color of the sediments ranges from yellowish for the more typical lacustrine beds (frequently 2,5 Y 7/3 light YE, 2,5 Y 8/3 pale YE, 2,5 Y 6/3 dull YE or even 2,5 Y 6/2 (GR) YE) to somewhat darker brown/dull yellow orange sediments in beds that seem often (but not always) to have been deposited in environments with slightly more energy (frequently 10 YR 5/4–7/3 dull YE BR or dull YE OR). The modern soil overlying the Chipalamawamba Beds is always easily recognizable, mainly by

BGD

9, 5793–5822, 2012

Stratigraphy and paleoenvironments of the Chipalamawamba Beds

B. Van Bocxlaer et al.

Title Page

Abstract

Introduction

Conclusions

References

Tables

Figures

⏪

⏩

◀

▶

Back

Close

Full Screen / Esc

Printer-friendly Version

Interactive Discussion



its darker color (10 YR 3/2 (BR) BL) and its higher magnetic susceptibility (on average $\sim 0.13 \times 10^{-3}$ SI) than the Chipalamawamba sediments (on average $\sim 0.05 \times 10^{-3}$ SI). Noteworthy is that beds just below the modern soil were always darker brown or dull yellow orange and that more yellowish sediments were dominant in L15 and profiles north of it, whereas profiles farther south had often relatively darker orange/brown sediments. Paleo-river gullies are recognizable by their infill with uniformly coarse and dull yellow orange/dull yellow brown (mainly 10 YR 7/3–7/4) sediments that generally lack fossils. They often display oblique bedding and foresets. Elsewhere foresets and oblique bedding is more occasionally present and often associated with bioturbations, fossil remains and concretions.

3.2 Radiocarbon dating

In total 23 dates have been obtained on fossil freshwater mollusk shells from the Chipalamawamba Beds (Table 1). One date was obtained by Gorthner (1994) and although we have approximate information as to what shell bed yielded the material, we have no information on the lab and dating codes, if and how he calibrated the date and whether he attempted to account for the reservoir effect. Therefore, we report his result here, but leave it untouched for all other purposes. We performed the remaining 22 dates on shells that have a well-constrained stratigraphic position. All results are internally consistent and are reported in Table 1 together with the date obtained on a modern shell for calibration. This modern shell with an age of 25 a BP yielded a radiocarbon age of 190 ± 30 ^{14}C a BP, suggesting that the reservoir effect in mollusks is ~ 175 yr, hence substantially smaller than that recorded in bulk organic material.

3.3 Fossil content

Including replicates, 163 samples of fossil material were obtained during the fieldwork campaigns in 2008 (17) and 2010 (146). Most of these fossils belong to freshwater mollusks, but fish bones and occasionally isolated mammal or bird remains have also been

BGD

9, 5793–5822, 2012

Stratigraphy and paleoenvironments of the Chipalamawamba Beds

B. Van Bocxlaer et al.

Title Page

Abstract

Introduction

Conclusions

References

Tables

Figures

⏪

⏩

◀

▶

Back

Close

Full Screen / Esc

Printer-friendly Version

Interactive Discussion



obtained. The fossil assemblages testify to the exclusively aquatic setting in which the Chipalamawamba Beds were deposited. The content of all but three of these samples has been fully identified and counted. In total this results in 34 215 specimens being processed, leaving about 10 000–15 000 more specimens yet to be handled (mainly belonging to the gastropod genus *Melanoides*). However, even though not all material has been processed, it was possible to make detailed comparisons of samples and their mollusk assemblages. While detailed discussions on the mollusk diversity through time is beyond the scope of this paper, very characteristic assemblages could be distinguished in a few cases and allowed correlations between profiles. Because some mollusk genera display considerable morphological change over the Holocene, some characteristics of fossil taxa enabled us to attribute shell beds to a particular stratigraphic unit. This aspect will be discussed below.

3.4 Stratigraphy

The Chipalamawamba Beds consist of four units separated from one another by erosional contacts, which unfortunately are not always easy to recognize in the field. They are overlain by modern soil. The bedding is usually nearly horizontal, often dipping slightly towards the north, but due to the lenticular nature of the beds variation occurs and dips to the south have been observed as well. Below, we describe these four units from bottom to top and have delineated, to the extent possible, the four major units in the grain size column of the profiles in Figs. 3 and 4. Magnetic susceptibility by itself did not allow to discern the units of the Chipalamawamba Beds because the variation within a bed is usually similar to or greater than that between beds. As MS properties are not characteristic for the individual units, they are not discussed below and peaks in MS values are used for correlation only in cases of correspondence with independent sedimentological evidence.

We describe the stratigraphy in informal terminology (beds and units instead of formations and members) because of uncertainties in the geographic (and cartographic) extent beyond Chipalamawamba, Kwitambo and Kazembe, because of the difficulties

BGD

9, 5793–5822, 2012

Stratigraphy and paleoenvironments of the Chipalamawamba Beds

B. Van Bocxlaer et al.

Title Page

Abstract

Introduction

Conclusions

References

Tables

Figures

⏪

⏩

◀

▶

Back

Close

Full Screen / Esc

Printer-friendly Version

Interactive Discussion



exist laterally. Several local diastems and evidence for short erosional phases have been recorded in Unit 2, as evidenced by a minor gully a few meters wide that we observed between L6A and L6B. Overall, the sediments of Unit 2 are well-sorted and very yellowish; shell beds are relatively abundant and typically occur in the coarser-grained, often darker colored beds.

Unit 2 has the widest geographical distribution within the Chipalamawamba Beds. It occurs in all profiles on the western shore, except for those taken in the two main paleo-gullies. Its youngest strata occur at Kazembe. The *Melanoides* community in shell beds of Unit 2 is dominated by a medium to strongly tuberculated *Melanoides* cf. *turritispira* morphotype, which is about the same size as the *Melanoides* cf. *polymorpha* morphotype in Unit 1 and is very closely related to it (Mandahl-Barth, 1972; Genner et al., 2007).

3.4.3 Unit 3

Radiocarbon dating on mollusk shells from sediments of Unit 3 resulted in ages of ~ 5.9–5.3 cal ka BP. More dates are required to elucidate whether these sediments have been deposited during one or two transgressions. Currently, different ages have been obtained from geographically separated outcrops. It has been more difficult to trace the main erosional surface(s) between Units 2 and 3, compared to the one between Units 1 and 2, but the white layers between Units 2 and 3 in Figs. 3 and 4 identify the sediments that may contain such surface(s). The upper boundary of Unit 3 is a conspicuous erosional contact with sediments belonging to Unit 4. In several localities Unit 3 is directly overlain by the modern soil. Like the sediments of Unit 2, those of Unit 3 are cut off by two major paleo-gullies. In the northern part Unit 3 reaches a thickness of 0.6 m, and it has the same thickness in the southern part of the area except for between L5 and L13, where the thickness is 2.0 m. The sediments of Unit 3 strongly resemble these of Unit 2. They are relatively fine-grained and well-sorted, often dull yellow orange sands. In shell beds, the sediments are on average coarser. The top of Unit 3 consists of well-sorted, fine-grained, dull yellow orange sands that are very poor

Stratigraphy and paleoenvironments of the Chipalamawamba Beds

B. Van Bocxlaer et al.

Title Page

Abstract

Introduction

Conclusions

References

Tables

Figures



Back

Close

Full Screen / Esc

Printer-friendly Version

Interactive Discussion



in or devoid of fossils, except for scattered fish bones, and in the northern part regular bioturbations.

Overall, Unit 3 occurs more patchily than Unit 2 and the outcrops north of the major paleo-gully and south of it have somewhat different characteristics. As mentioned and as supported by differences in shell bed composition, they may represent two separate transgressions. Shell beds are rarer in Unit 3 than in Unit 1 and 2, however, sediments of Unit 3 in localities L1 and L2 contain many dispersed shells in addition to a few thick shell beds that are dominated by a relatively small *Melanoides* cf. *turritispira*-like morphospecies. In contrast, *Bellamyia* and *Lanistes* are more frequent in the northern deposits of Unit 3, where *Melanoides* is rare. The *Melanoides* cf. *turritispira* morphotype that dominates the southern deposits of Unit 3 is very similar to the one in Unit 2. No conspicuous morphological features have been observed that allow discerning the mollusk communities from Unit 2 and 3 based on intrinsic faunistic properties.

3.4.4 Unit 4

The age of deposits belonging to Unit 4 has not been established via absolute dating as for Unit 1–3, but these sediments were deposited after deposition of Unit 3 and presumably before the Shire River was fully installed as outflow of Lake Malawi ~ 5.5–5.0 ka BP (Ricketts and Johnson, 1996). The lower boundary of Unit 4 consists of erosional unconformities with sediments belonging to Units 1 to 3. In profiles L3, L5, and L8A the direct erosional contact between Units 3 and 4 has been observed, but in other profiles this contact is more difficult to pinpoint. Unit 4 is overlaid by the modern soil. Unit 4 ranges in thickness from several decimeters (L8A, L3) up to more than 2.5 m (L11, L12). Unit 4 consists of coarse-grained and poorly-sorted, dull yellow orange/dull yellow brown sands (sometimes including fine gravel) that rarely contain fossil material. As mentioned, the limited fossil finds have not been dated (and actually may represent reworked material). Unit 4 sediments show a compact sedimentation with only minor changes in grain sizes related to weak fining or coarsening up cycles. These

Stratigraphy and paleoenvironments of the Chipalamawamba Beds

B. Van Bocxlaer et al.

Title Page

Abstract

Introduction

Conclusions

References

Tables

Figures

⏪

⏩

◀

▶

Back

Close

Full Screen / Esc

Printer-friendly Version

Interactive Discussion



sands have been deposited in higher energy environments than the other units of the Chipalamawamba Beds as is evidenced by regular oblique beddings and foresets.

Most sediments we studied of this unit were deposited in the main paleo-gully, which occurs between profiles L6A and L7A but extends beyond L7A up to L8A, is several hundreds of meters wide (in total perhaps up to 500 m) and literally divides the fossil-bearing Units 1 to 3 on the western shore into a northern (north of L7A) and a southern (south of L6A) area. The second paleo-gully between L3 and L5, which also was filled up by sediments of Unit 4, is smaller (60–130 m wide) and separates the southern area in two subregions (L3 & 4 versus L1, 2, 5, 6 and 13). The first bed below the modern soil in profile L9A is perhaps attributable to Unit 4 too. No fossils have been obtained from deposits of Unit 4, except for a single isolated and potentially reworked shell and a few fish-bone fragments.

4 Discussion

4.1 Paleoenvironmental context

Units 1 to 3 of the Chipalamawamba Beds consist predominantly of lake beds. The characteristics of the fossil assemblages, the sedimentological properties of the beds and their broad geographical extent all suggest these units have been deposited predominantly in shallow lacustrine conditions. Paludal circumstances may have prevailed occasionally, as is currently the case at the southern tip of Lake Malawi and at the margins of Lake Malombe. Deposition in paludal circumstances, evidenced by root bioturbations, differences in the mollusk fauna and in some cases by the presence of a finer fraction in the sediments, remained geographically localized and restricted in time. These three lower units of the Chipalamawamba Beds hence represent three major phases of high stand of Lake Malawi, separated from one another by regressive phases, during which erosion of previously deposited lake sediments occurred. Also within units minor diastems (including intermediate erosional events) have been

BGD

9, 5793–5822, 2012

Stratigraphy and paleoenvironments of the Chipalamawamba Beds

B. Van Bocxlaer et al.

Title Page

Abstract

Introduction

Conclusions

References

Tables

Figures

⏪

⏩

◀

▶

Back

Close

Full Screen / Esc

Printer-friendly Version

Interactive Discussion

5 recognized. The fourth and uppermost unit represents a different, higher energy environment. Its deposition took place shortly after that of Unit 3 and coincides with the development of the Shire River as the outlet of Lake Malawi. During this period, some existing paleo-river gullies that originated in the introductory phase of Unit 4, perhaps
10 with precursors from the regressive phase between Unit 2 and 3, filled with sediment as the Shire River formed its main river bed and other deltaic paleo-gullies became defunct. This could have occurred very fast from the moment flow-through diminished in the defunct paleo-gullies as the channel now known as the Shire River increased its discharge and cut its course through the lacustrine deposits. When the Shire River
15 cut sufficiently deep for floods outside the river bed to have become rare, the modern soil started developing on top of the Chipalamawamba sediments in the river banks. For reference, during our 2010 field campaign the bottom of the Shire River in the centre of the channel was $\sim 15\text{--}20$ m below the water level and traces of the annual high water stands from the last decades were detected in sediments up to ~ 1 m above
20 the water level, but not higher. The current water level was $\sim 473\text{--}474$ m a.s.l., which corresponds well with previous measurements (Bootsma and Hecky, 2003).

The rate of sedimentation appears generally to have been high for the Chipalamawamba Beds. Sediments of Unit 2, for example, have typically been deposited very fast with intermediate diastems, e.g., all Unit 2 sediments in profile L7B (~ 1.0 m) have
25 been deposited in roughly 200 yr between $\sim 7.6\text{--}7.4$ cal ka BP, whereas the 1.3 m of sediments in L4 appears to have been deposited in 500 yr ($\sim 7.5\text{--}7.0$ cal ka BP). About 1.3 m of Unit 2 in profile L8B was deposited in 150 years between 6.9–6.7 ka BP. Assuming constant sedimentation, this suggests deposition rates of ~ 0.50 , 0.26 and 0.87 m per century, respectively. In Unit 1, 1.1 m of sediments was deposited in L8B and L9A over 500 years ($\sim 10.6\text{--}10.1$ cal ka BP), suggesting ~ 0.22 m per century under the same assumption. Sedimentation rates are hard to estimate for Unit 3, because of more limited age control and the possibility that these sediments reflect not one but two high stand phases. Fast sedimentation is also suspected in Unit 4. The high energy environments in which deposition occurred and the narrow time window in

Stratigraphy and paleoenvironments of the Chipalamawamba Beds

B. Van Bocxlaer et al.

[Title Page](#)[Abstract](#)[Introduction](#)[Conclusions](#)[References](#)[Tables](#)[Figures](#)[Back](#)[Close](#)[Full Screen / Esc](#)[Printer-friendly Version](#)[Interactive Discussion](#)

between deposition of Unit 3 and the moment the Shire River became fully operational hint towards rates potentially even higher than the maximal estimates for Unit 2. Apart from the fast deposition of units, the spread in radiocarbon dates indicates that individual shell beds were deposited quickly too. The oldest shell bed in Unit 1 has been dated to 9550 ± 50 and 9580 ± 50 ^{14}C years; another shell bed from Unit 2 was dated to 6200 ± 40 , 6200 ± 40 , and elsewhere to 6185 ± 35 ^{14}C years; laterally equivalent shell bed extensions in the south were dated to 6040 ± 35 and 6050 ± 35 ^{14}C years. Dating information hence strongly suggests individual shell beds to have been deposited over periods as short as a few decades.

Unit 1 was predominantly deposited in shallow lacustrine conditions (0–3 m of depth), with relatively strong wave action. Apart from the poorly-sorted sediments, which contain a very coarse sand fraction, shell bed taphonomy supports this suggestion. Shells are abundant, but are regularly fragmented or broken, and some post-mortem transportation may have occurred. The top shell bed in this unit is a good example of this; it contains mainly rolled hinge fragments of bivalves and collumellar fragments of gastropods. That Unit 1 only occurs in the northern deposits of the Chipalamawamba Beds could be explained in two ways. First, the earliest Holocene transgressive phase may have been less extensive than the later ones. Taking into account the bathymetry of Lake Malawi (Scholz and Rosendahl, 1988), the more extensive a transgressive phase, the farther south deposits would extend. As such, sediments deposited during less extensive high stands may only be recognizable in the north. This argument based on bathymetry also implies that erosion would be strongest in the south, as deposits in the south would generally surface earlier and longer than deposits in the north. The second explanation is that Unit 1 was also deposited further south, but that southern deposits were eroded by the main paleo-gully. However, this last scenario cannot account for the absence of Unit 1 in deposits south of the main paleo-gully, and both explanations may have contributed to the present observations.

Unit 2 contains a larger fraction of fine sediments in the north, and towards the south, coarser grained and poorly sorted sediments become more abundant. In general, we

BGD

9, 5793–5822, 2012

Stratigraphy and paleoenvironments of the Chipalamawamba Beds

B. Van Bocxlaer et al.

Title Page

Abstract

Introduction

Conclusions

References

Tables

Figures

⏪

⏩

◀

▶

Back

Close

Full Screen / Esc

Printer-friendly Version

Interactive Discussion

Stratigraphy and paleoenvironments of the Chipalamawamba Beds

B. Van Bocxlaer et al.

Title Page

Abstract

Introduction

Conclusions

References

Tables

Figures



Back

Close

Full Screen / Esc

Printer-friendly Version

Interactive Discussion



observed that sediments lower in Unit 2 are generally coarser and less well-sorted than higher ones, and shell beds are deposited in relatively coarse sand. Even those shell beds sandwiched between finer-grained sediments normally contain coarser-grained sands. In layers of finer-grained sediments, dispersed shells regularly occur and the few shell beds that are deposited in fine-grained material do not show compositional differences from shell beds deposited in coarser-grained sediments. However, in contrast to the high energy shell accumulations preserved in Unit 1 those associated with coarse and relatively poorly sorted sediments in Unit 2 contain shells that are very well preserved. Bivalve specimens often display umbonal sculpture and the early teleoconchs of gastropods are usually intact. This suggests that conditions during the lifetime of these animals and at the time of deposition were calm enough to prevent shell abrasion and corrosion, or perhaps more likely, that conditions were relatively calm when the mollusks were alive and that deposition occurred sufficiently fast to prevent substantial damage. While deposition may have taken place in rather shallow waters (~ 0–3 m), many of the shells in Unit 2 may have belonged to animals that lived well below the surf zone, i.e., in waters of ~ 3–5 m, potentially deeper. Personal observations on living adult mollusks from shallower waters suggest that abrasion and corrosion of the teleoconch or the umbonal sculpture would have been unavoidable in shallow habitats.

The sediments of Unit 3 document the last major high stand of the lake and are very similar to those of Unit 2, however on average, they are darker in color. The erosional unconformity between Units 2 and 3 is more difficult to discern than the one between Units 1 and 2, probably because the hiatus was much shorter (~ 600yr compared to ~ 2000yr). Most deposits consist predominantly of fine-grained sands, but as in Unit 2 the sediments in shell beds are usually coarser than those in beds without shells. Outside the area between L1 and L2, however, shell beds are very rare in Unit 3. The fact that deposits of Unit 3 are scattered probably is due to erosion caused by the developing outflow shortly after the sediments were laid down. This erosion probably was patchy and rather widespread.

Stratigraphy and paleoenvironments of the Chipalamawamba Beds

B. Van Bocxlaer et al.

Title Page

Abstract

Introduction

Conclusions

References

Tables

Figures

⏪

⏩

◀

▶

Back

Close

Full Screen / Esc

Printer-friendly Version

Interactive Discussion



Unit 4 contains strata from the latest phase in the deposition of the Chipalamawamba Beds, and likely accumulated when the Shire River became functional. Sediments of Unit 4 have not been dated, but their stratigraphical position in combination with current estimates on the origin of the Shire River would imply Unit 4 was deposited rapidly. Also the sedimentological properties of deposits belonging to Unit 4 and their bearing on the depositional environments support fast deposition. Sediments of Unit 4 represent true riverine deposits that were formed when high lake levels of Lake Malawi resulted in substantial water discharge in the south. Coarse-grained sediments were deposited where previous river branches and paleo-gullies created accommodation space. As mentioned, these gullies filled up fast, potentially aided by decreasing discharge (and currents) via these channels when the channel now known as the Shire River expanded and increased its capacity to become the single outflow of Lake Malawi. While some gullies were filled with the coarse sediments belonging to Unit 4, the overall balance during this phase was perhaps more towards the side of erosion, and substantial parts of the older units of the Chipalamawamba Beds were eroded just before and during the period in which Unit 4 was deposited.

4.2 Current erosion of the Chipalamawamba Beds

Some outcrops of the Chipalamawamba Beds underwent a substantial amount of change between our fieldwork in 2008 and 2010. Besides erosion at the water level by the Shire River, the increasing human population causes considerable additional erosion. People frequent the waterside for multiple basic needs. Moreover fishermen are known to have engaged in digging out complete shell beds at or just below the waterline because towing over these fossil shell beds causes substantial damage to their fishing nets. This, in combination with the fact that most beds are strongly lenticular can result in future changes in the individual thickness of sediment layers and in the presence of fossil-bearing outcrops.

4.3 Paleolimnological inferences on lake levels

Hypotheses on Late Quaternary lake levels of Lake Malawi are widely discussed in scientific literature, partly because the timing of its low and high stands appears out of phase with those from African lakes farther north (e.g., Finney et al., 1996; Gasse, 2000; Johnson et al., 2002; Filippi and Talbot, 2005) and secondly because the climatic history of the basin during the Holocene, particularly in the early Holocene, has not been resolved (Castañeda et al., 2007). For example, low lake levels (100–150 m below present levels) were suggested for Lake Malawi during the early Holocene (6.0–10.0 ka BP) based on geochemical data from core sediments, diatom communities (Finney and Johnson, 1991; Finney et al., 1996), and from seismic features (Scholz and Finney, 1994). Similarly, vegetation records suggest that conditions were generally more arid 11.6–7.7 ka BP than at present (Meadows, 1984; DeBusk, 1998; Castañeda et al., 2007, 2009). Geochemical analyses of endogenic calcite suggest drying events between 9.0 and 8.5 ka BP, between 8.5 and 7.5 ka BP and between 7.2 and 6.5 ka BP (Ricketts and Johnson, 1996). Analyses of organic matter in sediment cores provides evidence for a much shorter duration (~2 ka) of the terminal Pleistocene-early Holocene low stand, with rising water levels ~10.5 to 10.0 ka BP, resulting in high lake levels ~8.0 ka BP (Filippi and Talbot, 2005). The scenario of high lake levels in the early and middle Holocene is generally supported by records of periphytic diatoms (Johnson et al., 2002). Records of planktonic diatoms support high or intermediate levels during much of the early Holocene, with short-lived regressions at 10.6 and 8.5–8.2 ka BP and a somewhat remarkable transgression 7.5–6.6 ka BP (Gasse et al., 2002). Finally, it is puzzling that several proxies from Lake Malawi suggest low lake levels and aridity when the nearby Lake Rukwa experienced humid conditions from 12.1 to 5.5 ka BP (Haberyan, 1987; Vincens et al., 2005), with paleo-shorelines during that interval at least temporarily reaching levels ~200 m above the present day lake level (Delvaux et al., 1998). Also Lake Massoko, a volcanic crater lake in the Rungwe Highlands, experienced relatively wet conditions in this period (Barker et al., 2003).

Stratigraphy and paleoenvironments of the Chipalamawamba Beds

B. Van Bocxlaer et al.

Title Page

Abstract

Introduction

Conclusions

References

Tables

Figures



Back

Close

Full Screen / Esc

Printer-friendly Version

Interactive Discussion



transgression between 7.5–6.6 ka BP reported by Gasse et al. (2002) based on planktonic diatoms, but they contradict these authors' short-lived regression at 10.6 ka BP. Note that the periods indicated for high lake level phases above give conservative estimates for the end of high-water phases. High lake levels may have prevailed for quite a bit longer, and significant amounts of the upper lake sediments deposited during high water stands may have been eroded during subsequent erosional phases. Therefore, we cannot contradict that lake levels were high 9.0 ka BP (Barker et al., 2007) or 8.0 ka BP (Filippi and Talbot, 2005), even though this would imply that all sediments deposited after 9.7 ka BP would have been eroded in intermittent erosional phases or in the period between 8.0 and 7.6 ka BP. The Chipalamawamba Beds clearly indicate that, at least periodically and regularly, Lake Malawi attained high lake levels in the early and middle Holocene, i.e., up to 5 m higher than at present. Although our data do not provide information on the magnitude of lake level drops during periods of low stands, they provide unambiguous evidence for oscillating lake levels and contrast with previous hypotheses of rather continuous high (Johnson et al., 2002) or low lake level phases (Finney and Johnson, 1991; Finney et al., 1996).

4.4 Paleobiological relevance

Mollusk assemblages are abundant in the Chipalamawamba Beds and material is generally very well preserved and can be retrieved relatively easily from the matrix. Moreover, considerable morphological changes have occurred in the mollusk communities since deposition of the early Holocene fossil beds and lineage splitting has putatively taken place (Van Bocxlaer, 2005). Additionally, the extant mollusk community from Lake Malawi consists predominantly of species that descended directly from the fossil lineages, but not necessarily from the exact populations preserved at Chipalamawamba. Therefore, the Chipalamawamba Beds offer an opportunity to complement neontological studies on the extant fauna (e.g., Genner et al., 2007; Schultheiß et al., 2009, 2011) with paleobiological studies of morphological evolution, diversification and divergence in fossil “populations” over time. Our stratigraphic and paleoenvironmental

Stratigraphy and paleoenvironments of the Chipalamawamba Beds

B. Van Bocxlaer et al.

Title Page

Abstract

Introduction

Conclusions

References

Tables

Figures



Back

Close

Full Screen / Esc

Printer-friendly Version

Interactive Discussion



studies on the Chipalamawamba Beds reveal a remarkable potential for high resolution paleontological analyses (100 s to a few 1000 s of years between subsequent beds; Table 1). These efforts may allow narrowing the “epistemological gap” between neontological and paleontological approaches to the study of organismal evolution (e.g., Kemp, 1999; Reznick and Ricklefs, 2009).

Acknowledgement. We thank chiefs Gundaphiri (Chipalamawamba) and Kwitambo-Dimba (Kwitambo) for allowing us to study the sediments and shell beds in their villages; we also thank chief Chowe (Kazembe) for allowing us to explore the outcrops near his village. We acknowledge the Cultural and Museum Centre Karonga for support and in particular Friedemann Schrenk, Harisson Simfukwe and Joseph Tembo for their assistance. More help in the field came from William, Daudi, Daud and Mike. Constructive suggestions on previous drafts of this paper were kindly provided by Frank H. Brown, Jocelyn Sessa and Gene Hunt. Finally we thank the editors of this special issue for inviting us to participate. Financial support was provided by the Leopold III-fund and the Flanders Research Foundation to BVB and JV, and by the Belgian American Educational Foundation to BVB.

References

- Barker, P., Williamson, D., Gasse, F., and Gibert, E.: Climatic and volcanic forcing revealed in a 50 000-year diatom record from Lake Massoko, Tanzania, *Quaternary Res.*, 60, 368–376, 2003.
- Barker, P., Leng, M. J., Gasse, F., and Huang, Y.: Century-to-millennial scale climatic variability in Lake Malawi revealed by isotope records, *Earth Planet. Sc. Lett.*, 261, 93–103, 2007.
- Barry, S. L.: Stratigraphic Correlation and High-Resolution Geochronology of Varved Sediments from Lake Malawi, East Africa, M.S. Thesis, University of Minnesota, Duluth, 2001.
- Barry, S. L., Filippi, M. L., Talbot, M. R., and Johnson, T. C.: A 20 000-yr sedimentological record from Lake Malawi, East Africa: the Late-Pleistocene/Holocene transition in the southern tropics, in: *The East African Great Lakes: Limnology, Palaeoclimatology and Biodiversity*, edited by: Odada, E. O. and Olago, D. O., Kluwer Academic Publishers, Dordrecht, 369–392, 2002.
- Bootsma, H. A. and Hecky, R. E.: Conservation of the African Great Lakes: a limnological perspective, *Conserv. Biol.*, 7, 644–656, 1993.

Stratigraphy and paleoenvironments of the Chipalamawamba Beds

B. Van Bocxlaer et al.

Title Page

Abstract

Introduction

Conclusions

References

Tables

Figures

⏪

⏩

◀

▶

Back

Close

Full Screen / Esc

Printer-friendly Version

Interactive Discussion



Stratigraphy and paleoenvironments of the Chipalamawamba Beds

B. Van Bocxlaer et al.

Title Page

Abstract

Introduction

Conclusions

References

Tables

Figures

◀

▶

◀

▶

Back

Close

Full Screen / Esc

Printer-friendly Version

Interactive Discussion

Bootsma, H. A. and Hecky, R. E.: A comparative introduction to the biology and limnology of the African Great Lakes, *J. Great Lakes Res.*, 29, 3–18, 2003.

Brown, D. S.: *Freshwater Snails of Africa and their Medical Importance*, Taylor and Francis, London, 1994.

5 Brown, E. T., Johnson, T. C., Scholz, C. A., Cohen, A. S., and King, J. W.: Abrupt change in tropical African climate linked to the bipolar seesaw over the past 55 000 years, *Geophys. Res. Lett.*, 34, L20702, 2007.

Castañeda, I. S., Werne, J. P., and Johnson, T. C.: Wet and arid phases in the Southern African tropics since the Last Glacial Maximum, *Geology*, 35, 823–826, 2007.

10 Castañeda, I. S., Werne, J. P., Johnson, T. C., and Filley, T. R.: Late Quaternary vegetation history of Southeast Africa: the molecular isotopic record from Lake Malawi, *Palaeogeogr. Palaeoclimatol.*, 275, 100–112, 2009.

DeBusk, G. H.: A 37 500-year pollen record from Lake Malawi and implications for the biogeography of afro-montane forests, *J. Biogeogr.*, 25, 479–500, 1998.

15 Delvaux, D., Kervyn, F., Vittori, E., Kajara, R. S. A., and Kilembe, E.: Late Quaternary tectonic activity and lake level change in the Rukwa Rift basin, *J. Afric. Earth Sci.*, 26, 397–421, 1998.

Gasse, F.: Hydrological changes in the African tropics since the Last Glacial Maximum, *Quaternary Sci. Rev.*, 19, 189–211, 2000.

20 Gasse, F., Barker, P., and Johnson, T.: A 24 600 yr diatom record from the Northern Basin of Lake Malawi, in: *The East African Great Lakes: Limnology, Palaeolimnology and Biodiversity. Advances in Global Change Research*, edited by: Odada, E. O. and Olago, D. O., Kluwer Academic Publishers, Dordrecht, 393–414, 2002.

Genner, M. J., Todd, J. A., Michel, E., Erpenbeck, D., Jimoh, A., Joyce, D. A., Piechocki, A., and Pointier, J.-P.: Amassing diversity in an ancient lake: evolution of a morphologically diverse parthenogenetic gastropod assemblage in Lake Malawi, *Mol. Ecol.*, 16, 517–530, 2007.

25 Gorthner, A.: Grenzen paläontologischer Systematik und Stratigraphie in lakustrischen Biotopen am Beispiel rezenter und fossiler Mollusken des Malawisees, *Neues Jahrb. Geol. P.-M.*, 8, 487–500, 1994.

Haberyan, K. A.: Fossil diatoms and the paleolimnology of Lake Rukwa, Tanzania, *Freshwater Biol.*, 17, 429–436, 1987.

30 Fairbanks, R. G., Mortlock, R. A., Chiu, T.-C., Cao, L., Kaplan, A., Guilderson, T. P., Fairbanks, T. W., and Bloom, A. L.: Marine radiocarbon calibration curve spanning 0 to 50 000

Stratigraphy and paleoenvironments of the Chipalamawamba Beds

B. Van Bocxlaer et al.

Title Page

Abstract

Introduction

Conclusions

References

Tables

Figures

◀

▶

◀

▶

Back

Close

Full Screen / Esc

Printer-friendly Version

Interactive Discussion

years B.P. based on paired $^{230}\text{Th}/^{234}\text{U}/^{238}\text{U}$ and ^{14}C dates on pristine corals, *Quaternary Sci. Rev.*, 24, 1781–1796, 2005.

Finney, B. P. and Johnson, T. C.: Sedimentation in Lake Malawi (East Africa) during the past 10 000 years: a continuous paleoclimatic record from the southern tropic, *Palaeogeogr. Palaeoclimatol.*, 85, 351–366, 1991.

Finney, B. P., Scholz, C. A., Johnson, T. C., and Trumbore, S.: Late Quaternary lake-level changes of Lake Malawi, in: *The Limnology, Climatology and Paleoclimatology of the East African Lakes*, edited by: Johnson, T. C. and Odada, E. O., Gordon and Breach, Amsterdam, 495–508, 1996.

Filippi, M. L. and Talbot, M. R.: The palaeoclimatology of northern Lake Malawi over the last 25 ka based upon the elemental and stable isotopic composition of sedimentary organic matter, *Quaternary Sci. Rev.*, 24, 1303–1328, 2005.

Johnson, T. C., Brown, E. T., McManus, J., Barry, S., Barker, P., and Gasse, F.: A high-resolution paleoclimate record spanning the past 25 000 years in Southern East Africa, *Science*, 296, 113–132, 2002.

Kemp, T. S.: *Fossils and Evolution*, Oxford University Press, Oxford, 1999.

Krynine, P. D.: The megascopic study and field classification of sedimentary rocks, *J. Geol.*, 56, 130–165, 1948.

Mandahl-Barth, G.: The freshwater Mollusca of Lake Malawi, *Rev. Zool. Bot. Afric.*, 86, 257–289, 1972.

Meadows, M. E.: Late Quaternary vegetation history of the Nyika Plateau, Malawi, *J. Biogeogr.*, 11, 209–222, 1984.

Oyama, M. and Takehara, H.: *Revised Standard Soil Color Charts*, Ministry of Agriculture and Forestry, Tokyo, Japan, 1967.

Owen, R. B., Crossley, R., Johnson, T. C., Tweddle, D., Kornfield, I., Davison, S., Eccles, D. H., and Engstrom, D. E.: Major low levels of Lake Malawi and their implications for speciation rates in cichlid fishes, *P. Roy. Soc. B.-Biol. Sci.*, 240, 519–553, 1990.

Ricketts, R. D. and Johnson, T. C.: Early Holocene changes in lake level and productivity in Lake Malawi as interpreted from oxygen and carbon isotopic measurements of authigenic carbonates, in: *The Limnology, Climatology and Paleoclimatology of the East African Lakes*, edited by: Johnson, T. C. and Odada, E. O., Gordon and Breach, Amsterdam, 475–493, 1996.

- Reznick, D. N. and Ricklefs, R. E.: Darwin's bridge between microevolution and macroevolution, *Nature*, 457, 837–842, 2009.
- Scholz, C. A. and Rosendahl, B. R.: Low lake stands in lakes Malawi and Tanganyika, East Africa, delineated with multifold seismic data, *Science*, 240, 1645–1648, 1988.
- 5 Scholz, C. A. and Finney, B. P.: Late Quaternary sequence stratigraphy of Lake Malawi (Nyasa), Africa, *Sedimentology*, 41, 163–179, 1994.
- Schultheiß, R., Van Bocxlaer, B., Wilke, T., and Albrecht, C.: Old fossils-young species: evolutionary history of an endemic gastropod assemblage in Lake Malawi, *P. Roy. Soc. B.-Biol. Sci.*, 276, 2837–2846, 2009.
- 10 Schultheiß, R., Wilke, T., Jørgensen, A., and Albrecht, C.: The birth of an endemic species flock: demographic history of the *Bellamyia* group (Gastropoda, Viviparidae) in Lake Malawi, *Biol. J. Linn. Soc.*, 102, 130–143, 2011.
- Van Bocxlaer, B.: Changes in the malacofauna of Lake Malawi since mid-Holocene times, *Geol. Belg.*, 8, 124, 2005.
- 15 Vincens, A., Buchet, G., Williamson, D., and Taieb, M.: A 23 000 yr pollen record from Lake Rukwa (8° S, SW Tanzania): new data on vegetation dynamics and climate in Central East Africa, *Rev. Palaeobot. Palyno.*, 137, 147–162, 2005.
- Zervas, D., Nichols, G. J., Hall, R., Smyth, H. R., Lüthje, C., and Murtagh, F.: Sedlog: A shareware program for drawing graphic logs and log data manipulation, *Comput. Geosci.-UK*, 35, 2151–2159, 2009.
- 20

BGD

9, 5793–5822, 2012

**Stratigraphy and
paleoenvironments of
the Chipalamawamba
Beds**

B. Van Bocxlaer et al.

[Title Page](#)[Abstract](#)[Introduction](#)[Conclusions](#)[References](#)[Tables](#)[Figures](#)[⏪](#)[⏩](#)[◀](#)[▶](#)[Back](#)[Close](#)[Full Screen / Esc](#)[Printer-friendly Version](#)[Interactive Discussion](#)

Table 1. Radiocarbon dating results for 23 fossil mollusk samples from the Chipalamawamba Beds and one modern shell. Dating of this modern shell (Dating number 1) indicates a reservoir effect of ~ 175 yr, which has been used to calibrate other dates from radiocarbon to calendar age. All MLW-BVB-08 (2008) and MLW-BVB-10 (2010) sample codes are linked to specific shell horizons in Figs. 3 and 4, except of 10-078 and 10-080, which were obtained from outcrops on the eastern shore near Kazembe.

Dating#	Lab#	Sample#	Material	^{14}C age (BP)	Calendar age (BP)
1	Beta-316041	MRAC-58430	<i>Chambardia</i> shell	190 \pm 30	25
2	Poz-31571	MLW-BVB-08-SH5	<i>Aspatharia</i> shell	6240 \pm 40	6918 \pm 53
3	Poz-31573	MLW-BVB-08-SH4	<i>Coelatura</i> shell	6675 \pm 35	7420 \pm 24
4	Poz-31574	MLW-BVB-08-SH1	<i>Coelatura</i> shell	9090 \pm 50	10081 \pm 109
5	Poz-30524	MLW-BVB-08-SH0	<i>Lanistes</i> shell	5290 \pm 40	5874 \pm 52
6	Poz-30525	AG-2.8.92-8.205 (eq. 08-SH7)	<i>Melanoides</i> shells	4795 \pm 35	5348 \pm 57
7	Poz-42241	MLW-BVB-10-099	<i>Coelatura</i> shell	6400 \pm 35	7149 \pm 54
8	Poz-42242	MLW-BVB-10-091	<i>Chambardia</i> shell	6050 \pm 35	6688 \pm 36
9	Poz-42243	MLW-BVB-10-028	<i>Coelatura</i> shell	6760 \pm 60	7478 \pm 48
10	Poz-42244	MLW-BVB-10-035	<i>Lanistes</i> shell	6300 \pm 40	6996 \pm 62
11	Poz-42246	MLW-BVB-10-038B	<i>Coelatura</i> shell	6040 \pm 35	6678 \pm 36
12	Poz-42247	MLW-BVB-10-050A	<i>Corbicula</i> shell	6560 \pm 35	7308 \pm 42
13	Poz-42248	MLW-BVB-10-052B	<i>Coelatura</i> shell	6790 \pm 40	7501 \pm 38
14	Poz-42249	MLW-BVB-10-053	<i>Coelatura</i> shell	6980 \pm 40	7642 \pm 32
15	Poz-42250	MLW-BVB-10-058	<i>Coelatura</i> shell	6080 \pm 40	6718 \pm 44
16	Poz-42251	MLW-BVB-10-057A	<i>Coelatura</i> shell	6185 \pm 35	6847 \pm 51
17	Poz-42256	MLW-BVB-10-054	<i>Coelatura</i> shell	9550 \pm 50	10594 \pm 63
18	Poz-42257	MLW-BVB-10-065	<i>Coelatura</i> shell	6200 \pm 40	6867 \pm 56
19	Poz-42258	MLW-BVB-10-077	<i>Coelatura</i> shell	9580 \pm 50	10630 \pm 66
20	Poz-42259	MLW-BVB-10-075	<i>Coelatura</i> shell	6200 \pm 40	6867 \pm 56
21	Poz-42261	MLW-BVB-10-086	<i>Coelatura</i> shell	6190 \pm 40	6853 \pm 56
22	Poz-42262	MLW-BVB-10-080	<i>Coelatura</i> shell	8910 \pm 50	9695 \pm 93
23	Beta-316041	MLW-BVB-10-078	<i>Coelatura</i> shell	5880 \pm 30	6479 \pm 36
24	Gorthner	Sample 10 (AG-2.8.92-10)	bivalve shell		5845 \pm 85

Stratigraphy and paleoenvironments of the Chipalamawamba Beds

B. Van Bocxlaer et al.

Title Page

Abstract

Introduction

Conclusions

References

Tables

Figures

◀

▶

◀

▶

Back

Close

Full Screen / Esc

Printer-friendly Version

Interactive Discussion

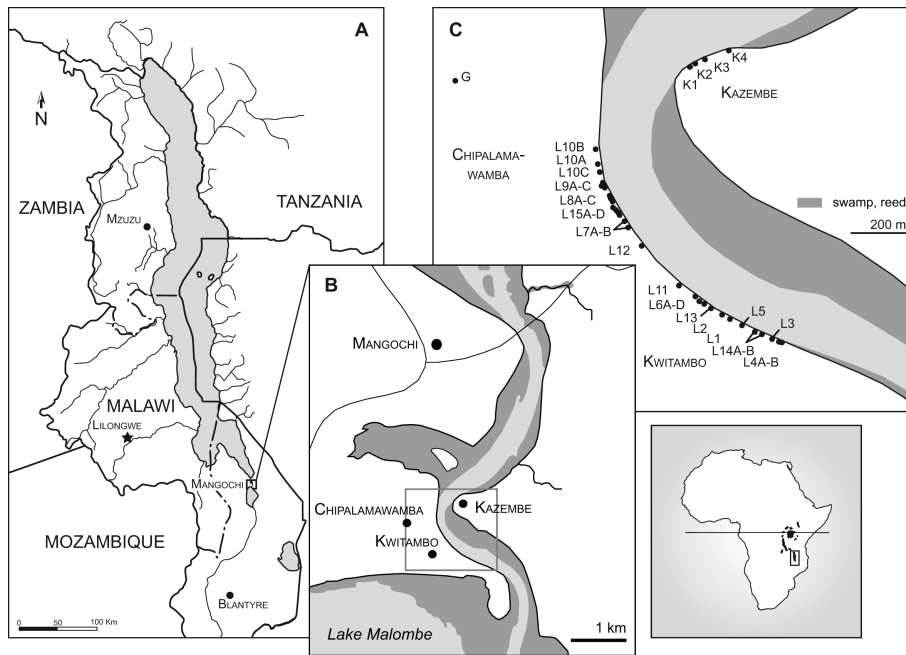


Fig. 1. (A) Lake Malawi and inflowing rivers illustrating the small catchment of the Malawi Basin. **(B)** The Mangochi region in between Lake Malawi and Lake Malombe indicating the study area by the grey rectangle enlarged in **(C)**. **(C)** Outcrops nearby Chipalamawamba, Kwitambo and Kazembe with their location codes. G indicates Chipalamawamba sediments dug up by locals at the graveyard.

Stratigraphy and paleoenvironments of the Chipalamawamba Beds

B. Van Bocxlaer et al.

Title Page

Abstract Introduction

Conclusions References

Tables Figures

◀ ▶

◀ ▶

Back Close

Full Screen / Esc

Printer-friendly Version

Interactive Discussion

Stratigraphy and paleoenvironments of the Chipalamawamba Beds

B. Van Bocxlaer et al.

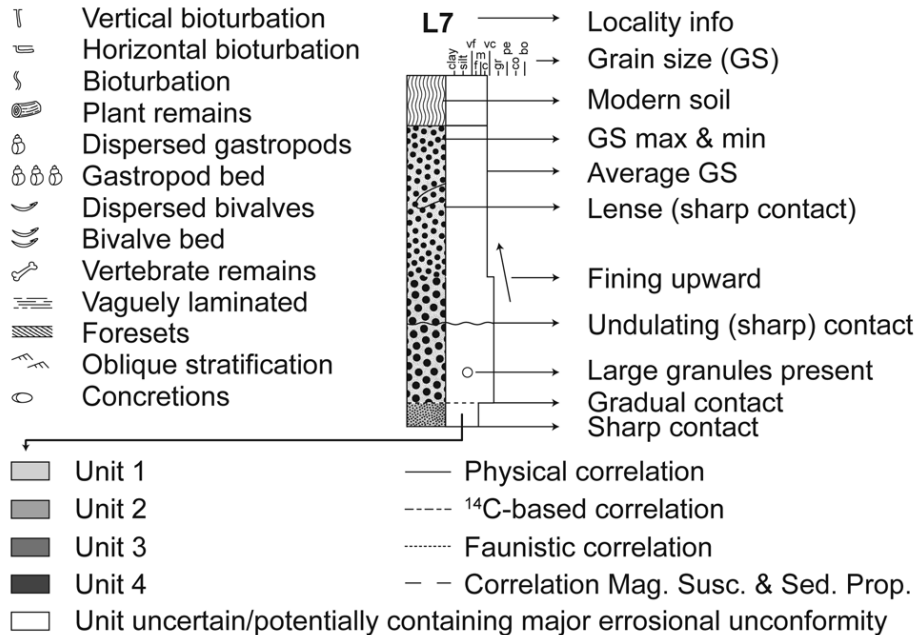


Fig. 2. Legend to the symbols and the diverse types of correlations between profiles used in Figs. 3 and 4.

Title Page

Abstract Introduction

Conclusions References

Tables Figures

⏪ ⏩

◀ ▶

Back Close

Full Screen / Esc

Printer-friendly Version

Interactive Discussion

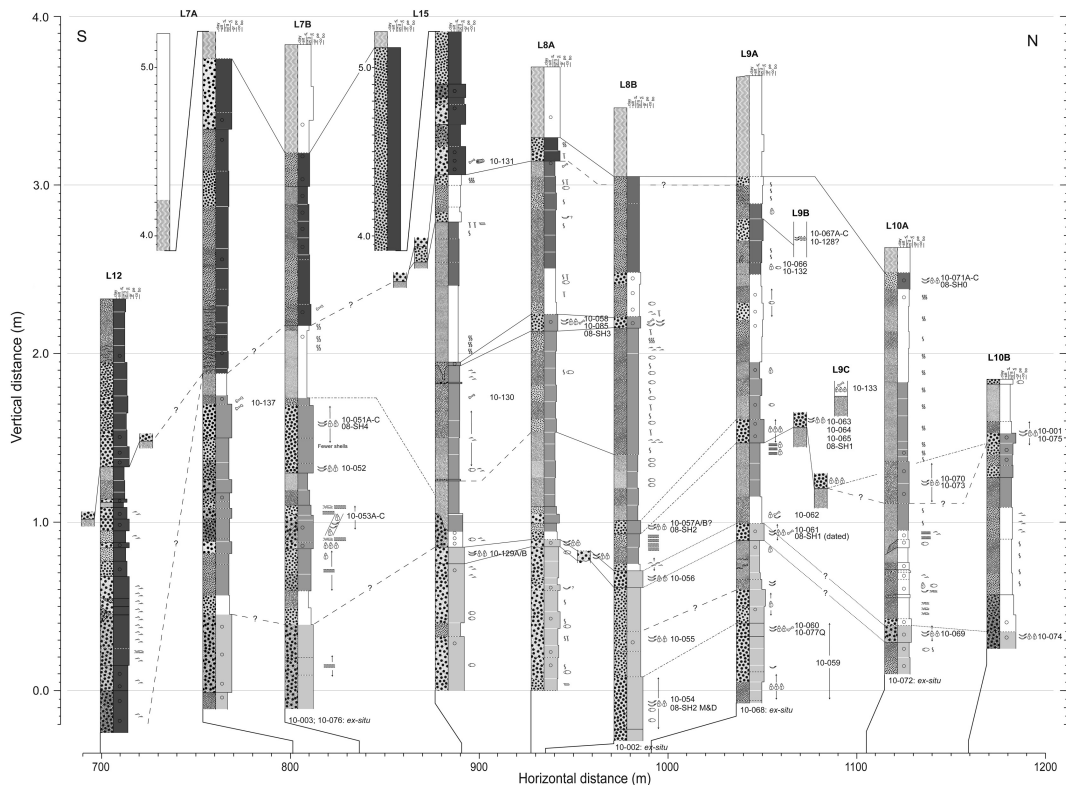


Fig. 3. Sedimentological and stratigraphical overview of the northern part of the Chipalamawamba Beds on the western shores of the Shire River nearby Chipalamawamba. Symbols and the diverse types of correlations between profiles used are explained in Fig. 2. Abbreviated paleontological sample numbers (those starting with 08 from 2008, others starting with 10 from 2010) are indicated to the right of fossil horizons. Those that correspond to sample numbers in Table 1 have been dated and hence provide specific age information for the horizon.

Stratigraphy and paleoenvironments of the Chipalamawamba Beds

B. Van Bocxlaer et al.

Title Page

Abstract

Introduction

Conclusions

References

Tables

Figures

⏪

⏩

◀

▶

Back

Close

Full Screen / Esc

Printer-friendly Version

Interactive Discussion

