

**Riparian zone's
effect on C and N
exports**

T. Wohlfart et al.

This discussion paper is/has been under review for the journal Biogeosciences (BG).
Please refer to the corresponding final paper in BG if available.

The importance of riparian zones on stream carbon and nitrogen export in a temperate, agricultural dominated landscape

**T. Wohlfart¹, J.-F. Exbrayat^{1,2}, K. Schelde³, B. Christen³, T. Dalgaard³,
H.-G. Frede¹, and L. Breuer¹**

¹Institute for Landscape Ecology and Resources Management (ILR), Research Centre for BioSystems, Land Use and Nutrition (IFZ), Justus-Liebig Universität Gießen, Germany

²Climate Change Research Centre, University of New South Wales, Sydney, New South Wales, Australia

³Department of Agroecology, Aarhus University, Denmark

Received: 29 March 2012 – Accepted: 20 May 2012 – Published: 25 June 2012

Correspondence to: L. Breuer (lutz.breuer@umwelt.uni-giessen.de)

Published by Copernicus Publications on behalf of the European Geosciences Union.

Title Page

Abstract

Introduction

Conclusions

References

Tables

Figures

◀

▶

◀

▶

Back

Close

Full Screen / Esc

Printer-friendly Version

Interactive Discussion



Abstract

The surrounding landscape of a stream has crucial impacts on the aquatic environment. This study pictures the hydro-biogeochemical situation of the Tyrebaekken creek catchment in central Jutland, Denmark. The intensively managed agricultural landscape is dominated by rotational croplands. One northern and one southern stream run through the catchment before converging to form a second order brook. The small catchments mainly consist of sandy soil types besides organic soils along the riparian zone of the streams. The aim of the study was to characterise the relative influence of soil type and land use on stream water quality. Nine snapshot sampling campaigns were undertaken during the growing season of 2009. On each sampling day, 20 points along the stream were sampled as well as eight drain outlets and two groundwater wells. Total dissolved nitrogen, nitrate, ammonium nitrogen and dissolved organic carbon (DOC) concentrations were measured and dissolved organic nitrogen (DON) was calculated for each grabbed sample. Electro-conductivity, pH and flow velocity were measured during sampling.

Statistical analyses showed significant differences between the northern, southern and converged stream parts, especially for nitrate concentrations with average values of 9.6 mgNI^{-1} , 1.4 mgNI^{-1} and 3.0 mgNI^{-1} , respectively. Furthermore, throughout the sampling period DON concentrations increased from 0.1 mgNI^{-1} to 2.8 mgNI^{-1} and from 0.1 mgNI^{-1} to 0.8 mgNI^{-1} in the northern and southern streams, respectively. This corresponded to a contribution of up to 81 % to total dissolved nitrogen. Multiple-linear regression analyses performed between chemical data and landscape characteristics showed a significant negative influence of organic soils on instream N concentrations and corresponding losses in spite of their overall minor share of the agricultural land (12.9%). On the other hand, organic soil frequency was positively correlated to the corresponding dissolved organic carbon concentrations. Croplands also had a significant influence but with weaker correlations. For our case study we conclude that soil types and corresponding biogeochemical properties have a major influence on stream

BGD

9, 7465–7497, 2012

Riparian zone's effect on C and N exports

T. Wohlfart et al.

Title Page

Abstract

Introduction

Conclusions

References

Tables

Figures



Back

Close

Full Screen / Esc

Printer-friendly Version

Interactive Discussion



water chemistry. Meanwhile, the contribution of dissolved organic nitrogen to the total nitrogen budget was substantial in this agricultural dominated landscape.

1 Introduction

Agricultural land use has been found responsible for major nutrient losses from land to river systems and estuaries worldwide (Vitousek et al., 1997). Nitrate (NO_3^-) is described as the main source of nitrogen (N) losses from cultivated land because it is the most important growth regulating nutrient and is often applied in excess to guarantee optimal crop yields (van Kessel et al., 2009; Martin et al., 2004; Randall and Mulla, 2001; Ruiz et al., 2002a; Steenvoorden et al., 2002). The amount of NO_3^- leaching into water bodies depends on dry and wet climatic cycles (Randall, 1998). During dry periods NO_3^- accumulates in soils before being released under wet conditions, even after many years (Randall and Mulla, 2001). More generally, N losses naturally show a large spatial and temporal variability with minimum losses occurring in summer as a result of biological uptake (Edwards et al., 1985). For example, Vagstad et al. (2004) described N losses ranging from 5 to 75 $\text{kg ha}^{-1} \text{ yr}^{-1}$ in different Baltic regions, with the highest losses corresponding to cropland on sandy soils. Indeed, soil physicochemical properties such as texture or organic content play an important role on N losses. Recently, researchers have put more emphasis on studying the contribution of dissolved organic nitrogen (DON) to the N balance of landscapes (Mattson et al., 2009; Cooper et al., 2007; Ghani et al., 2007; van Kessel et al., 2009; Neff et al., 2003, 2002). Hedin et al. (1995) found that organic N represents a large part of the total N losses from forest ecosystems, which was also described in other studies (van Breemen, 2002; Cooper et al., 2007; van Kessel et al., 2009; Neff et al., 2003, 2002). It was also found that DON can be used as N source by many plant species (Näsholm et al., 2009) and therefore could also play a substantial role in N flows of agricultural systems.

Cooper et al. (2007) pointed out that the release of DON (and dissolved organic carbon, DOC) is “strongly influenced by a wide range of hydro-meteorological factors.”

Riparian zone's effect on C and N exports

T. Wohlfart et al.

Title Page

Abstract

Introduction

Conclusions

References

Tables

Figures

◀

▶

◀

▶

Back

Close

Full Screen / Esc

Printer-friendly Version

Interactive Discussion



As DON includes labile and recalcitrant compounds (Neff et al., 2003) and has different retention times in soil and water, corresponding losses can substantially vary between different watersheds. Therefore, there is a need to better understand the fundamental role of DON in agricultural systems (Ghani et al., 2007; van Kessel et al., 2009) and in the global N cycle (see review by Durand et al., 2011), including its preferential flow pathways and biological degradation mechanisms (Perakis, 2002).

In this study, we focused on the N and carbon (C) fluxes in the Tyrebaekken stream (Denmark) and the influence of land use and soil properties on stream chemistry. Agriculture represents a large sector of Danish economy due to a suitable climate and relatively good soils. Manure is the main fertiliser source for agricultural production (Dalgaard et al., 2011b) and represents more than 80% of the N source in Danish streams, lakes and coastal waters (Kronvang et al., 2005, 2008; National Environmental Research Institute, 2006). We investigated the fractions of dissolved inorganic nitrogen (DIN) and DON within total dissolved nitrogen (TDN) concentrations and fluxes in the stream water, respectively. As DON is linked to DOC by often sharing the same origin of organic matter, DOC values were also studied. The main concern of this investigation concentrated on answering two questions:

1. What is the relative influence on stream chemistry of land use and soil properties?
2. How big is the contribution of DON to TDN losses from agriculture-dominated land?

To get an insight into the impact of soil properties and land use on in-stream chemistry, measurements of different C and N solutes with a high spatial and temporal resolution are required. Furthermore, to get a general overview on seasonal trends in effects of nutrient export, flushing rainfall events need to be excluded. Therefore, in our study we performed “snapshot” sampling campaigns during stable flow conditions (Grayson et al., 1997).

BGD

9, 7465–7497, 2012

Riparian zone's effect on C and N exports

T. Wohlfart et al.

Title Page

Abstract

Introduction

Conclusions

References

Tables

Figures

◀

▶

◀

▶

Back

Close

Full Screen / Esc

Printer-friendly Version

Interactive Discussion



2 Materials and methods

2.1 Study area

The study site is located south of Bjerringbro in Central Jutland, Denmark. Two streams run through the investigated area from the east towards north-west (Fig. 1; Hutchings et al., 2004). They converge to form the Tyrebaekken stream that ultimately reaches the Gudenå River approximately 3 km downstream of the studied area. The total catchment area is 842.7 ha and outlet coordinates are 56°35'14" N and 9°65'09" E. According to the available 2 × 2 m DEM digitised for the NitroEurope project (Dalgaard et al., 2011a; Hansen, 2004), elevation ranges from 25 to 58 m a.s.l. and topography is gentle with a mean slope of 3.7 %, although local maximum reaches 21.4 %. The mean annual rainfall in the area is about 712 mm with a corresponding mean evapotranspiration of 555 mm yr⁻¹. Mean annual temperature is 7.7 °C (PlantelInfo, 2011).

As presented in Fig. 1, three river parts were analysed: the northern branch (sampling points 1 to 6), the southern branch (points 11 to 20) and the downstream converged part (points 21 to 24). As summarised in Table 1 and depicted in Fig. 1, land use (is dominated by 90 % of intensive farming, primarily arable cropland in rotation (70 %). Pasture is the second most frequent land cover (20 %). The average fertilisation in the area is 80 kg N ha⁻¹ yr⁻¹ in the form of livestock manure (equal amounts of pig and cattle slurry), and 74 kg N ha⁻¹ yr⁻¹ in the form of synthetic fertilisers with a modelled average NO₃⁻ leaching equal to 58 kg N ha⁻¹ yr⁻¹ (Dalgaard et al., 2011a). The four dominant soil types are coarse sandy clay (27 %), coarse clayey sand (26 %), fine clayey sand (24 %) and organic soils (13 %) (Table 1). As illustrated in Fig. 2 (Dalgaard et al., 2002), organic soils are mostly found near streams. The northern part is dominated by coarse and fine clayey sands whilst coarse sandy clay dominates the southern part (Fig. 2).

BGD

9, 7465–7497, 2012

Riparian zone's effect on C and N exports

T. Wohlfart et al.

Title Page

Abstract

Introduction

Conclusions

References

Tables

Figures

◀

▶

◀

▶

Back

Close

Full Screen / Esc

Printer-friendly Version

Interactive Discussion



2.2 Sample collection and analyses

A total of nine snapshot sampling campaigns (Grayson et al., 1997) were carried out in 2009. Sampling periods corresponded to stable flow conditions in 20/24/27 April, 4/11/13 August and 10/17/25 September. Twenty different locations at an approximate spacing of 200 m along the stream were sampled during each campaign (Fig. 3). Furthermore, eight drains (T) that discharge directly into the southern stream were analysed as well as two nearby groundwater wells (GW) (Fig. 3). Geographic coordinates of the sampled waypoints were captured with a Global Positioning System (Garmin eTrex) and imported into a Geographic Information System (ArcGIS 9.3). A 2×2 m DEM from the Bjerringbro area was used to delineate and calculate the upstream contributing area corresponding to each sampled point (Fig. 3).

The sampling protocol included measuring in-stream flow velocity with an electromagnetic flow meter (FloMate 2000, Marsh McBirny, Frederick, US) and electric conductivity (EC) with a portable instrument (pH/cond 340i, WTW, Weilheim, DE). Discharge Q (ls^{-1}) was computed based on stream velocity and the cross sectional area of the stream bed. Triplicates of grabbed water samples were filled in 100 ml PELD-bottles at each waypoint on each sampling day. One bottle was stored cold for immediate analyses whilst two bottles were frozen for later analyses at the laboratory of the Justus-Liebig-Universität, Gießen.

Samples were filtered and analysed at Aarhus University within 24 h. Nitrate (NO_3^-) and ammonium (NH_4^+) concentrations were measured with a field photometer (Spectroquant[®] Multy, Merck, Darmstadt, DE) and converted to corresponding NO_3^- -N and NH_4^+ -N concentrations. pH was measured with the same portable instrument as EC. Samples that were stored frozen were later filtered with a $0.45 \mu\text{m}$ filter and analysed for DOC and TDN with a liquiTOC analyser (Elementar Analysensysteme GmbH, Hanau, DE) based on high temperature oxidation.

DON was finally computed as the difference between TDN and DIN. Because measured NH_4^+ concentrations were often under the detection limit of 0.02mg l^{-1} (63%

BGD

9, 7465–7497, 2012

Riparian zone's effect on C and N exports

T. Wohlfart et al.

Title Page

Abstract

Introduction

Conclusions

References

Tables

Figures

◀

▶

◀

▶

Back

Close

Full Screen / Esc

Printer-friendly Version

Interactive Discussion



of measurements) or just above ($< 0.05 \text{ mg l}^{-1}$ in 93 % of measurements), DIN was assumed to be equivalent to NO_3^- -N concentrations. Specific loads ($\text{g ha}^{-1} \text{ d}^{-1}$) of NO_3^- -N, DON and DOC were calculated by multiplying concentrations with daily specific discharge.

2.3 Statistical analysis

To determine significant spatial and temporal differences of C and N solutes, t-tests between different stream sections and sampling periods at a 5 % level were carried out. Furthermore, Pearson Correlation coefficients were calculated between the three components (NO_3^- -N, DON, DOC) for concentrations and specific loads to check for inter-dependence of solute dynamics.

To investigate the influence of land use and soils on stream chemistry, multivariate regression analyses were made with the “backwards” method using SPSS 15.0.1 (2006) (Jobson, 1991), defining measured stream chemistry at each waypoint as dependent variables. The independent variables were cropland distribution, portion of contributing area covered by coarse clayey sandy soils and portion covered by organic soils, two landscape characteristics (mean slope and mean Topographic Wetness Index (TWI) of each sub-basin) and the sampling period (April, August, September). TWI (Wilson and Gallant, 2000) is a measure of topographic control on hydrological processes that considers the local upslope catchment area and its slope. It was calculated with the Spatial Analyst Toolbox of ArcGIS 9.3 as $\text{TWI} = \ln(A_s / \tan \beta)$, with A_s being the specific catchment area and β the slope gradient. We only report coefficient of determinations (R^2) and standardised beta-coefficients as we focus on the relative importance of independent variables rather than predicting dependent variables. To exclude multicollinearity and autocorrelation of residuals, both Tolerance and Durbin-Watson coefficients were checked. Multicollinearity can be expected with a Tolerance value smaller than 0.1 (Jobson, 1991) None of the regression coefficients had tolerance values below this level. For the Durbin-Watson coefficient values below 1 or above 3 point to

BGD

9, 7465–7497, 2012

Riparian zone's effect on C and N exports

T. Wohlfart et al.

Title Page

Abstract

Introduction

Conclusions

References

Tables

Figures

◀

▶

◀

▶

Back

Close

Full Screen / Esc

Printer-friendly Version

Interactive Discussion



strong autocorrelation. Durban-Watson coefficients of all regression analyses varied between 1 and 1.5, indicating a moderate positive autocorrelation of residuals. This is often observed when time series are analysed. In particular, snapshot sampling is very sensitive to autocorrelation as waypoints are located in vicinity to each other and concentrations measured upstream are likely to impact conditions downstream. However, as we used the regression analyses for identifying relevant independent variables rather than predicting dependent variables, we assume to observe the basic conditions of regression analyses.

3 Results

Precipitation during the sampling period varied within the span of long term trends. Whilst April was substantially drier than usual with only 11 mm (−71%) precipitation instead of a long term monthly mean of 38 mm, July and August saw more rainfall than usual with 90 mm (+40%) and 82 mm (+28%), respectively, in relation to a mean of 64 mm for both months. September was drier than usual with 45 mm (−33%) instead of its monthly mean of 67 mm.

Measured EC and pH are presented in Table 2. Mean EC ranged from 351 to 418 μScm^{-1} and mean pH values from 7.2 to 7.7 in accordance with typically observed values in Danish streams (National Environmental Research Institute, 2006).

Discharge of up to 10.0 ls^{-1} in the northern stream was low in comparison to the southern branch. The discharge from the source of the southern stream towards the catchment outlet (including the converged part) increased with values from 2.1 ls^{-1} to 25.4 ls^{-1} for the southern stream part and from 16.8 ls^{-1} to 37.6 ls^{-1} for the converged part. Mean runoff during the sampling period is given in Table 2 for all three stream sections.

As shown in Fig. 4a, NO_3^- -N concentrations ranged from 7.6 to 11.3 mgNI^{-1} , from 0.8 to 3.1 mgNI^{-1} and from 0.4 to 4.0 mgNI^{-1} in the northern, southern and converged stream sections, respectively. The corresponding DON concentrations (Fig. 4c) showed

Riparian zone's effect on C and N exports

T. Wohlfart et al.

Title Page

Abstract

Introduction

Conclusions

References

Tables

Figures



Back

Close

Full Screen / Esc

Printer-friendly Version

Interactive Discussion



a similar distribution with highest values in the northern stream between < 0.01 and 4.3 mgNI^{-1} . Accordingly concentrations in the southern stream were lowest with values from < 0.01 to 1.7 mgNI^{-1} . In the converged stream section we found values between < 0.01 and 2.1 mgNI^{-1} . On the contrary, DOC concentrations (Fig. 4e) were lower in the northern part compared to concentrations in the southern stream section. DOC concentrations ranged from 5.9 to 11.5 mgCl^{-1} , 7.5 to 20.7 mgCl^{-1} and 8.6 to 15.6 mgI^{-1} in the northern, southern and converged sections, respectively.

Figure 4b, d and f show the corresponding loads of the three stream solutes. NO_3^- -N loads were highest with values ranging from 11.2 to $48.5 \text{ gNha}^{-1} \text{ d}^{-1}$ in the northern stream whilst lowest in the southern branch with loads from 0.9 to $8.3 \text{ gNha}^{-1} \text{ d}^{-1}$. The converged part saw values between 1.2 to 15.4 g N . Similarly, detected DON loads were highest in the northern stream ranging from < 0.01 to $16.0 \text{ gNha}^{-1} \text{ d}^{-1}$. The southern and converged stream part displayed values from < 0.01 to $2.5 \text{ gNha}^{-1} \text{ d}^{-1}$ and from < 0.01 to $6.2 \text{ gNha}^{-1} \text{ d}^{-1}$, respectively. Along with observed DOC concentrations, loads were higher in the southern stream. Overall loads ranged from 7.9 to $47.6 \text{ gCha}^{-1} \text{ d}^{-1}$, from 8.0 to $59.1 \text{ gCha}^{-1} \text{ d}^{-1}$ and from 18.4 to $53.0 \text{ gCha}^{-1} \text{ d}^{-1}$ in the northern, southern and converged streams, respectively

Distinct differences in concentrations between stream sections could be observed from these measurements. As shown in Fig. 4a the northern part always showed significantly higher NO_3^- -N concentrations than the other streams. Furthermore, the same stream section also depicted higher DON concentrations than the two other ones in August and September. Regarding DOC concentrations significantly higher values were measured in the southern stream for all three months. In the northern stream the high NO_3^- -N concentrations remained stable throughout the complete sampling period whereas DON concentrations increased significantly between April and September (Fig. 4c). Similarly, DOC concentrations were significantly lower in April than in August and September.

BGD

9, 7465–7497, 2012

Riparian zone's effect on C and N exports

T. Wohlfart et al.

Title Page

Abstract

Introduction

Conclusions

References

Tables

Figures

◀

▶

◀

▶

Back

Close

Full Screen / Esc

Printer-friendly Version

Interactive Discussion



Considering losses, DON loads were significantly lower in April than in August and September, whereas NO_3^- -N and DOC loads remained stable in the northern part over the observation periods

In the southern stream section the NO_3^- -N concentrations were significantly higher in April in comparison to the latter sampling periods. DON concentrations and losses in this stream section increased significantly between April and the end of summer. DOC concentrations were significantly higher in September than in April and August. Furthermore NO_3^- -N loads were significantly higher in April than in August and September. Significant differences in DOC loads were found for all three months in the southern part

The converged stream part showed significantly rising NO_3^- -N loads from August to September. Furthermore DOC loads declined significantly from April to August whereas no significant differences were found between August and September. All measured concentrations and DON loads showed no significant differences between the three sampling periods.

The drains sampled were all located in the southern subcatchment, as in the northern sections no such drains could be found. NO_3^- -N concentrations in April ($\sim 2\text{mgNI}^{-1}$) were higher than in August ($\sim 0.5\text{mgNI}^{-1}$) and declined in September to concentrations around 1.5mgNI^{-1} (Fig. 6). Groundwater well concentrations were in the range of drains. Meanwhile, DON and DOC did not show any significant temporal neither spatial differences throughout the sampling periods apart from single drains peaking in concentration during the third snapshot sampling in April and the first one in August. Pool and TPool, draining into the stream, were in the upper range of NO_3^- -N concentrations and the lower range in DON and DOC concentrations.

Multivariate regression analyses demonstrated a significant influence of organic and sandy soils on stream chemistry. NO_3^- -N concentrations and loads are negatively correlated with the occurrence of organic soils, while sandy soils showed positive correlations, indicated by standardized beta coefficients of -0.55 and -0.57 for organic soils and 0.48 and 0.45 for coarse clayey sand, respectively (Table 3). For DON we found

BGD

9, 7465–7497, 2012

Riparian zone's effect on C and N exports

T. Wohlfart et al.

Title Page

Abstract

Introduction

Conclusions

References

Tables

Figures

◀

▶

◀

▶

Back

Close

Full Screen / Esc

Printer-friendly Version

Interactive Discussion



positive correlations between the sampling date and sandy soil properties. The sampling period had the most significant influence on DON concentrations and loads with beta coefficients of 0.47 and 0.38, respectively. DOC concentrations showed a positive correlation with organic soils while DOC loads positively correlated with arable cropland. The distribution of organic soils seemed to have the most important influence on DOC concentrations as illustrated by a high beta coefficient of 0.70. The two topographical indicators (mean TWI and mean slope) had the lowest beta values, probably due to the uniformly gentle topography.

Furthermore, correlation coefficients were calculated for concentrations and loads to determine relations between the three solutes. We found NO_3^- -N and DON to exhibit a relative strong correlation with respect to concentrations and loads with coefficients of 0.47 and 0.57, respectively. On the other hand, DON and DOC were poorly correlated with corresponding coefficients of -0.17 and 0.06 for concentrations and loads, respectively. Whilst concentrations of DOC and NO_3^- -N depicted the highest correlation of -0.76 , this relation was not evident for loads (-0.05).

4 Discussion

4.1 Nitrate

In the Danish stream Tyrebaekken water analyses showed a quite heterogeneous distribution of NO_3^- -N concentrations and fluxes between the three stream sections. In the northern part, they were significantly higher than in the southern part even though the land use distribution did not vary much (Table 1). On average NO_3^- concentrations measured in the southern part represented about 15 % of the concentrations measured on the same day in the northern part. Due to the similar land use distribution we acknowledge that differences in past or present management practices might explain this variation. However, as pointed out in many studies (Böhlke and Denver, 1995; Ruiz et al., 2002a; Worrall and Burt, 2001) soils are able to store N leading to poor correlations

BGD

9, 7465–7497, 2012

Riparian zone's effect on C and N exports

T. Wohlfart et al.

Title Page

Abstract

Introduction

Conclusions

References

Tables

Figures

◀

▶

◀

▶

Back

Close

Full Screen / Esc

Printer-friendly Version

Interactive Discussion



between N losses from agricultural soils and headwater quality. Furthermore, the NO_3^- stored in soils can be released into sub-surface and groundwater after some time. Nutrients are mobilised by mineralisation processes during the growing season when high rates of microbial activity are observed (Böhlke and Denver, 1995; Böhlke, 2002; Schnabel et al., 1993). NO_3^- leached to shallow groundwater may be steadily released through time periods of a year or more (Martin et al., 2004; Molénat et al., 2002; Ruiz et al., 2002b). As shown by Schiff et al. (2002), NO_3^- concentrations can be traced back to groundwater charges and might give a correct basis to explain the almost constant NO_3^- concentrations measured at sampling point 1 over the whole sampling period.

Meanwhile, the concentrations measured in the southern part were significantly lower in August and September than in April. This was also seen in the concentrations of the drainage outlets found in the southern subcatchment. The lack of rainfall in April may have led to a concentration effect (Poor and McDonnell, 2007) as concentrations measured during wetter periods of August and September were almost two times lower (Fig. 4). Therefore, we can assume that the stream chemistry in the southern part was more dependent on precipitation input than on contributions from groundwater.

Regression analyses showed that nitrate concentrations and loads significantly depended on soil properties. Organic soils in the upstream area obtained beta coefficients of -0.55 for all three months despite their low proportion of the study area. As summarized in Table 1, there are more organic soils in the contributing area of the southern catchment than in the northern catchment. These soil properties imply a partial immobilization of NO_3^- (Randall and Mulla, 2001; Schiff et al., 2002) and therefore lower concentrations in stream water. In the same area with organic soils along the southern branch, Schelde et al. (2011) observed that ammonia was more abundant than nitrate in the organic soils, and they found emissions of nitrous oxide to be relatively low at the riparian organic soils. On the other hand, high positive correlations (0.87) between nitrate concentrations and soil properties were observed for coarse clayey sand that is predominant in the northern branch contributing area. The sandy nature implies a faster drainage of water and nutrients through the soil and a better aeration that favours

BGD

9, 7465–7497, 2012

Riparian zone's effect on C and N exports

T. Wohlfart et al.

Title Page

Abstract

Introduction

Conclusions

References

Tables

Figures

◀

▶

◀

▶

Back

Close

Full Screen / Esc

Printer-friendly Version

Interactive Discussion



mineralization and slows down denitrification (Scheffer and Schachtschabel, 2002). Therefore, sandy soils may be the explanation for the higher NO_3^- concentrations in the northern stream water.

According to the statistical analyses, arable cropland (i.e. excl. Grasslands) had a low influence (beta = -0.19) on NO_3^- concentrations and loads. There was a very similar distribution of land use over the respective contributing areas of the different sampled points. This might be the reason why regression analyses did not assign a higher influence to cropland. Usually, rivers that flow through agricultural land transport much greater nitrate loads in comparison to rivers flowing through forested land (Randall and Mulla, 2001). This contributes to the idea that agricultural practices have the greatest impact on NO_3^- losses. However, according to Keeney and DeLuca (1993) the fertilizer N addition is not the important N contributor to streams. The major part of NO_3^- supplies rather arises from agricultural practices that enhanced mineralization, leading to soluble N that can be rapidly transported to the aquatic environment through tile drains. These practices lead to higher losses of nitrate in agricultural dominated areas. After Randall (1998), NO_3^- losses are also greatly affected by dry and wet climatic cycles. This might explain the low influence of land use and the higher influence of soil properties on NO_3^- concentrations in our study.

4.2 Dissolved organic nitrogen (DON)

DON was found to be an important part of dissolved N losses from soils, with concentrations as well as loads increasing through the sampling period. Statistical analyses derived significant differences between the northern and southern stream part for August and September (Fig. 4). Multiple studies have shown that DON accounts for a significant fraction of N losses to streams of pristine or forested catchments (Campbell et al., 2000; Hedin et al., 1995; Lajtha et al., 1995; Neff et al., 2003). Mean April concentrations for the northern and southern stream part were 0.1 mg l^{-1} with 85 % of them being less than 0.01 mg l^{-1} (Fig. 4). Cooper et al. (2007) pointed out that the leaching of DON occurs when water drains through soils. Therefore, the duration and amount of

BGD

9, 7465–7497, 2012

Riparian zone's effect on C and N exports

T. Wohlfart et al.

Title Page

Abstract

Introduction

Conclusions

References

Tables

Figures

◀

▶

◀

▶

Back

Close

Full Screen / Esc

Printer-friendly Version

Interactive Discussion



drainage are important factors. This implies that DON losses depend on rainfall events (Hedin et al., 1995). Even when there is much DON found in the soil the driving factor that transports the nutrient to surface water may be missing (Hedin et al., 1995; van Kessel et al., 2009). The total precipitation in the Bjerringbro area in April was very low which may explain the low DON values during this period.

In the review of van Kessel et al. (2009), it was found that the average loss of DON in diverse agricultural systems with mostly light textured soils accounts for 26 % of total soluble nitrogen (mostly NO_3^- and DON). We found average contributions of 1.2 to 41.2 % in the various study periods and an overall average of 17 % of DON to TDN throughout the entire study (Fig. 5). This is somewhat lower than the typical contribution of DON to TDN in more pristine freshwater ecosystems (Willett et al., 2004). Goodale et al. (2000) found an average of 54 % of DON in total nitrogen exports in forested landscapes with corresponding mean DON losses of $0.7 \text{ kg ha}^{-1} \text{ yr}^{-1}$. Willett et al. (2004) described a contribution of $40 \pm 2\%$ of DON to total N in soil solution of Histosols and Spodosols notably under grazed grassland and forested land in Wales and Scotland. Nevertheless, we conclude that DON can contribute substantially to the total N budget, even under highly intensive land use systems such as those of the Bjerringbro landscape.

DON exports in our study ranged from $<0.01 \text{ g ha}^{-1} \text{ d}^{-1}$ to $16.0 \text{ g ha}^{-1} \text{ d}^{-1}$ and were mostly in the range of observed values reported in other studies. However, little is known on the role of DON in the N cycle in agricultural soils (Murphy et al., 2000) and flow path dynamics (Willett et al., 2004). Therefore, the connection between the organic N pool in soil and the in-stream DON export is not well understood. Generally, DON does not vary as much as inorganic N with biological activity, soil fertility, or season. Campbell et al. (2000) and Goodale et al. (2000) found that DON actually varied little throughout a year. This statement is not compatible with the increasing values from April to September that we observed. In fact, multivariate regression analyses pointed out that sampling time had the highest influence on DON concentrations and loads. Corresponding beta coefficients of 0.51 for DON concentrations and 0.55 for loads

BGD

9, 7465–7497, 2012

Riparian zone's effect on C and N exports

T. Wohlfart et al.

Title Page

Abstract

Introduction

Conclusions

References

Tables

Figures

◀

▶

◀

▶

Back

Close

Full Screen / Esc

Printer-friendly Version

Interactive Discussion



reflect the increasing values described above. Neff et al. (2002) pointed out that DON can enter ecosystems through precipitation. Different forms of DON are found in the atmosphere and have the potential to be washed out and flushed into soils and water. Dust might also play an important role as well as components emitted from surrounding agricultural fields (Neff et al., 2002). Wet nitrogen deposition can contain between 25 and 50 % of DON, but direct inputs to freshwater ecosystems are very low (Antia et al., 1991; McHale et al., 2000). Neff et al. (2002) also observed that the organic components of nitrogen found in rain are often labile fractions and very reactive. Due to quick transformations, the reactive nitrogen components in the atmosphere might therefore be more important for local emissions (Neff et al., 2002) and hence contribute less to freshwater. It is difficult to estimate to what extent these components contribute to surface water input but they should not be forgotten as a possible path for DON. That is why the ongoing rainfall in July (89.7 mm) and August (81.8 mm) might have an influence on the DON concentrations and fluxes at our landscape. The significant contrast to the drier month of April also highlights the importance of the sampling period, and heterogeneities in weather conditions, in the regression.

Regression analyses showed a significant influence of coarse clayey sand on DON concentrations and loads. In general, DON can be affected by biotic factors, like the production of organic matter, and abiotic factors, like soil texture that is responsible for sorption of organic components (Neff et al., 2000). On the other hand, DON losses did not seem to be strongly linked to traditional biotic mechanisms as described for inorganic N (Campbell et al., 2000; Hedin et al., 1995; Willett et al., 2004). Beta coefficients of -0.25 and 0.37 for concentrations and loads, respectively, may give an idea about the influence of soil texture on DON losses into streams. As shown in Fig. 4, DON and NO_3^- concentrations and loads were higher in the sand dominated northern stream part, consistent with previous studies (Neff et al., 2003). For DON, similarly to NO_3^- , regression analyses assigned negative beta coefficient values for land use (-0.15) and organic soils (-0.22). Moreover, correlations between NO_3^- and DON concentrations and loads link the behaviour of the two studied N components.

Riparian zone's effect on C and N exports

T. Wohlfart et al.

Title Page

Abstract

Introduction

Conclusions

References

Tables

Figures

◀

▶

◀

▶

Back

Close

Full Screen / Esc

Printer-friendly Version

Interactive Discussion



4.3 Dissolved Organic Carbon (DOC)

Similarly to the other chemical species studied, measured DOC concentrations and corresponding loads were significantly different between the stream sections. In contrast to nitrate concentrations, DOC values were lower in the northern stream section.

Concentrations increased from April to August in the northern stream section, whereas values rose significantly in September in the southern one (Fig. 4). These observations suggest an increasing trend during the growing season which was also observed by Dawson et al. (2002) and Aitkenhead et al. (1999). These studies reported increasing concentrations in Scottish landscapes from June to November and from May to June, respectively. The early autumn is considered to be the time of maximum DOC export (Cooper et al., 2007; Grieve, 1984; Worrall et al., 2004). The rising trend can result from increasing soil temperature and moisture which are driving factors for decomposition. Moore (2003) measured DOC concentrations ranging from 10 to 30 mgCl⁻¹ in a boreal landscape with generally increasing values throughout summer. Sand-Jensen and Pedersen (2005) reported DOC concentrations between 4.7 and 18.3 mgCl⁻¹ in northern Zealand, Denmark, for different sites (agriculture, forest, urban). Mattson et al. (2009) found a mean DOC concentration of 7.2 mgCl⁻¹ while considering 10 Danish streams throughout a year. Generally, the concentrations measured in our study were consistent with these previous results.

Due to the same organic matter origin and similar organic components, DON is often closely linked to the C cycle (Campbell et al., 2000; Cooper et al., 2007; Ghani et al., 2007; Goodale et al., 2000; van Kessel et al., 2009; Willett et al., 2004). According to that, it is assumed that DON and DOC should be equally influenced by soil type or land use. However, we hardly saw any correlations between DOC and DON. Organic soil occurrence explained only little of observed DON concentrations and loads (Table 3) whereas a highly significant influence of organic soils on DOC concentrations was found. The dependency of DOC concentrations on organic soils has been already described by Aitkenhead et al. (1999). Accordingly, Dawson et al. (2008) concluded

BGD

9, 7465–7497, 2012

Riparian zone's effect on C and N exports

T. Wohlfart et al.

Title Page

Abstract

Introduction

Conclusions

References

Tables

Figures

◀

▶

◀

▶

Back

Close

Full Screen / Esc

Printer-friendly Version

Interactive Discussion



that the export rate of DOC depends on the carbon soil pool and therefore the organic fraction. They suggested the possibility of assessing mean stream water concentrations from C pools in soils. Mineral soils contain a high proportion of degradable organic matter that can be eventually released by different physicochemical processes into streams (Kennedy et al., 1996). These observations coincide with the results of our study where we find a higher proportion of organic soils in the southern stream part along with higher DOC concentrations and loads.

Results indicated a significant influence of discharge on DOC concentrations, shown also in many other studies (Cooper et al., 2007; Grieve, 1994; Hope et al., 1994; Worrall et al., 2002). Cooper et al. (2007) and Worrall et al. (2002) described the importance of the amount of water flowing through soils and its transit time for flushing C out of soils. As soil properties can also affect the dissolution of C into surface waters through sorption (Aitkenhead et al., 1999; Cooper et al., 2007; Kennedy et al., 1996), faster drainage limits the ability for adsorption. Rewetting through rain and storm events seems to play an important role on the release of carbon. Surface and sub-surface runoff transport C out of soils, reducing time for microbiological degradation (Cooper et al., 2007). We assume that the water input by precipitation that influences the in-stream runoff is a driving factor for DOC exports to stream, thus explaining the observed correlation between DOC and discharge.

5 Conclusions

In spite of the homogeneous distribution of cropland in the area, C and N concentrations and loads were significantly different between the different sampled stream parts. We suggest that differences in soil properties are the strongest factor explaining this heterogeneity. As shown by the multiple regression analyses, the distribution of organic soils seemed to have high impact on stream chemistry, especially for DOC exports. Furthermore, dominating sandy soils in the northern part involved a better drainage leading to higher losses of N components than in the southern part, notably for DON.

Riparian zone's effect on C and N exports

T. Wohlfart et al.

Title Page

Abstract

Introduction

Conclusions

References

Tables

Figures



Back

Close

Full Screen / Esc

Printer-friendly Version

Interactive Discussion



The land use distribution also had a significant influence on in-stream chemistry but to a weaker extent. Additionally, precipitation may play an important role in nutrient transport in soil and water systems as illustrated by the increasing contribution of DON (up to 81 %) to the TDN losses during the wetter periods of August and September. Meanwhile, the little knowledge on the role of DON in the N cycle in agricultural soils and flow path dynamics hampers our efforts to connect observed stream water chemistry with agricultural practices and soil properties, and there is a clear need to investigate these aspects in further studies.

Acknowledgements. The authors would like to thank the NitroEurope IP for providing financial support. We would like to thank further the University of Aarhus for providing laboratories and working instrumentation and the possibility of working in the study area of Bjerringbro. Further the Viborg Kommune for providing datasets and landowners for allowing us to work on their land. Finally we thank all the involved people for helping with analyses, laboratory instrumentation and data preparation at Aarhus University (AU-Foulum), and the Institute for Landscape Ecology and Resources Management (ILR), Justus-Liebig-Universität Gießen.

References

- Aitkenhead, J. A., Hope, D., and Billett, M. F.: The relationship between dissolved organic carbon in stream water and soil organic carbon pools at different spatial scales, *Hydrol. Process.*, 13, 1289–1302, 1999.
- Antia, N. J., Harrison, P. J., and Oliveira, L.: The role of dissolved organic nitrogen in phytoplankton nutrition, cell biology and ecology, *Phycologia*, 30, 1–89, doi:10.2216/i0031-8884-30-1-1.1, 1991.
- Böhlke, J. K. and Denver, J. M.: Combined Use of Groundwater Dating, Chemical, and Isotopic Analyses to Resolve the History and Fate of Nitrate Contamination in Two Agricultural Watersheds, Atlantic Coastal Plain, Maryland, *Water Resour. Res.*, 31, 2319–2339, doi:10.1029/95WR01584, 1995.

BGD

9, 7465–7497, 2012

Riparian zone's effect on C and N exports

T. Wohlfart et al.

Title Page

Abstract

Introduction

Conclusions

References

Tables

Figures

◀

▶

◀

▶

Back

Close

Full Screen / Esc

Printer-friendly Version

Interactive Discussion



Riparian zone's effect on C and N exports

T. Wohlfart et al.

Title Page

Abstract

Introduction

Conclusions

References

Tables

Figures

◀

▶

◀

▶

Back

Close

Full Screen / Esc

Printer-friendly Version

Interactive Discussion



- Böhlke, J.-K.: Groundwater recharge and agricultural contamination, *Hydrogeol. J.*, 10, 153–179, doi:10.1007/s10040-001-0183-3, 2002.
- Campbell, J. L., Hornbeck, J. W., McDowell, W. H., Buso, D. C., Shanley, J. B., and Likens, G. E.: Dissolved organic nitrogen budgets for upland, forested ecosystems in New England, *Biogeochemistry*, 49, 123–142, 2000.
- Cooper, R., Thoss, V., and Watson, H.: Factors influencing the release of dissolved organic carbon and dissolved forms of nitrogen from a small upland headwater during autumn runoff events, *Hydrol. Process.*, 21, 622–633, doi:10.1002/hyp.6261, 2007.
- Dalgaard, T., Hutchings, N., Dragosits, U., Olesen, J. E., Kjeldsen, C., Drouet, J. L., and Cellier, P.: Effects of farm heterogeneity and methods for upscaling on modelled nitrogen losses in agricultural landscapes, *Environ. Pollut.*, 159, 3183–3192, 2011a.
- Dalgaard T., Olesen J. E., Petersen S. O., Petersen B. M., Jørgensen U., Kristensen T., Hutchings N., Gyldenkerne S., and Hermansen J. E.: Developments in greenhouse gas emissions and net energy use in Danish agriculture – How to achieve substantial CO₂ reductions?, *Environ. Pollut.*, 159, 3193–3203, 2011b.
- Dalgaard, T., Rygnestad, H., Jensen, J. D., and Larsen, P. E.: Methods to map and simulate agricultural activity at the landscape scale, *Danish J. Geogr.*, 3, 29–39, 2002.
- Dawson, J. J. C., Billett, M. F., Neal, C. and Hill, S.: A comparison of particulate, dissolved and gaseous carbon in two contrasting upland streams in the UK, *J. Hydrol.*, 257, 226–246, doi:10.1016/S0022-1694(01)00545-5, 2002.
- Dawson, J. J. C., Soulsby, C., Tetzlaff, D., Hrachowitz, M., Dunn, S. M., and Malcolm, I. A.: Influence of hydrology and seasonality on DOC exports from three contrasting upland catchments, *Biogeochemistry*, 90, 93–113, doi:10.1007/s10533-008-9234-3, 2008.
- Durand, P., Breuer, L., Johnes, P. J., Billen, G., Butturini, A., Pinay, G., van Grinsven, H., Garnier, J., Rivett, M., Reay, D. S., Curtis, C., Siemens, J., Maberly, S., Kaste, O., Humborg, C., Loeb, R., de Klein, J., Hejzlar, J., Skoulikidis, N., Kortelainen, P., Lepisto, A., and Wright, R.: Nitrogen processes in aquatic ecosystems, in: *The European Nitrogen Assessment. Sources, Effects and Policy Perspectives*, edited by: Sutton, M. A. Howard, C. M., Erisman, J. W., Billen, G., Bleeker, A., Grennfelt, P., van Griensven, H., Grizzetti, B., Cambridge, Cambridge University Press, 124–146, 2011.
- Edwards, A. C., Creasey, J., and Cresser, M. S.: Factors influencing nitrogen inputs and outputs in two Scottish upland catchments, *Soil Use Manage.*, 1, 83–88, doi:10.1111/j.1475-2743.1985.tb00664.x, 1985.

Riparian zone's effect on C and N exports

T. Wohlfart et al.

Title Page

Abstract

Introduction

Conclusions

References

Tables

Figures

◀

▶

◀

▶

Back

Close

Full Screen / Esc

Printer-friendly Version

Interactive Discussion



Ghani, A., Dexter, M., Carran, R. A., and Theobald, P. W.: Dissolved organic nitrogen and carbon in pastoral soils: the New Zealand experience, *Eur. J. Soil. Sci.*, 58, 832–843, doi:10.1111/j.1365-2389.2006.00873.x, 2007.

Goodale, C. L., Aber, J. D., and McDowell, W. H.: The long-term effects of disturbance on organic and inorganic nitrogen export in the White Mountains, New Hampshire, *Ecosystems*, 3, 433–450, 2000.

Grayson, R. B., Gippel, C. J., Finlayson, B. L., and Hart, B. T.: Catchment-wide impacts on water quality: the use of 'snapshot' sampling during stable flow, *J. Hydrol.*, 199(1–2), 121–134, doi:10.1016/S0022-1694(96)03275-1, 1997.

Grieve, I. C.: Concentrations and annual loading of dissolved organic matter in a small moorland stream, *Freshwater. Biol.*, 14, 533–537, doi:10.1111/j.1365-2427.1984.tb00173.x, 1984.

Grieve, I. C.: Dissolved organic carbon dynamics in two streams draining forested catchments at Loch ard, Scotland, *Hydrol. Process.*, 8, 457–464, doi:10.1002/hyp.3360080508, 1994.

Hansen, J.: Land Use and Landscape development. Perspectives for nature, agriculture, environment and management. Extended Summary. DJF report no. 110 (markbrug). p. 15–29. Foulum, Denmark, 2004.

Hedin, L. O., Armesto, J. J., and Johnson, A. H.: Patterns of nutrient loss from unpolluted, old-growth temperate forests: evaluation of biogeochemical theory, *Ecology*, 76, 493–509, 1995.

Hope, D., Billett, M. F., and Cresser, M. S.: A review of the export of carbon in river water: fluxes and processes, *Environ. Pollut.*, 84, 301–324, doi:10.1016/0269-7491(94)90142-2, 1994.

Jobson, J. D.: Applied Multivariate Data Analysis: Regression and experimental design, Springer, 1991.

Keeney, D. R. and DeLuca, T. H.: Des Moines River nitrate in relation to watershed agricultural practices: 1945 versus 1980s, *J. Environ. Qual.*, 22, 267–272, 1993.

Kennedy, J., Billett, M. F., Duthie, D., Fraser, A. R., and Harrison, A. F.: Organic matter retention in an upland humic podzol; the effects of pH and solute type, *Eur. J. Soil. Sci.*, 47, 615–625, doi:10.1111/j.1365-2389.1996.tb01860.x, 1996.

Kronvang, B., Andersen, H. E., Børgesen, C., Dalgaard, T., Larsen, S. E., Bøgestrand, J., and Blicher-Mathiasen, G.: Effects of policy measures implemented in Denmark on nitrogen pollution of the aquatic environment, *Environ. Sci. Policy*, 11, 144–152, doi:10.1016/j.envsci.2007.10.007, 2008.

**Riparian zone's
effect on C and N
exports**T. Wohlfart et al.

Title Page

Abstract

Introduction

Conclusions

References

Tables

Figures

◀

▶

◀

▶

Back

Close

Full Screen / Esc

Printer-friendly Version

Interactive Discussion



- Kronvang, B., Jeppesen, E., Conley, D. J., Søndergaard, M., Larsen, S. E., Ovesen, N. B., and Carstensen, J.: Nutrient pressures and ecological responses to nutrient loading reductions in Danish streams, lakes and coastal waters, *J. Hydrol.*, 304(1–4), 274–288, doi:10.1016/j.jhydrol.2004.07.035, 2005.
- 5 Lajtha, K., Seely, B., and Valiela, I.: Retention and leaching losses of atmospherically-derived nitrogen in the aggrading coastal watershed of Waquoit Bay, MA, *Biogeochemistry*, 28, 33–54, doi:10.1007/BF02178060, 1995.
- Martin, C., Aquilina, L., Gascuel-Oudou, C., Molénat, J., Fauchoux, M., and Ruiz, L.: Seasonal and interannual variations of nitrate and chloride in stream waters related to spatial and temporal patterns of groundwater concentrations in agricultural catchments, *Hydrol. Process.*, 18, 1237–1254, doi:10.1002/hyp.1395, 2004.
- 10 Mattsson, T., Kortelainen, P., and Räike, A.: Export of DOM from Boreal Catchments: Impacts of Land Use Cover and Climate, *Biogeochemistry*, 76, 373–394, doi:10.1007/s10533-005-6897-x, 2005.
- 15 McHale, M. R., Mitchell, M. J., McDonnell, J. J., and Cirimo, C. P.: Nitrogen solutes in an Adirondack forested watershed: Importance of dissolved organic nitrogen, *Biogeochemistry*, 48, 165–184, doi:10.1023/A:1006121828108, 2000.
- Molénat, J., Durand, P., Gascuel-Oudou, C., Davy, P. and Gruau, G.: Mechanisms of Nitrate Transfer from Soil to Stream in an Agricultural Watershed of French Brittany, *Water Air Soil Poll.*, 133, 161–183, 2002.
- 20 Moore, T. R.: Dissolved organic carbon in a northern boreal landscape, *Global Biogeochem. Cy.*, 17, 1–8, 2003.
- Murphy, D. V., Macdonald, A. J., Stockdale, E. A., Goulding, K. W. T., Fortune, S., Gaunt, J. L., Poulton, P. R., Wakefield, J. A., Webster, C. P., and Wilmer, W. S.: Soluble organic nitrogen in agricultural soils, *Biol. Fert. Soils.*, 30(5–6), 374–387, doi:10.1007/s003740050018, 2000.
- 25 Näsholm, T., Kielland, K. and Ganeteg, U.: Uptake of organic nitrogen by plants, *New Phytologist*, 182, 31–48, doi:10.1111/j.1469-8137.2008.02751.x, 2009.
- National Environmental Research Institute, Denmark: Running Waters – Historical development and restoration of lowland Danish streams, Copenhagen. [online] Available from: http://www2.dmu.dk/1_viden/2_Publikationer/3_Ovrige/rapporter/RW_web.pdf, 2006.
- 30

Riparian zone's effect on C and N exports

T. Wohlfart et al.

Title Page

Abstract

Introduction

Conclusions

References

Tables

Figures

◀

▶

◀

▶

Back

Close

Full Screen / Esc

Printer-friendly Version

Interactive Discussion



- Neff, J. C., Chapin III, F. S., and Vitousek, P. M.: Breaks in the cycle: dissolved organic nitrogen in terrestrial ecosystems, *Front. Ecol. Environ.*, 1, 205–211, 2003.
- Neff, J. C., Hobbie, S. E., and Vitousek, P. M.: Nutrient and mineralogical control on dissolved organic C, N and P fluxes and stoichiometry in Hawaiian soils, *Biogeochemistry*, 51, 283–302, 2000.
- Neff, J. C., Holland, E. A., Dentener, F. J., McDowell, W. H., and Russell, K. M.: The origin, composition and rates of organic nitrogen deposition: A missing piece of the nitrogen cycle?, *Biogeochemistry*, 57, 99–136, 2002.
- Perakis, S. S.: Nutrient limitation, hydrology and watershed nitrogen loss, *Hydrol. Process.*, 16(17), 3507–3511, doi:10.1002/hyp.5078, 2002.
- PlantefInfo 2011: http://www.plantefinfo.dk/Vejret/2008/index.asp?item_id=649&appl=0&sessionid=DTzWYlw9M52&_server=172.23.173.222&_port=5007&pi_menu=1&Fuzz=719, Accessed: 30.05.2011.
- Poor, C. J. and McDonnell, J. J.: The effects of land use on stream nitrate dynamics, *J. Hydrol.*, 332(1–2), 54–68, doi:10.1016/j.jhydrol.2006.06.022, 2007.
- Randall, G. W.: Implications of dry and wet cycles on nitrate loss to subsurface tile drainage. p. 53–60. In *Proc. 7th Annu. Drainage Symp.*, Orlando, F L. 8–10 Mar. 1998. Drainage in the 21st Century. American Society of Agricultural Engineers, St. Joseph, M I. 1998.
- Randall, G. W. and Mulla, D. J.: Nitrate Nitrogen in Surface Waters as Influenced by Climatic Conditions and Agricultural Practices, *J. Environ. Qual.*, 337–344, 2001.
- Ruiz, L., Abiven, S., Durand, P., Martin, C., Vertès, F., and Beaujouan, V.: Effect on nitrate concentration in stream water of agricultural practices in small catchments in Brittany: I. Annual nitrogen budgets, *Hydrol. Earth Syst. Sci.*, 6, 497–506, doi:10.5194/hess-6-497-2002, 2002a.
- Ruiz, L., Abiven, S., Martin, C., Durand, P., Beaujouan, V., and Molénat, J.: Effect on nitrate concentration in stream water of agricultural practices in small catchments in Brittany: II. Temporal variations and mixing processes, *Hydrol. Earth Syst. Sci.*, 6, 507–514, doi:10.5194/hess-6-507-2002, 2002b.
- Sand-Jensen, K. and Pedersen, N. L.: Differences in temperature, organic carbon and oxygen consumption among lowland streams, *Freshw. Biol.*, 50, 1927–1937, doi:10.1111/j.1365-2427.2005.01436.x, 2005.
- Scheffer, F. and Schachtschabel, P.: *Lehrbuch der Bodenkunde*, Spektrum Akademischer Verlag GmbH., 2002.

Riparian zone's effect on C and N exports

T. Wohlfart et al.

Title Page

Abstract

Introduction

Conclusions

References

Tables

Figures

◀

▶

◀

▶

Back

Close

Full Screen / Esc

Printer-friendly Version

Interactive Discussion



- Schelde, K., Cellier, P., Bertolini, T., Dalgaard, T., Weidinger, T., Theobald, M. R., and Olesen, J. E.: Nitrous oxide emissions at the landscape scale: spatial and temporal variability, *Biogeosciences Discuss.*, 8, 11941–11978, doi:10.5194/bgd-8-11941-2011, 2011.
- Schiff, S. L., Devito, K. J., Elgood, R. J., McCrindle, P. M., Spoelstra, J., and Dillon, P.: Two adjacent forested catchments: dramatically different NO_3^- export, *Water Resour. Res.*, 38, doi:200210.1029/2000WR000170, 2002.
- Schnabel, R. R., Urban, J. B., and Gburek, W. J.: Hydrologic controls in nitrate, sulfate, and chloride concentrations, *J. Environ. Qual.*, 22, 589–596, 1993.
- SPSS Inc., Systat for Windows, Version 15.0.1 SPSS Inc., Chicago, IL, USA, 2006.
- Steenvoorden, J. H. A. M., Claessen, F., and Willems, J.: Agricultural effects on ground and surface waters: research at the edge of science and society, IAH S., 2002.
- Vagstad, N., Stålnacke, P., Andersen, H.-E., Deelstra, J., Jansons, V., Kyllmar, K., Loigu, E., Rekolainen, S., and Tumas, R.: Regional variations in diffuse nitrogen losses from agriculture in the Nordic and Baltic regions, *Hydrol. Earth Syst. Sci.*, 8, 651–662, doi:10.5194/hess-8-651-2004, 2004.
- van Breemen, N.: Nitrogen cycle: Natural organic tendency, *Nature*, 415, 381–382, doi:10.1038/415381a, 2002.
- van Kessel, C., Clough, T., and van Groenigen, J. W.: Dissolved Organic Nitrogen: An Overlooked Pathway of Nitrogen Loss from Agricultural Systems?, *J. Environ. Qual.*, 38, 393, doi:10.2134/jeq2008.0277, 2009.
- Willett, V. B., Reynolds, B. A., Stevens, P. A., Ormerod, S. J., and Jones, D. L.: Dissolved organic nitrogen regulation in freshwaters, *J. Environ. Qual.*, 33, 201–209, 2004.
- Wilson, J. P. and Gallant, J. C.: *Terrain analysis: principles and applications*, John Wiley and Sons., 2000.
- Worrall, F. and Burt, T. P.: Inter-annual controls on nitrate export from an agricultural catchment – how much land-use change is safe?, *J. Hydrol.*, 243(3–4), 228–241, doi:10.1016/S0022-1694(00)00411-X, 2001.
- Worrall, F., Burt, T. P., Jaeban, R. Y., Warburton, J., and Shedden, R.: Release of dissolved organic carbon from upland peat, *Hydrol. Process.*, 16(17), 3487–3504, doi:10.1002/hyp.1111, 2002.

Worrall, F., Harriman, R., Evans, C. D., Watts, C. D., Adamson, J., Neal, C., Tipping, E., Burt, T., Grieve, I., Monteith, D., Naden, P. S., Nisbet, T., Reynolds, B., and Stevens, P.: Trends in Dissolved Organic Carbon in UK Rivers and Lakes, Biogeochemistry, 70, 369–402, doi:10.1007/s10533-004-8131-7, 2004.

5

BGD

9, 7465–7497, 2012

**Riparian zone's
effect on C and N
exports**

T. Wohlfart et al.

Title Page

Abstract

Introduction

Conclusions

References

Tables

Figures

◀

▶

◀

▶

Back

Close

Full Screen / Esc

Printer-friendly Version

Interactive Discussion



**Riparian zone's
effect on C and N
exports**

T. Wohlfart et al.

Table 1. Upstream area with related land use and soil type in the top layer calculated with ArcGIS. Point numbers correspond to Figs. 1, 2 and 3.

Point	Upstream area [ha]	Cropland [%]	Pasture [%]	Forest [%]	Wetland [%]	Coarse clayey sand [%]	Coarse sandy clay [%]	Fine clayey sand [%]	Organic [%]
01	153.0	72.0	14.1	1.9	0.1	59.7	8.1	18.6	6.4
06	227.1	66.5	21.6	1.3	0.2	40.2	5.5	41.1	7.2
11	263.2	68.3	20.0	1.7	1.1	35.9	22.0	13.1	27.5
20	559.2	72.3	19.5	1.0	0.6	22.8	36.6	12.5	15.9
21	809.0	70.9	19.7	1.0	0.4	27.0	28.2	21.7	13.0
24	842.7	70.0	20.3	1.3	0.4	26.0	27.4	23.9	12.9

Title Page

Abstract

Introduction

Conclusions

References

Tables

Figures

◀

▶

◀

▶

Back

Close

Full Screen / Esc

Printer-friendly Version

Interactive Discussion



Riparian zone's effect on C and N exports

T. Wohlfart et al.

Table 2. Mean values of pH, EC and discharge (*Q*) for April, August and September for the northern stream, southern stream and after convergence.

	pH (-)			EC (μScm^{-1})			<i>Q</i> (ls^{-1})		
	Apr.	Aug.	Sep.	Apr.	Aug.	Sep.	Apr.	Aug.	Sep.
Northern part	7.4 ^{ax}	7.2 ^{ax}	7.3 ^{ax}	351 ^{ax}	407 ^{bx}	405 ^{bx}	5.8 ^{ax}	6.0 ^{ax}	5.3 ^{ax}
Southern part	7.5 ^{ax}	7.4 ^{by}	7.4 ^{abx}	402 ^{ay}	418 ^{ax}	405 ^{by}	14.7 ^{ay}	10.0 ^{by}	10.7 ^{aby}
Converged part	7.7 ^{ay}	7.6 ^{az}	7.6 ^{by}	367 ^{axy}	409 ^{ax}	413 ^{bz}	31.9 ^{az}	20.9 ^{bz}	26.5 ^{cz}

^{abc} indicate significant differences between April, August and September measurements.

^{xyz} indicate significant differences between northern part, southern part and converged part.

Title Page

Abstract

Introduction

Conclusions

References

Tables

Figures



Back

Close

Full Screen / Esc

Printer-friendly Version

Interactive Discussion



Riparian zone's effect on C and N exports

T. Wohlfart et al.

Table 3. Corrected R^2 and standardized beta coefficients of multivariate regression analyses (n.s. = not significant, TWI = Topographic Wetness Index).

	R^2 corrected	Soil (Organic)	Soil (Coarse clayey sand)	Land use (Arable Cropland)	Discharge	Sampling period	Slope	TWI
NO_3^- (mgNI ⁻¹)	0.98	-0.55	0.48	-0.18	-0.07	-0.05	n.s.	-0.02
DON (mgNI ⁻¹)	0.47	-0.24	0.25	-0.17	n.s.	0.47	n.s.	n.s.
DOC (mgNI ⁻¹)	0.68	0.70	n.s.	n.s.	0.29	0.17	-0.28	n.s.
NO_3^- (gNha ⁻¹ d ⁻¹)	0.87	-0.57	0.45	n.s.	n.s.	-0.22	0.15	-0.08
DON (gNha ⁻¹ d ⁻¹)	0.42	-0.25	0.37	n.s.	n.s.	0.38	n.s.	n.s.
DOC (gNha ⁻¹ d ⁻¹)	0.25	n.s.	-0.18	0.36	n.s.	-0.18	n.s.	n.s.

Discussion Paper | Discussion Paper | Discussion Paper | Discussion Paper | Discussion Paper

Title Page

Abstract Introduction

Conclusions References

Tables Figures

◀ ▶

◀ ▶

Back Close

Full Screen / Esc

Printer-friendly Version

Interactive Discussion



**Riparian zone's
effect on C and N
exports**

T. Wohlfart et al.

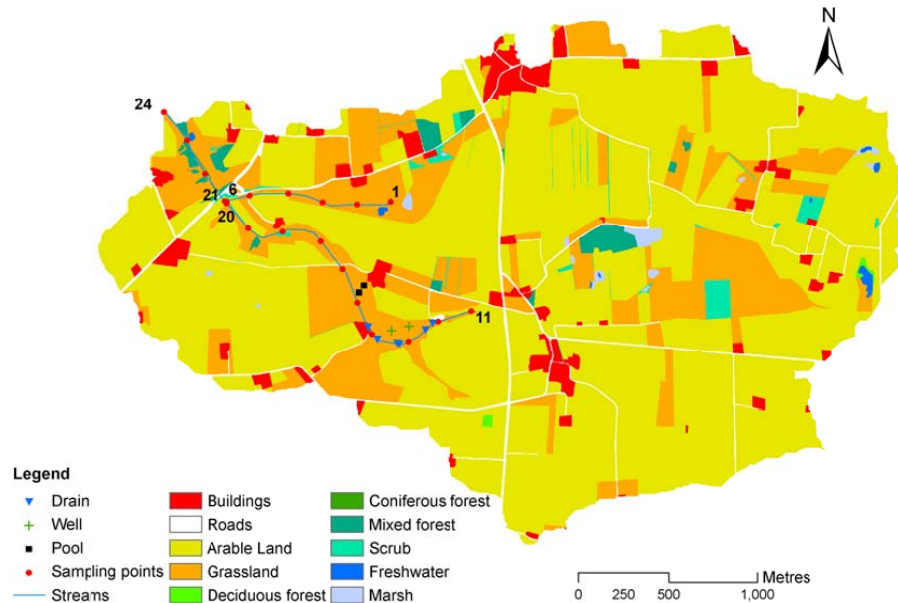


Fig. 1. Land use distribution over the Bjerringbro study area with stream network and sampling site numbers along the stream (digitized for the NitroEurope project; Dalgaard et al., 2011a).

Title Page

Abstract

Introduction

Conclusions

References

Tables

Figures

◀

▶

◀

▶

Back

Close

Full Screen / Esc

Printer-friendly Version

Interactive Discussion



Riparian zone's effect on C and N exports

T. Wohlfart et al.

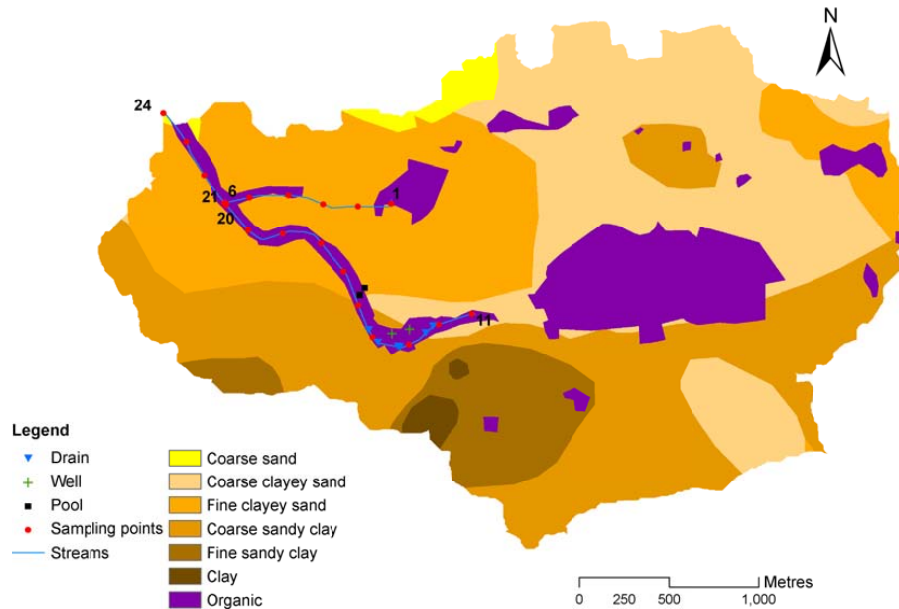


Fig. 2. Soil type distribution over the Bjerringbro study area with stream network and sampling site numbers along the stream (based on the soil type map from Dalgaard et al., 2002).

Title Page

Abstract

Introduction

Conclusions

References

Tables

Figures

◀

▶

◀

▶

Back

Close

Full Screen / Esc

Printer-friendly Version

Interactive Discussion



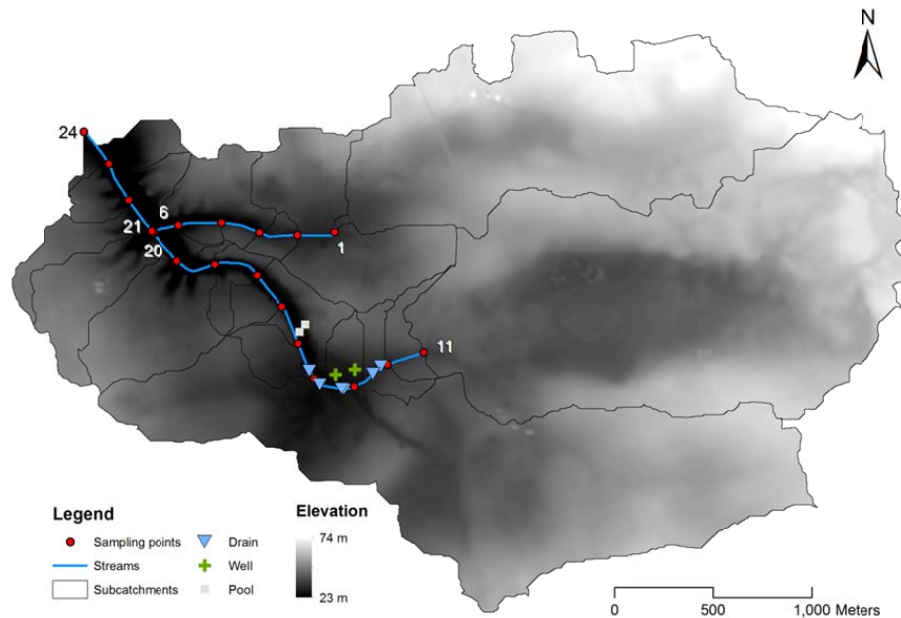


Fig. 3. Elevation model (2×2 m, based on the airborne laser-scanning by Hansen, 2004) with locations of sampling points along the three stream sections with corresponding sub-basins. Numeric labels indicate the number of the sampling point.

Riparian zone's effect on C and N exports

T. Wohlfart et al.

Title Page

Abstract Introduction

Conclusions References

Tables Figures

◀ ▶

◀ ▶

Back Close

Full Screen / Esc

Printer-friendly Version

Interactive Discussion



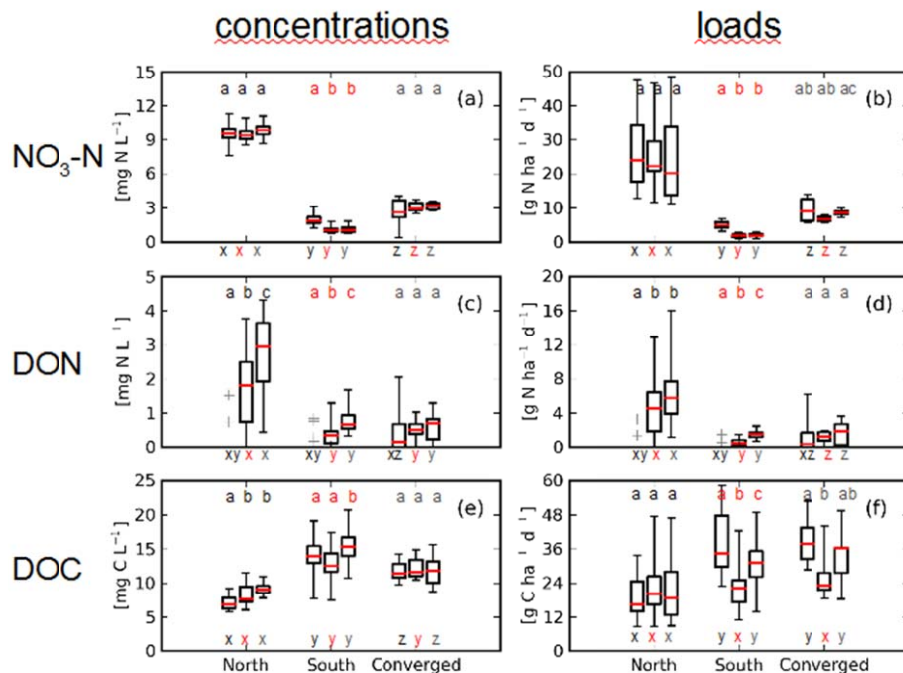


Fig. 4. Boxplots of measured NO_3^- -N (a,b), DON (c,d) and DOC (e,f) concentrations and loads for the northern, southern and converged part. Each group of three boxes corresponds to values measured in April, August and September, respectively. Markers indicate quartiles. In cases where most of the measured values were under detection limits, remaining single values are shown with crosses. Letters a, b and c above markers indicate significant differences between the mean values of April, August and September whereas letters x, y and z denote significant differences between the three stream branches referring to one sampling period.

Title Page

Abstract

Introduction

Conclusions

References

Tables

Figures

◀

▶

◀

▶

Back

Close

Full Screen / Esc

Printer-friendly Version

Interactive Discussion



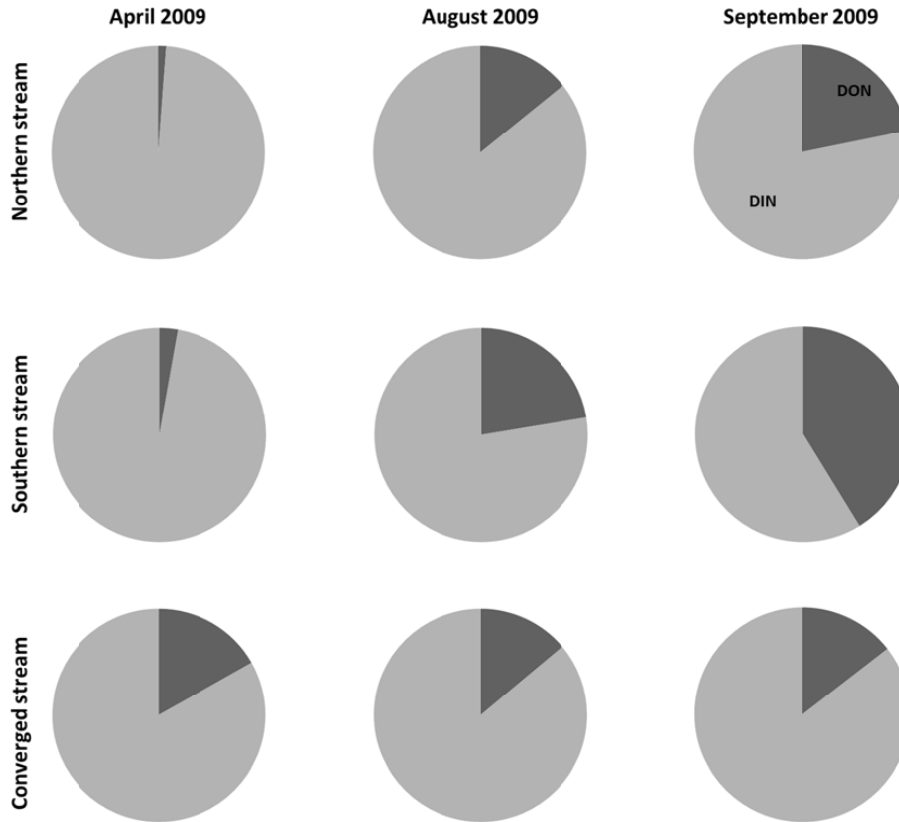


Fig. 5. Contribution (%) of DON (dark grey) and DIN (light grey) to total dissolved nitrogen budget for every stream section and every sampling period.

Riparian zone's effect on C and N exports

T. Wohlfart et al.

Title Page

Abstract Introduction

Conclusions References

Tables Figures

◀ ▶

◀ ▶

Back Close

Full Screen / Esc

Printer-friendly Version

Interactive Discussion



Riparian zone's effect on C and N exports

T. Wohlfart et al.

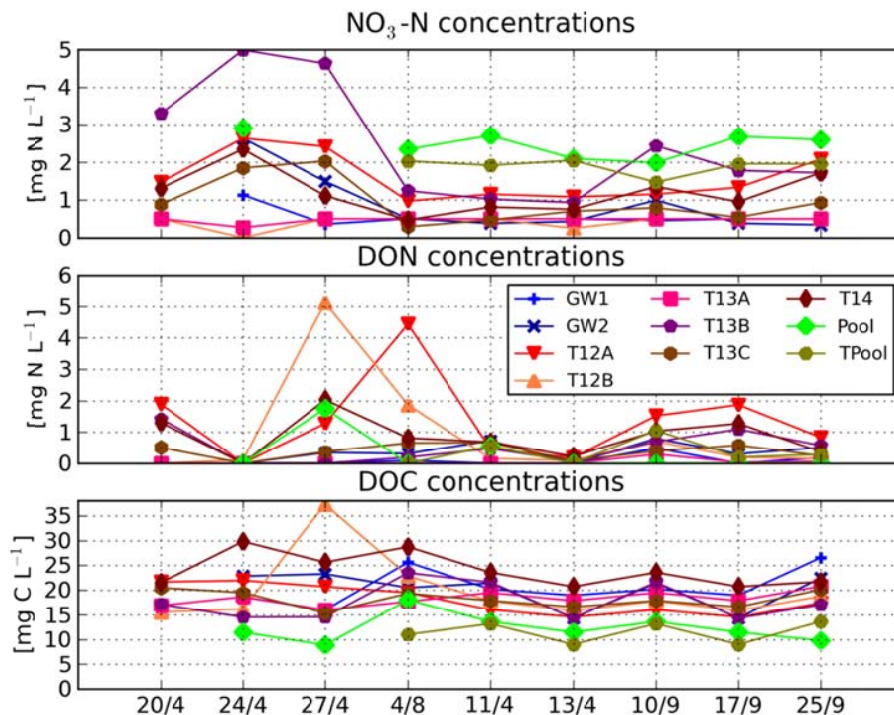


Fig. 6. Measured $\text{NO}_3\text{-N}$, DON and DOC concentrations (mg l^{-1}) analysed in drains (T), groundwater wells (GW) and pools. The given numbers of the drains refer to the previous in-stream sampling point, letters indicates the position of each drain between two points (A: first, B: second, C: third).

Title Page

Abstract

Introduction

Conclusions

References

Tables

Figures

◀

▶

◀

▶

Back

Close

Full Screen / Esc

Printer-friendly Version

Interactive Discussion

