

Interactive comment on “Effects of land use intensity on the full greenhouse gas balance in an Atlantic peat bog” by S. Beetz et al.

S. Beetz et al.

sascha.beetz@uni-rostock.de

Received and published: 5 September 2012

The comment was uploaded in the form of a supplement:
<http://www.biogeosciences-discuss.net/9/C3797/2012/bgd-9-C3797-2012-supplement.pdf>

Interactive comment on Biogeosciences Discuss., 9, 6793, 2012.

C3797

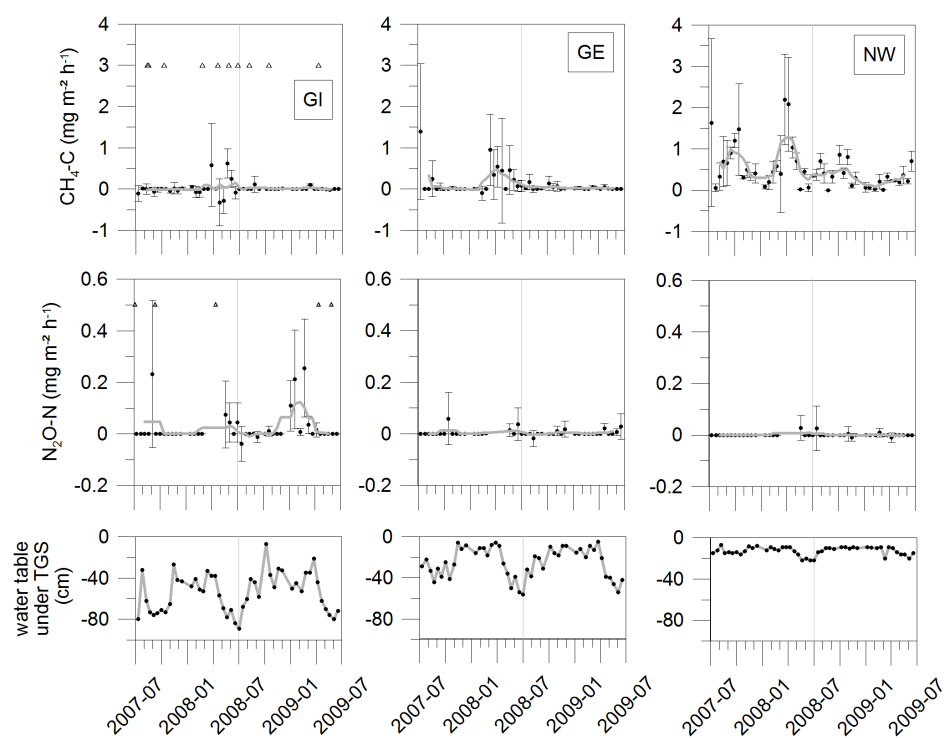


Fig. 1.

C3798