

Reply to the Review of Anonymous Referee #1

The authors would like to thank anonymous referee #1 for the valuable comments and the improvements on the earlier version of the manuscript. In the following, referee's comments are given in bold and author's responses in plain text. Suggested new text is quoted in italics together with page and line numbers.

I agree with all the modifications proposed by the authors. I think the revised version gives a clearer picture of the dataset and the interpretation of the observed signals. I only have three minor points:

Measurement system: I think the few lines describing the regular measurement of calibration and target gases is useful. From this short paragraph I understand that the 'overall accuracy' is estimated from the target gas. If this is the case I would not use the term 'overall accuracy' since the target gas measurement will not allow you to take into account the possible bias due to the water vapor correction, or any contamination in the inlet line. Could you please make this clarification in the manuscript.

The reviewer is right; we do estimate the accuracy using the target gas measurements only.

Therefore the following changes will be made on page 3 (line 21):

“The calculated accuracy using the target gas measurements corresponds to 3.48 ppb, 0.07 ppm and 0.30 ppb for CO, CO₂ and CH₄ measurements respectively (for details see Berhanu et al., 2015). Note that the overall accuracy might be slightly larger due to uncertainties in water vapor correction and potential contamination in the sample inlet lines.”

Wind speed/direction: The explanation you gave in your answer for not using the meteorological information to classify the dataset is satisfactory and I think you could insert this argument in the manuscript.

The following will be added on page 4 (line 21):

“Although meteorological observations are done at the tower, they were not used in the baseline selection. Oney et al. (2015) has analyzed the meteorological data in order to characterize and compare the local meteorological conditions at all four CarboCount-CH sites. Local wind conditions will likely correlate with the measurements to some extent, but they are not a reliable indicator of air mass origin and surface influence and thus are not very well suited to classify the data. According to Oney et al. (2015), winds are strongly channeled between the Alps and the Jura mountains along a south-west to north-east axis and wind speeds have a diurnal cycle with a minimum in the morning and a maximum around mid-night (at the highest elevation). The latter is likely due to the top of the tower being usually located above the nocturnal boundary layer. Therefore, a classification based on the local wind would not necessarily be very useful and diurnal effects would have to be separated from synoptic effects.”

Conclusions: same point regarding the data availability. It should be included in the manuscript.

Data availability will be added to the manuscript accordingly (page 14, line 10):

“Currently, data can be obtained upon request.”

References:

Oney, B., Henne, S., Gruber, N., Leuenberger, M., Bamberger, I., Eugster, W., and Brunner, D.: The CarboCount CH sites: characterization of a dense greenhouse gas observation network, Atmos. Chem. Phys., 15, 11147-11164, 10.5194/acp-15-10 11147-2015, 2015.

Continuous CO₂/CH₄/CO measurements (2012-2014) at Beromünster tall tower station in Switzerland

E. Satar^{1, 2}, T. A. Berhanu^{1, 2}, D. Brunner³, S. Henne³, and M. Leuenberger^{1, 2}

¹ Climate and Environmental Physics, Physics Institute, University of Bern, Bern, Switzerland

5 ² Oeschger Center for Climate Change Research, University of Bern, Bern, Switzerland

³ Empa, Laboratory for Air Pollution/Environmental Technology, Dübendorf, Switzerland

Correspondence to: E. Satar (satar@climate.unibe.ch)

Abstract. The understanding of the continental carbon budget is essential to predict future climate change. In order to quantify CO₂ and CH₄ fluxes at the regional scale, a measurement system was installed at the former radio tower in Beromünster as a part of the Swiss greenhouse gas monitoring network (CarboCount CH). We have been measuring the mixing ratios of CO₂, CH₄ and CO on this tower with sample inlets at 12.5, 44.6, 71.5, 131.6 and 212.5 m above ground level using a cavity ring down spectroscopy (CRDS) analyzer. The first two-year (December 2012-December 2014) continuous atmospheric record was analyzed for seasonal and diurnal variations and inter-species correlations. In addition, storage fluxes were calculated from the hourly profiles along the tower. The atmospheric growth rates from 2013 to 2014 determined from this two-year dataset were 1.78 ppm yr⁻¹, 9.66 ppb yr⁻¹ and -1.27 ppb yr⁻¹ for CO₂, CH₄ and CO, respectively. After detrending, clear seasonal cycles were detected for CO₂ and CO, whereas CH₄ showed a stable baseline suggesting a net balance between sources and sinks over the course of the year. CO and CO₂ were strongly correlated ($r^2 > 0.75$) in winter (DJF), but almost uncorrelated in summer. In winter, anthropogenic emissions dominate the biospheric CO₂ fluxes and the variations in mixing ratios are large due to reduced vertical mixing. The diurnal variations of all species showed distinct cycles in spring and summer, with the lowest sampling level showing the most pronounced diurnal amplitudes. The storage flux estimates exhibited reasonable diurnal shapes for CO₂, but underestimated the strength of the surface sinks during daytime. This seems plausible, keeping in mind that we were only able to calculate the storage fluxes along the profile of the tower but not the flux into or out of this profile, since no Eddy covariance flux measurements were taken at the top of the tower.

25 1 Introduction

Since industrialization, greenhouse gases in the atmosphere have been continuously increasing. According to IPCC (2013), CO₂ has increased from 278 ppm around the year 1750 to 390.5 in 2011, whereas CH₄ has increased from 722 ppb to 1803 ppb over the same period. The increase in atmospheric mixing ratios of CO₂ corresponds to less than half of the anthropogenic emissions from fossil fuels and land use change. The remaining fraction is removed from the atmosphere by sink mechanisms and stored in carbon reservoirs (Ciais et al., 2013; Le Quéré et al., 2015). Quantifying and understanding

these sinks is essential to improve our capabilities to predict future climate change. The ocean sink is relatively well understood, whereas the global land sink is difficult to quantify directly and therefore is often calculated as a residual from better constrained quantities, i.e. from fossil fuel consumption statistics, atmospheric growth rates, the ocean sink, and land use change estimates (Ciais et al., 2013; Le Quéré et al., 2015).

- 5 In order to fill in the gaps of knowledge in the carbon cycle and unravel the terrestrial sink, atmospheric observations of greenhouse gases are of prime importance. For instance, atmospheric inverse modeling enables the estimation of surface-atmosphere fluxes from measured atmospheric mixing ratios (Fan et al., 1998; Gurney et al., 2002; Rödenbeck et al., 2003; Broquet et al., 2013). However, traditionally, atmospheric measurements have been conducted in remote areas (Pales and Keeling, 1965) to reduce the influence of nearby sources. The measured mixing ratios of greenhouse gases at such
- 10 background sites provide information about the well mixed atmosphere at the hemispheric scale (Gloor et al., 2000). Two main limitations arise from this selection of sites: the resulting flux estimates are only representative for large scales and the measurements are biased towards the marine boundary layer or the free troposphere. In order to improve the understanding of land-atmosphere fluxes at regional scales, a greater share of data from continental sites is essential (Gloor et al., 2000). Tans (1993) proposed several ways of monitoring the carbon cycle on continents including tall tower measurements.
- 15 Observations from continental sites may take place in an environment of complex sink, source, and transport processes (due to local effects), and may thus be characterized by strong variability on different time scales. However, both inverse-modeling (Peylin et al., 2005) and budget calculation approaches from atmospheric mixing ratios of greenhouse gases (Bakwin et al., 2004) will be better constrained with the availability of high frequency continuous records.

- Atmospheric tall tower observations have a relatively short history in contrast to flask samplings at remote sites, which span
- 20 more than 20 years. The first tall tower atmospheric measurements launched in the United States in the early 1990s (Bakwin et al., 1995; Bakwin et al., 1998) were followed by atmospheric tall towers in Europe and Asia (Popa et al., 2010; Winderlich et al., 2010; Thompson et al., 2009; Schmidt et al., 2014; Vermeulen et al., 2011). In the early 21st century, a European network of tall tower stations was established under the umbrella of the CHIOTTO (Continuous High Precision Tall Tower Observations of Greenhouse Gases, www.chiotto.org) project. This tall tower network is currently being
- 25 integrated into a much broader European carbon observation system named ICOS (Integrated Carbon Observation System, www.icos-infrastructure.eu).

- In Switzerland, a greenhouse gas observation network with four new measurement sites was established in the framework of the project CarboCount CH (Oney et al., 2015) with a main objective of quantifying local to regional fluxes of greenhouse gases by combining top-down and bottom-up approaches. An important component and the only tall tower site of this
- 30 network is the former radio tower at Beromünster (47° 11' 23" N, 8° 10' 32" E, 212.5 m tall, base at 797 m a.s.l), which is located in a moderately hilly environment at the southern border of the Swiss Plateau, the most densely populated and agriculturally used region of Switzerland between the Alps in the south and the Jura mountains in the northwest.

Here we present the first two years (December 2012-December 2014) of continuous measurements of CO₂, CH₄ and CO at five different heights from this tall tower. We investigate the seasonal and diurnal variations of the three species, the development of vertical gradients between the different heights and the corresponding storage fluxes accumulated below the sampling height, and we draw inferences about the correlations between species. With this purely observation-based multi-species and multi-level approach, we characterize the site Beromünster with respect to the influences of different sinks (photosynthesis (CO₂), OH reaction (CO)) and sources (respiration (CO₂), fossil fuel combustion (CO₂, CO) and ruminants (CH₄)) of local and regional origin at diurnal to annual time scales. Combining observations with modeling approaches is done as part of additional publications using the CarboCount CH measurements (Oney et al., 2015; Henne et al., submitted).

2 Methods

10 2.1 Measurement system

The measurement system at the Beromünster tall tower was installed in October 2012, and mixing ratios of CO₂, CH₄, CO and H₂O have been measured continuously since, using a Picarro CRDS analyzer (G-2401). The technical setup of the measurement system as well as the data processing concept and calibration strategy were explained in detail in Berhanu et al.(2015). Here we provide a brief summary of the measurements: Sampling was conducted successively from five different elevations, 12.5, 44.6, 71.5, 131.6 and 212.5 m above ground level and at each level, the ambient air is measured for three minutes. From these three-minute measurements, only the last 60 seconds are used in the data analysis to prevent contamination from the previous measurement. In order to calibrate outside air measurements, standard gases bracketing the ambient air mixing ratios were measured once a week. In addition, a working standard was measured every 6 hours to monitor the measurement drift and a target gas once a day to check the accuracy and long term stability of the system. From the calibrated target gas measurements a long-term reproducibility of 2.79 ppb, 0.05 ppm and 0.29 ppb for CO, CO₂ and CH₄ was calculated over the 19 months of the measurements. The calculated accuracy using the target gas measurements corresponds to 3.48 ppb, 0.07 ppm and 0.30 ppb for CO, CO₂ and CH₄ measurements respectively (for details see Berhanu et al., 2015). Note that the overall accuracy might be slightly larger due to uncertainties in water vapor correction and potential contamination in the sample inlet lines. Due to a malfunction during November 2013 (1-21 November), the measurement instrument (Picarro CRDS G-2401) was replaced by another instrument (Picarro CRDS G-2311-f) which does not measure CO mixing ratios. For the consistency of the dataset between the measured species we only show measurements from Picarro CRDS G-2401 In addition to the measurements of trace gases, meteorological data, including wind speed, wind direction, air temperature, barometric pressure, and humidity, are measured at each height.

2.2 Time series analysis

The operation cycle described above resulted in time series of four measurements per hour at each of the five elevations, with each measurement representing a one-minute average. The two years of data were analyzed for seasonal and diurnal variations, for correlations between species, and to estimate greenhouse gas fluxes.

- 5 For the analysis of seasonality, first we estimated a smoothly varying signal, which we refer hereafter as baseline or background, based on the measurements at the highest elevation using the complete 25-month record. This background is considered to represent the concentrations that would have been observed if the air mass had not been influenced by recent emissions during its transport over the European continent. In order to ensure that the background values are not affected by local sources and sinks, we filtered the time series for pollution or depletion events using an iterative approach. First, a
10 moving average of 30 days was calculated and the standard deviation (σ) of the differences from this moving average was computed. Subsequently, all measurements with differences exceeding $2\text{-}\sigma$ were eliminated, and a new running mean was computed. This procedure was repeated until only points within the $2\text{-}\sigma$ limits were retained. Then, to estimate the trend of the background values, a function composed of 2 seasonal harmonics and a linear term (Thoning et al., 1989; Masarie and Tans, 1995) was fitted to the two full years of data (Eq. (1)). Finally, the atmospheric record was detrended using the
15 calculated trend (a_1).

$$f(t) = a_0 + a_1 t + \sum_{n=1}^2 \left(b_n \sin \frac{2\pi n t}{365} + c_n \cos \frac{2\pi n t}{365} \right) \quad (1)$$

where, t is time in days, and a_0 , a_1 , b_n and c_n are the coefficients of the fit.

- In addition to calculating a background based on the iterative approach described above, we have also applied the robust extraction of baseline signal (REBS) technique (Ruckstuhl et al., 2012) for comparison. This baseline estimate is a statistical method using non-parametric local regression with robustness weights. By default, the method assumes an asymmetric
20 contamination of the baseline signal due to local pollution events. Therefore, in REBS, the left-hand side of the residual distribution is used to estimate the standard deviation of the baseline, which should approximately follow a Gaussian behavior. However, in the presence of terrestrial sinks and fossil fuel sources of CO_2 , excursions below and above background levels are measured. Therefore, a symmetric estimator of the standard deviation was applied in the case of CO_2 . REBS was applied to all species with a bandwidth of 60 days and a maximum of 20 iterations.

- 25 Although meteorological observations are done at the tower, they were not used in the baseline selection. Oney et al. (2015) has analyzed the meteorological data in order to characterize and compare the local meteorological conditions at all four CarboCount-CH sites. Local wind conditions will likely correlate with the measurements to some extent, but they are not a reliable indicator of air mass origin and surface influence and thus are not very well suited to classify the data. According to Oney et al. (2015), winds are strongly channeled between the Alps and the Jura mountains along a south-west to north-east axis and wind speeds have a diurnal cycle with a minimum in the morning and a maximum around mid-night (at the highest
30

elevation). The latter is likely due to the top of the tower being usually located above the nocturnal boundary layer. Therefore, a classification based on the local wind would not necessarily be very useful and diurnal effects would have to be separated from synoptic effects.

For the analysis of correlations between species, a moving average of five days was used to eliminate slow variations including seasonal variability and to concentrate on short term fluctuations, in particular on diurnal variability and on the time scales of pollution events which typically lasted from a few hours to a few days. Since both variables used in the regression analysis are subject to uncertainty, standard major axis regression (Legendre and Legendre, 2012) was applied to the residual time series.

For the analysis of diurnal cycles and for the estimation of fluxes, only data starting from January 2013 was used to ensure an equal share of data from each month. Monthly mean diurnal cycles were calculated by averaging the corresponding hourly values within a month for each elevation. Five percent of the highest and lowest measurements per month and hour were trimmed to exclude extreme values. The data was detrended prior to averaging, in order to eliminate bias resulting from data gaps.

For the estimation of fluxes, hourly mean mixing ratios were used. The approach used for the flux estimation is explained further in the following section.

2.3 Flux estimation

The net ecosystem exchange (NEE) is the net flux into or out of the ecosystem, and can be calculated from atmospheric measurements as the sum of the advective flux, the storage flux and the turbulent flux (Lee, 1998; Finnigan, 1999; Yi et al., 2000). Here, the method presented by Winderlich et al. (2014) is adopted as it was specifically developed for measurements from multiple levels along a tall tower. Similar to previous studies (Haszpra et al., 2005; Winderlich et al., 2014) the advective flux component was not included in the calculations as this information was not available. Advective fluxes were shown to depend largely on topography and site characteristics (Aubinet et al., 2005; Feigenwinter et al., 2008) with an estimated contribution of about 10% of the overall flux for a very tall tower (Yi et al., 2000), but may occasionally be the dominating component. However, these fluxes are difficult to measure and vertical advection is likely to be compensated for by horizontal advection (Feigenwinter et al., 2004). Due to the lack of direct eddy flux measurements at the tower, a turbulence term could also not be taken into account. Thus, in our calculations, the flux estimates are restricted to the storage flux term.

The storage flux (F_{storage}) between the surface and the top level z_r of the tall tower at a given time t can be calculated from the gradients in mixing ratios along the tower according to:

$$F_{storage}(t, z_r) = \int_0^{z_r} \frac{1}{V_m(z)} \cdot \frac{\partial c(t, z)}{\partial t} \cdot dz \quad (2)$$

where t is time, V_m is the molar volume of air, and c is the mixing ratio of the measured trace gas. In order to solve the integral in Eq. (2), Winderlich et al. (2014) suggested to discretize the problem. The integral was approximated by trapezoidal areas, where concentrations are linearly interpolated between subsequent levels:

$$F_{storage}(t, z_r) = \sum_{h=1}^4 \frac{\frac{1}{2}(\rho_h + \rho_{h+1})}{m_{air}} \cdot \frac{\frac{1}{2}((c_h(t_{i+1}) - c_h(t_i)) + (c_{h+1}(t_{i+1}) - c_{h+1}(t_i)))}{t_{i+1} - t_i} \cdot (z_h - z_{h+1}) \quad (3)$$

where ρ is the air density, m_{air} is the molar mass of air, and z_h is the sampling height ($z_1=212.5$ m, $z_2=131.6$ m, $z_3=71.5$ m, $z_4=44.6$ m and $z_5=12.5$ m). The fluxes were individually calculated for each consecutive height interval for a time step of one hour. The total storage flux for each time step was obtained by taking the sum of the four flux estimates for the different height intervals. Note that in the absence of advective and turbulent fluxes a positive storage flux indicates a net surface source, whereas a negative flux implies a surface sink.

Calculations were done on a daily basis and averaged over a month, resulting in monthly averaged daily fluxes. The uncertainties were calculated using the standard error of the mean, considering the number of days as the sample size.

3 Results and Discussion

3.1 Seasonal variations and annual growth rate

Figure 1 shows the mixing ratios of the trace gases from the highest elevation. Points outside of the blue band are composed of either pollution or depletion events due to local (<10 km) and regional (some hundreds of km) sources and sinks and are often related to synoptic variability of atmospheric transport and mixing. The 2- σ filter applied in the estimation of the background values eliminated 31%, 34%, and 33% of the measurements for CO₂, CH₄ and CO, respectively.

CO₂ shows a clear seasonal cycle, with a mean peak-to-peak amplitude of 13.1 ppm for the two-year period (Fig. 1a). The seasonal variations of CO₂ are associated with biological activity; the minimum occurs in August and the maximum in March, as expected for a northern hemisphere site (Randerson et al., 1997). The observed amplitude can be compared with other tall tower stations in Europe: For Cabauw in the Netherlands (Vermeulen et al., 2011), Bialystok in Poland (Popa et al., 2010), and Ochsenkopf in Germany (Thompson et al., 2009), the observed seasonal amplitudes were 25, 20 and 15.5 ppm, respectively. The observed seasonal variation at Beromünster is comparatively low, but this may partly be explained by the filtering of the data. Other studies have not specifically filtered out the pollution events but took trimmed (means from the inter-quartile (25%-75%) range) mean values. Excursions from the baseline would tend to be positive in winter and negative in summer, yielding overall greater amplitudes of the monthly means in non-filtered data. Applying the latter estimation, a

larger fraction of the regional signal would still remain in the baseline. At Beromünster, taking the daily means from the inter-quartile (25%-75%) range results in a mean peak-to-peak amplitude of 18.2 ppm over the 2 years.

The CH₄ mixing ratios (Fig. 1b) varied between 1900 and 2200 ppb. Most of the variability is due to pollution events with mixing ratios varying by up to a few hundred ppb over time periods from minutes to days. The short-term spikes are likely due to emissions from agricultural activities in the vicinity of the tower (mostly ruminants), while the longer lasting peaks are related to synoptic variability of atmospheric transport and mixing. After eliminating such pollution events, the detrended time series exhibited a rather constant baseline with only a weak maximum in early spring. In Switzerland, more than 80% of the methane emissions are due to agriculture, mainly from ruminants (Swiss Federal Office for the Environment FOEN, 2015a), and the emissions are expected to be larger in spring and summer months due to higher temperatures in the manure storage and larger productivity of the dairy cows (Henne et al., submitted). Superimposed on the variability of the sources is the seasonality of the OH radical, which is the major CH₄ sink. The destruction of CH₄ by OH is most pronounced during summer months causing a CH₄ minimum in the northern hemisphere in late summer (Dlugokencky et al., 1994). The rather constant CH₄ values at Beromünster in summer indicate that the separation into background and polluted air is not perfect and that our baseline contains a non-negligible contribution from regional emissions which obscures the expected summertime minimum. Therefore, seasonal amplitudes for CH₄ were not calculated. In contrast to Beromünster, other tall tower stations in Europe (Thompson et al., 2009; Popa et al., 2010; Schmidt et al., 2014; Vermeulen et al., 2011) have reported more pronounced seasonal amplitudes between 35-70 ppb.

For CO (Fig.1c), higher values (up to 450 ppb) were observed in winter, and lower values (around 100 ppb) were observed in summer. The seasonal variations in CO are largely governed by anthropogenic emissions and the strength of the OH sink. The main sources of CO in Switzerland are the transport sector and residential heating, corresponding to 53% and 37% of the emissions, respectively (Swiss Federal Office for the Environment FOEN, 2015b). The observed seasonality might be associated with enhanced anthropogenic emissions of CO in winter months from increased heating and reduced atmospheric mixing. In addition to the variability of the sources, the main CO sink, which is the reaction of CO with OH radicals, also varies seasonally with a maximum during summer months. This sink may be partially compensated by enhanced chemical production of CO through the oxidation of CH₄ and VOCs which is also largest in summer (Granier et al., 2000). The timing of the maximum of the seasonal variation is similar to CO₂, and the mean peak-to-peak amplitude of CO is 47.7 ppb averaged over the two years. Other tall tower stations in Europe reported much higher seasonal amplitudes between 75 and 130 ppb (Thompson et al., 2009; Vermeulen et al., 2011; Popa et al., 2010). Similar to CO₂, some of the differences in the observed seasonal amplitudes might be related to data selection, and taking the daily means from the inter-quartile (25%-75%) range results in higher mean peak-to-peak amplitude of 54.5 ppb over the 2 years. Nevertheless, the comparison suggests that the Beromünster site has a more rural character with a lower anthropogenic peak in winter than these other sites. It should also be noted that CO emissions in Europe are still decreasing significantly (European Environment Agency

EEA, 2014), which will likely be reflected in a corresponding decrease in the seasonal amplitudes of the above mentioned European tall tower sites.

The analysis of seasonality was also carried out for all sampling heights. The background estimates were calculated for each level individually, but the detrending was done according to the highest elevation since it has the lowest short-term variability. The peak-to-peak amplitudes for CO₂ and CO were largest for the lowest elevation. This difference in amplitudes was related to higher maxima in winter rather than the lower minima in summer. The lowest summer minimum was observed at the topmost sampling height. This could be explained by the rectifier effect: Photosynthesis and thermally driven convective mixing are both regulated by the sun, and therefore show the same variability patterns on seasonal and diurnal scales. During times of strong convective mixing (daytime), photosynthesis is the dominating process, whereas during times of weak mixing (nighttime), respiration dominates (Denning et al., 1999). Therefore the time-mean vertical profile of CO₂ mixing ratios over vegetation shows higher values near the surface than aloft..

The 2013-2014 growth rates obtained from the regression fit are given in Table 1. For CO₂ and CH₄, positive annual growth rates are calculated. The calculated growth rate of CO₂ (1.78 ppm yr⁻¹) was slightly lower than the global increase of 2.07 ppm yr⁻¹ during the last decade, whereas the growth rate of CH₄ was higher than the global increase of 3.8 ppb yr⁻¹ (World Meteorological Organization WMO Global Atmosphere Watch GAW, 2014). For CO, a decrease of -1.27 ppb yr⁻¹ was obtained, which is in agreement with the generally decreasing trend in CO mixing ratios in Europe (European Environment Agency EEA, 2014; Swiss Federal Office for the Environment FOEN, 2014; Zellweger et al., 2009). However, the Beromünster time series is too short to determine reliable trend estimates, particularly in the presence of large inter-annual variability of meteorology (Warwick et al., 2002). This is especially true in the case of small relative trends and large local flux contributions (as in the case of CH₄).

In general, our seasonal amplitude estimates were lower for all species when compared with other tall tower sites. This may partly be explained by the differences in the estimation of the background values: among different tall tower studies, the selection of the background mixing ratios also varied. Taking the measurements from the highest elevation is common in most studies in order to exclude local effects (Bakwin et al., 1995; Popa et al., 2010; Thompson et al., 2009; Winderlich et al., 2010; Vermeulen et al., 2011; Schmidt et al., 2014). Trimmed daily means (means from the 25%-75% range), daytime minima (Vermeulen et al., 2011) or the mean of afternoon hours (Popa et al., 2010), were taken in the mentioned studies. However, with such approaches, our time series were still dominated by frequent stable atmospheric conditions that lead to emission accumulation and lasted up to a couple of days. As such events occur mostly in winter time, the maxima in the seasonal cycles were affected by their strength and the duration. Since the time series is relatively short, the inter-annual variability of the seasonal amplitudes was also dominated by the frequency of these events. Therefore, we might have underestimated the seasonal amplitudes when eliminating the local events.

As an independent approach to our elimination of local events, we have also conducted the seasonality analysis by using the so-called robust extraction of baseline signal (REBS) technique (Ruckstuhl et al., 2012). The resulting baseline is indicated by the green curve in Fig. 1. The two different baseline estimates for CO₂ and CH₄ closely follow each other, whereas CO exhibits a difference of 15 ppb in the maximum of 2013. This might be related to different responses of the two background filters to long lasting pollution events which were particularly prominent in the beginning of the dataset. The difference in the two baseline estimates resulted in a smaller negative annual growth rate of -0.20 ppb yr⁻¹ for REBS as compared to -1.27 ppb yr⁻¹ for the background filter. Since the time series is relatively short, both methods produce results that are still strongly affected by inter-annual variability.

3.2 Correlations between species

Figure 2 shows the reduced major axis regression slopes (left panel), and coefficient of determination (right panel) for all months and all heights. Slopes are presented on a mass basis rather than a molar basis to enable a direct comparison with ratios expected from emission inventories. By using the residuals of 5-day moving averages, we expect to track short-term changes which are most probably related to anthropogenic influences. However, even after the elimination of seasonality, both the regression slopes and the coefficients of determination showed seasonal variations. Winter months showed higher coefficients of determination (r^2) than summer months, with January being the highest: 0.92 and 0.80 for $\Delta\text{CO}/\Delta\text{CO}_2$ and $\Delta\text{CO}/\Delta\text{CH}_4$, respectively.

The strong seasonality seen in $\Delta\text{CO}/\Delta\text{CO}_2$ ratios is probably a result of the seasonality of the biospheric CO₂ fluxes. In summer, the correlation between CO and CO₂ almost drops to zero, which makes the determination of the slopes very uncertain. Taking only the well mixed afternoon values slightly improves the correlation and results in somewhat higher slopes for the summer months. It is unclear to what extent the $\Delta\text{CO}/\Delta\text{CO}_2$ ratios in summer can be interpreted in terms of anthropogenic $\Delta\text{CO}/\Delta\text{CO}_2$ emission ratios and to what extent this ratio is influenced by biospheric CO₂ fluxes. For winter months, on the other hand, the very tight correlations suggest that biospheric CO₂ fluxes play only a minor role and that the ratios are dominated by collocated anthropogenic emissions of CO and CO₂. The regression slopes for the winter months can therefore be compared with the most recent Swiss inventory estimates available for the year 2013 (Swiss Federal Office for the Environment FOEN, 2015a, b), indicated by the horizontal dashed lines (Fig. 2a). During winter months, the observed $\Delta\text{CO}/\Delta\text{CO}_2$ ratio is close to the ratio expected from the anthropogenic emission inventories, suggesting that the ratio in the inventories is consistent with atmospheric observations. However, the ratio observed at Beromünster in winter is still somewhat lower than the annual mean emission ratio of 4.96 g/kg reported for the year 2013. Considering the negative trends of CO in Europe the agreement is reasonable. A comprehensive analysis of CO/CO₂ ratios including the use of radiocarbon data is part of a forthcoming publication (Berhanu et al., in preparation).

For $\Delta\text{CO}/\Delta\text{CH}_4$ ratios (Fig. 2c) there is reasonable agreement between the measurements and the inventory estimates (Swiss Federal Office for the Environment FOEN, 2015a, b). However, observed ratios were larger than the inventory annual mean

ratio from December to March and were lower from May to October. The seasonality in the observation-based ratios is likely dominated by the seasonality in CO emissions, which are expected to peak during the cold season. Anthropogenic sources of CH₄, conversely, are expected to be relatively constant over the year (Hiller et al., 2014), though there is a tendency to smaller emissions in the cold season (Henne et al., submitted).

- 5 Besides seasonality, there are also differences in the height dependence of the correlations. In contrast to the ratios $\Delta\text{CO}/\Delta\text{CO}_2$, the wintertime ratios $\Delta\text{CO}/\Delta\text{CH}_4$ showed a clear dependence on height, ranging from 1.48 g/g at the highest to 1.18 g/g at the lowest level (Fig. 2c). Since the atmospheric mixing properties should be independent of species, the different height dependencies may be a reflection of differences in the relative importance of local versus distant sources. CO emissions from combustion processes are closely coupled to anthropogenic CO₂ emissions (Gamnitzer et al., 2006).
- 10 Therefore, $\Delta\text{CO}/\Delta\text{CO}_2$ ratio along the tower is not likely to change because of a relatively large distance to sources of fossil fuel combustion. However, for emissions from agriculture, no direct link between CH₄ and CO exists. The wider scatter ($r^2 = 0.54$ for January) and the lower ratio of the emissions at the lowest level suggest larger than average local emissions of CH₄. This is in agreement with the location of the tower in an area dominated by agricultural use (Hiller et al., 2014).

3.3 Diurnal variations

- 15 The monthly mean diurnal cycles of CO₂, CO and CH₄ for all sampling levels are shown in Fig. 3. For the calculation of monthly mean diurnal cycles, trimmed datasets were used, in which the highest and lowest 5% of the measurements per month and hour were excluded (see Sect. 2.2). Each x-axis spans 24 hours centered at noon. The times correspond to UTC, whereas the local time is UTC+1.

- The diurnal cycles of CO₂ were very pronounced in the spring and summer months (Fig. 3a), and showed distinct differences among the inlet heights. At lower heights the diurnal variations are amplified by local effects. Differences between the height levels were largest during night time, stable atmospheric conditions, when CO₂ emitted by plant respiration and anthropogenic emissions accumulate near the ground and only slowly mix to higher altitudes. CO₂ mixing ratios started to decrease with sunrise due to the uptake of CO₂ by plants and the simultaneous break-up of the nocturnal boundary layer by convective vertical mixing. The top of the growing planetary boundary layer (PBL) in the morning reached the highest inlet
- 25 with a delay of about 2 hours, as indicated by the time lag of the early morning peak between the highest and lowest inlet. Due to strong mixing in the fully developed convective PBL, the gradients along the tower disappeared around noon. The mixing ratios continued to decrease through the day until a minimum was reached in the late afternoon. At this point, the lowest mixing ratios were measured at 12.5 m, which likely reflects the influence of net uptake of CO₂ by photosynthetic activity in the surroundings of the tower. Vertical gradients started to reappear in the evening when convective mixing slows
- 30 down due to surface cooling. In contrast to the spring and summer months, winter months did not show distinct diurnal cycles, but a rather stable layering with distinctly different mixing ratios at the different sampling levels. During these months, the highest mixing ratios were always seen at the lowest level, suggesting that the surface is a net source of CO₂

during this time of the year. Throughout the course of the year, the amplitudes of the diurnal cycles varied, reaching a maximum amplitude of 17 ppm in July at the 12.5 m height

CH₄ observations (Fig. 3b) showed a similar diurnal pattern to CO₂ driven by atmospheric mixing processes and planetary boundary layer evolution. However, the early morning peak was lagging behind that of CO₂. Again, this indicates different dominating source and sink mechanisms and locations. As mentioned in Sect. 3.3.1, the main source of methane in the vicinity of the tower and the whole of Switzerland are emissions from ruminants. These are expected to remain rather constant throughout a day/night cycle although recent studies on direct emissions from grazing ruminants suggest lower night-time emissions (Felber et al., 2015). In contrast to CO₂, the primary sink of methane is the destruction by OH radicals, which is expected to experience a diurnal cycle related to the production mechanism of the radicals (Ehhalt, 1999). However, considering the very slow reaction of CH₄ with OH (lifetime 9-10 years) (Kirschke et al., 2013), no significant diurnal cycle resulting from chemical loss is expected. Relatively high mixing ratios were observed at the lowest inlet compared to other levels, indicating strong local sources. The latter can be directly related to cows that either graze in the vicinity of the tower or are housed in nearby farmsteads.

All species show clear diurnal variations, though, the diurnal variation of CO (Fig. 3c) is hardly visible since it is much smaller than its annual cycle. In winter months, when the diurnal evolution of the PBL is little pronounced and convective mixing is small, the diurnal variations were only weak and showed a pattern similar to CO₂ and CH₄. Highest and most variable CO mixing ratios were measured at the lowest level, whereas at the highest inlet, CO mixing ratios stayed relatively constant throughout the day. In the summer months, CO mixing ratios also showed pronounced diurnal cycles governed by atmospheric mixing processes and PBL evolution. Although the lifetime of CO is on the order of weeks in summer (Seinfeld, 2006), the effect of the OH sink during the day most plausibly will not be seen, since transport and mixing processes occur on much shorter time scales.

In November the diurnal variations of all species show marked differences compared to the months before and after (Fig. 3). This can mostly be explained by data availability. As mentioned in Sect. 2.1, three weeks of measurements are missing in November and the monthly mean diurnal cycles were calculated using a relatively small amount of data.

The differences in the timing of the diurnal variations for CO₂, CH₄, and CO together with the cosine of the solar zenith angle (NOAA Solar Calculator, <http://www.esrl.noaa.gov/gmd/grad/solcalc/>) are shown in Fig. 4. At 06.00 in the morning, CO₂ mixing ratios start to decrease with the onset of photosynthesis, whereas CH₄ and CO accumulation continues in the still shallow PBL. The decrease in the CH₄ mixing ratios starts later and only with the growth of the PBL. For CO, rather constant nighttime values were observed compared to CH₄. This indicates that the source of CO is not from the direct vicinity of the tower (< 2 km), but transported from the surrounding valleys. The increase in the mixing ratios during the morning coincides with the rush hour, suggesting emissions from traffic, resulting in a later CO peak compared to CH₄. The

disappearance of the vertical gradient of CO₂ thus appears to be a combination of surface uptake and convective mixing, whereas the decreases in CH₄ and CO mixing ratios are determined mostly by vertical mixing.

3.4 Flux estimation

Our storage flux estimates are based on the vertical gradients along the tower. In order to illustrate the development of the gradients, monthly mean mixing ratios of CO₂ versus height were plotted for the five elevations along the tower and for different hours of the day (Fig. 5). This was done for two selected months in summer and winter, respectively. For better visibility, only every third hour is plotted. In June, the monthly average mixing ratios varied over a broad range of 15 ppm over the course of the day, with pronounced vertical gradients at night, but little to no gradients during afternoon hours (Fig. 5a). In contrast, the mixing ratios in January varied over a much narrower range of five ppm, with gradients between different heights persisting throughout the day (Fig. 5b).

The areas enclosed between the profiles of two consecutive hourly time steps and heights correspond to the storage flux between those heights for that time interval. These fluxes were summed up to yield the total storage flux between the lowest and highest level.

According to Winderlich et al. (2014), this approach yields the most reliable estimates of NEE during nighttime when vertical mixing is reduced and NEE is dominated by the storage flux term. During daytime, vertical gradients of mixing ratios are much less pronounced due to vertical mixing and NEE is dominated by the turbulent flux through the top of the observed profile rather than the storage flux. Since this turbulent import or export of CO₂ into the vertical column through the highest level was not measured at Beromünster, our approach is likely to underestimate the surface sinks of CO₂ during daytime in the growing season. Moreover, the lowest sampling height in Beromünster tower is 12 m, thus, the variations in mixing ratios below 12 m could not be taken into consideration. This might as well lead to underestimation of the fluxes.

In Fig. 6, monthly averaged diurnal cycles of the storage fluxes for the years 2013 and 2014 are shown for all three measured species. Most calculated monthly mean hourly flux estimates for the winter months were insignificantly different from zero for all species, and included uncertainties as large as the signals. Although the atmosphere was usually stably stratified, the concentration increments between consecutive time steps were too low and the day-to-day variability was too large to yield reliable storage flux estimates. Hence, no conclusions could be drawn for winter months.

Between April and September, CO₂ (Fig. 6a) showed cycles of positive nighttime and negative daytime fluxes. Respiration of the biosphere is the most likely explanation for the positive fluxes at nighttime. The average night-time (23.00-04.00) storage flux estimate for these months was $1.57 \pm 0.11 \mu\text{mol m}^{-2} \text{s}^{-1}$. With the onset of photosynthesis and turbulent vertical mixing, the storage fluxes changed to negative values in the morning and remained mostly negative until the late afternoon, though afternoon fluxes were lower than morning fluxes. The largest negative fluxes of about $-6.8 \mu\text{mol m}^{-2} \text{s}^{-1}$ were reached

in July. The average daytime (11.00-16.00) flux for the April - September time period was calculated as $-1.56 \pm 0.08 \mu\text{mol m}^{-2} \text{s}^{-1}$. It should be noted that the day-time storage fluxes are likely to underestimate NEE.

The pattern obtained for CH_4 (Fig. 6b) was not as clear as in the case of CO_2 . For the same period (April - September), near-zero nighttime storage fluxes and a maximum storage flux in the morning hours lagging behind the nighttime maximum in the CO_2 profiles was observed. An explanation for this early morning peak could be the combined effect of the CH_4 sources in the region, and the mixing properties of the atmosphere. CH_4 accumulates near the ground during nighttime and prior to the start of the vertical mixing in the early morning hours. The accumulated emissions reach the upper levels of the tower only after the rise of the PBL, hence a time shifted maximum of fluxes occur. For CH_4 , the nighttime (23.00-04.00) average storage flux estimate for the two years from April to September was calculated as $3.21 \pm 0.78 \text{ nmol m}^{-2} \text{s}^{-1}$, whereas for the early morning hours (04.00-08.00), the average storage flux estimate was $13.99 \pm 1.18 \text{ nmol m}^{-2} \text{s}^{-1}$.

In contrast to CO_2 , where fluxes are expected to be influenced by photosynthetic activity, CH_4 is not related to a sink mechanism on the time scales of concern. Therefore, it is very likely that the negative fluxes calculated for CH_4 during the afternoon hours are related to vertical mixing and should be offset by strongly positive turbulent fluxes at the top of the tower. Since the method was applied in full analogy, the negative fluxes for CO_2 during afternoon hours may also be significantly affected by turbulent fluxes into the column and not only by plant uptake.

In analogy to CO_2 and CH_4 , flux estimates for CO were also calculated (Fig. 6c). However, the pattern is less clear, even when looking at the April – September period, which is probably due to relatively small night-time CO emissions in the local environment, as was already indicated by the analysis of the CO diurnal cycle. Nevertheless the average flux of the early morning hours (04.00-08.00) was calculated as $2.10 \pm 0.26 \text{ nmol m}^{-2} \text{s}^{-1}$ for the summer months.

In addition to the estimation of average fluxes, the approach enabled us to capture some differences between the years. For example, the daily variations in storage fluxes in April 2014 showed stronger uptake when compared with the previous year. This difference can be explained by the relatively cold spring in 2013 (MeteoSwiss, meteoswiss.ch).

The diurnal variations of fluxes in Beromünster are similar to the Zotino Tall Tower Observatory (ZOTTO; $60^\circ 48' \text{ N}$, $89^\circ 21' \text{ E}$) in Siberia (Winderlich et al., 2014). For the summer months (June – September) of 2009 – 2011, the mean of the total nighttime (23.00-04.00) flux was reported as $2.7 \pm 1.1 \mu\text{mol m}^{-2} \text{s}^{-1}$ and $5.6 \pm 4.5 \text{ nmol m}^{-2} \text{s}^{-1}$ for CO_2 and CH_4 respectively (Winderlich et al., 2014). In Beromünster taking the summer months (June – September) yielded a mean storage flux of 1.8 ± 0.2 (standard error of the mean) $\mu\text{mol m}^{-2} \text{s}^{-1}$ and 3.6 ± 1.0 (standard error of the mean) $\text{nmol m}^{-2} \text{s}^{-1}$ for CO_2 and CH_4 respectively. Average of monthly standard errors of hourly means as displayed in Fig. 6, of the period June- September amount to $0.87 \mu\text{mol m}^{-2} \text{s}^{-1}$ and $6.0 \text{ nmol m}^{-2} \text{s}^{-1}$ for CO_2 and CH_4 respectively. There exists a reasonable agreement between these flux estimates.

In order to compare our estimates with other measurements of NEE in Switzerland, we calculated the flux sums for an entire year, keeping in mind that the estimates for winter months are small yet unreliable. For the years 2013 and 2014, the flux

sums were -29 g C m^{-2} and -35 g C m^{-2} , respectively. In Switzerland, ecosystem flux measurements are done within the Swiss FluxNet using the Eddy covariance technique (www.swissfluxnet.ch). Chamau and Früebüel are grassland sites about 18 and 30 km away from the Beromünster tall tower, respectively. NEE for the years 2006 and 2007 was reported as -222 g C m^{-2} and -417 g C m^{-2} in Früebüel, and -59 g C m^{-2} and -69 g C m^{-2} in Chamau, respectively (Zeeman et al., 2010). Our estimates for Beromünster seem to be reasonable considering that (i) the interannual variations in climatic conditions strongly affect the NEE; (ii) the sites are not representative of the same land cover; (iii) the storage flux estimate for winter months are highly uncertain and (iv) they may include contributions from anthropogenic CO_2 emissions throughout the year. As explained earlier, this approach tends to underestimate NEE during daytime when it is expected to be most negative. Measurement of the turbulent fluxes at the top of the tower would be very valuable to close the budget. However, the presented storage fluxes can still provide a good first guess of the general temporal flux pattern if no turbulent and horizontal flux data are available. In such a situation, a multi-species approach (tracer ratio method) can be valuable, since it allows – at least qualitatively – distinguishing imprints from vertical mixing and source/sink mechanisms.

4 Conclusions and Outlook

We have presented an extensive analysis of the first two years of CO_2 , CH_4 and CO measurements at a new tall tower site in Switzerland. The data were analyzed for seasonal and diurnal variations, correlations between species, and storage fluxes within the atmospheric column below the highest elevation on the tower. Growth rates from 2013 to 2014, as well as mean seasonal cycles were estimated based on background mixing ratios determined for the three species. The correlations between species showed a strong link between CO and CO_2 in winter, but not in summer, suggesting that CO_2 variations were dominated by anthropogenic emissions in winter and by biospheric fluxes in summer, respectively. The diurnal profiles of the trace gases at the different sampling heights on the tower and in different seasons are largely controlled by diurnal variations of vertical mixing but also by local sources and sinks, particularly in the case of CO_2 . Lastly, storage flux estimates showed pronounced daily variations and are believed to provide a reasonable estimate of the surface fluxes during night-time and morning hours, but are potentially different from surface fluxes later during the day due to increased turbulent fluxes at the top of analyzed column.

Although our data was limited to two years, it enabled a general characterization of the site Beromünster. The correlation between CO and CO_2 will be further investigated with the addition of radiocarbon measurements. Moreover, the measurements from Beromünster will provide invaluable input for ongoing modeling studies aiming to quantify regional greenhouse gas fluxes by inverse modelling. [Currently, data can be obtained upon request.](#)

Acknowledgements

This project is supported by the Swiss National Science Foundation through the Sinergia program, CarboCount CH project (CRSII 2-136273). We thank Rüdiger Schanda for looking after the technical installations at the Beromünster site and Hanspeter Moret, Peter Nyfeler, and the mechanical workshop team for manufacturing the inlet- and valve switching units.

We would like to thank the two anonymous reviewers for their valuable comments which have improved the Biogeosciences Discussions manuscript considerably.

References

- Aubinet, M., Berbigier, P., Bernhofer, C., Cescatti, A., Feigenwinter, C., Granier, A., Grünwald, T., Havrankova, K., Heinesch, B., Longdoz, B., Marcolla, B., Montagnani, L., and Sedlak, P.: Comparing CO₂ Storage and Advection Conditions at Night at Different Carboeuroflux Sites, *Boundary-Layer Meteorology*, 116, 63-93, 10.1007/s10546-004-7091-8, 2005.
- 5 Bakwin, P. S., Tans, P. P., Zhao, C., Ussler, W., and Quesnell, E.: Measurements of carbon dioxide on a very tall tower, *Tellus B*, 47, 535-549, 10.1034/j.1600-0889.47.issue5.2.x, 1995.
- Bakwin, P. S., Tans, P. P., Hurst, D. F., and Zhao, C.: Measurements of carbon dioxide on very tall towers: results of the NOAA/CMDL program, *Tellus B*, 50, 401-415, 10.1034/j.1600-0889.1998.t01-4-00001.x, 1998.
- Bakwin, P. S., Davis, K. J., Yi, C., Wofsy, S. C., Munger, J. W., Haszpra, L., and Barcza, Z.: Regional carbon dioxide fluxes from mixing ratio data, *Tellus B*, 56, 10.3402/tellusb.v56i4.16446, 2004.
- 10 Berhanu, T. A., Satar, E., Schanda, R., Nyfeler, P., Moret, H., Brunner, D., Oney, B., and Leuenberger, M.: Measurements of greenhouse gases at Beromünster tall tower station in Switzerland, *Atmos. Meas. Tech. Discuss.*, 8, 10793-10822, 10.5194/amtd-8-10793-2015, 2015.
- 15 Broquet, G., Chevallier, F., Bréon, F. M., Kadygrov, N., Alemanno, M., Apadula, F., Hammer, S., Haszpra, L., Meinhardt, F., Morguí, J. A., Necki, J., Piacentino, S., Ramonet, M., Schmidt, M., Thompson, R. L., Vermeulen, A. T., Yver, C., and Ciais, P.: Regional inversion of CO₂ ecosystem fluxes from atmospheric measurements: reliability of the uncertainty estimates, *Atmos. Chem. Phys.*, 13, 9039-9056, 10.5194/acp-13-9039-2013, 2013.
- 20 Ciais, P., Sabine, C., Bala, G., Bopp, L., Brovkin, V., Canadell, J., Chhabra, A., DeFries, R., Galloway, J., Heimann, M., Jones, C., Le Quéré, C., Myneni, R. B., Piao, S., and Thornton, P.: Carbon and Other Biogeochemical Cycles, in: *Climate Change 2013: The Physical Science Basis. Contribution of Working Group I to the Fifth Assessment Report of the Intergovernmental Panel on Climate Change*, edited by: Stocker, T. F., Qin, D., Plattner, G.-K., Tignor, M., Allen, S. K., Boschung, J., Nauels, A., Xia, Y., Bex, V., and Midgley, P. M., Cambridge University Press, Cambridge, United Kingdom and New York, NY, USA, 465–570, 2013.
- 25 Denning, A. S., Takahashi, T., and Friedlingstein, P.: Can a strong atmospheric CO₂ rectifier effect be reconciled with a “reasonable” carbon budget?, *Tellus B*, 51, 249-253, 10.1034/j.1600-0889.1999.t01-1-00010.x, 1999.
- Dlugokencky, E. J., Steele, L. P., Lang, P. M., and Masarie, K. A.: The growth rate and distribution of atmospheric methane, *Journal of Geophysical Research: Atmospheres*, 99, 17021-17043, 10.1029/94JD01245, 1994.
- Ehhalt, D. H.: Photooxidation of trace gases in the troposphere Plenary Lecture, *Physical Chemistry Chemical Physics*, 1, 5401-5408, 10.1039/A905097C, 1999.
- 30 European Environment Agency EEA: European Union emission inventory report 1990–2012 under the UNECE Convention on Long-range Transboundary Air Pollution (LRTAP), 2014.
- Fan, S., Gloor, M., Mahlman, J., Pacala, S., Sarmiento, J., Takahashi, T., and Tans, P.: A Large Terrestrial Carbon Sink in North America Implied by Atmospheric and Oceanic Carbon Dioxide Data and Models, *Science*, 282, 442-446, 10.1126/science.282.5388.442, 1998.
- 35 Feigenwinter, C., Bernhofer, C., and Vogt, R.: The Influence of Advection on the Short Term CO₂ -Budget in and Above a Forest Canopy, *Boundary-Layer Meteorology*, 113, 201-224, 10.1023/B:BOUN.0000039372.86053.ff, 2004.
- 40 Feigenwinter, C., Bernhofer, C., Eichelmann, U., Heinesch, B., Hertel, M., Janous, D., Kolle, O., Lagergren, F., Lindroth, A., Minerbi, S., Moderow, U., Mölder, M., Montagnani, L., Queck, R., Rebmann, C., Vestin, P., Yernaux, M., Zeri, M., Ziegler, W., and Aubinet, M.: Comparison of horizontal and vertical advective CO₂ fluxes at three forest sites, *Agricultural and Forest Meteorology*, 148, 12-24, 10.1016/j.agrformet.2007.08.013, 2008.

- Felber, R., Münger, A., Neftel, A., and Ammann, C.: Eddy covariance methane flux measurements over a grazed pasture: effect of cows as moving point sources, *Biogeosciences*, 12, 3925-3940, 10.5194/bg-12-3925-2015, 2015.
- Finnigan, J.: A comment on the paper by Lee (1998): "On micrometeorological observations of surface-air exchange over tall vegetation", *Agricultural and Forest Meteorology*, 97, 55-64, [http://dx.doi.org/10.1016/S0168-1923\(99\)00049-0](http://dx.doi.org/10.1016/S0168-1923(99)00049-0), 1999.
- 5 Gamnitzer, U., Karstens, U., Kromer, B., Neubert, R. E. M., Meijer, H. A. J., Schroeder, H., and Levin, I.: Carbon monoxide: A quantitative tracer for fossil fuel CO₂?, *Journal of Geophysical Research: Atmospheres*, 111, D22302, 10.1029/2005JD006966, 2006.
- Gloor, M., Fan, S.-M., Pacala, S., and Sarmiento, J.: Optimal sampling of the atmosphere for purpose of inverse modeling: A model study, *Global Biogeochemical Cycles*, 14, 407-428, 10.1029/1999GB900052, 2000.
- 10 Granier, C., Pétron, G., Müller, J.-F., and Brasseur, G.: The impact of natural and anthropogenic hydrocarbons on the tropospheric budget of carbon monoxide, *Atmospheric Environment*, 34, 5255-5270, [http://dx.doi.org/10.1016/S1352-2310\(00\)00299-5](http://dx.doi.org/10.1016/S1352-2310(00)00299-5), 2000.
- Gurney, K. R., Law, R. M., Denning, A. S., Rayner, P. J., Baker, D., Bousquet, P., Bruhwiler, L., Chen, Y.-H., Ciais, P., Fan, S., Fung, I. Y., Gloor, M., Heimann, M., Higuchi, K., John, J., Maki, T., Maksyutov, S., Masarie, K., Peylin, P., Prather, M., 15 Pak, B. C., Randerson, J., Sarmiento, J., Taguchi, S., Takahashi, T., and Yuen, C.-W.: Towards robust regional estimates of CO₂ sources and sinks using atmospheric transport models, *Nature*, 415, 626-630, http://www.nature.com/nature/journal/v415/n6872/supinfo/415626a_S1.html, 2002.
- Haszpra, L., Barcza, Z., Davis, K. J., and Tarczay, K.: Long-term tall tower carbon dioxide flux monitoring over an area of mixed vegetation, *Agricultural and Forest Meteorology*, 132, 58-77, 10.1016/j.agrformet.2005.07.002, 2005.
- 20 Henne, S., Brunner, D., Oney, B., Leuenberger, M., Eugster, W., Bamberger, I., Meinhardt, F., Steinbacher, M., and Emmenegger, L.: Validation of Swiss Methane Emission Inventories by Atmospheric Observations and Inverse Modelling, *Atmos. Chem. Phys.*, submitted.
- Hiller, R. V., Bretscher, D., DelSontro, T., Diem, T., Eugster, W., Henneberger, R., Hobi, S., Hodson, E., Imer, D., Kreuzer, M., Künzle, T., Merbold, L., Niklaus, P. A., Rihm, B., Schellenberger, A., Schroth, M. H., Schubert, C. J., Siegrist, H., 25 Stieger, J., Buchmann, N., and Brunner, D.: Anthropogenic and natural methane fluxes in Switzerland synthesized within a spatially explicit inventory, *Biogeosciences*, 11, 1941-1959, 10.5194/bg-11-1941-2014, 2014.
- IPCC: Climate Change 2013: The Physical Science Basis. Contribution of Working Group I to the Fifth Assessment Report of the Intergovernmental Panel on Climate Change, Cambridge University Press, Cambridge, United Kingdom and New York, NY, USA, 1535 pp., 2013.
- 30 Kirschke, S., Bousquet, P., Ciais, P., Saunio, M., Canadell, J. G., Dlugokencky, E. J., Bergamaschi, P., Bergmann, D., Blake, D. R., Bruhwiler, L., Cameron-Smith, P., Castaldi, S., Chevallier, F., Feng, L., Fraser, A., Heimann, M., Hodson, E. L., Houweling, S., Josse, B., Fraser, P. J., Krummel, P. B., Lamarque, J.-F., Langenfelds, R. L., Le Quere, C., Naik, V., O'Doherty, S., Palmer, P. I., Pison, I., Plummer, D., Poulter, B., Prinn, R. G., Rigby, M., Ringeval, B., Santini, M., Schmidt, M., Shindell, D. T., Simpson, I. J., Spahni, R., Steele, L. P., Strode, S. A., Sudo, K., Szopa, S., van der Werf, G. R., 35 Voulgarakis, A., van Weele, M., Weiss, R. F., Williams, J. E., and Zeng, G.: Three decades of global methane sources and sinks, *Nature Geosci*, 6, 813-823, 10.1038/ngeo1955
<http://www.nature.com/ngeo/journal/v6/n10/abs/ngeo1955.html#supplementary-information>, 2013.
- Le Quéré, C., Moriarty, R., Andrew, R. M., Peters, G. P., Ciais, P., Friedlingstein, P., Jones, S. D., Sitch, S., Tans, P., Arneeth, A., Boden, T. A., Bopp, L., Bozec, Y., Canadell, J. G., Chini, L. P., Chevallier, F., Cosca, C. E., Harris, I., Hoppema, M., Houghton, R. A., House, J. I., Jain, A. K., Johannessen, T., Kato, E., Keeling, R. F., Kitidis, V., Klein Goldewijk, K., Koven, C., Landa, C. S., Landschützer, P., Lenton, A., Lima, I. D., Marland, G., Mathis, J. T., Metzl, N., Nojiri, Y., Olsen, A., Ono, T., Peng, S., Peters, W., Pfeil, B., Poulter, B., Raupach, M. R., Regnier, P., Rödenbeck, C., Saito, S., Salisbury, J. E., Schuster, U., Schwinger, J., Séférian, R., Segschneider, J., Steinhoff, T., Stocker, B. D., Sutton, A. J., Takahashi, T., 40

- Tilbrook, B., van der Werf, G. R., Viovy, N., Wang, Y. P., Wanninkhof, R., Wiltshire, A., and Zeng, N.: Global carbon budget 2014, *Earth Syst. Sci. Data*, 7, 47-85, 10.5194/essd-7-47-2015, 2015.
- Lee, X.: On micrometeorological observations of surface-air exchange over tall vegetation, *Agricultural and Forest Meteorology*, 91, 39-49, [http://dx.doi.org/10.1016/S0168-1923\(98\)00071-9](http://dx.doi.org/10.1016/S0168-1923(98)00071-9), 1998.
- 5 Legendre, P., and Legendre, L.: Chapter 10 - Interpretation of ecological structures, in: *Developments in Environmental Modelling*, edited by: Pierre, L., and Louis, L., Elsevier, 521-624, 2012.
- Masarie, K. A., and Tans, P. P.: Extension and integration of atmospheric carbon dioxide data into a globally consistent measurement record, *Journal of Geophysical Research: Atmospheres*, 100, 11593-11610, 10.1029/95JD00859, 1995.
- Oney, B., Henne, S., Gruber, N., Leuenberger, M., Bamberger, I., Eugster, W., and Brunner, D.: The CarboCount CH sites: characterization of a dense greenhouse gas observation network, *Atmos. Chem. Phys.*, 15, 11147-11164, 10.5194/acp-15-11147-2015, 2015.
- 10 Pales, J. C., and Keeling, C. D.: The concentration of atmospheric carbon dioxide in Hawaii, *Journal of Geophysical Research*, 70, 6053-6076, 10.1029/JZ070i024p06053, 1965.
- Peylin, P., Rayner, P. J., Bousquet, P., Carouge, C., Hourdin, F., Heinrich, P., Ciais, P., and contributors, A.: Daily CO₂ flux estimates over Europe from continuous atmospheric measurements: 1, inverse methodology, *Atmos. Chem. Phys.*, 5, 3173-3186, 10.5194/acp-5-3173-2005, 2005.
- 15 Popa, M. E., Gloor, M., Manning, A. C., Jordan, A., Schultz, U., Haensel, F., Seifert, T., and Heimann, M.: Measurements of greenhouse gases and related tracers at Bialystok tall tower station in Poland, *Atmos. Meas. Tech.*, 3, 407-427, 10.5194/amt-3-407-2010, 2010.
- 20 Randerson, J. T., Thompson, M. V., Conway, T. J., Fung, I. Y., and Field, C. B.: The contribution of terrestrial sources and sinks to trends in the seasonal cycle of atmospheric carbon dioxide, *Global Biogeochemical Cycles*, 11, 535-560, 10.1029/97GB02268, 1997.
- Rödenbeck, C., Houweling, S., Gloor, M., and Heimann, M.: CO₂ flux history 1982–2001 inferred from atmospheric data using a global inversion of atmospheric transport, *Atmos. Chem. Phys.*, 3, 1919-1964, 10.5194/acp-3-1919-2003, 2003.
- 25 Ruckstuhl, A. F., Henne, S., Reimann, S., Steinbacher, M., Vollmer, M. K., O'Doherty, S., Buchmann, B., and Hueglin, C.: Robust extraction of baseline signal of atmospheric trace species using local regression, *Atmos. Meas. Tech.*, 5, 2613-2624, 10.5194/amt-5-2613-2012, 2012.
- Schmidt, M., Lopez, M., Yver Kwok, C., Messenger, C., Ramonet, M., Wastine, B., Vuillemin, C., Truong, F., Gal, B., Parmentier, E., Cloué, O., and Ciais, P.: High-precision quasi-continuous atmospheric greenhouse gas measurements at Trainou tower (Orléans forest, France), *Atmospheric Measurement Techniques*, 7, 2283-2296, 10.5194/amt-7-2283-2014, 2014.
- 30 Seinfeld, J. H.: *Atmospheric chemistry and physics : from air pollution to climate change*, 2nd ed ed., edited by: Pandis, S. N., Hoboken, N.J : J. Wiley, Hoboken, N.J, 2006.
- Swiss Federal Office for the Environment FOEN: NABEL – Luftbelastung 2013. Messresultate des Nationalen Beobachtungsnetzes für Luftfremdstoffe (NABEL), Bundesamt für Umwelt, Bern, 130 S., 2014.
- 35 Swiss Federal Office for the Environment FOEN: Switzerland's Greenhouse Gas Inventory 1990-2013 - National Inventory Report 2015, 2015a.
- Swiss Federal Office for the Environment FOEN: Switzerland's Informative Inventory Report 2015, 2015b.
- Tans, P. P.: 11 - Observational Strategy for Assessing the Role of Terrestrial Ecosystems in the Global Carbon Cycle: Scaling Down to Regional Levels, in: *Scaling Physiological Processes*, edited by: Field, J. R. E. B., Academic Press, San Diego, 179-190, 1993.
- 40

- Thompson, R. L., Manning, A. C., Gloor, E., Schultz, U., Seifert, T., Hänsel, F., Jordan, A., and Heimann, M.: In-situ measurements of oxygen, carbon monoxide and greenhouse gases from Ochsenkopf tall tower in Germany, *Atmos. Meas. Tech.*, 2, 573-591, 10.5194/amt-2-573-2009, 2009.
- Thoning, K. W., Tans, P. P., and Komhyr, W. D.: Atmospheric carbon dioxide at Mauna Loa Observatory: 2. Analysis of the NOAA GMCC data, 1974–1985, *Journal of Geophysical Research: Atmospheres*, 94, 8549-8565, 10.1029/JD094iD06p08549, 1989.
- Vermeulen, A. T., Hensen, A., Popa, M. E., van den Bulk, W. C. M., and Jongejan, P. A. C.: Greenhouse gas observations from Cabauw Tall Tower (1992–2010), *Atmos. Meas. Tech.*, 4, 617-644, 10.5194/amt-4-617-2011, 2011.
- Warwick, N. J., Bekki, S., Law, K. S., Nisbet, E. G., and Pyle, J. A.: The impact of meteorology on the interannual growth rate of atmospheric methane, *Geophysical Research Letters*, 29, 8-1-8-4, 10.1029/2002GL015282, 2002.
- Winderlich, J., Chen, H., Gerbig, C., Seifert, T., Kolle, O., Lavrič, J. V., Kaiser, C., Höfer, A., and Heimann, M.: Continuous low-maintenance CO₂/CH₄/H₂O measurements at the Zotino Tall Tower Observatory (ZOTTO) in Central Siberia, *Atmos. Meas. Tech.*, 3, 1113-1128, 10.5194/amt-3-1113-2010, 2010.
- Winderlich, J., Gerbig, C., Kolle, O., and Heimann, M.: Inferences from CO₂ and CH₄ concentration profiles at the Zotino Tall Tower Observatory (ZOTTO) on regional summertime ecosystem fluxes, *Biogeosciences*, 11, 2055-2068, 10.5194/bg-11-2055-2014, 2014.
- World Meteorological Organization WMO Global Atmosphere Watch GAW: WMO GREENHOUSE GAS BULLETIN The State of Greenhouse Gases in the Atmosphere Based on Global Observations through 2013, 2014.
- Yi, C., Davis, K. J., Bakwin, P. S., Berger, B. W., and Marr, L. C.: Influence of advection on measurements of the net ecosystem-atmosphere exchange of CO₂ from a very tall tower, *Journal of Geophysical Research: Atmospheres*, 105, 9991-9999, 10.1029/2000jd900080, 2000.
- Zeeman, M. J., Hiller, R., Gilgen, A. K., Michna, P., Plüss, P., Buchmann, N., and Eugster, W.: Management and climate impacts on net CO₂ fluxes and carbon budgets of three grasslands along an elevational gradient in Switzerland, *Agricultural and Forest Meteorology*, 150, 519-530, <http://dx.doi.org/10.1016/j.agrformet.2010.01.011>, 2010.
- Zellweger, C., Hüglin, C., Klausen, J., Steinbacher, M., Vollmer, M., and Buchmann, B.: Inter-comparison of four different carbon monoxide measurement techniques and evaluation of the long-term carbon monoxide time series of Jungfraujoch, *Atmos. Chem. Phys.*, 9, 3491-3503, 10.5194/acp-9-3491-2009, 2009.

List of Figures

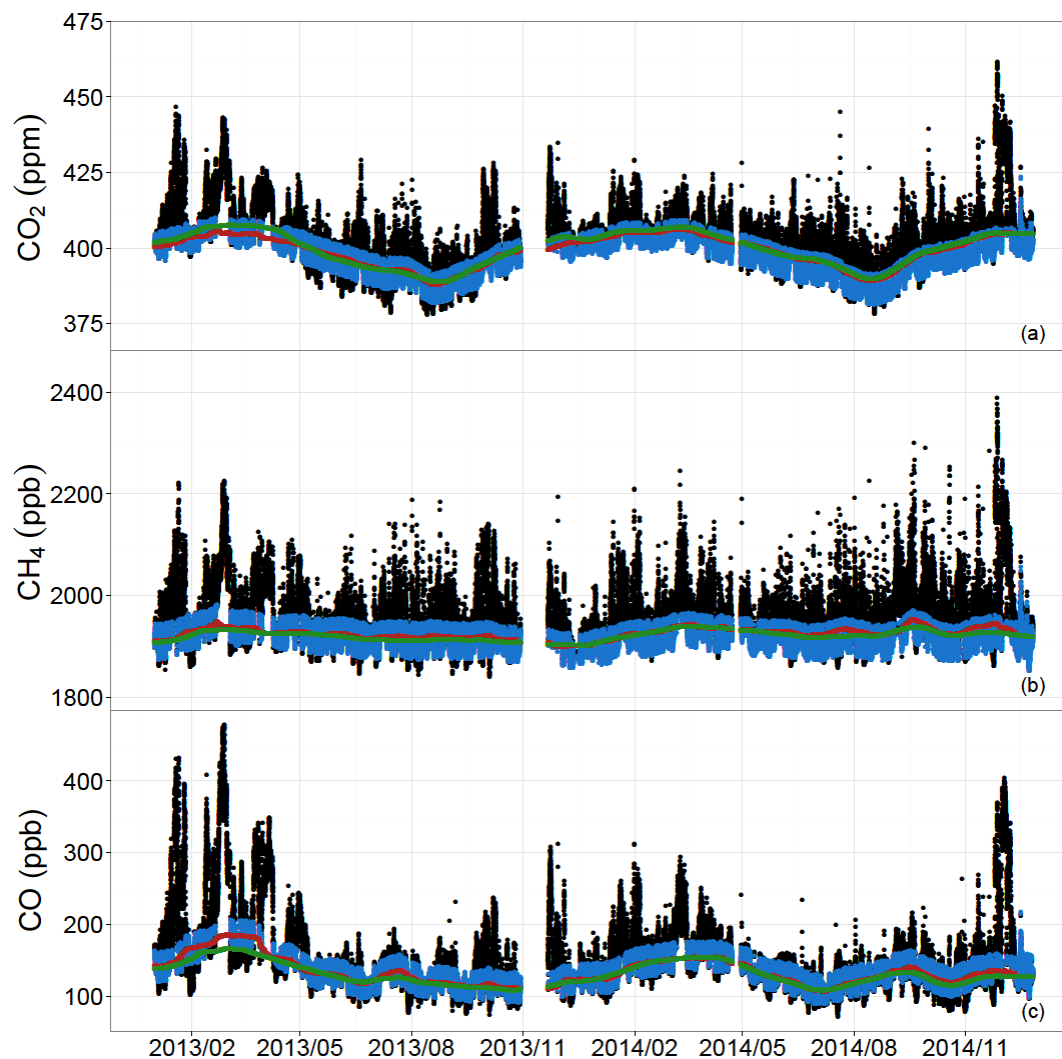


Figure 1 Time series (December 2012-December 2014) of CO₂ (a), CH₄ (b), and CO (c) at Beromünster for air sampled at 212.5 m. Color codes indicate: all measurements (black), estimated background values using 2- σ filter (blue), moving
5 average of 30 days based on the background estimates (red), and seasonal variations estimated by REBS (green).

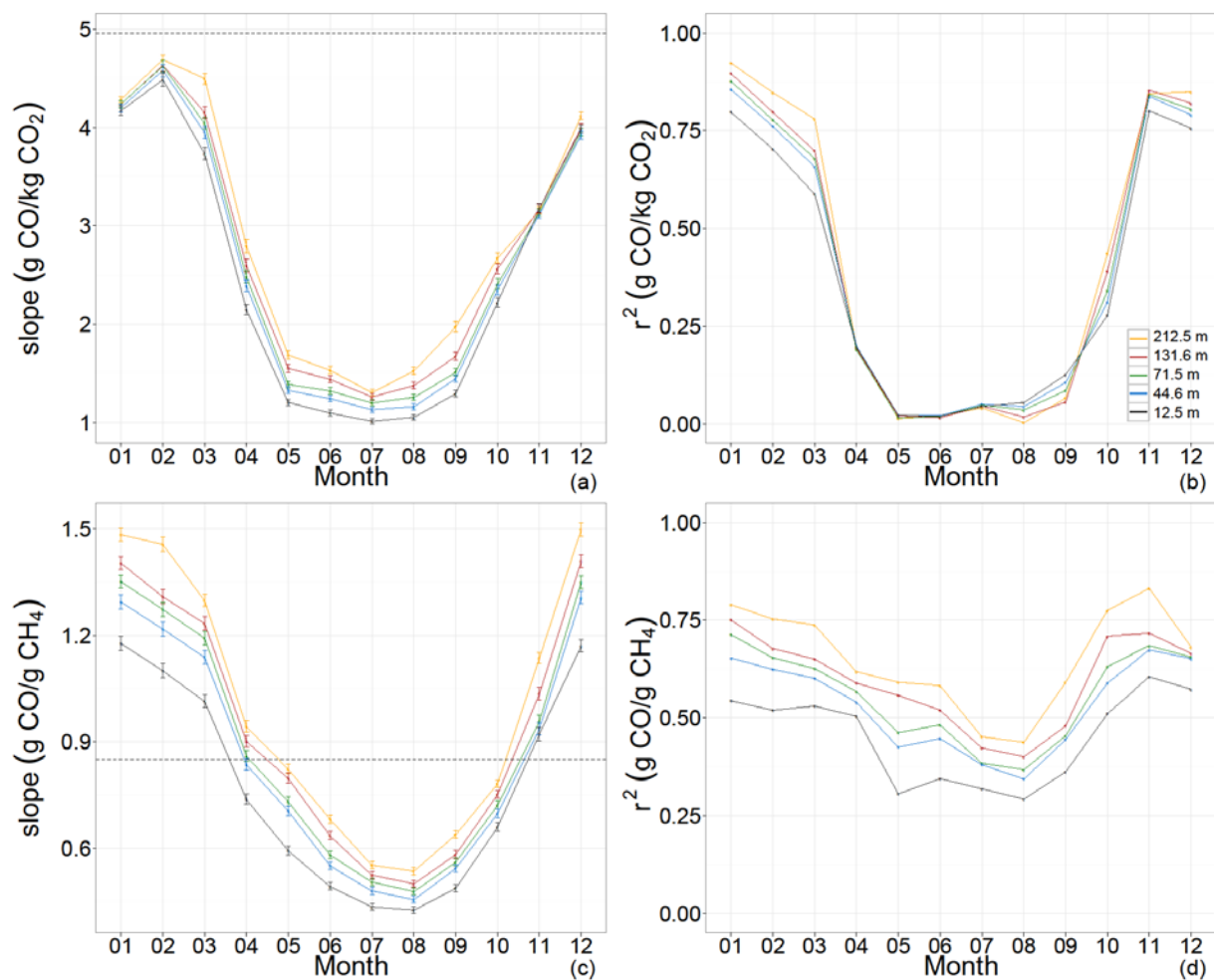


Figure 2 Slope and r^2 for $\Delta\text{CO}/\Delta\text{CO}_2$ (a, b) and $\Delta\text{CO}/\Delta\text{CH}_4$ (c, d) for the sampling levels 12.5 m (black), 44.6 m (blue), 71.5 m (green), 131.6 m (red) and 212.5 m (yellow). Horizontal dashed lines represent Swiss inventory estimates for 2013.

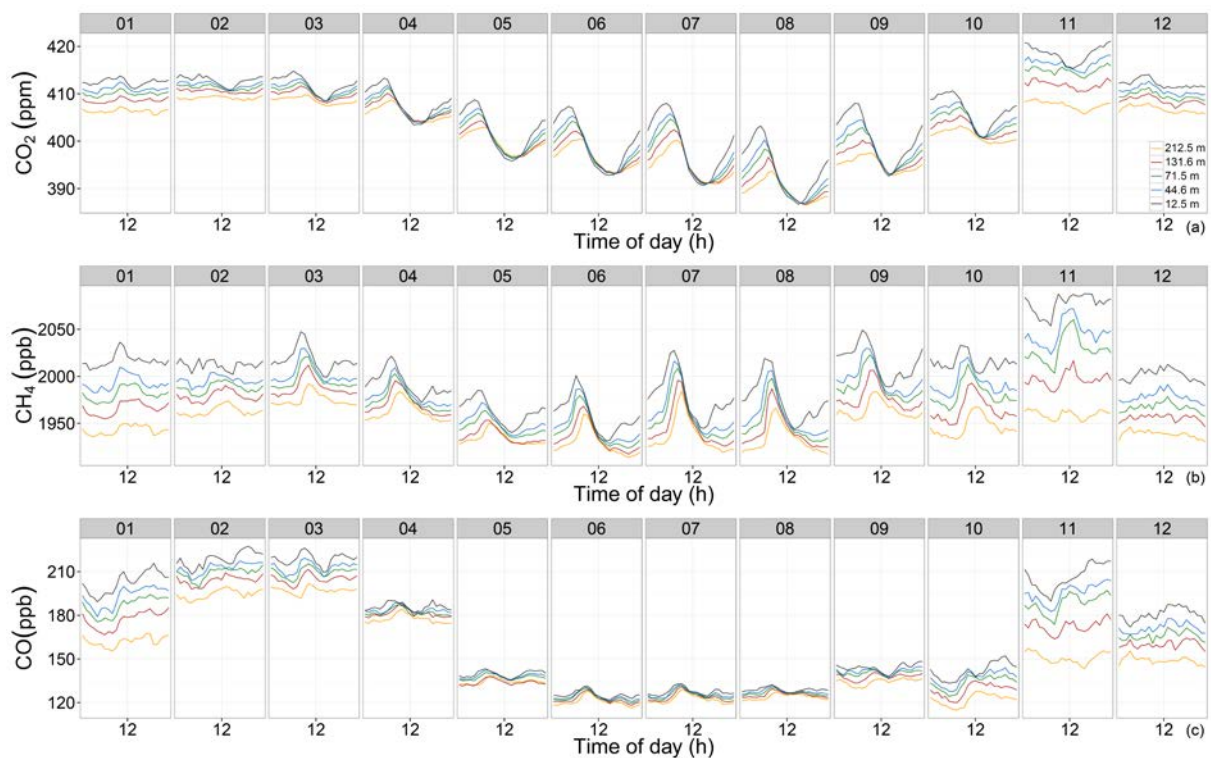


Figure 3 Monthly mean diurnal cycles of CO_2 (a), CH_4 (b) and CO (c) for the sampling levels 12.5 m (black), 44.6 m (blue), 71.5 m (green) 131.6 m (red), and 212.5 m (yellow). The x axis on each subplot is centered at noon (UTC 12:00).

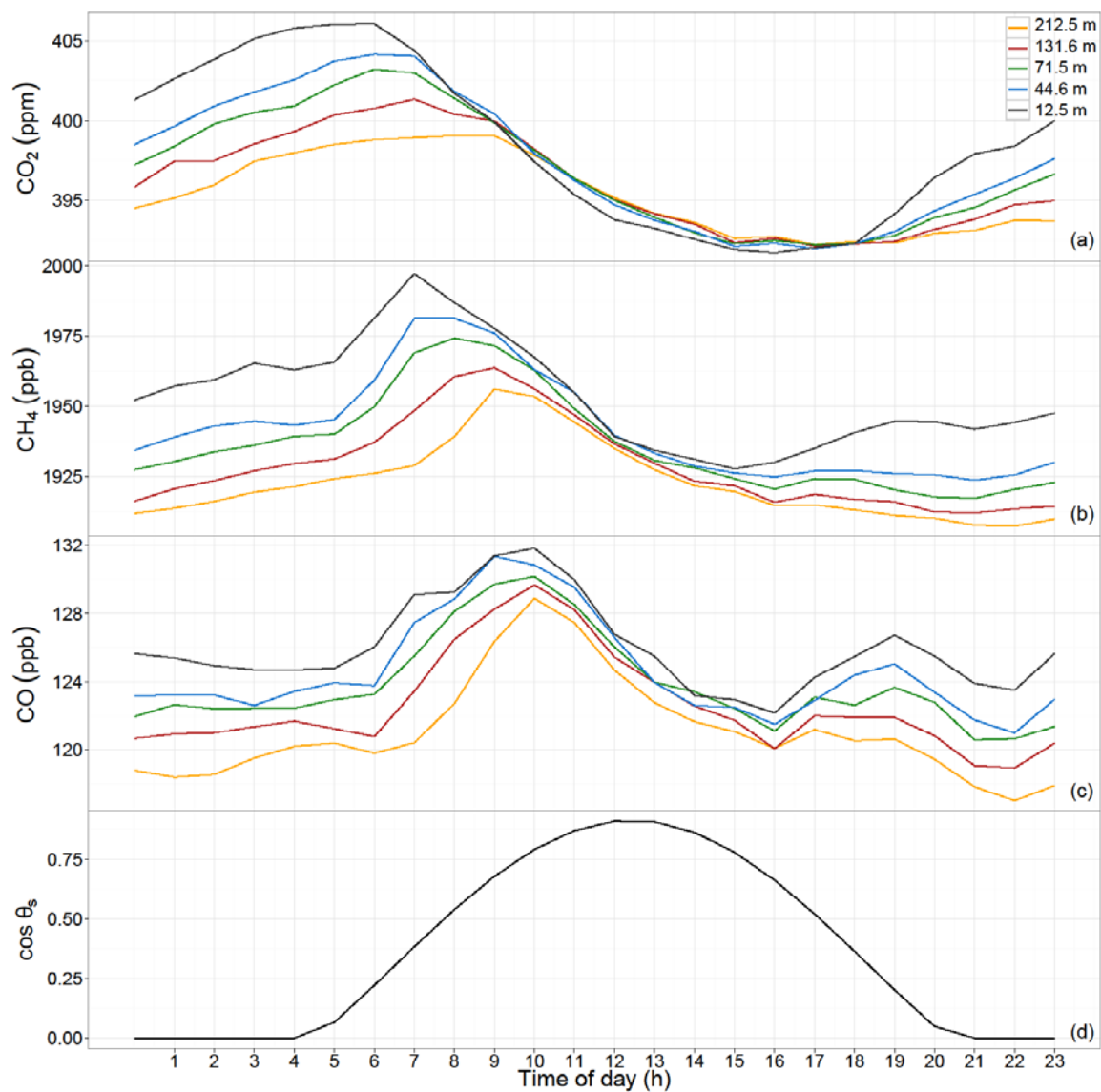


Figure 4 Mean diurnal cycles of CO₂ (a), CH₄ (b), CO (c) in June for the sampling levels 12.5 m (black), 44.6 m (blue), 71.5 m (green), 131.6 m (red), and 212.5 m (yellow) together with the cosine of the solar zenith angle (cosθ_s) calculated for the geographical coordinates of site Beromünster.

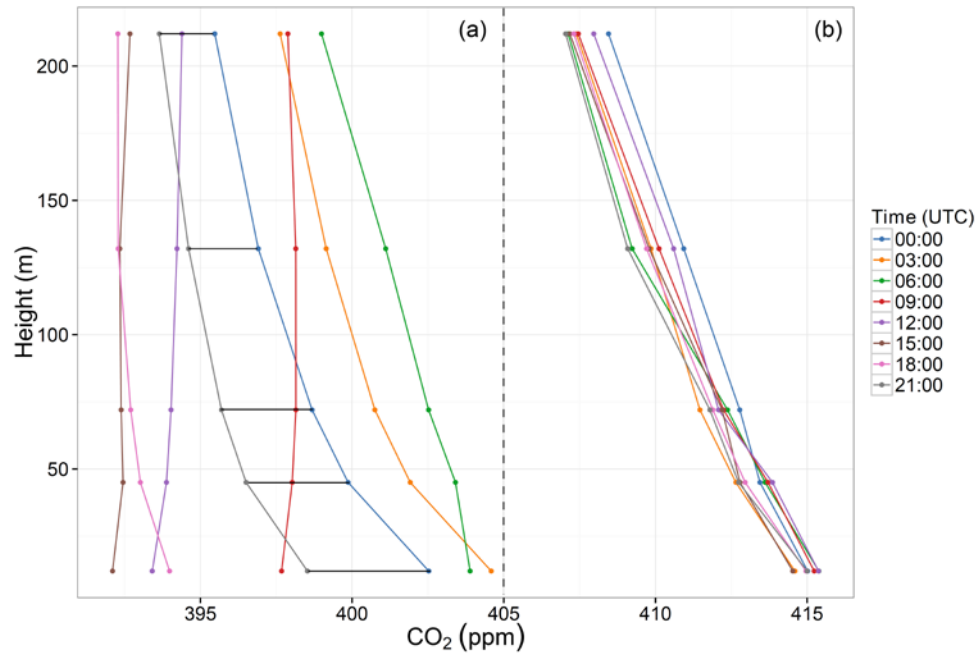


Figure 5 Development of monthly mean CO₂ profile by time of day along Beromünster tall tower (between 12.5 and 212.5 m) during June 2013 (a) and January 2013 (b).

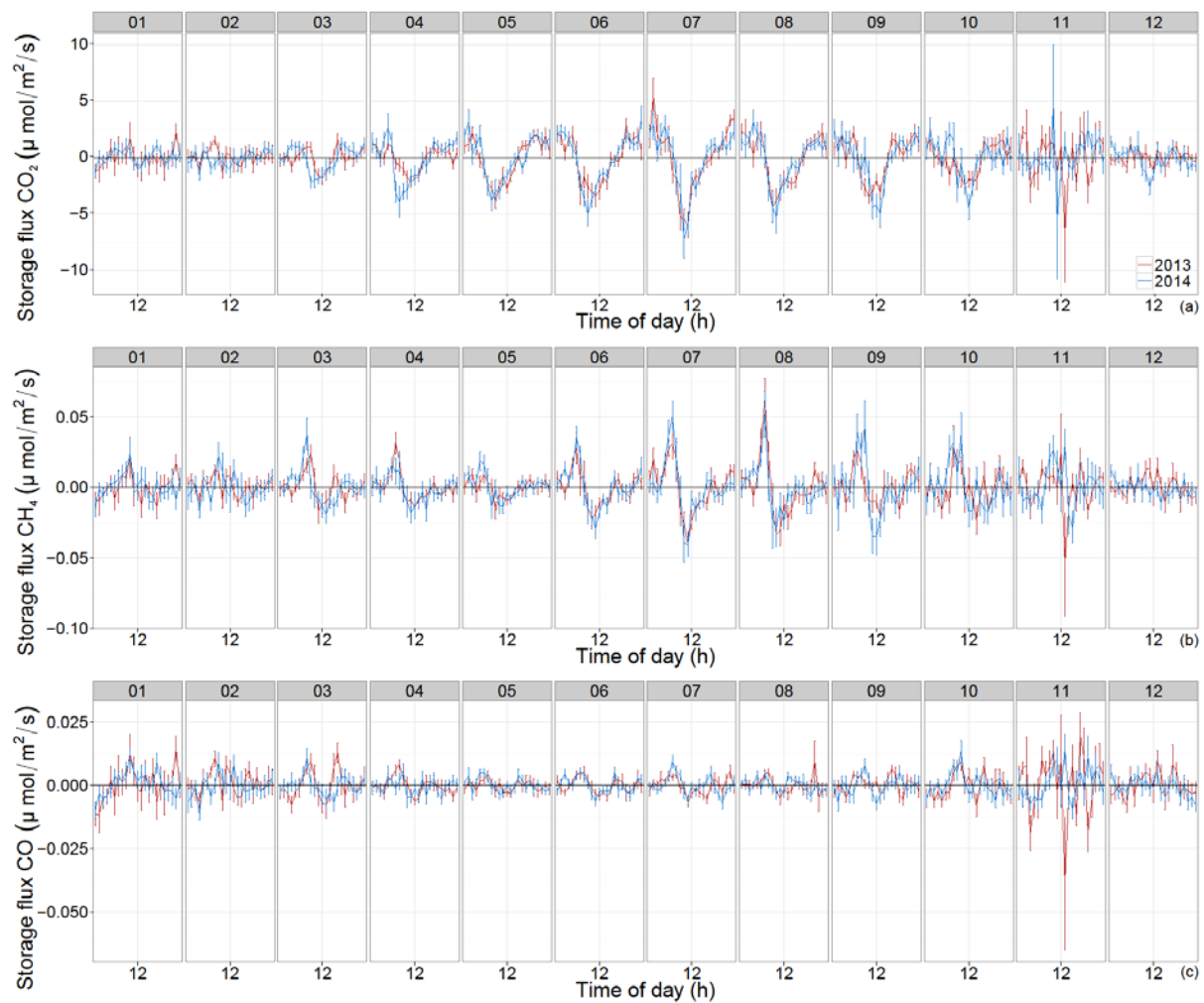


Figure 6 Diurnal cycle of the storage flux estimates for CO₂ (a), CH₄ (b) and CO (c) for the years 2013 (red) and 2014 (blue).

List of Tables

Table 1 Calculated growth rates from 2013-2014, seasonal amplitudes, and storage fluxes of species measured at Beromünster. The numbers in brackets are the estimates using the REBS technique.

Species	Growth rate (yr ⁻¹)	Amplitude	Storage flux (g C/m ²)	
			2013	2014
CO ₂ (ppm)	1.78 ± 0.05 (1.80 ± 0.01)	13.1	-29	-35
CH ₄ (ppb)	9.66 ± 0.37 (9.69 ± 0.07)	-		
CO (ppb)	-1.27 ± 0.26 (-0.20 ± 0.09)	47.7	-	-