

(a)

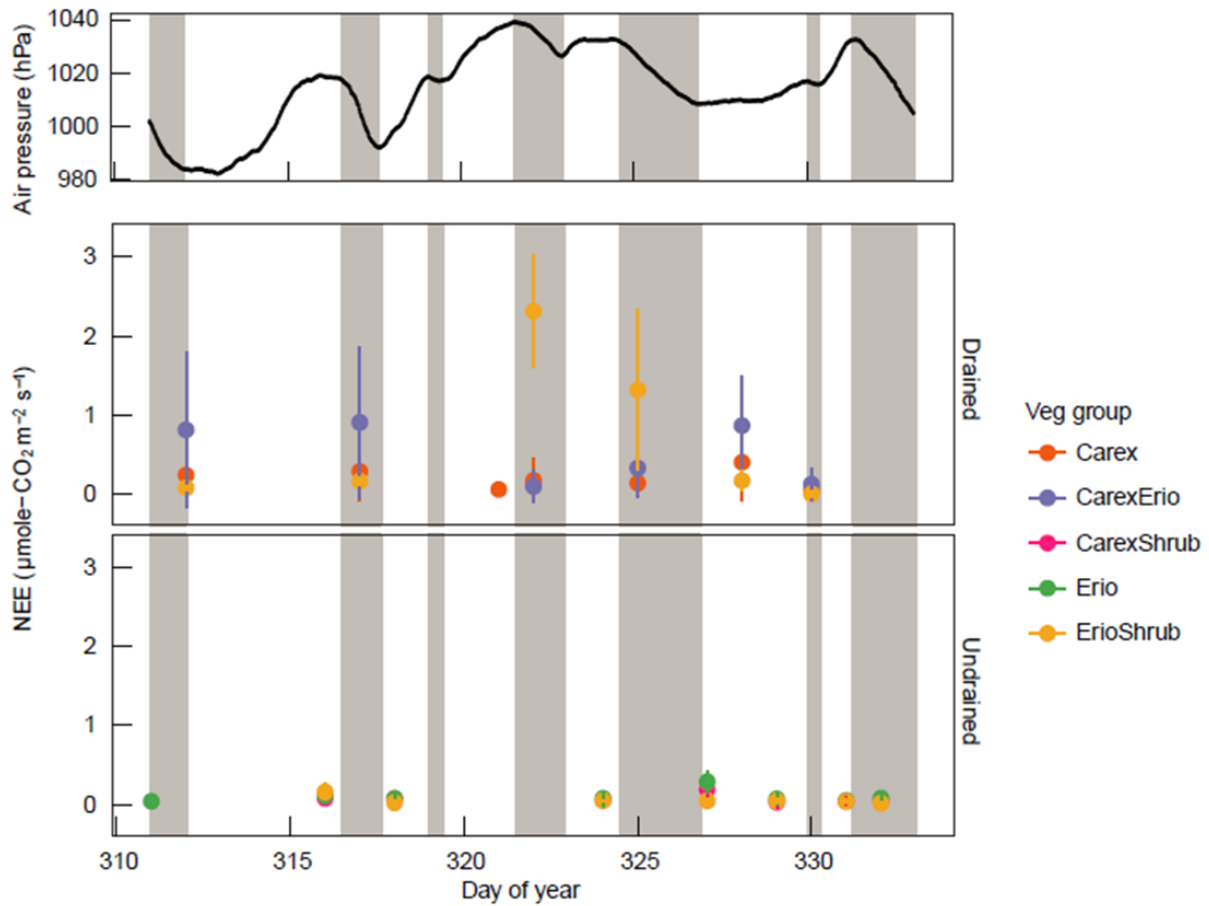


(b)

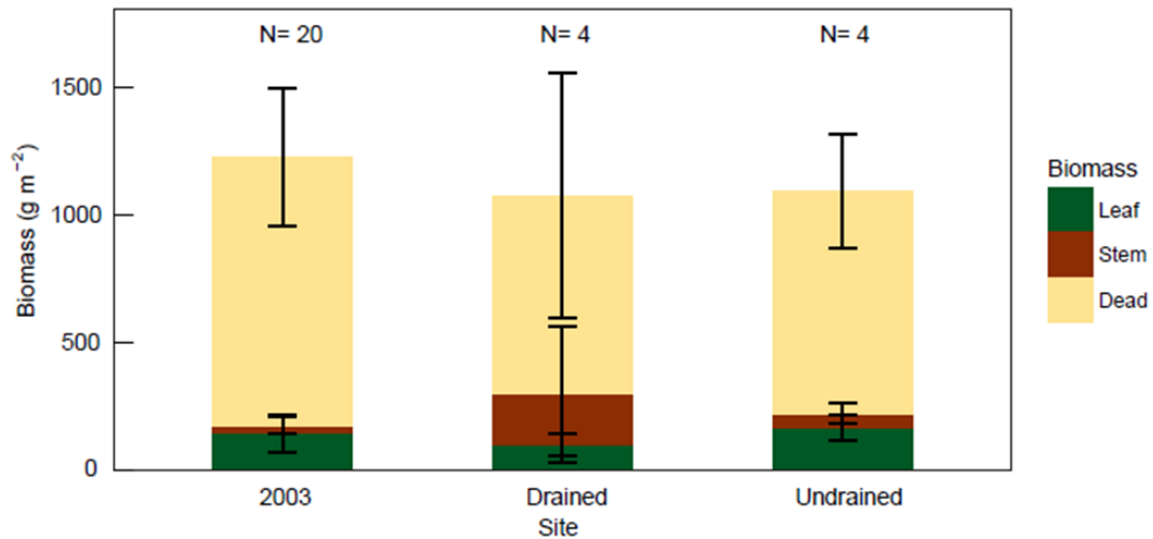


1
2

Appendix 1 Dominant vegetation species, (a) *Carex* species, (b) *Eriophorum angustifolium*



3
 4 Appendix 2 Atmospheric pressure (top) and NEE of November 2013 by vegetation group
 5 presented in parallel. Time period with decreasing air pressure was shaded in gray. NEE fluxes
 6 were pooled by vegetation group (color) and mean values and standard deviation were plotted.



7
8 Appendix 3 Total aboveground dry biomass of standing dead and living plants, measured in
9 2003 (N=20) and 2013 (N=4). Weight of dry biomass was summed up regardless of species.
10 Dead: standing dead material largely from *Carex* species and *Eriophorum angustifolium*, stem:
11 stems mainly from shrub species, leaf: green leaves of all species. Mean and standard deviation
12 of replicates are described with bars and error bars.