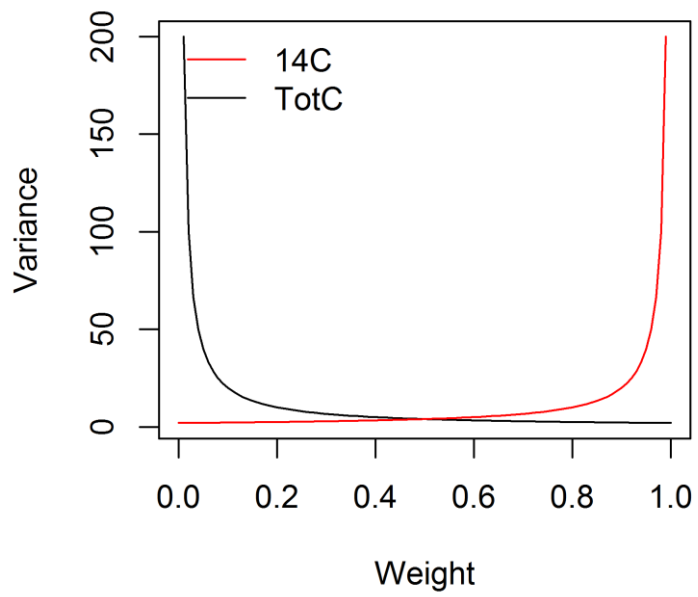
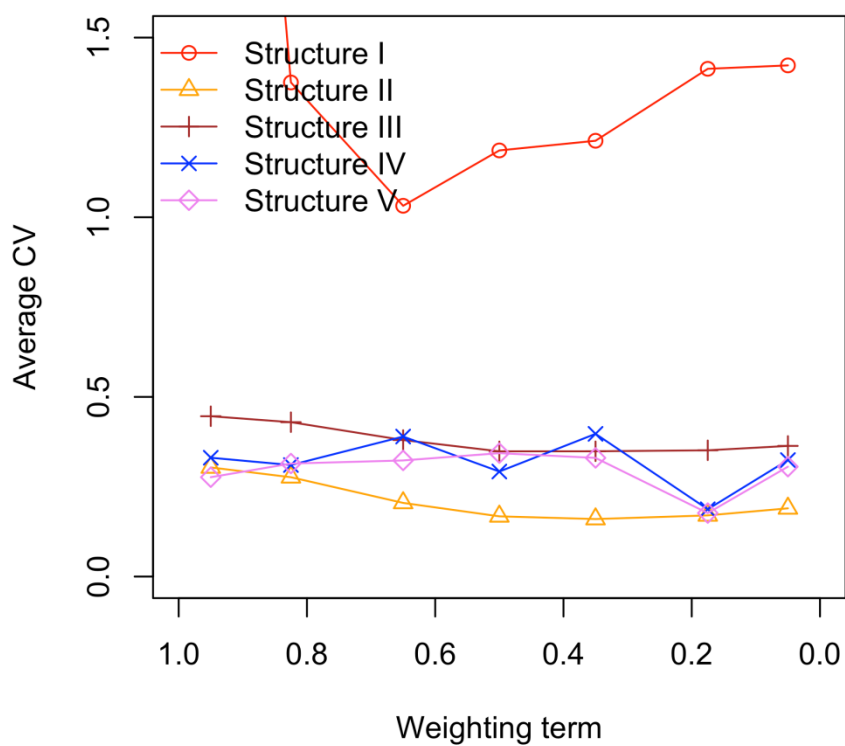


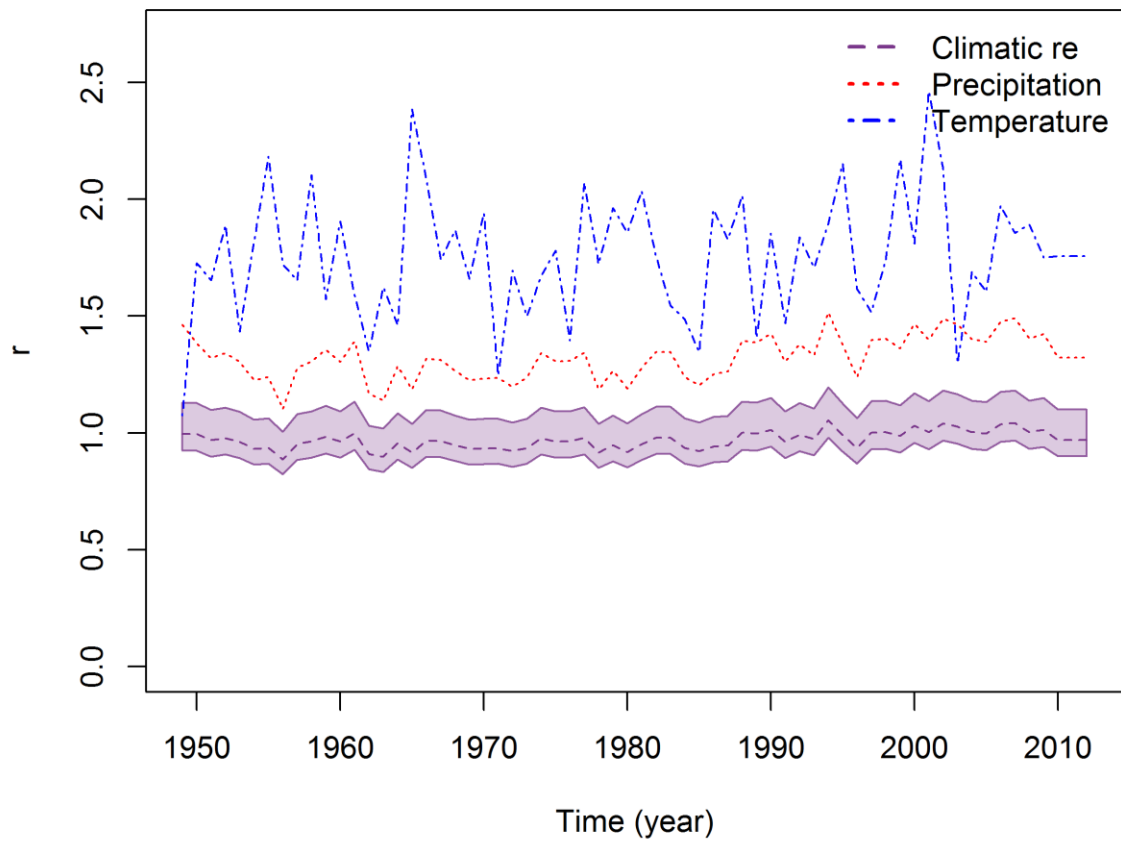
S1: Effect of the weighting parameter on the variance defining the probability distribution of the two data streams.



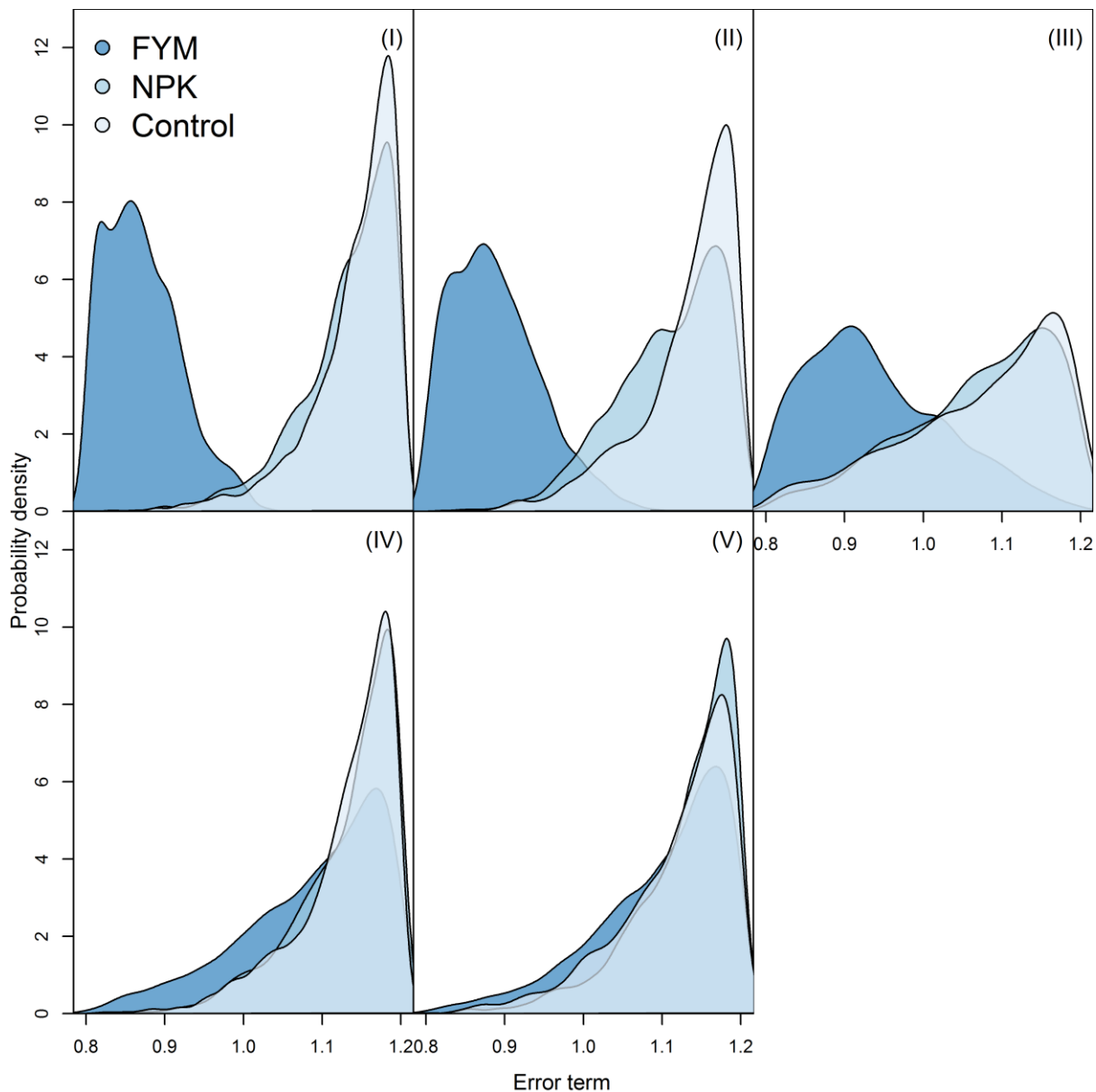
S2: Coefficient of variation of all the parameters (average) among all the three treatments for the five model structures with the variation of the relative weight of $SO^{14}C$ over total C. In this scale 1 means only total C, 0 means only $SO^{14}C$.



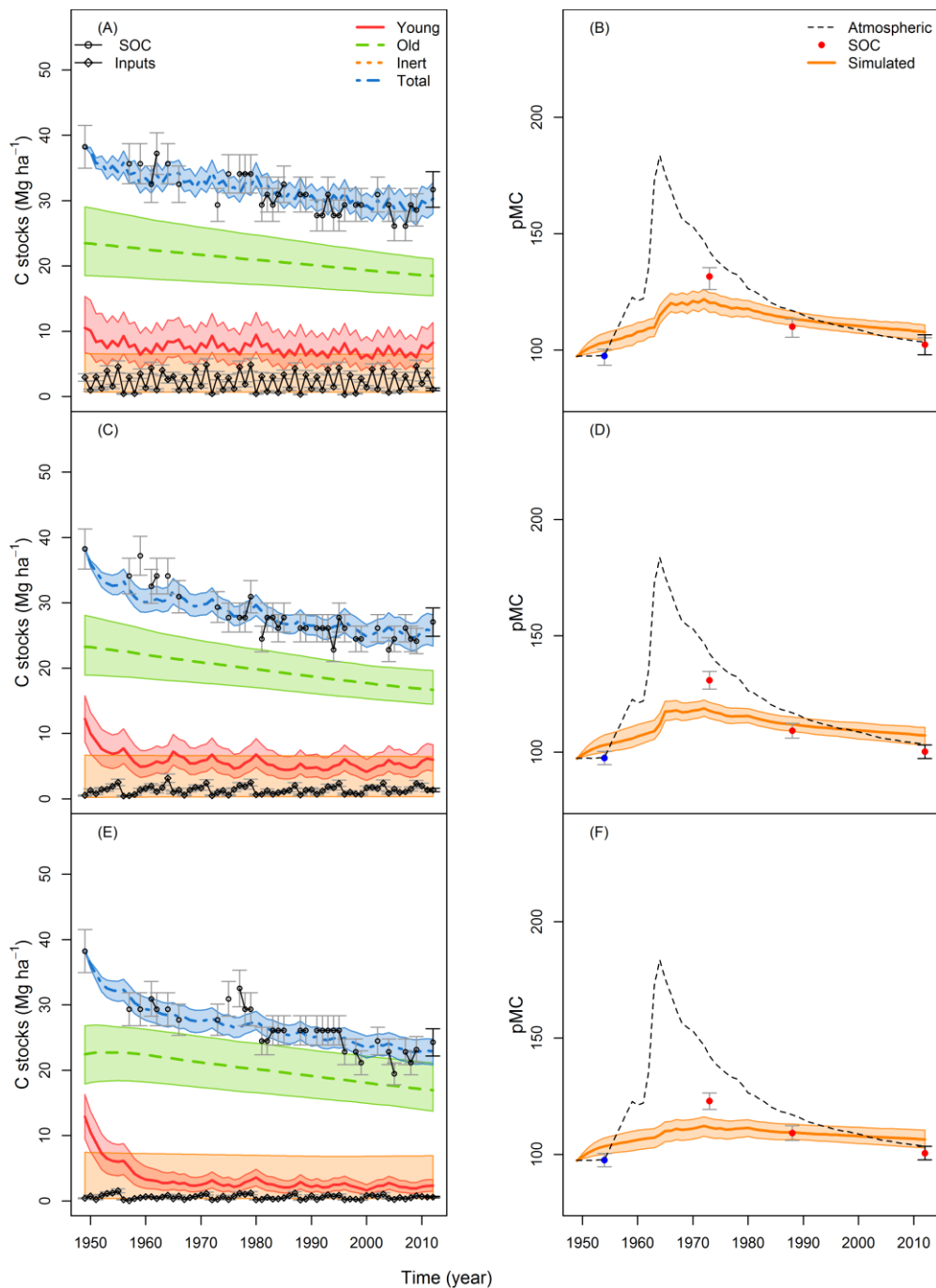
S3: Value (dimensionless) took by the climatic parameter r (Eq. (9)) over the simulation. The shaded area represents the parameter uncertainty.



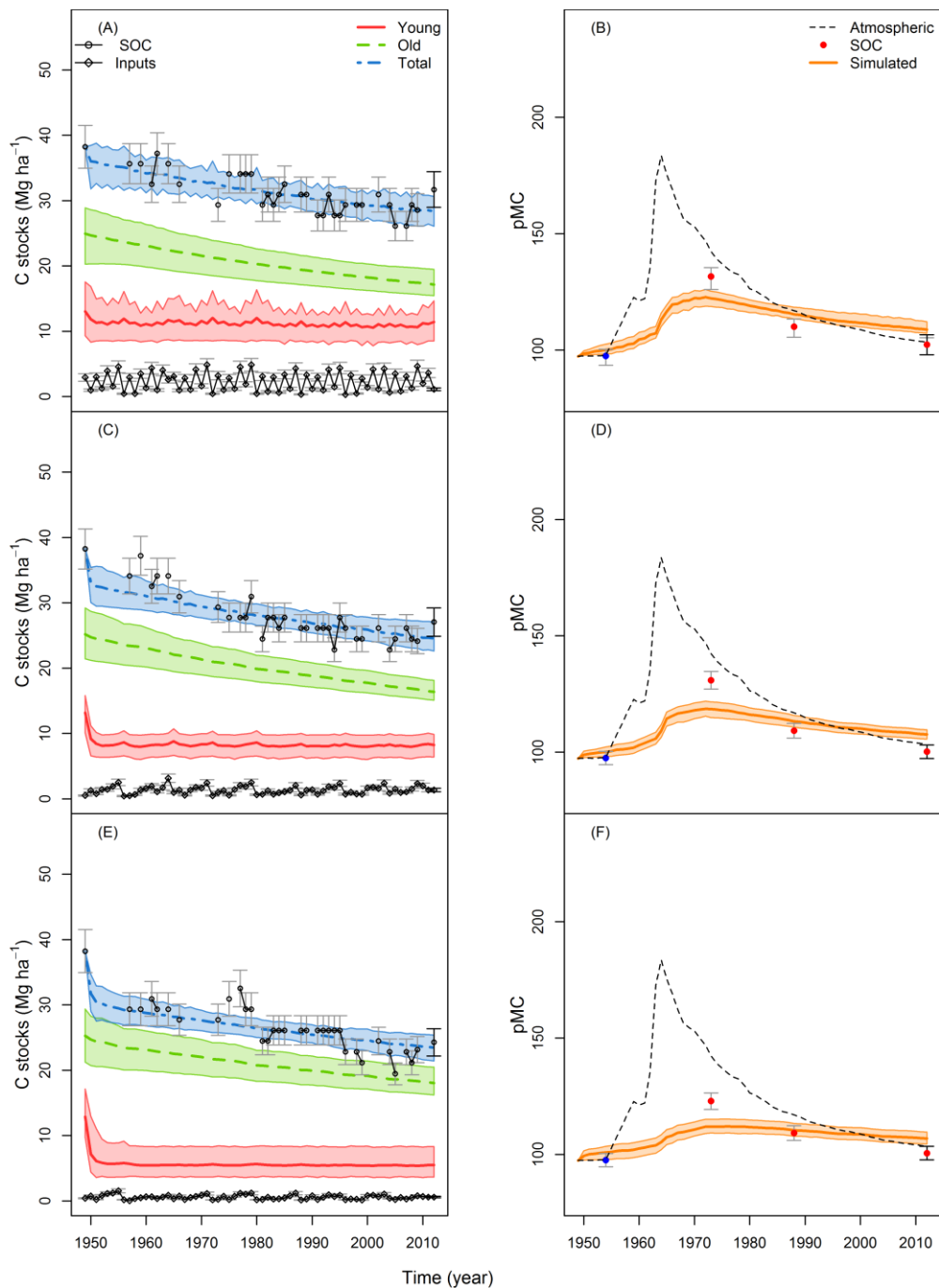
S4: The posterior probability density (vertical axis) for the input error term (dimensionless, horizontal axis) for model structure I (A), II (B), II, (C), IV (D) and V (E).



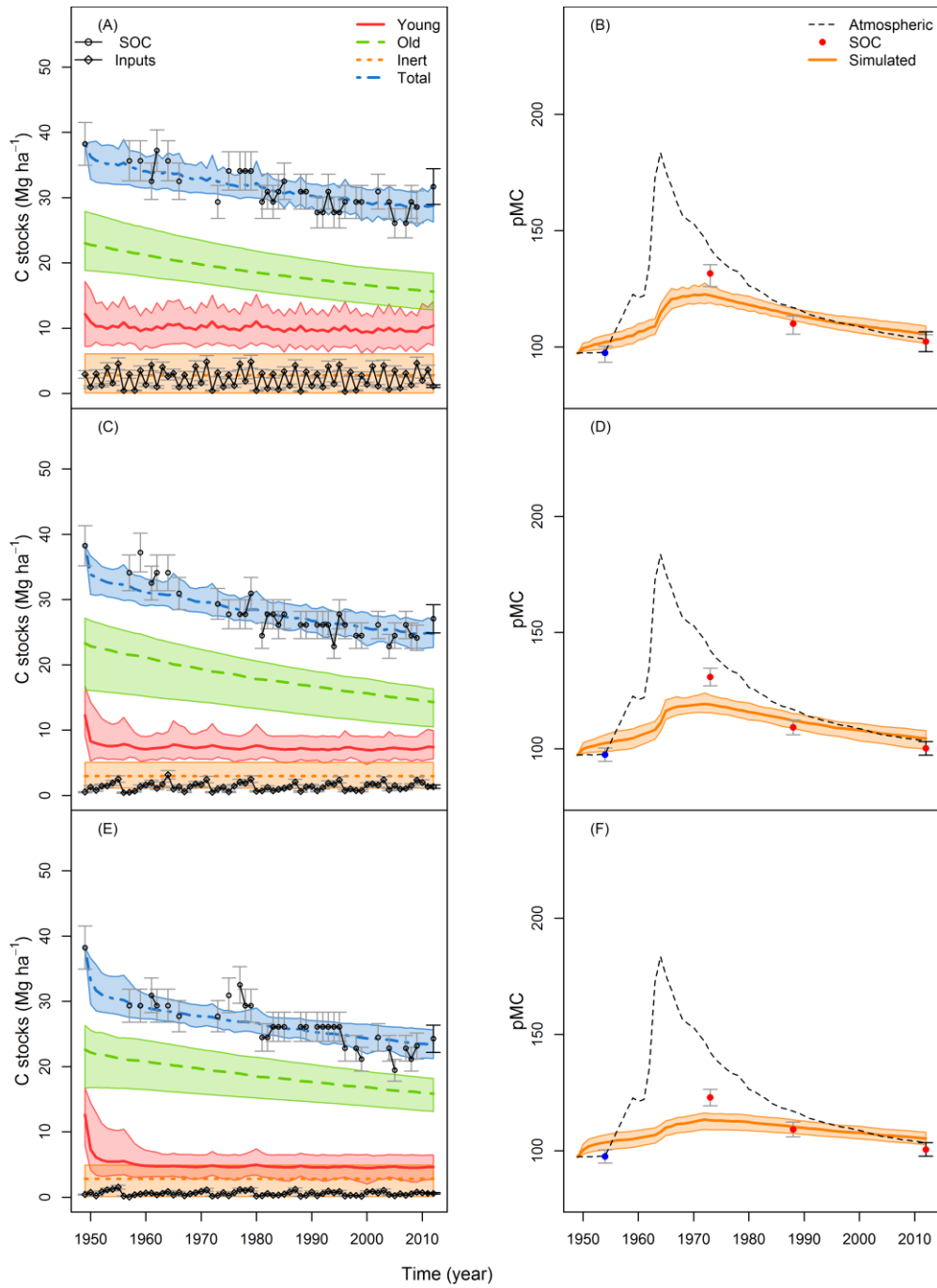
S5: Simulation of SOC pools in the ZOFE trial as described by model structure III, with weighting factor = 0.35. Error bars represent the measured (black) and estimated (dark grey) standard error of the measurements. SOC (A,C,E) is in Mg ha^{-1} , while SO^{14}C (B, D, F) is in pMC.



S6: Simulation of SOC pools in the ZOFE trial as described by model structure IV, with weighting factor = 0.35. Error bars represent the measured (black) and estimated (dark grey) standard error of the measurements. SOC (A,C,E) is in Mg ha^{-1} , while SO^{14}C (B, D, F) is in pMC.

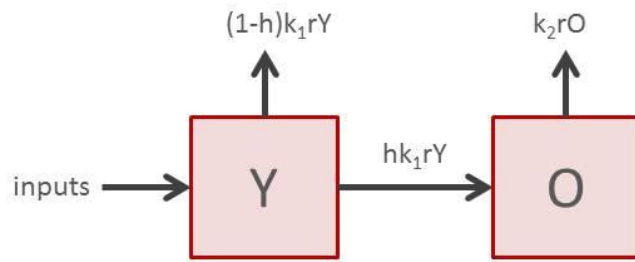


S7: Simulation of SOC pools in the ZOFE trial as described by model structure V, with weighting factor = 0.35. Error bars represent the measured (black) and estimated (dark grey) standard error of the measurements. SOC (A,C,E) is in Mg ha^{-1} , while SO^{14}C (B, D, F) is in pMC.



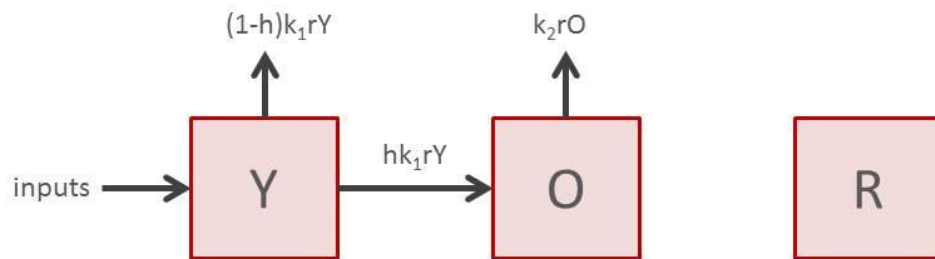
S8: Graphical abstract of model structure I

Model
Structure I



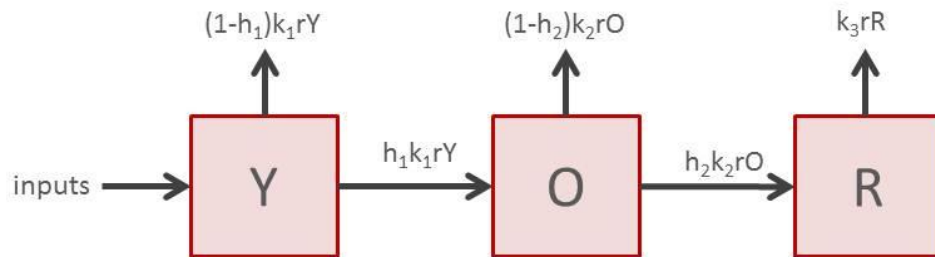
S9: Graphical abstract of model structure II

Model
Structure II



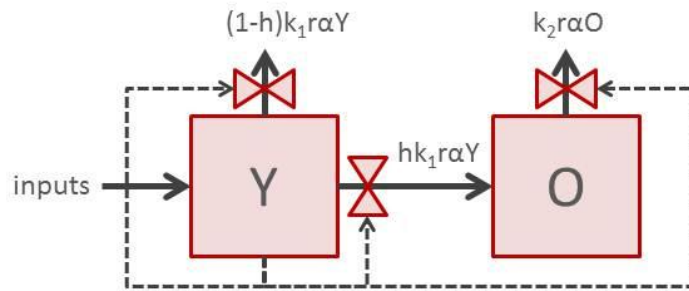
S10: Graphical abstract of model structure III

**Model
Structure III**



S11: Graphical abstract of model structure IV

Model Structure IV



S12: Graphical abstract of model structure V

Model Structure IV

