

Response to reviewer for Response of Export Production and Dissolved Oxygen Concentrations in Oxygen Minimum Zones to pCO₂ and Temperature Stabilization Scenarios in the Biogeochemical Model HAMOCC 2.0

Reviewer comment 1:

Page 6, Lines 16-17. This means that the temperature of the whole volume of the ocean, including the deep water of the Arctic and Antarctic origin is going to increase by 2.8, 5.9, 8.7 and 11.5 °C

Author response: The change in average global seawater temperature is the same throughout the ocean. The increases in seawater temperature are an increase in the global average temperature. Therefore, the models global average seawater temperature is 19.4 °C and at 2 X CO₂ the average temperature is 22.2 °C. This does not imply that the ocean temperature is uniform at 22.2 °C only the increase is uniform; therefore, poles stay much cooler than the equatorial region.

Reviewer comment 2:

Page 6, lines 24-27. If u, v and w are reduced by 25% to 100% you cannot say that convection does not change.

Author response: Yes, you are correct. The convection was not explicitly changed in the model but would be affected by the changes in velocities. The sentence has been corrected to read ' Diffusion is not changed in these experiments and remains at preindustrial reference simulation values.'

Reviewer comment 3:

Page 9, line 12. You mean DO rather than DOC, isn't it?

Author response: No, this line is correct. As POC decreases in the OMZ area the DOC increases. The simulated OMZ expands even with the sluggish velocities up to the 50% reduction in v, u and w. We believe this is due to the increase in dissolved organic carbon. At reduction of greater than 50% the OMZ contract and both POC and DOC are reduced.

Reviewer comment 4:

Page 14, lines 12-13. Please, edit this sentence.

Author response: Thank you for pointing this out. The sentence has been corrected to read 'The expansion of OMZs in this study is the result of changes in temperature-dependent productivity and changes in O₂ solubility. Consequently, OMZ expansion simulated may be modest due to no consideration of a weakened connection between the OMZs and the ocean surface in the future.'

Response of Export Production and Dissolved Oxygen Concentrations in Oxygen Minimum Zones to pCO₂ and Temperature Stabilization Scenarios in the Biogeochemical Model HAMOCC 2.0

T. Beaty¹, C. Heinze^{2,3}, T. Hughlett⁴, and A. M. E. Winguth⁴

[1]{New Mexico Consortium-Biological Laboratory, Los Alamos, New Mexico}

[2]{Geophysical Institute, University of Bergen, and Bjerknes Centre for Climate Research, Bergen, Norway}

[3]{Uni Research Climate, Bergen, Norway}

[4]{Department of Earth and Environmental Sciences, University of Texas Arlington, Arlington, Texas}

Correspondence to: T. Beaty (tbeaty@newmexicoconsortium.org)

Abstract

Dissolved oxygen (DO) concentration in the ocean is an important component of marine biogeochemical cycles and will be greatly altered as climate change persists. In this study a global oceanic carbon cycle model (HAMOCC 2.0) is used to address how mechanisms of oxygen minimum zones (OMZ) expansion respond to changes in CO₂ radiative forcing. Atmospheric pCO₂ is increased at a rate of 1% annually and the model is stabilized at 2 X, 4 X, 6 X, and 8 X preindustrial pCO₂ levels. With an increase in CO₂ radiative forcing, the OMZ in the Pacific Ocean is controlled largely by changes in particulate organic carbon (POC) export, resulting in increased remineralization and thus expanding the oxygen minimum zones within the tropical Pacific Ocean. A potential decline in primary producers in the future as a result of environmental stress due to ocean warming and acidification could lead to a substantial reduction of POC export production, vertical POC flux, and thus increased DO concentration particularly in the Pacific Ocean at a depth of 600-800 m. In

contrast, the vertical expansion of the OMZs within the Atlantic is linked to increases POC flux as well as changes in oxygen solubility with increasing seawater temperature. Changes in total organic carbon and increase SST also lead to the formation of a new OMZ in the western sub-tropical Pacific Ocean. The development of the new OMZ results in dissolved oxygen concentration of $\leq 50 \mu\text{mol kg}^{-1}$ throughout the equatorial Pacific Ocean at four times preindustrial pCO_2 . Total ocean volume with dissolved oxygen concentrations of $\leq 50 \mu\text{mol kg}^{-1}$ increases by 2.4%, 5.0%, and 10.5% for the 2 X, 4X, and 8 X CO_2 simulations, respectively.

1 Introduction

Rapid increases in concentrations of greenhouse gases (CO_2 , CH_4 , and N_2O) in the atmosphere since the 18th century have led to greenhouse gas radiative forcing and temperature change of $0.068 \text{ }^\circ\text{C dec}^{-1}$ (Karl et al. 2015). Atmospheric CO_2 concentrations are predicted to continue to rise from the pre-industrial level of 280 ppmv up to ~ 800 ppmv by the year 2100 (IPCC 2013) or ~ 2000 ppmv by year 2400 under the assumption that all fossil fuel reservoirs are emitted into the atmosphere (Caldeira and Wickett 2003, Zachos et al. 2008). The anthropogenic CO_2 will be partially sequestered by the ocean and by the biosphere on time scales on the order of 10^4 years. A rise in ocean temperature decreases the solubility of CO_2 in seawater and thus the CO_2 uptake into the ocean. In addition, the ocean buffer capacity decreases with rising pCO_2 .

Changes in climate as a result of CO_2 emission will affect the oxygen distribution in the ocean. DO (dissolved oxygen) concentration in the ocean is affected not only by changes in ocean ventilation but also by solubility and the biological pump (Volk and Hoffert 1985). The biological pump is controlled by export production, vertical carbon flux and decay of particulate organic carbon, dissolved organic carbon and by the transport of biogeochemical tracers by the ocean circulation. Variations in seasonal and long-term DO concentration have been observed in sub-polar and subtropical regions (Whitney et al. 2007, Stramma et al. 2008). Climate models predict that DO concentrations in the ocean will continue to decline with the warming of the deep-sea due to the subsequent decline in solubility as well as variations in the biological pump due to changes in mixing and enhanced ocean stratification. The decrease of the DO concentration will likely result in the expansion of oxygen minimum

zones (Sarmiento and Orr 1991, Sarmiento et al. 1998, Schmittner et al. 2008, Shaffer et al. 2009) and a significant expansion of bottom water hypoxia ($<10 \mu\text{mol O}_2 \text{ kg}^{-1}$).

There are five major non-seasonal OMZs discussed in the current literature, which are the eastern sub-tropical North Pacific OMZ ($\sim 15^\circ\text{-}25^\circ\text{N}$), the eastern tropical Pacific OMZ (equatorial region), the eastern South Pacific OMZ ($\sim 15^\circ\text{-}40^\circ\text{S}$), the Arabian Sea, the Bay of Bengal (Kamykowski and Zentara 1990, Karstensen et al. 2008, Paulmier et al. 2011), and one low oxygen zone (LOZ) or seasonal OMZ in the equatorial Atlantic. There is limited literature discussing the variability of the Atlantic and Indian Ocean OMZs; however, areas of the eastern North Atlantic OMZ are hypoxic with DO concentrations ranging from 40 to $<2 \mu\text{mol kg}^{-1}$ (Stramma et al. 2009, Karstensen et al. 2015). Pacific OMZs have been discussed extensively and there is strong evidence that expansion is already occurring (Oschlies et al. 2008, Stramma et al. 2008, Keeling et al. 2010, Stramma et al. 2012). An expansion of the OMZ, a shoaling of the depth of hypoxia (DOH; shallowest depth at which OMZ criteria is met), or a shoaling of the OMZ cores into the photic zone could have severe impacts most notably the decline in ecosystems in the ocean.

In this study, the core of the OMZ is defined as a dissolved oxygen concentration of $\leq 20 \mu\text{mol kg}^{-1} \text{ O}_2$ consistent with Helly and Levin 2004, Fuenzalida et al. 2009 and Paulmier et al. 2011. The OMZ boundaries are described to have a DO concentration of $50 \mu\text{mol kg}^{-1}$. The maximum DO concentration of $50 \mu\text{mol kg}^{-1}$ is more stringent than upper limits in other studies (Whitney et al. 2007, Karstensen et al. 2008); however, at these DO concentrations most microorganisms cannot survive (Kamykowski and Zentara 1990, Gray et al. 2002, Sarmiento and Gruber 2006, Paulmier et al. 2011) and therefore considered a reasonable criterion for non-seasonal OMZ. This study focuses on the extent of OMZ expansion and determining the relative strengths of two mechanisms of OMZ expansion, the export production and oxygen solubility.

2 Model Description

This study is conducted with the biogeochemical Hamburg Oceanic Carbon Cycle Model Version 2.0 (HAMOCC 2.0), which has been originally developed by Maier-Reimer and Hasselmann (1987) and Maier-Reimer (1993), and expanded to include an iron cycle, sedimentary phosphorus cycle, and improved atmospheric dust parameterization (Palastanga et al. 2011, Palastanga et al. 2013). The model utilizes an E-grid (Arakawa and Lamb 1977)

1 and has a horizontal resolution of $\sim 3.5^\circ \times 3.5^\circ$ with grid points 1.25° north and south of the
2 equator to resolve the equatorial upwelling belt. The model contains 11 layers (centered at
3 25, 75, 150, 250, 450, 700, 1000, 2000, 3000, 4000, and 5000 meters) with a total depth of
4 5000 meters (Heinze et al. 1999, Heinze et al. 2006, Heinze et al., 2009). HAMOCC 2.0
5 includes a sediment module with porewater and solid components that are coupled by a
6 reaction rate. The sediment module includes one 10 cm thick layer of bioturbated sediment,
7 which is further divided into 11 sub-layers. A more detailed description of the sediment
8 module can be found elsewhere (Heinze et al. 1991, Heinze et al. 1999, Heinze 2004).

9 The annually averaged version is computationally very economical and suitable for long-term
10 carbon cycle simulations of several 10,000 years. Long-term integrations are possible with
11 HAMOCC because of its coarse temporal and spatial resolution and because of the
12 computationally efficient solution of tracer equations by an upstream formulation (Maier-Reimer
13 and Hasselmann, 1987, Heinze and Maier-Reimer, 1999) that uses the prescribed annual
14 average circulation and hydrography of the Large Scale Geostrophic (LSG) ocean general
15 circulation model (Maier-Reimer et al., 1993; Winguth et al., 1999).

16 Atmospheric CO_2 and O_2 are exchanged between the ocean surface (top 50 m) and zonally
17 mixed atmospheric boxes. The air-sea gas exchange of CO_2 is determined by the difference in
18 the partial pressure of CO_2 in the sea surface and the atmospheric $p\text{CO}_2$, the gas transfer
19 velocity, and the requirement for a full equilibration of the surface layer inorganic carbon
20 system. The gas exchange of oxygen is an order of magnitude faster than that of CO_2 . Oxygen
21 exchange is carried out according to a fixed transfer velocity and is assumed to be at
22 equilibrium between the atmospheric layer and the surface water at the temperature and
23 salinity-dependent saturation level. The solubility of dissolved oxygen depends on
24 temperature, salinity and pressure (Weiss 1970). The O_2 flux into the atmosphere is neglected
25 since the atmospheric concentration of O_2 is by far larger than the DO concentration at the
26 ocean surface.

27 The temperature-dependent annual export production of particulate organic carbon (POC) and
28 opal from the euphotic zone is calculated via Michaelis-Menten kinetics (Parsons and
29 Takahashi 1973) and CaCO_3 production is dependent on the particulate organic and opal
30 production. This relationship is based on the assumption that in the present day ocean there is
31 a dominance of the silicate producers (e.g. diatoms) over the calcareous plankton (e.g.
32 coccolithophores) (Falkowski et al. 2007). The POC export from the surface into the deep sea

is determined from organic carbon production in the uppermost layer and then transported to the deep with a uniform sinking rate of 120 m day^{-1} . Remineralization of organic matter depends on the availability of oxygen for consumption in the water column. Remineralization of POC occurs as long as dissolved O_2 is larger than the minimum O_2 concentration $[\text{O}_{2\text{min}}] = 10^{-5} \text{ mol L}^{-1}$ for bacterial decomposition of POC. A more detailed description of the model can be found elsewhere (Maier-Reimer and Hasselmann 1987, Heinze et al. 1991, Maier-Reimer and Heinze 1999, Heinze et al. 1999, Palastanga et al. 2011, Palastanga et al. 2013, Beaty-Sykes 2014).

3 Experimental Design

The annually averaged version of the model was integrated to quasi-equilibrium state (200 kyr) with a stable atmospheric CO_2 concentration of 279.78 ppmv. The reference experiment and all OMZ sensitivity experiments are started from the near-equilibrium state and integrated for 30,000 yrs. For the reference experiment, the model is forced with flow fields from a LSG simulation. The globally averaged potential temperature and salinity are 3.78°C and 34.8 psu respectively (Winguth et al. 1999).

Carbon cycle sensitivity experiments are conducted in three sets of scenarios. The first set of scenarios consists of a perturbation of the atmospheric CO_2 concentration relative to preindustrial atmospheric levels ($\text{pCO}_{2\text{ref}}$, PAL) of 2 X CO_2 , 4 X CO_2 , 6 X CO_2 , and 8 X CO_2 to explore the sensitivity of distribution of dissolved oxygen concentration to rising atmospheric pCO_2 level. In these simulations, all other boundary conditions and model parameters are kept at preindustrial levels (Table 1). In a second set of experiments the pCO_2 levels are accompanied by the associated changes of temperature at the sea surface as well as in the deep sea to investigate the response of the dissolved oxygen distribution to increases in CO_2 radiative forcing. In a third set of experiments; POC is kept at preindustrial level to explore the relative strength of loss of O_2 solubility and oxygen consumption by remineralization. The preindustrial POC experiments are simulated with at atmospheric CO_2 concentrations of 2 X, 4 X and 8 X CO_2 . Stabilization scenarios and brief descriptions are listed in Table 2.

In all CO_2 perturbation scenarios atmospheric pCO_2 is increased from preindustrial levels by 1% each year (t) until the perturbed atmospheric pCO_2 ($\text{pCO}_{2\text{pert}}$) is stabilized at its maximum level ($\text{pCO}_{2\text{max}}$) by

$$\text{for } pCO_2 < pCO_{2_{max}}: pCO_{2_{pert}} = pCO_{2_{ref}}(1 + 0.01)^t$$

$$\text{and for } pCO_2 \geq pCO_{2_{max}}: pCO_{2_{pert}} = pCO_{2_{max}}. \quad (1)$$

The 1% increase of atmospheric CO₂ concentration follows the IPCC (2013) business as usual scenario and is stabilized after 70 years for doubling of preindustrial pCO₂ (see also Winguth et al. 2005). The second set of carbon perturbation scenarios includes the feedback of increasing seawater temperature due to rising atmospheric pCO₂ (Fig. 1). Temperature increases as a function of the 1% increase per time step of atmospheric pCO₂ and is determined using Eq. 2 from Hansen et al., (1988) for the radiative forcing of CO₂ with the addition of a climate model sensitivity of $A_t=0.6870$.

$$\Delta T = A_t 6.3 \ln \left(\frac{pCO_2}{pCO_{2_{ref}}} \right) \quad (2)$$

Therefore a doubling of pCO₂ results in a homogeneous increase in temperature of ~3°C, which is consistent with the estimate of Archer (2005) and Hansen et al. (1988). Note that this enhanced sensitivity includes climate feedbacks whereas the direct CO₂ warming for 2 X CO₂ is ~1.2°C (Ruddiman 2001, Houghton 2004). The resultant temperature change of the ocean for the doubling of pCO₂ for 2 X CO₂, 4 X CO₂, 6 X CO₂, and 8 X CO₂ is 2.8°C, 5.9°C, 8.7°C, and 11.5°C respectively (Fig. 1). The temperature change is applied at all depths of the ocean. Solubility and chemical kinetic equilibrium constants of the carbon cycle are adjusted to the changes in pCO₂ and temperature at each time step in the temperature feedback experiments.

In addition to experiments with increased pCO₂ with and without radiative forcing a reduced biology scenario is added in which primary productivity and export (Si, CaCO₃, and organic carbon) is set to zero following the approach of Maier-Reimer et al. (1996). The reduced biology scenario is simulated with preindustrial pCO₂ (279 ppmv; Table 2).

Four additional simulations were conducted in order to explore how DO concentrations in the model respond to changes in ocean ventilation. Velocity variables w, v and u are reduced uniformly over the ocean globally by 25%, 50%, 75% and 100%. Diffusion is not changed in these experiments and remains at preindustrial reference simulation values.

4 Results

4.1 Reference simulation

The relevant results of the reference experiment will be briefly discussed in this section. Prescribed temperature and salinity taken from Winguth et al. (1999) are comparable to the observed data from the World Ocean Atlas 2013 (referred hereafter as WOA2013; Locarnini et al. 2013, Zweng et al. 2013) and to the simulations of Maier-Reimer (1993). Simulated seawater temperature, dissolved oxygen and salinity are comparable to the World Ocean Atlas 2013 at 3000 m depth. Due to the slow ventilation of the ocean the WOA2013 data at 3000 m is more representative of preindustrial conditions. Compared to WOA2013, cooler simulated temperatures are projected for the Bering Sea by the LSG, leading to greater O₂ solubility at the surface and therefore higher DO concentration than the corresponding data from WOA2013 (Garcia et al. 2013, Locarnini et al. 2013). This bias may be partially linked to the long-term warming trend over the last decades (IPCC, 2013). Dissolved inorganic carbon (DIC) at the surface is similar to the simulations of Maier-Reimer (1993) and the observations from the WOA2013 (Locarnini et al. 2013) with the exception of the Arctic region in which the reference experiment simulated DIC concentrations at approximately 150 $\mu\text{mol kg}^{-1}$ less compared to corresponding values simulated by Maier-Reimer (1993). The decreased simulated DIC in the Arctic region of this preindustrial simulation could be due to the addition of dust fields (Mahowald et al. 2006) and Fe and P cycles (Palastanga et al. 2011, Palastanga et al. 2013). Simulated ocean oxygen concentrations are comparable to Maier-Reimer (1993) and the WOA2013. POC, CaCO₃, and opal export and sediment composition are comparable to Maier-Reimer (1993). However, the model does trend toward a slightly higher POC in the tropical latitudes compared to Sarmiento and Gruber (2006) who used the chlorophyll concentration and sea surface temperature based empirical algorithm of Dunne et al. (2005). This bias may be linked to overestimation of export production in HAMOCC 2.0 linked to nutrient trapping (Najjar et al. 1992) at the equator region of the Pacific Ocean (Fig. 2). In addition, HAMOCC 2.0 simulates a slightly elevated export of CaCO₃ and opal export compared to corresponding observed values inferred from CaCO₃:POC and opal:POC export ratios (Sarmiento and Gruber 2006).

Simulated DO distribution in the reference simulation represents all five major non-seasonal oxygen minimum zones of the Pacific Ocean and Indian Ocean and the seasonal OMZ or low oxygen zone (LOZ; defined as dissolved [O₂] < 90 $\mu\text{mol kg}^{-1}$) of the eastern South Atlantic

Ocean (Fig. 3). However, due to the coarse model grid, the eastern subtropical and tropical North Pacific OMZ as well as the OMZs in the Indian Ocean (Arabian Sea and Bay of Bengal) are not resolved individually. The LOZ of the eastern South Atlantic Ocean is simulated in the reference experiment with a OMZ core of $\sim 17\text{--}19 \mu\text{mol kg}^{-1} \text{O}_2$ and therefore, following the OMZ definition proposed here, the LOZ of the Atlantic Ocean is simulated as a non-seasonal OMZ.

The simulation is generally agreeable with the extent and depth of the OMZs, and DO core concentration values of the observations (Fig. 3). A model-data bias of the OMZ exist in the North Pacific Ocean resulting in the simulated OMZ reaching too far westward with the western boundary near $\sim 180^\circ\text{W}$. The OMZ is also simulated too deep with a maximum depth of approximately 2300m. The difference in horizontal extent between the model simulation and observed in the eastern North Pacific OMZ may be attributed to the non-consideration of seasonally variability in the simulation. For the sub-tropical South Atlantic Ocean, the simulated OMZ core is located in a water depth ranging from 300 to 700 meters; which is slightly shallower than the OMZ core in the Indian Ocean. The total ocean volume with DO concentration of $\leq 20 \mu\text{mol kg}^{-1}$ is approximately 1.4%.

4.2 Sensitivity of simulated dissolved oxygen to a reduced ventilation and biological pump

In order to explore the importance of biological pump (soft tissue pump) to the distribution and concentration of dissolved oxygen globally in the ocean we performed experiments in which P_{POC} remains at preindustrial levels and atmospheric CO_2 is increased by 2 X, 4 X and 8 X CO_2 as well as an extreme scenario in which all productivity is reduced to zero. This extreme simulation, referred hereafter as the reduced biology scenario, is similar to the “Kill Biology” experiment by Maier-Reimer et al. (1996). In this simulation the atmospheric $p\text{CO}_2$ is set to preindustrial levels, which is in contrast to a simulated exponential increase in atmospheric $p\text{CO}_2$ in response to the diminished export production in the study of Maier-Reimer et al. (1996).

Due to the reduced export production, the DIC concentrations increase at the ocean surface by $>400 \mu\text{mol kg}^{-1}$ and by $>200 \mu\text{mol kg}^{-1}$ in the intermediate and deep-water masses at mid-latitudes. This leads to a significant rise in total alkalinity by an average of $550 \mu\text{eq kg}^{-1}$. As a result, the pH increases by an average of 0.7 units despite the loss of calcification and CaCO_3

burial. Note that weathering rates are kept at preindustrial conditions in all simulations. Dissolved oxygen increases by $\sim 150 \mu\text{mol kg}^{-1}$ in the deep-sea and $\sim 200 \mu\text{mol kg}^{-1}$ in the intermediate water masses. The dissolved oxygen gradient in this reduced biology scenario is controlled by the air-sea gas exchange of O_2 at the surface and by the temperature-dependent solubility of oxygen: not by the vertical POC flux, which is set by definition to zero to the “killed” productivity. Thus consumption of oxygen by decay of POC is also diminished.

Experiments were performed to evaluate OMZ response to weakened ventilation (eg. vertical, zonal and meridional velocities) in the model. Ventilation is decreased by 25%, 50%, 75% and 100% (Fig. 4). With a 25% decrease the OMZ core ($< 25 \mu\text{mol kg}^{-1}$) the OMZ deepen in each ocean basin and expand horizontal only slightly. The OMZs continue to expand in the experiment with 50% reduction in ventilation. Although P_{POC} is decreasing as expected with the reduction in ventilation, DOC increase with a loss of 25% and 50% leading to the expansion of the OMZs in these two simulation. However, in simulations with 75% or greater loss in ventilation the DO concentration within the OMZ increases (Fig. 4). The increase in DO concentration coincides with a loss of P_{POC} as well as DOC globally and in equatorial region. Simulated dissolved oxygen concentrations in the deep sea increase in the model in each reduced ventilation scenario due to the convection of oxygen at the poles.

4.3 Model sensitivity to changes in oxygen solubility

Solubility is another control of OMZ expansion; therefore, to determine how the model represents the expansion of OMZs due to solubility in response to radiative forcing, P_{POC} is held at preindustrial levels and atmospheric CO_2 is increased to 2 X, 4 X and 8 X preindustrial concentrations. Oxygen solubility is dependent on salinity, pressure and temperature and is calculated using the equation presented by Weiss (1970) yielding an average change of $\sim 0.3 \text{ ml L}^{-1}$ per doubling of $p\text{CO}_2$ with the most significant changes in the deep sea. The relative strength of solubility and P_{POC} on OMZ expansion will be examined in the discussion.

4.4 Sensitivity of the OMZs and global dissolved oxygen concentrations to increased $p\text{CO}_2$ without radiative forcing

The increased $p\text{CO}_2$ simulations that do not include radiative forcing (temperature increase; Eq. 2) result in small increases of dissolved oxygen in the model at the ocean surface due to the enhancement of primary productivity. The small increase in productivity results in

increased DO globally. There are only slight changes in the distributions of DO concentration for these simulations as compared to the simulation that include radiative forcing (Fig. 5). Therefore, in order to discuss future changes in the OMZs the following sections address the expansion of each OMZ and OMZ core as well as the global change at 2 X, 4 X, 6 X, and 8 X CO₂ simulations that include the temperature feedback.

4.5 Sensitivity of the oxygen minimum zones to CO₂ radiative forcing

In each of the scenarios that include radiative forcing, the simulated OMZs expand (Fig 6). The results show the formation of a new OMZ core in the tropical western South Pacific Ocean. There are significant changes in the distributions of DO concentrations in all simulations.

4.5.1 Simulated OMZ expansion in the eastern tropical Pacific Ocean in response to CO₂ radiative forcing

For the 2 X CO₂ experiment, the OMZ cores (dissolved O₂ concentration $\leq 20 \mu\text{mol kg}^{-1}$) of the OMZ in the eastern North Pacific Ocean expands to 65°N compared to the extent to 35°N of corresponding OMZ in the 1 X CO₂ scenario. This OMZ merges with that of the eastern South Pacific OMZ at the equator and therefore is considered as a single OMZ, hereafter referred to as the eastern Pacific OMZ (Fig. 6). At a depth of 450 m it extends northward around the northern boundary of the North Pacific gyre with dissolved oxygen concentrations of $\leq 20 \mu\text{mol O}_2 \text{ kg}^{-1}$ in the Gulf of Alaska. The southern boundary of the eastern Pacific OMZ is located near the coast of Northern Chile at approximately 30°S at 450 meters depth. Compared to the reference simulation, the OMZ in the 2 X CO₂ experiment expands 200 km further to the south. The OMZ western boundary increases by approximately 550 km to 150°E. The depth of hypoxia (DOH) is between 150-250 meters. The OMZ has a max depth of 1900 meters, 200 meters deeper than the reference simulation (Fig. 6). The OMZ core shoals to 380 meters; however, the bottom boundary of the OMZ core does not deepen in the 2 X CO₂ simulation. The lowest oxygen concentration in the OMZ core is $17 \mu\text{mol O}_2 \text{ kg}^{-1}$ in this simulation (Fig. 7).

The horizontal extent of the OMZ in the 4 X CO₂ scenario is similar to the 2 X CO₂ experiment with the addition of all of the North Pacific outside of the North Pacific Gyre having a dissolved oxygen concentration of $\leq 50 \mu\text{mol L}^{-1}$ at a depth of 450 meters (Fig. 6).

The depth of hypoxia shoals vertically to between 75-150 m from the surface in the North Pacific Ocean and remains in a depth range of 150-250 m in the South Pacific Ocean. The maximum depth of the Pacific OMZ increases to 2000 m. For the 4 X CO₂ experiment, the OMZ core extends ~100 km west and deepens by 200 m compared to the 2 X CO₂ simulations. The depth of the OMZ core does not change in the 4 X CO₂ simulations compared to the 2 X CO₂ simulations; however, the minimum dissolved oxygen concentration decreases to 14 $\mu\text{mol kg}^{-1}$ (Fig. 7).

There is further extension of the OMZ core south to approximately 50°S (central coast of Chile) at 450 m depth in the 8 X CO₂ scenario relative to the 4 X CO₂ experiment (Fig. 6). The OMZ core, at a depth of ~2000 meters, does not shoal or deepen in the 6 X and 8 X CO₂ compared to the 4 X CO₂ experiment. In the 8 X CO₂ simulation, the core becomes hypoxic with a minimum dissolved oxygen concentration of $\leq 8 \mu\text{mol kg}^{-1}$. The 6 X CO₂ experiment results in a minimum dissolved oxygen concentration of $\sim 12 \mu\text{mol kg}^{-1}$ (Fig. 7).

4.5.2 Simulated OMZ expansion in the eastern tropical South Atlantic Ocean in response to CO₂ radiative forcing

The horizontal expansion of the OMZ in the eastern South Atlantic in the 2 X CO₂ simulation remains similar to the reference scenario with a southern boundary at approximately 25°S and extends northward along the west coast of Africa to the southern tip of Morocco to approximately 15°N (Fig. 6). The depth of hypoxia shoals from between 250-450 m in the reference experiment to 150-250 m. The maximum depth of OMZ increases by 100 m to 1200 m. In the eastern South Atlantic, the OMZ core in the 2 X CO₂ experiment expands relative to the reference experiment southward by 580 km to approximately 19°S and northward by 110 km ($\sim 1^\circ$ northward propagation). In the 2 X CO₂ experiment, the OMZ core expands vertically; it shoals to 450 m and deepens to 915 m, which is 65 m deeper than the reference simulation. The minimum dissolved O₂ concentration is reduced by 1 $\mu\text{mol kg}^{-1}$ relative to the reference experiment to 17 $\mu\text{mol O}_2 \text{ kg}^{-1}$ (Fig. 7).

Relative to the reference simulation, the 4 X CO₂ simulation results in insignificant horizontal expansion of the OMZ in the latitudinal direction (Fig. 6). The most notable area of expansion of the OMZ is in the southwest direction in which the southwestern boundary of the eastern South Atlantic OMZ extends to $\sim 30^\circ\text{S}$ and $\sim 20^\circ\text{W}$. The maximum depth increases by an additional 100 m to a depth of 1300 m. The OMZ core expands symmetrically in east-west

direction, by about 100 km, encompassing the Gulf of Guinea. The vertical expansion of the OMZ core is negligible between the 2 X and 4 X CO₂ simulations; however, the strength of the core increases significantly with a minimum dissolved O₂ concentration of 12 µmol kg⁻¹ (Fig. 7).

Horizontal expansion of the eastern South Atlantic OMZ does not occur between the 4 X CO₂ simulation and the 6 X or 8 X CO₂ scenarios (Fig. 6). In the 6 X CO₂ scenario the horizontal extent of the eastern South Atlantic Ocean at 450 m depth is reduced from the 4 X CO₂ simulation, whereas in the 8 X CO₂ simulation the horizontal area expands back to the extent of the 4 X CO₂ simulation. The depth of hypoxia remains between 150-250 m depth for both 6 X and 8 X CO₂ experiments. The maximum depth of the OMZ increases to 1500 m in the 8 X CO₂ simulation. The OMZ core deepens to 1050 m and shoals from the 6 X and 8 X CO₂ scenarios to 375 m. The minimum dissolved O₂ concentration remains at 12 µmol L⁻¹ for both the 6 X and 8 X CO₂ simulations (Fig. 7).

4.5.3 Simulated expansion of the OMZ in the tropical Indian Ocean in response to CO₂ radiative forcing.

The expansion of the OMZ in the Indian Ocean is limited at the western boundary by the east coast of Africa and the eastern boundary is constrained by the Indonesian archipelago. The Indian Ocean OMZ includes the poorly resolved Arabian Sea and the Gulf of Bengal, which is limited by the Indian subcontinent. Compared to the reference simulation, the OMZ extends southward to 10°S in the 2 X CO₂ simulation and deepens by 100 m to 1100 m (Fig. 6). The OMZ core does not expand horizontally but deepens to 900 meters and shoals by 50m to 225 meters. The minimum dissolved oxygen concentration is 10 µmol kg⁻¹ and remains the lowest concentration for each of the emissions scenario (Fig. 7).

In the 4 X, 6 X, and 8 X pCO₂ simulations the horizontal expansion in the Indian Ocean OMZ is insignificant but it deepens to 1300 m, 1400 m, 1700 m, respectively. For the 4 X CO₂ experiment the OMZ core expands in the western direction to 45°E and deepens by 100 m to 1000 m; however, the upper boundary of the OMZ remains unchanged. In the 8 X CO₂ simulation the core expands southward by 650 km to approximately 16°S and shoals to 100 m for both the 6 X and 8 X CO₂ scenarios; however, the lower boundary remains unchanged compared to the 4 X CO₂ experiment. The depth of hypoxia is located between 25 m and 75 m in the reference experiment and in all CO₂ emission scenarios. It is important to note that

1 due to complex climate variability and nutrient trapping the annual tracer distribution in the
2 Indian Ocean consist of large uncertainties and thus the model-data bias is generally high in
3 the region.

4 4.5.4 Simulated OMZ formation in the western tropical Pacific Ocean in 5 response to CO₂ radiative forcing

6 An OMZ core ($<20 \mu\text{mol L}^{-1} \text{O}_2$) is simulated in the western tropical Pacific Ocean (143E,
7 2N) near the Bismarck Sea (Fig. 6 and 8). This region is modeled as a low oxygen zone
8 (LOZ) in the reference simulation. For the 4 X CO₂ experiment, the OMZ develops in <2000
9 yr integration with a minimum dissolved oxygen concentration of $17 \mu\text{mol L}^{-1}$. The upper
10 boundary of the OMZ core remains unchanged for all perturbation simulations compared to
11 the reference. However, the OMZ core deepens from 725 m at 3 X CO₂ to 1000 m for the 8 X
12 CO₂ simulation.

13 4.6 Export of particulate organic carbon and changes in global dissolved O₂ 14 concentration in response to simulations with CO₂ radiative forcing

15 Simulated total POC production and export production of POC (P_{POC}) from the euphotic zone
16 into the deep sea increases predominantly near the equatorial Pacific with a rise in seawater
17 temperature in response to CO₂ radiative forcing (Fig. 2). P_{POC} in the northern Indian and
18 western tropical Pacific decreases in response to enhanced CO₂ radiative forcing most likely
19 due to nutrient trapping in the eastern Pacific Ocean. Changes P_{POC} in the east Atlantic Ocean
20 are insignificant.

21 Global DO concentration decreases most rapidly during the first 2000 years of integration in
22 each carbon perturbation simulation. The reduction in global dissolved oxygen concentration
23 continues on average 1500 years beyond the year in which the peak pCO₂ emission value is
24 reached. The total ocean area with a dissolved oxygen concentration of $<50 \mu\text{mol kg}^{-1}$
25 expands at approximately 2% per $\sim 3^\circ\text{C}$ increase in seawater temperature which corresponds
26 to a doubling of pCO₂. The total ocean volume at which the dissolved O₂ concentration is <50
27 $\mu\text{mol kg}^{-1}$ increases by 10.5% in the 8 X CO₂ simulations. The increase in the ocean volume
28 of hypoxic water in to the photic zone is insignificant ($< 0.3\%$) due to the equilibrium of
29 oxygen between the atmosphere and the surface layer in the model. However, an area of

hypoxia forms in the photic zone of the sub-tropical North Pacific Ocean with a dissolved O₂ concentration of less than 12 μmol kg⁻¹.

5 Discussion

In this study we investigate the expansion of OMZ in a biogeochemical model as a result of seawater temperature increase in response to CO₂ radiative forcing and changes in P_{POC}. It is important to note that changes in ocean stratification due to ocean temperature and density changes are not simulated and held constant at preindustrial conditions to allow for the long-term carbon cycle feedback and an integration time of 30 kyrs. The focus of this study is to examine changes in OMZs due to changes in solubility and remineralization. Furthermore, this study determines the relative strengths of these mechanisms of OMZ expansion in the biogeochemical model. The expansion of OMZs in this study is the result of changes in temperature-dependent productivity and changes in O₂ solubility. Consequently, the OMZ expansion simulated may be modest due to no consideration of a weakened connection between the OMZs and the ocean surface in the future (Glessmer et al. 2011). It has been suggested that the depth and strength of the thermocline may influence OMZ expansion and contraction (Deutsch et al. 2007). An increase of the thermocline in a warmer climate may result in a contraction of the OMZs due to reduced oxidative demand in hypoxic waters. However, this study assumes a constant thermocline depth, as the temperature increase is uniform at all depths. Other assumptions in this study are a constant nutrient inventory and Redfield ratio. Changes in the elemental stoichiometry (carbon overconsumption) due to rising pCO₂ has been suggested as a possible mechanism of enhanced volume of suboxic water in the ocean due to the respiration of increased organic carbon. (Oschlies et al. 2008, Riebesell et al., 2007). Measurements of dissolved oxygen concentration in the suboxic regions of the oceans are limited (Levitus et al. 2013, Locarnini et al. 2006); however, paleo-records and climate models support the assumption that ocean anoxic events occur during periods of high pCO₂ (Knoll et al., 1996; Falkowski et al. 2011). Furthermore, OMZs have expanded and contracted during the glacial interglacial cycles (Galbraith et al. 2004) as well as on shorter time scales in response to Dansgaard-Oeschger (D-O) events (Cannariato and Kennett 1999).

In the ventilation scenarios the model responds as expected for the reductions in ocean ventilation of 75% or greater. Figure 4 illustrates the dissolved oxygen response to a near

1 complete shutdown of ocean ventilation resulting in an increase in the vertical oxygen
2 gradient relative to the reference scenario. The increase in DO in the reduced ventilation
3 simulations of greater than 75% are due to the reduced P_{POC} and thus reduced remineralization
4 and to the convection of DO to the deep sea at the poles. The expansion of OMZ cores at
5 lower changes in ventilation (eg. 25% and 50%; Fig 4) may be due the increase of DOC both
6 global and regionally. An increase in dissolved organic carbon results in more available DO
7 for remineralization in the model; therefore, even with reduced P_{POC} the model response to
8 atmospheric perturbations with an expansion of OMZs with a 25% and 50% reduction in
9 ventilation.

10 The comparison between the 25% and 50% reduced ventilation experiment and the 4 X CO_2
11 with radiative forcing simulation, specifically in the Pacific Ocean basin, indicates that the
12 decrease of dissolved oxygen concentration in the model is strongly controlled by P_{POC} and
13 solubility as the expansion is greater due to the influence of these mechanisms rather than a
14 25% reduction in ocean ventilation or the increase in DOC (Fig. 9). This dominant control by
15 remineralization of organic matter in comparison to ventilation changes may be link to
16 changes in upwelling and export production.

17 The increased atmospheric CO_2 with radiative forcing simulations of this study agree with
18 other studies of model-simulated change and observed change in the extent of OMZs
19 (Whitney et al. 2007, Karstensen et al. 2008, Stramma et al. 2008, Shaffer et al. 2009,
20 Falkowski et al. 2011). However, the simulations presented here have a greater overall
21 decrease in global oxygen concentration of 9.1% after 300 years of integration for a doubling
22 of pCO_2 than previous studies, which range from 1-7% for various pCO_2 emissions and
23 integration times (Matear et al. 2000, Bopp et al. 2002, Oeschies et al. 2008, Schmittner et al.
24 2008, Bopp et al. 2013). The rapid decrease in global dissolved O_2 concentration is due to the
25 rapid change in global ocean temperature linked to the 1% business as usual atmospheric CO_2
26 emissions. However, the dissolved oxygen concentrations in the OMZ areas decrease more
27 slowly in the model simulations as compared to the observed trends from Stramma et al.,
28 (2008). The study of Stramma et al., (2008) suggests a temperature increase of $0.005\text{ }^{\circ}C\text{ yr}^{-1}$
29 in the Atlantic and Indian Oceans and a temperature decrease by $0.005\text{ }^{\circ}C\text{ yr}^{-1}$ for the Pacific
30 Ocean since the 1960s. Most of the expansion of suboxic area in this model study occurs
31 during the first 2000 years of the 30,000-year simulation due to the slow response time,
32 particularly in the deep Pacific Ocean. The atmospheric pCO_2 is stabilized at the elevated CO_2

1 concentrations in the carbon perturbation simulations in this study; therefore, no recovery is
2 simulated.

3 In all carbon perturbation simulations the upper boundary of the OMZ cores are
4 shallower compared to the reference simulation. The shallowest OMZ core is found in the
5 Indian Ocean OMZ at ~75 meters. Note that the upper boundary of the OMZ is located at 75
6 m depth because above this depth water masses are influenced by the air sea gas exchange of
7 the uppermost model layer. The core is not expected to shoal beyond 50 m depth in the
8 simulations due to the assumption that the atmosphere is at equilibrium with the surface of the
9 ocean which is simulated as the top 50 meters. The OMZ core of the North Pacific Ocean has
10 the deepest upper boundary, shoaling approximately 100 meters for the highest pCO₂ carbon
11 perturbation scenario. Downward expansion of the OMZ core is limited by the lower
12 boundary of the activity-ventilated zone at approximately 2000 meters in the Pacific Ocean.
13 This depth coincides with the depth of the wind-driven circulation, which remains unchanged
14 in each simulation, because the same wind stress forcing is applied to all simulations.
15 Deepening of the eastern South Atlantic OMZ and the Indian Ocean OMZ are also limited to
16 the bottom boundary of the well-ventilated mixed layer (~1500 meter for the Atlantic and
17 ~1000 meters for the Arabian Sea). The ventilation depth of the Arabian Sea may be
18 overestimated in the model due to the lack of monsoon variation, which can cause the mixed
19 layer depth to vary greatly in the Arabian Sea.

20 The simulated OMZs in the Indian and Atlantic Ocean respond to changes in the temperature-
21 dependent export production of POC and to changes in dissolved organic carbon. P_{POC}
22 increased in the Indian and Atlantic Ocean in the 2 X and 4 X CO₂ simulations and started to
23 decrease in the 6 X and 8 X CO₂ experiments (Fig. 2); however, dissolved organic carbon
24 increases at higher pCO₂ concentrations. The decrease in P_{POC} may be due to the trapping of
25 nutrients in the equatorial Pacific Ocean which exhibited a large increase in PO₄ at 6 X and 8
26 X CO₂. The limited expansion of the OMZ in the Indian and Atlantic Ocean in the 6 X and 8
27 X CO₂ simulations are the result of oxygen loss due to changes in solubility and to a lesser
28 degree increased dissolved organic carbon, which increases the amount of oxygen available
29 for remineralization by the model (Fig. 10). Therefore, oxygen is still consumed in the OMZs
30 of the Indian Ocean and Atlantic Ocean despite the loss of P_{POC} due to the high amount of
31 dissolved organic carbon. Figure 10 shows an increase in mineralization in the Indian and
32 Atlantic Ocean due to high concentration of DOC regardless of the loss in P_{POC}. Furthermore,

1 the extent of the OMZs in the Indian and Atlantic Oceans appear to be responding to changes
2 in the export of organic matter in response to radiative forcing as well as changes in DOC in
3 simulations of less than 6 times of the preindustrial pCO₂ (Fig 11). The extent of the present
4 day OMZ in the Atlantic Ocean has a much higher dissolved oxygen concentration due to
5 cooler water masses than in the northern Indian Ocean. However, the higher salinity of the
6 Atlantic Ocean could lead to greater loss of O₂ solubility at higher seawater temperatures as
7 compared to the Indian Ocean or eastern tropical Pacific Ocean for each pCO₂ simulation.

8 The change in the extent of the OMZ in the Pacific Ocean is driven by the change in
9 productivity and export production of POC and increases in remineralization (Fig. 10 and 11).
10 The response of the model to changes in P_{POC} in the Pacific Ocean is stronger than to a
11 reduction in ventilation by 25% (Fig. 9). The increase of export production of POC in the
12 eastern equatorial Pacific OMZ leads to significant horizontal expansion, which is not
13 simulated in the eastern South Atlantic or the Indian Ocean OMZs. The model does not
14 indicate a more significant increase in export production of POC in the cold tongue of the
15 Pacific Ocean as compared to the warm pool in the western Pacific Ocean. However, it is
16 important to note that the simulated CO₂-induced seawater temperature change is uniform and
17 therefore the eastern Pacific seawater temperature remains cooler relative to other regions of
18 the Pacific Ocean. The Pacific Ocean OMZ does not shoal as significantly as the Indian
19 Ocean or eastern South Atlantic OMZs but expands horizontally under the area of high
20 productivity. Oxygen loss due to remineralization of organic matter is potentially the main
21 mechanism for simulated expansion of the OMZ in the tropical Pacific Ocean. Figures 10 and
22 11 include cross sections of the amount of oxygen consumed by the remineralization of
23 organic matter indicating the large influence of organic matter export in the eastern tropical
24 Pacific OMZ as opposed to eastern South Atlantic OMZ.

25 In the carbon cycle perturbation simulations, the LOZ that currently exists in the western
26 tropical Pacific meets the criteria of a permanent non-seasonal OMZ at approximately 3 X
27 CO₂; however, in <2000 yrs a much stronger OMZ core develops in the 4 X CO₂ simulation
28 (Fig. 8). The formation occurs northwest of the Gulf of Carpentaria and expands into the
29 Banda Sea and south along the west coast of Australia. The western tropical Pacific OMZ
30 forms in the warm water masses of the Indonesian throughflow (ITF), which brings warm
31 water westward from the Pacific into the Indian Ocean. The OMZ is then expanded by the
32 oxygen-depleted water masses originating from the Leeuwin Current, which flows south

around the west coast of Australia. There is a net loss of export production of POC and a slight increase in DOC in the area suggesting the main control of OMZ core formation in the model is similar to that of the Indian and Atlantic Ocean OMZ expansion. This region is an area of high heat transport between the Pacific and Indian Oceans. The formation of an OMZ could be expected in this area of higher SST; however, it is important to note that the model simulation does not include changes in the intense tidal induced mixing that may affect sea surface temperatures and dissolved oxygen concentrations within the Indonesian throughflow nor any global changes to ocean ventilation. Furthermore, the DO concentration in the OMZ core of the western tropical Pacific Ocean is increased by $15 \mu\text{mol kg}^{-1} \text{O}_2$ with a 50% reduction in ventilation and therefore the OMZ simulated would not reach the OMZ criteria proposed here at 4 X CO_2 and a 50% reduction in ventilation.

6 Conclusions

Increased sea surface temperature as a result of CO_2 radiative forcing will likely cause expansion of present-day tropical OMZs as well as the possibility of the formation of new oxygen depleted regions. Understanding the extent and the mechanisms for these OMZ expansions and how models respond to changes in expansion mechanism is of the utmost importance in order to more accurately predict environmental changes in these regions. Simulated expansion of the oxygen minimum zones in this model study are greatest in the eastern tropical Pacific Ocean, indicating that the model is sensitivity to the change in export of particulate organic carbon which is overestimated by the model. Total production increases most in the equatorial Pacific leading to the rapid horizontal expansion of the OMZ core. Furthermore,, a change in the ecosystem structure could alter the C:N stoichiometry (carbon overconsumption) and therefore the expansion of the OMZ in the eastern equatorial Pacific Ocean could be reduced due to decrease in the export production of POC.

A rise in P_{POC} (2 X and 4 X CO_2 simulations) and dissolved organic carbon (6 X and 8 X CO_2 simulations) in conjunction with changes in solubility in the Atlantic Ocean leads to the greatest loss of simulated dissolved oxygen in the intermediate water masses of any of the OMZs. Dissolved oxygen loss causes a greater shoaling and deepening in the eastern tropical South Atlantic OMZ in the model rather than horizontal expansion. The Indian Ocean OMZ is restricted in horizontal expansion; therefore, simulated changes in this OMZ are mostly a vertical expansion of the core, which expands at a similar rate as the eastern tropical South

1 Atlantic OMZ. This simulated expansion is due loss of solubility and an increase in oxygen
2 available for remineralization due to increased concentration of dissolved organic carbon in a
3 region which is already at very low dissolved oxygen concentrations.

4 In conclusion, as sea surface temperature increases as a result of CO₂ emission the OMZs will
5 expand and strengthen as a result of changes in export of POC, DO, solubility and ventilation.
6 These changes will limit migration and habitat zones resulting in fundamental changes in the
7 marine ecosystem. The loss of dissolved oxygen will also result in changes to the carbon and
8 nitrogen cycles. Any expansion of hypoxia into the photic zone could be detrimental to
9 marine ecosystems. Further research on the expansion of OMZ should include changes in
10 ocean circulation due to changes in density and increased stratification in a comprehensive
11 earth system model (see e.g. Moore et al. 2013). Changes in the ventilation of the ocean
12 waters could lead to changes in both the intensity of the oxygen minimum zones as well as
13 any future expansion.

15 **Acknowledgements**

16 We acknowledge all those who have worked on and with the HAMOCC model, most notably
17 the late Dr. Ernst Maier-Reimer and Dr. Virginia Palastanga. Plotting was accomplished on
18 NCAR computers, which are supported by the National Science Foundation. This research is
19 supported by NSF grants EAR-0628336 and OCE-1536630 as well as NSF STEM support
20 and UTA graduate dissertation fellowship.

References

- Arakawa, A. and Lamb, V.: Computational design of the basic dynamical processes of the UCLA General Circulation Model, *Methods in Computational Physics*, 17, 174-267, 1977.
- Archer, D.: Fate of fossil fuel CO₂ in geologic time, *Journal of Geophysical Research: Oceans* (1978–2012), 110, 2005.
- Archer, D., Eby, M., Brovkin, V., Ridgwell, A., Cao, L., Mikolajewicz, U., Caldeira, K., Matsumoto, K., Munhoven, G. and Montenegro, A.: Atmospheric lifetime of fossil fuel carbon dioxide, *Annu. Rev. Earth Planet. Sci.*, 37, 117, 2009.
- Beaty-Sykes, T. M.: Effects of climate change and perturbation in biogeochemical cycles on oxygen distribution and ocean acidification, PhD Dissertation, University of Texas, Arlington, 2014.
- Bopp, L., Le Quéré, C., Heimann, M., Manning, A. C. and Monfray, P.: Climate-induced oceanic oxygen fluxes: Implications for the contemporary carbon budget, *Global Biogeochem. Cycles*, 16, 1022, 2002.
- Bopp, L., Resplandy, L., Orr, J. C., Doney, S. C., Dunne, J. P., Gehlen, M., Halloran, P., Heinze, C., Ilyina, T. and Séférian, R.: Multiple stressors of ocean ecosystems in the 21st century: projections with CMIP5 models., *Biogeosciences Discussions*, 10, 2013.
- Caldeira, K. and Wickett, M. E.: Oceanography: anthropogenic carbon and ocean pH, *Nature*, 425, 365-365, 2003.
- Cannariato, K. G. and Kennett, J. P.: Climatically related millennial-scale fluctuations in strength of California margin oxygen-minimum zone during the past 60 ky, *Geology*, 27, 975-978, 1999.
- Deutsch, C., Sarmiento, J. L., Sigman, D. M., Gruber, N. and Dunne, J. P.: Spatial coupling of nitrogen inputs and losses in the ocean, *Nature*, 445, 163-167, 2007.
- Dunne, J. P., Armstrong, R. A., Gnanadesikan, A. and Sarmiento, J. L.: Empirical and mechanistic models for the particle export ratio, *Global Biogeochem. Cycles*, 19, 2005.
- Falkowski, P. G., Knoll, A. H., Falkowski, P. and Knoll, A.: An introduction to primary producers in the sea: who they are, what they do, and when they evolved, *Evolution of Primary Producers in the Sea*, 1-6, 2007.

1 Falkowski, P., Algeo, T., Codispoti, L., Deutsch, C., Emerson, S., Hales, B., Huey, R., LyONS, T.,
2 NELSON, N. and SCHOFIELD, O.: Ocean De oxygen ation: Past, Present, and Future, *Eos*, 92, 2011.

3 Fuenzalida, R., Schneider, W., Garcés-Vargas, J., Bravo, L. and Lange, C.: Vertical and horizontal
4 extension of the oxygen minimum zone in the eastern South Pacific Ocean, *Deep Sea Research Part II:*
5 *Topical Studies in Oceanography*, 56, 992-1003, 2009.

6 Galbraith, E. D., Kienast, M., Pedersen, T. F. and Calvert, S. E.: Glacial-interglacial modulation of the
7 marine nitrogen cycle by high-latitude O₂ supply to the global thermocline, *Paleoceanography*, 19,
8 2004.

9 Garcia, H. E., Boyer, T. P., Locarnini, R. A., Antonov, J. I., Mishonov, A. V., Baranova, O. K.,
10 Zweng, M. M., Reagan, J. R., Johnson, D. R. and Levitus, S.: *World Ocean Atlas 2013: Dissolved*
11 *Oxygen, Apparent Oxygen Utilization, and Oxygen Saturation*, 2013.

12 Glessmer, M., Park, W. and Oschlies, A.: Simulated reduction in upwelling of tropical oxygen
13 minimum waters in a warmer climate, *Environmental Research Letters*, 6, 045001, 2011.

14 Gray, J. S., Wu, R. S. and Or, Y. Y.: Effects of hypoxia and organic enrichment on the coastal marine
15 environment, *Mar. Ecol. Prog. Ser.*, 238, 249-279, 2002.

16 Hansen, J., Fung, I., Lacis, A., Rind, D., Lebedeff, S., Ruedy, R., Russell, G. and Stone, P.: Global
17 climate changes as forecast by Goddard Institute for Space Studies three-dimensional model, *Journal*
18 *of Geophysical Research: Atmospheres* (1984–2012), 93, 9341-9364, 1988.

19 Heinze, C.: Simulating oceanic CaCO₃ export production in the greenhouse, *Geophys. Res. Lett.*, 31,
20 2004.

21 Heinze, C., Kriest, I., and Maier-Reimer, E.: Age offsets among different biogenic and lithogenic
22 components of sediment cores revealed by numerical modeling, *Paleoceanography*, 24.4, 2009.
23 Doi:10.1029/2008PA001662

24 Heinze, C., Gehlen, M. and Land, C.: On the potential of ²³⁰Th, ²³¹Pa, and ¹⁰Be for marine rain
25 ratio determinations: A modeling study, *Global Biogeochem. Cycles*, 20, 2006.

26 Heinze, C. and Maier-Reimer, E.: The hamburg oceanic carbon cycle circulation model version
27 “HAMOCC2s” for long time integrations, DKRZ, 1999.

1 Heinze, C., Maier-Reimer, E., Winguth, A. M. and Archer, D.: A global oceanic sediment model for
2 long-term climate studies, *Global Biogeochem. Cycles*, 13, 221-250, 1999.

3 Heinze, C., Maier-Reimer, E. and Winn, K.: Glacial pCO₂ reduction by the world ocean: Experiments
4 with the Hamburg carbon cycle model, *Paleoceanography*, 6, 395-430, 1991.

5 Helly, J. J. and Levin, L. A.: Global distribution of naturally occurring marine hypoxia on continental
6 margins, *Deep Sea Research Part I: Oceanographic Research Papers*, 51, 1159-1168, 2004.

7 IPCC 2013.: The IPCC Fifth Assessment Report (AR5), *Climate Change 2013: The Physical Science*
8 *Basis*. Intergovernmental Panel on Climate Change, Geneva, Switzerland, 2014.

9 John Theodore Houghton: *Global Warming*, Cambridge University Press, 2004.

10 Kamykowski, D. and Zentara, S.: Hypoxia in the world ocean as recorded in the historical data set,
11 *Deep Sea Research Part A. Oceanographic Research Papers*, 37, 1861-1874, 1990.

12 Karl, T. R., Arguez, A., Huang, B., Lawrimore, J. H., McMahon, J. R., Menne, M. J., Peterson, T. C.,
13 Vose, R. S. and Zhang, H. M.: CLIMATE CHANGE. Possible artifacts of data biases in the recent
14 global surface warming hiatus, *Science*, 348, 1469-1472, 10.1126/science.aaa5632 [doi], 2015.

15 Karstensen, J., Fiedler, B., Schütte F., Brandt, P., Körtzinger, A., Fischer, G., Zantopp, R., Hahn, J.,
16 Visbeck, M., and Wallace, D.: Open ocean dead zones in the tropical North Atlantic Ocean,
17 *Biogeosciences Discussions*, 11(12), 17391-17411, 2014.

18 Karstensen, J., Stramma, L. and Visbeck, M.: Oxygen minimum zones in the eastern tropical Atlantic
19 and Pacific oceans, *Prog. Oceanogr.*, 77, 331-350, 2008.

20 Keeling, R. F., Körtzinger, A. and Gruber, N.: Ocean deoxygenation in a warming world, *Annual*
21 *Review of Marine Science*, 2, 199-229, 2010.

22 Levitus, S., Antonov, J., Baranova, O., Boyer, T., Coleman, C., Garcia, H., Grodsky, A., Johnson, D.,
23 Locarnini, R. and Mishonov, A.: The World Ocean Database, *Data Science Journal*, 12, WDS229-
24 WDS234, 2013.

25 Locarnini, R., Mishonov, A., Antonov, J., Boyer, T., Garcia, H., Baranova, O., Zweng, M., Paver, C.,
26 Reagan, J. and Johnson, D.: *World Ocean Atlas 2013. Vol. 1: Temperature*, A. Mishonov, Technical
27 Ed. NOAA Atlas NESDIS, 73, 40, 2013.

- 1 Mahowald, N. M., Muhs, D. R., Levis, S., Rasch, P. J., Yoshioka, M., Zender, C. S. and Luo, C.:
2 Change in atmospheric mineral aerosols in response to climate: Last glacial period, preindustrial,
3 modern, and doubled carbon dioxide climates, *Journal of Geophysical Research*, 111, D10202, 2006.
- 4 Maier-Reimer, E.: Geochemical cycles in an ocean general circulation model. Preindustrial tracer
5 distributions, *Global Biogeochem. Cycles*, 7, 645-677, 1993.
- 6 Maier-Reimer, E. and Heinze, C.: , The Hamburg oceanic carbon cycle circulation model.Cycle 1,
7 1992.
- 8 Maier-Reimer, E. and Hasselmann, K.: Transport and storage of CO₂ in the ocean — — an inorganic
9 ocean-circulation carbon cycle model, *Clim. Dyn.*, 2, 63-90, 1987.
- 10 Maier-Reimer, E., Mikolajewicz, U. and Hasselmann, K.: Mean circulation of the Hamburg LSG
11 OGCM and its sensitivity to the thermohaline surface forcing, *J. Phys. Oceanogr.*, 23, 731-757, 1993.
- 12 Maier-Reimer, E., Mikolajewicz, U. and Winguth, A.: Future ocean uptake of CO₂: interaction
13 between ocean circulation and biology, *Clim. Dyn.*, 12, 711-722, 1996.
- 14 Matear, R., Hirst, A. and McNeil, B.: Changes in dissolved oxygen in the Southern Ocean with
15 climate change, *Geochem. Geophys. Geosyst.*, 1, 2000.
- 16 Moore, J. K., Lindsay, K., Doney, S. C., Long, M. C. and Misumi, K.: Marine Ecosystem Dynamics
17 and Biogeochemical Cycling in the Community Earth System Model [CESM1 (BGC)]: Comparison of
18 the 1990s with the 2090s under the RCP4. 5 and RCP8. 5 Scenarios., *J. Clim.*, 26, 2013.
- 19 Najjar, R. G., Sarmiento, J. L. and Toggweiler, J.: Downward transport and fate of organic matter in
20 the ocean: Simulations with a general circulation model, *Global Biogeochem. Cycles*, 6, 45-76, 1992.
- 21 Oschlies, A., Schulz, K. G., Riebesell, U. and Schmittner, A.: Simulated 21st century's increase in
22 oceanic suboxia by CO₂-enhanced biotic carbon export, *Global Biogeochem. Cycles*, 22, 2008.
- 23 Palastanga, V., Slomp, C. and Heinze, C.: Glacial-interglacial variability in ocean oxygen and
24 phosphorus in a global biogeochemical model, *Biogeosciences*, 10, 945-958, 2013.
- 25 Palastanga, V., Slomp, C. and Heinze, C.: Long-term controls on ocean phosphorus and oxygen in a
26 global biogeochemical model, *Global Biogeochem. Cycles*, 25, 2011.

- 1 Parsons, T. and Takahashi, M.: Environmental control of phytoplankton cell size, *Limnol. Oceanogr.*,
2 18, 511-515, 1973.
- 3 Paulmier, A., Ruiz-Pino, D. and Garçon, V.: CO₂ maximum in the oxygen minimum zone (OMZ),
4 *Biogeosciences*, 8, 239-252, 2011.
- 5 Riebesell, U., Schulz, K. G., Bellerby, R. G. J., Botros, M., Fritsche, P., Meyerhöfer, M., Neill, C.,
6 Nondal, G., Oschlies, A., Wohlers, J., and Zöllner, E.: Enhanced biological carbon consumption in a
7 high CO₂ ocean, *Nature*, 450(7169), 545-548, 2007. doi:10.1038/nature06267
- 8 Ruddiman, W. F.: *Earth's Climate: past and future*, Macmillan, 2001.
- 9 Sarmiento, J. L., Hughes, T. M., Stouffer, R. J. and Manabe, S.: Simulated response of the ocean
10 carbon cycle to anthropogenic climate warming, *Nature*, 393, 245-249, 1998.
- 11 Sarmiento, J. L. and Orr, J. C.: Three-dimensional simulations of the impact of Southern Ocean
12 nutrient depletion on atmospheric CO₂ and ocean chemistry, *Limnol. Oceanogr.*, 36, 1928-1950,
13 1991.
- 14 Sarmiento, J. L. and Gruber, N.: *Ocean biogeochemical dynamics*, Princeton University Press
15 Princeton, 2006.
- 16 Schmittner, A., Oschlies, A., Matthews, H. D. and Galbraith, E. D.: Future changes in climate, ocean
17 circulation, ecosystems, and biogeochemical cycling simulated for a business-as-usual CO₂ emission
18 scenario until year 4000 AD, *Global Biogeochem. Cycles*, 22, GB1013, 2008.
- 19 Shaffer, G., Olsen, S. M. and Pedersen, J. O. P.: Long-term ocean oxygen depletion in response to
20 carbon dioxide emissions from fossil fuels, *Nature Geoscience*, 2, 105-109, 2009.
- 21 Stramma, L., Oschlies, A. and Schmidtko, S.: Anticorrelated observed and modeled trends in
22 dissolved oceanic oxygen over the last 50 years, *Biogeosciences Discussions*, 9, 4595-4626, 2012.
- 23 Stramma, L., Visbeck, M., Brandt, P., Tanhua, T., and Wallace, D.: Deoxygenation in the oxygen
24 minimum zone of the eastern tropical North Atlantic, *Geophysical Research Letters* 36(20), 2009.
- 25 Stramma, L., Johnson, G. C., Sprintall, J. and Mohrholz, V.: Expanding oxygen-minimum zones in the
26 tropical oceans, *Science*, 320, 655-658, 2008.

- 1 Volk, T. and Hoffert, M. I.: Ocean carbon pumps: Analysis of relative strengths and efficiencies in
2 ocean-driven atmospheric CO₂ changes, *The Carbon Cycle and Atmospheric CO₂: Natural Variations*
3 *Archean to Present*, 99-110, 1985.
- 4 Weiss, R.: The solubility of nitrogen, oxygen and argon in water and seawater, in: *Deep Sea Research*
5 *and Oceanographic Abstracts*, 1970.
- 6 Whitney, F. A., Freeland, H. J. and Robert, M.: Persistently declining oxygen levels in the interior
7 waters of the eastern subarctic Pacific, *Prog. Oceanogr.*, 75, 179-199, 2007.
- 8 Winguth, A., Mikolajewicz, U., Gröger, M., Maier-Reimer, E., Schurgers, G. and Vizcaíno, M.:
9 Centennial-scale interactions between the carbon cycle and anthropogenic climate change using a
10 dynamic Earth system model, *Geophys. Res. Lett.*, 32, 2005.
- 11 Winguth, A., Archer, D., Duplessy, J., Maier-Reimer, E. and Mikolajewicz, U.: Sensitivity of
12 paleonutrient tracer distributions and deep-sea circulation to glacial boundary conditions,
13 *Paleoceanography*, 14, 304-323, 1999.
- 14 Zachos, J. C., Dickens, G. R. and Zeebe, R. E.: An early Cenozoic perspective on greenhouse warming
15 and carbon-cycle dynamics, *Nature*, 451, 279-283, 2008.
- 16 Zweng, M., Reagan, J., Antonov, J., Locarnini, R., Mishonov, A., Boyer, T., Garcia, H., Baranova, O.,
17 Johnson, D. and Seidov, D.: *World Ocean Atlas 2013. Vol. 2: Salinity*, NOAA Atlas NESDIS, 74, 39,
18 2013.
- 19

1 Table 1. List of initial conditions.

2 Table 2. List of model scenarios.

3 Figure 1. Atmospheric pCO₂ and sea surface temperature increase from the reference run (a) 2
4 X CO₂ (b) 4 X CO₂ (c) 6 X CO₂ (d) 8 X CO₂ for the first 500 years of a 30k year simulation.
5 The red dashed line indicates the preindustrial pCO₂ level.

6 Figure 2. The difference in particulate organic carbon ($\mu\text{mol kg}^{-1}$) for (a) 4 X CO₂ and the
7 reference simulation, (b) 6 X CO₂ and the reference simulation and (c) 8 X CO₂ simulation
8 and the reference simulation.

9 Figure 3. Locations of the OMZ at 450 meters depth simulated by HAMOCC 2.0 (reference
10 experiment) [1] Eastern North Pacific OMZ [2] Eastern South Pacific OMZ [3] Eastern South
11 Atlantic OMZ [4] Indian Ocean.

12 Figure 4. Reduced ventilation simulations at (a) reference (100% ventilation), (b) 25%
13 reduction, (c) 50% reduction, (d) 75% reduction and (e) 100% reduction in ventilation.

14 Figure 5. Dissolved O₂ concentration simulated by (a) the 4 X CO₂ experiment without CO₂
15 radiative forcing minus the reference experiment (b) the 4 X CO₂ with CO₂ radiative forcing
16 simulation minus reference experiment.

17 Figure 6. The horizontal expansion of OMZs at 450 meters depth for the Pacific, Atlantic and
18 Indian Oceans in the (a) 2 X CO₂ simulation, (b) 4 X CO₂ simulation, (c) 6 X CO₂ simulation
19 and 8 X CO₂ simulation.

20 Figure 7. Simulated vertical distribution of dissolved O₂ through the OMZ cores for a)
21 Eastern North Pacific OMZ [110°W, 10°N], b) Eastern South Pacific OMZ [85°W, 10°S], c)
22 Eastern South Atlantic OMZ [5°W, 10°S], and d) Indian Ocean OMZ [Gulf of Bengal; 85°E,
23 7°N] for the 1 X, 4 X and 8 X CO₂ simulations (top). The bottom row are finer scale
24 dissolved oxygen profiles for the OMZ cores e) Eastern North Pacific OMZ, f) Eastern South
25 Pacific OMZ, g) Eastern South Atlantic OMZ, and h) Indian Ocean OMZ for the 1 X, 4 X and
26 8 X CO₂ simulations. Observations are the annual statistical mean for dissolved oxygen from
27 the World Ocean Atlas, 2013 (Garcia et al., 2014). Standard error of the mean; upper ocean:
28 0.54-2.86 $\mu\text{mol L}^{-1}$, twilight zone: 0.42-2.32 $\mu\text{mol L}^{-1}$, deep ocean: 0.36-1.98 $\mu\text{mol L}^{-1}$.

Figure 8. Zonal cross-section at 1.25° N of the formation of the western tropical Pacific OMZ for the (a) 2 X, (b) 4 X and (c) 8 X CO₂ simulations. The OMZ core is located between 130° E and 150°E.

Figure 9. The difference in the dissolved oxygen concentration between (a) the 50% reduction in ventilation and the 4 X CO₂ simulation with radiative forcing and (b) the 75% reduction in ventilation and the 4 X CO₂ simulation with radiative forcing.

Figure 10. Mechanisms for oxygen loss in the OMZs at 8 X CO₂. (a) Reference simulation. (b) The difference in DO concentrations between 8 X CO₂ and the reference simulation. (c) The difference in DO lost due to changes in solubility between 8 X CO₂ and the reference simulation. (d) The increase in oxygen consumption due to remineralization of organic carbon between the 8 X CO₂ and reference simulation.

Figure 11. Mechanisms for oxygen loss in the OMZs at 4 X CO₂. (a) Reference simulation. (b) The difference in DO concentrations between 8 X CO₂ and the reference simulation. (c) The difference in DO lost due to changes in solubility between 8 X CO₂ and the reference simulation. (d) The increase in oxygen consumption due to remineralization of organic carbon between the 4 X CO₂ and reference simulation.

1 Table 1. List of initial conditions.

Water Column		Atmosphere	
Parameter	Value (mol L ⁻¹)	Parameter	Value (ppmv)
DIC ¹²	2.25 E ⁻³	CO ₂	279.78
Alkalinity	2.33 (eq)	O ₂	209761
PO ₄	2.54 E ⁻⁴		
O ₂	1.65 E ⁻⁴		
Fe dust	6.0 E ⁻¹⁰		

Table 2. List of model scenarios.

Increased pCO ₂ without Radiative Forcing	Increased pCO ₂ with Radiative Forcing	Atmospheric CO ₂ Concentration (ppmv)	Integration Time (years)	Brief Description of the Simulation
CO ₂ Stabilization Simulations				
1 X CO ₂		279.78	30,000	Reference simulation with preindustrial atmospheric CO ₂ levels.
2 X CO ₂ _nf	2 X CO ₂ _f	559.56	30,000	Experiments with no feedbacks (nf) have an increase of pCO ₂ of
3 X CO ₂ _nf	3 X CO ₂ _f	839.34	30,000	1% per year without temperature feedbacks. Temperature
4 X CO ₂ _nf	4 X CO ₂ _f	1,119.12	30,000	changes are applied in experiments with feedbacks (f) as a
6 X CO ₂ _nf	6 X CO ₂ _f	1,678.68	30,000	function of pCO ₂ after Hansen et al. (1988) resulting in a
8 X CO ₂ _nf	8 X CO ₂ _f	2,238.24	30,000	seawater temperature change of 2.8°C, 5.9°C, 8.7°C and 11.5°C for 2 X, 4 X, 6 X and 8 X CO ₂ , respectively.
Kill-Biology Simulations				
Kill_All_Prod		279.78	1000	Kill_All_Prod is simulated as an extinction simulation with primary productivity (POC, Si, CaCO ₃) reduced to 1X10 ⁻²⁰ PgC yr ⁻¹ and present day atmospheric O ₂ concentrations.
Preindustrial P _{POC} with Increasing Atmospheric pCO ₂ Simulations				
	2 X CO ₂ _POC	559.56	10,000	Experiments for static POC with changing atmospheric pCO ₂
	4 X CO ₂ _POC	1,119.12	10,000	concentrations involve prescribing POC to a preindustrial value
	8 X CO ₂ _POC	2,238.24	10,000	that does not evolve with model integration.
Reduced Ventilation Simulations				
Vent_25		279.78	10,000	Experiments with reduction in ventilation include a simulation in which ventilation (vertical, horizontal and meridional) is reduced by 25%, 50%, 75% and 100%. Atmospheric pCO ₂ remains at preindustrial concentrations for all experiments.

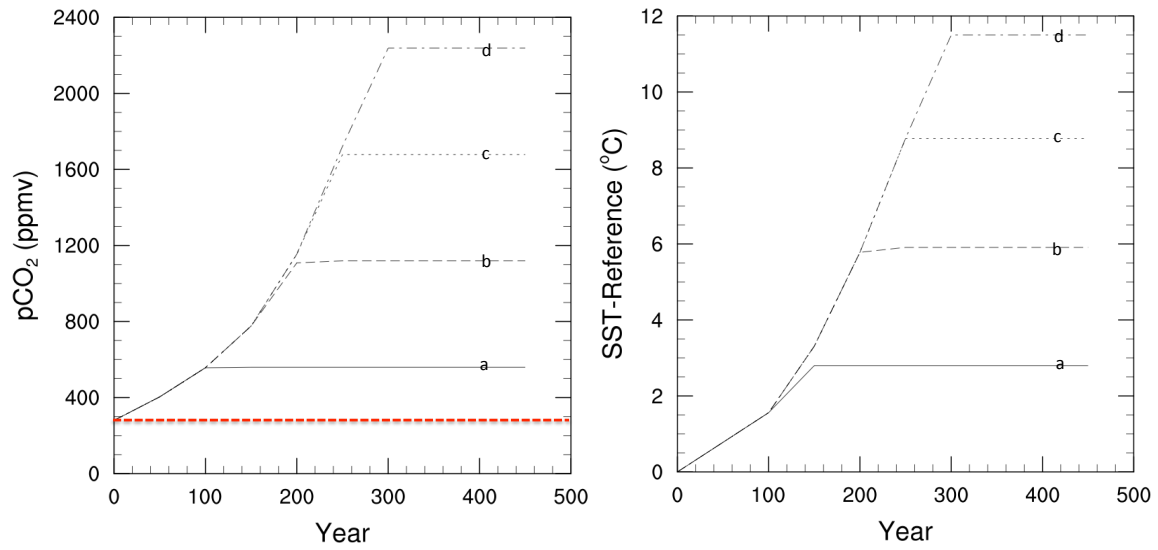
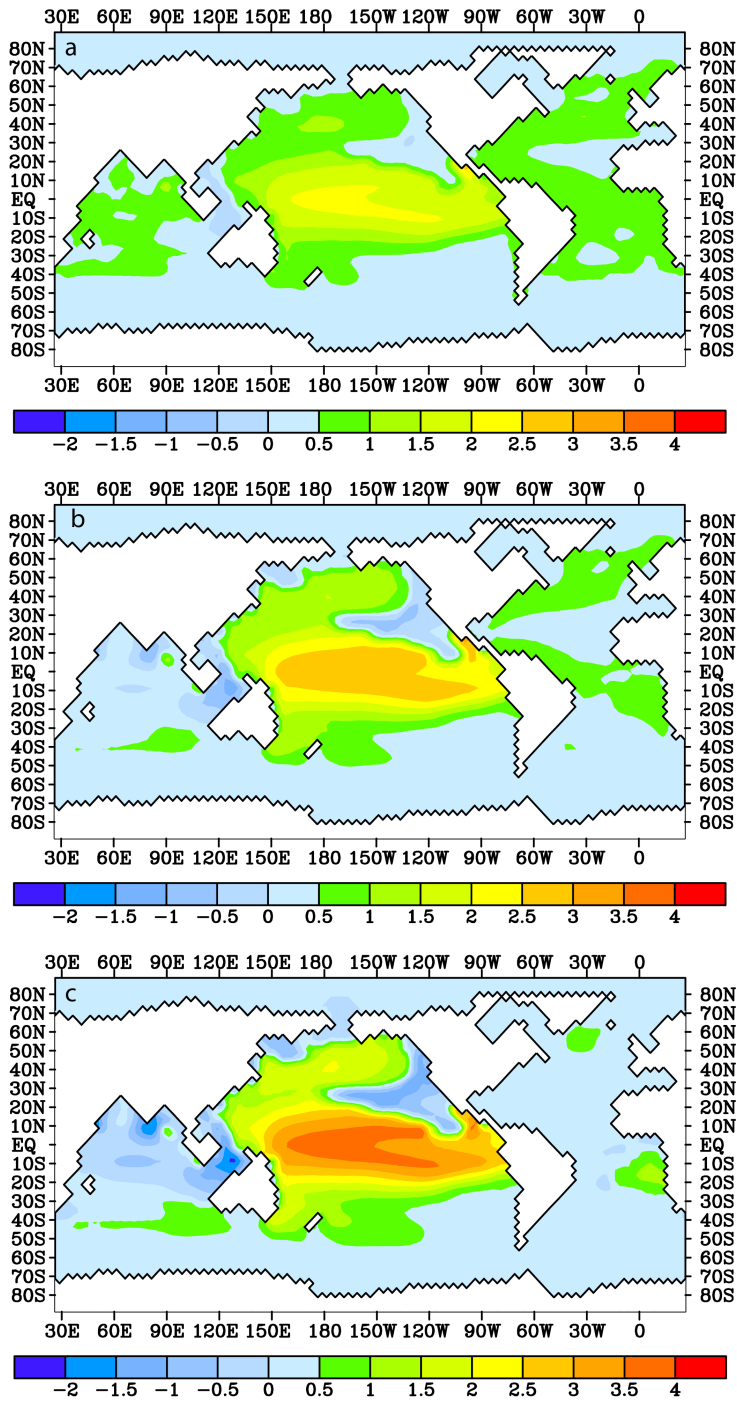


Figure 1. Atmospheric pCO₂ and sea surface temperature increase from the reference run (a) 2 X CO₂ (b) 4 X CO₂ (c) 6 X CO₂ (d) 8 X CO₂ for the first 500 years of a 30k year simulation. The red dashed line indicates the preindustrial pCO₂ level.



Particulate Organic Carbon (gC m⁻² yr⁻¹)

Figure 2. The difference in particulate organic carbon ($\mu\text{mol kg}^{-1}$) for (a) 4 X CO₂ and the reference simulation, (b) 6 X CO₂ and the reference simulation and (c) 8 X CO₂ simulation and the reference simulation.

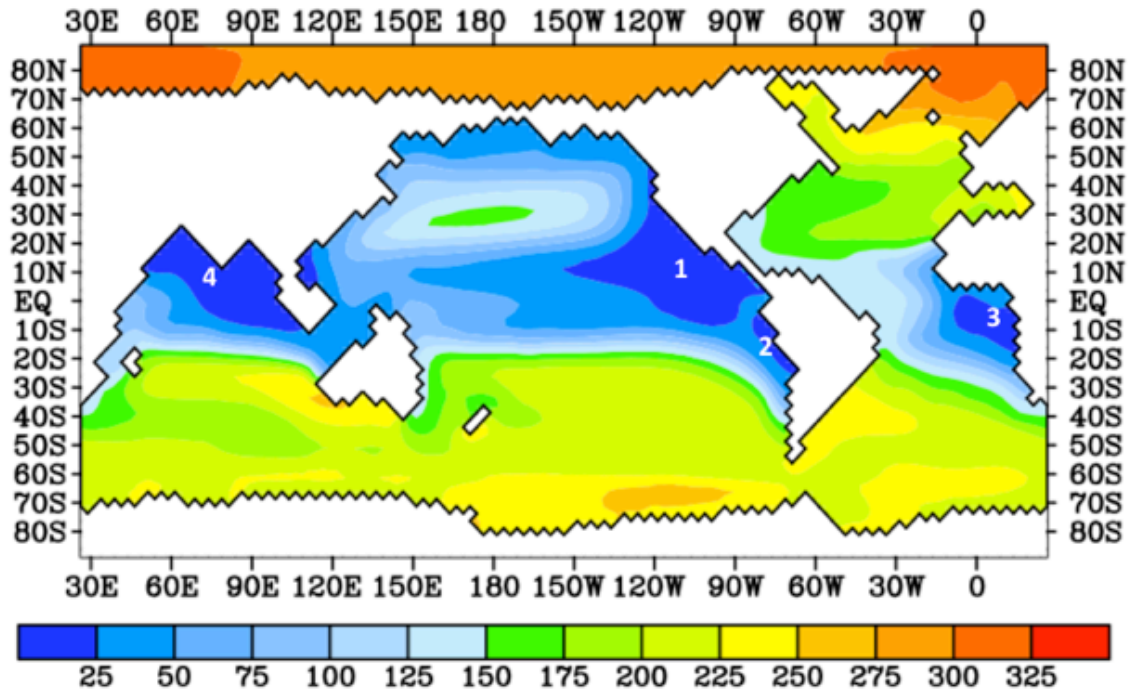


Figure 3. Locations of the OMZ at 450 meters depth simulated by HAMOCC 2.0 (reference experiment) [1] Eastern North Pacific OMZ [2] Eastern South Pacific OMZ [3] Eastern South Atlantic OMZ [4] Indian Ocean.

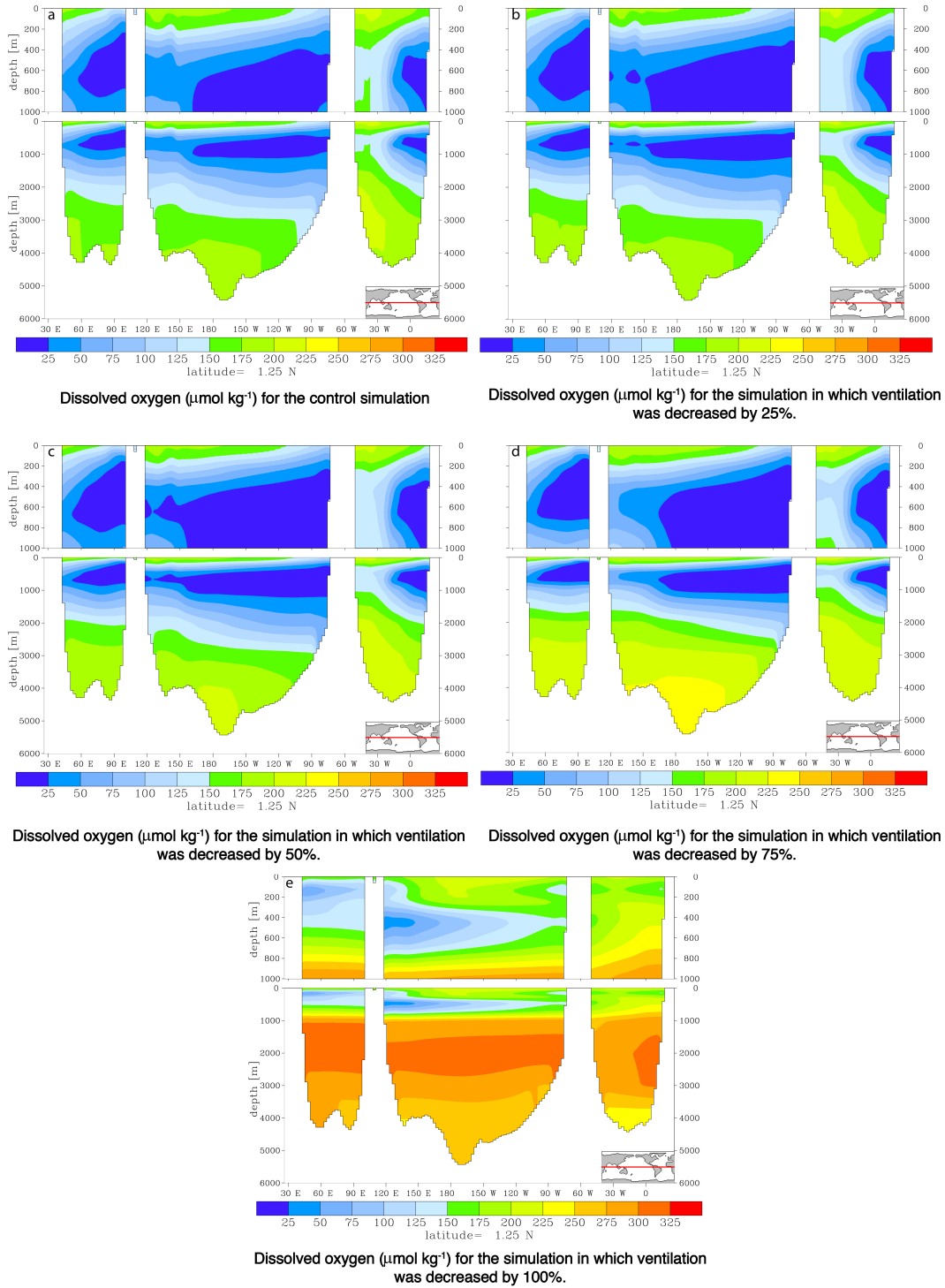


Figure 4. Reduced ventilation simulations at (a) reference (100% ventilation), (b) 25% reduction, (c) 50% reduction, (d) 75% reduction and (e) 100% reduction in ventilation.

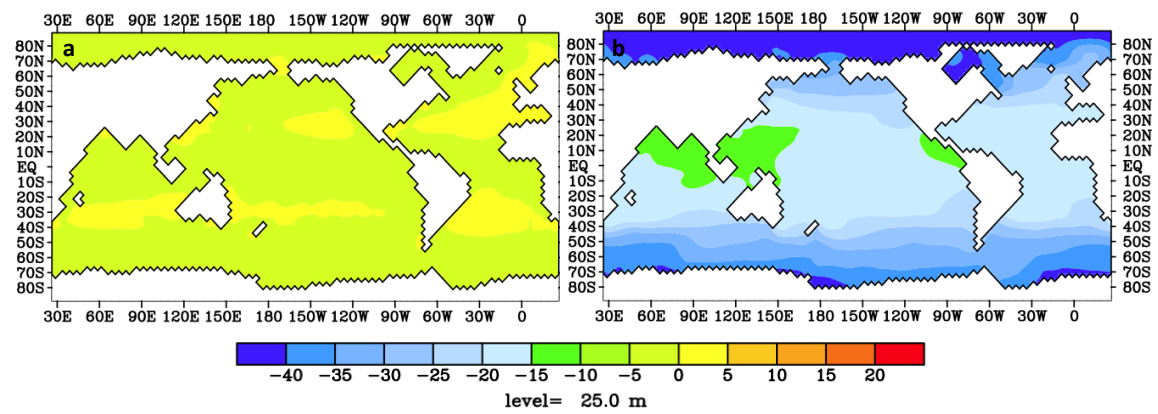


Figure 5. Dissolved O₂ concentration simulated by (a) the 4 X CO₂ experiment without CO₂ radiative forcing minus the reference experiment (b) the 4 X CO₂ with CO₂ radiative forcing simulation minus reference experiment.

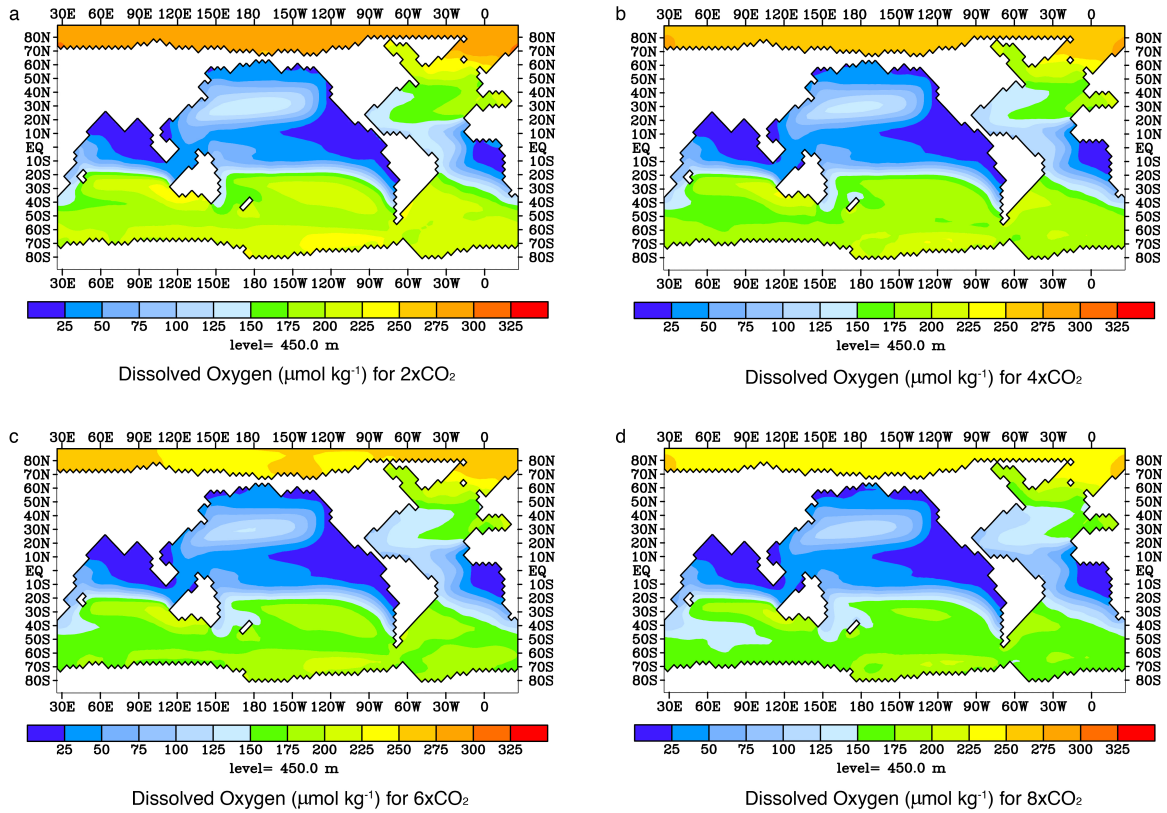


Figure 6. The horizontal expansion of OMZs at 450 meters depth for the Pacific, Atlantic and Indian Oceans in the (a) 2 X CO₂ simulation, (b) 4 X CO₂ simulation, (c) 6 X CO₂ simulation and 8 X CO₂ simulation.

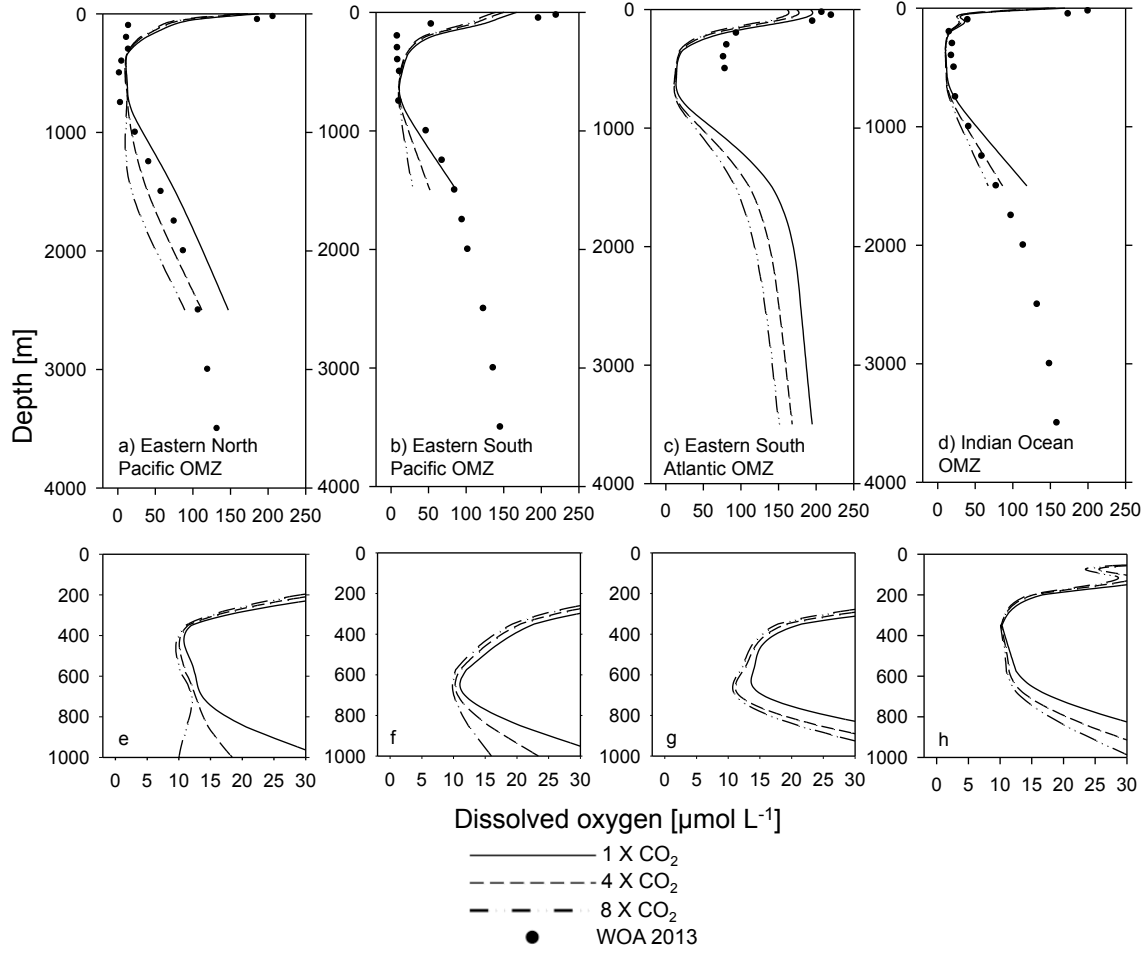


Figure 7. Simulated vertical distribution of dissolved O_2 through the OMZ cores for a) Eastern North Pacific OMZ [110°W, 10°N], b) Eastern South Pacific OMZ [85°W, 10°S], c) Eastern South Atlantic OMZ [5°W, 10°S], and d) Indian Ocean OMZ [Gulf of Bengal; 85°E, 7°N] for the 1 X, 4 X and 8 X CO_2 simulations (top). The bottom row are finer scale dissolved oxygen profiles for the OMZ cores e) Eastern North Pacific OMZ, f) Eastern South Pacific OMZ, g) Eastern South Atlantic OMZ, and h) Indian Ocean OMZ for the 1 X, 4 X and 8 X CO_2 simulations. Observations are the annual statistical mean for dissolved oxygen from the World Ocean Atlas, 2013 (Garcia et al., 2014). Standard error of the mean; upper ocean: 0.54-2.86 $\mu\text{mol L}^{-1}$, twilight zone: 0.42-2.32 $\mu\text{mol L}^{-1}$, deep ocean: 0.36-1.98 $\mu\text{mol L}^{-1}$.

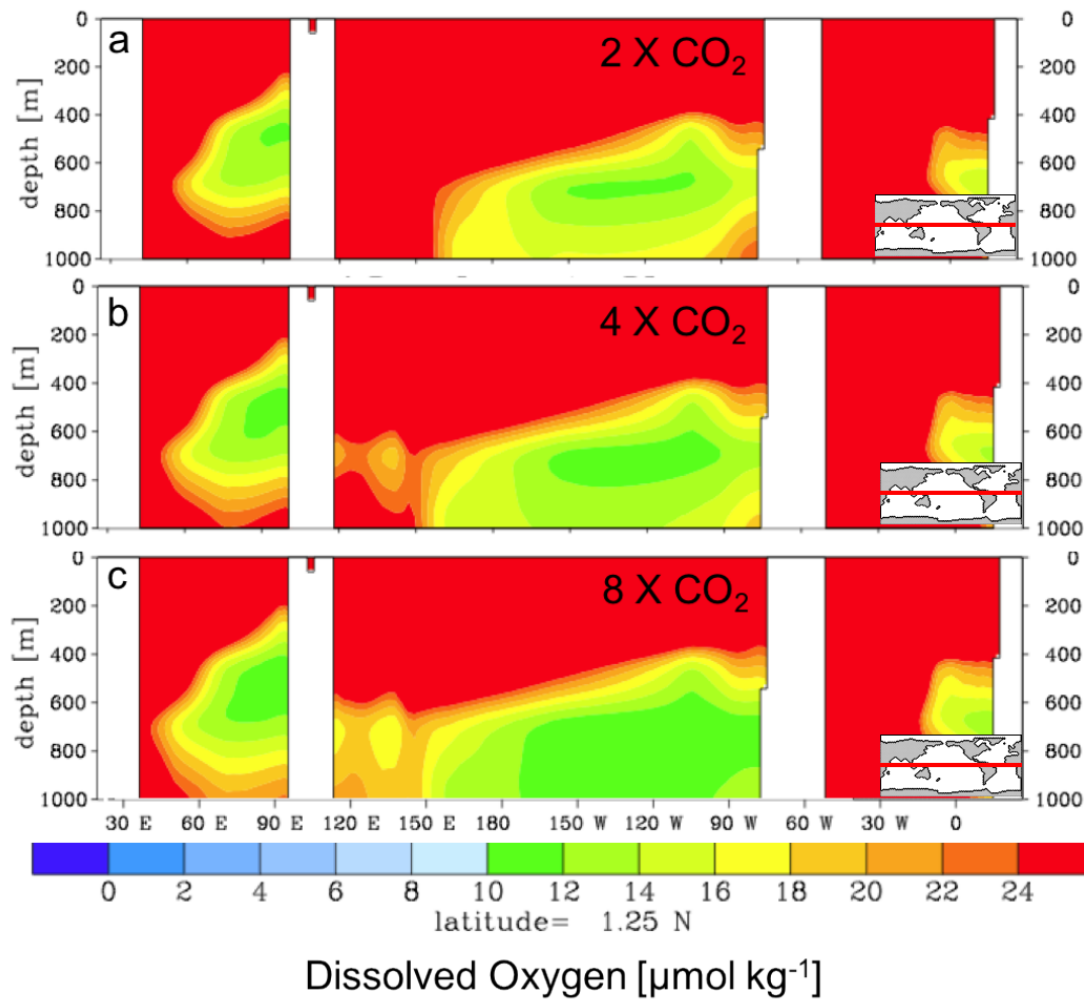


Figure 8. Zonal cross-section at 1.25° N of the formation of the western tropical Pacific OMZ for the (a) 2 X, (b) 4 X and (c) 8 X CO₂ simulations. The OMZ core is located between 130°E and 150°E.

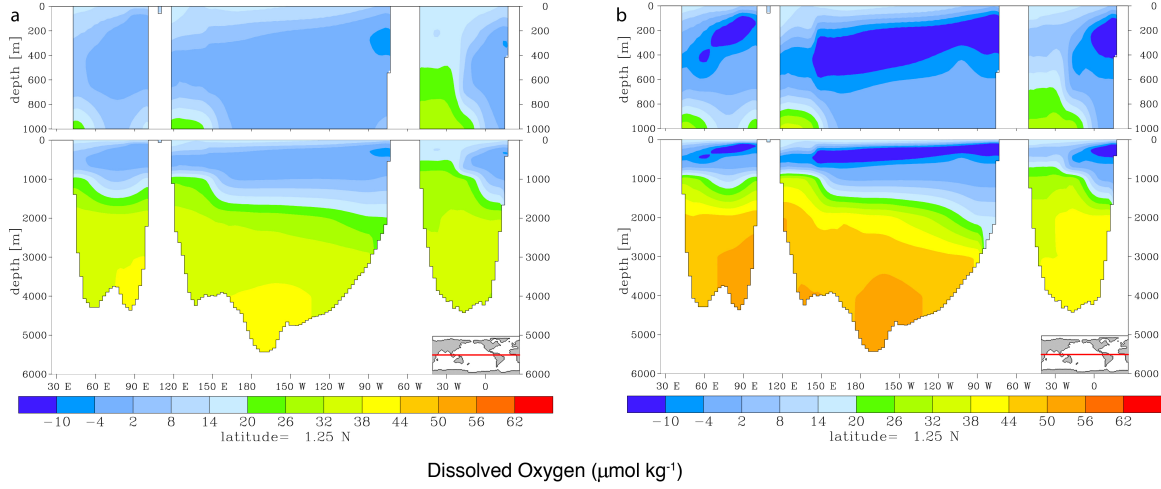


Figure 9. The difference in the dissolved oxygen concentration between (a) the 25% reduction in ventilation and the 4 X CO_2 simulation with radiative forcing and (b) the 50% reduction in ventilation and the 4 X CO_2 simulation with radiative forcing.

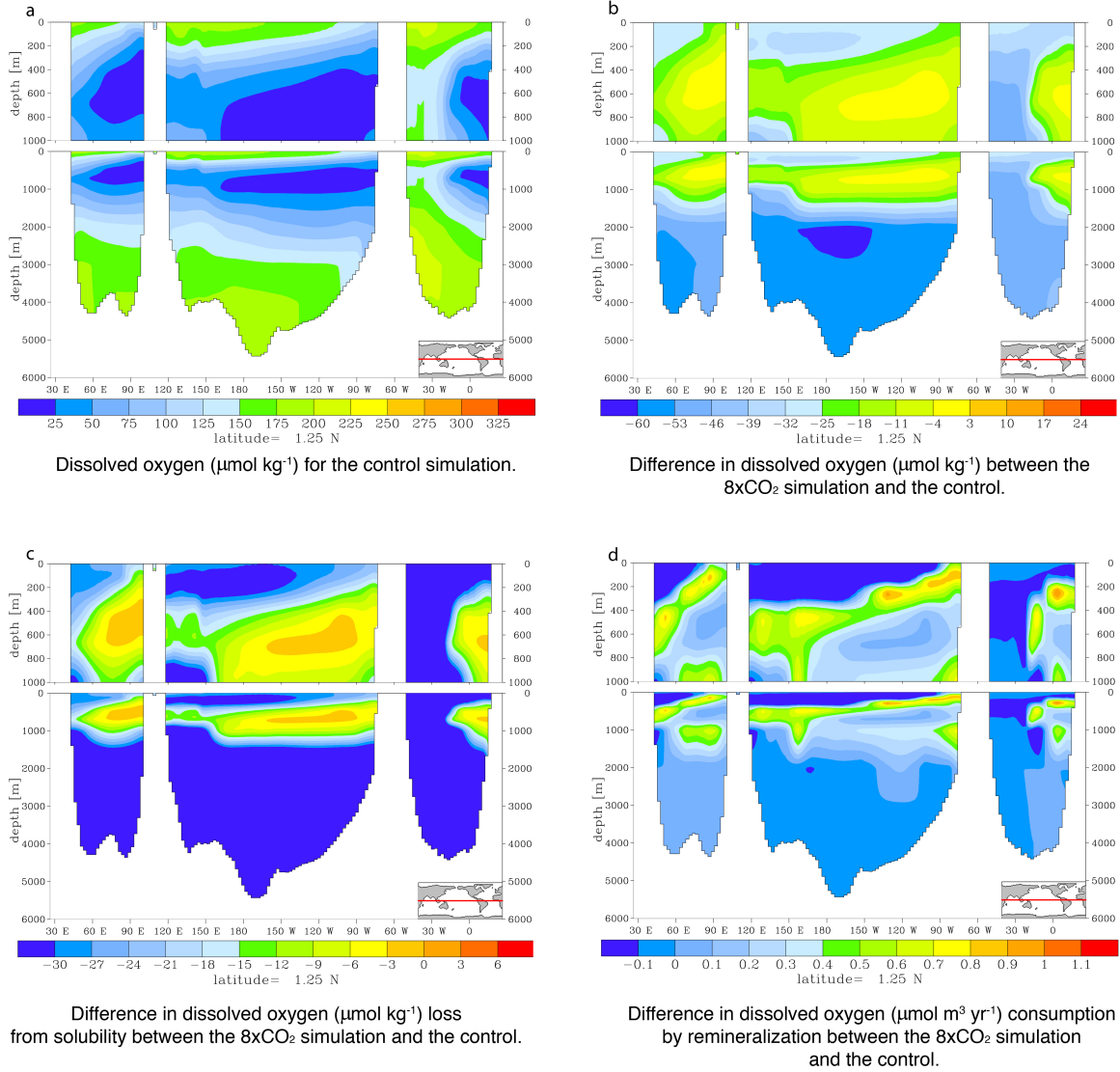


Figure 10. Mechanisms for oxygen loss in the OMZs at 8 X CO_2 . (a) Reference simulation. (b) The difference in DO concentrations between 8 X CO_2 and the reference simulation. (c) The difference in DO lost due to changes in solubility between 8 X CO_2 and the reference simulation. (d) The increase in oxygen consumption due to remineralization of organic carbon between the 8 X CO_2 and reference simulation.

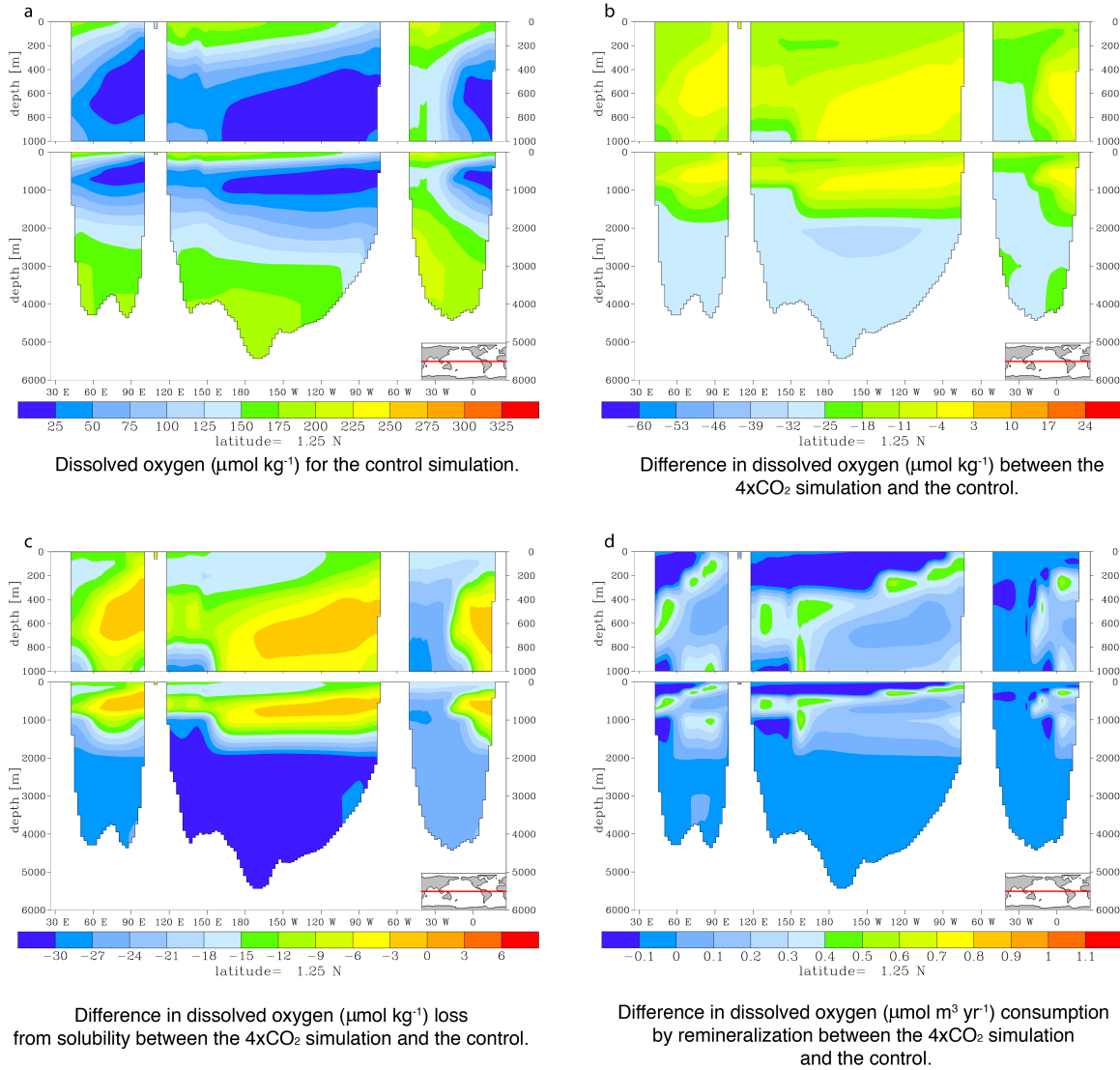


Figure 11. Mechanisms for oxygen loss in the OMZs at 4 X CO_2 . (a) Reference simulation. (b) The difference in DO concentrations between 4 X CO_2 and the reference simulation. (c) The difference in DO lost due to changes in solubility between 4 X CO_2 and the reference simulation. (d) The increase in oxygen consumption due to remineralization of organic carbon between the 4 X CO_2 and reference simulation.