

# **High resolution neodymium characterization along the Mediterranean margins and modeling of $\epsilon$ Nd distribution in the Mediterranean basins.**

M. Ayache, J.-C. Dutay, T. Arsouze, S. Révillon, J. Beuvier, and C. Jeandel

Laboratoire des Sciences du Climat et de l'Environnement (LSCE), IPSL, CEA/UVSQ/CNRS, Orme des Merisiers, Gif-Sur-Yvette, France.

Correspondence to: M Ayache (mohamed.ayache@lsce.ipsl.fr)

We thank Koji Suzuki (Editor), and anonymous Referees for their constructive comments and suggestions, which have helped to improve the manuscript. We have carefully considered all questions and concerns raised.

We provide a marked-up manuscript version; all change is recalled in red (see the revised manuscript with point-by-point responses below, after the responses to the reviewers' comments).

The structure of our reply is as follows; each comment from the anonymous reviewer is recalled in blue, and our reply in black.

## **Reply to Referree#1**

1. Disagreement of LIW  $\epsilon$ Nd values ( $\epsilon$ Nd > -5) towards the western basin between the field data and the simulation. The advection of high  $\epsilon$ Nd LIW ( $\epsilon$ Nd > -5) towards the western basin has not been observed for the field data. I agree that seawater  $\epsilon$ Nd data are still sparse to provide a robust diagnostic. But the authors ignored seawater Nd isotopic compositions reported by Henry et al. (1994) and Vance et al. (2004). The  $\epsilon$ Nd value from site BAOR in the Strait of Sicily ( $\epsilon$ Nd =  $-7.7 \pm 0.6$ ; Henry et al., 1994) provides a constraint for  $\epsilon$ Nd values of LIW entering the W Med Sea. Indeed, this value is consistent with other seawater Nd isotopic compositions from the intermediate water depths in the E Med Sea showing that high LIW values are confined in the easternmost part of the Levantine Sea (Fig. 5). Personally, I had never seen the LIW  $\epsilon$ Nd values at sites close to the Strait of Sicily as high as -5 for the modern seawater and recent archives. I suggest that the authors consider all the existing Med seawater data to optimize the relaxation time (Figs. 4, 5 and 6) and add explanation about the possible reasons for the data-model decoupling for the LIW  $\epsilon$ Nd values.

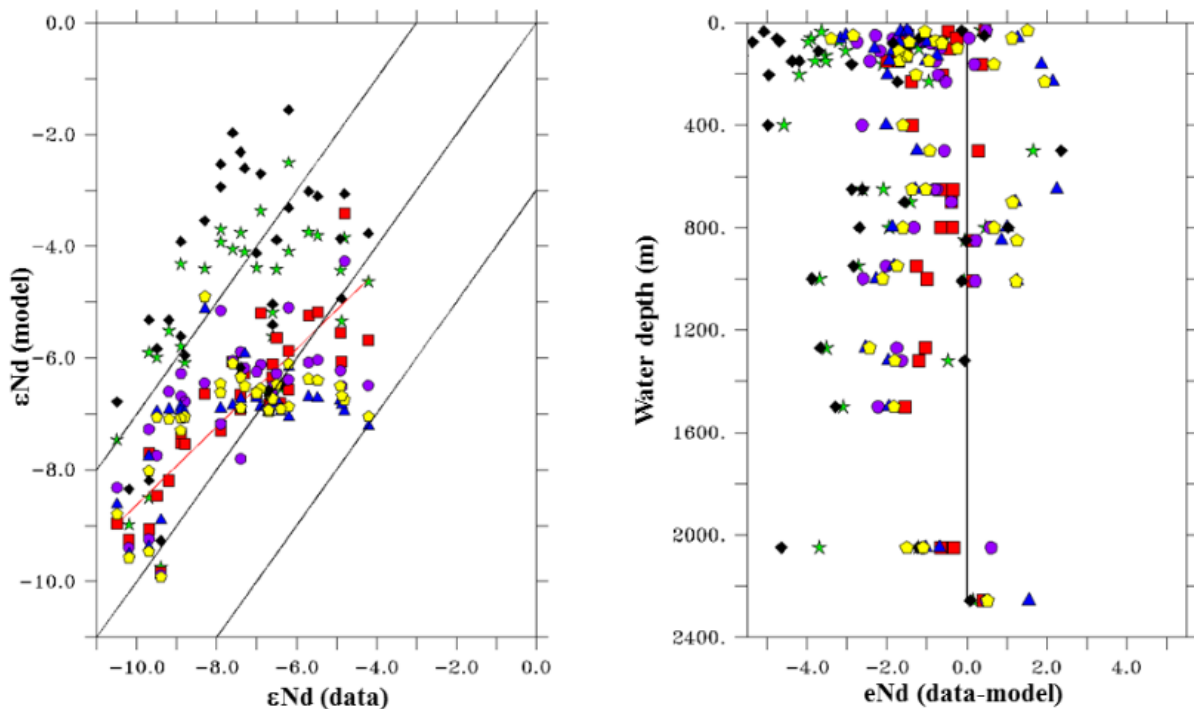
Our modeling approach gives a realistic simulation of  $\epsilon$ Nd in the eastern part of Levantine basin (value up to -4.8, in agreement with in-situ data from Tachikawa et al., (2004)). However we agree with the referee that the simulated LIW IC are too radiogenic in the Ionian sub-basin and around the Sicily strait compared to in-situ observation, as mentioned in the paper ( see P1-L11; P11-L4; and P12-L30).

The purpose of this work is to test the impact of the BE on the Nd IC distribution in the Med Sea starting from the global expertise of Nd modeling by Arsouze et al., (2007, 2009) and by using a realistic representation of the margin Nd IC exclusively compiled from in situ data. Among all the sensitivity tests made on the calibration of this relaxing time, the EXP with 3 months produces the best agreement with available in-situ data.

We have used Tachikawa et al., (2004) and the recent unpublished data from the Meteor cruise M84 in 2011 (P. Montagnia et al, in prep, not showing here). All in-situ data for the LIW layer gave an isotopic signature of almost  $-7 \pm 1$  (Tachikawa et al., 2004; Henry et al., 2004, and from P. Montagnia, in prep). Hence, we added the mentioned data from Henry et al. (1994) and Vance et al. (2004) to the statistic estimation of tau from Fig.4 (see the new Fig.4 and new Fig.5).

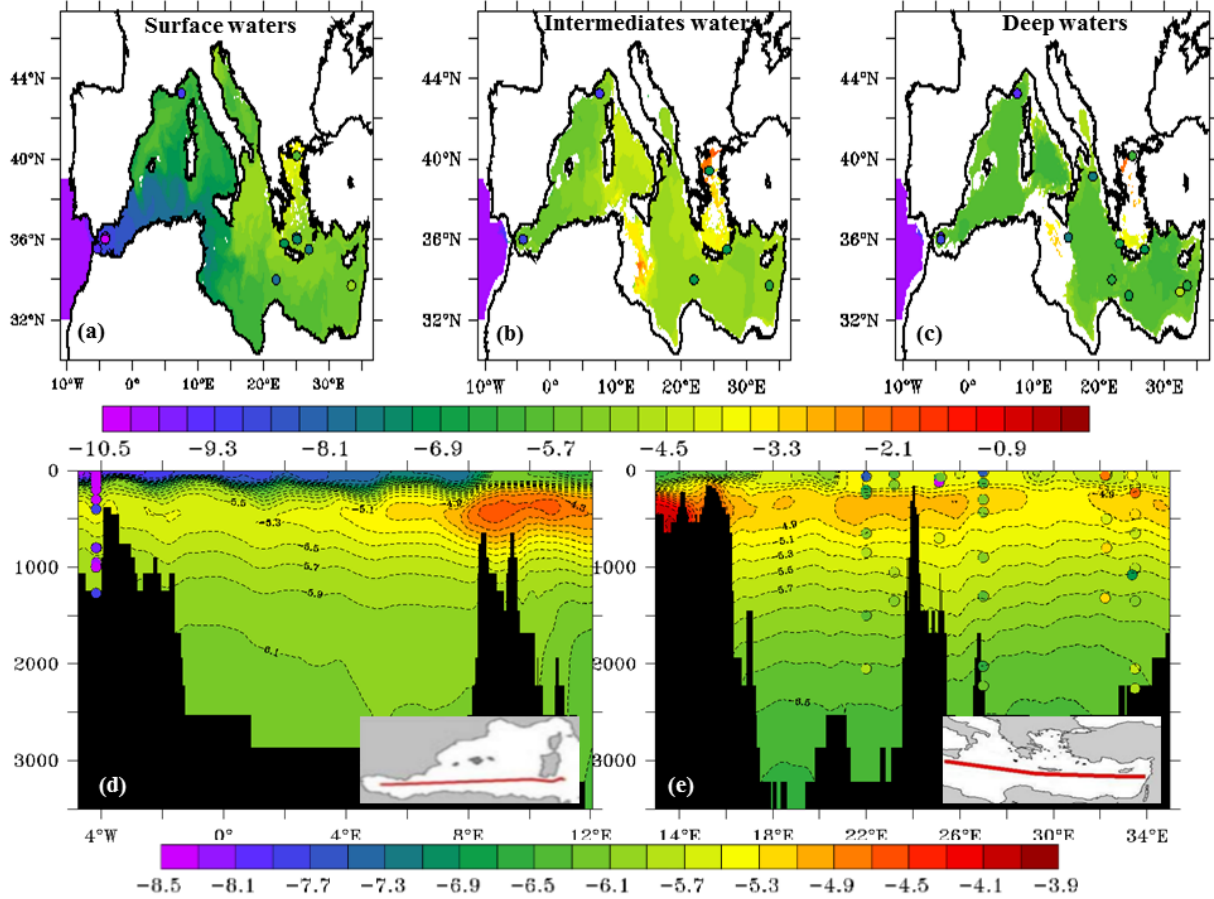
The model-data decoupling for the LIW layer can be explained by the fact that the LIW are formed in NW of Levantine sub-basin near the Cretan Arc, where the margin IC are about -4, leading to a relatively radiogenic signature as we consider only the margin Nd source. Adding dust ( $\epsilon\text{Nd} \sim -12$ ) and river inputs could likely improve the model performance for the representation of the LIW layer (on going work). Also, tritium/ $^3\text{He}$  (Ayache et al., 2015) and CFC (Palmiéri et al., 2015) simulations have shown that the model overestimates the mixing near the Cretan Arc, and in consequence the Levantine sub-basin isotopic signature is over-represented in this water mass.

A sentence was added to the text in the revised manuscript about the possible reasons for the data-model decoupling for the LIW  $\epsilon\text{Nd}$  values (see §5; p13, L14-17).



**Fig.4.** Model/data comparison for the 6 simulations performed with different relaxing time at the steady state (see Tab.3) and the in-situ data from Tachikawa et al., (2004) and Vance et al., (2004): (a) model-data correlation, red line is the linear regression from EXP2. Diagonal

black lines are lines  $\varepsilon\text{Nd}(\text{modeled}) = \varepsilon\text{Nd}(\text{data})$ ,  $\varepsilon\text{Nd}(\text{modeled}) = \varepsilon\text{Nd}(\text{data}) + 3 \varepsilon\text{Nd}$  and  $\varepsilon\text{Nd}(\text{modeled}) = \varepsilon\text{Nd}(\text{data}) - 3 \varepsilon\text{Nd}$ . **(b)** model/data comparison as a function of depth, black solid line represents the data from Tachikawa et al., (2004), Vance et al., (2004) and Henry et al., (1994).



**Fig.5.** Output of model from EXP3 ( $t = 3$  months) at the steady state. Upper panel: horizontal maps for surface waters (a), intermediate waters (b), and deep waters (c). Lower panel E-W section in WMed (d), and EMed (e), whereas colour-filled dots represent in situ observations (Tachikawa et al., 2004; Vance et al., 2004; Henry et al., 1994). Both use the same colour scale.

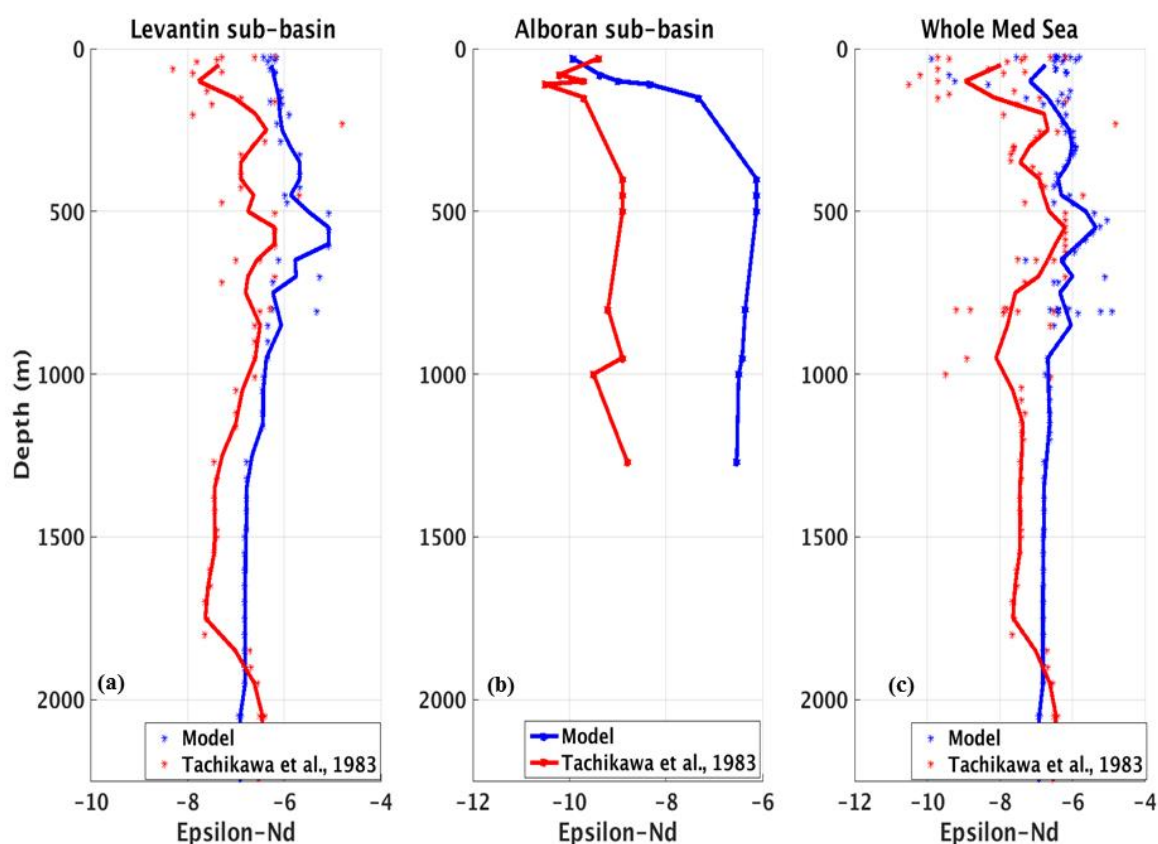
2. Diagnostic of simulation performance with vertical  $\varepsilon\text{Nd}$  profiles In relation to point 1, the comparison of vertical  $\varepsilon\text{Nd}$  profiles between the simulation and data would be carried out for site by site instead of the average profiles as shown in Figure 6. Seeing Figure 5d and 5e, one can have impression that simulated  $\varepsilon\text{Nd}$  is more stratified than the field data (for example Alboran Sea) but this feature does not appear in Figure 6. Since the number of sites providing seawater  $\varepsilon\text{Nd}$  profiles is limited, I suggest that the data-model comparison will be done for site by site along the longitude. This new Figure 6 will clarify the areas of data-model decoupling and will provide the elements of further discussion.

We agree with the referee that site by site data-model comparison gives a more interesting diagnostic of the simulation; however the available in-situ data are mainly localized in the

Levantine sub-basin with one vertical profile in the Alboran sub-basin (see fig.5). In the revised manuscript we provide a new Figure 6 with a separation between these two sites (see Fig below).

The simulated values is realistic in the Alboran sub-basin surface water, but too radiogenic in the deep layer by more the 2.5 eNd units relative to in-situ data from Tachikawa et al. 2004. This shortcoming could be associated with the Mediterranean outflow (mainly formed by the combination of LIW, EMDW and WMDW), where the Nd IC is overestimated in the LIW layer (see response 1), and the southern penetration of new WMDW is weaker in the simulation compared to what was deduced from in situ observations, leads to excessively high eNd values at depth of Alboran sub-basin (Ayache., et al 2015).

Contrastingly the simulated isotopic signatures give a satisfying agreement with the data in the Levantine sub-basin leading globally to the same conclusion from the previous Fig.6 in the paper.



**Fig.6:** Comparison of average vertical profiles of Nd isotopic signature (Nd-IC) from EXP3 (a) in the Levantine sub-basin, (b) in the Alboran sub-basin, and (c) in the whole Mediterranean Sea. Model results are in blue, while red indicates the in situ data.

3. Too radiogenic eNd values for the Aegean Sea and its impact on the simulated EMT. The direct measurement of seawater samples indicates that Aegean seawater eNd values do not exceed  $-5.9 \pm 0.2$  (Tachikawa et al., 2004). The simulated values are higher than this limit. The EMT simulation result could be sensitive to the performance Aegean Sea eNd simulation.

Considering the overestimation of Aegean eNd values and too weak formation of the Adriatic Deep Water formation, the simulated shift of seawater Nd isotopic signatures due to EMT could be overestimated. It is true that more negative eNd values of surface water in southern part of the E Med Sea will be obtained by Saharan dust contribution. In contrast, it is not obvious that the Aegean Sea water eNd will decrease by considering Nd sources other than the BE. Since the simulated eNd shift due to the EMT is relatively small, some comments about this point would be added.

As explained in response to the first comment, we agree that the model simulates too radiogenic values compared to in-situ data. Nevertheless, our calculations from this sensitivity test on the EMT are not affected by the “initial” value in the Aegean sub-basin because our purpose here is to evaluate the impact of a like-EMT event on the Nd IC in the EMed. Hence our results suggest that the shift is more important in the Levantine deep water, compared to intermediate water where the EMT impact is lower.

One of our goals is to give a useful diagnostic on the long term variability of Med Sea circulation and to demonstrate the potential of Nd to detect a like-EMT event. However we agree with the referee that the weak formation of AdDW could affect the simulated shift of seawater Nd IC.

For the sake of clarity specific paragraph has been added to the text (see §5; p14, L1-4)

Taking into account the above-mentioned points, I am not totally convinced by the BE alone can explain the major features of the Mediterranean seawater eNd distribution. Nonetheless, this work provides an important advance of understanding seawater eNd distribution in the Mediterranean Sea. Considering the compilation effort and the originality of modelling aspects, I strongly recommend accepting this work after moderate revision.

Many thanks for these positive remarks.

.....

Minor or specific comments.

Page 2, line 9, delete “all stable”.

Done (Page 2, line 9).

Page 2, line 26. Define “IC”.

Done Nd IC => Nd Isotopic Composition (Page 2, line 26).

Page 2 footnote about the eNd definition.

The equation should be corrected:  $eNd = [(^{143}Nd/^{144}Nd)_{sample}/(^{143}Nd/^{144}Nd)_{CHUR} - 1] \times 10^4$

Corrected (footnote page 2).

Page 3, line 5. The eNd value of the Mediterranean outflow was estimated to be -9.4 (Henry et al., 1994; Tachikawa et al., 2004).

Changed (Page 3, line 5).

Page 5, line 16. Acid concentrations are shown with wrong fonts. “HN03” should be “HNO3”.

Corrected (Page 4, line 16).

Page 6, line 9. Delete “Nd” after “eNd”.

Done (Page 6, line 9).

Page 9, lines 9-10. “Lacan et al., (2012)” should be replaced by “Spivack and Wasserburg, 1988”.

Replace, we thank the referee for this suggestion (Page 9, lines 9-10).

Page 10, line 15. “underestimation” should be “overestimation”.

Done (Page 10, line 15).

Page 11, line 5. About the comparison of intermediate eNd values between the model and the data. It is not clear the referred values here correspond to which part of Table 2.

Corrected to: However averaged simulated values are relatively too radiogenic at the intermediate level (-5.8 compared to  $-9.4 \pm 0.69$ , Tab.2).

Page 14, line 16. “eps Nd” should be corrected.

Done (Page 14, line 23).

Figure 1. Indicate the relationship between the geological province and colour code in the caption.

Done, see change below:

The filled contours indicate the geological province **limit based on the geological age (i.e. each color represent a separate age)** from a high resolution digital geological map (<http://www.geologie.ens.fr/spiylabocnrs/spip.php?rubrique67>) while the circles filled in blue represent the location of the discrete data compiled from EarthChem database (see Appendix1), and in red the location of the stations corresponding to the sediments analysed as part of the present work.

Figure 4. The x-axis should be delta eNd (data-model) and the y-axis should be “Water depth (m)” not “profondeur”. There is no “dashed line” as indicated in the caption. It should be the black solid line.

Done.

Figures 8 and 9. The colour code indicates eNd difference between specific year and 1987. Please indicate this information in the captions.

Done.

Appendix 2, 3 and 4. EXP5. The conditions of the relaxation time are different from Table 3. Please correct.

Corrected.



## Reply to Referee#2

### 4.3 The $\epsilon$ Nd distribution

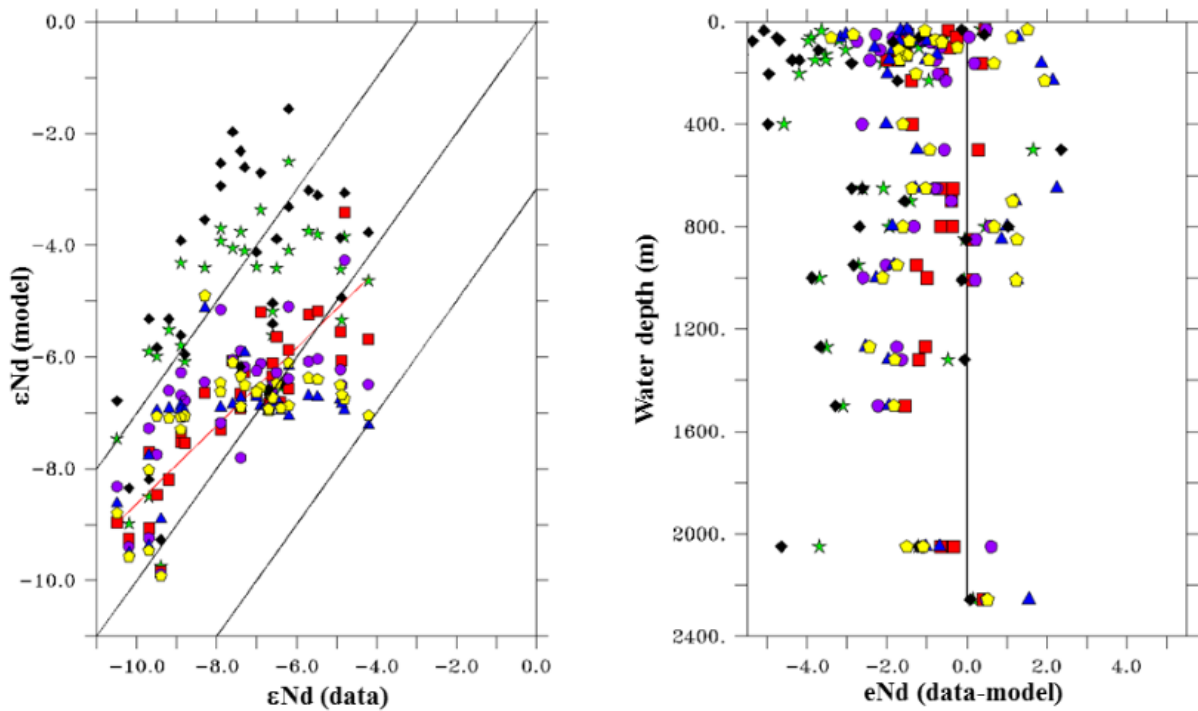
Authors seems to insist that the main features of  $\epsilon$ Nd distribution in the Mediterranean are well reproduced assuming only the BE operating Nd oceanic source. Authors also admit that the reproduced results are apparently more radiogenic than the in-situ data reported by Tachikawa et al. (2004). Although I partly agree that their model successfully reproduced some features of the distribution, I have two concerns on their approach. First, I am not quite sure whether the number and locality of in-situ data for comparison is sufficient or not. The data reported by Tachikawa do not cover whole the Mediterranean; the data are localized in the eastern and western parts, and almost no data in the central part. I do not think these data are sufficient for verifying the simulated results. I have found one depth profile at station Ville-franche (43° 24'N, 7° 52'E) located in the central part (Henry et al., 1994), which seems to show great shifts from the simulated data. I do not understand why authors neglect this data and believe that authors should discuss the data. Second, in my opinion, the evaluation on contribution of dust and river inputs should be more quantitative. In discussion section (p12 L31), authors claim that an incorporation of dust and river inputs should solve the discrepancy between simulated results and in-situ data. This does not say anything because besides BE processes these two inputs exclusively control Nd flux. Although I agree that it is not so easy to incorporate dust and river inputs into simulation, authors is highly expected to add more quantitative comments on these inputs, say, how much additional Nd with low  $\epsilon$ Nd is required to lower the simulated results.

We agree with the referee that more in-situ data (as those currently acquired in the framework of the GEOTRACES MEDBLACK programme) should help improving in the knowledge of Nd and its isotope cycles in the Med Sea to better constrained the fluxes of solid material and exchange between the continental margin and open ocean, as mentioned in the paper (see P14-L11-14). In this study we have evaluated the model result against published observations: Tachikawa et al., 2004 d, , and following the reviewer suggestion we added the mentioned data from Henry et al. (1994) and Vance et al. (2004) to the statistic estimation of tau from Fig.4 (see the new Fig.4 and new Fig.5). We added the station of Ville-franche (43° 24'N, 7° 52'E) from Henry et al. (1994) in Fig.5a, 5b et 5d (see the new Fig.5). However this vertical profile is not showed in Fig.5d, 5e, because it is situated far away from the E-W section in the southern part of western basin. Some new data from Meteor 84/3 cruise in 2011 (Montagna et al., in prep) will soon be available, but as they are still not published we could not use them in our manuscript. However, confronting these new data with our model experiment do not change any of our conclusions (personal communication).

Second, the purpose of this work is to test the impact of the BE on the Nd IC distribution in the Med Sea starting from the global expertise of Nd modeling by Arsouze et al., (2007, 2009) and by using a realistic representation of the margin Nd IC exclusively compiled from in situ data. Nevertheless this approach simulates a too radiogenic value in the Med Sea; this bias will likely be corrected once the dust and river inputs will be included in the model. As the reviewer mentioned, is not so easy to incorporate dust and river inputs into simulation, because this requires another modeling approach completely different from the adopted method here (i.e. we should simulate the Nd total concentration instead of  $\epsilon$ Nd, and a fully

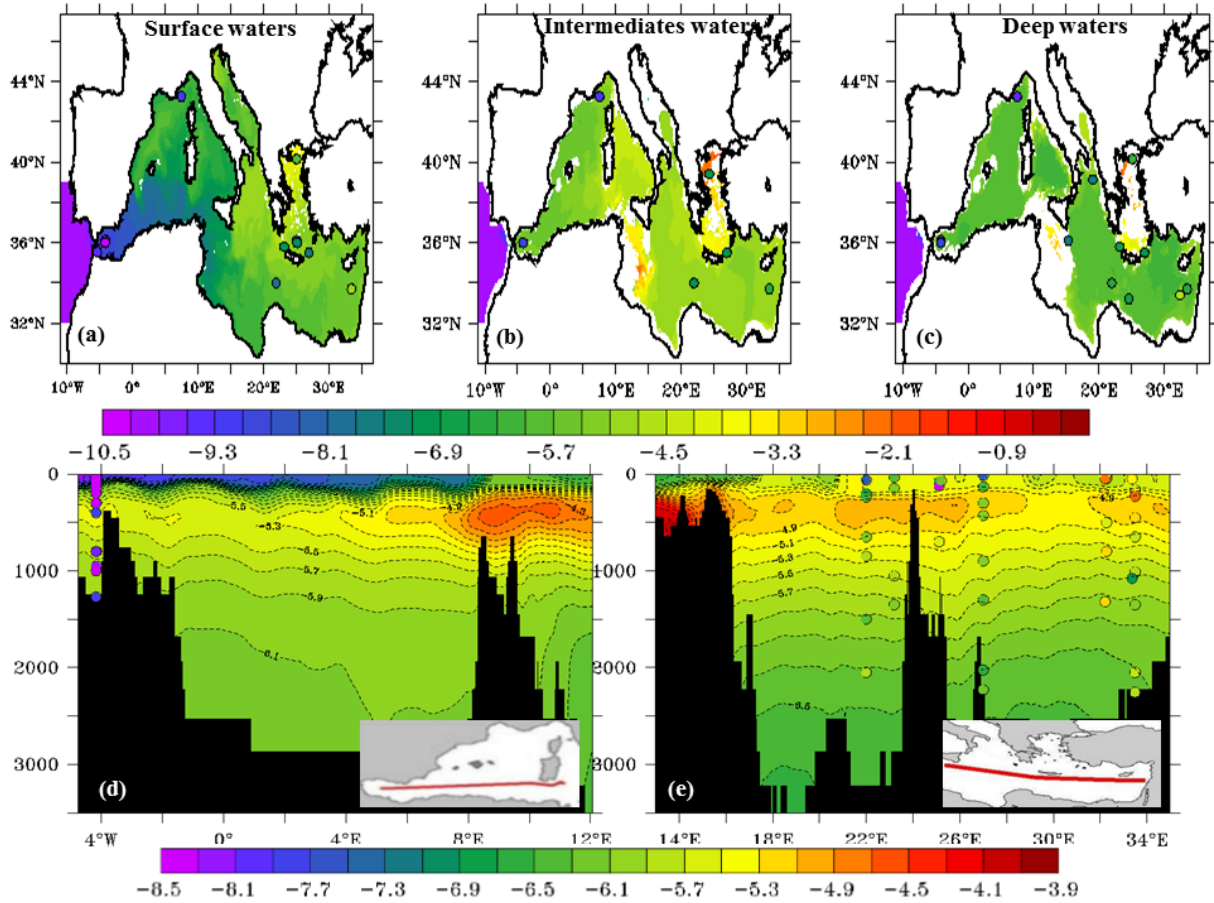
prognostic coupled dynamical/biogeochemical model to represent the scavenging of Nd in the surface water and the remineralisation in the deep layer). This is an ongoing work which aims at explicitly representing and quantifying the different sources and sinks implied in the oceanic cycle of the Nd. The results of this second approach will be addressed in a coming paper.

A sentence was added to the text in the revised manuscript about the possible reasons for the data-model decoupling for the LIW  $\epsilon\text{Nd}$  values (see §5, p13, L14-17).



**Fig.4.** Model/data comparison for the 6 simulations performed with different relaxing time at the steady state (see Tab.3) and the in-situ data from Tachikawa et al., (2004) and Vance et al., (2004): **(a)** model-data correlation, red line is the linear regression from EXP2. Diagonal black lines are lines  $\epsilon\text{Nd}(\text{modeled}) = \epsilon\text{Nd}(\text{data})$ ,  $\epsilon\text{Nd}(\text{modeled}) = \epsilon\text{Nd}(\text{data}) + 3 \epsilon\text{Nd}$  and  $\epsilon\text{Nd}(\text{modeled}) = \epsilon\text{Nd}(\text{data}) - 3 \epsilon\text{Nd}$ . **(b)** model/data comparison as a function of depth, black solid line represents the data from Tachikawa et al., (2004), Vance et al., (2004) and Henry et al., (1994).





**Fig.5.** Output of model from EXP3 (t =3 months) at the steady state. Upper panel: horizontal maps for surface waters (a), intermediate waters (b), and deep waters (c). Lower panel E-W section in WMed (d), and EMed (e), whereas colour-filled dots represent in situ observations (Tachikawa et al., 2004; Vance et al., 2004; Henry et al., 1994). Both use the same colour scale.

#### 4.4 The inter-annual variability

Although I found this is an interesting approach, I wonder how authors verify the results. Are there any marine samples recording the EMT events or any chances to observe the EMT in near future?

As detailed by Roether et al. (1996, 2007), the EMT was a temporary change in the EMDW formation that occurred when the source of this deep water switched from the Adriatic Sea to the Aegean Sea during 1992–1993. In a previous evaluation of the same dynamical model used in this study (Ayache et al., 2015), we have shown that the NEMO-MED12 model simulate correctly the EMT even with its corresponding penetration of tracers into the deep water in early 1995. Especially the transient evolution of the tracer age in the eastern basin revealed that the renewal of the bottom water masses is correctly simulated after the EMT (Ayache et al., 2015).

Hence, and by using the same model circulation (as in Ayache et al., 2015), and starting from the simulated steady state distribution of  $\epsilon\text{Nd}$ , we have made this sensitivity test to see the response of Nd IC to this well documented event of EMT, as showed in Fig. 7 and Fig.8. This

test gives a useful diagnostic on the long term variability of Med Sea to explore if an EMT-type event occurred in the past (Roether et al., 2014; Gacic et al., 2011).

Nd measurements will be performed on deep and intermediate corals in the med sea (Paleomex project, Mistrals/France). These new data will provide some information about past Mediterranean circulation, for more than hundred years ago. Our modeling efforts will represent a support to detect if some “EMT-like” events have occurred in the past.

See also our response to reviewer #1 about the EMT modelling.

#### Technical corrections

p5 L16; “24” of “24N” should not be superscript. Also correct for HNO<sub>3</sub> and HClO<sub>4</sub>

Done (see p5, L16).

p5 2.1.2; According to this section, the authors analyzed Nd IC of several sediment sample. Unfortunately, however, I could not understand how the Nd IC data are used in the model. I have checked Appendix 1 and could not find out. Please clarify this point.

Additional analyses of surface sediments were done, in order to improve the EarthChem dataset in key areas (e.g., Sicilian strait). And to complete this dataset in the areas with low spatial resolution of available data, the localization of this stations are showed in red in Fig.1.

For the sake of clarity a new column has been added to table. 1, with the results of the analyzed sediment samples (see new Tab.1), this core tops of sediments collected along a given margin (Fig.1) are directly in contact with the water masses and therefore representative of the signatures of the sediments supposed to “contaminate” the waters flowing along them. We applied the resulted isotopic signature analyzed in this study, in the Sicilo-Tunisian, Libyan, and Egyptian margins age based on the Nd model-age relationships (Allegre,2005; Goldstein et al., 1984, 1997; O’Nions et al., 1979).

**Tab.1.** Coordinates and results of the studied cores together with water depth.

Cruise	Years	Longitude (°E)	Latitude (°N)	Depth (m)	$\varepsilon_{Nd}$
ETNA80	1980	11.48	36.30	263	-10.09
		13.44	33,23	736	-10.92
DEDALE	1987	25.59	33.51	3020	-8.15
NOE	1984	30.01	32.19	1465	-4.49
		30.1	31.53	495	-3.92
Sicily strait	2003	12.57	37.30	29.5	-11.67
		14.37	36.36	87.4	-11.05
		14.22	36.16	488.2	-11.22
		12.32	36.56	117	-8.06

p15-p17 References; Some unnecessary information, such as link to paper, is shown. Should be deleted.

Done (see references).

p17 L10; This reference is from EPSL. Please write down the correct journal information.

Herrmann, M. J. and Somot, S, 2008 paper is published in Geophysical Research letters.

Figure 5; “EXP3” should be “EXP2”.

Corrected.

Appendix 1; What “” and “İ,T” stand for? Please explain. I could not find a list of reference for Appendix 1. Please add somewhere.

We have added the list of reference used in Appendix 1, in a new Excel file (more than 600 references).

$\lambda$  for longitude and  $\phi$  for latitudes, corrected in the new version.

.....

See the revised manuscript with point-by-point responses below.

# High resolution neodymium characterization along the Mediterranean margins and modeling of $\varepsilon_{Nd}$ distribution in the Mediterranean basins.

M. Ayache<sup>1</sup>, J.-C. Dutay<sup>1</sup>, T. Arsouze<sup>2,3</sup>, S. Révillon<sup>4</sup>, J. Beuvier<sup>5,6</sup>, and C. Jeandel<sup>7</sup>

<sup>1</sup>Laboratoire des Sciences du Climat et de l'Environnement LSCE/IPSL, CEA-CNRS-UVSQ, Université Paris-Saclay, 91191 Gif-sur-Yvette, France.

<sup>2</sup>ENSTA ParisTech, Université Paris-Saclay, 828 bd des Maréchaux, 91762 Palaiseau cedex, France

<sup>3</sup>Laboratoire de Météorologie Dynamique, École Polytechnique, Palaiseau, France.

<sup>4</sup>SEDISOR/UMR6538 "Laboratoire Domaines Océaniques", IUEM, CNRS-UBO, Plouzané, France

<sup>5</sup>Mercator-Océan, Ramonville Saint-Agne, France.

<sup>6</sup>Météo-France, Toulouse, France.

<sup>7</sup>LEGOS, Université de Toulouse, CNRS, CNES, IRD, UPS, Toulouse, France

*Correspondence to:* M. Ayache (mohamed.ayache@lsce.ipsl.fr).

**Abstract.** An extensive compilation of published neodymium (Nd) concentrations and isotopic compositions (Nd IC) was realized in order to establish a new database and a map (using a high resolution geological map of the area) of the distribution of these parameters for all the Mediterranean margins. Data were extracted from different kinds of samples: river solid discharge deposited on the shelf, sedimentary material collected on the margin or geological material outcropping above or close to a margin. Additional analyses of surface sediments were done, in order to improve this dataset in key areas (e.g., Sicilian strait).

The Mediterranean margin Nd isotopic signatures vary from non-radiogenic values around the Gulf of Lions, ( $\varepsilon_{Nd}$  values  $\sim -11$ ) to radiogenic values around the Aegean and the Levantine sub-basins up to +6. Using a high resolution regional oceanic model (1/12° of horizontal resolution),  $\varepsilon_{Nd}$  distribution was simulated for the first time in the Mediterranean Sea.

The high resolution of the model provides the unique opportunity to represent a realistic thermohaline circulation in the basin and thus apprehend the processes governing the Nd isotope distribution in the marine environment. Results reinforce the preceding conclusions on boundary exchange "BE" as an important process in the Nd oceanic cycle. **Nevertheless this approach simulates a too radiogenic value in the Med Sea**, this bias will likely be corrected once the dust and river inputs will be included in the model.

This work highlights that a significant interannual variability of  $\varepsilon_{Nd}$  distribution in seawater could occur. In particular, important hydrological events such as the Eastern Mediterranean Transient (EMT), associated with deep water formed in the Aegean sub-basin, could induce a shift in  $\varepsilon_{Nd}$  at deep/intermediate depths that could be noticeable in the Eastern part of the basin. This underlines that the temporal and geographical variations of  $\varepsilon_{Nd}$  could represent an interesting insight of Nd as tracer of the Mediterranean Sea circulation, in particular in the context of paleo-oceanographic applications.

## 1 Introduction

The Mediterranean Sea is a semi-enclosed sea of great interest because it is submitted to large range of dynamical processes and interactions, such as strong air-sea exchanges leading to open-sea deep water convection feeding a thermohaline circulation cell (Malanotte-Rizzoli and Robinson, 1988), strait transports and dynamics or cross-shore exchanges. From a biogeochemical perspective, it is a region receiving the highest aerosol loads owing to air masses carrying numerous and various aerosol types (Lelieveld et al., 2002; Nabat et al., 2014), where oligotrophy occurs and with a characteristic dynamic of the deep chlorophyll maximum (Mignot et al., 2014). Under the stress of the global change and anthropogenic forcing, understanding the functioning of the Mediterranean Sea and quantifying the biogeochemical cycles is a priority (MerMex-Group, 2011).

Neodymium (Nd) is a Rare Earth Element (REE) with seven naturally occurring isotopes. The radiogenic isotope  $^{143}\text{Nd}$  is produced by the radioactive  $\alpha$ -decay of  $^{147}\text{Sm}$ . At the continent surface, the Nd isotopic composition (usually expressed as  $\varepsilon_{\text{Nd}}$ <sup>1</sup> of a given material is a function of the Sm/Nd ratio characterizing this material, which is primarily a function of its age and lithology. On a global scale, it is higher in the Earth's mantle compared to its crust. As a consequence, the  $\varepsilon_{\text{Nd}}$  of the continents presents a heterogeneous distribution (Goldstein and Hemming, 2003; Jeandel et al., 2007).

Nd residence time range from 700 to 1500 yr in the global ocean (e.g., Lacan et al., 2012), long enough to be transported within the global thermohaline circulation system and short enough to avoid complete homogenisation. Therefore,  $\varepsilon_{\text{Nd}}$  is often considered to be a "quasi-conservative" tracer. In other words,  $\varepsilon_{\text{Nd}}$  values of the water masses could be conserved up to long distance from the source of lithogenic inputs. In such context, it could be used to tag water masses with distinct isotopic compositions in order to constrain water mass mixing and pathways, and the thermohaline circulation in modern and paleo ocean circulation (e.g., Lacan and Jeandel, 2005; Jeandel, 1993; Jeandel et al., 1998; Frank, 2002; Goldstein and Hemming, 2003; Piotrowski et al., 2004; Stichel et al., 2012; Piotrowski et al., 2012; Martin et al., 2012; Pena et al., 2013; Molina-Kescher et al., 2014; Arsouze et al., 2008). However, because Nd is particle reactive, Nd parameters are also successfully used to study Nd exchange between dissolved and particulate phases (Bertram and Elderfield, 1993; Henry et al., 1994; Jeandel et al., 1995; Tachikawa et al., 1999; Tachikawa, 2003; Garcia-Solsona et al., 2014; Rousseau et al., 2015; Haley et al., 2014).

Nd sources to the ocean are lithogenic, and the mean  $\varepsilon_{\text{Nd}}$  of an oceanic basin is representative of the surroundings continents (Jeandel et al., 2007). During the last few years, significant progress has been made in understanding how different water masses acquire their Nd IC (**Isotopic Composition**). Early 2000s, (Tachikawa, 2003) and (Lacan and Jeandel, 2005), suggested that exchange of Nd between the sediments deposited on the oceanic margins and the waters flowing along these margins, called the "Boundary Exchange" (BE) was the missing Nd source that could balance both the concentration and isotopic distributions of Nd on regional and world's scales. Since these pioneer works, many studies confirmed this hypothesis (Rickli et al., 2009, 2010; Stichel et al., 2012; Wilson et al., 2012; Grenier et al., 2013; Carter et al., 2012). The modelling studies have reached the same conclusions on the relative importance of the BE on the Nd oceanic cycle on the global scale, although dust and river

---

<sup>1</sup>  $\varepsilon_{\text{Nd}} = [({}^{143}\text{Nd}/{}^{144}\text{Nd})_{\text{sample}}/({}^{143}\text{Nd}/{}^{144}\text{Nd})_{\text{CHUR}} - 1] \cdot 10^4$ , where  $({}^{143}\text{Nd}/{}^{144}\text{Nd})_{\text{CHUR}} = 0.512638$  is the averaged earth value (Jacobsen and Wasserburg, 1980)

inputs could locally affect the surface waters, as off the Saharan for example (Arsouze et al., 2007; Siddall et al., 2008; Arsouze et al., 2009; Rempfer et al., 2011).

The Nd influx brought by the Atlantic Inflow at the Strait of Gibraltar is smaller than the Nd outflux exiting with the Mediterranean Outflow (Tachikawa et al., 2004; Greaves et al., 1991; Henry et al., 1994). The  $\epsilon_{Nd}$  value of the Mediterranean

5 outflow was estimated to be -9.4 (Henry et al., 1994; Tachikawa et al., 2004) is higher than that of the Atlantic inflow ( $\epsilon_{Nd} = -11.8$ ; Spivack and Wasserburg (1988)). Thus, a source of radiogenic Nd is required to balance these fluxes.

Frost et al. (1986) and Spivack and Wasserburg (1988) proposed that the additional Nd source might be the partial dissolution of river particles and/or aeolian particles. Greaves et al. (1991) argued that the missing source might be rather of marine origin. Schijf et al. (1991) suggested that the Black Sea was a net source to the Mediterranean Sea. Based on a two box model Henry  
10 et al. (1994) suggested that the  $\epsilon_{Nd}$  in the Ligurian sub-basin deep waters required an exchange involving  $30 \pm 20\%$  of the sinking particles of atmospheric origin. Finally, Tachikawa et al. (2004) proposed that the missing term could be sediments deposited on the margins. In other words, the origin of this radiogenic input remains unclear. The present study aims to compile data and develop modelling tools for clarifying this issue.

The circulation of the Mediterranean Sea is driven by the fact that the mean evaporation exceeds the mean precipitation  
15 leading to a density increase along surface water masses paths and subsequent strong convective events in winter. The main deep water sources are located in the Gulf of Lions (south of France) for the Western Mediterranean Sea (WMed), and the Adriatic sub-basin for the Eastern Mediterranean Sea (EMed; Millot and Taupier-Letage (2005)). In the mid-1990s a shift in the deep water formation site occurred during the Eastern Mediterranean Transient (EMT) events. The EMT describes a temporary change in the Eastern Mediterranean Deep Water (EMDW) formation site that switched from the Adriatic to the  
20 Aegean sub-basin (Roether et al., 1996, 2007; Lascaratos et al., 1999; Malanotte-Rizzoli et al., 1999; Theocharis et al., 1992, 1999). The new source has produced large quantities of very dense water masses, in particular the Cretan Deep Water (CDW) that overflowed through the Cretan Arc Straits and subsequently filled the eastern Mediterranean with waters denser than the previously existing deep and bottom water. However, EMT was revealed using hydrographic tracers and anthropogenic ones such as CFC and  $^3H$ , both transients and not imprinted in the sediments. Establishing the occurrence of similar EMT event in  
25 the past would require the identification of proxies that clearly identify the distribution and circulation of the different water masses and that is memorized in the sediments.

Tachikawa et al. (2004) demonstrated that the Nd isotopic signature is more conservative than the salinity in the Mediterranean Sea, the latter being strongly affected by the evaporation. In addition, these authors revealed that the Mediterranean water masses are well distinguished by their Nd isotopic signatures. The Mediterranean Sea makes an excellent "laboratory  
30 test" basin for studying the potential  $\epsilon_{Nd}$  distribution variations as it is a semi enclosed basin with a quite short residence time of the waters (50-100 years; Millot and Taupier-Letage (2005)). This paper also aims to investigate how EMT events affect the Nd distribution in the Mediterranean basin, in order to estimate the potential of this tracer to characterize from paleo archive (e.g., corals, foraminifera) the occurrence of such event in the past. Modelling represents an appropriate tool to address this question.



In this study, we developed a new modelling platform for simulating Nd isotopic composition at high resolution in the Mediterranean basin.

First, results of a dense compilation of the concentrations and isotopic compositions of the different materials that constitute the Mediterranean margins and are expected to interact with the water masses are presented. This high resolution mapping was established using a detailed geological map, providing the most realistic representation of the Mediterranean geology existing so far (see Fig. 1, Fig. 2, and Appendix 1).

Then, following the protocol made up for the global scale by (Arsouze et al., 2007), we implemented the neodymium in a high-resolution regional model (NEMO-MED12). We used dissolved  $\varepsilon_{Nd}$  data compiled by Tachikawa et al. (2004) to evaluate the ability of this model to reproduce the main features of the circulation and mixing of the Med Sea water masses for which Nd signatures are known. These tools provided perspectives on i) the role of the BE on the distribution of  $\varepsilon_{Nd}$  parameters, and ii) the impact of the inter-annual variability of the thermohaline circulation (e.g., EMT event) on the modelled  $\varepsilon_{Nd}$  distribution.

## 2 Data compilation and representation on the Mediterranean margins

Here we present the data compilation procedure and resulting map (Fig. 2) allowing us to characterize the Nd isotopic signatures and concentrations of all the margins surrounding the Mediterranean Sea.

Our approach was to prioritize the use of data directly measured in the outcropping sediments or geological fields, as proposed by (Jeandel et al., 2007). An extensive compilation of all published Nd concentrations and isotopic values was made using the EarthChem database (<http://www.earthchem.org>) with a zoom on the Mediterranean region (latitude between 28°N to 48°N, and between 10°W and 40°E in longitude). This yielded asset of more than 14200 discrete data reported in Appendix 1 and located in Fig. 1. When data were missing in crucial areas (e.g., strait of Sicily), we directly measured them on top core sediments.

Finally, we used a high resolution numerical geological map to extrapolate data from similar geological areas. Below we briefly discuss the pros and cons of this latter approach.

### 2.1 Sediment core tops and erodable material data

Surface sediments collected on the shelf or the slope were our first choice because they provide direct information on the geochemical and isotopic characteristics of the material in contact with the water masses. Sediments deposited during the recent Holocene were taken in consideration. When surface sediment data were missing, we took into account the Nd parameters of erodable material deposited along the coasts (Jeandel et al., 2007). Earthchem database provides a good spatial covering in the northern rive (Fig. 1), contrastingly to the southern rive (e.g., Algerian coast), while there are no published data for the Tunisian, Libyan and Egyptian coasts. We therefore distinguished between the two cases sections 2.1.1 and 2.1.2.

### 2.1.1 Areas with high spatial resolution of available data

For this kind of region (i.e., Italian coast), and for each geological province, we carefully established the extent to which we could extrapolate the measured values to the whole province. The average  $\varepsilon_{Nd}$  values for each geological province were calculated taken into account the number of cores collected in a given area, and the geochemical characteristics of the analysed sediments. We neglected data for specific area like very small volcanoes not representative of the geochemical and isotopic characteristics of the region, as in the Strait of Sicily for example (see Appendix 1 reports the full treatment, results and uncertainties). This approach was generating relatively robust Nd isotopic signatures characterizing the whole Northern Mediterranean Sea margins, with standard deviation less than 2  $\varepsilon_{Nd}$  units in most of the cases.

### 2.1.2 Areas with low spatial resolution of available data

For the southern coast, we gathered sediment samples from miscellaneous origins. Those were collected during the cruises of ETNA80, DEDALE, and NOE near the Tunisian, Libyan and the Egyptian coasts respectively (see Table 1). In the Strait of Sicily samples were collected along two transects, Sciacca-Pantelleria (SP hereafter) and Pozzallo-Malta (PM hereafter), perpendicular to the southern coast of Sicily (Tranchida et al., 2011). The sampling site identifications, depths, collection dates and positions are compiled in Table 1.

Sediment samples were analysed for Nd radiogenic isotopes. About 100 mg of samples were weighted and dissolved in teflon beakers in a mixture of ultrapure quartex HF (24N),  $HNO_3$  (14N) and  $HClO_4$  (12N) for four days at 160°C on a hot plate. After evaporation to dryness samples were dissolved in aqua regia and heated for 24 hours at 130°C. Nd fractions were chemically separated following conventional column chemistry procedures described in Révillon et al. (2011). Nd isotope compositions were measured in static mode on a Thermo TRITON at the PSO (Pole de Spectrométrie Océan) in Brest, France.

All measured Nd ratios were normalized to  $^{146}Nd/^{144}Nd = 0.7219$ . During the course of analysis, Nd standard solution La Jolla gave  $0.511854 \pm 0.000008$  ( $2\sigma$ ; n=28, recommended value 0.511850) and JNdi gave  $0.512099 \pm 0.000010$  ( $2\sigma$ ; n=6, recommended value 0.512100). Procedural blanks were all below 200 pg and therefore negligible in all case.

## 2.2 River and dust inputs

Dissolved Nd in river water is efficiently removed from solution by coagulation of colloids during the estuarine mixing. The recent compilation of Rousseau et al. (2015) confirmed that on a global scale  $71.8 \pm 16\%$  of dissolved riverine Nd is removed by this process, in agreement with preceding works (e.g., Elderfield et al., 1990). In addition, these authors evidenced that lithogenic Nd is released at higher salinities by the Suspended Particulate Material discharged by the river. Globally, this could represent  $5,700 \pm 2,600$  Mg of dissolved Nd annually brought to the ocean by this mechanism, a flux 6-17 times larger than the dissolved one, and 8 to 21 times larger than the atmospheric flux, assuming 2% dust dissolution. Note that the mechanism evidenced in the Amazon estuary by Rousseau et al. (2015) does not describe all the processes that likely affect the sediments deposited on the shelves and margins, hypothesis modelled by Arsouze et al. (2009) and Rempfer et al. (2011). Dust input

is also difficult to constrain: while flux is sporadic and hard to characterize, establishing the fraction dissolved at the air-sea interface is also challenging.

The main river systems of the Mediterranean basin are the Nile, Po and Rhone. River plume extensions were established using maps and satellite images from data banks provided by Ludwig et al. (2009).

5 Nd input derived from the Nile river water and/or particles could be transported eastward and northward to the Rhodes Gyre where the LIW is formed. Tachikawa et al. (2004) suggest that the most significant radiogenic Nd source to the EMed is partially dissolved Nile River particles, radiogenic Nd supplies to the eastern basin being formed by dissolved and particulate loads ( $\varepsilon_{Nd}$  of about  $\sim -4$ ).

Henry et al. (1994) have studied the potential impact of river inputs on the Nd isotopic composition of the WMed. The Rhone  
10 transports 80% of the solid riverine discharge into the northwestern Mediterranean Sea (Leveau and Coste, 1987). According to Henry et al. (1994) the Rhone dissolved water and superficial sediments display an average  $\varepsilon_{Nd}$  value of  $-10.2 \pm 0.5$ .

Contrastingly, the Po river is less documented. The geographical extension of Po river drainage basin was defined using the digital geological map referenced above, and Ludwig et al. (2009) data base. These information allowed us to extract the Nd isotopic signatures from the work of Conticelli et al. (2009), Prelević et al. (2008) and Owen (2007). These studies are the most  
15 representative of the Po drainage basin so far.

Finally, we included aeolian inputs to our compilation. To this extent, the review of Scheuven et al. (2013) was of great help. Indeed, this work presents a review of bulk composition data of northern dust inputs, their potential sediment sources and their elemental, isotope and mineralogical characteristics. Actually, these aeolian data will not be immediately used in our modelling approach. However, we considered relevant to present them with the remaining data, which allowed us to propose  
20 the most comprehensive data set.

All the discrete data extracted from the literature are reported in Appendix 1 and Fig. 1.

### 2.3 Extrapolation

Extrapolating the discrete data collected is required to allocate the margins with continuous Nd concentration and isotopic compositions. In other words, attributing an isotopic signature and Nd concentration to any margin area liable to be in contact  
25 with the waters flowing through. To this end, the tools developed by Jeandel et al. (2007) for the world margins were adapted for the Mediterranean Sea.

Because the Nd isotopic composition of any field is closely related to its geological nature and age (O’Nions et al., 1979; Goldstein et al., 1984, 1997; Allegre, 2005) we used a high resolution digital geological map which provides the contours of the fields (Fig. 1) of a given geological age and type (<http://www.geologie.ens.fr/spiplabocnrs/spip.php?rubrique67>). This  
30 allowed us to estimate the size of the coastal segments that could provide material with the same Nd characteristics.

In poorly documented areas, we first considered the age and geochemical nature of the field (Jeandel et al., 2007). Then we applied the same isotopic signature as similar fields of the same age based on the Nd model-age relationships (Allegre, 2005; Goldstein et al., 1984, 1997; O’Nions et al., 1979). This was thoroughly done by checking the geology, geochemistry and Nd signatures of the fields identified as the source of deposited material. Note that the resolution of the available data in

the Mediterranean basin is relatively high, reducing the uncertainties of the approach described above (see section 2, Appendix 1), Fig. 2b reveals the improvement allowed by this approach by comparing the high resolution patchwork of field documented yet compared to an extraction of the Mediterranean Sea basin (Fig. 2a) from the global low resolution distribution of Jeandel et al. (2007)(see section 4.1).

## 5 3 Modelling the Nd isotopic composition

### 3.1 Description of the model

We use the free-surface ocean circulation model NEMO (Nucleus for European Modelling of the Ocean) (Madec and NEMO-Team., 2008) in a regional configuration called NEMO-MED12 (Beuvier et al., 2012a), already used for biogeochemical studies (Ayache et al., 2015b; Guyennon et al., 2015; Ayache et al., 2015a; Palmiéri et al., 2015). This model uses the standard ORCA  
10 grid of NEMO at  $1/12^\circ$  resolution. This corresponds in the Mediterranean area to a grid cell size varying with latitude between 6 and 8 km, from  $46^\circ\text{N}$  to  $30^\circ\text{N}$  and also extends into the Atlantic Ocean to  $11^\circ\text{W}$  (buffer zone). Vertical resolution varies with depth from  $\Delta Z=1\text{ m}$  at the surface to  $\Delta Z=450\text{ m}$  at the bottom with 35 levels in the first 1000 m (50 levels in total).

Daily mean fields of momentum, freshwater flux (evaporation minus precipitation) and net heat flux from the high resolution atmospheric data set (ARPERA) are used for the air-sea fluxes (Herrmann et al., 2010; Herrmann and Somot, 2008). The heat  
15 flux is applied with a retroaction term using the ERA-40 Sea Surface Temperature (SST).

The initial state (temperature, salinity) for the Mediterranean Sea come from the MedAtlas-II (Rixen et al., 2005; MEDAR-MedAtlas-group, 2002) climatology weighted by a low-pass filter with a time window of 10 years using the MedAtlas data covering the 1955-1965 period, following (Beuvier et al., 2012b). For the temperature and salinity in the buffer zone (west of Gibraltar strait), the initial state is prescribed from the 2005 World Ocean Atlas (Antonov et al., 2006; Locarnini et al., 2006).  
20 River runoff is prescribed from the interannual data set of (Ludwig et al., 2009). The Black Sea is not explicitly included in the models, but is rather treated as one of the major freshwater sources of the Mediterranean Sea located at the Dardanelles strait, with a flux corresponding to Dardanelles' net budget estimates of (Stanev and Peneva, 2002).

NEMO-MED12 model simulates the main features of the thermohaline circulation and mixing of the Mediterranean Sea water masses and their interannual variability. In particular, the propagation of the Levantine Intermediate Water (LIW) from  
25 the Eastern to the western basin is produced with realistic timescale compared to observations (Ayache et al., 2015a). However, some aspects of the model still need to be improved. For example the formation of Adriatic Deep Water (AdDW) is too weak, leading to a too low contribution to the EMDW in the Ionian sub-basin (Palmiéri et al., 2015; Ayache et al., 2015a, b). The atmospheric forcing used by Beuvier et al. (2012b) includes some modifications to improve dense water fluxes through the Cretan Arc during the EMT. As established in the previous version of NEMO-MED8 ( $1/8^\circ$  of horizontal resolution, Beuvier et al. (2010)), the model is able to reproduce a transient deep-water formation as observed for the EMT, but the simulated  
30 transient produced less Eastern Mediterranean Deep Water (EMDW). Beuvier et al. (2012b) later performed a sensitivity test with modified forcing. The ARPERA forcing were modified over the Aegean sub-basin, by increasing daily water loss by 1.5 mm, daily surface heat loss by  $40\text{ W m}^{-2}$ , and the daily wind stress modulus by  $0.02\text{ N m}^{-2}$  during November to March in

the winters of 1991-1992 and 1992-1993, as done by Herrmann and Somot (2008) to study the Gulf of Lions deep convection. This resulted in average winter time increases in heat loss (+18 %), water loss (+41 %) and wind intensity (+17 %) over the Aegean sub-basin. These changes generate an improved circulation that satisfyingly reproduced the formation and renewal of the deep water in the Eastern basin during the EMT event (Ayache et al., 2015a). These performances of the dynamical model have to be kept in mind when analysing the Nd simulations.

### 3.2 The tracer model

Using different modelling approaches, Arsouze et al. (2007, 2010) and Rempfer et al. (2011) have shown that the exchange between the continental margins and seawater, the "boundary exchange" (BE) represents the major source of Nd on the global scale. This source represents more than 90 % of the total input, whereas dissolved riverine and dust inputs could be significant in the upper 500 m only. However, so far only little is known about the importance of the BE in a semi-enclosed and/or interiors basins like the Mediterranean Sea, where atmospheric and river fluxes could have significant impacts on the  $\varepsilon_{Nd}$  distribution too.

We chose as a first approach to simulate only the Nd isotopic composition ( $\varepsilon_{Nd}$ ) in order to test the BE hypothesis in the Mediterranean Sea (Arsouze et al., 2007). This approach does not require to simulate explicitly the Nd concentration, allowing us to focus on the timescale of the process studied. As in Arsouze et al. (2007, 2010),  $\varepsilon_{Nd}$  is implemented in the model as a passive conservative tracer which does not affect ocean circulation. It is transported in the Mediterranean Sea by NEMO-MED12 physical fields using a classical advection-diffusion equation, including the sources and sinks (SMS term, eq1). The rate of change of oceanic Nd isotopic composition is:

$$\frac{\delta \varepsilon_{Nd}}{\delta t} = S(\varepsilon_{Nd}) - U \cdot \nabla \varepsilon_{Nd} + \nabla \cdot (K \nabla \varepsilon_{Nd}), \quad (1)$$

where  $S(\varepsilon_{Nd})$  represents the SMS term,  $U \cdot \nabla \varepsilon_{Nd}$  is the three-dimensional advection and  $\nabla \cdot (K \nabla \varepsilon_{Nd})$  is the lateral and vertical diffusion of  $\varepsilon_{Nd}$ .

Since  $\varepsilon_{Nd}$  is a passive tracer, simulations could be run in off-line mode using the pre-computed transport fields (U, V, W) from the NEMO-MED12 dynamical model (Beuvier et al., 2012b). Physical forcing fields are read daily and interpolated each time step of 20 min. Offline simulations are performed for computational efficiency allowing many sensitivity tests on the SMS term parameterization. The same approach was used by Ayache et al. (2015b) to simulate the mantle and crustal helium isotope signature, by Ayache et al. (2015a) to model the anthropogenic tritium invasion, and by Palmiéri et al. (2015) to simulate CFCs and anthropogenic carbon storage.

The only SMS term taken into account in the present study is BE (Arsouze et al., 2007, 2010). It is parameterized by a relaxing equation between the ocean and the continental margin:

$$S(\varepsilon_{Nd}) = 1/\tau (\varepsilon_{Nd_{margin}} - \varepsilon_{Nd}) \cdot mask_{margin}, \quad (2)$$

where  $\tau$  is the characteristic relaxing time (i.e., the characteristic time needed to transfer isotopic properties from the continental margin to the ocean),  $\varepsilon_{Nd}$  is the Nd isotopic composition of seawater,  $\varepsilon_{Ndmargin}$  is the value of the material deposited along the continental margin (see section 2), and  $mask_{margin}$  is the percentage of continental margin in the grid box which represents the proportion of the surface in the grid where the BE process occurs. This quantity is estimated from the high-resolution bathymetry of the 10<sup>th</sup> version of the Mercator-LEGOS bathymetry at a resolution of 30"  $\times$  30".

The topographic extension of the oceanic margins of the Mediterranean Sea has been chosen to the  $\sim$ 540 m (Fig. 3) following the margin definition used to model the iron cycle in the Mediterranean Sea by Palmiéri (2014).

The exchanges of the Nd with the Atlantic Ocean are specified through a buffer zone between 11W° and the Strait of Gibraltar.  $\varepsilon_{Nd}$  values in the buffer zone are prescribed from observation using NE Atl. MED-15 vertical profile from Spivack and Wasserburg (1988).

We established some sensitivity experiments regarding the optimal value of  $\tau$  in the Med basin (Arsouze et al., 2007, 2010). In this aim, six tests were performed referred as EXP1, EXP2, EXP3 and EXP4 with  $\tau$  = 1 month, 3 months, 6 months, and 1 year, respectively. As surface ocean currents are generally more dynamic than deep ones, providing more energy for sediment-seawater interactions, we realized an additional simulation (EXP5) wherein  $\tau$  increases exponentially with depth from 1 month at the surface to 1 year at 600 m depth. We also explored the possibility that our BE parameterization might be dependent on the mineralogical maturity of margin sediments (e.g., granitic vs. basaltic). Hence, relaxing time  $\tau$  in EXP6 is varying linearly on a timescale of 1 month for the most radiogenic isotopic signature (i.e.,  $\varepsilon_{Nd}$  = +6 on the extreme east of the Mediterranean margin) to 1 years for the most non-radiogenic values (i.e.,  $\varepsilon_{Nd}$  = -12 along Spanish coast).

The simulations were initialized with uniform isotopic composition of  $\varepsilon_{Nd}$  = -7 and integrated to steady state, i.e., the global averaged drift was less than  $10^{-3}$   $\varepsilon_{Nd}$  per thousand years, for more than 75 years of spin-up run.

## 4 Results

### 4.1 Map of the outcropping Nd values

Results of the Nd parameter mapping are represented in Fig. 2, cold colours represent the old non-radiogenic rocks whereas the warm colours correspond to the recent radiogenic ones.

Tectonic and associated volcanic activities led to the very complex morphology and geology in the Mediterranean region, comprising small islands (e.g., Corsica, Cyprus), sub-basins (e.g., Adriatic, Aegean, and Tyrrhenian), and many narrow straits (e.g., Sicily channel, Otranto Passage). This particular context prevents the use of low resolution grid to represent properly this region. This motivated the realisation of the high resolution (1/12°x1/12°) version of the Nd isotopic signature (Fig. 2b) and Nd concentration (see Appendix. 5) for this basin.

The general trend is that the margin Nd isotopic signatures vary from non-radiogenic values in the WMed, to radiogenic values when reaching the Aegean and Egyptians coasts, the most radiogenic fields ( $\varepsilon_{Nd}$  up to +6) being located around the east border of the Levantine sub-basins, and in the volcanic region of the south of Italy (Fig. 2b). Contrastingly, the south Sicilian fields and the north Alboran sub-basin are characterized by the most negative isotopic signature (values around -12).



The Algerian, Tunisian, French and Spanish coasts display relatively homogeneous values between -11.5 and -10. Such West-East gradient of Nd isotopic signature is also observed in the seawater data, where poorly radiogenic waters from the Atlantic are progressively shifted toward more radiogenic values in the Levantine basin (Tachikawa et al., 2004).

All the details revealed by this new high resolution map will be used to set boundary conditions in the regional simulation (see section 3, Fig. 3).

## 4.2 The characteristic margin-to-ocean exchange time.

We first explored the impact of changing the value of the relaxing time on the  $\varepsilon_{Nd}$  distribution in the Med Sea. This was made following the strategy adopted by (Arsouze et al., 2010) in the North Atlantic basin, although NEMO-MED12 model has higher horizontal and vertical resolutions ( $1/12^\circ$  in this study compared to  $1/4^\circ$  in Arsouze et al. (2010)).

The results of these different sensitivity tests are compared with in-situ observations collected by Tachikawa et al. (2004) using correlation plots, coloured maps and sections (Fig. 4 and 5).

The simulated  $\varepsilon_{Nd}$  distributions in EXP2 and EXP3 (relaxing time of 3 and 6 months respectively) present the best correlation with in-situ data relative to the other experiments, with correlation coefficients close to 0.71 and 0.61 respectively (Tab. 3). The difference between in-situ data (dashed line) and the different sensitivity experiments as a function of depth (Fig. 4b) reveals that EXP2 provides the best agreement with observations, despite a slight **overestimation** of  $\varepsilon_{Nd}$  between 0.3 and 1  $\varepsilon_{Nd}$  units. The data-model differences are more important for the other experiments which produced too radiogenic simulations (of more than 2  $\varepsilon_{Nd}$  units). The horizontal distribution of  $\varepsilon_{Nd}$  (Appendix 2, 3 and 4) confirms this statistical correlation, showing that only EXP2 and EXP3 produced a reasonable East-West gradient of  $\varepsilon_{Nd}$ . EXP1 generated too pronounced  $\varepsilon_{Nd}$  geographical gradients particularly in surface waters along the continental margins suggesting an overestimation of the exchange compared to the transport. On the opposite a simulation with a relaxing time of 1 year (EXP4) leads to an homogeneous  $\varepsilon_{Nd}$  distribution in surface and deep waters with a low data-model correlation, indicating an underestimation of the boundary exchange process. EXP5 ( $\tau$  increases with depth) conducted to a strong gradient over the entire water column in WMed, showing that surface to deep variation of the BE rate was likely overestimated in this simulation. EXP6 displayed a realistic E-W gradient in the surface waters, but too homogeneous  $\varepsilon_{Nd}$  signal in the intermediate and deep waters, suggesting that the BE rate seems weakly affected by the lithology of the margin sediments. Finally, we consider that the characteristic exchange time providing the best agreement with observations is close to 3 months. This value is consistent with the results obtained by Arsouze et al. (2010) with its simulation of the North Atlantic area. Therefore we will only consider EXP2 for the rest of our analysis.

## 4.3 The $\varepsilon_{Nd}$ distribution

The monthly-averaged  $\varepsilon_{Nd}$  horizontal distributions resulting from EXP2 for the surface waters (0-200 m), the intermediate waters (200 - 600 m) and the deep waters (600 - 3500 m), are represented in Fig. 5a, 5b and 5c respectively, together with the data from Tachikawa et al. (2004). The model results are extracted after the steady state (in 1987) of the simulation and considered as representative of pre-EMT situation (i.e., EMT, Roether et al. (2007)).

The model correctly simulates the pronounced  $\varepsilon_{Nd}$  E-W gradient characterizing the surface waters (Fig. 5a). The values simulated in the WMED and Eastern Levantine basin are consistent with the observations while the simulated values in the Aegean and central Levantine basin tend to be too radiogenic. At intermediate depths, both modelled and observed E-W gradients are less pronounced than at the surface (Fig. 5b). However averaged simulated values are relatively too radiogenic at the intermediate level (-5.8 compared to  $-9.4 \pm 0.69$ , Tab.2). Especially high  $\varepsilon_{Nd}$  signatures are simulated over the Sicily channel and the Tyrrhenian sub-basins (Fig. 5b), but the lack of observations prevent us to assess their consistency. The most radiogenic simulated values are found in the north Aegean sub-basin and largely overestimate the observations. The  $\varepsilon_{Nd}$  distribution in the deep waters is relatively homogeneous over the whole basin except in the Aegean sub-basin and Sicilian channel (Fig. 5c).

Levantine Intermediate water mass (LIW) is well identified by its marked radiogenic signature. LIW is produced in the Levantine sub-basin before passing Crete at  $28^\circ\text{E}$ , where measured  $\varepsilon_{Nd}$  values reach -5 (Fig. 5). The  $\varepsilon_{Nd}$  isotopic signature is well identified over the entire LIW trajectory at the intermediate level (between 200 and 600 m depth), with values around -4.8 in the Algerian sub-basin and up to -5.7 in the Alboran sub-basin (Fig. 5d). The resolution of the available data hardly allows to evaluate the model performance for this water mass; nevertheless, station 74 ( $33^\circ\text{N}$ ,  $33^\circ\text{E}$ ) in the Eastern Levantine basin exhibits a discernible radiogenic signal associated to LIW (more pronounced than the modelled one), while station 51 ( $33.5^\circ\text{N}$ ,  $27^\circ\text{E}$ ) in the western Levantine basin does not reveal any specific isotopic signature. The surface waters originating from the Atlantic Ocean (Atlantic Waters, AW) are characterized by the most negative signature (value around -9) in good agreement with observations and are keeping the most negative signature over all the Med Sea, allowing a clear identification. The  $\varepsilon_{Nd}$  signatures of the deep water mass display values around -6.5, consistent with the observations available in the Eastern basin (Fig. 5e).

Overall the model captures correctly the global vertical profiles of Nd isotopic signatures (averaged over the entire water column), especially producing a realistic and significant radiogenic signature associated to LIW at the Intermediate level (Fig. 6), although the  $\varepsilon_{Nd}$  values are globally overestimated by roughly 1.5  $\varepsilon_{Nd}$  units.

#### 4.4 The inter-annual variability

In this section, we analyse inter annual variations on the redistribution of  $\varepsilon_{Nd}$  over the Mediterranean basin, with a special focus on the possible impact of the EMT events. The evolution of the monthly averaged  $\varepsilon_{Nd}$  at the intermediate level (between 200 and 600 m) in different "boxes" following the LIW trajectory from the Levantine sub-basin to the Algerian sub-basin (including Ionian, Sicily channel, Tyrrhenian, and Gulf of Lions) is represented in Fig. 7 for the 40 years of the simulation. It shows that  $\varepsilon_{Nd}$  signatures vary seasonally with maximum amplitude of 0.2  $\varepsilon_{Nd}$  units. The EMT event significantly impacts the  $\varepsilon_{Nd}$  signature at the global scale of the Med Sea. After 1992, which is referred as the beginning of the EMT event, an important change of  $\varepsilon_{Nd}$  distributions is simulated over all the Mediterranean Sea, with regional values shifted by almost 0.5  $\varepsilon_{Nd}$  units.

The drastic change caused by the EMT event at the beginning of 1990s is even more illustrated by showing the differences of  $\varepsilon_{Nd}$  distributions between the pre-EMT situations in 1987 and the subsequent years up to 2010. The analysis on different

horizontal levels (Fig. 8) as well as along E-W sections (Fig. 9) provides a better understanding of the source of ventilation for the interior of the Mediterranean Sea, and the connection between the surface, intermediate and deep water redistribution.

In comparison with the steady state situation for the Mediterranean Sea circulation (pre-EMT), the surface waters are relatively less radiogenic in the Levantine sub-basin, the Algerian, and the Alboran sub-basins between 1995 and 1999 (Fig. 8a and 8b). After 2001 these surface waters become more radiogenic over the whole basin. At the intermediate level only the EMed presents a less radiogenic signature in 1995, indeed the  $\varepsilon_{Nd}$  are more radiogenic over the entire basin after 2001 (Fig. 8f, 8g and 8h). The deep waters are globally more radiogenic between 1987 and 2010 especially in the EMed where increase of 1 units of  $\varepsilon_{Nd}$  are simulated around the Aegean sub-basin. The vertical section illustrates the important penetration of the surface and intermediate waters characterized with radiogenic  $\varepsilon_{Nd}$  into the deep waters near the Cretan Arc as a consequence of the EMT that shifted the Nd isotopic signature by almost +1.3  $\varepsilon_{Nd}$  units in the bottom waters (Fig. 7b). This radiogenic signal is maximum in 1995 at the bottom water around the Cretan Arc near 26°E, and for the next years (i.e., 1997, 1999, 2005 and 2010) propagates in the deep waters of the whole Levantine sub-basin that becomes typically more radiogenic of + 0.5 of  $\varepsilon_{Nd}$  (Fig. 9).

The amplifying tracer penetration caused by the EMT event generates less radiogenic values at the LIW layer in the EMed in 1995 and 1999, because this water is mixed with upwelled pre-EMT less radiogenic water masses. Contrastingly the simulated values become globally more radiogenic in the WMed. The radiogenic transient signal enters inside the western basin through the LIW outflow (up to +0.6  $\varepsilon_{Nd}$  unit) and gradually penetrates into the deep water through time. However the most  $\varepsilon_{Nd}$  shift was simulated in the Levantine sub-basin deep water with more than 1.3 unit change (Fig. 7b and Fig. 9).

## 5 Discussion

The high resolution simulation presented here confirms that the main features of the  $\varepsilon_{Nd}$  distribution are generated assuming that BE is the only Nd oceanic source term in the Med Sea, as previously demonstrated for the global ocean (Arsouze et al., 2007) and the Atlantic basin (Arsouze et al., 2010). This reinforces the preceding conclusions on BE as a major process in the Nd oceanic cycle, even at regional scale and in a semi-eclosed basin such as the Mediterranean basin. Although the processes leading to BE are still not fully understood yet (Jeandel and Oelkers, 2015), the resulting timescale is of the order of few months, in agreement with Arsouze et al. (2010). This timescale is also consistent with the kinetic rates of Nd release from basaltic material during the batch experiments conducted by Pearce et al. (2013). It is also consistent with the field data and their Lagrangian modelling developed by Grenier et al. (2013) in the highly dynamic South West pacific. Taking into account the lithology of the margin sediments did not improve our simulations. This requires more laboratory experiments, targeted on the issue of the nature of the sediments. Nevertheless the comparison with the available data in the Med Sea reveals that this approach simulates a slightly too radiogenic value in the surface and intermediate waters, especially in the EMed. This bias will likely be corrected once the dust and river inputs will be simulated. Indeed, those could locally affect the surface waters with less radiogenic values. The main river systems of the Mediterranean basin (i.e., the Nile, Po and Rhone) are characterized by a wide range of Nd IC signature, with an average  $\varepsilon_{Nd}$  value of -10.2 for the Rhone, and rather radiogenic Nd isotopic ratios

from the Nile ( $\varepsilon_{Nd} \sim -4$ ). The input of Saharan dust has important effects on the Mediterranean region (Guerzoni et al., 1997) where the Nd isotopic compositions of aerosols range from -9.2 in the eastern part of northern Africa (e.g., Egypt) to -16 in the central and western parts of northern Africa (Grousset and Biscaye, 2005; Scheuven et al., 2013). Previous studies suggest that the  $\varepsilon_{Nd}$  distribution at the near surface is for the most part reflecting river and aerosols inputs (Piepgras and Wasserburg, 1987; Arsouze et al., 2009; Jones et al., 2008; Siddall et al., 2008). Hence it is clear that taking into account the dust and river input in the future work could improve the simulation of Nd isotopic distribution in the Mediterranean Sea.

The LIW layer is particularly characterized by the most radiogenic signature in the intermediate level between 200 and 600 m, which is in good agreement with in-situ observations from Tachikawa et al. (2004) especially with the highest  $\varepsilon_{Nd}$  value of -4.8 found at about 200 m in the easternmost Levantine basin. The LIW represents the principal movement of water mass from the EMed into the WMed. The model simulates a satisfying lateral propagation into the western basin, demonstrated by a strong accumulation of radiogenic signal in the intermediate waters (Fig. 5d and 5e). This LIW signature is conserved in the WMed allowing us to study the impact of interannual variability, including the exceptional events observed in the ventilation of the deep waters (e.g., EMT) in the whole basin. **The model-data decoupling for the LIW layer can be explained by the fact that the LIW are formed in NW of Levantine sub-basin near the Cretan Arc, where the margin IC are about -4, leading to a relatively radiogenic signature as we consider only the margin Nd source. Also, tritium/helium (Ayache et al., 2015a) and CFC (Palmiéri et al., 2015) simulations have shown that the model overestimates the mixing near the Cretan Arc, and in consequence the Levantine sub-basin isotopic signature is over-represented in this water mass.**

The sequence of the EMT events occurring in the EMed at the beginning of the 1990s has completely changed the deep water mass structure. Different hypotheses concerning the preconditioning of the EMT and its timing have been proposed in the literature (Roether et al., 1996, 2007; Malanotte-Rizzoli et al., 1999; Lascaratos et al., 1999; Theocharis et al., 1992, 1999; Samuel et al., 1999; Theocharis and Kontoyiannis, 1999; Zervakis et al., 2000; Stanev and Peneva, 2002; Klein et al., 1999; Gertman et al., 2006; Josey, 2003). In our simulation, the  $\varepsilon_{Nd}$  distribution between 1995 and 2001 also revealed that LIW and deep water signatures were very different from the pre-EMT picture (see Fig. 7). This amplification of mixing caused by the EMT generates accumulation of radiogenic water at the bottom. The 1995 section emphasizes the severe impact of the EMT on water mass distribution, which transfers massive volumes of surface/intermediate waters into the deep layers, with the highest contributions toward the bottom and south of Crete (Fig. 8), causing a temporary change in the EMDW origin, from the Adriatic to Aegean sub-basin in 1992-1993. The renewal of the deep water masses is very similar to the tritium-helium3 redistribution observed by Roether et al. (2013) that is satisfyingly simulated by our regional model Ayache et al. (2015a). This gives some more reliability to the evolution of  $\varepsilon_{Nd}$  distribution simulated after the EMT event (Fig. 9).

The EMT modifies the characteristics of EMDW in the Levantine sub-basin by increasing the  $\varepsilon_{Nd}$  signature over the entire Eastern basin (Fig. 9). Hence the LIW layer is also affected by this  $\varepsilon_{Nd}$  shift, which is next transferred rapidly in the WMed by the overflow of the Sicily Channel. The LIW signal then propagates at depth in the western basin illustrating how the EMT event modify water masses characteristics and potentially affect the formation of deep and bottom water masses in this sub-basin.

Our results suggest that the shift is more important in the Levantine deep water, compared to intermediate water where the EMT impact is lower. This sensitivity test gives a useful diagnostic on the long term variability of Med Sea circulation and to demonstrate the potential of Nd to detect a like-EMT event. However the weak formation of AdDW could affect the simulated shift of seawater Nd IC in the Ionian deep water.

## 5 6 Conclusions

This study proposes a new map compiled from in-situ data with a sufficient resolution to cover the very complex morphology and geology of the Mediterranean Sea. This map shows Nd isotopic signatures for all the Mediterranean Sea margins. The quality of this interpolated map allows using it as a continuous source of  $\varepsilon_{Nd}$  to make a link between an ocean circulation model and the tracer inputs from the margins to better understand the thermohaline circulation in modern and paleo ocean circulation. This compilation provides a complete picture of the  $\varepsilon_{Nd}$  of the whole Mediterranean margins which could interest other earth science fields (e.g., solid earth, weathering, tectonic, etc.).

The  $\varepsilon_{Nd}$  distribution was simulated using a high-resolution regional model at  $1/12^\circ$  of horizontal resolution (6-8 km). The Boundary Exchange (BE) parameterization was performed via a relaxing term toward the isotopic composition of the margin from this new geological map. The characteristic margin-to-ocean exchange time is about 3 months in the Mediterranean Sea, in good agreement with the previous estimation of Arsouze et al. (2010) in the north Atlantic basin. Our next step was therefore to use a fully prognostic coupled dynamical/biogeochemical model with an explicit representation of all Nd sources (i.e., atmospheric dusts, dissolved river fluxes, and margin sediment re-dissolution) and sinks (i.e., scavenging) to simulate the Nd oceanic cycle in another dedicated study. More in-situ data (as those currently acquired in the framework of the GEOTRACES MEDBLACK programme) should help improving in the knowledge of Nd and its isotope cycles in the Med Sea to better constrained the fluxes of solid material and exchange between the continental margin and open ocean.

The Boundary Sources with  $\varepsilon_{Nd}$  implemented as a passive conservative has represented an interesting opportunity to explore the interannual variability on the  $\varepsilon_{Nd}$  distribution. Indeed, the Eastern Mediterranean Transient (EMT) signal from the Aegean sub-basin was simulated, conducting to a significant and measurable evolution of  $\varepsilon_{Nd}$  signal over the whole Mediterranean basin. It confirms that  $\varepsilon_{Nd}$  represents an appropriate proxy to improve our knowledge on the long term trend in the Med Sea circulation, especially to explore if EMT-type events occurred in the past (Roether et al., 2014; Gačić et al., 2011). New Nd-paleo-data (e.g., Jiménez-Espejo et al., 2015) or recent Nd observations collected on corals or foraminifera in the context of the PaleoMeX (Paleo Mediterranean Experiment) program should give the opportunity to address this question.

*Acknowledgements.* The authors wish to acknowledge F. Bassinot, Dr G. Tranchida and Dr P. Censi for sediments sample. We thank Dr S.Conticelli who kindly answered our questions on geological features of Italian coast, which greatly helped for the interpolation. Hugo Pradalier is acknowledged for his contribution at the beginning of this work.

## References

- Allegre, C.: *Géologie Isotopique*, Belin ed, Paris, 2005.
- Antonov, J. I., Locarnini, R. A., Boyer, T. P., Mishonov, A. V., and Garcia, H. E.: *World Ocean Atlas 2005, Volume 2: Salinity*, S. Levitus, Ed, NOAA Atlas NESDIS 62, U.S. Government Printing Office, Washington, D.C., p. 182 pp, 2006.
- 5 Arsouze, T., Dutay, J. C., Lacan, F., and Jeandel, C.: Modeling the neodymium isotopic composition with a global ocean circulation model, *Chemical Geology*, 239, 165–177, doi:10.1016/j.chemgeo.2006.12.006, 2007.
- Arsouze, T., Dutay, J.-C., Kageyama, M., Lacan, F., Alkama, R., Marti, O., and Jeandel, C.: A modeling sensitivity study of the influence of the Atlantic meridional overturning circulation on neodymium isotopic composition at the Last Glacial Maximum, *Climate of the Past*, 4, 191–203, doi:10.5194/cp-4-191-2008, <http://www.clim-past.net/4/191/2008/>, 2008.
- 10 Arsouze, T., Dutay, J.-C., Lacan, F., and Jeandel, C.: Reconstructing the Nd oceanic cycle using a coupled dynamical – biogeochemical model, doi:10.5194/bgd-6-5549-2009, 2009.
- Arsouze, T., Treguier, a. M., Peronne, S., Dutay, J. C., Lacan, F., and Jeandel, C.: Modeling the Nd isotopic composition in the North Atlantic basin using an eddy-permitting model, *Ocean Science*, 6, 789–797, doi:10.5194/os-6-789-2010, 2010.
- Ayache, M., Dutay, J.-C., Jean-Baptiste, P., Beranger, K., Arsouze, T., Beuvier, J., Palmieri, J., Le-vu, B., and Roether, W.: Modelling of the anthropogenic tritium transient and its decay product helium-3 in the Mediterranean Sea using a high-resolution regional model, *Ocean Science*, 11, 323–342, doi:10.5194/os-11-323-2015, 2015a.
- 15 Ayache, M., Dutay, J.-C., Jean-Baptiste, P., and Fourré, E.: Simulation of the mantle and crustal helium isotope signature in the Mediterranean Sea using a high-resolution regional circulation model, *Ocean Science*, 11, 965–978, doi:10.5194/os-11-965-2015, 2015b.
- Bertram, C. and Elderfield, H.: The geochemical balance of the rare earth elements and neodymium isotopes in the oceans, *Geochimica et Cosmochimica Acta*, 57, 1957–1986, doi:10.1016/0016-7037(93)90087-D, 1993.
- 20 Beuvier, J., Sevault, F., Herrmann, M., Kontoyiannis, H., Ludwig, W., Rixen, M., Stanev, E., Béranger, K., and Somot, S.: Modeling the Mediterranean Sea interannual variability during 1961–2000: Focus on the Eastern Mediterranean Transient, *Journal of Geophysical Research*, 115, C08 017, doi:10.1029/2009JC005950, 2010.
- Beuvier, J., Béranger, K., Lebeaupin Brossier, C., Somot, S., Sevault, F., Drillet, Y., Bourdallé-Badie, R., Ferry, N., and Lyard, F.: Spreading of the Western Mediterranean Deep Water after winter 2005: Time scales and deep cyclone transport, *Journal of Geophysical Research*, 117, C07 022, doi:10.1029/2011JC007679, 2012a.
- 25 Beuvier, J., Lebeaupin Brossier, C., Béranger, K., Arsouze, T., Bourdallé-Badie, R., Deltel, C., Drillet, Y., Drobinski, P., Lyard, F., Ferry, N., Sevault, F., , and Somot, S.: MED12, Oceanic component for the modelling of the regional Mediterranean Earth System, *Mercator Ocean Quarterly Newsletter*, 46, 60–66, 2012b.
- 30 Carter, P., Vance, D., Hillenbrand, C., Smith, J., and Shoosmith, D.: The neodymium isotopic composition of waters masses in the eastern Pacific sector of the Southern Ocean, *Geochimica et Cosmochimica Acta*, 79, 41–59, doi:10.1016/j.gca.2011.11.034, 2012.
- Conticelli, S., Guarnieri, L., Farinelli, A., Mattei, M., Avanzinelli, R., Bianchini, G., Boari, E., Tommasini, S., Tiepolo, M., Prelević, D., and Venturelli, G.: Trace elements and Sr–Nd–Pb isotopes of K-rich, shoshonitic, and calc-alkaline magmatism of the Western Mediterranean Region: Genesis of ultrapotassic to calc-alkaline magmatic associations in a post-collisional geodynamic setting, *Lithos*, 107, 68–92, doi:10.1016/j.lithos.2008.07.016, 2009.
- 35 Elderfield, H., Upstill-Goddard, R., and Sholkovitz, E.: The rare earth elements in rivers, estuaries, and coastal seas and their significance to the composition of ocean waters, *Geochimica et Cosmochimica Acta*, 54, 971–991, doi:10.1016/0016-7037(90)90432-K, 1990.



- Frank, M.: Radiogenic isotopes: Tracers of past ocean circulation and erosional input, *Reviews of Geophysics*, 40, 1001, doi:10.1029/2000RG000094, 2002.
- Frost, C., O’Nions, R., and Goldstein, S.: Mass balance for Nd in the Mediterranean Sea, *Chemical Geology*, 55, 45–50, 1986.
- Gačić, M., Civitarese, G., Eusebi Borzelli, G. L., Kovačević, V., Poulain, P.-M., Theocharis, A., Menna, M., Catucci, A., and Zarokanellos, N.:  
5 On the relationship between the decadal oscillations of the northern Ionian Sea and the salinity distributions in the eastern Mediterranean, *Journal of Geophysical Research*, 116, C12 002, doi:10.1029/2011JC007280, 2011.
- Garcia-Solsona, E., Jeandel, C., Labatut, M., Lacan, F., Vance, D., Chavagnac, V., and Pradoux, C.: Rare earth elements and Nd isotopes tracing water mass mixing and particle-seawater interactions in the SE Atlantic, *Geochimica et Cosmochimica Acta*, 125, 351–372, doi:10.1016/j.gca.2013.10.009, 2014.
- 10 Gertman, I., Pinardi, N., Popov, Y., and Hecht, A.: Aegean Sea Water Masses during the Early Stages of the Eastern Mediterranean Climatic Transient (1988–90), *Journal of Physical Oceanography*, 36, 1841–1859, doi:10.1175/JPO2940.1, 2006.
- Goldstein, S., O’Nions, R., and Hamilton, P.: A Sm-Nd isotopic study of atmospheric dusts and particulates from major river systems, *Earth and Planetary Science Letters*, 70, 221–236, doi:10.1016/0012-821X(84)90007-4, 1984.
- Goldstein, S., Arndt, N., and Stallard, R.: The history of a continent from U-Pb ages of zircons from Orinoco River sand and Sm-Nd isotopes  
15 in Orinoco basin river sediments, *Chemical Geology*, 139, 271–286, doi:10.1016/S0009-2541(97)00039-9, 1997.
- Goldstein, S. L. and Hemming, S. R.: Long-lived Isotopic Tracers in Oceanography, Paleoceanography, and Ice-sheet Dynamics, *Treatise on Geochemistry: Second Edition*, 8, 453–483, doi:10.1016/B978-0-08-095975-7.00617-3, 2003.
- Greaves, M. J., Rudnicki, M., and Elderfield, H.: Rare earth elements in the Mediterranean Sea and mixing in the Mediterranean outflow, *Earth and Planetary Science Letters*, 103, 169–181, doi:10.1016/0012-821X(91)90158-E, 1991.
- 20 Grenier, M., Jeandel, C., Lacan, F., Vance, D., Venchiarutti, C., Cros, A., and Cravatte, S.: From the subtropics to the central equatorial Pacific Ocean : neodymium isotopic composition and rare earth element concentration variations, *Journal of Geophysical Research. Oceans*, 118, 592–618, 2013.
- Grousset, F. E. and Biscaye, P. E.: Tracing dust sources and transport patterns using Sr, Nd and Pb isotopes, *Chemical Geology*, 222, 149–167, doi:10.1016/j.chemgeo.2005.05.006, 2005.
- 25 Guerzoni, S., Molinaroli, E., and Chester, R.: Saharan dust input to the western Mediterranean Sea: depositional patterns, geochemistry and sedimentology implications, *Deep-Sea Research II*, 44, 631–654, 1997.
- Guyennon, A., Baklouti, M., Diaz, F., Palmieri, J., Beuvier, J., Lebaupin-Brossier, C., Arsouze, T., Béranger, K., Dutay, J.-C., and Moutin, T.: New insights into the organic carbon export in the Mediterranean Sea from 3-D modeling, *Biogeosciences*, 12, 7025–7046, doi:10.5194/bg-12-7025-2015, 2015.
- 30 Haley, B. A., Frank, M., Hathorne, E., and Pisias, N.: Biogeochemical implications from dissolved rare earth element and Nd isotope distributions in the Gulf of Alaska, *Geochimica et Cosmochimica Acta*, 126, 455–474, doi:10.1016/j.gca.2013.11.012, 2014.
- Henry, F., Jeandel, C., Dupré, B., and Minster, J.-F.: Particulate and dissolved Nd in the western Mediterranean Sea: Sources, fate and budget, *Marine Chemistry*, 45, 283–305, doi:10.1016/0304-4203(94)90075-2, 1994.
- Herrmann, M., Sevault, F., Beuvier, J., and Somot, S.: What induced the exceptional 2005 convection event in the northwestern Mediterranean  
35 basin? Answers from a modeling study, *Journal of Geophysical Research*, 115, C12 051, doi:10.1029/2010JC006162, 2010.
- Herrmann, M. J. and Somot, S.: Relevance of ERA40 dynamical downscaling for modeling deep convection in the Mediterranean Sea, *Geophysical Research Letters*, 35, L04 607, doi:10.1029/2007GL032442, 2008.
- Jacobsen, S. B. and Wasserburg, G. J.: Sm-Nd isotopic evolution of chondrites, 1980.

- Jeandel, C.: Concentration and isotopic composition of Nd in the South Atlantic Ocean, *Earth and Planetary Science Letters*, 117, 581–591, doi:10.1016/0012-821X(93)90104-H, 1993.
- Jeandel, C. and Oelkers, E. H.: The influence of terrigenous particulate material dissolution on ocean chemistry and global element cycles, *Chemical Geology*, 395, 50–66, doi:10.1016/j.chemgeo.2014.12.001, 2015.
- 5 Jeandel, C., Bishop, J. K., and Zindler, A.: Exchange of neodymium and its isotopes between seawater and small and large particles in the Sargasso Sea, *Geochimica et Cosmochimica Acta*, 59, 535–547, doi:10.1016/0016-7037(94)00367-U, 1995.
- Jeandel, C., Thouvenot, D., and Fieux, M.: Concentrations and isotopic compositions of neodymium in the eastern Indian Ocean and Indonesian straits, *Geochimica et Cosmochimica Acta*, 62, 2597–2607, doi:10.1016/S0016-7037(98)00169-0, 1998.
- Jeandel, C., Arsouze, T., Lacan, F., Téchiné, P., and Dutay, J. C.: Isotopic Nd compositions and concentrations of the lithogenic inputs into  
10 the ocean: A compilation, with an emphasis on the margins, *Chemical Geology*, 239, 156–164, doi:10.1016/j.chemgeo.2006.11.013, 2007.
- Jiménez-Espejo, F., Pardos-Gené, M., Martínez-Ruiz, F., García-Alix, A., van de Flierdt, T., Toyofuku, T., Bahr, A., and Kreissig, K.: Geochemical evidence for intermediate water circulation in the westernmost Mediterranean over the last 20kyrBP and its impact on the Mediterranean Outflow, *Global and Planetary Change*, 135, 38–46, doi:10.1016/j.gloplacha.2015.10.001, 2015.
- Jones, K. M., Khatriwala, S. P., Goldstein, S. L., Hemming, S. R., and van de Flierdt, T.: Modeling the distribution of Nd isotopes in the oceans  
15 using an ocean general circulation model, *Earth and Planetary Science Letters*, 272, 610–619, doi:10.1016/j.epsl.2008.05.027, 2008.
- Josey, S. A.: Changes in the heat and freshwater forcing of the eastern Mediterranean and their influence on deep water formation, *Journal of Geophysical Research*, 108, 3237, doi:10.1029/2003JC001778, 2003.
- Klein, B., Roether, W., Manca, B., Bregant, D., Beitzel, V., Kovacevic, V., and Luchetta, A.: The large deep water transient in the Eastern Mediterranean, *Deep-Sea Research*, 46, 371 – 414, 1999.
- 20 Lacan, F. and Jeandel, C.: Acquisition of the neodymium isotopic composition of the North Atlantic Deep Water, *Geochemistry, Geophysics, Geosystems*, 6, n/a–n/a, doi:10.1029/2005GC000956, 2005.
- Lacan, F., Tachikawa, K., and Jeandel, C.: Neodymium isotopic composition of the oceans: A compilation of seawater data, *Chemical Geology*, 300–301, 177–184, doi:10.1016/j.chemgeo.2012.01.019, 2012.
- Lascaratos, A., Roether, W., Nittis, K., and Klein, B.: Recent changes in deep water formation and spreading in the eastern Mediterranean  
25 Sea: a review, *Progress in Oceanography*, 44, 5–36, doi:10.1016/S0079-6611(99)00019-1, 1999.
- Lelieveld, J., Berresheim, H., Borrmann, S., Crutzen, P. J., Dentener, F. J., Fischer, H., Feichter, J., Flatau, P. J., Heland, J., Holzinger, R., Korrmann, R., Lawrence, M. G., Levin, Z., Markowicz, K. M., Mihalopoulos, N., Minikin, A., Ramanathan, V., De Reus, M., Roelofs, G. J., Scheeren, H. A., Sciare, J., Schlager, H., Schultz, M., Siegmund, P., Steil, B., Stephanou, E. G., Stier, P., Traub, M., Warneke, C., Williams, J., and Ziereis, H.: Global air pollution crossroads over the Mediterranean., *Science (New York, N.Y.)*, 298,  
30 794–9, doi:10.1126/science.1075457, 2002.
- Leveau, M. and Coste, B.: Impact des apports rhodaniens sur le milieu pelagique du golfe du Lion, *Bull. Ecol*, 18, 119–112, 1987.
- Locarnini, R. A., Mishonov, A. V., Antonov, J. I., Boyer, T. P., and Garcia, H. E.: *World Ocean Atlas 2005, Volume 1: Temperature*, S. Levitus, Ed, NOAA Atlas NESDIS 61, U.S. Government Printing Office, Washington, D.C. 182 pp, 2006.
- Ludwig, W., Dumont, E., Meybeck, M., and Heussner, S.: River discharges of water and nutrients to the Mediterranean and  
35 Black Sea: Major drivers for ecosystem changes during past and future decades?, *Progress in Oceanography*, 80, 199–217, doi:10.1016/j.pocean.2009.02.001, 2009.
- Madec, G. and NEMO-Team.: Note du Pôle de modélisation, Institut Pierre-Simon Laplace (IPSL), France, NEMO ocean engine, 27, doi:ISSN N1288-1619, 2008.

- Malanotte-Rizzoli, P. and Robinson, A. R.: POEM: Physical Oceanography of the Eastern Mediterranean, *Eos, Transactions American Geophysical Union*, 69, 194, doi:10.1029/88EO00125, 1988.
- Malanotte-Rizzoli, P., Manca, B. B., D'Alcala, M. R., Theocharis, A., Brenner, S., Budillon, G., and Ozsoy, E.: The Eastern Mediterranean in the 80s and in the 90s: the big transition in the intermediate and deep circulations, *Dynamics of Atmospheres and Oceans*, 29, 365–395, doi:10.1016/S0377-0265(99)00011-1, 1999.
- Martin, E., MacLeod, K., Jiménez Berrocoso, A., and Bourbon, E.: Water mass circulation on Demerara Rise during the Late Cretaceous based on Nd isotopes, *Earth and Planetary Science Letters*, 327–328, 111–120, doi:10.1016/j.epsl.2012.01.037, 2012.
- MEDAR-MedAtlas-group: Medar-Medatlas Protocol (Version 3) Part I: Exchange Format and Quality Checks for Observed Profiles, *P. Rap. Int. IFREMER/TMSI/IDM/SIS002-006*, 50, 2002.
- MerMex-Group: Marine ecosystems' responses to climatic and anthropogenic forcings in the Mediterranean, *Progress in Oceanography*, 91, 97–166, doi:10.1016/j.pocean.2011.02.003, 2011.
- Mignot, A., Claustre, H., Uitz, J., Poteau, A., Ortenzio, F. D., and Xing, X.: Understanding the seasonal dynamics of phytoplankton biomass and the deep chlorophyll maximum in oligotrophic environments: A Bio-Argo float investigation, *AGU. global biogeochemical cycles*, pp. 856–876, doi:10.1002/2013GB004781, Received, 2014.
- Millot, C. and Taupier-Letage, I.: The Mediterranean Sea, vol. 5K, doi:10.1007/b107143., 2005.
- Molina-Kescher, M., Frank, M., and Hathorne, E.: Nd and Sr isotope compositions, REE concentrations and Al/Ca ratios of different phases of surface sediments in the South Pacific, doi:10.1594/PANGAEA.835638, 2014.
- Nabat, P., Somot, S., Mallet, M., Sevault, F., Chiacchio, M., and Wild, M.: Direct and semi-direct aerosol radiative effect on the Mediterranean climate variability using a coupled regional climate system model, *Climate Dynamics*, 44, 1127–1155, doi:10.1007/s00382-014-2205-6, 2014.
- O'Nions, R. K., Evensen, N. M., and Hamilton, P. J.: Geochemical modeling of mantle differentiation and crustal growth, *Journal of Geophysical Research*, 84, 6091, doi:10.1029/JB084iB11p06091, 1979.
- Owen, J. P.: Geochemistry of lamprophyres from the Western Alps, Italy: implications for the origin of an enriched isotopic component in the Italian mantle, *Contributions to Mineralogy and Petrology*, 155, 341–362, doi:10.1007/s00410-007-0246-0, 2007.
- Palmiéri, J.: Modélisation Biogéochimique de la mer Méditerranée avec le modèle régional couplé, Ph.D. thesis, 2014.
- Palmiéri, J., Orr, J. C., Dutay, J.-C., Béranger, K., Schneider, A., Beuvier, J., and Somot, S.: Simulated anthropogenic CO<sub>2</sub> storage and acidification of the Mediterranean Sea, *Biogeosciences*, 12, 781–802, doi:10.5194/bg-12-781-2015, 2015.
- Pearce, C. R., Jones, M. T., Oelkers, E. H., Pradoux, C., and Jeandel, C.: The effect of particulate dissolution on the neodymium (Nd) isotope and Rare Earth Element (REE) composition of seawater, *Earth and Planetary Science Letters*, 369–370, 138–147, doi:10.1016/j.epsl.2013.03.023, 2013.
- Pena, L. D., Goldstein, S. L., Hemming, S. R., Jones, K. M., Calvo, E., Pelejero, C., and Cacho, I.: Rapid changes in meridional advection of Southern Ocean intermediate waters to the tropical Pacific during the last 30kyr, *Earth and Planetary Science Letters*, 368, 20–32, doi:10.1016/j.epsl.2013.02.028, 2013.
- Piegras, D. J. and Wasserburg, G. J.: Rare earth element transport in the western North Atlantic inferred from Nd isotopic observations, *Geochimica et Cosmochimica Acta*, 51, 1257–1271, doi:10.1016/0016-7037(87)90217-1, 1987.
- Piotrowski, A., Galy, A., Nicholl, J., Roberts, N., Wilson, D., Clegg, J., and Yu, J.: Reconstructing deglacial North and South Atlantic deep water sourcing using foraminiferal Nd isotopes, *Earth and Planetary Science Letters*, 357–358, 289–297, doi:10.1016/j.epsl.2012.09.036, 2012.

- Piotrowski, A. M., Goldstein, S. L., Hemming, S. R., and Fairbanks, R. G.: Intensification and variability of ocean thermohaline circulation through the last deglaciation, *Earth and Planetary Science Letters*, 225, 205–220, doi:10.1016/j.epsl.2004.06.002, 2004.
- Prelević, D., Foley, S., Romer, R., and Conticelli, S.: Mediterranean Tertiary lamproites derived from multiple source components in post-collisional geodynamics, *Geochimica et Cosmochimica Acta*, 72, 2125–2156, doi:10.1016/j.gca.2008.01.029, 2008.
- 5 Rempfer, J., Stocker, T. F., Joos, F., Dutay, J. C., and Siddall, M.: Modelling Nd-isotopes with a coarse resolution ocean circulation model: Sensitivities to model parameters and source/sink distributions, *Geochimica et Cosmochimica Acta*, 75, 5927–5950, doi:10.1016/j.gca.2011.07.044, 2011.
- Révillon, S., Jouet, G., Bayon, G., Rabineau, M., Dennielou, B., Hémond, C., and Berné, S.: The provenance of sediments in the Gulf of Lions, western Mediterranean Sea, *Geochemistry, Geophysics, Geosystems*, 12, n/a–n/a, doi:10.1029/2011GC003523, 2011.
- 10 Rickli, J., Frank, M., and Halliday, A. N.: The hafnium-neodymium isotopic composition of Atlantic seawater, *Earth and Planetary Science Letters*, 280, 118–127, doi:10.1016/j.epsl.2009.01.026, 2009.
- Rickli, J., Frank, M., Baker, A., Aciego, S., de Souza, G., Georg, R., and Halliday, A.: Hafnium and neodymium isotopes in surface waters of the eastern Atlantic Ocean: Implications for sources and inputs of trace metals to the ocean, *Geochimica et Cosmochimica Acta*, 74, 540–557, doi:10.1016/j.gca.2009.10.006, 2010.
- 15 Rixen, M., Beckers, J. M., Levitus, S., Antonov, J., Boyer, T., Maillard, C., Fichaut, M., Balopoulos, E., Iona, S., Dooley, H., Garcia, M. J., Manca, B., Giorgetti, A., Manzella, G., Mikhailov, N., Pinardi, N., and Zavatarelli, M.: The Western Mediterranean Deep Water: A proxy for climate change, *Geophysical Research Letters*, 32, 1–4, doi:10.1029/2005GL022702, 2005.
- Roether, W., Manca, B. B., Klein, B., Bregant, D., Georgopoulos, D., Beitzel, V., Kovacevic, V., and Luchetta, A.: Recent Changes in Eastern Mediterranean Deep Waters, *Science*, 271, 333–335, doi:10.1126/science.271.5247.333, 1996.
- 20 Roether, W., Klein, B., Manca, B. B., Theocharis, A., and Kioroglou, S.: Transient Eastern Mediterranean deep waters in response to the massive dense-water output of the Aegean Sea in the 1990s, *Progress in Oceanography*, 74, 540–571, doi:10.1016/j.pocean.2007.03.001, 2007.
- Roether, W., Jean-Baptiste, P., Fourré, E., and Sültenfuß, J.: The transient distributions of nuclear weapon-generated tritium and its decay product  $^3\text{He}$  in the Mediterranean Sea, 1952–2011, and their oceanographic potential, *Ocean Science*, 9, 837–854, doi:10.5194/os-9-837-2013, 2013.
- 25 Roether, W., Klein, B., and Hainbucher, D.: The Eastern Mediterranean Transient : Evidence for Similar, *American Geophysical Union*, 12, 75–83, 2014.
- Rousseau, T. C. C., Sonke, J. E., Chmeleff, J., van Beek, P., Souhaut, M., Boaventura, G., Seyler, P., and Jeandel, C.: Rapid neodymium release to marine waters from lithogenic sediments in the Amazon estuary., *Nature communications*, 6, 7592, doi:10.1038/ncomms8592, 30 2015.
- Samuel, S., Haines, K., Josey, S., and Myers, P. G.: Response of the Mediterranean Sea thermohaline circulation to observed changes in the winter wind stress field in the period 1980–1993, *Journal of Geophysical Research*, 104, 7771, doi:10.1029/1998JC900130, 1999.
- Scheuven, D., Schutz, L., Kandler, K., Ebert, M., and Weinbruch, S.: Bulk composition of northern African dust and its source sediments - A compilation, *Earth-Science Reviews*, 116, 170–194, doi:10.1016/j.earscirev.2012.08.005, 2013.
- 35 Schijf, J., de Baar, H. J., Wijbrans, J. R., and Landing, W. M.: Dissolved rare earth elements in the Black Sea, *Deep Sea Research Part A. Oceanographic Research Papers*, 38, S805–S823, doi:10.1016/S0198-0149(10)80010-X, 1991.

- Siddall, M., Khatiwala, S., van de Flierdt, T., Jones, K., Goldstein, S. L., Hemming, S., and Anderson, R. F.: Towards explaining the Nd paradox using reversible scavenging in an ocean general circulation model, *Earth and Planetary Science Letters*, 274, 448–461, doi:10.1016/j.epsl.2008.07.044, 2008.
- Spivack, A. J. and Wasserburg, G.: Neodymium isotopic composition of the Mediterranean outflow and the eastern North Atlantic, *Geochimica et Cosmochimica Acta*, 52, 2767–2773, doi:10.1016/0016-7037(88)90144-5, 1988.
- Stanev, E. V. and Peneva, E. L.: Regional sea level response to global climatic change : Black Sea examples, *Europe*, 32, 33 – 47, 2002.
- Stichel, T., Frank, M., Rickli, J. D., Hathorne, E., Haley, B. A., Jeandel, C., and Pradoux, C.: Hafnium and neodymium in surface waters of the Atlantic sector of the Southern Ocean, doi:10.1594/PANGAEA.786906, 2012.
- Tachikawa, K.: Neodymium budget in the modern ocean and paleo-oceanographic implications, *Journal of Geophysical Research*, 108, 3254, doi:10.1029/1999JC000285, 2003.
- Tachikawa, K., Jeandel, C., and Roy-Barman, M.: A new approach to the Nd residence time in the ocean: the role of atmospheric inputs, *Earth and Planetary Science Letters*, 170, 433–446, doi:10.1016/S0012-821X(99)00127-2, 1999.
- Tachikawa, K., Roy-Barman, M., Michard, A., Thouron, D., Yeghicheyan, D., and Jeandel, C.: Neodymium isotopes in the Mediterranean Sea: Comparison between seawater and sediment signals, *Geochimica et Cosmochimica Acta*, 68, 3095–3106, doi:10.1016/j.gca.2004.01.024, 2004.
- Theocharis, A. and Kontoyiannis, H.: Interannual variability of the circulation and hydrography in the Eastern Mediterranean (1986 – 1995). In: Malanotte-Rizzoli, P., Eremeev, V.N. (Eds.), *NATO Science Series. Environmental Security: The Eastern Mediterranean as a Laboratory Basin for the As*, Kluwer Academic Publishing, Dordrecht, The Netherlands, 51 (2), 453 – 464, 1999.
- Theocharis, A., Georgopoulos, D., Karagevrekis, P., Iona, A., Perivoliotis, L., and Charalambidis, N.: Aegean influence in the deep layers of the Eastern Ionian Sea, *Rapport de la Commission internationale pour l'Exploration Scientifique de la Mer Méditerranée*, 33, 235, 1992.
- Theocharis, A., Nittis, K., Kontoyiannis, H., Papageorgiou, E., and Balopoulos, E.: Climatic changes in the Aegean Sea influence the Eastern Mediterranean thermohaline circulation (1986–1997), *Geophysical Research Letters*, 26 (11), 1617–1620, 1999.
- Tranchida, G., Oliveri, E., Angelone, M., Bellanca, A., Censi, P., D'Elia, M., Neri, R., Placenti, F., Sprovieri, M., and Mazzola, S.: Distribution of rare earth elements in marine sediments from the Strait of Sicily (western Mediterranean Sea): Evidence of phosphogypsum waste contamination, *Marine Pollution Bulletin*, 62, 182–191, doi:10.1016/j.marpolbul.2010.11.003, 2011.
- Wilson, D. J., Piotrowski, A. M., Galy, A., and McCave, I. N.: A boundary exchange influence on deglacial neodymium isotope records from the deep western Indian Ocean, *Earth and Planetary Science Letters*, 341–344, 35–47, doi:10.1016/j.epsl.2012.06.009, 2012.
- Zervakis, V., Georgopoulos, D., and Drakopoulos, P. G.: The role of the North Aegean in triggering the recent Eastern Mediterranean climatic changes, *Journal of Geophysical Research*, 105 (C11), 26 103–26 116, 2000.

**Table 1.** Coordinates of the studied cores together with water depth .

Cruise	Years	Longitude (°E)	Latitude (°N)	Depth (m)	$\varepsilon_{Nd}$
ETNA80	1980	11.48	36.30	263	-10.09
		13.44	33,23	736	-10.92
DEDALE	1987	25.59	33.51	3020	-8.15
NOE	1984	30.01	32.19	1465	-4.49
		30.1	31.53	495	-3.92
Sicily strait	2003	12.57	37.30	29.5	-11.67
		14.37	36.36	87.4	-11.05
		14.22	36.16	488.2	-11.22
		12.32	36.56	117	-8.06

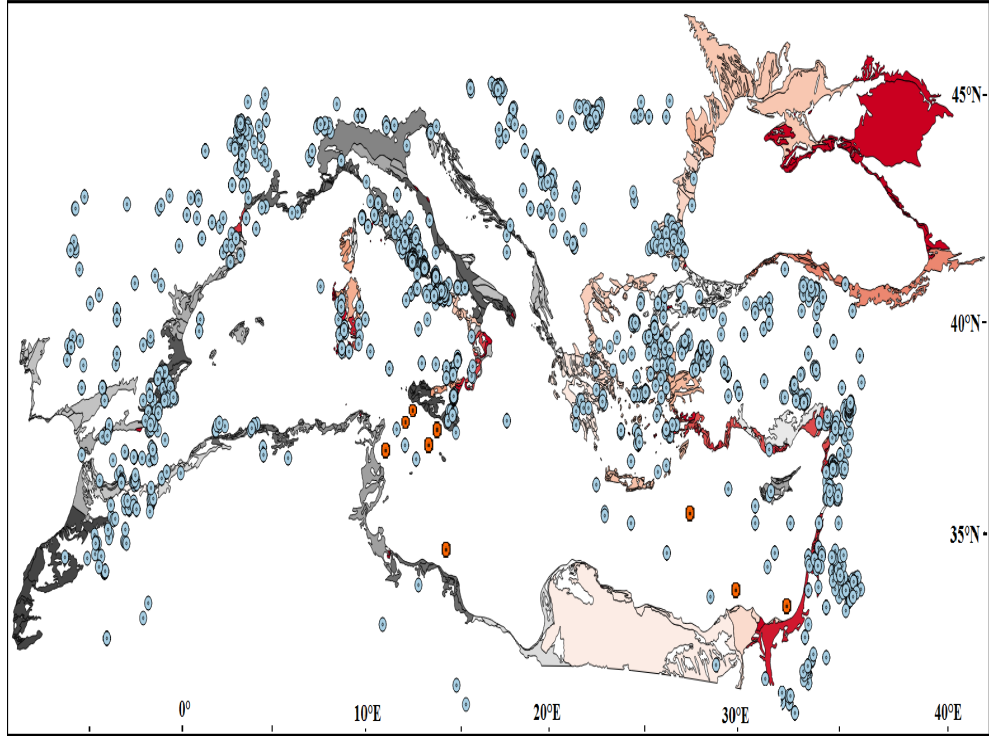
**Table 2.** Mean  $\varepsilon_{Nd}$  for the Med Sea, from EXP3 and for the in-situ data from Tachikawa et al. (2004)

	Model		In-situ data	
	Intermediate waters	Average all depths	Intermediate waters	Average all depths
Mediterranean Sea	-5.8	-6.2	$-7.6 \pm 1.37$	$-7.8 \pm 1.54$
Eastern basin (EMed)	-4.7	-5.1	$-7 \pm 0.85$	$-7.1 \pm 1.08$
Western Basin (WMed)	-5.8	-6.3	$-9.4 \pm 0.69$	$-9.6 \pm 0.48$

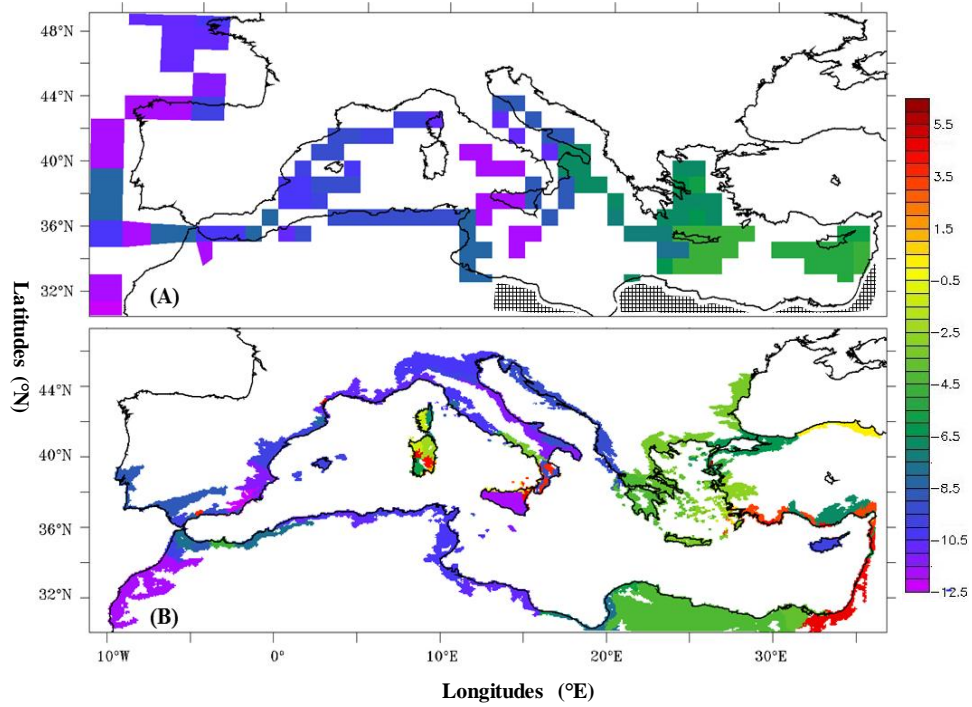
**Table 3.** Summary of the main characteristics for each experience

Experience	Relaxing time $\tau$	Regression coefficient for data/model points
EXP1	1 month	0.32
EXP2	3 months	0.75
EXP3	6 months	0.60
EXP4	1 year	0.34
EXP5	$\tau$ varying vertically from 1 month at the surface to 10 months at 540 m	0.27
EXP6	$\tau$ 1 month (max $\varepsilon_{Nd_{margin}}$ ) to 1 year (min $\varepsilon_{Nd_{margin}}$ )	0.39

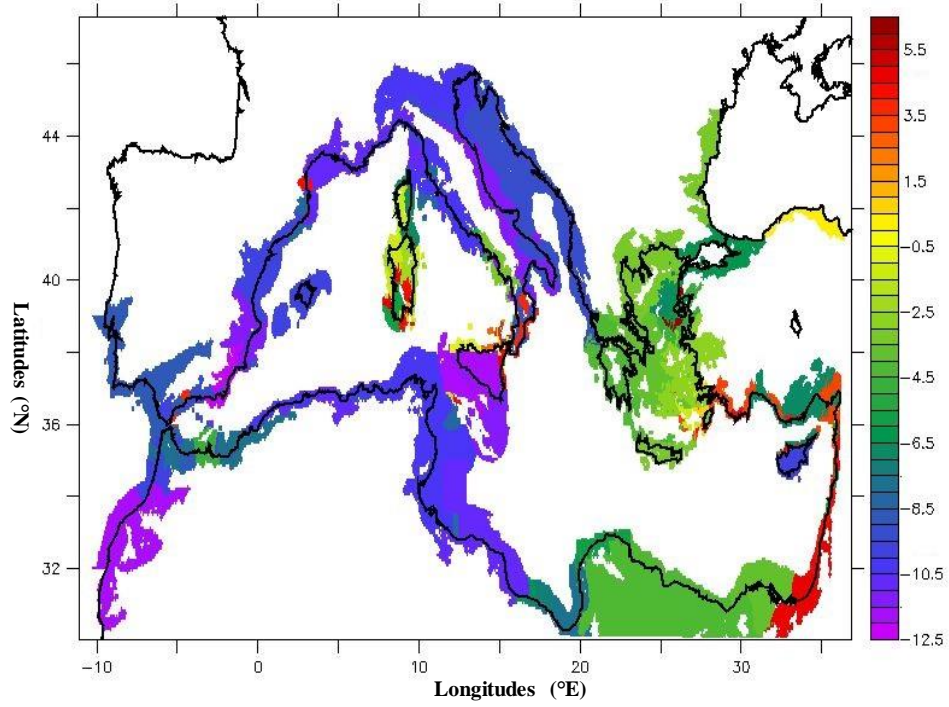




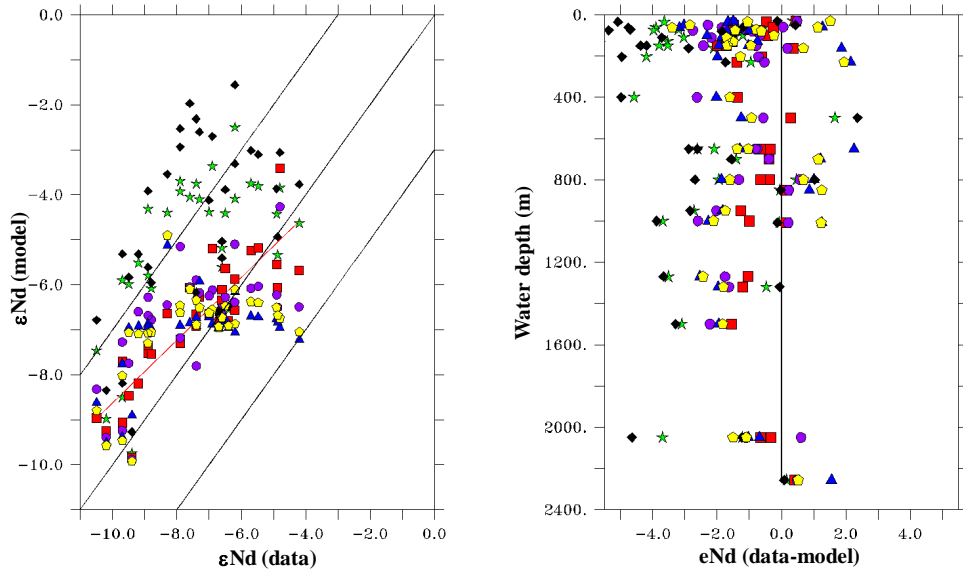
**Figure 1.** The filled contours indicate the geological province **limit based on the geological age (i.e. each color represent a separate age)** from a high resolution digital geological map (<http://www.geologie.ens.fr/spiplabocnrs/spip.php?rubrique67>) while the circles filled in blue represent the location of the discrete data compiled from EarthChem database (see Appendix1), and in red the location of the stations corresponding to the sediments analysed as part of the present work.



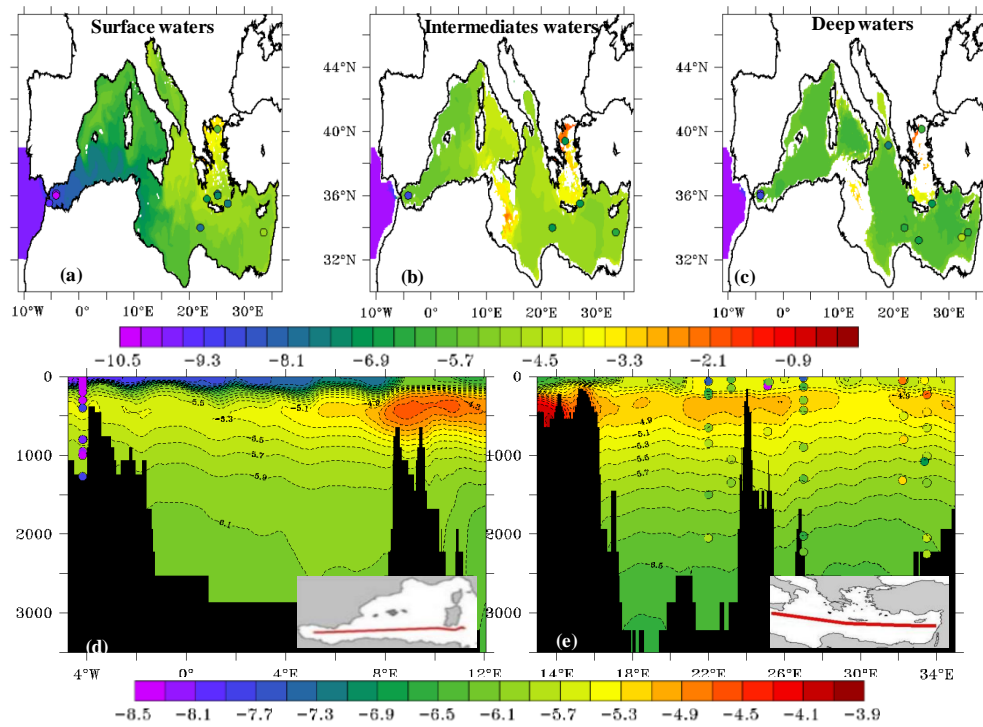
**Figure 2.** Extrapolated map providing a picture of the Nd signature of all the margins surrounding the Mediterranean Sea. (a) Low-resolution configuration ORCA2 (reproduced from Jeandel et al. (2007)), and (b) high resolution configuration NEMO-MED12 (this work). Hatched areas correspond to uncharacterized areas in the published literature (before 2007) as done by Jeandel et al. (2007).



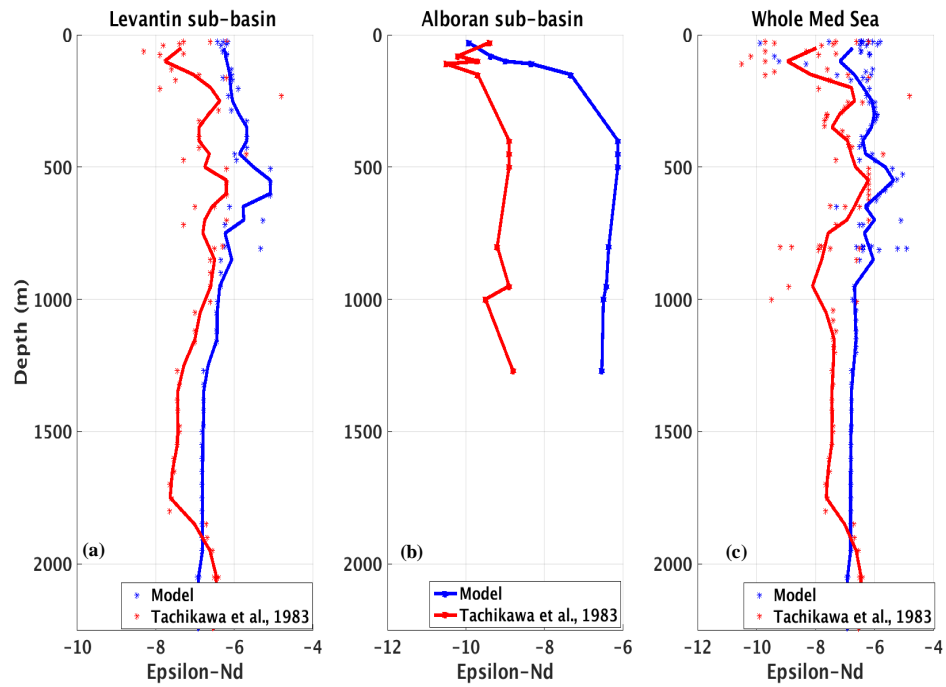
**Figure 3.** Map of the  $\epsilon Nd_{margin}$  used in the model simulation, done by interpolation of Fig. 1b on the oceanic margins of the Mediterranean Sea (see section 2).



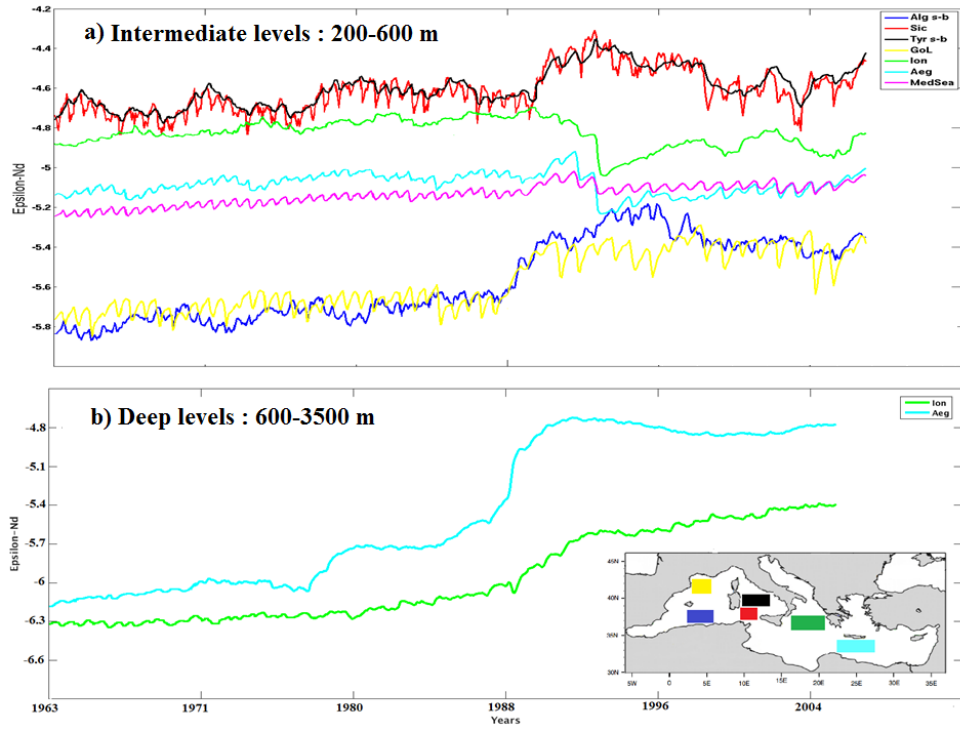
**Figure 4.** Model/data comparison for the 6 simulations performed with different relaxing time at the steady state (see Tab.3) and the in-situ data from Tachikawa et al. (2004): **(a)** model-data correlation, red line is the linear regression from EXP2. Diagonal black lines are lines  $\epsilon Nd$  (modeled) =  $\epsilon Nd$  (data),  $\epsilon Nd$  (modeled) =  $\epsilon Nd$  (data) + 3  $\epsilon Nd$  and  $\epsilon Nd$  (modeled) =  $\epsilon Nd$  (data) - 3  $\epsilon Nd$  Tachikawa et al. (2004). **(b)** model/data comparison as a function of depth, black solid line represents the data from Tachikawa et al. (2004).



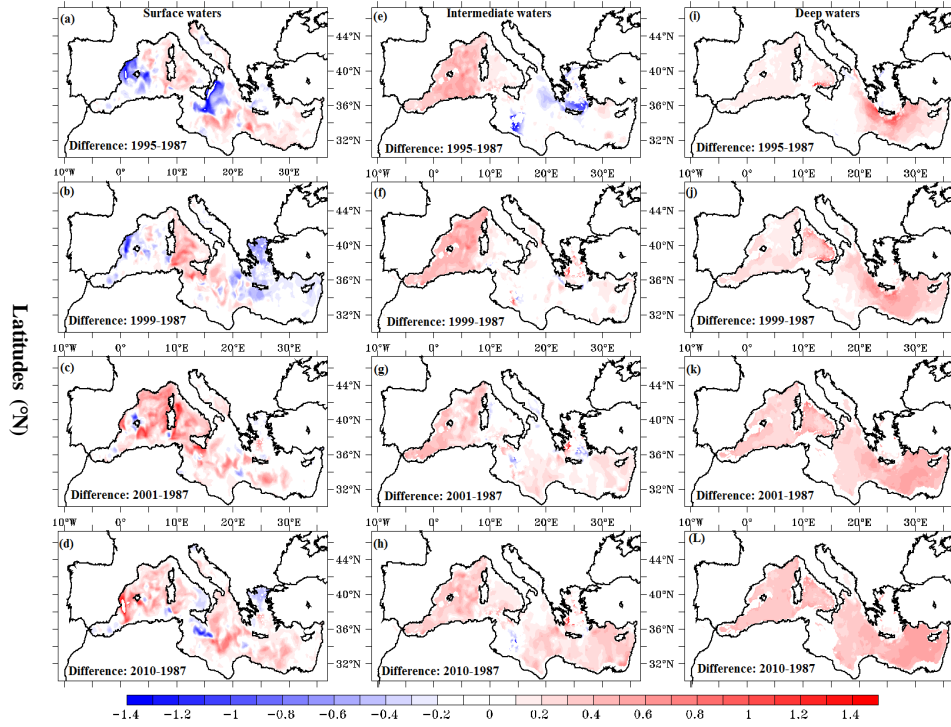
**Figure 5.** Output of model from EXP2 (t=3 months) at the steady state. Upper panel: horizontal maps for surface waters (a), intermediate waters (b), and deep waters (c). Lower panel E-W section in WMed (d), and EMed (e), whereas colour-filled dots represent in situ observations (Tachikawa et al., 2004). Both use the same colour scale.



**Figure 6.** Comparison of average vertical profiles of Nd isotopic signature (Nd-IC) from EXP3 ( $t = 3$  months) in the whole Mediterranean Sea. Model results are in blue, while red indicates the in situ data.

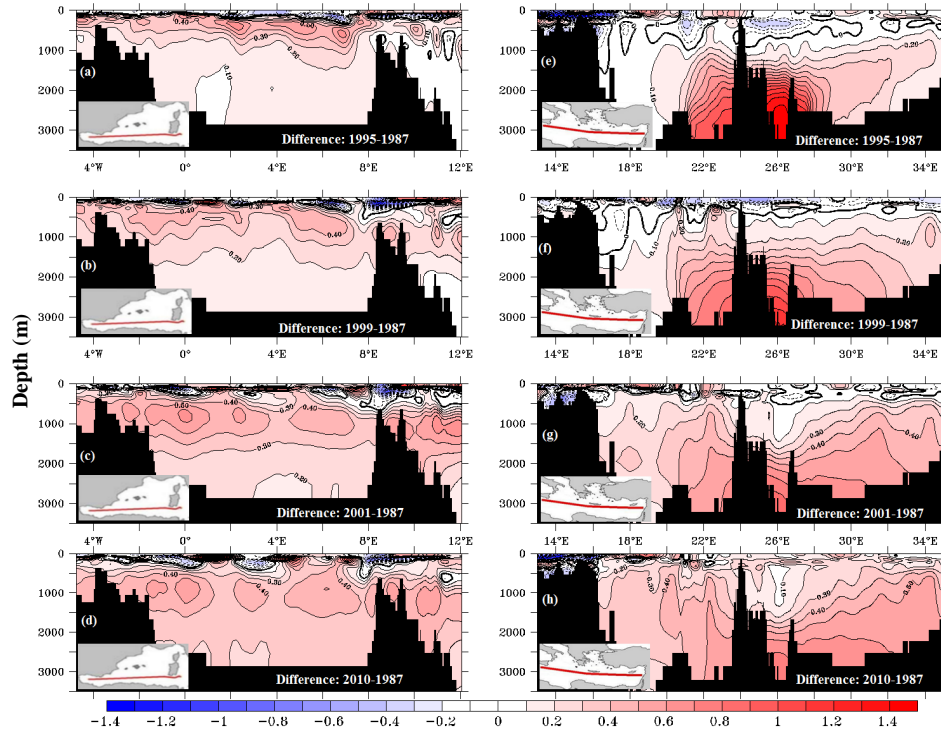


**Figure 7.** The  $\varepsilon Nd$  devolution from EXP3 ( $\tau = 3$  months) at the intermediate level in **(a)** (average depth between 200 and 600 m), and for the deep levels in **(b)** (average depth between 600 and 3500 m). In the Gulf of Lions (yellow), Algerian sub-basin (blue), Levantine s-b (cyan), Ionian s-b (green), Sicily channel (red), Tyrrhenian s-b (black).



**Figure 8.** Horizontal maps showing the difference relative to 1987 from EXP3 (tau = 3 month), in the left column for the surface level (0 - 200 m), in the middle column for the intermediate layer (between 250 - 600 m, and for the deep layer in the right column (600 - 3500 m).





**Figure 9.** Colour filled contours represents simulated Nd isotopic composition for the WMed in the left column, and the EMed sections are shown in the right column. The first line show the situation in 1987 (pre-EMT), the others sections show the difference in the Nd-IC between 1995 and 2010 (post-EMT period) **corrected to 1987 situation.**