

# “Depth-resolved particle associated microbial respiration in the northeast

## Atlantic” by A. Belcher et al.

### Author Response to Editor’s report

#### Editor’s comments

- 5 It is a great pleasure now to accept your manuscript for publication in Biogeosciences. Thank you very much for responding to the reviewers' comments so quickly and carefully.  
**AC: Thank you for taking the time to check out manuscript and manage the review process. We have made the necessary technical corrections as detailed below and in the track change version.**
- 10 Before it is published, please consider my technical corrections below:
- P1, L23 and hereafter: 36-500 m. Please use en dash (–), not hyphen (-) for the range.  
**AC: Changed to en dash throughout the manuscript**
- P2, L8: Remove the semicolon (;).  
**AC: Removed**
- 15 P3, L3: laboratory cultures  
**AC: Amended**
- P3, L20: mixed layer depth  $\leq$  500 m  
**AC: Changed to “mixed layer depth to 500 m” to explain the depth range we are interested in.**
- 20 P3, L21: the second “poorly” may be replaced by “little” or a similar word.  
**AC: Changed to “not well”**
- P5, L10: 0.08 mg C  
**AC: Amended**
- P5, L31: Please use the symbol “ $\chi$ ”, not alphabet “x”.  
**AC: Amended**
- 25 P6, L22: insert “, where  $z^*$  is the characteristic remineralization length scale for the flux decrease below  $z_0$  as in Buesseler and Boyd, 2009).  
**AC: Amended**
- P7, L26: 0.8 mol C (mol O<sub>2</sub>)<sup>(-1)</sup>  
**AC: Amended**
- 30 P8, L27: “R<sup>2</sup>” should be italic.  
**AC: Amended**
- P9, L29: Table S1  
**AC: Amended**
- 35 P11, L10: Use “ $\pm$ ”, not “+/-”.  
**AC: Amended**
- P12, L29: Remove a space immediately before “carbon”.  
**AC: Removed**
- P17, L32: the dark ocean’s pelagic  
**AC: Amended**
- 40 P29, L3: Error bars represent  $\pm$  one standard error of the mean.  
**AC: Amended**

# Depth-resolved particle associated microbial respiration in the northeast Atlantic

A. Belcher<sup>1,2</sup>, M. Iversen<sup>3,4</sup>, S. Giering<sup>1</sup>, V. Riou<sup>5</sup>, S.A. Henson<sup>1</sup>, L. Berline<sup>5</sup>, L. Guilloux<sup>5</sup>, R. Sanders<sup>1</sup>

<sup>1</sup> National Oceanography Centre, Southampton, SO14 3ZH, UK

5 <sup>2</sup> University of Southampton, Southampton, SO14 3ZH, UK

<sup>3</sup> Helmholtz Young Investigator Group SEAPUMP, Alfred Wegener Institute for Polar and Marine Research, Bremerhaven, Germany

<sup>4</sup> MARUM, University of Bremen, Bremen, Germany

<sup>5</sup> Aix-Marseille Université, Mediterranean Institute of Oceanography (MIO), UM 110 CNRS/INSU, IRD, 13288 Marseille;

10 Université du Sud Toulon-Var, 83957 La Garde, France

*Correspondence to:* A. Belcher (A.Belcher@noc.soton.ac.uk)

**Abstract.** Atmospheric levels of carbon dioxide are tightly linked to the depth at which sinking particulate organic carbon (POC) is remineralized in the ocean. Rapid attenuation of downward POC flux typically occurs in the upper mesopelagic (top few hundred meters of the water column), with much slower loss rates deeper in the ocean. Currently we lack understanding of the processes that drive POC attenuation, resulting in large uncertainties in the mesopelagic carbon budget. Attempts to balance the POC supply to the mesopelagic with respiration by zooplankton and microbes rarely succeed. Where a balance has been found, depth resolved estimates reveal large compensating imbalances in the upper and lower mesopelagic. In particular, it has been suggested that respiration by free-living microbes and zooplankton in the upper mesopelagic are too low to explain the observed flux attenuation of POC within this layer. We test the hypothesis that particle-associated microbes contribute significantly to community respiration in the mesopelagic, measuring particle associated microbial respiration of POC in the northeast Atlantic through shipboard measurements on individual marine snow aggregates collected at depth (36–500 m). We find very low rates of both absolute and carbon-specific particle associated microbial respiration ( $<3\% \text{ d}^{-1}$ ), suggesting that this term cannot solve imbalances in the upper mesopelagic POC budget. The relative importance of particle associated microbial respiration increases with depth, accounting for up to 33% of POC loss in the mid mesopelagic (128–500 m). We suggest that POC attenuation in the upper mesopelagic (36–128 m) is driven by the transformation of large, fast-sinking particles to smaller, slow-sinking and suspended particles via processes such as zooplankton fragmentation and solubilization, and that this shift to non-sinking POC may help to explain imbalances in the mesopelagic carbon budget.

## 30 1 Introduction

The biological carbon pump plays a key role in regulating the partitioning of carbon dioxide ( $\text{CO}_2$ ) between the ocean and atmosphere, and without it atmospheric  $\text{CO}_2$  would likely be 200 ppm higher than it is today (Parekh et al., 2006). Key

to determining its effectiveness is the efficiency with which organic carbon sinks through the ocean interior (quantified as the transfer efficiency), and thus the depth at which material is remineralized (Francois et al., 2002; Kwon et al., 2009). However, despite its importance, the processes governing the loss of organic carbon within the mesopelagic are poorly understood (Burd et al., 2010).

5 | POC sinking out of the euphotic zone can be transformed within the mesopelagic in many ways, including:  
zooplankton feeding, fragmentation via sloppy feeding, microbial solubilization to dissolved organic carbon (DOC), and physically driven aggregation and disaggregation processes (e.g. Azam and Malfatti, 2007; Belcher et al., 2016; Burd and Jackson, 2009; Steinberg et al., 2008). Ultimately carbon is lost from the organic carbon pool as dissolved inorganic carbon via respiration, and hence, in theory at steady state, community respiration should be balanced by the supply of POC (Burd  
10 | et al., 2010). However, settling organic matter is often found to be insufficient to meet the energy demands of microbes in the dark ocean, thus leading to an imbalanced mesopelagic carbon budget (Baltar et al., 2009; Herndl and Reinthaler, 2013; Steinberg et al., 2008).

A recent study managed to close the mesopelagic carbon budget between 50–1000 m in the North Atlantic (Giering et al., 2014) by making key changes to the terms included in the budget. However, Giering et al. (2014) found large and  
15 | compensating imbalances between sources and sinks in upper and lower mesopelagic layers, with an excess of POC supply to the upper mesopelagic (50–150 m depth), and an excess of respiration in the lower mesopelagic (150–1000 m depth). To the best of our knowledge, this oversupply in the upper mesopelagic has not previously been identified, likely because previous budget studies have not taken a depth resolved approach. In addition, most previous studies use a fixed upper  
20 | mesopelagic boundary of 100–200 m, rather than a dynamic upper boundary (such as the base of the mixed layer, Buesseler and Boyd, 2009) and therefore may have missed the region of most rapid POC attenuation. Our understanding of the mesopelagic carbon budget is therefore still incomplete. Giering et al. (2014) found prokaryotes to be responsible for most of the respiration (70–92%) across both depth ranges, however respiratory loss due to particle associated prokaryotes have typically not been included in mesopelagic carbon budget studies (Giering et al., 2014; Steinberg et al., 2008). Data from the subtropical North Atlantic and west Antarctic Peninsula show that particle associated microbial respiration can contribute  
25 | 32–93% of the total respiration measured in situ (McDonnell et al., 2015), suggesting that particle associated microbes could play an important role in the loss of POC in the mesopelagic. We hypothesize that POC losses via particle associated respiration (a term not directly measured by Giering et al., 2014 or Steinberg et al., 2008) may help to address imbalances in the upper mesopelagic carbon budget.

Marine snow particles (aggregates of detritus, living organisms and inorganic matter >0.5 mm in diameter, Alldredge  
30 | and Silver, 1988) can make up a large fraction of the sinking POC in the ocean and host microbial abundances 2–5 orders of magnitude higher than those found free-living in the surrounding water column (Silver and Alldredge, 1981; Thiele et al., 2015). The fragile nature of marine snow particles makes sampling and measurement difficult; many previous measures of particle associated respiration have been carried out on roller tank formed marine snow aggregates, either from laboratory  
cultures of phytoplankton or natural sea water samples (Grossart and Ploug, 2001; Iversen and Ploug, 2010, 2013; Iversen et

al., 2010). A few experiments have utilized divers or submersibles to collect in situ aggregates and estimate heterotrophic bacterial production by measuring leucine uptake (Alldredge and Youngbluth, 1985; Smith et al., 1992) with few measuring respiration directly on individual aggregates (Ploug et al., 1999). To the best of our knowledge only two studies have combined direct measures of respiration on aggregates collected at depth with measurements of POC flux (Collins et al., 2015; McDonnell et al., 2015), both of which lack sufficient vertical resolution in the upper mesopelagic to capture the region of most rapid change. Collins et al. (2015) measured rates of substrate-specific microbial respiration of  $0.007 \pm 0.003 \text{ d}^{-1}$  to  $0.173 \pm 0.105 \text{ d}^{-1}$  in the North Atlantic, and McDonnell et al. (2015) measured rates of  $0.01 \pm 0.02 \text{ d}^{-1}$  and  $0.4 \pm 0.1 \text{ d}^{-1}$  at the Western Antarctic Peninsula and Bermuda Atlantic Time Series respectively. Previous studies are therefore inconclusive as to the importance of particle associated microbes on the attenuation of POC, with some studies suggesting they play a minor role (Alldredge and Youngbluth, 1985; Collins et al., 2015; Ducklow et al., 1982; Iversen et al., 2010; Karl et al., 1988) and others suggesting a larger contribution (Iversen and Ploug, 2013; Ploug et al., 1999; Turley and Stutt, 2000).

To build upon these previous studies we assess the role of particle associated microbial respiration in POC flux attenuation, presenting a vertical profile of particle associated respiration rates measured on individual marine snow particles collected at depth. In an attempt to assess whether this term can improve our ability to balance the fast-sinking POC budget in the upper mesopelagic, we make these measurements in the northeast Atlantic at the site of Giering et al. (2014) where we have the most complete knowledge of the mesopelagic carbon budget. We focus on the upper ocean (mixed layer depth to 500 m) where the most rapid attenuation occurs, a region that is poorly-not well understood and poorly represented in model studies (Henderson and Marchal, 2015).

## 2 Methods

### 2.1 Study site

Measurements were made during research cruise DY032 (20<sup>th</sup> June – 8<sup>th</sup> July 2015) to the Porcupine Abyssal Plain (PAP) observatory site (49 °N, 16.5 °W) in the northeast Atlantic aboard RRS *Discovery*. Vertical profiles of the water column at each site were made using a Conductivity-Temperature-Depth (CTD) unit (Seabird 9Plus with SBE32 carousel). The mixed layer depth (MLD) was determined as the depth where temperature was 0.5°C lower than surface temperature (Monterey and Levitus, 1997).

### 2.2 Chlorophyll *a*

Depth profiles of chlorophyll *a* were measured at a number of points during the cruise using water samples (200 mL) collected with the CTD rosette. Samples were filtered onto 0.8 µm MPF300 glass fibre filters, and frozen at -20 °C. Pigments were extracted in 90% acetone for 22–24 hours at 4 °C and fluorescence measured on a Trilogy Turner Designs 7200 lab fluorometer calibrated with a pure chlorophyll *a* standard (Sigma, UK).

Aqua MODIS 9 km, 8 day satellite chlorophyll *a* data (downloaded from the NASA Ocean Biology website; <http://oceancolor.gsfc.nasa.gov/cms/>) were used to assess mesoscale variability (e.g. passage of eddies) during the sampling period. We examined changes in surface chlorophyll prior to and post sampling by averaging chlorophyll data over the study region (48.5–49.5 °N, 16.0–17.0 °W).

## 5 2.3 Particle flux and composition

Particle flux and composition were measured using Marine Snow Catchers (MSC), large (95 L) PVC closing water bottles designed to minimize turbulence (Belcher et al., 2016; Cavan et al., 2015; Riley et al., 2012). MSCs were deployed between 36–500 m during the course of the cruise, closed at depth, retrieved on deck and left for particles to settle. Deployment depths were chosen based on MLD determined as the depth with steepest gradient in temperature from the most recent CTD profile. MSC deployments were carried out during the day with the exception of the two samples at 36 m and 128 m, which were deployed at night due to logistical limitations. Particles were allowed to settle onto a particle collector tray at the base of the MSC for two hours (defined as ‘fast-sinking’ as in Riley et al., 2012), after which those visible by eye (>0.15 mm diameter) were picked from three quadrants using a wide bore pipette, filtered onto pre-combusted (450 °C, 24 h) glass fibre filters (25 mm diameter GF/F, Whatman), and oven dried at 50 °C for replicate analysis of POC. Filters were subsequently fumed with 37% HCl in a vacuum desiccator for 24 hours, and dried for 24 hours at 50 °C. Filters and filter blanks were placed in pre-combusted (450 °C, 24 h) tin capsules as in Hilton et al. (1986), and POC measured by a CE-440 Elemental analyser (Exeter Analytical.285 Inc). Particles in the remaining quadrant were transferred to a temperature controlled laboratory (10 °C) and used for measurements of sinking and respiration rates (section 2.4).

The flux of POC ( $F$  in  $\text{mg C m}^{-2} \text{d}^{-1}$ ) associated with fast-sinking particles was calculated as follows:

$$20 \quad F = \frac{m}{A} \times \frac{w}{h}, \quad (1)$$

where  $m$  refers to the total mass (mg) of fast-sinking POC collected from the MSC,  $A$  the area ( $0.059 \text{ m}^2$ ) of the MSC based on inner MSC diameter,  $w$  the measured sinking velocity ( $\text{m d}^{-1}$ ) from laboratory measurements, and  $h$  the height of the snow catcher (1.53 m). Sinking velocities of marine aggregates were measured in a flow chamber (section 2.4), and the median value for each depth horizon used to avoid bias by rare aggregates. The rate of particle flux attenuation was assessed by fitting a power-law function (Martin et al., 1987) to the flux data,

$$25 \quad F_z = F_0 \times (z/z_0)^{-b}, \quad (2)$$

where  $z$  is the depth of the flux, and  $F_0$  is the flux at the reference depth (in this case 26 m, i.e. the mixed layer depth). A high value of  $b$  corresponds to high attenuation (shallow remineralization) and vice versa. As in situ particle production at depth is not considered, this represents a lower estimate of flux attenuation.

30 The type of fast-sinking particles at each depth was assessed under a microscope and photographs taken using a Leica DM-IRB inverted microscope and Canon EOS 1100D camera. Particles were classified into phytodetrital aggregates (PA; aggregates >0.15 mm equivalent spherical diameter (ESD) containing phytoplankton cells and other phytodetrital material),

fecal pellets (FP), and unidentified phytodetritus. Individual particle dimensions were measured using ImageJ (version 1.49p) and volumes calculated using formulae for a sphere, prolate ellipsoid or cylinder depending on particle type and shape. Conversions to PA POC from PA volume were based on measurements of POC content of marine aggregates collected at depth (section 2.4), and a carbon to volume ratio of  $0.08 \text{ mg C mm}^{-3}$  used for FP based on literature estimates (range  $0.01\text{-}0.15 \text{ mg C mm}^{-3}$ , Wilson et al., 2008). FP carbon content can vary greatly even within species depending on factors such as food type and concentration (Urban-Rich, 2001), which introduces uncertainty into our estimates of their contribution to the total POC flux.

## 2.4 Oxygen gradients in marine snow aggregates

The rates at which sinking particles were degraded due to the respiration of particle associated microbes were calculated from direct measurements of oxygen gradients within PA. PA were transferred into a temperature controlled flow chamber system (Ploug and Jorgensen, 1999) containing filtered sea water ( $0.22 \mu\text{m}$ ), taken from the MSC deployed at 36 m and maintained at  $10 \text{ }^\circ\text{C}$  (at the low end of temperatures measured during the study, Fig. 1). Only one incubation temperature was possible due to laboratory and space limitations. The salinity in the flow chamber was 35.5 PSU which, considering the low variation in salinity profiles (standard deviation of 0.008 PSU at 36 m depth) should represent conditions at all depths sampled. Within 24 hours of collection, PA were placed carefully in the flow chamber using a wide bore pipette. The wide bore pipette lifts the particles with the surrounding water so that the particles remain suspended in water during the handling and minimal physical stress is exerted on the particles. The microbial communities associated with the aggregates are not removed by this method (Kjørboe et al., 2002). The x, y, and z dimensions of PA were measured using a horizontal dissection microscope with a calibrated ocular, and three measurements of the sinking velocity made for each PA by suspending the PA with an upward flow (Ploug et al., 2010). The formula of an ellipsoid was used to calculate PA volumes from their x, y, z dimensions, and equivalent spherical diameters (ESD) were computed.

A profile of oxygen was measured from the ambient water, through the diffusive boundary layer (DBL) and into the PA using a Clark-type oxygen microelectrode and guard cathode (Revsbech, 1989) mounted in a micromanipulator. Measurements were made in increments of  $50\text{--}200 \mu\text{m}$  on the downstream side of the particle and oxygen fluxes calculated using a diffusion-reaction model based on Fick's first law of diffusion (diffusion coefficients of  $1.4691 \times 10^{-5} \text{ cm}^2 \text{ s}^{-1}$  for  $10 \text{ }^\circ\text{C}$  and salinity 35 PSU, Broecker and Peng, 1974). Two to three replicate profiles were taken for each PA where possible. We used a solver routine to find the optimum solution minimizing the sum of the squares between measured and modelled oxygen concentrations (see Ploug et al. (1997) for full details). Total oxygen consumption within the PA was calculated using the equation for the surface area of an ellipsoid assuming that net oxygen fluxes do not vary significantly on the upstream and downstream sides (Ploug and Jorgensen, 1999). As oxygen consumption in the DBL is a measure of the respiration rate of the microbial community associated with the PA due to net exchange of oxygen via molecular diffusion, the carbon respiration ( $C_{\text{resp}}$  in  $\text{mg C mm}^{-3} \text{ d}^{-1}$ ) can be calculated based on a respiratory quotient (RQ) (here, 1 mol  $\text{O}_2$  to 1 mol  $\text{CO}_2$ , Ploug and Grossart, 2000; Ploug et al., 1997). This RQ was chosen as a conservative value in the range of literature

values typically applied (0.7–1.2 mol:mol) for respiration of carbohydrates and lipids (Berggren et al., 2012), but adds uncertainty to our estimates that cannot be better constrained without knowledge of the form of carbon within the PA utilized for microbial respiration.

Following respiration measurements, PA were stored in 1.5 mL Eppendorf tubes before pooling PA into size classes based on ESD and placing onto pre-combusted (450 °C, 24 h) glass fibre filters (25 mm diameter GF/F, Whatman) for measurement of POC as described in section 2.3. This enabled the carbon content per unit volume ( $\text{mg C mm}^{-3}$ ) for each size class at each depth range to be calculated and hence POC content of individual PA to be estimated. We measured POC to volume ratios of two sizes classes (typically  $<0.6$  mm ESD,  $>0.6$  mm ESD) at each depth horizon (with the exception of samples at 128, 200 and 500m where all measured particles were  $<0.6$  mm ESD so only one size class was used) to take into account the geometry of aggregates and non-linear volume to POC ratio (Alldredge, 1998). These PA POC contents ( $[POC]$  in  $\text{mg C mm}^{-3}$ ) were then used to calculate carbon-specific respiration rates ( $C_{\text{spec}}$  in  $\text{d}^{-1}$ ) as follows:

$$C_{\text{spec}} = C_{\text{resp}}/[POC]. \quad (3)$$

## 2.5 Statistics and error analysis

Attenuation of fast-sinking POC flux with depth was best described by a power-law relationship fit (of form,  $F_z = F_0 (z/z_0)^{-b}$ ,  $R^2=0.42$ ,  $p=0.06$ ,  $n=9$ ) (Martin et al., 1987) compared to an exponential fit ( $R^2=0.30$ ,  $p=0.128$ ,  $n=9$ ) (of form,  $F_z = F_0 \exp(z-z_0/z^*)$ , where  $z^*$  in the characteristic remineralization length scale for the flux decrease below  $z_0$  as in Buesseler and Boyd, 2009). We also tested for any statistical relationship between carbon-specific respiration rates and depth. All statistics were carried out in RStudio (version 0.98.1091; R development core team, 2014). We calculated a relation between particle ESD and sinking velocity by applying a power law fit to the data using the NLS function in RStudio. The choice of a power law relationship, based on the findings of previous studies (e.g. Iversen and Ploug, 2010), was motivated by the observed divergence of marine snow aggregates from Stoke's Law due to their irregular shapes (Logan and Wilkinson, 1990).

Time and methodological constraints of measuring very small particles, prohibited us from measuring the respiration rate of every particle collected in the MSC. Hence, before using these measurements to assess the contribution of particle associated microbial respiration to the mesopelagic carbon budget, we first defined upper and lower bounds to our estimates based on our uncertainties. We conducted a Monte Carlo analysis (with 10,000 iterations) of the individual parameters used in the calculations of carbon-specific respiration and remineralization length scale. We randomly sampled (with replacement) our measured volumetric oxygen respiration rates at each depth. For each of these randomly selected particles we used the corresponding sinking velocity and ESD in subsequent calculations of carbon-specific respiration and remineralization length scale. For the RQ we defined a uniform distribution of possible values over the range of RQ values typically applied in the literature (0.7–1.2, Berggren et al., 2012). PA were pooled into size classes and could only be measured once for POC content. For each depth, we created a normal distribution of possible POC:volume ratios for each size class, with our measured value as the mean, and standard deviation calculated from the standard deviation of the individual aggregate volumes within a size class. Based on the 10,000 iterations for each of the aforementioned parameters we obtained a range of

estimates for the remineralization length scale (via particle associated microbial respiration) at each depth. We then use the mean of these distributions  $\pm$  standard deviation to put error bounds on our estimates of the POC loss via particle associated microbial respiration.

## 2.6 Zooplankton respiration

5 | Zooplankton were sampled in vertical net hauls (0–200 m) at 1 m s<sup>-1</sup> speed using a 200  $\mu$ m mesh size WP2 net with a 57 cm  
frame diameter, fitted with filtering cod-ends. Collected organisms were fixed directly after collection with formaldehyde at  
10% final concentration for further analyses. In the laboratory, fixed samples were digitized with the ZooScan digital  
imaging system (Gorsky et al., 2010) to determine the size structure of the community. Each sample was divided into two  
fractions (<1000 and >1000  $\mu$ m) for accurate estimation of rare large organisms in the scanned subsample (Vandromme et  
10 | al., 2012). Fractions were split using a Motoda splitting box until containing approximately 1000 objects. The resulting  
aliquots were poured onto the scanning cell and individual zooplankton were manually separated with a wooden spine, in  
order to avoid overlapping organisms. Each scanned image was later processed using ZooProcess (Gorsky et al., 2010). Each  
object in the image was automatically classified into five zooplankton categories (copepods, chaetognatha, appendicularia,  
other crustaceans, other zooplankton) and three non-living categories (detritus, fibers and out of focus) using Plankton  
15 | Identifier ([http://www.obs-  
vlfr.fr/~gaspari/Plankton\\_Identifier/index.php](http://www.obs-vlfr.fr/~gaspari/Plankton_Identifier/index.php)), and manually validated. Finally, dry weight (DW)  
of each zooplankton object was estimated from its area using Lehette and Hernández-León's (2009) allometric relationships  
corresponding to the five zooplankton categories. Respiration per individual ( $\mu$ g C individual<sup>-1</sup> h<sup>-1</sup>) was computed from DW  
using relationship from Ikeda et al. (2001) for copepods and Ikeda, (1985) for other groups:

$$\text{Zooplankton Respiration} = \exp(a_1 + a_2 \ln(DW) + a_3 T) \times RQ \times 12/22.4 \quad (4)$$

20 | Here DW is dry weight (mg C individual<sup>-1</sup>), RQ is the respiratory quotient (0.8 mol C  $\mu$ (mol O<sub>2</sub>)<sup>-1</sup>), T is the average  
temperature over top 200 m (12.5 °C), 12/22.4 is the molar conversion factor and parameters a<sub>1</sub>, a<sub>2</sub>, and a<sub>3</sub> were dependent  
on the type of zooplankton. Total zooplankton respiration (0–200 m) was calculated by summing the respiration values for  
each individual. Day and night respirations were calculated for 16 and 8 hours respectively based on day length at the study  
site.

## 25 | 3 Results

### 3.1 Hydrography and surface chlorophyll *a*

The consistency of vertical temperature profiles suggests little variation in water mass structure during the cruise (Fig.  
1b). Temperatures ranged from 15.2 °C at the surface to 10.9 °C at 500 m, with salinity remaining relatively constant with  
depth (average 35.34–35.56, Fig. 1b). The mixed layer shallowed from 32 m to 26 m (Fig. 1b), with peak chlorophyll just  
30 | above the MLD at 15–25 m, and decreasing from 1.9 to 1.4 mg m<sup>-3</sup> during the course of the cruise based on discrete



measurements (Fig. 1c). The MLD was typically within  $\pm 5$  m of the 1% photosynthetically active radiation (PAR) level. Satellite chlorophyll data is consistent with in situ data, declining from 1.8 to 1.2  $\text{mg m}^{-3}$  in the PAP region, suggesting sampling was carried out in the 'post peak' phase (Fig.1c).

### 3.2 Particle composition

5 A total of 10 MSC deployments were made over an 11 day period with particle composition and respiration measurements carried out for 7 deployments (Table 1).

The dominant component of fast-sinking particles was PA (supplementary Fig. S1) at all depths sampled (one MSC sample per depth, Fig. 2), accounting for 96 % of sinking POC at 36 m and decreasing to 66 % at 500 m associated with an increasing abundance of FP with depth. The lack of FP observed in our sample at 113 m may be due to the heterogeneous  
10 distribution of FP at a particular depth associated with patchy zooplankton distributions. The increase in FP numbers below 100 m could be due to an increase in zooplankton populations with depth, zooplankton diel vertical migration, and/or increased FP loss in the upper mesopelagic due to processes such as fragmentation and coprophagy. Qualitative assessment of FP morphology shows that FP were longer, thinner and darker deeper in the water column, implying a change in zooplankton community composition with depth.

### 15 3.3 Particle sinking velocities

Sinking velocities of PA collected at depth ranged from 4–255  $\text{m d}^{-1}$  (Fig. 3), reflecting both the range in size of PA measured (0.14–1.09 mm ESD) and the heterogeneous composition of PA (Fig. S1). Median sinking velocities showed less variability ranging from 11–34  $\text{m d}^{-1}$  (10–32  $\text{m d}^{-1}$  and 21–62  $\text{m d}^{-1}$  for aggregates  $<0.6$  mm ( $n=74$ ) and  $>0.6$  mm ( $n=24$ ) ESD respectively). There was no significant relationship between PA sinking velocity and depth for either size class  
20 ( $R^2=0.004$ ,  $p>0.1$ ,  $n=98$ ). PA sinking velocity was significantly ( $R^2=0.17$ ,  $p<0.0001$ ,  $n=98$ ) related to ESD (6 outliers, defined as being outside 2 standard deviations from the mean, were excluded in this relationship). The low  $R^2$  suggest that the influence of particle size on the sinking velocity is limited and that particle composition may exert a higher influence.

### 3.4 Particle flux

Consistent with other studies we see a sharp decline in fast-sinking POC concentration (not shown) and fast-sinking  
25 POC flux with depth (Fig. 4) (e.g. Giering et al., 2014; Martin et al., 1987; Riley et al., 2012). Based on our sampling depths, we define the upper mesopelagic (36–128 m) as the region where the most rapid POC flux attenuation occurs, and the mid mesopelagic as the region below (128–500 m) where we observe a slower decrease and possibly even an increase in POC flux below 128 m. This change in the rate of flux attenuation with depth suggests that different processes may be controlling POC attenuation in the upper and mid mesopelagic, or that the rates of processes vary with depth. Interestingly we saw an  
30 increase in flux between 203 and 500 m, which may reflect higher surface production in the days prior to sampling (Fig. 1c) and the time taken for material to reach this depth from the surface (i.e. non steady state, Giering et al., in review). Based on

a median sinking rate of  $34 \text{ m d}^{-1}$  measured at 500 m, material at this depth would have originated at the surface on Julian day 164, 15 days prior to sampling, which corresponds to the peak in surface chlorophyll concentrations (Fig. 1c). This increase in flux is associated with twice as much FP POC at 500 m compared to 203 m, and a 29% increase in aggregate POC. Considering the decrease in resident zooplankton populations with depth (Giering et al., 2014), it seems unlikely that FP production was higher at this depth unless there is a large contribution by diel vertical migrators, and may instead reflect reduced FP loss. However, this scenario could also be due to zooplankton patchiness. Excluding this potentially non steady state value at 500 m, we calculate a Martin's  $b$  value of 0.71 which is in line with previous studies at this study site (Giering et al., 2014; Riley et al., 2012), but note that this fit is just outside the 5% significance level ( $R^2=0.42$ ,  $p=0.06$ ,  $n=9$ ). To assess the uncertainty surrounding our calculated  $b$  value, we have applied a bootstrap analysis with 100,000 simulations giving a mean  $b$  of  $0.67 \pm 0.34$  (standard deviation).

### 3.5 Microbial respiration in phytodetrital aggregates

Using the microelectrode approach we found that oxygen concentrations decreased from the ambient water towards the PA surface, reaching a minimum at the centre of the PA (but remaining well above anoxic conditions in all PA measured) (Fig. 5). Average oxygen fluxes to PA did not vary significantly with the depth at which particles were collected, ranging from  $11.7\text{--}19.1 \text{ nmol O}_2 \text{ mm}^{-3} \text{ d}^{-1}$  (Fig. 6), but variability between PA collected at each depth was large ( $3.1\text{--}43.8 \text{ nmol O}_2 \text{ mm}^{-3} \text{ d}^{-1}$  over the depth range measured, Table 2).

For each depth horizon we measure the POC contents of the PA used in respiration experiments (see section 2.4). POC contents of PA ranged from  $11.7\text{--}30.6 \text{ } \mu\text{g mm}^{-3}$  (average  $15.4 \text{ } \mu\text{g mm}^{-3}$ ) for PA  $<0.6 \text{ mm ESD}$ , and  $6.7\text{--}11 \text{ } \mu\text{g mm}^{-3}$  (average  $9.0 \text{ } \mu\text{g mm}^{-3}$ ) for PA  $>0.6 \text{ mm ESD}$ . The POC content of both size classes peaked at 46 m depth, showing a general decline below this (supplementary material, Table S1). Our POC measurements are based on filters containing a relatively low number of aggregates; 9–13 aggregates and 4–6 aggregates for aggregates  $<0.6\text{mm ESD}$  and  $>0.6\text{mm ESD}$ , respectively. However, despite the low concentrations of carbon measured, sample POC was significantly higher than POC filter blanks (Welch's t-test,  $p<0.001$ ).

### 3.5 Zooplankton respiration

Four zooplankton net tows were carried out during the cruise alongside MSC deployments, one during the day and three at night. Daytime zooplankton DW over the upper 200 m was  $313.4 \text{ mg DW m}^{-2}$ , with night values ranging from 419.1 to  $942.7 \text{ mg DW m}^{-2}$ . Calculated zooplankton respiration rates ranged from 5.1 to  $10.1 \text{ mg C m}^{-2} \text{ d}^{-1}$ .

## 4 Discussion

### 4.1 Rate of particle associated microbial respiration

Although rates of respiration per PA volume were found to be relatively uniform with depth, we observed variability within each depth range. This may reflect the heterogeneity in the availability of labile carbon and/or variation in microbial abundance, composition or activity within the PA. It may also simply be a result of the range in aggregate sizes at each depth, with higher respiration per volume in smaller aggregates that have higher POC:volume ratios (due to large aggregates having more complex shapes and structures, Logan and Wilkinson, 1990). Our measured aggregate (0.14–1.09 mm ESD) POC contents are 1.2–10.1 times higher than defined by the size relationship of Alldredge (1998) based on in situ collected 1–5 mm ESD marine snow of mixed composition, and are at the high end of the range of values measured on roller tank formed phytoplankton culture aggregates (0.9–4.6 mm ESD) by Iversen and Ploug (2010). The POC contents of our >0.6 mm ESD PA (6.7–11  $\mu\text{g mm}^{-3}$ ) do however compare well with the study of Laurenceau-Cornec et al. (2015) on aggregates formed in roller tanks from in situ collected phytoplankton assemblages; their regression between aggregate volume and POC content ( $\text{POC}=0.58 \cdot \text{Volume}^{0.35}$ ) gives POC of 7.4  $\mu\text{g mm}^{-3}$  for aggregates of 0.6 mm ESD.

In order to assess whether size related changes in carbon content of PA is the main cause of variability in volume specific respiration rates, we have calculated the carbon-specific respiration rate ( $C_{\text{spec}}$ ) (Fig. 7) based on the POC content of individual aggregates. There is a relatively small range in average  $C_{\text{spec}}$  (0.011–0.014  $\text{d}^{-1}$ ) for PA for each depth horizon. Iversen and Ploug (2010) measured higher rates of  $C_{\text{spec}}$  (0.13  $\text{d}^{-1}$ ) in roller tank formed phytoplankton culture aggregates with lower POC contents, suggesting that POC content was not the limiting factor for respiration in our study. There was large variability in  $C_{\text{spec}}$  for individual aggregates within each depth horizon (full dataset range: 0.002–0.031  $\text{d}^{-1}$ , Fig. 7), but average values of  $C_{\text{spec}}$  showed only small variations with depth. This suggests that the factors driving the variability in  $C_{\text{spec}}$  are either also quite constant with depth or counteracting. Our study does not however account for any changes in respiration that may occur as a result of pressure changes with depth (see section 4.4). If microbes largely attach to particles in the surface ocean (Thiele et al., 2015), the starting abundance of microbes will be in part limited by the residence time of the particle in the surface ocean as dictated by sinking rate. The highest volume-specific abundances of microbes have been measured on the smallest aggregates (Grossart et al., 2003) which we would expect to have lower sinking velocities. Variable microbial densities, driven by differences in sinking velocity and colonization time, may therefore account for some of the variability in the rate of respiration per aggregate volume or POC content. However, large aggregates could also have high microbial densities following the aggregation of smaller aggregates. There are a number of factors which influence colonization, and grazing has been modelled to have a higher impact than sinking rate (Kjørboe, 2003).

We must consider that all respiration measurements in this study were carried out at 10 °C (which is just below the temperature measured at 500 m depth), and therefore may not reveal the true vertical structure of particle associated microbial respiration due to the influence of temperature on metabolic rates. To account for this we have applied a Q10 factor of 3.5 based on a study on PA (Iversen and Ploug, 2013) and adjusted each  $C_{\text{spec}}$  to the in situ temperature (dashed line

Fig. 7). In this way we calculate the rate we would expect to be occurring at in situ temperature. This gives higher rates in the upper ocean where temperature changes are higher, but the range with depth is still relatively narrow (average 0.013–0.023 d<sup>-1</sup>, full range 0.002–0.037 d<sup>-1</sup>) and we observe no relationship between PA size and C<sub>spec</sub> (Fig. 8). In comparison, Ploug and Grossart (2000) measured C<sub>spec</sub> of 0.083 ± 0.034 d<sup>-1</sup> on aggregates formed from phytoplankton cultures at 16 °C. Iversen and Ploug (2010) measured average C<sub>spec</sub> of 0.13 d<sup>-1</sup> at 15 °C, but a range of 0.005–0.422 d<sup>-1</sup>, for lab formed aggregates of three different phytoplankton cultures. Similarly, rates of 0.13 d<sup>-1</sup> (range 0.02–0.36 d<sup>-1</sup>) were measured at 18 °C in aggregates formed in roller tanks from peak fluorescence waters off Cape Blanc, Africa (Iversen et al., 2010). These studies find a lack of size dependency in C<sub>spec</sub>, consistent with our observations. Our measurements are towards the low end of these measurements which we cannot explain by differences in temperature alone based on a Q10 factor of 3.5 (Iversen and Ploug, 2013). Recalculating the average C<sub>spec</sub> at each depth based on the upper bound of respiratory quotients that are typically applied in the literature (1.2, Berggren et al., 2012), increases our values of 0.019–0.033 d<sup>-1</sup> which is still lower than the aforementioned studies.

There have been limited measurements made on natural aggregates formed in situ. McDonnell et al. (2015) utilized in situ incubators to measure C<sub>spec</sub> of 0.4 d<sup>-1</sup> at the Bermuda Atlantic Time Series (BATS) station, and 0.01 d<sup>-1</sup> off the Western Antarctic Peninsula (WAP). Collins et al. (2015) carried out incubations with and without sinking particles collected in the North Atlantic, revealing C<sub>spec</sub> of 0.007–0.084 d<sup>-1</sup> with one higher value at 0.173 d<sup>-1</sup>. These rates are more in line with those measured here, yet there are still considerable differences between studies.

#### 4.2 Role of particle associated microbes in mesopelagic POC flux attenuation

Despite the uncertainties in the mechanisms governing rates of particle associated microbial respiration, we are still able to assess the importance of particle associated microbial respiration on the attenuation of fast-sinking POC in the mesopelagic and compare our results to the small number of other recent studies (Collins et al., 2015; McDonnell et al., 2015). We calculate the flux of fast-sinking POC ( $F_z$ ) at each depth ( $z$ ) that would result if the only loss was via particle associated microbial respiration. Calculations are based on the relationship between the remineralization length scale ( $L$  in m<sup>-1</sup>) (see Iversen and Ploug, 2013; Iversen et al., 2010), carbon-specific respiration rate ( $C_{spec}$  in d<sup>-1</sup>) and sinking velocity ( $w$  in m d<sup>-1</sup>).

$$L = \frac{C_{spec}}{w} = (-\ln(F_z/F_0))/(z - z_0) \quad (5)$$

We calculate upper and lower bounds on the remineralization length scale based on uncertainties in our measurements of C<sub>spec</sub> and  $w$ , as described in section 2.5. We compare observed fast-sinking POC flux attenuation and predicted losses via particle associated microbes over two discrete depth horizons; a region of rapid attenuation of 36–128 m (upper mesopelagic) and slow attenuation zone of 128–500 m (mid mesopelagic). Note that we exclude the non steady state value of POC flux at 500 m and instead use the value predicted from our power-law fit (Fig. 4) with bounds based on the standard deviation of our  $b$  value estimated via bootstrap analysis (see section 2.5). Our data suggest that particle associated microbial

respiration plays only a minor role in POC attenuation in the upper mesopelagic (8%; range: 1–14%), but becomes more important below this (33%; range: 12–50%) as the rate of POC attenuation decreases (Fig. 9a). Our measurements are based on a sub sample of the total assemblage of particles found in the water column, in particular only PA. If rates of microbial respiration are vastly different on other particle types then this would affect our calculations of POC removal by particle associated microbes. However, considering the dominance of PA in our samples (Fig. 2), we believe our calculations reflect the bulk of the sinking material at the time of sampling. We were not able to measure respiration rates on FP due to their low numbers and small size which adds uncertainty to our estimate of the contribution of particle associated microbial respiration to POC loss. However, rates measured on FP in the Scotia Sea, Antarctica are low ( $0.01\text{--}0.065\text{ d}^{-1}$ , Belcher et al., 2016) and even if FP were respired completely, they account for less than 10% of the flux between 36–128 m and thus could not resolve the large imbalances between POC supply and respiration that we observe in the upper mesopelagic.

Low rates of respiration result in only a very small loss of POC with depth below the euphotic zone. Thus our data agree with a recent study (Collins et al., 2015), suggesting that only a small fraction of fast-sinking POC is removed by particle associated bacteria. Despite being hotspots for microbial activity compared to the water column (Thiele et al., 2015), particle associated microbial respiration on fast-sinking particles may still be a minor contributor to the reduction in POC flux when compared to rapid loss via processes such as zooplankton grazing and fragmentation (Dilling and Alldredge, 2000; Stemmann et al., 2000; Svensen et al., 2014). This hypothesis is supported by measurements made in the mesopelagic of the Scotia Sea on FP (Belcher et al., 2016) and on PA off Cape Blanc, Africa (Iversen et al., 2010), as well as model studies (Gehlen et al., 2006; Stemmann et al., 2004).

#### 4.3 Mesopelagic carbon budget

A number of previous studies have revealed large imbalances in the mesopelagic carbon budget with heterotrophic organic carbon demand (typically assessed from 100 to 1000 m) exceeding POC supply by 2–3 orders of magnitude (Baltar et al., 2009; Burd et al., 2010; Reinthaler et al., 2006; Steinberg et al., 2008). Recently, advances in our understanding enabled the mesopelagic carbon budget at the PAP site to be balanced over 50–1000 m (Giering et al., 2014). However, a more in depth analysis revealed an imbalance between POC supply and bacterial carbon demand when the upper (50–150 m) and lower mesopelagic (150–1000 m) were examined separately, with an oversupply of POC in the upper mesopelagic and an undersupply in the lower mesopelagic (Giering et al., 2014). We find the same imbalance in the upper mesopelagic and as particle associated respiration was not directly measured in the aforementioned study, we assess whether this term could help to explain observed imbalances. In this way we test whether the low respiration rates ( $0.001\text{--}0.173\text{ d}^{-1}$ ) measured by Collins et al. (2015) are also applicable to our study site or whether the higher rates, such as observed in the western subtropical North Atlantic gyre ( $0.4\text{ d}^{-1}$ ) by McDonnell et al. (2015) are more appropriate. As our zooplankton net tows are integrated to 200 m, we compare sources and sinks of POC over the depth range of 36–200 m.

Although we measured low rates of both absolute and carbon-specific PA microbial respiration ( $<3\%\text{ d}^{-1}$ ) suggesting that this term cannot resolve imbalances in the upper mesopelagic carbon budget, we may have underestimated the

importance of particle associated microbes if solubilization of POC to DOC by ecto-enzymatic hydrolysis was significant (Allredge, 2000; Grossart and Simon, 1998; Smith et al., 1992). This solubilization to DOC is likely to fuel the respiration of free-living microbes. Smith et al. (1992) estimated that 97% of the hydrolysates produced by bacteria in marine snow were released, with the remaining 3% being utilized by bacteria in the aggregate. However, this value was based on nitrogen-rich amino acids in fresh aggregates (from the upper 25 m) and hydrolysis for carbon is likely lower as it is lost more slowly than nitrogen from sinking particles. Additionally, solubilization losses are probably lower in older detritus (Anderson and Tang, 2010); Grossart and Ploug (2001) estimated that 26% of the POC was taken up by particle associated bacteria on old aggregates. To calculate potential hydrolysis of carbon from particles, we follow Anderson and Tang (2010) and conservatively assume a value of 50% (i.e. assuming our measured loss via respiration is 50% of the total POC loss via particle associated microbes). This value sits between Smith et al.'s (1992) value and carbon solubilization losses of <30% measured in copepod fecal pellets which are much less porous (Møller et al., 2003). We conservatively set upper and lower bounds of 30 and 80% solubilization based on the aforementioned studies. With additional loss of fast-sinking POC via solubilization we find particle associated microbes can explain 25% (9–72% based on Monte Carlo analysis on respiration rates and the above range in solubilization) of POC losses over the upper 36–200 m (Fig. 9b). In spite of the limitations in our estimations of solubilization it is clear that a large discrepancy still remains in terms of an excess POC supply of 172 mg C m<sup>2</sup> d<sup>-1</sup> (65–210 mg C m<sup>-2</sup> d<sup>-1</sup>) over the upper 36–200 m.

The other direct loss of POC in the mesopelagic is via zooplankton respiration and ‘sloppy feeding’ (cell breakage during feeding and subsequent release of DOC) (Jumars et al., 1989). Our measured zooplankton respiration rates are likely an overestimate of their contribution to POC losses between 36 and 200 m as they include both migratory and non-migratory individuals, as well as individuals above the mixed layer depth. Even with these overestimations, zooplankton respiration (5.1–10.1 mg C m<sup>-2</sup> d<sup>-1</sup>) accounts for only a small POC sink in this upper region of the mesopelagic (Fig. 9b). We are not able to account for losses of POC to DOC or suspended POC via sloppy feeding.

The direct hydrolysis by attached microbes likely supplies free-living communities with DOC (Cho and Azam, 1988; Karl et al., 1988; Kjørboe and Jackson, 2001). However by definition free-living microbes are not associated with particles and hence do not contribute directly to the loss of large fast-sinking POC measured here, and as such we do not consider this loss process. The definition of dissolved and particulate is operational based on the pore size of a GF/F filter, and therefore microbes defined as ‘free-living’ may in fact be able to utilize colloids (Aristegui et al., 2009). However as we only measured the loss of large, fast-sinking POC, we exclude free-living prokaryotes from our analysis of fast-sinking POC loss processes. Free-living prokaryotic respiration may account for the ultimate loss of organic carbon from the organic carbon pool but we believe this is reliant on mechanical breakdown of large, fast-sinking POC by zooplankton and protozoa (Iversen and Poulsen, 2007; Lampitt et al., 1990; Poulsen and Iversen, 2008; Poulsen et al., 2011) and enzymatic hydrolysis (Smith et al., 1992). Previous measurements at the PAP site suggest that prokaryotic respiration results in loss rates of 42 mg C m<sup>2</sup> d<sup>-1</sup> between 36–203 m which greatly exceed estimated DOC input to the upper 1000 m (15 mg C m<sup>2</sup> d<sup>-1</sup>) (Giering et al., 2014), supporting this hypothesis.

POC loss via zooplankton respiration, particle associated microbial respiration and solubilization, as typically invoked in model studies (e.g. Anderson and Tang, 2010) can therefore not account for observed losses of fast-sinking POC in the upper mesopelagic, suggesting our knowledge of the mesopelagic carbon budget is still poorly constrained and/or incomplete.

#### 5 4.4 The missing piece of the mesopelagic carbon budget?

Before we begin to examine whether we are indeed missing a piece of the upper mesopelagic carbon budget puzzle we must acknowledge the limitations of our estimates thus far which may in themselves rectify imbalances. Large uncertainties surround our estimates of solubilization by particle associated microbes. We would require solubilization of 87% to balance our budget (36–200 m) which we believe to be high considering estimates of 97% for nitrogen in fresh aggregates (Smith et al., 1992) which is preferentially remineralized over carbon. In addition, as particle associated microbial respiration is able to account for a greater proportion of the fast-sinking POC loss in the mid mesopelagic (200–500 m), solubilization losses would need to be lower over this depth region (66%) to maintain a balance. Increased solubilization would present itself in the form of increased DOC and/or increased rates of microbial respiration, however these terms are included in the estimate by Giering et al. (2014) and a large imbalance in the upper mesopelagic is still apparent in their budget. We are not able to rule out increased solubilization in the upper mesopelagic as an additional sink term, but consider it unlikely to solve the imbalance.

Although our method of measuring particle associated microbial respiration attempts to avoid bottle effects and accurately simulate the environment of a sinking particle, we were not able to simulate pressure changes. Colonization of particles by pressure adapted microbial communities at depth may lead to an underestimation of in situ microbial activity using decompressed samples (Tamburini et al., 2013). Recent work suggests that the attached microbial community on sinking particles is ‘inherited’ from the fluorescence maximum (Thiele et al., 2015); these organisms are not adapted to changes in pressure (Tamburini et al., 2006, 2009) and temperature, and therefore exhibit lower prokaryotic growth efficiencies (PGE) and overall metabolic rates. Similarly, our experiments were carried out at constant temperatures whereas particles sinking through the water column will experience the range of water column temperatures, likely impacting all metabolic processes. We are also limited in our study by the lack of replicate MSC deployments at each depth. Although numerous aggregate respiration rates were measured from each sample, high patchiness in the type and source location of sinking particles could result in greater variability in respiration rates.

Additionally we were not able to measure mechanical disaggregation via processes such as fluid shear which could provide additional losses of large sinking POC. The forces required to break apart large marine snow aggregates have been shown to be higher than typical estimates of energy dissipation in the ocean, suggesting that this would not be a major loss process (Alldredge et al., 1990). Physical disaggregation could be more important in surface waters where dissipation rates can exceed the forces required to break marine snow aggregates (Alldredge et al., 1990; Burd and Jackson, 2009). However,

we suspect that only a small fraction of sinking POC would be fragmented by abiotic processes to particles <0.15mm and hence would not explain the large loss of fast-sinking POC measured in this study.

In order to address imbalances in the sources and sinks of fast-sinking POC to the upper mesopelagic we require an additional loss process of POC. One key term missing from the budget is that of free-living protozoans which would not be collected in zooplankton nets and can make up a substantial part of marine planktonic ecosystems (Biard et al., 2016). Laboratory experiments on copepod FP reveals that dinoflagellates degraded FP over three times faster than bacteria ( $0.18 \text{ d}^{-1}$  compared to  $0.04 \text{ d}^{-1}$ ), and the combined effects of bacteria, dinoflagellates and copepods led to FP degradation rates of  $1.12 \text{ d}^{-1}$  (Svensen et al., 2014). Dinoflagellates and ciliates have been shown to feed on FP (Poulsen and Iversen, 2008; Poulsen et al., 2011) and PA (Tiselius and Kiørboe, 1998). Therefore POC loss via protozoan respiration may account for at least some of the additional POC loss we require to resolve imbalances in upper mesopelagic carbon budgets, although respiration by any attached protozoans would be included in our microsensor measurements.

Loss of sinking POC via fragmentation of large sinking particles into small (<0.15 mm ESD) and non-sinking particles by both abiotic and biotic means may also explain some of our observed imbalance in the upper mesopelagic as the POC fluxes measured here are for ‘fast-sinking’ particles only (see methods). These slow-sinking particles may be an important part of the total carbon flux (Riley et al., 2012), however, as we did not measure loss processes, such as respiration rates on slow-sinking particles, we are not able to extend our budget to this carbon pool. Determining rates of respiration on slow sinking particles is a key area for future research and may help reconcile imbalances in the carbon budget when looking at the total organic carbon pool. We hypothesize, in line with a growing number of other studies (Cavan et al., 2015; Collins et al., 2015; Iversen et al., 2010), that zooplankton living in the upper mesopelagic may stimulate the loss of large, fast-sinking POC via fragmentation from sloppy feeding, swimming activities and/or microbial gardening (Iversen and Poulsen, 2007; Mayor et al., 2014). Fast-sinking particles can reach the deep ocean with minimal degradation due to the short time in which they are available for degradation (Iversen and Ploug, 2010). Conversely, once fragmented, the increased residence times (in terms of their sinking velocity) of slow and non-sinking POC allows removal to occur at low rates, on longer timescales by microbial respiration. As yet, we are not aware of any published studies measuring respiration rates on slow-sinking POC. Assuming that all of our measured excess POC (i.e. not explained by particle associated microbial respiration, zooplankton respiration or solubilization) in the upper 36–200 m is turned into slow-sinking POC with an average sinking velocity of  $9 \text{ m d}^{-1}$  (Alonso-González et al., 2010; Riley et al., 2012), we can calculate the respiration rate required to completely remove this excess POC based on equation 5. We estimate that this slow-sinking material would need to be respired at a rate of  $0.08 \text{ d}^{-1}$  ( $0.04\text{--}0.13 \text{ d}^{-1}$ ), which is not too dissimilar to the rates we have measured on fast-sinking particles, thus providing support to the hypothesis of fragmentation.

In theory, a seasonal balance in POC driven by fragmentation of fast-sinking particles should present itself in the form of an increase in slow and non-sinking POC following the seasonal peak in fast-sinking POC and a more gradual decline over the season. This less rapid seasonal decline in slowly sinking material is apparent in the results of a biogeochemical model study for subpolar regions (Henson et al., 2015). Seasonal cycles in particulate carbon in the upper 75



m (seasonal range of 2.3  $\mu\text{M}$  via GF/F filtering) have been detected following analysis of long term time series data at station ALOHA in the Pacific (Hebel and Karl, 2001). They suggest that the build-up and removal of standing stocks of POC do not require a large degree of decoupling between production and loss processes and can exist due to small but sustained differences. Considering the highly dynamic nature of the typical bloom-bust scenario of the North Atlantic it seems unlikely that a balance in source and sink processes would be found by ‘snapshot’ measurements such as made here.

Additional inputs/losses of organic carbon could be driven via physical processes such as advection or changes in mixed layer depth (e.g. Dall’Olmo and Mork, 2014). Although the mixed layer was relatively stable during our study period, the winter deepening in MLD to 250 m (Hartman et al., 2015) could provide a seasonal balance to the budget if concentrations of slow and non-sinking particles are sufficiently high (Bochdansky et al., 2016). Similarly, advective processes are unaccounted for as a source/sink of carbon in this study and could result in closer agreement between sources and sinks.

## 5 Conclusions

We present here a unique vertical profile of particle associated microbial respiration measured directly on sinking marine aggregates collected at depth. Rates of carbon-specific respiration were relatively constant with depth, and particle associated microbial respiration amounts to a small loss term in the mesopelagic carbon balance. We suggest that it may be possible to explain the loss of fast-sinking particles ( $>0.15$  mm ESD) in the upper mesopelagic through a combination of particle associated microbial respiration, solubilization, and the conversion into small ( $<0.15$  mm ESD) and non-sinking POC via zooplankton and protozoan mediated processes. Material lost through fragmentation would be retained in the upper mesopelagic allowing it to be slowly respired over time and enabling a balance of the mesopelagic carbon budget over seasonal timescales. However, detailed information about fragmentation processes are lacking and are needed to better constrain the upper mesopelagic carbon flows. Moreover, there is a need for seasonally resolved studies (of fast and slow-sinking pools of carbon) to get a better appreciation of how changing primary production in a non-steady state system can influence seasonal fluxes of POC in the mesopelagic.

## Acknowledgements

We would like to thank the officers, crew and science party aboard RRS Discovery for cruise DY032. In particular we would like to thank Emma Cavan and Chelsey Baker for their invaluable help with snow catcher deployments. In addition we would like to thank Christian Tamburini for his advice at early stages of manuscript preparation. We thank the two anonymous reviewers, whose thoughtful comments improved the initial manuscript. This work was supported through Natural Environment Research Council National Capability funding to Stephanie Henson and Richard Sanders, National Oceanography Centre, as well as a studentship to Anna Belcher from the University of Southampton. This work is also a

contribution to the Mediterranean Institute of Oceanography "AT-EMBE", and to the Labex OT-Med (ANR-11-LABEX-0061, [www.otmed.fr](http://www.otmed.fr)) funded by the Investissements d'Avenir, French Government project of the French National Research Agency (ANR, [www.agence-nationale-recherche.fr](http://www.agence-nationale-recherche.fr)) through the A\*Midex project (ANR-11-IDEX-0001-02), funding Virginie Riou during preparation of the manuscript.

5

## References

- Allredge, A. L.: The carbon, nitrogen and mass content of marine snow as a function of aggregate size, *Deep Sea Res. Part I Oceanogr. Res. Pap.*, 45, 529–541, doi:10.1016/S0967-0637(97)00048-4, 1998.
- 10 Allredge, A. L.: Interstitial dissolved organic carbon (DOC) concentrations within sinking marine aggregates and their potential contribution to carbon flux, *Limnol. Oceanogr.*, 45(6), 1245–1253, doi:10.4319/lo.2000.45.6.1245, 2000.
- Allredge, A. L. and Silver, M. W.: Characteristics, dynamics and significance of marine snow, *Prog. Oceanogr.*, 20, 41–82, doi:10.1016/0079-6611(88)90053-5, 1988.
- 15 Allredge, A. L. and Youngbluth, M. J.: The significance of macroscopic aggregates (marine snow) as sites for heterotrophic bacterial production in the mesopelagic zone of the subtropical Atlantic, *Deep Sea Res.*, 32(12), 1445–1456, doi:10.1016/0198-0149(85)90096-2, 1985.
- Allredge, A. L., Granata, T. C., Gotschalk, C. C. and Dickey, T. D.: The physical strength of marine snow and its implications for particle disaggregation in the ocean, *Limnol. Oceanogr.*, 35(7), 1415–1428, doi:10.4319/lo.1990.35.7.1415, 1990.
- 20 Alonso-González, I. J., Arístegui, J., Lee, C., Sanchez-Vidal, A., Calafat, A., Fabrés, J., Sangrá, P., Masqué, P., Hernández-Guerra, A. and Benítez-Barrios, V.: Role of slowly settling particles in the ocean carbon cycle, *Geophys. Res. Lett.*, 37(13), L13608, doi:10.1029/2010GL043827, 2010.
- Anderson, T. R. and Tang, K. W.: Carbon cycling and POC turnover in the mesopelagic zone of the ocean : Insights from a simple model, *Deep. Res. Part II*, 57(16), 1581–1592, doi:10.1016/j.dsr2.2010.02.024, 2010.
- 25 | Arístegui, J., Gasol, J. M., Duarte, C. M. and Herndl, G. J.: Microbial oceanography of the dark ~~ocean's~~ ocean's pelagic realm, *Limnol. Oceanogr.*, 54(5), 1501–1529, doi:10.4319/lo.2009.54.5.1501, 2009.
- Azam, F. and Malfatti, F.: Microbial structuring of marine ecosystems., *Nat. Rev Microbiol*, 5, 782–91, doi:10.1038/nrmicro1747, 2007.
- Baltar, F., Aristegui, J., Gasol, J. M., Sintes, E. and Herndl, G. J.: Evidence of prokaryotic metabolism on suspended 30 particulate organic matter in the dark waters of the subtropical North Atlantic, *Limnol. Oceanogr.*, 54(1), 182–193, 2009.
- Belcher, A., Iversen, M. H., Manno, C., Henson, S. A., Tarling, G. A. and Sanders, R.: The role of particle associated microbes in remineralization of fecal pellets in the upper mesopelagic of the Scotia Sea, Antarctica, *Limnol. Oceanogr.*,

61(3), 1049–1064, doi:10.1002/lno.10269, 2016.

Berggren, M., Lapiere, J.-F. and del Giorgio, P. A.: Magnitude and regulation of bacterioplankton respiratory quotient across freshwater environmental gradients., *ISME J.*, 6(5), 984–93, doi:10.1038/ismej.2011.157, 2012.

5 Biard, T., Stemmann, L., Picheral, M., Mayot, N., Vandromme, P., Hauss, H., Gorsky, G., Guidi, L., Kiko, R. and Not, F.: In situ imaging reveals the biomass of giant protists in the global ocean, *Nature*, 532, 504–507, doi:10.1038/nature17652, 2016.

Bochdansky, A. B., Clouse, M. A. and Herndl, G. J.: Dragon kings of the deep sea : marine particles deviate markedly from the common number-size spectrum, *Sci. Rep.*, 6, 22633, doi:10.1038/srep22633, 2016.

10 Broecker, W. S. and Peng, T. H.: Gas exchange rates between air and sea, *Tellus*, 26, 21–35, doi:10.1111/j.2153-3490.1974.tb01948.x, 1974.

Buesseler, K. O. and Boyd, P. W.: Shedding light on processes that control particle export and flux attenuation in the twilight zone of the open ocean, *Limnol. Oceanogr.*, 54(4), 1210–1232, doi:10.4319/lo.2009.54.4.1210, 2009.

Burd, A. B. and Jackson, G. A.: Particle aggregation, *Ann. Rev. Mar. Sci.*, 1, 65–90, doi:10.1146/annurev.marine.010908.163904, 2009.

15 Burd, A. B., Hansell, D. A., Steinberg, D. K., Anderson, T. R., Arístegui, J., Baltar, F., Beupré, S. R., Buesseler, K. O., Dehairs, F., Jackson, G. A., Kadko, D. C., Koppelman, R., Lampitt, R. S., Nagata, T., Reinthaler, T., Robinson, C., Robison, B. H., Tamburini, C. and Tanaka, T.: Assessing the apparent imbalance between geochemical and biochemical indicators of meso- and bathypelagic biological activity: What the @\$#! is wrong with present calculations of carbon budgets?, *Deep Sea Res. Part II Top. Stud. Oceanogr.*, 57(16), 1557–1571, doi:10.1016/j.dsr2.2010.02.022, 2010.

20 Cavan, E. L., Le Moigne, F., Poulton, A. J., Tarling, G. A., Ward, P., Daniels, C. J., G, F. and Sanders, R. J.: Attenuation of particulate organic carbon flux in the Scotia Sea, Southern Ocean, controlled by zooplankton fecal pellets, *Geophys. Res. Lett.*, 42(3), 821–830, doi:10.1002/2014GL062744, 2015.

Cho, B. C. and Azam, F.: Major role of bacteria in biogeochemical fluxes in the ocean's interior, *Nature*, 332(31), 441–443, 1988.

25 Collins, J. R., Edwards, B. R., Thamtrakoln, K., Ossolinski, J. E., Ditullio, G. R., Bidle, K. D., Doney, S. C. and Mooy, B. A. S. Van: The multiple fates of sinking particles in the North Atlantic Ocean, *Global Biogeochem. Cycles*, 1471–1494, doi:10.1002/2014GB005037.Received, 2015.

Dall'Olmo, G. and Mork, K. A.: Carbon export by small particles in the Norwegian Sea, *Geophys. Res. Lett.*, 1–6, doi:10.1002/2014GL059244.1., 2014.

30 Dilling, L. and Alldredge, A. L.: Fragmentation of marine snow by swimming macrozooplankton: A new process impacting carbon cycling in the sea, *Deep. Res. Part I Oceanogr. Res. Pap.*, 47(7), 1227–1245, doi:10.1016/S0967-0637(99)00105-3, 2000.

Ducklow, H. W., Kirchman, D. L. and Rowe, G. T.: Production and vertical flux of attached bacteria in the Hudson river plume of the New York Bight as studied with floating sediment traps, *Appl. Environ. Microbiol.*, 43(4), 769–776, 1982.

- Francois, R., Honjo, S., Krishfield, R. and Manganini, S.: Factors controlling the flux of organic carbon to the bathypelagic zone of the ocean, *Global Biogeochem. Cycles*, 16(4), 34–1 – 34–20, doi:10.1029/2001GB001722, 2002.
- Gehlen, M., Bopp, L., Emprin, N., Aumont, O., Heinze, C. and Ragueneau, O.: Reconciling surface ocean productivity, export fluxes and sediment composition in a global biogeochemical ocean model, *Biogeosciences*, 3(4), 521–537, doi:10.5194/bg-3-521-2006, 2006.
- Giering, S. L. C., Sanders, R., Lampitt, R. S., Anderson, T. R., Tamburini, C., Boutrif, M., Zubkov, M. V, Marsay, C. M., Henson, S. A., Saw, K., Cook, K. and Mayor, D. J.: Reconciliation of the carbon budget in the ocean’s twilight zone, *Nature*, 507(7493), 480–483, doi:10.1038/nature13123, 2014.
- Giering, S. L. C., Sanders, R. J., Martin, A. P., Henson, S. A., Riley, J. S., Marsay, C. M. and Johns, D.: Particle flux in the oceans: Challenging the steady state assumption, *Global Biogeochem. Cycles*, n.d.
- Gorsky, G., Ohman, M. D., Picheral, M., Gasparini, S., Stemmann, L., Romagnan, J. B., Cawood, A., Pesant, S., García-Comas, C. and Prejger, F.: Digital zooplankton image analysis using the ZooScan integrated system, *J. Plankton Res.*, 32(3), 285–303, doi:10.1093/plankt/fbp124, 2010.
- Grossart, H. and Ploug, H.: Microbial degradation of organic carbon and nitrogen on diatom aggregates, *Limnol. Oceanogr.*, 46(2), 267–277, doi:10.4319/lo.2001.46.2.0267, 2001.
- Grossart, H. and Simon, M.: Bacterial colonization and microbial decomposition of limnetic organic aggregates (lake snow), *Aquat. Microb. Ecol.*, 15, 127–140, doi:10.3354/ame015127, 1998.
- Grossart, H. P., Hietanen, S. and Ploug, H.: Microbial dynamics on diatom aggregates in Oresund, Denmark, *Mar. Ecol. Prog. Ser.*, 249, 69–78, doi:10.3354/meps249069, 2003.
- Hartman, S. E., Jiang, Z.-P., Turk, D., Lampitt, R. S., Frigstad, H., Ostle, C. and Schuster, U.: Biogeochemical variations at the Porcupine Abyssal Plain sustained Observatory in the northeast Atlantic Ocean, from weekly to inter-annual timescales, *Biogeosciences*, 12(3), 845–853, doi:10.5194/bg-12-845-2015, 2015.
- Hebel, D. V. and Karl, D. M.: Seasonal, interannual and decadal variations in particulate matter concentrations and composition in the subtropical North Pacific Ocean, *Deep. Res. Part II Top. Stud. Oceanogr.*, 48(8-9), 1669–1695, doi:10.1016/S0967-0645(00)00155-7, 2001.
- Henderson, G. M. and Marchal, O.: Recommendations for future measurement and modelling of particles in GEOTRACES and other ocean biogeochemistry programmes, *Prog. Oceanogr.*, 133(November 2011), 73–78, doi:10.1016/j.pocean.2015.01.015, 2015.
- Henson, S. A., Yool, A. and Sanders, R.: Variability in efficiency of particulate organic carbon export: A model study, *Global Biogeochem. Cycles*, 29, 33–45, doi:10.1002/2014GB004965.Received, 2015.
- Herndl, G. J. and Reinthaler, T.: Microbial control of the dark end of the biological pump, *Nat. Geosci.*, 6, 718–724, doi:10.1038/ngeo1921, 2013.
- Hilton, J., Lishman, J. P., Mackness, S. and Heaney, S. I.: An automated method for the analysis of “particulate” carbon and nitrogen in natural waters, *Hydrobiologia*, 141, 269–271, doi:10.1007/BF00014221, 1986.

- Ikeda, T.: Metabolic rates of epipelagic marine zooplankton as a function of body mass and temperature, *Mar. Biol.*, 85, 1–11, 1985.
- Ikeda, T., Kanno, Y., Ozaki, K. and Shinada, A.: Metabolic rates of epipelagic marine copepods as a function of body mass and temperature, *Mar. Biol.*, 139(5), 1020–1020, doi:10.1007/s002270100608, 2001.
- 5 Iversen, M. H. and Ploug, H.: Ballast minerals and the sinking carbon flux in the ocean: carbon-specific respiration rates and sinking velocity of marine snow aggregates, *Biogeosciences*, 7(9), 2613–2624, doi:10.5194/bg-7-2613-2010, 2010.
- Iversen, M. H. and Ploug, H.: Temperature effects on carbon-specific respiration rate and sinking velocity of diatom aggregates - potential implications for deep ocean export processes, *Biogeosciences*, 10, 4073–4085, doi:10.5194/bg-10-4073-2013, 2013.
- 10 Iversen, M. H. and Poulsen, L.: Coprorhexy, coprophagy, and coprochaly in the copepods *Calanus helgolandicus*, *Pseudocalanus elongatus*, and *Oithona similis*, *Mar. Ecol. Prog. Ser.*, 350(1990), 79–89, doi:10.3354/meps07095, 2007.
- Iversen, M. H., Nowald, N., Ploug, H., Jackson, G. A. and Fischer, G.: High resolution profiles of vertical particulate organic matter export off Cape Blanc, Mauritania: Degradation processes and ballasting effects, *Deep Sea Res. Part I Oceanogr. Res. Pap.*, 57(6), 771–784, doi:10.1016/j.dsr.2010.03.007, 2010.
- 15 Jumars, P. A., Penry, D. L., Baross, J. A., Perry, M. J. and Frost, B. W.: Closing the microbial loop: dissolved carbon pathways to heterotrophic bacteria from incomplete ingestion, digestion and absorption in animals, *Deep. Res.*, 36(4), 483–495, doi:10.1016/0198-0149(89)90001-0, 1989.
- Karl, D. M., Knauer, G. A. and Martin, J. H.: Downward flux of particulate organic matter in the ocean: a particle decomposition paradox, *Nature*, 332, 438–441, doi:10.1038/332438a0, 1988.
- 20 Kiørboe, T.: Marine snow microbial communities : scaling of abundances with aggregate size, *Aquat. Microb. Ecol.*, 33, 67–75, doi:10.3354/ame033067, 2003.
- Kiørboe, T. and Jackson, G. A.: Marine snow, organic solute plumes, and optimal chemosensory behavior of bacteria, *Limnol. Oceanogr.*, 46(6), 1309–1318, doi:10.4319/lo.2001.46.6.1309, 2001.
- Kiørboe, T., Grossart, H.-P., Ploug, H. and Tang, K.: Mechanisms and rates of colonisation of sinking aggregates, 25 *Appl. Environ. Microbiol.*, 68(8), 3996–4006, doi:10.1128/AEM.68.8.3996, 2002.
- Kwon, E. Y., Primeau, F. and Sarmiento, J. L.: The impact of remineralization depth on the air–sea carbon balance, *Nat. Geosci.*, 2(9), 630–635, doi:10.1038/ngeo612, 2009.
- Lampitt, R. S., Noji, T. and Bodungen, B. Von: What happens to zooplankton faecal pellets? Implications for material flux, *Mar. Biol.*, 104, 15–23, doi:10.1007/BF01313152, 1990.
- 30 Laurenceau-Cornec, E. C., Trull, T. W., Davies, D. M., De La Rocha, C. L. and Blain, S.: Phytoplankton morphology controls on marine snow sinking velocity, *Mar. Ecol. Prog. Ser.*, 520(Buesseler 1998), 35–56, doi:10.3354/meps11116, 2015.
- Lehette, P. and Hernández-León, S.: Zooplankton biomass estimation from digitized images: a comparison between subtropical and Antarctic organisms, *Limnol. Oceanogr. Methods*, 7, 304–308, doi:10.4319/lom.2009.7.304, 2009.

- Logan, B. E. and Wilkinson, D. B.: Fractal geometry of marine snow and other biological aggregates, *Limnol. Ocean.*, 35(1), 130–136, doi:10.4319/lo.1990.35.1.0130, 1990.
- Martin, J. H., Knauer, G. A., Karl, D. M. and Broenkow, W. W.: VERTEX: carbon cycling in the northeast Pacific, *Deep Sea Res. Part I Oceanogr. Res. Pap.*, 34(2), 267–285, doi:10.1016/0198-0149(87)90086-0, 1987.
- 5 Mayor, D. J., Sanders, R., Giering, S. L. C. and Anderson, T. R.: Microbial gardening in the ocean's twilight zone: Detritivorous metazoans benefit from fragmenting, rather than ingesting, sinking detritus, *BioEssays*, 36(12), 1132–7, doi:10.1002/bies.201400100, 2014.
- McDonnell, A. M. P., Boyd, P. W. and Buesseler, K. O.: Effects of sinking velocities and microbial respiration rates on the attenuation of particulate carbon fluxes through the mesopelagic zone, *Global Biogeochem. Cycles*, 29(2), 175–193, doi:10.1002/2014GB004935, 2015.
- 10 Møller, E., Thor, P. and Nielsen, T.: Production of DOC by *Calanus finmarchicus*, *C. glacialis* and *C. hyperboreus* through sloppy feeding and leakage from fecal pellets, *Mar. Ecol. Prog. Ser.*, 262, 185–191, doi:10.3354/meps262185, 2003.
- Monterey, G. I. and Levitus, S.: *Seasonal Variability of Mixed Layer Depth for the World Ocean*, U.S. Gov. Printing Office, Washington, DC, DC., 1997.
- 15 Parekh, P., Dutkiewicz, S., Follows, M. J. and Ito, T.: Atmospheric carbon dioxide in a less dusty world, *Geophys. Res. Lett.*, 33(3), L03610, doi:10.1029/2005GL025098, 2006.
- Ploug, H. and Grossart, H.-P.: Bacterial growth and grazing on diatom aggregates: Respiratory carbon turnover as a function of aggregate size and sinking velocity, *Limnol. Oceanogr.*, 45(7), 1467–1475, doi:10.4319/lo.2000.45.7.1467, 2000.
- Ploug, H. and Jørgensen, B. B.: A net-jet flow system for mass transfer and microsensor studies of sinking aggregates, *Mar. Ecol. Prog. Ser.*, 176(1987), 279–290, doi:10.3354/meps176279, 1999.
- 20 Ploug, H., Kühl, M., Buchholz-Cleven, B. and Jørgensen, B. B.: Anoxic aggregates - an ephemeral phenomenon in the pelagic environment?, *Aquat. Microb. Ecol.*, 13, 285–294, doi:10.3354/ame013285, 1997.
- Ploug, H., Grossart, H.-P., Azam, F. and Jørgensen, B. B.: Photosynthesis, respiration, and carbon turnover in sinking marine snow from surface waters of Southern California Bight: implications for the carbon cycle in the ocean, *Mar. Ecol. Prog. Ser.*, 179, 1–11, doi:10.3354/meps179001, 1999.
- 25 Ploug, H., Terbruggen, A., Kaufmann, A., Wolf-gladrow, D. and Passow, U.: A novel method to measure particle sinking velocity in vitro, and its comparison to three other in vitro methods, *Limnol. Ocean. Methods*, 8, 386–393, doi:10.4319/lom.2010.8.386, 2010.
- Poulsen, L. and Iversen, M. H.: Degradation of copepod fecal pellets: key role of protozooplankton, *Mar. Ecol. Prog. Ser.*, 367, 1–13, doi:10.3354/meps07611, 2008.
- 30 Poulsen, L., Moldrup, M., Berge, T. and Hansen, P.: Feeding on copepod fecal pellets: a new trophic role of dinoflagellates as detritivores, *Mar. Ecol. Prog. Ser.*, 441, 65–78, doi:10.3354/meps09357, 2011.
- Reinthal, T., Aken, H. Van, Veth, C., Ari, J., Robinson, C., Williams, P. J. B., Lebaron, P. and Herndl, G. J.: Prokaryotic respiration and production in the meso- and bathypelagic realm of the eastern and western North Atlantic basin,

- Limnol. Ocean., 51(3), 1262–1273, 2006.
- Revsbech, N. P.: An oxygen microsensor with a guard cathode, *Limnol. Oceanogr.*, 34, 474–478, doi:10.4319/lo.1989.34.2.0474, 1989.
- Riley, J. S., Sanders, R., Marsay, C., Le Moigne, F., Achterberg, E. P. and Poulton, A. J.: The relative contribution of  
5 fast and slow sinking particles to ocean carbon export, *Global Biogeochem. Cycles*, 26, doi:10.1029/2011GB004085, 2012.
- Silver, M. W. and Alldredge, A. L.: Bathypelagic marine snow: deep sea algal and detrital community, *J. Mar. Res.*,  
39, 501–530, 1981.
- Smith, D. D., Simon, M., Alldredge, A. L. and Azam, F.: Intense hydrolytic enzyme activity on marine aggregates  
and implications for rapid particle dissolution, *Nature*, 359, 139–142, doi:10.1038/359139a0, 1992.
- 10 Steinberg, D. K., Mooy, B. A. S. Van, Buesseler, K. O., Boyd, P. W. and Karl, D. M.: Bacterial vs. zooplankton  
control of sinking particle flux in the ocean's twilight zone, *Limnol. Oceanogr.*, 53(4), 1327–1338, 2008.
- Stemmann, L., Picheral, M. and Gorsky, G.: Diel variation in the vertical distribution of particulate matter (>0.15  
mm) in the NW Mediterranean Sea investigated with the Underwater Video Profiler, *Deep. Res. Part I Oceanogr. Res. Pap.*,  
47, 505–531, 2000.
- 15 Stemmann, L., Jackson, G. A. and Gorsky, G.: A vertical model of particle size distributions and fluxes in the  
midwater column that includes biological and physical processes — Part II: application to a three year survey in the NW  
Mediterranean Sea, *Deep Sea Res.*, 51, 885–908, doi:10.1016/j.dsr.2004.03.002, 2004.
- Svensen, C., Morata, N. and Reigstad, M.: Increased degradation of copepod faecal pellets by co-acting  
dinoflagellates and *Centropages hamatus*, *Mar. Ecol. Prog. Ser.*, 516, 61–70, doi:10.3354/meps10976, 2014.
- 20 Tamburini, C., Garcin, J., Grégori, G., Leblanc, K., Rimmelin, P. and Kirchman, D. L.: Pressure effects on surface  
Mediterranean prokaryotes and biogenic silica dissolution during a diatom sinking experiment, *Aquat. Microb. Ecol.*,  
43(1999), 267–276, doi:10.3354/ame043267, 2006.
- Tamburini, C., Goutx, M., Guigue, C., Garel, M., Lefe, D., Peterson, M. L., Sempe, R., Wakeham, S. and Lee, C.:  
Effects of hydrostatic pressure on microbial alteration of sinking fecal pellets, *Deep. Res. Part II*, 56, 1533–1546,  
25 doi:10.1016/j.dsr2.2008.12.035, 2009.
- Tamburini, C., Boutrif, M., Garel, M., Colwell, R. R. and Deming, J. W.: Prokaryotic responses to hydrostatic  
pressure in the ocean - a review, *Environ. Microbiol.*, 15(5), 1262–1274, doi:10.1111/1462-2920.12084, 2013.
- Thiele, S., Fuchs, B. M., Amann, R. and Iversen, M. H.: Colonization in the photic zone and subsequent changes  
during sinking determines bacterial community composition in marine snow, *Appl. Environ. Microbiol.*, 81(4), 1–34,  
30 doi:10.1128/AEM.02570-14, 2015.
- Tiselius, P. and Kiørboe, T.: Colonization of diatom aggregates by the dinoflagellate *Noctiluca scintillans*, *Limnol.*  
*Ocean.*, 43, 154–159, doi:10.4319/lo.1998.43.1.0154, 1998.
- Turley, C. M. and Stutt, E. D.: Depth-related cell-specific bacterial leucine incorporation rates on particles and its  
biogeochemical significance in the Northwest Mediterranean, *Limnol. Oceanogr.*, 45(2), 419–425,

doi:10.4319/lo.2000.45.2.0419, 2000.

Urban-Rich, J.: Seston effects on faecal pellet carbon concentrations from a mixed community of copepods in Balsfjord, Norway, and the Antarctic Polar Front, *ICES J. Mar. Sci.*, 58, 700–710, doi:10.1006/jmsc.2000.1055, 2001.

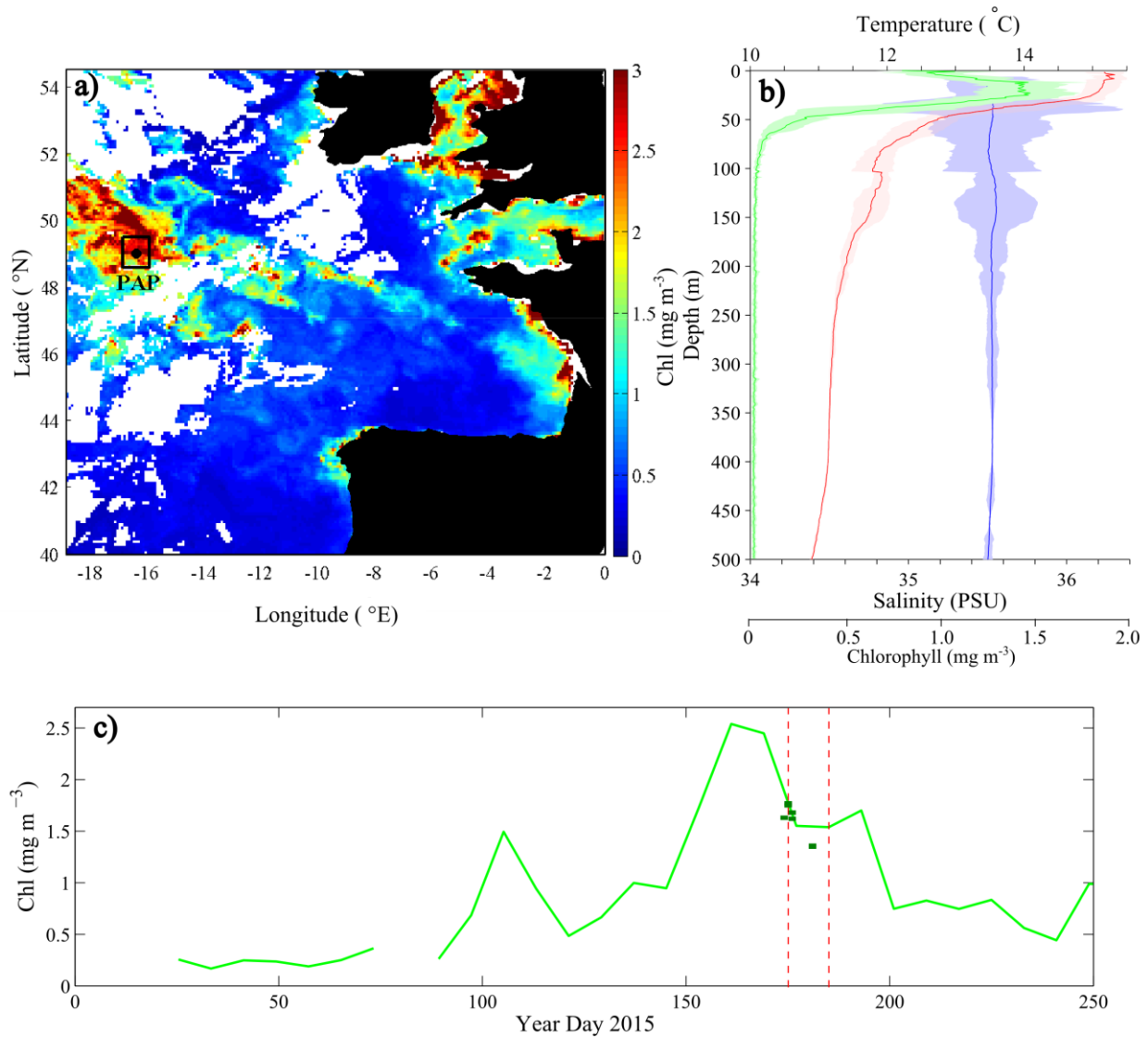
5 Vandromme, P., Lars, S., Garcia-Comas, C., Berline, L., Sun, X. and Gorsky, G.: Assessing biases in computing size spectra of automatically classified zooplankton from imaging systems: A case study with the ZooScan integrated system, *Methods Oceanogr.*, 1-2(July), 3–21, doi:10.1016/j.mio.2012.06.001, 2012.

Wilson, S. E., Steinberg, D. K. and Buesseler, K. O.: Changes in fecal pellet characteristics with depth as indicators of zooplankton repackaging of particles in the mesopelagic zone of the subtropical and subarctic North Pacific Ocean, *Deep Sea Res. Part II Top. Stud. Oceanogr.*, 55(14-15), 1636–1647, doi:10.1016/j.dsr2.2008.04.019, 2008.

10



## Figures and Figure Legends



5 **Figure 1: Surface chlorophyll concentration ( $\text{mg m}^{-3}$ ) at the PAP site, (a) PAP study region (black box) overlain on 9 km Aqua MODIS satellite chlorophyll for 18/06/2015–25/06/2015. (b) Average vertical temperature, salinity and chlorophyll profiles measured at the PAP site (red, blue and green lines respectively) and the standard deviation (light shading) of CTD deployments coinciding with MSC deployments. (c) Temporal change in surface chlorophyll ( $\text{mg m}^{-3}$ ) over the PAP study region based on 8 day, 9 km Aqua MODIS satellite data. Gaps in data are due to cloud cover. Vertical red lines indicate start and end of sampling period, and dark green squares are discrete measurements made from the CTD at depths of 5–10 m.**

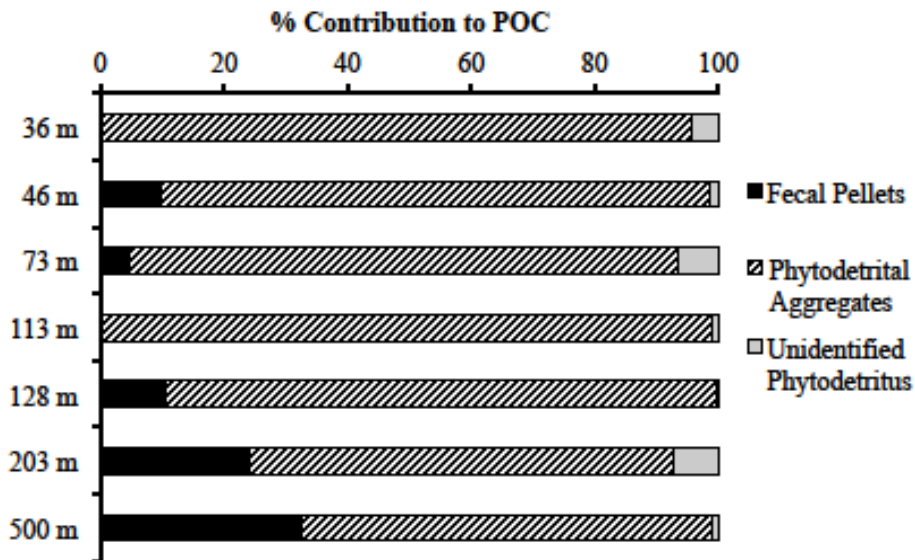
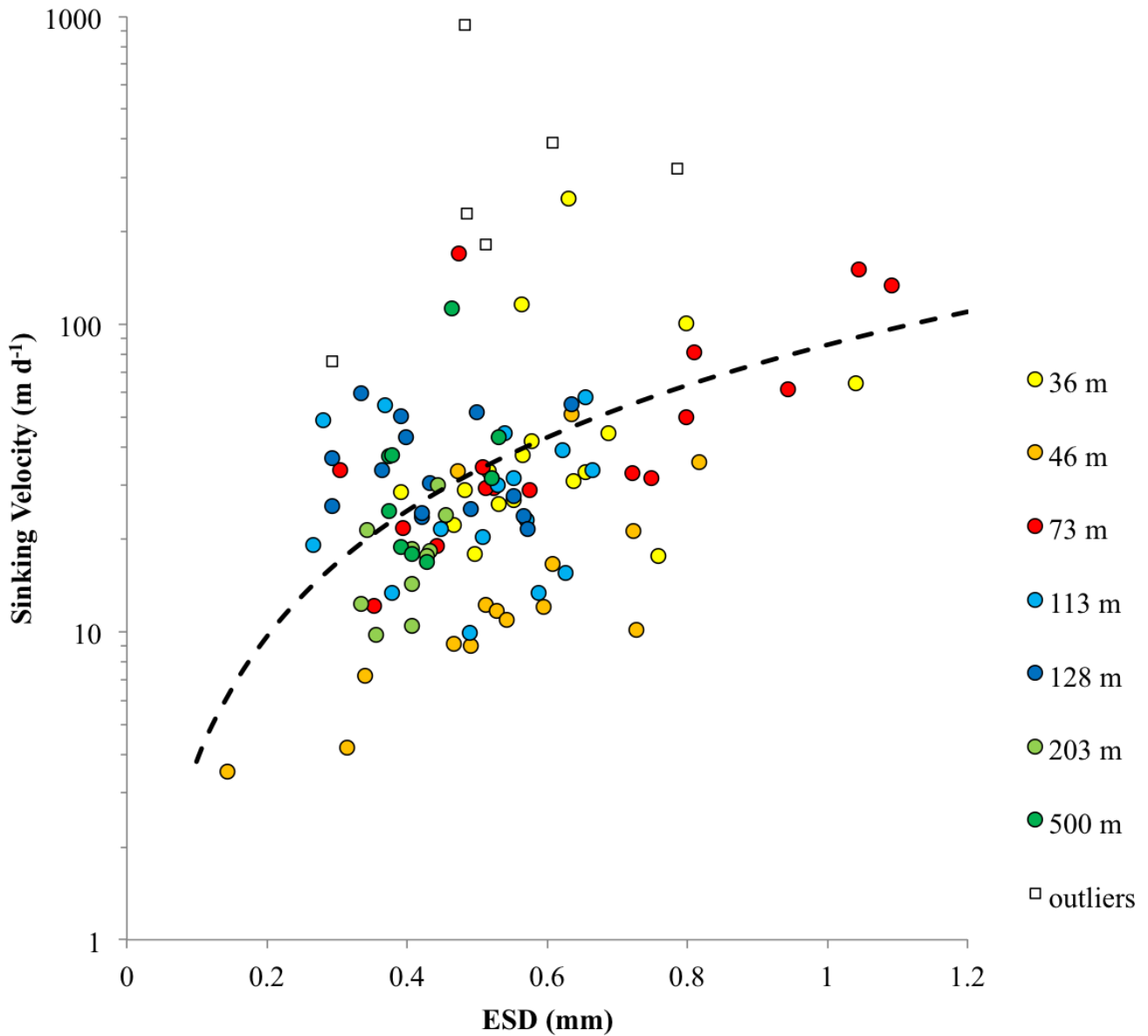


Figure 2: Composition of fast-sinking POC at each measured depth horizon. The percent (%) contribution of fecal pellets (black), phytodetrital aggregates (hatched), and unidentified phytodetritus (grey) to the total mass of fast-sinking POC collected in Marine Snow Catchers at each depth horizon. See Table 1 for numbers of particles in each category.



5 **Figure 3: Relationship between sinking velocity ( $\text{m d}^{-1}$ ) and equivalent spherical diameter (ESD, mm) of phytodetrital aggregates. The depth from which aggregates were sampled is shown by the colour of circles (36 m=yellow, 46 m=orange, 73 m=red, 113 m, light blue, 128 m=dark blue, 203 m=light green, 500 m=dark green). Note the log scale on the Y axis. We apply a power-law fit for between sinking velocity and aggregate ESD (dotted line  $Y = 85.8X^{1.4}$ ). 6 outliers (black open squares), defined as being outside 2 standard deviations from the mean, were excluded from the power-law fit.**

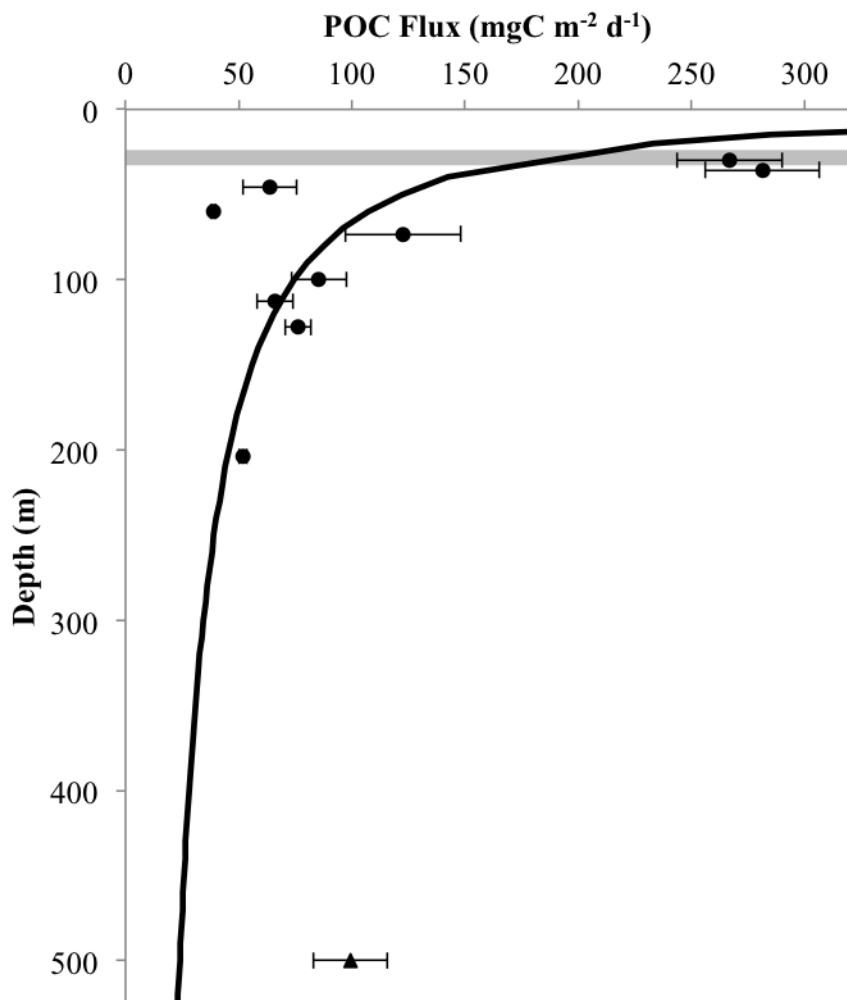


Figure 4: Flux of POC ( $\text{mg C m}^{-2} \text{d}^{-1}$ ) with depth at the PAP site. POC fluxes of fast-sinking particles measured in June 2015 at the PAP site via deployment of Marine Snow Catchers. Error bars relate to replicate filters per sample. A power-law curve was fitted to the data (black line),  $Y=194.9 \cdot (X/\text{MLD})^{-0.71}$  ( $R^2=0.42$ ,  $p=0.060$ ,  $n=9$ ), excluding the point at 500 m (triangle) which is likely due to non steady state conditions. The grey shaded area indicates the mixed layer depth over the study period.

5

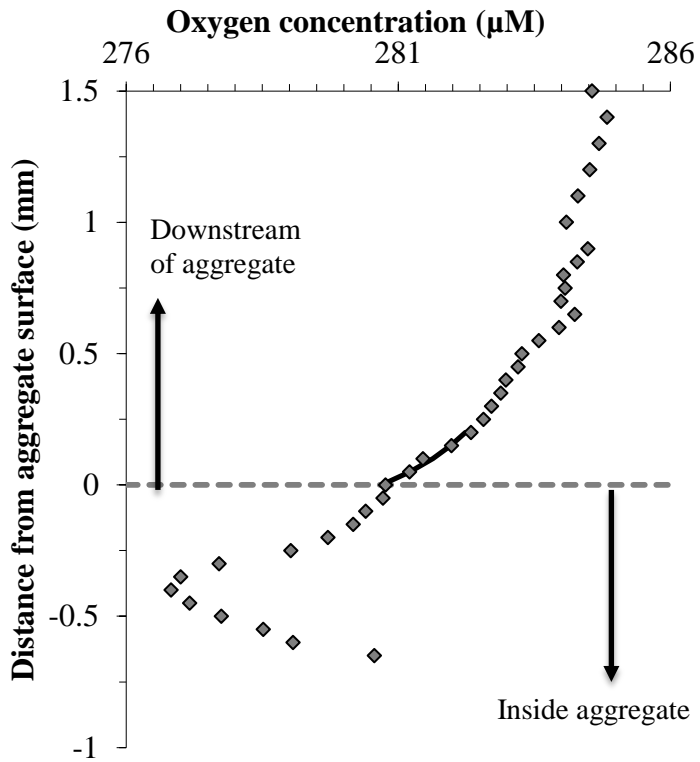


Figure 5: Example oxygen profile ( $\mu\text{M}$ ) through a phytodetrital aggregate collected at 46 m depth. Measurements were made with microsensors in steps of 50–100  $\mu\text{m}$ , with negative values reflecting the distance into the aggregate from the surface. The solid black line shows the model fit used to calculate the oxygen flux in the diffusive boundary layer.

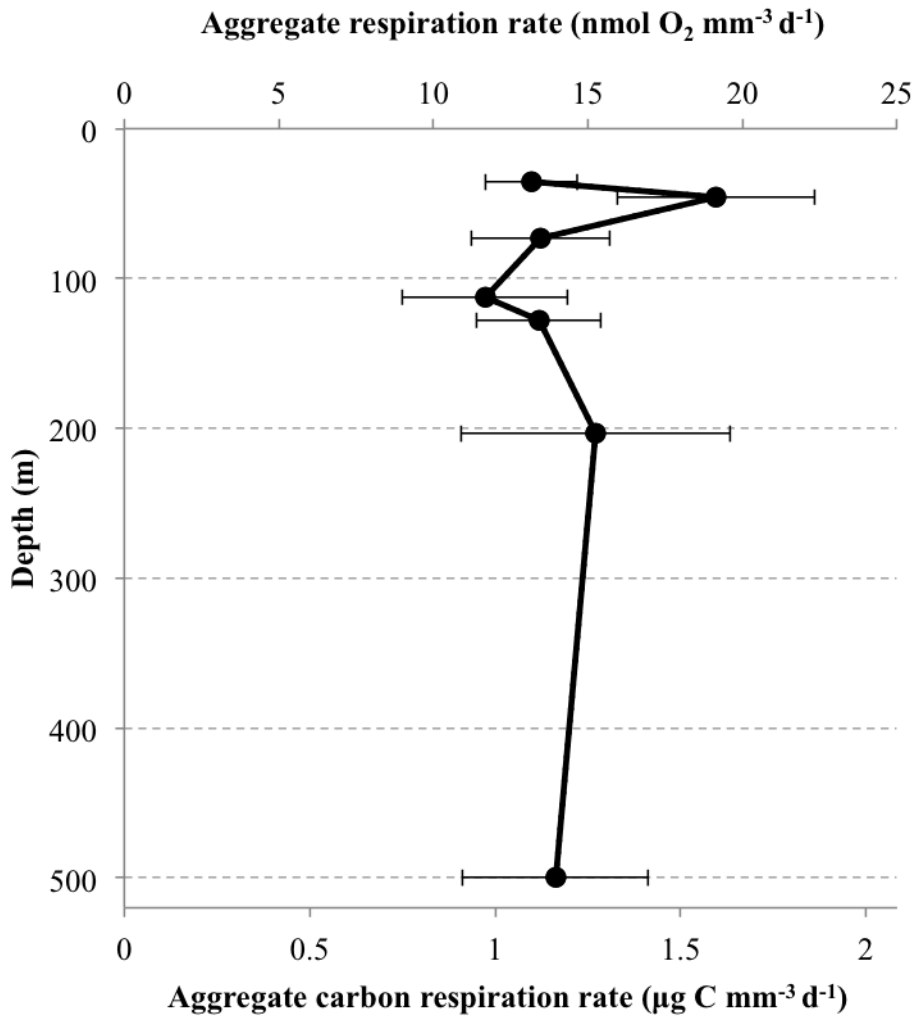


Figure 6: Respiration rates of phytodetrital aggregates with depth. Oxygen fluxes to aggregates (nmol O<sub>2</sub> mm<sup>-3</sup> d<sup>-1</sup>). For reference aggregate respiration rates are also shown in terms of carbon per aggregate volume (µg C mm<sup>-3</sup> d<sup>-1</sup>). Data are for experiments carried out at 10 °C. Error bars represent  $\pm$  one standard error of the mean.

5

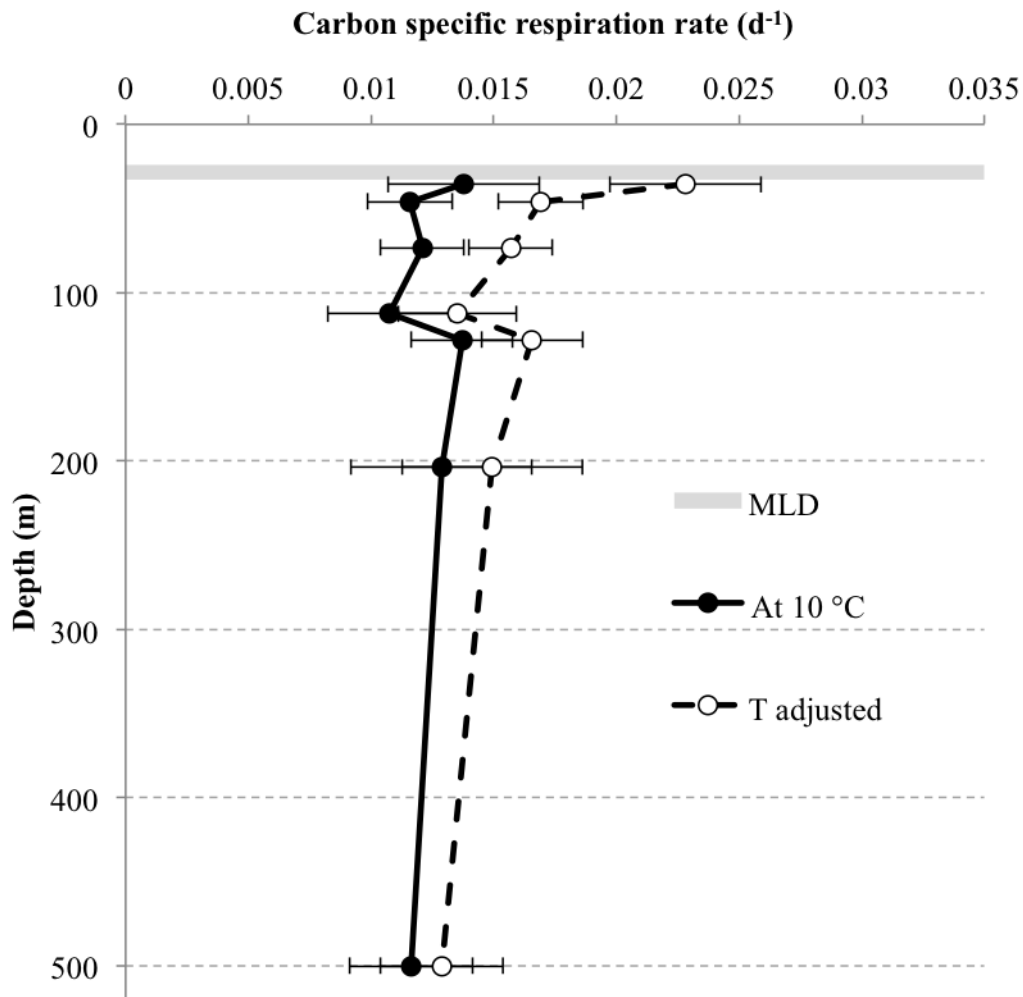


Figure 7: Carbon-specific respiration rates ( $d^{-1}$ ) for aggregates collected at depth. Rates adjusted to the in situ temperature (T) are shown by the dashed black line (open circles). Grey shading shows the range in mixed layer depth over the study period, and error bars represent standard errors.

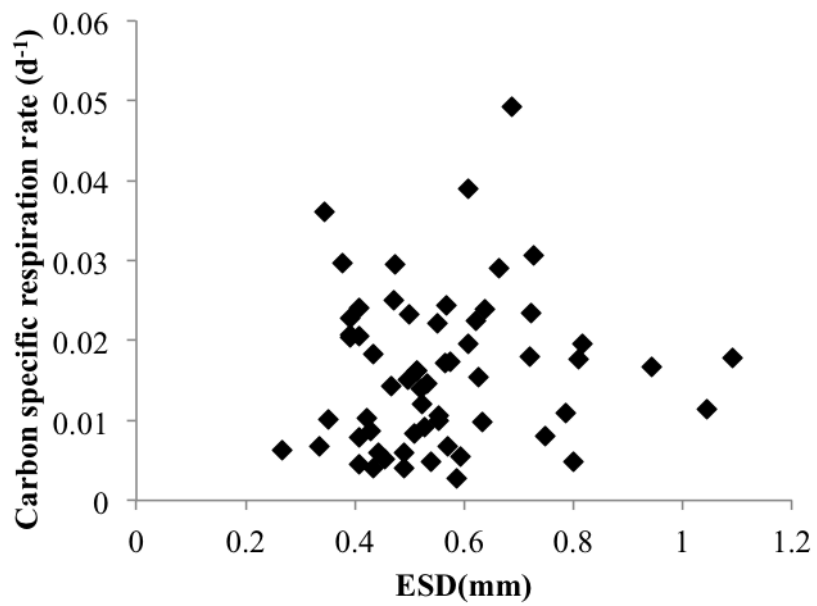
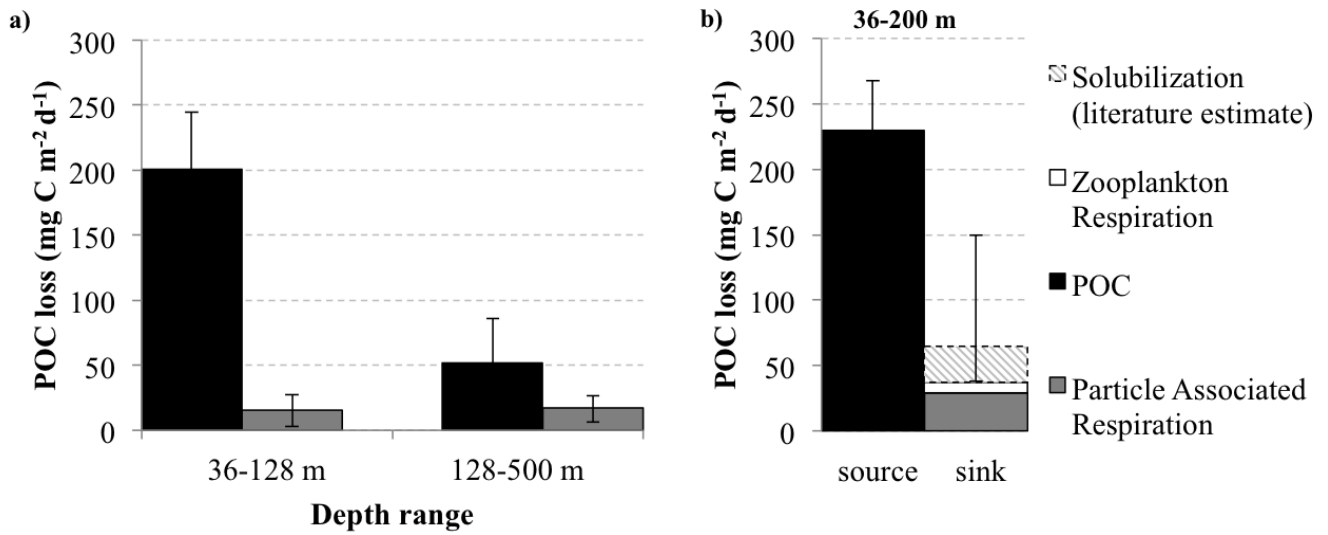


Figure 8: Carbon-specific respiration rates ( $d^{-1}$ ) of phytodetrital aggregates collected at depth. Data have been adjusted for in situ temperatures (see text).





5 Figure 9: Balance of processes controlling fast-sinking POC flux attenuation. (a) Comparison of observed POC loss (black bars) and estimated POC loss based on particle associated microbial respiration (grey bars) over two depth horizons (36–128 m, and 128–500 m). (b) POC sources and sinks in the upper 200m. Additional losses ('sinks') via solubilization of POC to DOC by particle associated microbes (estimate based on respiration, see section 4.3), and zooplankton respiration (estimate based on zooplankton biomass and allometric equations). Error bars show uncertainties from sensitivity analysis (see text for details).

## Tables

**Table 1: Deployment table for cruise DY032 to the PAP site.**

Depth (m)	Date	Time (GMT)	POC Flux (mg C m <sup>-2</sup> d <sup>-1</sup> )	# PA (in 95 L sample)**	# FP (in 95 L sample)**	Average PA ESD (mm)	Median PA sinking rate (m d <sup>-1</sup> )
36	24/06/2015	02:10	281.4	785	23	0.60	33.2
128	24/06/2015	02:35	76.2	259	61	0.53	11.7
73	26/06/2015	14:45	122.8	252	15	0.65	34.0
113	28/06/2015	11:50	66.0	198	0	0.49	30.1
500	28/06/2015	17:50	99.4	282	92	0.44	30.6
46	30/06/2015	18:45	63.7	702	61	0.41	18.3
204	02/07/2015	10:00	51.8	275	76	0.44	34.4
30	04/07/2015	13:00	266.8				
60	04/07/2015	13:20	38.7				
100	04/07/2015	13:30	85.5				

PA: Phytodetrital aggregate; FP: Fecal Pellet; ESD: Equivalent spherical diameter

\*\*Refers to counts of fast-sinking material collected from deployment of 95 L snow catcher bottle. Counts have been scaled

5 up from smaller sample split (1/4).

**Table 2: Rates of particle associated microbial respiration rates in phytodetrital aggregates. Averages are given for each depth with full range in brackets. Results are for experiments carried out at 10 °C.**

<b>Depth (m)</b>	<b>Total O<sub>2</sub> consumption (nmol O<sub>2</sub> agg<sup>-1</sup> d<sup>-1</sup>)</b>	<b>Volumetric O<sub>2</sub> consumption (nmol O<sub>2</sub> mm<sup>-3</sup> d<sup>-1</sup>)</b>	<b>C<sub>resp</sub> (ng C mm<sup>-3</sup> d<sup>-1</sup>)*</b>	<b>C<sub>spec</sub> (d<sup>-1</sup>) **</b>	<b># aggregates measured</b>
36	1.25 (0.56–2.81)	13.18 (8.03–17.77)	0.158 (0.096–0.213)	0.014 (0.006–0.030)	6
46	2.04 (0.65–3.89)	19.12 (9.49–43.76)	0.230 (0.114–0.525)	0.012 (0.004–0.021)	10
73	2.46 (0.22–6.92)	13.47 (4.69–37.67)	0.162 (0.056–0.452)	0.012 (0.004–0.030)	15
113	0.98 (0.07–2.80)	11.66 (3.10–32.39)	0.140 (0.037–0.390)	0.011 (0.002–0.024)	10
128	0.93 (0.20–1.88)	13.40 (3.22–19.73)	0.161 (0.039–0.237)	0.014 (0.003–0.020)	8
204	0.46 (0.14–0.87)	15.25 (4.05–36.77)	0.183 (0.049–0.441)	0.013 (0.003–0.031)	7
500	0.74 (0.17–1.24)	13.95 (4.86–24.71)	0.167 (0.058–0.297)	0.012 (0.004–0.021)	5

\* Volume specific respiration rate (C<sub>resp</sub>)

\*\*Carbon-specific respiration rate (C<sub>spec</sub>)

5