

Support letter

Emilia Röhr  
Åbo Akademi University  
Tykistökatu 6  
20520 Turku  
Finland  
[mrohr@abo.fi](mailto:mrohr@abo.fi)

Associate Editor  
Mr. Gerhard Herndl  
Biogeosciences  
September 1st, 2016

Dear Editor

Please find attached the second thorough revision of our manuscript (bg-2016-131) entitled “Blue carbon stocks in Baltic Sea eelgrass (*Zostera marina*) meadows” by Maria Emilia Röhr, Christoffer Boström, Paula Canal- Vergés and Marianne Holmer to be considered for publication in Biogeosciences. Firstly, we would like to thank both of the reviewers as well as the Editor for their contribution and valuable input to the revision process of this manuscript. We found the comments most useful in further focusing and clarifying the manuscript text and tables.

We have now focused on re-analyzing our samples so, that in addition to the model that included both regions, we have ran a reduced, country wise DistLm analysis in which environmental drivers for Corg stocks were studied separately for Finland and Denmark. We have as well worked on harmonizing the terminology regarding the Blue Carbon calculations and results.

In addition, we have improved the style and data presented in tables 1 and 2 and figures and figure legends 1, 3 and 4.

We are including the detailed responses to the comments by Referee 2 in the section below together with revised manuscript with visible track changes. We have also attached a revised manuscript with no visible track changes to file manager. Our reply and answers to Referee 1 and the first version of the revised manuscript has been posted on the interactive discussion site earlier in summer 2016.

Looking forward to your response,

Thank you for your consideration!

Sincerely,

Emilia Röhr, MSc  
Åbo Akademi University and University of Southern Denmark

Comments and answers to referee 2:

Received and published: 14 July 2016

This study has collected a range of relevant data with which to provide estimates of organic carbon storage in Finland and Denmark. The data set would certainly be a useful addition to the growing literature of carbon storage in seagrass meadows and uniquely provides an indication of the range of carbon stocks observed for a single species of seagrass in different regions. The manuscript would require a major revision before being suitable for publication. The description of methods and presentation of results are confusing in terms of context values and units. Many are small points but collectively it becomes very frustrating to try and discern what has been done. The discussion needs to be kept focussed and relevant.

Specific comments:

1. Study area: Line 126 the reference of Kristensen and Andersen 1987 seems at odds to the proceeding sentences as it is a methodological paper that uses different mixtures of sand/eelgrass and shell to examine methods of analysis. A better reference would be Leipe T et al., 2011 Geo-Mar Lett 31, 175-188 who have analysed and obtained low PIC The inorganic content analysis on the samples could then be used to test that this is a common observation.

*Answer: Reference corrected (new line 125).*

2. In testing carbonate content, 10 samples were taken from each region, so was this from each station i.e. full coverage of sites?

*Answer: Yes, samples were from each of the 10 study sites in both regions. Info added in text line 126-127.*

3. What are the units, wt%C or CaCO<sub>3</sub>? A line stating that that TC was therefore taken to represent OC is needed.

*Answer: The value is given as percent based on the weight percent of IC and TC in the sample; e.g. the IC content was 0.01%DW and the TC content was 0.20%DW, accordingly the proportion of IC is 5% of TC (lines 125-129).*

4. Can the study sites be identified that made up the gradients of sheltered to exposed (see that on line 317 sorting is used to identify).

*Answer: For a comprehensive picture, sites were chosen to represent the full range of environmental conditions in each region (see Fig. 1). The sites were chosen on previous (>20 yrs) mapping projects of environmental settings of eelgrass beds in respective regions. To quantify the exposure regime in a standardized way, the organic content, degree of sorting and silt fraction gives an integrated measure of the type of setting eelgrass grows in (see Table 1, Fig. 2).*

Field sampling:

5. If cores taken to 40cm, why were C stocks only estimated to 25cm?

*Answer: We couldn't force the corer down to 40 cm depth at all of the sites therefore 0-25 cm was chosen to be the undisturbed depth section to be analyzed. In addition, 25 cm sediment cores have been widely used in similar studies and for normalization to the top 1 m of the sediments (eg. Fourqurean et al. 2012, Lavery et al. 2013). Comment added in lines 150-151.*

6. Replicate cores taken at 5m for sediment but 15m apart for biomass? Clarify.

*Answer: Corrected, 15 meters for both samplings, line 150.*

7. Seagrass and sediment variables: In determining the stable isotopic composition of above and below ground biomass and sediments it seems odd to use the term particulate organic carbon, just OC would be a better description.

*Answer: Corrected OC instead of POC for entire ms, tables and figures.*

8. The method of  $\delta^{13}\text{C}$  analysis is given but an estimation of sample analytical error for biomass and sediment is needed. It is unclear whether all OC data is derived from the mass spectrometric determination of  $\delta^{13}\text{C}$ . Again error on sample analysis should be provided. It is confusing to know that the sediment has been analyzed for OM and OC content and yet the OM content is not discussed only presented in Table 1. OC instead of OM should be presented in table 1.

*Answer: The analytical error (2.8 %) from the analysis has been added to the ms in line 369. The OC data is derived from the mass spectrometric determination of  $\delta^{13}\text{C}$ . We have added a column including OC values to Table 1.*

9. C stocks and accumulation: line 220  $\rightarrow$  C stocks "obtained by depth integration of the POC  $\text{mg C cm}^{-3}$  of 0-25cm sediment layers would give units of  $\text{mg C cm}^{-2}$ . which if multiplied by the areal extent of seagrass would give units of  $\text{mg C}$ , not  $\text{g Corg m}^{-2}$  as reported. Suddenly the notation has changed to Corg, need to be consistent.

*Answer: We have clarified this part in the ms line 210-214  $\rightarrow$  New text: "The Corg (obtained by depth integration of the carbon density ( $\text{mg C cm}^{-3}$ ) of 0-25 cm sediment layers ( $\text{mg C cm}^{-2}$ ) of the sampled region was multiplied with estimated seagrass area of the region based on the most recent areal estimates (in  $\text{km}^2$ ) of seagrass distribution available in the literature (Boström et al. 2014) and given as Corg in  $\text{g C m}^{-2}$ ."*

10. The areal extent of Danish seagrass is given but not the Finnish (30km<sup>2</sup>?).

*Answer: We have added a line stating the areal estimate for Finland (30  $\text{km}^2$ ) also to this section of the ms (line 214) the areal extent of Finnish meadows can also be seen in text line 330 and Table 2.*

11. Economic loss would be better presented as loss in stock (pool) and rate of addition as separate values.

*Answer: Unfortunately we do not understand this comment. Clarification is needed in order to potentially address something. In line 528 we have defined the magnitude of loss in Corg stock.*

12. Is the economic loss in the last 100 years based on change areal extent times change in sequestration rate and biomass, but presumably no change in sediment C pool?

*Answer: Yes, we have measured the OC from existing eelgrass meadows and as there is no data available on the OC content of lost eelgrass meadows, we have assumed that if the lost meadows would have been present, the measured OC content would have been maintained.*

13. Results: If the C content of the biomass is known then why is the DW data used to determine the Corg pool in the living seagrass?

*Answer: We have already corrected this part of the ms in connection with the Referee #1 comments. We use g DW OC m<sup>-2</sup> for determining the Corg pool, not the whole biomass (line:227)*

14. It would be informative to have the dry bulk density data in Table 1 (rather than silt content) as it is not presented elsewhere.

*Answer: Good point; sediment dry density has been added to Table 1, in addition to silt content.*

15. Given that OC data for the sediments is available, why are the OM results presented in the text? Especially as the OC stock section now presents the data as g C cm<sup>-3</sup>.

*Answer: The OM results are presented only as single sentence stating the average value of OM at each region (line 305 and 306). The average OC results for each region has been added to text in to lines 308-309 and OC values for each site have been added to Table 1.*

16. Need to rationalize terms as it is confusing to use the same term Corg stocks (g C cm<sup>-3</sup>) in line 324 and (g C m<sup>-2</sup>) in line 329 and Table 2. g C cm<sup>-3</sup> (carbon density).

*Answer: Corg stock (mg C cm<sup>-3</sup>) has been re-named to "carbon density".*

17. The Corg accumulation section includes the sediment trap data. It is presented as gDW, not in OC and the relevance or significance of the measurements are not obvious. They would be better omitted.

*Answer: Sediment trap results have been omitted from the entire ms.*

18. The areas represented by Finland, Limfjorden and Funen seagrass should be provided.

*Answer: We have added the areal extent of Finnish meadows to line 214, the numbers are also given on l.330 (Finland) and 332 (Denmark minimum and maximum) and in Table 2 (Finland, Funen, Limfjorden, Denmark minimum and maximum areal extent).*

19. In the isotope section the sediment and source data should be presented before the results of the mixing model.

*Answer: The ms structure is now changed so that the sources are presented before the mixing model results.*

20. Allochthonous carbon is said to be a major contributor to the sediment (line 394-395), but no isotope value is given for its source term and it is not included as a component of Fig 5. It is not clear what it represents and is an input of terrestrial organic matter included or are there no significant riverine inputs to the area?

*Answer: "Allochthonous material" has been deleted from the ms. We have used phytoplankton values from plankton sieves or literature as source in Fig. 5 and text. Input of terrestrial organic matter was not included as a source. The Finnish sampling sites are in the archipelago, where riverine inputs are not significant sources of OM. Similarly, the study sites in Denmark are not in close proximity of rivers, therefore terrestrial input was not included as a source.*

21. Given the range of values for the sources it is difficult to understand how *P. pectinatus* and *R. maritima* can be isotopically distinguished from *Z. marina* in the mixing model for Finland

*Answer: R. maritima was not included in any models as it was not present at our study sites. R. cirrhosa contributed less than 5% to the sediment surface 13C signal at four Finnish sites and one Danish site and was included in the mixing model analysis when present. Lines 372-380 describe which species were present at the individual study sites. The values overlapping represent the range of the 13C signal in replicate samples for these species. When the 13C signals for each species were checked for individual sites, the signals for*

*different species differed significantly enough and running isotope mixing model analysis was thus possible to be made (eg.site Ångsö: Z. marina -10.12 to -10.50‰, R. cirrhosa -11.04‰, P. pectinatus -9.21‰).*

22. Discussion: Suggest discussion of sed trap data is removed as it adds little to the discussion.

*Answer: Sediment trap data has been removed.*

23. Analysis would be improved if it would highlight the differences in stock/accumulation, sources and particular influences (table 4) between Finland and Denmark given the difference in environmental factors

*Answer: We have re-analyzed our samples so, that in addition to the model that included both regions, we have ran a reduced, countrywise DistLm analysis in which environmental drivers for Corg stocks were studied separately for Finland and Denmark. We have added text explaining the results of these new analysis in to results section (lines 393-417) and to discussion section (lines 460-468). Our main finding in the new analysis was that biological variables (root to shoot- ratio, fraction of Z. marina from the sediment surface Corg pool) were important environmental drivers for Corg stocks in Denmark, while in Finland the sedimentary variables were better predictors for magnitude of Corg stocks.*

24. Overall the discussion could be shortened as there is a lot of extraneous text (more focussed) and consistent. One example is from the C accumulation and stock. Why not just compare with latest and most complete C stock assessment of Fourqurean et al., 2012 that has superceded all the other estimates.

*Answer: We have modified the discussion section so that it is more focused and consistent and the length has been reduced with 17 lines (10%).*

25. Are data for Z. marina included in the Fourqurean data set, if so, a comparison with this data would be more relevant.

*Answer: Fourqurean et al. 2012 does not report separate values for Z. marina.*

26. Table 3 C stock 627 g m<sup>-2</sup>, line 520 its 6900 t km<sup>-2</sup>, maths is wrong here?

*Answer: The numbers have been corrected (line 521).*

27. I do not see the relevance of comparing with tropical mangroves and marshes.

*Answer: Comparison with mangroves and salt marsh has been removed from the ms.*

28. In the comparison with stocks from Australia and Asia this would only be appropriate if the stocks were all calculated in the top 25cms.

*Answer: Lavery et al. 2013 has indeed calculated the Corg stocks in the top 25 cm normalized to top 1 meter. Miyayima et al. 2015 has calculated the Corg stocks directly from 1 meter cores. Similarly to Lavery et al. 2013, we have calculated the Corg stocks we measured in the top 25 cm and extrapolated to 1m.*

29. Why are different units used for comparisons km<sup>2</sup>, m<sup>2</sup> and ha<sup>-1</sup>.

*Answer: Different units have been used depending on the context, so that our numbers are comparable with numbers from other published papers that we are referring to.*

30. The discussion of cost of seagrass loss contains a lot of speculation and should be reduced. How viable is it to compare Danish stocks with those in Sweden and Germany? Line 549 onwards

*Answer: We have focused and shortened this section in the ms and deleted comparison between our study regions and Swedish and German meadows (line 534-> of the old version of the ms). However, the comparison*

*was included in the first place because Danish meadows are generally very similar to those in Sweden and Germany while the Finnish meadows are perhaps outliers in this geographical context, and we found this interesting information to compare.*

31. Does this mean that it was assumed that all the carbon was lost from 25 cm of sediment in the calculation?

*Answer: Yes.*

32. What was the basis for this assumption?

*Answer: We have based this assumption on the fact that the erosion should be enhanced when the protection from the leaf-canopy and the rhizome-root mat is lost, and that the organic rich sediment should be easily transported away. Currently, we are aware of two studies (Serrano et al. 2016, Marba et al. 2014) regarding how much of the sediment in seagrass beds are eroded when beds are lost, both studies are conducted in the Australian Oyster harbor in Posidonia oceanica meadows. In addition, in the well-cited paper by Fourqurean et al. 2012 they assume that the top meter of the sediment is eroded and oxidized when a seagrass bed is lost, so in comparison with that study, 25 cm could be considered conservative estimate.*

33. Why is the loss being discussed now 50 years when it was 100 years in the results.

*Answer: We do not understand this comment as we find no such section in the discussion in which the losses would be discussed for 50 years.*

34. Further minor comments Line 290- 291 state “proportion” but have reported %.

*Answer: Has been corrected in to “fraction” (line 284).*

35. When reporting mean values the error associated with the mean should also be reported. Line 291, 292: give mean %OC of biomass (that is used to determine C content ha<sup>-1</sup>)

*Answer: We have added the mean % OC of biomass (lines 285 and 286). SEM values have been added to referred sentence (line 288-289).*

36. Line 293: change to C units.

*Answer: The units have been changed (line 231).*

37. Line 306: the silt data is presented in Figure 2 and Table 1 (sorting data in Figure 2 but not referenced in the text).

*Answer: Reference to fig. 2 has been added to line 315.*

38. Line 326: In Figure 3 the max scale for Finland OC density is 20 and, but text reports value of 22 mg C cm<sup>-3</sup>, which must represent individual sediment values, it would be better if means for the site were reported in the text.

*Answer: Values from individual replicates have been replaced with mean values (line 320 and 322).*

39. Line 333: Finland stock ranged from – but only a single value given.

*Answer: We think there is a misunderstanding here, since we found no such error in the ms. A single value is discussed and represented for Finland as there was only one eelgrass area estimate for Finland (line 330).*

40. Line 335: the min C stock for Denmark is different in the text to that given in Table 2.

*Answer: The values have been corrected to the ms lines 331-332.*

41. Line 356: should be annual areal Corg

*Answer: This part has been clarified in the text line 352.*

42. Line 373: allochthanous

*Answer: "Allochtanous" has been deleted from the ms.*

43. Line 383: were not where

*Answer: "Where" has been corrected to "were" (line 367).*

44. Line 473: does this data relate to drifting algal mats?

*Answer: This sentence (currently lines 485-488) is not actually relating to drifting algal mats, but rather describing the importance of understanding that the sediment OM pool is almost always a mix of different sources and it is very unlikely that the OM pool would consist only of a sole source of OM.*

45. Figure 1: label a, b and c, which sites are shown?

*Answer: Labelling has been added to the figure.*

46. Figure 3: axis and legend is wrongly labelled as sediment profiles of particulate organic carbon content. This would have units of wt% or gC g<sup>-1</sup>.

*Answer: The axis and legend has been changed in to C mg C cm<sup>-3</sup> in Fig. 3.*

47. Figure 4: the legend "organic carbon stocks (Corg, g C m<sup>-2</sup>)" is confusing.

*Answer: The legend for Fig. 4 has been changed to Corg stocks (g C m<sup>-2</sup>).*

48. Fig 5: It would be easier to discern the different source if patterns rather than shading were used.

*Answer: We find shading is visually easier to interpret, since many of the sections are small and using patterns for these sections makes the figure more "messy" and harder to interpret. Since the fig. legend is organized exactly in the same order as the bars, it makes it very difficult to mix the different sources.*

49. Table 2: column 5 should be Mt.

*Answer: This has been corrected to the table 2.*

## Blue carbon stocks in Baltic Sea eelgrass (*Zostera marina*) meadows

Maria Emilia Röhr<sup>1,2\*</sup>, Christoffer Boström<sup>1</sup>, Paula Canal- Vergés<sup>3</sup>, Marianne Holmer<sup>2</sup>

<sup>1</sup>Åbo Akademi University, Faculty of Science and Engineering, Environmental and Marine Biology, Artillerigatan 6, 20520 Åbo, Finland

<sup>2</sup>University of Southern Denmark, Department of Biology, Campusvej 55, 5230 Odense M, Denmark

<sup>3</sup>Danish Shellfish Centre, DTU Aqua, Technical University of Denmark, Ørøddevej 80, 7900 Nykøbing Mors, Denmark

\* Corresponding author;

Emilia Röhr (mrohr@abo.fi)

### 1 Abstract

2  
3 Although seagrasses cover only a minor fraction of the ocean seafloor, their carbon sink capacity  
4 accounts for nearly one-fifth of the total oceanic carbon burial and thus play a critical structural  
5 and functional role in many coastal ecosystems. We sampled 10 eelgrass (*Zostera marina*)  
6 meadows in Finland and 10 in Denmark to explore seagrass carbon stocks (Corg stock) and  
7 carbon accumulation rates (Corg accumulation) in the Baltic Sea area. The study sites represent  
8 a gradient from sheltered to exposed locations in both regions to reflect expected minimum and  
9 maximum stocks and accumulation. The Corg stock integrated over the top 25 cm of the  
10 sediment averaged 627g C m<sup>-2</sup> in Finland, while in Denmark the average Corg stock was over six  
11 times higher (4324 g C m<sup>-2</sup>). A conservative estimate of the total organic carbon pool in the

regions ranged between 6.98-44.9 t C ha<sup>-1</sup>. Our results suggest that the Finnish eelgrass meadows are minor carbon sinks compared to the Danish meadows, and that majority of the Corg produced in the Finnish meadows is exported. Our analysis further showed that > 40 % of the variation in the Corg stocks was explained by sediment characteristics i.e. density, porosity and silt content. In addition, our analysis show, that the root:shoot-ratio of *Z. marina* explained > 12 % and contribution of *Z. marina* detritus to the sediment surface Corg pool explain > 10 % of the variation in the Corg stocks. The mean monetary value for the present carbon storage and carbon sink capacity of eelgrass meadows in Finland and Denmark, were 281 and 1809 € ha<sup>-1</sup>, respectively. For a more comprehensive picture of seagrass carbon storage capacity, we conclude that future Blue Carbon studies should in a more integrative way, investigate the interactions between sediment biogeochemistry, seascape structure, plant species architecture and the hydrodynamic regime.

Keywords: Blue Carbon, eelgrass, seagrass, carbon stock, carbon accumulation, sequestration, carbon sink

## Introduction

The atmospheric carbon dioxide (CO<sub>2</sub>) enters the ocean via gas-exchange processes at the ocean-atmosphere interface. In the ocean dissolved inorganic carbon is fixed in photosynthesis by primary producers, and released again through respiration. A large percentage of this fixed carbon is stored and sequestered in the sediments of vegetated coastal ecosystems of which the three globally most significant are saltmarshes, mangrove forests and seagrass meadows (Herr et al. 2012). The carbon stored by these ecosystems is known as Blue Carbon (Duarte et al. 2005 Duarte et al. 2013a, Nellemann et al. 2009). Blue Carbon ecosystems function as carbon sinks, in which the rate of carbon sequestered by the ecosystem exceeds the rate of carbon lost through respiration and export.

Seagrass meadows play a critical structural and functional role in many coastal ecosystems (Orth et al. 2006). Although seagrass meadows only cover globally about 300 000 - 600 000 km<sup>2</sup> of the ocean sea floor, corresponding to 0.1 to 0.2 % of the total area, their carbon sink capacity (capacity of seagrasses to absorb and store carbon in living and dead biomass and in the sediments) may account for up to 18 % of the total oceanic carbon burial (Gattuso et al. 1998, Duarte et al. 2005, Kennedy et al. 2010, Fourqurean et al. 2012). A large portion of the carbon sequestered (captured and stored) by seagrasses is stored in sediments with a conservative value of 10 Pg C in the top 1 meter of seagrass sediments (Fourqurean et al. 2012). Consequently, recent global estimates imply that seagrass sediments store almost 25 200 to 84 000 t C km<sup>2</sup> (Fourqurean et al. 2012). More importantly, carbon in submerged sediments is stored for timescales of millennia while terrestrial soils are usually less stable and only sequester carbon up to decades (Hendriks et al. 2008).

The coasts of Scandinavia and the Baltic Sea are key distribution areas for eelgrass (*Zostera marina* L.) meadows (Boström et al. 2002, Boström et al. 2014). The meadows extend from fully saline (>30) along the Norwegian coast to brackish (5-6) archipelago areas of Finland. This region is estimated to support >6 000 individual meadows covering at least 1 500 – 2 000 km<sup>2</sup>, which is four times more than the combined eelgrass area of Western Europe (Spalding et al. 2003, Boström et al. 2014). Consequently, this region plays a key role in the coastal carbon dynamics, but we presently lack estimates of the role of eelgrass for carbon storage in temperate sediments. Seagrasses are lost at accelerating rates and it has been estimated that 29 % of global seagrass area has disappeared since the initial recording of seagrasses in 1879 (Waycott et al. 2009). This decline could have severe consequences on the total capacity of marine ecosystems to store and sequester carbon in addition to the other ecosystem services seagrass meadows provide. Little is known about the magnitude of carbon emissions from degraded seagrasses ecosystems, not to mention its economic implications. A recent study points out, that despite the

importance of these ecosystems in the global carbon budget, none of the three Blue Carbon ecosystems have been included in global carbon market protocols (Pendleton et al. 2012).

Seagrasses exhibit marked differences in shoot architecture and grow under variable environmental settings, making direct extrapolations between species and locations difficult. Consequently, there is a pressing need to better understand which factors are causing variability in carbon storage (Corg stocks, carbon stored in living and dead seagrass biomass and sediments) and the capacity of seagrass meadows to sequester carbon (Corg accumulation) in seagrass sediments. Indeed, recent studies show considerable influence of seagrass habitat setting, sediment characteristics and species-specific traits on the variability in carbon storage capacity in seagrass meadows (Duarte et al. 2013a, Lavery et al. 2013, Miyajima et al. 2015). Such differences contribute to uncertainty in local and global estimates of the carbon storage capacity and carbon dynamics in coastal seagrass areas.

In order to determine seagrass Corg stocks and Corg accumulation, knowledge on the sources of the carbon stored in the sediments is also crucial. The different Corg sources vary in their turnover compared to seagrasses (sources other than seagrasses being typically faster) and volumes of standing stock (typically less) and thus affect the dynamics of the Corg stocks and accumulation (Fry et al. 1977, Kennedy et al. 2004, Kennedy et al. 2010). Seagrasses are known to be enriched in  $\delta^{13}\text{C}$  compared to other potentially sources of Corg in the seagrass sediments, such as plankton, macroalgae, allochthonous carbon material, seagrass epiphytes, and benthic microalgae (Kennedy et al. 2004, Kennedy et al. 2010, Fry and Sherr 1984, Moncreiff and Sullivan 2001, Bouillon et al. 2002, Bouillon and Boschker 2006, Macreadie et al. 2014). Thus, the stable isotope signals of seagrasses and other potential Corg sources can be relatively easily and reliably used as a proxy for identification of the origin of Corg in seagrass sediment carbon pool (Kennedy et al. 2010). Unfortunately, the current knowledge base on how these factors

91 interact and influence carbon fluxes and storage is, at best, limited at both local and global  
92 scales.

93  
94 In this study, we contrast storage, accumulation rates and sources of the accumulated carbon in  
95 eelgrass (*Zostera marina*) meadows in two regions differing in salinity, temperature and  
96 seagrass productivity, namely Finland and Denmark. Specifically we asked;

97 (1) How large is the carbon storage capacity (Corg stocks) of Baltic Sea eelgrass meadows?

98 (2) Which are the environmental factors determining the variability of carbon storage (Corg  
99 stocks) and accumulation (Corg accumulation) at local and regional scales?

100 (3) How do the sediment characteristics influence the carbon storage (Corg stocks) of  
101 eelgrass meadows at local and regional scales?

102 (4) How much carbon (Corg stocks) is presently stored in Finnish and Danish eelgrass  
103 meadows, respectively.

104 (5) What is the present and historically lost (only in Denmark) monetary carbon value?

## 106 Materials and methods

### 107 Study area

108  
109 Plant and sediment samples were collected in June-September 2014 from 10 sites in Finland  
110 (The Archipelago Sea) and 10 sites in Denmark (Funen and Limfjorden) (Fig. 1). The Baltic Sea  
111 sediments are typically mineral sediments consisting of glaciofluvial deposits and only a small  
112 fraction of the sediment carbon content consists of carbonates (Leipe et al. 2011). The inorganic  
113 carbon content in our samples was low and contributed with 0.5-5 % of total carbon content (n=  
114 10 sites per region) and therefore carbonates were not removed from the sediment samples  
115 prior to the analysis to avoid analytical errors in low organic samples (Schlacher and Connolly  
116 2014). The study sites in each region spanned a gradient from sheltered to exposed areas. The

Archipelago Sea of southwestern Finland is a shallow (mean depth 23 m), brackish (salinity 5-6) coastal area characterized by a complex mosaic of some 30.000 islands and skerries (Boström et al. 2006, Downie et al. 2013). The region is heavily influenced by human pressures, especially eutrophication, and exhibits naturally steep environmental gradients, as well as, strong seasonality in temperature and productivity (Boström et al. 2014).

Limfjorden is a brackish water area in the Jutland peninsula connected to both North Sea and Kattegat with salinity ranging from 17 to 35. The Fjord has a surface area of ~1500 km<sup>2</sup> and a mean depth of 4.7 m (Olesen and Sandjensen 1994, Wiles et al. 2006, Petersen et al. 2013). Funen is located between the Belt Seas in the transition zone where waters from Baltic Sea and Kattegat meet. The salinity of the area ranges between 10 and 25 and the annual mean water temperature ranges from 10-15° C (Rask et al. 1999). This study was conducted in shallow (< 10 m) fjords around Funen. Also the Danish areas are heavily influenced by human pressures, especially eutrophication from intense agricultural farming. (DMU; Danmarks Miljøundersøgelser, 2003).

## Field sampling

All samples were collected from depths of 2.5-3 m by scuba diving. At all sites, three replicate sediment cores (corer: length: 50 cm, diameter: 50 mm) were taken randomly at a minimum distance of 15 m from each other. The corer was manually forced to a depth of 30-40 cm and the sediment between 0-25 cm was used for the analysis. The cores were capped in both ends under water, and kept in a vertical position during transport to the laboratory. Eelgrass production and biomass were measured at all sites from four randomly chosen locations within the eelgrass meadow. In the vicinity of each sediment core, shoot density was counted using a 0.25 m<sup>2</sup> frame, and above- and belowground biomass samples were collected with a corer (diameter 19.7 cm) and bagged underwater. Additionally, when present, samples of plants and algae (drift algae,

other angiosperms, phytoplankton and epiphytes) considered likely carbon sources in the eelgrass meadows were collected from each site for identification and analysis of stable isotope composition. Approximately 10 g wet material was collected for each species. Annual eelgrass production was determined from estimates of previous growth by applying the horizontal rhizome elongation technique (Short and Duarte 2001). From each site, five replicate rhizome samples with the longest possible intact rhizome carefully removed, were collected and transported to the laboratory for further analysis.

#### Seagrass variables

In the laboratory, the above- and belowground biomass was separated and eelgrass leaves and rhizomes were cleaned from epiphytes, detritus and fauna with freshwater and gently scrubbed with a scalpel. All plant material was dried to constant weight (48 h in 60° C). The belowground biomass was separated into living and dead rhizomes and dried separately. Only the living rhizomes were used for the belowground biomass measurements while samples of both living and dead rhizomes were used for analysis of organic carbon (OC) and stable isotopic composition of the organic carbon ( $\delta^{13}\text{C}$ ). The root: shoot-ratio was calculated as the ratio between below- and aboveground biomasses of *Z. marina* samples. A pooled sample of 2 youngest leaves from 10 randomly selected shoots were collected prior to drying from the aboveground biomass samples and dried separately for analysis of OC and  $\delta^{13}\text{C}$ . All samples were analyzed by Thermo Scientific, delta V advantage, isotope ratio mass spectrometer. The measured isotope ratios were represented using the  $\delta$ - notation with Vienna Peedee belemnite as reference material.

Determination of annual eelgrass production was done by measuring length of each individual internode of the rhizomes to the nearest millimeters. To obtain an estimate of the mean annual production per site, internode length measurements of individual replicates (n= 5) were pooled.

Due to lack of two annual production peaks in both regions the annual production was estimated based on the distance between shortest and longest measured internodes, assuming that they represent the time point when the water temperature was at its minimum and maximum average, respectively. The time points for the water temperatures were obtained from databases of the Finnish and Danish Meteorological Institutes, respectively.

#### Sediment variables

In the laboratory, sediment samples were sliced into sections of 2-5 cm, where the upper 10 cm layer was divided into 2 cm layers and the remaining part in 5 cm layers. From each subsample visible plant parts and fauna were removed before the sediment was homogenized. From the 0-2 cm section a subsample of 20 ml was taken for grain size analysis by a Malvern Mastersizer 3000 particle size analyzer. The sediment silt content was calculated as the fraction with particle size of 2-63  $\mu\text{m}$  from the range of all particle sizes (Folk and Ward 1957). Sediment water content, dry bulk density and porosity were determined from a subsample of 5 ml that was taken using a cut-off 5 ml syringe and weighed before and after drying at 105°C for 6 h from all sediment layers. The dried sediment samples were homogenized in a mortar and divided into two subsamples from which one was used for analysis of sediment organic matter content (OM, as loss of ignition: 4 h in 520°C), and the other for analysis of sediment  $\delta^{13}\text{C}$  and OC as described above for the plant materials. Inorganic carbon content was low in sediments from both regions (< 5 %) and considered insignificant compared to the organic fraction (1-2 order of magnitude higher).

#### Corg stock and Corg accumulation calculations

To estimate sediment Corg stock and Corg accumulation of Finnish and Danish eelgrass area we used averages from 10 sites from each region in our calculations. The Corg (obtained by depth

integration of the carbon density ( $\text{mg C cm}^{-3}$ ) of 0-25 cm sediment layers ( $\text{mg C cm}^{-2}$ ) of the sampled region was multiplied with estimated seagrass area of the region based on the most recent areal estimates (in  $\text{km}^2$ ) of seagrass distribution available in the literature (Boström et al. 2014) and given as Corg in  $\text{g C m}^{-2}$ . In Finland the estimated areal extent was  $30 \text{ km}^2$ , while in Denmark the extrapolations were based on the minimum and maximum estimates of the areal extent, respectively ( $673$  and  $1345 \text{ km}^2$ ; Boström et al. 2014). Results for carbon burial (applied by multiplying the Corg stock, regional seagrass area and sediment accumulation rate estimate from literature) in each area are given as Corg accumulation ( $\text{t y}^{-1}$ ). Due to lack of long term monitoring of sediment accumulation in eelgrass meadows, we used available minimum, average and maximum sediment accumulation rates in seagrass meadows obtained from literature (Duarte et al. 2013b, Serrano et al. 2014, Miyajima et al. 2015).

To calculate the total Corg pool in Danish and Finnish eelgrass sediments, we summed the following three components: (1) the annual eelgrass carbon accumulation rate (Corg accumulation in  $\text{t C ha}^{-1}\text{y}^{-1}$ , calculated by dividing the measured Corg stocks ( $\text{C g DW m}^{-2}$ ) in each region with time that it takes to accumulate this stock with a sedimentation rate of  $2.02 \text{ mm y}^{-1}$ ), (2) the total C in the average living aboveground and belowground *Z. marina* tissue ( $\text{t C ha}^{-1}$ ), and (3) the mean Corg stocks ( $\text{t C ha}^{-1}$ ) in eelgrass sediments in Denmark and Finland, respectively. To calculate the present and lost economic value of eelgrass carbon stocks, we used the social cost of carbon of  $40.3 \text{ € t C}^{-1}$  (United States Government 2010) and multiplied this value with the Corg stocks ( $\text{t C km}^{-2}$ ). To estimate the Danish eelgrass losses over the past 100 years in economic terms, we used the calculations above, but accounted for the annually lost sequestration value by multiplying the rate by 100. We used the most recent loss estimates for Denmark for the period 1900-2000, assuming that the present coverage constitutes 10 % or 20 % of the historical area, respectively (Boström et al. 2014).

## Sediment carbon sources

The Isosource 1.3 isotope mixing model software (Phillips and Gregg 2003) was used to estimate the contribution of different carbon sources to the sediment surface Corg stock. We ran the Isosource model using the  $\delta^{13}\text{C}$  obtained from stable isotope analysis of *Z. marina* leaves, living and dead rhizomes and for samples of other abundant Corg sources within the meadow (n=1-5) with increments of 1 % and tolerance of 0.1. Numbers are given as percentage contribution to the sediment surface carbon pool.

## Data analysis

All statistical analyses were performed using the PRIMER 6 PERMANOVA+ package (Anderson et al. 2008). A 2-factor mixed model was used, where sampling sites and region (FIN, DEN) were used as fixed factors for the biological response variable (sediment organic carbon stock,  $\text{g C m}^{-2}$ ). In addition we ran reduced, countrywise DistLm models in order to better address the possible differences in regional environmental drivers for Corg stock. Prior to analysis, the environmental predictor variables (degree of sorting, sediment dry density, sediment water content, sediment porosity, sediment silt content, sediment organic content, annual production, root: shoot-ratio, shoot density and percentage of *Z. marina* detritus contribution to Corg) were visually inspected for collinearity using Draftsman plots of residuals. Due to autocorrelation between sediment variables (water content, porosity and dry density) sediment water content was removed from the environmental variables. To achieve normality in the retained environmental variables, data was log-transformed ( $\log(X+1)$ ) and Euclidean distance was used to calculate the resemblance matrix. The biological response variable (Corg stock in  $\text{g C m}^{-2}$ ) was square-root transformed and Bray-Curtis similarity was used to calculate the abundance matrix. The relative importance of different environmental variables was determined by use of DistLm, a distance-based linear model procedure (Legendre and Anderson 1999). DistLm model was

constructed using a step-wise procedure that allows addition and removal of terms after each step of the model construction. AICc (Akaike Information Criterion with a correction for finite sample sizes) was chosen as information criterion as it enables to fit the best explanatory environmental variables from of relatively small biological dataset compared to number of environmental variables (Burnham and Anderson 2002). An alpha level of significance of 95 % ( $p < 0.05$ ) was used for all the analysis. All means are reported as mean  $\pm$  SE (SEM).

## Results

### Seagrass meadow and sediment characteristics

In general, the Finnish meadows were found on exposed sandy bottoms while the environmental settings of the eelgrass meadows in Denmark were more variable (Fig. 2). Shoot density was nearly equal in both regions, averaging at  $417 \pm 75$  (shoots  $m^{-2}$ ) in Finland and  $418 \pm 32$  (shoots  $m^{-2}$ ) in Denmark. In Finland variation between sites (112-773 shoots  $m^{-2}$ ) was greater than in Denmark (300-652 shoots  $m^{-2}$ ). In Denmark the highest shoot density was found at the most exposed site (Nyborg), while in Finland the highest shoot density was found at Sackholm, a fairly sheltered site. The lowest shoot densities in Finland and Denmark were found in Tvärminne and Løgstør, respectively. The mean aboveground biomasses were  $101 \pm 3$  and  $145 \pm 5$  (g DW  $m^{-2}$ ) and the mean belowground biomasses  $79 \pm 5$  and  $148 \pm 13$  g (DW  $m^{-2}$ ) at Finnish and Danish sites, respectively. In Denmark, the mean fraction of OC in aboveground and belowground *Z. marina* tissue was  $35 \pm 0.32$  % DW and  $29 \pm 1.10$  % DW, respectively, while the corresponding numbers for Finland were  $38 \pm 0.24$  % DW and  $36 \pm 0.27$  % DW, respectively. Given an average total *Z. marina* biomass (above- and belowground) of  $293 \pm 22.31$  (Denmark) and  $180 \pm 9.60$  g DW  $m^{-2}$  (Finland), we estimate the Corg pool in bound in living seagrass biomass to  $0.66 \pm 0.005$  and  $0.94 \pm 0.014$  t C  $ha^{-1}$  in Finland and Denmark, respectively. The root:shoot-ratio was slightly lower in Finland ( $0.87 \pm 0.05$ ) than in Denmark ( $1.14 \pm 0.12$ ), and varied between 0.29 to 3.29 and

0.15 to 6.45 in Finland and Denmark, respectively. The annual production of eelgrass for Finland (average  $524 \pm 62$  g DW m<sup>-2</sup> y<sup>-1</sup>) showed relatively low variation between sites (270-803 g DW m<sup>-2</sup> y<sup>-1</sup>) being lowest at Jänisholm and highest at Ryssholmen. In Denmark, the mean annual eelgrass production was almost twice as high ( $928 \pm 159$  g DW m<sup>-2</sup> y<sup>-1</sup>) with large variation (470-2172 g DW m<sup>-2</sup> y<sup>-1</sup>). Production was lowest and highest at Dalby and Visby, respectively (Table 1).

The sediment characteristics varied significantly between Finland and Denmark. There was a significant difference ( $F_{1,9} = 14.7$ ,  $p < 0.003$ ) between regions in terms of silt content, which was generally lower at Finnish ( $6.3 \pm 1$  %) sites than at Danish sites ( $20.2 \pm 3.9$  %), although in Denmark the variation between sites ranged from 0.8 % at Nyborg to 31.6 % at Thurøbund (Table 1, Fig. 2). In Finland, the variation between sites was lower and ranged from 1.6% (Kolaviken) to 15.5 % (Sackholm). At the Finnish sites the mean sediment dry density was higher ( $1.35 \pm 0.01$  g cm<sup>-3</sup>) compared to the Danish sites ( $1.25 \pm 0.02$  g cm<sup>-3</sup>), and the Finnish sites exhibited lower within-region variability ranging from 1.1 g cm<sup>-3</sup> at Lyddaren to 1.5 cm<sup>-3</sup> at Långören, while the Danish sites varied from 0.3 g cm<sup>-3</sup> at Thurøbund to 1.5 g cm<sup>-3</sup> at Visby. The Finnish sites showed consistently lower pools of organic matter (LOI:  $1.4 \pm 0.3$  %DW) compared to the average of Danish sites (LOI:  $3.9 \pm 1.5$  % DW). Similarly, the mean OC content was lower in Finland ( $0.24 \pm 0.033$ ) than in Denmark ( $1.75 \pm 0.563$ ). Consequently, the mean water content was similarly lower in Finland ( $20.9 \pm 0.4$  %: range 16-29 %) than in Denmark ( $37.4 \pm 1.8$  %: range 17-76 %) (Table 1). Sediment porosity was similar in both regions, and ranged from 0.25 to 0.30 in Finland, and from 0.20 to 0.40 in Denmark. At the Finnish sites, the proxy (degree of sorting) that was used to estimate exposure, varied from 0.8 to 1.5 ( $\phi$ ), with Kolaviken being the most exposed and Ängsö being the most sheltered site. In Denmark degree of sorting varied from 0.6 to 2.1 ( $\phi$ ), with Nyborg and Visby being the most exposed and sheltered sites, respectively (Fig. 2).

## Organic carbon stocks

The profiles of carbon densities ( $\text{g C cm}^{-3}$ ) in the upper 25 cm of the sediment showed marked differences both between and within the sampled regions. At the Finnish sites, where eelgrass typically grows at exposed locations, the sediment carbon densities were low (mean  $2.6 \pm 0.09 \text{ mg C cm}^{-3}$ ) and declined with depth at most of the 10 study sites (Fig. 3). At the Danish sites, however, the sediment carbon density were more variable (mean  $17.45 \pm 9.42 \text{ mg C cm}^{-3}$ ) both within and between the sites (Fig. 3). Depth integrated Corg stocks (0-25 cm,  $\text{g C m}^{-2}$ , Fig. 4) were particularly high at one sheltered site in Funen, namely Thurøbund. This site is characterized by soft sediments with high organic content, high annual eelgrass production and high belowground biomass (Table 1). The lowest eelgrass Corg stocks in Denmark were found at two relatively exposed and sandy sites, namely Nyborg and Dalby (Fig. 4). The estimate of average total Corg stock in Finland was  $0.019 \pm 0.001 \text{ Mt C}$  taking the total area of eelgrass into account (30  $\text{km}^2$ ; Table 2). Using minimum and maximum estimates of the eelgrass area in Denmark the estimates for mean total sediment Corg stock in Denmark were  $2.164 \pm 0.005 \text{ Mt C}$  or  $5.868 \pm 0.014 \text{ Mt C}$ , respectively (673 and 1345  $\text{km}^2$ ; Table 2).

Using an annual carbon accumulation value of 0.05 and 0.35  $\text{t C ha}^{-1} \text{ y}^{-1}$  for Finland and Denmark, respectively, and assuming sediment accumulation of 2.02  $\text{mm y}^{-1}$  on average (Table 2), the total pool of Corg in the *Z. marina* meadows (Corg bound in living biomass, sediment Corg stock and Corg accumulation) corresponds to 6.98  $\text{t C ha}^{-1}$  (698  $\text{t km}^{-2}$ ) and 44.9  $\text{t C ha}^{-1}$  (4490  $\text{t km}^{-2}$ ) for Finland and Denmark, respectively. Using the social cost of carbon of 40.3  $\text{€ t C}^{-1}$  (United States Government 2010), the present economic value of eelgrass carbon in Finnish and Danish eelgrass meadows is estimated at 281 and 1809  $\text{€ ha}^{-1}$ , respectively. Using an average of these values (1045  $\text{€ ha}^{-1}$ ) and a conservative estimate of the eelgrass acreage in the Baltic Sea (2100  $\text{km}^2$ : Boström et al. 2014), we estimate a total monetary value of the present sequestration by eelgrass meadows to be 219.4 million euro. Given the total eelgrass loss in Denmark for the time period 1900-2000 is between 5381  $\text{km}^2$  (present area 20 % of historical

distribution) and 6053 km<sup>2</sup> (present area 10 % of historical distribution), this equals to a Corg loss of 0.042 and 0.048 Gt C, respectively. Using the average value (1045 € ha<sup>-1</sup>) these areal loss estimates corresponds to a lost economic value between 562 and 632 million euro, for the minimum and maximum areal loss estimates, respectively.

#### Corg accumulation

The estimates for annual Corg accumulation in the Finnish seagrass meadows (30 km<sup>2</sup>) were low (0.002, 0.016, 0.033 Mt C y<sup>-1</sup>), when applying sediment accumulation rates of 0.32, 2.02 and 4.20 mm y<sup>-1</sup>, respectively. The low Corg accumulation in Finnish meadows was a result of low mean Corg stocks and relatively small size of seagrass area compared to Denmark (Table 2). The estimates for annual Corg accumulation for the Danish sites differed between the two sub-regions Limfjorden (18 km<sup>2</sup>) and Funen (179 km<sup>2</sup>). At the sampling sites around Funen, the Corg accumulation was 0.139, 0.881 and 1.832 Mt C y<sup>-1</sup>, while in Limfjorden the Corg accumulation was lower (0.006, 0.038 and 0.079 Mt C y<sup>-1</sup>) and similar to Corg accumulation for Finland. Using upper and lower eelgrass areal estimates, total Corg accumulation based on 3 sediment accumulation rates in Denmark were more than four orders of magnitude higher (0.376, 2.373, 3.636 and 0.75, 4.741 and 9.859 Mt C y<sup>-1</sup>) than the estimated total Corg accumulation in Finnish eelgrass meadows.

#### Carbon sources

The  $\delta^{13}\text{C}$  values of the surface sediment within regions were quite homogenous ranging from -22.8 to -18.9 ‰ and -17.6 to 13.5 ‰, in Finland and Denmark respectively. The analytical error for the sediment  $\delta^{13}\text{C}$  values was 2.8 ‰. The  $\delta^{13}\text{C}$  in *Z. marina* tissues ranged from -11.4 to -8.5 ‰ and from -12.5 to -8.2‰, in Finland and Denmark, respectively. There was no significant difference between living above- and belowground tissue and decomposed belowground tissue

and samples were pooled in the isotope mixing model. Although *Z. marina* was the dominant seagrass species in Finland, the study sites included both monospecific and mixed seagrass meadows. Mixed meadows typically contained pondweeds, e.g. *Potamogeton pectinatus* and *Potamogeton perfoliatus*. In particular, *P. pectinatus* ( $\delta^{13}\text{C}$  -11.3 to -7.6 ‰) and *P. perfoliatus* ( $\delta^{13}\text{C}$  -15.6 to -12.6 ‰) were both present at five of the Finnish study sites (Jänisholm, Sackholm, Hummelskär, Tvärminne and Fårö) and *P. pectinatus* was present at Kolaviken, Ryssholmen and Lyddaren. *Ruppia cirrhosa* (-11.5 to -8.8 ‰) was less abundant and found at three of the Finnish sites (Sackholm, Ängsö, Kolaviken) and at one study site in Denmark (Kertinge). The  $\delta^{13}\text{C}$  for phytoplankton ranged from -24.6 to -22.6 ‰ and -18.6 to 16.4 ‰, in Finland and Denmark, respectively. Drift algae was present at all Danish study sites, except Thurøbund, and had  $\delta^{13}\text{C}$  values from -17.9 to -13.5 ‰, but only at five Finnish sites (Ängsö, Ryssholmen, Fårö, Långören and Hummelskär) with  $\delta^{13}\text{C}$  values ranging from -20.0 to -16.3‰.

The isotope mixing model indicated that at all Finnish sites, phytoplanktonic material was the major contributor (43-86 %) to the sediment surface Corg pool. In Denmark *Z. marina* contributed with 13-81 % to the sediment surface Corg pool, contribution being lowest at the most exposed site in Nyborg and highest in Visby. The corresponding numbers for Finland were 1.5-32 %, being lowest and highest in Tvärminne and Lyddaren, respectively (Fig. 5).

Environmental factors explaining carbon pools

The combined (FIN + DK) DistLm analysis showed, that three sediment variables (dry density, silt content, porosity) and three plant variables (annual eelgrass production, the root:shoot-ratio and *Z. marina* contribution to the sediment carbon pool) explained 67 % of the variation in the sediment Corg stock ( $\text{g C m}^{-2}$ ) (Table 3 and 4, Fig. 6). Specifically, sediment silt content alone explained > 36 % of the variation in Corg stocks (Table 3). In both regions, exposed sites characterized by sandy, low organic sediments and low silt content, had low Corg stocks. In

contrast, at sheltered sites like Thurøbund in Denmark, we measured the highest sediment Corg stock along with highest silt and water content among all sites. Although sediment porosity and sediment dry density also contributed to the model, they were of minor importance (~2 % each).

The combined (FIN+ DK) DistLm analysis also showed that the *Z. marina* contribution to the sediment surface carbon pool explained 10.9 % of the variation in the measured Corg stocks (Fig. 6, Table 3 and Table 4). Drift algae was a significant contributor (72 %) to the sediment surface Corg pool at the Danish sites, while it appeared to play only a minor role (0-21 %) in Finland. The carbon sources were generally more mixed at the Danish study sites compared to the Finnish sites where phytoplankton dominated (Fig. 5).

While the overall model including all sites explained almost 70 % of the variation in carbon stocks (Table 3, 4), and indicated that the most relevant environmental variables were included in this Baltic scale analysis, reduced, countrywise DistLM models revealed different results. In particular, variability in Finnish carbon stocks were explained up to 50 % by geological variables (porosity, sorting and sediment density), while the best sequential model for carbon stock variability at Danish sites explained 75 % of the total variance. In contrast to Finland, the role of eelgrass related variables (relative proportion of *Z. marina* in the sediment and the root:shoot ratio) were most important and explained 40 % and 25 %, respectively of the carbon stock variability.

## Discussion

Recent studies have shown considerable variation in the global estimates of carbon stocks (Corg stocks) and carbon accumulation rates (Corg accumulation) in seagrass meadows, indicating an incomplete understanding of factors influencing this variability (Fourqurean et al. 2012, Duarte

et al. 2013a, Lavery et al. 2013, Miyayima et al. 2015). The Baltic Sea forms a key distribution area for eelgrass in Europe, but similarly to the global data sets, we have so far lacked estimates on seagrass carbon stocks and accumulation.

In our study, the Finnish eelgrass meadows showed consistently very low Corg stocks and Corg accumulation, and the meadows were minor carbon sinks compared to the Danish meadows. The Danish sites showed more variation in the sediment Corg stock and accumulation and Corg stock was particularly high at one site, Thurøbund ( $26138 \pm 385 \text{ g C m}^{-2}$ ), which is a relatively sheltered site with high organic sediments. Expectedly, due to both larger overall eelgrass acreage and larger Corg stocks in the Danish meadows, the total Corg accumulation ( $0.38\text{-}9.86 \text{ t C y}^{-1}$ ) was three to four orders of magnitude higher than in the Finnish meadows ( $0.002\text{-}0.033 \text{ t C y}^{-1}$ ). As eelgrass in Finland generally grow in more exposed locations potentially due to increased interspecific competition with freshwater plants such as common reed (*Phragmites australis*) in sheltered locations (Boström et al. 2006), it is probable that most of the Corg produced in the Finnish meadows is exported, and thus incorporated in detrital food webs in deeper bottoms. This argument is supported when applying sediment accumulation rates from literature, as only 0.15 – 2.0 % of the annual production accumulated in Finnish meadows, while the corresponding numbers for Denmark were 0.6 -7.8 %. Duarte and Cebrian (1996) estimated that on average 25 % of the global seagrass primary production is exported, and seagrass detritus may thus contribute significantly to Corg stocks in other locations, a fact that is often overlooked.

Extrinsic drivers of carbon sequestration in seagrass meadows

As proposed in previous work accumulation of fine grained size fractions in seagrass sediments, relative to those accumulated in bare sediments, appears to be one of the major factors

influencing the carbon sink capacity of seagrass meadows (Kennedy et al. 2010, Miyajima et al. 2015), and may thus be a useful proxy for the sink capacity. In addition, it is well known, that seagrasses modify sediments by reducing water flow and consequently increasing particle trapping and sedimentation and reducing resuspension (Fonseca and Fisher 1986, Fonseca and Cahalan 1992, Gacia et al. 2002, Hendriks et al. 2008, Boström et al. 2010) and also increasing Corg (Kennedy et al. 2010).

In this study, the DistLm analysis showed, that contribution of *Z. marina* to the sediment surface carbon pool was an important driver (> 10.9 %) of the variation in the sediment Corg stock (Table 3 and 4, Fig. 6) when the model included both regions. Surprisingly, the reduced countrywise analysis revealed different results and showed that *Z. marina* contribution to the sediment surface carbon pool was an important driver for Corg stocks only in Denmark. We believe that the countrywise differences in explanatory variables might relate to the more pronounced influence of eelgrass for carbon stocks at Danish sites. Indeed, these sites exhibited on average 30 % higher aboveground biomasses, 45 % higher belowground biomasses, 24 % higher root:shoot- ratios and 44 % higher productivity compared to the Finnish sites. In Finland and the northern Baltic Sea, eelgrass meadows appears to be primarily physically controlled, and thus sediment variables play a relatively more pronounced role. The results from the model were also supported by our data in which we found increasing Corg stocks at the Danish sites, where *Z. marina* was the major source of organic carbon, contributing with 13-81% to the surface sediment Corg, while in contrast, at the Finnish sites where only a minor fraction of carbon buried in sediments derive from eelgrass detritus (1.5-39.6 %) the Corg stocks were low. Correspondingly, the average  $\delta^{13}\text{C}$  value (-16.2 ‰) in the Danish sediment samples was similar to the global median value (-16.3±0.2 ‰) reported by Kennedy et al. (2010) in which on average 51 % of the carbon was derived from seagrass detritus, whereas it was -20±0.6 ‰ in Finland indicative of higher contribution from other more negative carbon sources., such as phytoplankton. The importance of the *Z. marina* contribution to the Corg stocks may be

explained by slow decomposition rates of seagrass tissue. Especially, the high proportion of refractory organic compounds in the seagrass belowground parts and high C:N:P-ratios of seagrass tissue in general make seagrasses less biodegradable than most marine plants and algae (Fourqurean and Schrlau 2003, Vichkovitten and Holmer 2004, Kennedy and Björk 2009, Holmer et al. 2011, Röhr et al. in prep.). The slow decomposition rates are also a result of reduced sediment conditions commonly encountered in Danish seagrass meadows (Kristensen and Holmer 2001, Holmer et al. 2009, Pedersen et al. 2011). Despite the extensive distribution (2-29 ha), high biomasses (300-800 g DW m<sup>-2</sup>) and major impact of drifting algal mats on coastal ecosystem functioning (Norkko and Bonsdorff 1996, Salovius and Bonsdorff 2004, Rasmussen et al. 2013, Gustafsson and Boström 2014), the stable isotope composition of the sediments suggests that drift algae had a surprisingly minor influence on the sediment surface Corg pool in both regions. Thus, despite present on several sampling sites, drift algae is likely exported and mineralized in deeper sedimentation basins. Furthermore, we found that at all study sites in both regions, there were several other potential sources influencing the sediment surface Corg pool. Similarly, Bouillon et al. (2007) showed that in seagrass sediments adjacent to mangrove forests in Kenya, none of their sites had seagrass material as the sole source of Corg, and instead mangrove-derived detritus contributed significantly to the seagrass sediment Corg pool.

Similarly to the contribution of *Z. marina* to the sediment surface carbon pool, the root:shoot-ratio explained 12.7 % of the variation in the Corg stocks when both regions were included in the model, but in the reduced countrywise models it was important driver for Corg stocks in only Denmark. Accordingly, the highest Corg stocks, belowground biomass and root: shoot-ratio was found in Thurøbund (Denmark). In Finland, the highest root: shoot-ratio (2.07) was found at Kolaviken, with a relatively low Corg stock (397 g C m<sup>-2</sup>). Due to higher degree of exposure at the site (degree of sorting 0.7  $\phi$ ) compared to Thurøbund (1.4  $\phi$ ) it is likely that large portion of the eelgrass production was exported away from the meadow and not stored in the sediment. The

mean shoot densities were almost identical between regions, and shoot density did not contribute to the model explaining Corg.

The annual eelgrass production explained only 2.3 % of the variation in the Corg stocks in the combined model. The annual production rates were almost twice as high at Danish sites compared to the Finnish sites. Regional differences in seagrass productivity may be caused by differences in e.g. the inorganic carbon concentration in water column and light availability between the regions (with higher values in Denmark), which both affect the photosynthetic capacity of the plant (Hellblom and Björk 1999, Holmer et al. 2009, Boström et al. 2014). Eelgrass production tend to be higher in physically exposed areas compared to more sheltered areas, which can be due to improved sediment oxygen conditions and hydrodynamical effects (Hemminga and Duarte 2000). This finding was not supported by our study, in which we found the highest annual eelgrass production rates at both the most sheltered and exposed sites, namely Visby and Nyborg (DK).

#### Geographical comparisons of carbon stocks and accumulation

Our estimated Corg stocks for the study sites were generally lower (627-4324 t C km<sup>-2</sup>) than estimates (25200-84000 t C km<sup>-2</sup>) found in the literature (Duarte et al. 2005, Nellemann et al. 2009, Mcleod et al. 2011, Fourqurean et al. 2012). In Duarte et al. (2005) the data set used for the calculations was gathered from various studies conducted at different temporal scales and habitat types, as well as different methods for determination of Corg accumulation. Additionally, several of the studies were conducted in the Mediterranean *P. oceanica* meadows - a habitat with superior carbon sequestration and storage capacity (Duarte et al. 2005, Lavery et al. 2013). The average sizes of Corg stocks in Finnish and Danish eelgrass meadows were also considerably lower than the mean values reported by Alongi et al. (2014) for tropical seagrass meadows (14270 t C km<sup>-2</sup>). In contrast, our estimate for the carbon stock in the top 25 cm for Danish and

Finnish meadows ( $627\text{--}6005\text{ g C m}^{-2}$ ) are comparable to Australian ( $262\text{--}4833\text{ g C m}^{-2}$ ; Lavery et al. 2013) and Asian estimates ( $3800\text{--}12000\text{ g C m}^{-2}$ ; Miyajima et al. 2015).

#### Consequences of seagrass loss for carbon pools

Despite the importance of seagrasses, their global distribution has decreased by 29 % since 1879 primarily due to anthropogenic pressures (Waycott et al. 2009), thus weakening the carbon sink capacity of marine environments to sequester carbon (Duarte et al. 2005). Since the 1970s, the Baltic Sea has been subject to strong anthropogenic pressures (Conley et al. 2009) leading to eelgrass declines in several countries (Boström et al. 2014). In the 1930s, the Danish eelgrass meadows were significantly reduced by the wasting disease (Rasmussen 1977). These regime shifts in Denmark have resulted in a 80-90 % decline corresponding to  $6726\text{ km}^2$  in the beginning of 1900's to  $673\text{--}1345\text{ km}^2$  in 2005, using the minimum and maximum estimates for the current coverage area, respectively (Boström et al. 2014). Using the mean carbon density ( $17.45\text{ mg C cm}^{-3}$ ) measured at the Danish sites, the lost Corg stock is estimated to 23-27 Mt C and these large-scale seagrass declines, which are also found in Sweden and Germany, have eroded the Corg stocks in the Baltic Sea significantly (Table 2). In Finland there is a lack of long-term monitoring, but the meadows appear to be stable and cover at least  $30\text{ km}^2$  with no significant loss of Corg stocks.

Using a carbon monetary value of  $40.3\text{€ C}^{-1}$ , we calculated the monetary value of the present carbon storage and sequestration capacity of eelgrass meadows in Finland and Denmark to be 281 and 1809  $\text{€ ha}^{-1}$ , respectively. Pendleton et al. (2014) calculated a global estimated economic cost of lost seagrass meadows to be 1.9-13.7 billion USD. This value was derived from the cost of lost carbon sink capacity, ignoring other lost ecosystem services including e.g. coastal protection, water quality management, food provision and the role of seagrasses as fisheries and key habitats for marine species (Barbier et al. 2011, Atwood et al. 2015). Our estimate also only

considers lost carbon sink capacity and can be compared directly with Pendleton et al. (2014). The present economic value of carbon storage and sequestration capacity of Baltic Sea eelgrass meadows is thus between 1.7 and 12 % out of the global seagrass Blue Carbon value.

While useful, our and previous work still remain snap shots of complex processes causing local and regional variability in estimates of seagrass Blue Carbon stocks and accumulation. Clearly, in order to produce more reliable estimates of global seagrass carbon sequestration rates and stocks, there is a need for more studies integrating and modeling the individual and joint role of e.g. sediment biogeochemistry, seascape structure, plant species architecture and hydrodynamic regime. Since seagrasses are lost at accelerating rates (Waycott et al. 2009), there is also an urgent need for a better understanding of the fate of lost seagrass carbon (Macreadie et al. 2014) and the development of the carbon sink capacity in restored seagrass ecosystems (Nellemann et al. 2009, Greiner et al. 2013, Marba et al. 2015). Nelleman et al. (2009) proposed the use of carbon trading programs using financial incentives for forest conservation, such as REDD+ (Reduced Emissions from Deforestation and Degradation) and NAMAs (Nationally Appropriate Mitigation Actions), to include the blue carbon ecosystems as part of their environmental protection protocol. Both of these carbon mitigation programs require ongoing monitoring of organic carbon storage and emission in the different Blue Carbon ecosystems. In order to manage seagrass meadows, mitigate climate change and produce information required for the carbon trading programs, it is fundamental to understand factors influencing the capacity of seagrass meadows to capture and store carbon. By solving these uncertainties, the conservation and restoration of seagrass meadows can be implemented in the most beneficial manner by e.g. giving priority to protection of the seagrass meadows and species with the highest carbon sink capacity and foundation of restoration projects in areas most suitable for seagrass growth (Duarte et al. 2013a).

Copyright statement

The article is distributed under the [Creative Commons Attribution 3.0](#) License. Unless otherwise stated, associated published material is distributed under the same licence. Authors grant Copernicus Publications a license to publish the article and identify itself as the original publisher. Authors grant Copernicus Publications commercial rights to produce hardcopy volumes of the journal for purchase by libraries and individuals. Authors grant any third party the right to use the article freely under the stipulation that the original authors are given credit and the appropriate citation details are mentioned.

Acknowledgements

This work is part of a double degree program between Åbo Akademi University (ÅAU) and University of Southern Denmark (SDU). The study was funded by The Maj and Tor Nesslings Foundation and University of Southern Denmark. We are grateful for Archipelago Centre Korpoström and University of Southern Denmark for excellent working facilities. Tiina Salo and Karine Gagnon are acknowledged for field assistance and Katrine Kierkegaard and Birthe Christensen for their assistance in the laboratory work.

597

598

599

600

601

602

603

604

605

606

607

608

609

610

611

612

613

614

615

616

617

618

619

620

621

622

623

Alongi, D. M.: Carbon Cycling and Storage in Mangrove Forests. *Ann. Rev. Mar. Sci.* 6:195–219, 2014.

Anderson, M.J., Gorley, R.N. and Clarke, K.R.: PERMANOVA for PRIMER: guide to software and statistical methods. Plymouth, United Kingdom: PRIMER-E Ltd., 2008.

Atwood, T.B., Connolly, R.M., Euan, G.R., Lovelock, C.E., Heithaus, M.R. and Hays, G.C, Predators help protect carbon stocks in blue carbon ecosystem. *Nat. Clim. Change* 2015.

Barbier, E.B., Hacker, S.D., Kennedy, C., Koch, E.W., Stier, A.C. and Silliman, B.R.: The value of estuarine and coastal ecosystem services. *Ecol. Monogr.*,81(2):169-193, 2011.

Boström C., Baden S., Bockelmann A., Dromph K., Fredriksen S. and Gustafsson C.: Distribution, structure and function of Nordic eelgrass (*Zostera marina*) ecosystems: implications for coastal management and conservation. *Aq. Cons. Mar. Freshwater Ecosyst.*,24(3):410-434, 2014

Boström, C., Törnroos, A. and Bonsdorff, E.: Invertebrate dispersal and habitat heterogeneity: Expression of biological traits in a seagrass landscape. *J. Exp. Mar. Biol. Ecol.*, 390(2):106-117, 2010.

Boström, C., Bonsdorff, E., Kangas, P. and Norkko, A.: Long-term changes of a brackish-water eelgrass (*Zostera marina* L.) community indicate effects of coastal eutrophication. *Estuar. Coast. and Shelf Sci.* 55(5):795-804, 2002.

Boström, C., O'Brien, K., Roos, C. and Ekebom, J.: Environmental variables explaining structural and functional diversity of seagrass macrofauna in an archipelago landscape. *J. Exp. Mar. Biol. Ecol.* ,335(1):52-73, 2006

Bouillon S. and Boschker H.TS.: Bacterial carbon sources in coastal sediments: a cross-system analysis based on stable isotope data of biomarkers. *Biogeosciences*, 3(2):175-185, 2006.

Bouillon, S., Dahdouh-Guebas, F., Rao, A.V.V.S., Koedam, N. and Dehairs, F.: Sources of organic carbon in mangrove sediments: variability and possible ecological implications. *Hydrobiologia*, 495(1-3):33-39, 2003.

Bouillon, S., Dehairs, F., Velimirov, B., Abril, G. and Borges, A.V.: Dynamics of organic and inorganic carbon across contiguous mangrove and seagrass systems (Gazi Bay, Kenya). *J. Geophys. Research-Biogeosciences* 112(G2):G02018, 2007.

Burnham, K.P. and Anderson, D.R.: Model Selection and Multi-Model Inference: A Practical Information-Theoretic Approach (2nd Edition). Secaucus, NJ, USA: Springer, 2002.

Conley, D.J., Björck, S., Carstensen, J., Bonsdorff, E., Destouni, G. and Gustafsson, B.G.: Hypoxia- related processes in the Baltic Sea. *Env. Sci. Tech.*, 2009.

DMU-report, Ærtebjerg, G., Andersen, J.H. and Hansen, O.S.(Eds.): Nutrients and Eutrophication in Danish Marine Waters . A Challenge for Science and Management, National Environmental Research Institute, Denmark, 2003.

- Downie, A., von Numers, M. and Boström, C.: Influence of model selection on the predicted distribution of the seagrass *Zostera marina*. *Estuar. Coast. and Shelf S.*, 121:8-19, 2013.
- Duarte, C.M. and Cebrian, J.: The fate of marine autotrophic production. *Limnol. Oceanogr.*, 41(8):1758-1766, 1996.
- Duarte, C.M., Middelburg, J.J. and Caraco, N.: Major role of marine vegetation on the oceanic carbon cycle. *Biogeosciences*, 2(1):1-8, 2005.
- Duarte, C.M., Kennedy, H., Marba, N. and Hendriks, I.: Assessing the capacity of seagrass meadows for carbon burial: Current limitations and future strategies. *Ocean Coast Man.*, 83:32-38 2013.
- Duarte, C.M., Losada, I.J., Hendriks, I.E., Mazarrasa, I. and Marba, N.: The role of coastal plant communities for climate change mitigation and adaptation. *Nature Clim. Change*, 3 (11):961-968, 2013.
- Folk, R.L. and Ward, W.C.: Brazos river bar: a study of significance of grain size parameters. *J. Sediment Petrol* 1957;27:3, 1957
- Fonseca and Fisher, J.S.: A comparison of canopy friction and sediment movement between four species of seagrass with reference to their ecology and restoration. *Marine ecology progress series*. Oldendorf, 29(1):15-22, 1986
- Fonseca, M.S. and Cahalan, J.A.: A preliminary evaluation of wave attenuation by four species of seagrass. *Estuar. Coast. Shelf Sci.* 1992 12; 35(6):565-576, 1992.
- Fourqurean, J.W. and Schrlau, J.E. Changes in nutrient content and stable isotope ratios of C and N during decomposition of seagrasses and mangrove leaves along a nutrient availability gradient in Florida Bay, USA. *Chem. Ecol.* 19:373-390, 2003.
- Fourqurean, J.W., Duarte, C.M., Kennedy, H., Marba, N., Holmer, M. and Mateo, A.M.: Seagrass ecosystems as a globally significant carbon stock. *Nature Geoscience*, 5(7):505-509, 2012.
- Fry B. and Sherr E.B.  $\delta^{13}\text{C}$  measurements as indicators of carbon flow in marine and freshwater ecosystems. *Contrib. Mar. Sci.*, 27:13, 1984.
- Fry, B., Scalan, R.S., Parker, P.L.: Stable Carbon Isotope Evidence for 2 Sources of Organic-Matter in Coastal Sediments - Seagrasses and Plankton. *Geochim. Cosmochim. Acta* 41(12):1875-1877, 1977.
- Gacia, E., Granata, T.C. and Duarte, C.M.: An approach to measurement of particle flux and sediment retention within seagrass (*Posidonia oceanica*) meadows. *Aquat. Bot.*, 65(1-4):255-268, 1999.
- Gacia, E. and Duarte, C.M. and Middelburg, J.J.: Carbon and nutrient deposition in a Mediterranean seagrass (*Posidonia oceanica*) meadow. *Limnol. Oceanogr.* 47(1):23-32, 2002.
- Gattuso, J.P., Frankignoulle, M. and Wollast R. Carbon and carbonate metabolism in coastal aquatic ecosystems. *Ann. Rev. Ecol. Syst.*, 29:405-434, 1998.
- Greiner, J.T., McGlathery, K.J., Gunnell, J. and McKee, B.A. Seagrass Restoration Enhances "Blue Carbon" Sequestration in Coastal Waters. *Plos One*, 8(8):e72469, 2013.
- Gustafsson, C. and Boström, C.: Algal mats reduce eelgrass (*Zostera marina* L.) growth in mixed and monospecific meadows. *Journal of Experimental Marine Biology and Ecology*. 461:85-92, 2014.

- Hendriks, I.E., Sintes, T., Bouma, T.J. and Duarte, C.M.: Experimental assessment and modeling evaluation of the effects of the seagrass *Posidonia oceanica* on flow and particle trapping. *Mar. Ecol. Prog. Ser.* 356:163-173, 2008.
- Herr, D., Pidgeon, E., Laffoley, D. (Eds.): *Blue Carbon. Policy Framework: Based on the Discussion of the International Blue Carbon Policy Working Group*, IUCN and Arlington, Gland, Switzerland, USA: CI. vi+39pp, 2012.
- Holmer, M., Duarte, C.M., Boschker, H.T.S. and Barron, C.: Carbon cycling and bacterial carbon sources in pristine and impacted Mediterranean seagrass sediments. *Aquat. Microb. Ecol.*, 36(3):227-237, 2004.
- Holmer, M., Baden, S., Bostrom C and Moksnes P.: Regional variation in eelgrass (*Zostera marina*) morphology, production and stable sulfur isotopic composition along the Baltic Sea and Skagerrak coasts. *Aquat. Bot.*, 91(4):303-310, 2009.
- Holmer, M. 2009. Productivity and biogeochemical cycling in seagrass ecosystems. In *Coastal Wetlands: An Integrated Ecosystem Approach*, ed. G.M.E. Perillo, E. Wolanski, D.R. Cahoon and M.M. Brinson, 377-401. Amsterdam, The Netherlands.
- Holmer, M., Wirachwong, P. and Thomsen, M.S.: Negative effects of stress-resistant drift algae and high temperature on a small ephemeral seagrass species. *Mar. Biol.*, 158(2):297-309, 2011.
- Kennedy, H., Gacia, E., Kennedy, D.P., Papadimitriou, S. and Duarte, C.M.: Organic carbon sources to SE Asian coastal sediments. *Estuar. Coast. and Shelf S.*, 60(1):59-68, 2004.
- Kennedy, H. and Björk, M.: *Seagrasses, in The Management of Natural Coastal Carbon Sinks in Coastal Ecosystems: Investigating and Realising the Potential*. 2009.
- Kennedy, H., Beggins, J., Duarte, C.M., Fourqurean, J.W., Holmer, M. and Marba, N.: Seagrass sediments as a global carbon sink: Isotopic constraints. *Glob. Biogeochem. Cycles*, 24:GB4026, 2010.
- Kristensen, E. and Holmer, M.: Decomposition of plant materials in marine sediment exposed to different electron acceptors (O<sub>2</sub>, NO<sub>3</sub><sup>-</sup>, and SO<sub>4</sub><sup>2-</sup>), with emphasis on substrate origin, degradation kinetics, and the role of bioturbation. *Geochim. Cosmochim. Acta*, 65(3):419-433, 2001.
- Lavery, P.S., Mateo, M., Serrano, O. and Rozaimi. M.: Variability in the Carbon Storage of Seagrass Habitats and Its Implications for Global Estimates of Blue Carbon Ecosystem Service. *Plos One*, 8(9):e73748, 2013.
- Legendre, P. and Anderson, M.J.: Distance-based redundancy analysis: Testing multispecies responses in multifactorial ecological experiments (vol 69, pg 1). *Ecol. Monogr.*, 69 (4):512-512, 1999.
- Leipe, T., Tauber, F., Vallius, H., Virtasalo, J., Uścińowicz, S., Kowalski, N., Hille, S., Lindgren, S., and Myllyvirta, T.: Particulate organic carbon (POC) in surface sediments of the Baltic Sea. *Geo-Mar. Lett.* 31:175-188, 2011.
- Macreadie, P.I., Baird, M.E., Trevathan-Tackett, S.M., Larkum, A.W.D. and Ralph, P.J.: Quantifying and modelling the carbon sequestration capacity of seagrass meadows - A critical assessment. *Mar. Pollut. Bull.*, 83(2):430-439, 2014.

- Marba, N., Arias-Ortiz, A., Masque, P., Kendrick, G. A., Mazarrasa, I., Bastyan, G. R., Garcia-Orellana, J. and Duarte, C. M.: Impact of seagrass loss and subsequent revegetation on carbon sequestration and stocks. *J. of Ecology* 103:296-302, 2015
- Mcleod, E., Chmura, G.L., Bouillon, S., Salm, R., Bjork, M. and Duarte, C.M.: A blueprint for blue carbon: toward an improved understanding of the role of vegetated coastal habitats in sequestering CO<sub>2</sub>. *Front. Ecol. Env.*, 9(10):552-560, 2011.
- Miyajima, T., Hori, M., Hamaguchi, M., Shimabukuro, H., Adachi, H. and Yamano, H.: Geographic variability in organic carbon stock and accumulation rate in sediments of East and Southeast Asian seagrass meadows. *Glob. Biogeochem. Cycles*, 29(4):397-415, 2015.
- Moksnes, P.-E. and Cole, S. G.: Valuing multiple eelgrass ecosystem services in Sweden: Fish production and uptake of carbon and nitrogen. *Front. Mar. Sci.* 2(121):1-18, 2015.
- Moncreiff, C.A. and Sullivan M.J.: Trophic importance of epiphytic algae in subtropical seagrass beds: evidence from multiple stable isotope analyses. *Mar. Ecol. Prog. Ser.*, 215:93-106, 2001.
- Nellemann, C., Corcoran, E., Duarte, C.M., Valdés, L., De Young, C. and Fonseca, L.: Blue Carbon. A Rapid Response Assessment, 2009.
- Norkko, A. and Bonsdorff, E.: Rapid zoobenthic community responses to accumulations of drifting algae. *Mar. Ecol. Prog. Ser.*, 131:143-157, 1996.
- Olesen, B. and Sandjensen, K.: Patch Dynamics of Eelgrass *Zostera marina*. *Mar. Ecol. Prog. Ser.* 106(1-2):147-156, 1994.
- Orth, R.J., Carruthers, T.J.B., Dennison, W.C., Duarte, C.M., Fourqurean, J.W. and Heck, K. L. Jr. : A global crisis for seagrass ecosystems. *Bioscience*, 56(12):987-996, 2006.
- Pedersen, M. Ø., Serrano, O., Mateo, M.A, Holmer, M.: Temperature effects on decomposition of a *Posidonia oceanica* mat. *Aquat. Microb. Ecol.* 65: 169-182, 2011.
- Pendleton, L., Donato, D.C., Murray, B.C., Crooks, S., Jenkins, W.A. and Sifleet, S: Estimating Global "Blue Carbon" Emissions from Conversion and Degradation of Vegetated Coastal Ecosystems. *Plos One*, 7(9):e43542, 2012.
- Petersen, J.K., Maar, M., Ysebaert, T. and Herman, P.M.J.: Near-bed gradients in particles and nutrients above a mussel bed in the Limfjorden: influence of physical mixing and mussel filtration. *Mar. Ecol. Prog. Ser.*, 490:137-146, 2013.
- Phillips, D.L. and Gregg, J.W.: Source partitioning using stable isotopes: coping with too many sources. *Oecologia*, 136(2):261-269, 2003.
- Rask, N., Pedersen, S.E. and Jensen, M.H.: Response to lowered nutrient discharges in the coastal waters around the island of Funen, Denmark. *Hydrobiologia*, 393:69, 1999.
- Rasmussen, E.: The wasting disease of eelgrass *Zostera marina* and its effects on environmental factors and fauna. *Seagrass ecosystems. A scientific perspective*. New York: Marcel Dekker Inc., 1977.
- Rasmussen, J.R., Pedersen, M.F., Olesen, B., Nielsen, S.L. and Pedersen, T. M. : Temporal and spatial dynamics of ephemeral drift-algae in eelgrass *Zostera marina*, beds. *Estuar. Coast. and Shelf S.*

119:167-175, 2013.

Salovius, S. and Bonsdorff, E.: Effects of depth, sediment and grazers on the degradation of drifting filamentous algae (*Cladophora glomerata* and *Pilayella littoralis*). *Journal of Experimental Marine Biology and Ecology*. 298:93-109, 2004.

Schlacher, T.A and Conolly, R.M.: Effects of acid treatment on carbon and nitrogen stable isotope ratios in ecological samples: a review and synthesis. *Methods in Ecology and Evolution* 5(6):541-550, 2014.

Serrano, O., Lavery, P.S., Rozaimi, M. and Mateo, A. M.: Influence of water depth on the carbon sequestration capacity of seagrasses. *Global Biogeochem. Cycles* 28(9):950-961, 2014.

Short, F. and Duarte, C.M.: Methods for the measurement of seagrass growth and production. In: Short and Cole, editors. *Global seagrass research methods* Amsterdam: Elsevier; p. 155-182, 2001.

Spalding, M., Taylor, M., Ravilious, C., Short, F., Green, E.: Global overview: The distribution and status of seagrasses. In: Green, E.P. and Short F.T.: editors. *World Atlas of Seagrasses: Present Status and Future Conservation*. Berkeley California: University of California Press, p. 5-26, 2003.

United States Government. Technical Support Document: Social Cost of Carbon for Regulatory Impact Analysis Under Executive Order 12866 (United States Government Interagency Working Group on Social Cost of Carbon, Washington, DC), 2010.

Vichkovitten, T. and Holmer, M. Contribution of plant carbohydrates to sedimentary carbon mineralization. *Org. Geochem.*, 35(9):1053-1066, 2004.

Waycott, M., Duarte, C.M., Carruthers, T.J.B., Orth, R.J., Dennison, W.C. and Olyarnik, S.: Accelerating loss of seagrasses across the globe threatens coastal ecosystems. *Proc. Natl. Acad. Sci. USA*, 106(30):12377-12381, 2009.

Wiles, P.J., van Duren, L.A., Hase, C., Larsen, J. and Simpson, J.H.: Stratification and mixing in the Limfjorden in relation to mussel culture. *J. Mar. Syst.*, 60(1-2):129-143, 2006.

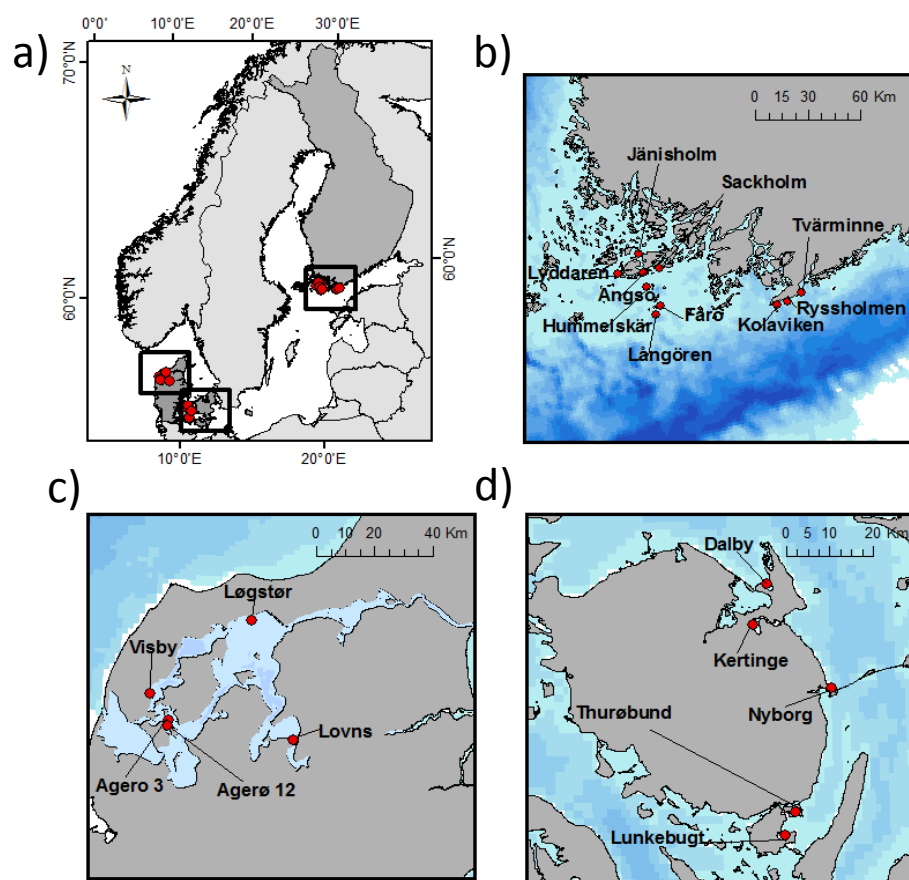


Fig. 1. The study sites in Denmark and Finland. a) study regions, b) Finnish study sites, c) Limfjorden study sites, d) Funen study sites.

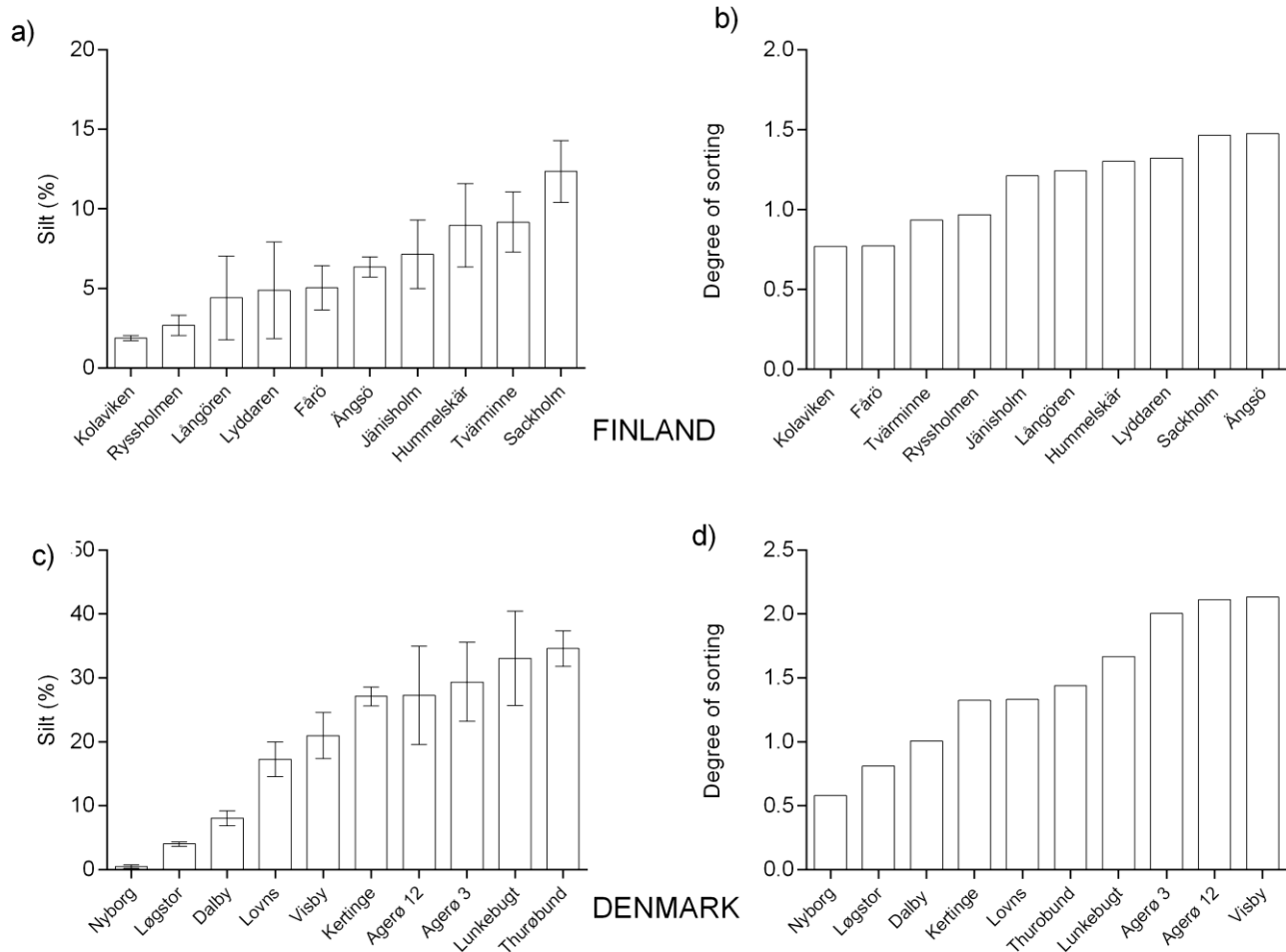
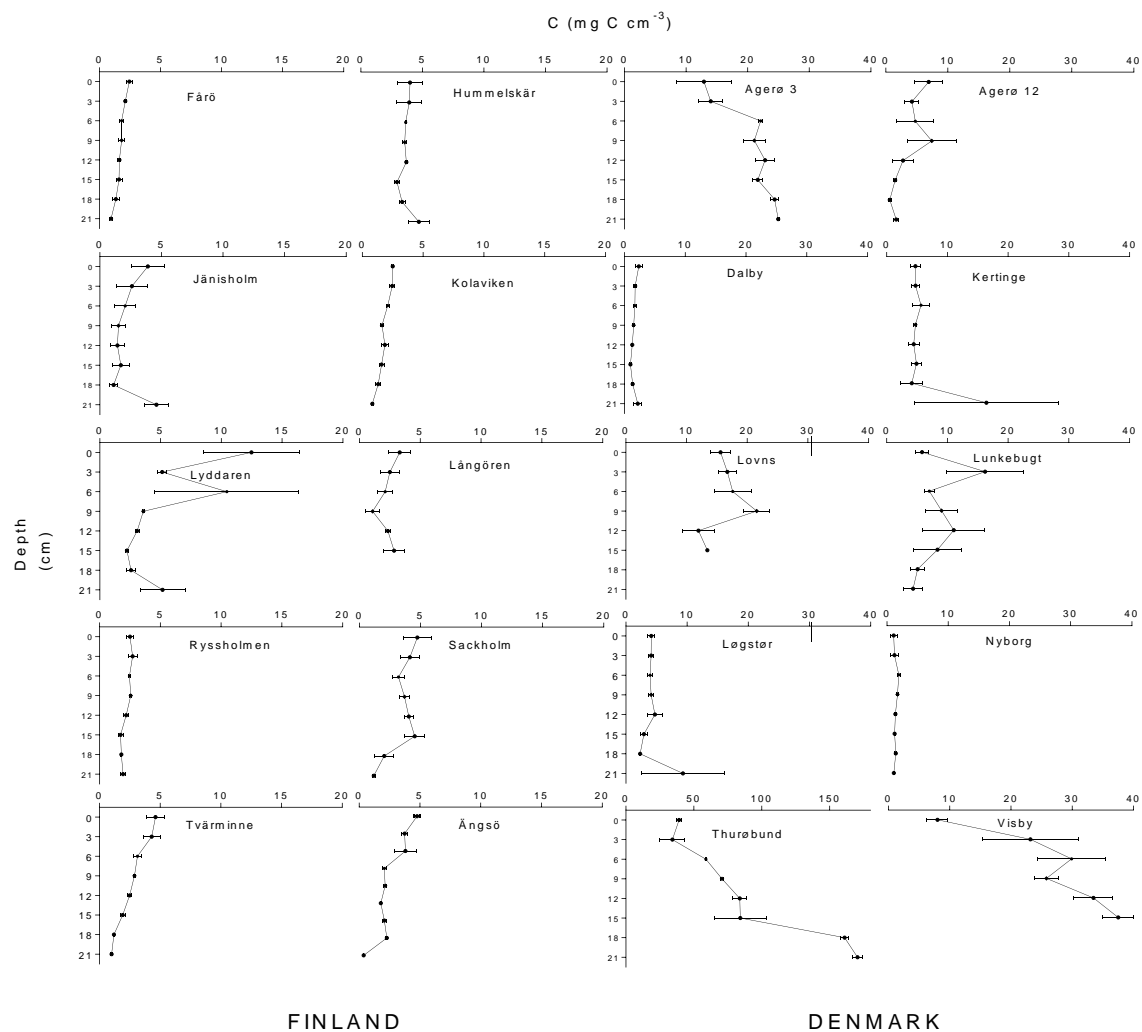


Fig. 2. Silt content (%) (a, c) and degree of sediment sorting (b, d) at the study sites in Finland and Denmark, respectively. Lower values in degree of sorting indicate well-sorted sediment types.

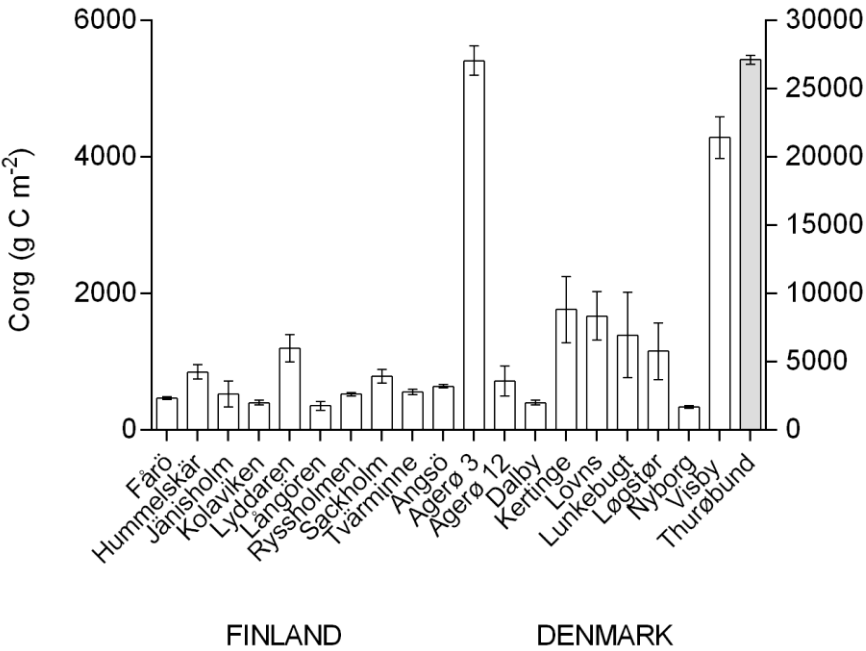
687  
688  
689  
690



691  
692  
693  
694  
695  
696  
697  
698  
699  
700  
701  
702  
703  
704  
705  
706  
707  
708  
709  
710

Fig. 3. Sediment profiles of organic carbon density (mg C cm<sup>-3</sup>) in the top 25 cm of the Finnish and Danish eelgrass (*Zostera marina*) meadows. Note the difference in the scale of x-axis between the regions.

711  
712  
713



714  
715  
716  
717  
718  
719

Fig. 4. Corg stocks (g C m<sup>-2</sup>) in the top 25 cm of sediment in Finnish and Danish eelgrass (*Zostera marina*) meadows. Note that the value of Thurøbund (grey bar) corresponds to right y-axis.

720  
721  
722  
723  
724  
725  
726  
727  
728  
729  
730

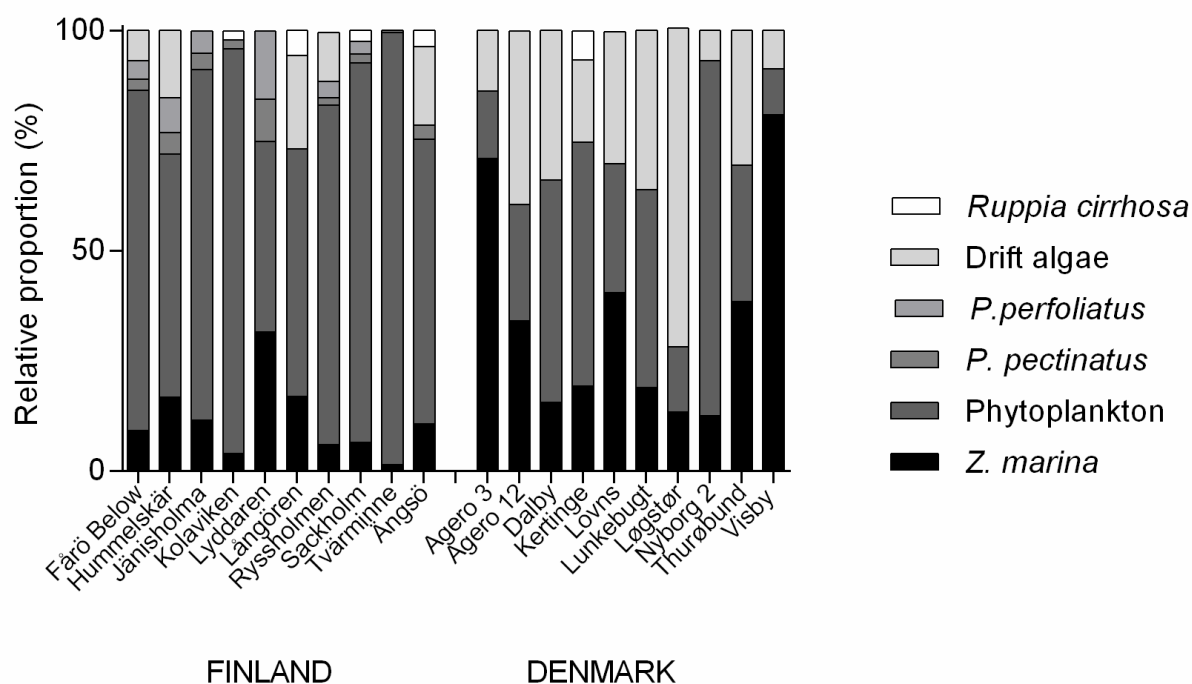


Fig. 5. Relative contribution of different organic matter sources (*Z. marina*, *P. perfoliatus*, *P. pectinatus*, *Ruppia cirrhosa*, phytoplankton and drift algae) to the  $^{13}\text{C}$  signal of the sediment surface layer (0-2 cm) in Finnish and Danish eelgrass (*Z. marina*) meadows.

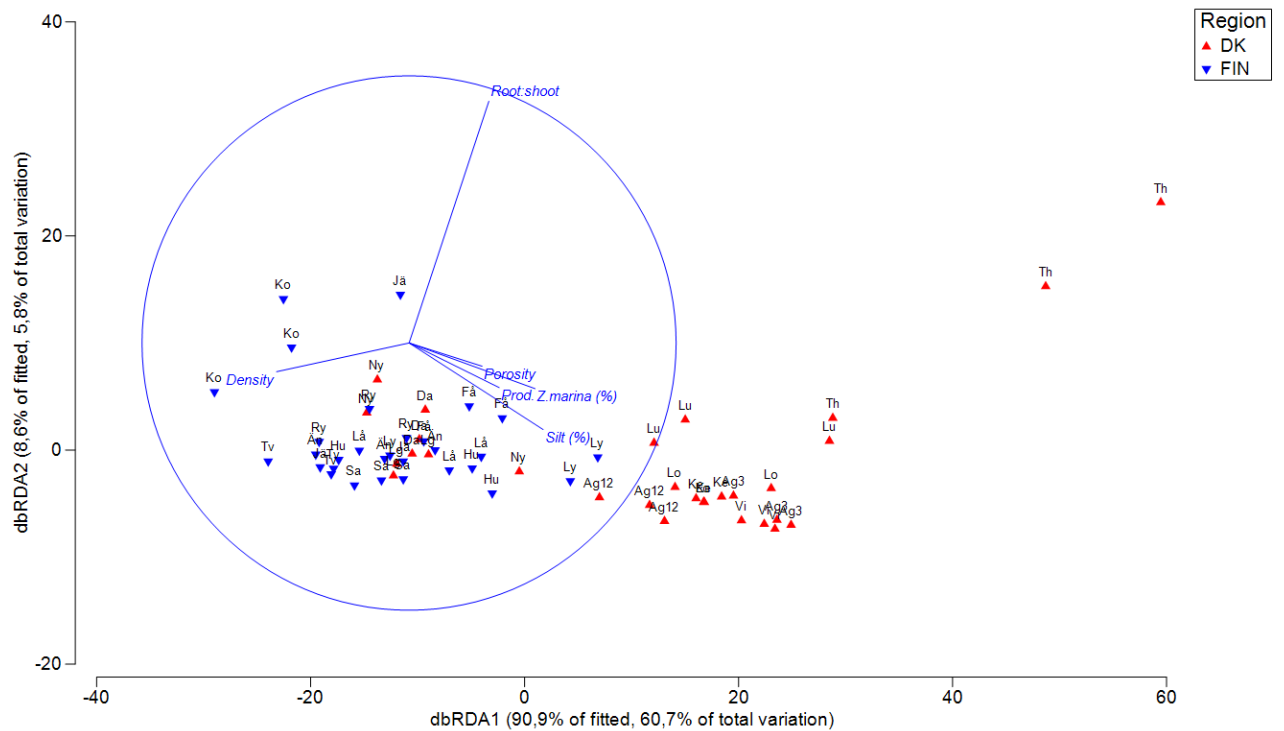


Fig. 6. Distance-based redundancy analysis (DbRDA) plot showing the environmental parameters (percentage of *Z. marina* in sediment carbon pool, above:belowground-ratio, annual eelgrass production, sediment silt content [%], sediment dry density and sediment porosity) fitted to the variation in the Corg stock ( $\text{g C m}^{-2}$ ) at the Finnish and Danish eelgrass (*Z. marina*) sites, respectively. Vectors indicate direction of the parameters effect. Site codes: Finland; Ko=Kolaviken, Ry=Ryssholmen, Tv=Tvärminne, Få=Fårö, Ly=Lyddaren, Lå=Långören, Hu=Hummelskär, Jä=Jänisholm, Sa=Sackholm, Än=Ängsö. Site codes: Denmark; Ag12=Agerø12, Ag3=Agerø3, Vi=Visby, Lg=Løgstør, Lo=Lovns, Th=Thurøbund, Lu=Lunkebugt, Da=Dalby, Ke=Kertinge, Ny=Nyborg.

778 Table 1. Location, silt content (% silt), sediment dry density (Dry dens. g cm<sup>-3</sup>), sediment organic carbon content (SedOC, % DW), sediment organic  
779 matter content (SedOM, %DW),  $\delta^{13}\text{C}$  sediment surface,  $\delta^{13}\text{C}$  *Z. marina* leaves,  $\delta^{13}\text{C}$  *Z. marina* rhizomes, seagrass shoot density (Shoot dens., shoots  
780 m<sup>-2</sup>), seagrass above and belowground biomass (AB and BB, gDW m<sup>-2</sup>), root:shoot-ratio (R:S), and aboveground production (Production, gDW m<sup>-2</sup> y<sup>-1</sup>)  
781 at the sampling sites. SE (n= 3–4) is given. Annual seagrass production is calculated from pooled values of replicates per site and therefore no SE is  
782 shown.

Country/ Location	Silt content (%)	Dry dens. (g cm <sup>-3</sup> )	SedOM (% DW)	SedOC (% DW)	$\delta^{13}\text{C}$ sediment surface	$\delta^{13}\text{C}$ <i>Z. marina</i> leaves	$\delta^{13}\text{C}$ <i>Z. marina</i> rhizomes	Shoot density (shoots m <sup>-2</sup> )	AB (gDW m <sup>-2</sup> )	BB (gDW m <sup>-2</sup> )	R:S	Production (gDW m <sup>-2</sup> y <sup>-1</sup> )
<b>Finland</b>												
Fårö	5.0±1.4	1.32±0.025	0.66±0.07	0.13±0.001	-20.58±0.27	-9.66±0.35	-9.01±0.20	304±32	138±20	167±28	1.27±0.13	773
Hummelskärr	9.0±2.6	1.33±0.009	1.06±0.20	0.35±0.019	-19.36±1.22	-9.31±0.28	-9.83±0.25	364±31	70±11	28±2	0.45±0.06	446
Jänisholm	7.1±2.1	1.37±0.076	0.93±0.20	0.33±0.135	-22.05±0.37	-10.84±0.39	-11.01±0.28	128±17	65±16	46±2	1.44±0.53	270
Kolaviken	1.9±0.2	1.34±0.035	0.75±0.02	0.13±0.011	-19.48±0.23	-10.32±0.28	-11.36±0.34	476±96	74±6	149±16	2.07±0.27	324
Lyddaren	4.9±2.5	1.34±0.171	1.75±0.70	0.45±0.094	-13.53±3.52	-8.75±0.35	-9.58±0.29	228±42	86±7	57±12	0.64±0.09	505
Långören	4.4±2.1	1.42±0.046	2.70±2.10	0.19±0.019	-18.88±0.35	-8.51±0.14	-8.87±0.15	436±53	121±46	68±25	0.58±0.06	788
Ryssholmen	2.7±0.6	1.34±0.054	0.89±0.20	0.16±0.004	-20.70±0.34	-11.45±0.13	-11.49±0.29	756±57	160±3	136±16	0.86±0.11	803
Sackholm	12.4±1.9	1.36±0.042	0.95±0.20	0.26±0.027	-21.07±0.78	-10.34±0.68	-9.90±0.34	774±234	110±18	37±9	0.31±0.04	377
Tvärminne	9.2±1.9	1.33±0.034	0.88±0.20	0.20±0.016	-22.73±0.59	-11.61±0.09	-11.50±0.25	112±11	99±16	38±7	0.37±0.01	436
Ängsö	6.3±0.5	1.36±0.052	0.84±0.02	0.20±0.010	-20.05±0.28	-10.28±0.08	-10.27±0.28	604±98	91±6	63±9	0.67±0.05	521
FIN average	6.3±1	1.35±0.014	1.4±0.3	0.24±0.033	-19.85±0.32	-10.11±0.33	10.28±0.32	417±75	101±3	79±5	0.87±0.06	524
<b>Denmark</b>												
Agero 3	29.4±6.2	1.24±0.085	1.94±0.60	2.30±0.082	-12.95±1.67	-9.24±0.47	-11.14±0.22	448±89	181±33	84±8	0.52±0.07	1075
Agero 12	27.3±7.7	1.35±0.173	1.65±0.80	0.29±0.135	-17.35±0.84	-10.68±0.25	-11.94±0.21	404±90	110±2	46±9	0.40±0.08	576
Dalby	8.1±1.2	1.37±0.034	0.67±0.03	0.12±0.009	-17.29±0.69	-9.68±0.27	-10.50±0.56	400±48	76±7	83±10	1.09±0.11	470
Kertinge	27.1±1.5	1.15±0.045	12.59±1.60	3.23±0.236	-16.64±0.20	-9.18±0.10	-9.75±0.08	328±64	90±17	64±14	0.68±0.02	527
Lovns	17.3±2.7	1.22±0.092	2.90±0.50	1.53±0.088	-16.25±2.44	-11.51±0.35	-12.16±0.37	360±27	141±4	100±11	0.70±0.06	848
Lunkebugt	33.0±7.4	1.23±0.227	4.72±2.40	1.71±0.806	-16.93±0.25	-8.86±0.87	-10.60±0.38	347±81	210±10	382±24	1.82±0.08	1056
Løgstør	4.0±0.4	1.23±0.025	0.75±0.03	0.31±0.089	-17.68±0.35	-9.67±0.40	-10.39±0.51	300±14	149±11	63±13	0.42±0.07	755
Nyborg	0.5±0.3	1.17±0.027	0.42±0.02	0.10±0.006	-17.57±1.09	-9.33±0.17	-10.62±0.34	652±30	203±24	214±50	1.00±0.14	1179
Thurøbund	34.6±2.8	1.27±0.030	14.48±0.80	5.78±0.512	-15.54±0.42	-8.17±0.14	-9.03±0.22	420±98	101±16	398±15	4.54±0.70	619
Visby	21.0±3.6	1.25±0.021	1.17±0.06	2.18±0.201	-13.79±1.17	-11.97±0.56	-12.41±0.70	520±21	193±13	49±4	0.25±0.01	2172
DK average	20.2±3.9	1.25±0.022	3.9±1.5	1.75±0.563	-16.20±0.22	-9.82±0.37	-10.85±0.33	418±32	145±5	148±14	1.14±0.13	928

787 Table 2. Estimated average carbon stocks (g C m<sup>-2</sup> and Mt C), annual areal carbon accumulation (Corg acc. t C ha<sup>-1</sup>y<sup>-1</sup>) and annual carbon accumulation  
788 (Annual Corg (Mt C y<sup>-1</sup>) in Finnish and Danish eelgrass (*Z. marina*) meadows. Denmark<sub>lost</sub> = eelgrass area of the region lost since the beginning 1900's.  
789 Limfjorden<sub>lost</sub>= eelgrass area of the region lost since the 1900's. See text for calculations. \*) mean carbon density (mg C cm<sup>-3</sup>) calculated for Denmark  
790 is used. n.d= no data. For calculations of annual carbon accumulation three different sediment accumulation rates were applied (0.32 mm y<sup>-1</sup>;  
791 Miyayima et al. 2015, 2.02 mm y<sup>-1</sup>; Duarte et al. 2013b and 4.2 mm y<sup>-1</sup>; Serrano et al. 2014), for Corg seq the sediment accumulation rate of 2.02 mm  
792 y<sup>-1</sup> was used.  
793

794

795

Region	Seagrass area (km <sup>2</sup> )	Carbon density (mg C cm <sup>-3</sup> )	Corg stock (g C m <sup>-2</sup> )	Corg stock (Mt C)	Corg acc. (t C ha <sup>-1</sup> y <sup>-1</sup> )	Annual Corg accumulation (Mt C y <sup>-1</sup> )		
						0.32 mm y <sup>-1</sup>	2.02 mm y <sup>-1</sup>	4.2 mm y <sup>-1</sup>
Finland	30	2.60±0.09	627±25	0.019±< 0.001	0.052	0.002	0.016	0.0328
Limfjorden	18	10.57±1.66	2644±207	0.047± 0.007	0.213	0.006	0.038	0.079
Funen	179	24.32±9.15	6005±1127	1.090±0.410	0.491	0.139	0.881	1.832
Denmark <sub>min</sub>	673	17.45±9.42*	4324±1188*	2.164±0.005	0.352	0.376	2.373	3.636
Denmark <sub>max</sub>	1345	17.45±9.42*	4324±1188*	5.868±0.014	0.352	0.75	4.741	9.859
Denmark <sub>lost</sub>	5381-6230	17.45±9.42*	17.45±9.42*	23.478-27.183	n.d	n.d	n.d	n.d

Table 3. Table from DistLm analysis showing variables in the marginal tests and the results for statistical analysis.

MARGINAL TESTS				
Variable	SS	Pseudo-F	P-value	Proportion
1. Root:shoot- ratio	5309	10.64	0.002	0.155
2. Sediment dry density	10704	26.37	0.001	0.313
3. Annual eelgrass production	4959	9.82	0.002	0.145
4. Shoot density	48	0.08	0.911	0.001
5. Porosity	3507	6.61	0.01	0.102
6. Silt content (%)	12653	33.99	0.001	0.369
7. C:N-ratio of plant material	464	0.79	0.397	0.014
8. <i>Z. marina</i> content (%)	12179	32.02	0.001	0.356
9. Degree of sorting	9725	23.01	0.001	0.284

Table 4. Table from DistLm analysis showing results from the sequential tests and solution given by the analysis.

Variable	AICc	Sum of squares	Pseudo-F	P- value	Proportion	Cumulative proportion	Degrees of freedom
6. Silt content (%)	357.4	12653	33.9	0.001	0.369	0.369	58
1. Root:shoot-ratio	346.0	4375	14.5	0.001	0.127	0.497	57
8. <i>Z. marina</i> content (%)	333.6	3745	15.6	0.001	0.109	0.606	56
3. Production	332.2	805	3.5	0.037	0.023	0.630	55
2. Density	331.3	700	3.2	0.049	0.020	0.650	54
5. Porosity	330.8	602	2.8	0.056	0.017	0.668	53
BEST SOLUTION	AICc	R <sup>2</sup>	RSS	Variables	Selections		
	330.8	0.668	11363	6	1-3;5;6;8		