

Interactive comment on “Physical control of the interannual variations of the winter chlorophyll bloom in the northern Arabian Sea” by M. G. Keerthi et al.

Anonymous Referee #1

Received and published: 5 July 2016

General Comments:

The Arabian Sea is one of the most productive regions of the world oceans which experiences phytoplankton blooms during boreal summer and winter. Both these blooms are reasonably well characterized and the physics controlling them are reasonably well studied. However, what is still largely least explored is the inter-annual variability of the summer as well as the winter blooms. The major reason why it has not yet been adequately addressed is the limitation in long time-series data. It is in this context that the present study assumes importance.

The present paper addresses the inter-annual variability of the winter chlorophyll bloom in the northern Arabian Sea (NAS) using both observation and simulations from a coupled biophysical ocean model. Towards the observational data, the authors used satellite-derived chlorophyll pigment concentrations, and Argo-derived mixed layer and thermocline depths. Using these, the authors aim at “better understanding the interannual variability of the NAS winter bloom” (lines 15).

The central theme of the study is the processes that leads to the phytoplankton bloom in NAS during winter and to ascertain whether the process suggested by Prasanna Kumar et al. (2001) or that by Wiggert et al. (2002) explains the bloom. The authors conclude that the winter blooms are strongly tied to mixed layer depth and the resulting modulation of nutrient entrainment into the mixed layer, a result similar to that of Prasanna Kumar et al. (2001). The inter-annual variability of NAS winter bloom amplitudes are controlled by the variation in the net heat flux at the air-sea interface, which in turn controls the MLD and nutrient entrainment.

It is a well-written manuscript and should be published, in my opinion, but only after consideration of some of the comments listed below.

We thank the reviewer for his positive comments and for his inputs on the paper. We provide a detailed answer to each of the comments below.

Major concerns: 1. What is the basis on which the authors use the months from January to April to define winter? This is not true in the case of the Arabian Sea and hence not acceptable. Let me explain. Based on the mean seasonal cycle of net heat flux both from observation as well as model presented in Figure 6 (c & f), the ocean loses heat from November until February. From March onwards the ocean starts gaining the heat and the net heat flux remains positive until October. Note that in April ocean gains heat as much as 100 w/m² indicating the warming of the ocean rather than the prevalence of winter conditions. So

from the net heat flux point of view November to February defines the winter condition. Similarly, the mean seasonal cycle of surface chlorophyll from observation and model in figure 6 (a & d) shows an increase from November, peaks in February and returns to the November value by March. In view of the above, November until March could be considered as winter while dealing with chlorophyll response in the box under study.

We agree with the reviewer that the definition we used for winter monsoon was not properly justified. As mentioned by the reviewer, Figure 6 clearly shows that the climatological heat flux is negative from November to February, which also corresponds to the period when the mixed layer depth (MLD) is deepest. The peak of the bloom is delayed by about one month relative to the deepest MLD due to the time it takes for the biomass to grow, and large chlorophyll values are still found in March. To better assess the seasonality of the amplitude of the winter bloom interannual variations, we calculated the monthly standard deviation of the interannual chlorophyll variations for each observed dataset. **This new analysis is now included as Figure 3b in the revised manuscript (shown as Figure R1-1 below).** This Figure clearly shows that the months of November and April correspond to minimum in the amplitude of interannual chlorophyll variability for most datasets. Based on this finding, we hence define the winter season as the period from December to March where interannual chlorophyll variations are larger. This is particularly true for February-March where interannual variations reach clear maximum amplitude. **All the figures and text have been revised accordingly using this new season definition. This change of the seasonal window used to define the winter monsoon however does not change the overall conclusions of our study.** This is illustrated on Figure R1-2 (similar to Figure 9 of the submitted version but for the new seasonal window considered).

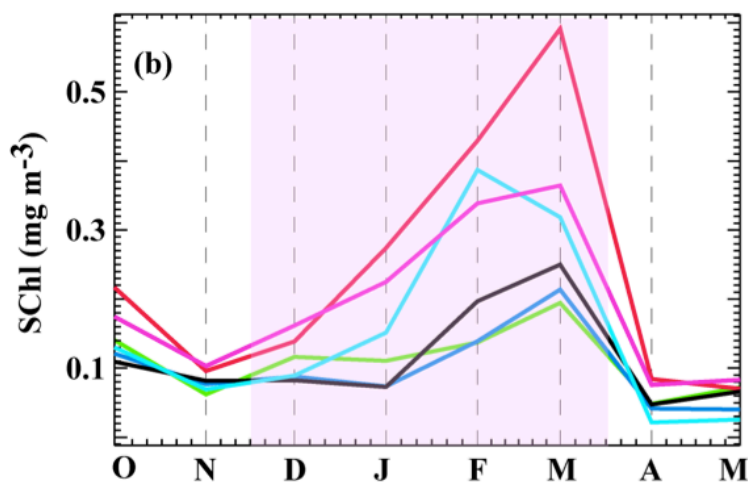


Figure R1-1: Monthly standard deviation of surface chlorophyll interannual anomalies for all satellite products.

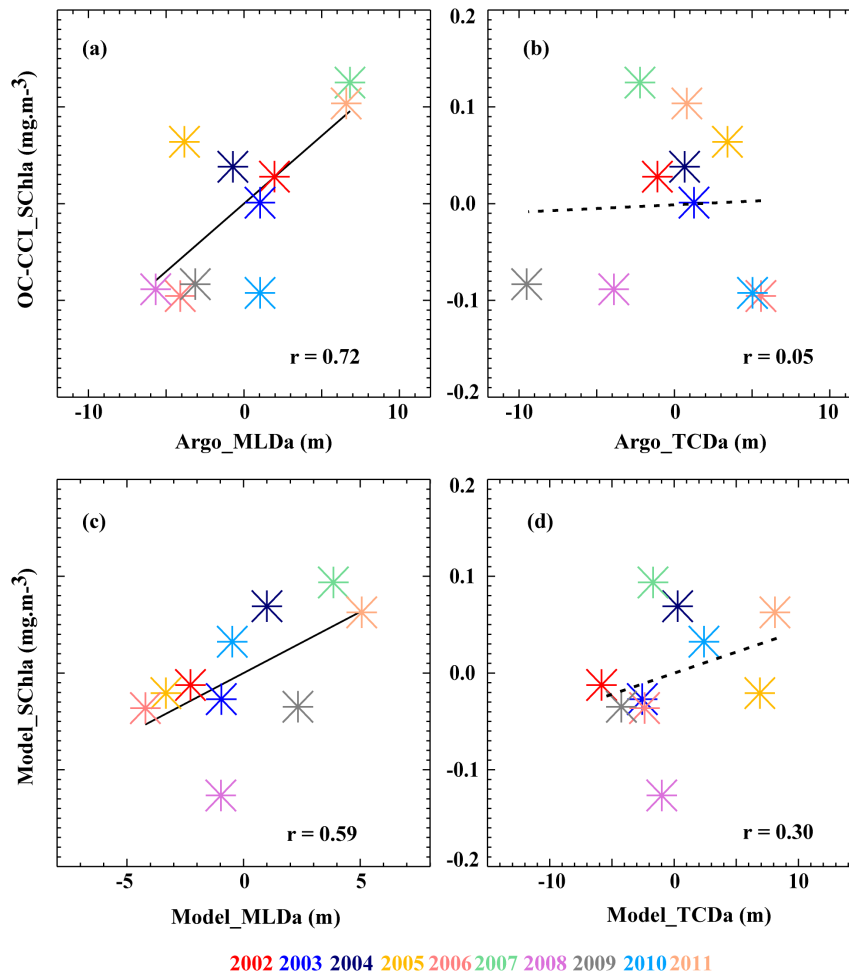


Figure R1-2: Scatterplot of winter (DJFM), NAS-averaged OC-CCI surface chlorophyll anomalies against observed (a) MLD and (b) thermocline depth anomalies. (c-d) Idem for Model.

2. *It has been shown in recent years that episodic dust storms that occur during winter are important in driving the interannual variability of chlorophyll in the Arabian Sea through the atmospheric input of nutrients, especially iron. See for example the studies of Wiggert and Murtugudde (2007), Patra et al (2007), Naqvi et al (2010) and Banerjee and Prasanna Kumar (2014). The authors need to at least address the role of dust-induced Fe input in driving the inter-annual variability of chlorophyll in their study region.*

We agree that this should have been discussed in the manuscript and revised the paper accordingly. In the revised model description section, we first clearly acknowledge that the model forcing uses climatological iron inputs (P5 L16-18). We also included a paragraph in the discussion section that acknowledges the potential influence of iron fertilisation by dust storms, quoting the papers listed by the reviewer (P13 L23-34). In this paragraph, we further mention that, despite the fact that non-seasonal iron aerial deposition is not included in our model, it is able to accurately capture the observed interannual variability of the chlorophyll bloom in winter (see Figure 7a), suggesting that this mechanism is unlikely to play a dominant role in the interannual variability of the bloom. We also mention modelling results of Aumont et al. (2008) that suggested that the variability of surface chlorophyll induced by

the interannual variability of aerosol iron is likely to be very small everywhere, especially relative to the impact of the ocean dynamics because largest fluctuations of surface iron produced by dust occur in oligotrophic regions where phytoplankton growth is not primarily controlled by iron availability. We finally suggest that the mismatch between model and observations for a couple of winters (like in 1997-1998) may be related to the absence of interannual variability of iron deposition, which is not included in the model.

Related References:

Aumont, O., Bopp, L., Schulz, M.: "What does temporal variability in aeolian dust deposition contribute to sea-surface iron and chlorophyll distributions?" *Geophysical Research Letters*, 35, 7, 2008.

Minor concerns:

3. Page 7 Line 15 “ *The simulation captures the surface chlorophyll seasonal cycle in the NAS. . .*”. While it is so during winter (even in winter note that the model SChl does not capture the increase from November to January seen in the observation), the model completely misses the declining SChl trend from July to August. Instead model depicts the continuation of monotonic increase from May to August. Authors need to point this out while discussing the simulation results.

We point this out when describing Figure 6 in the revised manuscript (P7 L24-26).

4. Page 8 lines 7-9 “*The figure illustrates that the observed interannual SChl. . .*”. The authors need to explain in the text/discussion what the inverse relationship between SChla and MLDa during 2003 & 2005 means.

Thank you for pointing this out. 2003 and 2005 actually behave inconsistently relative to other years in both the model and observations (Figures 7ab and 8a), suggesting that another mechanism the one that we describe could be at work during these years. **We now point it briefly here but have expanded the discussion of other possible mechanisms that could contribute to chlorophyll interannual anomalies in the discussion section, including the potential influence of anomalous iron deposition, as discussed above.**

5. Page 9 lines 2-3 “*As a result, the mixed layer nitrate. . .*”*Though the MLD nitrate concentration during 2008 Feb is double than that of 2007, the Chlorophyll did not show a commensurate increase. The authors need to explain this in the discussion in the of Redfield ratio and carbon fixation.*

There is no reason for the nitrate variations to be proportional to the chlorophyll variations as biogeochemical models are highly non-linear. In the model, the relation between the phytoplankton and nutrient growth rate is only linear for weak concentrations. In addition, even if the growth rate is increased by a factor two, there is no reason for the chlorophyll

The referee comments are italicized. Answers in regular typeface. **Actions taken in red.**

concentration to be doubled. It depends on plenty of other factors, including light availability and grazing rate.

Interactive comment on “Physical control of the interannual variations of the winter chlorophyll bloom in the northern Arabian Sea” by M. G. Keerthi et al.

Anonymous Referee #2

Received and published: 7 November 2016

General Comments:

The study, using multiple datasets and a model, examines the processes related to the interannual variability of winter chlorophyll in the northern Arabian Sea. The Arabian Sea, especially the coastal-open ocean upwelling regions are subjected to an interplay of oceanic processes, such as coastal upwelling, Ekman pumping, mixing, entrainment and lateral/vertical advection (Vialard et al 2012). Other than these physical processes, changes in light penetration and nutrient supply also regulate the chlorophyll content in this basin. Hence it is an interesting task to investigate the biophysical interactions over this region, which result in the observed chlorophyll variations. However, other than presenting several correlation analysis between the mixed layer depth and chlorophyll variations, the study does not delve in depth into the processes governing the chlorophyll changes. The paper is neatly written but it is difficult for the reviewer to comprehend what the prime objectives of the study are, or if there is anything novel in the results. Due to these shortcomings, and as detailed below, I do not recommend the manuscript for publication at its current state.

As underlined by the first reviewer, our study “*assumes importance because, while the seasonal chlorophyll variations in the Arabian Sea are rather well described, their interannual variability is largely unexplored because of the limitation in long time-series data.*” As we pointed out in the introduction (P3 L1-13), there have indeed been to date only two studies addressing the interannual chlorophyll variations in the northern Arabian Sea in winter and their related mechanisms (Prasanna Kumar et al., 2001 and Wiggert et al., 2002). These studies proposed different mechanisms on the basis of a very limited temporal sampling (two one-month-long in-situ time series in February 1995 and 1997 for Prasanna Kumar et al., 2001) and three consecutive winters from 1998 to 2000 for Wiggert et al., 2002). Our study tests the hypotheses of those two studies based on a much longer dataset (12 winters in observations and 20 winters in the model). In addition, while Wiggert et al. (2002) derived interannual thermocline variations from a model simulation, we derive these variations directly from in-situ (Argo) observations. Both our observational and model results support the Prasanna Kumar et al. (2001) hypothesis rather than the one of Wiggert et al. (2002). It hence better ascertain the mechanisms at stake in driving the chlorophyll interannual variability in the northern Arabian Sea. Another added value of the present study is to provide for this first time an intercomparison of all existing remotely sensed chlorophyll products in this region. We thus believe that our study brings new insights for this highly productive region with no consensus on the mechanisms responsible for year-to-year variations. **We underline those points better in the introduction (P3 L12-25) and discussion (P12 L20-27) sections of the revised manuscript.**

Related References:

- Prasanna Kumar, S., Ramaiah, N., Gauns, M., Sarma, V., Muraleedharan, P.M., Raghukumar, S., Kumar, M.D., Madhupratap, M. : Physical forcing of biological productivity in the northern Arabian Sea during the Northeast Monsoon, Deep-Sea Research II 48, 1115–1126, 2001.
- Wiggert, J. D., Murtugudde, R., and McClain, C. R.: Processes controlling interannual variations in wintertime (northeast monsoon) primary productivity in the central Arabian Sea, Deep Sea Res., Part II, 47, 2319 – 2343, 2002.

Specific Comments:

1. The study revolves around a hypothesis put forward by Wiggert et al (2002) that the interannual variations of chlorophyll intensity is regulated by diurnal mixing.

As pointed above, we examine two previously proposed mechanisms: that proposed by Wiggert et al. (2002) but also that suggested by Prasanna Kumar et al. (2001).

The current study, using correlation analyses, points out that the winter chlorophyll variability is tied to the mixed layer depth anomalies, which are associated with the surface heat flux anomalies. However, this factor has already been pointed by studies like Prasanna Kumar et al (2002), where they point out that surface cooling (due to evaporation) in the northern Arabian Sea, combined with reduced incoming solar radiation and high salinity, drives convective mixing, resulting in the upward transport of nutrients in the mixed layer. Similar to the current study, this study also compares two anomalous years and describe the processes involved.

We think that the current study has several merits:

- There are currently two contradictory hypotheses about the physical control of interannual chlorophyll variability in winter in the Northern Arabian Sea (Wiggert et al., 2002 vs Prasanna Kumar et al., 2001), which we examine separately, finding more support for the latter than for the former.
- Wiggert et al. (2002) and Prasanna Kumar et al. (2001) work are respectively based on 3 and 2 winters. As opposed to the reviewer statement, we do not only analyse two anomalous years but examine long datasets that span 2002-2013 (12 years) derived from in-situ observations for MLD and thermocline and several satellite datasets for chlorophyll along with outputs from a model simulation that spans 1993-2012 (20 years), which considerably strengthens the robustness of our results.
- We also provide an intercomparison of chlorophyll datasets in this region, which was necessary, given the large differences among the datasets. Stating that chlorophyll datasets generally agree for the phase of signals but not their amplitude is an important and useful information for studying chlorophyll variability in the Arabian Sea.

2. Also, apart from the correlation analyses between mixed layer depth (and nutrients) and chlorophyll concentrations, the manuscript does not examine how the oceanic processes such as the Ekman pumping, offshore advection etc plays a role on the interannual variability.

To address the reviewer comment, we performed composite analysis similar to Figure 10 but looking at the wind stress curl (i.e. the driver of Ekman pumping) and surface currents (which could induce advective changes) anomalies associated with enhanced winter blooms. As shown on Figure R2-1 below, this analysis show that interannual chlorophyll fluctuations are not associated with coherent Ekman pumping and surface currents variations in the northern Arabian Sea (while there is a clear MLD signal, see Figure 10b). We also found no significant correlations between interannual anomalies of the wind curl and surface currents with chlorophyll anomalies in the NAS box. These extra-analyses hence suggest that advection of chlorophyll and/or nutrient is unlikely to play a strong role on the interannual fluctuations of the winter bloom in the AS. **These analyses are mentioned explicitly in the updated version of the manuscript (P12 L10-16), referring to Figure R2-1 as not shown.**

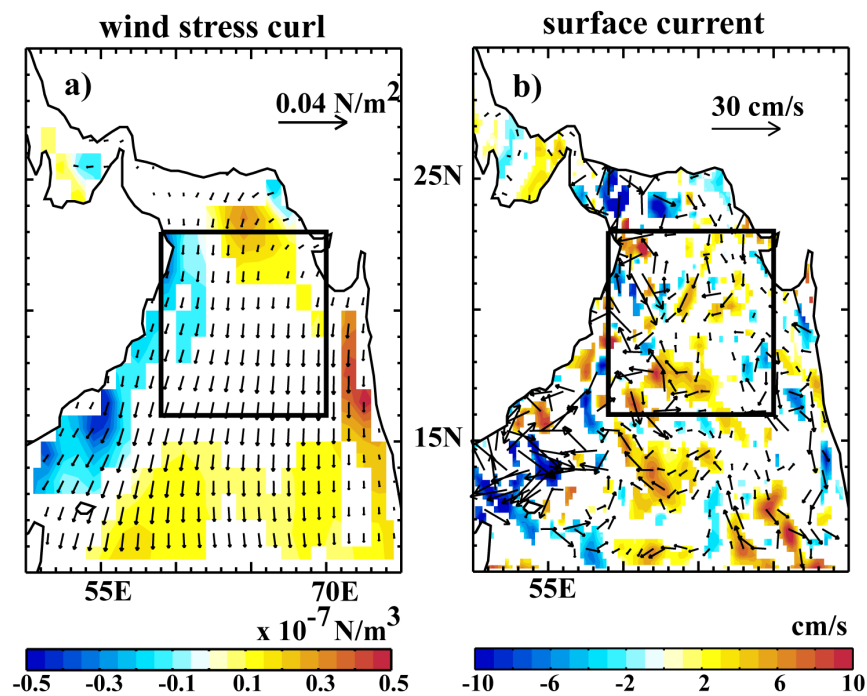


Figure R2-1: Observed interannual anomalies of (a) ERAI wind stress curl (color) and wind stress (vectors) for composite surface chlorophyll blooms (highlighted on Figure 8). Like for MLD and TCD composites, wind stress curl and wind stress composite are built from the months of February of the same year. (b) Same as left, but for surface currents anomalies derived from GEKCO product (Bonjean and Lagerloef, 2002). Regions where composite values are less than the standard error are displayed in white.

Related References:

Bonjean, F., Lagerloef, G.S.E. : Diagnostic Model and Analysis of the Surface Currents in the Tropical Pacific Ocean. J. Physical Ocean., 2, 10, 2938-2954, 2002.

Also, to counter the study by Wiggert et al (2002), the current study does not examine the contributions due to diurnal mixing.

We do not explicitly investigate the diurnal cycle in observations because the Argo data are too sparse to be able to analyse the diurnal variability from this dataset. A proper investigation of the impact of diurnal variability on interannual chlorophyll variations from observations would require continuous and long-term temperature and chlorophyll profiles from a fixed location, which are not available to date. Yet, if Wiggert's mechanism was dominating, there should be a negative correlation between interannual variations of chlorophyll and thermocline depth (i.e. a deeper thermocline leading to lower chlorophyll concentrations operating through daily dilution): Table 2, 3 and Figure 8, 9, 10 clearly demonstrates it is not the case in observations, neither over the entire winter period, nor during the beginning (December-January) or the end (February-March) of the winter monsoon period. In addition, despite the absence of a diurnal cycle in the model forcing (i.e. by construction, the model can't reproduce the Wiggert's mechanism), the model shows a good agreement with observed interannual chlorophyll variability in winter in the northern Arabian Sea (see Figures 7a and 10), which is an indirect evidence that the bulk of interannual chlorophyll variations are not linked to the diurnal cycle mechanism. Instead, we find large and statistically significant correlations between MLD and chlorophyll variations at the end of the winter monsoon, suggesting that the mechanism proposed by Prasanna Kumar et al. (2001) (a modulation of nutrient entrainment into the mixed layer, i.e. a mechanism similar to the one proposed at seasonal timescales) dominates during that period. During the early winter monsoon, neither of the two mechanisms appears to drive the weaker interannual chlorophyll anomalies during that season. These points were already mentioned in the submitted version of the paper but **this discussion is expanded in the revised manuscript to better stress these points out (P12 L29- P13L21).**

In fact, it is not clear to me where Wiggert et al (2012) says that mixed layer variations are not important in controlling the chlorophyll concentrations – though the study says that diurnal changes of mixed layer are important.

The mechanism proposed by Wiggert et al. (2002) might indeed imply a correlation between the MLD anomalies and the chlorophyll anomalies. But it also implies a control of MLD and chlorophyll anomalies by the thermocline depth, which is not seen in our results (see L5-6 of the abstract of Wiggert et al., 2002). **We point this out better in the discussion section of the revised version (P12 L33- P13 L5).**

3. Page 10, Line 10 says the MLD deepening is controlled by convective overturning, which in turn is controlled by surface heat fluxes. It is not clear to me how the cause and effect is separated here. Surface net heat flux is inversely proportional to the mixed layer depth. Hence it is not surprising as in Fig.10 that they show a good correlation.

There is a misunderstanding here. We agree with the reviewer that the sea surface temperature (SST) tendency induced by atmospheric heat flux forcing into the ocean (the term $Q_{net}/(\rho \cdot C_p \cdot MLD)$) could be anticorrelated with MLD variations because the MLD appears in the two terms. However, the y axis of Figure 12c does not show $Q_{net}/(\rho \cdot C_p \cdot MLD)$ but the net heat flux at the ocean-atmosphere interface Q_{net} and there is no reason for the surface

net heat flux to be inversely proportional to the mixed layer depth. Indeed surface net heat flux is controlled by atmospheric parameters (wind speed, cloudiness, stability...), which are not controlled by MLD variations. On the other hand the surface heat fluxes exert a strong control on the mixed layer depth. **We clarify this in the revised manuscript.**

4. Page 12, Line 20 suggests that the interannual variations in the surface flux are modulated by ENSO (strong correlations). The connection with ENSO was shown by Murtuggude et al (1999), which examined the chlorophyll changes in the Indian Ocean with respect to the 1997-1998 El Niño and the 1998 La Niña. The El Niño – La Niña episodes were accompanied by changes in chlorophyll over the Arabian Sea, with low Chl concentrations during the El Niño period, followed by anomalously high concentrations during the La Niña episode. These changes were attributed to local ocean-atmospheric dynamics linked to the shifts in the Walker circulation. On a similar case, the authors compare 2007 and 2008 MLD and chlorophyll. 2006/7 was a weak El Niño year and 2007/8 was a La Niña year, which is clearly reflected in the Chl anomalies, with the former resulting in negative anomalies and the latter in positive anomalies. Going by correlations as in the current study, I can say that ENSO is a major component in driving both the surface flux and chlorophyll anomalies in the Arabian Sea, on interannual timescales.

Thanks for pointing this out. **We have expanded the discussion about the remote control of ENSO onto the Arabian Sea climate and biogeochemistry in winter in the revised discussion.** We will now refer to Murtuggude et al. (1999) who showed that surface chlorophyll was anomalously high during December 1997 and January 1998, consistent with the elevated entrainment flux of nutrients into the euphotic zone expected during stronger than usual northeast monsoons. This indeed suggests from a single event that the 1997/98 El Niño could be responsible for this. We will however also refer to Wiggert et al. (2009) results that show a contrasted biological response of the western Arabian Sea to the 1997/1998 and 2006/2007 El Niño events, with an overall decrease of productivity during the earlier and a slight increase during the latter. Finally, we will also discuss the results from Currie et al. (2013) that showed ENSO control on chlorophyll interannual variations in the Arabian Sea during fall and winter is larger than that of the IOD. In line with these results, our analysis shows that interannual variations of the 2-m air temperature in winter in the northern Arabian Sea box is partly correlated with El Niño-Southern Oscillation (ENSO) index and weakly correlated with Indian Ocean Dipole (IOD) index. The positive correlation sign is however opposite to Murtuggude et al. (1999) results as it indicates that an El Niño event should lead to a reduced winter monsoon. To further explore this aspect, Table R2-1 shows the winter T2m correlation with ENSO index for two different periods: it illustrates that the influence of ENSO on the AS in winter is not very stable in time with large correlations when calculated over the recent 2002-2011 period (0.77) and far weaker correlations when performing this analysis over the extended 1993-2011 period (0.27). This table also shows that all observed and model chlorophyll products do show a negative correlation between ENSO and interannual fluctuations of the winter bloom, consistent with the hypothesis that an El Niño event drive a weaker winter monsoon and hence a weaker bloom. The level of correlation is however modest in all datasets (ranging from -0.11 in AVW to -0.44 in GSM), indicating that ENSO is

not the only driver of the interannual winter bloom variations in this region. **These new results along with their consistency with previous literature will be discussed in a new paragraph in the discussion section that details ENSO influence on the Arabian Sea in winter (P14 L17-P15 L8). We also include Table R2-1 as a new Table in the revised manuscript (Table 4).**

	IOD (SON)	ENSO (NDJ)
T2a (DJFM 1993-2011)	-0.06	0.27
T2a (DJFM 2002-2011)	0.05	0.77
SChla_OC-CCI (2002-2011)	0.07	-0.34
SChla_MODIS (2002-2011)	0.26	-0.39
SChla_MERIS (2002-2011)	0.04	-0.37
SChla_GSM (2002-2011)	0.24	-0.44
SChla_AVW (2002-2011)	0.05	-0.11
SChla_Model (2002-2011)	0.02	-0.30

Table R2-1: Correlation of IOD and ENSO index with NAS box averaged winter (DJFM) surface temperature anomaly (T2a) and surface chlorophyll anomaly (SChla) derived from different satellite products and model.

Related References:

- Currie, J., Lengaigne, M., Vialard, J., Kaplan, D., Aumont, O., Maury, O.: Indian Ocean Dipole and El Niño/Southern Oscillation impacts on regional chlorophyll anomalies in the Indian Ocean. *Biogeosciences* 10:5841– 5888, 2013.
- Murtugudde, R., McCreary, J. P., and Busalacchi, A. J.: Oceanic processes associated with anomalous events in the Indian Ocean with relevance to 1997 –1998, *J. Geophys. Res.*, 105, 3295–3306, 2000.
- Wiggert, J. D., Vialard, J., and Behrenfeld, M. J.: Basinwide modification of dynamical and biogeochemical processes by the positive phase of the Indian Ocean Dipole during the SeaWiFS era, in: *Indian Ocean Biogeochemical Processes and Ecological Variability*, vol. 185, edited by: J. D. Wiggert, R. R. Hood, S. Wajih, A. Naqvi, K. H. Brink, and S. L. Smith, p. 350, 2009.

5. Also, how do the changes in Eurasian winds (Page 13, Line 8, Goes et al 2005) compare with the ENSO impact? Are the winds increasing, and do they have an impact on the Chl in the Arabian Sea? If so, how does it ride on the interannual variability imposed by ENSO?

To have a preliminary look into the long-terms trends in winter in the Arabian Sea, Table R2-2 provides the linear trends of wind and chlorophyll in the Arabian Sea. This Table indicate that winds exhibit an increasing trend over the 2002-2011 period. When calculated over an extended period (1993-2011), these winds however show a decreasing trend. Regarding the chlorophyll trends, there is no consistent trend amongst products, some of them showing a decreasing trend (OC-CCI, MERIS, AVW) some others showing an increasing trend (MODIS, GSM). These discrepancies and uncertainties related to the short data length prevent a robust assessment of these trends. We however performed the analyses in the paper using

detrended data and found that our results regarding the interannual variability are robust. This is illustrated on Figure R2-2 that shows an analysis similar to that of Figure 9 but for detrended data. **This is pointed out in the revised version (P15 L8-12).**

Dataset	Period	Trend
Wind-ERA-Interim	1993-2011	-0.006
Wind-ERA-Interim	2002-2011	0.04
SCHla_OC-CCI	2002-2011	-0.005
SCHla_MODIS	2002-2011	0.015
SCHla_MERIS	2002-2011	-0.007
SCHla_AVHRR	2002-2011	-0.042
SCHla_GSM	2002-2011	0.03
SCHla_Model	1993-2011	-0.0015
SCHla_Model	2002-2011	0.0023

Table R2-2: Linear trends for NAS box averaged winter (DJFM) surface wind speed anomaly from ERA-Interim and surface chlorophyll anomaly (SCHla) derived from different satellite products and model.

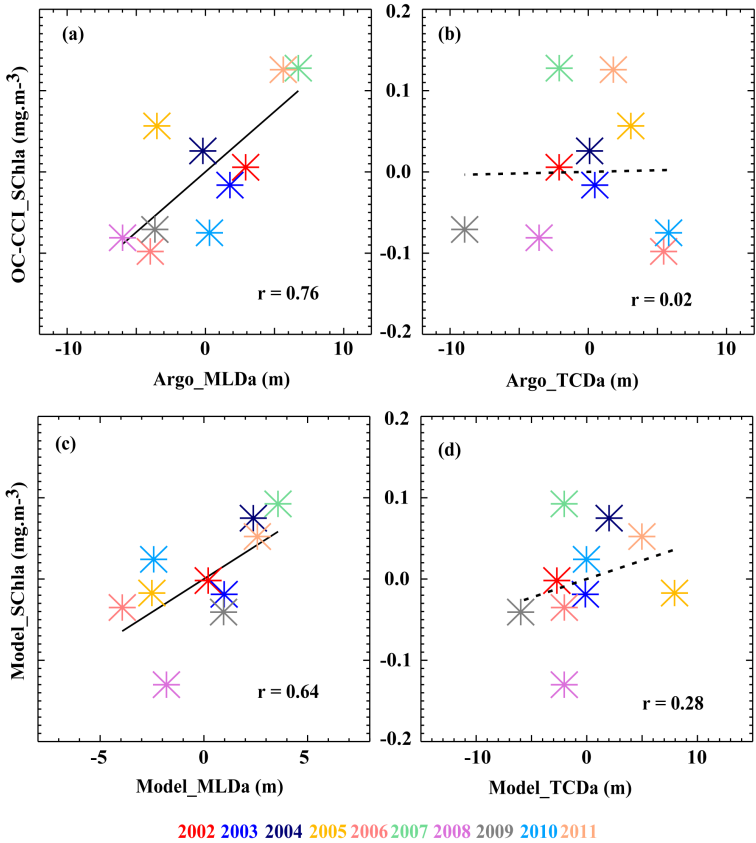


Figure R2-2: Scatterplot of winter (DJFM), NAS-averaged detrended OC-CCI surface chlorophyll anomalies against observed detrended (a) MLD and (b) thermocline depth anomalies. (c-d) Idem for Model.

Physical control of the northern Arabian Sea winter chlorophyll bloom interannual variations

M.G. Keerthi¹, Matthieu Lengaigne^{2,3}, Marina Levy², Jerome Vialard², V. Parvathi¹, Clément de Boyer Montégut⁴, Christian Ethé², Olivier Aumont², I. Suresh¹, V.P. Akhil¹, P.M. Muraleedharan¹

¹ CSIR-National Institute of Oceanography (CSIR-NIO), Goa, India
² Sorbonne Universités (UPMC, Univ Paris 06)-CNRS-IRD-MNHN, LOCEAN Laboratory, IPSL, Paris, France
³ Indo-French Cell for Water Sciences, IISc-NIO-IITM-IRD Joint International Laboratory, NIO, Goa, India
⁴ IFREMER, Univ. Brest, CNRS, IRD, Laboratoire d'Océanographie Physique et Spatiale, JUEM, 29280, Brest, France

Correspondence to: M.G. Keerthi (keerthanaamg@gmail.com)

Abstract. The northern Arabian Sea hosts a winter chlorophyll bloom, triggered by convective overturning in response to cold and dry northeasterly monsoon winds. Previous studies of interannual variations of this bloom only relied on a couple of years of data and reached no consensus on the associated processes. The current study aims at identifying these processes using both ~10 years of observations (including remotely-sensed chlorophyll data and physical parameters derived from Argo data) and a 20-year long coupled biophysical ocean model simulation. Despite discrepancies in the estimated bloom amplitude, the six different remotely-sensed chlorophyll products analysed in this study display a good phase agreement at seasonal and interannual timescales. The model and observations both indicate that the winter bloom interannual fluctuations are strongly tied to mixed layer depth interannual anomalies (~0.6 to 0.7 correlation), which are themselves controlled by the net heat flux at the air-sea interface. Our modelling results suggest that the mixed layer depth control of the bloom amplitude ensues from the modulation of nutrient entrainment into the euphotic layer. In contrast, the model and observations both display insignificant correlations between the bloom amplitude and thermocline depth, which precludes a control of the bloom amplitude by daily dilution down to the thermocline depth, as suggested in a previous study.

- keerthimg 3/8/y 4:10 PM
Supprimé: interannual variations of the
- keerthimg 3/8/y 4:10 PM
Supprimé: in the northern Arabian Sea
- keerthimg 3/8/y 4:10 PM
Supprimé: Laboratoire d'Océanographie
- keerthimg 3/8/y 4:10 PM
Supprimé: IFREMER
- keerthimg 3/8/y 4:10 PM
Supprimé: There is currently
- keerthimg 3/8/y 4:10 PM
Supprimé: about
- keerthimg 3/8/y 4:10 PM
Supprimé: responsible for the interannual variations of the magnitude of this bloom.
- keerthimg 3/8/y 4:10 PM
Supprimé: Six
- keerthimg 3/8/y 4:10 PM
Supprimé: are compared and they show
- keerthimg 3/8/y 4:10 PM
Supprimé: , but significant discrepancies in bloom amplitude. Both
- keerthimg 3/8/y 4:10 PM
Supprimé: of the winter bloom amplitude
- keerthimg 3/8/y 4:10 PM
Supprimé: (
- keerthimg 3/8/y 4:10 PM
Supprimé: ~0.6 to 0.7
- keerthimg 3/8/y 4:10 PM
Supprimé: mixed
- keerthimg 3/8/y 4:10 PM
Supprimé: our results show

1. Introduction

Located in the western arm of the northern Indian Ocean, the Arabian Sea (AS) is forced by energetic seasonally reversing monsoon winds, which largely control its physical properties. During boreal summer, strong southwesterly winds blow over the western AS (Findlater, 1969) and cause intense upwelling along the coasts of Somalia and Oman and downwelling in the central AS (e.g. Schott and McCreary, 2001). During boreal winter, the Eurasian continent cools and a high-pressure region develops on the Tibetan plateau, resulting in cold and dry north/northeasterly winds (e.g. Smith and Madhupratap, 2005) and leading to strong evaporative cooling (Dickey et al., 1998). These diverse physical processes cause substantial variations in marine biogeochemical and ecosystem response. Being one of the most productive regions in the world ocean (Satya Prakash and Ramesh, 2007; Prasanna Kumar et al., 2000) and being home to the second most intense oxygen minimum zone in the world ocean (Kamykowski and Zentara, 1990), the AS provides an excellent test bed for studying biophysical coupled processes (McCreary et al., 2009).

keerthim 3/8/y 4:10 PM

Supprimé: Satyaprabash et al.,

Previous studies have extensively described the seasonal variability of surface chlorophyll in the AS. The AS biogeochemical properties vary from stratified oligotrophic conditions during inter-monsoon periods to eutrophic conditions during monsoons (Smith et al., 1998; McCreary et al., 2009). Neither surface irradiance nor temperature limits the biological productivity in this tropical basin: instead, it is mostly attributed to dynamical processes in response to the monsoonal forcing (e.g. Barber et al., 2001; Marra and Barber, 2005). During boreal summer, the largest seasonal blooms are found along the coasts of the Arabian peninsula (e.g. Banzon et al., 2004; Lévy et al., 2007; Wiggert et al., 2005) and are exported offshore by mesoscale eddy stirring (e.g. Resplandy et al., 2011). In boreal winter, convective overturning allows entrainment of nutrients into the mixed layer and leads to a prominent bloom in the northern AS (Banse and English, 2000; Madhupratap et al., 1996; Prasanna Kumar et al., 2001; Wiggert et al., 2002). In addition to these seasonal variations, several studies revealed large interannual variations in the AS winter chlorophyll from either satellite (Banse and McClain, 1986; Banse and English, 1993; Sarma et al., 2006; Wiggert et al., 2002; Sarma et al., 2012) or in-situ measurements (Bauer et al., 1991; Madhupratap et al., 1996; Gundersen et al., 1998; Prasanna Kumar et al., 2001). This strong interannual variability of the northern AS winter bloom is illustrated on Fig. 1a,b for two consecutive winters. A particularly intense bloom developed in the northern AS during winter 2007 (Fig. 1b), with high surface chlorophyll concentration ($>1.0 \text{ mg.m}^{-3}$) extending southward down to 14°N . In contrast, the winter 2006 bloom remained confined to the northern AS (Fig. 1a), with high chlorophyll concentration ($>1.0 \text{ mg.m}^{-3}$) limited to the north of 20°N . The difference in the amplitude of the bloom between winter 2006 and 2007 averaged over the northern AS box (hereafter NAS region shown in Fig. 1) reaches 0.22 mg.m^{-3} , which is approximately 30% of the climatological winter chlorophyll value.

keerthim 3/8/y 4:10 PM

Supprimé: 2008

keerthim 3/8/y 4:10 PM

Supprimé: 2007

keerthim 3/8/y 4:10 PM

Supprimé: 2007

keerthim 3/8/y 4:10 PM

Supprimé: 2008

keerthim 3/8/y 4:10 PM

Supprimé: 23

Understanding the mechanisms driving these chlorophyll interannual variations is important, as this might have a profound influence on the variations of the fish stocks and of the oxygen minimum zone in the AS. To date, only a few

studies have discussed the mechanisms that could be responsible for the winter bloom interannual fluctuations (Banse and McClain, 1986; Prasanna Kumar et al., 2001; Wiggert et al., 2002) and no consensus has been reached so far. Comparing in-situ time series in February 1995 and 1997, Prasanna Kumar et al. (2001) suggested that increased convective cooling resulted in an intense convective mixing, a deeper mixed layer depth (hereafter, MLD), enhanced nutrients injection through entrainment and ultimately a stronger bloom in winter 1997 than in winter 1995. Keerthi et al. (2016) confirmed that large MLD variations occur in winter in the NAS, largely driven by fluctuations in the advection of dry, cold air from the continent, but did not investigate their biogeochemical consequences. Comparing three consecutive winters from 1998 to 2000, Wiggert et al. (2002) suggested using a simple one-dimensional model, that interannual variations of the bloom intensity were not controlled by interannual MLD variations, but rather by the night-time penetration of diurnal mixing, whose downward penetration is regulated by the thermocline depth (hereafter, TCD). In this paradigm, a deeper TCD allows for a deeper night-time mixing, a greater dilution of phytoplankton biomass and stronger inhibition of the bloom development. Previous studies hence not only proposed different mechanisms but also based their conclusions on a small sample, i.e. two one-month-long in-situ time series for Prasanna Kumar et al. (2001) and three consecutive winters from satellite chlorophyll data for Wiggert et al. (2002). The absence of consensus for the processes responsible for the NAS winter bloom interannual variations hence pleads for additional studies, especially now that longer remotely-sensed and in-situ time series are available.

In the present paper, we hence aim at better assessing and understanding the interannual variability of the NAS winter bloom. On the observational side, this study benefits from the extended temporal coverage of the satellite chlorophyll data (~15 years) and the advent of the Argo program that allows monitoring in-situ MLD and TCD variations from 2002 onwards. Performing a combined analysis of these datasets allowed us to perform a direct comparison between these physical parameters and the chlorophyll variability. In addition to these satellite and in-situ observations, we analyse outputs from a ~20 year long coupled biophysical model simulation. The analysis of this simulation, which accurately simulates NAS winter chlorophyll interannual variations, allows us to investigate the subsurface processes not readily available from observations. Section 2 describes the observational products (satellite chlorophyll estimates and Argo-derived MLD and TCD; Section 2.1) and the numerical experiment (Section 2.2). Section 3 provides an intercomparison of the available satellite chlorophyll products over the NAS (Section 3.1) and the model evaluation (Section 3.2). Section 4 provides a description of the chlorophyll interannual variability, its relationship with physical parameters and discusses the mechanisms driving these fluctuations. Section 5 finally provides a summary and discussion of our results.

2. Data and Method

2.1. Observations

keerthim 3/8/y 4:10 PM

Supprimé: 2015

keerthim 3/8/y 4:10 PM

Supprimé: which are

keerthim 3/8/y 4:10 PM

Supprimé: However, it should be noted that these previous studies based their conclusions on the analysis of a very limited number of winters

keerthim 3/8/y 4:10 PM

Supprimé: describing and

keerthim 3/8/y 4:10 PM

Supprimé: increased

keerthim 3/8/y 4:10 PM

Supprimé: ARGO

keerthim 3/8/y 4:10 PM

Supprimé: , which allows

keerthim 3/8/y 4:10 PM

Supprimé: ARGO

keerthim 3/8/y 4:10 PM

Supprimé: 2

keerthim 3/8/y 4:10 PM

Supprimé: 2.1

The surface chlorophyll (hereafter, SChl) estimates analysed in the present study are derived from different instruments (SeaWiFS, MERIS and MODIS), retrieval algorithms and span different periods (Table 1). We will compare these different retrievals in Section 3.1, in order to assess the robustness of remotely-sensed data to investigate the NAS winter bloom. We used the Level-3 Standard Mapped Images with a 9x9-km spatial and a monthly temporal resolution downloaded from <http://oceancolor.gsfc.nasa.gov> for all of these single-mission products. In addition, we also used three level 3 merged ocean-color products downloaded from <http://www.oceancolour.org/> at 4x4-km and monthly resolution: the weighted average empirical (AVW) product, the semi-analytical Garver Siegel Maritorena (GSM) product and the OC-CCI product from the Ocean Color Climate Change Initiative (OC-CCI) product. The longest observational period is provided by the OC-CCI product and spans from October 1997 to December 2013.

The ocean physical parameters are derived from an updated version of the dataset described in Keerthi et al. (2013), with an extended temporal coverage (2002 to 2013) and an estimate of the TCD in addition to that of the MLD. This dataset is built from a combination of Argo and historical temperature and salinity profiles. MLDs were estimated using a temperature criterion, and are defined as the depth where the temperature increases by 0.2°C with respect to the temperature at 10 m. The reference depth was taken at 10 m to avoid aliasing by the diurnal cycle. The TCD was defined as the depth of the maximal vertical temperature gradient. MLDs and TCDs were estimated from individual temperature profiles at their native vertical resolution. The resolution of the data was then degraded to a regular 2° monthly grid, by taking the median of all MLDs and TCDs in each grid mesh. A more detailed description of this procedure can be found in Keerthi et al. (2013). An overview of the spatio-temporal coverage of this dataset over the NAS is provided in Fig. 2. While the data coverage is particularly sparse in winter before 2002 in our targeted region (e.g. less than 10 data per month are available in winter 2000 in the NAS region), the data density increased considerably after 2002, with the development of the Argo program in that basin (Fig. 2a). After 2002, the NAS box winter data density ranged from 25 data per month during 2005 to nearly 120 data per month during 2012. Note that the data coverage is also spatially inhomogeneous, with the highest coverage along a shipping line crossing the NAS box (Fig. 2b).

We also use the World Ocean Atlas (WOA13) climatology (Boyer et al., 2013) to derive climatologies of the thermocline and nitracline depths, calculated as the depths of maximum temperature and nitrate gradients, respectively. Wind speeds, surface air temperatures and net heat fluxes are derived from the Tropflux product (Praveen Kumar et al., 2012). In order to assess the variability associated with various interannual climate modes, we have used standard climate indices. El Niño-Southern Oscillation (ENSO) is represented using the Nino3.4 index, which is the averaged SST anomalies over the Niño3.4 (120–170°W, 5°N–5°S) region during November-January, available from http://www.cpc.ncep.noaa.gov/products/analysis_monitoring/ensostuff/detrend_nino34.ascii.txt. The Indian Ocean Dipole (IOD) is represented by the dipole mode index (DMI, Saji et al., 1999), computed as the difference between interannual SST anomalies in the western (50–70°E, 10°N– 10°S) and eastern (90–110°E, 10–0°S) equatorial Indian Ocean in September–November, available from

keerthim 3/8/y 4:10 PM

Supprimé: analyzed

keerthim 3/8/y 4:10 PM

Supprimé: <http://oceancolor.gsfc.nasa.gov>

keerthim 3/8/y 4:10 PM

Supprimé: <http://www.oceancolour.org/>

keerthim 3/8/y 4:10 PM

Supprimé: The

keerthim 3/8/y 4:10 PM

Supprimé: which now has a

keerthim 3/8/y 4:10 PM

Supprimé: extended

keerthim 3/8/y 4:10 PM

Supprimé: includes

keerthim 3/8/y 4:10 PM

Supprimé: increased

2.2. Model configuration and numerical experiments

These observational products are complemented by a biophysical model simulation, which allows extending our analysis over a longer time period and analysing depth-integrated biogeochemical properties that are not captured by satellites. We use the NEMO (Nucleus for European Modelling of the Ocean; see Madec (2008) for an exhaustive description) ocean general circulation model coupled with the latest version of PISCES (Pelagic Interaction Scheme for Carbon and Ecosystem Studies; see Aumont et al. (2015) for an exhaustive description of the model) biogeochemical component. Briefly, PISCES includes two sizes of sinking particles and four “living” biological pools, that represent two phytoplankton (nano-phytoplankton and diatoms) and two zooplankton (micro-zooplankton and meso-zooplankton) size classes. Phytoplankton growth is limited by five nutrients: NO₃, NH₄, PO₄, SiO₄, and Fe. The ratios among C, N, and P are kept constant for the “living” compartments, at values proposed by Takahashi et al. (1985). On the other hand, the iron, silicon and calcite pools of the particles are explicitly modelled. As a consequence, their ratios are allowed to vary. Nutrients are supplied to the ocean from five different sources: atmospheric dust deposition, rivers, sea-ice, sediment mobilization, and hydrothermal vents. Dust deposition from the atmosphere has been estimated from climatological monthly deposition maps simulated by the National Center for Atmospheric Research model (Mahowald et al., 2005) assuming constant values for the iron content and solubility (Moore et al., 2004). The internal Fe contents of both phytoplankton groups and Si contents of diatoms are prognostically simulated as a function of ambient concentrations in nutrients and light level. Details on the red-green-blue model by which light penetration profiles are calculated, are given in Lengaigne et al. (2007). The Chl/C ratio is modelled using a modified version of the photo-adaptation model by Geider et al. (1998). For a more detailed description, manuals for NEMO and PISCES are available online at <http://www.nemo-ocean.eu/About-NEMO/Reference-manuals>.

The regional configuration used in this study is an Indian Ocean sub-domain of the global ¼° resolution (i.e. cell size ~25 km) configuration described by Barnier et al. (2006). It has 46 vertical levels, with a resolution ranging from 5 m at the surface to 250 m at the bottom. The African continent closes the western boundary of the domain. The oceanic portions of the eastern, northern and southern boundaries use radiative open boundaries (Treguier et al., 2001), constrained with a 150-day relaxation timescale to outputs from a global simulation (Dussin et al., 2009). The circulation and thermodynamics of this regional configuration have been extensively evaluated and reproduce observed variations of key physical parameters well in several Indian Ocean regions (Vialard et al., 2013; Akhil et al., 2014, 2016; Praveen Kumar et al., 2014), including the AS (Nisha et al., 2013; Keerthi et al., 2016).

The simulation starts from rest, with temperature and salinity initialized from the WOA13. PISCES biogeochemical tracers are also initialized from the WOA13 database for nutrient and from the climatology of a global simulation for the

keerthim 3/8/y 4:10 PM

Supprimé: 2.2

keerthim 3/8/y 4:10 PM

Supprimé: has 24 compartments, which include

keerthim 3/8/y 4:10 PM

Supprimé: intraseasonal

keerthim 3/8/y 4:10 PM

Supprimé: Arabian Sea

keerthim 3/8/y 4:10 PM

Supprimé: Vialard et al., 2013;

keerthim 3/8/y 4:10 PM

Supprimé: 2015

other tracers (Aumont and Bopp, 2006). After 5 years of spin-up with a climatological forcing, the model is forced with the Drakkar Forcing Set #4.4 (DFS4.4, Brodeau et al., 2010) from 1980 to 2012. This forcing is a modified version of the CORE dataset (Large and Yeager, 2004), with atmospheric parameters derived from ERA40 reanalysis (Uppala et al., 2005) and ECMWF analysis after 2002 for latent and sensible heat fluxes computation. Radiative fluxes are taken from the corrected International Satellite Cloud Climatology Project-Flux Dataset (ISCCP-FD) surface radiations (Zhang et al., 2004) while precipitation forcing are a blend of satellite products described in Large and Yeager (2004). All atmospheric fields are corrected to avoid temporal discontinuities and to remove known biases (see Brodeau et al., 2010 for details). In the following, we will analyse the 1993-2012 period.

3. Evaluation of the interannual variability in the Northern Arabian Sea

In this section, we provide an intercomparison of the six ocean colour products described above (Section 3.1) and a brief description on model performance at seasonal and interannual time scales in our targeted region (Section 3.2).

3.1. Satellite SChl products intercomparison

One of the major limitations of ocean colour imagery is the inability to perform accurate retrievals under clouds and in presence of aerosols. In the AS, this is particularly challenging during the summer monsoon but not during winter when the data coverage is larger than 90% for all datasets considered, and reaches 98% in the case of the merged products (Table 1). Fig. 3a shows the SChl climatological seasonal cycle averaged over the NAS region for the six available satellite products. This figure reveals a good agreement between the different products in terms of seasonal phasing, with a semi-annual cycle associated with two seasonal blooms, one in summer (maximum in July, except for MERIS) and the other in winter (maximum in February for all products). The amplitudes of these seasonal blooms however clearly differ depending on the product, with largest blooms in MODIS (up to 2 mg.m⁻³ in winter and 5 mg.m⁻³ in summer) while seasonal blooms hardly reach 1 mg.m⁻³ in GSM, OC-CCI and MERIS.

Fig. 3b allows assessing the amplitude of the winter bloom interannual variations in each product by computing the standard deviation of the interannual chlorophyll variations for each calendar month from October to May. This figure shows that the largest interannual deviations from the climatological evolution depicted on Fig. 3a occur during February and March, while a minimum in the amplitude of interannual chlorophyll variability is generally found during November and April. Based on this seasonality, we define winter in the following as the period encompassing the large climatological and interannual SChl signals, i.e. from December to March. For instance, we will refer to winter 2002 as the period averaged from December 2002 to March 2003. Fig. 3b however also illustrates that the amplitude of the winter bloom interannual variations considerably varies amongst SChl products. MODIS displays the largest winter standard deviation (up to 0.6

keerthimg 3/8/y 4:10 PM

Supprimé: 3

keerthimg 3/8/y 4:10 PM

Supprimé: 3.1

keerthimg 3/8/y 4:10 PM

Supprimé: 85

keerthimg 3/8/y 4:10 PM

Déplacé (insertion) [1]

keerthimg 3/8/y 4:10 PM

Supprimé: Figure

keerthimg 3/8/y 4:10 PM

Déplacé (insertion) [2]

keerthimg 3/8/y 4:10 PM

Supprimé: Large interannual ... b allows as ... [1]

keerthimg 3/8/y 4:10 PM

Déplacé vers le haut [1]: Fig.

keerthimg 3/8/y 4:10 PM

Supprimé: 3b). In the following... we def... [2]

keerthimg 3/8/y 4:10 PM

Déplacé (insertion) [3]

keerthimg 3/8/y 4:10 PM

Supprimé: from January to April. The...b ... [3]

keerthimg 3/8/y 4:10 PM

Déplacé vers le haut [2]: Fig.

keerthimg 3/8/y 4:10 PM

Supprimé: 3c....MODIS displays the large ... [4]

mg.m⁻³ in March) and SeaWiFS the weakest one (up to 0.2 mg.m⁻³ in March). This indicates that the analysis of interannual SCHl fluctuations may heavily depend on the product considered.

Scatterplots of monthly SCHl interannual anomalies from the different products are shown on Fig. 4. Despite varying amplitudes amongst products, there is generally a good phase agreement between the monthly anomalies from the different products, with correlation ranging from 0.55 between AVW and MODIS to 0.98 between OC-CCI and MERIS. Amongst the three merged products, OC-CCI displays the best match with the three individual satellite products, with a correlation of 0.84, 0.98 and 0.91 with MODIS, MERIS and SeaWiFS, respectively. The amplitude of anomalies from the merged products generally matches that of MERIS (with regression coefficients ranging from 0.87 to 1.44) but are considerably lower than the ones estimated by MODIS (regression coefficients ranging between 0.23 and 0.42). In the following, most results will be illustrated with the OC-CCI product that displays the best phase agreement with the three individual satellite products (Fig. 4), offers a very good coverage (Table 1) and spans the longest period (1997-2013). It must however be kept in mind that the amplitude of the interannual SCHl anomalies remains uncertain, given the large discrepancies amongst products. In the following, we however show that the interannual relationships existing between SCHl and ocean physical parameters are generally robust amongst ocean color products.

3.2. Model evaluation

A brief evaluation of the seasonal cycle of SCHl in the model simulation follows. The model accurately captures the large-scale SCHl patterns in the AS for both summer (Fig. 5a, c) and winter (Fig. 5b, d). As for observations, the largest SCHl bloom occurs in summer along the Oman coast while the winter bloom is maximum in the northernmost part of the AS (Fig. 5b, d). The modelled seasonal SCHl evolution agrees well with the OC-CCI data in terms of amplitude and timing (Fig. 6a, d), with a clear semi-annual cycle characterized by a larger SCHl bloom during summer (up to 1.5 mg.m⁻³) than in winter (up to 1 mg.m⁻³) and minimum SCHl concentrations (less than 0.5 mg.m⁻³) during inter-monsoons. Even though the model reasonably simulates the amplitude and timing of the SCHl bloom, the summer bloom maximum in the NAS occurs two months later in the model (September) as compared to observations (July). The seasonal timing of the winter bloom in the NAS is however very accurately captured, with a maximum bloom occurring in February in both model and observations (Fig. 6a, d). This winter bloom occurs in response to convective vertical mixing and related MLD deepening (Fig. 6a, b) driven by the cold, dry northeasterly winds (McCreary and Kundu, 1989; Madhupratap et al., 1996; Prasanna Kumar et al., 2001; Wiggert et al., 2000; Lévy et al., 2007; Kone et al., 2009). The model captures the main features of subsurface physical and biogeochemical variations (Fig. 6b, e): the winter bloom is triggered by the deepening of the mixed layer associated with a strong cooling by surface heat fluxes (Fig. 6c, f), accompanied by a deepening of the thermocline and nitracline. The maximum MLD deepening occurs in January in the model and observations (Fig. 6b, e), one month before SCHl peak (Fig. 6a, d). From then on, the upper ocean restratifies and the MLD shoals in response to increased net heat

keerthim 3/8/y 4:10 PM

Supprimé:) and OC-CCI

keerthim 3/8/y 4:10 PM

Supprimé: MERIS

keerthim 3/8/y 4:10 PM

Supprimé: ones (~

keerthim 3/8/y 4:10 PM

Supprimé: 1mg

keerthim 3/8/y 4:10 PM

Supprimé: 96

keerthim 3/8/y 4:10 PM

Supprimé: As already suggested by

keerthim 3/8/y 4:10 PM

Déplacé vers le haut [3]: Fig.

keerthim 3/8/y 4:10 PM

Supprimé: 96

keerthim 3/8/y 4:10 PM

Supprimé: 92

keerthim 3/8/y 4:10 PM

Supprimé: 3c, the

keerthim 3/8/y 4:10 PM

Supprimé: the

keerthim 3/8/y 4:10 PM

Supprimé: the one

keerthim 3/8/y 4:10 PM

Supprimé: 85

keerthim 3/8/y 4:10 PM

Supprimé: 37

keerthim 3/8/y 4:10 PM

Supprimé: 43

keerthim 3/8/y 4:10 PM

Supprimé: 3

keerthim 3/8/y 4:10 PM

Supprimé: 3.2

keerthim 3/8/y 4:10 PM

Supprimé: surface

keerthim 3/8/y 4:10 PM

Supprimé: The winter bloom in the NAS

fluxes into the ocean (Fig. 6c, f). This MLD shoaling combined with a nitracline that remains deep (Fig. 6b) limits further nitrate supply to the MLD. This analysis briefly illustrates the ability of the model to capture the main biogeochemical features and related mechanisms in the NAS in winter.

This simulation not only reasonably captures the SChl seasonal cycle in the NAS region but also its winter interannual variability. Fig. 1 provides a first illustration of the model's ability to capture the amplitude of the contrasted surface blooms during the 2006 and 2007 winters discussed in the introduction. In agreement with observations, the simulation displays a winter bloom that extends further south in 2007 than in 2006, resulting in larger mean SChl concentrations over the NAS region in 2007. Fig. 7a provides a more thorough validation of the model interannual SChl variations in this region. Observed winter SChl interannual anomalies range from $+0.4 \text{ mg.m}^{-3}$ (winter 2011) to -0.3 mg.m^{-3} (winter 2012; Fig. 7a). The largest observed winter positive anomalies are found during 2011, 2007, 2002, 2000 and 1999 (Fig. 7a), while the strongest negative anomalies are found in 1997, 2003, 2006, 2008, 2010 and 2012 (Fig. 7a). The modelled NAS winter interannual SChl anomalies agree generally well with those from the OC-CCI dataset both in terms of phase and amplitude (Fig. 7a), with a correlation between the two time series reaching 0.69 over the 2001-2011 period and 0.52 over the 1997-2011 period, both significant at the 99% confidence level. The main mismatch is found during 1997 and 2002 when the model and observational datasets display opposite anomalies. The observed MLD also exhibits large fluctuations, ranging from -23m in winter 2006 to around $\sim+14\text{m}$ in winter 2001, 2007 and 2011 (Fig. 7b). The model is also able to capture these observed MLD interannual variations (Fig. 7b), with a 0.65 correlation over the 2001-2011 period, significant at the 95% confidence level. The main disagreement between the model and observations occurs during the winters of 2002 and 2008, where the observed signals are not well captured by the model. Finally, the observed TCD also exhibits large year-to-year variations in winter, ranging from -15m in winter 2007 and 2009 to $\sim+15\text{m}$ in winter 2001. In contrast to SChl and MLD, the model does not capture the observed TCD variability well (0.3 correlation), although some major events such as the thermocline shoaling in 2007 and 2009 and the deepening in 2011 are properly simulated. However, the good agreement between the modelled and observed interannual SChl variability in NAS allows us to confidently use the model over a longer period (1993-2012) to further investigate interannual chlorophyll variability and its driving mechanisms.

4. Physical drivers of the interannual SChl variability

In this section, we describe how the main characteristics of the interannual chlorophyll variations in the NAS relate to ocean physical properties (MLD, TCD). The hypotheses of Wiggert et al. (2002) and Prasanna Kumar et al. (2001) for the mechanisms that controls SChl interannual variations imply a correlation of SChl anomalies with TCD and MLD anomalies, respectively. In order to test those hypotheses, we compared the time evolution of the OC-CCI SChl, MLD and TCD anomalies in the NAS box from 2002 to 2013 in Fig. 8. This figure illustrates that observed interannual SChl anomalies are closely related to interannual MLD fluctuations, with deeper MLDs generally associated with a positive chlorophyll

keerthimg 3/8/y 4:10 PM

Supprimé: properly...easonably captures tl ... [5]

keerthimg 3/8/y 4:10 PM

Supprimé: 4

anomaly, and vice-versa. This is verified for most winters, except for 2002 and 2004, where positive chlorophyll anomalies are concomitant with a modest shoaling. In addition, there is a consistent time lag between the MLD and SChl anomalies, with MLD anomalies usually peaking in February and chlorophyll anomalies peaking one month later. In contrast, there is no obvious connection between TCD and SChl anomalies (Fig. 8b): positive SChl anomalies can be either associated with thermocline deepening such as in 2011 or a thermocline shoaling as in 2002 and 2007. Similarly, negative SChl anomalies can be associated to a thermocline deepening as in 2006 or to a shoaling as in 2008 and 2012.

A more quantitative examination of the relationship between interannual SChl anomalies and MLD/TCD anomalies is provided in Fig. 9. As shown in Fig. 9a,c, the winter-averaged SChl and MLD anomalies are strongly correlated in both observations (0.72, statistically significant at the 99% confidence level; Fig. 9a) and the model (0.59 correlation significant at the 99% confidence level; Fig. 9c). In contrast, there is no statistically significant correlation at the 90% confidence level between SChl and TCD variations over the same period for the two datasets (Fig. 9b,d). The dependency of these relationships to the ocean color product is shown in Table 2. This table indicates that all observational products display larger correlations between SChl and MLD than between SChl and TCD anomalies. The strength of the MLD/SChl relationship however varies depending on the product considered, with the largest correlation for MODIS (0.86) and the weakest for the AVW product (0.38, not significant at the 90% significance level). None of the SChl products exhibits a significant relationship with TCD at the 90% confidence level (Table 2). These results are a strong indication that interannual SChl variations are controlled by MLD rather than by TCD variability.

The spatial distribution of the typical SChl, MLD and TCD anomalies during an anomalously strong bloom event is shown in Fig. 10 for both observations and model. This composite pattern is constructed from the half-difference between positive and negative events highlighted on Fig. 7 for model and Fig. 8 for observations. Observations and model exhibit very similar spatial patterns: the maximum SChl anomaly signal (exceeding 0.5 mg.m^{-3}) occupies the northern part of the box around 21°N , 64°E (Fig. 10a,e), with weaker but still significant SChl signals found everywhere in the NAS box. This SChl pattern matches well with the MLD pattern, with maximum MLD positive anomalies (exceeding 16 m) occurring at the northern boundary of the NAS box (Fig. 10b,f) and significant positive MLD anomalies everywhere in the NAS box. In contrast, the TCD composite hardly shows any significant anomaly within the NAS box during an anomalous strong bloom (Fig. 10c, g).

The availability of chlorophyll and nitrate data at depth from the model allows going a step further in the description of the processes driving the chlorophyll variability. Fig. 11 shows the chlorophyll and nitrate evolution between 100 m and the surface, averaged over the NAS box for the two contrasted winters of 2006 and 2007, already discussed on Fig. 1. Both years exhibit a chlorophyll bloom in winter, with maximum chlorophyll concentration in the surface layers in February. The absence of winter deep chlorophyll maximum (DCM) precludes the entrainment of chlorophyll from below to be responsible

keerthim 3/8/y 4:10 PM

Supprimé: 2003

keerthim 3/8/y 4:10 PM

Supprimé: 2005

keerthim 3/8/y 4:10 PM

Supprimé: 2012

keerthim 3/8/y 4:10 PM

Supprimé: 2003

keerthim 3/8/y 4:10 PM

Supprimé: 2008

keerthim 3/8/y 4:10 PM

Supprimé: 2007

keerthim 3/8/y 4:10 PM

Supprimé: 2009

keerthim 3/8/y 4:10 PM

Supprimé: 2013

keerthim 3/8/y 4:10 PM

Supprimé: 67

keerthim 3/8/y 4:10 PM

Supprimé: 6

keerthim 3/8/y 4:10 PM

Supprimé: used

keerthim 3/8/y 4:10 PM

Supprimé: 87

keerthim 3/8/y 4:10 PM

Supprimé: 40

keerthim 3/8/y 4:10 PM

Supprimé: Figure

keerthim 3/8/y 4:10 PM

Supprimé: 2007

keerthim 3/8/y 4:10 PM

Supprimé: 2008

keerthim 3/8/y 4:10 PM

Supprimé: a

for the SChI bloom during this season. This is clearly visible from Fig. 11a,b, which shows that the increase in chlorophyll at the surface layer is not associated with a vertical redistribution of chlorophyll, but with an increase in the vertically integrated biomass.

Let us now investigate what caused this larger phytoplankton growth in winter 2007. The MLD is deepest in January and reaches ~ 50 m during both winters. The similar maximum winter MLDs induce a similar amount of nutrients entrained into the mixed layer (nitrate concentration of 7.23 mmol.m⁻³ in January 2007 against 7.29 mmol.m⁻³ in January 2008) and similar SChI concentrations in January. The main difference between the two winter blooms is their duration: the 2006-07 bloom ends in mid-February, while the 2007-08 bloom persists until March (Fig. 11). MLD similarly remained deep until February in 2008 (~50m), but started shoaling one month earlier in 2007. The deeper MLD in February in 2008 is associated with sustained nutrients fluxes toward the surface. As a result, the mixed layer nitrate concentration reaches ~8 mmol.m⁻³ in February 2008 against ~4 mmol.m⁻³ in 2007, hence sustaining more SChI growth in 2008. It must also be noticed that the differences in nitracline depths cannot explain the bloom differences between these two winters: it is indeed slightly deeper in 2007-08 than in 2006-07 (red lines on Fig. 11).

Fig. 12 allows exploring if the processes observed for the 2006 and 2007 contrasted winters also operate to explain SChI winter anomalies over the entire period. As the largest winter MLD and SChI variability occurs in February-March (see Fig. 7 and 8) the analysis in Fig. 12 is restricted to the February-March period. Fig. 12a shows that the 0-200 m integrated chlorophyll anomalies exhibit an even stronger relationship with MLD fluctuations (0.84 correlation) than with SChI (Fig. 9c; 0.6 correlation), demonstrating that SChI variability does not arise from a vertical redistribution of chlorophyll within the water column, but mainly results from phytoplankton growth. In addition, larger MLD interannual anomalies are associated with more nutrients in the mixed layer over the 20-year period analysed (Fig. 12b), with a 0.63 correlation between the two parameters. This can occur either through a modulation of the maximum MLD and hence of the amount of nutrients entrained into the mixed layer, or through the period when the MLD is deep (as for 2006/2007) and hence through turbulent fluxes of nutrients into the MLD. As the interannual nitrate anomalies averaged over the mixed layer are correlated with both the MLD interannual anomalies (Fig. 12b, 0.63 correlation) and the maximum absolute MLD (not shown; 0.60 correlation), it however not possible to discriminate between the two processes. In any case, the above results suggest that interannual winter chlorophyll variations largely result from phytoplankton growth through nutrient input to the MLD through turbulent processes. Although these results are consistent with Prasanna Kumar et al. (2001) hypothesis, it does not preclude Marra and Barber (2005) hypothesis to operate, i.e. a MLD control through a modulation of the grazing pressure.

Fig. 12 also allows discussing the processes driving the interannual MLD variability in winter. There is a significant relationship between the modelled interannual MLD and net surface heat fluxes (Fig. 12c, -0.83 correlation) anomalies during winter. The typical spatial pattern of anomalous net heat flux displays a broad heat flux cooling over the entire

keerthim 3/8/y 4:10 PM
Supprimé: 2008

keerthim 3/8/y 4:10 PM
Supprimé: 2007

keerthim 3/8/y 4:10 PM
Supprimé: 2008

keerthim 3/8/y 4:10 PM
Supprimé: In terms of the

keerthim 3/8/y 4:10 PM
Supprimé: , one of the main differences is that it

keerthim 3/8/y 4:10 PM
Supprimé: 2008

keerthim 3/8/y 4:10 PM
Supprimé: 2007

keerthim 3/8/y 4:10 PM
Supprimé: Figure

keerthim 3/8/y 4:10 PM
Supprimé: 2007

keerthim 3/8/y 4:10 PM
Supprimé: 2008

keerthim 3/8/y 4:10 PM
Supprimé: Figure

keerthim 3/8/y 4:10 PM
Supprimé: Chl

keerthim 3/8/y 4:10 PM
Supprimé: /2008

keerthim 3/8/y 4:10 PM
Supprimé: Figure

northern AS, with maximum anomalies located at the northern end of the AS for both model and observation (Fig. 10d, h). This is consistent with a MLD deepening controlled by convective overturning, which in turn is controlled by surface heat fluxes. Interannual net heat flux variations in this region are strongly related to 2-m air temperature anomalies (Fig. 12d, correlation 0.63), indicative of southward advection of anomalously cold/warm air from the continent driving anomalous blooms, as already suggested by Keerthi et al. (2016). A significant relationship also exists between the modelled interannual MLD variability and sea surface temperature (SST) variability in winter (Fig. 12e). A deeper MLD is associated with a cooler SST (-0.69 correlation), which in turn is driven by net heat flux variability (Fig. 12f, 0.66 correlation). This finally results in a large -0.79 negative correlation between the SST and SChl winter interannual anomalies, because they are both initially driven by the same surface heat flux anomalies. Observations exhibit a similar correlation (-0.73), reinforcing the above conclusions from the model results.

5. Summary and discussion

5.1. Summary

The AS is one of the most productive regions in the world ocean, with a strong monsoon-driven seasonal cycle in SChl. The largest SChl bloom occurs during the summer monsoon in the western AS, in response to coastal and offshore upwelling driven by the Findlater jet. There is however also a prominent SChl bloom in winter in the northern AS, which exhibits large year-to-year fluctuations in its extent and intensity. These variations have not yet been described in detail and there is no consensus on their driving mechanism. In this paper, we described the NAS winter bloom interannual variability and the mechanism driving this variability. To reach that goal, we combined the analysis of several observational datasets (remotely sensed chlorophyll products from various satellites and physical oceanic parameters derived from Argo in-situ profiles) and a biogeochemical model simulation.

Our results reveal that SChl anomalies from the various satellite products exhibit a good phase agreement, but large amplitude discrepancies. There is a strong ($\sim \pm 50\%$ of the climatological value) year-to-year variability of the NAS winter SChl bloom. These fluctuations of the bloom amplitude are much better correlated ($r \sim 0.4$ to 0.9 depending on the satellite product) to MLD than to TCD ($r \sim 0.2$ to 0.4) interannual fluctuations. As a result, correlations with MLD interannual anomalies are significant at the 90% confidence level in four out of six chlorophyll satellite products, but are insignificant for TCD anomalies irrespective of the product.

The above analysis is based on a limited number of years in observations, due to the in-situ data temporal coverage, which only becomes sufficient after 2002 thanks to Argo profilers. Using a biogeochemical model allows us extending our analyses over a longer period (1993-2012) and to analyse subsurface chlorophyll data (which are not available from

keerthim 3/8/y 4:10 PM
Supprimé: 2015

keerthim 3/8/y 4:10 PM
Supprimé: 5

keerthim 3/8/y 4:10 PM
Supprimé: 5.1

keerthim 3/8/y 4:10 PM
Supprimé: 87

keerthim 3/8/y 4:10 PM
Supprimé: -

keerthim 3/8/y 4:10 PM
Supprimé: 06

observations). The model agrees well with observations in terms of both MLD and SCHl winter interannual anomalies averaged over the NAS (typically $r \sim 0.7$). As in observations, we find no relationship between the winter NAS SCHl anomalies and the TCD anomalies in this simulation, contrary to what would be expected in Wiggert et al. (2002) mechanism. Rather, we find a strong relationship ($r \sim 0.6$) between MLD and surface chlorophyll anomalies, as in the
 5 observations ($r \sim 0.7$). The analysis of the model vertical structure indicates that the increase in SCHl is not the result of the upward mixing of a pre-existing subsurface chlorophyll maximum. Rather, enhanced surface heat losses due to the advection of cold air by northerly winds result in a more convective overturning, an anomalously deep seasonal MLD and more turbulent fluxes of nutrients into the MLD. This promotes new production in the surface layer. Our study therefore demonstrates that the mechanisms controlling chlorophyll variations at seasonal timescales (Prasanna Kumar et al., 2001; Lévy et al., 2007, Koné et al., 2009) also operate at the interannual timescale. Despite these convincing evidences on the dominant role played by MLD variations in driving the year-to-year fluctuations of the winter NAS bloom, other oceanic processes such as the Ekman pumping or offshore advection could also play some role. Performing similar composite analyses as those displayed on Fig. 9 but for wind stress curl and surface currents anomalies does not reveal any significant relationship between these variables and winter interannual chlorophyll variations (not shown), suggesting that Ekman pumping or the advection of chlorophyll and/or nutrient is unlikely to play a strong role on the interannual fluctuations of the winter bloom in the NAS.

5.2. Discussion

20 The present study hence brings new insights on the interannual variability of the NAS winter bloom. As described in the introduction, there have indeed been to date only two studies addressing the physical mechanisms controlling this interannual variability (Prasanna Kumar et al., 2001; Wiggert et al., 2002), which proposed different mechanisms relying on the analysis of a very limited number of winters. Our study allows demonstrating which mechanism dominates based on the analysis of much longer and various datasets (12 winters in observations and 20 winters in the model). Our observational and
 25 modelling results are both inconsistent with the hypothesis proposed by Wiggert et al. (2002), i.e. that the TCD in winter controls the bloom amplitude through a daily dilution effect. In contrast, it is consistent with the hypothesis that interannual MLD variations largely control the amplitude of the bloom (Prasanna Kumar et al., 2001; Marra and Barber, 2005).

30 The diurnal cycle plays a key role in the hypothesis proposed by Wiggert et al. (2002). Because of the limited spatio-temporal coverage of the Argo, this dataset does not allow monitoring the diurnal MLD variability. A proper investigation of the impact of diurnal variability on interannual chlorophyll variations from observations would hence require continuous and long-term temperature and chlorophyll profiles from a fixed location, which are not available to date. If Wiggert et al. (2002) mechanism was dominating, there should however be a negative correlation between interannual variations of chlorophyll and TCD (i.e. a deeper thermocline leading to lower chlorophyll concentrations operating through

keerthimg 3/8/y 4:10 PM

Supprimé: Our model however does not include a proper representation of the diurnal cycle, a key ingredient

keerthimg 3/8/y 4:10 PM

Supprimé: Wiggert et al. (2002) mechanism that suggests a control of daily dilution through TCD anomalies. In addition,

keerthimg 3/8/y 4:10 PM

Supprimé: both the model and observations,

keerthimg 3/8/y 4:10 PM

Supprimé: 5.2

keerthimg 3/8/y 4:10 PM

Supprimé: Our results do not support

keerthimg 3/8/y 4:10 PM

Supprimé: It should be noted that the conclusions from these previous studies relies on the analysis of a very limited number of winters. In addition, the conclusion of Prasanna Kumar et al., (2001) relies on the comparison of MLD in-situ measurements in February 1995 and February 1997, while Wiggert et al. (2002) conclusions largely rely on TCD estimated from an ocean model output. With this in mind, Wiggert et al. (2005) argued that the inconsistency between Prasanna Kumar et al. (2001) and Wiggert et al. (2002) was

daily dilution). Table 2 and Figs. 8, 9, 10 clearly demonstrate that it is not the case. In addition, despite the absence of a diurnal cycle in the model forcing (i.e. by construction, the model can't reproduce the Wiggert et al. (2002) mechanism), the model displays a good agreement with observed interannual chlorophyll variability in winter in the NAS (see Figs. 7a and 10), which is an indirect evidence that the bulk of interannual chlorophyll variations are not linked to a modulation of night-time penetration of diurnal mixing by the TCD.

Wiggert et al. (2005) further argued that the inconsistency between Prasanna Kumar et al. (2001) and Wiggert et al. (2002) may be due to the different seasonal window considered in the two studies: December-January for Wiggert et al. (2002) and February for Prasanna Kumar et al. (2001). Wiggert et al. (2005) argued that during these two periods, two distinct processes drive the phytoplankton growth. On one hand, the transition from the winter monsoon to the spring inter-monsoon is characterized by detrainment blooms stimulated by increased irradiance received by phytoplankton due to mixed layer shoaling that follows the relaxation of monsoon winds. On the other hand, the beginning of the northeast monsoon is characterized by entrainment blooms that are stimulated by the increased in nutrients resulting from a deepening of the mixed layer in that period. To revisit this argument, we repeated our analysis over these two periods (Table 3). Our analysis indicates that interannual SCHl anomalies during the beginning of the monsoon period do not exhibit any significant relationship neither with MLD nor with TCD anomalies (correlation below 0.30 not significant at the 90% significance level), i.e. neither Wiggert et al. (2002) mechanism nor Prasanna Kumar et al. (2001) mechanism works during the bloom initiation period. However, a significant relationship exists between SCHl anomalies and MLD anomalies during post winter period (February-March) with a correlation of 0.80 in the observations and 0.51 for models (Table 3), suggesting that interannual MLD variations control the amplitude of the bloom during the period of peak interannual variability in winter (February-March).

Even though MLD and SCHl interannual variations co-vary for most winters, the winters of 2002 and 2004 behave inconsistently relative to other years in both the model and observations (Fig. 7ab and 8a), suggesting that another mechanism could be at work during these years. Banerjee and Prasanna Kumar (2014) demonstrated that episodic dust storms could contribute to the interannual variability of the winter bloom in the central AS, away from the region of active winter convection. Modelling results of Aumont et al. (2008) however suggested that the variability of SCHl induced by the interannual variability of aerosol iron is likely to be very small everywhere, especially relative to the impact of the ocean dynamics because largest fluctuations of surface iron produced by dust occur in oligotrophic regions where phytoplankton growth is not primarily controlled by iron availability. Even though the non-seasonal iron aerial deposition is not included in our model, it is able to accurately capture the observed interannual variability of the chlorophyll bloom in winter (Fig. 7a), suggesting that this mechanism is unlikely to play a dominant role in the interannual variability of the bloom in the NAS, a region of active winter convection. However, the mismatch between model and observations for a couple of winters may be related to the absence of interannual variability of iron deposition, which is not included in the model.

keerthim 3/8/y 4:10 PM

Supprimé: phytoplankton growth is driven by

keerthim 3/8/y 4:10 PM

Supprimé: 70

keerthim 3/8/y 4:10 PM

Supprimé: 52

keerthim 3/8/y 4:10 PM

Supprimé: Our results point towards a strong control of the MLD variability in the NAS by anomalous heat flux.

keerthim 3/8/y 4:10 PM

Déplacé vers le bas [4]: Although we generally refer to interannual MLD variability in this study, the largest MLD fluctuations in NAS are observed over a single month (see Fig. 7b). These variations hence rather occur at intraseasonal timescales but translate into interannual anomalies when averaging over the entire winter season. Keerthi et al.

keerthim 3/8/y 4:10 PM

Supprimé: (2015

keerthim 3/8/y 4:10 PM

Déplacé vers le bas [5]:) already provided a detailed description of these intraseasonal MLD fluctuations in this region in winter, relating them to the advection of continental temperature anomalies from the northern end of the basin. The climate variability behind these heat flux fluctuations is however currently unknown.

keerthim 3/8/y 4:10 PM

Supprimé: A rapid analysis reveals that interannual variations of the 2-m air temperature in winter in the NAS box is partly correlated with El Nino-Southern Oscillation (ENSO) index (correlation=0.5) and weakly correlated with Indian Ocean Dipole (IOD) index (correlation=0.17), suggesting that part of the winter chlorophyll variations in the NAS are driven by ENSO. However, the exact nature and processes have yet to be understood. .

Our model has shown its ability to capture the observed impact of MLD interannual variations on the bloom amplitude in winter in the NAS. However, comparison with another model suggests that this relationship is highly sensitive to the mean state of the model. A rapid examination of the SCHl-MLD relationship at interannual timescales in a 1/2°-global simulation (Bourgeois et al., 2016) forced with the same atmospheric field as our regional model simulation is given on Fig. 13. The correlation between winter interannual SCHl and MLD anomalies in this global simulation is of opposite sign (-0.21 correlation, not significant at 90%) to that of our regional model run (Fig. 13g, h, i). This sensitivity cannot be attributed to the version of the biogeochemical model nor to the atmospheric forcing used, because they are virtually the same between these two simulations. In fact, we believe that these differences ensue from differences in mean state simulated in the two models, the mean winter MLD in the global simulation being 30-m deeper than in the observations, while our regional model shows a far better agreement (Fig. 13 d-f). This mean state difference results in a weaker winter surface bloom in the global simulation than in our regional simulation and in observations (Fig. 13 a, c), likely because of light limitation. Variations in light limitation rather than in the amount of nutrient injected in the MLD hence dominates the impact of interannual MLD variations on the amplitude of the chlorophyll bloom in this global simulation, resulting in an opposite phase relation between SCHl and MLD in this simulation compared to observations and to a more realistic simulation.

keerthim 3/8/y 4:10 PM
Supprimé: 36

Our results point towards a strong control of the MLD variability in the NAS through anomalous heat flux perturbations. Although we generally refer to interannual MLD variability in this study, the largest MLD fluctuations in NAS are observed over a single month (see Fig. 7b). These variations hence rather occur at intraseasonal timescales but translate into interannual anomalies when averaging over the entire winter season. Keerthi et al. (2016) already provided a detailed description of these intraseasonal MLD fluctuations in this region in winter, relating them to the advection of continental temperature anomalies from the northern end of the basin. The climate variability behind these heat flux fluctuations is however currently unknown. Murtugude et al. (1999) showed that SCHl was anomalously high during December 1997 and January 1998, consistent with elevated entrainment flux of nutrients into the euphotic zone expected during stronger than usual northeast monsoons. This may suggest that the 1997/98 El Niño could be responsible for this, although conclusions are difficult to draw from a single event. Wiggert et al. (2009) results also point to a contrasted biological signature of the western AS during the 1997/1998 and 2006/2007 El Niño events, with an overall decrease of productivity during the earlier and a slight increase during the latter. Finally, the results from Currie et al. (2013) indicate that ENSO control on chlorophyll interannual variations in the AS during fall and winter is larger than that of IOD. In line with these results, we find that interannual variations of the winter 2-m air temperature in the NAS box over the 2002-2011 period is strongly correlated with ENSO index (correlation=0.77) and weakly correlated with IOD index (correlation=0.05), suggesting that surface forcing that drives NAS MLD interannual variability may be ENSO-driven (Table 4). The positive correlation sign is however opposite to Murtugude et al. (1999) results as it indicates that an El Niño event should lead to warmer air over the NAS, i.e. a reduced winter monsoon. Regarding the impact on SCHl, all observed and model chlorophyll

keerthim 3/8/y 4:10 PM
Déplacé (insertion) [4]

keerthim 3/8/y 4:10 PM
Déplacé (insertion) [5]

products do exhibit a modest negative correlation between ENSO and interannual fluctuations of the winter bloom over the 2002-2011 period (Table 4). This is consistent with the hypothesis that an El Niño event drives a weaker winter monsoon, warmer surface air, less convective overturning and hence a weaker bloom. The level of correlation is however modest and insignificant in all datasets (ranging from -0.11 to -0.44 amongst the analysed products), indicating that ENSO is not the only driver of the interannual winter bloom variations in this region. In addition, this influence of ENSO is not very stable in time (Table 4), with a larger correlation with 2-m air temperature over the recent 2002-2011 period (0.77) compared to the extended 1993-2011 period (0.27). Further detailed analyses are required to ascertain and better understand the influence of ENSO on the AS winter monsoon. Finally, while interannual SChl variations are rather consistent amongst products, linear SChl trend are not consistent amongst products, some of them showing a decreasing trend some others showing an increasing trend. These discrepancies hence prevented us to perform a robust assessment of these trends in the present study. We however performed the analyses in the paper using detrended data and found that our results regarding the interannual variability are robust.

An obvious perspective of this study is to investigate the processes controlling the interannual chlorophyll variations in summer, which are far larger than in winter. As compared to the winter season, an analysis based on observations during the summer monsoon is complicated by the poorer satellite data coverage (Table 1) and the fewer Argo profiles in the Oman/Somalia upwelling region (Fig. 2b). The model analysis may however provide further insights on the mechanisms that control the upwelling productivity during summer. Long-term variations also deserve further analysis. Goes et al. (2005) suggest that the southwest monsoon intensifies as a result of climate change, driving increased upwelling, primary production and ecosystem changes in the AS. Climate change models however show a large range of responses in terms of changes in the southwest monsoon (e.g. Turner and Annamalai, 2012), and of productivity in the AS (e.g. Bopp et al., 2013). Those large uncertainties call for more targeted studies of the impact of climate change on oceanic productivity in the AS.

Acknowledgments:

Keerthi M. G is ~~funded~~ by ~~the~~ IFCPAR (Indo French Centre for Promotion of Advanced Research) proposal 4907-1. Model experiments were performed at HPC Pravah at CSIR-NIO. M. Lengaigne, C. Ethé, J. Vialard, M. Levy, de Boyer Montegut and O. Aumont are funded by Institut de Recherche pour le Développement (IRD). Parvathi V is funded by CSIR under SRF. I. Suresh and Akhil V. P. acknowledge the financial support from CSIR, New Delhi. We thank Goddard GSFC/NASA for providing the SeaWiFs, MERIS and MODIS chlorophyll data, ESA-GLOBCOLOUR for providing the GSM and AVW chlorophyll data and ESA-OCEANCOLOUR for providing the OC-CCI chlorophyll data. The NIO contribution number is XXX.

keerthimg 3/8/y 4:10 PM

Supprimé: supported

keerthimg 3/8/y 4:10 PM

Supprimé: a Fellowship from CEFIPRA

References

- Akhil, V. P., Durand, F., Lengaigne, M., Vialard, J., Keerthi, M. G., Gopalakrishna, V. V., Deltel, C., Papa, F., de Boyer Montégut, C.: A modelling study of the processes of surface salinity seasonal cycle in the Bay of Bengal, *J. Geophys. Res.*, 116, 3926-3947, doi: 10.1002/2013JC009632, 2014.
- 5 [Akhil, V. P., Lengaigne, M., Vialard, J., Durand, F., Keerthi, M. G., Chaitanya, A. V. S., Papa, F., Gopalakrishna, V. V., de Boyer Montégut, C.: A modeling study of processes controlling the Bay of Bengal sea surface salinity interannual variability, *J. Geophys. Res. Oceans*, 121, 8471–8495, doi: 10.1002/2016JC011662, 2016.](#)
- Aumont, O. and Bopp, L.: Globalizing results from ocean in-situ iron fertilization studies, *Global Biogeochem. Cy.*, 20, GB2017, doi:10.1029/2005GB002591, 2006.
- 10 Aumont, O., Ethé, C., Tagliabue, A., Bopp, L., Gehlen, M.: PISCES-v2: an ocean biogeochemical model for carbon and ecosystem studies, *Geosci. Model Dev.*, 8, 2465-2513, doi: 10.5194/gmd-8-2465-2015, 2015.
- [Aumont, O., Bopp, L., Schulz, M.: "What does temporal variability in aeolian dust deposition contribute to sea-surface iron and chlorophyll distributions?", *Geophysical Research Letters*, 35, 7, 2008.](#)
- 15 [Banerjee, P. and Prasanna Kumar, S.: ENSO modulation of interannual variability of dust aerosols over the northwest Indian Ocean, *Journal of Climate*, 29, 4, 1287-1303, 2014.](#)
- Banse, K. and English, D. C.: Revision of satellite-based phytoplankton pigment data from the Arabian Sea during the northeast monsoon, *Mar. Res. Pakistan*, 2, 83–103, 1993.
- Banse, K. and English, D. C.: Geographical differences in seasonality of CZCS-derived phytoplankton pigment in the Arabian Sea for 1978–1986, *Deep Sea Res., Part II*, 47, 1623–1677, 2000.
- 20 Banse, K. and McClain, C. R.: Winter blooms of phytoplankton in the Arabian Sea as observed by Coastal Zone Color Scanner, *Mar. Ecol. Prog. Ser.*, 34, 201–211, 1986.
- Banzon, V. F., Evans, R.E., Gordon, H.R., Chomko, R.M.: SeaWiFS observations of the Arabian Sea southwest monsoon bloom for the year 2000, *Deep Sea Res., Part II*, 51, 189–208, 2004.
- 25 Barber, R.T., Marra, J., Bidigare, R.C., Codispoti, L.A., Halpern, D., Johnson, Z., Latasa, M., Goericke, R., Smith, S.L.: Primary productivity and its regulation in the Arabian Sea during 1995, *Deep-Sea Research II* 48, 1127–1172, 2001.
- Barnier, B., Madec, G., Penduff, T., Molines, J., Treguier, A., Sommer, J. L., Beckmann, A., Biastoch, A., Boning, C., Dengg, J., Derval, C., Durand, E., Gulev, S., Remy, E., Talandier, C., Theetten, S., Maltrud, M., McClean, J., and Cuevas, B. D.: Impact of partial steps and momentum advection schemes in a global ocean circulation model at eddy permitting resolution, *Ocean Dynam.*, 56, 543–567, doi:10.1007/s10236-006-0082-1, 2006.
- 30 Bauer, S., Hitchcock, G. L., and Olson, D. B.: Influence of monsoonally-forced Ekman dynamics upon the surface-layer depth and plankton biomass distribution in the Arabian Sea, *Deep-Sea Res.*, 38, 531–553, 1991.
- Bopp, L., Resplandy, L., Orr, J.C., Doney, S.C., Dunne, J.P., Gehlen, M., Halloran, P., Heinze, C., Ilyina, T., Seferian, R. and Tjiputra, J.: Multiple stressors of ocean ecosystems in the 21st century: projections with CMIP5 models, 2013.

keerthimg 3/8/y 4:10 PM
Supprimé: 200

- Bourgeois, T., Orr, J. C., Resplandy, L., Ethé, C., Gehlen, M., and Bopp, L.: Coastal-ocean uptake of anthropogenic carbon, *Biogeosciences Discuss.*, doi:10.5194/bg-2016-57, in review, 2016.
- Boyer, T. P., Antonov, J. I., Baranova, O. K., Coleman, C., Garcia, H. E., Grodsky, A., Johnson, D. R., Locarnini, R. A., Mishonov, A. V., O'Brien, T. D., Paver, C. R., Reagan, J. R., Seidov, D., Smolyar, I. V., and Zweng, M. M.: World Ocean Database 2013, NOAA Atlas NESDIS 72, S. Levitus, Ed., A. Mishonov, Technical Ed.; Silver Spring, MD, 209 pp., 2013.
- Brodeau, L., Barnier, B., Treguier, A.M., Penduff, T., Gulev, S.: An ERA 40-based atmospheric forcing for global ocean circulation models, *Sci Direct* 31:88–104. doi:10.1016/j.ocemod.2009.10.005, 2010.
- Currie, J., Lengaigne, M., Vialard, J., Kaplan, D., Aumont, O., Maury, O.: Indian Ocean Dipole and El Niño/Southern Oscillation impacts on regional chlorophyll anomalies in the Indian Ocean, *Biogeosciences*, 10: 5841– 5888, 2013.
- Dickey, T., Marra, J., Sigurdson, D.E., Weller, R.A., Kinkade, C.S., Zedler, S.E., Wiggert, J.D., Langdon, C.: Seasonal variability of biooptical and physical properties in the Arabian Sea: October 1994–October 1995, *Deep Sea Res Part II* 45(10):2001–2025, 1998.
- Dussin, R., Treguier A.-M., Molines, J. M., Barnier, B., Penduff, T., Brodeau, L., Madec, G.: Definition of the interannual experiment ORCA025-B83, 1958–2007, LPO Report 902, 2009.
- Findlater, J.: A major low-level air current near the Indian Ocean during the northern summer, *Q. J. R. Meteorol. Soc.*, 95, 362–380, 1969.
- Geider, R. J., MacIntyre, H. L., and Kana, T. M.: A dynamic regulatory model of phytoplanktonic acclimation to light, nutrients, and temperature, *Limnol. Oceanogr.*, 43, 679–694, 1998.
- Goes, J. I., Thoppil, P.G., Gomes, H.D., Fasullo, J.T. : Warming of the Eurasian landmass is making the Arabian Sea more productive, *Science*, 308, 545–547, 2005.
- Grant, M., Jackson, T., Chuprin, A., Sathyendranath, S., Zühlke, M., Storm, T., Boettcher, M., Fomferra, N.: Ocean Colour Climate Change Initiative (OC_CCI) – Phase Two, Product User Guide, Plymouth Marine Laboratory, http://www.esa-oceancolour-cci.org/?q=webfm_send/496, 2015.
- Gundersen, J.S., Gardner, W.D., Richardson, M.J., Walsh, I.D.: Effects of monsoons on the seasonal and spatial distributions of POC and chlorophyll in the Arabian Sea, *Deep-Sea Research II* 45, 2103–2132, 1998.
- Kamykowski, D. and Zentara, S. J.: Hypoxia in the world ocean as recorded in the historical data set, *Deep Sea Research Part A. Oceanographic Research Papers*, 37(12), 1861-1874, 1990.
- Keerthi, M.G., Lengaigne, M., Vialard, J., de Boyer Montégut, C., Muraleedharan, P.M.: Interannual variability of the Tropical Indian Ocean mixed layer depth. *Clim Dyn* 40:743–759, 2013.
- Keerthi M.G., Lengaigne, M., Drushka, K., Vialard, J., de Boyer Montégut, C., Pous, S., Levy, M., and Muraleedharan, P. M.: Intraseasonal variability of mixed layer depth in the tropical Indian, *Clim. Dyn.*, 46, 2633-2655, 2016.

keerthim 3/8/y 4:10 PM

Supprimé: doi:10.1007/s00382-015-2721-z, 2015

- Koné, V., Aumont, O., Lévy, M., and Resplandy, L.: Physical and Bio-geochemical controls of the Phytoplankton Seasonal Cycle in the Indian Ocean: a modeling study. in: Wiggert J. D., Hood, R. R., Naqvi, S. W. A., Brink, K. H., and Smith, S. L., 185, 147–166, American Geophysical Union, Washington DC, USA, 2009.
- Large, W. G., Yeager, S. G.: Diurnal to decadal global forcing for ocean and sea-ice models: the data sets and flux climatologies. NCAR/TN-460 STR, 111 pp, 2004.
- Lengaigne, M., Menkes, C., Aumont, O., Gorgues, T., Bopp, L., Andre, J. M., Madec, G.: Influence of the oceanic biology on the tropical Pacific climate in a coupled general circulation model, *Climate Dynamics*, 28, 503–516, 2007.
- Levy, M., Shankar, D., Andre, J. M., Shenoi S. S. C., Durand, F., de Boyer, C., Montegut, C.: Basinwide seasonal evolution of the Indian Ocean's phytoplankton blooms. *J Geophys Res* 112:C12014, 2007.
- Madec, G.: NEMO, the ocean engine, Note du Pole de modelisation, Institut Pierre-Simon Laplace (IPSL), France, No 27 ISSN No 1288–1619, available at: "http://www.nemo-ocean.eu/About-"www.nemo-ocean.eu/About-NEMO/Reference-manuals, 2008.
- Madhupratap, M., Kumar, S. P., Bhattachiri, P. M. A., Kumar, M. D., Raghukumar, S., Nair, K. K. C., and Ramaiah, N.: Mechanism of the biological response to winter cooling in the northeastern Arabian Sea, *Nature*, 384, 549–552, 1996.
- Mahowald, N., Baker, A., Bergametti, G., Brooks, N., Duce, R., Jickells, T., Kubilay, N., Prospero, J., and Tegen, I.: The atmospheric global dust cycle and iron inputs to the ocean, *Global Biogeochem. Cycles*, 19, GB4025, 2005.
- Maritorena, S. and Siegel, D.A.: Consistent Merging of Satellite Ocean Colour Data Sets Using a Bio-Optical Model. *Remote Sensing of Environment*, 94, 4, 429–440, 2005.
- Marra, J. and Barber, D.: Primary production in the Arabian Sea: A synthesis of JGOFS data, *Prog. Oceanogr.*, 65, 159–175, 2005.
- McCreary, J.P., Murtugudde, R., Vialard, J., Vinayachandran, P.N., Wiggert, J.D., Hood, R.R., Shankar, D. and Shetye, S.: Biophysical processes in the Indian Ocean. *Indian Ocean Biogeochemical Processes and Ecological Variability*, pp. 9–32, 2009.
- McCreary, J.P. and Kundu, P. K.: A numerical investigation of sea surface temperature variability in the Arabian Sea. *J Geophys Res* 94:16097–16114, 1989.
- Moore, J. K., Doney, S. C., and Lindsay, K.: Upper ocean ecosystem dynamics and iron cycling in a global 3-D model, *Global Biogeochem. Cy.*, 18, GB4028, doi:10.1029/2004GB002220, 2004.
- Murtugudde, R., McCreary, J. P., and Busalacchi, A. J.: Oceanic processes associated with anomalous events in the Indian Ocean with relevance to 1997–1998, *J. Geophys. Res.*, 105, 3295–3306, 1999.
- Nisha, K., Lengaigne, M., Gopalakrishna, V. V., Vialard, J., Pous, S., Peter, A.-C., Durand, F., Naik, S.: Processes of summer intraseasonal sea surface temperature variability along the coasts of India, *Ocean Dynamics*, 63, 329–346, 2013.
- O'Reilly, J. E., Maritorena, S., Siegel, D. A., O'Brien, M. C., Tool, D., Mitchell, B. G., Karhu, M., Chavez, F. P., Strutton, P., Cota, G., Hooker, S. B., McClain, C. R., Carder, K. L., Muller-Karger, F., Harding, L., Magnusson, A., Phinney, D., Moore, G. F., Aiken, J., Arrigo, K. R., Letelier, R., Culver, M.: Ocean color chlorophyll-a algorithms for SeaWiFS,

- OC2 and OC4: Version 4. In S. B. Hooker, & E. R. Firestone (Eds.), SeaWiFS postlaunch technical report series 11 SeaWiFS postlaunch calibration and validation analyses: Part 3 (pp. 9–23). Greenbelt, MD: NASA Goddard Space Flight Center, 2000.
- Prasanna Kumar, S., Madhupratap, M., Dileep Kumar, M., Gauns, M., Muraleedharan, P.M., Sarma, V.V.S., De Souza, S.N. : Physical control of primary productivity on a seasonal scale in central and eastern Arabian Sea, *Deep Sea Res.*: 433-441, 2000.
- Prasanna Kumar, S., Ramaiah, N., Gauns, M., Sarma, V., Muraleedharan, P.M., Raghukumar, S., Kumar, M.D., Madhupratap, M. : Physical forcing of biological productivity in the northern Arabian Sea during the Northeast Monsoon, *Deep-Sea Research II* 48, 1115–1126, 2001.
- Praveen Kumar, B., Vialard, J., Lengaigne, M., Murty, V.S.N., McPhaden, M.J. : TropFlux: Air-Sea Fluxes for the Global Tropical Oceans – Description and evaluation, *Climate Dynamics* 38:1521- 1543. [doi:10.1007/s00382-011-1115-0](https://doi.org/10.1007/s00382-011-1115-0), 2012.
- Praveen Kumar B., Vialard, J., Lengaigne, M., Murty, V. S. N., Foltz, G., McPhaden, M. J., Pous, S., and de Boyer Montégut, C.: Processes of interannual mixed layer temperature variability in the Thermocline Ridge of the Indian Ocean, *Clim. Dyn.*, 43, 2377-2397, 2014.
- Resplandy, L., Levy, M., Madec, G., Pous, S., Aumont, O., and Kumar, D.: Contribution of mesoscale processes to nutrient budgets in the Arabian Sea, *J. Geophys. Res.*, 116, C11007, doi: 10.1029/2011JC007006, 2011.
- Saji, N. H., Goswami, B. N., Vinayachandran, P. N., Yamagata, T.: A dipole mode in the tropical Indian Ocean, *Nature* 401:360–363, 1999.
- Sarma, V. V. S. S.: The influence of Indian Ocean Dipole (IOD) on biogeochemistry of carbon in the Arabian Sea during 1997–1998, *J. Earth Syst. Sci.*, 115(4), 433–450, doi:10.1007/BF02702872, 2006.
- Sarma, Y. V. B., Adnan Al Azri., Smith, L.S. : Inter-annual Variability of Chlorophyll-a in the Arabian Sea and its Gulfs, *International Journal of Marine Science* 2.1, 2012.
- Satya Prakash and Ramesh, R.: Is the Arabian Sea getting more productive?, *Current Science*, 92(5), 667-670, 2007.
- Schott, F. and McCreary, J. P. : The monsoon circulation of the Indian Ocean, *Prog. Oceanogr.*, 51, 1– 123, 2001.
- Smith, S.L. and Madhupratap, M.: Mesozooplankton of the Arabian Sea: patterns influenced by seasons, upwelling, and oxygen concentrations. *Progress in Oceanography*, this issue, doi:10.1016/j.pocean.2005.03.007, 2005.
- Smith, S. L., Roman, M., Prusova, I., Wishner, K., Gowing, M., Codispoti, L. A., et al. : Seasonal response of zooplankton to monsoonal reversals in the Arabian Sea. *Deep-Sea Research II*, 45, 2369–2403, 1998.
- Takahashi, T., Broecker, W. S., and Langer, S.: Redfield ratio based on chemical data from isopycnal surfaces, *J. Geophys. Res.*, 90, 6907–6924, 1985.
- Treguier, A., Barnier, B., de Miranda, A., Molines, J. M., Grima, N., Imbard, M., Madec, G., Messenger, C., Reynaud, T., and Michel, S.: An eddy-permitting model of the Atlantic circulation: Evaluating open boundary conditions, *J. Geophys. Res.*, 106, 22115– 22129, 2001.

keerthim 3/8/y 4:10 PM

Supprimé: Doi

keerthim 3/8/y 4:10 PM

Supprimé: ?

Turner, A. G. and Annamalai, H.: Climate Change and the South Asian Monsoon, *Nature Climate Change* **2**: 587-595, doi: 10.1038/nclimate1495, 2012.

Uppala, S.M. et al.: The ERA-40 re-analysis, *Q J R Meteorol Soc.* **131**:2961–3012, 2005.

Vialard, J., Drushka, K., Bellenger, H., Lengaigne, M., Pous, S., Duvel, J-P.: Understanding Madden–Julian-induced sea surface temperature variations in the North Western Australian Basin, *Clim Dyn.* Doi: 10.1007/s00382-012-1541-7, 2013.

Wiggert, J. D., Vialard, J., and Behrenfeld, M. J.: Basinwide modification of dynamical and biogeochemical processes by the positive phase of the Indian Ocean Dipole during the SeaWiFS era, in: *Indian Ocean Biogeochemical Processes and Ecological Variability*, vol. 185, edited by: J. D. Wiggert, R. R. Hood, S. Wajih, A. Naqvi, K. H. Brink, and S. L. Smith, p. 350, 2009.

Wiggert, J. D., Hood, R., Banse, K., and Kindle, J.: Monsoon driven biogeochemical processes in the Arabian Sea, *Progr. Oceanogr.*, **65**, 176–213, doi:10.1016/j.pocean.2005.03.008, *the Arabian Sea of the 1990s: New Biogeochemical Understanding*, 2005.

Wiggert, J. D., Jones, B. H., Dickey, T. D., Brink, K.H., Weller, R. A., Marra, J., Codispoti, L. A.: The northeast monsoon's impact on mixing, phytoplankton biomass and nutrient cycling in the Arabian Sea, *Deep Sea Res., Part II*, **47**, 1353–1385, 2000.

Wiggert, J. D., Murtugudde, R., and McClain, C. R.: Processes controlling interannual variations in wintertime (northeast monsoon) primary productivity in the central Arabian Sea, *Deep Sea Res., Part II*, **47**, 2319 – 2343, 2002.

Zhang, Y. C., Rossow, W. B., Lacis, A. A., Oinas, V., Mishchenko, M. I.: Calculation of radiative fluxes from the surface to top of atmosphere based on ISCCP and other global data sets: refinements of the radiative transfer model and the input data. *J Geophys Res* **109**:D19105. doi: 10.1029/2003JD004457, 2004.

keerthim 3/8/y 4:10 PM

Supprimé: theArabian

Name	Satellite	Algorithm	Period	Grid	Winter/Summer NAS coverage
SeaWiFs	GeoEye OrbView-2	OC4v6 (O'Reilly et al, 2000)	1997- 2010	9km	92% / 25%
MERIS	ESA ENVISAT	OC4Me (O'Reilly et al, 2000)	2002-2012	9km	96% / 30%
MODIS	Terra and Aqua	OC3v5 (O'Reilly et al, 2000)	2002- present	9km	96% / 20%
GSM	Combine SeaWiFs/MODIS/MERIS	GSM (Maritorena and Siegel, 2005)	1997- 2012	4km	98% / 45%
AVW	Combine SeaWiFs/MODIS/MERIS		2002-2012	4km	98% / 53%
OC-CCI	Combine SeaWiFs/MODIS/MERIS	OC-CCI- v2.0 (Grant et al 2015)	1997- 2013	4km	98% / 58%

Table 1: Main characteristics of ocean color satellite products used in the present study

SChla Data	Cor (MLDa)	Cor (TCDa)
SeaWiFs (2003-2010)	0.46	-0.006
MERIS (2003-2012)	0.69	0.05
MODIS (2003-2012)	0.86	-0.02
OC-CCI (2003-2012)	0.72	0.05
GSM (2003-2012)	0.77	-0.19
AVW (2003-2012)	0.38	-0.17

Table 2: Correlation between average NAS box winter (DJFM) SChl interannual anomalies derived from satellite products and in-situ MLD and TCD interannual anomalies. Bold typeface indicates correlations which are statistically different from zero at the 90% confidence level.

5

Correlation				
		December-March (DJFM)	December-January (DJ)	February-March (FM)
OC-CCI	MLDa Vs			
	SChla	0.72	-0.05	0.80
	TCDa Vs			
	SChla	0.05	0.43	-0.10
Model	MLDa Vs			
	SChla	0.59	0.21	0.51
	TCDa Vs			
	SChla	0.3	0.37	0.19

Table 3: Correlation between SChl interannual anomalies and MLD and TCD interannual anomalies averaged over the NAS box for January-April, December-January and February-March. Bold typeface indicates correlations which are statistically different from zero at the 90% confidence level.

10

	Correlation	
	IOD (SON)	ENSO (NDJ)
T2a (1993-2011)	-0.06	0.27
T2a (2002-2011)	0.05	0.77
SChl_OC-CCI (2002-2011)	0.07	-0.34
SChl_MODIS (2002-2011)	0.26	-0.39
SChl_MERIS (2002-2011)	0.04	-0.37
SChl_GSM (2002-2011)	0.24	-0.44
SChl_AVW (2002-2011)	0.05	-0.11
SChl_Model (2002-2011)	0.02	-0.30

Table 4: Correlation of IOD and ENSO index with NAS box averaged winter (DJFM) 2m-surface temperature interannual anomalies (T2a) and SChl interannual anomalies derived from different satellite products and model. Bold typeface indicates correlations which are statistically different from zero at the 90% confidence level.

5

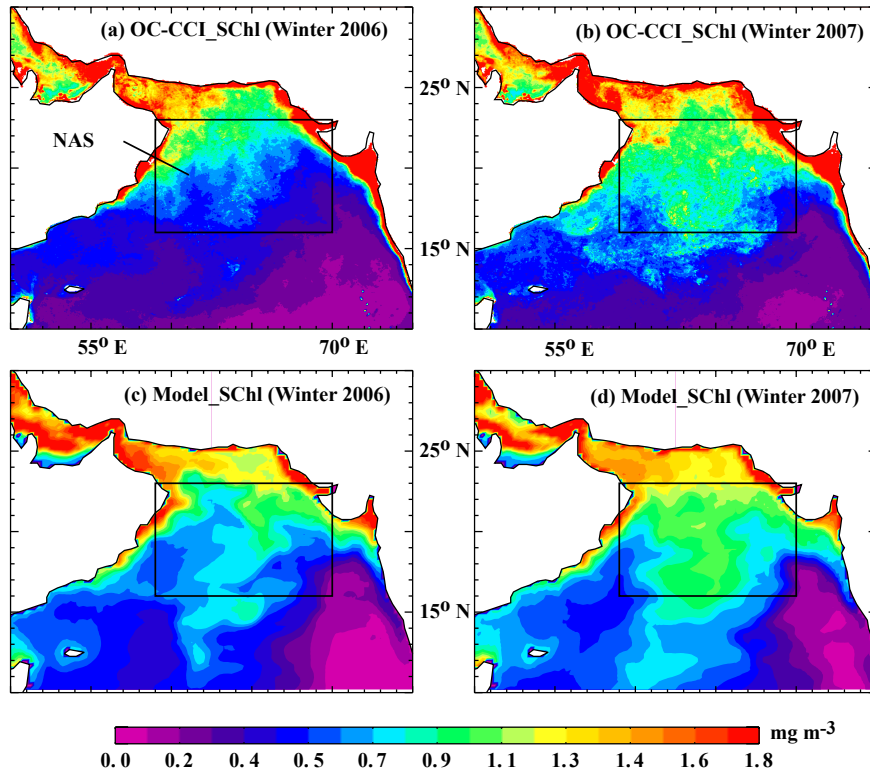


Figure 1: Arabian Sea average SCHl for the winter (DJFM) of (**left panels**) 2006 and (**right panels**) 2007 in (**top**) OC-CCI product and (**bottom**) model. The NAS (North Arabian Sea) box (59°E-70°E, 16°N-23°N) is indicated by a black frame for future reference.

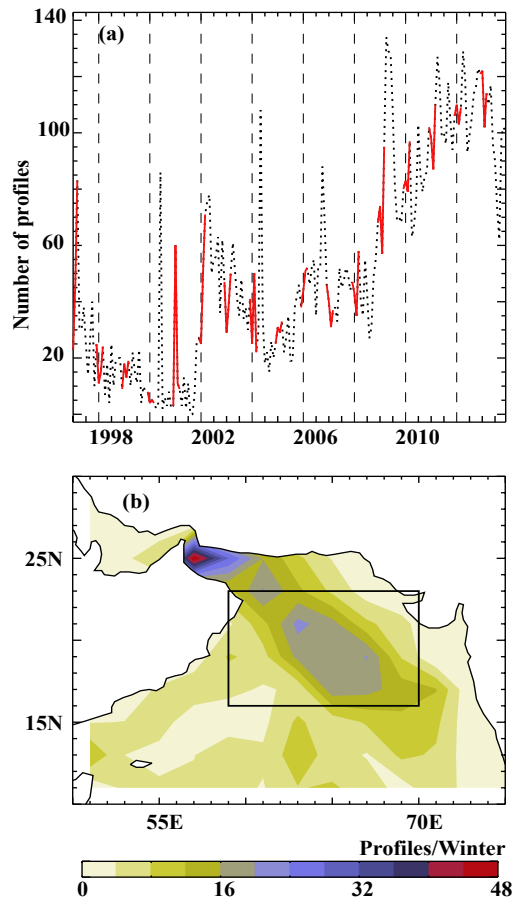


Figure 2: (a) Time series of the number of in-situ profiles per month over the NAS box, from 1997 to 2013. The curve is highlighted in red for winter (DJFM). (b) Average winter in-situ profiles density (per 2°x2° box and per season) for 2002-2012. The NAS region is indicated by a black frame on panel b.

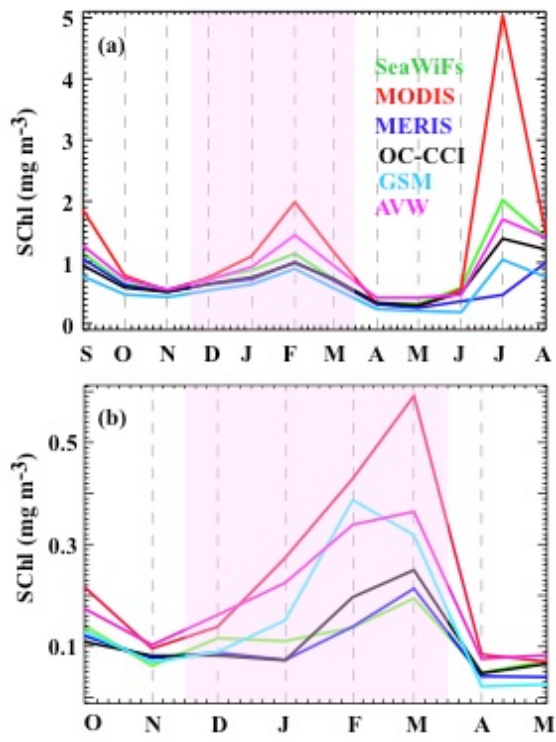


Figure 3. (a) Climatological monthly seasonal cycle of NAS-average SCHl for all satellite products. (b) Standard deviation of monthly (October-May) NAS-averaged SCHl for all satellite products.

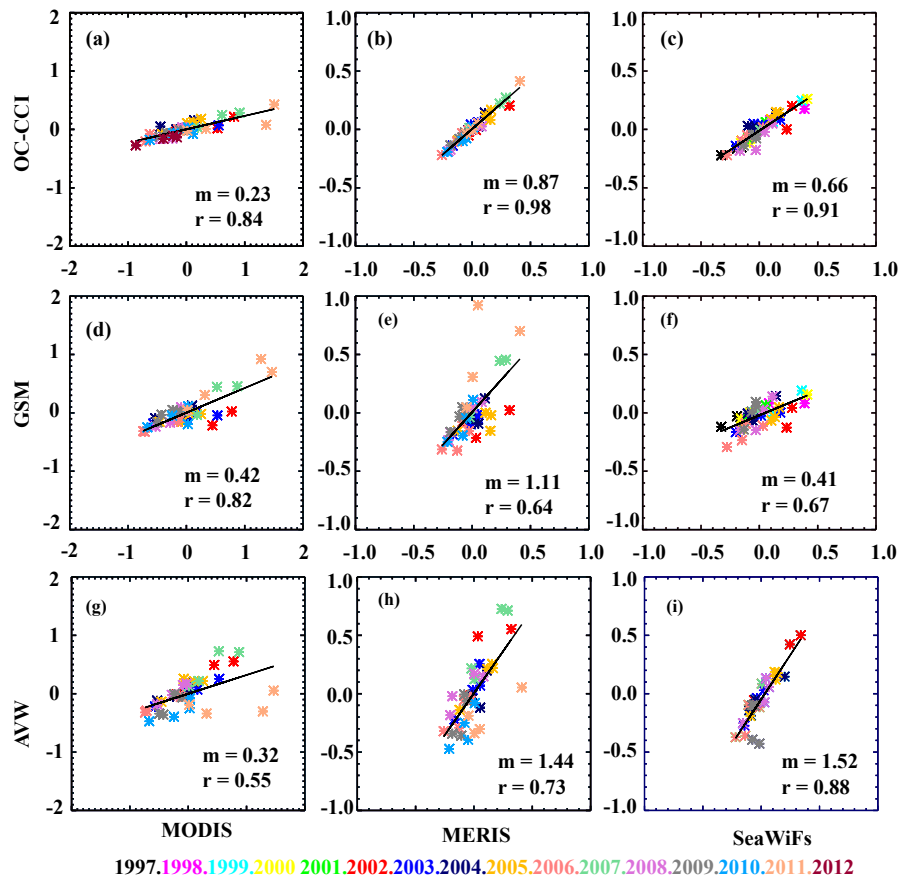


Figure 4. (First row) Scatter plot of NAS-average winter (DJFM) monthly SCHl interannual anomalies (mg.m^{-3}) in OC-CCI product against MODIS, MERIS and SeaWiFs products. (Second row) Idem for GSM product. (Third row) Idem for AVW product. All the correlations (r) and regression coefficients (m) indicated on each panel are significantly different from zero at the 90% confidence level.

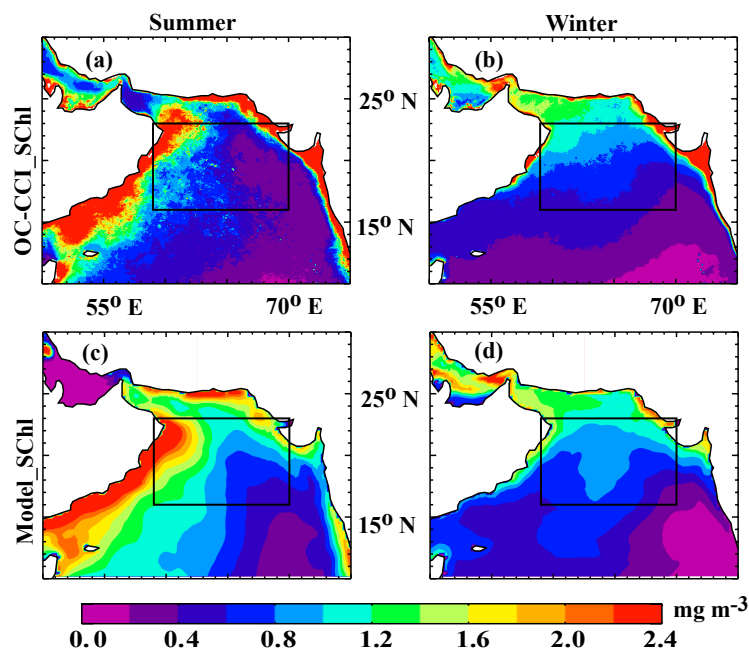


Figure 5: Arabian Sea climatology of (left panels) summer (JJAS) and (right panels) winter (DJFM) (**top**) OC-CCI and (**bottom**) modelled SChl (mg.m^{-3}).

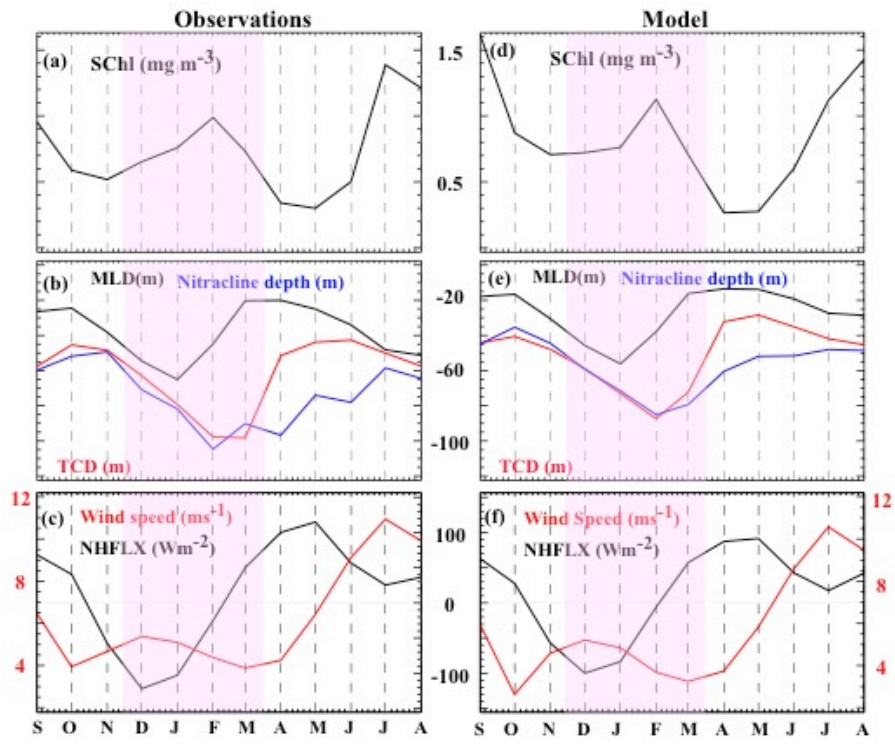


Figure 6: Mean seasonal cycle of NAS box-averaged monthly (a) SchI, (b) MLD (black line), TCD (red line) and nitracline depth (blue line), (c) surface net heat flux and wind speed in observations. (d-f) Same for model. The NAS box is outlined on Figure 1.

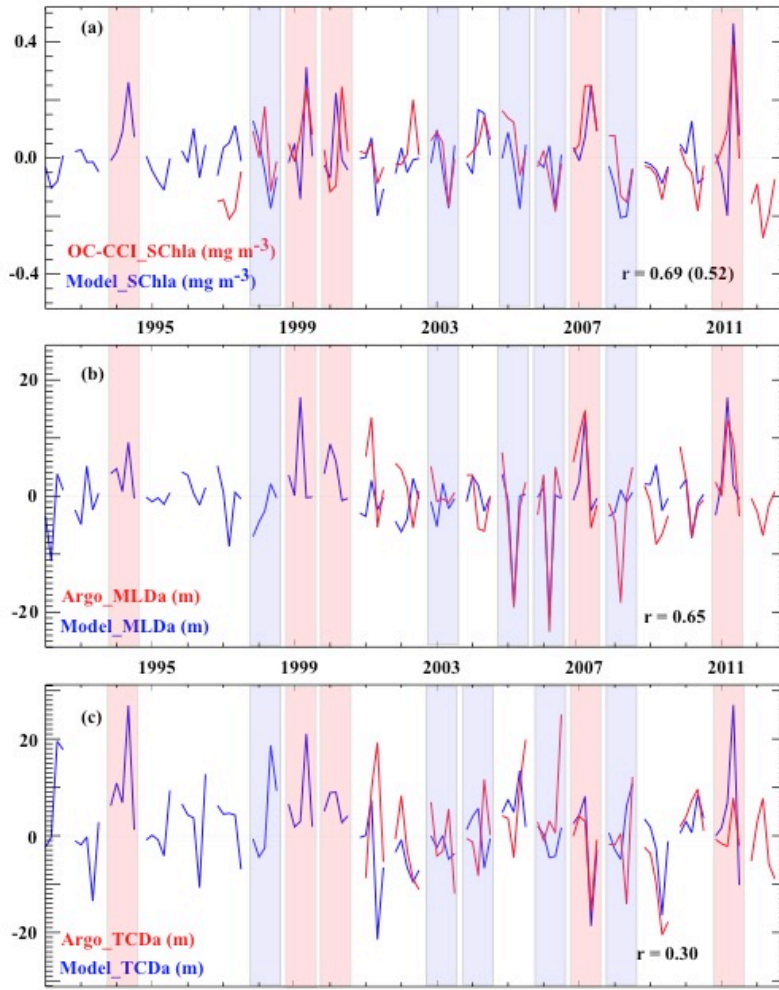


Figure 7: Monthly time series of NAS box-averaged modelled and observed interannual anomalies in winter for **(a)** SCHl, **(b)** MLD and **(c)** TCD. The correlation between the model and observations from 2002-2012 is indicated on panels (a-c). Red and blue shadings respectively indicate winters for strong and weak blooms in the model, considered for the composite plots of Figure 10.

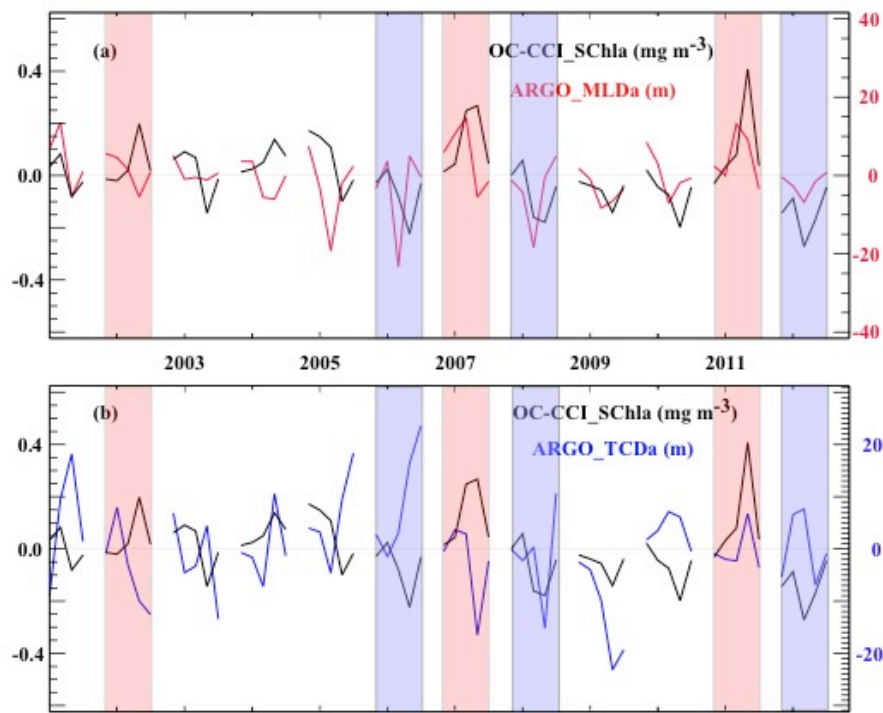


Figure 8: Observed monthly time series of box-averaged (a) SChl and MLD and (b) surface chlorophyll and thermocline depth anomalies in winter over the 2002-2013 period. The red (blue) shadings highlight the winters of strong (weak) blooms used in the composite plots of Figure 10.

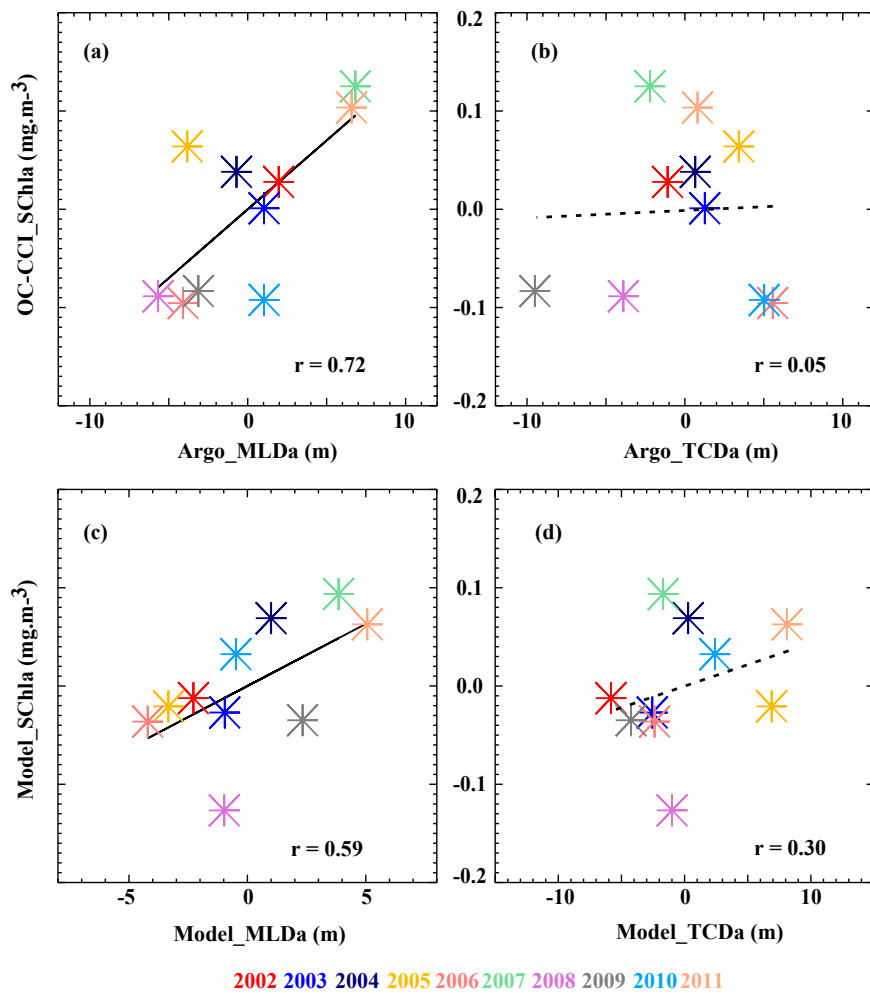


Figure 9: Scatterplot of winter NAS-averaged OC-CCI SCHl anomalies against observed (a) MLD and (b) TCD anomalies over the 2002-2011 period. (c-d) Idem for model. Plain (dashed) lines indicate the linear regression that is (not) significantly different from zero at the 90% confidence level.

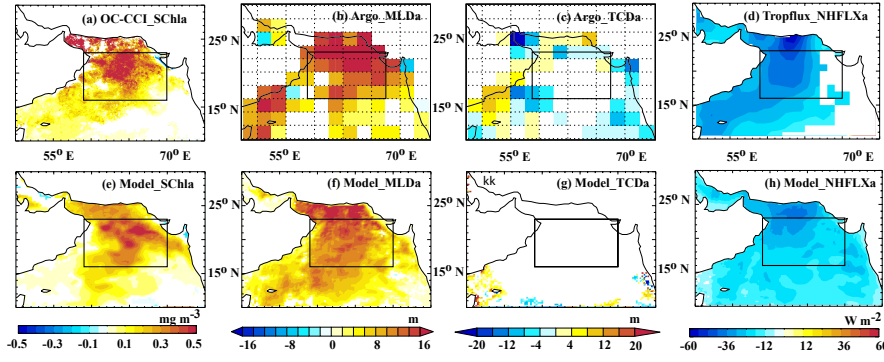


Figure 10: Observed interannual anomalies of (a) SCHL (OC-CCI), (b) MLD and (c) TCD (Argo-derived) (d) net surface heat flux (Tropflux) for composite SCHL blooms (build from half of the difference between positive and negative events highlighted on Figure 8). The SCHL composites are built from the months of max SCHL anomaly: March 2003, March 2008 and March 2012 for positive events; March 2007, March 2009 and February 2013 for negative events. The MLD and TCD composites are built from the months of February of the same year). (e-h) Idem for the model. For the model, composites are built from the positive and negative events highlighted on Figure 7 (SCHL is composited using March 1995, 2000, 2008, 2012 and February 2001 for positive events and March 1999, 2004, 2006, 2007, 2009 for negative events; MLD and TCD are composited using February of the same years). Regions where composite values are less than the standard error are displayed in white.

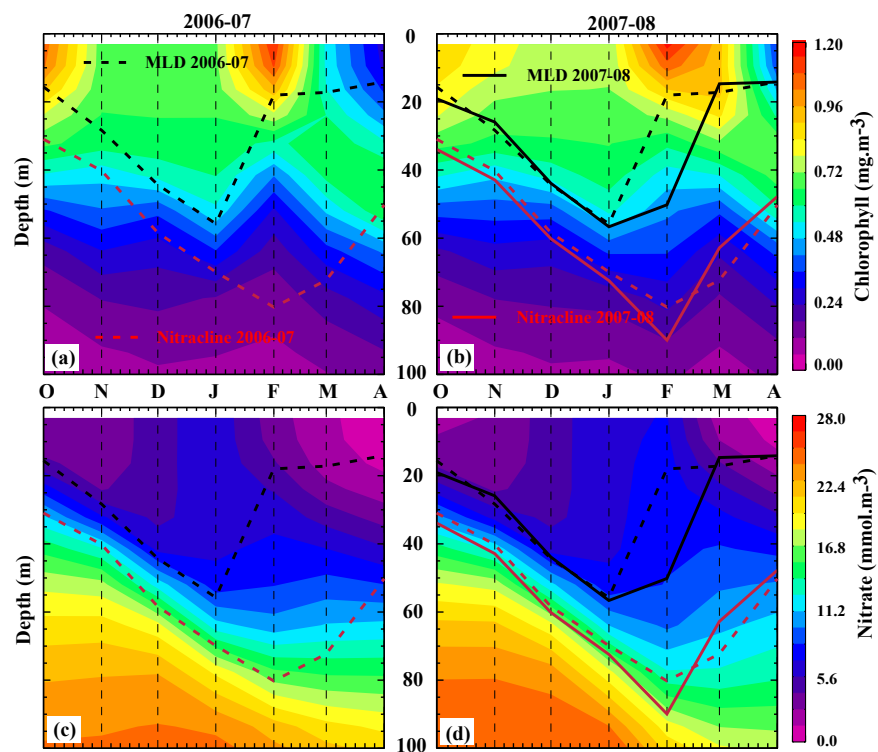


Figure 11: Depth-Time section of NAS-averaged (a, b) chlorophyll and (c, d) nitrate for (a, c) 2006-07 and (b, d) 2007-08. The black lines indicate the MLD, in thick for 2007-08 and dashed for 2006-07. The red lines similarly indicate the nitracline depth.

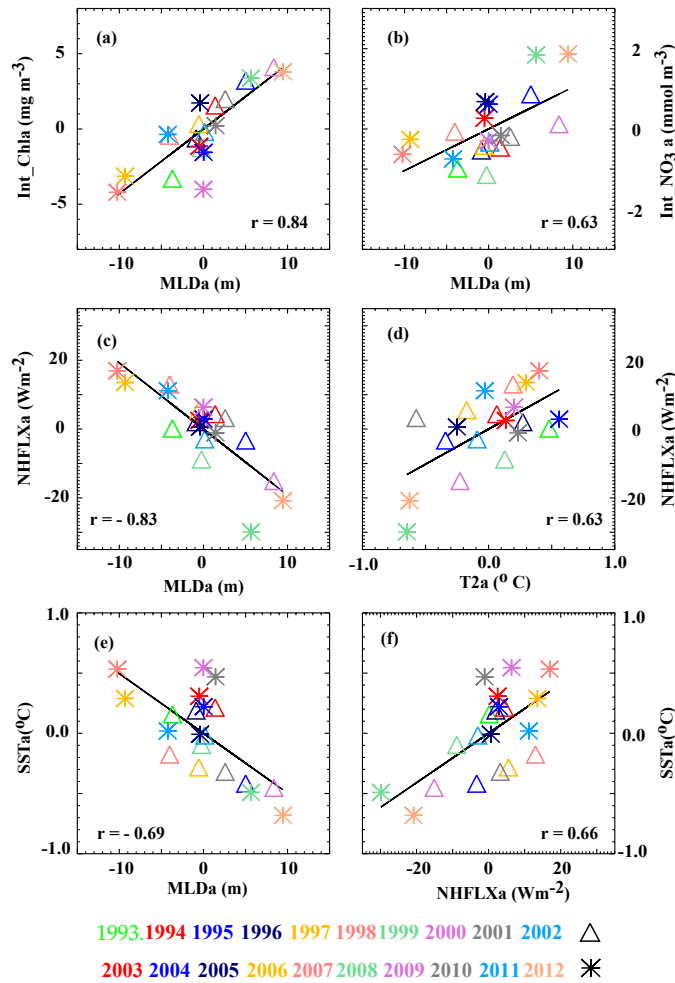


Figure 12: Scatterplot of modelled NAS box-averaged winter (February-March) interannual anomalies of (a) 0-200m total chlorophyll content against MLD. (b) Average MLD nitrate vs MLD. (c) surface net heat flux vs MLD. (d) surface net heat flux vs 2m air temperature. (e) SST vs. MLD. (f) SST vs. surface net heat flux. Plain lines indicate regression coefficients that are significantly different from zero at the 90% confidence level.

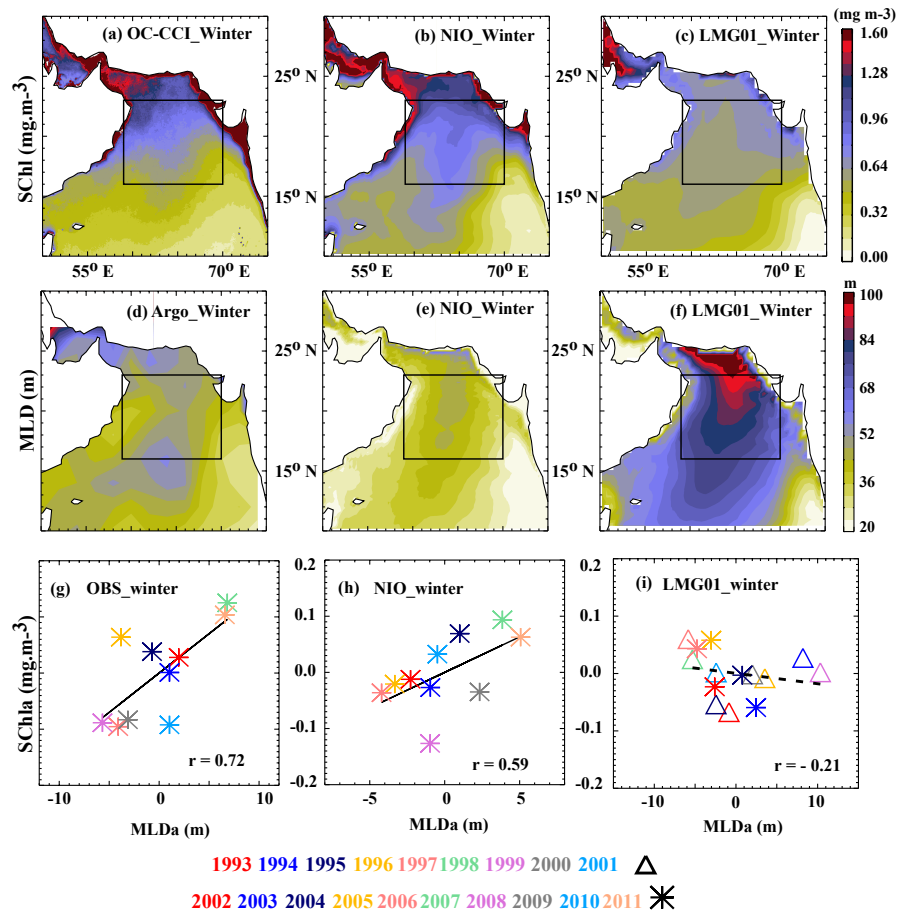


Figure 13: Climatological winter (DJFM) SCHl for (a) OC-CCI, (b) Model used in the current study, (c) LMG01 global simulation described in Bourgeois et al. (2016). (d-f) Idem for climatological winter MLD. Scatterplot of NAS box-averaged winter SCHl interannual anomalies against interannual MLD anomalies for (g) observations (OC-CCI vs in-situ derived estimates), (h) the regional simulation used in the current study and (i) the LMG01 global simulation. Plain (dashed) lines indicate the linear regression that is (not) significantly different from zero at the 95% confidence level.