

Response to reviewers comments on “Describing rainfall in northern Australia using multiple climate indices” by Cassandra Rogers and Jason Beringer

We thank the reviewers for their thoughtful comments and support for the quality of the manuscript. We have taken the reviewers comments seriously and have used them to suggest improvements that will strengthen the manuscript. We have taken the opportunity to make additional small changes to improve the clarity throughout as well as redraw figure 2. We think this is a much improved manuscript.

Anonymous Referee #1

Received and published: 19 May 2016

General comments

This manuscript describes an interesting study designed to evaluate how well several climate indices correlated with the spatial and temporal patterns of rainfall along a severe rainfall gradient in the Northern Territory, Australia. The investigators used a rainfall record from 1900 to 2010 and correlated the climate indices to rainfall at 16 locations along a rainfall gradient from 1600 mm/y to 200 mm/y. They investigated the relationship at annual, seasonal and monthly scales. The sites used are known at the North Australian Tropical Transect (NATT). The study found that across the NATT the AUSMI index provided the best correlations at a monthly time step while the TSI index was the best predictor at an annual time step. The study only examined correlations, so no cause and effect relationships could be determined.

Specific comments Recommendations for improvements to the manuscript:

1. Revise the Introduction to focus more on the topic of this study rather than on the ancillary topics of climate change and vegetation dynamics. Of course, variability in rainfall can have important effects on vegetation and is likely to change under future climates, but the study did not examine those things.
 - a. The reviewer raises a good point and we have revised the introduction to focus on rainfall variability and climate modes affecting the region by removing some ancillary material.
2. The presentation of the results was generally clear, but the Australia-wide data presented in Figures 5 and 6 and Tables 4 and 5 seemed out of place. I recommend putting that information in a supplementary materials section, or perhaps at the end of the Results and Discussion section as a separate topic, or omitting it.

- a. As suggested by the reviewer, the discussion referring to Figures 5 and 6 have been moved to a new section towards the end of the Results and Discussion section. These figures are used to discuss the correlation strength between rainfall and climate indices over the NATT in the broader Australian context.
- b. We argue that Table 4 is necessary for showing correlation strengths over the NATT and therefore should remain in the paper. Correlation strengths will be added to this Table to make it more useful.
- c. Table 5 has been removed as recommended.

3. Similar to (2), if I correctly understood the time lag analyses mentioned briefly in sections 2.5 and 3.3.4, they were conducted at continental and Northern Territory scales and also do not fit well with the other analyses done using the NATT. I recommend either omitting the discussion of the time lag analysis or more fully incorporating it into the manuscript by providing additional information and data.

- a. We agree with the reviewer and have remove the time lag analysis that now streamlines the paper better.

4. I think the Results and Discussion section would be improved by discussing the strength of the correlations between the climate indices and rainfall across the NATT. The authors pointed out that the correlations were highest at the northern end of the transect due to the dependability of the monsoon rainfall in that area, but did not address the low r^2 of even the best-correlated index at the southern end of the transect, or that most of the climate indices were very poorly correlated with rainfall at all time scales across the entire NATT (see Figures 7 and 8). Discussing the reasons for this would be a useful addition to the manuscript.

- a. More discussion has been added to address the nature of the correlations and physical processes that may be influencing these.

Technical corrections

- p. 2, line 4, substitute effects for implications
 - Have changed
- p. 3, line 19, “has been shown to feedback to affect. . .” is awkward
 - Have removed “to feedback”
- p. 5, line 14 substitute in for is
 - Changed in to is, i.e. from “which results in greenhouse gas emissions” to “which results is greenhouse gas emissions” sounds awkward.
- p. 5, line 20, mention where the rate change takes place along the transect
 - Have added “A sharp change in rainfall rate occurs around Dry Creek, with the stations north of Dry Creek experiencing higher rainfall, and the stations further south experiencing less rainfall.”

- p. 15, lines 13-14, mention that all of the correlations are low at the southern end of the transect
 - Have added “Correlation coefficients between AUSMI and rainfall were very strong in the north of the transect, but weak in the south.”
- p. 17, lines 23-24, this seems contradictory to Table 3 that shows an increase in rainfall over time for all points on the transect.
 - The section that the reviewer refers to states “This research has reinforced the notion that future water availability is uncertain due to both unknown trends and relationships between climatic phenomena and natural climate variability, and the uncertainty surrounding the effect of anthropogenic climate change on precipitation” and we feel there is nothing in this paragraph related to “increase in rainfall over time for all points on the transect” and therefore we have not modified this sentence.
- p. 17, lines 25-29. This discussion is off topic. Please modify or omit.
 - We do not agree that this section of the paper is off topic as it discusses some of the possible implications for humans and ecosystems. We think this is entirely appropriate for Biogeosciences that focuses on the intersection of disciplines. If this were a specialist climate journal then I would agree. In addition, this paper is a part of the OzFlux SI and creates some good links to the SI themes.
- p. 18, lines 5-18.
 - We are not sure what the reviewers concern is with this section of the paper.
- The first two paragraphs of the Conclusions did not describe much about the key findings of the study. Either revise or omit.
 - We have removed and it has streamlined the conclusions.

Describing rainfall in northern Australia using multiple climate indices

Cassandra [Denise Wilks](#) Rogers¹, Jason Beringer^{1,2}

5 ¹School of Earth, Atmosphere and Environment, Monash University, Clayton, 3800, Australia.

²School of Earth and Environment (SEE), The University of Western Australia, Crawley, WA, 6009, Australia.

10 *Corresponding author: Jason Beringer, tel. +61 409355496, e-mail: Jason.Beringer@uwa.edu.au*

Abstract. Savanna landscapes are globally extensive and highly sensitive to climate change, yet the physical processes and climate phenomena which affect them remain poorly understood and therefore poorly represented in climate models. Both human populations and natural ecosystems are highly susceptible to precipitation variation in these regions due to the effects implications on water and food availability and atmosphere-biosphere energy fluxes. Here we quantify the relationship between climate phenomena and historical rainfall variability in Australian savannas, and in particular, how these relationships changed across a strong rainfall gradient, namely the North Australian Tropical Transect (NATT). Climate phenomena were described by 16 relevant climate indices and correlated against precipitation from 1900 to 2010 to determine the relative importance of each climate index on seasonal, ~~inter~~-annual and decadal time scales. Precipitation trends, climate index trends, and wet season characteristics have also been investigated using linear statistical methods. In general, climate index-rainfall correlations were stronger in the north of the NATT where ~~inter~~-annual rainfall variability was lower and a high proportion of rainfall fell during the wet season. This is consistent with a decreased influence of the Indian-Australian monsoon from the north to the south. Seasonal variation was most strongly correlated with the Australian Monsoon Index, whereas ~~inter-annual~~yearly variability was related to a greater number of climate ~~indices ie phenomena,~~ (predominately the Tasman Sea and Indonesian sea surface temperature indices (both of which experienced a linear increase over the duration of the study) and the El Niño-Southern Oscillation indices along with Tasman Sea and Indonesian sea surface temperatures). These findings highlight the importance of ~~rainfall variability and the need to~~understanding the climate processes driving variability, and subsequently ~~being able to accurately represent~~the importance of understanding the relationships between rainfall and climatic phenomena in the Northern Territory these in climate models in order to project future rainfall patterns in the region~~Northern Territory~~.

1 Introduction

Human populations and ecosystems are highly susceptible to changes in both intensity and timing of precipitation events through their impact on global energy, water and carbon cycling (Beringer et al., 2011b). Knowledge of atmospheric processes and circulation patterns are important for assessing rainfall patterns under both natural variability and anthropogenic climate change. However, precipitation remains relatively poorly modelled at a global scale due to the inability of coupled Atmosphere-Ocean General Circulation Models to adequately model tropical rainfall and cloud formation (Randall et al., 2007). Possible~~Unknown~~ changes to the El Niño-Southern Oscillation (ENSO) system due to climate change and inconsistencies in model simulations of precipitation related to the Indian-Australian monsoon limit our ability to project future precipitation changes in northern Australia with much confidence (Christensen et al., 2007). Global precipitation patterns and rainfall trends over time are driven by many different climatic phenomena and interactions between the atmosphere, ocean and land surface over different timescales (Wallace and Hobbs, 2006). Major atmospheric and oceanic circulation patterns and systems are some of the major drivers of Australian rainfall, with ENSO (e.g. Nicholls, 1988), the Indian Ocean Dipole (IOD, e.g. Risbey et al., 2009), the Indian-Australian monsoon (also known as the Asian-Australian monsoon, e.g. Kumar et al., 1999) and

synoptic-scale weather events in the extra-tropics (Sturman and Tapper, 2006) among those known to have the greatest influence on Australian rainfall. Climatic phenomena, such as the Indian-Australian monsoon, affect rainfall; and hence water balance; on a seasonal scale (Sturman and Tapper, 2006). On longer time scales, natural climatic oscillations can cause inter-annual (e.g. ENSO) to decadal scale (e.g. the Pacific Decadal Oscillation) variability (Kamruzzaman et al., 2013). Ultimately rainfall is a complex part of the climate system that is dependent on many different factors, including various climatic phenomena, over many different time scales (Risbey et al., 2009).

One common method used to research the influence of climatic phenomena on various climatic variables, such as rainfall, is through the use of climate indices (e.g. Ashok et al., 2007; Kamruzzaman et al., 2013; Schepen et al., 2012). A climate index is a numerical value which provides a measure of the change away from the mean in an oscillatory climate system (National Center for Atmospheric Research, 2012). Climate indices generally consist of a single value, such as a measure of sea surface temperature (SST), mean sea level pressure (MSLP) or wind speed, which can be related via statistical analysis to highly complex climatic processes. For example, Australian rainfall is well correlated with the Southern Oscillation Index (SOI) which is in turn associated with ENSO (e.g. Murphy and Ribbe, 2004; Risbey et al., 2009; Schepen et al., 2012). ~~The spatial correlations performed in this research are no doubt influenced by ocean-atmosphere interactions that can have feedbacks and thresholds (Rial et al., 2004) which means that lags (Suarez and Schopf, 1988) in the system should also be accounted for.~~

~~Long term climate change can be caused by human induced changes to the natural environment. Greenhouse gas emissions, land use change and deforestation can alter rainfall by modifying cloud properties, evaporation and condensation rates, and climatic phenomena such as the monsoon (Franchito et al., 2011; IPCC, 2007a; Meehl et al., 2007). For example, in the north Australian region, savanna burning has been shown to feedback to affect the Australian monsoon index and precipitation (Beringer et al., 2014; Gorgen et al., 2006; Lynch et al., 2007).~~ There remain many uncertainties surrounding the impacts that anthropogenic climate change will have on precipitation, which Rowell (2011) argues is because rainfall model uncertainty in Australia is due to natural variation rather than errors in climate models or observational data. For example, in Queensland, Murphy and Ribbe (2004) found the relationship between ENSO and rainfall did not remain constant over time. They ascribed this to the change in the status of the Inter-decadal Pacific Oscillation. It is therefore important to better understand natural variation in circulatory climate systems to improve future climate projections. Over longer time periods, relationships between climatic phenomena may strengthen or weaken due to climate change. One potential major impact on Australian rainfall is an increase in northern Australian wet season rainfall due to an intensification of the monsoon. Kumar et al. (1999) observed an intensification of the monsoon due to a weakening in its relationship with ENSO. Climate change is also expected to alter other atmospheric circulation systems, such as the weakening of the Walker circulation (Power and Smith, 2007; Vecchi and Soden, 2007) and the broadening of the Hadley Cell (Brönnimann et al., 2009), making the potential impact of climate change on

precipitation in tropical Australia very ~~uncertain~~^{large}. Understanding the relationship between climate drivers and rainfall under both natural variability and anthropogenic change is required to project the future impact of climate change on food, fibre and water production in savanna regions.

5 In Australia, rainfall variability is crucial to the structure and productivity of the landscape, particularly across the vast extent of the savanna biome which accounts for ~~(25% of the continent;~~ (Beringer et al., ~~(2007);~~ ~~of northern Australia because of the significant influence rainfall exerts on savanna structure and productivity~~ (Beringer et al., 2011b; Eamus et al., 2013; Haverd et al., 2016; Hutley et al., 2011; Kanniah et al., 2011). Not only do savanna landscapes cover a large ~~portion~~^{area} of Australia, they ~~also cover a high proportion~~^{account for 15%} of the land surface of the planet ~~(15% of the land surface;~~ (Beringer et al., ~~(2011b);~~ ~~This area which~~ has the potential to increase in size due to climate change (Franchito et al., 2011), making the improved knowledge of these landscapes important in understanding future ~~rainfall~~^{climate} trends in Australia and around the world. Australian savannas remain fairly undisturbed (Beringer et al., 2014) making them good for temporal change studies. Vegetation productivity, ~~(and hence the carbon balance.)~~ ^{is are} vulnerable to changes in rainfall variability (Kanniah et al., 2011) because savanna structure, composition and function shift in response to short (monsoonal) and long term (ENSO, Inter-

15 decadal Pacific Oscillation, Pacific Decadal Oscillation Index (PDO), etc.) rainfall climatology (Beringer et al., 2011a). Moreover, disturbances, such as fire, cyclones and grazing, are also key drivers of savanna structure and productivity which are in turn driven by rainfall patterns (Beringer et al., 2007; Bond et al., 2003; Hutley and Beringer, 2011; Hutley et al., 2013). Savanna grass productivity is very sensitive to rainfall and the biomass produced creates fodder for cattle and fuel for frequent burning, ~~which results~~^{resulting} in greenhouse gas emissions (Beringer et al., 1995, 2014; Moore et al., 2015, 2016). Therefore,

20 evaluating the relationship between inter-annual variation in rainfall and climate phenomena is crucial for predicting the responses of the water, energy and carbon cycles of savanna vegetation (Beringer et al., 2011a; Kanniah et al., 2013). Despite this there has been a paucity of research undertaken on the climatic influences of rainfall in northern Australia and savannas, however, there have been a number of continental scale analyses (e.g. Nicholls, 1989; Risbey et al., 2009; Schepen et al., 2012).

25

From north to south ~~Along~~ the Northern Territory (NT), there is a substantial rainfall gradient (Table 1 and Fig. 1) known as the North Australian Tropical Transect (NATT). The north is highly seasonal with a characteristic tropical monsoonal climate (Bureau of Meteorology, 2011b; Hutley et al., 2011) and a rainy season between September and May (Nicholls et al., 1982; Suppiah and Hennessy, 1996), whereas the south is semi-arid to arid (Beringer et al., 2016) with very little seasonal variation

30 in rainfall (Hennessy et al., 1999). A sharp change in rainfall rate occurs around Dry Creek, with the stations north of Dry Creek experiencing higher rainfall, and the stations further south experiencing less rainfall. ~~Along this rainfall gradient, an ecological transect (North Australian Tropical Transect (NATT)) has been established under the international geosphere biosphere program (Koch et al., 1995), which has been used to examine how changes in rainfall alter vegetation and land~~

surface-atmosphere exchanges (Hutley et al., 2011). Such transects can be used in novel ways to link climate with ecosystem function in two dimensions allowing for fairly simple statistical analysis to be performed. Hence, spatial change along a transect of a particular biome can be used to represent temporal change and has the potential to provide insight into how that landscape type may change in the future (Epstein et al., 2004). T, therefore these transect studies can therefore be an important tool for understanding the potential effects of temporal variability (both natural and anthropogenic).

Due to humanity's heavy demand for reliable and plentiful sources of water, combined with the threat of unknown future rainfall changes due to anthropogenic climate change, there is a need to improve our knowledge of precipitation drivers in order to improve future rainfall projections. The high importance of the Australian savanna landscapes to the global carbon and water balances illustrates the need to better understand the climatic processes in these regions. This paper determines how well different climate indices describe rainfall ~~over the NT with a focus on~~ along the NATT. This has been achieved using ~~spatial and temporal~~ Pearson product-moment correlations ~~including a brief examination of time lags~~. This research addresses correlation, not causation, over an extensive historical record (1900 to 2010). Trends in climate indices and rainfall over the NATT for this time period have also been examined. An unprecedented number of climate indices, representing climatic phenomena that are known to influence Australian rainfall variability, have been implemented in this research.

2 Methodology

2.1 Site description

~~Much of t~~This paper ~~is focussed on~~ examines the strong rainfall gradient along an extended version of the NATT, where 16 sites were chosen (~~Table 1 and Fig. 1~~) to examine the spatial relationships of rainfall ~~with 16 different climate indices (Table 1 and Fig. 1)~~. Due to the recognition of the importance of the NATT as a 'living laboratory' (Hutley et al., 2011) and the role of rainfall in ecosystem structure and function (Beringer et al., 2011b), a number of micrometeorological flux measurements have been established along the NATT as part of the regional flux network (OzFlux). Beringer et al. (2016) provide a description of the OzFlux network with initial cross site analysis. Howard Springs has been a long term monitoring site with observations initiated in 1996 (Eamus et al., 2001) and other sites include Foggy Dam (Beringer et al., 2013), Daly River (Hutley et al., 2011), Dry Creek (Beringer et al., 2011b) and Alice Springs (Cleverly et al., 2013). Rainfall decreases along the NATT from approximately 1,600 mm per year in the north, at a rate of ~200 mm per degree, to approximately 200 mm per year in the south, at a rate of ~100 mm per degree (Bureau of Meteorology, 2011a; Cook and Heerdegen, 2001) (Table 1 and Fig. 1). Associated with this decrease in precipitation is a change in vegetation structure and composition which varies from moist woodland savanna in the north to dry grasslands in the south (Beringer et al., 2011b; Hutley et al., 2011). Seasonality of rainfall also decreases from the north to the south, mostly due to the decrease in the influence of the monsoon moving further inland (Cook and Heerdegen, 2001).

2.2 Climate indices

~~Where~~ we used an extensive 110 years of spatial data, from 1900 to 2010, to help identify persistent long term correlations between precipitation and climate indices and to capture multiple events of each climatic phenomenon occurring at different frequencies. We also advanced on previous ~~single index~~ studies ~~and used multiple by~~ examining a vast number of climate indices (16) ~~to assess the relative strength of influence of each climatic phenomenon~~, as described below and summarised in Table 2. ~~The use of~~ Using multiple climate indices enabled us to gain an insight into which ~~understand the influence of different~~ climatic phenomena may have the strongest relationships with ~~on~~ spatial rainfall patterns in the NT of rainfall, and ultimately which climatic phenomena may have an ~~their~~ effect on ecosystem structure, function and distribution. A map showing the regions over which each climate index is calculated is shown in Fig. 2.

Indian Ocean and Indonesian phenomena

Climatic phenomena over the Indian Ocean and Indonesia ~~affect~~ are related to Australian precipitation both directly (e.g. Kamruzzaman et al., 2013) and indirectly by influencing other climatic phenomena (e.g. the Inter-decadal Pacific Oscillation and ENSO (Power et al., 1999)). SST anomaly (SSTA) data over these regions were used to calculate four climate indices as follows (Table 2 and Fig. 2). The IOD, represented by the Dipole Mode Index (DMI), is defined as the difference between the Indian Ocean West Pole Index (WPI, the average of the SSTAs over 50°E to 70°E and 10°N to 10°S) and the Indian Ocean East Pole Index (EPI, the average of the SSTAs over 90°E to 110°E and 0°N to 10°S (Saji et al., 1999)). Changes in the DMI coincide with changes in equatorial zonal wind variation (Saji et al., 1999). Anomalies in the DMI begin around June and increase until October when they reach a maximum, after which they quickly return to normal (Saji et al., 1999).

The Indonesia Index (II, the average of the SSTAs over 120°E to 130°E and 0°N to 10°S) characterises SSTAs over the Indonesian region and has been related to eastern Australian winter rainfall (Verdon and Franks, 2005) and NT rainfall (Schepen et al., 2012).

El-Niño Southern Oscillation

The relationship between ENSO and Australian rainfall is well known (e.g. Risbey et al., 2009; Ropelewski and Halpert, 1996). There are multiple ENSO indices of which we used six (Table 2 and Fig. 2). The Southern Oscillation Index (SOI) is commonly used in Australian rainfall studies (e.g. Risbey et al., 2009; Ropelewski and Halpert, 1996; Schepen et al., 2012; Suppiah and Hennessy, 1996) ~~and is used to forecast and explain current rainfall patterns in Australia (Bureau of Meteorology, 2012b)~~. The SOI for a given month is calculated as a function of MSLP difference between Tahiti and Darwin ~~(Risbey et al., 2009)~~ (Bureau of Meteorology, 2012).

The four Niño indices represent ENSO using SSTA measurements that are averaged over different regions of the Pacific Ocean (Fig. 2). These indices and their corresponding regions are; the Extreme Eastern Tropical Pacific SST (Niño 1+2), 90°W to 80°W and 0°N to 10°S; the Eastern Tropical Pacific SST (Niño 3), 150°W to 90°W and 5°N to 5°S; the East Central Tropical

Pacific SST (Niño 3.4), 170°W to 120°W and 5°N to 5°S; and the Central Tropical Pacific SST (Niño 4), 160°E to 150°W and 5°N to 5°S

(ESRL, 2012; Kamruzzaman et al., 2013; Risbey et al., 2009). Kamruzzaman et al. (2013) noted a seasonal pattern in Niño 1+2 and Niño 3 from 1957 to 2007.

- 5 -The El Niño Modoki Index (EMI) quantifies El Niño-Southern Oscillation Modoki events, which are similar to traditional ENSO events (Ashok et al., 2007). ~~, but with the -El Niño-Southern Oscillation Modoki events have~~ maximum warming further east than normal ~~ENSO events~~ (Risbey et al., 2009). The EMI is defined by the following equation; $EMI = C - 0.5 * (E + W)$, where C represents SSTAs over 165°E to 140°W and 10°N to 10°S, E represents SSTAs over 110°W to 70°W and 5°N to 15°S and W represents SSTAs over 125°E to 145°E and 20°N to 10°S (Ashok et al., 2007; Schepen et al., 2012).

10

Extra-tropical phenomena

The Tasman Sea Index (TSI), ~~defined as an area off the east coast of Australia bounded by 150°E to 160°E and 30°S to 40°S (Murphy and Timbal, 2008).~~ was included in this research to investigate if there is a potential link between extra-tropical SSTs and NT rainfall (Table 2 and Fig. 2) ~~and is defined over an area off the east coast of Australia (150°E to 160°E and 30°S to 40°S) (Murphy and Timbal, 2008).~~ ~~Where we~~ used the average of the SSTAs over this area ~~to calculate the TSI~~. The use of the TSI to quantify extra-tropical SSTs has only been used in recent years (e.g. Murphy and Timbal, 2008; Schepen et al., 2012) so there are not many studies that include this index.

15

Atlantic and tropical phenomena

- 20 Links have been found between Atlantic Ocean SSTs and rainfall in south-eastern (Kamruzzaman et al., 2013) and north-western Australia (Lin and Li, 2012). The North Atlantic Index (NATL, average SSTA over 60°W to 30°W and 20°N to 5°N) and the South Atlantic Index (SATL, average SSTA over 30°W to 10°E and 0°N to 20°S (National Oceanic and Atmospheric Administration, 2012)) have been included in this research to determine if there is any potential teleconnection between NT rainfall and Atlantic Ocean SSTs (Table 2 and Fig. 2). Kamruzzaman et al. (2013) noted the presence of a seasonal pattern in
- 25 the NATL and the SATL as well as an increasing trend in both from 1957 to 2007.

- SSTs from the tropical regions in the Pacific, Atlantic and Indian Oceans all have links with Australian rainfall (Lin and Li, 2012; Risbey et al., 2009; Schepen et al., 2012). The Global Tropics Index (TROP, the average of the SSTAs between 10°N and 10°S around the equator (National Oceanic and Atmospheric Administration, 2012)) incorporates all three of the above
- 30 mentioned oceans into one climate index (Table 2 and Fig. 2). Correlations have been found between south-eastern Australian rainfall and TROP (Kamruzzaman et al., 2013). Kamruzzaman et al. (2013) noted the presence of a seasonal pattern in TROP as well as a quadratic trend from 1957 to 2007.

Indian-Australian Monsoon

The Indian-Australian monsoon is highly influential on tropical Australian rainfall (Sturman and Tapper, 2006) and is characterised by the reversal of easterly trade winds in the Australian tropics (Hendon et al., 2012). Kajikawa et al. (2009) reason that Indian-Australian monsoon variability can be depicted using a measurement of average zonal wind (U-wind) velocity at 850 mb over 110°E to 130°E and 5°S to 15°S, known as the *Australian Monsoon Index* (AUSMI, Table 2 and Fig. 2), however the definition used for this research differed slightly (see Section 2.3.3). AUSMI is negative for the majority of the year, when the easterly trade winds are dominant, until the start of the monsoon when these winds weaken and then become positive. Kajikawa et al. (2009) found AUSMI to be a good predictor of variability in the monsoon on seasonal, intra-seasonal, inter-annual and inter-decadal time scales.

The Pacific Decadal Oscillation

The *Pacific Decadal Oscillation Index* (PDO) is a measure of the Pacific Decadal Oscillation, a shift in Pacific Ocean temperatures that has a period of 20 to 30 years (Joint Institute for the Study of the Atmosphere and Ocean, 2012). The Pacific Decadal Oscillation is known to affect rainfall and global temperatures (Franks, 2002; Kamruzzaman et al., 2013). The PDO is defined as the leading principal component of SSTs in the north Pacific (Joint Institute for the Study of the Atmosphere and Ocean (2012); Table 2 and Fig. 2). The causes of the Pacific Decadal Oscillation remain unknown, therefore it is not possible to predict changes in the PDO (Joint Institute for the Study of the Atmosphere and Ocean, 2012). This limits the usefulness of the PDO for forecasting climate variability. Note, the Inter-decadal Pacific Oscillation was not included in this research as it is highly correlated with the Pacific Decadal Oscillation (Franks, 2002).

2.3 Data description and sources

All climate index data were calculated using monthly data whereas rainfall data were aggregated from daily to monthly data. Climate index and rainfall data were also aggregated from monthly to seasonal and annual timescales as appropriate. Throughout this research various time periods will be referred to, including summer, autumn, winter and spring, which all use austral definitions (i.e. December 1 to February 28 or 29 depending on the year, March 1 to May 31, June 1 to August 31 and September 1 to November 30 respectively). Unless otherwise stated, rainfall data will be reported as daily averages to remove any inconsistencies created by differing season or month lengths. We defined a year to start on July 1 and end on June 30 (the hydrological year) so that each wet season (as defined in Section 2.7) is not split over two calendar years. It is important to note that none of the data used for this study have been detrended and the seasonal cycle has not been removed.

2.3.1 Precipitation data

Australian gridded daily rainfall data, interpolated from station data (1900 to 2010), were obtained from the Australian Water Availability Project (AWAP) (Raupach et al., 2009, 2012), which was developed by the Commonwealth Scientific and

Industrial Research Organisation (CSIRO). AWAP resolution is 0.05° latitude by 0.05° longitude, (approximately 5 km by 5 km; (CSIRO (2012)). While AWAP data were available nationally from 1900 to 2010, at specific sites there were a very small number of missing values (~ 0.1% at the NATT sites). At the NATT sites, in the case of a single missing point, data were linearly interpolated. For consecutive missing values, daily averages for each month (excluding months with missing data) were calculated for each location and these averages replaced the missing values for the corresponding month.

2.3.2 Sea surface temperature indices and ENSO data

PDO data were obtained from the Joint Institute for the Study of the Atmosphere and Ocean (JISAO), Washington University (<http://jisao.washington.edu/pdo/PDO.latest>). SSTA data for the WPI, EPI, DMI, TSI, Niño1+2, Niño3, Niño3.4, Niño4, NATL, SATL, TROP, EMI and II were extracted from the Extended Reconstruction Sea Surface Temperature version 3b (ERSST.v3b) via the National Oceanic and Atmospheric Administration (NOAA) – National Operational Model Archive and Distribution System (NOMADS) Live Access Server (LAS) (<http://nomads.ncdc.noaa.gov/las/getUI.do>). ERSST.v3b is based on the International Comprehensive Ocean-Atmosphere Data Set (ICOADS) release 2.4 (National Climatic Data Center, 2012). For more information about past ERSST versions see Smith et al. (2008b). ERSST.v3b produces monthly SST and SSTA data over 2° grid boxes (Xue et al., 2010) using buoy and ship observations (National Climatic Data Center, 2012; Smith et al., 2008b; Yates et al., 2008). Data obtained from ERSST.v3b may be prone to uncertainty created by incomplete sampling or data errors (Smith et al., 2008b). Anomaly data are then created using a base period climatology from 1971 to 2000 following Xue et al. (2010). Monthly SSTA data were available from the 1854 to 2012 reconstruction, however data before 1940 are considered less reliable (NCDC, 2012). The use of SSTAs for some of these indices is consistent with other climate index research, e.g. WPI, EPI, DMI, Niño3, Niño3.4, Niño4, EMI, II and TSI by Schepen et al. (2012) and the Niño Indices, SOI, PDO, DMI, NATL, SATL and TROP by Kamruzzaman et al. (2013). SOI data were obtained from the Australian Bureau of Meteorology (<http://www.bom.gov.au/climate/current/soihtml1.shtml>).

2.3.3 Monsoon index data

The definition used for AUSMI in this research is slightly different to that used by Kajikawa et al. (2009) and was instead defined as the 850 mb zonal wind velocity averaged over the area enclosed within 110°E to 130°E and 6°S to 14°S. Eastward zonal wind velocity (m s^{-1}) data were extracted from the NOAA- Cooperative Institute for Research in Environmental Sciences (CIRES) 20th Century Reanalysis version 2 (20CR): Monthly Mean Pressure Level Data at 850 mb. The 20CR provides reanalysed weather data over time and space from the late 1800s to the present (http://www.esrl.noaa.gov/psd/data/gridded/data.20thC_ReanV2_pressure.mm.html). The 20th Century Reanalysis Data were made available by the NOAA/Office of Ocean and Atmospheric Research (OAR)/ Earth Systems Research Laboratory: Physical Sciences Division (ESRL, 2012), Boulder, Colorado, USA. The data were extracted for the latitudes 6, 8, 10, 12 and 14°S; and for the longitudes 110, 112, 114, 116, 118, 120, 122, 124, 126, 128 and 130°E. Since the data were only available

for every 2 degrees of latitude it was not possible to be exactly consistent with Kajikawa et al. (2009). Once the data were extracted they were averaged over the specified region to produce a one dimensional time series.

2.4 Trends

Before we assessed correlations between precipitation and climate indices we examined for linear trends in both the rainfall data and the climate indices. Linear regression and smoothing were used to identify persistent linear trends between 1900 and 2010.

2.5 Correlation maps

Maps of the correlations between rainfall and climate indices were created using Pearson product-moment correlation coefficients of determination (r^2 values) to quantify the correlations between rainfall and climate indices for every grid point (5 km resolution) across Australia using the gridded meteorological AWAP data. Significance was assessed through p values at the 95% significance level (~~95% SL~~) and only significant data were plotted throughout this research. Maps of r^2 and p values were used to determine which climate index was correlated best with rainfall at each grid point over Australia. These maps were spatially aggregated from $0.05^\circ \times 0.05^\circ$ to $1.25^\circ \times 1.25^\circ$ to aid visualisation (e.g. Fig. [5 and 6](#)). The spatially aggregated maps illustrated which climate index was most strongly correlated with rainfall, not how strongly it was correlated. Correlation maps were created for concurrent monthly and annual rainfall correlations for each of the 16 climate indices. ~~In addition, because the SOI is known to have a strong relationship with Australian rainfall (e.g. Suppiah and Hennessy, 1996) and has been shown to have a lagged relationship with NT precipitation (Schepen et al., 2012), we performed additional plots of monthly, summer, autumn, winter and spring SOI lags of -3, -2, -1, +0, +1, +2, +3 and +4 months (Figures not shown). While the results of the lagged correlations are not discussed in detail, we do note the potential as an area for future study.~~

Even though the focus of this research was on the NATT and the NT, correlations over the whole of Australia are shown to put the regional correlations in the broader Australian context.

2.6 Point correlations

~~Correlation strengths between rainfall and each climate index were determined for every site along the NATT~~ Correlations between rainfall and climate indices were performed at each site along the NATT (Table 1 and Fig. 1) for monthly, seasonal and annual time periods. These correlations are referred to throughout the paper as *point correlations*. The point correlations allowed for ~~an~~ more in depth analysis of which climate indices were most highly correlated with rainfall along the rainfall gradient (i.e. NATT) by providing a visual comparison of the relative correlation strengths of multiple indices in two dimensions.

For the purposes of this research, r^2 greater than 0.6 was considered very strong, between 0.2 and 0.6 was considered strong, between 0.1 and 0.2 was considered moderate and less than 0.1 was considered weak. These definitions were based on analysis done by Murphy and Ribbe (2004), Suppiah (2004) and Suppiah and Hennessy (1996) and were mainly intended to be used to compare relative correlation strengths between different indices, rather than to determine a definitive measure of strength. To compare point correlation strengths between climate indices over each time period, a numerical rank, referred to in this research as an index rank, was calculated. Each climate index was given a rank from 1 (strongest correlation) to 16 (weakest correlation) for each site along the NATT. The average rank over all sites for each climate index was then used to find which indices showed, on average, the strongest correlations along the entire NATT.

2.7 Wet season characteristics

Wet season start (onset) date was defined as the date when rainfall, between September 1 and April 30 the following year, exceeded 15% of the rainfall total between these two dates (Smith et al., 2008a). This definition was created by Smith et al. (2008a) who cited a similar definition by Nicholls (1984). Wet season end (retreat) date was defined as the date when rainfall, ~~again~~ between September 1 and April 30, exceeded 85% of the total rainfall (Smith et al., 2008a). The time between the start and end date is referred to as the wet season. Wet season onset and retreat is not to be confused with the monsoon onset and retreat. During the wet season the tropics experience heavy precipitation. Similarly, the monsoon is characterised by heavy rainfall but, unlike the wet season, the monsoon is also characterised by shifts in the wind and pressure in the region. Any single wet season typically consists of multiple monsoon active and break phases (Suppiah and Hennessy, 1996) but these have not been ~~examined~~used in this research. The wet season definition used for this research was chosen as it should cover all monsoon active phases and ensure that both start and end dates exist for each pointsite along the ~~entire~~-NATT for every year. Values were calculated for mean total wet season rainfall, maximum and minimum total, average wet season start and end date, average duration, number of rain days (number of days during the wet season where rainfall is greater than zero) and rainfall intensity for each NATT site.

2.8 Limitations

~~One~~A limitation of this study was the lack of inclusion of indices which measure the Madden-Julian Oscillation and the Southern Annular Mode. An area of further research for this study could include the inclusion of these phenomena but this may require significantly shortening the study period ~~or an improvement of available data, possibly through reconstructed data~~. Data accuracy in observational, reconstructed and modelled data all have implications on the correlations determined in this research. The length of this study poses some issues due to changes in observational equipment used to measure environmental variables and reduced spatial coverage of recording stations or gauges in the past. For example, ERSST.v3b data quality is compromised by a cold bias evident in historical SST data around the 1940s. This bias is due to changes in

observational methods associated with World War II (Smith and Reynolds, 2003). Additionally, AWAP data accuracy is limited by the sparseness of observation points (CSIRO, 2012).

3 Results and discussion

3.1 Trend analysis

- 5 Linear trends in rainfall and each climate index were analysed over the full 110 year time period. Fractional rainfall change was calculated for each site over the NATT, revealing a significant increase in rainfall at all sites (Table 3). Hennessy et al. (1999), Li et al. (2012) and Nicholls (2006) all noted similar rainfall trends from 1910 to 1995, 1948 to 2007 and 1950 to 2005 respectively, however only Li et al. (2012) found the increase was significant. While the increase in rainfall in the north was mostly greater in magnitude than in the south, rainfall change in the south was more variable and less linear (Table 3). The
- 10 dominant influence of the monsoon on northern rainfall (Sturman and Tapper, 2006) is likely to ~~be the explanation behind~~ explain these observations of ~~generally, in general,~~ high summer and low winter rainfall in the north ~~each year~~, whereas the low rainfall in the south has many different and inconsistent influences (Beringer and Tapper, 2000; Sturman and Tapper, 2006; Suppiah and Hennessy, 1996).
- 15 We found a significant increase in the magnitude of most climate indices (WPI, EPI, TSI, Niño1+2, Niño3, Niño3.4, Niño4, NATL, SATL, TROP, and II) and a significant decrease in AUSMI. All other indices showed no linear trend. The significant increases in SSTA data are consistent with conclusions in the Fourth Assessment Report by the Intergovernmental Panel on Climate Change (IPCC) that oceanic temperatures have increased (Bindoff et al., 2007). In this study we did not assess long term changes in the frequency or intensity of climate indices or changes in relationships between different climate indices.
- 20 However such changes have been documented, for example Vecchi and Soden (2007) noted a weakening in the Walker circulation while Power and Smith (2007) noted a reduction in the magnitude of the SOI and the possible dominance of an El Niño pattern from 1977 to 2006. Kumar et al. (1999) noted a weakening in the relationship between ENSO and the monsoon, leading to an intensification of the monsoon, and Nicholls et al. (1996) observed a reduction in the SOI due to a change in the relationship between Australian rainfall, temperature, and the SOI.
- 25
- AUSMI showed a fairly weak but significant negative linear trend over the study period ~~(not shown)~~. This finding suggests a weakening of the monsoon or a reduction in the duration of time when the monsoon is active. The observed decrease in AUSMI appears to contradict the observed precipitation increase over the NATT (Table 3), however the reduction in AUSMI is not evidence that the monsoon has weakened, rather that its circulation characteristics may have changed. Rainfall was also
- 30 observed to have increased in northern Western Australia which has been linked to an increase in aerosol emissions originating from Asian population centres (Rotstayn et al., 2007). This may help to explain the trends along the NATT but, as noted by

Rotstayn et al. (2007), more research is required before a link between Asian aerosols and Australian rainfall can be determined.

It is important to note that since we have not detrended rainfall or climate index data, relationships between rainfall and any of WPI, EPI, TSI, Niño1+2, Niño3, Niño3.4, Niño4, NATL, SATL, TROP, II and AUSMI (all of which show a linear trend) may be due to coincident trends rather than any physical relationship between the given climatic phenomenon and rainfall. Any relationships between rainfall and the climate indices that did not show any linear trends (DMI, SOI, EMI and PDO) are less likely to be coincidental.

3.2 Seasonality

Northern Australia and the north of the NATT have a highly seasonal climate. The wet season, as defined in the methods section, accounted for between 60% and 74% of annual rainfall along the NATT from 1900 and 2010 ~~(not shown)~~. The fact that most precipitation occurred during this period demonstrates the importance of understanding ~~the~~ wet season dynamics. Both the number of rain days and the intensity of rainfall on these days showed a decreasing non-linear trend from the north to the south of the NATT ~~(not shown)~~.

The wet season start day was earliest in the south of the NATT and latest in the mid-north (i.e. SP site) (Fig. 3), however the wet season start day has previously been found to occur earliest in the north (Smith et al., 2008a). This inconsistency is likely due to the use of a percentile based definition of onset and retreat dates ~~used for in~~ this research, rather than using a definition based on the location of the monsoon trough, as also noted by Smith et al. (2008a) in a study examining similar wet season characteristics. ~~The use of a single~~ Our choice of a percentile based definition for the wet season ~~onset and retreat for the entire NATT~~ is therefore not perfect but it allows onset and retreat dates to be defined every year, unlike some more traditional definitions, and is quite simple to calculate (Smith et al., 2008a). Wet season ~~The~~ end day showed much less variation than the start day and generally, in general, occurred earlier in the south (Fig. 3). The duration of the wet season was shortest in the northern half of the NATT and increased southward. Beyond about 19° south, ~~there was no real wet season and~~ rainfall became more variable and less seasonal, producing earlier and longer calculated wet seasons (Fig. 3). The annual mean wet season rainfall volume decreased from the north to the south of the NATT (Fig. 4). Rainfall in the north was normally distributed whereas in the south it showed a positive skew. Standard deviations were greatest in the north whereas coefficients of variability were greatest in the south ~~(not shown)~~, showing that precipitation variability was greatest in the south with respect to mean annual rainfall.

From the above discussion it is clear that relative variability in wet season total, start and end date, duration, number of rain days and intensity were all greater in the south of the NATT. These findings are consistent with the earlier results that annual

relative rainfall variability was greatest in the south. The lower variability in the north was most likely due to the dominance of the monsoon, creating relatively consistently high rainfall every year, whereas as discussed earlier, rainfall in the south was affected by more factors, the strength of which vary from year to year such as incursion of cold fronts (Beringer and Tapper, 2000).

5 3.3 Rainfall-climate index correlations

Correlations between rainfall and climate indices were ~~applied determined along the NATT (Fig. 7 and 8), and~~ over Australia using gridded AWAP rainfall data at a 5 km resolution. Maps are displayed at a 125 km resolution for clarity of viewing (Fig. 5 and 6). ~~Along the NATT, the highest statistically significant correlations, for rainfall over both seasonal and inter-annual yearly time scales, periods were found between rainfall and with~~ SOI, AUSMI, II, TSI, EMI, and to a lesser degree, EPI (Tables 4 and 5; Fig. 5, ~~and 6, 7 and 8~~). The relatively high correlations between these indices and rainfall, ~~suggests a coupling of NT rainfall with circulation over the north of Australia and the Pacific Ocean, and SSTs off the northern and eastern coasts of Australia and over the Pacific Ocean. These findings indicates~~ there may exist teleconnections between NT rainfall and Indonesian, Tasman and Pacific SSTs and the climate phenomena that affect these regions, mainly the monsoon, ENSO and the IOD, but further research would be required to determine any mechanistic links, ~~particularly as these relationships may be~~
15 ~~coincidental due to the linear trends in rainfall, AUSMI, II, TSI and EPI.~~ While most climate indices chosen for this study showed some significant correlations with rainfall, some did not; these were SATL (except for correlations with annual data), NATL, TROP, and PDO. This finding suggests that NT rainfall may not show a concurrent, linear relationship with Atlantic and tropical SSTs, north Pacific decadal SST variability, and the climate phenomena that affect these regions.

3.3.1 ~~Correlations between monthly rainfall and climate index data~~ Intra-annual (monthly) relationships

20 The highest correlations ~~between rainfall and any climate index~~ were found at the ~~intra-annual (monthly)~~ time scale (Fig. 7), ~~particularly in the north with the strength decreasing southward.~~ The most highly correlated index for monthly data was AUSMI, followed by SOI and EMI (Fig. 8a and Table 5). ~~Correlation coefficients between AUSMI and rainfall were very strong in the north of the transect, but weak in the south. The AUSMI-rainfall correlation gradient was negative, very strong and highly linear ($r^2 = 0.9850$) (Fig. 8a), reflecting the strong gradient in rainfall seasonality from the north to the south. AUSMI showed much stronger correlations in the north than the south and much stronger correlations than the SOI and EMI over most of the NATT (Fig. 8a), illustrating the strong seasonality of monsoonal rainfall. On the other hand, this relationship could be largely due to linear trends in both AUMSI and rainfall, of which absolute rainfall trends were greatest in the north, but relative rainfall trends were greatest in the south that is well correlated with AUSMI. Correlations between rainfall and both SOI and EMI were consistently weak along the entire NATT (Fig. 8a).~~
25 AUSMI was the most highly correlated climate index spatially
30 over the greater northern Australian region (Fig. 5). AUSMI was also correlated over a large portion of southern Australia, including almost all of Tasmania (the southern-most region of Australia, Fig. 5), suggesting this ~~was an~~ relationship is an

artefact since the monsoon is known to not extend this far south (Bureau of Meteorology, 2008). The seasonal wind shift associated with AUSMI is linked to the wet summer and dry winter seasons in tropical Australia, which coincides with the wet winters and dry summers respectively in temperate southern Australia. Thus, the correlation between AUSMI and southern Australian rainfall was most likely due to seasonal variation and the southern passage of the sun during autumn and the northern passage during spring, rather than a ~~relationship-teleconnection~~ between the monsoon and southern Australian rainfall. AUSMI is capturing the annual periodicity associated with the seasonal progression of the sun each year. While the monsoon may in fact have the strongest influence on rainfall variability in the north of the NT, from Fig. 5 it is not possible to determine how far south this possible relationship extends. We must therefore use caution when interpreting the results of this analysis. The AUSMI-rainfall correlation gradient was negative, very strong and highly linear ($r^2 = 0.9850$) (Fig. 8a), reflecting the strong gradient in rainfall seasonality from the north to the south.

3.3.2 Correlations between yearly rainfall and climate index data~~Inter-annual relationships~~

To examine ~~inter-annual~~annual to decadal correlations, annual rainfall data were ~~used~~examined. The three climate indices with the strongest correlations with annual rainfall over the NATT were TSI, II, and SOI, ~~of which all~~ of which had~~correlations were a~~ similar correlation strengths (Fig. 6 and 8b). In general, correlations were moderate to strong in the north and weak to moderate in the south showing that rainfall variability became less well described by these climate indices southwards along the NATT (Fig. 8b).

The fact that TSI and rainfall were more strongly correlated in the north than the south of the NATT (Fig. 8b) was surprising ~~because-since~~ the TSI region of measurement is geographically closer to the southern end of the transect (see Fig. 2). Frontal weather systems are likely to directly affect both the TSI region of measurement and the southern NATT, but not the northern NATT, further suggesting that we would expect TSI to be more strongly related to southern NATT rainfall. ~~These-Our~~ results are not consistent with Schepen et al. (2012) who found TSI-rainfall correlations, using a one month lag, to be greatest in the south-west or the centre of the NT between 1950 and 2009 between October and January. ~~On-the-other-hand, Our~~ research suggests that the correlations persisted for the entire year as we found significant correlations using annually averaged data (Fig. 8b). Sturman and Tapper (2006) noted a strong relationship between monsoon onset and synoptic weather in the extra-tropics. This relationship may help to explain the high correlations between TSI and NATT precipitation. Although, as mentioned earlier, both the TSI and rainfall have a significant linear trend which may produce higher correlations than are realistic.

One hypothesis to explain the correlations between Tasman Sea SSTs and NT rainfall is the link both have with Rossby waves (planetary scale atmospheric waves that circle the South Pole) and extra-tropical weather events. Rossby waves are known to have a strong relationship with extra-tropical weather events including high and low pressure cells (Kump et al., 2010; Sturman

and Tapper, 2006) and display coupling with global SSTs (Hill et al., 2000). Therefore, the TSI-NATT rainfall correlations could be due to the simultaneous effects of Rossby waves on both extra-tropical weather, which ~~are~~^{is} known to affect NT rainfall (Sturman and Tapper, 2006) and Tasman Sea SSTs. Additional research is necessary to further investigate this hypothesis.

5 3.3.3 ~~Inter-annual~~Annual relationships by seasons

~~To examine the relationships between seasonal rainfall and climate indices, data were averaged over each season for each year, then~~
~~Using annually averaged data binned into seasons,~~ rainfall-climate index correlation strengths were evaluated for each season. On ~~an inter-annual~~^{a seasonal} scale, the strong correlations between AUSMI and rainfall observed in the ~~annual-monthly~~ data persisted during summer and autumn (Tables 4 and 5), which is consistent with the well-known influence of the summer monsoon on northern Australian rainfall (Bureau of Meteorology, 2008; Suppiah and Hennessy, 1996). Spring rainfall showed significant correlations with a large number of climate indices across most sites, unlike the other seasons, and also showed the highest number of sites with significant correlations ~~(not shown)~~. Significant correlation strengths ranged from strong (maximum $r^2 = 0.31$) in the north of the transect, to moderate to weak correlations ($r^2 < 0.02$) in the south. This high number of significant correlations at the highly seasonal northern sites may be due to potential relationships between~~the influence of~~
~~the monsoon onset and various climate indices in the north~~ On the other hand, climate index-rainfall correlations in the south could be due to ~~at the same time there is~~ extra-tropical convection in the southern part of the NATT.

Interestingly the dominance of the summer and spring correlations in the north of the transect is replaced by stronger correlations with winter rainfall south of 23° latitude (Fig. 7). During most seasons, the monsoon and the location of the sub-tropical ridge over central Australia is thought to be the cause for the decrease in correlation strength from the north to the south of the NATT. During winter the change in the direction of this trend may be due to the typical northward shift of the sub-tropical ridge (Sturman and Tapper, 2006) and a relationship between SSTs off northwest Australia and the large northwest-southeast cloud bands (Wright, 1988a, 1988b), both of which are discussed more later in this section.

~~Of the ENSO indices, all showed significant correlations at most sites during the spring, the strength of which ranged from weak to moderate for the Niño indices (maximum $r^2 = 0.1859$) and weak to moderate, and weak to strong for EMI and SOI respectively (maximum $r^2 = 0.139$ and 0.283 respectively).~~ At most sites the SOI showed moderate to weak correlations during summer (maximum $r^2 = 0.18$) and mainly weak correlations during winter (maximum $r^2 = 0.11$), whereas for the SOI during autumn and the EMI and Niño indices for all ~~months seasons~~ excluding spring, few significant correlations were evident ~~(not shown)~~.

AUSMI showed significant correlations over the whole NATT for all seasons, except in the north during winter. Correlations were highest in summer (strong in the north and moderate to weak in the south) and remained mostly moderate during autumn. Correlations during spring, while significant at all sites, were relatively weak ~~(not shown)~~. These results suggest AUSMI is best at describing rainfall at the peak and the end of the wet season, covering the majority of monsoonal rainfall, but is not necessarily good at describing the monsoon onset. AUSMI and II had some of the highest correlations in the south of the NATT during winter (Table 4). Nicholls (1989) ~~previously~~ found that Australian winter rainfall was related to Indian Ocean and Indonesian SSTs and theorised that the SSTs over these regions have an influence on the location of the sub-tropical ridge along the east coast of Australia, which in turn influences rainfall. Wright (1988a) and Wright (1988b) found variability in southeastern Australian rainfall could be related to the presence of large cloud bands which form over the Indian Ocean, extending from northwest Australia, across the south of the NT, to southeast Australia. These past studies could help to explain why SSTs off the north of Australia showed higher correlations with rainfall in the south of the NATT rather than with rainfall in the north.

EPI and DMI only exhibited significant correlations during spring, coinciding with the peak of the DMI (Saji et al., 1999). While WPI did not show significant correlations during any season it cannot be assumed to have no effect on NT rainfall since it is a component of the DMI. The II showed significant correlations over the majority of the NATT during winter and spring only ~~(not shown)~~. IOD indices and the II are both calculated from SSTs near Indonesia and over the Indian Ocean. It is therefore possible that rainfall in winter and spring (but not summer or autumn) is influenced by climatic phenomena over the Indian Ocean and near Indonesia. Significant TSI-rainfall correlations were evident at almost all NATT sites during summer and spring as well as in the south during autumn ~~(not shown)~~. During autumn, TSI correlations were greatest in the south, while during summer they were greatest in the north. The presence of stronger correlations in the north during summer may be due to the fact that monsoon onset can be triggered by extra-tropical weather events (Sturman and Tapper, 2006) which, as mentioned earlier in Section 3.3.2, may be linked to Tasman Sea SSTs (i.e. the TSI). Over all seasons the PDO, NATL, SATL and TROP showed almost no significant correlation with rainfall, except for SATL in the north during autumn ~~(not shown)~~. The lack of correlation between these indices and rainfall suggests there are probably no strong linear teleconnections between NT rainfall and North Pacific SSTs, Atlantic Ocean SSTs, or zonal tropical SSTs on an ~~inter~~-annual timeframe.

This research has shown that correlations between NATT rainfall and climate indices are generally greater in the north. This is potentially due to the fact that, as discussed earlier, rainfall is more variable from year to year in the south. The dominant influence of the monsoon on rainfall in the north of the NATT, and the influence of various climatic phenomena on the monsoon, also potentially explain why northern correlation strengths are strongest. Another cause for the higher rainfall-climate index correlation strengths in the north could be the presence of stronger trends in rainfall in the north. Correlations

between rainfall and climate indices which also have significant trends could result in higher correlation strengths than would be expected if these data had been detrended before being analysed.

3.3.4 Lagged climate indices

- 5 ~~While this paper has so far focused solely on concurrent climate index rainfall correlations, we briefly investigated the potential of lagged climate indices to improve rainfall description ability in the NT. Lagged SOI was found to produce stronger correlations than the initial SOI rainfall correlations over some regions of the NT for certain time periods. Using monthly data, rainfall in the central west and south west of the NT showed the strongest correlations with SOI when rainfall was lagged behind SOI by three months (a positive lag), while the east of the NT favoured a concurrent correlation or positive one month~~
- 10 ~~lag (i.e. rainfall was lagged behind SOI, not shown). During summer, the highest rainfall correlations were shown with no lag in the north east, a positive one month lag in the west, and a negative one to negative three month lag in the south (i.e. SOI was lagged behind rainfall by one to three months in the south). During autumn, stronger correlations with SOI were evident when lagged by between negative two to negative three months. Winter rainfall SOI correlations were stronger in the southern half of the NT when lagged by positive three to positive four months whereas spring favoured a zero to positive two month~~
- 15 ~~lag in the south, a positive three month lag in the north east and a positive four month lag in the central west. It is therefore evident that while it may be possible to improve rainfall climate index correlations using lagged data, due to the variation in the sign and number of months lagged, producing stronger correlations using lagged climate indices may not be a simple task.~~

3.4 Implications

- Given the strong correlations between rainfall ~~and had with~~ indices derived from the Indian-Australian monsoon, ENSO, El
- 20 Niño-Southern Oscillation Modoki, IOD, and Tasman and Indonesian SSTs, there may be important atmosphere-ocean mechanisms in the region that are crucial for climate dynamics and regional rainfall. Therefore climate models must be able to capture these dynamics in order to more accurately project future rainfall change in the NT.

3.4.1 Climate change

- Over this study period there was a weakening in AUSMI, suggesting that the monsoon intensity may be weakening or that
- 25 monsoon duration may be decreasing. Li et al. (2012) also noted a weakening of the monsoon from 1948 to 2007 despite increasing rainfall, therefore suggesting that the rainfall dynamics may be changing. Influences such as changes in atmospheric constituents (Rotstayn et al., 2007) and temperature (Wardle and Smith, 2004) may modulate rainfall variability. This research has not investigated whether the strength of the correlations between AUSMI and NAT rainfall have changed over time which may provide some insight into the likelihood of this theory, suggesting an avenue for further research.

Using modelling, Vecchi and Soden (2007) found that the Walker circulation is expected to weaken over the 21st century, with an associated shift to more El Niño-like conditions, and the IPCC's Fourth Assessment Report noted that ENSO-monsoon relationships will possibly experience a weakening in a warmer climate (Meehl et al., 2007). ~~Given the correlation of SOI and rainfall observed here, the shift to more El Niño-like conditions suggests the NT may receive less rainfall in the future, however~~
5 ~~this theory is not consistent with the increase in rainfall at all NATT sites observed in this research.~~ If the link between the monsoon and ENSO weakens, as suggested by Kumar et al. (1999), the usefulness of ENSO related indices in describing future Australian rainfall may be reduced. More research is required to determine what effect these changes may have on NT rainfall.

3.4.2 Implications for human populations and ecosystems

This research has reinforced the notion that future water availability is uncertain due to both unknown trends and relationships
10 between climatic phenomena and natural climate variability, and the uncertainty surrounding the effect of anthropogenic climate change on precipitation. The net effect of climate change is expected to be detrimental to ecosystems (Yi et al., 2010) and biodiversity (IPCC, 2007b) thus affecting water availability and food production (Kanniah et al., 2010). Climate and land use change is expected to cause savannisation in some tropical forests, such as in the eastern Amazonia (IPCC, 2007b), further increasing the need to understand climatic processes and causes of rainfall in these biomes. The NATT and the entire OzFlux
15 network (Beringer et al., 2016) provides an ideal platform to study changes in savanna vegetation composition, density and ecosystem energy balance over time due to the low intervention by humans (Beringer et al., 2011b). The strong rainfall gradient along the NATT has the potential to be used for an investigation of how variability in rainfall amount and reliability can affect savanna ecosystems. The use of a rainfall gradient could also be used to project how savanna ecosystems may change in the future due to potential rainfall changes associated with anthropogenic climate change.

20

4 Conclusions

~~Despite the importance of precipitation in savanna landscapes there is a current lack of understanding of the causes of variability and physical processes within these landscapes. This research has determined the relative importance of 16 climate indices and respective climatic phenomena in describing rainfall in northern Australia from 1900 to 2010 that is highly relevant~~
25 ~~to the OzFlux network. Variability in rainfall across the region drives savanna composition and productivity as well as water resource availability. The North Australian Tropical Transect provides a unique framework for examining the spatial variability of rainfall and potential consequences for ecosystems and humans.~~

~~The main aim of this research was to use various climate indices to provide a description of rainfall variability in the NT and~~
30 ~~the NATT over seasonal and inter annual time scales using linear statistical methods. The large number of climate indices used in this research, which covers most oceans and climate phenomena which are known to affect NT rainfall, combined with~~

the 110 year study period makes this research unique. Many past studies that investigate climate index-rainfall relationships are limited by their use of only a single climate index or phenomenon, or a shorter time span covering only 40 to 50 years. This research, unlike many past studies, has been able to determine which climate index-rainfall correlations have persisted for more than 100 years.

5

~~This research has found that~~Clearly AUSMI~~the monsoon~~ had the strongest relationship with~~greatest influence on~~ monthly rainfall. This finding is consistent with past research which shows that ~~and~~ much of the change in rainfall and wet season characteristics from the north to the south of the NATT is due to the decreasing influence of the monsoon southwards along the transect. These changes were linked to the decrease of the influence of the monsoon inland (Cook and Heerdegen, 2001), creating dramatic differences in ecosystem type, function and vegetation density along the transect (Beringer et al., 2011b). The dominance of the monsoon in the north of the NATT creates an environment where yearly summer rainfall is consistently high. In contrast, the southern NATT experienced more variability in rainfall amounts, which was most likely due to the varying influence of many different climatic phenomena. The north of the NATT experienced less relative variability in wet season total, start and end date, duration, number of rain days and intensity than the south. It must be noted that AUSMI and NATT rainfall at all sites had significant linear trends which has potentially created correlation strengths that are unrealistically high.

10

15

This research has confirmed past findings that SOI is correlated with NT rainfall (e.g. Risbey et al., 2009; Schepen et al., 2012) and has provided a better understanding of correlations between lesser used climate indices such as the TSI and the II and how their relationship with NATT rainfall changes over the course of a year. We suggest that rainfall over the NATT may have teleconnections with Indonesian, Tasman and Pacific SSTs and the climatic phenomena that affect these regions, however some of these relationships might be due to linear trends in the data. ~~PHowever,~~ past research has demonstrated that some climate phenomena-rainfall relationships do not remain constant over time (e.g. Nicholls et al., 1996; Power et al., 1999; Risbey et al., 2009). This uncertainty is heightened due to the unknown influences of anthropogenic climate change on atmospheric processes and various climate phenomena-rainfall relationships (Murphy and Ribbe, 2004). Further work is needed to assess long term trends in atmosphere-ocean coupling and the potential affect of anthropogenic climate change on climatic phenomena.

20

25

This research has opened the door to many future studies concerning the use of climate indices to describe NT and savanna rainfall. ~~A brief examination of the potential usefulness of lagged climate indices to improve the concurrent correlations determined in this study found that lagged SOI could indeed produce higher correlations; however the improvements were not consistent over the entire NT.~~ This study has presented opportunities to expand this research to examine changes in climate

30

index-rainfall correlation strength over time, ~~to increase the spatial extent of this research to cover the whole of Australia,~~ and the inclusion of more climatic phenomena.

Acknowledgements

- 5 This work was funded by the Australian Research Council (DP130101566). Beringer is funded under an ARC FT (FT1110602). Support for collection and archiving was provided through the Australia Terrestrial Ecosystem Research Network (TERN) (<http://www.tern.org.au>). We would like to thank Darien Pardinas for programming and data processing, Neville Nicholls and Nigel Tapper for their constructive comments, Matt Paget and the CSIRO for access to the AWAP data, the NCDC: NOAA for access to the ERSST.v3b data, the Australian Bureau of Meteorology for access to the SOI data, the University of Washington: JISAO for access to PDO data, and the NOAA: ESRL for access to the 20CR data. Support for the Twentieth Century Reanalysis Project dataset is provided by the U.S. Department of Energy, Office of Science Innovative and Novel Computational Impact on Theory and Experiment (DOE INCITE) program, and Office of Biological and Environmental Research (BER), and by the National Oceanic and Atmospheric Administration Climate Program Office.

References

- 15 Ashok, K., Behera, S. K., Rao, S. A., Weng, H. and Yamagata, T.: El Niño Modoki and its possible teleconnection, *J. Geophys. Res.*, 112(C11), C11007, doi:10.1029/2006JC003798, 2007.
- Beringer, J. and Tapper, N. J.: The influence of subtropical cold fronts on the surface energy balance of a semi-arid site, *J. Arid Environ.*, 44(4), 437–450, doi:10.1006/jare.1999.0608, 2000.
- Beringer, J., Packham, D. and Tapper, N. J.: Biomass burning and resulting emissions in the Northern Territory, Australia, *Int. J. Wildl. Fire*, 5(4), 229–235 [online] Available from: <Go to ISI>://A1995TR42600004, 1995.
- 20 Beringer, J., Hutley, L. B., Tapper, N. J. and Cernusak, L. A.: Savanna fires and their impact on net ecosystem productivity in North Australia, *Glob. Chang. Biol.*, 13(5), 990–1004, doi:10.1111/j.1365-2486.2007.01334.x, 2007.
- Beringer, J., Hutley, L. B., Hacker, J. M., Neiningner, B. and Paw U, K. T.: Patterns and processes of carbon, water and energy cycles across northern Australian landscapes: From point to region, *Agric. For. Meteorol.*, 151(11), 1409–1416, doi:10.1016/j.agrformet.2011.05.003, 2011a.
- 25 Beringer, J., Hacker, J., Hutley, L. B., Leuning, R., Arndt, S. K., Amiri, R., Bannehr, L., Cernusak, L. A., Grover, S., Hensley, C., Hocking, D., Isaac, P., Jamali, H., Kanniah, K., Livesley, S., Neiningner, B., Paw U, K. T., Sea, W., Straten, D., Tapper, N., Weinmann, R., Wood, S. and Zegelin, S.: SPECIAL—Savanna Patterns of Energy and Carbon Integrated across the Landscape, *Bull. Am. Meteorol. Soc.*, 92(11), 1467–1485, doi:10.1175/2011BAMS2948.1, 2011b.
- 30 Beringer, J., Livesley, S. J., Randle, J. and Hutley, L. B.: Carbon dioxide fluxes dominate the greenhouse gas exchanges of a seasonal wetland in the wet–dry tropics of northern Australia, *Agric. For. Meteorol.*, 182, 239–247 [online] Available from: <http://www.sciencedirect.com/science/article/pii/S0168192313001664>, 2013.

- Beringer, J., Hutley, L. B., Abramson, D., Arndt, S. K., Briggs, P., Bristow, M., Canadell, J. G., Cernusak, L. a, Eamus, D., Evans, B. J., Fest, B., Goergen, K., Grover, S. P., Hacker, J., Haverd, V., Kanniah, K., Livesley, S. J., Lynch, A., Maier, S., Moore, C., Raupach, M., Russell-Smith, J., Scheiter, S., Tapper, N. J. and Uotila, P.: Fire in Australian Savannas: from leaf to landscape., *Glob. Chang. Biol.*, 11(1), 6641, doi:10.1111/gcb.12686, 2014.
- 5 Beringer, J., Hutley, L. B., McHugh, I., Arndt, S. K., Campbell, D., Cleugh, H. A., Cleverly, J., Dios, V. R. de, Eamus, D., Evans, B., Ewenz, C., Grace, P., Griebel, A., Haverd, V., Hinko-Najera, N., Huete, A., Isaac, P., Kanniah, K., Leuning, R., Liddell, M. J., Macfarlane, C., Meyer, W., Moore, C., Pendall, E., Phillips, A., Phillips, R. L., Prober, S., Restrepo-Coupe, N., Rutledge, S., Schroder, I., Silberstein, R., Southall, P., Sun, M., Tapper, N. J., Gorsel, E. van, Vote, C., Walker, J. and Wardlaw, T.: An introduction to the Australian and New Zealand flux tower network – OzFlux, *Biogeosciences Discuss.*, bg-2016-15(Submitted 22/4/2016), 2016.
- 10 Bindoff, N., Willebrand, L., Artale, V., Cazenave, A., Gregory, J., Gulev, S., Hanawa, K., Le Quéré, C., Levitus, S., Nojiri, Y., Shum, C., Talley, L. and A: Observations: Oceanic Climate Change and Sea Level, in *Climate Change 2007: The Physical Science Basis. Contribution of Working Group I to the Fourth Assessment Report of the Intergovernmental Panel on Climate Change*, edited by S. Solomon, D. Qin, M. Manning, Z. Chen, M. Marquis, K. Averyt, M. Tignor, and H. Miller, Cambridge University Press, United Kingdom and New York, NY, USA., 2007.
- 15 Bond, W. J., Midgley, G. F. and Woodward, F. I.: The importance of low atmospheric CO₂ and fire in promoting the spread of grasslands and savannas, *Glob. Chang. Biol.*, 9(7), 973–982 [online] Available from: <Go to ISI>://000183796800002, 2003.
- Brönnimann, S., Stickler, A., Griesser, T., Fischer, A. M., Grant, A., Ewen, T., Zhou, T., Schraner, M., Rozanov, E. and Peter, T.: Variability of large-scale atmospheric circulation indices for the northern hemisphere during the past 100 years, *Meteorol. Zeitschrift*, 18(4), 379–396, doi:10.1127/0941-2948/2009/0389, 2009.
- Bureau of Meteorology: The Australian Monsoon, [online] Available from: <http://www.bom.gov.au/watl/about-weather-and-climate/australian-climate-influences.shtml?bookmark=monsoon> (Accessed 7 May 2012), 2008.
- 25 Bureau of Meteorology: “Average rainfall Annual” [image] in Average annual, seasonal and monthly rainfall, [online] Available from: http://www.bom.gov.au/jsp/ncc/climate_averages/rainfall/index.jsp?period=an#ma (Accessed 27 June 2014a), 2011a.
- Bureau of Meteorology: Climate classification of Australia, [online] Available from: http://www.bom.gov.au/jsp/ncc/climate_averages/climate-classifications/index.jsp?maptype=kpng#maps (Accessed 30 March 2012b), 2011b.
- 30 Bureau of Meteorology: Climate Glossary: The Southern Oscillation Index, [online] Available from: <http://www.bom.gov.au/climate/glossary/soi.shtm> (Accessed 2 August 2012a), 2012.
- ~~Bureau of Meteorology: ENSO Wrap Up, [online] Available from: <http://www.bom.gov.au/climate/enso/> (Accessed 4 October 2012b), 2012.~~
- 35 Christensen, J., Hewitson, B., Busuioc, A., Chen, A., Gao, X., Held, I., Jones, R., Kolli, R., Kwon, W.-T., Laprise, R., Magaña Rueda, V., Mearns, L., Menéndez, C., Räisänen, J. and Rinke, A.: Regional Climate Projections, in *Climate Change 2007: The Physical Science Basis. Contribution of Working Group I to the Fourth Assessment Report of the Intergovernmental Panel on Climate Change*, edited by S. Solomon, D. Qin, M. Manning, Z. Chen, M. Marquis, K. Averyt, M. Tignor, and H. Miller, Cambridge University Press, Cambridge, United Kingdom and New York, NY, USA., 2007.

- Cleverly, J., Boulain, N., Villalobos-Vega, R., Grant, N., Faux, R., Wood, C., Cook, P. G., Yu, Q., Leigh, A. and Eamus, D.: Dynamics of component carbon fluxes in a semi-arid Acacia woodland, central Australia, *J. Geophys. Res. Biogeosciences*, 118, n/a–n/a, doi:10.1002/jgrg.20101, 2013.
- 5 Cook, G. D. and Heerdegen, R. G.: Spatial variation in the duration of the rainy season in monsoonal Australia, *J. Climatol.*, 21, 1723–1732, 2001.
- CSIRO: Readme File for Australian Water Availability Project (AWAP) Maps and Data, [online] Available from: http://www.csiro.au/awap/doc/AWAP_readme_v8.txt (Accessed 25 September 2012), 2012.
- Eamus, D., Hutley, L. B. and O’Grady, A. P.: Daily and seasonal patterns of carbon and water fluxes above a north Australian savanna, *Tree Physiol.*, 21(12-13), 977–988 [online] Available from: <Go to ISI>://000170782600022, 2001.
- 10 Eamus, D., Cleverly, J., Boulain, N., Grant, N., Faux, R. and Villalobos-Vega, R.: Carbon and water fluxes in an arid-zone Acacia savanna woodland: An analyses of seasonal patterns and responses to rainfall events, *Agric. For. Meteorol.*, 182-183, 225–238, doi:10.1016/j.agrformet.2013.04.020, 2013.
- Epstein, H. E., Beringer, J., Gould, W. A., Lloyd, A. H., Thompson, C. D., Chapin, F. S., Michaelson, G. J., Ping, C. L., Rupp, T. S. and Walker, D. A.: The nature of spatial transitions in the Arctic, *J. Biogeogr.*, 31(12), 1917–1933, doi:10.1111/j.1365-
15 2699.2004.01140.x, 2004.
- ESRL: Climate Indices: Monthly Atmospheric and Ocean Time Series, [online] Available from: <http://www.esrl.noaa.gov/psd/data/climateindices/list/> (Accessed 26 September 2012), 2012.
- Franchito, S. H., Rao, V. B. and Fernandez, J. P. R.: Tropical land savannization: impact of global warming, *Theor. Appl. Climatol.*, 109(1-2), 73–79, doi:10.1007/s00704-011-0560-3, 2011.
- 20 Franks, S. W.: Assessing hydrological change: deterministic general circulation models or spurious solar correlation?, *Hydrol. Process.*, 16(2), 559–564, doi:10.1002/hyp.600, 2002.
- Görge, K., Lynch, A. H., Marshall, A. G. and Beringer, J.: Impact of abrupt land cover changes by savanna fire on northern Australian climate, *J. Geophys. Res.*, 111(D19), 19106, doi:10.1029/2005jd006860, 2006.
- 25 Haverd, V., Smith, B., Raupach, M., Briggs, P., Nieradzik, L., Beringer, J., Hutley, L., Trudinger, C. M. and Cleverly, J.: Coupling carbon allocation with leaf and root phenology predicts tree–grass partitioning along a savanna rainfall gradient, *Biogeosciences*, 13(3), 761–779, doi:10.5194/bg-13-761-2016, 2016.
- Hendon, H. H., Lim, E.-P. and Liu, G.: The Role of Air–Sea Interaction for Prediction of Australian Summer Monsoon Rainfall, *J. Clim.*, 25(4), 1278–1290, doi:10.1175/JCLI-D-11-00125.1, 2012.
- 30 Hennessy, K. J., Suppiah, R. and Page, C. M.: Australian rainfall changes, 1910-1995, *Aust. Meteorol. Mag.*, 48(1), 1–13, 1999.
- Hill, K. L., Robinson, I. S. and Cipollini, P.: Propagation characteristics of extratropical planetary waves observed in the ATSR global sea surface temperature record, *J. Geophys. Res. Ocean.*, 105(C9), 21927–21945, doi:10.1029/2000JC900067, 2000.
- Hutley, L. . and Beringer, J.: Disturbance and climatic drivers of carbon dynamics of a north Australian tropical savanna, in *Ecosystem Function in Savannas: Measurement and Modeling at Landscape to Global Scales.*, edited by M. J. Hill and N. P. Hanan, pp. 57–75, CRC Press, Boca Raton., 2011.
- 35

- Hutley, L. B., Beringer, J., Isaac, P. R., Hacker, J. M. and Cernusak, L. a.: A sub-continental scale living laboratory: Spatial patterns of savanna vegetation over a rainfall gradient in northern Australia, *Agric. For. Meteorol.*, 151(11), 1417–1428, doi:10.1016/j.agrformet.2011.03.002, 2011.
- Hutley, L. B., Evans, B. J., Beringer, J., Cook, G. D., Maier, S. M. and Razon, E.: Impacts of an extreme cyclone event on landscape-scale savanna fire, productivity and greenhouse gas emissions, *Environ. Res. Lett.*, 8(4), 045023, doi:10.1088/1748-9326/8/4/045023, 2013.
- IPCC: Summary for Policymaker, in *Climate Change 2007: The Physical Science Basis. Contribution of Working Group I to the Fourth Assessment Report of the Intergovernmental Panel on Climate Change*, edited by S. Solomon, D. Qin, M. Manning, Z. Chen, M. Marquis, K. Averyt, M. Tignor, and H. Miller, Cambridge University Press, Cambridge, United Kingdom and New York, NY, USA., 2007a.
- IPCC: Summary for Policymakers, in *Climate Change 2007: Impacts, Adaptation and Vulnerability. Contribution of Working Group II to the Fourth Assessment Report of the Intergovernmental Panel on Climate Change*, edited by M. Parry, O. Canziani, J. Palutikof, P. van der Linden, and C. Hanson, Cambridge University Press, Cambridge, United Kingdom and New York, NY, USA., 2007b.
- Joint Institute for the Study of the Atmosphere and Ocean: The Pacific Decadal Oscillation (PDO), [online] Available from: <http://jisao.washington.edu/pdo/> (Accessed 26 September 2012), 2012.
- Kajikawa, Y., Wang, B. and Yang, J.: A multi-time scale Australian monsoon index, *Int. J. Climatol.*, 30(8), 1114–1120, doi:10.1002/joc.1955, 2009.
- Kamruzzaman, M., Beecham, S. and Metcalfe, a. V.: Climatic influences on rainfall and runoff variability in the southeast region of the Murray-Darling Basin, *Int. J. Climatol.*, 33(2), 291–311, doi:10.1002/joc.3422, 2013.
- Kanniah, K. D., Beringer, J. and Hutley, L. B.: The comparative role of key environmental factors in determining savanna productivity and carbon fluxes: A review, with special reference to northern Australia, *Prog. Phys. Geogr.*, 34(4), 459–490, doi:10.1177/0309133310364933, 2010.
- Kanniah, K. D., Beringer, J. and Hutley, L. B.: Environmental controls on the spatial variability of savanna productivity in the Northern Territory, Australia, *Agric. For. Meteorol.*, 151(11), 1429–1439 [online] Available from: <http://www.sciencedirect.com/science/article/pii/S0168192311002024> (Accessed 19 October 2013), 2011.
- Kanniah, K. D., Beringer, J. and Hutley, L. B.: Response of savanna gross primary productivity to inter-annual variability in rainfall: Results of a remote sensing based light use efficiency model, *Prog. Phys. Geogr.*, 37(5), 642–663, doi:10.1177/0309133313490006, 2013.
- Koch, G. W., Vitousek, P. M., Steffen, W. L. and Walker, B. H.: Terrestrial transects for global change research, *Plant Ecol.*, 121(1), 53–65 [online] Available from: <http://dx.doi.org/10.1007/BF00044672>, 1995.
- Kumar, K., Rajagopalan, B. and Cane, M.: On the weakening relationship between the indian monsoon and ENSO, *Science*, 284(5423), 2156–9 [online] Available from: <http://www.ncbi.nlm.nih.gov/pubmed/10381876> (Accessed 1 May 2016), 1999.
- Kump, L., Kasting, J. and Crane, R.: *The Earth System*, Third., Prentice Hall, San Francisco., 2010.
- Li, J., Feng, J. and Li, Y.: A possible cause of decreasing summer rainfall in northeast Australia, *Int. J. Climatol.*, 32(7), 995–1005, doi:10.1002/joc.2328, 2012.

- Lin, Z. and Li, Y.: Remote Influence of the Tropical Atlantic on the Variability and Trend in North West Australia Summer Rainfall, *J. Clim.*, 25(7), 2408–2420, doi:10.1175/JCLI-D-11-00020.1, 2012.
- Lynch, A. H., Abramson, D., Görgen, K., Beringer, J. and Uotila, P.: Influence of savanna fire on Australian monsoon season precipitation and circulation as simulated using a distributed computing environment, *Geophys. Res. Lett.*, 34(20), L20801, doi:10.1029/2007gl030879, 2007.
- Meehl, G., Stocker, T., Collins, W., Friedlingstein, P., Gaye, A., Gregory, J., Kitoh, A., Knutti, R., Murphy, J., Noda, A., Raper, S., Watterson, I., Weaver, A. and Zhao, Z.-C.: Global Climate Projections, in *Climate Change 2007: The Physical Science Basis. Contribution of Working Group I to the Fourth Assessment Report of the Intergovernmental Panel on Climate Change*, edited by S. Solomon, D. Qin, M. Manning, Z. Chen, M. Marquis, K. Averyt, M. Tignor, and H. Miller, Cambridge University Press, Cambridge, United Kingdom and New York, NY, USA., 2007.
- Moore, C. E., Beringer, J., Evans, B., Hutley, L. B., McHugh, I. and Tapper, N. J.: The contribution of trees and grasses to productivity of an Australian tropical savanna, *Biogeosciences Discuss.*, 12(23), 19307–19350, doi:10.5194/bgd-12-19307-2015, 2015.
- Moore, C. E., Beringer, J., Evans, B., Hutley, L. B., Tapper, N. J., Donohue, R. J., Exbrayat, J.-F. and Williams, M.: Looking to the past: a 15 year investigation of savanna tree-grass productivity dynamics, their meteorological drivers and their economic value in northern Australia, *Biogeosciences Discuss.*, IN prepara, 2016.
- Murphy, B. F. and Ribbe, J.: Variability of southeastern Queensland rainfall and climate indices, *Int. J. Climatol.*, 24(6), 703–721, doi:10.1002/joc.1018, 2004.
- Murphy, B. F. and Timbal, B.: A review of recent climate variability and climate change in southeastern Australia, *Int. J. Climatol.*, 28(7), 859–879 [online] Available from: <Go to ISI>://CCC:000256817900002, 2008.
- National Center for Atmospheric Research: The Climate Data Guide: Climate Indices Overview, [online] Available from: <https://climatedataguide.ucar.edu/guidance/climate-indices-overview> (Accessed 28 September 2012), 2012.
- National Climatic Data Center: Extended Reconstructed Sea Surface Temperature (ERSST.v3b), [online] Available from: <http://www.ncdc.noaa.gov/ersst/> (Accessed 1 August 2012), 2012.
- National Oceanic and Atmospheric Administration: Monthly Atmospheric & SST Indices, [online] Available from: <http://www.cpc.ncep.noaa.gov/data/indices/> (Accessed 26 September 2012), 2012.
- Nicholls, N.: A system for predicting the onset of the north Australian wet-season, *J. Climatol.*, 4(4), 425–435, doi:10.1002/joc.3370040407, 1984.
- Nicholls, N.: El Niño–Southern Oscillation and Rainfall Variability, *J. Clim.*, 1(4), 418–421, doi:10.1175/1520-0442(1988)001<0418:ENOARV>2.0.CO;2, 1988.
- Nicholls, N.: Sea Surface Temperatures and Australian Winter Rainfall, *J. Clim.*, 2(9), 965–973, doi:10.1175/1520-0442(1989)002<0965:SSTAAS>2.0.CO;2, 1989.
- Nicholls, N.: Detecting and attributing Australian climate change: A review, *Aust. Meteorol. Mag.*, 55, 199–211, 2006.
- Nicholls, N., McBride, J. and Ormerod, R.: On predicting the onset of the Australian wet season at Darwin, *Mon. Weather Rev.*, 110, 14–17, 1982.

- Nicholls, N., Lavery, B., Frederiksen, C., Drosowsky, W. and Torok, S.: Recent apparent changes in relationships between the El Niño-Southern Oscillation and Australian rainfall and temperature, *Geophys. Res. Lett.*, 23(23), 3357–3360, doi:10.1029/96GL03166, 1996.
- Power, S., Casey, T., Folland, C., Colman, A. and Mehta, V.: Inter-decadal modulation of the impact of ENSO on Australia, *Clim. Dyn.*, 15(5), 319–324, doi:10.1007/s003820050284, 1999.
- Power, S. B. and Smith, I. N.: Weakening of the Walker Circulation and apparent dominance of El Niño both reach record levels, but has ENSO really changed?, *Geophys. Res. Lett.*, 34(18), L18702, doi:10.1029/2007GL030854, 2007.
- Randall, D. A., Wood, R. A., Bony, S., Colman, R., Fichet, T., Fyfe, J., Kattsov, V., Pitman, A., Shukla, J., Srinivasan, J., Stouffer, R. J., Sumi, A. and Taylor, K. E.: Climate Models and Their Evaluation, in *Climate Change 2007: The Physical Science Basis. Contribution of Working Group I to the Fourth Assessment Report of the Intergovernmental Panel on Climate Change*, vol. Chapter 8, edited by S. Solomon, D. Qin, M. Manning, Z. Chen, M. Marquis, K. B. Averyt, M. Tignor, and H. L. Miller, Cambridge University Press, Cambridge, United Kingdom and New York, NY, USA., 2007.
- Raupach, M., Briggs, P., Haverd, V., King, E., Paget, M. and Trudinger, C.: Australian Water Availability Project (AWAP). CSIRO Marine and Atmospheric Research Component : Final Report for Phase 3., 2009.
- Raupach, M., Briggs, P., Haverd, V., King, E., Paget, M. and Trudinger, C.: Australian Water Availability Project, [online] Available from: <http://www.csiro.au/awap> (Accessed 1 June 2012), 2012.
- ~~Rial, J. a., Pielke Sr., R. a., Beniston, M., Claussen, M., Canadell, J., Cox, P., Held, H., de Noblet-Ducoudré, N., Prinn, R., Reynolds, J. F. and Salas, J. D.: Nonlinearities, Feedbacks and Critical Thresholds within the Earth's Climate System, *Clim. Change*, 65(1/2), 11–38, doi:10.1023/B:CLIM.0000037493.89489.3f, 2004.~~
- Risbey, J. S., Pook, M. J., McIntosh, P. C., Wheeler, M. C. and Hendon, H. H.: On the Remote Drivers of Rainfall Variability in Australia, *Mon. Weather Rev.*, 137(10), 3233–3253, doi:10.1175/2009MWR2861.1, 2009.
- Ropelewski, C. F. and Halpert, M. S.: Quantifying Southern Oscillation-Precipitation Relationships, *J. Clim.*, 9(5), 1043–1059, doi:10.1175/1520-0442(1996)009<1043:QSOPR>2.0.CO;2, 1996.
- Rotstayn, L. D., Cai, W., Dix, M. R., Farquhar, G. D., Feng, Y., Ginoux, P., Herzog, M., Ito, A., Penner, J. E., Roderick, M. L. and Wang, M.: Have Australian rainfall and cloudiness increased due to the remote effects of Asian anthropogenic aerosols?, *J. Geophys. Res.*, 112(D9), D09202, doi:10.1029/2006JD007712, 2007.
- Rowell, D. P.: Sources of uncertainty in future changes in local precipitation, *Clim. Dyn.*, 39(7-8), 1929–1950, doi:10.1007/s00382-011-1210-2, 2011.
- Saji, N. H., Goswami, B. N., Vinayachandran, P. N. and Yamagata, T.: A dipole mode in the tropical Indian Ocean, , 401(6751), 360–363, 1999.
- Schepen, A., Wang, Q. J. and Robertson, D.: Evidence for Using Lagged Climate Indices to Forecast Australian Seasonal Rainfall, *J. Clim.*, 25(4), 1230–1246, doi:10.1175/JCLI-D-11-00156.1, 2012.
- Smith, I. N., Wilson, L. and Suppiah, R.: Characteristics of the Northern Australian Rainy Season, *J. Clim.*, 21(17), 4298–4311 [online] Available from: <http://dx.doi.org/10.1175/2008JCLI2109.1>, 2008a.
- Smith, T. M. and Reynolds, R. W.: Extended Reconstruction of Global Sea Surface Temperatures Based on COADS Data

- (1854-1997), *J. Clim.*, 16(10), 1495–1510, doi:10.1175/1520-0442(2003)016<1495:EROGSS>2.0.CO;2, 2003.
- Smith, T. M., Reynolds, R. W., Peterson, T. C. and Lawrimore, J.: Improvements to NOAA’s Historical Merged Land–Ocean Surface Temperature Analysis (1880–2006), *J. Clim.*, 21(10), 2283–2296, doi:10.1175/2007JCLI2100.1, 2008b.
- Sturman, A. and Tapper, N.: The weather and climate of Australia and New Zealand, 2nd editio., Oxford University Press, Melbourne., 2006.
- ~~Suarez, M. J. and Schopf, P. S.: A Delayed Action Oscillator for ENSO, *J. Atmos. Sci.*, 45(21), 3283–3287, doi:10.1175/1520-0469(1988)045<3283:ADAOFE>2.0.CO;2, 1988.~~
- Suppiah, R.: Trends in the southern oscillation phenomenon and Australian rainfall and changes in their relationship, *Int. J. Climatol.*, 24(3), 269–290, doi:10.1002/joc.1001, 2004.
- 10 Suppiah, R. and Hennessy, K.: Trends in the intensity and frequency of heavy rainfall in tropical Australia and links with the Southern Oscillation, *Aust. Meteorol. Mag.*, 45, 1–17, 1996.
- Vecchi, G. A. and Soden, B. J.: Global Warming and the Weakening of the Tropical Circulation, *J. Clim.*, 20(17), 4316–4340, doi:10.1175/JCLI4258.1, 2007.
- Verdon, D. C. and Franks, S. W.: Indian Ocean sea surface temperature variability and winter rainfall: Eastern Australia, *Water Resour. Res.*, 41, W09413, 2005.
- 15 Wallace, J. and Hobbs, P.: Climate Dynamics, in *Atmospheric Science*, Academic Press, San Diego., 2006.
- Wardle, R. and Smith, I.: Modeled response of the Australian monsoon to changes in land surface temperatures, *Geophys. Res. Lett.*, 31(16), L16205, doi:10.1029/2004gl020157, 2004.
- Wright, W. J.: The low latitude influence on winter rainfall in Victoria, south-eastern Australia-I. Climatological aspects, *J. Climatol.*, 8(5), 437–462, doi:10.1002/joc.3370080502, 1988a.
- 20 Wright, W. J.: The low latitude influence on winter rainfall in Victoria, South-Eastern Australia-II. Relationships with the southern oscillation and Australian region circulation, *J. Climatol.*, 8(6), 547–576, doi:10.1002/joc.3370080602, 1988b.
- Xue, Y., Smith, T. M. and Reynolds, R. W.: Interdecadal Changes of 30-Yr SST Normals during 1871–2000, [online] Available from: [http://journals.ametsoc.org/doi/abs/10.1175/1520-0442\(2003\)016%3C1601%3AICOYSN%3E2.0.CO%3B2](http://journals.ametsoc.org/doi/abs/10.1175/1520-0442(2003)016%3C1601%3AICOYSN%3E2.0.CO%3B2) (Accessed 1 May 2016), 2010.
- 25 Yates, C. P., Edwards, A. C., Russell-Smith, J., A, C. P. Y., A, A. C. E. and A, J. R.: Big fires and their ecological impacts in Australian savannas: size and frequency matters, *Int. J. Wildl. Fire*, 17(6), 768–781, 2008.
- Yi, C. X., Ricciuto, D., Li, R., Wolbeck, J., Xu, X. Y., Nilsson, M., Aires, L., Albertson, J. D., Ammann, C., Arain, M. A., de Araujo, A. C., Aubinet, M., Aurela, M., Barcza, Z., Barr, A., Berbigier, P., Beringer, J., Bernhofer, C., Black, A. T., Bolstad, P. V., Bosveld, F. C., Broadmeadow, M. S. J., Buchmann, N., Burns, S. P., Cellier, P., Chen, J. M. Q., Ciais, P., Clement, R., Cook, B. D., Curtis, P. S., Dail, D. B., Dellwik, E., Delpierre, N., Desai, A. R., Dore, S., Dragoni, D., Drake, B. G., Dufrene, E., Dunn, A., Elbers, J., Eugster, W., Falk, M., Feigenwinter, C., Flanagan, L. B., Foken, T., Frank, J., Fuhrer, J., Gianelle, D., Goldstein, A., Goulden, M., Granier, A., Grunwald, T., Gu, L., Guo, H. Q., Hammerle, A., Han, S. J., Hanan, N. P., Haszpra, L., Heinesch, B., Helfter, C., Hendriks, D., Hutley, L. B., Ibrom, A., Jacobs, C., Johansson, T., Jongen, M., Katul, G., Kiely, G., Klumpp, K., Knohl, A., Kolb, T., Kutsch, W. L., Lafleur, P., Laurila, T., Leuning, R., Lindroth, A., Liu, H. P., Loubet, B.,
- 30
- 35

Manca, G., Marek, M., Margolis, H. A., Martin, T. A., Massman, W. J., Matamala, R., Matteucci, G., McCaughey, H., Merbold, L., Meyers, T., Migliavacca, M., Miglietta, F., Misson, L., Moelder, M., Moncrieff, J., Monson, R. K., Montagnani, L., Montes-Helu, M., Moors, E., Moureaux, C., Mukelabai, M. M., et al.: Climate control of terrestrial carbon exchange across biomes and continents, *Environ. Res. Lett.*, 5(3), 34007 [online] Available from: <Go to ISI>://CCC:000282273700008, 2010.

Table 1: Names, locations and mean annual precipitation (MAP) for sites along the North Australian Tropical Transect. Values in brackets show coefficients of variation. MAP from AWAP data from 1900 to 2010.

Site Name	Abbreviated Name	Latitude (°S)	Longitude (°E)	MAP (mm)
Howard Springs	HS	12.49	131.15	1520 (19%)
Fogg Dam	FD	12.55	131.31	1423 (20%)
Adelaide River	AR	13.08	131.12	1318 (22%)
DDRF	DD	13.83	131.19	1100 (22%)
Daly River Pasture (post cow)	DR	14.06	131.32	1060 (21%)
Daly Uncleared	DU	14.16	131.39	1041 (22%)
Dry Creek (a.k.a. Dry River)	DC	15.26	132.37	762 (27%)
Sturt Plains	SP	17.15	133.35	521 (37%)
Banka Banka Station	BB	18.71	133.92	394 (45%)
Warumungu	Wa	19.89	134.25	345 (47%)
Wycliffe Well	WW	20.81	134.23	298 (50%)
Barrow Creek	BC	21.50	133.92	294 (55%)
Alice Springs Flux Tower	AS	22.28	133.25	288 (52%)
Tiger Bush	TB	23.37	133.84	274 (55%)
MacDonalds	Ma	24.47	133.47	225 (58%)
Ghan	Gh	25.50	133.25	189 (62%)

4 **Table 2: Climate index information showing index name, related climatic phenomenon, variable measured, region of influence, data source, and a key reference.**

Climate Index	Climate Index Name	Climatic Phenomenon	Variable	Region	Data Source	References
WPI	Indian Ocean West Pole Index	IOD Component	SSTA	Indian Ocean	ERSST.v3b	(Saji et al., 1999)
EPI	Indian Ocean East Pole Index	IOD Component	SSTA	Indian Ocean	ERSST.v3b	(Saji et al., 1999)
DMI	Indian Ocean Dipole Mode Index	IOD	SSTA difference	Indian Ocean	ERSST.v3b	(Saji et al., 1999)
SOI	Southern Oscillation Index	ENSO	MSLP difference	Pacific Ocean	BoM	(Bureau of Meteorology, 2012 ^a)
TSI	Tasman Sea Index	Extratropical Climate	SSTA	Tasman Sea	ERSST.v3b	(Murphy and Timbal, 2008)
Nino1+2	Extreme Eastern Tropical Pacific SST	ENSO	SSTA	Pacific Ocean	ERSST.v3b	(ESRL, 2012)
Nino3	Eastern Tropical Pacific SST	ENSO	SSTA	Pacific Ocean	ERSST.v3b	(ESRL, 2012)
Nino3.4	East Central Tropical Pacific SST	ENSO	SSTA	Pacific Ocean	ERSST.v3b	(ESRL, 2012)
Nino4	Central Tropical Pacific SST	ENSO	SSTA	Pacific Ocean	ERSST.v3b	(ESRL, 2012)
NATL	North Atlantic Index	Atlantic Ocean	SSTA	Atlantic Ocean	ERSST.v3b	(National Oceanic and Atmospheric Administration, 2012)
SATL	South Atlantic Index	Atlantic Ocean	SSTA	Atlantic Ocean	ERSST.v3b	(National Oceanic and Atmospheric Administration, 2012)
TROP	Global Tropics Index	Tropical Oceans	SSTA	Equatorial	ERSST.v3b	(National Oceanic and Atmospheric Administration, 2012)
EMI	ENSO Modoki Index	ENSO	SSTA calculation	Pacific Ocean	ERSST.v3b	(Ashok et al., 2007)
II	Indonesia Index	Indonesia SST	SSTA	Indonesia	ERSST.v3b	(Verdon and Franks, 2005)
AUSMI	Australian Monsoon Index	Indian-Australian Monsoon	850mb U-wind	Indonesia	20CR	(Kajikawa et al., 2009)
PDO	Pacific Decadal Oscillation	PDO	SST PC	Pacific Ocean	JISAO	(Joint Institute for the Study of the Atmosphere and Ocean, 2012)

5

6

Table 3: Temporal rainfall trends using linear regression of annual data along the NATT for the period 1900 to 2010. Italicised and bold r^2 values are significant at the 95% significance level (i.e. all trends are significant). Strength shows the goodness of fit of the linear trend line. Absolute gradient shows the actual increase in annual rainfall per decade. Fractional gradient shows the increase in annual rainfall per decade of a site relative to the mean rainfall at that site. Brackets indicate the sign of the linear trend if significant. Coefficient of variation shows the variability of each site as a percentage of the sites annual average rainfall.

Site	Latitude (°S)	Correlation Coefficient (r^2)	Absolute Gradient (mm decade ⁻¹)	Fractional Gradient (% change per decade)	Coefficient of Variation
HS	12.49	0.14	33.20 (+)	2.18 (+)	19%
FD	12.55	0.17	36.52 (+)	2.57 (+)	20%
AR	13.08	0.22	41.71 (+)	3.16 (+)	22%
DD	13.83	0.16	29.82 (+)	2.71 (+)	22%
DR	14.06	0.17	28.52 (+)	2.69 (+)	21%
DU	14.16	0.19	30.25 (+)	2.91 (+)	22%
DC	15.26	0.22	30.54 (+)	4.01 (+)	27%
SP	17.15	0.13	21.77 (+)	4.18 (+)	37%
BB	18.71	0.04	10.78 (+)	2.74 (+)	45%
Wa	19.89	0.06	12.60 (+)	3.65 (+)	47%
WW	20.81	0.11	14.99 (+)	5.02 (+)	50%
BC	21.50	0.10	15.76 (+)	5.35 (+)	55%
AS	22.28	0.10	14.55 (+)	5.06 (+)	52%
TB	23.37	0.06	11.10 (+)	4.05 (+)	55%
Ma	24.47	0.06	9.70 (+)	4.32 (+)	58%
Gh	25.50	0.06	8.64 (+)	4.57 (+)	62%

Table 4: Table shows the first three most highly correlated indices with rainfall at each site over the NATT (Table 1) for the period 1900 to 2010. Correlations are shown using the monthly data and inter-annual correlations are provided using the annual data. In addition, annual correlations are computed for the individual seasons only. Only correlations significant at the 95% level are shown. Colours represent in which region the climate index is located and are defined as follows; red = Indonesia and Indian Ocean, light blue = Pacific Ocean, dark blue = Tasman Sea, orange = Atlantic and tropical ocean. The first column for each time period in this table (i.e. the “1” columns) are shown in Figure 57.

Site	Lat (°S)	Monthly			Annual			Summer			Autumn			Winter			Spring		
		1	2	3	1	2	3	1	2	3	1	2	3	1	2	3	1	2	3
HS	12.5	AUSMI	SOI	WP I	SOI	TSI	II	AUSMI	SOI	TSI	AUSMI	EMI	SOI	SOI	-	-	SOI	Nino3.4	Nino3
FD	12.6	AUSMI	SOI	WP I	TSI	II	SOI	AUSMI	SOI	TSI	AUSMI	SATL	SOI	SOI	-	-	SOI	II	Nino3.4
AR	13.1	AUSMI	SOI	WP I	TSI	II	SOI	AUSMI	TSI	SOI	AUSMI	EMI	SATL	SOI	II	-	II	SOI	EPI
DD	13.8	AUSMI	SOI	DMI	TSI	EMI	II	AUSMI	TSI	SOI	AUSMI	EMI	SOI	SOI	II	AUSMI	II	EPI	SOI
DR	14.1	AUSMI	SOI	DMI	TSI	II	EMI	AUSMI	SOI	TSI	AUSMI	EMI	SOI	SOI	-	-	II	EPI	SOI
DU	14.2	AUSMI	SOI	WP I	TSI	II	EMI	AUSMI	TSI	SOI	AUSMI	EMI	SOI	-	-	-	II	SOI	EPI
DC	15.3	AUSMI	SOI	WP I	II	TSI	SATL	AUSMI	SOI	TSI	AUSMI	SATL	SOI	SOI	II	-	SOI	II	DMI
SP	17.2	AUSMI	SOI	WP I	TSI	SOI	II	AUSMI	SOI	TSI	AUSMI	SOI	-	SOI	II	Nino3.4	SOI	II	TSI
BB	18.7	AUSMI	SOI	DMI	TSI	AUSMI	SOI	AUSMI	SOI	TSI	AUSMI	-	-	SOI	AUSMI	II	SOI	DMI	Nino3.4
Wa	19.9	AUSMI	SOI	WP I	AUSMI	TSI	-	AUSMI	SOI	TSI	AUSMI	-	-	SOI	AUSMI	SATL	SOI	II	EPI
WW	20.8	AUSMI	SOI	TSI	TSI	II	AUSMI	AUSMI	SOI	DMI	TSI	AUSMI	-	SOI	II	AUSMI	II	SOI	TSI
BC	21.5	AUSMI	SOI	TSI	TSI	II	AUSMI	AUSMI	TSI	DMI	AUSMI	-	-	AUSMI	SOI	WPI	II	SOI	AUSMI
AS	22.3	AUSMI	SOI	TSI	TSI	II	AUSMI	TSI	AUSMI	SATL	AUSMI	TSI	-	AUSMI	WPI	SOI	II	EPI	SOI
TB	23.4	AUSMI	SOI	TSI	TSI	AUSMI	SOI	AUSMI	SOI	TSI	AUSMI	TSI	-	AUSMI	II	SOI	SOI	II	TSI
Ma	24.5	AUSMI	SOI	TSI	TSI	AUSMI	SATL	AUSMI	SOI	-	AUSMI	TSI	-	AUSMI	II	SOI	SOI	II	AUSMI
Gh	25.5	AUSMI	SOI	II	TSI	II	EMI	AUSMI	-	-	TSI	AUSMI	II	II	DMI	AUSMI	II	SOI	EPI

19 **Table 5: Ranks showing relative correlation strengths of each climate index with precipitation over monthly, annual and seasonal time periods. Each rank shows, on average,**
20 **which climate index has the highest correlation with rainfall at all sites along the NATT from July 1900 to June 2010 (except winter which uses calendar year from 1900 to 2009,**
21 **not hydrological year). For example, on a monthly time scale AUSMI, on average, is the most highly correlated climate index over the entire NATT, SOI is the second most**
22 **highly correlated, EMI is the third highest, and so on. Note, this table does not take statistical significance into account. First***, second** and third* highest correlations are**
23 **shaded and given a number of asterisk's for clarity.**

Rank	Climate Index															
	WPI	EPI	DMI	SOI	TSI	Niño 1+2	Niño3	Niño 3.4	Niño4	NATL	SATL	TROP	EMI	II	AUSMI	PDO
Monthly	4	14.5	7	2**	5	16	12	8	11	13	10	14.5	3*	6	1***	9
Annual	10	7	13	3*	1***	16	11	8	12	14	6	15	4	2**	5	9
Summer	9	15	7	2**	3*	14	8	6	13	10	4	16	11	12	1***	5
Autumn	13	9	8	2**	4	11.5	14	10	6	11.5	5	15	3*	7	1***	16
Winter	8	16	7	1***	15	6	11	4.5	4.5	9	13	14	10	2.5**	2.5**	12
Spring	15	3*	4	1***	6	11	9	7	10	16	12.5	14	5	2**	8	12.5

24

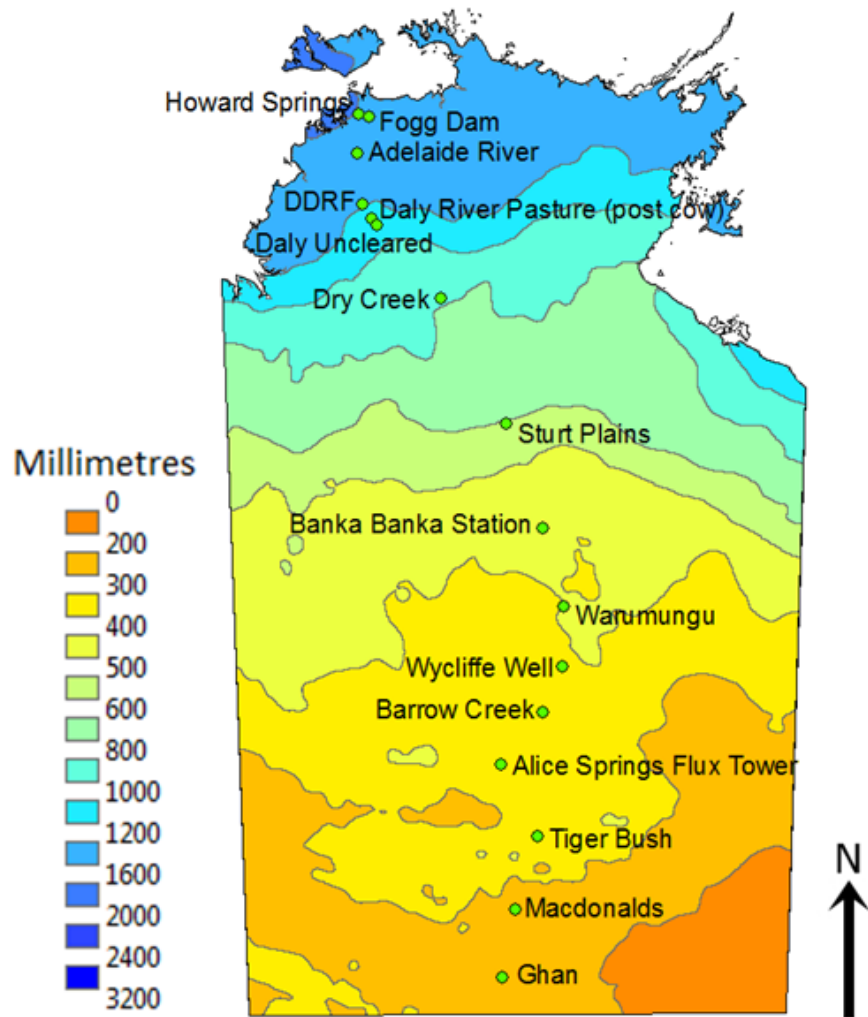


Figure 1: Map of average annual rainfall (mm) from 1961 to 1990 (colours) and the location of each site along the North Australian Tropical Transect (Adapted from Bureau of Meteorology (2011a)).

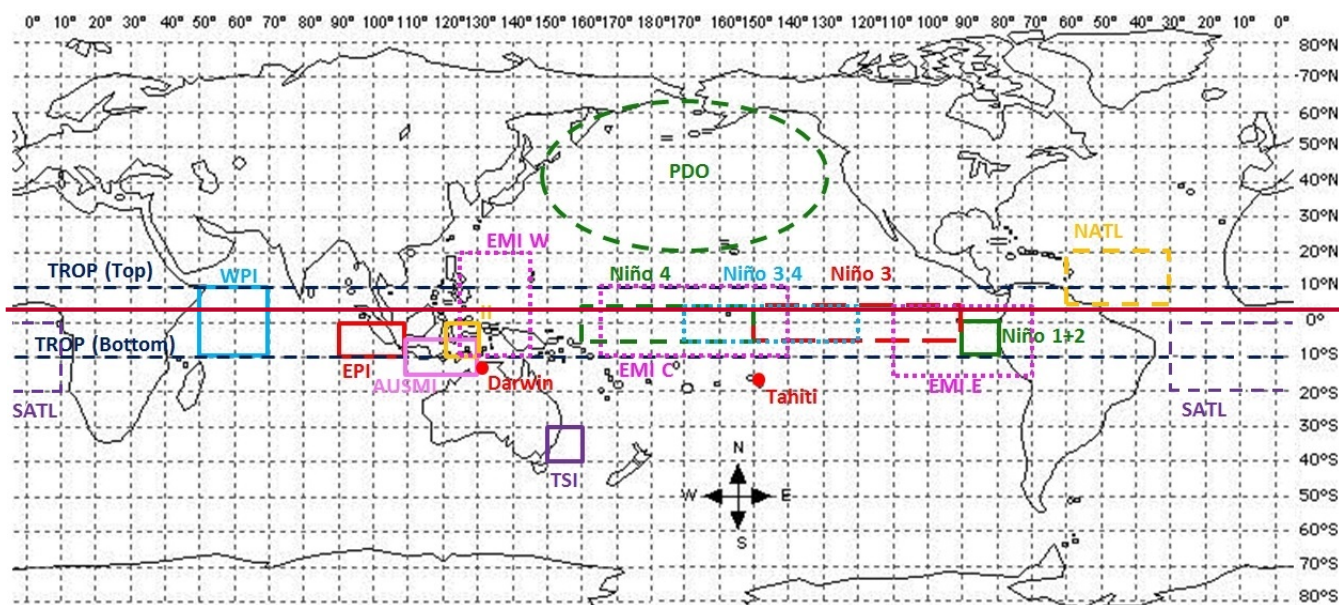
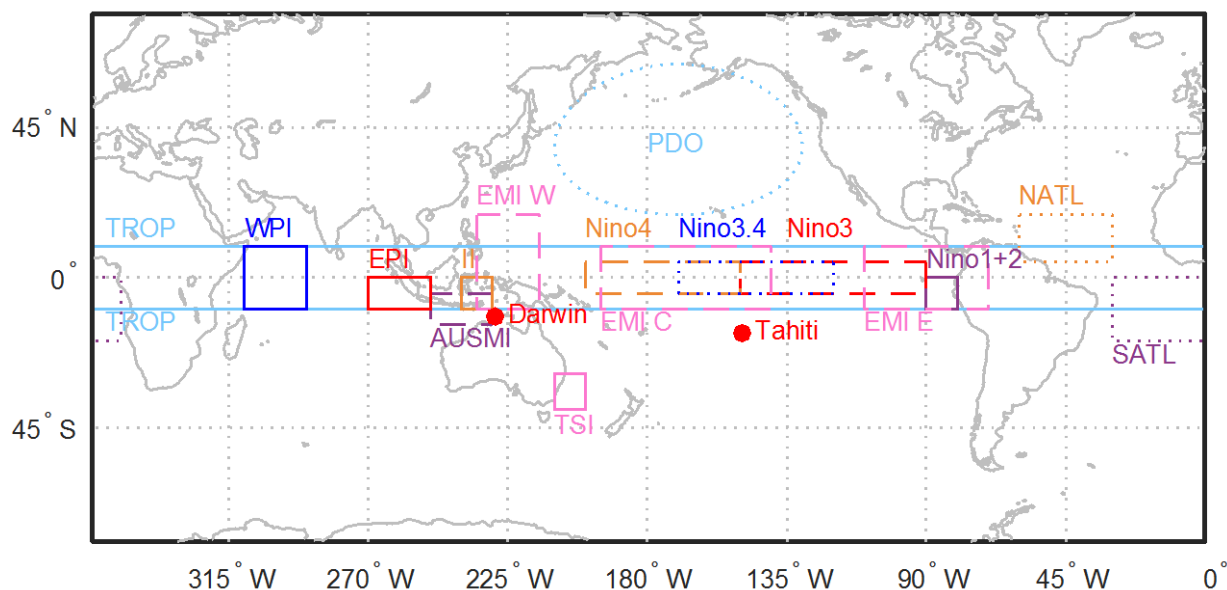


Figure 2: Approximate climate index measurement regions. Climate indices are calculated over the following areas: WPI – solid light blue rectangle, EPI – solid red rectangle, DMI – the difference between the WPI and the EPI, SOI – calculated using MSLP measurements at Tahiti and Darwin (red dots), TSI – solid pink rectangle, Niño 1+2 – solid purple rectangle, Niño 3 – dashed red rectangle, Niño 3.4 – dotted light blue rectangle, Niño 4 – dashed orange rectangle, NATL – dotted orange

rectangle, SATL – ~~dotted~~~~dashed~~ purple rectangle, TROP – calculated between top and bottom ~~light~~~~dashed~~~~dark~~ blue lines, EMI – calculated using areas enclosed by ~~dashed~~~~dotted~~ pink rectangles, II – solid orange rectangle, AUSMI – ~~dashed purple~~~~solid pink~~ rectangle and PDO – dashed ~~light blue~~~~green~~ oval (note: PDO is calculated over the entire area of the Pacific Ocean north of 20°N, the oval is only included for illustrative purposes). Figure produced using definitions for climate indices listed in Section 2.2.

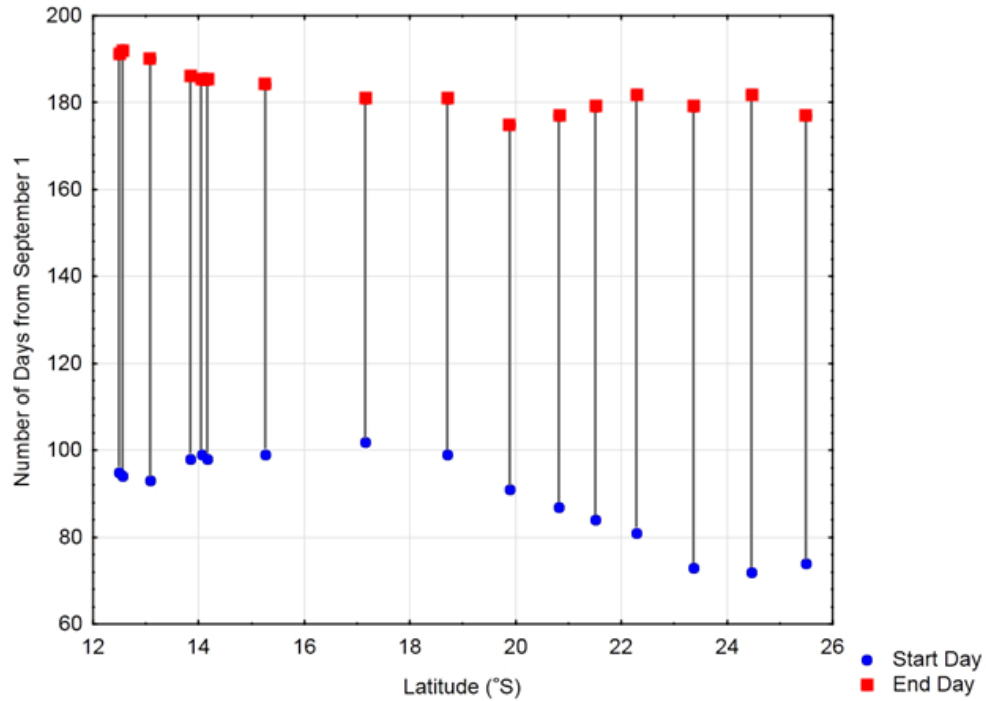


Figure 3: Wet season characteristics for each site along the NATT (Table 1) for the period 1900 to 2010. Sites are plotted as their latitude along the transect. Average wet season start day, end day and duration are given. Start and end day are defined as the date when rainfall, between September 1 and April 30 the following year, exceeded 15% and 85% respectively of the total rainfall between these two dates (Smith et al., 2008a). Start and end days are displayed as the number of days from September 1. Wet season duration is shown by the grey line connecting start and end days.

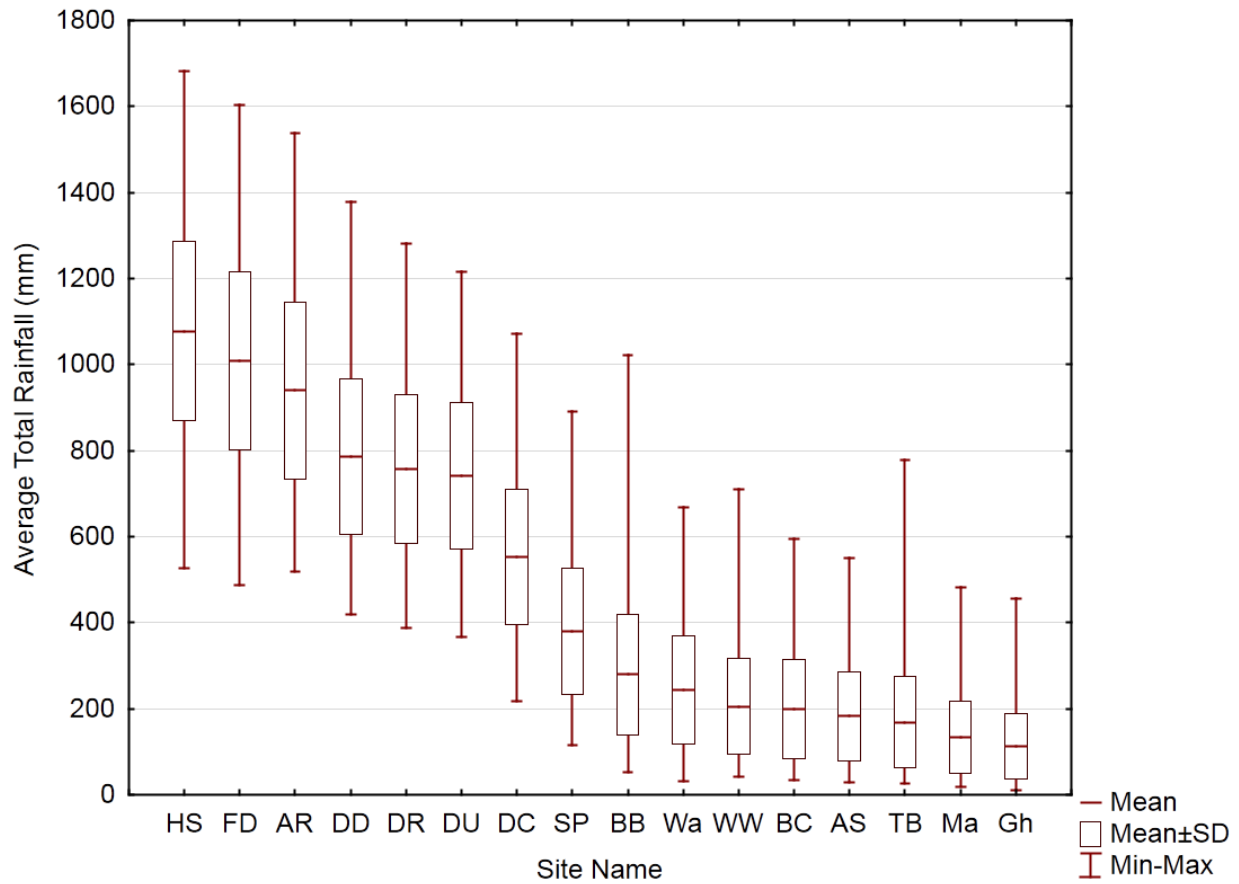


Figure 4: Mean annual wet season rainfall (mm) from 1900 to 2010 for each site along the NATT (Table 1). Boxes show one standard deviation and whiskers show maximum and minimum seasonal rainfall for each site.

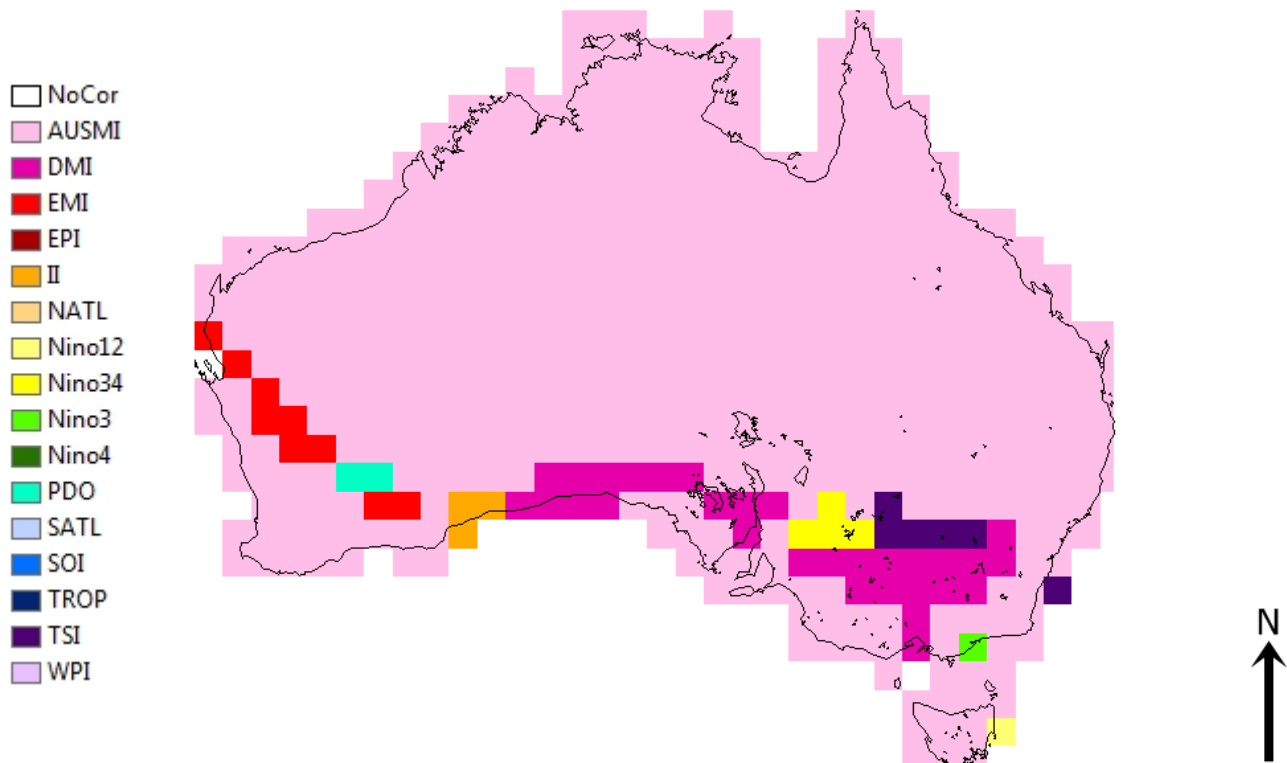


Figure 5: Map showing the climate index that correlates most strongly with monthly total rainfall over Australia between 1900 and 2010. Data aggregated to a resolution of 1.25° by 1.25° (approximately 125 km by 125 km). All coloured grid cells show correlations that are significant at the 95% significance level.

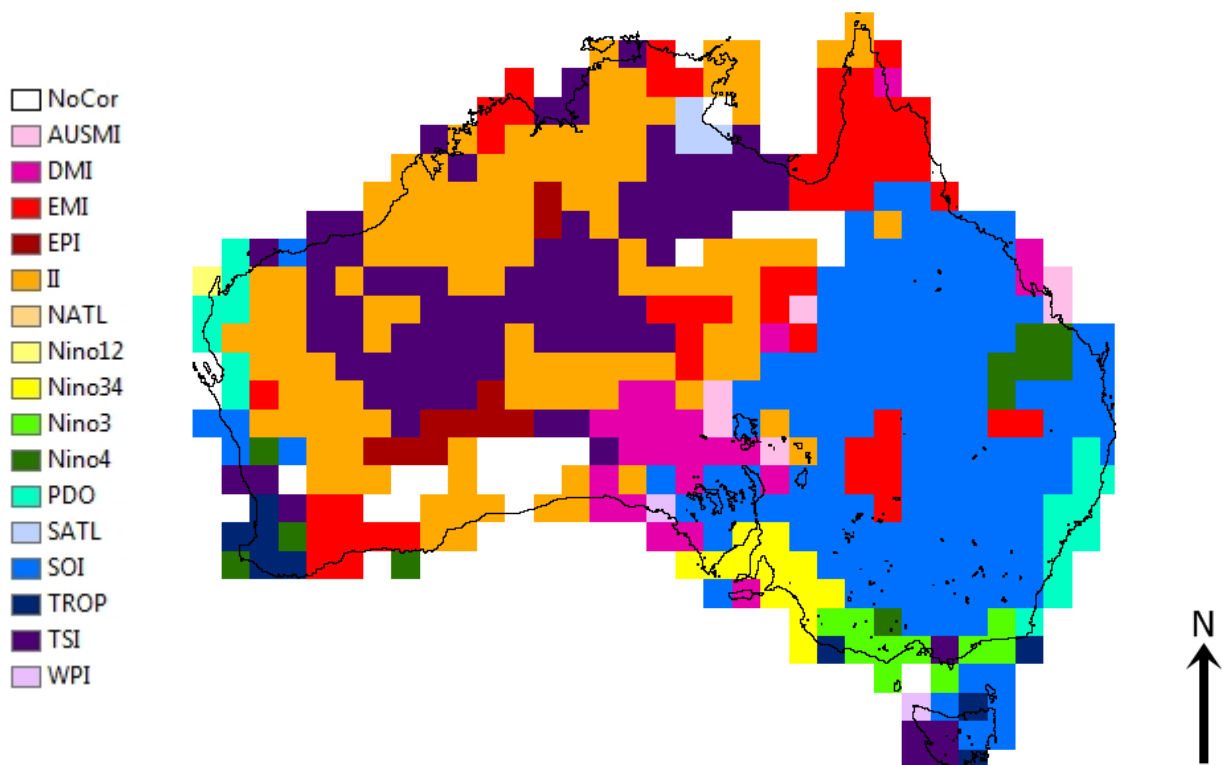


Figure 6: Map showing the climate index that correlates most strongly with annual total rainfall over Australia between 1900 and 2010. Data aggregated to a resolution of 1.25° by 1.25° (approximately 125 km by 125 km). All coloured grid cells show correlations that are significant at the 95% significance level. White grid cells show areas with no significant correlations.

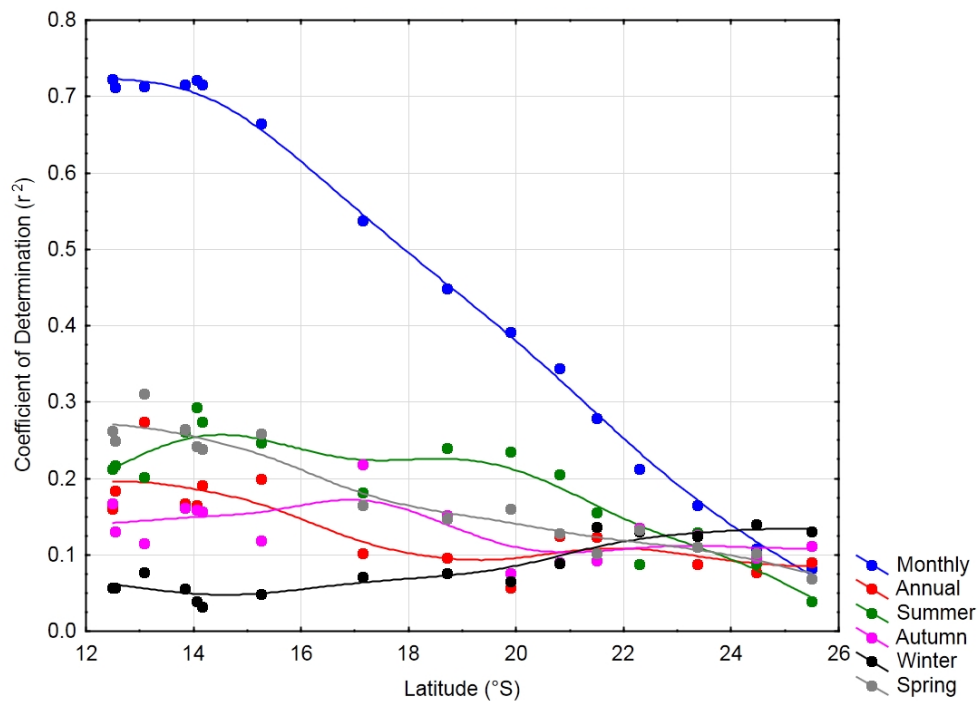


Figure 7: Correlations between rainfall and the climate index of maximum correlation at each site along the NATT (Table 1) for the period 1900 to 2010. Sites are plotted as their latitude along the transect. A distance weighted least squares fit has been included to enhance the visualisation of the trends along the NATT. The climate indices used for this graph vary depending on site and time period. Indices used for each point on the graph can be found in the “1” columns (highest correlation columns) of Table 4.

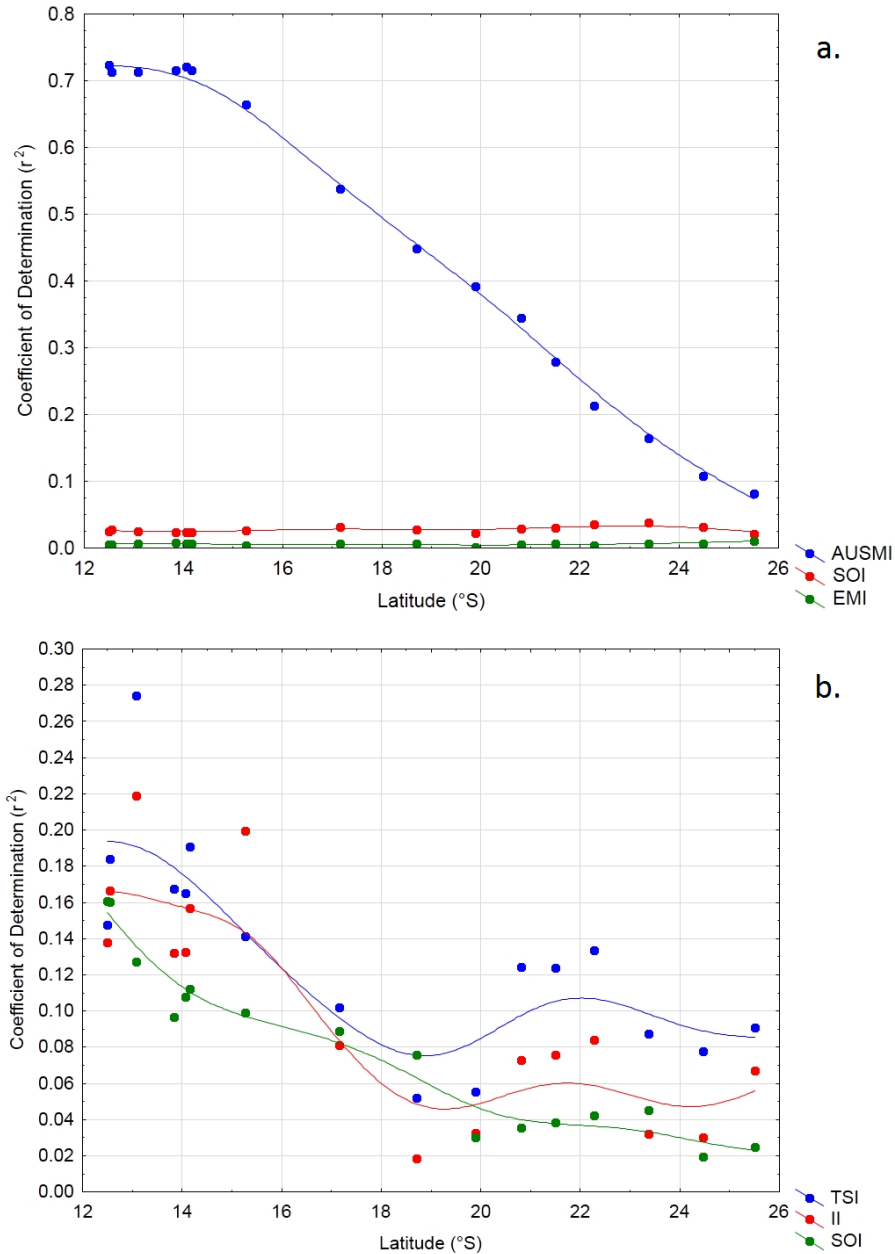


Figure 8: The three most highly correlated climate indices (r^2) on average along the NATT (Table 1) for the period 1900 to 2010. Sites are plotted as their latitude along the transect. Correlations are shown for (a) monthly and (b) yearly averaged daily rainfall. For monthly correlations, AUSMI had the strongest correlation, followed by SOI, then EMI. For annual correlations, TSI showed the strongest correlation on average over the entire NATT, followed by II then SOI. A distance weighted least squares fit has been included to aid the illustration of the trends along the NATT.