

Response of water use efficiency to summer drought in a boreal Scots pine forest in Finland

Yao Gao¹, Tiina Markkanen¹, Mika Aurela¹, Ivan Mammarella², Tea Thum¹, Aki Tsuruta¹, Huiyi Yang³, Tuula Aalto¹

¹Finnish Meteorological Institute, Helsinki, P.O. Box 503, 00101, Finland

²Department of Physics, University of Helsinki, Helsinki, P.O. Box 48, 00014, Finland

³Institute for Climate and Atmospheric Science, School of Earth and Environment, University of Leeds, Leeds, LS2 9JT, UK

Correspondence to: Yao Gao (yao.gao@fmi.fi)

5 **Abstract.** The influence of drought on plant functioning has received considerable attention in recent years, however our understanding of the response of carbon and water coupling to drought in terrestrial ecosystems still needs to be improved. A severe soil moisture drought occurred in southern Finland in the late summer of 2006. In this study, we investigated the response of water use efficiency to summer drought in a boreal Scots pine forest (*Pinus sylvestris*) at the daily time scale mainly using eddy covariance flux data from the Hyytiälä (southern Finland) flux site. In addition, simulation results from the JSBACH land surface model were evaluated against the observed results. Based on observed data, the ecosystem level water use efficiency (EWUE, the ratio of gross primary production (GPP) to evapotranspiration (ET)) showed a decrease during the severe soil moisture drought, while the inherent water use efficiency (IWUE, a quantity defined as EWUE multiplied with mean daytime vapour pressure deficit (VPD)) increased and the underlying water use efficiency (uWUE, a metric based on IWUE and a simple stomatal model, is the ratio of GPP multiplied with a square root of VPD to ET) was unchanged during the drought. The decrease in EWUE was due to the stronger decline in GPP than in ET. The increase in IWUE was because of the decreased stomatal conductance under increased VPD. The unchanged uWUE indicates that the trade-off between carbon assimilation and transpiration of the boreal Scots pine forest was not disturbed by this drought event at the site. The JSBACH simulation showed declines of both GPP and ET under the severe soil moisture drought, but to a smaller extent compared to the observed GPP and ET. Simulated GPP and ET led to a smaller decrease of EWUE but a larger increase in IWUE because of the severe soil moisture drought in comparison to observations. As in the observations, the simulated uWUE showed no changes in the drought event. The model deficiencies exist mainly due to the lack of the limiting effect of increased VPD on stomatal conductance during the low soil moisture condition. Our study provides deeper understanding of coupling of carbon and water cycles in the boreal ecosystem Scots pine forests and suggests possible improvements to land surface models, which play an important role in the prediction of biosphere-atmosphere feedbacks in the climate system.

Keywords: drought response, boreal forests, eddy covariance, water use efficiency, soil moisture drought, land surface model

1. Introduction

35 Terrestrial plants assimilate carbon dioxide (CO₂) through photosynthesis accompanied by a loss of water (H₂O) in transpiration. Both processes are strongly regulated by local environmental conditions and plant physiology (e.g., stomatal

conductance; g_s). Plants protect themselves from excessive water losses (diffusion out of the leaf) under water-limited environments through a reduction of stomatal conductance, which in turn leads to less carbon uptake (diffusion of CO_2 into the leaf) and possibly subsequent physiological stress (McDowell et al., 2008; Will et al., 2013).

40 Soil water deficit can induce a reduction of transpiration (Bréda et al., 1993; Clenciala et al., 1998; Granier et al., 2007; Irvine et al., 1998), and it has been recognized as the main environmental factor limiting plant photosynthesis at global scale (Nemani et al., 2003). Even though the occurrence of drought is low in northern Europe, the summer of 2006 in Finland has been found to be extremely dry and 24.4 % of the 603 forest health observation sites over entire Finland showed drought damage symptoms in visual examination, in comparison to 2–4 % damaged sites in a normal year (Muukkonen et al. 2015). According
45 to the simulated regional soil moisture, the summer drought in 2006 in southern Finland was the most severe one over the past 30 years (1981-2010), and the spatial distribution of the drought damages has been found to be closely related to the plant available soil moisture (Gao et al., 2016).

Water Use Efficiency (WUE) is a critical metric that quantifies the trade-off between photosynthetic carbon assimilation and
50 transpiration at the leaf level (Farquhar et al., 1982). WUE can be used to study ecosystem functioning which is in close connection to the global cycles of water, energy and carbon (Keenan et al., 2013). With the use of the eddy covariance technique (EC) and associated data processing, i.e., the derivation of gross primary production (GPP) and evapotranspiration (ET) from measurements of CO_2 flux and latent heat flux, WUE can be calculated at the ecosystem scale as the ecosystem level water use efficiency (EWUE), which is the ratio of GPP to ET. EWUE is broadly adopted as a surrogate for the leaf
55 level WUE in many studies, because more data are available at the ecosystem level than at the leaf level (Arneth et al., 2006; Law et al., 2002; Lloyd et al., 2002).

Reichstein et al. (2007) observed a small decrease in EWUE in the majority of the 11 studied EC sites during the 2003 summer heatwave in Europe. However, their findings are at odds with many models that describe the environmental controls on
60 stomatal conductance, with increased EWUE predicted during drought periods (Schulze et al., 2005). Many of those models are based on the optimality theory by Cowan and Farquhar (1977) who proposed that plants are able to regulate stomatal conductance in order to maximize WUE. Granier et al. (2008) reported that EWUE increased linearly with soil water deficit duration and intensity at a young beech forest site in north-eastern France. Moreover, EWUE also increased substantially at two forest sites, but not at grassland sites, during the 2011 spring drought in Switzerland (Wolf et al., 2013). However, no
65 differences in EWUE were shown between abundant- and low-rainfall years at a boreal Scots pine forest site in south-eastern Finland, even though GPP was reduced during low-rainfall years with long-lasting drought periods (Ge et al., 2014). Therefore, the impact of drought on EWUE remains unclear. Beer et al. (2009) concluded that the impact of vapour pressure deficit (VPD) on canopy conductance disturbs responses of both GPP and ET to changing environmental conditions and proposed the ecosystem level inherent water use efficiency (IWUE), which is a quantity defined as EWUE multiplied with mean
70 daytime VPD. IWUE has been found to increase during short-term moderate drought (Beer et al., 2009). Moreover, based on IWUE and an optimality theory (Cowan and Farquhar, 1977) based stomatal model with the assumptions suggested by Farquhar et al. (1993) and Lloyd and Farquhar (1994), the underlying water use efficiency (uWUE) was introduced to exclude the nonlinear dependence of IWUE on VPD, and the linear relationship between GPP multiplied with a square root of VPD and ET was found at the half-hourly time scale by Zhou et al. (2014). Later on, the appropriateness of uWUE at the daily time

75 scale was also demonstrated (Zhou et al., 2015).

Given the need to understand and project feedbacks between climate change and plant physiological responses, it is crucial to be able to realistically model the plant controls of stomatal conductance, and photosynthesis and transpiration responses under water stress (Berry et al., 2010; Knauer et al., 2015; Zhou et al., 2013). The various land ecosystem model simulations highlight the current uncertainty about plant physiology (water use) in response to drought in models (Huang et al., 2015; Jung et al., 2007).

The objectives of this study are (1) to understand the environmental controls on GPP and ET fluxes during a summer drought in boreal Scots pine (*Pinus sylvestris*) forests at a EC flux site in southern Finland, (2) to investigate the drought impact on WUE metrics, including EWUE, IWUE and uWUE, (3) to evaluate how adequately the JSBACH land surface model (LSM) captures plant responses to changes in environmental variables.

2. Data and methods

2.1 Study sites

The Hyytiälä flux site is located in southern Finland (61°51'N, 24°17'E, 180 m a.s.l.) at the SMEAR-II (Station for Measuring Ecosystem-Atmosphere Relations) field measurement station (Hari and Kulmala, 2005). The site is dominated by 55-year-old boreal Scots pine (*Pinus sylvestris*), which is homogeneous about 200 m in all directions from the site and extends to the north for about 1 km (Mammarella et al., 2007). The canopy height of trees is about 13-16 m and the mean all-sided leaf area index (LAI) is 6 m²/m². The soil at the site is Haplic podzol on glacial till (FAO-UNESCO, 1990). The 30-year (1961-1990) averaged annual mean air temperature is 2.9 °C and precipitation is 709 mm at the site (Vesala et al., 2005). Those details about the site are listed in Table 1. The ground vegetation consists mainly of blueberry (*Vaccinium myrtillus*), lingonberry (*Vaccinium vitis-idaea*), feather moss (*Pleurozium schreberi*) and other bryophytes (Kolari et al., 2009). We analysed the summer (June-August) from an 11-year period (1999-2009) according to data availability.

2.2 Flux measurement and data processing

Ecosystem carbon and water fluxes at the site were measured with the micrometeorological EC method. Turbulent fluxes were calculated as half-hourly averages following standard methodology (Aubinet et al., 2012) with EddyUH software (Mammarella et al., 2016). The vertical CO₂ flux was obtained as the covariance of high-frequency (10 Hz) observations of vertical wind speed and the CO₂ concentration (Baldocchi, 2003). The CO₂ flux was corrected for storage change to obtain net ecosystem CO₂ exchange (NEE), which was then partitioned into total ecosystem respiration (TER) and GPP according to Kolari et al. (2009). Data quality of 30 min values of NEE and latent heat flux (LE) was ensured by excluding records with low turbulent mixing (friction velocity below 0.25 m/s) as described in Markkanen et al. (2001), Mammarella et al. (2007) and Ilvesniemi et al. (2010). TER was modelled using an exponential equation with temperature at a depth of 2 cm in the soil organic layer as the explanatory factor. The value of GPP was then directly derived as residual from the measured NEE. When NEE was missing, GPP was gap-filled according to Kolari et al. (2009). LE was gap-filled using a linear regression against net radiation in a moving window of 5 days, and then ET was inferred from LE.

In addition to the EC measurements, a set of supporting meteorological variables were adopted as half-hourly averages; incoming shortwave radiation (R_s) and longwave radiation, air temperature (T_a), atmospheric humidity, precipitation were used as meteorological forcing for the site level simulation. The soil moisture was monitored at 1-hour intervals by the Time Domain Reflectometry (TDR) method (Tektronix 1502 C cable radar, Tektronix Inc., Redmond, USA). Three layers of mineral soil (0 to 5, 5 to 23 and 23 to 60 cm) were measured, as well as the organic layer on the top (-4 to 0 cm). In this study, soil moisture at the two lower levels of mineral soil (5 to 23 and 23 to 60 cm) at Hyytiälä was averaged over a day to represent daily soil moisture dynamics in the root zone at the site. The reason to exclude layer 1 soil moisture is that it is too sensitive to temperature and precipitation variations.

120

The half-hourly data of GPP and ET, as well as meteorological variables were averaged over the selected time periods in a day. Prior to averaging, rainy days and a number of dry days after the rainy days were firstly excluded from the data. The number of excluded dry days was determined by the ratio of daily precipitation to potential evapotranspiration (PET). When precipitation was smaller than PET, no dry day after rainy day was excluded. When precipitation was equal or larger than twice of PET, two dry days following the rainy day were excluded. Additionally, when precipitation was larger than PET but with the ratio less than two, one dry day after the rainy day was excluded. PET was calculated using the Penman-Monteith equation and the 'Evapotranspiration' Package in R software was used (Guo et al., 2016). Second, in order to capture the daily time periods of effective photosynthesis, only half-hourly data with R_s larger than 100 W/m^2 were selected. Finally, the half-hourly data of R_s , VPD, and T_a were also averaged over the selected time periods to get their daytime mean values respective to the GPP and ET data. The same data processing method was used for the simulation results.

130

2.3 JSBACH land surface model

JSBACH (Raddatz et al., 2007; Reick et al., 2013) is the LSM of the Max Planck Institute for Meteorology Earth System Model (MPI-ESM) (Roeckner et al., 1996; Stevens et al., 2013). The land physics of JSBACH mainly follow those of the global atmosphere circulation model ECHAM5 (Roeckner et al., 2003), and the biogeochemical components are mostly taken from the biosphere model BETHY (Knorr, 2000). In JSBACH, land vegetation cover is described as plant functional types (PFTs) and a set of properties (e.g., maximum LAI, albedo) is attributed to each PFT with respect to the processes that are accounted for by JSBACH. The phenology model (Logistic Growth Phenology; LoGro-P) of JSBACH simulates the LAI dynamics to compute photosynthetic production (Böttcher et al., 2016). The models of Farquhar et al. (1980) and Collatz et al. (1992) are used for photosynthesis of C3 and C4 plants, respectively. A five layer soil hydrology scheme was implemented in JSBACH by Hagemann and Stacke (2015). Gao et al. (2016) has demonstrated that JSBACH with its five-layer soil hydrology scheme is able to capture the soil moisture dynamics at sites and in the regional scale of Finland.

135

140

2.3.1 The stomatal conductance model in JSBACH

The current version of the stomatal conductance model in JSBACH considers the limitation from soil water availability on stomatal conductance (g_s), which further impacts on carbon assimilation and transpiration.

145

Firstly, the net assimilation rate (A_n [$\text{mol m}^{-2} \text{ s}^{-1}$]) and g_s [$\text{mol m}^{-2} \text{ s}^{-1}$] are calculated for without water limitation as the unstressed net assimilation rate ($A_{n,\text{pot}}$ [$\text{mol m}^{-2} \text{ s}^{-1}$]) and the unstressed stomatal conductance ($g_{s,\text{pot}}$ [$\text{mol m}^{-2} \text{ s}^{-1}$]). The $A_{n,\text{pot}}$ is calculated using the photosynthesis model in JSBACH, for which the intercellular CO_2 concentration under unstressed

150

condition ($C_{i,pot}$ [mol mol⁻¹]) is needed. The $C_{i,pot}$ is prescribed using the atmospheric CO₂ concentration (C_a [mol mol⁻¹]), where $C_{i,pot} = 0.87C_a$ for C3 plants and $C_{i,pot} = 0.67C_a$ for C4 plants (Knorr, 2000). After the $A_{n,pot}$ is determined, the $g_{s,pot}$ is derived using the following equation:

$$g_{s,pot} = \frac{1.6A_{n,pot}}{C_a - C_{i,pot}} \quad (1)$$

155 Then, an empirical water stress factor, which is a function of volumetric soil moisture, is used to derive g_s [mol m⁻² s⁻¹] from $g_{s,pot}$ as follows:

$$g_s = \beta g_{s,pot} \quad (2)$$

where

$$\beta = \begin{cases} 1 & \theta \geq \theta_{crit} \\ \frac{\theta - \theta_{wilt}}{\theta_{crit} - \theta_{wilt}} & \theta_{wilt} < \theta < \theta_{crit} \\ 0 & \theta \leq \theta_{wilt} \end{cases} \quad (3)$$

160 here, θ [m³ m⁻³] is the volumetric soil moisture, θ_{crit} [m³ m⁻³] is the critical point and θ_{wilt} [m³ m⁻³] is the permanent wilting point.

Finally, the intercellular CO₂ concentration (C_i) and A_n are resolved using g_s . The canopy conductance (G_c [mol m⁻² s⁻¹]) and canopy-scale A_n are integrated over the leaf area. Unlike the BETHY approach (Knorr, 2000), the control of g_s in JSBACH does not include the influence of atmospheric humidity.

165 2.4 Site level simulation by JSBACH

For the site simulation, JSBACH was forced with the half-hourly local meteorological observations. Based on the site-specific information, PFT was assigned as evergreen needleleaf forest and the soil type was set as loamy sand in JSBACH. The modelled LAI reached values close to the observed LAI when the parameter maximum LAI was set to 16 m²/m². Also, the maximum carboxylation rate (J_{max}) and maximum electron transport rate (V_{max}) at 25 °C were adjusted, for the simulated GPP to match the magnitude of the observed GPP. The V_{max} was set to be 37.5, and the J_{max} was 71.3. The soil depth and root depth at the site were derived from maps for the regional JSBACH simulation presented in Gao et al. (2016) (see also Hagemann and Stacke, 2015). Those parameter settings in the JSBACH site level simulation for the site are listed in Table 1. Prior to the actual simulations, a 30-year spin-up run was conducted by cycling meteorological forcing that was used for the actual simulation to obtain equilibrium for soil water and soil heat balances.

175 2.5 Soil Moisture Index (SMI)

In this study, the soil moisture dynamics are represented by SMI (also referred to as Relative Extractable Water – REW), which has been demonstrated to represent summer drought in boreal forests in Finland (Gao et al., 2016). The SMI describes the ratio of plant available soil moisture to the maximum volume of water available to plants in the soil (Betts, 2004; Seneviratne et al., 2010):

$$180 \quad SMI = (\theta - \theta_{WILT}) / (\theta_{FC} - \theta_{WILT}), \quad (4)$$

where θ is the volumetric soil moisture [m³ H₂O m⁻³], θ_{FC} is the field capacity [m³ H₂O m⁻³] and θ_{WILT} is the permanent wilting point [m³ H₂O m⁻³]. When θ exceeds θ_{FC} , soil water cannot be retained against gravitational drainage, while below θ_{WILT} , the

soil water is strongly held by the soil matrix and cannot be extracted by plants (Hillel, 1998). In this study, soil moisture conditions were classified to five groups according to SMI values with an interval of 0.2: very dry: $0 \leq \text{SMI} < 0.2$, moderate dry: $0.2 \leq \text{SMI} < 0.4$, mid-range: $0.4 \leq \text{SMI} < 0.6$, moderate wet: $0.6 \leq \text{SMI} < 0.8$, very wet: $0.8 \leq \text{SMI} < 1$.

From simulations, we used the average of the second layer (layer-2; 6.5–31.9cm) and the third layer (layer-3; 31.9–123.2 cm) soil moisture together with model soil parameters to determine the simulated SMI for Hyytiälä, for the aim to correspond with the observed SMI that calculated with measured soil moisture at the two lower levels of mineral soil at the site. The layer 1 soil moisture was excluded in determining both simulated and observed SMIs because it is too sensitive to temperature and precipitation variations. For the observed SMI, the measured soil parameters derived based on water retention curves determined from soil samples taken at the site were adopted (i.e., volumetric soil moisture at saturation ($\theta_{\text{SAT}} = 0.50 \text{ m}^3 \text{ H}_2\text{O m}^{-3}$, $\theta_{\text{FC}} = 0.30 \text{ m}^3 \text{ H}_2\text{O m}^{-3}$ and $\theta_{\text{WILT}} = 0.08 \text{ m}^3 \text{ H}_2\text{O m}^{-3}$). As θ_{FC} acts as a proxy for θ_{SAT} in the five layer soil hydrology scheme in JSBACH (Hagemann and Stacke, 2015), θ_{SAT} was used instead of θ_{FC} for consistency when calculating SMI based on the observed soil moisture data.

2.6 Ecosystem Water Use Efficiency (EWUE), Inherent Water Use Efficiency (IWUE) and Underlying Water Use Efficiency (uWUE)

The ecosystem level water use efficiency is calculated as,

$$\text{EWUE} = \text{GPP}/\text{ET}, \quad (5)$$

IWUE is defined as EWUE multiplied by daytime mean VPD in Beer et al. (2009),

$$\text{IWUE} = \text{GPP} \times \text{VPD}/\text{ET}, \quad (6)$$

uWUE is derived based on IWUE and an optimality theory (Cowan and Farquhar, 1977) based stomatal model with the assumptions suggested by Farquhar et al. (1993) and Lloyd and Farquhar (1994) in Zhou et al. (2014). The formulation of uWUE is,

$$\text{uWUE} = \text{GPP} \times \text{VPD}^{0.5}/\text{ET} \quad (7)$$

From EC data EWUE and IWUE can only be calculated with ET, which, in addition to transpiration, contains evaporation of water intercepted by surfaces and soil evaporation. However, process-based ecosystem models do resolve evaporation and transpiration which together compose ET. Therefore, transpiration-based EWUE, IWUE and uWUE can also be calculated using simulated transpiration instead of ET in those equations.

3. Results

3.1 Soil moisture drought at Hyytiälä in 2006

In the summer of 2006, a period with evidently lower SMI values (< 0.2) than in any other year during the 11-year time series was shown (Fig. 1 (a)). According to the in situ observation, in the summer of 2006, there were 37 consecutive days (23 July to 28 August) with SMI lower than 0.2, and 17 consecutive days (1 August to 17 August) with SMI lower than 0.15. The observed SMI reached its minimum of 0.115 on 16 August 2006. The simulated SMI was generally smaller than the observed

220 SMI in the summer of 2006, showing 42 consecutive days (17 July to 27 August) with SMI lower than 0.2, and 33 consecutive
days (26 July to 27 August) with SMI lower than 0.15. The lowest SMI from simulation was 0.052 on August 15th. The
simulated SMI agreed well with in situ observed SMI over the 11-year study period, with a correlation coefficient of 0.63 and
a root-mean-square error (RMSE) of 0.23. However, the simulated SMI showed larger amplitude and a faster response to
changes in climate conditions in comparison to the observed SMI. Nevertheless, a very good correlation coefficient of 0.97
225 between simulated and observed SMIs were found for year 2006 (Fig. 1 (b)), despite the simulated SMI being systematically
lower than the observed SMI (RMSE = 0.12).

Concurrently with the low soil moisture, a high T_a anomaly was observed in August 2006 (Fig. 1 (c)). In all the days in August
2006, the daily mean in situ T_a was higher than the 11-year averaged daily mean T_a . The monthly mean T_a in August 2006
(18.1 ± 1.9 °C) was 3.1 °C higher than that of the 11-year average (15.0 ± 1.63 °C). Also, the daily mean VPD in August 2006
was higher than the 11-year averaged daily mean VPD in August in general (not shown), except on the days with precipitation.
230 Especially, the mean value of the daily mean VPD in the period from 31 July to 16 August (1.067 ± 0.361 kPa) was
substantially higher than the mean of the 11-year averaged daily mean VPD over this period (0.582 ± 0.200 kPa). The biggest
difference between the daily mean VPD and the 11-year averaged daily mean VPD reached 1.054 kPa on August 5th that was
the day with highest T_a in August 2006. The daily mean R_s in the summer of 2006 was overall higher than the 11-year averaged
daily mean R_s , with the monthly mean values by 15.4%, 31.2% and 21.4 % higher in June, July and August respectively.

235 The precipitation events have strong impact on the temporal pattern of SMI. The cumulative in situ precipitation of 34 mm in
July 2006 was the lowest during the 11-year study period with the July average of 91 ± 31 mm. In contrast, the highest total
precipitation in July was in 2007, reaching 146 mm. The cumulative precipitation of 48 mm in August 2006 was not as low
as in July when compared to the 11-year average of 71 ± 43 mm. However, the lack of precipitation since the end of July led
to the continuous drop of SMI till mid August 2006, followed by a small increase in soil moisture after a light precipitation
240 event. The SMI increased to be above 0.2 in the end of August with a heavy precipitation event exceeding 25 mm in one day.
Moreover, the precipitation in June 2006 was also less than the 11-year average (45 vs. 70 ± 24 mm) and temporally unevenly
distributed, with only a small amount in the beginning of June and a large amount in the end of June. Therefore, there was a
continuous decrease of soil moisture from the beginning of June and an abrupt increase in SMI of more than 0.1 in the end of
June.

245 **3.2 The relationship of GPP to ET categorized by environmental variables**

In general, the daytime averaged GPP and ET from observations at Hyytiälä showed a non-linear relationship (Fig. 2 (a)).
When categorized according to environmental variables, there is a group of data under the very dry soil moisture condition
(encircled with a dashed line in Fig. 2 (a)) showing GPP values lower than other days. The ET values of this group are also
located in the lower end, but just partly lower than ET values on other days. It is found that the days in this group are with
250 SMI smaller than 0.15. Moreover, there are only two days with SMI values smaller than 0.15 that are not included in the
encircled group due to their slightly higher GPP values. Most of the days in the group have high daytime mean T_a (18 to
24 °C), sufficient daytime mean R_s (mostly above 300 W/m^2), and relatively high daytime mean VPD (above 1 kPa).

The non-linear relationship between the daytime averaged GPP and ET was also found in the JSBACH simulated result (Fig.
255 2 (b)). The decline of both GPP and ET during low SMI was captured by the model. However, under the very low soil moisture

condition ($SMI < 0.15$) during the summer drought in 2006, the model simulated much less reduction of GPP, while the ET decreased to be lower than the observation in few days. The non-linear relationship between simulated daytime averaged GPP and transpiration (Fig. S1 in supplementary) is similar to the relationship between simulated daytime averaged GPP and ET, which demonstrates that transpiration composes a large fraction of ET at daytime at the site, especially under soil water stress. Except the drought events, GPP and ET both increased with increasing R_s and VPD in the simulation, which was more evident than in the observational data.

3.3 Response of GPP and ET to environmental variables categorized by SMI

The dependence of GPP and ET on environmental variables was further investigated for different SMI ranges (Fig. 3). The exclusion of the night time and the days affected by rain (see details in section 2.2) removed also the small values of GPP and ET. Linear regressions were fitted between GPP (ET) and environmental variables for each soil moisture group to emphasize the deviating differences of dependence of GPP (ET) on environmental variables under different soil moisture conditions. The regression parameters, correlation coefficient and statistical significance are summarized in Table S1 in the Supplementary Material.

The very dry soil ($0 \leq SMI < 0.2$) led to a response of observed daytime mean GPP and ET to daytime mean R_s , T_a and VPD that deviated considerably from the responses of the daily mean SMI values greater than 0.2 (Fig.3 (a)). Under the very dry soil moisture condition, GPP decreased with the declining SMI with a high correlation of 0.79, whereas the other SMI groups showed more scattered relationship between GPP and SMI. Different from the other SMI groups, GPP was the most negatively correlated with T_a and VPD under the very dry soil moisture condition. Moreover, the group with SMI values less than 0.2 displayed lower GPP values (on average $97.6 \mu\text{g C m}^{-2}\text{s}^{-1}$) than the other groups (on average $151 \mu\text{g C m}^{-2}\text{s}^{-1}$). The response patterns of the observed ET to environmental variables were similar to those of GPP. As with GPP, the group under the very dry soil moisture condition deviated strongly from the other SMI groups. However, the decrease in ET under severe soil moisture drought was not as pronounced as in GPP.

For the simulated GPP and ET too, the group under the very dry soil moisture condition deviated from the other SMI groups, but not to the same extent as that in the observed GPP and ET. Under other soil moisture conditions ($SMI > 0.2$), the simulated GPP had stronger positive linear relationships with daytime mean R_s , T_a and VPD than the observed GPP. Compared to the observed ET, some differences existed in the response of the simulated ET to environmental variables. First, the dependence of simulated ET on R_s tended to be more linear than the observed ET and R_s relationship. Second, unlike observed ET, the simulated ET increased concomitantly with VPD at high VPD. Nevertheless, simulated ET of the group under severe soil moisture drought deviated strongly from the other SMI groups, but to a less extent than observed ET.

3.4 Soil moisture drought impacts on EWUE, IWUE and uWUE

From the observation, the decrease in GPP was much stronger than the decrease in ET during the soil moisture drought, which resulted in largely decreased EWUE that reached the recorded minimum during the severe soil moisture drought (Fig. 2 and Fig. S2 in Supplementary Material). In contrast to EWUE, IWUE increased from $3.25 \mu\text{g C kPa} / \text{mg H}_2\text{O}$ (the mean value for the days with SMI equal or larger than 0.2) to $3.93 \mu\text{g C kPa} / \text{mg H}_2\text{O}$ (the mean value for the days with SMI smaller than 0.2), and uWUE did not change under the severe soil moisture drought at Hyytiälä (Fig. 4 (a)). The simulated EWUE decreased

less and the simulated IWUE increased more (from 3.62 $\mu\text{g C kPa} / \text{mg H}_2\text{O}$ to 5.17 $\mu\text{g C kPa} / \text{mg H}_2\text{O}$) than the observation, which is mainly because of a smaller decrease of the simulated GPP than its observed counterpart during the soil moisture drought (Fig. 4 (b)). The simulated uWUE remained insensitive to the severe soil moisture drought. In addition, the transpiration based EWUE, IWUE and uWUE (Fig. S3 in Supplementary Material) showed similar results to those three metrics calculated with ET.

4. Discussion

4.1 Drought impacts on GPP and ET

Both GPP and ET were suppressed when there was the severe soil moisture drought in the summer of 2006 at Hyytiälä. In addition, the response of GPP and ET to the changes in environmental variables under severe water stress differed from those under other soil moisture conditions. The dominant reason is that low soil moisture leads to stomatal regulation of the plants, which limits plant carbon assimilation and transpiration. The decreased ET due to soil moisture drought may increase atmospheric VPD, which could in turn intensify stomatal closure (Eamus et al., 2013; Jarvis, 1976). Moreover, the GPP and ET were decoupled and EWUE decreased due to the soil moisture drought. Different to EWUE, IWUE increased but uWUE showed no changes during the severe soil moisture drought at Hyytiälä. IWUE depends on the difference between ambient partial pressure of CO_2 (C_a) and a weighted average of inner leaf partial pressure of CO_2 (C_i) through the canopy within the tower footprint (Beer et al., 2009). It has been shown that the term $(1-C_i/C_a)$ increases as VPD increases (Wong et al., 1979). Thus, the increase in IWUE during drought was a result of decreased stomatal conductance due to increased VPD. The uWUE was formulated to be more independent of a varying VPD than IWUE. According to Xie et al. (2016), both IWUE and uWUE at a flux site increased and reached their maximum values over long-term during a severe drought in central and southern China in the summer of 2013. In this work, the unchanged uWUE during this drought event demonstrate that the trade-off between carbon assimilation and transpiration of the boreal Scots pine forest was not disturbed by drought at the study site, even though the stomatal conductance decreased.

4.2 Differences between observations and site simulations

The model showed the limitations on GPP and ET under the very dry soil moisture condition ($0 \leq \text{SMI} < 0.2$) at Hyytiälä. However, the discrepancies in response between observed and simulated GPP and ET to changing environmental variables were obvious. This is because the formulation for stomatal conductance in JSBACH does not include a response to air humidity, and therefore the stomatal conductance in JSBACH is insensitive to atmospheric VPD (Knauer et al., 2015). In Knauer et al. (2015), Ball-Berry model (Ball et al., 1987) has been found to be the best among a few stomatal conductance models in its response to atmospheric drought under non-limited soil moisture conditions. In reality, low soil moisture and high T_a during drought are closely coupled with high atmospheric VPD. Our results indicate that the combined effects of soil moisture and atmospheric drought on stomatal conductance have to be taken into account. Moreover, model performance could be improved through the inclusion of non-stomatal limitations on plant photosynthesis, which have been considered to be important for the simulation of short-term plant responses to drought (Egea et al., 2011; Manzoni et al., 2011; Zhou et al., 2013). However, JSBACH is being continuously developed and the effect of soil water stress is to be accounted according to Egea et al., 2011 for both stomatal and non-stomatal processes, affecting both conductance and photosynthesis parameters.

330 Moreover, when comparing results from the EC data and simulations, it should be kept in mind that the EC method has its
uncertainties. Due to the stochastic nature of the turbulent flow, there is always a random error component in the observations.
In addition, imperfect spectral corrections and gap-filling procedures as well as calibration problems may be sources of
systematic errors (Richardson et al., 2012; Wilson et al., 2002). The uncertainty of EC flux data is typically 20-30% for annual
carbon budget (Aubinet et al., 2012; Baldocchi, 2003). Nevertheless, the uncertainties of the GPP and ET estimated from EC
335 measurements are likely to have negligible impacts on our findings of the three WUE metrics, as the same data with the same
uncertainties were used.

5. Conclusions

In this study, the impact of the severe soil moisture drought in the summer of 2006 on the water use efficiency of a boreal
Scots pine forest ecosystem at Hyytälä flux site in southern Finland was investigated using both ground-based observations
340 from a flux tower and the site-level simulation by the JSBACH land surface model. The soil moisture index (SMI) was used
to indicate the soil moisture condition at the site. Finland is a high-latitude country and drought is uncommon. Nevertheless,
the summer drought in 2006 caused severe forest damage in southern Finland (Muukkonen et al., 2015). The SMI
calculated from regional soil moisture simulations over the past 30 years (1981-2010) indicated that such extreme
drought affecting forest health was rare in Finland, and the summer drought in 2006 in southern Finland was the most
345 severe one in the 30-year study period (Gao et al., 2016). According to climate scenarios, regardless of the anticipated
increase of precipitation, a modest drying of soil is foreseen in the Northern-Europe during the 21st century because of
intensifying evapotranspiration (Ruosteenoja et al., 2017).

The impacts from the severe soil moisture drought on plant functioning at the site were clearly seen in the gross primary
production (GPP) and evapotranspiration (ET). From both observation and simulation results, the GPP and ET reached the
350 recorded minimums during the drought event. The ecosystem water use efficiency (EWUE) decreased, whereas the inherent
water use efficiency (IWUE) increased and the underlying water use efficiency (uWUE) was unchanged during the severe
soil moisture drought at the site. The EWUE is very sensitive to the daily changes of GPP and ET. The increase in IWUE
during drought was due to the decreased stomatal conductance of plants under increased VPD. The unchanged uWUE
355 indicates that the carbon assimilation and transpiration coupling of the boreal Scots pine forest was not disturbed by the
drought event at this site, although the stomatal conductance of plants decreased.

The simulated response in plant functioning to the severe soil moisture drought predicted by JSBACH was weaker than those
in the observed dataset, even though the strong limitation on GPP and ET through stomatal closure were seen at the very dry
360 soil moisture condition ($0 \leq \text{SMI} < 0.2$) as in the observed data. The differences between the observed and the model results
suggest that, in order to adequately simulate effects of drought on plant functioning, the combined effects of atmospheric and
soil moisture drought on stomatal conductance have to be included in the stomatal conductance model in JSBACH. Moreover,
inclusion of non-stomatal limitations on photosynthesis during drought, e.g., reduced mesophyll conductance or carboxylation
capacity, may additionally improve the model results (Keenan et al., 2010).

365 This study gives a view of the response of water use efficiency to a summer drought event in a boreal Scots pine forest in

Finland, and further suggests that improving our knowledge of ecosystem processes in land surface models are of great importance when estimating biosphere-atmosphere feedbacks of terrestrial ecosystems under climate change.

Acknowledgements

370 We would like to thank the Academy of Finland Centre of Excellence (272041), Academy of Finland (266803), OPTICA (295874), CARB-ARC (285630), ICOS Finland (281255), ICOS-ERIC (281250), MONIMET (LIFE07 ENV/FIN/000133, LIFE12 ENV/FIN/000409), NCoE eSTICC (57001) and EU FP7 EMBRACE (282672) projects for support. The authors acknowledge MPI-MET and MPI-BGC for fruitful co-operation regarding use of JSBACH model.

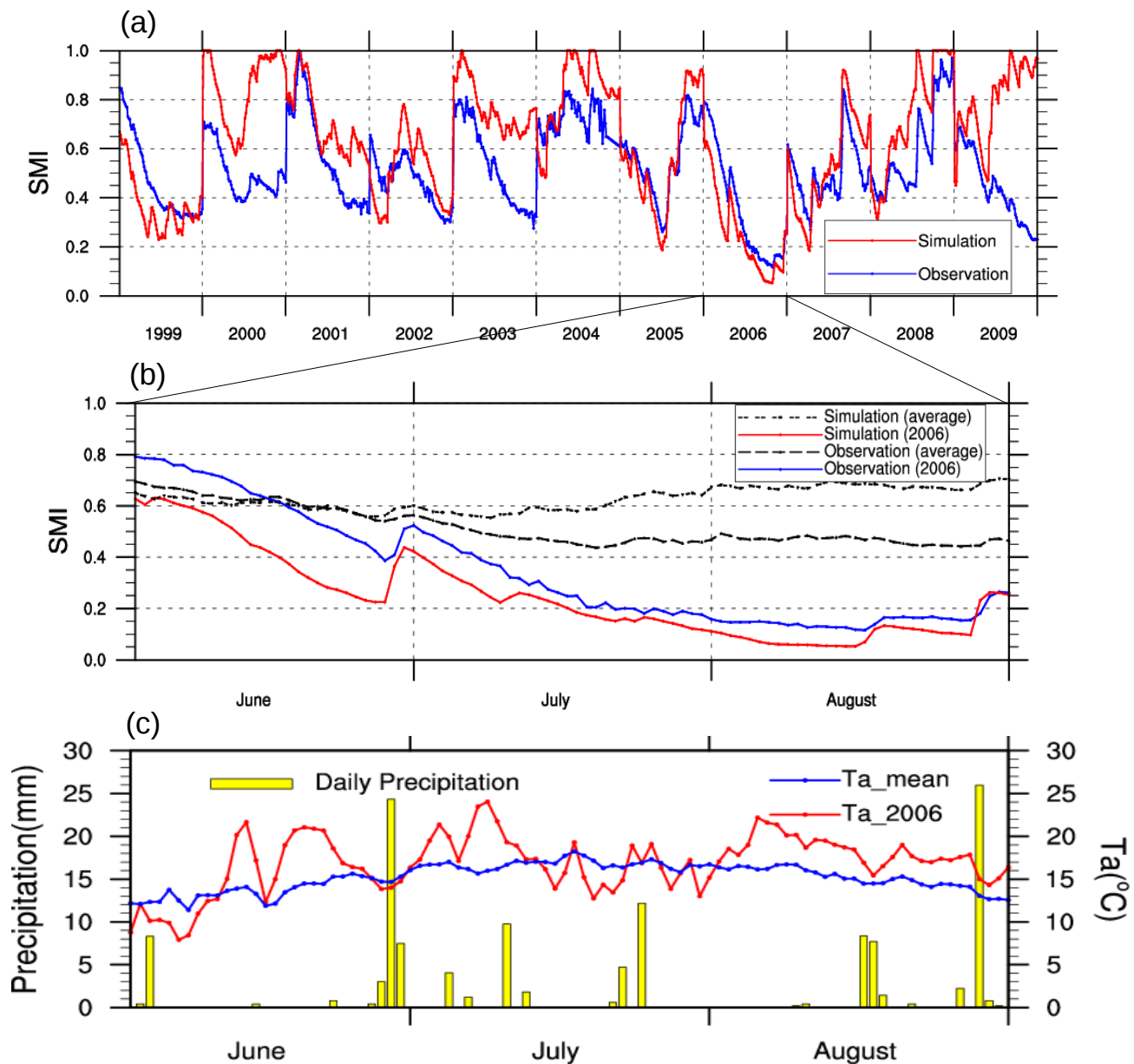
References

- 375 Arneeth, A., Veenendaal, E. M., Best, C., Timmermans, W., Kolle, O., Montagnani, L., and Shibistova, O.: Water use strategies and ecosystem-atmosphere exchange of CO₂ in two highly seasonal environments, *Biogeosciences*, 3, 421-437, doi:10.5194/bg-3-421-2006, 2006.
- Aubinet, M., Vesala, T., and Papale, D.: *Eddy covariance: a practical guide to measurement and data analysis*, Springer Science & Business Media, Netherlands, 2012.
- 380 Aurela M., Lohila A., Tuovinen J.-P., Hatakka J., Penttilä T., and Laurila T.: Carbon dioxide and energy flux measurements in four northern-boreal ecosystems at Pallas. *Boreal Env. Res.*, 20, 455–473, 2015.
- Aurela, M.: Carbon dioxide exchange in subarctic ecosystems measured by a micrometeorological technique, *Contributions*, 51, Finnish Meteorological Institute, Helsinki, Finland, 132 pp., 2005.
- 385 Baldocchi, D. D.: Assessing the eddy covariance technique for evaluating carbon dioxide exchange rates of ecosystems: past, present and future, *Global Change Biology*, 9, 479-492, 2003.
- Ball, J. T., Woodrow, I. E., and Berry, J. A.: A model predicting stomatal conductance and its contribution to the control of photosynthesis under different environmental conditions, *Progress in Photosynthesis Research*, J. Biggins (Editor), Springer Netherlands, Dordrecht, Netherlands, 221–224, 1987.
- 390 Beer, C., Ciais, P., Reichstein, M., Baldocchi, D., Law, B. E., Papale, D., Soussana, J. F., Ammann, C., Buchmann, N., Frank, D., Gianelle, D., Janssens, I. A., Knohl, A., Köstner, B., Moors, E., Rouspard, O., Verbeeck, H., Vesala, T., Williams, C. A., and Wohlfahrt, G.: Temporal and among-site variability of inherent water use efficiency at the ecosystem level, *Global Biogeochemical Cycles*, 23, 2009.
- Berry, J. A., Beerling, D. J., and Franks, P. J.: Stomata: key players in the earth system, past and present, *Current opinion in plant biology*, 13, 232-239, 2010.
- 395 Betts, A. K.: Understanding Hydrometeorology Using Global Models, *Bulletin of the American Meteorological Society*, 85, 1673-1688, 2004.
- Böttcher K., Markkanen, T., Thum, T., Aalto, T., Aurela, M., Reick, C. H., Kolari, P., Arslan, A. N., and Pulliainen, J.: Evaluating biosphere model estimates of the start of the vegetation active season in boreal forests by satellite observations, 8, 580, doi:10.3390/rs8070580, *Remote Sens.*, 2016.
- 400 Bréda, N., Cochard, H., Dreyer, E., and Granier, A.: Water transfer in a mature oak stand (*Quercus petraea*): seasonal evolution and effects of a severe drought, *Canadian Journal of Forest Research*, 23, 1136-1143, 1993.
- Clenciala, E., Kucera, J., Ryan, M., G., and Lindroth, A.: Water flux in boreal forest during two hydrologically contrasting years; species specific regulation of canopy conductance and transpiration, *Ann. For. Sci.*, 55, 47-61, 1998.
- 405 Collatz, G., Ribas-Carbo, M., and Berry, J.: Coupled photosynthesis-stomatal conductance model for leaves of C4 plants, *Australian Journal of Plant Physiology*, 19, 519-538, 10.1071/PP9920519, 1992.
- Cowan, I. R. and Farquhar, G. D.: Stomatal function in relation to leaf metabolism and environment, *Symp. Soc. Exp. Biol.*, 31, 471-505, 1977.
- Eamus, D., Boulain, N., Cleverly, J., and Breshears, D. D.: Global change-type drought-induced tree mortality: vapor pressure

- deficit is more important than temperature per se in causing decline in tree health, *Ecology and Evolution*, 3, 2711-2729, 2013.
- 410 Egea, G., Verhoef, A., and Vidale, P. L.: Towards an improved and more flexible representation of water stress in coupled photosynthesis–stomatal conductance models, *Agricultural and Forest Meteorology*, 151, 1370-1384, 2011.
- FAO-UNESCO: Soil map of the world: Revised legend. World Soil Resources Report 60, FAO, Rome, 1990.
- Farquhar, G. D., Lloyd, J., Taylor, J. A., Flanagan, L. B., Syvertsen, J. P., Hubick, K. T., Wong, S. C. and Ehleringer, J. R.: Vegetation effects on the isotope composition of oxygen in atmospheric CO₂, *Nature*, 363, 439-443, 1993.
- 415 Farquhar, G., O'Leary, M., and Berry, J.: On the Relationship Between Carbon Isotope Discrimination and the Intercellular Carbon Dioxide Concentration in Leaves, *Functional Plant Biology*, 9, 121-137, 1982.
- Farquhar, G. D., Caemmerer, S., and Berry, J. A.: A biochemical model of photosynthetic CO₂ assimilation in leaves of C3 species, *Planta*, 149, 78-90, 1980.
- 420 Gao, Y., Markkanen, T., Thum, T., Aurela, M., Lohila, A., Mammarella, I., Kämäräinen, M., Hagemann, S., and Aalto, T.: Assessing various drought indicators in representing summer drought in boreal forests in Finland, *Hydrol. Earth Syst. Sci.*, 20, 175-191, 2016.
- Ge, Z.-M., Kellomaki, S., Zhou, X., and Peltola, H.: The role of climatic variability in controlling carbon and water budgets in a boreal Scots pine forest during ten growing seasons, *Boreal environment research*, 19, 181-195, 2014.
- 425 Guo, D., Westra S., and Maier H. R.: An R package for modelling actual, potential and reference evapotranspiration, *Environmental Modelling & Software*, 78, 216-224, 2016.
- Granier, A., Bréda, N., Longdoz, B., Gross, P., and Ngao, J.: Ten years of fluxes and stand growth in a young beech forest at Hesse, North-eastern France, *Ann. For. Sci.*, 65, 704, 2008.
- 430 Granier, A., Reichstein, M., Bréda, N., Janssens, I. A., Falge, E., Ciais, P., Grünwald, T., Aubinet, M., Berbigier, P., Bernhofer, C., Buchmann, N., Facini, O., Grassi, G., Heinesch, B., Ilvesniemi, H., Keronen, P., Knohl, A., Köstner, B., Lagergren, F., Lindroth, A., Longdoz, B., Loustau, D., Mateus, J., Montagnani, L., Nys, C., Moors, E., Papale, D., Peiffer, M., Pilegaard, K., Pita, G., Pumpanen, J., Rambal, S., Rebmann, C., Rodrigues, A., Seufert, G., Tenhunen, J., Vesala, T., and Wang, Q.: Evidence for soil water control on carbon and water dynamics in European forests during the extremely dry year: 2003, *Agricultural and Forest Meteorology*, 143, 123-145, 2007.
- 435 Hagemann, S. and Stacke, T.: Impact of the soil hydrology scheme on simulated soil moisture memory, *Climate Dynamics*, 44, 1731-1750, 2015.
- Hari, P. and Kulmala, M.: Station for Measuring Ecosystem–Atmosphere Relations (SMEAR II), *Boreal Env. Res.*, 10, 315–322, 2005.
- Hillel, D.: *Environmental Soil Physics*, Academic Press, San Diego, 1998.
- 440 Huang, M., Piao, S., Sun, Y., Ciais, P., Cheng, L., Mao, J., Poulter, B., Shi, X., Zeng, Z., and Wang, Y.: Change in terrestrial ecosystem water-use efficiency over the last three decades, *Global Change Biology*, 21, 2366-2378, 2015.
- Ilvesniemi, H., Pumpanen, J., Duursma, R., Hari, P., Keronen, P., Kolari, P., Kulmala, M., Mammarella, I., Nikinmaa, E., Rannik, U., Pohja, T., Siivola, E., and Vesala, T.: Water balance of a boreal Scots pine forest, *Boreal Environment Research*, 15, 375-396. 2010.
- 445 Irvine, J., Perks, M. P., Magnani, F., and Grace, J.: The response of *Pinus sylvestris* to drought: stomatal control of transpiration and hydraulic conductance, *Tree Physiology*, 18, 393-402, 1998.
- Jarvis, P.: The interpretation of the variations in leaf water potential and stomatal conductance found in canopies in the field, *Philosophical Transactions of the Royal Society of London B: Biological Sciences*, 273, 593-610, 1976.
- 450 Jung, M., Maire, G. L., Zaehle, S., Luysaert, S., Vetter, M., Churkina, G., Ciais, P., Viomy, N., and Reichstein, M.: Assessing the ability of three land ecosystem models to simulate gross carbon uptake of forests from boreal to Mediterranean climate in Europe, *Biogeosciences*, 4, 647-656, 2007.
- Keenan, T. F., Hollinger, D. Y., Bohrer, G., Dragoni, D., Munger, J. W., Schmid, H. P., and Richardson, A. D.: Increase in forest water-use efficiency as atmospheric carbon dioxide concentrations rise, *Nature*, 499, 324-327, 2013.
- 455 Keenan, T., Sabate, S., and Gracia, C.: Soil water stress and coupled photosynthesis–conductance models: Bridging the gap between conflicting reports on the relative roles of stomatal, mesophyll conductance and biochemical limitations to photosynthesis, *Agricultural and Forest Meteorology*, 150, 443-453, 2010.

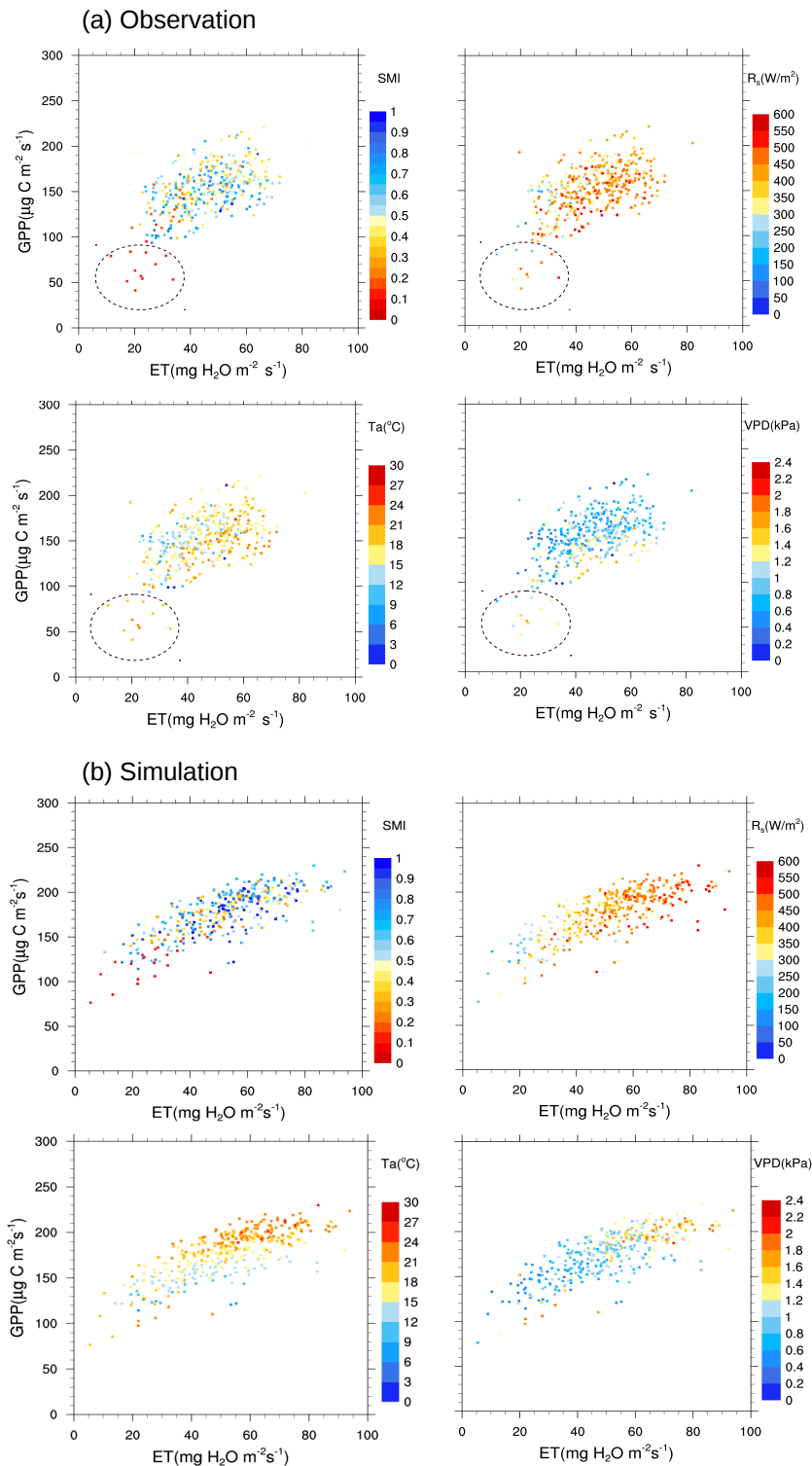
- Knauer, J., Werner, C., and Zaehle, S.: Evaluating stomatal models and their atmospheric drought response in a land surface scheme: A multibiome analysis, *Journal of Geophysical Research: Biogeosciences*, 120, 1894-1911, 2015.
- Knorr, W.: Annual and interannual CO₂ exchanges of the terrestrial biosphere: process-based simulations and uncertainties, *Global Ecology and Biogeography*, 9, 225-252, 2000.
- 460 Kolari, P., Kulmala, L., Pumpanen, J., Launiainen, S., Ilvesniemi, H., Hari, P., and Nikinmaa, E.: CO₂ exchange and component CO₂ fluxes of a boreal Scots pine forest, *Boreal Environment Research*, 14, 761-783, 2009.
- Law, B. E., Falge, E., Gu, L., Baldocchi, D. D., Bakwin, P., Berbigier, P., Davis, K., Dolman, A. J., Falk, M., Fuentes, J. D., Goldstein, A., Granier, A., Grelle, A., Hollinger, D., Janssens, I. A., Jarvis, P., Jensen, N. O., Katul, G., Mahli, Y., Matteucci, G., Meyers, T., Monson, R., Munger, W., Oechel, W., Olson, R., Pilegaard, K., Paw U, K. T., Thorgeirsson, H., Valentini, R., Verma, S., Vesala, T., Wilson, K., and Wofsy, S.: Environmental controls over carbon dioxide and water vapor exchange of terrestrial vegetation, *Agricultural and Forest Meteorology*, 113, 97-120, 2002.
- 465 Lloyd, J. O. N., Shibistova, O., Zolotoukhine, D., Kolle, O., Arneth, A., Wirth, C., Styles, J. M., Tchebakova, N. M., and Schulze, E. D.: Seasonal and annual variations in the photosynthetic productivity and carbon balance of a central Siberian pine forest, *Tellus B*, 54, 590-610, 2002.
- 470 Lloyd, J. and Farquhar, G.D.: ¹³C discrimination during CO₂ assimilation by the terrestrial biosphere, *Oecologia*, 99, 201-215, doi:10.1007/BF00627732, 1994.
- Mammarella, I., Peltola, O., Nordbo, A., Järvi, L., and Rannik, Ü., 2016. Quantifying the uncertainty of eddy covariance fluxes due to the use of different software packages and combinations of processing steps in two contrasting ecosystems, *Atmos. Meas. Tech.*, 9, 4915-4933, doi:10.5194/amt-9-4915-2016.
- 475 Mammarella, I., Kolari, P., Rinne, J., Keronen, P., Pumpanen, J. and Vesala, T.: Determining the contribution of vertical advection to the net ecosystem exchange at Hyytiälä forest, Finland, *Tellus B*, 59, 900-909, doi:10.1111/j.1600-0889.2007.00306.x, 2007.
- Manzoni, S., Vico, G., Katul, G., Fay, P. A., Polley, W., Palmroth, S., and Porporato, A.: Optimizing stomatal conductance for maximum carbon gain under water stress: a meta-analysis across plant functional types and climates, *Functional Ecology*, 25, 456-467, 2011.
- 480 Markkanen, T., Rannik, U., Keronen, P., Suni, T., and Vesala, T.: Eddy covariance fluxes over a boreal Scots pine forest, *Boreal environment research*, 6, 65-78, 2001.
- McDowell, N., Pockman, W. T., Allen, C. D., Breshears, D. D., Cobb, N., Kolb, T., Plaut, J., Sperry, J., West, A., Williams, D. G. and Yezpe, E. A.: Mechanisms of plant survival and mortality during drought: why do some plants survive while others succumb to drought?, *New Phytologist*, 178, 719-739, 2008.
- 485 Muukkonen, P., Nevalainen, S., Lindgren, M., and Peltoniemi, M.: Spatial Occurrence of Drought-Associated Damages in Finnish Boreal Forests: Results from Forest Condition Monitoring and GIS Analysis, *Boreal Environ. Res.*, 20, 172-180, 2015.
- Nemani, R. R., Keeling, C. D., Hashimoto, H., Jolly, W. M., Piper, S. C., Tucker, C. J., Myneni, R. B., and Running, S. W.: Climate-Driven Increases in Global Terrestrial Net Primary Production from 1982 to 1999, *Science*, 300, 1560-1563, 2003.
- 490 Raddatz, T. J., Reick, C. H., Knorr, W., Kattge, J., Roeckner, E., Schnur, R., Schnitzler, K. G., Wetzal, P., and Jungclaus, J.: Will the tropical land biosphere dominate the climate-carbon cycle feedback during the twenty-first century?, *Climate Dynamics*, 29, 565-574, 2007.
- Reichstein, M., Ciais, P., Papale, D., Valentini, R., Running, S., Viovy, N., Cramer, W., Granier, A., OgÉEE, J., Allard, V., Aubinet, M., Bernhofer, C., Buchmann, N., Carrara, A., GrÜNWald, T., Heimann, M., Heinesch, B., Knohl, A., Kutsch, W., Loustau, D., Manca, G., Matteucci, G., Miglietta, F., Ourcival, J. M., Pilegaard, K., Pumpanen, J., Rambal, S., Schaphoff, S., Seufert, G., Soussana, J. F., Sanz, M. J., Vesala, T., and Zhao, M.: Reduction of ecosystem productivity and respiration during the European summer 2003 climate anomaly: a joint flux tower, remote sensing and modelling analysis, *Global Change Biology*, 13, 634-651, 2007.
- 495 Reick, C. H., Raddatz, T., Brovkin, V., and Gayler, V.: Representation of natural and anthropogenic land cover change in MPI-ESM, *Journal of Advances in Modeling Earth Systems*, 5, 459-482, 2013.
- 500 Richardson, A. D., Aubinet, M., Barr, A. G., Hollinger, D. Y., Ibrom, A., Lasslop, G., and Reichstein, M.: Uncertainty Quantification. In: *Eddy Covariance: A Practical Guide to Measurement and Data Analysis*, Aubinet, M., Vesala, T., and Papale, D. (Eds.), Springer Netherlands, Dordrecht, 2012.

- 505 Roeckner, E., Arpe, K., Bengtsson, L., Christoph, M., Claussen, M., Dümenil, L., Esch, M., Giogetta, M., Schlese, U., and Schultz-Weida, U.: The atmospheric general circulation model ECHAM4: Model description and simulation of the present-day climate, Max Planck Institute for Meteorology, Hamburg, 1996.
- Roeckner, E., Bäuml, G., Bonaventura, L., Brokopf, R., Esch, M., Giorgetta, M., Hagemann, S., Kirchner, I., Kornblueh, L., and Manzini, E.: The atmospheric general circulation model ECHAM5. PART I: Model description. MPI for meteorology, Hamburg, Germany, 2003.
- 510 Ruosteenoja, K., Markkanen, T., Venäläinen, A., Räisänen, P. and Peltola, H.: Seasonal soil moisture and drought occurrence in Europe in CMIP5 projections for the 21st century, *Climate Dynamics*, 1-16, 2017, doi:10.1007/s00382-017-3671-4.
- Schulze, E.-D., Beck, E., and Müller-Hohenstein, K.: *Plant Ecology*, Springer-Verlag Berlin Heidelberg, 2005.
- 515 Seneviratne, S. I., Corti, T., Davin, E. L., Hirschi, M., Jaeger, E. B., Lehner, I., Orlowsky, B., and Teuling, A. J.: Investigating soil moisture–climate interactions in a changing climate: A review, *Earth-Science Reviews*, 99, 125-161, 2010.
- Stevens, B., Giorgetta, M., Esch, M., Mauritsen, T., Crueger, T., Rast, S., Salzmann, M., Schmidt, H., Bader, J., Block, K., Brokopf, R., Fast, I., Kinne, S., Kornblueh, L., Lohmann, U., Pincus, R., Reichler, T., and Roeckner, E.: Atmospheric component of the MPI-M Earth System Model: ECHAM6, *Journal of Advances in Modeling Earth Systems*, 5, 146-172, 2013.
- 520 Vesala, T., Suni, T., Rannik, Ü., Keronen, P., Markkanen, T., Sevanto, S., Grönholm, T., Smolander, S., Kulmala, M., Ilvesniemi, H., Ojansuu, R., Uotila, A., Levula, J., Mäkelä, A., Pumpanen, J., Kolari, P., Kulmala, L., Altimir, N., Berninger, F., Nikinmaa, E., and Hari, P.: Effect of thinning on surface fluxes in a boreal forest, *Global Biogeochemical Cycles*, 19, 2005.
- Will, R. E., Wilson, S. M., Zou, C. B., and Hennessey, T. C.: Increased vapor pressure deficit due to higher temperature leads to greater transpiration and faster mortality during drought for tree seedlings common to the forest–grassland ecotone, *New Phytologist*, 200, 366-374, 2013.
- 525 Wilson, K., Goldstein, A., Falge, E., Aubinet, M., Baldocchi, D., Berbigier, P., Bernhofer, C., Ceulemans, R., Dolman, H., Field, C., Grelle, A., Ibrom, A., Law, B. E., Kowalski, A., Meyers, T., Moncrieff, J., Monson, R., Oechel, W., Tenhunen, J., Valentini, R., and Verma, S.: Energy balance closure at FLUXNET sites, *Agricultural and Forest Meteorology*, 113, 223-243, 2002.
- 530 Wolf, S., Eugster, W., Ammann, C., Häni, M., Zielis, S., Hiller, R., Stieger, J., Imer, D., Merbold, L., and Buchmann, N.: Contrasting response of grassland versus forest carbon and water fluxes to spring drought in Switzerland, *Environmental Research Letters*, 8, 035007, 2013.
- Wong, S. C., Cowan, I. R. and Farquhar, G. D.: Stomatal conductance correlates with photosynthetic capacity, *Nature*, 282, 424-426, 1979.
- 535 Xie, Z., Wang, L., Jia, B., and Yuan, X.: Measuring and modeling the impact of a severe drought on terrestrial ecosystem CO₂ and water fluxes in a subtropical forest, *J. Geophys. Res. Biogeosci.*, 121, 2576-2587, doi: 10.1002/2016JG003437, 2016.
- Zhou, S., Duursma, R. A., Medlyn, B. E., Kelly, J. W. G., and Prentice, I. C.: How should we model plant responses to drought? An analysis of stomatal and non-stomatal responses to water stress, *Agricultural and Forest Meteorology*, 182–183, 204-214, 2013.
- 540 Zhou, S., Yu, B., Huang, Y., and Wang, G.: Daily underlying water use efficiency for AmeriFlux sites. *J. Geophys. Res. Biogeosci.*, 120, 887–902. doi: 10.1002/2015JG002947, 2015.
- Zhou, S., Yu, B., Huang, Y., and Wang G.: The effect of vapor pressure deficit on water use efficiency at the subdaily time scale, *Geophys. Res. Lett.*, 41, 5005–5013, doi:10.1002/2014GL060741, 2014.



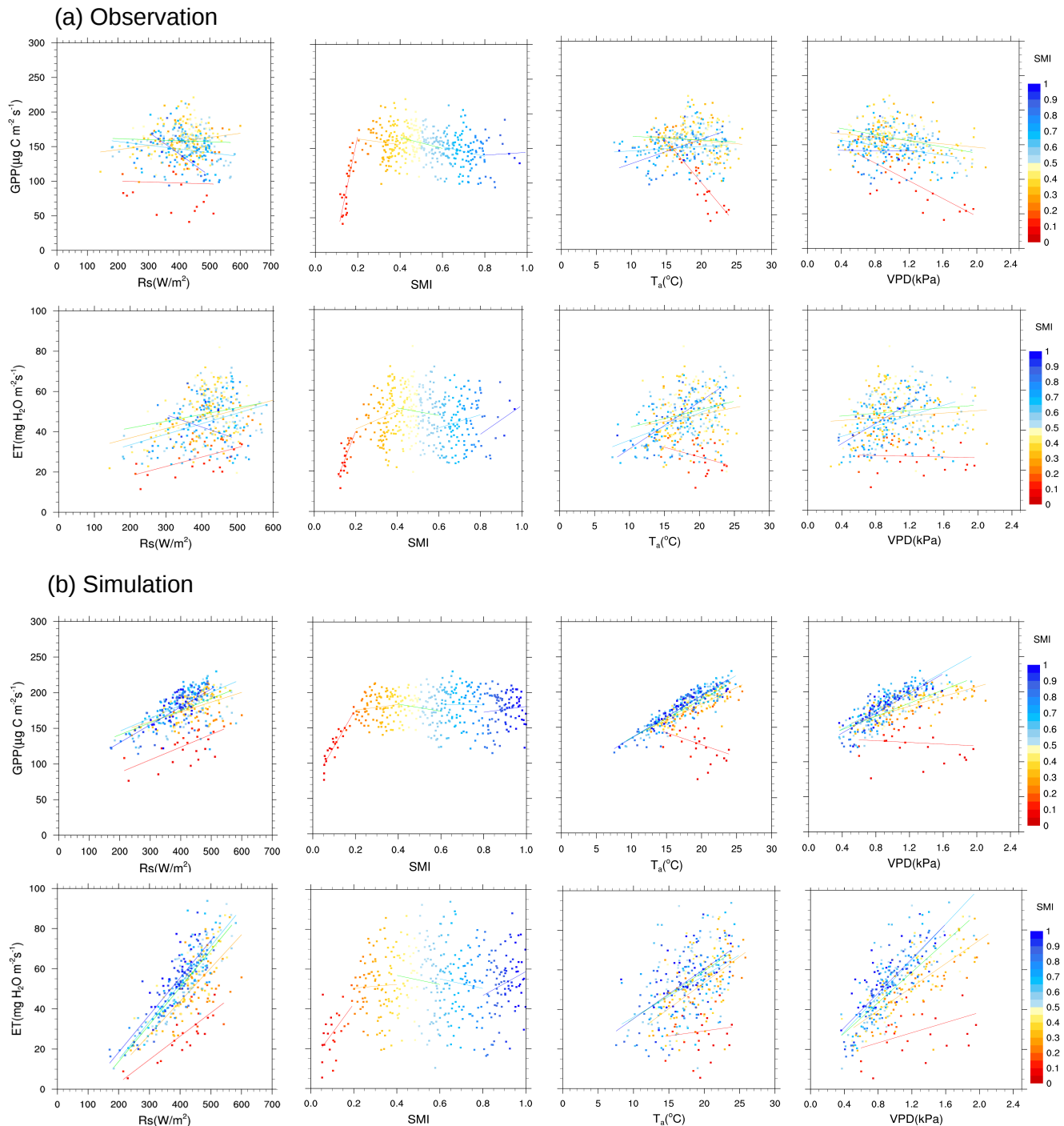
545 **Figure 1: (a) Daily mean soil moisture index (SMI) at Hyytiälä from observation and the JSBACH simulation for the summer months (June, July, August) in the 11-year study period (from 1999 to 2009). (b) Daily mean SMI at Hyytiälä from observation and the JSBACH simulation for the summer months in 2006; The two black dashed lines represent the averaged daily SMI in the summer months over the 11-year study period from observation and the JSBACH simulation. (c) Daily mean air temperature (T_a) in the summer months of 2006 and the averaged daily mean T_a in the summer months over the 11-year study period at Hyytiälä from observation, meanwhile, the daily precipitation amount in 2006 is shown as bar plot.**

550



555

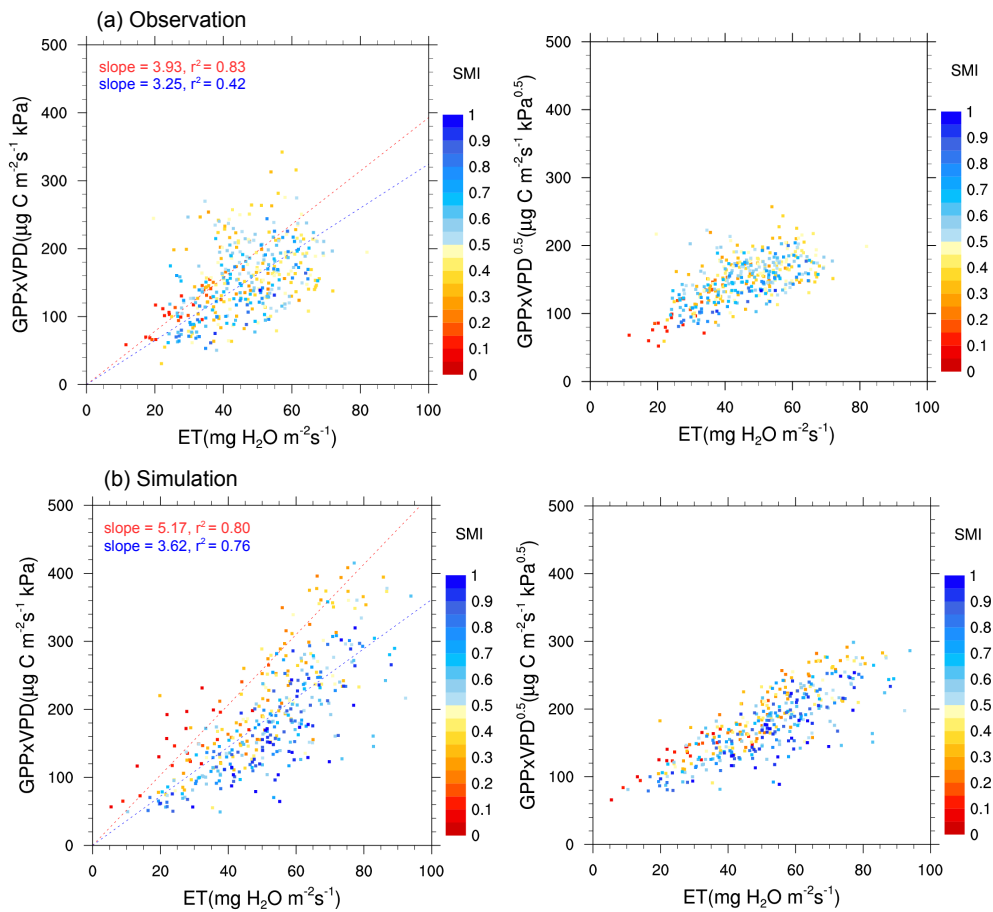
Figure 2: Relationship between the daytime averaged gross primary production (GPP in $\mu\text{g C m}^{-2}\text{s}^{-1}$) and evapotranspiration (ET in $\text{mg H}_2\text{O m}^{-2}\text{s}^{-1}$) at Hyttiälä in the summer months (June, July, August) of the 11-year study period (from 1999 to 2009) from (a) observation and (b) the JSBACH simulation. Data are categorized according to daily mean soil moisture index (SMI), daytime mean incoming shortwave radiation (R_s), daytime mean air temperature (T_a) and daytime mean vapour pressure deficit (VPD), respectively. In the observation, the group of data under the very dry soil moisture condition showing GPP values lower than other days is marked with dashed circle.



560

565

Figure 3: Response of daytime mean gross primary production (GPP in $\mu\text{g C m}^{-2}\text{s}^{-1}$) and evapotranspiration (ET in $\text{mg H}_2\text{O m}^{-2}\text{s}^{-1}$) to daytime mean incoming shortwave radiation (R_s), daytime mean air temperature (T_a), daytime mean vapour pressure deficit (VPD), and daily mean soil moisture index (SMI) at Hyttiälä, categorized by daily mean soil moisture index (SMI) in the summer months (June, July, August) of the 11-year study period (from 1999 to 2009) from (a) observation and (b) the JSBACH simulation. The regression lines are fitted for the five SMI groups (very dry: $0 \leq \text{SMI} < 0.2$, moderate dry: $0.2 \leq \text{SMI} < 0.4$, mid-range: $0.4 \leq \text{SMI} < 0.6$, moderate wet: $0.6 \leq \text{SMI} < 0.8$, very wet: $0.8 \leq \text{SMI} < 1$).



570

Figure 4: The dependence of the product of daytime mean gross primary production (GPP in $\mu\text{g C m}^{-2}\text{s}^{-1}$) and daytime mean vapour pressure deficit (VPD) on evapotranspiration (ET in $\text{mg H}_2\text{O m}^{-2}\text{s}^{-1}$) (i.e., $\text{GPP}\times\text{VPD}/\text{ET}$, which represents the inherent water use efficiency (IWUE)), and the dependence of the production of GPP and the square root of VPD on ET (i.e., $\text{GPP}\times\text{VPD}^{0.5}/\text{ET}$, which represents the underlying water use efficiency (uWUE)) in the summer months (June, July, August) of the 11-year study period (from 1999 to 2009) from (a) observation and (b) the JSBACH simulation. Data are categorized according to daily mean soil moisture index (SMI). The fitted lines for the dependence of the product of GPP and VPD on ET are for the data under $\text{SMI} < 0.2$ (red line) and the data under $0.2 \leq \text{SMI} < 1$ (blue line), respectively; both fittings are statistically significant ($p\text{-value} < 0.05$). No lines were fitted for the dependence of the production of GPP and the square root of VPD on ET, as the data under $\text{SMI} < 0.2$ and data under $0.2 \leq \text{SMI} < 1$ are more converged in a line in comparison to the dependence of the product of GPP and VPD on ET.

575

580

585

Table 1: Key characteristics relevant to this study from observation and the parameter settings in the JSBACH site level simulation at Hyttiälä site.

Observation									
Site	Location	Vegetation type	LAI (m ² /m ²) (all-sided, annual)	Canopy height (m)	Measurement height (m)	Annual mean air temperature (°C) and precipitation (mm) (30-year averages)	Soil type	Analysed measurement depth of soil moisture (cm)	References
Hyttiälä	61°51'N, 24°17'E	Scots pine	6	13-16	23	2.9; 709	Mineral (Haplic podzol)	5 to 23; 23 to 60	Markkanen et al.(2001); Vesala et al. (2005)
Settings in JSBACH									
Site	PFT	Maximum LAI (m ² /m ²)	Maximum electron transport rate (Vmax) at 25 °C	Maximum carboxylation rate at 25 °C	Soil type	Analysed depth of soil moisture (cm)	Soil depth (m)	Root depth (m)	
Hyttiälä	Evergreen needleleaf forest	16	37.5	71.3	Loamy sand	Average of layer-2 (6.5–31.9) and layer-3 (31.9–123.2)	5.416	1.265	