

Interactive comment on “Annual variability and regulation of methane and sulfate fluxes in Baltic Sea estuarine sediments” by Joanna E. Sawicka and Volker Brüchert

Joanna E. Sawicka and Volker Brüchert

volker.bruchert@geo.su.se

Received and published: 14 September 2016

The comment was uploaded in the form of a supplement:
<http://www.biogeosciences-discuss.net/bg-2016-272/bg-2016-272-AC1-supplement.pdf>

Interactive comment on Biogeosciences Discuss., doi:10.5194/bg-2016-272, 2016.

Printer-friendly version

Discussion paper



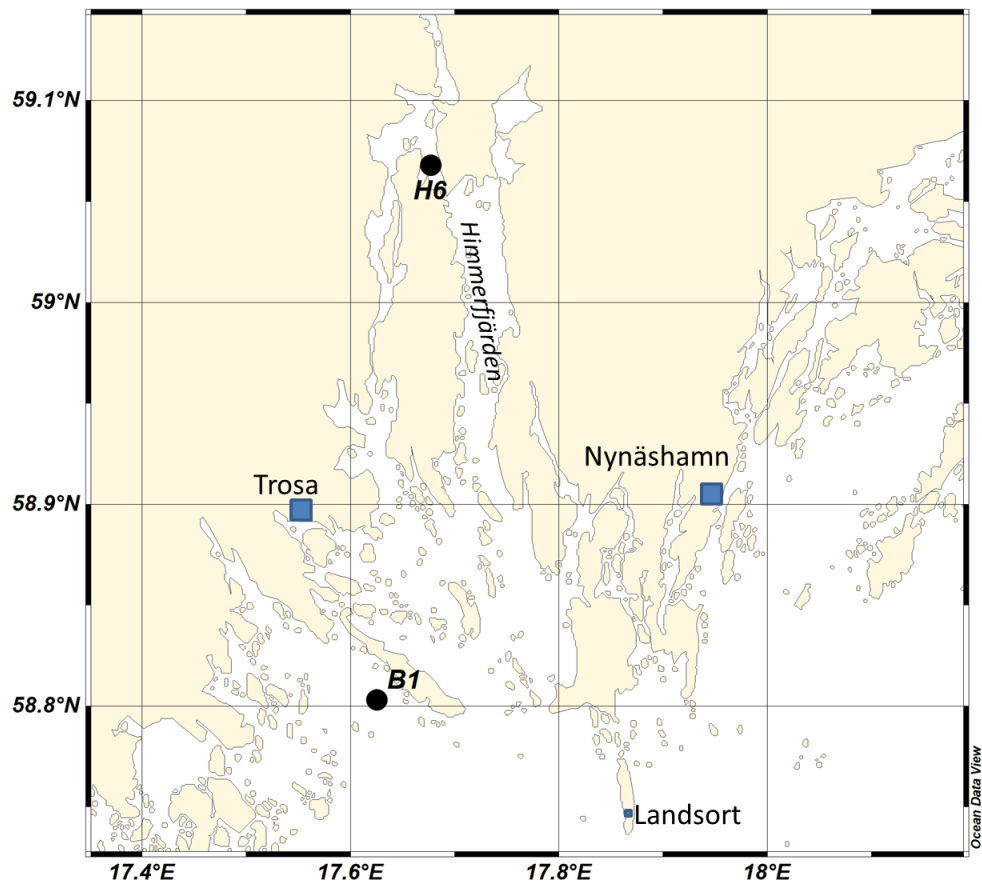


Fig. 1.

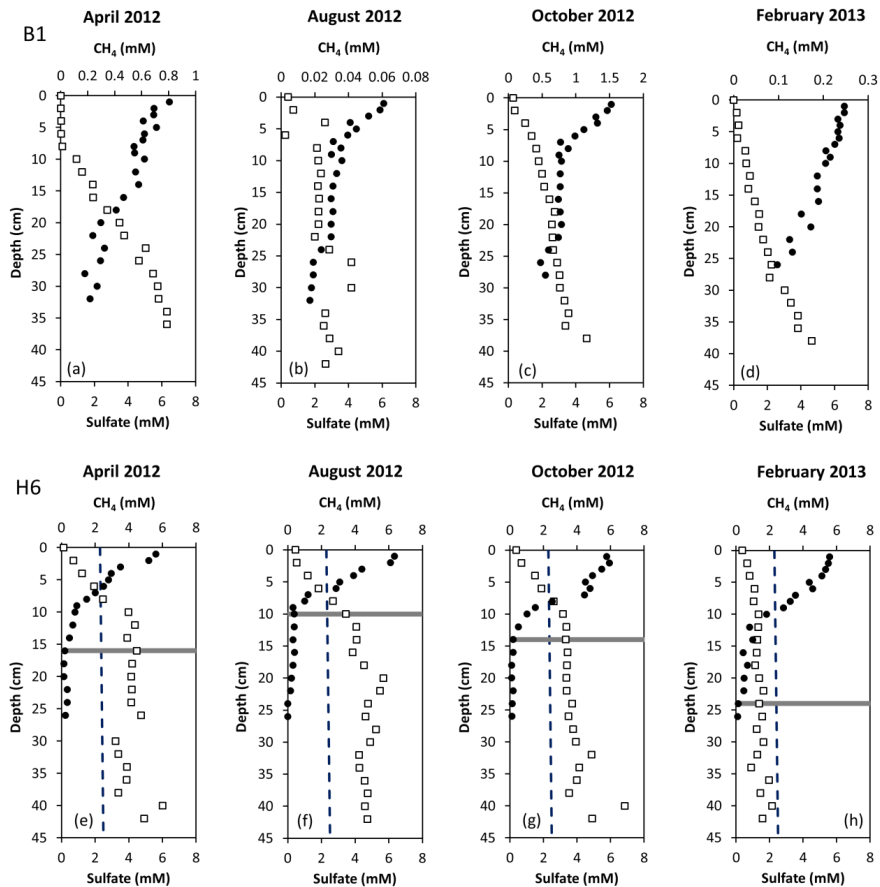


Fig. 2.

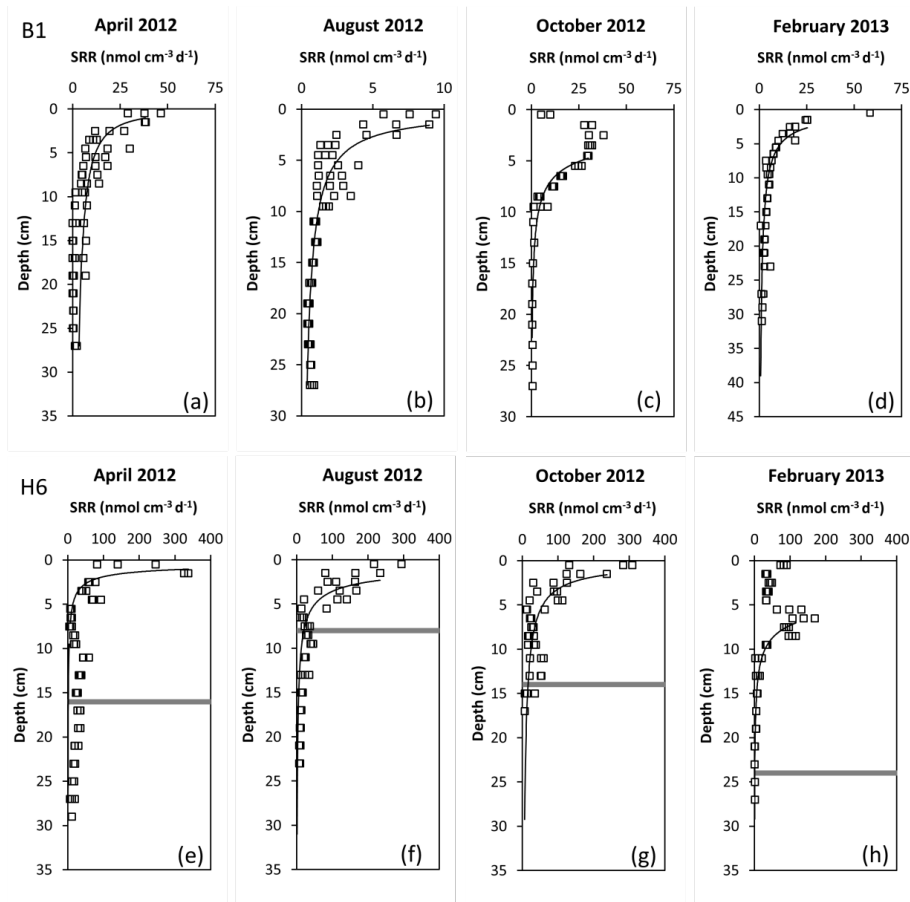


Fig. 3.

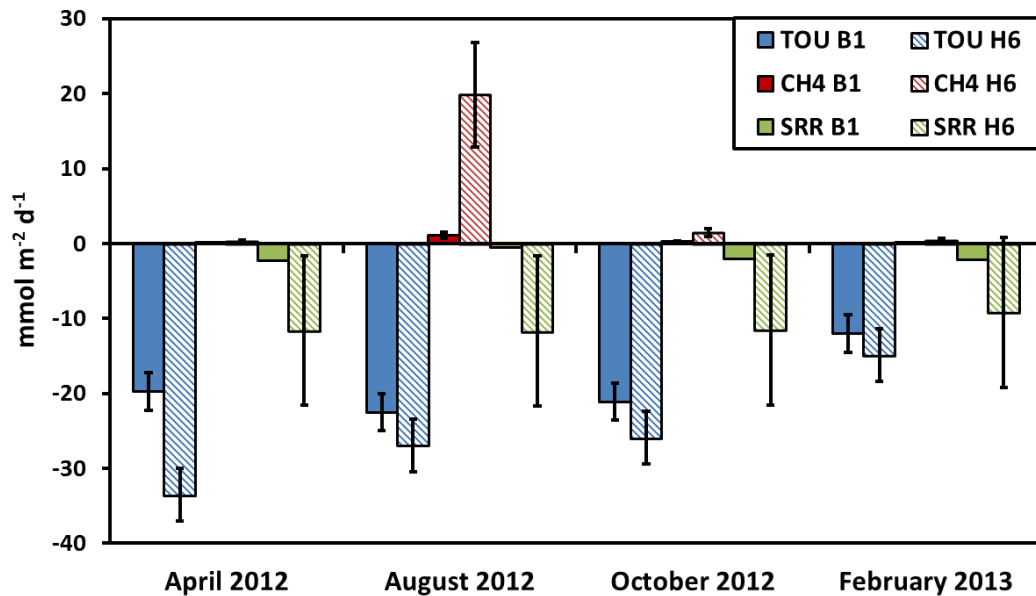


Fig. 4.

[Printer-friendly version](#)

[Discussion paper](#)

