

## ***Interactive comment on “Annual variability and regulation of methane and sulfate fluxes in Baltic Sea estuarine sediments” by Joanna E. Sawicka and Volker Brüchert***

**Joanna E. Sawicka and Volker Brüchert**

volker.bruchert@geo.su.se

Received and published: 14 September 2016

The comment was uploaded in the form of a supplement:  
<http://www.biogeosciences-discuss.net/bg-2016-272/bg-2016-272-AC2-supplement.pdf>

Interactive comment on Biogeosciences Discuss., doi:10.5194/bg-2016-272, 2016.

C1

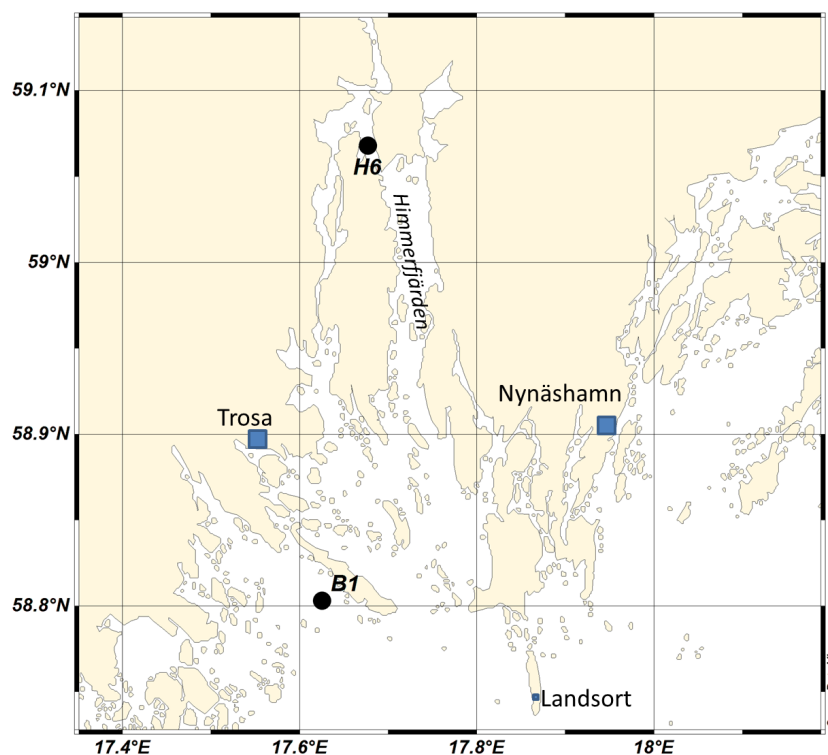


Fig. 1.

C2

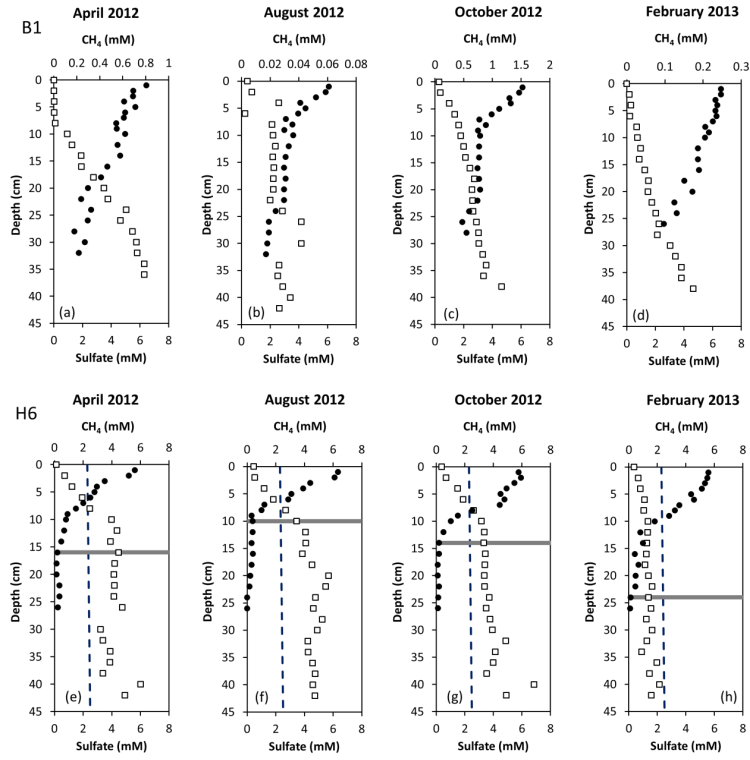


Fig. 2.

C3

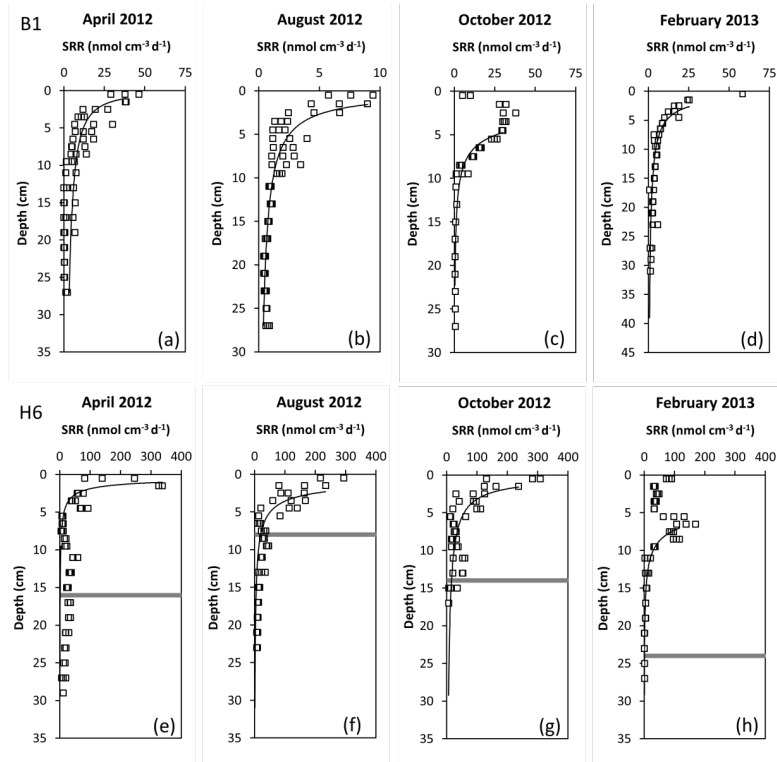


Fig. 3.

C4

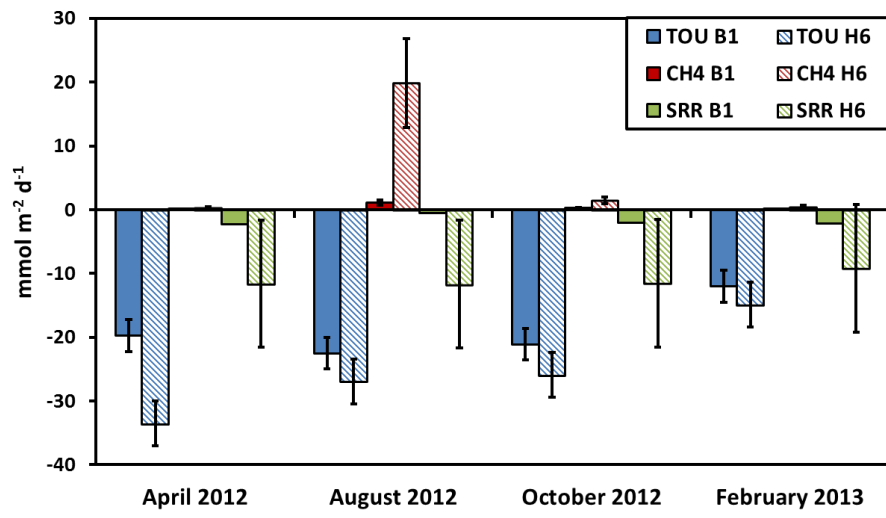


Fig. 4.