

Changes in substance were minor but a major modification of the manuscript organization was done, with modelling results moved from discussion to results in a separate subsection, and many paragraphs that were in the results moved to the discussion. The discussion has been restructured and divided into 4 subsections.

Regarding changes in substance, the main one is a more thorough discussion of summer effects and of existing literature, in particular of the shrub manipulation of Blok et al., a reference indicated by Reviewer 1. Numerous other minor modifications were done. These are detailed in the response to reviewers pasted below. Note that line numbers refer to those in the revised manuscript with accepted changes.

Our responses are in blue.

## **Responses to Reviewer 1**

### **General Comments: an initial section evaluating the overall quality of the discussion paper .**

The Conclusion section is informative and validates the contribution of this study. Questions 10 and 13 in the review criteria are the only two that give me pause with regard to this paper. There are too many results, principally from the simulation modelling, presented in the Discussion section, and some material that seems appropriate for the Discussion section is currently placed at the end of the Results section.

[We have extensively reorganized the manuscript as detailed below.](#)

There is also not enough discussion on the opposing effects of shrubs on temperatures during the winter and summer. Given that this study is put in the context of changes to permafrost, the authors should consider summer effects at greater length. I have recommended two particular studies that are a reasonable starting point for this expanded exposition. Nonetheless, I do think that there is enough new information in this study to warrant publication after some rearrangement and extension of the discussion of alternative processes controlling permafrost dynamics.

[Thank you for these extra references, which we now discuss, as detailed below.](#)

### **Specific Comments: a section addressing individual scientific questions/issues**

Lines 44-45: Similar to my comment below, explicitly connect snow thermal properties to changes in soil temperatures. Read the final discussion section of Lantz et al. 2013 Ecosystems and also look at Blok et al. 2010 Global Change Biology for the counteracting effects of winter and summer processes.

[We have reorganized the introduction, and transferred there equations that were further down in the manuscript \(lines 46-54\). We believe that this explain in more detail the connection between snow properties and ground temperature. We now discuss thermal effects and the differential effects of winter and summer in the discussion, with reference to the works kindly indicated. The works of Lantz et al. and Blok et al. are mentioned in the introduction \(lines 87-94\) and discussed in detail in section 4.4 of the discussion \(lines 423-438\). On that occasion, we also discuss summer processes in more detail, and this includes effects of different vegetation covers on albedo, hydrologic regime and thermal properties \(end of section 4.4\).](#)

Lines 80-81: I'd like to see you expand more clearly make the case for why "snow physical properties" are critical to relationships between shrubs and ground temperature.

[Towards the beginning of the introduction, we have explained with equations why changes in snowpack thickness and snow thermal conductivities were expected to lead to ground warming. The equations were initially in the discussion.](#)

Lines 81-88: Questions that are not explicitly addressed in this study would be better placed in the Discussion and expanded upon there. It is currently unclear exactly which questions are the focuses of this study.

[Lines 100-106, we have listed all questions relevant to the shrub-snow problem. Lines 107-110, we now specify which ones of these questions were addressed with new data and which ones were just discussed.](#)

Lines 104-106: How much higher than other vegetation (e.g. graminoids) are the shrubs? In other words, how tall is the herbaceous vegetation? I think if you are going to list shrub height, you should also state the height of the other vegetation

types.

We have added that “Herbaceous vegetation seldom exceeds a height of 10 cm” line 124.

Line 117: Was the probe inserted horizontally or vertically? Please explicitly state this.

Horizontally, as now mentioned line 140.

Line 182: Why was this not also done in the other two perpendicular directions? Was there any reason for thinking that winds that redistribute snow could not move along the slope rather than up or down it?

As explained lines 207 ff “From the surface structure of the snowpack, prevailing winds appeared to have been across the valley, i.e. coming from the north or south in the valley oriented east–west.” Our thinking is based on our field observation of snow structure.

Line 197: I would like to see data or a specific reference that indicates that 2014 was in fact a low snow year.

We have provided a link to time series of snow height in the valley, in the NordicanaD data base (CEN, 2016), line 365.

Line 274: Don’t state that something is obvious, make it become obvious to the reader by explaining it thoroughly but concisely.

We have replaced “obvious” with “striking”, line 396.

Lines 271-280: Merge these paragraphs. There does not seem to be a good reason to separate them.

Done.

Lines 286-298: This entire last paragraph seems better suited to the Discussion section. If the authors feel it is most appropriate here, I would appreciate hearing their rationale.

Indeed. In fact, the paper was significantly reorganized. A modelling subsection was created in the results section. Many paragraphs that were in the results section were moved to the discussion section. The discussion section was divided into 4 subsections for clarity.

Discussion section: Much of the reporting from the model simulation exercise would be better suited to the Results section.

Indeed, see response to previous comment.

Line 391: The statement on location and ecosystem context being critical would be more easily accepted if it were supported by a reference.

We thought it was clear we were talking about the work of Myers-Smith and Hik (2013), mentioned just one line above. The line after, we specify the vegetation type.

Lines 400-402: As above, see Lantz et al. 2013 and Blok et al. 2010. This statement on lower thaw that is contrary to the conclusions of this particular study seems to be of vital importance to the general context that this work is supposed to inform.

This is now discussed in detail in the discussion. In particular, the surprising conclusion of Blok et al. is critically examined and we conclude that “It therefore seems highly uncertain that the manipulations of Blok et al. based on shrub removal, allow conclusions regarding the impact of growing shrubs on the permafrost energy budget.” Lines 437-438.

Line 402: Did the authors actually observe moss to have increased in abundance under shrubs, or was it simply that the authors observed frequent co-occurrence of mosses and shrubs? In other words, is there evidence for making this sound like a causal statement?

We replaced “moss had grown” with “moss was present”. It is just an observation with no implication of causality. Line 434

Figure 1: It would be tremendously more useful to simply show the location of Bylot Island in the Canadian Arctic as an inset in the figure, which should be a map showing the locations of the sites within Qarlikturvik valley.

Agreed. Figure 1 has been completely changed to respond to this request.

Figure 3 caption: If you know the location information (site, bush) for these pictures, include that information here.

We have added that this was “near the “scattered willows 1” site”.

It seems unhelpful to the reader that the authors switch back and forth from thermal conductivity (e.g. Table 2, Figures 5b and 7b) to thermal resistance (Figure 8).

Thermal conductivity and thermal resistance are two different variables. A snow layer can be characterized by its thermal conductivity (Figures 5b and 7b) but a snowpack needs to be characterized by its thermal resistance (Figure 8), which is calculated from the heights and thermal conductivities of all snow layers.

Technical Corrections: a compact listing of purely technical corrections at the very end

Line 98: Allard and Gauthier 2014 is not listed in the references.

We apologize. It has now been added.

Line 137: Change to “not measured either” or otherwise correct the sentence.

Sure, thanks for spotting this error.

Line 389: Myers-Smith and Hik should probably be outside of parentheses.

Sure. This is how End Note works. This is usually routinely fixed at the type setting stage.

Line 414: remove comma after “snow density” and replace with “and”

Sure, thanks.

Figure 3 caption: Change to “enhanced with photographic modification software.”

Sure, thanks.

Figure 10: The main title of the plot should either be removed or cleaned up.

Sure, it has been removed.

Make sure to put a space between the semicolons when multiple articles are cited in the text.

Also ensure there is a space between sentences, as this is sometimes missing (e.g. Line 58).

This has been changed.

Multiple references (e.g. Essery et al., Pearson et al.) should be checked for formatting.

Yes. But again, errors caused by Endnote are fixed at type setting.

## Responses to Reviewer 2

### GENERAL COMMENTS

This is an interesting study demonstrating that shrub cover can have a strong effect on snowpack properties, with potentially important impacts on soil temperature regime and permafrost thaw. By focusing on snow-shrub interactions, the study is suitable for Biogeosciences and should appeal to its wide readership. However, to be worthy of publication, these issues should be addressed:

1- The structure needs to be improved, with a sub-section of the Results dedicated to the modelling effort (which is currently presented alongside the discussion). Conversely, there is currently a lot of interpretation incorporated in the results, and many paragraphs could be moved to the discussion.

Agreed. Extensive text reorganization has been done, as discussed in the reply to reviewer 1.

2- Statistical tests should be used to highlight differences in snow properties among vegetation types (see specific comments for suggestions); if not, the authors should respond as to why this is not feasible.

Statistical test were done in one case. In the other, we believe statistics are not required, as our objective is to understand processes, which statistics cannot perform as efficiently.

3- The research question(s) should be clearly defined, instead of “This work attempts to contribute to some of these

questions" (line 86). In that paragraph, you should define your questions and hypotheses rather than list the measurements you have taken. These research themes could then become subheadings in the next sections (esp. results and discussion), which would greatly enhance the flow and clarity.

This was also a comment by reviewer 1, which we addressed above. The text, and in particular the discussion, has been extensively restructured. The discussion has been organized in 4 subsections.

4- The presentation of figures should be uniformised (gridlines, text size, plot titles, etc); the clarity of some could be improved (see specific comments)

Changes have been done to Figures, as detailed below.

#### SPECIFIC COMMENTS

Results 3.1 and Table 1: Have you tested for significant differences? It does not look like it from your methods and no statistics are reported. At line 169, you write ". . .only that fully covered with willows shows a significantly higher value than the other sites" – which you cannot say unless you have tested for it! You should perform a statistical test that would contrast the effects of vegetation type (polygons, hummocks, shrubs) on snowpack height. Because of the hierarchical nature of your measurements (nested within plots and locations), you could do this with a mixed-effects model, using "plot within location" as nested random effects. Because you have only two years of measurements you should include "year" as a fixed effect, and if you add an interaction with vegetation type it could provide further insight into your discussion of different patterns in different years.

We now show the standard error in Table 1, and this clearly demonstrates that the snow height in the dense willow patch is significantly different from the others. To confirm this, we also performed an ANOVA analysis and a Tukey post-hoc test, but we feel it is not necessary to report that here. The standard errors speak for themselves.

The previous comment applies to Table 2 and comparisons of snow thermal characteristics. Why not perform an ANOVA or a rank-based test (you have even ranked the data already!) to try and highlight differences between vegetation types (Herbs, Willows, Hummocks)?

Our objective here is to understand the impact of shrubs on snow thermal conductivity. Our conclusion is that when melting does not take place, the mean thermal conductivity is decreased in the presence of shrubs, and when melting takes place, it is increased in the presence of shrubs. Statistics do not seem useful to us here. In fact, we wish to show that shrubs can have opposite effects depending on whether they are exposed to radiation or not. We believe a process study, and a detailed understanding of how shrubs, snow and radiation interact are more useful than statistics.

The paragraph discussing differences in years (starting at line 187) would be more appropriate to the discussion. Same goes for lines 211-227 and 248-255. The results section should focus on comparing values between shrub and herb tundra plots and reporting your model outputs, and then the discussion should be structured as to explain these results based on your understanding of the processes and your additional observations (particularly warm day, recent snowstorm, etc.). In the discussion, you skate over very quickly the potentially opposite effects of shrubs on soil temperature in the summer (line 383). It would be good to see this addressed in more detail so as to nuance your modelling results and general conclusions on permafrost thaw. (I see that the other reviewer has suggested the same thing and suggested references, so I will not expand further here.)

Paragraph starting at line 187 has been moved to discussion. Paragraph in lines 211-227 is essential to understand the description of snow stratigraphy that follows. It definitely belongs here. Otherwise, many sections have been moved to the discussion, as detailed earlier and in our response to reviewer 1. The discussion on summer effect has also been much expanded, as discussed earlier.

Figure 5. It would be worth adding a horizontal line at the height of 25 cm, which is the threshold you mention for shrub effects on snow properties. Please remove the gridlines from the figures.

In fact, the 25 cm height applies to the scattered willows, not the large willow patch of Figure 5. Grid lines have been

removed here.

## TECHNICAL CORRECTIONS

Reference formatting needs to be checked and made consistent throughout; many citations still have brackets when authors' names are used in the active voice (e.g. [. . .] than that measured by (Myers-Smith and Hik,2013), [. . .]). You also need a space after the semi-colon when citing multiple studies.

End note errors are fixed at type setting.

Latin names of plant species, when referred to for the first time, should be followed by the authority (e.g. *Salix richardsonii* Hook.)

This has been done.

Line 21: *Salix richardsonii* should be italicised

Done

Line 38-39: Incorrect sentence: replace with something like “are also known to be, or suspected of being, modified by shrubs”

Done, thanks

Line 61-76 should be a single paragraph

Sure, done.

Line 93: delete “see map on”

Done

Lines 198 and 201: do not capitalise “Alpine”

Done, thanks.

Table 2: The caption says “the lowest seven values are in bold and the highest 5 values are in italics” – but this is not the case. Again, I think a statistical test would be more appropriate than a qualitative observation of the table.

We apologize, the table was formatted by mistake. We have now restores the bold and italics characters for clarity.

# The growth of shrubs on high Arctic tundra at Bylot Island: impact on snow physical properties and permafrost thermal regime

5

Florent Domine<sup>1,2,3,4</sup>, Mathieu Barrere<sup>1,3,4,5,6</sup>, Samuel Morin<sup>5</sup>

<sup>1</sup>Takuvik Joint International Laboratory, Université Laval (Canada) and CNRS-INSU (France), Pavillon Alexandre Vachon, 1045 avenue de La Médecine, Québec, QC, G1V 0A6, Canada

10 <sup>2</sup>Department of Chemistry, Université Laval, Québec, QC, Canada

<sup>3</sup>Centre d'Etudes Nordiques, Université Laval, Québec, QC, Canada

<sup>4</sup>Department of Geography, Université Laval, Québec, QC, Canada

<sup>5</sup>Météo-France – CNRS, CNRM-GAME UMR 3589, CEN, Grenoble, France

<sup>6</sup>LGGE, CNRS-UJF, Grenoble, France

15

*Correspondence to:* F. Domine (florent.domine@gmail.com)

**Abstract.** With climate warming, shrubs have been observed to grow on Arctic tundra. Their presence is known to increase snow height and expected to increase the thermal insulating effect of the snowpack. An important consequence would be the warming of the ground, which will accelerate permafrost thaw, providing an important positive feedback to warming. At Bylot Island (73°N, 80°W) in the Canadian high Arctic where bushes of willows (*Salix richardsonii* Hook) are growing, we have observed the snow stratigraphy and measured the vertical profiles of snow density, thermal conductivity and specific surface area (SSA) in over 20 sites of herb high Arctic tundra and in willow bushes 20 to 40 cm high. We find that shrubs increase snow height, but only up to their own height. In shrubs, snow density, thermal conductivity and SSA are all significantly lower than on herb tundra. In shrubs, depth hoar was observed to grow up to shrub height, while on herb, depth hoar developed only to 5 to 10 cm high. The thermal resistance of the snowpack was in general higher in shrubs than on herb tundra. More signs of melting were observed in shrubs, presumably because stems absorb radiation and provide hotspots that initiate melting. When melting was extensive, ~~this increased~~ thermal conductivity was increased and ~~reduced~~ thermal resistance was reduced, counteracting the observed effect of shrubs in the absence of melting. Preliminary simulations of the effect of shrubs on snow properties and on the ground thermal regime were made with the Crocus snow physics model and the ISBA land surface scheme driven by in-situ and reanalysis meteorological data. These simulations did not take into account the summer impact of shrubs. They ~~se~~ predicted that the ground at 5 cm depth at Bylot Island during the 2014-2015 winter would be up to 13°C warmer in the presence of shrubs. Such warming may however be mitigated by summer effects.

35

## 1 Introduction

Climate warming leads to shrub growth on Arctic tundra (Ropars and Boudreau, 2012; Tape et al., 2006). Shrubs are known to limit snow erosion by wind and to trap blowing snow, therefore increasing snow depth and perhaps snowpack duration (Essery et al., 1999; Lawrence and Swenson, 2011; Liston et al., 2002). Snowpack properties such as density, thermal conductivity, ~~and~~ albedo and snow depth are also known to be, or suspected of being, modified by shrubs (Liston et al., 2002; Ménard et al., 2014; Sturm et al., 2005).

These modifications have many potentially important consequences, including: (1) Snow physical properties affect air temperature and climate through the energy budget of the snow surface, which involves snow albedo and snow thermal conductivity; (2) Snow thermal properties (thermal conductivity, height, density) determine heat exchanges between the ground and the atmosphere in winter, and hence are a key factor in the thermal regime of permafrost.

The heat flux  $F$  through the snowpack is proportional to snow thermal conductivity,  $k_{eff}$ :

$$F = -k_{eff} \frac{dT}{dz} \quad (1)$$

where  $dT/dz$  is the vertical temperature gradient through the snow. When several snow layers with different thermal conductivities  $k_{eff,i}$  and thicknesses  $h_i$  are found, the variable of most interest to characterize the thermal properties of the snowpack is its thermal resistance  $R_T$ :

$$R_T = \sum_i \frac{h_i}{k_{eff,i}} \quad (2).$$

$R_T$  allows expressing a very simple relationship between  $F$  and snowpack properties:

$$F = -\frac{T_{top} - T_{base}}{R_T} \quad (3)$$

where  $T_{top}-T_{base}$  is the temperature difference between the surface and the base of the snowpack.

Since shrub growth increases snowpack thickness and is expected to decrease its thermal conductivity (Liston et al., 2002), both these effects will contribute to increase snowpack thermal resistance following eq. 2 and therefore to limit the winter cooling of the ground, accelerating permafrost thaw, which ~~Permafrost thaw~~ is recognized as an important positive climate feedback. Indeed, because it could lead to the mineralization of organic matter stored there for millennia, leading to resulting in the emission of poorly quantified but potentially enormous amounts of greenhouse gases (Koven et al., 2011). Illustrating the reality of this second consequence, (Gouttevin et al., 2012) modelled the changes in permafrost thermal regime due to changes in snow thermal conductivity caused by the replacement of tundra by taiga and found ground temperature increases exceeding 10°C. While shrubs are not trees, this result does indicate the interest of investigating the impact of vegetation growth on snow physical properties.

Typical snowpacks on Arctic herb tundra first consist of a basal depth hoar layer which in general has a low density (200 to 280 kg m<sup>-3</sup>) and a low thermal conductivity (0.03 to 0.08 W m<sup>-1</sup> K<sup>-1</sup>) (Derksen et al., 2014; Domine et al., 2002; Domine et al., 2012; Sturm and Benson, 2004). However, depth hoar can be indurated, i.e. formed by the metamorphism of a dense wind slab, and its density can then exceed 400 kg m<sup>-3</sup> and its thermal conductivity 0.3 W m<sup>-1</sup> K<sup>-1</sup> (Domine et al., 2012; Sturm et al., 1997). Above that, one or several hard wind slabs made of small rounded grains are generally found (Domine et al., 2002; Domine et al., 2012; Sturm and Benson, 2004). These have densities from 300 to above 500 kg m<sup>-3</sup> and thermal conductivities above 0.15 W m<sup>-1</sup> K<sup>-1</sup>, reaching 0.6 W m<sup>-1</sup> K<sup>-1</sup> (Sturm et al., 1997). Other types of snow layers may also be observed above the basal depth hoar, such as layers of faceted crystals or other layers of depth hoar, sometimes located in between two wind slabs (Domine et al., 2002; Domine et al., 2012; Sturm and Benson, 2004). However a simplified and representative description of Arctic snowpacks on herb tundra is that they consist of a basal depth hoar layer of low density



75 and low thermal conductivity, overlaid by a hard wind slab of high density and high thermal conductivity. Several studies document some aspects of how snow properties are affected by shrubs. (Liston et al., 2002) modelled the effect of shrubs growing on Arctic tundra on snow height and energy fluxes. They took into account changes in snow depth and thermal conductivity. These last changes were ~~made~~ simulated by assuming that the depth hoar layer was thicker in shrubs. They assigned a depth hoar layer thickness and did not observe or simulate metamorphism and depth hoar growth in shrubs. (Euskirchen et al., 2009) modelled changes in vegetation under different climate evolution scenarios. They considered snow cover duration and its effect on albedo. They did not consider changes in snow properties. (Lawrence and Swenson, 2011) considered the effect of shrub expansion on active layer depth. They included some snow effects such as how shrubs affect snow redistribution by wind. One effect of shrubs on snow albedo is taken into account: its decrease due to stems protruding above the snow in spring. One of their conclusions was that blowing snow processes need to be incorporated in model projections of future Arctic climate change. However, they did not consider changes in snow properties other than albedo and it is possible or even likely (Gouttevin et al., 2012) that their conclusions would be significantly modified if they had. (Myers-Smith and Hik, 2013) observed that on Arctic tundra, snow was much thicker in low shrubs than on herb tundra (typically 30 vs. 10 cm). They also measured that winter ground temperature was up to about 8°C higher (typically 4 to 5°C warmer) under shrubs than under herb. They did not, however, observe snow properties. (Lantz et al., 2013) measured year round the albedo above and ground temperature below dwarf shrubs, open tall shrubs and dense tall shrubs in the MacKenzie delta. They observed that in summer dwarf shrubs had the highest albedo and dense tall shrubs the lowest, but in summer and at the beginning of winter, the ground temperature was warmest below open tall shrubs. The authors interpreted their observations mostly in terms of radiative budgets but did not consider conductive processes in detail. (Blok et al., 2010) investigated the effect of shrub growth by removing dwarf birch in plots of low shrub tundra in Siberia. They observed that after shrub removal, the active layer depth increased. This effect is opposite to what is expected from the considerations detailed above and is also contrary to the other related studies mentioned here. They did not, however study snow properties. (Ménard et al., 2014) performed a very detailed study of tall shrub bending by snow and how this affected albedo. They ~~foeussed on tall shrubs and~~ concluded that many other studies needed to be performed to better understand snow-shrubs interactions.

100 These few investigations are very useful, but to our knowledge there is no extensive study of the impact of shrubs on snow physical properties. These are required to quantitatively understand and model the relationship between shrubs and ground temperature, especially in the context of shrub growth and expansion. Questions that deserve further or novel investigations include: (1) Is the depth hoar in shrubs different from that on herb tundra? (2) To what height does depth hoar form in shrubs? (3a) What is the snow density profile in shrubs and (3b) how is this related to stem density? (4) How does the profile of snow specific surface area (SSA) in shrubs differ from that on grass? Since SSA, together with density and impurity content, governs snow albedo and also the light absorption profile and therefore the radiative energy input to the snowpack, this is a critical question affecting metamorphism and all snow physical properties. (5) How do shrub stems, which strongly absorb shortwave radiation, affect the irradiance profile in snow? (6) How do these light-absorbing stems increase the likelihood of snow melting events?

110 This work attempts to contribute data to question 1, 2, 3a, 4, and to discuss possible answers to the other ones.~~to some of these questions~~ We have performed field observations and measured snow depth, properties density, thermal conductivity and specific surface area at Bylot Island (73°N, 80°W), a high Arctic site where willow shrubs (*Salix richardsonii* Hook) 10 to 40 cm high are growing on herb tundra featuring mosses, ~~and~~ graminoids and forbs. ~~Our measurements include snow height and vertical profiles of density, thermal conductivity and specific surface area.~~ We compare data over grass and in shrubs and use our data to perform numerical simulations intended to evaluate the impact of willow shrubs on the ground thermal regime.

115



## 2 Methods

### 2.1 Site selection

Bylot Island is a high Arctic site (see map on Fig. 1) with rare erect vegetation. The geomorphology of the site has been detailed by (Fortier and Allard, 2004). Meteorological monitoring started in 1994 at our research site (Gauthier et al., 2013) in Qarlikturvik valley (around 73°10'N, 80°00'W). The mean annual air temperature for the period 1998-2013 is -14.3°C. Temperatures barely exceed 10°C in summer and drop down to -50°C most winters (Allard and Gauthier, 2014). More data are available from Pond Inlet, the nearest community, 84 km to the south-east, where the average measured snowpack height is 15 cm (Gauthier et al., 2013). The glacial valley of our study is roughly oriented E-W. It features wetlands at the bottom of the valley, consisting mainly of tundra polygons, thaw lakes and ponds. Vegetation is of the type “Graminoid, prostrate dwarf-shrub, forb tundra” according to (Walker et al., 2005). It is dominated by sedges (*Eriophorum sheuchzeri* Hoppe, *Carex aquatilis* Wahl.) and graminoids (*Dupontia fisheri* R. Br., *Pleuropogon sabinei* R. Br.). Further upland, drier mesic habitat dominate, with forbs (*Saxifraga* spp., *Potentilla* spp., *Ranunculus* spp.) and graminoids (*Arctagrostis latifolia* (R. Br.) Griseb., *Alopecurus alpinus* Trin, *Poa* spp., *Luzula* spp.) and mosses, as detailed by (Bilodeau et al., 2013). Herbaceous vegetation seldom exceeds a height of 10 cm. Woody vegetation is also found. Willows are common (*Salix richardsonii*, *S. arctica* Pall., *S. reticulata* L., *S. herbacea* L.) but so is *Cassiope tetragona* L. and some *Vaccinium uliginosum* L. are also observed. At our study site around 73°10' N, 79°54'W, most erect vegetation consists of ~~This is also where shrubs are found. These consist exclusively of willows (S. richardsonii and to a much lesser extent with some and S. arctica. The former species is at the northern limit of its range and), which was seen to rise 10 to 40 cm above the ground. The latter, although generally prostrate, was occasionally seen to rise to 10 cm in height.~~ During our field investigations in 2014 and 2015, most shrubs were encountered in the south (north facing) side of the valley. ~~Since signs of shallow underground water flow were observed in many shrub spots in summer, this observation is consistent with the observation of that “rates of shrub [...] expansion were not strongly correlated with temperature trends and were better correlated with mean annual precipitation”.~~ Shrubs were either isolated, or more often regrouped in bushes whose largest dimension was at most a few meters. One site fairly far up the valley (Fig. 1) was almost entirely covered with shrubs over a distance of several hundred meters, but such extensive coverage is not common around our site ~~appears exceptional.~~

### 2.2 Experimental methods

Field work took place around mid-May in 2014 and 2015, just before the onset of snow melt. It consisted in the measurement of snow depth at several hundred sites, the observation of snow stratigraphy in snow pits, and in the measurement of vertical profiles of snow density, thermal conductivity and specific surface area in these pits. Snow depth was measured with an avalanche probe. Density was measured with a 100 cm<sup>3</sup> metal box cutter 3 cm high, therefore providing a vertical resolution of 3 cm. Snow thermal conductivity,  ~~$k_{eff}$~~ , was measured by inserting a heated needle probe (TP02 model from Hukseflux) horizontally into the snow (Domine et al., 2012). The needle was connected to a data logger. The principle is to monitor the temperature of the needle as it is heated during 100 s at constant power. The rate of heating depends on snow thermal conductivity. The temperature rise is plotted as a function of  $Ln t$ , where  $t$  is time, and the slope of the curve is inversely proportional to  $k_{eff}$  (Morin et al., 2010). Snow specific surface area (SSA) is the ratio of the surface area of snow crystals accessible to gases over the snow sample mass (Domine et al., 2007). Essentially, this metric is equivalent to the surface to volume ratio. SSA almost always decreases over time, as snow grains grow (Taillandier et al., 2007). It was obtained by measuring the snow reflectance at 1310 nm using an integrating sphere, from which SSA was derived using a fairly simple algorithm (Gallet et al., 2009). SSA was measured with a vertical resolution of 1 to 2 cm. In shrubs, difficulties were encountered to sample snow. This was due to shrub stems preventing the insertion of the box cutter, or to the collapse of the depth hoar upon the slightest contact. SSA and density measurements could therefore sometimes not be done with the desired

vertical resolution.

### 2.3 Numerical simulations

Snow physical properties and ground temperature were modelled using the Crocus multilayer physical snowpack model coupled to the ISBA land surface scheme within the SURFEX interface (Vionnet et al., 2012). We forced the model with observed meteorological data when available. Before August 2014, air temperature and wind speed measured by instruments located in Qarlikturvik valley at 73°09'21"N, 79°57'25"W were used. Since August 2014, Crocus was forced by data from a fairly complete nearby meteorological station at 73°09'01.4"N, 80°00'16.6"W, ~~very close to some of our study sites~~. It measures air temperature, wind speed, relative humidity, and upwelling and downwelling shortwave and longwave radiation with a CNR4 radiometer from Kipp & Zonen, ventilated and heated with a CNF4 instrument. Other instruments measure snow height and snow and ground temperature and thermal conductivity, but these are not used as forcing data, but rather as a model output check. Because of the summer active layer, the CNR4 radiometer shifted from its horizontal position in late August 2014, causing errors in the radiation measurements. Precipitation was not measured ~~neither~~, so for this and possible data gaps, we used ERA-interim reanalysis data (Dee et al., 2011). When field data ~~were~~ available for comparison, ERA-interim data were corrected to better match local meteorological conditions using the method of (Vuichard and Papale, 2015). ERA-interim amounts of precipitation were not modified, but the phase was recalculated using local temperatures.

With forcing data, Crocus calculates the energy budget of the surface and of each snow layer. This is used to simulate processes occurring in the snow such as thermal diffusion, compaction, phase change (melt/freeze), liquid water percolation, and snow metamorphism, leading to a prediction of the time evolution of snow type (e.g. fresh snow, faceted crystals, depth hoar, small rounded grains, melt forms, etc.). Many snow physical properties can be calculated from these model outputs. The thermal conductivity of snow, which is used to solve the thermal diffusion equation in the snowpack, is calculated from snow density using the equation of (Yen, 1981). This equation implies that snow thermal conductivity ~~increased~~ increases monotonically with density.

The original Crocus snow model does not account for the effect of vegetation. Shrubs trap wind-blown snow, limit snow erosion by wind, and stems act as absorbers, decreasing the albedo of the surface. The network of stems also prevents snow compaction. This latter effect was simulated by increasing the viscosity of dry snow in the presence of shrubs by a factor 100 up to a snow height of 10 cm and by a factor 10 to the top of the shrub. The 10 cm threshold was set to simulate the greater biomass and stem density at the shrub base. Wind effects on snow, i.e. fragmentation, compaction and sublimation of the surface snow layers were deactivated in shrubs. The decrease of surface albedo by shrubs was simply simulated by decreasing snow albedo by an adjusted factor. Trapping of wind-blown snow by shrubs was not simulated.

Another effect not simulated by Crocus is the upward transport of water vapour due to the high temperature gradient in Arctic and subarctic snowpacks (Sturm and Benson, 1997). This process is useful to explain e.g. the transformation of melt-freeze layers or wind slabs into depth hoar or indurated depth hoar, and Crocus will therefore not predict such changes (Domine et al., 2013), nor the mass transfer from lower snow layers, causing their density to decrease, to the upper layers, causing their density to increase.

### 3 Results

Detailed observations and physical measurements were performed in a total of 14 snow pits ~~were studied~~ in 2014 and 21 pits in 2015. The 2014 campaign was exploratory and the 2015 campaign was more complete and targeted. The 2015 data are therefore reported and discussed in more detail.

### 3.1 Snow height

In 2014, four series of random snowpack height measurements were done at three sites, producing 1429 values (Table 1). In 2015, the same sites were measured again, as well as an additional three sites, totalling 901 values. One site consisted of low centered polygons (wetland) while the other five were on mesic areas. Of these, two featured scattered willow bushes covering about 10% of the ground, one was the ~~exceptional-uncommon~~ site fully covered with willows mentioned above, one was in hummock terrain without erect shrubs in the flat bottom of the valley, and one was further up on the NW facing slopes, also with hummocks.

The polygons site was studied on 14 May 2014 and also two days later to investigate the impact of a snow fall on 15 May and of a wind storm on 16 May. In 2015, the last site, studied on 19 May, shows the lowest average value (21.3 cm) for this campaign. On that day, the temperature almost rose to 0°C, there was bright sunshine and it felt very warm. Thin snowpacks were observed to be melting and many areas became snow-free. We therefore believe that this low value is at least partly explained by the meteorology of that day. The standard error clearly indicate that ~~Out~~ of the other five sites, only that fully covered with willows shows a significantly much higher value than the other sites, which allows to conclude that dense willows lead to an increase in snowpack thickness. The standard deviation of snowpack height appears to scale with the irregularity of topography. The largest standard deviation is for the low-centered polygon site, where the deep troughs separating the polygons could have 80 cm of snow, while the high polygon edges had very thin snow. Large standard deviations were also observed when hummocks were present.

We investigated the impact of isolated bushes on snow height. At those sites, shrubs covered about 10% of the surface. In 2015, a visual examination did not reveal any obvious impact. From the surface structure of the snowpack, prevailing winds appeared to have been across the valley, i.e. coming from the north or south in the valley oriented east–west. We therefore measured snow height at the center of bushes, and every 50 cm up to 3 m from the center uphill (south) and downhill (north) of the bush. Figure 2 illustrates that there was no systematic effect of an isolated bush on snow height. Snow height could either be at a local minimum (bush named Willow D1) or maximum (Willow D1b) in the bush. When the bush was not an extremum, the uphill side (Willow D2) or the downhill side (Willow D2b) could have thicker snow. We conclude that in 2015, an isolated bush appeared to have no clear impact on snow height. This is consistent with the data of Table 1. In fact the effect of topography was found to prevail over that of vegetation. As intuitively expected, thick snowpacks were in hollows and thin ones on bumps.

The situation was different in 2014. In the absence of shrubs, snow had often been eroded down to a more erosion-resistant melt-freeze crust. In willows, blowing snow had accumulated in the bush and downwind from it (Fig. 3). Even though measurements were less detailed in 2014, and no separate measurements were done in and outside the bushes, examination of photographs clearly indicates that in 2014 snow was thicker in bushes and in their wind shadow than far from them.

~~A crucial observation regarding snow height in shrubs is then the difference between 2014 and 2015: in 2014, shrubs had a direct effect on snow height (Fig. 3) while in 2015 they did not (Fig. 2). Our proposed interpretation is simply that in 2015, snow height was greater (27 cm) than in 2014 (16 cm) and shrubs impact snow height only up to their own height. In the “scattered willows” site, shrubs were 20 to 30 cm high. However, above 25 cm, the stem density was much lower than below, so that their effect on snow height above 25 cm was minimal. In 2014, which was a low snow year (CEN, 2016), average snow height was much lower than shrub height and the impact of shrubs could be felt. In 2015, when snow height reached or exceeded shrub height in the “scattered willows” areas, the impact of shrubs was not detectable. The data from the “large willow patch” site confirms this. Shrubs there were about 10 cm higher and therefore allowed more snow trapping and accumulation, explaining the 34.9 cm snow height.~~

### 3.2 Stratigraphy

Figure 4 shows typical snow stratigraphies on herb tundra in the polygons area, in the large shrub area and on slopes with

hummocks in 2015. Grain type symbols are mostly those recommended by the classification of (Fierz et al., 2009). Snow science was initially focused on avalanche prediction and that classification reflects this emphasis by being ~~perfectly~~-well adapted to ~~a~~Alpine snow. However, it does not allow the precise description of several snow types encountered in Arctic snow. In particular, indurated depth hoar (Domine et al., 2012; Sturm et al., 1997) is not represented, despite its frequent occurrence in Arctic snowpacks. That snow type forms in dense wind slabs under very high temperature gradients not encountered in ~~a~~Alpine snow. Its density can exceed  $400 \text{ kg m}^{-3}$ . Large depth hoar crystals coexist with small grains that have not been subject to fast crystal growth, probably because water vapour vertical transfer has followed preferential paths in the dense snow. This often gives indurated depth hoar a milky aspect. Unlike typical depth hoar (e.g. taiga depth hoar, (Sturm and Benson, 1997; Taillandier et al., 2006)) which has a very low cohesion, indurated depth hoar is reasonably cohesive, although fairly brittle, and large blocks can easily be cut out of it and manipulated. A variation of indurated depth hoar forms in refrozen layers. Given very high temperature gradients, melt-freeze layers can indeed partially or fully transform into depth hoar (Domine et al., 2009), which then retains some cohesion. It is harder than soft depth hoar, but usually more brittle than indurated depth hoar formed in wind slabs. In willows, we encountered indurated depth hoar formed in refrozen layers and propose a new symbol for this frequent Arctic snow type in Fig. 4.

As typical in the Arctic (Derksen et al., 2014; Domine et al., 2002; Domine et al., 2012; Sturm and Benson, 2004), the snowpack at Bylot Island mainly consists of a basal depth hoar layer and a top wind slab. The depth hoar mostly forms in autumn when the large temperature difference between the cold air and the ground which is still warm generates a large temperature gradient in the thin snowpack (Domine et al., 2002). The resulting intense water vapour fluxes lead to the growth of large depth hoar crystals. Later in the season, the temperature gradient decreases because the ground has cooled and because the snowpack is thicker. Depth hoar does not form anymore and wind-deposited snow instead forms hard wind slabs. Layers of depth hoar or faceted crystals can nevertheless form between two wind slabs. If a layer is not strongly remobilized by wind, it can keep a low density and a low thermal conductivity. If it is subsequently overlaid by a wind slab, a temperature gradient can be established in the lower density snow, because it has a lower thermal conductivity than both wind slabs above and below it.

These features were observed at Bylot Island and are ~~visible~~-~~illustrated~~ in Fig. 4. The depth hoar layer in the absence of shrubs was typically 5 to 10 cm thick. It could be thicker in the hollows in hummock areas. In shrubs, it typically rose to the shrub height, as wind-packing of snow usually does not take place in shrubs. Above the shrubs, a wind slab was found, but it was softer than on herb. ~~Explaining why depth hoar always keeps forming in shrubs late in the season while it does not on herb tundra requires the consideration of snow physical properties, detailed in the next section.~~ In 2015, most signs of melting were found in shrubs, and this is reported in Fig. 4 as indurated depth hoar ~~(from refrozen snow)~~ in the Willows 3 stratigraphy. ~~This may be explained by the absorption of solar radiation by the shrubs in autumn.~~ Very slight melt signs were also detected outside the shrubs, as indicated in the Hummock 1G stratigraphy, with the presence of indurated depth hoar and of a very thin melt-freeze crust.

Another variable that has to be taken into account to understand melting is the concentration of light-absorbing impurities in the snow. Some snow layers had a noticeable brown colour, most likely due to the presence of mineral dust. A likely source was the black hills to the north and indeed the dirty snow layers had been deposited by a northerly wind. Signs of melting at the surface of dirty snow layers were frequent. This is what explains ~~slight~~ melting in the Hummock 1G stratigraphy. A further noteworthy observation is the exceptionally large size of the depth hoar crystals in the willows, which reached 30 mm near the base.

### 3.3 ~~Vertical profiles of~~ ~~S~~now physical properties

We first compare physical properties of snow in the large willow patch with those on herb tundra located in the polygons. We select sites having about the same snow height to facilitate comparison.

280 Figure 5 shows that in general snow on herb tundra has higher densities, thermal conductivities and SSAs than in willow shrubs, because shrub snow is dominated by depth hoar, which has lower values than wind slabs for all these variables. The dense network of stems prevents snow compaction in shrubs, and the resulting low densities facilitate depth hoar growth (Marbouty, 1980). Densities as low as  $125 \text{ kg m}^{-3}$  were measured. Furthermore, many gaps, i.e. spots without snow, were observed in dense stem networks. At the base of the snowpack, gaps were often found, most likely due to the collapse of depth hoar because of continued vertical water vapour fluxes from the base to the top of the snowpack, leading to significant mass loss. This has already been detected in low Arctic shrub tundra (Domine et al., 2015). These basal gaps cannot be mistaken for lemming burrows, which were also observed (Fig. 4). Gaps due to depth hoar collapse have an erratic shape while lemming holes have a regular shape.

285 The above data were for a willow patch several hundred meters large. Snow properties inside and in the vicinity of smaller patches, only a few meters in size, need to be investigated as this is the most frequent occurrence of shrubs observed on Bylot and northern Baffin Islands. Differences can be expected, because wind can propagate much more easily in an isolated bush than in an extensive patch. Figure 6 shows the stratigraphies inside two bushes about 1 m in diameter and in snow about 1 m south (uphill) of the bushes. The bush named “Willows D2b” had stems protruding up to about 35 cm above the ground and bush “Willows D1b” to about 22 cm. In both cases stems were protruding above the snow. Figure 7 shows the corresponding vertical profiles of physical properties.

290 A striking observation in Fig. 7 is the peculiar property of the layer around 15 cm in the profile “Willows D2b center”. The high density and thermal conductivity values are probably due to melting of that layer in autumn, which produced a very hard melt-freeze crust. Why such intense melting took place here and not in the large willow patch may be due to the location. The large willow patch is further upvalley and closer to taller mountains to the south (Fig. 1), and was probably in the shade all day much earlier in the season. is uncertain, but it could be due to a higher stem density and/or more mineral dust in the snow. Besides this observation, physical properties at the center of the bushes appear similar to those of the large willow patch. The specific surface area of the “Willows D1b center” is slightly higher than those of the other bush sites, but this is probably not significant. Given that we only have 5 profiles inside bushes, it is difficult to make conclusive statistics in this case.

300 An interesting observation is that about 1 m south of the bushes, the snow physical properties are much closer to those in shrubs than those on herb. The influence of shrubs on snow properties therefore extends beyond the shrub area itself. We hypothesize that since shrubs reduce wind speed in their vicinity, snow compaction by wind is limited. Snow of lower density than in the absence of shrubs is then deposited during drifting snow events. Depth hoar formation is then facilitated, leading to a lower thermal conductivity and specific surface area.

310 ~~The influence of shrubs on snow physical properties extends beyond the bushes, presumably because of the impact of shrubs on wind velocity.~~

### 3.4 Snowpack thermal resistance

315 A central question this work seeks to answer is: what is the effect of shrubs on the insulating properties of the snowpack? This is conveniently quantified by considering the snowpack  $R_T$  values. A convenient way to express the insulating property of a medium made of different layers is to calculate its thermal resistance  $R_T$  defined as:

$$R_T = \sum_i \frac{h_i}{k_{eff,i}} \quad (1)$$

where  $h_i$  is the thickness of layer  $i$ .  $R_T$  thus has units of  $\text{m}^2 \text{ K W}^{-1}$ .  $R_T$  conveniently relates the heat flux through the snowpack

$F$  to the temperature difference between its surface and its base,  $T_{top} - T_{base}$ , and is thus very simple to use, for example in single layer snow models:

$$\underline{\underline{F = \frac{T_{top} - T_{base}}{R_T} \quad (2)}}$$

Table 2 sums up the 21  $R_T$  values measured in May 2015. From  $R_T$  and snow depth values, the average thermal conductivity of the snowpack was calculated as:

$$\underline{\underline{\overline{k_{eff}} = \frac{h}{R_T} \quad (43)}}$$

$R_T$  and  $\overline{k_{eff}}$  values are also shown in Table 2. The last column of Table 2 ranks the mean thermal conductivities, with 1 the lowest and 19 the highest. Two snow pits studied in a thick snow drift formed at the base of a steep talus were excluded from the ranking, as the mode of formation of these drifts is very different from those of snowpacks in more homogeneous areas, and including them in the comparison would not serve our purpose. They are nevertheless listed at the end of Table 2 for the sake of completeness.

### **3.4 Simulations**

We attempted to simulate snow and soil properties with the ISBA-Crocus model. Three scenarios were tested: (1) *herb*, where no vegetation is present, and this is intended to simulate snow on herb tundra; (2) *shrub*, where the effect of 40 cm-tall shrubs on snow density is simulated by limiting compaction and deactivating wind-induced processing of surface snow; (3) *shrubalb*, which is similar to *shrub*, but snow albedo has been decreased by 30 or 60%, for runs *shrubalb30* and *shrubalb60*, respectively.

Figure 8 shows the evolution of snow height and  $R_T$  under the *herb*, *shrub*, *shrubalb30* and *shrubalb60* scenarios, for the 2014-2015 winter. The effect of shrubs on snow compaction is obvious: snow height is increased by about 60% in the presence of shrubs. This increase in snow height leads to an increase in  $R_T$ , and this is further enhanced by the fact that the formation of depth hoar, which has a low thermal conductivity, is facilitated in the presence of shrubs. Our field observations lead us to expect that decreasing snow albedo would lead to episodes of snow melt. This, by forming denser melt-freeze crusts with a higher  $k_{eff}$ , leads to a snowpack with a lower thermal resistance. A surprising result of our simulations is that decreasing the snow albedo did not produce the expected effect until late March. In the fall, decreasing the albedo by 60% reduced the thermal resistance by just  $1 \text{ m}^2 \text{ K W}^{-1}$ , whereas in mid-winter the *shrubalb* runs predict a higher  $R_T$ . A detailed analysis of our model output data indicates that this is because at  $73^\circ\text{N}$ , according to our model, downwelling shortwave radiation is insufficient to strongly impact snow temperature through albedo effects. No melting takes place and thermal conductivity is therefore not increased.

Figure 9 shows the air temperature and wind speed, the incoming shortwave radiation and the snow depth in fall 2014. Simulated snowpacks began to accumulate on 12 September. A sharp drop in incident radiation took place on 10 October, implying that albedo effects become negligible after that date. Figure 10 shows the simulated density profiles on 10 October. The *shrubalb30* snow was slightly affected by the decrease in albedo, with a mean density of  $153 \text{ kg m}^{-3}$  on 10 October instead of  $145 \text{ kg m}^{-3}$  for the *shrub* run (Fig. 10). The snowpack was also thinner, resulting in a lower thermal resistance for the *shrubalb30* run (mean  $R_T = 2.9 \text{ m}^2 \text{ K W}^{-1}$ ) than for the *shrub* run (mean  $R_T = 3.2 \text{ m}^2 \text{ K W}^{-1}$ ) on 10 October. The *shrubalb60* snow accumulated slower because the first snow fall (12 September) melted, resulting in a thinner snowpack. As the downwelling shortwave radiation was low between 19 and 22 September ( $<70 \text{ W m}^{-2}$ , Fig. 9), the snowpack was not



360 affected by the albedo effect during the snow fall that took place at that time. Because of the thinner snowpack, the gradient metamorphism was stronger in the *shrubalb60* snowpack, leading to a lower density because, in Crocus, layers featuring faceted crystals or depth hoar are set to a higher apparent viscosity and thus undergo a lower rate of densification through compaction processes. A strong wind event occurred on 10 and 11 November, compacting and sublimating the *shrub* and *shrubalb30* snow layers which exceeded the shrub height, resulting in a decrease of  $R_T$ . As the *shrubalb60* snowpack was thin enough to remain protected by the shrubs, its thickness became equal to those of the *shrub* and *shrubalb30* snowpacks (Fig. 9) and its thermal resistance became higher (Fig. 8) since thermal conductivity increases with increasing density in Crocus. At the end of March 2015, incident radiation became large enough to induce snow melt, leading to an earlier snowpack disappearance for the *shrubalb* runs (Fig. 8).

365 A critical fallout of our work is an evaluation of the potential of shrub growth to affect ground temperature through the modification of snow properties. Figure 11 presents a simulation of ground temperature at 5 cm depth on herb tundra and on shrub tundra using ISBA-Crocus. Since this work is focused on winter processes and all model modifications related to shrubs pertain to their interactions with the snowpack, the summer part of the simulations were run with the conditions valid for herb tundra in all cases, with the consequences that summer results do not describe the effect of shrubs and are therefore much less variable than winter ones. Measurements on herb tundra are also shown. In summer 2014 we also placed ground temperature sensors in willows. Unfortunately they were dug out by foxes and the data loggers suffered water damage so we have no data in willows. Simulations indicate that in winter 2014-2015, the presence of shrubs raised ground temperature by up to 13°C. For the 2013-2014 winter the temperature difference was only up to 8°C because the snowpack was thinner, so its potential to influence ground temperature was lower. In the fall 2014, the ground temperature was colder for the *shrubalb60* run than for the *shrub* one because the lower snow  $R_T$  allows the cold air to affect the ground more. This cooling should be enhanced by a better simulation of the thermal conductivity of the melt-freeze snow, which is currently calculated from the snow density only. Melt-freeze layers usually have a higher thermal conductivity than other snow types for a given density (Sturm et al., 1997), because bonds between grains are stronger. Otherwise, the winter ground temperature is warmer under shrubs, and this warming is particularly significant in spring because of the earlier melting of the snowpack, which allows the warm spring air to heat up the ground. Except in early fall, the ground temperature data are fairly well simulated in winter in the absence of shrubs, with simulated temperatures within 4°C of data. The warmer ground temperatures in the simulations are explained by the thinner snowpack at our measurement site than in the simulations (Fig. 8), but in general, there is a good agreement between data and simulations. The early fall differences are due to an imperfect simulation of the soil thermal properties, and in particular to a higher thermal conductivity of the surface layer in the simulations. This effect rapidly becomes negligible as the insulating effect of snow increases.

## 4 Discussion and modelling

### 4.1 Snow height

390 Different patterns of the effect of shrubs on snow height were observed in ~~A crucial observation regarding snow height in shrubs is then the difference between~~ 2014 and 2015: in 2014, shrubs had a direct effect on snow height (Fig. 3) while in 2015 they did not (Fig. 2). Our proposed interpretation is simply that in 2015, snow height was greater (27 cm) than in 2014 (16 cm) and shrubs impact snow height only up to their own height. In the “scattered willows” site, shrubs were 20 to 30 cm high. However, above 25 cm, the stem density was much lower than below, so that their effect on snow height above 25 cm was minimal in that case. In 2014, which was a low snow year (CEN, 2016), average snow height was much lower than shrub height and the impact of shrubs could be felt. In 2015, when snow height reached or exceeded shrub height in the “scattered willows” areas, the impact of shrubs was not detectable. The data from the “large willow patch” site confirms this. Shrubs



there were about 10 cm higher and therefore allowed more snow trapping and accumulation, explaining the 34.9 cm snow height.

#### 4.2. Snow stratigraphy and physical properties

Figures 4 and 6 show that most signs of melting were found in shrubs. This may be explained by the absorption of solar radiation by the shrubs in autumn, as they have a much lower albedo than snow (Juszak et al., 2014). Signs of melting were stronger in the isolated shrubs than in the large willow patch, probably because of increase shading by relief as mentioned earlier. Some slight signs of melting were occasionally observed fairly high in the snowpack and most likely after radiation became sufficient in spring to induce melting. The possibility that freezing rain episodes took place would need to be explored.

Figure 4 shows that depth hoar in shrubs formed to much greater heights than on herb, and this requires an explanation. Depth hoar forms when the temperature gradient is sufficient, typically  $>20\text{ }^{\circ}\text{C m}^{-1}$  (Marbouty, 1980) and forms preferentially in low density snow (Marbouty, 1980). Late in autumn, when the temperature gradient has decreased, in part because the ground has cooled, depth hoar normally stops forming (Domine et al., 2002). Shrubs prevent snow compaction, favoring depth hoar formation. Depth hoar has a lower thermal conductivity than wind slabs. This effect will combine to the lower densities, which lead to a thicker snowpack, to form a snowpack with better thermal insulation properties in shrubs. Ground cooling in shrubs is therefore slower, maintaining a higher temperature gradient that further facilitates depth hoar growth. Indeed, the temperature of the snow-ground interface in mid-May 2015 was around  $-12^{\circ}\text{C}$  in shrubs and  $-18^{\circ}\text{C}$  on herb tundra. There is therefore a positive feedback between depth hoar formation and ground temperature which qualitatively explains why depth hoar can keep forming up to the top of the shrubs. Above the shrubs, snow is not protected from wind packing and wind slabs can form. The SSA of depth hoar in shrubs is lower than on herb tundra because crystals in shrubs are larger and to a first approximation, SSA is inversely proportional to grain size. Snow albedo depends on its SSA (Domine et al., 2008) so that this effect will contribute to decreasing snow albedo in shrubs. This lower albedo will combine to the absorption of solar radiation (when present) by shrub stems to produce a warmer snowpack in shrubs, further reducing ground cooling. In summary, in a large dense shrub patch, snow properties are dramatically modified relative to herb tundra and all the changes combine to reduce ground cooling in winter.

~~A central question this work seeks to answer is: what is the effect of shrubs on the insulating properties of the snowpack? A convenient way to express the insulating property of a medium made of different layers is to calculate its thermal resistance  $R_T$  defined as:~~

$$R_T = \sum_i \frac{h_i}{k_{eff,i}} \quad (1)$$

~~where  $h_i$  is the thickness of layer  $i$ .  $R_T$  thus has units of  $\text{m}^2 \text{K W}^{-1}$ .  $R_T$  conveniently relates the heat flux through the snowpack  $F$  to the temperature difference between its surface and its base,  $T_{top} - T_{base}$ , and is thus very simple to use, for example in single layer snow models:~~

$$F = - \frac{T_{top} - T_{base}}{R_T} \quad (2)$$

~~Table 2 sums up the 21  $R_T$  values measured in May 2015. From  $R_T$  and snow depth values, the average thermal conductivity~~

~~of the snowpack was calculated as:~~

$$\overline{k_{eff}} = \frac{h}{R_T} \quad (3)$$

~~$R_T$  and  $\overline{k_{eff}}$  values are shown in Table 2. The last column of Table 2 ranks the mean thermal conductivities, with 1 the lowest and 19 the highest. Two snow pits studied in a thick snow drift formed at the base of a steep talus were excluded from the ranking, as the mode of formation of these drifts is very different from those of snowpacks in more homogeneous areas, and including them in the comparison would not serve our purpose. They are nevertheless listed at the end of Table 2 for the sake of completeness.~~

### **4.3. Snowpack thermal resistance**

A striking feature of Table 2 is that out of the seven lowest  $\overline{k_{eff}}$  values (in bold in Table 2), five are for pits in willows. The other two pits, ranked 3 and 5, are respectively for a very thin snowpack where the fraction of depth hoar was high (7 out of 12 cm) and for a snowpack sheltered by a small ridge next to a polygon edge, where soft wind-blown snow of low  $k_{eff}$  had recently accumulated. The 3 pits studied in the large willow patch (Willows 1 to Willows 3) all had very low  $\overline{k_{eff}}$ , and the highest three  $R_T$  values are in this willow patch. A ~~tempting~~ compelling conclusion is therefore that the growth of *S. alix richardsonii* shrubs decreased the snow thermal conductivity by facilitating depth hoar formation. Since these shrubs also favor snow accumulation, at least up to their own height, both effects add up to lead to an enhanced thermal resistance, thus limiting winter ground cooling.

However, Table 2 also shows that among the highest five  $\overline{k_{eff}}$  values (in italics in Table 2), four are found in isolated willow bushes. Two of those pits have been detailed in Figs. 6 and 7. Their high  $\overline{k_{eff}}$  was caused by snow melt, which resulted in hard dense conductive layers. From our observations, we hypothesize that melting was caused by light absorption by shrub stems that have a much lower albedo than snow, and this was further facilitated by mineral dust contained in the snow layers that melted. There is also the possibility that vegetation debris ~~entrained~~ which were wind-blown slightly beyond the bushes facilitated melting in those pits dug about 1 m from the bushes.

In summary for this point, our data and observations indicate that the impact of shrubs on snow thermal properties can go both ways. If the air temperature remains low enough, then willows limit snow compaction and favor depth hoar formation, therefore leading to the formation of a highly insulating snowpack. However, if the air temperature is high enough so that the increased radiation absorption by willows can lead to snow melting, then hard melt-freeze layers with high  $k_{eff}$  can form, leading to a snowpack with reduced thermal insulating properties.

~~We attempted to simulate these effects with the ISBA-Crocus model. Three scenarios were tested: (1) *herb*, where no vegetation is present, and this is intended to simulate snow on herb tundra; (2) *shrub*, where the effect of 40 cm tall shrubs on snow density is simulated by limiting compaction and deactivating wind-induced processing of surface snow; (3) *shrubalb*, which is similar to *shrub*, but snow albedo has been decreased by 30 or 60%, for runs *shrubalb30* and *shrubalb60*, respectively.~~

~~Figure 8 shows the evolution of snow height and  $R_T$  under the *herb*, *shrub*, *shrubalb30* and *shrubalb60* scenarios, for the 2014-2015 winter. The effect of shrubs on snow compaction is obvious: snow height is increased by about 60% in the presence of shrubs. This increase in snow height leads to an increase in  $R_T$ , and this is further enhanced by the fact that depth hoar formation is facilitated in the presence of shrubs. Our field observations lead us to expect that decreasing snow albedo would lead to episodes of snow melt. This, by forming denser melt freeze crusts with a higher  $k_{eff}$ , leads to a snowpack with a~~

470 lower thermal resistance. A surprising result of our simulations is that decreasing the snow albedo did not produce the  
expected effect until late March. In the fall, decreasing the albedo by 60% reduced the thermal resistance by just  $1 \text{ m}^2 \text{ K W}^{-1}$ ,  
whereas in mid-winter the *shrubalb* runs predict a higher  $R_T$ . A detailed analysis of our model output data indicates that this is  
because at  $73^\circ\text{N}$ , according to our model, downwelling shortwave radiation is insufficient to strongly impact snow  
temperature through albedo effects. No melting takes place and thermal conductivity is therefore not increased.

475 Figure 9 shows the air temperature and wind speed, the incoming shortwave radiation and the snow depth in fall 2014.  
Simulated snowpacks began to accumulate on 12 September. A sharp drop in incident radiation took place on 10 October,  
implying that albedo effects become negligible after that date. Figure 10 shows the simulated density profiles on 10 October.  
The *shrubalb30* snow was slightly affected by the decrease in albedo, with a mean density of  $153 \text{ kg m}^{-3}$  on 10 October  
instead of  $145 \text{ kg m}^{-3}$  for the *shrub* run (Fig. 10). The snowpack was also thinner, resulting in a lower thermal resistance for  
480 the *shrubalb30* run (mean  $R_T = 2.9 \text{ m}^2 \text{ K W}^{-1}$ ) than for the *shrub* run (mean  $R_T = 3.2 \text{ m}^2 \text{ K W}^{-1}$ ) on 10 October. The  
*shrubalb60* snow accumulated slower because the first snow fall (12 September) melted, resulting in a thinner snowpack. As  
the downwelling shortwave radiation was low between 19 and 22 September ( $<70 \text{ W m}^{-2}$ , Fig. 9), the snowpack was not  
affected by the albedo effect during the snow fall that took place at that time. Because of the thinner snowpack, the gradient  
metamorphism was stronger in the *shrubalb60* snowpack, leading to a lower density because, in Crocus, layers featuring  
485 faceted crystals or depth hoar are set to a higher apparent viscosity and thus undergo a lower rate of densification through  
compaction processes. A strong wind event occurred on 10 and 11 November, compacting and sublimating the *shrub* and  
*shrubalb30* snow layers which exceeded the shrub height, resulting in a decrease of  $R_T$ . As the *shrubalb60* snowpack was  
thin enough to remain protected by the shrubs, its thickness became equal to those of the *shrub* and *shrubalb30* snowpacks  
(Fig. 9) and its thermal resistance became higher (Fig. 8) since thermal conductivity increases with increasing density in  
490 Crocus. At the end of March 2015, incident radiation became large enough to induce snow melt, leading to an earlier  
snowpack disappearance for the *shrubalb* runs (Fig. 8).

A critical fallout of our work is an evaluation of the potential of shrub growth to affect ground temperature through the  
modification of snow properties. Figure 11 presents a simulation of ground temperature at 5 cm depth on herb tundra and on  
shrub tundra using ISBA-Crocus. Since this work is focused on winter processes and all model modifications related to  
495 shrubs pertain to their interactions with the snowpack, we ran the model in the summer part of the simulations were run  
with the conditions valid for herb tundra in all cases, with the consequences that summer results are much less variable than winter  
ones. Measurements on herb tundra are also shown. In summer 2014 we also placed ground temperature sensors in willows.  
Unfortunately they were dug out by foxes and the data loggers suffered water damage so we have no data in willows.  
Simulations indicate that in winter 2014–2015, the presence of shrubs raised ground temperature by up to  $13^\circ\text{C}$ . For the 2013–  
500 2014 winter the temperature difference was only up to  $8^\circ\text{C}$  because the snowpack was thinner than previous year, so its  
potential to influence ground temperature was lower. In the fall 2014, the ground temperature was colder for the *shrubalb60*  
run than for the *shrub* one because the lower snow  $R_T$  allows the cold air to affect the ground more. This cooling should be  
enhanced by a better simulation of the thermal conductivity of the melt-freeze snow, which is currently calculated from the  
snow density only. Melt-freeze layers usually have a higher thermal conductivity than other snow types for a given density  
505 (Sturm et al., 1997), because bonds between grains are stronger. Otherwise, the winter ground temperature is warmer under  
shrubs, and this warming is particularly significant in spring because of the earlier melting of the snowpack, which allows the  
warm spring air to heat up the ground. Except in early fall, the ground temperature data are fairly well simulated in winter in  
the absence of shrubs, with simulated temperatures within  $4^\circ\text{C}$  of data. The warmer ground temperatures in the simulations  
are explained by the thinner snowpack at our measurement site than in the simulations (Fig. 8). The general good agreement  
510 between data and simulations supports the reliability of our simulation. The early fall differences are due to an imperfect  
simulation of the soil thermal properties, and in particular to a higher thermal conductivity of the surface layer in the  
simulations. This effect rapidly becomes negligible as the insulating effect of snow increases.

#### 4.4. Ground temperature

Our simulations confirm the insulating effect of snow in shrubs and predict that ground temperature under shrubs can be up to 13°C warmer than under herb. This ~~effect~~ simulated ~~effect~~ here is greater ~~in magnitude~~ than that measured by (Myers-Smith and Hik, 2013), who measured a 4 to 5°C (up to 8°C) winter warming under shrubs at a different location and in a different ecosystem. Their shrubs were 50 cm high willows and dwarf birch and it is likely that thermal effects are site and ecosystem-dependant. Since our simulations did not describe differences in summer effects between herb and shrubs, the 13°C warming effect of shrubs that we simulated in 2014-2015 (and 8°C warming the previous year) can be assigned here to the sole effect of shrubs on snow. Ground shading by shrubs in summer, as well as the presence of an insulating moss layer under the shrubs may limit summer warming, thus mitigating winter warming. Ground shading has already been invoked by (Lantz et al., 2013) to explain that under tall shrubs in the western Canadian Arctic, ground temperature were warmer under open shrubs than under dense ones.

The results of the manipulations of (Blok et al., 2010) are contrary to all these previous observations. In low shrub tundra, they removed shrubs in circular plots 10 m in diameter and observed increased ground thawing in cleared plots, relative to plots with shrubs, from which they concluded that “the expected expansion of deciduous shrubs in the Arctic region, triggered by climate warming, may reduce summer permafrost thaw”. Removing existing shrubs to detect their effect may not be equivalent to observing the effect of shrubs growing on high Arctic tundra. One effect of expanding shrubs is to trap snow relative to surrounding terrain. On the contrary, in a small 10 m gap, snow will accumulate just like in surrounding shrubs so that the manipulation of (Blok et al., 2010) probably did not reproduce this effect. Moreover, shrubs modify the energy and hydrologic budget of the surface, and therefore the plant species growing underneath. Both at Bylot and Umiujaq in low Arctic tundra (Domine et al., 2015), we observed that a moss layer and thicker litter were present below shrubs. These have different thermal and optical properties from the pre-shrub vegetation. Both the summer energy budget and the snow properties (and therefore the winter energy budget) of the plots with removed shrubs therefore have many reasons to be different from those of the pre-shrub tundra. It therefore seems highly uncertain that the manipulations of (Blok et al., 2010), based on shrub removal, allow conclusions regarding the impact of growing shrubs on the permafrost energy budget.

~~It is clear that our model is~~ are clearly imperfect and they ~~is~~ must be considered as a preliminary attempt to simulate snow properties in the presence of shrubs. In fact, we simulate thicker snowpacks and higher thermal resistances than measured, so actual effects are probably somewhat lower than simulated ones. In particular, the interactions between snow, shrubs and radiation are not satisfactory, as we were not able to adequately reproduce the observed snow melt in the presence of shrubs, even as we decreased albedo by 60%. A shrub stem broadband albedo is very low,  $<0.43$  (Juszak et al., 2014), and stems probably produces ~~a~~ hot spots where melting would be induced locally, possibly with water percolating to wet the whole snowpack. This of course cannot be modelled adequately with a 1-D model by homogeneously reducing snow albedo, as we did. Furthermore, summer effects may mitigate the shrub-induced winter warming. As mentioned above, shrubs modify the radiative budget of the surface, latent heat exchanges (Lorant and Goetz, 2012; Myers-Smith and Hik, 2013; Pearson et al., 2013), and surface vegetation and top soil properties are different under shrubs, so that simulating shrub and herb summer energy budget in an identical manner is not optimal. We made point temperature measurements in early July 2014 and found that the ground had thawed less under the shrubs. We also observed that thermally-insulating moss ~~had grown~~ was present under the shrubs, and this may partly explain the slower thawing. Summer effects ~~All these factors~~ should also be modelled in detail for a full quantification of the impact of shrubs on the permafrost thermal regime.

#### 5 Conclusion

These observations and simulations show that shrub-snow interactions are very complex. Our study confirms that shrubs often increase snow height and thermal resistance. Shrubs also decrease albedo (Ménard et al., 2014). ~~but w~~ We also made

555 many additional observations, some of which are novel:

- Shrubs increase snow height only up to their own height. If snow fall is sufficient, their effect on snow height becomes undetectable.
- Snow physical properties are dramatically affected by shrubs. In the absence of enhanced melting, shrubs decrease snow density and, favour depth hoar formation with concomitant decrease in snow thermal conductivity and SSA. A consequence is the increase in snowpack thermal resistance.
- The influence of shrubs on snow physical properties extends horizontally beyond the bushes, presumably because of the impact of shrubs on wind velocity.
- Shrubs increase radiation absorption by snow and this can lead to melting, which results in increased density and thermal conductivity. There is therefore a threshold effect, where sufficiently high temperature and radiation combine to reverse the effect of shrubs on the insulating properties of snow.
- Increased snowpack thermal resistance in the presence of shrubs and in the absence of melting is expected to contribute to ground warming. Simulations which only take into account winter processes indicate that the magnitude of this warming reaches 13°C at Bylot Island for the 2014-2015 winter and 8°C the previous winter. This warming may be mitigated by summer effects.

570 However, we stress again that our modelling effort is preliminary and many developments are still required for the proper simulation of shrubs on snow properties and on the permafrost thermal regime. Not only must snow-shrubs interactions be described in more detail, but summer effects of shrubs on the surface energy budget must also be included for a reliable prediction of the thermal regime of permafrost in the presence of shrubs.

#### Author contributions

575 F. Domine designed research. M. Barrere and F. Domine performed the field measurements. F. Domine analyzed the field data. M. Barrere performed the model simulations with suggestions and advice from S. Morin. F. Domine prepared the manuscript with input from M. Barrere and comments from S. Morin.

#### Supplement

580 A spreadsheet has been produced to supply all data used in the graphs.

#### Acknowledgements

This work was supported by the French Polar Institute (IPEV) through grant 1042 to FD and by NSERC through the discovery grant program. The Polar Continental Shelf Program (PCSP) efficiently provided logistical support for the research at Bylot Island. We are grateful to Gilles Gauthier and Marie-Christine Cadieux for their decades-long efforts to build and maintain the research base of the Centre d'Etudes Nordiques at Bylot Island. Marie-Christine Cadieux also kindly drafted the map of Figure 1. Field trips were shared with the group of Dominique Berteaux, who helped make this research much more efficient and fun. Bylot Island is located within Sirmilik National Park, and we thank Parks Canada and the Pond Inlet community (Mittimatalik) for permission to work there. Help in running the model from Matthieu Lafaysse and Vincent Vionnet (CNRM-GAME/CEN) is acknowledged. LGGE and CNRM-GAME/ CEN are part of LabEx OSUG@2020 (ANR10 LABX56). Frédéric Maps and Blanche Saint-Béat kindly provided advice on statistics. Helpful comments by two anonymous reviewers and by Esther Lévesque (Université du Québec à Trois-Rivières) are gratefully acknowledged.

## References

- Allard, M. and Gauthier, G.: Environmental data from Bylot Island in Nunavut, Canada, v. 1.4 (1992-2014). In: *Nordicana D2*, CEN (Ed.), Nordicana D2, Quebec City, 2014.
- 595 Bilodeau, F., Gauthier, G., and Berteaux, D.: The effect of snow cover on lemming population cycles in the Canadian High Arctic, *Oecologia*, 172, 1007-1016, 2013.
- Blok, D., Heijmans, M. M. P. D., Schaepman-Strub, G., Kononov, A. V., Maximov, T. C., and Berendse, F.: Shrub expansion may reduce summer permafrost thaw in Siberian tundra, *Global Change Biology*, 16, 1296-1305, 2010.
- CEN: <http://www.cen.ulaval.ca/nordicanad/dpage.aspx?doi=45039SL-EE76C1BDAADC4890>, last access: 2016 2016.
- 600 Dee, D. P., Uppala, S. M., Simmons, A. J., Berrisford, P., Poli, P., Kobayashi, S., Andrae, U., Balmaseda, M. A., Balsamo, G., Bauer, P., Bechtold, P., Beljaars, A. C. M., van de Berg, L., Bidlot, J., Bormann, N., Delsol, C., Dragani, R., Fuentes, M., Geer, A. J., Haimberger, L., Healy, S. B., Hersbach, H., Holm, E. V., Isaksen, I., Kallberg, P., Kohler, M., Matricardi, M., McNally, A. P., Monge-Sanz, B. M., Morcrette, J. J., Park, B. K., Peubey, C., de Rosnay, P., Tavolato, C., Thepaut, J. N., and Vitart, F.: The ERA-Interim reanalysis: configuration and performance of the data assimilation system, *Q. J. Roy. Meteorol. Soc.*, 137, 553-597, 2011.
- 605 Derksen, C., Lemmetyinen, J., Toose, P., Silis, A., Pulliainen, J., and Sturm, M.: Physical properties of Arctic versus subarctic snow: Implications for high latitude passive microwave snow water equivalent retrievals, *J. Geophys. Res.*, 119, 7254-7270, 2014.
- Domine, F., Albert, M., Huthwelker, T., Jacobi, H. W., Kokhanovsky, A. A., Lehning, M., Picard, G., and Simpson, W. R.: Snow physics as relevant to snow photochemistry, *Atmos. Chem. Phys.*, 8, 171-208, 2008.
- 610 Domine, F., Barrere, M., Sarrazin, D., Morin, S., and Arnaud, L.: Automatic monitoring of the effective thermal conductivity of snow in a low-Arctic shrub tundra, *The Cryosphere*, 9, 1265-1276, 2015.
- Domine, F., Cabanes, A., and Legagneux, L.: Structure, microphysics, and surface area of the Arctic snowpack near Alert during the ALERT 2000 campaign, *Atmos. Environ.*, 36, 2753-2765, 2002.
- 615 Domine, F., Gallet, J.-C., Bock, J., and Morin, S.: Structure, specific surface area and thermal conductivity of the snowpack around Barrow, Alaska, *J. Geophys. Res.*, 117, D00R14, 2012.
- Domine, F., Morin, S., Brun, E., Lafaysse, M., and Carmagnola, C. M.: Seasonal evolution of snow permeability under equi-temperature and temperature-gradient conditions, *Cryosphere*, 7, 1915-1929, 2013.
- Domine, F., Taillandier, A.-S., Cabanes, A., Douglas, T. A., and Sturm, M.: Three examples where the specific surface area of snow increased over time, *The Cryosphere*, 3, 31-39, 2009.
- 620 Domine, F., Taillandier, A. S., and Simpson, W. R.: A parameterization of the specific surface area of seasonal snow for field use and for models of snowpack evolution, *J. Geophys. Res.*, 112, F02031, 2007.
- Essery, R., Li, L., and Pomeroy, J.: A distributed model of blowing snow over complex terrain, *Hydrol. Processes*, 13, 2423-2438, 1999.
- 625 Euskirchen, E. S., McGuire, A. D., Chapin, F. S., Yi, S., and Thompson, C. C.: Changes in vegetation in northern Alaska under scenarios of climate change, 2003-2100: implications for climate feedbacks, *Ecological Applications*, 19, 1022-1043, 2009.
- Fierz, C., Armstrong, R. L., Durand, Y., Etchevers, P., Greene, E., McClung, D. M., Nishimura, K., Satyawali, P. K., and Sokratov, S. A.: The International classification for seasonal snow on the ground UNESCO-IHP, ParisIACS Contribution N°1, 80 pp., 2009.
- 630 Fortier, D. and Allard, M.: Late Holocene syngenetic ice-wedge polygons development, Bylot Island, Canadian Arctic Archipelago, *Can. J. Earth Sci.*, 41, 997-1012, 2004.
- Gallet, J.-C., Domine, F., Zender, C. S., and Picard, G.: Measurement of the specific surface area of snow using infrared reflectance in an integrating sphere at 1310 and 1550 nm, *The Cryosphere*, 3, 167-182, 2009.
- 635 Gauthier, G., Bety, J., Cadieux, M. C., Legagneux, P., Doiron, M., Chevallier, C., Lai, S., Tarroux, A., and Berteaux, D.: Long-term monitoring at multiple trophic levels suggests heterogeneity in responses to climate change in the Canadian Arctic

- tundra, *Philosophical Transactions of the Royal Society B-Biological Sciences*, 368, 2013.
- Gouttevin, I., Menegoz, M., Dominé, F., Krinner, G., Koven, C., Ciais, P., Tarnocai, C., and Boike, J.: How the insulating properties of snow affect soil carbon distribution in the continental pan-Arctic area, *J. Geophys. Res.*, 117, G02020, 2012.
- 640 Juszak, I., Erb, A. M., Maximov, T. C., and Schaepman-Strub, G.: Arctic shrub effects on NDVI, summer albedo and soil shading, *Remote Sens. Environ.*, 153, 79-89, 2014.
- Koven, C. D., Ringeval, B., Friedlingstein, P., Ciais, P., Cadule, P., Khvorostyanov, D., Krinner, G., and Tarnocai, C.: Permafrost carbon-climate feedbacks accelerate global warming, *Proc. Nat. Acad. Sci. U.S.A.*, 108, 14769-14774, 2011.
- Lantz, T. C., Marsh, P., and Kokelj, S. V.: Recent Shrub Proliferation in the Mackenzie Delta Uplands and Microclimatic Implications, *Ecosystems*, 16, 47-59, 2013.
- 645 Lawrence, D. M. and Swenson, S. C.: Permafrost response to increasing Arctic shrub abundance depends on the relative influence of shrubs on local soil cooling versus large-scale climate warming, *Environ. Res. Lett.*, 6, 045504, 2011.
- Liston, G. E., McFadden, J. P., Sturm, M., and Pielke, R. A.: Modelled changes in arctic tundra snow, energy and moisture fluxes due to increased shrubs, *Global Change Biology*, 8, 17-32, 2002.
- 650 Loranty, M. M. and Goetz, S. J.: Shrub expansion and climate feedbacks in Arctic tundra, *Environ. Res. Lett.*, 7, 1-3, 2012.
- Marbouty, D.: An experimental study of temperature-gradient metamorphism, *J. Glaciol.*, 26, 303-312, 1980.
- Ménard, C. B., Essery, R., Pomeroy, J., Marsh, P., and Clark, D. B.: A shrub bending model to calculate the albedo of shrub-tundra, *Hydrol. Processes*, 28, 341-351, 2014.
- Morin, S., Domine, F., Arnaud, L., and Picard, G.: In-situ measurement of the effective thermal conductivity of snow, *Cold Regions Sci. Tech.*, 64, 73-80, 2010.
- 655 Myers-Smith, I. H. and Hik, D. S.: Shrub canopies influence soil temperatures but not nutrient dynamics: An experimental test of tundra snow-shrub interactions, *Ecology and Evolution*, 3, 3683-3700, 2013.
- Pearson, R. G., Phillips, S. J., Loranty, M. M., Beck, P. S. A., Damoulas, T., Knight, S. J., and Goetz, S. J.: Shifts in Arctic vegetation and associated feedbacks under climate change, *Nature Clim. Change*, 3, 673-677, 2013.
- 660 Ropars, P. and Boudreau, S.: Shrub expansion at the forest-tundra ecotone: spatial heterogeneity linked to local topography, *Environ. Res. Lett.*, 7, 2012.
- Sturm, M. and Benson, C.: Scales of spatial heterogeneity for perennial and seasonal snow layers, *Annals of Glaciology*, Vol 38, 2004, 38, 253-260, 2004.
- Sturm, M. and Benson, C. S.: Vapor transport, grain growth and depth-hoar development in the subarctic snow, *J. Glaciol.*, 43, 42-59, 1997.
- 665 Sturm, M., Douglas, T., Racine, C., and Liston, G. E.: Changing snow and shrub conditions affect albedo with global implications, *Journal of Geophysical Research-Biogeosciences*, 110, G01004, 2005.
- Sturm, M., Holmgren, J., König, M., and Morris, K.: The thermal conductivity of seasonal snow, *J. Glaciol.*, 43, 26-41, 1997.
- Taillandier, A. S., Domine, F., Simpson, W. R., Sturm, M., and Douglas, T. A.: Rate of decrease of the specific surface area of dry snow: Isothermal and temperature gradient conditions, *J. Geophys. Res.*, 112, F03003, 2007.
- 670 Taillandier, A. S., Domine, F., Simpson, W. R., Sturm, M., Douglas, T. A., and Severin, K.: Evolution of the snow area index of the subarctic snowpack in central Alaska over a whole season. Consequences for the air to snow transfer of pollutants, *Environ. Sci. Technol.*, 40, 7521-7527, 2006.
- Tape, K., Sturm, M., and Racine, C.: The evidence for shrub expansion in Northern Alaska and the Pan-Arctic, *Global Change Biology*, 12, 686-702, 2006.
- 675 Vionnet, V., Brun, E., Morin, S., Boone, A., Faroux, S., Le Moigne, P., Martin, E., and Willemet, J. M.: The detailed snowpack scheme Crocus and its implementation in SURFEX v7.2, *Geosci. Model Dev.*, 5, 773-791, 2012.
- Vuichard, N. and Papale, D.: Filling the gaps in meteorological continuous data measured at FLUXNET sites with ERA-Interim reanalysis, *Earth Syst. Sci. Data*, 7, 157-171, 2015.



680 Walker, D. A., Reynolds, M. K., Daniels, F. J. A., Einarsson, E., Elvebakk, A., Gould, W. A., Katenin, A. E., Kholod, S. S., Markon, C. J., Melnikov, E. S., Moskalenko, N. G., Talbot, S. S., Yurtsev, B. A., and Team, C.: The Circumpolar Arctic vegetation map, *Journal of Vegetation Science*, 16, 267-282, 2005.

Yen, Y.-C.: Review of thermal properties of snow, ice, and sea ice, United States Army Corps of Engineers, Hanover, N.H., USACRREL Report 81-10, 1-27 pp., 1981.

685

Table 1. Average ~~and~~ standard deviation  $\sigma$  and standard error ( $=\sigma/n^{1/2}$ ) of snowpack height (cm) in Qarlikturvik valley measured at several hundred spots around the coordinates indicated. Three sites were measured in May 2014 and 6 sites in May 2015.

<u>Date</u>	<u>Location</u>	<u>Lat. N</u>	<u>Long. W</u>	<u>n</u>	<u>Height, aver.</u>	<u><math>\sigma</math></u>	<u>Standard error</u>
<u>14 May 14</u>	<u>Polygons</u>	<u>73°09.0'</u>	<u>80°00.0'</u>	<u>314</u>	<u>16.2</u>	<u>13.7</u>	<u>0.77</u>
<u>16 May 14</u>	<u>Polygons</u>	<u>73°09.0'</u>	<u>80°00.0'</u>	<u>360</u>	<u>16.9</u>	<u>12.8</u>	<u>0.67</u>
<u>17 May 14</u>	<u>Scattered willows 1</u>	<u>73°10.0'</u>	<u>79°54.0'</u>	<u>356</u>	<u>16.3</u>	<u>7.5</u>	<u>0.40</u>
<u>18 May 14</u>	<u>Plain, hummocks</u>	<u>73°10.0'</u>	<u>79°55.0'</u>	<u>399</u>	<u>25.1</u>	<u>11.2</u>	<u>0.56</u>
<u>12 May 15</u>	<u>Polygons</u>	<u>73°09.0'</u>	<u>80°00.0'</u>	<u>236</u>	<u>25.3</u>	<u>13.1</u>	<u>0.85</u>
<u>15 May 15</u>	<u>Scattered willows 2</u>	<u>73°09.5'</u>	<u>79°56.0'</u>	<u>123</u>	<u>27.0</u>	<u>9.3</u>	<u>0.84</u>
<u>16 May 15</u>	<u>Scattered willows 1</u>	<u>73°10.0'</u>	<u>79°54.0'</u>	<u>149</u>	<u>26.8</u>	<u>9</u>	<u>0.74</u>
<u>17 May 15</u>	<u>Large willow patch</u>	<u>73°10.0'</u>	<u>79°49.0'</u>	<u>130</u>	<u>34.9</u>	<u>7.9</u>	<u>0.69</u>
<u>18 May 15</u>	<u>Slope, hummocks</u>	<u>73°09'00"</u>	<u>79°56.5'</u>	<u>140</u>	<u>29.3</u>	<u>11.5</u>	<u>0.97</u>
<u>19 May 15</u>	<u>Plain, hummocks</u>	<u>73°10.0'</u>	<u>79°55.0'</u>	<u>123</u>	<u>21.3</u>	<u>9.8</u>	<u>0.88</u>

<u>Date</u>	<u>Location</u>	<u>Lat. N</u>	<u>Long. W</u>	<u>n</u>	<u>Height <math>\pm \sigma</math></u>
<u>14 May 14</u>	<u>Polygons</u>	<u>73°09'</u>	<u>80°00'</u>	<u>314</u>	<u>16.2<math>\pm</math>13.7</u>
<u>16 May 14</u>	<u>Polygons</u>	<u>73°09'</u>	<u>80°00'</u>	<u>360</u>	<u>16.9<math>\pm</math>12.8</u>
<u>17 May 14</u>	<u>Scattered willows 1</u>	<u>73°10'</u>	<u>79°54'</u>	<u>356</u>	<u>16.3<math>\pm</math>7.5</u>
<u>18 May 14</u>	<u>Plain, hummocks</u>	<u>73°10'</u>	<u>79°55'</u>	<u>399</u>	<u>25.1<math>\pm</math>11.2</u>
<u>12 May 15</u>	<u>Polygons</u>	<u>73°09'</u>	<u>80°00'</u>	<u>236</u>	<u>25.3<math>\pm</math>13.1</u>
<u>15 May 15</u>	<u>Scattered willows 2</u>	<u>73°09'</u>	<u>79°56'</u>	<u>123</u>	<u>27.0<math>\pm</math>9.3</u>
<u>16 May 15</u>	<u>Scattered willows 1</u>	<u>73°10'</u>	<u>79°54'</u>	<u>149</u>	<u>26.8<math>\pm</math>9.0</u>
<u>17 May 15</u>	<u>Large willow patch</u>	<u>73°10'</u>	<u>79°49'</u>	<u>130</u>	<u>34.9<math>\pm</math>7.9</u>
<u>18 May 15</u>	<u>Slope, hummocks</u>	<u>73°09'</u>	<u>79°56'</u>	<u>140</u>	<u>29.3<math>\pm</math>11.5</u>
<u>19 May 15</u>	<u>Plain, hummocks</u>	<u>73°10'</u>	<u>79°55'</u>	<u>123</u>	<u>21.3<math>\pm</math>9.8</u>

Table 2. Some thermal characteristics of the snow pits studied in May 2015.  $R_T$  and  $\overline{k_{eff}}$  have SI units.

Values of  $\overline{k_{eff}}$  are ranked from lowest to highest. The lowest seven values are in bold and the highest 5 values are in italics. Pits dug in a thick drift are excluded from the ranking.

Pit name	Terrain type	Depth, cm	$R_T$	$\overline{k_{eff}}$	Rank
Herb 1	Polygon, low center	28	4.1	0.068	13
Herb 2	Polygon, low center	41	7.1	0.058	9
Herb 3	Polygon, low center	30	5.9	<b>0.051</b>	<b>5</b>
Herb 4	Polygon, high center	25	3.4	0.074	14
Herb 5	Polygon, high center	20	2.5	<i>0.081</i>	<i>16</i>
Willows D2b North	Near shrub	42	2.7	<i>0.155</i>	<i>19</i>
Willows D2b Center	In shrub	30	3.4	<i>0.088</i>	<i>17</i>
Willows D2b South	Near shrub	32	3.5	<i>0.090</i>	<i>18</i>
Willows D1b North	Near shrub	19	2.5	<i>0.076</i>	<i>15</i>
Willows D1b Center	In shrub	20.5	3.7	<b>0.056</b>	<b>7</b>
Willows D1b South	Near shrub	20.5	3.7	<b>0.055</b>	<b>6</b>
Willows 1	In shrub	38	9.2	<b>0.041</b>	<b>1</b>
Willows 2	In shrub	43	10.1	<b>0.042</b>	<b>2</b>
Willows 3	In shrub	40.5	8.6	<b>0.047</b>	<b>4</b>
Hummock 1G	Hill, hummock	30	5.0	0.061	11
Hummock 1D	Hill, hummock	12	2.8	<b>0.043</b>	<b>3</b>
Hummock 2	Hill, hummock	42	7.3	0.057	8
Hummock 3	Plain, Hummock	19	2.9	0.065	12
Hummock 4	Plain, Hummock	35	5.7	0.061	10
	<b>Averages</b>	<b>30.1</b>	<b>6.2</b>	<b>0.067</b>	
Drift 1	Drift	41	7.6	0.054	
Drift 2	Drift	88	8.6	0.102	

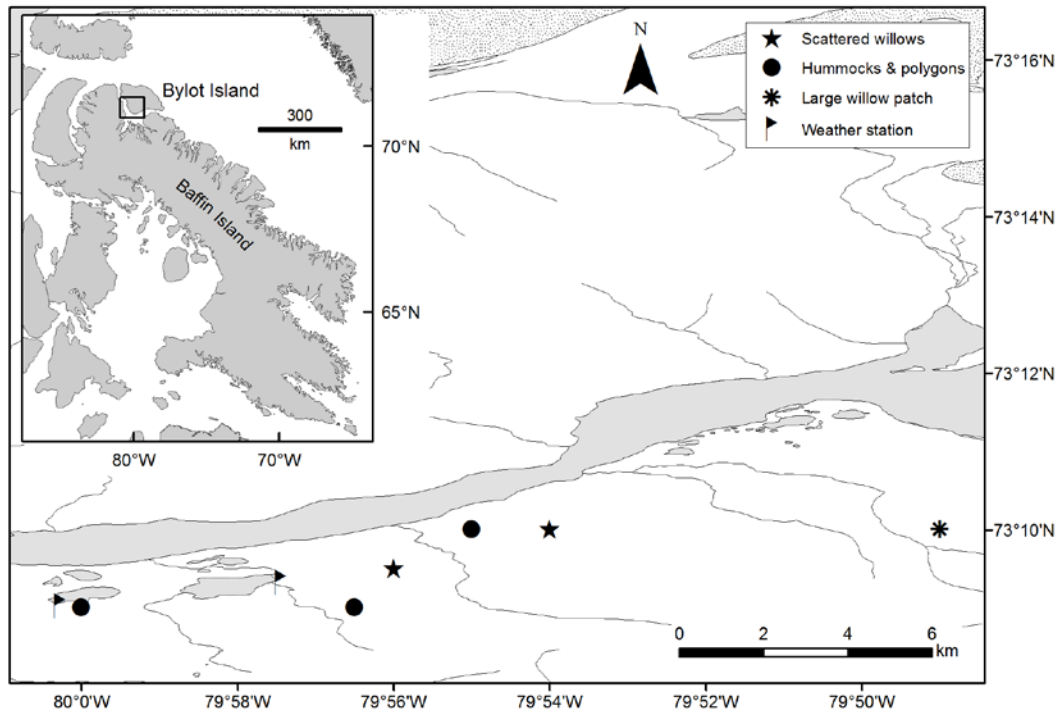


Figure 1. Map showing the location of our study sites in Qarlikturvik valley, in the south-west plain of Bylot Island, in the Canadian Arctic archipelago. ~~of parts of the Canadian Arctic Archipelago showing the position of Bylot Island, just North of Baffin Island. Our study site is on the south-west plain of the mostly mountainous Island.~~

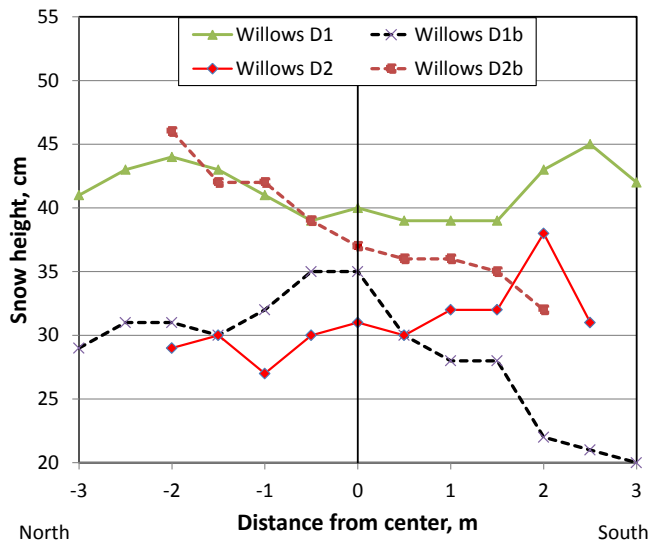


Figure 2. Effect of the presence of isolated bushes on snow height in May 2015. The origin is at the center of the bush. Snow height was then measured uphill (south, positive values) and downhill of the bush. The four bushes studied were given arbitrary names.



Figure 3. Photographs of snow trapping by willows in May 2014, [near the “scattered willows 1” site](#). Increased snow height caused by the presence of shrubs is obvious. On both pictures the contrast has been enhanced with a photographic modification software.

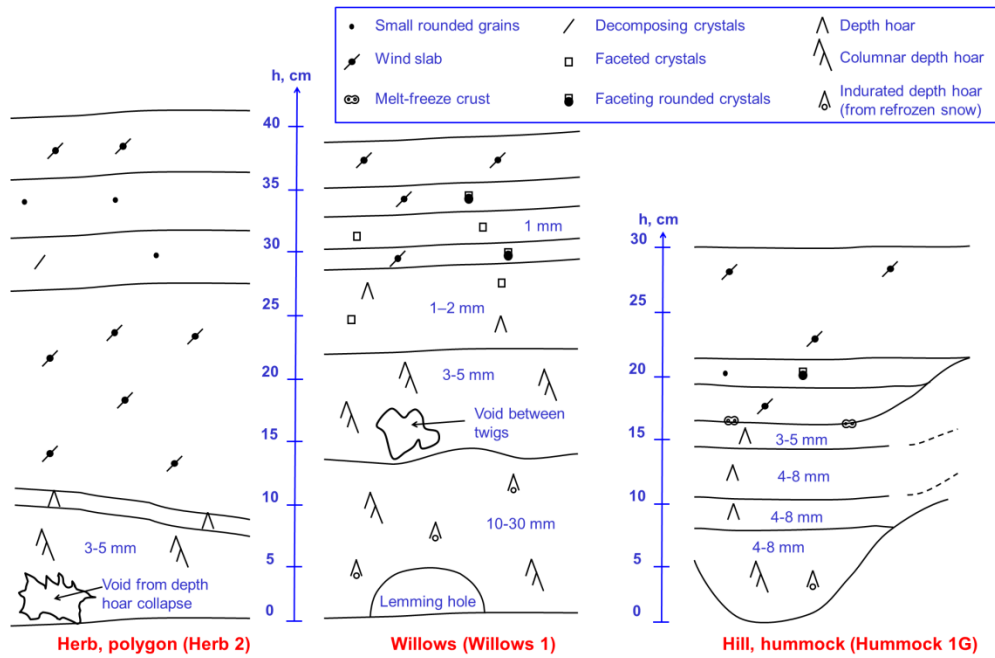


Figure 4. Simplified snow stratigraphy on herb tundra (polygons area), in the large shrub area, where shrubs reached 30 to 35 cm in height, and on the NW facing slopes with hummocks, in May 2015. Pit names are mentioned in parentheses (Herb 2, etc.) to allow correspondence with data in Table 2. The size (largest dimension) of depth hoar and faceted crystals is indicated. Grains in wind slabs and small rounded grains were in the range 0.2 to 0.3 mm. A new symbol is proposed for indurated depth hoar formed from refrozen snow layers.



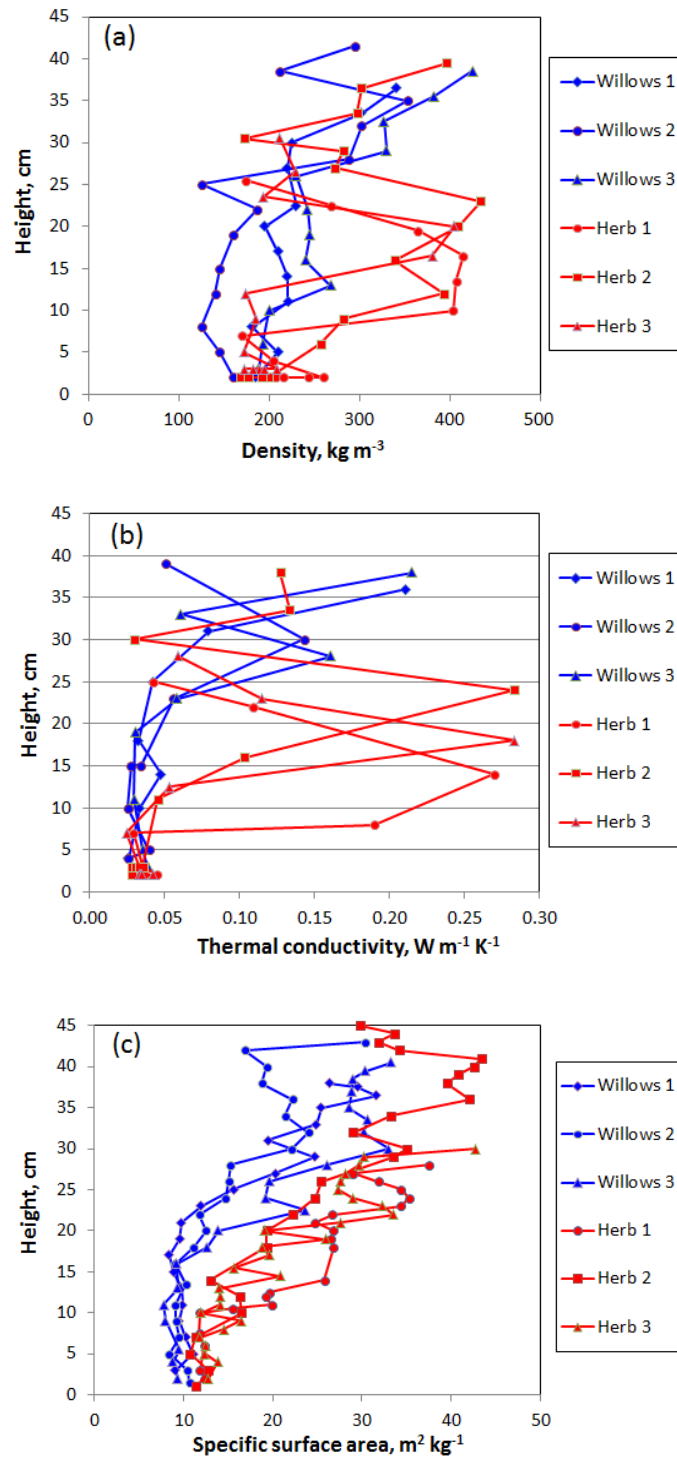


Figure 5. Comparison of physical properties of snow in three pits each in the large willow patch and on herb tundra. (a) Density; (b) thermal conductivity; (c) specific surface area. In the basal depth hoar, several measurements were sometimes made at the same height because of visible lateral variations.

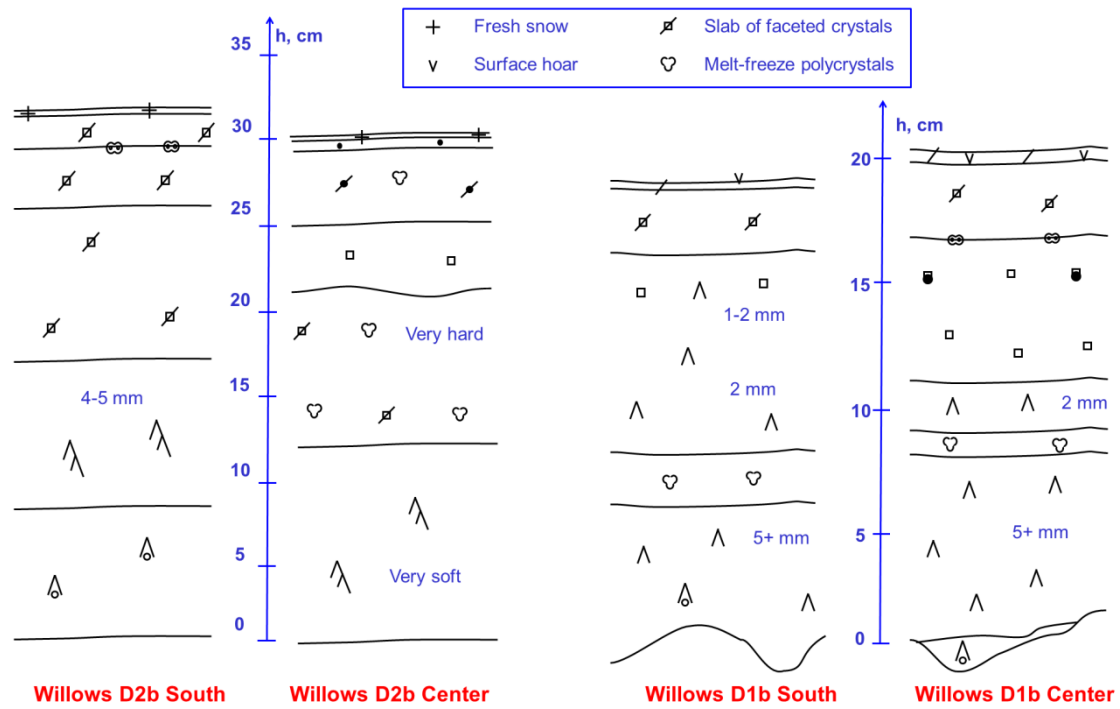


Figure 6. Simplified snow stratigraphy in isolated willow bushes. Two stratigraphies in the center of the bush and to the south (uphill) of bushes, about 1 m from the nearest shrub, are shown. Note the different vertical scales for both sites. The size (largest dimension) of depth hoar crystals is indicated. Only symbols not shown in Fig. 4 are explained.

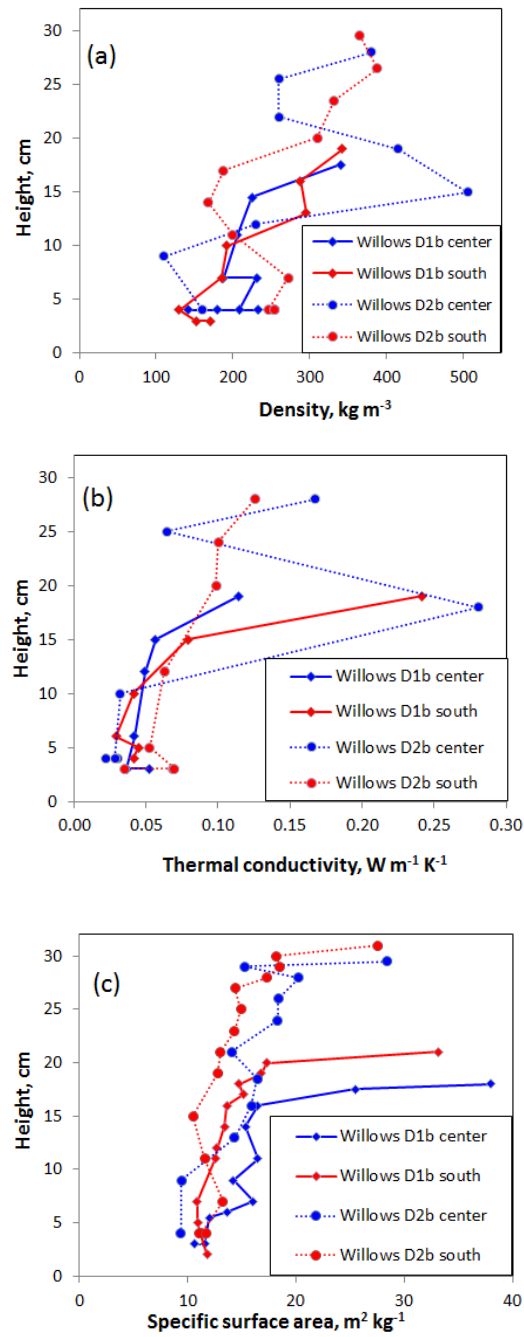


Figure 7. Physical properties of snow in isolated willow bushes (curves named “center”) and about 1 m uphill (“south”) of the bush. (a) Density; (b) thermal conductivity; (c) specific surface area. In the basal depth hoar, several measurements were sometimes made at the same height.

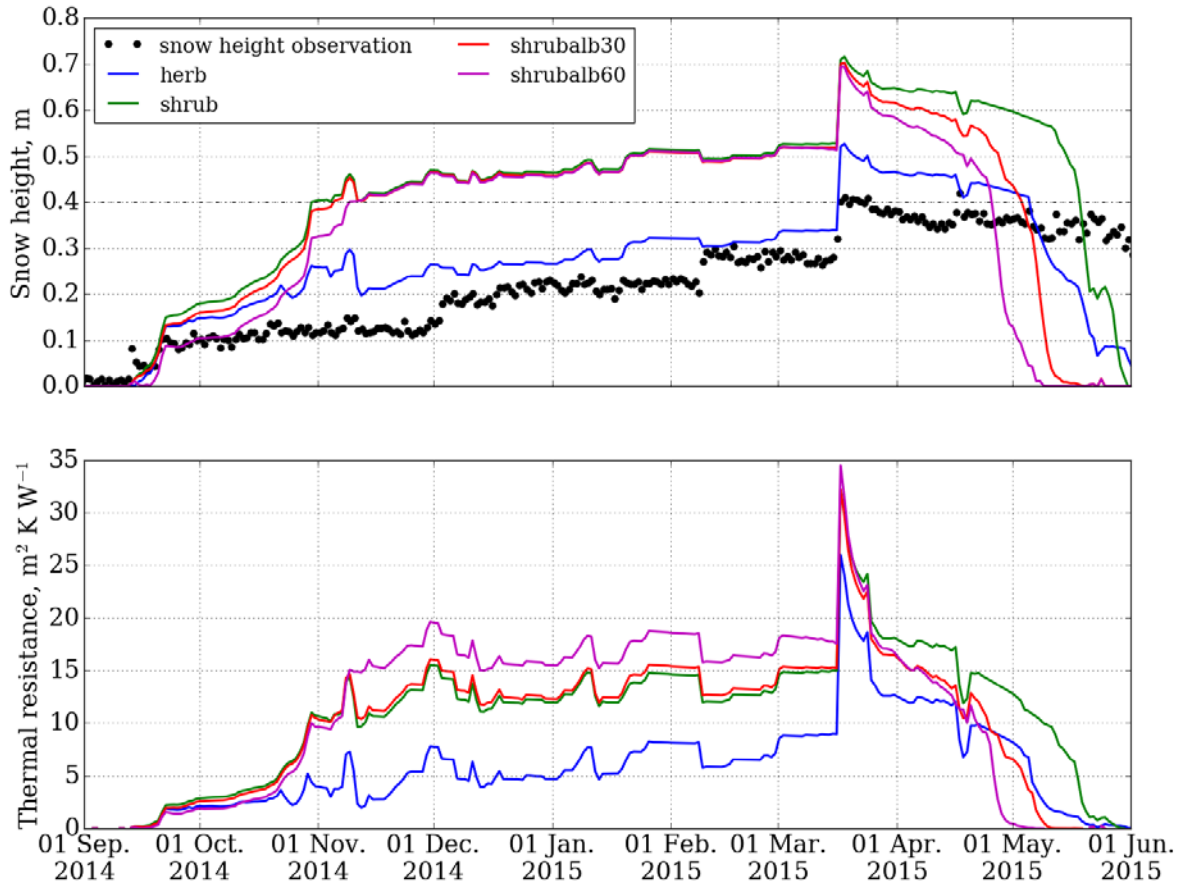


Figure 8. Simulation of the evolution of snow height (a) and snowpack thermal resistance (b) with the *herb*, *shrub*, *shrubalb30* and *shrubalb60* scenarios, for the 2014-2015 winter. Snow height monitored with an ultrasound snow gauge is also shown.

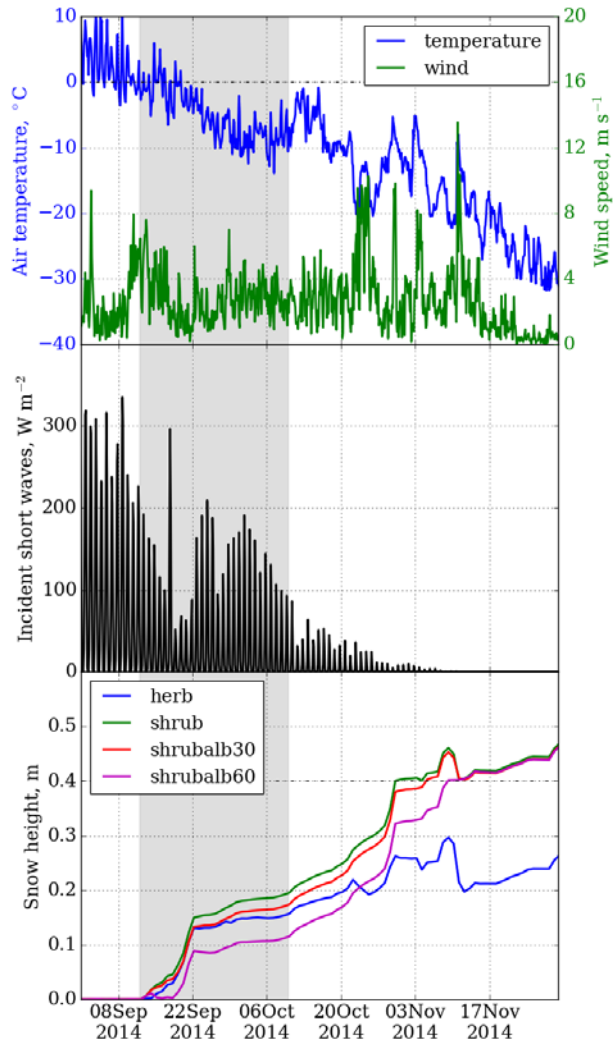


Figure 9. Air temperature, wind speed, incoming shortwave radiation and snow height in fall 2014. The shaded area indicates the period when snow is affected by albedo decrease.

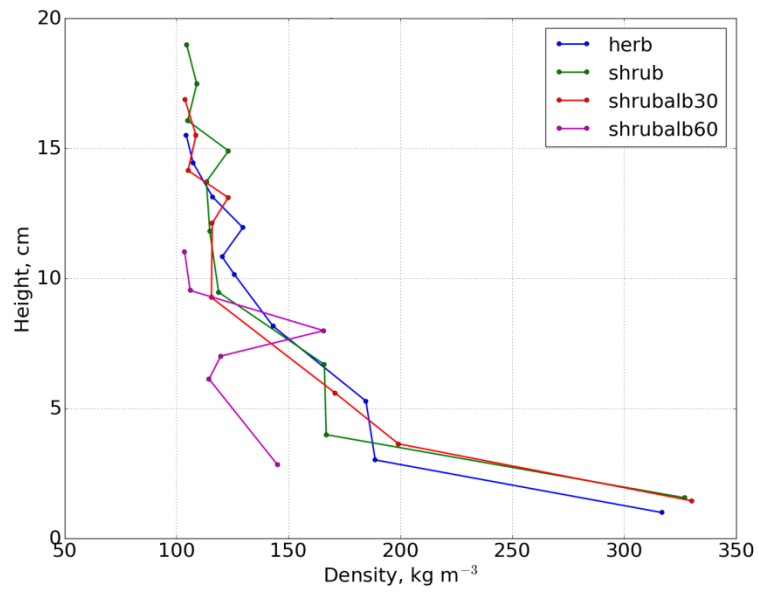


Figure 10: vertical density profiles simulated by Crocus on 10 October 2014, for the different scenarios. Densities shown are for the middle of the layers used by Crocus.

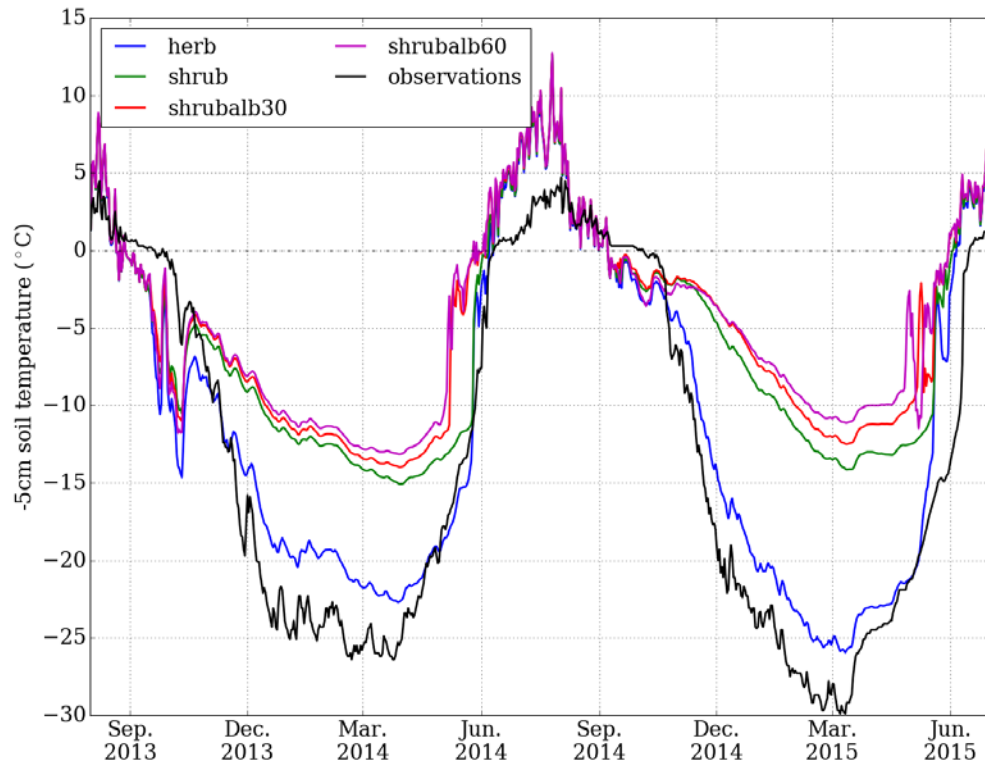


Figure 11. Simulation of ground temperature at 5 cm depth with the *herb*, *shrub*, and *shrubalb* scenarios, for the 2014-2015 winter. Measurement at our meteorological station, on herb tundra in a low center polygon area, is also shown for comparison.