

Geological nature of mineral licks and the reasons for geophagy among animals

Alexander M. Panichev¹, Vladimir K. Popov², Igor Yu. Chekryzhov², Ivan V. Seryodkin¹, Alexander A. Sergievich³, Kirill S. Golokhvast^{1,3,*}

5 ¹ Laboratory of animal ecology and protection, Pacific Geographical Institute, Far Eastern Branch of the Russian Academy of Sciences; 690041, 7 Radio street, Vladivostok, Russia, sikhote@mail.ru

² Far Eastern Geological Institute, Far Eastern Branch of the Russian Academy of Sciences, 690014, 159 100-letie Vladivostoku avenue, Vladivostok, Russia, chekr2004@mail.ru

³ Far Eastern Federal University, 690950, 8 Sukhanova street, Vladivostok, Russia

10

Correspondence to: Kirill S. Golokhvast (golokhvast.ks@dvfu.ru)

15

Abstract: In this paper, the reasons for geophagy (the eating of rocks by wild herbivores) in two regions of the Eastern Sikhote-Alin volcanic belt are considered. The mineralogical and chemical features of the consumed rocks, and also the geological conditions of their formation are investigated. A comparative analysis of the mineral and chemical composition of the consumed rocks and the excrement of the animals, almost completely consisting of mineral substances, is carried out. It is established that the consumed rocks are hydrothermally-altered rhyolitic tuffs located in the volcanic calderas and early Cenozoic volcano-tectonic depressions. They consist of 30–65% from zeolites (mainly clinoptilolites) and smectites, possessing powerful sorption properties. According to the obtained data, the main reason for geophagy may be connected with the animals' urge to discard excessive and toxic concentrations of certain elements that are widespread in specific habitats and ingested with forage plants.

20

Keywords: geophagy, volcanic rocks, zeolites, Sikhote-Alin.

25

1 Introduction

A new term, “kudur”, borrowed from the lexicon of Asian nomad tribes, is analogous to the archaic Russian term “animal salt lick” and defines a natural landscape complex featuring the outcrops of mineral soils, which are systematically consumed by animals and in some reasons by humans [Panichev, 2011; Panichev et al., 2013, Young, 2011]. The term “kudurites” emerged from “kudur”, and specifies all of the varieties of natural mineral soils consumed by animals in kudurs.

30

The majority of kudurs can be divided into two types - hydromorphic and lithomorphic [Panichev, 1990]. Hydromorphic kudurs are formed by running mineral water springs; specifically, clay rocks saturated with chemical elements become kudurites in a water discharge area. A lithomorphic kudur is an exposure of specific rocks that are actively searched for and consumed by animals. The reason why animals eat kudurites is not obvious in the majority of cases: this problem is still challenging and demands a comprehensive scientific explanation.

35

The importance of the kudurs and kudurites study becomes obvious if we recall that it is linked to the fundamental problem of the interaction of living systems with minerals (including minerals' contribution to the origin of life). This problem can be applied to the contemporary scientific fields of practical medicine, ecology, and animal breeding technologies.

40

The presence of kudurs, from the modern point of view, indicates the significance of certain unknown conditions (probably biogeochemical in nature) that are necessary to sustain herbivorous life in specific habitats. Kudurs are a very important constituent of many reserves, national parks and other protected areas. The most notable nature reserves containing kudurs that attract large numbers of hoofed mammals are the Yellowstone National Park in the USA and the Ngorongoro Conservation Area in Tanzania (Africa) [Panichev, 2011]. As we know, both of these parks border giant large calderas of late Cenozoic volcanoes.

45

Natural landscapes, including kudurs, are widely distributed within the territory of Eurasia, including Russia. The majority of such landscapes are located within protected areas. Extensive kudurs are known to be situated within the Caucasian State Biosphere Nature Reserve. There are also numerous kudurs in most of the reserves of the Altai-Sayan region, the western bank of Lake Baikal, and the Taymyr Peninsula, as well as in the Sikhote-Alin mountains.

This paper is written with the goal of introducing specialists with an interest in kudurs and geophagy to the results of the 2005-2008 and 2010-2012 detailed biological and geological research conducted within two areas of the Eastern Sikhote-Alin, Far East, Russia. We chose these two areas because they represent the typical geological-landscape situations associated with the appearance of kudurs in these volcanic mountains.

2 Materials and Methods

We were given permission to undertake sampling from the management of the Sikhote-Alinsky Biospheric Reserve. Confirmation was signed by the director of the reserve, Dr. Gorshkov D.G.

We chose Vanchinskaya, a rift-related coal-bearing basin near the intersection of the Milogradovka and Ussuri Rivers (the south-eastern part of the Primorsky region (Fig. 1, area №1), as well as the Solontsovsky palaeovolcano in the Sikhote-Alin biosphere nature reserve (the north-eastern part of the Primorsky region (Fig. 1, area №2) as examples of typical structures for this detailed research.

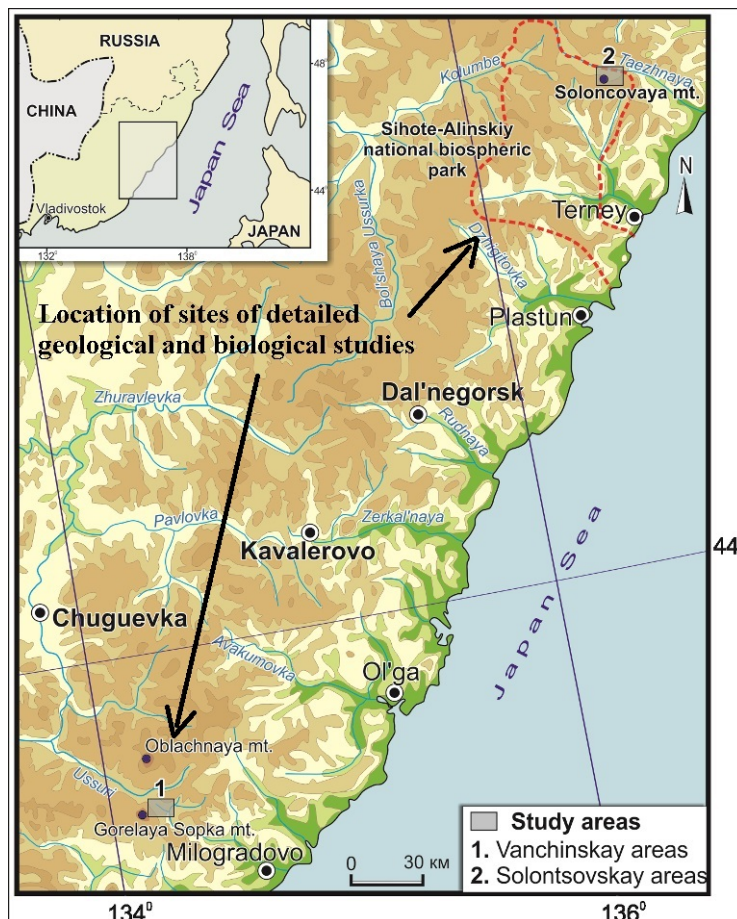


Figure 1. Location of sites of detailed geological and biological studies around the Vanchinsky coal-bearing basin (area №1) and in the area of the Solontsovsky palaeovolcano (area №2)

In studies of kudurs and kudurites, we are dealing with objects that have both a biological and geological content at the same time; thus, their effective study is possible only by adopting interdisciplinary approaches that bring together the efforts of biologists and geologists, specifically volcanologists, petrologists and geochemists. This explains the specific combination of the general biological approaches with the common geological methodologies and approaches in this work.

75 During the fieldwork, we studied the landscape peculiarities of the kudur complexes and surrounding territories, and collected kudurites and the parental rocks along which they form as well as coprolite (lithified animal excrement) samples. The collected rock samples and coprolites were studied and tested in the laboratory.

Thin sections were cut from the collected rock samples that were then studied under a polarized optical microscope in the Geochemical Laboratory of the Far Eastern Geological Institute, Far Eastern Branch of the Russian Academy of Science.

80 Fifty samples of rocks and two samples of coprolites (the Vanchinsky coal-bearing basin (area №1) and in the area of the Solontsovsky palaeovolcano (area №2)) were analyzed in the analytical centre of the Far Eastern Geological Institute by inductively coupled plasma mass spectrometry (ICP-MS) using an Agilent 7500 instrument and by X-ray phase spectroscopy (principal investigator, N.V. Zarubina). Eight samples from the Solontsovsky area and two from the Vanchinsky area were sent to the Mineral Crystal Chemistry Laboratory of the Belov Institute of Geology of Ore Deposits (Russian Academy of Science) to determine their quantitative mineral composition. The mineral structure of unknowns was diagnosed by comparing the experimental and reference spectra from the PDF-4 database using the software package Jade-6.5 (MDI Company). The quantitative analysis was carried out using the absorption coefficient method described elsewhere [Pushcharovsky, 2000]. A Rigaku D/Max-2200 diffractometer was applied (investigator, V.V. Krupskaya).

90 Finally, ten kudurite samples and two coprolite samples were studied under a Hitachi S-3400N electronic microscope with a Thermo Scientific energy-dispersive system at the Far Eastern Geological Institute (Far Eastern Branch of the Russian Academy of Science).

3 Results and discussion

3.1 Landscape characteristics of the research areas

95 The Vanchinskaya coal-bearing basin is situated near the division watershed of the Sikhote-Alin range of mountains. The majority of this area is located in the Vanchin-Ugolnyi river valley (right tributates of the Milogradovka River). In terms of relief, the Vanchinskaya basin is a wide and relatively flat basin, approximately 15 km long with an average width of 5 km. To the north and north-west, this basin is adjacent to the Berezovskaya coal-bearing basin situated in the Ussuri river floodplain to the south of Mount Oblachnaya, one of the highest peaks of the Sikhote-Alin range. The basins are divided by a modest watershed area with a relative height of approximately 100 m (the absolute height of the swell is approximately 600 m). To the south-west, the Vanchinskaya basin is bound by a tectonic scrap, well-defined in relief, with an average height relative to the bottom of the basin of approximately 500 m. The maximum elevation of the scrap is 1471 m (Mount Gorelaya Sopka).

105 Remnants of the Solontsovsky palaeovolcano are situated on the eastern slope of the Sikhote-Alin, within the borders of the Terneisky administrative district in the Primorsky region. The total area of the lithocomplexes related to the Solontsovsky palaeovolcano is approximately 300 km², of which two-thirds is situated on the right bank of the Tayozhnaya River in the Sikhote-Alin State Biospheric Reserve.

110 The Solontsovsky palaeovolcano does not stand out much in relief. It builds up a modest low mountain range on the eastern slopes of the Sikhote-Alin range with elevations from 400 to 1100 m. Mount Solontsovaya has the highest elevation of the volcanic remains (1160 m).

115 More than 90% of the territories under consideration are occupied by forest, with significant vertical zoning. Up to 600 m in elevation, cedar and broad-leaved forests of Korean pines (*Pinus koraiensis*) and Mongolian oaks (*Quercus mongolica*) prevail. Fir-spruce forests dominate the mountain slopes in the elevation interval from 600 to 1000 m. At elevations above 1000 m, stone birch forests take over, followed by sub-alpine type shrubs. Larch and birch-larch forests prevail in the flat watershed areas close to the Vanchinskaya basin.

Brown mountain-forest soils and brown taiga illuvial-humic strongly skeletal acidic soils are typical for the described areas. The soil profile is morphologically poorly differentiated into genetic horizons. Frequently, one can find localities with rock slides or crushed stone soil that are almost devoid of humus.

120 The typical species of herbivorous hoofed animals inhabiting both study areas are the Far Eastern red deer (*Cervus elaphus*) and the musk deer (*Moschus moschiferus*). Roe deer (*Capreolus pygargus*) are seasonally present (making sharp seasonal migrations into the territory). Of these, the main visitor to the kudurs is the Far Eastern red deer. Roe deer make extremely rare visits to the kudurs. Musk deer show no intention of visiting the kudurs, which is undoubtedly connected to nutritional differences among these herbivorous animals. It is

125 known that the musk deer diet is dominated by epiphytes, whereas the Far Eastern red deer prefers herbaceous plants and shrubs. Thus, it is obvious that the kudurs are visited by those animals that have a closer connection with bedrocks.

Not long ago, before the 1980s, an additional species of hoofed animal inhabited the territory of the Solontsovsky palaeovolcano and actively visited kudurs: the moose (*Alces alces*). Currently, there are no moose in this area, possibly due to the shift in the habitat borders of this species to the north in response to the
130 general trend of climate warming in the region.

Apart from hoofed animals, the blue hare (*Lepus timidus*), squirrel (*Sciurus vulgaris*), northern pika (*Ochotona mantchurica*) and mouse-like rodents (mice, field voles) also not infrequently visit kudurs, leaving distinctive teeth marks on the stones. Figure 2 shows a distinctive sample of exposed bedrock with the teeth marks of a mouse-like rodent, gathered from one of the kudurs in the Solontsovsky volcano area.
135

Kudurs, because they are gathering sites for hoofed animals, often attract large predators. These are most commonly brown bears (*Ursus arctos*), sometimes tigers (*Panthera tigris*), and, rarely, wolves (*Canis lupus*). As demonstrated by our group's research [Zaumislova et al., 1990] and the data of Kaplanov (1948) [Kaplanov, 1948], and as reported by a number of the reserve employees in the "Nature Chronicles", the
140 season in which animals visit kudurs is the entirely snow-free period of the year. The greatest peaks in visits by hoofed animals occur at the end of spring/beginning of summer and at the end of summer/beginning of autumn. At peak times, the number of kudur visits by animals can be dozens per 24 hours. During a visit to a kudur, a medium-sized Far Eastern red deer usually consumes between several hundred grams to several kilograms of kudurite.

Our field studies as well as the materials of our predecessors show that, in both areas under consideration, there are kudurs that are almost entirely of the lithomorphic type. As a rule, these are relatively dry rock exposures emerging on mountain slopes of various steepness that were created as a result of natural slope erosion processes and the activity of hoofed animals. Sometimes these sites are rock slides with small areas of exposed stone, showing evidence of consumption by animals in the form of recess saltlick niches in the rock and a peculiar
145 network of approach paths maintained by the animals over an extended period. The typical appearance of the kudurs occurring in the studied territories is shown in Figs. 3, 4, and 5.
150

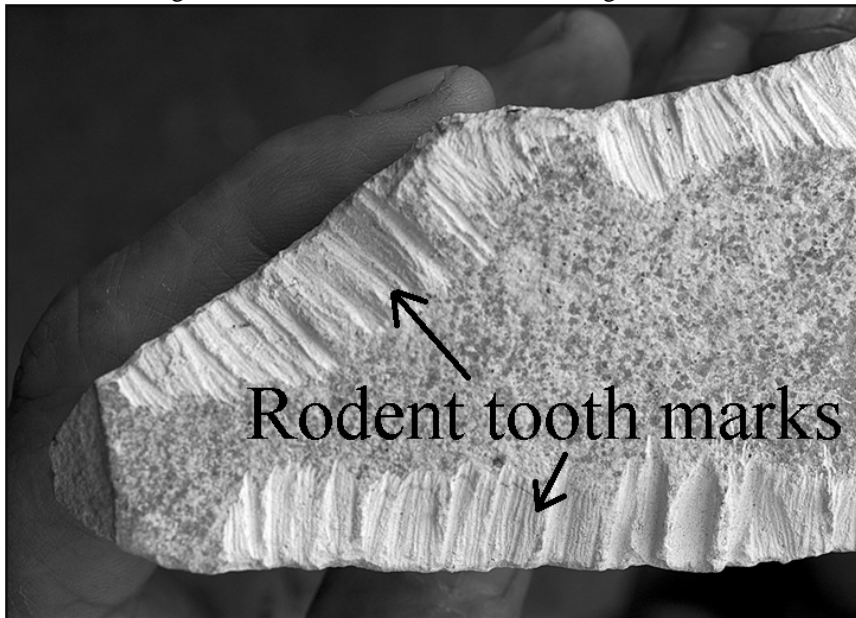


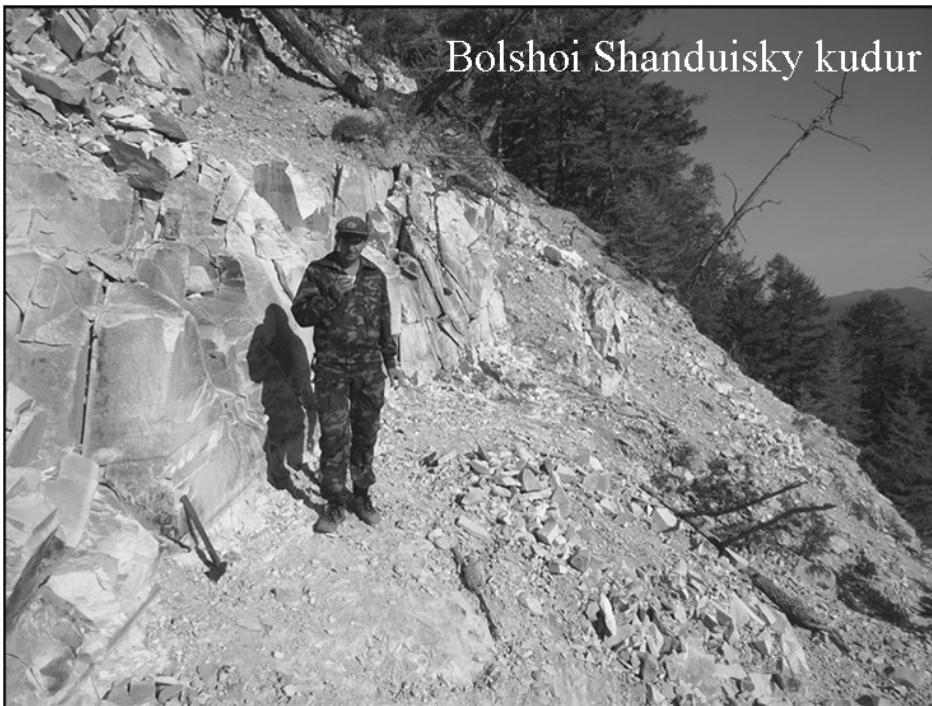
Figure 2. Rodent tooth marks on a dense zeolitic rhyolite tuff. Sample from a kudur in the Chetvertyi stream basin (the Solontsovsky palaeovolcano area).

155



Figure 3. Zeolitic rhyolite tuffite exposure with the marks of active usage of rocks by wild animals (kudur №9, the Vanchinskaya coal-bearing basin).

160 It should be emphasised that the kudurs in both areas under consideration are known to have existed for a very long time. The largest of them, for example, on the southern slope of Mount Solontsovaya, (Figs. 4, 5), have existed almost intact for several hundred years.



165 Figure 4. The Bolshoi Shanduisky kudur at the base of Mount Solontsovaya, at the head of the Malyi Solontsovyyi stream on a bedrock exposure of the Solontsovsky palaeovolcano caldera sediment. Animals actively eat loosened, weathered and partly clayed landwaste of zeolitic ash tuff and tuffites of rhyolite composition (Dr. Seryodkin I.V. on photo).



170

Figure 5. View of Mount Solontsovaya from the south (source: Google Maps). At the base of the mountain, kudur № 3 (Bolshoi Shanduisky) appears as a white spot.

175

An indirect form of evidence that kudurs have existed for centuries may be the nearby presence of archaeological sites with peculiar artefacts. Such a site from the Stone Age, that contained numerous hunting arrows and spear heads, was found in the wellhead part of the Vanchin-Ugolnyi stream (Fig. 6). Such sites also exist in the Solontsovsky palaeovolcano area (Fig. 7). The majority of the archaeological sites date back to the late Palaeolithic or early Neolithic Age [Kononenko, 1993].

180

Archaeologists explain ancient man's interest in both territories under consideration as being based on the presence of strongly silicified volcanic rock that was convenient for manufacturing stone implements. It is logical to suppose that these areas also attracted ancient man to go there to hunt the hoofed animals that were visiting the kudurs.

185

We believe that the lifespan of some kudurs may amount to thousands and even tens of thousands of years; as a matter of fact, these can be time periods of geological scale, during which the given territory was inhabited by large hoofed animals. The lifespan of small kudurs is less significant. The length of their life depends, first, on geological and geomorphological (bulge forming) factors determining the exposure of zeolite-containing rock and, second, on the convenience for wild animals to visit these sites.

190

The bedrock of a kudur has light, yellowish, greenish or pinkish colours. They are often covered with dark crusts and crystal dendrites of iron and manganese oxide. Outcrops are disintegrated by cracks throughout the stratum. Separate blocks of exposed rock, especially in the radical part of the trees, are often transformed into a loose, grainy mass that resembles halva when in a flooded state and appears off-white with different shades of impure dust and a sandy element when in a dry state. Derived secondary kudurites enriched with clay matter can form at the base of bedrock exposures where edge water exudes; they form specific mud and clayed grounds that are "stomped" by the animals with licked deepenings, which appear as a result of the animals licking the clay rocks. Often, there are layers containing the fossils of plants, some of which are coalificated, in Vanchin kudurites.

195

3.2 Brief geological characteristics of the research areas

200

In the late Cretaceous and Cenozoic, the continental blocks of Sikhote-Alin were affected by rifting and magmatism [Otofuji et al., 1995, 2002]. A prominent episode of ignimbrite volcanism took place in the late Cretaceous (Turonian to Campanian; ~90-75 Ma) and in the first half of the Paleogene (Paleocene-Eocene; ~65-45 Ma) [Grebennikov et al., 2014].

205

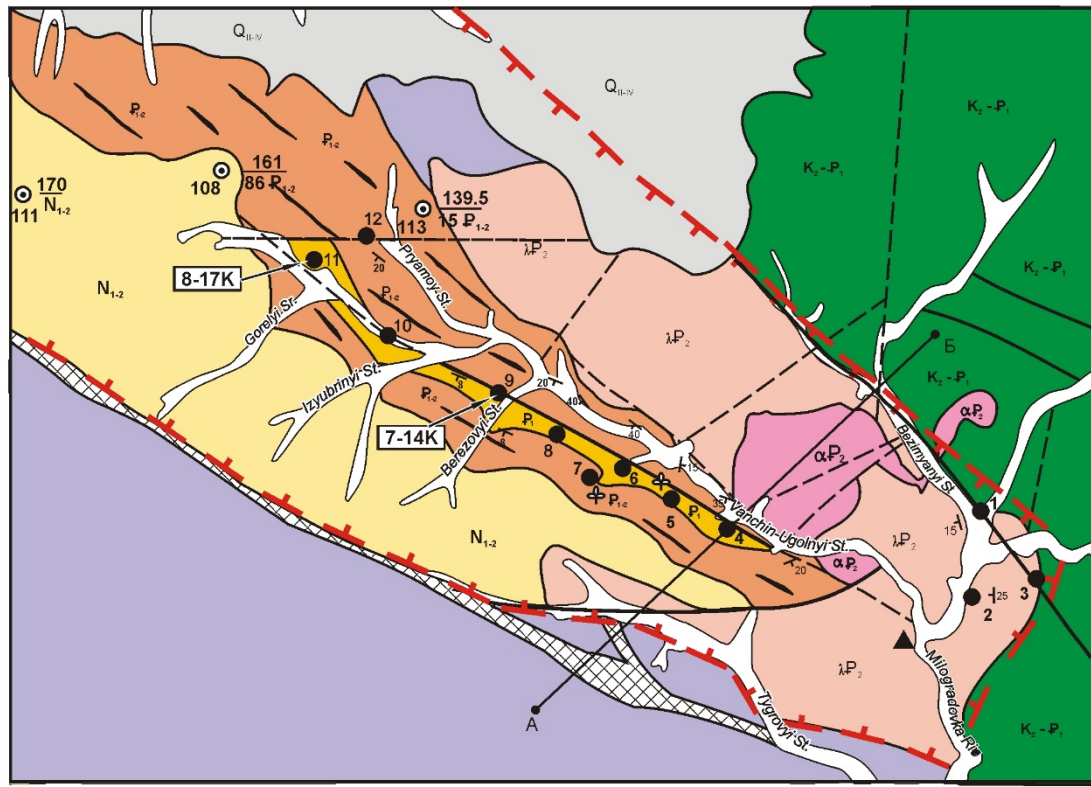
The former period of time (~90-75 Ma) is characterized by a thick plateau of ignimbrites of so-called Primorskaya formation, which is a part of the Sikhote-Alin volcanic belt. The Primorskaya formation is subdivided into tuffs, rhyo-dacitic and rhyolitic ignimbrites, which were formed due to caldera eruptions from

shallow felsic magma reservoirs. The distinctive feature of the ignimbrites is a high content (40-60%) of crystal clusters of quartz and a plagioclase up to 1 cm in size. Dark-coloured minerals are biotite and hornblende. Accessory minerals are magnetite and, rarely, apatite, zircon and allanite. Intrusive analogues of the plateau ignimbrites are granites of the Primorskaya formation, which are outcropped at eroded volcanic centres. They belong to calc-alkaline and alkaline rock series. On the upper crust normalized trace element diagram they show distinct minima of Nb, Sr, Zr, Ti and maxima of K, Th, La and Ce. According to the discrimination diagram of granitic rocks [Pearce et al., 1984] the granites and ignimbrites of the Primorskaya formation fall into the fields of the volcanic arcs and syn-collision granites [Popov et al., 2006; Grebennikov et al., 2014].

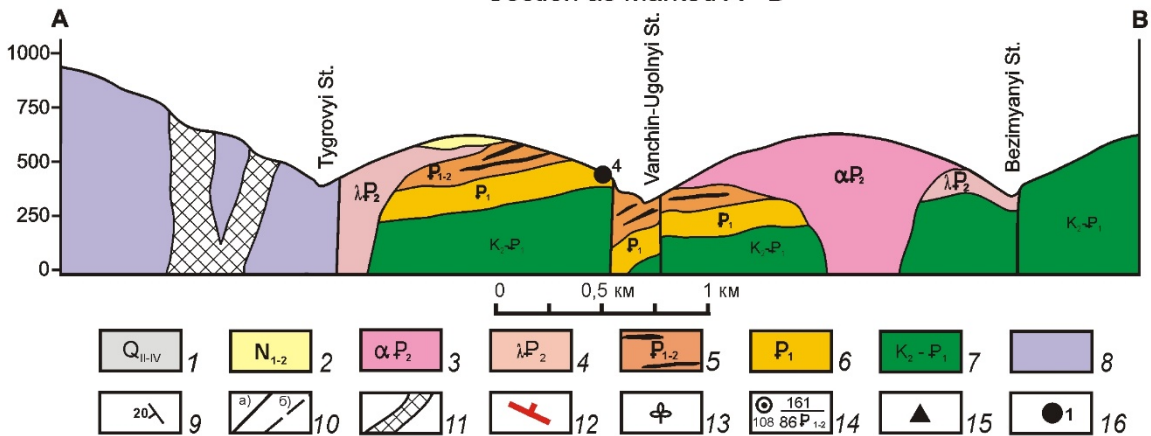
In the latter period of time (~65-45 Ma), rift structures of the EW and SE-NW orientation formed. Sediments in the rift depressions are often coal-bearing. Igneous formation of this age is located within the depressions and calderas. It is represented by basalts, ignimbrites, baked tuffs, volcanic glasses and rhyolites (often in the form of extrusive domes) of the Yakutinskaya, Solontsovsky and Buinskaya volcanic structures and Bogopolsky granitic complex (Fig. 1). The orientation of the magma conduits in concordance with the rift orientation testifies to the conditions of continental extension. The youngest depressions (e.g., the Vanchinskaya (Fig. 1), Zerkalnensky and Kraskinsky depressions) were formed ~47-45 Ma as dated by coeval fissure eruptions of basalts and rhyolites [Chekryzhov et al., 2010].

3.3 History of the Vanchinskaya coal-bearing basin formation

The Vanchinskaya coal-bearing basin, in accordance with the State Geological Survey stratigraphic scheme accepted in the 1960s, is filled by the Eocene volcanogenic coal-bearing sediments and the Oligocene and Miocene volcanic formations. Volcanics intercalated with aquifer sediments are highly altered to zeolite-rich rocks. The highly altered zeolite-bearing rocks were recorded within unconfined aquifer layers of volcanogenic sediments. At the end of the 1980s, Seredin, a researcher from the Institute of Geology of Ore Deposits of the Russian Academy of Science, discovered coal layers with a high concentration of rare earth elements [Seredin, Shpirt, 1999] while studying the geochemistry of Vanchinskaya basin coal.



Section as marked A - B



235 Figure 6. Geological map and transverse cross-section of the Vanchinskaya coal-bearing basin: 1—Quaternary deposits; 2—Eocene conglomerates and sandstones; 3—Eocene trachyandesites and trachydacites; 4—Eocene rhyolites and rhyolite tuff; 5—Eocene carbon-rich terrigenous and volcano-sedimentary deposits (argillites, siltstones, sandstones, tuffaceous sandstones, conglomerates, sometimes with interbeds of brown coal and rhyolite tuffs); 6—Paleocene volcanogenic-sedimentary deposits (tuffaceous siltstones and sandstones with interbeds of rhyolite tuffs); 7—Upper Cretaceous to Palaeocene poorly defined undifferentiated formations (predominantly felsic to intermediate and mafic volcanic units); 8—pre-Mesozoic sedimentary and volcanogenic deposits (predominantly siltstones and sandstones); 9—dip and strike of rock; 10—faults: determined (a), assumed (b); 11—tectonic breccia zones; 12—assumed border of the basin; 13—sampled localities of fossilized flora; 14—shafts and drill holes; 15—archaeological site; 16—the most prominent kudurs.

240

245

Our research on the Vanchinskaya basin included stratigraphic investigation involving the study of palaeoflora imprints and palynological research. The data obtained allowed us to reconstruct the geological history of the Vanchinskaya basin along with the stages of its volcanism, the impact on sedimentation and the hydrothermal alteration [Chekryzhov et al., 2010]. As a result, we were able to define the geological patterns of kudur

250

formation and their position in the Vanchinskaya depression, and then we applied these patterns to the evaluation of other Sikhote-Alin territories.

255 According to our reconstruction, during the initial stages of its formation, the Vanchinskaya basin was a closed intermountain basin with a steep south-western tectonic wall and a gently sloping north-eastern wall. Such a structure could be considered as a half-graben. The lake basin within it was a major storage area for terrigenous and volcaniclastic sediments. The data obtained proves that the basin started to form in the Palaeocene (~65-50 Ma).

A large portion of the erupted material (volcanic ash and pumice) was stored in the lake basin, as evidenced by the interbeds of vitroclastic tuffs and volcanic sands deposited in the water.

260 Felsic magma eruptions from near-surface magma chambers ended approximately at 43 Ma in the form of a small extrusion of andesitic melt on the north-eastern bank of the basin [Chekryzhov et al., 2010]. Its fragments, including explosive tuff conglomerates, lava flows and extrusive bodies of glassy trachyandesites, were currently outcropped. The final stages of the bimodal (rhyolite and trachyandesite) volcanism were associated with intensive alteration to the rocks near the thermal springs along the northwest-striking faults. Glassy
265 volcanics in the regions around the thermal springs were metasomatically modified into smectite, zeolite and opal-rich rocks. Within the aquifers of the basin, the whole mass of tuffaceous and sedimentary rocks experienced strong hydrothermal alteration. Postvolcanic processes were responsible for the formation of gold and silver ores at the Soyuznoe deposit within the Soyuznensky palaeovolcano (north-eastern side of the depression), as confirmed by the K-Ar dating of the adularia from quartz-adularia veins with gold and silver mineralisation [Tomson et al., 2002].

270 Final relief-forming processes took place between the late Miocene and the Pleistocene. This was especially true for the areas of the junction of major ridges and the sublatitude-oriented tectonic zones. The Milogradovskaya tectonic zone is an example.

275 The changes in relief were accompanied by a shift of the main divide of the Sikhote-Alin range and reorganization of the drainage pattern of the Ussuri River [Korotkiy, 1968]. As a result, the terraces of the Vanchin-Ugolnyi palaeovalley were “hanging” on the modern valley walls (50 m high and more), creating a specific intermittent structural bench that is located 300 m away from the modern stream (Fig. 6). This bench enabled the exposure of zeolite- and clay-bearing rocks along the volcanic and sedimentary deposits at the right wall of the valley. Some of those exposed areas were formed by specific kudur landscapes.

280

3.4 Geology and study history of the Solontsovsky volcano

In 1971, Bykovskaya was the first to identify the tuff mass of rhyolites with horizontal volcanic and sedimentary deposits in the middle current of the Tayozhnaya River as a separate stratigraphic unit called the
285 “Solontsovskaya unit”. As a result of further geological investigations in this area [Vetrennikov, 1976], it was discovered that the rocks in that mass represented the ruins of a volcanic structure (Fig. 7) that had been called the “Solontsovsky palaeovolcano or calders” by Vetrennikov.

290 According to V.V. Vetrennikov [Vetrennikov, 1976], the Solontsovsky volcano began to form 80 Ma. The first data obtained via the K/Ar dating of volcanic rocks indicate a younger age of 61-56 million years [Panchev et al., 2012].

The basement of the palaeovolcano is composed of coarse tuff conglomerates bedded with agglomerated rhyolitic tuffs. During subsequent caldera-forming stages of the volcanism, these were covered by an extensive layer of welded rhyolite tuffs and ignimbrites. Residual hills of these layers remain in the highest parts of the structure where the Zabolochennaya and Tayozhnaya rivers divide. Within the caldera, there is a rock mass on
295 the bed of the ignimbrites; these rocks could have been created in the lacustrine environment of the caldera’s central part fed by multiple thermal springs.

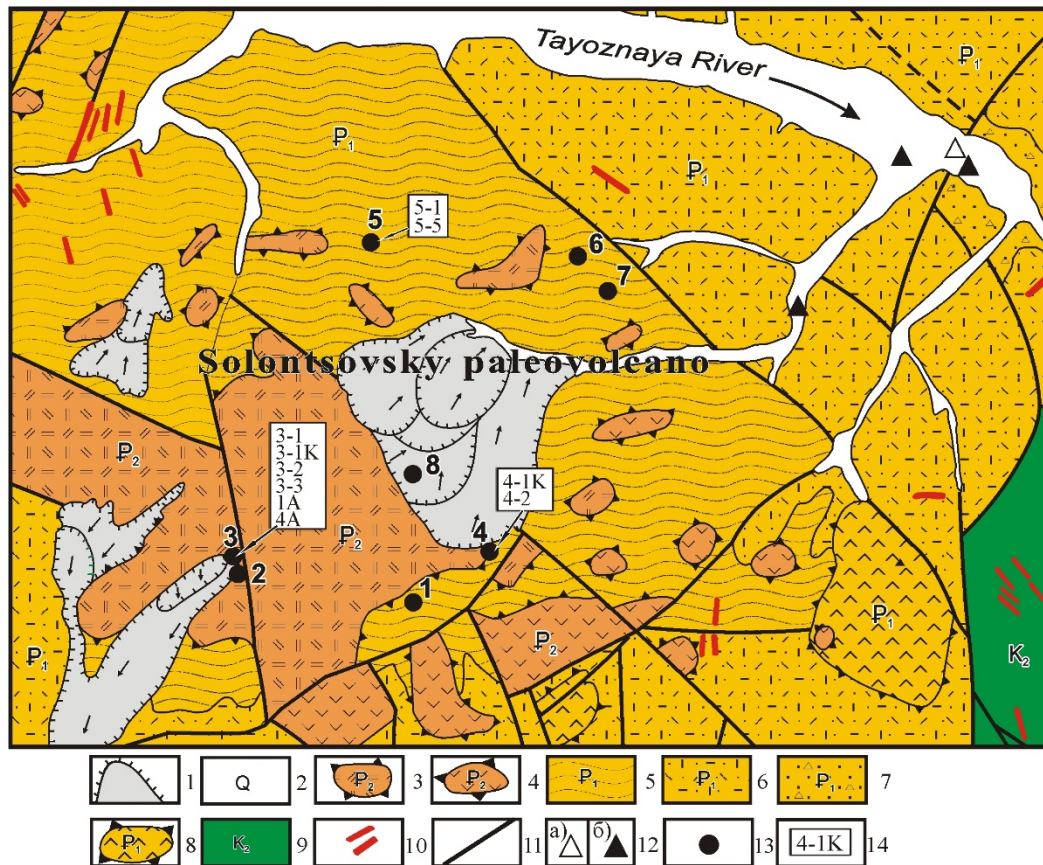


Figure 7. Geological scheme of the Solontsovsky palaeovolcano (Korolev, 1973, with additions): 1—undivided Quaternary landslide deposits (arrows mark the direction of the slide motion); 2—Quaternary alluvial deposits (sands, clay, gravels); 3-4—Eocene extrusive bodies of trachyrhyolites (3) and dacites (4); 5-7—Palaeocene volcanogenic and volcano-sedimentary formations of the Solontsovskaya unit: pelitic and psammitic tuffs of rhyolites with plant detritus, tuffites, tuff siltstones, tuffaceous sandstones with layers of banded silicites of the upper subunit (5); ignimbrites and welded tuffs of rhyolites, psammitic tuffs of rhyolites of the transitional subunit (6); ignimbrites and psephitic and psammitic tuffs of rhyolites, lower subunit tuffites (7); 8—Palaeocene andesite; 9—tuffs, tuffites, ignimbrites of the Primorsky Suite rhyolites, the Turonian and Santonian ages; 10— Eocene andesite subvolcanic bodies and dikes; 11—faults; 12 – archaeological sites of the Bronze (a) and Mesolithic ages (b); 13—kudurs; 14—sampling localities.

The upper subunit of stratified deposits consists of lacustrine and caldera formations. The rocks are primarily thin re-deposited dust tuffs, sometimes tuffites, created in water with subsequent diagenetic alteration of the volcanic glass particles. All kudurs examined in the area turned out to be confined to that upper subunit of the Solontsovskaya unit, namely to light grey, white or yellowish zeolite-bearing rhyolitic tuffs (mostly ash tuffs, sometimes with layers of tuffites).

3.5 Mineralogy and petrography of kudurites

According to X-ray diffraction analysis (Table 1), all kudurites and their source rocks have a substantial content of zeolites (35-65%). Apart from zeolites, kudurites contain clay minerals (up to 26%) as well as different types of silica (tridymite, cristobalite, quartz; 3-25%) and traces of feldspars, actinolite and goethite.

The mineral compositions of all kudurites within the Vanchinskaya basin is identical with 40-70% of zeolites being the heulandite and clinoptilolite types, occasionally with the addition of mordenite and stilbite, and clay minerals of the smectite group (up to 40%) with traces of quartz and feldspar. One of the kudurite samples contained a significant addition of adular along with the zeolitic vitroclastic tuffs. Another sample, collected where zeolitic tuff siltstones are in direct contact with a coal layer, also exhibited kaolinite-chlorite alterations.

The zeolites from the Shanduyskiy site (see Table 1) mostly contain clinoptilolite. Some samples contain rare minerals such as barrerite and holmquistite.

Table 1. The results of the quantitative X-ray phase analysis of kudurites and source bedrock.

samples	zeolites					clay rock			other minerals						
	clinoptilolite	mordenite	barrerite	holmquistite	scolecite	montmorillonite	illite	tridymite	crystaline silica	orthosepotash feldspar	sodium feldspar	actinolite	maghemite	goethite	
3-1	45,4	–	–	–	–	32,6	–	–	1,0	1,8	9,1	2,1	–	–	–
3-1K	40,2	–	–	–	–	25,7	3,5	4,1	3,4	1,5	7,6	8,2	–	–	–
3-2	47,8	–	–	–	–	31,1	1,0	–	1,0	1,7	5,5	5,7	–	–	5,1
3-3	52,2	–	–	–	–	10,8	3,2	–	2,4	1,5	8,7	7,1	11, 1	–	–
4-1K	35,4	–	–	–	–	9,0	5,3	–	–	26,3	7,1	10,2	4,1	2,6	–
4-2	17,5	–	14,4	16,2	–	7,4	1,0	–	–	17,6	7,5	18,4	–	–	–
5-1	–	3,5	–	–	–	94,3	–	–	–	2,2	–	–	–	–	–
5-5K	32,0	–	–	–	22,7	4,5	1,0	2,9	–	26,7	–	–	10, 2	–	–
7-14K	46,0	–	–	–	–	22,0	–	–	2,2	15,0	1,0	14,0	–	–	–
8-17K	48,8	–	–	–	–	36,1	1,1	–	1,7	3,8	4,1	1,4	–	–	–

330 Note. 3-1–3-3—Bolshoi Shanduisky kudur: 3-1—vitric tuff in bedrock, white with yellowish shades, in places with numerous tiny black inclusions of ferrous and manganous oxide, 3-1K—the same disintegrated in deluvium (kudurite); 3-2—vitric tuff similar to tuff from the lower subunit; 3-3—vitric tuff similar to the tuff from a different horizon; 4-1K–4-2—kudur 4: 4-1K—disintegrated tuffite in deluvium (kudurite); 4-2—pelitic tuffite, debris on the ground; 5-1–5-5K—kudur Nechet: 5-1—opoka-resembling rock from bedrock deposit in the upper part of rockslide without any marks of consumption by animals, light, white colour with yellowish-brown shading, breaks into plates with shell-like fracturing; 5-5K—land waste and small debris of vitric tuff in the roots of a larch tree (kudurite). Vanchinskaya basin: 7-14K—disintegrated tuffite in the form of interbed at the bedrock exposure, which resembles halva (kudurite), kudur № 9; 8-17K—disintegrated vitric tuff at the outcrop (kudurite), kudur 11.

340 Barrerite is a zeolite rich in sodium; for example it is typical of altered ores of the Kamchatka gold-silver deposits [Andreeva, Kim, 2008]. The presence of holmquistite is difficult to explain because this rare type of lithium-rich zeolite is more typical for metasomatically modified Li-rich granitoids.

345 The highest concentration of zeolites was found in the rocks of the Bolshoi Shanduisky kudur. The visible thickness of the subunit related to intensively zeolitic rocks is at least 50 m (with a zeolite concentration of approximately 40-52 %). This suggests that the frequency of animal visits to kudurs is closely linked to the kudur's content of zeolites.

350 The study of thin rock sections facilitated a more accurate identification of the parent rock on which the kudurites had formed and the determination of a number of details about their secondary transformation. The predominant part of such rocks was originally determined as being vitric tuffs of rhyolite composition, pelitic, rarely psammitic in grain size, more often with an insignificant content of crystalloclasts. Zeolites were most actively developing on ashy particles of glass, often fully replacing them with microfelsitic aggregates, which are very clearly seen under a polarized microscope (Fig. 8a). Pelitic materials were most actively formed in the

interim between large ashy particles, replacing the thinnest matrix of cementing mass. In some areas, vitric tuffs with a high concentration of zeolites were fully transformed into a microfelsitic mass consisting almost completely of zeolite (Fig. 8b).

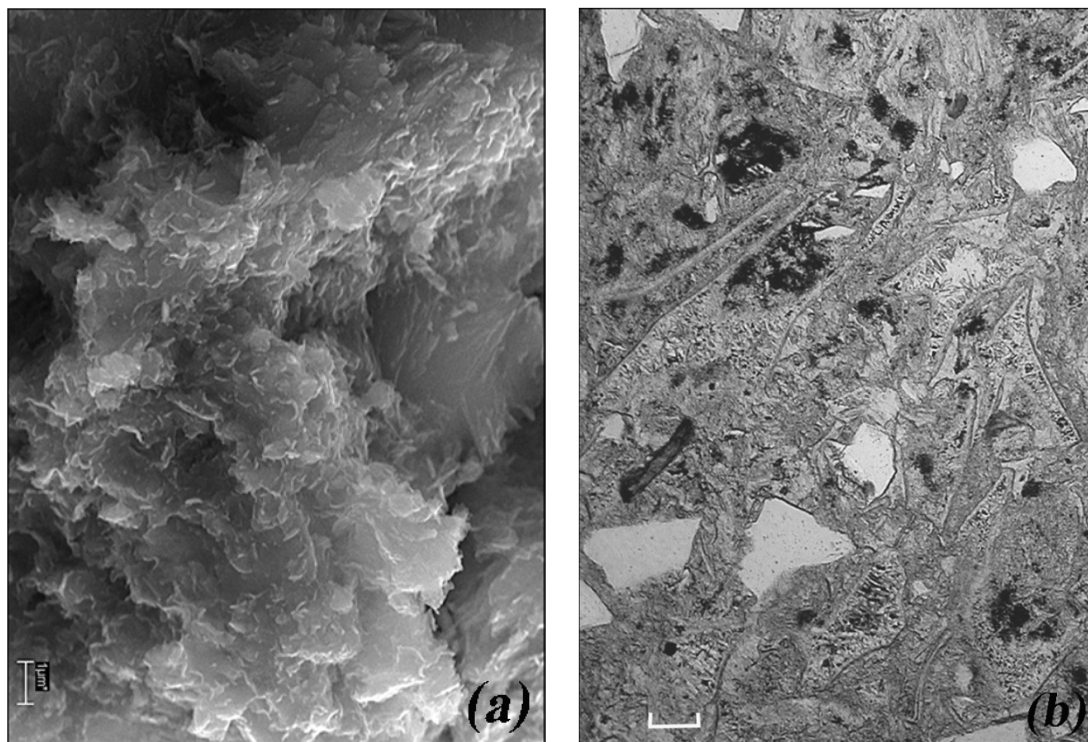


Figure 8. Zeolite microcrystals on glass:

- 360 a – sample 3-1 (vitric rhyolite tuff) under an electron microscope. There is a practically complete replacement of volcanic glass with zeolite-smectite aggregates. The dimension of scale is 1 μm .
 b – sample 4-2 (crystal vitric rhyolite tuff) under thin section. Zeolites are developed along the “hecks” of the volcanic glass. The dimension of scale is 50 μm .

365 3.6 Major and trace element composition of host rocks and kudurites

The volcanic rocks from which the kudurites are forming within the borders of the Vanchinskaya basin belong to the high-potassic dacite-rhyolite series. The obtained K/Ar dating on rhyolite (44.7 ± 1.0 Ma) [Chekryzhov et al., 2010] indicates their younger age compared to similar rocks from the Solontsovsky palaeovolcano. Zeolitic rocks (perlite and perlite tuffs) contain a much lower amount of alkalis compared to unaltered rhyolites and rock glasses. The chemical compositions of zeolitic perlite, perlite tuffs and tuffaceous sandstone from different parts of a transverse section of the volcano-sedimentary deposits are very similar.

370 Solontsovsky volcano rocks are represented by high-potassic rhyolites of the calc-alkaline series. Thin vitric tuffs in the upper part, including zeolitic variations, turned out to be close to the coarse tuffs and rhyolite ignimbrites in terms of their chemical composition (Table 1).

375 By comparing the data on volcanism and zeolite mineralisation in the Vanchinskaya basin and Solontsovsky palaeovolcano, it can be observed that the processes of zeolite formation in the studied volcanic masses, although different in terms of their morphology, geological structure and age, share a number of common features determined by the geochemical type of felsic explosive volcanism that has developed there.

380 The volcanic and tuffaceous sedimentary rocks of the basin are characterised by significant variations in their concentrations of trace elements (Table 2).

Table 2. Chemical (mass %) and microelement (micrograms/gram) composition of the studied kudurites' parent bedrocks and coprolites.

Element	Solontsovsky volcano	Vanchinskaya basin
---------	----------------------	--------------------

	2-1K	3-1K	3-3	3-2	4-1K	4-2	5-5	1A	4A	7-14K	8-17K
	kudurites						coprolites		kudurites		
SiO ₂	63.39	67.36	67.07	66.27	61.81	67.30	66.47	60.62	56.12	64.85	64.88
TiO ₂	0.74	0.11	0.13	0.16	0.55	0.14	0.19	0.17	0.17	0.32	0.43
Al ₂ O ₃	19.18	11.93	12.16	12.51	16.55	13.54	14.32	11.78	10.92	13.60	12.83
Fe ₂ O ₃	2.80	1.86	1.48	1.34	4.12	1.83	1.14	1.44	1.43	2.33	2.89
MnO	0.05	0.02	0.03	0.03	0.05	0.02	0.10	0.22	0.10	0.03	0.13
MgO	0.53	0.28	0.24	0.22	1.03	0.28	0.21	0.40	0.53	1.42	0.13
CaO	4.34	1.03	1.24	1.23	3.66	1.31	1.08	1.84	2.10	0.60	0.63
Na ₂ O	4.68	1.81	2.21	2.62	3.06	2.23	1.85	1.18	1.01	2.42	1.99
K ₂ O	1.93	3.64	3.87	3.92	2.10	3.75	4.28	5.68	4.62	3.38	2.78
P ₂ O ₅	0.04	0.01	0.02	0.02	0.03	0.01	0.04	0.27	0.40	0.15	0.10
LOI	2.17	11.95	11.55	6.53	4.42	5.93	8.56	16.40	22.60	7.65	9.90
H ₂ O ⁻	0.55	4.22	5.03	5.62	2.91	3.47	2.00	-	-	2.80	2.83
Σ	100.41	100.00	99.99	100.47	100.31	99.80	100.25	99.99	100.00	99.55	99.55
Ni	1.21	0.00	0.00	1.98	2.43	1.40	0.45	0.00	0.00	3.67	4.02
Co	3.86	0.14	1.03	0.55	3.97	0.47	0.49	1.29	0.69	1.89	2.03
Cr	67.04	0.00	0.00	4.02	30.12	1.00	0.65	0.00	0.00	1.00	3.50
V	39.32	3.67	5.15	5.80	42.90	5.21	4.26	7.64	8.43	3.55	3.01
Sc	5.60	3.49	3.92	4.40	6.73	4.20	4.10	3.79	3.27	4.37	5.22
Zn	47.80	34.41	30.28	42.00	85.40	58.80	50.50	41.92	45.24	81.22	73.16
Ga	18.02	17.74	15.21	12.96	15.86	12.79	12.84	13.71	12.35	37.60	23.85
Mo	3.71	0.20	0.21	0.64	2.04	0.45	0.24	1.54	0.10	0.33	0.27
Rb	39.28	128.63	132.13	90.77	91.47	103.62	88.77	147.08	134.18	210.00	157.33
Cs	1.99	7.25	6.53	2.97	7.47	8.70	2.56	6.38	5.82	17.20	9.27
Sr	533.80	58.11	89.56	100.34	314.74	115.40	99.70	178.01	147.81	94.00	157.33
Ba	466.20	347.40	451.70	421.50	343.60	641.70	808.30	674.60	536.60	131.00	462.81
Y	15.95	11.22	16.24	26.15	21.47	19.54	23.71	44.54	23.09	68.60	44.15
Zr	334.40	97.36	119.10	264.88	257.33	164.48	148.83	129.90	142.80	585.00	608.23
Nb	11.67	9.38	8.08	9.92	11.12	9.84	11.79	8.22	6.32	38.60	37.88
Ta	0.87	1.06	0.97	1.24	1.18	1.25	1.32	1.14	0.73	2.02	3.01
Hf	2.89	3.15	3.48	9.34	9.30	7.65	7.22	3.76	4.26	11.99	13.88
La	16.35	26.40	24.16	35.22	31.38	31.33	27.21	26.17	25.70	61.85	51.48
Ce	37.46	55.40	51.65	76.09	65.84	67.79	59.64	55.45	51.20	114.90	112.39
Pr	4.26	5.49	5.19	8.45	7.25	7.16	6.54	5.64	5.02	11.98	13.23

Nd	15.46	21.70	21.03	32.72	29.94	27.46	25.38	24.34	20.50	47.00	46.25
Sm	3.05	4.45	4.57	7.48	6.32	5.70	4.73	5.14	3.92	8.90	10.54
Eu	1.48	0.30	0.43	0.61	1.26	0.52	0.79	0.68	0.63	0.86	0.88
Gd	2.50	3.74	3.46	6.50	5.61	4.78	4.90	4.85	3.46	9.29	10.53
Tb	0.50	0.55	0.56	1.10	0.85	0.72	0.80	0.93	0.63	1.45	1.60
Dy	3.80	2.56	3.09	7.27	5.84	5.17	4.90	5.74	3.35	9.07	8.47
Ho	0.75	0.49	0.59	1.28	1.19	1.03	1.19	1.38	0.77	1.91	1.54
Er	2.50	1.33	1.84	4.10	3.27	3.51	3.37	4.84	2.45	5.53	3.78
Tm	0.36	0.21	0.27	0.64	0.50	0.55	0.51	0.74	0.35	0.41	0.61
Yb	2.62	1.55	2.11	4.21	3.49	3.38	3.91	5.07	2.53	6.06	3.31
Lu	0.40	0.22	0.30	0.68	0.60	0.58	0.64	0.70	0.36	0.98	0.51
Pb	16.70	6.20	8.80	16.32	19.70	12.70	25.42	14.10	6.00	19.00	67.40
Th	6.17	17.20	15.27	25.96	18.17	26.51	14.30	12.14	11.42	16.00	21.02
U	2.07	2.72	2.56	6.49	3.98	3.86	3.47	3.07	3.06	2.99	3.45

385 Notes. Solontsovsky volcano samples: 2-1K—zeolite-clay rock in deluvium with the marks of being eaten
 by animals (kudurite), kudur №2; 3-1K—zeolite-smectite rock in deluvium with the marks of being eaten
 by animals, kudur №3 (Bolshoi Shanduisky); 3-2—zeolitised vitric tuff of rhyolite from an outcrop, ib.;
 3-3—the same from a different layer; 4-1K—zeolite-clay rock in deluvium with the marks of being eaten
 by animals, kudur № 4; 4-2—pelitic tuffite from an outcrop. ib.; 5-5K—zeolite-clay rock in deluvium with
 390 the marks of being eaten by animals, kudur №5 (Nechet); 1A and 4A—Manchurian deer excrements
 (coprolites) gathered near Bolshoi Shanduisky kudur, Vanchinskaya basin samples: 7-14K— zeolite-clay
 rock in deluvium with the marks of being eaten by animals, kudur №9; 8-17K—id., kudur №11.

395 Alterations in the rocks studied were manifested by the hydrothermal changes in tuffaceous sedimentary rocks,
 vitric tuffs and rock glass. These changes were controlled by the discharge zones, both linear (Vanchinskaya
 basin) and focal (Solontsovsky volcano) types, along which hydrothermal fluids circulated, ascending from
 near-surface magma chambers. The formation of gold-silver Soyuznoe deposit at the eastern side of the
 Vanchinskaya basin and the Tayozhnoe silver deposit at the northern side of the Solontsovsky paleovolcano
 was related to this process.

400 Trace element upper crust normalized patterns of the tuffs, rhyolite ignimbrites and lacustrine-caldera ashy
 deposits, show a high degree of concordance between each other, with specific distinct minima of Sr, P, Ti and
 Tb. Rare earth element distribution in tuffs, rhyolite ignimbrites and lacustrine ashy deposits, normalised to
 chondrite, are also close to each other. They are characterised by a distinct europium minimum.

405 Why do animals living in certain areas of the Sikhote-Alin dig up and consume rocks with a high concentration
 of zeolites? This question was raised by us long ago, but no definite answer to it has yet emerged. At the same
 time, it may be noted that a general concept of geophagy among animals and people was already developed
 [Panichev, 2011; Panichev et al., 2013].

410 The first and easiest assumption, which any researcher exploring this problem should consider, is that zeolites
 contain a significant stock of sodium ions with exchange potential that can easily be released in the electrolytes
 of animals' gastrointestinal tracts, displacing potassium ions, which are in excess there. The widely-known
 hankering of ruminant animals for sodium salt supports this explanation.

415 The hypothesis about the active release of sodium exchangeable ions from zeolite-containing kudurites in the
 gastrointestinal tract was verified by us long ago after special experiments with artificial electrolytes [Panichev
 et al., 2012] as well as by a direct quantitative balance calculation based on coprolite silicate analysis (fossilized
 faeces) and analogous kudurites [Panichev, 1990]. The data acquired using both methods are in close agreement.

To confirm the hypothesis, let us refer to the results of the quantitative comparison of the chemical compositions of zeolite-containing kudurites and coprolites that we gathered in the area of the Bolshoi Shanduisky kudur (Table 3).

420 **Table 3.** The results of comparing the chemical compositions of kudurites and analogous coprolites gathered in the area of the Bolshoi Shanduisky kudur.

№ sample	Oxides									
	SiO ₂	TiO ₂	Al ₂ O ₃	Fe ₂ O ₃	MnO	MgO	CaO	Na ₂ O	K ₂ O	P ₂ O ₅
3-1	76.52	0.12	13.55	2.11	0.03	0.31	1.16	2.05	4.14	0.01
3-3	75.84	0.14	13.75	1.67	0.04	0.27	1.40	2.49	4.37	0.03
Average in kudurites	76.18	0.13	13.65	1.89	0.04	0.29	1.28	2.27	4.26	0.02
1A	72.52	0.20	14.10	1.72	0.26	0.47	2.20	1.41	6.79	0.32
4A	72.50	0.21	14.10	1.84	0.12	0.68	2.71	1.30	5.96	0.51
Average in coprolites	72.51	0.20	14.10	1.78	0.19	0.57	2.45	1.35	6.36	0.41
Difference	- 3.67	+ 0.07	+ 0.45	- 0.11	+ 0. 12	+ 0.28	+1.17	- 0.92	+ 2.10	+ 0.39
Difference, %	- 4.81	+ 53.84	+ 3.29	- 5.82	+ 300	+ 96.55	+ 91.40	- 40.52	+ 49.29	+ 1950

Notes. Ignition losses are proportionally distributed. «-» – subtraction of element from kudurite; «+» – addition of element to kudurite in the gastrointestinal tract environment.

425 Table 3 shows that the content of sodium in the rock comprises approximately 9 grams per kilogram. This marker is quite typical for zeolite-containing kudurites and is definitely significant when we consider that one Far Eastern red deer eats up to 10 kilograms of kudurite on average per season. Meanwhile, the sodium in the kudurite in the gastrointestinal tract conditions definitely exchanges with potassium ions (see Table 3, gross data). The fact is that, along with the sodium from kudurites, a considerable amount of silicon oxide is released into the gastrointestinal tract (more than 35 grams per kilogram of eaten rock). It can be explained by the fragmentary subtraction of its ultrafine particles, which leaves the rock and spreads along the gastrointestinal tract.

430 Upon further analysis of Table 3, it is clear that zeolite does more in the gastrointestinal tract than simply supply sodium ions or other chemical elements (in this case, for example, iron). It is also a natural sorbent, which apparently works directly to actively absorb potassium along with a number of other elements, the largest percentages of which are made up by phosphorus, calcium, magnesium and manganese (see Table 3). This action of zeolite can be understood as a cost that animals must endure to acquire Na in exchange for a more deficient element.

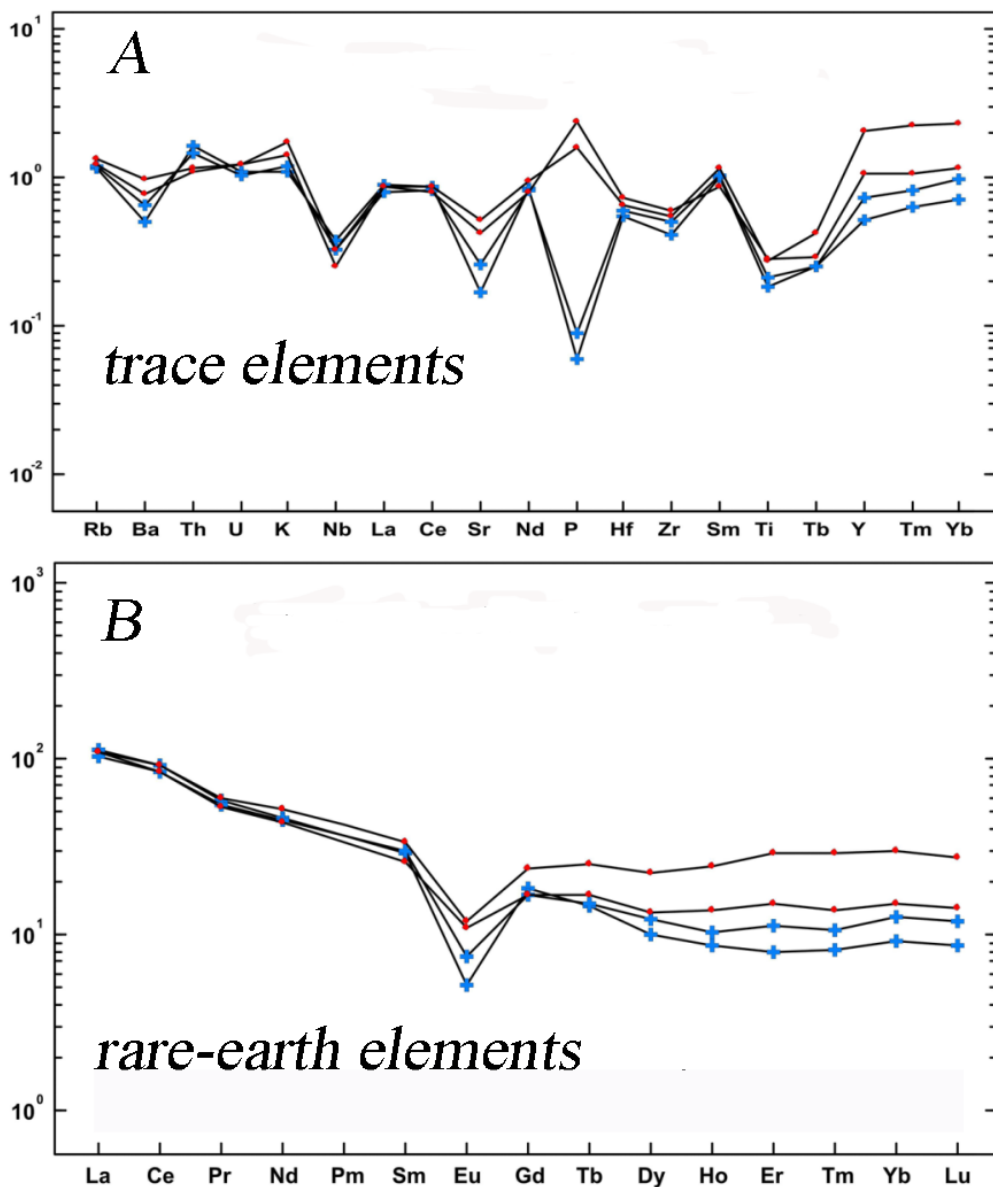
435 However, the results in Table 2 also reveal that there are equally complex interactions between kudurites and coprolites according to microelements. Moreover, the most interesting facts, from our perspective, emerge when we compare kudurite-coprolite analogues in the spectrum of incompatible and rare earth elements (these results are plotted for better visualisation in Fig. 9). The diagram shows that the elements that are actively released from the gastrointestinal tract, in addition to phosphorus, are Ba, Sr and practically all heavy rare earth elements. Thus, the character of the interaction between kudurites and electrolytes in the gastrointestinal tract provides

440 evidence that the “sodium hypothesis” offers one potential explanation for this. This impression is strengthened if we recall that zeolite-containing kudurites are less widely distributed in other regions of the world than chlorite-hydromica varieties, which rarely contain salts or sodium ions in sufficient amounts to compensate for the periodic deficit of this element in an animal’s body [Panichev, 1990]. The sodium hypothesis fails to explain why musk deer, whose basal feed (epiphytic lichen) species has the lowest sodium level compared to forage

450 plants for duplicidentates, deer and elk (in practically any other habitats), totally neglect the sodium-containing kudurs.

Our data based on comparison of zeolite-containing kudurs with coprolites rather suggests that the main reason for kudurite consumption in the Sikhote-Alin is connected with the animals' urge to discard excessive and toxic concentrations of certain elements that are widespread in specific habitats and ingested with forage plants. At the same time, the purging of such elements is apparently provided by the absorption properties of not only the zeolites themselves but also the silicon oxide gels, and possibly also the aluminium, iron and magnesium oxides formed in the alkaline conditions of the gastrointestinal tract due to the partial disintegration of the disperse phase of kudurite composition [Panichev, 2011].

455
460 One can only guess which elements animals are attempting to remove from their bodies with the help of mineral absorbent ion-exchangers. In all likelihood, geophagial mechanisms of body correction can be induced by various biochemical factors, one of which probably has a direct connection with the group of rare earth elements.



465 Figure 9. Concentrations of incompatible and rare earth elements normalised to the composition of the upper crust (according to Taylor et al., 1981) and chondrite (for REE, according to Sun and McDonough, 1989)) in coprolites and source kudurites from the Solontsovsky palaeovolcano. Coprolite and kudurite data are denoted by points and crosses, respectively.

5. Conclusions

470 The primary conclusion of this research is that the majority of the kudurs of the Eastern Sikhote-Alin (and, presumably, analogous situations that will be found in other volcanic areas) are formed from the zeolite-bearing volcanic and volcano-sedimentary rocks, glassy rhyolite in most cases, within the borders of the Cenozoic rift-related basins and calderas. The association of kudur landscape complexes with the manifestations of the Cenozoic felsic volcanism predetermines their localization at the Cenozoic volcanic edifices of the Eastern Sikhote-Alin.

475 In summary, we should particularly note that our attempt to understand the spectrum of problems touched upon here at the junction of geology and biology once again confirms the importance of scientific research in this area, as well as the need to broaden the cooperation between specialists in geology and biology [Golokhvast et al., 2014].

480 **Acknowledgments:** The authors express gratitude to the management of the Sikhote-Alinsky Biospheric Reserve and specially to director Dr. Gorshkov D.G. Golokhvast K.S. received funding from Grant of President of Russian Federation (MD-7737.2016.5)

485 **Author Contributions:** P.A.M. and P.V.K. conceived and designed the experiments; C.I.Y. performed the experiments; P.A.M., P.V.K. and C.I.Y. analyzed the data; S.I.V. and G.K.S. contributed reagents/materials/analysis tools; P.A.M., S.A.A. and G.K.S. wrote the paper.

Conflicts of Interest: The authors declare no conflict of interest.

490 References

1. Panichev, A.M. Lithophagy. Geological, ecological and biomedical aspects. Moscow: Publ. House «Nauka», 149, 2011. (in russian)
2. Panichev, A.M., Golokhvast, K.S., Gulkov, A.N., Chekryzhov, I.Y. Geophagy and geology of mineral licks (kudurs): a review of russian publications, *Environmental Geochemistry and Health*, 35(1), 133-152, 2013.
3. Panichev, A.M. Lithophagy in the human and animal world. Moscow: Publ. House «Nauka», 1990, 215. (in russian)
4. Pushcharovsky, D.Yu. Minerals X-ray analysis. Moscow: Publ. House «Geoinformmark», 292, 2000. (in russian)
5. Zaumislova, O.J., Panichev, A.M. Licks as a Component of Environment of the Ussuryi Elk, in *Proceedings III International Moose Symposium: Syktyvkar. USSR*, 55, 1990. (in russian)
6. Kaplanov, L.G. Tiger. Manchurian deer. Moose. Moscow: Moscow Society of Naturalists, 128, 1948. (in russian)
7. Kononenko, N.A. Late Paleolithic and Neolithic Periods in Primorye: Problems of Origin and Intercommunication of Ancient Cultures. in *Prehistory and Ancient History*. Seoul., 4, 153-166, 1993.
8. Otofujii, Y.I., Matsuda, T., Itaya, T., Shibata, T., Matsumoto, M., Yamamoto, T., Morimoto, C., Kulinich, R.G., Zimin, P.S., Matunin, A.P., Sakhno, V.G., Kimura, K. Late cretaceous to early Paleogene paleomagnetic results from Sikhote Alin, Far Esatern Russia: implications for deformation of East Asia. *Earth and Planetary Science Letters*, 130(1-4), 95-108, 1995.
9. Otofujii, Y.I., Matsuda, T., Enami, R., Uno, K., Nishihama, K., Su, L., Kulinich, R.G., Zimin, P.S., Matunin, A.P., Sakhno, V.G. Internal de-formation of Sikhote Alin volcanic belt, Far Eastern Russia: Paleogene paleomagnetic results. *Tectonophysics*, 350(3), 181-192, 2002.
10. Grebennikov, A.V., Popov, V.K. Petrogeochemical Aspects of the Late Cretaceous and Paleogene Ignimbrite Volcanism of East Sikhote-Alin. *Russian Journal of Pacific Geology*, 8(1), 38–55, 2014.
11. Pearce, J.A., Harris, N.B.W., Tindle, A.G. Trace element discrimination diagrams for the tectonic interpretation of granitic rocks. *Journal of Petrology*, 25, 956-983, 1984.
12. Popov, V.K., Simanenko, V.P., Sakhno, V.G. East Sikhote-Alin volcanic-plutonik belt (Late Cenomanian-Maastrichtian). Volcanic formations, In: *Geodinamics, magmatism and metallogeny of the Russian East: in 2 books / ed. A.I. Khanchuk. Vladivostok: Dalnauka, Book 1, 273-281, 2006.*

- 520 13. Chekryzhov, I.Y., Popov, V.K., Panichev, A.M., Seredin, V.V., Smirnova, E.V. New data on the stratigraphy, volcanism, and zeolite mineralization of the cenozoic Vanchinskaya depression in Primorye. *Russian Journal of Pacific Geology*, 4(4), 314-330, 2010.
14. Seredin, V.V., Shpirt, M.Y. Rare earth elements in the humic substance of metalliferous coals. *Lithology and Mineral Resources*, 3, 281-286, 1999.
- 525 15. Tomson, I.N., Polyakova, O.P., Sidorov, A.A., Alekseev, V.Y. Soyuznoe gold-silver deposit in Primorye and its prospects (Russia). *Geology of Ore Deposits*, 44 (4), 304-313, 2002.
16. Korotkiy, A.M. About reorganization of the Sikhote-Alin hydrographic system plan, in *Voprosy geologii I okeanologii sovetskogo sektora Tikhookeanskogo podvizhnogo poyasa*. Vladivostok, 315-322, 1968. (in russian)
- 530 17. Vetrechnikov, V.V. Geological structure of the Sikhote-Alin state reserve and the cenral Sikhote-Alin, in *Scientific Papers of Sikhote-Alin Biosphere Reserve, Vol. VI*. Vladivostok: Far East Book Publishing House, 167, 1976. (in russian)
18. Panichev, A.M., Popov, V.K., Chekryzhov, I.Y., Golokhvast, K.S., Seryodkin, I.V. Kudurs of Solontsovsky paleovolcano in Tayozhnaya river basin, Eastern Sikhote-Alin. *Achievements in the Life Sciences*, 5, 7-28, 2012. (in russian)
- 535 19. Andreeva, E.D., Kim, A.U. About zeolites of some epithermal gold-silver deposits of Kamchatka, in VI regional youth scientific conference «Researches in the field of sciences about Earth (geography, geology, geophysics, geocology, volcanology)». November 26-27: Petropavlovsk-Kamchatsky, Russia, 13-20, 2008. (in russian)
- 540 20. Elpatievsky, P.V., Panichev, A.M. Geochemical peculiarities of the Sikhote-Alin animal solonetz. *Bulletin of Moscow Society of Naturalists. Biological series*, 85 (6), 12-23, 1980. (in russian)
21. Golokhvast, K., Sergievich, A., Grigoriev, N. Geophagy (Rock Eating), *Experimental Stress and Cognitive Idiosyncrasy*. *Asian Pacific Journal of Tropical Biomedicine*, 4 (5), 362-366, 2014.
- 545 22. Young, S. *Craving Earth: Understanding Pica: the Urge to Eat Clay, Starch, Ice, and Chalk*. New York : Columbia University Press, 2011

