

Geochemical and microstructural characterisation of two species of cool-water bivalves (*Fulvia tenuicostata* and *Soletellina biradiata*) from Western Australia.

5 | Liza M. Roger^{1,2}, Annette D. George¹, Jeremy Shaw², Robert D. Hart², Malcolm Roberts², Thomas
Becker^{2,3}, Bradley J. McDonald⁴ and Noreen J. Evans⁴.

¹School of Earth [Sciences](#), The University of Western Australia, Crawley, 6009, Australia

²Centre for Microscopy, Characterisation and Analysis, The University of Western Australia, Crawley, 6009, Australia

³Department of Chemistry, Nanochemistry Research Institute, Curtin University, GPO Box U1987, Perth, 6845, Australia

⁴Department of Applied Geology, John de Laeter Centre, TIGeR, Curtin University, Bentley, 6102, Australia

10 | Correspondence to: Liza M. Roger (liza.roger@[hotmail.fr](mailto:liza.roger@hotmail.fr))

Abstract. The shells of two marine bivalve species (*Fulvia tenuicostata* and *Soletellina biradiata*), endemic to south Western Australia, have been characterised using a combined crystallographic, spectroscopic and geochemical approach. Both species have been described previously as purely aragonitic, however, this study identified the presence of three phases, namely aragonite, calcite and Mg-calcite using XRD analysis. Data obtained via confocal Raman spectroscopy, electron probe microanalysis, and laser ablation inductively coupled plasma - mass spectrometry (LA ICP-MS) show correlations between Mg/S and Mg/P in *F. tenuicostata*, and Sr/S and S/Ba in *S. biradiata*. The composition of organic macromolecules that constitute the shell organic matrix (i.e. soluble phosphorus-dominated and/or insoluble sulphur-dominated fraction) influences the incorporation of Mg, Sr and Ba into the crystal lattice. Ionic substitution, particularly Ca^{2+} by Mg^{2+} in calcite in *F. tenuicostata*, appears to have been promoted by the combination of both S- and P-dominated organic macromolecules. The elemental composition of these two marine bivalve shells is species-specific and is influenced by many factors such as crystallographic structure, organic macromolecule composition and environmental setting. In order to reliably use bivalve shells as proxies for paleoenvironmental reconstructions, both the organic and inorganic crystalline material need to be characterised to account for all influencing factors and accurately describe the “vital effect”.

15 Keywords

Geochemistry, microstructure, bivalve, organic macromolecule, crystal lattice, Mg/Ca, Sr/Ca, aragonite, calcite

Copyright statement

20 The content of this manuscript are protected by copyright. I hereby assign the copyright to the journal Biogeosciences on behalf of all authors.

1 Introduction

As calcifiers, molluscs play an important role in the ocean carbonate cycle. The calcium carbonate formed by marine organisms is a complex geochemical source and sink of carbon, which controls total oceanic carbon content, $p\text{CO}_2$ (partial pressure of CO_2) and more generally contributes to ocean alkalinity (e.g. Gattuso and Hansson, 2011). The biomineralisation process, or more precisely the elemental and isotopic composition of biogenic CaCO_3 , is affected by physiological processes (e.g. Freitas et al., 2006; Gillikin et al., 2005b; Lowenstam and Weiner, 1989) and environmental conditions at the time of deposition (e.g. Ferguson et al., 2011; Gazeau et al., 2010; Hahn et al., 2014; Heinemann, 2011; Henkes et al., 2013; Lowenstam and Weiner, 1989; Schöne et al., 2011). Molluscs are globally distributed and demonstrate sequential growth, thus providing high-resolution seasonal and sub-seasonal records of environmental conditions (e.g. Jones and Quitmyer, 1996).

A number of bivalve species are extremely long-lived, with lifetimes of many decades or even centuries, e.g. fresh water pearl mussels (e.g. Schöne et al., 2004), geoduck clams (e.g. Strom et al., 2004), ocean quahogs (e.g. Schöne et al., 2005) and giant clams (e.g. Ayling et al., 2006; Bonham, 1965). Many oceanic conditions, such as seawater surface temperature, productivity, circulation and carbon reservoir dynamics, have been reconstructed successfully using bivalve shell records (e.g. Klein et al., 1996; Lazareth et al., 2003; Richardson et al., 2004; Wanamaker et al., 2011). However, an organism's physiological control on the chemical composition of its shell can affect the reliability of the parameters recorded (e.g. Gillikin et al., 2005b; Lazareth et al., 2013; Lazareth et al., 2003). Differences between measured isotopic and elemental composition in carbonates materials are typically attributed to a physiological/biological influence commonly called the 'vital effect' (Zeebe et al., 2008). Spero et al. (1991) first attempted to describe the vital effect through quantitative modelling of stable carbon isotopes in foraminifera. The influence of the vital effect is variable between species, which is problematic for the development of a unique geochemical equilibrium model for seawater property reconstructions.

The work of pioneers in the field of molluscan biomineralisation, Bowerbank (Bowerbank, 1844) and Carpenter (Carpenter, 1845, 1847) amongst others, shifted the focus from fossil structures to 'modern' biogenic CaCO_3 structures (such as coral skeleton and mollusc shells). Influential work by Urey and colleagues (Urey et al., 1951) first used stable oxygen isotope values ($\delta^{18}\text{O}$) in biogenic CaCO_3 (belemnite rostrum) as a proxy for seasonal temperature change. Certain limitations remained, e.g. separating $\delta^{18}\text{O}_{\text{water}}$ (which is linearly correlated to salinity) from the temperature signals, leading to the development of other proxies according to their temperature dependency, e.g. Sr/Ca and Mg/Ca ratios (Gillikin et al., 2005a; Shirai et al., 2014). However, further work showed that elemental composition is strongly controlled by biological factors including: growth rate (e.g. Gillikin et al., 2005c); calcification rate (e.g. Carré et al., 2006); ontogenetic age (e.g. Purton et al., 1999); organic matrix (e.g. Schöne et al., 2010; Takesue et al., 2008) and microstructure (overall fabrics) (e.g. Schöne et al., 2013; Shirai et al., 2014).

Long-term records of seawater parameters (e.g. temperature, alkalinity and pH) are essential for understanding past climatic and oceanic changes in the current context of global climate change. Data from diverse geographical locations are

needed to develop a global understanding of those changes. Records from bivalve shells have contributed considerably to our knowledge, but environmental controls need to be well defined and differentiated from biological and physiological factors (e.g. Jacob et al., 2008).

5 | This study focuses on the microstructure and composition of shell from two species of bivalve endemic to southwestern Australia to gain insight into the physio-chemical processes involved in molluscan shell calcification. [It](#) constitutes the first step towards monitoring global climate change through biogenic carbonate in southwestern Australia. In general, limited geochemical data are available for temperate Australian marine bivalves and, to our knowledge, this work is the first multimodal (crystallographic, spectroscopic and geochemical) study focusing on marine bivalve species from Australian waters. The structure and mineral composition of shells from the Western Australian bivalves, *F. tenuicostata* and 10 | *S. biradiata*, have not previously been investigated as a potential proxy for [future](#) studies using this integrated approach. Given the absence of corals along the southern coast of Western Australia and the south coast of Australia as a whole, bivalve shells could serve as an alternative proxy for generating records of historical ocean chemistry providing that the overarching mechanisms are well defined and understood (e.g. elemental equilibrium, vital effect). This study contributes to the global understanding of how marine bivalves record environmental change through shell growth and the processes 15 | governing marine biogenic carbonate production.

2 Materials and Methods

2.1 Study Area – Marine Setting

20 | Samples were collected from [the muddy sands of](#) King George Sound, between 3–5m depth, on the southern coast of Western Australia near the town of Albany (Fig.1). This area experiences seasonal freshwater inputs, a temperate to Mediterranean climate, mean annual rainfall of 931.5 ± 0.2 mm between 1877 and 2014, maximum, $\sim 126.1 \pm 0.2$ mm, rainfall in August and minimum, $\sim 30.1 \pm 0.2$ mm, in December (Australia Government Bureau of Meteorology, Brouwers et al., 2013; Klausmeyer and Shaw, 2009). The main currents influencing the area are the Capes Current (coastal current) flowing westwards, the Leeuwin Current (shelf current) flowing eastward and the Flinders Current (oceanic current) flowing westward (Cresswell and Golding, 1980). Further south, Australian waters meet the cold and nutrient-rich Antarctic waters. 25 | The southwestern coastline of Australia is impacted by strong winter storms influenced by pressure systems over the Great Australian Bight, as well as Leeuwin current dynamics. Seawater surface temperatures (SST) vary annually between 16°C–21°C (August/September to April/May) and bottom temperatures vary between 15°C–20.6°C (Australian Government Bureau of Meteorology), at 40–50 m maximum depth.

2.2 Species

The study uses two species of bivalves: *Fulvia tenuicostata* (Lamarck, 1819) ('thin-ribbed cockle') and *Soletellina biradiata* (Wood, 1815) ('double-rayed sunset clam', Fig. 2). Both species are native and endemic to southwestern Australia (WoRMS, 2015). *F. tenuicostata* (Mollusca : Bivalvia : Veneroidea : Cardiidae), Fig. 2a and 2b, is typically 50-55 mm in length (anterior to posterior margin). The shells of this species are cream-coloured becoming yellow towards the margin (the periostracum can show staining from the surrounding mud). The shells are thin and delicate with narrow ribs (Fig. 2a and 2b). This genus is found in moderately sheltered areas of muddy sand (WoRMS, 2015). The shell structure of *F. tenuicostata* consists of a prismatic outer layer (OL), a simple crossed-lamellar middle layer (ML) and a complex crossed-lamellar inner layer (IL). *S. biradiata* (Mollusca : Bivalvia : Veneroidea : Psammobiidae) shells, Fig. 2c and 2d, may measure up to 70 mm. Shells are thin walled and have an elongate shape. With the thick periostracum removed, the shells are cream-coloured with tinges of pink and purple, with two distinctive pale radial rays extending from the umbo to the growing edge. *S. biradiata* is also found in moderately sheltered areas with muddy sand substrates. The shell structure of *S. biradiata* consists of a prismatic OL composed of acicular prismatic crystals directed toward the outer surface and locally curved, a simple crossed-lamellar ML and a complex crossed-lamellar IL. The OL may be absent, in which case the lamellae of the ML extend to the outer surface as noted for other species of this subfamily (Popov, 1986; Schneider and Carter, 2001).

2.3 Sample Preparation

Shells (five *F. tenuicostata* and three *S. biradiata*) were rinsed with fresh water, manually cleaned of any organic residues by scrubbing, then soaked in sodium hypochlorite (12.3 vol%) for approximately 12 hours. Shells were thoroughly rinsed with Milli-Q water then air dried. According to Krause-Nehring et al. (2011) treatment of biogenic calcium carbonate to remove organic matter may have an impact on elemental and crystallographic composition in the bivalve *Arctica islandica*. The effects of sodium hypochlorite (NaOCl) pretreatment (also used in our study) on *A. islandica* shell powder were insignificant compared to other treatments tested in that study. Indeed Sr/Ca and Mg/Ca ratios did not change significantly, and very little to no dissolution or phase change were observed. NaOCl treatment was also proved to be the most efficient to remove organic matter with the least effect on structure and composition in coral cores (Nategaal et al., 2012). Krause-Nehring et al. (2012) performed their study on powdered, pre-cleaned (manual removal of the periostracum) and found very little effect. In our study, where intact shells were pretreated with NaOCl, we suggest that the geochemical and crystallographic composition of the bivalves studied here was not significantly altered despite having some hypochlorite solution percolate through.

Shells were sampled along the growing edge using a hand-held dental drill for x-ray diffraction analysis (Fig. 2). Fifty milligrams of very fine powder was mixed with ~10 mg of CaF₂ (20 % by weight) and mounted on a low-level background holder according to the settings described in [Supplementary material S1](#). Bivalves were then cut along the axis of maximum growth (from umbo to ventral margin), fixed in Styrene polymer and mounted on a glass slide with Epoteck® 301 epoxy glue

then trimmed and polished to a thickness of between 20-40 μm . Thin-sectioned bivalves thus prepared were used for petrographic observations, confocal Raman spectroscopy and laser ablation mass-spectrometry work. All the analyses described below targeted the ventral margin of the shells, the youngest material. The growth increments of *F. tenuicostata* are about twice those of *S. biradiata* at 1 mm and 0.5 mm respectively. Each measurement was made to encapsulate approximately the same growth period.

2.4 X-ray Diffraction Analysis

X-ray diffraction (XRD) analysis of powdered shell was performed using a PANalytical Empyrean Diffractometer operated at 40kV and 40mA (Cu $K\alpha$ radiation and Ni Beta filter), using a PANalytical PixCel position sensitive detector. Particular settings are described in Supplementary material S1. Corundum NIST standard (676a, Certificate number 382200) was used as primary external standard and calcium fluoride (CaF_2) was used as secondary internal standard. The amount of secondary standard was tested by analysing different CaF_2 : sample ratios. Since no major differences were observed between the different ratios tested, 20% weight of CaF_2 was chosen. CaF_2 (lattice parameter $a = b = c = 5.4662(2) \text{ \AA}$, and $\alpha = \beta = \gamma = 90^\circ$) is an ideal internal standard because its diffraction peaks do not interfere with those of CaCO_3 .

Mineral phases were identified using the Inorganic Crystal Structure Database (ICSD) and International Centre for Diffraction Data (ICDD) database. The Rietveld refinement technique was used to quantify the phases. The Scherrer equation (Cullity, 1978) was used to calculate Coherently Scattering Domain (CSD) size (i.e. crystallite size) using the dominant reflections of calcite (104) and aragonite (111). Both the Rietveld refinement and the Scherrer calculation were calculated using PANalytical HighScore Plus software (version 3.0e). The non-crystalline fraction, or amorphous material, in the powder was typically calculated from the overestimation of the secondary standard during Rietveld refinement (Scarlett and Madsen, 2006).

2.5 Confocal Raman Microscopy

Confocal Raman Microscopy (CRM) uses intense monochromatic light (here infrared laser) to irradiate samples. The subsequent molecular vibrations produce a highly specific Raman spectrum that reflects the molecular structure and the chemical identity of the samples. Changes in intensity and peak position indicate different vibrational modes of a molecule and therefore may reveal subtle differences in the crystalline form, especially between the different polymorphs of CaCO_3 (Nehrke and Nouet, 2011). CaCO_3 peaks measured using CRM are caused by the unit cell symmetry of the crystals and the molecular carbonate ions (CO_3^{2-}). Because of their shared CO_3^{2-} related vibrational modes, differentiation between aragonite and calcite was accomplished using the lower end of the spectrum, 50 to 1200 cm^{-1} . In CRM a spectroscopy system is coupled with a confocal microscope allowing the mapping of samples with chemical sensitivity.

CRM was undertaken on thin sections of bivalve shells to confirm XRD-determined mineral phases and to provide key information about the crystallographic structure of CaCO_3 . To mitigate high fluorescence levels caused by a green excitation laser (wavelength 532 nm) a diode infrared laser module (wavelength 785 nm) with 20x objective and 0.4

numerical aperture was used, coupled with the Raman imaging system (WITec Raman alpha300 RA+). CRM was performed in reflection mode whereby the scattered light is collected through a 100 μm detection fibre connected to a UHTS 300 spectrometer equipped with a 300 lines/mm grating. The full Raman spectra at each imaging pixel were acquired using a camera with a thermoelectrically cooled, back-illuminated CCD chip. The first order Raman peak of silicon (520.2 cm^{-1}) was used to optimise alignment and signal intensity before each analysis. Measurements were made as large area scans with the accumulation of 3 to 5 spectra to minimise error ($\pm 1\text{ cm}^{-1}$) and integration time of 0.1 to 0.050 s. Two spectral ranges were measured: 0 to 1600 cm^{-1} and 1600 to 3000 cm^{-1} ; the second range was explored in an attempt to detect organic functional groups (C-H or C=O) within the crystalline structures. CRM data were processed and analysed with the WITec ProjectFOUR software.

2.6 Electron Probe Microanalysis

Quantitative chemical maps were acquired on petrographic thin sections using a JEOL 8530F Hyperprobe equipped with five tuneable wavelength dispersive spectrometers. Operating conditions for instrument calibration comprise a 40 degree take-off angle, beam energy of 15 kV and beam current of 20 nA. The beam was defocused to 2 μm . Elements were acquired using analysing crystals: PET (pentaerythritol) for Ca $\text{K}\alpha$, S $\text{K}\alpha$, and Sr $\text{L}\alpha$, TAP (thallium acid phthalate) for Na $\text{K}\alpha$ and Mg $\text{K}\alpha$. The standards used for instrument calibration were Barite for S $\text{K}\alpha$, Calcite for Ca $\text{K}\alpha$, Celestite for Sr $\text{L}\alpha$, Periclase for Mg $\text{K}\alpha$, and Jadeite for Na $\text{K}\alpha$. On peak counting times were 20 seconds and Mean Atomic Number background corrections were used throughout (Donovan and Tingle, 1996). Results are the average of 3 points and detection limits ranged from 0.008 wt % for S $\text{K}\alpha$ to 0.010 wt % for Mg $\text{K}\alpha$ to 0.049 wt % for Sr $\text{L}\alpha$. The Armstrong/Love Scott algorithm was used for data reduction (Armstrong, 1988). Quantitative element maps were obtained using the Probe Image® software for X-ray intensity acquisition. The beam current was 80 nA with a 40 ms per pixel dwell time and a 4 x 4 μm pixel dimension. Image processing and quantification was performed off-line with the CalcImage® software and output to Surfer®.

2.7 Laser Ablation ICP-MS

Analysis of carbonate material was undertaken using a Resonetics RESolution M-50A-LR incorporating a Compex 102 excimer laser coupled with an Agilent 7700s quadrupole ICP-MS on shell material that had already been thin sectioned. Following two cleaning pulses and a 20 s period of background analysis, samples were spot ablated for 30 s at a 7Hz repetition rate, using a 75 μm beam and laser energy of 5 J cm^{-2} . Oxide polyatomic interferences were minimised by tuning flow rates for a ThO/Th of $< 0.5\%$. The sample cell was flushed with ultrahigh purity He (350 mL min^{-1}) and N_2 (3.8 mL min^{-1}) and high purity Ar was employed as the plasma carrier gas. International glass standard NIST 612 and coral standard MACS-3 were used as the primary reference materials, to calculate elemental concentrations (using stoichiometric ^{43}Ca as the internal standard element) and to correct for instrument drift on all elements. Standard blocks were run after every 20

unknown sample. The mass spectra were reduced using Iolite (Armstrong, 1988). Data were collected on a total of 16 elements measured as ^7Li , ^{24}Mg , ^{28}Si , ^{31}P , ^{34}S , ^{44}Ca , ^{52}Cr , ^{55}Mn , ^{56}Fe , ^{63}Cu , ^{66}Zn , ^{75}As , ^{88}Sr , ^{111}Cd , ^{138}Ba and ^{208}Pb . Si concentration was used to determine if/when the laser hit the glass slide. The measurements taken when the laser hit the glass were discarded.

5 Trace element concentration profiles were measured in four shells of *F. tenuicostata* and two of *S. biradiata*. Five transects were measured on each shell: three parallel transects of seven to eight spots (T1–T3), oblique to the shell surface; one transect along the outer portion of the outer shell layer (T4, ten spots) and one along the inner portion of the outer shell surface (T5, ten spots; Fig. 2). Transects T1–T3 were measured to assess elemental variation towards the inner shell surface and the potential thickness of the last growth layer deposited. T4 and T5 were measured to compare trace element
10 concentrations in the innermost layer of the shell to the outermost layer.

3 Results

3.1 Shell Mineral Composition

XRD patterns indicate that the shells are composed of calcite and aragonite based on matching diffraction peaks (Fig. 3). The third identifiable diffraction pattern represents the internal standard, CaF_2 (20% weight of total sample). Rietveld refinement
15 was applied in order to obtain accurate phase quantification for each sample, however, the values produced by the software corresponding to the weight ratio of CaF_2 added were lower than the actual amount, and consequently, the results are not considered useful. Quantification errors in XRD are commonly caused by residual moisture, large organic content, amorphous crystallites or in this case errors due to small sample sizes and insufficient particle size reduction (Scarlett and Madsen, 2006). In the present case, moisture, organic material and amorphous crystals could all cause an over-estimation
20 (Scarlett and Madsen, 2006) but considered the under-estimation was likely caused by the small sample size (~50mg). Accurate quantification on small sample sizes can be obtained using synchrotron technology. Although the phases cannot be quantified, the lattice parameters and crystallite sizes (i.e. coherently scattering domain, CSD) produced post-refinement and post-Scherrer calculation can be used because of the addition of the pre-calibrated CaF_2 standard.

All of the samples analysed were indexed to the orthorhombic symmetry system for aragonite and the hexagonal
25 system for calcite. The lattice parameters (a , b , c) generated by the Rietveld refinement differ from the geological reference materials for both calcite and aragonite. All samples of *F. tenuicostata* manifest expansion in aragonite and calcite along the a -axis (Fig. 4). All samples of *S. biradiata* but one (G170) show the same phenomenon. In contrast, G170 shows contraction along all axes. The b -axis in both phases and both species also generally show a positive distortion (stretching) with a few exceptions (*F. tenuicostata*: G159; *S. biradiata*: G170, G173, all three in aragonite only). The calcite c -axis shows shrinking
30 in both species. The distortion along the c -axis in aragonite is variable (two out of four *F. tenuicostata* show contraction and two out three of *S. biradiata*). The largest distortion was found in calcite, particularly for a and b (+0.12% to +0.02%); c only shows small distortions of -0.03% to -0.004%. Aragonite is distorted along the a -axis between +0.03% and +0.017%; b -

and c -axes manifest smaller distortions +0.014% and -0.008% maximum, respectively. The main difference between the two species considered here lies in the amount of distortion, whereby *F. tenuicostata* manifests smaller distortion compared to *S. biradiata* (Fig. 4). The maximum distortion in aragonite of 0.02% and 0.066% in calcite for *F. tenuicostata* (both $\Delta a/a$) and, 0.03% and ~0.13%, respectively in *S. biradiata* (also $\Delta a/a$). Furthermore, although minimal, *F. tenuicostata* shows generalised stretching (0.004% maximum) along the c -axis in aragonite whereas *S. biradiata* shows shrinking (-0.008% maximum).

The CSD sizes estimated using the Sherrer equation (with $K = 0.9$) for the four dominant aragonite diffraction peaks corresponding to reflections (111), (102), (201) and (122) reveal aragonite crystals ranging from ~34 to ~144 nm long (Table 2). The majority of CSD values fall in the nano-crystal category (<100 nm) but some, especially those for the (122) plane, belong to the larger ultra-fine category (100–500 nm). The CSD sizes estimated for calcite used one dominant diffraction peak corresponding to reflection (104) to reveal smaller crystallites than in aragonite (~23 to ~29 nm long).

Different phases in the samples were identified using a combination of lattice modes and internal modes. Calcite and aragonite can be identified using the librational mode L_c (282 cm^{-1}) and L_a (209 cm^{-1}), respectively, and the in-plane band ν_4 (713 cm^{-1} for calcite and 702, 706 and 717 cm^{-1} for aragonite); the shared peaks (translational mode, T, ~152 cm^{-1} and symmetry stretch, ν_1 , 1085 cm^{-1}) represent the CO_3^{2-} ion motion and the C-O bond stretching common to both CaCO_3 polymorphs (Cuif et al., 2012, Fig. 5). Although very small and broad compared to aragonite-specific peaks, only the L_c peak identified calcite. The most pronounced aragonite peak is L_a . The scan range of the spectrometer was increased to 3000 cm^{-1} in order to detect the potential presence of organic compounds (e.g. Nehrke and Nouet, 2011), however, no features characteristic of these groups were found. As a consequence, the spectra presented here only extend to 2000 cm^{-1} .

Four filters were applied to each Raman spectrum (Fig. 5) to highlight different phases or reveal particular features of the shell: (1) Σ peak area of aragonite (centred at 209 cm^{-1}); (2) Σ peak area of calcite (centred at 282 cm^{-1}); (3) centre of mass/weighted width (Full Width at Half Maximum) of ν_1 (centred at 1085 cm^{-1}) and (4) Σ peak area of the tail of the spectrum targeting fluorescence (centred at 1450 cm^{-1}). Peak intensities at 152 cm^{-1} (translational mode T) and 209 cm^{-1} were also ratioed (PIR) to distinguish crystal orientation variations (Fig. 5 and 6).

Aragonite and calcite were both found in all samples analysed using CRM. The small intensity of the calcite peak indicates that it is a minor phase. Two distinct types of spectra are visible for aragonite (Fig. 5), both with identical peak positions but different peak intensity ratios (PIR), (Fig. 5, 6F and 6G), between the translational mode T and the other peaks characteristic of aragonite (Fig. 5 and 6).

The full width half maximum (FWHM) of the symmetric stretch ν_1 (CaCO_3^{2-}) reveals sequential variations or more precisely alternating high/low peak width, especially in sample G154 (Fig. 6C and 6H). The other samples show more discrete changes in FWHM. Filter 4 (the filter showing fluorescence) reveals clear banding throughout samples (Fig. 6E and 6J).

3.2 Elemental Composition

EPMA results show total elemental compositions are consistently between 98 and 100 wt% (Fig. 6A, 6A). Calcium is generally consistent across the samples with an average concentration of ~39.5 wt% (Fig. 8B, 9B). S and Na comprise up to 0.16 and 0.66 wt% respectively, but importantly show variations in concentration with opposing trends, i.e. high Na corresponds to low S and *vice versa* (Fig. 6). The concentration of S and Na correspond to growth lines with overall Na content higher towards the external surface of the shell and S towards the internal surface. Low S and high Na correspond to higher fluorescence levels detected using CRM (1450 cm⁻¹ filter, Fig. 6D and 6I). These results are consistent for both *S. biradiata* (Fig. 7) and *F. tenuicostata* (Fig. 8). Ca is typically uniformly distributed throughout each shell, nevertheless, patterns revealed by CRM correspond to patterns on Ca distribution maps. The patterns revealed by filters 4 and 5 (crystallinity and crystal orientation respectively) applied to the Raman spectrum, correspond to those visible on the Ca wt% map. Mg and Sr are below the instrumental detection limit (Table 3) and are not presented here.

Trace element concentration profiles measured using LA-ICP-MS showed NIST160 and MACS standard reproducibility in the range of acceptable values (between 0.5 and 4% on most elements; Supplementary materials S2). Very little reproducibility was observed between T1, T2 and T3 (Fig. 9 and 10) for all six shells tested however, compositionally distinct layers were identified, as were differences between species (Fig. 11 and S3). In *F. tenuicostata*, ratios of Sr/Ca, S/Ca and Pb/Ca along transects T1–T3 generally increase from the external surface inwards (maximum +1 mmol/mol, +3 mmol/mol and +0.05 μmol/mol respectively; Supplementary materials S3). Only Sr/Ca in G158 decreases by 2 mmol/mol inwards (Appendix D-3). Mg/Ca, P/Ca and Ba/Ca (Fig. 11 and S3) follow the opposite trend, with a maximum decrease of 1.5 mmol/mol, 0.06 mmol/mol and 3 μmol/mol, respectively. The elemental ratios in *S. biradiata* all decrease along the T1–T3 transects from the outer to the inner layer (Mg/Ca -0.15 mmol/mol, P/Ca -0.04 mmol/mol, Li/Ca -4 μmol/mol, Ba/Ca -2 μmol/mol) except Pb/Ca (+0.06 μmol/mol) and S/Ca, which is relatively stable at 1.3 mmol/mol. Sr/Ca increases inwards (+1.5 mmol/mol) but decrease to its original level at the edge of the internal layer (~2 mmol/mol). Li, Ca, Mn and Ba concentrations in *F. tenuicostata* are not linearly correlated to the other trace elements measured but statistically significant (paired t-test) linear correlation was found between [P]/[Sr] ($R^2=0.70$, $p<2.2\times 10^{-16}$), [P]/[S] ($R^2=0.74$, $p<2.2\times 10^{-16}$), [P]/[Mg] ($R^2=0.55$, $p=1.283\times 10^{-7}$) and [S]/[Mg] ($R^2=0.55$, $p<2.2\times 10^{-16}$). Li, Mg, Ca and Mn in *S. biradiata* are not linearly correlated to the other trace elements measured, but a statistically significant (paired t-test) linear correlation was found between [Sr]/[S] ($R^2=0.74$, $p<2.2\times 10^{-16}$), [Sr]/[Pb] ($R^2=0.60$, $p<2.2\times 10^{-16}$), [Sr]/[Ba] ($R^2=0.92$, $p<2.2\times 10^{-16}$), [Ba]/[S] ($R^2=0.66$, $p<2.2\times 10^{-16}$) and [Ba]/[Pb] ($R^2=0.55$, $p<2.2\times 10^{-16}$).

T4–T5 measurements confirm compositional differences between external and internal layers (Fig. 12 and S3). Overall, the external layer of *S. biradiata* shells studied demonstrates higher ratios of Li/Ca, Mg/Ca, P/Ca, Sr/Ca and Ba/Ca compared to the internal layer. Only S/Ca and Pb/Ca do not follow this pattern, where S/Ca is the same in both layer and Pb/Ca is higher in the internal layer (Fig. 12 and S3). In comparison, *F. tenuicostata* shells show higher ratios of Mg/Ca,

Sr/Ca, S/Ca, Ba/Ca and Pb/Ca in their internal layer compared to their external layer. P/Ca decreases inwards and Li/Ca is essentially consistent.

S and P are indicators of organic content and their presence in the bivalves [reflects a](#) variation in macromolecules content throughout the shells. *F. tenuicostata* has a higher S-containing macromolecule content in the organic matrix of its internal layer whereas a higher P/Ca ratio in the outer [layer suggests](#) organic matrix is richer in P-containing macromolecules in that section of the shell. Shells of *S. biradiata* are visibly more complex. They also show high S/Ca and low P/Ca towards the innermost layer but for most of the shell, variable S/Ca and P/Ca ratios suggest the external layers are characterised by alternating P- and S-containing macromolecules in organic components (Fig. 7–8 and 10–11).

4 Discussion

4.1 Mineralogy and Microstructure

Although *S. biradiata* and *F. tenuicostata* [belong to subfamilies typically](#) described as aragonitic ([Schneirder and Carter, 2001](#)), the XRD analysis and CRM results reveal a dominant aragonitic composition and a minor calcite fraction. The Rietveld refinement did not allow quantification of the different phases, however, CRM confirmed the presence of calcite by measuring (small intensities of the calcite librational mode L_C compared to that of aragonite L_a). The Raman spectra of *S. biradiata* have a slightly more intense calcite peak at 282 cm^{-1} in comparison to *F. tenuicostata*, and the XRD pattern shows the main calcite peak in *F. tenuicostata* is generally sharper and offset towards $30^\circ 2\theta$ compared to that of *S. biradiata*. According to Schroeder et al. (1969), this peak shift is indicative of the presence of Mg in carbonate, which suggests that some Mg^{2+} ions have substituted for Ca^{2+} in the CaCO_3 crystal lattice in *F. tenuicostata*. Considering the preferential incorporation of Mg^{2+} into calcite as opposed to aragonite (Mucci and Morse, 1982), we conclude that although both species appear to have similar amounts of calcite incorporated within their aragonitic shell, in *F. tenuicostata*, Ca^{2+} ions have been partially substituted by Mg^{2+} in the calcite lattice. [This is not the case](#) in *S. biradiata*. Sample G170 (*S. biradiata*), which shows shrinking in its aragonite phase according to XRD results, has a negative peak shift (CRM) indicative of Sr^{2+} substitution in aragonite. The LA ICP-MS analysis of G170 was not undertaken because the thin section was too cracked towards the ventral margin, therefore, the higher Sr/Ca in G170 is assumed from the distortion measurements and CRM.

Aragonite is present in two different orientations in most of the *F. tenuicostata* samples. The combination of these two orientations (e.g. Fig. 6) clearly corresponds to the crossed-lamellar microstructure characteristic of many bivalve shells. The microstructure of *S. biradiata* shells consists of a [prismatic outer shell layer, a crossed-lamellar middle layer and a complex crossed-lamellar inner layer \(not present in the portion of the shell in Fig. 6\)](#). Both species precipitate their shells differently from a structural point of view. The precipitation of microstructural units in a crossed-lamellar pattern is complex. The structural complexity of *F. tenuicostata* [with its crossed-lamellar pattern associated with marked ribs](#) suggests a higher level of biological control on CaCO_3 precipitation, which may influence the overall elemental composition of the shell. [For example](#), Paquette and Reeder (1995), [suggested that](#) crystal surface structure has an effect on trace element

incorporation. As such, the different microstructures present in the two species studied here may be expected to yield different elemental compositions.

The [measured](#) lattice parameters reveal lattice distortion in both *F. tenuicostata* and *S. biradiata* compared to mineral CaCO₃. Pokroy et al. (2006) also reported lattice distortions (*Perna canaliculus*, *Acanthocardia tuberculata* and *Strombus decorus*). After lattice parameter permutation, stretching was found along the *a*- and *b*-axes in both species, and shrinking was found along the *c*-axis in *S. biradiata* but not in *F. tenuicostata*. Distortion was not as pronounced in *S. biradiata* and *F. tenuicostata* compared to the species studied by Pokroy et al. (2006) which can be explained by the use of annealing to relax the CaCO₃ structure. Maximum anisotropic distortion in aragonite is $\Delta a/a$ 1.1×10^{-3} , $\Delta b/b$ 2.5×10^{-4} and $\Delta c/c$ 3×10^{-4} for *F. tenuicostata*, and $\Delta a/a$ 1.7×10^{-3} , $\Delta b/b$ 7×10^{-4} and $\Delta c/c$ -6×10^{-4} for *S. biradiata*. According to Pokroy et al. (2006), the organic molecules could be the source of these structural distortions. However, given *F. tenuicostata*'s lattice is more stretched than that of *S. biradiata* the substitution of Ca²⁺ ions by Mg²⁺ ions described previously could also be a source of distortions. Ion substitution, which has been measured here using XRD, could also be a cause of this distortion because crystal structures accommodate trace elements by dilation or contraction of the ionic site (structural relaxation), which is a factor of flexibility and stability of the surrounding structure (Finch and Allison, 2007; Loste et al., 2003).

4.2 Chemical Composition

LA-ICP-MS results show that Mg is positively correlated to both S and P, and Sr to P in *F. tenuicostata*. These Mg correlations are not evident for *S. biradiata*, but Sr is positively correlated to S, Ba and Pb (Fig. 12), and Ba to S in this [latter](#) species.

The strong correlations found in the present study seem to indicate that Mg incorporation is influenced by both phosphorus- and sulphur-containing macromolecules, i.e. both soluble and insoluble fractions of the organic shell matrix, in *F. tenuicostata* but not in *S. biradiata*. The incorporation of Sr appears to be influenced by the insoluble fraction of the organic matrix in *S. biradiata* and the soluble fraction in *F. tenuicostata*. The correlation found between Ba and S also suggests that the insoluble organic matrix influences the incorporation of Ba in *S. biradiata*. Shirai et al. (2014) suggested that incorporation of Sr is highly biologically mediated based on the strong correlation between Sr/Ca, S/Ca and shell microstructure, and that elemental composition varies at a scale comparable to that of crystallites, i.e. the micrometre scale. The relatively coarse resolution used for LA-ICP-MS (75 μm) does not allow us to verify the spatial scale (<10 μm) at which the elemental composition of *F. tenuicostata* and *S. biradiata* varies but we can differentiate between the types of organic macromolecules influencing the shell geochemical composition, i.e. S-dominated or P-dominated. Our findings agree with that of Shirai et al. (2014) [in that](#) changes in microstructure and S/Ca ratio reflect changes in organic composition at the mineralisation front. Our findings further show that P/Ca also reflects compositional changes at the mineralisation front. Consequently, we can say that not only do the organic matrices at the calcification front impact the chemical composition of the shell, but its composition also impacts the incorporation of trace elements in the shell, [regardless of](#) whether it is S- or P-dominated. This result is consistent with a number of previous studies that showed that S-containing and P-containing

macromolecules of the shell matrix, insoluble and soluble respectively, influence nucleation, growth and crystal structure (e.g. Borbas et al., 1991; Crenshaw, 1982; Reddy, 1977; Wheeler and Sikes, 1984). In the context of geochemical proxies, it becomes evident that the combined effect of shell organic matrix composition and environmental parameters (e.g. SST) may each cause variation in Mg/Ca and Sr/Ca ratios, two of the most common proxies used for reconstructing paleo-SST.

5 Additional complexity is also evident. P and S concentrations are consistent (transects T1, T2 and T3 comparison) in *F. tenuicostata* but highly variable in *S. biradiata*. In the latter, low Mg corresponds to high P and S, and high Sr to high S and low P. This suggests that the incorporation of these elements within the shell of *F. tenuicostata* is predominantly influenced by seawater, particularly Mg, whereas in *S. biradiata* it is predominantly influenced by the organic matrix composition, as demonstrated by the strong correlations in organic matrix-related elements. The fact that *S. biradiata* is
10 visibly richer in organic matrix and owes its strength to its organic fraction whereas *F. tenuicostata* shells have a thicker and more complex structure (e.g. ridges), might be one explanation for this finding. Another remarkable point of comparison that might help understand the differences between the two species of interest lies in their taxonomy. Indeed, both species belong to the Heterodonta (subclass): Cardiida (order), but belong to different superfamilies: Cardioidea and Tellinoidea, *F. tenuicostata* and *S. biradiata* respectively (Ponder and Lindberg, 2008). Different organic content and shell organic matrix
15 composition might be explained by evolved differences in mineralisation processes (Cuif et al., 2011). However, without quantifying organic matrix components (total, soluble and insoluble) and identifying its composition, this remains speculative.

These results not only reinforce the knowledge that the shell organic matrix of bivalves is involved in
20 biomineralisation, but also that its level of influence depends on its composition (phosphorus-containing or sulfur-containing macromolecules) and the specific element being incorporated into the CaCO₃. Furthermore, these results show this phenomenon is species-specific. The incorporation of the main elements (e.g. Mg, Sr, Ba) used as proxies from marine properties (e.g. SST) is highly mediated by the shell organic matrix in general.

5 Conclusions

The combination of geochemical, spectroscopic and crystallographic analyses on specimens of *F. tenuicostata* and *S. biradiata* from King George Sound (south Western Australia) has revealed compositional and microstructural differences.
25 Although the specimens were sampled from the same location and experienced the same marine conditions during their growth, they display different characteristics. Both species have been described as purely aragonitic but low levels of calcite and Mg-calcite are present in *S. biradiata* and *F. tenuicostata*, respectively. LA ICP-MS measurements revealed correlations between levels of Mg, S and P (*F. tenuicostata*), and Sr, S and Ba (*S. biradiata*). Although analysing the composition of the
30 shell organic matrix was beyond the scope of this study, the organic matrices of both bivalve species differ in composition and consequently in the way trace elements are incorporated into the CaCO₃. The incorporation of Sr and Ba is affected by the S-containing matrix of *S. biradiata* and the incorporation of Mg and Sr in *F. tenuicostata* is more influenced by S- and P-

containing organic macromolecules. The substitution of Ca^{2+} by Mg^{2+} in calcite in *F. tenuicostata* appears to be influenced by the composition of the organic matrix. The combination of S- and P-containing organics could be promoting ionic substitution in shells of *F. tenuicostata*.

The differences between these two species are clear and raise questions about genetic determinism considering they belong to different taxonomic superfamilies. This has consequences for environmental proxy applications. The present study shows that the elemental composition of marine bivalve shells is species-specific and influenced by multiple factors such as crystallographic structures, organic macromolecule composition and environmental setting. These factors complicate the use of bivalve shells as a proxy for reconstructing the past and present properties of seawater. Mg/Ca and Sr/Ca ratios are amongst the most common proxies used for SST reconstructions, however, this study shows elemental changes are not solely caused by SST variation. High definition multimodal/multidisciplinary characterisation of both the organic and microstructure are central to understanding calcification and elemental incorporation. Only then can geochemical proxies be used to reconstruct true time-series and the “vital effect” accurately described.

Data availability

The data in this manuscript forms part of the PhD research of Liza Roger which is not yet submitted for examination. The thesis and all data generated as part of the thesis work will be available in the UWA Thesis Repository after examination.

Team list and contribution

L.M. Roger wrote the manuscript, collected the samples and analysed them. As PhD supervisors, A.D. George and J. Shaw supervised the research and reviewed the manuscript. R. Hart helped understand and analyse the XRD data. M. Roberts collected the EPMA data. T. Becker helped understand the CRM data. B. McDonald and N. Evans collected the LA ICP-MS data.

Competing interests

All authors mentioned above declare having no competing financial, professional or personal interests that might influence the presentation of the work described in this manuscript.

Disclaimer

This manuscript is the result of the analyses that form part of the PhD research of L.M. Roger at the University of Western Australia and the Centre for Microanalysis, Characterisation and Analysis in collaboration with the John de Laeter Centre of Curtin University, and is subject to interpretation.

Acknowledgements

The authors acknowledge the facilities, and the scientific and technical assistance of the Australian Microscopy & Microanalysis Research Facility at the Centre for Microscopy, Characterisation & Analysis, The University of Western Australia, a facility funded by the University, State and Commonwealth Governments, and the GeoHistory Facility, John de Laeter Centre at Curtin University, a collaborative research venture involving Curtin University, The University of Western Australia, Geological Survey of Western Australia and the Commonwealth Scientific and Industrial Research Organisation (CSIRO). The authors are also grateful for constructive comments and notes provided by B. Schöne, and the technical assistance provided by F. Nemeth. This study was financially supported by the School of Earth Sciences and the Centre for Microscopy, Characterisation and Analysis of the University of Western Australia.

References

- 10 Armstrong, J. T.: Quantitative analysis of silicate and oxide minerals: Comparison of Monte-Carlo, ZAF and Phi-Rho-Z procedures, 1988.
- Ayling, B. F., Chappell, J., McCulloch, M. T., Gagan, M. K., and Elliot, M.: High-resolution paleoclimate of the MIS 11 interglacial (423–360ka) using geochemical proxies in giant *Tridacna* clams, *Geochimica et Cosmochimica Acta*, 70, A26, 2006.
- 15 Bonham, K.: Growth Rate of Giant Clam *Tridacna gigas* at Bikini Atoll as Revealed by Radioautography, *Science*, 149, 300-&, 1965.
- Borbás, J. E., Wheeler, A. P., and Sikes, C. S.: Molluscan shell matrix phosphoroproteins: correlation of degree of phosphorylation to shell mineral microstructure and to in vitro regulation of mineralization., *Journal of experimental Zoology*, 258, 1-13, 1991.
- 20 Bowerbank, J. S.: On the structure of the shells of molluscan and conchyferous animals, *Trans. Microsc. Soc. London*, 1, 123-152, 1844.
- WoRMS Editorial Board (2016). *World Register of Marine Species*. Available from <http://www.marinespecies.org> at VLIZ. Accessed 2016-10-26. doi:10.14284/170
- Brouwers, N. C., Mercer, J., Lyons, T., Poot, P., Veneklaas, E., and Hardy, G.: Climate and landscape drivers of tree decline in a Mediterranean ecoregion, *Ecology and evolution*, 2013. 67-79, 2013.
- 25 Carpenter, W.: On the microscopic structure of shells: Part I., *Br. Assoc. Adv. Sci.*, 14, 1-24, 1845.
- Carpenter, W.: On the microscopic structure of shells: Part II., *Br. Assoc. Adv. Sci.*, 17, 93-134, 1847.
- Carré, M., Bentaleb, I., Bruguier, O., Ordinola, E., Barrett, N. T., and Fontugne, M.: Calcification rate influence on trace element concentrations in aragonitic bivalve shells: Evidences and mechanisms, *Geochimica et Cosmochimica Acta*, 70, 4906-4920, 2006.
- 30 Crenshaw, M. A.: *Biological mineralization and demineralization*, Berlin Heidelberg, 1982.
- Cresswell, G. R. and Golding, T. J.: Observations of a south-flowing current in the southeastern Indian Ocean, *Deep Sea Research*, 27A, 449-466, 1980.
- Cuif, J. P., Dauphin, Y., Nehrke, G., Nouet, J., and Perez-Huerta, A.: Layered growth and crystallization in calcareous biominerals: impact of structural and chemical evidence on two major concepts in invertebrate biomineralization studies, *Minerals*, 2, 11-39, 2012.
- 35 Cuif, J. P., Dauphin, Y., and Sorauf, J. E.: *Biominerals and Fossils Through Time*, Cambridge University Press, Cambridge, 2011.
- Cullity, B. D.: *Elements of X-ray Diffraction*, 2nd, USA, 1978.
- 40 Donovan, J. J. and Tingle, T. N.: An improved mean atomic number correction for quantitative microanalysis *Journal of Microscopy*, 2, 1-7, 1996.

- Ferguson, J. E., Henderson, G. M., Fa, D. A., Finlayson, J. C., and Charnley, N. R.: Increased seasonality in the Western Mediterranean during the last glacial from limpet shell geochemistry, *Earth and Planetary Science Letters*, 308, 325-333, 2011.
- 5 Finch, A. A. and Allison, N.: Coordination of Sr and Mg in calcite and aragonite, *Mineralogical Magazine*, 71, 539-552, 2007.
- Freitas, P. S., Clarke, L. J., Kennedy, H., Richardson, C. A., and Abrantes, F.: Environmental and biological controls on elemental (Mg/Ca, Sr/Ca and Mn/Ca) ratios in shells of the king scallop *Pecten maximus*, *Geochimica Et Cosmochimica Acta*, 70, 5119-5133, 2006.
- Gattuso, J. P. and Hansson, L.: *Ocean Acidification*, Oxford University Press, New York, 2011.
- 10 Gazeau, F., Gattuso, J. P., Dawber, C., Pronker, A. E., Peene, F., Peene, J., Heip, C. H. R., and Middelburg, J. J.: Effect of ocean acidification on the early life stages of the blue mussel *Mytilus edulis*, *Biogeosciences*, 7, 2051-2060, 2010.
- Gillikin, D. P., De Ridder, F., Ulens, H., Elskens, M., Keppens, E., Baeyens, W., and Dehairs, F.: Assessing the reproducibility and reliability of estuarine bivalve shells (*Saxidomus giganteus*) for sea surface temperature reconstruction: implications for paleoclimate studies, *Paleogeography Paleoclimatology Paleoecology*, 228, 70-85, 2005a.
- 15 Gillikin, D. P., Lorrain, A., Navez, J., Taylor, J. W., Keppens, E., Baeyens, W., and Dehairs, F.: Strong biological controls on Sr/Ca ratios in aragonite marine bivalve shells, *Geochemistry, Geophysics, Geosystems*, 6, 16, 2005b.
- Hahn, S., Griesshaber, E., Schmahl, W. W., Neuser, R. D., Ritter, A.-C., Hoffmann, R., Buhl, D., Niedermayr, A., Geske, A., Immenhauser, A., and Pufahl, P.: Exploring aberrant bivalve shell ultrastructure and geochemistry as proxies for past sea water acidification, *Sedimentology*, doi: 10.1111/sed.12107, 2014. n/a-n/a, 2014.
- 20 Heinemann, A.: The suitability of *Mytilus edulis* as proxy archive and its response to ocean acidification, PhD, Christian-Albrechts-Universität, Kiel, Germany, 2011.
- Henkes, G. A., Passey, B. H., Wanamaker, A. D., Grossman, E. L., Ambrose, W. G., and Carroll, M. L.: Carbonate clumped isotope compositions of modern marine mollusk and brachiopod shells, *Geochimica Et Cosmochimica Acta*, 106, 307-325, 2013.
- 25 Jacob, D. E., Soldati, A. L., Wirth, R., Huth, J., Wehrmeister, U., and Hofmeister, W.: Nanostructure, composition and mechanisms of bivalve shell growth, *Geochimica Et Cosmochimica Acta*, 72, 5401-5415, 2008.
- Jones, D. S. and Quitmyer, I. R.: Marking time with bivalve shells: oxygen isotopes and season of annual increment formation, *Palaios*, 11, 340-346, 1996.
- Klausmeyer, K. R. and Shaw, M. R.: Climate change, habitat loss, protected areas and the climate adaptation potential of species in Mediterranean ecosystems worldwide, *PloS one*, doi: 4:e6392, 2009. 2009.
- 30 Klein, R. T., Lohmann, K. C., and Thayer, C. W.: Sr/Ca and ¹³C/¹²C ratios in skeletal calcite of *Mytilus trossulus*: covariation with metabolic rate, salinity and carbon isotopic composition of seawater, *Geochimica et Cosmochimica Acta*, 60, 4207-4221, 1996.
- Krause-Nehring, J., Klügel, A., Nehrke, G., Brellochs, B., and Brey, T.: Impact of sample pretreatment on the measured element concentrations in the bivalve *Arctica islandica*, *Geochemistry, Geophysics, Geosystems*, 12, 1525-2027, 2011.
- 35 Lazareth, C. E., Le Corneq, F., Candaudap, F., and Freyrier, R.: Trace element heterogeneity along isochronous growth layers in bivalve shell: Consequences for environmental reconstruction, *Palaeogeography Palaeoclimatology Palaeoecology*, 373, 39-49, 2013.
- Lazareth, C. E., Putten, E. V., André, L., and Dehairs, F.: High-resolution trace element profiles in shells of the mangrove bivalve *Isognomon ephippium*: a record of environmental spatio-temporal variations, *Estuarine, Coastal and Shelf Science*, 57, 1103-1114, 2003.
- 40 Loste, E., Wilson, R. M., Seshadri, R., and Meldrum, F. C.: The role of magnesium in stabilising amorphous calcium carbonate and controlling calcite morphologies, *Journal of Crystal Growth*, 254, 206-218, 2003.
- Lowenstam, H. A. and Weiner, S.: *On Biomineralization*, New York, 1989.
- 45 Mucci, A. and Morse, J. W.: The incorporation of Mg²⁺ and Sr²⁺ into calcite overgrowths: influences of growth rate and solution composition, *Geochimica et Cosmochimica Acta*, 47, 217-233, 1982.
- Nategaal, R., Grove, C. A., Kasper, S., Zinke, J., Boer, W., and Brummer, G.-J. A.: Spectral luminescence and geochemistry of coral aragonite: effects of whole-core treatment, *Chemical Geology*, 318-319, 6-15, 2012.

- Nehrke, G. and Nouet, J.: Confocal Raman microscope mapping as a tool to describe different mineral and organic phases at high spatial resolution within marine biogenic carbonates: case study on *Nerita undata* (Gastropoda, Neritopsina), *Biogeosciences*, 8, 3761-3769, 2011.
- Paquette, J. and Reeder, R. J.: Relationship between surface structure, growth mechanism, and trace element incorporation in calcite, *Geochimica et Cosmochimica Acta*, 59, 735-749, 1995.
- Pokroy, B., Fitch, A. N., Lee, P. L., Quintana, J. P., Caspi, E. N., and Zolotoyabko, E.: Anisotropic lattice distortions in the mollusk-made aragonite: a widespread phenomenon, *Journal of Structural Biology*, 153, 145-150, 2006.
- Popov, S. J.: Composite prismatic structures in bivalve shell, *Acta Palaeontologica Polonica*, 31(1-2), 3-26, 1986.
- Ponder, W. F. and Lindberg, D. R.: *Phylogeny and Evolution of the Mollusca*, University of California Press, London, 2008.
- Purton, L. M. A., Sheilds, G. A., Brasier, M. D., and Grime, G. W.: Metabolism controls Sr/Ca ratios in fossil aragonite molluscs, *Geology*, 27, 1083-1086, 1999.
- Reddy, M. M.: Crystallization of calcium carbonate in the presence of trace concentrations of phosphorus-containing anions: I. Inhibition by phosphate and glycerophosphate ions at pH 8.8 and 25 C, *Journal of Crystal Growth*, 41, 287-295, 1977.
- Richardson, C. A., Peharda, M., Kennedy, H., Kennedy, P., and V, O.: Age, growth rate and season of recruitment of *Pinna nobilis* (L) in the Croatian Adriatic determined from Mg : Ca and Sr : Ca shell profiles, *Journal of Experimental Marine Biology and Ecology*, 299, 1-16, 2004.
- Scarlett, N. V. Y. and Madsen, I. C.: Quantification of phases with partial or no known crystal structures, *Powder Diffraction*, 21, 278-284, 2006.
- Schneider, J. A., Carter, J. G.: Evolution and phylogenetic significance of Cardioidean shell microstructure (Mollusca, Bivalvia), *Journal of Paleontology*, 75(3), 607-643.
- Schöne, B. R., Dunca, E., Mutvei, H., and Norlund, U.: A 217-year record of summer air temperature reconstructed from freshwater pearl mussels (*M. margaritifera*, Sweden), *Quaternary Science Reviews*, 23, 1803-1816, 2004.
- Schöne, B. R., Houk, S. D., Castro, A. D. F., Fiebig, J., Oschmann, W., Kroncke, I., Dreyer, W., and Gosselck, F.: Daily growth rates in shells of *Arctica islandica*: Assessing sub-seasonal environmental controls on a long-lived bivalve mollusk, *Palaios*, 20, 78-92, 2005.
- Schöne, B. R., Radermacher, P., Zhang, Z., and Jacob, D. E.: Crystal fabrics and element impurities (Sr/Ca, Mg/Ca, and Ba/Ca) in shells of *Arctica islandica*—Implications for paleoclimate reconstructions, *Palaeogeography, Palaeoclimatology, Palaeoecology*, 373, 50-59, 2013.
- Schöne, B. R., Zhang, Z., Jacob, D. E., Gillikin, D. P., Tutken, T., Garbe-Schönberg, D., McConnaughey, T. A., and Soldati, A. L.: Effect of organic matrices on the determination of the trace element chemistry (Mg, Sr, Mg/Ca, Sr/Ca) of aragonite bivalve shells (*Arctica islandica*) - Comparison of ICP-OES and LA-ICP-MS data, *Geochemical Journal*, 44, 23-37, 2010.
- Schöne, B. R., Zhang, Z., Radermacher, P., Thébault, J., Jacob, D. E., Nunn, E. V., and Maurer, A.-F.: Sr/Ca and Mg/Ca ratios of ontogenetically old, long-lived bivalve shells (*Arctica islandica*) and their function as paleotemperature proxies, *Palaeogeography, Palaeoclimatology, Palaeoecology*, 302, 52-64, 2011.
- Schroeder, J. H., Dwornik, E. J., and Papike, J. J.: Primary Protodolomite in Echinoid Skeleton, *Geological Society of America Bulletin*, 80, 1613-1616, 1969.
- Shirai, K., Schöne, B. R., Miyaji, T., Radermacher, P., Krause, R. A., and Tanabe, K.: Assessment of the mechanism of elemental incorporation into bivalve shells (*Arctica islandica*) based on elemental distribution at the microstructural scale, *Geochimica Et Cosmochimica Acta*, 126, 307-320, 2014.
- Spero, H. J., Lerche, I., and Williams, D. F.: Opening the carbon isotope "vital effect" black box, 2, quantitative model for interpreting foraminiferal carbon isotope data, *Paleoceanography*, 6, 639-655, 1991.
- Strom, A., Francis, R. C., Mantua, N. J., Miles, E. L., and Peterson, D. L.: North Pacific climate recorded in growth rings of geoduck clams; a new tool for paleoenvironmental reconstruction, *Geophysical Research Letters*, 31, 2004.
- Takesue, R. K., Bacon, C. R., and Thompson, J. K.: Influences of organic matter and calcification rate on trace elements in aragonitic estuarine bivalve shells, *Geochimica Et Cosmochimica Acta*, 72, 5431-5445, 2008.
- Urey, H. C., Lowenstam, H. A., Epstein, A. W., and McKinney, C. R.: Measurement of paleotemperatures and temperatures of the Upper Cretaceous of England, Denmark, and the Southeastern United States, *Bull. Geol. Soc. Am.*, 62, 399-416, 1951.

Wanamaker, A. D., Hetzinger, S., and Halfar, J.: Reconstructing mid- to high-latitude marine climate and ocean variability using bivalves, coralline algae, and marine sediment cores from the Northern Hemisphere, *Palaeogeography, Palaeoclimatology, Palaeoecology*, 302, 1-9, 2011.

5 | Wheeler, A. P. and Sikes, C. S.: Regulation of [carbonate calcification by organic matrix](#), *American Zoologist*, 24, 933-944, 1984.

Zeebe, R., Bijma, J., Hönisch, B., Sanyal, A., Spero, H. J., and Wolf-Gladrow, D. A.: Vital effects and beyond: a modelling perspective on developing paleoceanographical proxy relationships in foraminifera, Geological Society, London, Special Publications, 303, 45-58, 2008.

Table 1: Lattice parameters a , b and c (Å) of aragonite after Rietveld refinement and other reference materials for comparison. *Perna canaliculus*: marine bivalve, *Acanthocardia tuberculata*: marine bivalve, *Strombus decorus persicus*: marine gastropod

Origin		a	b	c
<i>this study</i>				
G156	biogenic: <i>Fulvia tenuicostata</i>	5.7471	4.9634	7.9673
G158	biogenic: <i>Fulvia tenuicostata</i>	5.7481	4.9634	7.9678
G159	biogenic: <i>Fulvia tenuicostata</i>	5.7484	4.9624	7.9712
G160	biogenic: <i>Fulvia tenuicostata</i>	5.7480	4.9632	7.9692
G170	biogenic: <i>Soletellina biradiata</i>	5.7413	4.9580	7.9545
G171	biogenic: <i>Soletellina biradiata</i>	5.7519	4.9660	7.9629
G173	biogenic: <i>Soletellina biradiata</i>	5.7514	4.9602	7.9686
<i>Pokroy et al *</i>				
ICSD-98-015-7993	mineral: Morocco	5.7420	4.9630	7.9680
JCPDS-41-1475	mineral	5.7439	4.9623	7.9680
ICSD-98-015-7994	biogenic: <i>P. canaliculus</i>	5.7520	4.9670	7.9640
ICSD-98-015-7992	biogenic: <i>A. tuberculata</i>	5.7480	4.9650	7.9640
ICSD-98-015-7995	biogenic: <i>S. decorus persicus</i>	5.7530	4.9690	7.9590
ICSD-98-015-7996	biogenic: <i>S. decorus persicus</i> (Bleached)	5.7430	4.9630	7.9640
ICSD-98-015-7997	biogenic: <i>S. decorus persicus</i> (Annealed)	5.7530	4.9690	7.9610
<i>De Villiers (1971)**</i>				
ICSD-98-001-5194	mineral: Nevada	5.7400	4.9670	7.9670
<i>Bragg (1925)***</i>				
ICSD-98-005-6090	mineral: Hungary	5.7300	4.9500	7.9550
<i>External standard</i>				
NIST 676a Alumina	Synthetic powder	4.7593	4.7593	12.992
<i>Internal standard</i>				
CaF2	Synthetic powder	5.4664	5.4664	5.4664

5

* Pokroy B., Zolotoyabko E., Caspi E.N., Fitch A.N., von Dreele R.B. Chemistry of Materials (1, 1898-, 19, 3244 – 3251, (2007)

JCPDS: data file 41 – 1475, Joint Committee on Powder Diffraction Standards – Keller, L., Rask, J., and Buseck, P., 1989, JCPDS card no. 41-1475, Arizona State Univ., Tempe, AZ, USA., ICDD Grant-in-Aid

** De Villiers, J.P.R. (1971), American mineralogist, 56, 758-766 – XRD from single crystal CaCO₃ - Nevada

10 *** Bragg, W.L., Zeitschrift fuer Kristallographie, Kristallogeometrie, kristallphysik, kristallchemie (-144, 1977) 61, 425-451, (1925) – XRD from single crystal CaCO₃ – Hungary

Table 2: Aragonite and calcite crystallite size (coherently scattering domain, CSD) in nm, estimated using the Sherrer equation (Cullity, 1978), with K=0.9, on 4 main diffraction peaks of aragonite and peak (104) of calcite

Sample ID	CSD (nm)				
	Aragonite peak (hkl)				Calcite peak (hkl)
	(111)	(102)	(201)	(122)	(104)
<i>F. tenuicostata:</i>					
G155	68.5	58.8	41.6	105.2	25.5
G156	64.2	69.9	-	58.3	26.2
G158	69.1	64.4	42.3	-	28.3
G159	45.6	50.1	35.6	34.4	29.1
G160	66.3	73.0	-	-	26.2
<i>S. biradiata:</i>					
G170	69.1	68.1	51.2	-	29.0
G171	111.7	72.3	37.2	143.8	23.3
G173	93.7	93.9	46.8	99.1	24.6

Table 3: EPMA detection limits (3σ) on bivalve samples. Mg and Sr contents in both *S. biradiata* and *F. tenuicostata* were below the limits of detection (see Fig. 8 and 9).

Element (symbol)	<i>Fulvia tenuicostata</i>	<i>Soletellina biradiata</i>
Sodium (Na)	0.1355	0.17
Magnesium (Mg)	0.102	0.127
Sulfur (S)	0.01	0.085
Calcium (Ca)	0.115	0.1425
Strontium (Sr)	0.47	0.595

5

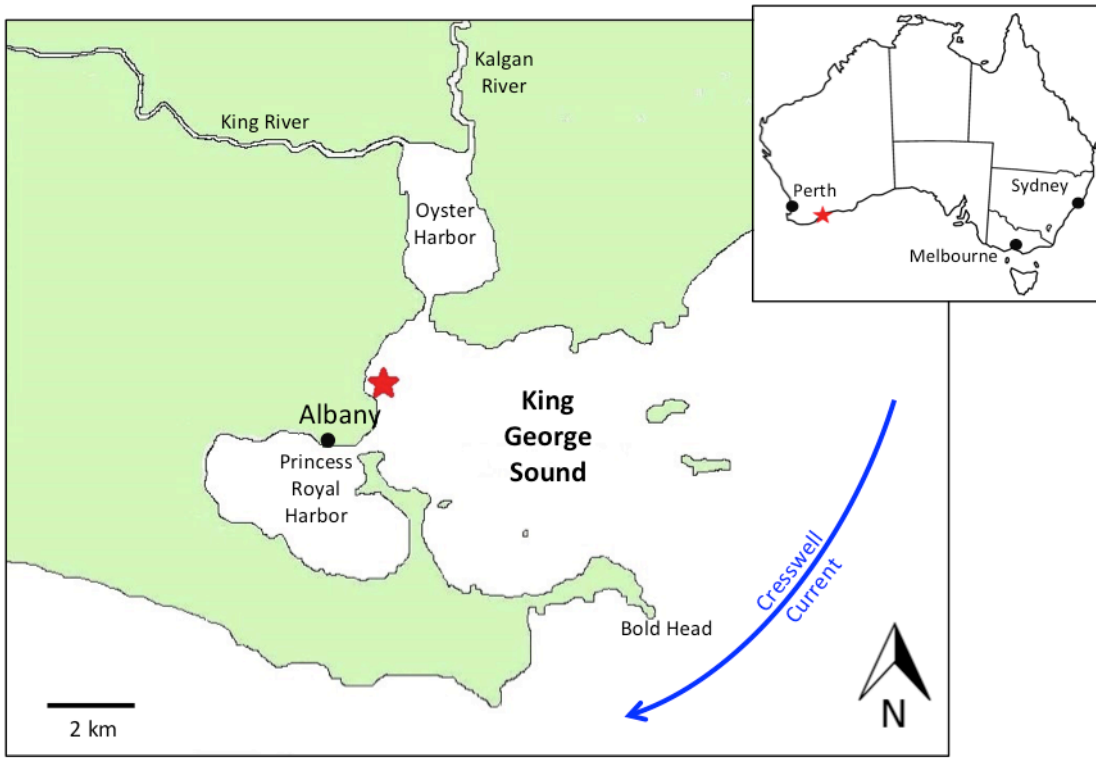
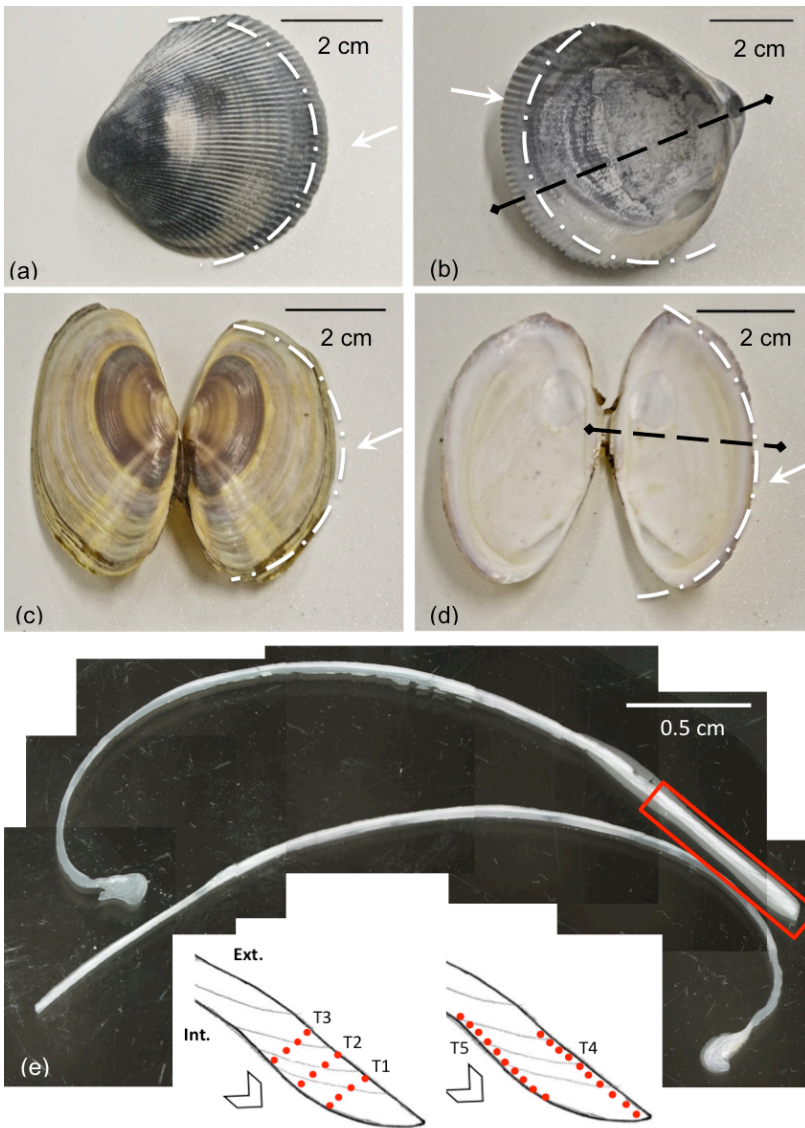


Figure 1: Map of King George Sound and surrounding coastline, south Western Australia. [The sampling site is indicated by the red star.](#)



5 | Figure 2: Photographs of external (left) and internal (right) views of bivalves. *Fulvia tenuicostata* (a,b); *Soletellina biradiata* (c, d). (e) Photo-mosaic showing ventral margin (*S. biradiata*) as seen in thin section. Powder was sampled from the ventral margin for x-ray diffraction analysis (white dashed lines and arrows: a, b, c and d). The area adjacent to the ventral margin was then targeted for confocal Raman microscopy, LA-ICP-MS and EPMA (red box: e). Lower panel show representation of laser spots along five transects (T1–T5). T1–T3 are parallel to the shell edge and T4 and T5 are parallel to the external and internal shell margin respectively.

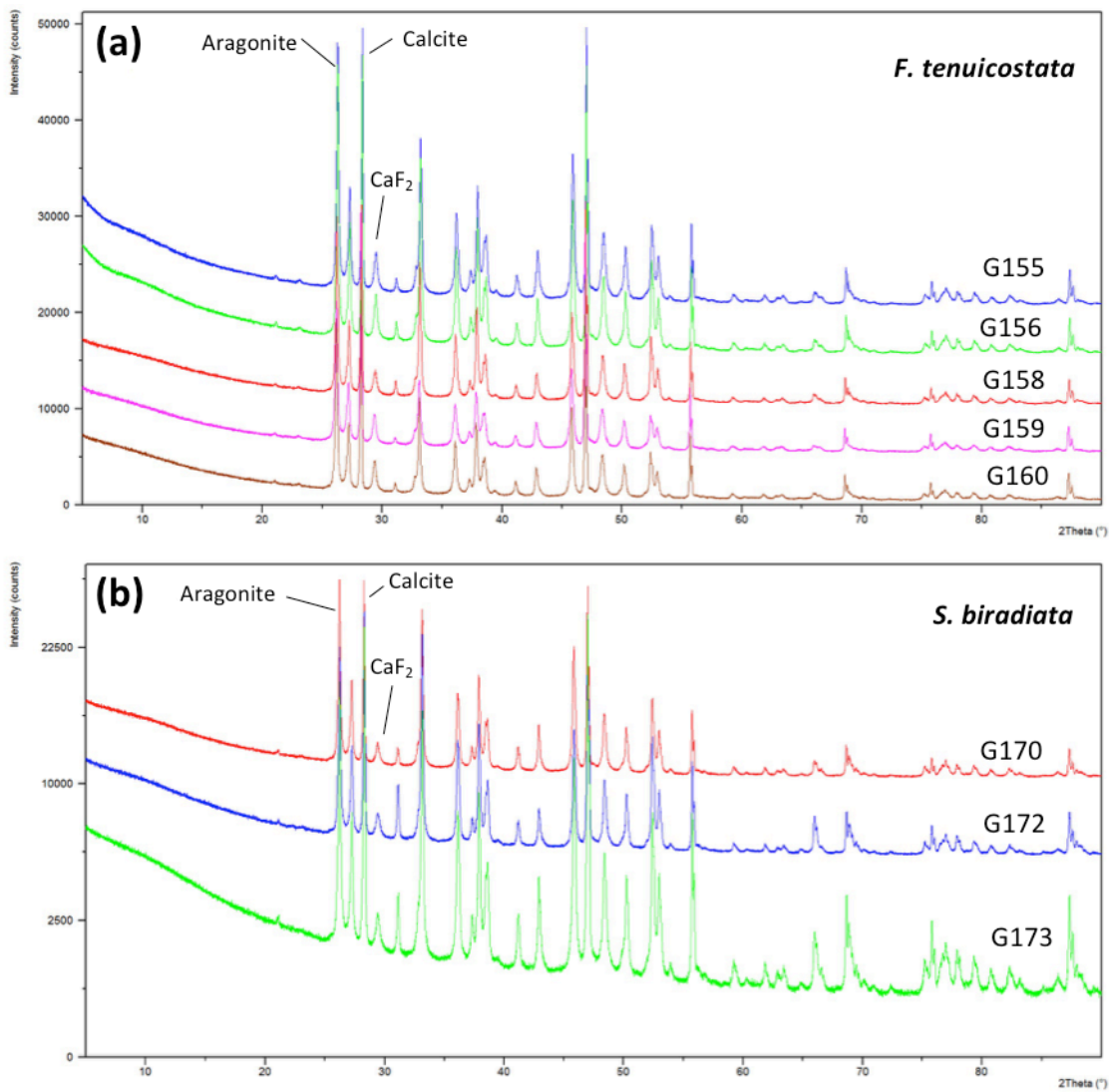


Figure 3: X-ray diffraction patterns of specimens of *Fulvia tenuicostata* (a) and *Soletellina biradiata* (b). Each XRD pattern is offset from the next (along the y-axis) to show the consistency of the diffraction peak positions. Sample ID indicated to the right of each diffraction pattern. Intensity is relative. Note: G154, G157 and G172 were not analysed using XRD because the sample weight was too low. Main diffraction peaks indicated for each phase identified (aragonite, calcite and calcium fluoride CaF₂).

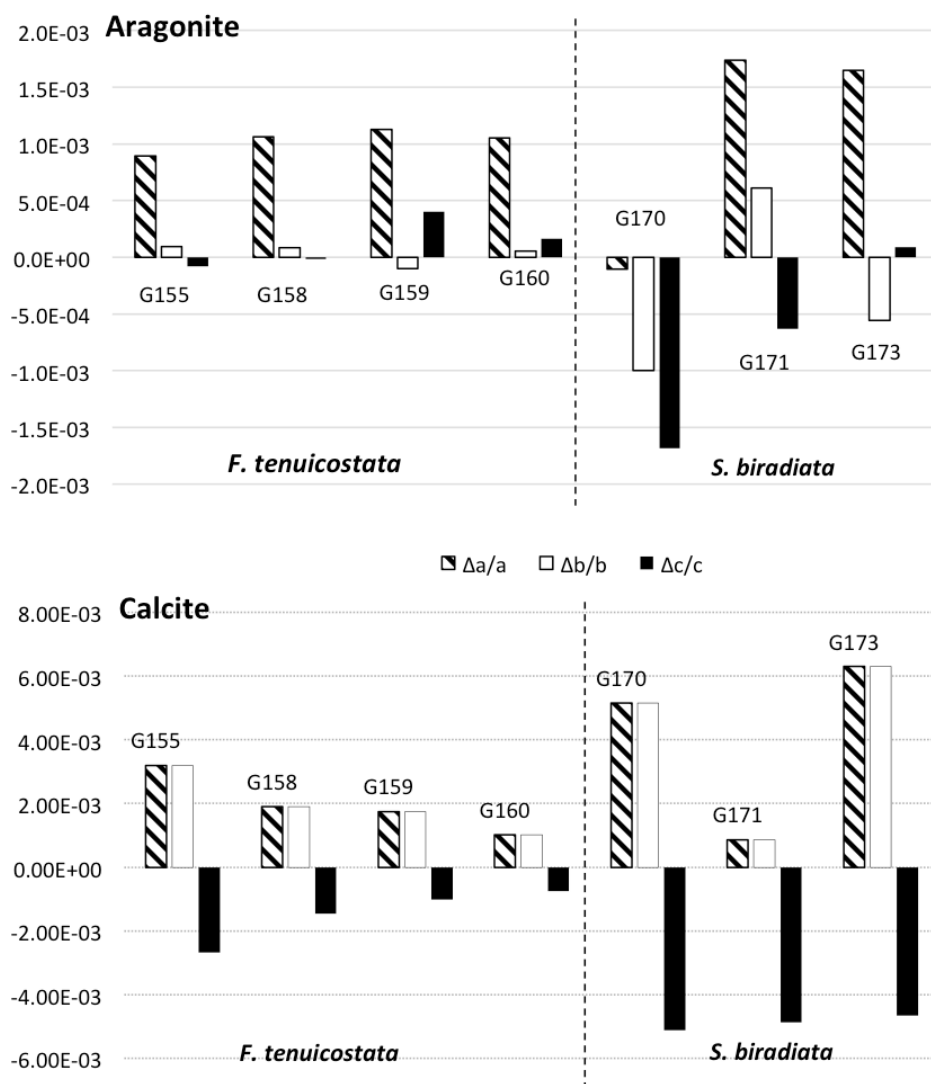


Figure 4: Aragonite lattice distortion presented as $\Delta a/a$, $\Delta b/b$ and $\Delta c/c$ compared to [mineral standard](#) (Pokroy et al, 2007) for four specimens of *F. tenuicostata* and three of *S. biradiata*. Y-axis indicates the amount of distortion compared to [ICSD-98-015-7993](#) mentioned above. Negative distortions are indicative of shrinking, positive distortions are indicative of stretching.

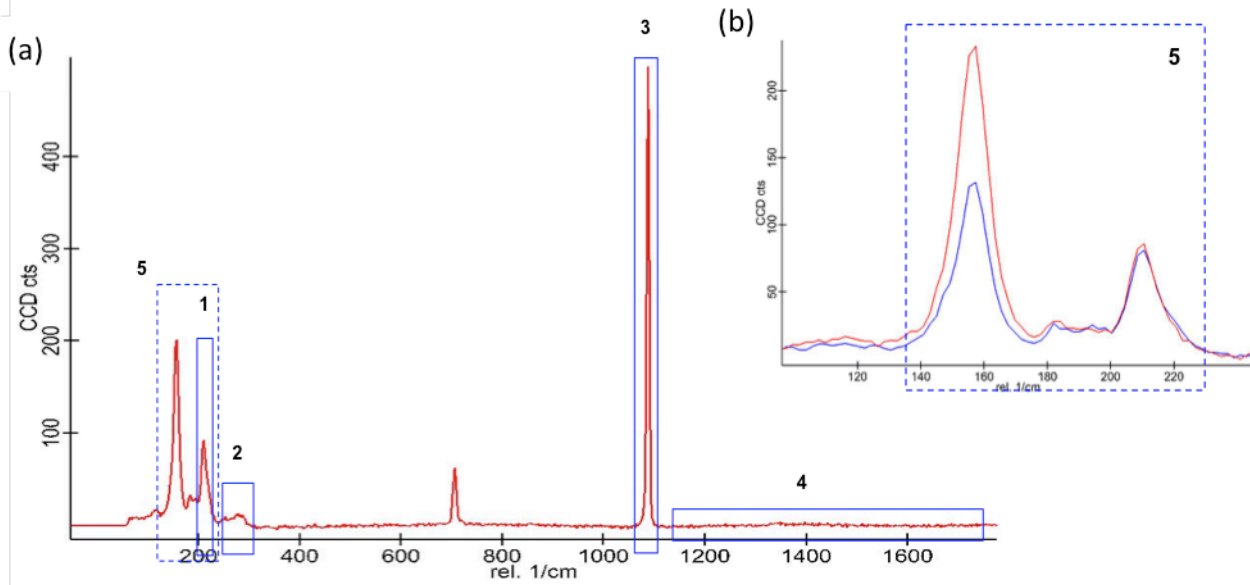
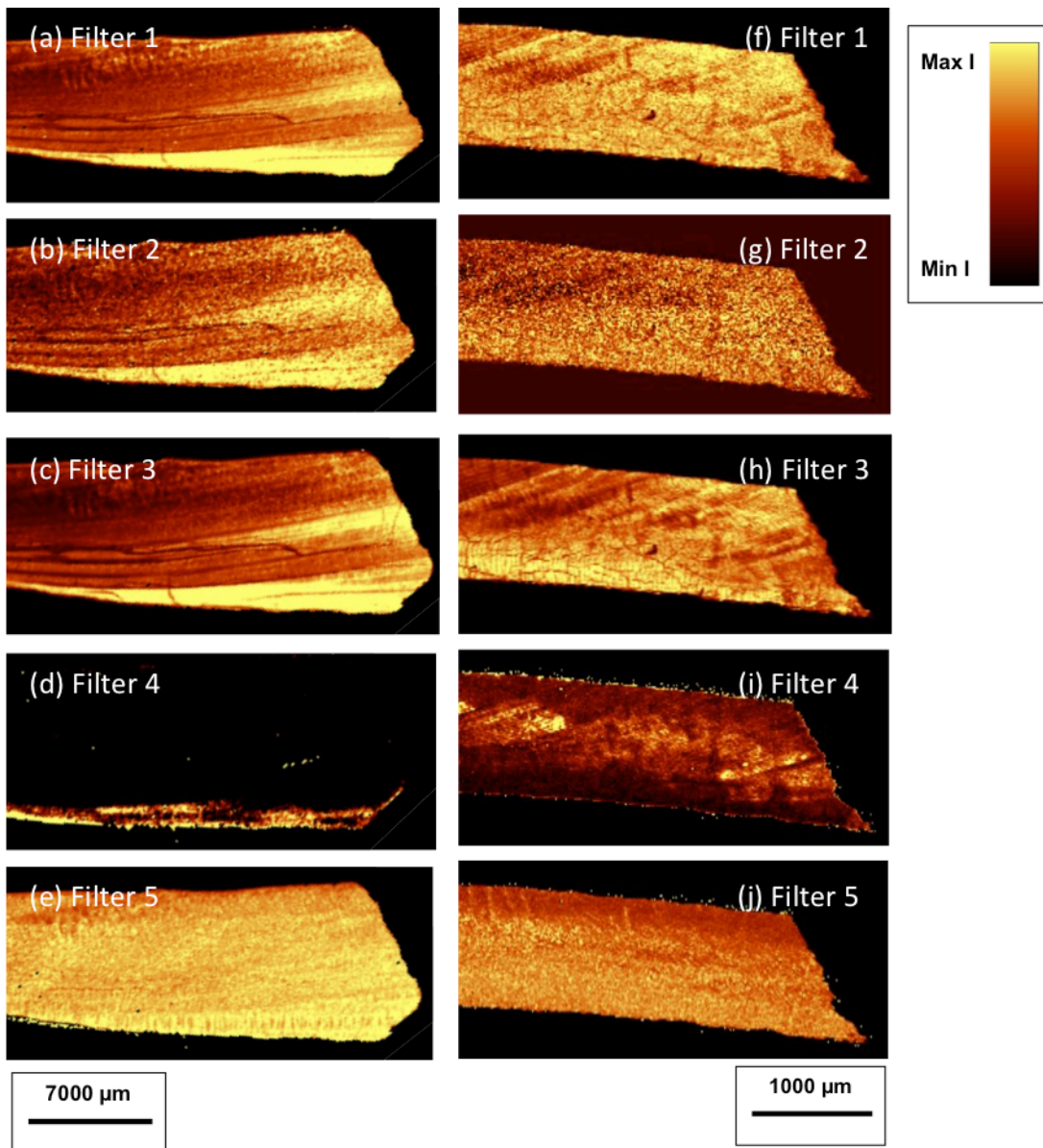


Figure 5: Typical Raman spectra from *S. biradiata* and *F. tenuicostata* (a). Blue boxes correspond to filters applied to the data: filter 1 (Σ peak area) centred at 209 cm^{-1} (width= 36.6 cm^{-1}), filter 2 (Σ peak area) centred at 282 cm^{-1} (width= 66.3 cm^{-1}), filter 3 (centre of mass, weighted width) centred at 1085 cm^{-1} (width= 36.6 cm^{-1}), filter 4 (Σ peak area) centred at 1450 cm^{-1} (width= 600 cm^{-1}). The blue dashed box, filter 5, encapsulates filter 1 and a filter centred at 152 cm^{-1} (Σ peak area, width= 36.6 cm^{-1}), to represent their calculated peak intensity ratio. The blue and red spectra (b) show the peak intensity difference seen at 152 cm^{-1} and 209 cm^{-1} . Each filter measures peak area, except filter 3, which measures Full Width at Half Maximum, and produces a qualitative map. Filter 1 targeted the aragonitic phase, filter 2 targeted calcite. Filter 3, by measuring variation in FWHM represents crystallinity and crystallite order. Filter 4, by targeting the tail of the spectrum shows fluorescence since peaks related to organics tend to show best in the tail of the spectrum. And finally, the peak intensity ratios (filter 5) show changes in crystallite orientation (aragonite crystallites)



5 | Figure 6: Images extracted from filters applied to the Raman spectra (see Fig. 5) from samples G171 (*S. biradiata*) (a-e), and G155 (*F. tenuicostata*) (f-j). Scale bar: 7000 μm (a-e), 1000 μm (f-j). Colour scale: bright colours correspond to high intensities (high CCD counts) and dark colours correspond to low intensities (low CCD counts). Sub-horizontal and curved lines, most visible in (a)–(c) and (f)–(h), are structural features of the shells. Scale bar: 500 μm.

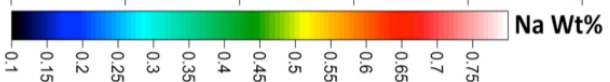
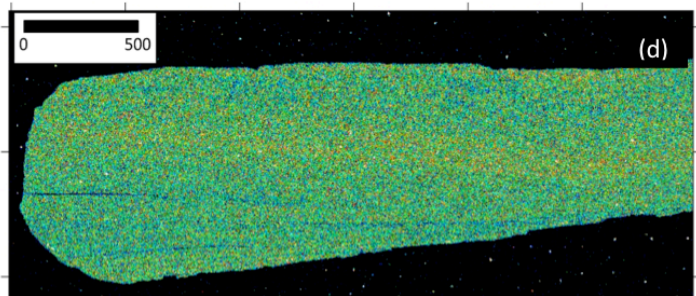
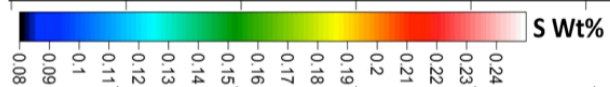
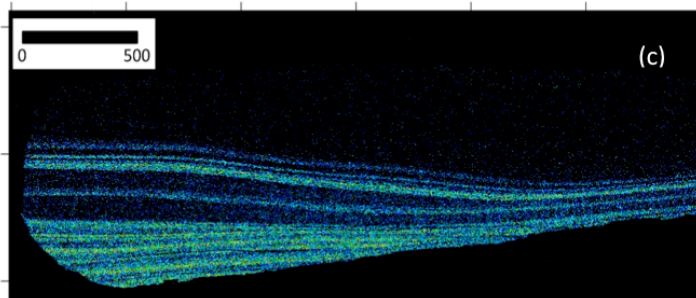
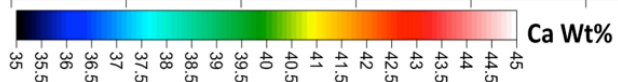
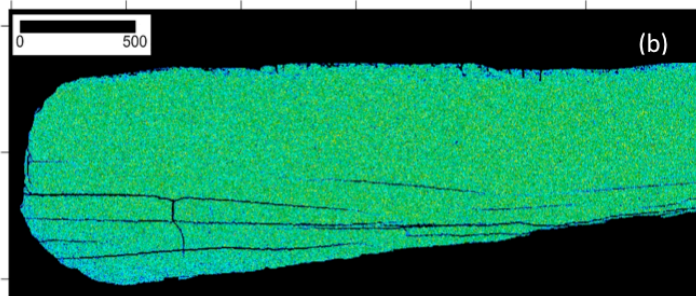
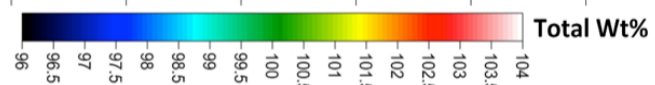
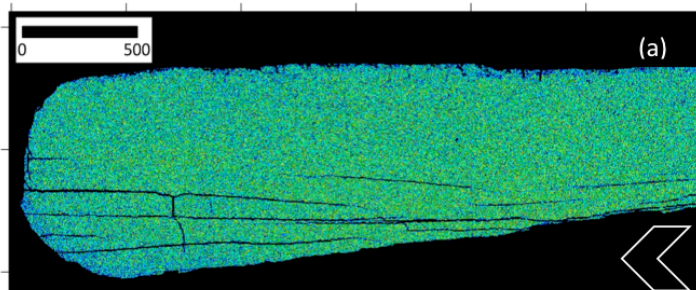


Figure 7: EPMA elemental map of sample G171, *S. biradiata*: totals (a); Ca concentration (b); S concentration (c); Na concentration (d). Mg and Sr concentration was below instrumental detection limit therefor not present here. Arrow (a) indicated direction of growth. Note: this shell shows a thick edge compared to the adjacent shell section directly. *S. biradiata* shell thickness is variable along the cross-section.

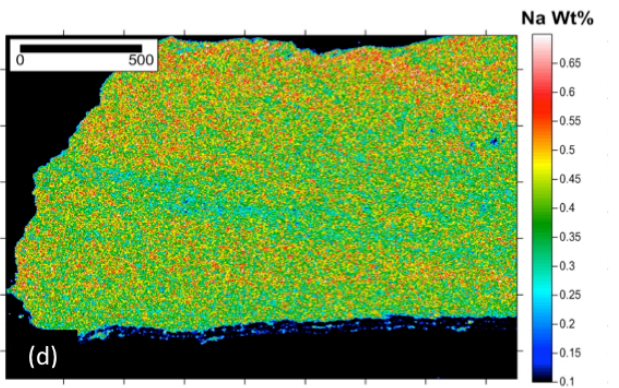
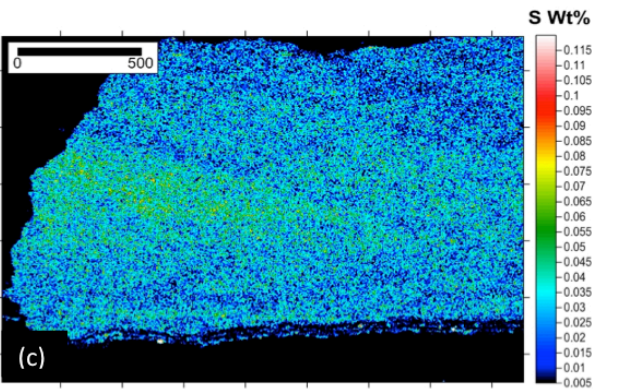
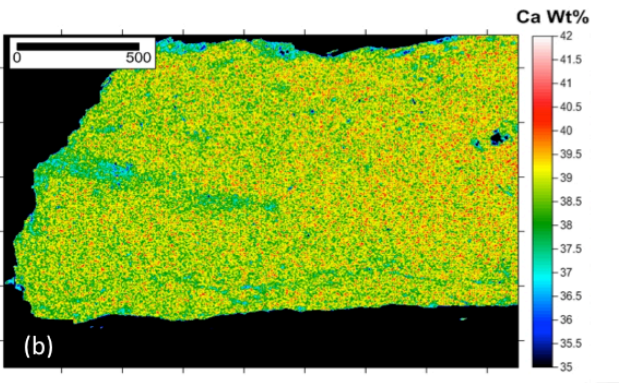
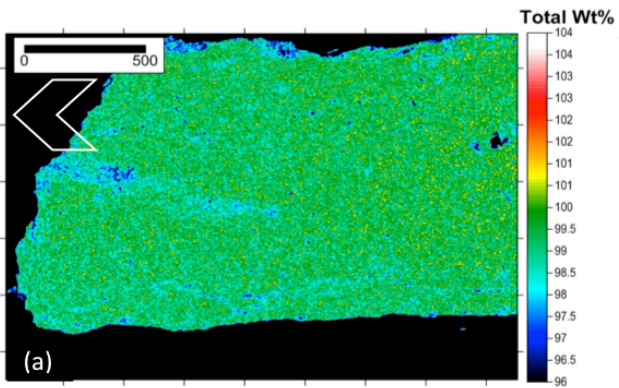


Figure 8: EPMA elemental map of sample G155 (*F. tenuicostata*): totals (a); Ca concentration (b); S concentration (c); Na concentration (d). Mg and Sr were below instrumental detection limit therefor not presented. Dashed line indicates scan overlap, since the sample was scanned twice to optimize precisions and quality. Scale bar: 500 μm . Arrow indicates direction of growth.

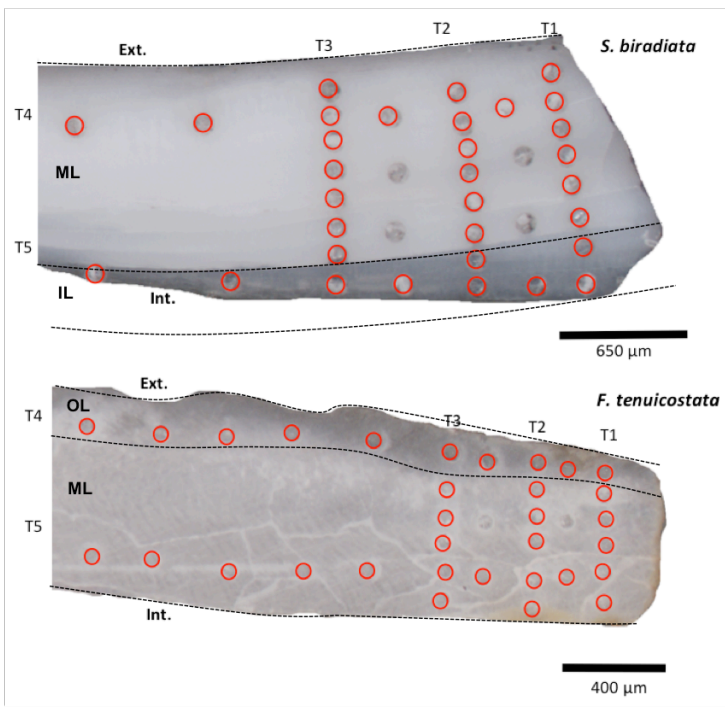


Figure 9: Location of laser spots along five transects. T1–T3 transects towards the inner shell surface and parallel to each other. T4 along the outer portion of the outer shell layer and T5 along the inner portion of the outer shell layer. Inner and outer portion of the outer shell layer indicates by Int. and Ext. respectively. Shell layers indicated by OL: outer layer and ML: middle layer, and IL: internal layer. Note: absence of outer shell layer and inner shell layer in these sections of *S. biradiata* and *F. tenuicostata* respectively. T4 and T5 were sampled from different shell layers as labelled.

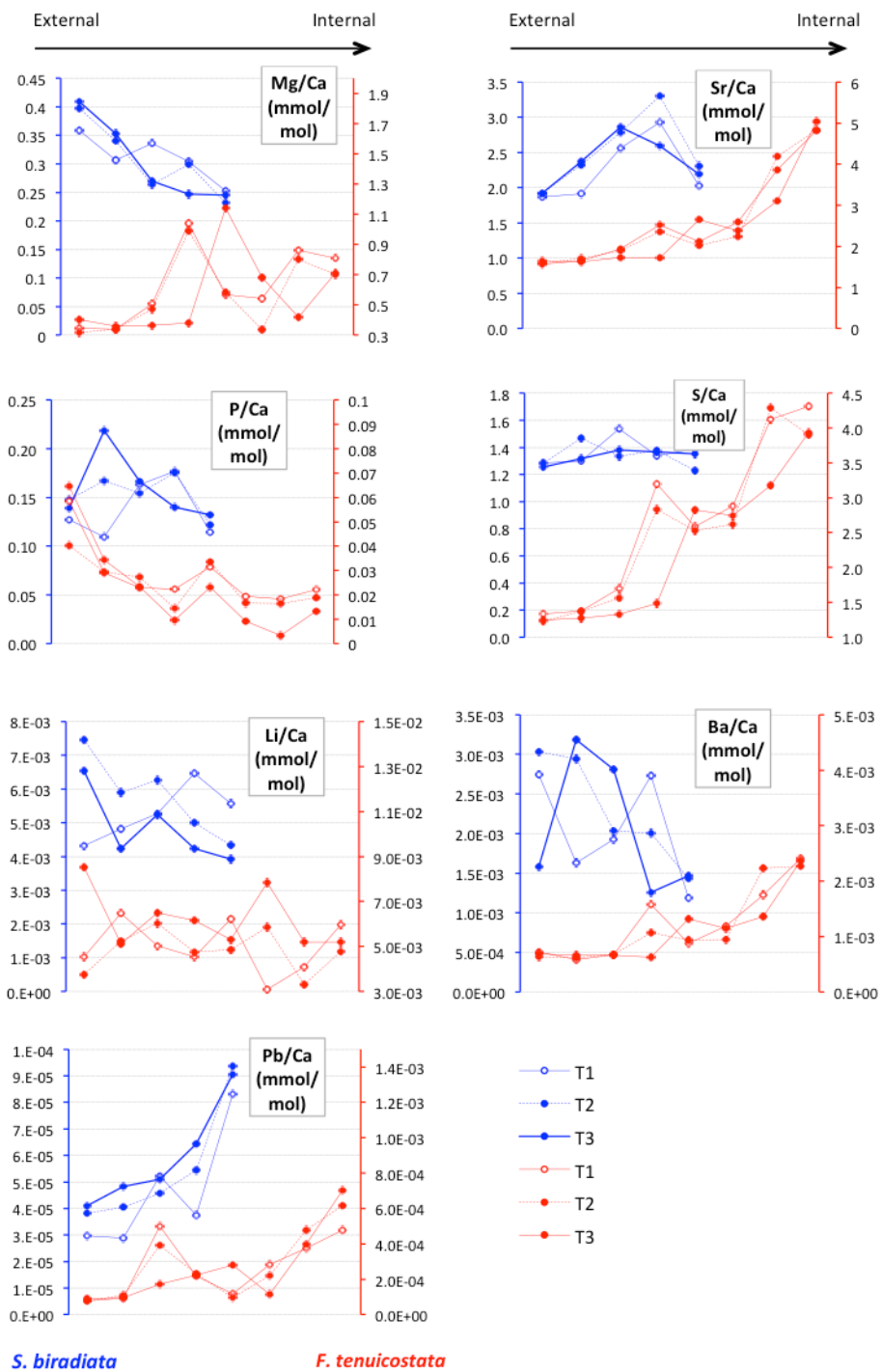
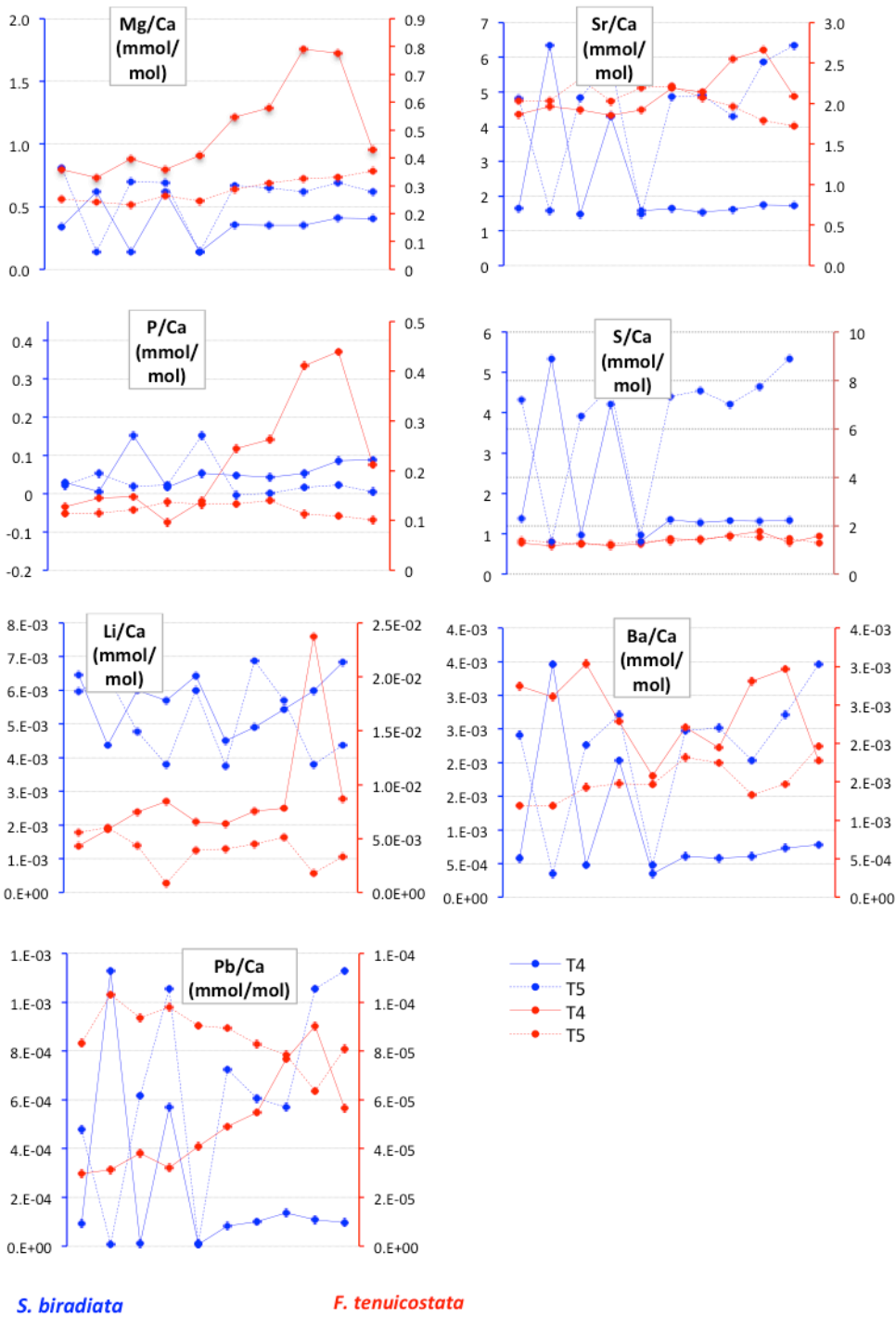


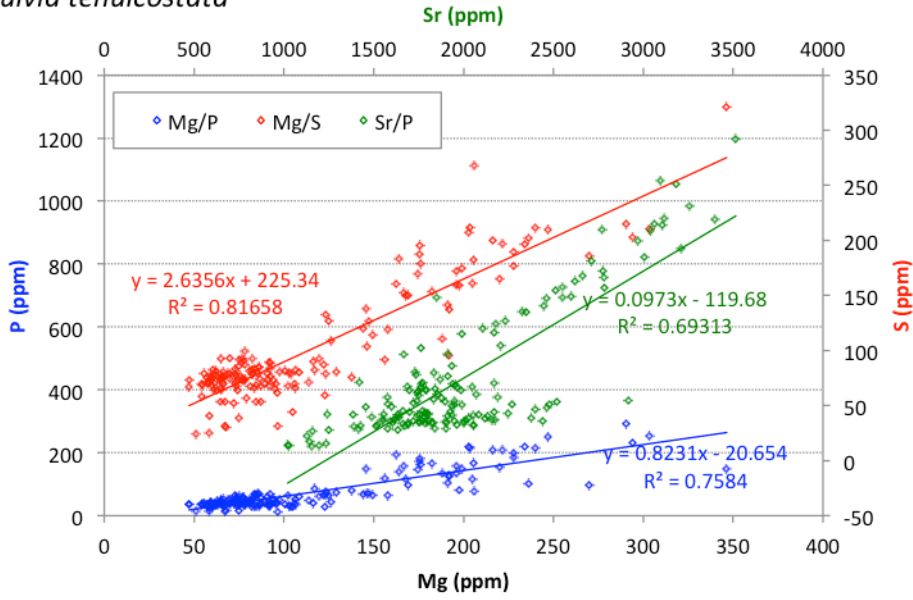
Figure 10: LA-ICP-MS results for transect T1, T2 and T3. Blue lines represent results for *S. biradiata* (G171) and red lines represent results for *F. tenuicostata* (G155). Five laser spots/transect were done on *S. biradiata*.



S. biradiata *F. tenuicostata*

Figure 11: LA-ICP-MS results for T4 and T5 transects. Blue lines represent results for *S. biradiata* (G171) and red lines represent results for *F. tenuicostata* (G155)

Fulvia tenuicostata



Soletellina biradiata

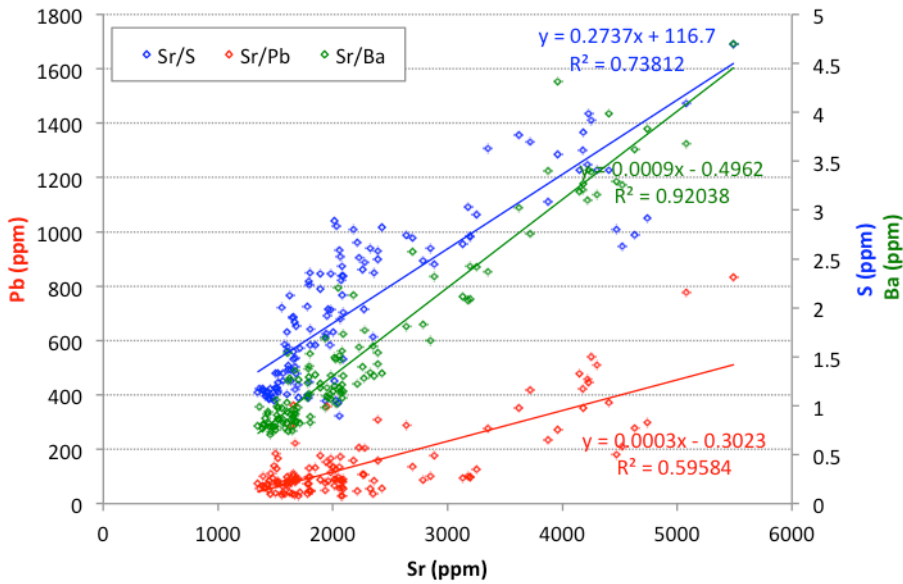


Figure 12: Graphs showing significant linear correlations of LA-ICP-MS measurements for *F. tenuicostata* (Mg/P, Mg/S and Sr/P) and *S. biradiata* (Sr/S, Sr/Pb and Sr/Ba)

Reviewer reports

We are pleased that this manuscript has been accepted subject to minor revisions. We thank the editor and the reviewers for their positive feedback, comments and helpful suggestions. All comments and suggestions have been carefully considered and revisions made accordingly. Point-by-point modifications are described below.

5

Report from the Editor: the Editor suggested the addition of a statement about the microenvironment experienced by the bivalves to inform the reader further considering sediment environmental gradients can be steep and patchy. We added “from the muddy sands (600–800 µm grain size)” on line 20 of page 4. A reference to muddy sands can also be found at lines 4 and 9 of page 5.

10

No report from Reviewer 1

Report from Reviewer 2

Reviewer 2 Major Points

1. I would like to request the authors to show shell layer distribution in Figure 9. Any molluscan shell consists of a few different layers, and each layer has a different microstructure with different elemental distribution. Normally two layers (outer and middle layers) are contained in a bivalve shell edge. So I guess transects T4 and T5 belong to different shell layers with different chemical nature (Bright and dark parts may represent different layers in Figure 9). Shirai et al. (2007), which is cited in this manuscript, presented a typical example.

Reply: Reviewer 2 makes a good point regarding the shell layer distribution. The species presented here show similar shell structures similar to each other. To improve microstructural information, the following statements were added: page 5 line 7–9 “The shell structure of *F. tenuicostata* consists of a prismatic outer layer (OL), a simple crossed-lamellar middle layer (ML) and a complex crossed-lamellar inner layer (IL)” and line 12–15 “The shell structure of *S. biradiata* consists of a prismatic OL composed of acicular prismatic crystals directed toward the outer surface and locally curved, a simple crossed-lamellar ML and a complex crossed-lamellar IL. The OL may be absent, in which case the lamellae of the ML extend to the outer surface as noted for other species of this subfamily (Popov, 1986; Schneider and Carter, 2001)”. The light/dark pattern seen on *S. biradiata* of Fig. 9 corresponds to the difference in orientation and microstructure between the middle shell layers and the inner shell layer. Shell structure information was added to Figure 9 and in the caption. T4 and T5 were analysed along different layers and Figure 9 has been labeled to show this clearly.

2. Shell microstructure of the two species should be mentioned briefly in Introduction or Results, if possible. Although the authors used the word “microstructure” in various parts of the manuscript, data on shell microstructure is not presented in this study. The term “shell microstructure” implies morphology of crystals and modes of their aggregation. For example, the most common types of molluscan shell microstructures include prismatic, nacreous, foliated and crossed-lamellar structures. Distinction of these microstructures seems important in the discussion of this paper, since organic contents are presumably different, depending on microstructures.

Reply: The revisions of the text in Section 2.2 for point #1 have also addressed this comment.

3. The authors mentioned that “the microstructure of *S. biradiata* shells consists of a nacreous outer portion of the

outer shell layer and a prismatic inner portion of the outer shell layer” (page 11, line 21). Probably the authors did not understand the shell microstructure of this species precisely. No species has been known to have a nacreous structure in the order Cardiida, and this description should be revised.

Reply: There is indeed a mistake in the description of the structure of *S. biradiata* which has now been corrected at the top of Section 4.1 (p. 11). This section now reads: “The microstructure of *S. biradiata* shells consists of a prismatic outer shell layer, a crossed-lamellar middle layer and a complex crossed-lamellar inner layer (not present in the portion of the shell in Fig. 6). Both species precipitate their shells differently from a structural point of view. The precipitation of microstructural units in a crossed-lamellar pattern is complex. The structural complexity of *F. tenuicostata* with its crossed-lamellar pattern associated with marked ribs suggests a higher level of biological control on CaCO₃ precipitation, which may influence the overall elemental composition of the shell. For example, Paquette and Reeder (1995), suggested that crystal surface structure has an effect on trace element incorporation. As such, the different microstructures present in the two species studied here may be expected to yield different elemental compositions.”

**4. The following article should be cited regarding the shell microstructure of the Cardiidae (*Fulvia*).
Schneider, J. A. & J. G. Carter. 2001. Evolution and phylogenetic significance of Cardioidean shell microstructure (Mollusca, Bivalvia). *Journal of Paleontology* 75(3): 607-643.**

Reply: This publication has now been cited in the revisions for point #1.

5. Source of data showing “purely aragonitic” (page 11, line 5): The first sentence of discussion started with “... are described as purely aragonitic (Boxshall, 2015).” I searched my library for literature but could not find any publication reporting shell mineral phase of *S. biradiata* and *F. tenuicostata*. The authors must quote the original data source for shell mineralogy of these two species. The reference cited in the manuscript (World Register of Marine Species) is a database of taxonomic names only, and there is no original data on shell mineralogy in the website.

Reply: The text has been revised to read “Although *S. biradiata* and *F. tenuicostata* belong to subfamilies typically described as aragonitic (Schneider and Carter, 2001)”.

6. As shown in Figure 2e, any bivalve shell becomes thinner towards its edge. From this viewpoint, the shell edge should be on the right side in Figure 7. Therefore, the growth direction indicated in this figure is opposite. If the left side of the figure is truly shell edge, it must be an artifact by sample treatment and needs explanation in the figure caption. Growth direction also should be checked in Figures 6, 7, 8 and 9 (especially Fig. 9 above).

Reply: The authors thank reviewer for asking for clarifications concerning the growth direction in the figures. The shell presented in Fig. 7 (*S. biradiata*) has a thick edge like the other specimens of this species studied here. The layers of *S. biradiata* stack towards the edge of the shell; they do not thin as seen in most shells. The growth directions of the figures are, therefore, correct. A note was added to the figure caption to: “Note: this shell shows a thick edge compared to the adjacent shell section directly. *S. biradiata* shell thickness is variable along the cross-section.”

7. Laser spots: In Figure 2e, transects of laser spots T1 to T3 are obliquely aligned against the shell surface, but actually these transects are vertical to the shell surface in Figure 9. Figure 2e should be emended in this case.

Reply: We agree that this is inconsistent and the T1 to T3 transects on Figure 2e have been amended to show their correct orientation matching Figure 9.

8. LA-ICP-MS and Mg calcite: The following paper conducted elemental analyses of a molluscan shell with LA-ICP-MS, and their results can be compared with those of this study. In addition, there are many references reporting the presence of Mg calcite in molluscan shells.

Lazareth et al. 2007. Nyctemeral variations of magnesium intake in the calcite layer of a Chilean mollusk shell (*Concholepas concholepas*, Gastropoda). *Geochimica et Cosmochimica Acta* 71: 5369-5383.

Reply: This publication has not been cited in the manuscript; it has not been used for Mg calcite because the study is based on gastropods rather than bivalves.	
Reviewer 2 Minor points	
Reviewer comments	Changes made
Page 3, line 12: It is better to show scientific genus names together with common names for scientific publication: freshwater pearl mussels (<i>Margaritifera</i>), geoduck clams (<i>Panopea</i>), ocean quahogs (<i>Arctica islandica</i>), giant clams (<i>Tridacna</i>).	Scientific genus names have been added.
Page 3, line 20: isotopees > isotopes	Revision made.
Page 3, line 30: Schone > Schöne	Revision made.
Page 5, line 2: A common name must not be inserted between a species epithet and an author of a scientific name. <i>Fulvia tenuicosta</i> ('thin-ribbed cockle' Lamarck, 1819) > <i>Fulvia tenuicostata</i> (Lamarck, 1819) ('thin-ribbed cockle'). An author name with parentheses means any change of generic status from the originally published name in zoological nomenclature. This is also true of <i>Soletellina biradiata</i> .	<i>Fulvia tenuicostata</i> (Lamarck, 1819) ('thin-ribbed cockle') and <i>Soletellina biradiata</i> (Wood, 1815) ('double-rayed sunset clam', Fig. 2)
Page 5, line 27: S1 > Supplementary material S1	Revision made.
References: Which should be used “.” or “,” between a title and a journal name? Two formats are mixed in the manuscript.	Reference list punctuation has been changed to be consistent with journal style.
Page 15, line 7: <i>Tridacna</i> > Italic	<i>Tridacna</i>
Page 15, Line 9: Growth Rate of Giant Clam <i>Tridacna Gigas</i> at Bikini Atoll as Revealed by Radioautography. > Growth rate of giant clam <i>Tridacna gigas</i> at Bikini Atoll as revealed by radioautography. (<i>Tridacna gigas</i> = Italic).	<i>Tridacna gigas</i>
Page 15, line 16: The citation of World Register of Marine Species is too long. According to WoRMS webpage, the recommended citation is WoRMS Editorial Board (2016). World Register of Marine Species. Available from http://www.marinespecies.org at VLIZ. Accessed 2016-XX-XX. doi:10.14284/170	Revision made.
Page 16, line 22: <i>Pecten maximus</i> > Italic	<i>Pecten maximus</i>
Page 16, line 26: <i>Mytilus edulis</i> > Italic	<i>Mytilus edulis</i>
Page 16, line 28: <i>Saxidomus giganteus</i> > Italic	<i>Saxidomus giganteus</i>

Page 16, line 30: Gillikin, 2005b, 2005c > These must be an identical paper.	Gillikin, 2005c was deleted
Page 16, line 49: <i>Mytilus trossulus</i> > Italic	<i>Mytilus trossulus</i>
Page 17, line 7: <i>Isognomon ephippium</i> > Italic	<i>Isognomon ephippium</i>
Page 17, line 17: <i>Nerita undata</i> > Italic	<i>Nerita undata</i>
Page 17, line 22: Journal of structural biology > Journal of Structural Biology	Revision made.
Page 17, line 28: <i>Pinna nobilis</i> > Italic	<i>Pinna nobilis</i>
Page 17, line 31: fo > of	of
Page 17, line 34: <i>M. margaritifera</i> > <i>M. margaritifera</i> (spelling correction) & Italic	<i>M. margaritifera</i>
Page 17, lines 36, 39, 43 & 45: <i>Arctica islandica</i> > Italic	<i>Arctica islandica</i>
Page 17, line 41: Schone > Schöne	Schöne
Page 18, line 1: Schone > Schöne	Schöne
Page 18, line 2: <i>Arctica islandica</i> > Italic	<i>Arctica islandica</i>
Page 18, line 16: Carbonate Calcification by Organic Matrix > carbonate calcification by organic matrix	Revision made.
Figure caption, Fig. 1: Star = locality?	“The sampling site is indicated by the red star” added to figure caption (Figure 1)
Figure caption. Fig. 4: ICSD-98-015-7993 appears twice in the caption. It is better to put “mineral standard” to the first one.	The first “ICSD-98-015-7993” was replaced by “mineral standard” in the caption of Fig. 4
Figure 6: There is an explanation on arrows in the caption, but there is no arrow in the figure.	Reference to arrows has been deleted.
Figure 6a, b: There are a few sharp horizontal lines in the shell. Are these cracks artificially made or original structure? If they are artifacts, it is better to add explanation to the figure caption.	The sharp lines are primary planes within the structure of the shells. “Sub-horizontal and curved lines, most visible in (a)–(c) and (f)–(h), are structural features of the shells. Scale bar: 500 µm.” was added to the figure caption
Figure 6: Add “Scale bar: 500 µm.” to the figure caption.	“Scale bar: 500 µm” has been added to the figure caption.

Report from Reviewer 3

5

Reviewer 3 Main Points
1. No detailed environmental data provided in this manuscript during shell growth including water temperature, salinity, and nutrients, and so on. It is not demonstrated in this manuscript and makes it difficult to judge whether difference and changes in microstructures are not related to environmental changes but other factors.
Reply: This study uses comparison of shells (collected from live animals) that experienced the same seawater conditions

throughout their lifespans. This study investigated similarities and differences within and between species' mineral and chemical composition on the basis that documentation of variations in modern shell composition is a pre-requisite for analysis of ancient materials.

2. There is no detailed explanation of the localization of shell mineralogy. Yes, the finding different mineral phase other than aragonite but calcite and high magnesium calcite must be one of most distinct results in this paper. The lack of this explanation leads difficult to understand the mechanisms of mineral phase.

Reply: The detailed mineral composition was obtained using powder XRD which is a bulk method that does not provide spatial information. For crystallographic mapping CRM was used. Figure 6a shows a map of aragonite. Through peak intensity, Figure 6a shows where aragonite is concentrated and where it is not. The areas where the intensity is low are areas where calcite and Mg-calcite are present. The mapping of these phases is difficult considering the peaks overlap. The software used for the data analysis did not allow for the demixing of peaks. We agree that this would be a great finding but unfortunately, the software capabilities were too limited to show such findings.

3. There is no direct evidence to explain the geochemical difference among the specimens and changes along growth direction. The organic materials in the shell microstructures seem to be one of reasons to explain it, but without any direct evidence, for instance, the content of organic materials, it is hard to conclude it. The demonstration of the geochemical results obtained by different technique of wet chemistry will help to explain this because Laser ablation method is good to get high resolution data but difficult to avoid the material background effects including the content of organic materials.

Reply: We agree that there is no direct evidence and the organic matrix is one factor that can explain the microstructure found in the shells studied here. Wet chemistry is not particularly suited for molluscs because the organic matrix is composed of soluble and insoluble macromolecules. Some dissolve during wet chemistry and some do not. Also, we know from experience that insoluble macromolecules form a residue on the surface of the liquid when wet chemistry is used. The results found using this method still includes part of the soluble fraction of the organic matrix. The method that would help here would be a direct analysis of the composition of the organic matrix but this technique was too time costly considering the time frame associated to this project.