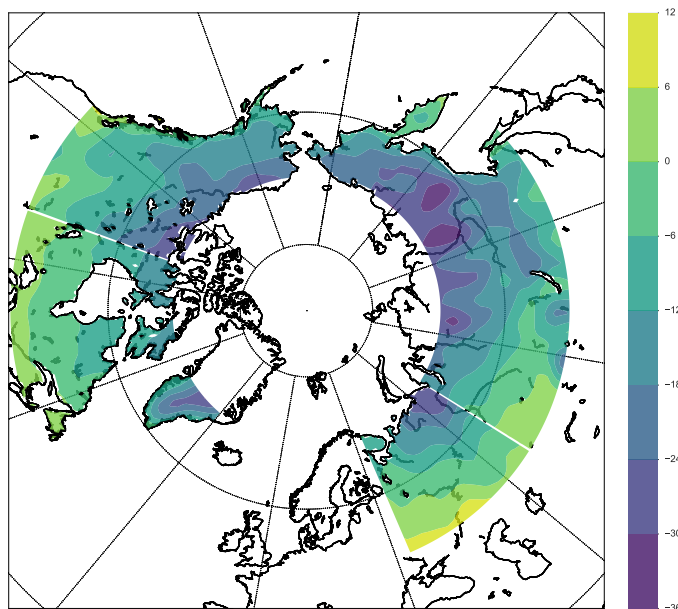
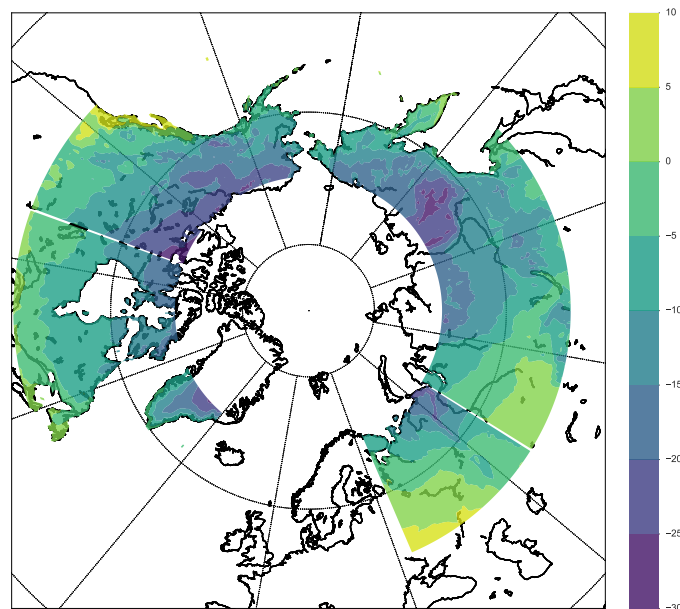


NCEP Vs CRU for MTmin

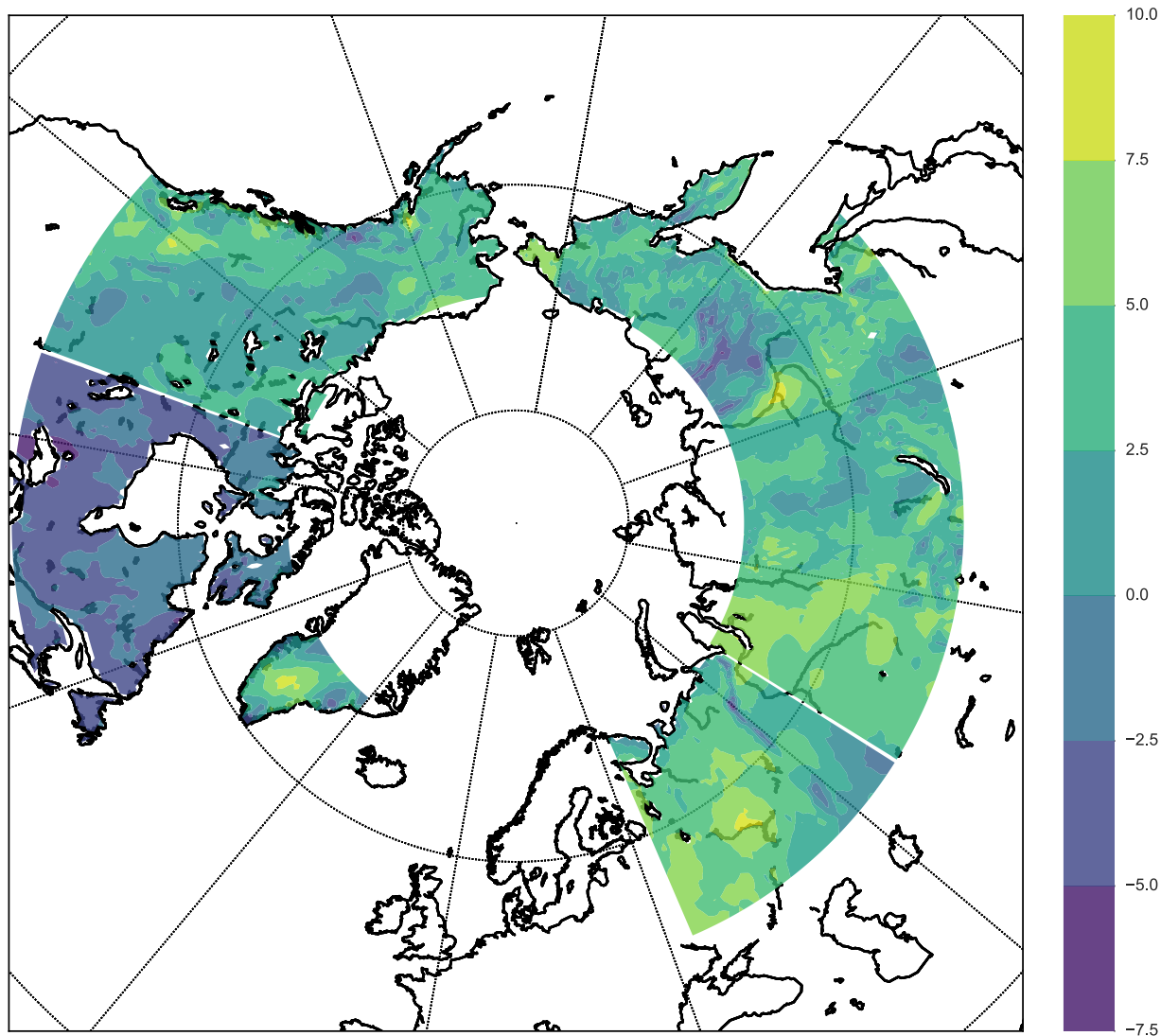
MTmin from NCEP/NCAR Reanalysis

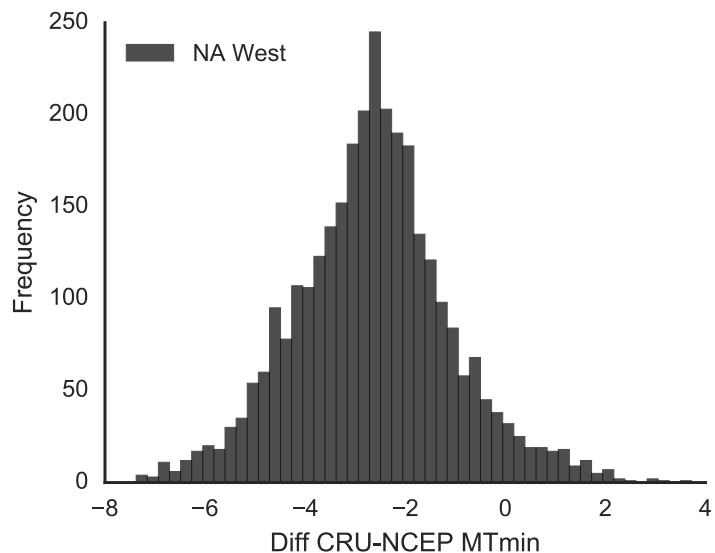
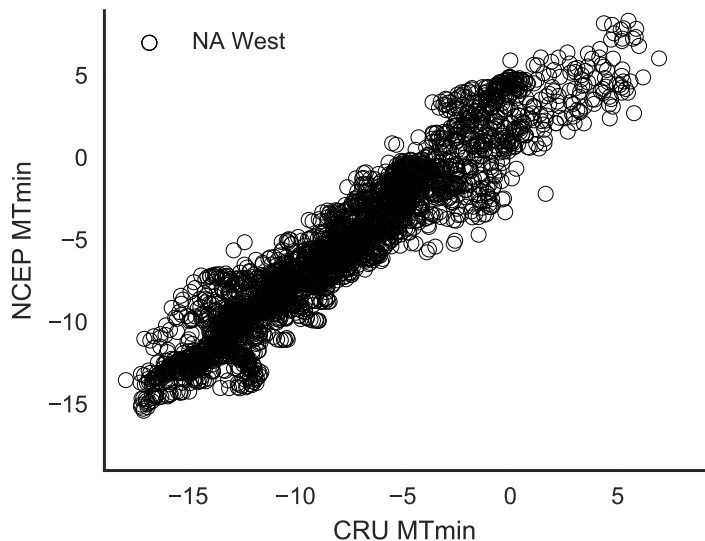
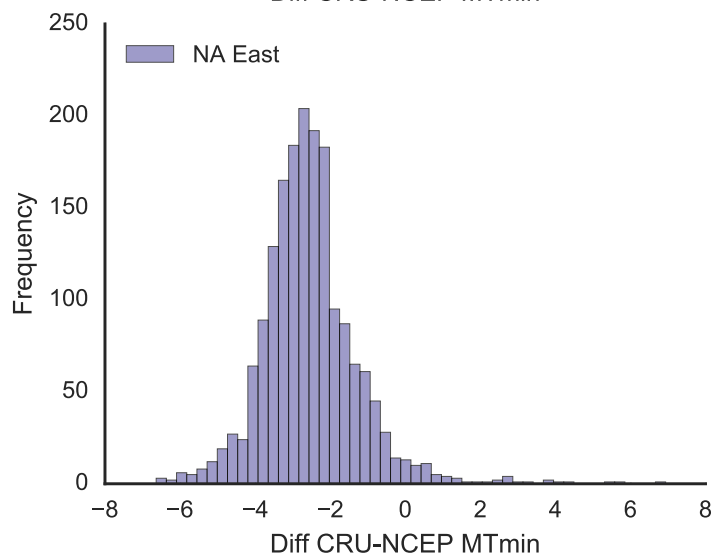
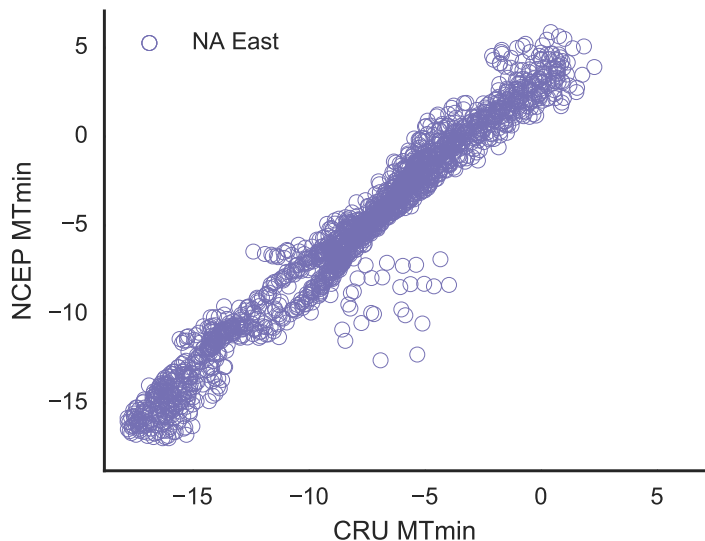
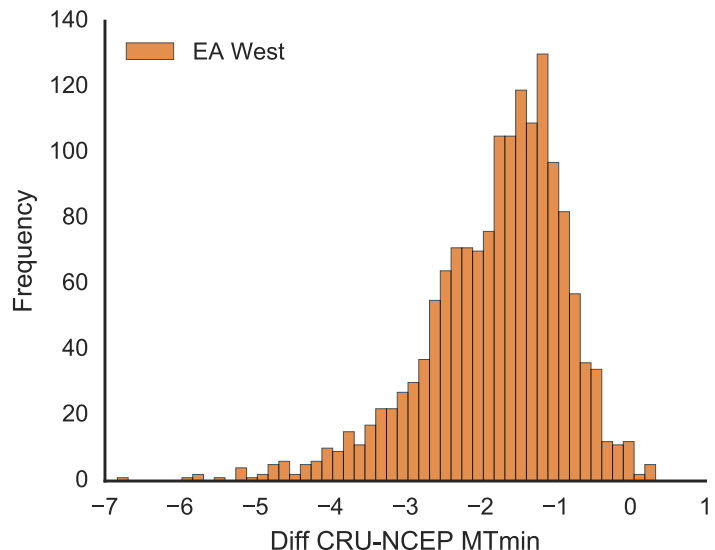
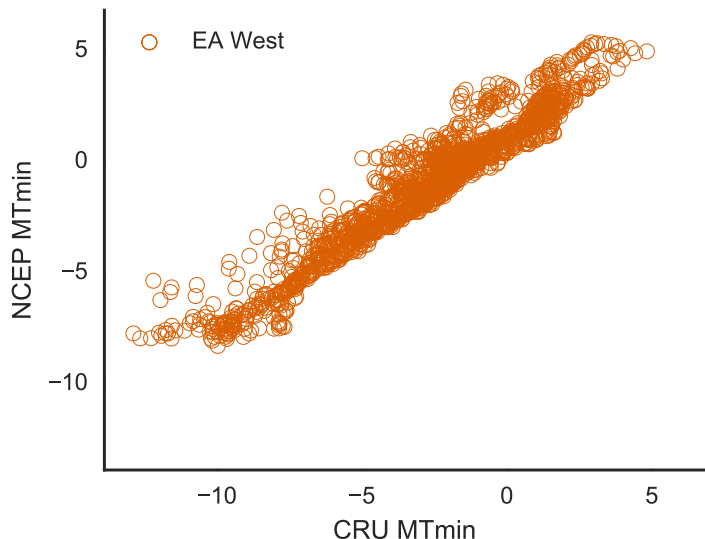
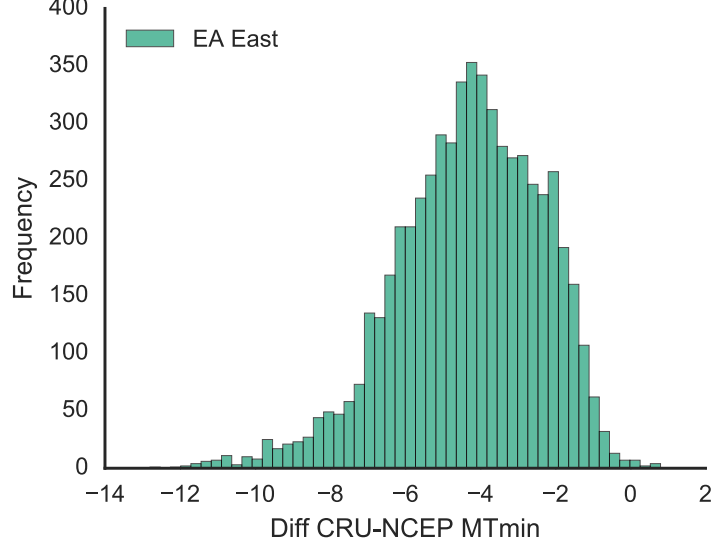
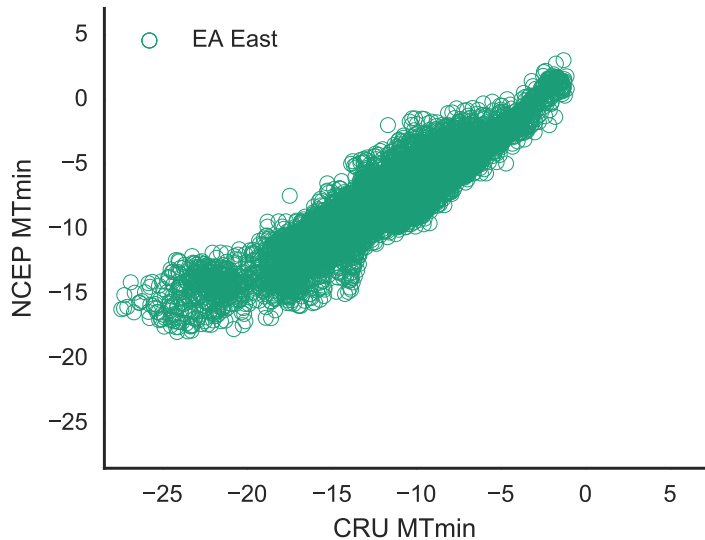


MTmin from CRU 3.22



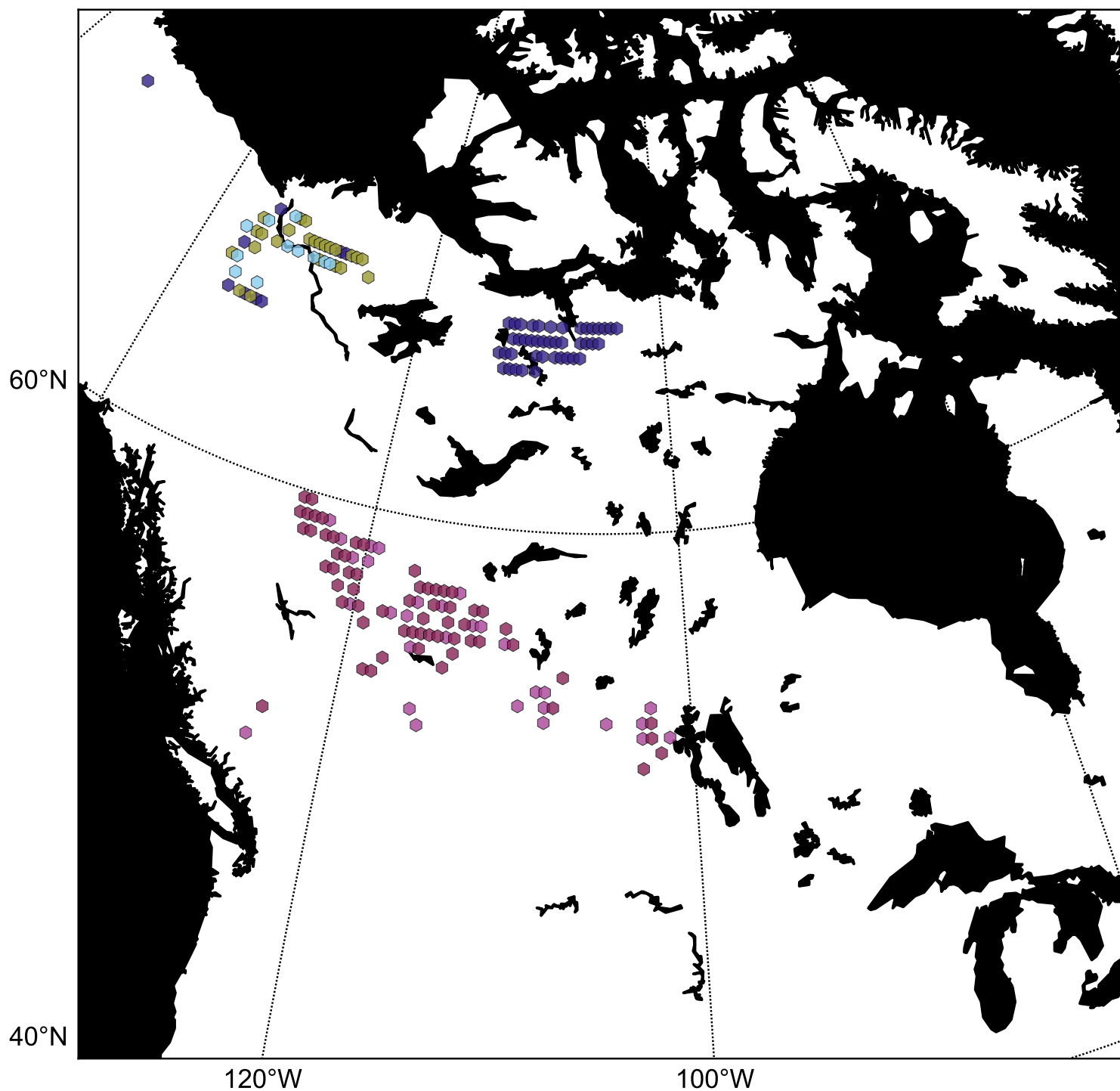
Diffplot of MTmin from CRU 3.22 and the NCEP/NCAR Reanalysis







Possible Alternative Tree Cover States over Western North America



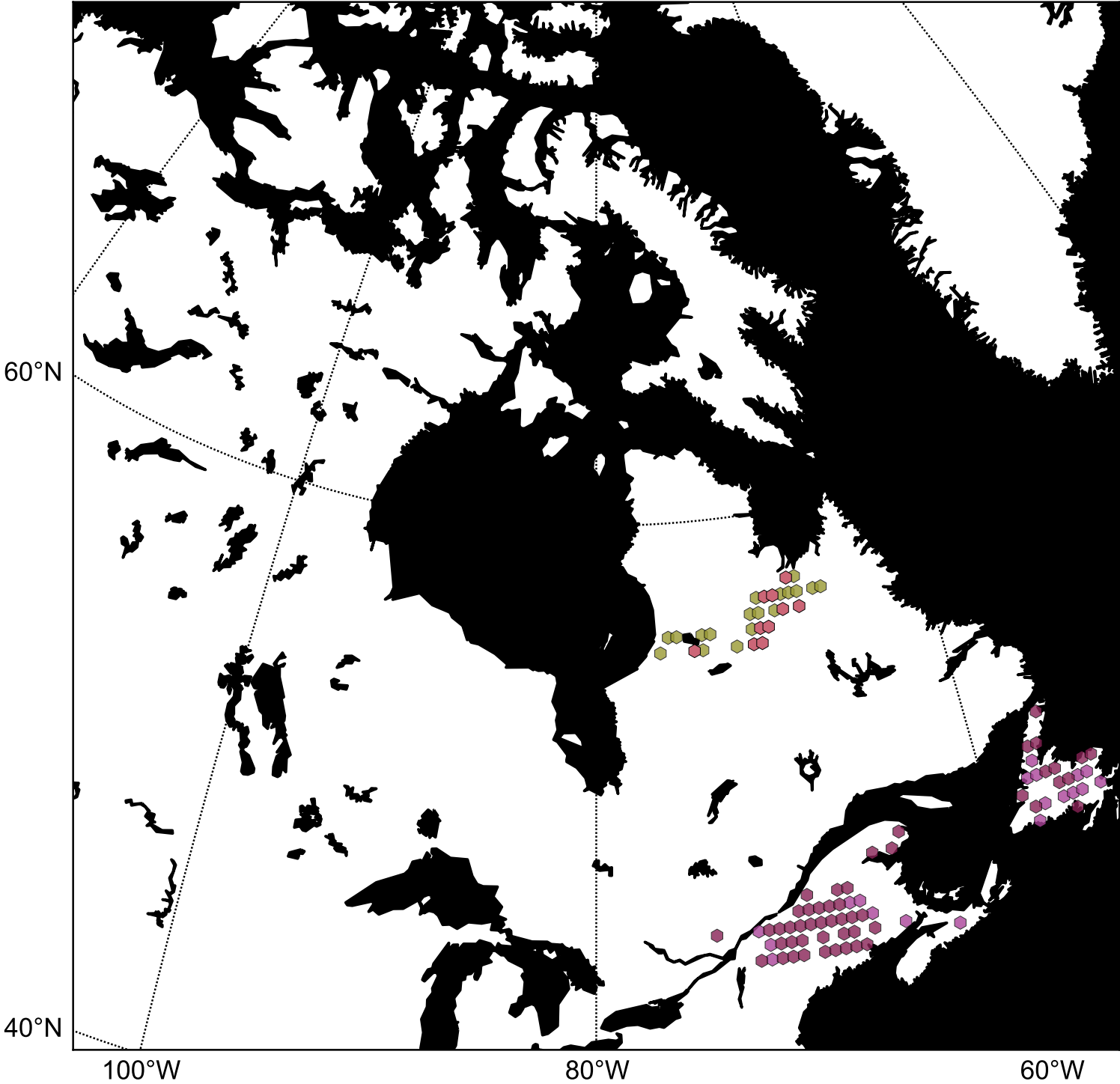
Equivalent Tree Cover States

- Grassland / Open Woodland
- Open Woodland / Grassland
- Open Woodland / Forest
- Forest / Open Woodland

Fire Disturbed Tree Cover States

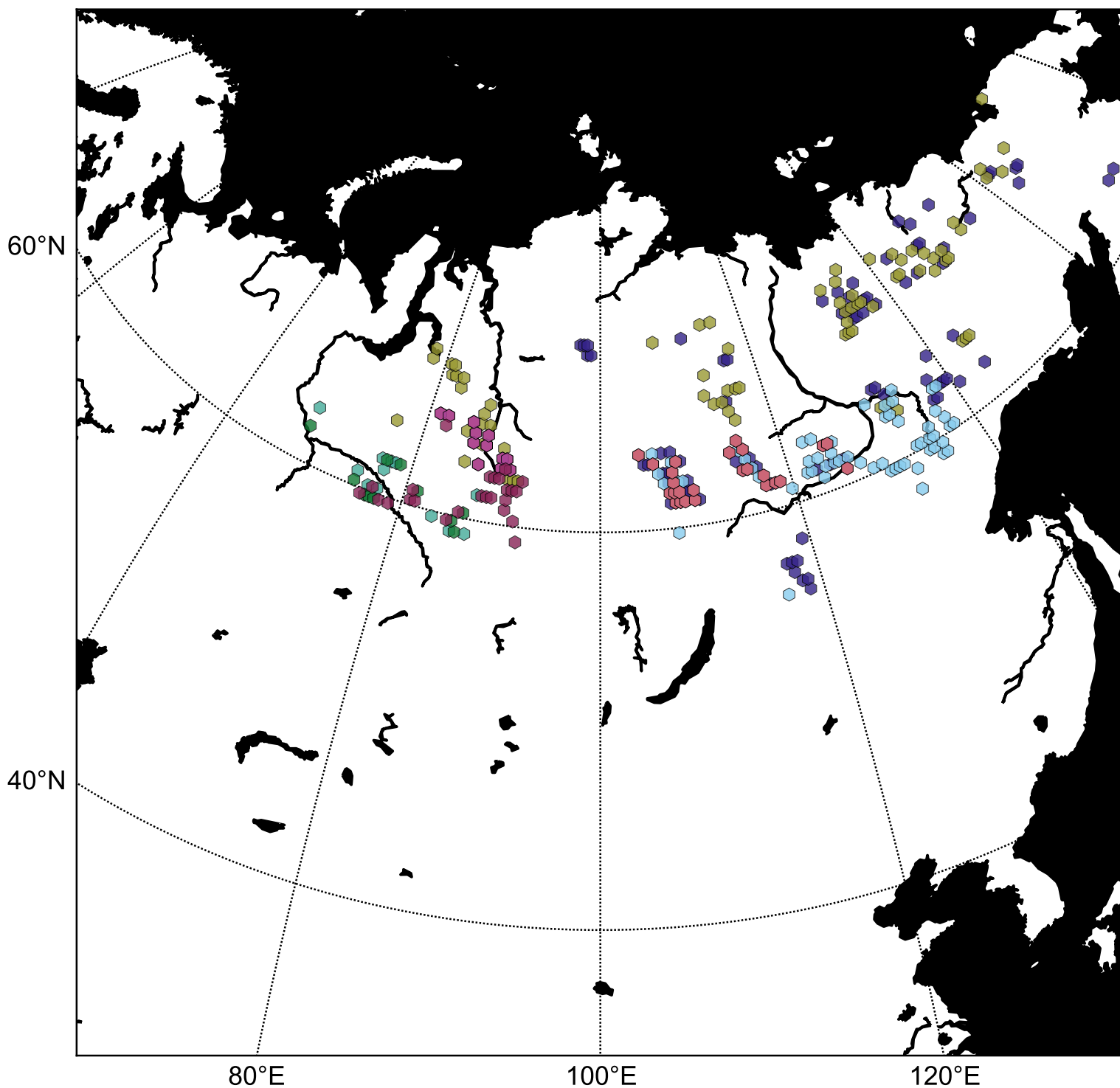
- Grassland / Open Woodland
- Open Woodland / Grassland
- Open Woodland / Forest
- Forest / Open Woodland

Possible Alternative Tree Cover States over Eastern North America



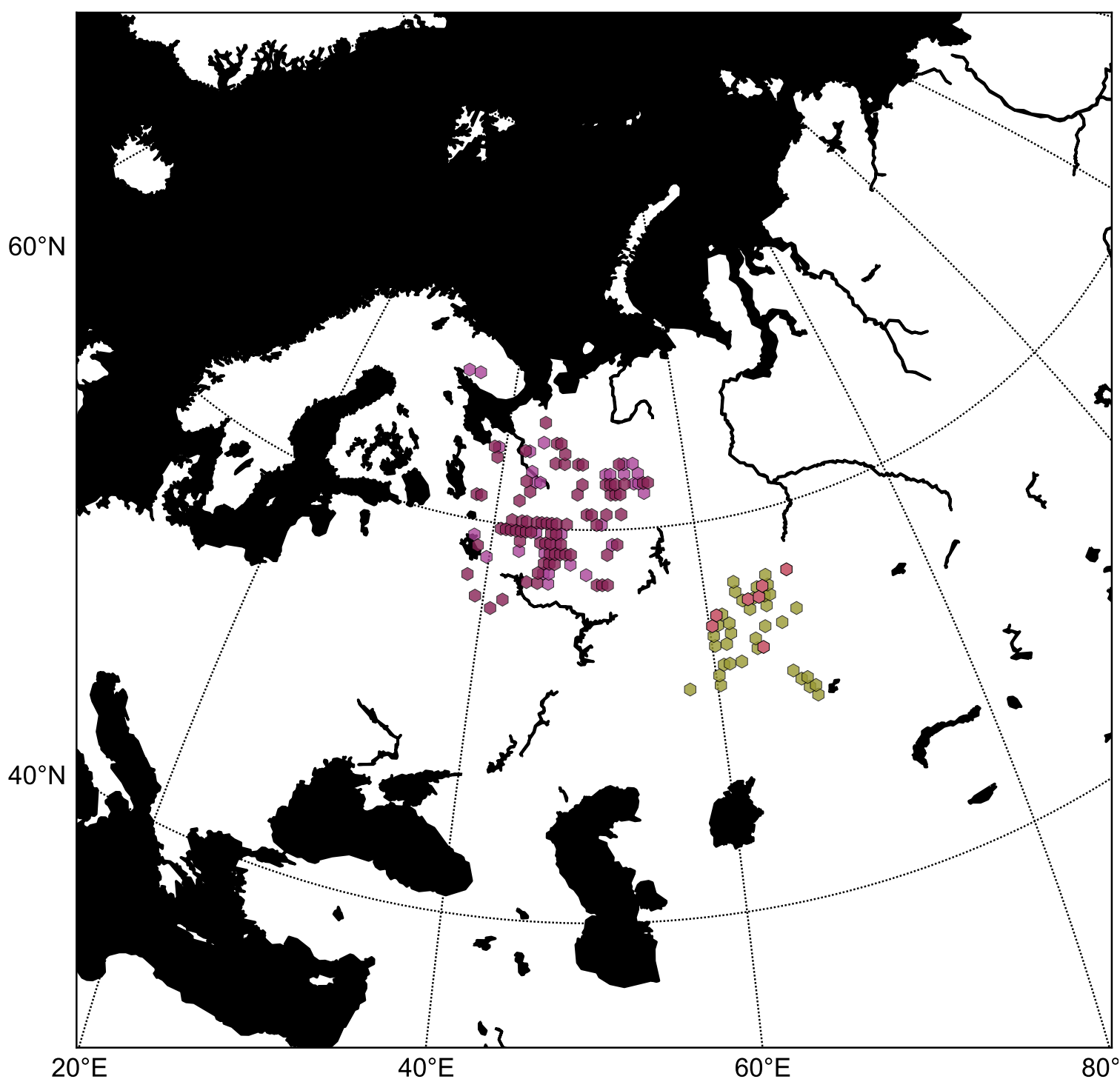


Possible Alternative Tree Cover States over Eastern North Eurasia

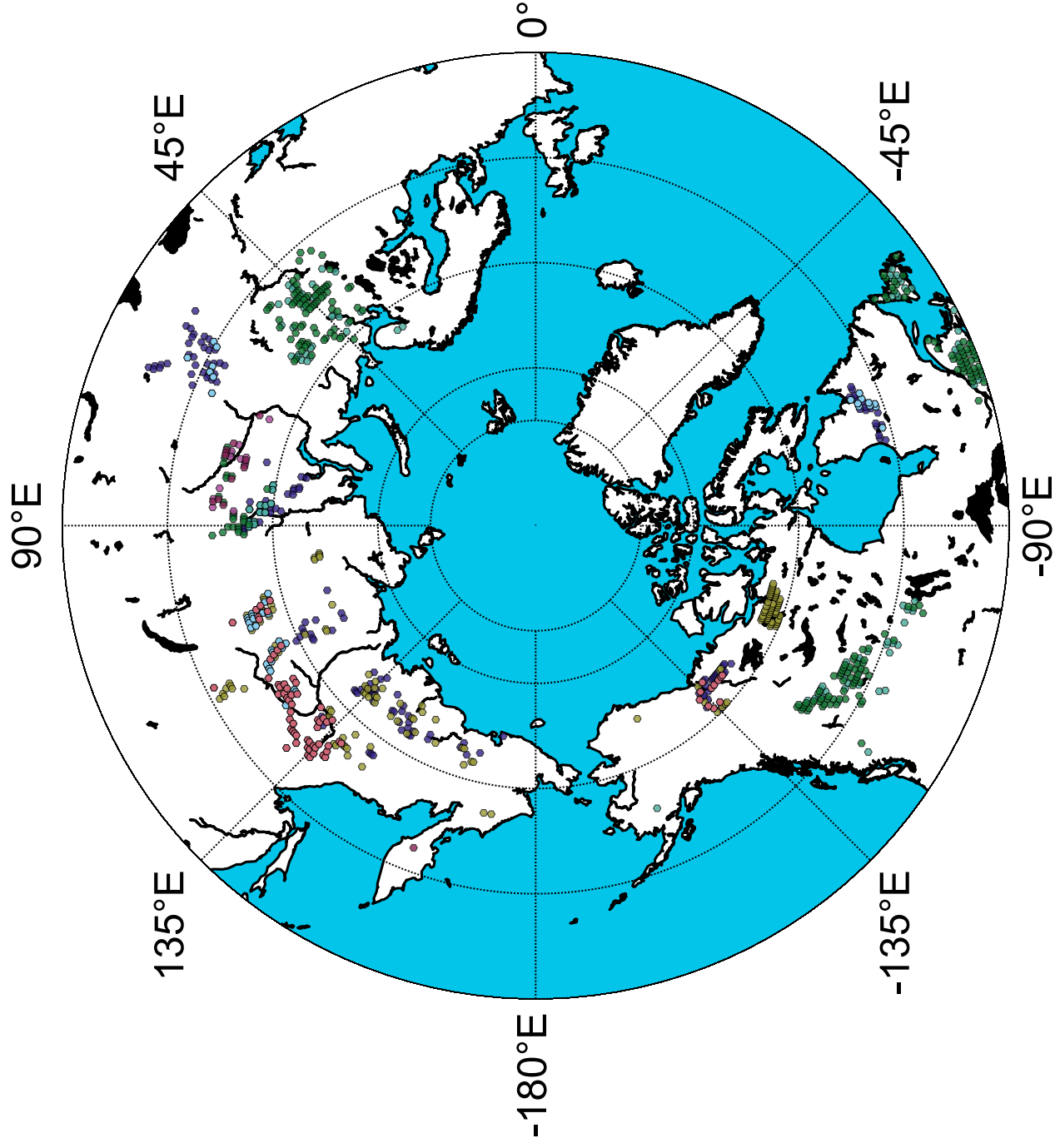




Possible Alternative Tree Cover States over Western North Eurasia



Alternative States using MTmin from CRU 3.22



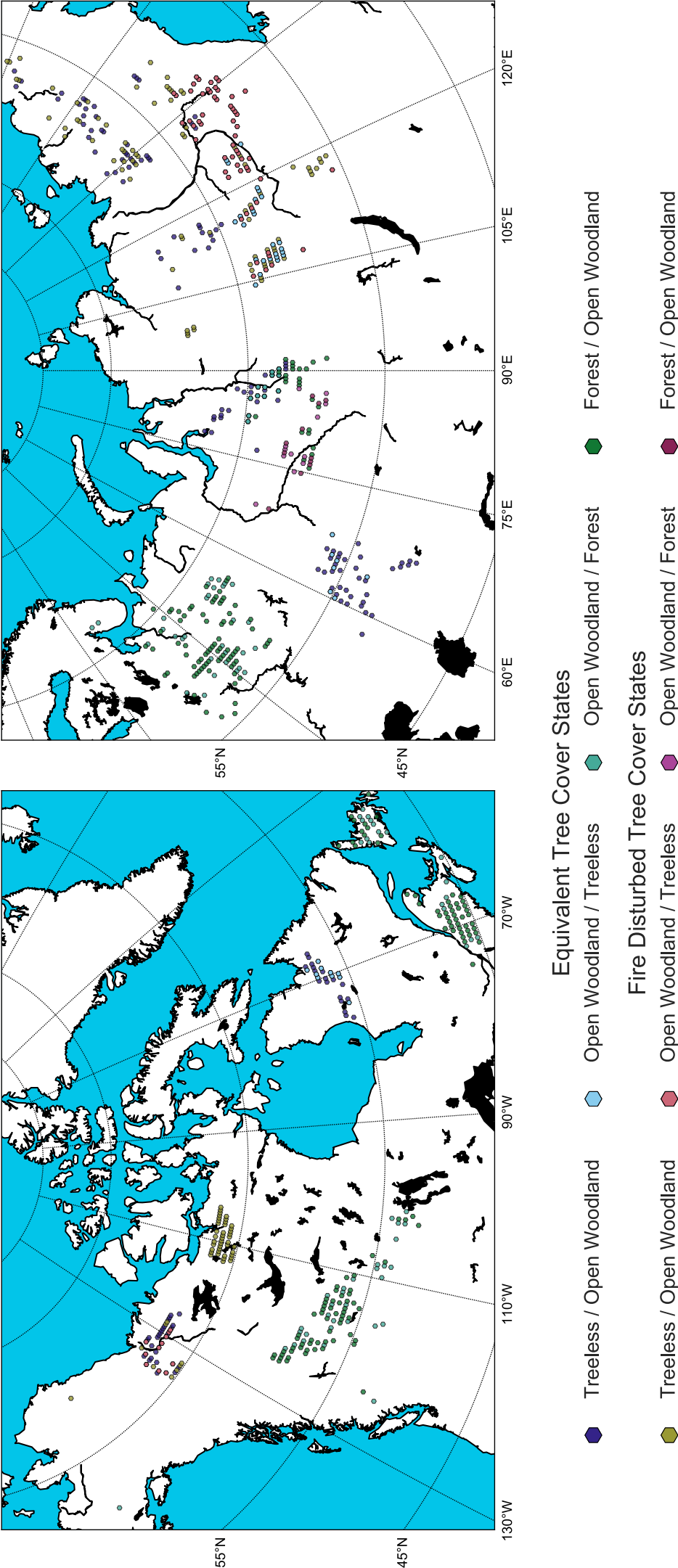
Equivalent Tree Cover States

- Treeless / Open Woodland
- Open Woodland / Treeless
- Open Woodland / Forest
- Forest / Open Woodland

Fire Disturbed Tree Cover States

- Treeless / Open Woodland
- Open Woodland / Treeless
- Open Woodland / Forest
- Forest / Open Woodland

Alternative States using MTmin from CRU 3.22



Alternative States using MTmin from NCEP

