

# Response to Dr Sebastiaan Luyssaert (Associate Editor)

We thank Dr Luyssaert for the positive evaluation of our manuscript and for his comments and suggestions.

## GENERAL COMMENT

5 The manuscript has now been reviewed by two external referees and the handling associate editor. All agreed that the manuscript is acceptable for publication but suggested several points that could be improved. The authors addressed these concerns during the discussion and are encouraged to prepare a revised manuscript by taking the discussion into account.

We thank the reviewers and Dr Luyssaert again for their helpful comments and effort. We addressed all points raised in the discussion and applied all corrections and suggestions that we indicated in our response. The most important improvements are

- 10 – rephrasing the objectives as hypotheses;
- modification of Figure 1 to show the different vegetation types more clearly;
- the new Table 1 with details on the different vegetation types;
- shortening of the methods section;
- correcting the information on standing dead leaf area after finding a mistake;
- 15 – the new Figure 4 with diel cycles of the most important variables;
- removing the former Figure 8;
- discussing our results in relation with the modelling results that we obtained in a second study;
- discussing the influence of mosses and lateral water flux on the energy budget.

20 Additionally we clarified details in the text and improved the wording. Please consider our detailed response to all reviewer comments made in the discussion for a more detailed list of changes and explanations.

The time series data is now published on the Pangaea platform <https://doi.pangaea.de/10.1594/PANGAEA.860561> (<https://doi.org/10.1594/PANGAEA.860561> once the DOI registration is finished), as cited in the revised manuscript. The data from distributed plot measurements as used for Figures 3, 7b, 8c, 9b and parts of Table 1 have been submitted to the Pangaea platform, and will be published after the processing is finished. We will add this second link to the manuscript as soon as it is available (typically within one week).

## ADDITIONAL COMMENTS

1. Rephrase the objectives as a hypothesis. The current objectives are basically a (very short) summary of the methods but it is not clear what can be learned from this study. Rephrasing the objectives as a hypothesis will overcome repetition and should indicate to the reader what (s)he can learn from the study.
- 30 We rephrased the objectives as two hypotheses: “The first hypothesis is that the canopy radiation budget impacts permafrost thaw. The second hypothesis is that weather conditions significantly affect radiation fluxes in Arctic tundra.”
2. Fig 1. subplot b is meaningless without a legend for the grey scales in the background. Link the symbols to the vegetation types in subplots c to f, for example, red triangles denote dwarf shrubs as shown in in Fig 1 (e). Looks like that is what you were trying to do but I could not figure it out.

35 Figure 1b shows an RGB orthomosaic. As we did not classify the vegetation based on the mosaic, we cannot add a legend for the image. However, we added a legend explaining the symbols and re-used the symbol colour for the canopy pictures. Furthermore, we clarified the content of Figure 1b in the caption and added, that shrubs appear darker on the image than sedges.

3. The description of the vegetation is very detailed but the information is not used in support of the findings. Focus on the essential elements/characteristics of the vegetation structure. A small table could also help to present the differences between the sites in a more concise way.

5 We shortened the study site description and included the most important characteristics in the new Table 1. Most information from the table is used in the discussion to support our findings (such as differences in ALT, canopy height, background properties that affect soil albedo, soil thermal properties). We prefer not to shorten the table content because the anonymous referee requested information on biomass and S. Launiainen (Referee) indicated that the data may be interesting for modelling soil–moss–air energy exchange. For such a modelling approach, information which is less relevant for our study (such as the moss layer thickness) may be beneficial.

10

4. The decision to report the results in two separate studies, i.e., a “data” and a “model” manuscript weakens the data-manuscripts because some of the hypothesis could have been confirmed or rejected by making use of the model (see also reviewer 2). Where relevant the authors should cite their own modeling study and discuss the consequences.

15 We agree that modelling requires high-quality data for validation and improvement. Here we, however, focus in the very first step, which is understanding the processes that are able to explain the mechanisms that might be responsible for the empirical findings deduced from field measurements. We think that in this way we can avoid the bias that is introduced by the selection of a specific model which may or may not be the best to represent the relevant processes. By separating our data-based process study from model application we can freely present our findings in a way that would allow all modellers to improve their model. We also use the data for model input and validation in a second study (Juszak et al. (2016), under review), which we now refer to in our discussion, but by separating the process study from the model study we can take a more neutral position with respect to the question which processes a model needs to take into account to represent the conditions that we found.

20

Please find below the track-change version of the manuscript.

# Contrasting radiation and soil heat fluxes in Arctic shrub and wet sedge tundra

Inge Juszak<sup>1</sup>, Werner Eugster<sup>2</sup>, Monique M. P. D. Heijmans<sup>3</sup>, and Gabriela Schaeppman-Strub<sup>1</sup>

<sup>1</sup>Department of Evolutionary Biology and Environmental Studies, University of Zurich, Winterthurerstrasse 190, 8057 Zurich, Switzerland

<sup>2</sup>Institute of Agricultural Sciences, ETH Zurich, Universitatstrasse 2, 8092 Zurich, Switzerland

<sup>3</sup>Plant Ecology and Nature Conservation, Wageningen University, Droevendaalsesteeg 3, 6708 PB Wageningen, The Netherlands

Correspondence to: I. Juszak (inge.juszak@gmx.de)

**Abstract.** Vegetation changes, such as shrub encroachment and wetland expansion, have been observed in many Arctic tundra regions. These changes feed back to permafrost and climate. Permafrost can be protected by soil shading through vegetation as it reduces the amount of solar energy available for thawing. Regional climate can be affected by a reduction in surface albedo as more energy is available for atmospheric and soil heating. Here, we compared the shortwave radiation budget of two common Arctic tundra vegetation types dominated by dwarf shrubs (*Betula nana*) and wet sedges (*Eriophorum angustifolium*) in North-East Siberia. We measured time series of the shortwave and longwave radiation budget above the canopy and transmitted radiation below the canopy. Additionally, we quantified soil temperature and heat flux as well as active layer thickness. The mean growing season albedo of dwarf shrubs was  $0.15 \pm 0.01$ , for sedges it was higher ( $0.17 \pm 0.02$ ). Dwarf shrub transmittance was  $0.36 \pm 0.07$  on average, and sedge transmittance was  $0.28 \pm 0.08$ . The standing dead leaves contributed strongly to the soil shading of wet sedges. Despite a lower albedo and less soil shading, the soil below dwarf shrubs conducted less heat resulting in a 17 cm shallower active layer as compared to sedges. This result was supported by additional, spatially distributed measurements of both vegetation types. Clouds were a major influencing factor for albedo and transmittance, particularly in sedge vegetation. Cloud cover reduced the albedo by 0.01 in dwarf shrubs and by 0.03 in sedges, while transmittance was increased by 0.08 and 0.10 in dwarf shrubs and sedges, respectively. Our results suggest that the observed deeper active layer below wet sedges is not primarily a result of the summer canopy radiation budget. Soil properties, such as soil albedo, moisture, and thermal conductivity, may be more influential, at least in our comparison between dwarf shrub vegetation on relatively dry patches and sedge vegetation with higher soil moisture.

## 1 Introduction

Recent climate warming in the Arctic (Stocker et al., 2013) is associated with increasing shrub abundance, cover, and biomass in many regions (Tape et al., 2006; Myers-Smith et al., 2011; Sturm et al., 2001b; McManus et al., 2012; Lantz et al., 2013; Frost and Epstein, 2014). However, vegetation can change in multiple directions and at larger scales the dominance of shrub tundra or wet sedge tundra is controlled by soil moisture and surface hydrology. While permafrost collapse leads to wetland

expansion in some continuous permafrost regions (Smith et al., 2005; Jorgenson et al., 2006; Lin et al., 2012; Schuur et al., 2015), drying has been observed in others (Oechel et al., 2000; Carroll et al., 2011; Jones et al., 2011; Lin et al., 2012). Shrub encroachment lowers the tundra albedo and thus positively feeds back to global warming (Sturm et al., 2001b; Lawrence and Swenson, 2011; Loranty and Goetz, 2012). However, larger scale atmospheric effects do not explain variations of permafrost conditions at the local scale, where wetland vegetation is often associated with deeper active layers (Anisimov et al., 2002; Mi et al., 2014).

Dwarf birch (*Betula nana*) profits more than other species from warming (Walker et al., 2003a) and fertilisation (Bret-Harte et al., 2001; Hobbie et al., 2005). It is a common species in many Arctic regions (de Groot et al., 1997) and likely to be the primary driver of shrub expansion (Sturm et al., 2001a). Common cottongrass (*Eriophorum angustifolium*) is a widespread wet sedge species (Phillips, 1954). In comparison with other sedges, *Eriophorum angustifolium* does not strongly profit from nutrient addition or warming (Shaver et al., 1998). However, it can expand in disturbed areas (Chapin and Shaver, 1981; Nauta et al., 2015) and where the surface gets wetter due to abrupt permafrost thaw (Schuur et al., 2015).

Arctic tundra ecosystems commonly comprise small scale vegetation patterns of shrubs, graminoids, and cryptogams associated with soil pH and moisture variation (Chapin et al., 2000b; Gamon et al., 2012). This intra-ecosystem variability is relevant for the radiation budget as it can have stronger effects on the summer albedo than the difference among biomes, such as tundra and boreal forest (Chapin et al., 2000b; Eugster et al., 2000). Vegetation alters the radiation budget and turbulent energy fluxes at the soil surface which is critical for the ground heat flux and thus for permafrost thaw (Jacobsen and Hansen, 1999; Beringer et al., 2005). Shallower thaw depths have been observed below shrub canopies as compared to below other tundra vegetation (Anisimov et al., 2002; Walker et al., 2003b). Blok et al. (2010) suggested that the overall warming effect of Arctic shrub encroachment due to decreasing albedo can be mitigated by soil shading.

The surface radiation budget is strongly influenced by cloud cover, which reduces the amount of incoming shortwave radiation and increases the fraction of diffuse light. High cloud fractions between 65% and 90% have been reported over Arctic land surfaces during the summer months (Curry et al., 1996; Wang and Key, 2005a; Dong et al., 2010). Recently, Arctic cloud cover has increased (Wang and Key, 2005b) and further increase is likely due to climate change (Chapin et al., 2005; Vavrus et al., 2009). Cloudy conditions reduce the albedo at solar zenith angles of 60° or more (Yang et al., 2008) and increase the radiation fraction reaching the soil below the vegetation (at solar zenith angles above 50°, Mahat and Tarboton, 2012). Therefore, changes in cloud cover potentially impact the tundra surface radiation budget and interact with the predicted changes in tundra vegetation.

Furthermore, additional components of the plant–soil system are closely linked with the radiation budget. For example, it has been shown that canopy shading affects the abundance and richness of mosses and lichens, which are suppressed by well-growing deciduous shrubs (van Wijk et al., 2003; Walker et al., 2006). Moreover, the radiation budget is linked with the carbon cycle. CO<sub>2</sub> fluxes were found to be highly related to net radiation in an Arctic tussock tundra site (Oechel et al., 2014).

Despite the importance of shading for the permafrost energy budget and plant species competition, it is rarely measured below different tundra vegetation types. While several studies assessed solar radiation transmittance below Arctic shrubs (Bewley et al., 2007; Chong et al., 2012; Juszak et al., 2014; Williams et al., 2014), this study compared shrub shading with shading by

other vegetation types. Furthermore, the radiation and soil heat flux budget of Arctic tundra has been more extensively studied in Alaska, Canada, and Europe than in the vast Siberian lowlands.

5 ~~The aim of our study was to quantify the above-canopy radiation budget, below-canopy transmitted shortwave radiation, and soil heat fluxes of two widespread tundra vegetation types, dwarf shrubs and wet sedges. We complemented time series measurements of these three components with spatially distributed measurements at the Kytalyk research site, North-East Siberia. In this way, we evaluated the importance of albedo and soil shading for permafrost thawing. Furthermore, we characterised the impact of weather conditions on radiative fluxes as cloud conditions are likely to change in the future.~~

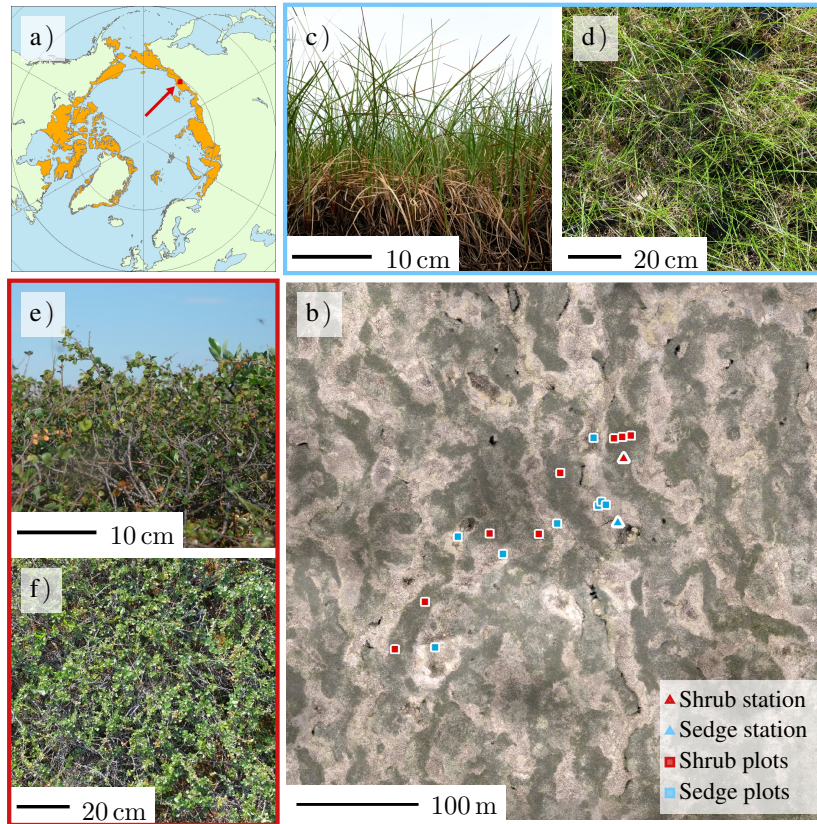
10 In our study, we evaluate two main hypotheses. The first hypothesis is that the canopy radiation budget impacts permafrost thaw. The second hypothesis is that weather conditions significantly affect radiation fluxes in Arctic tundra. We compare two widespread and discriminative tundra vegetation types to assess these hypotheses, dwarf shrubs and wet sedges. For these types, we quantified the above-canopy radiation budget, below-canopy transmitted shortwave radiation, and soil heat fluxes. We complemented time series measurements of these three components with spatially distributed measurements at the Kytalyk research site, North-East Siberia. Our results will assist modelling attempts in providing details on local scale variability of  
15 albedo, soil shading, and soil heat flux in an Arctic tundra ecosystem.

## 2 Methods

### 2.1 Field site, vegetation, and soil

The study area is located in a drained thaw lake bed in the Kytalyk nature reserve, North-East Siberia (70.83 °N, 147.49 °E, Fig. 1a). It is characterised by continuous permafrost and a shallow soil layer which thaws every summer and refreezes in  
20 winter. The depth of this layer, called an active layer thickness, varies in the range of 15–55 cm (van Huissteden et al., 2005) at the study site. The mean annual permafrost temperature at 15 m depth close to the site is  $-9.4^{\circ}\text{C}$  (Romanovsky et al., 2010). The study region in lowland tundra is underlain by very ice-rich permafrost (Iwahana et al., 2014), which makes it susceptible to rapid changes in case of warming (Jorgenson et al., 2006). A multi-year study by Parmentier et al. (2011a) observed the snowmelt between 18 May and 10 June. The growing season started about four weeks after snowmelt and ended  
25 early September in all years (Parmentier et al., 2011a). Ecosystem-scale measurements of energy and carbon fluxes are available from flux tower measurements by the VU Amsterdam (van der Molen et al., 2007; Parmentier et al., 2011b; Budishchev et al., 2014, site Russia, Chokurdakh, <http://www.europe-fluxdata.eu>).

The vegetation at the study site is classified as tussock sedge, dwarf shrub, and moss tundra in the Circumpolar Arctic vegetation map (Walker et al., 2005). More specifically, in the drained thaw lake bed, elongated, well-drained patches of  
30 erect dwarf shrub tundra alternate with depressions of sedge, moss, dwarf shrub wetland (Fig. 1b). Dwarf shrub and wet sedge patches are irregularly shaped and about 10–20 m wide and 70–150 m long (Fig. 1b). The surface elevation of dwarf shrub patches is 0.3–0.7 m higher than of wet sedge depressions. While dwarf shrub patches have an active layer thickness of 15–25 cm, it is 26–48 cm at wet sedges (van Huissteden et al., 2005). In winter, snow accumulates in the wet sedge depressions and reaches a depth of about 25 cm at the dwarf shrub patches (Nauta et al., 2015). In lowland tundra, the continuously high



**Figure 1.** (a) Location of the Kytalyk research station and Arctic tundra extent (data from Walker et al., 2005), (b) red-green-blue orthomosaic drone imagery of the site (drone flight July 2014) where shrubs appear as dark surfaces, while sedges are represented by bright shades including the locations of stations for time series measurement and distributed plot measurements on dwarf shrubs and wet sedges and the distributed plot measurements, (c, d) sedge vegetation and (e, f) dwarf shrub vegetation.

water content at the wet sedges can be replenished by lateral water fluxes due to microtopography and by thawing the ice-rich active layer (Helbig et al., 2013).

The centre of dwarf shrub patches is dominated by dwarf birch (*Betula nana*, Fig. 1e, f). Willows (mainly *Salix pulchra*) complement the dwarf birches and dominate the canopies along the rivers. Communities of lingonberry (*Vaccinium vitis-idaea*), mosses, and lichen surround the dense dwarf birch vegetation. Towards the lower, wetter areas peat mosses (*Sphagnum* spp.) and sedges border the dwarf shrub patches. Most commonly, the wet sedge community is comprised of common cottongrass (*Eriophorum angustifolium*, Fig. 1c, d), which does not form tussocks. Although dwarf birch dominated areas are usually separated from wet sedge areas by the described transition zones, in some places they can be found directly bordering each other. Sedges can invade drowning shrub-covered areas (Myers-Smith et al., 2011), especially after disturbance (Nauta et al.,

**Table 1.** Vegetation and soil characteristics of dwarf shrubs and wet sedges; all data were collected in our study, except the depth of soil layers; the measurements are described below in the methods section; the dwarf shrub area index is the projected area index adjusted by the average measurement efficiency.

Characteristic	Dwarf shrubs	Wet sedges
Dominant species	<i>Betula nana</i>	<i>Eriophorum angustifolium</i>
End of summer active layer thickness	16–25 cm	31–41 cm
End of winter snow depth	32 cm	71 cm
Canopy height	17–32 cm	38–66 cm
Standing dead leaf height	-	12–34 cm
Area index	0.7–1.2 green leaves, 0.4–1.1 wood	1.0–2.1 green leaves, 1.1–2.3 standing dead leaves
Dry biomass	86 g m <sup>-2</sup> green leaves, 1183 g m <sup>-2</sup> wood	181 g m <sup>-2</sup> green leaves, 162 g m <sup>-2</sup> standing dead leaves
Background	56% shrub litter, 38% mosses (predominantly <i>Dicranum</i> sp., <i>Polytrichum</i> sp., and <i>Aulacomnium</i> sp.), 4% lichen	Water, wet litter
Depth of soil layers	4–5 cm mosses, 10–15 cm highly organic soil, mineral clay soil mixed with organic matter* <sup>1</sup>	13–19 cm water saturated, loose organic material, mineral clay soil mixed with organic matter* <sup>2</sup>
Volumetric soil moisture	0.3–0.6 m <sup>3</sup> m <sup>-3</sup>	0.7 m <sup>3</sup> m <sup>-3</sup> (saturated)
Thermal conductivity	0.08 W m <sup>-1</sup> K <sup>-1</sup> top soil, 0.80 W m <sup>-1</sup> K <sup>-1</sup> mineral soil	0.44 W m <sup>-1</sup> K <sup>-1</sup> top soil
Volumetric heat capacity	0.5 MJ m <sup>-3</sup> K <sup>-1</sup> top soil, 2.1 MJ m <sup>-3</sup> K <sup>-1</sup> mineral soil	3.3 MJ m <sup>-3</sup> K <sup>-1</sup> top soil
* <sup>1</sup> Blok et al. (2010)		
* <sup>2</sup> Bartholomeus et al. (2012)		

2015), and shrubs can colonise peat moss covered areas, which in turn invade wet sedge depressions. Details on the canopy and soil characteristics of dwarf shrub and wet sedge vegetation are provided in Table 1.

5 Blok et al. (2010) measured an average dwarf birch canopy height of 21 cm, dry above ground biomass of 400 g m<sup>-2</sup> and a total shrub cover of about 70%. The wet sedge *Eriophorum angustifolium* can cover 50% of the surface in wet sedge locations (Schirmeister et al., 2012) and reach a maximum height of about 50 cm.

Below dwarf shrubs, the soil is mainly covered by mosses (about 38%, predominantly *Dicranum* sp., *Polytrichum* sp., and *Aulacomnium* sp.), shrub litter (about 56%), and some lichen (about 4%). The moss layer below dwarf shrubs is about 4–5 cm thick (Blok et al., 2011). Below 10–15 cm of highly organic soil (Blok et al., 2010), mineral clay soil mixed with organic matter can be found. The soil moisture is usually below saturation and varies between 0.3 and 0.6 m<sup>3</sup> m<sup>-3</sup> in the

growing season, depending on weather conditions (see below for details on instruments and measurements). With a thermal conductivity of  $0.08 \text{ W m}^{-1} \text{ K}^{-1}$  the highly organic top soil below dwarf birch is strongly insulating. The heat capacity of this layer is about  $0.5 \text{ MJ m}^{-3} \text{ K}^{-1}$ . The deeper clay layer has a thermal conductivity of about  $0.80 \text{ W m}^{-1} \text{ K}^{-1}$  and a heat capacity of  $2.1 \text{ MJ m}^{-3} \text{ K}^{-1}$ .

Below the green sedge leaves, a 10–20 cm thick layer of dry, standing dead leaves covers the water or wet litter. In the dense sedge patches studied, there were almost no mosses or other species growing below the standing dead leaves. The uppermost 13–19 cm of the soil is water saturated, loose organic material (Bartholomeus et al., 2012) with a water content of about  $0.7 \text{ m}^3 \text{ m}^{-3}$ . Due to the water content, this layer has a high thermal conductivity ( $0.44 \text{ W m}^{-1} \text{ K}^{-1}$ ) and heat capacity ( $3.3 \text{ MJ m}^{-3} \text{ K}^{-1}$ ) (see below for details on instruments and measurements).

## 2.2 Measurements

We assessed the effect of wet sedge versus dwarf shrub dominated vegetation on radiation energy fluxes above and below canopy as well as the soil heat flux at 10 cm depth, and in the top soil layer with field measurements. Time series of radiation and soil heat flux were acquired at a permanent location close to the centre of one patch per vegetation type. These measurements were complemented by sporadic measurements in eight spatially distributed plots per vegetation type to assess the spatial variation. For our below ground measurements in the wet sedge plot, we defined the top of the dark, wet, and cohesive litter as reference height. In the dwarf shrub plot, we used the top of the moss or litter as reference height (Blok et al., 2011).

The time series were recorded by two automatic measurement stations on a dwarf shrub and an adjacent wet sedge patch, located about 50 m apart (Fig. 1b, triangles). The instrument height was about 1.5 m above canopy to ensure that the instrument's footprint covered only one vegetation type. We used Kipp & Zonen CMP11 pyranometers (285–2800 nm) for incoming and reflected shortwave radiation, and an array of four (on sedge) and five (on dwarf shrub) Kipp & Zonen SPLITE2 silicon pyranometers (400–1100 nm) for below-canopy transmitted shortwave radiation. We installed the instruments on the moss or litter surface below dwarf shrubs and below some of the sedge standing dead leaves but above the early summer water level. We measured net longwave radiation with a Kipp & Zonen CNR2 net radiometer (300–2800 nm and  $4.5\text{--}42 \mu\text{m}$ ) in each plot. The two shortwave radiation flux components of the CNR2 also allowed for cross-validation with the CMP11 sensor data in our quality control procedure. Additionally, we cross-validated our incoming shortwave radiation measurements with one SPLITE2 pyranometer. Soil heat flux was measured in the organic top soil using three heat flux plates (HFP01, Hukseflux) per vegetation type at a depth of 10 cm below the reference height. Soil temperature data were acquired using three sensors (T107, Campbell Scientific) per vegetation type at a depth of 4 cm below the reference height. We measured soil moisture with two sensors (ThetaProbe ML2x, Delta-T Devices) per vegetation type and converted the signal to volumetric water content using standard parameters for organic soil. The data from all sensors were recorded every 30 sec and averaged at 10 min intervals using a Campbell Scientific CR1000 datalogger. The radiation data series covers 07 July 2013 – 31 August 2013 and 11 May 2014 – 17 August 2014. The soil flux data begin ten days later in 2013 and span the same period as radiation measurements in 2014. We measured the soil thermal properties with a KD2 PRO, Decagon Devices, instrument on 04 and 05 August 2013.



The measurements were done at all locations of soil heat flux measurements and in one soil pit per vegetation type to estimate soil properties below the highly organic horizon. The measurement date was after a dry summer period.

In order to assess the spatial variability of dwarf shrub and wet sedge vegetation and the spatial representativeness of the time series measurements, we additionally measured vegetation and radiation parameters in eight plots of 1 m<sup>2</sup> per vegetation type (Fig. 1b, squares). Three of the eight plots were located within the same vegetation patch as the time series measurements but outside of the footprint of the instruments. In the 16 plots, we measured spectral exitance about 1 m above the canopy with an Ocean Optics Jaz spectrometer using a bare 100 μm fiber. Spectral irradiance was measured before and after the exitance measurements of each plot using the same spectrometer and an upwards pointing fiber equipped with a cosine corrector. From these two measurements we calculated the hemispherical-conical reflectance factor in nadir direction in the range of photosynthetically active radiation (PAR, 400–700 nm). We measured incident and transmitted PAR with a Delta-T Devices SunScan ceptometer. Below canopy, 64 sensors on a 1 m long probe recorded transmitted PAR simultaneously with the above-canopy BF3 sensor. Active layer thickness and canopy height were measured relative to the reference height by inserting a metal probe at 25 points of a regular grid in every plot. Canopy height was estimated as average height of the highest leaves within a 5 cm radius around the measurement point. Additionally, we measured maximum height at all plots. We measured projected dwarf shrub leaf and wood area using a 1 m<sup>2</sup> point quadrat and recording all contacts between a vertically inserted needle and the vegetation at 81 points (Wilson, 1959). The leaf area of other vascular plants on the dwarf shrub plots was negligible. We used two additional plots to measure dwarf shrub biomass after cutting all shrubs, separating leaves from wood, and air-drying the biomass for about one week. We scanned a subset of the leaves and wood and estimated the leaf area index (LAI). In two destructive leaf area index (LAI) measurements We found that the point quadrat counts underestimated the shrub leaf area by 15% and 28%, which was 0.18 and 0.25 in absolute values. Dwarf shrub wood area was overestimated by 5% and underestimated by 17% using point quadrats in comparison with the destructive measurements (0.04 and 0.14 difference in absolute values).

To estimate sedge green leaf area index non destructively, we used an empirical allometric approach,

$$\text{LAI} = \frac{h_c}{h_r} \cdot \frac{1}{A} \cdot \sum_{i=1}^m n_i \cdot L_i$$

where  $h_c$  is the canopy height,  $A$  is the size of the investigation area (m<sup>2</sup>),  $n$  is the number of tillers of size  $i$ , and  $L$  is the average green leaf area (m<sup>2</sup>) of tillers of size  $i$ . Tiller size is expressed by the number of leaves that a tiller has, so the smallest tiller with  $i = 1$  has one leaf only and the largest tillers have  $m = 7$  leaves. The allometric value  $L_i$  for each tiller size was determined via destructive sampling on a 50·50 cm<sup>2</sup> plot with reference canopy height  $h_r$  from which 18 tillers out of 162 were randomly selected for analysis. We measured the length and width of all leaves and subsequently cut the leaves in segments to allow for accurate scanning of the one-sided leaf area. Thus, the empirical relationship of LAI as a function of  $n_i$  and  $h_c$  could be used on eight 1 m<sup>2</sup> plots for non destructive LAI estimation. Within each plot, we selected 16 subplots of 10·10 cm<sup>2</sup> size. In each of them we counted the number of tillers of each tiller size class ( $n_i$ ) and measured the canopy height  $h_c$  to estimate LAI. For validation, three destructive harvests were done to ascertain the quality of the non destructive LAI estimates based on weighing dry biomass of green and standing dead leaves separately and scanning a subset. This indicated that green

LAI was accurate to within  $\pm 0.4 \text{ m}^2 \text{ m}^{-2}$ : tiller counting overestimated the LAI by 0.4 and 0.3 in two plots while LAI was underestimated by 0.4 on the third plot.

### 2.3 Data analysis

- 5 To quantify the effects of vegetation type on the radiation budget, we computed net radiation  $R_n$ ,

$$R_n = K_{\downarrow} - K_{\uparrow} + L_{\downarrow} - L_{\uparrow}$$

with  $K$  and  $L$  being shortwave and longwave radiation fluxes, respectively. Arrows in the index show downward ( $\downarrow$ ) and upward ( $\uparrow$ ) directed radiation. The difference  $K_{\downarrow} - K_{\uparrow}$  is the net shortwave radiation. Shortwave albedo  $\alpha$  is derived as

$$\alpha = \frac{K_{\uparrow}}{K_{\downarrow}}$$

- 10 and transmittance  $\tau$  is the ratio between downwelling shortwave radiation measured below canopy (index  $bc$ ) and the same measurement carried out above canopy (index  $ac$ ),

$$\tau = \frac{K_{\downarrow, bc}}{K_{\downarrow, ac}}$$

To assess transmittance of each vegetation type, we combined all data of the five (below dwarf shrubs) and four (below sedges) sensors.

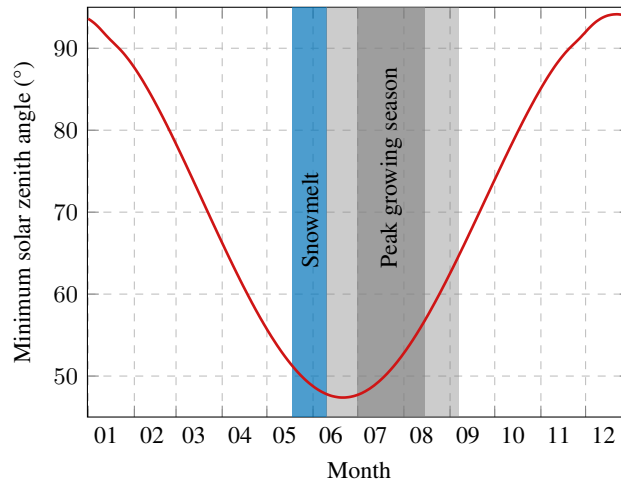
- 15 The radiation budget is strongly influenced by weather conditions and the solar zenith angle. We estimated both in order to isolate the vegetation effects. We calculated the solar zenith angle of each measurement using a MATLAB® script by Vincent Roy following an algorithm by Reda and Andreas (2004). We binned all solar zenith angles into  $2^\circ$  bins and used 10 min averages for  $K$  and  $L$  to compute  $R_n$ ,  $\alpha$ , and  $\tau$ . Additionally, the average effect of vegetation type and cloud cover on the radiation budget was estimated independently of the solar angle. In this case, we reduced the solar angle influence by taking
- 20 daily average fluxes of  $K$  and  $L$  to compute the mean and standard deviation of  $R_n$ ,  $\alpha$ , and  $\tau$ . ~~In order to reduce the solar angle influence, we took daily average fluxes of  $K$  and  $L$  to compute  $R_n$ ,  $\alpha$ , and  $T$  for the analysis of vegetation type and cloud cover effects. In this case, we computed mean and standard deviation per day or cloud condition.~~ We used the term ‘soil shading’ as reduction of incoming shortwave radiation (1–transmittance). We defined the peak growing season as 1 July – 15 August (Fig. 2).

- 25 In order to quantify the effects of clouds on the shortwave radiation budget, we classified the cloud cover into three categories, clear sky, partly cloudy, and cloudy. The classification was based on the cloud factor  $cf$  (Tuller, 1976; Crawford and Duchon, 1999)

$$cf = 1 - \frac{K_{\downarrow, measured}}{K_{\downarrow, potential}}$$

with measured ( $K_{\downarrow, measured}$ ) and potential ( $K_{\downarrow, potential}$ ) incoming shortwave radiation. We computed  $K_{\downarrow, potential}$  for each

- 30 10 min interval using an atmospheric transfer model by Corripio (2003) on the basis of the Iqbal (1983) study on solar radiation transfer through the atmosphere. The most important model inputs were site location, measured air temperature, and measured



**Figure 2.** Variation of the solar zenith angle at solar noon (14:10 local time); snowmelt (blue) and growing season (light grey) in different years (dates from Parmentier et al., 2011a) and peak growing season (1 July – 15 August).

surface albedo. Other parameters were ozone layer thickness (300 DU), visibility (180 km), and relative humidity (80%). Topographic shading was neglected because the research site is almost flat. We validated the model using observed clear-sky  $K_{\downarrow,measured}$ . As the relative error of  $K_{\downarrow,measured}$  and  $K_{\downarrow,potential}$  increases at low values in the morning and evening, we only computed cloud factors when  $K_{\downarrow,potential} > 50 \text{ W m}^{-2}$ . We calculated the mean cloud factor, either within a day or of each time step. While we used the daily classification to analyse vegetation and cloud impacts, the 10 min classification was needed for solar zenith angle effects. Each day with a mean cloud factor below 0.15 was classified as ‘Clear sky’, days above 0.55 were classified as ‘Cloudy’ while all other days were categorised as ‘Partly cloudy’. We used the same thresholds as for daily values for the 10 min intervals but with the additional condition that clear-sky and cloudy intervals required a standard deviation  $< 0.1$  determined from 1-hour centred at the 10 min interval of interest. Higher variation indicated partly cloudy conditions. We used MATLAB® for all computations.

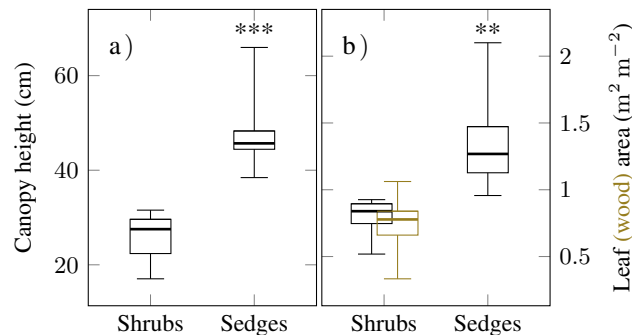
We used t-tests to assess the difference between dwarf shrub and sedge characteristics, namely in canopy height, LAI, PAR reflectance, and PAR transmittance on the spatially distributed plots. Mean values are shown  $\pm$  standard deviation to illustrate the spatial or temporal variability.

## 15 3 Results

### 3.1 Canopy structure

Dwarf shrub and sedge vegetation showed different canopy characteristics, radiation budgets, and soil heat fluxes. The sedge canopy was on average  $48 \pm 8 \text{ cm}$  high, almost twice the height of the dwarf shrub canopy (Fig. 3a). The estimated sedge green leaf area index was on average  $1.4 \pm 0.3$  and the projected dwarf shrub leaf area index as estimated using point quadrats

was  $0.8 \pm 0.1$  (Fig. 3b). Apart from the green leaves, also wood and standing dead material can influence the radiation budget. The dwarf shrub wood area index was similar to the leaf area index. The sum of projected shrub leaf and wood area index was  $1.5 \pm 0.3$ , slightly higher than wet sedges green leaf area index. In all three destructive harvests of wet sedge leaf and standing dead leaf area, we found that standing dead leaf area was 1.1 times green leaf area. From three destructive sedge leaf and standing dead leaf area measurements we found that standing dead leaf area varied between 0.8 and 2.2 times green leaf area. The highest standing dead leaf area estimate was obtained in the dry summer of 2013. Below dwarf shrubs, litter covered on average 56% of the surface. Additionally, wet litter covered most of the surface below green and dead sedge leaves.



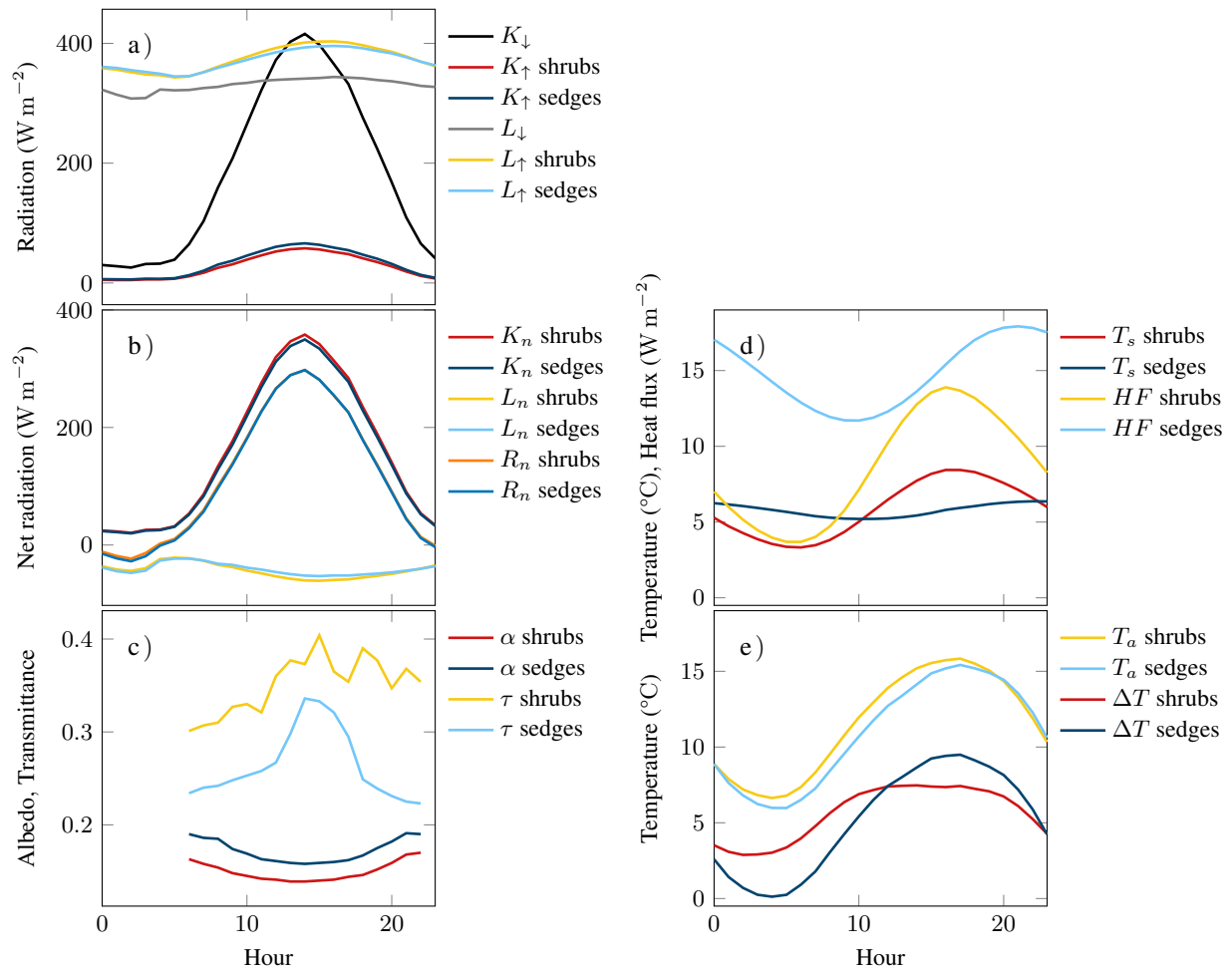
**Figure 3.** (a) Spatial variability of canopy height and (b) green leaf and wood area index measured 28 – 30 July 2013, percentiles (25, 50, and 75), minimum and maximum values of eight plots per vegetation type; please note that the wet sedges canopy additionally comprises standing dead leaves with an area of about 1.1 times green leaf area; significant differences between vegetation types are shown with \*\* ( $p \leq 0.01$ ) and \*\*\* ( $p \leq 0.001$ ).

### 3.2 Above-canopy radiation budget

Dwarf shrub and wet sedge vegetation influence the radiation budget differently. While the dwarf shrub canopy reflected less shortwave radiation, it emitted more longwave radiation (Fig. 4a, b). The difference between both vegetation types in net radiation on average and at any solar zenith angle was very small (Table 2, Fig. 4c, 6a, b).

During the growing season, sedge albedo was consistently higher than dwarf shrub albedo (Fig. 5, and 6c, d). The growing season mean daily albedo was 0.15 for dwarf shrubs and 0.17 for sedges (Table 2). In absolute terms, the dwarf shrub vegetation–soil system absorbed on average  $5 \text{ W m}^{-2}$  more shortwave radiation than sedge vegetation during the 2013 and 2014 growing seasons. The growing season albedo differences between the vegetation types based on time series measurements are consistent with spatially replicated spectrometer measurements in the PAR region in eight plots per vegetation type (Fig. 7b). However, PAR reflectance was  $0.024 \pm 0.006$  above dwarf shrubs and  $0.034 \pm 0.008$  above sedges and thus much lower than shortwave albedo.

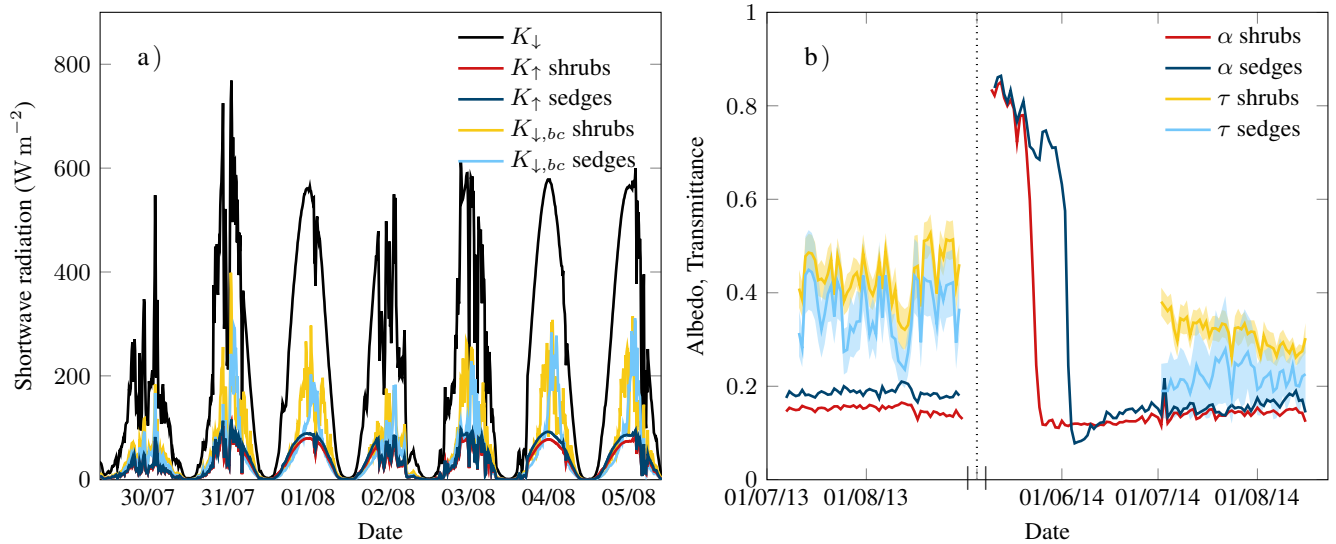
Additionally, the spring snow depth was 39 cm deeper in the sedge depression than on the elevated dwarf shrub patch (Table 171 cm and 32 cm, respectively, 09 May 2014). Thus, the snow on the sedge patch melted about ten days later (03 June



**Figure 4.** (a) Average diel cycle of above canopy shortwave ( $K$ ) and longwave ( $L$ ) radiation fluxes, (b) above canopy net shortwave ( $K_n$ ), net longwave ( $L_n$ ) and net ( $R_n$ ) radiation, (c) albedo ( $\alpha$ ) and transmittance ( $\tau$ ), (d) soil temperature ( $T_s$ ) at 4 cm depth and soil heat flux ( $HF$ ) at 10 cm depth, and (e) air temperature at 1.7 m above the soil surface ( $T_a$ ) and gradient between air and soil temperature ( $\Delta T$ ) of dwarf shrubs and wet sedges during the growing season; solar noon at 14:00 local time.

2014) as compared to the dwarf shrub patch (24 May 2014). Due to the albedo difference between snow covered and snow free surfaces, the dwarf shrub patch absorbed  $125 MJ m^{-2}$  ( $145 W m^{-2}$  on 10 days) shortwave radiation more than the sedge patch in this time (Fig. 7a).

- Clouds reduced albedo and net radiation of both canopies throughout the summer (Fig. 6). The reduction in albedo was more pronounced for sedges than for dwarf shrubs (Table 2). While the clear-sky albedo of both vegetation types increased at higher solar zenith angles, the cloudy-sky albedo was similar to the clear-sky albedo at solar noon for all zenith angles (Fig. 6c, d). Due to the strong effect of zenith angle on clear-sky albedo, the cloud effects were strongest in August, when the minimum solar

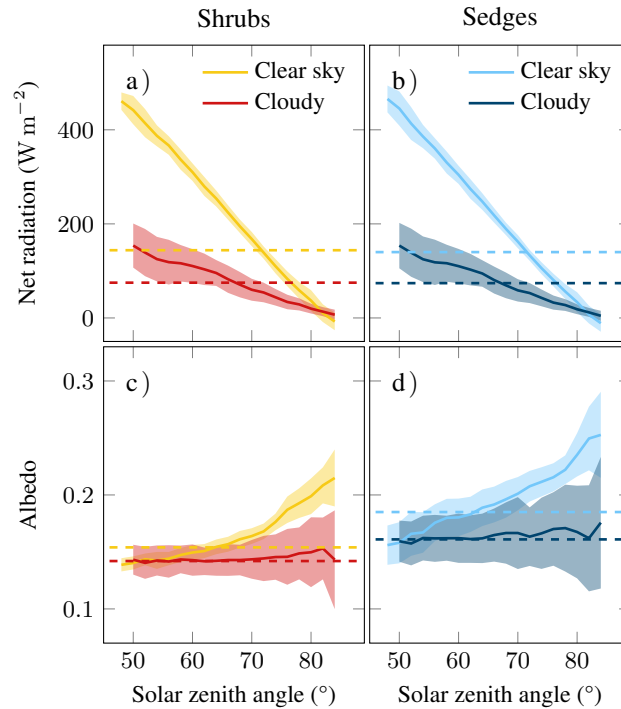


**Figure 5.** (a) Shortwave radiation fluxes incoming ( $K_{\downarrow}$ ), reflected ( $K_{\uparrow}$ ) and below canopy ( $K_{\downarrow, bc}$ ), one week time series of 2014 and (b) daily albedo ( $\alpha$ ) and transmittance ( $\tau$ ) time series; shaded area around transmittance represents  $\pm$  standard error of the mean of the spatial replicates.

**Table 2.** Energy fluxes and soil temperatures (mean  $\pm$  standard deviation determined from daily averages) of dwarf shrub and wet sedge vegetation under varying cloud conditions in the peak growing season 2013 and 2014; sw. denotes shortwave.

Type	Condition	Albedo	Transmittance	Net radiation $\text{W m}^{-2}$	Net sw. radiation $\text{W m}^{-2}$	Soil temp. ( $-4$ cm) $^{\circ}\text{C}$	Soil heat flux ( $-10$ cm) $\text{W m}^{-2}$
Dwarf shrubs	All	$0.15 \pm 0.01$	$0.36 \pm 0.07$	$116 \pm 38$	$157 \pm 54$	$5.9 \pm 2.0$	$8.6 \pm 3.2$
	Clear sky	$0.15 \pm 0.01$	$0.32 \pm 0.04$	$144 \pm 34$	$215 \pm 34$	$7.2 \pm 2.0$	$10.6 \pm 3.7$
	Partly cloudy	$0.15 \pm 0.01$	$0.36 \pm 0.06$	$123 \pm 30$	$164 \pm 36$	$6.1 \pm 1.7$	$8.8 \pm 2.9$
	Cloudy	$0.14 \pm 0.02$	$0.40 \pm 0.07$	$75 \pm 27$	$89 \pm 26$	$4.3 \pm 1.6$	$6.1 \pm 2.0$
Wet sedges	All	$0.17 \pm 0.02$	$0.28 \pm 0.08$	$114 \pm 38$	$152 \pm 52$	$5.8 \pm 2.3$	$14.8 \pm 5.2$
	Clear sky	$0.19 \pm 0.02$	$0.23 \pm 0.03$	$140 \pm 34$	$207 \pm 34$	$7.0 \pm 2.6$	$16.9 \pm 6.0$
	Partly cloudy	$0.17 \pm 0.02$	$0.27 \pm 0.07$	$121 \pm 30$	$160 \pm 36$	$5.8 \pm 2.1$	$15.1 \pm 5.0$
	Cloudy	$0.16 \pm 0.02$	$0.33 \pm 0.10$	$74 \pm 27$	$87 \pm 26$	$4.6 \pm 1.8$	$11.9 \pm 3.9$

zenith angle was larger than in June or July (Fig. 2). In both summers 2013 and 2014 about 20% of the days were classified as clear sky and 20% as cloudy, the remaining as partly cloudy.

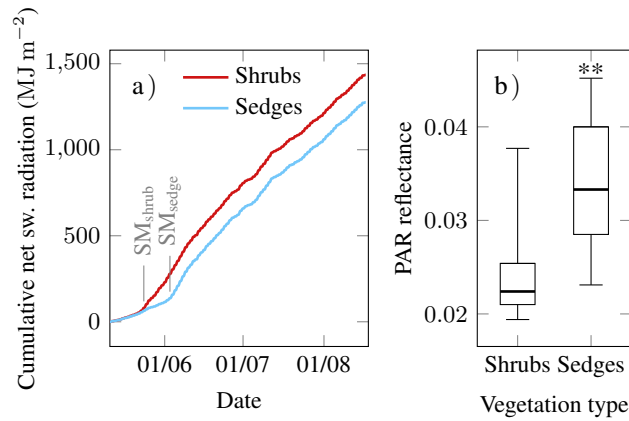


**Figure 6.** Dependence of (a, b) net radiation and (c, d) albedo on solar zenith angle and cloud cover for (a, c) dwarf shrub and (b, d) wet sedge, growing season mean  $\pm$  standard deviation values calculated for  $2^{\circ}$  intervals; the dashed lines represent the mean diel value under each condition.

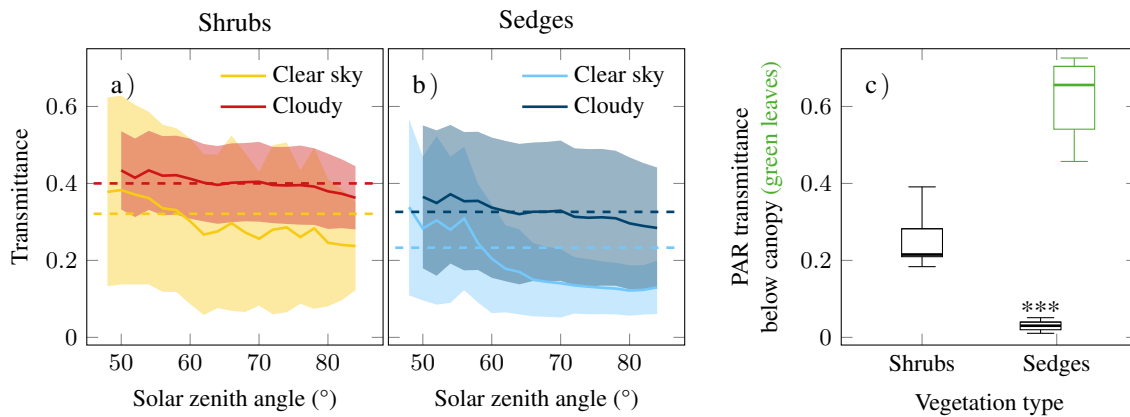
### 3.3 Soil shading

Canopy transmittance was on average 0.36 below dwarf shrubs and 0.28 below wet sedges during the growing season (Table 2, Fig. 4c, 8a, b). This difference implied that the surface below dwarf shrubs was exposed to  $15 W m^{-2}$  shortwave radiation in addition to what we observed below sedge vegetation. The spatially distributed measurements in the PAR range also showed a significant difference between the two vegetation types (Fig. 8c). However, the major effect could be attributed to the multi-year standing dead leaves below the green sedge leaves. The green leaves transmitted more light ( $0.62 \pm 0.11$ ) than dwarf shrubs ( $0.25 \pm 0.07$ ), but most light was reflected or absorbed by the standing dead layer (Fig. 8c).

Transmittance was strongly influenced by clouds (Fig. 8a, b). On average, clouds increased the transmittance by 25% below dwarf shrubs and by 43% below sedges (Table 2). However, for specific locations and sun angles the clear-sky transmittance exceeded the transmittance of cloudy times (Fig. ??). Transmittance was generally higher at small solar zenith angles, especially for sedges and at clear-sky conditions (Fig. 8a, b). Furthermore, soil shading was highly spatially and temporally variable, especially under clear-sky conditions (Fig. 8a, b and Fig. ??).



**Figure 7.** (a) Cumulative net shortwave (sw.) radiation 11 May – 16 August 2014, day of complete snowmelt (SM) indicated for dwarf shrubs and **wet** sedges and (b) spatial variability of PAR (400–700 nm) reflectance within vegetation type measured on 25 July 2013, percentiles (25, 50, and 75), minimum and maximum values of eight plots per vegetation type; significant differences between vegetation types are shown with \*\* ( $p \leq 0.01$ ).



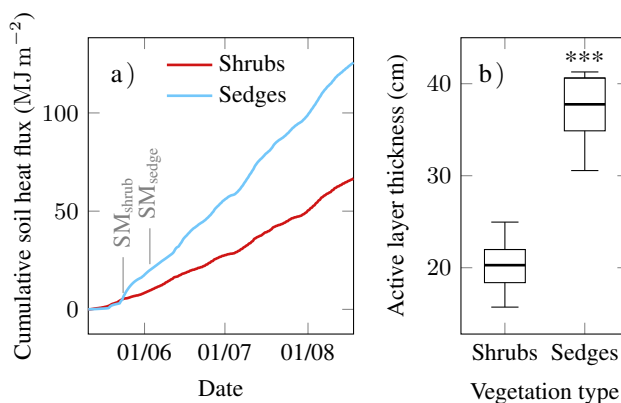
**Figure 8.** (a,b) Shortwave transmittance depending on solar zenith angle and cloud cover for dwarf shrub (a) and **wet** sedge (b), growing season mean  $\pm$  standard deviation calculated for 2° intervals, the dashed lines represent the mean diel value under each condition and (c) spatial variability of PAR (400–700 nm) transmittance measured 03 August 2013, percentiles (25, 50, and 75), minimum and maximum values of eight plots per vegetation type; significant differences between vegetation types are shown with \*\*\* ( $p \leq 0.001$ ).

### 3.4 Soil heat flux and permafrost active layer

Except during the cold and snow-covered period, the soil heat flux at 10 cm depth was consistently higher below **wet** sedges than below dwarf shrubs (Fig. 4d, 9a). As soon as the dwarf shrub patch was partly snow free in May 2014, the soil heat flux at the sedges reached a peak of 30 W m<sup>-2</sup> while the heat flux below dwarf shrubs was less than 5 W m<sup>-2</sup>. Afterwards, the



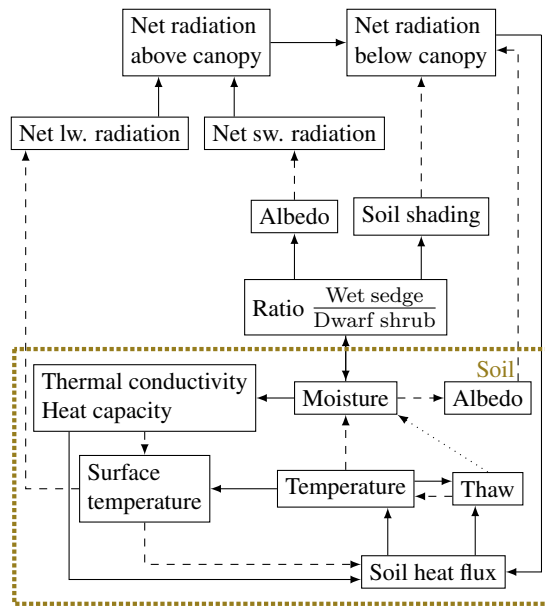
sedge soil heat flux reduced to about 1.6 times the flux below dwarf shrubs by the end of July (Fig. 9a). The mean growing season soil heat flux of 2013 and 2014 was  $8.6 \text{ W m}^{-2}$  on the dwarf shrub and  $14.8 \text{ W m}^{-2}$  on the sedge patch (Table 2). The 2014 growing season was wetter than 2013, resulting in elevated soil moisture content below dwarf shrubs ( $0.52 \text{ m}^3 \text{ m}^{-3}$  and  $0.37 \text{ m}^3 \text{ m}^{-3}$  in 2014 and 2013, respectively). The sedges soil was saturated at all times with a moisture content of about  $0.7 \text{ m}^3 \text{ m}^{-3}$  (Table 1). However, we observed higher water levels at the sedges in 2014. The wetter conditions in 2014 fostered higher soil heat fluxes below both vegetation types. Top soil temperature below dwarf shrubs was on average  $1.1 \text{ }^\circ\text{C}$  warmer in the dry growing season 2013, while it was  $0.6 \text{ }^\circ\text{C}$  colder than below sedges in the wet growing season 2014. On average over both summer measurement periods, the top soil temperature was almost equal below both vegetation types (Table 2). The spatially distributed active layer thickness measurements were consistent with the soil heat flux measurements. On average, the active layer below sedges was 1.8 times deeper than below dwarf shrubs (Fig. 9b).



**Figure 9.** (a) Cumulative soil heat flux 2014 at  $-10 \text{ cm}$  depth, day of complete snowmelt (SM) indicated for dwarf shrubs and wet sedges and (b) spatial variability of active layer thickness within vegetation type, measured 28 – 30 July 2013, percentiles (25, 50, and 75), minimum and maximum values of eight plots per vegetation type; significant differences between vegetation types are shown with \*\*\* ( $p \leq 0.001$ ).

#### 4 Discussion

We found that wet sedges shade the soil more efficiently than dwarf shrubs, which is in contrast to the higher soil heat flux below sedges. The considerable shading by wet sedges can partly be explained by the thick layer of standing dead leaves. The soil heat flux, on the other hand, depended strongly on soil thermal properties. This is in contrast to the studies by Blok et al. (2010) and Briggs et al. (2014) Lawrence and Swenson (2011), which identified soil shading as important control of local permafrost thaw. A schematic of the differences we found between key components of the dwarf shrub and wet sedge system can be found in Fig. 10. The different components are explained in more detail below.



**Figure 10.** Different vegetation types are associated with soil properties and soil heat fluxes (brown box), the radiation budget above and below canopy. Latent and sensible heat fluxes are not included as they were not measured in this study and effect directions are unclear. Permafrost thaw can feed back to soil moisture, but the direction of the effect depends on ice content and drainage conditions. Solid arrows represent positive, dashed arrows negative, and dotted arrows unknown feedbacks; lw. and sw. denote longwave and shortwave, respectively.

#### 4.1 Above-canopy radiation budget

Differences in surface albedo can affect air temperature and permafrost thaw (Lawrence and Swenson, 2011; Bonfils et al., 2012). Numerous studies found that shrub tundra has a lower growing season albedo than no-shrub tundra (Chapin et al., 2000a; Thompson et al., 2004; Beringer et al., 2005; Ahrends et al., 2012). Our study agrees with this finding although the albedo difference between dwarf shrubs and wet sedges was small (Table 2). The mean growing season albedo of 0.15 for dwarf shrubs and 0.17 for sedges observed in our study agree well with literature values (Chapin et al., 2000a; Eugster et al., 2000; Ahrends et al., 2012). The measured albedo values are within the range provided by modelling results of the two vegetation types at the same study site (Juszak et al., 2016). While the difference between dwarf shrub albedo and wet sedge albedo is relatively small, the modelling results indicate that the albedo of other vegetation types present at the field site varies more strongly. Juszak et al. (2016) found albedo variation between 0.18 for dry sedge wetland and 0.09 for waterlogged sedges. Therefore, the above canopy radiation budget is more variable if multiple vegetation types are taken into account and may influence the permafrost more strongly. The low values we measured for PAR reflectance (Fig. 7b) are in the same range as values measured by Lloyd et al. (2001) on an Arctic palsamire.

At our study site, the wet sedge canopy was almost twice as tall as the dwarf shrub canopy (Fig. 3). Furthermore, the plant area index of wet sedges including dead leaves was almost double of the plant area index of dwarf shrubs. In general, taller and

**denser** canopies trap light more efficiently and thus have a lower albedo (Oke, 1987). This is not the case in our comparison between dwarf shrubs and wet sedges, which may be due to two reasons. First, the wet sedge canopy comprises light-coloured standing dead leaves (Chapin et al., 2000a). Second, leaf and wood angle distributions ~~affected a dominant control of~~ canopy reflectance (Verstraete, 1987; Asner, 1998). While dwarf shrubs may have a spherical leaf angle distribution (Juszak et al., 2014), wet sedges likely have erectophil leaves. As compared to the dry summer of 2013, the albedo was lower by 0.01 on dwarf shrubs and by 0.03 on sedges during the wetter summer of 2014. In the wet year, standing water remained at the sedge patch throughout the growing season. Low albedo values on wet sedge locations, especially with standing water, have been reported in literature (Lafleur et al., 1997; Langer et al., 2011; Gamon et al., 2012).

Shrubs are associated with earlier snowmelt and thus decreased spring albedo (Sturm et al., 2005; Pomeroy et al., 2006). In spring 2014, the snow melted ten days earlier on the dwarf shrub patch as compared to the wet sedge patch. As found by Chapin et al. (2005) and Sturm et al. (2005), in our study snowmelt timing was far more important for the overall energy budget than the growing season albedo difference (Fig. 7a). Apart from the large albedo difference in this period, ~~the~~ high values of incoming shortwave radiation end of May and beginning of June contributed to the effect. However, at our study site, the earlier snowmelt at the shrub location was not primarily due to branches exposed above the snow surface (Sturm et al., 2005; Pomeroy et al., 2006), but rather due to the thinner snow cover. The snow cover levelled out some of the micro-topography. Thus more snow accumulated in the sedge depression (71 cm) than on the elevated dwarf shrub patch (32 cm, Table 1). This is in contrast to observation from study sites with taller shrubs which trap snow and thus lead to a deeper snow pack (Sturm et al., 2001a; Liston et al., 2002).

We found that clouds reduced the diel albedo by 0.01 (dwarf shrubs) to 0.03 (sedges). These values agree well with the value of 0.02 stated in Eugster et al. (2000) for vegetated and unvegetated tundra. As clear-sky and cloudy-sky albedo differ most at large solar zenith angles, cloud cover reduced the albedo most strongly in the late growing season. The average growing season albedo is likely to decrease in case of increased cloud cover in the future (Chapin et al., 2005; Wang and Key, 2005b; Vavrus et al., 2009). ~~Cloud cover changed over the growing season. Due to the strong dependence of albedo on cloud cover, we could not quantify~~ ~~The strong cloud impact on albedo masked other~~ temporal albedo trends within the growing season that may be caused by soil moisture or vegetation phenology.

While dwarf shrubs and sedges differed in the shortwave radiation budget, the growing season net radiation was similar (Table 2, Fig. 10). On one hand, the dwarf shrub canopy–soil system absorbed more shortwave radiation, on the other hand it emitted more longwave radiation as daily maximum soil temperatures were higher. However, in accordance with Rouse (2000) we found that during the snowmelt period net radiation strongly depended on the snow cover. The different snow melt dates of the vegetation types affected the growing season length locally which may influence the tundra carbon cycle, via respiration, primary production, and methane exchange.

## 4.2 Soil shading

Soil shading by shrubs has been suggested as major factor mitigating permafrost thaw at the local scale (Blok et al., 2010). However, unlike for forests or crops, shading by tundra vegetation has rarely been measured. In the shortwave range, we found

an average growing season transmittance of 0.36 below dwarf shrubs and 0.28 below sedges (Table 2). These values are in the same range as modelling results of dwarf shrubs and wet sedges by Juszak et al. (2016). In comparison with other vegetation types present at the site, the transmittance of both types is small. The low transmittance is caused by the high plant area index of dwarf shrubs and wet sedges as compared to other types. In the PAR range, dwarf shrubs transmitted on average 25% and sedges only 3% (Fig. 8c). The dwarf shrub PAR transmittance was in the same range as values by Juszak et al. (2014) measured at the same field site. Williams et al. (2014) measured PAR transmittance below tundra shrubs of 70–100 cm height, two to three times taller than the dwarf shrubs in our study (Fig. 3a). They found a PAR transmittance of about 0.2, which is the lower boundary of the range of values we obtained. The extremely low values of PAR transmittance below sedges were partly due to the lower measurement height of PAR as compared to shortwave transmittance. The shortwave transmittance sensor of 34 mm height was placed above the early summer maximum water level. The PAR sensor of 16 mm height was inserted as low as possible above the current wet litter or water surface. The standing dead leaves are a major component of the wet sedge vegetation (Fig. 1c) and account for most reflection and absorption (Fig. 8c) (Caldwell et al., 1974; Chapin et al., 2000a).

The reference level at the dwarf shrub site is above the shrub litter, which forms a thin, compact layer on the ground with more heavily degraded litter at the bottom and more loose, recent litter towards the top. Unlike the shrub canopy, the sedge canopy includes lots of standing dead material (Table 1). We defined the reference level for canopy transmittance and soil heat flux below this light-coloured layer but above the wet, dark-coloured, and compact litter. This distinction between standing dead leaves and wet litter is useful because of the different structure of both layers. Standing dead leaves form a 12–34 cm thick layer with arching dry leaves and large air spaces. Below this layer, more compacted, older, and usually water-saturated litter forms a continuous surface. In case of shrub or sedge litter on the ground, energy can be transferred from the litter to the soil through heat conduction. Therefore, the thermal properties of the litter can be treated similar to the thermal properties of the soil. For wet sedges, the thermal properties of the dry, standing dead leaves are less important as the leaves are surrounded by air and heat conduction will be dominated by the air. Thus heat conduction through the standing dead leaves may be limited and energy convection or radiation through the standing dead layer may be more important. Therefore we argue that for energy budget considerations shrub litter and wet litter of sedges can be treated analogously to soil, while sedge standing dead leaves resemble more green leaves and have to be treated as part of the above-ground canopy.

Clouds decreased soil shading of both vegetation types, especially at large solar zenith angles (Fig. 8a, b). The Williams et al. (2014) study on Arctic shrubs did not find a dependency of canopy transmittance on diffuse or direct radiation. However, we found that the effect was strongest for large solar zenith angles and Williams et al. (2014) measured at smaller solar zenith angles, around noon, and more than 2° lower latitude. The strong dependency of clear-sky sedge transmittance on sun angle can be attributed to the vertical orientation of the leaves. In addition to leaf angle distribution, plant area index and canopy height can cause differences between the vegetation types. In general, direct radiation transmittance decreases for large solar zenith angles as the path through the vegetation lengthens. For both vegetation types, transmittance was more variable under clear-sky conditions, which indicates an additional dependency on the solar azimuth angle for specific locations. Spatial variability of transmittance is thus related to spatial inhomogeneity of canopy structure. The higher transmittance of diffuse light as compared to direct light at large solar zenith angles has been measured in a number of studies (e.g. Eck and Deering, 1992; Promis et al.,

2009; Dengel et al., 2015). However, although the canopies shade less efficiently at cloudy conditions than during clear-sky hours, clouds reduce the absolute amount of transmitted shortwave radiation. Thus if the cloud cover increases, less shortwave radiation warms the soil directly.

### 5 4.3 Soil heat flux and permafrost active layer

Increasing active layer thickness can lead to substantial carbon emissions from permafrost soils (Schuur et al., 2009) and thus positively feeds back to climate warming (Field et al., 2007). We found a 17 cm shallower active layer and  $6.2 \text{ W m}^{-2}$  lower soil heat flux at 10 cm depth below dwarf shrubs as compared to wet sedges (Fig. 9a, Table 2), which agrees well with other studies (Anisimov et al., 2002; Walker et al., 2003b; Blok et al., 2010). We evaluated possible causes/drivers of this difference between vegetation types. The dwarf shrub canopy reflected less shortwave radiation and transmitted more to the moss or soil surface below. Thus, if the shortwave radiation budget was the major driver, a higher soil heat flux could be expected below the dwarf shrubs. The outgoing longwave radiation was slightly higher at the dwarf shrub patch. Thus the above-canopy net-radiation was almost equal at both vegetation types (Table 2), and hence differences in resulting energy fluxes (sensible, latent, and ground heat flux) were purely internally controlled by the vegetation structure and activity and by soil processes or soil properties.

Several Arctic studies found similar or less evapotranspiration in low shrub tundra as compared to wetland tundra (Eugster et al., 2000; Rouse, 2000; Eaton et al., 2001; McFadden et al., 2003). At our field site, dwarf shrub LAI was smaller than sedge LAI (Fig. 3b) and the shrub soil was much drier. Thus, we do not expect more energy loss due to evapotranspiration of the dwarf shrubs. Despite the close vicinity of wet sedges and dwarf shrubs, the frequent wind, and the similar average top soil temperatures, air temperature above the wet sedges was about  $0.6 \text{ }^\circ\text{C}$  colder than above dwarf shrubs (Figure 4e). This finding is consistent with the hypothesis of higher evapotranspiration at the wet sedge site.

The higher ground heat flux at the wet sedges may have lead to reduced sensible heat flux (McFadden et al., 1998). Although the average top-soil temperatures were very similar below both vegetation types (Table 2) and the gradient between air and soil temperature was smaller at wet sedges (Fig. 4e), the heat flux towards the sedge soil was larger. However, the same gradient between cold soil and warm air temperature may lead to higher flux below sedges as the thermal conductivity of the water-logged sedges soil was about five times higher than of the peaty dwarf shrub top soil ( $10.44 \text{ W m}^{-1} \text{ K}^{-1}$  and  $0.08 \text{ W m}^{-1} \text{ K}^{-1}$ , respectively). The heat capacity below wet sedges ( $3.3 \text{ MJ m}^{-3} \text{ K}^{-1}$ ) was more than six times the value measured below dwarf shrubs ( $0.5 \text{ MJ m}^{-3} \text{ K}^{-1}$ ). This stronger energy sink may have further enhanced the soil heat flux below sedges. Further, lateral soil water flux from the elevated shrub patches towards the lower lying sedge patches may contribute to the increased soil heat flux in sedge patches. Williams and Quinton (2013) also found that altered moisture conditions were more important for permafrost thaw than the shortwave radiation budget along linear disturbances in a boreal forest.

Mosses and lichen are important components of tundra canopies. Peat mosses contribute significantly to the different soil thermal properties which we observed between dwarf shrubs and wet sedges. Mosses can insulate the soil from air temperature (Beringer et al., 2001; Blok et al., 2011). Furthermore, mosses can alter microtopography and thus modify drainage and

moisture conditions (Gornall et al., 2007). As evapotranspiration is affected by mosses in multiple ways (Vourlitis and Oechel, 1999), they need to be considered when modelling energy, water and carbon exchange of Arctic and boreal ecosystems (Lau-  
niainen et al., 2015). Another important aspect is soil albedo. Mosses and lichen influence the albedo of the background below  
5 the canopy (Stoy et al., 2012). In this way, they do not only affect landscape albedo, but also the amount of radiation absorbed  
by the soil and the moss layer (Stoy et al., 2012). ~~Another difference between the two vegetation types is the soil albedo.~~ The  
wet litter surface below sedges had a low albedo, possibly less than the litter and moss surface below dwarf shrubs. Model  
results by Juszak et al. (2014) indicate a surface albedo below dwarf shrubs of 0.17 at our site. Given the average growing  
season transmittance of  $64 \text{ W m}^{-2}$ , the dwarf shrub soil may absorb around  $53 \text{ W m}^{-2}$ . With a low soil albedo, the sedge soil  
10 may have absorbed a greater fraction of the transmitted shortwave radiation ( $49 \text{ W m}^{-2}$  on average) than the dwarf shrub soil,  
an effect that may partly compensate the more efficient shading. ~~However, the above and below canopy radiation budget of  
dwarf shrubs and wet sedges is relatively similar which implies that other factors contribute more strongly to the differences  
in soil heat flux. Other vegetation types present at the site vary more strongly in albedo and reveal much higher transmittance  
(Juszak et al., 2016). Therefore, the radiation budget may explain more of the spatial variability in active layer thickness if  
15 more vegetation types are considered.~~

In summary, differences in net radiation ~~between dwarf shrubs and wet sedges~~ are smaller than expected, and clearly ad-  
ditional driving forces besides canopy–radiation interactions must be considered for explaining soil heat flux and active layer  
thickness in future studies, namely soil albedo and soil thermal conductivity (Fig. 10).

## 5 Conclusions

20 Our field data show that permafrost thaw was lower below tundra dwarf shrubs as compared to ~~wet~~ sedges, but not as a result  
of increased soil shading. Neither the above-canopy radiation budget nor soil shading explained the spatial differences in active  
layer thickness. Despite lower shortwave reflectance and higher transmittance by the dwarf shrubs, the soil below dwarf shrubs  
showed a smaller heat flux and a shallower active layer than below sedges. We found that the differences in snow melt timing  
were more important for the shortwave radiation budget than growing season albedo differences between the two vegetation  
25 types. Cloud cover reduced albedo and soil shading of both vegetation types but more strongly so for sedges. Standing dead  
leaves accounted for most of the soil shading of the sedge canopy. Soil properties, such as soil albedo and thermal conductivity,  
appear to be more important than the direct effect of the above-ground vegetation layer. Our results highlight the complexity of  
the atmosphere–vegetation–permafrost interaction. Future studies will need to incorporate plant traits, such as green, woody,  
and dead biomass, soil properties, as well as spatial patterns of vegetation types. These variables may be key controls of the  
30 potential feedbacks between vegetation changes and permafrost thaw and deserve more attention to understand the complex  
interactions between tundra ecosystems and climate.

*Author contributions.* I. Juszak and G. Schaepman-Strub conceived the study. I. Juszak carried out the field measurements and analysed the  
data with input from G. Schaepman-Strub and W. Eugster. I. Juszak prepared the manuscript with contributions from all co-authors.

The time series data used for this work are available at <https://doi.pangaea.de/10.1594/PANGAEA.860561>.

*Acknowledgements.* We thank Trofim C. Maximov and his group at the Siberian Branch of the Russian Academy of Science for supporting our field work. We thank Joseph P. McFadden, UC Santa Barbara, and Luca Belelli Marchesini, VU Amsterdam, for fruitful discussions on earlier versions of this manuscript. **Furthermore, we thank Samuli Launiainen and an anonymous referee for their helpful comments and suggestions.** This work was supported by the Swiss National Science Foundation through project grant 140631 and by the Netherlands Organisation for Scientific Research (NWO Vidi-grant 864.09.014). We were further supported by the University of Zurich through the University research priority programme on Global Change and Biodiversity (URPP GCB).

## References

- Ahrends, H. E., Oberbauer, S. F., and Eugster, W.: Small-scale albedo-temperature relationship contrast with large-scale relations in Alaskan acidic tussock tundra, in: Proc. SPIE 8531, Remote Sensing for Agriculture, Ecosystems, and Hydrology XIV, vol. 8531, p. 853113, doi:10.1117/12.974381, 2012.
- Anisimov, O. A., Shiklomanov, N. I., and Nelson, F. E.: Variability of seasonal thaw depth in permafrost regions: a stochastic modeling approach, *Ecological Modelling*, 153, 217–227, doi:10.1016/S0304-3800(02)00016-9, 2002.
- Asner, G. P.: Biophysical and Biochemical Sources of Variability in Canopy Reflectance, *Remote Sensing of Environment*, 64, 234–253, doi:10.1016/S0034-4257(98)00014-5, 1998.
- Bartholomeus, H., Schaepman-Strub, G., Blok, D., Sofronov, R., and Udaltsov, S.: Spectral Estimation of Soil Properties in Siberian Tundra Soils and Relations with Plant Species Composition, *Applied and Environmental Soil Science*, 2012, 241 535, doi:10.1155/2012/241535, 2012.
- Beringer, J., Lynch, A. H., Chapin, III, F. S., Mack, M., and Bonan, G. B.: The Representation of Arctic Soils in the Land Surface Model: The Importance of Mosses, *Journal of Climate*, 14, 3324–3335, doi:10.1175/1520-0442(2001)014<3324:TROAST>2.0.CO;2, 2001.
- Beringer, J., Chapin, III, F. S., Thompson, C. C., and McGuire, A. D.: Surface energy exchanges along a tundra-forest transition and feedbacks to climate, *Agricultural and Forest Meteorology*, 131, 143–161, doi:10.1016/j.agrformet.2005.05.006, 2005.
- Bewley, D., Pomeroy, J. W., and Essery, R. L. H.: Solar radiation transfer through a subarctic shrub canopy, *Arctic, Antarctic, and Alpine Research*, 39, 365–374, doi:10.1657/1523-0430(06-023)[BEWLEY]2.0.CO;2, 2007.
- Blok, D., Heijmans, M. M. P. D., Schaepman-Strub, G., Kononov, A. V., Maximov, T. C., and Berendse, F.: Shrub expansion may reduce summer permafrost thaw in Siberian tundra, *Global Change Biology*, 16, 1296–1305, doi:10.1111/j.1365-2486.2009.02110.x, 2010.
- Blok, D., Heijmans, M. M. P. D., Schaepman-Strub, G., van Ruijven, J., Parmentier, F. J. W., Maximov, T. C., and Berendse, F.: The Cooling Capacity of Mosses: Controls on Water and Energy Fluxes in a Siberian Tundra Site, *Ecosystems*, 14, 1055–1065, doi:10.1007/s10021-011-9463-5, 2011.
- Bonfils, C. J. W., Phillips, T. J., Lawrence, D. M., Cameron-Smith, P., Riley, W. J., and Subin, M.: On the influence of shrub height and expansion on northern high latitude climate, *Environmental Research Letters*, 7, 15 503–15 511, doi:10.1088/1748-9326/7/1/015503, 2012.
- Bret-Harte, M. S., Shaver, G. R., Zoerner, J. P., Johnstone, J. F., Wagner, J. L., Chavez, A. S., Gunkelman, IV, R. F., Lippert, S. C., and Laundre, J. A.: Developmental Plasticity Allows *Betula nana* to Dominate Tundra Subjected to an Altered Environment, *Ecology*, 82, 18–32, doi:10.1890/0012-9658(2001)082[0018:DPABNT]2.0.CO;2, 2001.
- Briggs, M. A., Walvoord, M. A., McKenzie, J. M., Voss, C. I., Day-Lewis, F. D., and Lane, J. W.: New permafrost is forming around shrinking Arctic lakes, but will it last?, *Geophysical Research Letters*, 41, 1585–1592, doi:10.1002/2014GL059251, 2014.
- Budishchev, A., Mi, Y., van Huissteden, J., Belelli-Marchesini, L., Schaepman-Strub, G., Parmentier, F. J. W., Fratini, G., Gallagher, A., Maximov, T. C., and Dolman, A. J.: Evaluation of a plot-scale methane emission model using eddy covariance observations and footprint modelling, *Biogeosciences*, 11, 4651–4664, doi:10.5194/bg-11-4651-2014, 2014.
- Caldwell, M. M., Tieszen, L. L., and Fareed, M.: The Canopy Structure of Tundra Plant Communities at Barrow, Alaska, and Niwot Ridge, Colorado, *Arctic and Alpine Research*, 6, 151–159, doi:10.2307/1550083, 1974.
- Carroll, M. L., Townshend, J. R. G., DiMiceli, C. M., Loboda, T., and Sohlberg, R. A.: Shrinking lakes of the Arctic: Spatial relationships and trajectory of change, *Geophysical Research Letters*, 38, L20 406, doi:10.1029/2011GL049427, 2011.



- Chapin, III, F. S. and Shaver, G. R.: Changes in Soil Properties and Vegetation Following Disturbance of Alaskan Arctic Tundra, *Journal of Applied Ecology*, 18, 605–617, <http://www.jstor.org/stable/2402420>, 1981.
- Chapin, III, F. S., Eugster, W., McFadden, J. P., Lynch, A. H., and Walker, D. A.: Summer differences among Arctic ecosystems in regional  
5 climate forcing, *Journal of Climate*, 13, 2002–2010, doi:10.1175/1520-0442(2000)013<2002:SDAAEI>2.0.CO;2, 2000a.
- Chapin, III, F. S., McGuire, A. D., Randerson, J., Pielke, R., Baldocchi, D., Hobbie, S. E., Roulet, N., Eugster, W., Kasischke, E., Rastetter, E. B., Zimov, S. A., and Running, S. W.: Arctic and boreal ecosystems of western North America as components of the climate system, *Global Change Biology*, 6, 211–223, doi:10.1046/j.1365-2486.2000.06022.x, 2000b.
- Chapin, III, F. S., Sturm, M., Serreze, M. C., McFadden, J. P., Key, J. R., Lloyd, A. H., McGuire, A. D., Rupp, T. S., Lynch, A. H.,  
10 Schimel, J. P., Beringer, J., Chapman, W. L., Epstein, H. E., Euskirchen, E. S., Hinzman, L. D., Jia, G., Ping, C.-L., Tape, K. D., Thompson, C. D. C., Walker, D. A., and Welker, J. M.: Role of land-surface changes in Arctic summer warming, *Science*, 310, 657–660, doi:10.1126/science.1117368, 2005.
- Chong, M., Humphreys, E., and Moore, T. R.: Microclimatic response to increasing shrub cover and its effect on *Sphagnum* CO<sub>2</sub> exchange in a bog, *Ecoscience*, 19, 89–97, doi:10.2980/19-1-3489, 2012.
- 15 Corripio, J. G.: Vectorial algebra algorithms for calculating terrain parameters from DEMs and solar radiation modelling in mountainous terrain, *International Journal of Geographical Information Science*, 17, 1–23, doi:10.1080/713811744, 2003.
- Crawford, T. M. and Duchon, C. E.: An Improved Parameterization for Estimating Effective Atmospheric Emissivity for Use in Calculating Daytime Downwelling Longwave Radiation, *Journal of Applied Meteorology*, 38, 474–480, doi:10.1175/1520-0450(1999)038<0474:AIPFEE>2.0.CO;2, 1999.
- 20 Curry, J. A., Rossow, W. B., Randall, D., and Schramm, J. L.: Overview of Arctic cloud and radiation characteristics, *Journal of Climate*, 9, 1731–1764, doi:10.1175/1520-0442(1996)009<1731:OOACAR>2.0.CO;2, 1996.
- de Groot, W. J., Thomas, P. A., and Wein, R. W.: *Betula nana* L. and *Betula glandulosa* Michx., *Journal of Ecology*, 85, pp. 241–264, doi:10.2307/2960655, 1997.
- Dengel, S., Grace, J., and MacArthur, A.: Transmissivity of solar radiation within a *Picea sitchensis* stand under various sky conditions,  
25 *Biogeosciences*, 12, 4195–4207, doi:10.5194/bg-12-4195-2015, 2015.
- Dong, X., Xi, B., Crosby, K., Long, C. N., Stone, R. S., and Shupe, M. D.: A 10 year climatology of Arctic cloud fraction and radiative forcing at Barrow, Alaska, *Journal of Geophysical Research: Atmospheres*, 115, D17 212, doi:10.1029/2009JD013489, 2010.
- Eaton, A. K., Rouse, W. R., Lafleur, P. M., Marsh, P., and Blanken, P. D.: Surface Energy Balance of the Western and Central Canadian Subarctic: Variations in the Energy Balance among Five Major Terrain Types, *Journal of Climate*, 14, 3692–3703, doi:10.1175/1520-  
30 0442(2001)014<3692:SEBOTW>2.0.CO;2, 2001.
- Eck, T. F. and Deering, D. W.: Canopy albedo and transmittance in a spruce-hemlock forest in mid-September, *Agricultural and Forest Meteorology*, 59, 237–248, doi:10.1016/0168-1923(92)90095-L, 1992.
- Eugster, W., Rouse, W. R., Pielke Sr, R. A., Mcfadden, J. P., Baldocchi, D. D., Kittel, T. G. F., Chapin, III, F. S., Liston, G. E., Vidale, P. L., Vaganov, E., and Chambers, S.: Land–atmosphere energy exchange in Arctic tundra and boreal forest: available data and feedbacks to  
35 climate, *Global Change Biology*, 6, 84–115, doi:10.1046/j.1365-2486.2000.06015.x, 2000.
- Field, C. B., Lobell, D. B., Peters, H. A., and Chiariello, N. R.: Feedbacks of Terrestrial Ecosystems to Climate Change, *Annual Review of Environment and Resources*, 32, 1–29, doi:10.1146/annurev.energy.32.053006.141119, 2007.
- Frost, G. V. and Epstein, H. E.: Tall shrub and tree expansion in Siberian tundra ecotones since the 1960s, *Global Change Biology*, 20, 1264–1277, doi:10.1111/gcb.12406, 2014.

- Gamon, J. A., Kershaw, G. P., Williamson, S., and Hik, D. S.: Microtopographic patterns in an arctic baydjarakh field: do fine-grain patterns enforce landscape stability?, *Environmental Research Letters*, 7, 015 502, doi:10.1088/1748-9326/7/1/015502, 2012.
- Gornall, J., Jónsdóttir, I., Woodin, S., and Wal, R.: Arctic mosses govern below-ground environment and ecosystem processes, *Oecologia*, 5 153, 931–941, doi:10.1007/s00442-007-0785-0, 2007.
- Helbig, M., Boike, J., Langer, M., Schreiber, P., Runkle, B. R. K., and Kutzbach, L.: Spatial and seasonal variability of polygonal tundra water balance: Lena River Delta, northern Siberia (Russia), *Hydrogeology Journal*, 21, 133–147, doi:10.1007/s10040-012-0933-4, 2013.
- Hobbie, S. E., Gough, L., and Shaver, G. R.: Species compositional differences on different-aged glacial landscapes drive contrasting responses of tundra to nutrient addition, *Journal of Ecology*, 93, 770–782, doi:10.1111/j.1365-2745.2005.01006.x, 2005.
- 10 Iqbal, M.: An introduction to solar radiation, Academic Press, New York - London, <http://www.sciencedirect.com/science/book/9780123737502>, 1983.
- Iwahana, G., Takano, S., Petrov, R. E., Tei, S., Shingubara, R., Maximov, T. C., Fedorov, A. N., Desyatkin, A. R., Nikolaev, A. N., Desyatkin, R. V., and Sugimoto, A.: Geocryological characteristics of the upper permafrost in a tundra–forest transition of the Indigirka River Valley, Russia, *Polar Science*, 8, 96–113, doi:10.1016/j.polar.2014.01.005, 2014.
- 15 Jacobsen, A. and Hansen, B. U.: Estimation of the soil heat flux/net radiation ratio based on spectral vegetation indexes in high-latitude Arctic areas, *International Journal of Remote Sensing*, 20, 445–461, doi:10.1080/014311699213532, 1999.
- Jones, B. M., Grosse, G., Arp, C. D., Jones, M. C., Walter Anthony, K. M., and Romanovsky, V. E.: Modern thermokarst lake dynamics in the continuous permafrost zone, northern Seward Peninsula, Alaska, *Journal of Geophysical Research: Biogeosciences*, 116, G00M03, doi:10.1029/2011JG001666, 2011.
- 20 Jorgenson, M. T., Shur, Y. L., and Pullman, E. R.: Abrupt increase in permafrost degradation in Arctic Alaska, *Geophysical Research Letters*, 33, L02 503, doi:10.1029/2005GL024960, 2006.
- Juzsak, I., Erb, A. M., Maximov, T. C., and Schaepman-Strub, G.: Arctic shrub effects on NDVI, summer albedo and soil shading, *Remote Sensing of Environment*, 153, 79–89, doi:10.1016/j.rse.2014.07.021, 2014.
- Juzsak, I., Iturrate-Garcia, M., Gastellu-Etchegorry, J.-P., Schaepman, M. E., Maximov, T. C., and Schaepman-Strub, G.: Drivers of shortwave radiation fluxes in Arctic tundra across scales, *Remote Sensing of Environment*, under Review, 2016.
- 25 Lafleur, P. M., Wurtele, A. B., and Duguay, C. R.: Spatial and Temporal Variations in Surface Albedo of a Subarctic Landscape Using Surface-Based Measurements and Remote Sensing, *Arctic and Alpine Research*, 29, 261–269, doi:10.2307/1552140, 1997.
- Langer, M., Westermann, S., Muster, S., Piel, K., and Boike, J.: The surface energy balance of a polygonal tundra site in northern Siberia – Part I: Spring to fall, *The Cryosphere*, 5, 151–171, doi:10.5194/tc-5-151-2011, 2011.
- 30 Lantz, T. C., Marsh, P., and Kokelj, S. V.: Recent shrub proliferation in the Mackenzie Delta uplands and microclimatic implications, *Ecosystems*, 16, 47–59, doi:10.1007/s10021-012-9595-2, 2013.
- Launiainen, S., Katul, G. G., Lauren, A., and Kolari, P.: Coupling boreal forest CO<sub>2</sub>, H<sub>2</sub>O and energy flows by a vertically structured forest canopy – Soil model with separate bryophyte layer, *Ecological Modelling*, 312, 385–405, doi:10.1016/j.ecolmodel.2015.06.007, 2015.
- Lawrence, D. M. and Swenson, S. C.: Permafrost response to increasing Arctic shrub abundance depends on the relative influence of shrubs on local soil cooling versus large-scale climate warming, *Environmental Research Letters*, 6, 045 504, doi:10.1088/1748-9326/6/4/045504, 2011.
- 35 Lin, D. H., Johnson, D. R., Andresen, C., and Tweedie, C. E.: High spatial resolution decade-time scale land cover change at multiple locations in the Beringian Arctic (1948–2000s), *Environmental Research Letters*, 7, 025 502, doi:10.1088/1748-9326/7/2/025502, 2012.

- Liston, G. E., McFadden, J. P., Sturm, M., and Pielke, R. A.: Modelled changes in arctic tundra snow, energy and moisture fluxes due to increased shrubs, *Global Change Biology*, 8, 17–32, doi:10.1046/j.1354-1013.2001.00416.x, 2002.
- Lloyd, C. R., Harding, R. J., Friberg, T., and Aurela, M.: Surface fluxes of heat and water vapour from sites in the European Arctic, *Theoretical and Applied Climatology*, 70, 19–33, doi:10.1007/s007040170003, 2001.
- 5 Loranty, M. M. and Goetz, S. J.: Shrub expansion and climate feedbacks in Arctic tundra, *Environmental Research Letters*, 7, 011 005, doi:10.1088/1748-9326/7/1/011005, 2012.
- Mahat, V. and Tarboton, D. G.: Canopy radiation transmission for an energy balance snowmelt model, *Water Resources Research*, 48, 1534, doi:10.1029/2011WR010438, <http://onlinelibrary.wiley.com/doi/10.1029/2011WR010438/abstract>, 2012.
- 10 McFadden, J. P., Chapin, III, F. S., and Hollinger, D. Y.: Subgrid-scale variability in the surface energy balance of Arctic tundra, *Journal of Geophysical Research: Atmospheres*, 103, 28 947–28 961, doi:10.1029/98JD02400, 1998.
- McFadden, J. P., Eugster, W., and Chapin, III, F. S.: A regional study of the controls on water vapor and CO<sub>2</sub> exchange in Arctic tundra, *Ecology*, 84, 2762–2776, doi:10.1890/01-0444, 2003.
- McManus, K. M., Morton, D. C., Masek, J. G., Wang, D., Sexton, J. O., Nagol, J. R., Ropars, P., and Boudreau, S.: Satellite-based evidence for shrub and graminoid tundra expansion in northern Quebec from 1986 to 2010, *Global Change Biology*, 18, 2313–2323, doi:10.1111/j.1365-2486.2012.02708.x, 2012.
- 15 Mi, Y., van Huissteden, J., Parmentier, F. J. W., Gallagher, A., Budishchev, A., Berridge, C. T., and Dolman, A. J.: Improving a plot-scale methane emission model and its performance at a northeastern Siberian tundra site, *Biogeosciences*, 11, 3985–3999, doi:10.5194/bg-11-3985-2014, 2014.
- 20 Myers-Smith, I. H., Forbes, B. C., Wilmsking, M., Hallinger, M., Lantz, T., Blok, D., Tape, K. D., Macias-Fauria, M., Sass-Klaassen, U., Lévesque, E., Boudreau, S., Ropars, P., Hermanutz, L., Trant, A., Collier, L. S., Weijers, S., Rozema, J., Rayback, S. A., Schmidt, N. M., Schaepman-Strub, G., Wipf, S., Rixen, C., Ménard, C. B., Venn, S., Goetz, S., Andreu-Hayles, L., Elmendorf, S., Ravolainen, V., Welker, J., Grogan, P., Epstein, H. E., and Hik, D. S.: Shrub expansion in tundra ecosystems: dynamics, impacts and research priorities, *Environmental Research Letters*, 6, 045 509, doi:10.1088/1748-9326/6/4/045509, 2011.
- 25 Nauta, A. L., Heijmans, M. M. P. D., Blok, D., Limpens, J., Elberling, B., Gallagher, A., Li, B., Petrov, R. E., Maximov, T. C., van Huissteden, J., and Berendse, F.: Permafrost collapse after shrub removal shifts tundra ecosystem to a methane source, *Nature Climate Change*, 5, 67–70, doi:10.1038/nclimate2446, 2015.
- Oechel, W. C., Vourlitis, G. L., Hastings, S. J., Zulueta, R. C., Hinzman, L., and Kane, D.: Acclimation of ecosystem CO<sub>2</sub> exchange in the Alaskan Arctic in response to decadal climate warming, *Nature*, 406, 978–981, doi:10.1038/35023137, 2000.
- 30 Oechel, W. C., Laskowski, C. A., Burba, G., Gioli, B., and Kalhori, A. A. M.: Annual patterns and budget of CO<sub>2</sub> flux in an Arctic tussock tundra ecosystem, *Journal of Geophysical Research: Biogeosciences*, 119, 323–339, doi:10.1002/2013JG002431, 2014.
- Oke, T. R.: *Boundary layer climates*, Methuen & Co, 2 edn., 1987.
- Parmentier, F. J. W., van der Molen, M. K., van Huissteden, J., Karsanaev, S. A., Kononov, A. V., Suzdalov, D. A., Maximov, T. C., and Dolman, A. J.: Longer growing seasons do not increase net carbon uptake in the northeastern Siberian tundra, *Journal of Geophysical Research: Biogeosciences*, 116, G04013, doi:10.1029/2011JG001653, 2011a.
- 35 Parmentier, F. J. W., van Huissteden, J., van der Molen, M. K., Schaepman-Strub, G., Karsanaev, S. A., Maximov, T. C., and Dolman, A. J.: Spatial and temporal dynamics in eddy covariance observations of methane fluxes at a tundra site in northeastern Siberia, *Journal of Geophysical Research: Biogeosciences*, 116, G03016, doi:10.1029/2010JG001637, 2011b.
- Phillips, M. E.: *Eriophorum angustifolium* Roth, *Journal of Ecology*, 42, 612–622, <http://www.jstor.org/stable/2256893>, 1954.

- Pomeroy, J. W., Bewley, D. S., Essery, R. L. H., Hedstrom, N. R., Link, T., Granger, R. J., Sicart, J. E., Ellis, C. R., and Janowicz, J. R.: Shrub tundra snowmelt, *Hydrological Processes*, 20, 923–941, doi:10.1002/hyp.6124, 2006.
- Promis, A., Schindler, D., Reif, A., and Cruz, G.: Solar radiation transmission in and around canopy gaps in an uneven-aged *Nothofagus betuloides* forest, *International Journal of Biometeorology*, 53, 355–367, doi:10.1007/s00484-009-0222-7, 2009.
- 5 Reda, I. and Andreas, A.: Solar Position Algorithm for Solar Radiation Applications, *Solar Energy*, 76, 577–589, doi:10.1016/j.solener.2003.12.003, 2004.
- Romanovsky, V. E., Drozdov, D. S., Oberman, N. G., Malkova, G. V., Kholodov, A. L., Marchenko, S. S., Moskalenko, N. G., Sergeev, D. O., Ukraintseva, N. G., Abramov, A. A., Gilichinsky, D. A., and Vasiliev, A. A.: Thermal state of permafrost in Russia, *Permafrost and Periglacial Processes*, 21, 136–155, doi:10.1002/ppp.683, 2010.
- 10 Rouse, W. R.: The energy and water balance of high-latitude wetlands: controls and extrapolation, *Global Change Biology*, 6, 59–68, doi:10.1046/j.1365-2486.2000.06013.x, 2000.
- Schirrmeister, L., Pestryakova, L., Wetterich, S., and Tumskoy, V.: Joint Russian-German Polygon Project East Siberia 2011 – 2014: The expedition Kytalyk 2011, Tech. Rep. 653, Alfred Wegener Institute for Polar and Marine Research, Bremerhaven, <http://hdl.handle.net/10013/epic.40369>, 2012.
- 15 Schuur, E. A. G., Vogel, J. G., Crummer, K. G., Lee, H., Sickman, J. O., and Osterkamp, T. E.: The effect of permafrost thaw on old carbon release and net carbon exchange from tundra, *Nature*, 459, 556–559, doi:10.1038/nature08031, 2009.
- Schuur, E. A. G., McGuire, A. D., Schädel, C., Grosse, G., Harden, J. W., Hayes, D. J., Hugelius, G., Koven, C. D., Kuhry, P., Lawrence, D. M., Natali, S. M., Olefeldt, D., Romanovsky, V. E., Schaefer, K., Turetsky, M. R., Treat, C. C., and Vonk, J. E.: Climate change and the permafrost carbon feedback, *Nature*, 520, 171–179, doi:10.1038/nature14338, 2015.
- 20 Shaver, G. R., Johnson, L. C., Cades, D. H., Murray, G., Laundre, J. A., Rastetter, E. B., Nadelhoffer, K. J., and Giblin, A. E.: Biomass and CO<sub>2</sub> flux in wet sedge tundras: Responses to nutrients, temperature, and light, *Ecological Monographs*, 68, 75–97, doi:10.1890/0012-9615(1998)068[0075:BACFIW]2.0.CO;2, 1998.
- Smith, L. C., Sheng, Y., MacDonald, G. M., and Hinzman, L. D.: Disappearing Arctic Lakes, *Science*, 308, 1429, doi:10.1126/science.1108142, 2005.
- 25 Stocker, T. F., Qin, D., Plattner, G.-K., Tignor, M., Allen, S. K., Boschung, J., Nauels, A., Xia, Y., Bex, V., and Midgley, P. M., eds.: *Climate Change 2013: The Physical Science Basis*, Cambridge University Press, [http://www.ipcc.ch/pdf/assessment-report/ar5/wg1/WG1AR5\\_ALL\\_FINAL.pdf](http://www.ipcc.ch/pdf/assessment-report/ar5/wg1/WG1AR5_ALL_FINAL.pdf), IPCC, 2013, 2013.
- Stoy, P. C., Street, L. E., Johnson, A. V., Prieto-Blanco, A., and Ewing, S. A.: Temperature, Heat Flux, and Reflectance of Common Subarctic Mosses and Lichens under Field Conditions: Might Changes to Community Composition Impact Climate-Relevant Surface Fluxes?, *Arctic, Antarctic, and Alpine Research*, 44, 500–508, doi:10.1657/1938-4246-44.4.500, 2012.
- 30 Sturm, M., McFadden, J. P., Liston, G. E., Chapin, III, F. S., Racine, C. H., and Holmgren, J.: Snow-Shrub Interactions in Arctic Tundra: A Hypothesis with Climatic Implications, *Journal of Climate*, 14, 336–344, doi:10.1175/1520-0442(2001)014<0336:SSIIAT>2.0.CO;2, 2001a.
- 35 Sturm, M., Racine, C., and Tape, K.: Increasing shrub abundance in the Arctic, *Nature*, 411, 546–547, doi:10.1038/35079180, 2001b.
- Sturm, M., Douglas, T., Racine, C., and Liston, G. E.: Changing snow and shrub conditions affect albedo with global implications, *Journal of Geophysical Research: Biogeosciences*, 110, G01 004, doi:10.1029/2005JG000013, 2005.
- Tape, K., Sturm, M., and Racine, C.: The evidence for shrub expansion in Northern Alaska and the Pan-Arctic, *Global Change Biology*, 12, 686–702, doi:10.1111/j.1365-2486.2006.01128.x, 2006.

- Thompson, C., Beringer, J., Chapin, III, F. S., and McGuire, A. D.: Structural complexity and land-surface energy exchange along a gradient from arctic tundra to boreal forest, *Journal of Vegetation Science*, 15, 397–406, doi:10.1111/j.1654-1103.2004.tb02277.x, 2004.
- 5 Tuller, S. E.: The relationship between diffuse, total and extra terrestrial solar radiation, *Solar Energy*, 18, 259–263, doi:10.1016/0038-092X(76)90025-6, 1976.
- van der Molen, M. K., van Huissteden, J., Parmentier, F. J. W., Petrescu, A. M. R., Dolman, A. J., Maximov, T. C., Kononov, A. V., Karsanaev, S. V., and Suzdalov, D. A.: The growing season greenhouse gas balance of a continental tundra site in the Indigirka lowlands, NE Siberia, *Biogeosciences*, 4, 985–1003, doi:10.5194/bg-4-985-2007, 2007.
- van Huissteden, J., Maximov, T. C., and Dolman, A. J.: High methane flux from an arctic floodplain (Indigirka lowlands, eastern Siberia), *Journal of Geophysical Research: Biogeosciences*, 110, G02 002, doi:10.1029/2005JG000010, 2005.
- 10 van Wijk, M. T., Clemmensen, K. E., Shaver, G. R., Williams, M., Callaghan, T. V., Chapin, III, F. S., Cornelissen, J. H. C., Gough, L., Hobbie, S. E., Jonasson, S., Lee, J. A., Michelsen, A., Press, M. C., Richardson, S. J., and Rueth, H.: Long-term ecosystem level experiments at Toolik Lake, Alaska, and at Abisko, Northern Sweden: generalizations and differences in ecosystem and plant type responses to global change, *Global Change Biology*, 10, 105–123, doi:10.1111/j.1365-2486.2003.00719.x, 2003.
- 15 Vavrus, S., Waliser, D., Schweiger, A., and Francis, J.: Simulations of 20th and 21st century Arctic cloud amount in the global climate models assessed in the IPCC AR4, *Climate Dynamics*, 33, 1099–1115, doi:10.1007/s00382-008-0475-6, 2009.
- Verstraete, M. M.: Radiation transfer in plant canopies: Transmission of direct solar radiation and the role of leaf orientation, *Journal of Geophysical Research: Atmospheres*, 92, 10 985–10 995, doi:10.1029/JD092iD09p10985, 1987.
- Vourlitis, G. L. and Oechel, W. C.: Eddy Covariance Measurements of CO<sub>2</sub> and Energy Fluxes of an Alaskan Tussock Tundra Ecosystem, *Ecology*, 80, 686–701, doi:10.1890/0012-9658(1999)080[0686:ECMOCA]2.0.CO;2, 1999.
- 20 Walker, D. A., Epstein, H. E., Jia, G. J., Balsler, A., Copass, C., Edwards, E. J., Gould, W. A., Hollingsworth, J., Knudson, J., Maier, H. A., Moody, A., and Reynolds, M. K.: Phytomass, LAI, and NDVI in northern Alaska: Relationships to summer warmth, soil pH, plant functional types, and extrapolation to the circumpolar Arctic, *Journal of Geophysical Research: Atmospheres*, 108, 8169, doi:10.1029/2001JD000986, 2003a.
- 25 Walker, D. A., Jia, G. J., Epstein, H. E., Reynolds, M. K., Chapin, III, F. S., Copass, C., Hinzman, L. D., Knudson, J. A., Maier, H. A., Michaelson, G. J., Nelson, F., Ping, C. L., Romanovsky, V. E., and Shiklomanov, N.: Vegetation–soil-thaw-depth relationships along a low-arctic bioclimate gradient, Alaska: synthesis of information from the ATLAS studies, *Permafrost and Periglacial Processes*, 14, 103–123, doi:10.1002/ppp.452, 2003b.
- Walker, D. A., Reynolds, M. K., Daniëls, F. J. A., Einarsson, E., Elvebakk, A., Gould, W. A., Katenin, A. E., Kholod, S. S., Markon, C. J., 30 Melnikov, E. S., Moskalenko, N. G., Talbot, S. S., Yurtsev, B. A., and The other members of the CAVM Team: The Circumpolar Arctic vegetation map, *Journal of Vegetation Science*, 16, 267–282, doi:10.1111/j.1654-1103.2005.tb02365.x, 2005.
- Walker, M. D., Wahren, C. H., Hollister, R. D., Henry, G. H. R., Ahlquist, L. E., Alatalo, J. M., Bret-Harte, M. S., Calef, M. P., Callaghan, T. V., Carroll, A. B., Epstein, H. E., Jónsdóttir, I. S., Klein, J. A., Magnússon, B. o., Molau, U., Oberbauer, S. F., Rewa, S. P., Robinson, C. H., Shaver, G. R., Suding, K. N., Thompson, C. C., Tolvanen, A., Totland, O., Turner, P. L., Tweedie, C. E., Webber, P. J., and Wookey, 35 P. A.: Plant community responses to experimental warming across the tundra biome, *Proceedings of the National Academy of Sciences*, 103, 1342–1346, doi:10.1073/pnas.0503198103, 2006.
- Wang, X. and Key, J. R.: Arctic Surface, Cloud, and Radiation Properties Based on the AVHRR Polar Pathfinder Dataset. Part I: Spatial and Temporal Characteristics., *Journal of Climate*, 18, 2558–2574, doi:10.1175/JCLI3438.1, 2005a.

- Wang, X. and Key, J. R.: Arctic Surface, Cloud, and Radiation Properties Based on the AVHRR Polar Pathfinder Dataset. Part II: Recent Trends., *Journal of Climate*, 18, 2575–2593, doi:10.1175/JCLI3439.1, 2005b.
- Williams, M., Rastetter, E. B., Van der Pol, L., and Shaver, G. R.: Arctic canopy photosynthetic efficiency enhanced under diffuse light, linked to a reduction in the fraction of the canopy in deep shade, *New Phytologist*, 202, 1267–1276, doi:10.1111/nph.12750, 2014.
- Williams, T. J. and Quinton, W. L.: Modelling incoming radiation on a linear disturbance and its impact on the ground thermal regime in discontinuous permafrost, *Hydrological Processes*, 27, 1854–1865, doi:10.1002/hyp.9792, 2013.
- Wilson, J. W.: Analysis of the spatial distribution of foliage by two-dimensional point quadrats, *New Phytologist*, 58, 92–99, doi:10.1111/j.1469-8137.1959.tb05340.x, 1959.
- 10 Yang, F., Mitchell, K., Hou, Y.-T., Dai, Y., Zeng, X., Wang, Z., and Liang, X.-Z.: Dependence of Land Surface Albedo on Solar Zenith Angle: Observations and Model Parameterization, *Journal of Applied Meteorology and Climatology*, 47, 2963–2982, doi:10.1175/2008JAMC1843.1, 2008.