

Point-to-point responses to the reviewer's comments are presented below in italic.

Reviewer #2 comments:

This paper has improved from its original version, but still requires substantial revision. The methods are unclear with insufficient detail. Comparisons to other work are provided, but these other approaches are also poorly described so the readers cannot actually understand what the comparisons indicate. Uncertainty is inconsistently presented. Handwaving statements about independence of methods are, in fact, untrue in the case of the ocean. This does not provide the reader confidence in the analysis.

We have revised the section explaining the uncertainty assessment. We have now also more carefully highlighted which estimates are truly independent, and where some overlap exists between the different datasets.

The paper does not lead to a substantial enhancement in scientific understanding, but reads instead like a technical report on a data product. Because of this, I think the paper would belong better in Earth System Science Data than Biogeosciences.

Comments:

Page 3, line 24 – The GCP separation of % to land and ocean needs to be qualified with the timeframe to which it refers. This is not a steady state partitioning as suggested by the sentence as written.

We have adjusted this statement to the years 2000-2009 (the time period closest to the time period discussed in the paper). The slightly adjusted numbers (45%, 27% and 27% respectively) are taken from Table 8 in Le Quéré et al. (2015).

Page 4, line 11 - The “full contemporary” exchange would include the large, persistent ocean outgassing in tropics, and uptake at high latitudes See Figure 6.1 of IPCC AR5 ch6, Ciais et al. 2013, these fluxes are +-80 PgC/yr. Similarly “Full contemporary fluxes” for the land would be about +-120PgC/yr as in the original version of this MS. So this net flux is not the “full contemporary exchange”, but only the net contemporary flux. The authors need to explain these differences and find appropriate language that clarifies for the reader.

As discussed in the response to the reviewers' comments, we focus here on the net CO₂ exchange between the surface and the atmosphere. Further, there are no bottom-up spatiotemporal explicit gross fluxes available for the ocean-atmosphere exchange. To make this clear, we have adjusted this sentence to “we consider here the full contemporary net exchange of surface-atmosphere CO₂ fluxes”.

Section 2.1 - The reader cannot understand to what “ensemble members” are being referred when these have not yet been introduced. The “random draw” approach is not clear. Where do the numbers come from in $10 \times 10 \times \dots$??? 2 is presumably the ocean, but this placement in the equation on line 24 does not correspond to equation 1, enhancing confusion. Figure 1 is not understandable. Table 1 could perhaps help, but there are more than 9 “estimates” there.

This presentation needs much work so that the reader can fully understand the approach.

We apologize, there was an additional “10” in the equation that was not needed. The correct number of possible estimates is $10 \times 50 \times 8 \times 10 \times 2 = 80000$ (Marine x Rivers x NEP x Crops x E_{LUG} for the 4

remaining variables we only have 1 estimate, see Table 1). We revised the beginning of this section to explain the random-draw approach better. “For all 9 variables contributing to NCE of equation 1, we obtained multiple spatiotemporally explicit estimates directly from the raw data products. These estimates are expected to sample the uncertainty in each variable. We could obtain 10 different estimates for the terms Marine and Crops respectively, 50 estimates for Rivers, 8 estimates for NEP, 2 estimates for ELUC, and only 1 estimate for each of the remaining 4 variables (Table 1). To estimate NCE including spatiotemporally explicit uncertainties, we randomly draw ensemble members from each of these 9 terms to create an integrated for NCE (Eq. 1). With the available estimates, we could in principle create $10 \times 50 \times 8 \times 10 \times 2 = 80000$ spatiotemporal explicit estimates of NCE. From these 80000 possible NCE estimates we randomly select 200 (to reduce computational expenses) to construct the NCE ensemble, which is used in the remainder of the paper.”

Section 2.2.4 – State here how many final estimates are produced (2 for marine) so that the reader can understand the error propagation. Do the same for the other sections.

Thank you for this suggestion. We have done this for all variables.

Section 2.5 - Yearly variability in precisely which of the fluxes above? The authors should not assume the reader knows what an “inversion” would provide. Also, the Median was used in RECCAP - what justifies the use of the Mean here?

We aim for a comparison of yearly variability, spatial patterns and latitudinal bands of NCE. We have made that explicit in the first sentence of 2.5. We have also now introduced atmospheric inversion by adding the sentences “Atmospheric CO₂ inversions estimate the spatiotemporal explicit CO₂ exchange between the Earth surface and atmosphere using atmospheric CO₂ measurements and a transport model. Inversions have a closed budget by construction.”

In Figures 4, 7, and 8 we now present the median and the interquartile range to be consistent with the RECCAP comparisons.

Page 10, line 30 – Support this statement about model tuning with evidence from the literature.

We refer to Schwalm et al. (2015). Models may be tuned to the few observational constraints available (e.g., CO₂ growth rate), making it difficult to uncover compensatory errors. In contrast, bottom-up approaches do not have such higher-level observational constraints.

Page 12, line 18 – Define “bookkeeping” – not all readers know this lingo

We have added the following explanation for bookkeeping: “A bookkeeping model combines local or regional observation-based estimates of C stocks before land-use change and trajectories of C stocks after land use change including slash, biomass, soil carbon, and harvested wood products with changing areas of different land use types (Houghton and Nassikas, 2017).”

Page 12, line 23-27 – This section on comparison to Ciais et al (in revision) is unintelligible because the reader does not know what this other paper does and so what does this comparison actually mean? Later it is stated that Ciais uses an “independent” method, but the authors have not described what this method is sufficiently.

We added the following sentence to explain the approach of Ciais et al.: “Ciais et al. (in revision) compiled regional estimates of land-atmosphere CO₂ fluxes in the RECCAP regions from original

publications, completed by river CO₂ outgassing fluxes from Raymond et al. (2013) and Lauerwald et al. (2015). Thus, these estimates are not fully independent from those presented in this study because they use the same river fluxes, fire emissions, and FF emission. All other fluxes are independent.”

Page 13., line 14. – It is untrue that the RECCAP ocean estimates are independent of those used here. Much of the same pCO₂ data is found in the Takahashi flux estimate, a major basis for RECCAP estimates, and that in SOCAT on which these estimates are based. While the Takahashi flux estimate is not directly used here, it is not correct that the ones used are fully independent. The authors should not overstate independence.

We agree. The independence is more in the methods that estimate CO₂ exchange over oceans. We have made this clearer by stating “While there is large overlap between the pCO₂ data used in the RECCAP estimates and our NCE estimates over oceans, different independent methods have been used to obtain flux estimates of ocean CO₂ exchange.”

Page 13, line 29. This comparison does not “suggest” less IAV in this result than in inversion, it directly shows it. Please be direct in wording.

We have replaced “suggest” with “shows”.

Figure 2 – Uncertainties must be included on this figure.

Uncertainties have been added.

References:

Houghton, R. A. and Nassikas, A. A.: Global and regional fluxes of carbon from land use and land cover change 1850–2015, *Global Biogeochemical Cycles*, 31, 456-472, 2017.

Schwalm, C. R., Huntzinger, D. N., Fisher, J. B., Michalak, A. M., Bowman, K., Ciais, P., Cook, R., El-Masri, B., Hayes, D., Huang, M., Ito, A., Jain, A., King, A. W., Lei, H., Liu, J., Lu, C., Mao, J., Peng, S., Poulter, B., Ricciuto, D., Schaefer, K., Shi, X., Tao, B., Tian, H., Wang, W., Wei, Y., Yang, J., and Zeng, N.: Toward “optimal” integration of terrestrial biosphere models. *Geophys. Res. Lett.*, 42, 4418–4428, 2015. doi: 10.1002/2015GL064002.

An empirical spatiotemporal description of the global surface-atmosphere carbon fluxes: opportunities and data limitations

Jakob Zscheischler^{1,2}, Miguel D. Mahecha^{2,3,4}, Valerio Avitabile⁵, Leonardo Calle⁶, Nuno Carvalhais^{2,7}, Philippe Ciais⁸, Fabian Gans², Nicolas Gruber⁹, Jens Hartmann¹⁰, Martin Herold⁵, Kazuhito Ichii^{11,12},
5 Martin Jung², Peter Landschützer^{9,13}, Goulven. G. Laruelle¹⁴, Ronny Lauerwald^{14,15}, Dario Papale¹⁶,
Philippe Peylin⁷, Benjamin Poulter^{6,17}, Deepak Ray¹⁸, Pierre Regnier¹⁴, Christian Rödenbeck², Rosa M. Roman-Cuesta⁵, Christopher Schwalm¹⁹, Gianluca Tramontana¹⁶, Alexandra Tyukavina²⁰, Riccardo Valentini²¹, Guido van der Werf²², Tristram O. West²³, Julie E. Wolf²³, and Markus Reichstein^{2,3,4}

- 10 ¹Institute for Atmospheric and Climate Science, ETH Zurich, Universitätsstr. 16, 8092 Zurich, Switzerland
²Max Planck Institute for Biogeochemistry, Hans-Knöll-Str. 10, 07745 Jena, Germany
³German Centre for Integrative Biodiversity Research (iDiv), Deutscher Platz 5e, 04103 Leipzig, Germany
⁴Michael Stifel Center Jena for Data-Driven and Simulation Science, 07743 Jena, Germany
⁵Wageningen University & Research, Laboratory of Geo-Information Science and Remote Sensing, Droevendaalsesteeg 3,
15 6708 PB Wageningen, the Netherlands
⁶Institute on Ecosystems and Department of Ecology, Montana State University, Bozeman, MT 59717, USA
⁷CENSE, Departamento de Ciências e Engenharia do Ambiente, Faculdade de Ciências e Tecnologia, Universidade NOVA de Lisboa, Caparica, Portugal
⁸Laboratoire des Sciences du Climat et de l'Environnement, CEA-CNRS-UVSQ, F-91191, Gif sur Yvette, France
20 ⁹Institute of Biogeochemistry and Pollutant Dynamics, ETH Zurich, Zurich, Switzerland
¹⁰Institute for Geology, CEN- Center for Earth System Research and Sustainability, University of Hamburg, Hamburg, Germany 55, D-20146 Hamburg, Germany
¹¹Department of Environmental Geochemical Cycle Research, Agency for Marine-Earth Science and Technology, Yokohama, Japan.
25 ¹²Center for Global Environmental Research, National Institute for Environmental Studies, Tsukuba, Japan.
¹³Max Planck Institute for Meteorology, Bundesstr. 53, Hamburg, Germany
¹⁴Dept. Geoscience, Environment & Society (DGES), CP160/02, Université Libre de Bruxelles, 1050 Bruxelles, Belgium
¹⁵College of Engineering, Mathematics and Physical Sciences, University of Exeter, EX4 4QE Exeter, Devon, UK
¹⁶Department for Innovation in Biological, Agro-food and Forest systems (DIBAF), University of Tuscia, Viterbo, 01100,
30 Italy

¹⁷NASA Goddard Space Flight Center, Biospheric Sciences Laboratory, Greenbelt, MD 20771, USA

¹⁸Institute on the Environment, University of Minnesota Twin-Cities, USA

¹⁹Woods Hole Research Center, Falmouth MA 02540, USA

²⁰Department of Geographical Sciences, University of Maryland, College Park, MD, USA

5 ²¹CMCC, Via A. Imperatore, 16, 73100, Lecce, Italy

²²Faculty of Earth and Life Sciences, Vrije Universiteit Amsterdam, the Netherlands

²³Joint Global Change Research Institute, Pacific Northwest National Laboratory, College Park, MD, USA

Correspondence to: J. Zscheischler (jakob.zscheischler@env.ethz.ch) and M. D. Mahecha (mmahecha@bgc-jena.mpg.de).

Abstract. Understanding the global carbon (C) cycle is of crucial importance to map current and future climate dynamics relative to global environmental change. A full characterization of C cycling requires detailed information on spatiotemporal patterns of surface-atmosphere fluxes. However, relevant C cycle observations are highly variable in their coverage and reporting standards. Especially problematic is the lack of integration of the carbon dioxide (CO₂) exchange of the ocean, inland freshwaters and the land surface with the atmosphere. Here we adopt a data-driven approach to synthesize a wide range of observation-based spatially explicit surface-atmosphere CO₂ fluxes from 2001 and 2010, to identify the state of today's observational opportunities and data limitations. The considered fluxes include net exchange of open oceans, continental shelves, estuaries, rivers, and lakes, as well as CO₂ fluxes related to net ecosystem productivity, fire emissions, loss of tropical aboveground C, harvested wood and crops, as well as fossil fuel and cement emissions. Spatially explicit CO₂ fluxes are obtained through geostatistical and/or remote sensing-based upscaling; thereby minimizing biophysical or biogeochemical assumptions encoded in process-based models. We estimate a bottom-up net C exchange (NCE) between the surface (land, ocean, and coastal areas) and the atmosphere. Though we provide also global estimates, the primary goal of this study is to identify key uncertainties and observational shortcomings that need to be prioritized in the expansion of in-situ observatories. Uncertainties for NCE and its components are derived using resampling. In many regions, our NCE estimates agree well with independent estimates from other sources such as process-based models and atmospheric inversions. This holds for Europe (mean±1 SD: 0.8±0.1 PgC/yr, positive numbers are sources to the atmosphere), Russia (0.1±0.4 PgC/yr), East Asia (1.6±0.3 PgC/yr), South Asia (0.3±0.1 PgC/yr), Australia (0.2±0.3 PgC/yr) and most of the Ocean regions. Our NCE estimates give a likely too large CO₂ sink in tropical areas such as the Amazon, Congo and Indonesia. Overall, and because of the over-estimated CO₂ uptake in tropical lands, our global bottom-up NCE amounts to a net sink of -5.4±2.0 PgC/yr. By contrast, the accurately measured mean atmospheric growth rate of CO₂ over 2001-2010 indicates that the true value of NCE is a net CO₂ source of 4.3±0.1 PgC/yr. This mismatch of nearly 10 PgC/yr highlights observational gaps and limitations of data-driven models in tropical lands, but also in North America. Our uncertainty assessment provides the basis for setting priority regions where to increase carbon observations in the future. High on the priority list are tropical land regions, which suffer from a lack of in-situ observations. Second, extensive pCO₂ data are missing in the Southern Ocean. Third, we lack observations that could enable seasonal estimates of shelf, estuary and inland

water-atmosphere C exchange. Our consistent derivation of data uncertainties could serve as prior knowledge in multi-criteria optimization such as the Carbon Cycle Data Assimilation System (CCDAS) and atmospheric inversions, without over- or under- stating bottom-up data credibility. In the future, NCE estimates of carbon sinks could be aggregated at national scale to compare with the official national inventories of CO₂ fluxes in the land use, land use change and forestry sector, upon which future emission reductions are proposed.

1 Introduction

The global carbon (C) cycle is crucial for sustaining life on Earth (Vernadsky, 1926). Humans have largely modified the C cycle over centuries if not millennia (Ruddiman, 2003; Pongratz et al., 2009). In the Industrial Era, the human-caused perturbation of the C cycle is largely driven by emissions of CO₂ from burning fossil fuel C previously in geological deposits, and changes in land use, which transfer CO₂ from C stocks in the land biosphere to the atmosphere, but can also result into CO₂ removal and increase of land stocks. As those anthropogenic C emissions are partly taken up by oceans and terrestrial ecosystems not affected by land-use change, the different reservoirs of the global C cycle and the fluxes between them change over time (Houghton, 2007). A precise knowledge of the various stocks and fluxes in the C cycle is a prerequisite to monitor these changes and make well-informed predictions under future climate change.

The Global Carbon Project (GCP) has made major efforts in this direction and its annual updates of the global C budget have become a key source of information for the scientific community and policy makers (Le Quéré et al., 2015). The GCP annual C budget quantifies the partitioning of anthropogenic C emissions among the atmosphere, land, and ocean components of the global C cycle, and separates the net land flux into land use change emissions and a so called 'residual land C sink' obtained by difference with other terms of the budget and thus corresponding to the net land-atmosphere CO₂ flux over non land-use affected ecosystems. The budget of the GCP focuses on annual values integrated at the global scale. An important point is that the GCP budget quantifies solely the anthropogenic perturbation of CO₂ fluxes, i.e., it provides information about the fate of anthropogenic CO₂ emissions in natural reservoirs (Ciais et al., 2013). According to the GCP, during the years 2000-2009 about 45% of the anthropogenic CO₂ emissions each year stay in the atmosphere, the rest being taken up by the oceans (27%) and land (27%) (Le Quéré et al., 2015).

Recently, a case has been made for a globally policy-relevant integrated C observation and analysis system (Ciais et al., 2014). This system would go beyond the update of global budgets, for which the CO₂ growth rate accurately measured at a single station (e.g. Mauna Loa) is sufficient to constrain the global annual time-space integral of all CO₂ sources and sinks. It proposes to quantify regional CO₂ fluxes with sufficient spatial details to monitor the effectiveness of CO₂ mitigation and to detect and monitor trends of CO₂ losses and gains by land and terrestrial systems. This is partly relevant for monitoring country-level Intended Nationally Determined Contributions (INDCs) to incept a CO₂ emission trajectory consistent with global warming below 2 degrees Celsius (UNFCCC, 2015). In such a policy-relevant C observing system, an uncertainty assessment for each data stream and CO₂ fluxes at different spatial and temporal scales is important to, for instance, identify significant regional emission hotspots and trends in emissions and sinks (Ciais et al., 2014).

Jakob 3/6/2017 14:45

Gelöscht: 44

Jakob 3/6/2017 14:45

Gelöscht: 26

Jakob 3/6/2017 14:45

Gelöscht: 30

The steadily increasing number of Earth observations, in particular since the start of the satellite era, has improved our knowledge of the Earth system (Berger et al., 2012; Tatem et al., 2008). Especially C cycle science has benefited from globally available satellite observations and community efforts to unify in-situ observational networks such as FLUXNET on land (Baldocchi, 2014), the Surface Ocean CO₂ Atlas (SOCAT) (Bakker et al., 2014) and more recently CO₂ outgassing from lakes and rivers (Raymond et al., 2013). Combining these available point measurements of either CO₂ fluxes (e.g., from eddy-covariance towers on land), or variables that can be directly related to CO₂ fluxes (e.g., pCO₂ over aquatic surfaces) with climate fields and remotely sensed variables (e.g., vegetation greenness), provides a basis to robustly upscale surface-atmosphere CO₂ exchange to larger areas using statistical models (Jung et al., 2011; Rödenbeck et al., 2015).

In this study we aim at characterizing the ability of current C cycle observations on ground for quantifying a spatiotemporally explicit picture of the net CO₂ exchange between the Earth's surface (terrestrial and aquatic) and the atmosphere (NCE). Unlike the GCP global budget of anthropogenic CO₂, we consider here the full contemporary net exchange of surface-atmosphere CO₂ fluxes. We focus our analysis on fluxes that can be directly derived from observations. That is, we use data-driven empirical models instead of process-based models that are only indirectly constrained by observations. Further, we only consider 'bottom-up' estimates derived from measurements at the Earth's surface or from satellites. Inversions, which largely rely on atmospheric measurements in combination with a transport model, are not directly included but used for comparison. The goal of this analysis is to test the up-scaling of local flux-related observations to regional and global budgets, and point out the limitations of the current observational networks and data-driven models used to interpolate point-scale CO₂ fluxes across larger scales, for quantifying the most important CO₂ fluxes exchanged between the Earth's surface and the atmosphere.

One of the major innovations of this study is combining data-driven estimates of oceanic, inland waters and terrestrial ecosystems CO₂ exchange and providing spatially explicit maps of the CO₂ exchange between the surface and the atmosphere at a monthly scale for the decade 2001-2010. At the same time, by adding emissions from fossil fuels and cement production and comparing with the annual growth rate of CO₂, we identify the limits of a C budget purely driven by surface data. We characterize regions in which surface-atmosphere CO₂ fluxes are most uncertain based on the currently available data and the models used for upscaling, and thus point out regions where either more observations or a better understanding of the processes are necessary. It is not the primary goal of this study to provide the best global CO₂ flux inventory, but rather to identify the key uncertainties and observational shortcomings that need to be prioritized in the expansion of in-situ observatories.

The paper is structured as follows. In Sect. 2 we introduce the different data streams used in the analysis, including spatially explicit estimates of aquatic and terrestrial CO₂ exchange. In Sect. 3 we present the resulting combined synthesis as global maps, regionally aggregated fluxes, absolute and relative uncertainties, latitudinal averages and seasonal cycles. Sect. 4 addresses the benefits and limits of the current observational system for constraining global net CO₂ fluxes. Sect. 5 provides an outlook on future requirements to achieve better observation-based net CO₂ flux estimates and discusses the necessity for more consistent uncertainty estimates.

2 Data and Methods

We collected ensembles of data-driven estimates of the net CO₂ exchange between the Earth's surface and the atmosphere (NCE) for the major subsystems of the Earth from 2001-2010 (Table 1). Each dataset was aggregated to 1 x 1 degree spatial resolution. All datasets have an original spatial resolution of at least 1 x 1 degree such that no information was lost through re-gridding. The temporal resolution is monthly. For datasets that were only available at yearly time scale or once over the complete time period (Table 1), we distributed fluxes evenly across all months. In this synthesis, we include net CO₂ exchange from open oceans, continental shelves, estuaries, rivers, lakes, and terrestrial ecosystems, which we combine with estimates of fossil fuel and cement emissions (FF). The terrestrial ecosystem component accounts for fire emissions (Fire), loss of tropical above-ground biomass assumed to be released as CO₂ to the atmosphere (E_{LUC}), emissions of the CO₂ contained in harvested wood (Wood) and crops (Crops), and Net Ecosystem Productivity (NEP). We combine fluxes from oceans, shelves, and estuaries into a homogeneous marine flux product in order to account for overlapping or missing regions from the different aquatic products (Marine, Sect. 2.2.6). We further compare the net CO₂ exchange derived from the combination of all the above products with the growth rate of atmospheric CO₂ (CGR). Data scarcity precludes including all known vertical CO₂ fluxes in this study. Missing fluxes include geological CO₂ fluxes, erosion related fluxes, non-CO₂ fluxes, wood product pools decay, and biofuel burning. Combining all fluxes, the overall net CO₂ exchange (NCE) between the Earth's surface and the atmosphere is given as:

$$\text{NCE} = \text{Marine} + \text{Lakes} + \text{Rivers} - \text{NEP} + \text{Crops} + \text{Wood} + \text{E}_{\text{LUC}} + \text{Fire} + \text{FF}. \quad (1)$$

All units were transformed into fluxes of C per unit time. If all CO₂ fluxes were included, NCE would translate into the CGR. By convention negative fluxes indicate an uptake by the Earth surface.

2.1 Uncertainty estimation and propagation

For all 9 variables contributing to NCE of equation 1, we obtained multiple spatiotemporally explicit estimates directly from the raw data products. These estimates are expected to sample the uncertainty in each variable. We could obtain 10 different estimates for the terms Marine and Crops respectively, 50 estimates for Rivers, 8 estimates for NEP, 2 estimates for E_{LUC}, and only 1 estimate for each of the remaining 4 variables (Table 1). To estimate NCE including spatiotemporally explicit uncertainties, we randomly draw ensemble members from each of these 9 terms to create an integrated for NCE (Eq. 1). With the available estimates, we could in principle create $10 \times 50 \times 8 \times 10 \times 2 = 80000$ spatiotemporal explicit estimates of NCE. From these 80000 possible NCE estimates we randomly select 200 (to reduce computational expenses) to construct the NCE ensemble, which is used in the remainder of the paper. This resampling approach is illustrated in Figure 1 and ensures a consistent propagation of spatiotemporally correlated uncertainties. For instance, by aggregating each member of NCE to the desired region and estimating uncertainty through the 200 members, we can compute regional uncertainties. In addition, we computed mean fluxes, uncertainty (defined as one standard deviation (SD) of the annual mean across all realizations),

Jakob 3/6/2017 14:45
Gelöscht: combine
Jakob 3/6/2017 14:45
Gelöscht: drawn
Jakob 3/6/2017 14:45
Gelöscht: all
Jakob 3/6/2017 14:45
Gelöscht: the
Jakob 3/6/2017 14:45
Gelöscht: datasets contributing
Jakob 3/6/2017 14:45
Gelöscht: realizations
Jakob 3/6/2017 14:45
Gelöscht: $10 \times 10 \times 50 \times 8 \times 10 \times 2 = 800000$
Jakob 3/6/2017 14:45
Gelöscht: (see Table 2 for the available number of realizations per dataset).
Jakob 3/6/2017 14:45
Gelöscht: 800000
Jakob 3/6/2017 14:45
Gelöscht: rest

interannual variability (IAV, defined here as one SD of annual means across all available years) and the coefficient of variation ($CV = IAV/\text{mean}$) for each of the 9 flux terms in Eq. 1.

2.2 Aquatic fluxes

2.2.1 Oceans

5 For the global open ocean flux estimate we used two complementary data-driven estimates (Table 1). Both approaches
computed maps of the sea surface partial pressure of CO_2 ($p\text{CO}_2$). They relied on the surface ocean CO_2 observations from
the SOCATv2 database (Bakker et al., 2014) and filled data gaps by either establishing relationships between auxiliary
driver data and observations, which can then be applied to extrapolate $p\text{CO}_2$ in regions without data coverage (SOM-FFN,
Landschützer et al., 2014), or by assimilating the available observations in a mass-balance model of the mixed layer and
10 directly interpolating data gaps (Jena CarboScope mixed-layer scheme oc_v1.2, Rödenbeck et al., 2014). To test the
established predictor-target relationship, the SOM-FFN method holds back a certain fraction of the observations proportional
to the methods degrees of freedom for internal validation. Repeating this relationship building process and withholding
different sets of validation data has created the 5 ensemble members used for this study. For the Jena CarboScope mixed-
layer scheme, we used the 5 sensitivity cases with **varied parameters such as** changes in correlation length, as described in
15 Rödenbeck et al (2014).

The $p\text{CO}_2$ fields of both methods have been validated against independent observations (Landschützer et al., 2014;
Landschützer et al., 2015; Rödenbeck et al., 2014) and were compared with other complementary data based interpolation
methods (Rödenbeck et al., 2015), illustrating their good performance in reconstructing interannual variation.

Both methods calculate the air-sea flux using a bulk formulation of the air-sea CO_2 transfer, driven by the air-sea $p\text{CO}_2$
20 difference ($\Delta p\text{CO}_2$) (Jähne et al., 1987) and a quadratic dependence of the wind speed at a height of 10 meters (Wanninkhof,
1992) updating the gas transfer coefficient to fit a mean transfer velocity of 16 cm per hour following Wanninkhof (2013).
High-resolution wind speeds at 10 meters are calculated from the u and v wind components of the ERA-interim wind speed
analysis (Dee et al., 2011) and atmospheric $p\text{CO}_2$ fields, required to calculate the $\Delta p\text{CO}_2$, are calculated are estimated from
the GLOBALVIEW-CO2, 2012 Marine Boundary Layer CO2 product.

25 2.2.2 Shelves

For continental shelf seas we derived the $\Delta p\text{CO}_2$ from 3×10^6 surface $p\text{CO}_2$ measurements extracted from the SOCATv2
database (Bakker et al., 2014) and observational atmospheric $p\text{CO}_2$ data (GLOBALVIEW-CO2, 2012). The local CO_2 air-
sea flux values were then obtained using a wind-dependent quadratic formulation parameterized as in Wanninkhof et al.
(2013) and wind speeds extracted from a cross-calibrated multiplatform (CCMP) high-resolution data product for ocean
30 surface winds (Atlas et al., 2011). The resulting local fluxes were then integrated spatially over 150 coastal regions
(COSCATs - COastal Segmentation and related CATchments; Laruelle et al. (2013); Meybeck et al. (2006)) using distinct
integration methods depending on the data density (Laruelle et al., 2014). In addition, a temporal integration was also
performed at the monthly, seasonal or yearly time scale depending on the data coverage. These temporally and regionally

Jakob 3/6/2017 14:45

Gelöscht: etc.

averaged air-sea CO₂ fluxes were then disaggregated using a 1-degree resolution map excluding land areas and open ocean waters using the shelf break as outer limit (Laruelle et al., 2014).

2.2.3 Estuaries

The CO₂ emissions from estuaries were derived from 161 annually averaged local CO₂ air-water exchange rates reported in the literature (Laruelle et al., 2013). The data were allocated to one of the 45 coastal MARCATS regions (MARGins and CATchments Segmentation) defined in Laruelle et al. (2013) and further categorized among the 4 dominant estuarine types (i.e., small deltas, tidal systems, lagoons, fjords, see (Dürr et al., 2011)) to calculate regionally-averaged, type specific CO₂ emission rates. In MARCATS regions devoid of estuarine data, the global average type-dependent air-water CO₂ flux was used from Laruelle et al. (2013). These flux densities were then multiplied by the estuarine surface areas for each type, estimated at 1-degree resolution from the length of the coastline and a type-specific length to estuarine surface ratio (Dürr et al., 2011).

2.2.4 Marine

We created 10 marine estimates by combining the 10 estimates for the open oceans, with shelves and estuaries to a consistent marine product. For pixels with observations from multiple products (e.g., estuaries and oceans) we follow a “priority rule” whereby the shelves, estuaries, or oceans observation value only (in that order) is retained. Empty pixels are gap-filled with 3 x 3 mean window. This same filter is also applied to the rest of the merged dataset to smooth out hard borders between the different estimates. This application does not significantly change the overall flux estimates, but arguably results in a more realistic interface. Note that in the merged Marine product, uncertainty and IAV could only be assessed for the ocean flux.

2.2.5 Rivers

50 estimates of CO₂ evasion from streams and rivers were derived from a spatially explicit, empirical model of river water pCO₂ and global maps of stream surface areas and gas exchange velocities at a resolution of 0.5 degree (Lauerwald et al., 2015). The empirical pCO₂ model was trained on 1182 river catchments from the GLORICH database (Hartmann et al., 2014) for which averages of pCO₂ could be calculated. Steepness of terrain, terrestrial net primary production, average air temperature as well as population density were identified as predictors (R²=0.47). The global maps of stream surface area and gas exchange velocities were obtained by a GIS-based application of published empirical scaling laws (Raymond et al., 2013; Raymond et al., 2012) using topography (Lehner et al., 2008) and runoff (Fekete et al., 2002). The CO₂ evasion was calculated as product of water-air pCO₂ gradient (assuming an atmospheric pCO₂ of 390 µatm), river surface areas, and gas exchange velocities. A Monte-Carlo simulation based on standard errors of the predictors in the pCO₂ model and uncertainty ranges for estimates of stream surface area and gas exchange velocity was run to produce 50 CO₂ evasion estimates.

2.2.6 Lakes

Estimates of CO₂ evasion from lakes and reservoirs were taken from Raymond et al. (2013), which reports average lake pCO₂, total lake/reservoir surface area, and total CO₂ evasion for 231 COSCAT regions (including endorheic regions). For

Jakob 3/6/2017 14:45

Gelösch: combined

Jakob 3/6/2017 14:45

Gelösch: ,

Jakob 3/6/2017 14:45

Gelösch: ,

Jakob 3/6/2017 14:45

Gelösch: Estimates

the total lake/reservoirs surface area, data from the Global Lakes and Wetland Data base (GLWD, Lehner and Döll, 2004) were combined with an estimate for small lakes and reservoirs not represented in the GLWD using a scaling law. Here, we used the GLWD data to downscale the estimates of Raymond et al. (2013) to a continuous 1-degree resolution. For this purpose, we combined a uniform air-water CO₂ flux (per unit surface area) within each COSCAT region with a spatially explicit estimate of the lakes/reservoirs surface at this resolution. The small lakes/reservoirs not represented in the GLWD were assumed evenly distributed over the COSCAT area.

2.3 Terrestrial fluxes

2.3.1 NEP

We used 8 empirical, machine learning based products from FLUXCOM (www.fluxcom.org) for net ecosystem productivity (NEP), derived from more than 200 FLUXNET sites and exclusively remote-sensing based predictor variables (“FLUXCOM-RS”, see Tramontana et al., 2016). The eight machine learning methods used here include artificial neural networks, four variants of model or regression tree ensembles, kernel methods (support vector machines, kernel ridge regression), and multivariate adaptive regression splines (Tramontana et al., 2016). All methods were trained on 8-daily tower based NEP estimates.

2.3.2 Crops

About 42% of global crop biomass is harvested, transported, and respired off site (Wolf et al., 2015a). The impact of this lateral C transport on fluxes can be seen at the country scale in the form of import and exports, but even more so at sub-regional scales where the movement of crop biomass to feed livestock and humans is evident (Hayes et al., 2012; West et al., 2011). To capture the spatial distribution of CO₂ fluxes from agricultural harvest, we used livestock and human CO₂ emissions estimates (Wolf et al., 2015b) that are available from 2005-2011 at 0.05 degree spatial resolution. CO₂ that has previously been taken up from the atmosphere by the harvested biomass of crops is included in the NEP estimates from FLUXCOM. We aggregated best estimates of the data to 1 degree, added all uncertainty estimates within one 1 degree pixel and used them as estimates for one standard deviation on the new 1 degree grid. Assuming Gaussian distributed errors we sampled 1000 values at each pixel and used 10 maps of the 5th, 15th, ..., 95th quantiles as different ensemble members. Data was then linearly extrapolated back to 2001-2004. In a final step, and because it is not known in which months the emissions occur, we further distributed the annual estimates equally across all 12 months.

2.3.3 Wood

We used 1 estimate of globally gridded forest harvesting data around year 2000 as described in the Supplementary Information S1. These data include fuelwood and roundwood harvested volumes in m³. We translated wood volumes into units of C using a value of 0.275 MgC/m³ from FAO (<http://www.fao.org/docrep/w4095e/w4095e06.htm>), assuming wood density of 0.55 t/m³. To avoid double counting wood harvest with aboveground biomass loss in tropical areas exposed to land use change, we use wood harvesting data only in locations where the amount of harvested wood (in C) exceeds E_{LUC}

(Sect. 2.3.4). We assume that 100% of the harvested wood is respired back to the atmosphere within a year, thus assuming no change in C stock of wood products and constant harvesting rates across years. However, C contained in harvested wood is usually emitted at a different location than where the harvest took place. We thus incorporated lateral shifts of harvested wood by redistributing wood harvest according to the consumption of wood as explained in the Supplementary Information

5 S1 (see also Fig. S2).

2.3.4 E_{LUC}

We used [2](#) estimates for CO₂ fluxes due to tropical deforestation and degradation. It is assumed here that 100% of biomass loss is converted to a CO₂ flux being released instantly (within a year) to the atmosphere. In reality, a fraction of lost tropical biomass decays in ecosystems (belowground biomass and slash) and a fraction is used in wood products of various lifetime.

10 However, slash is decomposed fast and biomass from deforested areas is transformed on average to short-lived products (\approx 5 years after Earles et al. (2012)).

1) Gross tropical deforestation emissions were taken from Harris et al. (2012). They represent total (above- and belowground) C loss from gross forest cover loss in the tropical regions due to human or natural causes (e.g. disturbances without forest recovery) for the period of 2000-2005.

15 2) More recent estimates of aboveground C loss in the tropics from stand-replacement disturbance of forest cover due to human or natural causes were provided by Tyukavina et al. (2015). Sample-based estimates of mean 2000-2012 aboveground C loss for each 30-m resolution forest C stratum were attributed to all pixels of the corresponding stratum and averaged to the 1x1 degree resolution.

We used E_{LUC} only in those pixels where the average of 1) and 2) exceeds wood harvesting (Sect. 2.3.3).

20 2.3.5 Fire

We used fire emissions from the Global Fire Emissions Database version 4 with small fires (GFED4s, <http://www.globalfiredata.org>) based on burned area from Giglio et al. (2013) and Randerson et al. (2012) and an updated version of the biogeochemical modelling framework of van der Werf et al. (2010) to convert burned area to C emissions. We included all fire types except tropical deforestation and degradation fires, which are included in E_{LUC} and should thus not be counted twice (Sect. 2.3.4). For an earlier version of fire emissions (GFED3) a Monte Carlo simulations indicated an uncertainty of about 20% (1σ) for continental-scale estimates but these estimates turned out to be not very reliable (van der Werf et al., 2017). For example, the inclusion of small fire burned led to an increase in burned area exceeding the previously assumed uncertainty and the current version therefore has no uncertainty assessment at pixel level. Note that GFED fire emissions depend on estimates of net primary production, and combustion factors as computed by the CASA model.

30 2.3.6 FF

We use the IER-EDGARv4.2 product for fossil fuel and cement emissions, which was derived within the CARBONES project by the Institute für Energiewirtschaft und Rationelle Energieanwendung (IER). It is based on the Edgar v4.2 fossil fuel spatial distribution (with the highest spatial resolution of 0.1 x 0.1 degree) and uses national consumption and global

Jakob 3/6/2017 14:45

Gelöscht: two

production statistics. Based on the sectorial distinguished EDGARv4.2 emissions, sector-specific and country specific temporal profiles were included. A detailed description of the construction of the product is given at <http://www.carbones.eu/wcmqs/project/ccdas/#Fossil%20Fuel>. It is important to note that FF emissions here are not observation based as the IER-EDGARv4.2 product is partly based on national estimates from official inventories reported by countries to the UNFCCC.

2.4 Atmospheric growth rate

We used the atmospheric rate of change of CO₂, which is equal to the space and time integral of all emissions and sinks at the surface, using the calculations made by the GCP (Le Quéré et al., 2015). These calculations are based on the global growth rate of atmospheric CO₂ (CGR) provided by the US National Oceanic and Atmospheric Administration Earth System Research Laboratory (NOAA/ESRL) and were derived from multiple stations selected from the marine boundary layer sites with well mixed background air (Ballantyne et al., 2012; Masarie and Tans, 1995). They applied conversion from concentrations to carbon mass is 1 ppm = 2.12 PgC (Prather et al., 2012).

2.5 Inversions

For a comparison of yearly variability, spatial patterns and latitudinal bands of NCE, we used annual means of atmospheric CO₂ inversions collected in Peylin et al. (2013), available at the same spatial and temporal resolution. Atmospheric CO₂ inversions estimate the spatiotemporal explicit CO₂ exchange between the Earth surface and atmosphere using atmospheric CO₂ measurements and a transport model. Inversions have a closed budget by construction. The median and interquartile range for each year is taken over all available inversions for that year, as not all inversions were available until 2010. Atmospheric CO₂ inversions estimate surface CO₂ fluxes such that they best fit observed atmospheric constraints. They usually rely on prior information provided by terrestrial and oceanic biogeochemical models but are mostly independent from the bottom-up datasets included in the present synthesis. They further use FF as an input and then provide the surface-atmosphere flux excluding FF.

3 Results

3.1 Global net carbon exchange

Mean fluxes, their uncertainties, interannual variability (IAV), and CV (the mean-normalized IAV) for all individual fluxes contributing to NCE are presented in Table 2. Mean fluxes are also summarized graphically in Figure 2 (mean over 2001-2010). Our best surface-data driven bottom-up global estimate of NCE is -5.4 ± 2.0 PgC / year. That means, that the observation-based datasets suggests a large net sink, even if FF and E_{LUC} are included in NCE. By contrast, the accurately measured CO₂ growth rate constrains NCE being a net CO₂ source to the atmosphere 4.3 ± 0.1 PgC / year (2001-2010, Le Quéré et al., 2015). Thus, there is a large mismatch with our NCE, which over-estimates the CO₂ sink at the surface by 9.7 ± 2.0 PgC / year. This highlights that our observation-based NCE is biased towards a too large sink. Potential reasons for this mismatch are discussed in Sect. 4. For most fluxes, uncertainty estimates strongly exceed IAV (Table 2). Interestingly,

Jakob 3/6/2017 14:45

Gelöscht: The mean and uncertainty

process-based models, which are only indirectly constrained by observations, provide an NCE that matches roughly the CO₂ growth rate (Le Quéré et al., 2015). Developers of process-based models have access to CO₂ growth rate data and may be in the position to tune their models so that they give realistic NCE values (Schwalm et al., 2015), whereas in our bottom-up approach, we conducted a blind up-scaling of ground measurements without trying to match the CO₂ growth rate.

5 3.2 Spatial patterns of net carbon exchange

The 200-member NCE ensemble and the uncertainty distribution of each flux component enables us to provide a best estimate for a gridded average surface-atmosphere CO₂ flux map for the time period 2001-2010 (Figure 3a). According to these estimates, tropical land areas are a larger CO₂ sink than the mid-latitudes despite the visible forest bands in North America and Russia that function as sinks. In contrast, the high latitudes indicate a relatively small source. In the ocean, these patterns are reversed, with sources in the tropics and a sink in the mid-latitudes. Clearly, there is a strong land-sea contrast and land NCE is much higher in magnitude compared to ocean NCE. In areas with high human population densities and active industry (Europe, Eastern China, US, South Africa), emissions from fossil fuels and cement production clearly dominate over land CO₂ fluxes.

Absolute uncertainty of NCE generally scales with the mean flux and is highest in the most productive areas over land (Amazon basin, Congo basin, Indonesia; Figure 3b). Due to the small contribution of the oceans, absolute uncertainties are barely discernible there. Although gross air-sea exchange fluxes have typical uncertainties of more than 20%, their differences are determined from independent measurements with a much higher accuracy (Ciais et al., 2013).

Relative uncertainties however show very distinct patterns (Figure 3c). These are high on land in semi-arid and arid, and in mountainous regions (i.e., rather unproductive areas with near-zero mean) such as Australia, the Middle East, the Midwest US, the Sahel, South Africa, the Andes, and around the Tibetan Plateau. Marine-atmosphere CO₂ exchange is most uncertain in relative terms in the Bay of Bengal and in the Southern Ocean, which is known to be under-sampled, and where the two data-driven NCE fluxes show substantial regional patterns (Landschützer et al., 2014; Rödenbeck et al., 2014). In addition, linear features with high relative uncertainty are visible, especially in the Southern Hemisphere. These are related to the borders of the clusters used for deriving homogenous regions of sea-air exchange in one of the ocean-exchange products, which result in this product in strong spatial gradients in the sea surface pCO₂ (Landschützer et al., 2014). Relative uncertainties are mostly below 100% for the median across latitudinal bands (Figure 3c). Only in the Southern Ocean the relative uncertainty is substantially higher, reflecting difficulties in reconstructing seasonal to interannual variabilities with sparse observational constraints (Landschützer et al., 2014; Rödenbeck et al., 2014). Nevertheless, Landschützer et al. (2015) have shown that there is a better agreement between the estimates of Landschützer et al. (2014) and Rödenbeck et al. (2014) when low frequency variability, such as decadal variability, is analysed.

Averaged over latitudinal bands, the tropics are clearly a CO₂ sink (Figure 4a), a feature of the FLUXCOM models used for NEP, whereas mid-latitudes form a net CO₂ source, mostly due to fossil fuel and cement emissions surpassing natural CO₂ sinks. This latitudinal pattern is strongly driven by the terrestrial fluxes (Figure 4b). Marine and land aquatic CO₂ exchange

Jakob 3/6/2017 14:45

Gelöscht: ,

in turn is about 4 times smaller in magnitude and shows CO₂ sources in the tropics and CO₂ sinks in the extratropics (Figure 4c). The aquatic CO₂ source in the tropics is not only the result of the ocean air-sea exchange, but also of the very intense river outgassing in low latitude regions (Lauerwald et al., 2015). NCE in the mid-latitudes is dominated by fossil fuel emissions (blue line in Figure 4d shows NCE-FF). FF have little contribution in the tropics and the high-latitudes but offset land and ocean CO₂ sinks in the northern mid-latitudes so that the net CO₂ balance of this latitude band is a net CO₂ source.

We use the land cover map of FLUXCOM to identify tropical forests (all pixels where broadleaved evergreen trees dominate). Tropical forest, which covers about 3.5% of the Earth's surface, are allocated a CO₂ sink of -5.0 ± 0.6 PgC / year, which is unrealistic, if compared to e.g. forest biomass inventories (Pan et al., 2011). Without this large sink, global NCE would be of -0.4 ± 1.8 PgC / year. This corrected estimate (assuming neutral C exchange in tropical forests) is still a sink more than 4 PgC / year larger than the global NCE accurately constrained by CO₂ growth rate observations (4.3 ± 0.1 PgC / year). Including missing fluxes (e.g. biogenic fluxes and emissions from wetlands, see Sect. 4.2) for which we do not have spatially explicit estimates (see Sect. 4.4) could close this gap. These considerations suggest that the CO₂ sink of tropical forests from FLUXCOM is probably strongly overestimated and responsible for at least half of the global mismatch with the observed CO₂ growth rate (see Sect. 4.1).

3.3 Net carbon exchange over the RECCAP regions

3.3.1 RECCAP over land

Here we compare our NCE estimates over land with largely independent estimates of net ecosystem exchange (NEE) over continental-scale regions collected in RECCAP (Regional Carbon Cycle Assessment and Processes). [Ciais et al. \(in revision\) compiled regional estimates of land-atmosphere CO₂ fluxes in the RECCAP regions from the original publications, complemented by river CO₂ outgassing fluxes from Raymond et al. \(2013\) and Lauerwald et al. \(2015\). Thus, these estimates are not fully independent from those presented in this study because they use the same river fluxes, fire emissions, and FF emission. All other fluxes are independent.](#) The RECCAP budgets were based on inventories, and in some instances on process models results. For E_{LUC}, RECCAP publications used regional datasets or bookkeeping models. [\(a bookkeeping model combines local or regional observation-based estimates of C stocks before land-use change and trajectories of C stocks after land use change including slash, biomass, soil carbon, and harvested wood products with changing areas of different land use types, Houghton and Nassikas, 2017\), that are independent from estimates gathered in Sect. 2.3.4. The RECCAP regions include North America \(NA, King et al., 2015\), South America \(SA, Gloor et al., 2012\), Europe \(EU, Luysaert et al., 2012\), Africa \(AF, Valentini et al., 2014\), Russia \(RU, Dolman et al., 2012\), East Asia \(EA, Piao et al., 2012\), South Asia \(SAs, Patra et al., 2013\), and Australia \(AU, Haverd et al., 2013\). No regional study is yet available for Southeast Asia \(SEA\). Greenland, Middle East, Ukraine, Kazakhstan and New Zealand are omitted in regional RECCAP studies because of the difficulty to obtain local ground-based observations. Ciais et al. \(in revision\) collected the regional estimates and combined them with estimates of lateral transport to estimate C budgets for each region. NEE in Ciais et al. \(in revision\) minus C export by rivers should in principal be equal to our NCE estimates without FF over the same regions](#)

Jakob 3/6/2017 14:45

Gelöscht: NCE components between RECCAP and this study that are not independent from each other are fire emissions, and FF emissions.

Jakob 3/6/2017 14:45

Gelöscht: ,

Jakob 3/6/2017 14:45

Gelöscht: Secti

Jakob 3/6/2017 14:45

Gelöscht: These

(Figure 5). In regions without tropical forest except NA (that is, EU, RU, EA, SAs, and AU) the estimates by Ciais et al (in revision) are within the interquartile range of our assessment. For NA and regions containing the tropics, our approach shows a much stronger C sink.

Using our methodology, the annual NCE-FF for all RECCAP regions amounts to -11.0 ± 1.9 PgC / yr in contrast to -1.3 ± 0.6 PgC / yr in Ciais et al. (in revision). If we exclude SA, AF and SEA, the numbers are -2.8 ± 1.0 PgC / yr and -1.5 ± 0.4 PgC / yr, respectively, bringing both estimates in each other's uncertainty range. For SA, AF and SEA, the two estimates even differ in sign. While our estimates indicate strong C sinks of -4.3 ± 0.5 , -2.7 ± 0.9 , and -1.2 ± 0.3 PgC / yr, respectively, Ciais et al. (in revision) report 0.1 ± 0.3 , 0.1 ± 0.3 , and 0.0 ± 0.2 PgC / yr.

Given that Ciais et al. (revision) rely on an independent method, this demonstrates that a relatively good understanding and observational coverage of net C fluxes exists for EU, RU, AU, and EA to some extent. It is somewhat surprising that both approaches largely differ over North America, where good observational coverage for instance through eddy-covariance towers exist. The comparison also reveals the high uncertainties and biases in bottom-up estimates of NCE over tropical forests (see Sect. 3.2, but also Gloor et al. (2012) and Valentini et al. (2014)) and underlines the importance of long-term ground based measurement campaigns (e.g. RAINFOR, <http://www.rainfor.org/>, Malhi et al. (2002), and ATTO, Andreae et al. (2015), Zhou et al. (2014)).

3.3.2 RECCAP over ocean

We compare our estimates of mean annual C exchange over the ocean with estimates from the RECCAP initiative. The Pacific Ocean is divided into North Pacific extratropics (NP), Tropical Pacific (TP) and South Pacific extratropics (SP) (Ishii et al., 2014). The Atlantic Ocean is divided into Arctic Ocean (AR), Northern Subtropics (NS), Equatorial (EQ) and Southern Subtropics (SS) (Schuster et al., 2013). Further, there are estimates for the Northern (NI) and Southern Indian Ocean (SI) (Sarma et al., 2013) as well as for the Southern Ocean (SO) (Lenton et al., 2013). While there is large overlap between the pCO₂ data used in the RECCAP estimates and our NCE estimates over oceans, different independent methods have been used to obtain flux estimates of ocean CO₂ exchange (Sect. 2.2.1). Overall, the estimates from both sources agree very well (Fig. 6) and show ocean net C release in tropical regions (TP, EQ and NI) and net C uptake in all other regions. In SO our estimates predict a smaller sink compared to the RECCAP estimates, a difference probably owing to the weak observational constraint (Landschützer et al., 2014; Rödenbeck et al., 2014). Our estimates generally have smaller uncertainty ranges, which is because i) the RECCAP studies include many more approaches (including process-based models, atmospheric and ocean inversions) in their estimates and ii) in our analysis we include the uncertainty from the ocean pCO₂ products and their realizations but do not account for the uncertainty in the kinetic gas transfer.

3.4 Comparison with inversions

We compare NCE without FF (NCE-FF) with annual values from 10 inversions estimating the surface-atmosphere CO₂ flux without FF (Peylin et al., 2013). While both estimates agree well in the mid-latitudes, they show opposite patterns in the

Jakob 3/6/2017 14:45

Gelöscht: The

Jakob 3/6/2017 14:45

Gelöscht: of

Jakob 3/6/2017 14:45

Gelöscht: are

Jakob 3/6/2017 14:45

Gelöscht: from the two

Jakob 3/6/2017 14:45

Gelöscht: that we use in this study

tropics and northern high latitudes (Figure 4d). The estimates of NEP in our NCE-FF probably have a substantial bias towards too much uptake over tropical land (Sect. 4.1). The comparison suggests that C fluxes are comparably well constrained in the mid-latitudes where bottom-up and top-down approaches agree. Similar results have been obtained in a comparison of a bottom-up upscaling approach with a more recent inversion based on CO₂ concentration data from the Greenhouse gases Observing SATellite (GOSAT, Kondo et al., 2015). The temporal evolution between both estimates show little agreement except the trend towards more net C uptake by the Earth's surface (Figure 7). The comparison shows that NCE-FF estimated from this study has lower interannual variability compared to inversion estimates. Uncertainties are very high for our NCE-FF. In addition, the mean annual C uptake in our estimates is nearly 10 PgC/yr higher than for inversions.

3.5 Monthly variability and mean seasonal cycle

NCE in the Northern hemisphere (NH) exhibits a much stronger mean seasonal cycle compared to the Southern hemisphere (SH), ranging from a net C uptake of nearly 2 PgC (per month) in July to a net C release of about 0.9 PgC in December and January (Figure 8). The SH is always a net C sink, ranging between slightly under 0.8 PgC uptake in January to roughly 0.1 PgC in August and September. This illustrates the 'breathing of the Earth', that is, vegetation activity largely follows the annual cycle of the sun. NH NCE is strongly offset by fossil fuel emissions. The uncertainties for the SH seasonal cycle are generally much lower than for the NH fluxes due to the larger contribution of the latter to the overall flux pattern, which is related to the distribution of land areas. If compared to inversions, we find that both estimates only match in the summer of the NH. In all other months and in the SH, our NCE estimates show a consistently much larger surface C sink. In addition, the NCE estimates from this synthesis show a smaller amplitude of the mean seasonal cycle compared to the inversions. The difference in amplitude of the mean seasonal cycle is on average 0.7 PgC for the NH and 0.4 PgC for the SH.

4 Current limitations of a bottom-up spatiotemporal assessment of net carbon exchange

Jakob 3/6/2017 14:45

Gelöscht: suggests

Our study shows that today's spatiotemporally explicit and independent bottom-up observation-driven estimates of surface-atmosphere CO₂ exchange suffer from large bias, such that they do not match the global NCE well constrained from the CO₂ growth rate. This statement is not downgrading the advances in the area, but rather a systematic reflection of the state of current research and monitoring. In fact, at the regional scale, those estimates are often well constrained and may be used for model-data integration studies and validation purposes. The regions where observation-driven CO₂ exchange is constrained the best include Europe, Russia, South Asia, East Asia, Australia and all oceanic regions except the Southern Ocean. The most likely candidate for inducing the mismatch between data-driven estimates and the atmospheric CO₂ growth rate is terrestrial NEP. In particular, tropical NEP estimates suggest a too large tropical sink. In the following sections, we discuss (i) the possible reasons for the large bias in NEP (Sect. 4.1), (ii) which fluxes are missing in our synthesis (Sect. 4.2), (iii) how this synthesis dataset could be used for model-data fusion (Sect. 4.3), (iv) uncertainties in fire emissions (Sect. 4.4), and (v) the impact of missing seasonal cycles in some of the datasets (Sect. 4.5).

4.1 Difficulties in estimating NEP over land

Correctly predicting NEP from remote sensing requires establishing universal relationships between those predictors and respiratory processes (Jägermeyr et al., 2014; Tramontana et al., 2016). However, predicting such processes still poses major challenges to researchers (Trumbore, 2006). The CO₂ flux related to heterotrophic decomposition processes, for instance, relates to factors controlling biological activity via temperature, moisture availability, and the decomposable substrate material. The question how soil respiration or total ecosystem respiration depends on these variables is not yet entirely understood. Advancing our knowledge on these processes is challenging due to both a lack of theory of respiration and the difficulty of obtaining relevant data to test models (Trumbore, 2006).

In addition to a good theory for respiration, information on disturbance history (e.g., time since last fire) and forest age would improve the upscaling of NEP from sites to regions (Ciais et al., 2014). Disturbances that cause physical damage to vegetation properties tend to temporarily increase respiration and reduce photosynthesis and thus alter the balance between gross C uptake and release. Disturbed ecosystems are thus initially assumed to be strong C sources until plant production recovers. However, how these regrowth processes compensate a given disturbance regime cannot yet be quantified at global scales, as the area covered by disturbed ecosystems is variable and unknown (Ciais et al., 2014). For example, regrowth of vegetation after fires and other disturbances is not well sampled neither in the FLUXNET stations nor in the set of predictors used by the FLUXCOM models and is assumed to be implicit in our NEP estimate. Furthermore, management can have strong effects on annual NEP of croplands, which form large parts of the land surface (Jung et al., 2011). However, not all of the relevant predictors (i.e. disturbance maps, management practices, soil moisture) are currently available to be included in empirical upscaling exercises (Tramontana et al., 2016).

In addition to the above difficulties, some regions are undersampled by eddy-covariance towers and thus NEP is not well constrained. This is the case for tropical forests and the northern high latitudes. In the tropics, undersampling leads to a large

overestimation of net CO₂ uptake in comparison to inversion and forest inventories (Peylin et al., 2013; Pan et al., 2011) whereas in the high latitudes it leads to a comparably large CO₂ release (Figure 4).

Given the difference between NCE and inversions in the tropics (Figure 4), we can assume that a bias of FLUXCOM NEP towards a too high CO₂ sink is the main reason why the C budget is not closed in our approach. This raises the question why upscaled NEP has such a strong systematic bias towards a sink, particularly in the tropics (see also Jung et al., 2011). We suspect that the eddy-covariance towers collected in FLUXNET, which provide the empirical basis for the global data driven estimates (see Sect. 2.3.1) do not represent the different age classes of forests very well. For instance, young and regrowing forests with a generally higher-than average NEP are possibly overrepresented in FLUXNET. However, such an age-dependency (Amiro et al., 2010; Coursolle et al., 2012; Hyvönen et al., 2007; Magnani et al., 2007) has not yet been included in global upscaling of NEP. This hypothesis should be tested in future upscaling exercises.

4.2 Missing fluxes

Due to a focus on spatially explicit maps, not all known fluxes between land surface and atmosphere are considered in our analysis. We assume that including the following fluxes may have an influence on the regional and global flux estimates (estimates of the flux magnitude are given in brackets if known):

- Emissions from biogenic volatile organic compounds (VOCs) amount to approximately 0.76PgC / year globally (Sindelarova et al., 2014)
 - CO₂ emissions from wetlands, estimated globally at around 2.1 PgC /year (Aufdenkampe et al., 2011)
 - CH₄ emissions from biogenic sources and animals
 - Crop residues burning in households
 - Biofuel burning
 - Changes in land management, e.g. shifts in agriculture, soil tillage, grassland ploughing and grazing
 - Geological fluxes
 - Raymond et al. (2013) estimate a much higher river evasion (1.8 PgC / year instead of 0.65 PgC / year used in this study).
- All known missing fluxes add up to an additional C release of about 4 PgC / yr. Although substantial, they do not cover the mismatch of more than 9 PgC / yr by far (Sect. 3.1). However, they would suffice to close the budget if tropical forests are assumed to be C neutral (tropical forests are responsible for a net C sink of about 5 PgC / year, Sect. 3.2). This significant amount of missing fluxes prohibits constraining FLUXCOM runs with all the remaining fluxes. In other words, we cannot be certain of the bias in upscaled NEP as long as the major fluxes are not quantified in a spatially explicit manner. Emissions from VOCs and wetlands should thus receive particular attention if a consistent spatiotemporal picture of vertical CO₂ exchange is to be obtained.

4.3 Uncertainty estimates and model-data fusion

Our uncertainty estimates of ocean and land C exchange likely underestimate the true uncertainty. In particular, Landschützer et al. (2014) estimated that the choice of sea-air gas transfer formulation (also including other relationships than quadratic) and the pCO₂ mapping mismatch lead to an uncertainty of 37% for the global average over sea-air exchange between 1998-2011, with the majority of this uncertainty stemming from the gas transfer formulation. Furthermore, the uncertainty of NEP is likely underestimated because all upscaling methods in FLUXCOM use the same set of predictors (Tramontana et al., 2016). Hence, the uncertainty estimates only cover the uncertainty related to the upscaling method but do not contain uncertainties related to the selection of predictors or observational uncertainty of the predictors themselves.

A comprehensive spatiotemporally explicit bottom-up estimate of NCE can be a powerful ingredient for model-data integration exercises (Rayner et al., 2005). Yet, model-data integration requires uncertainty characteristics of all used data streams (Raupach et al., 2005). Furthermore, it is important that uncertainties can be described in terms of random errors (Ciais et al., 2014). Error estimates at the local or regional level are difficult to use if no spatial error covariance matrix is available. The uncertainty analysis presented in this study obtained through Monte Carlo sampling aims to be of use for modal-data-integration studies. Errors are automatically propagated through different spatial resolutions by aggregating the individual ensembles of NCE. Naturally, efforts should be made to obtain error estimates for all integrated datasets (i.e., Wood, Fires, Shelves, Estuaries, and Lakes). Nevertheless, this first integrated NCE estimate offers new possibilities for approaches such as the Carbon Cycle Data Assimilation System (CCDAS, Rayner et al., 2005), by not only providing a full spatiotemporal grid of fluxes, but also a transparent and consistent error propagation scheme. This can have also practical applications, for instance for designing new measurement campaigns in regions with high uncertainties to reduce knowledge gaps in the global CO₂ fluxes.

4.4 Uncertainties in fire emissions

Fire emission estimates combine satellite-based fire data with ecosystems models. Uncertainties in global fire emission estimates are substantial and different fire products vary largely by location, vegetation type and fire weather (Ciais et al., 2014; French et al., 2011).

While GFED4 burned area estimates come with regional uncertainty estimates (Giglio et al., 2013), the actual uncertainty of C emissions from fires are probably much larger, on the order of 50% (van der Werf et al., 2017). The uncertainties of fire emission estimates depend regionally and temporally on the various input data sets such as burned area, small fire burned area, biomass loadings, and combustion completeness. Better quantifying this uncertainty requires an assessment of the burned area estimates as well as new field data on fuel consumption and emission factors. In this study we cannot propagate this uncertainty into the NCE estimates as this would require spatiotemporal error covariance matrices.

4.5 Seasonality for coastal and inland waters, wood and crop harvest emissions

Recently, major steps have been undertaken to resolve the spatial variability of coastal and inland water CO₂ fluxes (Laruelle et al., 2013; Laruelle et al., 2014; Lauerwald et al., 2015; Raymond et al., 2013). Estimates of the seasonal variation in these

fluxes are necessary to better constrain seasonal variations in NCE. For inland waters, seasonality has so far only been investigated at regional scale (Laruelle et al., 2015; Richey et al., 2002). For shelves some seasonal estimates are currently available in temperate and high latitudes, indicating that net C uptake is highest in spring whereas C release is highest in summer (Laruelle et al., 2014, 2017). These estimates indicate that seasonal differences in shelf net C exchange are as high as the annually integrated latitudinal gradient. An analysis performed over Atlantic shelves suggests that the seasonal variability in the air-sea CO₂ exchange is most pronounced over temperate latitudes. In these regions, shelves generally behave as strong CO₂ sinks in winter and spring, partly sustained by CO₂ fixation during the spring phytoplankton bloom, but can become mild CO₂ sources to the atmosphere in summer due to the effect of temperature-driven decrease CO₂ solubility in water (Laruelle et al., 2014). Such behaviour is consistent with that of the open ocean at similar latitudes (Takahashi et al., 2009). In the continental shelves surrounding other oceanic basins, however, a recent study suggests more complex seasonal patterns involving the contributions of processes other than temperature to the seasonality of coastal pCO₂ (Laruelle et al., 2017).

Biogenic C emissions related to tropical aboveground biomass loss as well as crop and wood harvest are equally distributed across months in this study. When exactly C emissions from humans and livestock occur is difficult to predict and would require more detailed consumption data (Wolf et al., 2015a).

5 Conclusions

From the presented synthesis, we draw the following main conclusions:

- i) Current estimates of surface-atmosphere CO₂ exchanges that are spatiotemporally explicit and entirely driven by surface observation are not sufficiently well constrained to close the C budget at the global scale. The data-driven estimates show a large bias towards too much C uptake by the Earth surface of nearly 10 PgC / year.
- ii) The most likely candidate for inducing the mismatch between data-driven surface-atmosphere CO₂ exchange and the atmospheric CO₂ growth rate is land NEP. In particular tropical NEP estimates appear to be strongly overestimated (too large land sink). Understanding this bias will help designing better upscaling approaches (e.g., by including currently missing relevant predictors) and pinpointing variables that need to be (better) monitored in the future.
- iii) Regionally, the estimates of NCE are partly well constrained and may be used for model-data integration studies, validation of models, and evaluating claims and potentials of net C uptake within the framework of the Paris agreement (UNFCCC, 2015). These regions include Europe, Russia, South Asia, East Asia, Australia and most oceanic regions. Better constraining C fluxes in regions with currently high uncertainties should be a priority of future research.

Acknowledgements

This study was funded by the European Union in the context of the FP7 project GEOCARBON (grant agreement #283080). Authors affiliated with [2] and [16] further acknowledge the EU for support via the H2020 project BACI (grant agreement #640176). Authors affiliated with [5] thank the SAMPLES project as part of the CGIAR research program CCAFS, and CIFOR from the governments of Australia (grant agreement #46167) and Norway (grant agreement #QZA-10/0468). N.C. acknowledges funding from the NOVA grant UID/AMB/04085/2013. G.G.L. is 'Chargé de recherches F.R.S.-FNRS' at ULB. R.L. received funding from ANR (ANR-10-LABX-0018) and BRIC at ULB. J.H. and R.L. received funding from the German Science Foundation DFG (HA4472/6-1 and the cluster of excellence CLISAP, DFG EXEC 177, Hamburg). L.C. acknowledges funding from a NASA Earth and Space Science Fellowship. We also acknowledge the European Commission, Joint Research Centre (JRC)/Netherlands Environmental Assessment Agency (PBL) for providing the Emission Database for Global Atmospheric Research (EDGAR), release version EDGARv4.2.

References

- Amiro, B. D., Barr, A. G., Barr, J. G., Black, T. A., Bracho, R., Brown, M., Chen, J., Clark, K. L., Davis, K. J., Desai, A. R., Dore, S., Engel, V., Fuentes, J. D., Goldstein, A. H., Goulden, M. L., Kolb, T. E., Lavigne, M. B., Law, B. E., Margolis, H. A., Martin, T., McCaughey, J. H., Misson, L., Montes-Helu, M., Noormets, A., Randerson, J. T., Starr, G., and Xiao, J.: Ecosystem carbon dioxide fluxes after disturbance in forests of North America, *Journal of Geophysical Research-Biogeosciences*, 115, 2010.
- 5 Andrae, M. O., Acevedo, O. C., Araùjo, A., Artaxo, P., Barbosa, C. G. G., Barbosa, H. M. J., Brito, J., Carbone, S., Chi, X., Cintra, B. B. L., da Silva, N. F., Dias, N. L., Dias-Júnior, C. Q., Ditas, F., Ditz, R., Godoi, A. F. L., Godoi, R. H. M., Heimann, M., Hoffmann, T., Kesselmeier, J., Könemann, T., Krüger, M. L., Lavric, J. V., Manzi, A. O., Lopes, A. P.,
- 10 Martins, D. L., Mikhailov, E. F., Moran-Zuloaga, D., Nelson, B. W., Nölscher, A. C., Santos Nogueira, D., Piedade, M. T. F., Pöhlker, C., Pöschl, U., Quesada, C. A., Rizzo, L. V., Ro, C. U., Ruckteschler, N., Sá, L. D. A., de Oliveira Sá, M., Sales, C. B., dos Santos, R. M. N., Saturno, J., Schöngart, J., Sörgel, M., de Souza, C. M., de Souza, R. A. F., Su, H., Targhetta, N., Tóta, J., Trebs, I., Trumbore, S., van Eijck, A., Walter, D., Wang, Z., Weber, B., Williams, J., Winderlich, J., Wittmann, F., Wolff, S., and Yáñez-Serrano, A. M.: The Amazon Tall Tower Observatory (ATTO): overview of pilot measurements on ecosystem ecology, meteorology, trace gases, and aerosols, *Atmos. Chem. Phys.*, 15, 10723-10776, 2015.
- 15 Atlas, R., Hoffman, R. N., Ardizzone, J., Leidner, S. M., Jusem, J. C., Smith, D. K., and Gombos, D.: A Cross-Calibrated Multiplatform Ocean Surface Wind Velocity Product for Meteorological and Oceanographic Applications, *Bulletin of the American Meteorological Society*, 92, 157-+, 2011.
- Aufdenkampe, A. K., Mayorga, E., Raymond, P. A., Melack, J. M., Doney, S. C., Alin, S. R., Aalto, R. E., and Yoo, K.: Riverine coupling of biogeochemical cycles between land, oceans and atmosphere, *Frontiers Ecology Environ.*, 9, 53-60, 2011.
- 20 Bakker, D. C. E., Pfeil, B., Smith, K., Hankin, S., Olsen, A., Alin, S. R., Cosca, C., Harasawa, S., Kozyr, A., Nojiri, Y., O'Brien, K. M., Schuster, U., Telszewski, M., Tilbrook, B., Wada, C., Akl, J., Barbero, L., Bates, N. R., Boutin, J., Bozec, Y., Cai, W. J., Castle, R. D., Chavez, F. P., Chen, L., Chierici, M., Currie, K., de Baar, H. J. W., Evans, W., Feely, R. A., Fransson, A., Gao, Z., Hales, B., Hardman-Mountford, N. J., Hoppema, M., Huang, W. J., Hunt, C. W., Huss, B., Ichikawa, T., Johannessen, T., Jones, E. M., Jones, S. D., Jutterström, S., Kitidis, V., Körtzinger, A., Landschützer, P., Lauvset, S. K., Lefèvre, N., Manke, A. B., Mathis, J. T., Merlivat, L., Metzl, N., Murata, A., Newberger, T., Omar, A. M., Ono, T., Park, G. H., Paterson, K., Pierrot, D., Ríos, A. F., Sabine, C. L., Saito, S., Salisbury, J., Sarma, V. V. S. S., Schlitzer, R., Sieger, R., Skjelvan, I., Steinhoff, T., Sullivan, K. F., Sun, H., Sutton, A. J., Suzuki, T., Sweeney, C., Takahashi, T., Tjiputra, J.,
- 30 Tsurushima, N., van Heuven, S. M. A. C., Vandemark, D., Vlahos, P., Wallace, D. W. R., Wanninkhof, R., and Watson, A. J.: An update to the Surface Ocean CO₂ Atlas (SOCAT version 2), *Earth Syst. Sci. Data*, 6, 69-90, 2014.
- Baldocchi, D.: Measuring fluxes of trace gases and energy between ecosystems and the atmosphere - the state and future of the eddy covariance method, *Global Change Biology*, 20, 3600-3609, 2014.
- Ballantyne, A. P., Alden, C. B., Miller, J. B., Tans, P. P., and White, J. W. C.: Increase in observed net carbon dioxide uptake by land and oceans during the past 50 years, *Nature*, 488, 70-72, 2012.
- 35 Berger, M., Moreno, J., Johannessen, J. A., Levelt, P. F., and Hanssen, R. F.: ESA's sentinel missions in support of Earth system science, *Remote Sensing of Environment*, 120, 84-90, 2012.
- Canadell, J. G., Ciais, P., Gurney, K., Le Quééré, C., Piao, S., Raupach, M. R., and Sabine, C. L.: An International Effort to Quantify Regional Carbon Fluxes, *Eos, Transactions American Geophysical Union*, 92, 81-82, 2011.
- 40 Ciais, P., Dolman, A., Bombelli, A., Duren, R., Pregon, A., Rayner, P., Miller, C., Gobron, N., Kinderman, G., and Marland, G.: Current systematic carbon-cycle observations and the need for implementing a policy-relevant carbon observing system, *Biogeosciences*, 11, 3547-3602, 2014.
- Ciais, P., Gasser, T., Lauerwald, R., Peng, S., Raymond, P. A., Wang, Y., Canadell, J. G., Peters, G. P., Andres, R. J., Chang, J., Yue, C., Dolman, A. J., Haverd, V., Hartmann, J., Laruelle, G., King, A. W., Liu, Y., Luyssaert, S., Maignan, F., Patra, P. K., Pregon, A., Regnier, P., Piao, S., Poulter, B., Shvidenko, A., Valentini, R., Wang, R., van Dijk, A. I. J. M., Broquet, G., Yin, Y., Zscheischler, J. and Zhu, D.: Observed regional carbon budgets imply reduced soil heterotrophic respiration, *Nature*, in revision.
- 45 Ciais, P., Sabine, C., Bala, G., Bopp, L., Brovkin, V., Canadell, J., Chhabra, A., DeFries, R., Galloway, J., Heimann, M., Jones, C., Le Quééré, C., Myneni, R. B., Piao, S., and Thornton, P.: Carbon and Other Biogeochemical Cycles. In: *Climate Change 2013: The Physical Science Basis. Contribution of Working Group I to the Fifth Assessment Report of the*
- 50

- Intergovernmental Panel on Climate Change, Stocker, T. F., Qin, D., Plattner, G.-K., Tignor, M., Allen, S. K., Boschung, J., Nauels, A., Xia, Y., Bex, V., and Midgley, P. M. (Eds.), Cambridge University Press, Cambridge, United Kingdom and New York, NY, USA, 2013.
- Coursolle, C., Margolis, H. A., Giasson, M. A., Bernier, P. Y., Amiro, B. D., Arain, M. A., Barr, A. G., Black, T. A., Goulden, M. L., McCaughey, J. H., Chen, J. M., Dunn, A. L., Grant, R. F., and Lafleur, P. M.: Influence of stand age on the magnitude and seasonality of carbon fluxes in Canadian forests, *Agricultural and Forest Meteorology*, 165, 136-148, 2012.
- Dee, D. P., Uppala, S. M., Simmons, A. J., Berrisford, P., Poli, P., Kobayashi, S., Andrae, U., Balmaseda, M. A., Balsamo, G., Bauer, P., Bechtold, P., Beljaars, A. C. M., van de Berg, L., Bidlot, J., Bormann, N., Delsol, C., Dragani, R., Fuentes, M., Geer, A. J., Haimberger, L., Healy, S. B., Hersbach, H., Holm, E. V., Isaksen, I., Kallberg, P., Kohler, M., Matricardi, M., McNally, A. P., Monge-Sanz, B. M., Morcrette, J. J., Park, B. K., Peubey, C., de Rosnay, P., Tavolato, C., Thepaut, J. N., and Vitart, F.: The ERA-Interim reanalysis: configuration and performance of the data assimilation system, *Quarterly Journal of the Royal Meteorological Society*, 137, 553-597, 2011.
- Dolman, A. J., Shvidenko, A., Schepaschenko, D., Ciais, P., Tchepakova, N., Chen, T., van der Molen, M. K., Belelli Marchesini, L., Maximov, T. C., Maksyutov, S., and Schulze, E. D.: An estimate of the terrestrial carbon budget of Russia using inventory-based, eddy covariance and inversion methods, *Biogeosciences*, 9, 5323-5340, 2012.
- Dürr, H. H., Laruelle, G. G., van Kempen, C. M., Slomp, C. P., Meybeck, M., and Middelkoop, H.: Worldwide Typology of Nearshore Coastal Systems: Defining the Estuarine Filter of River Inputs to the Oceans, *Estuaries and Coasts*, 34, 441-458, 2011.
- Earles, J. M., Yeh, S., and Skog, K.E.: Timing of carbon emissions from global forest clearance, *Nature Climate Change* 2, 682-685, 2012.
- Fekete, B. M., Vorosmarty, C. J., and Grabs, W.: High-resolution fields of global runoff combining observed river discharge and simulated water balances, *Global Biogeochem Cy*, 16, 2002.
- French, N. H. F., de Groot, W. J., Jenkins, L. K., Rogers, B. M., Alvarado, E., Amiro, B., de Jong, B., Goetz, S., Hoy, E., Hyer, E., Keane, R., Law, B. E., McKenzie, D., McNulty, S. G., Ottmar, R., Perez-Salcrip, D. R., Randerson, J., Robertson, K. M., and Turetsky, M.: Model comparisons for estimating carbon emissions from North American wildland fire, *Journal of Geophysical Research-Biogeosciences*, 116, 2011.
- Giglio, L., Randerson, J. T., and van der Werf, G. R.: Analysis of daily, monthly, and annual burned area using the fourth-generation global fire emissions database (GFED4), *Journal of Geophysical Research-Biogeosciences*, 118, 317-328, 2013.
- GLOBALVIEW-CO2: Cooperative atmospheric data integration project-Carbon dioxide. Multi-laboratory compilation of synchronized and gap-filled atmospheric carbon dioxide records for the period 1979-2011., NOAA ESRL, Boulder, 2012.
- Gloor, M., Gatti, L., Brien, R., Feldpausch, T. R., Phillips, O. L., Miller, J., Ometto, J. P., Rocha, H., Baker, T., de Jong, B., Houghton, R. A., Malhi, Y., Aragão, L. E. O. C., Guyot, J. L., Zhao, K., Jackson, R., Peylin, P., Sitch, S., Poulter, B., Lomas, M., Zaehle, S., Huntingford, C., Levy, P., and Lloyd, J.: The carbon balance of South America: a review of the status, decadal trends and main determinants, *Biogeosciences*, 9, 5407-5430, 2012.
- Harris, N. L., Brown, S., Hagen, S. C., Saatchi, S. S., Petrova, S., Salas, W., Hansen, M. C., Potapov, P. V., and Lotsch, A.: Baseline Map of Carbon Emissions from Deforestation in Tropical Regions, *Science*, 336, 1573-1576, 2012.
- Hartmann, J., Lauerwald, R., and Moosdorf, N.: A brief overview of the GLObal RIver CHemistry Database, *GLORICH, Geochemistry of the Earth's Surface Ges-10*, 10, 23-27, 2014.
- Haverd, V., Raupach, M. R., Briggs, P. R., Canadell, J. G., Davis, S. J., Law, R. M., Meyer, C. P., Peters, G. P., Pickett-Heaps, C., and Sherman, B.: The Australian terrestrial carbon budget, *Biogeosciences*, 10, 851-869, 2013.
- Hayes, D. J., Turner, D. P., Stinson, G., McGuire, A. D., Wei, Y., West, T. O., Heath, L. S., de Jong, B., McConkey, B. G., Birdsey, R. A., Kurz, W. A., Jacobson, A. R., Huntzinger, D. N., Pan, Y., Post, W. M., and Cook, R. B.: Reconciling estimates of the contemporary North American carbon balance among terrestrial biosphere models, atmospheric inversions, and a new approach for estimating net ecosystem exchange from inventory-based data, *Global Change Biology*, 18, 1282-1299, 2012.
- Houghton, R. A.: Balancing the global carbon budget, *Annual Review of Earth and Planetary Sciences*, 35, 313-347, 2007.
- [Houghton, R. A. and Nassikas, A. A.: Global and regional fluxes of carbon from land use and land cover change 1850–2015, *Global Biogeochemical Cycles*, 31, 456-472, 2017.](#)
- Hyvönen, R., Agren, G. I., Linder, S., Persson, T., Cotrufo, M. F., Ekblad, A., Freeman, M., Grelle, A., Janssens, I. A., Jarvis, P. G., Kellomaki, S., Lindroth, A., Loustau, D., Lundmark, T., Norby, R. J., Oren, R., Pilegaard, K., Ryan, M. G.,

- Sigurdsson, B. D., Stromgren, M., van Oijen, M., and Wallin, G.: The likely impact of elevated [CO₂], nitrogen deposition, increased temperature and management on carbon sequestration in temperate and boreal forest ecosystems: a literature review, *New Phytologist*, 173, 463-480, 2007.
- Ishii, M., Feely, R. A., Rodgers, K. B., Park, G.-H., Wanninkhof, R., Sasano, D., Sugimoto, H., Cosca, C. E., Nakaoka, S., Telszewski, M., Nojiri, Y., Mikaloff Fletcher, S. E., Niwa, Y., Patra, P. K., Valsala, V., Nakano, H., Lima, I., Doney, S. C., Buitenhuis, E. T., Aumont, O., Dunne, J. P., Lenton, A., and Takahashi, T.: Air-sea CO₂ flux in the Pacific Ocean for the period 1990-2009, *Biogeosciences*, 11, 709-734, 2014.
- Jägermeyr, J., Gerten, D., Lucht, W., Hostert, P., Migliavacca, M., & Nemani, R.: A high-resolution approach to estimating ecosystem respiration at continental scales using operational satellite data, *Global Change Biology*, 20, 1191-1210, 2014.
- Jähne, B., Munnich, K. O., Bosinger, R., Dutzi, A., Huber, W., and Libner, P.: On the Parameters Influencing Air-Water Gas-Exchange, *Journal of Geophysical Research-Oceans*, 92, 1937-1949, 1987.
- Jung, M., Reichstein, M., Margolis, H. A., Cescatti, A., Richardson, A. D., Arain, M. A., Arneth, A., Bernhofer, C., Bonal, D., Chen, J. Q., Gianelle, D., Gobron, N., Kiely, G., Kutsch, W., Lasslop, G., Law, B. E., Lindroth, A., Merbold, L., Montagnani, L., Moors, E. J., Papale, D., Sottocornola, M., Vaccari, F., and Williams, C.: Global patterns of land-atmosphere fluxes of carbon dioxide, latent heat, and sensible heat derived from eddy covariance, satellite, and meteorological observations, *Journal of Geophysical Research-Biogeosciences*, 116, 2011.
- King, A. W., Andres, R. J., Davis, K. J., Hafer, M., Hayes, D. J., Huntzinger, D. N., de Jong, B., Kurz, W. A., McGuire, A. D., Vargas, R., Wei, Y., West, T. O., and Woodall, C. W.: North America's net terrestrial CO₂ exchange with the atmosphere 1990-2009, *Biogeosciences*, 12, 399-414, 2015.
- Kondo, M., Ichii, K., Takagi, H. and Sasakawa, M.: Comparison of the data-driven top-down and bottom-up global terrestrial CO₂ exchanges: GOSAT CO₂ inversion and empirical eddy flux upscaling, *J. Geophys. Res. Biogeosci.*, 120, 1226-1245, 2015.
- Landschützer, P., Gruber, N., Bakker, D. C. E., and Schuster, U.: Recent variability of the global ocean carbon sink, *Global Biogeochem Cy*, 28, 927-949, 2014.
- Landschützer, P., Gruber, N., Haumann, F. A., Rödenbeck, C., Bakker, D. C. E., van Heuven, S., Hoppema, M., Metzl, N., Sweeney, C., Takahashi, T., Tilbrook, B., and Wanninkhof, R.: The reinvigoration of the Southern Ocean carbon sink, *Science*, 349, 1221-1224, 2015.
- Laruelle, G. G., Durr, H. H., Lauerwald, R., Hartmann, J., Slomp, C. P., Goossens, N., and Regnier, P. A. G.: Global multi-scale segmentation of continental and coastal waters from the watersheds to the continental margins, *Hydrol Earth Syst Sc*, 17, 2029-2051, 2013.
- Laruelle, G. G., Lauerwald, R., Pfeil, B., and Regnier, P.: Regionalized global budget of the CO₂ exchange at the air-water interface in continental shelf seas, *Global Biogeochem Cy*, 28, 1199-1214, 2014.
- Laruelle, G. G., Lauerwald, R., Rotschi, J., Raymond, P. A., Hartmann, J., and Regnier, P.: Seasonal response of air-water CO₂ exchange along the land-ocean aquatic continuum of the northeast North American coast., *Biogeosciences*, 12, 1447-1458, 2015.
- Laruelle, G. G., Landschützer, P., Gruber, N., Tison, J.-L., Delille, B., and Regnier, P.: Global high resolution monthly pCO₂ climatology for the coastal ocean derived from neural network interpolation, *Biogeosciences Discuss.*, doi:10.5194/bg-2017-64, in review, 2017.
- Lauerwald, R., Laruelle, G. G., Hartmann, J., Ciais, P., and Regnier, P. A. G.: Spatial patterns in CO₂ evasion from the global river network, *Global Biogeochem Cy*, 29, 534-554, 2015.
- Le Quéré, C., Moriarty, R., Andrew, R. M., Canadell, J. G., Sitch, S., Korsbakken, J. I., Friedlingstein, P., Peters, G. P., Andres, R. J., Boden, T. A., Houghton, R. A., House, J. I., Keeling, R. F., Tans, P., Arneth, A., Bakker, D. C. E., Barbero, L., Bopp, L., Chang, J., Chevallier, F., Chini, L. P., Ciais, P., Fader, M., Feely, R. A., Gkritzalis, T., Harris, I., Hauck, J., Ilyina, T., Jain, A. K., Kato, E., Kitidis, V., Klein Goldewijk, K., Koven, C., Landschützer, P., Lauvset, S. K., Lefèvre, N., Lenton, A., Lima, I. D., Metzl, N., Millero, F., Munro, D. R., Murata, A., Nabel, J. E. M. S., Nakaoka, S., Nojiri, Y., O'Brien, K., Olsen, A., Ono, T., Pérez, F. F., Pfeil, B., Pierrot, D., Poulter, B., Rehder, G., Rödenbeck, C., Saito, S., Schuster, U., Schwinger, J., Séférian, R., Steinhoff, T., Stocker, B. D., Sutton, A. J., Takahashi, T., Tilbrook, B., van der Laan-Luijkx, I. T., van der Werf, G. R., van Heuven, S., Vandemark, D., Viovy, N., Wiltshire, A., Zaehle, S., and Zeng, N.: Global Carbon Budget 2015, *Earth Syst. Sci. Data*, 7, 349-396, 2015.

- Lehner, B. and Döll, P.: Development and validation of a global database of lakes, reservoirs and wetlands, *Journal of Hydrology*, 296, 1-22, 2004.
- Lehner, B., Verdin, K., and Jarvis, A.: New Global Hydrography Derived From Spaceborne Elevation Data, *Eos, Transactions American Geophysical Union*, 89, 93-94, 2008.
- 5 Lenton, A., Tilbrook, B., Law, R. M., Bakker, D., Doney, S. C., Gruber, N., Ishii, M., Hoppema, M., Lovenduski, N. S., Matear, R. J., McNeil, B. I., Metzl, N., Mikaloff Fletcher, S. E., Monteiro, P. M. S., Rödenbeck, C., Sweeney, C., and Takahashi, T.: Sea-air CO₂ fluxes in the Southern Ocean for the period 1990–2009, *Biogeosciences*, 10, 4037-4054, 2013.
- Luyssaert, S., Abril, G., Andres, R., Bastviken, D., Bellassen, V., Bergamaschi, P., Bousquet, P., Chevallier, F., Ciais, P., Corazza, M., Dechow, R., Erb, K. H., Etiope, G., Fortems-Cheiney, A., Grassi, G., Hartmann, J., Jung, M., Lathière, J., Lohila, A., Mayorga, E., Moosdorf, N., Njakou, D. S., Otto, J., Papale, D., Peters, W., Peylin, P., Raymond, P., Rödenbeck, C., Saarnio, S., Schulze, E. D., Szopa, S., Thompson, R., Verkerk, P. J., Vuichard, N., Wang, R., Wattenbach, M., and Zaehle, S.: The European land and inland water CO₂, CO, CH₄ and N₂O balance between 2001 and 2005, *Biogeosciences*, 9, 3357-3380, 2012.
- 15 Magnani, F., Mencuccini, M., Borghetti, M., Berbigier, P., Berninger, F., Delzon, S., Grelle, A., Hari, P., Jarvis, P. G., Kolar, P., Kowalski, A. S., Lankreijer, H., Law, B. E., Lindroth, A., Loustau, D., Manca, G., Moncrieff, J. B., Rayment, M., Tedeschi, V., Valentini, R., and Grace, J.: The human footprint in the carbon cycle of temperate and boreal forests, *Nature*, 447, 848-850, 2007.
- 20 Malhi, Y., Phillips, O. L., Lloyd, J., Baker, T., Wright, J., Almeida, S., Arroyo, L., Frederiksen, T., Grace, J., Higuchi, N., Killeen, T., Laurance, W. F., Leano, C., Lewis, S., Meir, P., Monteagudo, A., Neill, D., Vargas, P. N., Panfil, S. N., Patino, S., Pitman, N., Quesada, C. A., Ruelas-Li, A., Salomao, R., Saleska, S., Silva, N., Silveira, M., Sombroek, W. G., Valencia, R., Martinez, R. V., Vieira, I. C. G., and Vinceti, B.: An international network to monitor the structure, composition and dynamics of Amazonian forests (RAINFOR), *Journal of Vegetation Science*, 13, 439-450, 2002.
- Masarie, K. A. and Tans, P. P.: Extension and Integration of Atmospheric Carbon-Dioxide Data into a Globally Consistent Measurement Record, *Journal of Geophysical Research-Atmospheres*, 100, 11593-11610, 1995.
- 25 Meybeck, M., Durr, H. H., and Vorosmarty, C. J.: Global coastal segmentation and its river catchment contributors: A new look at land-ocean linkage, *Global Biogeochem Cy*, 20, 2006.
- Pan, Y., Birdsey, R. A., Fang, J., Houghton, R., Kauppi, P. E., Kurz, W. A., Phillips, O. L., Shvidenko, A., Lewis, S. L., Canadell, J. G., Ciais, P., Jackson, R. B., Pacala, S. W., McGuire, A. D., Piao, S., Rautiainen, A., Sitch, S., and Hayes, D.: A Large and Persistent Carbon Sink in the World's Forests, *Science*, 333, 988-993, 2011.
- 30 Patra, P. K., Canadell, J. G., Houghton, R. A., Piao, S. L., Oh, N. H., Ciais, P., Manjunath, K. R., Chhabra, A., Wang, T., Bhattacharya, T., Bousquet, P., Hartman, J., Ito, A., Mayorga, E., Niwa, Y., Raymond, P. A., Sarma, V. V. S. S., and Lasco, R.: The carbon budget of South Asia, *Biogeosciences*, 10, 513-527, 2013.
- Peylin, P., Law, R. M., Gurney, K. R., Chevallier, F., Jacobson, A. R., Maki, T., Niwa, Y., Patra, P. K., Peters, W., Rayner, P. J., Rodenbeck, C., van der Laan-Luijkx, I. T., and Zhang, X.: Global atmospheric carbon budget: results from an ensemble of atmospheric CO₂ inversions, *Biogeosciences*, 10, 6699-6720, 2013.
- 35 Piao, S. L., Ito, A., Li, S. G., Huang, Y., Ciais, P., Wang, X. H., Peng, S. S., Nan, H. J., Zhao, C., Ahlström, A., Andres, R. J., Chevallier, F., Fang, J. Y., Hartmann, J., Huntingford, C., Jeong, S., Levis, S., Levy, P. E., Li, J. S., Lomas, M. R., Mao, J. F., Mayorga, E., Mohammad, A., Muraoka, H., Peng, C. H., Peylin, P., Poulter, B., Shen, Z. H., Shi, X., Sitch, S., Tao, S., Tian, H. Q., Wu, X. P., Xu, M., Yu, G. R., Viovy, N., Zaehle, S., Zeng, N., and Zhu, B.: The carbon budget of terrestrial ecosystems in East Asia over the last two decades, *Biogeosciences*, 9, 3571-3586, 2012.
- 40 Pongratz, J., Reick, C. H., Raddatz, T., and Claussen, M.: Effects of anthropogenic land cover change on the carbon cycle of the last millennium, *Global Biogeochem Cy*, 23, 2009.
- Poulter, B.: Global Wood Harvest, Operational Global Carbon Observing System – GEOCARBON Project Report, 2015 (data available upon request).
- 45 Prather, M. J., Holmes, C. D., and Hsu, J.: Reactive greenhouse gas scenarios: Systematic exploration of uncertainties and the role of atmospheric chemistry, *Geophys. Res. Lett.*, 39, L09803, doi:10.1029/2012GL051440, 2012.
- Randerson, J. T., Chen, Y., van der Werf, G. R., Rogers, B. M., and Morton, D. C.: Global burned area and biomass burning emissions from small fires, *J. Geophys. Res.*, 117, G04012, doi:10.1029/2012JG002128, 2012.

- Raupach, M. R., Rayner, P. J., Barrett, D. J., DeFries, R. S., Heimann, M., Ojima, D. S., Quegan, S., and Schullius, C. C.: Model-data synthesis in terrestrial carbon observation: methods, data requirements and data uncertainty specifications, *Global Change Biology*, 11, 378-397, 2005.
- Raymond, P. A., Hartmann, J., Lauerwald, R., Sobek, S., McDonald, C., Hoover, M., Butman, D., Striegl, R., Mayorga, E., Humborg, C., Kortelainen, P., Durr, H., Meybeck, M., Ciais, P., and Guth, P.: Global carbon dioxide emissions from inland waters, *Nature*, 503, 355-359, 2013.
- Raymond, P. A., Zappa, C. J., Butman, D., Bott, T. L., Potter, J., Mulholland, P., Laursen, A. E., McDowell, W. H., and Newbold, D.: Scaling the gas transfer velocity and hydraulic geometry in streams and small rivers, *Limnology and Oceanography: Fluids and Environments*, 2, 41-53, 2012.
- Rayner, P. J., Scholze, M., Knorr, W., Kaminski, T., Giering, R., and Widmann, H.: Two decades of terrestrial carbon fluxes from a carbon cycle data assimilation system (CCDAS), *Global Biogeochem Cy*, 19, 2005.
- Richey, J. E., Melack, J. M., Aufdenkampe, A. K., Ballester, V. M., and Hess, L. L.: Outgassing from Amazonian rivers and wetlands as a large tropical source of atmospheric CO₂, *Nature*, 416, 617-620, 2002.
- Rödenbeck, C., Bakker, D. C. E., Gruber, N., Iida, Y., Jacobson, A. R., Jones, S., Landschützer, P., Metzl, N., Nakaoka, S., Olsen, A., Park, G. H., Peylin, P., Rodgers, K. B., Sasse, T. P., Schuster, U., Shutler, J. D., Valsala, V., Wanninkhof, R., and Zeng, J.: Data-based estimates of the ocean carbon sink variability first - results of the Surface Ocean pCO₂ Mapping intercomparison (SOCOM), *Biogeosciences*, 12, 7251-7278, 2015.
- Rödenbeck, C., Bakker, D. C. E., Metzl, N., Sabine, C., Cassar, N., Reum, F., Keeling, R. F., and Heimann, M.: Interannual sea-air CO₂ flux variability from an observation-driven ocean mixed-layer scheme, *Biogeosciences*, 11, 4599-4613, 2014.
- Ruddiman, W. F.: The anthropogenic greenhouse era began thousands of years ago, *Climatic Change*, 61, 261-293, 2003.
- Sarma, V. V. S. S., Lenton, A., Law, R. M., Metzl, N., Patra, P. K., Doney, S., Lima, I. D., Dlugokencky, E., Ramonet, M., and Valsala, V.: Sea-air CO₂ fluxes in the Indian Ocean between 1990 and 2009, *Biogeosciences*, 10, 7035-7052, 2013.
- Schuster, U., McKinley, G. A., Bates, N., Chevallier, F., Doney, S. C., Fay, A. R., González-Dávila, M., Gruber, N., Jones, S., Krijnen, J., Landschützer, P., Lefèvre, N., Manizza, M., Mathis, J., Metzl, N., Olsen, A., Rios, A. F., Rödenbeck, C., Santana-Casiano, J. M., Takahashi, T., Wanninkhof, R., and Watson, A. J.: An assessment of the Atlantic and Arctic sea-air CO₂ fluxes, 1990-2009, *Biogeosciences*, 10, 607-627, 2013.
- Schwalm, C. R., Huntzinger, D. N., Fisher, J. B., Michalak, A. M., Bowman, K., Ciais, P., Cook, R., El-Masri, B., Hayes, D., Huang, M., Ito, A., Jain, A., King, A. W., Lei, H., Liu, J., Lu, C., Mao, J., Peng, S., Poulter, B., Ricciuto, D., Schaefer, K., Shi, X., Tao, B., Tian, H., Wang, W., Wei, Y., Yang, J., and Zeng, N.: Toward "optimal" integration of terrestrial biosphere models, *Geophys. Res. Lett.*, 42, 4418-4428, doi: 10.1002/2015GL064002, 2015.
- Sindelarova, K., Granier, C., Bouarar, I., Guenther, A., Tilmes, S., Stavrou, T., Muller, J. F., Kuhn, U., Stefani, P., and Knorr, W.: Global data set of biogenic VOC emissions calculated by the MEGAN model over the last 30 years, *Atmospheric Chemistry and Physics*, 14, 9317-9341, 2014.
- Sitch, S., Friedlingstein, P., Gruber, N., Jones, S. D., Murray-Tortarolo, G., Ahlström, A., Doney, S. C., Graven, H., Heinze, C., Huntingford, C., Levis, S., Levy, P. E., Lomas, M., Poulter, B., Viovy, N., Zaehle, S., Zeng, N., Arneeth, A., Bonan, G., Bopp, L., Canadell, J. G., Chevallier, F., Ciais, P., Ellis, R., Gloor, M., Peylin, P., Piao, S. L., Le Quéré, C., Smith, B., Zhu, Z., and Myrneni, R.: Recent trends and drivers of regional sources and sinks of carbon dioxide, *Biogeosciences*, 12, 653-679, 2015.
- Takahashi, T., Sutherland, S. C., Wanninkhof, R., Sweeney, C., Feely, R. A., Chipman, D. W., Hales, B., Friederich, G., Chavez, F., Sabine, C., Watson, A., Bakker, D. C. E., Schuster, U., Metzl, N., Yoshikawa-Inoue, H., Ishii, M., Midorikawa, T., Nojiri, Y., Kortzinger, A., Steinhoff, T., Hoppema, M., Olafsson, J., Arnarson, T. S., Tilbrook, B., Johannessen, T., Olsen, A., Bellerby, R., Wong, C. S., Delille, B., Bates, N. R., and de Baar, H. J. W.: Climatological mean and decadal change in surface ocean pCO₂, and net sea-air CO₂ flux over the global oceans (vol 56, pg 554, 2009), *Deep-Sea Research Part I-Oceanographic Research Papers*, 56, 2075-2076, 2009.
- Tatem, A. J., Goetz, S. J., and Hay, S. I.: Fifty years of earth-observation satellites - Views from space have led to countless advances on the ground in both scientific knowledge and daily life, *American Scientist*, 96, 390-398, 2008.
- Tramontana, G., Jung, M., Schwalm, C. R., Ichii, K., Camps-Valls, G., Ráduly, B., Reichstein, M., Arain, M. A., Cescatti, A., Kiely, G., Merbold, L., Serrano-Ortiz, P., Sickert, S., Wolf, S., and Papale, D.: Predicting carbon dioxide and energy fluxes across global FLUXNET sites with regression algorithms, *Biogeosciences*, 13, 4291-4313, 2016.

Jakob 3/6/2017 14:45

Gelöscht:

- Trumbore, S.: Carbon respired by terrestrial ecosystems - recent progress and challenges, *Global Change Biology*, 12, 141-153, 2006.
- Tyukavina, A., Baccini, A., Hansen, M. C., Potapov, P. V., Stehman, S. V., Houghton, R. A., Krylov, A. M., Turubanova, S., and Goetz, S. J.: Aboveground carbon loss in natural and managed tropical forests from 2000 to 2012, *Environmental Research Letters*, 10, 2015.
- UNFCCC: <http://www4.unfccc.int/submissions/indc/Submission%20Pages/submissions.aspx> 2015.
- Valentini, R., Arneth, A., Bombelli, A., Castaldi, S., Cazzolla Gatti, R., Chevallier, F., Ciais, P., Grieco, E., Hartmann, J., Henry, M., Houghton, R. A., Jung, M., Kutsch, W. L., Malhi, Y., Mayorga, E., Merbold, L., Murray-Tortarolo, G., Papale, D., Peylin, P., Poulter, B., Raymond, P. A., Santini, M., Sitch, S., Vaglio Laurin, G., van der Werf, G. R., Williams, C. A., and Scholes, R. J.: A full greenhouse gases budget of Africa: synthesis, uncertainties, and vulnerabilities, *Biogeosciences*, 11, 381-407, 2014.
- van der Werf, G. R., Randerson, J. T., Giglio, L., Collatz, G. J., Mu, M., Kasibhatla, P. S., Morton, D. C., DeFries, R. S., Jin, Y., and van Leeuwen, T. T.: Global fire emissions and the contribution of deforestation, savanna, forest, agricultural, and peat fires (1997–2009), *Atmos. Chem. Phys.*, 10, 11707-11735, doi:10.5194/acp-10-11707-2010, 2010.
- van der Werf, G. R., Randerson, J. T., Giglio, L., van Leeuwen, T. T., Chen, Y., Rogers, B. M., Mu, M., van Marle, M. J. E., Morton, D. C., Collatz, G. J., Yokelson, R. J., and Kasibhatla, P. S.: Global fire emissions estimates during 1997–2015, *Earth Syst. Sci. Data Discuss.*, doi:10.5194/essd-2016-62, in review, 2017.
- Vernadsky, V.: *The Biosphere* (New York: Copernicus, Springer), 1926. 1926.
- Wanninkhof, R.: Relationship between wind speed and gas exchange over the ocean, *J. Geophys. Res.-Oceans*, 97, 7373–7382, 1992.
- Wanninkhof, R., Park, G. H., Takahashi, T., Sweeney, C., Feely, R., Nojiri, Y., Gruber, N., Doney, S. C., McKinley, G. A., Lenton, A., Le Quéré, C., Heinze, C., Schwinger, J., Graven, H., and Khatiwala, S.: Global ocean carbon uptake: magnitude, variability and trends, *Biogeosciences*, 10, 1983-2000, 2013.
- West, T. O., Bandaru, V., Brandt, C. C., Schuh, A. E., and Ogle, S. M.: Regional uptake and release of crop carbon in the United States, *Biogeosciences*, 8, 2037-2046, 2011.
- Wolf, J., West, T. O., Le Page, Y. L., Kyle, G. P., Zhang, X., Collatz, G. J., and Imhoff, M. L.: Biogenic carbon fluxes from global agricultural production and consumption, *Global Biogeochem Cy*, doi: 10.1002/2015GB005119, 2015a.
- Wolf, J., West, T. O., Le Page, Y. L., Kyle, G. P., Zhang, X., Collatz, G. J., and Imhoff, M. L.: CMS: Carbon Fluxes from Global Agricultural Production and Consumption, 2005-2011. ORNL DAAC, Oak Ridge, Tennessee, USA, 2015b.
- Zhou, L. M., Tian, Y. H., Myneni, R. B., Ciais, P., Saatchi, S., Liu, Y. Y., Piao, S. L., Chen, H. S., Vermote, E. F., Song, C. H., and Hwang, T. H.: Widespread decline of Congo rainforest greenness in the past decade, *Nature*, 509, 86-90, 2014.

Table 1. Datasets used in this study including reference, time period and number of ensemble runs. If not specified, temporal resolution is monthly.

Data set	Reference	Time period used	# Runs
Ocean	Landschützer et al. (2014)	2001-2010	5+5=10
	Rödenbeck et al. (2014)		
Shelf	Laruelle et al. (2014)	1 estimate	1
Estuaries	Laruelle et al. (2013)	1 estimate	1
Marine		2001-2010	10
Rivers	Lauerwald et al. (2015)	1 estimate	50
Lakes	Raymond et al. (2013)	1 estimate	1
NEP	Tramontana et al. (2016)	2001-2010	8
Crops	Wolf et al. (2015b)	2005-2010, annual	10
Wood	Poulter (2015)	2000, 1 estimate	1
Fire	Giglio et al. (2013)	2001-2010	1
E _{LUC}	Tyukavina et al. (2015)	2000-2010, 1 estimate	1+1=2
	Harris et al. (2012)	2000-205, 1 estimate	
FF (Fossil Fuels)	CARBONES	2001-2010	1
Atmospheric growth rate	NOAA	2001-2010	1

Table 2. Net carbon exchange for different subsystems and variables that contribute to NCE (Eq. 1, negative numbers are surface uptake). Uncertainty (Unc.) is SD over ensemble runs. IAV is SD over annual values time (2001-2010), CV is coefficient of variation, computed as IAV divided by Mean.

Variable	Marine	Rivers	Lakes	-NEP	Crops	Wood	E_{LUC}	FF	Fire	NCE
Mean	-1.60	0.65	0.32	-18.41	2.68	0.71	0.83	7.78	1.81	-5.45
Unc.	0.15	0.08		2.08	0.21		0.16			1.99
IAV	0.36			0.36	0.09			0.75	0.11	
CV	0.22			0.02	0.03			0.10	0.06	0.11

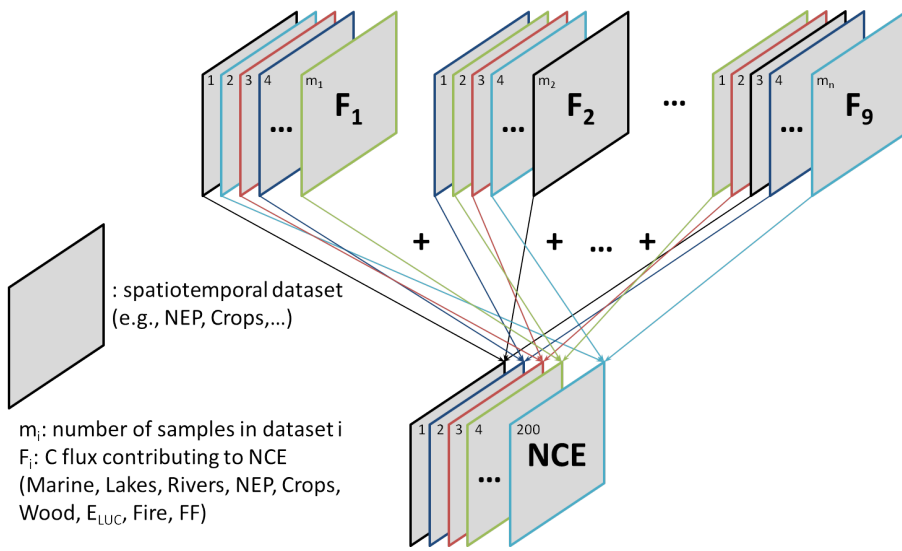


Figure 1. Schematic explanation of the uncertainty propagation. Each spatiotemporal estimate of NCE is computed as the sum of randomly selected estimates of the 9 fluxes contributing to NCE (see Eq. 1, here denoted by F_i). For this study we compute 200 estimates of NCE. Uncertainties can be assessed at different spatial scales by first aggregating all NCE estimates to the desired scale and then using the 200 members for uncertainty estimation.

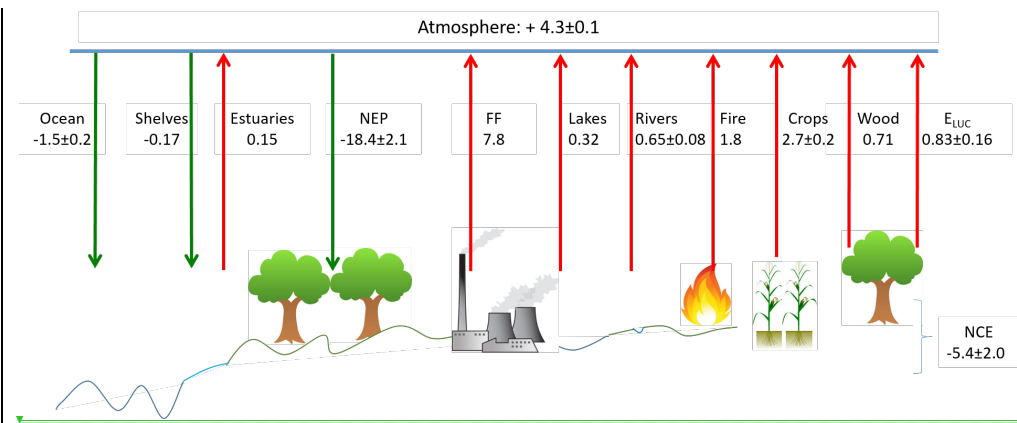


Figure 2. Different components of observation-driven C exchange between the Earth's surface and the atmosphere. Red arrows denote a flux from the surface to the atmosphere (net source), green arrows denote a flux from the atmosphere to the surface (net sink). Units are in PgC / year.

5



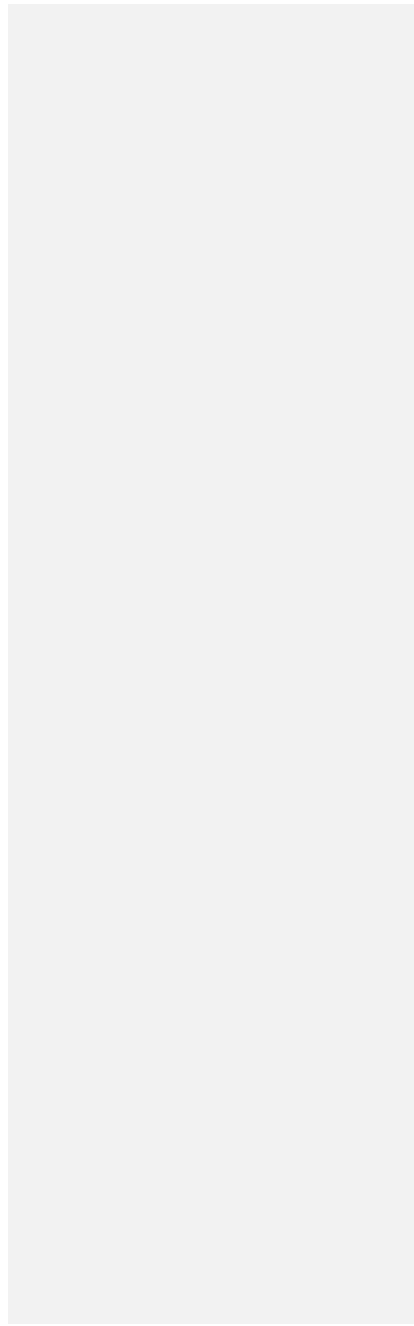
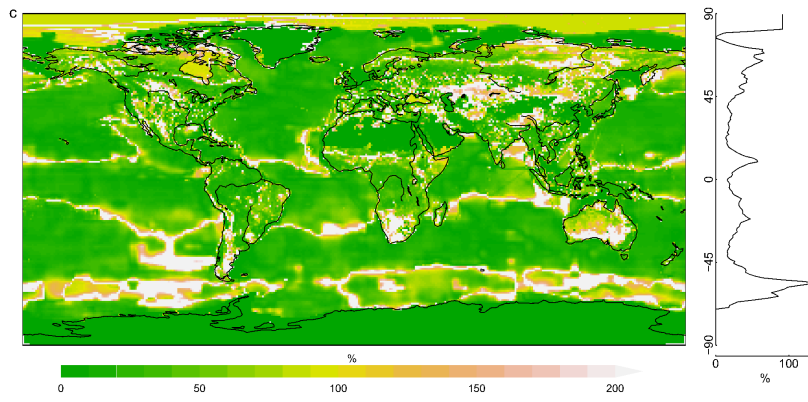
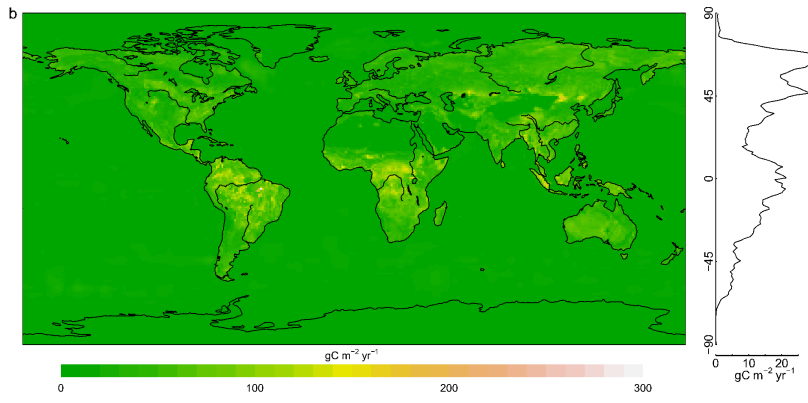
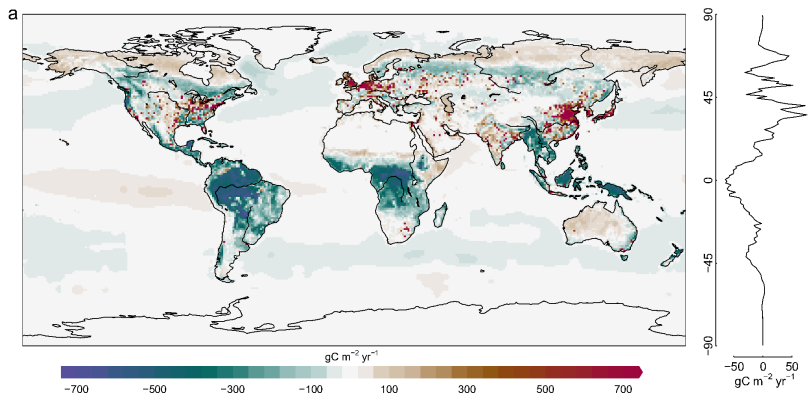
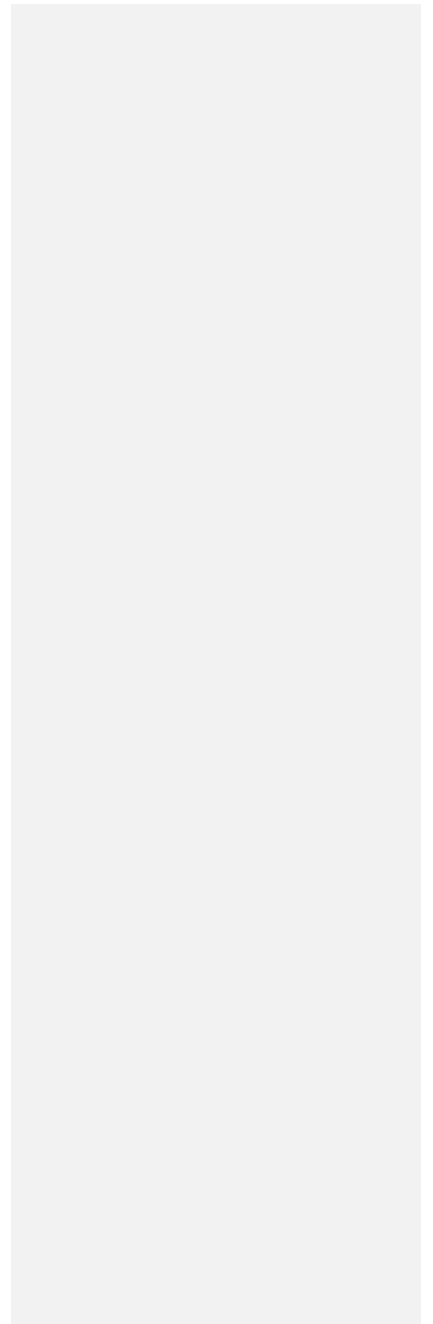


Figure 3. Gridded spatial patterns of NCE. a) 2001-2010 decadal mean. b) Uncertainty; 1SD across the NCE ensemble. c) Relative uncertainty; uncertainty normalized by absolute mean. Latitudinal plots in b) and c) denote median across latitudes.



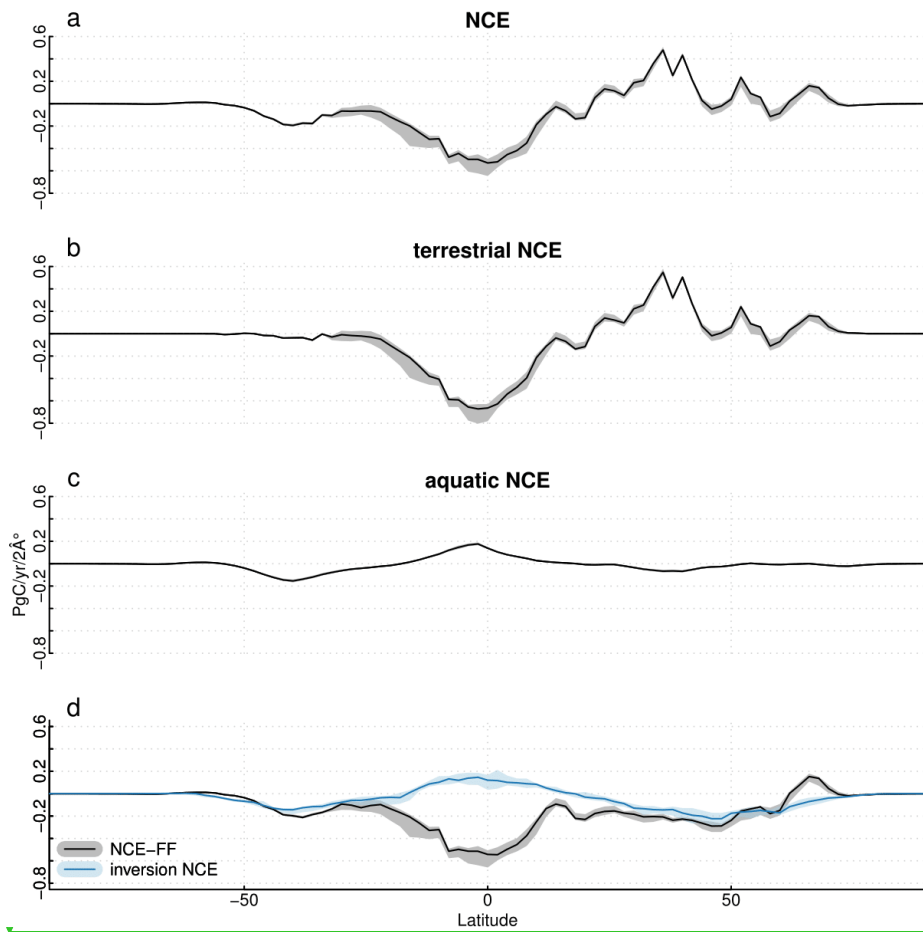
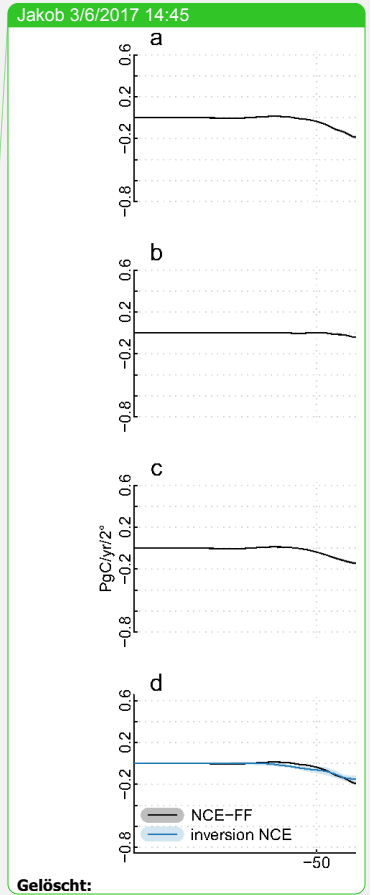


Figure 4. Median and interquartile range of different subsets of NCE (2001-2010 decadal mean). a) All fluxes. b) Terrestrial fluxes. c) Aquatic fluxes. d) NCE without fossil fuels from this synthesis (black) and from inversions (blue).



Gelöscht:

Jakob 3/6/2017 14:45

Gelöscht: Mean

Jakob 3/6/2017 14:45

Gelöscht: uncertainty (1 SD)

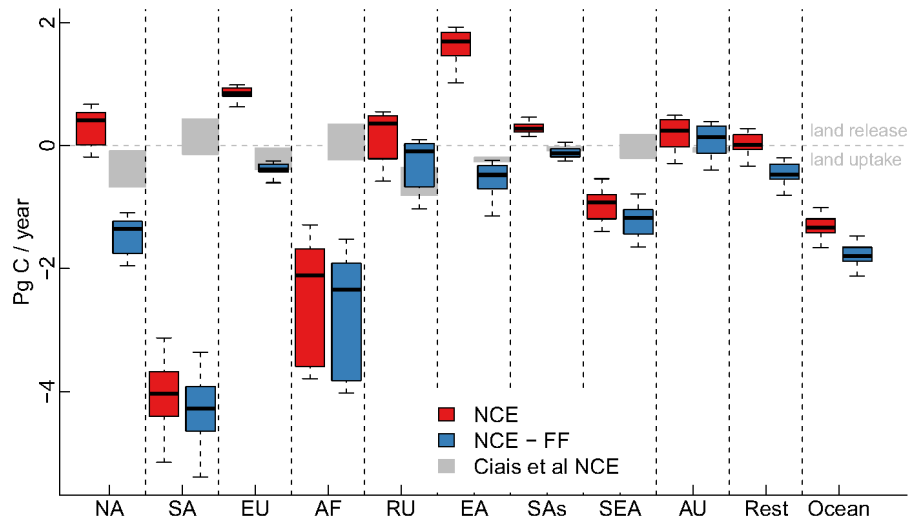


Figure 5. NCE (2001-2010 decadal mean) in RECCAP regions over land, including (red) and without fossil fuels (blue). Shown are median, interquartile range (box) and 1.5 x interquartile range (whiskers). The regional estimates including uncertainties of NCE collected in Ciais et al (in revision) are underlain in grey. NA: North America, SA: South America, EU: Europe, AF: Africa, RU: Russia, EA: East Asia, SAs: South Asia, SEA: South East Asia, AU: Australia, Rest: remaining land areas.

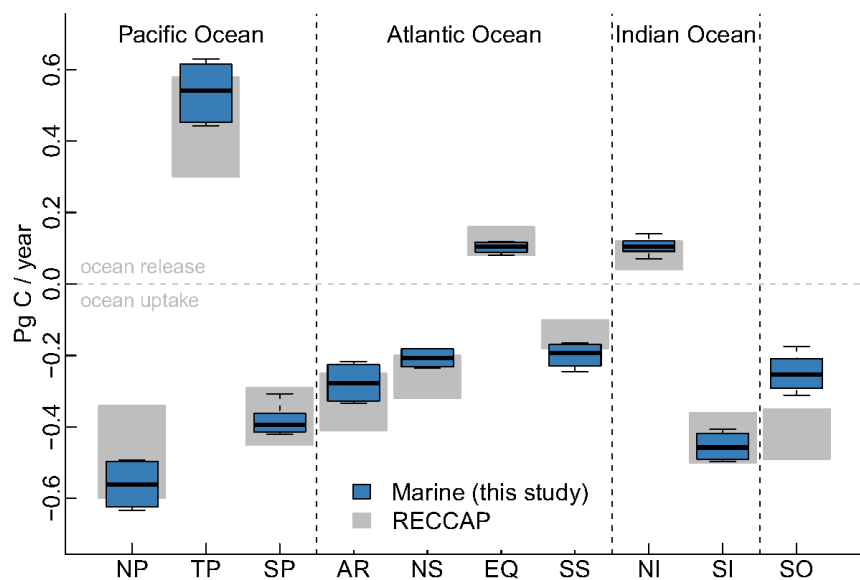


Figure 6. NCE in RECCAP regions over the ocean. Shown are median, interquartile range (box) and 1.5 x interquartile range (whiskers) of the Marine fluxes. The RECCAP estimates including uncertainties are underlain in grey. NP: North Pacific extratropics, TP: Tropical Pacific, SP: South Pacific extratropics, AR: Arctic Ocean, NS: Northern Subtropics, EQ: Equatorial, SS: Southern Subtropics, NI: Northern Indian Ocean, SI: Southern Indian Ocean, SO: Southern Ocean.

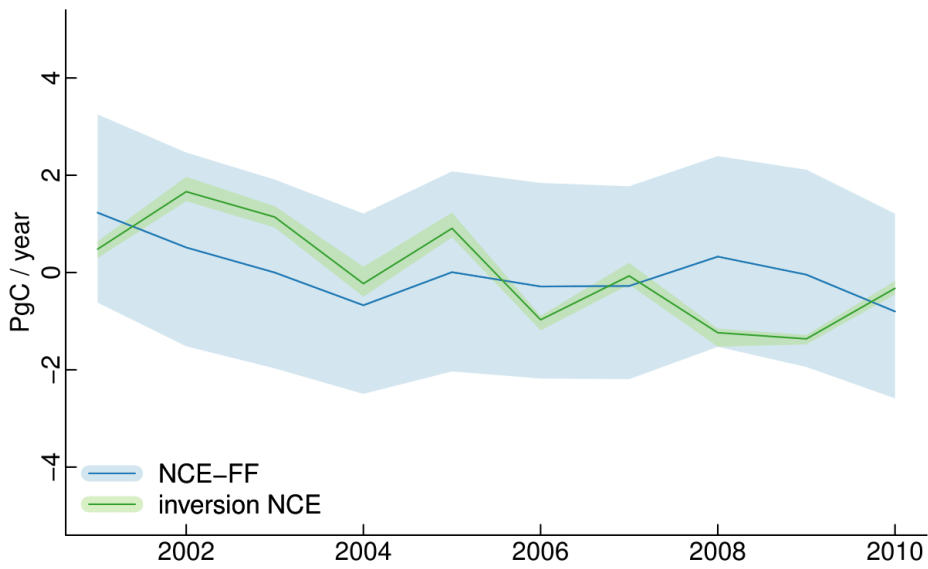
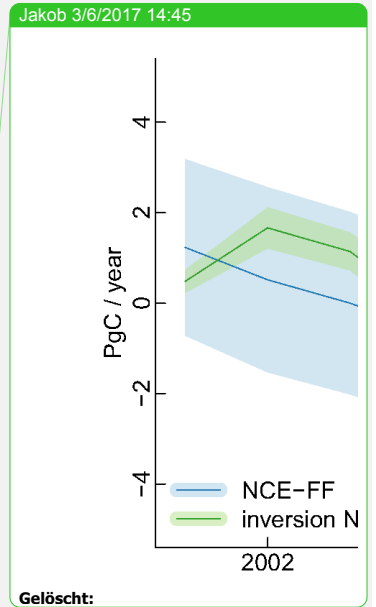


Figure 7. Comparison of NCE-FF with NCE from inversions (by construction without FF) on interannual time scales. Both time series were zero-centered by adding an offset of 13.23 PgC / year for NCE-FF and 3.74 PgC / year for NCE from inversions. Lines show **median**, shading **denotes interquartile range**.



Gelöscht:

Jakob 3/6/2017 14:45

Gelöscht: mean

Jakob 3/6/2017 14:45

Gelöscht: is 1 SD

5

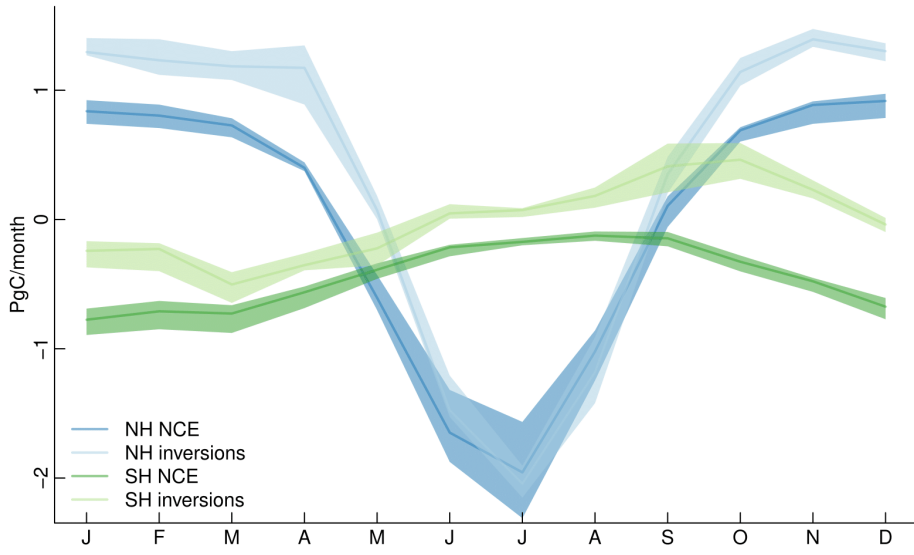


Figure 8. NCE median seasonal cycle and interquartile range for Northern (NH, 0°-90°N, blue) and Southern hemisphere (SH, 90°S-0°, green) for estimates from this study (dark colours) and inversions (light colours).

Jakob 3/6/2017 14:45

Jakob 3/6/2017 14:45

Gelöscht: mean

Jakob 3/6/2017 14:45

Gelöscht: uncertainty (1 SD)