

Initial shifts in nitrogen impact on ecosystem carbon fluxes in an alpine meadow: patterns and causes

Bing Song^{1,2}, Jian Sun¹, Qingping Zhou³, Ning Zong¹, Linghao Li², Shuli Niu^{1*}

¹Key Laboratory of Ecosystem Network Observation and Modeling, Institute of Geographic Sciences and Natural Resources Research, Chinese Academy of Sciences, Datun Road, Beijing 100101, China

²State Key Laboratory of Vegetation and Environmental Change, Institute of Botany, Chinese Academy of Sciences, Xiangshan, Beijing 100093, China

³Institute of Qinghai-Tibetan Plateau, Southwest University for Nationalities, Chengdu, 610041, China

* *Correspondence to:* Shuli Niu (sniu@igsnr.ac.cn)

Abstract

Increases in nitrogen (N) deposition can greatly stimulate ecosystem net carbon (C) sequestration through positive N-induced effects on plant productivity. However, how net ecosystem CO₂ exchange (NEE) and its components respond to different N addition rates remains unclear. Using a N addition gradient experiment (six levels: 0, 2, 4, 8, 16, 32 gN m⁻² year⁻¹) in an alpine meadow on the Qinghai-Tibetan Plateau, we explored the responses of different ecosystem C fluxes to a N addition gradient and revealed mechanisms underlying the dynamic responses. Results showed that NEE, ecosystem respiration (ER), and gross ecosystem production (GEP) all increased linearly with N addition rates in the first year of treatment, but shifted to N saturation responses in the second year with the highest NEE (-7.77 ± 0.48 μmol m⁻² s⁻¹) occurring under N addition rate of 8 gN m⁻² year⁻¹. The saturation responses of NEE and GEP were caused by N-induced accumulation of standing litter, which limited light availability for plant growth, under high N addition. The saturation response of ER was mainly due to the N-induced saturation response of aboveground plant respiration and decreasing soil microbial respiration along the N addition gradient, while decreases in soil microbial respiration under high N addition were caused by N-induced reductions in soil pH. We also found that various components of ER, including aboveground plant

respiration, soil respiration, root respiration, and microbial respiration, responded differentially to the N addition gradient. These results reveal temporal dynamics of N impacts and the rapid shift of ecosystem C fluxes from N limitation to N saturation. Our findings bring evidence of short-term initial shifts of responses of ecosystem C fluxes to increases in N deposition, which should be considered when predicting long-term changes in ecosystem net C sequestration.

1 Introduction

Anthropogenic reactive nitrogen (N) inputs to the terrestrial biosphere has increased more than threefold over the past century and is predicted to increase further (Lamarque et al., 2005; Galloway et al., 2008). Because of the strong coupling of ecosystem carbon (C) and N cycles, excess N deposition could have significant impacts on ecosystem C cycle (LeBauer and Treseder, 2008; Liu and Greaver, 2010; Lu et al., 2011). Ecosystem net C sequestration is predicted to increase or have no significant change under rising N deposition (Nadelhoffer et al., 1999; Magnani et al., 2007; Reay et al., 2008; Niu et al. 2010; Lu et al., 2011; Fernandez-Martinez et al., 2014). However, we have limited understanding on the dynamic N responses of C sequestration in terrestrial ecosystems, which is crucial for model projection of future terrestrial C cycle under rising N deposition (Reay et al., 2008).

Although N addition generally enhances plant growth and ecosystem net primary productivity (NPP) based on global syntheses of N addition experiments (LeBauer and Treseder, 2008; Xia and Wan, 2008; Lu et al., 2011), the responses of ecosystem C fluxes vary with N loading rates (Liu and Greaver, 2010; Lu et al., 2011). According to N saturation hypothesis, NPP is assumed to slowly increase with N addition rates first, then get at the maximum value at N saturation point and finally decline with further increase

of N input (Aber et al., 1989; Lovett and Goodale, 2011). During this process, NPP shifts from a N limited, a N intermediate, to a N saturation stage as N deposition increases. Similarly, the response of net ecosystem CO₂ exchange (NEE) and its components of gross ecosystem production (GEP) and ecosystem respiration (ER) may also respond nonlinearly to increasing N loading rates (Fleischer et al., 2013; Gomez-Casanovas et al., 2016; Tian et al., 2016). In the N limited stage, low rates of N addition could stimulate ecosystem productivity (Aber et al., 1989), GEP (Fleischer et al., 2013; Gomez-Casanovas et al., 2016), and ER (Hasselquist et al., 2012; Zhu et al., 2016), while in the N saturation stage, high doses of N addition could have negative effects on GEP and ER (Treseder, 2008; Janssens et al., 2010; Maaroufi et al., 2015). The unbalanced responses of GEP and ER may lead to changes in NEE.

Moreover, ER can be divided into aboveground plant respiration, belowground plant respiration (root respiration), and soil microbial respiration. These components of ER could be affected by plant aboveground biomass, root biomass, soil organic matter and microbial biomass C, which may respond variously to N addition (Phillips and Fahey, 2007; Hasselquist et al., 2012). For example, root respiration would be enhanced or not significantly changed under N addition, while soil microbial respiration may be suppressed by N addition (Zhou et al., 2014). The different responses of various components of ER to N addition will also consequently change the response of NEE. Nevertheless, there is limited knowledge on how various components of NEE respond differentially to N addition gradient. In addition, the N responses of ecosystem C fluxes may shift with time because of changes in plant community structure and other limiting factors (Niu et al., 2010). It is not clear when and how ecosystem C fluxes get N saturated under increasing N input. The mechanisms underlying the saturation response of C fluxes are even far from clear, which hinders us from accurately predicting the C cycle in response to rising N

deposition.

In this study, we explored the responses of various ecosystem C cycle processes to a N addition gradient in an alpine meadow on the Qinghai-Tibetan Plateau. The Qinghai-Tibetan Plateau has an area of 2.5 million km² with alpine meadow covering 35 % of this area, and it is sensitive to environmental change and human activities (Chen et al., 2013). The objectives of this study were to explore how different components of ecosystem C fluxes respond to increasing N loading gradient. Specifically, we addressed the following questions: (i) how do NEE and its components respond to N addition gradient in the alpine meadow? (ii) whether various C cycle processes can get N saturated? If so, at which N addition level they are saturated and how do the responses shift with time? and (iii) what are the mechanisms underlying N saturation responses of different C cycle processes?

2 Materials and methods

2.1 Study site

The study site is located in an alpine meadow in Hongyuan County, Sichuan Province, China, which is on the eastern Qinghai-Tibetan Plateau (32 °48' N, 102 °33' E). The altitude is ~3500 m. Long-term (1961-2013) mean annual precipitation is 747 mm with approximately 80 % occurring in May to September. Long-term mean annual temperature is 1.5 °C with monthly mean temperature ranging from -9.7 °C in January to 11.1 °C in July. The dominant species in this alpine meadow are *Deschampsia caespitosa* (Linn.) Beauv., *Kobresia setchwanensis* Hand. -Mazz., *Carex schneideri* Nelmes, and *Anemone rivularis* Buch.-Ham.. The vegetation cover of this grassland is over 90 %. The soil in the study site is classified as Mat Cry-gelic Cambisol according to the Chinese classification, with surface soil bulk density being

0.89 g cm⁻³. The soil organic C content and total N content are 37 gC kg⁻¹ and 3.5 gN kg⁻¹, respectively. The background N deposition is ranging from 0.87 to 1.38 gN m⁻² year⁻¹ on the eastern Qinghai-Tibetan Plateau, and the natural N deposition rate in China is ranging from 0.11 to 6.35 gN m⁻² year⁻¹ (Lü and Tian, 2007).

5

2.2 Experimental design

We conducted a N addition experiment with six levels of N addition rate (0, 2, 4, 8, 16, 32 gN m⁻² year⁻¹) in early 2014. The six N treatments were represented by N0 (control), N2, N4, N8, N16, and N32, respectively. The treatments were randomly assigned with five replications, so there were totally 30 plots.

10 Each plot was 8×8 m, and the distance between any two adjacent plots was 3 m. The N addition treatments started from May, 2014. In 2014 and 2015, N was applied by hand as NH₄NO₃ (>99 %) every month from May to September (i.e. during the growing season) before rainfall. The N amount was same in each month. In order to distribute dry NH₄NO₃ evenly in the plots, we mixed dry NH₄NO₃ with enough amounts of soil to apply.

15

2.3 Ecosystem C cycle properties and soil pH measurement

Ecosystem C fluxes were measured using a transparent static chamber (0.5×0.5×0.5 m) attached to an infrared gas analyzer (LI-6400XT; LI-COR Environmental, Lincoln, Nebraska, USA) in the field. During each measurement, the chamber was positioned over a square steel frame, which was permanently
20 inserted into soil and offered a flat base for the chamber. Inside the chamber, two electric fans were mounted in order to mix the chamber atmosphere. The measurements were conducted twice per month

on clear, sunny days from May to September in 2014 and 2015. Nine consecutive recordings of CO₂ concentration were taken on each base at 10-second intervals. CO₂ flux rates were determined from the time-courses of the concentrations to calculate net ecosystem CO₂ exchange (NEE). After the measurement of NEE, the chamber was covered by an opaque cloth and the CO₂ measurement was repeated. As the second measurement eliminated light, the CO₂ flux value obtained represented ecosystem respiration (ER). Gross ecosystem production (GEP) was calculated as the difference between NEE and ER. Negative or positive NEE and GEP values represent net C uptake or release, respectively. The detailed methods have also been described in Niu et al. (2008) and Niu et al. (2013).

Soil respiration (SR) was assessed following the measurement of NEE and ER. It was also measured with LI-6400XT attaching a soil CO₂ flux chamber (991 cm³ in total volume; LI-6400-09; LI-COR Environmental, Lincoln, Nebraska, USA). A PVC collar (10.5 cm in diameter and 5 cm in height) was permanently installed 2-3 cm into the soil. The soil respiration chamber attached to LI-6400XT was placed on each PVC collar for 1-2 minutes to measure SR. Living plants inside the collars were removed regularly by hand to eliminate aboveground plant respiration. Soil heterotrophic respiration (i.e. soil microbial respiration, R_{mic}) was measured using the same method as soil respiration. Differently, the PVC collar was 40 cm in height and installed 36-38 cm into the soil. As >90 % of plant roots were distributing in the topsoil (0-20 cm), 40-cm-long PVC collars could cut off old plant roots and prevented new roots from growing inside the collars. Plants in the collars were completely removed by hand to exclude C supply. The experiment was conducted in early 2014 and the measurements of CO₂ fluxes above these 40-cm-long PVC collars began in late July in 2014, leaving enough time for the remaining plant roots inside the collars to die. Thus CO₂ fluxes in those deep collars represented R_{mic}. The method was same to

Wan et al. (2005) and Zhou et al. (2007). Root respiration (R_{root}) was calculated by value of SR minus R_{mic} . Aboveground plant respiration (R_{above}) was calculated by ER minus SR, and ecosystem plant respiration (R_{plant}) was calculated as the difference between ER and R_{mic} . All the measurements of ecosystem C fluxes were simultaneous.

5 Soil samples were collected from the topsoil (0-10 cm) of the 30 plots on August 15, 2014 and August 14, 2015. Two soil cores (8 cm in diameter and 10 cm in depth) were taken at least 1 m from the edge in each plot, and then completely mixed to get a composite sample. The soil samples were sieved by a 2 mm mesh and then were air-dried for chemical analysis. Soil pH was determined with a glass electrode in a 1:2.5 soil:water solution (w/v).

2.4 Statistical analysis

Repeated-measures ANOVA (RMANOVA) was used to examine N addition effects on each ecosystem C flux over the growing season in 2014 and 2015. When we evaluate N addition effects on the different components of ER and their proportions, we averaged their values across the year and then used one-way ANOVA to test the differences among treatments. To test the response pattern of ecosystem C cycle properties to the N addition gradient, we fitted the response parameter to linear or quadratic functions which had higher R^2 . Simple linear regression analyses were used to evaluate relationships of ER with its components and NEE across the two years. ΔR_{mic} and ΔpH were calculated by data in different N addition treatments minus data in the control treatment. All data were tested for normal distribution before statistical analysis. The a posteriori comparisons were performed by DUNCAN test, and the effects were considered to be significantly different if $P < 0.05$. All statistical analyses were conducted with SAS V.8.1

software (SAS Institute Inc., Cary, North Carolina, USA).

3 Results

3.1 NEE and its components in response to N addition gradient

5 Net ecosystem CO₂ exchange (NEE) varied throughout the growing seasons in both 2014 and 2015. The maximum rates of net CO₂ uptake (indicated by large negative values of NEE) occurred in July in both years (Fig. 1a,d). N addition had a significant impact on NEE in 2014 ($P=0.020$) and a marginally significant effect in 2015 ($P=0.059$) (Table 1). Mean NEE across months had different responses to the N addition gradient between the two years (Fig. 1a,d). It increased linearly with N addition rates in 2014
10 (Fig. 2a), but shifted to a saturating response with N addition rates in 2015 (Fig. 2d). The largest NEE was $-7.77 \pm 0.48 \mu\text{mol m}^{-2} \text{s}^{-1}$ under $8 \text{ gN m}^{-2} \text{year}^{-1}$ addition rate (N8) in 2015.

The N addition gradient had significant effects on ER ($P=0.033$ and 0.006 , respectively) and GEP ($P=0.002$ and 0.038 , respectively) in both 2014 and 2015 (Table 1). Similar to NEE, both ER and GEP showed linear responses to N addition rates in 2014 but shifted to saturation responses in 2015 (Fig. 2).
15 On average, ER was enhanced by 0.9-16.1 % in 2014 and 7.9-23.7 % in 2015 under different N addition treatments. GEP was increased by 2.4-19.2 % in 2014 and 6.7-20.5 % in 2015 under different N addition levels, with maximal values being $-24.40 \pm 0.48 \mu\text{mol m}^{-2} \text{s}^{-1}$ under $32 \text{ gN m}^{-2} \text{year}^{-1}$ in 2014 and $-15.38 \pm 0.72 \mu\text{mol m}^{-2} \text{s}^{-1}$ under $16 \text{ gN m}^{-2} \text{year}^{-1}$ in 2015 (Fig. 2).

20 3.2 Components of ecosystem respiration in response to N addition gradient

We divided ER into aboveground plant respiration (R_{above}), soil respiration (SR), root respiration (R_{root}),

and microbial respiration (R_{mic}), and found that different ER components showed diverse responses to N addition gradient. Mean SR across months was not significantly changed by N addition gradient in 2014 (Table 1; Fig. 3). However, in 2015, it ranged from $4.98 \pm 0.33 \mu\text{mol m}^{-2} \text{s}^{-1}$ to $6.23 \pm 0.23 \mu\text{mol m}^{-2} \text{s}^{-1}$ under different N addition levels, with significant reduction under high N addition levels of 16 and 32 gN $\text{m}^{-2} \text{year}^{-1}$ ($P=0.010$; Fig. 3). Additionally, the relationship between SR and N addition rates was not significant in 2014 (Fig. 3a), while SR leveled off under high N addition rates in 2015 (Fig. 3c). Interestingly, R_{mic} increased linearly with N addition rates in 2014 (Fig. 3b), while it decreased with N addition rates in 2015 (Fig. 3d). Comparing among various components of ER, only R_{mic} showed distinctively inverse responses to N addition rates between years. R_{above} increased with increasing N addition rates in 2014 (Fig. 4b) but got the maximum value at N16 in 2015 (Fig. 4e). By contrast, R_{root} decreased with increasing N addition rates in 2014 (Fig. 4c), while it had no statistically significant response to N addition gradient in 2015 (Fig. 4f).

In addition, the proportions of different efflux components to ER differed in response to N addition gradient between years (Fig. 5). The proportions of R_{above} to ER kept increasing with N addition rates in 2014 but got saturated at N16 in 2015 (Fig. 5a,d). The proportions of R_{root} to ER ranged from $31.90 \pm 6.69 \%$ in N0 plots to $11.18 \pm 1.28 \%$ in N32 plots in 2014 (Fig. 5b), but was not significantly different among N addition levels in 2015 (Table 1; Fig. 5e). In 2014, the contributions of R_{mic} to ER did not significantly change under N addition treatments (Table 1; Fig. 5c), whereas they declined along the N addition gradient in 2015 (Fig. 5f).

3.3 Causes for the N saturation responses of ecosystem C fluxes

In order to examine the causes for the N saturation responses of NEE and ER in 2015, we examined the relationship between ER and its various components and also NEE. The results showed that ER had significantly positive correlation with R_{above} (Fig. 6a) but not with R_{root} (Fig. 6b), and had significantly negative correlation with R_{mic} (Fig. 6c). Moreover, NEE closely correlated with ER (Fig. 6d). We further explored the causes for decreasing R_{mic} with N addition in 2015 and found that N addition significantly reduced soil pH in 2015 (Fig. 7a). N-induced reduction in soil microbial respiration (ΔR_{mic}) was positively dependent on N-induced reduction in soil pH (ΔpH) in 2015 (Fig. 7b), but not in 2014.

4 Discussion

4.1 Nitrogen saturation responses of ecosystem C fluxes and the causes

Our results showed that initial ecosystem C fluxes (NEE, ER, and GEP) in 2014 suggested ecosystem N limitation, whereas in 2015 these C fluxes clearly suggested N saturation under high N addition rates. These findings not only extend the N saturation hypothesis for the response of NPP to N addition (Aber et al., 1998; Aber et al., 1989; Lovett and Goodale, 2011), but also provide comprehensive evidence of potential relationships between various ecosystem C fluxes and ecosystem N dynamics. Previous N addition studies used only one level of N addition and found that NEE showed a positive (Niu et al., 2010; Huff et al., 2015) or no significant response (Harpole et al., 2007; Bubier et al., 2007) to N addition. Using one level of N addition only might not be enough to capture or quantify complex ecosystem responses to N addition. By using a N addition gradient experiment, this study comprehensively showed the saturation responses of NEE and its components to different N loading rates.

The N saturation response of NEE in 2015 was mainly attributed to the saturation responses of ER

and GEP (Fig. 2), while the N saturation response of ER was likely caused by the saturation response of aboveground plant respiration and decreasing soil microbial respiration along the N addition gradient. The decrease of aboveground plant respiration under N32 treatment was primarily due to that N addition stimulated plant growth and thus standing litter accumulation after plant senescence (Fig. S1-S2). In 2014, plant aboveground biomass (AGB) was stimulated under high N addition treatment, especially AGB of grasses (Fig. S2). In this grassland, grasses usually have higher height than other plants. The accumulation of grasses standing litter under N32 treatment limited light condition for other plants and negatively influenced plant growth in the early growing season in 2015. Therefore, GEP and NEE did not keep increasing at the highest N addition rate, leading to N saturation response. The N-induced light limitation for plant growth was also observed in other ecosystems, like temperate grassland (Niu et al., 2010; Kim and Henry, 2013). Moreover, our results showed that most components of ER had similar response patterns between the two years except soil microbial respiration that increased in 2014 but decreased in 2015 along with N addition rates. Thus, we propose that soil microbial respiration might play a key role in mediating the N saturation effects for ER and thus NEE, which is not reported in previous studies. The decline of microbial respiration under high N addition conditions was primarily due to the N-induced reduction in soil pH (Fig. 7). Although many factors can influence soil microbial respiration, such as soil N availability and microbial community structure (Janssens et al., 2010), previous studies with similar N addition gradient suggested that soil pH was the most important driver for responses of microbes under high N addition rates (Liu et al., 2014; Song et al., 2014; Chen et al., 2016). N addition can lead to soil acidification and bring negative impacts on soil microbial growth and activities (Liu et al., 2014; Tian et al., 2016). In this study, the decreased soil pH may cause toxicity effects on microbial activity (Treseder,

2008; Zhou et al., 2012) and thus reduces microbial respiration after two years of N addition.

4.2 The time and N threshold for the saturation responses

Our findings demonstrate that N responses of ecosystem C fluxes shifted from linear response to
5 saturation response over the two years of treatments (Fig. 2). A recent study revealed that ecosystem C
fluxes exhibited saturating responses to N addition during two consecutive measurement years in a
temperate grassland (Tian et al., 2016). However, their measurement was conducted after ten years of N
addition treatments (similar N addition rates with our study), so it did not capture the early response
signals of ecosystem C exchange. Results of another N addition gradient experiment carried out in three
10 marsh ecosystems showed that aboveground plant biomass increased linearly with N addition rates after
seven months of treatment, but showed saturating responses after 14 months of N addition (Vivanco et
al., 2015). Taken together with our results, it suggests that N saturation of ecosystem C fluxes might
happen within couple years of N input. The different responses between years in this study are not likely
due to climate differences, because temperature and precipitation were not significantly different between
15 2014 and 2015. We acknowledge that our findings are just based on the short-term study, while long-time
experiment may capture more robust patterns on N saturation and the underlying mechanisms, but the
findings of the initial shift of N responses are helpful to better understand the dynamics of ecosystem in
response to external N input.

The N saturation threshold for ecosystem C fluxes of this alpine meadow is approximately 8 gN m^{-2}
20 year^{-1} . This level is much higher than that in an alpine steppe on the Qinghai-Tibetan Plateau (Liu et al.,
2013). In Liu et al.'s study, biomass N concentration, soil N_2O flux, N-uptake efficiency and N-use

efficiency showed saturating responses at N addition rate of $4 \text{ gN m}^{-2} \text{ year}^{-1}$. The discrepancy is probably caused by different precipitation at the two sites. The precipitation is 747 mm in our study site and is 415 mm in their study site. The lower precipitation may constrain ecosystem's response to N addition in Liu et al. (2013). Likewise, the N saturation load in our alpine meadow is higher than that in an alpine dry meadow in Colorado (Bowman et al., 2006) and is comparable with that in a temperate steppe of Eurasian grasslands which found a saturation N addition rate of approximately $10.5 \text{ gN m}^{-2} \text{ year}^{-1}$ (Bai et al., 2010). The higher saturation levels indicate that this alpine meadow is more limited by N comparing with other resources. Furthermore, the N critical load for causing changes in ecosystem C cycle processes is around $2 \text{ gN m}^{-2} \text{ year}^{-1}$ in this alpine meadow. In the first year, ecosystem C exchanges were not significantly different between N0 and N2 treatments, but C fluxes were greater in N2 plots than that in N0 plots in the second year (Fig. 1). This threshold for triggering changes in ecosystem C fluxes is comparable to that in another alpine meadow on the mid-south of the Tibetan Plateau (Zong et al., 2016). Considering that atmospheric wet N deposition is ranging from 0.87 to $1.38 \text{ gN m}^{-2} \text{ year}^{-1}$ on the eastern Qinghai-Tibetan Plateau (Lü and Tian, 2007), our estimate on N critical load suggests that ecosystem C cycle may be largely affected under future N deposition in the alpine meadow of Qinghai-Tibetan Plateau.

4.3 Diverse responses of C flux components to N addition gradient

The components of ER showed diverse responses to the N addition gradient (Fig. 4,5). For example, in 2014, aboveground plant respiration and its proportion to ER increased, but belowground plant respiration and its proportion to ER decreased with N addition amounts (Fig. 4b,c, Fig.5a,b). To our knowledge, no previous study examined different components of ER in response to N addition gradient. Some studies

conducted in alpine grassland demonstrated that N addition had no significant effects on ER (Jiang et al., 2013; Gong et al., 2014), since aboveground biomass did not respond to N addition in their studies. In this study, comparing to the control treatment (without N addition), greater plant growth and aboveground biomass under N addition enhanced aboveground plant respiration and thus stimulated ER. The lack of N effect on soil respiration (SR) in 2014 may be attributed to the counteractive responses of soil microbial respiration and root respiration to N addition. In the first year, N addition ameliorated the nutrient limitation for microbes, thus soil microbial activity and biomass increased in short term (Treseder, 2008) and subsequently stimulated microbial respiration (Peng et al., 2011). On the other hand, N addition could reduce belowground biomass allocation (Haynes and Gower, 1995), leading to decrease in root respiration. The increase of soil microbial respiration partly offsets the decrease of root respiration. As a result, SR had no significant difference among N treatments in the first year. However, in the second year, soil microbial respiration declined under high N addition levels, in combination with the low root respiration, resulting in decreases of SR under N16 and N32 treatments. This decrease in SR was also observed in other ecosystems under long-term or high levels of N addition (Yan et al., 2010; Zhou and Zhang, 2014; Maaroufi et al., 2015). We are fully aware that there are some limitations for the partitioning technique, by which we used deep versus shallow collars to partition root from microbial respiration. This approach excludes effects of changes in plant C allocation on microbial respiration. However, microbial respiration responses are not solely plant-mediated (Janssens et al., 2010). The method we used is still a common and useful technique to partition the components of ER, which is widely used in previous studies (Wan et al., 2005; Zhou et al., 2007).

5 Conclusions

Based on a field N addition gradient experiment, this study tested N saturation theory against multiple C cycle processes. We found that ecosystem C fluxes of NEE, GEP, and ER shifted from linear responses to saturation responses over two years of N addition. The saturation responses of NEE and ER were mainly caused by the N-induced saturation response of aboveground plant respiration and decreasing soil microbial respiration along the N addition gradient. N-induced reduction in soil pH was the main mechanism underlying declines in microbial respiration under high N addition. We also revealed that various components of ER, including aboveground plant respiration, soil respiration, root respiration, and microbial respiration, responded differentially to N addition gradient. The findings suggest that the C cycle processes have differential responses to N addition between aboveground and belowground plant parts, and between plants and microbes. Our findings provide experimental evidences for the dynamic N responses of ecosystem C cycle, which is helpful for parameterizing biogeochemical models and guiding ecosystem management in light of future increasing N deposition.

15 Acknowledgements

The authors thank Xiaojing Qin, Yanfang Li, Fangyue Zhang, QuanQuan, Zheng Fu, Qingxiao Yang and Xiaoqiong Huang for their help in field measurement. We thank the staff of Institute of Qinghai-Tibetan Plateau in Southwest University for Nationalities. This study was financially supported by National Natural Science Foundation of China (31625006, 31470528), the Ministry of Science and Technology of China (2016YFC0501803, 2013CB956300), the “Thousand Youth Talents Plan”, and West Light Foundation of the Chinese Academy of Sciences.

References

- Aber, J. D., Nadelhoffer, K. J., Steudler, P., and Melillo, J. M.: Nitrogen saturation in northern forest ecosystems, *BioScience*, 39, 378-286, 1989.
- 5 Aber, J. D., McDowell, W., Nadelhoffer, K., Magill, A., Berntson, G., Kamakea, M., McNulty, S., Currie, W., Rustad, L., and Fernandez, I.: Nitrogen saturation in temperate forest ecosystems - Hypotheses revisited, *BioScience*, 48, 921-934, doi: 10.2307/1313296, 1998.
- Bai, Y., Wu, J., Clark, C. M., Naeem, S., Pan, Q., Huang, J., Zhang, L., and Han, X.: Tradeoffs and thresholds in the effects of nitrogen addition on biodiversity and ecosystem functioning: evidence
10 from Inner Mongolia Grasslands, *Global Change Biology*, 16, 358-372, doi: 10.1111/j.1365-2486.2009.01950.x, 2010.
- Bowman, W. D., Gartner, J. R., Holland, K., and Wiedermann, M.: Nitrogen critical loads for alpine vegetation and terrestrial ecosystem response: Are we there yet?, *Ecological Applications*, 16, 1183-1193, 2006.
- 15 Bubier, J. L., Moore, T. R., and Bledzki, L. A.: Effects of nutrient addition on vegetation and carbon cycling in an ombrotrophic bog, *Global Change Biology*, 13, 1168-1186, doi: 10.1111/j.1365-2486.2007.01346.x, 2007.
- Chapin III, F. S., Matson, P. A., and Vitousek, P.: *Principles of terrestrial ecosystem ecology*, Springer, 2011.
- 20 Chen, D., Li, J., Lan, Z., Hu, S., and Bai, Y.: Soil acidification exerts a greater control on soil respiration than soil nitrogen availability in grasslands subjected to long-term nitrogen enrichment, *Functional*

Ecology, 30, 658–669, 2016.

Chen, H., Zhu, Q., Peng, C., Wu, N., Wang, Y., Fang, X., Gao, Y., Zhu, D., Yang, G., and Tian, J.: The impacts of climate change and human activities on biogeochemical cycles on the Qinghai - Tibetan Plateau, *Global Change Biology*, 19, 2940-2955, 2013.

5 Fernandez-Martinez, M., Vicca, S., Janssens, I. A., Sardans, J., Luyssaert, S., Campioli, M., Chapin, F. S., Ciais, P., Malhi, Y., Obersteiner, M., Papale, D., Piao, S. L., Reichstein, M., Roda, F., and Penuelas, J.: Nutrient availability as the key regulator of global forest carbon balance, *Nature Climate Change*, 4, 471-476, doi: 10.1038/Nclimate2177, 2014.

10 Fleischer, K., Rebel, K. T., van der Molen, M. K., Erisman, J. W., Wassen, M. J., van Loon, E. E., Montagnani, L., Gough, C. M., Herbst, M., Janssens, I. A., Gianelle, D., and Dolman, A. J.: The contribution of nitrogen deposition to the photosynthetic capacity of forests, *Global Biogeochemical Cycles*, 27, 187-199, doi: 10.1002/gbc.20026, 2013.

Galloway, J. N., Townsend, A. R., Erisman, J. W., Bekunda, M., Cai, Z. C., Freney, J. R., Martinelli, L. A., Seitzinger, S. P., and Sutton, M. A.: Transformation of the nitrogen cycle: Recent trends, 15 questions, and potential solutions, *Science*, 320, 889-892, doi: 10.1126/science.1136674, 2008.

Gomez-Casanovas, N., Hudiburg, T. W., Bernacchi, C. J., Parton, W. J., and Delucia, E. H.: Nitrogen deposition and greenhouse gas emissions from grasslands: Uncertainties and future directions, *Global Change Biology*, 22, 1348-1360, doi: 10.1111/gcb.13187, 2016.

Gong, Y., Mohammat, A., Liu, X., Li, K., Christie, P., Fang, F., Song, W., Chang, Y., Han, W., and Lü X.: 20 Response of carbon dioxide emissions to sheep grazing and N application in an alpine grassland- Part 1: Effect of sheep grazing, *Biogeosciences*, 11, 1743-1750, 2014.

- Harpole, W. S., Potts, D. L., and Suding, K. N.: Ecosystem responses to water and nitrogen amendment in a California grassland, *Global Change Biology*, 13, 2341-2348, doi: 10.1111/j.1365-2486.2007.01447.x, 2007.
- 5 Hasselquist, N. J., Metcalfe, D. B., and Högberg, P.: Contrasting effects of low and high nitrogen additions on soil CO₂ flux components and ectomycorrhizal fungal sporocarp production in a boreal forest, *Global Change Biology*, 18, 3596-3605, 2012.
- Haynes, B. E., and Gower, S. T.: Belowground carbon allocation in unfertilized and fertilized red pine plantations in northern Wisconsin, *Tree physiology*, 15, 317-325, 1995.
- 10 Huff, L. M., Potts, D. L., and Hamerlynck, E. P.: Ecosystem CO₂ exchange in response to nitrogen and phosphorus addition in a restored, temperate Grassland, *The American Midland Naturalist*, 173, 73-87, 2015.
- Janssens, I., Dieleman, W., Luyssaert, S., Subke, J.-A., Reichstein, M., Ceulemans, R., Ciais, P., Dolman, A. J., Grace, J., and Matteucci, G.: Reduction of forest soil respiration in response to nitrogen deposition, *Nature Geoscience*, 3, 315-322, 2010.
- 15 Jiang, J., Zong, N., Song, M., Shi, P., Ma, W., Fu, G., Shen, Z., Zhang, X., and Ouyang, H.: Responses of ecosystem respiration and its components to fertilization in an alpine meadow on the Tibetan Plateau, *European Journal of Soil Biology*, 56, 101-106, 2013.
- Kim, M. K., and Henry, H. A.: Net ecosystem CO₂ exchange and plant biomass responses to warming and N addition in a grass-dominated system during two years of net CO₂ efflux, *Plant and Soil*, 371, 20 409-421, 2013.
- Lü, C. Q., and Tian, H. Q.: Spatial and temporal patterns of nitrogen deposition in China: synthesis of

observational data, *Journal of Geophysical Research: Atmospheres* (1984–2012), 112, 2007.

Lamarque, J. F., Kiehl, J. T., Brasseur, G. P., Butler, T., Cameron-Smith, P., Collins, W. D., Collins, W. J., Granier, C., Hauglustaine, D., Hess, P. G., Holland, E. A., Horowitz, L., Lawrence, M. G., McKenna, D., Merilees, P., Prather, M. J., Rasch, P. J., Rotman, D., Shindell, D., and Thornton, P.: Assessing
5 future nitrogen deposition and carbon cycle feedback using a multimodel approach: Analysis of nitrogen deposition, *Journal of Geophysical Research-Atmospheres*, 110, Artn D19303, doi: 10.1029/2005jd005825, 2005.

LeBauer, D. S., and Treseder, K. K.: Nitrogen limitation of net primary productivity in terrestrial ecosystems is globally distributed, *Ecology*, 89, 371-379, doi: 10.1890/06-2057.1, 2008.

10 Liu, L. L., and Greaver, T. L.: A global perspective on belowground carbon dynamics under nitrogen enrichment, *Ecology Letters*, 13, 819-828, doi: 10.1111/j.1461-0248.2010.01482.x, 2010.

Liu, W., Jiang, L., Hu, S., Li, L., Liu, L., and Wan, S.: Decoupling of soil microbes and plants with increasing anthropogenic nitrogen inputs in a temperate steppe, *Soil Biology and Biochemistry*, 72, 116-122, 2014.

15 Liu, Y. W., Xu, X. L., Wei, D., Wang, Y. H., and Wang, Y. S.: Plant and soil responses of an alpine steppe on the Tibetan Plateau to multi-level nitrogen addition, *Plant and Soil*, 373, 515-529, 2013.

Lovett, G. M., and Goodale, C. L.: A new conceptual model of nitrogen saturation based on experimental nitrogen addition to an oak forest, *Ecosystems*, 14, 615-631, doi: 10.1007/s10021-011-9432-z, 2011.

Lu, M., Zhou, X. H., Luo, Y. Q., Yang, Y. H., Fang, C. M., Chen, J. K., and Li, B.: Minor stimulation of
20 soil carbon storage by nitrogen addition: A meta-analysis, *Agriculture Ecosystems & Environment*, 140, 234-244, doi: 10.1016/j.agee.2010.12.010, 2011.

- Maaroufi, N. I., Nordin, A., Hasselquist, N. J., Bach, L. H., Palmqvist, K., and Gundale, M. J.: Anthropogenic nitrogen deposition enhances carbon sequestration in boreal soils, *Global Change Biology*, 21, 3169-3180, 2015.
- Magnani, F., Mencuccini, M., Borghetti, M., Berbigier, P., Berninger, F., Delzon, S., Grelle, A., Hari, P., Jarvis, P. G., and Kolari, P.: The human footprint in the carbon cycle of temperate and boreal forests, *Nature*, 447, 849-851, 2007.
- Nadelhoffer, K. J., Emmett, B. A., Gundersen, P., Kjonaas, O. J., Koopmans, C. J., Schleppi, P., Tietema, A., and Wright, R. F.: Nitrogen deposition makes a minor contribution to carbon sequestration in temperate forests, *Nature*, 398, 145-148, doi: 10.1038/18205, 1999.
- Niu, S., Wu, M., Han, Y., Xia, J., Li, L., and Wan, S.: Water-mediated responses of ecosystem carbon fluxes to climatic change in a temperate steppe, *New Phytologist*, 177, 209-219, 2008.
- Niu, S., Sherry, R. A., Zhou, X., and Luo, Y.: Ecosystem carbon fluxes in response to warming and clipping in a tallgrass prairie, *Ecosystems*, 16, 948-961, 2013.
- Niu, S. L., Wu, M. Y., Han, Y., Xia, J. Y., Zhang, Z., Yang, H. J., and Wan, S. Q.: Nitrogen effects on net ecosystem carbon exchange in a temperate steppe, *Global Change Biology*, 16, 144-155, doi: 10.1111/j.1365-2486.2009.01894.x, 2010.
- Peng, Q., Dong, Y., Qi, Y., Xiao, S., He, Y., and Ma, T.: Effects of nitrogen fertilization on soil respiration in temperate grassland in Inner Mongolia, China, *Environmental Earth Sciences*, 62, 1163-1171, 2011.
- Phillips, R. P., and Fahey, T. J.: Fertilization effects on fineroot biomass, rhizosphere microbes and respiratory fluxes in hardwood forest soils, *New Phytologist*, 176, 655-664, 2007.

- Reay, D. S., Dentener, F., Smith, P., Grace, J., and Feely, R. A.: Global nitrogen deposition and carbon sinks, *Nature Geoscience*, 1, 430-437, 2008.
- Song, B., Niu, S. L., Li, L. H., Zhang, L. X., and Yu, G. R.: Soil carbon fractions in grasslands respond differently to various levels of nitrogen enrichments, *Plant and Soil*, 384, 401-412, 2014.
- 5 Tian, D. S., Niu, S. L., Pan, Q. M., Ren, T. T., Chen, S. Q., Bai, Y. F., and Han, X. G.: Nonlinear responses of ecosystem carbon fluxes and water-use efficiency to nitrogen addition in Inner Mongolia grassland, *Functional Ecology*, 30, 490-499, doi: 10.1111/1365-2435.12513, 2016.
- Treseder, K. K.: Nitrogen additions and microbial biomass: A meta-analysis of ecosystem studies, *Ecology Letters*, 11, 1111-1120, doi: 10.1111/j.1461-0248.2008.01230.x, 2008.
- 10 Vivanco, L., Irvine, I. C., and Martiny, J. B. H.: Nonlinear responses in salt marsh functioning to increased nitrogen addition, *Ecology*, 96, 936-947, doi: 10.1890/13-1983.1, 2015.
- Wan, S., Hui, D., Wallace, L., and Luo, Y.: Direct and indirect effects of experimental warming on ecosystem carbon processes in a tallgrass prairie, *Global Biogeochemical Cycles*, 19, 2005.
- Xia, J. Y., and Wan, S. Q.: Global response patterns of terrestrial plant species to nitrogen addition, *New*
15 *Phytologist*, 179, 428-439, doi: 10.1111/j.1469-8137.2008.02488.x, 2008.
- Yan, L., Chen, S., Huang, J., and Lin, G.: Differential responses of auto- and heterotrophic soil respiration to water and nitrogen addition in a semiarid temperate steppe, *Global Change Biology*, 16, 2345-2357, 2010.
- Zhou, L. Y., Zhou, X. H., Zhang, B. C., Lu, M., Luo, Y. Q., Liu, L. L., and Li, B.: Different responses of
20 soil respiration and its components to nitrogen addition among biomes: A meta-analysis, *Global Change Biology*, 20, 2332-2343, doi: 10.1111/Gcb.12490, 2014.

- Zhou, X., Wan, S., and Luo, Y.: Source components and interannual variability of soil CO₂ efflux under experimental warming and clipping in a grassland ecosystem, *Global Change Biology*, 13, 761-775, 2007.
- 5 Zhou, X., Zhang, Y., and Downing, A.: Non-linear response of microbial activity across a gradient of nitrogen addition to a soil from the Gurbantunggut Desert, northwestern China, *Soil Biology and Biochemistry*, 47, 67-77, 2012.
- Zhou, X., and Zhang, Y.: Seasonal pattern of soil respiration and gradual changing effects of nitrogen addition in a soil of the Gurbantunggut Desert, northwestern China, *Atmospheric Environment*, 85, 187-194, 2014.
- 10 Zhu, C., Ma, Y. P., Wu, H. H., Sun, T., La Pierre, K. J., Sun, Z. W., and Yu, Q.: Divergent Effects of nitrogen addition on soil respiration in a semiarid grassland, *Scientific Reports*, 6, doi: 10.1038/srep33541, 2016.
- Zong, N., Shi, P., Song, M., Zhang, X., Jiang, J., and Chai, X.: Nitrogen critical loads for an alpine meadow ecosystem on the Tibetan Plateau, *Environmental management*, 57, 531-542, doi: 10.1007/s00267-015-0626-6, 2016.
- 15

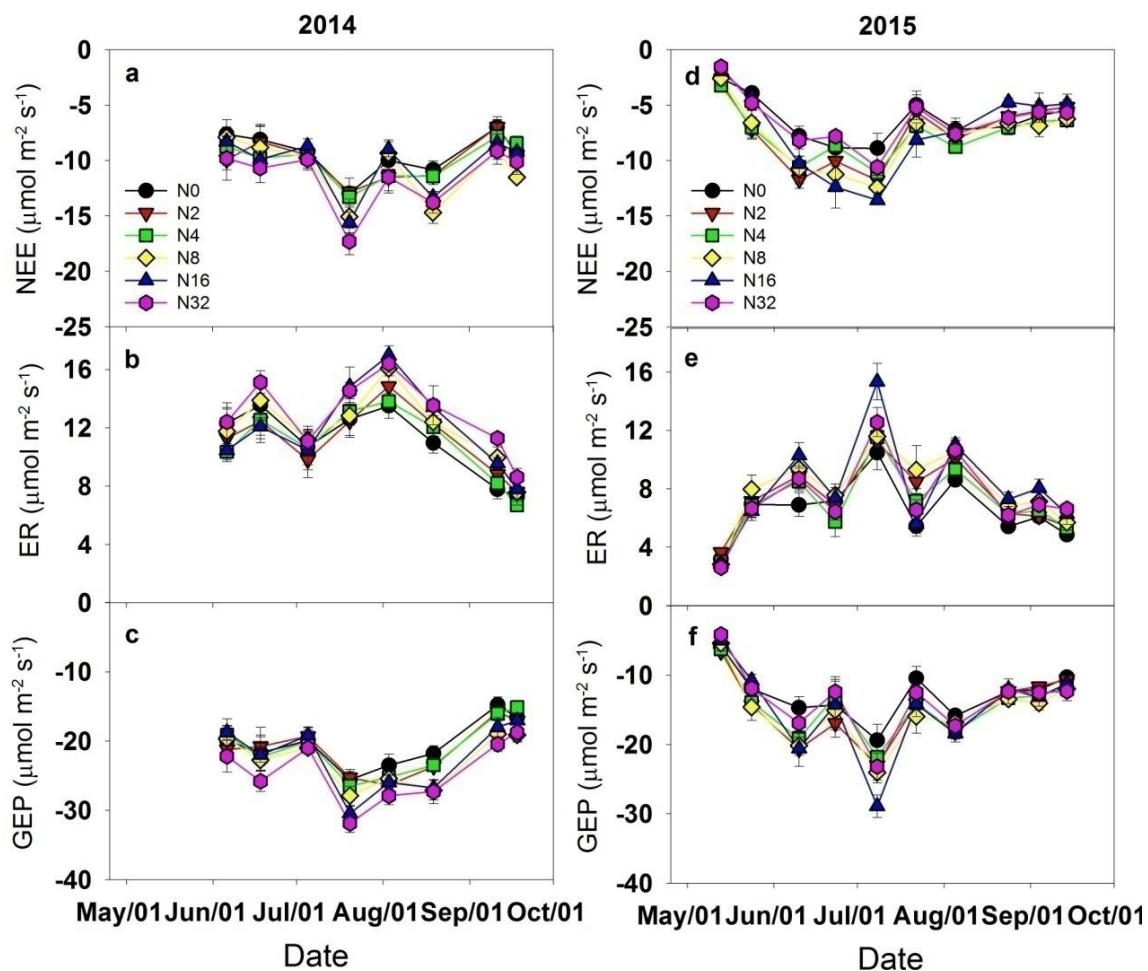


Figure 1. Seasonal dynamics of net ecosystem CO₂ exchange (NEE) (a, d), ecosystem respiration (ER) (b, e), and gross ecosystem production (GEP) (c, f) in 2014 and 2015. N0, N2, N4, N8, N16, N32 represent N addition rate of 0, 2, 4, 8, 16, 32 gN m⁻² year⁻¹, respectively.

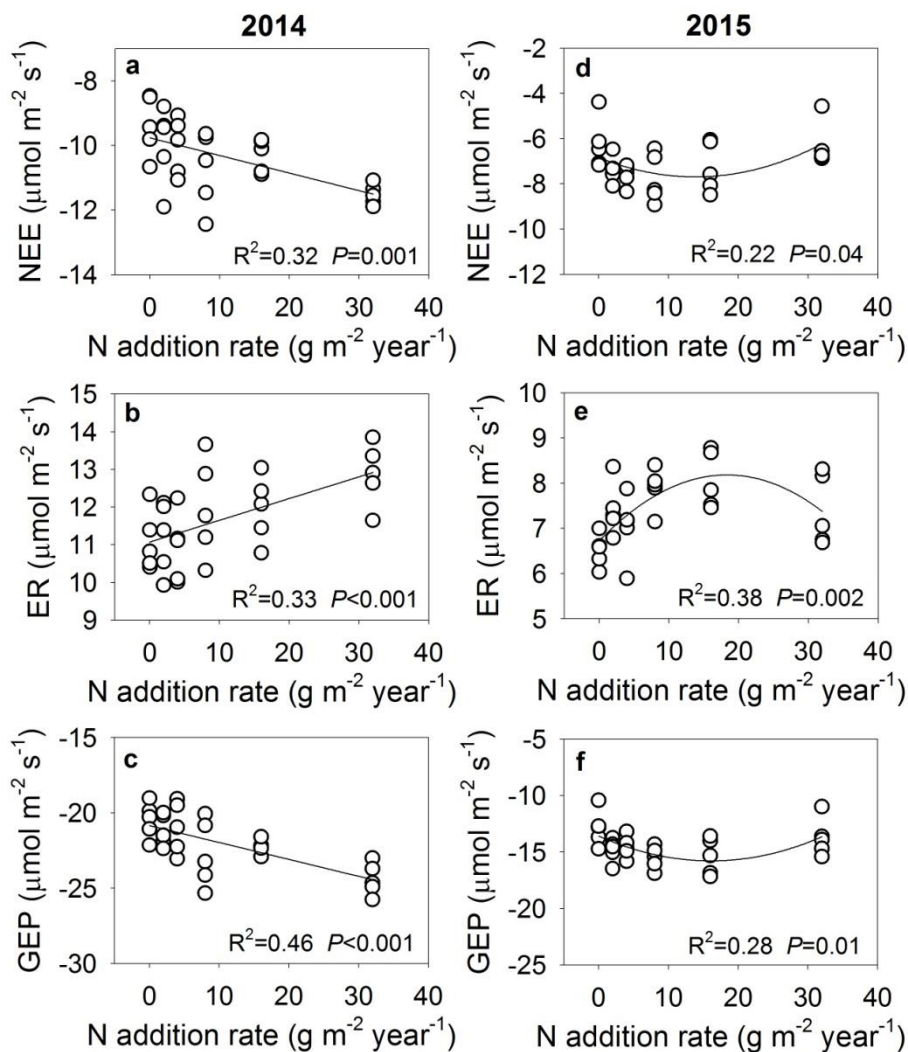


Figure 2. Relationships between N addition rate and net ecosystem CO₂ exchange (NEE) (a, d), ecosystem respiration (ER) (b, e), and gross ecosystem production (GEP) (c, f) in 2014 and 2015.

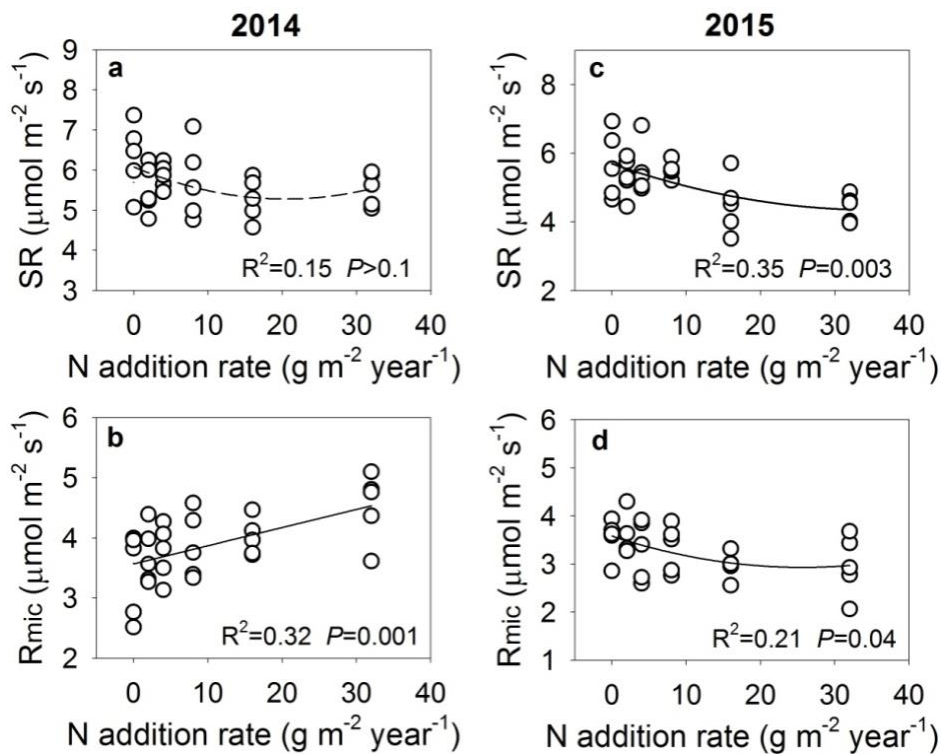


Figure 3. Relationships between N addition rate and soil respiration (SR) (a, c), and soil microbial respiration (R_{mic}) (b, d) in 2014 and 2015.

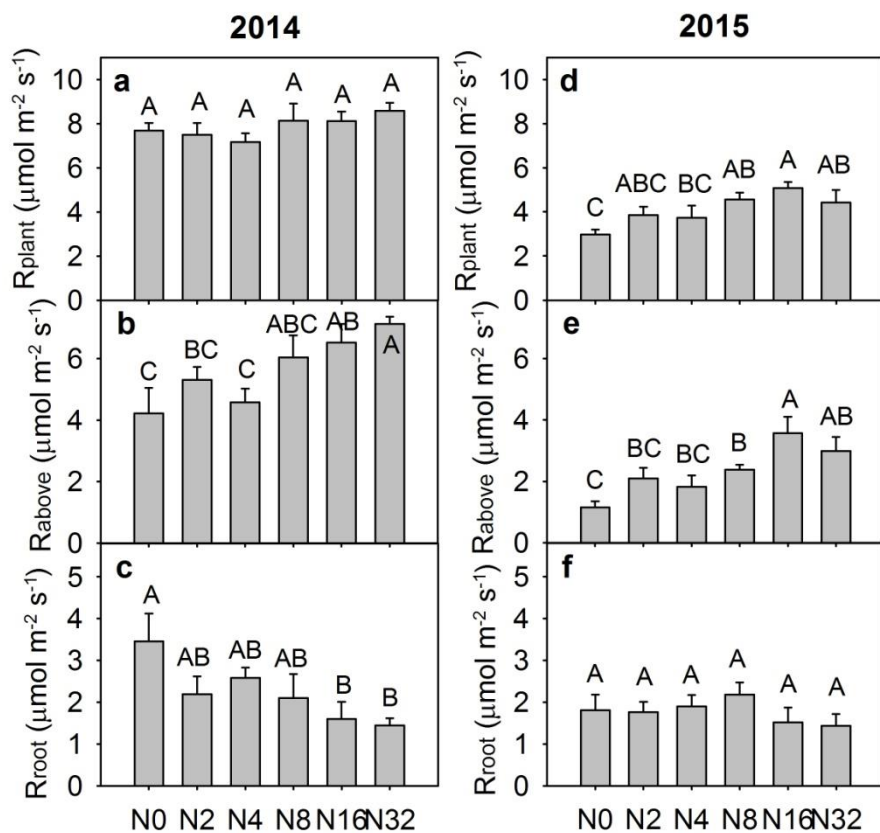


Figure 4. Plant respiration and its components in response to the N addition gradient in 2014 and 2015 (mean \pm SE, $n = 5$). R_{plant} : plant respiration (a, d), R_{above} : aboveground plant respiration (b, e), R_{root} : plant root respiration (c, f). N0, N2, N4, N8, N16, N32 represent N addition rate of 0, 2, 4, 8, 16, 32 $\text{gN m}^{-2} \text{year}^{-1}$, respectively.

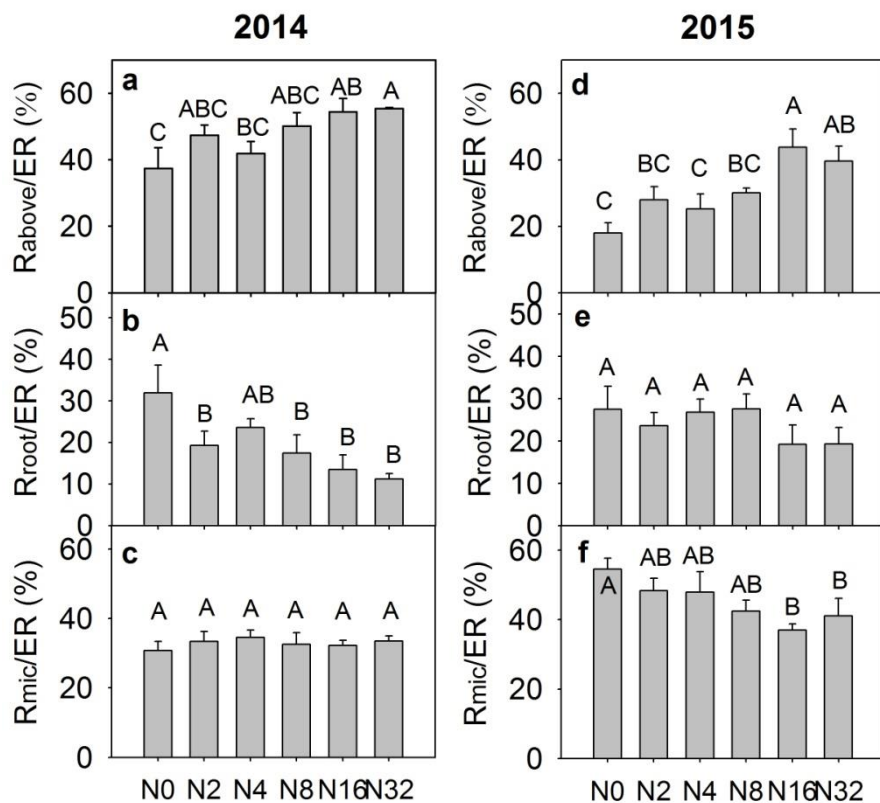


Figure 5. The contributions of different source components to ecosystem respiration (ER) in response to the N addition gradient in 2014 and 2015 (mean \pm SE, $n = 5$). **R_{above}**: aboveground plant respiration, **R_{root}**: plant root respiration, **R_{mic}**: soil microbial respiration. N0, N2, N4, N8, N16, N32 represent N addition rate of 0, 2, 4, 8, 16, 32 gN m⁻² year⁻¹, respectively.

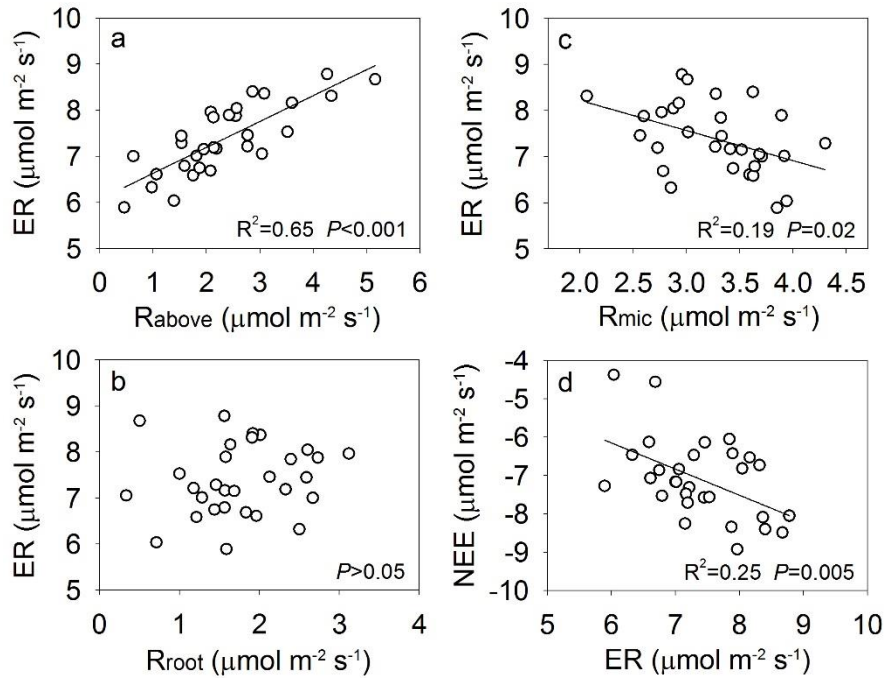


Figure 6. Relationships between aboveground plant respiration (R_{above}), root respiration (R_{root}), soil microbial respiration (R_{mic}) and ecosystem respiration (ER) (a,b,c), ER and net ecosystem CO₂ exchange(NEE) (d) across all plots in 2015.

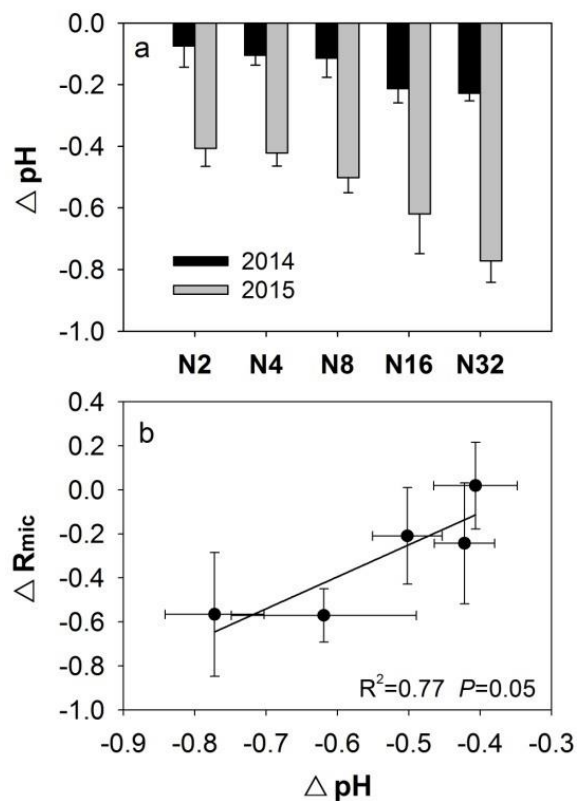


Figure 7. N-induced changes in soil pH (ΔpH) (a) (mean \pm SE, $n = 5$) and the dependence of N-induced changes in soil microbial respiration (ΔR_{mic}) on N-induced changes in soil pH (ΔpH) in 2015 (b). N2, N4, N8, N16, N32 represent N addition rate of 2, 4, 8, 16, 32 $\text{gN m}^{-2} \text{year}^{-1}$, respectively.

Table 1. Results (F and P values) of one-way ANOVA on the effects of nitrogen addition on ecosystem C fluxes in 2014 and 2015. NEE: net ecosystem CO₂ exchange, ER: ecosystem respiration, GEP: gross ecosystem production, SR: soil respiration, R_{mic}: soil microbial respiration, R_{plant}: plant respiration, R_{above}: aboveground plant respiration, R_{root}: plant root respiration.

	df	NEE		ER		GEP		SR		R _{mic}	
		F	P	F	P	F	P	F	P	F	P
2014	5	3.35	0.020	2.95	0.033	5.37	0.002	1.56	0.209	1.49	0.246
2015	5	2.50	0.059	4.35	0.006	2.83	0.038	3.94	0.010	1.40	0.259

	df	R _{plant}		R _{above}		R _{root}		R _{above} /ER		R _{root} /ER		R _{mic} /ER	
		F	P	F	P	F	P	F	F	F	P	F	P
2014	5	1.06	0.409	3.84	0.011	2.64	0.049	3.08	0.027	3.56	0.015	0.28	0.919
2015	5	3.25	0.022	5.38	0.002	0.78	0.573	5.54	0.002	0.97	0.456	2.46	0.062