

Supplement Information for

**Along-stream transport and transformation of dissolved organic
matter in a large tropical river**

Thibault Lambert^{1,*}, Cristian R. Teodoru², Frank C. Nyoni³, Steven Bouillon², François
Darchambeau¹, Philippe Massicotte⁴ and Alberto V. Borges¹.

¹ University of Liège, Chemical Oceanography Unit, Liège, Belgium

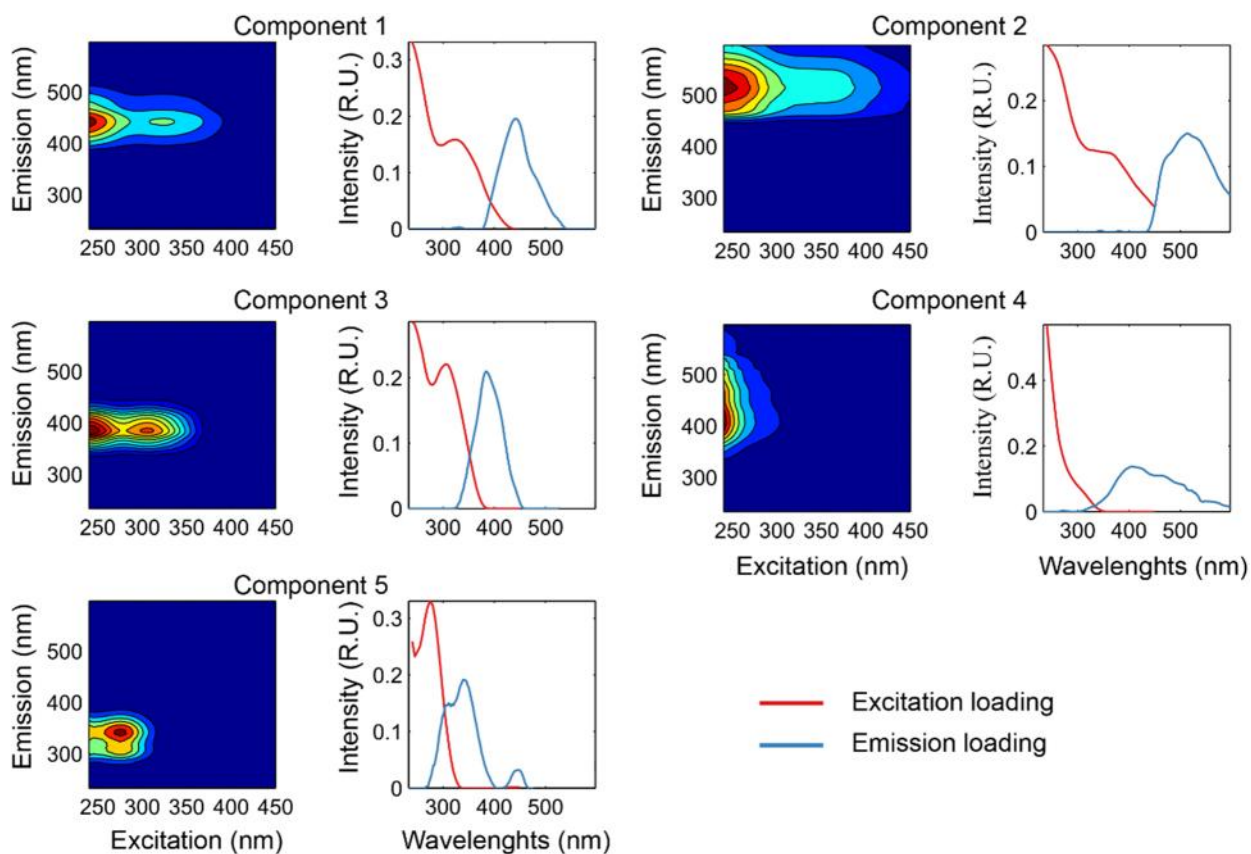
² KU Leuven, Department of Earth and Environmental Sciences, Leuven, Belgium

³ University of Zambia, Integrated Water Resources Management Center,
Lusaka, Zambia

⁴ Aarhus University, Department of Bioscience, Denmark

* Corresponding author

Supplementary Figure 1 – Spectral properties of the five fluorophores identified by the parallel factor analysis (PARAFAC). Line plots represent emission (blue lines) and excitation (red lines) loadings for each components. Color scale indicates the fluorescence intensity varying from low (blue) to high (red) in Raman's units.



Supplementary Figure 2 – Land cover map of the Zambezi Basin (data from Mayaux et al. 2004).

