

Interactive comment on “Plant n-alkane production from litterfall altered the diversity and community structure of alkane degrading bacteria in litter layer in lowland subtropical rainforest in Taiwan” by Tung-Yi Huang et al.

Tung-Yi Huang et al.

cwfan@mail.eq.ccu.edu.tw

Received and published: 24 September 2017

We would like to appreciate referee #2 for the valid comments. Our responses have been submitted in an attached pdf, including the supplementary material.

Please also note the supplement to this comment:

<https://www.biogeosciences-discuss.net/bg-2017-161/bg-2017-161-AC2-supplement.pdf>

Printer-friendly version

Discussion paper



[Printer-friendly version](#)

[Discussion paper](#)



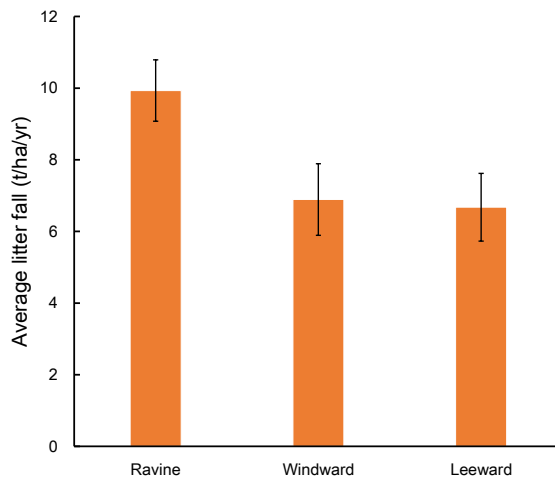


Figure 1. Annual litterfall in 3 habitats of Nanjenshan Reserve. Annual productions of litterfall in ravine habitat were higher than windward and leeward habitats ($p < 0.05$).

Figure

1

Fig. 1. Revised figure 1

Printer-friendly version

Discussion paper



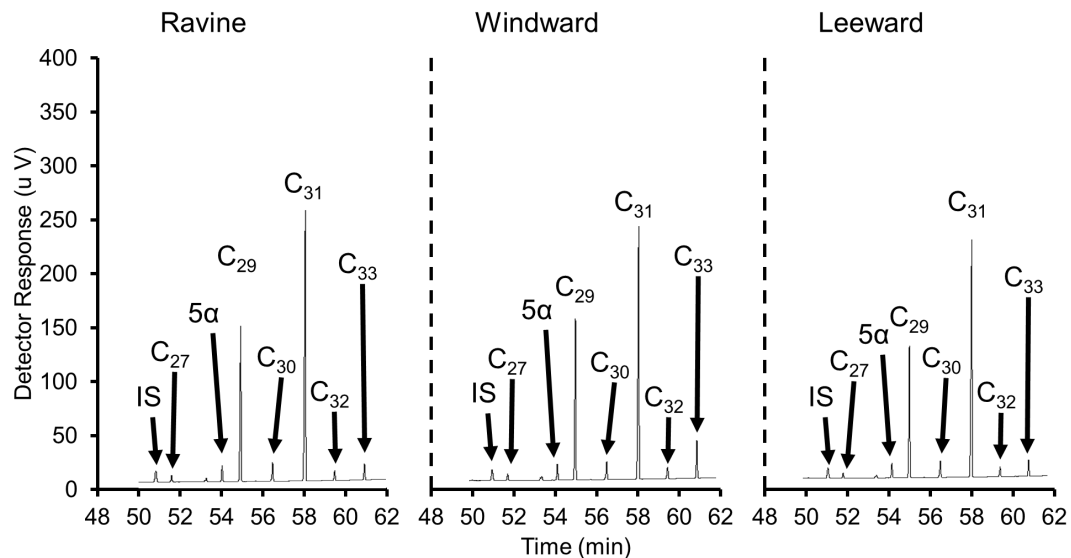


Figure 2. Representative GC-FID chromatograms of aliphatic hydrocarbons of *Iles rotunda* in each habitat.

Figure

1

Fig. 2. Revised figure 2

Printer-friendly version

Discussion paper



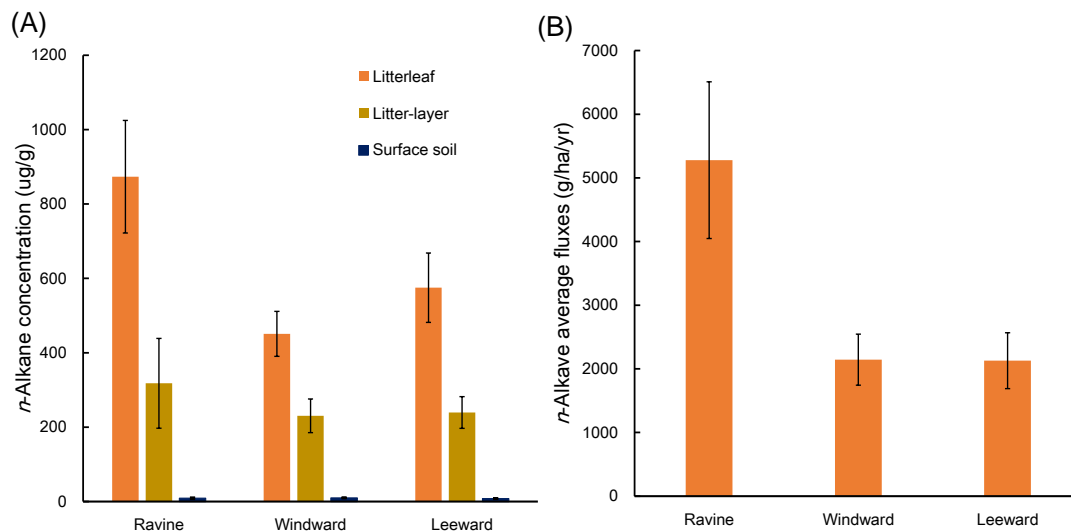


Figure 3. (A) *n*-Alkane concentration in litterleaf, litter-layer and surface soil. (B) Estimated annual *n*-alkane flux generated by litterleaf of litterfall in 3 habitats.

Figure

1

Fig. 3. Revised figure 3

Printer-friendly version

Discussion paper



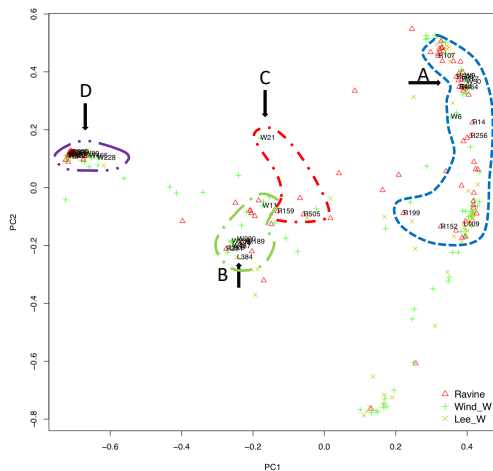


Figure 6. The PCoA plot of OTUs data in class. The circle areas in A, B, C and D are α -Proteobacteria, β -Proteobacteria, γ -Proteobacteria and Actinobacteria, respectively.

Figure

6

Fig. 4. Revised figure 6

Printer-friendly version

Discussion paper

