

# The Extant Shore-Platform Stromatolite (SPS) Facies Association: A glimpse into the Archean?

Alan Smith<sup>1,6</sup>, Andrew Cooper<sup>1,2</sup>, Saumitra Misra<sup>1</sup>, Vishal Bharuth<sup>3</sup>, Lisa Guastella<sup>4,6</sup>, Riaan Botes<sup>5</sup>

<sup>1</sup> Discipline of Geology, School of Agriculture, Earth and Environmental Sciences, University of KwaZulu-Natal, Westville 3630, South Africa

<sup>2</sup> School of Environmental Science, University of Ulster, Coleraine, Northern Ireland, UK

<sup>3</sup> Microscopy and Microanalysis Unit, University of KwaZulu Natal, Westville 3630, South Africa

<sup>4</sup> Bayworld Centre for Research and Education (BCRE), Cape Town, South Africa.

<sup>5</sup> Geo-Dynamic Systems, PO Box 1283, Westville 3630, South Africa

<sup>6</sup> Coast Busters Inc Research Group, 29 Brown's Grove, Sherwood, Durban 4091, South Africa

*Correspondence to:* Alan Smith (asconsulting@telkomsa.net)

**Abstract.** Shore platform stromatolites (SPS) were first noted from Cape Morgan on the southeast African seaboard. Since then they have been found growing discontinuously in rocky peritidal zones along the entire southern African seaboard. In addition they have been found on the southwest Australian coast, Giant's Causeway, N. Ireland, and more recently at Harris on the Scottish Hebridean Atlantic coast. In this paper their occurrence and their potential as analogues for Precambrian fossil stromatolites and potential Martian occurrences is assessed. Sub-horizontal surfaces promote stromatolite development, while tufa develops on cliffs and steep rocky surfaces. Tufa and stromatolites are end members of a spectrum dictated by coastal topography. Extant SPS occur on well indurated shore platforms in high wave energy settings, often around or near headlands. They can be associated with boulder beaches, boulder ridges, storm swash-terraces, coastal dunes and peat bogs. In contrast to other extant stromatolites, SPS are produced primarily by mineral precipitation, although minor trapping and binding stromatolites do occur. From a geological perspective, SPS are developing in mildly transgressive siliciclastic settings in various climatic and tidal regimes. We suggest that SPS could be preserved in the geological record as micritic lenses on palaeo-shore platform surfaces. SPS share many features with Precambrian stromatolites and are a valid modern analogue despite the widely different atmospheric and oceanic conditions of the Archean. We suggest that terraces associated with former oceanic or lacustrine flooding surfaces on Mars are potential targets in the search for palaeo-SPS on Mars.

# 1 Introduction

The oldest known stromatolites include those of the Isua Group (3.7 Ga), Greenland (Nutman et al., 2016), the Strelley Pool occurrence (3.43 Ga), Australia (Allwood et al., 2006), the Barberton Mountain Land (3.22 Ga), South Africa (Gamper et al., 2011) and the Pongola Group (2.9 Ga), South Africa (Mason & von Bruun, 1977; Bolhar et al., 2015). Comparison of the environment in which extant and sub-fossil stromatolites occur with ancient examples may advance our knowledge concerning the conditions under which life developed and in what environment it began. Stromatolite-building organisms probably dominated the Earth during the Archean and Proterozoic Eons, but under contemporary conditions only thrive in extreme environments that limit Metazoan competition. Such environments include geothermal springs (Jones et al., 2000; Berelsen et al., 2011) peritidal marine environments (Logan et al., 1964; Reid et al., 2000; Smith & Uken, 2003; Smith et al., 2005; 2011; Perissinotto et al., 2014; Rishworth et al 2016; Edwards et al., 2017) and salt lakes (Martin & Wilczewski, 1972). Prokaryotes are also recorded from the Earth's upper crust to depths of (at least) 7km (Sankaran, 1997) and from within the atmosphere (DeLeon-Rodriguez et al., 2012).

Stromatolites are biosedimentary structures produced by sediment trapping and binding and/ or mineral precipitation as a result of the growth and metabolic activity of Cyanobacteria (Awramik & Margulis, 1976). The best known extant stromatolite models are based on the trapped and bound stromatolites of Shark Bay, Western Australia and several sites in the Caribbean (Logan et al., 1964; Reid & Browne, 1991). In contrast, Precambrian stromatolites are of the mineral precipitation variety (Awramik & Grey, 2005; Reid et al., 2011). Shore-platform stromatolites (SPS) are mineral-precipitated (Smith et al.2011; Perissinotto et al., 2014; Rishworth et al. 2016; Edwards et al., 2017) and offer a plausible Precambrian stromatolite analog and deserves scrutiny.

Cape Morgan (Fig. 1) in the Eastern Cape Province, South Africa, was the first location where SPS was found. They form on shore platforms within the peritidal zone where suitable (carbonate-rich) terrestrial runoff is present (Smith et al., 2011; Perissinotto et al., 2014; Rishworth et al., 2016). The supratidal/ high intertidal zone experiences extreme environmental changes, which partially excludes Metazoans (Perissinotto et al., 2014; Rishworth et al., 2016) and enables prokaryotes to dominate. The Cape Morgan locality was discovered by Mountain (1937), although its significance was only realized much later (Smith & Uken, 2003). Smith et al. (2011) proposed the extant Cape Morgan (Fig. 1) stromatolites as a partial analogue for the 3.43 Ga stromatolites from Strelley Pool Australia. Smith et al. (2011) documented extant and subfossil SPS from Cape Morgan and indicated that they were found in patches from Tofo (Mozambique) to Port Elizabeth (Eastern Cape, South Africa)(Fig. 1). Since then other colonies have been found in Northern Ireland (Cooper et al., 2013) and further localities in

the Eastern Cape (Perissinotto et al, 2014; Rishworth et al., 2016; Edwards et al., 2017), and elsewhere in southern Africa (Fig. 1). More recently new discoveries have been made on the west coast of Harris, in the Scottish Hebrides.

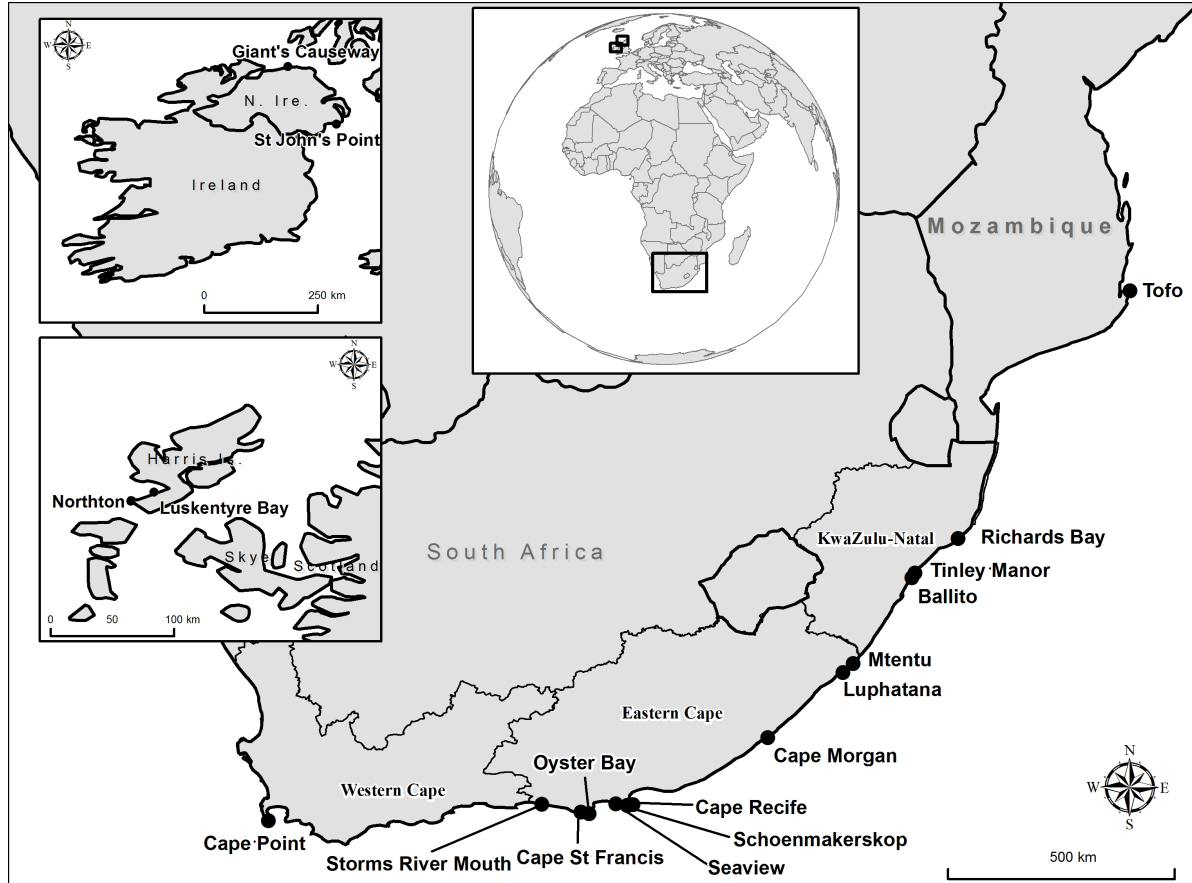


Fig. 1: Location of SPS sites on the eastern seaboard of southern Africa, Northern Ireland and the Scottish Hebrides.

### 3 Methodology

This work is heavily reliant on fieldwork which has taken advantage of many serendipitous trips. No attempt has been made to institute a scientific survey due to the distances involved and limited manpower. Stromatolite (SPS of this paper) morphology, microstructure and ecology is discussed in detail elsewhere (Smith et al., 2011; Perissinotto et al., 2014; Rishworth et al., 2016; 2017; Edwards et al., 2017). New localities are discussed and compared with known. Such review is required to establish similarities and differences. This paper will focus on the synthesis of a Facies Association using tabulated geomorphological, lithological, oceanographic and climatological elements. This is a relatively new branch of stromatolites science and is heavily reliant on description and comparisons.

We document all known SPS localities (Table 1) with the aim of distillation of a generalised global SPS Facies Association. To this end we also describe several new SPS localities both on the southern African eastern seaboard and from the Atlantic side of Harris Island in the Scottish Hebrides, UK. Then we compile and review the physical, oceanographic, climatological, lithological and geomorphological settings in which extant SPS are forming in the Scottish Hebrides, the northeast coast of Northern Ireland and the southern African seaboard. All known SPS location coordinates and source data are given in Table 1. On the basis of this review, we present a Facies Association model for SPS.

We then compare the SPS Facies Association to extant stromatolites from contrasting peritidal environments in Hamelin Pool, W. Australia (Logan et al., 1964), Kuwait (Alshuaibi et al 2015), the Bahamas (Reid et al., 2000) and the Dutch North Sea (Kremer et al., 2008). Further, on the basis of this comparison, extant SPS are assessed as potential analogues for Precambrian stromatolites. We also comment briefly on potential targets for SPS on Mars.

## 4 Results

### 4.1. SPS Distribution

Extant shore platform stromatolites (SPS) occur discontinuously along a 2 300 km stretch of the southern African eastern seaboard (Fig. 1; Table 1). In addition extant SPS have been documented from W. Australia (Forbes et al., 2010) and Giant's Causeway, Northern Ireland (Cooper et al., 2013). Previously unreported occurrences in the UK are also documented here. All known SPS occurrences are based on opportunistic observation as no systematic survey of their location has yet been made. SPS often occurs in association with tufa but the proportions vary with the coastal geomorphology. All are fed by spring water emanating from the terrestrial hinterland (Smith et al., 2011; Perissinotto et al., 2014; Edwards et al., 2017). If the coastline is cliffed or dominated by high-angle surfaces, tufa dominates (Fig. 2A; B), whereas SPS typically occurs within rock pools on competent sub-horizontal shore-platforms (Fig. 2A). In many instances there is a clear spatial gradation from tufa to stromatolites (2A and B). Most SPS develops directly on the shore platform but the trapped and bound (Fig. 3) variety develops adjacent to, and in channels cut into, the shore platform.

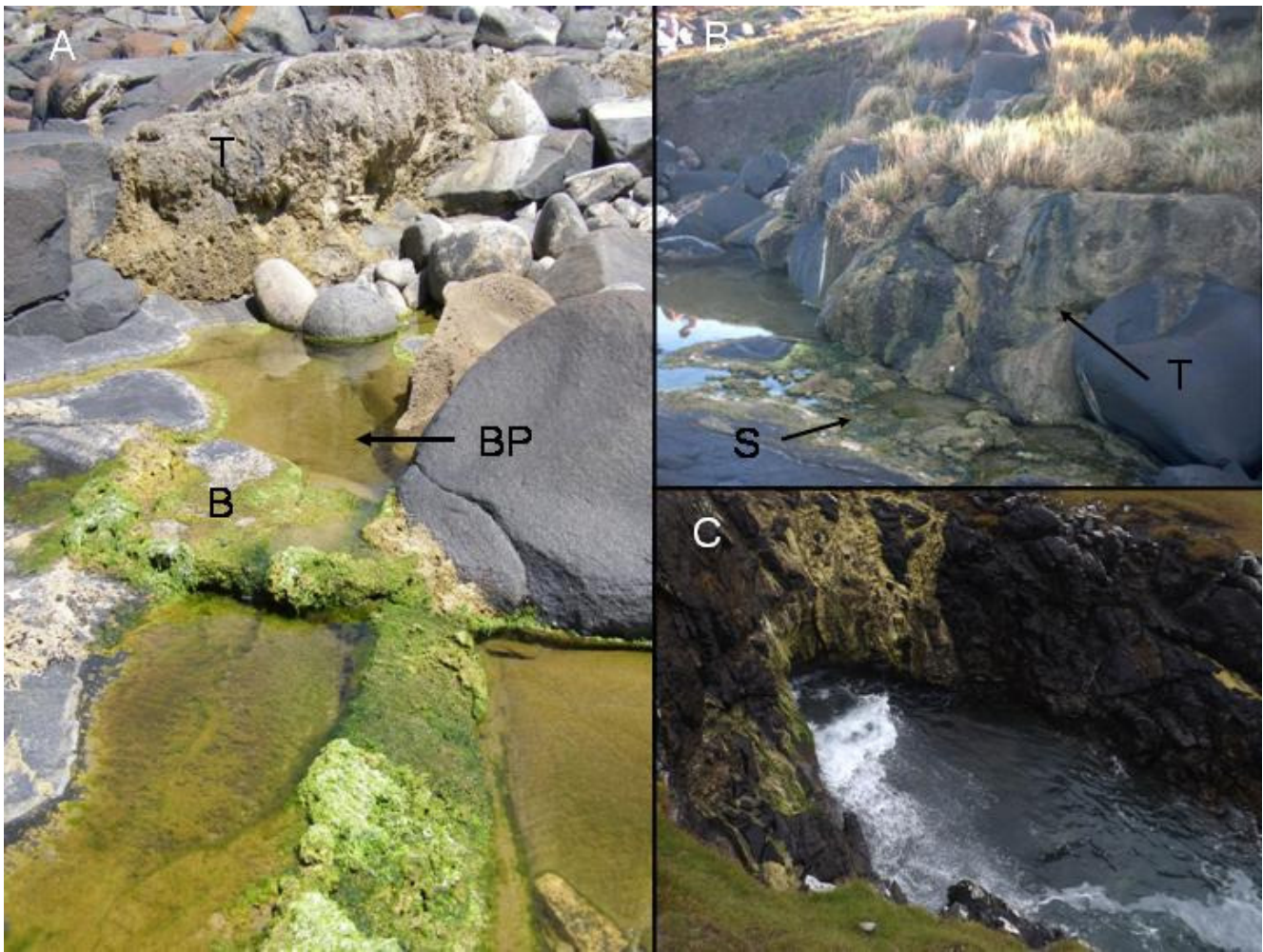


Fig. 2: A: Shore platform showing a low tufa curtain (T), barrage (B) and pool (BP); B: Higher tufa curtain (T) forming on a cliff at the back of the dolerite shore platform with stromatolites (S) at its toe (A and B from Cape Morgan), and C: Tufa curtain from Northston, Harris, UK. Here there is no shore platform.

5

10

Table 1: Location, context and stromatolite type of SPS localities (Y=yes; N= no; n/r = no record).

LOCATION	COORDS	SHORE PLATFORM	CLIFF	TRAPPED & BOUND	MIN PTN	TUFA
Cape Point, SA	34° 20' 48.42" S; 18° 27' 48.16" E	Y	Y			Y
<sup>1</sup> Storms River	34° 10' 34" S; 24° 39' 46" E	Y	n/r	N	Y	n/r
<sup>1</sup> Oyster Bay	34° 11' 25.07" S; 24° 41' 43.76" E	Y		N	Y	n/r
<sup>1</sup> Cape St Francis	34° 12' 49" S; 24° 50' 04" E	Y	N	N	Y	n/r
<sup>1</sup> Seaview	34°_01' 03.16" S; 25°_21' 56.48" E	Y	N	N	Y	n/r
<sup>1</sup> Skoenmakerskop	34°_02' 28.23" S; 25°_32' 18.60" E	Y	N	Y	Y	n/r
<sup>1</sup> Cape Recife	34°_02' 42.13" S; 25°_34' 07.50" E	Y	N	N	Y	n/r
<sup>2</sup> Cape Morgan	32° 41' 36" S ; 28° 22' 27" E	Y	Minor	Y	Y	Y
Luphatana	31° 25' 10" S; 29° 51' 30" E	Y	N	N	Y	N
Mtentu	31° 14' 30" S ; 31° 03' 22" E	Y	N	N	Y	N
Port Edward	31° 02' 55.26" S; 30° 13' 47.79" E	Y	N	N	Y	N
Ballito	29° 32' 15" S; 31° 13' 20" E	Y	Minor	N	Y	N
Tinley Manor	29° 26' 43.98" S; 31° 17' 26.99" E	Y	Minor	N	Y	Minor
Richards Bay	28° 46' 15.20" S; 32° 08' 00.32" E	X	Y	N	Y	Y
Tofo, Mozambique	23° 41' 26" S; 35° 33' 04" E	Y	Y	N	Y	N
<sup>3</sup> Giant's Causeway, N. Ireland, UK	See reference	Y	Y	N	Y	N
St John's Point, N. Ireland, UK	54° 13' 31.23" N; 5° 39' 32.69" W	Y	Y	N	Y	N
Luskentyre Bay (S), Harris, UK	57°52'08.73"N 6°57'42.01"W	Y	Y	N	Y	Y
Luskentyre Bay (N), Harris, UK	57°52'17.65"N 6°54'28.52"W	Y	N	Y	Y	N
Northton, Harris, UK	57°48'09.56"N 7°04'57.52"W	N	Y	N	Y	Y
<sup>4</sup> Kuwait Bay, Kuwait	See reference	Y	N	N	Y	N
<sup>5</sup> N. Sea, Netherlands	See reference	N	N	n/r	?	N
<sup>6</sup> SW Australia	See reference	Y	Y	N	Y	Y
Monkey Mia, W. Australia	Not known	Y	N	N	Y	N

<sup>1</sup> Perissinotto et al. (2014)

<sup>2</sup> Smith & Uken (2003)

<sup>3</sup> Cooper et al. (2013)

<sup>4</sup> Alshuaibi et al., (2015)

<sup>5</sup> Kremer et al. (2008)

<sup>6</sup> Forbes et al. (2010)



#### 4.2.. Trapped & Bound SPS

Trapped and bound stromatolites are relatively rare, but have only been observed at Cape Morgan (Smith et al., 2011; Fig. 3), Seaview Skoenmakerskop (South Africa: see Edwards et al., 2017) and the north coast of Luskentyre Bay (Harris, UK).

- 5 This stromatolite type appears to be restricted to clastic environments associated with the shore platform system and hence are still termed SPS. Trapped and bound stromatolites are found growing on cemented beach gravel in breaks and gullies in the shore platform and beaches adjacent to the shore platform. The beach grain calibres involved vary from fine sand to boulders. A storm beach deposit (6-10 cm thick) bound between two mineralized laminar stromatolites has been observed (Fig. 3X) (Smith et al., 2011). In addition, within a depression in the Cape Morgan shore platform, a headland conglomerate
- 10 formed by stromatolite cementation of dolerite boulders is present (Smith et al., 2005), some of these boulders have been disaggregated and re-cemented into the conglomerate (Fig. 3D). Trapped and bound stromatolites are associated with strong terrestrial runoff.



Fig. 3: A: Trapped and bound stromatolites forming on a stromatolite apron, located on a shore platform adjacent to Luskentyre Bay, Harris, UK; B: trapped and bound stromatolites developed on a cobble beach adjacent to a shore platform and, Dolerite boulders quarried from a shore platforms and bound by stromatolites. Fig. B & C are reproduced from Smith et al., 2005; 2011).

#### 4.3 Mineral Precipitated Stromatolites

Mineral precipitated stromatolites dominate the SPS Facies Association and forms on shore platforms (Table 2; Fig. 1). SPS grows in chemically- or mechanically- produced pools and barrage pools (see: Forbes et al., 2010), constructed by stromatolite growth (Fig. 4), and the inclined apron terrace (Campbell et al., 2015) slopes that connect them (Fig. ????).. The water in the shore-platform pools varies from fresh to hypersaline (Smith et al., 2011; Perissinotto et al., 2014) depending on immediate wave and weather conditions. Elevated water temperatures, as much as 10° C above ambient environmental, at Cape Morgan, Luphatana and Richards Bay suggest inputs from warm thermal spring activity (Smith et al., 2011). These warm waters often occur at the base of pools, separated from the overlying water by a thermocline. In such cases, SPS growth is absent below the thermocline (Smith & Uken, 2003). At Cape Morgan and Tinley Manor, stromatolite colonies are clearly being fed by springs that emanate from a storm swash terrace, whereas at Luskentyre Bay, the colonies are fed from seeps flowing out of a peat bog (Fig. 5?). Water ponding, within suitable topography on shore platform surfaces provides accommodation space for growing SPS. SPS are variously present as thin crusts (1-30 cm thick), barrage deposits (Perissinotto et al., 2014), low mounds (>20cm high) and as oncoid-like cobble and boulder coatings (Edwards et al., 2017). These cobbles and boulders are probably the grinders involved in pothole production.



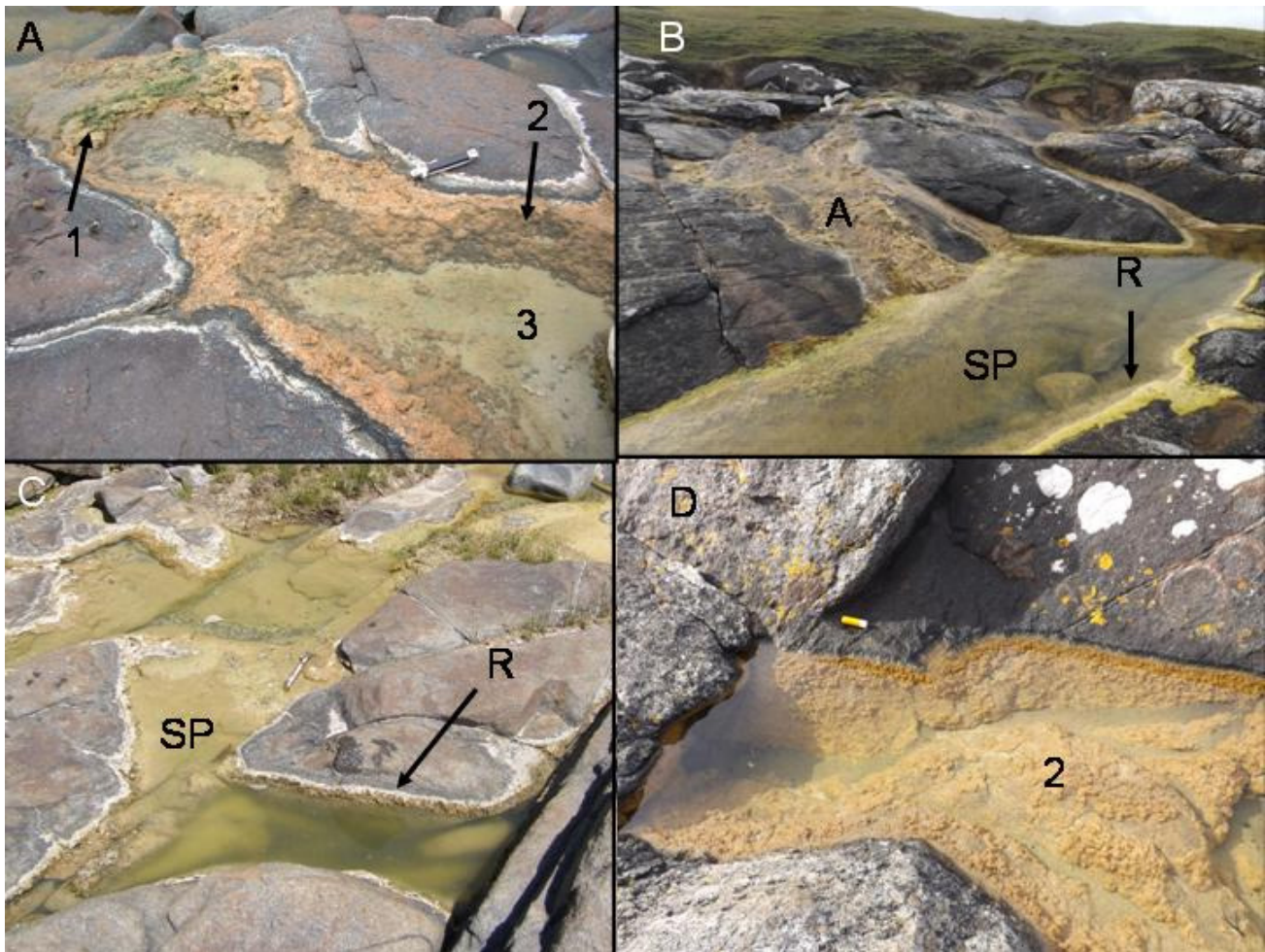


Fig. 4: SPS mineral precipitated stromatolites. ; A: Stromatolite pool showing pustular (1); laminar and columnar (2) and colloform (3) stromatolite types from Cape Morgan, SA; B: stromatolite pool (SP), stromatolite apron (A) and stromatolite rim (R); C: joint controlled stromatolite pool (SP) and stromatolites and a stromatolite rim ( R). Both B and C are from Luskentyre Bay, Harris, UK and, D: stromatolite pool from Mtentu, South Africa.

SPS growth zones are related to water physico-chemistry, calcification and limited to salinity values of <20 psu (generally 2– 10 psu) (Smith et al., 2011; Perissinotto et al., 2014; Edwards et al., 2017). In areas where groundwater discharge is very strong coralline red algae may alternate with tufa growth in the lower part of cliffs reaching down into the lower intertidal zone. SPS may cease growing, desiccate and suffer rain dissolution, and then regrow forming erosion surfaces. Growth cessation may be due to “self” blocking of the water conduit by stromatolite growth and carbonate precipitation, wave erosion or drought conditions interrupting ground water inflow.

Three depth-controlled, stromatolite morphologies have been reported from pools (Fig. 4A) (Smith et al., 2011; Perissinotto et al., 2014; Rishworth et al., 2016; Edwards et al., 2017). Partially emergent pustular stromatolites occur in the subareal wet area around pools and seeps (Fig. 4). This morphology occurs as mounds up to a few centimetres above pool rims and in very shallow water. At some localities (eg Luphatana and Mtentu: Fig. 1) the pustular stromatolite variety is not present. In these cases water inflow is via joint planes directly into the pools. Pustular stromatolite morphology is often a link morphology between stromatolites and tufa (Fig. 4A). Laminar and columnar stromatolites (1-10cm high) occur in shallow water (Fig. 4A). These form a pool rim at, and just below, the water surface (Smith et al., 2011; Edwards et al., 2017). The laminar stromatolite morphology is particularly common in the wind-shadow margins of pools, whereas in deeper pools (20 – 30 cm depth) only the colloform stromatolite morphology is present (Fig. 4A). SPS are highly colourful during bloom (Fig. 3), but become white on desiccation to a micrite crust.

#### 4.4 TUFAs

Tufa waterfalls (see Perissinotto et al., 2014); varying from a few centimetres to several metres high, often coat cliffs and steep rock surfaces (Table 1; Fig. 3A & B). Tufa dominates on coast characterised by seacliffs (Table 2). At Cape Morgan an inter layering of tufa and coralline red algae was noted in the lower part of the intertidal zone at a locality characterised by a strong water inflow. If only cliffs are present (and no shore platform) only tufa is present. Tufa waterfalls are often connected to SPS pools, either directly at the tufa toe or via connecting apron terraces.

## 5 GEOMORPHOLOGY & GEOLOGY OF SPS SETTINGS

All locations discussed are open coast except for Luskentyre Bay and Kuwait Bay (Table 2). The geomorphology of each shore platform is controlled by lithology, jointing and bedding style. Shore-platforms comprised a variety of competent lithologies (Table 2). Shore platforms vary from 5 to 60 m wide and are generally backed by a boulder beach or boulder ridge (Fig. 5). The boulder ridges contain angular blocks or megaclasts (up to 80 tons), as opposed to the smaller (> 50cm diameter) rounded boulders found in boulder beaches and gullies in, and adjacent to, the shore platform (Table 2).

Table 2: Lithological features of Shore Platforms (N/R: no record)

LOCATION	LITHOLOGY	ATTITUDE	BOULDERS PRESENT	AGE	BEDROCK STATUS
Cape Point, SA	Sandstone (Nardou)	Folded	Boulder beach	Ordovician	v.indurated
Storms River	Sandstone (Nardou)	Folded	Boulder Ridge	Ordovician	v.indurated
Oyster Bay	S/Stone (Nardou)	n/r	n/r	Ordovician	v.indurated
St Francis	S/Stone (Nardou)	n/r	n/r	Ordovician	v.indurated
Seaview	<sup>1</sup> SQuartzites, Grits and Phyllites	Deformed	Boulders in pools	Precambrian	v.indurated
Skoenmakerskop	<sup>1</sup> Metaseds (Sardinia Bay Fm)	Deformed	n/r	Ordovician	v.indurated
Cape Recife	S/Stone (Nardou)	Deformed	n/r	Ordovician	v.indurated
<sup>2</sup> Cape Morgan	Dolerite	Sill	Boulder Ridge	Jurassic	Fresh
Luphatana	S/Stone (Msikaba)	Horizontally bedded	Boulder Ridge	L Devonian	v. ndurated
Mtentu	S/Stone (Msikaba)	Horizontally bedded	Boulder Ridge	L Devonian	v.indurated
Port Edward	Granite	Deformed	Boulder Ridge	1.1 Ga	Fresh
Ballito	Dolerite	Sill	Storm Beach	Jurassic	Fresh
Tinley Manor	Dolerite	Sill	Storm Beach	Jurassic	Fresh
Richards Bay	Pt Durnford Fm muds, silts, F/sst	Sea cliff	Storm Beach	Pleistocene	Semi-consolidated
Tofo, Mozambique	Tufa (no base seen)	Massive	Storm Beach	Pleistocene	Tufa
<sup>3</sup> Giants Causeway, N. Ireland	Basalt	Columnar Basalt	Storm Beach	Cretaceous	Fresh
St John's Point, N. Ireland	Limestone	n/r	Storm Beach	Lower Carboniferous	Fresh
Luskentyre Bay (North), Harris Island, UK	Granitic	Deformed	Storm Beach	Proterozoic-Archean	Fresh
Luskentyre Bay (South), Harris Island, UK	Granitic	Deformed	Storm Beach	Proterozoic-Archean	Fresh
Northton, Harris Island, UK	Granitic	Sea cliff	N	Archean	Fresh
<sup>4</sup> Kuwait Bay, Kuwait	Beach Rock	Bedded	Not present	Late Quaternary	Fresh
<sup>5</sup> SW.Australia	Limestone/ Granite	n/r	Storm Beach	Pleistocene Limestone/ Granite (540-780 Ma)	Fresh
Monkey Mia, W. Australia	Not known	n/r	Not present	n/r	Fresh

<sup>1</sup> Perissinotto et al. (2014)<sup>2</sup> Smith & Uken (2003)<sup>3</sup> Cooper et al. (2013)<sup>4</sup> Alshuaibi et al., (2015)<sup>5</sup> Forbes et al. (2010)

. The geomorphology of each shore platform is controlled by lithology, jointing and bedding style. Shore-platforms comprised a variety of competent lithologies (Table 2). Where the coast comprises incompetent lithologies no shore platforms can form. Competent sandstones form wide shore-platforms (Fig. 5; Table 2). The SPS bearing shore-platforms at Mtentu and Luphatana (Fig. 5C; Table 2) are formed in well-indurated Lower Devonian Msikaba Formation sandstone. These are the widest at up to 60m wide. The Msikaba Formation is well-bedded (more-or-less horizontal) and vertically jointed. The shore-platform has been formed by wave quarrying of large blocks, which break along bedding and joint planes. The eroded boulders have accumulated in a boulder ridge at the rear of the platform (Fig. 5A).

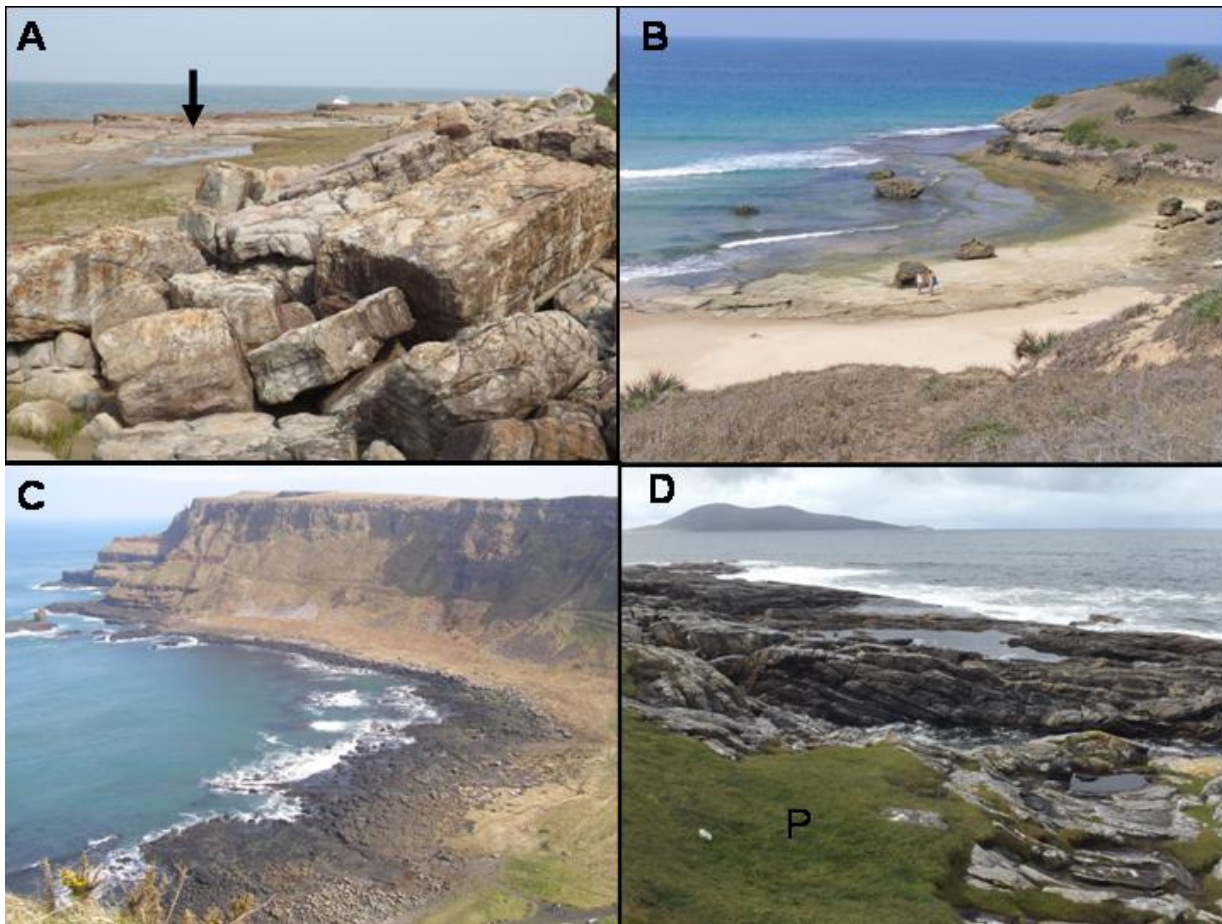


Fig. 5: A: Sandstone shore platform and boulder ridge at Luphatana, South Africa. Stromatolite pool is arrowed. 80 ton boulders are present in the boulder ridge. B: Tofo, Mozambique tufa shore platform with scattered large boulders. C: Giant's Causeway basalt shore platform and cliffs. D: Lewisian gneiss shore platform at Luskentyre Bay, Harris, UK. Note the peat marsh (P).

At Cape Point SPS occurrences are rare but massive tufa deposits are present inland. Tufa is the main lithological component at Tofo and the shore-platform has been excavated into this lithology (Fig. 5B). Thin (1-2cm thick) sub-fossil stromatolites (Table 2) are interbedded. Sub-fossil mineral precipitated stromatolites are also found as upper intertidal and supra tidal active pothole linings. No growing tufa or stromatolites were observed, but the presence of SPS in potholes within an active shore platform indicates them to be Recent. It is possible that this tufa deposit is related to a lower sea level stillstand and has been reworked into a shore platform where SPS has developed at a later stage.

Dolerite sill shore Platforms are present at Tinley Manor, Ballito and Cape Morgan (Fig. 1; 5); the latter being the best example (Table 2). The dolerite is strongly jointed and forms a rugged shore platform. The platform itself tends to undulate and shows minor sea cliffs and pools. The former are produced by wave bore quarrying of blocks along joint surfaces. Pools are formed by mechanical joint widening, pot-holing and chemical weathering while barrage pools are impounded by stromatolite growth (Fig. 4).

At Port Edward (Fig. 1) granite forms a poorly developed shore platform littered with megaclasts. Minor SPS and tufa were noted near the landward shore-platform boundary. The Luskentyre Bay granitic, Harris Island, Scottish Hebrides (Fig. 1) shore platform is backed by an extensive but thin ( $\pm 30\text{cm}$ ) peat bog. Seaward of this shore platform is a very extensive intertidal fine-grained low-end macrotidal flat (Fig. 5).

At Richards Bay (Fig. 1) the southeast African coastline is marked by the semi-indurated Pleistocene Port Durnford Beds (Fig. 1). These comprise incompetent muds, silts and fine sands. The shore platform is poorly developed and backed by a retreating coastal cliff comprised of the poorly-consolidated Durban Beds sediments. Only tufa is present growing on the cliff face but will not be preserved due to ongoing marine action.

## 6. SPS Hinterland

Storm swash terrace deposits (McKenna et al., 2012; Dixon et al., 2015) occur at the rear of Port Edward, Ballito, Tinley Manor, Mtentu, Luphatana and Cape Morgan shore platforms. These are associated with boulder ridges, boulder beaches and coastal dunes. Storm swash terrace deposits (McKenna et al., 2012) may partially bury older beach ridges. Boulder beaches are present at the Luskentyre Bay, Harris, Scottish Hebrides (UK), SPS sites but here the hinterland is characterised by peat bog overlying bedrock which projects through at high points (Fig. 5). At Tofo (Mozambique) the tufa is backed by a very extensive (kilometres wide) coastal dune cordon, strongly impacted by farming and urbanization. Several SPS localities have a coastal dune cordon hinterland and some are associated with bogs (Table 3). The hinterland at Giants Causeway comprises high basalt cliffs (Fig. 5). A model of the SPS Facies Association is shown in Fig. 6.

Table 3: Hinterland geology &amp; geomorphology of SPS locations (gaps indicate not recorded)

LOCATION	SHORE PLATFORM	CLIFF	STORM SWASH TERRACE	DUNES	PEAT BOG	TUFA	URBANISED
Cape Point, SA	Y	Y	N	N	n/r	Y	N
<sup>1</sup> Storms River	Y	n/r	n/r	n/r	n/r		N
<sup>1</sup> Oyster Bay	Y	N	n/r	Y	n/r		Partly
<sup>1</sup> Cape St Francis	Y	N	n/r	Y	n/r		Y
<sup>1</sup> Seaview	Y	N	n/r	Y	n/r		Y
<sup>1</sup> Skoenmakerskop	Y	N	n/r	Y	n/r		N
<sup>1</sup> Cape Recife	Y	N	n/r	Y	n/r		N
<sup>2</sup> Cape Morgan	Y	Y	Y	Y	Y		N
Luphatana	Y	N	Y	Y	Y		N
Mtentu	Y	N	Y	Y	Y		N
Port Edward	Y	N	Y	Y	Y		N
Ballito	Y	Minor	Y	N	Y		Y
Tinley Manor	Y	Minor	Y	N	Y		Y
Richards Bay	N	Y	N	Y	N		N
Tofo, Mozambique	Y	Y	N	Y	N		Y
<sup>3</sup> Giant's Causeway, N. Ireland	Y	Y	Y	N	N		Some infrastructure
St John's Point, N. Ireland	Y	Y	n/r	n/r	N		N
Luskentyre Bay (S) Harris, UK	Y	Y	N	N	Y		N
Luskentyre Bay (N) Harris, UK	Y	N	N	N	Y		N
Northton Harris, UK	N	Y	N	N	Y		N
<sup>4</sup> Kuwait Bay, Kuwait	Y	N	n/r	Y	N		N
<sup>5</sup> N. Sea, Netherlands	N	N	n/r	n/r	N		N
<sup>6</sup> SW Australia	Y	Y	n/r	n/r	n/r		N
Monkey Mia, W. Australia	Y	N	n/r	Y	N		N

<sup>1</sup> Perissinotto et al. (2014)<sup>2</sup> Smith & Uken (2003)<sup>3</sup> Cooper et al. (2013)<sup>4</sup> Alshuaibi et al., (2015)<sup>5</sup> Kremer et al. (2008)<sup>6</sup> Forbes et al. (2010)



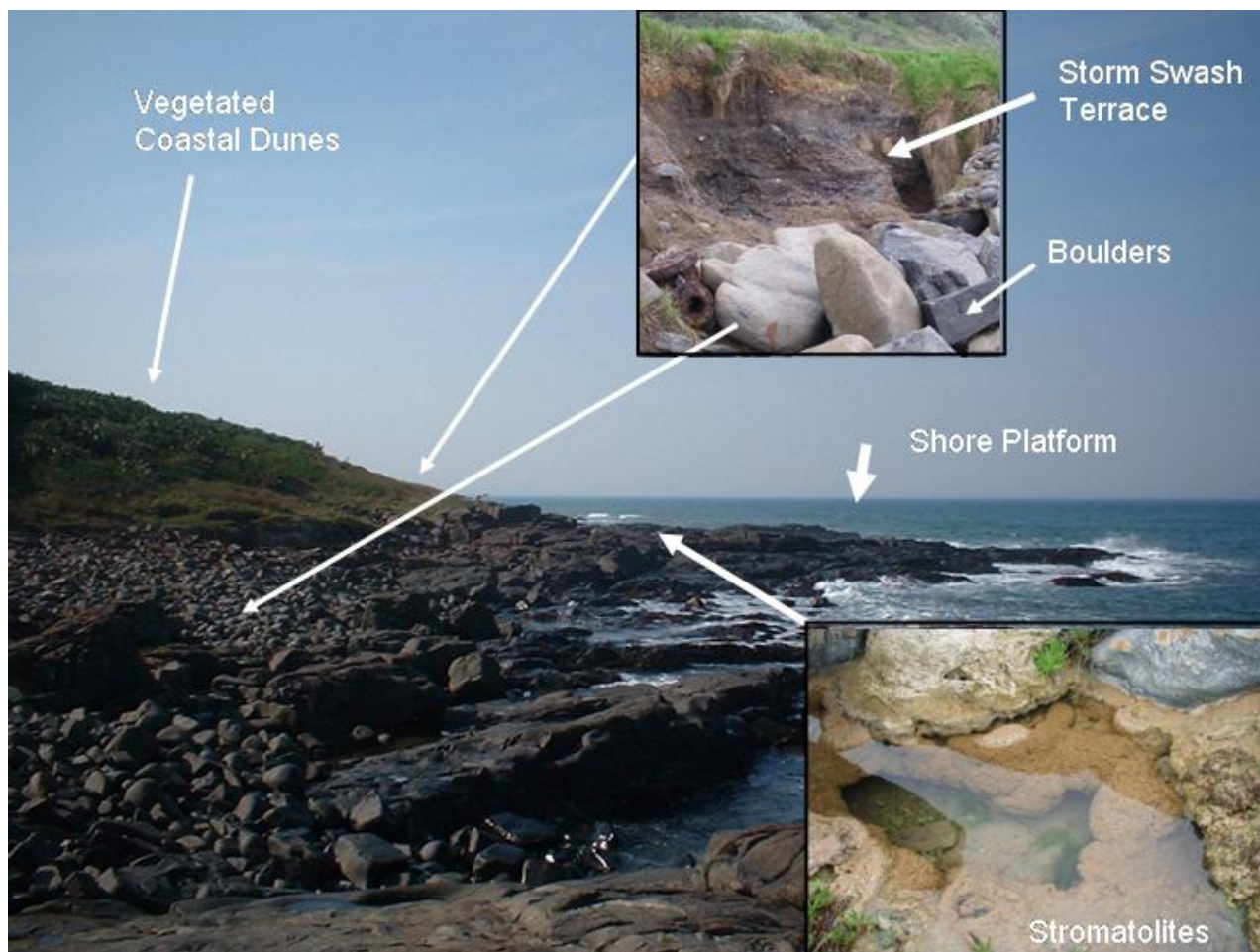


Figure 6: SPS Facies Association model based around the Cape Morgan SPS context.

## 5 7. Regional and Global Aspects

SPS occur in a variety of climatic and oceanographic settings (Table 4) and although no systematic survey of SPS distribution has yet been undertaken, we expect that they are globally widespread. Shore platforms, associated with boulder ridges and boulder beaches, are indicative of high wave activity (Hall et al., 2006; McKenna et al., 2012; Dixon et al., 2015).

- 10 In the case of the southern African eastern seaboard this is confirmed by modally high wave conditions (Guastella and Rossouw, 2012). Extreme waves, however, exceed modal conditions by several metres. On the southern African eastern seaboard, extreme waves originate from extra tropical low pressure systems, tropical storms/ cyclones (Smith et al., 2010). Tsunamis cannot be ruled out.

An eastern southern African seaboard high swell event on 18-20 March 2007 (impacts ranged from Port Elizabeth to Maputo) (Fig. 1), was produced by a cut-off-low pressure system. This event produced swells up to 14m high ( $H_s=8.5\text{m}$ ) with run-ups of 7-11m amsl (Smith et al., 2007). A further high swell event between 31st August and the 1st September 2008 impacted the southern and southeast African coast, from Cape Point to Cape Morgan (Fig. 1). This was generated by an extremely deep low pressure system and produced swells of  $H_s=10.7\text{m}$  (Guastella and Rossouw, 2012) with a 7-8m run-up at Cape Morgan (Smith et al., 2014).

Field inspection following both the March (2007) and September (2008) high swell events indicated changes to the Cape Morgan colonies (the other colonies listed in Table 1 were unknown prior to 2007). In the case of both storms, growing and unconsolidated microbial mat was largely removed by wave action, but lithified stromatolites remained on the shore-platform. However, large blocks of tufa were removed by the high swell impact. Following the March 2007 event, surface stromatolite growth at Cape Morgan had been largely restored by January 2008.

At Ballito (Fig. 1), sub-fossil peritidal stromatolites that had been buried under coastal reclamation were exposed by erosion during the 2007 high swell event. This event deposited a boulder beach (boulders  $>1\text{m}$  diameter) over the dolerite sill shore platform. At one point a thin crust of sub-fossil stromatolites was observed, this extended landward under the boulder beach and storm swash terrace. This shows that SPS can be interbedded with storm deposits. At Cape Morgan, boulders in the boulder beach are often coated by stromatolite growth indicating periods of disaggregation and stability. Several rounded boulders were found with multiple rims of stromatolite, indicating they had been experienced several cycles of stability and movement.

At Luphatana extant SPS colony is located just in front of a boulder ridge which contains 80 ton boulders, indicative of extreme waves (date unknown), the parameters of which are as yet unquantified (Fig. 5A). Similarly the St Johns Point and Giant's Causeway, N. Ireland stromatolites (Cooper et al., 2013) are both associated with very large boulders. Wave spray deposits have been found at levels of 60m amsl at Cape Morgan, South Africa (Smith et al., 2014) and at Aird Uig (Harris, Scotland) wave scouring has taken place on a cliff top at a height of 20–30 m OD (Hall et al., 2006), proving that SPS can withstand the present extremes in wave climate.

The Irish and Scottish coasts are known for strong wave action (Hall et al., 2006; O'Brien et al., 2012) as the 2013-14 storm season has proved (Wadley et al., 2015). Both Giant's Causeway (on the west coast) and Luskentyre Bay are afforded some protection, but the boulder storm beaches at both localities (Table 2) show then to be vulnerable to wave attack.

Table 4: Tectonic and Oceanographic Aspects of SPS localities. Tidal data from the South African Naval Hydrographic Office and British Admiralty (\*measured values) and satides.co.za (modeled data)(n/g=not gauged).

LOCATION	TECTONIC	SLR (mm/yr)	SST RANGE (°C)	TIDAL RANGE (m)	WAVE REGIME	CLIMATE ZONE
Cape Point	Passive	1.94 (Simon's Town)	8 - 15	1.83*	Very High	Mediterranean
<sup>1</sup> Storms River	Passive	n/g	15.5 - 19.5	2.14	Very High	Moderate coast
<sup>1</sup> Oyster Bay	Passive	n/g	16 - 18	2.12	Very High	Moderate coast
<sup>1</sup> Cape St Francis	Passive	n/g	16 - 20.5	2.1	Very High	Moderate coast
<sup>1</sup> Seaview	Passive	n/g	16 - 20	n/g	Very High	Moderate coast
<sup>1</sup> Skoenmakerskop	Passive	n/g	16 - 23	n/g	Very High	Moderate coast
<sup>1</sup> Cape Recife	Passive	2.39 (PE)	16 - 23	1.99 *	Very High	Subtropical coast
<sup>2</sup> Cape Morgan	Passive	n/g	17.5 - 20.5	1.98	Very High	Subtropical coast
Luphatana	Passive	n/g	19 - 22.5	n/g	Very High	Subtropical coast
Mtentu	Passive	n/g	19 - 22.5	n/g	Very High	Subtropical coast
Port Edward	Passive	n/g	19.5 - 23	2.05	Very High	Subtropical coast
Ballito	Passive	1.23 (Durban)	20.5 - 24.5	2.13*	Very High	Subtropical coast
Tinley Manor	Passive	n/g	20.5 - 24.5	n/g	Very High	Subtropical coast
Richards Bay	Passive	n/g	20 - 24.5	2.3	Very High	Subtropical coast
Tofo	Passive	n/g	22 - 29	5.0	Very High	Tropical coast
<sup>3</sup> Giant's Causeway	Epeirogenic	0.07 (Dublin)	7.9 - 15.3	2.4* (Port Rush)	High	Cool Temperate
St John's Point	Epeirogenic	0.07 (Dublin)	7.4 - 15.4	2.4* (Port Rush)	High	Cool Temperate
Luskentyre Bay (S)	Epeirogenic	1.92 (Stornoway)		4.4* (Tarbert)	Moderate	Cool Temperate
Luskentyre Bay (N)	Epeirogenic	1.92 (Stornoway)		4.4* (Tarbert)	Moderate	Cool Temperate
Northton	Epeirogenic	1.92 (Stornoway)		4.4* (Tarbert)	Very High	Cool Temperate
<sup>4</sup> Kuwait	Epeirogenic	?	13.3 - 32.3	4.3* (Kuwait Bay)	Low	Dry Desert
<sup>5</sup> SW Australia	Passive	1.54 (Freemantle)		?	?	Mediterranean
Monkey Mia, W. Australia	Epeirogenic	2.89 (Carnarvon)		?	?	Dry Desert
<sup>6</sup> N. Sea, Netherlands	Epeirogenic	1.71-2.53 (Netherlands)		?	?	Cool Temperate

<sup>1</sup> Perissinotto et al. (2014)

<sup>2</sup> Smith & Uken (2003)

<sup>3</sup> Cooper et al. (2013)

<sup>4</sup> Alshuaibi et al., (2015)

<sup>5</sup> Forbes et al. (2010)

<sup>6</sup> Kremer et al. (2008)

Sea Surface Temperature obtained from Smit et al. (2013) and Alshuaibi et al. (2015).

It must be restated that this sample is far from complete, representing only coastlines that have been investigated but from Table 4 the following can be noted. Extant SPS are:

- Recorded in passive plate margins and epeirogenic settings

- Occur from microtidal to macrotidal environments
  - Sea level rise varying from 0.07 to 2.89 mm/yr
  - Sea surface temperatures varying from 7.4 to 32.3°
  - Cool Temperate to Dry Desert.
- 5      ➤ Varying high wave regimes, all characterised by boulders

## 8 Discussion

10      SPS grow in shore platform depressions on high-energy coasts. They grow within shallow rock pools (Smith et al., 2011; Perissinotto et al., 2014; Rishworth et al., 2016) potholes and SPS dammed barrage pools (Forbes et al., 2010; Perissinotto et al., 2014) on shore platforms. SPS comprise thin micritic crusts, with only rare examples of the trapped and bound stromatolite varieties being associated. Not all localities show the complete tripartite stromatolite morphology (Fig. 3B) but the subaqueous laminar and columnar and the colloform variety is ubiquitous. Where vertical surfaces are present tufa  
15      grows.

Any SPS model must take into account that they are forming at the interface of freshwater seeps and a high energy rocky peritidal zone (Smith et al., 2011; Perissinotto et al., 2014). The SPS are calcium carbonate mineralised due to the high pH regime (Smith et al., 2011) and are growing on older siliceous rocks (Tofo may be an exception but the base is not visible)  
20      within a siliciclastic contemporary setting. Mud and sand are passing through this system but are not being deposited in significant amounts. Microbialites are ubiquitous in the peritidal setting but only become stromatolites if a carbonate rich groundwater plume is present (Smith et al., 2011; Rishworth et al., 2016).

The following points also need to be considered, although they may, or may not, be necessary for SPS growth. Sea level rise  
25      is ongoing. SPS possess seasonal to sub-seasonal (due to storm abrasion) laminae (Smith et al., 2005). The lack of climax lamination in the calcified form may be due to storm activity or non-calcification of this lamina type. Warm thermal ground water may be present indicating a groundwater source. The stromatolites and shore-platform contact is an unconformity.

The diversity of shore platform substrates suggests that lithology is not important for SPS growth; however, the  
30      competency of the substrate is vital for growth and probably for potential preservation. Tufa deposits and pustular stromatolite deposits are very unlikely to survive transgression or regression as there is no accommodation space. However, SPS in rock pools and barrage pool build ups can form a lenses or layers of stromatolite which could then be overstepped during marine transgression (possibly similar to the multi-metre steps which post-dated the last glacial maximum) and

preserved in a future stratigraphy. Marine processes may break up the stromatolite and free stromatolite encrusted boulders from barrage and rock pools, such as is seen at Cape Morgan (Fig. 2A), and transport them as littoral drift for deposition elsewhere as conglomerates. SLR rise is taking place globally, thus SPS deposits could form as part of a global transgressive coastal sequence.

5

The best opportunity for preservation is provided by rock pools, especially potholes, in competent shore-platform rock as this provides accommodation space. SPS growth itself could seal the SPS deposit, especially in flat bedded competent sandstone as at Mtentu and Luphatana (Fig 5). Thus SPS environments could be preserved as lenses on palaeo-shore-platforms. The extant stromatolite regrowth which has taken place at Ballito (Fig. 1) suggests that preservation can take place. An investigation of subaqueous post-last glacial maximum coastlines might resolve this issue.

10

## 8.1 Global Extant Stromatolites

There are several important differences between the extant SPS described here and other, well known extant stromatolite occurrences. Variations on the Hamelin Pool theme are generally used for artists' conceptions of the Archean; however this instance is unusual as within a hypersaline lagoon (Logan et al., 1964). The Highborne Cay, Bahamas sub-tidal model is characterized by columnar stromatolites within an ooid shoal (Reid et al., 1995; Visscher et al., 1998; Baumgartner et al., 2009). Both Shark Bay and the Bahamian extant stromatolite settings contain stromatolites produced by trapping and binding within a soft coastline. These may leave traces such as MISS (Noffke and Awramik, 2013) but are unlikely to be preserved in the long-term. Kremer et al (2008) found calcium carbonate being precipitated within annual Cyanobacteria mats in beaches of the Dutch North Sea, but again these were of the trapped and bound variety, as opposed to mineral precipitation. The Kuwait Bay examples (Alshuaibi et al., 2015), however, are of the mineral precipitation variety. These are developed on beachrock and could conceivably be preserved.

15

20

25

## 8.2 Precambrian Stromatolites

Precambrian stromatolites are commonly found to have developed in transgressive settings on varying substrate types (Table 5). Erosion surfaces are common within them (Kranendonke (2011; Nutman et al., 2016) as is the case with SPS. In the case of Strelley Pool (Australia), stromatolites formed initially on a rocky shore-platform (Allwood et al., 2006), which compares well with SPS (Tables 1 & 2). Allwood et al. (2006) base this interpretation on the following:

30

1. Wide and discontinuous distribution of boulders with a rounded clast-supported fabric,
2. Correlation between clast and substrate, on an unconformity,

3. Substrate-dependent lateral transition from clustered and isolated large boulders on a shore platform to embayment beach conglomerates type
4. The presence of palaeo-cliffs, fissures and cavities in the substrate
5. Soft mud intraclasts and desiccation cracks associated with local mudstone substrate

5

All of the points made by Allwood et al. (2006) are present within the extant SPS facies association (Tables 1 & 2). The presence of vertical surfaces at Strelley Pool is interesting as this suggests that the stromatolite growing on these was tufa. This shows that tufa can be preserved despite the perceived lack of accommodation space. The 1.88 Ga Gunflint Chert is based on a weathered Archean lava, characterized by rounded lava boulders (Brasier et al., 2015) and may also be a palaeo

10 SPS occurrence.

Table 5: Comparison of SPS with some Precambrian stromatolites.

ROCK UNIT	AGE (Ga)	ENERGY	PALAEO-TIDAL REGIME	COAST	PALAEO-SUBSTRATE	TRANSGRESSION	SOURCE
Isua Group Greenland	3.7	?	Shallow marine	Soft?	Metacarbonate	?	Nutman et al. (2016)
Strelley Pool Chert, N. Aus	3.43	Hi	Peritidal	Rocky (SPS)	Jasper banded black chert; potholes	Transgression	Allwood et al., (2006)
Josefsdal Chert, SA	3.5-3.3	Hi	Peritidal	Soft?	Volcanic seds / Hydrothermal spring source	?	Westall et al (2006)
Moodies Group, SA	3.22	Med	Inter to subtidal	Soft (gravel)	Sand	Transgression	Gamper et al (2011) Ericksson et al (2006)
Pongola Group, SA	2.9	Low	Inter-to-subtidal	Soft?	Sand	Transgression?	Mason & Von Bruun (1979) Bolhar et al. (2015)
Malmani Dolomite, SA	2.56-2.52	Low-Hi	Peritidal to deep subtidal-	Soft?	Variable	Transgression?	Sumner & Grotzinger (2004)
Turee Creek Group, W. Australia?	2.45–2.22 Ga	Hi	Sub-tidal	Soft?	Sandy siliciclastic/carbonate	Progradation	Martindale et al (2015)
Gunflint chert, Canada	1.88				Archean lava with rounded boulders	Transgression	Brasier et al. (2015)
Extant SPS	Extant	Very Hi	Peritidal	Rocky (SPS) & T& B v. rare)	Dolerite, Sandstone, Tufa Granite Sand & Gravel (v. rare)	Transgression	Smith & Uken (2003) Perisotimo et al. (2014) This study

- 15 In contrast to SPS most Precambrian stromatolites apparently formed on soft coastlines (Table 5). Perhaps the Precambrian marine climate was markedly less aggressive than at present or stromatolites are simply preserved in low energy embayments such as Kuwait Bay (Alshuaibi et al., 2015) or Luskentyre Bay.



The presence of tufa within the SPS facies association and its similarity to that of the 3.4 Ga Strelley Pool stromatolites strongly hints that microbial life existed in Archean terrestrial settings. It is quite reasonable to assume that tufa was present landward of Archean stromatolite settings, but was not preserved.

## 5 8.3 SPS AS A MODERN PRECAMBRIAN ANALOGUE

It has been suggested that no adequate marine extant stromatolite analogue exists for Precambrian marine mineral precipitated stromatolites, as most modern marine extant stromatolites are of the trapped and bound variety (Awramik & Grey, 2005). The mineral precipitated SPS deposits fill this gap. Most Precambrian stromatolites formed in a transgressive setting, similar to the SPS (Table 5). The peritidal stromatolite setting is a common theme for Precambrian stromatolites; although intertidal and subtidal components are also present (Table 5). The SPS setting shows only a stunted intertidal and no subtidal component. Microbialite develops in the crack between terrestrial and marine influence where Metazoans are reduced by the extreme nature of this setting and thus reduces the competition for space. If the ground water chemistry is suitable, SPS form. It is easy to imagine how the SPS environment would unfold if Metazoan activity was reduced or not present, as was the case in the Precambrian; this would allow large subtidal stromatolites, such as those in the Malmani Dolomite (Sumner & Grotzinger, 2004) (Table 5) to develop. Similarly it is very likely that tufa existed in the terrestrial environment, but has not been preserved (or recognised). The SPS model strongly suggests the occurrence of terrestrial prokaryotes during the Archean. Extant SPS are growing during a mild transgression, thus their preservability at the present time is probably low. However, should SLR accelerate in the future, it is possible that this environment could be overstepped and preserved as rock pool and pothole fills. The lower colloform and laminar stromatolite variety are more likely to be preserved and the tufa least likely or not at all.

## 8.4 Extraterrestrial Implications

Phosphorous on Mars is commoner than on Earth (Greenwood et al., 2007) so it is reasonable to expect that stromatolites would have formed if life (as we know it) was ever present, and the water chemistry was suitable. On Mars, marine and lacustrine flooding surfaces should be investigated. Palaeoshore-platforms, especially if associated with megaclast fields or ridges should be targets for investigation. Although no shore platforms have been reported (Banfield et al., 2015) as yet, the terrain at Chryse Planitia and Arabia Terra, which bordered the postulated Vastitas Borealis Ocean, (Wilson et al., 2016, Rodriguez et al., 2016), could be shore platform candidates. Recently Ruff & Farmer (2016) suggested that structures in the Ma'Adim terraces within the Gusev Crater are siliceous stromatolites. These terraces may have been formed by wave action in the Gusev Palaeolake or at the margin of the Vastitas Borealis Ocean. The proposed siliceous stromatolites near *Home*

*Plate* (Ruff & Farmer, 2016) were previously interpreted as hydrothermal deposits (Squyres et al., 2008), but this does not preclude them being stromatolites. It is possible that these features are extraterrestrial palaeo-SPS.

## 9 Conclusions

5

Extant SPS are present on high energy rocky coasts on passive margins and in epeirogenic settings; however this may be a function of sampling. They are associated with well-indurated shore platforms, boulder bars and boulder beaches. The hinterland is frequently boggy or marshy. SPS appear to be unrelated to climate and tidal regime. They may be better developed in warmer climates but the sample size is yet too small. If vertical surfaces are present on the shore platform, tufa forms. In shallow shore platform pools SPS develop. There is a gradation from SPS to tufa. SPS develop within transgressive settings, as was the case with many Precambrian stromatolites. The preservability of these micrite stromatolites is probably low, but may improve with stromatolite cementation to competent substrate rock. Contemporary rocky and Quaternary coastlines should be investigated globally for the SPS environment. The SPS setting is a valid analogue for the Archean Strelley Pool Archean stromatolite and possibly the base of the Gunflint stromatolite occurrence, however most Precambrian stromatolites appear to have formed on soft coastlines. The association with trapped and bound stromatolites and the Luskentyre Bay environment (shore platform and tidal flat) hints at a possible SPS soft coastline link. Shore-platform settings should be targets in the search for Martian stromatolites.

## 10. References

- 20 Allwood, A.C., Walter, M.R., Kamber, B.S., Marshall, C.P., and Burch, I.W.: Stromatolite reef from the Early Archean era of Australia, *Nature*, 441, 714–718, 2006.
- Alshuaibi, A.A., Khalaf, F.I., and Zamel, A. Al.: Calcareous thrombolitic crust on Late Quaternary beachrocks in Kuwait, Arabian Gulf, *Arabian Journal of Geosciences*, DOI: 10.1007/s12517-015-1869-5, 2015.
- Awramik, S.M., and Margulis, L.: *Developments in Sedimentology, Stromatolites*, Vol. 20. M. Walter (Editor), Amsterdam, Elsevier, 790p, 1976.
- 25 Awramik, S.M., and Riding, R.: Role of algal eukaryotes in subtidal columnar stromatolite formation, *Proceedings of the National Academy of Sciences USA*, 85, 1327-1329, 1988.
- Awramik, S.M., and Grey, K.: Stromatolites: Biogenicity, Biosignatures, and Bioconfusion, In: *Astrobiology and Planetary Missions*, R.B. Hoover, G.V. Levin, A.Y. Rozanov, G.R. Gladstone (Eds), *Proc. of SPIE* 5906, 59060P, 2005.
- 30 Banfield, D., Donelan, D., and Cavaleri, L.: Winds, waves and shorelines from ancient Martian seas, *Icarus*, 250, 368–383, 2015.

- Baumgartner, L.K., Spear, J.R., Buckley, D.H., Pace, N.R., Reid, R.P., Dupraz, C., and Visscher, P.T.: Microbial diversity in modern marine stromatolites, Highborne Cay, Bahamas, *Environmental Microbiology*, 11(10), 2710–2719, 2009.
- Berelson, W.M., Corsetti, F.A., Pepe-Ranne, C., Hammonde, D.E., Beaumont, T W., and Spear, J.R.: Hot spring siliceous stromatolites from Yellowstone National Park: assessing growth rate and laminae formation, *Geobiology*, 9, 411–424, 2011.
- 5 Bolhar, R., Hofmann, A., Siah, M., Feng, Y., and Delvigne, C.: A trace element and Pb isotopic investigation into the provenance and deposition of stromatolitic carbonates, ironstones and associated shales of the ~3.0 Ga Pongola Supergroup, Kaapvaal Craton, *Geochimica et Cosmochimica Acta*, 158, 57–78, 2015.
- Bosman, C., Uken, R., and Smith, A.M.: The bathymetry of the Aliwal Shoal, Scottburgh, South Africa, *South African Journal of Science*, 101, 1-3, 2005.
- 10 Conradie, D.: South Africa's Climatic Zones: Today, Tomorrow. International, Green Building Conference and Exhibition Future Trends and Issues Impacting on the Built Environment, July 25-26, 2012, Sandton, South Africa, 2012. .
- Cooper, J.A.G., Smith, A.M., and Arnscheidt J.: Contemporary stromatolite formation in high intertidal rock pools, Giant's Causeway, Northern Ireland: preliminary observations, *Journal of Coastal Research*, Special Issue No. 65, 1675-1680, 2013.
- DeLeon-Rodriguez, N., Lathem, T.L., Rodriguez, L.M., Barazesh, J.M., Anderson, B.E., Beyersdorf, A.J., Ziemba, L.D.,
- 15 Bergin, M., Nenes, A., and Konstantinidis, K.T.: Microbiome of the upper troposphere: Species composition and prevalence, effects of tropical storms, and atmospheric implications, *Proceedings of the National Academy of science of the USA*, 110, 2575–2580, 2012.
- Dixon, S., Green, A.N., and Cooper, J.A.G.: Storm swash deposition on an embayed coastline facies, formative mechanisms, and preservation, *Journal of Sedimentary Research*, 85, 1155–1165, 2015.
- 20 Edwards, C.T., Pufahl, P.K., Hiatt, E.E., and Kyser, K.: Paleoenvironmental and taphonomic controls on the occurrence of Paleoproterozoic microbial communities in the 1.88 Ga Ferriman Group, Labrador Trough, Canada, *Precambrian Research*, 212–213, 91–106, 2012.
- Edwards, M.J.K, Anderson, C.R., Perissinotto, R., Rishworth, G.M.: Macro- and meso-fabric structures of peritidal tufa stromatolites along the Eastern Cape coast of South Africa, *Sedimentary Geology* 359 (2017) 62–75
- 25 Eriksson, K.A., Simpson, E.L., and Mueller, W.: An unusual fluvial to tidal transition in the MesoArchean Moodies Group, South Africa: A response to high tidal range and active tectonics, *Sedimentary Geology*, 190, 13– 24, doi: 10.1016/j.sedgeo.2006.05.011, 2006.
- Forbes, M., Vogwill, R., and Onton, K. A.: Characterization of the coastal tufa deposits of south-west Western Australia, *Sedimentary Geology*, 232, 52–65. <http://dx.doi.org/10.1016/j.sedgeo.2010.09.009>, 2010.
- 30 Gamper, A., Heubeck, C., Damskold, D., and Hoehse, M.: Composition and microfacies of Archean microbial mats (Moodies Group, 3.22 Ga, South Africa), *Microbial Mats in Siliciclastic Depositional Systems Through Time SEPM Special Publication No. 101*, Copyright \_ 2011 SEPM (Society for Sedimentary Geology), ISBN 978-1-56576-314-2, p. 65–74, 2011.

- Greenwood, J.P., Blake, R.E., Barron, V., and Torrent, J.: Phosphorus geochemistry of Mars: evidence for an early acidic hydrosphere. Seventh International Conference on Mars, July 9-13, 2007, Pasadena, California, 2007.
- Guastella, L.A., and Rossouw, M.: What will be the impact of increasing frequency and intensity of coastal storms along the South African coast?, *Reef Journal*, 2, 129-139, 2012.
- 5 Jones, B., Renault, R.W., and Rosen, M.R.: Stromatolites Forming in Acidic Hot-Spring Waters, North Island, New Zealand, *Palaos*, 15(5), 450-475, 2000,
- Kamber, B.S., and Webb, G.E.: The geochemistry of late Archean microbial carbonate: Implications for ocean chemistry and continental erosion history, *Geochimica et Cosmochimica Acta*, 65(15), 2509–2525, 2001.
- Kremer, B., Kazmierczak, J., and Stal, L.J.: Calcium carbonate precipitation in Cyanobacterial mats from sandy tidal flats of  
 10 the North Sea, *Geobiology*, 6, 46–56, 2008.
- Logan, B.W., Rezak, R., and Ginsberg, R.N.: Classification and environmental significance of algal stromatolites, *Journal of Geology*, 72, 68-83, 1964.
- Martindale, R.C., Strauss, J.V., Sperling, E.A., Johnson, J.E., Van Kranendonke, M.J., Flannery, D., French, K., Lepoti, K., Mazumder, R., Rice, M.S., Schrag, D.P., Summons, R., Walter, M., Abelson, J., and Knoll, A.H.: Sedimentology,  
 15 chemostratigraphy, and stromatolites of lower Paleoproterozoic carbonates, Turee Creek Group, Western Australia, *Precambrian Research*, 266, 194–211, 2015.
- Mather, A.A., Garland, D.D., and Stretch, D.D.: Southern African sea levels: corrections, influences and trends, *African Journal of Marine Science*, 31, 145-156, 2009.
- Mavume, A.F., Rydberg, L., Rouault, M., and Lutjeharms, J.R.E.: Climatology and Landfall of Tropical Cyclones in the  
 20 South- West Indian Ocean,, *Western Indian Ocean J. Marine Sci.*, 8, 15-36, 2009.
- Mason, T.R., and von Brunn, V.: 3.0 G.y. old stromatolites from South Africa, *Nature*, 266, 47-49, 1977.
- McKenna, J., Cooper, J.A.G., and Jackson, W.T.: Storm Swash Terraces: A Previously Overlooked Element of the Cliff-Shore Platform, *System Journal of Sedimentary Research*, 82, 260-269, 2012.
- Mountain, E.D.: Tufa-lined basins in coastal platforms (East London Region, Cape of Good Hope), *South African Journal of  
 25 Science*, 33, 242–247, 1937.
- Noffke, N., and Awramik, S.: Stromatolites and MISS: differences between relatives, *GSA Today*, 23, 5–9, 2013.
- Nutman, A.P., Bennett, V.C., Friend, C.L., Van Kranendonke, M.J., and Chivas, A.R.: Rapid emergence of life shown by discovery of 3,700-million-year-old microbial structures, doi: 10.1038/nature19355, 2016.
- Perissinotto, R., Bornman, T.G., Steyn, P., Miranda, N.A.F., Dorrington, R.A., Matcher, G.F., Strydom, N., and Peer, N.:  
 30 Tufa stromatolite ecosystems on the South African south coast, *South African Journal of Science*, 110, 1-8, 2014.
- Ramsay, P.J., and Cooper, J.A.G.: Late Quaternary sea level change in South Africa, *Quaternary Research*, 57, 82-90, 2002.
- Reid, R. P., Macintyre, I. G., Steneck, R. S., Browne, K. M., and Miller, T. E.: Stromatolites in the Exuma Cays, Bahamas: Uncommonly common, *Facies*, 33, 1-18, 1995.

- Reid, R.P., Visscher, P.T., Decho, A.W., Stolz, J.F., Beboutk, B.M., Dupraz, C., Macintyre, I.J., Paerl, H.W., Pinckney, J.L., Prufert-Beboutk, L., Steppe, T.F., and DesMarais, D.J.: The role of microbes in accretion, lamination and early lithification of modern marine stromatolites, *Nature*, 406, 989-992, 2000.
- Rishworth, G.M., Perissinotto, R., Miranda, N.A.F., Bornman, T.G., and Steyn, P.: Phytoplankton community dynamics within peritidal pools associated with living stromatolites at the freshwater–marine interface, *Aquatic Science*, DOI 10.1007/s00027-016-0502-3, 2016.
- Rishworth, G.M., Perissinotto, R., Bird, M.S., Strydom, N.A., Nasreen Peer, Miranda, A.F., and Raw, J.L.: Non-reliance of Metazoans on stromatolite-forming microbial mats as a food resource, *Scientific Reports*, 7:42614 | DOI: 10.1038/srep42614, 2017.
- Rodell, M., Chao, B.H., Au, A.Y., Kimball, J.S., and McDonald, K.C.: Global Biomass Variation and Its Geodynamic Effects: 1982–98 Earth Interactions, 9, paper No. 2, 2005.
- Rodriguez, J.A.P., Fairén, A.G., Linares, R., Zarroca, M., Platz, T., Komatsu, G., Karge, J.S., Gulick, V., Jianguo, Y., Higuchi, K., Miyamoto, H., Baker, V.R., and Glines, N.: Tsunami waves extensively resurfaced the shorelines of an early Martian ocean, 47th Lunar and Planetary Science Conference, 2016, 1680.pdf, 2016.
- Ruff, S.W., and Farmer, J.D.: Silica deposits on Mars with features resembling hot spring biosignatures at El Tatio in Chile, *Nature Communications*, 7, 13554 | DOI: 10.1038/ncomms13554 | www.nature.com/naturecommunications, 2016.
- Salzmänn, L., Green, A.: Boulder emplacement on a tectonically stable, wave-dominated coastline, Mission Rocks, northern KwaZulu-Natal, South Africa, *Marine Geology*, 323-325, 95-106, 2012.
- Sankaran, A.V.: Entombed bacteria deep inside the Earth, *Current Science*, 73, 495-97, 1997.
- Smit, A.J., Roberts, M., Anderson, R.J., Dufois, F., Dudley, S.F.J., Bornman, T.G., et al. A Coastal Seawater Temperature Dataset for Biogeographical Studies: Large Biases between In Situ and Remotely-Sensed Data Sets around the Coast of South Africa, *PLoS ONE*, 8(12), e81944. doi:10.1371/journal.pone.0081944, 2013
- Smit, A.J., Roberts, M., Anderson, R.J., Dufois, F., Dudley, S.F.J., Bornman, T.G., et al. A Coastal Seawater Temperature Dataset for Biogeographical Studies: Large Biases between *In Situ* and Remotely-Sensed Data Sets around the Coast of South Africa, *PLoS ONE*, 8(12), e81944. doi:10.1371/journal.pone.0081944, 2013
- Smith, A.M., and Uken, R.: Living marine stromatolites at Kei River mouth, *South African Journal of Science*, 99, 200, 2003.
- Smith, A.M., Uken, R., and Thackeray, Z.: Cape Morgan peritidal stromatolites: the origin of lamination, *South African Journal of Science*, 101, 107–108, 2005.
- Smith, A.M., Guastella, L.A., Bundy, S.C., and Mather, A.A.: Combined marine storm and Saros spring-high tide erosion event, March 19–20, 2007: a preliminary assessment, *South African Journal of Science*, 103, 274–276, 2007.
- Smith, A.M., Andrews, J.E., Uken, R., Thackeray, Z., Perissinotto, R., Leuci, R., and Marca-Bell, A.: Rock pool tufa stromatolites on a modern South African wave-cut platform: partial analogues for Archean stromatolites?, *Terra Nova*, 23, 375-381, 2011.

- Smith, A.M., Guastella, L.A., Mather, A.A., Bundy, S.C., and Haigh, I.: KwaZulu-Natal coastal erosion in time and space: a predictive tool? Comparisons between the 2011 and 2007 erosion event, *South African Journal of Science*, 109, 1–4, 2013.
- Smith, A.M., Green, A.N., Cooper, J.A.G., Dixon, S., Pretorius, L., Wiles, E., and Guastella, L.A.: Cliff-top storm deposits (55-63m amsl) from Morgans Bay, South Africa, In: *Proceedings 13th International Coastal Symposium (Durban, South Africa)*, Green, AN and Cooper, J.A.G. (eds.), *Journal of Coastal Research*, Special Issue 70, 349–353, 2014.
- Smith, A.M., Bundy, S.C., and Cooper, J.A.G.: Apparent dynamic stability of the southeast African coast despite sea level rise, *Earth Surface Processes and landforms*, DOI: 10.1002/esp.3917, (2016).
- Squyres, S.W., Arvidson, R.E., Ruff, S., Gellert, R., Morris, R.V, Ming, D.W., Crumpler, L., Farmer, J.D., Des Marais, D.J., Yen, A., McLennan, M., Calvin, W., Bell, J.F., III, Clark, B, C, Wang, A., McCoy, T.J., Schmidt, M.E., and de Souza, P.A., Jr: Detection of Silica-Rich Deposits on Mars, *Science*, 320, 1063-67, 2008.
- SANS. South African National Standard.: SANS 204-2. Energy efficiency in buildings, part 2: The application of the energy efficiency requirements for buildings with natural environmental control, SABS Standards Division, 2008.
- Sumner, D.Y., and Grotzinger, J.P.: Implications for NeoArchean ocean chemistry from primary carbonate mineralogy of the Campbellrand-Malmani Platform, South Africa, *Sedimentology*, 51, 1–27, (2004).
- Van der Borch van Verwolde, E.: Characteristics of Extreme Wave Events and the Correlation between Atmospheric Conditions along the South African Coast, MSc Thesis (unpublished), University of Cape Town, 103 pp, 2004.
- Van Kranendonke, M.J.: Morphology as an Indicator of Biogenicity for 3.5–3.2 Ga Fossil Stromatolites from the Pilbara Craton, Western Australia, *Advances in Stromatolite Geobiology*, *Lecture Notes in Earth Sciences*, 131, DOI 10.1007/978-3-642-10415-2\_32, 2011.
- Verplanck, P.L., Taylor, H.E, Nordstrom, D.K., and Barber, L.B.: Aqueous Stability of Gadolinium in Surface Waters Receiving Sewage Treatment Plant Effluent, Boulder Creek, Colorado, *Environ. Sci. Technol.*, 39 (18), 6923-6929, (2005)
- Visscher, P.T., Reid, R.P., Bebout, B.M., Hoefft, S.E., Macintyre, I.G., and Thompson, J.A., Jr.: Formation of lithified micritic laminae in modern marine stromatolites (Bahamas): the role of sulfur cycling, *American Mineralogist*, 83, 1482–1494, 1998.
- Walter, M.R.: Introduction. In *Stromatolites*, ed. M.R. Walter, pp. 1–3. Elsevier, Amsterdam, 1976.
- Westall, F., de Ronde, C.E.G., Southam, G., Grassineau, N., Colas, M., Cockell, C., and Lammer, H.: Implications of a 3.472–3.333 Gyr-old subaerial microbial mat from the Barberton greenstone belt, South Africa for the UV environmental conditions on the early Earth, *Phil. Trans. R. Soc., B* 361, 1857–1875, 2006.
- Wilson, S. A., Howard, A.D., Moore, J.M., and, Grant, J.A.: A cold-wet middle-latitude environment on Mars during the Hesperian Amazonian transition: Evidence from northern Arabia valleys and paleolakes, *J. Geophys. Res. Planets*, 121, doi:10.1002/2016JE005052, 2016.

## Websites Cited



<http://tidesandcurrents.noaa.gov/sltrends/sltrends.html>)(archived).