

We thank the referee very much for their helpful review. We have addressed all of the issues raised and give details of this below, with the proposed revised manuscript following the comments.

While the study is laid out well in the paper, I do wonder if some re-structuring and/or additional information could strengthen the emphasis on the key ecosystem processes being studied here, i.e. the 6 or so pieces serving as subsections of the results. More text on background and motivation could be added to the introduction for each, including more references for previous studies that have explored these issues. Perhaps it'd be useful in the introduction to add a sentence on each issue that frames them as questions or hypotheses as a preview of what the reader can expect to see in the analysis and results.

We have added such a 'preview' in the introduction (penultimate paragraph), which references some relevant studies and outlines what will be addressed in our study. This paragraph now reads as follows:

"In this paper we assess the ability of the land surface components from three Earth System Models to represent the observed carbon stocks and fluxes at tundra sites, identifying the processes that have the greatest impact on the uncertainty. These processes are therefore priorities for future model development. Observational studies in tundra environments have shown that carbon dynamics are sensitive to physical conditions (Lund et al., 2012; Cannone et al., 2016; Pirk et al., 2017), so we first assess the ability of the models to capture the mean physical state of the system and the differences between sites, specifically in terms of snow depth, soil temperature, soil moisture and active layer depth. Secondly, soil carbon stocks are evaluated against measured soil carbon profiles, assessing the main causes of biases in the models. Half-hourly NEE data from eddy flux towers are used to evaluate the simulated carbon fluxes, comparing the models directly against observations before analysing the relationships between ecosystem carbon fluxes and different driving variables. We also consider the impacts of other controlling factors such as nutrient limitation and mosses, whose importance has been identified in previous studies (Atkin, 1996; Uchida et al., 2009)."

Next, the authors might consider moving the 'Methods' / 'Evaluation data' more up front, ahead of the model and site descriptions. This way, the descriptions could then focus on the model and site information most directly relevant to the specific evaluations conducted here.

We have moved the evaluation data section to go first in the methods, followed by model description, then site description, and finally the simulation set-up. The Methods section is also now introduced as you suggested, see below*.

One example, as pointed out in a previous review comment, is that PFT information is not included for JSBACH – and for the other two apparently in the end are effectively just cold C3 grasses? Here's how this might look: rather than subsections for each model, it would read "here we evaluated model A (ref), B (ref) and C (ref). For process X, model A & B are similar in that they do Y, but model C is different because it does Z". Again this puts the emphasis on the process and organizing it this way allows the reader to keep track of and more directly compare the models across the key evaluations presented in the results.

We have completely re-written the model description section following your suggestions. This can be found in the marked-up manuscript attached at the end of this file.

Another potential addition to consider, at the beginning of the methods perhaps, is a short but explicit definition / overview of the scope of inference of the study. The scope has three angles, which follow the subsequent subsections of the methods, i.e. (1) indicators (evaluations included in this analysis, e.g. snow, ALT, soil C, CO₂ fluxes, etc.), (2) processes (collectively included / compared among these 3 particular models), and (3) geography (climate, vegetation, permafrost etc. conditions across the 5 sites).

*At the beginning of the Methods section we have added: "This study takes three different angles: 1) Comparison with observed indicators. 2) Comparison of processes between models. 3) Comparison of geographical conditions (e.g. vegetation, permafrost) between sites. The structure of the methods section follows this, describing firstly the observational indicators used (Section 2.1), secondly the processes represented in the models (Section 2.2), and thirdly the conditions at the sites (Section 2.3). Lastly, details of the simulation set-up and forcing data are given in Section 2.4."

Line 418: the suggestions above may help to expand on this statement about what / how C dynamics are intrinsically linked to the physical state of the system...

We have expanded this statement to give an example of the links between C dynamics and physics, so it now

reads: “The carbon dynamics are intrinsically linked to the physical state of the system (for example, determining the rate of soil carbon decomposition), so we start by assessing the snowpack, soil temperature, soil moisture, and active layer thickness in all three models.”

420-1: consider adding a sentence or two to point out the important, relevant results of the three previous studies referenced here. Did those results provide direction / motivation for this study?

We have added the following: “In these studies, representing organic soil was identified as a key influence on the simulation of soil physics, and following this we compare organic against mineral soils in our analysis.”

469: the partitioning of CO₂ vs CH₄ is appropriately mentioned as a key issue here, but it is not evaluated or discussed elsewhere; do these models even simulate CH₄ fluxes?

Although this is of course a key issue, we did not have the model capability to simulate CH₄ in this present work. However, we certainly shouldn't have ignored it in our manuscript! Accordingly, we have added the following paragraph in the conclusion:

“The feedbacks between the Arctic and the global climate are strongly dependent on whether carbon is released into the atmosphere from heterotrophic respiration as carbon dioxide or methane. The modelling capability at the time of this study was not sufficient to simulate the methane flux. However, this development is in progress, see e.g. Kaiser et al. (2017), and represents an important topic for future work.”

503: there is “very little carbon” – is that true when aggregated over the whole profile? Perhaps a 6th panel could be added to show / compare the total stocks simulated?

As suggested we have added a 6th panel to the plot. This shows the total column and top 1m soil carbon for the default versions of JULES and ORCHIDEE (it was too crowded to also show the experiments: ‘jules fixed veg’ and ‘orchidee no mix’, and line 503 refers to the default versions). The observations for the top 1m are also shown. We have made the statement on line 503 less ambiguous. It now reads: “The most obvious problem is underestimation: there is much too little carbon simulated at many of the sites (see last panel on Figure 5).”

514-515: this implies that vegetation C via GPP is the only input, but would orchidee and jsbach also have inputs from thawed permafrost C that should be considered in the turnover rate?

Thank you for this important comment. In fact, JULES and ORCHIDEE model versions used in this study do represent a soil carbon mixing process into the permafrost, while the current JSBACH model does not. This affects the effective mean residence time. The important process is that some of the carbon from primary production has been transported into the permafrost over decades to centuries, and this way excluded from the carbon cycling. Such effects are represented implicitly by a box model approach like the one used in JSBACH, due to the effective soil temperature and its effect on carbon decomposition.

With climate change and permafrost thawing, this carbon can enter the cycling again, and be decomposed by microbes. However, that was not the question here. With Fig. 6 we address the question of the validity of turnover processes: How much of the carbon from primary production will stay in the soil over a long period of time, during pre-industrial conditions? For example, ORCHIDEE results suggest that (even when considering soil carbon mixing) carbon turnover rates are far too high, since GPP is reasonable but soil carbon stocks are underestimated. The opposite is true for JSBACH results at Zackenberg. In contrast, even when some of the JSBACH and JULES GPP and carbon stock results do not match perfectly with the observations, turnover processes seem to be better parameterized, e.g. in case of JSBACH and Kytalyk. Higher GPP results would also lead to higher soil carbon stock results here.

Technical Corrections

I did not find any obvious technical errors in the text, but there are a couple of issues with the figures like inconsistent and/or missing labels for the site names in the mean and spread panels, lacking an explanation of what the error bars represent in Figure 4, and lacking explanation of what the dotted lines refer to in Figures 4 and 5.

Where the labels are inconsistent or missing in the mean/spread panels, we have changed them so that they all take the same form: Abisko, Bayelva, Kytalyk, Sam., Zack. And just to be completely clear we have added the following in the captions: “On 6th panel, Samoylov and Zackenberg are abbreviated to ‘Sam.’ and ‘Zack.’”

We have also clarified the meaning of the error bars and dotted lines as requested.

Carbon stocks and fluxes in the high latitudes: Using site-level data to evaluate Earth system models

Sarah Chadburn^{1,2}, Gerhard Krinner³, Philipp Porada^{4,5}, Annett Bartsch^{6,7}, Christian Beer^{4,5}, Luca Belelli Marchesini^{8,9}, Julia Boike¹⁰, Bo Elberling¹¹, Thomas Friborg¹¹, Gustaf Hugelius¹², Margareta Johansson¹³, Peter Kuhry¹², Lars Kutzbach¹⁴, Moritz Langer¹⁰, Magnus Lund¹⁵, Frans-Jan Parmentier¹⁶, Shushi Peng^{3,17}, Ko Van Huissteden⁹, Tao Wang¹⁸, Sebastian Westermann¹⁹, Dan Zhu²⁰, and Eleanor Burke²¹

¹University of Leeds, School of Earth and Environment, Leeds LS2 9JT, U.K.

²University of Exeter, College of Engineering, Mathematics and Physical sciences, Exeter EX4 4QF, U.K.

³Laboratoire de Glaciologie et Géophysique de l'Environnement (LGGE), 38041 Grenoble, France

⁴Department of Environmental Science and Analytical Chemistry, Stockholm University, 10691 Stockholm, Sweden

⁵Bolin Centre for Climate Research, Stockholm University

⁶Vienna University of Technology, Vienna, Austria

⁷Austrian Polar Research Institute, Vienna, Austria

⁸School of Natural Sciences, Far Eastern Federal University, Vladivostok (Russia)

⁹Department of Earth Sciences, Vrije Universiteit (VU) Amsterdam, The Netherlands

¹⁰Alfred Wegener Institute, Helmholtz Center for Polar and Marine Research (AWI) 14473 Potsdam, Germany

¹¹Center for Permafrost (CENPERM), Department of Geosciences and Natural Resource Management, University of Copenhagen, Denmark

¹²Department of Physical Geography, Stockholm University, 10691 Stockholm, Sweden

¹³Dept. of Physical Geography and Ecosystem, Lund University, Sölvegatan 12, 223 62 Lund, Sweden

¹⁴Institute of Soil Science, Center for Earth System Research and Sustainability, Universität Hamburg, Hamburg, Germany

¹⁵Department of Bioscience, Arctic Research Center, Aarhus University, Frederiksborgvej 399, DK-4000 Roskilde, Denmark

¹⁶Department of Arctic and Marine Biology, UiT - The Arctic University of Norway, Tromsø, Norway

¹⁷Sino-French Institute for Earth System Science, College of Urban and Environmental Sciences, Peking University, Beijing 100871, China

¹⁸Key Laboratory of Alpine Ecology and Biodiversity, Institute of Tibetan Plateau Research and Center for Excellence in Tibetan Plateau Earth Sciences, Chinese Academy of Sciences, Beijing 100085, China

¹⁹University of Oslo, Department of Geosciences, P.O. Box 1047 Blindern, NO-0316 Oslo, Norway

²⁰Laboratoire des Sciences du Climat et de l'Environnement, LSCE CEA CNRS UVSQ, Gif Sur Yvette, France

²¹Met Office Hadley Centre, Fitzroy Road, Exeter EX1 3PB, U.K.

Correspondence to: Sarah Chadburn (s.e.chadburn@exeter.ac.uk)

Abstract.

It is important that climate models can accurately simulate the terrestrial carbon cycle in the Arctic, due to the large and potentially labile carbon stocks found in permafrost-affected environments, which can lead to a positive climate feedback, along with the possibility of future carbon sinks from northward expansion of vegetation under climate warming. Here we evaluate the simulation of tundra carbon stocks and fluxes in three land surface schemes that each form part of major Earth System Models (JSBACH, Germany; JULES, UK and ORCHIDEE, France). We use a site-level approach where comprehensive, high-frequency datasets allow us to disentangle the importance of different processes. The models have improved physical permafrost processes and there is a reasonable correspondence between the simulated and measured physical variables, including soil temperature, soil moisture and snow.

We show that if the models simulate the correct leaf area index (LAI), the standard C3 photosynthesis schemes produce the correct order of magnitude of carbon fluxes. Therefore, simulating the correct LAI is one of the first priorities. LAI depends quite strongly on climatic variables alone, as we see by the fact that the dynamic vegetation model can simulate most of the differences in LAI between sites, based almost entirely on climate inputs. However, we also identify an influence from nutrient limitation as the LAI becomes too large at some of the more nutrient-limited sites. We conclude that including moss as well as vascular plants is of primary importance to the carbon budget, as moss contributes a large fraction to the seasonal CO₂ flux in nutrient-limited conditions. Moss photosynthetic activity can be strongly influenced by the moisture content of moss, and the carbon uptake can be significantly different from vascular plants with similar LAI.

The soil carbon stocks depend strongly on the rate of input of carbon from the vegetation to the soil, and our analysis suggests that an improved simulation of photosynthesis would also lead to an improved simulation of soil carbon stocks. However, the stocks are also influenced by soil carbon burial (e.g. through cryoturbation) and the rate of heterotrophic respiration, which depends on the soil physical state. More detailed below-ground measurements are needed to fully evaluate soil biological and physical processes. Furthermore, even if these processes are well modelled, the soil carbon profiles cannot resemble peat layers as peat accumulation processes are not represented in the models.

Thus we identify three priority areas for model development: 1. Dynamic vegetation including a. climate and b. nutrient limitation effects. 2. Adding moss as a plant functional type. 3. Improved vertical profile of soil carbon including peat processes.

1 Introduction

Land areas in northern high latitudes may represent a net source or a net sink of carbon to the atmosphere in the future, and there is not yet a consensus as to which of the two is more likely, e.g.

(Cahoon et al., 2012; Hayes et al., 2011). This is not because it is likely to be small: on a pan-Arctic scale we could see anything between a net emission of over 100GtC or a net sink of up to 60GtC by the end of this century (Schuur et al., 2015; Qian et al., 2010). To put this into context, the remaining emissions budget in order to stabilise climate warming below 2°C above pre-industrial levels is less than 250GtC from 2017 (Peters et al., 2015), so it is very important to reduce uncertainty in the northern high latitude carbon cycle. The uncertainty comes largely from the representation of these processes in Earth System Models (ESM's), which are our main tool for future climate projections.

The potential for large carbon emissions comes from the large quantities of old carbon that are frozen into permafrost, protected from decomposition under the current cold climate. Around 800Gt of carbon is stored in permanently frozen soils (Hugelius et al., 2014). If the permafrost thaws, this carbon may decompose and be released to the atmosphere (Burke et al., 2012, 2013; Koven et al., 2015; Schneider von Deimling et al., 2012, 2015; MacDougall and Knutti, 2016). On the other hand, the increased vegetation growth that is already taking place in the Arctic under climate warming (Tucker et al., 2001; Tape et al., 2006) could result in a net uptake of carbon from the atmosphere (Quegan et al., 2011; Qian et al., 2010). It should be noted, however, that in some areas Arctic vegetation growth is not increasing but rather 'browning' (Epstein et al., 2016).

The representations of both permafrost carbon and Arctic vegetation in Earth System Models are not well developed. Some models now include a vertical representation of soil carbon which allows the frozen carbon in permafrost to be included (Koven et al., 2009, 2013; Schaphoff et al., 2013; Burke et al., 2017), but most do not yet represent important mechanisms of carbon storage and release, such as sedimentation, thermokarst formation, and a proper representation of cryoturbation (Schneider von Deimling et al., 2015; Beer, 2016), although sedimentation is included in Zhu et al. (2016). There is also a growing consensus that the chemical decomposition models used in ESMs are not adequate to represent microbial processes (Wieder et al., 2013; Xenakis and Williams, 2014). Vegetation models also, for the most part, do not include the appropriate high latitude vegetation types and those models that have dynamic vegetation are lacking in processes that are essential determinants of vegetation dynamics, such as nutrient limitation and interactions with soil (Wieder et al., 2015).

In this paper we assess the ability of the land surface components from three Earth System Models to represent the observed carbon stocks and fluxes at tundra sites, identifying the processes that have the greatest impact on the uncertainty. These processes are therefore priorities for future model development. Observational studies in tundra environments have shown that carbon dynamics are sensitive to physical conditions (Lund et al., 2012; Cannone et al., 2016; Pirk et al., 2017), so we first assess the ability of the models to capture the mean physical state of the system and the differences between sites, specifically in terms of snow depth, soil temperature, soil moisture and active layer depth. Secondly, soil carbon stocks are evaluated against measured soil carbon profiles, assessing the main causes of biases in the models. Half-hourly NEE data from eddy flux towers are used to evaluate the

simulated carbon fluxes, comparing the models directly against observations before analysing the relationships between ecosystem carbon fluxes and different driving variables. We also consider the impacts of other controlling factors such as nutrient limitation and mosses, whose importance has been identified in previous studies (Atkin, 1996; Uchida et al., 2009).

This is a synthesis from the recently concluded EU project PAGE21 (Permafrost in the Arctic and Global Effects in the 21st century), evaluating the models that took part in the project (described in Section 2.2, below) at the five PAGE21 primary sites, which are all located in Arctic permafrost regions, specifically Siberia, Sweden, Svalbard and Greenland. After the site-level evaluation of physical processes by Ekici et al. (2015), this evaluation of carbon cycle processes continues site-level model evaluation efforts. The sites are described in detail in Section 2.1.

2 ~~Model descriptions~~Methods

~~The three models studied here are JSBACH, JULES and ORCHIDEE. These are all land surface components of major Earth System Models. They can be run in a coupled mode within the ESM, or, as here, they can be run standalone forced by observed meteorology. Each model had some development of high-latitude processes during the PAGE21 project, and model developments have also been ongoing since the conclusion of the project in late 2015 (see below). This study takes three different angles: 1) Comparison with observed indicators. 2) Comparison of processes between models. 3) Comparison of geographical conditions (e.g. vegetation, permafrost) between sites. The structure of the methods section follows this, describing firstly the observational indicators used (Section 2.1), secondly the processes represented in the models (Section 2.2), and thirdly the conditions at the sites (Section 2.1). Lastly, details of the simulation set-up and forcing data are given in Section 2.1.~~

2.1 ~~JSBACH~~Evaluation data

~~The Jena Scheme for Biosphere-Atmosphere Coupling in Hamburg (JSBACH 3.0 (Raddatz et al., 2007; Brovkin et al., 2009)) is the land surface component of the Max Planck Institute Earth system model (MPI-ESM). The model simulates water fluxes, heat fluxes, and carbon fluxes from vegetation and soil via one-dimensional vertical fluxes. Photosynthesis in JSBACH is based on the approaches of Farquhar et al. (1980) and Collatz et al. (1992), as described in Knorr (2000). The carbon cycle is represented by three vegetation pools (active, reserves, wood) and five soil carbon pools which are defined by solubility (Goll et al., 2015). However, the soil carbon model does not have a vertical dimension.~~

2.1.1 ~~Carbon dioxide flux~~

~~Hydrological fluxes are simulated by a five-layer scheme (Hagemann and Stacke, 2015). The model is run as a gridded set of points for large-scale simulations. Each grid cell is subdivided into tiles~~

which represent different vegetation types and which can vary in fractional cover. During Eddy covariance half hourly CO₂ flux data and related meteorological variables used in this study are archived in the PAGE21 , soil freezing, dynamic snow layers and a simple organic layer were added in JSBACH (Ekici et al., 2014). In the version used in this paper, the simple organic layer is switched off and replaced by a moss layer with dynamic soil moisture contents and thermal properties (Porada et al., 2016) , and additional soil layers were added in order to represent a 50 m depth . The moss carbon fluxes (photosynthesis, respiration) are also simulated, as in the model described by Porada et al. (2013) . In the version used here, the moss carbon fluxes are not yet fully coupled into the JSBACH carbon cycle, so the moss carbon fluxes are considered separately in the analysis that follows.

2.2 JULES

JULES is the land surface component of the new community Earth System model, UKESM (Jones and Sellar, 2015). It can also be run offline forced by observed meteorology, and it can be run at a regional or point scale as well as globally. JULES is described in Best et al. (2011); Clark et al. (2011) . It is a community model with many users and many ongoing developments. JULES includes a dynamic vegetation model (TRIFFID), surface energy balance, a dynamic snowpack model (vertical processes only); vertical heat and water fluxes, soil freezing, large scale hydrology, and carbon fluxes and storage in both vegetation and soil . It also includes specific representations of crops, urban heat and water dynamics, fire diagnostics and river routing.

During PAGE21 the permafrost physics in JULES was improved (Chadburn et al., 2015a) , and a vertical representation of soil carbon, including cryoturbation mixing, was added (Burke et al., 2017). In this work the vertical soil carbon, organic soil properties, deep soil column (including bedrock) and high resolution soil are used. We also use the 9 PFT's described in Harper et al. (2016) and the latest set of PFT parameters from the UKESM project. For more details of soil and vegetation configuration see Simulation Set-up (Section 2.1) and Appendix. The version of JULES used is available on [https://fluxes.database \(http://code.metoffice.gov.uk/www/europe-fluxdata.eu/svn/page21\)](https://fluxes.database(http://code.metoffice.gov.uk/www/europe-fluxdata.eu/svn/page21)) which is part of the European Flux Database Cluster.

Flux post-processing was performed consistently for all the sites following the protocol applied for the Fluxnet 2015 data release (<http://jules/mainfluxnet.fluxdata.org/branches/data/dev/fluxnet2015-dataset>), with customized choices of the processing options. The applied scheme included: (i) a quality assessment/[eleanorburke/vn4.3](https://github.com/eleanorburke/vn4.3) quality control procedure over single variables aimed at detecting implausible values or incorrect time stamps (e.g. by comparing patterns of potential and observed downward shortwave radiation at a given location); (ii) the computation of net ecosystem exchange (NEE) by adding the CO₂ flux storage term calculated from a single CO₂ concentration measurement point (at the top of the flux tower) and assuming a vertically uniform concentration field; (iii) the de-spiking of NEE based on Papale et al. (2006) using a threshold value ($z=5$); (iv) NEE filtering

according to an ensemble of friction velocity (u^*) thresholds obtained by bootstrapping following the methods of Barr et al. (2013) and Papale et al. (2006) and selection of a u^* threshold, different for each year, based on the highest model efficiency (Nash-Sutcliffe); (vi) the gap-filling of NEE time series with the marginal distribution sampling (MDS) method (Reichstein et al., 2005).

Finally, NEE was partitioned into the gross primary productivity (GPP) and ecosystem respiration (Reco) components using a semi-empirical model based on hyperbolic light response curve fitted to daytime NEE data (Lasslop et al., 2010). The years of data available for each site are given in supplementary Table S1.

2.1.1 Soil carbon profiles

Typical soil profiles with data on soil organic carbon content were generated for each site. Based on extensive field campaigns in each study area, individual pedons for representative landscape and soil types were combined and harmonized. In brief, soils were classified and sampled from open soil pits dug down to the permafrost. Permafrost samples were collected through manual coring into the permafrost at the bottom of the soil pit. In most cases, soils were sampled to a depth of 1 m. The harmonized soil profiles were generated by averaging several soil pedons per landscape type at a 1 cm depth resolution. For more detailed descriptions of field sampling and laboratory procedures see Palmtag et al. (2015); Siewert et al. (2015, 2016). Top 1m total soil carbon values were calculated from a weighted average of different typical profiles, based on the fractional coverage of landscape types in the footprint area of the flux towers.

2.2 ORCHIDEE

2.1.1 Snow depth

Snow depth was recorded using automatic sensors (except Abisko where it is manual). Snow depth from the Abisko mire (Storflaket) was recorded manually monthly (Johansson et al., 2013). Snow depth at Samoylov and Bayelva was recorded hourly, and for Zackenberg 3-hourly (using sonic range and laser sensors). Snow depth at Kytayk was measured by means of a 70 cm vertical profile made of thermistors spaced every 5 cm (2.5 cm between 0 and 10 cm height from the ground). Data were logged every 2 hours and the snow-air interface level was identified by analyzing the profile patterns with a Matlab® routine calibrated to search for deviations between consecutive resistance readings above a given threshold. Years used for each site are given in supplementary Table S1.

ORCHIDEE is the land-surface component of the IPSL climate model as well as a standalone land-surface model. ORCHIDEE simulates the principal processes of the biosphere influencing the global carbon cycle (photosynthesis, autotrophic and heterotrophic respiration of plants and in soils, fire, etc.) as well as latent, sensible, and kinetic energy exchanges at the land surface (Krinner et al., 2005).

2.1.2 Soil temperature

For Samoylov, Bayelva, Kytalyk and Zackenberg, soil temperature was recorded hourly using thermistors (Kytalyk set-up described in van der Molen et al. (2007)). Ground temperatures for Abisko mire were recorded at the Storflaket mire, at boreholes cased with plastic tubes and instrumented with Hobo loggers U12 (Industry, 4 channels) together with Hobo soil temperature sensors (Johansson et al., 2011). Years used for each site are given in supplementary Table S1.

~~The ORCHIDEE high-latitude version includes vertically resolved soil carbon and cryoturbative mixing (Koven et al., 2009), a scheme describing soil freezing and its effect on soil~~

2.1.3 Soil moisture

Continuous soil moisture measurements are only available for Bayelva, Samoylov and Zackenberg. At Samoylov and Bayelva, hourly volumetric soil water content was recorded (using Time Domain Reflectometry). At Zackenberg soil moisture was measured using permanently installed ML2x Thetaprobes (Lund et al., 2014). Years used for each site are given in supplementary Table S1. Indicative soil moisture levels for Abisko mire were collected from May to October 2015 (Pedersen et al., 2017), measured manually as volumetric soil water content integrated over 0-6 cm depth using a handheld ML2x Theta Probe (Delta-T Devices Ltd., Cambridge, UK). Soil moisture was measured 5 times in each plot and averages were subsequently used.

2.1.4 Active layer depth

Active layer depth was measured at CALM grids at most of the sites. At Bayelva there is no CALM grid, so active layer was estimated from soil temperature measurements and is given as an 'indicative' value. Active layer thickness monitoring is determined by mechanical probing. A 1 cm diameter graduated steel rod is inserted into the soil to the depth of resistance to determine the active layer thickness (Åkerman and Johansson, 2008) according to the CALM standard.

2.1.5 Leaf area index

Leaf area index was taken from MODIS product (MODIS15A2), for the closest coordinates to the sites. This product has been successfully applied to tundra sites (Cristóbal et al., 2017). It was evaluated by Cohen et al. (2006) who found an RMSE of 0.28 at a tundra site. There are, however, still considerable uncertainties in using this data product (see Section 3.6.1).

2.1.6 GPP per unit leaf area

This was calculated using the partitioned GPP from the eddy covariance data (Section 2.1.1), averaged daily and taken on the same day as the values from the MODIS LAI product (Section 2.1.5). Note that there are no time-resolved GPP values for Bayelva due to insufficient data. The extracted GPP

values were divided by the appropriate LAI estimates and the resulting values were collected for all sites and binned into intervals of air temperature (1.5°C) and shortwave radiation (20 Wm⁻²), for which the mean and standard deviation were then calculated (shown on Figure 9).

2.2 Model description

The three models studied here are JSBACH (Jena Scheme for Biosphere-Atmosphere Coupling in Hamburg, Raddatz et al. (2007); Brovkin et al. (2009)), JULES (Joint UK Land Environment Simulator, Best et al. (2011); Clark et al. (2011)) and ORCHIDEE (ORGanizing Carbon and Hydrology In Dynamic Ecosystems Environment, Krinner et al. (2005)). These are all land surface components of major ESM's (JSBACH: MPI-ESM; JULES: UKESM; ORCHIDEE: IPSL).

These models can be run in a coupled mode within the ESM, or, as here, they can be run standalone forced by observed meteorology. The models are run as a gridded set of points for large scale simulations, and they can also be run for single points, as in this study. Each model had some development of high latitude processes during the PAGE21 project, and model developments have also been ongoing since the conclusion of the project in late 2015.

All the models simulate vertical fluxes of water, heat and carbon between the atmosphere, the vegetation and the soil. Of relevance to permafrost physics, the models simulate a dynamic snowpack by means of a multilayer snow scheme, and the freezing and thawing of soil (Ekici et al., 2014; Gouttevin et al., 2012a; Wang et al., 2013; Best et al., 2011) . All models use a vertical discretisation of soil thermal and hydrological dynamics (Gouttevin et al., 2012a), and a multi-layer snow scheme with improved representation of snow thermal conductivity, as well as snow settling, water percolation and refreezing (Wang et al., 2013). In its latest version used in this study, the impacts of soil organic matter on soil thermal and hydraulic properties, including porosity, thermal conductivity, heat capacity and water holding capacity, are incorporated in the model, generally following Lawrence and Slater (2008) . The fluxes, with differing resolutions (see Appendix Table A.2). JSBACH has the lowest resolution soil, with only 5 layers in the top 10 m (Hagemann and Stacke, 2015) , although in this latest version it is extended to 50 m depth with additional layers. ORCHIDEE and JULES also simulate an extra thermal-only column on the base of the hydrological column, to represent bedrock (Chadburn et al., 2015a) .

Soil thermal and hydrological properties in both JULES and ORCHIDEE have been adapted to allow better representation of organic soils, whereas in JSBACH only mineral soil properties are represented. However, JSBACH additionally simulates a moss/lichen layer at the surface with dynamic moisture contexts and thermal properties (Porada et al., 2016) , which physically represents the surface organic layer. Organic soil properties in JULES are described in (Chadburn et al., 2015a) . In ORCHIDEE the scheme follows Lawrence and Slater (2008) , using the observation-based soil organic carbon map from NCSCD (Hugelius et al., 2014) is used in the thermal and hydrological modules to derive the above mentioned soil properties, after linear interpolation from their original

~~4-layer (i.e. 0-30, 30-100, 100-200, 200-300 cm) values to fit ORCHIDEE vertical layers. The latest ORCHIDEE now has the same vertical discretization scheme for the thermal and hydrological modules above 2 m (11 layers), while the thermal module further extends to 38 m (total 32 layers) Hugelius et al. (2014).~~

Soil carbon is represented by a multi-pool scheme in all the models, with inputs from vegetation, and decomposition rates depending on soil temperature, soil moisture, and intrinsic turnover times of different pools (Goll et al., 2015; Clark et al., 2011). Both ORCHIDEE and JULES represent a vertical profile of soil carbon (discretised in line with the soil hydrology), including cryoturbation mixing (Koven et al., 2009; Burke et al., 2017). JSBACH, on the other hand, represents only a single layer, with decomposition rates determined by conditions in the upper layer of soil.

None of the models simulate nitrogen or other nutrients. Vegetation growth and productivity is therefore only determined by soil moisture and atmospheric forcing data, with no nutrient limitation. Different land cover types are represented in the models by surface tiles, which can vary in fractional cover. In JULES, a dynamic vegetation model is run with 9 competing plant functional types (PFT's) (Harper et al., 2016), whereas in the other models, vegetation is fixed, but with dynamic phenology. ORCHIDEE has 13 PFT's, but there is no specific high-latitude PFT in the version used here, so C3 grasses are prescribed as a fixed land cover (but with dynamic phenology) for these sites. In JSBACH there are 20 PFT's (including crop and pasture) and for these sites a 'tundra' PFT is used, which is similar to C3 grass but with reduced V_{max}. In JSBACH there is also a dynamic moss model simulating moss photosynthesis and respiration, as in the model described by Porada et al. (2013). This model represents both mosses and lichens by one plant functional type with 'average' physiological properties. In the version used here, the moss carbon fluxes are not yet fully coupled into the JSBACH carbon cycle, so the moss carbon fluxes are considered separately in the analysis that follows.

For more details of soil and vegetation configuration see Simulation Set-up (Section 2.1) and Appendix.

3 Site descriptions

2.1 Site descriptions

The sites represent a range of climatological and biogeophysical conditions across the tundra. Abisko is the warmest site, ~~in the sporadic permafrost zone with sporadic permafrost~~, followed by Bayelva, which is a high Arctic maritime site (on Svalbard), and Zackenberg, which is a maritime site in Greenland (colder than Bayelva). Samoylov and Kytalyk have a continental Siberian climate and the coldest mean annual temperatures. ~~The soil types, vegetation types and the wetness of the ground all vary between sites. The landscapes at each site also differ~~ The landscapes differ between sites, which can influence the permafrost and carbon dynamics, for example ~~via wind-blown snow and lateral~~

~~water fluxes~~through the impact of topography on snow distribution and hydrology. The following

sections provide a short description of each study area, and the important climatic and permafrost variables are given in Table 2.

2.2 ~~Abisko~~

At all sites there has been some tendency towards air temperature warming, which in many cases is accompanied by warming or thawing of permafrost (Callaghan et al. 2010; Christiansen et al. 2010 Parmentier et al. 2011; Boike et al. 2013; Lund et al. 2014; Abermann et al. 2017).

2.1.1 Abisko

The Abisko site (~~68°21' N, 18°49' E, 385m a.s.l~~) is located about 200 km north of the Arctic Circle ~~is located~~ in the Torneträsk catchment, northernmost Sweden. ~~The catchment ranges from 345 m a.s.l. to 1700 m a.s.l. and is centered around Lake Torneträsk. Mean annual air temperature is close to 0°C (-0.6°C for the period 1913-2006), and warming has resulted in mean annual air temperatures above 0°C for the last decade (Callaghan et al. (2010) ; Abisko Station meteorological data; www.polar.se/abisko).~~ The Abisko area is situated in a rain shadow and the total annual precipitation was 304 mm for the period 1961-1990 (Alexandersson et al., 1991) . However the total annual precipitation has increased since then and is now around 350 mm (Abisko Station meteorological data; www.polar.se/abisko).

~~The vegetation cover in the Abisko area ranges from remnants of boreal pine forest, through the subalpine zone dominated by mountain birch forest, through the low alpine belt, which extends from the treeline up to where *Vaccinium myrtillus* no longer persist, to the high alpine belt with non-vegetated surfaces (Carlsson et al., 1999; Lantmäteriet, 1997) . The footprint of the eddy covariance tower is characterized by wet fen with no permafrost present, and vegetation dominated by tall graminoids (Jammet et al., 2015, 2017) .~~

According to Brown et al. (1998), the Abisko area lies within the zone of discontinuous permafrost. However, with the observed permafrost degradation during the last decades (Åkerman and Johansson, 2008; Johansson et al., 2011), the area is now more characteristic of the ~~“sporadic permafrost”~~“sporadic permafrost” zone. Permafrost is widespread in the mountains (Ridefelt et al., 2008), but at lower elevations permafrost is only found in peat mires (Johansson et al., 2006).

Data from three sites from the Torneträsk catchment (within an area of 10 km) have been used for this study. The principal sites are Storflaket and Stordalen peat mires. The active layer measurements and the ground temperatures are monitored at the Storflaket site (Åkerman and Johansson, 2008; Johansson et al., 2011) and the carbon monitoring, including the eddy covariance measurement, is carried out at the Stordalen site. These two mire sites are very similar in terms of climate, soil profile and permafrost characteristics. The footprint of the eddy covariance tower is characterized by wet fen with no permafrost present, and vegetation dominated by tall graminoids (Jammet et al., 2015, 2017) .

For comparison, additional soil temperature data is included from a mineral soil site at the Abisko

315 Scientific Research Station, which is not underlain by permafrost.

2.1.2 Bayelva (Svalbard)

2.2 **Bayelva (Svalbard)**

The study site is located in the high Arctic Bayelva River catchment area, close to Ny-Ålesund on Spitsbergen Island in the Svalbard archipelago. ~~The catchment area lies between two mountains, with the glacial Bayelva River originating from the Brøggerbreen glacier. The West Spitsbergen Ocean Current warms this area to an average air temperature of about -13°C in January and $+5^{\circ}\text{C}$ in July; it also provides about 400 mm of precipitation annually, which falls mostly as snow. The area has experienced a significant warming since the 1960s related to atmospheric circulation patterns and in later years the lack of sea ice during winter (Hanssen-Bauer and Førland, 1998; Førland et al., 2012).~~

320 The area is characterized by maritime continuous permafrost. In bioclimatic terms the area represents a semi-desert ecosystem (Uchida et al., 2009).

~~The study site is located on Leirhaugen hill (25 m a.s.l.), on permafrost patterned ground mainly consisting of non-sorted soil circles or mud boils. The ground is mostly bedrock but is partly covered by a mixture of sediments, comprising glacial till and finer glacio-fluvial sediments and clays. The mud boils have bare soil centers (about 1 m diameter) and a surrounding rim of vegetation including~~

330 Vegetation includes low vascular plants (mainly grass, sedge, catchfly, saxifrage and willow), mosses and lichens (Ohtsuka et al., 2006; Uchida et al., 2006). ~~The soils are mineral (described as ‘silty loam’) with low organic content, although there can be locally high concentrations of organic carbon, for example at the base of the soil profile (Boike et al., 2008a).~~

335 ~~The area is characterized by maritime continuous permafrost with temperatures around -2 to -3°C . The active layer thickness in general exceeds 1 m and can reach as deep as 2 m in some areas (Westermann et al., 2010). Recent recent climatic warming has become manifest in the permafrost temperatures (Christiansen et al., 2010).~~

The ground is mostly bedrock but is partly covered by a mixture of sediments. The study site is

340 located on permafrost patterned ground mainly consisting of non-sorted soil circles or mud boils, with around 60% vegetation cover. The eddy covariance measurements were conducted on Leirhaugen hill ($78^{\circ}55.0'\text{N}$, $11^{\circ}57.0'\text{E}$). ~~Additional, and additional~~ meteorological observations and ground temperature measurements are continuously conducted at the Bayelva soil and climate monitoring station (Boike et al., 2003, 2008a; Roth and Boike, 2001) 100 m away. Over the past decade the

345 Bayelva catchment has been the focus of intensive investigations on soil and permafrost conditions (Roth and Boike, 2001; Boike et al., 2008a; Westermann et al., 2010, 2011), and the surface energy balance (Boike et al., 2003; Westermann et al., 2009). Details of the measurements are provided in Westermann et al. (2009); Lüers et al. (2014).

2.2 Kytalyk

2.1.1 Kytalyk

The Kytalyk site (~~70°50' N, 147°30' E, 10 m a.s.l.~~) is located in the Kytalyk reserve, 28 km north-west of the village of Chokurdakh in the Republic of Sakha (Yakutia), Russian Federation. The site is located between the East Siberian Sea (~~150 km to the North~~) and the transition zone between taiga and tundra. ~~Based on the data from Chokurdakh airport, the monthly mean air temperatures range between -34.2 °C (January) and +10.4 °C (July). There is a current tendency to warming in particular in autumn (Parmentier et al., 2011). Annual mean precipitation amounts to 232 mm, of which about half falls as snow.~~

~~Three major topographic levels occur around the measurement site. The highest level in the~~ The area is underlain by 'ice complex deposits' or 'Yedoma': ice-rich silt deposits (Schirrmeister et al., 2002; Gavrilov et al., 2003; Zimov permafrost. The measurement site is located on the bottom of a drained former thermokarst lake, and the site is bordered by the edge of the present river floodplain. Both on the floodplain and the lake bottom a network of ice wedge polygons occurs, in general of the low-centered type. ~~The ice wedge polygons on the lake bottom have broad ridges that may coalesce into low palsa-like plateaus. In between these plateaus a network of diffuse, strongly vegetated drainage channels have developed.~~ ~~This network of plateaus and drainage channels locally masks the original polygon structure. The~~ These form a mosaic of low plateaus and ridges ~~is~~ dominated by *Betula nana*, ~~the~~ and diffuse drainage channels ~~are~~ covered with a meadow-like vegetation of *Eriophorum angustifolium* and *Carex* sp. ~~There is also~~ hummocky *Sphagnum* with low *Salix* dwarf shrubs, polygon ponds ~~are~~ covered with mosses and *Comarum palustre*, deeper ponds where ice wedges have thawed, and drier areas ~~are~~ covered with *Eriophorum vaginatum* tussocks. The soils generally have a 10-40 cm organic top layer overlying silt. ~~In case of wet sites, the organic layer consists of loose peaty material, composed either of sedge roots or Sphagnum peat, depending on the vegetation. Drier sites tend to have a thinner, more compact organic layer.~~

~~The area is underlain by continuous permafrost. The active layer ranges from ~25 cm in dry, peat-covered locations to ~50 cm in wet locations. On the floodplain the active layer may be locally thicker.~~

~~The~~ The eddy covariance tower is located at a distance of ca. 200 m from the research station buildings (van der Molen et al., 2007). The tower footprint covers a wet northwestern and southeastern sector dominated by *Sphagnum* and ponds, while the northeastern and southwestern sectors have drier vegetation types.

2.2 Samoylov

2.1.1 Samoylov

The Lena River Delta in northern Yakutia is one of the largest deltas in the Arctic. Samoylov Island ($72^{\circ}22'N$, $126^{\circ}28'E$) Samoylov Island lies within one of the main river channels in the southern part of the delta and is relatively young, with an age of between 4 and 2 ka BP (Schwamborn et al., 2002). The annual mean air temperature on Samoylov Island from 1998–2011 was $-12.5^{\circ}C$, with the coldest monthly temperatures (January and February) around $-30^{\circ}C$, and maximum monthly temperature around $10^{\circ}C$ (July and August) (Boike et al., 2013). The Lena river delta, northern Yakutia. The landscape on Samoylov Island, and in the delta as a whole, has generally been shaped by water through erosion and sedimentation (Fedorova et al., 2015), and by thermokarst processes (Morgenstern et al., 2013). ~~The proportion of the total land surface of the delta covered by surface water can amount to more than 25% (Muster et al., 2012).~~

Continuous cold permafrost underlies the study area to between about 400 and 600 m below the surface. The terrace where the study site is situated is covered in low-centred ice wedge polygons. ~~In the depressed polygon centres, drainage is impeded due to the underlying permafrost, leading to,~~ with water-saturated soils or small ponds ~~in the polygon centres.~~ The mineral soil is generally sandy loam, underlain by silty river deposits, with a ~ 30 cm thick organic layer ~~at the surface~~ (Boike et al., 2013). ~~The vegetation~~ (Boike et al., 2013). Vegetation in the polygon centres and at the edge of ponds is dominated by sedges and mosses, and at the polygon rims, various mesophytic dwarf shrubs, forbs and mosses dominate (Kutzbach et al., 2007). ~~The maximum summer leaf coverage of the vascular plants was estimated to be about 0.3, and the leaf coverage of mosses was estimated to be about 0.95 (Kutzbach et al., 2007).~~ It is estimated that moss contributes around 40% to the total photosynthesis (Kutzbach et al., 2007).

Continuous cold permafrost (with a mean annual temperature of $-10^{\circ}C$ at 10 m depth) underlies the study area to between about 400 and 600 m below the surface. The active layer depth is generally less than 1 m, and typical snow depth around 0.2–0.4 m (Boike et al., 2013). Since observations started in 2006, the permafrost at 10.7 m depth has warmed by $> 1.5^{\circ}C$ (Boike et al. (2013) ; <http://gtnpdatabase.org/boreholes/view/5>

~~Additional detailed~~ (Kutzbach et al., 2007). Detailed information concerning the climate, permafrost, land cover, vegetation, and soil characteristics of ~~these islands in the Lena River Delta~~ Samoylov Island can be found in Boike et al. (2013) and Morgenstern et al. (2013). Analysis of the energy balance for the site is found in (Boike et al., 2008b; Langer et al., 2011a, b).

2.2 Zackenberg

2.1.1 Zackenberg

The Zackenberg study site is located near the Zackenberg Research Station within the Northeast Greenland National Park ($74^{\circ}28'N$; $20^{\circ}33'W$). ~~High mountains (> 1000 m a.s.l.)~~, within the continuous permafrost zone. High mountains surround the Zackenberg valley to the west, east and north, ~~while~~

in the south a fjord forms its boundary. The area has been covered by the Greenland Ice sheet several times. The climate is high Arctic with an annual mean air temperature of -9.0°C (1996-2014) and only June, July, August and September have mean monthly temperatures above 0°C . The annual mean temperature has increased by 0.06°C per year since 1996 with most rapid warming occurring during summer months (Abermann et al., 2017). The mean annual precipitation is 211 mm (1996-2014) of which most falls as snow; the water with a fjord to the south, and snow cover is characterized by large interannual variability (Pedersen et al., 2016). Water availability is thus regulated by topography and snow distribution patterns. The seasonal snow cover is characterized by large interannual variability with maximum snow depths ranging from 0.13 m in 2013 to 1.33 m in 2002 (Pedersen et al., 2016).

Most vegetated surfaces. Most vegetation in the Zackenberg valley are is located below 300 m.a.s.l., where the lowland is dominated by non-calcareous sandy fluvial sediments (Elberling et al., 2008). Mineral soil types dominate while, and peat soils have limited spatial coverage (Palmtag et al., 2015). At least five main plant community types can be identified: fens occurring in water-saturated areas (*Dupontia psilosantha*, *Eriophorum scheuchzeri*), grasslands in semi-sloping, wet-to-moist terrain (*Arctagrostis latifolia*, *Eriophorum triste*), *Salix arctica* snow-beds mostly in slopes with prolonged snow cover, *Cassiope tetragona* heaths in drier, level ground in the central valley, and *Dryas* heath in dry and wind-exposed areas (Elberling et al., 2008). The study site is located within a *C. Cassiope tetragona* tundra heath, dominated by *C. tetragona*, *Dryas integrifolia* and *Vaccinium uliginosum*, accompanied by with patches of mosses.

Zackenberg is situated within the continuous permafrost zone, and the landscape development is dominated by periglacial processes. Only the upper 45-80 cm of the soil (active layer thickness) thaws every summer. However, in a CALM (Circumpolar Active Layer Monitoring Network) field close to the study site, the maximum thaw depth has increased with 1.0-1.5 cm per year since 1997 (Lund et al., 2014).

Several studies on soil and permafrost (Palmtag et al., 2015; Westermann et al., 2015), surface energy balance (Lund et al., 2014; Stiegler et al., 2016; Lund et al., 2017) and carbon exchange (Mastepanov et al., 2008; Lund et al., 2012; Elberling et al., 2013) have been published based on data from this site. A rich data set is available from this site through the extensive, cross-disciplinary Greenland Ecosystem Monitoring (GEM) programme (www.g-e-m.dk).

3 Methods

2.1 Evaluation data

2.0.1 Carbon dioxide flux

Eddy covariance half hourly CO₂ flux data and related meteorological variables used in this study are archived in the PAGE21 fluxes database (<http://www.europe-fluxdata.eu/page21>) which is part of the European Flux Database Cluster.

Flux post-processing was performed consistently for all the sites following the protocol applied for the Fluxnet 2015 data release (<http://fluxnet.fluxdata.org/data/fluxnet2015-dataset>), with customized choices of the processing options. The applied scheme included: (i) a quality assessment/quality control procedure over single variables aimed at detecting implausible values or incorrect time stamps (e.g. by comparing patterns of potential and observed downward shortwave radiation at a given location); (ii) the computation of net ecosystem exchange (NEE) by adding the CO₂ flux storage term calculated from a single CO₂ concentration measurement point (at the top of the flux tower) and assuming a vertically uniform concentration field; (iii) the de-spiking of NEE based on Papale et al. (2006) using a threshold value ($z=5$); (iv) NEE filtering according to an ensemble of friction velocity (u^*) thresholds obtained by bootstrapping following the methods of Barr et al. (2013) and Papale et al. (2006) and selection of a u^* threshold, different for each year, based on the highest model efficiency (Nash-Sutcliffe); (v) the gap-filling of NEE time series with the marginal distribution sampling (MDS) method (Reichstein et al., 2005).

Finally, NEE was partitioned into the gross primary productivity (GPP) and ecosystem respiration (Reco) components using a semi-empirical model based on hyperbolic light response curve fitted to daytime NEE data (Lasslop et al., 2010). The years of data available for each site are given in supplementary Table S1.

2.0.1 Soil carbon profiles

Typical soil profiles with data on soil organic carbon content were generated for each site. Based on extensive field campaigns in each study area, individual pedons for representative landscape and soil types were combined and harmonized. In brief, soils were classified and sampled from open soil pits dug down to the permafrost. Permafrost samples were collected through manual coring into the permafrost at the bottom of the soil pit. In most cases, soils were sampled to a depth of 1 m. The harmonized soil profiles were generated by averaging several soil pedons per landscape type at a 1 cm depth resolution. For more detailed descriptions of field sampling and laboratory procedures see Palmtag et al. (2015); Siewert et al. (2015, 2016). Top 1m total soil carbon values were calculated from a weighted average of different typical profiles, based on the fractional coverage of landscape types in the footprint area of the flux towers.

2.0.1 Snow depth

Snow depth was recorded using automatic sensors (except Abisko where it is manual). Snow depth from the Abisko mire (Storflaket) was recorded manually monthly (Johansson et al., 2013). Snow height at Samoylov and Bayelva was recorded hourly, and for Zackenberg 3-hourly (using sonic

range and laser sensors). Snow depth at Kytayk was measured by means of a 70-cm vertical profile made of thermistors spaced every 5 cm (2.5 cm between 0 and 10 cm height from the ground). Data were logged every 2 hours and the snow-air interface level was identified by analyzing the profile patterns with a Matlab® routine calibrated to search for deviations between consecutive resistance readings above a given threshold. Years used for each site are given in supplementary Table S1.

2.0.1 Soil temperature

For Samoylov, Bayelva, Kytalyk and Zaackenber, soil temperature was recorded hourly using thermistors (Kytalyk set-up described in van der Molen et al. (2007)). Ground temperatures for Abisko mire were recorded at the Storflaket mire, at boreholes cased with plastic tubes and instrumented with Hobo loggers U12 (Industry, 4 channels) together with Hobo soil temperature sensors (Johansson et al., 2011). Years used for each site are given in supplementary Table S1.

2.0.1 Soil moisture

Continuous soil moisture measurements are only available for Bayelva, Samoylov and Zaackenber. At Samoylov and Bayelva, hourly volumetric soil water content was recorded (using Time Domain Reflectometry). At Zaackenber soil moisture was measured using permanently installed ML2x Theta probes (Lund et al., 2014). Years used for each site are given in supplementary Table S1. Indicative soil moisture levels for Abisko mire were collected from May to October 2015 (Pedersen et al., 2017); measured manually as volumetric soil water content integrated over 0–6 cm depth using a handheld ML2x Theta Probe (Delta-T Devices Ltd., Cambridge, UK). Soil moisture was measured 5 times in each plot and averages were subsequently used.

2.0.1 Active layer depth

Active layer depth was measured at CALM grids at most of the sites. At Bayelva there is no CALM grid, so active layer was estimated from soil temperature measurements and is given as an ‘indicative’ value. Active layer thickness monitoring is determined by mechanical probing. A 1-cm-diameter graduated steel rod is inserted into the soil to the depth of resistance to determine the active layer thickness (Åkerman and Johansson, 2008) according to the CALM standard.

2.0.1 Leaf area index

Leaf area index was taken from MODIS product (MODIS15A2), for the closest coordinates to the sites. This product has been successfully applied to tundra sites (Cristóbal et al., 2017). It was evaluated by Cohen et al. (2006) who found an RMSE of 0.28 at a tundra site. There are, however, still considerable uncertainties in using this data product (see Section 3.6.1).

2.0.1 GPP per unit leaf area

This was calculated using the partitioned GPP from the eddy covariance data (Section 2.1.1), averaged daily and taken on the same day as the values from the MODIS LAI product (Section 2.1.5). Note that there are no time-resolved GPP values for Bayelva due to insufficient data. The extracted GPP values were divided by the appropriate LAI estimates and the resulting values were collected for all sites and binned into intervals of air temperature (1.5°C) and shortwave radiation (20 Wm^{-2}), for which the mean and standard deviation were then calculated (shown on Figure 9).

2.1 Simulation set-up

The sites were represented in all the models by a single vertical column, although there was some horizontal representation by means of tiling approaches (see model [descriptions](#)[description](#), Section 2.2). The models were run in the most ‘up-to-date’ configurations, including new permafrost-relevant model developments where available. Variables were output at hourly and/or daily resolutions.

The meteorological driving data were prepared using observations from the site combined with reanalysis data for the grid cell containing the site. For the period 1901-1979, Water and Global Change forcing data (WFD) was used (Weedon et al., 2011). Data is provided at half-degree resolution for the whole globe at 3-hourly time resolution from 1902-2001. For the period 1979-2014, WATCH Forcing Data Era-Interim (WFDEI) was used (Weedon, 2013). For the time periods where observed data were available, correction factors were generated by calculating monthly biases relative to the WFDEI data. These corrections were then applied to the time-series from 1979-2014 of the WFDEI data. The WFD before 1979 was then corrected to match this data and the two datasets were joined at 1979 to provide gap-free 3-hourly forcing from 1901-2014. Local meteorological station observations were used for all variables except snowfall, which was estimated from the observed snow depth by treating increases in snow depth as snowfall events with an assumed snow density (see Appendix). These reconstructions were then used to provide correction factors to WFDEI and WFD. This leads to a more realistic snow depth in the model than using direct precipitation measurements, due to wind effects and the difficulty of accurately measuring snowfall. However, the local precipitation measurements were still used for rainfall, as this is much more reliable, with a potential undercatch of only around 10% (Yang et al., 2005). For Abisko, meteorological data from the research station were used, but additionally corrected by scaling the snowfall according to the ratio of monthly snow depths at the mire vs the research station (snow depth was only measured monthly at Storflaket mire), and a reduction of 1°C in air temperature. Even with these corrections, there is still considerable uncertainty in precipitation forcing, particularly the snowfall, so in order to test the impact of this, two of the models (JULES and JSBACH) performed two additional sets of simulations, with snowfall increased and reduced by 50%.

Spin-up was performed as consistently as possible between the models, using the meteorological forcing from 1901-1930. Years were selected at random from this 30 year period and the models were run for 10000 years with pre-industrial CO₂ (1850, 286 ppm), followed by 50 years with changing CO₂ (1851-1900). The model state at the end of this spin-up period was taken as the initial state for the main run (1901-01-01 to 2013-12-31). For JSBACH, there was an initial 50 years of hydrological spin-up before the main spin-up, with the permafrost impact on hydrology switched off, to allow the water to form a realistic profile (permafrost layers are impermeable and thus unrealistic initial conditions could otherwise be preserved). For JSBACH, the long spin-up was also between 7000-8000 years rather than 10000, since in this model there is no vertical representation of soil carbon, and therefore the soil carbon pools equilibrate much more quickly and had reached a steady state after 7-8000 years. The CO₂ forcing data is from Meinshausen et al. (2011).

The soil parameters in the models were set up to represent each site as closely as possible (see Appendix, and Table A.1). These drew from literature values, a PAGE21 deliverable ‘Catalogue of physical parameters’, and field experience. (Note that the soil carbon profiles described in Section 2.1.1 were not used for this).

Vegetation was prescribed in ORCHIDEE and JSBACH. Since these are tundra sites, JSBACH used a ‘tundra’ PFT (100% coverage), which is similar to C3 grass but with reduced V_{cmax} (maximum rate of carboxylation in leaves). ORCHIDEE prescribed C3 grass (100% coverage) as there is no tundra PFT in this model version. JULES was run with dynamic vegetation using 9 PFT’s (Harper et al., 2016), which do not include any tundra PFT’s. All 9 PFT’s prognostically determine their coverage according to the environmental conditions, and they are all allowed to compete for space. In practice, only the C3 grass PFT is able to grow at these sites.

Some experiments were performed to separate the impacts of different processes. ORCHIDEE was run with and without vertical mixing of soil carbon. JSBACH carbon fluxes were analysed with and without an additional contribution from a new moss photosynthesis scheme. In JULES, an extra set of simulations was performed with fixed vegetation, to compare with the dynamic vegetation scheme.

3 Results and discussion

The carbon dynamics are intrinsically linked to the physical state of the system ~~–(for example,~~ determining the rate of soil carbon decomposition), so we start by assessing the snowpack, soil temperature, soil moisture, and active layer thickness in all three models. The model physics has also been evaluated in detail in previous publications (Ekici et al., 2015, 2014; Chadburn et al., 2015a; Porada et al., 2016), so is kept short here. In these studies, representing organic soil was identified as a key influence on the simulation of soil physics, and following this we compare organic against mineral soils in our analysis. We then evaluate the soil carbon stocks and the ecosystem CO₂ fluxes,

and we analyse the CO₂ fluxes in detail. The fluxes depend on every part of the system, so all of the preceding analysis contributes to our understanding of the carbon dynamics at these sites.

3.1 Snow

~~Seasonal~~ The seasonal cycle of snow depth is shown in Figure 1. It depends strongly on the snowfall driving data. Since the snowfall was back-calculated from the snow depth, the accumulation period should match well with observations. There is still some variation due to the fresh snow density in the models (which can differ both from the assumed density in making the driving data, and between the models), and furthermore the compaction of the snow is dependent on the model process representation and physical conditions. Nonetheless, ~~the models all for the most part the models~~ make a reasonable simulation of the snowpack accumulation and compaction. ~~However, during the melting season they~~, with the exception of Abisko where the models are all biased high. Here, snow inputs are particularly uncertain as no high-resolution timeseries of snow depth are available (unlike the other sites). We performed a sensitivity study to test the impact of uncertainties or variability in snow depth on the simulated carbon-cycle processes. In this study, a reduction of 50% in snowfall allows the models to simulate a realistic snow depth at Abisko – see supplementary material. The impacts on soil carbon stocks and fluxes are fairly small, however (between 0.2% and 10%, supplementary Figures S7 and S8).

During the melting season the models are less accurate than during accumulation, with the snow often melting ~~a little too early~~ too early, by up to 25 days in the most extreme case. Our method of back-calculating snowfall from snow depth may miss some snowfall events during the melt season. There are also many other potential influences such as albedo effects, snow-vegetation interactions and the influence of wind-blown sediment. For example, the vegetation in the models is quite tall (up to 1m), and can lead to a lower albedo in the models than reality, and thus faster snowmelt (this is modelled by interpolating between snow-covered and snow-free albedo depending on snow depth and vegetation height). At Bayelva, where the vegetation is particularly small (~5cm), there is a notable underestimation of the snow depth and early snowmelt in all models, which supports this hypothesis (snow at Bayelva can be modelled very well when vegetation is not included (López-Moreno et al., 2016)). Snowdrift is only represented by scaling the snowfall data to match the observed snow accumulation, which limits the extent to which snowpack dynamics can be recreated by the models.

It is important to be careful when modelling snow depth based on single point observations, as they may not be representative of the area as a whole. Further details on the representativity of snow depths are given in supplementary information. The sensitivity of carbon cycle processes to increased/reduced snowfall is discussed in Sections 3.5 and 3.6.1.

620 3.2 Soil temperature

Soil temperature annual cycles at $\sim 40\text{cm}$ depth are shown on Figure 2. In general the models simulate the soil temperature at mineral soil sites quite well: Bayelva and Zackenberg sites on Figure 2. There are greater errors in the simulation of organic soils: Abisko, Kytalyk and Samoylov on Figure 2.

625 For JSBACH and ORCHIDEE, the annual cycles of temperature are too large for the organic sites, indicating that these models need to better represent the insulating/damping properties of organic soils. To illustrate this, additional observations are shown on the Abisko plot (Fig. 2), from mineral soil at the nearby research station (where there is no permafrost). This line matches much more closely with the ORCHIDEE and JSBACH simulations, suggesting that these models are behaving
630 thermally like a mineral soil. At Abisko, permafrost only occurs in peat plateaus and thus including organic soil properties in the models is essential for capturing the difference between permafrost and non-permafrost conditions.

In JULES, on the other hand, the annual cycle amplitude is too small at the organic sites and also at Zackenberg, mostly due to biases in the winter soil temperatures. This suggests that the
635 snow thermal conductivity or density may be too low in JULES. A similar problem was found with a previous JULES simulation of Samoylov island, using a similar model set-up and forcing data (Chadburn et al., 2015a). There, the winter soil temperature was improved by increasing snow density. Indeed, the conductivity of snow in the JULES simulations is between $0.03\text{-}0.1\text{ Wm}^{-1}\text{K}^{-1}$ at the sites with shallow snow (and in the upper layers of the snowpack at sites with
640 deeper snow), which is considerably lower than typical values for similar tundra sites, which suggest a realistic conductivity would be around $0.2\text{-}0.3\text{ Wm}^{-1}\text{K}^{-1}$, at least for the upper part of the snowpack (Gouttevin et al., 2012b; Domine et al., 2016) . See supplementary material for further discussion on snow conductivity/density.

3.3 Soil moisture

645 As with temperature, the (unfrozen) soil moisture is simulated well at mineral soil sites - see Bayelva and Zackenberg in Figure 3. In the winter, ORCHIDEE ~~has a problem in that it~~ does not represent the unfrozen water fraction in frozen soils, but the other models simulate a reasonable water content in winter. However, soil moisture is in general too low at organic sites - Samoylov and Abisko mire. The soils should be able to hold water near the surface and remain saturated very close to the surface
650 (or even above). This points to problems with the hydrology schemes. The soil moisture is very important for the soil temperatures, and it can also have a strong influence on soil carbon stocks and the partitioning of decomposition into CO_2 and methane. Furthermore, it ~~is important for moss photosynthesis, and therefore~~ influences vegetation growth, and thus the uptake of CO_2 from the atmosphere. Therefore it is important to further improve the soil hydrology in these models.

655 Note that saturated zones can be influenced by landscape heterogeneity and lateral water fluxes that would not be captured in a point simulation. This can potentially be simulated by the models as a landscape average (see for example Gedney and Cox (2003)). However, such schemes simulate only a gridbox mean water content, which does not capture, for example, the influence of anaerobic conditions on decomposition.

660 Figure 3 shows quite a large variation in the timing of freeze-up and thaw between the models, reflecting the soil temperature differences in Figure 2. Correspondingly, the largest differences are at the organic soil sites.

3.4 ALT

The active layer depth is shown on Figure 4. In the models it is calculated by interpolation of soil
665 temperatures to find the daily thaw depth, except in JULES which uses the method of Chadburn et al. (2015a). (The two methods differ at most within the thickness of the soil layers, Table A.2). In ORCHIDEE and JSBACH the active layer is too deep, which corresponds to the too-warm soil temperatures in summer, Fig. 2. In JSBACH the summer temperatures are only a little warmer than the observations - certainly closer than in ORCHIDEE, yet at some sites the active layer is just
670 as deep. This is because technically the ALT cannot be diagnosed correctly in JSBACH, given the thick soil layers below 20 cm depth (see Appendix Table A.2). Increasing the resolution of the soil layers, while it does not make a big difference to the soil temperature profile, has a very large impact on the simulation of the active layer depth, as shown by Chadburn et al. (2015b). In JULES there is generally quite a good match to the observations as supported by the fact that the summer soil
675 temperatures match closely with the observations for most sites. For Zackenberg the active layer is a little too shallow, but still in the range of observed values. This shows the importance both of resolving the soil column and the insulating effects of organic matter for determining the summer soil temperatures (Dyrness, 1982).

3.5 Soil carbon stocks

680 JULES and ORCHIDEE represent a vertical profile of soil carbon, whereas JSBACH does not. Without a vertical representation of soil carbon it is not possible to simulate permafrost carbon stocks, because all of the carbon is subject to the seasonal freezing and thawing of the active layer and the model does not contain any 'inert' permanently frozen carbon. Therefore, a vertical representation of soil carbon is prerequisite for simulating soil carbon stocks at these sites. However, JULES and
685 ORCHIDEE have some problems in simulating the profiles - Figure 5. The ~~biggest-most obvious~~ problem is underestimation: there is ~~very-much too~~ little carbon simulated at many of the sites (see last panel on Figure 5). For the sites where the quantity of soil carbon is somewhat realistic, the shape of the profiles vary from a steep exponential-looking decay with depth, to a shallower decline with more carbon in the deeper soil. The same kind of profiles are seen in the observations, particularly

690 for the mineral soil sites (Bayelva and Zackenberg). However, neither of the models can produce the carbon-rich peaty layers of the organic soils. To simulate this would require additional process representation in the models, including representing saturated (and thus anaerobic) conditions in peat soil, and a dynamic representation of bulk density.

The reasons for the major underestimation are different in JULES and ORCHIDEE. In JULES, the
695 main problem is that the GPP is underestimated, so there are not enough plant inputs to accumulate carbon in the soil. This is made clearer by Figure 6, which shows the relationship between GPP and top 1m soil carbon stocks. In JULES, the relationships are very similar to the observations, which indicates that the turnover of carbon in the soil is reasonable in JULES. Therefore, if the GPP were large enough, the soil carbon stocks would be much more realistic. In ORCHIDEE, the story
700 is different. Even when the vegetation is productive, the soil carbon stocks are still very low. This indicates a problem with the soil carbon decomposition. There are two factors that could affect this. Firstly, the soil temperatures in ORCHIDEE are much too warm, and the active layer is too deep (Fig.s 2 and 4). This can lead to too much decomposition. In order to improve this the model needs to better represent the insulation from the organic soils. Another possible problem is the deep soil
705 respiration. In ORCHIDEE the only factor that suppresses the soil respiration at depth is the cold and/or frozen nature of the ground. In JULES, however, there is an additional decay of respiration with depth that empirically represents some processes that are missing in the model (following the implementation in CLM, see Koven et al. (2013)). Including this in ORCHIDEE could lead to a higher carbon stock at depth. The deeper soil carbon stocks are also influenced by long-term burial
710 processes, which are only represented by a simple diffusion scheme in these models. We include JSBACH on Figure 6 because the top 1m soil carbon is mostly in the active layer. However, given
Given that the decomposition in JSBACH is controlled by the temperature of the top soil layer (3cm), it is not surprising that the ~~model somewhat underestimates the carbon stocks. relationships are not captured perfectly, as the upper soil layer will be much more sensitive to variations in temperature~~
715 than the deeper ones. However, on average the turnover is quite realistic for this model.

It should be noted that the observed relationship on Figure 6 may be confounded by the history of soil carbon formation at these sites. There is inconsistency between Holocene climate and the pre-industrial climate used in model spin-ups. Reconstructed Holocene climate for northern hemisphere is warmer than pre-industrial (Marcott et al., 2013), and possibly wetter, favouring the formation of
720 peat, so some underestimation by the models may be expected.

The soil carbon stocks are sensitive to changes in snow depth in these models (see supplementary Figure S8), through changes in soil temperature (JSBACH) and changes in vegetation growth (JULES). In JULES, both vegetation and soil temperature changes affect the soil carbon, but the vegetation effect dominates. In fact, for two of the sites (Kytalyk and Samoylov), the vegetation coverage is so different during spinup that the simulation with increased snowfall accumulates twice as much soil
725

carbon as the default case (although the stocks are still much too small and the absolute difference is less than 10 kgm^{-2} in the whole soil column).

We conclude that improving soil carbon stocks demands a different priority in each model. For JULES, the first priority is to simulate realistic vegetation productivity, for ORCHIDEE it is to improve the soil carbon decomposition, and for JSBACH it is to represent a vertical profile of soil carbon. Assuming we can combine the best features from all of the models, the greatest difference between the observed and simulated profiles will be the peaty, organic layers that are present in observations and not models (Figure 5). Therefore the next priority for model development is to better represent these organic soils. See e.g. Frolking et al. (2010); Schuldt et al. (2013) for examples of modelling peat. While peatlands represent a small fraction of the land surface, they contain very large carbon stocks (Yu et al., 2010), so it is important to include them in ESM's.

3.6 Carbon fluxes

Figure 7 shows the seasonal cycle of CO_2 flux at every site. The day-time and night-time fluxes are plotted separately (partitioned by incoming shortwave radiation), showing in general uptake during the day and emissions during the night. For the most part the models show uptake and emissions at the same time as the observations, and a similar timing of peak uptake/emission (one exception being the spring daytime flux in ORCHIDEE, see Section 3.6.1).

From the observations we also have the gap-filled estimates of annual gross primary productivity (GPP) and ecosystem respiration (Reco), which are compared with the annual totals for each model on Figure 8 (the moss GPP shown here is discussed in Section 3.6.3). For the GPP we see that for each model there is a positive correlation (sites with larger GPP in reality have larger GPP in the models), but that the overall values are too small for JULES, for ORCHIDEE there is a bigger variation, and for JSBACH, they tend to be too large for the less productive sites and too small for the more productive sites - i.e. the slope of the relationship between model and observations is too shallow. Nonetheless, a significant amount of the variation between sites is captured by the models, to which the only inputs are climate data and soil properties. Of these, climate is the main driver of vegetation growth in these models (since nutrient limitation is not included, the soil only impacts the vegetation through moisture stress - which is also partly climate-related), so we can say that a lot of the difference between the GPP/Reco across different sites is due to the difference in climate. In fact, in JULES and JSBACH, over 90% of the variation in GPP between sites is explained by the model, despite the systematic biases (R squared values of modelled GPP against observed GPP: JSBACH - 0.94, JULES - 0.95, ORCHIDEE - 0.63). This suggests that a model based on climate alone and with one tundra PFT could capture most of the variability in tundra carbon uptake, if the vegetation was correctly calibrated. This is a promising sign that the model simulations could be easily improved.

Due to the magnitude of errors in GPP and Reco, when considering the difference between the two - the net ecosystem exchange (NEE), the noise will be larger than the signal. Nonetheless, the

models and observations both generally show a carbon sink in the present day, due to environmental conditions being more favourable for growth (warmer, more CO₂) than in the ‘pre-industrial’ spin-up period (Table 3).

3.6.1 Drivers of carbon fluxes

The models indicate different drivers of GPP in different parts of the growing season. In particular, ~~that GPP depends mostly on LAI until around the middle of the growing season (end of July) and mostly on shortwave radiation~~ the increase in GPP in the first half of the season is driven by increasing LAI, and the downward trend of GPP in the second half of the season (August onwards) is driven by shortwave radiation. There is also a temperature dependence in all parts of the growing season. These relationships are shown in Supplementary Figure S1. Figure S1 also shows the plant respiration in the models, which exhibits a similar behaviour to the GPP, being influenced by temperature, shortwave radiation and LAI. The fact that these variables influence the GPP and autotrophic respiration is clear from the model structure (for example Knorr (2000); Clark et al. (2011)), however the apparent split between the two halves of the season is an emergent behaviour.

The other component of the ecosystem respiration is heterotrophic respiration. This does not exhibit the same dependencies as the plant respiration as it is determined by below-ground conditions. The heterotrophic respiration has a loose relationship with air temperature and a much stronger relationship with the ~20cm soil temperature - see Supplementary Figure S2.

In order to compare the photosynthesis schemes in the models more directly, we normalise by the LAI. It then becomes clear that the photosynthesis models in JSBACH and ORCHIDEE are in fact quite similar. Figure 9 shows the normalised GPP (per m² of leaf) against the air temperature and shortwave radiation. JSBACH and ORCHIDEE show similar relationships, although ORCHIDEE still has a slightly higher GPP, potentially explained by the fact that V_{cmax} is higher. On these plots we also show the limited data that we can plot from observations, using MODIS LAI. It is clear that the normalised GPP in JULES is too low (this is a problem requiring attention in the model, probably related to canopy scaling), but for JSBACH and ORCHIDEE the GPP is approximately consistent with the observations. The observations are a little higher than the models, but this is largely influenced by underestimated LAI at Samoylov (note that for the other sites, MODIS LAI compares reasonably with ground-based estimates). Moss cover is close to 100% on Samoylov (Kutzbach et al., 2007) and by contrast, maximum LAI from MODIS is only around 0.3. This could be due to the large size of the MODIS pixels (1km×1km) leading to the inclusion of water in the pixel, or because the moss has a different absorption spectrum from vascular plants and could register as bare soil. Whatever the cause, the GPP per unit LAI at Samoylov would be at least doubled by this underestimation of LAI, and if we were to account for this, the observation-based estimates would be very close to the JSBACH and ORCHIDEE results.

Aside from the low-bias in JULES, we therefore conclude that the main source of error in the modelled seasonal cycle of GPP is the huge variation in the simulated LAI. This is shown on Figure 10. For example, ORCHIDEE LAI remains at zero in the early season, when the observations and other models show carbon uptake, and it suddenly increases to a very large value later in the season, then showing an uptake that is much larger than the observations (Fig. 7). In fact, at Zackenberg the cumulative temperature is never high enough to initiate budburst in the model, so the LAI is always zero. These problems lead to unrealistic daytime emissions during spring from ORCHIDEE on Fig. 7 for most sites, and no fluxes at all for Zackenberg. Since the GPP seems to be consistent with observations when the impact of LAI is removed, we conclude that if the models could simulate the correct LAI they would largely simulate the correct GPP. JULES captures more of the difference in LAI between the sites than the other models (and subsequently captures more of the inter-site variation in GPP). This is because JULES is running a dynamic vegetation scheme that allows the vegetation fraction to vary. The LAI from JULES with fixed vegetation is also shown on Figure 10, and captures less of the inter-site variability. Therefore, both improving the LAI and including a dynamic vegetation scheme is the priority for improved simulations of tundra carbon uptake.

Carbon fluxes are also sensitive to soil moisture, as seen in simulations with increased/decreased snowfall, where differences in soil moisture availability in summer are reflected by changes in annual mean GPP, ecosystem respiration and vegetation fraction in JULES (Supplementary Figure S7), in line with Frost and Epstein (2014) . Therefore, realistic simulation of precipitation and soil moisture is a pre-requisite for improved LAI and vegetation dynamics.

3.6.2 Components of respiration

If the system were in equilibrium, the annual mean ecosystem respiration would be equal to the GPP. Thus, improving the simulation of GPP would by default improve the simulated respiration. However, the seasonal cycle of respiration is significantly different from that of GPP, due to the heterotrophic component. (This is particularly true in cold climates as the soil temperature can lag a long way behind air temperature due to the latent heat of freezing/thawing.) Furthermore, the response of respiration to changing conditions must be correctly simulated, otherwise any shift from the equilibrium state - a net source or sink of carbon - will not be correctly simulated.

It is difficult to compare the modelled respiration fluxes with the eddy covariance data (other than the annual mean). This is because the gases are assumed to be immediately emitted from the soil in the models, whereas in reality they can accumulate in the soil profile, and diffuse upwards with a significant delay. The accumulated gas may also be released from the soil in bursts, e.g. in the case of Bayelva, where the bursts of emissions in the autumn season correspond to heavy rainfall events, which (it is hypothesised) may be forcing the gas out of the soil (J. Boike, personal communication). Similarly, strong autumn emissions of CO₂ from the soil were observed by chamber measurements at Zackenberg, due to the freezing of the active layer forcing out bubbles of gas (Mastepanov et al.,

2013). Further difficulty is introduced since the heterotrophic and autotrophic components cannot be separated in the measurements. Therefore we cannot evaluate the soil respiration schemes in detail without direct measurements in the soil. However, one conclusion we can make is that for some models the soil carbon is approximately correct when the inputs to the system (GPP) are correct (Figure 6), which gives some indication that the decomposition models behave reasonably in these conditions.

3.6.3 Nutrient limitation and moss.

We have discussed the need for a dynamic vegetation model to capture the inter-site differences in LAI, as shown on Figure 10 where JULES using a dynamic vegetation model captures much more of the inter-site variability than the other models. However, looking more closely highlights some missing processes.

For example, the LAI at Bayelva is very small (close to zero) during the early part of the JULES simulation, but between around 2002-2006 it rapidly increases to around 1. To illustrate this transition, the fractional coverage of vegetation in JULES is shown on Supplementary Figure S3. In reality, vegetation cannot establish rapidly at a site such as this (even if climatic conditions become appropriate), because of the lack of a soil matrix and nutrients needed for plant growth, particularly nitrogen. Vascular plants could take 100's of years to establish once climatic conditions become appropriate, due to the large timescales involved in soil development. The vegetation at Bayelva is ~~mainly~~ largely mosses and lichens, which can grow in nutrient-poor conditions, but photosynthesise more slowly than vascular plants (Yuan et al., 2014). Therefore, to simulate the CO₂ flux at a very nutrient-limited site it is necessary to have a different PFT that represents the low-nutrient but low-GPP vegetation such as moss, and to include nutrient limitation for the other PFTs.

A similar problem can be seen at Samoylov, where around 90% of the site is covered by moss (Boike et al., 2013), and JULES simulates an LAI similar to that of Kytalyk (as the climatic conditions are similar), but in reality the LAI's of the two sites are very different and at Samoylov the LAI (of vascular plants) and CO₂ flux should be much smaller than that of Kytalyk. At Samoylov, the moss contributes around 40% to the total photosynthesis (Kutzbach et al., 2007), showing its importance in the carbon budget of this site. It is hypothesised that there are fewer vascular plants at Samoylov because the more waterlogged conditions (due to many polygon centre ponds) could reduce vegetation growth. In fact, reduced vegetation growth is also seen in areas with many polygon centre ponds at Kytalyk. Moreover, nitrogen may be lost in these waterlogged environments by denitrification, making it a more nutrient-limited environment.

Thus, to really capture the inter-site differences in GPP it is necessary to include nutrient limitation and other soil/plant interactions in the model. And once nutrient limitation is introduced, then moss is required (which grows in nutrient-deficient and very wet conditions where the vascular plants will not grow) in order to recreate the observed carbon uptake.

In JSBACH, moss carbon fluxes can be included - see Figure 8. This shows that the moss model
870 can contribute significantly to the carbon budget at the mossy sites. However, at the sites with less
vascular vegetation in reality (Bayelva and Samoylov), including the moss makes the total fluxes
much too large, as JSBACH (like JULES) simulates too much vascular vegetation.

At Samoylov there is an early-season peak of carbon uptake that is missed in the models (Figure
7). It is possible that this could correspond to the wet ground directly following snowmelt, which
875 leads the moss to start photosynthesising. However, it is difficult to make conclusions from the data
available, and we also know that eddy covariance methods can have some problems around the time
of snowmelt (for example [Pirk et al. \(2017\)](#)). Nonetheless, we can get a clue from the moss model
in JSBACH. Supplementary Figure S4 shows the annual cycle of moss GPP along with the GPP
from JSBACH (without moss), showing that it captures an early-season peak before the vascular
880 plant uptake starts in JSBACH. This plot also shows the moisture content of the moss layer, making
it clear that there is a strong relationship between moisture content and moss photosynthesis. Thus
it becomes even more important to simulate soil moisture correctly once moss is included in the
models.

It could also be important to consider lichens separately from mosses, as their physical and
885 biological properties can be very different. For example, the high albedo of lichens can impact the
Earth's radiation budget (Bernier et al., 2011).

4 Conclusions

Based on the analysis above, we can identify priority developments that would improve the carbon
stocks and fluxes in the models. Assuming that 'state-of-the-art' is represented by a combination
890 of the best parts of each model, we provide the following priorities for next steps to advance the
state-of-the-art:

1. Improve vegetation phenology/dynamics to simulate realistic LAI (including nutrient limita-
tion and dynamic vegetation).
2. Include moss both for photosynthesis and peat accumulation.
- 895 3. Improve the soil carbon profile for organic soils (including peat processes).

~~There~~ There is also a need to address remaining issues in the model physics, particularly for soil
moisture and snow. There are feedbacks between the vegetation and the soil physical state (e.g.
Sturm et al. (2001)), so incorporating more realistic vegetation such as Arctic shrubs could also lead
to an improved simulation of ~~the~~ soil temperature and moisture.

900 There are several reasons why distinguishing between different tundra PFT's, such as grasses
and shrubs, could be useful, such as differences in carbon storage, and snow interactions. Note that
JULES includes a 'shrub' PFT, but these are large shrubs (~ 1.5m tall) which would not be expected

to grow at the cold sites. Smaller, cold-tolerant shrubs should be added as a separate PFT. There are few modelling studies to date where tundra phenology is explicitly considered, but see Van Wijk et al. (2003) for one example.

In JSBACH the moss photosynthesis is already simulated, and the coupling to the soil carbon will be available in the next version. This provides clear guidance for other models to follow, see Porada et al. (2013, 2016). However, since JSBACH does not include nutrient limitation, the combined GPP/Reco from vascular vegetation and moss is too high (Fig. 8). Including nutrient limitation is an essential part of these priority developments.

In order to facilitate improvements to the vegetation schemes, better site-level measurements of LAI are required. This was identified as one of the largest modelling uncertainties, but only indirect satellite-derived LAI products are available, which are not sufficiently detailed or accurate for developing the model schemes. Furthermore, in order to improve the simulation of soil carbon profiles, better observations and understanding of all below-ground processes such as in-situ decomposition rates and the dynamics of cryoturbative mixing are required (Beer, 2016).

Future changes in NEE are key to understanding the role of the Arctic in a global context. We can see in Table 3 that the size of the NEE is much smaller than the errors we are currently seeing in, for example, the simulated GPP. This supports the need for the model improvements highlighted above.

Future changes in the carbon balance will come both from changes in vegetation productivity/type, and decomposition of old soil carbon due to thawing permafrost. Therefore, dynamic vegetation (including nutrient limitation) is required for future simulations as well as for simulating the correct LAI in the present day. The vertical representation of soil carbon is therefore also particularly important for the fluxes in the future. However, soil carbon release will also be triggered by landscape dynamics like ground collapse and thermokarst formation, which are not yet represented in any of these models. See e.g. Schneider von Deimling et al. (2015) for a modelling study in which some of these impacts are included. This is another important aspect that must be taken into account in future model development (Rowland and Coon, 2015).

The feedbacks between the Arctic and the global climate are strongly dependent on whether carbon is released into the atmosphere from heterotrophic respiration as carbon dioxide or methane. The modelling capability at the time of this study was not sufficient to simulate the methane flux. However, this development is in progress, see e.g. Kaiser et al. (2017) , and represents an important topic for future work. Lakes and ponds also play a major role in methane and carbon dioxide exchange with the atmosphere (Bouchard et al., 2015; Langer et al., 2015) and should also be considered in future land surface models.

Accurate process representation at a site level will not necessarily transfer the same level of accuracy to a global simulation. In particular, there are issues with using a single ‘gridbox mean’ value to represent a large area of land (heterogeneity in soil/microtopography exerts non-linear controls on carbon and vegetation dynamics), and with obtaining realistic large-scale observations for quan-

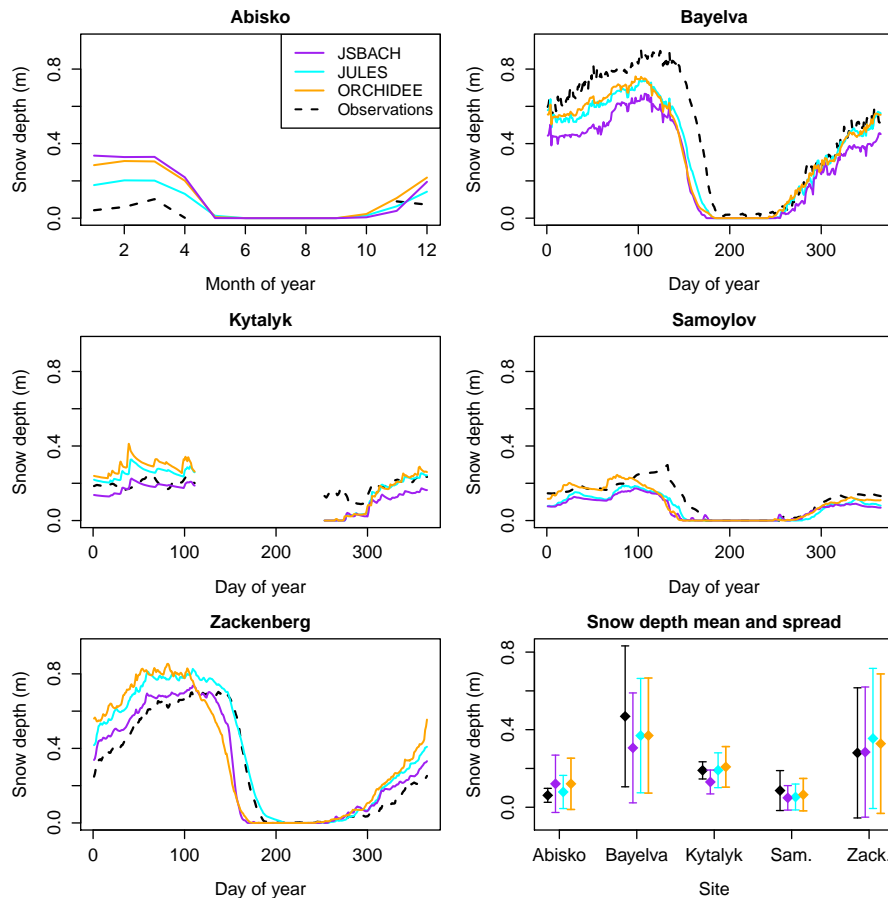


Figure 1. Mean annual cycle of snow depth at each site, showing both observations and models. [On 6th panel, Samoylov and Zackenberg are abbreviated to ‘Sam.’ and ‘Zack.’. Mean annual cycle is calculated from a single site over a number of years, except for Abisko where measurements were taken in several different locations on the mire.](#) See supplementary Table S1 for years used at each site.

940 titles such as soil parameters. On the other hand, the sites used in this study represent typical tundra
sites, and the model development priorities that we identify are consistent across sites, indicating
that these would also lead to improved tundra carbon dynamics in global simulations. This study has
allowed us to quantify deficiencies in the models that we could not have robustly identified using
global datasets, due to the quantity and quality of observational data available. [This work also opens](#)
945 [up opportunities for further process studies in future.](#)

Appendix A: Details of model set-up

Mineral soil properties were calculated from sand/silt/clay fractions. Slightly different pedotransfer
functions are used in each model, but they are all taken from the same baseline soil texture (see

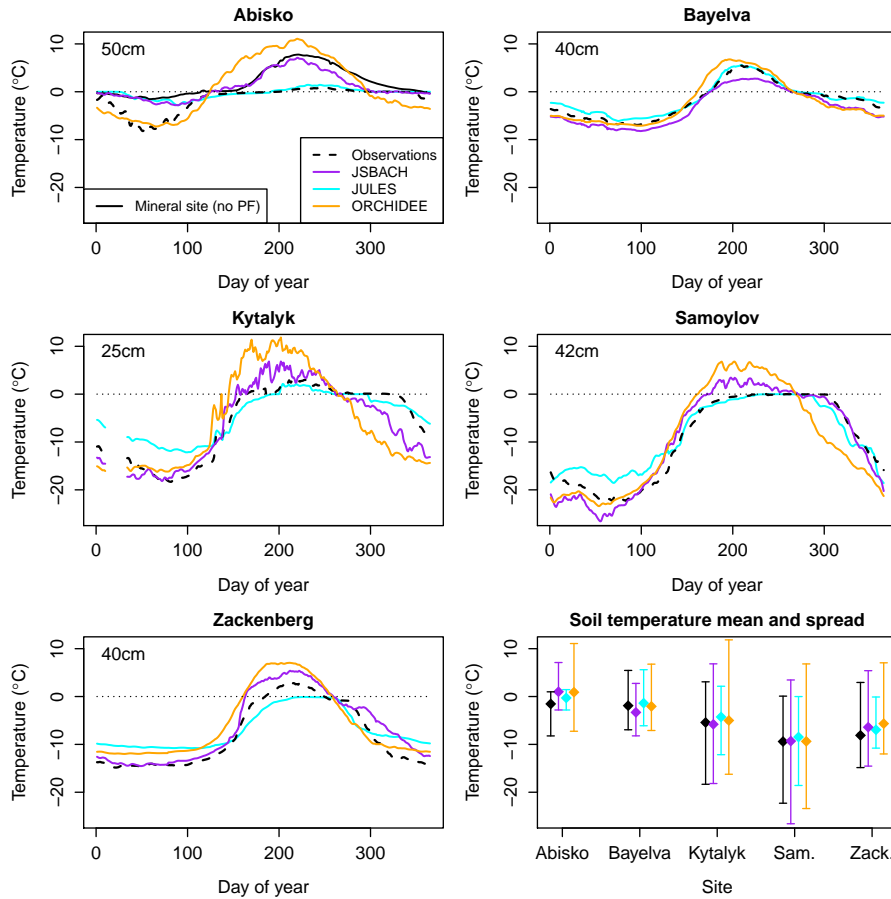


Figure 2. Mean annual cycle of soil temperature at each site, showing both observations and models. Depths of observations: Abisko: 50cm, Bayelva: 40cm, Kytalyk: 25cm, Samoylov: 42cm, Zackenberg: 40cm. JULES and ORCHIDEE take nearest soil layer and JSBACH is interpolated to correct depth, as soil layers are not well-enough resolved to get close to the right depth. [On 6th panel, Samoylov and Zackenberg are abbreviated to ‘Sam.’ and ‘Zack.’.](#) See supplementary Table S1 for years used at each site.

Table A.1). For JULES, the organic soil fraction as a function of depth was estimated using the bulk density and carbon density. The combined organic/mineral soil properties were then calculated as in Chadburn et al. (2015a).

Assumed ‘fresh’ snow density for creating snowfall timeseries from snow depth: This depends on the resolution of the data. If we have low-resolution snow depth data, there may be some compaction between the snow landing and the measurement being taken, so we will use a higher density to generate the timeseries. The density used for most sites, hourly to daily resolution, is 180 kgm^{-3} . At Abisko, only 5-daily snow depth data was available, and this was at the research station rather than the mire. Since this is a relatively warm site leading to more melting, and due to the long time interval between readings, in order to give enough snow in the models a density of 240 kgm^{-3}

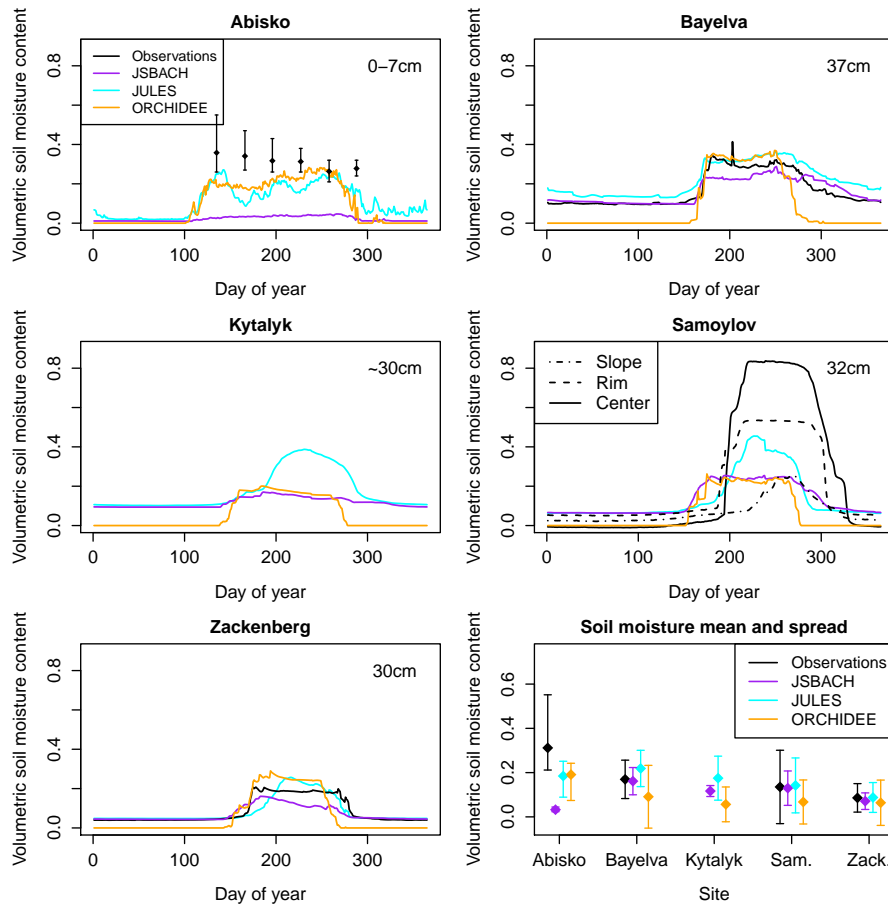


Figure 3. Mean annual cycle of unfrozen soil moisture at each site, showing both observations (where available) and models. Depths: JSBACH: 19cm for all sites (this is the closest to 30cm - the next layer is at 78cm), except Abisko, 3cm. JULES: 32cm (except Abisko, 3cm). ORCHIDEE: 36cm (except Abisko, 4cm). Observations: Bayelva: 37cm Samoylov: 32cm Zackenberg: 30cm Abisko: 0-7cm. For Samoylov, three different soil moisture profiles are shown that represent different parts of the polygonal microtopography. [On 6th panel, Samoylov and Zackenberg are abbreviated to 'Sam.' and 'Zack.'](#) See supplementary Table S1 for years used at each site.

was used. For Abisko mire there were just a handful of snow depth measurements each year. All available values taken during a given month were averaged to give a monthly average timeseries of snow depth. We compared the depth with the model output from JULES using the forcing data prepared from the research station. The snowfall was then scaled according to the ratio of monthly snow depth in the model vs the observations. This approach introduces uncertainties that would be reduced by the availability of a higher-resolution snow depth dataset from Stordalen mire.

Acknowledgements. The authors acknowledge financial support by the European Union Seventh Framework Programme (FP7/2007-2013) project PAGE21, under GA282700. SEC, SW and GH acknowledge support

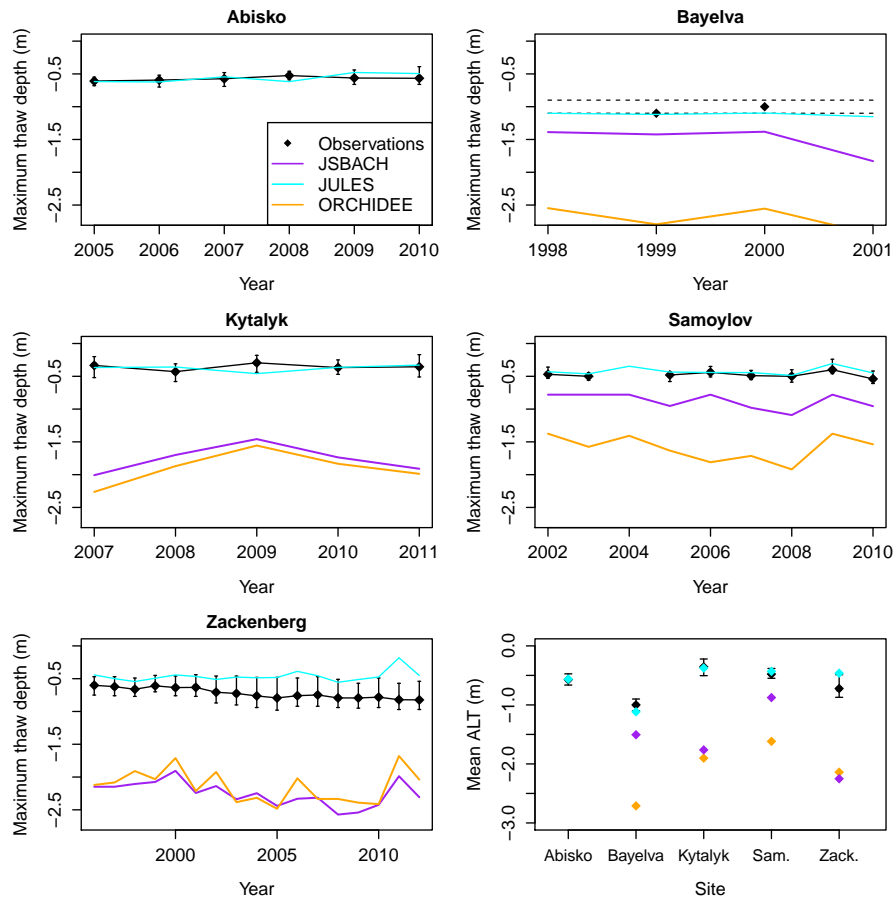


Figure 4. Maximum summer thaw depth (active layer) over a number of years at each site, comparing observations and models. Dotted lines on the second panel represent the range of observed estimates. For all other panels, CALM grids are used, and the error bars show the full range of measured values in the grid. On the final panel the error bars show the mean of the upper/lower limits from the previous panels.

from COUP (Constraining Uncertainties in Permafrost-climate Feedback) Joint Programming Initiative project (S.E.C: National Environment Research Council grant NE/M01990X/1; G.H: Swedish Research Council grant no. E0689701; S.W: Research Council of Norway project no. 244903/E10).

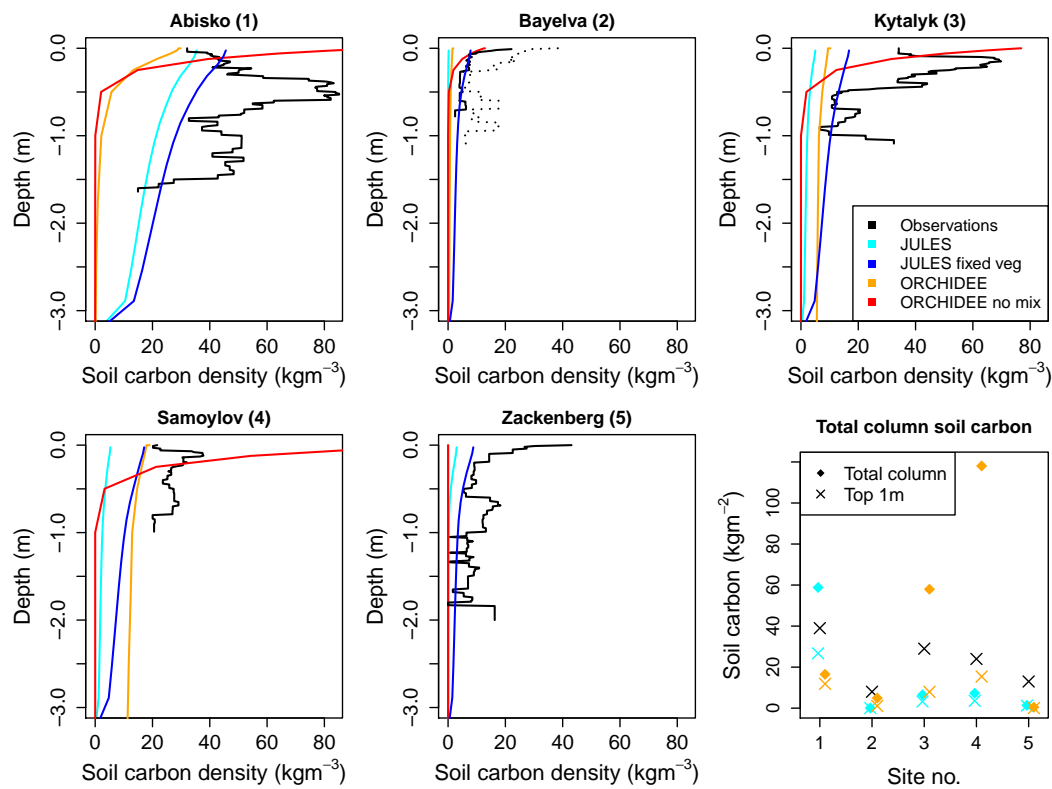


Figure 5. Profile of soil carbon at each site (kgm⁻³). Observations and two of the models (ORCHIDEE and JULES) are shown, as these models have a vertically resolved soil carbon profile. Dotted/solid lines on second panel (Bayelva) show two different land cover types in the vicinity of the site (solid=barren ground, dotted=sparse shrub-moss tundra.) Note that site numbers on the last panel are given in the headings of the preceding panels.

970 References

- Abermann, J., Hansen, B., Lund, M., Wacker, S., Karami, M., and Cappelen, J.: Hotspots and key periods of Greenland climate change during the past six decades, *Ambio*, 46, 3–11, 2017.
- Åkerman, H. J. and Johansson, M.: Thawing permafrost and thicker active layers in sub-arctic Sweden, *Permafrost and Periglacial Processes*, 19, 279–292, 2008.
- 975 Alexandersson, H., Karlström, C., and Larsson-McCann, S.: Temperature and precipitation in Sweden 1961-90. Reference normals, Sveriges Meteorologiska och Hydrologiska Inst., 1991.
- Atkin, O. K.: Reassessing the nitrogen relations of Arctic plants: a mini-review, *Plant, Cell & Environment*, 19, 695–704, doi:10.1111/j.1365-3040.1996.tb00404.x, <http://dx.doi.org/10.1111/j.1365-3040.1996.tb00404.x>, 1996.
- 980 Barr, A., Richardson, A., Hollinger, D., Papale, D., Arain, M., Black, T., Bohrer, G., Dragoni, D., Fischer, M., Gu, L., et al.: Use of change-point detection for friction-velocity threshold evaluation in eddy-covariance studies, *Agricultural and Forest Meteorology*, 171, 31–45, 2013.

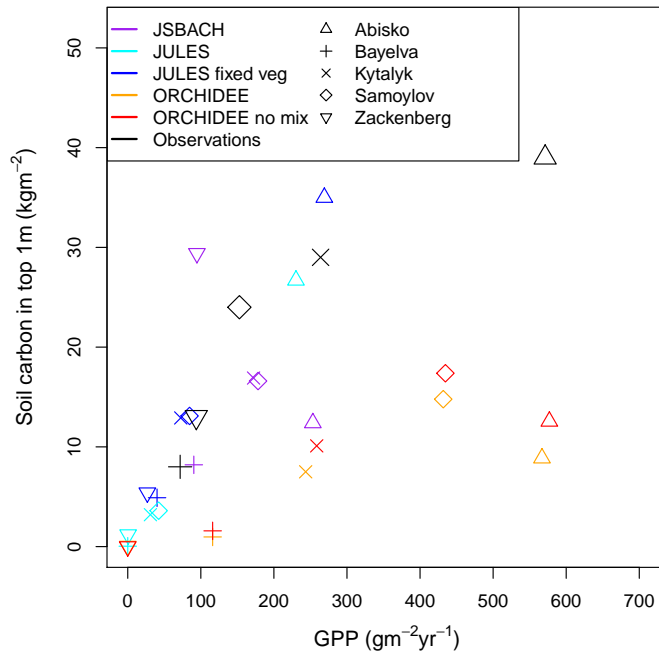


Figure 6. GPP against top 1m soil carbon at each site. The top 1m soil carbon values are for the tower footprint area (see supplementary Table S2), so that equivalent values are being compared.

Table 1. Key features of the land surface models used in this study.

<u>Process</u>	<u>JSBACH</u>	<u>JULES</u>	<u>ORCHIDEE</u>
<u>PFT's</u>	<u>20</u>	<u>9 (+4 crop/pasture)</u>	<u>13</u>
<u>PFT that grows/is used</u>	<u>Tundra</u>	<u>C3 grass</u>	<u>C3 grass</u>
<u>Dynamic vegetation</u>	<u>No</u>	<u>Yes</u>	<u>No</u>
<u>Dynamic phenology</u>	<u>Yes</u>	<u>Yes</u>	<u>Yes</u>
<u>Nutrient limitation</u>	<u>No</u>	<u>No</u>	<u>No</u>
<u>Soil carbon</u>	<u>One layer</u>	<u>Multilayer</u>	<u>Multilayer</u>
<u>Soil carbon mixing</u>	<u>No</u>	<u>Yes</u>	<u>Yes</u>
<u>Deep soil respiration</u>	<u>None</u>	<u>Suppressed</u>	<u>Not suppressed</u>
<u>Soil latent heat</u>	<u>Yes</u>	<u>Yes</u>	<u>Yes</u>
<u>Snow</u>	<u>Multilayer</u>	<u>Multilayer</u>	<u>Multilayer</u>

Bartholomeus, H., Schaepman-Strub, G., Blok, D., Sofronov, R., and Udaltsov, S.: Spectral estimation of soil properties in Siberian tundra soils and relations with plant species composition, Applied and Environmental Soil Science, 2012, 2012.

Beer, C.: Permafrost sub-grid heterogeneity of soil properties key for 3-D soil processes and future climate projections, Frontiers in Earth Science, 4, 81, 2016.

Table 2. Key climatic/physical variables at the sites.

	Abisko	Bayelva	Kytalyk	Samoylov	Zackenberg
<u>Latitude</u>	<u>68.35</u>	<u>78.92</u>	<u>70.83</u>	<u>72.22</u>	<u>74.5</u>
<u>Longitude</u>	<u>19.05</u>	<u>11.93</u>	<u>147.5</u>	<u>126.28</u>	<u>-20.6</u>
<u>Elevation</u>	<u>385 m.a.s.l</u>	<u>25 m.a.s.l</u>	<u>10 m.a.s.l</u>	<u>6 m.a.s.l</u>	<u>40 m.a.s.l</u>
Mean annual air temp.	-0.6°C	-5°C	-10.5°C	-12.5°C	-9°C
Summer <u>Max. monthly</u> air temp.	11°C	5°C	10°C	10°C	6.5°C
Winter <u>Min. monthly</u> air temp.	-11°C	-13°C	-34°C	-33°C	-20°C
Annual precipitation	350 mm	400 mm	230 mm	~190 mm	210mm <u>260mm</u>
<u>Fraction as snow</u>	<u>~40%</u>	<u>~75%</u>	<u>~50%</u>	<u>~30%</u>	<u>~85%</u>
Typical snow depth	0.1m	0.5-0.8m	0.2-0.4m	0.2-0.4m	0.1-1.3m
Active layer depth	0.55-1.2m	1-2m	0.25-0.5m	<1m	0.45-0.8m
Permafrost temperature	~0°C	-2 to -3°C	-8°C	-10°C	-6.5 to -7°C
Soil type (mineral/organic)	Organic	Mineral	Organic	Organic	Mineral

Table 3. Mean NEE budget ($\text{gCm}^{-2}\text{yr}^{-1}$), showing that in general this is smaller than the errors in simulated GPP, therefore the noise is larger than the signal in this data. Positive numbers represent a carbon source.

Site	JSBACH	JULES	ORCHIDEE	Observations
Abisko	-6.6	-16.0	-79.2	-162.0
Bayelva	-8.8	-15.1	-34.7	-13.9
Kytalyk	-19.0	-18.9	-24.3	-108.0
Samoylov	+1.5	-15.1	-58.9	-49.6
Zackenberg	+35.9	-5.2	+0.01	-12.0
<i>Mean absolute error in GPP</i>	<i>100.2</i>	<i>123.6</i>	<i>88.4</i>	-

Beringer, J., Lynch, A. H., Chapin, F. S., Mack, M., and Bonan, G. B.: The Representation of Arctic Soils in the Land Surface Model: The Importance of Mosses, *Journal of Climate*, 14, 3324–3335, doi:10.1175/1520-0442(2001)014<3324:TROASI>2.0.CO;2, [http://dx.doi.org/10.1175/1520-0442\(2001\)014<3324:TROASI>2.0.CO;2](http://dx.doi.org/10.1175/1520-0442(2001)014<3324:TROASI>2.0.CO;2), 2001.

Bernier, P., Desjardins, R., Karimi-Zindashty, Y., Worth, D., Beaudoin, A., Luo, Y., and Wang, S.: Boreal lichen woodlands: A possible negative feedback to climate change in eastern North America, *Agricultural and Forest Meteorology*, 151, 521 – 528, doi:<http://dx.doi.org/10.1016/j.agrformet.2010.12.013>, <http://www.sciencedirect.com/science/article/pii/S0168192311000050>, 2011.

Best, M. J., Pryor, M., Clark, D. B., Rooney, G. G., Essery, R. L. H., Ménard, C. B., Edwards, J. M., Hendry, M. A., Porson, A., Gedney, N., Mercado, L. M., Sitch, S., Blyth, E., Boucher, O., Cox, P. M., Grimmond, C. S. B., and Harding, R. J.: The Joint UK Land Environment Simulator (JULES), model description Part

Table A.1. Parameters for the sites. ¹Klaminder et al. (2008). ²J. Boike, personal communication. ³Van Huissteden et al. (2005). ⁴van der Molen et al. (2007). ⁵Boike et al. (2013). ⁶Hollesen et al. (2011). ⁷Rydén et al. (1980). ⁸Roth and Boike (2001). ⁹S. Zubrzycki, soil carbon data. ¹⁰PAGE21 Catalogue of physical parameters. ¹¹Bartholomeus et al. (2012). ¹²Elberling et al. (2008). In most cases soil types (see Section 2.1) were translated to approx. sand/silt/clay fractions using Table 1 in Beringer et al. (2001). *Estimated from bulk density. Topographic index is from a global dataset: a 0.5° aggregate from (US Geological Survey, 2000).

	Abisko	Bayelva	Kytalyk	Samoylov	Zackenberg
Latitude	68.35	78.92	70.83	72.22	74.5
Longitude	19.05	11.93	147.5	126.28	-20.6
Organic layer thickness (cm)	~50 ¹	0 ²	~20 ^{3,4}	~30 ⁵	5 ⁶
Sand fraction	0.1	0.17	0.17	0.58	0.8 ⁶
Silt fraction	0.9	0.7	0.7	0.32	0.1 ⁶
Clay fraction	0.0	0.13	0.13	0.1	0.1 ⁶
Bulk density	1.3 ⁷	1.7 ⁸	0.6 ⁴	0.8 ⁹	0.9-1.8 ¹⁰
C below organic layer (kgm ⁻³)	14*	0*	17 ¹¹ *	35 ⁹	10 ¹²
Topographic index mean	4.0	3.9	6.2	5.9	6.7
Topographic index st.dev.	2.5	1.6	2.8	2.2	1.2

Table A.2. Soil layer thicknesses in the models.

Model	Layer thicknesses (m)
JSBACH	0.03, 0.19, 0.78, 2.68, 6.98, 16.44, 38.11 <u>0.06, 0.26, 0.92, 2.88, 5.72, 13.2, 30.1</u>
JULES	0.05, 0.08, 0.11, 0.14, 0.17, 0.19, 0.22, 0.24, 0.26, 0.28, 0.30, 0.32, 0.34, 0.36, 0.38, 0.40, 0.42, 0.44, 0.46, 0.47, 0.49, 0.51, 0.53, 0.54, 0.56, 0.58, 0.59, 0.61
ORCHIDEE hydrological	0.0005, 0.002, 0.01, 0.01, 0.03, 0.06, 0.12, 0.25, 0.50, 1.00, 1.75
ORCHIDEE thermal	0.0005, 0.002, 0.01, 0.01, 0.03, 0.06, 0.12, 0.25, 0.50, 1.00, 1.75, 2.50, 3.50, 4.55, 5.66, 6.81, 8.03, 9.31, 10.65, 12.06, 13.54, 15.09, 16.72, 18.43, 20.23, 22.12, 24.10, 26.18, 28.37, 30.66, 33.07, 35.60

1: Energy and water fluxes, Geoscientific Model Development, 4, 677–699, doi:10.5194/gmd-4-677-2011, <http://www.geosci-model-dev.net/4/677/2011/>, 2011.

Boike, J., Roth, K., and Ippisch, O.: Seasonal snow cover on frozen ground: Energy balance calculations of a permafrost site near Ny-Ålesund, Spitsbergen, Journal of Geophysical Research: Atmospheres, 108, 2003.

Boike, J., Ippisch, O., Overduin, P. P., Hagedorn, B., and Roth, K.: Water, heat and solute dynamics of a mud boil, Spitsbergen, Geomorphology, 95, 61–73, 2008a.

Boike, J., Wille, C., and Abnizova, A.: Climatology and summer energy and water balance of polygonal tundra in the Lena River Delta, Siberia, Journal of Geophysical Research: Biogeosciences, 113, 2008b.

- Boike, J., Kattenstroth, B., Abramova, K., Bornemann, N., Chetverova, A., Fedorova, I., Fröb, K., Grigoriev, M., Grüber, M., Kutzbach, L., Langer, M., Minke, M., Muster, S., Piel, K., Pfeiffer, E.-M., Stoof, G., Westermann, S., Wischniewski, K., Wille, C., and Hubberten, H.-W.: Baseline characteristics of climate, permafrost and land cover from a new permafrost observatory in the Lena River Delta, Siberia (1998-2011), *Biogeosciences*, 10, 2105–2128, doi:10.5194/bg-10-2105-2013, <http://www.biogeosciences.net/10/2105/2013/>, 2013.
- Bouchard, F., Laurion, I., Prèskenis, V., Fortier, D., Xu, X., and Whiticar, M. J.: Modern to millennium-old greenhouse gases emitted from ponds and lakes of the Eastern Canadian Arctic (Bylot Island, Nunavut), *Biogeosciences*, 12, 7279–7298, doi:10.5194/bg-12-7279-2015, <https://www.biogeosciences.net/12/7279/2015/>, 2015.
- Brovkin, V., Raddatz, T., Reick, C. H., Claussen, M., and Gayler, V.: Global biogeophysical interactions between forest and climate, *Geophysical Research Letters*, 36, 2009.
- Brown, J., Ferrians Jr, O. J., Heginbottom, J., and Melnikov, E.: Circum-arctic map of permafrost and ground ice conditions, National Snow and Ice Data Center, http://nsidc.org/data/docs/fgdc/ggd318_map_circumarctic, 1998.
- Burke, E. J., Hartley, I. P., and Jones, C. D.: Uncertainties in the global temperature change caused by carbon release from permafrost thawing, *The Cryosphere*, 6, 1063–1076, doi:10.5194/tc-6-1063-2012, <http://www.the-cryosphere.net/6/1063/2012/>, 2012.
- Burke, E. J., Jones, C. D., and Koven, C. D.: Estimating the permafrost-carbon climate response in the CMIP5 climate models using a simplified approach, *Journal of Climate*, 26, 4897–4909, 2013.
- Burke, E. J., Chadburn, S. E., and Ekici, A.: A vertical representation of soil carbon in the JULES land surface scheme (vn4.3_permafrost) with a focus on permafrost regions, *Geoscientific Model Development*, 10, 959–975, doi:10.5194/gmd-10-959-2017, <http://www.geosci-model-dev.net/10/959/2017/>, 2017.
- Cahoon, S. M. P., Sullivan, P. F., Shaver, G. R., Welker, J. M., and Post, E.: Interactions among shrub cover and the soil microclimate may determine future Arctic carbon budgets, *Ecology Letters*, 15, 1415–1422, doi:10.1111/j.1461-0248.2012.01865.x, <http://dx.doi.org/10.1111/j.1461-0248.2012.01865.x>, 2012.
- Callaghan, T. V., Bergholm, F., Christensen, T. R., Jonasson, C., Kokfelt, U., and Johansson, M.: A new climate era in the sub-Arctic: Accelerating climate changes and multiple impacts, *Geophysical Research Letters*, 37, 2010.
- Cannone, N., Augusti, A., Malfasi, F., Pallozzi, E., Calfapietra, C., and Brugnoli, E.: The interaction of biotic and abiotic factors at multiple spatial scales affects the variability of CO₂ fluxes in polar environments, *Polar Biology*, 39, 1581–1596, 2016.
- Carlsson, B. A., Karlsson, P. S., and Svensson, B. M.: Alpine and subalpine vegetation, *Acta Phytogeographica Suecica*, 84, 75–90, 1999.
- Chadburn, S., Burke, E., Essery, R., Boike, J., Langer, M., Heikenfeld, M., Cox, P., and Friedlingstein, P.: An improved representation of physical permafrost dynamics in the JULES land-surface model, *Geoscientific Model Development*, 8, 1493–1508, doi:10.5194/gmd-8-1493-2015, <http://www.geosci-model-dev.net/8/1493/2015/>, 2015a.
- Chadburn, S. E., Burke, E. J., Essery, R. L. H., Boike, J., Langer, M., Heikenfeld, M., Cox, P. M., and Friedlingstein, P.: Impact of model developments on present and future simulations of permafrost in a global land-

surface model, *The Cryosphere*, 9, 1505–1521, doi:10.5194/tc-9-1505-2015, <http://www.the-cryosphere.net/9/1505/2015/>, 2015b.

Christiansen, H. H., Etzelmüller, B., Isaksen, K., Juliussen, H., Farbro, H., Humlum, O., Johansson, M., Ingeman-Nielsen, T., Kristensen, L., Hjort, J., et al.: The thermal state of permafrost in the Nordic area during the International Polar Year 2007–2009, *Permafrost and Periglacial Processes*, 21, 156–181, 2010.

Clark, D. B., Mercado, L. M., Sitch, S., Jones, C. D., Gedney, N., Best, M. J., Pryor, M., Rooney, G. G., Es-sery, R. L. H., Blyth, E., Boucher, O., Harding, R. J., Huntingford, C., and Cox, P. M.: The Joint UK Land Environment Simulator (JULES), model description Part 2: Carbon fluxes and vegetation dynamics, *Geoscientific Model Development*, 4, 701–722, doi:10.5194/gmd-4-701-2011, <http://www.geosci-model-dev.net/4/701/2011/>, 2011.

Cohen, W. B., Maier-Sperger, T. K., Turner, D. P., Ritts, W. D., Pflugmacher, D., Kennedy, R. E., Kirschbaum, A., Running, S. W., Costa, M., and Gower, S. T.: MODIS land cover and LAI collection 4 Product quality across nine sites in the western hemisphere, *IEEE Transactions on Geoscience and Remote Sensing*, 44, 1843–1857, 2006.

Collatz, G. J., Ribas-Carbo, M., and Berry, J.: Coupled photosynthesis-stomatal conductance model for leaves of C4 plants, *Functional Plant Biology*, 19, 519–538, 1992.

Cristóbal, J., Prakash, A., Anderson, M. C., Kustas, W. P., Euskirchen, E. S., and Kane, D. L.: Estimation of surface energy fluxes in the Arctic tundra using the remote sensing thermal-based Two-Source Energy Balance model, *Hydrology and Earth System Sciences*, 21, 1339–1358, doi:10.5194/hess-21-1339-2017, <http://www.hydrol-earth-syst-sci.net/21/1339/2017/>, 2017.

Domine, F., Barrere, M., and Sarrazin, D.: Seasonal evolution of the effective thermal conductivity of the snow and the soil in high Arctic herb tundra at Bylot Island, Canada, *The Cryosphere*, 10, 2573–2588, doi:10.5194/tc-10-2573-2016, <https://www.the-cryosphere.net/10/2573/2016/>, 2016.

Dyrness, C.: Control of depth to permafrost and soil temperature by the forest floor in black spruce/feathermoss communities, *Pacific Northwest Forest and Range Experiment Station (Portland, Or.)*, 396, 1982.

Ekici, A., Beer, C., Hagemann, S., Boike, J., Langer, M., and Hauck, C.: Simulating high-latitude permafrost regions by the JSBACH terrestrial ecosystem model, *Geoscientific Model Development*, 7, 631–647, doi:10.5194/gmd-7-631-2014, <http://www.geosci-model-dev.net/7/631/2014/>, 2014.

Ekici, A., Chadburn, S., Chaudhary, N., Hajdu, L., Marmy, A., Peng, S., Boike, J., Burke, E., Friend, A., Hauck, C., et al.: Site-level model intercomparison of high latitude and high altitude soil thermal dynamics in tundra and barren landscapes, *The Cryosphere*, 9, 1343–1361, 2015.

Elberling, B., Tamstorf, M. P., Michelsen, A., Arndal, M. F., Sigsgaard, C., Illeris, L., Bay, C., Hansen, B. U., Christensen, T. R., Hansen, E. S., et al.: Soil and plant community-characteristics and dynamics at Zackenberg, *Advances in Ecological Research*, 40, 223–248, 2008.

Elberling, B., Michelsen, A., Schädel, C., Schuur, E. A., Christiansen, H. H., Berg, L., Tamstorf, M. P., and Sigsgaard, C.: Long-term CO₂ production following permafrost thaw, *Nature Climate Change*, 3, 890–894, 2013.

Epstein, H., Bhatt, U., Reynolds, M., Walker, D., Forbes, B., Macias-Fauria, M., Lorant, M., Phoenix, G., and Bjerke, J.: Tundra Greenness, www.arctic.noaa.gov/reportcard, p. 59, 2016.

- 1085 Farquhar, G. v., Caemmerer, S. v., and Berry, J.: A biochemical model of photosynthetic CO₂ assimilation in leaves of C₃ species, *Planta*, 149, 78–90, 1980.
- Fedorova, I., Chetverova, A., Bolshiyarov, D., Makarov, A., Boike, J., Heim, B., Morgenstern, A., Overduin, P. P., Wegner, C., Kashina, V., et al.: Lena Delta hydrology and geochemistry: long-term hydrological data and recent field observations, *Biogeosciences*, 12, 345–363, 2015.
- 1090 Førland, E. J., Benestad, R., Hanssen-Bauer, I., Haugen, J. E., and Skaugen, T. E.: Temperature and precipitation development at Svalbard 1900–2100, *Advances in Meteorology*, 2011, 2012.
- Frolking, S., Roulet, N. T., Tuittila, E., Bubier, J. L., Quillet, A., Talbot, J., and Richard, P. J. H.: A new model of Holocene peatland net primary production, decomposition, water balance, and peat accumulation, *Earth System Dynamics*, 1, 1–21, doi:10.5194/esd-1-1-2010, <http://www.earth-syst-dynam.net/1/1/2010/>, 2010.
- 1095 Frost, G. V. and Epstein, H. E.: Tall shrub and tree expansion in Siberian tundra ecotones since the 1960s, *Global Change Biology*, 20, 1264–1277, doi:10.1111/gcb.12406, <http://dx.doi.org/10.1111/gcb.12406>, 2014.
- Gavrilov, A., Romanovskii, N., Romanovsky, V., Hubberten, H.-W., and Tumskey, V.: Reconstruction of ice complex remnants on the eastern Siberian Arctic Shelf, *Permafrost and Periglacial Processes*, 14, 187–198, 2003.
- 1100 Gedney, N. and Cox, P. M.: The Sensitivity of Global Climate Model Simulations to the Representation of Soil Moisture, *Journal of Hydrometeorology*, 4, 1265–1275, doi:10.1175/1525-7541(2003)004<1265:TSOGCM>2.0.CO;2, [http://dx.doi.org/10.1175/1525-7541\(2003\)004<1265:TSOGCM>2.0.CO;2](http://dx.doi.org/10.1175/1525-7541(2003)004<1265:TSOGCM>2.0.CO;2), 2003.
- Goll, D. S., Brovkin, V., Liski, J., Raddatz, T., Thum, T., and Todd-Brown, K. E.: Strong dependence of CO₂ emissions from anthropogenic land cover change on initial land cover and soil carbon parametrization, *Global Biogeochemical Cycles*, 29, 1511–1523, 2015.
- 1105 Gouttevin, I., Krinner, G., Ciais, P., Polcher, J., and Legout, C.: Multi-scale validation of a new soil freezing scheme for a land-surface model with physically-based hydrology, *The Cryosphere*, 6, 407–430, doi:10.5194/tc-6-407-2012, <http://www.the-cryosphere.net/6/407/2012/>, 2012a.
- 1110 Gouttevin, I., Menegoz, M., Dominé, F., Krinner, G., Koven, C., Ciais, P., Tarnocai, C., and Boike, J.: How the insulating properties of snow affect soil carbon distribution in the continental pan-Arctic area, *Journal of Geophysical Research: Biogeosciences*, 117, n/a–n/a, doi:10.1029/2011JG001916, <http://dx.doi.org/10.1029/2011JG001916>, 2012b.
- Hagemann, S. and Stacke, T.: Impact of the soil hydrology scheme on simulated soil moisture memory, *Climate Dynamics*, 44, 1731–1750, 2015.
- 1115 Hanssen-Bauer, I. and Førland, E.: Long-term trends in precipitation and temperature in the Norwegian Arctic: can they be explained by changes in atmospheric circulation patterns?, *Climate Research*, 10, 143–153, 1998.
- Harper, A. B., Cox, P. M., Friedlingstein, P., Wiltshire, A. J., Jones, C. D., Sitch, S., Mercado, L. M., Groenendijk, M., Robertson, E., Kattge, J., Bönsch, G., Atkin, O. K., Bahn, M., Cornelissen, J., Niinemets, U., Onipchenko, V., Peñuelas, J., Poorter, L., Reich, P. B., Soudzilovskaia, N. A., and Bodegom, P. V.: Improved representation of plant functional types and physiology in the Joint UK Land Environment Simulator (JULES v4.2) using plant trait information, *Geoscientific Model Development*, 9, 2415–2440, doi:10.5194/gmd-9-2415-2016, <http://www.geosci-model-dev.net/9/2415/2016/>, 2016.

- Hayes, D. J., McGuire, A. D., Kicklighter, D. W., Gurney, K. R., Burnside, T. J., and Melillo, J. M.: Is the northern high-latitude land-based CO₂ sink weakening?, *Global Biogeochemical Cycles*, 25, n/a–n/a, doi:10.1029/2010GB003813, <http://dx.doi.org/10.1029/2010GB003813>, gB3018, 2011.
- Hollesen, J., Elberling, B., and Jansson, P.-E.: Future active layer dynamics and carbon dioxide production from thawing permafrost layers in Northeast Greenland, *Global Change Biology*, 17, 911–926, 2011.
- Hugelius, G., Strauss, J., Zubrzycki, S., Harden, J. W., Schuur, E. A. G., Ping, C.-L., Schirrmeister, L., Grosse, G., Michaelson, G. J., Koven, C. D., O'Donnell, J. A., Elberling, B., Mishra, U., Camill, P., Yu, Z., Palmtag, J., and Kuhry, P.: Estimated stocks of circumpolar permafrost carbon with quantified uncertainty ranges and identified data gaps, *Biogeosciences*, 11, 6573–6593, doi:10.5194/bg-11-6573-2014, <http://www.biogeosciences.net/11/6573/2014/>, 2014.
- Jammet, M., Crill, P., Dengel, S., and Friborg, T.: Large methane emissions from a subarctic lake during spring thaw: Mechanisms and landscape significance, *Journal of Geophysical Research: Biogeosciences*, 120, 2289–2305, 2015.
- Jammet, M., Dengel, S., Kettner, E., Parmentier, F.-J. W., Wik, M., Crill, P., and Friborg, T.: Year-round CH₄ and CO₂ flux dynamics in two contrasting freshwater ecosystems of the subarctic, *Biogeosciences Discussions*, 2017, 1–49, doi:10.5194/bg-2016-466, <http://www.biogeosciences-discuss.net/bg-2016-466/>, 2017.
- Johansson, M., Christensen, T. R., Åkerman, H. J., and Callaghan, T. V.: What determines the current presence or absence of permafrost in the Torneträsk Region, a sub-Arctic landscape in Northern Sweden?, *AMBIO: A Journal of the Human Environment*, 35, 190–197, 2006.
- Johansson, M., Åkerman, J., Keuper, F., Christensen, T. R., Lantuit, H., and Callaghan, T. V.: Past and present permafrost temperatures in the Abisko area: Redrilling of boreholes, *Ambio*, 40, 558, 2011.
- Johansson, M., Callaghan, T. V., Bosiö, J., Åkerman, H. J., Jackowicz-Korczynski, M., and Christensen, T. R.: Rapid responses of permafrost and vegetation to experimentally increased snow cover in sub-arctic Sweden, *Environmental Research Letters*, 8, 035 025, 2013.
- Jones, C. and Sellar, A.: Development of the 1st version of the UK Earth system model, UKESM newsletter no.1 - August 2015, <http://www.jwcrp.org.uk/research-activity/ukesm-newsarchive.asp>, 2015.
- Kaiser, S., Göckede, M., Castro-Morales, K., Knoblauch, C., Ekici, A., Kleinen, T., Zubrzycki, S., Sachs, T., Wille, C., and Beer, C.: Process-based modelling of the methane balance in periglacial landscapes (JSBACH-methane), *Geoscientific Model Development*, 10, 333–358, doi:10.5194/gmd-10-333-2017, <https://www.geosci-model-dev.net/10/333/2017/>, 2017.
- Klaminder, J., Yoo, K., Rydberg, J., and Giesler, R.: An explorative study of mercury export from a thawing palsa mire, *Journal of Geophysical Research: Biogeosciences*, 113, 2008.
- Knorr, W.: Annual and interannual CO₂ exchanges of the terrestrial biosphere: Process-based simulations and uncertainties, *Global Ecology and Biogeography*, 9, 225–252, 2000.
- Koven, C., Friedlingstein, P., Ciais, P., Khvorostyanov, D., Krinner, G., and Tarnocai, C.: On the formation of high-latitude soil carbon stocks: Effects of cryoturbation and insulation by organic matter in a land surface model, *Geophysical Research Letters*, 36, n/a–n/a, doi:10.1029/2009GL040150, <http://dx.doi.org/10.1029/2009GL040150>, 2009.
- Koven, C. D., Riley, W. J., Subin, Z. M., Tang, J. Y., Torn, M. S., Collins, W. D., Bonan, G. B., Lawrence, D. M., and Swenson, S. C.: The effect of vertically resolved soil biogeochemistry and alternate soil C and

- N models on C dynamics of CLM4, *Biogeosciences*, 10, 7109–7131, doi:10.5194/bg-10-7109-2013, <http://www.biogeosciences.net/10/7109/2013/>, 2013.
- 1165 Koven, C. D., Schuur, E., Schädel, C., Bohn, T., Burke, E., Chen, G., Chen, X., Ciais, P., Grosse, G., Harden, J. W., et al.: A simplified, data-constrained approach to estimate the permafrost carbon–climate feedback, *Phil. Trans. R. Soc. A*, 373, 20140423, 2015.
- Krinner, G., Viovy, N., de Noblet-Ducoudré, N., Ogée, J., Polcher, J., Friedlingstein, P., Ciais, P., Sitch, S., and Prentice, I. C.: A dynamic global vegetation model for studies of the coupled atmosphere-biosphere system, *Global Biogeochemical Cycles*, 19, n/a–n/a, doi:10.1029/2003GB002199, <http://dx.doi.org/10.1029/2003GB002199>, gB1015, 2005.
- 1170 Kutzbach, L., Wille, C., and Pfeiffer, E.-M.: The exchange of carbon dioxide between wet arctic tundra and the atmosphere at the Lena River Delta, Northern Siberia, *Biogeosciences*, 4, 869–890, 2007.
- 1175 Langer, M., Westermann, S., Muster, S., Piel, K., and Boike, J.: The surface energy balance of a polygonal tundra site in northern Siberia - Part 1: Spring to fall, *The Cryosphere*, 5, 151–171, doi:10.5194/tc-5-151-2011, <http://www.the-cryosphere.net/5/151/2011/>, 2011a.
- Langer, M., Westermann, S., Muster, S., Piel, K., and Boike, J.: The surface energy balance of a polygonal tundra site in northern Siberia - Part 2: Winter, *The Cryosphere*, 5, 509–524, doi:10.5194/tc-5-509-2011, <http://www.the-cryosphere.net/5/509/2011/>, 2011b.
- 1180 Langer, M., Westermann, S., Anthony, K. W., Wischnewski, K., and Boike, J.: Frozen ponds: production and storage of methane during the Arctic winter in a lowland tundra landscape in northern Siberia, Lena River delta, *Biogeosciences*, 12, 977, 2015.
- Lantmäteriet: Vegetation map of Abisko 30I and Rensjön 30J, Produced and digitised by Lantmäteriet GSD, Scale 1:100 000, 1997.
- 1185 Lasslop, G., Reichstein, M., Papale, D., Richardson, A. D., Arneeth, A., Barr, A., Stoy, P., and Wohlfahrt, G.: Separation of net ecosystem exchange into assimilation and respiration using a light response curve approach: critical issues and global evaluation, *Global Change Biology*, 16, 187–208, 2010.
- Lawrence, D. and Slater, A.: Incorporating organic soil into a global climate model, *Climate Dynamics*, 30, 145–160, doi:10.1007/s00382-007-0278-1, <http://dx.doi.org/10.1007/s00382-007-0278-1>, 2008.
- 1190 López-Moreno, J., Boike, J., Sanchez-Lorenzo, A., and Pomeroy, J.: Impact of climate warming on snow processes in Ny-Ålesund, a polar maritime site at Svalbard, *Global and Planetary Change*, 146, 10–21, 2016.
- Lüers, J., Westermann, S., Piel, K., and Boike, J.: Annual CO₂ budget and seasonal CO₂ exchange signals at a high Arctic permafrost site on Spitsbergen, Svalbard archipelago, *Biogeosciences*, 11, 6307–6322, 2014.
- 1195 Lund, M., Falk, J. M., Friborg, T., Mbufong, H. N., Sigsgaard, C., Soegaard, H., and Tamstorf, M. P.: Trends in CO₂ exchange in a high Arctic tundra heath, 2000–2010, *Journal of Geophysical Research: Biogeosciences*, 117, 2012.
- Lund, M., Hansen, B. U., Pedersen, S. H., Stiegler, C., and Tamstorf, M. P.: Characteristics of summer-time energy exchange in a high Arctic tundra heath 2000–2010, *Tellus B*, 66, 2014.
- 1200 Lund, M., Stiegler, C., Abermann, J., Citterio, M., Hansen, B. U., and van As, D.: Spatiotemporal variability in surface energy balance across tundra, snow and ice in Greenland, *Ambio*, 46, 81–93, 2017.

- MacDougall, A. H. and Knutti, R.: Projecting the release of carbon from permafrost soils using a perturbed parameter ensemble modelling approach, *Biogeosciences*, 13, 2123–2136, doi:10.5194/bg-13-2123-2016, <http://www.biogeosciences.net/13/2123/2016/>, 2016.
- 1205 Marcott, S. A., Shakun, J. D., Clark, P. U., and Mix, A. C.: A reconstruction of regional and global temperature for the past 11,300 years, *science*, 339, 1198–1201, 2013.
- Mastepanov, M., Sigsgaard, C., Dlugokencky, E. J., Houweling, S., Ström, L., Tamstorf, M. P., and Christensen, T. R.: Large tundra methane burst during onset of freezing, *Nature*, 456, 628–630, 2008.
- Mastepanov, M., Sigsgaard, C., Tagesson, T., Ström, L., Tamstorf, M. P., Lund, M., and Christensen, T. R.:
 1210 Revisiting factors controlling methane emissions from high-Arctic tundra, *Biogeosciences*, 10, 5139–5158, doi:10.5194/bg-10-5139-2013, <http://www.biogeosciences.net/10/5139/2013/>, 2013.
- Meinshausen, M., Smith, S. J., Calvin, K., Daniel, J. S., Kainuma, M. L. T., Lamarque, J.-F., Matsumoto, K., Montzka, S. A., Raper, S. C. B., Riahi, K., Thomson, A., Velders, G. J. M., and van Vuuren, D. P.: The RCP greenhouse gas concentrations and their extensions from 1765 to 2300, *Climatic Change*, 109, 213–241,
 1215 doi:10.1007/s10584-011-0156-z, <http://dx.doi.org/10.1007/s10584-011-0156-z>, 2011.
- MODIS15A2: NASA EOSDIS Land Processes DAAC, USGS Earth Resources Observation and Science (EROS) Center, Sioux Falls, South Dakota (<https://lpdaac.usgs.gov>), accessed [12 13, 2016].
- Morgenstern, A., Ulrich, M., Günther, F., Roessler, S., Fedorova, I. V., Rudaya, N. A., Wetterich, S., Boike, J., and Schirrmeister, L.: Evolution of thermokarst in East Siberian ice-rich permafrost: A case study, *Geomorphology*, 201, 363–379, 2013.
 1220
- Muster, S., Langer, M., Heim, B., Westermann, S., and Boike, J.: Subpixel heterogeneity of ice-wedge polygonal tundra: a multi-scale analysis of land cover and evapotranspiration in the Lena River Delta, Siberia, *Tellus B*, 64, <http://www.tellusb.net/index.php/tellusb/article/view/17301>, 2012.
- Ohtsuka, T., Adachi, M., Uchida, M., and Nakatsubo, T.: Relationships between vegetation types and soil properties along a topographical gradient on the northern coast of the Brgger Peninsula, Svalbard, *Polar bio-science*, 19, 63–72, 2006.
- 1225 Palmtag, J., Hugelius, G., Lashchinskiy, N., Tamstorf, M. P., Richter, A., Elberling, B., and Kuhry, P.: Storage, Landscape Distribution, and Burial History of Soil Organic Matter in Contrasting Areas of Continuous Permafrost, Arctic, Antarctic, and Alpine Research, 47, 71–88, doi:10.1657/AAAR0014-027, <http://aaarjournal.org/doi/abs/10.1657/AAAR0014-027>, 2015.
 1230
- Papale, D., Reichstein, M., Aubinet, M., Canfora, E., Bernhofer, C., Kutsch, W., Longdoz, B., Rambal, S., Valentini, R., Vesala, T., et al.: Towards a standardized processing of Net Ecosystem Exchange measured with eddy covariance technique: algorithms and uncertainty estimation, *Biogeosciences*, 3, 571–583, 2006.
- Parmentier, F., Van Der Molen, M., Van Huissteden, J., Karsanaev, S., Kononov, A., Suzdalov, D., Maximov, T., and Dolman, A.: Longer growing seasons do not increase net carbon uptake in the northeastern Siberian tundra, *Journal of Geophysical Research: Biogeosciences*, 116, 2011.
 1235
- Pedersen, E., Elberling, B., and Michelsen, A.: Seasonal variations in methane fluxes in response to summer warming and leaf litter addition in a subarctic heath ecosystem., *Journal of Geophysical Research: Biogeosciences* (revised), 2017.

- 1240 Pedersen, S. H., Tamstorf, M. P., Abermann, J., Westergaard-Nielsen, A., Lund, M., Skov, K., Sigsgaard, C.,
Mylius, M. R., Hansen, B. U., Liston, G. E., et al.: Spatiotemporal characteristics of seasonal snow cover in
Northeast Greenland from in situ observations, *Arctic, Antarctic, and Alpine Research*, 48, 653–671, 2016.
- Peters, G. P., Andrew, R. M., Solomon, S., and Friedlingstein, P.: Measuring a fair and ambitious climate
agreement using cumulative emissions, *Environmental Research Letters*, 10, 105004, [http://stacks.iop.org/](http://stacks.iop.org/1748-9326/10/i=10/a=105004)
1245 1748-9326/10/i=10/a=105004, 2015.
- Pirk, N., Sievers, J., Mertes, J., Parmentier, F.-J. W., Mastepanov, M., and Christensen, T. R.: Spatial vari-
ability of CO₂ uptake in polygonal tundra: assessing low-frequency disturbances in eddy covariance flux
estimates, *Biogeosciences*, 14, 3157–3169, doi:10.5194/bg-14-3157-2017, [https://www.biogeosciences.net/](https://www.biogeosciences.net/14/3157/2017/)
14/3157/2017/, 2017.
- 1250 Porada, P., Weber, B., Elbert, W., Pöschl, U., and Kleidon, A.: Estimating global carbon uptake by lichens
and bryophytes with a process-based model, *Biogeosciences*, 10, 6989–7033, doi:10.5194/bg-10-6989-2013,
<http://www.biogeosciences.net/10/6989/2013/>, 2013.
- Porada, P., Ekici, A., and Beer, C.: Effects of bryophyte and lichen cover on permafrost soil temperature at
large scale, *The Cryosphere*, 10, 2291–2315, doi:10.5194/tc-10-2291-2016, [https://www.the-cryosphere.net/](https://www.the-cryosphere.net/10/2291/2016/)
1255 10/2291/2016/, 2016.
- Qian, H., Joseph, R., and Zeng, N.: Enhanced terrestrial carbon uptake in the Northern High Latitudes in the
21st century from the Coupled Carbon Cycle Climate Model Intercomparison Project model projections,
Global Change Biology, 16, 641–656, doi:10.1111/j.1365-2486.2009.01989.x, [http://dx.doi.org/10.1111/j.](http://dx.doi.org/10.1111/j.1365-2486.2009.01989.x)
1365-2486.2009.01989.x, 2010.
- 1260 Quegan, S., Beer, C., Shvidenko, A., McCallum, I., Handoh, I. C., Peylin, P., Roedenbeck, C., Lucht, W., Nils-
son, S., and Schmullius, C.: Estimating the carbon balance of central Siberia using a landscape-ecosystem
approach, atmospheric inversion and Dynamic Global Vegetation Models, *Global Change Biology*, 17, 351–
365, 2011.
- Raddatz, T., Reick, C., Knorr, W., Kattge, J., Roeckner, E., Schnur, R., Schnitzler, K.-G., Wetzol, P., and Jung-
1265 claus, J.: Will the tropical land biosphere dominate the climate–carbon cycle feedback during the twenty-first
century?, *Climate Dynamics*, 29, 565–574, 2007.
- Reichstein, M., Falge, E., Baldocchi, D., Papale, D., Aubinet, M., Berbigier, P., Bernhofer, C., Buchmann,
N., Gilmanov, T., Granier, A., et al.: On the separation of net ecosystem exchange into assimilation and
ecosystem respiration: review and improved algorithm, *Global Change Biology*, 11, 1424–1439, 2005.
- 1270 Ridefelt, H., Etzelmüller, B., Boelhouwers, J., and Jonasson, C.: Statistic-empirical modelling of mountain
permafrost distribution in the Abisko region, sub-Arctic northern Sweden, *Norsk Geografisk Tidsskrift-*
Norwegian Journal of Geography, 62, 278–289, 2008.
- Roth, K. and Boike, J.: Quantifying the thermal dynamics of a permafrost site near Ny-Ålesund, Svalbard,
Water resources research, 37, 2901–2914, 2001.
- 1275 Rowland, J. C. and Coon, E. T.: From documentation to prediction: raising the bar for thermokarst research,
Hydrogeology Journal, 24, 2015.
- Rydén, B., Fors, L., and Kostov, L.: Physical properties of the tundra soil-water system at Stordalen, Abisko,
Ecological Bulletins, pp. 27–54, 1980.

- Schaphoff, S., Heyder, U., Ostberg, S., Gerten, D., Heinke, J., and Lucht, W.: Contribution of permafrost soils to the global carbon budget, *Environmental Research Letters*, 8, 014 026, <http://stacks.iop.org/1748-9326/8/i=1/a=014026>, 2013.
- Schirrmeister, L., Siegert, C., Kuznetsova, T., Kuzmina, S., Andreev, A., Kienast, F., Meyer, H., and Bobrov, A.: Paleoenvironmental and paleoclimatic records from permafrost deposits in the Arctic region of Northern Siberia, *Quaternary International*, 89, 97–118, 2002.
- Schneider von Deimling, T., Meinshausen, M., Levermann, A., Huber, V., Frieler, K., Lawrence, D. M., and Brovkin, V.: Estimating the near-surface permafrost-carbon feedback on global warming, *Biogeosciences*, 9, 649–665, doi:10.5194/bg-9-649-2012, <http://www.biogeosciences.net/9/649/2012/>, 2012.
- Schneider von Deimling, T., Grosse, G., Strauss, J., Schirrmeister, L., Morgenstern, A., Schaphoff, S., Meinshausen, M., and Boike, J.: Observation-based modelling of permafrost carbon fluxes with accounting for deep carbon deposits and thermokarst activity, *Biogeosciences*, 12, 3469–3488, doi:10.5194/bg-12-3469-2015, <http://www.biogeosciences.net/12/3469/2015/>, 2015.
- Schuldt, R. J., Brovkin, V., Kleinen, T., and Winderlich, J.: Modelling Holocene carbon accumulation and methane emissions of boreal wetlands - an Earth system model approach, *Biogeosciences*, 10, 1659–1674, doi:10.5194/bg-10-1659-2013, <http://www.biogeosciences.net/10/1659/2013/>, 2013.
- Schuur, E. A. G., McGuire, A. D., Schadel, C., Grosse, G., Harden, J. W., Hayes, D. J., Hugelius, G., Koven, C. D., Kuhry, P., Lawrence, D. M., Natali, S. M., Olefeldt, D., Romanovsky, V. E., Schaefer, K., Turetsky, M. R., Treat, C. C., and Vonk, J. E.: Climate change and the permafrost carbon feedback, *Nature*, 520, 171–179, doi:10.1038/nature14338, <http://dx.doi.org/10.1038/nature14338>, 2015.
- Schwamborn, G., Rachold, V., and Grigoriev, M. N.: Late Quaternary sedimentation history of the Lena Delta, *Quaternary international*, 89, 119–134, 2002.
- Siewert, M. B., Hanisch, J., Weiss, N., Kuhry, P., Maximov, T. C., and Hugelius, G.: Comparing carbon storage of Siberian tundra and taiga permafrost ecosystems at very high spatial resolution, *Journal of Geophysical Research: Biogeosciences*, 120, 1973–1994, doi:10.1002/2015JG002999, <http://dx.doi.org/10.1002/2015JG002999>, 2015JG002999, 2015.
- Siewert, M. B., Hugelius, G., Heim, B., and Faucherre, S.: Landscape controls and vertical variability of soil organic carbon storage in permafrost-affected soils of the Lena River Delta, *Catena*, 147, 725–741, 2016.
- Stiegler, C., Lund, M., Christensen, T. R., Mastepanov, M., and Lindroth, A.: Two years with extreme and little snowfall: effects on energy partitioning and surface energy exchange in a high-Arctic tundra ecosystem, *The Cryosphere*, 10, 1395–1413, 2016.
- Sturm, M., Holmgren, J., McFadden, J. P., Liston, G. E., Chapin III, F. S., and Racine, C. H.: Snow–shrub interactions in Arctic tundra: a hypothesis with climatic implications, *Journal of Climate*, 14, 336–344, 2001.
- Tape, K., Sturm, M., and Racine, C.: The evidence for shrub expansion in Northern Alaska and the Pan-Arctic, *Global Change Biology*, 12, 686–702, doi:10.1111/j.1365-2486.2006.01128.x, <http://dx.doi.org/10.1111/j.1365-2486.2006.01128.x>, 2006.
- Tucker, C. J., Slayback, D. A., Pinzon, J. E., Los, S. O., Myneni, R. B., and Taylor, M. G.: Higher northern latitude normalized difference vegetation index and growing season trends from 1982 to 1999, *International Journal of Biometeorology*, 45, 184–190, doi:10.1007/s00484-001-0109-8, <http://dx.doi.org/10.1007/s00484-001-0109-8>, 2001.

- Uchida, M., Nakatsubo, T., Kanda, H., and Koizumi, H.: Estimation of the annual primary production of the lichen *Cetrariella delisei* in a glacier foreland in the High Arctic, Ny-Ålesund, Svalbard, *Polar Research*, 25, 39–49, 2006.
- Uchida, M., Kishimoto, A., Muraoka, H., Nakatsubo, T., Kanda, H., and Koizumi, H.: Seasonal shift in factors controlling net ecosystem production in a high Arctic terrestrial ecosystem, *Journal of plant research*, 123, 79, 2009.
- US Geological Survey, .: HYDRO1k Elevation derivative database, US Geological Survey Earth Resources Observation and Science (EROS) Center, Sioux Falls, South Dakota, <https://lta.cr.usgs.gov/HYDRO1K>, 2000.
- van der Molen, M. K., van Huissteden, J., Parmentier, F. J. W., Petrescu, A. M. R., Dolman, A. J., Maximov, T. C., Kononov, A. V. ., Karsanaev, S. V., and Suzdalov, D. A.: The growing season greenhouse gas balance of a continental tundra site in the Indigirka lowlands, NE Siberia, *Biogeosciences*, 4, 985–1003, doi:10.5194/bg-4-985-2007, <http://www.biogeosciences.net/4/985/2007/>, 2007.
- Van Huissteden, J., Maximov, T., and Dolman, A.: High methane flux from an arctic floodplain (Indigirka lowlands, eastern Siberia), *Journal of Geophysical Research: Biogeosciences*, 110, 2005.
- Van Wijk, M. T., Williams, M., Laundre, J., and Shaver, G.: Interannual variability of plant phenology in tussock tundra: modelling interactions of plant productivity, plant phenology, snowmelt and soil thaw, *Global Change Biology*, 9, 743–758, doi:10.1046/j.1365-2486.2003.00625.x, <http://dx.doi.org/10.1046/j.1365-2486.2003.00625.x>, 2003.
- Wang, T., Ottlé, C., Boone, A., Ciais, P., Brun, E., Morin, S., Krinner, G., Piao, S., and Peng, S.: Evaluation of an improved intermediate complexity snow scheme in the ORCHIDEE land surface model, *Journal of Geophysical Research: Atmospheres*, 118, 6064–6079, doi:10.1002/jgrd.50395, <http://dx.doi.org/10.1002/jgrd.50395>, 2013.
- Weedon, G. P.: Readme file for the ‘WFDEI’ dataset, http://www.eu-watch.org/gfx_content/documents/README-WFDEI.pdf, 2013.
- Weedon, G. P., Gomes, S., Viterbo, P., Shuttleworth, W. J., Blyth, E., Österle, H., Adam, J. C., Bellouin, N., Boucher, O., and Best, M.: Creation of the WATCH forcing data and its use to assess global and regional reference crop evaporation over land during the twentieth century, *Journal of Hydrometeorology*, 12, 823–847, doi:doi:10.1175/2011JHM1369.1, 2011.
- Westermann, S., Lüers, J., Langer, M., Piel, K., and Boike, J.: The annual surface energy budget of a high-arctic permafrost site on Svalbard, Norway, *The Cryosphere*, 3, 245, 2009.
- Westermann, S., Wollschläger, U., and Boike, J.: Monitoring of active layer dynamics at a permafrost site on Svalbard using multi-channel ground-penetrating radar, *The Cryosphere*, 4, 475–487, doi:10.5194/tc-4-475-2010, <http://www.the-cryosphere.net/4/475/2010/>, 2010.
- Westermann, S., Boike, J., Langer, M., Schuler, T., and Etzelmüller, B.: Modeling the impact of wintertime rain events on the thermal regime of permafrost, *The Cryosphere*, 5, 1697–1736, 2011.
- Westermann, S., Elberling, B., Højlund Pedersen, S., Stendel, M., Hansen, B. U., and Liston, G. E.: Future permafrost conditions along environmental gradients in Zackenberg, Greenland, *The Cryosphere*, 9, 719–735, 2015.
- Wieder, W. R., Bonan, G. B., and Allison, S. D.: Global soil carbon projections are improved by modelling microbial processes, *Nature Climate Change*, 3, 909–912, 2013.

- Wieder, W. R., Cleveland, C. C., Smith, W. K., and Todd-Brown, K.: Future productivity and carbon storage
 1360 limited by terrestrial nutrient availability, *Nature Geoscience*, 8, 441–444, 2015.
- Xenakis, G. and Williams, M.: Comparing microbial and chemical kinetics for modelling soil organic carbon
 decomposition using the DecoChem v1.0 and DecoBio v1.0 models, *Geoscientific Model Development*, 7,
 1519–1533, doi:10.5194/gmd-7-1519-2014, <http://www.geosci-model-dev.net/7/1519/2014/>, 2014.
- Yang, D., Kane, D., Zhang, Z., Legates, D., and Goodison, B.: Bias corrections of long-term
 1365 (1973–2004) daily precipitation data over the northern regions, *Geophysical Research Letters*, 32, n/a–n/a,
 doi:10.1029/2005GL024057, <http://dx.doi.org/10.1029/2005GL024057>, 119501, 2005.
- Yu, Z., Loisel, J., Brosseau, D. P., Beilman, D. W., and Hunt, S. J.: Global peatland dynamics since the Last
 Glacial Maximum, *Geophysical Research Letters*, 37, n/a–n/a, doi:10.1029/2010GL043584, <http://dx.doi.org/10.1029/2010GL043584>, 113402, 2010.
- 1370 Yuan, W., Liu, S., Dong, W., Liang, S., Zhao, S., Chen, J., Xu, W., Li, X., Barr, A., Black, T. A., et al.: Dif-
 ferentiating moss from higher plants is critical in studying the carbon cycle of the boreal biome, *Nature*
communications, 5, 2014.
- Zhu, D., Peng, S., Ciais, P., Zech, R., Krinner, G., Zimov, S., and Grosse, G.: Simulating soil organic carbon in
 yedoma deposits during the Last Glacial Maximum in a land surface model, *Geophysical Research Letters*,
 1375 43, 5133–5142, 2016.
- Zimov, S. A., Schuur, E. A., and Chapin III, F. S.: Permafrost and the global carbon budget, *Sci-
 ence(Washington)*, 312, 1612–1613, 2006.

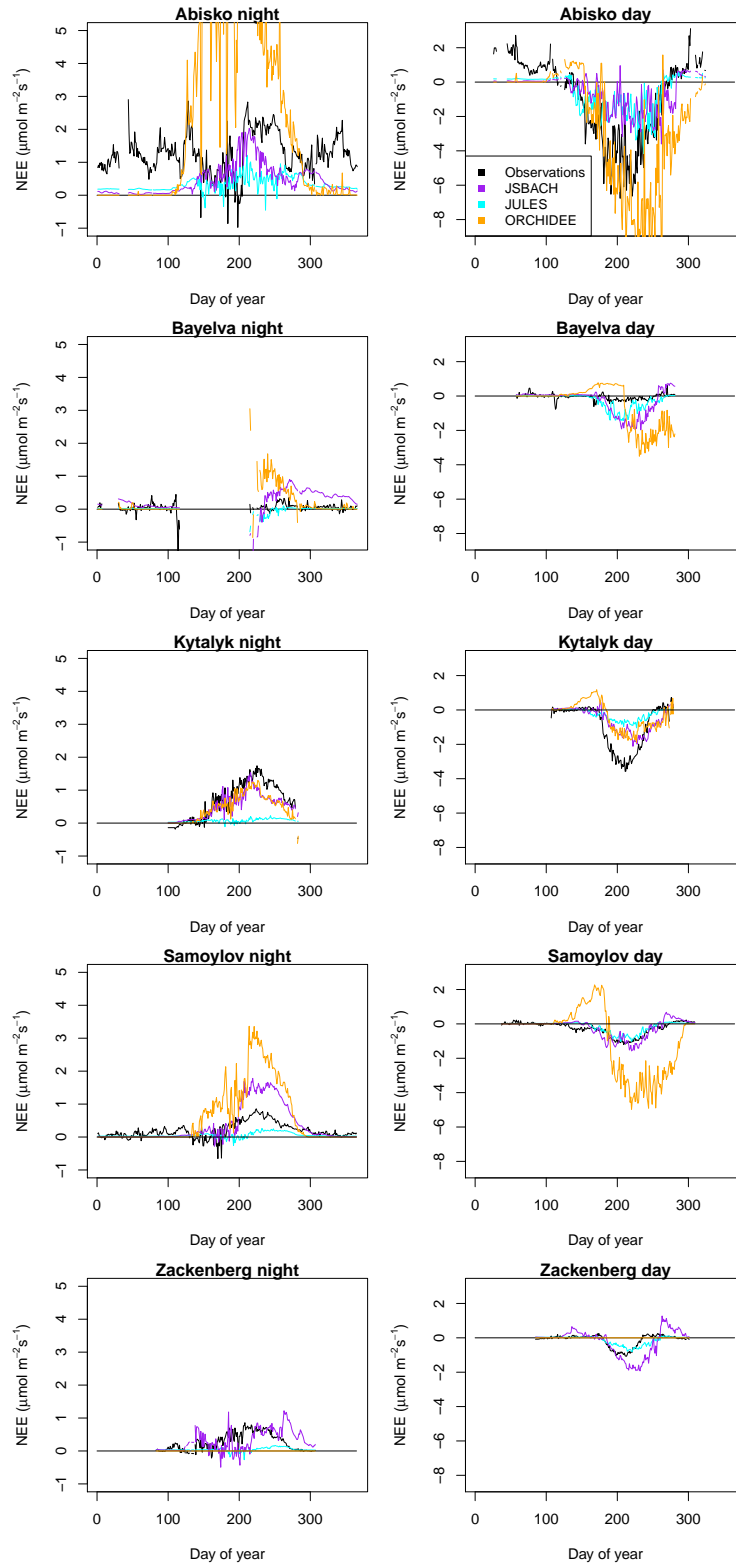


Figure 7. Mean annual cycles of CO₂ fluxes for all sites, observations and models. Left: nighttime flux; Right: daytime flux (corresponding to incoming shortwave radiation $>20 \text{ Wm}^{-2}$). See supplementary Table S1 for years used at each site.

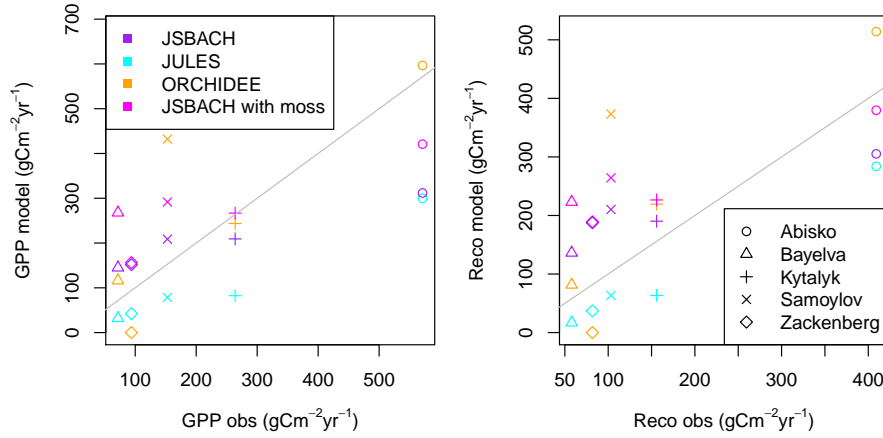


Figure 8. Mean annual GPP (gross primary productivity) and Reco (ecosystem respiration) from the models, plotted against the observation-derived values for the same time periods. See supplementary Table S1 for years used at each site.

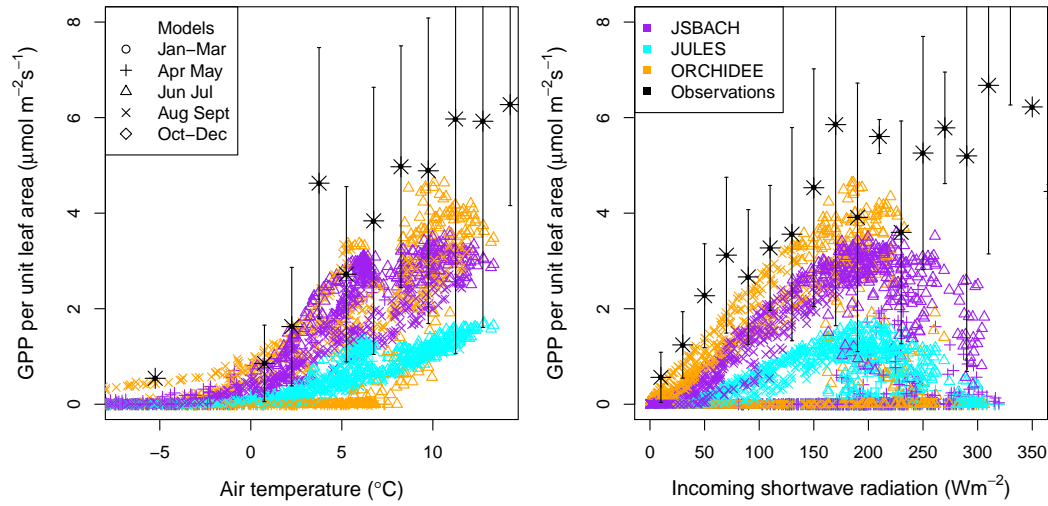


Figure 9. Relationship of 'normalised' GPP (GPP per m^2 of leaf) to air temperature and incoming solar radiation. All models and sites are shown, plus observationally-derived values using GPP estimated from eddy covariance data and LAI from MODIS (MODIS15A2), see Section 2.1.6.

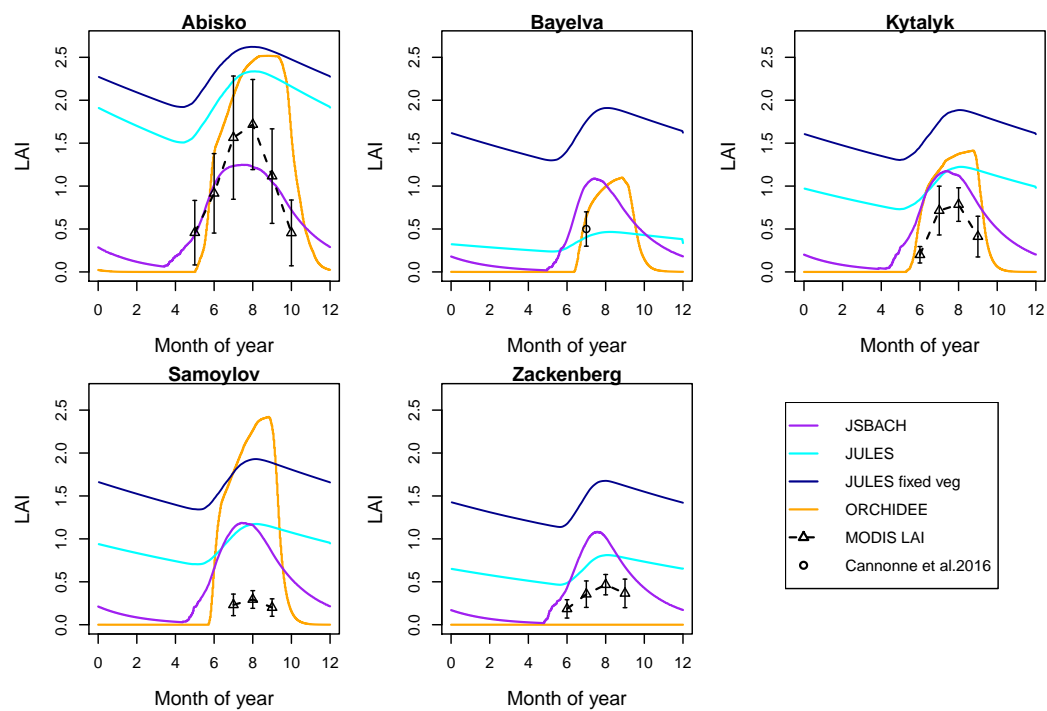


Figure 10. Mean annual cycles of LAI (leaf area index), for each site. ‘Observed’ values are from MODIS LAI product (MODIS15A2), except Bayelva which is from Cannone et al. (2016).