

## ***Interactive comment on* “Catchment tracers reveal discharge, recharge and sources of groundwater-borne pollutants in a novel lake modelling approach” by Emil Kristensen et al.**

**Emil Kristensen et al.**

emil.kristensen@bio.ku.dk

Received and published: 28 December 2017

Dear editor.

Here are our answers to the referee. We have made major changes to the manuscript which we hope will improve the understanding.

We have attached the answers as a PDF.

Merry Christmas and a happy new year!

Best regards Emil

[Printer-friendly version](#)

[Discussion paper](#)



Please also note the supplement to this comment:

<https://www.biogeosciences-discuss.net/bg-2017-209/bg-2017-209-AC2-supplement.pdf>

---

Interactive comment on Biogeosciences Discuss., <https://doi.org/10.5194/bg-2017-209>, 2017.

**BGD**

---

Interactive  
comment

Printer-friendly version

Discussion paper



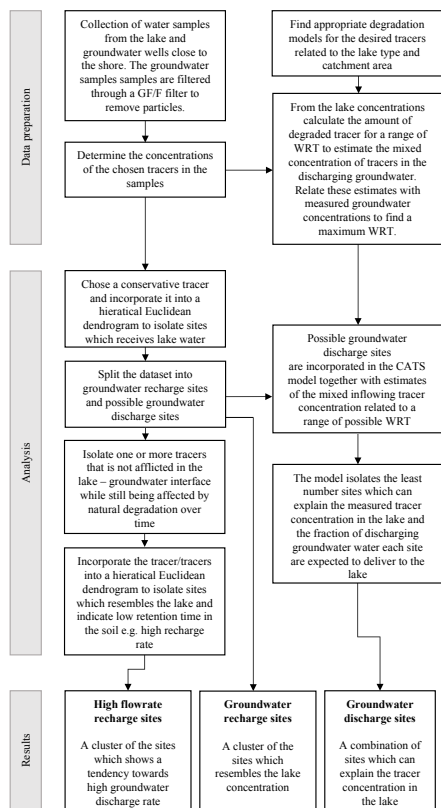


Fig. 1.