

Spatial and temporal variability in coccolithophore abundance and distribution in the NW Iberian coastal upwelling system

B. Ausín^{1,2} (blanca.ausin@erdw.ethz.ch), D. Zúñiga^{3,4,5} (diana.zuniga@uvigo.es), J.-A. Flores¹ (flores@usal.es), C. Cavaleiro^{4,5,6} (caterina.cavaleiro@ipma.pt), M. Froján³ (mariafrojan@iim.csic.es), N. Villaceros-Robineau⁷ (nvrobineau@gmail.com), F. Alonso-Pérez³ (fernando@iim.csic.es), B. Arbones³ (belen@iim.csic.es), C. Santos^{4,5,6,8} (celia.neto@ipma.pt), F. de la Granda⁹ (francisco.delagranda@bsh.de),
5 C.G. Castro³ (cgcastro@iim.csic.es), F. Abrantes^{4,5} (fatima.abrantes@ipma.pt), T. Eglinton² (timothy.eglinton@erdw.ethz.ch), E. Salgueiro^{4,5} (emilia.salgueiro@ipma.pt)

¹Departamento de Geología, Universidad de Salamanca, Salamanca, 37008, Spain

²Department of Earth Sciences, ETH Zurich, Zurich, 8092, Switzerland

³Instituto de Investigaciones Marinas (IIM), Consejo Superior de Investigaciones Científicas (CSIC), Vigo, E-36208, Spain

⁴Div. Geologia e Georecursos Marinhos, Instituto Português do Mar e da Atmosfera (IPMA), Lisbon, 1749-077, Portugal

⁵CCMAR - Centre of Marine Sciences, Universidade do Algarve, Faro, 8005-139, Portugal

⁶MARUM, Center for Marine Environmental Sciences, Bremen, 28359, Germany

⁷Laboratoire d'Océanographie et du Climat, Université Pierre et Marie Curie, Paris, 75005, France

⁸Alfred Wegener Institute, Helmholtz Center for Polar and Marine Sciences, Bremerhaven, D-27570, Germany

15 ⁹Federal Maritime and Hydrographic Agency, Hamburg, 20359, Germany

Correspondence to: Blanca Ausín (blanca.ausin@erdw.ethz.ch)

20 **Abstract.** A systematic investigation of the spatial and temporal variability in coccolithophore abundance and distribution through the water column of the NW Iberian coastal upwelling system was performed. From July 2011 to June 2012, monthly sampling at various water depths was conducted at two parallel stations located at 42° N.

Total coccosphere abundance was higher at the outer-shelf station, where warmer, nutrient-depleted waters favoured coccolithophore rather than phytoplanktonic diatom blooms, which are known to dominate the inner-shelf location.

25 In seasonal terms, higher coccosphere and coccolith abundances were registered at both stations during upwelling seasons, coinciding with high irradiance levels. This was typically in conjunction with stratified, nutrient-poor conditions (i.e. relaxing upwelling conditions), however also occurred during some upwelling events of colder, nutrient-rich subsurface waters onto the continental shelf. Minimum abundances were generally found during downwelling periods, with unexpectedly high coccolith abundance registered in subsurface waters at the inner-shelf station. This finding can only be
30 explained if strong storms during these downwelling periods favoured resuspension processes, thus remobilizing deposited coccoliths from surface sediments, and hence hampering the identification of autochthonous coccolithophore community structure.

At both locations, the major coccolithophore assemblages were dominated by *Emiliana huxleyi*, small *Gephyrocapsa* group, *Gephyrocapsa oceanica*, *Florisphaera profunda*, *Syracosphaera* spp., *Coronosphaera mediterranea*, and *Calcidiscus*
35 *leptoporus*. Ecological preferences of the different taxa were assessed by exploring the relationships between environmental conditions and temporal and vertical variability in coccosphere abundance. These findings provide relevant information for the use of fossil coccolith assemblages in marine sediment records, in order to infer past environmental conditions, of

particular importance for Paleooceanography. Both *E. huxleyi* and the small *Gephyrocapsa* group are proposed as proxies for the upwelling regime with a distinct affinity for different stages of the upwelling event: *E. huxleyi* was associated with warmer, nutrient-poor and more stable water column (i.e. upwelling relaxation stage) while the small *Gephyrocapsa* group was linked to colder waters and higher nutrient availability (i.e. early stages of the upwelling event), similarly to *G. oceanica*. Conversely, *F. profunda* is suggested as a proxy for the downwelling regime and low productivity conditions. The assemblage composed by *Syracosphaera pulchra*, *Coronosphaera mediterranea*, and *Rhabdosphaera clavigera* may be a useful indicator of the presence of subtropical waters conveyed northward by the Iberian Poleward Current. Finally, *C. leptoporus* is proposed as an indicator of warmer, saltier, and oligotrophic waters during the downwelling/winter regime.

10 **Keywords:** extant coccolithophore ecology, coccosphere, coccolith, Iberian margin, coastal upwelling, water column

1 Introduction

Coccolithophores are a group of marine calcifying phytoplankton with worldwide distribution in modern oceans. These microscopic algae are one of the main contributors to biogenic sediments by the production of calcite plates, named coccoliths, which form their outer shell, the coccosphere. Environmental conditions within the photic zone determine coccolithophore productivity, assemblage composition, and spatial distribution. Thus, fossil coccolith records recovered from sedimentary archives are extensively used to reconstruct past variability of surface water dynamics (e.g. McIntyre, 1967), nutricline position (e.g. Molino and McIntyre, 1990), primary productivity (e.g. Beaufort et al., 1997; Beaufort et al., 2001), and CO₂ (e.g. Stoll et al., 2002), among others. In the modern ocean, different coccolithophore assemblages are broadly distributed according to five biogeographic regions, each of them characterized by specific water masses (McIntyre and Bé, 1967). However, local processes such as eddies, jets, upwelling plumes, etc., can determine a much wider variety of assemblages whose ecology and relationships with the local environmental conditions cannot be extrapolated elsewhere (Baumann et al., 2005). Hence, extensive understanding on the regional ecology of coccolithophores in modern ocean waters is crucial to correctly interpret abundance of calcareous nannofossils in marine sediment records to infer environmental conditions and productivity variations in the past.

25 The Atlantic Iberian margin is located at the northern part of the Canary Eastern Boundary Upwelling Ecosystem, one of the four major coastal upwelling systems of the world's oceans (Fraga, 1981; Fiúza, 1983; Arístegui et al., 2009). It is a preferred location for paleoceanographic investigations due to high sedimentation rates, which allow studying marine records at sub-millennial scale. Furthermore, the combination of fluvial inflow from several rivers and a narrow continental shelf allows for the study of land-ocean interaction processes (Sánchez-Goñi et al., 1999; Sánchez-Goñi et al., 2002). Fossil coccolith records are being extensively used for climatic reconstructions along the western Iberian margin (Parente et al., 2004; Flores et al., 2010; Incarbona et al., 2010; Amore et al., 2012; Palumbo et al., 2013). However, the few existing studies characterizing living coccolithophore community, distribution, abundance and ecology in the water column are mostly based

on central and southern areas (Cachão and Moita, 2000; Cachão et al., 2000; Ferreira and Cachão, 2005; Silva et al., 2008; Moita et al., 2010; Guerreiro et al., 2013; Guerreiro et al., 2014), being scarce for northern locations (Abrantes and Moita, 1999; Moita, 2001). In this context, we present a yearlong dataset of coccospheres and free coccoliths based on monthly sampling at several depths at two different stations (one on the inner shelf and one on the outer shelf) across the NW Iberian margin. This study aims to characterize spatial and temporal variability in coccolithophore abundance as a response to local and regional environmental processes. These findings will further contribute to infer different paleoceanographic patterns of the NW Iberian coastal upwelling system by analyzing fossil coccolith assemblages.

2 Oceanographic setting

The sampling sites (RAIA and CALIBERIA stations; Fig. 1) were located in the NW Iberian coastal upwelling system. Large-scale oceanographic processes in this area are marked by a strong seasonal pattern, mostly determined by the regional atmospheric circulation. Generally, the semi-permanent Azores High displaces northward during spring–summer seasons (April to September–October), promoting northerly winds blowing over the continental shelf and inducing offshore Ekman transport (Fiúza, 1983; Alvarez et al., 2011). Accordingly, upwelling of subsurface, cold, and nutrient-rich Eastern North Atlantic Central Water (ENACW) occurs, leading to high primary production (Fraga, 1981; Tenore et al., 1995; Figueiras et al., 2002). On the contrary, during autumn and winter (October to March–April), the Azores High weakens and migrates southward while the Icelandic Low intensifies. In this context, southerly wind regime is accompanied by downwelling favorable conditions and a consequent decrease in primary productivity. Strong southwesterly winds at this time might also induce highly energetic storms that can lead to wave-driven mobilization of fine sediments from mid-shelf depths (Dias et al., 2002a; Vitorino et al., 2002; Oberle et al., 2014). During these periods, fluvial discharges from Minho and Douro rivers, located south, can contribute terrestrial sediments to the study area (Dias et al., 2002a; Dias et al., 2002b; Zúñiga et al., 2016). Oceanographically, from October to January, the region is affected by the presence of the Iberian Poleward Current (IPC), which flows northwards and transports relatively warm, saline and nutrient-poor waters to our study site (Haynes and Barton, 1990; Castro et al., 1997; Álvarez-Salgado et al., 2003, and references therein; Peliz et al., 2005; Relvas et al., 2007). Later on, the winter cooling in February–March favors a decrease in temperature that promotes a well homogenized mixed layer of cold and nutrient-rich waters (Castro et al., 1997; Álvarez-Salgado et al., 2003).

3 Material and methods

3.1 Sea water samples collection and environmental data

Sea water samples were collected at two stations: one close to the coast (4.1 km from the coastline) located off Cabo Silleiro (RAIA station; 42°05' N; 8°56' W, 75 m water depth), and one further offshore (52.8 km from the coastline) located at the outer continental shelf (CALIBERIA station; 42°05' N, 9°23' W; 350 m water depth). Continuous CTD–SBE911 profiles were recorded at both stations to measure temperature and salinity through the water column. Sampling was conducted

monthly on board “R/V Mytilus” from July 2011 to June 2012 (except August and April). Water column samples were obtained from selective rosette 10 L PVC Niskin bottles at 10, 50, and 70 m water depth at RAlIA station and at 10, 50, 100, 150, 250, and 300 m water depth at CALIBERIA sampling site. Seawater samples were used for analyses of coccolithophore and diatom assemblages, and determination of both inorganic nutrients (NO_3^- , HPO_4^{2-} , Si(OH)_4) and chlorophyll *a* (Chl *a*) concentrations. For coccolithophore analyses, a seawater volume between 2 and 5 L was filtered through a cellulose filter of 0.45 μm pore size by using a vacuum pump. Then, each filter was stored in plastic petri dishes and dried. Additionally, diatom abundance was determined at 5 m water depth by depositing between 10 and 50 mL in composite sedimentation chambers for observation through an inverted microscope. Sample preparation and analyses for diatom abundance determination are described in detail in Zúñiga et al. (2017). Inorganic nutrients were measured by segmented flow analysis with Futura-Alliances autoanalyzers following Hansen and Grassoff (1983) and pigment extract fluorescence was performed to estimate final Chl *a* concentrations with a Turner Designs fluorometer calibrated using pure Chl *a* (Sigma) (for details, see Zúñiga et al., 2016).

Data of regional irradiance, wave height, Bakun’s upwelling index, and river discharge from July 2011 to June 2012 presented in Zúñiga et al. (2016; 2017) were used in this study to evaluate the influence of physical forcing on coccosphere and coccolith abundance and variability (Figs. 2a–d).

3.2 Coccolithophore analyses

A random piece of filter was cut and mounted on a slide and rendered transparent with a few drops of immersion oil. General preservation of coccoliths and coccospheres was determined in every sample based on visual criteria as barren, very poor, poor, moderate, and good following Flores and Marino (2002), and converted into a numerical scale from 0 for barren samples to 4 for good general preservation. Excluding barren samples, at least 500 coccoliths per sample and all the coccospheres (i.e. coccolithophores) encountered during this process (ranging from 100 to 300) were counted and identified using a polarized light microscope at $\times 1000$ magnification. Consequently, species with a relative abundance $> 2\%$ could be detected with a confidence limit of 99.5% for the coccolith data set, and within a confidence limit range of 90%-99.5% for the coccosphere data set (Fatela and Taborda, 2002).

Following Cachão and Oliveira (2000), data sets of free-coccoliths and coccospheres were studied separately. The relative abundance (%) and the absolute abundance (given in coccoliths L^{-1} and cells L^{-1} , for coccoliths and coccospheres respectively) of each species were calculated for all samples. Absolute abundance (*A*) was calculated by Eq. (1):

$$A = (C a) / (N V n)$$

where *C* is the number of coccoliths or coccospheres, *N* is the number of visual fields considered; *V* is the volume of the filtered water (mL); *a* is the area of the filter; and *n* is the area per visual field.

Species were classified following Young et al. (2003). *Gephyrocapsa* specimens smaller than 3 μm (*G. aperta* and *G. ericsonii*) were lumped together as ‘small *Gephyrocapsa* group’ (Flores et al., 1999). Distinct morphotypes of the species

Coccolithus pelagicus were classified according to coccolith size criteria (*C. pelagicus* ssp. *braarudii* ($> 10 \mu\text{m}$) and *C. pelagicus* ssp. *pelagicus* ($< 10 \mu\text{m}$)) following Parente et al. (2004). Non-extant species of calcareous nannofossils were counted as “reworked specimens”. These belong to older stratigraphic levels and have generally been affected by resuspension and secondary transport by rivers or deep currents (Ferreira et al., 2008), indicating an allochthonous environmental signal.

3.3 Statistical analysis

Evaluation of ecological similarities among coccolithophore species and their relationship with the environmental conditions was performed using a Canonical Correspondence Analysis (CCA). The analysis was only implemented for the CALIBERIA station dataset given that RAIA station was affected by resuspension of coccoliths from the underlying sediments, which may also affected coccolithophore distribution in the water column (see Sect. 5.1.1.). Ecological relationships were assessed as a function of the distance among the species and the variables on an ordination graph. Akaike’s information criterion (AIC) was applied in a prior ordination analyses to identify the model with the minimum number of environmental variables that, being statistically significant, explained the maximum inertia (i.e. variance in the coccospheredata). Initially, eleven explanatory variables were considered: temperature, salinity, NO_3^- , HPO_4^{2-} , $\text{Si}(\text{OH})_4$, particulate organic carbon (POC), irradiance, wave height, Bakun’s upwelling index, and both Minho River and Douro River discharges. For each variable, three different temporal resolutions were considered averaging the available data corresponding to: the sampling date, the sampling day plus two days before, and the sampling day plus four days before. Barren samples were excluded from the ordination analyses and only major coccolithophore species (those with a relative abundance $> 2\%$ in at least 2 samples and whose confidence limit of detection is $> 90\%$ in this study) were considered. After significant variables were identified via backward procedure, CCA was performed. Ordinations were performed with the “vegan” package v.2.3. (Oksanen et al., 2016) for R (R Core Team, 2015).

4 Results

4.1 Environmental conditions and associated physical processes during sampling

Environmental conditions at RAIA station from November 2008 to June 2012 have been previously assessed in detail by Zúñiga et al. (2016). For the period considered in this study, northerly winds occurred from July to November 2011, and from February to May-June of 2012, with the water column being characterized by the upwelling of cold, more saline and nutrient-rich ENACW on the NW Iberian margin, principally at the inner continental shelf where the presence of these upwelled waters at shallower depths were strongly linked to Chl *a* maxima (Fig. 2i). On the other hand, from November to January, and part of May, downwelling favorable winds and low irradiance levels were also accompanied by high wave heights and consecutive Minho and Douro river discharges, as shown by the presence of less saline water lenses at the surface layer (Fig. 2d and 2f). Since November till December, anomalously warmer ($14\text{--}16\text{ }^\circ\text{C}$), saltier (>35.8), and

nutrient-poor ($\sim 0.1 \mu\text{M}$ of HPO_4^{2-} and $< 2.5 \mu\text{M}$ of NO_3^-) waters conveyed by the IPC were distinguished (Figs. 2e-h). Finally, during February, winter mixing conditions were also detected with the water column being homogeneously characterized by colder waters ($< 13 \text{ }^\circ\text{C}$) with salinity values < 35.8 and higher nutrient concentration ($0.3\text{--}0.5 \mu\text{M}$ of HPO_4^{2-} and $2.5\text{--}5 \mu\text{M}$ of NO_3^-). The outer-shelf station was generally characterized by warmer and more nutrient-poor waters. Yet, the temperature and nutrient distribution in the upper layer revealed similar seasonal patterns in both stations and the influence of less saline lenses from river discharges was also observed in the outer-shelf station in May (Figs. 2e-h). Chl *a* concentrations were of the same order in both stations, although its temporal variability differed markedly and coupling between stations only occurred from March to May (Fig. 2i).

4.2 Diatom abundance

Diatom abundances at 5 m water depth at the RAIA inner-shelf station have been previously discussed by Zúñiga et al. (2017). These peak during the upwelling periods and reach a maximum of $\sim 1 \times 10^6$ cells L^{-1} in September 2011 (Fig. 3a). At the CALIBERIA outer-shelf station, diatom abundances were much lower reaching a maximum of $\sim 200 \times 10^3$ cells L^{-1} during the second upwelling period (March–June 2012).

4.3 Total coccosphere and coccolith absolute abundances

In general, coccosphere and coccolith preservation varied from moderate to good (Fig. 3b), allowing identification of nearly all (moderate preservation) or all specimens (good preservation) at species level.

4.3.1. Coccolithophore standing crops

At RAIA inner-shelf station, coccosphere absolute abundance was generally very low, except during March and June 2012 at 10 m water depth reaching 1×10^5 and 2×10^5 cells L^{-1} , respectively (Fig. 3c).

At CALIBERIA outer-shelf station, coccosphere absolute abundance ranged between $0\text{--}3 \times 10^5$ cells L^{-1} (Fig. 3c). Higher cell densities occurred during spring and summer months between 10–50 m depth, reaching maximum numbers in March 2012 (Fig. 3c). On the contrary, coccosphere abundances dropped to minimum levels during winter.

4.3.2. Coccolith absolute abundance

At RAIA inner-shelf station, coccolith absolute abundance ranged between 0 and 6×10^7 coccoliths L^{-1} (Fig. 3d). Minimum values were registered between July and October 2011 and February–May 2012 at 10 m. Coccolith minima in September 2011 coincides with poor sample preservation but also maxima in diatom abundance. Maximum values were observed in December 2011 and January 2012 at 70 m, and June 2012 at 10 m.

At CALIBERIA outer-shelf station, coccolith absolute abundance ranged between 0 and 1.25×10^7 coccoliths L^{-1} (Fig. 3d) with maximum abundances in July 2011 ($\sim 7.5 \times 10^6$ coccoliths L^{-1}) and June 2012 ($\sim 1.25 \times 10^7$ coccoliths L^{-1}) at 10 m water

depth, decreasing gradually through the fall season (October and November 2011), and dropping to minimum values in winter (December 2011–March 2012).

Distributions of total both coccosphere and coccolith abundances within each station are in general agreement. One exception is found in March 2012 at both stations, when the maximum of coccospheres does not have a counterpart in the coccolith signals. Another exception to this general agreement occurs from November to January at RAIA station, when higher coccolith abundances at 70 m depth are not reflected by the coccosphere abundance.

4.4 Major assemblage composition

Assemblages of both forms, coccospheres and coccoliths, showed the same major composition at both stations (Figs. 4 and 5). *E. huxleyi* was the dominant species, being present through the whole studied period, and achieving percentages higher than 90 % of both forms during the upwelling regime. The second major taxa was small *Gephyrocapsa* group, which reached its highest relative abundance from February to May at both stations. Other major species were: *Gephyrocapsa oceanica*, *Florisphaera profunda*, *Syracosphaera* spp. (mainly *S. pulchra*), *Coronosphaera mediterranea*, *Calcidiscus leptoporus*, and, to a small extent, *Rhabdosphaera clavigera* in only two samples of CALIBERIA station. Reworked coccolith specimens did not exceed 0.3 % of relative abundance for any sample (Figs. 4 and 5). Other minor species and taxa identified and counted are listed in Appendix A.

4.5. Inner-shelf temporal variability in species absolute abundance

At the RAIA inner-shelf station, *E. huxleyi* ranged between 0 and 5×10^5 cells L^{-1} , being more abundant in March and June 2012 at 10 m, similarly to small *Gephyrocapsa* group (up to $\sim 4 \times 10^4$ cells L^{-1}) (Fig. 6). *G. oceanica* (up to $\sim 8 \times 10^3$ cells L^{-1}) reached its maximum in July at 10 m depth, but it abounded at and below 50 m water depth. *F. profunda* was present in October at all depths, reaching its highest density ($\sim 5 \times 10^3$ cells L^{-1}) at 50 m. *Syracosphaera* spp. and *C. leptoporus* were present in November, the former at 10 (1×10^3 cells L^{-1}) and the latter at 50 m water depth (1.5×10^4 cells L^{-1}) (Fig. 6). *C. mediterranea* shows higher density (3×10^4 cells L^{-1}) in June 2012 at 10 m and lower abundances in February and March. Coccolith and coccosphere distribution were found to differ significantly, especially at and below 50 m water depth. For instance, all major species showed relative maxima in coccoliths L^{-1} from November to January at 70 m water depth (Fig. 6).

4.6. Outer-shelf temporal variability in species absolute abundance

At the CALIBERIA outer-shelf station, *E. huxleyi* (up to 2×10^5 cells L^{-1}) was much more abundant during the upwelling regime (Fig. 7). Small *Gephyrocapsa* group (up to 1.75×10^5 cells L^{-1}) and *G. oceanica* (up to 1.4×10^5 cells L^{-1}) showed their highest abundance in March 2012, with the latter dominating at greater depths. *F. profunda* (up to 5×10^4 cells L^{-1}) only appeared during winter, mostly between 50–100 m water depth, while *Syracosphaera* spp. abounded in September and, similarly to *R. clavigera*, November 2011 at 10 m. *C. mediterranea* shows its highest density (2×10^4 cells L^{-1}) in June 2012,

and lower abundances during October–November 2011 within the first 50 m. *C. leptoporus* appeared from November to January at and below 50 m water depth.

Except for *G. oceanica* and *C. leptoporus*, temporal distribution of coccolithophore species at the outer-shelf station were broadly mimicked by their corresponding coccoliths. Yet, coccoliths showed a wider vertical distribution (Fig. 7). Coccoliths of *G. oceanica* were much more abundant during the upwelling regime if compared with coccospheres of the same species. Coccoliths of *Syracosphaera* spp. coexisted with those of *C. mediterranea* and *R. clavigera* in November 2011 at 10 m water depth (Fig. 7). Coccoliths of *C. leptoporus* were present throughout the studied period at and below 100 m depth, and only appeared in the first 50 m during November–December.

4.7 CCA

The first canonical axis (CCA1) of the CCA_{CALIBERIA} model explained 51 % of the constrained inertia (i.e. variance) in the coccosphere data and was mostly related to the negative gradient of irradiance, and to the positive gradients of salinity and both Douro River and Minho River discharges (Fig. 8). The second canonical axis (CCA2) explained 22 % of the constrained variance and showed a positive gradient with temperature and a negative relationship with HPO_4^{2-} and NO_3^- . *E. huxleyi* was linked to the upwelling regime samples (June and July) and showed a positive relationship with temperature. Small *Gephyrocapsa* group was also related to the upwelling regime during March but, unlike *E. huxleyi*, linked to higher nutrient content. *F. profunda* was associated to the downwelling regime samples and presented a negative relationship with irradiance. *G. oceanica* was related to nutrients and mainly linked to samples below 50 m water depth. *Syracosphaera* spp., *C. mediterranea* and *R. clavigera* are all associated with the poleward regime samples (November 2011 –January 2012), positively related to temperature and negatively associated with nutrients. *C. leptoporus*, which is located next to the latter species, shows a positive relationship with salinity and temperature, and a negative one with nutrient content and irradiance.

5 Discussion

5.1 General patterns in coccolithophore and coccolith abundance in the NW Iberian margin

This work represents the first year–long investigation of variability in coccolithophore abundance and distribution in the NW Iberian coastal upwelling system. On the one hand, maximum coccosphere abundance at both stations was comparable to maximum values reported for other northern, central and southern locations along the Portuguese margin and other major upwelling systems (Table 1). On the other hand, coccolith abundance in RAIA station was the same order of magnitude as that found by Ferreira and Cachão (2005) for an estuary in the SW Iberian margin. Unfortunately, very few studies quantify the occurrence of free–coccoliths in the water column, limiting comparison with other regions.

At both stations, the number of coccospheres drastically drops below 50 m water depth, possibly due to rapid zooplankton grazing and coccolithophore disaggregation into coccoliths.

Total abundance of both, coccospheres and coccoliths, were higher at the outer-shelf station if compared with the inner-shelf site (Figs. 3c, d), as previously stated by other studies based on water column and surface sediment samples recovered along longitudinal transects off the Portuguese coast (Abrantes and Moita, 1999; Cachão et al., 2000; Moita, 2001) and as inferred from Table 1. Higher cell densities agree with higher Chl *a* values and low diatom abundances further offshore in October 2011 and March 2012 (Figs. 2i and 3a, c). This suggests that under more (but not extreme) oligotrophic conditions this phytoplankton group can out-compete diatoms (Baumann et al., 2005; Gregg and Casey, 2007), and possibly be significant contributors to Chl *a* values in the study area. On the contrary, at the inner-shelf station where upwelling is more intense, the entrance of cold and nutrient rich waters favors diatoms proliferation at times of maximum Chl *a* as recorded in July and September 2011. These results point to the need of considering coccolithophores to better explain primary productivity patterns at the NW Iberian continental margin.

5.1.1 Inner-shelf temporal variability of coccosphere and coccolith abundance: the influence of coastal processes

At the inner-shelf station, total coccosphere abundance presented maximum values during the upwelling season. By contrast, coccolith maxima were also observed during the downwelling regime, close to the seafloor (75 m). Given that environmental conditions at those times were unfavorable for coccolithophore growth and that no coccoliths nor coccospheres are observed above this depth to explain possible vertical settling, the existence of an allochthonous source of coccoliths (i.e. laterally transported from nearby locations) or resuspension of coccoliths from underlying sediments is proposed to explain these results. Further support for coccolith resuspension comes from the composition of the coccolith assemblage at those times (i.e. November–January and May), counting on many more taxa than the typical bloom-forming *E. huxleyi* and small *Gephyrocapsa* group (Fig. 6) recurrently dominating in productive conditions (Tyrrell and Merico, 2004). Simultaneously, large increases in wave height were observed (Fig. 2b), that is, high-energy wave-driven processes could have favored resuspension of coccoliths from the underlying sediments. Our data are in agreement with Zúñiga et al. (2016), who studied downward CaCO₃ fluxes at the same location and concluded that calcareous shelled organisms had to be remobilized from surface sediments during the highly hydrodynamic downwelling periods. As a consequence, discernment between autochthonous and allochthonous coccolithophore signals in the water column was not possible for these periods, preventing CCA to be applied to the RAIA data set. Guerreiro et al. (2013) have observed a rapid increase in coccolithophore production at the inner shelf of the central Iberian margin influenced by a nutrient-rich buoyant plume resulting from intense river runoff. However, our results give no conclusive evidence as to whether freshwater lenses advected to RAIA station influenced the total coccosphere abundance (Figs. 2f and 3d).

5.1.2 Outer-shelf temporal variability in coccosphere and coccolith abundance: the influence of seasonal dynamics

At the outer-shelf site, coccosphere and coccolith abundances were seasonally modulated, showing higher values during the summer/upwelling regime and decreasing drastically in abundance during the winter/downwelling periods. Except for the coccosphere maximum in March 2012 at both stations, summer coccosphere and coccolith maxima were associated with

high irradiance levels and relaxation of northerly winds during summer, conditions that promoted more stable water column and nutrient depletion (Figs. 2 and 3c). This affinity of coccolithophores for summer stratified conditions during the upwelling season was already observed by Silva et al., (2008) in Lisbon Bay, from a four year weekly-sampled data set. On the other hand, the coccosphere maximum in March 2012 occurred under completely different environmental conditions:
5 cold and nutrient-rich waters characteristic of the onset of the upwelling season (Figs. 2 and 3c). Indeed, despite the general association of coccolithophores with weak upwelling and nutrient depletion, our results show that these phytoplankton group may follow diverse life strategies, as demonstrated for this region by Guerreiro et al. (2013).

5.2 Coccolithophore ecology and potential as paleoenvironmental indicators

Both the coccosphere and coccolith major assemblages were mainly represented by *E. huxleyi*, small *Gephyrocapsa* group,
10 *G. oceanica*, *F. profunda*, *Syracosphaera* spp., *C. mediterranea*, and *C. leptoporus* at both stations. Given that resuspension events were found to mask the composition of the coccolith assemblage, and therefore to possibly influence the coccosphere assemblage, in the water column of RAlIA station, discussion on coccolithophore ecology will be uniquely based on the coccosphere data set from CALIBERIA station.

E. huxleyi was the dominant species throughout the studied period regardless of the environmental conditions (Fig. 7).
15 Higher cell densities of *E. huxleyi*, as well as the small *Gephyrocapsa* group, appeared highly related to the upwelling regime, in agreement with other studies carried out in the central Iberian margin and other coastal upwelling regions (Ziveri et al., 1995; Baumann et al., 2008; Silva et al., 2008; Guerreiro et al., 2013; Narciso et al., 2016), where both taxa are proposed as indicators of productive periods. Despite this common affinity for the upwelling regime, temporal variability of their absolute abundance and the CCA (Figs. 7 and 8) also emphasize a connection of the small *Gephyrocapsa* group with
20 spring samples, when colder and more nutrient-rich ENACW waters upwelled on the shelf. In contrast, *E. huxleyi* was related to warmer and nutrient-poor waters during summer stratification when upwelling favorable winds relaxed (Zúñiga et al., 2017). Silva et al. (2008) also found both taxa were linked to the upwelling season, and noticed a preferential development of *E. huxleyi* during very week upwelling events, although in spring and late summer. Yet, our outcomes highlight that both species are unambiguously linked to the upwelling regime.

25 *G. oceanica* was related to nutrient-rich waters below 50 m, as evidenced by the CCA bi-plot (Figs. 7 and 8). This species is regarded as a component of the lower limit of the photic zone in coastal settings (Baumann and Boeckel, 2013), and has been related to relatively nutrient-rich coastal waters in the SW Iberian margin (Ferreira and Cachão, 2005; Silva et al., 2008; Guerreiro et al., 2013; Guerreiro et al., 2014). Its highest abundance coincides with maximum Chl *a* values and higher nutrient content (Figs. 2g-i and 7), suggesting rapid response to nutrient availability (Guerreiro et al., 2013). This is
30 supported by comparison of the temporal distribution of *G. oceanica* coccospheres and coccoliths. Water column conditions during the upwelling regime in July-November and May-June indicate ongoing relaxation of the upwelling event; at those times, only coccoliths of *G. oceanica* are present, indicating an ongoing or already terminated decay of the species

population (Cachão and Oliveira, 2000). On the contrary, in March, only coccospheres of *G. oceanica* are present, indicating new growth of cells of this species (Cachão and Oliveira, 2000).

F. profunda was related to the downwelling regime and deeper waters (Figs. 7), in agreement with its classical definition as a LPZ inhabitant (Okada and Honjo, 1973; Molfino and McIntyre, 1990). Since Molfino and McIntyre (1990) pointed to the inverse relationship of *F. profunda* with productivity in the upper photic zone (UPZ), its relative abundance in fossil records has been widely used to qualify and quantify past productivity variations in many oceanic regions (e.g. Beaufort, 1996; Beaufort et al., 1997; Beaufort et al., 2001; Grelaud et al., 2012) including the Atlantic Iberian margin (Incarbona et al., 2010; Palumbo et al., 2013; Marino et al., 2014). Indeed, the ordination analyses for CALIBERIA supports this interpretation, relating *F. profunda* to deeper and downwelling regime samples (Fig. 8). Considering that the influence of Duero and Minho River discharges is limited to the first 10 m of the water column (Fig. 2f), the proximity of *F. profunda* to these environmental variables in the bi-plot is only interpreted as consequence of their common temporal occurrence during the winter months. Contrary to the expected, coccolith abundance of *F. profunda* was not linked to deeper but to shallow waters at the inner-shelf station (Fig. 6). This fact supports coccolith remobilization from surface sediments at the inner continental shelf from October to January, preventing further interpretation of the coccolithophore ecology close to the coast during that period.

Syracosphaera spp., (mainly *S. pulchra*), is a major component during autumn (Fig. 7), in agreement with Beaufort and Heussner (2001). In spite of previous work (Guerreiro et al., 2015) has suggested that its imprint in the underlying sediments may be underrepresented owing to selective dissolution of delicate coccoliths, several studies propose that this genus can dominate the water column assemblage in the study area in occasional periods and in both close to the shore (Silva et al., 2008) and open ocean conditions (Guerreiro et al., 2014). In this regard, *S. pulchra* along with *Helicosphaera carteri*, *C. mediterranea*, and *R. clavigera*, constitute a minority but persistent late summer–autumn assemblage in the S and SW Iberian coast that has been proposed by previous authors (Cachão et al., 2000; Silva et al., 2008; Silva et al., 2009; Moita et al., 2010) as a tracer for ENACW of subtropical origin (Fiúza, 1983). Except for *H. carteri*, this assemblage was observed further offshore in November 2011 (Figs. 7), when the upper water column was characterized by warmer, saltier, and nutrient–poor waters if compared to the inner-shelf station (Fig. 2) and as emphasized by the CCA (Fig. 8). A similar assemblage including these three species has been observed in the Central North Atlantic Ocean and related to warm and oligotrophic waters (Narciso et al., 2016). Although further research is required to assess its preservation in the fossil record, our results broaden the geographical extent of this assemblage as a potential proxy for ENACW of subtropical origin conveyed northward by the IPC.

This assemblage coexists with *C. leptoporus*, which is also present in the following winter months at and below 50 m water depth (Fig. 7). In a study of the vertical distribution of extant coccolithophores, Baumann et al. (2008) describes *C. leptoporus* as a deep-dwelling species, along with *F. profunda*. This species has shown broad tolerance to environmental conditions and has been related to warm and oligotrophic waters (Giraudeau, 1992; Silva et al., 2013) as well as to colder, fresher, and eutrophic waters (Baumann et al., 2016), in this and other regions. In this study, CCA points to a clear

relationship of *C. leptoporus* with saltier, warmer, and poor-nutrient waters, and low levels of irradiance (Fig. 8). These results are in good agreement with previous works in the study area (Silva et al., 2008; Silva et al., 2009; Guerreiro et al., 2014), where *C. leptoporus* is regarded as a tracer of nutrient-depleted water masses of subtropical origin in the study area, suggesting a strong regional hydrographic control on its distribution.

5 6 Conclusions

This paper reports on the assessment of the temporal and spatial variability and distribution of coccolithophore and coccolith abundances in the NW Iberian coastal upwelling system. Our results highlight the role of calcareous nanoplankton as primary producers in the study area and suggest this group might be a potential contributor to higher Chl *a* values at the outer Iberian margin continental shelf. A coastal-offshore gradient was observed in coccosphere abundance, contrary to that of diatoms, with an increase in both coccosphere and coccolith abundances towards the outer shelf where the water column was characterized by relatively more oligotrophic conditions. Even so, temporal variability in coccosphere and coccolith abundances differs between stations. At the inner shelf, coastal processes like strong stormy events were found to resuspend coccoliths from the underlying sediments, masking the autochthonous coccolith assemblage in the water column and hampering interpretation of their ecology. Further offshore, the variability in coccosphere and coccolith abundance is modulated by the seasonal upwelling-downwelling regime. Higher abundances of both forms were observed during spring-summer, when high irradiance levels and upwelling favorable winds promote optimal conditions for coccolithophore growth. We found higher coccosphere and coccolith abundance occurred mostly under more stratified and nutrient-poor conditions, but also when the cold and nutrient-rich ENACW upwelled onto the continental shelf.

This information on coccolithophore distribution and temporal variability might be of great use to qualitatively interpret coccolith fossil records in terms of past dynamics of the upper water column and thus to monitor large-scale modes of surface oceanic circulation along the NW Iberian margin, but more specifically in locations far from the influence of coastal hydrodynamic processes. Increases in the absolute abundance of both *E. huxleyi* and the small *Gephyrocapsa* group in the fossil record are proposed as indicators of upwelling periods and therefore persistent northerly winds. Despite their common affinity for the upwelling regime, distinct ecological preferences were found between both taxa and attributed to their affinity for different stages of the upwelling event: *E. huxleyi* was linked to upwelling relaxation conditions (i.e. more stable, warmer and nutrient-poor water column) while the small *Gephyrocapsa* group was associated with early stages of the upwelling event (i.e. colder waters and higher nutrient availability), similarly to *G. oceanica*. Conversely, *F. profunda* is proposed as a proxy for the downwelling regime and low productivity conditions. The assemblage composed by *S. pulchra*, *C. mediterranea*, and *R. clavigera* may be used as a tracer of the hydrographic influence of the IPC, which carries warmer and nutrient-poor southerly waters. More broadly, *C. leptoporus* is proposed as an indicator of warmer, saltier, and oligotrophic waters during the downwelling/winter regime.

Appendix A. Taxonomic list of the identified species. Their presence at each station is noted by x.

Taxon	CALIBERIA	RAIA
<i>Braarudosphaera bigelowii</i> (Gran & Braarud 1935)	X	X
<i>Coronosphaera mediterranea</i> (Lohmann, 1902)	X	X
<i>Calcidiscus leptoporus</i> (Murray & Blackman 1898)	X	X
<i>Coccolithus pelagicus</i> ssp. <i>braarudii</i> (Gaarder 1962)	X	X
<i>Coccolithus pelagicus</i> (Wallich 1877) Schiller 1930 ssp. <i>pelagicus</i>	X	X
<i>Discosphaera tubifera</i> (Murray & Blackman, 1898)	X	
<i>Emiliana huxleyi</i> (Lohmann 1902)	X	X
<i>Florisphaera profunda</i> (Okada & Honjo 1973)	X	X
<i>Gephyrocapsa aperta</i> Kamptner 1963	X	X
<i>Gephyrocapsa ericsonii</i> McIntyre & Bé 1967	X	X
<i>Gephyrocapsa muelleriae</i> Bréhéret 1978	X	X
<i>Gephyrocapsa oceanica</i> Kamptner 1943	X	X
<i>Gladiolithus flabellatus</i> (Halldal & Markali 1955)	X	
<i>Helicosphaera</i> spp., (mainly <i>H. carteri</i> (Wallich 1877))	X	X
<i>Oolithotus fragilis</i> (Lohmann 1912)	X	X
<i>Pontosphaera</i> spp. Schiller 1925	X	X
<i>Rhabdosphaera clavigera</i> Murray & Blackman 1898	X	X
<i>Scyphosphaera apsteinii</i> Lohmann, 1902	X	X
<i>Syracosphaera</i> spp. (mainly <i>S. pulchra</i> , Lohmann 1902)	X	X
<i>Umbellosphaera</i> spp., (mainly <i>U. tenuis</i> (Kamptner 1937))	X	X
<i>Umbilicosphaera sibogae</i> (Weber-van Bosse 1901)	X	X

5 **Competing interests.** The authors declare that they have no conflict of interest

Acknowledgements

The authors would like to thank M. Cachão, M. Triantaphyllou, and two other anonymous reviewers for their valuable comments and suggestions to improve the quality of the paper. The authors want to thank the Captain and crew of the RV ‘Mytilus (CSIC)’. This work was funded by the EXCAPA project (10MDS402013PR) funded by Xunta de Galicia, and CALIBERIA project supported the coccolithophore analysis (PTDC/MAR/102045/2008 from Fundação para a Ciência e a Tecnologia -Portugal- and COMPETE/FEDER -FCOMP-01-0124-FEDER-010599). Project CGL2015-68459-P from Ministerio de Economía y Competitividad also contributed to the founding of this study. B.A. was supported by a FPU grant (AP2010-2559) of the Ministry of Education of Spain and by an ETH Zurich Postdoctoral Fellowship from the Swiss

Federal Institute of Technology in Zurich (ETHZ). D.Z. was funded by a postdoctoral fellowship (Plan I2C) from Xunta de Galicia (Spain). F.G. was funded by RAI A.co (0520_RAIA.co_1_E). N. V-R. was funded by Isabel Barreto Program (Xunta de Galicia, Spain). M.F. (BI/PTDC/MAR/102045/2008/2010-016), C.S. (BI/ PTDC/MAR/102045/2008/2010-022) and C.C. (BI/PTDC/MAR/102045/2008/2011-027) were supported by CALIBERIA project. E.S. was funded by a postdoctoral
5 fellowship (SFRH/ BPD/111433/2015) from FCT and from Plurianual/Estratégico project (UID/Multi/04326/2013).

Table 1. Maximum coccolithophore abundance (cells L⁻¹) reported in this study, in other works from the Iberian Margin and in major upwelling areas in the Atlantic Ocean.

	Reference	Oceanic region	Region	Maximum cells L ⁻¹	Environmental conditions
Iberian Margin	This study	Portuguese Margin	CALIBERIA (outer-shelf)	3x10 ⁵	Summer regime, colder and more nutrient waters
	This study	Portuguese Margin	RAIA (inner shelf)	2x10 ⁵	Summer regime, warmer and oligotrophic waters
	Cachão et al. (2000)	Portuguese Margin	Northwest (Oporto)	2.7x10 ⁵	Winter regime, upwelling conditions, and local runoff
	Silva et al. (2008)	Portuguese Margin	Central West Lisbon Bay	2x10 ³	Declining phase of the upwelling event
	Guerreiro et al. (2013)	Portuguese Margin	Central West (Cape Carvoeiro)	1.5x10 ⁵	Winter regime, upwelling conditions but decreasing nutrient content, river discharge
	Abrantes and Moita (1999)	Portuguese Margin	Southwest (Cape Saint Vicent)	3x10 ⁴	Summer regime, warmer waters
	Cachão et al. (2000)	Portuguese Margin	Southwest (Cape Saint Vicent)	8.4x10 ⁴	Winter regime, upwelling conditions
Other major upwelling areas in the Atlantic Ocean	Abrantes et al. (2002)	North Atlantic	NW Africa	5x10 ³	Local upwelling
	Kinkel et al. (2000)	Equatorial Atlantic	Equatorial upwelling	3x10 ⁶	Upwelling conditions
	Giraudeau et al. (1993)	South Atlantic	Benguela	4.6x10 ⁵	Low turbulence and low nutrient content
	Mitchell-Innes and Winter	South Atlantic	South Africa (Cape Peninsula)	2x10 ⁶	Declining phase of the upwelling event

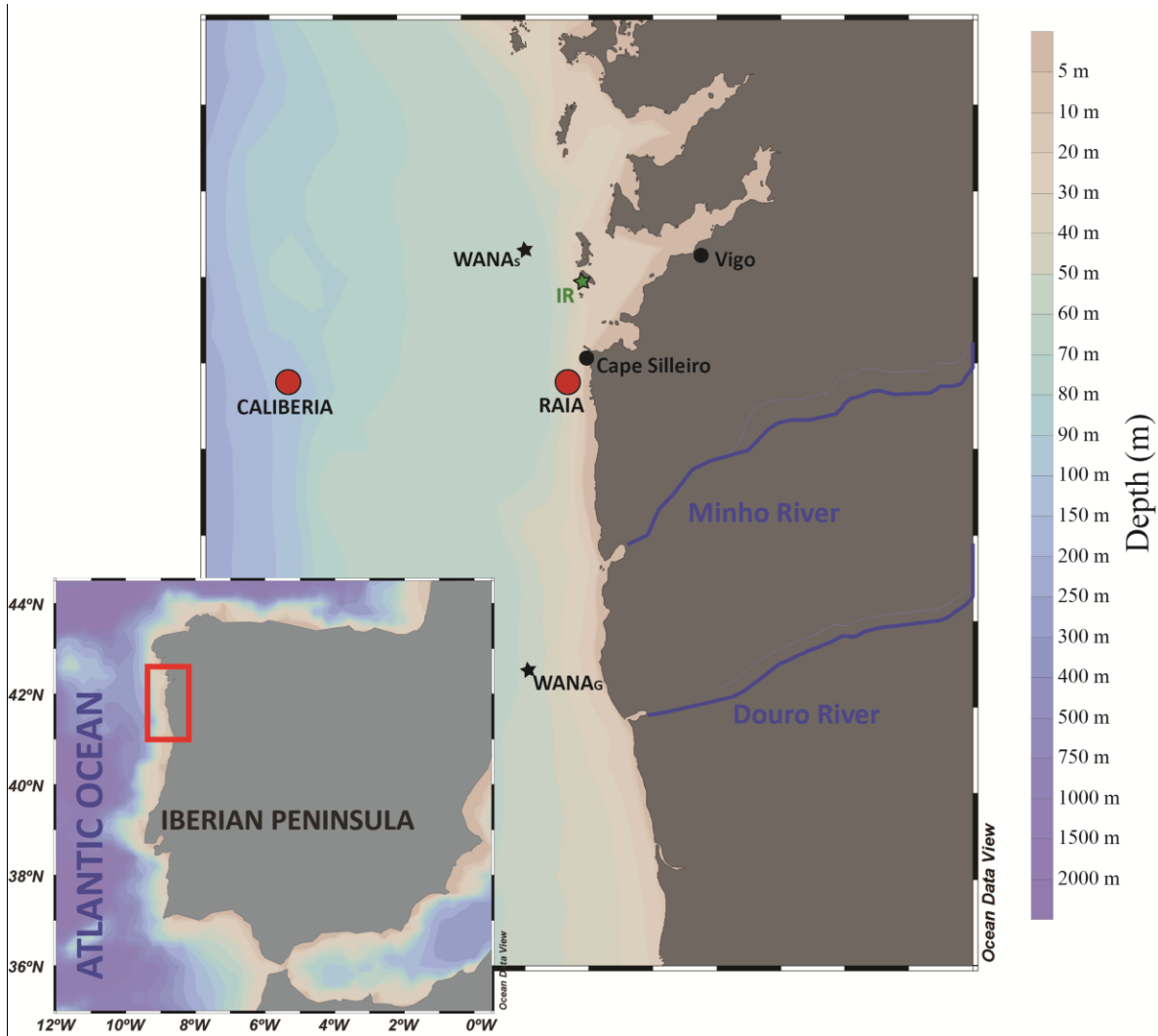


Figure 1. Map of the NW Iberian Margin showing CALIBERIA and RAIA stations. Location of Cíes meteorological station (IR, in green), and WANA hindcast reanalysis points WANA_s and WANA_G (black stars) from which irradiance and wave data were respectively obtained (Zúñiga et al. 2016).

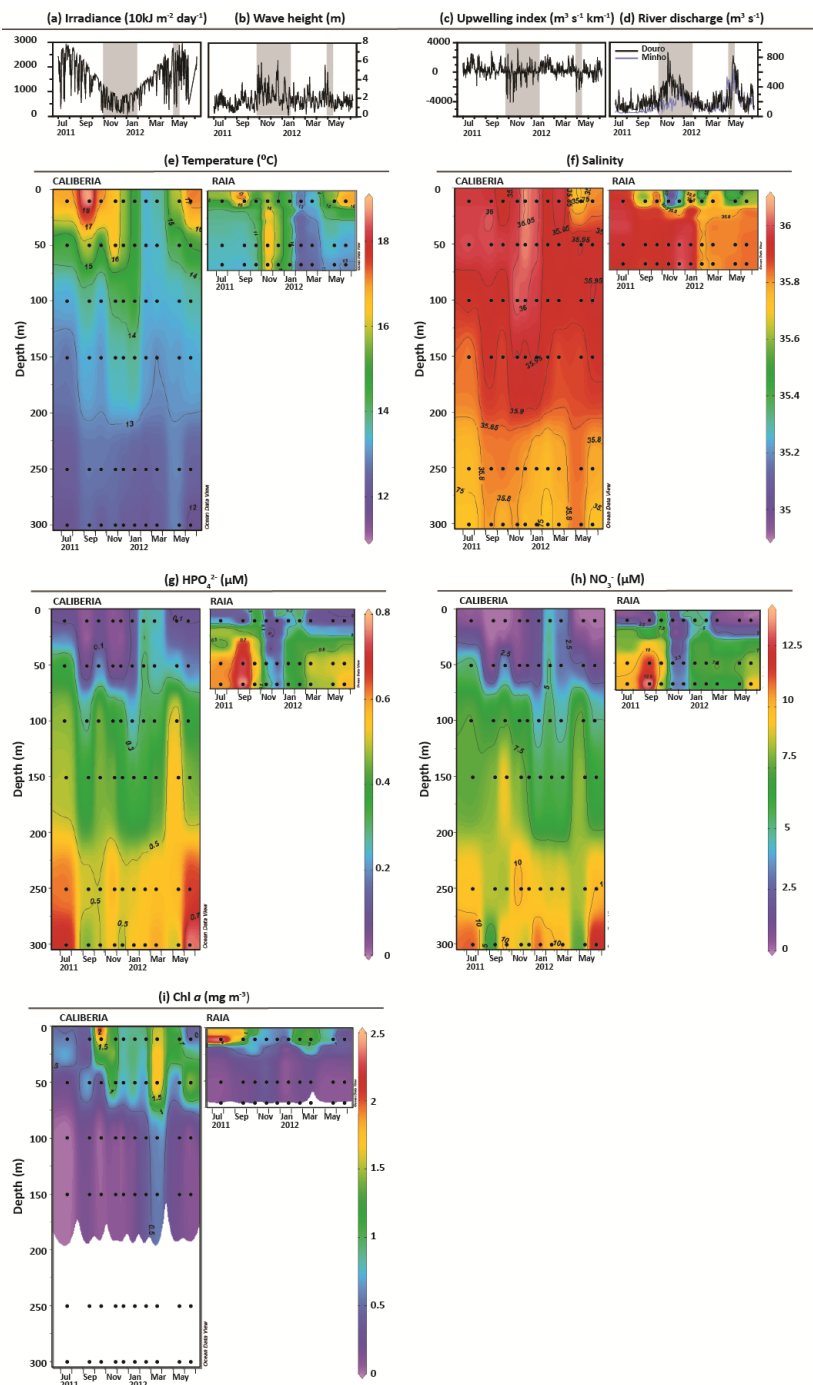
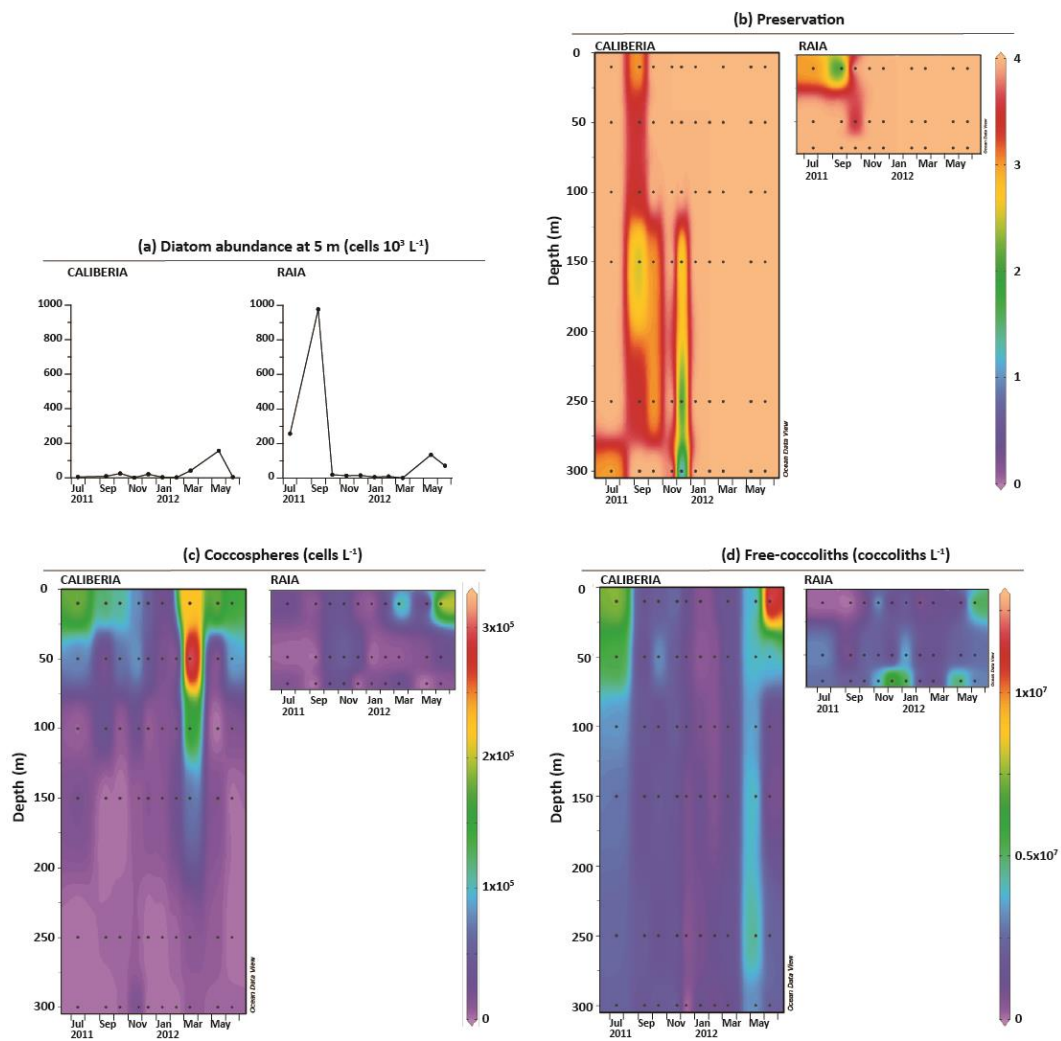


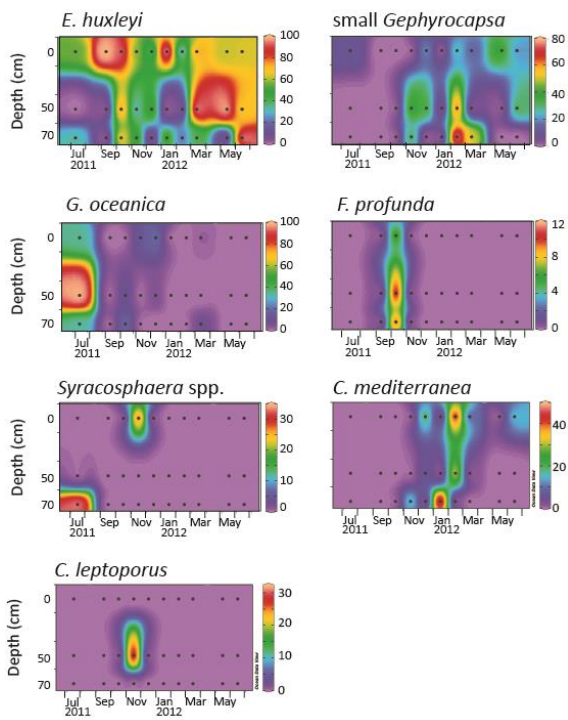
Figure 2. Environmental conditions for the studied period. Available data on a) irradiance, b) wave height, c) Bakun's upwelling index, and d) discharges by Minho (blue) and Douro (black) Rivers (Zúñiga et al., 2016; 2017). Grey and white bars represent downwelling and upwelling periods, respectively, based on upwelling index and biogeochemical data presented and interpreted in Zúñiga et al. (2016; 2017). Temporal and vertical distribution of e) temperature, f) salinity, g) HPO_4^{2-} , h) NO_3^- , and i) Chl a at CALIBERIA and RAI A stations. Black dots represent collected water samples for coccolithophore analyses.

5



5 **Figure 3. a) Diatom absolute abundance (cells 10^3 L^{-1}) at 5 m at CALIBERIA (this study) and RAI A (Zúñiga et al., 2017); b) Preservation of coccolithophore samples; and temporal and vertical distribution of the total number of c) coccospheres (cells L^{-1}) and d) free-coccoliths (coccoliths L^{-1}), at CALIBERIA and RAI A stations. Black dots represent the sampling month and depth. See text for conversion of numeric values in preservation color bar to the corresponding qualitative preservation.**

RAIA-Coccospheres [%]



RAIA-Coccoliths [%]

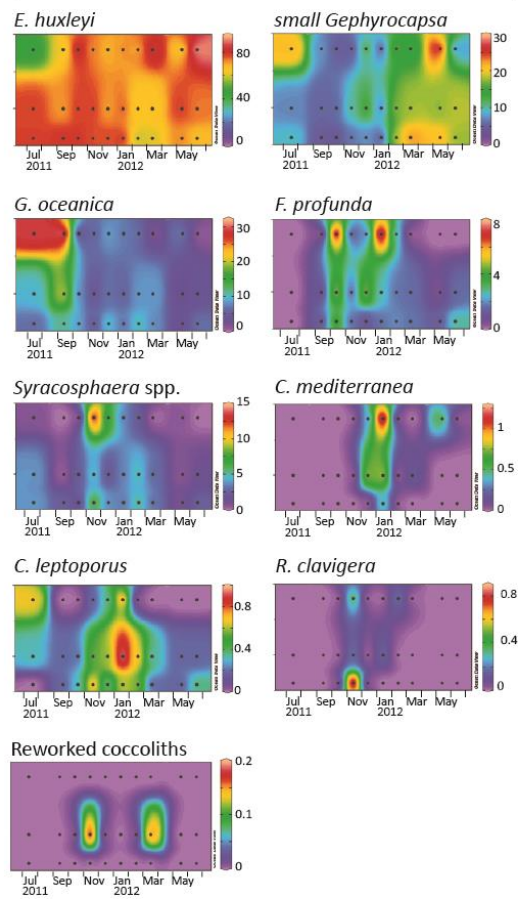


Figure 4. Relative abundance (%) of major species of coccospheres (left panel) and coccoliths (right panel) in RAIA station. Black dots represent the sampling month and depth. Note that each color bar has been scaled to the maximum and minimum values of its corresponding species.

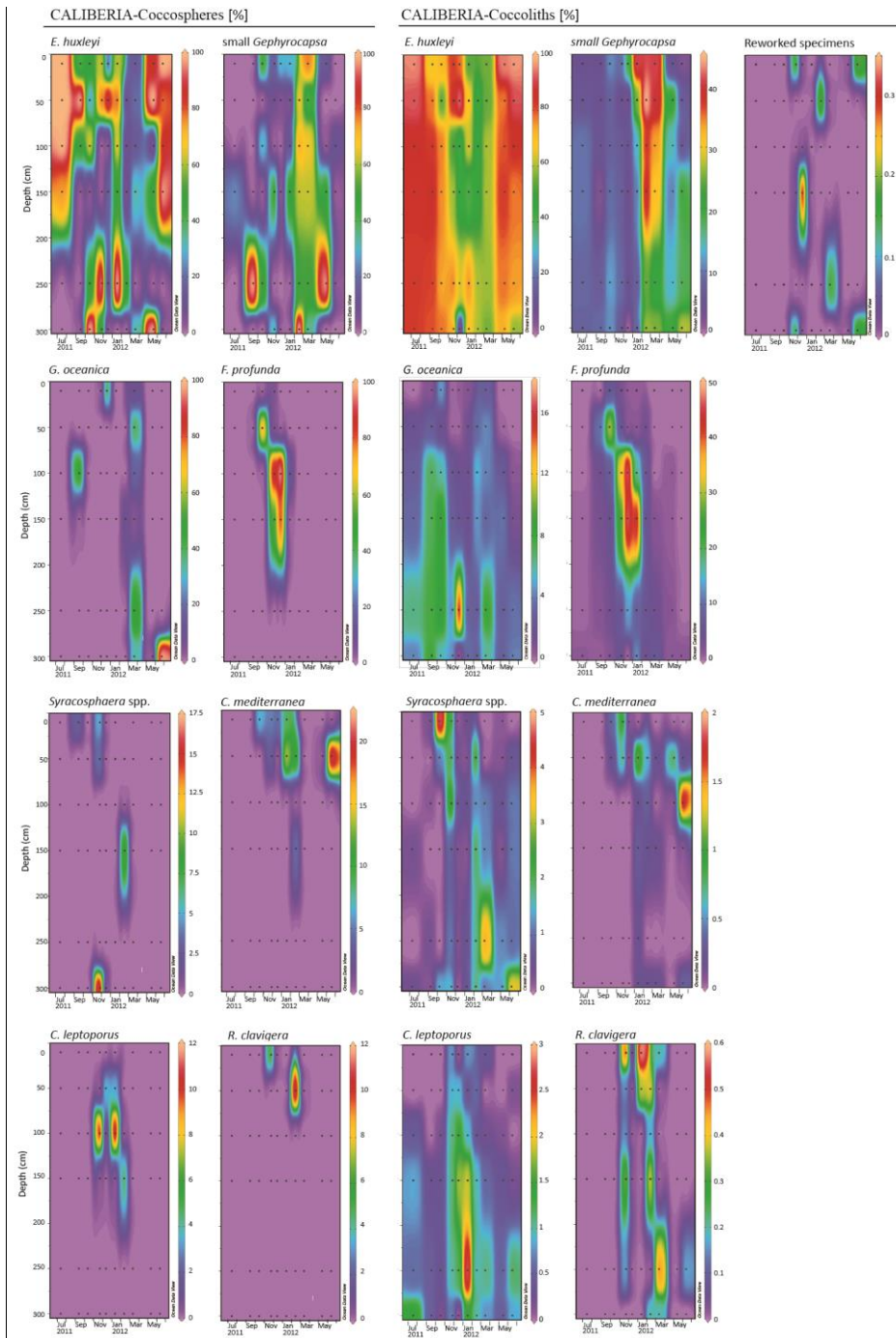


Figure 5. Relative abundance (%) of major species of coccospheres (left panel) and coccoliths (right panel) in CALIBERIA station. Black dots represent the sampling month and depth. Note that each color bar has been scaled to the maximum and minimum values of its corresponding species.

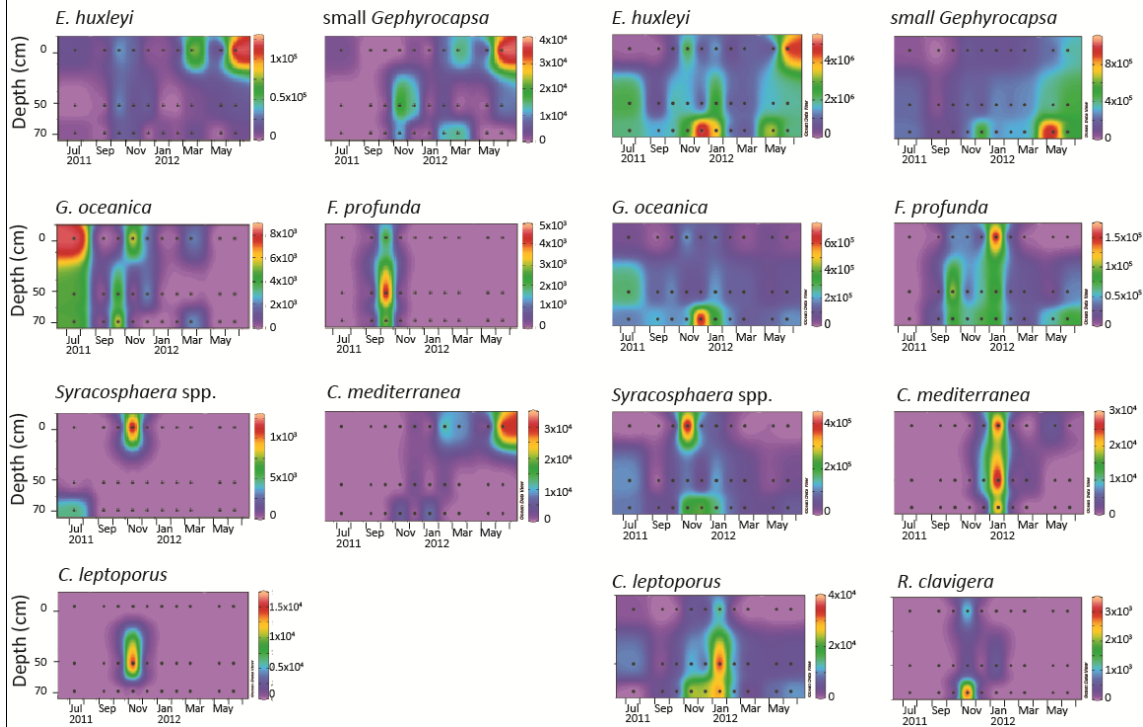


Figure 6. Absolute abundance of major species of coccospheres (left panel, given in Cells L⁻¹) and coccoliths (right panel, given in coccoliths L⁻¹) in RAIA station. Black dots represent the sampling month and depth. Note that each color bar has been scaled to the maximum and minimum values of its corresponding species.

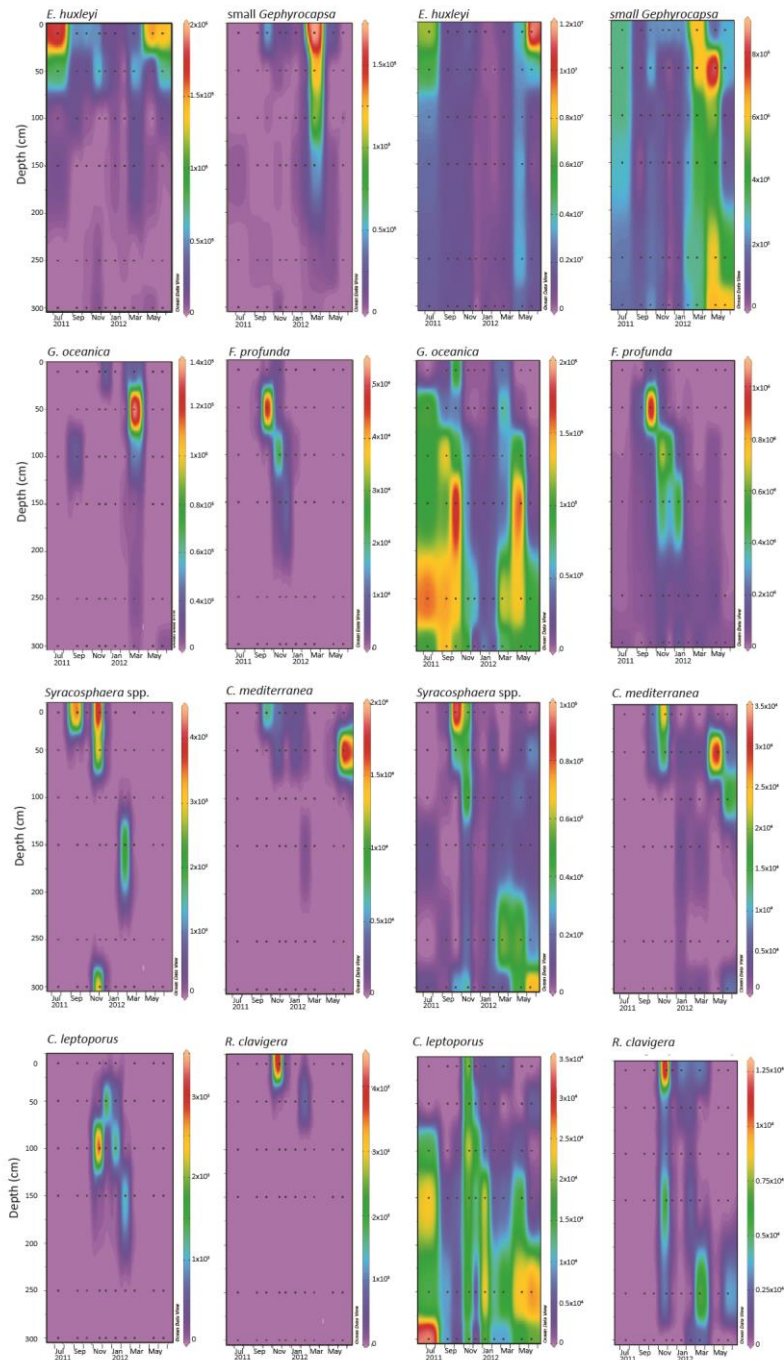


Figure 7. Absolute abundance of major species of coccospheres (left panel, given in Cells L⁻¹) and coccoliths (right panel, given in coccoliths L⁻¹) in CALIBERIA station. Black dots represent the sampling month and depth. Note that each color bar has been scaled to the maximum and minimum values of its corresponding species.

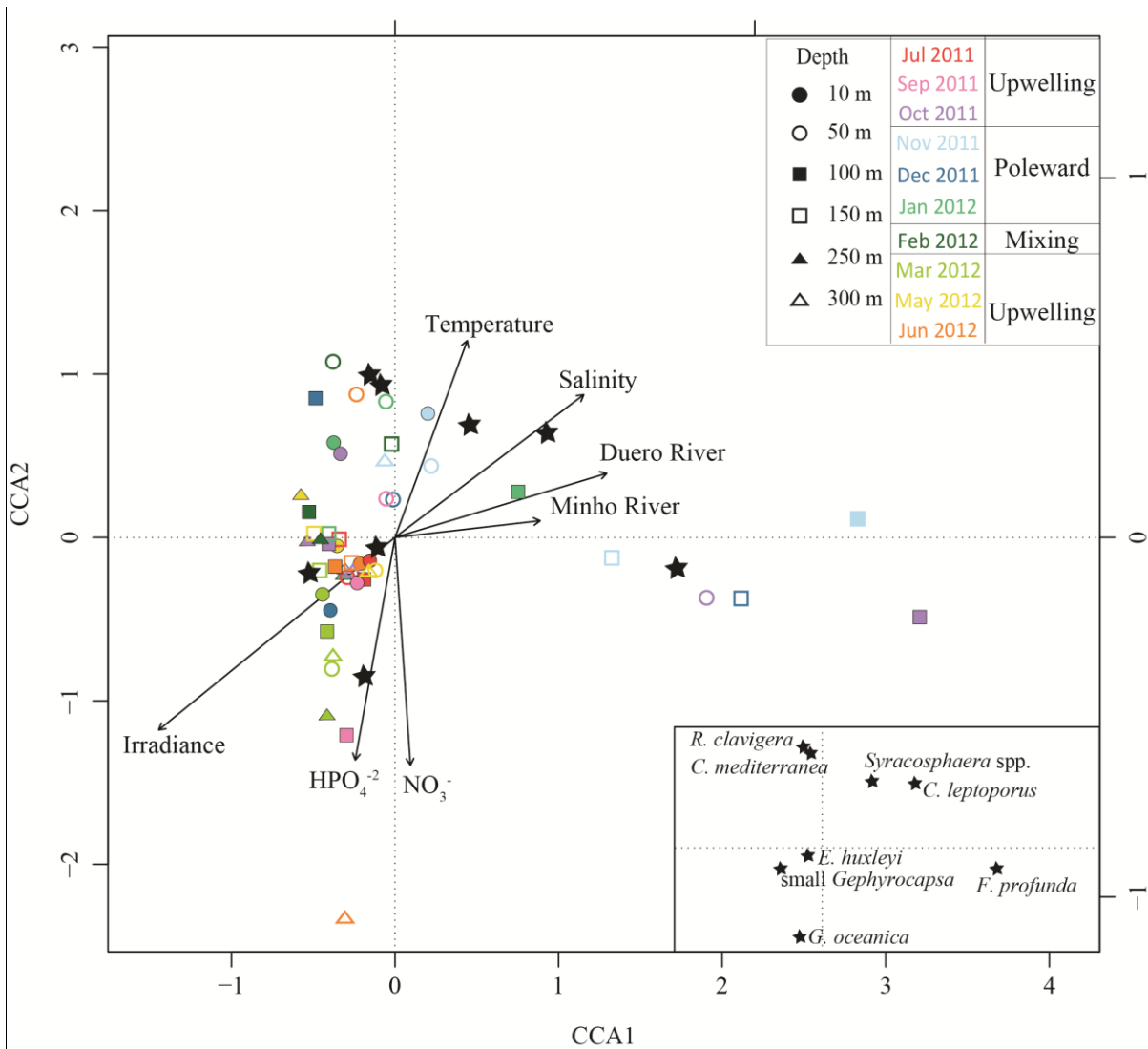


Figure 8. Ordination graph for the first two axes of the CCA for CALIBERIA datasets. The species scores are represented by stars and environmental variables by arrows. Samples are shown through colored symbols according to their sampling month and depth.

5

Abrantes, F., Meggers, H., Nave, S., Bollman, J., Palma, S., Sprengel, C., Henderiks, J., Spies, A., Salgueiro, E., Moita, T., Neuer, S.: Fluxes of micro-organisms along a productivity gradient in the Canary Islands region (29°N): Implications for paleoreconstructions, *Deep-Sea Research Part II: Topical Studies in Oceanography*, 49, 3599-3629, 2002.

10 Abrantes, F., Moita, M.T.: Water column and recent sediment data on diatoms and coccolithophorids, off Portugal, confirm sediment record of upwelling events, *Oceanologica Acta*, 22, 319-336, 1999.

Álvarez-Salgado, X.A., Figueiras, F.G., Pérez, F.F., Groom, S., Nogueira, E., Borges, A.V., Chou, L., Castro, C.G., Moncoiffé, G., Ríos, A.F., Miller, A.E.J., Frankignoulle, M., Savidge, G., Wollast, R.: The Portugal coastal counter current off NW Spain: new insights on its biogeochemical variability, *Progress in Oceanography*, 56, 281-321, 2003.

- Alvarez, I., Gomez-Gesteira, M., deCastro, M., Lorenzo, M.N., Crespo, A.J.C., Dias, J.M.: Comparative analysis of upwelling influence between the western and northern coast of the Iberian Peninsula, *Continental Shelf Research*, 31, 388-399, 2011.
- Amore, F.O., Flores, J.A., Voelker, A.H.L., Lebreiro, S.M., Palumbo, E., Sierro, F.J.: A Middle Pleistocene Northeast Atlantic coccolithophore record: Paleoclimatology and paleoproductivity aspects, *Marine Micropaleontology*, 90-91, 44-59, 2012.
- 5 Arístegui, J., Barton, E.D., Álvarez-Salgado, X.A., Santos, A.M.P., Figueiras, F.G., Kifani, S., Hernández-León, S., Mason, E., Machú, E., Demarcq, H.: Sub-regional ecosystem variability in the Canary Current upwelling, *Progress in Oceanography*, 83, 33-48, 2009.
- 10 Baumann, K.-H., Boeckel, B.: Spatial distribution of living coccolithophores in the southwestern Gulf of Mexico, *Journal of Micropalaeontology*, 32, 123-133, 2013.
- Baumann, K.-H., Saavedra-Pellitero, M., Böckel, B., Ott, C.: Morphometry, biogeography and ecology of *Calcidiscus* and *Umbilicosphaera* in the South Atlantic, *Revue de Micropaléontologie*, 59, 239-251, 2016.
- Baumann, K.H., Andruleit, H., Boeckel, B., Geisen, M., Kinkel, H.: The significance of extant coccolithophores as indicators of ocean water masses, surface water temperature, and palaeoproductivity: a review, *Palaeontologische Zeitschrift*, 79, 93-112, 2005.
- 15 Baumann, K.H., Boeckel, B., Čeppek, M.: Spatial distribution of living coccolithophores on an East-West transect in the subtropical South Atlantic, *Journal of Nannoplankton Research* 30, 9-21, 2008.
- Beaufort, L.: Dynamics of the monsoon in the equatorial Indian Ocean over the last 260,000 years, *Quaternary International*, 20 31, 13-18, 1996.
- Beaufort, L., de Garidel-Thoron, T., Mix, A.C., Pisias, N.G.: ENSO-like Forcing on Oceanic Primary Production During the Late Pleistocene, *Science*, 293, 2440-2444, 2001.
- Beaufort, L., Heussner, S.: Seasonal dynamics of calcareous nannoplankton on a West European continental margin: the Bay of Biscay, *Marine Micropaleontology*, 43, 27-55, 2001.
- 25 Beaufort, L., Lancelot, Y., Camberlin, P., Cayre, O., Vincent, E., Bassinot, F., Labeyrie, L.: Insolation Cycles as a Major Control of Equatorial Indian Ocean Primary Production, *Science*, 278, 1451-1454, 1997.
- Cachão, M., Moita, M.T.: *Coccolithus pelagicus*, a productivity proxy related to moderate fronts off Western Iberia, *Marine Micropaleontology*, 39, 131-155, 2000.
- Cachão, M., Oliveira, A.: (Cocco)liths versus (cocco)spheres: approaching the ecological performance of coccolithophores, *Journal of Nannoplankton Research*, 22, 29-34, 2000.
- 30 Cachão, M., Oliveira, A., Vitorino, J.: Subtropical winter guests, offshore Portugal, *Journal of Nannoplankton Research*, 22, 19-26, 2000.
- Castro, C.G., Álvarez-Salgado, X.A., Figueiras, F.G., Pérez, F.F., Fraga, F.: Transient hydrographic and chemical conditions affecting microplankton populations in the coastal transitions zone of the Iberian upwelling system (NW Spain) in September 1986, *Journal of Marine Research*, 55, 321-352, 1997.
- 35 Dias, J.M.A., Gonzalez, R., Garcia, C., Diaz-del-Rio, V.: Sediment distribution patterns on the Galicia-Minho continental shelf, *Progress in Oceanography*, 52, 215-231, 2002a.
- Dias, J.M.A., Jouanneau, J.M., Gonzalez, R., Araújo, M.F., Drago, T., Garcia, C., Oliveira, A., Rodrigues, A., Vitorino, J., Weber, O.: Present day sedimentary processes on the northern Iberian shelf, *Progress in Oceanography*, 52, 249-259, 2002b.
- 40 Fatela, F., Taborda, R.: Confidence limits of species proportions in microfossil assemblages, *Marine Micropaleontology*, 45, 169-174, 2002.
- Ferreira, J., Cachão, M.: Calcareous nannoplankton from the Guadiana estuary and Algarve continental shelf (southern Portugal), *Thalassas*, 21, 35-44, 2005.
- Ferreira, J., Cachao, M., González, R.: Reworked calcareous nanofossils as ocean dynamic tracers: The Guadiana shelf case study (SW Iberia), *Estuarine, Coastal and Shelf Science*, 79, 59-70, 2008.
- 45 Figueiras, F.G., Labarta, U., Fernández Reiriz, M.J.: Coastal upwelling, primary production and mussel growth in the Rías Baixas of Galicia, *Hydrobiologia*, 484, 121-131, 2002.
- Fiúza, A.F.G.: Upwelling Patterns off Portugal, in: *Coastal Upwelling Its Sediment Record: Part A: Responses of the Sedimentary Regime to Present Coastal Upwelling*, Suess, E., Thiede, J. (Eds.) Springer US, Boston, MA, pp. 85-98, 1983.

- Flores, J.A., Colmenero-Hidalgo, E., Mejía-Molina, A.E., Baumann, K.-H., Henderiks, J., Larsson, K., Prabhu, C.N., Sierro, F.J., Rodrigues, T.: Distribution of large *Emiliana huxleyi* in the Central and Northeast Atlantic as a tracer of surface ocean dynamics during the last 25,000 years, *Marine Micropaleontology*, 76, 53-66, 2010.
- Flores, J.A., Gersonde, R., Sierro, F.J.: Pleistocene fluctuations in the Agulhas Current Retroflexion based on the calcareous plankton record, *Marine Micropaleontology*, 37, 1-22, 1999.
- 5 Flores, J.A., Marino, M.: Pleistocene calcareous nannofossil stratigraphy for ODP Leg 177 (Atlantic sector of the Southern Ocean), *Marine Micropaleontology*, 45, 191-224, 2002.
- Fraga, F.: Upwelling off the Galician Coast, Northwest Spain, in: *Coastal Upwelling American Geophysical Union*, pp. 176-182, 1981.
- 10 Giraudeau, J.: Distribution of Recent nannofossils beneath the Benguela system: Southwest African continental margin, *Marine Geology*, 108, 219-237, 1992.
- Giraudeau, J., Monteiro, P.M.S., Nikodemus, K.: Distribution and malformation of living coccolithophores in the northern Benguela upwelling system off Namibia, *Marine Micropaleontology*, 22, 93-110, 1993.
- Gregg, W.W., Casey, N.W.: Modeling coccolithophores in the global oceans, *Deep Sea Research Part II: Topical Studies in Oceanography*, 54, 447-477, 2007.
- 15 Grelaud, M., Marino, G., Ziveri, P., Rohling, E.J.C.P.A.: Abrupt shoaling of the nutricline in response to massive freshwater flooding at the onset of the last interglacial sapropel event, *Paleoceanography*, 27, PA3208, doi:3210.1029/2012PA002288, 2012.
- Guerreiro, C., de Stigter, H., Cachão, M., Oliveira, A., Rodrigues, A.: Coccoliths from recent sediments of the central Portuguese margin: Taphonomical and ecological inferences, *Marine Micropaleontology*, 114, 55-68, 2015.
- 20 Guerreiro, C., Oliveira, A., de Stigter, H., Cachão, M., Sá, C., Borges, C., Cros, L., Santos, A., Fortuño, J.-M., Rodrigues, A.: Late winter coccolithophore bloom off central Portugal in response to river discharge and upwelling, *Continental Shelf Research*, 59, 65-83, 2013.
- Guerreiro, C., Sá, C., de Stigter, H., Oliveira, A., Cachão, M., Cros, L., Borges, C., Quaresma, L., Santos, A.I., Fortuño, J.-M., Rodrigues, A.: Influence of the Nazaré Canyon, central Portuguese margin, on late winter coccolithophore assemblages, *Deep Sea Research Part II: Topical Studies in Oceanography*, 104, 335-358, 2014.
- 25 Hansen, H.P., Grasso, K.: *Automated Chemical Analysis. Methods of Seawater Analysis*, Verlag Chemie, Weinheim, 1983.
- Haynes, R., Barton, E.D.: A poleward flow along the Atlantic coast of the Iberian peninsula, *Journal of Geophysical Research: Oceans*, 95, 11425-11441, 1990.
- 30 Incarbona, A., Martrat, B., Di Stefano, E., Grimalt, J.O., Pelosi, N., Patti, B., Tranchida, G.: Primary productivity variability on the Atlantic Iberian Margin over the last 70,000 years: Evidence from coccolithophores and fossil organic compounds, *Paleoceanography*, 25, PA2218, doi:2210.1029/2008PA001709, 2010.
- Kinkel, H., Baumann, K.H., Čepel, M.: Coccolithophores in the equatorial Atlantic Ocean: response to seasonal and Late Quaternary surface water variability, *Marine Micropaleontology*, 39, 87-112, 2000.
- 35 Marino, M., Maiorano, P., Tarantino, F., Voelker, A., Capotondi, L., Girone, A., Lirer, F., Flores, J.-A., Naafs, B.D.A.: Coccolithophores as proxy of seawater changes at orbital-to-millennial scale during middle Pleistocene Marine Isotope Stages 14–9 in North Atlantic core MD01-2446, *Paleoceanography*, 29, 518-532, 2014.
- McIntyre, A.: Coccoliths as Paleoclimatic Indicators of Pleistocene Glaciation, *Science*, 158, 1314-1317, 1967.
- 40 McIntyre, A., Bé, A.W.H.: Modern coccolithophoridae of the Atlantic Ocean. Placoliths and cyrtoliths, *Deep Sea Research and Oceanographic Abstracts*, 14, 561-597, 1967.
- Mitchell-Innes, B.A., Winter, A.: Coccolithophores: a major phytoplankton component in mature upwelled waters off the Cape Peninsula, South Africa in March, 1983, *Marine Biology*, 95, 25-30, 1987.
- Moita, M.T.: *Estrutura, variabilidade e dinâmica do Fitoplâncton na Costa de Portugal Continental*. PhD Thesis., Faculdade de Ciências da Universidade de Lisboa, 272, 2001.
- 45 Moita, M.T., Silva, A., Palma, S., Vilarinho, M.G.: The coccolithophore summer–autumn assemblage in the upwelling waters of Portugal: Patterns of mesoscale distribution (1985–2005), *Estuarine, Coastal and Shelf Science*, 87, 411-419, 2010.
- Molfini, B., McIntyre, A.: Precessional forcing of nutricline dynamics in the equatorial Atlantic, *Science*, 249, 766-769, 1990.

- Narciso, Á., Gallo, F., Valente, A., Cachão, M., Cros, L., Azevedo, E.B., e Ramos, J.B.: Seasonal and interannual variations in coccolithophore abundance off Terceira Island, Azores (Central North Atlantic), *Continental Shelf Research*, 117, 43-56, 2016.
- 5 Oberle, F.K.J., Storlazzi, C.D., Hanebuth, T.J.J.: Wave-driven sediment mobilization on a storm-controlled continental shelf (Northwest Iberia), *Journal of Marine Systems*, 139, 362-372, 2014.
- Okada, H., Honjo, S.: The distribution of oceanic coccolithophorids in the Pacific, *Deep Sea Research and Oceanographic Abstracts*, 20, 355-374, 1973.
- Oksanen, J., Blanchet, F.G., Friendly, M., Kindt, R., Legendre, P., McGlenn, D., Minchin, P.R., O'Hara, R.B., Simpson, G.L., Solymos, P., Stevens, M.H.H., Szoecs, E., Wagner, H.: *vegan: Community Ecology Package*, R package version 2.4-0. 10 <https://CRAN.R-project.org/package=vegan>, 2016.
- Palumbo, E., Flores, J.A., Perugia, C., Emanuele, D., Petrillo, Z., Rodrigues, T., Voelker, A.H.L., Amore, F.O.: Abrupt variability of the last 24 ka BP recorded by coccolithophore assemblages off the Iberian Margin (core MD03-2699), *Journal of Quaternary Science*, 28, 320-328, 2013.
- 15 Parente, A., Cachão, M., Baumann, K.-H., de Abreu, L., Ferreira, J.: Morphometry of *Coccolithus pelagicus* s: l. (Coccolithophore, Haptophyta) from offshore Portugal, during the last 200 kyr, *Micropaleontology*, 50, 107–120, 2004.
- Peliz, Á., Dubert, J., Santos, A.M.P., Oliveira, P.B., Le Cann, B.: Winter upper ocean circulation in the Western Iberian Basin—Fronts, Eddies and Poleward Flows: an overview, *Deep Sea Research Part I: Oceanographic Research Papers*, 52, 621-646, 2005.
- R Core Team, 2015. R: A language and environment for statistical computing. R Foundation for Statistical Computing, 20 Vienna, Austria, available at: <http://www.R-project.org> (last access: 15 August 2016).
- Relvas, P., Barton, E.D., Dubert, J., Oliveira, P.B., Peliz, Á., da Silva, J.C.B., Santos, A.M.P.: Physical oceanography of the western Iberia ecosystem: Latest views and challenges, *Progress in Oceanography*, 74, 149-173, 2007.
- Sánchez-Goñi, M., Cacho, I., Turon, J., Guiot, J., Sierro, F.J., Peypouquet, J., Grimalt, J., Shackleton, N.: Synchronicity between marine and terrestrial responses to millennial scale climatic variability during the last glacial period in the 25 Mediterranean region, *Climate Dynamics*, 19, 95-105, 2002.
- Sánchez-Goñi, M.F., Eynaud, F., Turon, J.L., Shackleton, N.J.: High resolution palynological record off the Iberian margin: direct land-sea correlation for the Last Interglacial complex, *Earth and Planetary Science Letters*, 171, 123-137, 1999.
- Silva, A., Brotas, V., Valente, A., Sá, C., Diniz, T., Patarra, R.F., Álvaro, N.V., Neto, A.I.: Coccolithophore species as indicators of surface oceanographic conditions in the vicinity of Azores islands, *Estuarine, Coastal and Shelf Science*, 118, 30 50-59, 2013.
- Silva, A., Palma, S., Moita, M.T.: Coccolithophores in the upwelling waters of Portugal: Four years of weekly distribution in Lisbon bay, *Continental Shelf Research*, 28, 2601-2613, 2008.
- Silva, A., Palma, S., Oliveira, P.B., Moita, M.T.: Composition and interannual variability of phytoplankton in a coastal upwelling region (Lisbon Bay, Portugal), *Journal of Sea Research*, 62, 238-249, 2009.
- 35 Stoll, H.M., Rosenthal, Y., Falkowski, P.: Climate proxies from Sr/Ca of coccolith calcite: calibrations from continuous culture of *Emiliana huxleyi*, *Geochimica et Cosmochimica Acta*, 66, 927-936, 2002.
- Tenore, K.R., Alonso-Noval, M., Alvarez-Ossorio, M., Atkinson, L.P., Cabanas, J.M., Cal, R.M., Campos, H.J., Castillejo, F., Chesney, E.J., Gonzalez, N., Hanson, R.B., McClain, C.R., Miranda, A., Roman, M.R., Sanchez, J., Santiago, G., Valdes, L., Varela, M., Yoder, J.: Fisheries and oceanography off Galicia, NW Spain: Mesoscale spatial and temporal changes in 40 physical processes and resultant patterns of biological productivity, *Journal of Geophysical Research: Oceans*, 100, 10943-10966, 1995.
- Tyrrell, T., Merico, A.: *Emiliana huxleyi*: bloom observations and the conditions that induce them, in: *Coccolithophores: From Molecular Processes to Global Impact*, Thierstein, H.R., Young, J.R. (Eds.) Springer Berlin Heidelberg, Berlin, Heidelberg, pp. 75-97, 2004.
- 45 Vitorino, J., Oliveira, A., Jouanneau, J.M., Drago, T.: Winter dynamics on the northern Portuguese shelf. Part 2: bottom boundary layers and sediment dispersal, *Progress in Oceanography*, 52, 155-170, 2002.
- Young, J.R., Geisen, M., Cros, L., Kleijne, A., Sprengel, C., Probert, I., Østergaard, J.: A guide to extant coccolithophore taxonomy, *Journal of Nannoplankton Research, Special Issue1*, 1-125, 2003.
- Ziveri, P., Thunell, R.C., Rio, D.: Seasonal changes in coccolithophore densities in the Southern California Bight during 50 1991–1992, *Deep Sea Research Part I: Oceanographic Research Papers*, 42, 1881-1903, 1995.

Zúñiga, D., Santos, C., Froján, M., Salgueiro, E., Rufino, M.M., De la Granda, F., Figueiras, F.G., Castro, C.G., Abrantes, F.: Diatoms as a paleoproductivity proxy in the NW Iberian coastal upwelling system (NE Atlantic), *Biogeosciences*, 14, 1165-1179, 2017.

5 Zúñiga, D., Villaciers-Robineau, N., Salgueiro, E., Alonso-Pérez, F., Rosón, G., Abrantes, F., Castro, C.G.: Particle fluxes in the NW Iberian coastal upwelling system: Hydrodynamical and biological control, *Continental Shelf Research*, 123, 89-98, 2016.