

Response to comments by the editor dated 17.11.2017

P 1 L 19: Can you be more specific about what the implications are?

We changed the sentence accordingly.

P 2 L 7: Please adjust wording. There is no need for a soil to provide the P a plant needs. A plant has to cope with whatever it gets from the soil.

We changed the sentence accordingly.

P2 L 25 (or at a similarly suitable place). Please define the relationship between PBC and K_m , possibly by introducing a new equation giving $K_m = \text{concentration} / \text{exchange rate}$ (or whatever would be the most appropriate description when comparing this to eq 1. You may well combine this with current equation 2.

We see the editor's point that it would be nice to define the relationship between PBC and K_m at this point and introduce an equation parallel to Eq. 1 explaining K_m in like terms. However, this is not so straightforward. K_m is the mean rate of exchange between phosphate ions in solution and inorganic phosphate in soil. This equates to the flux of P between the soil solution and the solid phase ($\text{mg P kg}^{-1} \text{ min}^{-1}$) divided by the soil solution concentration (mg P kg^{-1}). However, it is not possible to measure this flux, rather K_m can be used to calculate the flux. Thus we think including this definition might just confuse the reader.

We propose to change the text at L 25 to introduce and define K_m rather than including another equation.

P4 L 6: are you really referring to eq 2 (not 3)? Please carefully check all text references to equations.

Thank you for catching this error. We corrected Eq. references here and elsewhere.

P8 L 2: "On which time frame" ?

We changed the wording to "on which time frame".

P9 L 3-4: Given that K_m is derived from n and m , K_m is also only a statistical variable. Please check the wording here. I assume you want to say that your derived K_m can be readily interpreted in terms of real-soil processes?

We changed the sentence accordingly.

P9 L 25: what kind of P is meant here?

We added "availability" to make it clear that we mean P availability.

Soil solution phosphorus turnover: derivation, interpretation, and insights from a global compilation of isotope exchange kinetic studies

Julian Helfenstein¹, Jannes Jegminat², Timothy I. McLaren¹, Emmanuel Frossard¹

¹Institute of Agricultural Sciences, ETH Zürich, Lindau, 8315, Switzerland

²Institute of Neuroinformatics, University of Zürich and ETH Zürich, Zürich, 8057, Switzerland

Correspondence to: Julian Helfenstein (julian.helfenstein@usys.ethz.ch)

Abstract. The exchange rate of inorganic phosphorus (P) between the soil solution and solid phase, also known as soil solution P turnover, is essential for describing the kinetics of bioavailable P. While soil solution P turnover (K_m) can be determined by tracing radioisotopes in a soil-solution system, few studies have done so. We believe that this is due to a lack of understanding on how to derive K_m from isotopic exchange kinetic (IEK) experiments, a widespread form of radioisotope dilution study. Here, we provide a derivation of calculating K_m using parameters obtained from IEK experiments. We then calculated K_m for 217 soils from published IEK experiments in terrestrial ecosystems, and also for that of 18 long-term P fertilizer field experiments. Analysis of the global compilation dataset revealed a negative relationship between concentrations of soil solution P and K_m . Furthermore, K_m buffered isotopically exchangeable P in soils with low concentrations of soil solution P. This finding was supported by an analysis of long-term P fertilizer field experiments, which revealed a negative relationship between K_m and phosphate buffering capacity. Our study highlights the importance of calculating K_m for understanding the kinetics of P between the soil solid and solution phases where it is bioavailable. We argue that our derivation can also be used to calculate soil solution turnover of other environmentally-relevant, and strongly-sorbing elements that can be traced with radioisotopes, such as zinc, cadmium, nickel, arsenic, and uranium.

Gelöscht: Our

Gelöscht: This also has implications for

1 Introduction

As an essential but often limiting nutrient, phosphorus (P) plays a central role in food production and more efficient P management is key to improve food security (Tilman et al., 2002; Syers et al., 2008). Phosphorus limitation in agroecosystems is usually overcome by applying P fertilizers to the soil surface. However, excessive applications of fertilizer P to soil can cause ecological, societal and economic problems. First, fertilizer P is largely derived from rock phosphate, which is a non-renewable resource and major deposits are located in only a few countries (Elser and Bennett, 2011; Obersteiner et al., 2013). Second, applications of P fertilizers to soils with a high P sorption capacity can be inefficient because P largely accumulates in the soil as sparingly-soluble forms (Roy et al., 2016). Third, leaching or runoff of fertilizer

P from agricultural land to aquatic and marine ecosystems contributes to fish die-off and declining water quality (Carpenter et al., 1998). To improve food security while reducing ecosystem pollution, it is essential that we improve our understanding of soil P dynamics, particularly the mechanisms controlling P movement between the soil solid phase and the soil solution where it is bioavailable.

Plants take up P from the soil solution as ionic orthophosphate ($H_2PO_4^-$ or HPO_4^{2-}) via roots or mycorrhizal hyphae (Pierzynski and McDowell, 2005). The soil solution typically contains low concentrations of P, (Achat et al., 2016), but the soil solution can be replenished with P from the soil solid phase, which can provide additional P for uptake by plants (Pierzynski and McDowell, 2005). Therefore, P exchange kinetics, or the rate at which the soil solution is replenished by P from the soil solid phase, have important implications for the P requirements of living organisms (Menezes-Blackburn et al., 2016;Fardeau et al., 1991). In this study, we investigate a potential link between two different concepts: phosphorus buffering capacity and soil solution P turnover, by analyzing a dataset of global soils and P fertilizer experiments.

Phosphorus buffering capacity (PBC) is defined as the ability of soil to moderate changes in the concentration of soil solution P (Pypers et al., 2006;Olsen and Khasawneh, 1980;Beckett and White, 1964). Historically, PBC has been calculated using Eq. (1).

$$PBC = \frac{\Delta \text{conc. of P in soil solution}}{\Delta \text{conc. of P in the soil}} \quad (1)$$

The traditional approach of determining PBC in soil is by adding various amounts of P to a soil suspension, equilibrating, and then measuring the slope between adsorbed P and P in soil solution (Olsen and Khasawneh, 1980). Alternatively, PBC can be measured by analyzing the change in soil solution P concentration with regard to P budget in field P fertilization experiments (Morel et al., 2000). These approaches have revealed that PBC is influenced by ambient temperature, soil solution pH, and concentrations of P in the soil solution, and is highly variable among soil types (Barrow, 1983). One of the most important factors among soil types is the specific surface area of Fe/Al oxides and clay minerals, which are important sites of P sorption (Gérard, 2016). Whilst the aforementioned approaches are a useful and cost effective way to study soil P dynamics (Bolland and Allen, 2003;Burkitt et al., 2002;Barrow and Debnath, 2014), they are not able to directly determine the turnover of P in the solution.

Soil solution P turnover (K_{ex}) is the mean rate of exchange between phosphate ions in solution and inorganic phosphate in soil and can be calculated from parameters determined in an isotopic exchange kinetic experiment (IEK) (Fardeau, 1996). Isotopic exchange kinetic experiments involve the use of P radioisotopes (^{32}P or ^{33}P) to directly measure the exchange of P between the soil solid and solution phases (Frossard et al., 2011). They are based on the assumption that during the short term experiments usually lasting 100 minutes there is only physicochemical exchange but no biological exchange (Oehl et al., 2001). Measures of isotopically exchangeable P are a more accurate indicator of P bioavailability than that of conventional soil tests based on chemical extraction because the former involve a P radiotracer that can be directly measured and distinguished from all other P ions in the soil (Demaria et al., 2005;Hamon et al., 2002). Previous studies have shown that isotopically exchangeable P is the predominant source of P for most crops (Frossard et al., 1994;Morel and

Gelöscht: However, concentrations of
Gelöscht: in the soil solution are usually small
Gelöscht: .
Gelöscht: and plants rely on constant replenishment of P to the soil solution in order to meet plant needs P in the soil solution must be replenished continuously

Gelöscht: uation

Gelöscht: Mean s
Formatiert: Schriftart:Kursiv
Formatiert: Schriftart:Kursiv, Tiefgestellt

Plenchette, 1994). Though the IEK approach does not consider root-induced pH alterations or secretion of organic acids, increased P availability due to root exudates can be quantified by comparing isotopically exchangeable P with radioisotope uptake in plants (Hedley et al., 1982). Isotopic dilution in a soil-solution system is characterized by two statistically fitted parameters, m and n , which can be used to calculate K_m using Eq. (2) (Fardeau, 1985; Fardeau et al., 1991).

$$K_m = \frac{n}{m^{\frac{1}{n}}} \quad (2)$$

The importance of parameters m and n as well as their relation to soil properties was recently investigated (Achat et al., 2016).

Despite several decades of using radioisotopes in P research and the potential relevance of soil solution P turnover to understanding agricultural and natural ecosystems, only six studies have published K_m values, and there has been no synthesis of these values (Frossard et al., 2011; Fardeau et al., 1991; Fardeau, 1985, 1993; Oberson et al., 1993; Xiong et al., 2002). We believe that this is because an intuitive derivation of K_m has never been published. Whilst information on soil solution P turnover remains limited, K_m values can easily be calculated using data from previously published IEK experiments.

The first aim of our study was to provide a clear and intuitive derivation of the K_m term. Our second aim was to calculate K_m values from previously published IEK studies, which resulted in a global dataset of over 200 soils. We then tested specific hypotheses related to concentrations of soil solution P and isotopically exchangeable P. Our third aim was to understand the relationship between PBC and K_m . This involved an additional dataset based on long-term P fertilizer field experiments, which have reported IEK results and the fertilizer P budgets. Lastly, we carried out a sensitivity analysis of K_m in order to assist interpretation of future results.

Our first hypothesis was that turnover of soil solution P would differ based on soil group. More specifically, we hypothesized that soil groups known to have higher concentrations of sorption sites (such as Andosols and Ferralsols) would have faster turnover rates. Our second hypothesis was that soils with higher concentrations of soil solution P (P_w) would have lower values of K_m compared to soil with lower concentrations of soil solution P. This is because a high concentration of sorption sites leads to fast adsorption and consequently low concentration of P in the solution. Lastly, we hypothesized that the dependence of isotopically exchangeable P on P_w and K_m evolves with time.

2. Materials and methods

2.1 Derivation of K_m

A given volume of soil can be described as containing inorganic P in one of two states: the soil phase or the soil solution phase. In any given time interval, physicochemical reactions transfer a fraction of P from the soil solution phase into the solid phase. The rate constant of this reaction is solution P turnover K_m [min^{-1}]. Thus, K_m plays a critical role in determining the time and amount of P that is potentially available to plants. At low values of K_m , there is little exchange.

Gelöscht: soil solution P turnover

Gelöscht: Equation

Gelöscht: physicochemical

Gelöscht: in the soil

In equilibrium, an underlying assumption of an IEK experiment, the net flux between the phases is zero because of the balancing effect of the inverse flux, i.e. the flux from the soil phase to the solution phase through desorption and dissolution. In other words, the inverse flux prevents us from measuring K_m directly by fitting the temporal loss of P in soil solution. If radioisotopes (for P, either ^{32}P or ^{33}P) are injected in the soil solution, it becomes possible to experimentally eliminate the inverse flux. Shortly after the injection, the radioisotope is not present in the solid phase and, consequently, there is no inverse flux. Equation (3) has been found to describe the resulting decline of radioisotope in solution (Fardeau et al., 1991; Frossard et al., 2011).

$$\frac{r(t)}{R} = m \left(t + \frac{1}{m^n} \right)^{-n} + \frac{r(\infty)}{R} \quad (3)$$

where $r(t)$ is the radioactivity [Bq] measured at time t [min], R is the total amount of radioactivity added, and m and n are the model parameters that describe the rapid and slow physico-chemical processes respectively. Since K_m is equivalent to the decline rate of the radioisotope in the absence of an inverse flux, we analyze Eq. (3) right after the injection ($t = 0$) and derive Eq. (2) (for details on the derivation, please see Supporting Information).

K_m is thus calculated in three steps: first, $r(t)/R$ is measured, then n and m are determined by non-linear regression, and finally Eq. (2) is applied. A limitation of K_m is that it does not take into account an indefinite number of P species each with their own exchange rate (Andersson et al., 2016; Menezes-Blackburn et al., 2016; Gérard, 2016). Also, the IEK method as described above does not consider microbial uptake or mineralization of organic P (Oehl et al., 2001). Therefore, the variable K_m should be considered as the average P exchange rate of the soil solution with an indefinite number of solid inorganic P pools.

2.2 Dataset

We carried out a literature search for IEK studies reporting m , n , and P_w values based on the methodological approach of Fardeau et al. (1991). Only values from topsoil layers (0 – 30 cm layer, if reported) were compiled. The dataset includes all papers cited by Achat et al. (2016) in accordance with our aforementioned selection criteria, plus more recent publications. In addition, data obtained from the published literature were supplemented with unpublished data (7 soils), from studies carried out in the Group of Plant Nutrition (ETH Zurich). This resulted in a final dataset of 217 soils taken from 41 references (see Supporting Information Table S1). The soils represented 19 soil groups across the world reference base (WRB, 2015), 26 countries, and all continents except Antarctica. Eighty-five soils were from cropland, 64 from grassland, and 32 from forest, while for 36 soils land use was not specified. Several studies (58 soils) used a simplified version of Eq. 3. Since the simplified version leads to only minor differences in parameter estimation, we assumed that this would not affect calculation of K_m (Fardeau et al., 1991). To avoid overrepresentation, sample sizes of two articles reporting many samples of similar soils were randomly reduced, from 30 to 10 (Compaoré et al., 2003) and from 48 to 12 (Tran et al., 1988).

In addition, we carried out a literature search for IEK studies on long-term P fertilizer field experiments. We found published data across 18 long-term experiment sites (Oberson et al., 1993; Oberson et al., 1999; Fardeau et al., 1991; Gallet et

Gelöscht: 2

Gelöscht: equation

Gelöscht: 3

al., 2003; Morel et al., 1994). The soils represented the following soil groups (WRB, 2015): Cambisols, Chernozems, Ferralsols, Fluvisols, Gleysols and Luvisols. In general, the field experiments involved different types of mineral and organic P fertilizers applied at varying rates. The difference in inputs minus outputs led to a range in P budgets from -52 to 125 kg P ha⁻¹ yr⁻¹.

5 2.3 Data analysis

Isotopically exchangeable P (i.e. E -values: $E_{(t)}$ [mg kg⁻¹]), the amount of P that can reach the soil solution within a given time frame is calculated using Eq. (4) (Hamon et al., 2002; Fardeau, 1996).

$$E_{(t)} = P_w * \frac{R}{r(t)} \quad (4)$$

While IEK experiments only last several minutes, $E_{(t)}$ values can be extrapolated beyond the IEK experiment based on Eq. (3) and Eq. (4) (Frossard et al., 1994; Morel and Planchette, 1994; Buehler et al., 2003). Extrapolated $E_{(t)}$ values are highly influenced by concentrations of P_w . One of the main challenges of the IEK experiment is an accurate and precise determination of P_w , particularly in high P-fixing soils (Randriamanantsoa et al., 2013). Analysis involving $E_{(t)}$ could only be performed for studies that reported P_{inorg} in addition to P_w , m and n .

To examine the relationship between K_m and isotopically exchangeable P, $E_{(t)}$ was calculated for $t = 0$ to 129,600 min using Eq. (4) (129,600 minutes is equal to 3 months). First, we calculated the difference between $E_{(t)}$ and $E_{(0)}$ as $\log_{10}(E_{(t)}) - \log_{10}(E_{(0)})$. We then tested if K_m was a significant predictor of this difference using linear regression. To determine the timespan over which K_m affected $E_{(t)}$, we performed linear regression between K_m and $E_{(t)}$ at $t = 1$ to 129,600 min. We also carried out linear regression with P_w and P_{inorg} as predictors of $E_{(t)}$ over the aforementioned time points, respectively. During data analysis, we noticed that different P_w levels were differently sensitive to predictor variables. Therefore, we used Jenks natural breaks optimization to systematically partition the P_w data into three clusters using R package 'classInt' (Bivand et al., 2015).

To show sensitivity of K_m , we assumed relative standard deviations (standard deviation/mean [%]) of 10% for each reported m and n . Uncertainty was then approximated using the partial derivatives approach for error propagation (Eq. (5)) (Ku, 1966). By assuming independent errors of the two fitted parameters, we obtain an upper bound on the error of K_m (Weiss et al., 2006):

$$s_{K_m} = \sqrt{\left(\frac{\partial K_m}{\partial m}\right)^2 s_m^2 + \left(\frac{\partial K_m}{\partial n}\right)^2 s_n^2} \quad (5)$$

All statistical analyses and graphics were carried out using R (R Core Team, 2017). All model regressions were checked and the model fit determined using significance of fit ($p = 0.05$) and the regression coefficient (R^2).

Gelöscht: uation

Gelöscht: uation

Gelöscht: s

Gelöscht: 2

2.4 Analysis of long-term field experiments

The fertilizer P budgets were calculated as the average annual input of fertilizer P minus that of crop offtake ($\text{kg P ha}^{-1} \text{ yr}^{-1}$). Each site had three to four P treatments, usually one with a negative budget, one with a balanced budget, and one with a positive budget. To determine the effect of P budget on P_w and K_m , we calculated the slope of linear regressions between P budget and P_w . The slope of the line relating P_w to P budget can be taken as a field PBC, since the slope of P_w corresponds to the change in P_w over the change in soil P concentration (Eq. (1)). Next, we investigated if there was a relationship between the thus determined PBC and K_m .

3. Results and discussion

3.1 Global analysis of P turnover in the soil solution (K_m)

10 The turnover rate of P in the soil solution ranged nine orders of magnitude from 10^{-2} to 10^6 min^{-1} across the 217 soils surveyed (Fig. 1). However, approximately half of the soils had a P turnover rate within the range of 10^0 and 10^2 min^{-1} . Clear differences in K_m between different soil groups suggest that K_m is related to soil properties governing kinetics of inorganic P in the soil-solution system. Surface soil horizons of Ferralsols had the highest values of K_m , followed by Andosols and Cambisols (Fig. 1). High K_m values of Ferralsols suggest that P in these soils is rapidly adsorbed, i.e. these soils have a high
15 P buffering capacity. The three of the four lowest K_m values were found in Podzols, soils which are known to have low P-sorbing capacity (Chen et al., 2003; Achat et al., 2009).

Fardeau, Morel, and Boniface (Fardeau et al., 1991) showed that K_m is largest for small values of n and m , and becomes smaller as n approaches 0.5, and m approaches 1, respectively. Values of n and m have often been found to correlate with soil properties (pH, carbonate concentration, oxalate-extractable Al-/Fe, organic matter, etc.) (Tran et al.,
20 1988; Demaria et al., 2013; Frossard et al., 1993; Achat et al., 2013). In a global compilation study, it was shown that low values of n occur for soils with low concentrations of oxalate-extractable Al and Fe, which are indicative of amorphous Al and Fe oxides (Achat et al., 2016). In contrast, low values of m tend to occur for soils with a low ratio of organic C to Al and Fe oxides (Achat et al., 2016). The high K_m values of Ferralsols are due to extremely low m values (Mean = 0.025, SD = 0.012, $n = 26$), and are consistent with low ratios of organic C to Al and Fe oxides typically reported in these soils
25 (Randriamanantsoa et al., 2013). The Podzols in the dataset, on the other hand, have distinguishably high m values (Mean = 0.50, SD = 0.43, $n = 14$), which is consistent with the low Al and Fe oxide content of the upper horizon of Podzols (Achat et al., 2009). However, small sample sizes per soil group and large spans in soil properties even within soil groups mean that group-specific K_m values should not be over-interpreted.

3.2 Relationship between soil solution P turnover (K_m) and concentration of soil solution P (P_w)

30 There was a negative correlation between K_m and P_w , as shown in Fig. (2) and described in Eq. (6):

$$\log_{10}(K_m) = 1.26 - 0.960 * \log_{10}(P_w) \quad (6)$$

with $F = 127$, $p < 10^{-15}$ and an $R^2 = 0.37$. The two variables P_w and K_m are important in governing plant available P, because the former describes the amount of P in solution and the latter describes the rate at which it is exchanged. At $t = 1$ min, the highest values of $E_{(t)}$ occurred for soils with high values of K_m and P_w , whereas the lowest values of $E_{(t)}$ occurred for soils with low values of K_m and P_w (Fig. S1). The relationship was less clear at $t = 1$ day (Fig S1). However, the trend that lowest E-values occurred for soils with a low K_m and low P_w is still apparent at $t = 1$ day.

The negative correlation between K_m and P_w confirms our second hypothesis, that soils with high P_w would have low K_m , and is in accordance with findings from other studies using different methodological approaches. For example, it has been observed that sorption is less pronounced on heavily fertilized soils, due to more negative surface charge (Barrow and Debnath, 2014). In our study, high K_m values imply the presence of many potential binding sites, where P may adsorb or precipitate. This leads to a rapid exchange between sorption sites and the soil solution, as solution P quickly binds to a new site. Consequently, P_w is low. On the other hand, slower turnover rates of P in the soil solution and high P_w occur when P-binding sites are few or saturated.

3.3 Soil solution P turnover (K_m) as a buffer of isotopically exchangeable P ($E_{(t)}$)

We found that K_m is an important buffer of isotopically exchangeable P. As t increases, $E_{(t)}$ values diverge from P_w and eventually approach P_{morg} . Interestingly, the range of $E_{(t)}$ values decreased with time (Fig 3a). While P_w values ranged almost 4 orders of magnitude, $E_{(t)}$ values only ranged 3 orders of magnitude. Furthermore, differences in E-values between soils of low, middle and high P_w decreased with time. We found that the difference between $\log_{10}(E_{(t)})$ and $\log_{10}(E_{(0)})$ was strongly correlated with $\log_{10}(K_m)$ ($F = 615$, $p < 10^{-15}$, and $R^2 = 0.79$). Thus, soils with fast rates of K_m had large increases in $E_{(t)}$ compared to soils with slow rates of K_m , which showed little difference in $E_{(t)}$ from $E_{(0)}$ to $E_{(t)}$. Furthermore, soils with the largest increases in $E_{(t)}$ had low concentrations of P_w but high values of K_m (Fig. 3b).

While it is evident that $E_{(t)}$ and K_m would be related since both variables are calculated from the same isotope exchange kinetic parameters, the dependency reveals that many soils with low concentrations of P_w attained E-values comparable to other soils due to extremely high soil solution P turnover rates (Fig. 3b). One can thus interpret that a soil with high K_m has a higher PBC and a majority of P applied as fertilizer will be quickly adsorbed. On the other hand, high turnover means that there is a large flux of P ions through the soil solution and phosphate ions in solution are quickly replaced through desorption when plants take up P. If soils with $E_{(1min)}$ value of over 5 mg P kg⁻¹ are considered highly P-fertile (Gallet et al., 2003), high P fertility can be found in both soils with high P_w and or soils with low P_w but high K_m (Fig. S1). Soils with low P_w and low K_m , such as most Lixisols, also have low E-values. Thus, P “fixing” by soils is reversible and says little about P availability.

3.4 Timeframe over which K_m buffers isotopically exchangeable P ($E_{(t)}$)

On which time frame is $E_{(t)}$ dependent on K_m ? By performing linear regressions between P_w , K_m , and P_{inorg} , respectively, and $E_{(t)}$ for $t = 1$ min to 3 months, we found that the fits are strongly dependent on P_w class (high, middle, low). Based on Jenks natural breaks optimization, three clusters of P_w were determined: 0.008 – 0.16 mg kg⁻¹ ($n = 46$), 0.16 – 1.9 mg kg⁻¹ ($n = 94$), and 1.9 – 42.5 mg kg⁻¹ ($n = 77$). Calculating the R^2 of the regression as a function of time showed that for the class of high P_w soils, P_w explained 60% of variability in $E_{(t)}$ at 1 min (Fig 4a). However, P_w lost power as a predictor of $E_{(t)}$ rapidly, explaining only 20% of variability by $t = 60$ min. In contrast, soils with low concentrations of P_w showed no relationship between values of $E_{(t)}$ and P_w even at short time spans. Thus, the concentration of P in the soil solution has a strong legacy on plant P-availability for soils with high P_w at short time spans, but does not indicate P availability in soils with low concentrations of P_w . In these soils, values of $E_{(t)}$ are primarily driven by K_m (Fig 4b). Eventually both K_m and P_w lose predictive power, as $E_{(t)}$ inevitably approaches P_{inorg} (see Eq. (4)) (Fig 4c). However, predictive power of P_{inorg} is again dependent on P_w -class.

$E_{(t)}$ over timespans between 1 min and 3 months were differently related to predictors P_w , K_m , and P_{inorg} depending on concentrations of P_w . The effect of K_m on $E_{(t)}$ is thus strongly dependent on P_w . In P depleted soils the kinetic component is crucial in predicting a soil's P availability. An underestimation of the kinetic components of P availability will lead to overfertilization of P-fixing soils. In more P-rich soils, however, P availability can be relatively accurately assessed with static measures, i.e. the concentration of P in the solution and the total inorganic P in the soil.

3.5 K_m buffers fertilizer application in long-term fertilizer experiments

There was a positive relationship between P_w and P budget across all 18 long-term P fertilizer experimental sites, which is consistent with the study of Morel et al. (2000). However, the slopes spanned three orders of magnitude, from 0.007 [mg P kg⁻¹ soil]/[kg P ha⁻¹ yr⁻¹] (Ferralsol, Colombia) (Oberson et al., 1999) to 3.9 [mg P kg⁻¹ soil]/[kg P ha⁻¹ yr⁻¹] (Chernozem, Canada) (Morel et al., 1994). This shows that soil solution P is more strongly buffered in some soils than others. Results from the fertilizer experiments thus confirm that in high P-sorbing soils, such as Ferralsols, additions of P fertilizers may lead to only incremental increases in solution P concentration (Roy et al., 2016). However, this does not necessarily translate to P availability (Pypers et al., 2006).

PBC on the field experiments, taken as the slope of P_w increase with increasing P budget, was negatively dependent on K_m ($F = 10.8$, $p = 0.0047$, and $R^2 = 0.40$) (Fig. 5). In other words, soils with higher K_m values were characterized by slower increases in P_w at similar yearly P input-output budgets, and vice-versa. Both PBC and K_m are measures to describe the exchange of P between the soil solution and solid phases (Olsen and Khasawneh, 1980; Fardeau et al., 1991). However, the two have never been directly related. Data from long-term field experiments enabled us to compare K_m to field-scale PBC. The fact that the two are correlated in fertilizer field experiments thus underlines our findings from the global soil investigation that K_m and PBC provide information on the same underlying processes.

3.6 Implications for using K_m

Most previous studies involving isotopic exchange kinetics have focused on analyzing m , n , and E -values (Frossard et al., 1993; Achat et al., 2016; Tran et al., 1988; Brédoire et al., 2016). However, m and n are simply statistical parameters, whereas K_m can be readily interpreted in terms of soil processes (Fardeau et al., 1991). K_m is the mechanism behind PBC and is useful in explaining P availability. However, when using K_m , it is important to be aware of its limitations (as described in the methods section) and K_m 's sensitivity to the parameters m and n . (Fig. 6) Depending on the study, a relatively large uncertainty for K_m may be acceptable because differences in K_m between soils or treatments often vary in orders of magnitude (Frossard et al., 2011; Fardeau et al., 1991). However, for low values of m and or n , K_m calculation becomes very sensitive to uncertainty in m and or n , and relative errors may be much higher than 100% (Fig. 6). Future studies should take this into account and conduct appropriate error propagation, or consult Fig. 6 to get an overview of sensitive m and n ranges.

While we focused our analysis on P studies, the derivation of K_m as well as the finding that there is extremely rapid exchange between solid and liquid phases is equally relevant for other nutrients and or pollutants with strongly-sorbing ion species. The isotope exchange kinetic approach has also been successfully applied to study availability of Zn (Sinaj et al., 1999), Cd (Gray et al., 2004; Gérard et al., 2000), Ni (Echevarria et al., 1998), As (Rahman et al., 2017), and U (Clark et al., 2011), and applications are also plausible for other elements with radioisotopes. Isotope exchange kinetic studies with Zn, Cd, and Ni have used the same method as studies on P analyzed here, also modeling the decline in radioactivity using Eq. (3) (Gray et al., 2004; Sinaj et al., 1999; Echevarria et al., 1998). For such studies, the derivation of K_m as it is presented here is directly transferable and might provide additional useful information for understanding soil-solution exchange.

3.7 Environmental implications

Our study provides new insight on the diffusion-based mechanisms of P buffering across a large range of soil types. Prior to this study, little was known about soil solution P turnover rate, as K_m had previously been calculated by only a handful of studies. Our analysis of 217 soils showed that K_m is inversely proportional to P_w and is an important determinant of plant available P. Biological adaptations to P availability have received a lot of attention, as it has been shown that plant communities have different strategies for P nutrition depending on P availability (Lambers et al., 2008). Indeed, biological activity acts as an important buffer of P availability in many ecosystems, with higher fluxes of biological P often occurring when there are lower fluxes of physicochemical P (Bünemann et al., 2016; Bünemann et al., 2012). Our global compilation of 217 samples demonstrated there is another buffer of soil solution P, which is independent of biological activity and exclusively diffusion-based. Soils with a low concentration of P in the soil solution tend to have a high P turnover rate, thus buffering isotopically exchangeable P values. This does not mean that negative balances of P will improve the availability of soil P for plant uptake, rather it explains why changes in P availability are not as large as suggested by more drastic changes in P_w .

Gelöscht: is a process-based variable

Gelöscht: 2

Our findings complement the notion that there are two categories of soils in regard to P dynamics. In many low P_w soils, sorption is extremely high and the soil solution is buffered from P inputs or outputs (Barrow and Debnath, 2014). For these soils, the prevalence of sites with fast exchange rates is crucial to assure a steady flux of P to the soil solution (Fig. 3b). In terms of agricultural management, in such a soil, P fertilization has to be higher than P output via crop removal to account for the buffering effect (Roy et al., 2016). However, once a soil reaches a certain P level and binding sites are saturated by phosphate and other anions, P exchange is less important and fertilizer inputs can be lowered to equal crop offtake (Syers et al., 2008). For these soils, additional P inputs will directly reflect in an increase in P in the soil solution and P availability is largely driven by the amount of P in the soil solution (Fig. 4a). A better understanding of P kinetics in soil will allow more effective nutrient management to meet the dual goals of improving agricultural production while reducing fertilizer use and pollution.

Data availability

The global soil as well as the fertilizer field experiments datasets used in this study are available via the supporting online material.

15 Information about the supplement

The derivation of K_m , a table presenting isotope exchange kinetic properties of soils used in the study, and figures relating E -values to P_w and K_m are available in the supplement.

Author contributions

20 The project was conceived and carried out by Julian Helfenstein with support from Emmanuel Frossard, Timothy McLaren, and Jannes Jegminat. Jannes Jegminat provided the derivation of K_m . Julian Helfenstein prepared the manuscript with contributions from all co-authors.

Competing interests

25 The authors declare that they have no conflict of interest.

Acknowledgements

We thank Dr. Astrid Oberson for her helpful comments. The project was funded by the Swiss National Science Foundation (Project number 200021_162422), which is gratefully acknowledged.

References

- 5 Achat, D. L., Bakker, M. R., Augusto, L., Saur, E., Dousseron, L., and Morel, C.: Evaluation of the phosphorus status of P-deficient podzols in temperate pine stands: combining isotopic dilution and extraction methods, *Biogeochemistry*, 92, 183-200, 10.1007/s10533-008-9283-7, 2009.
- Achat, D. L., Bakker, M. R., Augusto, L., Derrien, D., Gallegos, N., Lashchinskiy, N., Milin, S., Nikitich, P., Raudina, T., Rusalimova, O., Zeller, B., and Barsukov, P.: Phosphorus status of soils from contrasting forested ecosystems in southwestern Siberia: effects of microbiological and physicochemical properties, *Biogeosciences*, 10, 733-752, 10.5194/bg-10-733-2013, 2013.
- 10 Achat, D. L., Pousse, N., Nicolas, M., Brédoire, F., and Augusto, L.: Soil properties controlling inorganic phosphorus availability: general results from a national forest network and a global compilation of the literature, *Biogeochemistry*, 127, 255-272, 10.1007/s10533-015-0178-0, 2016.
- Adler, D.: vioplot: Violin plot. R Package version 0.2. 2005.
- 15 Andersson, K. O., Tighe, M. K., Guppy, C. N., Milham, P. J., McLaren, T. I., Scheffe, C. R., and Lombi, E.: XANES Demonstrates the Release of Calcium Phosphates from Alkaline Vertisols to Moderately Acidified Solution, *Environmental Science & Technology*, 50, 4229-4237, 10.1021/acs.est.5b04814, 2016.
- Barrow, N. J.: A mechanistic model for describing the sorption and desorption of phosphate by soil, *Journal of Soil Science*, 34, 733-750, 10.1111/j.1365-2389.1983.tb01068.x, 1983.
- 20 Barrow, N. J., and Debnath, A.: Effect of phosphate status on the sorption and desorption properties of some soils of northern India, *Plant and Soil*, 378, 383-395, 10.1007/s11104-014-2042-8, 2014.
- Beckett, P. H. T., and White, R. E.: Studies on the phosphate potentials of soils, *Plant and Soil*, 21, 253-282, 10.1007/bf01377744, 1964.
- Bivand, R., Ono, H., Dunlap, R., and Stigler, M.: classInt: Choose Univariate Class Intervals. R package version 0.1-24. 2015.
- Bolland, M. D. A., and Allen, D. G.: Phosphorus sorption by sandy soils from Western Australia: effect of previously sorbed P on P buffer capacity and single-point P sorption indices, *Soil Research*, 41, 1369-1388, <http://dx.doi.org/10.1071/SR02098>, 2003.
- 25 Brédoire, F., Bakker, M. R., Augusto, L., Barsukov, P. A., Derrien, D., Nikitich, P., Rusalimova, O., Zeller, B., and Achat, D. L.: What is the P value of Siberian soils? Soil phosphorus status in south-western Siberia and comparison with a global data set, *Biogeosciences*, 13, 2493-2509, 10.5194/bg-13-2493-2016, 2016.
- Buehler, S., Oberson, A., Sinaj, S., Friesen, D. K., and Frossard, E.: Isotope methods for assessing plant available phosphorus in acid tropical soils, *European Journal of Soil Science*, 54, 605-616, 10.1046/j.1365-2389.2003.00542.x, 2003.
- 30 Bünemann, E. K., Oberson, A., Liebisch, F., Keller, F., Annaheim, K. E., Huguenin-Elie, O., and Frossard, E.: Rapid microbial phosphorus immobilization dominates gross phosphorus fluxes in a grassland soil with low inorganic phosphorus availability, *Soil Biology and Biochemistry*, 51, 84-95, 10.1016/j.soilbio.2012.04.012, 2012.
- Bünemann, E. K., Augstburger, S., and Frossard, E.: Dominance of either physicochemical or biological phosphorus cycling processes in temperate forest soils of contrasting phosphate availability, *Soil Biology and Biochemistry*, 101, 85-95, 10.1016/j.soilbio.2016.07.005, 2016.
- 35 Burkitt, L. L., Moody, P. W., Gourley, C. J. P., and Hannah, M. C.: A simple phosphorus buffering index for Australian soils, *Soil Research*, 40, 497-513, <http://dx.doi.org/10.1071/SR01050>, 2002.
- Carpenter, S. R., Caraco, N. F., Correll, D. L., Howarth, R. W., Sharpley, A. N., and Smith, V. H.: Nonpoint pollution of surface waters with phosphorus and nitrogen, *Ecological Applications*, 8, 559-568, 10.1890/1051-0761(1998)008[0559:NPOSWW]2.0.CO;2, 1998.
- 40 Chen, C. R., Condon, L. M., Sinaj, S., Davis, M. R., Sherlock, R. R., and Frossard, E.: Effects of plant species on phosphorus availability in a range of grassland soils, *Plant and Soil*, 256, 115-130, 10.1023/a:1026273529177, 2003.
- Clark, M. W., Harrison, J. J., and Payne, T. E.: The pH-dependence and reversibility of uranium and thorium binding on a modified bauxite refinery residue using isotopic exchange techniques, *Journal of Colloid and Interface Science*, 356, 699-705, 45 <http://dx.doi.org/10.1016/j.jcis.2011.01.068>, 2011.
- Compaoré, E., Frossard, E., Sinaj, S., Fardeau, J. C., and Morel, J. L.: Influence of land-use management on isotopically exchangeable phosphate in soils from Burkina Faso, *Communications in Soil Science and Plant Analysis*, 34, 201-223, 10.1081/css-120017426, 2003.
- Demaria, P., Flisch, R., Frossard, E., and Sinaj, S.: Exchangeability of phosphate extracted by four chemical methods, *Journal of Plant Nutrition and Soil Science*, 168, 89-93, 10.1002/jpln.200421463, 2005.

Feldfunktion geändert

Feldfunktion geändert

Feldfunktion geändert

- Demaria, P., Sinaj, S., Flisch, R., and Frossard, E.: Soil properties and phosphorus isotopic exchangeability in cropped temperate soils, *Communications in Soil Science and Plant Analysis*, 44, 287-300, 10.1080/00103624.2013.741896, 2013.
- Echevarria, G., Morel, J. L., Fardeau, J. C., and Leclerc-Cessac, E.: Assessment of Phytoavailability of Nickel in Soils, *Journal of Environmental Quality*, 27, 1064-1070, 10.2134/jeq1998.00472425002700050011x, 1998.
- 5 Elser, J., and Bennett, E.: Phosphorus cycle: A broken biogeochemical cycle, *Nature*, 478, 29-31, 2011.
- Fardeau, J.-c., Morel, C., and Boniface, R.: Phosphate ion transfer from soil to soil solution: kinetic parameters, *Agronomie*, 11, 787-797, 1991.
- Fardeau, J. C.: Cinétique d'échange des ions phosphate dans les systèmes sol-solution. Vérification expérimentale de l'équation théorique, *C.R. Acad. Sci. Paris*, t 300, 371-376, 1985.
- 10 Fardeau, J. C.: Le phosphore assimilable des sols : sa représentation par un modèle fonctionnel à plusieurs compartiments, *Agronomie*, 13, 317-331, 1993.
- Fardeau, J. C.: Dynamics of phosphate in soils. An isotopic outlook, *Fertilizer Research*, 45, 91-100, 10.1007/bf00790658, 1996.
- Frossard, E., Feller, C., Tiessen, H., Stewart, J. W. B., Fardeau, J. C., and Morel, J. L.: Can an isotopic method allow for the determination of the phosphate-fixing capacity of soils?, *Communications in Soil Science and Plant Analysis*, 24, 367-377, 10.1080/00103629309368807, 1993.
- 15 Frossard, E., Morel, J. L., Fardeau, J. C., and Brossard, M.: Soil isotopically exchangeable phosphorus: A comparison between E and L values, *Soil Science Society of America Journal*, 58, 846-851, 10.2136/sssaj1994.03615995005800030031x, 1994.
- Frossard, E., Achat, D. L., Bernasconi, S. M., Fardeau, J.-c., Jansa, J., Morel, C., Randriamanantsoa, L., Sinaj, S., and Oberson, A.: The use of tracers to investigate phosphate cycling in soil-plant systems, in, edited by: Bünemann, E. K., Springer, Heidelberg, 59-91, 2011.
- 20 Gallet, A., Flisch, R., Ryser, J.-P., Frossard, E., and Sinaj, S.: Effect of phosphate fertilization on crop yield and soil phosphorus status, *Journal of Plant Nutrition and Soil Science*, 166, 568-578, 10.1002/jpln.200321081, 2003.
- Gérard, E., Echevarria, G., Sterckeman, T., and Morel, J. L.: Cadmium Availability to Three Plant Species Varying in Cadmium Accumulation Pattern, *Journal of Environmental Quality*, 29, 1117-1123, 10.2134/jeq2000.00472425002900040012x, 2000.
- Gérard, F.: Clay minerals, iron/aluminum oxides, and their contribution to phosphate sorption in soils — A myth revisited, *Geoderma*, 262, 213-226, 10.1016/j.geoderma.2015.08.036, 2016.
- 25 Gray, C. W., McLaren, R. G., Günther, D., and Sinaj, S.: An assessment of cadmium availability in cadmium-contaminated soils using isotope exchange kinetics, *Soil Science Society of America Journal*, 68, 1210-1217, 10.2136/sssaj2004.1210, 2004.
- Hamon, R. E., Bertrand, I., and McLaughlin, M. J.: Use and abuse of isotopic exchange data in soil chemistry, *Soil Research*, 40, 1371-1381, <http://dx.doi.org/10.1071/SR02046>, 2002.
- 30 Hedley, M. J., White, R. E., and Nye, P. H.: Plant-induced changes in the rhizosphere of rape (*Brassica-napus* var - Emerald) seedlings 3. Changes in L value, soil phosphate fractions and phosphatase-activity, *New Phytologist*, 91, 45-56, 10.1111/j.1469-8137.1982.tb03291.x, 1982.
- Ku, H.: Notes on the use of propagation of error formulas, *Journal of Research of the National Bureau of Standards. Section C: Engineering and Instrumentation*, 70, 263, 1966.
- 35 Lambers, H., Raven, J. A., Shaver, G. R., and Smith, S. E.: Plant nutrient-acquisition strategies change with soil age, *Trends in Ecology & Evolution*, 23, 95-103, <http://dx.doi.org/10.1016/j.tree.2007.10.008>, 2008.
- Menezes-Blackburn, D., Zhang, H., Stutter, M., Giles, C. D., Darch, T., George, T. S., Shand, C., Lumsdon, D., Blackwell, M., Wearing, C., Cooper, P., Wendler, R., Brown, L., and Haygarth, P. M.: A holistic approach to understanding the desorption of phosphorus in soils, *Environmental Science & Technology*, 50, 3371-3381, 10.1021/acs.est.5b05395, 2016.
- 40 Morel, C., and Plenchette, C.: Is the isotopically exchangeable phosphate of a loamy soil the plant-available P?, *Plant and Soil*, 158, 287-297, 10.1007/bf00009502, 1994.
- Morel, C., Tiessen, H., Moir, J. O., and Stewart, J. W. B.: Phosphorus transformations and availability under cropping and fertilization assessed by isotopic exchange, *Soil Science Society of America Journal*, 58, 1439-1445, 10.2136/sssaj1994.03615995005800050023x, 1994.
- 45 Morel, C., Tunney, H., Plénet, D., and Pellerin, S.: Transfer of phosphate ions between soil and solution: Perspectives in soil testing, *Journal of Environmental Quality*, 29, 50-59, 10.2134/jeq2000.00472425002900010007x, 2000.
- Oberson, A., Fardeau, J. C., Besson, J. M., and Sticher, H.: Soil phosphorus dynamics in cropping systems managed according to conventional and biological agricultural methods, *Biology and Fertility of Soils*, 16, 111-117, 10.1007/bf00369411, 1993.
- Oberson, A., Friesen, D. K., Tiessen, H., Morel, C., and Stahel, W.: Phosphorus status and cycling in native savanna and improved pastures on an acid low-P Colombian Oxisol, *Nutrient Cycling in Agroecosystems*, 55, 77-88, 10.1023/a:1009813008445, 1999.
- 50 Obersteiner, M., Peñuelas, J., Ciais, P., van der Velde, M., and Janssens, I. A.: The phosphorus trilemma, *Nature Geoscience*, 6, 897-898, 10.1038/ngeo1990, 2013.
- Oehl, F., Oberson, A., Sinaj, S., and Frossard, E.: Organic phosphorus mineralization studies using isotopic dilution techniques, *Soil Science Society of America*, 65, 780-787, 2001.

Feldfunktion geändert

Feldfunktion geändert

Formatiert: Englisch (USA)

- Olsen, S. R., and Khasawneh, F. E.: Use and limitations of physical-chemical criteria for assessing the status of phosphorus in soils, in: *The Role of Phosphorus in Agriculture*, edited by: Khasawneh, F. E., Sample, E. C., and Kamprath, E. J., American Society of Agronomy, Crop Science Society of America, Soil Science Society of America, Madison, WI, 361-410, 1980.
- 5 Pierzynski, G. M., and McDowell, R. W.: Chemistry, Cycling, and Potential Movement of Inorganic Phosphorus in Soils, in: *Phosphorus: Agriculture and the Environment*, edited by: Sims, J. T., and Sharpley, A. N., Agronomy Monograph, 46, American Society of Agronomy, Crop Science Society of America, and Soil Science Society of America, Madison, WI, 53-86, 2005.
- Pypers, P., Delrue, J., Diels, J., Smolders, E., and Merckx, R.: Phosphorus intensity determines short-term P uptake by pigeon pea (*Cajanus cajan* L.) grown in soils with differing P buffering capacity, *Plant and Soil*, 284, 217-227, 10.1007/s11104-006-0051-y, 2006.
- 10 R Core Team: R: A language and environment for statistical computing. R Foundation for Statistical Computing, Vienna, Austria, 2017.
- Rahman, M. S., Clark, M. W., Yee, L. H., Comarmond, M. J., Payne, T. E., Kappen, P., and Mokhber-Shahin, L.: Arsenic solid-phase speciation and reversible binding in long-term contaminated soils, *Chemosphere*, 168, 1324-1336, <http://dx.doi.org/10.1016/j.chemosphere.2016.11.130>, 2017.
- 15 Randriamanantsoa, L., Morel, C., Rabeharisoa, L., Douzet, J. M., Jansa, J., and Frossard, E.: Can the isotopic exchange kinetic method be used in soils with a very low water extractable phosphate content and a high sorbing capacity for phosphate ions?, *Geoderma*, 200-201, 120-129, 10.1016/j.geoderma.2013.01.019, 2013.
- Roy, E. D., Richards, P. D., Martinelli, L. A., Coletta, L. D., Lins, S. R. M., Vazquez, F. F., Willig, E., Spera, S. A., VanWey, L. K., and Porder, S.: The phosphorus cost of agricultural intensification in the tropics, *Nature Plants*, 16043, 10.1038/nplants.2016.43, 2016.
- Sinaj, S., Mächler, F., and Frossard, E.: Assessment of isotopically exchangeable zinc in polluted and nonpolluted soils, *Soil Science Society of America Journal*, 63, 1618-1625, 10.2136/sssaj1999.6361618x, 1999.
- 20 Syers, J. K., Johnston, A., and Curtin, D.: Efficiency of soil and fertilizer phosphorus use: Reconciling changing concepts of soil phosphorus behaviour with agronomic information, Food and Agriculture Organization of the United Nations, Rome, 2008.
- Tilman, D., Cassman, K. G., Matson, P. A., Naylor, R., and Polasky, S.: Agricultural sustainability and intensive production practices, *Nature*, 418, 671-677, 10.1038/nature01014, 2002.
- 25 Tran, T. S., Giroux, M., and Fardeau, J. C.: Effects of soil properties on plant-available phosphorus determined by the isotopic dilution phosphorus-32 method, *Soil Science Society of America Journal*, 52, 1383-1390, 10.2136/sssaj1988.03615995005200050033x, 1988.
- Weiss, N. A., Holmes, P. T., and Hardy, M.: *A Course in Probability*, Pearson Addison Wesley, 2006.
- WRB, I. W. G.: World reference base for soil resources 2014, update 2015: International soil classification system for naming soils and creating legends for soil maps, FAO, Rome, 2015.
- 30 Xiong, L. M., Zhou, Z. G., Fardeau, J. C., Feng, G. L., and Lu, R. K.: Isotopic assessment of soil phosphorus fertility and evaluation of rock phosphates as phosphorus sources for plants in subtropical China, *Nutrient Cycling in Agroecosystems*, 63, 91-98, 10.1023/a:1020501007558, 2002.

Feldfunktion geändert
 Formatiert: Englisch (USA)

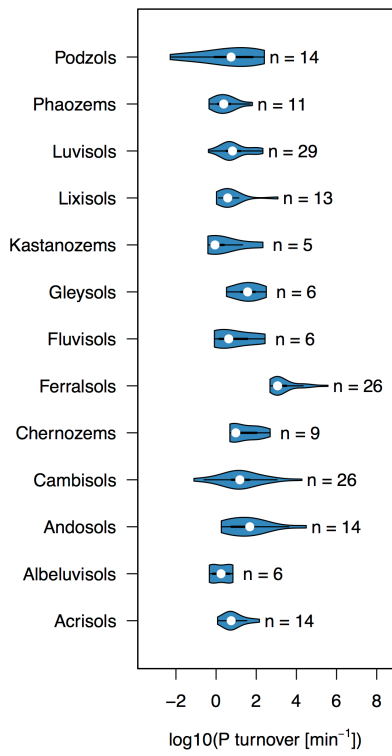


Figure 1: Violin plots of P turnover (K_m) for different world reference base soil groups. Only soil groups with at least five observations were plotted. The number of observations in each violin is written next to the plot. Violin plots were made using the R package 'vioplot' (Adler, 2005).

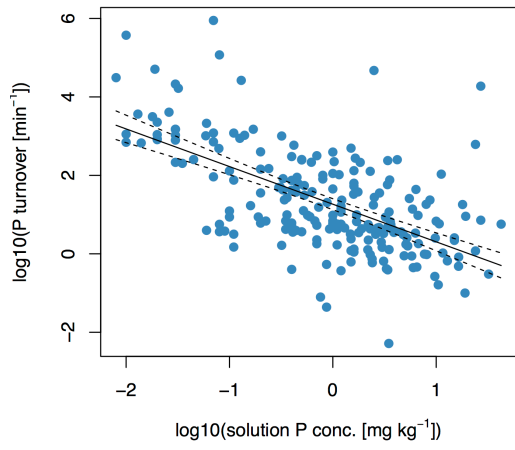
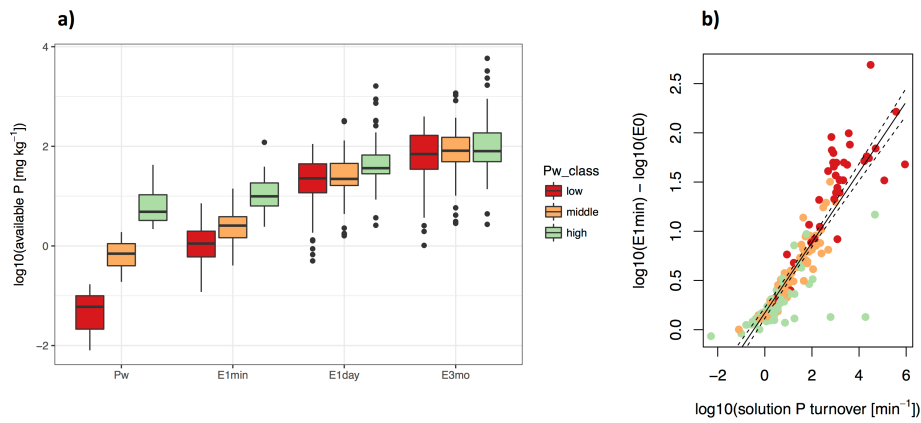
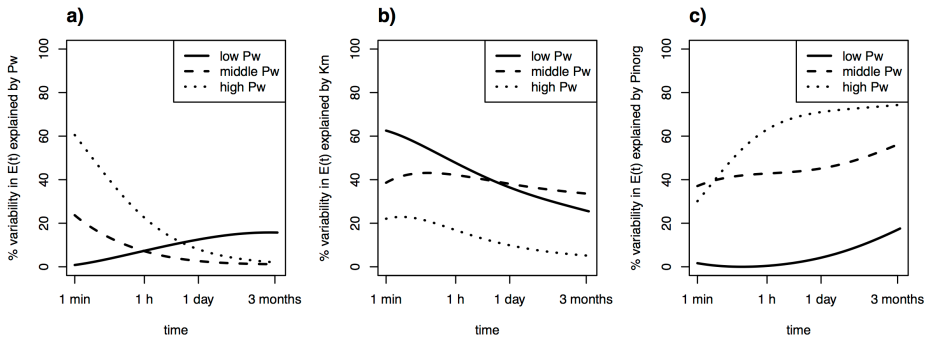


Figure 2: Simple linear regression between soil solution P turnover (K_m) and soil solution P concentration (P_w) for 217 soils. The equation is given by $\log_{10}(K_m) = 1.26 - 0.960 * \log_{10}(P_w)$ with $F = 127$, $p < 10^{-15}$ and an $R^2 = 0.37$. Dashed lines represent the 95% confidence interval.

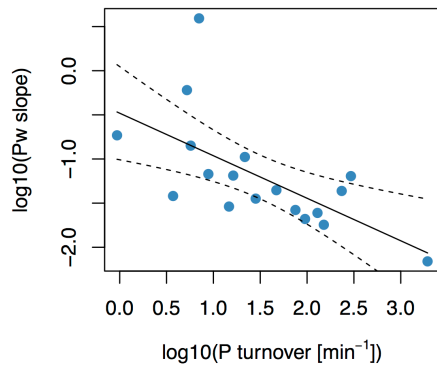
5



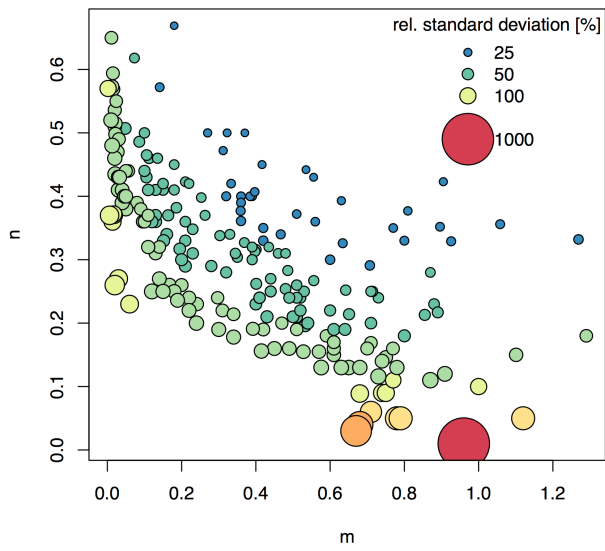
5 **Figure 3:** Soil solution P turnover (K_m) as a driver of available P ($E_{(t)}$). While there is a large range in P availability at $t = 0$ (P_w), this variability becomes smaller and gradually uncoupled from P_w class for longer time frames ($t=1, 1440, 129\cdot600$ min) (a). The growth in P availability between $t=0$ and $t = 1$ is dependent on K_m (b). Simple linear regression between K_m and the difference between $E_{(1)}$ and $E_{(0)}$ is given by $\log_{10}(E_{(1)}) - \log_{10}(E_{(0)}) = 0.170 + 0.357 * \log_{10}(K_m)$ with $F = 615$, $p < 10^{-15}$, and $R^2 = 0.79$. $n = 170$. Red, orange, and green colors refer to low, middle, and high P_w -classes as determined by Jenks natural breaks optimization. In (b), dashed lines represent the 95% confidence interval.



10 **Figure 4:** R^2 of simple linear regressions between isotopically exchangeable P ($E_{(t)}$) explained by predictors P_w (a), K_m (b), and P_{morg} (c) as a function of time. Regressions were fit separately for each class of P_w (low, middle, high), as determined by Jenks natural breaks optimization. Low $P_w = 0.008 - 0.16 \text{ mg kg}^{-1}$ ($n = 46$), middle $P_w = 0.16 - 1.9 \text{ mg kg}^{-1}$ ($n = 94$), and high $P_w = 1.9 - 42.5 \text{ mg kg}^{-1}$ ($n = 77$).



5 Figure 5: Simple linear regression between phosphorus buffering capacity (PBC) and soil solution P turnover (K_m) for 18 long-term P fertilizer experiments. PBC was calculated as the slope of the regression between P_w and P budget. PBC was found to correlate with K_m , as given by, $\log_{10}(PBC) = -0.481 - 0.482 * \log_{10}(K_m)$, with an R^2 of 0.40 ($F = 10.8, p = 0.0047$). Dashed lines represent 95% confidence interval.



5 Figure 6: Relative standard deviations (RSD) of K_m after error propagation assuming 10% uncertainty in m and n input parameters, respectively. The plot shows the m and n values from the 217 soils included in this global compilation study. Uncertainty in K_m was approximated using the partial derivatives approach. Bubble size and color relates to the RSD of K_m for the plotted m and n combination.