

1 **Variations and determinants of carbon content in plants: a global**  
2 **synthesis**

3 Suhui Ma<sup>1</sup>, Feng He<sup>2</sup>, Di Tian<sup>3</sup>, Dongting Zou<sup>1</sup>, Zhengbing Yan<sup>1</sup>, Yulong Yang<sup>4</sup>, Tiancheng Zhou<sup>4</sup>,  
4 Kaiyue Huang<sup>4</sup>, Haihua Shen<sup>5</sup>, Jingyun Fang<sup>1\*</sup>

5 <sup>1</sup> *Department of Ecology, College of Urban and Environmental Sciences, Peking University, Beijing 100871, China;*

6 <sup>2</sup> *College of Life Sciences, University of Chinese Academy of Sciences, Beijing 100049, China;*

7 <sup>3</sup> *College of Life Sciences, Capital Normal University, Beijing 100048, China;*

8 <sup>4</sup> *College of Earth and Environmental Sciences, Lanzhou University, Lanzhou 730000, China;*

9 <sup>5</sup> *State Key Laboratory of Vegetation and Environmental Change, Institute of Botany, Chinese Academy of Sciences,*  
10 *Beijing 100093, China*

11 *\*Corresponding author: Jingyun Fang*

12 Email: jyfang@urban.pku.edu.cn

13 Tel: +86-10-6276 5578, Fax: +86-10-6275 6560

14 **Abstract.** Plant carbon (C) content is one of the most important plant traits and is critical to the assessment of global C  
15 cycle and ecological stoichiometry; however, the global variations in plant C content remain poorly understood. In this  
16 study, we conducted a global analysis of the plant C content by synthesizing data from 4,318 species to document specific  
17 values and their variation of the C content across plant organs and life forms. Plant organ C contents ranged from 45.0%  
18 in reproductive organs to 47.9% in stems at global scales, which were significantly lower than the widely employed  
19 canonical value of 50%. Plant C content in leaves (global mean of 46.9%) was higher than that in roots (45.6%). Across  
20 life forms, woody plants exhibited higher C content than herbaceous plants. Conifers, relative to broad-leaved woody  
21 species, had higher C content in roots, leaves and stems. Plant C content tended to a decrease with increasing latitude.  
22 The life form explained more variation of the C content than climate. Our findings suggest that specific C content values  
23 of different organs and life forms developed in our study should be incorporated into the estimations of regional and  
24 global vegetation biomass C stocks.

25 **Keywords:** plant, carbon content, organ, life form, climate, biogeographical pattern

## 26 **1 Introduction**

27 Carbon (C) is one of the most abundant elements in all living organisms (Hessen et al., 2004; Dietze et al., 2014). Plant  
28 photosynthesis transfers C from CO<sub>2</sub> to the forms of biological compounds to maintain metabolic functions and build  
29 basic structures (Dietze et al., 2014; Martínez-Vilalta et al., 2016). This process creates a huge organic C pool in  
30 terrestrial vegetation (Schlesinger and Bernhardt, 2013), which is usually estimated by multiplying total plant biomass  
31 by a corresponding biomass C conversion factor, i.e., the C content (Bert and Danjon, 2006; Thomas and Martin, 2012).  
32 The most widely employed C content in plants is 50% in the regional and global vegetation C stock estimations (De  
33 Vries et al., 2006; Keith et al., 2009; Lewis et al., 2009; Saatchi et al., 2011; Zhu et al., 2015, 2017). Originally, this  
34 value was calculated from an average molecular formula CH<sub>1.44</sub>O<sub>0.66</sub> i.e., elemental composition of about 50% C, 6%  
35 hydrogen, 44% oxygen and trace amounts of several metal ions in living plant wood (Pettersen, 1984; Bert and Danjon,  
36 2006).

37 However, an increasing number of studies have indicated that C content varied significantly among plant organs  
38 (Alriksson and Eriksson, 1998; Bert and Danjon, 2006; Yao et al., 2015), life forms (Tolunay, 2009; Fang et al., 2010;  
39 Cao and Chen, 2015), biomes (He et al., 2006; Martin and Thomas, 2011; Martin et al., 2015), and even across  
40 individuals (Elias and Potvin, 2003; Uri et al., 2012; Martin et al., 2013). Using the default value of 50% as biomass C  
41 conversion factor which ignores the variation of C content may lead to biases (Zhang et al., 2009; Martin and Thomas,  
42 2011; Rodrigues et al., 2015). For example, change of 1% wood C content from the canonical value of 50% can bring  
43 up to ~7 petagrams variation in global vegetation C stocks, which is almost equivalent to half of the vegetation C stocks  
44 of continental USA (Dixon et al., 1994; Jones and O'Hara, 2016). Therefore, accurate knowledge of plant C content is  
45 crucial for estimating the potential magnitude of C sequestration in different biomes and understanding the roles of  
46 vegetation in the global C cycle (Thomas and Martin, 2012).

47 To reduce the uncertainty in estimation of vegetation C stocks, several studies have used the species-specific organ C  
48 content in regional scales (Jones and O'Hara, 2012; Rodrigues et al., 2015; Wu et al., 2017). Basically, the weighted  
49 mean C content (WMCC) of plants, especially woody plants, was useful for precise C stock estimation (Zhang et al.,  
50 2009). However, it is hard to obtain available data of C content and biomass allocation for every species and organ in  
51 diverse vegetation. Combining the phylogenic, taxonomic and environment-dependent traits of species, the generalized  
52 C contents of specific life forms provide an alternative for realistic estimations (Thomas and Martin, 2012; Wu et al.,  
53 2017). For instance, the Intergovernmental Panel on Climate Change (IPCC) (2006) provided the wood C content of  
54 trees in tropical/subtropical forests (47%), temperate/boreal forests (48% of broad-leaved trees and 51% of conifers),  
55 respectively. Although the values were more accurate than the default value of 50%, errors were still introduced to C  
56 stock estimation in the actual application (Martin and Thomas, 2011), especially when the uncertainty resulted from  
57 estimation using available plant C contents of limited specific life forms could not be eliminated (Thomas and Martin,  
58 2012). Thus, the specific C contents of different life form plants require explicit consideration and application in  
59 vegetation C stock evaluations. In addition, exploring the biogeographic pattern and driving factors of plant C content

60 will benefit for elucidating ecological stoichiometry and the mechanisms of plants' response to global change (Fyllas et  
61 al., 2009; Ordoñez et al., 2009; Zhang et al., 2012).

62 For the above reasons, we compiled a global dataset of plant organ C content to provide referable C contents of plant  
63 organs in different life forms. We tried to answer the following two questions: (1) how much C do specific plant organs  
64 contain? and (2) what are the biogeographical patterns of plant C content and the possible driving factors?

## 65 **2 Material and methods**

### 66 **2.1 Data compilation**

67 We searched Google Scholar (<https://scholar.google.com/>), Web of Science (<http://isiknowledge.com>) and CNKI (China  
68 National Knowledge Infrastructure) (<http://www.cnki.net/>) for literatures reporting the C content of plants published  
69 from 1970 to 2016. We documented 315 publications according to the following two criteria: (1) the data from natural  
70 ecosystems (including wetland and mangrove) or plantation ecosystems (including grassland and cropland) were  
71 accepted, while the data from laboratory or field experiments were excluded; and (2) plant C content detected by two  
72 commonly used methods (i.e. the  $K_2Cr_2O_7-H_2SO_4$  oxidation and the combustion methods) was included, while studies  
73 that used the default value, assumed value, or values calculated from the chemical compositions were excluded from our  
74 data compilation. In addition, we also included data of specific plant organs from the TRY database ([https://www.try-  
db.org](https://www.try-<br/>75 db.org)) (Kattge et al., 2011) (Table S1).

76 Finally, a total of 24,326 records of 4,318 species in 1,694 genera and 238 families were included in our global dataset  
77 (Fig. 1), in which 36.33% and 63.67% were from literatures and the TRY database, respectively. For each data record,  
78 we documented the geographical information (latitude, longitude and altitude), Latin binomial, genus and family of  
79 species, organ (reproductive organ, root, leaf and stem), life forms, chemical compounds (lignin and cellulose), and plant  
80 C content. Plant life forms were divided into five categories: herbaceous species (herb), woody plants, fern, vine, and  
81 bamboo. Data of crops were separately analyzed in the herbaceous category. The woody plants were further categorized  
82 into three groups: evergreen broadleaved woody plants, deciduous broadleaved woody plants, and conifers. For those  
83 data with no information on life forms, we documented it from Flora of China (<http://foc.eflora.cn>), Wikipedia  
84 (<https://en.wikipedia.org/wiki/Wiki/>), Useful Tropical Plants (<http://tropical.theferns.info>) or The Plant List  
85 (<http://www.theplantlist.org>). In order to explore biogeographic pattern and the driving factors of C content of plant  
86 organs, we used the latitude and longitude of each site to extract data of climatic variables (mean annual temperature,  
87 MAT, °C; mean annual precipitation, MAP, mm) from WorldClim (<http://www.worldclim.org/>) (Hijmans et al., 2005).  
88 Given that plant C content might vary with the growth stages of individuals (Elias and Potvin, 2003; Uri et al., 2012;  
89 Martin et al., 2013), we recorded the averaged C content of herbaceous species across different growth stages.

### 90 **2.2 Statistical analyses**

91 We first documented statistics of plant organ C content for different life forms, including arithmetic mean (Mean),  
92 median (Median), standard deviation (SD), and coefficient of variation (CV) (Table 1). The C content of each organ

93 showed a normal distribution (Fig. 2), and thus the one sample Student's t-test was used to determine whether the stem  
94 C content of woody plants significantly differed from the default value of 50% and the IPCC values (47%, 48% and  
95 51%), respectively. The two sample Student's t-test was used to determine whether statistical differences of plant organ  
96 C content existed between different life forms. Specifically, we compared the C contents of herbs vs. woody plants,  
97 conifers vs. deciduous broad-leaved woody plants, and conifers vs. evergreen broad-leaved woody plants.

98 A linear model without accounting for other factors was used to explore biogeographical pattern of plant organ C content  
99 along latitudinal gradients, MAT and MAP (Han et al., 2011). To evaluate the effects of life form and climatic factors  
100 (i.e. MAT and MAP) on the variations of plant C contents, a partial generalized linear model was used to calculate total  
101 explanation, independent explanation and interactive explanation of climatic factors and life forms for different organs  
102 (i.e. reproductive organ, root, leaf, and stem), respectively (Han et al., 2011). Additionally, a linear model and an analysis  
103 of variance with the type III were performed to test the variations of C contents explained by climatic factors and life  
104 forms. A linear model was used to explore the relationship of plant C content with the content of lignin and cellulose.  
105 All statistical analyses were performed in the R 3.3.1 software (R core Team, 2016).

## 106 **3 Results**

### 107 **3.1 Carbon content of plant organs**

108 Plant C content varied significantly among organs. Arithmetic means of C content for reproductive organ, root, leaf and  
109 stem were 45.01%, 45.64%, 46.85% and 47.88%, respectively (Fig. 2, Table 1), all of which were significantly lower  
110 than the default value of 50% ( $p < 0.05$ ). Plant organ C content also varied markedly across life forms (Table 1). Among  
111 herbaceous plants, C content ranged from 42.41% in stems to 44.73% in leaves; and among woody plants, C content  
112 changed from 47.43% in roots to 48.56% in reproductive organs (Table 1). C contents in all four organs were  
113 significantly higher in the woody species than in the herbaceous species. Across woody species, C contents in roots,  
114 leaves, and stems of conifers were significantly higher than those of deciduous broad-leaved and evergreen broad-leaved  
115 woody plants, respectively. In addition, the C contents of ferns, vines and bamboo ranged from 42.98% to 49.20% (Table  
116 1).

### 117 **3.2 Latitudinal trends of carbon content and possible driving factors**

118 Plant C contents in roots and leaves decreased with increasing latitude and decreasing MAT and MAP ( $r^2 = 0.05$ ,  $p <$   
119  $0.001$  in all cases), while reproductive and stem C content displayed no significant latitudinal trends ( $r^2 = 0.02$ ,  $p > 0.05$ ;  
120  $r^2 < 0.01$ ,  $p > 0.05$ ; Fig. 3, Table S2).

121 The C content of plant organs was significantly affected by climatic factors ( $p < 0.05$  in stem), life form and their  
122 interaction ( $p < 0.05$  in all cases, except for reproductive organ), respectively (Tables S3-S6). The effects of climatic  
123 factors and life forms on plant C content varied largely across the plant organs (Fig. 4). The independent explanations  
124 of climatic factors on the variation in the C contents of the reproductive organs, roots, leaves, and stems were 8.4%,  
125 0.2%, 3.8% and 0.5%, respectively. The variation of C content in the reproductive organs, roots, leaves, and stems

126 explained independently by life forms were 19.8%, 21.5%, 7.2%, and 10.0%, respectively. The interactive explanations  
127 of climatic factors and life form on the variation of C content of the reproductive organs, roots, leaves, and stems were  
128 15.7%, 3.6%, 5.2%, and 0.7%, respectively. These results demonstrated that the variation of plant C content was  
129 explained more by life form than by climatic factors (Fig. 4; Tables S3-S6).

## 130 **4 Discussion**

131 We evaluated plant C content across plant organs and life forms by establishing a global plant C content dataset. Our  
132 results showed that plant C content varied remarkably among organs, which was consistent with previous studies  
133 (Alriksson and Eriksson, 1998; Northup et al., 2005; Tolunay, 2009). Notably, we found that the global average C  
134 contents of four organs were significantly lower than the canonical value of 50% which was widely used to convert  
135 vegetation biomass to C stock at large-scales, such as in temperate forests (De vries et al., 2006), tropical forests (Lewis  
136 et al., 2009; Saatchi et al., 2011), and global forests (Keith et al., 2009). In addition, C contents of stems and leaves were  
137 significantly higher than another default value of 45.45% proposed by Whittaker (1975), although the C contents of roots  
138 and reproductive organs showed no significantly statistical difference. Furthermore, our results showed that plant C  
139 contents varied significantly among life forms (Table 1). Among woody plants, the stem C contents of broad-leaved  
140 woody species (i.e. 47.69% in deciduous and 47.78% in evergreen) and conifers (51.48%) were comparable with those  
141 (47.7% and 50.8%, respectively) reported by Thomas and Martin (2012). However, these data were significantly lower  
142 than the values of temperate broad-leaved woody species (48%;  $p < 0.001$  and  $p = 0.018$ ) and conifers (51%;  $p < 0.001$ ),  
143 but higher than that of tropical broad-leaved woody species (47%;  $p < 0.001$  and  $p < 0.001$ ) proposed by IPCC (2006).  
144 This suggested that these values from IPCC may overestimate or underestimate the stem C content for broadleaved trees  
145 and conifers at global scales.

146 The variation of plant C content among organs and life forms were associated with differences in their chemical  
147 compositions (Figs. 5-6). Plant organs are composed of several organic compounds with different C content, such as  
148 lignin (with C content of 63% – 66%), cellulose (with C content of about 44%), and nonstructural carbohydrates (NSC)  
149 (e.g. sugar or starch with C content of about 44%) (Adler, 1977; Poorter and Bergkotte, 1992). Our result was consistent  
150 with previous findings that plant organs with higher lignin (e.g. stems) tend to a higher C content than organs with lower  
151 lignin content (e.g. leaves, roots, and reproductive organs, Fig. 5a) (Savidge, 2000; Lamblom and Savidge, 2003; Bert  
152 and Danjon, 2006; Martin and Thomas, 2011). Despite of the high lignin in roots, the C content in roots was lower than  
153 that in leaves, probably because of the high proportions of protein and others C-rich compounds in leaves (Rouwenhorst  
154 et al., 1991; Niinemets et al., 2002) and high content of starch in roots (Bert and Danjon, 2006). The lowest C content in  
155 reproductive organs was consistent with its high quantities of NSC and low content of lignin (Barros et al., 1996). Across  
156 life forms, woody plants generally require proportionally greater investments of C at the cellular level to synthesize  
157 lignin to support structures with relatively low growth rate, which result in high lignin and C content (Fig. 6a). In contrast,  
158 the high relative growth rate of herbs is accordant with their low lignin and C content (Armstrong et al., 1950; Johnson  
159 et al., 2007). Furthermore, the difference in stem C contents of broad-leaved woody plants (i.e. 47.69% and 47.78% for

160 deciduous and evergreen species, respectively) and conifers (50.48%) could also be explained by their corresponding  
161 differences in chemical compositions (Lamlom and Savidge, 2003; Thomas and Martin, 2012).

162 Our results showed that C contents in roots and leaves decreased significantly with increasing latitude (Fig. 3). This was  
163 inconsistent with previous studies reporting that C content of global plant fine root showed no latitudinal trend (Yuan et  
164 al., 2011), but was consistent with the latitudinal trends of plant C contents of roots and leaves in China's forests (Zhao  
165 et al., 2016). Generally, climatic factors (i.e. temperature and precipitation) regulate elemental contents in plant organs  
166 by influencing the associated plant metabolism and functioning (Reich and Oleksyn, 2004; Reich, 2005; Zhang et al.,  
167 2012). In our study, climatic factors explained independently less variation of plant C contents of four organs (0.2 –  
168 8.4%, see Fig. 4) than other factors. The climatic factors and life form together explained higher proportion of the  
169 variation in C contents of roots and leaves (25.3% and 16.2% in Fig. 4), while both the independent effect of climatic  
170 factors and the interactive effect of climate and life form on the C content of stem were lower (0.5% and 0.7%,  
171 respectively) than those of other organs, respectively. This may be one reason for the lack of significant latitudinal trend  
172 for C content in stems.

173 Our data showed that the life form independently explained more variation of plant C content of four organs (7.2 –  
174 21.5%, Fig. 4), which was consistent with the results of Fyllas et al. (2009) and other studies about plant nutrient  
175 stoichiometry at global scales (Han et al., 2011; Zhao et al., 2016; Tian et al., 2017). Further, the interactive effects of  
176 climatic factors with life forms were higher than the independent explanations of climate (0.7 –15.7%, Fig. 4). These  
177 results conjointly revealed the important role of plant life form in shaping plant C content, which implied that the shift  
178 of species composition in regional vegetation along the latitudinal gradients influenced by climate could partly explain  
179 the biogeographic pattern of plant C content. Generally, the proportion of woody plants tends to a decrease while that of  
180 herbs increases with increasing latitude and decreasing MAT and MAP (Fig. S1). Hence, the variation in life forms  
181 grouping in different biomes further corroborates our results of the biogeographic pattern of plant C content.

## 182 **5 Conclusions**

183 Plant C contents varied with organs and life forms at global scales. Specifically, plant C content in leaves was higher  
184 than that in roots. Across life forms, woody plants exhibited higher C content than herbaceous plants. Using the canonical  
185 values of 50% may underestimate and overestimate the C content in stems and leaves of conifers and in all organs of  
186 other life forms, respectively. Thus, specific plant C contents given in Table 1 provided an alternative to IPCC for their  
187 guidelines to update the plant C fractions and could improve the accuracy of vegetation C stock estimations. Furthermore,  
188 plant C content showed significant latitudinal trends induced by climatic factors and life forms. This suggests that these  
189 latitudinal trends and driving factors should be incorporated into the research of plant ecological stoichiometry and  
190 biogeochemical modeling.

191

## 192 **Supporting information**

193 **Figure S1.** Changes in the species composition along the gradients of latitude, mean annual temperature (MAT) and  
194 mean annual precipitation (MAP). The percentage of woody plants decreased with increasing latitude and with  
195 decreasing MAT and MAP. Herbs showed the opposite trends with woody plants. Other life forms showed no significant  
196 change along latitudinal and climatic gradient.

197 **Table S1.** Data sets in TRY that contributed to our global dataset of plant carbon (C) content. References cited in  
198 this table are attached below.

199 **Table S2.** Model summary for the ordinary least squares (OLS) regression of plant carbon content on three factors  
200 (Latitude, MAT and MAP). Abbreviations: MAT, mean annual temperature; MAP, mean annual precipitation.

201 **Table S3.** The summary of anova (Type III tests) for plant C content in reproductive organs. Climatic factor includes  
202 mean annual temperature (MAT) and mean annual precipitation (MAP).

203 **Table S4.** The summary of anova (Type III tests) for plant C content in roots. Climate factor contains mean annual  
204 temperature (MAT) and mean annual precipitation (MAP).

205 **Table S5.** The summary of anova (Type III tests) for plant C content in leaves. Climate factor contains mean annual  
206 temperature (MAT) and mean annual precipitation (MAP).

207 **Table S6.** The summary of anova (Type III tests) for plant C content in stems. Climate factor contains mean annual  
208 temperature (MAT) and mean annual precipitation (MAP).

## 209 **Competing interests**

210 The authors declare that they have no conflict of interest.

## 211 **Funding**

212 This work was supported by the National Natural Science Foundation of China (31330012, 31621091).

## 213 **Acknowledgments**

214 We thank Peng Li, Chengjun Ji and Zhiyao Tang for their helpful suggestions for data collection and analysis. We thank  
215 Aaron Hogan, Anwar Eziz, Jianxiao Zhu, Qiong Cai and Ming Ouyang for a friendly review of the manuscript. We also  
216 thank the TRY initiative on plant traits (<http://www.try-db.org>). The TRY database is hosted at the Max Planck Institute  
217 for Biogeochemistry (Jena, Germany) and supported by DIVERSITAS/Future Earth, the German Centre for Integrative  
218 Biodiversity Research (iDiv) Halle-Jena-Leipzig and EU project BACI (grant ID 640176).



219 **References**

- 220 Adler, E.: Lignin chemistry—past, present and future, *Wood Sci. Technol.*, 11, 169-218, 1977.
- 221 Alriksson, A., and Eriksson, H. M.: Variations in mineral nutrient and C distribution in the soil and vegetation  
222 compartments of five temperate tree species in NE Sweden, *Forest Ecol. Manag.*, 108, 261-273, 1998.
- 223 Armstrong, D., Cook, H., and Thomas, B.: The lignin and cellulose contents of certain grassland species at different  
224 stages of growth, *J. Agri. Sci.*, 40, 93-99, 1950.
- 225 Barros, R. S., Finger, F. L., and Magalhães, M. M.: Changes in non-structural carbohydrates in developing fruit of  
226 *Myrciaria jaboticaba*, *Sci. Hortic.*, 66, 209-215, 1996.
- 227 Bert, D., and Danjon, F.: Carbon concentration variations in the roots, stem and crown of mature *Pinus pinaster* (Ait.),  
228 *Forest Ecol. Manag.*, 222, 279-295, 2006.
- 229 Cao, Y., and Chen, Y. M.: Biomass, Carbon and nutrient storage in a 30-year-old Chinese cork oak (*Quercus*  
230 *Variabilis*) forest on the south slope of the qinling mountains, China, *Forests*, 6, 1239-1255, 2015.
- 231 De Vries, W., Reinds, G. J., Gundersen, P., and Sterba, H.: The impact of nitrogen deposition on carbon sequestration  
232 in European forests and forest soils, *Global Change Biol.*, 12, 1151-1173, 2006.
- 233 Dietze, M. C., Sala, A., Carbone, M. S., Czimczik, C. I., Mantooth, J. A., Richardson, A. D., and Vargas, R.:  
234 Nonstructural carbon in woody plants, *Annu. Rev. Plant Biol.*, 65, 667-687, 2014.
- 235 Dixon, R. K., Solomon, A. M., Brown, S., Houghton, R. A., Trexler, M. C., and Wisniewski, J.: Carbon pools and flux  
236 of global forest ecosystems, *Science*, 263, 185-190, 1994.
- 237 Elias, M., and Potvin, C.: Assessing inter-and intra-specific variation in trunk carbon concentration for 32 neotropical  
238 tree species, *Can. J. Forest Res.*, 33, 1039-1045, 2003.
- 239 Fang, S. Z., Li, H. L., Sun, Q. X., and Chen, L. B.: Biomass production and carbon stocks in poplar-crop intercropping  
240 systems: a case study in northwestern Jiangsu, China, *Agroforest Syst.*, 79, 213-222, 2010.
- 241 Fyllas, N. M., Patiño, S., Baker, T. R., Bielefeld Nardoto, G., Martinelli, L. A., Quesada, C. A., Paiva, R., Schwarz, M.,  
242 Horna, V., Mercado, L. M., Santos, A., Arroyo, L., Jiménez, E. M., Luizão, F. J., Neill, D. A., Silva, N., Prieto, A.,  
243 Rudas, A., Silviera, M., Vieira, I. C. G., Lopez-Gonzalez, G., Malhi, Y., Phillips, O. L., and Lloyd, J.: Basin-wide  
244 variations in foliar properties of Amazonian forest: phylogeny, soils and climate, *Biogeosciences*, 6, 2677-2708,  
245 2009.
- 246 Han, W. H., Fang, J. Y., Reich, P. B., Ian Woodward, F., and Wang, Z. H.: Biogeography and variability of eleven  
247 mineral elements in plant leaves across gradients of climate, soil and plant functional type in China, *Ecol. Letts.*,  
248 14, 788-796, 2011.
- 249 He, J. S., Fang, J. Y., Wang, Z. H., Guo, D. L., Flynn, D. F., and Geng, Z.: Stoichiometry and large-scale patterns of leaf  
250 carbon and nitrogen in the grassland biomes of China, *Oecologia*, 149, 115-122, 2006.
- 251 Hessen, D. O., Ågren, G. I., Anderson, T. R., Elser, J. J., and de Ruiter, P. C.: Carbon sequestration in ecosystems: the  
252 role of stoichiometry, *Ecology*, 85, 1179-1192, 2004.

253 Hijmans, R. J., Cameron, S. E., Parra, J. L., Jones, P. G., and Jarvis, A.: Very high resolution interpolated climate surfaces  
 254 for global land areas, *Int. J. Climatol.*, 25, 1965-1978, 2005.

255 IPCC: Forest lands, Intergovernmental Panel on Climate Change Guidelines for National Greenhouse Gas Inventories,  
 256 Institute for Global Environmental Strategies (IGES), Hayama, Japan, 2006.

257 Johnson, J. M. F., Barbour, N. W., and Weyers, S. L.: Chemical composition of crop biomass impacts its decomposition,  
 258 *Soil Sci. Soc. Am. J.*, 71, 155-162, 2007.

259 Jones, D. A., and O'Hara, K. L.: Carbon density in managed coast redwood stands: implications for forest carbon  
 260 estimation, *Forestry*, 85(1), 99-110, 2012.

261 Jones, D. A., and O'Hara, K. L.: The influence of preparation method on measured carbon fractions in tree tissues, *Tree*  
 262 *Physiol.*, 36, 1177-1189, 10.1093/treephys/tpw051, 2016.

263 Kattge, J., Diaz, S., Lavorel, S., Prentice, I. C., Leadley, P., Bonisch, G., Garnier, E., Westoby, M., Reich, P. B., Wright,  
 264 I. J., Cornelissen, J. H. C., Violle, C., Harrison, S. P., Van Bodegom, P. M., Reichstein, M., Enquist, B. J.,  
 265 Soudzilovskaia, N. A., Ackerly, D. D., Anand, M., Atkin, O., Bahn, M., Baker, T. R., Baldocchi, D., Bekker, R.,  
 266 Blanco, C. C., Blonder, B., Bond, W. J., Bradstock, R., Bunker, D. E., Casanoves, F., Cavender-Bares, J., Chambers,  
 267 J. Q., Chapin III, F. S., Chave, J., Coomes, D., Cornwell, W. K., Craine, J. M., Dobrin, B. H., Duarte, L., Durka,  
 268 W., Elser, J., Esser, G., Estiarte, M., Fagan, W. F., Fang, J. Y., Fernandez-Mendez, F., Fidelis, A., Finegan, B.,  
 269 Flores, O., Ford, H., Frank, D., Freschet, G. T., Fyllas, N. M., Gallagher, R. V., Green, W. A., Gutierrez, A. G.,  
 270 Hickler, T., Higgins, S. I., Hodgson, J. G., Jalili, A., Jansen, S., Joly, C. A., Kerkhoff, A. J., Kirkup, D., Kitajima,  
 271 K., Kleyer, M., Klotz, S., Knops, J. M. H., Kramer, K., Kuhn, I., Kurokawa, H., Laughlin, D., Lee, T. D., Leishman,  
 272 M., Lens, F., Lenz, T., Lewis, S. L., Lloyd, J., Llusia, J., Louault, F., Ma, S., Mahecha, M. D., Manning, P., Massad,  
 273 T., Medlyn, B. E., Messier, J., Moles, A. T., Muller, S. C., Nadrowski, K., Naeem, S., Niinemets, Ü, Noliert, S.,  
 274 Nuske, A., Ogaya, R., Oleksyn, J., Onipchenko, V. G., Onoda, Y., Ordonez, J., Overbeck, G., Ozinga, W. A., Patino,  
 275 S., Paula, S., Pausas, J. G., Penuelas, J., Phillips, O. L., Pillar, V., Poorter, H., Poorter, L., Poschlod, P., Prinzing,  
 276 A., Proulx, R., Rammig, A., Reinsch, S., Reu, B., Sack, L., Salgado-Negret, B., Sardans, J., Shiodera, S., Shipley,  
 277 B., Siefert, A., Sosinski, E., Soussana, J. F., Swaine, E., Swenson, N., Thompson, K., Thornton, P., Waldram, M.,  
 278 Weiher, E., White, M., White, S., Wright, S. J., Yguel, B., Zaehle, S., Zanne, A. E., and Wirth, C.: TRY—a global  
 279 database of plant traits, *Global Change Biol.*, 17, 2905-2935, 2011.

280 Keith, H., Mackey, B. G., and Lindenmayer, D. B.: Re-evaluation of forest biomass carbon stocks and lessons from the  
 281 world's most carbon-dense forests, *Proc. Natl. Acad. Sci. USA*, 106, 11635-11640, 2009.

282 Lamtom, S. H., and Savidge, R. A.: A reassessment of carbon content in wood: variation within and between 41 North  
 283 American species, *Biomass Bioenerg.*, 25, 381-388, 2003.

284 Lewis, S. L., Lopez-Gonzalez, G., Sonke, B., Affum-Baffoe, K., Baker, T. R., Ojo, L. O., Phillips, O. L., Reitsma, J. M.,  
 285 White, L., Comiskey, J. A., Djuikouo, M. N., Ewango, C. E. N., Feldpausch, T. R., Hamilton, A. C., Gloor, M.,  
 286 Hart, T., Hladik, A., Lloyd, J., Lovett, J. C., Makana, J. R., Malhi, Y., Mbago, F. M., Ndangalasi, H. J., Peacock,  
 287 J., Peh, K. S. H., Sheil, D., Sunderland, T., Swaine, M. D., Taplin, J., Taylor, D., Thomas, S. C., Votere, R., and  
 288 Woll, H.: Increasing carbon storage in intact African tropical forests, *Nature*, 457, 1003, 2009.

289 Martin, A. R., and Thomas, S. C.: A reassessment of carbon content in tropical trees, *Plos One*, 6, e23533, 2011.

290 Martin, A. R., Thomas, S. C., and Zhao, Y.: Size-dependent changes in wood chemical traits: a comparison of neotropical  
291 saplings and large trees, *AOB Plants*, 5, plt039, 2013.

292 Martin, A. R., Gezahegn, S., and Thomas, S. C.: Variation in carbon and nitrogen concentration among major woody  
293 tissue types in temperate trees, *Can. J. Forest Res.*, 45, 744-757, 2015.

294 Martínez-Vilalta, J., Sala, A., Asensio, D., Galiano, L., Hoch, G., Palacio, S., Piper, F. I., and Lloret, F.: Dynamics of  
295 non-structural carbohydrates in terrestrial plants: a global synthesis, *Ecol. Monogr.*, 86, 495-516, 2016.

296 Niinemets, Ü., Ellsworth, D. S., Lukjanova, A., and Tobias, M.: Dependence of needle architecture and chemical  
297 composition on canopy light availability in three North American *Pinus* species with contrasting needle length,  
298 *Tree Physiol.*, 22, 747-761, 2002.

299 Northup, B., Zitzer, S., Archer, S., McMurtry, C., and Boutton, T.: Above-ground biomass and carbon and nitrogen  
300 content of woody species in a subtropical thornscrub parkland, *J. Arid Environ.*, 62, 23-43, 2005.

301 Ordoñez, J. C., Bodegom, P. M. V., Witte, J. P. M., Wright, I. J., Reich, P. B., and Aerts, R.: A global study of  
302 relationships between leaf traits, climate and soil measures of nutrient fertility, *Global Ecol. Biogeogr.*, 18, 137-  
303 149, 2009.

304 Pettersen, R. C.: The chemical composition of wood, in: *The Chemistry of Wood. Advances in Chemistry Series 207*,  
305 edited by: Rowel, R. M., ACS Publications, Washington, DC, 57-126, 1984.

306 Poorter, H., and Bergkotte, M.: Chemical composition of 24 wild species differing in relative growth rate, *Plant Cell*  
307 *Environ.*, 15, 221-229, 1992.

308 R Core Team: *R: A Language and Environment for Statistical Computing*. Vienna, Austria: R Foundation for Statistical  
309 Computing; 2014. R Foundation for Statistical Computing, 2016.

310 Reich, P. B., and Oleksyn, J.: Global patterns of plant leaf N and P in relation to temperature and latitude, *Proc. Natl.*  
311 *Acad. Sci. USA*, 101, 11001-11006, 2004.

312 Reich, P. B.: Global biogeography of plant chemistry: filling in the blanks, *New Phytol.*, 168, 263-266, 2005.

313 Rodrigues, D. P., Hamacher, C., Estrada, G. C. D., and Soares, M. L. G.: Variability of carbon content in mangrove  
314 species: Effect of species, compartments and tidal frequency, *Aquat. Bot.*, 120, 346-351, 2015.

315 Rouwenhorst, R. J., Jzn, J. F., Scheffers, W. A., and van Dijken, J. P.: Determination of protein concentration by total  
316 organic carbon analysis, *J. Biochem. Bioph. Meth.*, 22, 119-128, 1991.

317 Saatchi, S. S., Harris, N. L., Brown, S., Lefsky, M., Mitchard, E. T., Salas, W., Zutta, B. R., Buermann, W., Lewis, S.  
318 L., and Hagen, S.: Benchmark map of forest carbon stocks in tropical regions across three continents, *Proc. Natl.*  
319 *Acad. Sci. USA*, 108, 9899-9904, 2011.

320 Savidge, R.: Biochemistry of seasonal cambial growth and wood formation-an overview of the challenges, Savidge, R,  
321 A., Barnett, J, R., Napier, R ed (s). *Cell and molecular biology of wood formation. Experimental Biology Reviews.*  
322 BIOS Scientific Publishers Ltd.: Oxford, UK, 1-30, 2000.

323 Schlesinger, W. H., and Bernhardt, E. S.: Chapter 5 - The Biosphere: The Carbon Cycle of Terrestrial Ecosystems, in:  
324 *Biogeochemistry: An Analysis of Global Change, Third Edition*, Elsevier Inc., 2013.

325 Thomas, S. C., and Martin, A. R.: Carbon content of tree tissues: a synthesis, *Forests*, 3, 332-352, 2012.

326 Tian, D., Yan, Z. B., Niklas K. J., Han, W. X., Kattge, J., Reich, P. B., Luo, Y. K., Chen, Y. H., Tang, Z. Y., Hu, H. F.,  
327 Wright, I. J., Schmid, B., and Fang, J. Y.: 2017. Global leaf nitrogen and phosphorus stoichiometry and their  
328 scaling exponent. *Natl. Sci. Rev.*, 2017. (In press)

329 Tolunay, D.: Carbon concentrations of tree components, forest floor and understorey in young *Pinus sylvestris* stands in  
330 north-western Turkey, *Scand. J. Forest Res.*, 24, 394-402, 2009.

331 Uri, V., Varik, M., Aosaar, J., Kanal, A., Kukum ägi, M., and Lõhmus, K.: Biomass production and carbon sequestration  
332 in a fertile silver birch (*Betula pendula* Roth) forest chronosequence, *Forest Ecol. Manag.*, 267, 117-126, 2012.

333 Whittaker, R.H. *Communities and Ecosystems*. 2nd Revised Edition, MacMillan Publishing Co., New York, 1975.

334 Wu, H. L., Xiang, W. H., Fang, X., Lei, P. F., Ouyang, S., and Deng, X. W.: Tree functional types simplify forest  
335 carbon stock estimates induced by carbon concentration variations among species in a subtropical area, *Sci. Rep.*,  
336 7, 4992, 2017.

337 Yao, F. Y., Chen, Y. H., Yan, Z. B., Li, P., Han, W. X., and Fang, J. Y.: Biogeographic patterns of structural traits and  
338 C:N:P stoichiometry of tree twigs in China's forests, *Plos One*, 10, e0116391, 10.1371/journal.pone.0116391, 2015.

339 Yuan, Z. Y., Chen, H. Y. H., and Reich, P. B.: Global-scale latitudinal patterns of plant fine-root nitrogen and phosphorus,  
340 *Nat. Commun.*, 2, 344, 2011.

341 Zhang, Q. Z., Wang, C. K., Wang, X. C., and Quan, X. K.: Carbon concentration variability of 10 Chinese temperate  
342 tree species, *Forest Ecol. Manag.*, 258, 722-727, 10.1016/j.foreco.2009.05.009, 2009.

343 Zhao, N., Yu, G. R., He, N. P., Wang, Q. F., Guo, D. L., Zhang, X. Y., Wang, R. L., Xu, Z. W., Jiao, C. C., Li, N. N.,  
344 and Jia, Y. L.: Coordinated pattern of multi-element variability in leaves and roots across Chinese forest biomes,  
345 *Global Ecol. Biogeogr.*, 25, 359-367, 2016.

346 Zhu, J. X., Hu, X. Y., Yao, H., Liu, G. H., Ji, C. J., and Fang, J. Y.: A significant carbon sink in temperate forests in  
347 Beijing: based on 20-year field measurements in three stands, *Sci. China Life Sci.*, 58, 1135-1141, 2015.

348 Zhu, J. X., Hu, H. F., Tao, S. L., Chi, X. L., Li, P., Jiang, L., Zhu, J. L., Tang, Z. Y., Pan, Y. D., Birdsey R. A., He, X.  
349 H., and Fang, J. Y.: Carbon stocks and changes of dead organic matter in China's forests, *Nat. Commun.*, 8, 151,  
350 2017.

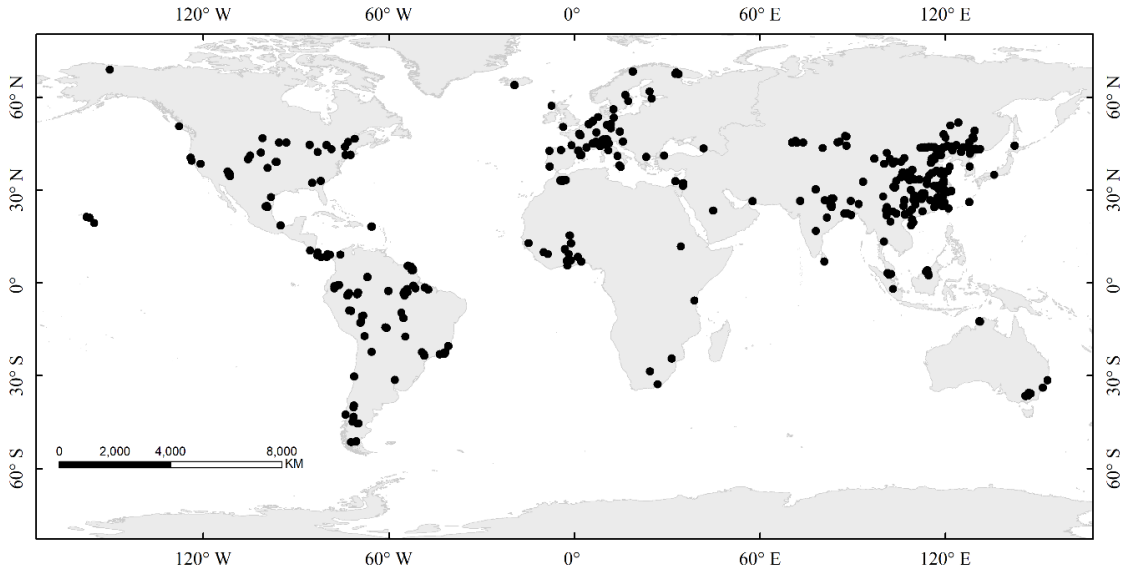
351 **Table 1.** Plant carbon content (%) in four organs across different life forms. *n* is the sample size, and SD is the  
 352 abbreviation of standard deviation. Samples for stem include the samples from shoot, stem, twig and branch. “-” indicates  
 353 no data.

354

Life form	Reproductive organ		Root		Leaf		Stem	
	<i>n</i>	Mean ±SD	<i>n</i>	Mean ±SD	<i>n</i>	Mean ±SD	<i>n</i>	Mean ±SD
Herbaceous plants	83	42.56 ±4.57	749	42.45 ±5.12	5181	44.73 ±3.45	162	42.41 ±3.54
Crop	42	42.40 ±5.11	56	38.20 ±5.23	85	41.32 ±3.38	69	43.26 ±3.15
Woody plants	57	48.56 ±4.07	1392	47.43 ±3.94	12064	47.83 ±3.81	3461	48.16 ±3.27
Deciduous broad-leaved	17	46.81 ±3.93	513	46.59 ±3.55	5074	47.25 ±3.42	1581	47.69 ±2.68
Evergreen broad-leaved	29	49.64 ±4.42	520	47.72 ±4.14	4490	48.48 ±3.86	1212	47.78 ±3.58
Conifers	8	48.25 ±2.56	252	48.43 ±4.16	560	50.25 ±3.33	502	50.48 ±3.07
Fern	-	-	2	43.64 ±3.83	98	44.47 ±3.33	-	-
Vine	2	45.83 ±0.33	38	46.25 ±4.46	251	45.74 ±4.77	82	46.73 ±2.69
Bamboo	-	-	23	45.06 ±4.28	30	42.98 ±5.09	39	49.20 ±3.54
All	142	45.01 ±5.23	2306	45.64 ±4.95	18124	46.85 ±3.98	3754	47.88 ±3.49

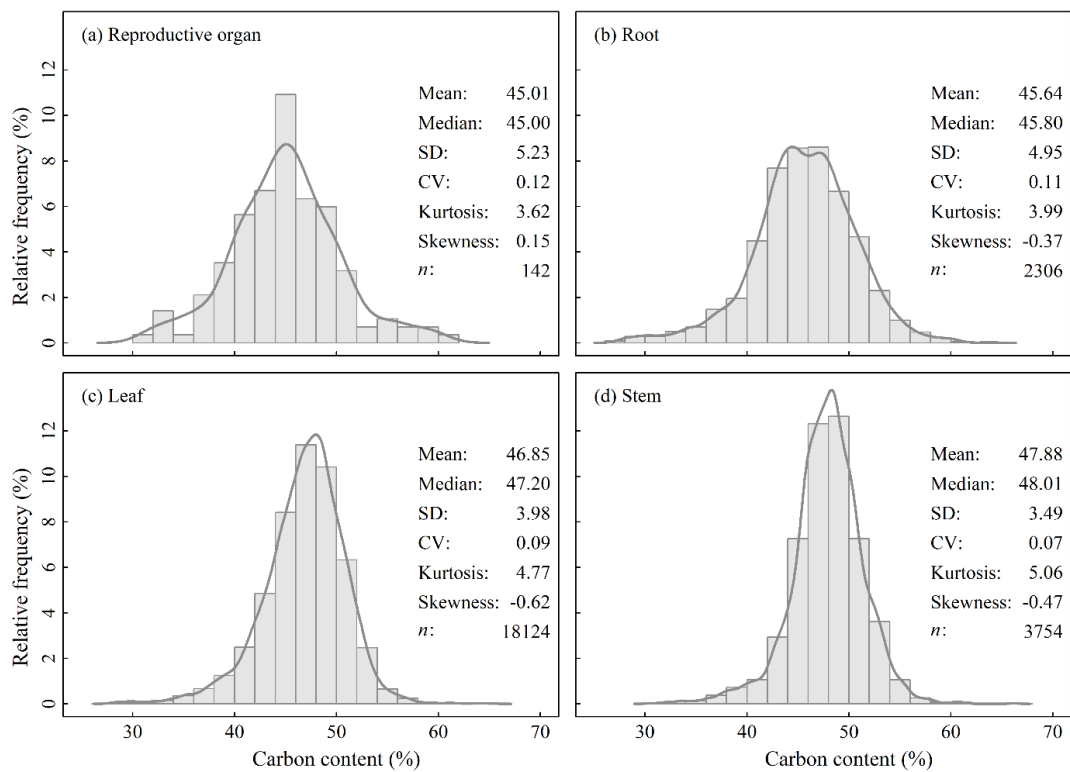
355 **Figure 1.** Geographic distribution of sample sites used in this synthesis.

356



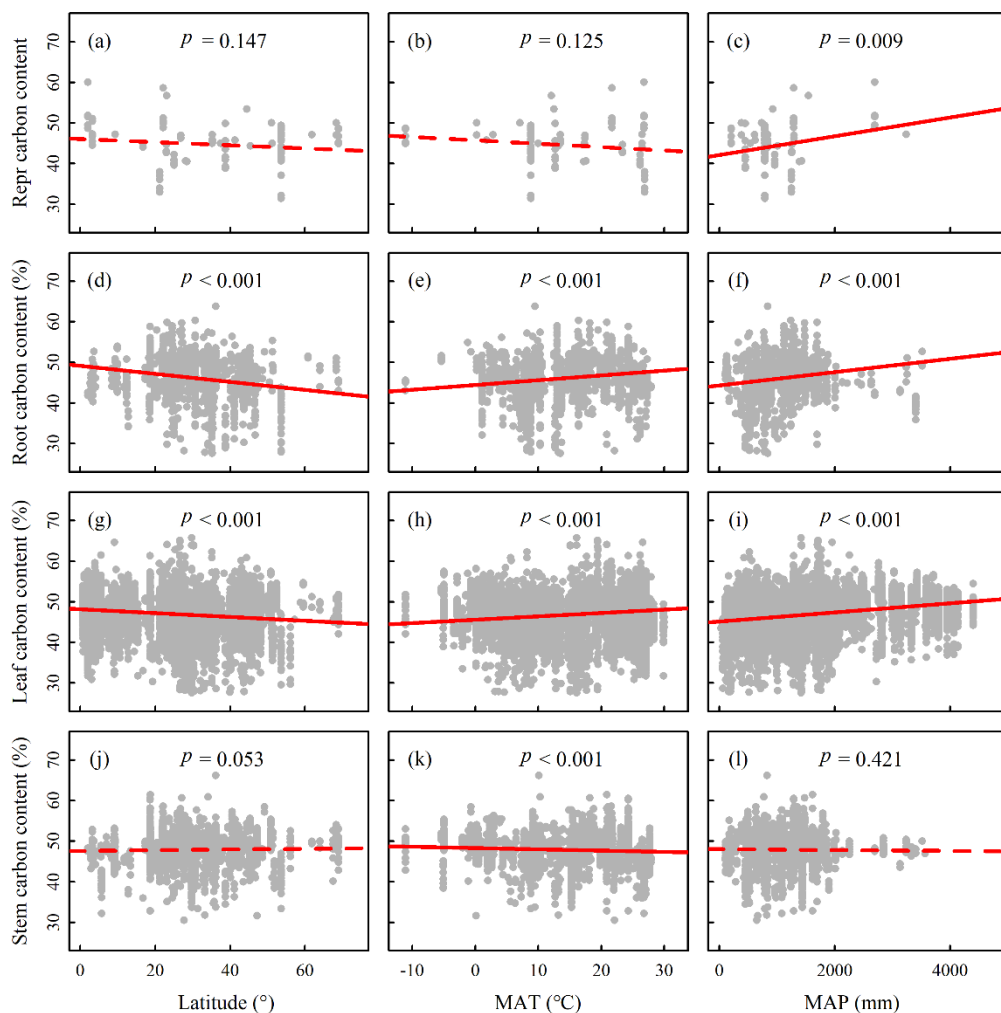
357

358 **Figure 2.** Histograms of carbon content of (a) reproductive organ, (b) root, (c) leaf and (d) stem. Abbreviations: SD,  
359 Standard deviation; CV, coefficient of variation. *n* indicates sample size.



360

361 **Figure 3.** Trends in the plant carbon contents along latitude and climate gradients. MAT, mean annual temperature;  
362 MAP, mean annual precipitation. Ordinary least squares (OLS) regression lines are fit to the data. Solid lines indicate  
363 the significant relationships with  $p < 0.05$ , and dashed lines denotes the insignificant relationships with  $p > 0.05$ .  
364 Abbreviations: Repr carbon content, Reproductive organ carbon content. Plant carbon content in roots and leaves showed  
365 a significant latitudinal trend.

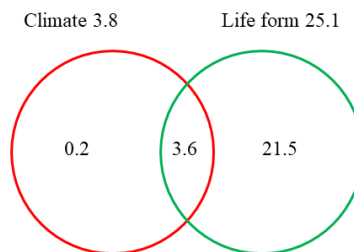
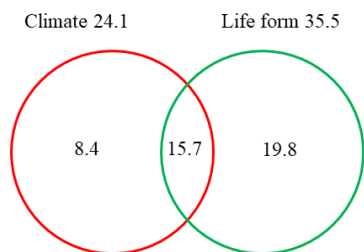


366

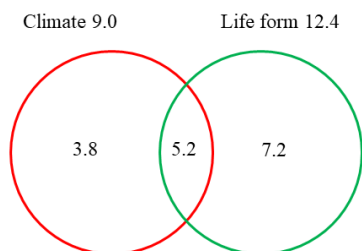


367 **Figure 4.** Variation partitioning ( $r^2$ ) of climate and life forms in accounting for the variances in plant carbon contents  
368 across different organs. (a) reproductive organ, (b) root, (b) leaf, and (d) stem. Life form independently explained more  
369 variation of carbon content in each organ than climate.  
370

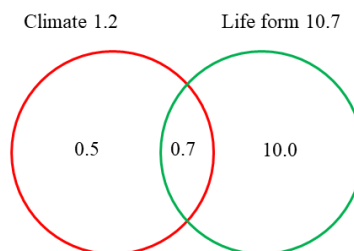
(a) Full model for reproductive organ carbon content: 43.9 (%) (b) Full model for root carbon content: 25.3 (%)



(c) Full model for leaf carbon content: 16.2 (%)



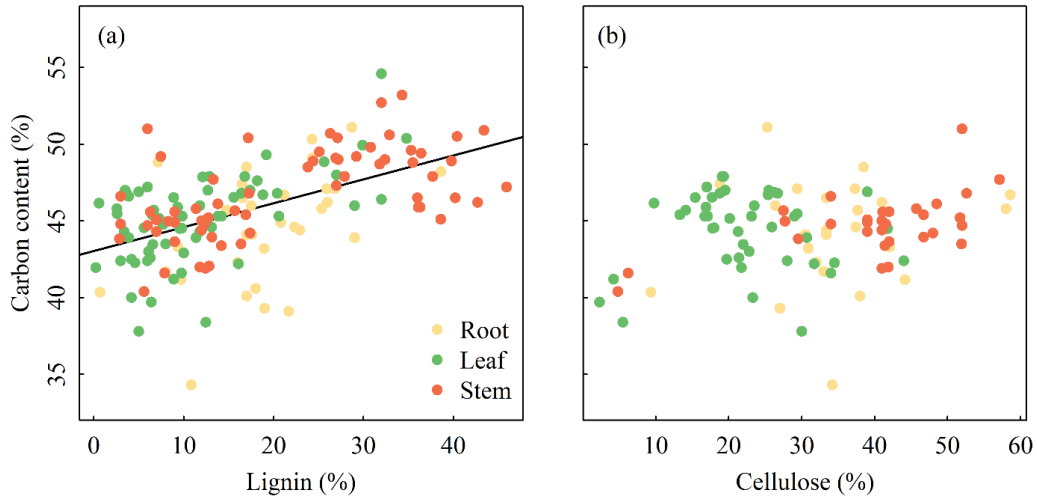
(d) Full model for stem carbon content: 11.2 (%)



371

372 **Figure 5.** Relationships between plant carbon content and lignin and cellulose among three organs. Plant carbon  
373 content increases significantly with the increasing lignin in plant ( $r^2 = 0.29$ ,  $p < 0.001$ ), whereas it is not correlated  
374 with the cellulose in plants.

375



376 **Figure 6.** Relationships between plant carbon content and lignin and cellulose in woody plants and herbaceous plants.  
377 Plant carbon content increases significantly with increasing lignin in plant ( $r^2 = 0.29, p < 0.001$ ), whereas it is not  
378 correlated with the cellulose in plants.

