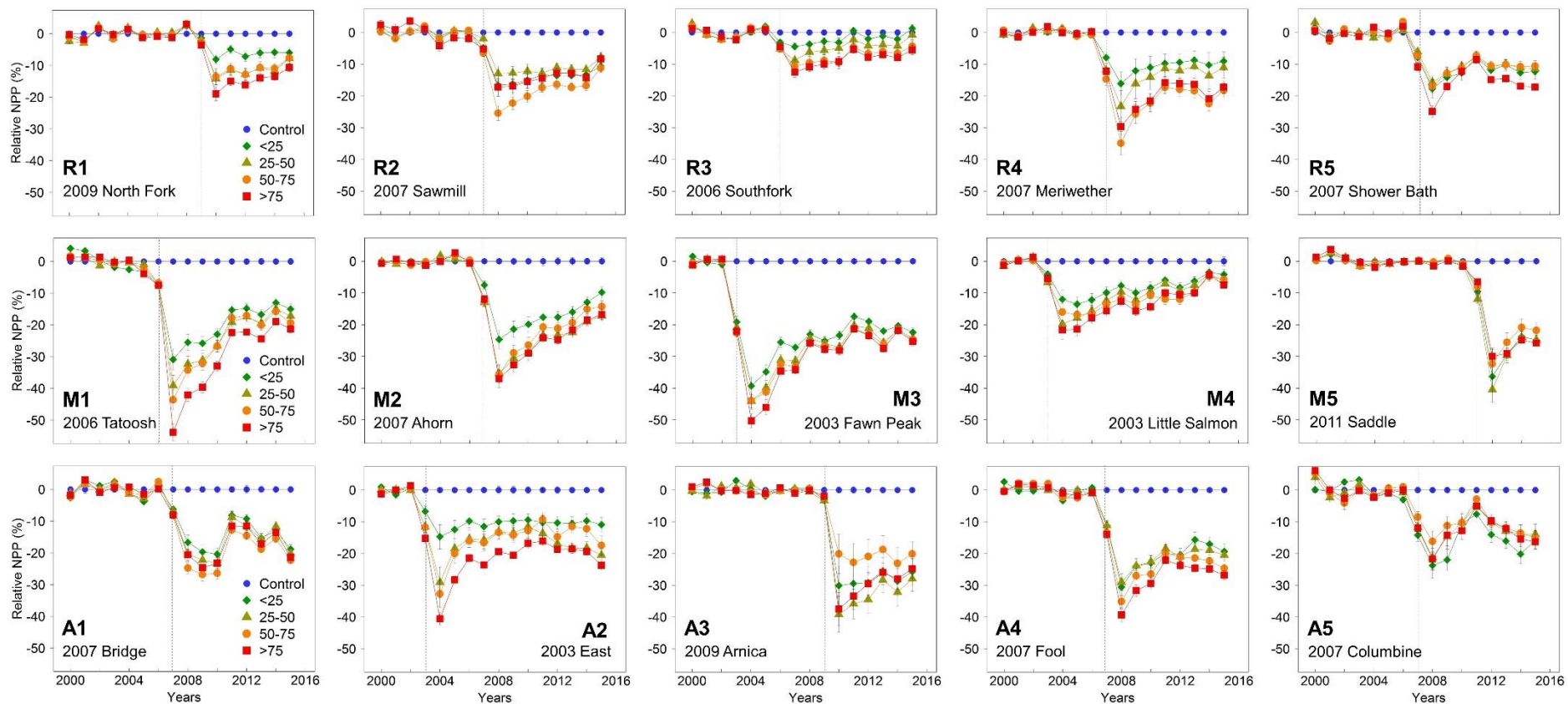
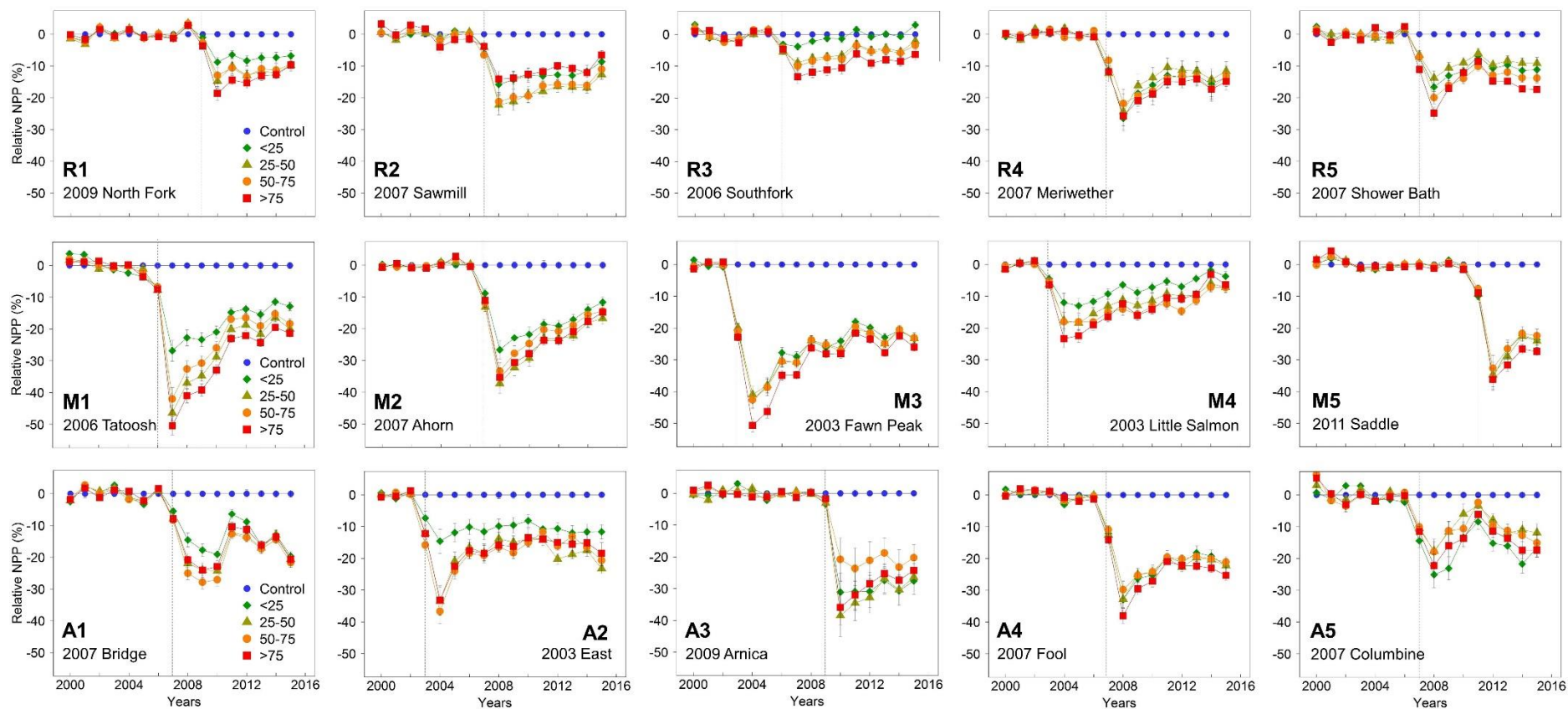


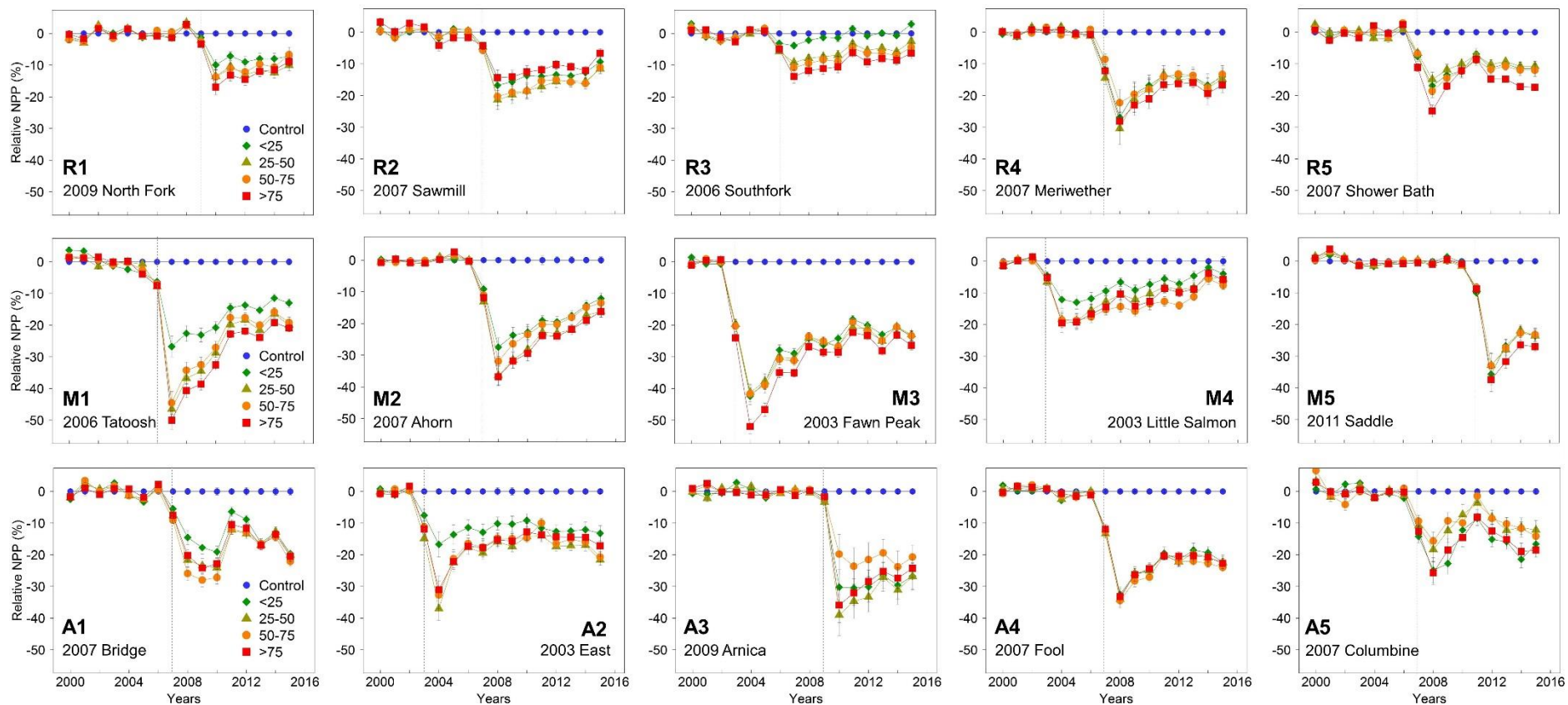
**Supplemental Figure 1.** FIRE dose impacts on NPP response observed in forest stands dominated with species across the fire resistance continuum. Forests dominated by fire-resistant species (R1-R5), mixed species (M1-M5), and fire-susceptible species (A1-A5) are shown. Grey dotted line marks fire year.



**Supplemental Figure 2.** Peak FRP dose impacts on NPP response observed in forest stands dominated with species across the fire resistance continuum. Forests dominated by fire-resistant species (R1-R5), mixed species (M1-M5), and fire-susceptible species (A1-A5) are shown. Grey dotted line marks fire year.



**Supplemental Figure 3.** 90<sup>th</sup> percentile FRP dose impacts on NPP response observed in forest stands dominated with species across the fire resistance continuum. Forests dominated by fire-resistant species (R1-R5), mixed species (M1-M5), and fire-susceptible species (A1-A5) are shown. Grey dotted line marks fire year.



**Supplemental Figure 4.** Mean FRP dose impacts on NPP response observed in forest stands dominated with species across the fire resistance continuum. Forests dominated by fire-resistant species (R1-R5), mixed species (M1-M5), and fire-susceptible species (A1-A5) are shown. Grey dotted line marks fire year.

