

We thank the reviewer for the positive and helpful comments. Please find below our detailed responses to their remarks (in italics).

## 1 Response to remarks from reviewer 1

*1. I am curious why the authors used LaThuile dataset which includes short term dataset than FLUXNET2015. This is particularly important as this manuscript deals with climate extreme and C fluxes.*

We understand that the reviewer is surprised to see that we work with the La Thuile data set and this indeed needs justification: This activity started as a synthesis activity in the period where only the La Thuile dataset was available. However, please note that we already added more recent data for several sites available from the European flux network (<http://www.europe-fluxdata.eu/>) so we are basically using an extended La Thuile version of FLUXNET. Still, due to internal reasons, the paper could not be finalized earlier than 2017. We are also aware that the length of the time-series has increased in the US since we started the analysis and the record length of our analysis is not as long as it could have been. However, the complicated data harmonization, upscaling and WAI analyses with the La Thuile dataset were quite extensive and cannot be repeated because the first author has moved on to other duties. We therefore decided to progress with the publication using the La Thuile dataset. We see this paper as a prototype on how one could reanalyze the new FLUXNET releases but also as a benchmark for the results from the numerous papers published on the La Thuile version of the FLUXNET dataset.

*2. I am curious why Tmax related events are much more frequent than the others (Tmin, WAI..) in Fig 3a. The extremes were defined as 5*

First of all, this is due to the different durations of high temperature extremes detected compared to the detected WAI extremes. Due to the different data streams and climate variables used, temperature values tended to fluctuate with a much higher frequency compared to the rather smooth and slow fluctuations of WAI (cf. Fig 8 for an example). This resulted in many independent but rather short extreme events for temperature compared to fewer but longer extreme events for the strongly auto-correlated WAI. The amount of extreme **days** (in contrast to extreme **events**) was identical for both variables (5% of the data). The small amount of  $T_{min}$  extreme events compared to  $T_{max}$  is due to the fact that we only investigated (and, hence, plotted in Fig 3) instantaneous responses during the growing season (cf. Sec. 2.5). For extra tropical sites, many of the defined  $T_{min}$  extreme events occurred during winter, which is outside the growing season. This explains the much lower number of extreme events in Fig 3.

*3. I recommend choosing a few (not all) long-term (>15 years) flux tower data from FLUXNET2015, and testing how your delta GPP, Reco, and NEE are robust with different time spans (e.g. 5, 10, 15 years) or random samples (say, 10 years) many times and check delta GPP, Reco and NEE. Although the authors started with Fig 1 stressing available long-term data, I feel many*

sites have 15 years data records, which might be not enough to test delta GPP, Reco, and NEE although they include climate extreme years. I think the authors already have all results for individual sites, so it would not require substantial efforts.

First of all, we are not overly concerned about this issue, as the extremes were identified in the meteorological data streams which consisted of 30 year time series for every site. We then only compared the distributions of the flux anomalies during these extremes. Thus, longer flux time series would only make the estimated flux impacts slightly more robust but are unlikely to change the general results on extreme event distributions etc. discussed in this paper. In addition, due to changed professional locations, regrettably, we are unable to do this (see also our response to remark 1 above). We would have to redo the extensive analyses, including meteorological downscaling (which includes downloading current ERA interim datasets, harmonizing them, etc), new WAI calculations, etc..

*P8 L13: Curious why APAR was used in computing potential evaporation. Net radiation is a better proxy and is available from reanalysis datasets.*

Thanks for bringing this to our attention. In fact, net radiation is used in our estimation. We basically scaled potential evapotranspiration (which is estimated via the Priestley Taylor approach using net radiation) with fAPAR, which is a common approach. Our method description (and the more detailed description we are referring to in Tramontana et.al (2016)) does not, however, mention this explicitly. We extended our methods description (line 12ff, page 8) to make this more clear:

Potential evapotranspiration is estimated based on Priestley and Taylor (1972) from net radiation (also taken from the reanalysis data) using a Priestley-Taylor coefficient of 1.26. Potential evapotranspiration is then finally scaled with smoothed fAPAR (from MODIS).”

*P9 L1: I think some ecosystems (e.g. savanna) reveal seasonally varying sensitivity to water availability (e.g. wet vs dry season).*

The referee is right. See the corresponding answer to a similar remark from referee 2 (i.e. the 5th comment) for details.

*P10 L27: remove )*

We removed “)”.

*P12 L7: add (*

We added “(”.

*P12 L17: Reco is computed using soil/air temperature from NEE. I am curious if such high sensitivity of Reco to temp extremes is entirely independent from the way to compute Reco.*

The reviewer raises very valid issue here. We are confident that this dependence of the different variables does not bias our results very much, as, using the approach of Reichstein et. al. (2005), the temperature dependence of Reco to NEE is computed using a rather short and local time window. If high temperatures during drought extremes would cause an impact on the ecosystem which would change this dependency, the flux partitioning algorithm would reflect this temporal change. We tested our confidence, however, by performing

the identical analysis with night time NEE as a directly measured proxy for NEE and mid-day NEE as a proxy for GPP (page 7, line 2-6) and found patterns consistent with the results presented (data is not shown in the submitted manuscript).

*P15 L8: The argument, a stronger increase in Reco led more C gain looks contradictory. Probably stronger increase in GPP?*

Thanks for bringing this to our attention, GPP and Reco were confused here. We changed this to:

“A stronger increase in GPP led to a slight overall increase of NEP (i.e. a C gain)”

*P18 L27: add )*

We added “)”.

## 2 Response to remarks from reviewer 2

*Section 1.2 Provides thorough and very specific background on the response of photosynthesis to temperature and water stress (line 25 p. 3 to line 6 p. 4), but less detailed background on microbial responses to the same stressors (lines 7-14 p. 4). It would be great to balance this by providing a bit more background on microbial ecology, and perhaps streamline the background on photosynthetic responses.*

We agree. We supplemented the discussion of extreme event impacts on ecosystem respiration with the following:

“Ecosystem respiration ( $R_{eco}$ ) is the sum of autotrophic respiration and the CO<sub>2</sub> emissions arising from the heterotrophic decomposition of organic matter in soil (e.g. Law et al., 1999, 2001; Epron et al., 2004). Like GPP, it is affected by changing soil (and, hence, ambient air) temperatures (Lloyd and Taylor, 1994; Kirschbaum, 1995; Davidson et al., 1998; Kirschbaum, 2006). Rising temperatures directly increase the kinetics of microbial decomposition, root respiration and the diffusion of enzymes. Hence, soil respiration is commonly modeled as an exponential function of temperature using the vant Hoff type Q10 model (vant Hoff 1898, Jassal 2008, Mahecha et.al. 2010) or other functions of similar shape (e.g. Ktterer et al., 1998, Kirschbaum, 1995 and Reichstein et.al, 2008). Even though enzyme activity generally decreases above a certain temperature optimum (Kirschbaum, 1995), such high temperatures rarely occur in extra tropical soils (Reichstein et.al., 2008), so high temperatures alone are rarely an inhibiting stressor for soil respiration.

In addition, the activity of soil microorganisms depends on soil moisture (Orchard and Cook, 1983; Gaumont-Guay et al., 2006; Liu et al., 2009; Epron et al., 2004). Drought conditions strongly reduce soil respiration because the microbial activity causing soil respiration is dependent on the presence of water films for substrate diffusion and exo-enzyme activity (Davidson & Janssens, 2006, Jassal et al., 2008, Frank et. al., 2015). In addition, low soil water status may even cause microbial dormancy and/or death (Orchard & Cook, 1983). Indirectly, drought reduces microbial activity through different processes like the

alteration of soil nutrient retention and availability (Muhr et al., 2010; Bloor & Bardgett, 2012) or changes in microbial community structure (Sheik et al., 2011, Frank et.al. 2015). Finally, interactions between the response to temperature and water status, such as changing temperature dependency due to changing soil water status (e.g. Reichstein et al., 2002, 2007), further complicate the picture.”

*Section 2.2 (line 5) is there a citation that could be added to justify the use of midday NEE as approximation for GPP and nighttime NEE for  $R_{eco}$ ?*

Thanks for bringing this to our attention. We added a reference for this:

“To assess whether this could bias our analysis, we also performed all of our calculations using midday NEE as a rough estimate for GPP and averaged nighttime NEE as a proxy for  $R_{eco}$  (Reichstein et. al. 2005).”

*Section 2.3 (line 4 p.8) What is the relevance of noting that most sites have  $R^2 > 0.9$ ? Is this a source of concern, or is the exclusion of sites with  $R^2 < 0.6$  sufficient? Clarification would be useful.*

We are sorry, but the “i” was a mere spelling mistake. We corrected it to “j”:

“The correlation between downscaled and site-level data for air temperature was  $R^2 > 0.9$  for nearly 90% of the sites.”

*Section 2.3 (line 10 p. 8) If i understand this description correctly, the authors are stating that their approach assumes that the water storage capacity is assumed the same everywhere. In absence of good site-specific information, this approach may be reasonable, but it would also be useful to provide some commentary on how the results might be affected by this assumption. For example, what would the sensitivity of the results be to assuming a slightly lower or higher water storage capacity?*

The reviewer raises a very valid issue here. The water storage capacity is highly dependent on various soil specifics. However, to consistently calculate a water status estimator for the wide range of sites investigated here without the availability of consistent and comparable water storage capacity data for all sites, we had to use this rather crude simplification. We added the following paragraph to the methodological description of WAI (page 8, line 18):

“The WAI does not account for local soil or vegetation specific properties such as soil texture, rooting depth, etc. such that the WAI may be interpreted as a ‘climatological water availability metric’. The results are sensitive to the fixed value of storage capacity, which influences the timing and magnitude of extreme drought events. For example, a larger (smaller) storage capacity value would tend to result in a later (earlier) extreme drought detection. We are confident, however, that these changes would not strongly bias the qualitative and global patterns of the flux impacts investigated in this analysis.”

*Section 2.4 (p. 9 lines 2-3) Why is seasonal variation in sensitivity to water availability not expected? My intuition is that there could be quite a bit of sensitivity in ecosystems where phenology is driven by precipitation rather than temperature. Can the authors provide more explanation?*

We agree, for several ecosystems the response to WAI can certainly vary seasonally. Simply de-seasonalizing the WAI time series (like we did with temperature) would, however, not be a good solution to this. To fully address this

issue, it would be necessary to systematically stratify the extreme events according to the phenological stages or timing during the growing season. This was, however, not the scope of this first assessment, but may be the focus of future studies using the presented framework (see page 22, line 27).

*Section 3.3 p. 13 line 23 This is a small thing, but having the longer term reversal in the trend for  $R_{eco}$  described as "somewhat surprising" makes me wonder what evidence there is that we might expect any other trend. A little context on why the authors find it surprising would be helpful, or alternatively, I'd suggest just deleting the phrase "and somewhat surprisingly,"*

The referee is right, it is not that "surprising that the negative impacts on  $R_{eco}$  increased with duration. With our formulation we wanted to stress the importance of the fact that short extremes generally showed increasing effects on  $R_{eco}$ , whereas longer extremes resulted in mostly decreases in  $R_{eco}$ . We changed the paragraph as follows to clarify this aspect:

"With increasing duration, the response in  $R_{eco}$  was reversed: for short heat events (i.e. a duration of less than 18 days),  $R_{eco}$  increased with respect to normal conditions by up to  $2\sigma$ , whereas for events that last longer than a month, the response of  $R_{eco}$  was predominantly negative."

### 3 References

(in addition to the ones already cited in the discussion version of the manuscript):

- Bloor JMG, Bardgett RD, 2012, Stability of above-ground and below-ground processes to extreme drought in model grassland ecosystems: Interactions with plant species diversity and soil nitrogen availability. Perspectives in Plant Ecology Evolution and Systematics, 14, 193- 204.
- Davidson EA, Janssens IA, 2006, Temperature sensitivity of soil carbon decomposition and feedbacks to climate change. Nature, 440, 165-173.
- Ktterer, T., Reichstein, M., Andrn, O., Lomander, A. (1998): Temperature dependence of organic matter decomposition: a critical review using literature data analyzed with different models. Biol. Fertil. Soils 27, 258-262.
- Miguel D. Mahecha, Markus Reichstein, Nuno Carvalhais, Gitta Lasslop, Holger Lange, Sonia I. Seneviratne, Rodrigo Vargas, Christof Ammann, M. Altaf Arain, Alessandro Cescatti, Ivan A. Janssens, Mirco Migliavacca, Leonardo Montagnani, Andrew D. Richardson (2010). Global convergence in the temperature sensitivity of respiration at ecosystem level. Science, 329(5993), 838-840.
- Muhr J, Franke J, Borken W (2010) Drying-rewetting events reduce C and N losses from Norway spruce forest floor. Soil Biology & Biochemistry, 42, 1303-1312

- Reichstein et al, (2005), *Global Change Biology* 11, 116, doi: 10.1111/j.1365-2486.2005.001002.x, On the separation of net ecosystem exchange into assimilation and ecosystem respiration: review and improved algorithm
- Reichstein, M., & Beer, C. (2008). Soil respiration across scales: the importance of a modeldata integration framework for data interpretation. *Journal of Plant Nutrition and Soil Science*, 171(3), 344-354.
- Sheik CS, Beasley WH, Elshahed MS, Zhou X, Luo Y, Krumholz LR (2011) Effect of warming and drought on grassland microbial communities. *The ISME Journal - Multidisciplinary Journal of Microbial Ecology*, 5, 1692-1700.
- vant Hoff, J. H. (1898): *Lectures on Theoretical and Physical Chemistry. Part 1: Chemical Dynamics.* Edward Arnold, London
- Reichstein et al, (2005), *Global Change Biology* 11, 116, doi: 10.1111/j.1365-2486.2005.001002.x, On the separation of net ecosystem exchange into assimilation and ecosystem respiration: review and improved algorithm
- Tramontana, G., Jung, M., Schwalm, C. R., Ichii, K., Camps-Valls, G., Rduly, B., Reichstein, M., Arain, M. A., Cescatti, A., Kiely, G., Merbold, L., Serrano-Ortiz, P., Sickert, S., Wolf, S., and Papale, D. (2016): Predicting carbon dioxide and energy fluxes across global FLUXNET sites with regression algorithms, *Biogeosciences*, 13, 4291-4313, <https://doi.org/10.5194/bg-13-4291-2016>.

## 4 Additional changes

Some minor things were changed in the document compared to the first submission which were not mentioned by the reviewers:

- some author affiliations
- a paragraph that was duplicated in the first manuscript was deleted
- capitalisation of some acronyms
- section heading 1.2 was made more precise
- “cf.” was changed to “see”

Manuscript prepared for Biogeosciences  
with version 2014/05/22 6.83 Copernicus papers of the L<sup>A</sup>T<sub>E</sub>X class copernicus.cls.  
Date: 14 January 2018

# Impacts of droughts and extreme temperature events on gross primary production and ecosystem respiration: a systematic assessment across ecosystems and climate zones

Jannis von Buttlar<sup>1,2</sup>, Jakob Zscheischler<sup>1,3</sup>, Anja Rammig<sup>4</sup>, Sebastian Sippel<sup>1,5</sup>,  
Markus Reichstein<sup>1,6</sup>, Alexander Knohl<sup>2</sup>, Martin Jung<sup>1</sup>, Olaf Menzer<sup>7</sup>,  
M Altaf Arain<sup>8</sup>, Nina Buchmann<sup>3</sup>, Alessandro Cescatti<sup>9</sup>, Damiano Geinelle<sup>10</sup>,  
Gerard Kiely<sup>11</sup>, Beverly E. Law<sup>12</sup>, Vincenzo Magliulo<sup>13</sup>, Hank Margolis<sup>14</sup>,  
Harry McCaughey<sup>15</sup>, Lutz Merbold<sup>3,16</sup>, Mirco Migliavacca<sup>1</sup>,  
Leonardo Montagnani<sup>17</sup>, Walter Oechel<sup>18,19</sup>, Marian Pavelka<sup>20</sup>, Matthias Peichl<sup>21</sup>,  
Serge Rambal<sup>22</sup>, Antonio Raschi<sup>23</sup>, Russell L. Scott<sup>24</sup>, Francesco P. Vaccari<sup>23</sup>,  
Eva van Gorsel<sup>25</sup>, Andrej Varlagin<sup>26</sup>, Georg Wohlfahrt<sup>27</sup>, and  
Miguel D. Mahecha<sup>1,5</sup>

<sup>1</sup>Max Planck Institute for Biogeochemistry, 07745 Jena, Germany

<sup>2</sup>Georg-August-Universität Göttingen, Wilhelmsplatz 1, 37073 Göttingen, Germany

<sup>3</sup>ETH Zürich, Rämistrasse 101, 8092 Zürich, Switzerland

<sup>4</sup>TUM School of Life Sciences Weihenstephan, Technische Universität München, 85354 Freising, Germany

<sup>5</sup>Norwegian Institute of Bioeconomy Research, Høgskoleveien 8, 1431 Ås, Norway

<sup>6</sup>German Centre for Integrative Biodiversity Research (iDiv) Halle-Jena-Leipzig, Deutscher Platz 5e, 04103 Leipzig, Germany

<sup>7</sup>University of California Santa Barbara, Santa Barbara CA 93106-3060, U.S.A.

<sup>8</sup>McMaster University, 1280 Main St W, Hamilton, ON L8S 4L8, Canada

<sup>9</sup>JRC, Institute for Environment and Sustainability, TP290 Via E. Fermi, 2749 I-21027 Ispra, Italy

<sup>10</sup>Fondazione Edmund Mach di San Michele all'Adige, Via E. Mach, 1 38010 S. Michele all'Adige, Italy

<sup>11</sup>University College Cork, College Road, Cork T12 YN60, Ireland

<sup>12</sup>Oregon State University, Corvallis OR 97331, USA

<sup>13</sup>CNR, Institute for Mediterranean Forest and Agricultural Systems, via Patacca 85, 80040 Ercolano (Napoli), Italy

<sup>14</sup>Université Laval, 2325, rue de l'Université, Québec G1V 0A6, Canada

<sup>15</sup>Queen's University, 99 University Avenue, Kingston, Ontario, K7L 3N6, Canada

<sup>16</sup>Mazingira Centre, International Livestock Research Institute (ILRI), PO Box 30709, 00100 Nairobi, Kenya

<sup>17</sup>Free University of Bozen-Bolzano, Piazza Università 1, 39100 Bolzano BZ, Italy

<sup>18</sup>Global Change Research Group, San Diego State University, San Diego, CA. USA 92182

<sup>19</sup>Department of Geography, College of Life and Environmental Sciences, University of Exeter, Exeter, UK EX4 4RJ

<sup>20</sup>Global Change Research Institute CAS, Bělidla 986/4a, 603 00 Brno, Czech Republic

<sup>21</sup>Department of Forest Ecology & Management, Swedish University of Agricultural Sciences, Skogsmarksgränd, 901 83 Umeå, Sweden

<sup>22</sup>Centre d'Ecologie Fonctionnelle et Evolutive CEFE, 1919, route de Mende 34293 Montpellier 5, France

<sup>23</sup>Istituto di Biometeorologia - Sede di Firenze, Via Giovanni Caproni 8 - I-50145 Firenze, Italy

<sup>24</sup>Southwest Watershed Research Center, 2000 E. Allen Road, Tucson, AZ, 85719, USA

<sup>25</sup>Australian National University, Acton ACT 2601, Canberra, Australia

<sup>26</sup>A.N. Severtsov Institute of Ecology and Evolution, Russian Academy of Sciences, Leninsky pr., 33, Moscow, 119071, Russia

<sup>27</sup>University of Innsbruck, Sternwartestrasse 15, A-6020 Innsbruck, Austria

Correspondence to: J. v. Buttlar (jbuttlar@bgc-jena.mpg.de), M. D. Mahecha

## Abstract.

Extreme climatic events, such as droughts and heat stress induce anomalies in ecosystem-atmosphere CO<sub>2</sub> fluxes, such as gross primary production (GPP) and ecosystem respiration ( $R_{eco}$ ), and, hence, can change the net ecosystem carbon balance. However, despite our increasing understanding of the underlying mechanisms, the magnitudes of the impacts of different types of extremes on GPP and  $R_{eco}$  within and between ecosystems remain poorly predicted. Here we aim to identify the major factors controlling the amplitude of extreme event impacts on GPP,  $R_{eco}$ , and the resulting net ecosystem production (NEP). We focus on the impacts of heat and drought and their combination. We identified hydrometeorological extreme events in consistently downscaled water availability and temperature measurements over a 30 year time period. We then used FLUXNET eddy-covariance flux measurements to estimate the CO<sub>2</sub> flux anomalies during these extreme events across dominant vegetation types and climate zones. Overall, our results indicate that short-term heat extremes increased respiration more strongly than they down-regulated GPP, resulting in a moderate reduction of the ecosystem's carbon sink potential. In the absence of heat stress, droughts tended to have smaller and similarly dampening effects on both GPP and  $R_{eco}$ , and, hence, often resulted in neutral NEP responses. The combination of drought and heat typically led to a strong decrease in GPP, whereas heat and drought impacts on respiration partially offset each other. Taken together, compound heat and drought events led to the strongest C sink reduction compared to any single-factor extreme. A key insight of this paper, however, is that duration matters most: for heat stress during droughts, the magnitude of impacts systematically increased with duration, whereas under heat stress without drought, the response of  $R_{eco}$  over time turned from an initial increase to a down-regulation after about two weeks. This confirms earlier theories that not only the magnitude but also the duration of an extreme event determines its impact. Our study corroborates the results of several local site-level case studies, but as a novelty generalizes these findings at the global scale. Specifically, we find that the different response functions of the two antipodal land-atmosphere fluxes GPP and  $R_{eco}$  can also result in increasing NEP during certain extreme conditions. Apparently counter-intuitive findings of this kind bear great potential for scrutinizing the mechanisms implemented in state-of-the-art terrestrial biosphere models and provide a benchmark for future model development and testing.

## 1 Introduction

### 1.1 Overview

Extreme climatic events such as heat or drought are key features of Earth's climatic variability (Ghil et al., 2011) that occur on a wide range of time scales (Huybers and Curry, 2006). Extreme climatic events directly propagate into the terrestrial biosphere, thus affecting ecosystem functioning (Reichstein et al., 2013; Frank et al., 2015) and land surface properties (e.g. soil moisture), which in turn



triggers ecosystem-atmosphere feedback loops (e.g. Seneviratne et al., 2010; Green et al., 2017). For example, drought in conjunction with severe heat reversed several years of ecosystem carbon sequestration in Europe in 2003 (Ciais et al., 2005), and strong land-atmosphere feedbacks exacerbated the event while it was occurring (Fischer et al., 2007). However, ecosystem impacts of extreme climatic events are often non-linear and interact with concurrent climatic conditions. Additionally, potential impacts can cancel each other out depending on the type and state of the ecosystem and the magnitude of the climatic event. For instance, extremely warm conditions at the beginning of the growing season during spring 2012 in the contiguous US increased ecosystem carbon uptake, which subsequently compensated for ecosystem carbon losses later during the same year's summer heat and drought. Nonetheless, warm spring conditions and corresponding earlier vegetation activity likely also contributed to exacerbating drought impacts through reduced initial soil moisture at the onset of summer drought (Wolf et al., 2016). Because extreme climate events have been changing in recent decades with, for example, a general increase in the amount of warm days and the duration of warm spells and the opposite trend for cold days and spells (Sillmann et al., 2013a), and are projected to continue to change (Sillmann et al., 2013b), an understanding of their impacts on ecosystems is crucial. Ideally, this understanding would cover ecological processes that operate at both local and global scales. However, due to non-linear and interacting ecosystem effects of climate extremes, differences in ecosystem responses across various growing season stages (Wolf et al., 2016), and various ways through which different ecosystem types mediate climatic extremes (e.g. Teuling and Seneviratne, 2011), it currently remains unclear whether a global perspective on ecosystem responses to climate extremes can emerge from local-scale observations alone. Moreover, understanding ecosystem responses to climate extremes is crucial in the context of potentially increasing intensities or frequencies of climatic extremes that could lead to a positive carbon cycle-climate feedback via a reduction in the land carbon sink.

## 60 **1.2 Ecophysiology Stress ecophysiology of photosynthesis and respiration**

Gross primary production (GPP, which is carboxylation rate (i.e. true photosynthesis) minus photorespiration ~~ref. Wohlfahrt and Gu (2015)~~ (Wohlfahrt and Gu, 2015) is strongly impacted by temperature and water stress (Reichstein et al., 2013). Besides its other main environmental drivers (radiation, humidity (i.e. vapor pressure deficit (VPD)) and CO<sub>2</sub> concentration (Leuning, 1990)), temperature directly influences photosynthesis by affecting the kinetics of its two main chemical processes, namely the maximum rates of carboxylation (i.e.  $V_{c,max}$ , Farquhar et al. (1980)) and electron transport (i.e.  $J_{max}$ ) (e.g. Medlyn et al., 2002; Sage and Kubien, 2007). Both rates initially increase with rising temperature but decrease above a certain optimum temperature (Bonan, 2008). Leaf (i.e. light) respiration similarly increases with temperature (Leuning, 1990), which additionally reduces GPP. As a result, extremely high temperatures can severely reduce photosynthesis (and, hence, GPP) (Salvucci and Crafts-Brandner, 2004; Allakhverdiev et al., 2008).

Soil water stress impacts photosynthesis (see e.g. van der Molen et al., 2011, for a review) by causing either ecophysiological or structural changes to the plant (Schulze, 1986; Chaves, 1991). For instance, a physiological reduction in photosynthesis can be caused by reductions in enzymatic activity (Chaves et al., 2009; Keenan et al., 2010; van der Molen et al., 2011) or a reduction in mesophyll and stomatal conductance (e.g. Flexas and Medrano, 2002; Bréda et al., 2006). Structural changes reducing photosynthesis include reductions in leaf area and specific leaf area or changes in leaf geometry or orientation (Bréda et al., 2006; Fisher et al., 2007). Via increased tree mortality, droughts can also severely impact ecosystem level photosynthesis long after the drought event itself (e.g. Bréda et al., 2006; Bigler et al., 2007).

All these responses are highly species dependent, highlighting the need for global cross-site analyses. For example, forest species generally close their stomata much earlier compared to species from grassland or savannah ecosystems, which often keep transpiring until their water storage is depleted (Wolf et al., 2016). In addition, anisohydric plants in general have no control over their stomata (van der Molen et al., 2011). A soil dependent factor increasing the ecosystem's drought resilience is the rooting depth and the general availability of fine roots (Bréda et al., 2006).

In addition, interactions between heat and drought may affect GPP. For example, drought-induced closing of the stomata and the subsequent reduction in evaporative cooling can further increase heat stress when water stress co-occurs with a high temperature anomaly (De Boeck and Verbeeck, 2011; Bréda et al., 2006). Conversely, high temperature impacts can be alleviated by evaporative cooling as long as enough water for transpiration is available (De Boeck et al., 2010).

Ecosystem respiration ( $R_{eco}$ ) is the sum of autotrophic respiration and the  $CO_2$  emissions arising from the heterotrophic decomposition of organic matter in soil (e.g. Law et al., 1999, 2001; Epron et al., 2004) (e.g. Law et al., 1999). Like GPP, it is affected by changing soil (and, hence, ambient air) temperatures (Lloyd and Taylor, 1994; Kirschbaum, 1995; Davidson et al., 1998; Kirschbaum, 2006). Rising temperatures directly increase the kinetics of microbial decomposition, root respiration and the diffusion of enzymes. Hence, soil respiration is commonly modeled as an exponential function of temperature using the van't Hoff type Q10 model (van 't Hoff, 1898; Jassal et al., 2008; Mahecha et al., 2010) or other functions of similar shape (e.g. Kätterer et al., 1998; Kirschbaum, 1995; Reichstein and Beer, 2008). Even though enzyme activity generally decreases above a certain temperature optimum (Kirschbaum, 1995), such high temperatures rarely occur in extra tropical soils (Reichstein and Beer, 2008), so high temperatures alone are rarely an inhibiting stressor for soil respiration.

In addition, the activity of soil microorganisms depends on soil moisture (~~Orchard and Cook, 1983; Gaumont-Guay et al., 2006; Liu and drought conditions directly~~ (Orchard and Cook, 1983; Gaumont-Guay et al., 2006; Liu et al., 2009; Epron et al., 2004)). Drought conditions strongly reduce soil respiration (Jassal et al., 2008). Interactions because the microbial activity causing soil respiration is dependent on the presence of water films for substrate diffusion and exo-enzyme activity (Davidson and Janssens, 2006; Jassal et al., 2008; Frank et al., 2015). In addition, low soil water status may even cause microbial dormancy and/or death (Orchard and Cook, 1983).

110 Indirectly, drought reduces microbial activity through different processes like the alteration of soil nutrient retention and availability (Muhr et al., 2010; Bloor and Bardgett, 2012) or changes in microbial community structure (Sheik et al., 2011; Frank et al., 2015). Finally, interactions between the response of these two climate forcings to temperature and water status, such as changing temperature dependency due to changing soil water status (e.g. Reichstein et al., 2002, 2007) (Reichstein et al., 2002; Reichstein and Beer, 2008), further complicate the picture.

115 As described above, both heat and drought affect GPP and  $R_{eco}$  in a similar fashion, although the amplitude and onset of this impact may differ. Hence, one important outstanding question involves the impact of climate extremes on the balance of these two fluxes: the net ecosystem production (NEP). Models tend to agree that drought affects GPP more strongly than  $R_{eco}$ , but their spread is large and predictions for the C balance are uncertain (Zscheischler et al., 2014b). In addition, 120 observational studies on large drought and heat events like the 2003 European heat wave (Ciais et al., 2005; Vetter et al., 2008; Reichstein et al., 2007; Granier et al., 2007) or the 2000-2004 drought in North America (Schwalm et al., 2012) have shown, for example, that drought may cause a much stronger reduction in GPP compared to  $R_{eco}$ , leading to a reduction in the ecosystem's carbon ( $\text{CO}_2$ ) uptake.

125 However, it is important to understand that the tight coupling between GPP and  $R_{eco}$  in most ecosystems (Irvine et al., 2008; Mahecha et al., 2010; Migliavacca et al., 2010; van der Molen et al., 2011; Peichl et al., 2013; Rambal et al., 2014) complicates systematic assessments across sites. For example, heterotrophic respiration is not only a function of the environment, but is also strongly driven by the availability of recently assimilated carbon (Irvine et al., 2005; Granier et al., 2007; 130 Ruehr et al., 2012). Hence, a reduction in photosynthesis may cause a lagged reduction in soil respiration (Law, 2005; Ryan and Law, 2005; Jassal et al., 2012) in the absence of a large labile carbon stock.

### 1.3 Today's opportunities

The majority of studies so far focus on individual sites and predefined extreme events (see Frank et al., 2015, for a review) and only a few have focused on comparisons of extreme event impacts 135 globally across sites and/or across broader regions and different ecosystems (Schwalm et al., 2010, 2012). The La Thuille dataset collected by FLUXNET consists of 252 sites of eddy-covariance flux observations in a standardized way (Baldocchi, 2008). This data provides a basis for a robust assessment of the impacts of climatic extremes on ecosystem  $\text{CO}_2$  fluxes. The opportunities arising 140 from this observation trove are exemplified in Fig. 1. The figure re-calculates the impacts of the 2003 heat wave on land fluxes as estimated by Ciais et al. (2005) using more reference years based on the data available. The general findings of Ciais et al. (2005), who showed a strong reduction in C uptake, are confirmed, but we now estimate a lower reduction in  $\text{CO}_2$  uptake when considering more reference years, which is consistent with Vetter et al. (2008), who found a similar pattern using

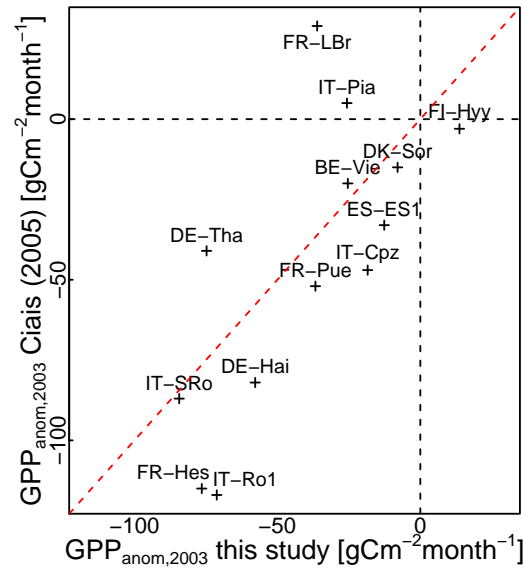


Figure 1: Comparison of the gross primary productivity (GPP) reductions during the 2003 European heat wave for several FLUXNET sites. Ciais et al. (2005) quantified this reduction by comparing the 2003 fluxes to the previous year, whereas we are able to use all available site years as a baseline.

145 models. Consequently, the length of today’s data records and in particular the tremendous work of the numerous networks and initiatives (ref. Sec. A) who collect this data and provide it to the scientific community allows us to update previous quantifications of the CO<sub>2</sub> flux impacts of climate extremes.

#### 1.4 Objectives of this study

150 The objectives of this study are threefold: First, we want to exploit the available FLUXNET data to systematically assess if extreme events corroborate our assumptions about ecosystem behavior and to empirically describe the spectrum of extreme responses across the globe. To do so, we extract information about the occurrence of an extreme climatic event directly from the observed data, not by first assuming the occurrence of an extreme event (i.e. by identifying an extreme response  
 155 of the observed ecosystem). Second, our goal is to develop an extreme event detection framework with a focus not only on the extremeness of the climate forcing but which simultaneously takes into account the resulting extremeness of the ecosystem’s response or lack thereof (Smith, 2011; Reichstein et al., 2013). Finally, we aim to bridge the gap between local site level studies and global assessments, which most often are based on models (e.g. Cramer et al., 1999; Friedlingstein et al.,  
 160 2006) or upscaling studies (Beer et al., 2010; Jung et al., 2017) by providing some helpful benchmarks for the models and their underlying assumptions (Canadell et al., 2000; Williams et al., 2009).

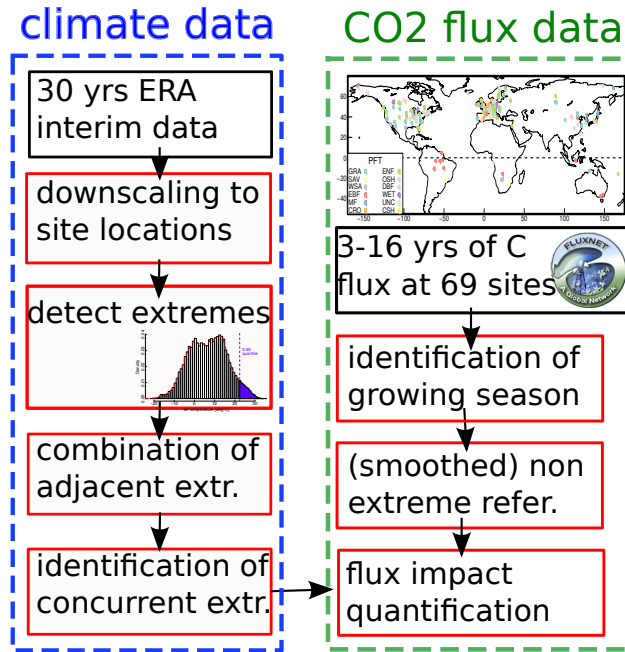


Figure 2: Conceptual overview of the different data streams and subsequent steps of our analysis.

## 2 Methods

### 2.1 Study concept and overview

Our study can be outlined as a three-step process (Fig. 2): first, we use consistently downsampled  
 165 climate data (Sec. 2.3) to detect climatic extreme events (Sec. 2.4) during the growing season in  
 a set of ecosystems. Second, we compare CO<sub>2</sub> fluxes (Sec. 2.2) during these extreme events with  
 reference fluxes during comparable, non-extreme periods to quantify the impact of each extreme  
 event (Sec. 2.5). Third, we use site-specific information like plant functional type (PFT) or eco-  
 climatic zone (Geiger Köppen climate classes) as well as climate extreme characteristics (including  
 170 type and duration) to systematically assess potential causes of differences between extreme event  
 responses in the different ecosystems.

### 2.2 CO<sub>2</sub> flux data

Measurements of CO<sub>2</sub> flux and climate parameters collected through a network of measurement  
 sites were used in this study. CO<sub>2</sub> fluxes were measured using the eddy-covariance technique (e.g.  
 175 Moncrieff et al., 1997; Baldocchi, 2003). The measured net carbon flux (i.e. net ecosystem exchange  
 (NEE)) was partitioned into GPP and R<sub>eco</sub> (Reichstein et al., 2005) at each site. The empirical rela-  
 tionships used by this partitioning scheme assume similar ecophysiological conditions for any given

time step (e.g. for one of the extreme events detected here) and a short reference period is used to fit these empirical functions. Environmental stress, however, could also directly impact the processes governing these empirical relationships and hence the validity of this assumption. To assess whether this could bias our analysis, we also performed all of our calculations using midday NEE as a rough estimate for GPP and averaged nighttime NEE as a proxy for  $R_{eco}$  (Reichstein et al., 2005). Throughout the rest of the manuscript, we refer to net ecosystem production (NEP) instead of NEE (i.e.  $NEP = GPP - R_{eco} = (-1) \cdot NEE$ ), because NEP is centered on the ecosystem (i.e. positive NEP equals  $CO_2$  uptake) and facilitates a more intuitive interpretation together with the component fluxes GPP and  $R_{eco}$ .

Eddy-covariance measurements are continuously taken at various sites across the globe by individual research teams and are collected and consistently processed by the FLUXNET network (Baldocchi et al., 2001; Baldocchi, 2008, 2014). For this analysis, we used the FLUXNET LaThuile dataset, which consists of a total of 252 sites. We used additional data from the European eddy fluxes database cluster (<http://www.europe-fluxdata.eu/>) for site-years collected since the creation of the La Thuile dataset in 2007. Both networks consistently filter the submitted data for potential outliers. The half-hourly measurements supplied by the data providers are consistently gap-filled via marginal distribution sampling (MDS) (Reichstein et al., 2005), i.e. by filling missing values with measurements taken under similar meteorological conditions, and aggregated to daily mean values. For this analysis we used only daily aggregates and excluded data for days with less than 85% original measurements or high confidence gap-filled data.

To be able to compare flux measurements during a potential extreme event with fluxes during non-extreme conditions during comparable stages of the phenological cycle in other years, we selected 102 sites with time series longer than 3 years. In addition, we removed 4 sites where the correlation between downscaled climate data and measured site meteorology was too low ( $R^2 < 0.6$ ) (Sec. 2.3), and 4 sites where water availability (Sec. 2.3) could not be calculated due to missing data. Finally, we excluded 25 managed and disturbed sites where disturbances such as fire and thinning would have resulted in biases in the calculations of the non-extreme reference data in years before or after the disturbance. This resulted in a subset of 69 sites (Tab. 4) out of the original 252 LaThuille sites, with a total of 433 site-years of data (i.e. years with data > 75% complete). These sites span eleven plant functional types (PFTs) including grasslands, wetlands and forest type ecosystems (Tab. 2) and all major Geiger Köppen climate zones (Tab. 3) (i.e. first category zones A-E), as well as half of the 24 Geiger Köppen sub-zones (i.e. the secondary categories).

## 2.3 Climate data

To be able to identify extreme events over sufficiently long and consistent time periods for all sites, compared to the much shorter time periods where actual measurements were available, we used downscaled climate data for the extreme event detection. We used daily air temperature, and, for the

215 calculation of the water availability (see below), global radiation and precipitation from ERA-Interim data (Dee et al., 2011) at 0.5° spatial resolution (i.e. the area of 1 pixel  $\leq (55\text{km})^2$ ).

Multiple linear regression models of the nearest 9 grid-boxes (i.e. the gridbox with the tower and its direct neighbor pixels) were fitted to FLUXNET site-level meteorology measurements. The resulting models were used to predict site-level values for a time period of 30 years between 1983-2012. The resulting time series were then used to detect climate extremes. The correlation between 220 downscaled and site-level data for air temperature was  $R^2 \approx 0.9$  for nearly 90% of the sites. Sites with  $R^2 < 0.6$  ( $\approx 5\%$  of the sites, mainly tropical evergreen broad-leaved forests) were removed from the analysis due to the low quality of the downscaling.

To consistently quantify the amount of soil water available to the plant, a water availability index (WAI) was calculated. This index based on the water balance between precipitation and evapotranspiration and was calculated as a simple two-layer bucket model (see supplement 3 in Tramontana et al., 2016, for detailed equations etc.). At each time step, the soil is recharged with water by precipitation up to a maximum value defined by the storage capacity (125 mm). Losses of water by evapotranspiration are taken as the minimum of either potential evapotranspiration or supply limited evapotranspiration. Potential evapotranspiration is ~~calculated~~ estimated based on Priestley and 230 Taylor (1972) from net radiation (also taken from the reanalysis data) using a Priestley-Taylor coefficient of 1.26 ~~and~~ Potential evapotranspiration is then finally scaled with smoothed fAPAR (from MODIS). Supply limited evapotranspiration is calculated following Teuling et al. (2009), and is simply defined as a fraction (i.e. 0.05, the median of the values determined by Teuling et al. (2009)) of current WAI. Assuming that both water recharge (i.e. precipitation) and water loss (i.e. evapotranspiration) operate from top to bottom, WAI was computed for a simple two-layer model, where the 235 storage capacity of the upper layer was set to 25 mm, and of the lower layer to 100 mm. Only WAI of the lower layer was used in the subsequent analysis and scaled to 0-1 (by dividing by the maximum capacity of 100). The WAI does not account for local soil or vegetation specific properties such as soil texture, rooting depth, etc. such that the WAI may be interpreted as a 'climatological water availability metric'. The results are sensitive to the fixed value of storage capacity, which influences the timing and magnitude of extreme drought events. For example, a larger (smaller) storage capacity value would tend to result in a later (earlier) extreme drought detection. We are confident, however, that these changes would not strongly bias the qualitative and global patterns of the flux impacts investigated in this analysis.

## 245 2.4 Extreme event detection

*Extreme events* were defined and detected in the following stepwise procedure:

1. identification of single extreme data points (i.e. days) crossing the upper and lower 5th percentile threshold

2. combination of temporally connected single extreme data-points into *extreme events*

250 3. identification of co-occurring extreme events of different variables to classify *concurrent extremes*.

A percentile based approach (Seneviratne et al., 2012; Zscheischler et al., 2014a) was used to define the upper and lower 5th percentile of the original distribution as extreme (subscript  $_{max}$  and  $_{min}$ ). Due to the strong seasonal cycles of air temperature and WAI at most outer tropical sites, this definition resulted in extreme events mainly being detected in summer and winter and represents a means for capturing extreme conditions beyond an actual value with direct physiological meaning.

255 However, from an ecosystem physiological perspective, an extreme climatic event can also occur outside the maximum or minimum period of the year (e.g. during spring or fall for temperature). To detect such extreme events, air temperature time-series were deseasonalized by subtracting a *mean annual cycle* (MAC) to yield *anomalies*. The MAC was computed as the daily average of all 30 years and smoothed with a 2 week moving-average. The upper (and lower) 5th percentiles of these anomalies were defined as extreme (subscript  $_{anom,max}$  and  $_{anom,min}$ ) (Tab. 1 for all extreme event notations used). Such anomaly extremes were only detected for air temperature, because seasonally varying sensitivity to water availability is not expected.

265 After the identification of single extreme time steps (i.e. days), contiguous extreme time steps were concatenated into extreme *events*. Additionally, two successive but not contiguous extreme events were subsequently grouped into one long extreme event if the non-extreme period between them was shorter than 20% of the combined length of the two extreme events together. This prevented short term fluctuations of temperature (WAI did not usually fluctuate so quickly) below the extreme threshold during one long period of high temperature from separating this period into smaller extreme events and allowed for a more realistic assessment of the extreme event duration (see below).

270 To differentiate between the effects of univariate extremes and the possibility of different impacts of simultaneous extremes of heat and drought, the following types of extreme events were differentiated: (1) single variable extreme events irrespective of the possible extremeness of other variables (denoted  $T/WAI_{min}$ ), (2) single variable extreme events without other variables being extreme (denoted  $T/WAI_{min,s}$ ) and (3) concurrent extremes (Seneviratne et al., 2012; Leonard et al., 2014), i.e. coupled extreme events with multiple variables being extreme ( $T_{max} + WAI_{min}$ ) (Tab. 1 for an overview).

280 Finally all extreme events were described by characteristics such as duration and type (see above) to identify which of these factors influence the type and magnitude of possible impacts. At this first stage we did not consider several other ecosystem specific important factors which influence the ecosystem's response to climatic extremes such as site history and detailed species composition (e.g. Law, 2014). Such an analysis should be generally possible at future stages (Sec. 3.6), however, the relevant information first has to be gathered across all sites in a standardized and comparable way.



Table 1: Overview of different extreme event types and the suffixes denoting them.

label	extreme type
$T_{max}/T_{min}$	temperature maximum/minimum
$WAI_{min}$	water availability minimum (i.e. drought)
$T_{anom,max}$	temperature anomaly maximum
$T_{max,s}/WAI_{min,s}$	temperature/WAI extreme without the other variable being extreme
$T_{max} + WAI_{min}$	concurrent extreme with both temperature and WAI being extreme

## 285 2.5 Flux impact calculations

To identify those events that actually have a physiological impact among all the detected climatic extreme events, a consistent quantification of the actual impact on the ecosystem was required.

To do so, differences between the mean of the fluxes during the *extreme event* and comparable *reference periods* were computed (see e.g. Ciais et al., 2005; Schwalm et al., 2012; Van Gorsel et al., 290 2016; Wolf et al., 2016, for a similar approach). These reference periods were defined to be non-extreme, identical days of the year (DOY) from all other available years. For the reference period, the mean was computed from a moving-average smoothed time series (i.e. 14 day moving-average filtering computing the median) to minimize the influence of stochastic fluctuations. During the actual extreme event, however, non-smoothed data were used to compute these means.

$$295 \quad \Delta f = \bar{f}_{extr} - \bar{f}_{ref} = \frac{1}{n} \sum_{k=i}^{i+n-1} f_k - \frac{1}{ny} \sum_{k=j} f_k \quad (1)$$

Here  $f$  denotes the respective CO<sub>2</sub> flux (NEP, GPP or Reco),  $i$  denotes the first day of one particular extreme event of length  $n$ ,  $j$  denotes the identical (and not extreme) days of the year (DOY) in all other years, and  $y$  is the number of reference years.

As the amplitudes of  $R_{eco}$  and GPP differ significantly between highly productive and less pro- 300 ductive ecosystems, all analyses were done for original (Eq. 1) and for  $z$  transformed time series:

$$\Delta z = \bar{z}_{extr} - \bar{z}_{ref} = \frac{1}{n} \sum_{k=i}^{i+n-1} z_k - \frac{1}{ny} \sum_{k=j} z_k \quad (2)$$

with

$$z_k = \frac{f_k - \bar{f}}{\hat{\sigma}(f)} \quad (3)$$

for all  $k$ .

305 Even though extreme events outside the growing season, such as extreme frost periods in winter, can have impacts on the ecosystem's carbon fluxes such impacts would be lagged in many cases (i.e. visible during the following growing season). Because only instantaneous responses were investigated with our framework, it was necessary to exclude such extreme events from the analysis. To identify the growing season, a spline function was used to smooth the time series of GPP. In the  
310 first step, all smoothed values above the 25th percentile were considered to be the growing season. Subsequently, in each year these periods were extended at the beginning and end of the detected period by identifying the first day when the smoothed series dropped below the 5th percentile.

### 3 Results and Discussion

We begin by discussing the different effects of heat and drought on primary production and respira-  
315 tion observed at a global scale (i.e. averaged over all ecosystems). The different responses to concurrent heat and drought extreme events in contrast to heat or drought only events are highlighted and discussed in Sec. 3.2. The crucial role that the duration of the extreme event plays for the impact is discussed in Sec. 3.3 and the response of different ecosystem types or PFTs that may explain the large spread of the impacts in Sec. 3.4. We conclude by discussing strengths and limitations of the  
320 approach presented here (Sec. 3.5) and examining future directions (Sec. 3.6).

#### 3.1 Contrasting impacts of heat vs. drought on GPP and $R_{eco}$

High temperature extremes without particularly low water availability (i.e.  $T_{max}$ ,  $T_{anom,max}$ ,  $T_{max,s}$  and  $T_{anom,max,s}$ ) had only small or virtually zero impacts on GPP (Fig. 3), which is consistent with earlier findings (e.g. for the European heat wave 2003 (Reichstein et al., 2007)). This averaged ef-  
325 fect can be partly explained by the specific response of different ecosystem types (see Sec. 3.4). Heat extremes in general tended to have no or only a small negative impact on observed rates of GPP in most cases. Even though GPP has been shown to have clear temperature optima and decreases at high temperatures due to enzyme inhibition (Bernacchi et al., 2001; Medlyn et al., 2002; Larcher, 2003), such conditions (i.e. temperatures well above 30 °C) are experienced only rarely in  
330 the (mostly temperate and Mediterranean) sites investigated. Other studies also confirm the small impact of heat alone on GPP (De Boeck et al., 2010). Only for very long and pronounced extreme events was a clear negative impact on GPP observed (discussed in detail in Sec. 3.3).

In our analysis, water scarcity events (i.e.  $WAI_{min}$  and  $WAI_{min,s}$ ) in general showed a reduction in GPP and  $R_{eco}$ , which, due to compensation of these component fluxes, led to no discernible  
335 changes in NEP on average over the considered FLUXNET sites (Fig. 3). In contrast, events in which low water availability coincided with heat led to a very strong reduction in GPP, but a lesser reduction in  $R_{eco}$  and as a consequence to the strongest reduction in carbon uptake (see Sec. 3.2

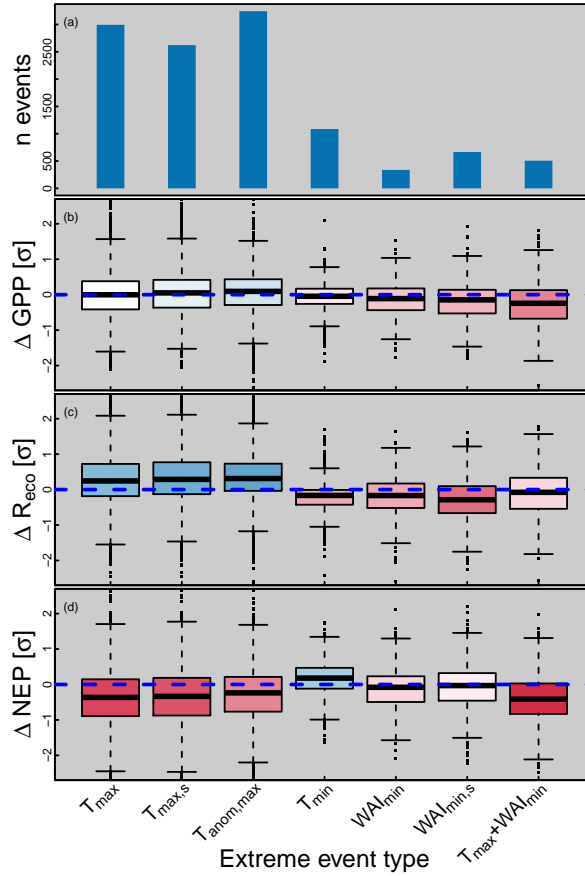


Figure 3: Impacts of different extreme event types for a selection of different extreme event types (heat ( $T_{max}$ ), heat only ( $T_{max,s}$ ), temperature anomalies extreme ( $T_{anom,s}$ ), cold ( $T_{min}$ ), drought ( $WAI_{min}$ ), drought only ( $WAI_{min,s}$ ) and combined drought and heat ( $T_{max}+WAI_{min}$ ), Tab. 1 for details on all extreme types) on gross primary production (GPP), ecosystem respiration ( $R_{eco}$ ) and net ecosystem production (NEP). Shown are differences between the normalized fluxes (i.e. their z-scores) during a non-extreme reference period and the fluxes during the extreme event ( $\Delta z = z_{extr} - z_{ref}$ , cf. see Eq. 2 and 3 for details). Boxplots are color coded according to the median of the distribution with shades of blue (for positive values, i.e. a flux increase during the extreme) and red (for negative/decreased values).

for a more detailed discussion). Such a strong effect of droughts (compared to high temperatures alone) on GPP and the generally decreasing effect of drought on GPP is consistent with other studies (e.g. Ciais et al., 2005; Zhao and Running, 2010; Wolf et al., 2013; Zscheischler et al., 2014a, d, c) where water stress directly forces plants to close their stomata to limit transpiration, reducing photosynthesis. Similarly, Jung et al. (2017) found that water availability is a much bigger control

on the inter annual variability of GPP (IAV, which is controlled to a large degree by extreme events) compared to a smaller temperature control on a global level.

345 In contrast to the small response of GPP to heat, however,  $R_{eco}$  generally increased during most high temperature extreme events (Fig. 3). As a consequence, NEP decreased, which represents reduced carbon uptake of the ecosystem. Rising temperatures in general lead to an increase in the microbial degradation of biomass (Mahecha et al., 2010) which explains rising  $R_{eco}$  rates during short periods of high temperatures as observed in other studies (Rustad et al., 2001; Wu et al., 2011; 350 Zhao and Running, 2010; Anderson-Teixeira et al., 2011; Van Gorsel et al., 2016). An additional factor could be higher radiation inputs, which result in increased photo-degradation in relatively open non-forest ecosystems.

Compared to temperature, soil respiration as the main component of  $R_{eco}$  is regulated much more strongly by soil water availability (Meir et al., 2008). Droughts in general in our study led to a similar 355 reduction in  $R_{eco}$  compared to GPP. The reason for this could be the inhibition of soil microbial processes due to moisture limitation. Additionally, a decrease in GPP also results in a coupling of the two fluxes and, hence, also leads to a reduction in  $R_{eco}$  (Högberg et al., 2001; Meir et al., 2008). The compensating effect of drought-induced reductions in both GPP and  $R_{eco}$  resulted in small or negligible changes in NEP, which has also been demonstrated at local (e.g. Law, 2005; Meir et al., 360 2008) and global (Jung et al., 2017) levels.

### 3.2 The differentiated impacts of concurrent heat and drought events on GPP and $R_{eco}$

In contrast to individual events discussed above, concurrent heat and drought extremes ( $T_{max} + WAI_{min}$ ) led to a much stronger reduction in GPP in most cases. On the contrary,  $R_{eco}$  was not so strongly (or not at all) reduced. This resulted in the strongest NEP (i.e. C-sink) reduction of any 365 extreme event (Fig. 3).

Several studies have found a lower drought sensitivity of  $R_{eco}$  compared to GPP (Ciais et al., 2005; Schwalm et al., 2010, 2012; Rambal et al., 2014; Zscheischler et al., 2014d) whereas we observed comparable or even slightly greater reductions during drought only ( $WAI_{min,s}$ ) extremes at the global scale. The strong drought extremes investigated in these studies, however, usually co- 370 incided with heat extremes and are hence more comparable to our concurrent heat and drought extremes ( $T_{max}+WAI_{min,s}$ ) where we also see a nearly negligible mean effect on  $R_{eco}$  (compared to GPP).

NEP is the sum of the opposing fluxes of GPP and  $R_{eco}$  and hence, the direction and amplitude of its change is always determined by the sum of the extreme event impacts on the gross fluxes. 375 For heat extremes, the general increase in  $R_{eco}$  adds to slight decreases (or no change) of GPP, leading to a generally reduced rate of net carbon uptake. For only drought (and no heat) extremes, the reductions in both GPP and  $R_{eco}$  seem to roughly cancel each other out, leading to no strong effects on NEP (again, as a FLUXNET average). However, during the concurrent heat and drought

extremes,  $R_{eco}$  is less strongly reduced than GPP (and also compared to only drought extremes),  
380 leading to strong reductions in net carbon uptake compared to non-extreme conditions. Part of this  
effect can be explained by the compensating and opposite effects of heat and drought on  $R_{eco}$  (Ciais  
et al., 2005).

While our analysis confirms a crucial impact of dryness on the individual carbon fluxes GPP and  
 $R_{eco}$ , it also shows that drought extreme events in which dryness coincides with  $T_{max}$  extremes have  
385 a disproportionately large negative impact on the net carbon balance (i.e. compare also Fig. 4 lowest  
panels on the right side), which is consistent with model results (Zscheischler et al., 2014b). The  
combined effect of dryness and heat might be interpreted in a process-oriented way in that dryness  
acts primarily to reduce GPP, while heat increases  $R_{eco}$ , thus both leading to a severe reduction in  
net ecosystem carbon sequestration. Hence, we conclude that indeed an assessment of combinations  
390 of extreme climate variables, in particular heat and drought (Zscheischler and Seneviratne, 2017), is  
crucial for understanding ecosystem impacts (Leonard et al., 2014).

### 3.3 Event duration crucially affects extreme event impacts

Extreme event duration is an important factor that influences ecosystem impacts (Frank et al., 2015).  
In our study, with increasing duration of the extreme climatic event, the impact on GPP generally  
395 emerged more clearly (Fig. 4). For  $T_{max}$  extreme events there was a threshold at a duration of >  
27 days at which GPP strongly decreased by approximately 1-2  $\sigma$ . This effect was also visible for  
 $R_{eco}$ , albeit less pronounced. ~~However, and somewhat surprisingly, with increasing duration~~ With  
increasing duration, the response in  $R_{eco}$  was reversed: for short heat events (i.e. a duration of less  
than 18 days),  $R_{eco}$  increased with respect to normal conditions by up to 2  $\sigma$ , whereas for events that  
400 last longer than a month, the response of  $R_{eco}$  was predominantly negative.

During concurrent  $T_{max}$  and  $WAI_{min}$  extremes, GPP and  $R_{eco}$  were reduced only for extreme  
events longer than 18 days. For all other extreme types and for the other fluxes, no clear relationship  
between extreme length and impact was observed (Fig. 4).

The impact of extreme climate events on GPP ranged from a neutral impact (heat lasting less  
405 than one week, not coinciding with dryness) to severe impacts (if temperature extremes persisted for  
more than a month). The reversal from positive impacts for short durations to negative impacts for  
long extreme events in the case of  $R_{eco}$  might be interpreted as an initial pulse of microbial activity  
in the soil, which is reduced after some time when the supply limitation of respiration (i.e. GPP  
effects) kicks in. Hence, these findings highlight that event duration is a critical parameter that might  
410 qualitatively affect the directionality of the response, and thus lead to highly non-linear ecosystem  
responses. These duration effects are often not explicitly considered in the analysis of climate ex-  
treme effects on ecosystems (e.g. Ciais et al., 2005; Wolf et al., 2016). Future research should address  
the question of whether such non-trivial patterns can be reproduced in model simulations.

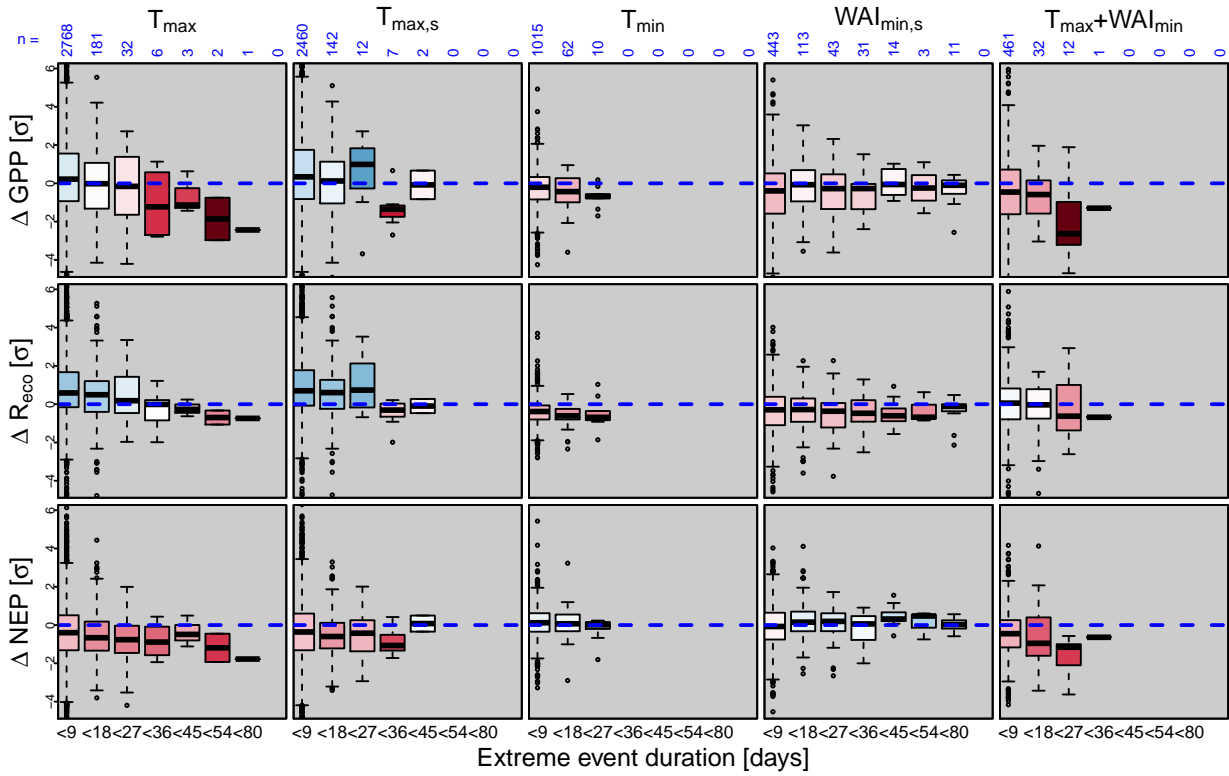


Figure 4: Influence of extreme event duration on extreme event impact. Shown are normalized flux differences between extreme events and a reference period ( $\Delta z = z_{extr} - z_{ref}$ , cf. see Eq. 2 and 3 for details) for gross primary production (GPP), ecosystem respiration ( $R_{eco}$ ) and net ecosystem production (NEP) (in rows 1 - 3) for a selection of different extreme event types (in columns 1 - 5: heat ( $T_{max}$ ), heat only ( $T_{max,s}$ ), cold ( $T_{min}$ ), drought only ( $WAI_{min,s}$ ) and combined drought and heat ( $T_{max}+WAI_{min}$ ), Tab. 1 for details on all extreme types).

Most climate extreme indices for temperature consider only relatively short temperature extremes, such as monthly maximum values of temperature or the count or percentage of days that exceed an absolute or relative threshold. Furthermore, currently used climate extreme indices are based on univariate metrics (Sillmann et al., 2013a). Our empirical analysis shows that ecosystem impacts of climate extremes critically depend on the duration of an extreme event and the coincidence of several climate variables. Hence, most critical/negative ecosystem impacts are seen on time-scales of 2-3 weeks to a few months (see also Murray-Tortarolo et al., 2016) and when heat coincides with dryness.

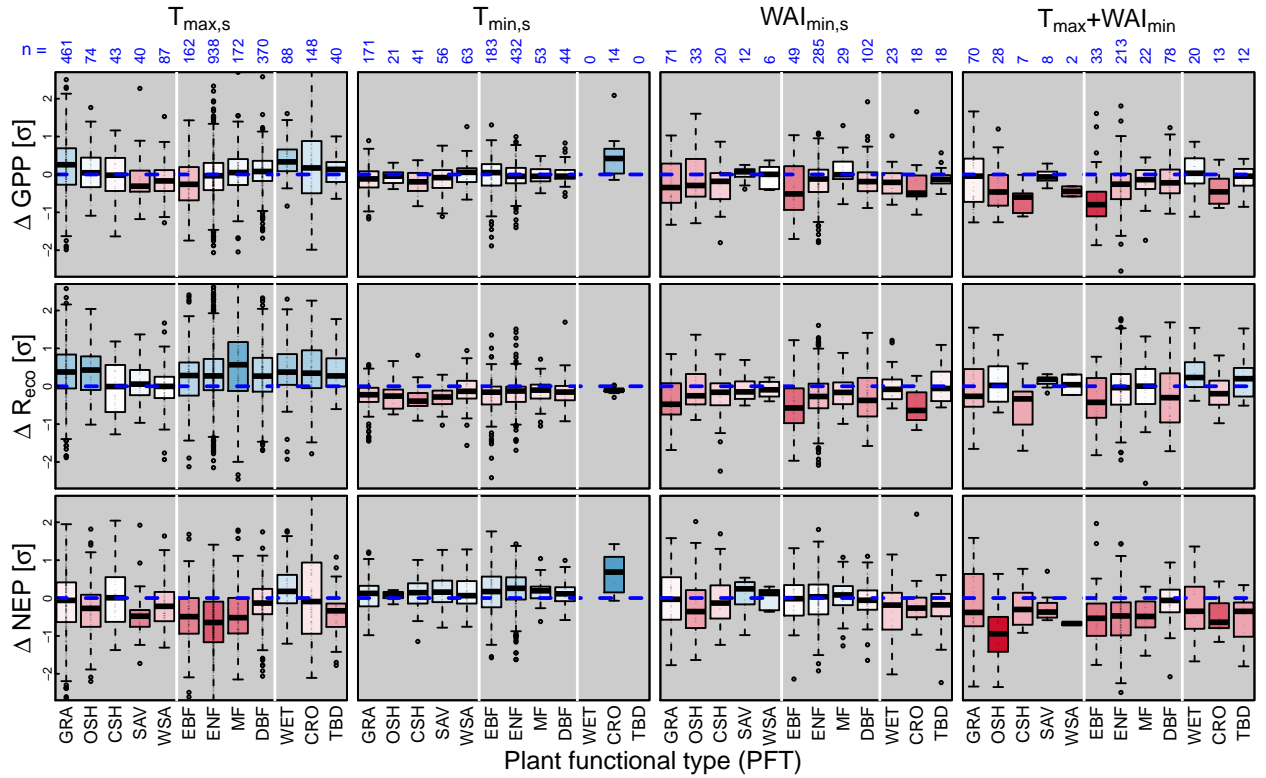


Figure 5: Differences between z-transformed CO<sub>2</sub> fluxes during extreme events and reference periods for the different extreme event types and the different fluxes ( $\Delta z = z_{extr} - z_{ref}$ , cf. see Eq. 2 and 3 for details) according to the **Plant Functional Type** plant functional type (PFT) (see Tab. 2 for the acronyms used) of the respective ecosystem (Fig. 6 for a detailed description of the boxplots shown).

### 3.4 Different impacts in different ecosystems

Compared to the differences between the means of the impacts discussed above, the spread of the impacts is rather large (Fig. 3). One reason for this is that differences between ecosystems are hidden  
 425 by the global (i.e. averaged) focus investigated and discussed above. Fig. 5 shows the extreme event impacts for the different extreme event types separated for the different PFTs, Fig. 6 for different Geiger-Köppen climate classes and Fig. 7 for the combination of the two factors.

The clearest differences between impacts for ecosystems in particular climate zones appeared in the open shrublands (OSH) of the polar climate zone (ET) (Fig. 7). Both GPP and  $R_{eco}$  were  
 430 increased by more than  $\sim 1 \sigma$  during  $T_{max}$  extremes (Fig. 6). A stronger increase of  $R_{eco}$  in GPP led to a slight overall increase of  $\Delta$  in NEP (i.e. a C gain). No drought extremes occurred during the investigated growing seasons in these ecosystems.

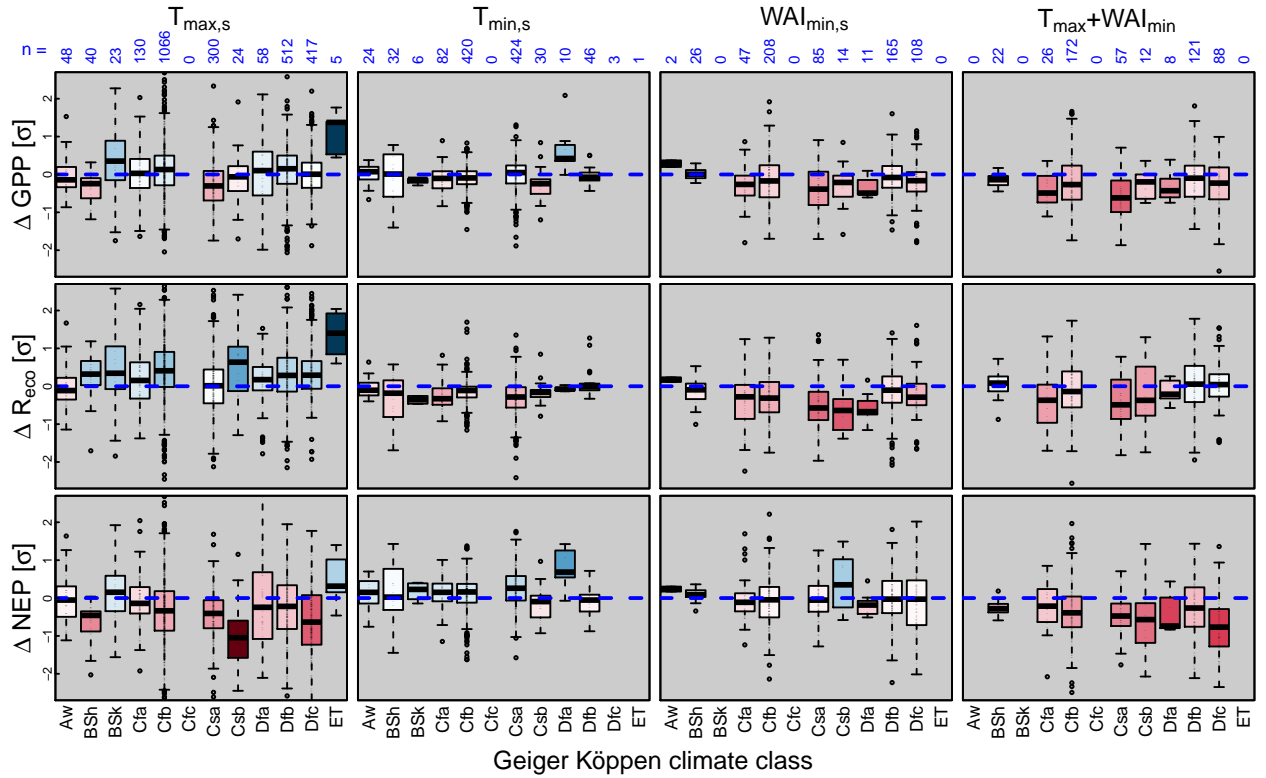


Figure 6: Differences between z-transformed CO<sub>2</sub> fluxes during extreme events and reference periods ( $\Delta z = z_{extr} - z_{ref}$ , cf. see Eq. 2 and 3 for details) for the different extreme event types (columns 1 - 4: heat alone ( $T_{max,s}$ ), cold alone ( $T_{min,s}$ ), drought alone ( $WAI_{min,s}$ ) and combined heat and drought ( $T_{max}+WAI_{min}$ ) and the different fluxes (rows 1 - 3: gross primary production (GPP), ecosystem respiration ( $R_{eco}$ ) and net ecosystem production (NEP)) according to the Geiger Köppen climate class (Tab. 3 for the acronyms used) of the respective ecosystem.

A similar but smaller ( $\sim 0.3 \sigma$ ) GPP increase during heat extremes occurred in the cold-arid (Bsk), mostly GRA and OSH (Fig. 7), ecosystems (Fig. 6). Here, however,  $R_{eco}$  was increased by a similar magnitude, resulting in only a slight increase in NEP. Again, drought extremes did not occur during the investigated growing seasons. In contrast, in the warm arid (i.e. Bsh climate zone) and exclusively ENF ecosystems, GPP experienced moderate decreases during the  $T_{max}$  extremes. In combination with an increase of  $R_{eco}$  comparable to the impact in the warm steppe climates (Bsh), this resulted in a general NEP decrease.

The ecosystems in the mostly North American and continental European and Asian ‘snow’ climate zones (Dfa, Dfb, Dfc) experienced mean increases of  $R_{eco}$  during heat extremes of around  $0.5 \sigma$  (Fig. 6). GPP, however, showed almost no changes averaged over the whole Dfc (i.e. cold summer) climate zone during heat extremes but with this being the result of a reduction in its open shrublands (OSH)



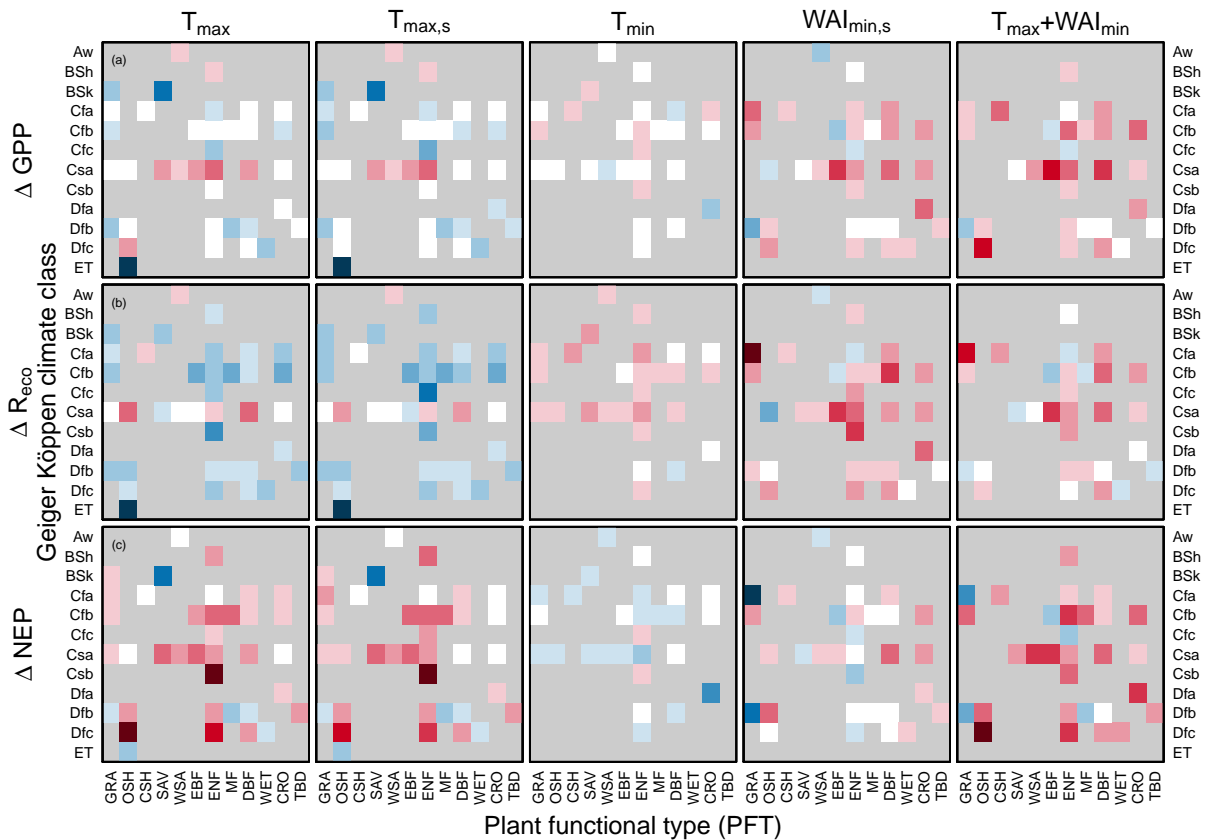


Figure 7: Z-transformed flux differences Differences between z-transformed CO<sub>2</sub> fluxes during extreme events and reference periods for the different extreme event types and the different fluxes ( $\Delta z = z_{extr} - z_{ref}$ , cf. see Eq. 2 and 3 for details) of the different extreme event types on GPP,  $R_{eco}$  and NEP (rows 1 - 3) separated according to plant functional types (PFT) (x axis in each plot, Tab. 2 for the acronyms used) and Geiger Köppen climate class (y axis in each plot, Tab. 3 for the acronyms used) for different types of extreme events (columns 1- 5: heat ( $T_{max}$ ), heat alone ( $T_{max,s}$ ), cold ( $T_{min,s}$ ), drought alone ( $WAI_{min,s}$ ) and combined heat and drought ( $T_{max}+WAI_{min}$ )). Shades of red indicate reductions of different size in the respective fluxes, shades of blue increases. Refer to figures 5 and 6 for a visualization or quantification of the actual magnitude of these impacts.

and opposing increases in the wetlands (WET) of this climate zone (Fig. 7). In hot and warm summer ecosystems of this climate zone (Dfa and Dfb) GPP was slightly increased. As a consequence, this resulted in a relatively strong NEP decrease in Dfc ecosystems, but only a moderate decrease in Dfa and Dfb climates. For drought extremes, however, only the summer hot Dfa cropland (CRO) ecosystems showed reductions in  $R_{eco}$  and, to a lesser extent, in GPP during drought extremes.

Temperate and summer hot and dry (Csa, mainly Mediterranean) ecosystems experienced the  
450 strongest GPP reductions ( $0.3 \sigma$ ), with particularly strong impacts in the forest and savannah ecosys-  
tem compared to grasslands and open shrublands (Fig. 7), during heat extremes (Fig. 6), whereas  
 $R_{eco}$  in general was not impacted, resulting in a NEP decrease (Fig. 6) during heat extremes. During  
drought periods, these Csa sites were among the ecosystems with the strongest reductions in  $R_{eco}$   
455 for all forest and savannah ecosystems but not the open shrublands which experienced increases in  
respiration (Fig. 7), and to a lesser extent in GPP. In contrast, temperate summer dry ecosystems with  
only warm summers (Csb) did not experience such strong reductions in GPP and even increases of  
 $R_{eco}$  during heat extremes and a smaller decrease of GPP during drought extremes (compared to  
Csa). Most other ecosystems in humid temperate climate zones (Cfa and Cfb) showed impacts con-  
sistent with the general patterns (i.e slight GPP and stronger  $R_{eco}$  increases during heat extremes, a  
460 reduction in both fluxes during drought and a smaller reduction in  $R_{eco}$  during concurrent heat and  
drought) [which is in line with other research \(i.e. Schwalm et al., 2010; Wolf et al., 2016\)](#).

The few equatorial winter dry (Aw) woody savanna ecosystems under investigation experienced  
slight reductions in GPP during heat extremes. They were one of the few climate zones where  $R_{eco}$   
was slightly reduced during  $T_{max}$  extremes. Due to the few sites and short time series, drought  
465 extremes did not occur here often enough to reliably investigate their impacts.

Whether temperature or water availability governs an ecosystem's response to extreme events is  
mainly dependent on whether the ecosystem is located in a temperature or water-limited environment  
(Nemani et al., 2003). This explains the strong increases of both GPP and  $R_{eco}$  during high temper-  
ature extremes in the open shrublands of the temperature-limited polar ET climate zone compared  
470 to all other climatic zones (Fig. 8). Similar results have been found by Wu et al. (2011). In addition,  
the detected extreme events are at relatively low temperatures below  $20^\circ\text{C}$ , which are probably well  
below a possible heat stress for the affected plants and still in the range where increasing temper-  
atures increase both GPP rates and the decomposition processes which govern  $R_{eco}$ . An additional  
factor could have been the increased sunlight during the extreme events (which may have caused the  
475 heat extreme in the first place) in these energy-limited regions.

Temperature extremes at sites of the arid steppe climates (BSh and BSk) have comparatively small  
impacts, probably because most heat extremes occur during dry periods with very low biological  
activity (Fig. 8). For one BSk site, however, the period of high temperatures and high fluxes coincides  
with GPP increases during these extreme events, causing the general mean GPP increase in this  
480 climate class compared to the BSh sites.

~~Temperate and summer hot and dry (Csa, mainly Mediterranean) ecosystems experienced the  
strongest GPP reductions ( $0.3 \sigma$ ) during heat extremes, whereas  $R_{eco}$  in general was not impacted,  
resulting in a moderate NEP decreases (Fig. 6) during heat extremes. During drought periods, these  
sites were among the ecosystems with the strongest reductions in  $R_{eco}$  and to a lesser extent GPP.  
485 In contrast, temperate summer dry ecosystems with warm summers (Csb) did not experience such~~

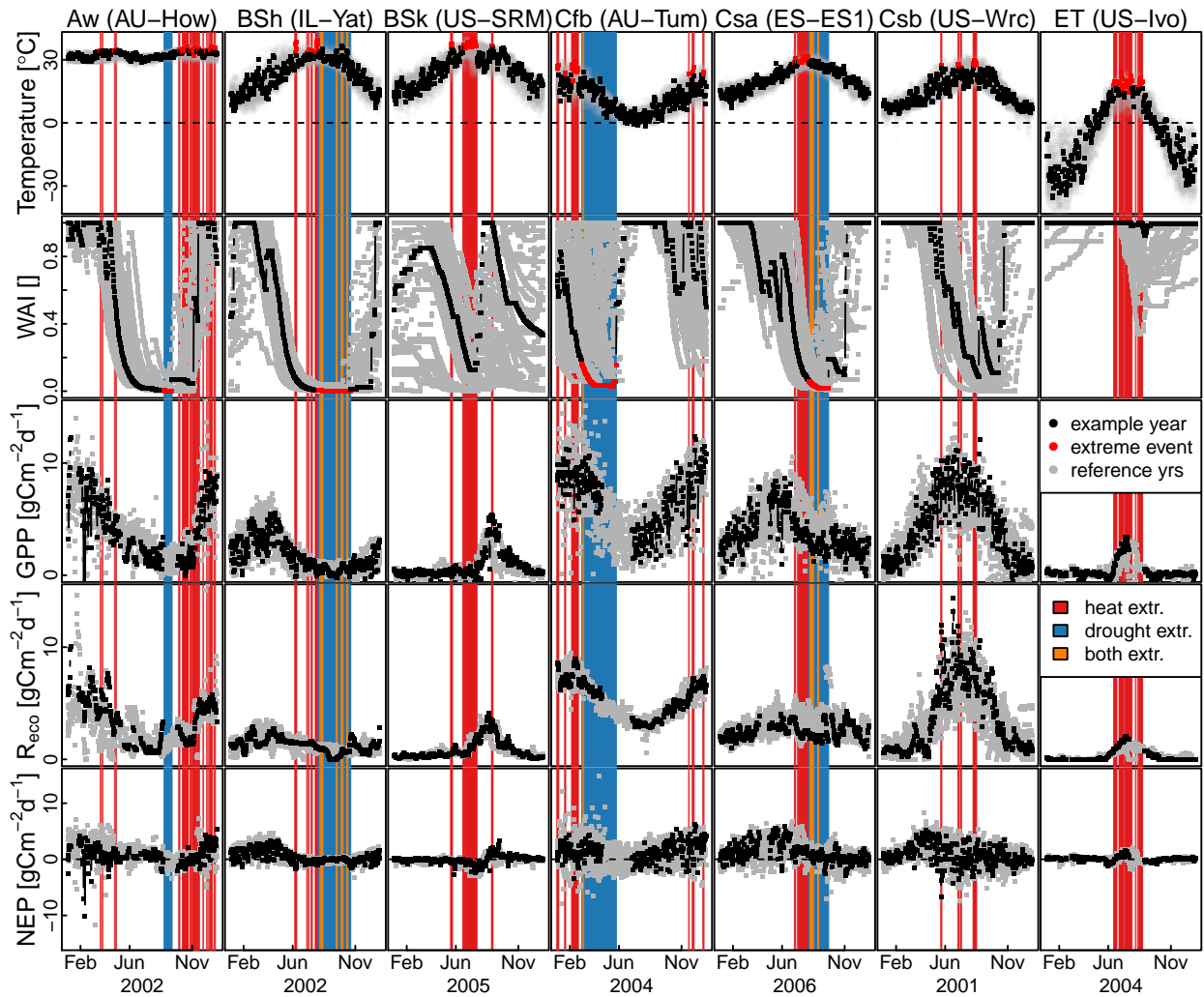


Figure 8: Yearly cycles for climatic forcing variables (air temperature and the water availability index (WAI)) and carbon fluxes (gross primary production (GPP), ecosystem respiration ( $R_{eco}$ ) and net ecosystem production (NEP)) for one example site for each different climatic region (i.e. Geiger Köppen climate class, Tab.3). Shown are one example year (black dots) with various detected extreme events (red dots). Grey dots represent all reference data from other years. Colored backgrounds indicate the different extreme events detected in the example year.

strong reductions in GPP, and even experienced increases of  $R_{eco}$  during heat extremes and a smaller decrease of GPP during drought extremes (compared to Csa). Most other ecosystems in humid temperate climate zones (Cfa and Cfb) showed impacts consistent with the general patterns (i.e slight GPP and stronger  $R_{eco}$  increases during heat extremes, a reduction in both fluxes during drought and

490 a smaller reduction in  $R_{eco}$  during concurrent heat and drought (Schwalm et al., 2010; Wolf et al., 2016).

For the one available tropical Aw site, very small seasonal temperature changes between  $\approx 30^\circ\text{C}$  and  $32^\circ\text{C}$  are observed (Fig. 8). As a result, our extreme detection framework detects all extreme events during the slightly hotter rainy season at the beginning and end of the year (in the Southern Hemisphere). Still, such small temperature differences are unlikely to cause visible physiological impacts, which is demonstrated by the nearly non-existent mean impact on GPP,  $R_{eco}$  and NEP in this climate zone. However, station density in tropical ecosystems is very low compared to temperate Northern European or North American sites so this may also be a consequence of the small amount of extreme events detected.

### 500 3.5 Opportunities and limitations of our approach

The approach presented in this paper is based on a global, empirical characterization of the impacts of climate extremes on ecosystem-atmosphere carbon fluxes, which has several advantages but also limitations for addressing global ecological questions. Classical extreme event research has often focused on events where the response was already known *a priori* to be strong and has possibly neglected several comparable climatic periods with similar conditions but with smaller or even opposite impacts. In contrast, all periods are included in our analysis because we did not select our extreme events *a priori*. Our results show that comparable extreme events can lead to contrasting impacts, which depend on ecosystem type or extreme event timing.

In addition, this research is one of the few global and cross-site/ecosystem investigations of extreme climate impacts on (measured)  $\text{CO}_2$  fluxes. We try to extend the sometimes limiting (but still valuable) focus on particular sites and compare such responses globally. This allows for a holistic picture with which such local site observations can be compared.

Our global results highlight the importance of drought events for the ecosystem carbon cycle. Hence, a reliable estimate of water availability is crucial for the identification of climatic extreme events. As soil water measurements at FLUXNET sites differ strongly between sites in quality, depth and duration, we chose to use the modeled WAI for better between-site comparability and consistency (e.g. Tramontana et al., 2016). Even though we see responses of the fluxes to decreasing WAI, the detailed investigation of individual drought events (e.g. the 2003 heat wave: Fig. 1) highlighted the possible sudden decrease of the fluxes to gradual changes in WAI, emphasizing the need for a reliable estimate of WAI. At this stage, WAI was not optimized for the individual sites and represents a purely hydrometeorological variable rather than a direct measure of ecosystem-specific water stress.

We applied the 95th (or 5th) percentile threshold to define extreme events throughout our study to allow for a comparable extreme definition for all ecosystems. Importantly, this approach has as few *a priori* assumptions as possible (compared to identifying extreme events via somehow “subjective” expert knowledge or by identifying extreme events using extreme responses) allowed us to

thoroughly test such assumptions. However, this approach also has some limitations. First, enforcing this extreme definition always leads to a fixed number (i.e. 5%) of “extreme” days per site. For long enough and strongly varying time series, this approach yields actual extreme events. However, for shorter time series or sites with weakly varying climate (e.g. tropical sites), this method may lead to a *false positive* extreme event identification of non-extreme conditions. The WAI extreme detection is probably more strongly affected by this problem. For the rather smooth time series with long periods of low and only slightly varying WAI at several sites (see for example the IT Ro1 WAI time series of 2003 in Fig. 1) this approach probably led to rather arbitrary breaks between extreme and non-extreme timespans caused by only very small WAI differences. A more flexible data-driven approach to determine site-specific extreme thresholds may be helpful for alleviating this problem in future approaches. For WAI in particular, an ecosystem and soil type specific threshold may lead to improved results. Finally, future approaches should take additional extreme strength indicators like amplitude or occurrence into account when defining the extreme threshold. One also has to note that FLUXNET sites are not necessarily well placed to capture extreme events (Mahecha et al., 2017).

We used changes of the CO<sub>2</sub> fluxes to quantify the impact of the extreme events. Such changes, however, can only be defined relative to an undisturbed reference period. Due to the strong seasonal cycles at many of the investigated sites, we used fluxes from other years but identical periods (in the year) as these reference values. However, shifts of the phenological cycle between years could bias these reference values, especially during stages of steep phenological changes at the beginning and end of the growing season. We used smoothed data from multiple years to attenuate this effect. A possibly promising future improvement would be to synchronize each yearly cycle with a reference by shifting it in time until a maximum agreement is reached. For short extreme events, the impact could alternatively be calculated with regard to the fluxes before and or after the extreme.

### 3.6 Future directions

In addition to the methodological modifications and improvements outlined above (Sec.3.5) there are several promising methodological extensions and possibilities.

For strongly fluctuating time series such as air temperature, our method of defining individual days as extreme and subsequently joining them into concurrent extreme events often resulted in the identification of several successive but interrupted events. These were then analyzed and treated independently, which may neglect their cumulative impact (e.g. Bréda et al., 2006; Granier et al., 2007) on the ecosystem. We alleviated this effect by joining large extreme events with small gaps in between, but our choice of when to join the extreme events and when to treat them separately was rather *ad-hoc*. Such problems could be solved by applying a moving-window based approach when detecting the extreme events, which takes into account the “extremeness” of a defined period before each individual day. In particular, this approach could improve the results for the multivariate extreme events where the fluctuations in temperature led to many small, fragmented extreme events.

In addition, our method for defining multivariate extreme events is (intentionally) simple and suffers from some restrictions. By independently identifying extreme events in each climate forcing (i.e. temperature and WAI), we may miss out potentially differing impact thresholds in situations  
565 when both forcings are extreme. A true multivariate extreme detection methodology, possibly also including other variables such as vapor pressure deficit or radiation, could overcome this limitation (e.g. Seneviratne et al., 2012; Leonard et al., 2014; Flach et al., 2016; Zscheischler and Seneviratne, 2017).

One important aspect of extreme event impacts on ecosystems not covered by the approach presented here are *lagged* or *carry-over* (i.e. memory) effects (e.g. Krishnan et al., 2006; Bréda et al., 2006; Bigler et al., 2007; Arnone Iii et al., 2008; Thomas et al., 2009). These are impacts which persist even after the end of the actual extreme or occur only after the event or during subsequent growing seasons. In addition, extreme events outside of the growing season (i.e. frost events during winter) are not investigated here. We chose to focus on instantaneous effects and neglect such lagged  
575 aspects because only the direct and unambiguous connection of possible impacts to one unique extreme event ensured a large enough sample size to apply the assumption-free approach and test all possible extreme event sizes and types for impacts. However, focusing on a subset of long and pronounced extreme events, an identical approach could be used to assess non-instantaneous effects. An additional interesting aspect would be to examine the effect of the size of the time span between the  
580 extreme event onset and the flux response for  $R_{eco}$  and GPP (i.e. the size of the “lag”) and a possible difference between the two fluxes (e.g. Zscheischler et al., 2014b).

#### 4 Conclusions

In this study we evaluated and corroborated the current understanding and hypotheses about the response of ecosystem  $CO_2$  fluxes to extreme climatic events. We aimed for a strictly data-driven  
585 and assumption-free approach that takes into account both the ‘extremeness’ of the climate forcing and that of the response.

Our approach first defines extreme values in the climate data (i.e. the highest and lowest 5%) to detect extreme events of varying length and then calculates the difference between  $CO_2$  fluxes during these events compared to non-extreme reference periods.

We found that periods of dryness (without extraordinary heat) reduce both GPP and  $R_{eco}$ , which led to a relatively neutral across-site impact in net ecosystem carbon sequestration. In contrast, heat without dryness increased  $R_{eco}$  but did not consistently affect GPP (partly because of differentiated effects across ecosystem types and event duration), which overall led to a reduction of NEP. If heat coincided with drought, these events strongly reduced GPP, but yielded smaller reductions in  $R_{eco}$ ,  
595 which led to strong reductions in NEP. A crucial contributing factor to these differentiated impacts was the duration of the respective climate extreme events: for instance, under heat extremes,  $R_{eco}$

initially increased (for the first 18 days on average) relative to non-extreme conditions, but decreased for longer events, presumably due to a reduction in GPP and thus in soil carbon pools for long heat events.

600 Similar extreme events at similar sites in several cases led to decreases but also to increases of CO<sub>2</sub> fluxes, i.e. a large spread remained in the data. These different responses could be partly linked to ecosystem-specific factors. For example, boreal ecosystems experienced strong increases in GPP and  $R_{eco}$  during heat extremes compared to smaller changes in most other ecosystems, whereas Mediterranean summer dry ecosystems showed particularly strong flux decreases during drought  
605 extremes. However, uncertainties and somewhat diverging impacts still remain unexplained after accounting for ecosystem type, climate zone, and event duration.

The framework proposed here forms a suitable basis for several promising modifications and more in-depth analyses in the future. We plan to address these open questions by improving the extreme detection methodology and performing an in-depth investigation of several additional aspects. As  
610 responses to heat and drought also influence the exchange of water and, hence, the fluxes of water and energy (e.g. Bonan, 2015) and such fluxes are also measured by the eddy covariance technique (i.e. their net balance), we plan to conduct a similar analysis with these fluxes, as has been done for individual events (e.g. Teuling et al., 2010). Other important aspects to include in future studies are the timing of the extreme during the growing season, which can significantly influence the response  
615 (Schwalm et al., 2010; De Boeck and Verbeeck, 2011; Wolf et al., 2013). Eddy covariance measurements continue to be collected so for several FLUXNET sites increasingly long time series are becoming available. Hence we are looking forward to future data releases and to the possibility of extreme event detection using the measured data directly, without the constraints and possible biases of the downscaling, which highlights the crucial importance of continuous long-term measurements  
620 for meaningful ecosystem and climate research.

## Appendix A: Appendix A

Table 2: Description of the ~~Plant Functional Type~~ plant functional type (PFT) classes of the ecosystems investigated in this study (according to the IGBP vegetation classification scheme).

Class	Name	Detailed Description
CRO	Croplands	temporary crops
CSH	Closed Shrublands	woody shrub vegetation
DBF	Decid. Broadleaf For.	seasonal broadleaf trees
EBF	Evergr. Broadleaf Forests	evergreen broadleaf trees
ENF	Evergr. Needleleaf Forests	evergreen needleleaf trees
GRA	Grasslands	herbaceous types (tree and shrub cover < 10%)
MF	Mixed Forests	mixture of all tree types
OSH	Open Shrublands	woody vegetation (cover between 10-60%)
SAV	Savannas	herbaceous and other understory systems (woodland between 10-30%).
WET	Permanent Wetlands	permanent mixture of water and herbaceous or woody vegetation
WSA	Woody Savannas	herbaceous/other understory veg. (woodland between 30-60%,)

Table 4: List of FLUXNET sites analysis with their code, name, country, geographical location, Geiger Köppen climate (KGC) class, plant functional type (PFT) and the measurement time periods of the data used.

Code	Name	Country	Latitude	Longitude	PFT	KGC	Site-years	Reference
AU-How	Howard Springs	Australia	-12.49	131.15	WSA	Aw	2001-2006	Beringer (2003)
AU-Tum	Tumbarumba	Australia	-35.66	148.15	EBF	Cfb	2001-2006	Finnigan and Leuning (2000)
BE-Bra	Brasschaat (De Inslag Forest)	Belgium	51.31	4.52	MF	Cfb	1999-2009	Carrara et al. (2004)
BE-Lon	Lonzee	Belgium	50.55	4.74	CRO	Cfb	2004-2010	Moureaux et al. (2006)
BE-Vie	Vielsalm	Belgium	50.31	6.00	MF	Cfb	1996-2011	Aubinet et al. (2001)
CA-Ca1	Campbell River - Mature Forest Site	Canada	49.87	-125.33	ENF	Cfb	1997-2005	Morgenstern et al. (2004)
CA-Let	Lethbridge	Canada	49.71	-112.94	GRA	Dfb	1998-2005	Flanagan et al. (2002)
CA-Man	BOREAS NSA - Old Black Spruce	Canada	55.88	-98.48	ENF	Dfc	1994-2003	Lafleur et al. (2003)
CA-Mer	Eastern Peatland- Mer Bleue	Canada	45.41	-75.52	WET	Dfb	1998-2005	Lafleur et al. (2003)
CA-NS2	UCI-1930 burn site	Canada	55.91	-98.52	ENF	Dfc	2001-2005	Goulden et al. (2006)
CA-NS3	UCI-1964 burn site	Canada	55.91	-98.38	ENF	Dfc	2001-2005	Goulden et al. (2006)
CA-NS6	UCI-1989 burn site	Canada	55.92	-98.96	OSH	Dfc	2001-2005	Goulden et al. (2006)
CA-Oas	Sask.- SSA Old Aspen	Canada	53.63	-106.20	DBF	Dfc	1997-2005	Black et al. (1996)
CA-Obs	Sask.- SSA Old Black Spruce	Canada	53.99	-105.12	ENF	Dfc	1999-2005	Jarvis et al. (1997)

*Continued on next page*



Table 4 – Continued from previous page

Code	Name	Country	Latitude	Longitude	PFT	KGC	Site-years	Reference
CA-Ojp	Sask.- SSA Old Jack Pine	Canada	53.92	-104.69	ENF	Dfc	1999-2005	Baldocchi et al. (1997)
CA-Qfo	Quebec Mature Boreal Forest Site	Canada	49.69	-74.34	ENF	Dfc	2003-2006	Bergeron et al. (2007)
CH-Oe1	Oensingen1 grass	Switzerland	47.29	7.73	GRA	Cfb	2002-2008	Ammann et al. (2007)
CZ-BK1	Bily Kriz- Beskidy Mountains	Czech Republic	49.50	18.54	ENF	Dfb	2000-2012	Havránková and Sedlák (2004)
CZ-BK2	Bily Kriz- grassland	Czech Republic	49.50	18.54	GRA	Dfb	2004-2011	Marek et al. (2011)
DE-Geb	Gebesee	Germany	51.10	10.91	CRO	Cfb	2002-2008	Anthoni et al. (2004)
DE-Hai	Hainich	Germany	51.08	10.45	DBF	Cfb	2000-2007	Knohl et al. (2003)
DE-Wet	Wetzstein	Germany	50.45	11.46	ENF	Cfb	2005-2008	Anthoni et al. (2004)
DK-Sor	Soroe- LilleBogeskov	Denmark	55.49	11.65	DBF	Cfb	1996-2009	Pilegaard et al. (2001)
ES-ES1	El Saler	Spain	39.35	-0.32	ENF	Csa	1999-2006	Reichstein et al. (2005)
ES-LMa	Las Majadas del Tietar	Spain	39.94	-5.77	SAV	Csa	2004-2011	Perez-Priego et al. (2017)
FI-Kaa	Kaamanen wetland	Finland	69.14	27.30	WET	Dfc	2000-2008	Aurela et al. (2004)
FI-Sod	Sodankyla	Finland	67.36	26.64	ENF	Dfc	2000-2008	Thum et al. (2007)
FR-Fon	Fontainebleau	France	48.48	2.78	DBF	Cfb	2005-2008	Michelot et al. (2011)
FR-LBr	Le Bray (after 6/28/1998)	France	44.72	-0.77	ENF	Cfb	1996-2008	Berbigier et al. (2001)
FR-Lq1	Laqueuille	France	45.64	2.74	GRA	Cfb	2004-2010	Allard et al. (2007)
FR-Lq2	Laqueuille extensive	France	45.64	2.74	GRA	Cfb	2004-2010	Allard et al. (2007)
FR-Pue	Puechabon	France	43.74	3.60	EBF	Csa	2000-2011	Rambal et al. (2004)
HU-Bug	Bugacpuszta	Hungary	46.69	19.60	GRA	Cfb	2002-2008	Nagy et al. (2007)
HU-Mat	Matra	Hungary	47.85	19.73	GRA	Cfb	2004-2008	Nagy et al. (2007)
IE-Dri	Dripsey	Ireland	51.99	-8.75	GRA	Cfb	2003-2007	Peichl et al. (2011)
IL-Yat	Yatir	Israel	31.34	35.05	ENF	BSh	2001-2006	Grünzweig et al. (2003)
IT-Amp	Amplero	Italy	41.90	13.61	GRA	Cfa	2002-2008	Wohlfahrt et al. (2008)
IT-Cpz	Castelporziano	Italy	41.71	12.38	EBF	Csa	1997-2008	Tirone et al. (2003)
IT-Lav	Lavarone (after 3/2002)	Italy	45.96	11.28	ENF	Cfb	2000-2012	Cescatti and Marcolla (2004)
IT-LMa	La Mandria	Italy	45.58	7.15	GRA	Cfb	2003-2009	Maselli et al. (2006)
IT-MBo	Monte Bondone	Italy	46.02	11.05	GRA	Cfb	2003-2012	Marcolla and Cescatti (2005)
IT-Non	Nonantola	Italy	44.69	11.09	DBF	Cfa	2001-2008	Nardino et al. (2002)
IT-Pia	Island of Pianosa	Italy	42.58	10.08	OSH	Csa	2002-2006	Vaccari et al. (2012)
IT-SRo	San Rossore	Italy	43.73	10.28	ENF	Csa	1999-2010	Chiesi et al. (2005)
JP-Tak	Takayama	Japan	36.15	137.42	DBF	Dfb	1999-2004	Yamamoto et al. (1999)
JP-Tom	Tomakomai National Forest	Japan	42.74	141.51	MF	Dfb	2001-2003	Hirano et al. (2003)
NL-Hor	Horstermeer	Netherlands	52.03	5.07	GRA	Cfb	2004-2010	Hendriks et al. (2007)
NL-Loo	Loobos	Netherlands	52.17	5.74	ENF	Cfb	1996-2012	Dolman et al. (2002)
PT-Esp	Espirra	Portugal	38.64	-8.60	EBF	Csa	2002-2008	Rodrigues et al. (2011)
PT-Mi2	Mitra IV Tojal	Portugal	38.48	-8.02	GRA	Csa	2004-2008	Pereira et al. (2007)
RU-Fyo	Fyodorovskoye wet spruce stand	Russia	56.46	32.92	ENF	Dfb	1998-2010	Kurbatova et al. (2008)
SE-Deg	Degero	Sweden	64.18	19.55	WET	Dfc	2001-2009	Sagerfors et al. (2008)
SE-Fla	Flakaliden	Sweden	64.11	19.46	ENF	Dfc	1996-2002	Valentini et al. (2000)
SE-Nor	Norunda	Sweden	60.09	17.48	ENF	Dfb	1996-2007	Lagergren et al. (2008)
US-Bo1	IL - Bondville	USA	40.01	-88.29	CRO	Dfa	1996-2007	Meyers and Hollinger (2004)
US-FPe	MT - Fort Peck	USA	48.31	-105.10	GRA	BSk	2000-2006	Pataki and Oren (2003)
US-Ho1	ME - Howland Forest (main tower)	USA	45.20	-68.74	ENF	Dfb	1996-2004	Hollinger et al. (2004)
US-Ho2	ME - Howland Forest (west tower)	USA	45.21	-68.75	ENF	Dfb	1999-2004	Hollinger et al. (2004)
US-Ivo	AK - Ivotuk	USA	68.49	-155.75	WET	ET	2003-2006	Epstein et al. (2004)
US-KS2	FL - Kennedy Space Center	USA	28.61	-80.67	CSH	Cfa	2000-2006	Powell et al. (2006)
US-MMS	IN - Morgan Monroe State Forest	USA	39.32	-86.41	DBF	Cfa	1999-2005	Roman et al. (2015)
US-NR1	CO - Niwot Ridge Forest	USA	40.03	-105.55	ENF	Dfc	1999-2003	Monson et al. (2002)
US-SO4	CA - Sky Oaks- New Stand	USA	33.38	-116.64	CSH	Csa	2004-2006	Lipson et al. (2005)
US-SRM	AZ - Santa Rita Mesquite	USA	31.82	-110.87	WSA	BSk	2004-2006	Scott et al. (2009)
US-Ton	CA - Tonzi Ranch	USA	38.43	-120.97	WSA	Csa	2001-2006	Ma et al. (2007)
US-UMB	MI - Univ. of Mich. Biological Station	USA	45.56	-84.71	DBF	Dfb	1999-2003	Gough et al. (2008)
US-Var	CA - Vaira Ranch- Ione	USA	38.41	-120.95	GRA	Csa	2001-2006	Xu and Baldocchi (2004)

Continued on next page

Table 4 – *Continued from previous page*

Code	Name	Country	Latitude	Longitude	PFT	KGC	Site-years	Reference
US-WCr	WI - Willow Creek	USA	45.81	-90.08	DBF	Dfb	1999-2006	Cook et al. (2004)
US-Wrc	WA - Wind River Crane Site	USA	45.82	-121.95	ENF	Csb	1998-2006	Falk et al. (2008)

*Acknowledgements.* Authors affiliated with the MPI for Biogeochemistry acknowledge the European Union for funding via the H2020 project BACI (grant agreement No: 640176), This work used eddy covariance data  
625 acquired by the FLUXNET community and in particular by the following networks: AmeriFlux (U.S. Department of Energy, Biological and Environmental Research, Terrestrial Carbon Program (DE-FG02-04ER63917 and DE-FG020-4ER63911)), AfriFlux, AsiaFlux, CarboAfrica, CarboEuropeIP, CarboItaly, CarboMont, ChinaFlux, Fluxnet-Canada (supported by CFCAS, NSERC, BIOCAP, Environment Canada, and NRCan), Canadian Carbon Program (supported by CFCAS, Environment Canada, and NRCan), GreenGrass, KoFlux, LBA,  
630 NECC, OzFlux, Swiss FluxNet, TCOS-Siberia, USCCC. We acknowledge the financial support to the eddy covariance data harmonization provided by CarboEuropeIP, FAO-GTOS-TCO, iLEAPS, Max Planck Institute for Biogeochemistry, National Science Foundation, University of Tuscia, Université Laval, Environment Canada and US Department of Energy and the database development and technical support from Berkeley Water Center, Lawrence Berkeley National Laboratory, Microsoft Research eScience, Oak Ridge National Laboratory,  
635 University of California - Berkeley and the University of Virginia. Finally we thank Andrew Durso for helpful comments and assistance on the fine secrets of the English language.

Table 3: Description of Geiger-Köppen climate classes after Kottek et al. (2006) defined by temperature (T) and precipitation (P) (with  $P_{th}$  being a dryness threshold and  $_s$  and  $_w$  denoting summer and winter values respectively (e.f. Kottek et al., 2006, for details)(see Kottek et al., 2006, for details)

Class	Description	Characteristics
A	equat. cl.	$T_{min} \geq 18^\circ C$
Af	equat. full humid rainforest	$P_{min} > 60\text{mm}$
Am	equat. monsoon	$P_{ann} \geq 25(100\text{mm} - P_{min})$
As	equat. Savannah + dry sum.	$P_{min} < 60\text{mm}$ in summer
Aw	equat. Savannah + dry win.	$P_{min} < 60\text{mm}$ in winter
B	Arid cl.	$P_{ann} < 10 P_{th}$
BS	Steppe cl.	$P_{ann} > 5 P_{th}$
BW	Desert cl.	$P_{ann} \leq 5 P_{th}$
C	Warm temp. cl.	$-3^\circ C < T_{min} < 18^\circ C$
Cs	Warm temp. cl. + dry sum.	$P_{min,s} < P_{min}$ ; $P_{max,w} > 3P_{min,s}$ and $P_{min,s} < 40\text{mm}$
Cw	Warm temp. cl. + dry win.	$P_{min,w} < P_{min,s}$ and $P_{max,s} > 10P_{min,w}$
Cf	Warm temp. fully humid	cl. neither Cs nor Cw
D	Snow cl.	$T_{min} \leq -3^\circ C$
Ds	Snow cl. + dry summer	$P_{min,s} < P_{min,w}$ ; $P_{max,w} > 3P_{min,s}$ and $P_{min,s} < 40\text{mm}$
Dw	Snow cl. + dry winter	$P_{min,w} < P_{min,s}$ and $P_{max,s} > 10P_{min,w}$
Df	Snow cl., fully humid	neither Ds nor Dw
E	Polar cl.	$T_{max} \leq 10^\circ C$
EF	Tundra cl.	$0^\circ C \leq T_{max} < 10^\circ C$
ET	Frost cl.	$T_{max} \leq 0^\circ C$
third letter:		
h	Hot steppe / desert	$T_{ann} \geq 18^\circ C$
k	Cold steppe /desert	$T_{ann} < 18^\circ C$
a	Hot summer	$T_{max} \geq 22^\circ C$
b	Warm summer	not (a) + $> 4T_{mon} \geq 10^\circ C$
c	Cool summer and cold winter	not (b) and $T_{min} > -38^\circ C$
d	extremely continental	like (c) but $T_{min} \leq -38^\circ C$

## References

- Allakhverdiev, S. I., Kreslavski, V. D., Klimov, V. V., Los, D. A., Carpentier, R., and Mohanty, P.: Heat stress: an overview of molecular responses in photosynthesis, *Photosynthesis Research*, 98, 541–550, doi:10.1007/s11120-008-9331-0, 2008.
- 640 Allard, V., Soussana, J.-F., Falcimagne, R., Berbigier, P., Bonnefond, J.-M., Ceschia, E., D'hour, P., Hånault, C., Laville, P., Martin, C., and Pinarès-Patino, C.: The role of grazing management for the net biome productivity and greenhouse gas budget (CO<sub>2</sub>, N<sub>2</sub>O and CH<sub>4</sub>) of semi-natural grassland, *Agriculture, Ecosystems & Environment*, 121, 47–58, <http://www.sciencedirect.com/science/article/pii/S0167880906004324>, 2007.
- 645 Ammann, C., Flechard, C. R., Leifeld, J., Neftel, A., and Fuhrer, J.: The carbon budget of newly established temperate grassland depends on management intensity, *Agriculture, Ecosystems & Environment*, 121, 5–20, <http://www.sciencedirect.com/science/article/pii/S0167880906004300>, 2007.
- Anderson-Teixeira, K. J., Delong, J. P., Fox, A. M., Brese, D. A., and Litvak, M. E.: Differential responses of production and respiration to temperature and moisture drive the carbon balance across a climatic gradient in New Mexico, *Global Change Biology*, 17, 410–424, doi:10.1111/j.1365-2486.2010.02269.x, <http://onlinelibrary.wiley.com/doi/10.1111/j.1365-2486.2010.02269.x/full>, 2011.
- 650 Anthoni, P. M., Knohl, A., Rebmann, C., Freibauer, A., Mund, M., Ziegler, W., Kolle, O., and Schulze, E.-D.: Forest and agricultural land-use-dependent CO<sub>2</sub> exchange in Thuringia, Germany, *Global Change Biology*, 10, 2005–2019, <http://onlinelibrary.wiley.com/doi/10.1111/j.1365-2486.2004.00863.x/full>, 2004.
- 655 Arnone Iii, J. A., Verburg, P. S. J., Johnson, D. W., Larsen, J. D., Jasoni, R. L., Lucchesi, A. J., Batts, C. M., von Nagy, C., Coulombe, W. G., Schorran, D. E., Buck, P. E., Braswell, B. H., Coleman, J. S., Sherry, R. A., Wallace, L. L., Luo, Y., and Schimel, D. S.: Prolonged suppression of ecosystem carbon dioxide uptake after an anomalously warm year, *Nature*, 455, 383–386, doi:10.1038/nature07296, <http://www.nature.com/nature/journal/v455/n7211/abs/nature07296.html>, 2008.
- 660 Aubinet, M., Chermanne, B., Vandenhaute, M., Longdoz, B., Yernaux, M., and Laitat, E.: Long term carbon dioxide exchange above a mixed forest in the Belgian Ardennes, *Agricultural and Forest Meteorology*, 108, 293–315, 2001.
- Aurela, M., Laurila, T., and Tuovinen, J.-P.: The timing of snow melt controls the annual CO<sub>2</sub> balance in a subarctic fen, *Geophysical research letters*, 31, <http://onlinelibrary.wiley.com/doi/10.1029/2004GL020315/full>, 2004.
- 665 Baldocchi, D.: 'Breathing' of the terrestrial biosphere: lessons learned from a global network of carbon dioxide flux measurement systems, *Australian Journal of Botany*, 56, 1, doi:10.1071/BT07151, <http://www.publish.csiro.au/?paper=BT07151>, 2008.
- Baldocchi, D.: Measuring fluxes of trace gases and energy between ecosystems and the atmosphere - the state and future of the eddy covariance method, *Global change biology*, 20, 3600–3609, <http://onlinelibrary.wiley.com/doi/10.1111/gcb.12649/full>, 2014.
- 670 Baldocchi, D., Falge, E., Gu, L. H., Olson, R., Hollinger, D., Running, S., Anthoni, P., Bernhofer, C., Davis, K., Evans, R., Fuentes, J., Goldstein, A., Katul, G., Law, B., Lee, X. H., Malhi, Y., Meyers, T., Munger, W., Oechel, W., Paw U, K. T., Pilegaard, K., Schmid, H. P., Valentini, R., Verma, S., Vesala, T., Wilson, K., and Wofsy, S.: FLUXNET: a new tool to study the temporal and spatial variability of ecosystem-scale
- 675

- carbon dioxide, water vapor, and energy flux densities, *Bulletin of the American Meteorological Society*, 82, 2415–2434, 2001.
- Baldocchi, D. D.: Assessing the Eddy Covariance technique for evaluating carbon dioxide exchange rates of ecosystems: past, present and future, *Global Change Biology*, 9, 479–492, doi:10.1046/j.1365-2486.2003.00629.x, 2003.
- 680 Baldocchi, D. D., Vogel, C. A., and Hall, B.: Seasonal variation of carbon dioxide exchange rates above and below a boreal jack pine forest, *Agricultural and Forest Meteorology*, 83, 147–170, 1997.
- Beer, C., Reichstein, M., Tomelleri, E., Ciais, P., Jung, M., Carvalhais, N., Rdenbeck, C., Arain, M. A., Baldocchi, D., Bonan, G. B., and others: Terrestrial gross carbon dioxide uptake: global distribution and covariation with climate, *Science*, 329, 834–838, <http://science.sciencemag.org/content/329/5993/834.short>, 2010.
- 685 Berbigier, P., Bonnefond, J.-M., and Mellmann, P.: CO<sub>2</sub> and water vapour fluxes for 2 years above Euroflux forest site, *Agricultural and Forest Meteorology*, 108, 183–197, 2001.
- Bergeron, O., Margolis, H. A., Black, T. A., Coursolle, C., Dunn, A. L., Barr, A. G., and Wofsy, S. C.: Comparison of carbon dioxide fluxes over three boreal black spruce forests in Canada, *Global Change Biology*, 13, 89–107, 2007.
- 690 Beringer: Fire impacts on surface heat, moisture and carbon fluxes from a tropical savanna in northern Australia, *International Journal of Wildland Fire*, 12, 333, doi:10.1071/WF03023, 2003.
- Bernacchi, C. J., Singaas, E. L., Pimentel, C., Portis Jr, A. R., and Long, S. P.: Improved temperature response functions for models of Rubisco-limited photosynthesis, *Plant, Cell & Environment*, 24, 253–259, <http://onlinelibrary.wiley.com/doi/10.1111/j.1365-3040.2001.00668.x/full>, 2001.
- 695 Bigler, C., Gavin, D. G., Gunning, C., and Veblen, T. T.: Drought induces lagged tree mortality in a subalpine forest in the Rocky Mountains, *Oikos*, 116, 1983–1994, <http://onlinelibrary.wiley.com/doi/10.1111/j.2007.0030-1299.16034.x/full>, 2007.
- Black, T., Hartog, G. d., Neumann, H., Blanken, P., Yang, P., Russell, C., Nestic, Z., Lee, X., Chen, S., Staebler, R., et al.: Annual cycles of water vapour and carbon dioxide fluxes in and above a boreal aspen forest, *Global Change Biology*, 2, 219–229, 1996.
- 700 Bloor, J. M. and Bardgett, R. D.: Stability of above-ground and below-ground processes to extreme drought in model grassland ecosystems: interactions with plant species diversity and soil nitrogen availability, *Perspectives in Plant Ecology, Evolution and Systematics*, 14, 193–204, 2012.
- 705 Bonan, G.: *Ecological Climatology: Concepts and Applications*, Cambridge University Press, 2015.
- Bonan, G. B.: Forests and Climate Change: Forcings, Feedbacks, and the Climate Benefits of Forests, *Science*, 320, 1444–1449, doi:10.1126/science.1155121, 2008.
- Bréda, N., Huc, R., Granier, A., and Dreyer, E.: Temperate forest trees and stands under severe drought: a review of ecophysiological responses, adaptation processes and long-term consequences, *Annals of Forest Science*, 63, 20, doi:10.1051/forest:2006042, 2006.
- 710 Canadell, J. G., Mooney, H. A., Baldocchi, D. D., Berry, J. A., Ehleringer, J. R., Field, C. B., Gower, S. T., Hollinger, D. Y., Hunt, J. E., Jackson, R. B., Running, S. W., Shaver, G. R., Steffen, W., Trumbore, S. E., Valentini, R., and Bond, B. Y.: Carbon metabolism of the terrestrial biosphere: a multitechnique approach for improved understanding, *Ecosystems*, 3, 115–130, 2000.

- 715 Carrara, A., Janssens, I. A., Yuste, J. C., and Ceulemans, R.: Seasonal changes in photosynthesis, respiration and NEE of a mixed temperate forest, *Agricultural and Forest Meteorology*, 126, 15–31, <http://www.sciencedirect.com/science/article/pii/S0168192304001145>, 2004.
- Cescatti, A. and Marcolla, B.: Drag coefficient and turbulence intensity in conifer canopies, *Agricultural and forest meteorology*, 121, 197–206, 2004.
- 720 Chaves, M. M.: Effects of water deficits on carbon assimilation, *Journal of Experimental Botany*, 42, 1–16, 1991.
- Chaves, M. M., Flexas, J., and Pinheiro, C.: Photosynthesis under drought and salt stress: regulation mechanisms from whole plant to cell, *Annals of Botany*, 103, 551–560, doi:10.1093/aob/mcn125, <http://www.ncbi.nlm.nih.gov/pmc/articles/PMC2707345/>, 2009.
- 725 Chiesi, M., Maselli, F., Bindi, M., Fibbi, L., Cherubini, P., Arlotta, E., Tirone, G., Matteucci, G., and Seufert, G.: Modelling carbon budget of Mediterranean forests using ground and remote sensing measurements, *Agricultural and Forest Meteorology*, 135, 22–34, 2005.
- Ciais, P., Reichstein, M., Viovy, N., Granier, A., Ogee, J.e, J., Allard, V., Aubinet, M., Buchmann, N., Bernhofer, C., Carrara, A., Chevallier, F., De Noblet, N., Friend, A. D., Friedlingstein, P., Gruenwald, T., Heinesch, B., Keronen, P., Knohl, A., Krinner, G., Loustau, D., Manca, G., Matteucci, G., Miglietta, F., Ourcival, 730 J. M., Papale, D., Pilegaard, K., Rambal, S., Seufert, G., Soussana, J. F., Sanz, M. J., Schulze, E. D., Vesala, T., and Valentini, R.: Europe-wide reduction in primary productivity caused by the heat and drought in 2003, *Nature*, 437, 529–533, doi:10.1038/nature03972, <http://www.nature.com/nature/journal/v437/n7058/full/nature03972.html>, 2005.
- 735 Cook, B. D., Davis, K. J., Wang, W., Desai, A., Berger, B. W., Teclaw, R. M., Martin, J. G., Bolstad, P. V., Bakwin, P. S., Yi, C., et al.: Carbon exchange and venting anomalies in an upland deciduous forest in northern Wisconsin, USA, *Agricultural and Forest Meteorology*, 126, 271–295, 2004.
- Cramer, W., Kicklighter, D. W., Bondeau, A., Iii, B. M., Churkina, G., Nemry, B., Ruimy, A., Schloss, A. L., and the participants of the Potsdam NPP mode intercomparison: Comparing global models of terrestrial net 740 primary productivity (NPP): overview and key results, *Global change biology*, 5, 1–15, <http://onlinelibrary.wiley.com/doi/10.1046/j.1365-2486.1999.00009.x/full>, 1999.
- Davidson, E. A. and Janssens, I. A.: Temperature sensitivity of soil carbon decomposition and feedbacks to climate change, *Nature*, 440, 165–173, 2006.
- Davidson, E. A., Belk, E., and Boone, R. D.: Soil water content and temperature as independent or confounded 745 factors controlling soil respiration in a temperate mixed hardwood forest, *Global Change Biology*, 4, 217–227, doi:10.1046/j.1365-2486.1998.00128.x, 1998.
- De Boeck, H. J. and Verbeeck, H.: Drought-associated changes in climate and their relevance for ecosystem experiments and models, *Biogeosciences*, 8, 1121–1130, doi:10.5194/bg-8-1121-2011, <http://www.biogeosciences.net/8/1121/2011/>, 2011.
- 750 De Boeck, H. J., Dreesen, F. E., Janssens, I. A., and Nijs, I.: Climatic characteristics of heat waves and their simulation in plant experiments, *Global Change Biology*, 16, 1992–2000, doi:10.1111/j.1365-2486.2009.02049.x, <http://doi.wiley.com/10.1111/j.1365-2486.2009.02049.x>, 2010.
- Dee, D. P., Uppala, S. M., Simmons, A. J., Berrisford, P., Poli, P., Kobayashi, S., Andrae, U., Balmaseda, M. A., Balsamo, G., Bauer, P., and others: The ERA-Interim reanalysis: Configuration and performance

- 755 of the data assimilation system, *Quarterly Journal of the royal meteorological society*, 137, 553–597, <http://onlinelibrary.wiley.com/doi/10.1002/qj.828/full>, 2011.
- Dolman, A., Moors, E., and Elbers, J.: The carbon uptake of a mid latitude pine forest growing on sandy soil, *Agricultural and Forest Meteorology*, 111, 157–170, 2002.
- Epron, D., Ngao, J., and Granier, A.: Interannual variation of soil respiration in a beech forest  
760 ecosystem over a six-year study, *Annals of Forest Science*, 61, 499–505, doi:10.1051/forest:2004044, wOS:000225197900002, 2004.
- Epstein, H. E., Calef, M. P., Walker, M. D., Stuart Chapin, F., and Starfield, A. M.: Detecting changes in arctic tundra plant communities in response to warming over decadal time scales, *Global Change Biology*, 10, 1325–1334, <http://onlinelibrary.wiley.com/doi/10.1111/j.1529-8817.2003.00810.x/full>, 2004.
- 765 Falk, M., Wharton, S., Schroeder, M., Ustin, S., and U, K. T. P.: Flux partitioning in an old-growth forest: seasonal and interannual dynamics, *Tree Physiology*, 28, 509–520, <https://academic.oup.com/treephys/article-abstract/28/4/509/1720561>, 2008.
- Farquhar, G. D., Caemmerer, S. V., and Berry, J. A.: A biochemical-model of photosynthetic CO<sub>2</sub> assimilation in leaves of C-3 species, *Planta*, 149, 78–90, 1980.
- 770 Finnigan, J. and Leuning, R.: Long term flux measurements-coordinate systems and averaging, in: *Proc. International Workshop for Advanced Flux Network and Flux Evaluation*, pp. 51–56, Centre for Global Environmental Research, National Institute for Environmental Studies, 2000.
- Fischer, E. M., Seneviratne, S. I., Lüthi, D., and Schär, C.: Contribution of land-atmosphere coupling to recent European summer heat waves, *Geophysical Research Letters*, 34, <http://onlinelibrary.wiley.com/doi/10.1029/2006GL029068/full>, 2007.
- 775 Fisher, R. A., Williams, M., Da Costa, A. L., Malhi, Y., Da Costa, R. F., Almeida, S., and Meir, P.: The response of an Eastern Amazonian rain forest to drought stress: results and modelling analyses from a throughfall exclusion experiment, *Global Change Biology*, 13, 2361–2378, doi:10.1111/j.1365-2486.2007.01417.x, <http://onlinelibrary.wiley.com/doi/10.1111/j.1365-2486.2007.01417.x/abstract>, 2007.
- 780 Flach, M., Gans, F., Brenning, A., Denzler, J., Reichstein, M., Rodner, E., Bathiany, S., Bodesheim, P., Guaniche, Y., Sippel, S., and Mahecha, M. D.: Multivariate Anomaly Detection for Earth Observations: A Comparison of Algorithms and Feature Extraction Techniques, *Earth System Dynamics Discussions*, pp. 1–27, doi:10.5194/esd-2016-51, <http://www.earth-syst-dynam-discuss.net/esd-2016-51/>, 2016.
- Flanagan, L. B., Wever, L. A., and Carlson, P. J.: Seasonal and interannual variation in carbon dioxide  
785 exchange and carbon balance in a northern temperate grassland, *Global Change Biology*, 8, 599–615, doi:10.1046/j.1365-2486.2002.00491.x, <http://doi.wiley.com/10.1046/j.1365-2486.2002.00491.x>, 2002.
- Flexas, J. and Medrano, H.: Drought-inhibition of photosynthesis in C-3 plants: Stomatal and non-stomatal limitations revisited, *Annals of Botany*, 89, 183–189, doi:10.1093/aob/mcf027, 2002.
- Frank, D., Reichstein, M., Bahn, M., Frank, D., Mahecha, M. D., Smith, P., Thonicke, K., van der Velde, M.,  
790 Vicca, S., Babst, F., Beer, C., Buchmann, N., Canadell, J. G., Ciais, P., Cramer, W., Ibrom, A., Miglietta, F., Poulter, B., Rammig, A., Seneviratne, S. I., Walz, A., Wattenbach, M., Zavala, M. A., and Zscheischler, J.: Effects of climate extremes on the terrestrial carbon cycle: concepts, processes and potential future impacts, *Global Change Biology*, pp. n/a–n/a, doi:10.1111/gcb.12916, <http://onlinelibrary.wiley.com/doi/10.1111/gcb.12916/abstract>, 2015.

- 795 Friedlingstein, P., Cox, P., Betts, R., Bopp, L., von Bloh, W., Brovkin, V., Cadule, P., Doney, S., Eby, M., Fung, I., Bala, G., John, J., Jones, C., Joos, F., Kato, T., Kawamiya, M., Knorr, W., Lindsay, K., Matthews, H. D., Raddatz, T., Rayner, P., Reick, C., Roeckner, E., Schnitzler, K.-G., Schnur, R., Strassmann, K., Weaver, A. J., Yoshikawa, C., and Zeng, N.: Climate-carbon cycle feedback analysis: Results from the C4MIP model intercomparison, *J. Climate*, 19, 3337–3353, doi:10.1175/JCLI3800.1, 2006.
- 800 Gaumont-Guay, D., Black, T. A., Griffis, T. J., Barr, A. G., Jassal, R. S., and Nesic, Z.: Interpreting the dependence of soil respiration on soil temperature and water content in a boreal aspen stand, *Agricultural and Forest Meteorology*, 140, 220–235, doi:10.1016/j.agrformet.2006.08.003, 2006.
- Ghil, M., Yiou, P., Hallegatte, S., Malamud, B. D., Naveau, P., Soloviev, A., Friederichs, P., Keilis-Borok, V., Kondrashov, D., Kossobokov, V., Mestre, O., Nicolis, C., Rust, H. W., Shebalin, P., Vrac, M., Witt, A., and Zaliapin, I.: Extreme events: dynamics, statistics and prediction, *Nonlin. Processes Geophys.*, 18, 295–350, doi:10.5194/npg-18-295-2011, <https://www.nonlin-processes-geophys.net/18/295/2011/>, 2011.
- 805 Gough, C., Vogel, C., Schmid, H., Su, H.-B., and Curtis, P.: Multi-year convergence of biometric and meteorological estimates of forest carbon storage, *Agricultural and Forest Meteorology*, 148, 158–170, 2008.
- Goulden, M. L., Winston, G. C., McMILLAN, A., Litvak, M. E., Read, E. L., Rocha, A. V., and Rob Elliot, J.: An eddy covariance mesonet to measure the effect of forest age on land–atmosphere exchange, *Global Change Biology*, 12, 2146–2162, 2006.
- 815 Granier, A., Reichstein, M., Bréda, N., Janssens, I., Falge, E., Ciais, P., Gruenwaldnwald, T., Aubinet, M., Berbigier, P., Bernhofer, C., Buchmann, N., Facini, O., Grassi, G., Heinesch, B., Ilvesniemi, H., Keronen, P., Knohl, A., Koestner, B., Lagergren, F., Lindroth, A., Longdoz, B., Loustau, D., Mateus, J., Montagnani, L., Nys, C., Moors, E., Papale, D., Peiffer, M., Pilegaard, K., Pita, G., Pumpanen, J., Rambal, S., Rebmann, C., Rodrigues, A., Seufert, G., Tenhunen, J., Vesala, T., and Wang, Q.: Evidence for soil water control on carbon and water dynamics in European forests during the extremely dry year: 2003, *Agricultural and Forest Meteorology*, 143, 123 – 145, doi:DOI: 10.1016/j.agrformet.2006.12.004, 2007.
- 820 Green, J. K., Konings, A. G., Alemohammad, S. H., Berry, J., Entekhabi, D., Kolassa, J., Lee, J.-E., and Gentine, P.: Regionally strong feedbacks between the atmosphere and terrestrial biosphere, *Nature Geoscience*, 10, 410–414, [http://web.mit.edu/~hamed\\_al/www/ngeo2957.pdf](http://web.mit.edu/~hamed_al/www/ngeo2957.pdf), 2017.
- Grünzweig, J., Lin, T., Rotenberg, E., Schwartz, A., and Yakir, D.: Carbon sequestration in arid-land forest, *Global Change Biology*, 9, 791–799, 2003.
- 825 Havránková, K. and Sedlák, P.: Wind velocity analysis for mountainous site Bily Kriz, *Ekologia-Bratislava*, 23, 46–54, 2004.
- Hendriks, D. M. D., Van Huissteden, J., Dolman, A. J., and Van der Molen, M. K.: The full greenhouse gas balance of an abandoned peat meadow, *Biogeosciences Discussions*, 4, 277–316, <https://hal.archives-ouvertes.fr/hal-00297865/>, 2007.
- 830 Hirano, T., Hirata, R., Fujinuma, Y., Saigusa, N., Yamamoto, S., Harazono, Y., Takada, M., Inukai, K., and Inoue, G.: CO<sub>2</sub> and water vapor exchange of a larch forest in northern Japan, *Tellus B*, 55, 244–257, 2003.
- Högberg, P., Nordgren, A., Buchmann, N., Taylor, A. F., Ekblad, A., Högberg, M. N., Nyberg, G., Ottosson-Löfvenius, M., and Read, D. J.: Large-scale forest girdling shows that current photosynthesis drives soil respiration, *Nature*, 411, 789–792, doi:10.1038/35081058, 2001.



- Hollinger, D., Aber, J., Dail, B., Davidson, E., Goltz, S., Hughes, H., Leclerc, M., Lee, J., Richardson, A.,  
835 Rodrigues, C., et al.: Spatial and temporal variability in forest–atmosphere CO<sub>2</sub> exchange, *Global Change  
Biology*, 10, 1689–1706, 2004.
- Huybers, P. and Curry, W.: Links between annual, Milankovitch and continuum temperature variability, *Nature*,  
441, 329, <http://search.proquest.com/openview/29f1a1b48d072e620358be48ba87d8c3/1?pq-origsite=gscholar&cbl=40569>, 2006.
- 840 Irvine, J., Law, B. E., and Kurpius, M. R.: Coupling of canopy gas exchange with root and rhizosphere  
respiration in a semi-arid forest, *Biogeochemistry*, 73, 271–282, doi:10.1007/s10533-004-2564-x, <http://link.springer.com/article/10.1007/s10533-004-2564-x>, 2005.
- Irvine, J., Law, B. E., Martin, J. G., and Vickers, D.: Interannual variation in soil CO<sub>2</sub> efflux and the re-  
sponse of root respiration to climate and canopy gas exchange in mature ponderosa pine, *Global Change Bi-*  
845 *ology*, 14, 2848–2859, doi:10.1111/j.1365-2486.2008.01682.x, <http://onlinelibrary.wiley.com/doi/10.1111/j.1365-2486.2008.01682.x/abstract>, 2008.
- Jarvis, P., Massheder, J., Hale, S., Moncrieff, J., Rayment, M., and Scott, S.: Seasonal variation of carbon  
dioxide, water vapor, and energy exchanges of a boreal black spruce forest, *Journal of Geophysical Research:  
Atmospheres*, 102, 28 953–28 966, 1997.
- 850 Jassal, R. S., Black, T. A., Novak, M. D., Gaumont-Guay, D., and Nescic, Z.: Effect of soil water stress on  
soil respiration and its temperature sensitivity in an 18-year-old temperate Douglas-fir stand, *Global Change  
Biology*, 14, 1305–1318, 2008.
- Jassal, R. S., Black, T. A., and Nescic, Z.: Biophysical controls of soil CO<sub>2</sub> efflux in two coastal Douglas-  
fir stands at different temporal scales, *Agricultural and forest meteorology*, 153, 134–143, <http://www.sciencedirect.com/science/article/pii/S0168192311001468>, 2012.
- 855 Jung, M., Reichstein, M., Schwalm, C. R., Huntingford, C., Sitch, S., Ahlström, A., Arneth, A., Camps-Valls,  
G., Ciais, P., Friedlingstein, P., Gans, F., Ichii, K., Jain, A. K., Kato, E., Papale, D., Poulter, B., Raduly,  
B., Rödenbeck, C., Tramontana, G., Viovy, N., Wang, Y.-P., Weber, U., Zaehle, S., and Zeng, N.: Com-  
pensatory water effects link yearly global land CO<sub>2</sub> sink changes to temperature, *Nature*, 541, 516–520,  
860 doi:10.1038/nature20780, <http://www.nature.com/doi/10.1038/nature20780>, 2017.
- Kätterer, T., Reichstein, M., Andrén, O., and Lomander, A.: Temperature dependence of organic matter decom-  
position: a critical review using literature data analyzed with different models, *Biology and fertility of soils*,  
27, 258–262, 1998.
- Keenan, T., Sabate, S., and Gracia, C.: The importance of mesophyll conductance in regulating forest ecosys-  
865 tem productivity during drought periods, *Global Change Biology*, 16, 1019–1034, doi:10.1111/j.1365-  
2486.2009.02017.x, <http://onlinelibrary.wiley.com/doi/10.1111/j.1365-2486.2009.02017.x/abstract>, 2010.
- Kirschbaum, M. U. F.: The temperature dependence of soil organic-matter decomposition and the effect of  
global warming on soil organic C storage, *Soil Biology and Biochemistry*, 27, 753–760, doi:10.1016/0038-  
0717(94)00242-S, 1995.
- 870 Kirschbaum, M. U. F.: The temperature dependence of organic-matter decomposition—still a topic of  
debate, *Soil Biology and Biochemistry*, 38, 2510–2518, doi:10.1016/j.soilbio.2006.01.030, <http://www.sciencedirect.com/science/article/pii/S0038071706001416>, 2006.

- Knohl, A., Schulze, E.-D., Kolle, O., and Buchmann, N.: Large carbon uptake by an unmanaged 250-year-old deciduous forest in Central Germany, *Agricultural and Forest Meteorology*, 118, 151–167, 2003.
- 875 Kottek, M., Grieser, J., Beck, C., Rudolf, B., and Rubel, F.: World map of the Köppen-Geiger climate classification updated, *Meteorologische Zeitschrift*, 15, 259–263, 2006.
- Krishnan, P., Black, T. A., Grant, N. J., Barr, A. G., Hogg, E. T. H., Jassal, R. S., and Morgenstern, K.: Impact of changing soil moisture distribution on net ecosystem productivity of a boreal aspen forest during and following drought, *Agricultural and Forest Meteorology*, 139, 208–223, <http://www.sciencedirect.com/science/article/pii/S0168192306001626>, 2006.
- 880 Kurbatova, J., Li, C., Varlagin, A., Xiao, X., and Vygodskaya, N.: Modeling carbon dynamics in two adjacent spruce forests with different soil conditions in Russia, *Biogeosciences*, 5, 969–980, 2008.
- Lafleur, P. M., Roulet, N. T., Bubier, J. L., Froking, S., and Moore, T. R.: Interannual variability in the peatland-atmosphere carbon dioxide exchange at an ombrotrophic bog, *Global Biogeochemical Cycles*, 17, <http://onlinelibrary.wiley.com/doi/10.1029/2002GB001983/full>, 2003.
- 885 Lagergren, F., Lindroth, A., Dellwik, E., Ibrom, A., Lankreijer, H., Launiainen, S., Mölder, M., Kolari, P., Pilegaard, K., and Vesala, T.: Biophysical controls on CO<sub>2</sub> fluxes of three northern forests based on long-term eddy covariance data, *Tellus B*, 60, 143–152, 2008.
- Larcher, W.: *Physiological plant ecology: ecophysiology and stress physiology of functional groups*, Springer Verlag, Berlin, Heidelberg, Germany and New York, NY, USA, 4 edn., 2003.
- 890 Law, B.: Carbon dynamics in response to climate and disturbance: Recent progress from multi-scale measurements and modeling in AmeriFlux, in: *Plant Responses to Air Pollution and Global Change*, edited by Omasa, K., Nouchi, I., and Kok, L. J. D., pp. 205–213, Springer Japan, [http://link.springer.com/chapter/10.1007/4-431-31014-2\\_23](http://link.springer.com/chapter/10.1007/4-431-31014-2_23), doi: 10.1007/4-431-31014-2\_23, 2005.
- 895 Law, B., Thornton, P., Irvine, J., Anthoni, P., and Van Tuyl, S.: Carbon storage and fluxes in ponderosa pine forests at different developmental stages, *Global Change Biology*, 7, 755–777, doi:10.1046/j.1354-1013.2001.00439.x, <http://onlinelibrary.wiley.com/doi/10.1046/j.1354-1013.2001.00439.x/abstract>, 2001.
- Law, B. E.: Regional analysis of drought and heat impacts on forests: current and future science directions, *Global Change Biology*, 20, 3595–3599, doi:10.1111/gcb.12651, <http://doi.wiley.com/10.1111/gcb.12651>, 900 2014.
- Law, B. E., Ryan, M. G., and Anthoni, P. M.: Seasonal and annual respiration of a ponderosa pine ecosystem, *Global Change Biology*, 5, 169–182, doi:10.1046/j.1365-2486.1999.00214.x, <http://onlinelibrary.wiley.com/doi/10.1046/j.1365-2486.1999.00214.x/abstract>, 1999.
- Leonard, M., Westra, S., Phatak, A., Lambert, M., van den Hurk, B., McInnes, K., Risbey, J., Schuster, S., 905 Jakob, D., and Stafford-Smith, M.: A compound event framework for understanding extreme impacts, *Wiley Interdisciplinary Reviews: Climate Change*, 5, 113–128, 2014.
- Leuning, R.: Modelling stomatal behaviour and photosynthesis of *Eucalyptus grandis*, *Functional Plant Biology*, 17, 159–175, <http://www.publish.csiro.au/fp/PP9900159>, 1990.
- Lipson, D. A., Wilson, R. F., and Oechel, W. C.: Effects of elevated atmospheric CO<sub>2</sub> on soil microbial biomass, activity, and diversity in a chaparral ecosystem, *Applied and Environmental Microbiology*, 71, 8573–8580, 910 2005.

- Liu, W., Zhang, Z., and Wan, S.: Predominant role of water in regulating soil and microbial respiration and their responses to climate change in a semiarid grassland, *Global Change Biology*, 15, 184–195, doi:10.1111/j.1365-2486.2008.01728.x, 2009.
- 915 Lloyd, J. and Taylor, J. A.: On the temperature dependence of soil respiration, *Functional Ecology*, 8, 315–323, doi:10.2307/2389824, <http://www.jstor.org/stable/2389824>, 1994.
- Ma, S., Baldocchi, D. D., Xu, L., and Hehn, T.: Inter-annual variability in carbon dioxide exchange of an oak/grass savanna and open grassland in California, *Agricultural and Forest Meteorology*, 147, 157–171, <http://www.sciencedirect.com/science/article/pii/S016819230700189X>, 2007.
- 920 Mahecha, M. D., Reichstein, M., Carvalhais, N., Lasslop, G., Lange, H., Seneviratne, S. I., Vargas, R., Ammann, C., Arain, M. A., Cescatti, A., Janssens, I. A., Migliavacca, M., Montagnani, L., and Richardson, A. D.: Global Convergence in the Temperature Sensitivity of Respiration at Ecosystem Level, *Science*, 329, 838–840, doi:10.1126/science.1189587, 2010.
- Mahecha, M. D., Gans, F., Sippel, S., Donges, J. F., Kaminski, T., Metzger, S., Migliavacca, M., Papale, D., 925 Rammig, A., and Zscheischler, J.: Detecting impacts of extreme events with ecological in-situ monitoring networks, *Biogeosciences Discussions*, 2017.
- Marcolla, B. and Cescatti, A.: Experimental analysis of flux footprint for varying stability conditions in an alpine meadow, *Agricultural and Forest Meteorology*, 135, 291–301, <http://www.sciencedirect.com/science/article/pii/S0168192306000049>, 2005.
- 930 Marek, M. V., Janouš, D., Taufarová, K., Havránková, K., Pavelka, M., Kaplan, V., and Marková, I.: Carbon exchange between ecosystems and atmosphere in the Czech Republic is affected by climate factors, *Environmental pollution*, 159, 1035–1039, <http://www.sciencedirect.com/science/article/pii/S0269749110005361>, 2011.
- Maselli, F., Barbati, A., Chiesi, M., Chirici, G., and Corona, P.: Use of remotely sensed and ancillary data for 935 estimating forest gross primary productivity in Italy, *Remote Sensing of Environment*, 100, 563–575, 2006.
- Medlyn, B. E., Dreyer, E., Ellsworth, D., Forstreuter, M., Harley, P. C., Kirschbaum, M. U. F., Le Roux, X., Montpied, P., Strassmeyer, J., Walcroft, A., Wang, K., and Loustau, D.: Temperature response of parameters of a biochemically based model of photosynthesis. II. A review of experimental data, *Plant Cell and Environment*, 25, 1167–1179, 2002.
- 940 Meir, P., Metcalfe, D., Costa, A., and Fisher, R.: The fate of assimilated carbon during drought: Impacts on respiration in Amazon rainforests, *Philosophical Transactions of the Royal Society B: Biological Sciences*, 363, 1849–1855, doi:10.1098/rstb.2007.0021, <http://rstb.royalsocietypublishing.org/cgi/doi/10.1098/rstb.2007.0021>, 2008.
- Meyers, T. P. and Hollinger, S. E.: An assessment of storage terms in the surface energy balance of maize and 945 soybean, *Agricultural and Forest Meteorology*, 125, 105–115, <http://www.sciencedirect.com/science/article/pii/S0168192304000620>, 2004.
- Michelot, A., Eglin, T., Dufrene, E., Lelarge-Trouverie, C., and Damesin, C.: Comparison of seasonal variations in water-use efficiency calculated from the carbon isotope composition of tree rings and flux data in a temperate forest, *Plant, cell & environment*, 34, 230–244, 2011.
- 950 Migliavacca, M., Reichstein, M., Richardson, A. D., Colombo, R., Sutton, M. A., Lasslop, G., Tomerelli, E., Wohlfahrt, G., Carvalhais, N., Cescatti, A., Mahecha, M. D., Montagnani, L., Papale, D., Zaehle, S., Arain, A.,

- Arneeth, A., Black, T. A., Carrara, A., Dore, S., Gianelle, D., Helfter, C., Hollinger, D., Kutsch, W. L., Lafleur, P. M., Nouvellon, Y., Rebmann, C., Da Rocha, H. R., Rodeghiero, M., Roupsard, O., Sebastian, M.-T., Seuffert, G., Soussana, J.-F., and Van Der Molen, M. K.: Semiempirical modeling of abiotic and biotic factors controlling ecosystem respiration across Eddy Covariance sites, *Global Change Biology*, doi:10.1111/j.1365-2486.2010.02243.x, 2010.
- 955 Moncrieff, J. B., Massheder, J. M., deBruin, H., Elbers, J., Friborg, T., Heusinkveld, B., Kabat, P., Scott, S., Soegaard, H., and Verhoef, A.: A system to measure surface fluxes of momentum, sensible heat, water vapour and carbon dioxide, *Journal of Hydrology*, 189, 589–611, 1997.
- 960 Monson, R., Turnipseed, A., Sparks, J., Harley, P., Scott-Denton, L., Sparks, K., and Huxman, T.: Carbon sequestration in a high-elevation, subalpine forest, *Global Change Biology*, 8, 459–478, 2002.
- Morgenstern, K., Black, T. A., Humphreys, E. R., Griffis, T. J., Drewitt, G. B., Cai, T., Nescic, Z., Spittlehouse, D. L., and Livingston, N. J.: Sensitivity and uncertainty of the carbon balance of a Pacific Northwest Douglas-fir forest during an El Niño/La Niña cycle, *Agricultural and Forest Meteorology*, 123, 201–219, 2004.
- 965 Moureaux, C., Debacq, A., Bodson, B., Heinesch, B., and Aubinet, M.: Annual net ecosystem carbon exchange by a sugar beet crop, *Agricultural and Forest Meteorology*, 139, 25–39, <http://www.sciencedirect.com/science/article/pii/S0168192306001493>, 2006.
- Muhr, J., Franke, J., and Borken, W.: Drying–rewetting events reduce C and N losses from a Norway spruce forest floor, *Soil Biology and Biochemistry*, 42, 1303–1312, 2010.
- 970 Murray-Tortarolo, G., Friedlingstein, P., Sitch, S., Seneviratne, S. I., Fletcher, I., Mueller, B., Greve, P., Anav, A., Liu, Y., Ahlström, A., and others: The dry season intensity as a key driver of NPP trends, *Geophysical Research Letters*, 43, 2632–2639, <http://onlinelibrary.wiley.com/doi/10.1002/2016GL068240/full>, 2016.
- Nagy, Z., Pintér, K., Czóbel, S., Balogh, J., Horváth, L., Fóti, S., Barcza, Z., Weidinger, T., Csintalan, Z., Dinh, N. Q., Grosz, B., and Tuba, Z.: The carbon budget of semi-arid grassland in a wet and a dry year in Hungary, *Agriculture, Ecosystems & Environment*, 121, 21–29, doi:10.1016/j.agee.2006.12.003, <http://www.sciencedirect.com/science/article/pii/S0167880906004312>, 2007.
- 975 Nardino, M., Georgiadis, T., Rossi, F., Ponti, F., Miglietta, F., and Magliulo, V.: Primary productivity and evapotranspiration of a mixed forest, in: Congress CNR-ISA Fo., Istituto per i Sistemi Agricoli e Forestali del Mediterraneo, Portici, pp. 24–25, 2002.
- 980 Nemani, R. R., Keeling, C. D., Hashimoto, H., Jolly, W. M., Piper, S. C., Tucker, C. J., Myneni, R. B., and Running, S. W.: Climate-driven increases in global terrestrial net primary production from 1982 to 1999, *science*, 300, 1560–1563, <http://science.sciencemag.org/content/300/5625/1560.short>, 2003.
- Orchard, V. and Cook, F.: Relationship between soil respiration and soil-moisture, *Soil Biology & Biochemistry*, 15, 447–453, doi:10.1016/0038-0717(83)90010-X, 1983.
- 985 Pataki, D. E. and Oren, R.: Species differences in stomatal control of water loss at the canopy scale in a mature bottomland deciduous forest, *Advances in Water Resources*, 26, 1267–1278, <http://www.sciencedirect.com/science/article/pii/S0309170803001179>, 2003.
- Peichl, M., Leahy, P., and Kiely, G.: Six-year stable annual uptake of carbon dioxide in intensively managed humid temperate grassland, *Ecosystems*, 14, 112–126, 2011.
- 990 Peichl, M., Sonnentag, O., Wohlfahrt, G., Flanagan, L. B., Baldocchi, D. D., Kiely, G., Galvagno, M., Gianelle, D., Marcolla, B., Pio, C., Migliavacca, M., Jones, M. B., and Saunders, M.: Convergence

- of potential net ecosystem production among contrasting C3 grasslands, *Ecology Letters*, 16, 502–512, doi:10.1111/ele.12075, <http://onlinelibrary.wiley.com/doi/10.1111/ele.12075/abstract>, 2013.
- 995 Pereira, J. S., Mateus, J. A., Aires, L. M., Pita, G., Pio, C., Andrade, V., Banza, J., David, T. S., Rodrigues, A., and David, J. S.: Effects of drought? altered seasonality and low rainfall? in net ecosystem carbon exchange of three contrasting Mediterranean ecosystems, *Biogeosciences Discussions*, 4, 1703–1736, <https://hal-sde.archives-ouvertes.fr/hal-00298324/>, 2007.
- 1000 Perez-Priego, O., El-Madany, T. S., Migliavacca, M., Kowalski, A. S., Jung, M., Carrara, A., Kolle, O., Martín, M. P., Pacheco-Labrador, J., Moreno, G., and Reichstein, M.: Evaluation of eddy covariance latent heat fluxes with independent lysimeter and sapflow estimates in a Mediterranean savannah ecosystem, *Agricultural and Forest Meteorology*, 236, 87–99, doi:10.1016/j.agrformet.2017.01.009, <http://www.sciencedirect.com/science/article/pii/S0168192317300096>, 2017.
- Pilegaard, K., Hummelshøj, P., Jensen, N., and Chen, Z.: Two years of continuous CO<sub>2</sub> eddy-flux measurements over a Danish beech forest, *Agricultural and Forest Meteorology*, 107, 29–41, 2001.
- 1005 Powell, T. L., Bracho, R., Li, J., Dore, S., Hinkle, C. R., and Drake, B. G.: Environmental controls over net ecosystem carbon exchange of scrub oak in central Florida, *Agricultural and Forest Meteorology*, 141, 19–34, <http://www.sciencedirect.com/science/article/pii/S0168192306002425>, 2006.
- Priestley, C. and Taylor, R.: On the assessment of surface heat flux and evaporation using large-scale parameters, *Monthly Weather Review*, 100, 81–92, 1972.
- 1010 Rambal, S., Joffre, R., Ourcival, J., Cavender-Bares, J., and Rocheteau, A.: The growth respiration component in eddy CO<sub>2</sub> flux from a *Quercus ilex* mediterranean forest, *Global Change Biology*, 10, 1460–1469, 2004.
- Rambal, S., Lempereur, M., Limousin, J. M., Martin-StPaul, N. K., Ourcival, J. M., and Rodríguez-Calcerrada, J.: How drought severity constrains gross primary production (GPP) and its partitioning among carbon pools in a *Quercus ilex* coppice?, *Biogeosciences*, 11, 6855–6869, doi:10.5194/bg-11-6855-2014, <http://www.biogeosciences.net/11/6855/2014/>, 2014.
- 1015 Reichstein, M. and Beer, C.: Soil respiration across scales: The importance of a model-data integration framework for data interpretation, *Journal of Plant Nutrition and Soil Science*, 171, 344–354, 2008.
- Reichstein, M., Tenhunen, J. D., Roupsard, O., Ourcival, J.-m., Rambal, S., Miglietta, F., Peressotti, A., Pecchiari, M., Tirone, G., and Valentini, R.: Severe drought effects on ecosystem CO<sub>2</sub> and H<sub>2</sub>O fluxes at three Mediterranean evergreen sites: revision of current hypotheses?, *Global Change Biology*, 8, 999–1017, doi:10.1046/j.1365-2486.2002.00530.x, <http://onlinelibrary.wiley.com/doi/10.1046/j.1365-2486.2002.00530.x/abstract>, 2002.
- 1020 Reichstein, M., Falge, E., Baldocchi, D., Papale, D., Aubinet, M., Berbigier, P., Bernhofer, C., Buchmann, N., Gilmanov, T., Granier, A., Grunwald, T., Havrankova, K., Ilvesniemi, H., Janous, D., Knohl, A., Laurila, T., Lohila, A., Loustau, D., Matteucci, G., Meyers, T., Miglietta, F., Ourcival, J. M., Pumpanen, J., Rambal, S., Rotenberg, E., Sanz, M., Tenhunen, J., Seufert, G., Vaccari, F., Vesala, T., Yakir, D., and Valentini, R.: On the separation of net ecosystem exchange into assimilation and ecosystem respiration: review and improved algorithm, *Global Change Biology*, 11, 1424–1439, 2005.
- 1025 Reichstein, M., Ciais, P., Papale, D., Valentini, R., Running, S., Viovy, N., Cramer, W., Granier, A., Ogee, J., Allard, V., Aubinet, M., Bernhofer, C., Buchmann, N., Carrara, A., Grünwald, T., Heimann, M., Heinesch, B., Knohl, A., Kutsch, W., Loustau, D., Manca, G., Matteucci, G., Miglietta, F., Ourcival, J., Pilegaard,

- K., Pumpanen, J., Rambal, S., Schaphoff, S., Seufert, G., Soussana, J.-F., Sanz, M.-J., Vesala, T., and Zhao, M.: Reduction of ecosystem productivity and respiration during the European summer 2003 climate anomaly: a joint flux tower, remote sensing and modelling analysis, *Global Change Biology*, 13, 634–651, doi:10.1111/j.1365-2486.2006.01224.x, <http://onlinelibrary.wiley.com/doi/10.1111/j.1365-2486.2006.01224.x/abstract>, 2007.
- 1035 Reichstein, M., Bahn, M. and Ciais, P., Frank, D., Mahecha, M. D., Seneviratne, S. I., Zscheischler, J., Beer, C., Buchmann, N., Frank, D. C., Papale, D., Rammig, A., Smith, P., Thonicke, K., van der Velde, M., Vicca, S., Walz, A., and Wattenbach, M.: Climate extremes and the carbon cycle, *Nature*, 500, 287–295, doi:10.1038/nature12350, 2013.
- 1040 Rodrigues, A., Pita, G., Mateus, J. a., Kurz-Besson, C., Casquilho, M., Cerasoli, S., Gomes, A., and Pereira, J. a.: Eight years of continuous carbon fluxes measurements in a Portuguese eucalypt stand under two main events: Drought and felling, *Agricultural and forest meteorology*, 151, 493–507, <http://www.sciencedirect.com/science/article/pii/S0168192310003400>, 2011.
- 1045 Roman, D., Novick, K., Brzostek, E., Dragoni, D., Rahman, F., and Phillips, R.: The role of isohydric and anisohydric species in determining ecosystem-scale response to severe drought, *Oecologia*, 179, 641–654, 2015.
- Ruehr, N. K., Martin, J. G., and Law, B. E.: Effects of water availability on carbon and water exchange in a young ponderosa pine forest: Above-and belowground responses, *Agricultural and forest meteorology*, 164, 136–148, 2012.
- 1050 Rustad, L., Campbell, J., Marion, G., Norby, R., Mitchell, M., Hartley, A., Cornelissen, J., and Gurevitch, J.: A meta-analysis of the response of soil respiration, net nitrogen mineralization, and aboveground plant growth to experimental ecosystem warming, *Oecologia*, 126, 543–562, <http://www.springerlink.com/index/EBCG4KX5E13Q5MDJ.pdf>, 2001.
- 1055 Ryan, M. G. and Law, B. E.: Interpreting, measuring, and modeling soil respiration, *Biogeochemistry*, 73, 3–27, doi:10.1007/s10533-004-5167-7, <http://link.springer.com/article/10.1007/s10533-004-5167-7>, 2005.
- Sage, R. F. and Kubien, D. S.: The temperature response of C(3) and C(4) photosynthesis, *Plant, Cell & Environment*, 30, 1086–1106, doi:10.1111/j.1365-3040.2007.01682.x, 2007.
- Sagerfors, J., Lindroth, A., Grelle, A., Klemetsson, L., Weslien, P., and Nilsson, M.: Annual CO<sub>2</sub> exchange between a nutrient-poor, minerotrophic, boreal mire and the atmosphere, *Journal of Geophysical Research: Biogeosciences*, 113, <http://onlinelibrary.wiley.com/doi/10.1029/2006JG000306/full>, 2008.
- 1060 Salvucci, M. E. and Crafts-Brandner, S. J.: Inhibition of photosynthesis by heat stress: the activation state of Rubisco as a limiting factor in photosynthesis, *Physiologia Plantarum*, 120, 179–186, doi:10.1111/j.0031-9317.2004.0173.x, 2004.
- 1065 Schulze, E. D.: Carbon-dioxide and Water-vapor Exchange In Response To Drought In the Atmosphere and In the Soil, *Annual Review of Plant Physiology and Plant Molecular Biology*, 37, 247–274, 1986.
- Schwalm, C. R., Williams, C. A., Schaefer, K., Arneth, A., Bonal, D., Buchmann, N., Chen, J., Law, B. E., Lindroth, A., Luysaert, S., Reichstein, M., and Richardson, A. D.: Assimilation exceeds respiration sensitivity to drought: A FLUXNET synthesis, *Global Change Biology*, 16, 657–670, doi:10.1111/j.1365-2486.2009.01991.x, 2010.
- 1070

- Schwalm, C. R., Williams, C. A., Schaefer, K., Baldocchi, D., Black, T. A., Goldstein, A. H., Law, B. E., Oechel, W. C., Scott, R. L., and others: Reduction in carbon uptake during turn of the century drought in western North America, *Nature Geoscience*, 5, 551–556, <http://www.nature.com/ngeo/journal/v5/n8/abs/ngeo1529.html>, 2012.
- 1075 Scott, R. L., Jenerette, G. D., Potts, D. L., and Huxman, T. E.: Effects of seasonal drought on net carbon dioxide exchange from a woody-plant-encroached semiarid grassland, *Journal of Geophysical Research: Biogeosciences*, 114, <http://onlinelibrary.wiley.com/doi/10.1029/2008JG000900/full>, doi:10.1029/2008JG000900, 2009.
- Seneviratne, S. I., Corti, T., Davin, E. L., Hirschi, M., Jaeger, E. B., Lehner, I., Orlowsky, B., and Teuling, A. J.:  
1080 Investigating soil moisture-climate interactions in a changing climate: A review, *Earth-Science Reviews*, 99, 125–161, <http://www.sciencedirect.com/science/article/pii/S0012825210000139>, 2010.
- Seneviratne, S. I., Nicholls, N., Easterling, D., Goodess, C. M., Kanae, S., Kossin, J., Luo, Y., Marengo, J.,  
McInnes, K., Rahimi, M., and others: Managing the Risks of Extreme Events and Disasters to Advance  
Climate Change Adaptation. A Special Report of Working Groups I and II of the Intergovernmental Panel  
1085 on Climate Change (IPCC)., chap. 3 Changes in climate extremes and their impacts on the natural physical environment, pp. 109–230, IPCC, [http://ipcc.ch/pdf/presentations/SREX\\_geneva\\_march2012/ipcc\\_srex\\_seneviratne\\_geneva\\_201203.pdf](http://ipcc.ch/pdf/presentations/SREX_geneva_march2012/ipcc_srex_seneviratne_geneva_201203.pdf), 2012.
- Sheik, C. S., Beasley, W. H., Elshahed, M. S., Zhou, X., Luo, Y., and Krumholz, L. R.: Effect of warming and drought on grassland microbial communities, *The ISME journal*, 5, 1692–1700, 2011.
- 1090 Sillmann, J., Kharin, V. V., Zhang, X., Zwiers, F. W., and Bronaugh, D.: Climate extremes indices in the CMIP5 multimodel ensemble: Part 1. Model evaluation in the present climate, *Journal of Geophysical Research: Atmospheres*, 118, 1716–1733, <http://onlinelibrary.wiley.com/doi/10.1002/jgrd.50203/full>, 2013a.
- Sillmann, J., Kharin, V. V., Zwiers, F. W., Zhang, X., and Bronaugh, D.: Climate extremes indices in the CMIP5 multimodel ensemble: Part 2. Future climate projections, *Journal of Geophysical Research: Atmospheres*,  
1095 118, 2473–2493, <http://onlinelibrary.wiley.com/doi/10.1002/jgrd.50188/full>, 2013b.
- Smith, M. D.: An ecological perspective on extreme climatic events: a synthetic definition and framework to guide future research, *Journal of Ecology*, 99, 656–663, doi:10.1111/j.1365-2745.2011.01798.x, <http://onlinelibrary.wiley.com/doi/10.1111/j.1365-2745.2011.01798.x/abstract>, 2011.
- Teuling, A. J. and Seneviratne, S. I.: The contrasting role of forests and grasslands on land-climate interaction during recent European heat waves, in: *Earth Observation for Land-Atmosphere Interaction Science*, vol. 688, p. 23, <http://adsabs.harvard.edu/abs/2011ESASP.688E..23T>, 2011.
- Teuling, A. J., Hirschi, M., Ohmura, A., Wild, M., Reichstein, M., Ciais, P., Buchmann, N., Ammann, C., Montagnani, L., Richardson, A. D., Wohlfahrt, G., and Seneviratne, S. I.: A regional perspective on trends in continental evaporation, *Geophysical Research Letters*, 36, L02 404, doi:10.1029/2008GL036584, 2009.
- 1105 Teuling, A. J., Seneviratne, S. I., Stöckli, R., Reichstein, M., Moors, E., Ciais, P., Luyssaert, S., van den Hurk, B., Ammann, C., Bernhofer, C., Dellwik, E., Gianelle, D., Gielen, B., Grünwald, T., Klumpp, K., Montagnani, L., Moureaux, C., Sottocornola, M., and Wohlfahrt, G.: Contrasting response of European forest and grassland energy exchange to heatwaves, *Nature Geoscience*, 3, 722–727, doi:10.1038/ngeo950, <http://www.nature.com/doi/10.1038/ngeo950>, 2010.

- 1110 Thomas, C. K., Law, B. E., Irvine, J., Martin, J. G., Pettijohn, J. C., and Davis, K. J.: Seasonal hydrology explains interannual and seasonal variation in carbon and water exchange in a semiarid mature ponderosa pine forest in central Oregon, *Journal of Geophysical Research*, 114, doi:10.1029/2009JG001010, <http://doi.wiley.com/10.1029/2009JG001010>, 2009.
- Thum, T., Aalto, T., Laurila, T., Aurela, M., Kolari, P., and Hari, P.: Parametrization of two photosynthesis models at the canopy scale in a northern boreal Scots pine forest, *Tellus B*, 59, 874–890, 2007.
- 1115 Tirone, G., Dore, S., Matteucci, G., Greco, S., and Valentini, R.: Evergreen Mediterranean forests. carbon and water fluxes, balances, ecological and ecophysiological determinants, in: *Fluxes of Carbon, Water and Energy of European Forests*, pp. 125–149, Springer, 2003.
- Tramontana, G., Jung, M., Schwalm, C. R., Ichii, K., Camps-Valls, G., Ráduly, B., Reichstein, M., Arain, M. A., Cescatti, A., Kiely, G., Merbold, L., Serrano-Ortiz, P., Sickert, S., Wolf, S., and Papale, D.: Predicting carbon dioxide and energy fluxes across global FLUXNET sites with regression algorithms, *Biogeosciences*, 13, 4291–4313, doi:10.5194/bg-13-4291-2016, <http://www.biogeosciences.net/13/4291/2016/>, 2016.
- 1120 Vaccari, F. P., Lugato, E., Gioli, B., D’Acqui, L., Genesio, L., Toscano, P., Matese, A., and Miglietta, F.: Land use change and soil organic carbon dynamics in Mediterranean agro-ecosystems: The case study of Pianosa Island, *Geoderma*, 175, 29–36, doi:10.1016/j.geoderma.2012.01.021, <http://www.sciencedirect.com/science/article/pii/S001670611200047X>, 2012.
- Valentini, R., Matteucci, G., Dolman, A., Schulze, E.-D., Rebmann, C., Moors, E., Granier, A., Gross, P., Jensen, N., Pilegaard, K., et al.: Respiration as the main determinant of carbon balance in European forests, *Nature*, 404, 861–865, 2000.
- 1130 van der Molen, M. K., Dolman, A. J., Ciais, P., Eglin, T., Gobron, N., Law, B. E., Meir, P., Peters, W., Phillips, O. L., Reichstein, M., and others: Drought and ecosystem carbon cycling, *Agricultural and Forest Meteorology*, 151, 765–773, <http://www.sciencedirect.com/science/article/pii/S0168192311000517>, 2011.
- Van Gorsel, E., Wolf, S., Cleverly, J., Isaac, P., Haverd, V., Ewenz, C. M., Arndt, S., Beringer, J., De Dios, V. R., Evans, B. J., and others: Carbon uptake and water use in woodlands and forests in southern Australia during an extreme heat wave event in the "angry Summer" of 2012/2013, <http://ro.ecu.edu.au/ecuworkspost2013/2341/>, 2016.
- 1135 van 't Hoff, J. H.: *Lectures on theoretical and physical chemistry*, London, E. Arnold, 1898.
- Vetter, M., Churkina, G., Jung, M., Reichstein, M., Zaehle, S., Bondeau, A., Chen, Y., Ciais, P., Feser, F., Freibauer, A., Geyer, R., Jones, C., Papale, D., Tenhunen, J., Tomelleri, E., Trusilova, K., Viovy, N., and Heimann, M.: Analyzing the causes and spatial pattern of the European 2003 carbon flux anomaly using seven models, *Biogeosciences*, 5, 561–583, doi:10.5194/bg-5-561-2008, <http://www.biogeosciences.net/5/561/2008/>, 2008.
- 1140 Williams, M., Richardson, A. D., Reichstein, M., Stoy, P. C., Peylin, P., Verbeeck, H., Carvalhais, N., Jung, M., Hollinger, D. Y., Kattge, J., and others: Improving land surface models with FLUXNET data, *Biogeosciences*, 6, 1341–1359, <http://www.biogeosciences.net/6/1341/2009/bg-6-1341-2009.pdf>, 2009.
- Wohlfahrt, G. and Gu, L.: The many meanings of gross photosynthesis and their implication for photosynthesis research from leaf to globe, *Plant, cell & environment*, 38, 2500–2507, 2015.
- Wohlfahrt, G., Anderson-Dunn, M., Bahn, M., Balzarolo, M., Berninger, F., Campbell, C., Carrara, A., Cescatti, A., Christensen, T., Dore, S., Eugster, W., Friborg, T., Furger, M., Gianelle, D., Gimeno, C., Hargreaves,



- 1150 K., Hari, P., Haslwanter, A., Johansson, T., Marcolla, B., Milford, C., Nagy, Z., Nemitz, E., Rogiers, N., Sanz, M. J., Siegwolf, R. T., Susiluoto, S., Sutton, M., Tuba, Z., Ugolini, F., Valentini, R., Zorer, R., and Cernusca, A.: Biotic, abiotic, and management controls on the net ecosystem CO<sub>2</sub> exchange of European mountain grassland ecosystems, *Ecosystems*, 11, 1338–1351, doi:10.1007/s10021-008-9196-2, <http://link.springer.com/10.1007/s10021-008-9196-2>, 2008.
- 1155 Wolf, S., Eugster, W., Ammann, C., Häni, M., Zielis, S., Hiller, R., Stieger, J., Imer, D., Merbold, L., and Buchmann, N.: Contrasting response of grassland versus forest carbon and water fluxes to spring drought in Switzerland, *Environmental Research Letters*, 8, 035 007, doi:10.1088/1748-9326/8/3/035007, <http://stacks.iop.org/1748-9326/8/i=3/a=035007?key=crossref.c2748823ac9054a853ec0a4778f2bee7>, 2013.
- 1160 Wolf, S., Keenan, T. F., Fisher, J. B., Baldocchi, D. D., Desai, A. R., Richardson, A. D., Scott, R. L., Law, B. E., Litvak, M. E., Brunzell, N. A., and others: Warm spring reduced carbon cycle impact of the 2012 US summer drought, *Proceedings of the National Academy of Sciences*, 113, 5880–5885, <http://www.pnas.org/content/113/21/5880.short>, 2016.
- 1165 Wu, S. H., Jansson, P.-E., and Kolari, P.: Modeling seasonal course of carbon fluxes and evapotranspiration in response to low temperature and moisture in a boreal Scots pine ecosystem, *Ecological modelling*, 222, 3103–3119, <http://www.sciencedirect.com/science/article/pii/S0304380011003036>, 2011.
- Xu, L. and Baldocchi, D. D.: Seasonal variation in carbon dioxide exchange over a Mediterranean annual grassland in California, *Agricultural and Forest Meteorology*, 123, 79–96, <http://www.sciencedirect.com/science/article/pii/S0168192303002533>, 2004.
- 1170 Yamamoto, S., Murayama, S., Saigusa, N., and Kondo, H.: Seasonal and inter-annual variation of CO<sub>2</sub> flux between a temperate forest and the atmosphere in Japan, *Tellus B*, 51, 402–413, 1999.
- Zhao, M. and Running, S. W.: Drought-induced reduction in global terrestrial net primary production from 2000 through 2009, *science*, 329, 940–943, <http://science.sciencemag.org/content/329/5994/940.short>, 2010.
- Zscheischler, J. and Seneviratne, S. I.: Dependence of drivers affects risks associated with compound events, *Science Advances*, 3, e1700 263, 2017.
- 1175 Zscheischler, J., Mahecha, M. D., Buttler, J. v., Harmeling, S., Jung, M., Rammig, A., Randerson, J. T., Schölkopf, B., Seneviratne, S. I., Tomelleri, E., Zaehle, S., and Reichstein, M.: A few extreme events dominate global interannual variability in gross primary production, *Environmental Research Letters*, 9, 035 001, doi:10.1088/1748-9326/9/3/035001, <http://iopscience.iop.org/1748-9326/9/3/035001>, 2014a.
- 1180 Zscheischler, J., Michalak, A. M., Schwalm, C., Mahecha, M. D., Huntzinger, D. N., Reichstein, M., Berthier, G., Ciais, P., Cook, R. B., El-Masri, B., Huang, M., Ito, A., Jain, A., King, A., Lei, H., Lu, C., Mao, J., Peng, S., Poulter, B., Ricciuto, D., Shi, X., Tao, B., Tian, H., Viovy, N., Wang, W., Wei, Y., Yang, J., and Zeng, N.: Impact of large-scale climate extremes on biospheric carbon fluxes: An intercomparison based on MsTMIP data, *Global Biogeochemical Cycles*, 28, 585–600, doi:10.1002/2014GB004826, <http://onlinelibrary.wiley.com/doi/10.1002/2014GB004826/abstract>, 2014b.
- 1185 Zscheischler, J., Reichstein, M., Harmeling, S., Rammig, A., Tomelleri, E., and Mahecha, M. D.: Extreme events in gross primary production: A characterization across continents, *Biogeosciences*, 11, 2909–2924, doi:10.5194/bg-11-2909-2014, <http://www.biogeosciences.net/11/2909/2014/>, 2014c.
- Zscheischler, J., Reichstein, M., von Buttler, J., Mu, M., Randerson, J. T., and Mahecha, M. D.: Carbon cycle extremes during the 21st century in CMIP5 models: Future evolution and attribution to climatic drivers,

1190 Geophysical Research Letters, 41, 8853–8861, [http://onlinelibrary.wiley.com/doi/10.1002/2014GL062409/](http://onlinelibrary.wiley.com/doi/10.1002/2014GL062409/full)  
full, 2014d.