

# The competing impacts of climate change and nutrient reductions on dissolved oxygen in Chesapeake Bay

Isaac D. Irby<sup>1</sup>, Marjorie A. M. Friedrichs<sup>1</sup>, Fei Da<sup>1</sup> and Kyle E. Hinson<sup>1</sup>

5

<sup>1</sup> Virginia Institute of Marine Science, College of William & Mary, Gloucester Point, VA 23062

*Correspondence to:* Isaac D. Irby (isaacirby@gmail.com) and Marjorie A. M. Friedrichs (marjy@vims.edu)

10

**Short Summary.** We use an estuarine-watershed modeling system of the Chesapeake Bay to examine the impact climate change may have on the ability of nutrient reduction regulations to increase dissolved oxygen. We find that climate change will move the onset of hypoxia ~7 days earlier, while also decreasing oxygen in the Bay primarily due to increased temperature. While this effect is smaller than the increase in oxygen due to nutrient reduction, it is enough to limit the regulation's future effectiveness.

15

20

**Abstract.** The Chesapeake Bay region is projected to experience changes in temperature, sea level, and precipitation as a result of climate change. This research uses an estuarine-watershed hydrodynamic-biogeochemical modeling system along with projected mid 21<sup>st</sup> century changes in temperature, freshwater flow, and sea level rise to explore the impact climate change may have on future Chesapeake Bay dissolved oxygen (DO) concentrations and the potential success of nutrient reductions in attaining mandated estuarine water quality improvements. Results indicate that warming Bay waters will decrease oxygen solubility year-round, while also increasing oxygen utilization via respiration and remineralization, primarily impacting bottom oxygen in the spring. Rising sea level will increase estuarine circulation, reducing residence time in bottom waters and increasing stratification. As a result, oxygen concentrations in bottom waters are projected to increase, while oxygen concentrations at mid-depths ( $3 < DO < 5 \text{ mg L}^{-1}$ ) will typically decrease. Changes in precipitation are projected to deliver higher winter and spring freshwater flow and nutrient loads, fueling increased primary production. Together, these multiple climate impacts will lower DO throughout the Chesapeake Bay and negatively impact progress towards meeting water quality standards associated with the Chesapeake Bay Total Maximum Daily Load. However, this research also shows that the potential impacts of climate change will be significantly smaller than improvements in DO expected in response to the required nutrient reductions, especially at the anoxic and hypoxic levels. Overall, increased temperature exhibits the strongest control on the change in future DO concentrations, primarily due to decreased solubility, while sea level rise is expected to exert a small positive impact and increased winter river flow is anticipated to exert a small negative impact.

40

## 1 Introduction

Global climate change is projected to alter the world's marine environments with coastal and estuarine systems bearing exacerbated impacts. Rising temperatures and sea levels, along with changes in precipitation patterns, have the potential to dramatically alter water quality conditions in these highly productive and increasingly human-influenced systems (Najjar et al., 2010; Altieri and Gedan, 2015). While there are multiple metrics with which to evaluate water quality, dissolved oxygen (DO) concentrations are widely used to identify systems in distress. Large volumes of hypoxic water (generally considered to be waters with  $DO < 2 \text{ mg L}^{-1}$ ), commonly referred to as dead zones, can be found in many coastal oceans and estuaries around the world (Diaz and Rosenberg, 2008). As the climate continues to change, it is important to evaluate the impact these changes will have on DO concentrations in critical coastal environments like the Chesapeake Bay.

Climate change is generally predicted to have a net negative effect on DO in coastal waters through changes in temperature, sea level, and precipitation (Boesch et al., 2007; Meier et al., 2011; Altieri and Gedan, 2015). Higher temperatures impact both the timing and rates of biological functions, while also potentially driving changes in oxygen production and consumption (Winder and Sommer, 2012). Although increased temperature is not anticipated to have a major effect on estuarine stratification, which is primarily controlled by salinity in systems such as the Chesapeake Bay (Murphy et al., 2011), the increased temperature will act to reduce the amount of oxygen a given volume of water can hold via decreased solubility. Sea level rise (SLR) can act to increase estuarine circulation, water column stratification, and water body volume (Chua and Xu, 2014). These impacts are counteractive, as increasing volume and circulation can bring in high-oxygen water from the coastal ocean, while increased stratification inhibits downward mixing of the high-oxygen water from the surface waters. Stronger estuarine circulation generally also leads to shorter residence times that typically increase oxygen concentrations (Hong and Shen, 2012; Du and Shen, 2015). In addition over much of the mid-Atlantic region, annual precipitation, and thus river discharge, has been increasing (Yang et al., 2015a; Yang et al., 2015b, Tian et al., 2015). In the future, precipitation is most likely to increase most during the winter/spring and in the northern part of the region (Najjar et al., 2009; IPCC Annex I, 2013), delivering higher river flows and nutrient loads that fuel spring productivity and produce more organic matter available for summer decomposition (Najjar et al., 2010). Changes in nutrient loading and hydrologic conditions can also alter the Bay's phytoplankton composition, changing the biomass available for eventual decomposition (Harding et al., 2016).

Compounding the complicated process of projecting future water quality conditions are nutrient management efforts such as the Chesapeake Bay 2010 Total Maximum Daily Load (TMDL; USEPA, 2010) that was developed to improve water quality conditions in the Bay by decreasing nutrient and sediment loads. These nutrient management efforts should be fully implemented by 2025 with the ultimate goal of reducing summer hypoxia (Keisman and Shenk, 2013). Examining the potential impact of climate change in light of these mandated nutrient reductions is important because the multiple impacts of climate change have the potential to render current nutrient reduction goals inadequate (Justic et al., 2007; Meier et

al., 2013; Lennartz et al., 2014; Altieri and Gedan, 2015). Furthermore, assessing the science behind  
80 climate change impacts is critical for policies like the Chesapeake Bay TMDL that are prone to legal  
challenges (McCormick et al., 2017).

While much of the discussion around water quality regulations focuses on hypoxia ( $DO < 2 \text{ mg L}^{-1}$ ),  
studying low-DO water that encompasses concentrations greater than hypoxic levels ( $DO$  concentrations  
up to  $5 \text{ mg L}^{-1}$ ) is also critical due to the impact of increases in temperature on economically important  
85 fisheries. For example, not only do temperature increases impact  $DO$  concentrations, but they also increase  
metabolic rates in fish. This increase causes fish to experience adverse health impacts at higher and higher  
 $DO$  concentrations (Portner and Knust, 2007; Vaquer-Sunyer and Duarte, 2011; Bucheister et al., 2013).  
Furthermore, the TMDL mandates multiple levels of minimum  $DO$  concentrations at various times and  
locations throughout the Chesapeake Bay (USEPA, 2010; Tango and Batiuk, 2013). While much of the  
90 regulation targets traditional hypoxia, the TMDL mandates a monthly mean  $DO \geq 3 \text{ mg L}^{-1}$  in the deep  
water of the Bay to protect the survival and recruitment of Bay anchovy eggs and larvae, and a monthly  
mean of  $DO \geq 5 \text{ mg L}^{-1}$  above the pycnocline to protect the growth of larval, juvenile, and adult fish and  
shellfish (Tango and Batiuk, 2013).

This study examines the impact of climate change on oxygen concentrations in the Chesapeake  
95 Bay by utilizing a coupled hydrodynamic-biogeochemical model that has previously been compared to  
other Chesapeake Bay models (Irby et al., 2016). As the Chesapeake Bay TMDL stipulates a time horizon  
of 2025 for full nutrient reduction implementation, this research assumes that the required nutrient  
management strategies are in place and limiting nutrient delivery to their full potential. Future estimates of  
mid 21<sup>st</sup> century temperature, SLR, and watershed nutrient loading are applied to the model in order to  
100 examine the sensitivity of the individual and combined impacts of these environmental changes on future  
anoxic ( $< 0.2 \text{ mg L}^{-1}$ ), hypoxic ( $< 2 \text{ mg L}^{-1}$ ) and low- $DO$  ( $2 - 5 \text{ mg L}^{-1}$ ) water in the Chesapeake Bay.

## 2 Methods

### 2.1 ChesROMS-ECB

The estuarine model is based on the Regional Ocean Modeling System (ROMS; Shchepetkin and  
105 McWilliams, 2005) and uses the Chesapeake Bay curvilinear horizontal grid (ChesROMS) of Xu et al.  
(2012) with an average wet cell resolution inside the Bay of 1.7 km. As in Feng et al. (2015), the model is  
configured to use the recursive MPDATA 3-D advection scheme for tracers, third-order upstream  
advection scheme for horizontal momentum and fourth-order centered difference for momentum in the  
vertical, with a 20-layer vertically stretched sigma grid. The Estuarine-Carbon-Biogeochemistry (ECB)  
110 component of the model (Feng et al., 2015) was developed originally from a continental shelf application  
(Hofmann et al., 2011), using dissolved organic matter cycling similar to that described in Druon et al.  
(2010). With only single phytoplankton and zooplankton classes and only one limiting nutrient (nitrogen),  
the ECB model is simpler than that employed by the Chesapeake Bay Program (Cercio et al., 2010), but is

115 more complex than simple dissolved oxygen models that utilize a constant oxygen consumption rate (e.g. Scully, 2010; Bever et al., 2013). ChesROMS-ECB has been previously shown to adequately resolve the spatial and temporal variability of key physical and biological variables such as temperature, salinity, nitrogen, and DO (Feng et al., 2015; Irby et al., 2016).

120 Before using ChesROMS-ECB to determine the impact of changes in temperature on water quality parameters, the temperature dependence of the biogeochemical formulations within the model required a careful evaluation. Several biogeochemical formulations within ChesROMS-ECB did not previously include a dependence on temperature, and temperature dependence was added as part of this study (a complete list of model changes is provided in Appendix A). For example, temperature-dependence was introduced to the rates for maximum phytoplankton growth, zooplankton grazing/growth, nitrification, detrital solubilization, and detrital remineralization. All modifications introduce an exponential relationship  
125 between temperature and maximum rate, except for maximum phytoplankton growth. The function for phytoplankton growth is based on Lomas et al. (2002) and employs a constant growth rate below 20°C of 2.15 d<sup>-1</sup>, with an exponential maximum growth curve for temperatures above 20°C. Remineralization of the dissolved organic constituents previously included temperature dependence, but to ensure consistency, these rates were modified to match the Chesapeake-specific community respiration Q<sub>10</sub> values from Lomas et al. (2002).  
130

An additional two changes were made to improve the light attenuation parameterization in ChesROMS-ECB. First, a minimum value of 0.6 m<sup>-1</sup> was applied to the diffuse attenuation coefficient, based on model-data comparisons (Wang et al., 2009; Son and Wang, 2015). Second, the organic portion of the total suspended solids term in the light attenuation formulation of Feng et al. (2015) was multiplied by  
135 two, since carbon is generally considered to be roughly half of the total weight of organic matter.

To assess the relative skill of the revised model, the skill in reproducing water quality observations at 23 stations along the Bay (Fig. 1, Table A1) was compared to the skill of the earlier version of the model used in Feng et al. (2015) and Irby et al. (2016). The 23 stations were assigned to four regions that are functionally delineated by salinity characteristics, with Region A representing the oligohaline, Regions B and C representing the upper and lower mesohaline (and generally the lowest DO concentrations), and  
140 Region D representing the polyhaline. The updated model retained its gross skill in terms of total root mean squared difference (Table A2) compared to the version of the model evaluated in Irby et al. (2016). Specifically, the updated model improved bottom DO skill in Regions C and D, primarily due to the light attenuation modifications mentioned above (see Appendix A for details).

## 145 **2.2 Chesapeake Bay Program Watershed Model**

This study utilizes freshwater discharge and riverine nitrogen and sediment concentrations from the Chesapeake Bay Program's Watershed Model (version 5.3.2) that was used in the development of the 2010 TMDL (Shenk and Linker, 2013). (As in Feng et al. (2015), riverine carbon concentrations that are required as inputs to ChesROMS-ECB were obtained from the Dynamic Land Ecosystem Model (Tian et

150 al., 2015)). This research generally assumes that the management practices required to meet the 2010  
TMDL nutrient reductions in the absence of climate change (Shenk and Linker, 2013) are fully realized;  
however, a brief examination of the potential impact of climate change without nutrient reduction is also  
explored. Because the TMDL is based on a reference time period of 1993-1995 (USEPA, 2010), these are  
the years used in this study. Fortuitously, this period includes both relatively wet years (1993, 1994) and a  
155 dry year (1995), allowing the investigation of how future climate change impacts are affected by natural  
interannual variability. Simulations using the TMDL reduction in nutrient concentrations are hereafter  
referred to as the TMDL scenarios while the base 1993 to 1995 simulations will hereafter be referred to as  
the Base run (Table 1). Compared to the Base run, the TMDL scenarios include a Bay-wide reduction in  
riverine nutrient loading of 45%, 44%, and 38% for the three years (1993 to 1995), respectively (Fig. 2a).

## 160 **2.3 Climate Change Sensitivity Experiments**

In this study, the sensitivity of Chesapeake Bay hypoxia to projected regional impacts for three  
aspects of climate change (temperature, SLR, and precipitation/rivers) is examined. A time horizon of mid-  
21<sup>st</sup> century is chosen for these changes because it is far enough in the future to allow for the assumption  
that the TMDL nutrient reductions have been fully implemented (including nutrient transport lag effects),  
165 while also being soon enough for relatively constrained estimates of future climate change impacts.

### **2.3.1 Temperature**

By 2050, the Chesapeake Bay region is expected to experience air temperature increases greater  
than the global average. Specifically, the IPCC projection of median annual average atmospheric  
temperature increase for 2046-2065 relative to 1986-2005 for the Chesapeake Bay region is about 2°C  
170 (~0.036°C y<sup>-1</sup>; IPCC Annex I, 2013), whereas the analogous global increase is projected to be 1.4°C  
(~0.025°C y<sup>-1</sup>; IPCC Summary, 2013). Further research from the IPCC establishes that ocean warming  
tends to be 20 to 40% lower than the rate of atmospheric warming (Collins et al., 2013). As the Chesapeake  
Bay is a relatively shallow, well-mixed estuary and there has recently been an observed increase in the rate  
of Chesapeake Bay warming (Ding and Elmore, 2015), this research utilizes a ratio between atmospheric  
and ocean warming that is slightly lower than the open ocean range. The 1.75°C (~0.032°C y<sup>-1</sup>) increase in  
175 Bay water temperature for the mid-21<sup>st</sup> century relative to the mid-1990s used in this study (Table 1) is  
higher than the ~0.02°C y<sup>-1</sup> observed Chesapeake Bay warming between 1949 and 2002 (Preston, 2004).  
However, Preston (2004) found evidence of increased warming in the late 1990s. The rate of warming used  
in this analysis is also consistent with projected increases from downscaled global climate models for the  
180 Bay (Muhling et al., 2017). It is also slightly lower than the warming estimated using a high resolution  
climate model (CM2.6) for the location of the ChesROMS open boundary (2.6°C; Saba et al., 2016) and  
less than the average satellite-derived rate of Bay surface water warming of 0.005-0.175°C y<sup>-1</sup> from 1984 to  
2007 (Ding and Elmore, 2015).

The 1.75°C water temperature increase was applied uniformly across time and space to  
185 biogeochemical process and oxygen solubility throughout the Bay, but the temperature increase was not

applied to other physical properties or processes, such as water density gradients or meteorological forcing. Thus, these increased temperatures do not impact stratification or other physical dynamics of the Bay within the model. This approach implicitly assumes that the Bay is shallow enough that climatic warming will occur uniformly over time. Supporting this assumption, Preston (2004) found that the surface and subsurface waters of the Bay warmed at relatively similar rates, even finding that, on average, the subsurface waters warmed slightly faster than surface waters. In addition, recent trends in the intensification of early summer stratification have been found not to be due to water column temperature changes, but rather are primarily due to changes in salinity as a result of SLR and altered freshwater inputs (Murphy et al., 2011). Changes in salinity along the ChesROMS open boundary on the continental shelf between the 1990s and the mid-20<sup>th</sup> century have been computed by Saba et al. (2016) to be very minor (~0.2 psu) and are thus not considered here. This is consistent with our goal of examining the first order impacts of temperature change on hypoxia (through solubility and growth/grazing/remineralization changes); the effect of warming on Chesapeake Bay hydrodynamics is being analyzed in a separate follow-on study. The temperature increase sensitivity experiment will hereafter be referred to as the TMDL+tempCC scenario since the increase in temperature is applied to the TMDL nutrient scenario (Table 1).

### 2.3.2 Sea Level Rise (SLR)

The Chesapeake Bay is expected to incur a greater increase in sea level than the global average, and the Bay has experienced a recent acceleration in SLR, as has most of the Mid-Atlantic coast (Sallenger et al., 2012). Boon and Mitchell (2015) found a roughly 0.1m increase in sea level in Norfolk, Virginia between 1993 and 2014. Assuming a linear extrapolation of that rate (~5mm y<sup>-1</sup>), by the mid-21<sup>st</sup> century, Norfolk would expect a SLR of 0.3m relative to the mid-1990s. However, the linear extrapolation ignores the projected, and recently observed, acceleration in SLR. Incorporating anticipated acceleration, Boon and Mitchell (2015) estimate an average increase in SLR by 2050 of ~0.5m in the Chesapeake Bay relative to the relative mean sea level between 1969-2014. This estimate is similar to that of Sweet et al. (2017) who, using downscaled global models, estimated a similar SLR in the Mid-Atlantic for 2050 under an intermediate emissions scenario. Based on these recent regional estimates, this research assumes a mid-21<sup>st</sup> century SLR of 0.5m (~9mm y<sup>-1</sup>) relative to the mid-1990s..

Model implementation of SLR follows that of Hong and Shen (2012). The 0.5m increase was added to the free water surface layer at the outer boundary of the model grid, along the continental shelf. The vertical grid stretching parameters were not altered and the simulation required less than six months for the Bay to equilibrate to the increased sea level. The SLR sensitivity experiment will hereafter be referred to as the TMDL+slrCC scenario since the 0.5m increase is applied to the TMDL scenario (Table 1).

### 2.3.3 River Flow

The Chesapeake Bay watershed is expected to undergo a range of precipitation change over the next century, with the southern portion of the watershed expected to experience a lower intensity change

than the northern portion of the watershed, complicating estimates of future precipitation change, and as a result, river flow (Najjar et al., 2009). The future river loading estimates used here (Fig. 2a) were provided by the Chesapeake Bay Program, and were derived from an implementation of the Chesapeake Bay  
225 Watershed Model (Section 2.2) that incorporated downscaled ( $1/8^\circ$  resolution) precipitation and temperature estimates for the mid-21<sup>st</sup> century from multiple Global Climate Model realizations (Hargreaves and Samani, 1982; Groisman et al., 2004; Reclamation, 2013). Overall, increases in precipitation over the Chesapeake Bay watershed resulted in generally greater runoff to the Chesapeake Bay, especially in the winter and spring months, even though the warmer temperatures throughout the year  
230 mitigated some of these increases via increased rates of evapotranspiration.

From these Watershed Model results, the ratio of monthly freshwater delivery to the Bay for the climate change scenario relative to the Base run was calculated for the Susquehanna River (Table 2), and was applied to all rivers in ChesROMS-ECB. This is a reasonable approach given that the Susquehanna watershed accounts for > 80% of the Bay watershed area that drains directly to the main stem and is the  
235 primary source of the nutrients that drive the summer hypoxic region of the Bay between the Patapsco River in the north and the Rappahannock River in the south (Hagy et al., 2004). Overall, the resulting increase in river flow applied to the model (Table 2) causes both an increase in freshwater discharge and an increase in nutrient delivery (Fig. 2a). The combined impact of increased freshwater flow and nutrient loads will hereafter be referred to as the TMDL+riverCC scenario (Table 1).

#### 240 **2.3.4 Combined Climate Change Sensitivity Experiment**

A final sensitivity experiment that combines all three of the climate change impacts was run for both nutrient cases, i.e. the TMDL scenario (reduced nutrients) and the Base run (realistic nutrients). These experiments will hereafter be referred to as the TMDL+allCC and Base+allCC scenarios, respectively, since the combined impact of all climate change variables (temperature, SLR, and rivers) was applied  
245 (Table 1).

#### **2.4 Dissolved Oxygen Analysis**

Hypoxic volume is a commonly used metric to quantify the amount of water that experiences a given level of DO concentration over a specific time (e.g. Murphy et al., 2011; Bever et al., 2013). In this study, two metrics related to hypoxic volume are computed: cumulative hypoxic volume (CHV) and  
250 hypoxic duration (HD). CHV is calculated as the sum of each day's hypoxic volume over a year (Bever et al., 2013), and HD is computed as the number of days that have a hypoxic volume greater than  $1 \text{ km}^3$ . While traditional DO concentration levels of hypoxia ( $< 2 \text{ mg L}^{-1}$ ) and anoxia ( $< 0.2 \text{ mg L}^{-1}$ ) are examined, this research also considers impacts of low-DO, defined here as  $\text{DO} < 5 \text{ mg L}^{-1}$ . This level is consistent with the highest DO concentrations stipulated in the Chesapeake Bay water quality standards (USEPA,  
255 2010) and is a conservative upper bound on DO concentration found to initiate stress on marine fish (Vaquer-Sunyer and Duarte, 2008; Buchheister et al., 2013).



### 3 Results

260 The impact of nutrient reduction on bottom DO concentrations is greater than that of climate  
change (Fig. 2b,c). The reduction of nutrients (between the Base run and TMDL scenario) causes a general  
increase in bottom DO concentrations. This impact is largest during the drawdown of bottom oxygen in the  
spring (April – June), dampens during the course of the summer, and is lowest in winter (Dec – Feb). In  
Region B, the region of the Bay where oxygen concentrations are lowest and most persistent, this impact is  
strongest in the driest year (1995), during which the increase in bottom DO exceeds  $2.5 \text{ mg L}^{-1}$ . In 1993 and  
265 1994 the bottom DO increase is only around  $1.5 \text{ mg L}^{-1}$  (Fig. 2). In contrast Region C, encompassing the  
southern extent of the hypoxic zone, experiences a greater increase in spring bottom DO than Region B in  
the wet years ( $>2 \text{ mg L}^{-1}$  in 1993 and 1994) and a smaller increase in the dry year ( $\sim 1.5 \text{ mg L}^{-1}$  in 1995).

Climate change has a smaller effect on bottom DO concentrations than the TMDL nutrient  
reductions. Climate change has almost no impact on bottom DO during the peak of summer when bottom  
270 DO concentrations are the lowest (near zero). In the Base run (realistic nutrient inputs), the effect of climate  
change on spring bottom DO is a decrease of  $\sim 0.6 \text{ mg L}^{-1}$  and  $\sim 0.8 \text{ mg L}^{-1}$  in Regions B and C respectively.  
Climate change impacts bottom DO similarly in the TMDL scenario, with reductions in spring bottom DO  
of  $\sim 0.5 \text{ mg L}^{-1}$  in both Regions B and C (Fig. 2). In both regions, these reductions in bottom DO are similar  
in all three years.

275 Of the three climate factors considered (temperature, SLR and river flow), temperature had the  
largest impact on bottom DO. As a result, the TMDL+allCC scenario is most similar to the  
TMDL+tempCC scenario (Fig. 3). In Region B, the TMDL+slrCC and the TMDL+riverCC scenarios have  
a smaller impact on bottom DO during the wet years of 1993 and 1994 than during the dry year of 1995.  
The opposite occurs in Region C, with the TMDL+slrCC and the TMDL+riverCC scenarios having a larger  
280 impact on bottom DO during the wet years of 1993 and 1994 than during the dry year of 1995. In both  
regions, the impact of SLR generally increases bottom DO during the spring and summer, while changes in  
the rivers (increased seasonality and nutrient load) suppress DO. These two essentially equal and opposite  
effects largely cancel each other out (Fig. 3).

Although temperature had the largest impact on bottom DO in each of the four regions considered,  
285 the magnitude of the individual impacts of climate change differed by region (Table 3) and by oxygen  
concentration (Table 4). Specifically, in the TMDL+allCC scenario, bottom DO decreased compared to the  
TMDL+noCC run in all four regions, with Region A exhibiting the highest total average change ( $-0.58 \text{ mg L}^{-1}$ )  
and the other three regions all exhibiting an average change of roughly  $-0.4 \text{ mg L}^{-1}$  (Table 3). This is  
primarily due to the large decreases in bottom DO in the TMDL+slrCC scenario in Region A ( $-0.21 \text{ mg L}^{-1}$ ),  
290 relative to the small (mostly positive) impacts due to sea level rise in the other regions. Overall, the  
impact of all three of the climate change factors is nearly linearly additive (Table 3).

The relative impact of the three climate change factors also varied with oxygen concentration,  
particularly for temperature, which exerted the greatest impact on cumulative hypoxic volume at  $3 < \text{DO} <$   
 $5 \text{ mg L}^{-1}$  (Table 4). The TMDL+slrCC scenario increased oxygen at low concentrations ( $\text{DO} < 3 \text{ mg L}^{-1}$ )

295 and decreased oxygen at higher concentrations ( $3 < \text{DO} < 5 \text{ mg L}^{-1}$ ). In contrast, the impact of changes in  
riverine nutrient loading was relatively similar for all oxygen concentrations, typically generating a small  
decrease in DO (Table 4).

The CHV for all of the TMDL scenarios (both with and without climate change) is less than the  
CHV from the Base run without climate change (Fig. 4). This pattern holds true for all six DO levels  
300 examined ( $< 0.2 \text{ mg L}^{-1}$  to  $< 5 \text{ mg L}^{-1}$ ). At each DO level, the CHV for the dry year (1995) is much less  
than for the wet years (1993 and 1994) for each TMDL scenario. Furthermore, the CHV for the TMDL  
scenarios in the wet years is generally higher than the CHV from the Base run for the dry year (Fig. 4). The  
CHV in the TMDL+slrCC and TMDL+riverCC scenarios tend to track closely to the TMDL+noCC  
scenario, while the TMDL+tempCC scenario is most similar to the TMDL+allCC scenario (Fig. 4), as was  
305 also the case for bottom DO (Fig. 3).

The percent change in CHV relative to the progress, or gains, made in CHV by applying the  
TMDL nutrient reductions varies across DO level and by scenario (Fig. 5). In general, the TMDL+slrCC  
scenario resulted in a  $\sim 0$ -10% increase in the improvement made by the TMDL scenario (here, an increase  
of gains is actually a decrease in CHV) across all DO levels and all years. In contrast, the TMDL+riverCC  
310 and TMDL+tempCC scenarios resulted in a degradation of the system, compared to the TMDL+noCC  
scenario. The TMDL+riverCC scenario consistently causes a loss of  $\sim 0$ -5% of the gains, with slightly  
larger losses in 1994 and 1995 at higher DO levels. The TMDL+riverCC scenario combines two separate,  
but linked, climate change impacts: increased freshwater flow (particularly in the winter) and increased  
nutrient loads (as a result of increased freshwater flow). While not shown, separate experiments isolating  
315 the impacts of flow and load demonstrated that the increase in nutrient load, rather than the increase in  
freshwater flow, caused the increase in CHV in the TMDL+riverCC scenario. The TMDL+tempCC  
scenario was the strongest function of DO level, with a relatively small loss of  $\sim 5\%$  at the  $< 0.2 \text{ mg L}^{-1}$   
level and a large  $\sim 40\%$  loss at the  $< 5 \text{ mg L}^{-1}$  level (Fig. 5). The combined effect of climate change  
(TMDL+allCC) was a net increase in CHV of more than 50% over the TMDL+noCC scenario in the wet  
320 years of 1993 and 1994 for  $\text{DO} < 5 \text{ mg L}^{-1}$ , and a corresponding 40% increase in CHV for the dry year of  
1995 (Fig. 5).

As shown above, increased temperature generally maintains the greatest control on the  
TMDL+allCC scenario (Fig. 4). The impact of temperature on DO in this analysis is due to two factors:  
chemical solubility and biological oxygen demand. (The impact of temperature on DO is not due to a  
325 change in stratification, since the experiment was explicitly designed to focus on the impacts of chemical  
solubility and biological oxygen demand and neglect any change in stratification, which previous studies  
(Preston, 2004) have suggested is small.) To further isolate these two impacts, the differences in modeled  
DO computed with and without warming are computed considering only solubility effects and considering  
both solubility and biological oxygen demand (Fig. 6; Table 5). Since oxygen saturation is more sensitive  
330 to changes in temperature at low temperatures, there is a larger change in DO as a result of changes in  
solubility during the winter than during the summer, even though the change in temperature is constant in

time. Deviations from the change in DO due to solubility can be attributed to changes in biological oxygen demand, and can be estimated by comparing the simulation assuming only solubility impacts (red line in Fig. 6) with the simulation assuming temperature changes affect both solubility and biological oxygen demand (black line in Fig. 6). Overall, 65-85% of the change in DO between the TMDL+tempCC scenario compared to the TMDL+noCC scenario is a result of temperature's impact on solubility, with solubility exerting a larger impact at the surface than at depth (Table 5). The impact of biological oxygen demand is consistently negative at depth during the spring and early summer, enhancing the initiation of hypoxic conditions (Fig. 6b).

In terms of the number of days that the Bay experiences hypoxic and low-oxygen conditions each year, climate change reduces the positive impact of the nutrient reduction (Fig. 7). While there is a moderate decrease in hypoxic duration resulting from the nutrient reduction, the TMDL+allCC scenario demonstrates that when climate change is included all levels of low-DO and hypoxia initiate an average of ~7 days earlier. This trend is not evident in the cessation of hypoxia and low-DO, i.e. climate change does not necessarily cause hypoxia to last later in the year. While all three years exhibit a similar pattern and timeline of cessation of low-DO with  $< 0.2 \text{ mg L}^{-1}$  ceasing 3-4 months before  $< 5 \text{ mg L}^{-1}$ , each year is different in terms of initiation timing. In 1993 for the Base+noCC run, all levels of DO initiate within 2 weeks of each other. This timing holds true for the TMDL scenarios as well, but with anoxia lagging behind. In 1994 in the Base+noCC run, there is a steady progression from low-DO to anoxia over ~6 weeks. In the TMDL scenarios, that is extended to ~3 months. In 1995, the TMDL nutrient reduction results in no  $\text{DO} < 1 \text{ mg L}^{-1}$  and significantly delays the onset of low-DO by up to ~3 months compared to the Base run.

Nutrient reduction primarily reduces the horizontal extent of the hypoxic zone (Fig. 8). Examining a south-north transect along the main stem of the Bay for July 1<sup>st</sup>, 1993 (Fig. 8a,c) and 1995 (Fig. 8b,d) reveals that nutrient reduction acts to compress the southern extent of the hypoxic zone more than the northern extent. One similarity between all four subplots (a-d) is the vertical extent of the low-oxygen waters, which are capped by the pycnocline at ~5m depth. As expected, the extent and severity of anoxia and hypoxia on July 1<sup>st</sup> is much greater than the summer (May-September) average for both the Base+noCC run and TMDL+noCC scenario (Fig 8e-h). In general, the impact of climate change is greater in the dry year (1995; Fig. 8j,l) than in the wet year (1993; Fig. 8i,k). The location of the greatest magnitude change is near the pycnocline depth (Fig. 8i,j) but the location of greatest percent change is below the pycnocline (Fig. 8k,l).

The climate change sensitivity experiments cause a larger volume of the Bay to experience low-DO concentrations in both wet and dry years and under both the Base+allCC and TMDL+allCC scenarios (Fig. 9). While climate change does not greatly exacerbate the volume of the Bay that experiences anoxic and hypoxic conditions, climate change increases the percent of the Bay experiencing conditions of  $\text{DO} < 5 \text{ mg L}^{-1}$  by up to ~6 %, regardless of whether or not the TMDL nutrient reductions have occurred. Similarly, regardless of whether or not climate change occurs, the volume of the Bay experiencing low-DO

under nutrient reduction is ~10% lower than that in the 1993-1995 Base run nutrient conditions. Overall, the dry year (1995) results in ~30-50% as much of the Bay experiencing low-DO and hypoxic waters as compared to the wet years (1993, 1994).

## 4 Discussion

### 4.1 How will Chesapeake Bay DO concentrations change in the future as a result of climate change?

- By the mid-21<sup>st</sup> century low-DO conditions can be expected to begin about one week earlier due to climate change, with increases in volume and extent being largest at the margins and at the southern extent of the hypoxic zone. Significant impacts will be felt on water with DO concentrations in the range of 2-5mg L<sup>-1</sup>, and not only on hypoxic waters (DO < 2mg L<sup>-1</sup>).

The most consistent impact across all levels of low-DO waters due to climate change is an earlier onset of hypoxic and low-DO conditions by an average of ~7 days. While an earlier onset was identified, there was no trend in the cessation of hypoxic and low-DO conditions, with climate change sometimes causing an earlier and sometimes a later cessation. Furthermore, an earlier onset of conditions is projected to occur under both nutrient-reduced and nutrient-replete futures. The pattern of earlier onset is primarily due to the additive impacts of an increase in spring biological oxygen utilization at depth and decreased solubility, both the result of the increase in temperature (Fig. 6). An analysis of climate change impact on DO of an estuarine tributary of the Chesapeake Bay similarly found that hypoxic duration is likely to be extended in the future (Lake and Brush, 2015).

In terms of a change in the volume of low-DO waters, the relative impact of climate change increases with DO concentration (Figs. 4, 5). The improvements due to the nutrient reductions are reduced by climate change, ranging from ~5% for DO < 0.2 mg L<sup>-1</sup> to ~45% for DO < 5 mg L<sup>-1</sup>. The difference between impact at anoxic levels versus waters with DO of 3 - 5 mg L<sup>-1</sup> is accentuated during the dry year of 1995 due to the fact that the nutrient reductions result in no modeled DO < 1 mg L<sup>-1</sup> during this year (Fig. 7), regardless of whether or not climate change is occurring. Even assuming realistic 1995 nutrient inputs, the volume and duration of anoxia under climate change in 1995 is very small.

Throughout the water column, the greatest change in DO will be at the edges of the low-DO and hypoxic zones, particularly at the southern and vertical extents (Fig. 8). Conversely, the smallest changes will occur in the anoxic waters where DO cannot be decreased further (Fig. 8). As hypoxia is capped by the pycnocline (Irby et al., 2016), the magnitude of DO change (~ 0.5 mg L<sup>-1</sup>) is not great enough to extend low-DO conditions to the DO-replete surface waters. Laterally, the largest changes in bottom DO will be in the southern extent of hypoxia and the degree of east-west compression along the main stem of the Bay. Such a change would be likely to detrimentally impact demersal fish and shellfish communities along the shallow flanks of the Bay and its tributaries.

#### 4.2 How will the individual impacts of climate change (increased temperatures, SLR, river flow) affect DO concentrations in the Chesapeake Bay?

405 - The combined impacts of climate change will cause reduced DO concentrations in the mid-21<sup>st</sup> century, with increased water temperatures being the strongest driver of this change.

In examining the individual impacts of future (mid-21<sup>st</sup> century) temperature, SLR, and river flow on Chesapeake Bay DO concentrations, temperature exhibits the largest overall impact (Figs. 4, 5; Table 3, 410 4). The decrease in DO associated with increases in temperature is also consistent with other modeling research focused on the York River estuary, a tributary of the Chesapeake Bay (Lake and Brush, 2015). The present research demonstrates the importance of temperature on solubility, as the annual average impact of temperature on oxygen saturation outpaced the impact of temperature on biological functions on average by roughly 2:1 in the region of the Bay that experiences hypoxia (Fig. 6; Table 5). This ratio is 415 decreased to roughly 1:1 during the spring/early summer drawdown of bottom DO in the main stem channel (Fig. 6). Murphy et al. (2011) similarly found that increased respiration due to increased temperature potentially plays a smaller role on changes in hypoxia than the physical and chemical changes. However, it is possible that as temperature continues to increase, the ratio of impact between solubility and biological oxygen demand may shift toward a greater influence by biological oxygen demand. This is 420 because the additional impact of further changes in solubility will decrease as temperatures continue to rise, while biological respiration at depth and production at the surface may continue to steadily rise with increasingly warmer temperatures.

Increasing sea levels can impact future Chesapeake Bay oxygen concentrations in multiple ways. By increasing estuarine circulation and decreasing residence time (Hong and Shen, 2012; Du and Shen, 425 2015), rising sea levels can actually increase bottom oxygen concentrations in the most anoxic portions of the deep mainstem trench. At the same time, increasing estuarine circulation increases stratification (Chua and Xu, 2014), which serves to further decrease oxygen concentrations (Lennartz et al., 2014). In the Chesapeake Bay simulations presented here, the former process dominates at depth where SLR results in higher oxygen concentrations (Fig. 3; Table 4). On the contrary, the latter process (increased stratification) 430 dominates in the mid-water column, where SLR results in lower oxygen concentrations (Table 4). In the driest year (1995) the overall impact of SLR is a decrease in the total volume of water with  $DO < 5 \text{ mg L}^{-1}$  (Fig. 5), whereas in the wettest year (1994) when stratification is already relatively high, the overall impact of SLR is dominated by the stratification effect and results in a net increase in the total volume of water with  $DO < 5 \text{ mg L}^{-1}$ . The larger impact of SLR during dry years is consistent with a study from the 435 Delaware Bay showing that high flow dampens the salinity intrusion that results from SLR (Ross et al., 2015) and with a study in San Francisco Bay finding that the impact of SLR is limited under high flow conditions (Chua and Xu, 2014).

Future climate change will also modify freshwater and nutrient loading from the watershed to the Bay, causing the largest increases in the winter months (December-February; Table 2). This increase in

440 river nutrient loading to the Bay (Fig. 2a) reduces oxygen concentrations both at the bottom (Fig. 3) as well  
as throughout the water column, resulting in greater cumulative hypoxic volumes (Fig. 4, 5; Table 4).  
However, this impact is much smaller than that of temperature (Table 4). The increase in winter  
precipitation, delivering both increased freshwater flow and increased nutrient loads, accounts for a larger  
percentage of the overall change in DO during the dry year (1995), because the low-flow conditions cause  
445 the Bay to be more sensitive to changes in freshwater flow and nutrient loading.

### 4.3 How might climate change impact the success of the 2010 TMDL nutrient reductions?

- Climate change may cause the 2010 TMDL nutrient reductions to be insufficient to meet the  
required water quality improvements in the Chesapeake Bay.

450 This research demonstrates that the improvements in Chesapeake Bay water quality due to the  
TMDL nutrient reductions are much greater than the deleterious impacts of ~2050 climate change;  
however, results also indicate that by the mid-21<sup>st</sup> century climate change will likely decrease oxygen levels  
and increase both hypoxic volume and hypoxic duration. Because some locations in the Bay barely pass  
TMDL standards and others require special allowances to meet the standards (Irby and Friedrichs, in  
455 revision), even these small increases in anoxic and hypoxic conditions can cause locations that previously  
passed the water quality standards to fail under a changing climate. The DO minima in the TMDL  
regulations are based on both space and time criteria. Although the spatial dimension may not be greatly  
impacted at the anoxic and hypoxic levels, this research suggests that the temporal dimension will be. This  
could cause locations in the Bay that are currently projected to pass the minimum standards to fail them in  
460 light of climate change, simply due to an extension of the hypoxic season without an expansion of hypoxic  
volume.

With increased temperature being the primary cause of the impact of climate change on DO  
concentrations, it is important to consider other potential impacts increased temperature may have on the  
ecosystem in the context of the success of the TMDL nutrient reductions. Temperature increases in the  
465 Chesapeake Bay are anticipated to produce temperatures outside of previously observed extremes (Muhling  
et al., 2017), lending increased pertinence to understanding the impact of temperature changes on meeting  
water quality goals. In light of this, the impact on the TMDL of a decrease in oxygen concentrations due to  
climate change should be viewed in conjunction with the impact increased temperature is likely to have on  
the species upon which the DO levels in the TMDL nutrient reductions were predicated. Multiple studies  
470 have established that increasing water temperature increases metabolic rates in fish that cause them to  
experience negative health impacts at higher DO concentrations than they do at lower temperatures  
(Breitburg, 2002; Portner and Lanning, 2009; Lapointe et al., 2014). Due to those compounding impacts  
and the large role temperature is expected to play in regulating future DO, it may be prudent for the TMDL  
to elevate the mandated minimum DO levels in an effort to protect target species. If this occurred, the  
475 impacts of climate change would likely cause an even larger failure rate of TMDL standards.

#### 4.4 How will climate change impact DO if the TMDL nutrient reductions are not met?

- Although the relative impact of climate change is similar on a reduced nutrient future and a high nutrient future, the degree of interannual variability in hypoxia may change in a reduced versus high nutrient future due to differences in the responses of oxygen to fluctuations between dry and wet years.

480

The relative impact of climate change on a reduced nutrient versus a high nutrient future is similar in terms of hypoxic volume and duration. In both a low and high nutrient future, the percent of the Bay that experiences a given DO level is increased with climate change (Fig. 9). Furthermore, in both cases, the impact of climate change at low-DO concentrations ( $< 5 \text{ mg L}^{-1}$ ) is greater than that at hypoxic levels ( $< 2 \text{ mg L}^{-1}$ ). In terms of relative change in DO along the main stem of the Bay, a high nutrient future is expected to experience a higher (~9-15%) change in DO concentration than a low nutrient future (~6-9%), with the largest changes in both cases occurring at the southern end of the hypoxic zone (Fig. 8).

485

The largest potential ecological difference between the two futures is in the dry year of 1995. In this year TMDL scenarios exhibited no anoxia in the Bay, regardless of whether or not climate change was occurring. This suggests that during dry years, when the nutrient reduction may be sufficient to alleviate anoxia, climate change impacts may not be large enough to overcome the hysteric or threshold level of DO initiation similar to what has been observed with hypoxic responses to nutrient loading (Kemp et al., 2009). It may seem counterintuitive, but this suggests that the interannual variability of anoxic conditions may be exacerbated in a future with nutrient reduction because the interannual percent change in anoxic conditions will be relative to ~0% in the very dry years. Because of this, when climate change is added to the TMDL nutrient reductions, there is likely to be greater disparity in terms of anoxic volume between wet and dry years. Further intensifying the difference between wet and dry years is the potential impact of nutrient storage in the watershed during dry years that is delivered to the Bay in a successive wet year, amplifying hypoxia and anoxia (Lee et al., 2016).

490

495

500

#### 4.5 Methodological limitations

This research is a first order assessment of the potential impacts that changes in climate may have on the efficacy of nutrient reduction efforts in the Chesapeake Bay; however, more robust examinations of the problem are needed in order to adequately aid in the regulatory decision making process going forward. As the present research has identified increased temperature as the largest contributor to changes in DO, future efforts should work to incorporate the impact of increased air temperature and changes in meteorological forcing on the air-sea interface and Bay hydrodynamics. In addition, increased stream temperatures will likely need to be accounted for, as there is evidence that the current rates of Bay warming cannot be fully explained by the observed increase in regional air temperatures (Ding and Elmore, 2015). Estimates of future precipitation indicate changes in storm intensification and extreme events that could have dramatic effects on nutrient delivery to the Bay (Sinha et al., 2017), and thus these should be

505

510

considered in future work as well. Finally, the atmospheric wind field will likely change in the future. Although there is significantly uncertainty associated with future wind projections, the strong impact of wind on hypoxia in the Chesapeake Bay (Scully, 2010) makes this an important issue to better understand.

515 Due to the uncertainty in projected changes in temperature, river flow, and SLR, assessing the sensitivity of DO to multiple estimates of climate change will be important. This research establishes that the increase in temperature has the strongest control on DO, but that does not mean that DO concentrations are most sensitive to the bounds of potential 2050 temperature changes. While the high computational expense of running multiple sensitivity tests through complex coupled hydrodynamic-biogeochemical  
520 models can be prohibitive, establishing a range of uncertainty is critical to informed adaptive management decision-making.

Additional limitations are related to timing. For example, the present research assumes a discontinuity between the reduction of nutrients and the changes in climate. This is an unrealistic assumption because the nutrient reductions and climate change will continue to occur contemporaneously.  
525 These changes are also not immediate but manifest over time in a continuously evolving environment. In addition, the current approach simply identifies the potential ramifications of climate change on nutrient reduction efforts but does not establish a timeline for the water quality changes as a result of nutrient reductions to occur. This means that climate change has the potential to further limit the effectiveness of nutrient reduction efforts because the impacts of climate change may be more immediate than the impacts  
530 of nutrient reduction. To address these limitations, an effort to conduct a continuous simulation from 2015 – 2050 including both gradual implementation of the nutrient reductions and climate change impacts is currently underway.

## 5 Conclusions

535 Overall, the most striking result of this research is that the potential impact of climate change by the mid-21<sup>st</sup> century is much smaller than the impact of the 2010 TMDL nutrient reductions, particularly at anoxic and hypoxic levels. However, the decrease in DO concentrations resulting from the combined impacts of climate change may cause portions of the Bay that currently meet mandated water quality standards to fail them in the future. At the most stringent DO standards, this is primarily due to an increase  
540 in hypoxic duration rather than hypoxic volume, as under climate change, the onset of hypoxic conditions is projected to initiate ~7 days earlier on average across all DO concentrations 0.2 – 5 mg L<sup>-1</sup>.

Changes in DO as a result of the increase in temperature dominate the combined climate change impact. While the influence of solubility on DO concentrations is the primary control on decreased DO throughout the year, the impact of increased biological oxygen demand is most prevalent at the bottom in  
545 the spring to early summer, contributing to the earlier initiation of hypoxic conditions. The impact of temperature is likely to affect low-oxygen tolerance of higher trophic levels as well by increasing metabolic rates, making species less tolerant at higher DO levels. This may result in the DO minimums mandated in the water quality standards to be insufficient to protect key species even if the current goals are met.



550 Both sea level rise and changes in river flow exert a greater influence on change in DO during dry,  
low streamflow years. Changes in river flow are likely to deliver higher freshwater flows during the winter  
and spring that will both deliver higher nutrient loads and increase estuarine circulation. These two effects  
impact DO concentrations oppositely, with higher loads resulting in more organic matter being available  
for decomposition and increased estuarine circulation delivering more oxygen-rich ocean water: however,  
555 the impact of increased loads outcompetes the greater circulation. Sea level rise exerts the only net positive  
impact of climate change on DO concentrations, increasing the effectiveness of the TMDL nutrient  
reductions by ~5% in the mesohaline. However, this positive impact is undermined by the large negative  
impact of temperature.

The relative effects of climate change are similar whether the TMDL nutrient reductions are  
achieved or not. In both cases, there is a slight increase in anoxic conditions, and the relative impact of  
560 climate change intensifies at higher DO concentrations (3 - 5 mg L<sup>-1</sup>). The impact of the nutrient reductions  
on dry years is accentuated compared to the 'business as usual' dry years due to the greater moderating  
influence sea level rise exerts during low-flow conditions. This results in anoxic and hypoxic conditions to  
be depressed with nutrient reduction plus climate change in the dry year of 1995, but not when climate  
change is combined with no nutrient reduction.

565 Overall, this study demonstrates that climate change has the potential to limit the effectiveness of  
future management actions aimed at reducing nutrient inputs to the Chesapeake Bay. However, the  
negative impacts of climate change are smaller than the positive impacts resulting from the mandated  
nutrient reductions. Given that this analysis only considers a mid-21<sup>st</sup> century time horizon and climate  
impacts are expected to intensify with time, it is critical to continue to examine how the Bay may evolve in  
570 the future.

## Acknowledgements

575 This paper is the result of research funded in part by NOAA's National Centers for Coastal Ocean  
Science under award NA16NOS4780207 to the Virginia Institute of Marine Science (VIMS) and by  
NOAA's U.S. Integrated Ocean Observing System Program Office as a subcontract to VIMS under award  
NA13NOS0120139 to the Southeastern University Research Association. Funding for early stages of  
model development was also provided by the NASA Interdisciplinary Science program (grant #  
580 NNX14AF93G). Chesapeake Bay Program Watershed Model output was provided by G. Shenk and R.  
Tian. Thank you to C. Hershner, R. Hood, R. Najjar and C. Friedrichs, for comments on an initial version  
of this manuscript and to P. Cook and an anonymous reviewer for their peer reviews. This work was  
performed in part using computing facilities at the College of William and Mary, which were provided by  
contributions from the National Science Foundation, the Commonwealth of Virginia Equipment Trust  
Fund, and the Office of Naval Research. This is Virginia Institute of Marine Science contribution 3736 and  
585 NOAA CHRP contribution 231.

**Tables**

**Table 1** Definitions of sensitivity experiments

Experiment	Nutrients	Climate Change
Base+noCC	Realistic 1993 – 1995 nutrients	None
TMDL+noCC	TMDL nutrient reductions	None
TMDL+riverCC	TMDL nutrient reductions	River change only (Table 2)
TMDL+tempCC	TMDL nutrient reductions	1.75°C increase
TMDL+slrCC	TMDL nutrient reductions	0.5m increase in sea level
TMDL+allCC	TMDL nutrient reductions	All three above changes
Base+allCC	Realistic 1993 – 1995 nutrients	All three above changes

590

595

600

605

610

615

620

625

630

**Table 2** Monthly freshwater discharge fractional change factor used for the TMDL+riverCC, TMDL+allCC, and Base+allCC scenarios, calculated as the ratio between the freshwater inputs in 2050 divided by the freshwater inputs in the Base Run.

635

Month	Freshwater change factor*
January	1.165
February	1.168
March	1.035
April	0.964
May	1.034
June	1.015
July	0.965
August	1.042
September	0.986
October	0.984
November	1.093
December	1.158

640

645

650

655

660

665

670

**Table 3** Average change in bottom DO ( $\text{mg L}^{-1}$ ) relative to the TMDL+noCC scenario for each experiment and region.

675

Experiment	Region A	Region B	Region C	Region D
TMDL+allCC	-0.58	-0.37	-0.44	-0.44
TMDL+slrCC	-0.21	0.09	0.04	-0.04
TMDL+riverCC	-0.01	-0.05	-0.03	-0.01
TMDL+tempCC	-0.36	-0.40	-0.44	-0.38
Additive impact of slrCC+riverCC+tempCC	-0.58	-0.36	-0.43	-0.43

680

685

690

695

700

705

710

715

720

**Table 4** Average (1993 - 1995) change in cumulative hypoxic volume ( $\text{km}^3$  days) for various oxygen concentration ranges, relative to the TMDL+noCC experiment

Experiment	0 < DO < 1 $\text{mg L}^{-1}$	1 < DO < 2 $\text{mg L}^{-1}$	2 < DO < 3 $\text{mg L}^{-1}$	3 < DO < 4 $\text{mg L}^{-1}$	4 < DO < 5 $\text{mg L}^{-1}$
TMDL+allCC	11.5	13	72.3	117.5	202
TMDL+slrCC	-22.1	-12	-5.6	3.6	30.9
TMDL+riverCC	5.9	6.9	10.1	9.8	5.5
TMDL+tempCC	21.1	12.8	58.8	89.3	150

725

**Table 5** Percent\* of 3-year average bottom DO change as a result of the temperature experiment due to solubility for each region at the surface and bottom of the water column.

Region	Surface	Bottom
A	75%	75%
B	72%	66%
C	77%	69%
D	85%	79%

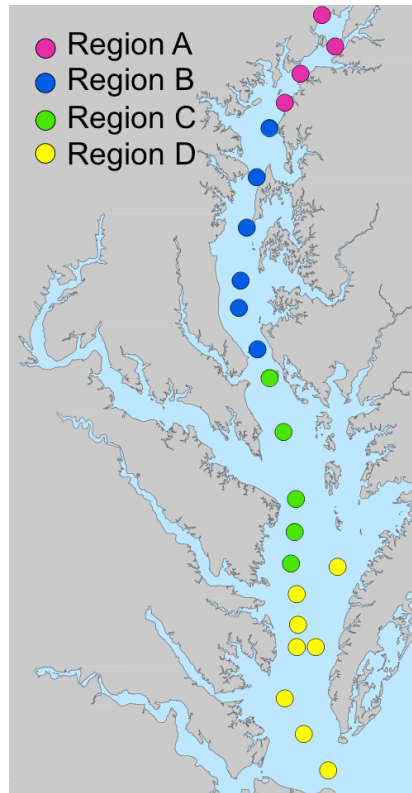
730

\*Percent calculated as the expected change in bottom DO as predicted by solubility divided by the modeled change in bottom DO.

735

740

Figures



745

**Figure 1: Map of the Chesapeake Bay with water quality monitoring stations (Table A1) identified by region, based primarily on salinity. A: oligohaline, B & C: upper & lower mesohaline, D: polyhaline.**

750

755

760

765



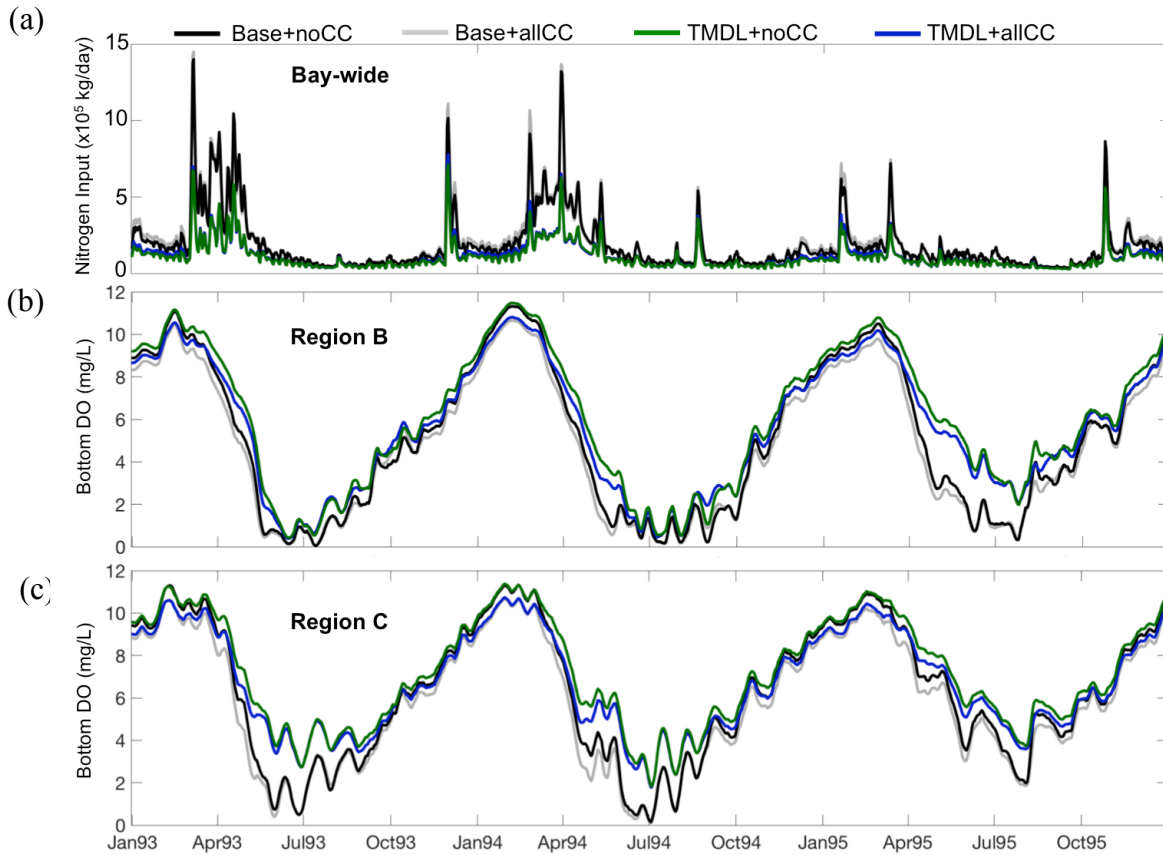


Figure 2: (a) Total (Bay-wide) riverine nitrogen loading into the Bay, (b) time series (7-day running mean) of bottom DO with and without nutrient reductions (TMDL vs. Base) and with and without climate change (allCC vs. noCC), for the average of the stations in the upper mesohaline Region B, and (c) as in (b) but for the lower mesohaline Region C.

770

775

780

785

790

795

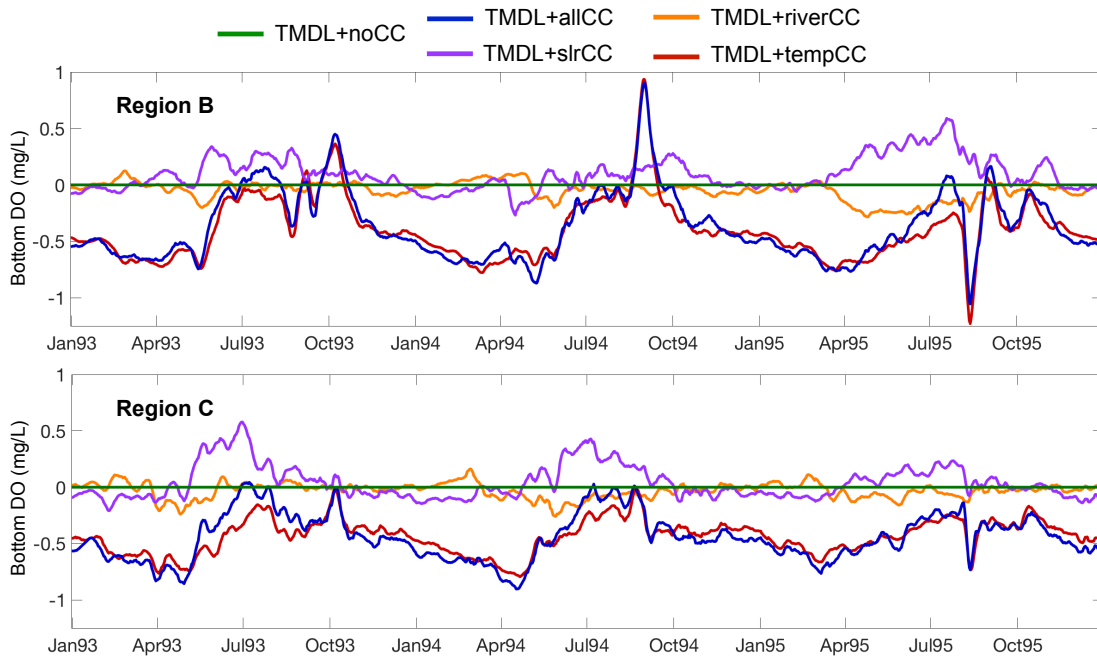


Figure 3: Time series (7-day running mean) of the change in bottom DO between the TMDL climate change and no climate change scenarios for the average of the (top panel) upper mesohaline Region B and (bottom panel) lower mesohaline Region C.

800

805

810

815

820

825

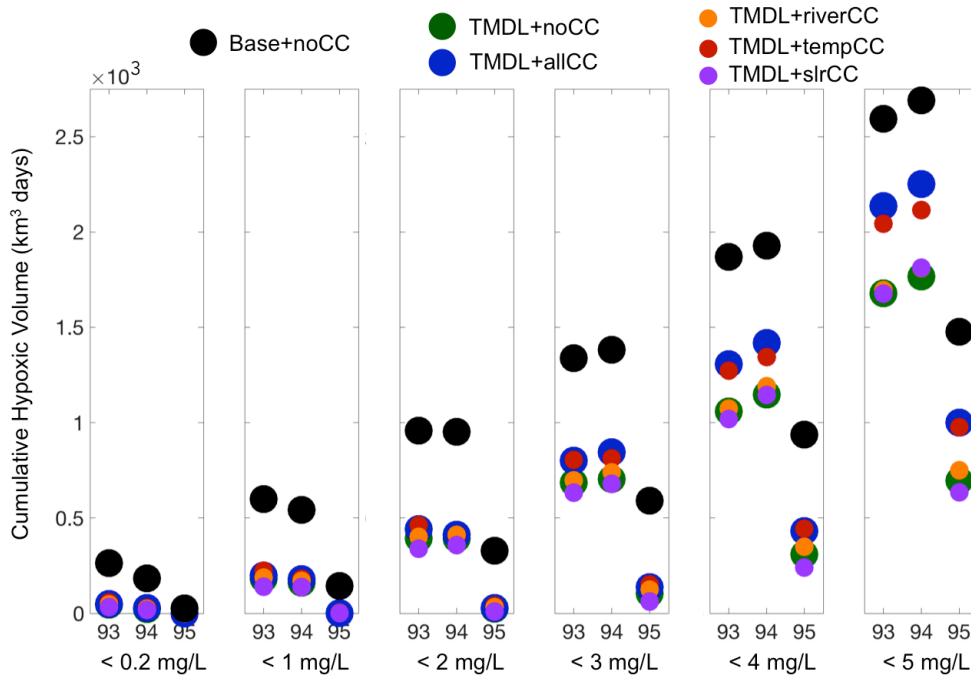


Figure 4: Cumulative hypoxic volume for six ranges of DO concentrations, for each of the study years and each of the scenarios (colored circles).

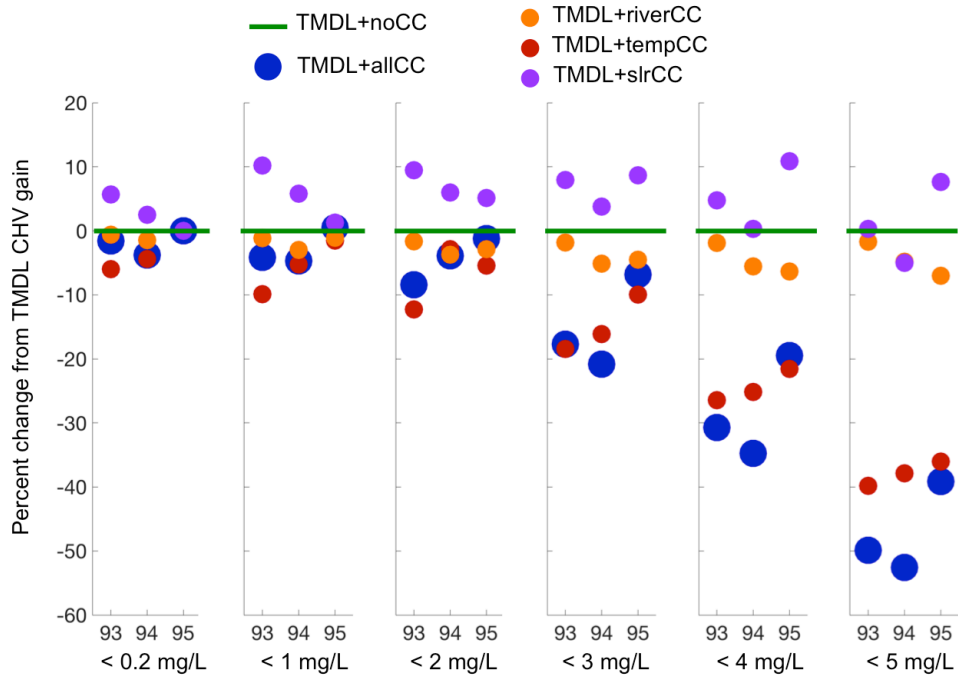
830

835

840

845

850



855

**Figure 5: Percent change due to climate change, relative to the improvement in CHV between the TMDL+noCC scenario and Base+noCC run. Percent change in CHV gain is defined as:  $(TMDL+xx - TMDL+noCC)/(TMDL+noCC - Base\ run+noCC)$ .**

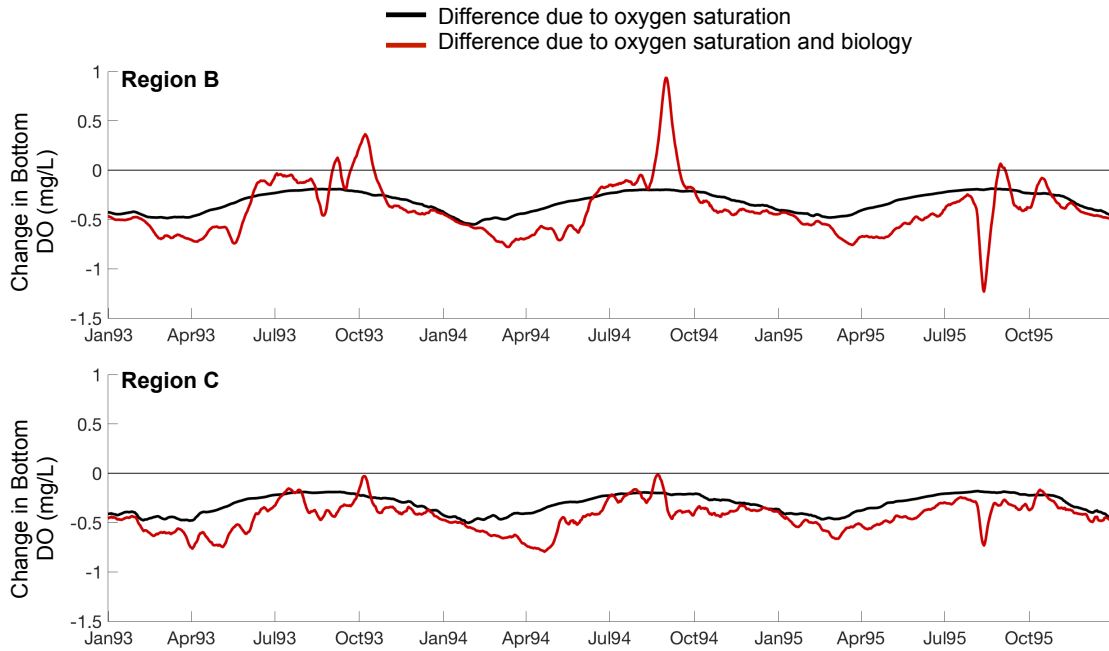
860

865

870

875

880



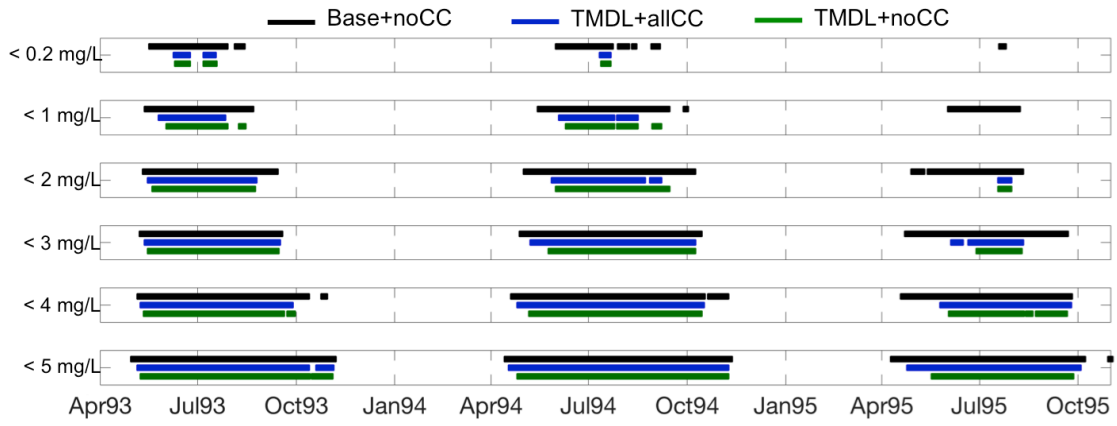
885 **Figure 6: DO differences due to climate change (between the TMDL+noCC and TMDL+tempCC scenarios)**  
890 **averaged for (top panel) the stations in Region B and (bottom panel) the stations in Region C. The black lines**  
895 **are the average change expected if only solubility was impacted by an increase in temperature. The red lines are**  
900 **the modeled change in DO as a result of the increase in temperature affecting both solubility and biological**  
905 **oxygen production/demand.**

890

895

900

905



910

**Figure 7: Bars showing duration of hypoxic volume (> 1km<sup>3</sup>) at each DO level for the Base+noCC run and the TMDL+noCC and TMDL+allCC nutrient scenarios.**

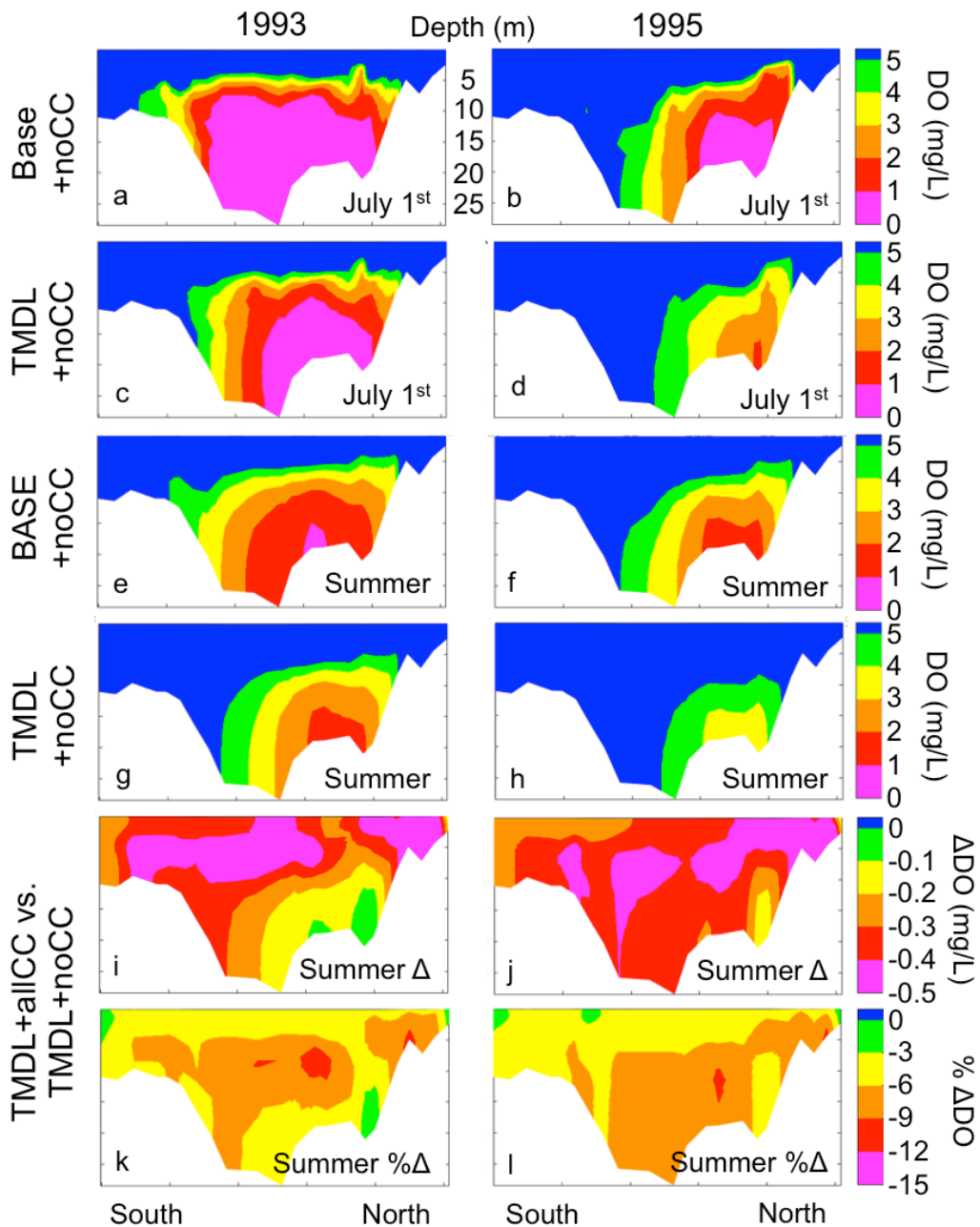
915

920

925

930

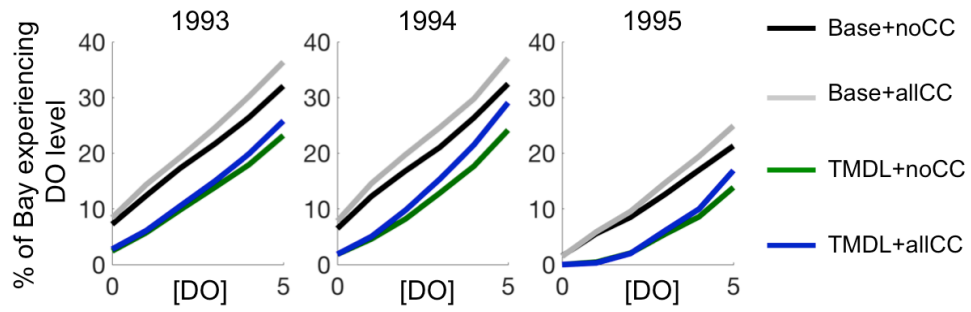
935



940

945

Figure 8: Latitudinal along-Bay DO transects for the Base+noCC run and TMDL+noCC scenario for July 1, 1993 (a,c) and July 1, 1995 (b,d), average summer (May-Sept) for 1993 (e,g) and 1995 (f,h), the difference in average summer DO between the TMDL+noCC and TMDL+allCC scenarios (i,j), and the percent difference in average summer DO between the TMDL+noCC and TMDL+allCC scenarios (k,l).



950

Figure 9: Percent of the entire Bay that experiences a given DO level during 1993, 1994, and 1995.

955

960

965

970

975

980



## Appendix A

985 Before being used for climate change sensitivity experiments, the ChesROMS-ECB temperature  
parameterizations were re-examined and modified as necessary based on information from the literature  
and extensive skill assessment using data from 23 Chesapeake Bay Program Water Quality Monitoring  
stations (Table A1). (Data are available at:  
990 <http://www.chesapeakebay.net/data/downloads/cbpwaterqualitydatabase1984present>.) Modifications of  
biological functions from the model version published in Feng et al. (2015) and used in the model  
comparisons published in Irby et al. (2016) are documented in Table A2. Specifically, temperature  
dependence was added to the zooplankton maximum growth rate, the remineralization rates of large and  
small detritus, and the phytoplankton growth rate at temperatures above 20°C. The maximum rate of  
nitrification, the temperature dependency on remineralization of semi-labile DON, and the remineralization  
rate of DOC at 0°C were also modified to fit with current understanding (Lomas et al., 2002).

995 Skill of the modified model was assessed via total Root Mean Squared Difference (RMSD; Table  
A3), normalized target diagrams (Joliff et al., 2009), and time series analysis (Irby, 2017). For the total  
RMSD calculations, the model results were compared to monthly/bi-monthly observations at the stations  
and regions shown in Fig. 1. Results from the modified model were also compared to an earlier iteration of  
the model evaluated in Irby et al. (2016).

1000

1005 **Table A1** Characteristics of observation stations.

Station	Latitude (°N)	Longitude (°W)	Station Depth (m)	Region
CB1.1	39.54794	-76.08481	6.1	A
CB2.1	39.44149	-76.02599	6.3	A
CB2.2	39.34873	-76.17579	12.4	A
CB3.1	39.2495	-76.2405	13	A
CB3.2	39.16369	-76.30631	12.1	B
CB3.3C	38.99596	-76.35967	24.3	B
CB4.1C	38.82593	-76.39945	32.2	B
CB4.2C	38.64618	-76.42127	27.2	B
CB4.3C	38.55505	-76.42794	26.9	B
CB4.4	38.41457	-76.34565	30.3	B
CB5.1	38.3187	-76.29215	34.1	C
CB5.2	38.13705	-76.22787	30.6	C
CB5.3	37.91011	-76.17137	26.9	C
CB5.4	37.80013	-76.17466	31.1	C
CB5.5	37.6918	-76.18967	17	C
CB6.1	37.58847	-76.16216	12.5	D
CB6.2	37.4868	-76.15633	10.5	D
CB6.3	37.41153	-76.15966	11.3	D
CB6.4	37.23653	-76.20799	10.2	D
CB7.1	37.68346	-75.98966	20.9	D
CB7.2	37.41153	-76.07966	20.2	D
CB7.3	37.11681	-76.12521	13.6	D
CB7.4	36.9957	-76.02048	14.2	D

1010

**Table A2.** Modifications to formulations and parameter values from Feng et al. (2015).

Symbol	Description	Feng et al. (2015)	this paper	Units
$g_{max}$	*Zooplankton maximum growth rate	0.3	$0.05 * e^{0.0742 * T}$	d <sup>-1</sup>
$n_{max}$	Maximum rate of nitrification	0.05	0.2	d <sup>-1</sup>
$r_{D_L}$	*Remineralization of large nitrogen detritus	0.2	$0.05 * e^{0.0742 * T}$	d <sup>-1</sup>
$r_{D_S}$	*Remineralization of small nitrogen detritus	0.2	$0.05 * e^{0.0742 * T}$	d <sup>-1</sup>
$\kappa_{[DON]_{SL}}$	*Temperature dependency remineralization of semi-labile DON	0.07	0.0742	(°C) <sup>-1</sup>
$a_{0C}$	Remineralization rate of DOC at 0 °C	0.003835	0.008	d <sup>-1</sup>
$\mu_0$	^Phytoplankton growth rate	2.15	<20°C, 2.15 T ≥ 20°C, $1.81 + e^{0.16 * T - 4.27}$	d <sup>-1</sup>

\*Community respiration and zooplankton grazing temperature dependent functions are based on a Q<sub>10</sub> of 2.1 (Lomas et al., 2002)

^Phytoplankton growth rate at low temperatures (T < 20°C) is constant with higher temperatures following a rate based on Lomas et al. (2002) with an average Q<sub>10</sub> between 20°C to 40°C of ~2.4.

1015

1020

1025

1030

1035

1040

1045

1050

1055

**Table A3** Total RMSD (and observational mean) of surface and bottom temperature (T), salinity (S), dissolved oxygen (DO) and nitrate (NO<sub>3</sub>) of the present model and the earlier model version used in Feng et al. (2015) and Irby et al. (2016) for the four regions (A,B,C,D) defined in Fig. 1.

1060

1065

1070

1075

1080

Variable	Earlier Model Version				Modified Model Version used here				
	Total	A	B	C	Total	A	B	C	D
Surface T (°C)	1.23 (17.15)	1.69 (16.86)	0.91 (16.71)	1.17 (17.25)	1.23 (17.15)	1.73 (16.86)	0.92 (16.71)	1.19 (17.25)	1.17 (17.62)
Bottom T (°C)	2.27 (15.98)	1.68 (16.74)	2.92 (15.42)	2.28 (15.89)	2.22 (15.98)	1.72 (16.74)	2.84 (15.42)	2.22 (15.89)	1.86 (16.09)
Surface S	2.14 (12.64)	2.32 (1.84)	1.96 (10.54)	1.95 (14.20)	1.86 (12.64)	2.11 (1.84)	1.56 (10.54)	1.54 (14.20)	2.11 (19.15)
Bottom S	2.09 (18.18)	2.10 (3.92)	1.78 (17.59)	2.04 (20.88)	2.17 (18.18)	2.31 (3.92)	2.04 (17.59)	1.83 (20.88)	2.40 (24.52)
Surface DO (mg L <sup>-1</sup> )	1.60 (9.35)	1.89 (9.24)	1.61 (9.65)	1.56 (9.39)	1.48 (9.35)	1.73 (9.24)	1.61 (9.65)	1.28 (9.39)	1.34 (9.13)
Bottom DO (mg L <sup>-1</sup> )	2.51 (5.78)	2.62 (8.00)	1.63 (3.82)	2.49 (5.01)	1.82 (5.78)	2.47 (8.00)	1.63 (3.82)	1.58 (5.01)	1.72 (6.71)
Surface NO <sub>3</sub> (mmolN m <sup>-3</sup> )	0.21 (0.32)	0.36 (0.93)	0.18 (0.34)	0.17 (0.17)	0.20 (0.32)	0.35 (0.93)	0.18 (0.34)	0.13 (0.17)	0.11 (0.07)
Bottom NO <sub>3</sub> (mmolN m <sup>-3</sup> )	0.17 (0.21)	0.34 (0.81)	0.28 (0.14)	0.07 (0.08)	0.23 (0.21)	0.37 (0.81)	0.28 (0.14)	0.14 (0.08)	0.06 (0.04)

1085

## References

- Altieri, A.H. and Gedan, K.B.: Climate change and dead zones, *Glob. Change Biol.*, 21,  
1090 1395-1406, doi: 10.1111/bcg.12754, 2015.
- Bever, A. J., Friedrichs, M. A. M., Friedrichs, C. T., Scully, M. E., and Lanerolle, L. W.:  
Combining observations and numerical model results to improve estimates of hypoxic  
volume within the Chesapeake Bay, USA, *J. Geophys. Res.-Oceans*, 118, 4924–  
4944, doi:10.1002/jgrc.20331, 2013.
- 1095 Breitburg, D.: Effects of hypoxia, and the balance between hypoxia and enrichment, on  
coastal fishes and fisheries, *Estuaries*, 25, 767–781, 2002.
- Boesch, D.F., Coles, V.J., Kimmel, D.G., and Miller, W.D.: Coastal Dead Zones &  
Global Climate Change – Ramifications of Climate Change for Chesapeake Bay  
Hypoxia, PEW Center on Global Climate Change, 2007.
- 1100 Boon, J.D. and Mitchell, M.: Nonlinear Change in Sea Level Observed at North  
American Tide Stations, *J. Coastal Res.*, 31: 1295-1305. doi: 10.2112/JCOASTRES-  
D-15-00041.1, 2015.
- Buchheister, A., Bonzek, C. F., Gartland, J., and Latour, R. J.: Patterns and drivers of the  
demersal fish community of Chesapeake Bay, *Mar. Ecol. Prog. Ser.*, 481, 161–180,  
1105 doi:10.3354/meps10253, 2013.
- Cerco, C., Kim, S.-C., and Noel, M.: The 2010 Chesapeake Bay Eutrophication Model –  
A Report to the US Environmental Protection Agency Chesapeake Bay Program and  
to The US Army Engineer Baltimore District, US Army Engineer Research and  
Development Center, Vicksburg, MS, 2010.
- 1110 Chua, V.P. and Xu, M.: Impacts of sea-level rise on estuarine circulation: An idealized  
estuary and San Francisco Bay, *J. Mar. Sys.*, 139: 58-67, doi:  
10.1016/j.jmarsys.2014.05.012, 2014.
- Church, J.A., P.U. Clark, A. Cazenave, J.M. Gregory, S. Jevrejeva, A. Levermann, M.A.  
Merrifield, G.A. Milne, R.S. Nerem, P.D. Nunn, A.J. Payne, W.T. Pfeffer, D.  
1115 Stammer, and A.S. Unnikrishnan, 2013: Sea Level Change. In: *Climate Change  
2013: The Physical Science Basis. Contribution of Working Group I to the Fifth*

*Assessment Report of the Intergovernmental Panel on Climate Change*, Cambridge University Press.

1120 Collins, M., Knutti, R., Arblaster, J., Dufresne, J-L., Fichet, T., Friedlingstein, P., Gao, X., Gutowski, W. J., Johns, T., Krinner, G., Shongwe, M., Tebaldi, C., Weaver, A. J., and Wehner, M.: Long-term Climate Change: Projections, Commitments and Irreversibility, *Climate Change 2013: The Physical Science Basis*, Contribution of Working Group I to the Fifth Assessment Report of the Intergovernmental Panel on Climate Change, Cambridge University Press, Cambridge, United Kingdom and New York, NY, USA, 2013.

1125 Diaz, R. J. and Rosenberg, R.: Spreading dead zones and consequences for marine ecosystems, *Science*, 321, 926–929, doi:10.1126/science.1156401, 2008.

Ding, H., and Elmore, A.J.: Spatio-temporal patterns in water surface temperature from Landsat time series data in the Chesapeake Bay, U.S.A., *Remote Sens. Environ.*, 168: 335-348. doi: 10.1016/j.rse.2015.07.009, 2015.

1130 Feng, Y., Friedrichs, M. A. M., Wilkin, J., Tian, H., Yang, Q., Hofmann, E. E., Wiggert, J. D., and Hood, R. R.: Chesapeake Bay nitrogen fluxes derived from a land-estuarine ocean biogeochemical modeling system: model description, evaluation, and nitrogen budgets, *J. Geophys. Res.-Biogeo.*, 120, 1666–1695, doi:10.1002/2015JG002931, 2015.

Goberville, E., Beaugrand, G., Hautekeete, N-C., Piquot, Y., and Luczak, C.: Uncertainties in the projection of species distributions related to general circulation models, *Ecol. Evol.*, 5: 1100-1116. doi: 10.1002/ece3.1411, 2015.

1140 Groisman, P.Y., Knight, R.W., Karl, T.R., Easterling, D.R., Sun, B., and Lawrimore, J.H.: Contemporary changes of the hydrological cycle over the contiguous United States: Trends derived from in situ observations, *J. Hydrometeorol.*, 5, 1, 64-85, 2004.

1145 Hagy, J. D., Boyton, W. R., Keefe, C. W., and Wood, K. V.: Hypoxia in Chesapeake Bay, 1950–2001: long-term change in relation to nutrient loading and river flow, *Estuaries*, 27, 634–658, 2004.

- Harding, L.W., Gallegos, C.L., Perry, E.S., Miller, W.D., Adolf, J.E., Mallonee, M.E., and Paerl, H.W.: Long-Term trends of nutrients and phytoplankton in Chesapeake Bay, *Estuar. Coast.*, 39, 664-681, doi:10.1007/s12237-015-0023-7, 2016.
- 1150 Hargreaves, G.H. and Samani, Z.A.: Estimating potential evapotranspiration, *Journal of the Irrigation and Drainage Division*, 108: 225-230, 1982.
- Hofmann, E.E., Cahill, B., Fennel, K., Friedrichs, M.A.M., Hyde, K. Lee, C., Mannino, A., Najjar, R.G., O'Reilly, J.E., Wilkin, J. and Xue, J.: Modeling the Dynamics of Continental Shelf Carbon, *Annu. Rev. Mar. Sci.*, 3: 93-122. doi:10.1146/annurev-marine-120709-142740, 2011.
- 1155 Hong, B. and Shen, J.: Responses of estuarine salinity and transport processes to potential future sea-level rise in the Chesapeake Bay, *Estuar. Coast. Shelf S.*, 104–105, 33–45, doi:10.1016/j.ecss.2012.03.014, 2012.
- IPCC, 2013: Annex 1: Atlas of Global and Regional Climate Projections [van Oldenborgh, G.J., M. Collins, J. Arblaster, J.H. Christensen, J. Marotzke, S.B. Power, 1160 M. Rummukainen, and T. Zhou (eds.)]. In: *Climate Change 2013: The Physical Science Basis. Contributions of the Working Group 1 to the Fifth Assessment Report of the Intergovernmental Panel on Climate Change* [Stocker, T.F., D. Qin, G-K. Plattner, M. Tignor, S.K. Allen, J. Boschung, A. Nauels, Y. Xia, V. Bex, and P.M. Midgley (eds.)]. Cambridge University Press, Cambridge, United Kingdom and New York, NY, USA, 2013.
- 1165 IPCC, 2013: Summary for Policymakers, In: *Climate Change 2013: The Physical Science Basis. Contribution of Working Group I to the Fifth Assessment Report of the Intergovernmental Panel on Climate Change* [Stocker, T.F., D. Qin, G-K. Plattner, M. Tignor, S.K. Allen, J. Boschung, A. Nauels, Y. Xia, V. Bex, and P.M. Midgley (eds.)]. Cambridge University Press, Cambridge, United Kingdom and New York, NY, USA, 2013.
- 1170 Irby, I.D., Friedrichs, M.A.M., Friedrichs, C.T., Bever, A.J., Hood, R.R., Lanerolle, L.W.J., Li, M., Linker, L., Scully, M.E., Sellner, K., Shen, J., Testa, J., Wang, H., Wang, P. and Xia, M.: Challenges associated with modeling low-oxygen waters in Chesapeake Bay: a multiple model comparison, *Biogeosciences*, 13, 2011-2018, doi:10.5194/bg-13-2011-2016, 2016.
- 1175

- Irby, I.D. and Friedrichs, M.A.M.: Evaluating confidence in the impact of regulatory nutrient reduction on Chesapeake Bay water quality, *Estuar. Coast.*, in revision.
- 1180 Irby, I.D.: Using Water Quality Models in Management – A Multiple Model Assessment, Analysis of Confidence, and Evaluation of Climate Change Impacts, Doctoral thesis, William & Mary, Williamsburg, VA, USA, 2017.
- Justic, D., Bierman, V.J., Scavia, D., and Hetland, R.D.: Forecasting Gulf’s Hypoxia: The Next 50 Years?, *Estuar. Coast.*, 30, 5, 791-801, 2007.
- 1185 Keisman, J. and Shenk, G.: Total maximum daily load criteria assessment using monitoring and modeling data, *J. Am. Water Resour. As.*, 49, 1134–1149, doi:10.1111/jawr.12111, 2013.
- Kemp, W. M., Testa, J. M., Conley, D. J., Gilbert, D., and Hagy, J. D.: Temporal responses of coastal hypoxia to nutrient loading and physical controls, *Biogeosciences*, 6, 2985–3008, doi:10.5194/bg-6-2985-2009, 2009.
- 1190 Lake, S.J. and Brush, M.J.: Modeling estuarine response to load reductions in a warmer climate: York River Estuary, Virginia, USA, *Mar. Ecol. Prog. Ser.*, 538: 81-98. doi: 10.3354/meps11448, 2015.
- 1195 Lapointe, D., Vogelbein, W.K., Fabrizio, M.C., Gauthier, D.T., and Brill, R.W.: Temperature, hypoxia, and mycobacteriosis: effects on adult striped bass *Morone saxatilis* metabolic performance, *Dis. Aquat. Organ.*, 108: 113-127. doi:10.3354/dao02693, 2014.
- Lee, M., Shevliakova, E., Malyshev, S., Milly, P.C.D. and Jaffe., P.R.: Climate variability and extremes, interacting with nitrogen storage, amplify eutrophication risk, *Geophys. Res. Lett.*, 43: 7520-7528. doi:10.1002/2016GL069254, 2016.
- 1200 Lennartz, S.T., Lehmann, A., Herrford, J., Malien, F., Hansen, H.-P., Biester, H., Bange, H.W.: Long-term trends at the Boknis Eck time series station (Baltic Sea), 1957-2014: does climate change counteract the decline in eutrophication? *Biogeosciences*, 11, 6323-6339, doi:10.5194/bg-11-6323-2014, 2014.
- 1205 Lomas, M.W., Gilbert, P.M., Shiah, F.K., and Smith, E.M.: Microbial processes and temperature in Chesapeake Bay: current relationships and potential impacts of regional warming, *Glo. Change Biol.*, 8: 51-70, 2002.



- McCormick, S., Simmens, S.J., Glicksman, R.L., Paddock, L., Kim, D., Whited, B., and Davies, W.: Science in litigation, the third branch of U.S. climate policy, *Science*, 357, 6355, 979-980, doi:10.1126/science.aao0412, 2017.
- 1210 Meier, H.E.M., Anderson, H.C., Eilola, K., Gustafsson, B.G., Kuznetsov, I., Muller-Karulis, B., Neumann, T., and Savchuk, O.P.: Hypoxia in future climates: A model ensemble study for the Baltic Sea, *Geophys. Res. Lett.*, 38, doi:10.1029/2011GL049929, 2011.
- Meire, L., Soetaert, K. E. R., and Meysman, F. J. R.: Impact of global change on coastal oxygen dynamics and risk of hypoxia, *Biogeosciences*, 10, 2633–2653, doi:10.5194/bg-10-2633-2013, 2013.
- 1215
- Muhling, B.A., Gaitan, C.F., Stock, C.A., Saba, V.S., Tommasi, D. and Dixon, K.W.: Potential salinity and temperature futures for the Chesapeake Bay using a statistical downscaling spatial disaggregation framework, *Estuar. Coast.*, doi:10.1007/s12237-017-0280-8, 2017.
- 1220
- Murphy, R. R., Kemp, W. M., and Ball, W. P.: Long-term trends in Chesapeake Bay seasonal hypoxia, stratification, and nutrient loading, *Estuar. Coast.*, 34, 1293–1309, doi:10.1007/s12237-011-9413-7, 2011.
- Najjar, R.G., Patterson, L., and Graham, S.: Climate Simulations of Major Estuarine Watersheds in the Mid-Atlantic Region of the US, *Climate Change*, 95, 2009.
- 1225
- Najjar, R. G., Pyke, C. R., Adams, M. B., Breitburg, D., Hershner, C., Kemp, M., Howarth, R., Mulholland, M. R., Paolisso, M., Secor, D., Sellner, K., Wardrop, D., and Wood, R.: Potential climate-change impacts on the Chesapeake Bay, *Estuar. Coast. Shelf S.*, 86, 1–20, doi:10.1016/j.ecss.2009.09.026, 2010.
- 1230
- Portner, H.O. and Knust, R.: Climate change affects marine fishes through the oxygen limitation of thermal tolerance, *Science*, 315: 95-97, 2007.
- Portner, H.O. and Lanning, G.: Oxygen and capacity limited thermal tolerance, The hypoxic environment, *Fish Physiol., Vol 27*, Academic Press, San Diego, CA, p 143-191, 2009.
- 1235
- Preston, B.L.: Observed Winter Warming of the Chesapeake Bay Estuary (1949-2002): Implications for Ecosystem Management, *Environmental Assessment*, 34: 125-139. doi: 10.1007/s00267-004-0159-x, 2004.

- Reclamation: Downscaled CMIP3 and CMIP5 Climate and Hydrology Projections:  
Release of Downscaled CMIP5 Climate Projections, Comparison with preceding  
1240 Information, and Summary of User Needs. Prepared by the U.S. Department of the  
Interior, Bureau of Reclamation, Technical Services Center, Denver, Colorado. 47pp,  
2013.
- Ross, A.C., R.G. Najjar, R.G., M. Li, M., E. Mann, M.E., S.E. Ford, S. E., and B. Katz,  
B.: Sea-level rise and other influences on decadal-scale salinity variability in a  
1245 coastal plain estuary, *Estuar. Coast. Shelf S.*, 157: 79-92. doi:  
10.1016/j.ecss.2015.01.002, 2015.
- Saba, V.S., Griffies, S.M., Anderson, W.G., Winton, M., Alexander, M.A., Delworth,  
T.L., Hare, J.A., Harrison, M.J., Rosati, A., Vecchi, G.A., and Zhang, R.: Enhanced  
warming of the Northwest Atlantic Ocean under climate change, *J. Geophys. Res.-*  
1250 *Oceans*, 120, doi:10.1002/2015JC011346, 2016.
- Sallenger, A.H., Doran, K.S., and Howd, P.A.: Hotspot of accelerated sea-level rise on  
the Atlantic coast of North America, *Nat. Clim. Change*,  
doi:10.1038/NCLIMATE1597, 2012.
- Scully, M. E.: The importance of climate variability to wind-driven modulation of  
1255 hypoxia in Chesapeake Bay, *J. Phys. Oceanogr.*, 40, 1435–1440,  
doi:10.1175/2010JPO4321.1, 2010.
- Shchepetkin, A. F. and McWilliams, J. C.: The Regional Ocean Modeling System  
(ROMS): a split-explicit, free-surface, topography-following-coordinate oceanic  
model, *Ocean Model.*, 9, 347–404, doi:10.1016/j.ocemod.2004.08.002, 2005.
- 1260 Shenk, G.W. and Linker, L.C.: Development and application of the 2010 Chesapeake  
Bay watershed total maximum daily load model, *J. Am. Water Resour. As.*, 49, 1–  
15, doi:10.1111/jawr.12109, 2013.
- Sinha, E., Michalak, A.M., and Balaji, V.: Eutrophication will increase during the 21<sup>st</sup>  
century as a result of precipitation changes, *Science*, 357: 405-408.  
1265 doi:10.1126/science.aan2409, 2017.
- Son, S.H. and Wang, M.: Diffuse attenuation coefficient of the photosynthetically  
available radiation  $K_d(\text{PAR})$  for global open ocean and coastal waters, *Rem. Sen.*  
*Environ.*, 159: 250-258. doi: 10.1016/j.rse.2014.12.011, 2015.

- 1270 Sweet, W.V., Kopp, R.E., Weaver, C.P., Obeysekera, J., Horton, R.M., Thieler, E.R., and  
Zervas, C.: Global and Regional Sea Level Rise Scenarios for the United States.  
NOAA Technical Report NOS CO-OPS 083, 2017.
- Tango, P.J. and Batiuk, R.A.: Deriving Chesapeake Bay water quality standards, *J. Am.  
Water Resour. As.*, 1-18. doi: 10.1111/jawr.12108, 2013.
- 1275 Tian, H., Yang, Q., Najjar, R., Ren, W., Friedrichs, M. A. M., Hopkinson, C. S., and Pan,  
S.: Anthropogenic and climatic influences on carbon fluxes from eastern North  
America to the Atlantic Ocean: a process-based modeling study, *J. Geophys. Res.-  
Biogeo.*, 120, 752–772, doi:10.1002/2014JG002760, 2015.
- 1280 USEPA: Chesapeake Bay Total Maximum Daily Load for Nitrogen, Phosphorus, and  
Sediment, US Environmental Protection Agency, US Environmental Protection  
Agency Chesapeake Bay Program Office, Annapolis, MD, 2010.
- Vaquer-Sunyer, R. and Duarte, C.M.: Thresholds of hypoxia for marine biodiversity, *P.  
Natl. Acad. Sci. USA*, 105, 15452–15457, doi:10.1073/pnas.0803833105, 2008.
- Vaquer-Sunyer, R. and Duarte, C.M.: Temperature effects on oxygen thresholds for  
hypoxia in marine benthic organisms, *Glob. Change Biol.*, doi:10.1111/j.1365-  
1285 2486.2010.02343.x, 2011.
- Wang, M., Son, S.H., and Harding, L.W.: Retrieval of diffuse attenuation coefficient in  
the Chesapeake Bay and turbid ocean regions for satellite ocean color applications, *J.  
Geophys. Res.– Oceans*, 114. doi:10.1029/2009JC005286, 2009.
- 1290 Winder, M. and Sommer, U.: Phytoplankton response to a changing climate,  
*Hydrobiologia*, 698: 5-16, 2012.
- Xu, J., Long, W., Wiggert, J. D., Lanerolle, L. W. J., Brown, C. W., Murtugudde, R., and  
Hood, R. R.: Climate forcing and salinity variability in Chesapeake Bay, USA,  
*Estuar. Coast. Shelf Science*, 35, 237–261, doi:10.1007/s12237-011-9423-5, 2012.
- 1295 Yang, Q., Tian, H., Friedrichs, M. A. M., Hopkinson, C. S., Lu, C., and Najjar, R. G.:  
Increased nitrogen export from eastern North America to the Atlantic Ocean due to  
climatic and anthropogenic changes during 1901–2008, *J. Geophys. Res. Biogeo.*,  
120, 1046–1068, doi:10.1002/2014JG002763, 2015a.
- Yang, Q., Tian, H., Friedrichs, M. A. M., Liu, M., Li, X., and Yang, J.: Hydrological  
responses to climate and land-use changes along the North American east coast: a

1300 110-year historical reconstruction, *J. Am. Water Resour. As.*, 51, 47–67,  
doi:10.1111/jawr.12232, 2015b.