

Dear Dr. Middelburgh:

We are pleased to submit our revised manuscript, “Changes in gross oxygen production, net oxygen production, and air-water gas exchange during seasonal ice melt in Whycocomagh Bay, a Canadian estuary in the Bras d’Or Lake system.” Our author comments posted on Biogeosciences Discussions (<https://www.biogeosciences-discuss.net/bg-2017-428/#discussion>) contain a point-by-point response to the reviews and detail the changes made to the manuscript in response to each reviewer comment. A marked-up manuscript is included following this letter.

As recommended by Reviewer 1, we have changed the title of the manuscript, added a new section “site description” with new references to past work in the Bras d’Or Lake system, added a new table with the experimental timeline and modified Figure 1. As recommended by Reviewer 2, we provided an explanation of why the tracer ratio did not steadily decrease during injection 1, and added more discussion of the potential effect of the open water on the measured productivity at Little Narrows.

In response to comments from both reviewers relating to lack of subsurface measurements of the O₂ tracers, we decided to no longer calculate GOP or NOP during the ice melt period because of the uncertainties in the steady-state and non-steady state term at this time. We now more clearly state the uncertainties in our calculated GOP and NOP values due to the lack of subsurface measurements and explicitly recommend that researchers conducting similar studies in the future include depth-resolved measurements. We modified Figures 6 and 7 (GOP and NOP results) to include the mixed layer depth instead of the cumulative GOP and NOP.

Reviewer 2 recommended we revise our GOP calculations to use equation 1a from Haskell et al. (2017) in order to incorporate non-steady state O₂ concentration and mixed layer depth into the calculation. We explained in our author comment that the equation we used to calculate GOP already incorporates non-steady state O₂ concentration and that we have concluded that incorporating non-steady state mixed layer depth into the GOP calculation would require knowledge of the O₂ concentration and isotopic composition below the mixed layer, data which we did not collect. When we carefully derived an equation for GOP with a non-steady state mixed layer depth, we did not achieve the same equation as in Haskell et al. (2017). Therefore, the equation we used to calculate GOP remains unchanged.

We also made the text modifications and additions recommended by both reviewers. We would like to thank the reviewers again for their constructive and thorough reviews that have improved the manuscript.

Thank you very much for your patience as we worked to revise this manuscript, incorporating the recommendations of both reviewers.

Sincerely,
Cara Manning

Changes in gross oxygen production, net oxygen production, and air-water gas exchange during seasonal ice melt in Whycocomagh Bay, a Canadian estuary in the Bras d'Or Lake, ~~a Canadian estuary system~~

Cara C. Manning^{1,2,3,a}, Rachel H. R. Stanley⁴, David P. Nicholson², Brice Loose⁵, Ann Lovely⁵, Peter Schlosser^{6,7,8}, and Bruce G. Hatcher⁹

¹MIT/WHOI Joint Program in Oceanography/Applied Ocean Science and Engineering, Woods Hole, MA, USA.

²Department of Marine Chemistry and Geochemistry, Woods Hole Oceanographic Institution, Woods Hole, MA, USA

³Department of Earth, Atmospheric and Planetary Sciences, Massachusetts Institute of Technology, Cambridge, MA, USA

⁴Department of Chemistry, Wellesley College, Wellesley, MA, USA

⁵Graduate School of Oceanography, University of Rhode Island, Narragansett, RI, USA

⁶Lamont-Doherty Earth Observatory of Columbia University, Palisades, NY, USA

⁷Department of Earth and Environmental Sciences, Columbia University, Palisades, NY, USA

⁸Department of Earth and Environmental Engineering, Columbia University, New York, NY, USA

⁹Department of Biology and Bras d'Or Institute, Cape Breton University, Sydney, NS, Canada

^aNow at: Department of Earth, Ocean and Atmospheric Sciences, University of British Columbia, Vancouver, BC, Canada

Correspondence: Cara C. Manning (cmanning@eoas.ubc.ca)

Abstract. Sea ice is an important control on gas exchange and primary production in polar regions. We measured net oxygen production (NOP) and gross oxygen production (GOP) using near-continuous measurements of the O₂/Ar gas ratio and discrete measurements of the triple isotopic composition of O₂ ~~in~~, during the transition from ice-covered to ice-free conditions, in Whycocomagh Bay, an estuary in the Bras d'Or Lake, ~~an estuary system~~ in Nova Scotia, Canada, ~~as the bay transitioned from~~

5 ~~ice-covered to ice-free conditions~~. The volumetric gross oxygen production was $5.4^{+2.8}_{-1.6}$ mmol O₂ m⁻³ d⁻¹, similar at the beginning and end of the time-series, and likely peaked at the end of the ice melt period. Net oxygen production displayed more temporal variability and the system was on average net autotrophic during ice melt and net heterotrophic following the ice melt. We performed the first field-based dual tracer release experiment in ice-covered water to quantify air-water gas exchange. The gas transfer velocity at >90 % ice cover was 6 % of the rate for nearly ice-free conditions. Published studies have shown a wide
10 range of results for gas transfer velocity in the presence of ice, and this study indicates that gas transfer through ice is much slower than the rate of gas transfer through open water. The results also indicate that both primary producers and heterotrophs are active in Whycocomagh Bay during spring while it is covered in ice.

1 Introduction

The annual cycle of sea ice formation and melt regulates primary production and CO₂ uptake and ventilation in polar regions. Ice alters the rate of air-water gas exchange, reduces the penetration of light into surface water, changes stratification and mixing

processes, and harbors microbes and biogenic gases including CO₂ (Cota, 1985; Loose et al., 2011a; Loose and Schlosser, 2011).

The question of whether climate change will increase or decrease Arctic Ocean carbon uptake is a topic of considerable debate (Bates et al., 2006; Bates and Mathis, 2009; Cai, 2011). Global warming is causing dramatic reductions in sea ice cover and increases in freshwater inflow and organic carbon supply to the Arctic Ocean, which impacts ecosystems (ACIA, 2004; Vaughan et al., 2013; Macdonald et al., 2015). Because conducting field work in the Arctic is challenging, measurements of productivity and gas exchange are limited. Biogeochemical time-series observations resolving seasonal changes in productivity are particularly scarce in the Arctic (MacGilchrist et al., 2014; Stanley et al., 2015). Measurements at Palmer Station in Antarctica show a strong seasonality in biological productivity and carbon uptake associated with changes in light, physical mixing, and grazing and demonstrate the benefits of high-frequency sampling for quantifying CO₂ uptake in seasonally ice-covered waters (Ducklow et al., 2013; Tortell et al., 2014; Goldman et al., 2015).

Parameterization ~~The parameterization~~ of gas exchange in the presence of ice also remains highly uncertain. Many investigators have assumed that there is negligible gas transfer through ice and therefore the gas transfer velocity can be linearly scaled as a function of the fraction of open water, multiplied by the open water gas transfer velocity (Takahashi et al., 2009; Legge et al., 2015; Evans et al., 2015; Stanley et al., 2015), ~~however, this assumption is not well-verified~~. A recent field study by Butterworth and Miller (2016) ~~concluded that gas transfer velocities~~ in the Southern Ocean at ~~0–100–0–100%~~ ice cover ~~approximated a linear relationship with ice cover, but~~ verified this approach. However, other studies report that gas exchange is reduced or enhanced in the presence of sea ice relative to a linear scaling based on the fraction of open water, including some studies measuring higher transfer velocities in ice-covered waters than in open water (Fanning and Torres, 1991; Else et al., 2011; Papakyriakou and Miller, 2011; Rutgers van der Loeff et al., 2014). Additional studies show that gas exchange in ice-covered waters cannot be predicted from wind speed alone, which may be a cause of the wide range of results (Loose et al., 2009; Lovely et al., 2015; Loose et al., 2016). An additional factor reducing air-water exchange in ice-covered waters is that ice significantly reduces fetch for wave generation and therefore wind-driven near-surface turbulence (Squire et al., 1995; Overeem et al., 2011). However, other processes may enhance near-surface turbulence in the presence of sea ice including convection associated with heat loss and brine rejection (Morison et al., 1992; Smith and Morison, 1993), boundary layer shear between ice and water (McPhee, 1992; Saucier et al., 2004), and wave interactions with drifting ice (Kohout and Meylan, 2008).

In this study, we measured productivity and gas exchange over a 1-month period during and following ice melt in Whycocomagh Bay, an estuary in the Bras d’Or Lake, ~~an estuary system~~ on Cape Breton Island in Nova Scotia, Canada (see section 1.1 for a full site description and map). We performed two dual tracer release experiments at different fractions of ice cover to quantify air-water gas exchange by adding ³He and SF₆ to the mixed layer. We measured net oxygen production (NOP) and gross oxygen production (GOP) at Little Narrows while Whycocomagh Bay transitioned from completely ice-covered to ice-free conditions. GOP is the total amount of O₂ generated by autotrophic microbes as a result of photosynthesis. NOP is GOP minus respiratory consumption of O₂ by autotrophs and heterotrophs. The NOP/GOP ratio provides an estimate of the export efficiency, i.e., the fraction of autotrophic production available for export to waters below the mixed layer. The time-series approach allowed us to quantify non-steady state O₂ fluxes, which can be a significant fraction of the total O₂ flux in many

5 regions (Hamme et al., 2012; Tortell et al., 2014; Manning et al., 2017b). We quantify GOP with discrete measurements of the triple oxygen isotopic composition of O₂ (Luz et al., 1999; Luz and Barkan, 2000; Juranek and Quay, 2013) and NOP with near-continuous measurements of the O₂/Ar saturation anomaly (Cassar et al., 2009).

To our knowledge, there are no other published field-based experiments where the dual tracer technique was used in the presence of ice, and this study adds to a limited number of in situ measurements of NOP and GOP during ice melt (Goldman
10 et al., 2015; Stanley et al., 2015; Eveleth et al., 2017).

1.1 Site description

The Bras d'Or Lake system consists of several interconnected channels and basins and has a total surface area of 1070 km² and an average depth of ~30 m (maximum 280 m) (Petrie and Raymond, 2002; Petrie and Bugden, 2002). The Bras d'Or Lake system exchanges water with the Atlantic Ocean primarily through the Great Bras d'Or Channel at the northeastern
15 region of the estuary; this channel has a shallow (16 m deep) and narrow (0.3 km) ~~restriction-sill~~ at the mouth (Petrie and Raymond, 2002). We conducted the work for this study in Whycocomagh Bay, an enclosed embayment approximately 13 km long and 3 km wide, at the ~~western-northwestern~~ end of the estuary, approximately 60 km from the open ocean (Figure 1). Whycocomagh Bay is separated from the rest of the Bras d'Or Lake system by Little Narrows, a channel which is approximately 0.2 km wide and 0.5 km long. ~~Whycomomagh Bay is In~~ Whycomomagh Bay, there are two basins (western and eastern basin)
20 that are up to 40 m deep~~and~~. Little Narrows channel is ~15–20 m deep (Gurbutt and Petrie, 1995). ~~Maximum~~ The annual maximum ice cover is typically reached in early March~~and ice disappears most rapidly in April and has usually disappeared completely~~. Ice disappears rapidly during April until its total melt by the first week of May (Petrie and Bugden, 2002).

~~We performed two dual-tracer release experiments to quantify air-water gas exchange by adding ³He and SF₆ to the mixed layer. The first tracer release experiment (Injection 1) occurred under near-complete ice cover and the second experiment~~
25 ~~(Injection 2) occurred in nearly ice-free conditions. We measured net oxygen production (NOP) and gross oxygen production (GOP) at Little Narrows while Whycocomagh Bay transitioned from completely ice-covered to ice-free conditions. GOP is~~
The Bras d'Or Lakes system exhibits standard estuarine circulation with freshwater flowing outward at the surface and denser saltwater flowing inward in the deeper layers (Gurbutt et al., 1995; Gurbutt and Petrie, 1995). The deep water in western Whycocomagh Bay is strongly isolated due to the presence of a sill at the bottom of Little Narrows Channel, and very little
30 mixing occurs between the surface and sub-surface waters (Petrie and Bugden, 2002). Whycocomagh Bay receives a relatively large amount of freshwater compared to other regions of the bay. This freshwater forms ice in winter and the stratification remains very stable, preventing vertical mixing (Krauel, 1975). In general, excluding the narrow channels in direct contact with the ~~total amount of O₂ generated by autotrophic microbes as a result of photosynthesis. NOP is GOP minus respiratory consumption of O₂ by autotrophs and heterotrophs. The ratio of these two terms provides an estimate of the export efficiency, i.e., the fraction of autotrophic production available for export from the mixed layer. The~~ ocean, the Bras d'Or Lakes system does not exhibit significant tidally-driven variability in temperature, salinity, and sea surface level (Krauel, 1975; Petrie, 1999; Petrie and Bugden, 2002; Dupont et al., 2003). A 21-day time-series approach allowed us to quantify non-steady-state O₂ fluxes, which can be a significant fraction of the total O₂ flux in many regions. We quantify GOP with discrete measurements

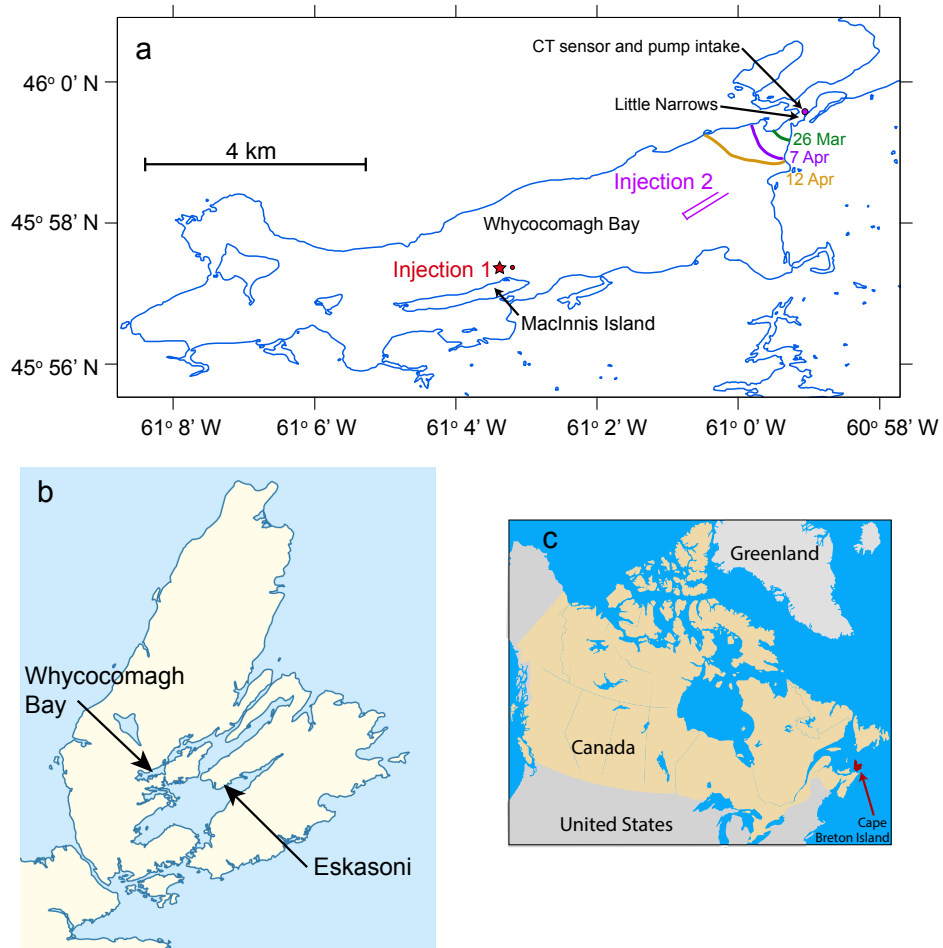


Figure 1. (a) Map of Whycocomagh Bay showing the locations of Injections 1 and 2 and the sampling equipment at Little Narrows. For Injection 1, the injection location is shown with a red star and the location where initial samples were collected is shown with a red circle. The colored lines labeled 26 Mar, 7 Apr, and 12 Apr show the location of the ice edge on these days. (b) Map of Cape Breton Island, showing the location of Whycocomagh Bay and Eskasoni (where wind speeds were obtained). (c) Map of Canada showing location of Cape Breton Island.

5 of the triple oxygen isotopic composition of O_2 and NOP with near-continuous measurements of the O_2/Ar saturation anomaly
- in western Whycocomagh Bay showed no detectable diurnal or semidiurnal tides (Dupont et al., 2003).

To our knowledge, there are no other published field-based experiments where the dual-tracer technique was used in the
presence of ice, and this study adds to a limited number of in-situ measurements of NOP and GOP during ice melt previously
published measurements of water column chemistry in Whycocomagh Bay in ice-covered conditions. Measurements from
10 July 1974 showed that the western portion of the Whycocomagh Bay became anoxic in the isolated deep waters below 25 m
depth whereas measurements in the eastern portion of the basin (closer to Little Narrows) showed the water column had an
 O_2 saturation of 61% at the bottom depth of 30 m (Krauel, 1975; Gurbutt and Petrie, 1995). Measurements collected from
1995–1997 (from late April to late September) showed O_2 concentrations in Whycocomagh Bay from 1–5 m depth were near
equilibrium (94 to 112 % saturation) throughout the bay. In the deeper waters, O_2 concentrations in eastern Whycocomagh
15 Bay ranged from 69 % at 25 m depth on 28 April 1996 to 54 % at 13 m depth on 26 Sep 1995 and 30 % at 30 m depth on 23
Sep 1996, and the western basin was persistently anoxic (Strain et al., 2001).

2 Field work and analytical methods

2.1 Setup Sampling setup at Little Narrows

Table 1 presents key events that occurred during the experiment. We continuously sampled water at Little Narrows channel
(Figure 1) over a 1-month period during a 33-day time series (25 March–28 April 2013). We moored a Goulds SB Bruiser
5-18 GPM submersible pump with intake at ~ 0.5 m depth (within the mixed layer), placed inside a mesh filter bag to prevent
large particles from clogging the pump, and a conductivity and temperature (CT) sensor (Sea-Bird Electronics SBE37) at ~ 0.5
m depth. From the submersible pump, water flowed through flexible high-pressure PVC tubing submerged underwater to a
5 3-port pressure-relief valve (on shore) and was then pumped along shore (~ 50 m) to our sampling apparatus. The water passed
through three 10" canister filters (100, 20, and 5 μm nominal pore size) and then into a sampling manifold containing valves
for distributing water for measurement of O_2/Ar (continuously, by mass spectrometry) and for discrete sampling. As discussed
below, we sampled discretely for SF_6 , 3He , and O_2/Ar and the triple oxygen isotopic composition of O_2 , and near-continuously
for O_2/Ar . Excess water flowed through tubing back into the bay. We covered the tubing on shore and the filter canisters in
10 foam insulation to minimize temperature changes in the water.

We deployed a Nortek acoustic doppler-Doppler current profiler (ADCP) at ~ 4 m depth in the middle of the channel
beginning on 7 April through the end of the time-series from 7–28 Apr. The mean current speed at 0.5 m depth was 3.4 $km\ d^{-1}$
(3.9 $cm\ s^{-1}$) with an orientation toward 31° (approximately along the channel axis), indicating the transit time through Little
Narrows is relatively short. The ADCP measurements are not used to interpret the results below because our measurements
15 data is shown in Supplemental Figure 1. Our measurements (salinity, O_2/Ar , etc.) did not display any correlation with tidal
cycles. However, a figure of the ADCP data is provided as Supplemental Figure 1., consistent with previous studies of the Bras
d'Or Lakes system indicating tides have a negligible influence on water properties within Whycocomagh Bay (Krauel, 1975;
Petrie, 1999; Petrie and Bugden, 2002; Dupont et al., 2003).

Table 1. Key events during experiment

<u>Date (in 2013)</u>	<u>Event</u>
<u>22 Mar</u>	<u>First CTD profile at Little Narrows</u>
<u>25 Mar</u>	<u>Start of continuous water sampling with water pump and CT sensor at Little Narrows</u>
<u>30–31 March</u>	<u>Tracer Injection 1 (under ice)</u>
<u>7 April</u>	<u>ADCP installed at Little Narrows</u>
<u>7–10 April</u>	<u>Tracer from Injection 1 sampled at Little Narrows</u>
<u>16–19 April</u>	<u>Rapid decline in ice cover in Whycocomagh Bay</u>
<u>19 April</u>	<u>Tracer Injection 2 (open water)</u>
<u>20–23 April</u>	<u>Tracer from Injection 2 sampled at Little Narrows</u>
<u>28 Apr</u>	<u>End of continuous water sampling and ADCP measurements at Little Narrows, and last CTD profile at Little Narrows</u>

The CT sensor was initially placed closer to shore than the water pump because the cable was not long enough to reach the pump, but after obtaining a longer cable, we were able to co-locate the CT sensor with the water pump (beginning 12 April). For the discrete samples, we used the CT sensor temperature and salinity measurements beginning on 12 April (when we moved the CT to the same location as the pump) to calculate the equilibrium concentration of each gas. Prior to 12 April, we collected measurements with a YSI temperature and salinity probe from the water on shore and used these measurements as the temperature and salinity for the discrete samples. We determined the average warming through the underway line to be $0.37(\pm 0.22) ^\circ\text{C}$ based on comparisons between the temperatures from the CT sensor (in situ) and the YSI probe (on shore) after 12 April and applied this offset to all YSI temperature measurements. For the continuous O_2/Ar data we used a temperature record from a thermocouple ~~in the~~ located in the sampling bucket because it had fewer gaps in time. We calibrated the thermocouple using an Aanderaa 4330 optode sensor which contains a temperature sensor (accuracy $\pm 0.03 ^\circ\text{C}$) and then decreased the temperature by $0.37 ^\circ\text{C}$ to correct for warming effects.

We installed the gas chromatograph (for measurement of SF_6) and mass spectrometer (for measurement of O_2/Ar) inside a garage connected to the Little Narrows Ferry building. The majority of the wet equipment was set up outside the garage adjacent to a window on the garage, which was used for connecting equipment and power cables between the outdoors and indoors.

We deployed the water pump and in situ CT sensor to the east (oceanward) of the Little Narrows cable ferry which periodically crosses the channel and operates 24 hours per day. We found no correlations between our temperature, salinity, and geochemical measurements and the position of the ferry within the channel. We collected conductivity, temperature and depth (CTD) profiles with a SBE 19Plus sensor at Little Narrows, usually by boat using a winch, but occasionally by lowering the CTD by hand on a rope from the Little Narrows cable ferry. This CTD package was also equipped with an O_2 sensor, but unfortunately the O_2 sensor malfunctioned throughout the experiment. Therefore, we can characterize vertical structure of salinity and temperature but not O_2 .

The GPS-equipped boat enabled us to map out the location of the ice edge nearest to Little Narrows, to perform the second tracer injection, and to sample after the tracer injection.

2.2 Tracer injections

- 10 The approach in this study was to dissolve the tracer mixture ($^3\text{He}/\text{SF}_6$) in Whycocomagh Bay, and sample continuously at Little Narrows, a constriction at the mouth of the bay. The net surface flow within Whycocomagh Bay, Little Narrows, and St. Patrick's Channel is toward the ocean due to the substantial freshwater inputs to the bay from surface runoff and precipitation (Gurbutt and Petrie, 1995; Yang et al., 2007) and therefore tracer dissolved within the bay at the surface will eventually pass through Little Narrows, or be ventilated to the atmosphere. Two tracer injections occurred during the time-series, resulting in
- 15 estimates of the gas transfer velocity for two extremes: near-complete ice cover, and essentially ice-free conditions.

- Injection 1 occurred through a hole in the ice from 30–31 March, near MacInnis Island (Figure 1a). Approximately 0.11 mol SF_6 and 4.0×10^{-4} mol ^3He ~~was~~were diluted by a factor of 50 with N_2 and then bubbled using a manifold within the mixed layer, over a 21-hour period. The ice thickness was ~ 0.3 m and the injection occurred in the upper 0.5 m of the water column. Because the tracer was added at a fixed location, the tracer was added very slowly to increase the fraction of the
- 20 gas that dissolved. We sampled for initial ^3He and SF_6 concentrations at the injection site, immediately before starting the injection, and after terminating the tracer addition, by drilling ~~a separate hole near~~several holes >10 m away from the injection site (because the bubbling action would have perturbed gas concentrations at the injection site). Subsequently, we sampled the tracer as it flowed through Little Narrows from 7–11 April. From 31 March–11 April, the bay was nearly completely full of ice, with a small opening near Little Narrows (Figure 1a). We also collected under-ice samples for O_2/Ar and TOI immediately
- 25 before and after the injection but they displayed a wide range in values for O_2/Ar , from -14 to 2%. Therefore, we were unable to define any initial under-ice values for these parameters.

- Injection 2 occurred by boat on the morning of 19 April. By this time, the bay was nearly ice-free and all tracer from the previous experiment had passed through and/or been ventilated to the atmosphere such that the tracer concentrations at Little Narrows were below detection. While the boat was moving, we used the same manifold as for Injection 1 to bubble
- 30 approximately approximately 4.4 mol SF_6 and 0.021 mol ^3He , diluted by a factor of four with N_2 into the mixed layer (Figure 1a). The injection lasted 40 min. We detected the tracers at Little Narrows beginning on 20 April 23:30 and measured the change in the ratio between 20 April–23 April as the tracer patch flowed through Little Narrows. We used a higher quantity and concentration of SF_6 and ^3He during this injection because we expected the tracer would be ventilated more rapidly due to higher gas exchange rates given the open water conditions. We were able to inject the tracer more rapidly because it was distributed over a large area instead of through a small hole in the ice.

2.3 Measurement of O_2/Ar and the triple oxygen isotopic composition of O_2

- We set up an equilibrator inlet mass spectrometer (EIMS) for measurement of O_2/Ar similarly to the system described in Cassar
- 5 et al. (2009). However, we used a larger membrane contactor cartridge (Liqui-Cel MiniModule 1.7 x 5.5) because the design is more robust than the Liqui-Cel MicroModule 0.75 x 1 used by Cassar et al. (2009). The water flow rate through the cartridge

was $\sim 1.5 \text{ L min}^{-1}$. We attached a custom female Luer-Lok fitting paired to a capillary adapter to the upper headspace sampling port and the lower sampling port was left closed.

For O_2/Ar and the triple oxygen isotopic composition of O_2 , we collected samples in pre-evacuated, pre-poisoned glass
10 flasks from a spigot in the water pumped to shore, or for shipboard sampling, using a small submersible water pump. Analysis occurred within ~ 6 months of flask evacuation and 4 months of sample collection at the Woods Hole Oceanographic Institution with a Thermo Fisher Scientific MAT 253 isotope ratio mass spectrometer, following the method of Barkan and Luz (2003) with modifications as described in Stanley et al. (2010, 2015).

The precision of the discrete samples, calculated based on the standard deviation of equilibrated water samples run daily
15 along with the environmental samples was 0.011 and 0.020 ‰ for $\delta^{17}\text{O}$ and $\delta^{18}\text{O}$ respectively, 5.6 per meg for $^{17}\Delta$, and 0.07 ‰ for O_2/Ar . The mean difference between the EIMS and discrete samples was 0.05 ‰, and the mean magnitude of the difference was 0.35 ‰; given the small mean offset, the EIMS data was not calibrated using discrete samples.

2.4 Measurement of SF_6

For SF_6 , we collected $\sim 20 \text{ mL}$ ~~water samples of water~~ in 50 mL glass gas-tight syringes, then added $\sim 20 \text{ mL}$ of nitrogen
20 and allowed the samples to be shaken for 10 min to achieve equilibration between the headspace and water (Wanninkhof et al., 1987). After the water equilibrated to room temperature, we injected 1 mL of the headspace into an SRI-8610C gas chromatograph with an electron capture detector, heated to 300°C (Lovely et al., 2015). We calibrated the detector response using a 150 ppt SF_6 standard (balance N_2).

We also operated an automated gas extraction system at Little Narrows which sampled nearly every hour. The system
25 recirculated a 118 mL loop of water through a membrane contactor, and the headspace of the membrane contactor was under vacuum, causing the dissolved gas to be extracted from the water into the headspace. ~~This system enabled determination of when the tracer was flowing through Little Narrows and helped inform the timing of discrete sample collection~~ When the automated system showed measurable SF_6 in the water, we began collecting discrete samples for SF_6 and ^3He .

SF_6 equilibrium solubility concentrations are calculated following Bullister et al. (2002) and diffusivity is from King and
30 Saltzman (1995). Precision of the system, based on the standard deviation of measurements of the 150 ppt standard, was 7 ‰. We assume a dry atmospheric mole fraction of 8 ppt for SF_6 (Bullister, 2015).

2.5 Measurement of ^3He

For ^3He analysis, we collected samples in copper tubes, mounted in aluminum channels and sealed the samples at each end
using clamps. Sample analysis occurred at the Lamont Doherty Earth Observatory, using a VG5400 mass spectrometer for ^3He and ^4He concentration (Ludin et al., 1998). Error for ^3He sample analysis (combined precision and accuracy) was $\leq 2\%$ of the
5 measured ^3He excess concentration above equilibrium. We used He solubility from Lott and Jenkins (personal communication, 2015) and diffusivity from Jähne et al. (1987a). The Lott and Jenkins ~~is solubility~~ solubility values are $\sim 2\%$ higher than published data from Weiss (1971). The He solubility is for bulk He and we calculate the ^3He solubility using an atmospheric mole ratio $M(^3\text{He})/M(^4\text{He}) = 1.399 \times 10^{-6}$ (Mamyrin et al., 1970; Porcelli et al., 2002), although some more recent results

indicate the current ratio may be slightly lower, $\simeq 1.390 \times 10^{-6}$ (Brennwald et al., 2013). We use the He equilibrium isotopic
10 fractionation as described in Benson and Krause (1980b).

3 Calculations, results, and discussion

The three goals of the experiment were to 1) quantify gas transfer velocity by dual tracer release, 2) quantify gross oxygen
production from the triple isotopic composition of O_2 , and 3) quantify net oxygen production from O_2/Ar . We begin by
discussing the hydrographic characteristics of the study area and then describe the calculations, results, and interpretation for
15 each of the three goals, in sequence.

3.1 Hydrography

We began sampling O_2 at Little Narrows on 25 March, when Whycocomagh Bay was nearly (>95 %) ~~full of~~ fully covered by
ice, and completed sampling on 28 April, when the bay was completely ice-free (Figure 2). The surface ice cover retreated
most rapidly between 16–18 April and was completely gone by 22 April or perhaps even earlier. Figure 2 shows 18 April and
20 23 April; MODIS images on 22 April were also ice-free (but more blurry, so are not shown in the figure) and we estimated
ice cover to be <10 % in the bay during surveys by boat during daytime on 20 April. The ice was likely melting even at the
beginning of the time-series since the surface water temperature was always above the freezing temperature of water (Figure 3).
Changes in surface ice cover and total ice volume are both important factors during the study; changes in ice volume/thickness
will affect stratification and convection in the mixed layer as well as light penetration through the ice, and the surface ice cover
25 affects the rate of gas exchange (Smith and Morison, 1993; Butterworth and Miller, 2016; Loose et al., 2016).

CTD profiles at Little Narrows channel near the water pump intake showed substantial changes in stratification during the
time-series (Figure 3). From 25 March through 8 April the water column was strongly stratified and we estimated the mixed
layer depth to average 0.8(0.3) m. During this period, it was often difficult to determine the exact mixed layer depth because
the mixed layer depth was similar to the length of the CTD instrument and obtaining a stable CTD response so close to the
30 surface was challenging. Following 8 April, the mixed layer deepened and warmed and its salinity increased, likely due to
convection and heating following sea ice melt. For this period, we defined the mixed layer depth as the first depth where the
density is 1 kg m^{-3} greater than the value at 1 m. The mixed layer reached a maximum of 3.0 m on 23 April and then shoaled
by the end of the time-series on 28 April. On most days, the density profile and mixed layer depth were driven by stratification
in salinity, but for the final profile on 28 April the mixed layer depth was determined by a combination of temperature and
salinity stratification due to heat uptake by the surface water following the ice melt. These changes in mixed layer depth must
be considered in order to interpret the O_2 measurements and to quantify the gas transfer velocity.

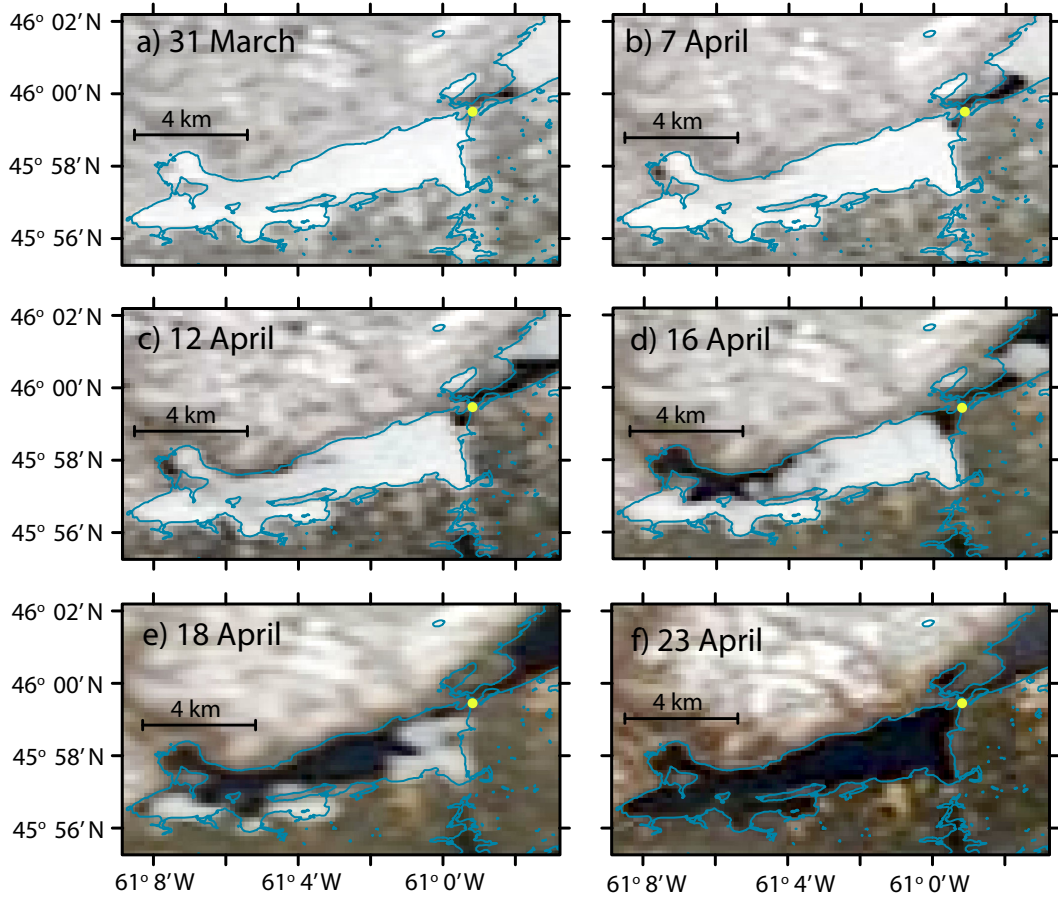


Figure 2. MODIS Terra true color images showing changes ice cover during the time-series between 31 March to 23 April. Little Narrows is indicated with a yellow circle on all images. Ice cover retreated most rapidly between 12 April–20 April. Shore-line data (blue lines) is from GeoGratis/Natural Resources Canada (<http://geogratis.gc.ca>) and satellite data is from NASA Worldview (<http://worldview.earthdata.nasa.gov>).

3.2 Gas transfer velocity

3.2.1 Calculation

We calculate the gas transfer velocity using the dual tracer approach (Watson et al., 1991; Wanninkhof et al., 1993). For each experiment, we dissolved a mixture of ^3He and SF_6 in the water, both of which are normally present at very low ambient concentrations, and then measured the change in the ratio of the two gases as a function of time. Measuring two tracers enables
 5 correction for dilution and mixing, which reduces the excess concentrations of both gases (relative to air-water equilibrium) but does not change their ratio. Over time, the concentrations of both gases decay toward air-water equilibrium as gas is ventilated

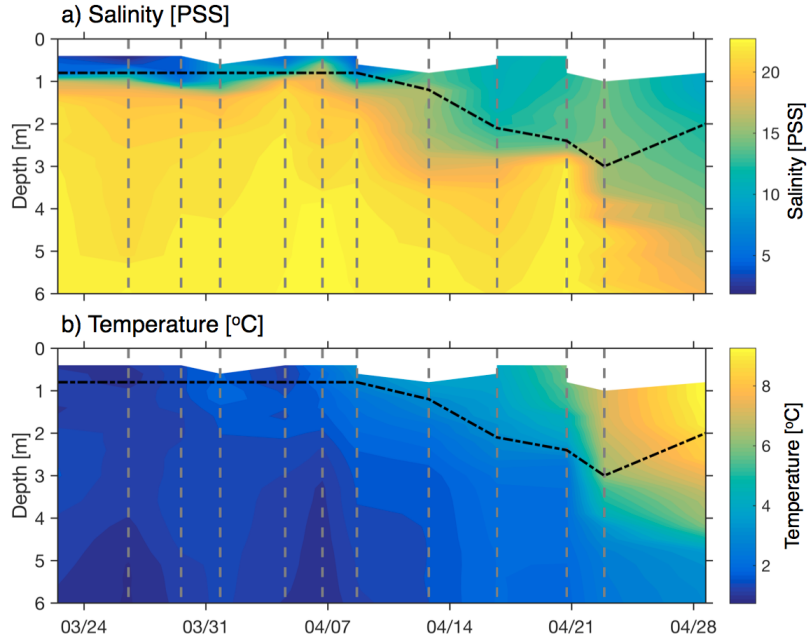


Figure 3. (a) Salinity and (b) temperature profiles measured at Little Narrows. The vertical grey dashed lines indicate the timing of CTD casts (22, 26, 29, and ~~the~~ 31 Mar, and 4, 6, 8, 12, 16, 20, 23, and 28 Apr). The black dot-dashed line shows the estimated mixed layer depth. The data in this plot were binned into 0.2 m depth bins from 0.4 to 3.0 m and 0.3 m depth bins from 3.3 to 9.9 m. The shallowest depth varies between casts due to challenges in getting stable CTD data in the upper 1 m.

to the atmosphere through gas exchange. Because the molecular diffusivity of ^3He is 8–9 times higher than SF_6 , ^3He is lost to the atmosphere more rapidly than SF_6 and therefore the $^3\text{He}:\text{SF}_6$ ratio decreases with time. The ratio of the gas transfer velocity for the two gases is expressed as

$$10 \quad \frac{k_{^3\text{He}}}{k_{\text{SF}_6}} = \left(\frac{Sc_{^3\text{He}}}{Sc_{\text{SF}_6}} \right)^{-n} \quad (1)$$

where k is the gas transfer velocity (m d^{-1}) and Sc is the Schmidt number (unitless), defined as the kinematic viscosity of water divided by the molecular diffusivity of the gas in water, and n is an empirical exponent, typically between 0.5–0.67 (Jähne et al., 1984; Liss and Merlivat, 1986). Using a time-series of measurements of the two gases, the gas transfer velocity for ^3He is calculated as

$$k_{^3\text{He}} = h \frac{d}{dt} \left(\frac{\ln([^3\text{He}]_{\text{exc}}/[^3\text{He}]_{\text{eq}})}{1 - (Sc_{\text{SF}_6}/Sc_{^3\text{He}})^{-n}} \right). \quad (2)$$

Here h is the mixed layer depth, $[^3\text{He}]_{\text{exc}} = [^3\text{He}]_{\text{meas}} - [^3\text{He}]_{\text{eq}}$ where $[^3\text{He}]_{\text{exc}}$ is the ^3He excess concentration, $[^3\text{He}]_{\text{meas}}$ is the measured concentration and $[^3\text{He}]_{\text{eq}}$ is the equilibrium concentration (calculated as a function of temperature and salinity). $[\text{SF}_6]_{\text{exc}}$ is defined analogously.

We can write the analytical solution to equation 2 as (Ho et al., 2011b)

$$\left(\frac{[{}^3\text{He}]_{\text{exc}}}{[\text{SF}_6]_{\text{exc}}}\right)_t = \left(\frac{[{}^3\text{He}]_{\text{exc}}}{[\text{SF}_6]_{\text{exc}}}\right)_{t-1} \exp\left(-\frac{k_{3\text{He}}\Delta t}{h} \left[1 - \left(\frac{Sc_{\text{SF}_6}}{Sc_{3\text{He}}}\right)^{-n}\right]\right). \quad (3)$$

Using this equation and a cost function, we can find the value of $k_{3\text{He}}$ that minimizes the error between the measured and modeled $[{}^3\text{He}]_{\text{exc}}/[\text{SF}_6]_{\text{exc}}$. Once $k_{3\text{He}}$ is known, we can calculate k for any other gas using equation 1 by substituting Sc_{SF_6} for the Schmidt number of the gas of interest. For example, for $Sc = 600$ (the Schmidt number for CO_2 at 20°C in freshwater),

$$k_{600} = k_{3\text{He}} \left(\frac{600}{Sc_{3\text{He}}}\right)^{-n}. \quad (4)$$

For this study, we use a Schmidt number dependence of $n = 0.5$ which is appropriate for wavy, unbroken water surfaces (no bubble entrainment) (Jähne et al., 1984; Liss and Merlivat, 1986; Jähne et al., 1987a; Ho et al., 2011b). At Little Narrows, we observed that tidal currents generated surface waves, even at low wind speeds. These waves produce near-surface water turbulence which is the ultimate driver of air-water gas exchange (Jähne et al., 1987b; Wanninkhof et al., 2009).

The Schmidt number at a salinity of 4 PSS and temperature of 2°C is 305 for ${}^3\text{He}$ 2684 for SF_6 . The initial $Sc_{\text{SF}_6}/Sc_{3\text{He}}$ ratio was 8.7 for Injection 1 and 8.2 for Injection 2.

3.2.2 Results

The gas transfer velocity was much lower for Injection 1, which was sampled while the basin was essentially full of ice (31 March–10 April), compared to Injection 2, which was sampled when the basin was nearly ice-free (20–23 April). We used equation 3 to model the measurements. We started the model at the time of the first measurement, initialized it with an initial excess concentration ratio and ran it through time for the duration of the injection. We selected the value of $k_{3\text{He}}$ yielding the smallest root mean square deviation (RMSD) between the measured ratio and modeled ratio for each injection. The model ran 1000 times using a Monte Carlo simulation where the measured excess concentration ratios, including the initial condition, are varied with a Gaussian distribution, with the standard deviation being the estimated measurement error in the ratio (7.3 %).

We assume a constant $Sc_{3\text{He}}/Sc_{\text{SF}_6}$ and mixed layer depth (h) for each injection. In actuality, during each injection $Sc_{3\text{He}}$ varies by $\sim 1\%$ and the ratio of the Schmidt numbers varies by less than 0.2% , so this is a small source of error. ~~We For Injection 1, we~~ assume a mixed layer depth (h) of $0.8(0.3)$ m ~~for Injection 1.~~ This depth is consistent with the salinity profiles at Little Narrows (Figure 3a) between 31 March and 8 April (between 0.6 – 1.0 m depth), as well as measurements with a hand-held temperature probe at the site of Injection 1 which indicated that the mixed layer depth was between 0.75 – 1 m. The mixed layer depth may have increased slightly between April 8 and April 10, but was likely 1.3 m or less (Figure 3).

For Injection 1, the excess SF_6 and ${}^3\text{He}$ concentrations were reduced by two orders of magnitude by the time the tracer reached Little Narrows (7–11 days after injection). The tracer ratio did not display a consistent decrease over the three days we sampled it at Little Narrows, ~~likely in part which may be~~ due to the substantially lower gas transfer velocity, as well as the very low tracer concentrations potentially increasing measurement uncertainty. The best fit to all the measurements was $k_{600} = 0.0457(0.0051) \text{ m d}^{-1}$, in the presence of ice and a shallow mixed layer, with the uncertainty the standard deviation of the

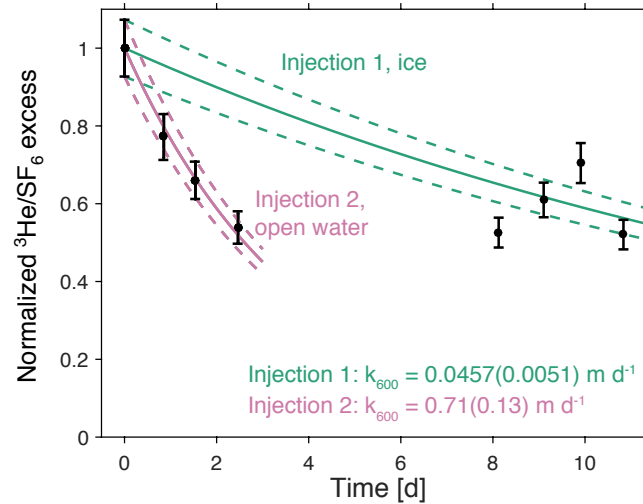


Figure 4. Measured and modeled ratio of excess $^3\text{He}/\text{SF}_6$, normalized to the initial measured ratio for each injection. The modeled excess ratio is calculated using the $k_{^3\text{He}}$ that minimizes error between the model and measurements. Model results are shown for the model initialized with the initial measured concentration (solid lines), and starting one standard deviation above or below the measured initial concentration (based on an error of 7.3 % in the tracer ratio, dashed lines).

distribution of k_{600} from the Monte Carlo simulation (Figure 4). ~~We avoided collecting discrete tracer samples when the tides were flowing into Whycomagh Bay, based on visual observation of surface currents, to ensure that the gas transfer velocity reflected the ice coverage within the bay and was not skewed by the open water east of Little Narrows.~~

~~Measured and modeled ratio of excess $^3\text{He}/\text{SF}_6$, normalized to the initial measured ratio for each injection. The modeled excess ratio is calculated using the $k_{^3\text{He}}$ that minimizes error between the model and measurements. Model results are shown for the model initialized with the initial measured concentration (solid lines), and starting one standard deviation above or below the measured initial concentration (based on an error of 7.3 in the tracer ratio, dashed lines).~~

The mixed layer appeared to deepen between the CTD profiles on 8 April 16:08 and 12 April 19:13 (Figure 3), and it is possible that the mixed layer depth on 9–10 April may have been slightly deeper than the estimate of 0.8(0.3) m. However, if ~~this were the case mixed layer deepening had a significant influence on our gas transfer velocity estimate~~, we would expect k_{600} (calculated assuming a constant mixed layer depth) to be lowest when calculated over the longest time period, using the sample collected on 10 April. Instead, the gas transfer velocity was actually the lowest when integrated to 9 April (the excess tracer ratio appears above the best-fit line) and second lowest on 8 April. Since the gas transfer velocities for Injection 1 integrate over 7–10 days, any change in mixed layer depth during the last 1–2 days will have a small effect on the calculated k .

For Injection 2, we use a mixed layer depth of 2.7(0.3) m based on CTD profiles at Little Narrows on 20 April and 23 April, which had mixed layer depths of 2.4 and 3.0 m, respectively (Figure 3a). Calculation of the gas transfer velocity for Injection

Table 2. Data for determination of the gas transfer velocity

Date	Time	Injection 1				
		Salinity ^a (PSS)	Temperature ^a (°C)	$\delta^3\text{He}^b$ (%)	[SF ₆] (mol L ⁻¹)	[³ He] _{exc} /[SF ₆] _{exc} (mol mol ⁻¹)
31 March	15:00	0.9	2.1	17176	66.6	0.00788
7 April	18:00	13.2	2.6	13.8	0.152	0.00411
8 April	17:27	8.4	2.0	56.9	0.423	0.00480
9 April	12:47	9.0	2.1	39.0	0.289	0.00553
10 April	11:02	9.3	1.8	12.6	0.115	0.00405

Date	Time	Injection 2				
		Salinity ^a (PSS)	Temperature ^a (°C)	$\delta^3\text{He}^b$ (%)	[SF ₆] (mol L ⁻¹)	[³ He] _{exc} /[SF ₆] _{exc} (mol mol ⁻¹)
20 April	23:30	11.18	5.64	310.3	3.96	0.00227
21 April	20:00	14.91	6.49	91.8	1.60	0.00176
22 April	12:27	14.64	7.16	43.6	0.938	0.00150
23 April	10:40	11.01	5.73	6.5	0.299	0.000799

^a During Injection 1, we measured temperature and salinity with a YSI probe to a precision of one decimal place. During Injection 2, we measured temperature with a calibrated thermocouple and salinity with the in situ CTD, to a precision of two decimal places.

^b $\delta^3\text{He} = ((^3\text{He}/^4\text{He})_{\text{meas}}/(^3\text{He}/^4\text{He})_{\text{eq}})$

2 was relatively straightforward as the ratio of excess ³He/SF₆ steadily decreased over the five measurements (Table 2). The best fit to all four measurements was $k_{600} = 0.71(0.13) \text{ m d}^{-1}$ [for open water](#) (Figure 4).

Using the published He solubility from Weiss (1971) instead of the unpublished data of Lott and Jenkins (2015, personal communication) results in a gas transfer velocity that is 8 % lower [in the presence of ice](#) (for Injection 1) and 0.4 % lower ~~for Injection 2~~ [in open water \(for Injection 2\)](#).

3.2.3 Discussion

30 The gas transfer velocity calculated for Injection 1 is the effective gas transfer velocity (k_{eff}); it averages the gas transfer velocity through ice (k_{ice}), weighted by the time the tracer spent under ice, and the gas transfer velocity for open water (k), weighted by the time the tracer spent in open water (Loose et al., 2014). In partially-ice covered waters, the effective gas transfer velocity is sometimes calculated as

$$k_{\text{eff}} = (f)k + (1 - f)k_{\text{ice}} \quad (5)$$

where f is the fraction of open water (Loose et al., 2014; Lovely et al., 2015). If k_{ice} is negligible, then $k_{\text{eff}} = (f)k$ (Loose and Jenkins, 2014; Crabeck et al., 2014; Butterworth and Miller, 2016). For Injection 2, we determined k , the value for open

water. We expect k_{ice} to be lower than k because the ice acts as a physical barrier to gas exchange. The rate of gas molecular
 5 diffusion in water (Jähne et al., 1987a; King and Saltzman, 1995) is higher than gas diffusion through ice (Gosink et al., 1976;
 Ahn et al., 2008; Loose et al., 2011b; Lovely et al., 2015). However, the exact rate of gas diffusion through saltwater ice (and
 by extension the value of k_{ice}) is not well constrained and likely varies based on the physical properties of the ice such as
 brine volume and temperature (Golden et al., 2007; Loose et al., 2011b; Zhou et al., 2013; Moreau et al., 2014; Lovely et al.,
 2015). ~~An additional factor reducing air-water exchange in ice-covered waters is that ice significantly reduces fetch for wave~~
 10 ~~generation and therefore wind-driven near-surface turbulence. However, other processes may enhance near-surface turbulence~~
~~in the presence of sea ice including convection associated with heat loss and brine rejection, boundary layer shear between ice~~
~~and water, and wave interactions with drifting ice.~~

To evaluate these results within the framework of equation 5, we must estimate the fractional ice cover during Injection 1.
 During ~~surveys by ear~~ visual surveys along the shoreline of Whycocomagh Bay and satellite data indicated that the bay was
 15 nearly fully covered with a continuous sheet of ice from 31 March–10 April, except for an opening close to Little Narrows
 (Figure 2a–b). Beginning between 7 April and 12 April, a small region of water appeared to open up along the shoreline
 northwest of the site of Injection 1, however, by this time the tracer patch had moved eastward, close to Little Narrows and
 likely was not significantly affected by this open water (Figure 2c). We mapped out the location of the ice edge closest to Little
 Narrows by boat on 26 March, 7 April, and 12 April (Figure 1a). Using these surveys and shoreline data, we calculate that
 20 for the surface area of the bay between the injection site and Little Narrows, $f = 0.01$ on 26 March, 0.05 on 7 April, and 0.08
 on 12 April. The f experienced by the tracer patch during Injection 1 is likely between ~~0.05~~ 0.02–0.08 because the tracer was
injected on 30–31 Mar and flowed through the open water near Little Narrows between 6 April - 11 April. If k for open water
 is the same for both injections ($k = 0.71 \text{ m d}^{-1}$), then the results yield $k_{eff} = (f)k$ with $f = 0.064$, which is consistent with the
 fraction of open water we estimate for Injection 1. Thus we conclude that k_{ice} was negligible, compared to k . For example, if
 25 k_{ice} was even 10 % of k for open water, then k_{eff} for Injection 1 would have been $\sim 0.11 \text{ m d}^{-1}$, more than double the observed
 value of $0.0457(0.0051) \text{ m d}^{-1}$. One source of uncertainty in estimating the correct value of f is that the transit speed between
the injection site and Little Narrows was non-constant. The mean current velocity at Little Narrows channel was 3.4 km d^{-1} ,
but the tracer took approximately 8 days to flow 7 km from the injection site to Little Narrows.

In calculating GOP and NOP by oxygen mass balance, we apply the tracer-based gas transfer velocities estimated by dual
 30 tracer release throughout the time-series, since there is no consensus on the best treatment of gas transfer in lakes and estuaries
 (Clark et al., 1995; Cole and Caraco, 1998; Crusius and Wanninkhof, 2003; Ho et al., 2011a), nor on the parameterization of
 gas transfer in the presence of ice (Else et al., 2011; Lovely et al., 2015; Butterworth and Miller, 2016). Additionally, if bottom-
 derived turbulence (e.g., from tidal flow) is a significant contributor to air-water gas exchange, a parameterization based on
 wind speed alone may not be appropriate. This method of calculating one average k_{600} for each injection does not enable the
 development of a wind speed-dependent parameterization for the gas transfer velocity.

Because the k_{600} for Injection 1 and Injection 2 are very different, the treatment of the gas transfer velocity in between
 the two injections strongly affects the productivity estimates for this period. We use $k_{600} = 0.0457(0.0051) \text{ m d}^{-1}$ from the
 beginning of the time-series until ~~midnight 16 April, the day when Figure 2d was collected~~ the end of 15 April. Figure 2d,

5 collected on 16 April is the first satellite image showing substantial open water within Whycocomagh Bay, but the open water is primarily in the western half of the bay, far from Little Narrows. We use $k_{600} = 0.71(0.13) \text{ m d}^{-1}$ from ~~midnight 20-21~~ April until the end of the time-series on 28 April. Surveys by boat on 19 April and 20 April indicated <10 % ice cover on these days and we collected the first tracer measurements following Injection 2 on 20 April 23:30. Between 16 April and 20 April, we apply a linear interpolation of the k_{600} for Injection 1 and Injection 2 as a function of time. The gas transfer velocity is most
 10 uncertain during the period when the ice cover rapidly decreased because we do not have any measurements of gas transfer at intermediate ice cover. However, because the ice cover retreated rapidly, only four days of the productivity estimates (out of a 33-day time-series) are affected by the uncertainties in gas transfer at intermediate ice cover.

3.2.4 Comparison with other estimates

To compare the gas exchange estimates with other published studies, we use wind speed data measured at 10 m height (u_{10}) at
 15 Eskasoni Reserve, 27 km northeast of Little Narrows (Figure 1b) and archived by the Government of Canada (<http://climate.weather.gc.ca>). The archived data are two-minute averages measured once per hour. ~~For~~ During the period that samples with tracer from Injection 2 ~~;~~ were collected (between 20 April 23:00 and 23 April 11:00) the average wind speed was $2.6(1.4) \text{ m s}^{-1}$, the median was 2.2 m s^{-1} ; ~~and the~~ The calculated k_{600} over this time period from dual tracer data is $0.71(0.13) \text{ m d}^{-1}$. Cole and Caraco (1998) find $k_{600} = 0.636(0.029) \text{ m d}^{-1}$ (95 % confidence interval) and their estimate is independent of wind
 20 speed in a lake with daily wind speeds of $1.39(0.06) \text{ m s}^{-1}$ (95 % confidence interval); this k_{600} is consistent within uncertainty with the Injection 2 result. Standard open ocean parameterizations that use a quadratic dependence on wind speed predict $k_{600} \simeq 0.5\text{--}0.6 \text{ m d}^{-1}$ with uncertainties of $\sim 20\%$ or $\sim 0.10 \text{ m d}^{-1}$ (Ho et al., 2006; Sweeney et al., 2007; Wanninkhof, 2014).

Crusius and Wanninkhof (2003) found that in a lake gas exchange can be estimated nearly equally well using three different parameterizations. Using their parameterizations with the wind speed record during our time-series, we calculate transfer
 25 velocities of $0.32\text{--}0.66 \text{ m d}^{-1}$ and the velocity is most similar to our result when we use a constant gas transfer velocity $k_{600} = 0.24 \text{ m d}^{-1}$ for $u_{10} < 3.7 \text{ m s}^{-1}$ and $k_{600} = 1.23u_{10} - 4.30$ for $u_{10} \geq 3.7 \text{ m s}^{-1}$. However, Crusius and Wanninkhof (2003) parameterized the gas transfer using instantaneous (e.g. one-minute averaged) winds measured throughout the time-series, not once per hour, and emphasize the importance of including the variability in short-term winds when quantifying gas exchange at low wind speeds. If gas transfer velocity has a nonlinear dependence on wind speed, then short-term wind speed measurements
 30 will more accurately represent the gas transfer than wind ~~speeds~~ speed values averaged over longer periods (Livingstone and Imboden, 1993; Crusius and Wanninkhof, 2003). Since we only have two-minute averages measured once per hour (for a total of 60 measurements during Injection 2) the wind record we use may not fully represent the variability in winds during the Injection 2 measurement period.

A source of error in comparisons with published results is that the wind speed data come from a different location than the study area. Although Eskasoni Reserve is adjacent to the Bras d'Or Lake, the local topography and bathymetry is different near the reserve and in Whycocomagh Bay. Thus, it is likely that the wind speed and momentum stress at the air-water interface differs at Whycocomagh Bay compared to Eskasoni Reserve (Ortiz-Suslow et al., 2015).

5 The measurements are in agreement with other studies showing that gas transfer velocity is significantly reduced under near-complete ice cover (Lovely et al., 2015; Butterworth and Miller, 2016) and contrast with studies showing enhanced gas transfer under >85 % ice cover (Fanning and Torres, 1991; Else et al., 2011). We find that $k_{eff} = (f)k$ for >90 % ice cover but we cannot evaluate whether the same equation holds at intermediate ice cover because there was no injection at a lower fractional ice cover. In this study, the ice cover was near-continuous across the entire bay during Injection 1 and likely did not
 10 contain the polynyas and ice leads that are prevalent in the common in Arctic and Antarctic sea ice; differences in gas transfer behaviour are expected based on the nature of the ice pack.

3.3 Gross oxygen production

3.3.1 Calculation

The triple oxygen isotopic composition of O_2 is an effective tracer of gross photosynthetic O_2 production (Juranek and Quay,
 15 2013). Due to reactions in the upper atmosphere that impart a small mass-independent isotopic signature on atmospheric oxygen, dissolved O_2 derived from air-water exchange (~~from the atmosphere~~) has a unique triple isotopic signature compared to O_2 generated by photosynthesis (~~from H_2O~~) and O_2 consumed by respiration. We characterize the oxygen isotopic composition using

$$\delta^{18}O = X^{18}/X_{std}^{18} - 1, \quad (6)$$

20 and express the $\delta^{18}O$ in ‰ by multiplying by 1000. Here $X^{18} = r(^{18}O/^{16}O)$ is the measured ratio and $X_{std}^{18} = r(^{18}O/^{16}O)_{std}$ is the ratio of the isotopes in the standard. We calculate $\delta^{17}O$ analogously. For GOP studies, O_2 in air is the standard for isotopic measurements of O_2 and isotopes of H_2O is-are referenced to the VSMOW-SLAP scale. For clarity, we distinguish between the isotopic composition of the two substrates (O_2 and H_2O) as $\delta^{18}O-O_2$ and $\delta^{18}O-H_2O$.

The term $^{17}\Delta$ quantifies the triple isotopic composition of dissolved O_2

$$25 \quad ^{17}\Delta = \ln(\delta^{17}O-O_2 + 1) - \lambda \ln(\delta^{18}O-O_2 + 1). \quad (7)$$

We report $^{17}\Delta$ with $\lambda = 0.5179$, the ratio of the fractionation factors for respiratory O_2 consumption in ^{17}O relative to ^{18}O (i.e. $\lambda = ^{17}\epsilon/^{18}\epsilon$, where ϵ is the isotopic fractionation of O_2 due to respiratory consumption) (Luz and Barkan, 2005). This value for λ is selected so that $^{17}\Delta$ is nearly unaffected by respiratory O_2 consumption and reflects the proportion of O_2 that is derived from photosynthesis relative to air-water gas exchange (Hendricks et al., 2005; Juranek and Quay, 2013; Nicholson
 30 et al., 2014). We report $^{17}\Delta$ in per meg (1 per meg = 0.001 ‰) due to the small range of values (~~typically 8—294 per meg~~) in natural waters in natural waters, typically 8–242 per meg (Juranek and Quay, 2013; Manning et al., 2017a).

Two key constraints in the calculation of GOP from measurements of the triple isotopic composition of O_2 are the isotopic composition of O_2 derived from air-water exchange, and the isotopic composition of photosynthetic O_2 . The composition of photosynthetic O_2 is dependent on the triple oxygen isotopic composition of H_2O , the substrate for photosynthetic O_2 , and the isotopic fractionation associated with photosynthetic O_2 production. In oceanic studies, a common assumption is that the H_2O

isotopic composition is equivalent to VSMOW (standard mean ocean water), but in brackish systems it is necessary to estimate the isotopic composition of water and incorporate this into the GOP calculation Manning et al. (2017a).

Because we did not measure the triple oxygen isotopic composition of H₂O, we use previously published measurements of $\delta^{18}\text{O-H}_2\text{O}$ and published relationships between $\delta^{17}\text{O-H}_2\text{O}$ and $\delta^{18}\text{O-H}_2\text{O}$ (Luz and Barkan, 2010; Li and Cassar, 2016) to estimate the values of $\delta^{18}\text{O-H}_2\text{O}$ and $\delta^{17}\text{O-H}_2\text{O}$ during the time-series, as described in Manning et al. (2017a). We assume that the waters in the estuary represent a mixture of two endmembers: seawater and meteoric (precipitation-derived). We define the salinity and $\delta^{18}\text{O-H}_2\text{O}$ for the two endmembers and then calculate $\delta^{18}\text{O-H}_2\text{O}$ for each water sample collected during the time-series as a linear function of salinity. A similar approach is applied for $\delta^{17}\text{O-H}_2\text{O}$.

For the seawater endmember, we use compilations of $\delta^{18}\text{O-H}_2\text{O}$ and salinity (Schmidt, 1999; Bigg and Rohling, 2000) available from an online database (Schmidt et al., 1999). We included all 19 near-surface samples (<5 m depth) between 44–48 °N and 58–64 °W in the database. For these samples, the average $\delta^{18}\text{O-H}_2\text{O} = -1.68(0.26) \text{‰}$ and salinity = 31.25(0.30) PSS.

For the meteoric [water](#) endmember, we use an 8-year time-series of $\delta^{18}\text{O-H}_2\text{O}$ measured in Truro, Nova Scotia (200 km southwest of our study area [and](#) 40 m elevation) and archived in the Global Network of Isotopes in Precipitation (GNIP) database (IAEA/WMO, 2016). The amount-weighted value of $\delta^{18}\text{O-H}_2\text{O}$ over the time-series was $-9.3(3.1) \text{‰}$ versus VSMOW, using precipitation measurements from Truro NS over the same time period from the Government of Canada historical weather database (<http://climate.weather.gc.ca>). Also, Timsic and Patterson (2014) measured $\delta^{18}\text{O-H}_2\text{O} = -8.8(0.1) \text{‰}$ on a water sample collected in July 2009 from the Skye River, within the Whycocomagh Bay watershed (Parker et al., 2007), consistent with the average Truro, NS value.

Using the two endmembers, $S = 0 \text{ PSS}$, $\delta^{18}\text{O-H}_2\text{O} = -9.3 \text{‰}$ (local meteoric water) and $S = 31.25 \text{ PSS}$, $\delta^{18}\text{O-H}_2\text{O} = -1.68 \text{‰}$ (local seawater), we derive the equation $\delta^{18}\text{O-H}_2\text{O} = 0.2439S - 9.30$ (Figure 5). This equation is consistent with published $\delta^{18}\text{O-H}_2\text{O}$ measurements from within the estuary (Figure 5). Mucci and Page (1987) collected water samples from the Bras d'Or Lake in November 1985 and found a salinity of $S = 26.42(1.12) \text{ PSS}$ and $\delta^{18}\text{O} = -2.99(0.32) \text{‰}$ for samples at 17 different stations (albeit none within Whycocomagh Bay). Notably, VSMOW ($S = 34.5 \text{ PSS}$) plots 0.9‰ above the local mixing line, which demonstrates the importance of accurately defining both the freshwater and seawater endmembers.

Then, for the two endmember values of $\delta^{18}\text{O-H}_2\text{O}$, we estimate $\delta^{17}\text{O-H}_2\text{O}$ using the following equation:

$$^{17}\text{O-excess} = \ln(\delta^{17}\text{O-H}_2\text{O} + 1) - \lambda_w \ln(\delta^{18}\text{O-H}_2\text{O} + 1) \quad (8)$$

with $\lambda_w = 0.528$ and all isotopic compositions referenced to VSMOW-SLAP. [Equations 7 and 8 have a similar form, however, researchers in the H₂O isotope community have traditionally used the \$^{17}\text{O-excess}\$ terminology, whereas researchers in the O₂ isotope community have used the \$^{17}\Delta\$ notation](#) (Luz and Barkan, 2010). The value of $\lambda_w = 0.528$ is well established for meteoric waters and seawater (Meijer and Li, 1998; Landais et al., 2008; Luz and Barkan, 2010). Spatial variability in the $^{17}\text{O-excess}$ of natural waters is less well understood due to the currently limited observations at sufficient accuracy to resolve the small excess (Luz and Barkan, 2010; Li et al., 2015). To calculate the freshwater and seawater endmembers for $\delta^{17}\text{O-H}_2\text{O}$ we use the average values of $^{17}\text{O-excess}$ of 33 per meg for meteoric water and -5 per meg for seawater (Luz and Barkan, 2010). The

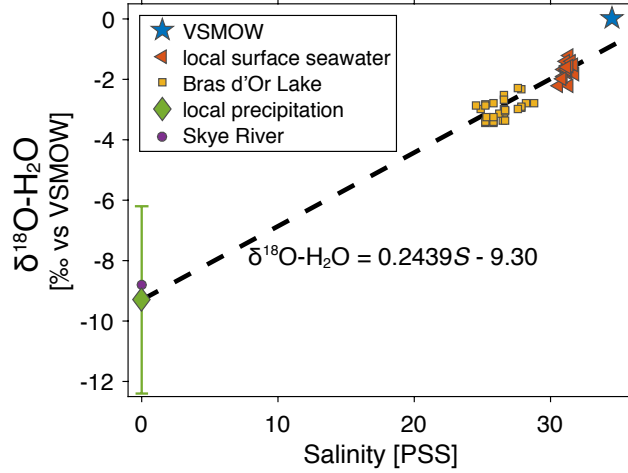


Figure 5. Measurements of $\delta^{18}\text{O-H}_2\text{O}$ in local surface seawater, the Bras d'Or Lake, local precipitation, and Skye River (within the Whycomomagh Bay watershed). The regression is calculated using the local precipitation and seawater values. The local precipitation value is plotted as 9.3(3.1) ‰, with the error bar the standard deviation of the amount-weighted annual average.

20 endmembers are $\delta^{17}\text{O-H}_2\text{O} = -4.888\text{‰}$ and -0.908‰ for meteoric water and seawater respectively, and the linear regression is $\delta^{17}\text{O-H}_2\text{O} = 0.1274S - 4.89$. These δ values for H_2O , referenced to VSMOW, are subsequently referenced to atmospheric O_2 using results from Barkan and Luz (2011). In this study, the choice of $\delta^{18}\text{O-H}_2\text{O}$ is more important than the ^{17}O -excess because ^{17}O -excess varies by less than 0.1 ‰ between samples whereas the freshwater $\delta^{18}\text{O-H}_2\text{O}$ differs from VSMOW by 9.1 ‰. We discuss the sensitivity of the GOP calculations to the assumed ^{17}O -excess and $\delta^{18}\text{O-H}_2\text{O}$ below, and the effect of

25 other processes on the isotopic composition of H_2O in section 3.6.

We calculate GOP using equation 7 from Manning et al. (2017a), which is equivalent to equation S8 from Prokopenko et al. (2011).

$$\text{GOP} = k_{\text{O}_2}[\text{O}_2]_{eq} \left[\frac{\frac{X^{17} - X_{eq}^{17}}{X^{17}} - \lambda \frac{X^{18} - X_{eq}^{18}}{X^{18}}}{\left[\frac{X_p^{17} - X^{17}}{X^{17}} - \lambda \frac{X_p^{18} - X^{18}}{X^{18}} \right]} \right] + \frac{h[\text{O}_2] \frac{\partial^{17}\Delta}{\partial t}}{\left[\frac{X_p^{17} - X^{17}}{X^{17}} - \lambda \frac{X_p^{18} - X^{18}}{X^{18}} \right]}. \quad (9)$$

In this equation, k_{O_2} is the gas transfer velocity for O_2 (m d^{-1}), $[\text{O}_2]$ is the O_2 concentration (mol m^{-3}), h is the mixed layer depth (m), $X^{17} = r(^{17}\text{O}/^{16}\text{O})$, and $\lambda = 0.5179$ (equation 7). The subscripts eq and p refer to O_2 at air-water equilibrium and produced by photosynthesis and terms without a subscript ($[\text{O}_2]$, X^{17} , and $^{17}\Delta$) are the measured mixed layer values. The first term on the right side of equation 9 is the steady state GOP term, and the second term is the non-steady state GOP term. If the system is at steady state with respect to $^{17}\Delta$ (i.e., there is no change in $^{17}\Delta$ with time) then the second term on the right side of equation 9 equals zero and can be eliminated.

30

This non-steady state equation for GOP incorporates temporal variability in both O_2 concentration and isotopic composition (see equation 5 in Prokopenko et al. (2011)). It does not account for time-variability in mixed layer depth (e.g. entrainment of

deeper waters into the mixed layer), nor does it account for vertical diffusion of O_2 across the mixed layer. In order to account for vertical processes in the O_2 mass balance, we would need to have triple oxygen isotope measurements below the mixed layer (Castro Morales et al., 2013; Munro et al., 2013; Wurgaft et al., 2013; Nicholson et al., 2014). Since we do not have these data, we cannot correct for vertical processes affecting the O_2 budget.

We calculate X_{eq}^{18} based on Benson and Krause (1980a, 1984), and X_{eq}^{17} using $^{17}\Delta_{eq} = 8$ per meg (Reuer et al., 2007; Stanley et al., 2010), which is consistent with the daily measurements of distilled water equilibrated at room temperature that were analyzed along with the environmental samples (8.1 per meg with standard error of 1.6 per meg, $n = 12$), as well as prior measurements of distilled water equilibrated at $<5^\circ C$ (R.H.R. Stanley, unpublished data). We calculate X_p^{18} and X_p^{17} using the salinity-dependent isotopic composition of H_2O defined above, and isotopic fractionation factors for photosynthetic O_2 with respect to H_2O based on data in Luz and Barkan (2011) for average phytoplankton ($\alpha_p^{18} = 1.0033890$ and $\alpha_p^{17} = 1.0017781$). The Matlab code used to calculate GOP and the triple oxygen isotopic composition of water (from two-endmember mixing of $\delta^{18}O-H_2O$ and salinity) is available online (Manning and Howard, 2017).

We calculate gross oxygen production using samples collected at Little Narrows from 25 March–27 April (Figure 6). Visual inspection of the $^{17}\Delta$ data indicated that $^{17}\Delta$ changed during the time-series and therefore the calculation includes a non-steady state GOP term. The non-steady state term in equation 9 is $h[O_2]\partial^{17}\Delta/\partial t$. To calculate the rate of change in $^{17}\Delta$ with time, we first averaged the data into 24-hour bins (beginning and ending at 19:30, local sunset) to avoid over-weighting times when samples were collected at higher frequency. We calculated the average $^{17}\Delta$ and sampling time for all samples collected each day. Next, we separated the data into two periods: one period began on 25 March and ended 19 April 07:30, and the second period covered the remainder of the time-series (ending 27 April). A linear regression of $^{17}\Delta$ versus time for the two time periods yielded a slope of 0.67 per meg d^{-1} ($r^2 = 0.47$) for the first period and -2.99 per meg d^{-1} ($r^2 = 0.94$) for the second period. The approximate timing for the change between periods was determined by visual inspection and then adjusted to maximize the r^2 and so that the equations of the two lines gave very similar $^{17}\Delta$ values at 19 April 00:00 (within 1 per meg). Splitting the period from 25 March–19 April into two separate regressions (or one period where $^{17}\Delta$ increased and one period where it was constant) yielded much lower r^2 values and a discontinuous $^{17}\Delta$ record (different $^{17}\Delta$ values at the end of one period and the start of another), so a single regression was used for this period.

The other two variables in the non-steady state GOP term are the mixed layer depth (h) and $[O_2]$. We estimate $[O_2]$ as

$$[O_2] \simeq [O_2]_{eq} \frac{O_2/Ar}{O_2/Ar_{eq}}. \quad (10)$$

This estimate assumes that $[Ar] = [Ar]_{eq}$. If $[Ar]$ is, for example, 2 % supersaturated then the estimated $[O_2]$ and non-steady state GOP term will be 2 % too high (Cassar et al., 2011).

Using equation 9, GOP is estimated for each sample, using an isotopic composition for H_2O based on the salinity of the sample, and a mixed layer depth, rate of change in $^{17}\Delta$ with time, and gas transfer velocity based on the sampling time (values shown in Figure 6), and then calculate the daily average GOP from all samples on a given day (beginning and ending at 19:30, local sunset). ~~A-The mean number of samples per day was 2, the maximum was 4, and a few days had no measurements and the remainder of days had between 1–4 samples.~~ The uncertainty in GOP on each day is calculated by propagating uncertainty

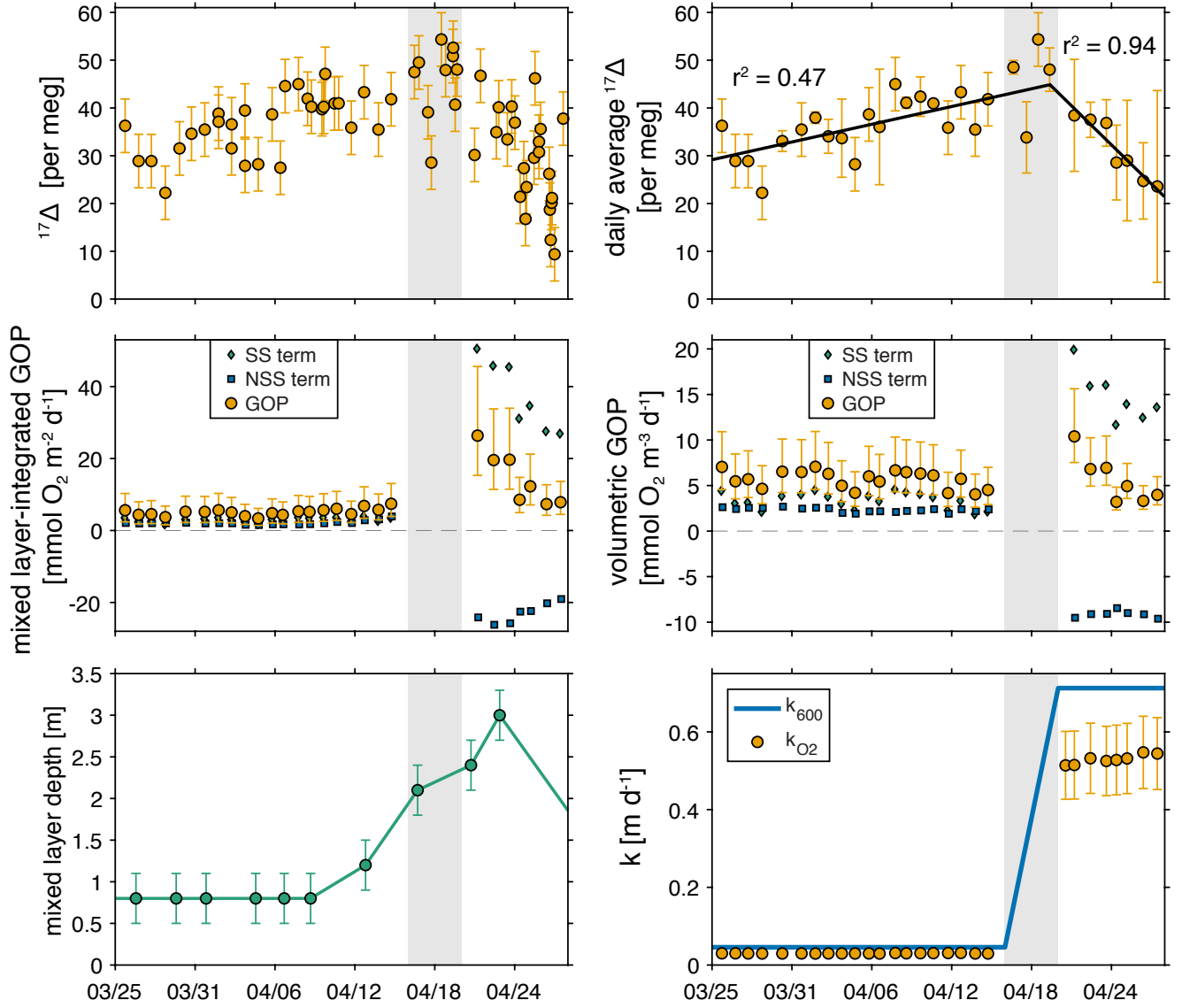


Figure 6. Gross oxygen production at Little Narrows and data used in the calculation. $^{17}\Delta$ measurements from (a) all samples and (b) daily averaged values with the two linear regressions shown. Gross oxygen production in (c) mixed layer-integrated and (d) volumetric units. The green diamonds and blue squares show the values of the two terms in the GOP calculation (steady state, SS and non-steady state, NSS), and the yellow circles show the total GOP (the sum of the two terms). Error bars are only shown on the total GOP for clarity. The SS and NSS terms are slightly offset in time to make it easier to see both terms at the start of the time-series. (e) ~~cumulative GOP in mixed layer-integrated and volumetric units; error (pink shaded range of values) is only shown for the volumetric GOP for clarity~~ Mixed layer depth. (f) ~~gas~~ Gas transfer velocity for a gas with a Schmidt number of 600 (blue line), and for O_2 (yellow circles), which has a variable Schmidt number based on temperature and salinity). The ~~grey-shaded grey area in all plots is the period where gas exchange and we do not calculate GOP due to uncertainties related to the rapidly melting ice cover and non-steady state GOP term are most uncertain.~~

in k_{O_2} (11 % for Injection 1, 18 % for Injection 2), uncertainty in the mixed layer depth (from 10–38 %, 0.3 m), uncertainty in
 5 the rate of change in $^{17}\Delta$ with time (22 % and 9 % where $^{17}\Delta$ is increasing and decreasing, respectively), and uncertainty in the
 photosynthetic endmember (discussed below). Measurement uncertainty in the isotopic composition of O_2 is excluded from
 the error calculation because it is a random error, rather than a systematic error (meaning that by taking many measurements of
 $^{17}\Delta$ over several days, the measurements with high and low $^{17}\Delta$ will average out) and because the measurement error is smaller
 than most other sources of error. All uncertainties are expressed as the standard deviation.

10 The isotopic composition of H_2O is one of the largest sources of error: if the ^{18}O - H_2O endmembers for meteoric water and
 local seawater are changed to the minimum values of -12.4 ‰ and -1.94 ‰ (one standard deviation below the mean value) and
 then $\delta^{18}O$ - H_2O and $\delta^{17}O$ - H_2O are re-calculated for each sample, GOP is on average 48 % higher. If we shift the $\delta^{18}O$ - H_2O
 endmembers for meteoric water and local seawater to the maximum values of -6.2 ‰ and 1.42 ‰, respectively, GOP is on
 average 23 % lower. The calculated GOP increases nonlinearly as the isotopic composition of photosynthetic O_2 becomes more
 15 different from the isotopic composition of equilibrated O_2 (Manning et al., 2017a). If the ^{17}O -excess of H_2O is increased or
 decreased by 20 per meg, GOP changes by an average of 10 %.

GOP calculated with the local isotopic composition of H_2O is 46–97 % higher (mean 74 %) than GOP calculated assuming
 the water's isotopic composition is equivalent to VSMOW. Using the local isotopic composition of water instead of VSMOW
 is particularly important in this study because the system is not pure seawater. However, even in some oceanic regions such as
 20 the Arctic, the isotopic composition of H_2O can be substantially different from VSMOW (LeGrande and Schmidt, 2006). The
 definition and importance of the photosynthetic endmember for GOP calculations in different environments warrants further
 review (Manning et al., 2017a).

We calculate the mixed layer-integrated GOP ($mmol\ O_2\ m^{-2}\ d^{-1}$) and the volumetric GOP ($mmol\ O_2\ m^{-3}\ d^{-1}$), which is
 the mixed layer-integrated GOP divided by the mixed layer depth. For this time-series GOP is only calculated for the mixed
 25 layer because there are no O_2 measurements below the mixed layer. The average errors in the daily GOP are $^{+77}_{-49}$ % and $^{+52}_{-31}$
 % for the volumetric and mixed layer-integrated GOP, respectively. ~~We also calculate the cumulative GOP (the sum of the
 daily GOP estimates, from the start of the time-series until a given day) which provides an estimate of the total amount of
 photosynthetic O_2 produced by autotrophs during our time-series (Figure 6e).~~

3.3.2 Results and discussion

30 ~~GOP is most uncertain from 16 April through 19 April (We do not present GOP estimates during the period where ice cover
 decreased most rapidly (16–19 April, grey shaded area in Figure 6) .During this period, the ice cover was retreating and we due
 to the large uncertainties in GOP at this time. We do not have an estimate of k_{O_2} at intermediate or varying ice cover, nor do we
 have estimates of ice cover on 17 April or 19 April, because clouds obscured the satellite images on those days. Additionally,
 the exact timing of the change in the sign of the non-steady state term is unclear. For example, in Figure 6b, on 18 April is the
 35 final day where $\partial^{17}\Delta/\partial t$ is positive and the calculated GOP is the calculated GOP assuming $^{17}\Delta$ is increasing at 0.67 per meg
 d^{-1} (the slope of the first best-fit line in Figure 6b) is 58 $mmol\ O_2\ m^{-2}\ d^{-1}$.If 18 April is included in the period where and
 the calculated GOP assuming $^{17}\Delta$ is decreasing ,the calculated GOP at 2.99 per meg d^{-1} (the slope of the second best-fit line~~

in Figure 6b)) is $27 \text{ mmol O}_2 \text{ m}^{-2} \text{ d}^{-1}$ on 18 April. The concentration of photosynthetic O_2 is highest during this time ($^{17}\Delta = 48\text{--}54$ per meg on 16 April, 18 April, and 19 April), despite the increasing gas transfer velocity. Therefore it is likely that
5 GOP peaked ~~at~~ during or soon after the end of the ~~ice-melt-period~~ and then declined to values similar to the beginning of the time-series, but the uncertainties in GOP from 16–19 April are large.

Before interpreting the GOP results, we emphasize that the impact of changing mixed layer depth on the O_2 mass balance is not accounted for in our calculations. The mixed layer deepened from 8–23 Apr and then appeared to shoal from 23–28 Apr. If the $^{17}\Delta$ value below the mixed layer were higher (lower) than $^{17}\Delta$ in the mixed layer, this would cause us to overestimate (underestimate) GOP as the mixed layer deepened.
10

Overall, the rate of volumetric mixed layer GOP was relatively constant throughout the time-series ~~(excluding the period from 16 April–20 April, when values are most uncertain)~~ at $5.5(^{+2.9}_{-1.7})$ at $5.7^{+3.1}_{-1.9}$ $\text{mmol O}_2 \text{ m}^{-3} \text{ d}^{-1}$. The mixed layer-integrated GOP showed larger changes with time that are related to the influence of changes in the mixed layer depth on the non-steady state term. From 25 March through 8 April, mixed layer-integrated GOP was $4.6(^{+3.7}_{-2.6})$ $\text{mmol O}_2 \text{ m}^{-2} \text{ d}^{-1}$. Beginning after 8
15 April, the mixed layer depth began to increase and the non-steady state calculation showed a substantial increase in mixed layer-integrated GOP, to $7.2(^{+5.4}_{-3.3})$ $\text{mmol O}_2 \text{ m}^{-3} \text{ d}^{-1}$ on 14 April, a 56 % increase. The non-steady state GOP term is multiplied by the mixed layer depth, and therefore it increases linearly as the mixed layer deepens, causing the total mixed layer-integrated GOP to decrease. However, the non-steady state GOP term is constant in volumetric units because the mixed layer depth cancels out of the equation. After the ice ~~is~~ was gone, $^{17}\Delta$ ~~begins~~ began to decrease and so ~~does~~ did the mixed layer-integrated
20 GOP. On the last four days of the time-series, the mixed layer-integrated ~~mixed-layer-GOP is~~ GOP was $8.7(^{+3.6}_{-6.3})$ $\text{mmol O}_2 \text{ m}^{-2} \text{ d}^{-1}$, 89 % higher than the average value prior to 9 April, but the mixed layer ~~is~~ was also more than twice as deep at the end of the time-series compared to the beginning.

~~The influence of mixed layer depth on the GOP calculations is demonstrated with the cumulative GOP (Figure 6e). The volumetric GOP is roughly constant with time and therefore the cumulative volumetric GOP increases in an approximately
25 linear fashion, except during the period from 16–19 April, where GOP is most uncertain. The mixed layer-integrated GOP is slightly lower than the volumetric GOP at the start of the time-series (because the mixed layer is slightly less than 1 m deep) and then as the mixed layer deepens, the cumulative mixed layer-integrated GOP increases rapidly. In the last few days of the time-series the mixed layer shoals and the rate of increase in cumulative mixed layer-integrated GOP is lower.~~

Overall, the The result that volumetric GOP was similar at the beginning and end of the time-series indicates that ice-free
30 conditions are not a pre-requisite for phytoplankton growth in this system. Currently, ecosystem dynamics within and below ice formed from fresh and brackish waters are not well understood (Salonen et al., 2009; Bertilsson et al., 2013; Hampton et al., 2015). Other investigators have shown that photosynthetic microbes can inhabit the interior, upper surface, and lower surface of ice, and tend to be most concentrated on the bottom surface (Welch et al., 1988; Cota et al., 1991; Frenette et al., 2008; Boetius et al., 2013). Traditionally, investigators have argued that ice-associated communities are most prevalent in ice formed from
5 seawater; as salinity increases, the volume of unfrozen brines within the ice that the microbes can inhabit increases, and the bottom surface of the ice becomes more uneven, increasing bottom algal settlement efficiency (Legendre et al., 1981; Gosselin et al., 1986). However, more recently, investigators have also found algae growing within and on the bottom of freshwater ice

in lakes and rivers, including locations in Canada such as the Great Lakes and the St. Lawrence River (Bondarenko et al., 2006; Frenette et al., 2008; Twiss et al., 2012; D'souza et al., 2013).

10 Phytoplankton can also grow in the water column beneath ice, especially ~~thinner~~under thin first-year ice (Legendre et al., 1981; Mundy et al., 2009; Arrigo et al., 2012). Bare ice transmits more light to surface waters than snow-covered ice, and melt pond-covered ice transmits four times as much light as bare ice (Light et al., 2008; Arrigo et al., 2012; Light et al., 2015). First-year ice in the Arctic (0.5–1.5 m thick) transmits ~47–75 % of incident light through melt pond-covered ice and ~13–25 % of incident light through snow-free ice (Arrigo et al., 2012; Light et al., 2015). The ice in the Bras d'Or Lake near the site
15 of Injection 1 was ~0.3 m thick on 29 March and therefore likely similar or greater fractions of light were transmitted through the ice. Ice transmitting just 2 % of surface irradiance may support high rates of photosynthetic activity, if the microbes are acclimated to lower light levels (Cota, 1985). We observed melt ponds on the Bras d'Or Lake during tracer injections on 31 March and frequently during visual surveys in April. The shallow mixed layer prior to ice melt (~0.8 m from the beginning of the time-series until 8 April) would have kept phytoplankton in the mixed layer close to the surface and therefore receiving
20 light that penetrated through the ice.

Our O₂ mass balance techniques will record GOP by free-floating phytoplankton in the water column below the ice, as well as GOP by ice-associated phytoplankton if the O₂ they produce diffuses into the water rather than into the ice surface or atmosphere. Bottom-associated algae likely release much of their O₂ into the water column, especially for filamentous forms such as the diatoms frequently observed in Lake Erie and the Arctic (D'souza et al., 2013; Boetius et al., 2013).

25 We believe that the O₂ measurements at Little Narrows from the beginning of the time-series through 16 April (the date when the fraction of open water in Whycomagh Bay began to increase rapidly) are generally representative of the under-ice rates due to the rapid transport of water through Little Narrows channel. The mean current speed at Little Narrows channel at 0.5 m depth was 3.4 km d⁻¹. The distance between the ice edge and the sampling intake ranged from ~0.4–1 km between the beginning of the time-series and 12 Apr. Assuming a gas transfer velocity for O₂ of 0.5 m d⁻¹ once the water mass encountered
30 open water and a mixed layer depth between 0.8 to 2 m, the residence time of O₂ in the mixed layer was 1.6–4 d. Assuming a current speed of 3.4 km in open water, the water mass would have only been exposed to open water for between 0.1–0.3 d (20 % or less of the residence time of O₂). However, we recognize that the current speed near the ice edge may have been somewhat slower than the speed at the constriction at Little Narrows, therefore the transit time in open water may have been somewhat longer than 0.1–0.3 d.

3.4 Net oxygen production and export efficiency

3.4.1 Calculation

5 We quantify non-steady state NOP, incorporating the observed changes in O₂/Ar during the time-series. We estimate NOP as

$$\text{NOP} = k_{O_2} \Delta(\text{O}_2/\text{Ar}) [\text{O}_2]_{eq} + h \frac{\partial \Delta(\text{O}_2/\text{Ar})}{\partial t} [\text{O}_2]_{eq} \quad (11)$$

where k_{O_2} is the real-time gas transfer velocity (m d⁻¹), $[\text{O}_2]_{eq}$ is the equilibrium O₂ concentration (mol m⁻³) and h is the mixed layer depth (m) (Hamme et al., 2012). The first term on the right side of equation 11 is the steady state NOP term, and

the second term is the non-steady state NOP term, which is dependent on the rate of change in $\Delta(\text{O}_2/\text{Ar})$ with time. To calculate the rate of change in $\Delta(\text{O}_2/\text{Ar})$ with time, we resampled the data to a fixed 5 s interval (each scan of all masses took 5–6 s) and filled in gaps with a linear interpolation. Then we applied a third order lowpass Butterworth filter with a cutoff frequency of 0.3 d^{-1} to generate a smooth O_2/Ar record (Roberts and Roberts, 1978) (Figure 7). We selected the cutoff frequency to remove the short-term variability from tides and diel changes in photosynthesis and respiration, and to minimize the number of times the inflection of the curve changed while capturing the overall trends in O_2/Ar . Below we discuss the sensitivity of the calculated NOP to the choice of cutoff frequency. Finally, we calculated the derivative of $\Delta(\text{O}_2/\text{Ar})$ with respect to time using the filtered record. We applied the same filtering method to the in situ salinity and thermocouple temperature data and used the filtered data to calculate the $[\text{O}_2]_{eq}$ and k_{O_2} , to prevent short-term fluctuations in salinity and temperature from producing apparent changes in NOP. We calculate the daily NOP (from 19:30 to 19:29 local time) using the average $\partial\Delta(\text{O}_2/\text{Ar})/\partial t$ based on the filtered record and the average $\Delta(\text{O}_2/\text{Ar})$ (using the raw, unfiltered data).

As for the GOP calculations, our NOP calculations do not account for the impact of changing mixed layer depth, nor the impact of vertical diffusion, on the O_2 mass balance because we do not have any measurements of O_2 below the mixed layer (Munro et al., 2013; Castro Morales et al., 2013). We expect that the O_2 concentration below the mixed layer was lower than the concentration within the mixed layer, based on past measurements showing undersaturated O_2 in the subsurface waters of Whycocomagh Bay (Krauel, 1975; Gurbutt and Petrie, 1995; Strain et al., 2001). Therefore, vertical processes would likely cause us to underestimate NOP. For example, a deepening of the mixed layer between 8–23 Apr may have entrained waters with a lower O_2 concentration into the mixed layer, causing a decrease in O_2 (and O_2/Ar). Using equation 11, we would interpret this decrease on O_2 as a decrease in NOP.

To calculate the uncertainty in NOP, uncertainty in k_{O_2} (11 % for Injection 1, 18 % for Injection 2), mixed layer depth (0.3 m, 10–38 %), and the non-steady state term are propagated. Uncertainty in the non-steady state term is based on the results using different filtering methods. For the cumulative NOP over the whole time-series, the non-steady state NOP changes by 3–13 % if we double or halve the cutoff frequency. A conservative 13 % error associated with the cutoff frequency choice is included in the estimates of daily and cumulative NOP. Uncertainty in $\Delta(\text{O}_2/\text{Ar})$ (<0.1 %, based on the mean offset between the EIMS and the discrete samples) has a negligible impact on NOP, relative to the other sources of error. The average errors in the daily NOP are $\pm 0.8 \text{ mmol O}_2 \text{ m}^{-2} \text{ d}^{-1}$ (34 %) and $\pm 0.3 \text{ mmol O}_2 \text{ m}^{-3} \text{ d}^{-1}$ (23 %) for the mixed layer-integrated and volumetric NOP, respectively. All uncertainties are the standard deviation.

Finally, we calculate the ratio of NOP to GOP for each daily estimate (the export efficiency). This ratio is similar to an f-ratio or an e-ratio (Dugdale and Goering, 1967; Laws et al., 2000) and provides information on the fraction of GOP that is available for export out of the mixed layer (Figure 7f). The uncertainties in the NOP/GOP ratio on each day are quite large. In a steady state NOP and GOP calculation, the gas transfer velocity k_{O_2} cancels out of the equation for the NOP/GOP ratio and therefore it is not a source of uncertainty; however, in the non-steady state term the k_{O_2} does not cancel out.

3.4.2 NOP results and comparison of ~~of~~ NOP and GOP

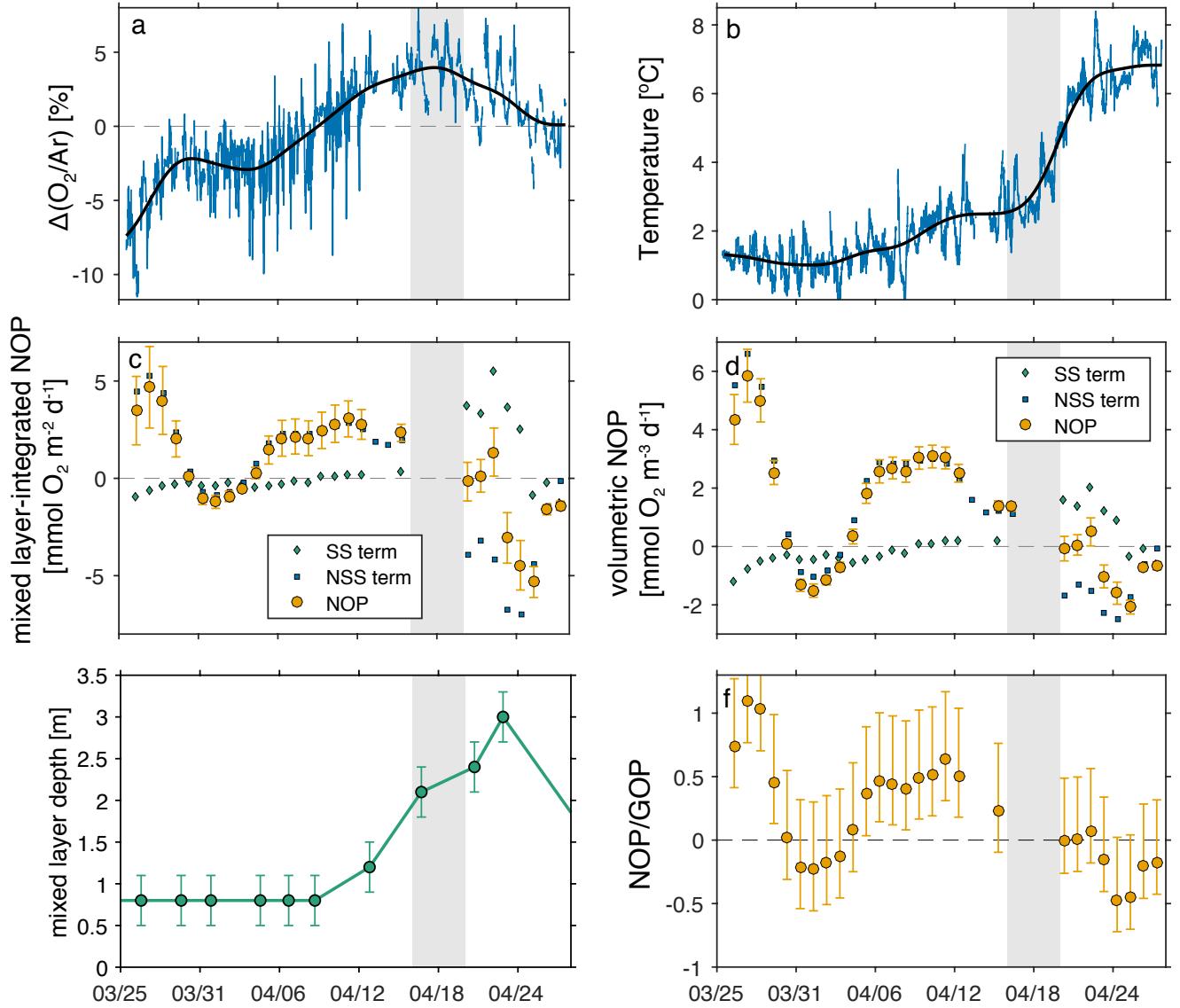


Figure 7. Net oxygen production at Little Narrows and data used in the calculation. (a) $\Delta(\text{O}_2/\text{Ar})$ and (b) temperature measurements. The blue lines are the raw data and the black line is the filtered data. NOP in (c) mixed layer-integrated and (d) volumetric units. The ~~yellow-green~~ diamonds and ~~pink-triangles~~ ~~blue squares~~ show the values of the two terms in the GOP calculation (steady state, SS and non-steady state, NSS). (e) ~~cumulative NOP in mixed layer-integrated and volumetric units~~ Mixed layer depth. (f) ~~export-Export~~ efficiency ratio (NOP/GOP). The shaded grey area is the period where ~~we do not calculate NOP due to uncertainties related to the rapidly melting ice cover~~ was decreasing rapidly and NOP is most uncertain.

As for GOP, we do not present NOP estimates during 16–19 Apr due to the uncertainties associated with the rapid decrease in ice cover. There are additional uncertainties in NOP from 12–23 Apr due to the increasing mixed layer depth, which may have entrained lower- O_2 waters into the mixed layer. Historical O_2 data from Whycocomagh Bay showed that there is a strong decrease in O_2 with depth below the mixed layer, however, to our knowledge, no prior measurements during ice melt have been published (Krauel, 1975; Gurbutt and Petrie, 1995; Strain et al., 2001).

Based on the non-steady state NOP estimates, the ecosystem was on average net autotrophic as the ice was melting, from the beginning of the time-series through 15 April (mean volumetric NOP of $1.9(2.1) \text{ mmol } O_2 \text{ m}^{-3} \text{ d}^{-1}$, median $2.5 \text{ mmol } O_2 \text{ m}^{-3} \text{ d}^{-1}$). During the (nearly) ice-free period from 20 April through the end of the time-series, the community was on average net heterotrophic but with a smaller magnitude than during the start of the time-series (mean volumetric NOP of $-0.7(0.9) \text{ mmol } O_2 \text{ m}^{-3} \text{ d}^{-1}$, median $-0.7 \text{ mmol } O_2 \text{ m}^{-3} \text{ d}^{-1}$). When the bay was nearly full of ice cover (from the beginning of the time-series until ~ 16 April), NOP was dominated by the non-steady state term and this term was positive except for between 31 March–3 April when it was negative but small in magnitude. As the ice cover decreased and retreated, the non-steady state term decreased and became negative on 18 April. From 18–22 April the steady state term is roughly equal in magnitude but opposite in sign to the non-steady state NOP term. The NOP is more strongly negative from 23–25 April (volumetric NOP of $-1.6(0.5) \text{ mmol } O_2 \text{ m}^{-3} \text{ d}^{-1}$) and then on the last two days of the time-series $\Delta(O_2/Ar)$ was close to 0 and so was the rate of change in $\Delta(O_2/Ar)$ with time (volumetric NOP of $-0.7 \text{ mmol } O_2 \text{ m}^{-3} \text{ d}^{-1}$). If the time-series had continued for longer, it would have been possible to observe whether the NOP value eventually stabilized near 0 following the dynamic ice melt period, or if it continued to oscillate between periods of net autotrophy and net heterotrophy.

~~Similarly to GOP, NOP is most uncertain between 16–19 April due to uncertainties in the fractional ice cover and the parameterization of gas exchange. However, the rate of change with time term is more certain for NOP during this period, compared to the same period in the GOP calculation, because the high-frequency measurements allowed us to calculate a smoothly varying non-steady state term, rather than an abrupt change in the non-steady state term based on a linear fit. NOP appears to decrease during the period where the ice cover changes most rapidly.~~

~~When summed over the entire time-series, the magnitude of the cumulative volumetric NOP ($37.6(6.3) \text{ mmol } O_2 \text{ m}^{-3}$) is greater than the cumulative mixed layer integrated NOP ($28.8(4.4) \text{ mmol } O_2 \text{ m}^{-2}$). Volumetric NOP is negative in the second half of the time-series and the mixed layer is deepest during this period, causing the cumulative mixed layer integrated NOP to decrease substantially. The cumulative NOP contrasts with cumulative GOP; the mixed layer integrated GOP exceeds the volumetric GOP because GOP is always positive and the mixed layer was on average $> 1 \text{ m}$ deep.~~

The ratio of NOP/GOP has large uncertainties but qualitatively follows the trends of NOP, since the mixed layer integrated GOP was relatively constant throughout the time-series (except during and immediately following the loss of ice cover), whereas the mixed layer integrated NOP was far more variable. At the start of the time-series, there are two dates where NOP/GOP > 1 which by definition is not possible. The high NOP/GOP values could be due to uncertainty in the isotopic composition of water, which enters into the GOP calculation but not the NOP calculation, and/or the non-steady state terms for GOP and NOP. Vertical mixing-diffusion across the mixed layer is another possible cause of the estimated NOP/GOP ratios exceeding 1; because we do not have measurements below the mixed layer, we cannot compute a correction for vertical mixing. The

gradients in $^{17}\Delta$ and $\Delta(\text{O}_2/\text{Ar})$ are likely different with depth, leading to different magnitudes of the vertical mixing correction for NOP and GOP, which could potentially lead to errors in the estimated NOP/GOP ratio (section 3.6). We recommend that researchers planning future studies using O_2 -based tracers include depth profiles of O_2/Ar and $^{17}\Delta$ in their experimental design (Castro Morales et al., 2013; Munro et al., 2013; Wurgaft et al., 2013).

~~The different trends in GOP and NOP warrant some discussion. Volumetric GOP was relatively constant throughout the time-series except briefly at the end of the ice melt period where it was likely somewhat higher, whereas NOP decreased during and following the end of the ice melt period, and was negative from 23–27 April.~~

~~One possible explanation for the GOP results is that light may have limited productivity at the beginning of the time-series and nutrients may have limited productivity at the end of the time-series. In this case, the peak in GOP during the end of the melt period could indicate a reduction in light limitation causing enhanced growth rates, followed by the onset of nutrient limitation. Although nutrient concentrations have not been measured in the Bras d'Or Lake during winter or early spring, estimated a maximum wintertime NO_3^- concentration of~~ The GOP results demonstrate that GOP was similar when Whycocomagh Bay was full of ice and when it was ice-free (on a volumetric basis). On the other hand, the calculated volumetric NOP was generally positive when the bay was full of ice but began to decrease toward negative values around 12 April. The mixed layer depth was $\sim 5\text{ }\mu\text{M}$, based on fall nutrient measurements and assuming no primary production for 3 months. This NO_3^- concentration should be considered a maximum since the assumption of dormant phytoplankton in winter may not be correct. Five μM of NO_3^- could support gross primary production of 33 mmol C m^{-3} , using a Redfield ratio of 106:16 C:N, and $46\text{ mmol O}_2\text{ m}^{-3}$, using a ratio of 1.4:1 O_2 :C for nitrate-based uptake. This concentration of NO_3^- would be consumed in 8 days at the average volumetric GOP of $5.5\text{ mmol O}_2\text{ m}^{-3}\text{ d}^{-1}$, or just 3 days using the average GOP rate from 16–19 April of $15(8)\text{ mmol O}_2\text{ m}^{-3}\text{ d}^{-1}$.

~~Another possible explanation for the GOP trends is that nutrients limited productivity throughout the~~ 0.8 m from the beginning of the time-series, causing GOP to be similar at the start and until 12 April, deepened from 12–23 Apr and then increased until the end of the time-series. ~~In this case, the likely increase in volumetric GOP during the most rapid reduction in ice cover could be due to changes in the water column that affected nutrient supply (e.g., nutrients were released from the melting ice, or the ice melt drove convection which entrained nutrients from deeper waters into the mixed layer).~~

~~The~~ The apparent decrease in volumetric NOP ~~must beginning around 12 April could~~ be due to a number of factors including: an increase in respiration and recycling of organic carbon by heterotrophs (and possibly also autotrophs) within the mixed layer, since autotrophic production (GOP) stayed relatively constant. One possible explanation for the NOP trends is that zooplankton growth rates increased as the ice was melting and water warmed, leading to an increase in respiration at the same time that GOP was decreasing due to nutrient limitation. Zooplankton growth rates may increase more rapidly than phytoplankton growth rates in response to increasing temperatures. The water temperature in the system rapidly increased between 12–24 April from ~ 2 to 7°C , as the ice cover retreated and the surface waters absorbed more heat and therefore it is likely that growth rates also increased over this period (Figure 7b).

~~A second possible explanation for the decreasing NOP is that ice melt (and perhaps riverine inflow) increased the organic carbon concentrations within the water column and therefore increased grazing rates by heterotrophs. Zooplankton are thought~~

to graze primarily on free-floating phytoplankton and algae that are released from the ice, rather than algae attached to the ice surface, and organic carbon sedimentation events associated with ice melt have been observed in other environments. Concentrations of organic carbon in ice vary widely, measured average ice algal deposition to sediments of $750 \text{ mmol C m}^{-2}$ during summer in the Arctic. If a similar amount of ice algae were released from the ice in the Bras d'Or Lake, it would be more than sufficient to support the observed increase in respiration (decrease in NOP) of up to $\sim 7 \text{ mmol autotrophs and/or heterotrophs, and/or vertical processes that are not taken into account in our calculations. We note that the mixed layer NOP was actually lowest and } \Delta \text{O}_2 \text{ m}^{-2} \text{ d}^{-1} (5\text{--}6 \text{ mmol C m}^{-2} \text{ d}^{-1}, \text{ using a C:O}_2 \text{ ratio of 1.1--1.4) at the end of the time-series. Additionally, river flow on Cape Breton Island typically peaks in April or May, and river flows in April are } \sim 40\text{--}100 \text{ higher than flows in March and } \sim 50\text{--}150 \text{ greater than the average monthly flow. However, dissolved organic carbon concentrations of rivers in Cape Breton during early spring have not been measured and the bioavailability of terrigenous organic carbon to aquatic microbes is not well known.}$

However, for both of these potential explanations of the NOP results, the increased respiration rates should also increase the nutrient supply available to autotrophs which would counteract nutrient limitation of GOP. Therefore, we might expect the observed increase in respiration (decrease in NOP) to favor an increase in GOP because the organic matter is being more efficiently recycled and therefore available to support more autotrophic production within the mixed layer. It is possible that the increase in mixed layer depth between 16–23 April diluted the autotrophic biomass and caused volumetric GOP to decrease /Ar was decreasing between 23–27 Apr, a period where the mixed layer actually appeared to shoal. Therefore a deepening mixed layer cannot be the only driver of the decrease in NOP following ice melt.

Additionally, the uncertainties in GOP are relatively large, averaging $\pm \frac{52}{31}$ for the volumetric GOP throughout the time-series, and therefore it is possible that there were moderate differences in GOP between the beginning and end of the time-series that are not apparent from our methods. For example, a systematic error in the gas transfer velocity at the end of the time-series (the Injection 2 result) would cause us to systematically overestimate or underestimate GOP at the end of the time series, if our calculated k_{O_2} were too high or too low, respectively. We discuss the potential impacts of other physical processes on our GOP and NOP estimates below (section 3.6).

3.5 Comparison to other productivity estimates

To our knowledge, our data are the only published estimates of NOP and GOP in the Bras d'Or Lake. Geen (1965) measured primary production by ^{14}C uptake in the Bras d'Or Lake during summer 1962–1964 and found an average uptake rate at 5 m depth, the depth of maximum photosynthesis, of $\sim 4 \text{ mmol C m}^{-3} \text{ d}^{-1}$ ($50 \text{ mg C m}^{-3} \text{ d}^{-1}$) (Geen and Hargrave, 1966). These rates are based on 6-h daytime incubations and ignore nighttime respiratory loss of ^{14}C , and therefore approximate net primary production (NPP, gross primary production minus autotrophic respiration) or something between NPP and gross primary production (GPP) (Bender et al., 1999; Marra, 2002, 2009; Quay et al., 2010). Assuming a C:O₂ ratio of 1.1–1.4 (Laws, 1991), the equivalent O₂ production based on the ^{14}C incubations is $4.4\text{--}5.6 \text{ mmol O}_2 \text{ m}^{-3} \text{ d}^{-1}$. Thus, the ^{14}C -PP is between the average NOP and GOP values, as expected.

In the Bras d'Or Lake, Hargrave and Geen (1970) found, based on summertime incubations, that zooplankton grazing was sufficient to consume all of the daily primary production, indicating the estuary ecosystem metabolism may be close to balanced (NOP ~ 0) on a daily basis. We obtained a more dynamic record of NOP, with an average volumetric rate of $1.1(\pm 2.0)$ mmol O_2 $m^{-3} d^{-1}$ over the entire time-series.

Comparisons with in situ gas tracer-based productivity estimates in other environments are challenging because mixed layer-integrated rates are most commonly calculated, and the mixed layer in many other systems is much deeper than 0.8–3 m. In the Beaufort Gyre (Arctic Ocean) Stanley et al. (2015) estimate a steady state GOP of 16(5) and 38(3) mmol O_2 $m^{-2} d^{-1}$ in summer 2011 (higher ice cover) and 2012 (lower ice cover), respectively and NOP of 3 mmol O_2 $m^{-2} d^{-1}$ in both summers. Mixed layer depths were ~ 10 m. Mixed layer-integrated GOP increases as the mixed layer depth increases, but trends in NOP are less clear. In this study we found that cumulative volumetric and cumulative mixed layer-integrated NOP were similar when calculated over the entire time-series, but the result might be different if we integrated to 10 m.

3.6 Effect of physical processes on productivity estimates

There are a number of additional environmental processes that may affect the O_2 isotope and O_2/Ar mass balance in the mixed layer but cannot be directly quantified from the time-series. However, in some cases we can determine whether these processes would tend to increase or decrease our NOP and GOP estimates.

The isotopic composition of freshwater within the bay may have varied during our time-series, which would impact the GOP estimates. Using model results from Gurbutt and Petrie (1995) we calculate that the residence time of water in Whycocomagh Bay is ~ 0.7 y for surface waters (0–10 m) with respect to freshwater input and ~ 2 y for deep waters (10 m to bottom) with respect to exchange with the surface waters. Thus we expect the isotopic composition of the water in the mixed layer of Whycocomagh Bay to reflect some average over multiple months. For example, if a substantial portion of the meltwater entering the estuary is derived from snow rather than from ice that freezes from water within the bay, its isotopic composition will be more reflective of seasonal precipitation. If we calculate an amount-weighted $\delta^{18}O-H_2O$ for meteoric water at Truro, NS, using only the months when ice was present in Whycocomagh Bay in 2013 (January–April), $\delta^{18}O-H_2O = -11.0(3.6) \text{‰}$ versus VSMOW, which is within the uncertainty of our annually-averaged value ($-9.3(3.1) \text{‰}$). In general, a lower value of $\delta^{18}O-H_2O$ will increase GOP estimates.

The freezing and melting of ice in saline waters will generate a non-linear salinity- $\delta^{18}O-H_2O$ relationship because the $\delta^{18}O-H_2O$ value of sea ice is similar to the water from which it formed (within ~ 2 – 3‰) (Tan and Strain, 1980; Macdonald et al., 1995, 1999), but the salinity in sea ice is substantially lower due to brine rejection (O'Neil, 1968; Weeks and Ackley, 1986). We are not able to accurately quantify the triple oxygen isotopic composition of H_2O in the ice and in water, nor can we quantify the timing and volume of ice freezing and melt within Whycocomagh Bay (although we know when the ice cover decreased most rapidly, the ice volume was decreasing throughout our time-series). The volume contribution and isotopic composition of other sources of water inputs (e.g., riverine input and melting snow) is another source of uncertainty in the calculations.

In addition to affecting the isotopic composition of H_2O , ice melt and riverine inflow may affect the NOP and GOP calculations in other ways. If the ice melted at the upper surface (in contact with the atmosphere) and then drained through brine

channels in the ice, it likely had an isotopic composition and gas ratio similar to air-equilibrated water ($^{17}\Delta \simeq 8$ per meg and $\Delta(\text{O}_2/\text{Ar}) \simeq 0$ %). Thus, water in melt ponds that was added to the water column would tend to decrease GOP, as $^{17}\Delta$ always exceeded 8 per meg in the mixed layer (Figure 6a) and either increase or decrease NOP, since $\Delta(\text{O}_2/\text{Ar})$ transitioned from negative to positive as the ice was melting. If the ice melted at the bottom (in contact with the water) its effect on NOP and GOP estimates is less clear. During sea ice formation, approximately 40–55 % of the O_2 and Ar originally dissolved in the water is retained in the ice matrix (i.e. within the ice itself, in gas bubbles, or in brine pockets) and the remainder is excluded, generating supersaturations of the gases in the water below the ice (Top et al., 1988; Hood et al., 1998; Loose et al., 2009). Photosynthesis and respiration both occur in sea ice (Loose et al., 2011a; Zhou et al., 2014) and will change the O_2/Ar and $^{17}\Delta$ signatures within the ice and it is difficult to predict what proportions of the O_2 within brine pockets in the ice remained within the brines, migrated into the water column, or migrated into the atmosphere prior to the complete melting of the ice. We measured an ice thickness of ~ 0.3 m near the injection site on 29 March, and thus if the mixed layer depth after ice melt was 2.5 m deep, the ice could contribute ~ 11 % of the mixed layer volume, or ~ 5 % of the mixed layer O_2 (assuming $[\text{O}_2]$ in ice is ~ 45 % of the equilibrium $[\text{O}_2]$ in water). Thus bottom ice melt would likely be a minor influence on the oxygen mass balance. We observed bare ice and melt ponds at the surface of the ice (Supplemental Figures 2-4) and the water temperature throughout our time-series was above freezing which would stimulate bottom melt. Therefore, both surface and bottom melt likely occurred during the time-series. The volume, O_2 concentration and isotopic composition of runoff and river water during our time-series is also poorly constrained and thus these water sources are another uncertainty in our NOP and GOP calculations.

It is likely that GOP occurred below the mixed layer but was not quantified by our methods because we only had measurements within the mixed layer. In open water, the Secchi depth at the ice edge on 26 March (just west of Little Narrows) was 1.9 m, yielding a euphotic zone depth of ~ 5 m (defined as the depth where 1 % of surface photosynthetically active radiation penetrates) and the Secchi depth at Little Narrows on 7 April was ~ 4.5 m giving an approximate euphotic zone depth of 12 m (Idso and Gilbert, 1974). Mixed layer depths during our time-series ranged from 0.8–3.0 m. Even [when in field studies where](#) O_2 measurements below the euphotic zone are available, it is challenging to quantify this subsurface productivity because the biological O_2 fluxes below the mixed layer are small and the physical fluxes are large and highly uncertain, as they are driven by lateral and vertical mixing rather than air-water gas exchange (Giesbrecht et al., 2012; Munro et al., 2013; Manning et al., 2017b).

We also cannot correct our results for the effect of entrainment of deeper waters into the mixed layer (Hendricks et al., 2004; Munro et al., 2013; Wurgaft et al., 2013). We were not able to sample below the mixed layer but we hypothesize that $^{17}\Delta$ and O_2/Ar both likely decreased below the mixed layer when the ice was melting and the mixed layer was deepening. Therefore, entrainment of these waters into the mixed layer would tend to decrease NOP and GOP estimates. Respiration increases with depth, causing $[\text{O}_2]$ and $\Delta(\text{O}_2/\text{Ar})$ to decrease with depth in oceanic systems (Spitzer and Jenkins, 1989; Emerson et al., 1991). In some oceanic regions, photosynthesis below the mixed layer generates excess $^{17}\Delta$ (because there is no process decreasing $^{17}\Delta$ below the mixed layer), which can then be entrained into the euphotic zone, where $^{17}\Delta$ is lower because some of the photosynthetic O_2 is ventilated to the atmosphere (Hendricks et al., 2004; Sarma et al., 2005; Juranek and Quay, 2013). In this study, the gas transfer velocity out of the mixed layer was extremely low up until 16 April, and therefore photosynthetic O_2

(i.e., $^{17}\Delta$) would also accumulate in the mixed layer, likely at a greater rate than below the mixed layer due to photosynthesis rates being higher closer to the surface. Once the gas transfer velocity increased to the open water value (20 April), it is not clear whether we would expect to observe an excess of $^{17}\Delta$ below the mixed layer, and therefore whether entrainment would increase or decrease GOP.

Another source of error in our interpretation of the O_2 data is that we must assume that spatial variability in O_2 has a negligible effect on our calculations. We interpret all changes in O_2 assuming that we are measuring the same water mass; this is an oversimplification because the bay is within an estuary that experiences tidal flows. However, spatial surveys of O_2/Ar during a pilot experiment in 2011 indicated that spatial variability in O_2 within the Bras d'Or Lakes is relatively low.

4 Conclusions

Using the dual tracer ($^3He/SF_6$) technique in the Bras d'Or Lake, we found that at >90 % ice cover, the gas transfer velocity was 6 % of the open water gas transfer velocity. This result indicates that k_{ice} is negligible.

The volumetric GOP was similar at the beginning and end of the time-series, when the basin was full of ice and when it was ice free, ~~but likely increased in the middle of the time-series as the last of the ice melted~~. Volumetric NOP was more variable with time; Whycomagh Bay was on average net autotrophic ($NOP > 0$) while the ~~ice was melting~~ bay was ice-covered, and net heterotrophic ($NOP < 0$) but with a smaller magnitude after the bay was ice-free. These results indicate that an algal bloom (increasing NOP) can occur in an ice-covered estuary, similar to observations of net autotrophy under ice in the Great Lakes, Arctic, and Antarctic. ~~The~~ (Tortell and Long, 2009; Twiss et al., 2012; D'souza et al., 2013). The apparent decrease in NOP may be due to ~~the onset of nutrient limitation and/or a number of factors, such as~~ an increase in heterotrophic respiration of organic carbon released from the ice and possibly also from rivers, and/or the entrainment of waters with a lower O_2 concentration into the mixed layer (Wurgalt et al., 2013; Castro Morales et al., 2013; Nicholson et al., 2014).

Obtaining a time-series of O_2 data and obtaining simultaneous gas transfer velocity measurements were both critical for quantifying productivity. The non-steady state term was a significant contributor to NOP and GOP throughout the time-series, and time-series measurements are needed to quantify the non-steady state O_2 flux. Additionally, because the gas transfer velocity was ~ 16 times higher at the end of the time-series than at the beginning and the values of $^{17}\Delta$ and $\Delta(O_2/Ar)$ changed with time, the relative importance of the steady state term versus the non-steady state term changed substantially during our time-series.

5 Code availability

~~MATLAB code for calculating GOP incorporating the local isotopic composition of H_2O is available on Zenodo at and GitHub at.~~

5 Data availability

~~The discrete O_2/Ar and triple oxygen isotope data, continuous~~ In future studies in similar settings, we recommend authors collect measurements of O_2/Ar and triple oxygen isotope data, continuous isotopes below the mixed layer in order to better correct for the impact of vertical processes on the O_2 mass balance. For tidally-influenced regions, surveys of lateral variability in O_2/Ar data, and CTD profile data are available on Zenodo at ~~and~~ $^{17}\Delta$ could also help to constrain the influence of horizontal advection on the O_2 mass balance (Munro et al., 2013; Howard et al., 2017). Measurements of nutrients and dissolved organic carbon could be useful for inferring the causes of changes in GOP and NOP. We also encourage measurement of the triple isotopic composition of H_2O (Manning et al., 2017a).

Code availability. MATLAB code for calculating GOP incorporating the local isotopic composition of H_2O is available on Zenodo at <https://dx.doi.org/10.5281/zenodo.376786> and GitHub at <https://github.com/caramanning/calcGOP> (Manning and Howard, 2017).

Data availability. The discrete O_2/Ar and triple oxygen isotope data, continuous O_2/Ar data, and CTD profile data are available on Zenodo at <http://dx.doi.org/10.5281/zenodo.1011216> (Manning and Stanley, 2017).

Author contributions. CC Manning, RHR Stanley, B Loose, and B Hatcher designed the study. CC Manning, RHR Stanley, B Loose, B Hatcher, and A Lovely collected the samples. CC Manning, RHR Stanley, B Loose, and P Schlosser analyzed samples and processed data. CC Manning, RHR Stanley, DP Nicholson, and B Loose interpreted the data, and CC Manning prepared the manuscript with contributions
35 from RHR Stanley, DP Nicholson, and B Loose.

Competing interests. The authors declare that they have no conflict of interest.

Acknowledgements. We thank [Evan Howard \(University of Washington\)](#) for helpful discussions regarding the GOP calculations. We thank Zoe Sandwith (WHOI) and Dave Woodland (Cape Breton University) for field and laboratory assistance. We also thank the staff of the Little Narrows Ferry Terminal for providing facilities. RHR Stanley and B Loose received funding from the WHOI Arctic Research Initiative, and CC Manning received graduate scholarships from NSERC and CMOS. Figure 1 (b–c) were modified from an image created by Hanhil
5 (https://commons.wikimedia.org/wiki/File:Canada_Nova_Scotia_location_map_2.svg), "Canada Nova Scotia location map 2" as permitted under the CC-BY-SA 3.0 license, <https://creativecommons.org/licenses/by-sa/3.0/legalcode>.



- ACIA: Impacts of a Warming Arctic-Arctic Climate Impact Assessment, vol. 1, Cambridge University Press, Cambridge, UK, 2004.
- Ahn, J., Headly, M., Wahlen, M., Brook, E. J., Mayewski, P. A., and Taylor, K. C.: CO₂ diffusion in polar ice: observations from naturally
 10 formed CO₂ spikes in the Siple Dome (Antarctica) ice core, *J. Glaciol.*, 54, 685–695, <https://doi.org/10.3189/002214308786570764>, 2008.
- Arrigo, K. R., Perovich, D. K., Pickart, R. S., Brown, Z. W., Van Dijken, G. L., Lowry, K. E., Mills, M. M., Palmer, M. A., Balch, W. M.,
 Bahr, F., et al.: Massive phytoplankton blooms under Arctic sea ice, *Science*, 336, 1408–1408, <https://doi.org/10.1126/science.1215065>,
 2012.
- Barkan, E. and Luz, B.: High-precision measurements of ¹⁷O/¹⁶O and ¹⁸O/¹⁶O of O₂ and O₂/Ar ratio in air, *Rapid Commun. Mass Spectrom.*,
 15 17, 2809–2814, 2003.
- Barkan, E. and Luz, B.: The relationships among the three stable isotopes of oxygen in air, seawater and marine photosynthesis, *Rapid
 Commun. Mass Spectrom.*, 25, 2367–2369, <https://doi.org/10.1002/rcm.5125>, 2011.
- Bates, N. and Mathis, J.: The Arctic Ocean marine carbon cycle: evaluation of air-sea CO₂ exchanges, ocean acidification impacts and
 potential feedbacks, *Biogeosciences*, 6, 2433–2459, <https://doi.org/10.5194/bg-6-2433-2009>, 2009.
- 20 Bates, N. R., Moran, S. B., Hansell, D. A., and Mathis, J. T.: An increasing CO₂ sink in the Arctic Ocean due to sea-ice loss, *Geophys. Res.
 Lett.*, 33, <https://doi.org/10.1029/2006GL027028>, 123609, 2006.
- Bender, M., Orchardo, J., Dickson, M.-L., Barber, R., and Lindley, S.: In vitro O₂ fluxes compared with ¹⁴C production and other rate terms
 during the JGOFS Equatorial Pacific experiment, *Deep-Sea Res. Pt. I*, 46, 637–654, [https://doi.org/10.1016/S0967-0637\(98\)00080-6](https://doi.org/10.1016/S0967-0637(98)00080-6),
 1999.
- 25 Benson, B. B. and Krause, D.: The concentration and isotopic fractionation of gases dissolved in freshwater in equilibrium with the atmo-
 sphere. 1. Oxygen, *Limnol. Oceanogr.*, 25, 662–671, <https://doi.org/10.4319/lo.1980.25.4.0662>, 1980a.
- Benson, B. B. and Krause, D.: Isotopic fractionation of helium during solution: A probe for the liquid state, *J. Solution Chem.*, 9, 895–909,
 <https://doi.org/10.1007/BF00646402>, 1980b.
- Benson, B. B. and Krause, D.: The concentration and isotopic fractionation of oxygen dissolved in freshwater and seawater in equilibrium
 30 with the atmosphere, *Limnol. Oceanogr.*, 29, 620–632, <https://doi.org/10.4319/lo.1984.29.3.0620>, 1984.
- Bertilsson, S., Burgin, A., Carey, C. C., Fey, S. B., Grossart, H.-P., Grubisic, L. M., Jones, I. D., Kirillin, G., Lennon, J. T., Shade, A., et al.:
 The under-ice microbiome of seasonally frozen lakes, *Limnol. Oceanogr.*, 58, 1998–2012, <https://doi.org/10.4319/lo.2013.58.6.1998>,
 2013.
- Bigg, G. R. and Rohling, E. J.: An oxygen isotope data set for marine waters, *J. Geophys. Res. Oceans*, 105, 8527–8535,
 35 <https://doi.org/10.1029/2000JC900005>, 2000.
- Boetius, A., Albrecht, S., Bakker, K., Bienhold, C., Felden, J., Fernández-Méndez, M., Hendricks, S., Katlein, C., Lalande, C., Krumpen, T.,
 et al.: Export of algal biomass from the melting Arctic sea ice, *Science*, 339, 1430–1432, <https://doi.org/10.1126/science.1231346>, 2013.
- Bondarenko, N., Timoshkin, O., Röpstorf, P., and Melnik, N.: The under-ice and bottom periods in the life cycle of *Aulacoseira baicalensis*
 (K. Meyer) Simonsen, a principal Lake Baikal alga, *Hydrobiologia*, 568, 107–109, <https://doi.org/10.1007/s10750-006-0325-7>, 2006.
- Brennwald, M. S., Vogel, N., Figura, S., Vollmer, M. K., Langenfelds, R., Steele, L. P., Maden, C., and Kipfer, R.: Concentrations and
 isotope ratios of helium and other noble gases in the Earth’s atmosphere during 1978–2011, *Earth Planet. Sci. Lett.*, 366, 27–37,
 <https://doi.org/10.1016/j.epsl.2013.01.039>, 2013.

- 5 Bullister, J.: Atmospheric Histories (1765-2015) for CFC-11, CFC-12, CFC-113, CCl₄, SF₆ and N₂O. NDP-095(2015), http://cdiac.ornl.gov/ftp/oceans/CFC_ATM_Hist/CFC_ATM_Hist_2015, 2015.
- Bullister, J. L., Wisegarver, D. P., and Menzia, F. A.: The solubility of sulfur hexafluoride in water and seawater, *Deep-Sea Res. Pt. I*, 49, 175–187, [https://doi.org/10.1016/S0967-0637\(01\)00051-6](https://doi.org/10.1016/S0967-0637(01)00051-6), 2002.
- Butterworth, B. J. and Miller, S. D.: Air-sea exchange of carbon dioxide in the Southern Ocean and Antarctic marginal ice zone, *Geophys. Res. Lett.*, 43, 7223–7230, <https://doi.org/10.1002/2016GL069581>, 2016GL069581, 2016.
- 10 Cai, W.-J.: Estuarine and coastal ocean carbon paradox: CO₂ sinks or sites of terrestrial carbon incineration?, *Ann. Rev. Mar. Sci.*, 3, 123–145, <https://doi.org/10.1146/annurev-marine-120709-142723>, 2011.
- Cassar, N., Barnett, B., Bender, M., Kaiser, J., Hamme, R., and Tilbrook, B.: Continuous High-Frequency Dissolved O₂/Ar Measurements by Equilibrator Inlet Mass Spectrometry, *Anal. Chem.*, 81, 1855–1864, <https://doi.org/10.1021/ac802300u>, 2009.
- 15 Cassar, N., DiFiore, P., Barnett, B., Bender, M., Bowie, A., Tilbrook, B., Petrou, K., Westwood, K., Wright, S., and Lefevre, D.: The influence of iron and light on net community production in the Subantarctic and Polar Frontal Zones, *Biogeosciences*, 8, 227–237, <https://doi.org/10.5194/bg-8-227-2011>, 2011.
- Castro Morales, K., Cassar, N., Shoosmith, D. R., and Kaiser, J.: Biological production in the Bellingshausen Sea from oxygen-to-argon ratios and oxygen triple isotopes, *Biogeosciences*, 10, 2273–2291, <https://doi.org/10.5194/bg-10-2273-2013>, 2013.
- 20 Clark, J. F., Schlosser, P., Wanninkhof, R., Simpson, H. J., Schuster, W. S., and Ho, D. T.: Gas transfer velocities for SF₆ and ³He in a small pond at low wind speeds, *Geophys. Res. Lett.*, 22, 93–96, <https://doi.org/10.1029/94GL02410>, 1995.
- Cole, J. J. and Caraco, N. F.: Atmospheric exchange of carbon dioxide in a low-wind oligotrophic lake measured by the addition of SF₆, *Limnol. Oceanogr.*, 43, 647–656, <https://doi.org/10.4319/lo.1998.43.4.0647>, 1998.
- Cota, G., Legendre, L., Gosselin, M., and Ingram, R.: Ecology of bottom ice algae: I. Environmental controls and variability, *J. Mar. Sys.*, 2, 257–277, [https://doi.org/10.1016/0924-7963\(91\)90036-T](https://doi.org/10.1016/0924-7963(91)90036-T), 1991.
- 25 Cota, G. F.: Photoadaptation of high Arctic ice algae, *Nature*, 315, 219–222, <https://doi.org/10.1038/315219a0>, 1985.
- Crabeck, O., Delille, B., Rysgaard, S., Thomas, D. N., Geilfus, N.-X., Else, B., and Tison, J.-L.: First in situ determination of gas transport coefficients (D_{O₂}, D_{Ar}, and D_{N₂}) from bulk gas concentration measurements (O₂, N₂, Ar) in natural sea ice, *Journal of Geophysical Research: Oceans*, 119, 6655–6668, <https://doi.org/10.1002/2014JC009849>, 2014.
- 30 Crusius, J. and Wanninkhof, R.: Gas transfer velocities measured at low wind speed over a lake, *Limnol. Oceanogr.*, 48, 1010–1017, 2003.
- D'souza, N., Kawarasaki, Y., Gantz, J., Lee, R., Beall, B., Shtarkman, Y., Kocer, Z., Rogers, S., Wildschutte, H., Bullerjahn, G., et al.: Diatom assemblages promote ice formation in large lakes, *ISME J.*, 7, 1632–1640, <https://doi.org/10.1038/ismej.2013.49>, 2013.
- Ducklow, H. W., Fraser, W. R., Meredith, M. P., Stammerjohn, S. E., Doney, S. C., Martinson, D. G., Sailley, S. F., Schofield, O. M., Steinberg, D. K., Venables, H. J., et al.: West Antarctic Peninsula: an ice-dependent coastal marine ecosystem in transition, *Oceanography*, 26, 190–203, <https://doi.org/10.5670/oceanog.2013.62>, 2013.
- 35 Dugdale, R. and Goering, J.: Uptake of new and regenerated forms of nitrogen in primary productivity, *Limnol. Oceanogr.*, 12, 196–206, <https://doi.org/10.4319/lo.1967.12.2.0196>, 1967.
- Dupont, F. B., Petrie, B., and Chaffey, J.: Modeling the tides of the Bras d'Or Lakes, Tech. Rep. 230, Department of Fisheries and Oceans Canada, 2003.
- Else, B. G. T., Papakyriakou, T. N., Galley, R. J., Drennan, W. M., Miller, L. A., and Thomas, H.: Wintertime CO₂ fluxes in an Arctic polynya using eddy covariance: Evidence for enhanced air-sea gas transfer during ice formation, *J. Geophys. Res. Oceans*, 116, <https://doi.org/10.1029/2010JC006760>, c00G03, 2011.

- 5 Emerson, S., Quay, P., Stump, C., Wilbur, D., Knox, M., and Washington, S.: O₂, Ar, N₂, and ²²²Rn in the surface water of the subarctic ocean: Net biological O₂ production, *Global Biogeochem. Cy.*, 5, 49–69, <https://doi.org/10.1029/90GB02656>, 1991.
- Evans, W., Mathis, J. T., Cross, J. N., Bates, N. R., Frey, K. E., Else, B. G. T., Papkyriakou, T. N., DeGrandpre, M. D., Islam, F., Cai, W.-J., Chen, B., Yamamoto-Kawai, M., Carmack, E., Williams, W. J., and Takahashi, T.: Sea-air CO₂ exchange in the western Arctic coastal ocean, *Global Biogeochem. Cy.*, 29, 1190–1209, <https://doi.org/10.1002/2015GB005153>, 2015.
- 10 Eveleth, R., Cassar, N., Sherrell, R., Ducklow, H., Meredith, M., Venables, H., Lin, Y., and Li, Z.: Ice melt influence on summertime net community production along the Western Antarctic Peninsula, *Deep Sea Research Part II: Topical Studies in Oceanography*, 139, 89–102, <https://doi.org/10.1016/j.dsr2.2016.07.016>, 2017.
- Fanning, K. A. and Torres, L. M.: ²²²Rn and ²²⁶Ra: Indicators of sea-ice effects on air-sea gas exchange, *Polar Research*, 10, 51–58, <https://doi.org/10.1111/j.1751-8369.1991.tb00634.x>, 1991.
- 15 Frenette, J.-J., Thibault, P., Lapierre, J.-F., and Hamilton, P. B.: Presence of algae in freshwater ice cover of fluvial Lac Saint-Pierre (St. Lawrence River, Canada), *J. Phycol.*, 44, 284–291, <https://doi.org/10.1111/j.1529-8817.2008.00481.x>, 2008.
- Geen, G. and Hargrave, B.: Primary and secondary production in Bras d’or Lake, Nova Scotia, Canada, *Int. Ver. Theor. Angew. Limnol. Verh.*, 16, 333–340, <https://doi.org/10.1080/03680770.1965.11895702>, 1966.
- Geen, G. H.: Primary production in Bras d’Or Lake and other inland waters of Cape Breton Island, Nova Scotia, Ph.D. thesis, Dalhousie University, 1965.
- Giesbrecht, K. E., Hamme, R. C., and Emerson, S. R.: Biological productivity along Line P in the subarctic northeast Pacific: In situ versus incubation-based methods, *Global Biogeochem. Cy.*, 26, <https://doi.org/10.1029/2012GB004349>, GB3028, 2012.
- Golden, K. M., Eicken, H., Heaton, A. L., Miner, J., Pringle, D. J., and Zhu, J.: Thermal evolution of permeability and microstructure in sea ice, *Geophys. Res. Lett.*, 34, <https://doi.org/10.1029/2007GL030447>, 116501, 2007.
- 25 Goldman, J. A., Kranz, S. A., Young, J. N., Tortell, P. D., Stanley, R. H., Bender, M. L., and Morel, F. M.: Gross and net production during the spring bloom along the Western Antarctic Peninsula, *New Phytol.*, 205, 182–191, <https://doi.org/10.1111/nph.13125>, 2015.
- Gosink, T. A., Pearson, J. G., and Kelley, J. J.: Gas movement through sea ice, *Nature*, 263, 41–42, <https://doi.org/10.1038/263041a0>, 1976.
- Gosselin, M., Legendre, L., Therriault, J.-C., Demers, S., and Rochet, M.: Physical control of the horizontal patchiness of sea-ice microalgae, *Mar. Ecol. Prog. Ser.*, 29, 289–298, <https://doi.org/10.3354/meps029289>, 1986.
- 30 Gurbutt, P., Petrie, B., and Jordan, F.: The physical oceanography of the Bras d’Or Lakes: Data analysis and modeling, Tech. Rep. 147, Department of Fisheries and Oceans Canada, <http://publications.gc.ca/pub?id=9.805786&sl=0>, 1995.
- Gurbutt, P. A. and Petrie, B.: Circulation in the Bras d’Or Lakes, *Est. Coast. Shelf Sci.*, 41, 611–630, <https://doi.org/10.1006/ecss.1995.0081>, 1995.
- Hamme, R. C., Cassar, N., Lance, V. P., Vaillancourt, R. D., Bender, M. L., Strutton, P. G., Moore, T. S., DeGrandpre, M. D., Sabine, C. L., Ho, D. T., and Hargreaves, B. R.: Dissolved O₂/Ar and other methods reveal rapid changes in productivity during a Lagrangian experiment in the Southern Ocean, *J. Geophys. Res. Oceans*, 117, C00F12, <https://doi.org/10.1029/2011JC007046>, 2012.
- 35 Hampton, S. E., Moore, M. V., Ozersky, T., Stanley, E. H., Polashenski, C. M., and Galloway, A. W.: Heating up a cold subject: prospects for under-ice plankton research in lakes, *J. Plankton. Res.*, 37, 277–284, <https://doi.org/10.1093/plankt/fbv002>, 2015.
- Hargrave, B. T. and Geen, G. H.: Effects of copepod grazing on two natural phytoplankton populations, *J. Fish. Board Can.*, 27, 1395–1403, <https://doi.org/10.1139/f70-165>, 1970.
- Hendricks, M. B., Bender, M. L., and Barnett, B. A.: Net and gross O₂ production in the Southern Ocean from measurements of biological O₂ saturation and its triple isotope composition, *Deep-Sea Res. Pt. I*, 51, 1541–1561, <https://doi.org/10.1016/j.dsr.2004.06.006>, 2004.

- 5 Hendricks, M. B., Bender, M. L., Barnett, B. A., Strutton, P., and Chavez, F. P.: Triple oxygen isotope composition of dissolved O₂ in the equatorial Pacific: A tracer of mixing, production, and respiration, *J. Geophys. Res. Oceans*, 110, <https://doi.org/10.1029/2004JC002735>, C12021, 2005.
- Ho, D. T., Law, C. S., Smith, M. J., Schlosser, P., Harvey, M., and Hill, P.: Measurements of air-sea gas exchange at high wind speeds in the Southern Ocean: Implications for global parameterizations, *Geophys. Res. Lett.*, 33, <https://doi.org/10.1029/2006GL026817>, 116611,
10 2006.
- Ho, D. T., Sabine, C. L., Hebert, D., Ullman, D. S., Wanninkhof, R., Hamme, R. C., Strutton, P. G., Hales, B., Edson, J. B., and Hargreaves, B. R.: Southern ocean gas exchange experiment: setting the stage, *J. Geophys. Res. Oceans*, 116, <https://doi.org/10.1029/2010JC006852>, c00F08, 2011a.
- Ho, D. T., Schlosser, P., and Orton, P. M.: On factors controlling air–water gas exchange in a large tidal river, *Estuar. Coast*, 34, 1103–1116,
15 <https://doi.org/10.1007/s12237-011-9396-4>, 2011b.
- Hood, E., Howes, B., and Jenkins, W.: Dissolved gas dynamics in perennially ice-covered Lake Fryxell, Antarctica, *Limnol. Oceanogr.*, 43, 265–272, <https://doi.org/10.4319/lo.1998.43.2.0265>, 1998.
- Howard, E. M., Durkin, C. A., Hennon, G., Ribalet, F., and Stanley, R.: Biological production, export efficiency, and phytoplankton communities across 8000 km of the South Atlantic, *Global Biogeochemical Cycles*, 31, 1066–1088, <https://doi.org/10.1002/2016GB005488>,
20 2017.
- IAEA/WMO: Global Network of Isotopes in Precipitation. The GNIP Database, <http://www.iaea.org/water>, 2016.
- Idso, S. and Gilbert, R.: On the universality of the Poole and Atkins Secchi disk-light extinction equation, *J. Appl. Ecol.*, 11, 399–401, <https://doi.org/10.2307/2402029>, 1974.
- Jähne, B., Huber, W., Dutzi, A., Wais, T., and Ilmberger, J.: Wind/wave-tunnel experiment on the Schmidt number and wave field dependence
25 of air/water gas exchange, in: *Gas transfer at water surfaces*, pp. 303–309, Springer, https://doi.org/10.1007/978-94-017-1660-4_28, 1984.
- Jähne, B., Heinz, G., and Dietrich, W.: Measurement of the diffusion coefficients of sparingly soluble gases in water, *J. Geophys. Res. Oceans*, 92, 10 767–10 776, <https://doi.org/10.1029/JC092iC10p10767>, 1987a.
- Jähne, B., Münnich, K. O., Bösinger, R., Dutzi, A., Huber, W., and Libner, P.: On the parameters influencing air-water gas exchange, *J. Geophys. Res. Oceans*, 92, 1937–1949, <https://doi.org/10.1029/JC092iC02p01937>, 1987b.
- 30 Juranek, L. and Quay, P.: Using Triple Isotopes of Dissolved Oxygen to Evaluate Global Marine Productivity, *Ann. Rev. Mar. Sci.*, 5, 503–524, <https://doi.org/10.1146/annurev-marine-121211-172430>, 2013.
- King, D. and Saltzman, E.: Measurement of the diffusion coefficient of sulfur hexafluoride in water, *J. Geophys. Res. Oceans*, 100, 7083–7088, [https://doi.org/Measurement of the diffusion coefficient of sulfur hexafluoride in water](https://doi.org/Measurement%20of%20the%20diffusion%20coefficient%20of%20sulfur%20hexafluoride%20in%20water), 1995.
- Kohout, A. and Meylan, M.: An elastic plate model for wave attenuation and ice floe breaking in the marginal ice zone, *J. Geophys. Res. Oceans*, 113, <https://doi.org/10.1029/2007JC004434>, 2008.
35
- Krauel, D. P.: The physical oceanography of the Bras d’Or Lakes 1972-1974, Tech. Rep. 570, Fisheries and Marine Service Canada, 1975.
- Landais, A., Barkan, E., and Luz, B.: Record of $\delta^{18}\text{O}$ and ^{17}O -excess in ice from Vostok Antarctica during the last 150,000 years, *Geophys. Res. Lett.*, 35, <https://doi.org/10.1029/2007GL032096>, 2008.
- Laws, E. A.: Photosynthetic quotients, new production and net community production in the open ocean, *Deep-Sea Res. Pt. A*, 38, 143–167, [https://doi.org/10.1016/0198-0149\(91\)90059-O](https://doi.org/10.1016/0198-0149(91)90059-O), 1991.
- Laws, E. A., Falkowski, P. G., Smith, W. O., Ducklow, H., and McCarthy, J. J.: Temperature effects on export production in the open ocean,
5 *Global Biogeochem. Cy.*, 14, 1231–1246, <https://doi.org/10.1029/1999GB001229>, 2000.

- Legendre, L., Ingram, R., and Poulin, M.: Physical control of phytoplankton production under sea ice (Manitounuk Sound, Hudson Bay), *Can. J. Fish. Aquat. Sci.*, 38, 1385–1392, <https://doi.org/10.1139/f81-185>, 1981.
- Legge, O. J., Bakker, D. C., Johnson, M. T., Meredith, M. P., Venables, H. J., Brown, P. J., and Lee, G. A.: The seasonal cycle of ocean-atmosphere CO₂ flux in Ryder Bay, west Antarctic Peninsula, *Geophys. Res. Lett.*, 42, 2934–2942, <https://doi.org/10.1002/2015GL063796>, 2015.
- LeGrande, A. N. and Schmidt, G. A.: Global gridded data set of the oxygen isotopic composition in seawater, *Geophys. Res. Lett.*, 33, <https://doi.org/10.1029/2006GL026011>, L12604, 2006.
- Li, S., Levin, N. E., and Chesson, L. A.: Continental scale variation in ¹⁷O-excess of meteoric waters in the United States, *Geochim. Cosmochim. Acta*, 164, 110–126, <https://doi.org/10.1016/j.gca.2015.04.047>, 2015.
- 15 Li, Z. and Cassar, N.: Satellite estimates of net community production based on O₂/Ar observations and comparison to other estimates, *Global Biogeochem. Cy.*, 30, 735–752, <https://doi.org/10.1002/2015GB005314>, 2016.
- Light, B., Grenfell, T. C., and Perovich, D. K.: Transmission and absorption of solar radiation by Arctic sea ice during the melt season, *J. Geophys. Res. Oceans*, 113, <https://doi.org/10.1029/2006JC003977>, c03023, 2008.
- Light, B., Perovich, D. K., Webster, M. A., Polashenski, C., and Dadic, R.: Optical properties of melting first-year Arctic sea ice, *J. Geophys. Res. Oceans*, 120, 7657–7675, <https://doi.org/10.1002/2015JC011163>, 2015.
- 20 Liss, P. S. and Merlivat, L.: Air-sea gas exchange rates: Introduction and synthesis, in: *The role of air-sea exchange in geochemical cycling*, pp. 113–127, Springer, https://doi.org/10.1007/978-94-009-4738-2_5, 1986.
- Livingstone, D. M. and Imboden, D. M.: The non-linear influence of wind-speed variability on gas transfer in lakes, *Tellus B*, 45, 275–295, <https://doi.org/10.3402/tellusb.v45i3.15729>, 1993.
- 25 Loose, B. and Jenkins, W. J.: The five stable noble gases are sensitive unambiguous tracers of glacial meltwater, *Geophys. Res. Lett.*, 41, 2835–2841, <https://doi.org/10.1002/2013GL058804>, 2014.
- Loose, B. and Schlosser, P.: Sea ice and its effect on CO₂ flux between the atmosphere and the Southern Ocean interior, *J. Geophys. Res. Oceans*, 116, <https://doi.org/10.1029/2010JC006509>, 2011.
- Loose, B., McGillis, W. R., Schlosser, P., Perovich, D., and Takahashi, T.: Effects of freezing, growth, and ice cover on gas transport processes in laboratory seawater experiments, *Geophys. Res. Lett.*, 36, <https://doi.org/10.1029/2008GL036318>, 105603, 2009.
- 30 Loose, B., Miller, L. A., Elliott, S., and Papakyriakou, T.: Sea Ice Biogeochemistry and Material Transport Across the Frozen Interface, *Oceanography*, 24, 202–218, <https://doi.org/10.5670/oceanog.2011.72>, 2011a.
- Loose, B., Schlosser, P., Perovich, D., Ringelberg, D., Ho, D., Takahashi, T., Richter-Menge, J., Reynolds, C., McGillis, W., and Tison, J.-L.: Gas diffusion through columnar laboratory sea ice: Implications for mixed-layer ventilation of CO₂ in the seasonal ice zone, *Tellus B*, 63, 23–39, <https://doi.org/10.1111/j.1600-0889.2010.00506.x>, 2011b.
- 35 Loose, B., McGillis, W. R., Perovich, D., Zappa, C. J., and Schlosser, P.: A parameter model of gas exchange for the seasonal sea ice zone, *Ocean Sci.*, 10, 17–28, <https://doi.org/10.5194/os-10-17-2014>, 2014.
- Loose, B., Lovely, A., Schlosser, P., Zappa, C., McGillis, W., and Perovich, D.: Currents and convection cause enhanced gas exchange in the ice-water boundary layer, *Tellus B: Chemical and Physical Meteorology*, 68, 32803, <https://doi.org/10.3402/tellusb.v68.32803>, 2016.
- Lovely, A., Loose, B., Schlosser, P., McGillis, W., Zappa, C., Perovich, D., Brown, S., Morell, T., Hsueh, D., and Friedrich, R.: The Gas Transfer through Polar Sea ice experiment: Insights into the rates and pathways that determine geochemical fluxes, *J. Geophys. Res. Oceans*, 120, 8177–8194, <https://doi.org/10.1002/2014JC010607>, 2015.
- 5

- Ludin, A., Weppernig, G., Bönisch, G., and Schlosser, P.: Mass spectrometric measurement of helium isotopes and tritium in water samples, Tech. rep., Lamont-Doherty Earth Observatory, Palisades, NY, http://www.ldeo.columbia.edu/~etg/ms_ms/Ludin_et_al_MS_Paper.html, 1998.
- Luz, B. and Barkan, E.: Assessment of oceanic productivity with the triple-isotope composition of dissolved oxygen, *Science*, 288, 2028–2031, <https://doi.org/10.1126/science.288.5473.2028>, 2000.
- Luz, B. and Barkan, E.: The isotopic ratios $^{17}\text{O}/^{16}\text{O}$ and $^{18}\text{O}/^{16}\text{O}$ in molecular oxygen and their significance in biogeochemistry, *Geochim. Cosmochim. Acta*, 69, 1099–1110, <https://doi.org/10.1016/j.gca.2004.09.001>, 2005.
- Luz, B. and Barkan, E.: Variations of $^{17}\text{O}/^{16}\text{O}$ and $^{18}\text{O}/^{16}\text{O}$ in meteoric waters, *Geochim. Cosmochim. Acta*, 74, 6276–6286, <https://doi.org/10.1016/j.gca.2010.08.016>, 2010.
- 15 Luz, B. and Barkan, E.: Proper estimation of marine gross O_2 production with $^{17}\text{O}/^{16}\text{O}$ and $^{18}\text{O}/^{16}\text{O}$ ratios of dissolved O_2 , *Geophys. Res. Lett.*, 38, <https://doi.org/10.1029/2011GL049138>, 2011.
- Luz, B., Barkan, E., Bender, M. L., Thiemens, M. H., and Boering, K. A.: Triple-isotope composition of atmospheric oxygen as a tracer of biosphere productivity, *Nature*, 400, 547, <https://doi.org/10.1038/22987>, 1999.
- Macdonald, R., Carmack, E., and Paton, D.: Using the $\delta^{18}\text{O}$ composition in landfast ice as a record of Arctic estuarine processes, *Mar. Chem.*, 65, 3–24, [https://doi.org/10.1016/S0304-4203\(99\)00007-9](https://doi.org/10.1016/S0304-4203(99)00007-9), 1999.
- 20 Macdonald, R., Kuzyk, Z., and Johannessen, S.: It is not just about the ice: a geochemical perspective on the changing Arctic Ocean, *Journal of Environmental Studies and Sciences*, 5, 288–301, <https://doi.org/10.1007/s13412-015-0302-4>, 2015.
- Macdonald, R. W., Paton, D. W., Carmack, E. C., and Omstedt, A.: The freshwater budget and under-ice spreading of Mackenzie River water in the Canadian Beaufort Sea based on salinity and $^{18}\text{O}/^{16}\text{O}$ measurements in water and ice, *J. Geophys. Res. Oceans*, 100, 895–919, <https://doi.org/10.1029/94JC02700>, 1995.
- 25 MacGilchrist, G., Garabato, A. N., Tsubouchi, T., Bacon, S., Torres-Valdés, S., and Azetsu-Scott, K.: The Arctic Ocean carbon sink, *Deep-Sea Res. Pt. I*, 86, 39–55, 2014.
- Mamyrin, B., Anufriyev, G., Kamenskiy, I., and Tolstikhin, I.: Determination of the isotopic composition of atmospheric helium, *Geochem. Int.*, 7, 498–505, 1970.
- 30 Manning, C. C. and Howard, E. M.: calcGOP: MATLAB functions for the calculation of gross oxygen production from triple oxygen isotope data used in Manning et al. (2017) *Geophysical Research Letters*, release 1.0, Zenodo, <http://dx.doi.org/10.5281/zenodo.376786>, 2017.
- Manning, C. C. and Stanley, R. H. R.: Oxygen/argon, triple oxygen isotope, and CTD data from Bras d’Or Lake, Nova Scotia, Canada, version 2, Zenodo, <http://dx.doi.org/10.5281/zenodo.1011216>, 2017.
- Manning, C. C., Howard, E. M., Nicholson, D. P., Ji, B. Y., Sandwith, Z. O., and Stanley, R. H. R.: Revising estimates of aquatic gross oxygen production by the triple oxygen isotope method to incorporate the local isotopic composition of water, *Geophys. Res. Lett.*, 44, <https://doi.org/10.1002/2017GL074375>, 2017a.
- 35 Manning, C. C., Stanley, R. H. R., Nicholson, D. P., Smith, J. M., Timothy Pennington, J., Fewings, M. R., Squibb, M. E., and Chavez, F. P.: Impact of recently upwelled water on productivity investigated using in situ and incubation-based methods in Monterey Bay, *Journal of Geophysical Research: Oceans*, 122, 1901–1926, <https://doi.org/10.1002/2016JC012306>, 2017b.
- Marra, J.: Approaches to the measurement of plankton production, in: *Phytoplankton Productivity: Carbon assimilation in marine and freshwater ecosystems*, pp. 78–108, Blackwell Publishing, Ltd. Cambridge, Blackwells, 2002.
- Marra, J.: Net and gross productivity: weighing in with ^{14}C , *Aquat. Microb. Ecol.*, 56, 123–131, 2009.

- 5 McPhee, M. G.: Turbulent heat flux in the upper ocean under sea ice, *J. Geophys. Res. Oceans*, 97, 5365–5379, <https://doi.org/10.1029/92JC00239>, 1992.
- Meijer, H. and Li, W.: The use of electrolysis for accurate $\delta^{17}\text{O}$ and $\delta^{18}\text{O}$ isotope measurements in water, *Isot. Environ. Health. Sci.*, 34, 349–369, 1998.
- Moreau, S., Vancoppenolle, M., Zhou, J., Tison, J.-L., Delille, B., and Goosse, H.: Modelling argon dynamics in first-year sea ice, *Ocean Model.*, 73, 1–18, <https://doi.org/10.1016/j.ocemod.2013.10.004>, 2014.
- 10 Morison, J., McPhee, M., Curtin, T., and Paulson, C.: The oceanography of winter leads, *J. Geophys. Res.*, 97, 199–11, 1992.
- Mucci, A. and Page, P.: The water chemistry of cruise 85-036 on Bras d’Or Lake, Cape Breton Island, Nova Scotia, Current Research, Part A, Geological Survey of Canada, Paper 87-1A, 17–24, <https://doi.org/10.4095/122491>, 1987.
- Mundy, C., Gosselin, M., Ehn, J., Gratton, Y., Rossnagel, A., Barber, D. G., Martin, J., Tremblay, J.-É., Palmer, M., Arrigo, K. R., et al.: Contribution of under-ice primary production to an ice-edge upwelling phytoplankton bloom in the Canadian Beaufort Sea, *Geophys. Res. Lett.*, 36, <https://doi.org/10.1029/2009GL038837>, 2009.
- 15 Munro, D. R., Quay, P. D., Juranek, L. W., and Goericke, R.: Biological production rates off the Southern California coast estimated from triple O_2 isotopes and O_2 :Ar gas ratios, *Limnol. Oceanogr.*, 58, 1312–1328, <https://doi.org/10.4319/lo.2013.58.4.1312>, 2013.
- Nicholson, D., Stanley, R. H., and Doney, S. C.: The triple oxygen isotope tracer of primary productivity in a dynamic ocean model, *Global Biogeochem. Cy.*, 28, 538–552, <https://doi.org/10.1002/2013GB004704>, 2014.
- 20 O’Neil, J. R.: Hydrogen and oxygen isotope fractionation between ice and water, *J. Phys. Chem.*, 72, 3683–3684, <https://doi.org/10.1021/j100856a060>, 1968.
- Ortiz-Suslow, D., Haus, B. K., Williams, N., Laxague, N., Reniers, A., and Graber, H. C.: The spatial-temporal variability of air-sea momentum fluxes observed at a tidal inlet, *J. Geophys. Res. Oceans*, 120, 660–676, <https://doi.org/10.1002/2014JC010412>, 2015.
- 25 Overeem, I., Anderson, R. S., Wobus, C. W., Clow, G. D., Urban, F. E., and Matell, N.: Sea ice loss enhances wave action at the Arctic coast, *Geophys. Res. Lett.*, 38, <https://doi.org/10.1029/2011GL048681>, 117503, 2011.
- Papakyriakou, T. and Miller, L.: Springtime CO_2 exchange over seasonal sea ice in the Canadian Arctic Archipelago, *Ann. Glaciol.*, 52, 215–224, <https://doi.org/10.3189/172756411795931534>, 2011.
- Parker, M., Westhead, M., Doherty, P., and Naug, J.: Ecosystem Overview and Assessment Report for the Bras d’Or Lakes, Nova Scotia, Tech. Rep. 2789, Fisheries and Oceans Canada, <http://publications.gc.ca/pub?id=9.618303&sl=0>, 2007.
- 30 Petrie, B.: Sea level variability in the Bras d’Or Lakes, *Atmos. Ocean*, 37, 221–239, <https://doi.org/10.1080/07055900.1999.9649627>, 1999.
- Petrie, B. and Bugden, G.: The physical oceanography of the Bras d’Or Lakes, *Proc. N. S. Inst. Sci.*, 42, <https://doi.org/10.15273/pnsis.v42i1.3586>, 2002.
- Petrie, B. and Raymond, J.: The oceanography of the Bras d’Or Lakes: General introduction, *Proc. N. S. Inst. Sci.*, 42, <https://doi.org/10.15273/pnsis.v42i1.3589>, 2002.
- 35 Porcelli, D., Ballentine, C. J., and Wieler, R.: An overview of noble gas geochemistry and cosmochemistry, *Rev. Mineral. Geochem.*, 47, 1–19, <https://doi.org/10.2138/rmg.2002.47.1>, 2002.
- Prokopenko, M. G., Pauluis, O. M., Granger, J., and Yeung, L. Y.: Exact evaluation of gross photosynthetic production from the oxygen triple-isotope composition of O_2 : Implications for the net-to-gross primary production ratios, *Geophys. Res. Lett.*, 38, <https://doi.org/10.1029/2011GL047652>, 2011.
- Quay, P., Peacock, C., Björkman, K., and Karl, D.: Measuring primary production rates in the ocean: Enigmatic results between incubation and non-incubation methods at Station ALOHA, *Global Biogeochem. Cy.*, 24, <https://doi.org/10.1029/2009GB003665>, 2010.

- 5 Reuer, M., Barnett, B., Bender, M., Falkowski, P., and Hendricks, M.: New estimates of Southern Ocean biological production rates from O_2/Ar ratios and the triple isotope composition of O_2 , *Deep-Sea Res. Pt. I*, 54, 951–974, <https://doi.org/10.1016/j.dsr.2007.02.007>, 2007.
- Roberts, J. and Roberts, T. D.: Use of the Butterworth low-pass filter for oceanographic data, *J. Geophys. Res. Oceans*, 83, 5510–5514, <https://doi.org/10.1029/JC083iC11p05510>, 1978.
- Rutgers van der Loeff, M. M., Cassar, N., Nicolaus, M., Rabe, B., and Stimac, I.: The influence of sea ice cover on air-sea gas exchange estimated with radon-222 profiles, *J. Geophys. Res. Oceans*, 119, 2735–2751, <https://doi.org/10.1002/2013JC009321>, 2014.
- 10 Salonen, K., Leppäranta, M., Viljanen, M., and Gulati, R.: Perspectives in winter limnology: closing the annual cycle of freezing lakes, *Aquat. Ecol.*, 43, 609–616, <https://doi.org/10.1007/s10452-009-9278-z>, 2009.
- Sarma, V., Abe, O., Hashimoto, S., Hinuma, A., and Saino, T.: Seasonal variations in triple oxygen isotopes and gross oxygen production in the Sagami Bay, central Japan, *Limnol. Oceanogr.*, 50, 544–552, <https://doi.org/10.4319/lo.2005.50.2.0544>, 2005.
- 15 Saucier, F., Senneville, S., Prinsenber, S., Roy, F., Smith, G., Gachon, P., Caya, D., and Laprise, R.: Modelling the sea ice-ocean seasonal cycle in Hudson Bay, Foxe Basin and Hudson Strait, Canada, *Clim. Dynam.*, 23, 303–326, <https://doi.org/10.1007/s00382-004-0445-6>, 2004.
- Schmidt, G., Bigg, G. R., and Rohling, E. J.: Global Seawater Oxygen-18 Database - v1.21, <http://data.giss.nasa.gov/o18data/>, accessed September 1, 2016, 1999.
- 20 Schmidt, G. A.: Forward modeling of carbonate proxy data from planktonic foraminifera using oxygen isotope tracers in a global ocean model, *Paleoceanography*, 14, 482–497, <https://doi.org/10.1029/1999PA900025>, 1999.
- Smith, D. C. and Morison, J. H.: A numerical study of haline convection beneath leads in sea ice, *J. Geophys. Res. Oceans*, 98, 10 069–10 083, <https://doi.org/10.1029/93JC00137>, 1993.
- Spitzer, W. S. and Jenkins, W. J.: Rates of vertical mixing, gas exchange and new production: Estimates from seasonal gas cycles in the upper ocean near Bermuda, *J. Mar. Res.*, 47, 169–196, <https://doi.org/10.1357/002224089785076370>, 1989.
- 25 Squire, V. A., Dugan, J. P., Wadhams, P., Rottier, P. J., and Liu, A. K.: Of ocean waves and sea ice, *Ann. Rev. Fluid Mech.*, 27, 115–168, <https://doi.org/10.1016/j.coldregions.2007.04.007>, 1995.
- Stanley, R., Kirkpatrick, J., Cassar, N., Barnett, B., and Bender, M.: Net community production and gross primary production rates in the western equatorial Pacific, *Global Biogeochem. Cy.*, 24, GB4001, <https://doi.org/10.1029/2009GB003651>, 2010.
- 30 Stanley, R. H., Sandwith, Z. O., and Williams, W. J.: Rates of summertime biological productivity in the Beaufort Gyre: A comparison between the low and record-low ice conditions of August 2011 and 2012, *J. Mar. Sys.*, 147, 29–44, <https://doi.org/10.1016/j.jmarsys.2014.04.006>, 2015.
- Strain, P. M., Bugden, G., Brylinsky, M., and Denny, S.: Nutrient, dissolved oxygen, trace metal and related measurements in the Bras d’Or Lakes, 1995–97, *Can. Data Rep. Fish Aquat. Sci.*, 1073, 56 pp., 2001.
- 35 Sweeney, C., Gloor, E., Jacobson, A. R., Key, R. M., McKinley, G., Sarmiento, J. L., and Wanninkhof, R.: Constraining global air-sea gas exchange for CO_2 with recent bomb ^{14}C measurements, *Global Biogeochem. Cy.*, 21, <https://doi.org/10.1029/2006GB002784>, gB2015, 2007.
- Takahashi, T., Sutherland, S. C., Wanninkhof, R., Sweeney, C., Feely, R. A., Chipman, D. W., Hales, B., Friederich, G., Chavez, F., Sabine, C., et al.: Climatological mean and decadal change in surface ocean pCO_2 , and net sea-air CO_2 flux over the global oceans, *Deep-Sea Res. Pt. II*, 56, 554–577, <https://doi.org/10.1016/j.dsr2.2008.12.009>, 2009.
- 5 Tan, F. and Strain, P.: The distribution of sea ice meltwater in the eastern Canadian Arctic, *J. Geophys. Res. Oceans*, 85, 1925–1932, <https://doi.org/10.1029/JC085iC04p01925>, 1980.

- Timsic, S. and Patterson, W. P.: Spatial variability in stable isotope values of surface waters of Eastern Canada and New England, *J. Hydrol.*, 511, 594–604, <https://doi.org/10.1016/j.jhydrol.2014.02.017>, 2014.
- 1160 Top, Z., Martin, S., and Becker, P.: A laboratory study of dissolved noble gas anomaly due to ice formation, *Geophys. Res. Lett.*, 15, 796–799, <https://doi.org/10.1029/GL015i008p00796>, 1988.
- Tortell, P. D. and Long, M. C.: Spatial and temporal variability of biogenic gases during the Southern Ocean spring bloom, *Geophys. Res. Lett.*, 36, <https://doi.org/10.1029/2008GL035819>, 2009.
- Tortell, P. D., Asher, E. C., Ducklow, H. W., Goldman, J. A., Dacey, J. W., Grzyski, J. J., Young, J. N., Kranz, S. A., Bernard, K. S., and
 1165 Morel, F. M.: Metabolic balance of coastal Antarctic waters revealed by autonomous pCO₂ and ΔO₂/Ar measurements, *Geophys. Res. Lett.*, 41, 6803–6810, <https://doi.org/10.1002/2014GL061266>, 2014.
- Twiss, M., McKay, R., Bourbonniere, R., Bullerjahn, G., Carrick, H., Smith, R., Winter, J., D'souza, N., Furey, P., Lashaway, A., et al.: Diatoms abound in ice-covered Lake Erie: An investigation of offshore winter limnology in Lake Erie over the period 2007 to 2010, *J. Great Lakes Res.*, 38, 18–30, <https://doi.org/10.1016/j.jglr.2011.12.008>, 2012.
- 1170 Vaughan, D., Comiso, J., Allison, I., Carrasco, J., Kaser, G., Kwok, R., Mote, P., Murray, T., Paul, F., Ren, J., Rignot, E., Solomina, O., Steffen, K., and Zhang, T.: Observations: Cryosphere, in: *Climate Change 2013: The Physical Science Basis. Contribution of Working Group I to the Fifth Assessment Report of the Intergovernmental Panel on Climate Change*, edited by Stocker, T., Qin, D., Plattner, G.-K., Tignor, M., Allen, S., Boschung, J., Nauels, A., Xia, Y., Bex, V., and Midgley, P., chap. 4, pp. 317–482, Cambridge University Press, Cambridge, United Kingdom and New York, NY, USA, 2013.
- 1175 Wanninkhof, R.: Relationship between wind speed and gas exchange over the ocean revisited, *Limnol. Oceanogr. Meth.*, 12, 351–362, 2014.
- Wanninkhof, R., Ledwell, J. R., Broecker, W. S., and Hamilton, M.: Gas exchange on Mono Lake and Crowley Lake, California, *J. Geophys. Res. Oceans*, 92, 14 567–14 580, <https://doi.org/10.1029/JC092iC13p14567>, 1987.
- Wanninkhof, R., Asher, W., Weppernig, R., Chen, H., Schlosser, P., Langdon, C., and Sambrotto, R.: Gas transfer experiment on Georges Bank using two volatile deliberate tracers, *J. Geophys. Res.*, 98, 20 237–20 248, <https://doi.org/10.1029/93JC01844>, 1993.
- 1180 Wanninkhof, R., Asher, W. E., Ho, D. T., Sweeney, C., and McGillis, W. R.: Advances in quantifying air-sea gas exchange and environmental forcing, *Ann. Rev. Mar. Sci.*, 1, 213–244, <https://doi.org/annurev.marine.010908.163742>, 2009.
- Watson, A. J., Upstill-Goddard, R. C., and Liss, P. S.: Air–sea gas exchange in rough and stormy seas measured by a dual-tracer technique, *Nature*, 349, 145–147, <https://doi.org/10.1038/349145a0>, 1991.
- Weeks, W. F. and Ackley, S. F.: The Growth, Structure, and Properties of Sea Ice, in: *The Geophysics of Sea Ice*, edited by Untersteiner, N., pp. 9–164, Springer US, Boston, MA, https://doi.org/10.1007/978-1-4899-5352-0_2, 1986.
- 1185 Weiss, R. F.: Solubility of helium and neon in water and seawater, *J. Chem. Eng. Data*, 16, 235–241, <https://doi.org/10.1021/jc60049a019>, 1971.
- Welch, H. E., Bergmann, M. A., Jorgenson, J. K., and Burton, W.: A subice suction corer for sampling epontic ice algae, *Can. J. Fish. Aquat. Sci.*, 45, 562–568, <https://doi.org/10.1139/f88-067>, 1988.
- 1190 Wurgaft, E., Shamir, O., and Angert, A.: Technical Note: The effect of vertical turbulent mixing on gross O₂ production assessments by the triple isotopic composition of dissolved O₂, *Biogeosciences*, 10, 8363–8371, <https://doi.org/10.5194/bgd-10-14239-2013>, 2013.
- Yang, B., Sheng, J., Hatcher, B. G., and Petrie, B.: Numerical study of circulation and temperature-salinity distributions in the Bras d'Or Lakes, *Ocean Dyn.*, 57, 245–268, <https://doi.org/10.1007/s10236-007-0120-7>, 2007.

- Zhou, J., Delille, B., Eicken, H., Vancoppenolle, M., Brabant, F., Carnat, G., Geilfus, N.-X., Papakyriakou, T., Heinesch, B., and Tison, J.-L.: Physical and biogeochemical properties in landfast sea ice (Barrow, Alaska): Insights on brine and gas dynamics across seasons, *J. Geophys. Res. Oceans*, 118, 3172–3189, <https://doi.org/10.1002/jgrc.20232>, 2013.
- Zhou, J., Delille, B., Brabant, F., and Tison, J.-L.: Insights into oxygen transport and net community production in sea ice from oxygen, nitrogen and argon concentrations, *Biogeosciences*, 11, 5007–5020, <https://doi.org/10.5194/bg-11-5007-2014>, 2014.