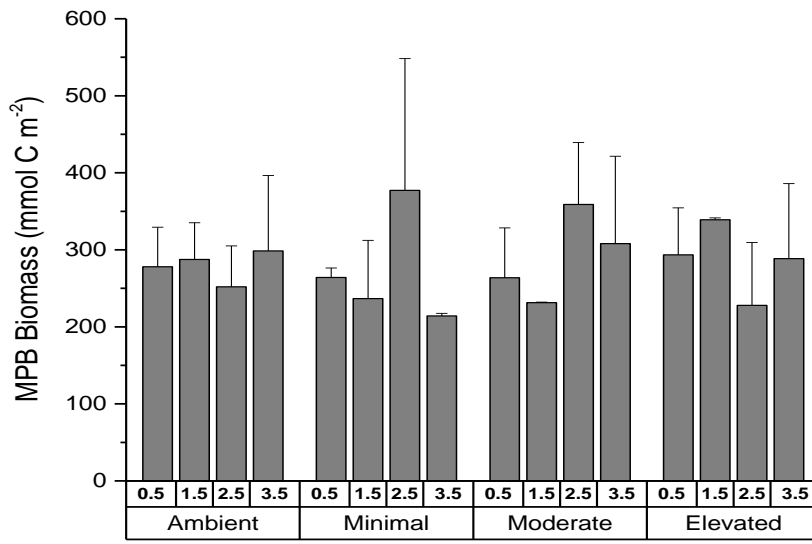


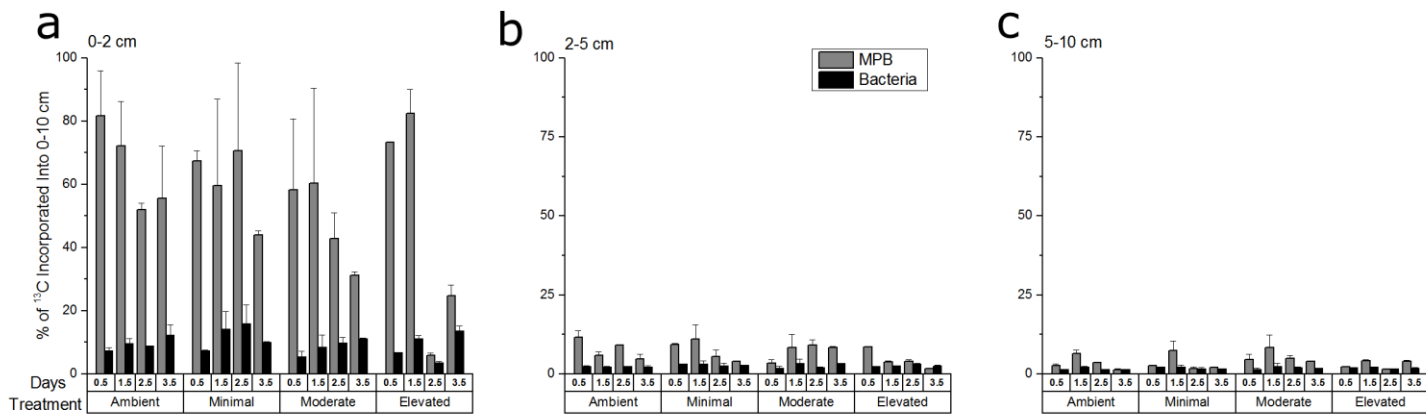
1

2 **Supplemental Figure 1:** Dissolved inorganic nitrogen in the overlying core waters during
 3 sampling for light and dark incubations. The solid line is when cores were placed into
 4 treatment tanks prior to the start of incubation. Dashed lines represent additional treatment
 5 pulses (N= NH_4^+ , P= PO_4^{3-} , Si= SiO_3) that occurred during incubation.

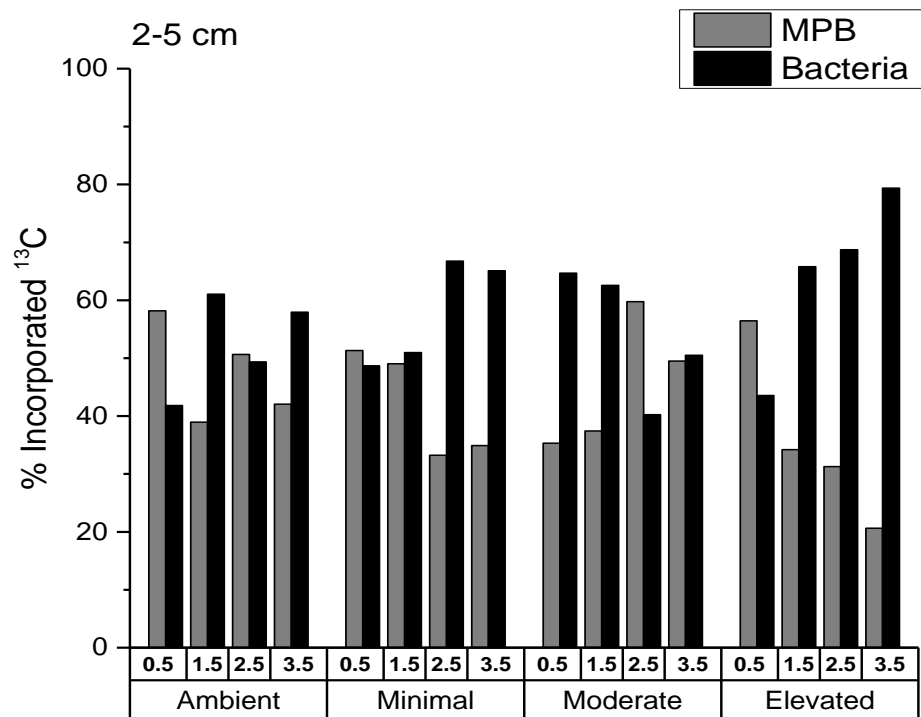


6

7 **Supplemental Figure 2:** MPB carbon biomass in 0 to 2 cm sediments calculated from
 8 chlorophyll α concentrations, assuming a C:Chl- α ratio of 40 (mean \pm SE).



10 **Supplemental Figure 3:** Excess ^{13}C incorporation into MPB and bacterial biomass at depths
 11 a) 0-2 cm, b) 2-5 cm and c) 5-10 cm as a portion of the total ^{13}C in 0-10 cm sediment OC at
 12 each time.

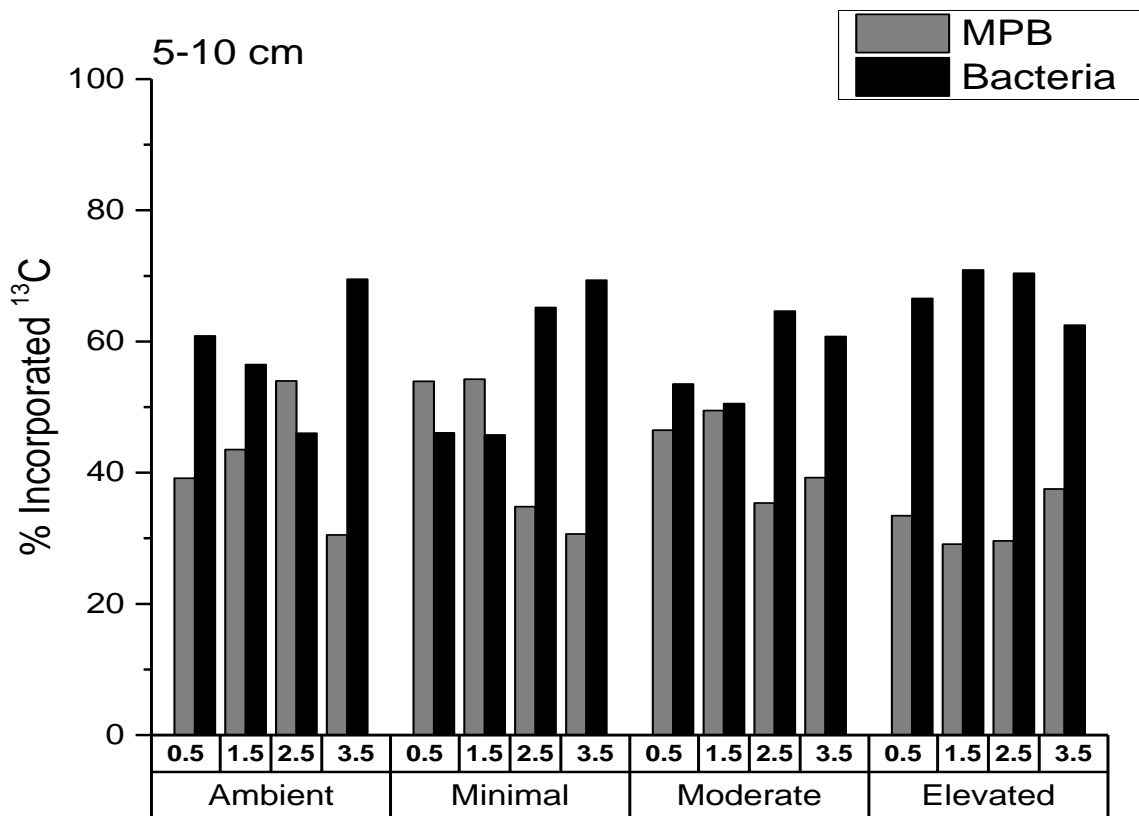


13

14 **Supplemental Figure 4:** Excess ^{13}C incorporation into MPB and bacterial biomass at a depth
 15 of 2-5 cm as a percentage of the total ^{13}C in microbial biomass at 2-5 cm at each time period.

16 There are no error bars as PLFAs were analyzed for only one replicate sample from each time
 17 period.

18



19

20 **Supplemental Figure 5:** Excess ^{13}C incorporation into MPB and bacterial biomass at a depth
 21 of 5 -10 cm as a percentage of the total ^{13}C in microbial biomass at 5-10 cm at each time
 22 period. There are no error bars as PLFAs were analyzed for only one replicate sample from
 23 each time period.

24