

## Review 1 Response

Reviewer 1 had three main comments regarding the analysis completed in this manuscript. They include the trend results reported for the Drake Passage region, the definition of the Subpolar Seasonally Stratified biome, and lastly the time period considered for analysis. We thank the reviewer for their thorough response to our manuscript and will respond to each of their comments and concerns below.

C1: The first specific comment refers to the trends reported in the manuscript and the “newness” of these results. The reviewer refers to previous analyses including Takahashi et al. 2014, Munro et al. 2015, and Landschützer et al. 2015 and questions why our results are different and how they represent a new analysis. We acknowledge that the trends for the SPSS biome as a whole are not groundbreaking results (similar analysis done in Fay and McKinley, 2013 and further discussed in Fay et al. 2014), but remind the reviewer that the purpose of our manuscript is the (as yet unexplored) comparison of the larger biome to the Drake Passage region. In fact, each of the papers referenced by the reviewer uses a different data set for analysis: Takahashi et al. 2014 uses the LDEO database, Munro et al. 2015 uses underway Drake Passage data, and Landschützer et al. 2015 results are based on a neural network interpolation method. Besides these differences in the datasets, small differences in analysis method can significantly influence the resulting trends, specifically for the Southern Ocean (Fay et al. 2014).

The reviewer highlights the difference between our reported trends for SOCAT-DP and the findings reported in Munro et al. 2015. The trends are not statistically different given their reported uncertainties ( $1.52 \pm 0.15 \mu\text{atm/yr}$  in Munro et al. 2015 and  $1.33 \pm 0.16 \mu\text{atm/yr}$  in this analysis for years 2002-2015). Many differences exist in the analysis methodology, which can account for these differences. Munro et al. average underway Drake Passage data spatially to the four defined regions sitting parallel to the mean flow of the ACC. In this analysis, we use data from the SOCAT dataset (which has its own quality control methods and does not necessarily include all underway Drake Passage data) and average spatially to  $1^\circ \times 1^\circ$  grid cells. Text was added to the manuscript to elucidate these differences. The reviewer’s suggestion to include a table of trends shown in Figure 5 is much appreciated and is now included as a supplementary table.

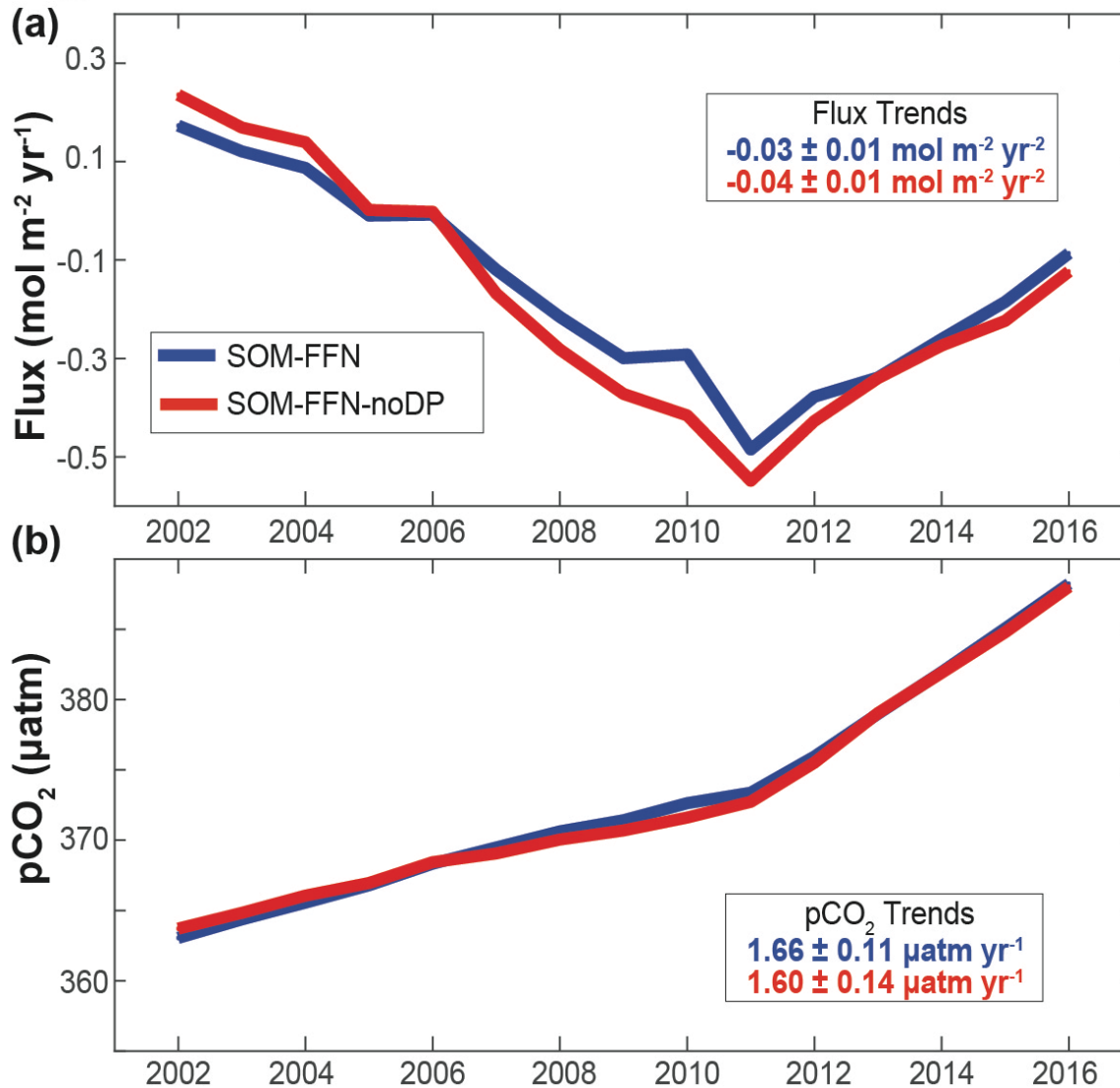
The reviewer suggested also that we further discuss the differences between the northern and southern portions of the Drake Passage region. We did analyze our trends north and south of the front and find results that agree with conclusions presented in other research (Munro et al. 2015) that the northern section reports higher trends than the southern portion and that the seasonal cycle south of the front is significantly different from that in the north. Munro et al. 2015 discusses the reasons behind this difference and therefore we did not find it necessary to investigate in more detail. We have added to the text to recall these previous findings more clearly, and note that our overall results do not change when looking at annual trends for SOCAT-DP and SOCAT-noDP: North of the front, trends for SOCAT-DP and SOCAT-noDP are not statistically different while South of the front we see lower trends overall as seen by others, but again, the SOCAT-DP and SOCAT-noDP trends are not statistically different from one another. Therefore, our conclusions regarding the representativity of the Drake Passage to the larger subpolar region remain unchanged.

The last portion of this comment refers to Figure 6 and the change seen in the flux and  $\text{pCO}_2$  trends around 2011. We agree that this is an interesting finding, which has also been highlighted in Gregor et al. 2018. Additionally, other efforts are currently underway that focus explicitly on the recent trend stagnation/reversal, its spatial structure and its drivers (e.g. Keppler and Landschützer, in prep). We disagree however that comparing subtrends for 2002-2011 and 2011-2015 in this study would be a valuable addition as the second time period is quite short and as previous analysis has shown, trends over short time series are highly influenced by the specific start and end year and potential anomalies that occur in those years, and are often not indicative of a larger overall shift. It is outside of the scope of this paper to investigate this potential shift in 2011, but it would be a potential next step for research building off of this paper.

We do however agree that it could be confusing to the reader that for Figure 6 we utilize a different region for the SOM-FFN sensitivity test. We have remade this figure using the SPSS biome as the region. While the axes of the figure are different because of a mean offset of the flux and pCO<sub>2</sub> found in this more southern region, the trends remain indistinguishable between the SOM-FFN and SOM-FFN-noDP. We have replaced Figure 6 in the manuscript.

Luke Gregor, Schalk Kok, and Pedro M. S. Monteiro, Biogeosciences, 15, 2361 2378, <https://doi.org/10.5194/bg-15-2361-2018>, 2018).

**Figure 6**



C2: The reviewer suggests including the definition of the SPSS biome in addition to referencing Fay & McKinley, 2014. We have added this definition. The SPSS biome covers nearly all of the region between the tip of South America and the Antarctic Peninsula, which is not influenced by ice. Additionally, for this analysis, we eliminate data within 50km of land (as defined by the SOCAT distance to land reported value) so as to further ensure we are not including data that could be influenced by runoff and ice melt. As pointed out in the reviewer comment, the region in

the SPSS biome which lies north and south of the Antarctic Polar Front does exhibit a gradient in  $p\text{CO}_2$  (Munro et al. 2015). We account for the possibility of background gradients influencing trends due to sparse sampling over the large biomes by removing a background climatology before averaging up to biome scale. We refer the reviewer to McKinley et al. 2011 and Fay & McKinley, 2013 for further details of our methodology.

C3: As discussed in response to C1, we have remade Figure 6 to focus on the SPSS biome region, but also extended the timeseries through 2016 with an updated SOM-FFN product. We thank the reviewer for this suggestion. We agree that there are interesting shifts evident in the time series, however that analysis is not in the scope of this paper and not related to the purpose of Figure 6 as it relates to this work. We are aware of others working towards understanding this shift and we are interested to see if it continues to appear as a persistent signal as additional years of observations allow the product to be extended. We also suggest the recent publication by Gregor et al. 2018 as it discusses drivers of the Southern Ocean using the SOM-FFN as well as two additional products over a similar time period.

Additionally, the reviewer's comments that we have data through 2017 are partially incorrect. SOCATv5, which this manuscript has been updated with, includes data through December 2016 with only few data in January 2017. The portion of this study that shows data for 2017 is simply the comparison between the underway Drake Passage data and the SOCCOM floats. Additionally, as it relates to the SOM-FFN product, the most recent update extends to December 2016 as it is only based on years with complete SOCAT data coverage and therefore cannot be extended any further until the next SOCAT release (SOCATv6, expected summer 2018).

C4: We thank the author for their opinion on how the SOCCOM float comparisons seem disjointed from the previous portion of the manuscript. We have worked on the transitions to make this less abrupt. Our analysis of trends and seasonality show that there is no statistically significant difference between the Drake Passage region and the larger subpolar Southern Ocean, given the ship-based data available. We see this next section as a lead-in to future work that has the potential to increase the available observations in this sparsely sampled region, ultimately potentially lowering our uncertainty on these trends and seasonal cycles.

While the reviewer brings up many great questions and suggestions regarding how to incorporate SOCCOM float data and how it can lead to new understandings when compared with SOCAT and SOM-FFN, we direct them to forthcoming publications (Gray et al. in review, Gray et al. in prep.) which focus on these questions in much more detail. Our preliminary fine-scale comparison of the SOCCOM floats to underway Drake Passage data (Figure 8) provides an important measure of confidence for possible future efforts to incorporate float data into the SOCAT database. Much work is currently being done on this topic and it is an exciting emerging topic for the ocean carbon community.

Other comments and minor comments:

OC1: Line 56-64: Authors recall previous results that showed decreasing  $\text{CO}_2$  sink in the SO (80s-90s) followed with increasing sink (since 2002). Interestingly, one result presented in this paper (Figure 6a) suggests a relatively stable sink over 2011-2015. This result is new and should be discussed in the paper. We thank the author for their suggestion but feel that a thorough discussion of this is outside the scope of this paper. Additionally, these findings are not entirely new as they have been shown in Gregor et al., 2018 who compare the sea surface  $p\text{CO}_2$  and its drivers across various products.

OC2: Line 110-120: DPT data. Authors list the properties measured during DPT. Not sure to understand why they refer to "TCO<sub>2</sub>, calculate nutrient and carbonate parameters", apparently not used in this manuscript. However, TCO<sub>2</sub> data might be used with  $p\text{CO}_2$  to compare pH from SOCCOM floats (suggestion). These data might be also used to explain why authors conclude

that seasonality is “controlled by a combination of temperature and deep water mixing effects”. However, process analysis is not presented in this study. We agree that it may cause confusion that we mention additional parameters measured as part of the Drake Passage time series but do not discuss or utilize them in our analysis. We have revised this paragraph in an attempt to clarify this. The other suggestions are reiterated in further reviewer comments and will be responded to accordingly.

OC3: Line 121-129: SOCAT data: Authors should specify in more detail the data they use; are they use all original SOCAT data (WOCE flag 2) with cruise flags A,B,C,D,E or only A,B,C,D (i.e. not include data from buoys, see also comment below for Figure 3) ? SOCAT-V4 is used here, but SOCAT-V5 was made public in June. Would it be possible to extend your analysis with SOCAT-V5 (SOM-FFN product should be available with SOCAT-V5, Le Quéré et al, 2017). Although it is specified later (line 190), authors should indicate in this section that they construct their own monthly 1x1 fields based on SOCAT original data (i.e. they not use SOCAT gridded products). We have updated our analysis to SOCATv5. We have added the specific WOCE and cruise flags included in our analysis. We feel that the explanation of our monthly 1°x1° calculations is best suited in the methods section and restrict the dataset discussion to an overall description of the actual data that is included.

OC4: Line 123: Detail: Data in 1957-1958 were first included and QCed in SOCAT-V3 (Bakker et al 2016). We thank the reviewer for this clarification. We have reworded this paragraph and this portion of the statement was removed for clarity.

OC5: Line 130-144: SOM-FFN: Could you specify how the data are extracted from SOM-FFN for the SPSS biome: is it based on SST criteria (and from SOM-FFN SST) or Lat/Long grid ? The data are extracted based on lat/lon criteria.

OC6: Line 150: pCO<sub>2</sub> from floats are derived from pH and reconstructed alkalinity. As this study is focus on DPT data, it would be interesting to show first the pH cycles (measured by floats) and compare with pH data calculated from pCO<sub>2</sub>/TCO<sub>2</sub> DPT data. Also, how well TA is reproduced in this region (either based on TA/SSS/SST relations or TCO<sub>2</sub>/pCO<sub>2</sub> data ?). Recall however that uncertainty on derived pCO<sub>2</sub> is not very sensitive to TA (Williams et al., 2017). We thank the reviewer for this suggestion but feel it is outside of the scope of this analysis as the comparison between floats and the DPT is preliminary and there is much potential future work that would constitute an additional manuscript.

OC7: Line 150: Johnson and Claustre, (2016) not in reference. Thank you for pointing out this omission. It has been added to the reference list.

OC8: Line 157: Authors have now in hand data to explore if the merge of pCO<sub>2</sub> underway and from floats would be useful to include in SOCAT (a question now regularly discussed in SOCAT community). Why not merging these data now and re-evaluate trends over 2002-2017 (with or without floats)? The results would be really supportive to progress on international data synthesis. We thank the reviewer for this suggestion but feel it is outside of the scope of this analysis. Other groups are currently working on this topic using a variety of approaches (Gray et al. in review, Gray et al. in prep.).

OC9: Line 170: SPSS: the analysis is strongly based on this biome. The biome definition should be recalled (is it SST<8°C or 4>SST>9°C ?); is this criteria suitable for all seasons and all waters in DP? For the interannual pCO<sub>2</sub> variability analysis, is the SPSS biome boundary used here is climatological or interannual (Fay and McKinley, 2014)? Maybe interannual variability of the biome is minor for this analysis. We first direct to our response to the reviewer’s second major point (C2) where we address the biome definition. We have added the definition to the manuscript. In regard to the question of if this criteria is suitable for “all waters in DP”, the point of the biome definition is not to encompass the DP but to define waters that exhibit subpolar traits. Further explanation of the biome assignments and history of definition is available in Fay &

McKinley, 2014. The biomes used here are climatological. Fay & McKinley 2014 also show how biome area changes as a function of year if interannual biomes are considered and their findings show that the Southern Ocean SPSS biome area does not vary much for years 1998-2010.

OC10: Line 181: SPSS versus PAZ: authors indicate that conclusions remain unchanged. However, pCO<sub>2</sub> trends seem significantly different especially in austral winter (Figure 5 and sup. Figure 3). This should be discussed in section “4.3 Trends”. We thank the reviewer for this suggestion. This portion of the manuscript has changed during the revision process but we acknowledge that the results shown initially did produce different results in the austral winter. Our statement about conclusions remaining unchanged referred to the trends all being indistinguishable when using the “DP”, “no-DP”, or “all” datasets (gray, green, and blue bars in each of the respective figures). The fact that trends are different for the PAZ versus the SPSS biome is understandable given the different areas they cover. Specifically looking at the Drake Passage itself, the PAZ has a much more limited spatial area in that region than that encompassed by the SPSS biome. We have elaborated on this comparison in our revised version section 4.3 as suggested.

OC11: Line 210: Seasonal cycle: mean seasonal pCO<sub>2</sub> amplitude in the SPSS is 23  $\mu$ atm. This is very coherent with previous studies including low amplitude compared to north SPSS (e.g. see SO-SPSS results for all method in SOCOM, Rödenbeck et al, 2015). But interestingly, amplitude of pCO<sub>2</sub> seasonality derived from floats in the Polar Antarctic Zone seems much larger (Williams et al., 2017) with some floats showing winter pCO<sub>2</sub> much higher than in the atmosphere, a signal apparently not revealed in SOCAT-DP, SOCAT- noDP, or SOM-FFN (Figure 2). On the other hand, in the DP, Munro et al (2015) reported seasonal cycles significantly different in the north and south (large cycle in the north, small cycle in the south). These results should be included in the discussion. We have added additional discussion of these comparison studies. We would like to point out however that the referenced comparison to Williams et al. 2017 for amplitudes derived from floats in the PAZ is in fact only based on one float which has one complete seasonal cycle as shown in Figure 5c of Williams et al. 2017. Therefore it would not be unexpected for one occurrence to differ from a mean or climatological value based on decades of data.

OC12: Line 216-217: If processes are not evaluated here (SST versus TCO<sub>2</sub>), add a reference (e.g. Munro et al., 2015). Reference has been added.

OC13: Line 218-220: For clarity, specify that original xCO<sub>2</sub> (in ppm) data for atmospheric concentrations are converted to pCO<sub>2</sub> (in  $\mu$ atm). Are the atmospheric values represent global mean or only southern hemisphere? Units have been changed to correspond directly with reference provided and “global” has been added to clarify region.

OC14: Line 221: Results and discussion on uncertainty of the seasonal mean are not clear (for me). Compared to measurements accuracy (2-5  $\mu$ atm) these uncertainties seem small (5  $\mu$ atm or less) suggesting that seasonal cycle is relatively well constrained with available observations. Correct? Measurement accuracy on underway pCO<sub>2</sub> systems is estimated to be  $\pm$  2 $\mu$ atm (Pierrot et al. 2009), and SOCAT QC flags included in this analysis list an accuracy of <5  $\mu$ atm. The uncertainty of the seasonal mean presented in Figure 2 represent the standard error around the mean for the available years of data, by month. These errors are indeed small (around 5 $\mu$ atm). We have added further discussion into this section to clarify for readers and distinguish between measurement accuracy and the errors reported here.

Pierrot, D., Neill, C., Sullivan, K., Castle, R., Wanninkhof, R., Luger, H., Johannessen, T., Olsen, A., Feely, R. A., and Cosca, C. E.: Recommendations for autonomous underway pCO<sub>2</sub> measuring systems and data reduction routines, Deep-Sea Res. Pt. II, 512–522, 2009.

OC15: Line 227: What is the origin of the pCO<sub>2</sub> peak in June (in both SPSS and PAZ)? An anomaly related to a specific location, cruises, year? Is such signal also seen in floats? Why this is not reproduced in SOM-FNN? The June peak in the SOCAT-noDP dataset seasonal cycle is

due to high pCO<sub>2</sub> observations reported in June 2008 just downstream of the Drake Passage (and therefore in the SOCAT-noDP dataset). The bar plots below the seasonal cycles in Figure 2 and Supplementary Figure 2 show the number of years of data available for each specific month. There are very few years available for June, and the data that is available for SPSS is occurs in years 2004 and 2008 only and is all located just downstream of the Drake Passage. Additionally, preliminary analysis of floats in the SPSS region do not show a consistent signal of a June peak however further analysis would be required to make broader conclusions for float seasonal cycles. The SOM-FFN product assembles data from around the globe and reconstructs them using monthly 1°x1° driver fields. In case of local events that are not represented in these “coarse” driver fields, the SOM-FFN method is likely to smooth out small scale and high frequency variability.

OC16: Line 230: Figure 3: I am surprised some data in SOCAT are not (apparently) seen in austral winter (JJA). Maybe change the color scale to better highlight the locations of the data (white-yellow not very clear on this figure). I would suspect authors used SOCAT-V4 for Cruises with Flag A, B, C, D, i.e. pCO<sub>2</sub> data from drifting buoys (flag E) not included. (however, later in this paper authors use pCO<sub>2</sub> derived from pH SOCCOM floats). If this is correct, authors should specify why they are not using all SOCAT-V4 data, including pCO<sub>2</sub> from 14 drifting buoys in the S.O. in 2002-2011 (and one launched in DP). We have changed the color bar on Figure 3 in order to improve the clarity of the figure. As stated above, and added to the manuscript, we now utilize SOCATv5 however we maintain only data with QC Flags A-D and do not include drifting buoys. One reason is to remain consistent with how SOCAT calculates their gridded products which many groups use for their analysis. Another reason is that data with QC flags A-D have uncertainty values <5 µatm as compared to estimated accuracy better than 10 µatm for flag E data. The portion of the paper that presents pCO<sub>2</sub> data calculated from SOCCOM floats is kept separate and used only as a comparison in this case and the higher uncertainty levels are clearly presented and discussed. Future work could continue this comparison between SOCCOM float observations and those of the drifting buoys in the Southern Ocean, specifically with regard to crossover instances between the two.

OC17: Line 255: For the anomaly in June could you explain why you “expect data to be less similar to that collected in the Drake Passage.” This statement references results shown in Figure 4b, however give that this figure has not been presented or discussed yet at this point of the manuscript we have reworded the sentence to add clarification of our point.

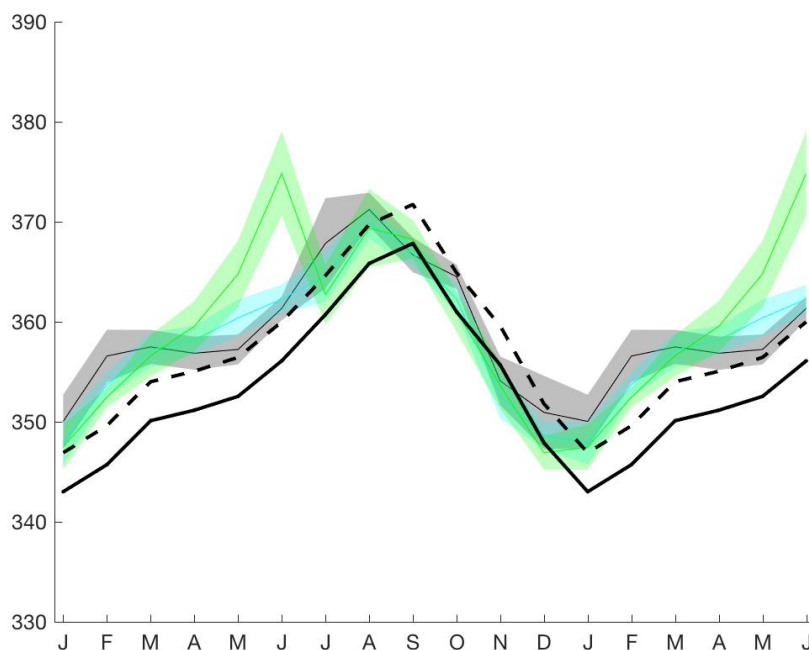
OC18: Line 265: Authors indicate that “the Drake Passage seasonal cycle is representative of the broader SPSS biome seasonality, based on the available observations to date.” However recent data from floats suggest high pCO<sub>2</sub> in winter, well above 400 µatm (Williams et al. 2017) and one would conclude that DP is not always representative of the SPSS. The statement referred to here is in reference to Figure 2, which shows that the seasonal cycles do not differ significantly for SOCAT data inside and outside of the Drake Passage region defined. We have added text to clarify that this does not take into account float data. Additionally, recent float data showing high pCO<sub>2</sub> in winter as mentioned, does not necessarily preclude that the DP is not representative of the SPSS as implied by the reviewer. In fact, the DPT frequently records observed pCO<sub>2</sub> higher than 400 µatm (Figure 7a,c).

OC19: Line 267: Again, in May-June, some data from buoys are available in SOCAT (values ranging between 320 and 400 µatm for these months). Are these data used in your study? As previously stated, only SOCAT data with flags A-D are included, thus excluding the buoy data referenced here. Additional analysis comparing buoy data to SOCCOM float data is an exciting next step of potential analysis but this analysis is focused on underway SOCAT/DPT data.

OC20: Line 270: Authors suggest that SOM-FNN is likely being driven by Drake Passage data. However in Figure 6 they show that SOM-FNN with DP or no-DP lead to the about same results. It would be interesting to show the seasonality derived from SOM-FNN with SOCAT-noDP (like for the trends presented in Figure 6). Figure 6 does indeed show that SOM-FFN does not report

significant differences with the inclusion/exclusion of Drake Passage data. The creation of the product allows for data from all regions of the global ocean to educate and help determine values for regions lacking data, given the training variables included. The statement that the reviewer is pointing to however is in regard to the SOCAT-DP, SOCAT-noDP, and SOCAT-all seasonal cycles. The statement merely states that because of a lack of data outside of the Drake Passage during certain months, the SOCAT-all seasonal cycle is likely being dominated by the data from the Drake Passage. The statement is not in reference to the SOM-FFN. We have edited these sentences to help clarify.

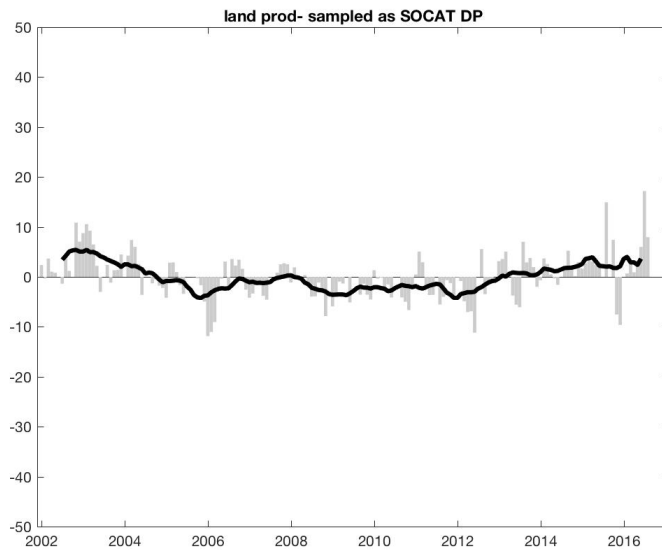
OC21: Line 273: To conclude on the seasonality, because authors construct a new “climatology” for SPSS based on data for the period 2002-2015, it would have been interesting to compare and discuss these cycles (DP and no-DP) with previous climatologies (e.g. Takahashi et al 2009, 2014) that used data back to the 80s (including winter cruises in the 90s in the SPSS but not used in the present study). Thank you for this suggestion. We are not constructing a “new climatology” as you say, but simply showing the average seasonal cycles for the different subsets of data in Figure 2. We do agree though that it would be interesting to compare to the Takahashi climatology that includes data dating back to the 1980s (and even before). The figure shown here is the same as Figure 2 but includes a bold black line representing the mean seasonal cycle for the SPSS biome from the Takahashi et al. 2009 climatology. The dashed black line is a corrected curve to year 2002 (assuming 1.95  $\mu\text{atm}/\text{yr}$  trend as was used in this manuscript). While there are differences, the magnitude and general shape of the curve are similar to that of the SOCAT-all curve (blue).



OC22: Line 286: Could you really compare your results with the model of Lovenduski et al (2015)? The model was applied for a different period (1981-2007) and the SPSS biome in this model seems different (back to my comment on SPSS definition). We do not specifically “compare” these results to those of Lovenduski et al. 2015 but instead use the results from the model to motivate specific analysis on this data. Text has been added to highlight that the model is for a different subset of years. To highlight the low IAV in the model, would it be possible to plot the model results in DP like for observations (Figure 4a)? These results suggest that the model is not able to capture correct IAV and this is important to notice as such models are also used for prediction. Is your analysis in DP would help to identify processes that should be first revised in the model (in few words: dynamics, mixing, biology or others)? We thank the reviewer for this suggestion. We utilize the model here simply to motivate a discussion of interannual variability

and do not include any analysis of the model within this manuscript. The ideas presented are outside the scope of this paper and will be left to future model-based analyses to assess.

OC23: Line 292: To better follow the discussion on IAV, would be nice to add a figure, like Figure 4a but for SOM-FFN in DP. How your IAV results impact on the next steps, i.e. errors associated to long-term trends and fluxes analyses (Figure 6) and our understanding of the S.O. carbon sink variability? **This figure would look nearly identical to current Figure 4a (see below). The increased smoothness is a factor of this being based on an interpolated product. We do not think that including this figure in the manuscript would add much to further the discussion within.**



OC24: Line 325-330: All trends presented in Figure 5 are below atmospheric value. However, in previous analysis (and in the PAZ, Supp Figure 3) trends were near or above atmospheric level in north DP (Takahashi et al 2014; Munro et al 2015). These differences should be discussed (related to new data, region selected, years?). **We have added further discussion on these differences.** Results presented in Figure 5 should be listed in a table (or Supp. Mat.). **We thank the reviewer for this comment and have added a table with the trend values.** Another conclusion: the trends, about  $1.5 \mu\text{atm/yr}$ , confirm the corrections applied in  $\text{pCO}_2$  climatologies for reference year (Takahashi et al., 2009; 2014).

OC25: Line 350-355: Results presented in Figure 6 lead to several questions. First, as previous sections focused on SPSS biome, why Figure 6 now shows results for the Southern Ocean, south of  $35^\circ\text{S}$ ? Are the results for SPSS only lead to the same conclusions? **We thank the reviewer for this comment. We have changed Figure 6 to represent only the SPSS biome so as to remain consistent with the region of interest in the rest of the paper. Conclusions are not significantly changed.** Second, it is interesting that results of the SOM-FNN with or without DP data lead to the same conclusion: the sink increases. Why the flux (and  $\text{pCO}_2$  trends) are so close with or without DP data? **We agree that this result is interesting and may surprise some. We believe this comes from the inherent properties of the product itself in that it utilizes data from around the globe to inform the values for regions without data in the Southern Ocean. We believe the SOM-FNN method has "learned" robust relationships between environmental driver data and  $\text{pCO}_2$  and is therefore able to reproduce the  $\text{pCO}_2$  variations as they are reflected in the environmental predictors (e.g. SST variations).** Would that means that no-DP data are suitable to reproduce the increasing sink? Or is it because results are shown for all regions south of  $35^\circ\text{S}$  (i.e. more data in the band  $35\text{-}50^\circ\text{S}$ )? It would be interesting to show a map of the  $\text{pCO}_2$  trends from both SOM-FNN with and without DP data to identify the main differences (if any). **Trends are reported on Figure 6 for the SPSS biome (and previously for regions south of  $35^\circ\text{S}$ ).** On the other hand, the results



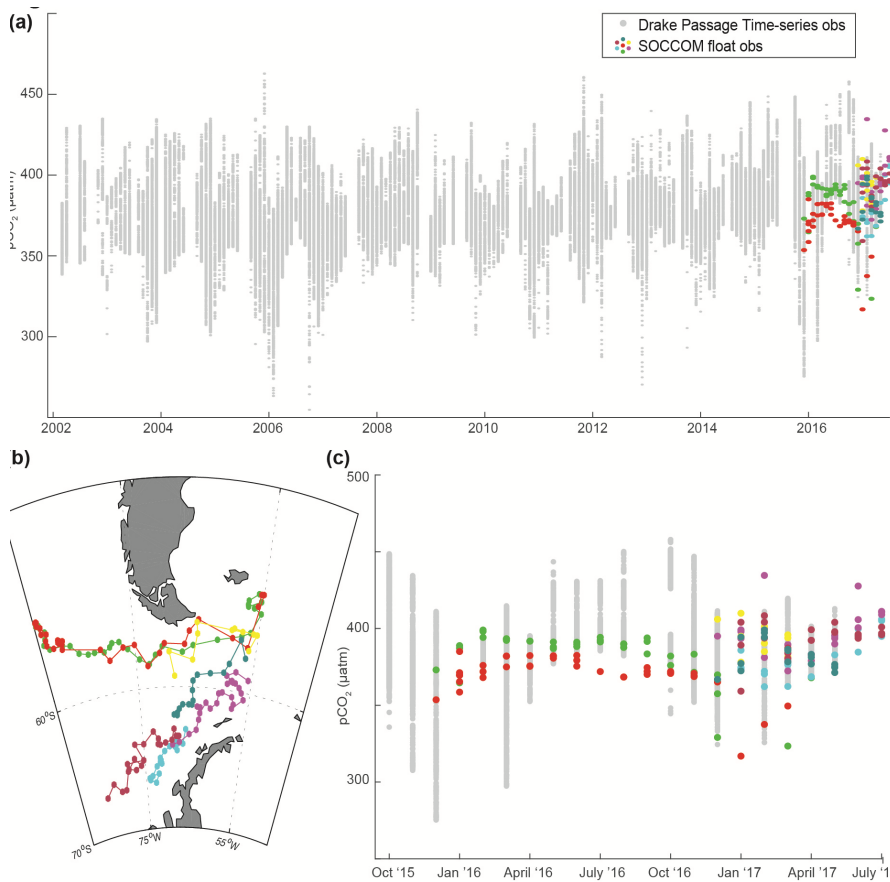
suggest stability in 2011-2015. I think this is new and should be discussed. What is the origin of the shift around 2011? This seems related to no-DP data (correct?). The exclusion/inclusion of Drake Passage data does not seem to be the cause of this shift beginning in year 2011 as both curves on the plot are consistent with regard to this shift. We agree that this is an interesting result and it deserves further investigation, however we feel that it is outside of the scope of this paper.

OC26: Line 370: Taking into account all uncertainties (standards, SST and equilibrium temperature calibrations, . . .) the accuracy of  $\pm 2 \mu\text{atm}$  for ship-based systems is the best that can be achieved. Many cruises in SOCAT received a flag (C,D) with accuracy of  $\pm 5 \mu\text{atm}$  (about half the floats,  $11 \mu\text{atm}$ ). Thank you for this comment. While it is true that SOCAT data with a flag C or D report accuracy better than  $5 \mu\text{atm}$ , the comparison discussed in this section of the manuscript (Section 5) focuses *only* on Drake Passage Time Series data which has a reported uncertainty of  $\pm 2 \mu\text{atm}$ .

OC27: Line 371: "there is great potential for these two observational platforms to work in concert". Yes, I fully agree. This could be done in this study, e.g. exploring the seasonality with merging product, or extend trend analysis to 2017. It is outside the scope of this analysis to combine SOCCOM float data into the dataset. As the reviewer mentioned earlier, it is a hotly discussed topic if SOCCOM (and other platforms) be included in SOCAT and specifically in the SOCAT gridded products. Work is being conducted on this front and we leave it to those groups to present their results in due time.

OC28: Line 374: If you use SOCAT-V5, other data are available in 2016. Might be useful to explore and add few more cross-overs with floats. The data used in the crossover plots is solely from the Drake Passage Time series and not from SOCAT (although they are not mutually exclusive). Broader comparisons of SOCAT data to SOCCOM floats is underway by other researchers whose manuscripts are in review (Gray et al. in review). Crossovers between the DPT and SOCCOM floats passing through the Drake Passage is the focus of this analysis.

OC29: Line 375-380: Figure 7 shows nicely when and where floats data are available, but comparison of underway  $\text{pCO}_2$  and floats is not easy to see on figure 7. Authors should add a plot of  $\text{pCO}_2$  versus time for the period 2016-2017 (e.g. like figure 5 in Williams et al., 2017). We thank the author for this suggestion. In a previous version we had a figure similar to what the reviewer suggested (See below for reviewer). The difficulty we faced is that we wanted to show the comparison of the DPT data to the floats with both the spatial and temporal spread as well as the  $\text{pCO}_2$  comparisons. We feel that the current plots in Figure 7 accomplish this.

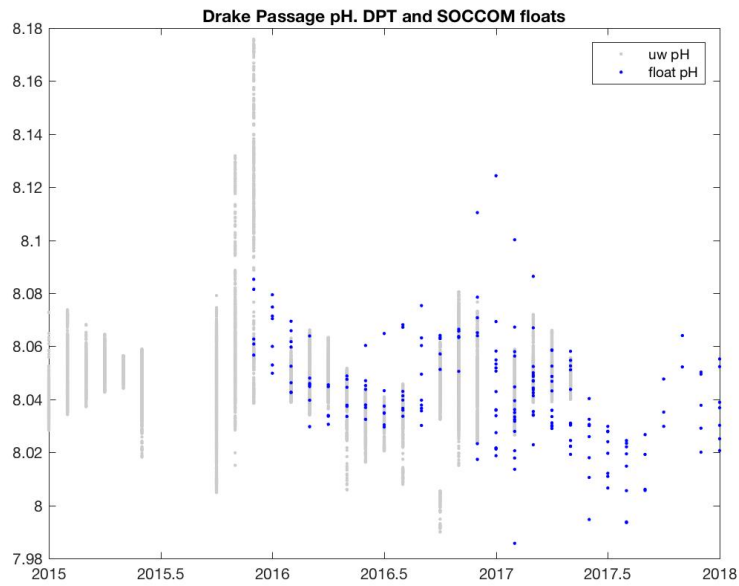
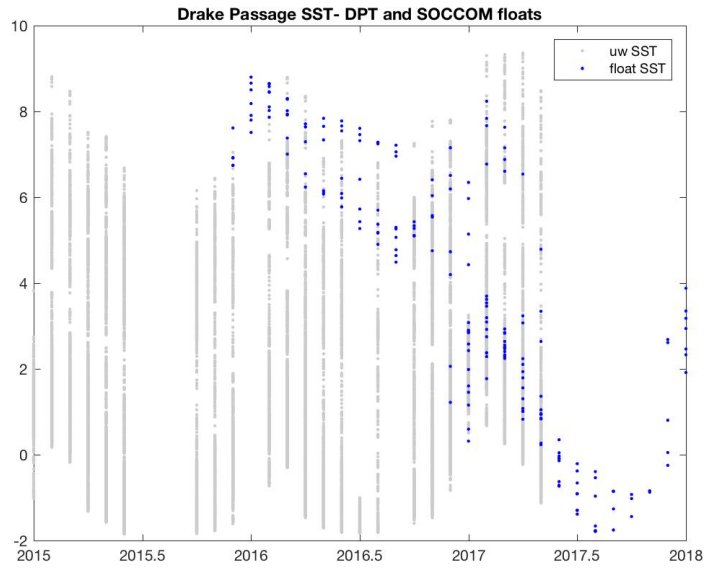


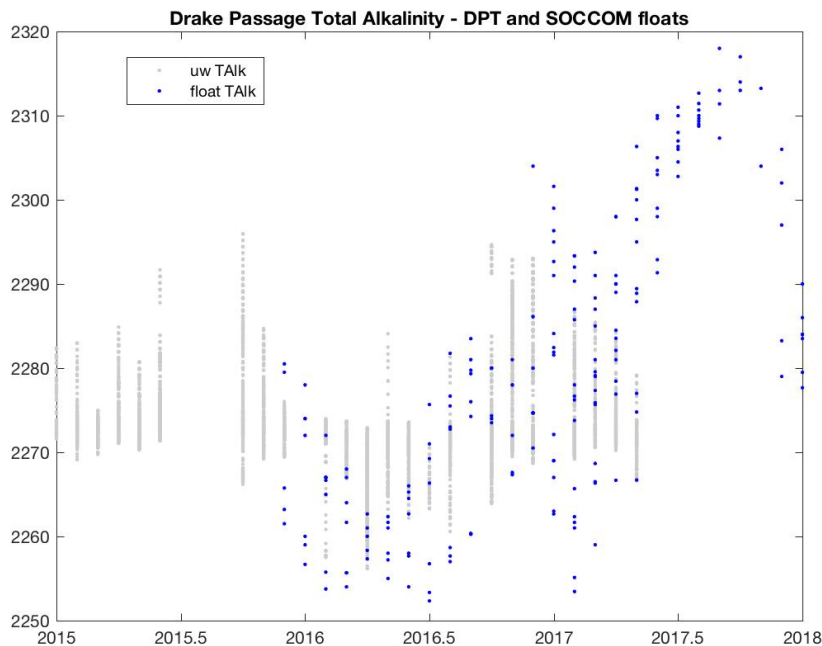
OC30: Line 380:  $p\text{CO}_2$  data from floats in June-July 2017 suggest high  $p\text{CO}_2$ . What are the values (not clear in figure 7)? Are these values coherent with other floats in the SPSS in other sectors (float 9096, Williams et al., 2017). Floats in the Drake Passage region (those shown in Figure 7) with collected data in June and July 2017, report calculated  $p\text{CO}_2$  ranging from  $384.6\mu\text{atm}$  to  $427.6\mu\text{atm}$ , with a mean of  $401\mu\text{atm}$ . Underway Drake Passage Time Series  $p\text{CO}_2$  measurements during that same timeframe (June/July 2017) collected measurements as high as  $517\mu\text{atm}$ , but have an average of  $373\mu\text{atm}$ . Figure 7 shows these comparisons of  $p\text{CO}_2$  between floats and underway DPT.

Your question as to if the June/July 2017 high  $p\text{CO}_2$  values from floats are coherent with other floats in the SPSS biome is not a topic that we will address in this manuscript as float intercomparison has been thoroughly analyzed by those from the SOCCOM group (Williams et al. 2017 and continued efforts). Also, to note- Float 9096 that you mention (not included in this manuscript) does not have reported  $p\text{CO}_2$  values after February 2017.

OC31: Line 406-420: Authors recalled that  $p\text{CO}_2$  derived from floats are subject to uncertainties associated to pH calibration, TA reconstruction, etc.. Here, they have in hand  $\text{TCO}_2$  and  $p\text{CO}_2$  data from DPT, and it would be interesting to quantify comparison for Salinity (used for TA), TA and pH (from DPT  $\text{TCO}_2/p\text{CO}_2$  data). Would this lead to the same accuracy ( $\pm 11\mu\text{atm}$ ). What TA algorithm is used in your calculations? Would it be appropriate to use an algorithm specific of the DP region? We utilize the LIAR algorithm for TA calculations from SOCCOM float data (Carter et al. 2016). In response to the reviewers other ideas mentioned here, indeed they are great questions worthy of investigation in a follow-on study. Below are a few preliminary plots showing comparisons of underway DPT data and SOCCOM float Total Alkalinity, SST, and pH for the defined Drake Passage area.

Carter, B. R., N. L. Williams, A. R. Gray, and R. A. Feely (2016), Locally interpolated alkalinity regression for global alkalinity estimation, *Limnol. Oceanogr. Methods*, 14(4), 268–277, doi:10.1002/lom3.10087.





OC32: Line 415: Authors recalled that in previous analysis, mean difference with ship data was only 3.7  $\mu\text{atm}$ . What mean difference did you get in your comparison at DP? The mean difference referenced by the reviewer is a comparison between the first float profile and underway data collected “nearby”. The analysis shown in Figure 8b is similar but is not restricted to being on the first float profile. As Figure 8b shows, there are multiple underway observations within the designated crossover criteria. Mean differences for each float range from -11.95  $\mu\text{atm}$  to 11.77  $\mu\text{atm}$  for the crossovers shown in Figure 8b.

OC33: Line 426-427: Authors conclude: “With this complete coverage we find seasonal amplitudes in the SPSS to be smaller than subpolar regions in the Northern Hemisphere, and controlled by a combination of temperature and deep water mixing effects”. I think this is not really new but confirm previous results (e.g. Takahashi et al 2009; Rödenbeck et al., 2015) and authors did not evaluate processes (temperature, mixing) in their study. Thank you for this comment. We have revised this paragraph with the reviewer’s comments in mind.

OC34: Line 426-427: Authors conclude: “Uncertainties in the seasonality remain considerable”. What is “considerable”? Would the conclusion the same if all SOCAT data are used, including data back in the 90s with more cruises conducted in winter? We have revised this paragraph with the reviewer’s comments in mind. We do not feel the uncertainties in seasonality would be much improved with data from the 1990s as such limited full-seasonal coverage data is available in the subpolar Southern Ocean prior to the beginning of the DPT project.

OC35: Line 430: do we need such analysis to conclude that there is a lack of winter data? This is an important message for future observations, but for the past decades the only way to mimic winter data is to reconstruct at best  $\text{pCO}_2$  fields (such as SOM- FNN, or ocean models). For the Southern Ocean, I understand that the  $\text{CO}_2$  sink and its decadal variability is relatively well-known (e.g. Landschützer et al., 2015 and your figure 6) although winter data were sparse. We stand by this statement and the necessity for additional winter data. Additional winter-time data outside of the Drake Passage is essential in order to identify if the seasonality of the waters within the Drake Passage and in the broader subpolar region are consistent, specifically the winter-time peak that

is shown in the SOCAT-noDP analysis.

OC36: Line 445-447: Authors conclude: "Southern Ocean has been a growing sink for atmospheric carbon since 2002." Again, from your results (Figure 6) it appears that ocean pCO<sub>2</sub> increased faster in recent years (2011-2015) compared to 2002-2011, and fluxes relatively stable. This result, not discussed in the manuscript, argues to maintain long-time series observations to better detect how (and why) the ocean pCO<sub>2</sub> is changing, and subsequently the fluxes in this important region. A thorough investigation of this transition is beyond the scope of this paper. Considering the full period (2002-2016) the Southern Ocean has been a growing sink, hence we have not made a change to this statement.

OC37: Line 449: Authors conclude: "Comparisons between underway DPT and SOCCOM float measurements show general agreement". What is "general agreement" ? Please give a number (e.g. mean differences). Are your comparisons, here specifically for the DP region, confirm or not previous analyses (difference around 4 µatm, Williams et al., 2017)? We have reworded this sentence to be more specific. Please refer to the response to OC32 which describes mean differences between the floats and DPT observations as compared to that found in Williams et al. 2017. Figure 8 clearly shows the differences for when crossovers occur between these two platforms.

OC38: Line 452: Authors conclude: "...could aid in reducing the uncertainty on the float pCO<sub>2</sub> measurements by helping to identify problematic float sensors.". In your analysis, did you experienced problem with sensors? Our research does not explore sensor issues. The high uncertainty levels on float pCO<sub>2</sub> is due to compounding uncertainty from multiple calculations that go into acquiring the necessary parameters to calculate pCO<sub>2</sub>. Additionally, instrument drift and failure is an issue that could be improved upon through technological developments. These improvements could help to reduce the uncertainty in float calculated pCO<sub>2</sub> which would improve comparison efforts such as this one by better and more directly being able to compare shipboard observations and float estimates.

OC39: Line 454 : Authors conclude that a coordinated monitoring efforts that combine underway and float data is highly needed. I totally agree. If achieved, this would be a very important step, not only for the Southern Ocean as a test experience, but should be engaged at global scale (a new dream). In this context, and authors have the data in hand, I think the present study should present results combining underway and floats data (at least for the seasonality in DP, maybe for the trends 2002-2017 as a first test). We thank the reviewer for this comment and agree that such a coordinated monitoring effort would be ideal. We feel that this study is a first step in utilizing crossover comparisons and acknowledge that other groups with more direct knowledge of the float sensors are also investigating these comparisons. This research definitely could pave the way for future comparisons. We have added a discussion of seasonality comparisons between the Drake Passage Time series data and SOCCOM float estimated pCO<sub>2</sub> but a more in-depth comparison is out of the scope for this manuscript. A thorough investigation of these comparisons with multiple shipboard time series globally would constitute enough discussion for another manuscript.

OC40: Line 535: Correct reference: Gruber et al 2009 We have corrected the reference.

OC41: Line 700: Correct reference: Williams et al 2017 We have corrected the reference.

OC42: Figure 1: add name of other colored biomes (ICE)? This map might be extended to 35S (the limit chosen for figure 6)? We have updated Figure 1 with new colors and labels.

OC43: Figure 3: Legend: add that gray lines depict the SPSS biome. Change color- scale (white-yellow not very clear). We have updated the colorbar for this figure and added text in the caption to identify the gray lines.

OC44: Figure 7: legend 7c: the plot starts from Jan-2016 (not Oct 2015) [We have now corrected the start year accordingly in the figure legend](#)