

# Expansion of great cormorant colony immediately increased isotopic enrichment in small mammals

5 Linas Balčiauskas<sup>1</sup>, Raminta Skipitytė<sup>1,2</sup>, Marius Jasiulionis<sup>1</sup>, Laima Balčiauskienė<sup>1</sup>, Vidmantas Remeikis<sup>2</sup>

<sup>1</sup>Nature Research Centre, Akademijos 2, LT-08412 Vilnius, Lithuania

<sup>2</sup>Centre for Physical Sciences and Technology, Savanorių 231, LT-02300 Vilnius, Lithuania

*Correspondence to:* L. Balčiauskas (linasbal@ekoi.lt)

Supplement

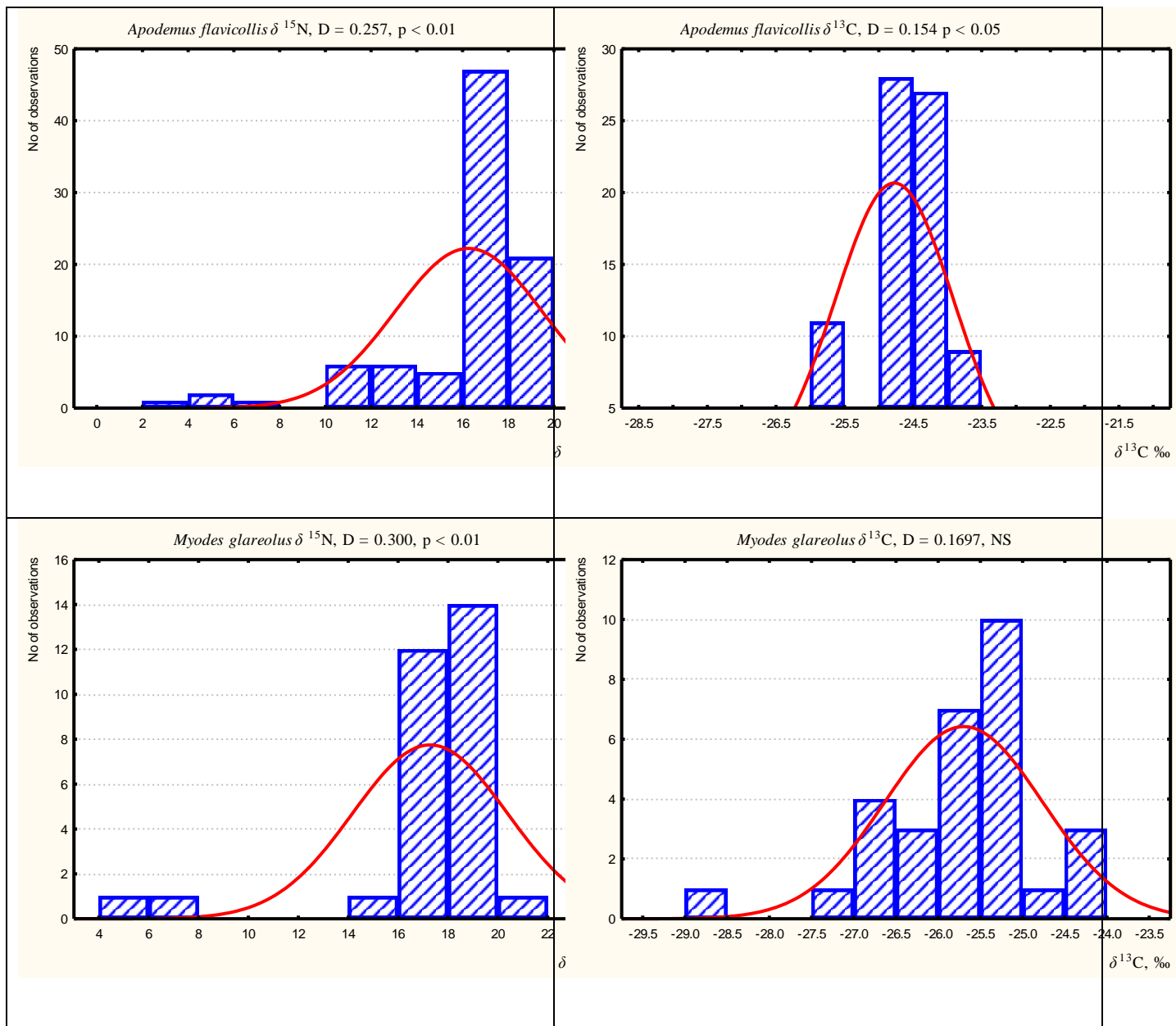


Figure S1. Distribution of  $\delta^{13}\text{C}$  and  $\delta^{15}\text{N}$  values in the hair of *Apodemus flavicollis* and *Myodes glareolus* trapped in the Juodkrantė colony of great cormorants. Data for each species lumped across all zones. Normality tested using Kolmogorov-Smirnov's D.

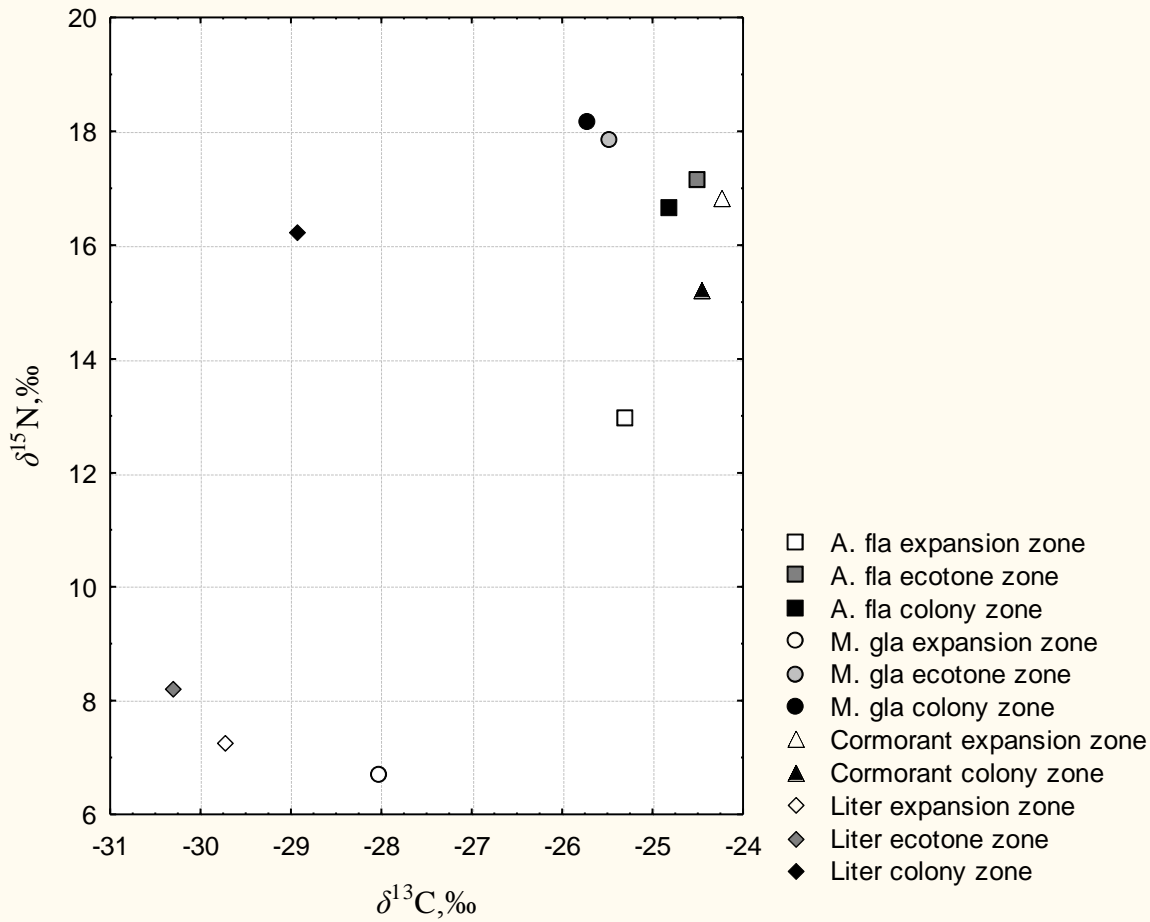


Figure S2. Central position of stable isotope ratios in litter, cormorant feathers and the hair of *Apodemus flavicollis* and *Myodes glareolus* in different zones of the Juodkrantė colony of great cormorants in 2015. Key: *Apodemus flavicollis*, squares; *Myodes glareolus*, circles; great cormorants, triangles; litter, diamonds; expansion zone, white; ecotone zone, shaded; colony zone, black.