

Author's Response – Editor

(1) Author's Response

Dear Dr. Akob,

We thank you for your time reviewing our manuscript and making insightful editorial comments for content changes to be made. We have considered your changes and have now made the appropriate additions to the manuscript.

For your convenience, we have highlighted the sections in the manuscript in yellow which reflect these changes alongside comment bubbles, where appropriate, which provide additional rationale / clarification for a change.

We do welcome any further comments regarding how we may make the manuscript stronger and, specifically, if the above rationale can be made more clearly in the current manuscript.

Thank you again for your time and kind efforts providing your editorial expertise.

(2) Author's Changes in Manuscript

1. L. 21: can you define "U" as units here?

Done

2. L. 139: use subscript for OD600

Modified

3. L. 178: provide the strain designation after the species name

Provided

4. L. 195: Sporosarcina is spelled wrong.

Edited

5. When referring to figures please give the panel letter in the text (e.g., l. 276, l. 279 and elsewhere)

Panels letters have now been added. Please see yellow highlighted texts for the appropriate additions made throughout the manuscript.

45 6. L. 274: the inclusion of parenthetical information here is a bit awkward. Consider
revising.

Revised

50 7. L. 228-231: did you have any other SEM prep steps? Did you dehydrate the samples or
mount them onto anything?

Details on mounting steps added.

55 8. L. 339: since you are working with liquid cultures colony is not correct. Modify

Modified to 'cell abundance'

60 9. Figure 2: it is difficult to tell the circles from the squares because of the error bars,
consider modifying with color or gray scale. It would be more logical to put UB-1
medium on the left and UB-2 on the right. Also, define YE in the legend and specify that
it's a N source.

All suggestions made and detailed in Fig. 2 as requested.

65 10. L. 368-369: revise to "media (i.e., CM-1) significantly ($p < 0.05$) improved in shear
strength compared to control vessels (15.77 kPa) with MICP media only"

Revised as suggested with some modifications as per comments from Editor #3.

70 11. L. 509-576: please break this up into more than 1 paragraph

Divided into 3 distinct paragraphs as detailed below (in yellow)

75 12. L. 613: not significantly

Change made

80 13. L. 632 and elsewhere: it seems that this should be abundance and not "colony total"

Modified as detailed above for L339 comment.

85 14. L. 646: do you mean retain?

Changed to clarify 'retention' of direct shear strength

90 15. L. 652: do you mean "reflective of"?

Editorial change made.

Improving the Strength of Sandy Soils via Ureolytic CaCO₃ Solidification by *Sporosarcina ureae*

Justin Michael Whitaker¹, Sai Vanapalli², and Danielle Fortin¹;

¹Department of Earth and Environmental Sciences (413-ARC). University of Ottawa, K1N 6N5, Ottawa, ON, Canada

²Department of Civil Engineering (A015-CBY). University of Ottawa, K1N 6N5, Ottawa, ON, Canada

Correspondence to: D. Fortin (dfortin@uottawa.ca)

Key words: Urease, calcite precipitation, MICP, *Sporosarcina*, *Bacillus*, biomineralisation, biofilm

Comment [L1]: Typographical error corrected

Abstract

'Microbial induced carbonate precipitation' (MICP) is a biogeochemical process that can be applied to strengthen materials. The hydrolysis of urea by microbial catalysis to form carbonate is a commonly studied example of MICP.

In this study, *Sporosarcina ureae*, a ureolytic organism, was compared to other ureolytic and non-ureolytic organisms of *Bacillus* and *Sporosarcina* in the assessment of its ability to produce carbonates by ureolytic MICP for

ground reinforcement. It was found that *S. ureae* grew optimally in alkaline (pH ~9.0) conditions which favoured MICP and could degrade urea (units [U]/mL = $\mu\text{mol}/\text{min}\cdot\text{mL}\cdot\text{OD}_{600}$) at levels (30.28 U/mL) similar to *S. pasteurii* (32.76

U/mL), the model ureolytic MICP organism. When cells of *S. ureae* were concentrated ($\text{OD}_{600} \sim 15\text{-}20$) and mixed with cementation medium containing 0.5 M calcium chloride (CaCl_2) and urea into a model sand, repeated treatments (3 x 24 h)

were able to improve the confined direct shear strength of samples from 15.77 kPa to as much as 135.80 kPa. This was more

than any other organism observed in the study. Imaging of the reinforced samples with scanning electron microscopy and energy dispersive spectroscopy confirmed the successful precipitation of calcium carbonate (CaCO_3), across sand particles

by *S. ureae*. Treated samples were also tested experimentally according to model North American climatic conditions to understand the environmental durability of MICP. No statistically significant ($p < 0.05$, $n = 3$) difference in strength was

observed for samples that underwent freeze-thaw cycling or flood-like simulations. However, shear strength of samples following acid-rain simulations fell to 29.2% of control MICP samples. Overall, the species *S. ureae* was found to be an

excellent organism for MICP by ureolysis to achieve ground strengthening. However, the feasibility of MICP as a durable reinforcement technique is limited by specific climate conditions (i.e. acid rain).

Comment [L2]: L21 modification
Change from U / mL to units [U] / mL

Comment [L3]: L21 modification
Alternative units: $\mu\text{mol}/\text{min}\cdot\text{mL}\cdot\text{OD}_{600}$

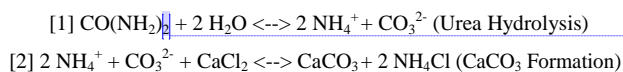
Comment [L4]: Typographical error corrected

Comment [L5]: Clarified sample size (n) and wording to specify a statistical test was performed (as described in section 2.6)

1 Introduction

Biomediated calcium carbonate (CaCO₃) production is the process by which organisms induce the precipitation of calcium carbonate. With reference to bacterial CaCO₃ precipitation, also known as, 'microbial induced carbonate precipitation', 'microbial induced calcite precipitation' (MICP) and 'microbial induced calcium carbonate precipitation' (MICCP), the phenomenon is well documented (Stocks-Fischer et al., 1999; Dejong et al., 2006; Whiffin et al., 2007; van Paassen et al., 2010). For example, cyanobacteria precipitate CaCO₃ in microbial processes related to the shedding of the S-layer, forming the stalagmites and stalactites in limestone caves and adding to the rocky sediments of coral reefs (Southam 2000). Crystal aggregation of CaCO₃ in the kidney, urinary tract or gallbladder have been shown to be induced by microorganisms such as *Proteus mirabilis*, a urease positive organism due to secondary infection (Worcester and Coe 2008). Ureolytic soil organisms of the species *Sporosarcina* or *Bacillus*, can also induce CaCO₃. For example, in their cycling of nitrogen with a urease enzyme (Hammes et al., 2003; Gower 2008; Worcester and Coe 2008). This last group of MICP producers has peaked recent engineering interests to apply them in a bioengineering and repair context.

MICP biotechnology utilizing ureolytic soil organisms, most notably *Sporosarcina pasteurii*, has been shown to directly reinforce or restore engineered or natural structures, such as the repair of historical monuments (Le Métayer-Levrela et al., 1999; Webster and May 2006), marble slabs (Li and Qu 2011) and stone heritage sites (Rodriquez-Navaro et al., 2012) and reduce weathering of soil embankments (Chu et al., 2012). The enzyme urease (urea amidohydrolase, E.C. 3.5.1.5) initiates the process, catalyzing the breakdown of urea to raise local pH and produce CaCO₃ in a solution of calcium ions often supplied as calcium chloride (CaCl₂), as summarized in equations 1 and 2 (eq. [1, 2]). The produced CaCO₃ fills structural gaps or bridges materials (i.e., soils grains, etc.) to form a cemented product with unconfined strengths of up to 20 MPa (Whiffin et al., 2007).



Comment [L6]: Typographical error; removed 'see also'

Comment [L7]: Editorial comment
Chemical formula changed

Bacterial species such as *Bacillus sphaericus* (van Tittelboom et al., 2010) and *Bacillus megaterium* (Krishnapriya et al., 2015) have also been applied in material or volume strengthening. The aforementioned ureolytic soil organisms are attractive for MICP as they are, 'generally regarded as safe', (GRAS) bacteria with accessible substrates (i.e., urea) and an aerobic metabolism applicable to most engineering and terrestrial environments (DeJong et al., 2006). These gram positive organisms offer other attractive features such as spore forming capability allowing for long term capsule storage in cements (Jonkers 2011) and exopolysaccharide (EPS) secretion for improved material bonding (Bergdale 2012).

The application of MICP in industry as a biotechnology is proposed to help reduce the need for current structure repair practices such as chemical grouting, which have been found to be environmentally detrimental in its permanence (DeJong et al., 2010) and, in some cases, posing serious human health risks (Karol 2003). That said, ureolytic MICP does produce excess ammonia which can be harmful (van Paassen et al., 2010). The use of

165 nitrifying and denitrifying bacteria could help solve this issue by oxidizing ammonia to nitrate and later nitrogen gas without
affecting MICP. In fact, the work of Gat et al. (2014) has shown co-cultures of ureolytic and non-ureolytic bacteria can
actually be beneficial to MICP. Alternatively, denitrifying bacteria can be used to directly induce MICP to avoid ammonia
toxicity, though the level of CaCO₃ is comparatively less to ureolytic MICP and harmful nitrites can build up in solution (van
Paassen et al. 2010). Other pathways to achieve MICP have also been explored with *B. megaterium* and *B. sphaericus* (Kang
170 et al., 2015; Li et al., 2015).

Comment [L8]: Editorial comment
Typographical error corrected

Problems on large scale application of the MICP technology have occurred too and remain unsolved. Research by van
Paassen et al. (2009) found poor sample homogeneity of MICP as well as decreasing biomass and urease-inducing CaCO₃
activity over time and increasing soil depth in a pilot 100 m³ sand study using *Sporosarcina pasteurii*, attributing these
heterogeneities mostly to the application process. Alternative metabolisms and bacteria for large scale applications in
175 biomineralization of CaCO₃ have also been investigated by the group (van Paassen et al., 2010). Indeed, it has been
commented that the type of bacteria utilized is one of the major considerations and potential limitations in large scale
geotechnical operations (Mitchell and Santamarina, 2005).

Therefore, the search for new bacteria by which to achieve viable levels of MICP is important for optimizing the protocol
best suited (in terms of performance, economics and environmental impact) for marketing in green industry (van Paassen et
180 al., 2010; Cheng and Cord-Ruwisch 2012; Patel 2015). Following a literature review of the nine documented species of
Sporosarcina (Claus and Fahmy, 1986), seven species were found to be urease positive and distinct from *Sporosarcina*
pasteurii as alternative ureolytic MICP sources. While no candidate improves on some of the shortcomings of ureolytic
MICP (i.e., ammonia toxicity), each candidate was found to be poorly investigated in the current MICP technology, despite
fitting the ureolytic model for MICP. One candidate, *Sporosarcina ureae* was selected at random for investigation as it was
185 deemed appropriate to explore the feasibility of a single candidate species in thorough comparison to other, already published
species applied in ureolytic MICP.

Comment [L9]: Editorial comment
Rearranged literature sources chronologically.

Comment [L10]: Editorial comment
Typographical error corrected

Thus, the primary goal of this study was to investigate the suitability of *S. ureae* as a MICP organism in material
improvement by testing it experimentally against the previously investigated species of *Sporosarcina pasteurii*, *Bacillus*
megaterium and *Bacillus sphaericus*. In its assessment, a parallel investigation was also performed to assess how the MICP
190 technology, utilizing *S. ureae* as the candidate MICP organism, can perform under various environmental conditions
including acid rain, flooding and freeze-thaw cycling concurrent with colder North American climates.

2 Materials and methods

195 2.1 Bacteria strains, media, culture and stock conditions

Strains of *Sporosarcina ureae* (BGSC 70A1), *Bacillus megaterium* (BGSC 7A16), *Lysinibacillus sphaericus* (BGSC
13A4; previously known as *Bacillus sphaericus* [Ahmed et al., 2007]) and *Bacillus subtilis* (BGSC 3A1^T) were obtained
from the Bacillus Genetic Stock Centre (BGSC).

Comment [L11]: While not suggested, previous
Genus designation stated

200 *Sporosarcina pasteurii* (ATCC 11859), previously known as *Bacillus pasteurii* (Yoon et al., 2001), was kindly donated by
the group of Rodrigues *et al.* (University of Houston, USA). *Escherichia coli* DH5aTM was obtained from ThermoFisher. *S.*
ureae and *S. pasteurii* strains were grown at 30 °C in a modified ATCC 1832 medium as follows: 5 g/L yeast extract (YE)

Comment [L12]: Previous Genus designation
stated as suggested

(BD Bacto™), Tris-Base (Trizma™), 5 g/L ammonium sulfate (Molecular biology grade, Sigma-Aldrich), 10 g/L urea (Molecular biology grade, Sigma-Aldrich), pH 8.6. The culture broth, ATCC Medium 3 (3 g/L Beef extract [BD Bacto™] and 5 g/L peptone [BD Bacto™]) was used for *B. megaterium*, *L. sphaericus* and *B. subtilis*. and grown at 30 °C, unless otherwise specified. Colonies of *Bacillus* and *Sporosarcina* were maintained on plates prepared as described supplemented with 15 g/L agar [BD Difco™]. *E. coli* was grown in Luria-Bertani (LB) broth (10 g/L tryptone [Molecular biology grade, Sigma-Aldrich], 5 g/L yeast extract [BD Bacto™], 10 g/L NaCl [Molecular biology grade, Sigma-Aldrich], pH 7.5) and maintained on LB plates at 37 °C supplemented with 15 g/L agar (BD Difco™). Long term stocks of all cultures were prepared as described (Moore and Rene, 1975) but using dry ice as the freezing agent.

2.2 Chemical and Biological Analysis

2.2.1 Culturing

Single colonies were lifted and grown overnight at 200 RPM in 5mL of respective strain culture medium in a 15 mL Corning Falcon® tube. The overnight stock was combined with 200 mL of appropriate culture medium in a 500 mL Erlenmeyer flask and cultured at 175 RPM. The optical density at 600 nm (OD₆₀₀) was used to track changes in turbidity of a culture volume using a Biomate UV-Vis spectrophotometer (Thermoscientific) where 1 mL of culture volume was placed into 1.5mL polystyrene cuvettes (BioRad) of a 1 cm path length. Ultra-pure water (ddH₂O) was used as a blank. At OD₆₀₀ values greater than 0.4, samples of culture volumes were diluted 10-100X in Tris buffered saline (TBS; 50 mM Tris-base [Trizma®, Sigma-Aldrich], 150 mM NaCl [Molecular biology grade, Sigma-Aldrich], pH 7.5) to maintain a linear relationship between turbidity and cell growth. When OD₆₀₀ reached ~ 0.5, the culture was twice spun at 5000 RPM for 5 minutes followed by a pellet re-suspension in 50 mL TBS each time. Next a fraction of volume was removed, spun at 5000 RPM for 5 minutes and re-suspended (OD₆₀₀ ~ 0.2) in 200 mL of a urea broth (UB) medium in a 500 mL Corning PYREX® round glass media storage bottle containing a modified Stuart's Broth (Stuart et al., 1945) as follows: 20 g/L Urea (BioReagent, Sigma-Aldrich), 5 g/L Tris-Base (Trizma®, Sigma-Aldrich), 1 g/L glucose (Reagent grade, Sigma-Aldrich), pH 8.0, with (UB-1) or without (UB-2) 10 g/L yeast extract (YE) (BD Difco™). A negative control included a medium only condition. All steps were performed aseptically with preparations incubated at 150 RPM at 30 °C in triplicate for each medium condition: UB-1 and UB-2. Each culture for a medium condition was staggered 10 min apart and observed for 12 h, with duplicate 2.5 mL aliquots aseptically withdrawn every 1hr, beginning at time zero (t = 0 h). The entire protocol was performed twice for a total of 6 data sets (n = 6), measured in duplicate, per culture in a single medium condition.

2.2.2 Total Ammonia (NH₃-NH₄⁺), pH and growth (OD₆₀₀) aliquots

To evaluate different cell parameters efficiently, duplicate aliquots (2.5mL) were taken for tracking pH, OD₆₀₀ and NH₃-NH₄⁺ production. In brief, first, whole aliquot volume pH was taken with a SB20 symphony pH probe (VWR). Next, a 1mL volume was removed for OD₆₀₀ reading as described (2.2.1). Finally, a 500 uL sample for NH₃-NH₄⁺ analysis was retrieved and diluted in 500 uL of ddH₂O and stored as described by HACH Inc. (Hach Co. 2015) with the following additional modifications made: -20 °C storage, 1 drop 5 N H₂SO₄.

Comment [L13]: L166 modification
Description of optical density / cellular density procedure used for all aspects of the study.
If desired the following procedural notes could also be added:

While ddH₂O was used as a blank, samples diluted 10-100X had a corresponding TBS sample diluted with medium only in that range.
E.g. Sample 1-10 diluted 20X in TBS (50uL culture volume in 950uL TBS). Then, a sample diluted 20X with medium only was prepared (50mL medium in 950uL TBS). Final OD600 values reported subtracted this value from all sample values measured for a dilution.
For undiluted samples, a sample with medium only was prepared.

Comment [L14]: L166 modifications
Based on previous calibrations performed from recommendations in :

- (1) Koch, AL. 1994. "Growth Measurement" IN: Methods for General and Molecular Bacteriology Gerhardt, P et al (ed) American Society for Microbiology, Washington, DC. p. 248-277.
- (2) Collins and Lyne's Microbiological Methods" (Estimating Microbial Numbers – p. 144-155)

Comment [L15]: Typographical error changed

Comment [L16]: L166 modification
A fraction was equal to the volume required to reach OD600 ~0.2 from the equation C1V1 = C2V2 where C1 was the OD600 of the concentrated culture in TBS, and C2 = ~0.2, V2 = 200mL and V1 = volume to be spun down.

Comment [L17]: Editorial comment
Word change made 'run' to 'incubated'

Comment [L18]: Typographical error changed

Comment [L19]: L139: Change to subscript for OD600.

Comment [L20]: L151 modification
URL provided for the downloadable technical manual of total ammonia measurement by HACH.

Comment [L21]: L151 modification
Sentences hereafter removed.

2.2.3 Spectrophotometric analysis of NH₃-NH₄⁺

Samples were thawed and neutralized with 5 N NaOH as described by HACH Inc. (Hach Co. 2015). NH₃-NH₄⁺ measurements were then performed as outlined (HACH Co. 2015) based on an adaptation of the work by Reardon et al. (1966) using a portable DR2700 HACH spectrophotometer. Samples were brought to a measurable range (0.01 to 0.50 mg/L NH₃-N) where required. Measurements for appropriate dilutions were made by mass and corrected to volume assuming a density of 1 g/L. Final values were reported as, 'U/mL' where units U = μmol of NH₃-NH₄⁺ produced per minute and mL = mL solution normalized to culture density (OD₆₀₀) starting from t = 1 h.

Comment [L22]: L151 modification
Original literature report adapted for total ammonia analysis provided for additional clarity.

Comment [L23]: L147 modification
Density assumption stated here only.

Comment [L24]: L274 modification
Alternative definition: umol of NH₃-NH₄⁺ produced per minute per mL solution, normalized to cellular density (OD₆₀₀), where U / mL = umol/min/mL/OD₆₀₀.

2.3 Microbial cementation

2.3.1 Model sand

Industrial quality, pure coarse silica sand (Unimin Canada Limited) was examined with the following grain distribution where D₁₀, D₅₀, D₆₀ are 10 %, 50 % and 60 % of the cumulative mass: D₁₀ = 0.62 mm, D₅₀ = 0.88 mm, D₆₀ = 0.96 mm. The uniformity coefficient, C_u was 1.55 indicating a poorly graded (i.e. uniform) sand as designated by the Unified Soil Classification System (USCS) (ASTM, 2017). A poorly graded soil was used as a model due to its undesirable geotechnical characteristics in construction (i.e., settling) and tendency for instability in nature (i.e., liquefaction) (Nakata et al., 2001; Scott, 1991).

Comment [L25]: L163: Please see USCS designations for a sand that is 'poorly graded' (i.e. having uniform particle sizes) and 'coarse' grained (i.e. > 50% mass retained on no. 200 sieve with > 50% passing no. 4 sieve) with less than 5% fines.

See ASTM 2011.

A convenient web link:

https://en.wikipedia.org/wiki/Unified_Soil_Classification_System

2.3.2 Cementation medium (CM) and culture

Cells of each strain were grown in 1L of their respective medium split into two 1 L Erlenmeyer flasks containing 500 mL medium each at 175 RPM to an OD₆₀₀ of ~ 1.5 – 2.0 as described (2.2.1). Cells were then harvested and successively concentrated over three runs to 50 mL. Runs involved a spin down at 5000 RPM for 5 min followed by a pellet re-suspension in TBS. Prior to sand inoculation, 50 mL of a two-times (2X) concentrated cementation (CM) medium (2X CM; 0.5 M CaCl₂ [Anhydrous granular, Sigma-Aldrich], 0.5 M urea [BioReagent, Sigma-Aldrich], 5 g/L yeast extract [YE] [BD Difco™], 50 mM Tris-Base [Trizma®, Sigma-Aldrich], pH 8) was added to the final suspension. Negative controls were 1:1 mixes of ddH₂O and 2X CM as well as the non-ureolytic strain *B. subtilis* (BGSC 3A1⁺) (Cruz-Ramos et al., 1997). A positive control with *S. pasteurii* (ATCC 11859), a ureolytic organism capable of ureolytic MICP, (van Paassen et al., 2009) was also run. The procedure was repeated every 24 h to provide fresh cells for injection during cementation trials.

Comment [L26]: L166 modification

Comment [L27]: Typographical error corrected

Comment [L28]: L178 : Strain designation placed after species name.

Comment [L29]: Editorial comment
'Fresh sample inoculate' to 'fresh cells'

2.3.3 Sample preparation and cementation trial

Triplicate test units were constructed from aluminum (Fig. 1), each housing a triplicate set of sample moulds measuring 60 x 60 x 15 mm. Moulds were sized according to the sample intake for the direct shear apparatus (Model: ELE-26-2112/02) utilized in confined shear tests. Each mould was equipped with a drainage valve for

Comment [L30]: Typographical error corrected

Comment [L31]: Editorial comment
'had equipped' to 'was equipped'

medium replacement. Filter paper was placed over the drainage valve holes during silica sand packing to prevent material loss. Silica (autoclaved; dry cycle, 120 °C, 15 min) was packed to a dry density of 2.50 - 2.55 g/cm³ and washed three times with 25 mL of TBS. Thereafter, 25 mL of a CM suspension containing bacteria was added and incubated for 24 h. At the end of the incubation period, the CM suspension was drained and the sand washed three times with 25 mL of TBS. This was repeated twice for a total of three, 24 h incubation periods. In addition, during each 24 h incubation period, 1 mL of solution was reserved for serial dilution at two times: (1) immediately after addition of CM suspension and (2) immediately before draining of CM suspension. Serial dilutions were performed using TBS onto agar plates as described (2.1) with 0.1 mg/L Ampicillin (Sigma-Aldrich) to measure biomass as colony forming units (CFU). Many species of *Bacillus* were found to be resistant at these Ampicillin concentrations (Environment Canada 2015), but otherwise lethal to most contaminant bacteria. In-lab tests observed more than 95 % survival rates for all considered *Bacillus* and *Sporosarcina* strains compared to a less than 0.1 % survival rate among a model *E. coli* (DH5 α TM, Thermofisher). Ambient temperatures of treated sands were maintained at 22 °C, reflective of average sub-surface soil temperatures of central North American climate in the summer (Mesinger et al., 2006).

Comment [L32]: Typographical error corrected

Comment [L33]: Editorial comment
'Silica' added

Comment [L34]: Typographical error corrected

Comment [L35]: L189 and L220-224
modifications
Additional descriptions detailed for the preparation,
incubation and washing of samples provided.

Comment [L36]: Typographical error : Change
to *Sporosarcina*

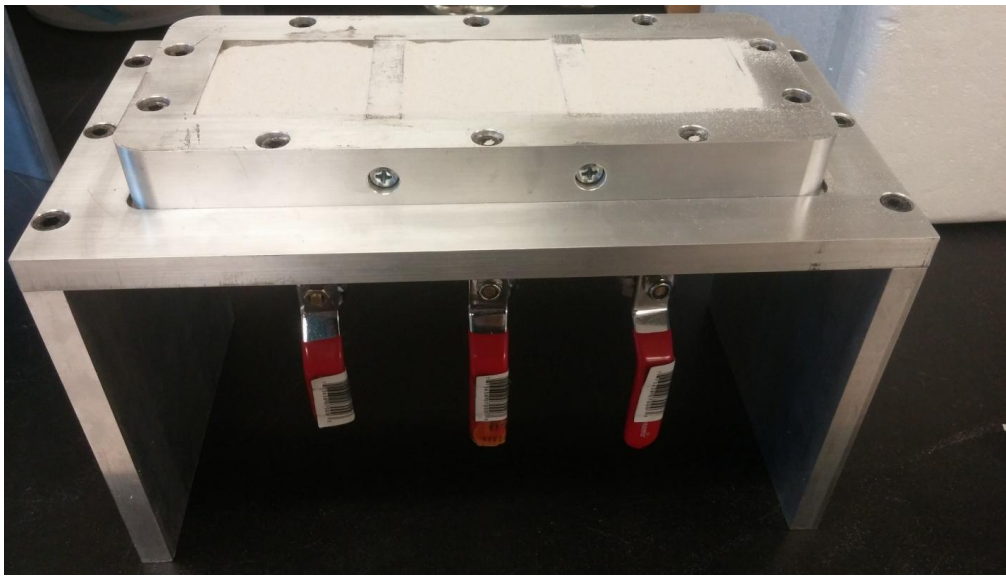


Fig. 1. Aluminum mould constructed for cementation testing

Comment [L37]: Fig 1: Change from 'model' to
'mould'

2.3.4 Confined direct shear tests

Treated, drained samples were washed twice with 25 mL of ddH₂O and dried in an oven for 48 h at 65 °C. Washing with ddH₂O was done to remove salts other than CaCO₃ to prevent cementation of the sand due to salt precipitation in the drying process as has been found in the literature (Jia and Jian 2015 ; Zeng et al. 2018). The shear strength tests were performed in

a direct shear machine (Model: ELE-26-2112/02). Unless otherwise specified, shear tests were performed on samples with an applied normal stress of 25 kPa. Shear stress was then applied to failure at a rate of 2.5 mm/min under dry and drained conditions. Stress-strain curves were acquired via LabView data acquisition software.

Comment [L38]: L220-224
The washing, drying and testing methods are described and made more clear
L230/231 modification
The effect of drying is discussed

2.4 Scanning electron microscopy (SEM) observation

Silica grains from the surface layer of treated, washed and dried sands were mounted on a samples holder (51 mm) using double-sided copper tape and observed to confirm the crystalline nature of the resulting precipitates using a JEOL6610LV scanning electron microscope (5 kV). Elemental composition of surface structures was analysed, in parallel, by energy dispersive x-ray spectroscopy (EDS).

Comment [L39]: L228-231: Sample mounting details added. No dehydration performed but cleaning with ddH₂O and drying by oven was done (as described)/

Comment [L40]: L228 : Editorial comment
Replaced 'Visualization' with 'observed'

Comment [L41]: Typographical error ; Changed from 'analyzed' to 'analysed'

2.5 Environmental simulation tests

2.5.1 Water flushing

The ability for cured samples to perform following a one month saturation period was tested. Treated silica sands were incubated with ddH₂O over 6 periods of incubation. Each period involved injection of 25 mL of ddH₂O followed by a 5 day treatment under ambient temperature of 22 °C. Volumes were replaced at the end of each period. No aliquots for colony counts were taken.

Comment [L42]: L236 modification.
Wording changed to reflect the incubation period.

Comment [L43]: Typographical change made

2.5.2 Ice-water cycling

To understand the degree to which ice cycling impacted the shear strength of treated silica sand, a selected number of samples were treated over 6 periods of ddH₂O incubation as described immediately above. However, each period began with a freezing at -20 °C for 24 h, holding for 3 days at -20 °C, followed by a thawing for 24 h at 22 °C. The selected maximum and minimum temperatures reflect those capable of being reached in Ontario winters and summer (Canada), respectively, according to Environment Canada (Climatic station: Ottawa CDA) (Government of Canada 2017).

Comment [L44]: Editorial comment
Change from 'the trials' and 'withstand' to 'treated silica sand' and 'impacted'.

2.5.3 Acid erosion

Formulation of an acid rain model was made according to average pH values (pH ~ 4.4) of rainfalls reported for North-Eastern regions of North America (Environment Canada, 2013). The final pH was adjusted using concentrated sulfuric acid (H₂SO₄). One delivery volume of acid rain was equivalent to the average monthly precipitation of a North American region (April, Ottawa, Canada), calculated from records of Environment Canada (Climatic station: Ottawa CDA) (Government of Canada 2017). Rain was delivered as described for 'Water Flushing' with ddH₂O but for a single incubation period. Following incubation, the treated volumes were flushed with 25 mL of ddH₂O.

2.6 Statistical processing

All statistical manipulations were performed in Excel (2007). Sample means were reported alongside the standard error of the mean (SE) or standard deviation (SD). Normality of all data sets were confirmed with the Anderson-Darling test ($\alpha = 0.05$). The Student's t-test (unpaired, two-tailed; $\alpha = 0.05$) was utilized to compare sample means of experimental conditions for statistical significance. Prior to each t-test, homogeneity of variances for data sets were determined using a F-test ($\alpha = 0.05$). Where variances were statistically observed as unequal, a Welch's t-test was adapted to test statistical significance between two sample means.

3 Results

3.1 $\text{NH}_3\text{-NH}_4^+$ production

Among the different bacterial strains considered, *S. pasteurii* and *S. ureae* were capable of producing the first and second highest levels of $\text{NH}_3\text{-NH}_4^+$, respectively, per unit of time, in both UB-1 (32.50 U/mL ; 29.00 U/mL) and UB-2 (32.76 U/mL ; 30.28 U/mL) medium (Fig. 2a, 2b). Isolates of *B. subtilis* (2.91 U/mL), *B. megaterium* (4.87 U/mL) and *L. sphaericus* (5.89 U/mL) displayed a lower peak of $\text{NH}_3\text{-NH}_4^+$ production in both media. When urea in medium moved from the sole source (i.e., UB-2) to one of a number of sources (i.e., UB-1) for nitrogen, $\text{NH}_3\text{-NH}_4^+$ production dropped to near zero values (Fig. 2a, 2b) for *B. subtilis* (0.44 U/mL), *B. megaterium* (0.56 U/mL) and *L. sphaericus* (1.20 U/mL) that were statistically significantly different ($p < 0.05$, $n = 6$) from the final UB-1 values for each species. However, isolates of *S. ureae* and *S. pasteurii* observed no statistically significant difference ($p > 0.05$, $n = 6$) between final values recorded in UB-1 and UB-2 medium. Instead, a rise in production ($t = 0 - 5$ h) followed by a levelling off in value ($t = 6 - 12$ h) was the general trend observed in UB-1 and UB-2 medium (Fig. 2a, 2b).

Comment [L45]: L274 : Revised to list production values (U/mL) at end of sentence. L276: Revised to include panel number

Comment [L46]: Typographical change made

Comment [L47]: Modifications made to clarify that urea was the only source of nitrogen in UB-2 while one of a number of sources for nitrogen in UB-1.

Comment [L48]: L279: Revised to include panel number

Comment [L49]: 'significant' reworded to 'statistically different'

Comment [L50]: 'non significant' reworded to 'no statistically significant difference'

Comment [L51]: Typographical change made

Comment [L52]: Revised to include panel number

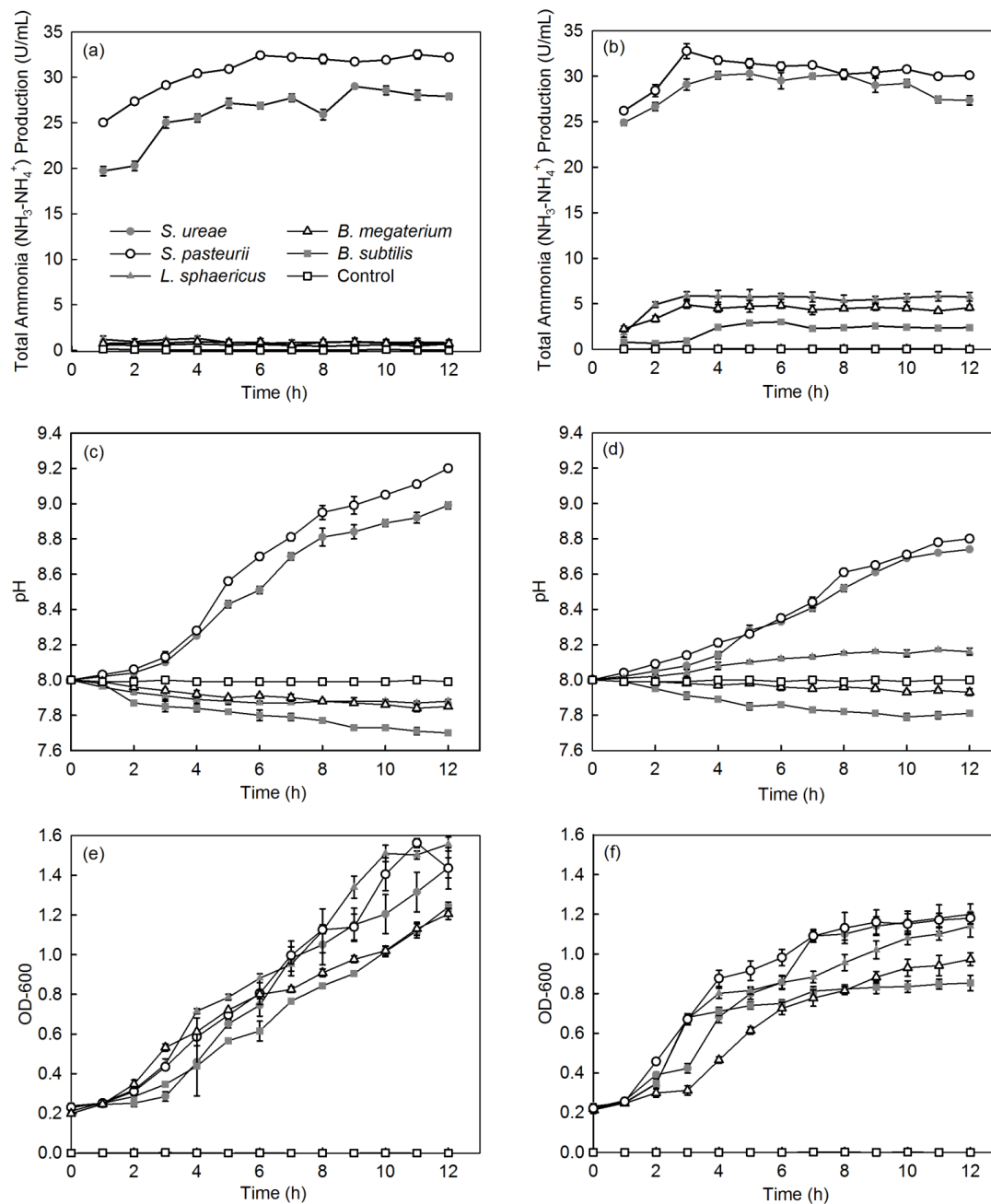


Fig. 2. (a) , (b) $\text{NH}_3\text{-NH}_4^+$ production (U/mL = $\mu\text{mol of NH}_3\text{-NH}_4^+ / \text{minute.mL.OD}_{600}$ of culture) ; (c), (d) pH ; and (e), (f) growth of selected bacteria types in (a) , (c), (e) UB-1 (No yeast extract [YE]) and (b) , (d) , (f) UB-2 (10 g/L YE) nutrient conditions (SD, n = 6). YE was a nitrogen source in the growth medium.

Comment [L53]: Additional suggested change based on L274 comment

Comment [L54]: Figure 2:
 (1) YE defined as yeast extract and clarified to be a N source in medium.
 (2) Change from black to grey scale to better differentiate error bars from data points.
 (3) Placement of UB-1 medium panels on left and UB-2 medium panels on right.

3.2 Examination of colony abundance in culture

Comment [L55]: L339: Changed from 'colony total' to 'colony abundance'

All strains showed a decline in growth progression when medium was restricted (i.e., UB-2) to urea as nitrogen and glucose as carbon, sources, respectively (Fig. 2e, 2f). Growth repression was greatest in the cases of *B. subtilis* (-33.9 %), *L. sphaericus* (-26.8 %) and *B. megaterium* (-23.6 %) compared to *S. pasteurii* (-17.8 %) and *S. ureae* (-16.6 %). Additionally, the final OD_{600} (t = 12 h) achieved for all strains in UB-2 medium was decreased compared to UB-1 medium values (t = 12 h) and the difference in value for each strain was found to be statistically significantly different ($p < 0.05$, n = 6). Growth cessation (i.e. stationary phase) occurred for *S. ureae* and *S. pasteurii* in both conditions but later in UB-1 (t = 11 h) compared to UB-2 (t = 9 – 10 h) medium (Fig. 2e, 2f); they grew logistically in both medium conditions. In general, growth of *L. sphaericus*, *B. subtilis* and *B. megaterium* in UB-2 medium followed a logistic growth curve too. However, in UB-1 medium their growth fit an exponential model, whereby an exponential growth phase was observed from t = 4 – 12 h following a lag phase of growth between t = 0 – 3 h.

Comment [L56]: Revised to include panel number

Comment [L57]: Typographical error correction

Comment [L58]: L344-346 correction

Comment [L59]: Wording modified to reflect that differences were statistically different and decreased. Also reference section 2.6 for specific tests used, where appropriate.

Comment [L60]: Revised to include panel number

Comment [L61]: Additional observations noted for growth in medium UB-1 and UB-2

3.3 Changes in pH

The alkalinity increased with the increase in time for the strains of *S. ureae* and *S. pasteurii* studied, in both UB-1 (8.99, 9.2) and UB-2 (8.74, 8.8) medium. The lowest final pH values were observed in *L. sphaericus* (7.88; 8.16), *B. megaterium* (7.85 ; 7.93) and *B. subtilis* (7.70 ; 7.81) in UB-1 and UB-2 medium, at the end of 12 h (Fig. 2c, 2d). While pH continued to rise for *S. pasteurii* and *S. ureae* in either UB-1 or UB-2 medium, it was constant for *L. sphaericus*, *B. megaterium* and *B. subtilis* after time in UB-1 medium as early as 6 h (*L. sphaericus* and *B. megaterium*) in UB-2 medium. While final pH values for *L. sphaericus*, *B. megaterium* and *B. subtilis* reached higher final (t = 12 h) values in UB-2 medium compared to UB-1, that were found to be statistically significantly different ($p < 0.05$, n = 6), the opposite was true for *S. pasteurii* and *S. ureae*; values in UB-2 were lower compared to UB-1 and the difference was found to be statistically significantly different for each species ($p < 0.05$, n = 6). In general, acidity increased with the increase in time for *L. sphaericus*, *B. megaterium* and *B. subtilis* in UB-1 medium. This was also true in UB-2 medium except for *L. sphaericus* which showed an increase in pH over time.

Comment [L62]: Revised to include panel number

Comment [L63]: L355-357 correction

Comment [L64]: Additional details provided on statistical data used (also reference section 2.6 for specific tests used, where appropriate)

Comment [L65]: Additional details provided on statistical data used (also reference section 2.6 for specific tests used, where appropriate)

3.4 Mechanical and biological behaviour in MICP reinforced sands

Experiments of sand consolidation with triplicate holding vessels (Fig. 1) mixed with *S. ureae* (135.77 kPa) or *S. pasteurii* (135.5kPa) and fed MICP medium (i.e., CM-1) had improvements in their direct shear strength compared to control vessels (15.77 kPa) fed with MICP medium only. In fact, the difference in direct shear strength values for *S. ureae* and *S. pasteurii* compared to control vessels were found to be statistically significantly different ($p < 0.05$, n = 3). However, the difference in strength between *S. ureae* and *S. pasteurii* were not statistically significantly different ($p > 0.05$, n = 3). Mixtures of non-ureolytic *B. subtilis* (28.1 kPa) showed no statistically significant difference ($p > 0.05$, n = 3) in value when compared to the control (Fig. 3). While pre-injection (21.9×10^7 CFU/mL) and post incubation (3.2×10^7 CFU/mL) cell abundance was highest in the case of *B. subtilis*, (Fig. 4) all bacterial isolates showed a decrease in cell abundance when comparing pre-injection to post incubation cell abundance with statistically significant differences ($p < 0.05$, n = 9). Also, the percentage loss of cell abundance, taken as the difference between post incubation and pre-

Comment [L66]: L368-369: Suggested changes made.

Comment [L67]: Additional details provided on statistical data used (also reference section 2.6 for specific tests used, where appropriate)

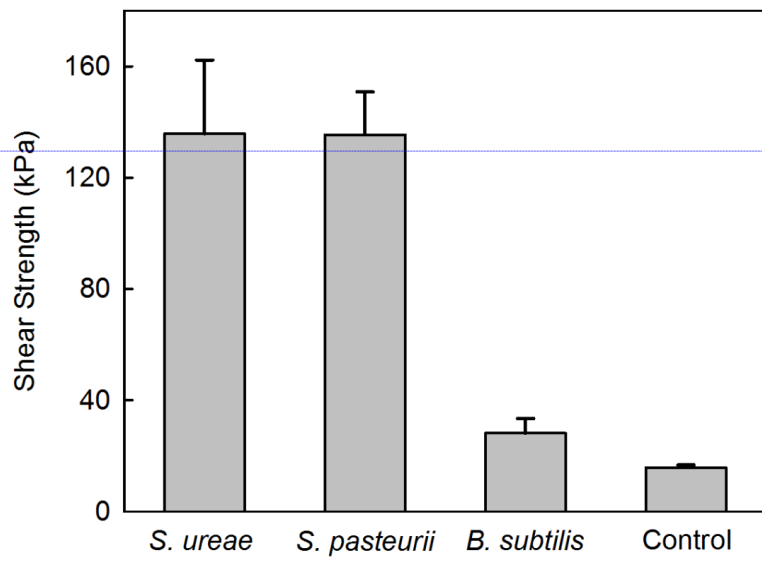
Comment [L68]: Change from 'colony total' to 'cell abundance'

465

injection cell abundances divided by the initial pre-injection cell abundance (-77.7 % [*S. ureae*], -75.4 % [*S. pasteurii*], -77.7 % [*B. subtilis*]) were not statistically significantly different ($p > 0.05$, $n = 9$) when comparing values between species. Of note, the medium-only control had no cell growth (CFU/mL) observed before and after incubation.

Comment [L69]: L371-373 corrections

Comment [L70]: Change from 'colony growth' to 'cell growth'



Comment [L71]: L386: 'Subtilis' to 'subtilis'

Fig. 3. Direct shear strengths (τ , kPa) of treated sands (SE, $n = 3$).

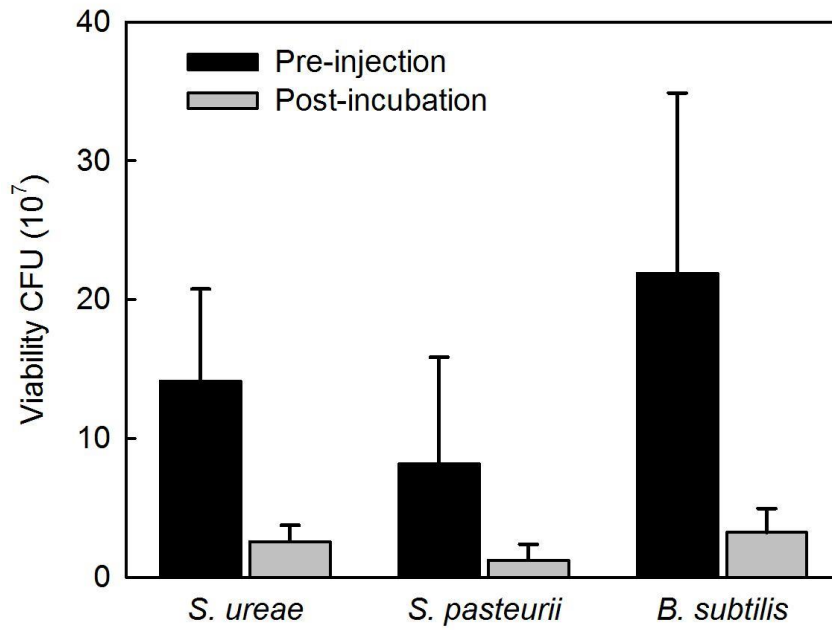


Fig. 4. Microbial viability of treated sands before injection (black bars) and after incubation (gray bars) (SD, $n = 9$).

3.5 Microstructure investigation

505 The precipitation of calcium as CaCO_3 via MICP was visualized. Sand granules from approximately the first 1cm of
sands treated with MICP solution (i.e., CM-1) combined with *S. ureae* are shown (Fig. 5a, 5b) where crystals arranged in
rosette peaks (20 – 40 μm) can be seen across the surface of a sand grain (Fig. 5a, 5b). Rod-shaped structures (40 – 80 μm)
can also be visualized, though less commonly, across grain surfaces (Fig. 5a, 5b). Calcium, carbon and oxygen peaks
captured by EDS analysis for crystals organized in ‘rosette’ patterns as well as in rod-shaped structures suggest CaCO_3

510 precipitation (Fig. 5c, 5d).

Comment [L72]: Revised to include panel number

Comment [L73]: Additional corrections made in line with L414/415, L418 and L594 comment

515

520

525

530

535

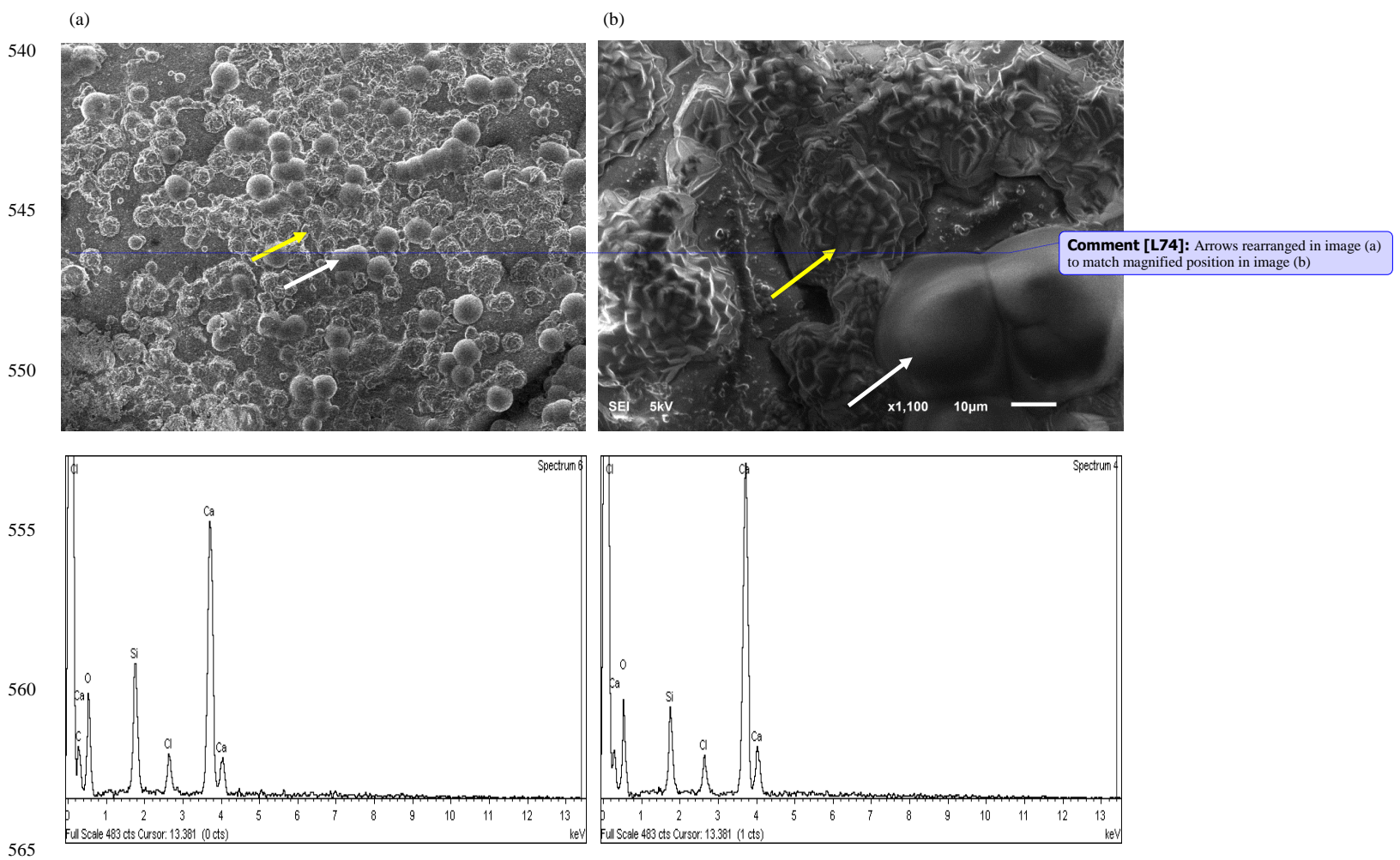


Fig 5. SEM image of the (a) whole surface (*bar*, 100 μm) and (b) magnified (*bar*, 10 μm) silica granule with crystalline (*yellow arrow*) and amorphous (*white arrow*) calcium structures following bacterial treatment. EDS analysis shows the chemical composition of (c) crystalline and (d) amorphous precipitates.

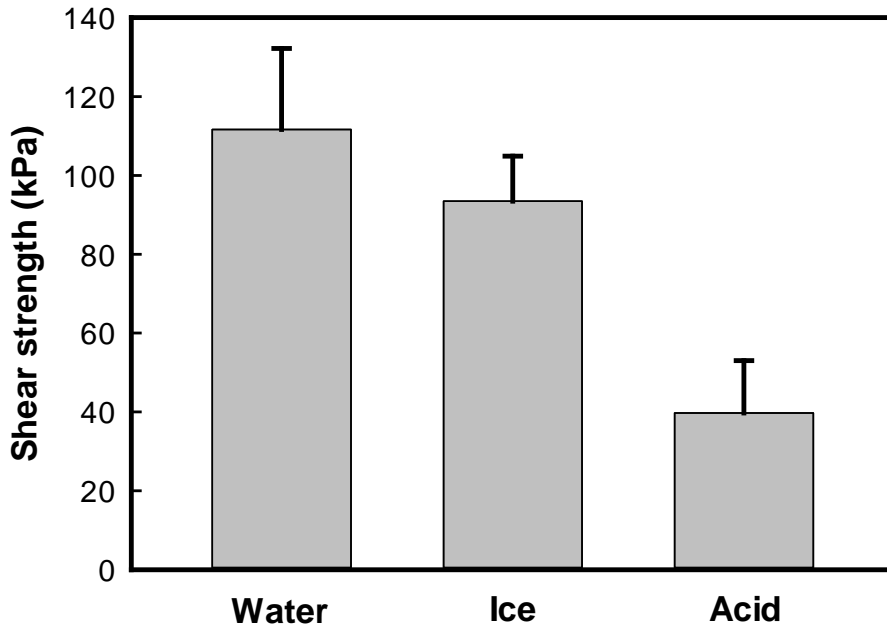
570

575

3.6 Environmental durability of MICP

580 A reduction in the reinforcement of sands by CaCO_3 mineralisation with *S. ureae* inoculations was observed following exposure to acid rain as direct shear strengths reduced to 39.7 kPa (Fig. 6) or 29.2 % compared to those with no such treatment (Fig. 3). Treated sands under flooding (111.7 kPa) or freeze thaw (93.5 kPa) rounds had better durability (i.e., strength retention) compared to acidified states, with differences in strength being statistically significantly different ($p < 0.05$, $n = 3$). In fact, no severe mechanical damage was incurred by samples treated under simulated flooding or freeze-thaw cycles (Fig. 6); when comparing the difference in their direct shear strengths to sands tested under ideal (i.e., non-environmental) conditions, these differences were found to be not statistically significantly different ($p > 0.05$, $n = 3$) (Fig. 3).

585 **Comment [L75]:** L 488, L490 and L491-493 correction and additional details provided for statistical data used. The tests used can be referenced in section 2.6.



590 Fig 6. Direct shear strengths (τ , kPa) of treated sands with *Sporosarcina ureae* in flood (water), freeze-thaw (ice) and acid rain (acid) simulations (SE , $n = 3$).

4 Discussion

In characterizing *S. ureae* as a ureolytic organism in MICP, the goals of the study were to understand: (1) its ability to degrade urea over time relative to other commonly applied MICP bacterial isolates and (2) its preference for urea as a nitrogen source. The strain (BGSC 70A1) was consistent in its total nitrogen ($\text{NH}_3\text{-NH}_4^+$) production regardless of whether the nutrient medium included (i.e. UB-1) or did not include (i.e. UB-2) yeast extract. This can be attributed to mostly urea catabolism in UB-1 medium and entirely so in UB-2 medium as urea was the sole source of nitrogen. It is important to note that minor mineralization of the yeast extract components in UB-1 medium would likely have contributed ammonium (Gat et al., 2014) in this medium condition. This is supported by data recorded for the negative control (medium-only) in UB-1 medium with production as high as 0.12 U/mL (Fig. 2a, 2b). Also, degradation of amino acids from bacterial metabolism, such as ornithine, particularly supplied in UB-1 medium via yeast extract, could also contribute to total nitrogen in solution for this condition (Cruz-Ramos et al., 1997). For both media (UB-1 and UB-2) dissolution of ammonium as ammonia into the atmosphere would have reduced available nitrogen for measurement, over time. Thus, a quantitative urea hydrolysis rate cannot be determined from the data collected, as nitrogen production over extended periods of time is a complex collection of some or all of these processes. This limits the conclusions able to be drawn as only the broad bacterial activity in medium, as regards preferences for urea as a nitrogen source, overtime can be considered. For a quantitative method determining urease rates a robust protocol is presented by Lauchnor et al. (2015). Also, urea hydrolysis-induced CaCO_3 precipitation rates can be determined by measuring the decrease in dissolved Ca^{2+} ions overtime (HARBOTTLE et al., 2016). However, overall, the total nitrogen production over time draws support for *S. ureae* as a promising MICP candidate in bioceement as over the time period measured it was able to produce a consistent amount of nitrogen as ammonia- ammonium in UB-1 or UB-2 medium and ammonia production has been found to be directly proportional to CaCO_3 production (Reddy et al., 2010) and soil stabilization (Park et al., 2012). As mentioned, the production of nitrogen by *S. ureae* in medium is due mostly, or completely, to urea catabolism and this process is likely driven chiefly by its urease enzyme (Gruninger and Goldman, 1988 ; Mobley and Hausinger, 1989). Alternatively, an unknown urea-degrading enzyme other than urease could produce or contribute to the result. Notably, all *Bacillus* strains observed a decrease in total ammonia production when yeast extract was available (i.e., UB-1). This was not observed for *S. ureae* much like *S. pasteurii*. Urea is a nitrogen source for bacterial growth, often catabolised by urease, (Lin et al., 2012) which has been found to be controlled by nitrogen levels and pH as well as other factors which can differ between bacterial species (Mobley et al., 1995; Mobley et al., 2001). Our observations indicate that *S. ureae* selects for urea in a metabolic pattern potentially similar to *S. pasteurii* and quite differently from the *Bacillus* strains investigated here, which appear to have medium-dependent metabolism of urea. The observation that the investigated *Bacillus* strains have medium-dependent metabolism of urea is particularly interesting for *B. subtilis* as it has been applied as a non-ureolytic control organism in previous literature (Stocks-Fischer et al., 1999; Gat et al., 2014). In UB-2 medium, a non-zero total ammonia activity was measured for this strain (Fig 2a, 2b). This is consistent with previously published literature linking total ammonia production to urea breakdown from urease, when urea is the sole source of nitrogen and urease is the assumed main catabolic enzyme; the enzyme expressed constitutively in species of *Sporosarcina* (Mobley et al., 1995) but in a repressible manner (i.e., activated in the absence of NH_4^+ and other

Comment [L76]: L509 ; 'chief' changed to the current sentence.

Comment [L77]: L512 : Changed to specify that the nutrient medium, with or without yeast extract did not affect the ability for *S. ureae* to produce $\text{NH}_3\text{-NH}_4^+$ from compounds like urea.

Comment [L78]: Revised to include panel number

Comment [L79]: L518: change of 'mediums' to 'media'

Comment [L80]: L521/522 : Additions addressing the limitations of the ammonium/ammonia measurement on the conclusions able to be drawn in the study.

Comment [L81]: L509-576: New paragraph created.

Comment [L82]: L527 – removed 'see also'

Comment [L83]: L532 – removed 'see also'

Comment [L84]: L509-576: Sentence reworded to make a new paragraph.

Comment [L85]: Revised to include panel number

forms of nitrogen [i.e., NO_3^-] and urea being the sole nitrogen source) in strains such as *B. megaterium* (Mobley and Hausinger, 1989) and *B. subtilis* (Atkinson and Fisher, 1991; Cruz-Ramos et al., 1997). This is indeed suggested by our data as it was observed for *B. subtilis* (and also for *B. megaterium* and *L. sphaericus*) that increased total ammonia production reached higher values in UB-2 medium compared to near zero values in UB-1 medium with yeast extract as an alternative nitrogen source. In fact, in UB-2 medium peaks were reached within 3 – 6 h from near zero values ($t = 0 - 1$ h) for all *Bacillus* species, further suggesting an increase in processes related to urea hydrolysis, such as urease expression, overtime following a reduction in genetic repression (Fig 2a, 2b); This also corroborates well with growth patterns. A comparatively slow growth rate occurred ($t = 8 - 12$ h) after a comparatively fast ($t = 3 - 7$ h) rate of growth following a lag period ($t = 0 - 2$ h) for these strains, in general (Fig. 2a, 2b). An increase in urease, or other urea hydrolysis processes, may account for an ability to grow quickly ($t = 3 - 7$ h) despite nitrogen limitation in UB-2, as ureolysis would provide nitrogen for growth related processes. However, growth could have been restricted, overtime, due to other nutrient limitations such as glucose depletion. This would explain a continued but reduced growth rate ($t = 8-12$ h) (Fig. 2a, 2b). Alternatively, or in addition, the decreased growth could be due to decreased dissolved oxygen content in medium overtime, which is required for aerobic respiration, such that each *Bacillus* species switched to a slower, anaerobic growth pattern. An increase in harmful metabolites such as organic acids in solution over time could also have hindered growth; they are supported to have occurred for these species in UB-1 medium as a decrease in pH over time was observed which correlates to organic acid production (Fig. 2c). Taken together, this has significance as while *B. megaterium* and *L. sphaericus* have been investigated as candidates in ureolytic MICP, this has not been extensively the case for *B. subtilis* which in this study shows ureolytic capability under specific conditions. This may guide future research on ureolytic MICP with *B. subtilis*, particularly where cementation media do not contain nutrient rich additives such as yeast extract. This has been the case in some literature solutions for inducing ureolytic MICP (van Paassen et al., 2010; Cheng et al., 2013). In this study *B. subtilis* was included in sand solidification as a non-ureolytic strain control as the cementation medium contained yeast extract, intended for maximum biomass support and CaCO_3 production rates (van Paassen et al., 2010).

It is clear that *S. ureae* prefers an alkaline environment, like *S. pasteurii* and quite different from the other isolates in trials, as in both growth conditions samples grew not only exponentially but towards an increased pH (Fig. 2c, 2d). Urea hydrolysis, driven potentially by urease, in this species, may maintain ureolytic activity for production of the highly alkaline environment to which it is suited for growth as an alkaliphile and for its role as a nitrogen cyclor (Gruninger and Goldman 1988). These conditions are also important for CaCO_3 production (Whiffin et al., 2007). It can also use the charge gradient generated from ammonium production for energy (Jahns 1996) to support growth. A diagram of this ATP-generating system coupled to ureolysis is available in the work of Jahns (1996) and Whiffin (2004). Additionally, the ammonium is an accessible nutrient (i.e. nitrogen) source (Gruninger and Goldman 1988). This may partly account for *S. ureae* and *S. pasteurii* having the smallest change in growth between UB-1 and UB-2 medium by having the material but also energetic means to multiply. This is extremely promising as van Paassen et al. (2010) determined the CaCO_3 precipitation rate is positively correlated to the number of viable micro-organisms in solution. Thus, taken together, the ureolytic, pH and growth data of this study support *S. ureae* as superior in ureolytic action to every *Bacillus* strain considered except *S. pasteurii*. Indeed, the work of Harbottle et al. (2016) likewise found *S. ureae* and *S. pasteurii* to be about as efficient in terms of ureolytic activity (2016). Given the current data, *S. ureae* and *S. pasteurii* are comparable as candidates for ureolytic MICP.

Comment [L86]: Removed 'see also'

Comment [L87]: Typographical error ; change from 'media' to 'medium'

Comment [L88]: Typographical error ; addition of 'medium'

Comment [L89]: Changed 'co-nitrogen' to 'alternative nitrogen'.

Comment [L90]: Revised to include panel number

Comment [L91]: Revised to include panel number

Comment [L92]: L 549-553 correction

Comment [L93]: Revised to include panel number

Comment [L94]: Phrase reworded to better clarify other factors contributing to a decreased growth rate overtime.

Comment [L95]: L360-L364 : Discussion of why acidity in UB-1 medium would increase over time included.

Comment [L96]: Revised to include panel number

Comment [L97]: Typographical error; changed 'media' to 'medium'

Comment [L98]: L561 : Removed 'returning to *S. ureae*'. Started new paragraph.

Comment [L99]: Revised to include panel number

Comment [L100]: Word change; 'high' to 'ureolytic'

Comment [L101]: Typographical error; change 'alkalophile' to 'alkaliphile'

Comment [L102]: L565; Word change, 'Whiffin' to 'Whiffin'

Comment [L103]: L566 correction

This should prompt interest for further investigations differentiating between the two strains on such parameters as protease activity, exopolysaccharide production and biofilm levels, also connected to MICP capability (Achal et al. 2010), so as to identify the superior candidate. Some differential work has already been done (Sarmast et al., 2014).

To understand the macroscopic engineering aspects of *S. ureae* in MICP application, efforts of this study were focused on measuring and assessing its ability to strengthen model sands via urea hydrolysis to form CaCO₃. In experiments with a model silica sand featuring poor geotechnical characteristics (i.e., uniform sand profile) for high susceptibility to settling and static strength decreases (Conforth 2005), it was clearly shown that the *S. ureae* treatment led to consolidation of the medium in 48 h with an improvement in strength to 135.77 kPa. This was eight times that of the control treatment (15.76 kPa) (Fig. 3). In addition, while average consolidation strengths had no statistically significant difference ($p < 0.05$, $n = 3$) between *S. ureae* and *S. pasteurii*, the peak sample strength recorded for a *S. ureae* mould (175.8 kPa) exceeded the maximum sample strength recorded for *S. pasteurii* (165.7 kPa), the typical model ureolytic organism in MICP soil strengthening. It was also well above peak average strength recorded for *B. subtilis* (28.1 kPa) (Fig. 3). This is as expected; *B. subtilis* is a non-ureolytic organism in the 'good nitrogen' (Atkinson and Fisher, 1991) nutrient conditions supplied by the yeast extract of CM-1 medium. Other *Bacillus* species were not tested under the assumption that they too would experience repressive urea hydrolysis expression in CM-1 medium and would produce similar observations as a result. This is supported by data provided by the groups of Al-Qabany et al. (2012) and van Paassen et al. (2010) that found CaCO₃ precipitation, and by inference soil strength, improved with more suitable micro-organisms in MICP. Taken together, this study provides evidence that *S. ureae* is capable of soil improvement by ureolytic MICP similarly to *S. pasteurii*.

The presence of crystals as organized 'rosettes' and amorphous 'rods' was observed (Fig. 5a, 5b) along sand granules treated with *S. ureae* and are evidence that it is capable of inducing prevalent formation of secondary minerals. The structures were analyzed by EDS and the results provide support for CaCO₃ formation (Fig. 5c, 5d). Assuming that the solution was saturated with respect to CaCO₃ and that the nucleation and crystallization of the calcite polymorph was thermodynamically favoured overtime, the organized deposits should represent calcite (De Yoreo and Vekilov, 2003). However, fast nucleation and crystallization can result in amorphous CaCO₃ structures and could explain the 'rod' deposits that appear amorphous in morphology under SEM (Fig. 5a, 5b) (Addadi et al., 2003). This observation is limited though as SEM cannot discriminate among CaCO₃ polymorphs which can have varying morphology based on the crystallization conditions (Ni and Ratner, 2008). The exact polymorph of CaCO₃ for each structure could be distinguished with techniques such as x-ray diffraction (XRD) and / or Fourier transform infrared spectroscopy (FTIR) (Anthony et al., 2003; Ni and Ratner, 2008). Assuming the 'rod' structures are amorphous precipitates, this indicates that the treatment conditions were potentially sub-optimal for the maximum precipitation of crystalline CaCO₃ such as calcite overtime. This could be due to high, local chemical concentrations (e.g., calcium) which have been found to hinder CaCO₃ crystal formation as calcite (Al Qabany et al., 2012).

Investigators may be prompted to test alternative calcium concentrations from those used in this study for injections so as to increase the efficiency of crystalline CaCO₃ precipitation in MICP. Finally, medium and *B. subtilis* treated sands gave no discernible crystal CaCO₃ formation (data not shown). This provides evidence of superficial strengthening in shear tests for these treatments based on natural biofilm excretion (*B. subtilis*) or sporadic mineral crystallization. Thus, overall, the microscopy

Comment [L104]: L572-573 ; Included work of Harbottle et al. (2016) as well as Sarmast et al. (2014) to provide context for this work's conclusions in relation to those found by other groups working with *S. ureae* on MICP.

Comment [L105]: L581 : Removed 'only'

Comment [L106]: L585 : Changed to better explain improvements in strength of *S. ureae* treated samples in relation to the control treatments.

Comment [L107]: Additional details provided on statistical data used (also reference section 2.6 for specific tests used, where appropriate)

Comment [L108]: Typographical error change; 'an' to 'a'

Comment [L109]: Typographical error change; 'sp.' to 'species'

Comment [L110]: Changed to clarify that evidence supports *S. ureae* can improve soils by ureolytic MICP, much like *S. pasteurii*

Comment [L111]: L594 ; 'Rhombohedral' changed to more qualitative descriptions based on the SEM images provided.

Comment [L112]: Revised to include panel number

Comment [L113]: Revised to include panel number

Comment [L114]: Revised to include panel number

Comment [L115]: L594, L600, L600-604: This section is rewritten to better reflect the mineralogy and microscopy techniques used to identify mineral precipitation along MICP treated surfaces.

Comment [L116]: Typographical error ; 'media' to 'medium'.

Comment [L117]: L597/98: Data not shown but available upon request.

evidence does support that *S. ureae* can precipitate CaCO₃ for strength improvements in soil which was part of the goal in studying *S. ureae* in MICP.

Analysing the cell viability of injections before and after incubation in treated sands, it was found that *S. ureae* maintained higher post-incubation (2.56 x 10⁷ CFU) cell abundance compared to *S. pasteurii* (1.21 x 10⁷ CFU) and that these differences were statistically significant (p < 0.05, n = 9) (Fig. 5). Also, both species' cell abundance was lower and found to be statistically significantly different (p < 0.05, n = 9) compared to the cell abundance for *B. subtilis* (3.2 x 10⁷ CFU). This difference could be due to the solution (i.e., TBS) utilized for serial dilution of the growth medium. The TBS did not include ammonium and was not buffered at a high pH which are two necessary conditions for the survival of alkaliphilic species such as *Sporosarcina* (Morsdörf and Kaltwasser, 1989). Thus, a deflated value for *S. pasteurii* and *S. ureae* would result. Also, moulds become mostly anaerobic overtime below the subsurface and within the microenvironments of sand grains as oxygen is depleted by bacterial respiration (van Paassen et al., 2010). *B. subtilis* cells may have survived anaerobically (Clements et al., 2002) as opposed to the obligate aerobes *S. ureae* and *S. pasteurii* (Claus and Fahmy, 1986), leading to higher post incubation cell abundance for *B. subtilis*. However, considering the percentage loss of cell abundance calculated as described (3.4) is comparable between all three species this indicates that neither species outperforms the other in cell survival while in the high salt, high urea CM-1 medium with incubation in treated sands. That being written, the total cell abundance in *S. ureae* is higher compared to *S. pasteurii*. This is important as cells provide nucleation points for CaCO₃ formation. Indeed, the literature reports designate that strength enhancement by ureolytic MICP is driven by urea hydrolysis activity but also by the presence of bacteria acting as nucleation sites (Stocks-Fischer et al., 1999; Gat et al., 2014). While sand surfaces can also act as nucleation points, the negatively charged bacteria cell wall attracts positively charged cations (e.g., calcium) preferentially for the controlled nucleation of CaCO₃ over time. In fact, it has been shown that cell abundance in MICP treatments positively correlate to the precipitation of CaCO₃ in both the rate of production and crystal size (Morris and Ferris, 2006). The group of Hommel et al. (2015) have even developed a model showing that calcite precipitation is proportional to cell abundance (i.e. biomass) and potentially improved soil strengths. This model assumes that the features of the cells such as biofilm production around their cell walls favour and facilitate the precipitation of CaCO₃. It follows that any intact cell wall part of the biofilm can facilitate the precipitation process whether the cell itself is alive or dead. Thus, in general, more cells equates to more CaCO₃ precipitation. However, in this study, *S. ureae* gave rise to strengths in sands that were not statistically significantly different (p > 0.05, n = 3) versus *S. pasteurii* treatments. This is unexpected since *S. ureae* had comparable ureolytic activity to *S. pasteurii* but higher cell abundance overtime in precipitation medium. Therefore, more CaCO₃ precipitation should have occurred and led to a greater strength increase in sands in *S. ureae* treatments. This non-linear increase in strength compared to cell abundance can be a result of a number of factors. For example, the ability for cells to precipitate CaCO₃ can be hindered when an abundance of cells injected into porous material (i.e., sands) lead to pore plugging from the organic matter (i.e., cells). This has been seen to lead to a varied amount of CaCO₃ precipitation throughout the volume of a mould (van Paassen et al., 2009). Where cells are distributed more evenly they can facilitate the precipitation of CaCO₃ as nucleation points (Hommel et al., 2015). This may explain why *S. ureae*, having a comparable NH₃-NH₄⁺ activity to *S. pasteurii* did not outperform it on average in undrained, direct shear strength tests despite having a higher cell abundance on average. It may also explain the broader range of strengths achieved in *S. ureae* (Fig. 3). For example, a

- Comment [L118]:** L594, L600, L600-604 : This section is added to give context for why SEM analysis was performed.
- Comment [L119]:** Typographical error ; 'analyzed' to 'analysed'
- Comment [L120]:** Change from 'colony total' to 'cell abundance'
- Comment [L121]:** Change from 'colony total' to 'cell abundance'
- Comment [L122]:** Change from 'colony total' to 'cell abundance'
- Comment [L123]:** Changed from 'colony count' to 'serial dilution of the growth medium'
- Comment [L124]:** L606-610 ; This section is reworded to better clarify that differences in the cell counts for *S. ureae* / *S. pasteurii* compared to *B. subtilis* could be due to the dilution medium used for cell counts.
- Comment [L125]:** Typographical error changed ; ',' to ','
- Comment [L126]:** Change from 'colony total' to 'cell abundance'
- Comment [L127]:** Change from 'colony total' to 'cell abundance'
- Comment [L128]:** L613: Phrase reworded to remove 'non-significant' statement.
- Comment [L129]:** Typographical error change ; change from 'bacterial' to 'bacteria'
- Comment [L130]:** Change from 'cell number' to 'cell abundance'
- Comment [L131]:** Typographical error changed ; 'modeled' to 'modelled'
- Comment [L132]:** Change from 'cell number' to 'cell abundance'
- Comment [L133]:** L632: Change from 'colony total' or 'cell number' to 'colony abundance' or 'cell abundance'.
- Comment [L134]:** Change from 'cell number' to 'cell abundance'
- Comment [L135]:** Change from 'colony total' or 'cell number' to 'colony abundance' or 'cell abundance'.

740 sub-optimal spreading mechanism could have hindered strength achievement in some moulds of *S. ureae* treatment where
pore plugging by organic matter (i.e., cells) occurred. This in mind, optimization of treatment protocols would help to
determine whether or not *S. ureae* is the superior candidate compared to *S. pasteurii* given that it has consistently
increased total cell abundance (Fig. 3) to support more nucleation of CaCO₃ overtime, in tandem with a NH₃-
NH₄⁺ production comparable to that of *S. pasteurii*. However, it is important to note that *S. ureae* cells are significantly
745 smaller than cells of *S. pasteurii* (Claus and Fahmy, 1986). Therefore, the total cellular surface area available for nucleation
of CaCO₃ would be similar for the two species. This provides a possible explanation for why no statistically significant
differences in strength was observed because if total cellular surface area was most important for precipitating CaCO₃ this
means there would be no difference in strengths expected for the same total cellular surface area whether it was spread over a
relatively high number of smaller cells (i.e., *S. ureae*) or fewer number of larger cells (i.e., *S. pasteurii*).

Comment [L136]: L615/616, L616-619, L621, L625/626 : This section rewritten to better describe the role of bacteria as nucleation points for the precipitation of CaCO₃ to provide context in the discussion of possible reasons *S. ureae* treatments did not lead to meaningful strength differences compared to *S. pasteurii* treatments.

Comment [L137]: Change from 'colony total' or 'cell number' to 'colony abundance' or 'cell abundance'.

Comment [L138]: L635 : Rephrased from 'may prove' to 'whether or not'

Comment [L139]: L639: 'proximal' to 'similar'

750 It was the current authors' focus to also apply tests in conditions reflective of a Canadian environment with a relatively novel bacterial isolate (*S. ureae*). Sands treated with *S. ureae* and which underwent short-term flooding (111.67 kPa) or freeze-thaw cycling (93.47 kPa) showed no statistically significant ($p > 0.05$, $n = 3$) strength difference compared to in-lab (135.77 kPa) conditions (Fig. 6). It has been shown that MICP treated sands maintain some porosity in materials (Cheng and Cord-Ruwisch 2012; Chu et al., 2012) and that good strength maintenance in seasonal water saturation and freeze-thaw is possible with porous materials (Cornforth 2005). Further studies may wish to investigate the permeability of hardened sands via *S. ureae* at various levels of CaCO₃ precipitation to strike a balance between porosity, peak strength and endurance overtime in weather simulations.

Comment [L140]: L646: Change to following to reflect 'retention' of strength.

Comment [L141]: L647: 'remain' to 'maintain'

Predictably, it was seen that the acid rain model, reflective of a Northern Ontario rain pH (4.4), eroded the shear strength of sands (Fig. 6) to 35.5 % of originally observed values (Fig. 3). This is a result of the reaction of acid
760 with CaCO₃ producing units of H₂O, CO₂ and salt, known as weathering. A study by Cheng and Cord-Ruwisch (2013) reported similar results with a *Bacillus sphaericus* model. This prompts the idea that a MICP strength model, regardless of the bacteria treatment selected (*S. ureae*, *S. pasteurii*, etc.) for strength enhancement, would require a time-based repair of treated volumes. This realistically limits its geotechnical and economical practicality in the industry. However, it does prompt interest to test the ability of natural buffers, such as limes and sodas, to increase
765 the life-span of MICP induced strength enhancement by reducing acid rain degradation.

Comment [L142]: L652: Typographical error ; change from 'reflective or' to 'reflective of'

5 Conclusions

This study has worked to verify that *S. ureae* is a suitable organism to be applied in the soil hardening technology currently being developed via ureolytic MICP. The authors designate it a close ureolytic MICP candidate, in
770 performance, to the well-studied *S. pasteurii* and a superior one to several other *Bacillus* strains. As larger scale simulations are employed, it is strongly encouraged by the authors that further optimization in the treatment procedure, regardless of the MICP organism selected, be undergone including ideal soil buffering to reduce certain climatic effects (i.e., acid rain) and optimum volume porosity in the space to be treated to assure an economical application in industry.
775

Comment [L143]: Typographical change ; from 'well studied' to 'well-studied'

6 Compliance with Ethical Standards

Funding: The study was funded by NSERC (Discovery grant number 2016-2021 ; Discovery grant number 2015-2020) and the University of Ottawa (UROP grant 2012 ; USRA grant 2014)

7 Competing Interests

The authors state they have no conflict of interest.

8 Acknowledgements

The authors would like to acknowledge the University of Ottawa (UROP Grant) and the National Sciences and Engineering Research Council of Canada (NSERC USRA and NSERC Discovery grants to D. Fortin and S. Vanapalli) for financial provisioning in support of this project. Thanks are also given to Mr. Jean Celestin, Mr. Yunlong (Harry) Lui, Mr. Penghai (Peter) Yin, Dr. Nimal De Silva, Dr. Erika Revesz and Mr. George Mrazek; each providing assistance in shear measurements, microscopy and/or data analysis.

9 References

- Achal, V., Abhijit, M., & Reddy, M. (2010). Characterization of Two Urease-Producing and Calcifying *Bacillus* spp. Isolated from Cement. *J. Microbiol. Biotechnol.* , 20(11), 1571-76. doi:10.4014/jmb.1006.06032
- Achal, V., Mukherjee, A., Basu, P. C., & Reddy, M. S. (2009). Strain improvement of *Sporosarcina pasteurii* for enhanced urease and calcite production. *J. Ind. Microbiol. Biotechnol.* , 36(7), 981-88. doi:10.1007/s10295-009-0578-z
- Al Qabany, A., Soga, K., & Santamarina, C. (2012). Factors affecting efficiency of microbially induced calcite precipitation. *J. Geotech. Geoenviron. Eng.* , 138(8), 992-1001. doi:10.1061/(ASCE)GT.1943-5606.0000666
- Anthony, J. W., Bideaux, R. A., Bladh, K. W., & Nichols, M. C., available at: <http://www.handbookofmineralogy.org> (2003).
- Borates, Carbonates, Sulfates (Vol. 5) in: *Handbook of Mineralogy*. Chantilly, VA: Mineralogical Society of America.
- ASTM D2487-17, Standard Practice for Classification of Soils for Engineering Purposes (Unified Soil Classification System) available at : <http://www.astm.org/cgi-bin/resolver.cgi?D2487>, 2017. Last access: June 2018.
- Atkinson, M. R., & Fisher, S.H. (1991). Identification of genes and gene products whose expression is activated during nitrogen-limited growth in *Bacillus subtilis*. *J. Bacteriol.* 173, 23–27
- Barabesi, C., Galizzi, A., Mastromei, G., Rossi, M., Tamburini, E., & Perito, B. (2007). *Bacillus subtilis* Gene Cluster Involved in Calcium Carbonate Biomineralization. *J. Bacteriol.* , 189(1), 228-35. doi:10.1128/JB.01450-06

Comment [L144]: Several typographical errors corrected (e.g., line spacing). Additional literature sources also added (see highlighted text).

- Bergdale, T. E., Pinkelman, R. J., Hughes, S. R., Zambelli, B., Ciurli, S., & Bang, S. S. (2012). Engineered biosealant strains producing inorganic and organic biopolymers. *J. Biotech.*, *161*(3), 181-89. doi:10.1016/j.jbiotec.2012.07.001
- 815 Cheng, L., & Cord-Ruwisch, R. (2012). In situ soil cementation with ureolytic bacteria by surface percolation. *J. Ecol. Eng.*, *42*, 64-72. doi:10.1016/j.ecoleng.2012.01.013
- Cheng, L., Cord-Ruwisch, R., & Shahin, M. A. (2013). Cementation of sand soil by microbially induced calcite precipitation at various degrees of saturation. *Can. Geotech. J.*, *50*(1), 81-90. doi:10.1139/cgj-2012-0023
- Chu, J., Stabnikov, V., & Ivanov, V. (2012). Microbially Induced Calcium Carbonate Precipitation on Surface or in the Bulk of Soil. *Geomicrobiol. J.*, *29*(6), 544-49. doi:10.1080/01490451.2011.592929
- 820 Claus, D. & Fahmy, F. (1986). Genus *Sporosarcina* Kluver and van Niel 1936. In Mair, Sneath, Sharpe and Holt (Editors), *Bergey's Manual of Systematic Bacteriology*, vol. 2. The Williams & Wilkins Co., Baltimore, 1202-1206.
- Clements, L.D., Miller, B.S., & Streips, U.N. (2002). Comparative growth analysis of the facultative anaerobes *Bacillus subtilis*, *Bacillus licheniformis*, and *Escherichia coli*. *Syst. Appl. Microbiol.* *25*: 284–286.
- 825 Cornforth, D. H. (2005). *Landslides in Practice: Investigation, Analysis, and Remedial/Preventative Options in Soils* (1st ed.). Wiley.
- Cruz-Ramos, H., Glaser, P., Wray, L. V., Jr., & Fisher, S. H. (1997). The *Bacillus subtilis* ureABC Operon. *J. Bacteriol.*, *179*(10), 3371-3373.
- DeJong, J. T., Fritzes, M. B., & Nüsslein, K. (2006). Microbially Induced Cementation to Control Sand Response to Undrained Shear. *J. Geotech. and Geoenviron. Eng.*, *132*(11), 1381-92. doi:10.1061/(ASCE)1090-0241(2006)132:11(1381)
- 830 DeJong, J. T., Mortensen, B. M., Martinez, B. C., & Nelson, D. C. (2010). Bio-mediated soil improvement. *J. Ecol. Eng.*, *36*(2), 197-210. doi:10.1016/j.ecoleng.2008.12.029
- De Yoreo, J. J., & Vekilov, P. G. (2003). Principles of crystal nucleation and growth. *Rev. Mineral. Geochem.* *54*(1), 57-93. doi:10.2113/0540057
- 835 Environment Canada. (2013). Acid Rain FAQ. Retrieved 2016, from <https://www.ec.gc.ca/air/default.asp?lang=En&n=7E5E9F00-1>
- Environment Canada (2015). Final Screening Assessment for 'DSL *Bacillus licheniformis/subtilis* group' (*B. licheniformis/subtilis* group (pp. 13-17) (Canada, Environment Canada, Health Canada). Environment Canada.
- 840 Gat, D., Tsesarsky, M., Shamir, D., & Ronen, Z.. (2014). Accelerated microbial-induced CaCO₃ precipitation in a defined co-culture of ureolytic and non-ureolytic bacteria. *Biogeosciences*, *11*, 2561-2569. doi: 10.5194/bg-11-2561-2014
- Government of Canada. (2017). Almanac Averages and Extremes for April 21. Retrieved 2016, from http://climate.weather.gc.ca/climate_data/almanac_e.html?StationID=4333&period=30&searchMethod=begin&txtStationName=Ottawa&month=4&day=2
- 845 Gower, L. (2008). Biomimetic model systems for investigating the amorphous precursor pathway and its role in biomineralization. *Chem. Rev.*, *108*(11), 4551-627. doi:10.1021/cr800443h
- Gruninger, S. E., & Goldman, M. (1988). Evidence for urea cycle activity in *Sporosarcina ureae*. *Arch. Microbiol.* *150*(4), 394-99. doi:10.1007/BF00408313
- Hach Co. Nitrogen Ammonia Salicylate Method [Technical Manual]: available at: <https://www.hach.com/asset-get.download.jsa?id=7639983745>, last access: 7 June, 2018.
- 850

- Hammes, F., Boon, N., Villiers, J., Verstraete, W., & Siciliano, S. D. (2003). Strain-Specific Ureolytic Microbial Calcium Carbonate Precipitation. *Appl. Envr. Microbiol.*, 69(8), 4901-09. doi:10.1128/AEM.69.8.4901-4909.2003
- Harbottle, M., Mugwar, A. J., & Botusharova, S., (2016). Aspects of Implementation and Long Term Performance of Biologically Induced Mineralisation of Carbonates in Porous Media. 26th Goldschmidt Conference, Yokohoma, Japan, June 26 – July 1 2016, 1051.
- Hommel, J., Lauchnor, E., Phillips, A., Gerlach, R., Cunningham, A.B., Helmig, R., Ebigo, A., & Class, H. (2015). A revised model for microbially induced calcite precipitation: Improvements and new insights based on recent experiments. *Water Resour. Res.*, 51(5), 3695-3715. doi: 10.1002/2014WR016503
- Iftikhar, A., Yokota, A., Yamazoe, A., & Fujiwara, Toru (2007). "Proposal of *Lysinibacillus boronitolerans* gen. nov. sp. nov., and transfer of *Bacillus fusiformis* to *Lysinibacillus fusiformis* comb. nov. and *Bacillus sphaericus* to *Lysinibacillus sphaericus* comb. nov". *Int. J. Syst. Evol. Microbiol.* 57(5): 1117–1125. doi:10.1099/ijs.0.63867-0
- Jahns, T. (1996). Ammonium/urea-dependent generation of a proton electrochemical potential and synthesis of ATP in *Bacillus pasteurii*. *J. Bacteriol.*, 178(2), 403-409. doi: 10.1128/jb.178.2.403-409.1996
- Jia, He, & Jian, Chu. (2016). Cementation of sand due to salt precipitation in drying process. *Mar. Georesour. Geotec.* 35(3), 441-445. doi: 10.1080/1064119X.2016.1168498
- Jonkers, H. M. (2011). Bacteria-based self-healing concrete. *Heron*, 56(1), 1-12.
- Karol, R. H. (2003). *Chemical Grouting And Soil Stabilization, Revised And Expanded* (3rd ed., Vol. 1). New York, NY : Taylor & Francis Inc.
- Krishnapriya, S., Venkatesh Babu, D.L., & Prince Arulraj, G.(2015). Isolation and identification of bacteria to improve the strength of concrete. *Microbiol. Res.* 174, 48-55. doi: 10.1016/j.micres.2015.03.009
- Kang, C., Kwon, Y., & So, J. (2015). Soil Bioconsolidation Through Microbially Induced Calcite Precipitation by *Lysinibacillus sphaericus* WJ-8. *Geomicrobiol. J.*, 33(6), 473-78. doi:10.1080/01490451.2015.1053581
- Lauchnor, E. G., Topp, D. M., Parker, A. E., & Gerlach, R. (2015). Whole cell kinetics of ureolysis by *Sporosarcina pasteurii*. *J. Appl. Microbiol.* 118(6). doi : 10.1111/jam.12804
- Li, M., Fu, Q.-L., Zhang, Q., & Achal, V. (2015). Bio-grout based on microbially induced sand solidification by means of asparaginase activity. *Sci. Rep.*, 5, 16128. doi: 10.1038/srep16128
- Li, P., & Qu, W. (2011). Bioremediation of historic architectural heritages by *Sporosarcina pasteurii*. *ICETCE*. doi:10.1109/ICETCE.2011.5775264
- Lin, W., Mathys, V., Ang, E. L., Koh, V. H., Gomez, J. M., Ang, M. L., & Alonso, S. (2012). Urease Activity Represents an Alternative Pathway for Mycobacterium tuberculosis Nitrogen Metabolism. *Infect. Immun.*, 80(8), 2771-79. doi:10.1128/IAL06195-11
- Litvan, G. G. (1980). *Freeze-Thaw Durability of Porous Building Materials* (Tech. No. STP691). doi:10.1520/STP36080S
- Le Métayer-Levrela, G., Castaniera, S., Orialb, G., Loubière, J.-F., & Perthuisota, J.-P. (1999). Applications of bacterial carbonatogenesis to the protection and regeneration of limestones in buildings and historic patrimony. *Sed. Geo.*, 126(1-4), 25-34. doi: https://doi.org/10.1016/S0037-0738(99)00029-9

Comment [L145]: Typographical error correction

Comment [L146]: Typographical error correction

- 890 Mesinger, F., DiMego, G., Kalnay, E., & Mitchell, K.. (2006). North American Regional Reanalysis. Bulletin of the
American
Meteorological Society ,87, 343-60. doi:10.1175/BAMS-87-3-343
- Mitchell, A. C., & Ferris, F. G. (2006). The influence of *Bacillus pasteurii* on the nucleation and growth of calcium
carbonate.
Geomicrobiol. J., 23, 213-226.
- 895 Mitchell, J.K., & Santamarina, J.C.. (2005). Biological considerations in geotechnical engineering. J. Geotech. Geoenviron.
Eng. 131(10), 1222-1233. doi: 10.1061/(asce)1090-0241(2005)131:10(1222)
- Mobley, H. L. T., & R.P., Hausinger. (1989). Microbial ureases: significance, regulation, and molecular characterization.
Microbiol. Mol. Biol. Rev. 53, 85–108.
- Mobley, H.L.T., Island, M.D., & Hausinger, R.P. (1995). Molecular biology of microbial ureases. Microbiol. Rev. 59, 451-
900 480.
- Mobley, H. L., Mendz, G. L., & Hazell, S. L. (2001). *Helicobacter pylori: Physiology and Genetics*. Retrieved 2016, from
<https://www.ncbi.nlm.nih.gov/books/NBK2408/>
- Moore, L.W. & Rene, V. (1975). Liquid nitrogen storage of phytopathogenic bacteria. Phytopathology, 65, 246-50.
- Mörsdorf, K., & Kaltwasser, H. (1989). Ammonium assimilation in *Proteus vulgaris*, *Bacillus pasteurii* and *Sporosarcina*
905 *ureae*.
Arch. Microbiol. 152(2), 125-131.
- Nakata, Y., Kato, Y., Hyodo, M., Hyde, A. F., & Murata, H. (2001). One Dimensional Compression Behaviour of Uniformly
Graded Sand Related to Particle Crushing Strength. Soils Found., 41(2), 39-51. doi:10.3208/sandf.41.2_39
- Ni, M., & Ratner, B. D. (2008). Differentiation of Calcium Carbonate Polymorphs by Surface Analysis Techniques – An
910 XPS
and TOF-SIMS study. Surf. Interface Anal. 40(10), 1356-1361. doi: 10.1002/sia.2904
- Park, J., Park, S., Kim, W., & Ghim, S. (2012). Application of *Bacillus subtilis* 168 as a Multifunctional Agent for
Improvement of the Durability of Cement Mortar. J. Microbiol. Biotechnol., 22(11), 1568-74.
doi:10.4014/jmb.1202.02047
- 915 Patel, P. (2015). Helping Concrete Heal Itself. ACS Cent Sci., 1(9), 470-72. doi:10.1021/acscentsci.5b00376
- Reardon, J., Foreman, J. A., & Searcy, R. L. (1966). New reactants for the colorimetric determination of ammonia. Clin.
Chim.
Acta., 14, 403-405. doi : 10.1016/0009-8981(66)90120-3
- Rodriguez-Navarro, C., Jroundi, F., Schiro, M., Ruiz-Agudo, E., & González-Muñoz, M. T. (2012). Influence of Substrate
920 Mineralogy on Bacterial Mineralization of Calcium Carbonate: Implications for Stone Conservation. Appl.
Envr. Microbiol.,78(11), 4017-29. doi: 10.1128/AEM.07044-11
- Sarmast, M., Farpoor, M. H., Sarcheshmehpoor, M., & Eghbal, M. K. (2014). Micromorphological and Biocalcification
Effects of *Sporosarcina pasteurii* and *Sporosarcina ureae* in Sandy Soil Columns. J. Agr. Sci. Tech., 16(3),
681-93.
- 925 Scott, J. S. (1991). *Dictionary of Civil Engineering* (4th ed.). New York, NY: Chapman & Hall.

Southam G. (2000). Bacterial Surface-Mediated Mineral Formation, p 257-276. *In* Lovley D. (ed), Environmental Microbe

Metal Interactions. Washington, DC: ASM Press. doi: 10.1128/9781555818098.ch12

Stocks-Fischer, S., Galinat, J. K., & Bang, S. S. (1999). Microbiological precipitation of CaCO₃. *Soil Biol. Biochem.*,
930 31(11), 1563-71. doi:10.1016/S0038-0717(99)00082-6

Stuart, C.A., Van Stratum, E., & Rustigian, R. (1945). Further Studies on Urease Production by *Proteus* and Related
Organisms. *J. Bacteriol.*, 49(5), 437-444.

van Paassen, L. A., Harkers, M. P., van Zwieten, G. A., van der Zon, W. H., van der Star, W. R., & van Loosdrecht, M. C.
(2009). Scale up of BioGrout: a biological ground reinforcement method. 17th International Conference on Soil
935 Mechanics and Geotechnical Engineering, Alexandria, Egypt, October 5th – 9th 2009, 2328-33.
doi:10.3233/978-1-60750-031-5-2328

van Paassen, L. A., Daza, C. M., Staal, M., Sorokin, D. Y., van der Zon, W., & van Loosdrecht, M. C. (2010). Potential soil
reinforcement by biological denitrification. *J. Ecol. Eng.*, 36, 168-75. doi:10.1016/j.ecoleng.2009.03.026

van Tittelboom, K., De Belie, N., De Muynck, W., & Verstraete, W. (2010) Use of bacteria to repair cracks in concrete.
940 *Cem. Concr. Res.*, 40(1), 157-166. doi: 10.1016/j.cemconres.2009.08.025

Webster, A., & May, E. (2006). Bioremediation of weathered-building stone surfaces. *Trends Biotechnol.*, 24(6), 255-60.

doi:10.1016/j.tibtech.2006.04.005

Whiffin, V. S. (2004). Microbial CaCO₃ precipitation for the production of biocement. PhD Thesis: Murdoch University , 1-
945 162.

Whiffin, V. S., van Paassen, L. A., & Harkes, M. P. (2007). Microbial Carbonate Precipitation as a Soil Improvement
Technique. *Geomicrobiol. J.*, 24(5), 417-23. doi:10.1080/01490450701436505

Worcester , E. M., & Coe, F. L. (2008). Nephrolithiasis *Prim. Care*, 35(2), 369-Vii. doi:10.1016/j.pop.2008.01.005

Yoon, J. H., Lee, K. C., Weiss N., Kho Y. H., Kang, K. H., & Park Y. H. (2001). *Sporosarcina aquimarina* sp. nov., a
950 bacterium

isolated from seawater in Korea, and transfer of *Bacillus globisporus* (Larkin and Stokes 1967), *Bacillus*
psychrophilus (Nakamura 1984) and *Bacillus pasteurii* (Chester 1898) to the genus *Sporosarcina* as
Sporosarcina globispora comb. nov., *Sporosarcina psychrophila* comb. nov. and *Sporosarcina pasteurii* comb. nov.,

and
955 emended description of the genus *Sporosarcina*. *Int. J. Syst. Evol. Microbiol.* 51, 1079-86. doi:

10.1099/00207713-
51-3-1079

Zeng, C., Zheng, J., Cui, M., & Yao, X. (2018). Effecton of Water Content on the Strength of Bio-Cemented Sand in
Various

Drying Process. 2nd International Symposium on Asia Urban GeoEngineering. Changsha, China, Nov 24th – 27th
960 2017, 23 – 25.