

Nutrient availability and the ultimate control of the biological carbon pump in the Western Tropical South Pacific Ocean

Thierry Moutin¹, Thibaut Wagener¹, Mathieu Caffin¹, Alain Fumenia¹, Audrey Gimenez¹, Melika Baklouti¹, Pascale Bouruet-Aubertot², Mireille Pujon-Pay³, Karine Leblanc¹, Dominique Lefevre¹,
5 Sandra Helias Nunige¹, Nathalie Leblond⁴, Olivier Grosso¹ and Alain de Verneil¹

¹ Aix Marseille Université, CNRS, Université de Toulon, IRD, OSU Pythéas, Mediterranean Institute of Oceanography (MIO), UM 110, 13288, Marseille, France.

² Sorbonne Universités - UPMC Univ. Paris 06 - LOCEAN, BP100, 4 place Jussieu, 75252 Paris cedex 05, France.

³ Laboratoire d'Océanographie Microbienne – UMR 7321, CNRS - Sorbonne Universités, UPMC Univ Paris 06,
10 Observatoire Océanologique, 66650 Banyuls-sur-mer, France.

⁴ Observatoire Océanologique de Villefranche, Laboratoire d'Océanographie de Villefranche, UMR 7093, Villefranche-sur-mer, France.

Correspondence to: Thierry Moutin (Thierry.moutin@mio.osupytheas.fr)

15 Abstract

Surface waters (0-200 m) of the western tropical South Pacific (WTSP) were sampled along a longitudinal 4000 km transect (OUTPACE cruise, 18 Feb., 3 Apr. 2015) during the stratified period between the Melanesian Archipelago (MA) and the western part of the SP gyre (WGY). Two distinct areas were considered for the MA, the western MA (WMA) and the eastern MA (EMA). The main carbon (C), nitrogen (N), phosphorus (P) pools and fluxes provide a basis for the
20 characterization of the expected trend from oligotrophy to ultra-oligotrophy, and the building of first-order budgets at the daily and seasonal scales (using climatology). Sea surface chlorophyll *a* reflected well the expected oligotrophic gradient with higher values obtained at WMA, lower values at WGY and intermediate values at EMA. As expected, the euphotic zone depth, the deep chlorophyll maximum and nitracline depth deepen from west to east. Nevertheless, phosphoclines and nitraclines did not match. The decoupling between phosphocline and nitracline depths in the MA allows excess P to be
25 locally provided in the upper water by winter mixing. We found a significant biological “soft tissue” carbon pump in the MA sustained almost exclusively by N₂ fixation and essentially controlled by phosphate availability in this iron-replete environment. The MA appears to be a net sink for atmospheric CO₂ while the WGY is in quasi-steady state. We suggest that the necessary excess P, allowing the success of nitrogen fixers and subsequent carbon production and export, is mainly brought to the upper surface by local deep winter convection at an annual scale rather than by surface circulation. While the
30 origin of the decoupling between phosphocline and nitracline remains uncertain, the direct link between local P upper waters enrichment, N₂ fixation, organic carbon production and export, offers a possible shorter time scale than previously thought between N input by N₂ fixation and carbon export. The low iron availability in the SP gyre and P availability in the MA during the stratified period may appear as the ultimate control of N input by N₂ fixation. Because of the huge volume of water to consider, and because the SP Ocean is the place of intense denitrification in the east (N sink) and N₂ fixation in the
35 west (N source), precise seasonal C, N, P, Fe budgets would be of prime interest to understand the efficiency, at the present time, and in the future, of the oceanic biological carbon pump.

1 Introduction

The oceanic biological carbon pump corresponds to the transfer of carbon from the upper surface to the ocean interior by biological processes, greatly influencing atmospheric CO₂ concentration and therefore the earth's climate. It is a highly
40 ranked priority in current research in oceanography (Burd et al., 2016). Two biological pumps have been defined (Volk and Hoffert, 1985), the “soft tissue” and “carbonate” pumps associated with organic matter or calcium carbonate processes (e.g.

production, export, remineralization or dissolution). The “soft tissue” pump (see Moutin et al., 2017; their figure 1), considering both its intensity and shorter time scales, is by far the larger contributor to the dissolved inorganic carbon gradient between the upper surface and the deep sea. Following climate alteration, the biological “soft tissue” pump begins to deviate from its equilibrium condition, meaning that its influence on atmospheric CO₂ change may occur at time scales shorter than previously thought (Sarmiento and Grüber, 2006). Because the strength of the biological carbon pump depends on nutrient availability in the upper ocean, and more particularly on nitrogen availability (Falkowski et al., 1998, Tyrell, 1999, Moore et al., 2013), which is at long term regulated by external input by dinitrogen (N₂) fixation and internal denitrification (Grüber and Sarmiento, 1997; Codispoti et al., 2001; Deutsch et al., 2001; Brandes and Devol, 2002; Grüber, 2004; Mahaffey et al., 2005; Deutsch et al., 2007; Codispoti et al., 2007; Capone and Knapp, 2007; Moutin et al., 2008; Deutsch and Weber, 2012; Landolfi et al., 2013, Jickells et al., 2017), quantitative evaluation of the regulation, interdependence and patterns of change of these two processes require attention at the present time. It has been suggested earlier that N₂ fixation may play a large part in changing atmospheric CO₂ inventories (McElroy et al., 1983), but at long time scales and taking into account major differences in Aeolian iron input (Falkowski, 1997, Broecker and Henderson, 1998). Because N₂ fixation may ultimately be controlled by iron availability, and because dust delivery to the ocean is climate sensitive, there may be inextricably linked feedback mechanisms that regulate N₂ fixation, atmospheric CO₂ concentrations and dust deposition over relatively long periods (Michaels et al., 2001; Karl, 2014). Although fundamental, the time scales by which N sources and sinks are coupled in the ocean remain uncertain (Falkowski et al., 1998; Brandes and Devol, 2002; Straub et al., 2013). Excess P emerges as a master variable to link them in the modern ocean (Deutsch et al., 2007), as well as from a paleobiogeochemical point of view (Straub et al., 2013). It has been suggested that the recent (since the beginning of the industrial era) increase in production by N₂-fixing cyanobacteria may have provided a negative feedback response to rising atmospheric carbon dioxide concentrations (McMahon et al., 2015), although an inverse trend was also proposed (Kim et al., 2017). While the observed changes in N₂ fixation and biogeochemical cycling reflect either natural oceanic variability or climate change (Karl et al., 1997; Karl, 2014), the most probable changes for the near future in both N₂ fixation and denitrification processes following climate forcing are predicted to be a strengthening control of the carbon cycle by P availability (Moutin et al., 2008).

The western tropical South Pacific (WTSP) is a poorly studied area where large blooms of diazotrophs were previously observed by satellite (Dupouy et al., 2000; 2011), and which has been recently qualified as a hotspot of N₂ fixation (Bonnet et al., 2017). It is hypothesized that following the South Equatorial Current (SEC), the N-depleted, P-enriched waters from areas of denitrification located in the East Pacific reach waters with sufficient iron in the west to allow N₂ fixation to occur (Moutin et al., 2008; Bonnet et al., 2017). While horizontal advection of waters from the east through the SEC probably supports an active biological pump in the WTSP, local vertical convection may also play a central role.

In addition to the main objective of following the same water mass for several days (de Verneil et al., 2017) by a quasi-Lagrangian experiment (Moutin et al., 2017) in order to propose daily budgets (Caffin et al., this issue; Knapp et al., this issue), or short term biological trends (Van Wambeke et al., this issue), we proposed here to work at larger space and time scales, in complement to the work by Fumenia et al. (this issue) showing that N₂ fixation in the WTSP may influence the whole SP Ocean. While many recent works focus on small spatial scales influencing the biological carbon pump (Lévy et al., 2012; Stukel et al., 2017), we found it important to also show results from a larger scale study in the OUTPACE (Oligotrophy to UTRa-oligotrophy PACific Experiment) special issue (https://www.biogeosciences.net/special_issue894.html), showing that they are complementary rather than mutually exclusive. Another interest of this study is that we are far from resolving seasonal variations of the main biogeochemical variables in the WTSP, still largely under-sampled compared to the North Pacific and Atlantic. The aim of this study is therefore to provide a large spatial (hundreds of km) and temporal (annual) scale study of the main biogeochemical C, N, P

stocks and fluxes in the upper 200 m of the WTSP Ocean from measurements gathered during the stratified period, and to evaluate the main seasonal trends on the basis of estimations of previous winter conditions and climatological analysis.

2 Material and methods

2.1 General method and strategy

5 *Station locations, chronology, CTD measurements, sample collection*

The OUTPACE cruise was carried out between 18 February and 3 April 2015 from Nouméa (New Caledonia) to Papeete (French Polynesia) in the WTSP (Fig. 1). We sampled water along a 4000 km transect from the oligotrophic water of the MA to the clearest ocean waters of the South Pacific (SP) gyre (Moutin et al., 2017) from a SBE 911+ CTD-Rosette. Euphotic zone depth (EZD) was immediately determined on-board from the photosynthetic available radiation (PAR) at depth compared to the sea surface PAR(0⁺), and used to determine the upper waters sampling depths corresponding to 75, 54, 36, 19, 10, 3, 1 (EZD), 0.3, and 0.1 % of PAR(0⁺). CTD sensors were calibrated and data processed post-cruise using Sea-Bird Electronics software in 1m bins. Conservative temperature, absolute salinity and potential density were computed using TEOS-10 (McDougall and Barker, 2011). Chlorophyll a (chl a) in mg m⁻³ were measured with an Aqua Trak III fluorimeter (Chelsea Technologies Group Ltd). All samples were collected from 24 12-L Niskin bottles equipped with
15 silicone rubber closures and tubing for measurements (see section 2.2. Analytical method) of stock variables (dissolved oxygen, dissolved inorganic carbon (DIC), total alkalinity (TA), nutrients, chl a, particulate and dissolved organic C, N, P) and fluxes (primary and bacterial production rates, N₂ fixation rates, and dissolved inorganic phosphate (DIP) turnover times, i.e. the ratio of DIP concentration to DIP uptake).

20 *Group of stations*

For our large-scale study, we considered 3 areas: the western MA (WMA), the eastern MA (EMA) and the western gyre (WGY) waters. Four 0-200 m CTD casts, mainly devoted to nutrient pool analyses, were considered for each area and correspond to the following stations: SD 1, SD 2, SD 3 and LD A for WMA, SD 6, SD 7, SD 9 and SD 10 for EMA and SD 13, SD 14, SD 15 and LD C for WGY (Fig. 1, Tables 1 & 2). Therefore, the same number of CTD casts was used to
25 characterize each area. The choice of the stations for each area was essentially geographical, but justified *a posteriori* by the results. SD 8 was discarded because no nutrient measurements were available. SD 11, SD 12 and LD B were also discarded because a bloom was sampled at LD B, meaning these measurements are outside the scope of this paper, which deals with large-scale spatial and temporal variations. The specificities of the transition area between the MA and GY waters are presented in another paper of the OUTPACE special issue (de Verneil et al., 2017). WMA, EMA and WGY will be
30 presented in dark green, light green and blue, respectively, in close relationship with the expected oligotrophic gradient.

Mixed layer depths

Mixed layer depth (MLD) was calculated using a threshold temperature of 0.2 °C deviation from the reference value at 10m depth (de Boyer-Montegut et al., 2004) from OUTPACE CTD profiles (Table 1). For climatological MLD data (Fig. 2a, 2d,
35 2g), values at each station were extracted from the global climatology at 2° resolution proposed by de Boyer-Montegut et al. (2004) (downloaded from http://www.ifremer.fr/cerweb/deboyer/mld/Surface_Mixed_Layer_Depth.php on Jan 12, 2017). The same criterion (threshold temperature deviation of 0.2 °C) was used.

Vertical eddy diffusivity measurement

40 The mean eddy vertical diffusivity between 40-200 m was determined for each station from one to several casts undertaken using a VMP1000 (Bouruet-Aubertot et al., this issue). Briefly, K_z is inferred from the dissipation rate of turbulent kinetic

energy, ϵ , mixing efficiency, γ , and buoyancy frequency, N , according to the Osborn relationship: $K_z = (\gamma \epsilon) / N^2$. ϵ is computed from the microstructure shear measurements (e.g. Xie et al, 2013) and mixing efficiency is inferred from the Bouffard and Boegman parameterization as a function of turbulence intensity (Bouffard and Boegman, 2013).

5 *Satellite data*

Sea surface temperature (SST) (Fig. 2b, 2e, 2h) and sea surface chl a (SSchl a) (Fig. 2c, 2f, 2i) from July 2014 to July 2015 were obtained using processed satellite data provided by the MODIS Aqua mission (downloaded from <https://oceandata.sci.gsfc.nasa.gov/> on Jan 3, 2017). The mapped level 3 re-analysis has a 4 km spatial resolution produced at a monthly time scale. For each station, pixels within a rectangle with sides $\pm 1/8^\circ$ longitude and latitude away from the station position were averaged together to produce a single value.

Depth profiles of all discrete variables

All measurements are presented together with their estimated mean concentrations profile (thick line) in Figs. 3, 4, 5, 6. In order to determine the mean concentrations, the profiles of the variable in question (concentration vs depth) for all stations included in the group were interpolated between 5 and 200 m with a piecewise cubic hermite interpolating scheme (pchip function in the pracma R package). In case of missing values close to 200 m, the interpolation was stopped at the deepest (above 200 m) point available. The mean profile was estimated from the mean value of the interpolated profiles at every one-meter depth horizon. For inorganic nutrient concentrations $<$ quantification limit (QL) (see section 2.2), a zero was indicated to show that a measurement was taken.

20

Normalization

Concentrations normalized by salinity are used to study biological processes independent of variations related to evaporation/precipitation. At global scales, it is common to apply $S_P=35$ (Millero, 2007). In order to estimate seasonal trends in our specific areas, we normalized to the mean absolute salinity measured at 70 m depth in each area, $S_A = 35.65 \pm 0.04$, 35.83 ± 0.04 and 35.91 ± 0.02 g.kg $^{-1}$ for the WMA, EMA and WGY, respectively. This choice will be further justified hereafter. Important differences in the carbonate system require this normalization to be taken into account, which justifies its use for the other variables, even if changes are relatively small (e.g., for nutrients).

Inventories

30 Inventories were calculated from the depth profiles of the discrete variables of inorganic and organic C, N, P dissolved and particulate pools (see section 2.2), measured during the OUTPACE cruise (Table 3) between 0 and 70 m depth. The latter depth corresponded to the average deeper annual MLD obtained using climatology, as explained above and shown in Fig. 2 (a, d, g). The integrated fluxes were calculated considering the same depths.

35 *Settling particulate matter mass and C, N, and P flux measurements*

The settling of particles in the water column outside the upper layer was measured using 2 PPS5 sediment traps (1 m 2 surface collection, Technicap, France), deployed for 4 days at 150 and 330 m at LD A (MA) and LD C (WGY) stations (Fig. 1). The PPS5 traps are covered with baffled lids (sieve 1cm 2) to reduce current shear at the mouth of the trap, but also to prevent large zooplankton and fish from entering the traps. Particle export was recovered in polyethylene flasks screwed on a rotary disk, which automatically changed the flask every 24-h to obtain daily material recovery. The flasks were previously filled with a 2% (v/v) buffered solution of formaldehyde (final pH \approx 8) prepared with in situ deep seawater. A sample of this water is kept to measure dissolved nutrients (phosphate and silicate). Immediately after trap retrieval, samples were stored at 4 °C in the dark until they were processed. Back in the laboratory, one part of the sample's supernatant was kept and stored at 4°C

to measure dissolved nutrients (phosphate and silicate), and pH was checked on every trap sample. Swimmers (all organisms deemed to have actively entered the trap) were identified under a stereomicroscope and carefully removed with plastic fine-tipped forceps and placed in small vials with some of the reserved trap preservative. The main species removed were copepods, crustaceans (ostracods, euphausiids, amphipods) and pteropods. Microphotographs of each sample were taken.

5 After the swimmers were removed, the whole sample was then rinsed 3 times with ultrapure (MilliQ) water in order to remove salt and then freeze-dried. Mass particle fluxes were obtained by weighing the freeze-dried sample 5 times. The accuracy of the weighing (and thus of the flux) was 1 % over the whole data series. In this study, swimmers were rinsed and freeze-dried and their dry weight was also determined. Settling particulate matter and swimmers were analyzed separately on an Elemental Analyzer coupled to an Isotope Ratio Mass Spectrometer EA-IRMS (Integra2, Sercon Ltd) to quantify total C and N. Total P was analyzed as described in Sect. 2.2. The total element measurements for the settling particulate matter were considered to represent the settling particulate organic C, N, P. The results are presented in Sect. 2.2 (Table 4).

Ocean-atmosphere CO₂ fluxes

Ocean-atmosphere CO₂ fluxes $\Phi_{\text{CO}_2} = -k_g * (p_{\text{CO}_2}^{\text{atm}} - p_{\text{CO}_2}^{\text{oc}})$ were calculated considering 1) a mean k_g of $0.031 \pm 0.005 \text{ mol m}^{-2} \text{ y}^{-1} \mu\text{atm}^{-1}$ (i.e. $85 \mu\text{mol m}^{-2} \text{ d}^{-1} \mu\text{atm}^{-1}$) for gas transfer velocity, estimated from the Liss and Melivat (1986) relationship and sea winds derived from satellite measurements (1999-2009). Data came from Boutin et al. (downloaded from <http://cersat.ifremer.fr/> on March 3, 2017 and extracted on a geographical grid (Latitude : -17 to -23° N, Longitude: +159 to +211° E) - one grid was used because no significant differences were obtained in k_g for the 3 areas WMA, EMA and WGY), 2) a mean oceanic p_{CO_2} ($p_{\text{CO}_2}^{\text{oc}}$) determined for each area during the OUTPACE cruise, and 3) a mean atmospheric p_{CO_2} ($p_{\text{CO}_2}^{\text{atm}}$) estimated from the molar fraction of CO₂ (X_{CO_2}) in dry air measured at SMO station Tutuila (American Samoa, Lat 14.247° S, Lon 170.564° W, north of LD B (Fig. 1), NOAA/ESRL - data downloaded from <http://dx.doi.org/10.7289/V51834DB> on February 7, 2017). A monthly averaged $X_{\text{CO}_2} = 398.4 \text{ ppm}$ for March 2015 was used, whereas X_{CO_2} varied from 396.0 to 398.4 ppm from July 2014 to July 2015 at Tutuila with an annual mean of 397.3 ppm. The X_{CO_2} data were converted in $p_{\text{CO}_2}^{\text{atm}}$ considering 100% humidity and a total pressure of 1 atm (101325 Pa), following Weiss and Price (1980), with surface seawater temperature and salinity of each area (Table 5). A total pressure of $101260 \pm 180 \text{ Pa}$ was determined considering NCEP-NCAR Reanalysis 1 on the OUTPACE area from July 2014 to July 2015, with no longitudinal trend, justifying considering 1 atm as total pressure for the conversion (downloaded from <https://www.esrl.noaa.gov/psd/data/gridded/data.ncep.reanalysis.html> on December 19, 2017).

Upper layer (0-70 m) daily C, N, P, budgets

Comparative daily C, N, and P budgets of the upper 70 m layer were established for each area (Table 6). Inputs from below associated with vertical turbulent diffusion were calculated using the mean vertical eddy diffusivity, and slopes of nutriclines (Table 2) and DIC gradients calculated between 70-200 m using linear regressions (data not shown). The ocean-atmosphere CO₂ fluxes were detailed in the previous paragraph. The input of nitrogen by N₂ fixation was calculated for each area (Table 6) using depth profile sampling and on-deck 24-h ¹⁵N₂ incubations (section 2.2). Both C, N, P particulate and dissolved organic export were estimated. The way of obtaining particulate export by settling material (Table 4) was described above. Output of dissolved and particulate organic matter by turbulent diffusion was calculated from the mean vertical eddy diffusivity (Table 1) and from gradients estimated with linear regressions (data not shown) between the surface and 70 m depth of DOC-POC (Fig. 5d-5g), DON-PON (Fig. 5e-5h) and DOP-POP (Fig. 5f-5i). When non-significant gradients were obtained, fluxes were nil.

Seasonal variations and upper layer (0-70 m) annual C, N, P budgets

We sampled for OUTPACE during the stratified period characterized by minimum MLDs close to 20-40 m (Fig. 2a, 2d, 2g), where the largest part of biological fluxes (Fig. 6) occurred. Because the only mechanism able to disrupt this stratification at a large spatial scale is deep water mixing occurring during winter, and more specifically in July in this area (Fig. 2a, 2d, 2g), we postulated that conditions at 70 m depth (average depth of wintertime MLD) remained unchanged, or did not significantly change, throughout the year. Considering no large inter-annual differences in winter MLDs, we considered that the mean measurements at 70 m depth during OUTPACE well represented the homogeneous upper water column (0-70 m) variables and initial winter conditions (i.e. conditions in July 2014), allowing us to determine first-order winter to summer seasonal variations (Table 7) and 8-month C, N, P budgets (Table 8). The dashed lines in Figs. 3, 4 and 5 indicate the upper surface expected values for all variables during the 2014 austral winter, and allow evaluation of the temporal variation toward the austral summer season (full lines) in each area.

Surface waters carbonate system climatology

The climatological gridded values proposed in Takahashi et al. (2014), hereafter referred as NDP-094 climatology, were used to validate our estimated values for the carbonate system in the upper surface previous winter conditions (July 2014). The dataset is based on interpolated $p_{\text{CO}_2}^{\text{OC}}$ and calculated TA data (based on regional linear potential alkalinity-salinity relationships) on a 4° Latitude by 5° Longitude monthly grid in the reference year 2005. The variable DIC (among others) is calculated from $p_{\text{CO}_2}^{\text{OC}}$ and TA. Data were downloaded from http://cdiac.ess-dive.lbl.gov/ftp/oceans/NDP_094/ on December 19, 2017. Climatological July data centred on 20°S were extracted along the cruise transect and 2, 3 and 3 pixels were averaged for comparison in the WMA, EMA and WGY areas, respectively (Table 5). In order to account for the p_{CO_2} increase at the earth's surface between 2005 and 2015, a constant offset of $1.5 \mu\text{atm.y}^{-1}$ was applied to p_{CO_2} and a corresponding constant offset of $1 \mu\text{mol kg}^{-1} \text{y}^{-1}$ was also applied to DIC.

2.2 Analytical chemical methods

Oxygen and apparent oxygen utilization (AOU)

Oxygen concentration in the water column was measured with a Seabird SBE43 electrochemical sensor interfaced with the CTD unit. The raw signal was converted to an oxygen concentration with 13 calibration coefficients. The method is based on the Owens and Millard (1985) algorithm that has been slightly adapted by Seabird in the data treatment software using a hysteresis correction. A new set of calibration coefficients has been determined after the cruise to post-process the whole dataset. Only three coefficients (the oxygen signal slope, the voltage at zero oxygen signal, the pressure correction factor) among the 13 determined by the pre-cruise factory calibration of the sensor were adjusted with the following procedure: the oxygen concentrations measured by Winkler were matched with the signal measured by the sensor at the closing of the Niskin bottles. The three values were fitted by minimizing the sum of the square of the difference between Winkler oxygen and oxygen derived from the sensor signal. Winkler oxygen concentration was measured following the Winkler method (Winkler, 1888), with potentiometric endpoint detection (Oudot et al., 1988) on discrete samples collected with Niskin bottles. For sampling, reagents preparation and analysis, the recommendations from Langdon (2010) have been carefully followed. The Thiosulfate solution was calibrated by titrating it against a potassium iodate certified standard solution of 0.0100N (WAKO). AOU was computed with oxygen concentration at saturation estimated following the algorithm proposed by Garcia and Gordon (1992), considering Benson and Krause values.

TA, DIC and $p_{\text{CO}_2}^{\text{OC}}$

Samples for total alkalinity (TA) and dissolved inorganic carbon (DIC) were collected from Niskin bottles in one 500 mL glass flask (Schott Duran) and poisoned directly after collection with HgCl_2 (final concentration 20 mg.L^{-1}). Samples were

stored at 4°C during transport and analyzed 5 months after the end of the cruise at the SNAPO-CO₂ (Service National d'Analyse des paramètres Océaniques du CO₂- LOCEAN – Paris). TA and DIC were measured on the same sample based on one potentiometric titration in a closed-cell (Edmond, 1970). A non-linear curve fitting approach was used to estimate TA and DIC (Dickson 1981, DOE 1994). Measurements were calibrated with reference materials (CRM) for oceanic CO₂ measurements purchased by the SNAPO-CO₂ from Prof. A. Dickson (Oceanic Carbon Dioxide Quality Control, USA). The reproducibility expressed as the standard deviation of the CRM analysis was 4.6 μmol kg⁻¹ for TA and 4.7 μmol kg⁻¹ for DIC. Moreover, the standard deviation on the analysis of 12 replicates collected at the same depth (25 m) at station LD C was 3.6 μmol kg⁻¹ for TA and 3.7 μmol kg⁻¹ for DIC. The Estimation of pCO₂^{oc} was made with the SEACARB R package [Gattuso and Lavigne, 2009]. The dissociation constants K₁ and K₂ (for carbonates in seawater) from Lueker et al. (2000) were used. When available, phosphate and silicate concentrations were used in the calculation.

-Nutrient, dissolved and particulate C, N, P pools

Total C, N, P (TC, TN, TP) in seawater samples may be separated in three pools: the dissolved inorganic C, N, P pools (DIC, DIN, DIP), the dissolved organic C, N, P pools (DOC, DON, DOP) and the particulate organic C, N, P pools (POC, PON, POP). No significant particulate inorganic pools are generally considered in open ocean waters.

Two samples for dissolved inorganic nutrient pool measurements were collected from Niskin bottles in 20-mL Polyethylene bottles, and one sample was directly analyzed on-board and the other poisoned with 50 μl HgCl₂ (20 g.L⁻¹) and stored for analysis after the cruise in the laboratory. DIN = [NO₃⁻] + [NO₂⁻] + [NH₄⁺], sum of nitrate, nitrite and ammonium, respectively. Because [NO₂⁻] and [NH₄⁺] were negligible compared to [NO₃⁻], DIN = [NO₃⁻]. DIP = [HPO₄²⁻] + [PO₄³⁻] = orthophosphates also symbolized as PO₄. Nitrate, nitrite and orthophosphates concentrations were determined on a segmented flow analyzer (AAIII HR SEAL ANALYTICAL) according to Aminot and Kérouel (2007), with a QL of 0.05 μmol L⁻¹. Ammonium was measured by fluorometry (Holmes et al., 1999; Taylor et al., 2007) on a fluorimeter Jasco FP-2020 with a QL of 0.01 μmol L⁻¹.

The dissolved organic pools, DON and DOP, were measured using high-temperature (120 °C) persulfate wet-oxidation mineralization (Pujo-Pay and Raimbault, 1994). Samples were collected from Niskin bottles in 100 mL combusted glass bottles and immediately filtered through 2 pre-combusted (24h, 450 °C) glass fiber filters (Whatman GF/F, 25mm). Filtered samples were then collected in Teflon vials adjusted at 20 mL for wet oxidation. Nitrate and phosphate formed, corresponding to total dissolved pool (TDN and TDP), were then determined as previously described for the dissolved inorganic pools. DON and DOP were obtained by the difference between TDN and DIN, and TDP and DIP, respectively. The precision and accuracy of the estimates decreased with increasing depth, as inorganic concentrations became the dominant component in the total dissolved nutrient pools. The limits of quantification were 0.5 and 0.05 μmol L⁻¹ for DON and DOP, respectively. The same pre-filtration was used for dissolved organic carbon (DOC) measurements. Filtered samples were collected into glass pre-combusted ampoules that were sealed immediately after samples were acidified with orthophosphoric acid (H₃PO₄) and analyzed by high temperature catalytic oxidation (HTCO) (Sugimura and Suzuki, 1988; Cauwet, 1994, 1999) on a Shimadzu TOC-L analyzer. Typical analytical precision is ± 0.1–0.5 (SD). Consensus reference materials (<http://www.rsmas.miami.edu/groups/biogeochem/CRM.html>) were injected every 12 to 17 samples to insure stable operating conditions.

The particulate pools (PON, POP) were determined using the same wet oxidation method (Pujo-Pay and Raimbault; 1994). 1.2-L samples were collected from Niskin bottles in polycarbonate bottles and directly filtered onto a pre-combusted (450 °C, 4 h) glass fiber filter (Whatman 47 mm GF/F). Filters were then placed in teflon vials with 20 mL of ultrapure water (Milli-Q grade) and 2.5 mL of wet oxidation reagent for mineralization. Nitrate and orthophosphates produced were analyzed as described previously. QLs are 0.02 μmol L⁻¹ and 0.001 μmol L⁻¹ for PON and POP, respectively. Particulate organic carbon (POC) was measured using a CHN analyzer and the improved analysis proposed by Sharp (1974).

Primary production rates and DIP turnover times

Vertical profiles of DIC uptake (V_{DIC}) and phosphate turnover time (T_{DIP}) were measured once at each station using a dual-labeling method (^{14}C and ^{33}P) considering a ^{33}P period $T_{1/2} = 25.55 \pm 0.05$ days (Duhamel et al., 2006). Each sample (150 mL polycarbonate bottle) was inoculated with 10 μCi of ^{14}C -Carbon (Sodium bicarbonate, Perkin Elmer NEC086H005MC) and 4 μCi of ^{33}P -Phosphate (H_3PO_4 in dilute hydrochloric acid, Perkin Elmer NEZ080001MC). The bottles were then placed in blue-screen-on-deck incubators representing 75, 54, 36, 19, 10, 2.7, 1, 0.3 and 0.1 % incident PAR (<https://outpace.mio.univ-amu.fr/spip.php?article135>) and maintained at constant temperature using a continuous circulation of surface seawater. The same protocol was used for duplicate 150 mL samples, where 150 μL HgCl_2 (20 g L^{-1}) had been added as a control for non-biological uptake. After 3 to 24 h (the optimal incubation time was determined from a prior time-series experiment), incubations were stopped by the addition of 150 μL of non-radioactive KH_2PO_4 (10 mmol L^{-1}) and dark conditions. Filtrations of 50 mL triplicate subsamples were carried out on 25 mm polycarbonate filters (0.2 μm), placed on DIP-saturated support GF/F filters, using a low-vacuum pressure < 0.2 bars. Filters were not washed with filtered seawater at the end of the filtration, but pressure was briefly increased to 0.6 bars, to remove non-cellular ^{33}P radioactivity from the filter. Filters were then placed in low-potassium 6 mL glass scintillation vials (Wheaton) with 500 μL of 0.5 M HCl for 12 hours in order to drive off any unincorporated ^{14}C . Then, 6 mL of scintillation liquid (Ultima gold MV, Packard) was added and the radioactivity of the filters measured using a scintillation counter Packard Tri-Carb® 2100TR on-board (first count). Initial radioactivity was also measured on 5 replicates for each profile. Samples were then stored until the second count in the laboratory after ^{33}P emission became not measurable (12 months). DIC uptake and DIP turnover time were then deduced from the following equations (details in Thingstad et al., 1993; Moutin et al., 2002): $T_{\text{DIP}} = -Ti / (\ln(1 - (\text{dpm}^{33}\text{P} - \text{dpm}_{\text{b}33\text{P}}) / \text{dpm}_{\text{t}33\text{P}}))$, where T_{DIP} is DIP turnover time (in days), Ti is the incubation time, dpm^{33}P is the dpm attributable to the ^{33}P activity, $\text{dpm}_{\text{b}33\text{P}}$ is the dpm attributable to the blank and $\text{dpm}_{\text{t}33\text{P}}$ is the initial (total) activity of ^{33}P . $V_{\text{DIC}} = [(\text{dpm}^{14}\text{C} - \text{dpm}_{\text{b}14\text{C}}) / \text{dpm}_{\text{t}14\text{C}}] * [\text{DIC}] / Ti$ where: V_{DIC} is the C uptake rate ($\text{nmol L}^{-1} \text{h}^{-1}$), dpm^{14}C is the dpm attributable to the ^{14}C activity of the filtered sample, $\text{dpm}_{\text{b}14\text{C}}$ is the dpm attributable to the blank, $\text{dpm}_{\text{t}14\text{C}}$ is the initial (total) activity of ^{14}C added to the sample, $[\text{DIC}]$ is the dissolved inorganic carbon concentration of the sample, and Ti is the incubation time. The daily surface photosynthetic available radiation (SPAR) data were used to estimate the daily primary production (PP) values from the PP rates obtained with short time incubation durations using a conversion model (Moutin et al., 1999).

N_2 fixation rates

N_2 fixation rates were measured using the $^{15}\text{N}_2$ tracer method (Montoya et al., 1996), adapted and precisely described in Bonnet et al. (this issue). As for PP measurements, seawater was rapidly collected in triplicates from the Niskin bottles in 2.3 L polycarbonates bottles at 6 depths (75 %, 54 %, 19 %, 10 %, 1 %, and 0.1 % surface irradiance levels). 2.5 mL of $^{15}\text{N}_2$ gas (99 atom% ^{15}N , Eurisotop) were injected in each bottle through the septum cap using a gas-tight syringe. All bottles were shaken 20 times to facilitate the $^{15}\text{N}_2$ dissolution and incubated for 24 h from sunrise to sunrise. To avoid any possible rate underestimation due to equilibration of the $^{15}\text{N}_2$ gas with surrounding seawater, final ^{15}N enrichment in the N_2 pool was quantified for each profile in triplicates at 5 m and at the deep chl a maximum (DCM). After incubation, 12 mL of each 4.5L bottle were subsampled in Exetainers, fixed with HgCl_2 and stored upside down at 4°C in the dark and analyzed onshore within 6 months after the cruise, according to Kana et al. (1994), using a Membrane Inlet Mass Spectrometer. Incubation was stopped by gentle filtration of the samples onto pre-combusted (450°C , 4 h) Whatman GF/F filters (25 mm diameter, 0.7 μm nominal porosity). Filters were stored in pre-combusted glass tubes at -20°C during the cruise, then dried at 60°C for 24 h before analysis onshore by EA-IRMS on an Integra2 (Sercon Ltd). The detection limit associated with the measurement was $0.14 \text{ nmol L}^{-1} \text{ d}^{-1}$. The accuracy of the EA-IRMS system was systematically controlled using International

Atomic Energy Agency (IAEA) reference materials, AIEA-N-1 and IAEA-310A. In addition, the natural $\delta^{15}\text{N}$ of particulate organic N needed for N_2 fixation rate calculations was measured on each profile at two depths (surface and DCM).

3 Results

3.1 General annual trends of MLD, SST and SSchl a for the 3 selected areas

5 MLD against month in the climatology (Fig. 2a, 2d, 2g) varied annually from around 70 m depth in July during the austral winter to between 20-40 m during the austral summer for the 3 areas. The OUTPACE cruise from 18 Feb. to 3 Apr. 2015 (red lines) sampled during the stratified period characterized by minimum MLD and maximum SST (Fig. 2b, 2e, 2h). SST varied from 24.2 ± 0.2 to 28.8 ± 0.3 °C, 23.8 ± 0.5 to 28.3 ± 0.7 °C, 25.9 ± 0.4 to 29.0 ± 0.4 °C between July 2014 and July 10 close to the mean conservative temperature measurements measured in the MLD during the OUTPACE cruise of 28.9 ± 0.3 °C, 29.3 ± 0.3 °C and 29.5 ± 0.4 °C for WMA, EMA and WGY, respectively. The mean conservative temperature measurements at 70 m depth were 25.3 ± 0.3 °C, 24.8 ± 0.9 °C, 26.1 ± 0.9 °C for WMA, EMA and WGY, respectively (Fig. 3a). These values are comparable with the SST measured during the deeper winter mixing in July 2014 of 24.9 ± 0.2 , 24.2 ± 0.7 and 26.5 ± 0.2 for WMA, EMA and WGY, respectively (Table 5). Our hypothesis to consider limited exchanges 15 allowing properties to be conservative at 70 m depth seems reasonable for temperature. Expected seasonal upper surface temperature variations calculated from the differences between temperature at the surface and at 70 m depth of 3.6 ± 0.6 , 4.5 ± 1.2 and 3.4 ± 1.3 °C for WMA, EMA and WGY, respectively, agreed relatively well with SST variations observed between July 2014 and March 2015 of 3.9 ± 0.5 , 4.2 ± 1.4 and 2.6 ± 0.6 °C (Fig. 2b, 2e, 2h). Following a similar reasoning, we established a relatively good comparison between chl a measured at 70 m depth during OUTPACE of 0.217 ± 0.092 , 20 0.091 ± 0.012 and 0.046 ± 0.010 mg m⁻³ for WMA, EMA and WGY, respectively (Fig. 3f), and SSchl a obtained during the deeper mixing of 0.173 ± 0.005 , 0.121 ± 0.023 and 0.042 ± 0.002 mg m⁻³ for WMA, EMA and WGY, respectively (Fig. 2c, 2f, 2i). SSchl a reflected well the expected oligotrophic gradient with higher values obtained at WMA, lower values at WGY and intermediate values at EMA. The increase of SSchl a observed in July seems to be related to the deep mixing during winter. The comparison between measurements at 70 m depth and in the upper mixed layer during OUTPACE may be used 25 as a first approach to characterize surface seasonal changes of physical and biogeochemical properties of upper surface waters (section 4.3).

3.2 General hydrological and biogeochemical conditions allowing for characterization of oligotrophic states of the different upper water masses sampled during OUTPACE

The general hydrological and biogeochemical conditions during OUTPACE provide the means to characterize the 30 oligotrophic states of the different water masses sampled (Table 1). The shallow austral summer MLD varied between 11 and 34 m with a mean of 16.7 m (SD = 6.4 m). The low variation is in agreement with the relatively similar weather conditions and SST along the zonal transect near 20° S (Moutin et al., 2017). The euphotic zone depth (EZD) and the DCM depth (DCMD) deepen from west to east, from around 70 m to considerably deeper than 100 m, indicating the higher oligotrophy of the SP gyre water compared to the MA water with shallower nitracline depths. The DCM concentration 35 decreases from west to east, but only slightly, from a maximum of 0.40 to a minimum of 0.25 mg m⁻³. A better indicator of oligotrophic conditions is the depth of the nitracline (D_{NO_3}) which varied between 46 and 141 m, typical of oligotrophic to ultraoligotrophic areas of the world ocean (Moutin et al., 2012, their Fig. 9). A relative homogeneity of the slopes ($S_{\text{NO}_3} = 47.0 \pm 11.5$ $\mu\text{mol m}^{-4}$) was observed (Table 1). Phosphaclines and nitraclines did not match, as shown by the lower D_{PO_4} observed everywhere. No phosphaclines linked with upper water biological processes were determined in the SP gyre

because phosphate concentrations above the QL were measured up to the surface. S_{PO_4} , when measurable, was $2.8 \pm 1.0 \mu\text{mol m}^{-4}$ (Table 1).

The same characteristics are presented for the 3 areas considered (WMA, EMA and WGY) in Table 2 by their means and SD. The DCMD (about 10-20 m below the EZD in all areas) increased from 78 ± 10 m in the WMA to 134 ± 14 m in the WGY, with an intermediate value of 104 ± 15 m in EMA. D_{NO_3} follows the same pattern, with values of 76 ± 10 m, 100 ± 18 m, and 116 ± 18 m, respectively, showing a clear relationship between DCMD and D_{NO_3} (Table 2).

The 3 areas considered are characterized by similar trends of conservative temperature, absolute salinity and potential density vs depth between 0-200 m (Fig. 3a, 3b, 3c), i.e. a homogeneity in the mixed layer followed by a drastic change at the base of the mixed layer and a break in slopes around 70 m depth. Temperature increased from the deeper layer to the surface where higher temperature characterized the austral summer heating, while lower salinity above 70 m depth indicate significant fresh water input from rainfall. The deepening of the DCMD from WMA (dark green) to WGY (blue), with an intermediate value for EMA (light green), demonstrates the westward-eastward gradient of increased oligotrophy (Fig. 3f), reflected as well as by corresponding D_{NO_3} ($D_{NO_3} = D_{DIN}$, see section 2.2) at similar depths (Fig. 5b). 0-70 m integrated chl \underline{a} decreased considerably from west to east along the transect, from $7.2 \pm 2.1 \text{ mg m}^{-2}$ for WMA to $2.0 \pm 0.6 \text{ mg m}^{-2}$ for WGY, with an intermediate value of $4.6 \pm 0.7 \text{ mg m}^{-2}$ for EMA (Table 2). When integrated over the top 200 m, no difference between chl \underline{a} stocks were noticeable with a mean value for the whole dataset of $19.9 \pm 2.4 \text{ mg m}^{-2}$.

AOU showed similar patterns in all areas, with a slight decrease from the surface to a minimum between 50-70 m, and an increase below 70 m (Fig. 3e). The values close to zero for the first depths indicated saturation or a light super-saturation following classical rapid exchanges with atmospheric oxygen. The AOU values below, and up to, 70 m at both WMA and EMA, and to 100 m depth at WGY, indicated oversaturation. Between 70 and 200 m, almost linear relationships between AOU and depth were observed for all areas.

3.3 C, N, P pools

The dissolved inorganic (upper), dissolved organic (middle) and particulate organic (below) C, N and P (left to right) pools are represented in Fig. 5. For N and P graphs, a Redfield ratio (RR) of 16:1 was systematically applied between N and P axes, allowing for a more direct comparison. DIC in $\mu\text{mol kg}^{-1}$ (Fig. 4a), nDIC (normalized DIC) in $\mu\text{mol kg}^{-1}$ (Fig. 4c) and in $\mu\text{mol L}^{-1}$ (Fig. 5a) showed linear increasing trends with depth in all areas between 70 and 200 m. The specific variations of nDIC close to the surface will be discussed later. Total alkalinity increased rapidly with depth between 0 and 70 m and was more or less constant below down to 200 m (Fig. 4b). Normalized total alkalinity indicated no change in concentration with depth (Fig. 4d), showing that total alkalinity variations were related to fresh water input. Surface $p_{CO_2}^{oc}$ was everywhere close to or below the average atmospheric p_{CO_2} of $383 \mu\text{atm}$ (Table 5). Nitrate (DIN) was under the QL everywhere in the upper surface down to 70 m (Fig. 5b). Then the increase with depth (nitracline) was almost the same in each area (similar slopes, S_{NO_3}) but did not begin at the same depth (D_{NO_3}), as previously described. Phosphate (DIP) concentrations were considerably higher than nitrate concentrations (considering RR) everywhere except close to the surface at WMA and EMA, where they reached QL. High DIP concentrations around $0.2 \mu\text{mol L}^{-1}$ in the upper 70 m were observed at WGY (Fig. 5c). The depletion in DIP was higher in EMA than in WMA (Fig. 5c). DOC, DON and DOP concentrations were higher close to the surface (Fig. 5d, 5e, 5f) and decreased almost linearly with depth down to 200 m with only slight differences between the different areas, particularly for the deeper depth measurements where ~ 50 , 4, and $0.07 \mu\text{mol L}^{-1}$ of DOC, DON and DOP were measured, respectively. The concentration increases at the surface compared to the values at 200 m depth corresponded roughly to around 25, 1.5, and $0.1 \mu\text{mol L}^{-1}$ of DOC, DON and DOP, respectively (in similar proportions to the RR for N and P, but more than 2-fold higher for C). The particulate organic C, N, and P pools showed similar patterns with depth between 70 and 200 m but diverged in the upper layer between the different areas (Fig. 5g, 5h, 5i). No to few changes were observed at WGY while significant increases in concentration close to the surface were observed both in WMA and EMA. The

increases in surface water concentrations compared to the value at 200 m depth corresponded roughly to changes around 5, 0.5 and 0.03 $\mu\text{mol L}^{-1}$ of POC, PON and POP, respectively (in relatively similar proportions to the RR for C, N and P).

The 0-70 m depth inventories are presented in Table 3. Interestingly, there were very similar C stocks in the 3 areas, both for the dissolved inorganic and dissolved organic pools. The particulate organic C pool was twice lower in WGY than in the MA. Very similar observations were obtained for all N pools. Nevertheless, DIN stocks were negligible in all areas. DIP stocks were different, and higher in the gyre. The other P pools follow the same pattern as C and N pools, i.e. almost identical in the 3 areas concerning the dissolved organic pool and twice lower in the gyre for the particulate pool.

3.4 C, N, P fluxes

Some major fluxes, PP and N_2 fixation rates, together with DIP turnover times, are shown Fig. 6. All rates are considerably higher for WMA and EMA than for WGY, where values indicated only slight differences with depth. Conversely, higher PP (Fig. 6a) and N_2 fixation (Fig. 6b) rates were measured close to the surface, and rapidly decreased with depth reaching negligible values below 50 m and beyond for WMA and EMA. T_{DIP} values of around 100 days for WGY contrast with lower values for WMA and EMA upper waters close to or even below 2 days (Fig. 6c).

Particulate matter mass flux and swimmer contents collected with sediment traps are presented in Table 4 with C, N, and P partitioning. Wide variability occurs between measurements as shown by the minimum and maximum values obtained. Nevertheless, a mean particulate matter mass flux of 48 mg d^{-1} , three times higher in the MA compared to WGY, was obtained, in good agreement with the higher PP rates and biomass in the MA compared to the gyre. Swimmer contents were also highly variable and represent, as a mean, 9.7 (min: 0.7, max: 26.0) times more mass (dry weight) per day than the settling particles in the MA, and 4.4 (min: 1.4, max: 7.1) times for WGY. The mean proportion of C, N, and P in the settling organic matter of 106/12.7/1.2 for MA and 106/16.6/0.5 for WGY are in relatively good agreement with the theoretical 106/16/1 RR. Note that this is also the case for C, N, and P proportions in swimmers both for MA (106/15.8/0.7) and WGY (106/19.9/0.7), particularly when P measured in the supernatant was added to the swimmers (see * in Table 4). Otherwise, very low and improbable P contents were found in the swimmers (see the previous column in Table 4).

4 Discussion

4.1 A significant biological carbon pump in the WTSP fuelled by N_2 fixation

We use the surface $p_{\text{CO}_2^{\text{oc}}}$ expected seasonal changes between austral winter and summer in order to draw a first picture of the role of the biological pump in the WTSP. Surface $p_{\text{CO}_2^{\text{oc}}}$ is determined by temperature and salinity changes, and by processes affecting the DIC and alkalinity concentrations, which includes gas exchange, the biological pump, lateral and vertical advection, and mixing (Sarmiento and Gruber, 2006). We will consider that the horizontal spatial scale is large enough to avoid considering lateral advection. Numerical horizontal particle experiments integrating several months of satellite data using Ariane (Rousselet et al., this issue), together with the relative homogeneity of SST along the 4000 km water transect (Moutin et al., 2017), provides support for this first assumption. Furthermore, we will consider that the influence of salinity changes on the “soft tissue” pump is negligible, as generally considered (Sarmiento and Gruber, 2006).

Upper surface temperature variations between the 2014 austral winter and the 2015 austral summer period were estimated to be 3.6 ± 0.6 , 4.5 ± 1.2 and 3.4 ± 1.3 $^{\circ}\text{C}$ for WMA, EMA and WGY, respectively. Estimated winter $p_{\text{CO}_2^{\text{oc}}}$ were 372, 355 and 364 μatm (Table 5). Following the Takahashi (1993) calculation ($\Delta p_{\text{CO}_2^{\text{oc}}}_{\text{Thermal}} \approx p_{\text{CO}_2^{\text{oc}}} * 0.0423 * \Delta T$), considering a closed system with constant DIC and Alk, we estimate an increase in $p_{\text{CO}_2^{\text{oc}}}$ of +57, +68 and +52 μatm following summer warming for WMA, EMA and WGY, respectively. The seasonal warming should result in an ~ 60 μatm increase of $p_{\text{CO}_2^{\text{oc}}}$, which is not observed for any group of stations; indeed, the differences in $p_{\text{CO}_2^{\text{oc}}}$ were $366 - 372 = -6$, $376 - 355 = +21$ and $390 - 364 =$

+26 μatm between winter and summer for WMA, EMA and WGY, respectively (Table 5). The differences were obtained from normalized DIC and Alk measured during the OUTPACE cruise in the MLD and estimated from the expected normalized winter DIC and Alk. The lower than expected $p_{\text{CO}_2}^{\text{oc}}$ changes suggest that the seasonal variations of $p_{\text{CO}_2}^{\text{oc}}$ due to SST changes are counterbalanced by a seasonal reduction due to DIC and/or Alk changes. We can estimate this term by removing p_{CO_2} changes due to thermal variation from the observations ($\Delta p_{\text{CO}_2}^{\text{oc}}_{\text{DIC,Alk}} = \Delta p_{\text{CO}_2}^{\text{oc}}_{\text{observed}} - \Delta p_{\text{CO}_2}^{\text{oc}}_{\text{thermal}}$), resulting in -63, -47 and -26 μatm for WMA, EMA and WGY, respectively. The negative signs imply a decrease in DIC or an increase in Alk between winter and summer. When normalized, we do not observe any difference in Alk with depth (Fig. 4d), suggesting that seasonal salinity changes due to high rainfall may explain the small change in Alk observed (Fig. 4b). Therefore, the carbonate pump does not seem to play a significant role in the WTSP, and consequently, we expect a major role of the “soft tissue” pump and thus DIC variations. Considering a Revelle factor γ_{DIC} of 9.5, we calculate DIC changes of -35.8, -28.0 and -15.0 $\mu\text{mol kg}^{-1}$ ($\Delta\text{DIC} = \text{DIC}/p_{\text{CO}_2}^{\text{oc}}\gamma_{\text{DIC}} * \Delta p_{\text{CO}_2}^{\text{oc}}_{\text{DIC,Alk}}$) necessary to explain the changes in $p_{\text{CO}_2}^{\text{oc}}$ observed. We did indeed observe a decrease in nDIC concentration of 32.9, 25.7 and 15.3 $\mu\text{mol kg}^{-1}$ (Table 5) for WMA, EMA and WGY, respectively (37.0, 30.0 and 18.7 $\mu\text{mol L}^{-1}$, Table 7, Fig. 5a) between the estimated winter concentration and the mean value measured during the OUTPACE cruise, that may explain the negative sign, and the order of magnitude of the DIC changes. This result based on estimated winter values is reinforced by the fact that winter DIC from NDP-094 climatology of 2006.4 \pm 0.7, 2000.9 \pm 3.0 and 2004.7 \pm 9.9 $\mu\text{mol kg}^{-1}$, are close to our estimates for winter conditions, 2007.5 \pm 3.0; 2009.6 \pm 9.6 and 2008.9 \pm 3.7 $\mu\text{mol kg}^{-1}$, for WMA, EMA and WGY, respectively (Table 5). TA also showed good agreement, 2335.4 \pm 0.2, 2333.6 \pm 1.7 and 2343.4 \pm 8.6 $\mu\text{mol kg}^{-1}$ from NDP-094 climatology, and 2332.4 \pm 5.0, 2344.1 \pm 6.5 and 2350.8 \pm 2.7 $\mu\text{mol kg}^{-1}$ with our estimates for winter conditions. The differences between climatological $p_{\text{CO}_2}^{\text{oc}}$ and our estimates for winter conditions are wider (Table 5) and can be related to differences in temperature (SST from NDP-094 climatology, SST from MODIS Aqua, T from our estimates). If $p_{\text{CO}_2}^{\text{oc}}$ are calculated from DIC and Alk (NDP-094 climatology) with SST from MODIS Aqua (361, 344 and 371 μatm) or our estimated temperatures (366, 353 and 368 μatm), the values are close to our estimated winter upper surface $p_{\text{CO}_2}^{\text{oc}}$ (372, 355 and 364 μatm for WMA, EMA and WGY, respectively) (Table 5). Upper surface estimated DIC seasonal changes may explain why counter-intuitive low seasonal $p_{\text{CO}_2}^{\text{oc}}$ changes were obtained despite significant increases in temperature. What therefore controls the decrease in nDIC? Is it gas exchange at the air-sea interface, mixing, and/or the biological pump?

Gas exchange may be excluded because surface water $p_{\text{CO}_2}^{\text{oc}}$ ranged from 355-390 μatm while the $p_{\text{CO}_2}^{\text{atm}}$ is 383 μatm , with almost no seasonal variations (Table 5). Therefore, surface waters are close to saturation at WGY or under-saturated in the MA all year round and will uptake CO_2 from the atmosphere, and as a result DIC should then increase, which was not observed. Thus, our observations are more biological in origin, but there is an inconsistency. The significant decrease in nDIC (Fig. 5a and Table 7), indicating a significant biological soft tissue pump, coincided with no significant changes in nitrate concentration, which were $\leq 0.03 \mu\text{mol L}^{-1}$ in all areas (Fig. 5b, Table 7), indicating no or almost no nitrate input by deep winter mixing. Considering the low nitrogen input by upward nitrate turbulent diffusion (see later), we have to consider another nitrogen source, N_2 fixation (Fig. 6b), which is really high in the upper water of the WTSP, recently identified as a hotspot for N_2 fixation (Bonnet et al., 2017).

The estimated seasonal nDIC (ΔDIC) variations for the MA waters of 32.9 and 25.7 $\mu\text{mol kg}^{-1}$ for WMA and EMA, respectively, can be compared to those measured in oceanic gyre time-series sites. They are higher than the $\Delta\text{DIC} \sim 15 \mu\text{mol kg}^{-1}$ observed at the HOT station in the North Pacific subtropical gyre near Hawaii (Dore et al., 2003), and close to the $\Delta\text{DIC} \sim 30 \mu\text{mol kg}^{-1}$ observed at BATS in the subtropical North Atlantic gyre near Bermuda (Bates et al., 2012), where ΔDIC is at least partially attributable to nitrate from below (Sarmiento and Gruber, 2006). Interestingly, the estimated amplitude of surface DIC seasonal change for the MA is only twice lower than the around 50 $\mu\text{mol kg}^{-1}$ DIC decrease measured between March and April in the North Atlantic (Merlivat et al., 2009), in an area known to experience a large bloom of

phytoplankton. The biological “soft tissue” carbon pump, fuelled almost exclusively by N₂ fixation (see section 4.2), therefore plays a significant role in the WTSP.

4.2 A net sink of atmospheric CO₂

Quantification of the major biogeochemical fluxes on a daily basis allows certain conclusions to be drawn concerning the upper biogeochemical cycles of C, N, and P (Table 6). C-budgets of the 0-70 m upper layer showed that the MA area appears as a net sink of atmospheric CO₂ with a mean atmospheric carbon input in the ocean of 1250 μmol m⁻² d⁻¹ in the MA. Sediment trap POC export was one order of magnitude higher than POC or DOC export by turbulent diffusion, which represented only 7-12 % of the total organic export. Without considering any additional flux, the budget resulted in a surprising daily net accumulation of carbon of 859 μmol m⁻² d⁻¹ for WMA, and a quasi-equilibrium for EMA and WGY. Note that the accumulation at WMA resulting in an increase of only several nmol L⁻¹ d⁻¹, is considerably below what we are able to measure at the present time, and longer time scales are thus needed to observe and study the changes (section 4.3). Averaged integrated PP (IPP) rates were 33.3 ± 12.1, 26.4 ± 16.2 and 6.5 ± 2.4 mmol m⁻² d⁻¹, and export by settling and turbulent diffusion (Table 6, in μmol m⁻² d⁻¹) represented only 1.2, 1.2 or 0.3 mmol m⁻² d⁻¹, for WMA, EMA and WGY, respectively. The organic matter exported daily compared to IPP represented 3.6, 4.5 and 4.6 %, respectively, in good agreement with previous measurements in oligotrophic areas (Moutin and Raimbault, 2002, Karl et al., 2012), with a high proportion relative to particles settling, 3.3, 4.1 and 4.1 %, rather than turbulent diffusion. Swimmer contents are really high in the sediment traps, considerably above fluxes by settling material (Table 4, last column) and diel vertical migrations of mesozooplankton-micronekton, already observed in the MA (Smeti et al., 2015), followed by respiration at depth half of the day time might play a significant role in the transfer of carbon from the upper surface to deeper layers. Except for the WMA area, there were no DIN gradients around 70 m depth and therefore no nitrate input from below by turbulent diffusion (Table 6). Nitrogen input by N₂ fixation was by far the largest input of new nitrogen (at least 83%), and reached values among the highest measured anywhere in the open ocean (Bonnet et al., 2017; Caffin et al., this issue, Knapp et al., this issue). A net daily accumulation of nitrogen is estimated for MA and equilibrium for WGY. Zooplankton diel migrations may also play a significant role in daily N budgets through defecation, excretion or mortality at depth (Caffin et al., this issue; Valdes et al., this issue). Averaged integrated N₂ fixation rates were 0.64 ± 0.21, 0.45 ± 0.27 and 0.04 ± 0.04 mmol m⁻² d⁻¹ for WMA, EMA and WGY, respectively. The very high N₂ fixation rates in the MA, compared to other areas in the world (Bonnet et al., 2017), may provide the new nitrogen required for new PP, creating the necessary decrease in pCO₂^{oc} to stimulate CO₂ invasion.

The daily P-budgets of the 0-70 m upper layer showed losses greater than inputs, in complete contrast to daily C and N budgets showing accumulation in the WMA (Table 6). This observation indicates why this element, compared to carbon and nitrogen, may rapidly become a limiting factor for biological production and specifically of the input of nitrogen by N₂ fixation in the MA (Moutin et al., 2008). Nevertheless, the mean particulate P export seemed relatively high (Table 6) and should be considered with caution, considering the huge range of variation, from 0.6 to 68.9 μmol m⁻² d⁻¹, for only 8 measurements in the MA.

4.3 Estimated seasonal trends of the major biogeochemical stocks and fluxes

As already stated, the dashed lines in Figs. 3, 4 and 5 indicate the upper surface expected values for all variables during the 2014 austral winter, and allow evaluation of the temporal variation toward the 2015 austral summer season (full lines) in each area corresponding to the OUTPACE dataset. The hypothesis allowing this first-order estimation of seasonal variation was presented in section 2.1, validated for SST and chl *a* variations in section 3.1, and shown to give good agreement with upper surface DIC expected seasonal changes (section 4.2).

Conservative temperature (Fig. 3a) increased everywhere, but more for WMA and EMA than for WGY, while absolute salinity decreased everywhere. Potential density values were similar in each area at 70 m depth. Similar mean depths of convection were estimated for the three areas (min of 68 m at LD A and max of 73 m at LD C), and justified the mean value of 70 m taken into account for the whole OUTPACE area. The rapid exchanges of oxygen between ocean and atmosphere pre-empted significant seasonal changes in the upper surface (Fig. 3d, 3e). The vertical homogeneous chl *a* concentration expected in winter (Fig. 3f) was shown to be in good agreement with climatological SSchl *a* (section 3.1). Part of the relatively high chl *a* concentration estimated in July 2014, specifically in WMA, is probably linked to enhanced vertical winter mixing from the DCM.

The seasonal C, N, and P pool changes may be followed in concentration in Fig. 5 but are easier to discuss as 0-70 m water column inventories (Table 8). As previously indicated, DIC decreased in all areas but more in the west than in the east (Fig. 5a), following the already described oligotrophic gradient clearly shown both in biomass (Fig. 3f) and in PP (Fig. 6a). The DIC decrease was partially compensated by the increase in organic concentrations, with the increase of the dissolved concentrations (Fig. 5d) being larger than those of the particulates (Fig. 5g). No increase in the particulate carbon concentration was found for WGY. The decrease of TC (representing the sum of all pools) between winter and summer indicated that 68.1, 61.9 and 68.3 % of Δ DIC were lost from the upper layer, i.e only 31.9, 38.1 and 31.7 % accumulated in the organic C pools for WMA, EMA and WGY, respectively (Table 8). Therefore, organic matter accumulation may partly explain why the large input of atmospheric carbon did not result in DIC accumulation in the MA waters. It may partly explain why the total carbon pool decreased so much seasonally. Following the RR, DIN decreases of 236, 198 and 109 mmol m⁻² might be expected from the DIC decreases. The DIN decreases were indeed around 0-2 mmol m⁻², which is in concordance with very poor DIN replenishment of the upper water column. Conversely, increases of the PON stocks of the same order of magnitude as the RR predicts from POC stocks for WMA and EMA were observed (12.0 and 7.3, compared to RR = 6.6), with a small PON decrease for WGY. The largest increases for the organic pools were for the dissolved phase in all areas (Table 8). DOC accumulation was 3.8 and 8.1 times higher than POC accumulation for WMA and EMA, respectively. Only DOC accumulated at WGY, but with a change twice lower in magnitude than in the MA waters (Table 8).

A relative stronger dissolved organic carbon production compared to particulate production may be observed in oligotrophic areas, depending largely on light and nutrient availabilities (Carlson, 2002). In oligotrophic areas, characterized by low export of particulate organic matter, relatively large dissolved organic matter production, and heterotrophic bacteria often limited by nutrients (Van Wambeke et al., 2002), DOC may accumulate (Copin-Montégut and Avril, 1993; Marañón et al., 2005, Pujo-Pay et al., 2011), which is indeed observed (Fig. 5d). Dissolved organic carbon accumulation reached 391, 445 and 220 mmol m⁻² over 8 months (Table 8), which dispersed over 70 m gives a mean 8-month accumulation of 7.0, 7.1 and 3.0 μ mol L⁻¹ for the 0-70 m water column. These values, while lower, are of the same order of magnitude of DOC concentration changes observed in the upper mixed layers of 10.1, 9.3 and 5.0 μ mol L⁻¹ for WMA, EMA and WGY, respectively (Fig. 5d, Table 7). Interestingly, the western SP was recently shown as a localized refractory dissolved organic carbon sink (Hansell and Carlson, 2013).

No significant DIN inventory changes were observed while strong increases in the DON stocks and similar but relatively lower increases were observed for the PON stocks for WMA and EMA (Table 8, Fig. 5e, 5h). The TN evolution was a net increase of inventories between winter and summer, of 49 and 34 mmol m⁻² for WMA and EMA, respectively. No significant changes of the N pools were observed at WGY (Table 8, Fig. 5b, 5e, 5h). A decrease of DIP stocks was observed in the MA waters between the winter and summer, with no significant change for WGY (Table 8). Following the RR, DIP decreases of 14.7, 12.3 and 6.8 mmol m⁻² might be expected from the DIC decreases. The DIP decreases were indeed less, 5.9 and 3.1 mmol m⁻² for WMA and EMA, and no decrease was observed at WGY. The DIC decreases are probably only partially related to the DIP decreases in the MA. As for C and N, the highest organic P inventory increases were for the dissolved phase (Fig. 5f, Table 8). Nevertheless, the changes were close to the SD calculated for the mean concentrations

and should be considered with caution. As an example, the 1.8 mmol m^{-2} increase in DOP concentrations for EMA (Table 8) corresponds to the difference between $11.6 \pm 1.1 \text{ mmol m}^{-2}$ during winter and $9.8 \pm 2.0 \text{ mmol m}^{-2}$ during summer. Note that the SD reported is the maximum SD calculated at each season (Table 8). Small or no decreases in the organic P pools were observed for WGY. Finally, it is clear that seasonal C losses were not compensated by organic carbon accumulation in the 0-70 m layer. Therefore, organic carbon production, which represents by far the largest flux in each area, should be linked with an efficient export from the upper layer, not directly related to RR.

We shall now try to connect the seasonal variations of C, N, and P stocks with the estimated C, N, and P fluxes in order to determine first-order budgets and characterize the main seasonal trends in the WTSP. Our very simple model considers an instantaneous winter mixing followed by 8 months (240 days) of C, N, and P fluxes at the same rates as the mean rates measured during the OUTPACE cruise. All fluxes expressed in mmol m^{-2} and corresponding to the 8-month period defined (July 2014-March 2015) are summarized in Fig. 7. Accumulation rates are presented inside the boxes and input and output fluxes outside the boxes, with arrows for direction (+ for input, - for output). The X value corresponds to the flux necessary to reach equilibrium in each box. The main question is how can we explain the large DIC losses in all areas, whereas we obtained a significant DIC input by winter convection and turbulent diffusion, low export of organic matter by settling or turbulent diffusion during the summer period, and a $p_{\text{CO}_2^{\text{oc}}}$ lower than or equal to the $p_{\text{CO}_2^{\text{atm}}}$ meaning a DIC enrichment by atmospheric exchanges, and furthermore no significant input of DIN from below in the 0-70 m upper layer?

The source of new N required to sustain new PP is clearly N_2 fixation (Fig. 7b, 7e, 7h). Converted in C using the RR of 6.6, new production may represent 12.8, 11.3 and 4.2 % of IPP of 7.94, 6.34 and 1.56 mol m^{-2} for the 8-month period in the WMA, EMA and WGY, respectively. New production $\leq 5\%$ is typical of strong oligotrophic conditions (Moutin and Raimbault, 2002), while above 5% is related to more productive areas or areas with high N_2 fixation rates (Karl et al., 2012). Taking into account the fact that the previous values are for 8 months only, we can estimate annual production rates of 145, 116 and $28 \text{ gC m}^{-2} \text{ y}^{-1}$ for WMA, EMA and WGY, respectively, close to the average rate of $170 \text{ gC m}^{-2} \text{ y}^{-1}$ reported for the ALOHA station in the North Pacific central gyre (Karl et al., 1996), and to the $86\text{-}232 \text{ gC m}^{-2} \text{ y}^{-1}$ range reported for the Mediterranean Sea at the DYFAMED site (Marty and Chiavérini, 2002), known as oligotrophic areas.

Having found the source of new N, in order to answer the question regarding DIC losses, several hypotheses may be considered. A first hypothesis is an episodic or seasonal high export of matter considerably different from that measured during the end of the summer season (OUTPACE cruise). We cannot discard this hypothesis specifically because no seasonal data are available at the present time, and also because episodic yet large export fluxes have already been reported in other oligotrophic areas (Böttjer et al., 2017). Nevertheless, the relative constant chl *a* concentration during the entire period considered in the upper water column (Fig. 2c, 2f, 2i), where most of the production is likely to occur (Fig. 6a), preferentially suggests relatively constant production and therefore export. Furthermore, the C, N, and P proportions of the X fluxes (Fig. 7) in all areas are completely different from RR, even in an opposite sense for P (Fig. 7c, 7f, 7i), suggesting that such C fluxes were not directly related to organic matter settling.

A second hypothesis might be in relation with diel vertical migrations of zooplankton-micronekton already described in the MA (Smeti et al., 2015), which may explain significant C losses with proportionally lower N losses and no P losses (Fig. 7). Indeed, mesozooplankton-micronekton feed at night in order to avoid predators and migrate to spend half of the time at around 500 m depth where they respire and lose carbon. Chl *a* varied only between 0.05 and 0.20 mg m^{-3} in the MA upper surface, suggesting a strong top-down control by zooplankton able to maintain pigment concentration in a quasi-steady state for many months (Banse et al., 2012). Zooplankton-micronekton diel vertical migrations, the latter being widespread in the ocean and forming a fundamental component of the biological pump generally overlooked in global models (Bianchi et al., 2013), and well known in the Pacific Ocean (Zhang and Dam, 1998, Al-Mutairi and Landry, 2001; Landry et al., 2011), might explain part of the unexplained ΔDIC observed in the upper surface waters. A third hypothesis might be an underestimation of the settling carbon through methodological issues, mainly concerning the performance of traps (Buesseler

et al., 2007) or solubilization (Antia, 2005), which is impossible to take into account without specific measurements. There is in fact no reliable way to separate swimmers' contribution of different elements from that originating from the passive flux (Antia, 2005), and in particular, using formalin, we cannot measure the DOC in the trap supernatant.

Tropical storms, such as Cyclone PAM observed during the OUTPACE cruise (de Verneil et al., 2017), might have an influence on seasonal budgets. Law et al., (2011) reported the effect of such a cyclone in the North Tasman Sea. There was no nitrate entrainment but rather phosphate entrainment due to explicit differences in nitracline and phosphacline depths. This allowed nitrogen fixation to be enhanced in a process close to that we described in our study, albeit in response to physical forcing acting at a smaller spatial than winter mixing. During OUTPACE, the strong wind forcing event PAM entered the Southwest Pacific in early March, and a drop in SST and increase in Chl followed in its wake. The storm did indeed have a fertilizing effect but at relatively short spatial (around Vanuatu islands) and time (around 2 weeks) scales, compared to the larger-scale processes highlighted in the present study.

Mesoscale structures have been previously shown to influence primary production (Falkowski et al., 1991; Oschlies and Garçon, 1998; Moutin and Prieur, 2012; Levy et al., 2015). Nevertheless, the mesoscale vertical fluxes due to quasi-geostrophic forcing calculated from satellite data during OUTPACE were weak and acted on a layer displaced from the relevant nutrient reservoirs (de Verneil et al., 2017). The seasonal vertical nutrient input into the photic layer, mainly driven by deep vertical mixing, will be the main influence on annual biological production, whereas summertime mesoscale activity will primarily influence the horizontal spatial distribution of phytoplankton (Rousselet et al., this issue).

4.4 Iron and phosphate availabilities as key factors controlling the N input by N₂ fixation and the biological carbon pump in the WTSP

The western SP is known as an iron-rich area (Wells et al., 1999). Iron concentrations measured during the DIAPALIS cruises (<http://www.obs-vlfr.fr/proof/vt/op/ec/diapazon/dia.htm>) near New Caledonia (M. Rodier unpubl. data in Van den Broeck et al., 2004) were higher than concentrations reported in the sub-tropical North Pacific (Landing and Bruland, 1987), and indicated no clear seasonal variations. Average iron concentrations of 0.57 nmol L⁻¹ were reported in the upper surface waters of the WTSP (Campbell et al., 2005), higher than the ~0.1 nmol L⁻¹ measured in the upper 350 m water column of the SP gyre (Blain et al., 2008) where ferricline depths were located well below nitracline depths (Blain et al., 2008). The Equatorial Undercurrent, which originates near Papua New Guinea, close to New Caledonia, is known to be a source of iron in the SP Ocean (Wells et al., 1999; Ganachaud et al., 2017). Nevertheless, atmospheric deposition fluxes of iron are very low (Duce and Tindale 1991, Wagener et al., 2008). During OUTPACE, the apparent contradiction between low atmospheric deposition of iron and high surface water iron concentration was resolved. The high iron average concentration within the photic layer in the MA (1.7 nmol L⁻¹) compared to WGY (0.3 nmol L⁻¹) was shown to be related to the influence of hydrothermal sources at shallower depths than commonly associated with volcanic activities (Guieu et al., in revision), confirming the importance of hydrothermal contribution to the oceanic iron inventory (Tagliabue et al., 2010; Fitzsimmons et al., 2014; Tagliabue et al., 2017). The averaged 0-70 m integrated concentrations were 0.57 ± 0.14 nM; 1.18 ± 1.02 nM; 0.28 ± 0.03 nM for WMA, EMA and WGY, respectively. Iron is a major component of the nitrogenase enzyme that catalyzes N₂ fixation (Raven, 1988). The high iron concentration likely alleviates the iron limitation of N₂ fixation in the WTSP, again considered as a hotspot of N₂ fixation (Bonnet et al., 2017).

Phosphate turnover time (T_{DIP}) represents the ratio between natural concentration and uptake by planktonic species (Thingstad et al., 1993) and is considered the most reliable measurement of phosphate availability in the upper ocean waters (Moutin et al., 2008). Phosphate availability in the MA, characterized by DIP < 50 nmol L⁻¹ and T_{DIP} reaching below 2 days, is considerably lower than in the SP gyre, with DIP concentrations above 100 nmol L⁻¹ and T_{DIP} in the order of magnitude of months (Fig. 6c), as already reported (Moutin et al., 2008). Phosphate availability, as well as primary production, were

shown to follow the same seasonal patterns close to New Caledonia in the MA, suggesting that in this iron-rich area known to sustain high N_2 fixation rates, phosphate may appear as a key factor controlling carbon production (Van den Broeck et al., 2004). It was suggested that a seasonal pattern of phosphate availability with higher values (Low DIP, High T_{DIP}) related to winter mixing and lower value (Higher DIP, Lower T_{DIP}) during the stratified period might control *Trichodesmium* spp. growth and decay in the SP near New Caledonia (Moutin et al., 2005). A T_{DIP} below 2 days was shown to be critical for *Trichodesmium* spp. growth (Moutin et al., 2005). T_{DIP} below or close to 2 days was measured in the MA upper waters during the OUTPACE cruise (Fig. 6c), and T_{DIP} as low as several hours was measured at LD B station and has been related with the strong biomass and specifically *Trichodesmium* spp. decline observed at this station (de Verneil et al., 2017). With T_{DIP} around or even below 2 days, the MA appears as a low P area during the stratified period, indicating a probable role of phosphate availability in the control of nitrogen input by the nitrogen fixers. The higher iron availability in the MA is probably the main factor allowing N_2 fixation to occur, and phosphate availability the main factor controlling the annual input of N by N_2 fixation. A T_{DIP} of 2 days corresponds to the lowest value reported at ALOHA station in the NP (Table 2 in Moutin et al., 2008), where phosphate availability is considered to play a dominant role in the control of nitrogen fixers (Karl et al., 1997; Karl, 2014). T_{DIP} reached several hours, which is close to the phosphate availability of the Mediterranean Sea or the Sargasso Sea, known for a long time for their phosphate deficiency (Wu et al., 2000; Moutin et al., 2002). While phytoplankton and heterotrophic bacterioplankton may appear N-limited (Van Wambeke et al., this issue; Gimenez et al., this issue), the low availability of phosphate in the upper waters of the WTSP during the stratified period probably controls the biomass of nitrogen fixers and ultimately the input of nitrogen by this process. In a recent mesocosm experiment, high increases in N_2 fixation rates, PP rates and carbon export were obtained after a DIP enrichment of WTSP waters (Berthelot et al., 2015). Nevertheless, several days were necessary to measure significant increases, indicating that regular short-term experiments to establish nutrient limitation as usually operated (Dekaezemacker et al., 2013; Moisander et al., 2012; Moore et al., 2013), may not be relevant in WTSP conditions (Gimenez et al., 2016).

The high DIP low DIN (excess P or high P^*) content of water was suggested as a preliminary condition allowing N_2 fixation to occur (Redfield, 1934; Capone and Knapp, 2007; Deutsch et al., 2007), and is a characteristic of surface waters of the South Equatorial current flowing from the east to the west in the SP, due to intense denitrification related to one of the main OMZ (Oxygen Minimum Zone) areas in the East Pacific (Codispoti et al., 2001). The alleviation of iron limitation when waters originating from the east reach the WTSP was considered as the main factor explaining the hotspot of N_2 fixation observed in the OUTPACE area (Bonnet et al., 2017). The strong nitracline and phosphacline depth differences (Table 1), associated with winter mixing down to around 70 m, allows us to estimate a replenishment of DIP of the order of magnitude of ΔDIP (5.9 mmol m^{-2} for WMA and 3.0 mmol m^{-2} for EMA; Fig. 7c, 7f), far above the vertical input by turbulent diffusion (around 0.7 mmol m^{-2}), together with no DIN replenishment. Alone, these DIP fluxes may support N_2 fixation of 94.4 and 48.0 mmol m^{-2} during this period (following RR), of the order of magnitude of the fluxes of 154 and 108 mmol m^{-2} calculated for WMA and EMA (Fig. 7b, 7e), respectively. While horizontal advection of high DIP low DIN waters from the SP gyre toward the iron-rich WTSP was suggested to create the environmental conditions favourable for diazotroph growth (Moutin et al., 2008; Bonnet et al., 2017), we here suggest that local seasonal winter mixing may also play a significant role in providing excess P to the upper waters, and therefore in controlling nitrogen input by N_2 fixation and therefore the associated carbon cycle. Phosphate availability appears, in the high iron MA, as the ultimate control of the biological carbon pump. The simulations of the main C, N, and P fluxes at LD A and LD C, using a 1DV model with similar physical forcing, strengthen the idea of strong seasonal variations being able to explain the control of N_2 fixation and carbon fluxes by the availability of phosphate in the MA and iron at WGY (Gimenez et al., this issue). Iron was hypothesised to prevent N_2 fixation at LD C and this allows to obtain the high DIP concentration observed at LD C.

4.5 Toward reconciliation between simulations and observations?

During the past 10 years, global biogeochemical model simulations suggested relatively high N₂ fixation in the SP gyre and low fixation in the western part of the Pacific Ocean (Deutsch et al., 2007; Grüber 2016), in contradiction with the little data then available. While the decrease in P* toward the centre of the gyre observed during the BIOSOPE cruise (ETSP toward the central gyre 10-30°S in latitude) corresponds to the trend observed by Deutsch et al. (2007), N₂ fixation in the simulation, with minimum values found on the edge and maximum values found in the centre of the gyre, was contrary to our observations (Moutin et al., 2008). The high N₂ fixation expected in the ETSP, because “downstream of OMZs, surface waters that initially carry a surplus of phosphorus (because of subsurface denitrification) lose this excess gradually through N₂ fixation” (Deutsch et al., 2007), was not confirmed by isotopic budgets (Knapp et al., 2016), suggesting an elusive marine N₂ fixation (Grüber, 2016). The discovery of a hotspot of N₂ fixation in the whole WTSP covered by the OUTPACE transect and other cruises in the Coral Sea (Bonnet et al., 2017), justifies considering a larger spatial coupling between denitrification and N₂ fixation than previously thought (Deutsch et al., 2007). Taking into account the role of iron to allow (or not) N₂ fixation to occur seems a necessary basis to reconcile simulations and observations (Dutkiewicz et al., 2012; Monteiro et al., 2011; Weber and Deutsch, 2014). These new modelling studies have identified the WTSP as a unique region with conditions seemingly favourable for significant N₂ fixation fluxes (Knapp et al., this issue). Interestingly, the opposite trends between expected N₂ fixation and P* observed during the BIOSOPE cruise and possibly attributed to non-Redfieldian processes (Moutin et al., 2008) may be rather due to horizontal advection and isopycnal mixing of water masses originating from the WTSP, and therefore marked by a strong signature of intense N₂ fixation (High N* corresponding to Low P*) (Fumenia et al., this issue), in an opposite sense than the better-known and more widely studied influence of water masses marked by a strong signature of intense denitrification originating from the OMZ (Yoshikawa et al., 2015). Furthermore, the deepening of isopycnals from the eastern to the western SP (Yoshikawa et al., 2015; Fumenia et al., this issue) suggests a deeper (~200 m) influence of excess P waters from the SEC in the MA, deeper than previously hypothesised (Moutin et al., 2008; Bonnet et al., 2017). Because the influence of isopycnal mixing is below the maximum mixing depth estimated in the WTSP (~70 m), the link between N sink in the east and N source in the west implies longer time scales than that associated only with surface circulation. The N budget of the SP Ocean is of prime interest to understand the efficiency, at the present time, and in the future, of the oceanic biological carbon pump. Determining the budget requires a precise understanding of the general water mass circulation, which at the present time suffers from a lack of data, specifically during water mass formation (Fumenia et al., this issue).

5 Conclusion

We found a significant biological soft tissue carbon pump in the WTSP despite no winter replenishment of surface waters by DIN. N₂ fixation is the major process introducing the necessary N to sustain the biological soft tissue carbon pump allowing oceanic pCO₂^{oc} < pCO₂^{atm} in the MA, and therefore significant atmospheric C input. Because of N₂ fixation, the WTSP is a significant atmospheric carbon sink.

The upper surface waters of the MA sampled during the stratified period were characterized by a DIP availability close to or below the level required for phosphate sufficiency, which contrasts with observations in the central Pacific gyre at the same latitude. We confirmed the geographical trend of limitation of N₂ fixation in the SP, from a probable iron limitation in the east and central SP Ocean, to a P limitation in the west. The limit was clearly shown to be associated with the lower depths of the MA, where sufficient iron was provided to upper surface waters to alleviate iron limitation of N₂ fixation, probably by hydrothermal sources at anomalously shallow depths. Extrapolating these data in order to obtain seasonal trends enables us to show that winter vertical mixing, although limited to 70 m depth, may bring sufficient excess P to allow most of N₂ fixation to occur. In addition, more excess P may be locally provided in the upper surface (where N₂ fixation was shown to

occur predominantly) by winter mixing than by horizontal transport from areas of excess P formation (OMZ). As previously hypothesized (Moutin et al., 2008), the low availability of phosphate in the high iron upper waters of the WTSP during the stratified period probably controls the biomass of nitrogen fixers and ultimately the input of nitrogen by this process, and the biological pump. As high nutrient concentrations in High Nutrient Low Chlorophyll (HNLC) areas (Minas et al. 1986) may be considered as the result of an inefficient biological carbon pump (Sarmiento and Gruber, 2006), high phosphate concentrations (and high DIP turnover time) in the south Pacific gyre (Moutin et al., 2008; this study) may be the result of inefficient or inexistent N₂ fixation. Conversely, the low P availability (low concentration and DIP turnover time) in the upper surface of the WTSP is the result of intense N₂ fixation. Because iron concentrations are low in the gyre and high in the MA (even during the strongest stratified period), and because of the specific iron needs of diazotrophs, iron availability is the best candidate for preventing nitrogen fixation in the gyre and allowing nitrogen fixation in the MA. Therefore, iron availability and DIP availability may appear as the ultimate controls of biological production and export in the gyre and in the MA, respectively.

The SP Ocean deserves special attention because of its huge volume of water where the N budget is likely to be controlled by N lost in the east (denitrification) and N gain in the west (N₂ fixation). Furthermore, both diazotrophy and denitrification are expected to undergo drastic alterations due to climate change (McMahon et al., 2015; Lachkar et al., 2018). Our data suggest that one had better take into account the role of iron and phosphate in global biogeochemical models, in order to better reconcile simulations and data, which seems to be the prerequisite to understand at the present time the relationship between N sources and sinks in the SP Ocean. Moreover, it will be of great interest to study future scenarios which consider iron coming from below (hydrothermal sources) in addition to that from above (atmospheric source) in the WTSP and in the whole SP Ocean. Changes in N₂ fixation following changes in dust (iron) supply have been suggested to play a central role in explaining past glacial/interglacial changes in CO₂ concentration and earth temperature. It was considered that N₂ fixation on a regional scale would change global nitrogen availability and the biological carbon pump on the time scale of ocean circulation. The direct link between N₂ fixation and carbon export proposed here for the WTSP, a hotspot of N₂ fixation, allows for a much closer coupling between N₂ fixation and the biological carbon pump, which may in turn require us to consider changes at shorter time scales such as that associated with climate change.

Acknowledgements

This is a contribution of the OUTPACE (Oligotrophy from Ultra-oligoTrophy PACific Experiment) project (<https://outpace.mio.univ-amu.fr/>) funded by the French research national agency (ANR-14-CE01-0007-01), the LEFE-CyBER program (CNRS-INSU), the GOPS program (IRD) and the CNES (BC T23, ZBC 4500048836). The OUTPACE cruise (<http://dx.doi.org/10.17600/15000900>) was managed by the MIO (OSU Institut Pytheas, AMU) from Marseille (France) and received funding from European FEDER Fund under project 1166-39417. The authors thank Nicolas Metzl for constructive comments on the manuscript and the SNAPO-CO₂ (Service National d'Analyse des paramètres Océaniques du CO₂- LOCEAN – Paris). The authors also thank the crew of the R/V L'Atalante for outstanding shipboard operation. G. Rougier and M. Picheral are warmly thanked for their efficient help in CTD rosette management and data processing, as is Catherine Schmechtig for the LEFE CYBER database management. The satellite-derived data of Sea Surface Temperature, chl *a* concentration and current have been provided by CLS in the framework of the CNES funding; we warmly thank I.Pujol and G.Taburet for their support in providing these data. Aurelia Lozingot is acknowledged for the administrative work.

We acknowledge NOAA, and in particular R.Lumpkin, for providing the SVP drifter. The Argo data were collected and made freely available by the International Argo Project and the national programmes that contribute to it (<http://www.argo.ucsd.edu>, <http://argo.jcommops.org>). Argo is a pilot programme of the Global Ocean Observing System. Argo DOI (<http://dx.doi.org/10.17882/42182>). All data and metadata are available at the following web address: <http://www.obs-vlfr.fr/proof/php/outpace/outpace.php>

References

- Al-Mutairi, H., and Landry, M. R.: Active export of carbon and nitrogen at station ALOHA by diel migrant zooplankton, *Deep. Res. Part II*, 48(8–9), 2083–2103, doi:10.1016/S0967-0645(00)00174-0, 2001.
- Aminot, A., and Kérouel, R.: Dosage automatique des nutriments dans les eaux marines : méthodes en flux continu. Ed. Ifremer, *Méthodes d'analyse en milieu marin*, 188 pp., 2007.
- Antia, A. N.: Solubilization of particles in sediment traps: revising the stoichiometry of mixed layer export, *Biogeosciences*, 2, 189–204, <https://doi.org/10.5194/bg-2-189-2005>, 2005.
- Banse, K.: Reflections about chance in my career, and on the top-down regulated world. *Annual Rev. of Mar. Science*, 5: 2.1-2.19, 2013.
- 10 Bates, N. R., Best, M. H. P., Neely, K., Garley, R., Dickson, A. G., and Johnson, R. J.: Detecting anthropogenic carbon dioxide uptake and ocean acidification in the North Atlantic Ocean, *Biogeosciences*, 9, 2509–2522, <https://doi.org/10.5194/bg-9-2509-2012>, 2012.
- Berthelot, H., Moutin, T., L'Helguen, S., Leblanc, K., Hélias, S., Grosso, O., Leblond, N., Charrière, B., and Bonnet, S.: Dinitrogen fixation and dissolved organic nitrogen fueled PPand particulate export during the VAHINE mesocosm
15 experiment (New Caledonia lagoon), *Biogeosciences*, 12, 4099–4112, 2015.
- Bianchi, D., Stock, C., Galbraith, E. D., and Sarmiento, J. L.: Diel vertical migration: Ecological controls and impacts on the biological pump in a one dimensional ocean model. *Global Biogeochem. Cycles*. 27, 478–491, doi:10.1002/gbc.20031, 2013.
- Blain, S., Bonnet, S., and Guieu, C.: Dissolved iron distribution in the tropical and subtropical South Eastern Pacific,
20 *Biogeosciences*, 5, 269–280, <https://doi.org/10.5194/bg-5-269-2008>, 2008.
- Bonnet, S., Caffin, M., Berthelot, H. and Moutin, T.: Hot spot of N₂ fixation in the western tropical South Pacific pleads for a spatial decoupling between N₂ fixation and denitrification, *Proc. Natl. Acad. Sci.*, 114(14), E2800–E2801, doi:10.1073/pnas.1619514114, 2017.
- Bonnet S., Caffin, M., Berthelot, H., Grosso, O., Guieu, C., and Foster, R.: Contribution of dissolved and particulate
25 fractions to the Hot Spot of N₂ fixation in the Western Tropical South Pacific Ocean (OUTPACE cruise). *Biogeosciences* (this issue).
- Böttjer, D., Dore, J. E., Karl, D. M., Letelier, R. M., Mahaffey, C., Wilson, S. T., Zehr, J., and Church, M. J.: Temporal variability of nitrogen fixation and particulate nitrogen export at Station ALOHA, *Limnol. Oceanogr.*, 62, 200–216, 2017.
- Bouffard, D., and Boegman, L.: A diapycnal diffusivity model for stratified environmental flows, *Dyn. of Atm. and Oceans*,
30 61, 14–34, 2013.
- Bouruet-Aubertot, P., Cuypers, Y., Le Goff, H., Rougier, G., de Verneuil, A., Doglioli, A. M., Picheral, M., Yohia, C., Caffin, M., Lefèvre, D., Petrenko, A. A., and T. Moutin.: Longitudinal contrast in small scale turbulence along 20°S in the Pacific Ocean: origin and impact on biogeochemical fluxes. *Biogeosciences* (this issue).
- 35 Buesseler, K.O., Antia, A.N., Chen, M., Fowler, S.W., Gardner, W.D., Gustafsson, O., Harada, K., Michaels, A.F., van der Loeff, M.R., Sarin, M., Steinberg, D.K., and Trull, T.: An assessment of the use of sediment traps for estimating upper ocean particle fluxes. *J. Mar. Res.*, 65, pp. 345–416, 2007.
- Brandes, J. A., and Devol, A. H.: A global marine fixed nitrogen isotopic budget: Implications for Holocene nitrogen cycling, *Global Biogeochem. Cycles*, 16, 67.61–67.14, 2002. doi:10.1029/2001GB001856.
- 40 Broecker, W. S., and Henderson G. M.: The sequence of events surrounding Termination II and their implications for the cause of glacial-interglacial CO₂ changes. *Paleoceanogr.* 13:352–64, 1998.
- Burd, A. B., Buchan, A., Church, M., Landry, M., McDonnell, A., Passow, U., Steinberg, D., Benway, H.: Towards a transformative understanding of the biology of the ocean's biological pump: Priorities for future research. Report of the NSF

- Biology of the Biological Pump Workshop, February 19-20 (Hyatt Place New Orleans, New Orleans, LA) 6, pp., DOI: 10.1575/1912/8263, 2016.
- Caffin, M., Moutin, T., Foster, R. A., Bouruet-Aubertot, P., Doglioli, A. M., Berthelot, H., Grosso, O., Helias-Nunige, S., Leblond, N., Gimenez, A., Petrenko, A. A., de Verneil, A., and Bonnet, S.: Nitrogen budgets following a Lagrangian strategy in the Western Tropical South Pacific Ocean: the prominent role of N₂ fixation (OUTPACE cruise), *Biogeosciences Discuss.*, <https://doi.org/10.5194/bg-2017-468>, in review, 2017.
- Campbell, L., Carpenter, E. J., Montoya, J. P., Kustka, A. B., and Capone, D. G.: Picoplankton community structure within and outside a *Trichodesmium* bloom in the southwestern Pacific Ocean, *Vie et Milieu-Life and Environment*, 55, 185-195, 2005.
- Carlson, C. A.: Production and removal processes, in *Biogeochemistry of Marine Dissolved Organic Matter*, edited by D. A. Hansell, and C. A. Carlson, pp. 91–151, Academic, San Diego, Calif., doi:10.1016/B978-012323841-2/50006-3, 2002.
- Capone, D. G. and Knapp, A. N.: Oceanography – A marine nitrogen cycle fix? *Nature*, 445, 159–160, 2007.
- Cauwet, G.: HTCO method for dissolved organic carbon analysis in seawater: influence of catalyst on blank estimation. *Mar. Chem.*, 47 (1), 55-64, 1994.
- Cauwet, G.: Determination of dissolved organic carbon (DOC) and nitrogen (DON) by high temperature combustion. In: K. Grashoff, K. Kremling and M. Ehrhard (Eds), *Methods of seawater analysis*, 3 rd edition. Wiley-VCH, Weinheim. pp. 407-420, 1999.
- Codispoti, L. A., Brandes, J. A., Christensen, J. P., Devol, A. H., Naqvi, S. W. A., Paerl, H. W. and Yoshinari, T.: The oceanic fixed nitrogen and nitrous oxide budgets: Moving targets as we enter the anthropocene? *Scientia Marina*, 65, 85-105, 2001.
- Codispoti, L. A.: An oceanic fixed nitrogen sink exceeding 400 Tg N a⁻¹ vs the concept of homeostasis in the fixed-nitrogen inventory, *Biogeosciences*, 4, 233-253, <https://doi.org/10.5194/bg-4-233-2007>, 2007.
- Copin-Montégut, G., and Avril, B.: Vertical distribution and temporal variation of dissolved organic carbon in the North-Western Mediterranean Sea, *Deep-Sea Res.*, 40, 1963–1972, 1993.
- de Boyer Montégut, C., Madec, G., Fischer, A. S., Lazar, A. and Iudicone, D.: Mixed layer depth over the global ocean: an examination of profile data and a profile-based climatology, *J. Geophys. Res.*, 109, C12003, 2004. [doi:10.1029/2004JC002378](https://doi.org/10.1029/2004JC002378)
- Dekaezemacker, J., Bonnet, S., Grosso, O., Moutin, T., Bressac, M., and D. G. Capone, D.G.: Evidence of active dinitrogen fixation in surface waters of the eastern tropical South Pacific during El Nino and La Nina events and evaluation of its potential nutrient controls, *Global Biogeochem. Cycles*, 27, doi:10.1002/gbc.20063, 2013.
- Deutsch, C., Gruber, N., Key, R., and Sarmiento, J. L.: Denitrification and N₂ fixation in the Pacific Ocean, *Global biogeochem. Cycles*, 15, 2, 2001.
- Deutsch, C., Sarmiento J. L., Sigman D. M., Gruber N., and Dunne J. P.: Spatial coupling of nitrogen inputs and losses in the ocean. *Nature* 445:163–67, 2007.
- Deutsch, C., and Weber, T.: Nutrient Ratios as a Tracer and Driver of Ocean Biogeochemistry, *Annual Rev. of Mar. Science*, 41, 4-113, 2012.
- de Verneil, A., Rousselet, L., Doglioli, A. M., Petrenko, A. A., and Moutin, T. : The fate of a southwest Pacific bloom : gauging the impact of submesoscale vs. mesoscale circulation on biological gradients in the subtropics, *Biogeosciences*, 14, 3471-3486, <https://doi.org/10.5194/bg-14-3471-2017>, 2017.
- Dickson, A. G.: An exact definition of total alkalinity and a procedure for the estimation of alkalinity and total inorganic carbon from titration data. *Deep-Sea Res.* 28A, 609–623, 1981.
- DOE. Handbook of methods for the analysis of the various parameters of the carbon dioxide system in sea water; version 2, A. G. Dickson and C. Goyet, Eds. ORNL/CDIAC-74, 1994.

- Dore, J. E., Lukas, R., Sadler, D. W., and Karl, D. M.: Climate-driven changes to the atmospheric CO₂ sink in the subtropical North Pacific Ocean. *Nature* 424, 754-757. doi :10.1038/nature01885, 2003.
- Duce, R., and Tindale, N.: Atmospheric transport of iron and its deposition in the ocean, *Limnol. Oceanogr.*, 36, 1715– 1726, 1991.
- 5 Duhamel, S., Zeman, F., and Moutin, T.: A dual-labeling method for the simultaneous measurement of dissolved inorganic carbon and phosphate uptake by marine planktonic species, *Limnol. Oceanogr. Meth.*, 4, 416–425, 2006.
- Dupouy, C., Neveux, J., Subramaniam, A., Mulholland, M. R., Montoya, J. P., Campbell, L., Carpenter, E. J., and Capone D. G.: Satellite captures Trichodesmium blooms in the southwestern tropical Pacific. *EOS* 81:13–16, 2000.
- Dupouy, C., Benielli-Gary, D., Neveux, J., Dandonneau, Y., and Westberry, T. K.: An algorithm for detecting
10 Trichodesmium surface blooms in the South Western Tropical Pacific, *Biogeosciences*, 8, 3631–3647, 2011.
- Edmond, J.M.: High precision determination of totration alkalinity and the total carbone dioxide contentof seawater by potentiometric titration. *Deep Sea Res.*, 17, 737-750, 1970.
- Dutkiewicz, S., Ward, B. A., Monteiro, F., and Follows, M. J.: Interconnection of nitrogen fixers and iron in the Pacific Ocean: Theory and numerical simulations, *Global Biogeochem. Cycles*, 26, 2012.
- 15 Falkowski, P.G., Ziemann, D., Kolber, Z. and Bienfang, P.K.: Role of eddy pumping in enhancing primary production in the ocean. *Nature*, 352(6330), p.55, 1991.
- Falkowski, P. G., Evolution of the nitrogen cycle and its influence on the biological sequestration of CO₂ in the ocean, *Nature*, 387, 272-275, 1997.
- Falkowski, P. G., Barber, R. T., and Smetacek, V.: Biogeochemical Controls and Feedbacks on Ocean Primary Production,
20 *Science*, 281, 200-206, 1998.
- Fitzsimmons, J.N., Boyle, E.A., and Jenkins, W.J.: Distal transport of dissolved hydrothermal iron in the deep South Pacific Ocean. *Proc Natl Acad Sci U S A*. 2014 Nov 25;111(47):16654-61. doi: 10.1073/pnas.1418778111, 2014.
- Fumenia, A., Moutin, T., Bonnet, S., Benavides, M., Petrenko, A.A., Hélias-Nunige, S., and Maes, C.: Nutrient pools and excess nitrogen as a marker of intense dinitrogen fixation in the thermocline waters of the Western Tropical South Pacific
25 *Ocean. Biogeosciences* (this issue).
- Ganachaud, A., et al.: The Solomon Sea: its circulation, chemistry, geochemistry and biology explored during two oceanographic cruises *Elem Sci Anth*, 5: 33, doi: <https://doi.org/10.1525/elementa.221>, 2017.
- Garcia, H.E., and Gordon, L.I.: Oxygen solubility in seawater: Better fitting equations. *Limnol. Oceanogr.* 37:1307-1312, doi:10.4319, 1992.
- 30 Gattuso, J.P. and Lavigne, H.: Technical Note: Approaches and software tools to investigate the impact of ocean acidification, *Biogeosciences*, 6, 2121-2133, <https://doi.org/10.5194/bg-6-2121-2009>, 2009.
- Gimenez, A., Baklouti, M., Bonnet, S., and Moutin, T.: Biogeochemical fluxes and fate of diazotroph-derived nitrogen in the food web after a phosphate enrichment: modeling of the VAHINE mesocosms experiment, *Biogeosciences*, 13, 5103-5120, <https://doi.org/10.5194/bg-13-5103-2016>, 2016.
- 35 Gimenez, A., Baklouti, M., and Moutin, T.: Investigation of the main processes controlling the biological carbon pump in the Western Tropical South Pacific using a 1DV biogeochemical-physical coupled model. *Biogeosciences* (this issue).
- Guieu, C., Bonnet, S., Petrenko, A. A., Menkes, C., Chavagnac, V., Desboeufs, K., Maes, C., and Moutin, T. Iron from a submarine source impacts the productive layer of the Western Tropical South Pacific (WTSP). *Nature Sci. Rep.* (in revision).
- Grüber, N.: Elusive marine nitrogen fixation. *Proc. Natl. Acad. Sci.*, 113(16):4246–4248, 2016.
- 40 Grüber, N.: The dynamics of the marine nitrogen cycle and its influence on atmospheric CO₂. In: *The ocean carbon cycle and climate*, Follows, M. and Oguz, T. (Eds.), Kluwer Academic, Dordrecht, 2004.
- Grüber, N., and Sarmiento J.L.: Global patterns of marine nitrogen fixation and denitrification, *Global Biogeochem. Cycles*, 11, 235-266, 1997.

- Hansell, D. A., and Carlson, C. A.: Localized refractory dissolved organic carbon sinks in the deep ocean, *Global Biogeochem. Cycles*, 27, 705–710. doi:10.1002/gbc.20067, 2013.
- Holmes, R. M., Aminot, A., K rouel, R., Hooker, B. A., and Peterson, B. J.: A simple and precise method for measuring ammonium in marine and freshwater ecosystems . *Can. J. Fish. Aquat. Sci./J. can. sci. halieut. aquat.* 56(10): 1801-1808, 5 1999.
- Jickells, T. D., Buitenhuis, E., Altieri, K., Baker, A. R., Capone, D.G., Duce, R. A., Dentener, F., Fennel, K., Kanakidou, M., LaRoche, J., Lee, K., Liss, P., Middelburg, J. J., Moore, J. K., Okin, G., Oschlies, A., Sarin, M., Seitzinger, S., Sharples, J., Singh, A., Suntharalingam, P., Uematsu, M., and Zamora, L. M.: A reevaluation of the magnitude and impacts of anthropogenic atmospheric nitrogen inputs on the ocean. *Global Biogeochem. Cycles*. ISSN 0886-6236, 10 doi:10.1002/2016GB005586, 2017.
- Kana, T. M., Darkangelo, C., Hunt, M. D., Oldham, J. B., Bennett, G. E. and Cornwell, J. C.: Membrane Inlet Mass Spectrometer for Rapid High-Precision Determination of N₂, O₂, and Ar in Environmental Water Samples, *Anal. Chem.*, 66(23), 4166–4170, doi:10.1021/ac00095a009, 1994.
- Karl, D. M.: Microbially mediated transformations of phosphorus in the sea: new views of an old cycle, *Ann Rev Mar Sci*, 6, 15 279-337, 2014.
- Karl, D. M., Christian, J. R., Dore, J. E., Hebel, D. V., Letelier, R. M., Tupas, L. M., and Winn, C. D.: Seasonal and interannual variability in primary production and particle flux at station ALOHA. *Deep-Sea Res. II* 43, 539–568, 1996.
- Karl, D. M., Letelier, R. M., Tupas, L. M., Dore, J. E., Christian, J. R., and Hebel, D. V.: The role of nitrogen fixation in biogeochemical cycling in the subtropical North Pacific Ocean, *Nature*, 388, 533-538, 1997.
- 20 Karl, D. M., Church, M. J., Dore, J. E., Letelier, R. M. and Mahaffey, C.: Predictable and efficient carbon sequestration in the North Pacific Ocean supported by symbiotic nitrogen fixation, *Proc. Natl. Acad. Sci.*, 109(6), 1842–1849, doi:10.1073/pnas.1120312109, 2012.
- Kim, D. Jeong, D. J., Kim, T. W., Noh, J. H., Kim, H. J., Choi, D. H., Kim, E., and Jeon, D.: The reduction in the biomass of cyanobacterial N₂ fixer and the biological pump in the Northwestern Pacific Ocean. *Nature Sci. Rep.* 7, 41810, doi: 25 10.1038/srep41810, 2017.
- Knapp, A. N., Fawcett, S. E., Martinez-Garcia, A., Leblond, N., Moutin, T., and Bonnet, S.: Nitrogen isotopic evidence for a shift from nitrate- to diazotroph-fueled export production in the VAHINE mesocosm experiments, *Biogeosciences*, 13, 4645-4657, 2016.
- Knapp, A. N., McCabe1, K., Grosso, O., Lebond, N., Moutin, T., and Bonnet, S.: Distribution and rates of nitrogen fixation 30 in the tropical southwest Pacific Ocean constrained by nitrogen isotope budgets. *Biogeosciences* (this issue).
- Lachkar, Z., L vy, M., and Smith, S.: Intensification and deepening of the Arabian Sea oxygen minimum zone in response to increase in Indian monsoon wind intensity, *Biogeosciences*, 15, 159-186, <https://doi.org/10.5194/bg-15-159-2018>, 2018.
- Landing, W. M., Bruland, K. W.: The contrasting biogeochemistry of iron and manganese in the Pacific Ocean. *Geochim. Cosmochim. Acta*, 51:29–43, 1987.
- 35 Landolfi, A., Dietze, H., Koeve, W. and Oschlies, A.: Overlooked runaway feedback in the marine nitrogen cycle: the vicious cycle, *Biogeosciences*, 10, 1351–1363, doi:10.5194/bg-10-1351-2013, 2013.
- Landry, M. R., Selph, K. E., Taylor, A. G., De´cima, M., Balch, W. M. and Bidigare, R. R.: Phytoplankton growth, grazing and production balances in the HNLC equatorial Pacific. *Deep-Sea Res. II*, 58, 524–535, 2011.
- Langdon, C.: Determination of Dissolved Oxygen in Seawater by Winkler Titration Using the Amperometric Technique In 40 *The GO-SHIP Repeat Hydrography Manual: A Collection of Expert Reports and Guidelines*. Hood, E.M., C.L. Sabine, and B.M. Sloyan, eds. IOCCP Report Number 14, ICPO Publication Series Number 134. Available online at: <http://www.go-ship.org/HydroMan.html>, , 2010.

- Law, C. S., Woodward, E. M. S., Ellwood, M. J., Marriner, A., Bury, S. J., and Safi, K. A.: Response of surface nutrient inventories and nitrogen fixation to a tropical cyclone in the southwest Pacific. *Limnology and Oceanography* 56, 1372–1385, 2011.
- Lévy, M., Ferrari, R., Franks, P. J. S., Martin, A. P. and Rivière, P.: Bringing physics to life at the submesoscale. *Geophys. Res. Letter.* 39, L14602, doi:10.1029/2012GL052756, 2012.
- 5 Levy, M., Jahn, O., Dutkiewicz, S., Follows, M. J., and F. d'Ovidio, F.: The dynamical landscape of marine phytoplankton diversity, *Royal. Soc. Interface*, 12: 20150481, <http://dx.doi.org/10.1098/rsif.2015.0481>, 2015.
- Liss, P. S. and Merlivat, L.: The role of air-sea exchange in geochemical cycling. *Air-sea gas exchange rates: Introduction and synthesis.* 113–127, doi:10.1007/97894009473825, 1986.
- 10 Lueker, T. J., Dickson, A., and Keeling, C. D.: Ocean pCO₂ calculated from dissolved inorganic carbon, alkalinity, and equations for K₁ and K₂: validation based on laboratory measurements of CO₂ in gas and seawater at equilibrium, *Mar. Chem.*, 70(1–3), 105–119, 2000.
- Mahaffey, C., Michaels, A. F., and Capone, D. G.: The conundrum of marine N₂ fixation, *Am. J. of Science*, 305, 546-595, 2005.
- 15 Marañón, E., Cermeno, P., and Perez, V.: Continuity in the photosynthetic production of dissolved organic carbon from eutrophic to oligotrophic waters. *Mar. Ecol. Prog. Ser.* 299, 7–17, 2005.
- Marty, J. C., and Chiavérini, J.: Seasonal and interannual variations in phytoplankton production at DYFAMED time-series station, northwestern Mediterranean Sea. *Deep-Sea Res. II*, 49, 2017–2030, 2002.
- McElroy, M. B.: Marine biological controls on atmospheric CO₂ and climate. *Nature*, 302, 328-329, 1983.
- 20 McMahan, K. W., McCarthy, M. D., Sherwood, O. A., Larsen, T., and Guilderson, T. P.: Millennial-scale plankton regime shifts in the subtropical North Pacific Ocean, *Science*, 350, 1530-1533, 2015.
- Merlivat, L., Gonzalez Davila, M., Caniaux, G., Boutin, J., and Reverdin, G.: Mesoscale and diel to monthly variability of CO₂ and carbon fluxes at the ocean surface in the northeastern Atlantic, *J. Geophys. Res.*, 114, C03010, doi:10.1029/2007JC004657, 2009.
- 25 Michaels, A. F., Karl, D. M., Capone, D. G.: Element stoichiometry, new production and nitrogen fixation. *Oceanography* 14(4): 68–77, 2001.
- Millero, F. J.: The marine inorganic carbon cycle, *Chem. Rev.*, 107, 308–341, 2007.
- Minas, H.J., Minas, M., and Packard, T.T.: Productivity in upwelling areas deduced from hydrographic and chemical fields. *Limnol. Oceanogr.*, 31(6), 1182-1206, 1986.
- 30 Moore, C. M., Mills, M. M. M., Arrigo, K. R., Berman-Frank, I., Bopp, L., Boyd, P. W., Galbraith, E. D., Geider, R. J., Guieu, C., Jaccard, S. L., Jickells, T. D., La Roche, J., Lenton, T. M., Mahowald, N. M., Maranon, E., Marinov, I., Moore, J. K., Nakatsuka, T., Oschlies, A., Saito, M. A., Thingstad, T. F., Tsuda, A., and Ulloa, O.: Processes and patterns of oceanic nutrient limitation, *Nat. Geo.*, 6, 701–710, 2013.
- McDougall, T. J., and Barker, P. M.: Getting started with TEOS-10 and the Gibbs Seawater (GSW) Oceanographic Toolbox, 28pp, SCOR/IAPSO WG127, ISBN 978-0-646-55621-5, 2011.
- 35 Moisaner, P.H., Zhang, R., Boyle, E.A., Hewson, I., Montoya, J.P. and Zehr, J.P.: Analogous nutrient limitations in unicellular diazotrophs and *Prochlorococcus* in the South Pacific Ocean. *The ISME journal*, 6(4), pp.733-744, 2012.
- Monteiro, F. M., Dutkiewicz, S., and Follows, M. J.: Biogeographical controls on the marine nitrogen fixers, *Global Biogeochem. Cycles*, 25, 2011.
- 40 Montoya, J. P., Voss, M., Kahler, P. and Capone, D. G.: A Simple, High-Precision, High-Sensitivity Tracer Assay for N₂ Fixation, *Appl. Environ. Microbiol.*, 62(3), 986–993, 1996.
- Moore, C. M., Mills, M. M., Arrigo, K. R., Berman-Frank, I., Bopp, L., Boyd, P. W., Galbraith, E. D., Geider, R. J., Guieu, C., Jaccard, S. L., Jickells, T. D., La Roche, J., Lenton, T. M., Mahowald, N. M., Marañón, E., Marinov, I., Moore, J. K.,

- Nakatsuka, T., Oschlies, A., Saito, M. A., Thingstad, T. F., Tsuda, A., and Ulloa, O.: Processes and patterns of oceanic nutrient limitation, *Nat. Geo.* 6, 2013.
- Moutin, T., Karl, D. M., Duhamel, S., Rimmelin, P., Raimbault, P., Van Mooy, B. A. S., and Claustre, H.: Phosphate availability and the ultimate control of new nitrogen input by nitrogen fixation in the tropical Pacific Ocean, *Biogeosciences*, 5, 95-109, 2008.
- Moutin, T., Thingstad, T. F., Van Wambeke, F., Marie, D., Slawyk, G., Raimbault, P., and Claustre, H.: Does competition for nano-molar phosphate supply explain the predominance of the cyanobacterium *Synechococcus*? *Limnol. Oceanogr.*, 47, 1562-1567, 2002.
- Moutin, T., and Raimbault, P.: Primary production, carbon export and nutrients availability in western and eastern Mediterranean Sea in early summer 1996 (MINOS cruise), *J. of Mar. Syst.*, 33-34, 273-288. doi:10.1016/S0924-7963(02)00062-3, 2002.
- Moutin, T., Van Den Broeck, N., Beker, B., Dupouy, C., Rimmelin, P., and LeBouteiller, A.: Phosphate availability controls *Trichodesmium* spp. biomass in the SW Pacific ocean, *Mar. Ecol. Prog. Ser.*, 297, 15-21, 2005.
- Moutin, T., Doglioli, A. M., de Verneil, A., and Bonnet, S.: Preface : The Oligotrophy to the Ultra-oligotrophy PACific Experiment (OUTPACE cruise, 18 February to 3 April 2015), *Biogeosciences*, 14, 3207-3220, doi: <https://doi.org/10.5194/bg-14-3207-2017>, 2017
- Moutin, T. and Prieur, L.: Influence of anticyclonic eddies on the Biogeochemistry from the Oligotrophic to the Ultraoligotrophic Mediterranean (BOUM cruise), *Biogeosciences*, 9, 3827-3855, doi:10.5194/bg-9-3827-2012, 2012.
- Moutin, T., P. Raimbault, P. and Poggiale, J. C.: Production primaire dans les eaux de surface de la Méditerranée occidentale : Calcul de la production journalière. *C. R. Acad. Sci. Paris, Sciences de la vie.* 322: 651-659, 1999.
- Moutin, T., Van Wambeke, F., and Prieur, L.: Introduction to the Biogeochemistry from the Oligotrophic to the Ultraoligotrophic Mediterranean (BOUM) experiment, *Biogeosciences*, 9, 3817-3825, doi:10.5194/bg-9-3817-2012, 2012.
- Oudot, C., Gerard, R., Morin, P., Gningue, I.: Precise shipboard determination of dissolved-oxygen (Winkler Procedure) with a commercial system. *Limnol. Oceanogr.*, 33, 1, 146-150, WOS:A1988M521700015, 1988.
- Oschlies, A. and Garçon, V.: Eddy-induced enhancement of primary production in a model of the North Atlantic Ocean. *Nature*, 394(6690), pp.266-269, 1998.
- Owens, W.B., and Millard Jr., R.C.: A new algorithm for CTD oxygen calibration. *J. Phys. Oceanogr.*, 15, 621-631, 1985.
- Pujo-Pay, M. and Raimbault, P.: Improvement of the wet-oxidation procedure for simultaneous determination of particulate organic nitrogen and phosphorus collected on filters. *Mar. Ecol. Progr. Ser.* 105: 203-207, 1994.
- Pujo-Pay, M., Conan, P., Oriol, L., Cornet-Barthaux, V., Falco, C., Ghiglione, J.-F., Goyet, C., Moutin, T., and Prieur, L.: Integrated survey of elemental stoichiometry (C, N, P) from the western to eastern Mediterranean Sea, *Biogeosciences*, 8, 883-899, doi:10.5194/bg-8-883-2011, 2011.
- Raven, J. A.: The iron and molybdenum use efficiencies of plant growth with different energy, carbon and nitrogen source. *New Phytol.* 109:279-287, 1988.
- Redfield, A. C.: On the proportions of organic derivatives in sea water and their relation to the composition of plankton, in: James Johnstone Memorial Volume, edited by: Daniel, R. J., University Press, 176-192, 1934.
- Rousselet, L., de Verneil, A., Doglioli, A. M., Petrenko, A. A., Duhamel, S., Maes, C., and Blanke, B.: Large to submesoscale surface circulation and its implications on biogeochemical/biological horizontal distributions during the OUTPACE cruise (SouthWest Pacific), *Biogeosciences Discuss.*, <https://doi.org/10.5194/bg-2017-456>, in review, 2017.
- Sarmiento, J. L., and Gruber, N.: *Ocean Biogeochemical Dynamics*, Princeton University Press, Princeton. 503 pp, 2006.
- Sharp, J. H.: Improved analysis for "particulate" organic carbon and nitrogen from seawater. *Limnol. Oceanogr.* 19: 984-989, 1974.

- Smeti H., Pagano M., Menkès C., Lebourges Dhaussy A., Hunt B. P. V., Allain V., Rodier M., de Boissieu F., Kestenare E., Sammari C.: Spatial and temporal variability of zooplankton off New Caledonia (Southwestern Pacific) from acoustics and net measurements. *J. of Geophys. Res. Oceans*, 120 (4), 2676-2700. ISSN 2169-9275, 2015.
- Straub, M., Sigman, D. M., Ren, H., Martínez-García, A., Meckler, A. N., Hain, M.P., Haug, G.H.: Changes in North Atlantic nitrogen fixation controlled by ocean circulation, *Nature*, 2013, 501, 7466, doi:10.1038/nature12397, 2013.
- 5 Stukel, M. R., Aluwihare, L. I., Barbeau, K. A., Chekalyuk, A. M., Goericke, R., Miller, A. J., Ohman, M. D., Ruacho, A., Song, H., Stephens, B., Landry, M. R.: Mesoscale ocean fronts enhance carbon export due to gravitational sinking and subduction. *Proc. Natl. Acad. Sci.*, 114(6): 1252-1257, doi: 10.1073/pnas.1609435114, 2017.
- Sugimura Y, and Suzuki Y.: A high-temperature catalytic oxidation method for the determination of non-volatile dissolved organic carbon in seawater by direct injection of a liquid sample. *Mar. Chem.* 24:105-131, 1988.
- 10 Tagliabue, A., Bopp, L., Dutay, J. C., Bowie, A. R., Chever, F., Jean-Baptiste, P., Bucciarelli, E., Lannuzel, D., Remenyi, T., Sarthou, G., Aumont, O., Gehlen, M., and Jeandel, C.: Hydrothermal iron contribution to oceanic dissolved iron inventory, *Nat. Geo.* 3, 252–256, 2010. doi:10.1038/ngeo818, 2010.
- Tagliabue, A., Bowie, A. R., Boyd, P. W., Buck, K. N., Johnson, K. S., and Saito, M. A.: The integral role of iron in ocean biogeochemistry, *Nature* 1; 543(7643):51-59. doi: 10.1038/nature21058, 2017.
- 15 Takahashi, T., Olafsson, J., Goddard, J., Chipman, D. W., and Sutherland, S. C.: 1993. Seasonal variation of CO₂ and nutrients in the high-latitude surface oceans: a comparative study. *Glob. Biogeochem. Cycles* 7, 843–878, 1993.
- Takahashi, T., Sutherland, S. C., Chipman, D. W., Goddard, J. G., Cheng Ho, Newberger, T., Sweeney, C., Munro, D. R.: Climatological Distributions of pH, pCO₂, Total CO₂, Alkalinity, and CaCO₃ Saturation in the Global Surface Ocean, and Temporal Changes at Selected Locations. *Mar. Chem.* doi: 10.1016/j.jmarchem.2014.06.004, 2014.
- 20 Taylor, B. W., Keep, C. F., Hall, Jr., R. O., Koch, B. J., Tronstad, L. M., Flecker, A. S., and Ulseth, A. J.: Improving the fluorometric ammonium method: matrix effects, background fluorescence, and standard additions. *J. N. Am. Benthol. Soc.*, 26(2):167–177, 2007. Thingstad, T. F., Skjoldal, E. F. and Bohne, R. A.: Phosphorus cycling and algal–bacterial competition in Sandsfjord, western Norway. *Mar. Ecol. Prog. Ser.* 99: 239–259, 1993.
- 25 Tyrell, T.: The relative influences of nitrogen and phosphorus on oceanic primary production. *Nature* 400, 525–531, 1999.
- Van Den Broeck, N., Moutin, T., Rodier, M., and Le Bouteiller, A.: Seasonal variations of phosphate availability in the SW Pacific Ocean near New Caledonia, *Marine and Ecological Progress Series*, 268, 1-12, 2004.
- Valdés, V., Donoso, K., Carlotti, F., Pagano, M., Molina, V., Escribano, R., and C. Fernandez, C.: Nitrogen and phosphorus recycling mediated by copepods in the western tropical south Pacific. *Biogeosciences* (this issue).
- 30 Van Wambeke, F., Christaki, U., Giannakourou, A., Moutin, T., Souvemerzoglou, K.: Longitudinal and vertical trends of bacterial limitation by phosphorus and carbon in the Mediterranean Sea. *Microb. Ecol.* 43:119–133, 2002.
- Van Wambeke F., Gimenez, A., Duhamel, S., Dupouy, C., Lefèvre, D., Pujo-Pay, M., and Moutin, T.: Dynamics of phytoplankton and heterotrophic bacterioplankton in the Western Tropical South Pacific Ocean along a gradient of diversity and activity of nitrogen fixers. *Biogeosciences* (this issue).
- 35 Weber, T. and Deutsch, C.: Local versus basin-scale limitation of marine nitrogen fixation, *Proc. Natl. Acad. Sci.*, 111, 8741-8746, 2014.
- Volk, T. and Hoffert, M. I.: The carbon cycle and atmospheric CO₂: natural variations Archean to present. Chapman conference papers, 1984. Sundquist, E. T. & Broecker, W. S. (eds.). American Geophysical Union; *Geophysical Monograph* 32, p. 99-110 12 p., 1985.
- 40 Wagener, T., Guieu, C., Losno, R., Bonnet, S. and Mahowald, N. M.: Revisiting atmospheric dust export to the Southern Hemisphere ocean: Biogeochemical implications, *Global Biogeochem. Cycles*, 22(2), 1–13, doi:10.1029/2007GB002984, 2008.

- Wells, M.L., Vallis, G.K., and Silver, E.A.: Tectonic processes in Papua New Guinea and past productivity in the eastern equatorial Pacific Ocean. *Nature* 398:601–604, 1999.
- Weiss, R. F., Price B. A.: Nitrous oxide solubility in water and seawater. *Mar. Chem.* 8:347-359, 1980.
- Winkler, L. W.: Die Bestimmung des im Wasser gelosten Sauerstoffes. *Ber. Dtsch. Chem. Ges.* 21: 2843-2853, 1888.
- 5 Wu, J., Sunda, W., Boyle, E. A., and Karl, D. M.: Phosphate depletion in the western North Atlantic Ocean. *Science* 289: 759–762, 2000.
- Xie, X. H., Cuypers, Y., Bouruet-Aubertot, P., Ferron, B., Pichon, A., Lourenço, A., and Cortes, N.: Large-amplitude internal tides, solitary waves, and turbulence in the central Bay of Biscay, *Geophys. Res. Letters*, 40, 2748-2754, 2013.
- Yoshikawa, C., Makabe, A., Shiozaki, T., Toyoda, S., Yoshida, O., Furuya, K. and Yoshida, N.: Nitrogen isotope ratios of
10 nitrate and N* anomalies in the subtropical South Pacific, *Geochem. Geophys. Geosyst.*, 16, 1439–1448. doi:10.1002/2014GC005678, 2015.
- Zhang, X. and Dam, H. G.: Downward export of carbon by diel migrant mesozooplankton in the central equatorial Pacific, , 44(9–10), 2191–2202, 1998.

Table 1. General physical and biogeochemical characteristics of the stations investigated along the OUTPACE transect presented in columns : (1) Short duration (SD) or long duration (LD) station; (2) Station number; (3) CTD-rosette number; (4) MLD: Mixed layer depth (m); (5) EZD: Euphotic zone depth (m); (6) K_z : Mean 40-200 m vertical eddy diffusivity ($m^2 d^{-1}$); (7) K_z error ($m^2 d^{-1}$); (8) DCMD, Deep chl a maximum depth; (9) DCMC, Deep chl a maximum concentration: chl a concentration at the DCMD ($mg m^{-3}$); (10 and 11) $I_{chl a}$, integrated (0-70 m) and (0-200 m) total chl a concentration ($mg m^{-2}$); (12-24) D_x , eD_x , S_x , eS_x , N_x and r_x^2 : characteristics of nutriclines (depths in m where NO_3 or PO_4 reaches zero and slopes in $\mu mol m^{-4}$ with associated errors, N: number of samples for the linear relationship, r^2 : correlation coefficient). QL: Quantification limit; nd : no data; nc : not calculated (linear relationship not established); na : nutrient above QL at surface.

10

Station	CTD number	MLD (m)	EZD (m)	$K_z (m^2 s^{-1})$	$eK_z (m^2 s^{-1})$	Chl a				Nitracline						Phosphacline					
						DCMD (m)	DCMC ($mg m^{-3}$)	I 0-70m ($mg m^{-2}$)	I 0-200m ($mg m^{-2}$)	D_{NO_3} (m)	eD_{NO_3} (m)	S_{NO_3} ($\mu mol m^{-4}$)	eS_{NO_3} ($\mu mol m^{-4}$)	N	r^2	D_{PO_4} (m)	eD_{PO_4} (m)	S_{PO_4} ($\mu mol m^{-4}$)	eS_{PO_4} ($\mu mol m^{-4}$)	N	r^2
SD 1	out_c_006	12	70	9.37E-06	1.10E-05	88	0.40	5.0	18.9	73	8	53	9	3	0.97	25	18	2.8	0.6	5	0.89
SD 2	out_c_010	23	70	7.69E-06	7.28E-06	85	0.33	6.0	20.4	78	4	61	6	3	0.99	27	4	3.2	0.2	5	0.99
SD 3	out_c_019	14	70	5.04E-06	3.79E-06	69	0.28	9.4	20.0	87	8	61	8	4	0.97	17	5	2.7	0.3	4	0.98
LD A	out_c_066	14	70	1.45E-05	1.83E-04	71	0.32	8.4	21.3	65	11	39	9	3	0.96	11	3	5.3	0.6	3	0.99
SD 4	out_c_070	12	70	7.15E-06	8.26E-06	62	0.49	9.2	19.8	54	15	24	3	5	0.96	22	18	2.0	0.5	3	0.95
SD 5	out_c_074	11	70	1.33E-05	1.33E-05	62	0.49	9.3	27.0	46	25	24	4	5	0.92	nc	nc	nc	nc	nc	nc
SD 6	out_c_078	13	79	7.49E-06	1.39E-05	119	0.29	5.4	22.3	118	6	56	11	3	0.96	40	10	1.9	0.2	5	0.97
SD 7	out_c_082	12	90	4.51E-06	2.79E-06	89	0.30	4.1	16.9	77	7	41	4	4	0.98	33	7	2.4	0.2	4	0.98
SD 8	out_c_086	12	90	5.95E-06	6.75E-06	114	0.28	3.3	17.5	nd	nd	nd	nd	nd	nd	nd	nd	nd	nd	nd	nd
SD 9	out_t_012	22	90	3.29E-06	2.36E-06	nd	nd	nd	nd	95	10	43	9	3	0.96	60	12	2.4	0.3	5	0.95
SD 10	out_c_094	13	90	4.90E-06	4.30E-06	103	0.28	4.2	18.1	112	1	64	1	3	1.00	nc	nc	nc	nc	nc	nc
SD 11	out_c_098	13	90	7.01E-06	8.37E-06	91	0.36	4.4	18.2	78	18	42	8	5	0.90	41	6	2.8	0.2	4	0.99
SD 12	out_c_102	16	85	5.25E-06	4.80E-06	94	0.33	5.1	18.8	84	2	57	2	3	1.00	na	na	na	na	na	na
LD B	out_c_150	21	55	4.18E-06	6.66E-06	74	0.35	7.8	22.2	120	1	48	1	3	1.00	nc	nc	nc	nc	nc	nc
SD 13	out_c_152	27	x	nd	nd	122	0.30	1.2	18.1	102	12	41	5	4	0.97	na	na	na	na	na	na
LD C	out_c_198	34	120	4.25E-06	1.49E-05	129	0.29	1.9	19.6	117	4	51	3	5	0.99	na	na	na	na	na	na
SD 14	out_c_209	13	110	3.49E-06	4.11E-06	155	0.25	2.1	18.2	141	10	50	3	5	0.99	na	na	na	na	na	na
LD 15	out_c_212	19	116	3.06E-06	2.45E-06	131	0.26	2.7	20.3	105	12	45	7	4	0.96	na	na	na	na	na	na

Table 2. General physical and biogeochemical characteristics for the 3 selected areas presented in columns: (1) western Melanesian Archipelago (WMA), eastern Melanesian Archipelago (EMA), western gyre (WGY) with the corresponding stations chosen; (2) Mean or standard deviation (SD); (3) MLD: Mixed layer depth (m); (4) EZD: Euphotic zone depth (m); (5) K_z : Mean 40-200 m vertical eddy diffusivity ($\text{m}^2 \text{d}^{-1}$); (6) DCMD: Deep chl a maximum depth; (7) DCMC: Deep chl a maximum concentration = chl a concentration at the DCMD (mg m^{-3}); (8 and 9) Ichl a , Integrated (0-70 m) and (0-200 m) total chl a concentration (mg m^{-2}); (10-13) D_x , S_x : characteristics of nutriclines (depths in m where NO_3 or PO_4 reaches zero and slopes in $\mu\text{mol m}^{-4}$). QL: Quantification limit; na: nutrient above QL at surface.

		Chl a						Nitracline		Phosphacline		
		MLD (dbar)	EZD (dbar)	K_z ($\text{m}^2 \text{d}^{-1}$)	DCMD (m)	DCMC (mg m^{-3})	I 0-70m (mg m^{-2})	I 0-200m (mg m^{-2})	D_{NO_3} (m)	S_{NO_3} ($\mu\text{mol m}^{-4}$)	D_{PO_4} (m)	S_{PO_4} ($\mu\text{mol m}^{-4}$)
WMA (SD 1,2,3 LD A)	Mean	16	70	0.79	78	0.33	7.2	20.2	76	53	20	3.5
	SD	5	0	0.34	10	0.05	2.1	1.0	10	10	7	1.2
EMA (SD 6,7,9,10)	Mean	15	87	0.44	104	0.29	4.6	19.1	100	51	44	2.2
	SD	5	6	0.15	15	0.01	0.7	2.8	18	11	14	0.3
WGY (SD 13,14,15 LD C)	Mean	23	115	0.31	134	0.28	2.0	19.0	116	47	na	na
	SD	9	5	0.05	14	0.03	0.6	1.1	18	5	na	na

10

Table 3. Mean integrated 0-70 m C, N, and P pools (mol m^{-2}) during the OUTPACE cruise (austral summer period) for the 3 selected areas: western Melanesian Archipelago (WMA), eastern Melanesian Archipelago (EMA), and western gyre (WGY). Dissolved inorganic (DI), dissolved organic (DO) and particulate organic (PO), C, N and P, respectively.

5

		DIC	DOC	POC	DIN	DON	PON	DIP	DOP	POP
WMA	Mean	141.2	5.07	0.21	0.000	0.392	0.035	0.0040	0.0112	0.0019
	SD	0.3	0.12	0.02	0.000	0.036	0.004	0.0020	0.0018	0.0002
Austral summer EMA	Mean	141.6	5.22	0.22	0.000	0.370	0.031	0.0011	0.0117	0.0018
	SD	0.6	0.07	0.02	0.001	0.017	0.002	0.0011	0.0010	0.0001
WGY	Mean	141.9	5.35	0.09	0.000	0.378	0.015	0.0101	0.0136	0.0010
	SD	0.4	0.08	0.01	0.000	0.045	0.001	0.0012	0.0020	0.0001

Table 4. Sediment trap data. Minimum, maximum and mean values of particulate matter mass flux and swimmer contents, C, N, P and Redfield ratio (RR) from particulate matter and swimmers (Zoo). * P calculated from the RR with adding the P measured in the supernatant. Last column: particulate matter mass flux and swimmer content ratio. MA: Melanesian Archipelago, WGY: western SP gyre.

5

		Particulate matter	Swimmer	POC	PON	POP	RR 106/N/P proportion			Zoo-C	Zoo-N	Zoo-P	Zoo-P*	RR 106/N/P proportion			* P	Zoo/Particulate
		mgDW d ⁻¹	mgDW d ⁻¹	μmol m ⁻² d ⁻¹			C	N	P	μmol m ⁻² d ⁻¹			C	N	P	P	mass flux ratio	
MA	Min	14	69	241	22	0.6	106	9.8	0.3	2 994	492	4	22	106	12.4	0.0	0.2	0.7
(N=8)	Max	122	403	3 084	395	68.9	106	15.4	2.9	11 742	1 653	26	55	106	20.2	0.6	1.1	26.0
	Mean	48	219	1 092	136	18.5	106	12.7	1.2	6 903	961	14	36	106	15.8	0.2	0.7	9.7
WGY	Min	7	24	138	20	0.4	106	11.2	0.2	609	75	2	5	106	13.1	0.2	0.5	1.4
(N=8)	Max	28	148	385	59	2.1	106	20.4	0.8	4 552	1 067	16	28	106	25.2	0.5	0.9	7.1
	Mean	17	76	266	41	1.1	106	16.6	0.5	2 330	473	8	15	106	19.9	0.3	0.7	4.4

10

Table 5. Molar fraction of CO₂ (X_{CO_2}) in dry air measured at SMO station Tutuila (American Samoa, Lat 14.247° S, Lon 170.564° W, see Fig. 1; Source: NOAA/ESRL) and derived atmospheric p_{CO_2} ($p_{CO_2}^{atm}$). Mean values for the carbonate system, measured in the mixed layer depth (MLD) during the OUTPACE cruise (summer conditions), measured at 70 m depth (estimated winter conditions) and NDP-094 climatological data (Takahashi et al., 2014). Oceanic climatological p_{CO_2} ($p_{CO_2}^{oc}$) are given for different estimations of winter temperature (SST from NDP-094, mean T at 70 m depth from OUTPACE, SST from MODIS Aqua). CT: conservative temperature, S_p : practical salinity, nDIC: normalized dissolved inorganic carbon, nAlk: normalized alkalinity, SST: sea surface temperature; SSS: sea surface salinity). WMA: western Melanesian Archipelago, EMA: eastern Melanesian Archipelago, and WGY: western SP gyre sampled during the OUTPACE cruise.

10

SMO station TUTUILA	Monthly mean X_{CO_2} (March 2015)	ppm	398.4					
	Annual mean X_{CO_2} (Jul 2014-Jul 2015)	ppm	397.3 (SD = 0.8)					
		Unit	WMA		EMA		WGY	
			Mean	SD	Mean	SD	Mean	SD
	Monthly mean $p_{CO_2}^{atm}$ (March 2015)	μatm	383.0		382.7		382.5	
Mean values measured in the MLD (austral summer conditions, March 2015)	CT	°C	28.9	0.3	29.3	0.3	29.5	0.4
	S_p		35.0	0.1	35.1	0.2	35.1	0.1
	nDIC	$\mu mol kg^{-1}$	1974.6	9.5	1983.9	8.6	1993.6	3.2
	nAlk	$\mu mol kg^{-1}$	2333.7	1.9	2343.1	8.0	2347.7	6.1
	$nP_{CO_2}^{oc}$	μatm	366	11	376	8	390	6
Mean values at 70 m (estimated austral winter MLD conditions)	CT	°C	25.3	0.2	24.8	0.8	26.2	0.9
	S_p		35.5	0.0	35.7	0.0	35.7	0.0
	nDIC	$\mu mol kg^{-1}$	2007.5	3.0	2009.6	9.6	2008.9	3.7
	nAlk	$\mu mol kg^{-1}$	2332.4	5.0	2344.1	6.5	2350.8	2.7
	$nP_{CO_2}^{oc}$	μatm	372	10	355	15	364	8
Austral winter (July 2014) temperature at surface from MODIS Aqua	SST	°C	24.9	0.2	24.2	0.7	26.5	0.2
	SST	°C	23.9	0.0	24.4	0.1	25.1	0.1
Mean climatological austral winter values at surface (from Takahashi et al., 2014)	SSS		35.5	0.0	35.5	0.0	35.6	0.1
	DIC	$\mu mol kg^{-1}$	2006.4	0.7	2000.9	3.0	2004.7	9.9
	Alk	$\mu mol kg^{-1}$	2335.4	0.2	2333.6	1.7	2343.4	8.6
	$P_{CO_2}^{oc}$ at surface	μatm	344	1	345	4	349	7
	Mean climatological austral winter $P_{CO_2}^{oc}$ at surface calculated with different temperatures	T from OUTPACE, mean CT at 70 m depth	μatm	366		353		368
SST from MODIS Aqua		μatm	361		344		371	

Table 6. 0-70 m upper layer comparative C, N, P daily budgets in the 3 selected areas (western Melanesian Archipelago (WMA), eastern Melanesian Archipelago (EMA), and western gyre (WGY)) sampled during the OUTPACE cruise ($\mu\text{mol m}^{-2} \text{d}^{-1}$).

		WMA			EMA			WGY			
		C	N	P	C	N	P	C	N	P	
INPUT	Dissolved inorganic turbulent diffusion	426	46	2.8	198	0	1.0	200	0	0.0	
	Atmospheric CO ₂ exchange or N ₂ fixation	1675	642	negligible	825	452	negligible	0	41	negligible	
		Particulate organic settling	-1092	-136	-18.5	-1092	-136	-18.5	-266	-41	-1.1
OUTPUT	Particulate organic turbulent diffusion	-29	-4	-0.2	-16	-1	-0.1	2	0	0.0	
	Dissolved organic turbulent diffusion	-121	-8	-0.7	-58	-6	-0.3	-21	0	0.0	
BUDGETS		859	540	-16.6	-143	309	-17.9	-85	0	-1.1	

5

5 Table 7. Estimated temporal evolution of surface biogeochemical properties between austral winter (up) and summer (below) in $\mu\text{mol L}^{-1}$ presented in columns: (1) Mean measurements at 70 m depth during OUTPACE were considered to represent the homogeneous upper water column (0-70 m) variables and initial winter conditions (i.e. conditions in July 2014). The summer conditions were those observed during the OUTPACE cruise (March 2015). Δ represents the summer – winter conditions differences. (2) Selected area: western Melanesian Archipelago (WMA), eastern Melanesian Archipelago (EMA) or western gyre (WGY). (3) Mean or standard deviation (SD), (4 to 15) Dissolved inorganic (DI), dissolved organic (DO), particulate organic (PO), and total (T), C and N and P, respectively. All variables were normalized to the mean absolute salinity measured at 70 m depth to discard evolution due to evaporation/precipitation.

			nDIC	nDOC	nPOC	nTC	nDIN	nDON	nPON	nTN	nDIP	nDOP	nPOP	nTP
Austral winter	WMA	Mean	2055.1	67.5	1.6	2124.2	0.00	5.06	0.38	5.44	0.142	0.125	0.022	0.289
		SD	3.0	4.4	0.5		0.00	0.38	0.06		0.030	0.024	0.005	
	EMA	Mean	2057.5	68.9	2.3	2128.7	0.03	4.93	0.34	5.30	0.059	0.140	0.021	0.220
		SD	10.2	2.0	0.4		0.04	0.27	0.05		0.046	0.028	0.004	
	WGY	Mean	2056.2	74.2	1.4	2131.8	0.01	5.52	0.24	5.77	0.142	0.182	0.015	0.339
		SD	4.3	2.3	0.2		0.01	0.74	0.01		0.020	0.037	0.001	
Austral summer	WMA	Mean	2018.1	77.6	4.3	2100.0	0.00	6.05	0.68	6.73	0.000	0.163	0.032	0.195
		SD	10.0	2.2	0.3		0.00	0.58	0.12		0.000	0.029	0.004	
	EMA	Mean	2027.5	78.2	4.5	2110.1	0.00	5.72	0.59	6.31	0.000	0.180	0.031	0.211
		SD	8.8	1.1	1.1		0.00	0.39	0.15		0.000	0.018	0.005	
	WGY	Mean	2037.6	79.2	1.2	2117.9	0.00	5.50	0.21	5.71	0.150	0.190	0.013	0.353
		SD	3.4	1.1	0.2		0.00	0.70	0.04		0.014	0.017	0.002	
Δ	WMA		-37.0	10.1	2.6	-24.2	0.00	1.00	0.29	1.29	-0.142	0.037	0.010	-0.095
	EMA		-30.0	9.3	2.2	-18.6	-0.03	0.79	0.25	1.01	-0.059	0.040	0.010	-0.009
	WGY		-18.7	5.0	-0.2	-13.9	-0.01	-0.02	-0.03	-0.06	0.008	0.008	-0.002	0.014

10

Table 8. Estimated temporal evolution of (0-70 m) biogeochemical inventories between austral winter and summer in mmol m⁻² presented in columns: (1) Mean measurements at 70 m depth during OUTPACE were considered to represent the homogeneous upper water column (0-70 m) variables and initial winter conditions (i.e. conditions in July 2014). The summer conditions were those observed during the OUTPACE cruise (March 2015). Δ represents the summer – winter conditions differences. (2) Selected area: western Melanesian Archipelago (WMA), eastern Melanesian Archipelago (EMA) or western gyre (WGY). (3) Mean or standard deviation (SD), (4 to 15) Dissolved inorganic (DI), dissolved organic (DO), particulate organic (PO), and total (T), C and N and P, respectively. All variables were normalized to the mean absolute salinity measured at 70 m depth to discard evolution due to evaporation/precipitation.

10

		nDIC	nDOC	nPOC	nTC	nDIN	nDON	nPON	nTN	nDIP	nDOP	nPOP	nTP	
Δ (summer - winter)	WMA	Mean	-1563	391	102	-1070	0.0	40.8	8.5	49	-5.9	2.4	0.4	-3.1
		SD	209	307	33		0.0	35.6	4.1		2.1	1.8	0.4	
	EMA	Mean	-1355	445	55	-855	-1.7	28.0	7.5	34	-3.0	1.8	0.3	-0.9
		SD	713	139	26		3.1	19.0	3.7		3.2	2.0	0.3	
	WGY	Mean	-659	220	-8	-448	-0.3	-4.6	-1.5	-6	0.1	1.0	-0.1	1.1
		SD	298	162	14		0.9	51.5	1.3		1.4	2.6	0.1	

Figures caption

Fig. 1. Transect of the OUTPACE cruise (18 Feb. 3 Apr. 2015) superimposed on a bathymetry map (GEBCO_2014 grid) of the Western Tropical South Pacific Ocean. The two types of stations, short duration and long duration, are indicated together with the stations chosen to represent 3 selected areas: the western Melanesian Archipelago (WMA in dark green), the eastern Melanesian Archipelago (EMA in light green) and the western SP gyre (WGY in blue). SMO station Tutuila (American Samoa, Lat 14.247° S, Lon 170.564° W).

Fig. 2. Monthly mean mixed layer depth (MLD) against month in climatology (a, d, g), sea surface temperature (SST) (b, e, h) and chl *a* (c, f, i) against months from July 2014 to July 2015, respectively, for (a, b, c) the western Melanesian Archipelago (WMA), (d, e, f) the eastern Melanesian Archipelago (EMA) and (g, h, i) the western SP gyre (WGY). The horizontal dashed lines indicate the mixed layer depth of 70 m. The vertical red lines indicate the period of the OUTPACE cruise: 18 Feb. to 3 Apr. 2015.

Fig. 3. Vertical profiles of (a) conservative temperature (CT in °C), (b) absolute salinity (SA in g kg⁻¹), (c) potential density (Sigma in kg m⁻²), (d) dissolved oxygen (O₂ in μmol kg⁻¹), (e) apparent oxygen utilization (AOU in μmol kg⁻¹) and (f) chl *a* (mg m⁻³) versus depth (0-200 m) in the 3 distinct areas sampled during the OUTPACE cruise: the western Melanesian Archipelago (WMA in dark green), the eastern Melanesian Archipelago (EMA in light green) and the western SP gyre (WGY in blue). The horizontal dashed lines indicate the mixed layer depth of 70 m. The vertical dashed lines indicate the upper surface expected values for all variables during the 2014 austral winter.

Fig. 4. Vertical profiles of (a) dissolved inorganic carbon (DIC), (b) total alkalinity (TA), (c) normalized dissolved inorganic carbon (nDIC) and (d) normalized total alkalinity (nTA) against depth (m) for the 3 distinct areas sampled during the OUTPACE cruise: the western Melanesian Archipelago (WMA in dark green), the eastern Melanesian Archipelago (EMA in light green) and the western SP gyre (WGY in blue). The horizontal dashed lines indicate the mixed layer depth of 70 m. The vertical dashed lines indicate the upper surface expected values for all variables during the 2014 austral winter.

Fig. 5. Vertical profiles of normalized (n) C, N, P data against depth (m). Dissolved inorganic (DI), dissolved organic (DO) and particulate organic (PO) C (a, d, g), N (b, e, h) and P (c, f, i), respectively, in μmol L⁻¹, for the 3 distinct areas sampled during the OUTPACE cruise: the western Melanesian Archipelago (WMA in dark green), the eastern Melanesian Archipelago (EMA in light green) and the western SP gyre (WGY in blue). The horizontal dashed lines indicate the mixed layer depth of 70 m. The vertical dashed lines indicate the upper surface expected values for all variables during the 2014 austral winter.

Fig. 6. Vertical profiles of (a) primary production (PP rate in nmolC L⁻¹ d⁻¹), (b) N₂ fixation rate (nmolN L⁻¹ d⁻¹) and dissolved inorganic phosphate turnover times (T_{DIP} in days on log scale) against depth for the 3 distinct areas sampled during the OUTPACE cruise: the western Melanesian Archipelago (WMA in dark green), the eastern Melanesian Archipelago (EMA in light green) and the western SP gyre (WGY in blue). The vertical red line indicates the critical DIP turnover time of 2 days.

Fig. 7. C, N, and P estimated budgets in the 0-70 m water column during the 8-month period between deep convection in July 2014 (austral winter) and strong stratification in March 2015 (austral summer) for the 3 distinct areas sampled during the OUTPACE cruise: the western Melanesian Archipelago (WMA, top), the eastern Melanesian Archipelago (EMA,

middle) and the western SP gyre (WGY, bottom). C budgets (7a, 7d, 7g), N budgets (7b, 7e, 7h) and P budgets (7c, 7f, 7i). Dissolved inorganic (DI), dissolved organic (DO), and particulate organic (PO) C, N, and P fluxes are considered, respectively. Atmospheric exchanges limited to CO₂ penetration and N₂ fixation are indicated. All fluxes are expressed in mmol m⁻² (of elemental C, N, and P, respectively) with arrows indicating direction (input or output). The 2 numbers for the
5 particulate fluxes correspond to fluxes by turbulent diffusion (above) and particle settling (below). Estimated accumulation rates for the same period are indicated inside the boxes.

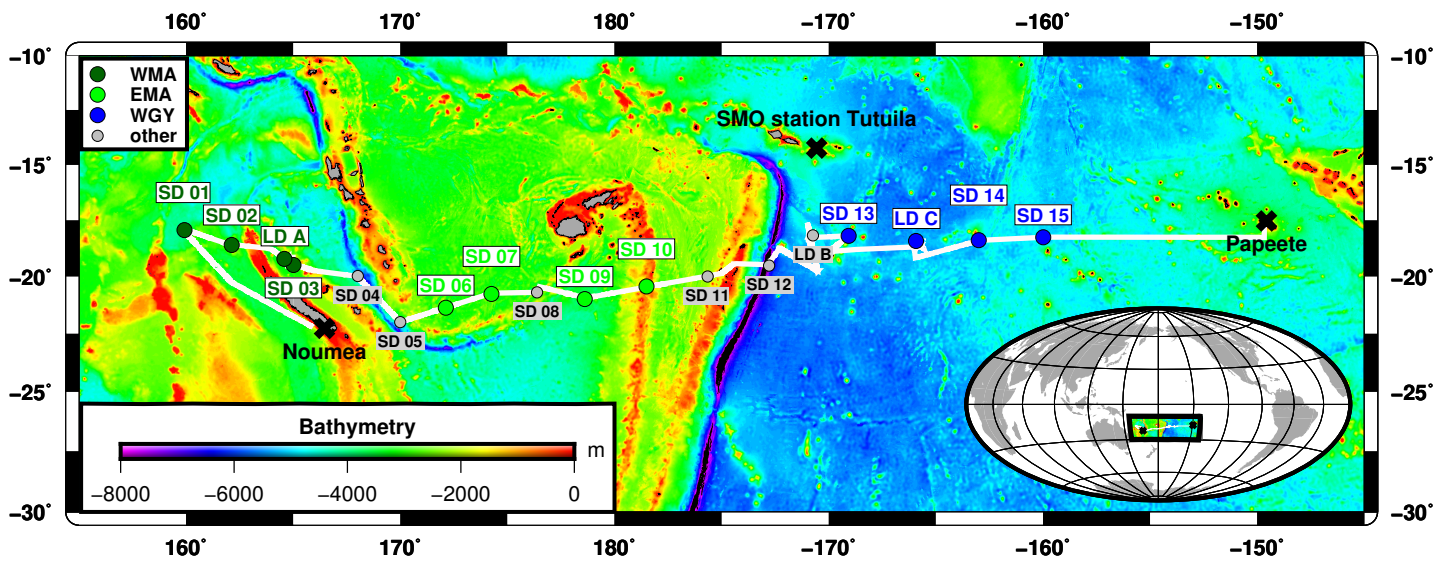


Figure 1

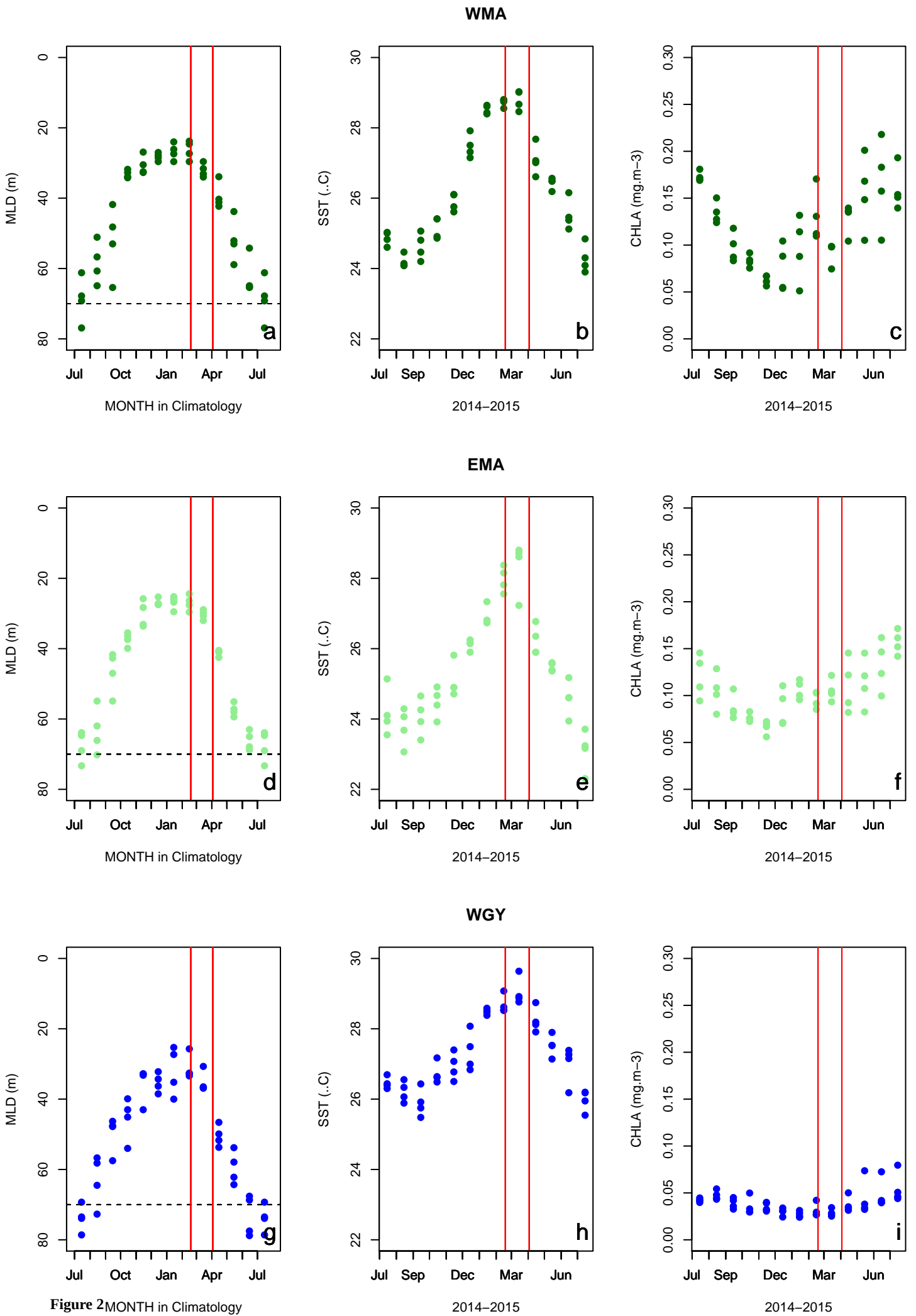


Figure 2

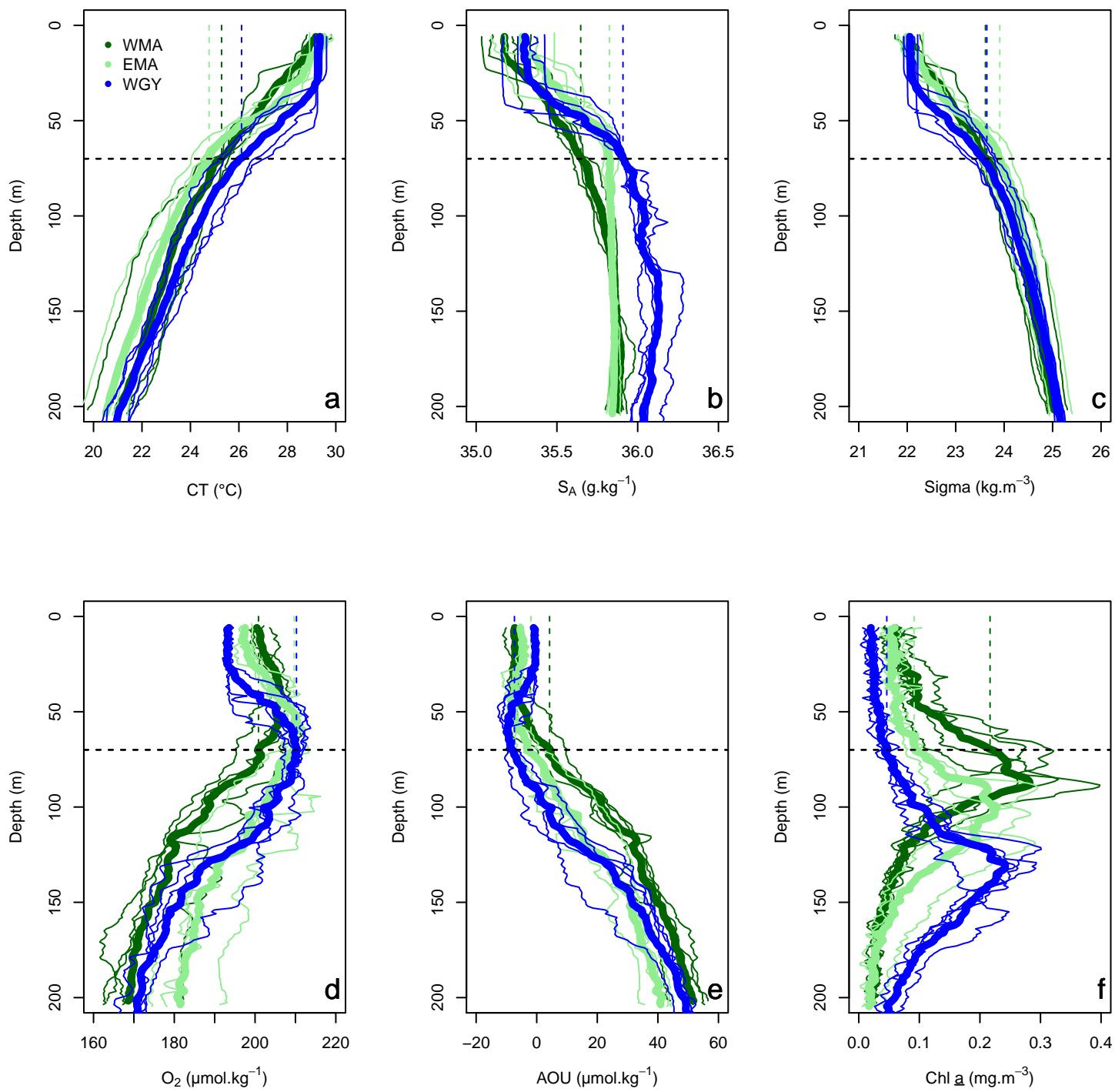


Figure 3

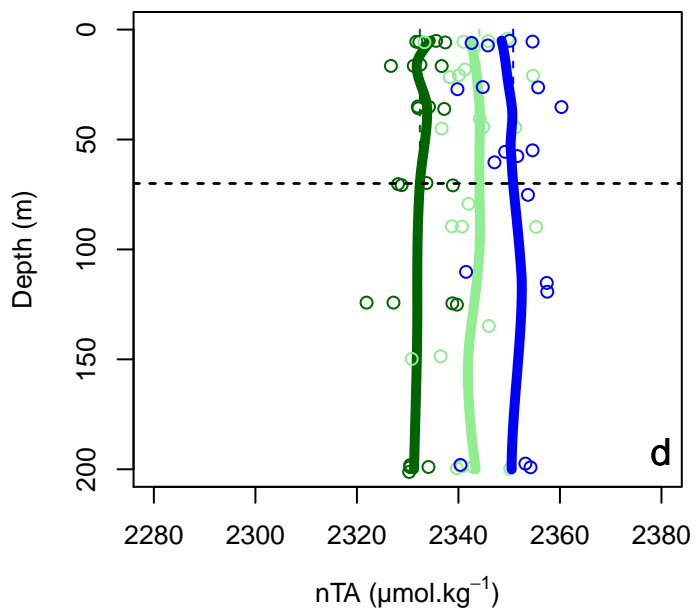
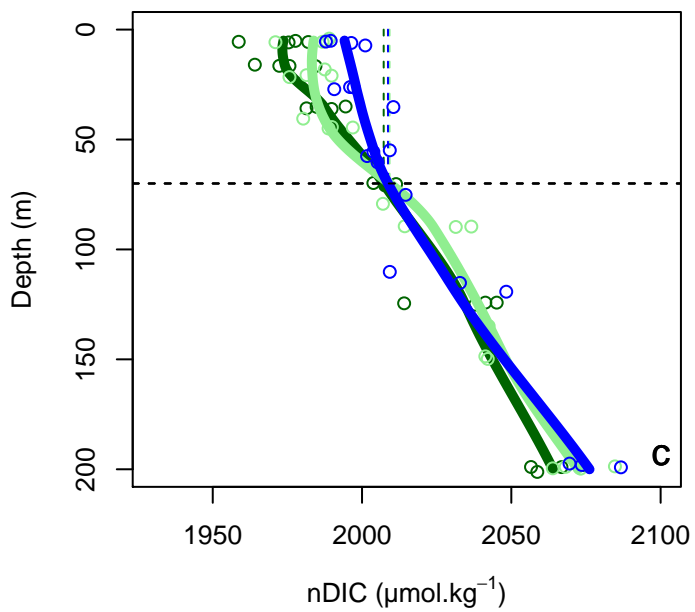
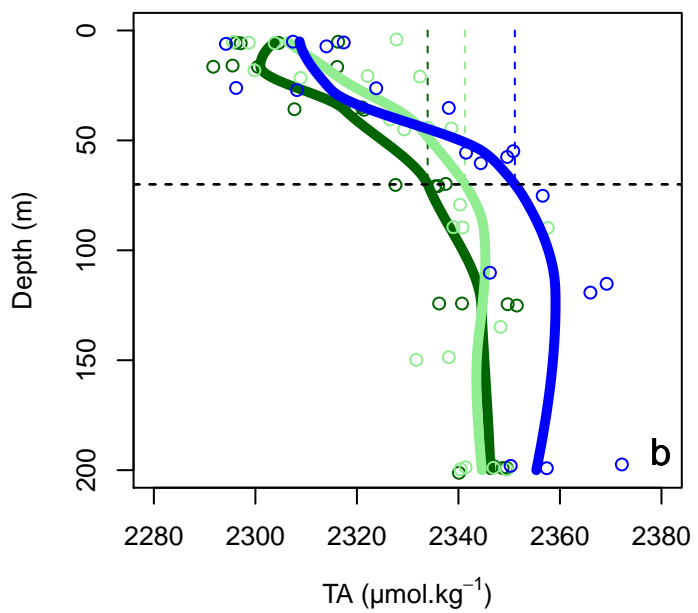
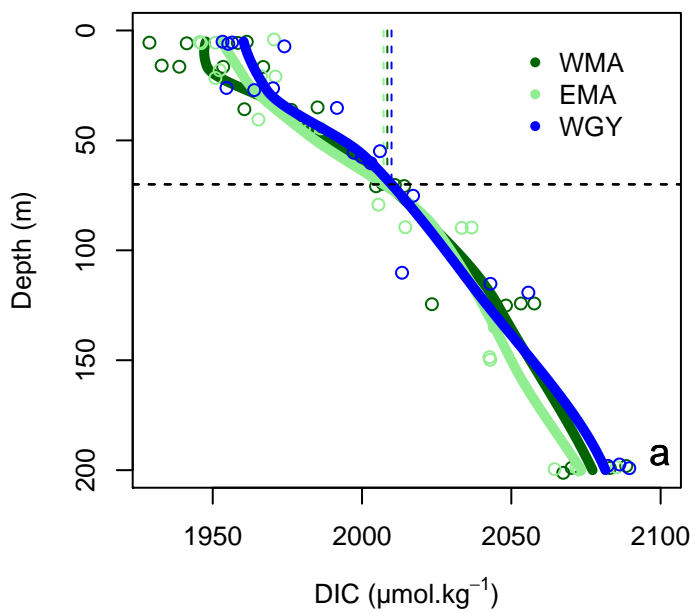


Figure 4

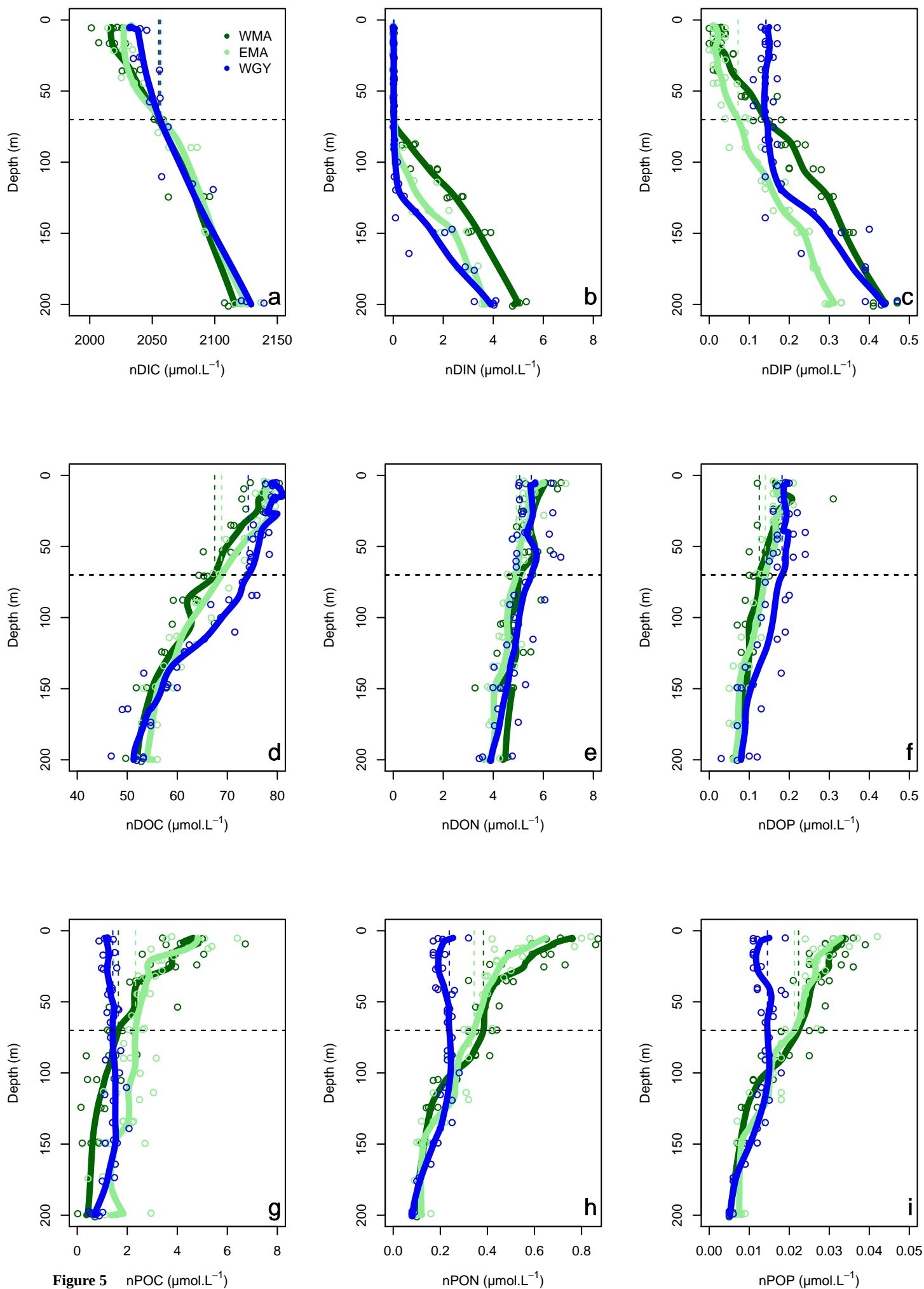


Figure 5 nPOC ($\mu\text{mol.L}^{-1}$)

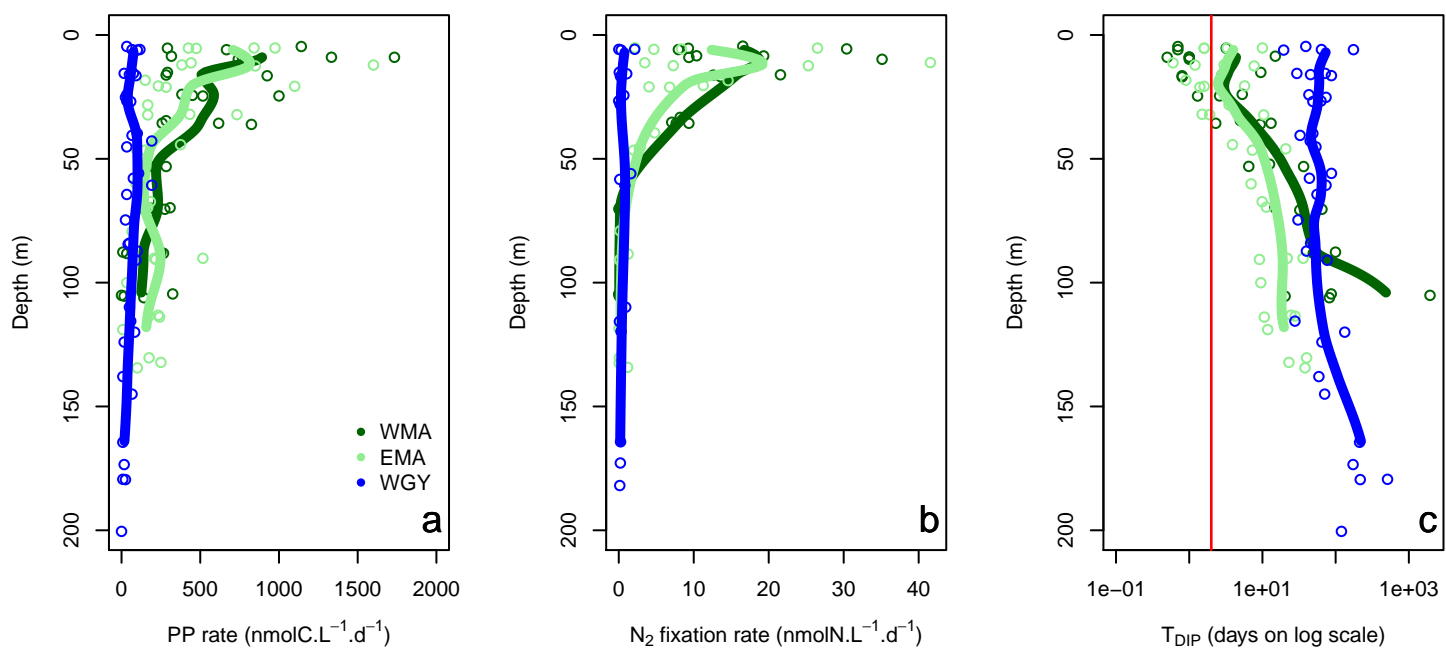


Figure 6

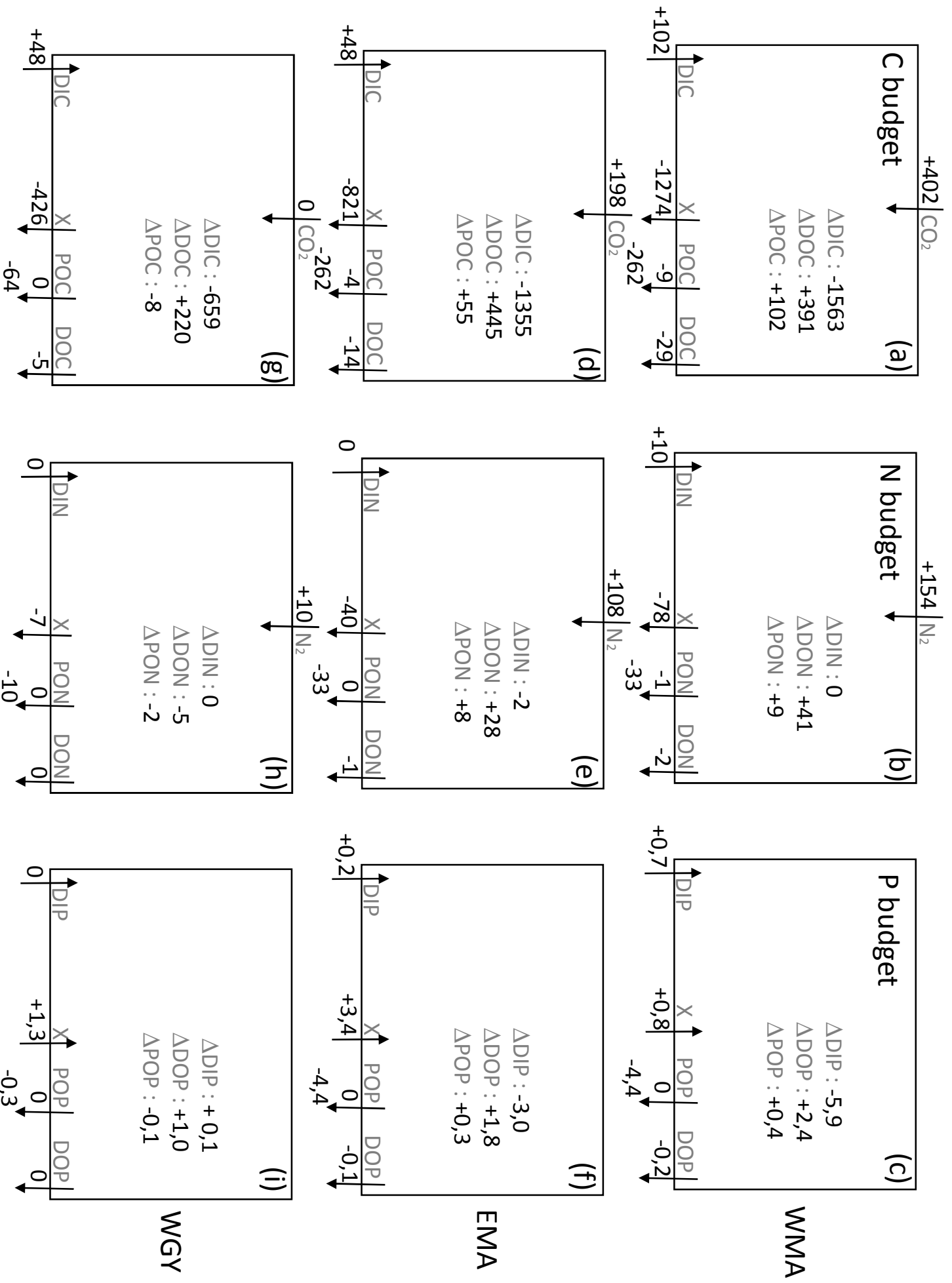


Figure 7