



Carbon and nutrient export regimes from headwater catchments to downstream reaches

Rémi Dupas^{1,*}, Andreas Musolff², James W. Jawitz³, P. Suresh C. Rao⁴, Christoph G. Jäger¹, Jan H. Fleckenstein², Michael Rode¹, Dietrich Borchardt¹

5 ¹Department of Aquatic Ecosystems Analysis and Management, Helmholtz Centre for Environmental Research UFZ, Magdeburg, Germany

²Department of Hydrogeology, Helmholtz Centre for Environmental Research UFZ, Leipzig, Germany

³Soil and Water Science Department, University of Florida, Gainesville, Florida, USA

⁴School of Civil Engineering and Department of Agronomy, Purdue University, West Lafayette, Indiana, USA

10 *Now at: INRA, UMR1069 SAS, F-35000 Rennes, France

Correspondence to: Rémi Dupas (remi.dupas@inra.fr)

Abstract: Excessive amounts of nutrients and dissolved organic matter in freshwater bodies affect aquatic ecosystems. In this study, the spatial and temporal variability in nitrate (NO₃), dissolved organic carbon (DOC) and soluble reactive phosphorus (SRP) was analyzed in the Selke (Germany) river continuum from headwaters
15 draining 1 – 3 km² catchments to downstream reaches representing spatially integrated signals from 184 – 456 km² catchments. Three headwater catchments were selected as archetypes of the main landscape units (land use x lithology) present in the Selke catchment. Export regimes in headwater catchments were interpreted in terms of NO₃, DOC and SRP land-to-stream transfer processes. Headwater signals were subtracted from downstream signals, with the differences interpreted in terms of in-stream processes and contribution of point-source
20 emissions. The seasonal dynamics for NO₃ were opposite those of DOC and SRP in all three headwater catchments, and spatial differences also showed NO₃ contrasting with DOC and SRP. These dynamics were interpreted as the result of the interplay of hydrological and biogeochemical processes, for which riparian zones were hypothesized to play a determining role. In the two downstream reaches, NO₃ was transported almost conservatively, whereas DOC was consumed and produced in the upper and lower river sections, respectively.
25 The natural export regime of SRP in the three headwater catchments mimicked a point-source signal (high SRP during summer low flow), which may lead to overestimation of domestic contributions in the downstream reaches. Monitoring the river continuum from headwaters to downstream reaches proved effective to investigate jointly land-to-stream and in-stream transport and transformation processes.



30 1. Introduction

Riverine exports are a key component in the global biogeochemical cycles of carbon (C), nitrogen (N) and phosphorus (P) (Beusen et al., 2016). River export regimes of their dominant soluble forms, dissolved organic C (DOC), nitrate-N (NO_3) and soluble reactive P (SRP), result from the interplay of land-to-stream diffuse transfer processes and in-stream transformations, and can be altered by point-source contributions (Seitzinger et al., 35 2010). Excess delivery of DOC, NO_3 and SRP into sensitive water-bodies affects ecosystems structure and functions, and elemental stoichiometric ratios have been shown to be of major importance (Sardans et al., 2012). Therefore, detailed knowledge of the catchment processes controlling the spatial and temporal variability in the delivery of DOC, NO_3 , SRP and stoichiometric ratios at relevant management scales, e.g., the European Union Water Framework Directive (CEC, 2000) water-bodies, is a prerequisite for designing effective water pollutions 40 mitigation programs (Wall et al., 2011).

Water-quality assessment programs performed by environmental agencies typically focus on relatively large (> 100 km²) catchments, to increase spatial coverage within a given hydrographic basin or administrative unit, while reducing the density of monitoring stations and thus the cost (Bouraoui and Grizzetti, 2011; Dupas et al., 2015a). However, large catchments include both diffuse and point-source emissions and possibly various 45 landscape units. Thus, the water quality signal measured at the outlet integrates several transfer mechanisms contributing to emissions to the river network, as well as in-stream processes (Grathwohl et al., 2013). Therefore, it is difficult to decipher the diffuse contributions of different landscape units from point-source contributions and in-stream transformations (Bishop et al., 2008, Temnerud et al., 2016). In contrast to environmental agency monitoring programs, scientific programs often focus on headwater catchments free of point-sources and with 50 relatively homogeneous landscape types (Fealy et al., 2010; McGonigle et al., 2014), and where in-stream processes are often considered to be minimal (Salmon-Monviola et al., 2013). Comparison of export regimes in contrasting catchments representing different landscape types can be performed to investigate the effect of, for example, contrasting dominant land use, dominant flow paths or climate (Outram et al., 2014; Dupas et al., 2015d). In headwater catchments, several studies have highlighted the important role of landscape heterogeneity 55 within hillslopes, notably the crucial role of reactive zones such as riparian wetlands (Dick et al., 2015; Pinay et al., 2015; Tiwari et al., 2017), in controlling solute export regimes.

To upscale headwater signals to downstream reaches, previous landscape mixing models, i.e., “models mixing headwater signals in proportion to their patch coverage” (Tiwari et al., 2017) often lack consideration of temporal variability in headwaters signals and explicit consideration of in-stream transformations (e.g., Laudon 60 et al. (2011), Agren et al. (2014)). Few opportunities exist to study the export regimes of several headwater catchments representing “archetypes” of the main landscape units in a larger catchment, for multiple solutes and at different time scales, and to compare headwater export regimes to the integral signal measured in downstream reaches. Monitoring data from the Bode catchment (3300 km²), part of the hydrological Harz/Central German Lowland Observatory in the Helmholtz Association Terrestrial Environmental Observatories (TERENO) 65 network (Zacharias et al., 2011), offers such opportunities. The Bode catchment covers large gradients in topography, climate, geology, soil, and land use, and all combinations of these landscape features are represented in the 456 km² catchment of the Selke tributary (Wollschlager et al., 2016), and it was this catchment that is taken as a case study in this paper. The Harz/Central German Lowland Observatory also includes monitoring of



1-3 km² headwater catchments representing the dominant combinations of land-use x lithology, termed here
70 landscape units, in the Selke and Bode catchments.

Keck and Lepori (2012) have reviewed 382 nutrient-enrichment experiments to examine which factors promote
limitation of micro-phytobenthos biomass by N or P. They found that prediction of N or P limitation was highly
uncertain, except at extreme N:P molar ratios <1 : 1 and >100 : 1. Other studies have considered a narrower
range of N:P molar ratios to assess possible co-limitation: for example McDowell et al. (2009) considered that N
75 – P co-limitation could take place for N:P molar ratios between 16:1 and 32:1.

In this paper we hypothesized that the land use and lithology characteristics of the landscape units identified
control export regimes in headwaters, and that in-stream processes and point-source contributions alter export
regimes in downstream reaches. We also hypothesized that spatial and temporal variability in solute
concentrations could lead to variability in N and P limitation in streams and rivers. The main objective of this
80 paper, therefore, was to characterize the spatial and temporal variability in NO₃, DOC and SRP export regimes
from archetypal headwater catchments to downstream reaches, and to analyze the resulting nutrient
stoichiometric ratios. Export regimes in headwater catchments are used for interpretation of land-to-stream NO₃,
DOC and SRP transfer processes and compared with those in downstream reaches to infer in-stream processes
and point-source contributions. The potential ecological impacts of the observed export regimes at different
85 spatial scales are discussed in terms of nutrient stoichiometric ratios. In this study we considered both the large
interval of Keck and Lepori (2012) and the narrower interval of McDowell et al. (2009) to evaluate possible N-P
co-limitation; hence both thresholds 100:1 and 32:1 were considered.

2. Material and methods

2.1. Study area

90 The Bode catchment (3300 km²) is located in the German part of the Elbe river basin (144055 km²) (Zacharias et
al., 2011). The Bode catchment stretches from the Harz Mountains, a low mountain range in central Germany
(altitude max 1142 m above sea level), to the Central German Lowlands, a flat and fertile area dedicated to
arable agriculture (altitude around 100 m above sea level). This topographic gradient coincides with gradients of
climate, geology, soil, and land use pressures (Wollschlager et al., 2016). Long-term mean annual (1951-2011)
95 precipitation and temperature in the Bode catchment ranges from 1700 mm and 5°C in the Harz Mountains to
500 mm and 9.5°C in the lowland area, with the lowest and highest temperatures in January and July
(Wollschlager et al., 2016). The Selke tributary catchment (456 km²) was selected for study here as it
encompasses the different combinations of land use and lithology present in the Bode catchment and it has been
intensively monitored since 2010. Other varying environmental factors, such as soil types, climate and dominant
100 farming systems, coincide with the topographic gradient reflected in the differentiation according to lithology.

[Insert Figure 1 here]

The 456-km² Selke catchment (Fig. 1) comprises upper and lower portions. The upper Selke (184km²),
monitored at Meisdorf station (MEIS), is located in the Harz Mountains (209-595 m above sea level). The
dominant soil type is Cambisol overlaying impervious schist and claystone, resulting in a dominance of shallow



105 flow pathways (Jiang et al., 2014b). These shallow groundwater systems favor the development of hydromorphic
 riparian soils (periodically waterlogged soils near the streams, delineated in this study according to a soil map),
 representing 10% of the surface area. The land use is dominated by 71% forest (including broad-leaved,
 coniferous and mixed forest) followed by 26% agriculture (mainly arable crops: winter cereals, rapeseed and
 maize). Artificial surfaces cover the remaining 3%. The upper Selke catchment also includes three wastewater
 110 treatment plants with 9300 equivalent inhabitants. The lowland area of the lower Selke (272 km²) is a fertile
 plain (62-209 m above sea level) dominated by Chernozems overlaying non-metamorphic sedimentary rocks
 (sandstones and limestones) partly covered by loess. The downstream monitoring station at Hausneindorf
 (HAUS) integrates the combined influence of the upper and lower Selke. Hydrology in the lowland area is
 dominated by deeper groundwater flows (Jiang et al., 2014b); soils classified as hydromorphic represent only 3%
 115 of the surface area. The land use is dominated by 81% agriculture (mainly arable crops: winter cereals, rapeseed,
 maize and sugar beet) followed by 10% forest. The remaining 9% comprises artificial surfaces and small lakes.
 The lowland area includes two wastewater treatment plants with 10,600 equivalent inhabitants. More than 95%
 of the population in the Selke catchment is connected to a wastewater treatment plant (Rode et al., 2016a).

In addition to these two stations located on the main river, three first-order headwater catchments (Fig. 1)
 120 representing the main landscape units (i.e. combinations of land use x lithology) in the Selke catchment were
 monitored. The Schäfertal (1.44 km²) is representative of an agricultural catchment in the upper Selke. Its
 elevation ranges between 379 m and 466 m above sea level, 19% of the surface area consists of hydromorphic
 riparian soils and 98% of the land use is arable agriculture (only 2% forest). The upper Rappbode (2.58 km²) is
 representative of a forested catchment in the upper Selke. Its elevation ranges between 542 and 619 m above sea
 125 level, 19% of the surface area consists of hydromorphic riparian soils and 100% of the land use is forest. The
 Sauerbach (1.37 km²) is representative of an agricultural catchment in the lower Selke. Its elevation ranges
 between 144 and 200 m above sea level, 100% of the surface area consists of well-drained soils and 98% of the
 land use is arable agriculture (only 2% forest).

In this study the three headwater catchments are considered as “archetypes” of the different landscape units (land
 130 use x lithology) in the Selke catchment. Schäfertal and upper Rappbode represent respectively agricultural and
 forested areas in the Harz Mountains, i.e. the fraction of the Selke catchment upstream of the MEIS station.
 Schäfertal and upper Rappbode are termed thereafter “US-Agr” and “US-For” for “Upper Selke – Agriculture”
 and “– Forest”, respectively. Sauerbach represents agricultural land use in the lowland part of the catchment, i.e.
 the dominant landscape between the MEIS and HAUS stations. Sauerbach is termed thereafter “LS-Agr” for
 135 “Lower Selke – Agriculture”. Minor landscape types (e.g. forest in lowland area) are neglected. All three
 headwater catchments are located in the 3300 km² Bode catchment of the TERENO Harz/Central German
 Lowland Observatory, but only US-Agr is a sub-catchment of the Selke; US-For and LS-Agr are nearby sub-
 catchments of the Bode (distance from the Selke catchment: 13 km and 20 km, respectively) and are considered
 representative of headwater catchments in the Selke catchment.

140 2.2. Monitoring strategy

Discharge and water quality were monitored comparably at the outlet of the two large catchments (MEIS and
 HAUS) and three headwater catchments (US-Agr, US-For and LS-Agr). At MEIS and HAUS, discharge data



were measured by the hydrological state authority of Saxony-Anhalt (*Landesbetrieb für Hochwasserschutz und Wasserwirtschaft*) at 15 min interval. Water quality was sampled as part of the TERENO program biweekly
145 from June 2010 to September 2013 and monthly from October 2013 to December 2015, complemented by high
frequency sampling during 8 storm events at MEIS and 7 storm events at HAUS (2 to 4 hours interval, ISCO
6700 autosampler).

In US-Agr, discharge was measured every 15 minutes at a gauging station with a water level sensor upstream of
a V-notch weir. Manual grab samples were collected biweekly to monthly from March 1999 to September 2010,
150 complemented by high frequency sampling during 8 storm events (20 min to 1 hour interval, ISCO 6700
autosampler). In US-For, discharge was measured every 10 minutes using a Solinst LTC data logger and external
barometric measurements. Manual grab samples were collected biweekly from March 2013 to October 2015 and
no high frequency monitoring of storm events has been performed in this catchment. In LS-Agr, discharge was
155 measured every 10 minutes at a gauging station with a pressure logger (ecoTech PDL) upstream of a triangular
weir (V-notch weir). Manual grab samples were collected biweekly to monthly from June 2010 to December
2015, complemented by high frequency sampling during 4 storm events (20 min to 1 hour interval, ISCO 6700
autosampler).

All samples were filtered in the field using 0.45 μm cellulose acetate filters and kept cool until analysis within 2
days. Nitrate concentration was determined by ion chromatography (ICS-2000, Dionex), DOC was determined
160 with a carbon analyzer (TOC 5050, Shimadzu) and SRP was determined colorimetrically by reaction with
ammonium molybdate. Samples from all five catchments were analyzed following the same protocol and in the
same laboratory at UFZ Magdeburg. An exception to this standardized protocol was measurement of total
phosphorus (TP) in US-For; to convert TP into SRP and allow comparison with the other catchments, the mean
SRP/TP ratio of 0.42, established in 55 forested catchments throughout Germany (Musolff et al., 2016b), was
165 used (standard deviation of the SRP/TP ratio was 0.19, reflecting relatively small variability).

2.3. Data analysis

Solute export regimes for DOC, NO_3 and SRP were characterized on an intra-annual basis (seasonal variability)
and for discrete storm events. The term “solute export regime” was chosen by analogy with the hydrological
definition of river regimes, i.e. the variability in a river discharge throughout the course of a year in response to
170 precipitation, temperature, evapotranspiration, and drainage basin characteristics (Beckingsale, 1969). The
reference study period in this analysis was June 2010 - December 2015, i.e., the period when data was available
in the two stations situated in the main Selke river (MEIS and HAUS) and in LS-Agr. The US-Agr catchment
was monitored prior to the establishment of the TERENO observatory (March 1999 - September 2010). The US-
For catchment was not part of the permanent TERENO monitoring, so this catchment was monitored for 20
175 months for this study (March 2013 – October 2014). The different monitoring periods in two of the headwater
catchments were assumed to have minimal effect on mean annual concentration and seasonal variability, due to
the well-documented biogeochemical stationarity in catchments (Basu et al., 2010; Humbert et al., 2015; Godsey
et al., 2009) resulting in consistent annual pattern in solutes concentration despite potentially large interannual
variability in the hydroclimate. This biogeochemical stationarity can be verified with the 10-year record in the



180 US-Agr catchment (Supplementary material) and in the comparison of discharge and solute variability (Sect.
 3.1). The same assumption cannot be made for discharge due to interannual climate variability.

2.3.1. Discharge and concentration variability

185 First, river flow regimes were characterized in all five study catchments after aggregation of discharge data on a
 monthly basis. Second, to quantify the overall variability of discharge and concentration data (grab sampling),
 the coefficients of variation (CV) for both discharge and concentrations were calculated for each study
 catchment and for each year using daily data. The coefficient of variation, defined as the ratio of the standard
 deviation to the mean of a variable, has been used for the same purpose in previous water quantity (Botter et al.,
 2013) and water quality studies (Dupas et al., 2016; Musolff et al., 2015; Thompson et al., 2011). Finally,
 correlation coefficients were calculated between solute concentrations and discharge and between pairs of solute
 190 concentrations. The Spearman rank correlation coefficient was used because relations between pairs of variables
 are not necessarily linear (Thomas et al., 2016).

2.3.2. Seasonal variability in concentrations and stoichiometric ratio

Grab sampling data were used to fit a periodic equation to the data in all five study catchments:

$$\text{Concentration} = a + b * \cos(2\pi / i + c) \quad (1)$$

195 In Eq. (1), “a” is an estimate of the mean concentration, “b” is an estimate of the seasonal amplitude, “c” is a
 phase coefficient to identify seasonal maximum and “i” is the Julian day. In addition, the coefficient of
 determination R^2 was calculated to quantify the percentage of the variance explained by a periodic signal (i.e.,
 the seasonal variation) and the “b/a” ratio was calculated as an estimate of the relative amplitude of the seasonal
 variation. The periodic equation was not fitted to the discharge data because: i) daily discharge data does not
 200 exhibit a clear cosine shape (due to storm events) and ii) interannual climate variability results in varying
 seasonal amplitudes from year to year (data not shown).

In this study, the influence of in-stream processes and point-source emissions was inferred by the difference
 between the observed export regimes in downstream reaches and the export regimes that would have been
 expected if the integral downstream signal consisted of a “conservative mixing” of the export regimes observed
 205 in the archetypal headwater catchments. The “conservative mixing” method to simulate the export regime for
 MEIS consisted in a surface area weighted averaging of US-Agr and US-For export regimes; we chose not to use
 observed discharge as a weighting factor because both headwater catchments have been monitored during
 different periods. The “conservative mixing” method to simulate the export regime for HAUS consisted in a
 weighted averaging of MEIS and LS-Agr export regime, with a weighting factor being the discharge measured at
 210 MEIS and the difference between discharges measured in HAUS and MEIS (assuming that this difference
 represented the contribution of the lowland area, with a concentration export regime represented by LS-Agr). For
 HAUS, we used discharge as a weighting factor because both MEIS and HAUS have been monitored during the
 same period.



2.3.3. Storm event response

215 High-frequency autosampler data were used to calculate the linear slope of the concentration – discharge (C-Q)
relations during discrete storm events. A *p* value of 0.05 was used as a threshold for each event to have a
significant positive slope (accretion pattern) and negative slope (dilution pattern). The linear slopes of the C-Q
relations were calculated for all storm events in the MEIS, HAUS, US-Agr and LS-Agr catchments; because the
US-For catchment was not part of the permanent TERENO monitoring, no high-frequency autosampler data
220 were available in this catchment. The mixing model was not applied to storm event export regimes because
rainfall could be very localized in the study area, hence a mixing model applied to storm events would require
precise knowledge of the spatial distribution of rainfall over the different landscape archetypes for each event,
which is beyond the scope of this paper.

3. Results

225 3.1. Discharge and concentration variability

Seasonal variability in discharge exhibited high-flow periods both during the spring and the autumn-winter
period, which is characteristic of a nivo-pluvial (Beckingsale, 1969) river regime (Fig. 2). In the headwater
catchments (Fig. 2a), a higher seasonal variability in discharge was observed in the two catchments located in the
Harz Mountains, representing the upper Selke (US-Agr and US-For), compared to the catchment located in the
230 lowland area (LS-Agr). This difference in seasonal discharge can be explained both by the climate gradient, with
higher snowfall in the Harz Mountains compared to the lowland area, and by the different lithology, which
results in a flashier river regime in the upper Selke compared to the lower Selke (Jiang et al., 2014b). The same
conclusions hold when observing seasonal discharge variability at the downstream stations MEIS and HAUS
(Fig. 2b), namely with a higher variability in the upper Selke than in the lower Selke. The coefficient of variation
235 of daily discharge CV_Q (Table 1) was also higher in catchments representing the upper Selke (on average 2.32,
1.25 and 1.23 in US-Agr, US-For and MEIS, respectively) than in the lower Selke (on average 0.22 and 0.99 in
LS-Agr and HAUS, respectively).

[Insert Figure 2 here]

[Insert Table 1 here]

240 In a large majority of situations (all three solutes in US-Agr, US-For, MEIS and HAUS, and NO_3 in LS-Agr),
 $CV_C < CV_Q$ (Table 1), which reveals a biogeochemical stationarity termed “chemostasis” in previous catchments
studies (Basu et al., 2010; Musolff et al., 2015; Godsey et al., 2009). Only SRP and DOC in the LS-Agr
catchment exhibited a higher coefficient of variation than discharge (Table 1).

3.2. Seasonal variability in concentrations and stoichiometric ratio

245 The mean concentration observed in the three headwater catchments (quantified by the “a” parameter in Table 2)
was in the order US-For < US-Agr < LS-Agr for NO_3 , and LS-Agr < US-Agr \approx US-For for DOC and SRP (Fig.
3a). The seasonal amplitude of the periodic function (quantified by its absolute value “b” or relative value “b/a”
in Table 2) was higher in US-Agr and US-For than in LS-Agr for all three solutes. Consistent with the higher



250 seasonal amplitude in US-Agr and US-For compared to LS-Agr, the percentage of the variation explained by the
 cosine function (quantified by the R^2 parameter in Table 2) was higher in US-Agr and US-For than in LS-Agr,
 ranging from 0.16 - 0.67 in US-Agr, 0.09 - 0.69 in US-For and 0.03 - 0.15 in LS-Agr. Despite differences in
 mean concentration values and seasonal amplitudes, the three catchments were in phase (cf. “seasonal
 maximum” in Table 2) for each solute. Nitrate reached its annual maximum between Julian days 23 – 66, i.e.,
 during a period of high flow and low temperature, whereas DOC and SRP reached their annual maxima between
 255 Julian days 236 – 282 and 248 – 258, respectively, i.e., during a period of low flow and high temperature. Nitrate
 was positively and significantly correlated with discharge in all three catchments ($r = 0.63 - 0.81$, Table 3). DOC
 and SRP were negatively and significantly correlated with discharge only in the US-Agr catchment ($r = -0.51$
 and $r = -0.65$, respectively), whereas the negative correlations and positive correlations in US-For and LS-Agr,
 respectively, were not significant (Table 3).

260 **[Insert Figure 3 here]**

[Insert Table 2 here]

The solute export regimes for DOC and SRP exhibited similar behavior, with: i) higher concentration in US-Agr
 and US-For compared to LS-Agr and ii) a seasonal maximum in the late summer, during a period of low flow
 and high temperature. The export behavior of NO_3 was opposite, with: i) higher concentration in LS-Agr
 265 compared to US-Agr and US-For and ii) a seasonal maximum in the winter-early spring season, during a period
 of high flow and low temperature. The similar behavior of DOC and SRP, and their opposite dynamics to NO_3 ,
 was confirmed by the generally negative coefficients of correlation calculated between pairs of solutes (Table 3).

[Insert Table 3 here]

In the downstream reaches, the observed export regimes approximately matched those expected from
 270 conservative mixing of headwater signals for NO_3 (MEIS and HAUS) and SRP at MEIS, but not for DOC
 (MEIS and HAUS) and SRP at HAUS (Fig. 3). For NO_3 , the difference between observed concentrations and
 concentrations simulated through “conservative mixing” was on average $< 1 \text{ mg N l}^{-1}$ in both MEIS and HAUS.
 In MEIS, the relative seasonal amplitude for NO_3 was 72%, i.e., similar to the 68% and 73% observed in US-Agr
 and US-For, respectively, and the seasonal maximum was reached on Julian day 27, i.e., similar to Julian days
 275 41 and 23 observed in US-Agr and US-For, respectively. In HAUS, the relative seasonal amplitude for NO_3 was
 small (“b/a” = 8% and $R^2 = 0.05$) but the chemostatic export regime at this location could be predicted by the
 “conservative mixing” of the MEIS export regime (which exhibited a large seasonal amplitude) and the LS-Agr
 export regime (which exhibited a small seasonal amplitude) (Fig. 3b). For DOC, difference between observed
 concentrations and concentrations simulated through “conservative mixing” was considerable (up to 3 mg DOC
 280 l^{-1}) in both MEIS and HAUS. In both MEIS and HAUS, the large relative seasonal amplitude that would have
 been expected from “conservative mixing” was not observed (“b/a” was 12% in MEIS and 7% in HAUS, and R^2
 was only 0.09 in MEIS and 0.07 in HAUS). Conservative mixing of DOC export regimes resulted in an
 overestimation of the observed concentrations at MEIS, and an underestimation of DOC at HAUS. For SRP,
 difference between observed concentrations and concentrations simulated through “conservative mixing” was $<$
 285 $0.01 \text{ mg SRP l}^{-1}$ in MEIS and ranged from $< 0.01 \text{ mg SRP l}^{-1}$ in winter to up to $0.04 \text{ mg SRP l}^{-1}$ in summer in
 HAUS. In MEIS, the relative seasonal amplitude for SRP was 62%, i.e., similar to the 79% and 77% observed in



US-Agr and US-For, respectively, and the seasonal maximum was reached on Julian day 235, i.e., similar to Julian days 248 and 258 observed in US-Agr and US-For, respectively. In HAUS, the relative seasonal amplitude for SRP was 65%, i.e., slightly higher than would have been expected from the “conservative mixing” of MEIS and LS-Agr (Fig. 3c), but the seasonal maximum was reached at a date comparable to MEIS and LS-Agr (Julian day 223, versus 235 and 257 in MEIS and LS-Agr, respectively). In HAUS, the underestimation of the relative seasonal amplitude was mainly due to underestimation of summer concentration (up to 0.04 mg SRP l⁻¹, Fig. 3b and 3c).

Results show that the N:P ratio was more variable than NO₃ and SRP concentrations in US-Agr, US-For, MEIS and HAUS, and was more variable than NO₃ but not SRP in LS-Agr (Table 2). The higher variability of the N:P ratio compared to NO₃ and SRP in a large majority of situations is a direct consequence of the opposite seasonal dynamics of NO₃ and SRP in all the catchments, except LS-Agr where NO₃ and SRP seasonal amplitudes were small. In all the catchments, the N:P ratio remained above the two thresholds defined to assess possible N-P co-limitation for a majority of the time. However, in two of the headwater catchments (US-Agr and US-For) and in the two downstream reaches (MEIS and HAUS), the thresholds defined to assess possible N-P co-limitation were crossed during the late summer low-flow season (Fig. 4). Considering the threshold defined by Keck and Lepori (2012), N-P co-limitation occurred 4% of the time in US-Agr, 14% in US-For, 36% in MEIS and 3% in HAUS. Considering the threshold defined by McDowell et al. (2009), N-P co-limitation occurred 17% of the time in US-Agr, 47% in US-For, 57% in MEIS and 28% in HAUS.

[Insert Figure 4 here]

3.3. Storm event responses

Among the three headwater catchments, high frequency monitoring data during storm events was available in US-Agr (n=8) and LS-Agr (n=4) (Fig. 5a). Similar to seasonal dynamics, DOC and SRP storm dynamics exhibited similar behavior with each other but opposite to NO₃ in a majority of situations. However, DOC and SRP exhibited a majority of accretion patterns during storm events (whereas SRP and DOC was generally negatively related to discharge on a seasonal basis) and NO₃ exhibited a majority of dilution patterns during storm events (whereas NO₃ was generally positively related to discharge on a seasonal basis) (Table 4). In addition, NO₃ storm dynamics appeared to be more complex in US-Agr with the occurrence of one accretion pattern and two non-significant slopes but apparent accretion patterns. It should be noted that the slopes of the C-Q relationships did not always reflect the amplitude of solute concentration responses or the absolute concentrations, and slopes were generally larger in LS-Agr than in US-Agr because the former had smaller variations in discharge, arguably due to the more groundwater dominated flow regime: in general, concentration values in LS-Agr remained higher for NO₃ and lower for DOC and SRP than in US-Agr (Fig. 5a), similar to concentrations from the grab sampling. In the two downstream reaches, high frequency monitoring data during storm events was available in both MEIS (n=8) and HAUS (n=8) (Fig. 5b). For these two stations, accretion patterns appeared to be dominant for NO₃, DOC and SRP when significant slopes were detected. One significant dilution pattern was observed for NO₃ in HAUS, similar to the dominant storm pattern in LS-Agr. However, non-significant slopes were dominant in a majority of events for SRP in MEIS and for all three solutes in HAUS,



and among the non-significant slopes, apparent dilution patterns were observed for SRP in the two downstream reaches (Fig. 5b).

[Insert Figure 5 here]

[Insert Table 4 here]

4. Discussion

Solutes export regimes were interpreted in terms of land-to-stream transfer and in-stream processes. Archetypal headwater catchments were selected without point sources and in-stream processes were deemed to have minimal effect due to the small catchment size; hence they are suitable spatial units to study NO_3 , DOC and SRP land-to-stream transfer processes in relatively homogeneous landscape units. The two downstream reaches were influenced by point-source emissions and potentially in-stream processes; hence the difference between export regimes observed in headwater and downstream reaches can be interpreted in terms of point-source and in-stream influences.

4.1. Land-to-stream transfer

The three archetypal headwater catchments had synchronous seasonal export regimes for each solute. Yet, the mean concentrations and the seasonal periodic amplitudes differed between catchments and solutes. We thus conclude that the same controlling factors influenced NO_3 , DOC and SRP export in the three catchments, but that the respective influence of these controlling factors differed according to landscape. Seasonal concentration variability is traditionally explained by the varying contribution of several conceptual compartments (end-members) with distinct chemical signatures (Aubert et al., 2013), the contribution of these compartments to stream discharge being controlled by changing hydroclimatic conditions on a seasonal basis. In addition, biogeochemical processes controlled by temperature and by the convergence of reactants in reactive hotspots such as the riparian zone (Pinay et al., 2015; Tiwari et al., 2017; Dick et al., 2015) could lead to temporal variability in the concentrations within different conceptual compartments. Thus the interplay of hydrological and biogeochemical processes controls stream NO_3 , DOC and SRP concentrations (Thomas et al., 2016).

Considering catchment compartments with distinct chemical signatures, we can propose a conceptual model where the seasonal variability of NO_3 , DOC and SRP concentrations in headwater catchments results from the mixing of i) a riparian compartment with low NO_3 concentration (because of no fertilizer application in the riparian zone in agricultural catchments, and because of high denitrification potential due to hydromorphic soils in both agricultural and forested catchments (Anderson et al., 2014)) and high DOC and SRP concentration (because of the shallow groundwater interacting with the organic soil horizons), and ii) an upslope compartment with higher NO_3 concentration (because of fertilization in agricultural catchments, and because of low denitrification potential in well-drained soils) and lower DOC and SRP (because of the deeper groundwater level hindering interaction with organic soil layers (Dupas et al., 2015b)). During the dry season, the contribution of the riparian compartment dominates, leading to low NO_3 and high DOC and SRP concentrations, whereas during the wet season, the contribution of the upslope compartment dominates, leading to high NO_3 and low DOC and SRP concentrations (Fig. 6). In addition to this lateral differentiation of NO_3 , DOC and SRP sources, a vertical



360 distribution has previously been observed (e.g., Musolff et al., 2016a) or hypothesized (e.g., Dupas et al. (2016))
for NO_3 , with higher NO_3 concentrations in the uppermost soil layers compare to deeper soil layers, leading to
higher NO_3 concentrations in the stream during the wet season due to activation of shallow flow pathways. The
hypothesis of a vertical differentiation of concentrations controlling seasonal variations in concentrations cannot
apply to DOC and SRP, because these two elements are also expected to be present in higher concentrations in
365 the uppermost soil layers and this should therefore lead to seasonal DOC and SRP variations similar to NO_3 .
Furthermore, biogeochemical processes take place in the riparian and upslope compartments, which may lead to
additional seasonal variability linked to mobilization and/or retention of C, N and P sources. Biogeochemical
processes are temperature-dependent, and they are also influenced by residence time (Hrachowitz et al., 2016)
and by the presence/absence of reactants in biogeochemical hotspots such as the riparian zone (Pinay et al.,
370 2015; Tiwari et al., 2017; Dick et al., 2015). In this respect, high temperature and low flow velocity during the
summer season (leading to high residence time in the riparian zone) provide favorable conditions for riparian
denitrification and DOC and SRP mobilization. Finally, C, N and P also interact with each other, and several
mechanisms can take place: for example increased DOC mobilization during the summer period represents a
source of electron donors which can enhance denitrification (Taylor and Townsend, 2010), and DOC and SRP
375 can be mobilized via redox processes for which NO_3 can act as a buffer (Musolff et al., 2016b; Dupas et al.,
2015c).

Considering these hydrological and biogeochemical mechanisms, one can explain the different mean NO_3 , DOC
and SRP concentrations in the three headwater catchments with i) higher NO_3 concentrations in LS-Agr due to
high N source in agricultural land and low denitrification potential because of the absence of riparian
380 hydromorphic soils; intermediate NO_3 concentration in US-Agr due to high N source in agricultural land but
high denitrification potential because of the presence of riparian hydromorphic soils; low NO_3 concentration in
US-For due to low N source in agricultural land but high denitrification potential because of the presence of
riparian hydromorphic soils; ii) lower DOC and SRP concentrations in LS-Agr due to the deep groundwater
level, inhibiting hydrological connectivity between soil C and P sources and the stream; higher DOC and SRP
385 concentrations in US-Agr and US-For due to soil-groundwater interactions in the riparian zone, leading to
hydrological connectivity between soil C and P sources and the stream. One can also explain the larger seasonal
amplitudes in US-Agr and US-For compared to LS-Agr, linked to the presence of riparian hydromorphic soils
with different hydrological and biogeochemical properties than upslope soils (Fig. 6).

[Insert Figure 6 here]

390 Whereas the seasonal concentration-discharge variability appeared clearly in the three headwater catchments,
with high NO_3 during high flow and high DOC and SRP during low flow, these relationships seemed to be more
complex during storm events. Storm events pattern (accretion or dilution) provide insight into the NO_3 , DOC and
SRP concentrations in the flow pathways activated during storms, i.e. overland flow and shallow sub-surface
flow, relative to the baseflow concentration (Dupas et al., 2016; Buda and DeWalle, 2009; Jiang et al., 2014a). In
395 both US-Agr and LS-Agr, DOC and SRP storm event dynamics exhibited a majority of accretion patterns,
suggesting high C and P source in the uppermost soil layers compared to deeper soil layers (Dupas et al., 2015d;
Outram et al., 2014; Bieroza and Heathwaite, 2015). Therefore we conclude that, whereas lateral differentiation
of C and P sources could explain the seasonal variability in DOC and SRP, vertical gradients of sources could



400 explain the storm event responses. In contrast to DOC and SRP, NO₃ storm dynamics exhibited a majority of dilution patterns in LS-Agr and a combination of dilution and accretion pattern in US-Agr. This suggests that soil NO₃ concentrations in LS-Agr were lower than in the subsoil, due to plant uptake in the soil and presence of legacy NO₃ in the subsoil of LS-Agr (Outram et al., 2016), whereas soil NO₃ concentrations in US-Agr could be lower or higher than in the subsoil according to seasonal variability in soil NO₃ availability and possibility lateral difference between non-cultivated riparian soils and cultivated upslope soils (Dupas et al., 2016). Therefore, both 405 lateral and vertical gradients of N sources can explain variability in NO₃ storm responses.

4.2. In-stream processes and point-source contributions

In the downstream reaches, the observed export regimes approximately matched the export regimes expected from conservative mixing of headwater signals for NO₃ (MEIS and HAUS) and SRP at MEIS, but not for DOC (MEIS and HAUS) and SRP at HAUS. This means that in-stream processes and point-source contributions affect 410 NO₃ export regimes to a lesser degree than DOC and SRP export regimes.

For NO₃, the difference between observed concentrations and concentrations estimated through “conservative mixing” model was on average < 1 mg N l⁻¹ in both MEIS and HAUS, which was considered as a low absolute difference given the potentially high uncertainty in input estimation (see Sect. 4.4). However, this low absolute difference represents a large relative difference in MEIS (39% on an annual basis and up to 73% in summer) and 415 a moderately large difference in HAUS (18% on an annual basis and up to 63% in summer). In a previous study analyzing gross primary production and NO₃ assimilatory uptake in the MEIS and HAUS catchments, Rode et al. (2016a) estimated that annual in-stream NO₃ uptake represented 5% of NO₃ input in MEIS, with summer daily maxima up to 41%, and 13% of NO₃ input in HAUS, with summer daily maxima up to 47%. Whereas in HAUS the same orders of magnitude of relative NO₃ uptake were obtained with the balance calculation used in 420 this study, the large relative difference in MEIS was arguably due to overestimation of NO₃ inputs (in relative terms) because NO₃ concentrations were low in this forest dominated catchment. Point-source contributions were not likely to explain the overestimation of inputs at MEIS because inputs were overestimated the most during the winter period (Fig. 3b) whereas point-source contributions to load would be expected to be highest during the summer low flow period. To summarize, the mean concentration and the seasonal patterns observed 425 for NO₃ at MEIS and HAUS were close to the expected result of conservative mixing of headwater export regimes, despite relative errors exceeding 50% when NO₃ concentration were low; interestingly, conservative mixing of NO₃ can lead to large seasonal amplitudes (72% in MEIS, R² = 0.47) or to small seasonal amplitudes (8% in HAUS, R² = 0.05), depending on the seasonal export regimes of the different contributing landscape units. During storm events, the large variability in the patterns observed at MEIS and HAUS can be explained by 430 the contribution of different landscape units, therefore no conclusion can be drawn about effects of in-stream processes and point-source contributions on NO₃ storm dynamics.

For DOC, the difference between observed concentrations and those estimated through “conservative mixing” model was large (up to 3 mg DOC l⁻¹) in both MEIS and HAUS, and the large seasonal amplitudes observed in US-Agr and US-For were not observed in MEIS. In MEIS, conservative mixing of DOC resulted in an 435 overestimation of the observed concentration, whereas in HAUS, DOC concentrations were underestimated. This suggests an in-stream consumption of DOC in the upper part of the Selke river (with low nutrient and low light



availability due to forest shading, (Rode et al., 2016a)), and an in-stream production of DOC in the lower part of the Selke river (with high nutrient and high light availability due to absence of riparian shading, (Rode et al., 2016a)). The attenuation of seasonal amplitudes, increase of low DOC concentrations and decrease of high DOC concentrations suggests that the Selke river acts as a “chemostat” (Creed et al., 2015), transforming chemodynamic headwater signals into chemostatic export regimes in downstream reaches. Within two independent forested catchments (~ 40 km²) of the TERENO Harz/Central German Lowland Observatory, Kamjunke et al. (2016) observed that heterotrophic bacteria respiration could consume up to 90% of the DOC during low flow periods. From a national scale analysis of DOC concentration and chemical composition in the USA, Creed et al. (2015) found that, in low order rivers, labile dissolved organic matter of terrestrial origin was rapidly removed, while in higher order rivers, more aliphatic autochthonous DOC could be produced. These findings are compatible with observations in the Selke river, where an apparent DOC consumption was observed in the upstream part, close to the sources of terrestrial DOC, and an apparent DOC production was observed in the downstream part, where all labile DOC from the upstream was likely to have been consumed, but where autochthonous DOC production was made possible by higher light and nutrient availability (Rode et al., 2016a). Many other studies have found changes in DOC quantity and quality during in-stream transport (e.g., Lambert et al., 2016). During storm events, DOC dynamics exhibited a majority of accretion patterns, as expected from DOC dynamics in headwater catchments, suggesting limited in-stream or point-source influences during storm events.

440

445

450

455 For SRP, the seasonal fluctuations observed at MEIS and HAUS corresponded to observations in headwater catchments free of point-sources, namely with annual SRP maxima during the late summer low-flow period. High phosphorus concentrations during low flow are commonly interpreted as resulting from un-diluted point-sources (Withers et al., 2014; Bowes et al., 2014, 2015), and this may lead catchment managers to target point-sources in priority to reduce eutrophication risk during the summer low flow period. However in the present study, high SRP during low flow was also observed in headwater catchments free of point-source emissions, and this phenomenon was more prominent in the headwater catchments with presence of riparian hydromorphic soils (US-Agr and US-For). In independent (mostly forested) catchments located in low Mountain areas in Germany, Musolff et al. (2016b) have observed that summer SRP release was associated with iron release, suggesting that iron colloids could be a vector of SRP. Musolff et al. (2016b) also showed that DOC was closely associated with SRP transfer, similar to observations in US-Agr and US-For. Hence, a biogeochemical process taking place in the riparian zone could release SRP during the summer low flow in headwater catchments, mimicking a point-source signal in downstream reaches. In the MEIS catchment, which included three waste water treatment plants, the signal from the headwater catchments represented 88% of SRP during the late summer. In the lowland area, which included two waste water treatment plants, the signal from the headwater catchments represented 57% of SRP during the late summer. Therefore, attributing all summer SRP load to point-source emissions would lead to an overestimation of their contribution to phosphorus load. For a quantitative assessment of this overestimation, it would be necessary to consider in-stream exchange of SRP with particulate P and unreactive soluble P. During storm events, SRP accretions patterns in MEIS and HAUS were less dominant than in the headwater catchments, with a majority of non-significant concentration-discharge slopes and even occurrence of apparent dilution patterns; this reflects the contrasting effect of point sources dilution and diffuse transfer activation during storm events.

460

465

470

475



4.3. Implications for monitoring and management

Monitoring of the Selke river continuum from headwater catchments to downstream reaches showed that NO_3 , DOC and SRP concentration variability, characterized by export regime metrics, was influenced both by land-to-stream transfer processes, and downstream processes such as in-stream transformations and point-source contributions. Thus, monitoring headwater catchments was necessary to disentangle both types of processes, as observed downstream export regimes may not describe well the dynamics of land-to-stream emissions (Worrall et al., 2012; Baronas et al., 2017; Temnerud et al., 2016). Furthermore, both upstream processes (e.g., summer SRP release) and downstream emissions (e.g., point-source SRP emission during summer) may lead to the same export regime (e.g., high SRP during low flow); this phenomenon creates epistemic uncertainty, which may lead to equifinality problems when calibrating catchment models to the data (Beven, 2013). This epistemic uncertainty can be effectively reduced by integrating headwater and downstream reaches in monitoring and modeling studies, as proposed by Jiang et al. (2014b). In this respect, authority monitoring programs, which typically focus on catchments $> 100 \text{ km}^2$, are suitable for water quality assessment but this data alone may not be enough to interpret land-to-stream transfer processes, as the signal from land emission might be altered by downstream processes.

The results of this study also have implications for management, to improve the ecological status of rivers. First, the export regimes observed exhibit large temporal and spatial variability in C, N, P emission: i) the opposite seasonal dynamics of NO_3 and SRP concentrations can lead to a switch from P limitation to N-P co-limitation during the summer growing season; ii) emissions from different landscape units vary in space and time. This knowledge of temporal and spatial variability is necessary for prioritizing management effort towards N or P according to a water quality target (for which N:P ratio should be considered) and towards the landscape units most responsible for not attaining the water quality targets (Doody et al., 2016). Second, comparison of seasonal export regimes in headwater and downstream reaches showed that attributing the seasonal SRP maximum during low flow only to point-source contribution could lead to ineffective management decision if the wrong source is targeted. Finally, in-stream transformations of C, N, P are typically given less consideration in management programs than the reduction of land-to-stream emissions. Management approaches in which land use patches would be relocated geographically in order to maximize in-stream retention could provide a viable addition to conventional management schemes.

505 4.4. Limits and perspectives

This study considers archetypal headwater catchments as representative of the main landscape units present in larger catchments. Although this assumption corresponds to the expert knowledge in the study area, and it has led to satisfying results in previous modeling studies (e.g., Jiang et al. (2014b)), variability within landscape units (for example agricultural management practices) may exist and further research would be necessary to quantify it. This could be undertaken by considering a larger number of headwater catchments and developing empirical models such the landscape model of Tiwari et al. (2014) combined with a stream network model. Without a quantification of uncertainty, it is difficult to assess quantitatively the effect of the different processes highlighted qualitatively in this study. For example, the small absolute difference between modeled and observed NO_3 at MEIS should not be interpreted in relative terms to infer in-stream NO_3 retention, as the concentrations



515 involved were small compared to the uncertainty in the inputs. Another limit in this study, which prevents a
quantitative assessment of processes from mass balance calculations, is the consideration of only one N and P
form, and DOC as a bulk, whereas the chemical composition of C, N, P compounds may be more diverse (Yates
and Johnes, 2013). For example, the finding that previous P load apportionment studies may overestimate point-
source contribution cannot be made qualitatively when only SRP data is available; a quantitative assessment
520 would require consideration of particulate P and soluble unreactive P, and exchange-transformation with SRP.

This top-down analysis study also led to new hypotheses that should be further explored via process-based
studies in geochemical hotspots such as the riparian and hyporheic zones. For example, SRP release during the
summer low-flow period has rarely been documented to our knowledge (see however Smolders et al. (2017)).
Finally, this study focused mainly on manual grab sampling data, with a limited number of high frequency
525 sampling of storm events; however, the storm events monitored exhibited different export regimes from seasonal
variations, with for example NO₃ and SRP exhibiting alternatively synchronous and opposite dynamics, whereas
NO₃ and SRP consistently had opposite dynamics on a seasonal basis. These short terms variations have
implication of N:P load ratios and further research involving high frequency sensors will allow their quantitative
evaluation (Rode et al., 2016b), including seasonal variability of storm event patterns (Dupas et al., 2015d).

530 5. Conclusions

The C, N, P export regimes observed at the outlet of large catchments (> 100 km²) result from the combined
effects of land-to-stream transfer processes, in-stream transformations, and point-source contributions. In this
study, monitoring the river continuum from headwaters to downstream reaches allowed:

- 535 • Identifying land-to-stream transfer processes for different solutes and for the main landscape units
present in the study area. A seasonal export regime for NO₃ opposite to those of DOC and SRP was
highlighted in the three landscape types investigated. Presence/absence of riparian hydromorphic soils
appeared to play a crucial role in NO₃, DOC and SRP export intensity and seasonal variability.
- 540 • Identifying in-stream transformation processes and point-source contributions, highlighting that
downstream signals could be strongly altered by in-stream processes (e.g., for DOC) and that natural
SRP release during summer and point-source contributions could lead to similar export regimes.

Thus, this study highlights the benefit of complementary monitoring of downstream reaches and headwaters
representing archetypical of landscape units, to improve understanding of processes throughout the continuum
from soils to large rivers. This study also calls for a seasonal strategy to achieve water quality targets, and a
landscape approach designed to maximize land and in-stream retention is advocated.

545 Data availability

The data is available upon request



Supplementary material

The manuscript has additional graphs as supplementary material

Acknowledgements

- 550 This work was funded by TERENO (Terrestrial Environmental Observatories). The authors would like to thank all those who helped with the field and lab work, Gregor Ollesch, Ralph Meissner and the University of Applied Sciences Magdeburg

References

- 555 Agren, A. M., Buffam, I., Cooper, D. M., Tiwari, T., Evans, C. D., and Laudon, H.: Can the heterogeneity in stream dissolved organic carbon be explained by contributing landscape elements?, *Biogeosciences*, 11, 1199-1213, 10.5194/bg-11-1199-2014, 2014.
- Anderson, T. R., Groffman, P. M., Kaushal, S. S., and Walter, M. T.: Shallow Groundwater Denitrification in Riparian Zones of a Headwater Agricultural Landscape, *Journal of Environmental Quality*, 43, 732-744, 10.2134/jeq2013.07.0303, 2014.
- 560 Aubert, A. H., Gascuel-Oudou, C., Gruau, G., Akkal, N., Faucheux, M., Fauvel, Y., Grimaldi, C., Hamon, Y., Jaffrezic, A., Lecoq-Boutnik, M., Molenat, J., Petitjean, P., Ruiz, L., and Merot, P.: Solute transport dynamics in small, shallow groundwater-dominated agricultural catchments: insights from a high-frequency, multisolute 10 yr-long monitoring study, *Hydrology and Earth System Sciences*, 17, 1379-1391, 10.5194/hess-17-1379-2013, 2013.
- 565 Baronas, J. J., Torres, M. A., Clark, K. E., and West, A. J.: Mixing as a driver of temporal variations in river hydrochemistry: 2. Major and trace element concentration dynamics in the Andes-Amazon transition, *Water Resour. Res.*, 53, 10.1002/2016WR019729, 2017.
- Basu, N. B., Destouni, G., Jawitz, J. W., Thompson, S. E., Loukinova, N. V., Darracq, A., Zanardo, S., Yaeger, M., Sivapalan, M., Rinaldo, A., and Rao, P. S. C.: Nutrient loads exported from managed catchments reveal emergent biogeochemical stationarity, *Geophysical Research Letters*, 37, 10.1029/2010gl045168, 2010.
- Beckinsale, R.P.: River regimes. In: *Water, Earth and Man* (ed. By RJ Chorley), 176-192, Methuen, London UK, 1969.
- 575 Beusen, A. H. W., Bouwman, A. F., Van Beek, L. P. H., Mogollon, J. M., and Middelburg, J. J.: Global riverine N and P transport to ocean increased during the 20th century despite increased retention along the aquatic continuum, *Biogeosciences*, 13, 2441-2451, 10.5194/bg-13-2441-2016, 2016.
- Beven, K.: So how much of your error is epistemic? Lessons from Japan and Italy, *Hydrol. Process.*, 27, 1677-1680, 10.1002/hyp.9648, 2013.
- 580 Bierzoza, M. Z., and Heathwaite, A. L.: Seasonal variation in phosphorus concentration-discharge hysteresis inferred from high-frequency in situ monitoring, *Journal of Hydrology*, 524, 333-347, 10.1016/j.jhydrol.2015.02.036, 2015.



- Bishop, K., Buffam, I., Erlandsson, M., Folster, J., Laudon, H., Seibert, J., and Temnerud, J.: Aqua Incognita: the unknown headwaters, *Hydrol. Process.*, 22, 1239-1242, 10.1002/hyp.7049, 2008.
- 585 Botter, G., Basso, S., Rodriguez-Iturbe, I., and Rinaldo, A.: Resilience of river flow regimes, *Proceedings of the National Academy of Sciences of the United States of America*, 110, 12925-12930, 10.1073/pnas.1311920110, 2013.
- Bouraoui, F., and Grizzetti, B.: Long term change of nutrient concentrations of rivers discharging in European seas, *Sci Total Environ*, 409, 4899-4916, 10.1016/j.scitotenv.2011.08.015, 2011.
- 590 Bowes, M. J., Jarvie, H. P., Naden, P. S., Old, G. H., Scarlett, P. M., Roberts, C., Armstrong, L. K., Harman, S. A., Wickham, H. D., and Collins, A. L.: Identifying priorities for nutrient mitigation using river concentration-flow relationships: The Thames basin, UK, *Journal of Hydrology*, 517, 1-12, 10.1016/j.jhydrol.2014.03.063, 2014.
- Bowes, M. J., Jarvie, H. P., Halliday, S. J., Skeffington, R. A., Wade, A. J., Loewenthal, M., Gozzard, E., Newman, J. R., and Palmer-Felgate, E. J.: Characterising phosphorus and nitrate inputs to a rural river using high-frequency concentration-flow relationships, *The Science of the total environment*, 511, 608-620, 10.1016/j.scitotenv.2014.12.086, 2015.
- Buda, A. R., and DeWalle, D. R.: Dynamics of stream nitrate sources and flow pathways during stormflows on urban, forest and agricultural watersheds in central Pennsylvania, USA, *Hydrol. Process.*, 23, 3292-3305, 10.1002/hyp.7423, 2009.
- 600 Creed, I. F., McKnight, D. M., Pellerin, B. A., Green, M. B., Bergamaschi, B. A., Aiken, G. R., Burns, D. A., Findlay, S. E. G., Shanley, J. B., Striegl, R. G., Aulenbach, B. T., Clow, D. W., Laudon, H., McGlynn, B. L., McGuire, K. J., Smith, R. A., and Stackpoole, S. M.: The river as a chemostat: fresh perspectives on dissolved organic matter flowing down the river continuum, *Canadian Journal of Fisheries and Aquatic Sciences*, 72, 1272-1285, 10.1139/cjfas-2014-0400, 2015.
- Dick, J. J., Tetzlaff, D., Birkel, C., and Soulsby, C.: Modelling landscape controls on dissolved organic carbon sources and fluxes to streams, *Biogeochemistry*, 122, 361-374, 10.1007/s10533-014-0046-3, 2015.
- Doody, D. G., Withers, P. J. A., Dils, R. M., McDowell, R. W., Smith, V., McElarney, Y. R., Dunbar, M., and Daly, D.: Optimizing land use for the delivery of catchment ecosystem services, *Frontiers in Ecology and the Environment*, 14, 325-332, 10.1002/fee.1296, 2016.
- 610 Dupas, R., Delmas, M., Dorioz, J. M., Garnier, J., Moatar, F., and Gascuel-Oudou, C.: Assessing the impact of agricultural pressures on N and P loads and eutrophication risk, *Ecological Indicators*, 48, 396-407, 10.1016/j.ecolind.2014.08.007, 2015a.
- 615 Dupas, R., Gascuel-Oudou, C., Gilliet, N., Grimaldi, C., and Gruau, G.: Distinct export dynamics for dissolved and particulate phosphorus reveal independent transport mechanisms in an arable headwater catchment, *Hydrol. Process.*, 29, 3162-3178, 10.1002/hyp.10432, 2015b.
- Dupas, R., Gruau, G., Gu, S., Humbert, G., Jaffrezic, A., and Gascuel-Oudou, C.: Groundwater control of biogeochemical processes causing phosphorus release from riparian wetlands, *Water Research*, 84, 307-314, 10.1016/j.watres.2015.07.048, 2015c.
- 620 Dupas, R., Tavenard, R., Fovet, O., Gilliet, N., Grimaldi, C., and Gascuel-Oudou, C.: Identifying seasonal patterns of phosphorus storm dynamics with dynamic time warping, *Water Resour. Res.*, 51, 8868-8882, 10.1002/2015wr017338, 2015d.



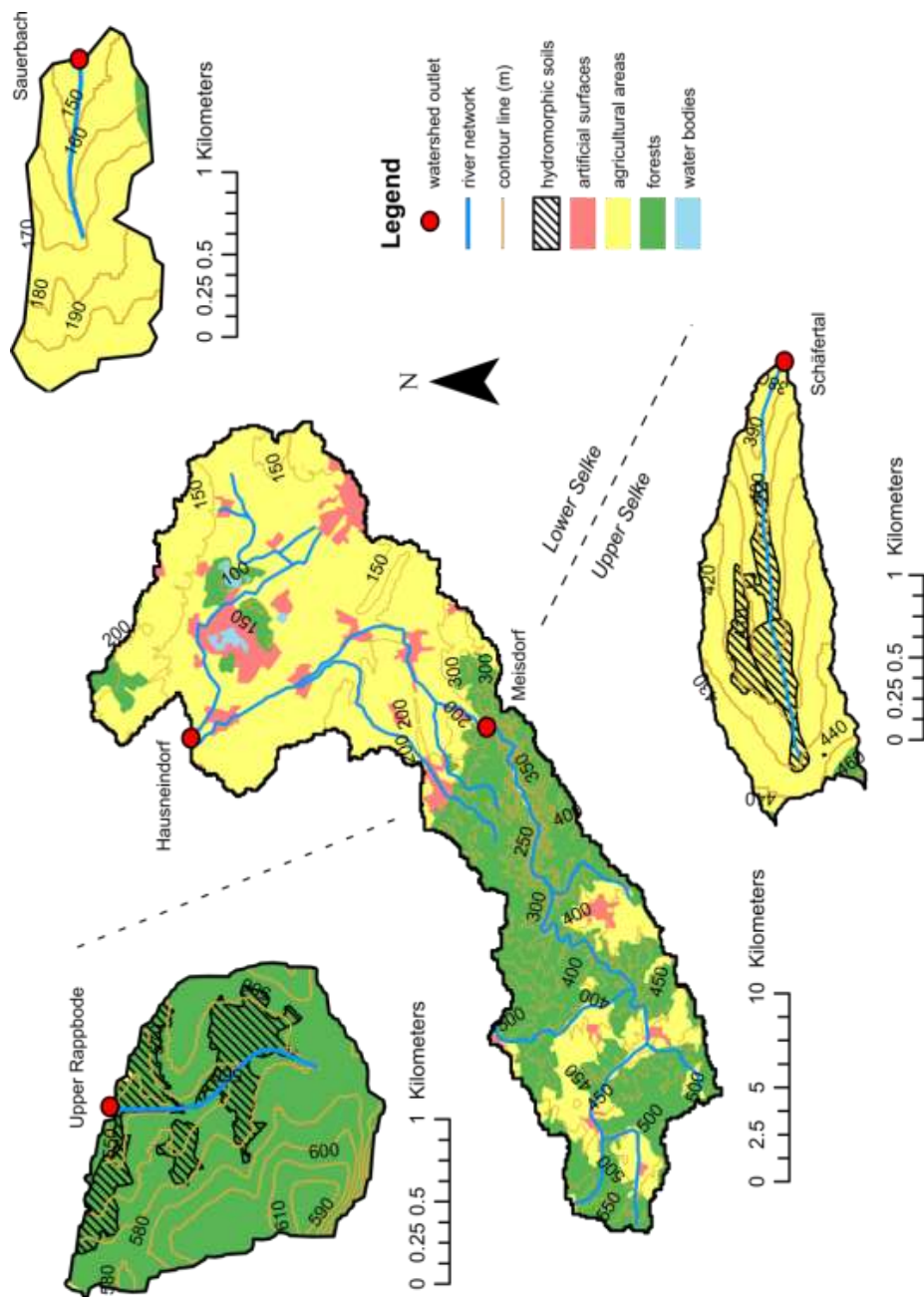
- 625 Dupas, R., S., J., Musolff, A., Borchardt, D., and Rode, M.: Disentangling the influence of hydroclimatic patterns and agricultural management on river nitrate dynamics from sub-hourly to decadal time scales, *Science of the Total Environment*, 791-800, 10.1016/j.scitotenv.2016.07.053, 2016.
- Fealy, R. M., Buckley, C., Mehan, S., Melland, A., Mellander, P. E., Shortle, G., Wall, D., and Jordan, P.: The Irish Agricultural Catchments Programme: catchment selection using spatial multi-criteria decision analysis, *Soil Use and Management*, 26, 225-236, 10.1111/j.1475-2743.2010.00291.x, 2010.
- 630 Godsey, S. E., Kirchner, J. W., and Clow, D. W.: Concentration-discharge relationships reflect chemostatic characteristics of US catchments, *Hydrol. Process.*, 23, 1844-1864, 10.1002/hyp.7315, 2009.
- Grathwohl, P., Rugner, H., Wohling, T., Osenbruck, K., Schwientek, M., Gayler, S., Wollschlager, U., Selle, B., Pause, M., Delfs, J. O., Grzeschik, M., Weller, U., Ivanov, M., Cirpka, O. A., Maier, U., Kuch, B., Nowak, W., Wulfmeyer, V., Warrach-Sagi, K., Streck, T., Attinger, S., Bilke, L., Dietrich, P., Fleckenstein, J. H., Kalbacher, T., Kolditz, O., Rink, K., Samaniego, L., Vogel, H. J., Werban, U., and Teutsch, G.: Catchments as reactors: a comprehensive approach for water fluxes and solute turnover, *Environ. Earth Sci.*, 69, 317-333, 10.1007/s12665-013-2281-7, 2013.
- 635 Hrachowitz, M., Benettin, P., van Breukelen, B. M., Fovet, O., Howden, N. J., Ruiz, L., van der Velde, Y., and Wade, A. J.: Transit times—the link between hydrology and water quality at the catchment scale, *Water*, 2016.
- Humbert, G., Jaffrezic, A., Fovet, O., Gruau, G., and Durand, P.: Dry-season length and runoff control annual variability in stream DOC dynamics in a small, shallow groundwater-dominated agricultural watershed, *Water Resour. Res.*, 51, 7860-7877, 10.1002/2015wr017336, 2015.
- 645 Jiang, R., Hatano, R., Zhao, Y., Kuramochi, K., Hayakawa, A., Woli, K. P., and Shimizu, M.: Factors controlling nitrogen and dissolved organic carbon exports across timescales in two watersheds with different land uses, *Hydrol. Process.*, 28, 5105-5121, 10.1002/hyp.9996, 2014a.
- Jiang, S. Y., Jomaa, S., and Rode, M.: Modelling inorganic nitrogen leaching in nested mesoscale catchments in central Germany, *Ecology*, 7, 1345-1362, 10.1002/eco.1462, 2014b.
- 650 Kamjunke, N., Oosterwoud, M. R., Herzsprung, P., and Tittel, J.: Bacterial production and their role in the removal of dissolved organic matter from tributaries of drinking water reservoirs, *Science of the Total Environment*, 548, 51-59, 10.1016/j.scitotenv.2016.01.017, 2016.
- Keck, F., and Lepori, F.: Can we predict nutrient limitation in streams and rivers?, *Freshwater Biology*, 57, 1410-1421, 10.1111/j.1365-2427.2012.02802.x, 2012.
- 655 Lambert, T., Teodoru, C. R., Nyoni, F. C., Bouillon, S., Darchambeau, F., Massicotte, P., and Borges, A. V.: Along-stream transport and transformation of dissolved organic matter in a large tropical river, *Biogeosciences*, 13, 2727-2741, 10.5194/bg-13-2727-2016, 2016.
- Laudon, H., Berggren, M., Agren, A., Buffam, I., Bishop, K., Grabs, T., Jansson, M., and Kohler, S.: Patterns and Dynamics of Dissolved Organic Carbon (DOC) in Boreal Streams: The Role of Processes, Connectivity, and Scaling, *Ecosystems*, 14, 880-893, 10.1007/s10021-011-9452-8, 2011.
- 660 McDowell, R. W., Larned, S. T., and Houlbrooke, D. J.: Nitrogen and phosphorus in New Zealand streams and rivers: control and impact of eutrophication and the influence of land management, *New Zealand Journal of Marine and Freshwater Research*, 43, 985-995, 2009.
- McGonigle, D. F., Burke, S. P., Collins, A. L., Gartner, R., Haft, M. R., Harris, R. C., Haygarth, P. M., Hedges, M. C., Hiscock, K. M., and Lovett, A. A.: Developing Demonstration Test Catchments as a



- platform for transdisciplinary land management research in England and Wales, *Environmental Science-Processes & Impacts*, 16, 1618-1628, 10.1039/c3em00658a, 2014.
- Musloff, A., Schmidt, C., Selle, B., and Fleckenstein, J. H.: Catchment controls on solute export, *Advances in Water Resources*, 86, 133-146, 10.1016/j.advwatres.2015.09.026, 2015.
- 670 Musloff, A., Schmidt, C., Rode, M., Lischeid, G., Weise, S. M., and Fleckenstein, J. H.: Groundwater head controls nitrate export from an agricultural lowland catchment, *Advances in Water Resources*, 96, 95-107, 10.1016/j.advwatres.2016.07.003, 2016a.
- Musloff, A., Selle, B., Buettner, O., Opitz, M., and Tittel, J.: Unexpected release of phosphate and organic carbon to streams linked to declining nitrogen depositions, *Global Change Biology*, 1-11, 10.1111/gcb.13498, 2016b.
- 675
- Outram, F. N., Lloyd, C. E. M., Jonczyk, J., Benskin, C. M. H., Grant, F., Perks, M. T., Deasy, C., Burke, S. P., Collins, A. L., Freer, J., Haygarth, P. M., Hiscock, K. M., Johnes, P. J., and Lovett, A. L.: High-frequency monitoring of nitrogen and phosphorus response in three rural catchments to the end of the 2011-2012 drought in England, *Hydrology and Earth System Sciences*, 18, 3429-3448, 10.5194/hess-18-3429-2014, 2014.
- 680
- Outram, F. N., Cooper, R. J., Sünnerberg, G., Hiscock, K. M., and Lovett, A. A.: Antecedent conditions, hydrological connectivity and anthropogenic inputs: Factors affecting nitrate and phosphorus transfers to agricultural headwater streams, *Science of the Total Environment*, 545-546, 184-199, 10.1016/j.scitotenv.2015.12.025, 2016.
- 685
- Pinay, G., Peiffer, S., De Dreuzy, J. R., Krause, S., Hannah, D. M., Fleckenstein, J. H., Sebilo, M., Bishop, K., and Hubert-Moy, L.: Upscaling Nitrogen Removal Capacity from Local Hotspots to Low Stream Orders' Drainage Basins, *Ecosystems*, 18, 1101-1120, 10.1007/s10021-015-9878-5, 2015.
- Rode, M., Halbedel, S., Anis, M., Borchardt, D., and Weitere, M.: Continuous In-Stream Assimilatory Nitrate Uptake from High Frequency Sensor Measurements, *Environmental Science & Technology*, 690 Accepted manuscript, 10.1021/acs.est.6b00943, 2016a.
- Rode, M., Wade, A. J., Cohen, M. J., Hensley, R. T., Bowes, M. J., Kirchner, J. W., Arhonditsis, G. B., Jordan, P., Kronvang, B., Halliday, S. J., Skeffington, R. A., Rozemeijer, J. C., Aubert, A. H., Rinke, K., and Jomaa, S.: Sensors in the Stream: The High-Frequency Wave of the Present, *Environmental Science & Technology*, 50, 10297-10307, 10.1021/acs.est.6b02155, 2016b.
- 695
- Salmon-Monviola, J., Moreau, P., Benhamou, C., Durand, P., Merot, P., Oehler, F., and Gascuel-Oudou, C.: Effect of climate change and increased atmospheric CO₂ on hydrological and nitrogen cycling in an intensive agricultural headwater catchment in western France, *Climatic Change*, 120, 433-447, 10.1007/s10584-013-0828-y, 2013.
- Sardans, J., Rivas-Ubach, A., and Penuelas, J.: The elemental stoichiometry of aquatic and terrestrial ecosystems and its relationships with organismic lifestyle and ecosystem structure and function: a review and perspectives, *Biogeochemistry*, 111, 1-39, 10.1007/s10533-011-9640-9, 2012.
- 700
- Seitzinger, S. P., Mayorga, E., Bouwman, A. F., Kroeze, C., Beusen, A. H. W., Billen, G., Van Drecht, G., Dumont, E., Fekete, B. M., Garnier, J., and Harrison, J. A.: Global river nutrient export: A scenario analysis of past and future trends, *Global Biogeochemical Cycles*, 24, Gb0a0810.1029/2009gb003587, 705 2010.
- Smolders, E., Baetens, E., Verbeek, M., Nawara, S., Diels, J., Verdievel, M., Peeters, B., De Cooman, W., and Baken, S.: Internal Loading and Redox Cycling of Sediment Iron Explain Reactive Phosphorus Concentrations in Lowland Rivers, *Environmental Science & Technology*, 2017.



- 710 Taylor, P. G., and Townsend, A. R.: Stoichiometric control of organic carbon-nitrate relationships from soils to the sea, *Nature*, 464, 1178-1181, 10.1038/nature08985, 2010.
- Temnerud, J., von Bromssen, C., Folster, J., Buffam, I., Andersson, J. O., Nyberg, L., and Bishop, K.: Map-based prediction of organic carbon in headwater streams improved by downstream observations from the river outlet, *Biogeosciences*, 13, 399-413, 10.5194/bg-13-399-2016, 2016.
- 715 Thomas, Z., Abbott, B., Troccaz, O., Baudry, J., and Pinay, G.: Proximate and ultimate controls on carbon and nutrient dynamics of small agricultural catchments, *Biogeosciences*, 13, 1863-1875, 10.5194/bg-13-1863-2016, 2016.
- Thompson, S. E., Basu, N. B., Lascrain, J., Jr., Aubeneau, A., and Rao, P. S. C.: Relative dominance of hydrologic versus biogeochemical factors on solute export across impact gradients, *Water Resour. Res.*, 47, 10.1029/2010wr009605, 2011.
- 720 Tiwari, T., Laudon, H., Beven, K., and Agren, A. M.: Downstream changes in DOC: Inferring contributions in the face of model uncertainties, *Water Resour. Res.*, 50, 514-525, 10.1002/2013wr014275, 2014.
- Tiwari, T., Lidman, F., Laudon, H., Lidberg, W., and Agren, A.: GIS-based prediction of stream chemistry using landscape composition, wet areas and hydrological flow pathways, *Journal of Geophysical Research: Biogeosciences*, 10.1002/2016JG003399, 2017.
- 725 Wall, D., Jordan, P., Melland, A. R., Mellander, P. E., Buckley, C., Reaney, S. M., and Shortie, G.: Using the nutrient transfer continuum concept to evaluate the European Union Nitrates Directive National Action Programme, *Environmental Science & Policy*, 14, 664-674, 10.1016/j.envsci.2011.05.003, 2011.
- 730 Withers, P. J. A., Jordan, P., May, L., Jarvie, H. P., and Deal, N. E.: Do septic tank systems pose a hidden threat to water quality?, *Frontiers in Ecology and the Environment*, 12, 123-130, 10.1890/130131, 2014.
- 735 Wollschlager, U., Attinger, S., Borchardt, D., Brauns, M., Cuntz, M., Dietrich, P., Fleckenstein, J. H., Friese, K., Friesen, J., and al., e.: The Bode hydrological observatory: a platform for integrated, interdisciplinary hydro-ecological research within the TERENO Harz/Central German Lowland Observatory, *Environ Earth Sci*, 76, 2016.
- Worrall, F., Davies, H., Bhogal, A., Lilly, A., Evans, M., Turner, K., Burt, T., Barraclough, D., Smith, P., and Merrington, G.: The flux of DOC from the UK - Predicting the role of soils, land use and net watershed losses, *Journal of Hydrology*, 448, 149-160, 10.1016/j.jhydrol.2012.04.053, 2012.
- 740 Yates, C. A., and Johnes, P. J.: Nitrogen speciation and phosphorus fractionation dynamics in a lowland Chalk catchment, *Science of the Total Environment*, 444, 466-479, 10.1016/j.scitotenv.2012.12.002, 2013.
- 745 Zacharias, S., Boga, H., Samaniego, L., Mauder, M., Fuss, R., Putz, T., Frenzel, M., Schwank, M., Baessler, C., Butterbach-Bahl, K., Bens, O., Borg, E., Brauer, A., Dietrich, P., Hajnsek, I., Helle, G., Kiese, R., Kunstmann, H., Klotz, S., Munch, J. C., Papen, H., Priesack, E., Schmid, H. P., Steinbrecher, R., Rosenbaum, U., Teutsch, G., and Vereecken, H.: A Network of Terrestrial Environmental Observatories in Germany, *Vadose Zone Journal*, 10, 955-973, 10.2136/vzj2010.0139, 2011.



750 Fig. 1: Landscape types in the Selke catchment and location of monitoring sites.

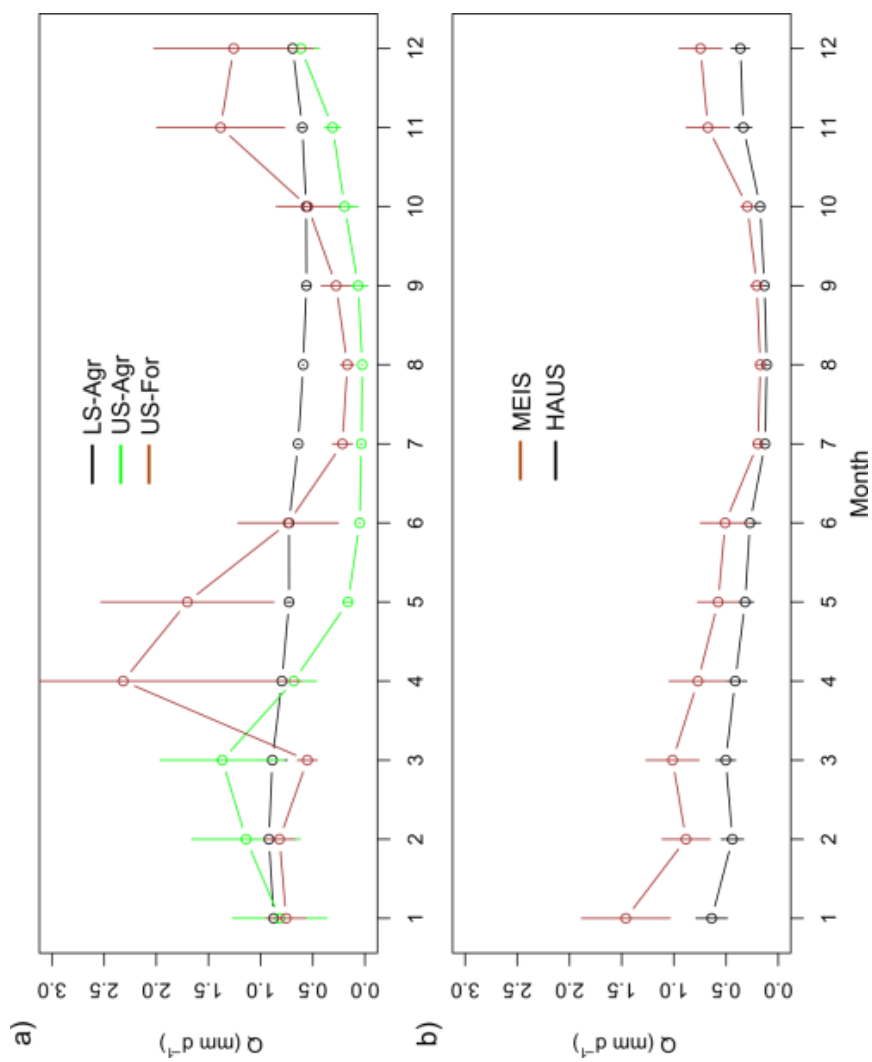


Fig. 2: Monthly discharge in headwater catchments (a) and downstream catchments (b). Error bar represent standard deviation (n = 2 – 10 years).

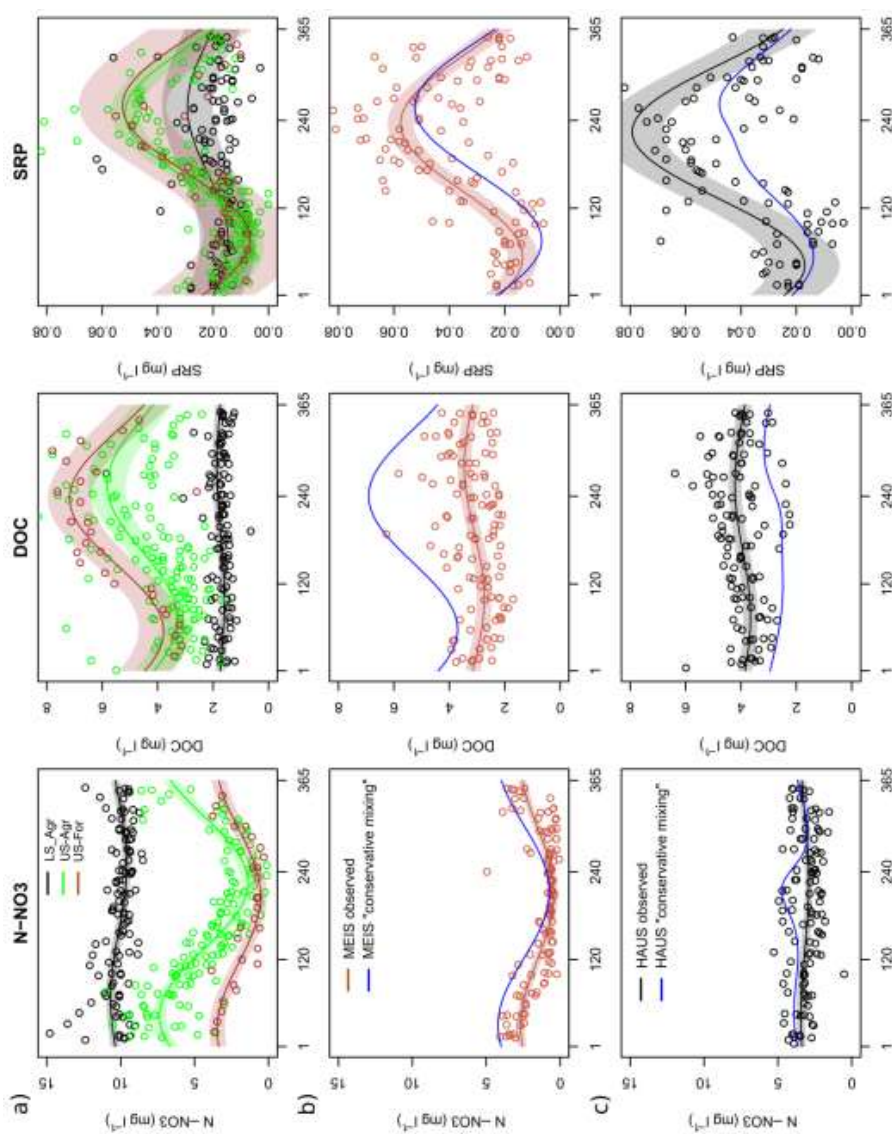


Fig. 3: Intra-annual variability of nitrate (N-NO₃), Dissolved Organic Carbon (DOC) and Soluble Reactive Phosphorus (SRP) in headwater catchments (a) and in the downstream catchments Meisdorf (b) and Hausneindorf (c). Circles represent observation data, lines represent cosine fitting and shaded areas represent 95% confidence intervals. “Conservative mixing” represents the theoretical signal that would have been obtained through mixing of headwater signals without any in-stream or point source influence.

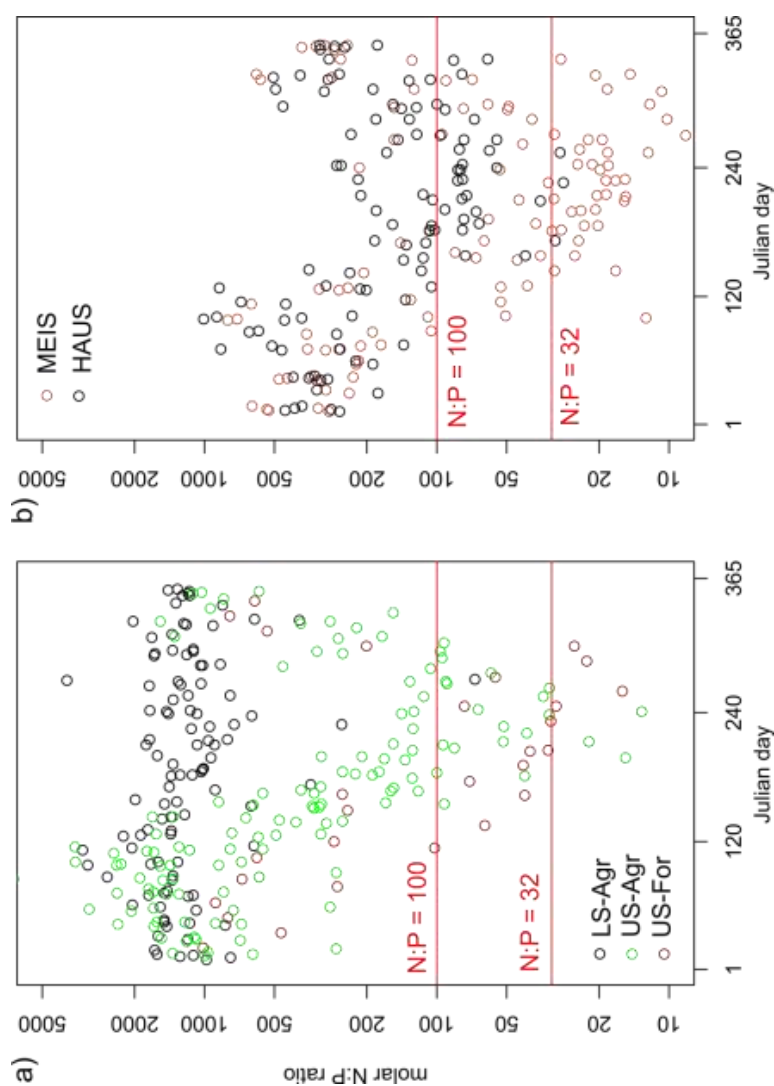


Fig. 4: Intra-annual variability of the molar N:P ratio calculated with grab sampling data in headwater catchments (a) and downstream reaches (b). The two thresholds represent N:P = 32 mol:mol and N:P = 100 mol:mol.

760

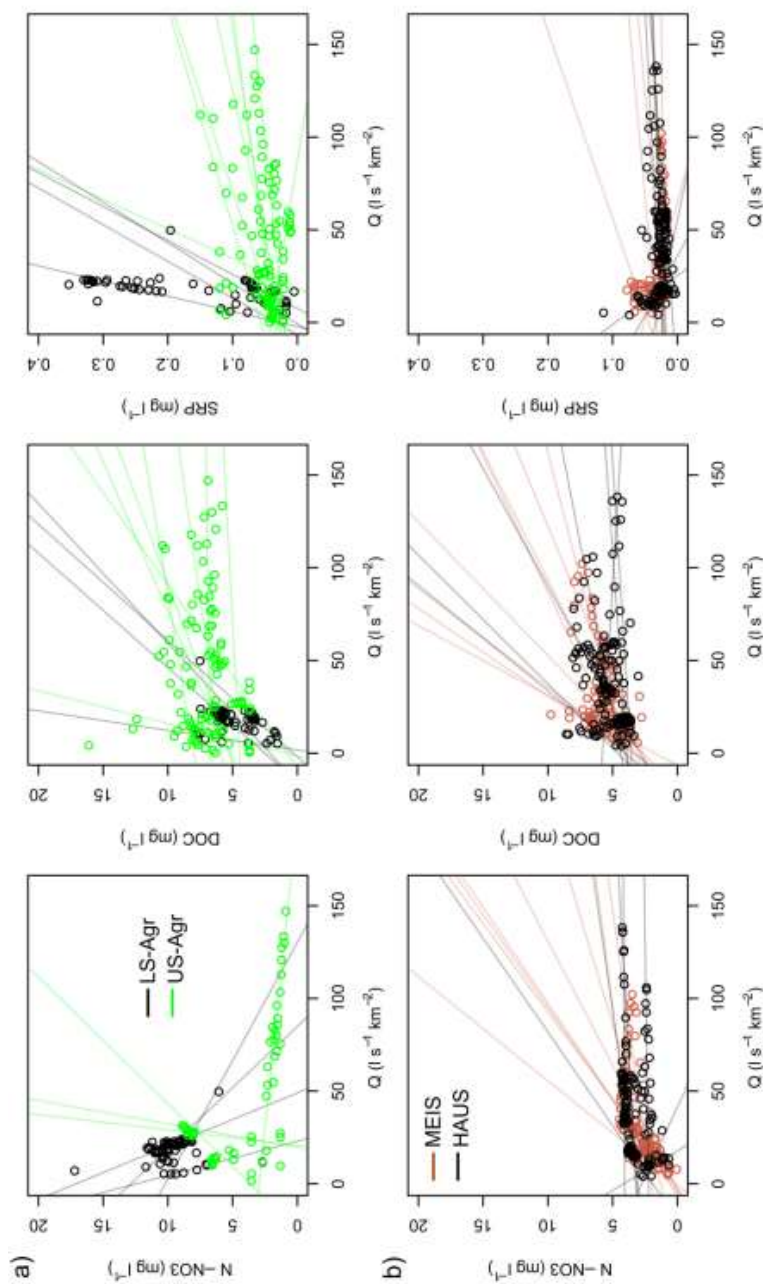


Fig. 5: Concentration-discharge relationships during storm events in (a) two headwater catchments (LS-Agr n=4, US-Agr n=8) and in (b) two downstream reaches (MEIS n=8, HAUS n=8) for three solutes: nitrate-N, Dissolved Organic Carbon (DOC) and Soluble Reactive Phosphorus (SRP). Linear regression models were fitted to each event to quantify the proportion of events with a dilution (negative slope) or an accretion pattern (positive slope).

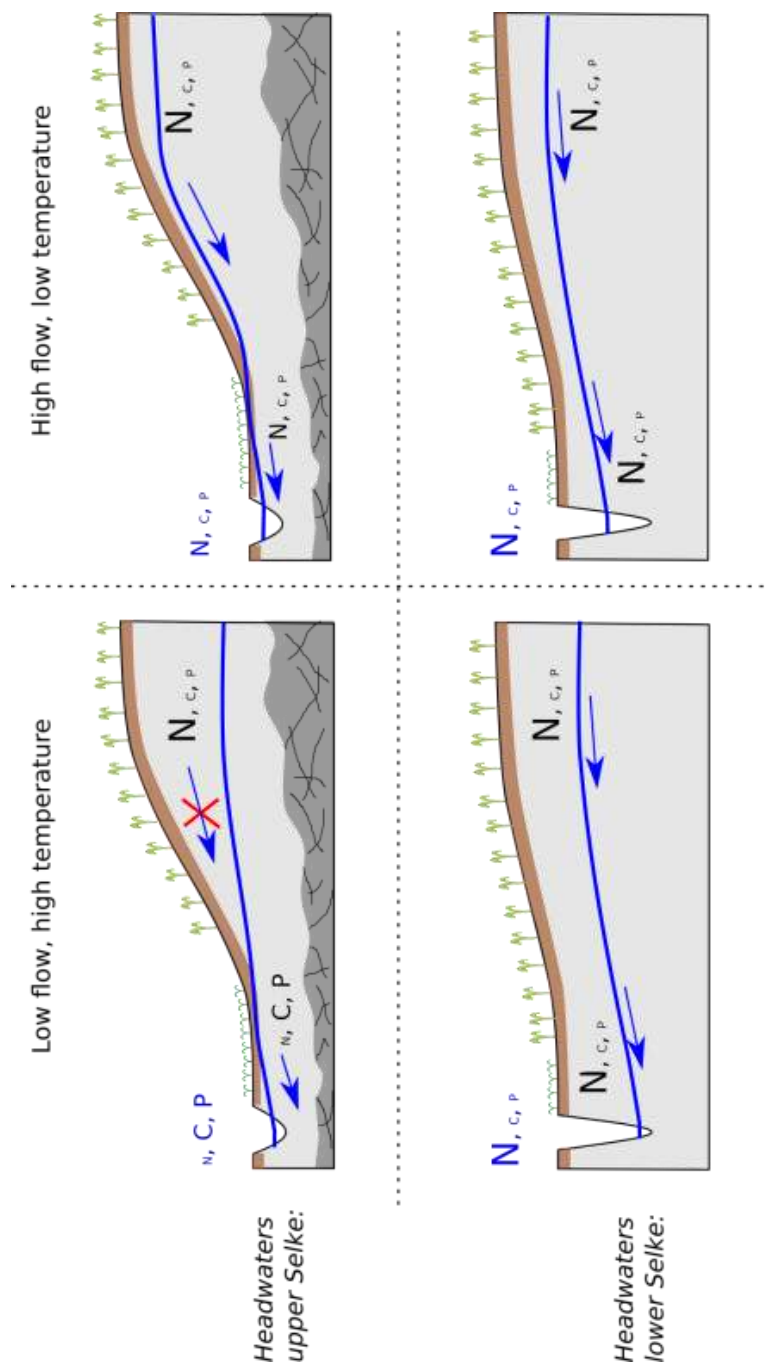


Figure 6: Conceptual model of C, N, P intra-annual variability in headwater catchments in the upper Selke (archetypes US-Agr and US-For) and in the lower Selke (archetype LS-Agr). Letter size refers to the intensity of the mass flux for each solute.



Table 1: Coefficient of variation (mean \pm standard deviation, $n = 2-10$ years) of daily discharge, concentrations N:P ratio.

	CV_Q	CV_{NO3}	CV_{DOC}	CV_{SRP}	$CV_{N:P}$
LS-Agr	0.22 \pm 0.15	0.06 \pm 0.03	0.24 \pm 0.18	0.55 \pm 0.47	0.42 \pm 0.23
US-Agr	2.32 \pm 0.72	0.56 \pm 0.18	0.45 \pm 0.15	0.73 \pm 0.24	1.04 \pm 0.44
US-For	1.25 \pm 0.96	0.60 \pm 0.12	0.30 \pm 0.07	0.74 \pm 0.20	1.05 \pm 0.37
MEIS	1.23 \pm 0.39	0.73 \pm 0.12	0.25 \pm 0.07	0.48 \pm 0.22	0.98 \pm 0.27
HAUS	0.99 \pm 0.29	0.22 \pm 0.08	0.19 \pm 0.10	0.65 \pm 0.27	0.70 \pm 0.24



775 Table 2: Coefficient of the cosine equation fitting to grab sampling concentration data.

		LS-Agr	US-Agr	US-For	MEIS	HAUS
N-NO3	a (mg l ⁻¹)	10.14	4.39	2.01	1.55	3.18
	b (mg l ⁻¹)	0.54	3.00	1.46	1.12	0.26
	b/a (%)	5.33	68.33	72.59	72.20	8.27
	seasonal maximum (Julian day)	66	42	24	27	42
	R ²	0.15	0.67	0.69	0.47	0.05
DOC	a (mg l ⁻¹)	1.73	4.55	5.48	3.10	3.94
	b (mg l ⁻¹)	0.13	1.27	1.69	0.36	0.28
	b/a (%)	7.75	27.96	30.91	11.61	7.12
	seasonal maximum (Julian day)	282	254	237	284	256
	R ²	0.03	0.16	0.51	0.09	0.07
SRP	a (mg l ⁻¹)	0.02	0.03	0.03	0.04	0.05
	b (mg l ⁻¹)	0.01	0.02	0.02	0.02	0.03
	b/a (%)	33.33	79.46	77.27	61.92	64.73
	seasonal maximum (Julian day)	258	249	259	235	224
	R ²	0.03	0.49	0.33	0.51	0.28



Table 3: Spearman's rank correlations for discharge and concentration parameters. Significant correlations ($p < 0.05$, Holm-corrected) are in bold.

LS-Agr	Q	NO3	SRP
NO3	0.63		
SRP	0.11	0.06	
DOC	0.08	0.05	0.20

US-Agr	Q	NO3	SRP
NO3	0.81		
SRP	-0.65	-0.78	
DOC	-0.51	-0.63	0.62

LS-For	Q	NO3	SRP
NO3	0.70		
SRP	-0.53	-0.72	
DOC	-0.16	-0.44	0.64

MEIS	Q	NO3	SRP
NO3	0.79		
SRP	-0.67	-0.66	
DOC	0.46	0.19	0.01

HAUS	Q	NO3	SRP
NO3	0.18		
SRP	-0.47	-0.03	
DOC	-0.02	-0.39	0.07



Table 4: Counting of accretion and dilution patterns during storm events derived from the slope of concentration-discharge relationships ($p < 0.05$).

		dilution	accretion	non-significant slope
LS-Agr	N-NO3	3/4	0/4	1/4
	DOC	0/4	4/4	0/4
	SRP	0/4	4/4	0/4
US-Agr	N-NO3	1/4	1/4	2/4
	DOC	0/8	3/8	5/8
	SRP	0/8	5/8	3/8
MEIS	N-NO3	0/8	6/8	2/8
	DOC	0/8	7/8	1/8
	SRP	0/5	1/5	4/5
HAUS	N-NO3	1/8	2/8	5/8
	DOC	0/7	3/7	4/7
	SRP	0/7	2/7	5/7