

1 **Response to reviewer comments on manuscript bg-2017-99: “Bryophyte-dominated biological soil**  
2 **crusts mitigate soil erosion in an early successional Chinese subtropical forest”**

3  
4 We would like to thank the reviewers for their helpful comments, which greatly improved our  
5 manuscript. We have prepared a revised manuscript where we account for all points raised by the  
6 reviewers, as described below. We show the reviewers’ comments in grey text, while our responses are  
7 formatted as standard text. Line indications refer to the revised manuscript without marked changes.

8  
9 Anonymous referee #1:

10 Thank you very much for taking the time to revise this manuscript and for giving this positive evaluation  
11 with constructive comments.

12  
13  
14 Compared with lots of reports regarding biocrusts from drylands, little topics were discussed in humid  
15 region. This paper selected a novel issue and conducted a scientific experiment, and whereby some clear  
16 but not unexpected results were concluded. My suggestions are as follows to improve the manuscript:

- 17  
18 1. while authors analyzed the influence of vegetation, soil, and terrain on biocrusts cover, they should  
19 emphasized the interactive impact of different factors, but not only single factor’s influence;  
20  
21 - This work benefits from the large dataset of the BEF China project and we tried to include a  
22 high number of single influences. Nevertheless, we agree with you that interactions of  
23 different factors are of high importance and more explanations regarding interactions are  
24 needed in the manuscript. We already tried to address this issue by using linear mixed  
25 effects models, which account for a combination of fixed and random effects (lines 182-187,  
26 188-196, 223-226, Table 3, 233-238, Table 4). We now widened the discussion part of the  
27 manuscript in this regard and tried to better explain combined effects of single factors, such  
28 as vegetation (crown cover and LAI) or terrain (e.g. northness) (lines 286-290, 299-310, 311-  
29 318).
- 30  
31 2. the authors must quantitatively describe the effects of biocrusts on sediment and  
32 runoff, and also in the discussion section, they should compared their results with other  
33 researchers’ conclusions;
- 34 - Thank you very much for this legitimate comment. We widened the description of our  
35 results, demonstrating the effects of biocrusts on soil erosion, by presenting measured  
36 values of runoff and sediment delivery (see lines 231-233). We also widened the discussion  
37 section of the manuscript by including additional comparisons with other studies (lines 320-  
38 324, 339-343, 344-348).
- 39 Nevertheless, as correctly stated by all reviewers, these comparisons have to remain  
40 incomplete, as there are only very few studies on biocrust development in forests under  
41 mesic conditions and their impact on soil erosion.
- 42  
43

- 44 3. generally, this manuscript present too much emphasis on qualitative description instead of  
45 quatitative analysis;  
46 - We considered this aspect in the revised version of the manuscript and indeed put a larger  
47 emphasis on our quantitative results and widened the discussion (see above).  
48
- 49 4. the experiment was conducted in PR China, however, there is none of authors or affiliation from  
50 Chinese territory, which is not logical or even not permitted by China government  
51 - The BEF China project is a joint Sino-German research project with a high level of close  
52 cooperation between Chinese and German universities. Thus, our authors' team already  
53 included a Chinese national, who was originally based at the Institute of Soil Science, CAS,  
54 Nanjing. Nevertheless, we agree that affiliations were not sufficiently presented and our  
55 Chinese cooperation partner and supervisor of fieldworks in China Prof. Xuezheng Shi from  
56 the Institute of Soil Science in Nanjing agreed to join the authors' team and contributed to  
57 the revision of the manuscript (see affiliations).

58

59 Anonymous referee #2:

60 Many thanks for your critical and constructive review. We considered your comments and reworked the  
61 manuscript as suggested. Please find more detailed responses to your remarks below.

62

63 1.) I have received your manuscript "Bryophyte-dominated biological soil crusts mitigate soil erosion in  
64 an early successional Chinese subtropical forest" for review. There are elements to like about this paper,  
65 especially the fact that this is one of the rare studies that addresses the influence and role of biological  
66 soil crusts on in early secondary succession after severe human impact. Before the manuscript can be  
67 considered for publication in Biogeosciences, the authors should nevertheless consider some general  
68 comments and rework parts of the manuscript. There is a general question as to how the soil crust in  
69 this studied can be referred to. In the introduction (first sentence) the authors refer to the importance  
70 of biocrusts in many ecosystems. By checking the reference and also other major biocrust research and  
71 literature it becomes obvious that the biocrust in this study is very special because it occurs in a forest.  
72 Such ecosystems are dominated by trees are their sheer occurrence indicates a high water availability.  
73 So, here it comes to a contradiction to the definition of a biocrust, which were recently defined to occur  
74 "in regions where water availability limits vascular plant cover" (Weber et al. 2016 - same reference as  
75 used by the authors). Almost every other biocrust study is taking place in drylands or at least areas  
76 where an arid element occurs. In the most recent review about biocrust distribution patterns by Bowker  
77 et al. 2016, the presence of biocrust is discussed as a function of effective precipitation within semiarid,  
78 arid and hyperarid ecosystems, certainly not in the humid forest with a mean precipitation of 1635 mm  
79 as in this case. This makes this study very special and requires that the authors explain very precisely  
80 why they discuss the topic in the biocrust background.

81 - We would like to thank the reviewer for this overall positive review and especially for the  
82 comment above. It indeed is right that the biocrust described in this manuscript is a special one,  
83 as it occurs within a forest. Biological soil crusts are defined to occur in arid environments and in  
84 places where arid (microclimatic) conditions are met. Thus, biocrusts are mostly described for  
85 dryland regions, where they form a key and enduring ecosystem component. In addition to this  
86 main habitat, however, biocrusts have also been described as a transient feature in mesic  
87 environments, where annual rainfall amounts are larger, but where biocrusts may form after  
88 major singular or repeated disturbance events. Examples for such transient biocrusts are e.g.  
89 these of dry grasslands (“Mainfränkische Trockenrasen”, Germany) and biocrusts occurring on  
90 Öland, Sweden (Büdel et al., 2014), but also biocrusts in former mining areas (Fischer et al.,  
91 2014). In all these habitats, biocrusts developed due to severe disturbance caused by trampling  
92 and driving, continuous grazing, soil removal and biomass removal. Once these regular  
93 disturbance events stop, a dense layer of vascular vegetation would develop and replace the  
94 biocrusts.

95 In the current study, an existing forest has been clear-cut and trees have been replanted. After  
96 this severe disturbance, transient biocrusts developed, which could grow on the bare ground  
97 under fairly sunny conditions. However, we already observed an alteration in species inventory  
98 and expect, that eventually these biocrusts will disappear again, being replaced by vascular  
99 vegetation (in light forests) or buried under persisting leaf litter (under darker conditions) (lines  
100 269-276).

101 In the revised version, we sharpened the discussion and conclusion about biocrusts in mesic  
102 environments and explained the relationship between biocrust occurrence and vegetation  
103 disturbances (lines 64-67, 69-76, 81-83, 249-252, 269-276, 361-364).

104

105 2.) It should be stated in the manuscript that biocrusts only contribute a minor ecological role in this  
106 ecosystem, certainly because of their low biomass and soil penetration depth, compared with trees and  
107 it should be taken into account that the trees are the major driver of this ecosystem. The presence of  
108 the mosses and algae may certainly have an effect as shown in this paper, but this should be seen in the  
109 bigger context and appropriately assigned.

110 - We fully agree with the comment, that biomass of biocrusts within this habitat is nearly  
111 negligible. Nevertheless, we observed that biocrusts play a key role within this early-  
112 successional system. By minimizing erosion and stabilizing the soil surface, they effectively  
113 preserve soil fertility within this disturbed forest habitat. Thus, despite their low biomass, we  
114 consider biocrusts to fulfil key ecosystem services within this habitat. Nevertheless, we agree  
115 that the bigger context should be better assigned and we added further information on that  
116 issue to the discussion (lines 324-326, 341-343).

117

118 3.) In the ongoing introduction, the authors explicitly describe the role of biocrusts in early succession,  
119 while the study site cannot be referred to as in early succession because of the existence of trees, that  
120 indicate quite a late successional stage. Nevertheless, the study site is special, because the trees were

121 artificially planted, so the soil itself remains at an early successional stage (straight after disturbance)  
122 while the occurring vascular vegetation is at a later stage, due to human impact (at least the trees. What  
123 other vegetation occurs?). A more detailed explanation of the hypothetical background should be taken  
124 into consideration.

125 - We agree that the special circumstances of the study site indeed need to be described in more  
126 detail in the paper. From a forestry perspective, the study site was referred to as an early  
127 successional tree plantation in 2013 (see Bruelheide et al. 2014). To establish the experiment  
128 and help the tree saplings (~5-15 cm height) grow in their first two years, shrubs and coppices  
129 have been weeded from 2010 to 2012. Thus, it is an artificial setup, but following common  
130 practice in forestry and tree plantations of this area. Understory growth was generally low, with  
131 smaller patches of e.g. *Miscanthus* at southward slopes and only little leaf abscission from trees  
132 in the first years. We gave a more detailed explanation in the revised manuscript (lines 131-137,  
133 146-147).

134

135 4.) Additionally, it should be clearly defined which ecological process is in the focus of this study. From  
136 the study background, the most reasonable is secondary succession after human disturbance. Within  
137 this, the biocrust may occur as one of the initial players, thus it will provide the basis for other plants but  
138 also disappear with ongoing succession. This should be stated.

139 - We agree and thank you again for this very helpful comment. Some further statements were  
140 added (line 110 f). We do expect that biocrusts are an initial player (lines 247-249, 253-255, 255-  
141 258) and they will disappear with ongoing succession (line 269-270, 273-276). Actually, we were  
142 surprised that their extent was still increasing after five years of tree growth, when some trees  
143 were already up to a height of 7 m.

144

145 5.) The hypotheses should come with explanations or at least theoretical background. In Hyp 1 is the  
146 parameter tree growth or canopy cover or light intensity? Hyp 2, what is the exact expectation here?  
147 This sound very vague. Please be precise.

148 - We adapted the introduction to give more theoretical background (lines 57ff) and sharpened  
149 the hypotheses (116-121). Regarding Hyp 2, we tried to focus on the humid forest environment  
150 and to keep it somewhat more general, as we will not be able to explain all influences based on  
151 our data set. The pH for example, influences crust components (lichens, algae etc.) differently  
152 and e.g. different bryophyte species show variable responses on pH changes.

153

154 6.) In general, the introduction could benefit from more precise statements and direct explanations. In  
155 the moment, many sections read like overall summaries rather than leading to explicit research  
156 questions for the study.

157 - Thank you for this comment. We adapted the introduction and tried to be more precise and to  
158 better link the introductory part to the statement of hypotheses. We also included assumptions  
159 to each paragraph, leading to the hypothesis generation (lines 81-83, 88-91, 107-109).

160

161 7.)

162 Material and Methods 135: which were the determinants for the crust types

163 - Biocrusts were described in the field based on appearance, functional groups and species  
164 composition and biocrust types determined based on the dominating autotrophic component.  
165 Further details were added to the manuscript (lines 140-142).

166

167 Results 210: Please explain why the existence of vascular plants indicates any developmental stage of  
168 biocrust? Is this climax or are the plants taking over and the crust will disappear? If this is the case you  
169 should refer to the developmental stage of the vegetation in general and the crusts occur only for a little  
170 while.

171 - The existence of vascular plants does not indicate a developmental stage of biocrusts; the  
172 expression was somewhat misleading. Instead, we believe that vascular plants like *Selaginella*  
173 and *Poaceae* will take over and biocrust cover will decline, even without a continuous leaf litter  
174 layer (see above). We changed the phrasing accordingly (lines 215 - 216)

175

176 Discussion Overall the discussion could clearly benefit from more explicit arguments of the given results  
177 rather than summarising literature. Sections read like reviews and summaries of recent literature. Could  
178 you please discuss your own data and indicate what information these add to the existing knowledge?  
179 Here I strongly agree with the first reviewer how also stated that the discussion needs improvement.  
180 Please explain more detailed what your own findings mean and implement.

181 - We agree with you and reviewer #1 (see comment above) and sharpened the discussion and  
182 strengthened the focus on our own data. Major parts of the discussion have been rearranged  
183 and widened (e.g. lines 249-251, 253-255, 256-258, 269-272, 274-276, 277-278, 290-294, 302-  
184 304, 309-310, 311-313, 316-318, 321-324, 324-326, 335-339, 341-343, 350-351).

185

186 Additionally, you might want to consider reading more about bryophytes and their growth in forest  
187 understories. Surely the discussion could benefit from some comparisons for growth rates and  
188 microenvironments. For the implication of the story, the authors should clearly underline, that this is a  
189 case study in a single, very special subtropical forest ecosystem and therefore findings cannot easily be  
190 extrapolated to other systems.

191 - We agree with you that findings cannot be extrapolated to other ecosystems and it is not our  
192 objective to do so. We clarified this point in the revised conclusion (lines 361-363). Nevertheless,  
193 we believe that they could be compared to other forest plantations in subtropical China and it  
194 would be very interesting to evaluate the biocrust occurrence in other forest ecosystems after  
195 clear-cut and replantation of trees.  
196 Furthermore, we added more literature about biocrust recovery (Read et al 2011, Read et al  
197 2016, Eldridge 1998) and bryophyte development in forests (Fenton and Frego 2005, Goffinet  
198 and Shaw 2009, Spitale 2017, Tinya and Odor 2016, Gilliam 2007). We fully agree that this study  
199 could benefit from comparisons of growth rates, for example. Nevertheless, there are not so  
200 many other studies on biocrust recovery in those subtropical climates and to our knowledge,  
201 generally studies in forest environments are rare (except work done by Read et al. and Eldridge  
202 from Australian semi-arid woodlands, see above).  
203

204 In the first section of the discussion, statements are made, that do not refer to the presented data. 243:  
205 biocrusts were highly competitive 244: biocrusts prepared the upper soil layer 246: tree growth provides  
206 shade and protection from the wind, which then leads to advancement in biocrust development (Please  
207 explain that you use crown cover as a proxy for shading. Are there data about the wind?). Other 260:  
208 Replace competitive by coexisting. 261-265: The authors provide a very nice list of moss species for this  
209 study and assume here that species composition changes with decreasing light availability. It would be  
210 excellent to underline this finding by data. Can you provide data that show this shift of species? The  
211 statement could significantly gain importance if the change in species could be correlated to the  
212 decreasing light. As it stands now, it reads like an assumption.

213 - We changed the discussion according to your suggestions (lines 246-263). Crown cover is a  
214 proxy for shading and there is no detailed data about wind speed or direction.  
215 Furthermore, we agree that adding more data about single species from e.g. 2011 and 2015  
216 would be very useful and beneficial. Unfortunately, we do not have any further detailed species  
217 lists as it was not possible to sample biocrusts but in 2013. Classifications of biocrust types in  
218 other years were done by visual judgement in the field. Thus, we cannot substantiate the  
219 species shift with further data, but would like to do so in further studies.

220

221 279-280: Irrelevant for the study. Can be deleted.

222 - Deleted.

223

224 Additional minor comments:

225 Some of the writing does not seem to be appropriate. Please reconsider

226 34: "Our" experimental forest ecosystem

227 36: Biocrust “covers” were still increasing

228 42: quickly colonise gaps in” higher vegetation layers” – what do you mean with layers? Which gaps are  
229 closed?

230 207: “traces of lichens”

231 210: organisms were found in minor numbers – is this fewer species, individuals or coverage?

232 243: early stage of the ecosystem

233 283: fasten themselves on the soil surface

234 329: They developed quickly to later-stages

235 - Thank you for pointing out mistakes and incomprehensibilities in writing. We changed the  
236 writing according to your comments and counterchecked the manuscript.

237 - 42: Higher vegetation layers in this context are the tree or shrub layer and gaps occur by treefall  
238 or tree cutting. 220: This is fewer species (then bryophyte species).

239

240

241 Anonymous referee #3:

242 Thank you very much for your review and the very valuable suggestions to improve the manuscript.

243

244 1.) The topic of this paper is likely to have a substantial impact. However, it is very difficult to follow the  
245 numbers of sample replicates across the study. Perhaps a table would help where the hierarchy of  
246 sampling is broken down and all in one place.

247 - Thank you for this comment. We agree that sample numbers may appear somewhat confusing,  
248 which is due to the fact that the study was initially not designed to investigate biocrust  
249 development. Within the BEF China experiment, 34 research plots were used and equipped with  
250 five runoff plots each (thus 170 ROPs in total). Measuring four rainfall events in 2013, we came  
251 up with an n=334 of valid measurements for the erosion assessment. From 2011 to 2015, a  
252 selection of 70 ROPs could be continuously checked for biocrusts. We added further information  
253 to the methods section (lines 139-144, 155-162) and table 1 to clarify sample numbers in the  
254 revised version of the manuscript.

255

256 2.) The authors also put a lot of influence on canopy cover dictating cover of biocrusts but their abiotic  
257 variables are likely influencing the canopy cover. These things should be addressed together or the

258 abiotic setting should be controlled for when looking at canopy cover. The disturbance that is  
259 mentioned, that is the reason for the development of biocrusts is not described.

260 - Thank you for this comment. We agree that abiotic variables are influencing the canopy cover  
261 just as well. Nevertheless, abiotic factors were mainly used to explain biocrust covers as their  
262 influence on the tree layer is investigated by other scientists in separate studies within the BEF  
263 China consortium. In our opinion, widening the analysis would lead beyond the scope of this  
264 study.  
265 Nevertheless, we added further information on clear-cutting and pre-disturbance vegetation  
266 (lines 131-137). Unfortunately, there is no further data on biocrust species before the setup of  
267 the project. The potential natural vegetation of this region is a subtropical broadleaved forest  
268 with dominating evergreen species, which was replaced by a commercial forest plantation in the  
269 1980's. This plantation was then clear-cut in 2008 when the BEF-China experiment was  
270 established (see methods 2.1, Bruelheide et al. 2014, Yang et al. 2013).

271

272 3.) Specific comments: Line 114: The hypotheses could be stated more clearly. (1) "Biocrusts ARE widely  
273 developED (2) "The development of biocrust is influenced by BOTH the surrounding vegetation cover  
274 AND THE soil and terrain attributes."

275 - Hypotheses were adapted according to your and reviewer #2's comments (lines 116-121)

276 Line 173- It is not clear is the analyses met the assumptions of ANOVA.

277 - The dataset was tested and met the assumptions for ANOVA. We added further information on  
278 normality and multi-collinearity to this paragraph (lines 197-198).

279 Line 185- "Than" should be "then".

280 - Changed

281 Line 239- I thought that this paper was primarily about soil erosion and biocrusts but that it not clear  
282 from the first paragraph of the discussion.

283 - The paper is structured along the three hypotheses (1) Biocrust extend under forest, (2)  
284 Influence of vegetation, soil and terrain on biocrust development, (3) Impact of biocrusts on soil  
285 erosion. Thus, we used the same order in the results and discussion part. The title is pointing  
286 more on soil erosion, though, as this was the most important finding in our opinion.  
287 Nevertheless, biocrust development and e.g. classified moss species are of high importance, too.

288 Line 240- It is confusing to state hypotheses by numbers but quickly paraphrasing the hypothesis would  
289 make interpretation easier for the reader.

290 - We agree that paraphrasing the hypotheses in the discussion part enhances the  
291 comprehensibility for the reader. Thus, we added short repetitions of the hypotheses at the  
292 beginning of each discussion paragraph (lines 247-248, 265-266, 285-286, 320-321).



293 Line 241- Is there any pre-disturbance data? It is hard to understand the connection between  
294 interspaces and disturbance without some description of the pre-disturbance structure of the  
295 vegetation.

296 - See comment above. Unfortunately, we do not have any data on biocrusts and biocrust  
297 development derived before the establishment of the experiment in 2009-2010. The pre-  
298 disturbance vegetation was a *Cunninghamia lanceolata* plantation (lines 132-133). The methods  
299 section has been adapted accordingly (131-137).

300 Line 271- Cite Condon and Pyke 2016, who have been able to restore a great deal of moss cover very  
301 quickly.

302 - Thank you for pointing out further literature, which has been added. The work of Condon and  
303 Pyke gives very valuable insights on moss development after vegetation disturbance and fits  
304 well in our context (line 280).

305 Line 321- You would have a stronger close if you finished with the sentence that ends here. It's also  
306 unclear given your findings if there is much of a need to restore biocrusts since you saw recovery of  
307 bryophytes really quickly.

308 - We completely agree and the last two sentences have been removed from the manuscript.  
309 Furthermore, we also believe that the need to restore biocrusts in mesic environments where  
310 biocrusts establish quickly is less evident, than in arid environments (lines 281-282).  
311 Nevertheless, we assume that biocrusts play an important role in young tree plantations, as high  
312 soil losses can already occur in single heavy rainfall events, causing high damage when soil  
313 surfaces are not sufficiently covered. Additionally, there is not much literature about biocrust  
314 recovery in temperate climates and under forest plantations. The end of the paragraph has been  
315 adapted accordingly (lines 276-282).

316 Line 335- You should remind the reader here of your scale as this likely influenced the effects of soil  
317 attributes.

318 - We added further information about scale and improved the manuscript as suggested by the  
319 reviewer (line 366).

320 The authors need to work on the storyline of the paper as well.

321 - We generally improve the writing and storyline throughout the manuscript and changed major  
322 parts of the introduction and discussion.

323

324 **Bryophyte-dominated biological soil crusts mitigate soil erosion**  
325 **in an early successional Chinese subtropical forest**

326

327 Steffen Seitz<sup>1</sup>, Martin Nebel<sup>2,3</sup>, Philipp Goebes<sup>1</sup>, Kathrin Käppeler<sup>1</sup>, Karsten Schmidt<sup>1</sup>, Xuezheng  
328 Shi<sup>4</sup>, Zhengshan Song<sup>1,4</sup>, Carla L. Webber<sup>5</sup>, Bettina Weber<sup>6</sup>, Thomas Scholten<sup>1</sup>

329

330 <sup>1</sup> Soil Science and Geomorphology, Department of Geosciences, University of Tübingen, Tübingen, 72070,  
331 Germany

332 <sup>2</sup> State Museum of Natural History, Stuttgart, 70191, Germany

333 <sup>3</sup> Nees Institute for Biodiversity of Plants, University of Bonn, Bonn, 53115, Germany

334 <sup>4</sup> State Key Laboratory of Soil and Sustainable Agriculture, Institute of Soil Science, Chinese Academy of Sciences,  
335 Nanjing, 210008, PR China

336 <sup>5</sup> Department of Geosciences, Federal University of Rio Grande do Sul, Porto Alegre, 90040-060, Brazil

337 <sup>6</sup> Multiphase Chemistry Department, Max Planck Institute for Chemistry, Mainz, 55128, Germany

338

339 *Correspondence to:* Steffen Seitz ([steffen.seitz@uni-tuebingen.de](mailto:steffen.seitz@uni-tuebingen.de))

340

341

342

343

344

345

346

347

348

349

350

351

352 **Abstract.** This study investigated the development of biological soil crusts (biocrusts) ~~covers~~ in an early successional  
353 subtropical forest ~~ecosystem-plantation~~ and their impact on soil erosion. Within a biodiversity and ecosystem  
354 functioning experiment in Southeast China (BEF China), ~~the effect of these biocrusts on~~ sediment ~~discharge-delivery~~  
355 and runoff ~~measurements were conducted~~ ~~was assessed~~ within micro-scale runoff plots under natural rainfall and  
356 biocrust covers ~~were~~ ~~as~~ surveyed over a five-year period.

357 Results showed that biocrusts occurred widely in ~~our~~ ~~the~~ experimental forest ecosystem and developed from initial  
358 light cyanobacteria- and algae-dominated crusts to later-stage bryophyte-dominated crusts ~~within~~ only three years.  
359 Biocrust covers ~~were~~ ~~as~~ still increasing after six years of tree growth. Within later stage crusts, 25 bryophyte species  
360 were determined. ~~The development of biocrusts was significantly influenced by the s~~ Surrounding vegetation cover  
361 and terrain attributes ~~significantly influenced the development of biocrusts~~. Besides high crown cover and leaf area  
362 index, the development of biocrusts was favoured by low slope gradients, slope orientations towards the incident  
363 sunlight and the altitude of the research plots. ~~Our m~~ Measurements showed, that bryophyte-dominated biocrusts ~~were~~  
364 ~~importantly decreasing~~ ~~strongly decreased~~ soil erosion ~~and being~~ more effective ~~in erosion reduction~~ than abiotic soil  
365 surface covers. Hence, their significant role to mitigate sediment ~~discharge-delivery~~ and runoff generation in mesic  
366 forest environments and their ability to quickly colonize ~~gaps in higher vegetation layers~~ ~~soil surfaces after forest~~  
367 ~~disturbance~~ are of particular interest for soil erosion control in early stage forest plantations. ~~A detailed record of~~  
368 ~~different biocrust species and their functional influence on soil erosion processes as well as a thorough monitoring of~~  
369 ~~biocrust covers under closing tree canopy in subtropical forests is required in further studies.~~

370

371

372

373

374

375

376

377

378

379

380

381

## 382 1 Introduction

383 Biological soil crusts (hereinafter referred to as biocrusts) are a living soil cover, which plays significant functional  
384 roles in many environments (Weber et al., 2016). In initial ecosystems, communities of cyanobacteria, algae, fungi,  
385 lichens, bryophytes and bacteria in varying combinations are the first to colonize the substrate (Evans and Johansen,  
386 1999). ~~Bioerusts~~They are often dominated by one organism group, with cyanobacterial crusts being indicators for  
387 early stage crusts and drier conditions (Malam Issa et al., 1999; Malam Issa et al., 2007) and bryophyte-dominated  
388 crusts being indicators for later stage crusts and moister conditions (Colesie et al., 2016; Seppelt et al., 2016). Those  
389 highly specialized communities form a biological crust immediately on top or within the first millimetres of the soil  
390 surface (Büdel, 2005). Biocrusts ~~generally-preferably~~ occur under harsh conditions of temperature or light, ~~and when~~  
391 ~~the cover of where~~ vascular vegetation ~~is sparse~~tends to be rare (Allen, 2010). Therefore, biocrusts are generally  
392 widespread under dryland conditions (Berkeley et al., 2005; Belnap, 2006; Büdel et al., 2009), whereas under mesic  
393 conditions they mostly occur as a successional stage after disturbance or in environments under regularly disturbed  
394 regimes (Büdel et al., 2014).

395 ~~In direct competition~~Bioerusts are generally less capable of competing with phanerogamic plants, biocrusts are  
396 generally in an inferior position and thus their ~~erust~~ development is limited ~~when under~~ closed plant canopies or ~~when~~  
397 ~~leaf~~ litter layers ~~come into play~~occur (Belnap et al., 2003a). This limitation is due to the competition for light (Malam  
398 Issa et al., 1999) and nutrients (Harper and Belnap, 2001). ~~Nevertheless, Disturbance of the phanerogamic vegetation~~  
399 ~~layers, however, changes this competitive situation. Such disturbances can occur e.g. in forest ecosystems by natural~~  
400 ~~treefall or after~~human-induced clear-cutting (Barnes and Spurr, 1998). ~~The e~~Complete removal of a forest  
401 ~~signifies~~causes a harsh ~~cut~~shift in vegetation development and creates a starting point for new vascular plant ~~as well~~  
402 ~~as biocrust communities~~ (Bormann et al., 1968; Keenan and Kimmins, 1993; Beck et al., 2008). Biocrusts are able to  
403 quickly colonize gaps in higher vegetationnatural clearances in tree layers (Belnap et al., 2003a) ~~or as well as gaps~~  
404 ~~appearing after human disturbance~~ (Dojani et al., 2011; Chiquoine et al., 2016). Biocrusts are often dominated by one  
405 organism group, with cyanobacterial crusts being indicators for early stage crusts and drier conditions (Malam Issa et  
406 al., 1999; Malam Issa et al., 2007). ~~Generally, it can be stated that a high number of studies could not clarify current~~  
407 ~~knowledge on~~ the relation between the development of biocrust cover and vascular plant cover leaves room for further  
408 research (Kleiner and Harper, 1977; Belnap et al., 2003b; Zhang et al., 2016)~~and some studies even showed a positive~~  
409 ~~correlation (Belnap et al., 2003b). This coherence was explained with enhanced nutrient levels provided for vascular~~  
410 ~~plants growing on crusted compared to non-crusted soil surfaces (Kleiner and Harper, 1977; Belnap, 2002). Therefore,~~  
411 ~~the improvement of soil fertility by bioerusts has been shown to be fundamental for the development of vascular plant~~  
412 ~~communities in some regions (St. Clair and Johansen, 1993; Harper and Belnap, 2001). Bioerusts are able to quickly~~  
413 ~~colonize gaps in higher vegetation layers (Belnap et al., 2003a) or gaps appearing after disturbance (Dojani et al.,~~  
414 ~~2011; Chiquoine et al., 2016).~~ ~~Such disturbances can occur e.g. in forest ecosystems by treefall or after clear cutting~~  
415 ~~(Barnes and Spurr, 1998). The complete removal of a forest signifies a harsh cut in vegetation development and creates~~  
416 ~~a starting point for new vascular plant as well as bioerust communities (Bormann et al., 1968; Keenan and Kimmins,~~  
417 ~~1993; Beck et al., 2008).~~ NeverthelessIn particular, the development of biocrusts in early successional forest

418 ecosystems ~~under a closing tree canopy~~ has not been in focus of research so far ~~and thus there are only few studies on~~  
419 ~~this topic~~ (Su et al., 2007; Zhang et al., 2016). Furthermore, ~~evidence for descriptions of~~ different biocrust types in  
420 mesic vegetation zones and ~~especially from investigations in~~ southeast Asia are rare (Büdel, 2003a; Bowker et al.,  
421 2016). ~~We assume that biocrusts are also able to coexist in mesic subtropical forest environments shortly after~~  
422 ~~deforestation, but their cover decreases with ongoing tree canopy closure and decreasing light intensity.~~

423 Functional ~~roles~~ of biocrusts have been investigated for decades, but less attention has been paid to their spatial  
424 distribution and characteristics (Allen, 2010). Biocrust cover varies across ~~different spatial~~ scales (from centimetres  
425 to kilometres) and ~~it could be shown that it~~ depends not only on the surrounding vascular vegetation cover, but also  
426 on ~~soils, geomorphology and (micro-)topography or terrain~~ (Evans and Johansen, 1999; Ullmann and Büdel, 2003;  
427 Kidron et al., 2009; Bowker et al., 2016) ~~in arid, semi-arid, temperate and boreal environments~~. Different biocrust  
428 distributions ~~could have been~~ related to elevation and terrain-influenced microclimatic gradients (Kutiel et al., 1998),  
429 different geomorphic zones (Eldridge, 1999), varying aspects (George et al., 2000) ~~and/or~~ soil types (Bu et al., 2016).  
430 ~~We assume that this is also true for mesic subtropical forest environments.~~ To our knowledge, investigations on the  
431 influence of small-scale (centimetres to metres) topographic variations on biocrust development are rare and further  
432 studies will ~~assist in the understanding of their abundance and distribution~~ ~~help to understand the role of these small-~~  
433 ~~scale factors~~ (Garcia-Pichel and Belnap, 2003; Bu et al., 2016; Bowker et al., 2016). Furthermore, as the development  
434 of biocrusts is characterized by a high complexity and spatial heterogeneity with many micro-climatic and micro-  
435 environmental factors, it is of great significance to conduct comparative studies on the spatial distribution of biocrusts  
436 (Bu et al., 2013b). This is particularly true for initial forest ecosystems (Weber et al., 2016).

437 ~~Moreover, biocrusts have been~~ ~~were~~ recognized ~~as to having~~ ~~have a~~ major influences on terrestrial ecosystems (Buscot  
438 and Varma, 2005; ~~Belnap, 2006~~) as they protect soil surfaces against erosive forces by both wind and water (Bowker  
439 et al., 2008; Zhao et al., 2014), ~~enhance soil stability (Malam Issa et al., 2001; Warren, 2003) and influence the~~  
440 ~~hydrological cycle (Belnap, 2006). Nevertheless, They can absorb the kinetic energy of rain drops (splash effect),~~  
441 ~~decrease shear forces and stabilize soil particles with protonemal mats and fine rhizoids~~ ~~impacts of bioerusts on and~~  
442 ~~thus decrease particle detachment and enhance~~ soil stability (Malam Issa et al., 2001; Warren, 2003; Belnap and  
443 Lange, 2003) ~~and soil hydrology~~. ~~Those effects may~~ differ with regard to soil texture, surface roughness, water  
444 repellency and finally different crust species and developmental stages (Warren, 2003; Belnap and Büdel, 2016).  
445 ~~Furthermore~~ ~~However,~~ studies that directly relate ~~different types of~~ biocrust cover to rates of soil erosion are few  
446 (Allen, 2010). ~~Furthermore,~~ ~~and~~ the influence of biocrusts on sediment ~~discharge-delivery~~ and runoff ~~has mostly been~~  
447 ~~investigated in arid and semi-arid climates and in~~ humid climates ~~has~~ ~~ve~~ been largely disregarded (Belnap and Lange,  
448 2003; Weber et al., 2016). ~~We assume that biocrusts are effectively counteracting soil losses in early successional~~  
449 ~~subtropical forest plantations and thus may play a major functional role in soil erosion control in mesic areas under~~  
450 ~~anthropogenic influence.~~

451 This study aims to investigate the development of biocrust cover in an early successional subtropical forest ecosystem  
452 ~~after human disturbance~~ and the impact of those biocrusts on soil erosion. Therefore, interrill erosion was measured  
453 with runoff plots and the occurrence, distribution and development of biocrusts was recorded. The study was

454 conducted in an experimental forest plantation (BEF China), which aims to study biodiversity and ecosystem  
455 functioning relationships in southeast China (Yang et al., 2013; Bruelheide et al., 2014). During the study, the  
456 following hypotheses were addressed:

457 (1) Biocrusts ~~widely develop~~ are able to coexist in mesic early successional subtropical forest ecosystems, but crust  
458 cover decreases with ongoing ~~tree growth~~ canopy closure and decreasing light intensity.

459

460 (2) The development of biocrusts in mesic subtropical forests is not only influenced by the surrounding vegetation  
461 cover, but also by soil attributes which influence biocrust growth and terrain attributes which affect microclimatic  
462 conditions.

463

464 (3) Biocrusts mitigate interrill soil erosion in early successional subtropical forest ~~ecosystems~~ plantations.

465

## 466 2 Material and methods

### 467 2.1 Study site and experimental design

468 The study was carried out within the BEF China experiment (Bruelheide et al., 2014) in Xingangshan, Jiangxi  
469 Province, PR China (29°06.450' N and 117°55.450' E). The experimental area is located in a mountainous landscape  
470 at an elevation of 100 m a.s.l. to 265 m a.s.l. with slopes from 15° to 41° (Scholten et al., 2017). The bedrock is non-  
471 calcareous slates weathered to saprolite and predominant soil types are Cambisols with Anthrosols in downslope  
472 positions and Gleysols in valleys (Scholten et al., 2017). The mean annual temperature is 17.4 °C and the annual  
473 precipitation is 1635 mm with about 50 % falling during May to August (Goebes et al., 2015). The climate is typical  
474 for summer monsoon subtropical regions. The potential natural vegetation of this region is a subtropical broadleaved  
475 forest with dominating evergreen species. It has been widely replaced by tree plantations of mostly *Cunninghamia*  
476 *lanceolata* for the purpose of commercial forestry in the 1980's (Bruelheide et al., 2014). The experimental area  
477 (approx. 38 ha) is structured in 566 research plots (25.8 m × 25.8 m each) at two sites (A and B) and was clear-cut  
478 and replanted with 400 tree saplings per plot in different tree species mixtures in 2009 and 2010 (Yang et al., 2013).  
479 A selection of 34 research plots (VIPs, Very Intensively studied Plots) was used for this study (Seitz et al., 2016).  
480 which were clear cut and replanted with 400 tree saplings per plot in 2009 and 2010, respectively (Yang et al., 2013).  
481 Shrubs and coppices were weeded once a year from 2010 to 2012 to help the tree saplings grow, following common  
482 practice in forest plantations of this area. ~~A selection of 34 research plots (VIPs, Very Intensively studied Plots) was~~  
483 ~~used for this study.~~

### 484 2.2 Field methods

485 Biocrust cover was determined photogrammetrically in 70 selected micro-scale runoff plots (ROPs, 0.4 m × 0.4 m;  
486 Seitz et al., 2015) at five timesteps (November 2011, May 2012, May 2013, May 2014 and May 2015). ~~and general~~  
487 ~~biocrust types~~Biocrusts were described in the field based on appearance, functional groups and species composition  
488 and biocrust types determined based on the dominating autotrophic component. During the rainy season in summer  
489 2013, an extended survey linked to soil erosion measurements (see below) was conducted in five ROPs on 34 research  
490 plots each in (170 ROPs in total, (see below and Table 1). At each ROP, perpendicular images were taken with a  
491 single lens reflex camera system (Canon 350D, Tokio, Japan) and processed with the grid quadrat method in GIMP  
492 2.8 using a digital grid overlay with 100 subdivisions (cf. Belnap et al., 2001). Stone cover and biocrust cover were  
493 separated by hue distinction. A continuous leaf litter cover, which may impede analyses, was not present during  
494 measurements. Biocrusts were collected in 2013 and samples were dried at 40 °C (Dörrex drying unit, Netstal,  
495 Switzerland). The identification of species was carried out by morphological characteristics using a stereomicroscope  
496 (Leitz TS, Wetzlar, Germany), a transmitted-light microscope (Leitz Laborlux S, Wetzlar, Germany) and ultraviolet  
497 light. Bryophytes (dominating taxa in 2013) were determined to the species level, wherever possible and separated  
498 into mosses (Bischler-Causse, 1989; Moos flora of China: Gao et al., 1999; 2001; 2002; 2003; 2005; 2007; 2008;  
499 2011) and liverworts (Zhu, 2006; Söderström et al., 2016 and Alfons Schäfer-Verwimp, personal communication).  
500 Comparisons were conducted with specimen hosted in the herbarium of the State Museum of Natural History in  
501 Stuttgart, Germany (Herbarium STU).

502 Sediment discharge-delivery and surface runoff were measured ~~within 34 research plots on five micro-scale ROPs~~  
503 ~~each within 170 ROPs~~ in summer 2013 (see above and n=170, Table 1). After four timesteps, 334 valid ROP  
504 measurements entered the analysis (for detailed information see Seitz et al., 2016). Sediment discharge-delivery was  
505 sampled, dried at 40 °C and weighed, whereas surface runoff and rainfall amount were measured in situ. At every  
506 ROP, crown cover and leaf area index (LAI) were measured with a fish-eye camera system (Nikon D100 with Nikon  
507 AF G DX 180°, Tokio, Japan) and calculated with HemiView V.8 (Delta-T devices, Cambridge, UK). Measurements  
508 of tree height and crown width were provided by Li et al. (2014) at research plot scale (n=34). Tree species richness  
509 and tree composition resulted from the experimental setup of BEF China (Bruehlheide et al., 2014).

510 Soil attributes (Table 1) were determined for every research plot (n=34) using pooled samples from nine point  
511 measurements each. Soil pH was measured in KCl (WTW pH-meter with Sentix electrodes, Weilheim, Germany),  
512 bulk soil density was determined by the mass-per-volume method and total organic carbon (TOC) was measured using  
513 heat combustion (Elementar Vario EL III, Hanau, Germany). Soil organic matter (SOM) was calculated by multiplying  
514 TOC with the factor 2 (Pribyl, 2010).

### 515 2.3 Digital terrain analysis

516 Terrain attributes (Table 1) were derived from a digital elevation model (DEM, Scholten et al., 2017) at research plot  
517 scale (n=34). Attributes were the terrain ruggedness index (TRI, Riley et al., 1999) to describe the heterogeneity of  
518 the terrain, the Monte-Carlo based flow accumulation (MCCA, Behrens et al., 2008) to diagnose terrain driven water  
519 availability, altitude above sea level to address elevation effects and the eastness and the northness (Roberts, 1986) to

520 describe plant related climatic conditions. Those terrain attributes cover major landscape features of the experimental  
521 area and were not correlated. Slope was additionally measured with an inclinometer at every ROP (n=170, see Seitz  
522 et al., 2016).

523

524 [ Table 1 ]

525

526 2.4 Statistical methods

527 The temporal development of biocrust covers (1) from 2011 to 2015 was assessed at five timesteps within 70 ROPs  
528 (see above) by an analysis of variance (ANOVA) and Tukey's Honestly Significant Difference (HSD) test (n=350).

529 The influences of vegetation, soil and topographic attributes on biocrust cover (2) in 170 ROPs (see above) were  
530 assessed by linear mixed effects (LME) models (n=334). Crown cover, bulk soil density, SOM, pH, altitude, slope,  
531 MCCA, TRI, eastness, northness and tree species richness were fitted as fixed effects and biocrust cover as response  
532 variable. The attributes were tested with Pearson's correlation coefficient before fitting. LAI was fitted individually  
533 in exchange to crown cover due to multi-collinearity. Experimental site and research plot were fitted as random effects  
534 and hypotheses were tested with an ANOVA type 1 with Satterthwaite approximation for degrees of freedom.

535 The influences on soil erosion (3) were assessed by LME models with restricted maximum likelihood (n=334) and  
536 sediment discharge-delivery and surface runoff as response variables, respectively. Crown cover, slope, surface cover,  
537 SOM, rainfall amount and tree species richness were fitted as fixed effects. Surface cover was ~~then~~ split into surface  
538 cover by biocrusts and by stones, which entered the analysis as fixed conjoined factors. Precipitation events nested in  
539 plot, tree species composition, experimental site and ROP nested in plot were fitted as random effects. Attributes were  
540 not correlated. The hypothesis was tested with an ANOVA type 1 with Satterthwaite approximation for degrees of  
541 freedom. Moreover, the Wilcoxon rank sum test was applied to test for differences between biocrust cover and stone  
542 cover on sediment discharge-delivery and surface runoff. Therefore, the dataset was split into data points where  
543 biocrust cover exceeds stone cover (n=281) and data points where stone cover exceeds biocrust cover (n=53).

544 All response variables were log-transformed before modelling. ~~and~~ The dataset was tested for multi-collinearity and  
545 met all prerequisites to carry out ANOVAs. All analyses were performed with R 3.1.2 (R Core Team, 2014). LME  
546 modelling was conducted with "lmerTest" (Kuznetsova et al., 2014) and rank sum tests with "exactRankTests"  
547 (Hothorn and Hornik, 2015). Figures were designed with "ggplot2" (Wickham, 2009).

548

549 **3 Results**

550 3.1 Temporal development of biocrust cover



551 Biocrusts ~~were detected~~occurred in 94 % of all ROPs and their cover within ROPs ranged between 1 % and 88 % over  
552 ~~all the course of~~ five years. The mean biocrust cover of all ROPs more than tripled from their installation in 2011 to  
553 the last measurement in 2015 (Fig. 1). ~~This~~ increases ~~was~~ere significant from 2011 to 2015 and from 2012 to 2013,  
554 2013 to 2014 and 2014 to 2015 ( $p < 0.001$ ).

555

556 [ Figure 1 ]

557 Whereas a clear bryophyte-dominance of biocrusts was evident at the time of sampling in 2013, different successional  
558 stages were identified in the field and on ROP photos from 2011 to 2015 (Fig. 2). In 2011, a smooth, light  
559 cyanobacteria- and algae-dominated crust with ~~traces of~~few lichens and ~~few~~ bryophytes indicated ~~an earlier pioneer~~  
560 stage of biocrust development (~~cf.~~ Colesie et al., 2016). In 2013, 25 moss and liverwort species were classified (Table  
561 2) and formed a bryophyte-dominated crust with some cyanobacteria, algae, lichens and micro-fungi still observed ~~in~~  
562 ~~minor numbers~~ within ROPs. The same was true in 2015, but first evidence of vascular plants (*Selaginella* and  
563 *Poaceae*) indicated a further advanced biocrust stage change in the vegetation cover of the soil surface.

564

565 [ Figure 2 ]

566

567 [ Table 2 ]

568

569 3.2 The influence of vegetation, soil and terrain on biocrust cover

570 The development of biocrust cover in 2013 was positively influenced by crown cover and LAI as attributes of the  
571 surrounding vegetation (Table 3). Furthermore, it was negatively affected by slope and northness and slightly  
572 positively affected by the altitude of the research plots as terrain attributes (Table 3). Further ~~soil or~~ terrain attributes  
573 or any soil attributes did not affect the development of biocrust cover.

574

575 [ Table 3 ]

576

577 3.3 The impact of biocrust cover on soil erosion

578 The results indicate that biocrusts strongly affect soil erosion. ROPs with biocrust cover below 10 % showed a mean  
579 sediment delivery of 302 g m<sup>-2</sup> and a mean runoff volume of 39 L m<sup>-2</sup>, whereas ROPs with biocrust cover above 50 %  
580 showed a mean sediment delivery of 74 g m<sup>-2</sup> and a mean runoff volume of 29 L m<sup>-2</sup>. Both biocrust and stone cover,

581 as well as total soil surface cover (comprising both biocrust and stone cover, p<0.001) negatively affected sediment  
582 discharge-delivery (p<0.001, Table 4). In addition, soil surface cover negatively affected surface runoff (p=0.003).  
583 However, only biocrust but not stone cover mediated the effect of runoff. Furthermore, crown cover, SOM and rainfall  
584 amount affected sediment discharge-delivery, whereas runoff was affected by crown cover and rainfall amount. ROPs  
585 primarily influenced with increased by-stone cover showed higher sediment discharge-delivery and surface runoff  
586 than compared to those primarily influenced by with increased biocrust cover (Fig. 3).

587

588 [ Table 4 ]

589

590 [ Figure 3 ]

591

## 592 4 Discussion

### 593 4.1 Temporal development of biocrust cover

594 Biocrusts were detected widely within the experiment and occupied a considerable area in the interspaces of the  
595 growing tree community. Thus, the first part of hypothesis 1, stating that biocrusts are able to coexist in mesic early  
596 successional subtropical forests, can be confirmed, as biocrusts they successfully colonized the newly created habitats  
597 originating from the disturbance by forest clear-cutting and weeding (Bruehlheide et al., 2014). Although biocrusts  
598 have been mainly defined to occur in dryland regions (Weber et al., 2016), they can also appear as a transient feature  
599 in mesic environments after major singular or repeated disturbance events (Büdel et al., 2014, Fischer et al., 2014). In  
600 the current study, The deforestation provided a local arid micro-environment, which initiated early biocrust  
601 development (Büdel, 2003b). At this early young stage of the forest development ecosystem, biocrusts were highly able  
602 to competitive coexist with upcoming tree saplings and formed a pioneer vegetation on the soil surface (Langhans et  
603 al., 2009), which then prepared the upper soil layer for further provides the basis for the growth of vascular other plants  
604 by the input of carbon and nitrogen (West, 1990; Evans and Johansen, 1999). Biocrusts generally are known to  
605 facilitate the succession of vascular plants to more advanced stages (Bowker, 2007), but, Accordingly, tree growth  
606 and thus crown cover provide shade and protection from wind, which then can also leads to an advancement in biocrust  
607 development, e.g. due to the protection from direct sunlight (Zhao et al., 2010; Tinya and Ódor, 2016). The bryophyte-  
608 dominance of biocrusts in 2013 documented this development into a later and somewhat moister successional stage  
609 (Williams and Büdel, 2012). Biocrusts are often dominated by one organism group, with cyanobacterial crusts being  
610 indicators for early stage crusts and drier conditions (Malam Issa et al., 1999; Malam Issa et al., 2007). The  
611 successional development of biocrusts within the BEF China experiment seemed to be faster than e.g. reported by  
612 Zhao et al. (2010) for the Chinese Loess Plateau, who claimed biocrusts from a 3 year old site as early successional  
613 dominated by cyanobacteria. Later-stage B bryophytes in biocrusts have received comparatively little attention in

614 forest understorey (Gilliam, 2007) and biocrust studies (Weber et al., 2016), and in Asia only 23 different species have  
615 been reported within biocrusts up to now (Seppelt et al., 2016). Thus, this study with 25 recorded moss and liverwort  
616 species, most of them being new records within Asian biocrusts (Burkhard Büdel, personal communication)  
617 substantially increases the knowledge on biocrusts of this region.

618 ~~Nevertheless,~~ The extent of biocrusts was strongly increasing since 2012 i.e. three years after tree replantation and  
619 still gaining coverage in the sixth year after ~~our~~the experimental setup. Thus, the second part of hypothesis 1, stating  
620 that crust cover decreases with ongoing canopy closure, has to be rejected. Even if single trees were already up to 7.4  
621 m high (Li et al., 2014) and LAI was up to 5.35 in 2013, biocrusts still remained ~~competitive-coexisting~~ within the  
622 early stage forest ecosystem. ~~Moreover~~ Furthermore, increasing crown cover and LAI seemed to foster the  
623 development of bryophyte-dominated biocrusts at this ecological stage. By the end of this study, there were indications  
624 that biocrust cover may start to be pushed back, as first vascular plants appeared in between. This is in line with  
625 existing literature, demonstrating that ~~It is assumed that with~~ continuing tree growth will cause ~~the~~ biocrust  
626 communities ~~will~~ to adapt ~~and the~~ with an altered composition of moss and liverwort species ~~will further change~~  
627 (Eldridge and Tozer, 1997; Fenton and Frego, 2005; Goffinet and Shaw, 2009). ~~Thus~~ It has been shown, that  
628 bryophytes ~~will likely~~ switch from species favouring sunny habitats to more shade-tolerant species (Zhao et al., 2010;  
629 Müller et al., 2016). In addition, there might also be a reduction in bryophyte diversity due to shady conditions, where  
630 only a smaller number of species could prevail. ~~Nevertheless, adapting biocrusts seem to be able to coexist widely~~  
631 ~~with vascular plants under a nearly closed tree canopy, even if~~ In later stages is assumed that biocrust cover will be  
632 replaced by vascular vegetation (in light forests) or buried under persisting leaf litter (under darker conditions).  
633 ~~decrease in later years with an increasing leaf litter layer (Belnap and Lange, 2003).~~ In this context, the ecological  
634 roles of biocrusts in succession models and plant restoration are of interest (Hawkes, 2004; Bowker, 2007). In  
635 particular, biocrust succession in temperate climates has received limited scientific attention (Read et al., 2016).  
636 ~~Restoration of biocrusts in disturbed ecosystems could be a practical approach to improve and accelerate plant~~  
637 ~~community rehabilitation after disturbance and~~ Furthermore, there are several projects under way to establish  
638 successful restoration techniques in arid and semi-arid environments (Rosentreter et al., 2003; Bowker, 2007;  
639 Chiquoine et al., 2016; Condon and Pyke, 2016), which could be adapted to mesic environments. Nevertheless, it has  
640 to be stated here that biocrust restoration might be dispensable in some mesic systems, as natural reestablishment  
641 appeared to be very fast in this study.

#### 642 4.2 The influence of vegetation, soil and terrain on biocrust cover

643 In the current study, ~~The~~ development of biocrusts was influenced by vegetation and terrain ~~attributes~~, but not by soil  
644 attributes. Thus, hypothesis 2, stating that the biocrust development is not only influenced by surrounding vegetation,  
645 but also by soil and terrain, can ~~only~~ be partly be confirmed for this ecosystem. As ~~already shown before~~ demonstrated  
646 above, high crown cover and LAI positively affected the development of biocrust cover in 2013. This increase in  
647 biocrust cover is likely caused by ~~finding is due to the~~ successional alteration of biocrusts towards bryophyte-  
648 dominance. Mosses and liverworts profit from humid conditions and a higher protection from light compared to  
649 cyanobacteria- or lichen-dominated crusts (Ponzetti and McCune, 2001; Marsh et al., 2006; Williams et al., 2013).

650 The successional development of biocrusts within the BEF China experiment was faster than reported by Zhao et al.  
651 (2010) for Chinese grasslands (Loess Plateau), who claimed biocrusts from a 3-year old site as early successional and  
652 dominated by cyanobacteria. The recovery rate was also faster than described by Eldridge (1998) and Read et al.  
653 (2011) for semi-arid Australia, each one of the very few studies on biocrust recovery under woodland. In the study  
654 presented here, the rapid change in biocrust community composition is mainly linked to the growth rates of  
655 surrounding trees in this subtropical forest. As functions of biocrusts, such as erosion reduction, are species-dependent,  
656 the rapid change in species composition might also lead to considerable variations in functional responses. Further  
657 studies are required to investigate species changeover times in different environments and particularly in disturbed  
658 mesic ecosystems. Environmental factors such as water content, light intensity and temperature influence e.g.  
659 photosynthesis and respiration (Zhao et al., 2010; Weber et al., 2012).

660 Furthermore, several terrain attributes affected biocrust cover. Slope was the most prominent of those factors, causing  
661 a considerable decline in biocrust cover with increasing slope. ~~This finding was being~~ explained by their decreasing  
662 ability to ~~fasten~~ themselves on the soil surface at high slope angles and thus their tendency to erode from the soil  
663 surface, especially when large surface water flows occurred during rainfall events (Chamizo et al., 2013; Bu et al.,  
664 2016). Thus, the surface-protecting effect of biocrusts decreases at steep plantation sites and during heavy monsoon  
665 rainfall events, which frequently occur in the broader research area in Jiangxi Province, China (Yang et al., 2013;  
666 Goebes et al., 2015). Moreover, microclimatic factors played a role in the development of biocrusts. Northness showed  
667 a positive impact on biocrust covers and indicated that slope orientations towards the incident sunlight directly  
668 influence the biocrust development. This was also observed in other studies in arid and semi-arid areas (Bowker et al.,  
669 2002; Zaady et al., 2007). Furthermore, biocrust development depended on the altitude, which is probably also by  
670 affecting microclimatic conditions (Kutiel et al., 1998; Chamizo et al., 2016; Bu et al., 2016). Those microclimatic  
671 factors are additionally altered by the growing tree vegetation itself.

672 Interestingly, SOM and pH did not affect biocrust cover in this study, ~~whereas generally, underlying substrates are a~~  
673 main factor for bryophyte development (Spitale, 2017) and soil attributes are known to strongly influence biocrust  
674 cover (Bowker et al., 2016). At the experimental area, increased organic matter contents and acidic conditions have  
675 been determined, as they were found at the experimental area (Scholten et al., 2017), which generally favour the  
676 development of bryophyte-dominated biocrusts (Eldridge and Tozer, 1997; Seppelt et al., 2016). Nevertheless,  
677 ~~discrepancies~~ the variation between the research plots ~~were~~ small and apparently not large enough to cause prominent  
678 differences in biocrust development. Comparisons between forest plantations on different substrates would help to  
679 clarify the influence of soil attributes on biocrust development in those environments and to assess their effect in a  
680 broader environmental context (Spitale, 2017).

#### 681 4.3 The impact of biocrust cover on soil erosion

682 Biocrust cover clearly mitigated interrill soil erosion in this early stage ecosystem and thus hypothesis 3 was  
683 confirmed. Sediment delivery was strongly reduced with increasing biocrust cover. For arid environments, e.g. Cantón  
684 et al. (2011) and Maestre et al. (2011) showed that sediment delivery from soil surfaces covered with biocrusts

685 decreases compared to bare soil surfaces with physical crusting (from 20 g m<sup>-2</sup> to <1 g m<sup>-2</sup> and 40 g m<sup>-2</sup> to <5 g m<sup>-2</sup>,  
686 respectively), both studies using micro-scale runoff plots (0.25 m<sup>2</sup>). The study presented here shows, that biocrusts  
687 fulfil this key ecosystem service also within a particular mesic habitat, even if their biomass and soil penetration depth  
688 is low compared to trees. This functional role is due to the fact that Bbiocrusts attenuate the impact of raindrops on  
689 the soil surface and greatly improve its resistance against soil erosion sediment detachment (Eldridge and Greene,  
690 1994; Goebes et al., 2014; Zhao et al., 2014). Moreover, they have the ability to glue loose soil particles by  
691 polysaccharides extruded by eyanaobacteriacyanobacteria and green algae (Buscot and Varma, 2005). In the current  
692 study, protonemata and rhizoids of mosses and liverworts were observed to be most effective by weaving and thus  
693 fixing the first millimetres of the top soil, as also described by ~~(Bowker et al., 2008)~~ Bowker et al. (2008). *Pogonatum*  
694 *inflexum* and *Atrichum subserratum* are well known to have a positive effect on erosion control due to their sustained  
695 protonema system (Martin Nebel, personal observation). Furthermore, bryophytes increase the formation of humus,  
696 which in turn assists to bind primary particles into aggregates (Scheffer et al., 2010; Zhang et al., 2016). ~~Thus, biocrusts~~  
697 ~~contribute to the aggregation of soil particles and stabilize the upper soil surface.~~

698 Whereas a partial stone cover doesid not decrease surface runoff in this study, bryophyte-dominated biocrusts  
699 positively influenced the hydrological processes in the top soil layer regarding erosion control. Thus, they actively  
700 mitigated initial soil erosion compared to abiotic components such as stones and pebbles. Furthermore, bBiocrusts are  
701 knownhave been frequently shown to influence hydrological processes such as surface runoff and infiltration rates  
702 (Belnap, 2006; ~~Cantón et al., 2011; Chamizo et al., 2012;~~ Rodríguez-Caballero et al., 2013). ~~Just r~~Recently, Chamizo  
703 et al. (2016) showed that ~~runoff and infiltration also depend on the investigation scale. Whereas point based~~  
704 ~~measurements showed both increasing and decreasing runoff through biocrusts depending on the study site, studies of~~  
705 ~~larger scale (>2 m<sup>2</sup>) revealed that~~ biocrusts decrease runoff generation at larger scale (>2 m<sup>2</sup>) (Chamizo et al., 2016),  
706 but converse behaviour has also been found (Cantón et al., 2002; Maestre et al., 2011). ~~Whereas a partial stone cover~~  
707 ~~does not enhance infiltration, bryophyte dominated biocrusts positively influence the hydrological processes in the~~  
708 ~~top soil layer regarding erosion control. Thus, they actively mitigate initial soil erosion compared to abiotic~~  
709 ~~components such as stones. Moreover, r~~Reducing effects on runoff are related to ~~the~~ biocrusts species composition  
710 (Belnap and Lange, 2003) and later developmental biocrust stages with higher biomass levels provide more resistance  
711 to soil loss (Belnap and Büdel, 2016). Especially bryophyte-dominated crusts ~~appear~~ have shown to enhance  
712 infiltration and reduce runoff due to their rhizome system, ~~whilecausing~~ soil erosion rates to stay low (Warren, 2003;  
713 Yair et al., 2011). Also other Ffield studies ~~in Utah, USA,~~ revealed that later stage biocrusts, containing both lichens  
714 and ~~mosses~~ bryophytes, offer more protection against soil erosion than cyanobacterial crusts (Belnap and Gillette,  
715 1997), as They provide higher infiltration potential than biocrusts dominated by cyanobacteria (Kidron, 1995) ~~and~~  
716 ~~decrease the aggradation of soil pores by reducing the kinetic energy of raindrops~~ (Eldridge and Greene, 1994).  
717 Moreover, biocrusts dominated by bryophytes increase surface roughness and thus slow down runoff (Kidron et al.,  
718 1999; Rodríguez-Caballero et al., 2012). ~~Furthermore~~ inally, they also absorb water and provide a certain comparably  
719 high water storage capacity (Warren, 2003; Belnap, 2006). ~~Especially~~ For example, Leucobryum juniperoidum,  
720 which has been widely found in this study, ~~is~~ known for its water absorbing capacity (Martin Nebel, personal  
721 observation). Thus, the observed rapid change in biocrust composition from cyanobacteria to bryophyte dominance

722 improved soil erosion control in this forest environment. ~~Whereas a partial stone cover does not enhance infiltration,~~  
723 ~~bryophyte-dominated biocrusts positively influence the hydrological processes in the top soil layer regarding erosion~~  
724 ~~control. Thus, they actively mitigate initial soil erosion compared to abiotic components such as stones.~~ This study  
725 showed, that biocrust covers play an important role in the avoidance of severe soil erosion in early successional forest  
726 plantations. This effect should be considered for the replantation of forests in regions endangered by soil erosion.  
727 ~~Furthermore, the artificial cultivation of mosses in such initial forest ecosystems could improve erosion control (Bu~~  
728 ~~et al., 2013a; Zhao et al., 2016).~~ At this point, the importance of biocrusts in the rehabilitation of disturbed ecosystems  
729 comes into focus again (Bowker, 2007).

730

## 731 5 Conclusion

732 This study investigated the development and distribution of biocrusts in an early stage subtropical forest ecosystem  
733 plantation as well as their impact on interrill soil erosion after human disturbance. The following conclusions were  
734 obtained:

735 (1) Biocrusts occurred widely in this mesic early successional forest ecosystem in subtropical China. ~~They developed~~  
736 ~~quickly to later stages in this mesic environment~~ and were already dominated by bryophytes after three years of tree  
737 growth (25 bryophyte species classified). After six years of continuing canopy closure, biocrust cover was still  
738 increasing. Further monitoring under closing tree canopy is of importance to detect changes in biocrust cover and  
739 species composition ~~in subtropical environments.~~ As this study discusses a very particular subtropical forest  
740 environment, where trees were replanted after clearcutting, results have to be viewed with this particular setup in  
741 mind. Further studies on biocrust development in different disturbed forest ecosystems appear to be of high interest.

742 (2) The surrounding vegetation and underlying terrain affected biocrust development, whereas soil attributes did not  
743 have an effect at this small experimental scale. Besides high crown cover and LAI, the development of biocrusts was  
744 favoured by low slope gradients, slope orientations towards the incident sunlight and altitude. Further research appears  
745 to be necessary to explain effects of terrain attributes such as aspect or elevation and effects of underlying soils and  
746 substrates.

747 (3) Soil surface cover of biocrusts largely affected soil erosion control in this early stage of the forest  
748 ecosystemplantation. Bryophyte-dominated crusts ~~had showed~~ erosion-reducing characteristics ~~regarding~~ both with  
749 regard to sediment discharge-delivery and surface runoff. Furthermore, they were more effectively decreasing-to  
750 decrease soil losses compared-to abiotic soil surface covers. ~~These functional properties~~ erosion-reducing  
751 influence of bryophytes dominated biocrusts and their rapid development from cyanobacteria-dominated crusts with  
752 regard to soil erosion need should-to be considered ~~for~~ in management practices in early stage forest plantations.  
753 Further research is required on functional mechanisms of different biocrust and bryophyte species and their impact on  
754 soil erosion processes.

755 **Data availability**

756 Data are publicly accessible and archived at the BEF China data portal (<http://china.befdata.biow.uni-leipzig.de>).

757

758 **Author contribution**

759 Steffen Seitz and Thomas Scholten designed the experiment and Steffen Seitz, Zhengshan Song, Kathrin Käppeler  
760 and Carla L. Webber carried it out. Martin Nebel and Kathrin Käppeler classified biocrust types and determined  
761 bryophyte species. Steffen Seitz, Philipp Goebes and Karsten Schmidt performed the statistical models. Steffen Seitz,  
762 [Xuezheng Shi](#) and Bettina Weber prepared the manuscript with contributions from all co-authors. The authors declare  
763 that they have no conflict of interest.

764

765 **Acknowledgements**

766 We are grateful to the BEF China research group and especially to our students Mario Ahner, Milan Daus, Marlina  
767 Hall, Madeleine Janker, Paula Kersten, Vera Müller and Andrea Wadenstorfer for assistance in fieldwork. We also  
768 thank Alfons Schäfer-Verwimp for assistance in determination of bryophytes, Karl Forchhammer for giving us first  
769 insights into the world of cyanobacteria and the participants of BioCrust3 for helpful comments on the results.

770 This work was funded by the German Research Foundation (DFG FOR 891/2 and 891/3). We also benefitted from  
771 travel grants by the Sino-German Centre for Research Promotion (GZ 699 and GZ 785) [and from funding of the Max](#)  
772 [Planck Society](#).

773

774 **References**

775 Allen, C. D.: Biogeomorphology and biological soil crusts: a symbiotic research relationship,  
776 *geomorphologie*, 16, 347–358, doi:10.4000/geomorphologie.8071, 2010.

777 Barnes, B. V. and Spurr, S. H.: *Forest ecology*, 4th ed., Wiley, New York, 774 pp., 1998.

778 Beck, E., Hartig, K., Roos, K., Preußig, M., and Nebel, M.: Permanent Removal of the Forest: Construction  
779 of Roads and Power Supply Lines, in: *Gradients in a tropical mountain ecosystem of Ecuador*, Beck, E.  
780 (Ed.), *Ecological studies*, 198, Springer, Berlin, 361–370, 2008.

781 Behrens, T., Schmidt, K., and Scholten, T.: An approach to removing uncertainties in nominal  
782 environmental covariates and soil class maps, in: Digital soil mapping with limited data, Hartemink,  
783 A. E., McBratney, A. B., Mendonça-Santos, Maria de Lourdes (Eds.), Springer, Dordrecht, London,  
784 213–224, 2008.

785 Belnap, J.: Impacts of off-road vehicles on nitrogen cycles in biological soil crusts: resistance in different  
786 U.S. deserts, *Journal of Arid Environments*, 52, 155–165, doi:10.1006/jare.2002.0991, 2002.

787 Belnap, J.: The potential roles of biological soil crusts in dryland hydrologic cycles, *Hydrol. Process.*, 20,  
788 3159–3178, doi:10.1002/hyp.6325, 2006.

789 Belnap, J. and Büdel, B.: Biological Soil Crusts as Soil Stabilizers, in: *Biological soil crusts: An organizing*  
790 *principle in drylands*, Weber, B., Büdel, B., Belnap, J. (Eds.), Ecological studies, analysis and synthesis,  
791 226, Springer, Switzerland, 305–320, 2016.

792 Belnap, J., Büdel, B., and Lange, O. L.: Biological Soil Crusts: Characteristics and Distribution, in: *Biological*  
793 *soil crusts: Structure, function and management*, 1st ed., rev. 2nd printing., Belnap, J., Lange, O. L.  
794 (Eds.), Springer, Berlin, 3–30, 2003a.

795 Belnap, J. and Gillette, D. A.: Disturbance of biological soil crusts: impacts on potential wind erodibility of  
796 sandy desert soils in southeastern Utah, *Land Degrad. Dev.*, 8, 355–362, doi:10.1002/(SICI)1099-  
797 145X(199712)8:4<355:AID-LDR266>3.0.CO;2-H, 1997.

798 Belnap, J., Kaltenecker, J. H., Rosentreter, R., Williams, J., Leonard, S., and Eldridge, D. J.: *Biological Soil*  
799 *Crusts: Ecology and Management*, Technical Reference, 1730-2, United States Department of the  
800 Interior - Bureau of Land Management, 2001.

801 Belnap, J. and Lange, O. L. (Eds.): *Biological soil crusts: Structure, function and management*, 1st ed., rev.  
802 2nd printing., Springer, Berlin, IX, 503, 2003.



803 Belnap, J., Prasse, R., and Harper, K. T.: Influence of Biological Soil Crusts on Soil Environments and  
804 Vascular Plants, in: *Biological soil crusts: Structure, function and management*, 1st ed., rev. 2nd  
805 printing., Belnap, J., Lange, O. L. (Eds.), Springer, Berlin, 281–300, 2003b.

806 Berkeley, A., Thomas, A. D., and Dougill, A. J.: Cyanobacterial soil crusts and woody shrub canopies in  
807 Kalahari rangelands, *African J Ecol*, 43, 137–145, doi:10.1111/j.1365-2028.2005.00560.x, 2005.

808 Bischler-Causse, H.: *Marchantia L.: The asiatic and oceanic taxa*, J. Cramer, Berlin [etc.], 317 pp., 1989.

809 Bormann, F. H., Likens, G. E., Fisher, D. W., and Pierce, R. S.: Nutrient loss accelerated by clear-cutting of  
810 a forest ecosystem, *Science*, 159, 882–884, doi:10.1126/science.159.3817.882, 1968.

811 Bowker, M. A.: Biological Soil Crust Rehabilitation in Theory and Practice: An Underexploited  
812 Opportunity, *Restor Ecology*, 15, 13–23, doi:10.1111/j.1526-100X.2006.00185.x, 2007.

813 Bowker, M. A., Belnap, J., Bala Chaudhary, V., and Johnson, N. C.: Revisiting classic water erosion models  
814 in drylands: The strong impact of biological soil crusts, *Soil Biology and Biochemistry*, 40, 2309–2316,  
815 doi:10.1016/j.soilbio.2008.05.008, 2008.

816 Bowker, M. A., Belnap, J., Büdel, B., Sannier, C., Pietrasiak, N., Eldridge, D. J., and Rivera-Aguilar, V.:  
817 Controls on Distribution Patterns of Biological Soil Crusts at Micro- to Global Scales, in: *Biological soil  
818 crusts: An organizing principle in drylands*, Weber, B., Büdel, B., Belnap, J. (Eds.), *Ecological studies,  
819 analysis and synthesis*, 226, Springer, Switzerland, 173–197, 2016.

820 Bowker, M. A., Reed, S. C., Belnap, J., and Phillips, S. L.: Temporal variation in community composition,  
821 pigmentation, and  $F(v)/F(m)$  of desert cyanobacterial soil crusts, *Microbial ecology*, 43, 13–25,  
822 doi:10.1007/s00248-001-1013-9, 2002.

823 Bruelheide, H., Nadrowski, K., Assmann, T., Bauhus, J., Both, S., Buscot, F., Chen, X.-Y., Ding, B., Durka,  
824 W., Erfmeier, A., Gutknecht, Jessica L. M., Guo, D., Guo, L.-D., Härdtle, W., He, J.-S., Klein, A.-M.,  
825 Kühn, P., Liang, Y., Liu, X., Michalski, S., Niklaus, P. A., Pei, K., Scherer-Lorenzen, M., Scholten, T.,  
826 Schuldt, A., Seidler, G., Trogisch, S., Oheimb, G. von, Welk, E., Wirth, C., Wubet, T., Yang, X., Yu, M.,

827 Zhang, S., Zhou, H., Fischer, M., Ma, K., Schmid, B., and Muller-Landau, H.: Designing forest  
828 biodiversity experiments: general considerations illustrated by a new large experiment in subtropical  
829 China, *Methods Ecol Evol*, 5, 74–89, doi:10.1111/2041-210X.12126, 2014.

830 Bu, C., Wu, S., Xie, Y., and Zhang, X.: The Study of Biological Soil Crusts: Hotspots and Prospects, *Clean*  
831 *Soil Air Water*, 41, 899–906, doi:10.1002/clen.201100675, 2013a.

832 Bu, C., Wu, S., Zhang, K., Yang, Y., and Gao, G.: Biological soil crusts: An eco-adaptive biological  
833 conservative mechanism and implications for ecological restoration, *Plant Biosystems - An*  
834 *International Journal Dealing with all Aspects of Plant Biology*, 149, 364–373,  
835 doi:10.1080/11263504.2013.819820, 2013b.

836 Bu, C., Zhang, P., Wang, C., Yang, Y.-s., Shao, H.-b., and Wu, S.: Spatial distribution of biological soil crusts  
837 on the slope of the Chinese Loess Plateau based on canonical correspondence analysis, *CATENA*,  
838 137, 373–381, doi:10.1016/j.catena.2015.10.016, 2016.

839 Büdel, B.: Biological Soil Crusts of Asia Including the Don and Volga Region, in: *Biological soil crusts:*  
840 *Structure, function and management*, 1st ed., rev. 2nd printing., Belnap, J., Lange, O. L. (Eds.),  
841 Springer, Berlin, 87–94, 2003a.

842 Büdel, B.: Synopsis: Comparative Biogeography of Soil-Crust Biota, in: *Biological soil crusts: Structure,*  
843 *function and management*, 1st ed., rev. 2nd printing., Belnap, J., Lange, O. L. (Eds.), Springer, Berlin,  
844 141–152, 2003b.

845 Büdel, B.: Microorganisms of Biological Crusts on Soil Surfaces, in: *Microorganisms in Soils: Roles in*  
846 *Genesis and Functions*, Buscot, F., Varma, A. (Eds.), Springer, New York, 307–324, 2005.

847 Büdel, B., Colesie, C., Green, T. G. A., Grube, M., Lazaro Suau, R., Loewen-Schneider, K., Maier, S., Peer,  
848 T., Pintado, A., Raggio, J., Ruprecht, U., Sancho, L. G., Schroeter, B., Turk, R., Weber, B., Wedin, M.,  
849 Westberg, M., Williams, L., and Zheng, L.: Improved appreciation of the functioning and importance

850 of biological soil crusts in Europe: the Soil Crust International Project (SCIN), Biodiversity and  
851 conservation, 23, 1639–1658, doi:10.1007/s10531-014-0645-2, 2014.

852 Büdel, B., Darienko, T., Deutschewitz, K., Dojani, S., Friedl, T., Mohr, K. I., Salisch, M., Reisser, W., and  
853 Weber, B.: Southern African biological soil crusts are ubiquitous and highly diverse in drylands, being  
854 restricted by rainfall frequency, *Microbial ecology*, 57, 229–247, doi:10.1007/s00248-008-9449-9,  
855 2009.

856 Buscot, F. and Varma, A. (Eds.): *Microorganisms in Soils: Roles in Genesis and Functions*, Springer, New  
857 York, 2005.

858 Cantón, Y., Domingo, F., Solé-Benet, A., and Puigdefábregas, J.: Influence of soil-surface types on the  
859 overall runoff of the Tabernas badlands (south-east Spain): field data and model approaches, *Hydrol.*  
860 *Process.*, 16, 2621–2643, doi:10.1002/hyp.1052, 2002.

861 Cantón, Y., Solé-Benet, A., Vente, J. de, Boix-Fayos, C., Calvo-Cases, A., Asensio, C., and Puigdefábregas,  
862 J.: A review of runoff generation and soil erosion across scales in semiarid south-eastern Spain,  
863 *Journal of Arid Environments*, 75, 1254–1261, doi:10.1016/j.jaridenv.2011.03.004, 2011.

864 Chamizo, S., Belnap, J., Eldridge, D. J., Cantón, Y., and Malam Issa, O.: The Role of Biocrusts in Arid Land  
865 Hydrology, in: *Biological soil crusts: An organizing principle in drylands*, Weber, B., Büdel, B., Belnap,  
866 J. (Eds.), *Ecological studies, analysis and synthesis*, 226, Springer, Switzerland, 321–346, 2016.

867 Chamizo, S., Cantón, Y., Domingo, F., and Belnap, J.: Evaporative losses from soils covered by physical  
868 and different types of biological soil crusts, *Hydrol. Process.*, 27, 324–332, doi:10.1002/hyp.8421,  
869 2013.

870 Chamizo, S., Cantón, Y., Rodríguez-Caballero, E., Domingo, F., and Escudero, A.: Runoff at contrasting  
871 scales in a semiarid ecosystem: A complex balance between biological soil crust features and rainfall  
872 characteristics, *Journal of Hydrology*, 452-453, 130–138, doi:10.1016/j.jhydrol.2012.05.045, 2012.

873 Chiquoine, L. P., Abella, S. R., and Bowker, M. A.: Rapidly restoring biological soil crusts and ecosystem  
874 functions in a severely disturbed desert ecosystem, *Ecological applications* a publication of the  
875 Ecological Society of America, 26, 1260–1272, 2016.

876 Colesie, C., Felde, V. J.M., and Büdel, B.: Composition and Macrostructure of Biological Soil Crusts, in:  
877 Biological soil crusts: An organizing principle in drylands, Weber, B., Büdel, B., Belnap, J. (Eds.),  
878 Ecological studies, analysis and synthesis, 226, Springer, Switzerland, 159–172, 2016.

879 Condon, L. A. and Pyke, D. A.: Filling the interspace-restoring arid land mosses: Source populations,  
880 organic matter, and overwintering govern success, *Ecol Evol*, 6, 7623–7632, doi:10.1002/ece3.2448,  
881 2016.

882 Dojani, S., Büdel, B., Deutschewitz, K., and Weber, B.: Rapid succession of Biological Soil Crusts after  
883 experimental disturbance in the Succulent Karoo, South Africa, *Applied Soil Ecology*, 48, 263–269,  
884 doi:10.1016/j.apsoil.2011.04.013, 2011.

885 Eldridge, D. J.: Soil crust lichens and mosses on calcrete-dominant soils at Maralinga in arid South  
886 Australia, *Journal of Adelaide Botanic Gardens*, 18, 9–24, 1998.

887 Eldridge, D. J.: Distribution and floristics of moss- and lichen-dominated soil crusts in a patterned *Callitris*  
888 *glaucophylla* woodland in eastern Australia, *Acta Oecologica*, 20, 159–170, doi:10.1016/S1146-  
889 609X(99)80029-0, 1999.

890 Eldridge, D. J. and Greene, R.S.B.: Assessment of sediment yield by splash erosion on a semi-arid soil  
891 with varying cryptogam cover, *Journal of Arid Environments*, 26, 221–232,  
892 doi:10.1006/jare.1994.1025, 1994.

893 Eldridge, D. J. and Tozer, M. E.: Environmental Factors Relating to the Distribution of Terricolous  
894 Bryophytes and Lichens in Semi-Arid Eastern Australia, *The Bryologist*, 100, 28,  
895 doi:10.2307/3244384, 1997.

896 Evans, R. D. and Johansen, J. R.: Microbiotic Crusts and Ecosystem Processes, *Critical Reviews in Plant*  
897 *Sciences*, 18, 183–225, doi:10.1080/07352689991309199, 1999.

898 Fenton, N. J. and Frego, K. A.: Bryophyte (moss and liverwort) conservation under remnant canopy in  
899 managed forests, *Biological Conservation*, 122, 417–430, doi:10.1016/j.biocon.2004.09.003, 2005.

900 Fischer, T., Gypser, S., Subbotina, M., and Veste, M.: Synergic hydraulic and nutritional feedback  
901 mechanisms control surface patchiness of biological soil crusts on tertiary sands at a post-mining  
902 site, *Journal of Hydrology and Hydromechanics*, 62, doi:10.2478/johh-2014-0038, 2014.

903 Gao, C., Crosby, M. R., and He, S.: Moss flora of China: Volume 01: Sphagnaceae - Leucobryaceae,  
904 English Version, Science Press and Missouri Botanical Garden, Beijing, St. Louis, 273 pp., 1999.

905 Gao, C., Crosby, M. R., and He, S.: Moss flora of China: Volume 02: Fissidentaceae - Phytomitriaceae,  
906 English Version, Science Press and Missouri Botanical Garden, Beijing, St. Louis, 283 pp., 2001.

907 Gao, C., Crosby, M. R., and He, S.: Moss flora of China: Volume 06: Hookeriaceae -Thuidiaceae, English  
908 Version, Science Press and Missouri Botanical Garden, Beijing, St. Louis, 2002.

909 Gao, C., Crosby, M. R., and He, S.: Moss flora of China: Volume 03: Grimmiaceae - Tetrarhizaceae,  
910 English Version, Science Press and Missouri Botanical Garden, Beijing, St. Louis, 141 pp., 2003.

911 Gao, C., Crosby, M. R., and He, S.: Moss flora of China: Volume 08: Sematophyllaceae - Polytrichaceae,  
912 English Version, Science Press and Missouri Botanical Garden, Beijing, St. Louis, 2005.

913 Gao, C., Crosby, M. R., and He, S.: Moss flora of China: Volume 04: Bryaceae - Timmiaceae, English  
914 Version, Science Press and Missouri Botanical Garden, Beijing, St. Louis, 211 pp., 2007.

915 Gao, C., Crosby, M. R., and He, S.: Moss flora of China: Volume 07: Amblystegiaceae - Plagiotheciaceae,  
916 English Version, Science Press and Missouri Botanical Garden, Beijing, St. Louis, 258 pp., 2008.

917 Gao, C., Crosby, M. R., and He, S.: Moss flora of China: Volume 05: Erpodiaceae - Climaciaceae, English  
918 Version, Science Press and Missouri Botanical Garden, Beijing, St. Louis, 2011.

919 Garcia-Pichel, F. and Belnap, J.: Small-Scale Environments and Distribution of Biological Soil Crusts, in:  
920 Biological soil crusts: Structure, function and management, 1st ed., rev. 2nd printing., Belnap, J.,  
921 Lange, O. L. (Eds.), Springer, Berlin, 193–201, 2003.

922 George, D. B., Davidson, D. W., Schliep, K. C., and Patrell-Kim, L. J.: Microtopography of microbiotic  
923 crusts on the Colorado Plateau, and distribution of component organisms, Western North American  
924 Naturalist, 60, 343–354, 2000.

925 Gilliam, F. S.: The Ecological Significance of the Herbaceous Layer in Temperate Forest Ecosystems,  
926 *BioScience*, 57, 845, doi:10.1641/B571007, 2007.

927 Goebes, P., Seitz, S., Geißler, C., Lassu, T., Peters, P., Seeger, M., Nadrowski, K., and Scholten, T.:  
928 Momentum or kinetic energy – How do substrate properties influence the calculation of rainfall  
929 erosivity?, *Journal of Hydrology*, 517, 310–316, doi:10.1016/j.jhydrol.2014.05.031, 2014.

930 Goebes, P., Seitz, S., Kühn, P., Li, Y., Niklaus, P. A., Oheimb, G. von, and Scholten, T.: Throughfall kinetic  
931 energy in young subtropical forests: Investigation on tree species richness effects and spatial  
932 variability, *Agricultural and Forest Meteorology*, 213, 148–159,  
933 doi:10.1016/j.agrformet.2015.06.019, 2015.

934 Goffinet, B. and Shaw, A. J.: *Bryophyte biology*, 2nd ed., Cambridge University Press, Cambridge, xiv,  
935 565, 2009.

936 Harper, K. T. and Belnap, J.: The influence of biological soil crusts on mineral uptake by associated  
937 vascular plants, *Journal of Arid Environments*, 47, 347–357, doi:10.1006/jare.2000.0713, 2001.

938 Hawkes, C. V.: Effects of biological soil crusts on seed germination of four endangered herbs in a xeric  
939 Florida shrubland during drought, *Plant Ecology*, 170, 121–134,  
940 doi:10.1023/B:VEGE.0000019035.56245.91, 2004.

941 Hothorn, T. and Hornik, K.: *exactRankTests: Exact Distributions for Rank and Permutation Tests*, 2015.

942 Keenan, R. J. and Kimmins, J. P.: The ecological effects of clear-cutting, *Environ. Rev.*, 1, 121–144,  
943 doi:10.1139/a93-010, 1993.

944 Kidron, G. J.: The impact of microbial crust upon rainfall-runoff-sediment yield relationships on  
945 longitudinal dune slopes, Nizzana, western Negev Dessert, Israel, PhD Thesis, Hebrew University of  
946 Jerusalem, Jerusalem, 1995.

947 Kidron, G. J., Vonshak, A., and Abeliovich, A.: Microbiotic crusts as biomarkers for surface stability and  
948 wetness duration in the Negev Desert, *Earth Surf. Process. Landforms*, 34, 1594–1604,  
949 doi:10.1002/esp.1843, 2009.

950 Kidron, G. J., Yaalon, D. H., and Vonshak, A.: Two Causes for Runoff Initiation on Microbiotic Crusts:  
951 Hydrophobicity and Pore Clogging, *Soil Science*, 164, 18–27, doi:10.1097/00010694-199901000-  
952 00004, 1999.

953 Kleiner, E. F. and Harper, K. T.: Soil Properties in Relation to Cryptogamic Groundcover in Canyonlands  
954 National Park, *Journal of Range Management Archives*, 30, 202–205, 1977.

955 Kutiel, P., Lavee, H., and Ackermann, O.: Spatial distribution of soil surface coverage on north and south  
956 facing hillslopes along a Mediterranean to extreme arid climatic gradient, *Geomorphology*, 23, 245–  
957 256, doi:10.1016/S0169-555X(98)00007-5, 1998.

958 Kuznetsova, A., Brockhoff, P. B., and Christensen, R. H.: lmerTest: Tests in Linear Mixed Effects Models,  
959 2014.

960 Langhans, T. M., Storm, C., and Schwabe, A.: Biological soil crusts and their microenvironment: Impact  
961 on emergence, survival and establishment of seedlings, *Flora - Morphology, Distribution, Functional  
962 Ecology of Plants*, 204, 157–168, doi:10.1016/j.flora.2008.01.001, 2009.

963 Li, Y., Härdtle, W., Bruelheide, H., Nadrowski, K., Scholten, T., Wehrden, H. von, and Oheimb, G. von: Site  
964 and neighborhood effects on growth of tree saplings in subtropical plantations (China), *Forest  
965 Ecology and Management*, 327, 118–127, doi:10.1016/j.foreco.2014.04.039, 2014.

966 Maestre, F. T., Bowker, M. A., Cantón, Y., Castillo-Monroy, A. P., Cortina, J., Escolar, C., Escudero, A.,  
967 Lazaro Suau, R., and Martínez, I.: Ecology and functional roles of biological soil crusts in semi-arid  
968 ecosystems of Spain, *Journal of Arid Environments*, 75, 1282–1291,  
969 doi:10.1016/j.jaridenv.2010.12.008, 2011.

970 Malam Issa, O., Défarge, C., Le Bissonnais, Y., Marin, B., Duval, O., Bruand, A., D'Acqui, L. P., Nordenberg,  
971 S., and Annerman, M.: Effects of the inoculation of cyanobacteria on the microstructure and the  
972 structural stability of a tropical soil, *Plant Soil*, 290, 209–219, doi:10.1007/s11104-006-9153-9, 2007.

973 Malam Issa, O., Le Bissonnais, Y., Défarge, C., and Trichet, J.: Role of a cyanobacterial cover on structural  
974 stability of sandy soils in the Sahelian part of western Niger, *Geoderma*, 101, 15–30,  
975 doi:10.1016/S0016-7061(00)00093-8, 2001.

976 Malam Issa, O., Trichet, J., Défarge, C., Couté, A., and Valentin, C.: Morphology and microstructure of  
977 microbiotic soil crusts on a tiger bush sequence (Niger, Sahel), *CATENA*, 37, 175–196,  
978 doi:10.1016/S0341-8162(99)00052-1, 1999.

979 Marsh, J., Nouvet, S., Sanborn, P., and Coxson, D.: Composition and function of biological soil crust  
980 communities along topographic gradients in grasslands of central interior British Columbia  
981 (Chilcotin) and southwestern Yukon (Kluane), *Can. J. Bot.*, 84, 717–736, doi:10.1139/b06-026, 2006.

982 Müller, S. J., Gütle, D. D., Jacquot, J.-P., and Reski, R.: Can mosses serve as model organisms for forest  
983 research?, *Annals of Forest Science*, 73, 135–146, doi:10.1007/s13595-015-0468-7, 2016.

984 Ponzetti, J. M. and McCune, B. P.: Biotic Soil Crusts of Oregon's Shrub Steppe: Community Composition  
985 in Relation to Soil Chemistry, Climate, and Livestock Activity, *The Bryologist*, 104, 212–225,  
986 doi:10.1639/0007-2745(2001)104[0212:BSCOOS]2.0.CO;2, 2001.

987 Pribyl, D. W.: A critical review of the conventional SOC to SOM conversion factor, *Geoderma*, 156, 75–  
988 83, doi:10.1016/j.geoderma.2010.02.003, 2010.



989 R Core Team: R: A Language and Environment for Statistical Computing, R Foundation for Statistical  
990 Computing, Vienna, Austria, 2014.

991 Read, C. F., Duncan, D. H., Vesk, P. A., and Elith, J.: Surprisingly fast recovery of biological soil crusts  
992 following livestock removal in southern Australia, *J Veg Sci*, 22, 905–916, doi:10.1111/j.1654-  
993 1103.2011.01296.x, 2011.

994 Read, C. F., Elith, J., Vesk, P. A., and Pugnaire, F.: Testing a model of biological soil crust succession, *J Veg  
995 Sci*, 27, 176–186, doi:10.1111/jvs.12332, 2016.

996 Riley, S. J., Degloria, S. D., and Elliot, R.: A Terrain Ruggedness Index that Quantifies Topographic  
997 Heterogeneity, *Intermountain Journal of Sciences*, 5, 23–27, 1999.

998 Roberts, D. W.: Ordination on the Basis of Fuzzy Set Theory, *Vegetatio*, 66, 123–131, 1986.

999 Rodríguez-Caballero, E., Cantón, Y., Chamizo, S., Afana, A., and Solé-Benet, A.: Effects of biological soil  
1000 crusts on surface roughness and implications for runoff and erosion, *Geomorphology*, 145-146, 81–  
1001 89, doi:10.1016/j.geomorph.2011.12.042, 2012.

1002 Rodríguez-Caballero, E., Cantón, Y., Chamizo, S., Lazaro Suau, R., and Escudero, A.: Soil Loss and Runoff  
1003 in Semiarid Ecosystems: A Complex Interaction Between Biological Soil Crusts, Micro-topography,  
1004 and Hydrological Drivers, *Ecosystems*, 16, 529–546, doi:10.1007/s10021-012-9626-z, 2013.

1005 Rosentreter, R., Eldridge, D. J., and Kaltenecker, J. H.: Monitoring and Management of Biological Soil  
1006 Crusts, in: *Biological soil crusts: Structure, function and management*, 1st ed., rev. 2nd printing.,  
1007 Belnap, J., Lange, O. L. (Eds.), Springer, Berlin, 457–468, 2003.

1008 Scheffer, F., Schachtschabel, P., and Blume, H.-P.: *Lehrbuch der Bodenkunde*, 16th ed., Spektrum Verlag,  
1009 Heidelberg, Berlin, 569 pp., 2010.

1010 Scholten, T., Goebes, P., Kühn, P., Seitz, S., Assmann, T., Bauhus, J., Bruelheide, H., Buscot, F., Erfmeier,  
1011 A., Fischer, M., Härdtle, W., He, J.-S., Ma, K., Niklaus, P. A., Scherer-Lorenzen, M., Schmid, B., Shi, X.,  
1012 Song, Z., Oheimb, G. von, Wirth, C., Wubet, T., and Schmidt, K.: On the combined effect of soil

1013 fertility and topography on tree growth in subtropical forest ecosystems - a study from SE China,  
1014 Journal of Plant Ecology, 10, 111-127, doi:10.1093/jpe/rtw065, 2017.

1015 Seitz, S., Goebes, P., Song, Z., Bruelheide, H., Härdtle, W., Kühn, P., Li, Y., and Scholten, T.: Tree species  
1016 and functional traits but not species richness affect interrill erosion processes in young subtropical  
1017 forests, SOIL, 2, 49–61, doi:10.5194/soil-2-49-2016, 2016.

1018 Seitz, S., Goebes, P., Zumstein, P., Assmann, T., Kühn, P., Niklaus, P. A., Schuldt, A., and Scholten, T.: The  
1019 influence of leaf litter diversity and soil fauna on initial soil erosion in subtropical forests, Earth Surf.  
1020 Process. Landforms, 40, 1439–1447, doi:10.1002/esp.3726, 2015.

1021 Seppelt, R. D., Downing, A. J., Deane-Coe, K. K., Zhang, Y., and Zhang, J.: Bryophytes Within Biological  
1022 Soil Crusts, in: Biological soil crusts: An organizing principle in drylands, Weber, B., Büdel, B., Belnap,  
1023 J. (Eds.), Ecological studies, analysis and synthesis, 226, Springer, Switzerland, 101–120, 2016.

1024 Söderström, L., Hagborg, A., Konrat, M. von, Bartholomew-Began, S., Bell, D., Briscoe, L., Brown, E.,  
1025 Cargill, D. C., Costa, D. P., Crandall-Stotler, B. J., Cooper, E. D., Dauphin, G., Engel, J. J., Feldberg, K.,  
1026 Glenny, D., Gradstein, S. R., He, X., Heinrichs, J., Hentschel, J., Ilkiu-Borges, A. L., Katagiri, T.,  
1027 Konstantinova, N. A., Larraín, J., Long, D. G., Nebel, M., Pócs, T., Puche, F., Reiner-Drehwald, E.,  
1028 Renner, Matt A M, Sass-Gyarmati, A., Schäfer-Verwimp, A., Moragues, José Gabriel Segarra, Stotler,  
1029 R. E., Sukkharak, P., Thiers, B. M., Uribe, J., Váňa, J., Villarreal, J. C., Wigginton, M., Zhang, L., and  
1030 Zhu, R.-L.: World checklist of hornworts and liverworts, PhytoKeys, 1–828,  
1031 doi:10.3897/phytokeys.59.6261, 2016.

1032 Spitale, D.: Forest and substrate type drive bryophyte distribution in the Alps, Journal of Bryology, 39,  
1033 128–140, doi:10.1080/03736687.2016.1274090, 2017.

1034 St. Clair, L. L. and Johansen, J. R.: Introduction to the symposium on soil crust communities, Great Basin  
1035 Naturalist, 53, 1–4, 1993.

1036 Su, Y.-G., Li, X.-R., Cheng, Y.-W., Tan, H.-J., and Jia, R.-L.: Effects of biological soil crusts on emergence of  
1037 desert vascular plants in North China, *Plant Ecology*, 191, 11–19, doi:10.1007/s11258-006-9210-8,  
1038 2007.

1039 **Tinya, F. and Ódor, P.: Congruence of the spatial pattern of light and understory vegetation in an old-**  
1040 **growth, temperate mixed forest, *Forest Ecology and Management*, 381, 84–92,**  
1041 **doi:10.1016/j.foreco.2016.09.027, 2016.**

1042 Ullmann, I. and Büdel, B.: Ecological Determinants of Species Composition of Biological Soil Crusts on a  
1043 Landscape Scale, in: *Biological soil crusts: Structure, function and management*, 1st ed., rev. 2nd  
1044 printing., Belnap, J., Lange, O. L. (Eds.), Springer, Berlin, 203–213, 2003.

1045 Warren, S. D.: Synopsis: Influence of Biological Soil Crusts on Arid Land Hydrology and Soil Stability, in:  
1046 *Biological soil crusts: Structure, function and management*, 1st ed., rev. 2nd printing., Belnap, J.,  
1047 Lange, O. L. (Eds.), Springer, Berlin, 349–360, 2003.

1048 Weber, B., Büdel, B., and Belnap, J. (Eds.): *Biological soil crusts: An organizing principle in drylands,*  
1049 *Ecological studies, analysis and synthesis*, 226, Springer, Switzerland, 1 online resource (ix, 603,  
1050 2016.

1051 Weber, B., Graf, T., and Bass, M.: Ecophysiological analysis of moss-dominated biological soil crusts and  
1052 their separate components from the Succulent Karoo, South Africa, *Planta*, 236, 129–139,  
1053 doi:10.1007/s00425-012-1595-0, 2012.

1054 West, N. E.: Structure and Function of Microphytic Soil Crusts in Wildland Ecosystems of Arid to Semi-  
1055 arid Regions, *Advances in Ecological Research*, 20, 179–223, doi:10.1016/S0065-2504(08)60055-0,  
1056 1990.

1057 Wickham, H.: *Ggplot2: Elegant graphics for data analysis, Use R!*, Springer, Dordrecht, New York, 1  
1058 online resource (viii, 212, 2009.

1059 Williams, A. J., Buck, B. J., Soukup, D. A., and Merkler, D. J.: Geomorphic controls on biological soil crust  
1060 distribution: A conceptual model from the Mojave Desert (USA), *Geomorphology*, 195, 99–109,  
1061 doi:10.1016/j.geomorph.2013.04.031, 2013.

1062 Williams, W. J. and Büdel, B.: Species diversity, biomass and long-term patterns of biological soil crusts  
1063 with special focus on Cyanobacteria of the *Acacia aneura* Mulga Lands of Queensland, Australia,  
1064 *Algo Stud*, 140, 23–50, doi:10.1127/1864-1318/2012/0059, 2012.

1065 Yair, A., Almog, R., and Veste, M.: Differential hydrological response of biological topsoil crusts along a  
1066 rainfall gradient in a sandy arid area: Northern Negev desert, Israel, *CATENA*, 87, 326–333,  
1067 doi:10.1016/j.catena.2011.06.015, 2011.

1068 Yang, X., Bauhus, J., Both, S., Fang, T., Härdtle, W., Kröber, W., Ma, K., Nadrowski, K., Pei, K., Scherer-  
1069 Lorenzen, M., Scholten, T., Seidler, G., Schmid, B., Oheimb, G. von, and Bruelheide, H.: Establishment  
1070 success in a forest biodiversity and ecosystem functioning experiment in subtropical China (BEF-  
1071 China), *Eur J Forest Res*, 132, 593–606, doi:10.1007/s10342-013-0696-z, 2013.

1072 Zaady, E., Karnieli, A., and Shachak, M.: Applying a field spectroscopy technique for assessing  
1073 successional trends of biological soil crusts in a semi-arid environment, *Journal of Arid*  
1074 *Environments*, 70, 463–477, doi:10.1016/j.jaridenv.2007.01.004, 2007.

1075 Zhang, Y., Aradottir, A. L., Serpe, M., and Boeken, B.: Interactions of Biological Soil Crusts with Vascular  
1076 Plants, in: *Biological soil crusts: An organizing principle in drylands*, Weber, B., Büdel, B., Belnap, J.  
1077 (Eds.), *Ecological studies, analysis and synthesis*, 226, Springer, Switzerland, 385–406, 2016.

1078 Zhao, Y., Bowker, M. A., Zhang, Y., and Zaady, E.: Enhanced Recovery of Biological Soil Crusts After  
1079 Disturbance, in: *Biological soil crusts: An organizing principle in drylands*, Weber, B., Büdel, B.,  
1080 Belnap, J. (Eds.), *Ecological studies, analysis and synthesis*, 226, Springer, Switzerland, 499–523,  
1081 2016.

1082 Zhao, Y., Qin, N., Weber, B., and Xu, M.: Response of biological soil crusts to raindrop erosivity and  
1083 underlying influences in the hilly Loess Plateau region, China, *Biodivers Conserv*, 23, 1669–1686,  
1084 doi:10.1007/s10531-014-0680-z, 2014.

1085 Zhao, Y. G., Xu, M., and Belnap, J.: Response of biocrusts' photosynthesis to environmental factors: a  
1086 possible explanation of the spatial distribution of biocrusts in the Hilly Loess Plateau region of China,  
1087 *Acta Ecologica Sinica*, 30, 4668–4675, 2010.

1088 Zhu, R.-L.: New Checklist of Chinese liverworts, hornworts, and takakiophytes: 3rd version in January  
1089 2006, East China Normal University, 2006.

1090

1091

1092

1093

1094

1095

1096

1097

1098

1099

1100

1101

1102

1103

1104

1105

1106

1107

1108

1109 **Tables**

1110 **Table 1: Erosion, soil, soil cover, vegetation and terrain attributes in 170 runoff plots (ROPs, n=170) and on 34 research**  
 1111 **plots (n=34with five ROPs each) in Xingangshan, Jiangxi Province, PR China in 2013.**

	<i>Min</i>	<i>Mean</i>	<i>Max</i>
<i><u>Runoff plots (ROPs, four measured rainfall events, n=170334)</u></i>			
Sediment <del>discharge</del> -delivery [g]	21.6	195.5	989.0
Surface runoff [ml]	3.1	40.3	111.8
Rainfall amount [ml]	25	94	178
<i><u>Runoff plots (ROPs in use, n=170)</u></i>			
Slope [°]	5	29	60
Soil cover [%]	0	19	62
- Biological soil crust cover [%]	0	24	62
- Stone cover [%]	0	4	42
Crown cover [%]	0.00	0.32	1.00
Leaf area index (LAI)	0.00	0.73	5.35
<i><u>Research plots (n=34)</u></i>			
Bulk soil density [g cm <sup>-2</sup> ]	0.83	0.98	1.12
Soil organic matter [%]	4.2	6.5	9.7
pH (KCl)	3.24	3.66	4.00
Altitude [m]	119	167	244
MCCA	0.98	2.07	3.81
TRI	0.72	2.39	3.86
Eastness	-0.86	0.09	0.99
Northness	-0.87	0.23	0.99

Tree height [m]	1.0	2.2	7.4
Crown width [m]	0.4	1.2	3.0

1112 **Soil cover: proportion of soil surface area covered by biocrusts or stones, crown cover: proportion of soil surface area**  
1113 **covered by crowns of live trees, leaf area index: one-sided green leaf area per unit soil surface area, MCCA: Monte-Carlo**  
1114 **based flow accumulation (Behrens), TRI: terrain ruggedness index (Riley), Eastness and Northness: state of being east or**  
1115 **north (Roberts), tree height: distance from stem base to apical meristem, crown width: length of longest spread from edge**  
1116 **to edge across the crown**

1117

1118

1119

1120 **Table 2: Liverwort and moss species sampled in the BEF China experiment in Xingangshan, Jiangxi Province, PR China**  
1121 **in 2013.**

Family	Species	Author
<u>Liverworts</u>		
<i>Calypogeiaceae</i>	<i>Calypogeia fissa</i>	(L.) Raddi
<i>Conocephalaceae</i>	<i>Conocephallum salebrosum</i>	Szweyk., Buczk. et Odrzyk.
<i>Lophocoleaceae</i>	<i>Heteroscyphus zollingeri</i>	(Gottsche) Schiffn.
<i>Marchantiaceae</i>	<i>Marchantia emarginata</i>	Reinw., Blume et Nees
<i>Acrobolbaceae</i>	<i>Notoscyphus lutescens</i>	(Lehm. et Lindenb.) Mitt.
<u>Mosses</u>		
<i>Polytrichaceae</i>	<i>Atrichum subserratum</i>	(Harv. et Hook. f.) Mitt.
<i>Pottiaceae</i>	<i>Barbula unguiculata</i>	Hedw.
<i>Bryaceae</i>	<i>Bryum argenteum</i>	Hedw.
<i>Leucobryaceae</i>	<i>Campylopus atrovirens</i>	De Not.
<i>Dicranellaceae</i>	<i>Dicranella heteromalla</i>	(Hedw.) Schimp.
<i>Pottiaceae</i>	<i>Didymodon constrictus</i>	(Mitt.) K. Saito
<i>Pottiaceae</i>	<i>Didymodon ditrichoides</i>	(Broth.) X.J. Li et S. He
<i>Ditrichaceae</i>	<i>Ditrichum pallidum</i>	(Hedw.) Hampe
<i>Entodontaceae</i>	<i>Entodon spec.</i>	sterile
<i>Hypnaceae</i>	<i>Hypnum cupressiforme</i>	Hedw.
<i>Hypnaceae</i>	<i>Hypnum macrogynum</i>	Besch.
<i>Leucobryaceae</i>	<i>Leucobryum juniperoideum</i>	(Brid.) Müll. Hal.
<i>Bartramiaceae</i>	<i>Philonotis marchica</i>	(Hedw.) Brid.
<i>Bartramiaceae</i>	<i>Philonotis mollis</i>	(Dozy et Molk.) Mitt.
<i>Bartramiaceae</i>	<i>Philonotis roylei</i>	(Hook. f.) Mitt.
<i>Mniaceae</i>	<i>Plagiomnium acutum</i>	(Lindb.) T.J. Kop.
<i>Polytrichaceae</i>	<i>Pogonatum inflexum</i>	(Lindb.) Sande Lac.
<i>Thuidiaceae</i>	<i>Thuidium glaucinoides</i>	Broth.
<i>Mniaceae</i>	<i>Trachycystis microphylla</i>	(Dozy et Molk.) Lindb.
<i>Pottiaceae</i>	<i>Trichostomum crispulum</i>	Bruch

1122 **Table 3: Results of the final linear mixed effects (LME) model for vegetation, soil and terrain attributes on biological soil**  
 1123 **crust cover in Xingangshan, Jiangxi Province, PR China in 2013 (\*\*\*: p < 0:001; \*\*: p < 0:01; \*: p < 0:05; .: p < 0:1; ns:**  
 1124 **not significant; n=215).**

Biological soil crust cover				
	denDF	F	Pr	estim.
<i>Fixed effects</i>				
Crown cover	136	12.9	***	10.8
Bulk soil density	37	0.03	ns	3.65
SOM	39	1.11	ns	(-)0.95
pH (KCl)	38	2.47	ns	(-)16.7
Altitude	37	3.69	.	0.80
Slope	191	7.53	**	(-)2.72
MCCA	39	0.02	ns	0.33
TRI	38	0.04	ns	(-)0.40
Eastness	37	2.73	ns	(-)4.23
Northness	37	9.14	**	5.99
Tree species richness	38	1.22	ns	(-)0.27
<i>Random effects</i>		<i>SD</i>	<i>Variance</i>	
Site		<0.01	<0.01	
Plot		<0.01	<0.01	
<i>Vegetation attribute fitted in exchange to crown cover</i>				
Leaf area index	107	42.8	***	5.98

1125 SOM: soil organic matter; MCCA: monte carlo based flow accumulation; TRI: topographic roughness index; denDF:  
 1126 denominator degrees of freedom; F: F value; Pr: significance; estim.: estimates



1127 **Table 4: Results of the final linear mixed effects (LME) models for sediment discharge-delivery and surface runoff with**  
 1128 **surface cover split into biological soil crust cover and stone cover in Xingangshan, Jiangxi Province, PR China in 2013**  
 1129 **(\*\*\*: p < 0:001; \*\*: p < 0:01; \*: p < 0:05; .: p < 0:1; ns: not significant; n=334).**

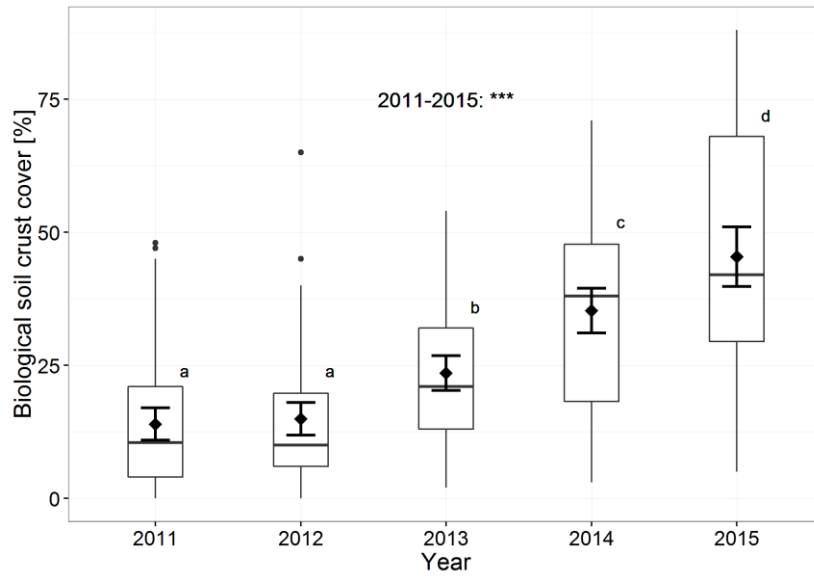
	Sediment <u>discharge-delivery</u>				Surface runoff			
	den DF	F	Pr	estim.	den DF	F	Pr	estim.
<i>Fixed effects</i>								
Crown cover	130	6.53	*	(-)0.15	173	9.11	**	(-)0.14
Slope	151	1.23	ns	0.06	168	2.25	ns	(-)0.06
Surface cover								
- Biocrust	151	50.2	***	(-)0.38	159	8.11	**	(-)0.12
- Stone	136	10.3	**	(-)0.19	188	1.66	ns	(-)0.06
SOM	44	5.71	*	(-)0.08	72	2.43	ns	0.12
Rainfall	95	5.46	*	(-)0.08	302	13.2	***	0.14
Tree species richness	22	0.46	ns	0.05	68	0.11	ns	(-)0.03
<i>Random effects</i>								
		<i>SD</i>	<i>Variance</i>			<i>SD</i>	<i>Variance</i>	
Precip. event : plot		0.199	0.040			0.537	0.288	
Tree composition		0.292	0.085			0.000	0.000	
Site		0.466	0.217			0.443	0.196	
Plot : ROP		0.441	0.195			0.269	0.073	

1130 **SOM: soil organic matter; denDF: denominator degrees of freedom; F: F value; Pr: significance; estim.: estimates**

1131

1132

1133 **Figures**



1134

1135 **Figure 1: The development of biological soil crust cover in runoff plots of the BEF China experiment from 2011 to 2015 in**  
1136 **Xingangshan, Jiangxi Province, PR China (n=350). Horizontal lines within boxplot represent medians and diamonds**  
1137 **represent means with standard error bars. Points signify outliers and small letters significant differences (p<0.001).**

1138

1139

1140

1141

1142

1143

1144



1145

1146 **Figure 2: Successional stages of biological soil crusts in two exemplary runoff plots (top row and bottom row, 0.4 m × 0.4**  
1147 **m each) in 2011, 2013 and 2015 (from left to right) at the BEF China experiment in Xingangshan, Jiangxi Province, PR**  
1148 **China.**

1149

1150

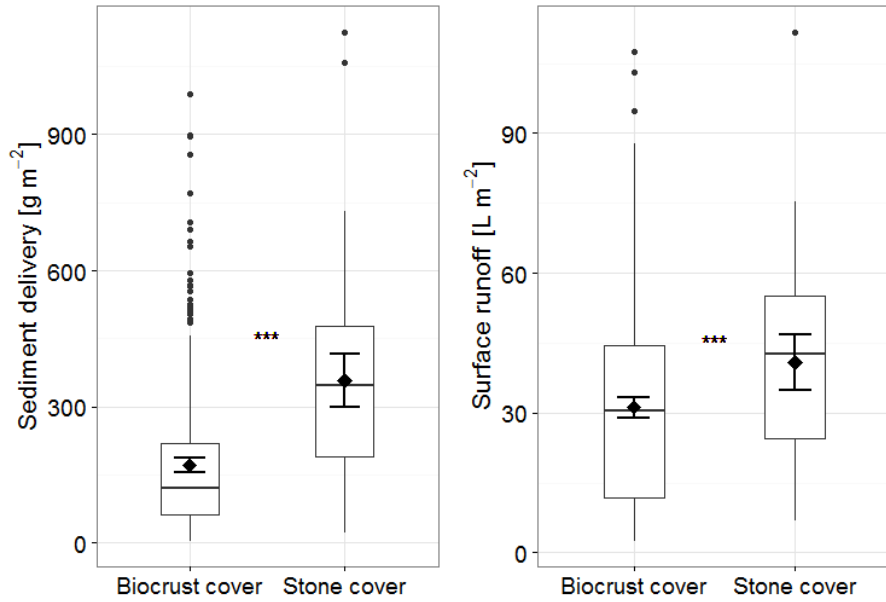
1151

1152

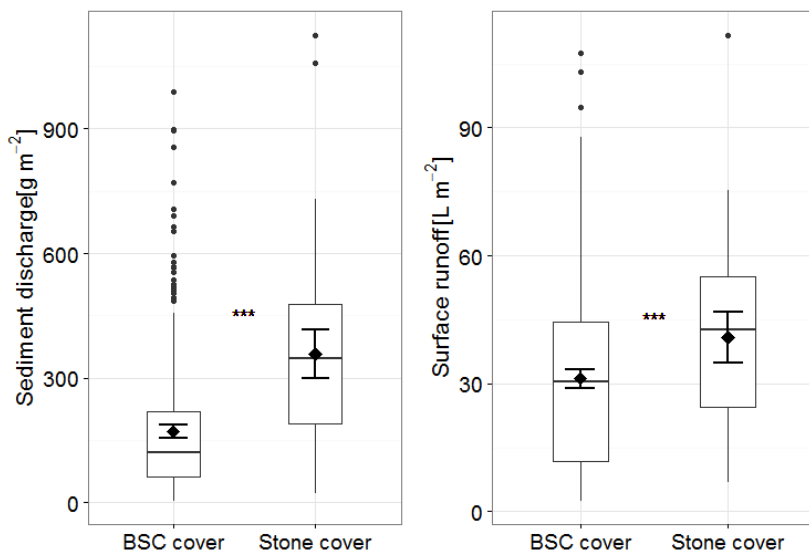
1153

1154

1155



1156



1157

1158 **Figure 3: The influence of runoff plots dominated by biological soil crust cover (BSC, n=281) and stone cover (n=53) on**  
 1159 **sediment ~~discharge-delivery~~ and surface runoff in Xingangshan, Jiangxi Province, PR China in 2013. Horizontal lines**  
 1160 **within box plots represent median and diamonds represent mean with standard error bars.**