

Response to reviewer comments on manuscript bg-2017-99: "Bryophyte-dominated biological soil crusts mitigate soil erosion in an early successional Chinese subtropical forest" – Minor revisions

Dear Reviewers, dear Associate Editor,

Thank you again for taking the time to revise the manuscript and helping us to improve our work.

We now prepared a revised version where we account for all points raised by the reviewers, as described below. We show the reviewers' comments in grey text, while our responses are formatted as standard text. **Line indications refer to the revised manuscript without marked changes.**

Anonymous referee #2, report #1:

Dear Authors,

thank you very much for the in-depth revision of your manuscript, which reads much better as it stands now. From my side, there are two minor comments left, that you should be corrected before the manuscript can be published.

1) This is still about the classification of the crusts in the methods section. You corrected sentence reads as follows: "Biocrusts were described in the field based on appearance, functional groups and species composition and biocrust types determined based on the dominating autotrophic component". Unfortunately it is still not clear to me what your determination criteria were. Appearance, functional groups, species composition or dominating autotrophic component? If this was the dominating autotrophic component, what the threshold to declare one organism dominant? Was this based on coverage then?

- We now understand that this point is not yet clear to every reader. Thank you again for pointing that out.
In the field, we first described species within the biocrusts in ROPs by appearance and functional groups, as far as possible. Then, we classified the general crust type per ROP with the help of the dominating autotrophic component (cyanobacteria, algae, moss, liverwort etc.) and this classification indeed was based on coverage of the soil surface (majority within one ROP).
We apologize for still not being clear in our explanation and changed the text passage according to the reviewers' comments (lines 141-143).

2) In table 1 all mean values should be given with standard deviation.

- Standard deviations were added to table 1 (page 27-28).

Anonymous referee #4, report #2:

Most studies concerning biocrusts have been conducted in dryland regions, while literature addressing biocrust topics in humid areas is very scarce. This study analyses the influence of different biotic and abiotic factors on biocrust cover and the effect of biocrusts on erosion in a humid area in China, reason why I think the results presented in this manuscript are novel and interesting. I also consider the authors have adequately addressed most of the comments previously made by reviewers.

I only have some minor comments:

L68-71. I do not think biocrusts compete with plants for light or nutrients. As said in previous lines, biocrusts appear in the areas where plants are not able to grow. As soon as light and water conditions permit, soils are occupied by vegetation. So, I would delete the sentence "In direct competition with phanerogamic plants" and would slightly change the arguments included in this paragraph.

- Thank you very much for this thought-provoking impulse. We agree that biocrusts often appear in (arid) areas, where phanerogamic plants are not able to grow. Nevertheless, foresters removed the tree and shrub vegetation on our particular study site artificially. Those plants are very well able to grow again and continuously do so next to pioneer biocrust species. In our opinion, there is a competition for light in particular, which will finally limit the development of biocrusts. Competition between cryptogams and vascular plants have also been observed in other temperate environments (see e.g. Büdel et al. 2014, Biodiversity and Conservation). Therefore, we rather tend to keep the sentence as it is. Nevertheless, we could attenuate the phrasing, if the editor sees the need for changes too.

L81-83, L91, L107-109. All these assumptions are indeed the hypotheses of this study, so they should be moved to the end of the Introduction where the different hypotheses are stated.

- You are right; those assumptions are actually recapitulating the 2nd, 3rd and 4th paragraph, respectively, which are in each case substantiating one of the three hypotheses. We slightly changed the order of the 3rd paragraph/2nd hypothesis, to better point that out (lines 89-90, 95-96).
If you do not wish to have those recapitulations in the introduction, we would suggest to delete them from the manuscript, rather than to move them to the end of the introduction, where the hypotheses are stated separately.

L129-130. Please, add also the potential evapotranspiration in the area. It is also important to include in this section the soil texture as it is a very important factor influencing biocrust cover and runoff and erosion rates.

- Unfortunately, there is no data on evapotranspiration available now. Nevertheless, we agree with you about the importance of particles sizes and included information on soil texture (lines 128-129). In relation to the wide distribution of sand and silt stones, the

particle size distribution on both experimental sites were quite similar having loam as the main texture class (see Scholten et al. 2017; Journal of Plant Ecology).

L211-212. Please, include in the text the average moss cover of the plots in the year 2013.

- Further information on mean cover in 2013 was added (lines 214-215).

L270-271. At the end of the study, the authors observe “indications that biocrust cover may start to be pushed back “. It seems that after a certain threshold in LAI or crown cover, increasing shade provided by denser vegetation has a negative effect on biocrust cover. Could the authors provide a value of LAI/ crown cover/vegetation cover at which the shift to decreased biocrust cover is observed?

- Thank you for this remark. We completely agree that there is some kind of turning point or threshold in vegetation/canopy cover regarding biocrust development. We now included information on tree vegetation cover in summer 2016 (lines 273-274). Unfortunately, as this observation was made at the end of the study, no further investigations or data on biocrust development could be included for 2016, so conclusions have to stay speculative. Furthermore, the LAI is very heterogonous between different tree species and in our opinion, further conclusions should be drawn based on the tree species level.

L322-324. The discussion about the effects of moss biocrusts on erosion should be improved by including more comparisons with other studies that have also reported erosivity/erosion rates in moss-dominated crusts. Some examples:

Knapen et al (2007) Effects of microbiotic crusts under cropland in temperate environments on soil erodibility during concentrated flow. Earth Surface Processes and Landforms.

Zhao et al (2014) Response of biological soil crusts to raindrop erosivity and underlying influences in the hilly Loess Plateau region, China. Biodiversity and Conservation.

Zhao and Xu (2013). Runoff and Soil Loss from Revegetated Grasslands in the Hilly Loess Plateau Region, China: Influence of Biocrust Patches and Plant Canopies. Journal of Hydrologic Engineering.

Bu et al (2015) The Combined Effects of Moss-Dominated Biocrusts and Vegetation on Erosion and Soil Moisture and Implications for Disturbance on the Loess Plateau, China. Plos One.

- Thank you for pointing out further literature, which we included in the manuscript to widen the discussion part on soil erosion rates in drylands (lines 329-330).

L336-337. Some studies in semiarid and temperate environments have reported an increase in soil hydrophobicity with the presence of later successional biocrusts (e.g. moss-dominated biocrusts), which could have a positive effect on runoff. See for an example “Drahorad et al. (2013) Ongoing succession of

biological soil crusts increases water repellency—a case study on Arenosols in Sekule, Slovakia”. Discuss very briefly in the text (and as compared with the results found in this area) the possible opposite (positive) effect of mosses on runoff in some areas due to an increase in soil hydrophobicity.

- Indeed, water repellency might also play an important role to mitigate soil loss in this system and it would be very interesting to conduct further research on this topic in forest environments. We included the mentioned literature by Drahorad et al. and added a brief explanation to the discussion part of our manuscript (lines 352-355).

Anonymous referee #5, report #3:

The topic of this work is very interesting: it is revealed the significant role of a “not always recognized player (bryophytes) in forests” reducing soil erosion during the restoration of a subtropical forest after disturbance. This work also contributes to the knowledge of biocrusts succession in a subtropical climate. As the succession dynamic and roles of biocrusts in humid forests are very scarce, any proper contribution to this knowledge will help to predict the effects of human disturbances and to advance on modelling of the dynamic of these ecosystems under a global change context.

However, I am concerned on two aspects of the paper:

1.- In its present form, biocrusts succession analysis does not actually depend on the erosion/runoff study and furthermore the effects of different stages of succession on erosion is not presented. In fact, both analyses are quite independent to each other, so why not focus the paper on one of the topic, going deeply on it. If not, I would recommend increasing the connexion between both issues, providing data analysis linking them.

- We agree, that additional data analyses might reveal more and interesting new insights. We do also plan to conduct further studies on biocrusts and erosion under forest in general, as well as in this specific Chinese forest experiment. Thus, we thank the reviewer very much for his comments and will consider them for our future work.

2.- I am also concerned on the statements about soil properties effects on biocrust development. On the one hand authors do not indicate soil depth sampling, which is very important because biocrusts have been demonstrated to be influenced by upper layers of the soil. Also it is crucial to indicate when soils were sampled, because biocrusts are also affecting upper soil properties, so depending on the sampling moment we can speak on the influence of soils on biocrusts cover or on the influence of biocrusts on soils properties. On the other hand, only 3 soil properties are analysed, without explaining why these properties and no others were selected, and with them authors conclude that soil attributes did not have effect. Maybe other soil properties could affect biocrusts development such as texture, pools of SOC, CEC or even soil sealing.... With the mentioned limitations it is very difficult to evaluate the influence of soil.

- We agree that the influence of soil parameters on biocrust development are not completely covered by this study. Due to limited time and financial budgets we were only able to test a selection of parameters. The three mentioned properties seemed the most appropriate choice to us and we believe that they are suitable to explain major effects on biocrust

development (pH) and biocrusts and soil erosion (SOM, bulk soil density) together. Nevertheless, we fully agree that an overall evaluation of the influence of soils cannot be done based on this data set. Thus, we attenuated the phrasing and explained the limited interpretation possibilities (lines 118, 288-289, 322-323). Moreover, information on soil sampling depth and time were added (lines 166-167).

Some minor points:

Although I realize that the idea of the limited number of studies on biocrusts from subtropical forest environments is key, however it is somewhat repetitive in the introduction and discussion. For introduction I recommend more emphasis on the impacts of filling this knowledge gap.

- Thank you for this comment. We tried to omit redundant repetitions and adapted the introduction according to your comment (lines 78-79, 89-90).

This study aims to investigate the development of biocrust cover in an early successional subtropical forest ecosystem after human disturbance and the impact of those biocrusts on soil erosion. I think the reader first impression is that you mean the impact of biocrust development on erosion, however the impacts only refer to a given moment, of the development, I recommend justifying the interest of choosing this moment.

- This study first aimed on soil erosion in an early successional subtropical tree plantation (for more detailed information please see Seitz et al. 2016, Goebes et al. 2015). While setting up the study, we already saw that biocrusts are developing widely and might also have a substantial influence on our measurements. We then immediately started recording the biocrust development within our ROPs. We agree with you, that the impact of biocrusts on soil erosion might be limited to a given moment in time, most likely during the first years of the plantation with young tree ages and only little leaf litter on the forest floor. Thus, we decided to measure erosion rates after the first three years after tree planting (lines 157-159).

Methods:

2.2 Within field methods, in my opinion it should be better clarify if ROPs for biocrust cover measurements coincide with those for soil erosion measurements. It is not very clear the experimental design description, especially concerning plots types and measurements, I think it may be improved.

- Biocrust cover measurements and biocrust type classification took place in the same ROPs, in which we also measured sediment delivery and runoff. We clarified this in lines 143-145, 157-159).

Also it should be indicated if soil analysis were done at the start of the experiment and it is very important to indicate the sampling depth

- Soil analyses were done in 2013 and at the same time when the erosion and extended biocrust cover determination took place. Soil sampling depth was 0-5 cm and further information was added to the methods section (lines 166-167).

2.3, I recommend to specify at least the resolution of the DEM, to have an idea of its capability to capture topographic changes.

- DEM resolution was 5 x 5 m and information was added to the methods section (lines 172).

Table 1: Sediment delivery, runoff and rainfall should be expressed in g/m² and mm respectively or at least the source area should be indicated in the caption (0.16m²?)

- You are right, sediment delivery, runoff and rainfall should be given in g m⁻² or l m⁻² (mm). Please apologize this shortcoming; the table was modified according to your comment (page 27-28).

Additionally, we added acknowledgments (line 404), as we have successfully applied for an open access publication grant at the Open Access Publishing Fund of the University of Tübingen.

Please find the revised version with marked changes below:

Bryophyte-dominated biological soil crusts mitigate soil erosion in an early successional Chinese subtropical forest

Steffen Seitz¹, Martin Nebel^{2,3}, Philipp Goebes¹, Kathrin Käppeler¹, Karsten Schmidt¹, Xuezheng Shi⁴, Zhengshan Song^{1,4}, Carla L. Webber⁵, Bettina Weber⁶, Thomas Scholten¹

¹ Soil Science and Geomorphology, Department of Geosciences, University of Tübingen, Tübingen, 72070, Germany

² State Museum of Natural History, Stuttgart, 70191, Germany

³ Nees Institute for Biodiversity of Plants, University of Bonn, Bonn, 53115, Germany

⁴ State Key Laboratory of Soil and Sustainable Agriculture, Institute of Soil Science, Chinese Academy of Sciences, Nanjing, 210008, PR China

⁵ Department of Geosciences, Federal University of Rio Grande do Sul, Porto Alegre, 90040-060, Brazil

⁶ Multiphase Chemistry Department, Max Planck Institute for Chemistry, Mainz, 55128, Germany

Correspondence to: Steffen Seitz (steffen.seitz@uni-tuebingen.de)

Abstract. This study investigated the development of biological soil crusts (biocrusts) in an early successional subtropical forest plantation and their impact on soil erosion. Within a biodiversity and ecosystem functioning experiment in Southeast China (BEF China), the effect of these biocrusts on sediment delivery and runoff was assessed within micro-scale runoff plots under natural rainfall and biocrust cover was surveyed over a five-year period.

Results showed that biocrusts occurred widely in the experimental forest ecosystem and developed from initial light cyanobacteria- and algae-dominated crusts to later-stage bryophyte-dominated crusts within only three years. Biocrust cover was still increasing after six years of tree growth. Within later stage crusts, 25 bryophyte species were determined. Surrounding vegetation cover and terrain attributes significantly influenced the development of biocrusts. Besides high crown cover and leaf area index, the development of biocrusts was favoured by low slope gradients, slope orientations towards the incident sunlight and the altitude of the research plots. Measurements showed that bryophyte-dominated biocrusts strongly decreased soil erosion being more effective than abiotic soil surface cover. Hence, their significant role to mitigate sediment delivery and runoff generation in mesic forest environments and their ability to quickly colonize soil surfaces after forest disturbance are of particular interest for soil erosion control in early stage forest plantations.

1 Introduction

Biological soil crusts (hereinafter referred to as biocrusts) are a living soil cover, which plays significant functional roles in many environments (Weber et al., 2016). In initial ecosystems, communities of cyanobacteria, algae, fungi, lichens, bryophytes and bacteria in varying combinations are the first to colonize the substrate (Evans and Johansen, 1999). Biocrusts are often dominated by one organism group, with cyanobacterial crusts being indicators for early stage crusts and drier conditions (Malam Issa et al., 1999; Malam Issa et al., 2007) and bryophyte-dominated crusts being indicators for later stage crusts and moister conditions (Colesie et al., 2016; Seppelt et al., 2016). Those highly specialized communities form a biological crust immediately on top or within the first millimetres of the soil surface (Büdel, 2005). Biocrusts preferably occur under harsh conditions of temperature or light, where vascular vegetation tends to be rare (Allen, 2010). Therefore, biocrusts are generally widespread under dryland conditions (Berkeley et al., 2005; Belnap, 2006; Büdel et al., 2009), whereas under mesic conditions they mostly occur as a successional stage after disturbance or in environments under regularly disturbed regimes (Büdel et al., 2014).

In direct competition with phanerogamic plants, biocrusts are generally in an inferior position and thus their development is limited under closed plant canopies or when leaf litter layers occur (Belnap et al., 2003a). This limitation is due to the competition for light (Malam Issa et al., 1999) and nutrients (Harper and Belnap, 2001). Disturbance of the phanerogamic vegetation layers, however, changes this competitive situation. Such disturbances can occur in forest ecosystems by natural treefall or human induced clear-cutting (Barnes and Spurr, 1998). Complete removal of a forest causes a harsh shift in vegetation development and creates a starting point for new vascular plant as well as biocrust communities (Bormann et al., 1968; Keenan and Kimmins, 1993; Beck et al., 2008). Biocrusts are able to quickly colonize natural clearances in tree layers (Belnap et al., 2003a) as well as gaps appearing after human disturbance (Dojani et al., 2011; Chiquoine et al., 2016). Generally, it can be stated that current knowledge on the relation between the development of biocrust cover and vascular plant cover leaves room for further research (Kleiner and Harper, 1977; Belnap et al., 2003b; Zhang et al., 2016). In particular, there are only few studies on the development of biocrusts in early successional forest ecosystems has not been in focus of research so far and thus there are only few studies on this topic (Su et al., 2007; Zhang et al., 2016). Furthermore, descriptions of different biocrust types in mesic vegetation zones and investigations in southeast Asia are rare (Büdel, 2003; Bowker et al., 2016). We assume that biocrusts are also able to coexist in mesic subtropical forest environments shortly after deforestation, but their cover decreases with ongoing tree canopy closure and decreasing light intensity.

Functional roles of biocrusts have been investigated for decades, but less attention has been paid to their spatial distribution and characteristics (Allen, 2010). Biocrust cover varies across spatial scales (from centimetres to kilometres) and it could be shown that it depends not only on the surrounding vascular vegetation cover, but also on soils, geomorphology and (micro-)topography or terrain (Evans and Johansen, 1999; Ullmann and Büdel, 2003; Kidron et al., 2009; Bowker et al., 2016) in arid, semi-arid, temperate and boreal environments. Different biocrust distributions have been related to elevation and terrain-influenced microclimatic gradients (Kutiel et al., 1998),

different geomorphic zones (Eldridge, 1999), varying aspects (George et al., 2000) and soil types (Bu et al., 2016). ~~We assume that this is also true for mesic subtropical forest environments.~~ To our knowledge, investigations on the influence of small-scale (centimetres to metres) topographic variations on biocrust development are rare and further studies will help to understand the role of these small-scale factors (Garcia-Pichel and Belnap, 2003; Bu et al., 2016; Bowker et al., 2016). Furthermore, as the development of biocrusts is characterized by a high complexity and spatial heterogeneity with many micro-climatic and micro-environmental factors, it is of great significance to conduct comparative studies on the spatial distribution of biocrusts (Bu et al., 2013). ~~We assume that This is particularly true for initial forest ecosystems.~~ (Weber et al., 2016), soil attributes as well as terrain attributes have major influences on the development of biocrusts in mesic subtropical forest environments and this is particularly true for initial ecosystems.

Biocrusts were recognized to have a major influence on terrestrial ecosystems (Buscot and Varma, 2005; Belnap, 2006) as they protect soil surfaces against erosive forces by both wind and water (Bowker et al., 2008; Zhao et al., 2014). They can absorb the kinetic energy of rain drops (splash effect), decrease shear forces and stabilize soil particles with protonemal mats and fine rhizoids and thus decrease particle detachment and enhance soil stability (Malam Issa et al., 2001; Warren, 2003; Belnap and Lange, 2003). Those effects differ with regard to soil texture, surface roughness, water repellency and finally different crust species and developmental stages (Warren, 2003; Belnap and Büdel, 2016). However, studies that directly relate different types of biocrust cover to rates of soil erosion are few (Allen, 2010). Furthermore, the influence of biocrusts on sediment delivery and runoff has mostly been investigated in arid and semi-arid climates and humid climates have been largely disregarded (Belnap and Lange, 2003; Weber et al., 2016). We assume that biocrusts are effectively counteracting soil losses in early successional subtropical forest plantations and thus may play a major functional role infor soil erosion control in mesic areas under anthropogenic influence.

This study aims to investigate the development of biocrust cover in an early successional subtropical forest ecosystem after human disturbance and the impact of those biocrusts on soil erosion. Therefore, interrill erosion was measured with runoff plots and the occurrence, distribution and development of biocrusts was recorded. The study was conducted in an experimental forest plantation (BEF China), which aims to study biodiversity and ecosystem functioning relationships in southeast China (Yang et al., 2013; Bruelheide et al., 2014). During the study, the following hypotheses were addressed:

- (1) Biocrusts are able to coexist in mesic early successional subtropical forest ecosystems, but crust cover decreases with ongoing canopy closure and decreasing light intensity.
- (2) The development of biocrusts in mesic subtropical forests is not only influenced by the surrounding vegetation cover, but also by major soil attributes which influence biocrust growth and terrain attributes which affect microclimatic conditions.
- (3) Biocrusts mitigate interrill soil erosion in early successional subtropical forest plantations.

Feldfunktion geändert

Formatiert: Schriftart: (Standard) Times New Roman, 10 Pt.

2 Material and methods

2.1 Study site and experimental design

The study was carried out within the BEF China experiment (Bruehlheide et al., 2014) in Xingangshan, Jiangxi Province, PR China (29°06.450' N and 117°55.450' E). The experimental area is located in a mountainous landscape at an elevation of 100 m a.s.l. to 265 m a.s.l. with slopes from 15° to 41° (Scholten et al., 2017). The bedrock is non-calcareous sandstones, siltstones and slates weathered to saprolite and predominant soil types are Cambisols with Anthrosols in downslope positions and Gleysols in valleys (Scholten et al., 2017). The particle size distribution was quite homogenous throughout the experimental area having loam as the main texture class (Scholten et al., 2017). The mean annual temperature is 17.4 °C and the annual precipitation is 1635 mm with about 50 % falling during May to August (Goebes et al., 2015). The climate is typical for summer monsoon subtropical regions. The potential natural vegetation of this region is a subtropical broadleaved forest with dominating evergreen species. It has been widely replaced by tree plantations of mostly *Cunninghamia lanceolata* for the purpose of commercial forestry in the 1980's (Bruehlheide et al., 2014). The experimental area (approx. 38 ha) is structured in 566 research plots (25.8 m × 25.8 m each) at two sites (A and B) and was clear-cut and replanted with 400 tree saplings per plot in different tree species mixtures in 2009 and 2010 (Yang et al., 2013). A selection of 34 research plots was used for this study (Seitz et al., 2016). Shrubs and coppices were weeded once a year from 2010 to 2012 to help the tree saplings grow, following common practice in forest plantations of this area.

2.2 Field methods

Biocrust cover was determined photogrammetrically in 70 selected micro-scale runoff plots (ROPs, 0.4 m × 0.4 m; Seitz et al., 2015) at five timesteps (November 2011, May 2012, May 2013, May 2014 and May 2015). Biocrust species were first described in the field based on appearance, and functional groups, and species composition and biocrust types were then determined based on the dominating autotrophic component (highest share of total biocrust cover per ROP). During the rainy season in summer 2013, an extended survey linked together with soil erosion measurements (see below) was conducted in five ROPs on 34 research plots each (170 ROPs in total, Table 1). At each ROP, perpendicular images were taken with a single lens reflex camera system (Canon 350D, Tokio, Japan) and processed with the grid quadrat method in GIMP 2.8 using a digital grid overlay with 100 subdivisions (cf. Belnap et al., 2001). Stone cover and biocrust cover were separated by hue distinction. A continuous leaf litter cover, which may impede analyses, was not present during measurements. Biocrusts were collected in 2013 and samples were dried at 40 °C (Dörex drying unit, Netstal, Switzerland). The identification of those sampled species was carried out by morphological characteristics using a stereomicroscope (Leitz TS, Wetzlar, Germany), a transmitted-light microscope (Leitz Laborlux S, Wetzlar, Germany) and ultraviolet light. Bryophytes (dominating taxa in 2013) were determined to the species level, wherever possible and separated into mosses (Bischler-Causse, 1989; Moos flora of China: Gao et al., 1999; 2001; 2002; 2003; 2005; 2007; 2008; 2011) and liverworts (Zhu, 2006; Söderström et al., 2016 and Alfons

Schäfer-Verwimp, personal communication). Comparisons were conducted with specimen hosted in the herbarium of the State Museum of Natural History in Stuttgart, Germany (Herbarium STU).

Sediment delivery and surface runoff were measured within 170 ROPs in summer 2013 [together with an extended biocrust survey](#) (see above and Table 1), [when tree saplings did not exceed three years of age and leaf litter fall was still low](#). After four timesteps, 334 valid ROP measurements entered the analysis (for detailed information see Seitz et al., 2016). Sediment delivery was sampled, dried at 40 °C and weighed, whereas surface runoff and rainfall amount were measured in situ. At every ROP, crown cover and leaf area index (LAI) were measured with a fish-eye camera system (Nikon D100 with Nikon AF G DX 180°, Tokio, Japan) and calculated with HemiView V.8 (Delta-T devices, Cambridge, UK). Measurements of tree height and crown width were provided by Li et al. (2014) at research plot scale (n=34). Tree species richness and tree composition resulted from the experimental setup of BEF China (Bruehlheide et al., 2014).

Soil attributes (Table 1) were determined for every research plot (n=34, [sampling in 2013](#)) using pooled samples from nine point measurements each ([sampling depth 0-5 cm](#)). Soil pH was measured in KCl (WTW pH-meter with Sentix electrodes, Weilheim, Germany), bulk soil density was determined by the mass-per-volume method and total organic carbon (TOC) was measured using heat combustion (Elementar Vario EL III, Hanau, Germany). Soil organic matter (SOM) was calculated by multiplying TOC with the factor 2 (Pribyl, 2010).

2.3 Digital terrain analysis

Terrain attributes (Table 1) were derived from a digital elevation model (DEM, [5 m × 5 m](#), Scholten et al., 2017) at research plot scale (n=34). Attributes were the terrain ruggedness index (TRI, Riley et al., 1999) to describe the heterogeneity of the terrain, the Monte-Carlo based flow accumulation (MCCA, Behrens et al., 2008) to diagnose terrain driven water availability, altitude above sea level to address elevation effects and the eastness and the northness (Roberts, 1986) to describe plant related climatic conditions. Those terrain attributes cover major landscape features of the experimental area and were not correlated. Slope was additionally measured with an inclinometer at every ROP (n=170, see Seitz et al., 2016).

[Table 1]

2.4 Statistical methods

The temporal development of biocrust cover (1) from 2011 to 2015 was assessed at five timesteps within 70 ROPs (see above) by an analysis of variance (ANOVA) and Tukey's Honestly Significant Difference (HSD) test (n=350).

The influences of vegetation, soil and topographic attributes on biocrust cover (2) in 170 ROPs (see above) were assessed by linear mixed effects (LME) models (n=334). Crown cover, bulk soil density, SOM, pH, altitude, slope,

MCCA, TRI, eastness, northness and tree species richness were fitted as fixed effects and biocrust cover as response variable. The attributes were tested with Pearson's correlation coefficient before fitting. LAI was fitted individually in exchange to crown cover due to multi-collinearity. Experimental site and research plot were fitted as random effects and hypotheses were tested with an ANOVA type 1 with Satterthwaite approximation for degrees of freedom.

The influences on soil erosion (3) were assessed by LME models with restricted maximum likelihood (n=334) and sediment delivery and surface runoff as response variables, respectively. Crown cover, slope, surface cover, SOM, rainfall amount and tree species richness were fitted as fixed effects. Surface cover was then split into surface cover by biocrusts and by stones, which entered the analysis as fixed conjoined factors. Precipitation events nested in plot, tree species composition, experimental site and ROP nested in plot were fitted as random effects. Attributes were not correlated. The hypothesis was tested with an ANOVA type 1 with Satterthwaite approximation for degrees of freedom. Moreover, the Wilcoxon rank sum test was applied to test for differences between biocrust cover and stone cover on sediment delivery and surface runoff. Therefore, the dataset was split into data points where biocrust cover exceeded stone cover (n=281) and data points where stone cover exceeded biocrust cover (n=53).

All response variables were log-transformed before modelling. The dataset was tested for multi-collinearity and met all prerequisites to carry out ANOVAs. All analyses were performed with R 3.1.2 (R Core Team, 2014). LME modelling was conducted with "lmerTest" (Kuznetsova et al., 2014) and rank sum tests with "exactRankTests" (Hothorn and Hornik, 2015). Figures were designed with "ggplot2" (Wickham, 2009).

3 Results

3.1 Temporal development of biocrust cover

Biocrusts occurred in 94 % of all ROPs and their cover within ROPs ranged between 1 % and 88 % over the course of five years. The mean biocrust cover of all ROPs more than tripled from their installation in 2011 to the last measurement in 2015 (Fig. 1). The increases were significant from 2011 to 2015 and from 2012 to 2013, 2013 to 2014 and 2014 to 2015 ($p < 0.001$).

[Figure 1]

Whereas a clear bryophyte-dominance of biocrusts was evident at the time of sampling in 2013 ([average ROP surface cover 24 %](#)), different successional stages were identified in the field and on ROP photos from 2011 to 2015 (Fig. 2). In 2011, a smooth, light cyanobacteria- and algae-dominated crust with few lichens and bryophytes indicated an earlier stage of biocrust development (Colesie et al., 2016). In 2013, 25 moss and liverwort species were classified (Table 2) and formed a bryophyte-dominated crust with some cyanobacteria, algae, lichens and micro-fungi still observed within

ROPs. The same was true in 2015, but first evidence of vascular plants (*Selaginella* and *Poaceae*) indicated a further change in the vegetation cover of the soil surface.

[Figure 2]

[Table 2]

3.2 The influence of vegetation, soil and terrain on biocrust cover

The development of biocrust cover in 2013 was positively influenced by crown cover and LAI as attributes of the surrounding vegetation (Table 3). Furthermore, it was negatively affected by slope and northness and slightly positively affected by the altitude of the research plots as terrain attributes (Table 3). Further terrain attributes or any soil attributes did not affect the development of biocrust cover.

[Table 3]

3.3 The impact of biocrust cover on soil erosion

The results indicate that biocrusts strongly affect soil erosion. ROPs with biocrust cover below 10 % showed a mean sediment delivery of 302 g m⁻² and a mean runoff volume of 39 L m⁻², whereas ROPs with biocrust cover above 50 % showed a mean sediment delivery of 74 g m⁻² and a mean runoff volume of 29 L m⁻². Both biocrust and stone cover, as well as total soil surface cover (comprising both biocrust and stone cover, p<0.001) negatively affected sediment delivery (Table 4). In addition, soil surface cover negatively affected surface runoff (p=0.003). However, only biocrust but not stone cover mediated the effect of runoff. Furthermore, crown cover, SOM and rainfall amount affected sediment delivery, whereas runoff was affected by crown cover and rainfall amount. ROPs with increased stone cover showed higher sediment delivery and surface runoff compared to those with increased biocrust cover (Fig. 3).

[Table 4]

[Figure 3]

4 Discussion

4.1 Temporal development of biocrust cover

Biocrusts were detected widely within the experiment and occupied a considerable area in the interspaces of the growing tree community. Thus, the first part of hypothesis 1, stating that biocrusts are able to coexist in mesic early successional subtropical forests, can be confirmed, as they successfully colonized the newly created habitats originating from the disturbance by forest clear-cutting and weeding (Bruehlheide et al., 2014). Although biocrusts have been mainly defined to occur in dryland regions (Weber et al., 2016), they can also appear as a transient feature in mesic environments after major singular or repeated disturbance events (Büdel et al., 2014, Fischer et al., 2014). In the current study, deforestation provided a local arid microenvironment, which initiated early biocrust development. At this young stage of forest development, biocrusts were able to coexist with upcoming tree saplings and formed a pioneer vegetation on the soil surface (Langhans et al., 2009), which provides the basis for the growth of other plants by the input of carbon and nitrogen (West, 1990; Evans and Johansen, 1999). Biocrusts are known to facilitate the succession of vascular plants to more advanced stages (Bowker, 2007), but tree growth and thus crown cover can also lead to an advancement in biocrust development, e.g. due to the protection from direct sunlight (Zhao et al., 2010; Tinya and Ódor, 2016). The bryophyte-dominance of biocrusts in 2013 documented this development into a later and somewhat moister successional stage. Later-stage bryophytes have received comparatively little attention in forest understorey (Gilliam, 2007) and biocrust studies (Weber et al., 2016) and in Asia only 23 different species have been reported within biocrusts up to now (Seppelt et al., 2016). Thus, this study with 25 recorded moss and liverwort species, most of them being new records within Asian biocrusts (Burkhard Büdel, personal communication) substantially increases the knowledge on biocrusts of this region.

The extent of biocrusts was strongly increasing since 2012 i.e. three years after tree replantation and still gaining coverage in the sixth year after the experimental setup. Thus, the second part of hypothesis 1, stating that crust cover decreases with ongoing canopy closure, has to be rejected. Even if single trees were already up to 7.4 m high (Li et al., 2014) and LAI was up to 5.35 in 2013, biocrusts still remained coexisting within the early stage forest ecosystem. Furthermore, increasing crown cover and LAI seemed to foster the development of bryophyte-dominated biocrusts at this ecological stage. By the end of this study [in summer 2016 \(LAI up to 6.18\)](#), there were indications that biocrust cover may start to be pushed back, as first vascular plants appeared in between. This is in line with existing literature, demonstrating that continuing tree growth will cause biocrust communities to adapt with an altered composition of moss and liverwort species (Eldridge and Tozer, 1997; Fenton and Frego, 2005; Goffinet and Shaw, 2009). It has been shown, that bryophytes switch from species favouring sunny habitats to more shade-tolerant species (Zhao et al., 2010; Müller et al., 2016). In addition, there might also be a reduction in bryophyte diversity due to shady conditions, where only a smaller number of species could prevail. In later stages, biocrust cover will be replaced by vascular vegetation (in light forests) or buried under persisting leaf litter (under darker conditions). In this context, the ecological roles of biocrusts in succession models and plant restoration are of interest (Hawkes, 2004; Bowker, 2007). In particular, biocrust succession in temperate climates has received limited scientific attention (Read et al., 2016). Furthermore, there are several projects under way to establish successful restoration techniques in arid and semi-arid environments

(Rosentreter et al., 2003; Bowker, 2007; Chiquoine et al., 2016; Condon and Pyke, 2016), which could be adapted to mesic environments. Nevertheless, it has to be stated that biocrust restoration might be dispensable in some mesic systems, as natural reestablishment appeared to be very fast in this study.

4.2 The influence of vegetation, soil and terrain on biocrust cover

In the current study, the development of biocrusts was influenced by vegetation and terrain, but not by [the three](#) soil attributes [investigated in this study](#). Thus, hypothesis 2, stating that the biocrust development is not only influenced by surrounding vegetation, but also by soil and terrain, can only partly be confirmed for this ecosystem. As demonstrated above, high crown cover and LAI positively affected the development of biocrust cover in 2013. This increase in biocrust cover is likely caused by successional alteration of biocrusts towards bryophyte-dominance. Mosses and liverworts profit from humid conditions and a higher protection from light compared to cyanobacteria- or lichen-dominated crusts (Ponzetti and McCune, 2001; Marsh et al., 2006; Williams et al., 2013). The successional development of biocrusts within the BEF China experiment was faster than reported by Zhao et al. (2010) for Chinese grasslands (Loess Plateau), who claimed biocrusts from a 3-year old site as early successional and dominated by cyanobacteria. The recovery rate was also faster than described by Eldridge (1998) and Read et al. (2011) for semi-arid Australia, each one of the very few studies on biocrust recovery under woodland. In the study presented here, the rapid change in biocrust community composition is mainly linked to the growth rates of surrounding trees in this subtropical forest. As functions of biocrusts, such as erosion reduction, are species-dependent, the rapid change in species composition might also lead to considerable variations in functional responses. Further studies are required to investigate species changeover times in different environments and particularly in disturbed mesic ecosystems.

Furthermore, several terrain attributes affected biocrust cover. Slope was the most prominent of those factors, causing a considerable decline in biocrust cover with increasing slope. This finding was explained by their decreasing ability to fix themselves on the soil surface at high slope angles and thus their tendency to erode from the soil surface, when large surface water flows occur during rainfall events (Chamizo et al., 2013; Bu et al., 2016). Thus, the surface-protecting effect of biocrusts decreases at steep plantation sites and during heavy monsoon rainfall events, which frequently occur in the broader research area in Jiangxi Province, China (Yang et al., 2013; Goebes et al., 2015). Moreover, microclimatic factors played a role in the development of biocrusts. Northness showed a positive impact on biocrust cover and indicated that slope orientations towards the incident sunlight directly influence the biocrust development. This was also observed in other studies in arid and semi-arid areas (Bowker et al., 2002; Zaady et al., 2007). Furthermore, biocrust development depended on the altitude, which is probably also by affecting microclimatic conditions (Kutiel et al., 1998; Chamizo et al., 2016; Bu et al., 2016). Those microclimatic factors are additionally altered by the growing tree vegetation itself.

Interestingly, SOM and pH did not affect biocrust cover in this study, whereas generally, underlying substrates are a main factor for bryophyte development (Spitale, 2017) and soil attributes are known to strongly influence biocrust cover (Bowker et al., 2016). At the experimental area, increased organic matter contents and acidic conditions have been determined (Scholten et al., 2017), which favour the development of bryophyte-dominated biocrusts (Eldridge

and Tozer, 1997; Seppelt et al., 2016). Nevertheless, the variation between the research plots was small and apparently not large enough to cause prominent differences in biocrust development. Comparisons between forest plantations on different substrates would help to clarify the influence of soil attributes on biocrust development in those environments and to assess their effect in a broader environmental context (Spitale, 2017). [Furthermore, a broader range of soil parameters should be included in future studies.](#)

4.3 The impact of biocrust cover on soil erosion

Biocrust cover clearly mitigated interrill soil erosion in this early stage ecosystem and thus hypothesis 3 was confirmed. Sediment delivery was strongly reduced with increasing biocrust cover. For arid environments, e.g. Cantón et al. (2011) and Maestre et al. (2011) showed that sediment delivery from soil surfaces covered with biocrusts decreases compared to bare soil surfaces with physical crusting (from 20 g m⁻² to <1 g m⁻² and 40 g m⁻² to <5 g m⁻², respectively), both studies using micro-scale runoff plots (0.25 m²). Bu et al. (2015) and Zhao and Xu (2013) [found similar erosion-reducing patterns for the sub-arid temperate Chinese Loess Plateau.](#) The study presented here shows, that biocrusts fulfil this key ecosystem service also within a particular mesic habitat, even if their biomass and soil penetration depth is low compared to trees. This functional role is due to the fact that biocrusts attenuate the impact of raindrops on the soil surface and greatly improve its resistance against sediment detachment (Eldridge and Greene, 1994; Goebes et al., 2014; Zhao et al., 2014). Moreover, they have the ability to glue loose soil particles by polysaccharides extruded by cyanobacteria and green algae (Buscot and Varma, 2005). In the current study, protonemata and rhizoids of mosses and liverworts were observed to be most effective by weaving and thus fixing the first millimetres of the top soil, as also described by Bowker et al. (2008). *Pogonatum inflexum* and *Atrichum subseriatum* are well known to have a positive effect on erosion control due to their sustained protonema system (Martin-Nebel, personal observation). Furthermore, bryophytes increase the formation of humus, which in turn assists to bind primary particles into aggregates (Scheffer et al., 2010; Zhang et al., 2016).

Whereas a partial stone cover did not decrease surface runoff in this study, bryophyte-dominated biocrusts positively influenced the hydrological processes in the top soil layer regarding erosion control. Thus, they actively mitigated initial soil erosion compared to abiotic components such as stones and pebbles. Biocrusts have been frequently shown to influence hydrological processes such as surface runoff and infiltration rates (Cantón et al., 2011; Chamizo et al., 2012; Rodríguez-Caballero et al., 2013). Recently, Chamizo et al. (2016) showed that biocrusts decrease runoff generation at larger scale (>2 m²), but converse behaviour has also been found (Cantón et al., 2002; Maestre et al., 2011). Reducing effects on runoff are related to biocrusts species composition (Belnap and Lange, 2003) and later developmental biocrust stages with higher biomass levels provide more resistance to soil loss (Belnap and Büdel, 2016). Especially bryophyte-dominated crusts have shown to enhance infiltration and reduce runoff due to their rhizome system, causing soil erosion rates to stay low (Warren, 2003; Yair et al., 2011). Also other field studies revealed that later stage biocrusts, containing both lichens and bryophytes, offer more protection against soil erosion than cyanobacterial crusts (Belnap and Gillette, 1997), as they provide higher infiltration potential (Kidron, 1995). [On the other hand, ??? found an increase in water repellency and a decrease in water sorptivity with ongoing biocrust succession on a temperate forest glade, which could also strongly affect runoff and sediment transport on subtropical](#)

forest soil surfaces. Moreover, biocrusts dominated by bryophytes increase surface roughness and thus slow down runoff (Kidron et al., 1999; Rodríguez-Caballero et al., 2012). Finally, they also absorb water and provide comparably high water storage capacity (Warren, 2003; Belnap, 2006). For example, *Leucobryum juniperoideum*, which has been widely found in this study, is known for its water absorbing capacity (Martin Nebel, personal observation). Thus, the observed rapid change in biocrust composition from cyanobacteria to bryophyte dominance improved soil erosion control in this forest environment. This effect should be considered for the replantation of forests in regions endangered by soil erosion.

5 Conclusion

This study investigated the development and distribution of biocrusts in an early stage subtropical forest plantation as well as their impact on interrill soil erosion after human disturbance. The following conclusions were obtained:

(1) Biocrusts occurred widely in this mesic early successional forest ecosystem in subtropical China and were already dominated by bryophytes after three years of tree growth (25 bryophyte species classified). After six years of continuing canopy closure, biocrust cover was still increasing. Further monitoring under closing tree canopy is of importance to detect changes in biocrust cover and species composition. As this study discusses a very particular subtropical forest environment, where trees were replanted after clear-cutting, results have to be viewed with this particular setup in mind. Further studies on biocrust development in different disturbed forest ecosystems appear to be of high interest.

(2) The surrounding vegetation and underlying terrain affected biocrust development, whereas soil attributes did not have an effect at this small experimental scale. Besides high crown cover and LAI, the development of biocrusts was favoured by low slope gradient, slope orientations towards the incident sunlight and altitude. Further research appears to be necessary to explain effects of terrain attributes such as aspect or elevation and effects of underlying soil and substrates.

(3) Soil surface cover of biocrusts largely affected soil erosion control in this early stage of the forest plantation. Bryophyte-dominated crusts showed erosion-reducing characteristics with regard to both sediment delivery and surface runoff. Furthermore, they were more effectively decreasing soil losses than abiotic soil surface covers. The erosion-reducing influence of bryophyte-dominated biocrusts and their rapid development from cyanobacteria-dominated crusts should be considered in management practices in early stage forest plantations. Further research is required on functional mechanisms of different biocrust and bryophyte species and their impact on soil erosion processes.

Data availability

Data are publicly accessible and archived at the BEF China data portal (<http://china.befdata.biow.uni-leipzig.de>).

Author contribution

Steffen Seitz and Thomas Scholten designed the experiment and Steffen Seitz, Zhengshan Song, Kathrin Käppeler and Carla L. Webber carried it out. Martin Nebel and Kathrin Käppeler classified biocrust types and determined bryophyte species. Steffen Seitz, Philipp Goebes and Karsten Schmidt performed the statistical models. Steffen Seitz, Xuezheng Shi and Bettina Weber prepared the manuscript with contributions from all co-authors. The authors declare that they have no conflict of interest.

Acknowledgements

We are grateful to the BEF China research group and especially to our students Mario Ahner, Milan Daus, Marlena Hall, Madeleine Janker, Paula Kersten, Vera Müller and Andrea Wadenstorfer for assistance in fieldwork. We also thank Alfons Schäfer-Verwimp for assistance in determination of bryophytes, Karl Forchhammer for giving us first insights into the world of cyanobacteria and the participants of BioCrust3 for helpful comments on the results.

This work was funded by the German Research Foundation (DFG FOR 891/2 and 891/3). We also benefitted from travel grants by the Sino-German Centre for Research Promotion (GZ 699 and GZ 785) and from funding of the Max Planck Society. [We acknowledge support by the Open Access Publishing Fund of the University of Tübingen.](#)

References

- Allen, C. D.: Biogeomorphology and biological soil crusts: a symbiotic research relationship, *geomorphologie*, 16, 347–358, doi:10.4000/geomorphologie.8071, 2010.
- Barnes, B. V. and Spurr, S. H.: *Forest ecology*, 4th ed., Wiley, New York, 774 pp., 1998.
- Beck, E., Hartig, K., Roos, K., Preußig, M., and Nebel, M.: Permanent Removal of the Forest: Construction of Roads and Power Supply Lines, in: *Gradients in a tropical mountain ecosystem of Ecuador*, Beck, E. (Ed.), *Ecological studies*, 198, Springer, Berlin, 361–370, 2008.

Feldfunktion geändert

Formatiert: Englisch (Vereinigtes Königreich)

- Behrens, T., Schmidt, K., and Scholten, T.: An approach to removing uncertainties in nominal environmental covariates and soil class maps, in: Digital soil mapping with limited data, Hartemink, A. E., McBratney, A. B., Mendonça-Santos, Maria de Lourdes (Eds.), Springer, Dordrecht, London, 213–224, 2008.
- Belnap, J.: The potential roles of biological soil crusts in dryland hydrologic cycles, *Hydrol. Process.*, 20, 3159–3178, doi:10.1002/hyp.6325, 2006.
- Belnap, J. and Büdel, B.: Biological Soil Crusts as Soil Stabilizers, in: Biological soil crusts: An organizing principle in drylands, Weber, B., Büdel, B., Belnap, J. (Eds.), Ecological studies, analysis and synthesis, 226, Springer, Switzerland, 305–320, 2016.
- Belnap, J., Büdel, B., and Lange, O. L.: Biological Soil Crusts: Characteristics and Distribution, in: Biological soil crusts: Structure, function and management, 1st ed., rev. 2nd printing., Belnap, J., Lange, O. L. (Eds.), Springer, Berlin, 3–30, 2003a.
- Belnap, J. and Gillette, D. A.: Disturbance of biological soil crusts: impacts on potential wind erodibility of sandy desert soils in southeastern Utah, *Land Degrad. Dev.*, 8, 355–362, doi:10.1002/(SICI)1099-145X(199712)8:4<355:AID-LDR266>3.0.CO;2-H, 1997.
- Belnap, J., Kaltenecker, J. H., Rosentreter, R., Williams, J., Leonard, S., and Eldridge, D. J.: Biological Soil Crusts: Ecology and Management, Technical Reference, 1730-2, United States Department of the Interior - Bureau of Land Management, 2001.
- Belnap, J. and Lange, O. L. (Eds.): Biological soil crusts: Structure, function and management, 1st ed., rev. 2nd printing., Springer, Berlin, IX, 503, 2003.
- Belnap, J., Prasse, R., and Harper, K. T.: Influence of Biological Soil Crusts on Soil Environments and Vascular Plants, in: Biological soil crusts: Structure, function and management, 1st ed., rev. 2nd printing., Belnap, J., Lange, O. L. (Eds.), Springer, Berlin, 281–300, 2003b.

- Berkeley, A., Thomas, A. D., and Dougill, A. J.: Cyanobacterial soil crusts and woody shrub canopies in Kalahari rangelands, *African J Ecol*, 43, 137–145, doi:10.1111/j.1365-2028.2005.00560.x, 2005.
- Bischler-Causse, H.: *Marchantia L.: The asiatic and oceanic taxa*, J. Cramer, Berlin [etc.], 317 pp., 1989.
- Bormann, F. H., Likens, G. E., Fisher, D. W., and Pierce, R. S.: Nutrient loss accelerated by clear-cutting of a forest ecosystem, *Science*, 159, 882–884, doi:10.1126/science.159.3817.882, 1968.
- Bowker, M. A.: Biological Soil Crust Rehabilitation in Theory and Practice: An Underexploited Opportunity, *Restor Ecology*, 15, 13–23, doi:10.1111/j.1526-100X.2006.00185.x, 2007.
- Bowker, M. A., Belnap, J., Bala Chaudhary, V., and Johnson, N. C.: Revisiting classic water erosion models in drylands: The strong impact of biological soil crusts, *Soil Biology and Biochemistry*, 40, 2309–2316, doi:10.1016/j.soilbio.2008.05.008, 2008.
- Bowker, M. A., Belnap, J., Büdel, B., Sannier, C., Pietrasiak, N., Eldridge, D. J., and Rivera-Aguilar, V.: Controls on Distribution Patterns of Biological Soil Crusts at Micro- to Global Scales, in: *Biological soil crusts: An organizing principle in drylands*, Weber, B., Büdel, B., Belnap, J. (Eds.), Ecological studies, analysis and synthesis, 226, Springer, Switzerland, 173–197, 2016.
- Bowker, M. A., Reed, S. C., Belnap, J., and Phillips, S. L.: Temporal variation in community composition, pigmentation, and F(v)/F(m) of desert cyanobacterial soil crusts, *Microbial ecology*, 43, 13–25, doi:10.1007/s00248-001-1013-9, 2002.
- Bruehlheide, H., Nadrowski, K., Assmann, T., Bauhus, J., Both, S., Buscot, F., Chen, X.-Y., Ding, B., Durka, W., Erfmeier, A., Gutknecht, Jessica L. M., Guo, D., Guo, L.-D., Härdtle, W., He, J.-S., Klein, A.-M., Kühn, P., Liang, Y., Liu, X., Michalski, S., Niklaus, P. A., Pei, K., Scherer-Lorenzen, M., Scholten, T., Schuldt, A., Seidler, G., Trogisch, S., Oheimb, G. von, Welk, E., Wirth, C., Wubet, T., Yang, X., Yu, M., Zhang, S., Zhou, H., Fischer, M., Ma, K., Schmid, B., and Muller-Landau, H.: Designing forest biodiversity experiments: general considerations illustrated by a new large experiment in subtropical China, *Methods Ecol Evol*, 5, 74–89, doi:10.1111/2041-210X.12126, 2014.

- Bu, C., Wu, S., Han, F., Yang, Y., and Meng, J.: The combined effects of moss-dominated biocrusts and vegetation on erosion and soil moisture and implications for disturbance on the Loess Plateau, China, *PLoS one*, 10, e0127394, doi:10.1371/journal.pone.0127394, 2015.
- Bu, C., Wu, S., Zhang, K., Yang, Y., and Gao, G.: Biological soil crusts: An eco-adaptive biological conservative mechanism and implications for ecological restoration, *Plant Biosystems - An International Journal Dealing with all Aspects of Plant Biology*, 149, 364–373, doi:10.1080/11263504.2013.819820, 2013.
- Bu, C., Zhang, P., Wang, C., Yang, Y.-s., Shao, H.-b., and Wu, S.: Spatial distribution of biological soil crusts on the slope of the Chinese Loess Plateau based on canonical correspondence analysis, *CATENA*, 137, 373–381, doi:10.1016/j.catena.2015.10.016, 2016.
- Büdel, B.: Biological Soil Crusts of Asia Including the Don and Volga Region, in: *Biological soil crusts: Structure, function and management*, 1st ed., rev. 2nd printing., Belnap, J., Lange, O. L. (Eds.), Springer, Berlin, 87–94, 2003.
- Büdel, B.: Microorganisms of Biological Crusts on Soil Surfaces, in: *Microorganisms in Soils: Roles in Genesis and Functions*, Buscot, F., Varma, A. (Eds.), Springer, New York, 307–324, 2005.
- Büdel, B., Colesie, C., Green, T. G. A., Grube, M., Lazaro Suau, R., Loewen-Schneider, K., Maier, S., Peer, T., Pintado, A., Raggio, J., Ruprecht, U., Sancho, L. G., Schroeter, B., Turk, R., Weber, B., Wedin, M., Westberg, M., Williams, L., and Zheng, L.: Improved appreciation of the functioning and importance of biological soil crusts in Europe: the Soil Crust International Project (SCIN), *Biodiversity and conservation*, 23, 1639–1658, doi:10.1007/s10531-014-0645-2, 2014.
- Büdel, B., Darienko, T., Deutschewitz, K., Dojani, S., Friedl, T., Mohr, K. I., Salisch, M., Reisser, W., and Weber, B.: Southern African biological soil crusts are ubiquitous and highly diverse in drylands, being restricted by rainfall frequency, *Microbial ecology*, 57, 229–247, doi:10.1007/s00248-008-9449-9, 2009.

- Buscot, F. and Varma, A. (Eds.): *Microorganisms in Soils: Roles in Genesis and Functions*, Springer, New York, 2005.
- Cantón, Y., Domingo, F., Solé-Benet, A., and Puigdefábregas, J.: Influence of soil-surface types on the overall runoff of the Tabernas badlands (south-east Spain): field data and model approaches, *Hydrol. Process.*, 16, 2621–2643, doi:10.1002/hyp.1052, 2002.
- Cantón, Y., Solé-Benet, A., Vente, J. de, Boix-Fayos, C., Calvo-Cases, A., Asensio, C., and Puigdefábregas, J.: A review of runoff generation and soil erosion across scales in semiarid south-eastern Spain, *Journal of Arid Environments*, 75, 1254–1261, doi:10.1016/j.jaridenv.2011.03.004, 2011.
- Chamizo, S., Belnap, J., Eldridge, D. J., Cantón, Y., and Malam Issa, O.: The Role of Biocrusts in Arid Land Hydrology, in: *Biological soil crusts: An organizing principle in drylands*, Weber, B., Büdel, B., Belnap, J. (Eds.), *Ecological studies, analysis and synthesis*, 226, Springer, Switzerland, 321–346, 2016.
- Chamizo, S., Cantón, Y., Domingo, F., and Belnap, J.: Evaporative losses from soils covered by physical and different types of biological soil crusts, *Hydrol. Process.*, 27, 324–332, doi:10.1002/hyp.8421, 2013.
- Chamizo, S., Cantón, Y., Rodríguez-Caballero, E., Domingo, F., and Escudero, A.: Runoff at contrasting scales in a semiarid ecosystem: A complex balance between biological soil crust features and rainfall characteristics, *Journal of Hydrology*, 452-453, 130–138, doi:10.1016/j.jhydrol.2012.05.045, 2012.
- Chiquoine, L. P., Abella, S. R., and Bowker, M. A.: Rapidly restoring biological soil crusts and ecosystem functions in a severely disturbed desert ecosystem, *Ecological applications a publication of the Ecological Society of America*, 26, 1260–1272, 2016.
- Colesie, C., Felde, V. J.M., and Büdel, B.: Composition and Macrostructure of Biological Soil Crusts, in: *Biological soil crusts: An organizing principle in drylands*, Weber, B., Büdel, B., Belnap, J. (Eds.), *Ecological studies, analysis and synthesis*, 226, Springer, Switzerland, 159–172, 2016.

- Condon, L. A. and Pyke, D. A.: Filling the interspace-restoring arid land mosses: Source populations, organic matter, and overwintering govern success, *Ecol Evol*, 6, 7623–7632, doi:10.1002/ece3.2448, 2016.
- Dojani, S., Büdel, B., Deutschewitz, K., and Weber, B.: Rapid succession of Biological Soil Crusts after experimental disturbance in the Succulent Karoo, South Africa, *Applied Soil Ecology*, 48, 263–269, doi:10.1016/j.apsoil.2011.04.013, 2011.
- Eldridge, D. J.: Soil crust lichens and mosses on calcrete-dominant soils at Maralinga in arid South Australia, *Journal of Adelaide Botanic Gardens*, 18, 9–24, 1998.
- Eldridge, D. J.: Distribution and floristics of moss- and lichen-dominated soil crusts in a patterned *Callitris glaucophylla* woodland in eastern Australia, *Acta Oecologica*, 20, 159–170, doi:10.1016/S1146-609X(99)80029-0, 1999.
- Eldridge, D. J. and Greene, R.S.B.: Assessment of sediment yield by splash erosion on a semi-arid soil with varying cryptogam cover, *Journal of Arid Environments*, 26, 221–232, doi:10.1006/jare.1994.1025, 1994.
- Eldridge, D. J. and Tozer, M. E.: Environmental Factors Relating to the Distribution of Terricolous Bryophytes and Lichens in Semi-Arid Eastern Australia, *The Bryologist*, 100, 28, doi:10.2307/3244384, 1997.
- Evans, R. D. and Johansen, J. R.: Microbiotic Crusts and Ecosystem Processes, *Critical Reviews in Plant Sciences*, 18, 183–225, doi:10.1080/07352689991309199, 1999.
- Fenton, N. J. and Frego, K. A.: Bryophyte (moss and liverwort) conservation under remnant canopy in managed forests, *Biological Conservation*, 122, 417–430, doi:10.1016/j.biocon.2004.09.003, 2005.
- Fischer, T., Gypser, S., Subbotina, M., and Veste, M.: Synergic hydraulic and nutritional feedback mechanisms control surface patchiness of biological soil crusts on tertiary sands at a post-mining site, *Journal of Hydrology and Hydromechanics*, 62, doi:10.2478/johh-2014-0038, 2014.

- Gao, C., Crosby, M. R., and He, S.: Moss flora of China: Volume 01: Sphagnaceae - Leucobryaceae, English Version, Science Press and Missouri Botanical Garden, Beijing, St. Louis, 273 pp., 1999.
- Gao, C., Crosby, M. R., and He, S.: Moss flora of China: Volume 02: Fissidentaceae - Phytomitriaceae, English Version, Science Press and Missouri Botanical Garden, Beijing, St. Louis, 283 pp., 2001.
- Gao, C., Crosby, M. R., and He, S.: Moss flora of China: Volume 06: Hookeriaceae - Thuidiaceae, English Version, Science Press and Missouri Botanical Garden, Beijing, St. Louis, 2002.
- Gao, C., Crosby, M. R., and He, S.: Moss flora of China: Volume 03: Grimmiaceae - Tetrarhizaceae, English Version, Science Press and Missouri Botanical Garden, Beijing, St. Louis, 141 pp., 2003.
- Gao, C., Crosby, M. R., and He, S.: Moss flora of China: Volume 08: Sematophyllaceae - Polytrichaceae, English Version, Science Press and Missouri Botanical Garden, Beijing, St. Louis, 2005.
- Gao, C., Crosby, M. R., and He, S.: Moss flora of China: Volume 04: Bryaceae - Timmiaceae, English Version, Science Press and Missouri Botanical Garden, Beijing, St. Louis, 211 pp., 2007.
- Gao, C., Crosby, M. R., and He, S.: Moss flora of China: Volume 07: Amblystegiaceae - Plagiotheciaceae, English Version, Science Press and Missouri Botanical Garden, Beijing, St. Louis, 258 pp., 2008.
- Gao, C., Crosby, M. R., and He, S.: Moss flora of China: Volume 05: Erpodiaceae - Climaciaceae, English Version, Science Press and Missouri Botanical Garden, Beijing, St. Louis, 2011.
- Garcia-Pichel, F. and Belnap, J.: Small-Scale Environments and Distribution of Biological Soil Crusts, in: Biological soil crusts: Structure, function and management, 1st ed., rev. 2nd printing., Belnap, J., Lange, O. L. (Eds.), Springer, Berlin, 193–201, 2003.
- George, D. B., Davidson, D. W., Schliep, K. C., and Patrell-Kim, L. J.: Microtopography of microbiotic crusts on the Colorado Plateau, and distribution of component organisms, *Western North American Naturalist*, 60, 343–354, 2000.
- Gilliam, F. S.: The Ecological Significance of the Herbaceous Layer in Temperate Forest Ecosystems, *BioScience*, 57, 845, doi:10.1641/B571007, 2007.

Goebes, P., Seitz, S., Geißler, C., Lassu, T., Peters, P., Seeger, M., Nadrowski, K., and Scholten, T.:

Momentum or kinetic energy – How do substrate properties influence the calculation of rainfall erosivity?, *Journal of Hydrology*, 517, 310–316, doi:10.1016/j.jhydrol.2014.05.031, 2014.

Goebes, P., Seitz, S., Kühn, P., Li, Y., Niklaus, P. A., Oheimb, G. von, and Scholten, T.: Throughfall kinetic

energy in young subtropical forests: Investigation on tree species richness effects and spatial variability, *Agricultural and Forest Meteorology*, 213, 148–159,

doi:10.1016/j.agrformet.2015.06.019, 2015.

Goffinet, B. and Shaw, A. J.: *Bryophyte biology*, 2nd ed., Cambridge University Press, Cambridge, xiv,

565, 2009.

Harper, K. T. and Belnap, J.: The influence of biological soil crusts on mineral uptake by associated

vascular plants, *Journal of Arid Environments*, 47, 347–357, doi:10.1006/jare.2000.0713, 2001.

Hawkes, C. V.: Effects of biological soil crusts on seed germination of four endangered herbs in a xeric

Florida shrubland during drought, *Plant Ecology*, 170, 121–134,

doi:10.1023/B:VEGE.0000019035.56245.91, 2004.

Hothorn, T. and Hornik, K.: *exactRankTests: Exact Distributions for Rank and Permutation Tests*, 2015.

Keenan, R. J. and Kimmins, J. P.: The ecological effects of clear-cutting, *Environ. Rev.*, 1, 121–144,

doi:10.1139/a93-010, 1993.

Kidron, G. J.: The impact of microbial crust upon rainfall-runoff-sediment yield relationships on

longitudinal dune slopes, Nizzana, western Negev Dessert, Israel, PhD Thesis, Hebrew University of Jerusalem, Jerusalem, 1995.

Kidron, G. J., Vonshak, A., and Abeliovich, A.: Microbiotic crusts as biomarkers for surface stability and

wetness duration in the Negev Desert, *Earth Surf. Process. Landforms*, 34, 1594–1604,

doi:10.1002/esp.1843, 2009.

- Kidron, G. J., Yaalon, D. H., and Vonshak, A.: Two Causes for Runoff Initiation on Microbiotic Crusts: Hydrophobicity and Pore Clogging, *Soil Science*, 164, 18–27, doi:10.1097/00010694-199901000-00004, 1999.
- Kleiner, E. F. and Harper, K. T.: Soil Properties in Relation to Cryptogamic Groundcover in Canyonlands National Park, *Journal of Range Management Archives*, 30, 202–205, 1977.
- Kutiel, P., Lavee, H., and Ackermann, O.: Spatial distribution of soil surface coverage on north and south facing hillslopes along a Mediterranean to extreme arid climatic gradient, *Geomorphology*, 23, 245–256, doi:10.1016/S0169-555X(98)00007-5, 1998.
- Kuznetsova, A., Brockhoff, P. B., and Christensen, R. H.: *lmerTest: Tests in Linear Mixed Effects Models*, 2014.
- Langhans, T. M., Storm, C., and Schwabe, A.: Biological soil crusts and their microenvironment: Impact on emergence, survival and establishment of seedlings, *Flora - Morphology, Distribution, Functional Ecology of Plants*, 204, 157–168, doi:10.1016/j.flora.2008.01.001, 2009.
- Li, Y., Härdtle, W., Bruehlheide, H., Nadrowski, K., Scholten, T., Wehrden, H. von, and Oheimb, G. von: Site and neighborhood effects on growth of tree saplings in subtropical plantations (China), *Forest Ecology and Management*, 327, 118–127, doi:10.1016/j.foreco.2014.04.039, 2014.
- Maestre, F. T., Bowker, M. A., Cantón, Y., Castillo-Monroy, A. P., Cortina, J., Escolar, C., Escudero, A., Lazaro Suau, R., and Martínez, I.: Ecology and functional roles of biological soil crusts in semi-arid ecosystems of Spain, *Journal of Arid Environments*, 75, 1282–1291, doi:10.1016/j.jaridenv.2010.12.008, 2011.
- Malam Issa, O., Défarge, C., Le Bissonnais, Y., Marin, B., Duval, O., Bruand, A., D'Acqui, L. P., Nordenberg, S., and Annerman, M.: Effects of the inoculation of cyanobacteria on the microstructure and the structural stability of a tropical soil, *Plant Soil*, 290, 209–219, doi:10.1007/s11104-006-9153-9, 2007.

- Malam Issa, O., Le Bissonnais, Y., Défarge, C., and Trichet, J.: Role of a cyanobacterial cover on structural stability of sandy soils in the Sahelian part of western Niger, *Geoderma*, 101, 15–30, doi:10.1016/S0016-7061(00)00093-8, 2001.
- Malam Issa, O., Trichet, J., Défarge, C., Couté, A., and Valentin, C.: Morphology and microstructure of microbiotic soil crusts on a tiger bush sequence (Niger, Sahel), *CATENA*, 37, 175–196, doi:10.1016/S0341-8162(99)00052-1, 1999.
- Marsh, J., Nouvet, S., Sanborn, P., and Coxson, D.: Composition and function of biological soil crust communities along topographic gradients in grasslands of central interior British Columbia (Chilcotin) and southwestern Yukon (Kluane), *Can. J. Bot.*, 84, 717–736, doi:10.1139/b06-026, 2006.
- Müller, S. J., Gütle, D. D., Jacquot, J.-P., and Reski, R.: Can mosses serve as model organisms for forest research?, *Annals of Forest Science*, 73, 135–146, doi:10.1007/s13595-015-0468-7, 2016.
- Ponzetti, J. M. and McCune, B. P.: Biotic Soil Crusts of Oregon's Shrub Steppe: Community Composition in Relation to Soil Chemistry, Climate, and Livestock Activity, *The Bryologist*, 104, 212–225, doi:10.1639/0007-2745(2001)104[0212:BSCOOS]2.0.CO;2, 2001.
- Pribyl, D. W.: A critical review of the conventional SOC to SOM conversion factor, *Geoderma*, 156, 75–83, doi:10.1016/j.geoderma.2010.02.003, 2010.
- R Core Team: R: A Language and Environment for Statistical Computing, R Foundation for Statistical Computing, Vienna, Austria, 2014.
- Read, C. F., Duncan, D. H., Vesk, P. A., and Elith, J.: Surprisingly fast recovery of biological soil crusts following livestock removal in southern Australia, *J Veg Sci*, 22, 905–916, doi:10.1111/j.1654-1103.2011.01296.x, 2011.
- Read, C. F., Elith, J., Vesk, P. A., and Pugnaire, F.: Testing a model of biological soil crust succession, *J Veg Sci*, 27, 176–186, doi:10.1111/jvs.12332, 2016.

- Riley, S. J., Degloria, S. D., and Elliot, R.: A Terrain Ruggedness Index that Quantifies Topographic Heterogeneity, *Intermountain Journal of Sciences*, 5, 23–27, 1999.
- Roberts, D. W.: Ordination on the Basis of Fuzzy Set Theory, *Vegetatio*, 66, 123–131, 1986.
- Rodríguez-Caballero, E., Cantón, Y., Chamizo, S., Afana, A., and Solé-Benet, A.: Effects of biological soil crusts on surface roughness and implications for runoff and erosion, *Geomorphology*, 145-146, 81–89, doi:10.1016/j.geomorph.2011.12.042, 2012.
- Rodríguez-Caballero, E., Cantón, Y., Chamizo, S., Lazaro Suau, R., and Escudero, A.: Soil Loss and Runoff in Semiarid Ecosystems: A Complex Interaction Between Biological Soil Crusts, Micro-topography, and Hydrological Drivers, *Ecosystems*, 16, 529–546, doi:10.1007/s10021-012-9626-z, 2013.
- Rosentreter, R., Eldridge, D. J., and Kaltenecker, J. H.: Monitoring and Management of Biological Soil Crusts, in: *Biological soil crusts: Structure, function and management*, 1st ed., rev. 2nd printing., Belnap, J., Lange, O. L. (Eds.), Springer, Berlin, 457–468, 2003.
- Scheffer, F., Schachtschabel, P., and Blume, H.-P.: *Lehrbuch der Bodenkunde*, 16th ed., Spektrum Verlag, Heidelberg, Berlin, 569 pp., 2010.
- Scholten, T., Goebes, P., Kühn, P., Seitz, S., Assmann, T., Bauhus, J., Bruelheide, H., Buscot, F., Erfmeier, A., Fischer, M., Härdtle, W., He, J.-S., Ma, K., Niklaus, P. A., Scherer-Lorenzen, M., Schmid, B., Shi, X., Song, Z., Oheimb, G. von, Wirth, C., Wubet, T., and Schmidt, K.: On the combined effect of soil fertility and topography on tree growth in subtropical forest ecosystems - a study from SE China, *Journal of Plant Ecology*, 10, 111-127, doi:10.1093/jpe/rtw065, 2017.
- Seitz, S., Goebes, P., Song, Z., Bruelheide, H., Härdtle, W., Kühn, P., Li, Y., and Scholten, T.: Tree species and functional traits but not species richness affect interrill erosion processes in young subtropical forests, *SOIL*, 2, 49–61, doi:10.5194/soil-2-49-2016, 2016.

Formatiert: Englisch (Vereinigtes Königreich)

- Seitz, S., Goebes, P., Zumstein, P., Assmann, T., Kühn, P., Niklaus, P. A., Schuldt, A., and Scholten, T.: The influence of leaf litter diversity and soil fauna on initial soil erosion in subtropical forests, *Earth Surf. Process. Landforms*, 40, 1439–1447, doi:10.1002/esp.3726, 2015.
- Seppelt, R. D., Downing, A. J., Deane-Coe, K. K., Zhang, Y., and Zhang, J.: Bryophytes Within Biological Soil Crusts, in: *Biological soil crusts: An organizing principle in drylands*, Weber, B., Büdel, B., Belnap, J. (Eds.), *Ecological studies, analysis and synthesis*, 226, Springer, Switzerland, 101–120, 2016.
- Söderström, L., Hagborg, A., Konrat, M. von, Bartholomew-Began, S., Bell, D., Briscoe, L., Brown, E., Cargill, D. C., Costa, D. P., Crandall-Stotler, B. J., Cooper, E. D., Dauphin, G., Engel, J. J., Feldberg, K., Glenn, D., Gradstein, S. R., He, X., Heinrichs, J., Hentschel, J., Ilkiu-Borges, A. L., Katagiri, T., Konstantinova, N. A., Larraín, J., Long, D. G., Nebel, M., Pócs, T., Puche, F., Reiner-Drehwald, E., Renner, Matt A M, Sass-Gyarmati, A., Schäfer-Verwimp, A., Moragues, José Gabriel Segarra, Stotler, R. E., Sukkharak, P., Thiers, B. M., Uribe, J., Váňa, J., Villarreal, J. C., Wigginton, M., Zhang, L., and Zhu, R.-L.: World checklist of hornworts and liverworts, *PhytoKeys*, 1–828, doi:10.3897/phytokeys.59.6261, 2016.
- Spitale, D.: Forest and substrate type drive bryophyte distribution in the Alps, *Journal of Bryology*, 39, 128–140, doi:10.1080/03736687.2016.1274090, 2017.
- Su, Y.-G., Li, X.-R., Cheng, Y.-W., Tan, H.-J., and Jia, R.-L.: Effects of biological soil crusts on emergence of desert vascular plants in North China, *Plant Ecology*, 191, 11–19, doi:10.1007/s11258-006-9210-8, 2007.
- Tinya, F. and Ódor, P.: Congruence of the spatial pattern of light and understory vegetation in an old-growth, temperate mixed forest, *Forest Ecology and Management*, 381, 84–92, doi:10.1016/j.foreco.2016.09.027, 2016.

- Ullmann, I. and Büdel, B.: Ecological Determinants of Species Composition of Biological Soil Crusts on a Landscape Scale, in: *Biological soil crusts: Structure, function and management*, 1st ed., rev. 2nd printing., Belnap, J., Lange, O. L. (Eds.), Springer, Berlin, 203–213, 2003.
- Warren, S. D.: Synopsis: Influence of Biological Soil Crusts on Arid Land Hydrology and Soil Stability, in: *Biological soil crusts: Structure, function and management*, 1st ed., rev. 2nd printing., Belnap, J., Lange, O. L. (Eds.), Springer, Berlin, 349–360, 2003.
- Weber, B., Büdel, B., and Belnap, J. (Eds.): *Biological soil crusts: An organizing principle in drylands*, Ecological studies, analysis and synthesis, 226, Springer, Switzerland, 1 online resource (ix, 603, 2016.
- West, N. E.: Structure and Function of Microphytic Soil Crusts in Wildland Ecosystems of Arid to Semi-arid Regions, *Advances in Ecological Research*, 20, 179–223, doi:10.1016/S0065-2504(08)60055-0, 1990.
- Wickham, H.: *Ggplot2: Elegant graphics for data analysis*, Use R!, Springer, Dordrecht, New York, 1 online resource (viii, 212, 2009.
- Williams, A. J., Buck, B. J., Soukup, D. A., and Merkler, D. J.: Geomorphic controls on biological soil crust distribution: A conceptual model from the Mojave Desert (USA), *Geomorphology*, 195, 99–109, doi:10.1016/j.geomorph.2013.04.031, 2013.
- Yair, A., Almog, R., and Veste, M.: Differential hydrological response of biological topsoil crusts along a rainfall gradient in a sandy arid area: Northern Negev desert, Israel, *CATENA*, 87, 326–333, doi:10.1016/j.catena.2011.06.015, 2011.
- Yang, X., Bauhus, J., Both, S., Fang, T., Härdtle, W., Kröber, W., Ma, K., Nadrowski, K., Pei, K., Scherer-Lorenzen, M., Scholten, T., Seidler, G., Schmid, B., Oheimb, G. von, and Bruehlheide, H.: Establishment success in a forest biodiversity and ecosystem functioning experiment in subtropical China (BEF-China), *Eur J Forest Res*, 132, 593–606, doi:10.1007/s10342-013-0696-z, 2013.

- Zaady, E., Karnieli, A., and Shachak, M.: Applying a field spectroscopy technique for assessing successional trends of biological soil crusts in a semi-arid environment, *Journal of Arid Environments*, 70, 463–477, doi:10.1016/j.jaridenv.2007.01.004, 2007.
- Zhang, Y., Aradottir, A. L., Serpe, M., and Boeken, B.: Interactions of Biological Soil Crusts with Vascular Plants, in: *Biological soil crusts: An organizing principle in drylands*, Weber, B., Büdel, B., Belnap, J. (Eds.), *Ecological studies, analysis and synthesis*, 226, Springer, Switzerland, 385–406, 2016.
- Zhao, Y., Qin, N., Weber, B., and Xu, M.: Response of biological soil crusts to raindrop erosivity and underlying influences in the hilly Loess Plateau region, China, *Biodiversity and conservation*, 23, 1669–1686, doi:10.1007/s10531-014-0680-z, 2014.
- Zhao, Y. and Xu, M.: Runoff and Soil Loss from Revegetated Grasslands in the Hilly Loess Plateau Region, China: Influence of Biocrust Patches and Plant Canopies, *J. Hydrol. Eng.*, 18, 387–393, doi:10.1061/(ASCE)HE.1943-5584.0000633, 2013.
- Zhao, Y. G., Xu, M., and Belnap, J.: Response of biocrusts' photosynthesis to environmental factors: a possible explanation of the spatial distribution of biocrusts in the Hilly Loess Plateau region of China, *Acta Ecologica Sinica*, 30, 4668–4675, 2010.
- Zhu, R.-L.: *New Checklist of Chinese liverworts, hornworts, and takakiophytes: 3rd version in January 2006*, East China Normal University, 2006.

Formatiert: Englisch (Vereinigtes Königreich)

Tables

Table 1: Erosion, soil, soil cover, vegetation and terrain attributes in 170 runoff plots (ROPs) and on 34 research plots (with five ROPs each) in Xingangshan, Jiangxi Province, PR China in 2013.

	<i>Min</i>	<i>Mean</i>	<i>Max</i>	<i>Sd</i>
<i>Runoff plots (ROPs, four measured rainfall events, n=334)</i>				
Sediment delivery [g m^{-2}]	21.6	195.5	989.0	<u>165.8</u>
Surface runoff [mm m^{-2}]	3.1	40.3	111.8	<u>21.7</u>
Rainfall amount [mm]	25	94	178	<u>28</u>
<i>Runoff plots (ROPs in use, n=170)</i>				
Slope [°]	5	29	60	<u>6</u>
Soil cover [%]	0	19	62	<u>14</u>
- Biological soil crust cover [%]	0	24	62	<u>14</u>
- Stone cover [%]	0	4	42	<u>6</u>
Crown cover [%]	0.00	0.32	1.00	<u>0.34</u>
Leaf area index (LAI)	0.00	0.73	5.35	<u>1.04</u>
<i>Research plots (n=34)</i>				
Bulk soil density [g cm^{-2}]	0.83	0.98	1.12	<u>0.06</u>
Soil organic matter [%]	4.2	6.5	9.7	<u>1.7</u>
pH (KCl)	3.24	3.66	4.00	<u>0.18</u>
Altitude [m]	119	167	244	<u>37</u>
MCCA	0.98	2.07	3.81	<u>0.83</u>
TRI	0.72	2.39	3.86	<u>0.59</u>
Eastness	-0.86	0.09	0.99	<u>0.56</u>
Northness	-0.87	0.23	0.99	<u>0.62</u>

Formatierte Tabelle

Formatiert: Hochgestellt

Formatiert: Hochgestellt

Tree height [m]	1.0	2.2	7.4	<u>1.7</u>
Crown width [m]	0.4	1.2	3.0	<u>0.8</u>

Soil cover: proportion of soil surface area covered by biocrusts or stones, crown cover: proportion of soil surface area covered by crowns of live trees, leaf area index: one-sided green leaf area per unit soil surface area, MCCA: Monte-Carlo based flow accumulation (Behrens), TRI: terrain ruggedness index (Riley), Eastness and Northness: state of being east or north (Roberts), tree height: distance from stem base to apical meristem, crown width: length of longest spread from edge to edge across the crown. Min: minimum, Max: maximum, Sd: standard deviation.

Table 2: Liverwort and moss species sampled in the BEF China experiment in Xingangshan, Jiangxi Province, PR China in 2013.

Family	Species	Author
<u>Liverworts</u>		
<i>Calypogeiaceae</i>	<i>Calypogeia fissa</i>	(L.) Raddi
<i>Conocephalaceae</i>	<i>Conocephallum salebrosum</i>	Szweyk., Buczk. et Odrzyk.
<i>Lophocoleaceae</i>	<i>Heteroscyphus zollingeri</i>	(Gottsche) Schiffn.
<i>Marchantiaceae</i>	<i>Marchantia emarginata</i>	Reinw., Blume et Nees
<i>Acrobolbaceae</i>	<i>Notoscyphus lutescens</i>	(Lehm. et Lindenb.) Mitt.
<u>Mosses</u>		
<i>Polytrichaceae</i>	<i>Atrichum subserratum</i>	(Harv. et Hook. f.) Mitt.
<i>Pottiaceae</i>	<i>Barbula unguiculata</i>	Hedw.
<i>Bryaceae</i>	<i>Bryum argenteum</i>	Hedw.
<i>Leucobryaceae</i>	<i>Campylopus atrovirens</i>	De Not.
<i>Dicranellaceae</i>	<i>Dicranella heteromalla</i>	(Hedw.) Schimp.
<i>Pottiaceae</i>	<i>Didymodon constrictus</i>	(Mitt.) K. Saito
<i>Pottiaceae</i>	<i>Didymodon ditrichoides</i>	(Broth.) X.J. Li et S. He
<i>Ditrichaceae</i>	<i>Ditrichum pallidum</i>	(Hedw.) Hampe
<i>Entodontaceae</i>	<i>Entodon spec.</i>	sterile
<i>Hypnaceae</i>	<i>Hypnum cupressiforme</i>	Hedw.
<i>Hypnaceae</i>	<i>Hypnum macrogynum</i>	Besch.
<i>Leucobryaceae</i>	<i>Leucobryum juniperoideum</i>	(Brid.) Müll. Hal.
<i>Bartramiaceae</i>	<i>Philonotis marchica</i>	(Hedw.) Brid.
<i>Bartramiaceae</i>	<i>Philonotis mollis</i>	(Dozy et Molk.) Mitt.
<i>Bartramiaceae</i>	<i>Philonotis roylei</i>	(Hook. f.) Mitt.
<i>Mniaceae</i>	<i>Plagiomnium acutum</i>	(Lindb.) T.J. Kop.
<i>Polytrichaceae</i>	<i>Pogonatum inflexum</i>	(Lindb.) Sande Lac.
<i>Thuidiaceae</i>	<i>Thuidium glaucinoides</i>	Broth.
<i>Mniaceae</i>	<i>Trachycystis microphylla</i>	(Dozy et Molk.) Lindb.
<i>Pottiaceae</i>	<i>Trichostomum crispulum</i>	Bruch

Table 3: Results of the final linear mixed effects (LME) model for vegetation, soil and terrain attributes on biological soil crust cover in Xingangshan, Jiangxi Province, PR China in 2013 (*: $p < 0.001$; **: $p < 0.01$; *: $p < 0.05$; .: $p < 0.1$; ns: not significant; $n=215$).**

Biological soil crust cover				
	denDF	F	Pr	estim.
<i>Fixed effects</i>				
Crown cover	136	12.9	***	10.8
Bulk soil density	37	0.03	ns	3.65
SOM	39	1.11	ns	(-)0.95
pH (KCl)	38	2.47	ns	(-)16.7
Altitude	37	3.69	.	0.80
Slope	191	7.53	**	(-)2.72
MCCA	39	0.02	ns	0.33
TRI	38	0.04	ns	(-)0.40
Eastness	37	2.73	ns	(-)4.23
Northness	37	9.14	**	5.99
Tree species richness	38	1.22	ns	(-)0.27
<i>Random effects</i>				
		<i>SD</i>	<i>Variance</i>	
Site		<0.01	<0.01	
Plot		<0.01	<0.01	
<i>Vegetation attribute fitted in exchange to crown cover</i>				
Leaf area index	107	42.8	***	5.98

SOM: soil organic matter; MCCA: monte carlo based flow accumulation; TRI: topographic roughness index; denDF: denominator degrees of freedom; F: F value; Pr: significance; estim.: estimates

Table 4: Results of the final linear mixed effects (LME) models for sediment delivery and surface runoff with surface cover split into biological soil crust cover and stone cover in Xingangshan, Jiangxi Province, PR China in 2013 (*: p < 0:001; **: p < 0:01; *: p < 0:05; .: p < 0:1; ns: not significant; n=334).**

	Sediment delivery				Surface runoff			
	den DF	F	Pr	estim.	den DF	F	Pr	estim.
<i>Fixed effects</i>								
Crown cover	130	6.53	*	(-)0.15	173	9.11	**	(-)0.14
Slope	151	1.23	ns	0.06	168	2.25	ns	(-)0.06
Surface cover								
- Biocrust	151	50.2	***	(-)0.38	159	8.11	**	(-)0.12
- Stone	136	10.3	**	(-)0.19	188	1.66	ns	(-)0.06
SOM	44	5.71	*	(-)0.08	72	2.43	ns	0.12
Rainfall	95	5.46	*	(-)0.08	302	13.2	***	0.14
Tree species richness	22	0.46	ns	0.05	68	0.11	ns	(-)0.03
<i>Random effects</i>								
		<i>SD</i>	<i>Variance</i>			<i>SD</i>	<i>Variance</i>	
Precip. event : plot		0.199	0.040			0.537	0.288	
Tree composition		0.292	0.085			0.000	0.000	
Site		0.466	0.217			0.443	0.196	
Plot : ROP		0.441	0.195			0.269	0.073	

SOM: soil organic matter; denDF: denominator degrees of freedom; F: F value; Pr: significance; estim.: estimates

Figures

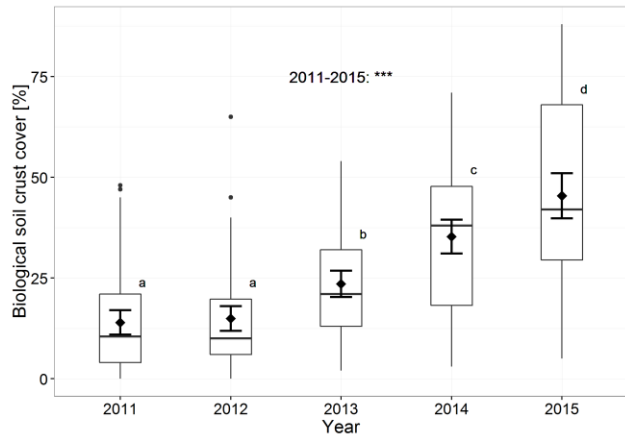


Figure 1: The development of biological soil crust cover in runoff plots of the BEF China experiment from 2011 to 2015 in Xingangshan, Jiangxi Province, PR China (n=350). Horizontal lines within boxplot represent medians and diamonds represent means with standard error bars. Points signify outliers and small letters significant differences (p<0.001).



Figure 2: Successional stages of biological soil crusts in two exemplary runoff plots (top row and bottom row, 0.4 m × 0.4 m each) in 2011, 2013 and 2015 (from left to right) at the BEF China experiment in Xingangshan, Jiangxi Province, PR China.

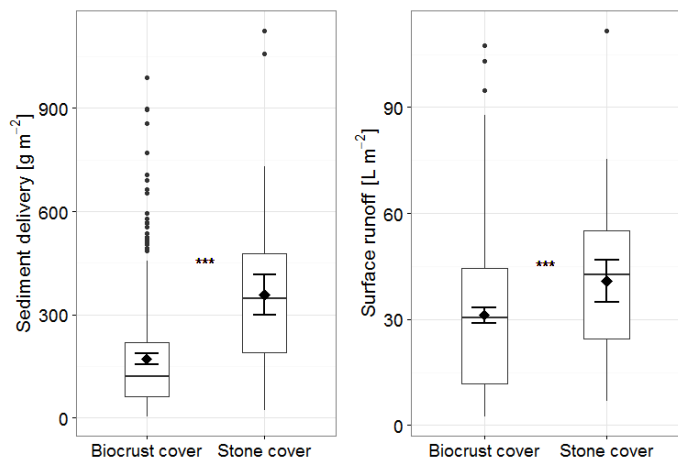


Figure 3: The influence of runoff plots dominated by biological soil crust cover (n=281) and stone cover (n=53) on sediment delivery and surface runoff in Xingangshan, Jiangxi Province, PR China in 2013. Horizontal lines within box plots represent median and diamonds represent mean with standard error bars.