

***Interactive comment on “Latitudinal variations of  $\delta^{30}\text{Si}$  and  $\delta^{15}\text{N}$  signatures along the Peruvian shelf: quantifying the effects of nutrient utilization versus denitrification over the past 600 years” by Kristin Doering et al.***

**K. Doering**

kdoering@geomar.de

Received and published: 23 May 2018

Referee #1 is right that the description in section 3.1 is not matching figure 3 well. This unfortunately occurred due to an error in figure 3, where the grey areas depicting humid conditions were shifted by 50 years indicating too young time periods. This was now corrected as can be found in the figure attached.

Interactive comment on Biogeosciences Discuss., https://doi.org/10.5194/bg-2018-118, 2018.

Printer-friendly version

Discussion paper



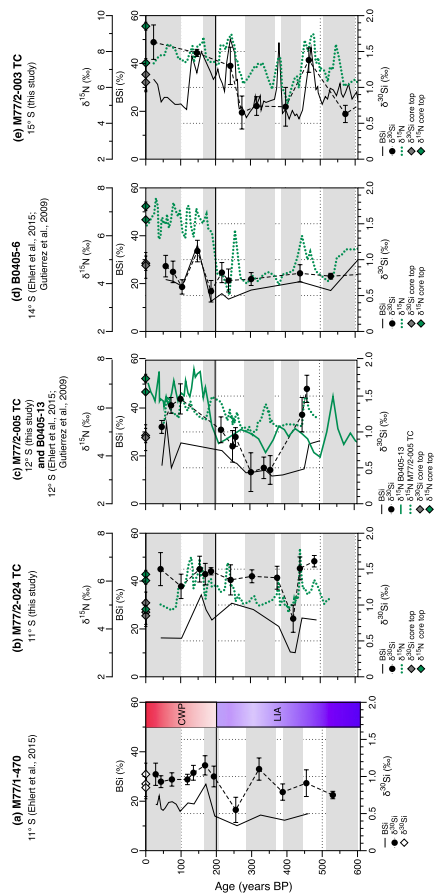


Fig. 1.