

# Environmental and taxonomic controls of carbon and oxygen stable isotope composition in *Sphagnum* across broad climatic and geographic ranges

Gustaf Granath<sup>1</sup>, Håkan Rydin<sup>1</sup>, Jennifer L. Baltzer<sup>2</sup>, Fia Bengtsson<sup>1</sup>, Nicholas Boncek<sup>3</sup>, Luca Bragazza<sup>4,5,6</sup>, Zhao-Jun Bu<sup>7,8</sup>, Simon J. M. Caporn<sup>9</sup>, Ellen Dorrepaal<sup>10</sup>, Olga Galanina<sup>11,40</sup>, Mariusz Galka<sup>12</sup>, Anna Ganeva<sup>13</sup>, David P. Gillikin<sup>14</sup>, Irina Goia<sup>15</sup>, Nadezhda Goncharova<sup>16</sup>, Michal Hájek<sup>17</sup>, Akira Haraguchi<sup>18</sup>, Lorna I. Harris<sup>19</sup>, Elyn Humphreys<sup>20</sup>, Martin Jiroušek<sup>21, 22</sup>, Katarzyna Kajukalo<sup>12</sup>, Edgar Karofeld<sup>23</sup>, Natalia G. Koronatova<sup>24</sup>, Natalia P. Kosykh<sup>24</sup>, Mariusz Lamentowicz<sup>12</sup>, Elena Lapshina<sup>25</sup>, Juul Limpens<sup>26</sup>, Maiju Linkosalmi<sup>27</sup>, Jin-Ze Ma<sup>7,8</sup>, Marguerite Mauritz<sup>28</sup>, Tariq M. Munir<sup>29, 30</sup>, Susan Natali<sup>31</sup>, Rayna Natcheva<sup>13</sup>, Maria Noskova<sup>†</sup>, Richard J. Payne<sup>32, 33</sup>, Kyle Pilkington<sup>3</sup>, Sean Robinson<sup>34</sup>, Bjorn J. M. Robroek<sup>35</sup>, Line Rochefort<sup>36</sup>, David Singer<sup>37,41</sup>, Hans K. Stenøien<sup>38</sup>, Eeva-Stiina Tuittila<sup>39</sup>, Kai Vellak<sup>23</sup>, Anouk Verheyden<sup>14</sup>, James Michael Waddington<sup>42</sup>, Steven K. Rice<sup>3</sup>

<sup>1</sup>Department Ecology and Genetics, Uppsala University, Norbyvägen 18D, Uppsala, Sweden

<sup>2</sup>Biology Department, Wilfrid Laurier University, 75 University Ave. W., Waterloo, ON, N2L 3C5, Canada

15 <sup>3</sup>Department of Biological Sciences, Union College, Schenectady, NY, US

<sup>4</sup>Department of Life Science and Biotechnologies, University of Ferrara, Corso Ercole I d'Este 32, I-44121 Ferrara, Italy

<sup>5</sup>Swiss Federal Institute for Forest, Snow and Landscape Research, WSL Site Lausanne, Station 2, 1015 Lausanne, Switzerland

20 <sup>6</sup>Ecole Polytechnique Fédérale de Lausanne EPFL, School of Architecture, Civil and Environmental Engineering ENAC, Laboratory of ecological systems ECOS, Station 2, 1015 Lausanne, Switzerland

<sup>7</sup>Institute for Peat and Mire Research, Northeast Normal University, State Environmental Protection Key Laboratory of Wetland Ecology and Vegetation Restoration, 5268 Renmin St., Changchun 130024, China

<sup>8</sup>Jilin Provincial Key Laboratory for Wetland Ecological Processes and Environmental Change in the Changbai Mountains, 5268 Renmin St., Changchun 130024, China

25 <sup>9</sup>School of Science and the Environment, Division of Biology and Conservation Ecology, Manchester Metropolitan University, Manchester, M1 5GD, UK

<sup>10</sup>Climate Impacts Research Centre, Dept. of Ecology and Environmental Science, Umeå University, 98107 Abisko, Sweden

<sup>11</sup>Institute of Earth Sciences, St. Petersburg State University, Universitetskaya nab., 7-9, Russia, 199034, St.Petersburg, Russia

30 <sup>12</sup>Department of Biogeography and Paleoecology, Adam Mickiewicz University in Poznan, Bogumiła Krygowskiego 10, 61-680 Poznan, Polen

<sup>13</sup>Institute of Biodiversity and Ecosystem Research, Bulgarian Academy of Sciences, 2 Yurii Gagarin Str., 1113 Sofia, Bulgaria

<sup>14</sup>Department of Geology, Union College, Schenectady, NY, USA

35 <sup>15</sup>Babeş-Bolyai University, Faculty of Biology and Geology, Department of Taxonomy and Ecology, 42 Republicii Street, RO-400015, Cluj Napoca, Romania

<sup>16</sup>Institute of Biology of Komi Scientific Centre of the Ural Branch of the Russian Academy of Science, Russia

<sup>17</sup>Department of Botany and Zoology, Faculty of Science, Masaryk University, Kotlarska 2, CZ-61137, Brno, Czech Republic

40 <sup>18</sup>Department of Biology, The University of Kitakyushu, Kitakyushu 8080135, Japan

<sup>19</sup>Department of Geography, McGill University, 805 Sherbrooke Street West, Montreal, QC, H3A 0B9, Canada

<sup>20</sup>Department of Geography and Environmental Studies, Carleton University, Ottawa, Canada

- <sup>21</sup>Department of Botany and Zoology, Faculty of Science, Masaryk University, Kotlarska 2, CZ-61137, Brno, Czech Republic
- 45 <sup>22</sup>Department of Plant Biology, Faculty of AgriSciences, Mendel University in Brno, Zemedelska 1, CZ-61300, Brno, Czech Republic
- <sup>23</sup>University of Tartu, Institute of Ecology and Earth Sciences, Lai st 40, Tartu 51005, Estonia
- <sup>24</sup>Laboratory of Biogeocenology, Institute of Soil Science and Agrochemistry, Siberian Branch of Russian Academy of Sciences, Ak. Lavrent'ev ave., 8/2, Novosibirsk, 630090, Russia
- 50 <sup>25</sup>Yugra State University, Chekhova str, 16, Khanty-Mansiysk, 628012, Russia
- <sup>26</sup>Plant Ecology and Nature conservation group, Wageningen University, Droevendaalse steeg 3a, 6708 PD Wageningen, the Netherlands
- <sup>27</sup>Finnish Meteorological Institute, Erik Palménin aukio 1, FI-00560 Helsinki, Finland
- <sup>28</sup>Center for Ecosystem Science and Society (EcoSS), Department of Biological Sciences, Northern Arizona University, POBox 5620, Flagstaff, AZ 86011, USA
- 55 <sup>29</sup>Department of Geography, University of Calgary, 2500 University Dr. NW, Calgary, AB, T2N 1N4, Canada
- <sup>30</sup>Department of Geology, St. Mary's University, Calgary, AB, T2X 1Z4, Canada
- <sup>31</sup>Woods Hole Research Center, 149 Woods Hole Road, Falmouth MA 02540, USA
- <sup>32</sup>Environment, University of York, York YO105DD, UK
- 60 <sup>33</sup>Penza State University, Krasnaya str., 40, 440026 Penza, Russia
- <sup>34</sup>Department of Biology, SUNY-Oneonta, Oneonta, NY, USA
- <sup>35</sup>Biological Sciences, University of Southampton, Southampton SO17 1BJ, UK
- <sup>36</sup>Department of Plant Science and Center for Northern Studies, Laval University, QC, Canada
- <sup>37</sup>Laboratory of Soil Biodiversity, Institute of Biology, University of Neuchâtel, Rue Emile-Argand 11, CH-2000 Neuchâtel, Switzerland
- 65 <sup>38</sup>NTNU University Museum, Norwegian University of Science and Technology, Erling Skakkes gate 47, N-7491 Trondheim, Norway
- <sup>39</sup>School of Forest Sciences, University of Eastern Finland, B.O. Box 111, FIN-80110 Joensuu, Finland
- <sup>40</sup>Komarov Botanical Institute Russian Academy of Sciences, Professor Popov st. 2, 197376, St.Petersburg, Russia
- 70 <sup>41</sup>Department of Zoology, Institute of Biosciences, University of São Paulo, 05508-090, Brazil
- <sup>42</sup>School of Geography and Earth Sciences, McMaster University, 1280 Main Street West, Hamilton, ON, L8S 4K1, Canada
- <sup>†</sup>deceased, 27 August 2017

Correspondence to: Gustaf Granath (gustaf.granath@gmail.com)

- 75 **Abstract.** Rain-fed peatlands are dominated by peat mosses (*Sphagnum* sp.), which for their growth depend on nutrients, water and CO<sub>2</sub> uptake from the atmosphere. As the isotopic composition of carbon (<sup>12,13</sup>C) and oxygen (<sup>16,18</sup>O) of these *Sphagnum* mosses are affected by environmental conditions, the *Sphagnum* tissue accumulated in peat constitutes a potential long-term archive that can be used for climate reconstruction. However, there is a lack of adequate understanding of how isotope values are influenced by environmental conditions, which restricts their current use as environmental and
- 80 palaeoenvironmental indicators. Here we tested (i) to what extent C and O isotopic variation in living tissue of *Sphagnum* is species-specific and associated with local hydrological gradients, climatic gradients (evapotranspiration, temperature, precipitation), and elevation; (ii) if the C isotopic signature can be a proxy for net primary productivity (NPP) of *Sphagnum*; and (iii) to what extent *Sphagnum* tissue δ<sup>18</sup>O tracks the δ<sup>18</sup>O isotope signature of precipitation. In total, we analysed 337 samples from 93 sites across North America and Eurasia using two important peat-forming *Sphagnum* species (*S. magellanicum*, *S. fuscum*) common to the Holarctic realm. There were differences in δ<sup>13</sup>C values between species. For *S.*
- 85

*magellanicum*  $\delta^{13}\text{C}$  decreased with increasing height above the water table (HWT,  $R^2=17\%$ ) and was positively correlated to productivity ( $R^2=7\%$ ). Together these two variables explained 46% of the between-site variation in  $\delta^{13}\text{C}$  values. For *S. fuscum*, productivity was the only significant predictor of  $\delta^{13}\text{C}$  but had low explanatory power (total  $R^2=6\%$ ). For  $\delta^{18}\text{O}$  values, approximately 90% of the variation was found between sites. Globally-modelled annual  $\delta^{18}\text{O}$  values in precipitation explained 69% of the between-site variation in tissue  $\delta^{18}\text{O}$ . *S. magellanicum* showed lower  $\delta^{18}\text{O}$  enrichment than *S. fuscum* (-0.83‰ lower). Elevation and climatic variables were weak predictors of tissue  $\delta^{18}\text{O}$  values after controlling for  $\delta^{18}\text{O}$  values of the precipitation. To summarise, our study provides evidence for **(a)** good predictability of tissue  $\delta^{18}\text{O}$  values from modelled annual  $\delta^{18}\text{O}$  values in precipitation, and **(b)** the possibility to relate tissue  $\delta^{13}\text{C}$  values to HWT and NPP, but this appears to be species-dependent. These results suggest that isotope composition can be used at a large scale for climatic reconstructions but that such models should be species-specific.

## 1 introduction

Peatlands in temperate, boreal and arctic regions form large reservoirs of carbon, which are vulnerable to release under expected changes in global climate and land management (Rydin and Jeglum 2013, Loisel et al. 2014). Because peat decomposes slowly and gradually accumulates, it preserves information on past peatland ecosystem dynamics and responses to allogenic and autogenic forcings. Palaeoenvironmental studies of peat may, therefore, help anticipate future responses of these globally important ecosystems to climate change (Loader et al. 2016). Past climate and local hydrology can be estimated using a variety of biotic and biogeochemical proxies, including the  $\delta^{13}\text{C}$  and  $\delta^{18}\text{O}$  values of organic material (e.g. van der Knaap 2011, Royles et al. 2016, Lamentowicz et al. 2015). However, the environmental (e.g. climate) and biotic (e.g. species identity) controls of isotope differentiation in peatland-dwelling plants are still poorly understood and current assumptions regarding these controlling factors are yet to be tested at larger spatial scales.

*Sphagnum* mosses are the most dominant peat-forming plant group in acidic peatlands. The composition of stable isotopes of carbon and oxygen in their tissues is affected by different environmental conditions, operating through their impact on fractionation processes. When not submerged, carbon isotope signals in bulk tissues or components such as cellulose depend mainly on the concentration and isotopic composition of  $\text{CO}_2$  in the chloroplast, which alters isotope discrimination during biochemical fixation of  $\text{CO}_2$  (Farquhar et al. 1989, O'Leary 1988). In mosses, the  $\text{CO}_2$  concentration in the chloroplast,  $[\text{CO}_2]_c$ , is determined by temperature, light availability,  $\text{CO}_2$  partial pressure and, most importantly, plant water status (Finsinger et al. 2013, van der Knaap et al. 2011, Ménot and Burns 2001, Ménot-Combes et al. 2004, Royles et al. 2014, Skrzypek et al. 2007a, Kaislahti Tillman et al. 2013). When wet, external water films on leaf surfaces impede diffusion and  $[\text{CO}_2]_c$  is lowered (Rice and Giles 1996, Rice 2000, Williams and Flanagan 1996); consequently, the proportion of fixed  $^{13}\text{C}$  increases due to internal drawdown of the preferred isotope  $^{12}\text{C}$ . When submerged, assimilation of respired or methane-derived  $\text{CO}_2$  can alter  $[\text{CO}_2]$  and also the isotopic composition of C in *Sphagnum* (Raghoebarsing et al. 2005). Even when

not submerged, respiratory carbon can be refixed by *Sphagnum* (Turetsky and Wieder 1999, Limpens et al. 2008). Given that respired CO<sub>2</sub> is isotopically lighter than that in the atmosphere, it may also contribute to variation in tissue isotope values. Despite many detailed studies, there remains uncertainty about how the multiple controls on <sup>13</sup>C isotope values combine to determine isotopic composition, and how universal the proposed mechanisms are on a global scale. This uncertainty currently restricts the utility of C isotope signals as a palaeoclimatic/palaeoenvironmental indicator in peatlands (Loader et al. 2016).

Oxygen isotope values in moss tissues depend on the isotopic composition of the water sources, enrichment associated with evaporation from the moss surface and biochemical fractionation (Dawson et al. 2002). Once on the plant, <sup>18</sup>O present in water equilibrates with that in atmospheric CO<sub>2</sub> prior to fixation as well as being incorporated directly during hydrolysis reactions, especially during the initial stages of carbon fixation (Gessler et al. 2014, Sternberg et al. 2006). Hence, variation in tissue oxygen isotopes reflect environmental conditions that control source water (rainfall, snowfall, groundwater) as well as fractionation caused by evaporation prior to fixation which is controlled by micrometeorological conditions (mainly temperature, relative humidity and incident energy) (Daley et al. 2010, Moschen et al. 2009, Royles et al. 2013, Kaislahti Tillman et al. 2010). Oxygen isotope composition has, therefore, been used to reconstruct climatic conditions and to infer the dominant water source in peatlands (Aravena and Warner 1992, Ellis and Rochefort 2006, van der Knaap et al. 2011). Ongoing measurements of oxygen isotopes in precipitation across the globe (Bowen 2010, IAEA/WMO 2015) have generated models that predict spatial patterns in oxygen isotope composition of precipitation based on temperature, elevation, atmospheric residence time and circulation patterns (e.g. Bowen 2010). Once isotopic composition of the source water is accounted for, variation in moss tissue isotopic values should be largely determined by fractionation that accompanies evaporation from the surface of plants. How well oxygen isotopes in *Sphagnum* tissues reflect atmospheric water or plant surface water depend on local weather conditions such as precipitation, air temperature and humidity. For example, Bilali et al. (2013) suggest that oxygen isotopes in *Sphagnum* mosses from maritime bogs will track variation in precipitation patterns whereas isotopic values in continental habitats will be more dependent on summer temperature, as temperature and humidity are more variable in those regions. At local scales, oxygen isotope values also vary as a function of temperature and humidity. Aravena and Warner (1992) found differences that correspond with changes in microtopography. Elevated microsites (hummocks) were enriched in <sup>18</sup>O, which they ascribed to higher evaporation compared to that of neighbouring wet depressions (hollows). However, as with <sup>13</sup>C, there remains uncertainty in how <sup>18</sup>O signatures relate to environmental factors and species identity, and to what extent global <sup>18</sup>O patterns in precipitation dominate over local processes.

Stable isotopes can also serve as indicators of primary productivity (NPP) (Rice and Giles 1996, Williams and Flanagan 1996, Rice 2000). However, few studies have explored these relationships in the field. In a multispecies comparison of peat mosses, Rice (2000) found that plants with higher relative growth rates had lower discrimination against <sup>13</sup>C and therefore

were more enriched in  $^{13}\text{C}$ . This was attributed to the local environment, with fast growing plants of wetter microhabitats having thicker water films that inhibits  $\text{CO}_2$  diffusion into the plant, and to species-specific differences in maximum rates of photosynthesis. Both factors would reduce internal  $[\text{CO}_2]$  and thereby lower discrimination. In line with this, a warming experiment by Deane-Coe et al. (2015) reported a positive relationship between moss net primary productivity (NPP) and  $\delta^{13}\text{C}$  values for tundra mosses (*Dicranum*, *Pleurozium*, *Sphagnum*). Clearly, carbon isotope values show promise as indicators of peat moss contemporary growth, and potentially as an NPP proxy in paleoecological studies. This could be particularly valuable to differentiate productivity and decomposition controls in long-term carbon accumulation studies. To date, we are not aware of attempts to explore the robustness of these relationships across large spatial scales.

160

Together, tissue carbon and oxygen isotope compositions are controlled both by environmental factors at micro- and macro-scales, and by species-specific differences that relate to water balance and carbon dynamics in peat mosses. Paleoecological studies rely on such environment— $\delta^{13}\text{C}$  relationships for environmental reconstructions (Ellis and Rochefort 2006, van der Knaap et al. 2011). The underlying mechanisms are, however, rarely fully explored using known environmental gradients (but see Ménot and Burns 2001 for an example), or only tested across narrow bands of environmental variation, often with sets of correlated environmental factors (Loader et al. 2016). Moreover, interactions with biotic factors such as species identity have received little attention despite the large variations in *Sphagnum* species dominance commonly observed down peat cores (e.g. Ménot and Burns 2001). Here we aim to provide a robust, cross-scale evaluation of how environmental factors and species identity influence the C and O isotope compositions of *Sphagnum* using two common and widely distributed peat-forming species (*S. magellanicum* and *S. fuscum*) that are primarily rain-fed. To achieve this, we performed a unprecedented large sampling campaign across the Holarctic realm.

Specifically, we (i) investigated relationships between C and O isotope values and factors known to influence plant water availability (height above the water table - HWT, temperature, evaporation and precipitation) and  $\text{CO}_2$  partial pressure (elevation), and tested if their effects were modified by species identity; (ii) tested the prediction that *Sphagnum* tissue  $\delta^{13}\text{C}$  values are associated with NPP; (iii) tested if tissue  $\delta^{18}\text{O}$  in rain-fed *Sphagnum* is predicted by the  $\delta^{18}\text{O}$  isotope signature in precipitation but modified by negative relationships with precipitation and positive ones with temperature/evaporation. Across these objectives we examined how C and O isotope values varied with scale (within-peatland *versus* between-peatlands) and to what extent HWT and NPP could explain variation within and between peatlands.

## 180 2 Materials and Methods

### 2.1 Study species and collection sites

Our study focused on two common peat-forming *Sphagnum* species, *S. fuscum* (Schimp.) H. Klinggr. (circumpolar distribution) and *S. magellanicum* Brid. (cosmopolitan distribution). In general, these species are confined to primarily rain-

fed peatlands (bogs), and described as hummock (*S. fuscum*) and lawn (*S. magellanicum*) species. However, *S.*  
185 *magellanicum* is a species with a very broad niche and found in a range of habitats with varying degrees of groundwater  
influence (Flatberg 2013). These species are easy to identify but recent research has shown that the dark European morph of  
*S. fuscum* is conspecific to the North American *S. beothuk* (Kyrkjeeide et al. 2015), and *S. magellanicum* has been shown to  
consist of two genetically diverged morphotypes (Kyrkjeeide et al. 2016) that recently were separated at the species level  
(Hassel et al. 2018). Unpublished genetic data suggest that samples collected in our study consist of both *S. magellanicum*  
190 morphs (approximately 50/50) and possibly one or two samples of *S. beothuk* (Pers. comm. N. Yousefi). Hence, we here  
treat our species as aggregates (i.e. species collectiva), *S. fuscum* coll. and *S. magellanicum* coll.

The two species were sampled across the Holarctic region at a total of 93 sites (Figure 1; Supplemental Table S1) at the end  
of the growing season. To make comparisons between species and between sites possible, we focused on habitats where both  
195 species can be found and have low influence of surrounding groundwater. Thus, we only sampled bogs (including a few poor  
fens with ombrotrophic character) and open (no tree canopy) habitats. Sampling was conducted mainly during 2013, but a  
few sites were sampled at a similar time of year in 2014. At each site two patches (minimum 10 m apart) for each species  
were sampled (except for 11 sites that contained only one patch for one species). At each sampling patch we recorded moss  
growth, HWT (height above the water table) and GPS coordinates, and collected a moss sample (78 cm<sup>2</sup> and 5 cm deep) at  
200 the end of the growing season (September to November depending on location and generally coincided with when there was  
a risk of the first snowfall to occur). Moss samples were dried (24 hrs at 60-65 °C) within 72 h, or alternatively immediately  
frozen and later thawed and dried. The apical part (the capitula, top 1 cm) of the dried plant shoots was used for isotope  
analysis, while the stem section was used for bulk density estimation to calculate moss NPP.

## 2.2 Isotope determination

205 Ten capitula from each patch were selected and finely chopped with a single-edge razor by hand and mixed. Capitula were  
chosen as they reflect the most recently fixed organic matter and should relate better to recent growing season conditions. In  
Sphagnum,  $\delta^{13}\text{C}$  from the capitulum is similar to that of branches within the top 15 cm plants, but is approximately 1-2 ‰  
less negative than stems (Loader et al. 2007). For  $\delta^{18}\text{O}$ , the offset between branches and stems is around 1 ‰ (Moschen et  
al. 2009). Standard deviations of repeated samples were 0.6 and 0.7 ‰ for  $\delta^{13}\text{C}$  and  $\delta^{18}\text{O}$ , respectively. Approximately 0.5  
210 mg dry sample was packed in tin cups for  $\delta^{13}\text{C}$  analyses, and ~0.2 mg in silver cups for  $\delta^{18}\text{O}$  analyses. Samples were  
analyzed at Union College (Schenectady, NY, USA) using a Thermo Delta Advantage mass spectrometer in continuous flow  
mode connected (via a ConFlo IV) to a Costech Elemental Analyzer for  $\delta^{13}\text{C}$  analysis or a Thermo TC/EA for  $\delta^{18}\text{O}$  analyses.  
Isotope values are presented as  $1000 \times (R_{\text{sample}}/R_{\text{standard}} - 1)$ , where  $R_{\text{sample}}$  and  $R_{\text{standard}}$  are the ratios of heavy to light isotopes  
(e.g.,  $^{13}\text{C}/^{12}\text{C}$ ) and are referenced to VPDB and VSMOW for C and O, respectively. Carbon isotope data were corrected  
215 using sucrose (IAEA-CH-6, -10.449‰), acetanilide (in house, -37.07‰), and caffeine (IAEA-600, -27.771‰). Oxygen  
isotope data were corrected using sucrose (IAEA-CH-6, 36.4‰), cellulose (IAEA-C3, 31.9‰) and caffeine (IAEA-600,

-3.5‰) with values from Hunsinger et al. (2010). Oxygen isotope standardization was further checked with the whole wood standards USGS54 and USGS56. The combined instrument uncertainty for  $\delta^{13}\text{C}$  (VPDB) is  $< 0.1\text{‰}$  based on the in-house acetanilide standard and  $< 0.5\text{‰}$  for  $\delta^{18}\text{O}$  (VSMOW) based on the cellulose standard (IAEA-C3).

220

We performed isotope analyses on whole-plant tissue rather than on cellulose extracts. In living *Sphagnum* samples, there is strong linear relationship between the isotopic composition of these two components for both  $\delta^{13}\text{C}$  ( $R^2$  values 0.89-0.96; Kaislahti Tillman et al. 2010, Ménot and Burns 2001, Skrzypek et al. 2007b) and for  $\delta^{18}\text{O}$  ( $R^2$  values 0.53-0.69; Kaislahti Tillman et al. 2010, Jones et al. 2014). Focussing on whole-plant tissue allowed us to analyze a higher number of samples for  
225 this study, allowing larger numbers of sites and more replication.

### 2.3 Environmental variables

The modelled  $\delta^{18}\text{O}$  signal in meteoric water (precipitation) (Bowen and Wilkinson 2002) was obtained from <http://www.waterisotopes.org> as annual and monthly isotope ratio estimates at 10' resolution. These global estimates have shown to be highly accurate ( $R^2 = 0.76$  for mean annual  $\delta^{18}\text{O}$  in precipitation) and are based on absolute latitude and  
230 elevation and account for regional effects on atmospheric circulation patterns (for details see Bowen 2010, IAEA/WMO 2015, Bowen 2017). To test which temporal period of  $\delta^{18}\text{O}$  values in precipitation showed the highest correlation with tissue  $\delta^{18}\text{O}$  values, we calculated annual (Jan-Dec), growing season (May-Oct), winter-spring (Jan-April) mean isotope ratio. We calculated both unweighted means and weighted against precipitation for each month. Monthly precipitation (PRECTOTCORR), land evapotranspiration (EVLAND) and surface air temperature (TLML) for each site and year of  
235 sampling (2013 or 2014) were retrieved from the NASA GESDISC data archive, land surface and flux diagnostics products (M2T1NXLND, M2TMNXFLX; resolution longitude 0.667°, latitude 0.5°; Global Modeling and Assimilation Office 2015ab). Total precipitation and evapotranspiration (ET), and mean temperature, from April to October were used as predictors in the statistical models. As ET can be compensated for by precipitation, we used the ET/P quotient as a predictor for the effect of water loss. A high value ( $>1$ ) indicates a net loss of water to the atmosphere. Site altitude was retrieved from  
240 a global database using the R package *elevatr* (ver 0.1-2, Hollister and Shah 2017).

The distance from the moss surface to the water table (height above the water table, HWT), was measured using water wells (commonly a PVC pipe, 2–5 cm in diameter and slotted or perforated along the sides) with a “plumper” (a cylinder on a string that makes a ‘plump’ sound when it hits the water surface) or a “bubbler” (a narrow tube that makes bubbles when it  
245 hits the water surface while the user blows in it). HWT was measured in the spring and in the fall and there was a strong correlation between the two time points ( $r = 0.74$ ). As growth mainly occurs in late summer/fall in temperate and boreal regions, we used HWT at the the end of the season as the proxy of relative HWT between sites.

## 2.4 Moss growth

Moss growth (or productivity, NPP) was measured with a modified version of the cranked wire method (see Clymo 1970, Rydin and Jeglum 2013 for details), with bristles from a paint brush spirally attached to a wire. These ‘brush wires’ were inserted in the moss layer with the end of the wire protruding above the surface. Height increment (i.e. vertical growth) was measured over the growing season as the change in distance (to nearest mm) between the moss layer and the top of the wire. A minimum of three wires were inserted within a 1 x 1 m uniform area (same microhabitat, vegetation and general structure). To determine moss bulk density ( $\text{kg m}^{-3}$ ) we dried (24 hrs at 60-65 °C) the top 30 mm of the stems (area 78  $\text{cm}^2$ ) in our collected core (see Sect. 2.1). Biomass growth on an area basis ( $\text{g m}^{-2} \text{ year}^{-1}$ ) was calculated as height increment  $\times$  bulk density.

## 2.5 Statistical analyses

To test and quantify the influence of environmental variables and species identity on isotope composition, we used linear mixed models in R (R core team 2016), employing the R package *lme4* ver 1.1-12 (Bates et al. 2015). Site dependence (i.e. multiple samples from the same site) was accounted for by adding site as a random factor. For tissue  $\delta^{13}\text{C}$ , we first fitted two separate models to test the independent effects of HWT, NPP and species identity (*S. fuscum* and *S. magellanicum*), and if the HWT or NPP effect varied between species by fitting a species interaction term. To test the explanatory power of environmental variables (ET/P, precipitation, temperature, elevation) we first constructed a base model with HWT and NPP as they were identified as the main predictors in literature. For simplicity we removed negligible interactions from this model. Each environmental variable and their interaction with species was then tested against the base model. For tissue  $\delta^{18}\text{O}$ , we first explored which temporal period of modelled  $\delta^{18}\text{O}_{\text{precip}}$  (annual, growing season, winter-spring) had the highest explanatory power and if the relationship varied between species. The identified best model was then used as base model to separately test each environmental variable (HWT, ET/P, precipitation, temperature) and its interaction with species.

The proportion of variance explained by the predictors was calculated at the site level (Gelman and Hill 2007) or as marginal  $R^2$  (Nakagawa and Schielzeth 2013; R package *piecewiseSEM* ver 1.1-4, Lefcheck 2015). Although our study focused on explained variance by predictors, we also performed statistical tests of predictors and their interactions using type-2 (main effects tested after all the others in the model but without the interaction term) *F*-tests, applying Kenward-Roger adjustments to the degrees of freedom, as implemented in the *car* package (ver. 2.1-3, Fox and Weisberg 2011). Standard model checking was performed (e.g., residual analyses and distribution of random effects), to ensure compliance with model assumptions. Covariances between predictors were small ( $r < 0.15$ ) or moderate ( $r = 0.40$ - $0.50$  between ET/P, precipitation and temperature) and this multicollinearity had minor impact on model estimates.

### 3 Results

Data collection from a geographically broad area resulted in large variation of isotope values and explanatory variables (Table S2). Due to uncertainty in height increment measurement we recorded a few negative values resulting in negative NPP. These values were kept in the analyses. Mean and standard deviation (in parenthesis) of height increment (HI, mm) and bulk density (BD, kg m<sup>-3</sup>) were: HI for *S. fuscum* 14.3 (10.1) and *S. magellanicum* 19.5 (14.1), BD for *S. fuscum* 17.8 (9.9) and *S. magellanicum* 10.2 (7.6).

#### 3.1 $\delta^{13}\text{C}$ signal

Variation in *Sphagnum* tissue  $\delta^{13}\text{C}$  values was marginally greater within sites than between sites (Table 1). HWT predicted the  $\delta^{13}\text{C}$  values, but the relationship differed between the two species (Table 2, Figure 2). Although  $\delta^{13}\text{C}$  values decreased with increasing HWT for both species, the slope was less steep for *S. fuscum* and this species had slightly higher  $\delta^{13}\text{C}$  values overall. In separate models for the two species, HWT for *S. fuscum* had near zero explanatory power, while for *S. magellanicum* HWT explained 33% of the between-site variation, and 17% of the total variance (i.e., marginal  $R^2$ ).

Measured  $\delta^{13}\text{C}$  values were related to moss productivity (NPP), and  $\delta^{13}\text{C}$  values increased by 0.0023‰ (SE: 0.00048) for each mg biomass produced per m<sup>2</sup>. NPP explained 11% of the between-site variation in  $\delta^{13}\text{C}$  and 7% of the total variation. HWT and NPP, explained 48% of the between-site variation of  $\delta^{13}\text{C}$  in *S. magellanicum*, and 24% of the total variation. Corresponding values for *S. fuscum* were 6% and 7%, respectively. Of the additional environmental variables tested, we found weak evidence that ET/P and temperature were positively correlated with  $\delta^{13}\text{C}$ , but only for *S. magellanicum* (Table 2).

#### 3.2 $\delta^{18}\text{O}$ signal

*Sphagnum* tissue  $\delta^{18}\text{O}$  values varied more between sites than within sites, and at similar magnitude and proportions for both species (Table 1). Tissue  $\delta^{18}\text{O}$  values were predicted by the spatially explicit estimates of  $\delta^{18}\text{O}$  values isotope signature in precipitation (Figure 3, Table 3). Annual mean  $\delta^{18}\text{O}_{\text{precip}}$  explained 69% of the variation in  $\delta^{18}\text{O}_{\text{tissue}}$  between sites. This was similar to mean winter-spring (Jan-Apr)  $\delta^{18}\text{O}_{\text{precip}}$  values (75% explained), but higher than growing season (Apr-Sep)  $\delta^{18}\text{O}_{\text{precip}}$  (58%). Using precipitation-weighted  $\delta^{18}\text{O}_{\text{precip}}$  values resulted in lower percentages of explained variance for all three time periods ( $R^2_{\text{site}}$ : annual 52%, Jan-Apr 65%, Apr-Sep 52%). *S. magellanicum* had consistently lower  $\delta^{18}\text{O}$  values than *S. fuscum* (-0.83‰), but both species had a similar relationship between tissue  $\delta^{18}\text{O}$  and  $\delta^{18}\text{O}_{\text{precip}}$  (Figure 3, Table 3).

Height above the water table (HWT) at the end of the growing season was, on average, 11 cm lower in *S. magellanicum* patches (= wetter habitat) compared to *S. fuscum* (HWT = 33 cm) patches ( $F_{1,224} = 131.9$ ,  $P < 0.0001$ ). However, we found only very weak support for the hypothesis that HWT predicts tissue  $\delta^{18}\text{O}$  values, as HWT explained <1% of the  $\delta^{18}\text{O}$

variation (Table 2). There was negligible influence of the additional environmental variables on  $\delta^{18}\text{O}$  values (Table 2). ET/P  
310 was associated with higher  $\delta^{18}\text{O}$  values in *S. magellanicum* and lower in *S. fuscum* (but not different from zero effect), while  
increasing temperature was weakly associated with overall lower  $\delta^{18}\text{O}$  values.

## 4 Discussion

### 4.1 Stable carbon isotope discrimination in *Sphagnum*

Our data were consistent with the hypothesis that moss growing closer to the water table (low HWT) has reduced carbon  
315 isotope fractionation, leading to greater fixation of  $^{13}\text{CO}_2$  and more  $^{13}\text{C}$  enriched tissue (Rice and Giles 1996, Williams and  
Flanagan 1996). Given that the water table position was measured in different places at different times and all are one-time  
measurements, this result is remarkably robust. For example refixation of  $^{12}\text{C}$  enriched substrate-derived  $\text{CO}_2$  in living  
Sphagna (Turetsky and Weider 1999, Raghoebarsing et al. 2005) can potentially contribute to within-site variation in  $\delta^{13}\text{C}$  as  
it potentially affects both the ambient concentration of  $\text{CO}_2$  as well as its isotopic composition. Interestingly, the strength of  
320 the  $\delta^{13}\text{C}$  - HWT relationship differed in the two species, with *S. magellanicum* exhibiting a greater reduction in  $\delta^{13}\text{C}$  in  
response to drier conditions (high HWT) than *S. fuscum*. The weaker effect of HWT on  $\delta^{13}\text{C}$  values in *S. fuscum* is likely a  
consequence of limited fluctuation in tissue water content as this species is well known to store abundant water within  
capillary spaces and resist drying (Rydin 1985), thus maintaining the waterfilm that results in reduced fractionation. Loader  
et al. (2016) reported a similar slope estimate for *S. magellanicum* in a single peatland and several studies have confirmed  
325 effects of contrasting microtopography (i.e. hummock—hollow differences) using multi-species comparisons (Price et al.  
1997, Loisel et al. 2009, Markel et al. 2010). As such, our results suggest that species-specific differences in carbon isotope  
discrimination in *Sphagnum* are related to water retention capacity and, consequently, become more apparent under drier  
conditions. This supports the results of previous, smaller-scale studies (Rice 2000).

330 The influence of species identity on the relationship between  $\delta^{13}\text{C}$  values and water table position has important implications  
for palaeoenvironmental reconstructions based on  $\delta^{13}\text{C}$  values. The relationship between  $\delta^{13}\text{C}$  and HWT has been used in  
paleoecological reconstructions of surface wetness (e.g., Loisel et al. 2009). In our dataset the strength of the relationship  
was weaker than previously reported. For instance, Loader et al. (2016) reported  $R^2 = 54\%$  for *S. magellanicum* in a single  
site. Given the characteristics of our data (large-scale, circumpolar), the explanatory power ( $R^2_{\text{marginal}} = 17\%$ ) can be  
335 considered acceptable and comparable to other proxies such as testate amoebae (16% in Loader et al. 2016; Sullivan and  
Booth 2011). Our results imply that isotopic signals of peatland wetness in hummock-dwelling species (such as *S. fuscum*)  
may be weaker, or absent, compared to lawn species. It is therefore important that the same species, or species type (e.g.,  
lawn species as they likely have a broad HWT niche), are used if  $\delta^{13}\text{C}$  values are employed as a proxy to infer changes in  
HWT.

340

We also identified evidence that evapotranspiration (ET), and productivity (NPP) modify  $\delta^{13}\text{C}$  values, although the effect of ET was weak and restricted to *S. magellanicum*. We expected a stronger relationship as ET and temperature control  $\delta^{13}\text{C}$  by increasing water loss at the moss surface and reducing the diffusive resistance (i.e., reducing  $\text{CO}_2$  limitation), enabling increased discrimination against  $^{13}\text{C}$  (Williams and Flanagan 1996). NPP only explained a small proportion of the variation in  $\delta^{13}\text{C}$  values but the relationship was apparent across species. Several studies have proposed the use of  $\delta^{13}\text{C}$  values to infer *Sphagnum* productivity (e.g., Rice and Giles 1996, Rice 2000, Munir et al. 2017) and our study is the first to test this at the pan-Holarctic scale. Deane-Coe et al. (2015) investigated  $\delta^{13}\text{C}$  values across moss species (including *Sphagnum*) and years at one site and found a weak relationship between productivity and  $\delta^{13}\text{C}$  values ( $R^2=0.10$  and  $0.31$ , respectively). Similarly, Rice (2000) reported that relative growth rate explained about 25% of the variation in  $^{13}\text{C}$  discrimination. We did not find as strong a relationship ( $R^2 < 0.12$ ), but our study was geographically broader and less controlled; consequently, our results were likely influenced by more complex interactions among environmental factors that affect *Sphagnum* growth across our sites. Nevertheless, our results indicate independent effects of evaporation and productivity on  $\delta^{13}\text{C}$  values. The lack of a strong NPP pattern somewhat limits the ability to infer productivity of *Sphagnum* in paleoecological studies.

#### 4.2 Global patterns of $\delta^{18}\text{O}$ values in *Sphagnum*

Modelled  $\delta^{18}\text{O}$  values in precipitation (Bowen 2010) explained much of the variation in  $\delta^{18}\text{O}_{\text{tissue}}$  values between sites ( $R^2=68\%$  for annual mean  $\delta^{18}\text{O}_{\text{precip}}$ ). The percent variance explained was even higher if the spring period for modelled  $^{18}\text{O}_{\text{precip}}$  was used, but lower for the growing season average. This result does not necessarily mean that spring season water was utilised by the plants during the growing season. Between-site variation in  $^{18}\text{O}_{\text{precip}}$  values are much larger in the winter (Figure S1, see end of document), more effectively discriminating maritime and continental regions (Bowen 2010). The better fit may simply be an effect of a more distinct separation of  $^{18}\text{O}_{\text{precip}}$  in the winter data. Although the  $\delta^{18}\text{O}_{\text{tissue}} - ^{18}\text{O}_{\text{precip}}$  relationship presented here is robust, a few  $\delta^{18}\text{O}$  values are less well-predicted by the regression model and they originate from Northwest Territories (Canada) and West Siberia (Russia). Likely, this suggests that the  $^{18}\text{O}_{\text{precip}}$  model is less accurate in these interior regions with fewer precipitation collection stations.

In contrast, the data did not support a negative correlation between precipitation amount and  $\delta^{18}\text{O}_{\text{tissue}}$  values and  $\delta^{18}\text{O}_{\text{tissue}}$  values were only weakly affected by predictors associated with water loss (ET/P and/or temperature) and species identity. The indication of  $^{18}\text{O}$  enrichment in *S. magellanicum* due to ET/P was expected as the lighter isotope  $^{16}\text{O}$  needs less energy to vaporize. However, the opposite trend was suggested for *S. fuscum*, and surprisingly, higher surface temperatures decreased  $^{18}\text{O}$  enrichment. Hence we conclude that climatic variables associated with water loss were weak predictors after controlling for  $\delta^{18}\text{O}_{\text{precip}}$  values. This result may not be too unexpected as laboratory experiments have so far failed to relate  $^{18}\text{O}$  enrichment in *Sphagnum* to differences in evaporation rates (Brader et al. 2010).

There have been few regional studies on moss  $\delta^{18}\text{O}_{\text{tissue}}$  values that span gradients of  $\delta^{18}\text{O}_{\text{precip}}$  values (Royles et al. 2016, Skrzypek et al. 2010) and most interpretations of moss  $\delta^{18}\text{O}_{\text{tissue}}$  - climate relationships come from peat core studies (e.g. van der Knaap et al. 2011). In antarctic non-*Sphagnum* peat banks variation in  $\delta^{18}\text{O}_{\text{cellulose}}$  values tracked  $\delta^{18}\text{O}$  values in moss water across a latitudinal gradient (61°S-65°S) despite a lack of difference in  $\delta^{18}\text{O}_{\text{precip}}$ . This result led Royles et al. (2016) to suggest that moss water and tissue  $\delta^{18}\text{O}$  values are better temporal integrators of source water than point rainfall measurements. The authors interpreted site-to-site differences as relating to differential evaporative enrichment and other physio-chemical factors that affect  $^{18}\text{O}$  exchange, fixation and biochemical synthesis. Skrzypek et al. (2010) explored variation in *Sphagnum*  $\delta^{18}\text{O}_{\text{tissue}}$  values across a regional altitudinal gradient and found no consistent trend or significant relationship linking  $\delta^{18}\text{O}_{\text{tissue}}$  values to altitude, where  $\delta^{18}\text{O}$  in source water is expected to differ. Although fractionation in source water caused by adiabatic cooling with altitude should lead to altitudinal effects, differences in precipitation amount can confound this pattern (Gat et al. 2000). Unfortunately, there are limited regional studies that have tested the effects of variation in source water on  $\delta^{18}\text{O}_{\text{tissue}}$  values. The present study provides a much greater range of geographical and environmental variation, and shows strong support for *Sphagnum* strongly tracking source water.

Interestingly, the relationship between  $\delta^{18}\text{O}_{\text{tissue}}$  and  $\delta^{18}\text{O}_{\text{precip}}$  values detected here is very similar to that proposed some time ago by Epstein et al. (1977);  $\delta^{18}\text{O}_{\text{cellulose}} = 27.33 + 0.33 \times \delta^{18}\text{O}_{\text{precip}}$  [note that Jones et al. 2014 show high correspondence between  $\delta^{18}\text{O}_{\text{cellulose}}$  and  $\delta^{18}\text{O}_{\text{tissue}}$  values]). However, our data suggest a slightly steeper slope and lower intercept, particularly for *S. magellanicum*. The species effect on  $\delta^{18}\text{O}$  suggests a difference in the degree of evaporation from the plant surface prior to uptake of water. The lower  $\delta^{18}\text{O}$  values for *S. magellanicum* compared to *S. fuscum* (-0.83‰) is comparable to the results from bogs in Canada for the same species (-2.2‰, Aravena and Warner 1992) and between a hollow and a hummock species in The Netherlands (-2‰, Brenninkmeijer et al. 1982). This suggests that the absorbed water in this *S. magellanicum* was subject to less evaporation. In *Sphagnum* plants, surface water is largely affected by capillarity, water storage and reducing conductance with compact morphology. Plant traits that enhance these functions are more pronounced in species and individuals found at high HWT as these characteristics maintain high tissue water content (Hayward and Clymo 1982, Laing et al. 2014, Waddington et al. 2015). Consequently, during droughts, *Sphagnum* species growing close to the water table will dry out quickly as the evaporative demand cannot be balanced, and simultaneously photosynthesis is shut down. *Sphagnum* species higher above the water table wick water from below and store water effectively, thereby remaining photosynthetically active while water is lost due to evaporation. This mechanism would result in  $^{18}\text{O}$  enrichment being higher above the water table (Brenninkmeijer et al. 1982, Aravena and Warner 1992), and explains the positive relationship between HWT and  $\delta^{18}\text{O}$  in *S. magellanicum* reported by Loader et al. (2016) along a 10 m transect. We found a weak positive relationship of  $\delta^{18}\text{O}$  with HWT, which suggests that HWT cannot entirely explain species-specific differences in  $^{18}\text{O}$  enrichment. Instead, this can be attributed to lower water retention (i.e. higher evaporation at the same water deficit) in *S. magellanicum* compared to *S. fuscum* (Clymo 1973, McCarter and Price 2014). Although species differences in  $^{18}\text{O}$  have been reported (Aravena and Warner 1992, Zanazzi and Mora 2005, Bilali et al. 2013), our study suggests that the species-

specific  $\delta^{18}\text{O}$  signals may not simply be a consequence of growing at different HWT but can rather reflect distinct water retention capacity in these species.

410 The strong influence of  $\delta^{18}\text{O}_{\text{precip}}$  values and, to a much lesser extent, environmental variables related to water loss, combined with a relatively small within-site variation in  $\delta^{18}\text{O}_{\text{tissue}}$  values, suggest that macroclimatic drivers, such as precipitation inputs, largely determine the  $\delta^{18}\text{O}$  value of peatland moss tissue. These results are promising for the use of oxygen isotopes in large-scale paleoecological reconstructions from peat cores (Ellis and Rochefort 2006, Chambers et al. 2012, Daley et al. 2010), although a better understanding of O isotope fractionation within tissue components and their decay relationships  
415 would improve their utility. Moreover, the simple relationships presented here can potentially be utilised to trace changes in  $\delta^{18}\text{O}_{\text{precip}}$  values that mirrors climate variability.

## 5 Conclusions

Our study provides new insights into large-scale variation in *Sphagnum* tissue isotopic signature and suggests that isotopic composition can be used for climatic reconstructions. We show a close link between precipitation and tissue  $\delta^{18}\text{O}$  values and  
420 conclude that variation in  $\delta^{18}\text{O}$  values are mainly driven by the macroclimate, but species differences exist. In contrast,  $\delta^{13}\text{C}$  values were strongly related to local microtopography while the influence of macroclimate was negligible. As suggested in earlier studies,  $\delta^{13}\text{C}$  values were also weakly associated with NPP. These conclusions were most strongly supported for the cosmopolitan *S. magellanicum* complex and species identity should be accounted for in future carbon isotope studies to avoid spurious conclusions.

## 425 6 Data and code availability

Data and R-script to reproduce results are available at Figshare, <https://dx.doi.org/10.6084/m9.figshare.6969497>.

## 7 Supplementary material

Figure S1, Table S1 and Table S2.

## 8 Author contribution

430 SKR, GG, HR initiated the study and formulated the research objectives. All authors were involved in data collection and SKR, NB, KP, AV, DPG performed the isotope analyses. GG performed the statistical analyses and wrote the first draft with input from SKR and HR. All authors read and commented on the manuscript and approved the final version.

## 9 Competing interests

The authors declare that they have no conflict of interest.

## 435 10 Acknowledgement

To the memory of coauthor and *Sphagnum* enthusiast Maria Noskova, who passed away, tragically, before this paper was finished. We thank Union College and the U.S. National Science Foundation for providing funding for Union isotope ratio mass spectrometer and peripherals (NSF-MRI #1229258) and Sarah Katz for laboratory assistance. The project was supported by the Swedish Research Council (2015-05174), the Russian Science Foundation (grant 14-14-00891), the  
440 Russian Foundation for Basic Research (research projects No 14-05-00775, No 15-44-00091 and No 16-55-16007), University of Ferrara (FAR 2013 and 2014), the Polish National Centre for Research and Development (within the Polish-Norwegian Research Programme: the project WETMAN (Central European Wetland Ecosystem Feedbacks to Changing Climate Field Scale Manipulation) Project ID: 203258), the National Science Centre, Poland (ID: 2015/17/B/ST10/01656), institutional research funds from the Estonian Ministry of Education and Research (grant IUT34-7), the Natural Sciences and  
445 Engineering Research Council of Canada Discovery Grants program awarded to JLB, an NSERC Strategic Grant, and with generous support awarded to LIH from the W. Garfield Weston Foundation Fellowship for Northern Conservation, administered by Wildlife Conservation Society (WCS) Canada, and National Science Foundation (NSF-1312402) to SMN. We acknowledge the Adirondack and Maine offices of The Nature Conservancy, the Autonomous Province of Bolzano (Italy), Staatsbosbeheer and Landschap Overijssel (the Netherlands), the Greenwoods Conservancy, NY and the University  
450 of Maine for access to field sites.

## References

- Aravena, R. and Warner, B. G.: Oxygen-18 composition of *Sphagnum*, and microenvironmental water relations, *The Bryologist*, 95, 445–448, 1992.
- Bates, D., Mächler, M., Bolker, B. and Walker, S.: Fitting Linear Mixed-Effects Models Using lme4, *J. Stat. Softw.*, 67(1), doi:10.18637/jss.v067.i01, 2015.
- Bilali, H. E., Patterson, R. T. and Prokoph, A.: A Holocene paleoclimate reconstruction for eastern Canada based on  $\delta^{18}\text{O}$  cellulose of *Sphagnum* mosses from Mer Bleue Bog, *The Holocene*, 23(9), 1260–1271, doi:10.1177/0959683613484617, 2013.
- Bowen, G. J.: Isoscapes: spatial pattern in isotopic biogeochemistry, *Annu. Rev. Earth Planet. Sci.*, 38(1), 161–187, doi:10.1146/annurev-earth-040809-152429, 2010.
- Bowen, G. J.: Gridded maps of the isotopic composition of meteoric waters. [online] Available from: <http://www.waterisotopes.org> (Accessed 17 September 2017), 2017.

- Bowen, G. J. and Wilkinson, B.: Spatial distribution of  $\delta^{18}\text{O}$  in meteoric precipitation, *Geology*, 30(4), 315–318, doi:10.1130/0091-7613(2002)030<0315:SDOOIM>2.0.CO;2, 2002.
- Brader, A. V., van Winden, J. F., Bohncke, S. J. P., Beets, C. J., Reichart, G.-J. and de Leeuw, J. W.: Fractionation of hydrogen, oxygen and carbon isotopes in n-alkanes and cellulose of three *Sphagnum* species, *Org. Geochem.*, 41(12), 1277–1284, doi:10.1016/j.orggeochem.2010.09.006, 2010.
- Brenninkmeijer, C. A. M., van Geel, B. and Mook, W. G.: Variations in the D/H and  $^{18}\text{O}/^{16}\text{O}$  ratios in cellulose extracted from a peat bog core, *Earth Planet. Sci. Lett.*, 61(2), 283–290, doi:10.1016/0012-821X(82)90059-0, 1982.
- Chambers, F. M., Booth, R. K., De Vleeschouwer, F., Lamentowicz, M., Le Roux, G., Mauquoy, D., Nichols, J. E. and van Geel, B.: Development and refinement of proxy-climate indicators from peats, *Quat. Int.*, 268, 21–33, doi:10.1016/j.quaint.2011.04.039, 2012.
- Clymo, R. S.: The growth of *Sphagnum* : Methods of measurement, *J. Ecol.*, 58, 13–49, 1970.
- Clymo, R. S.: The growth of *Sphagnum* : Some effects of environment, *J. Ecol.*, 61, 849–869, 1973.
- Daley, T. J., Barber, K. E., Street-Perrott, F. A., Loader, N. J., Marshall, J. D., Crowley, S. F. and Fisher, E. H.: Holocene climate variability revealed by oxygen isotope analysis of *Sphagnum* cellulose from Walton Moss, northern England, *Quat. Sci. Rev.*, 29(13), 1590–1601, doi:10.1016/j.quascirev.2009.09.017, 2010.
- Dawson, T. E., Mambelli, S., Plamboeck, A. H., Templer, P. H. and Tu, K. P.: Stable isotopes in plant ecology, *Annu. Rev. Ecol. Syst.*, 33(1), 507–559, doi:10.1146/annurev.ecolsys.33.020602.095451, 2002.
- Deane-Coe, K. K., Mauritz, M., Celis, G., Salmon, V., Crummer, K. G., Natali, S. M. and Schuur, E. A. G.: Experimental warming alters productivity and isotopic signatures of tundra mosses, *Ecosystems*, 18(6), 1070–1082, doi:10.1007/s10021-015-9884-7, 2015.
- Ellis, C. J. and Rochefort, L.: Long-term sensitivity of a High Arctic wetland to Holocene climate change, *J. Ecol.*, 94(2), 441–454, doi:10.1111/j.1365-2745.2005.01085.x, 2006.
- Farquhar, G. D., Ehleringer, J. R. and Hubick, K. T.: Carbon isotope discrimination and photosynthesis, *Annu. Rev. Plant Physiol. Plant Mol. Biol.*, 40(1), 503–537, doi:10.1146/annurev.pp.40.060189.002443, 1989.
- Finsinger, W., Schoning, K., Hicks, S., Lücke, A., Goslar, T., Wagner-cremer, F. and Hyypä, H.: Climate change during the past 1000 years: a high-temporal-resolution multiproxy record from a mire in northern Finland, *J. Quat. Sci.*, 28(2), 152–164, doi:10.1002/jqs.2598, 2013.
- Flatberg, K. I.: *Norges torvmoser*, Akad. Forl, Oslo., 2013.
- Fox, J. and Weisberg, S.: *An R companion to applied regression*, 2nd ed., SAGE Publications, Thousand Oaks, Calif., 2011.
- Gat, J. R., Mook, W. G. and Meijer Harro, A. J.: Observed isotope effects in precipitation. *Environmental Isotopes in the Hydrological Cycle: Principles and Applications*. International Atomic Energy Agency and United Nations Educational, Scientific and Cultural Organization., 2, 197–207, 2000.

- Gelman, A. and Hill, J.: Data analysis using regression and multilevel/hierarchical models, Cambridge University Press, Cambridge ; New York., 2007.
- Gessler, A., Ferrio, J. P., Hommel, R., Treydte, K., Werner, R. A. and Monson, R. K.: Stable isotopes in tree rings: towards a mechanistic understanding of isotope fractionation and mixing processes from the leaves to the wood, *Tree Physiol.*, 34(8), 796–818, doi:10.1093/treephys/tpu040, 2014.
- Global Modeling and Assimilation Office (GMAO): MERRA2 tavgl\_2d\_flux\_Nx: 2d,1-Hourly,Time-Averaged,Single-Level,Assimilation,Surface Flux Diagnostics V5.12.4, NASA Goddard Earth Sciences Data and Information Services Center, Greenbelt, MD, USA., 2015a.
- Global Modeling and Assimilation Office (GMAO): MERRA2 tavgl\_2d\_lnd\_Nx: 2d,1-Hourly,Time-Averaged,Single-Level,Assimilation,Land Surface Diagnostics V5.12.4, NASA Goddard Earth Sciences Data and Information Services Center, Greenbelt, MD, USA., 2015b.
- Hassel, K., Kyrkjeeide, M. O., Yousefi, N., Prestø, T., Stenøien, H. K., Shaw, A. J. and Flatberg, K. I.: *Sphagnum divinum* (sp. nov.) and *S. medium* Limpr. and their relationship to *S. magellanicum* Brid. *J. Bryol.*, doi: 10.1080/03736687.2018.1474424
- Hayward, P. M. and Clymo, R. S.: Profiles of water content and pore size in *Sphagnum* and peat, and their relation to peat bog ecology, *Proc. R. Soc. Lond. B Biol. Sci.*, 215, 299–325, 1982.
- Hollister, J. W. and Shah, T.: Elevatr: Access elevation data from various APIs, CRAN., 2017.
- Hunsinger, G. B., Hagopian, W. M. and Jahren, A. H.: Offline oxygen isotope analysis of organic compounds with high N:O, *Rapid Commun. Mass Spectrom.*, 24(21), 3182–3186, doi:10.1002/rcm.4752, 2010.
- IAEA/WMO: Global Network of Isotopes in Precipitation, The GNIP Database., 2015.
- Jones, M. C., Wooller, M. and Peteet, D. M.: A deglacial and Holocene record of climate variability in south-central Alaska from stable oxygen isotopes and plant macrofossils in peat, *Quat. Sci. Rev.*, 87, 1–11, doi:10.1016/j.quascirev.2013.12.025, 2014.
- Kaislahti Tillman, P., Holzkämper, S., Kuhry, P., Sannel, A. B. K., Loader, N. J. and Robertson, I.: Stable carbon and oxygen isotopes in *Sphagnum fuscum* peat from subarctic Canada: Implications for palaeoclimate studies, *Chem. Geol.*, 270(1), 216–226, doi:10.1016/j.chemgeo.2009.12.001, 2010.
- Kaislahti Tillman, P., Holzkämper, S., Andersen, T. J., Hugelius, G., Kuhry, P. and Oksanen, P.: Stable isotopes in *Sphagnum fuscum* peat as late-Holocene climate proxies in northeastern European Russia, *The Holocene*, 23(10), 1381–1390, doi:10.1177/0959683613489580, 2013.
- van der Knaap, W. O., Lamentowicz, M., van Leeuwen, J. F. N., Hangartner, S., Leuenberger, M., Mauquoy, D., Goslar, T., Mitchell, E. A. D., Lamentowicz, Ł. and Kamenik, C.: A multi-proxy, high-resolution record of peatland development and its drivers during the last millennium from the subalpine Swiss Alps, *Quat. Sci. Rev.*, 30(23), 3467–3480, doi:10.1016/j.quascirev.2011.06.017, 2011.

- Kyrkjeeide, M. O., Hassel, K., Stenøien, H. K., Prestø, T., Boström, E., Shaw, A. J. and Flatberg, K. I.: The dark morph of *Sphagnum fuscum* (Schimp.) H.Klinggr. in Europe is conspecific with the North American *S. beothuk*, J. Bryol., 37(4), 251–266, doi:10.1179/1743282015Y.0000000020, 2015.
- Kyrkjeeide, M. O., Hassel, K., Flatberg, K. I., Shaw, A. J., Yousefi, N. and Stenøien, H. K.: Spatial genetic structure of the abundant and widespread peatmoss *Sphagnum magellanicum* Brid., PLOS ONE, 11(2), e0148447, doi:10.1371/journal.pone.0148447, 2016.
- Laing, C. G., Granath, G., Belyea, L. R., Allton, K. E. and Rydin, H.: Tradeoffs and scaling of functional traits in *Sphagnum* as drivers of carbon cycling in peatlands, Oikos, 123(7), 817–828, doi:10.1111/oik.01061, 2014.
- Lamentowicz, M., Galka, M., Lamentowicz, Ł., Obremaska, M., Köhl, N., Lücke, A. and Jassey, V. E. J.: Reconstructing climate change and ombrotrophic bog development during the last 4000 years in northern Poland using biotic proxies, stable isotopes and trait-based approach, Palaeogeogr. Palaeoclimatol. Palaeoecol., 418, 261–277, doi:10.1016/j.palaeo.2014.11.015, 2015.
- Lefcheck, J. S.: piecewiseSEM: Piecewise structural equation modelling in R for ecology, evolution, and systematics, Methods Ecol. Evol., 7(5), 573–579, doi:10.1111/2041-210X.12512, 2016.
- Limpens, J., Robroek, B. J. M., Heijmans, M. M. P. D., and Tomassen, H. B. M.: Mixing ratio and species affect the use of substrate-derived CO<sub>2</sub> by *Sphagnum*, Journal of Vegetation Science, 19, 841–848, doi: 10.3170/2008-8-18456, 2008.
- Loader, N. J., McCarroll, D., van der Knaap, W. O., Robertson, I., and Gagen, M.: Characterizing carbon isotopic variability in *Sphagnum*, The Holocene, 17(3), 403–410, 2007.
- Loader, N. J., Street-Perrott, F. A., Mauquoy, D., Roland, T. P., van Bellen, S., Daley, T. J., Davies, D., Hughes, P. D. M., Pancotto, V. O., Young, G. H. F., Amesbury, M. J., Charman, D. J., Mallon, G. and Yu, Z. C.: Measurements of hydrogen, oxygen and carbon isotope variability in *Sphagnum* moss along a micro-topographical gradient in a southern Patagonian peatland, J. Quat. Sci., 31(4), 426–435, doi:10.1002/jqs.2871, 2016.
- Loisel, J., Garneau, M. and Hélie, J.-F.: Modern *Sphagnum*  $\delta^{13}\text{C}$  signatures follow a surface moisture gradient in two boreal peat bogs, James Bay lowlands, Québec, J. Quat. Sci., 24(3), 209–214, doi:10.1002/jqs.1221, 2009.
- Loisel, J., Yu, Z., Beilman, D. W., Camill, P., Alm, J., Amesbury, M. J., Anderson, D., Andersson, S., Bochicchio, C., Barber, K., Belyea, L. R., Bunbury, J., Chambers, F. M., Charman, D. J., De Vleeschouwer, F., Fia kiewicz-Kozie, B., Finkelstein, S. A., Ga ka, M., Garneau, M., Hammarlund, D., Hinchcliffe, W., Holmquist, J., Hughes, P., Jones, M. C., Klein, E. S., Kokfelt, U., Korhola, A., Kuhry, P., Lamarre, A., Lamentowicz, M., Large, D., Lavoie, M., MacDonald, G., Magnan, G., Makila, M., Mallon, G., Mathijssen, P., Mauquoy, D., McCarroll, J., Moore, T. R., Nichols, J., O'Reilly, B., Oksanen, P., Packalen, M., Peteet, D., Richard, P. J., Robinson, S., Ronkainen, T., Rundgren, M., Sannel, A. B. K., Tarnocai, C., Thom, T., Tuittila, E.-S., Turetsky, M., Valiranta, M., van der Linden, M., van Geel, B., van Bellen, S., Vitt, D., Zhao, Y. and Zhou, W.: A database and synthesis of northern peatland soil properties and Holocene carbon and nitrogen accumulation, The Holocene, 24(9), 1028–1042, doi:10.1177/0959683614538073, 2014.
- McCarter, C. P. R. and Price, J. S.: Ecohydrology of *Sphagnum* moss hummocks: mechanisms of capitula water supply and simulated effects of evaporation, Ecohydrology, 7(1), 33–44, doi:10.1002/eco.1313, 2014.
- Ménot, G. and Burns, S. J.: Carbon isotopes in ombrogenic peat bog plants as climatic indicators: calibration from an altitudinal transect in Switzerland, Org. Geochem., 32(2), 233–245, doi:10.1016/S0146-6380(00)00170-4, 2001.

- Menot-Combes, G., Combes, P.-P. and Burns, S. J.: Climatic information from  $\delta^{13}\text{C}$  in plants by combining statistical and mechanistic approaches, *The Holocene*, 14(6), 931–939, doi:10.1191/0959683604hl771rp, 2004.
- Moschen, R., Köhl, N., Rehberger, I. and Lücke, A.: Stable carbon and oxygen isotopes in sub-fossil *Sphagnum*: Assessment of their applicability for palaeoclimatology, *Chem. Geol.*, 259(3), 262–272, doi:10.1016/j.chemgeo.2008.11.009, 2009.
- Munir, T. M., Khadka, B., Xu, B. and Strack, M.: Mineral nitrogen and phosphorus pools affected by water table lowering and warming in a boreal forested peatland, *Ecohydrology*, 10(8), n/a-n/a, doi:10.1002/eco.1893, 2017.
- Nakagawa, S. and Schielzeth, H.: A general and simple method for obtaining  $R^2$  from generalized linear mixed-effects models, *Methods Ecol. Evol.*, 4(2), 133–142, doi:10.1111/j.2041-210x.2012.00261.x, 2013.
- O’Leary, M. H.: Carbon isotopes in photosynthesis, *Bioscience*, 38(5), 328–336, 1988.
- Price, G. D., McKenzie, J. E., Pilcher, J. R. and Hoper, S. T.: Carbon-isotope variation in *Sphagnum* from hummock-hollow complexes: implications for Holocene climate reconstruction, *The Holocene*, 7(2), 229–233, doi:10.1177/095968369700700211, 1997.
- Raghoebarsing, A. A., Smolders, A. J. P., Schmid, M. C., Rijpstra, W. I. C., Wolters-Arts, M., Derksen, J., Jetten, M. S. M., Schouten, S., Damste, J. S. S., Lamers, L. P. M., Roelofs, J. G. M., den Camp, H. and Strous, M.: Methanotrophic symbionts provide carbon for photosynthesis in peat bogs, *Nature*, 436(7054), 1153–1156, 2005.
- R\_Development\_Core\_Team: R: a language and environment for statistical computing, R Foundation for Statistical Computing, Vienna, Austria. [online] Available from: <https://www.R-project.org>, 2016.
- Rice, S. K.: Variation in carbon isotope discrimination within and among *Sphagnum* species in a temperate wetland, *Oecologia*, 123, 1–8, 2000.
- Rice, S. K. and Giles, L.: The influence of water content and leaf anatomy on carbon isotope discrimination and photosynthesis in *Sphagnum*, *Plant Cell Environ.*, 19(1), 118–124, 1996.
- Royles, J., Sime, L. C., Hodgson, D. A., Convey, P. and Griffiths, H.: Differing source water inputs, moderated by evaporative enrichment, determine the contrasting  $\delta^{18}\text{O}_{\text{CELLULOSE}}$  signals in maritime Antarctic moss peat banks, *J. Geophys. Res. Biogeosciences*, 118(1), 184–194, doi:10.1002/jgrg.20021, 2013.
- Royles, J., Horwath, A. B. and Griffiths, H.: Interpreting bryophyte stable carbon isotope composition: Plants as temporal and spatial climate recorders, *Geochem. Geophys. Geosystems*, 15(4), 1462–1475, doi:10.1002/2013GC005169, 2014.
- Royles, J., Amesbury, M. J., Roland, T. P., Jones, G. D., Convey, P., Griffiths, H., Hodgson, D. A. and Charman, D. J.: Moss stable isotopes (carbon-13, oxygen-18) and testate amoebae reflect environmental inputs and microclimate along a latitudinal gradient on the Antarctic Peninsula, *Oecologia*, 181(3), 931–945, doi:10.1007/s00442-016-3608-3, 2016.
- Rydin, H.: Effect of water level on desiccation of *Sphagnum* in relation to surrounding Sphagna, *Oikos*, 45, 374–379, 1985.
- Rydin, H. and Jeglum, J. K.: *The Biology of Peatlands*, 2nd ed., Oxford University Press Inc., New York., 2013.

Skrzypek, G., Kałużny, A. and Jędrysek, M. O.: Carbon stable isotope analyses of mosses—Comparisons of bulk organic matter and extracted nitrocellulose, *J. Am. Soc. Mass Spectrom.*, 18(8), 1453–1458, doi:10.1016/j.jasms.2007.04.020, 2007a.

Skrzypek, G., Kałużny, A., Wojtuń, B. and Jędrysek, M.-O.: The carbon stable isotopic composition of mosses: A record of temperature variation, *Org. Geochem.*, 38(10), 1770–1781, doi:10.1016/j.orggeochem.2007.05.002, 2007b.

Skrzypek, G., Jezierski, P. and Szynkiewicz, A.: Preservation of primary stable isotope signatures of peat-forming plants during early decomposition — observation along an altitudinal transect, *Chem. Geol.*, 273(3), 238–249, doi:10.1016/j.chemgeo.2010.02.025, 2010.

Sternberg, L., Pinzon, M. C., Anderson, W. T. and Jahren, A. H.: Variation in oxygen isotope fractionation during cellulose synthesis: intramolecular and biosynthetic effects, *Plant Cell Environ.*, 29(10), 1881–1889, doi:10.1111/j.1365-3040.2006.01564.x, 2006.

Sullivan, M. E. and Booth, R. K.: The potential influence of short-term environmental variability on the composition of testate amoeba communities in *Sphagnum* peatlands, *Microb. Ecol.*, 62(1), 80–93, doi:10.1007/s00248-011-9875-y, 2011.

Turetsky, M.R. and Weider, K.: Boreal bog *Sphagnum* refixes soil-produced and respired  $^{14}\text{CO}_2$ , *Écoscience*, 6(4), 587–591.

Waddington, J. M., Morris, P. J., Kettridge, N., Granath, G., Thompson, D. K. and Moore, P. A.: Hydrological feedbacks in northern peatlands, *Ecohydrology*, 8(1), 113–127, doi:10.1002/eco.1493, 2015.

Williams, T. G. and Flanagan, L. B.: Effect of changes in water content on photosynthesis, transpiration and discrimination against  $^{13}\text{CO}_2$  and  $\text{C}_{18}\text{O}_{16}\text{O}$  in *Pleurozium* and *Sphagnum*, *Oecologia*, 108(1), 38–46, 1996.

Willis, K. S., Beilman, D., Booth, R. K., Amesbury, M., Holmquist, J. and MacDonald, G.: Peatland paleohydrology in the southern West Siberian Lowlands: Comparison of multiple testate amoeba transfer functions, sites, and *Sphagnum*  $\delta^{13}\text{C}$  values, *The Holocene*, 25(9), 1425–1436, doi:10.1177/0959683615585833, 2015.

Zanazzi, A. and Mora, G.: Paleoclimatic implications of the relationship between oxygen isotope ratios of moss cellulose and source water in wetlands of Lake Superior, *Chem. Geol.*, 222(3), 281–291, doi:10.1016/j.chemgeo.2005.08.006, 2005.

				Within-site		Between-site	
	Species	N <sub>site</sub>	N <sub>obs</sub>	Std. Dev.	Proportion variance (%)	Std. Dev.	Proportion variance (%)
δ <sup>13</sup> C	<i>S. fuscum</i>	80	169	0.9	56	0.8	44
	<i>S. magellanicum</i>	83	168	1	51	0.98	49
δ <sup>18</sup> O	<i>S. fuscum</i>	80	168	0.7	13	1.83	87
	<i>S. magellanicum</i>	83	167	0.67	10	2	90

**Table 1.** Sample sizes, standard variation and overall partitioning of measured variation for each species and response (δ<sup>13</sup>C and δ<sup>18</sup>O). N<sub>site</sub> is the number of sites and N<sub>obs</sub> the total sample size. Standard deviation of the responses is given for within and between sites, together with the proportion of total variance measured between sites and within sites.

465

470

475

480

485

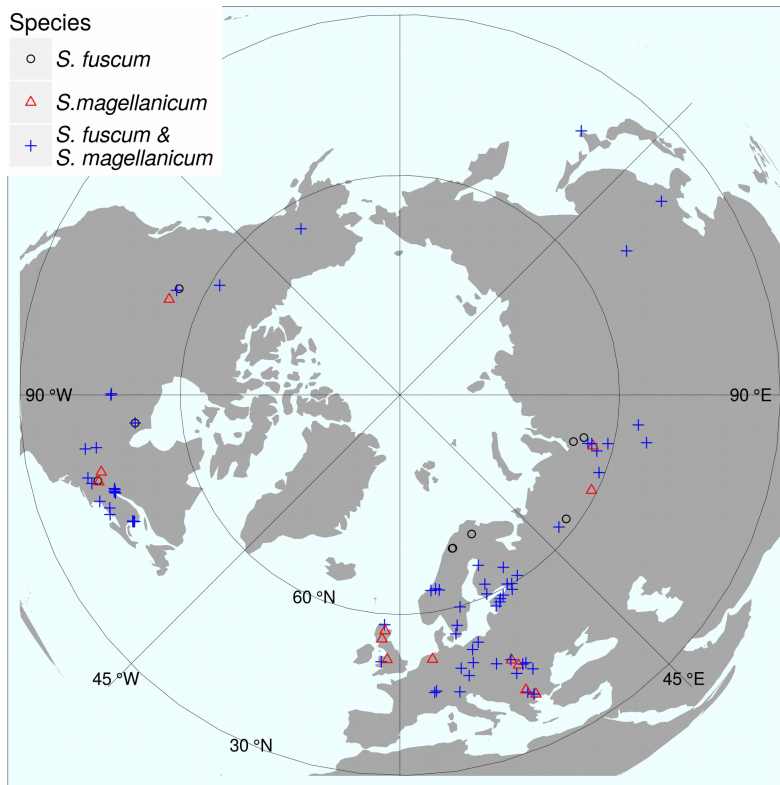
variable	effect	F	DF	P	N	R <sup>2</sup> site	R <sup>2</sup> marginal
HWT		26.8	1, 67	<0.001	311		
species	-0.88+-0.13*	43	1, 274	<0.001			
HWT*species	S.fus: -0.021+-0.008 S.mag: -0.045+-0.008	6	1, 235	0.01		0.32	0.18
HWT [S.magellanicum]	-0.04+-0.008	26	1, 134	<0.001	158	0.33	0.17
NPP	0.0023+-0.0005	23.1	1, 309	<0.001	318	0.12	0.07
species	-0.38+-0.12	9.4	1, 266	<0.01		0.01	0.01
NPP*species		0.7	1, 290	0.41			
HWT		25.5	1, 246	<0.001	295		
species	-0.62+-0.13*	22.1	1, 269	<0.001			
NPP	0.0022+-0.0005	22.4	1, 281	<0.001		0.11	0.07
HWT*species	S.fus: -0.012+-0.007 S.mag: -0.042+-0.007	10.6	1, 267	<0.01		0.2	0.12
elevation	0.00035+-0.0002	2.7	1, 81	0.11	295	0.03	0.01
elevation*species		0.5	1, 233	0.47			
ET/P		0.2	1, 90	0.66	295		
(ET/P)*species	S.fus: -0.33+-0.40 S.mag: 0.78+-0.44	5	1, 266	0.03		-0.02	0.01
P	-0.00013+-0.0006	0	1, 80	0.83	295	-0.01	0
P*species		1.2	1, 248	0.27			
T		0	1, 91	0.97	295		
T*species	S.fus: -0.051+-0.034 S.mag: 0.087+-0.041	9.7	1, 273	<0.01		-0.05	0.02

\*The effect of *S. magellanicum* compared to *S. fuscum* at HWT 28 cm.

490 Table 2. Results from linear mixed-models for  $\delta^{13}\text{C}$  values. Statistical tests are based on type-2 *F*-test using Kenward-Roger  
adjusted degrees of freedom. The second model only included *S. magellanicum*. Elevation [m asl] and the three climatic variables  
(growing season sums and means: ET/P, P [mm], temp [°C]) were tested one by one in the model including HWT [Height above  
the Water Table, cm], species and NPP [g m<sup>-2</sup> year<sup>-1</sup>]. For simplicity, the negligible HWT × NPP term was dropped from this model  
(P = 0.36). Estimated effects (+/- SEs) are only given for main effects if interactions were considered negligible. These effects are  
495 slopes for continuous variables (all variables except species) and for species (categorical) the difference between *S. magellanicum*  
and *S. fuscum* (i.e. *S. fuscum* being the reference level). In the presence of an interaction between HWT and species, the species  
effect was estimated at mean HWT. R<sup>2</sup><sub>site</sub> = explained between-site variance, R<sup>2</sup><sub>marginal</sub> = explained total variance.

variable	effect	F	DF	P	N	R <sup>2</sup> site	R <sup>2</sup> marginal
annual precip d18O	0.43+-0.035	148.4	1, 95	<0.001	335	0.69	0.5
species	-0.83+-0.083	101.3	1, 250	<0.001			0.05
annual precip d18O*species		1.9	1, 261	0.16			
Apr-Sep precip d18O	0.49+-0.049	100.5	1, 94	<0.001	335	0.58	0.42
species	-0.83+-0.083	99.4	1, 249	<0.001			0.05
Apr-Sep precip d18O*species		1.4	1, 256	0.24			
Jan-Apr precip d18O	0.37+-0.027	187.2	1, 96	<0.001	335	0.75	0.55
species	-0.84+-0.083	102.3	1, 252	<0.001			0.05
Jan-Apr precip d18O*species		2.3	1, 265	0.13			
annual precip d18O	0.41+-0.038	111.9	1, 88	<0.001	310	0.64	0.46
HWT	0.015+-0.005	10.4	1, 288	<0.01		0	0.01
ET/P		0.1	1, 99	0.81	335		
(ET/P)*species	S.fus: -0.39+-0.48 S.mag: 0.28+-0.50	3.5	1, 266	0.06		0	0
P	-0.0005+-0.0008	0.4	1, 99	0.54	335	0	0
P*species		0.8	1, 257	0.37			
T	-0.14+-0.051	7.4	1, 96	0.01	335	0.02	0.02
T*species		1.6	1, 274	0.21			

**Table 3. Results from linear mixed-models for  $\delta^{18}\text{O}$  values. Statistical tests are based on type-2 *F*-test using Kenward-Roger adjusted degrees of freedom. Three time periods for modelled  $\delta^{18}\text{O}$  values (‰) in precipitation were tested individually: annual mean, growing season (Apr-Sep) and spring (Jan-Apr). The three climatic variables (growing season sums and mean: ET/P, P [mm], temp [°C]) were tested one by one in a model including HWT [cm] and mean annual  $\delta^{18}\text{O}$  values). Estimated effects (+/- SEs) are only given for main effects if interactions were considered of negligible. These effects are slopes for continuous variables (all variables except species) and for species (categorical) the difference between *S. magellanicum* and *S. fuscum* (i.e. *S. fuscum* being the reference level).  $R^2_{\text{site}}$  = explained between-site variance,  $R^2_{\text{marginal}}$  = explained total variance.**



525 **Figure 1. Map illustrating sample sites for the investigated species. At some sites only one of the two *Sphagnum* species was**  
**sampled, indicated by red triangles or black circles, otherwise sites contained both species (blue crosses). The map is centered on**  
**the North Pole and has an orthographic projection. Geographical ranges: latitude 41.6N-69.1N, elevation 2 - 1 829 m asl. See**  
**Table S1 for details.**

530

535

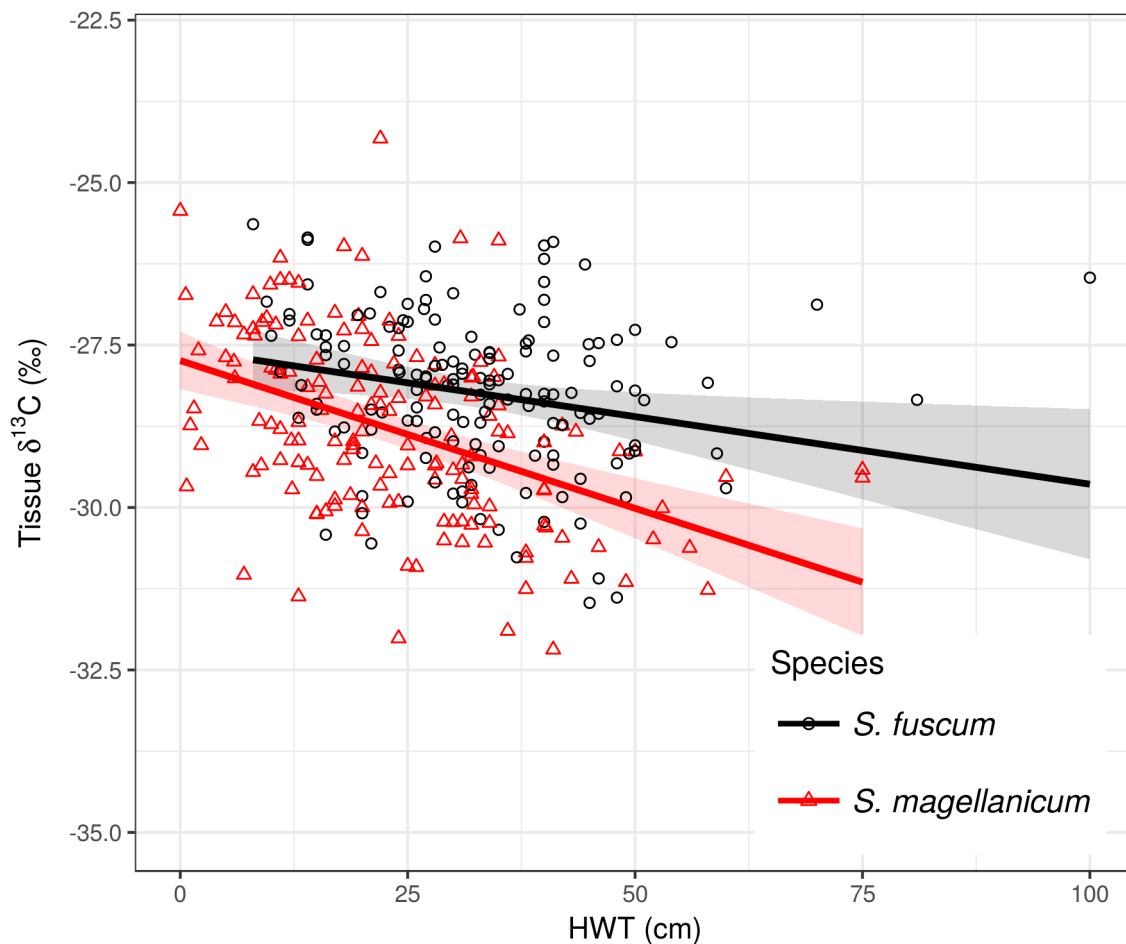


Figure 2. Relationship between height above the water table (HWT, measured at the end of the growing season) and  $\delta^{13}\text{C}$  values in two *Sphagnum* species sampled across the Holarctic realm. Lines show the pooled regression line in a mixed-effect model. Shaded areas indicate approximate 95% confidence intervals ( $2 \times \text{SE}$ ) of the regression coefficients that do not include the uncertainty of the random effects. Equations: *S. fuscum*,  $\delta^{13}\text{C} = -27.56 - 0.021 \times \text{HWT}$ ; *S. magellanicum*,  $\delta^{13}\text{C} = -27.74 - 0.045 \times \text{HWT}$ .  $N_{\text{site}} = 83$ ,  $N_{\text{total}} = 311$ . See also Table 1.

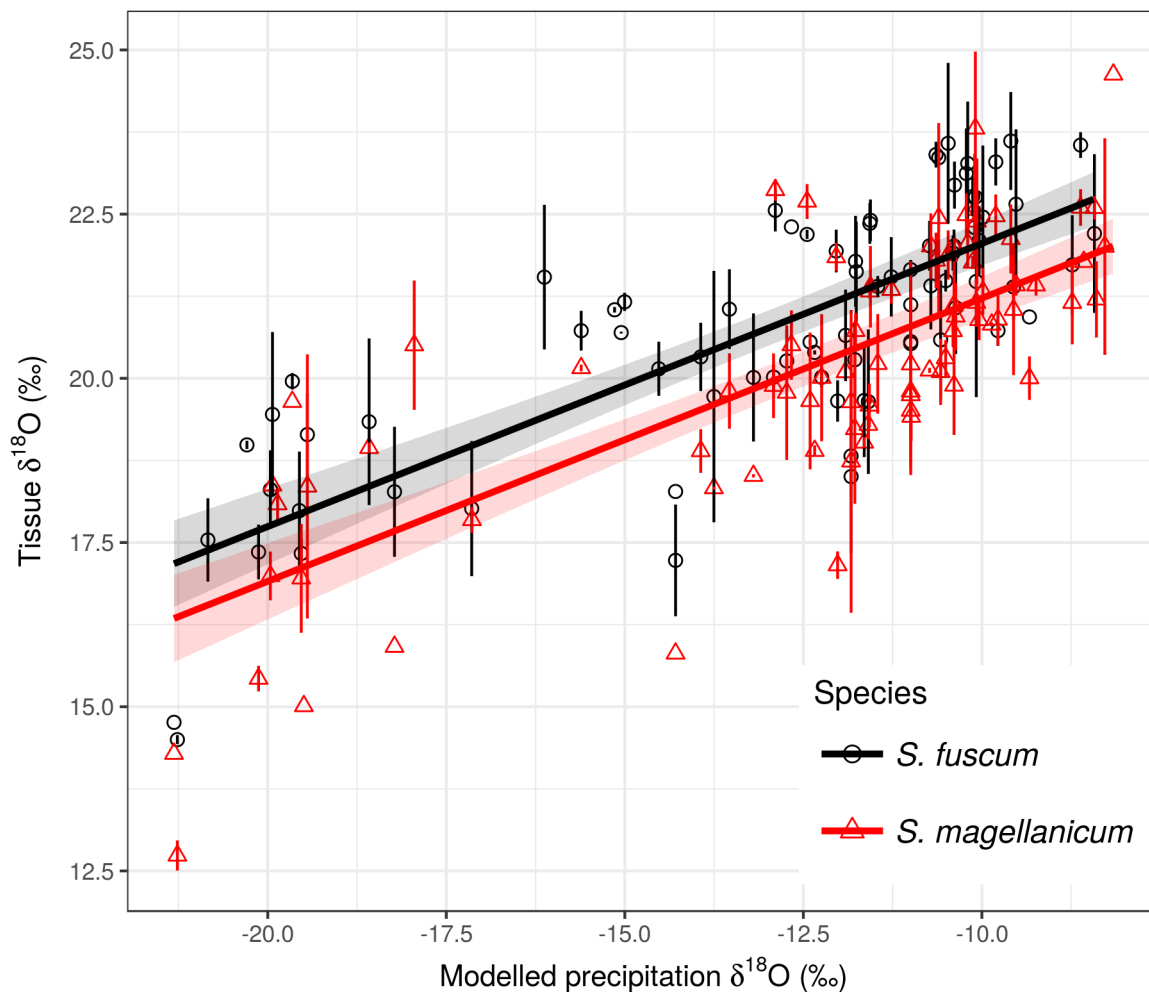


Figure 3. Association between modelled annual mean  $\delta^{18}\text{O}_{\text{precip}}$  values and  $\delta^{18}\text{O}$  values in two *Sphagnum* species. Data show site means for each species and error bars represent the standard deviation (at some sites only one sample of a species was taken). Regression lines with different intercepts ( $P < 0.001$ , Table 2) illustrate the relationship between modelled  $\delta^{18}\text{O}_{\text{precip}}$  and *Sphagnum*  $\delta^{18}\text{O}$ . Equations: *S. fuscum*,  $26.36 + 0.43 \times \delta^{18}\text{O}_{\text{precip}}$  ( $n = 1-2$ ,  $N_{\text{site}} = 80$ ); *S. magellanicum*,  $25.53 + 0.43 \times \delta^{18}\text{O}_{\text{precip}}$  ( $n = 1-2$ ,  $N_{\text{site}} = 83$ ). Shaded areas indicate approximate 95% confidence intervals ( $2 \times \text{SE}$ ) of the regression coefficients that do not include the uncertainty of the random effects.