

## ***RESPONSE TO REVIEW COMMENTS***

### ***Referee 1***

- 5 I will restrict this review to the revised aspects of the newly submitted manuscript, and focus on the changes that address my major points of concern from the previous review. Overall, I acknowledge that my major areas of concern have been addressed well by the authors, so that the current version of the text has been significantly improved. I still think there is room for improvement, but this may be covered in a follow-up study that was announced by the authors in the conclusions.
- 10 Structure and length of the manuscript text are now well chosen, here particularly the methods section has benefitted from the revisions compared to the original manuscript. The results and their interpretation, separated into 3 major blocks, are convincingly organised, and well connected. The presentation of results in figures and tables is adequate. As the bottom line, I have only a few minor comments that should be addressed before publication of this study (see below).
- 15 Besides these minor things, one of my major concerns, the assessment of uncertainties and their impact on the study results, still has not been fully addressed. I acknowledge that a new section (3.4) has been added discussing methodological issues, but this is far from being a comprehensive uncertainty assessment. Most of the things that are addressed here in a qualitative fashion could as well be quantified, e.g. by running repeated optimisations based on randomly disturbed LCC maps or
- 20 the input parameters for the footprint model. Also, the uncertainty of the eddy fluxes and their impact on the performance of the flux partitioning should be treated. I believe that the presented manuscript could be substantially strengthened through such a quantitative uncertainty assessment; however, I am not demanding this as mandatory for the given paper. If the authors decide to leave their uncertainty treatment at a qualitative level for now, I highly recommend to include the quantitative assessment for
- 25 the follow-up paper.

***Reply:*** *We note that all flux results presented in the manuscript do include quantitative uncertainty estimates. Concerning the methodological issues discussed in Section 3.4, however, we certainly agree that a more quantitative assessment, along the lines of what is suggested here, would shed more light on these issues. We*

30 *thank the reviewer for these suggestions that are beneficial for our follow-up studies.*

minor comments:

- the 4th paragraph of the introduction (p.3 ll.10ff, general intro on footprints) is not contributing much to the story. It may be shortened, and combined with the following paragraph

5

**Reply:** *We shortened this paragraph and combined it with the following paragraph.*

- move 2.3.2 further up, since 2.3.1 partly refers to it. Options would be to either either swap 2.3.1 and 2.3.2, or move this up to the landscape classification section as 2.1.5

10

**Reply:** *We swapped Sections 2.3.1 and 2.3.2 and edited the text accordingly.*

- in Section 3.2, the only part missing is that the actual LCC fluxes are not given in the text (only in a table), so that a quantitative comparison against chamber data does not make sense

15

**Reply:** *In general, it is unnecessary to repeat numbers that are presented in a table. However, we acknowledge that any reference to the LCC fluxes is missing from the paragraph reporting this comparison (Section 3.2, 4th paragraph). We added here two references to Table 5 to identify the data that are compared against the chamber data.*

20

- p.20, l.9ff: it is unclear how the discussion on definition of target area adds to this story (same for the conclusions)

25

**Reply:** *We believe that this is pertinent discussion that directly emerges from our analysis. Our results show that there can be a significant mismatch between the site description data (e.g., LCC proportions) and the field of view of EC measurements, i.e. the LCC composition actually observed. This is presented as a practical implication of the study.*

Given these minor edits will be implemented, I recommend the manuscript for publication.

30

## *Referee 2*

This is my second review of the paper by Tuovinen et al. and although I feel that the manuscript has improved, I think it still needs a lot of work because there are many aspects that are simply not clear enough. What the paper aims to do is not overly complicated, but the text is still very difficult to follow from the methods section onwards. Moreover, the approach relies strongly on idealized mathematical theory with a long list of assumptions, which disregard the chaotic nature of natural ecosystems. These assumptions may be valid for the purpose of this paper but need to be better supported.

10 **Reply:** *We revised the presentation for improved clarity, as detailed below.*

Section 2.2.1 reads as a background chapter in a textbook without a clearly presented goal. The frequent use of “we can” without a clearly stated purpose does not make it obvious to the reader how these equations will be used in the rest of the paper. A reader may wonder whether this is background information or whether it’s used in the final calculations. This is not clear until the reader has reached the results section. It would help to rewrite the methods section and clearly indicate at each stage what the goal is of the chosen approach, without ambiguous wording. This helps the reader to follow the paper a lot better and avoids that people will have to read it twice to understand the approach.

20 **Reply:** *We edited Section 2.2.1 (a subsection of Material and methods) to remove the obscurity noted by the reviewer. We added an introductory sentence to the beginning of this Section to highlight the fact that the equations presented constitute an integral part of the methods employed in the study. In the end of this Section, we now explicitly indicate how each equation is connected to the rest of the paper.*

25 The same unclarity goes for the many assumptions this paper makes in the methods section, which are not properly argued or followed up on. Here is a short list:

- In section 2.2.3  $\sigma_v/u^*$  is fixed at the median value of 2.3, but what is the consequence of doing this for all stabilities? By how much does  $\sigma_v/u^*$  vary and does it change your results?

30

**Reply:**  $\sigma_v/u^*$  only affects turbulent diffusion in the crosswind direction. Thus its value is unimportant for those calculations in which all wind directions are weighted equally or the crosswind-integrated footprint is considered. Concerning the results presented in the manuscript, the choice of  $\sigma_v/u^*$  only has an effect on the footprint dimensions of the 'Single three-dimensional' case in Table S1 in the Supplement. In addition, the  
5 stability dependence of  $\sigma_v/u^*$  proved to be rather unsystematic in our data. In the footprint calculations for the statistical model, the observed  $\sigma_v$  and  $u^*$  were used directly, i.e., no scaling was assumed. We added a brief note about the crosswind diffusion (Section 2.2.3).

- Page 10, line 16: it is assumed that methane fluxes do not vary within an LCC which is very unlikely  
10 considering previously published studies. The effect of this choice is not shown.

**Reply:** In principle, the fluxes of course vary within any LCC. However, the text here only implies that the model is formulated in terms of the mean fluxes and that we are interested in the differences of these means among different LCCs. Previously published studies indicate that these mean fluxes differ widely, as discussed in the  
15 manuscript. If the spatial variation within an LCC were too large, the modelling would fail. The rationale behind this approach is explained in Introduction (last paragraph, 2nd objective) and discussed in Section 3.4 (2nd paragraph).

- Page 10, line 20: it is further assumed that LCC-specific fluxes remain constant in time even though  
20 Figure 6 shows this is not the case.

**Reply:** Similarly to the previous comment, this statement relates to the model structure. The LCC-specific fluxes are not assumed to be universally constant. Instead, constancy is assumed for any arbitrary data set (e.g., representing a time period or a temperature range) that is analysed with the statistical model. For the results  
25 shown in Figure 6, the model was applied on a weekly basis, i.e., we calculated separately the mean weekly fluxes, which indeed were different from each other. We removed the reference to the number of observations in the full data set here as this may appear confusing.

- Page 11, line 13: it is assumed that these confidence intervals reflect the overall uncertainty, but  
30 errors in ec-fluxes are highly non-linear. Is OLS still applicable in that case? Also, no evidence is presented that this is a proper replacement for a bottom-up error analysis.

**Reply:** Such non-linear errors produce a heteroskedastic model error structure, which is what was observed in the present study, as reported in the manuscript. In this case, OLS is still applicable for the regression coefficient estimates, which are unbiased, but not for the variance and standard error estimates as these are biased. Therefore, we calculated the confidence intervals using a heteroskedasticity (and autocorrelation) consistent variance estimator. We have also tested a more advanced weighted least squares technique; this produced very similar results for the mean fluxes and thus was not adopted for the manuscript. A bottom-up error analysis would shed more light on the role of different error sources, but given that we have a well-defined statistical problem that is analysed with appropriate methods, the confidence intervals obtained should be considered fully justifiable in the context they are presented, i.e., for testing the hypotheses introduced and for representing the uncertainty of the mean fluxes estimated.

- Page 11, line 21: it is assumed that model residuals represent measurement error. This doesn't make sense. These residuals indicate how well your model performs, not the other way round. Yes, there is uncertainty in ec-measurements but there are well-established methods in the community on how to calculate random and systematic measurement errors.

**Reply:** This error estimate is based on the rationale that here we want to estimate the standard error of the measured mean flux (the red line in Figure 7). If the flux were constant, we would calculate this error as standard deviation/sqrt( $n$ ). As the flux varies strongly due to environmental drivers, most notably with footprint, this approach would seriously overestimate the variance related to the measurement itself. The modelled flux, which on average is unbiased, was thus introduced to remove most of the environment-driven variance and to produce a conservative estimate. As the use of modelled fluxes as reference may seem controversial, we replaced this approach by now calculating the dispersion with respect to the mean observed flux of 50 binned wind direction classes. To a close approximation, this results in the same error estimate as originally presented. We revised the description of the related methods in Section 2.3.1 (2.3.2 after reorganisation), while the results remain unchanged.

- Page 12, line 11: it is hypothesized that the neutral group is not statistically different from zero. Is this tested? Figure 6 appears to suggest otherwise, especially in week 7.

30

**Reply:** The model results include the 95% confidence intervals, which indicate whether the flux is statistically different from zero or not. Table 5 shows that the mean flux of the neutral group is not different from zero for the full study period. Figure 6 shows that typically this is true also for the weekly results. Week 7 is the exception, where the confidence intervals of all the LCC groups are wide, due to a poor coverage of different wind directions. This is discussed in Section 3.4.

All these assumptions explain why there is such a huge difference in the spread between the modelled and measured values. This does not represent, as suggested by the authors, measurement error, but rather an inability of their model to represent this variation. This should be easily visible from either a scatter plot or a time-series, but this is not presented.

**Reply:** The model represents 80% of the total variance in the measurements, which can be considered a good performance metric, so it is not true that there is a huge difference in the spread between the modelled and measured values. If the comment refers to the dispersion after the effect of wind direction is removed (Figure 5), then obviously the model does not represent this residual variation well, as footprint is the dominant factor determining the LCC group proportions, i.e., the explanatory variables of the model. A scatter or time series plot does not indicate anything else. Also, we do not claim that the unexplained variance is due to measurement error alone. Rather, we mention in passing that “part of this variation arose from measurement noise”, Section 3.2, 2nd paragraph). For further illustration, however, we added a scatter and a time series plot to the Supplement (Figure S5), which show how well the model is able to reproduce the short-term variation.

The lack of a correlation with soil temperature, as mentioned on page 15, line 24, and page 7, line 1, may have to do with the fact that soil temperature was measured at a single point, although this is not clearly stated in the paper. If so, it's unsurprising that there is a poor correlation with spatially averaged data. Also, it's not clear to me whether this was a linear correlation? Methane fluxes vary non-linearly with temperature. Furthermore, Figure S1 clearly shows that the model and soil temperature have highly different time intervals. Does the correlation become better when soil temperature is binned according to the same intervals as the model?

**Reply:** Using several measurement points would not necessarily increase correlation, as the common air temperature drives soil temperatures and variations can thus be expected to be similar at different locations.

From the available temperature measurements, those from a dry fen plot were considered the most representative ones. We added a clarification to the text (Section 2.1, last paragraph) and to the caption of Figure S1. The reported correlation was linear. We agree that an exponential relationship is more plausible, but such a fit produced an equally low R2. We added a note on this to the text (Section 3.2, 3rd paragraph). The temperature correlation for weekly averages (i.e., the modelling interval in Figure 6) is discussed in the last paragraph of Section 3.2.

But in principal, the investigation of the temporal variation in fluxes should be done at a higher frequency. Methane fluxes can vary strongly within a day and within a week, especially after rain storms. However, the influence of changes in the water table on temporal trends is not discussed in this paper. The calculated TWI provides only spatial, but no temporal information.

**Reply:** Our results show that the footprint-controlled variation dominates the high-frequency variation. A more detailed analysis of other controls was not an objective of this manuscript but will be presented in a forthcoming study. The aims of the present manuscript are explicitly described in Introduction (last paragraph).

Finally, I'd like to comment on my earlier review where I said that adjusting the study area to achieve a better model fit "felt like cheating". I can understand how this may have been perceived as an accusation, which was not my intention. I could have used less candid words, but my remark was an honest response to the way this was written. If post-hoc changes are made to make the results look better, this does not look favorably. If I, as a reviewer who tries to read this paper as carefully as possible, misinterpret what's written then others will do so, too. It's important that the authors avoid such misinterpretation. In that light, the addition of the extra sentence about post-hoc interpretation is welcome. If the authors also add an extra reference to Figure 7 for clarification, it may further help to avoid misinterpretation by others.

**Reply:** We did not adjust the study area to achieve a better model fit. Instead, we analysed the spatial scope of EC measurements. Nevertheless, we acknowledge that the original text was imprecise and had to be revised. We also agree that a reference to Figure 7 is necessary here; it was placed just before the 'post hoc' sentence (Section 3.3, 3rd paragraph).

Minor comments:

The authors insist of the use of microgram/m<sup>2</sup>/s as a flux unit, since gram is an SI unit. This was not the point of my remark. CO<sub>2</sub> fluxes measured with ec are almost always presented as micromol/m<sup>2</sup>/s and within the flux community it has become common practice to report methane fluxes in nmol/m<sup>2</sup>/s. The use of grams is a remnant following from flux chamber studies but not helpful in the context of eddy covariance unless cumulative budgets are discussed.

**Reply:** *That may be a common practice, but it is not obvious at all why it should be maintained. As this comment indicates, use of nmol/m<sup>2</sup>/s commonly results in an unwanted situation where two different units must be used in a single paper. Unless the Associate Editor decides otherwise, we would prefer to use grammes.*

Page 12, line 5: which other fens?

**Reply:** *We rephrased this to: "The drier fens within the study area..."*

Page 12, line 6: which previous data?

**Reply:** *We rephrased this to: "The syntheses cited above..."*

Page 14, line 4-10: the studies cited here used very different scales for their analysis. How is this a comparison?

**Reply:** *The reviewer probably means that our study area is larger than the 1 km<sup>2</sup> area mentioned in the text. In both of the studies cited here, the spatial representativeness of EC tower measurements was assessed with respect to different reference scales. In the first paper (Wang et al.), the results were reported for three scales, of which we cited the smallest (1 km<sup>2</sup>) and largest (300 km<sup>2</sup>) ones to indicate that the bias was moderate even at a scale much larger than that of an EC site. Concerning the second paper (Kim et al.), we cited the 1 km<sup>2</sup> scale, which is the only one for which the sensor location bias is reported. However, it is possible to deduce from other results presented in this paper that the sensor location bias remains approximately the same for areas of up to 4 km<sup>2</sup>*



(the maximum range considered), which is similar to our study area. We added a note on this to the text (Section 3.1, 5th paragraph).

Page 14, line 22: is this map derived in the same way as the smaller map?

5

**Reply:** *The smaller LCC map is a subset of the larger LCC map, as indicated in Material and methods (Section 2.1.3).*

Page 15, line 9: the inability of your model to capture high-frequency dynamics in methane fluxes should not be dismissed as ‘measurement noise’

10

**Reply:** *Again, it is not true that the model is unable to capture high-frequency dynamics. As mentioned above, and reported on the previous line in the manuscript, 80% of the variance of the 30-min fluxes is captured. We also do not dismiss the unexplained variance as measurement noise but simply state that such noise is present.*

15

Page 20, line 2: the poor fit to the high frequency data, as shown in figure 5, shows that this method cannot be used for gapfilling of the time series at 30 min intervals. It only provides averages which may make sense at seasonal timescales, but not shorter. There are much better gapfilling methods available.

20

**Reply:** *The alleged poor fit to the high-frequency data seems to be a misunderstanding, as the model is tested against those data and shown to perform well. The explanatory skill is unlikely to be worse than that of any typical gap-filling model based on temperature response, for example. We acknowledge that the model is unable to reproduce the level of highest peaks, but that is a typical situation with any model and does not mean that the model is unable to produce half-hourly variations. Both these features can be seen from the time series plot that was added to the Supplement (Figure S5).*

25

# Interpreting eddy covariance data from heterogeneous Siberian tundra: land cover-specific methane fluxes and spatial representativeness

Juha-Pekka Tuovinen<sup>1</sup>, Mika Aurela<sup>1</sup>, Juha Hatakka<sup>1</sup>, Aleksi Räsänen<sup>2,3</sup>, Tarmo Virtanen<sup>2</sup>, Juha Mikola<sup>4</sup>, Viktor Ivakhov<sup>5</sup>, Vladimir Kondratyev<sup>6</sup>, Tuomas Laurila<sup>1</sup>

<sup>1</sup>Finnish Meteorological Institute, Climate System Research, P.O. Box 503, FI-00101 Helsinki, Finland

<sup>2</sup>Ecosystems and Environment Research Programme, Faculty of Biological and Environmental Sciences and Helsinki Institute of Sustainability Science (HELSUS), P.O. Box 65, FI-00014 University of Helsinki, Finland

<sup>3</sup>Department of Geography, Norwegian University of Science and Technology, NO-7491 Trondheim, Norway

<sup>4</sup>Ecosystems and Environment Research Programme, Faculty of Biological and Environmental Sciences, University of Helsinki, Niemenkatu 73, FI-15140 Lahti, Finland

<sup>5</sup>Voeikov Main Geophysical Observatory, St Petersburg, Russia

<sup>6</sup>Yakutian Service for Hydrometeorology and Environmental Monitoring, Tiksi, Russia

*Correspondence to:* Juha-Pekka Tuovinen (juha-pekka.tuovinen@fmi.fi)

**Abstract.** The non-uniform spatial integration, an inherent feature of the eddy covariance (EC) method, creates a challenge for flux data interpretation in a heterogeneous environment, where the contribution of different land cover types varies with flow conditions, potentially resulting in biased estimates in comparison to the areally averaged fluxes and land cover attributes. We modelled flux footprints and characterized the spatial scale of our EC measurements at Tiksi, a tundra site in northern Siberia. We used leaf area index (LAI) and land cover class (LCC) data, derived from very high spatial resolution satellite imagery and field surveys, and quantified the sensor location bias. We found that methane (CH<sub>4</sub>) fluxes varied strongly with wind direction (−0.09 to 0.59 μg CH<sub>4</sub> m<sup>−2</sup> s<sup>−1</sup> on average) during summer 2014, reflecting the distribution of different LCCs. Other environmental factors had only a minor effect on short-term flux variations but influenced the seasonal trend. Using footprint weights of grouped LCCs as explanatory variables for the measured CH<sub>4</sub> flux, we developed a multiple regression model to estimate LCC group-specific fluxes. This model showed that wet fen and graminoid tundra patches in locations with topography-enhanced wetness acted as strong sources (1.0 μg CH<sub>4</sub> m<sup>−2</sup> s<sup>−1</sup> during the peak emission period), while mineral soils were significant sinks (−0.13 μg CH<sub>4</sub> m<sup>−2</sup> s<sup>−1</sup>). To assess the representativeness of measurements, we upscaled the LCC group-specific fluxes to different spatial scales. Despite the landscape heterogeneity and rather poor representativeness of EC data with respect to the areally averaged LAI and coverage of some LCCs, the mean flux was close to the CH<sub>4</sub> balance upscaled to an area of 6.3 km<sup>2</sup>, with a location bias of 14 %. We recommend that EC site descriptions in a heterogeneous environment should be complemented with footprint-weighted high-resolution data on vegetation and other site characteristics.

## 1 Introduction

Biosphere–atmosphere exchange of greenhouse gases (GHGs) is commonly measured using the micrometeorological eddy covariance (EC) method (Aubinet et al., 2012). This tower-based, non-intrusive technique provides spatially integrated flux data at the ecosystem scale with a typical integration domain of a few hectares. This is in stark contrast to flux chamber measurements that can be focused on homogeneous small-scale ( $< 1 \text{ m}^2$ ) patches of an ecosystem or on individual plant communities (Livingston and Hutchinson, 1995; Virkkala et al., 2017). The spatial aggregation inherent in the EC data is a strong asset if one’s objective is to study functioning or GHG exchange of an extensive, relatively homogeneous ecosystem. Heterogeneous landscapes consisting of a mosaic of differing vegetation and land cover patches, however, may entail issues on the interpretation of the spatial representativeness of measurements. This stems from the fact that the EC integration process equals to non-uniform weighting of the upwind surface elements that influence the measured flux, thus potentially resulting in an unequal and temporally varying contribution from different land cover types (Schmid, 2002). Especially isolated zones of high source/sink density may bias the estimated average flux of the area surrounding the EC tower. The spatial distribution of relative weights, a function that Leclerc and Thurtell (1990) coined “footprint”, depends on the measurement height and strongly on wind direction. As the flux footprint is also affected by other properties of the atmospheric flow, e.g., hydrostatic stability, directional averaging does not guarantee an unbiased flux estimate either.

Arctic tundra serves as a prime example of a surface that is heterogeneous with respect to biogeochemical processes. The vegetation, soil and land cover structure of tundra areas are fragmented, the landscape typically comprising patches of different plant communities, water bodies and other land cover types (Stow et al., 2004; Virtanen and Ek, 2014; Mikola et al., 2018). Such heterogeneity concerns both the composition and configuration of land cover properties. This is clearly manifested by the leaf area index (LAI), which shows a higher relative variation among sites in tundra than in any other biome (Asner et al., 2003), and there are pronounced spatial and temporal LAI patterns at the landscape scale (Marushchak et al., 2013; Juutinen et al., 2017). Surface heterogeneity also generates high variability in the ecosystem–atmosphere fluxes of GHGs, including methane ( $\text{CH}_4$ ) (Olefeldt et al., 2013). Tundra biomes are responsible for ca. 3 % of the total  $\text{CH}_4$  emissions estimated at  $560 \text{ Tg yr}^{-1}$ , 40 % of which is biogenic (McGuire et al., 2012; Saunois et al., 2016). The emissions from tundra are predicted to increase substantially, as a fraction of the vast reservoir of organic carbon in permafrost soils may be released into the atmosphere as a result of warming-induced thawing, creating a positive feedback to climate change (Schuur et al., 2015).

The heterogeneity in the ecosystem–atmosphere  $\text{CH}_4$  flux originates from the multitude of biochemical and physical controls of the anaerobic- $\text{CH}_4$  production, and bacterial- $\text{CH}_4$  oxidation and transport of  $\text{CH}_4$  (Whalen and Reeburgh, 1990; Lai, 2009; Bridgman et al., 2013). Methane can be released into the atmosphere through gradual diffusion in soil and water, in ebullition (bubbling) events and via plant-mediated advective transport. These processes involve different residence times

and thus expose the produced CH<sub>4</sub> to different degree of oxidation. As a result of this complexity, field studies have identified a wide range of factors that are associated with the level and variation of observed fluxes. Of these, soil temperature and moisture (or water table level) typically constitute the key environmental controls (Olefeldt et al., 2013). As a general rule, wet carbon-rich soils emit substantial amounts of CH<sub>4</sub>, while dry tundra soils act as small net sinks (Lau et al., 2015). Even if lesser in magnitude, the uptake flux in dry areas may dominate the regional CH<sub>4</sub> balance (Jørgensen et al., 2015; D’Imperio et al., 2017). Methane flux strongly depends on vegetation and soil characteristics, such as the abundance of vascular plants with aerenchyma tissue facilitating gas transport; other important variables include substrate availability, and soil acidity and redox potential (Lai, 2009; Bridgham et al., 2013; Olefeldt et al., 2013).

10 Landscape heterogeneity not only calls for further measurements of fluxes and their controls on multiple spatial scales, preferably including multiple EC towers for spatial replication (Hill et al., 2017), but also necessitates development of techniques for data interpretation, including down- and upscaling methods for generalization of observations. Micrometeorological models are available for estimating the flux footprint (Leclerc and Foken, 2014) and have been utilized in various ways when dealing with the representativeness of flux measurements, ~~based on either chambers or EC, or a combination of the two~~. In its simplest form, such an analysis involves determination of footprint dimensions for typical flow conditions, to ensure that the expected “field of view” of EC measurements is sufficiently confined to the area of interest (e.g., Aurela et al., 2009), ~~or to roughly evaluate the appropriate upscaling area of chamber measurements that are compared with concurrent EC data (e.g., Riutta et al., 2007)~~.

20 Averaged footprints, or footprint “climatologies”, can be calculated from time series of actual short-term (typically 30 min) meteorological data, thus providing a fuller view of the spatial extent of EC aggregation (e.g., Amiro, 1998). ~~A flux-weighted footprint climatology has been suggested for further illustration, hinging on the assumption that the surface flux is spatially uniform within each short term footprint (Chen et al., 2009)~~. When combined with a land cover map, footprint time series can be used for data quality control by quantifying the contribution of different land cover types or, specifically, that of a certain ecosystem intended to be observed (Tuovinen et al., 1998; Rebmann et al., 2005; Göckede et al., 2008). The footprint function can also be used for a formal expression of the spatial, or more precisely the point-to-area (Nappo et al., 1982), representativeness of the EC measurements performed at a certain location. A suitable metric for this, termed the “sensor location bias” by Schmid and Lloyd (1999), can be defined by comparing the footprint-weighted average of a surface-related quantity, mapped across the study area, to the corresponding arithmetic average.

30 While EC data from a heterogeneous environment are still commonly compared with plot-scale data without considering the differential weighting of the plots in the EC signal (e.g., Heikkinen et al., 2002; Sachs et al., 2010; Yu et al., 2013), footprint modelling has been successfully combined with land cover information in various studies for a representative upscaling of chamber-based fluxes (e.g., Marushchak et al., 2016), plot-scale model results (e.g., Budishchev et al., 2014), remotely

sensed fluxes (e.g., Chen et al., 2009) and vegetation data for model input (e.g., Stoy et al., 2013). The temporally varying footprint weights of different land cover types can also be taken as a basis for constructing statistical models that unravel land cover-specific fluxes from the spatially aggregated EC data, but this depends on the quality of land cover data (Fan et al., 1992; Forbrich et al., 2011). The very high spatial resolution (VHSR) satellite imagery makes it possible to derive reliable land cover maps with as high as a ~1 m resolution. By utilizing such a detailed vegetation map, Budishchev et al. (2014) showed that footprint-weighting of modelled plot-scale CH<sub>4</sub> emissions from permafrost tundra resulted in a good agreement with EC measurements, while areally averaged fluxes failed to reproduce the heterogeneity-induced temporal variability. A similar conclusion was reached by Davidson et al. (2017), who upscaled chamber-based CH<sub>4</sub> fluxes for four sites in Alaska by means of VHSR vegetation maps.

10

The aims of the present study are threefold. First, we characterize the dimensions of the field of view and the point-to-area representativeness of the EC measurements carried out at a micrometeorological measurement station, located on permafrost tundra at Tiksi in northern Siberia, during summer 2014. We demonstrate and quantify the heterogeneity of this site, producing information that is essential for any further study exploiting these flux data. For this we employcombine a micrometeorological footprint model and detailed maps of ecosystem characteristics, including land cover classes (LCCs), LAI and topographic wetness index (TWI). These are based on VHSR satellite imagery and extensive field surveys, which still are scant for Siberian tundra. Second, we hypothesize that distinguishable mean fluxes can be determined for LCC groups that represent different CH<sub>4</sub> source/sink capacities; this can be accomplished by developing a multiple regression model that links these fluxes to the EC measurements via footprint weighting. This approach was motivated by the findings of Davidson et al. (2016), who demonstrated that a simple vegetation classification could explain the variation in CH<sub>4</sub> emissions from Arctic tundra as accurately as a set of key environmental drivers. Furthermore, the flux chamber measurements made at Tiksi showed that the effect of LCC was much larger than that of environmental controls (Vähä, 2016). Because of this objective, we limit our data to the growing season. Finally, the LCC group-specific fluxes obtained in this way offer us an opportunity to upscale the CH<sub>4</sub> balance to the landscape scale and thus to evaluate the representativeness of EC measurements also with respect to CH<sub>4</sub> exchange. We emphasize that the scope of this study is focused on the ramifications of the unavoidable non-uniform spatial sampling involved in EC measurements rather than on ecosystem processes.

## 2 Material and methods

### 2.1 Site and data

#### 2.1.1 Site description and meteorological conditions

5 The study area covers the surroundings of the micrometeorological GHG flux measurement station at Tiksi in northeastern Russia, near the Tiksi Observatory operated by Yakutian Service for Hydrometeorology and Environmental Monitoring. The EC tower of the station is located at 71.5943°N, 128.8878°E, 7 m above sea level, ca. 500 m from the shoreline of the Laptev Sea and ca. 50 km from the Lena River delta. The flux measurements are run by the Finnish Meteorological Institute and constitute part of the International Arctic Systems for Observing the Atmosphere (IASOA) activities (Uttal et al., 2016).

10 Tiksi is located within the continuous permafrost zone, and the climate is arctic: the winters are long and cold, while the summers are cool. The mean annual temperature and precipitation at Tiksi in 1981–2010 were  $-12.7$  °C and 323 mm, respectively; the year 2014 was somewhat warmer ( $-10.9$  °C) and drier (249 mm) (AARI, 2018). Air temperature typically falls below 0 °C in the end of September, and the soil temperatures reach the freezing point at approximately the same time. During the winter, air temperatures are typically below  $-20$  °C, and the soil temperatures are reduced to levels below  $-10$  °C.  
15 Snow appears typically in October and melts in early June. After the snowmelt, the top (a few cm) layer of soil warms quickly, but the thawing rate of deeper layers varies depending on the soil type and vegetation (Mikola et al., 2018).

The soil type ranges from mineral soil to peatlands with a high organic content ( $>60$  % of dry soil mass) (Mikola et al., 2018). The landscape around the EC tower represents the coastal tundra zone of eastern Siberia with a high diversity of plant  
20 species and community types, including fens, bogs, tundra heaths and meadows, but there are also areas of bare ground (Juutinen et al., 2017; Mikola et al., 2018). The terrain is relatively flat, sloping gently ( $2-3^\circ$ ) towards the south. This generates a hydrological gradient, and a small brook runs through the site; there are also ponds and small lakes within the study area. Further details of vegetation and soil characteristics are presented in Sects. 2.1.3 and 2.1.4.

25 The data analysed in this study cover the period of 5 July to 29 August 2014, which represents the thermal growing season of that year, using the daily mean air temperature of 5 °C as the threshold (Fig. S1 in the Supplement). During this period, the mean air temperature was higher ( $10.2$  °C) than the corresponding 1981–2010 mean ( $7.8$  °C), which was also the case for the precipitation sum (116 mm vs. the long-term mean 86 mm). In 2014, the soil temperature at 10 cm depth, measured with a Pt100 sensor in dry fen soil, varied within the typical summertime range of  $5 \pm 2$  °C from early July to the end of August  
30 (Fig. S1 in the Supplement). The depth of the active soil layer mostly varied within 0.2–0.4 m in early July – mid-August 2014 (Mikola et al., 2018).

### 2.1.2 Flux measurements

The CH<sub>4</sub> and energy fluxes used in the present study were measured continuously with the micrometeorological eddy covariance method (Aubinet et al., 2012). The EC instrumentation consisted of a USA-1 (METEK GmbH, Elmshorn, Germany) sonic anemometer/thermometer, an LI-7000 (LI-COR, Inc., Lincoln, NE, USA) CO<sub>2</sub>/H<sub>2</sub>O analyser and an RMT-200 (Los Gatos Research, Inc., San Jose, CA, USA) CH<sub>4</sub> analyser. The measurement height was 3 m. The sampling frequency was 10 Hz, and the turbulent fluxes were calculated with the in-house PyBARFluxCalc program with 30 min block averaging according to standard procedures, including double coordinate rotation, lag determination and wet-to-dry mole fraction conversion where necessary (Aubinet et al., 2012). The high-frequency CH<sub>4</sub> flux loss was corrected for using an empirical approach described by Laurila et al. (2005); for this a half-power frequency of 1.1 Hz was estimated from the data. The CH<sub>4</sub> flux data were screened for stationarity by removing cases in which the relative non-stationarity of either momentum or CH<sub>4</sub> flux exceeded 30 % (Foken and Wichura, 1996). In addition, periods of weak turbulence (friction velocity < 0.12 m s<sup>-1</sup>) were discarded. In total, 911 half-hourly observations were included in the analysis. No gap-filling of the time series was necessary for the purposes of the present study.

In addition to the EC technique, CH<sub>4</sub> exchange was measured with a static flux chamber (Vähä, 2016). The surface area of this chamber was 0.25 m<sup>2</sup> and its height 0.3 m. The sample air from the chamber was directed to a DLT-100 (Los Gatos Research, Inc., San Jose, CA, USA) CH<sub>4</sub> analyser. The chamber closure time was either 4 or 10 min, depending on the LCC and the expected magnitude of CH<sub>4</sub> flux. The measurements were carried out between 15 July and 16 August 2014. However, the number of chamber plots was modest and the reach of these measurements from the EC mast was limited due to the use of an online gas analyser; moreover, the measurement plots do not fully correspond to the land cover classification that was developed subsequently (Mikola et al., 2018) and used in the present study. Therefore, instead of aiming at a full analysis of the chamber data, we utilized them for a partial validation of the estimated LCC-specific fluxes, using four plots on dry fen, two plots on wet fen and one plot on bare soil, with 31 or 32 measurements taken on each plot.

### 2.1.3 Mapping of landscape characteristics

The land cover classification consists of nine classes visually distinguished according to their key characteristics (Table 1). The LCCs were identified within an area of 1 km<sup>2</sup> around the EC tower on the basis of a vegetation and soil survey and verified using statistical ordination of the 92 established study plots according to plant species composition and functional plant and soil attributes (Mikola et al., 2018). To extrapolate the LCCs to the landscape scale (Fig. 1a, Fig. S2 in the Supplement), a supervised object-based classification with the random forest method was carried out using two VHSR multispectral satellite images (12 August 2012 and 11 July 2015; WorldView-2, DigitalGlobe, Inc., Westminster, CO, USA) and a digital elevation model (DEM) constructed from the 2015 WorldView-2 stereo pair (Fig. 1b). The internal (cross-

validation of training data) and external (validation data) classification accuracy of the land cover classification were 80 and 49 %, respectively. For details, see Mikola et al. (2018).

Using non-linear regression, the LAI of vascular plants was estimated from the normalized difference vegetation index (NDVI) calculated from the reflectance data of the 2012 WorldView-2 image (Fig. 1c). This map represents the period of maximum LAI in 2012; for the estimated development of the LAI of different LCCs in 2014, see Juutinen et al. (2017) and Fig. S1 (in the Supplement). The topographic wetness index (TWI) was calculated from the DEM using the method of Böhner and Selige (2006) (Fig. 1d). TWI is defined as a function of the upslope contributing area and the local terrain slope and thus serves as a proxy for potential soil moisture. For details of the DEM and TWI data, see Mikola et al. (2018). All maps have a 2 m pixel size, and in this study they were limited to a circle with a radius of 1.4 km from the EC tower, which defines the domain of the present study. For upscaling to a regional scale, we also considered the LCCs determined within a larger area of 35.8 km<sup>2</sup> (Fig. S2 in the Supplement).

#### 2.1.4 Main features of the land cover classes

The LCCs employed in the present study are described by Juutinen et al. (2017) and in greater detail by Mikola et al. (2018); a summary of observed vegetation characteristics is provided in Table 1. Briefly, the dry fen, wet fen and bog classes represent peat-forming environments, while the other LCCs refer to environments with no discernible peat layer. The vascular plant vegetation of fens, i.e. the wetter peatlands, is characterized by sedges (*Carex* spp.). In 2014, the LAI of this vegetation reached its maximum in early August, estimated at 1.1 and 0.5 for wet and dry fens, respectively (Fig. S1 in the Supplement; Juutinen et al., 2017). *Sphagnum* mosses are abundant in the dry fens, while in the wet fens the moss cover is sparse and water pools are common. The bogs are drier and show microtopographic variation; their vegetation consists mainly of dwarf shrubs, dwarf birch (*Betula nana*) and *Sphagnum* and other mosses. The vegetation of flood meadows and graminoid tundra is dominated by graminoids (sedges and grasses), which yield a relatively high maximum vascular-plant LAI of 0.9 and 0.7, respectively, for these LCCs during the study period (Juutinen et al., 2017). The areas defined as shrub tundra have an abundant coverage of feather mosses and dwarf shrubs. In addition, lichen tundra patches with lesser biomass alternate with stony bare-ground areas.

In terms of soil properties of the vegetated areas, the dry fen, wet fen, bog and graminoid tundra LCCs stand out with their high organic matter (on average 38 % of soil dry mass) and water concentration (on average 73 % of fresh mass) in the top 10 cm soil layer, while the lowest concentrations (4 and 22 %, respectively) were found in the soils of the lichen tundra LCC, as measured on 9–14 August 2014 (Mikola et al., 2018). The soil temperature at a depth of 15 cm was clearly highest in the lichen tundra sampling plots, and flood meadow and wet fen soils mostly had a higher temperature than those of the other remaining LCCs. The depth of the biologically active soil layer approximately doubled from early July to mid-August



2014 (the period when weekly measurements were taken). In mid-August, the active layer depth was highest, ca. 40 cm, at the wet fen and flood meadow plots and lowest, ca. 25 cm, at the shrub tundra and lichen tundra plots (Mikola et al., 2018).

## 2.2 Application of footprints

### 2.2.1 Footprint-weighted averaging and sensor location bias

5 | In this Section, we first present an exposition of the footprint-weighting of continuous variables and LCC maps and then define the sensor location bias, which are needed for the heterogeneity assessment and regression modelling. The footprint function (Horst and Weil, 1992) specific to a certain measurement configuration ( $f$ ) ~~can be~~ expressed here in polar coordinates as

$$\langle F \rangle = \int_0^\infty \int_0^{2\pi} f(\theta, r) F(\theta, r) d\theta dr, \quad (1)$$

10 | where  $F$  is the surface flux density distribution,  $\langle F \rangle$  is the vertical flux density at the measurement point above the surface, and  $\theta$  and  $r$  are the horizontal direction and distance with respect to this location. Equation (1) postulates that the flux at a certain location above the ground represents a spatial weighting of the surface flux distribution, where the weighting is defined by the footprint function  $f$ ,  $f \in [0,1], \forall \theta, r$  &  $\int_0^\infty \int_0^{2\pi} f(\theta, r) d\theta dr = 1$ , that describes the turbulent transport between each surface element and the reference point. In the context of EC measurements,  $f$  can be estimated by micrometeorological modelling, and  $\langle F \rangle$  denotes the measured flux, while  $F(\theta, r)$  is unknown.

15

Based on  $f(\theta, r)$ , we ~~define~~ define, analogously to Eq. (1), ~~define~~ footprint-weighted averages of other quantities. For a continuous variable  $X$ , such as LAI and terrain elevation, we write this average, or the “effective” value of  $X$  related to a certain footprint  $f$ , as

$$\langle X \rangle = \int_0^\infty \int_0^{2\pi} f(\theta, r) X(\theta, r) d\theta dr. \quad (2)$$

20 | We ~~can~~ apply a similar averaging operation to an LCC map, in which each location (in practice, a pixel) is allocated to a single LCC. ~~If we~~ We denote the LCC map by  $\Lambda(\theta, r) = j$ , where the integer  $j = 1 \dots N$  specifies the LCC at  $(\theta, r)$ , and define the weighted LCC corresponding to  $f$  ~~is defined~~ as

$$\langle \Lambda \rangle_j = \int_0^\infty \int_0^{2\pi} f(\theta, r) \delta(\Lambda, j) d\theta dr, \quad (3a)$$

where

$$\delta(\Lambda, j) = \begin{cases} 0, & \Lambda(\theta, r) \neq j \\ 1, & \Lambda(\theta, r) = j \end{cases} \quad (3b)$$

This provides the proportion of each LCC within the footprint, which can be calculated for a footprint climatology as well as a single footprint distribution. If the variable  $X$  in Eq. (2) is LCC-specific but otherwise does not depend on location, i.e., we can specify constants  $X_j$ ,  $j = 1 \dots N$ , then we can combine Eqs. (2) and (3) to obtain the footprint-weighted  $X$  as

$$\langle X \rangle = \sum_{j=1}^N \int_0^{\infty} \int_0^{2\pi} f(\theta, r) \delta(\Lambda, j) X_j d\theta dr. \quad (4)$$

To describe the point-to-area representativeness of the flux measurements with respect to a variable related to a surface property or exchange, we follow Schmid and Lloyd (1999) and define a metric that quantifies how well the measurement at a certain location reflects the actual conditions averaged over the area of interest. The sensor location bias for  $X$  is calculated here as

$$\Delta_X = \frac{\langle X \rangle - \bar{X}}{\bar{X}}, \quad (5)$$

where  $\bar{X}$  denotes the mean  $X$  within the study area. This definition differs from the one introduced by Schmid and Lloyd (1999), who expressed the sensor location bias as  $\Delta_X^2$ . As  $\langle X \rangle$  depends on the footprint and thus varies with time,  $\Delta_X$  is not temporally invariant either.

We calculated the sensor location bias with Eqs. (2) and (5) for terrain elevation, the maximum LAI and TWI that were mapped across the study area (Fig. 1). In addition, to investigate the effect of landscape heterogeneity, this bias was calculated for the mean CH<sub>4</sub> flux, for which the areal reference was obtained from ~~the~~-LCC group-specific fluxes. These fluxes were estimated with a multiple regression model derived from Eq. (4) (to be described in Sect. 2.3), in which the LCC group proportions calculated with Eq. (3) were used as explanatory variables.

### 2.2.2 Footprint modelling

We calculated the flux footprints  $f$  for each 30 min flux averaging period in a horizontal 2 m × 2 m grid by using the analytical footprint model developed by Kormann and Meixner (2001) (here “KM model”). The KM model is based on a stationary gradient diffusion formulation, building on the classical solution of the two-dimensional advection–diffusion equation with vertical power law profiles assumed for the mean wind speed and eddy diffusivity (Pasquill and Smith, 1983). As a novel feature, these profiles are related to the corresponding Monin–Obukhov similarity (MOS) profiles. The crosswind diffusion is assumed to be Gaussian and height-independent.

Our EC measurements provide the necessary input data for the KM model, including mean wind direction ( $\theta$ ), mean horizontal wind speed at anemometer height ( $U$ ), friction velocity ( $u_*$ ), hydrostatic stability ( $L^{-1}$ ) and the standard deviation of lateral wind velocity ( $\sigma_v$ ). When matching the wind and diffusivity power laws to the MOS profiles at the measurement height, the KM model does not require an explicit definition of roughness length ( $z_0$ ), since the input data (i.e.,  $U$ ,  $u_*$ ,  $L^{-1}$ )

implicitly specify  $z_0$  according to the MOS profile of the horizontal wind speed. In the case of a heterogeneous surface, this simplifies the computations significantly as compared to models that require additional flux aggregation procedures for estimating the effective  $z_0$  (Göckede et al., 2006).

5 Independent of the flow conditions, a part of each footprint distribution formally extends beyond any finite target area. Therefore, in those footprint calculations that involve a surface property distribution such as the LCC map, we normalize the footprint integrated over the map area to 1, unless indicated otherwise. This means that the upper distance of radial integration in Eqs. (2)–(4) is set to a finite limit of  $r_m$  and the footprint-weighted averages are scaled by dividing by  $\int_0^{r_m} \int_0^{2\pi} f(\theta, r) d\theta dr$ , where  $r_m$  ( $\approx 1.4$  km) is the radius of the present land cover maps.

### 10 2.2.3 Examples of flow conditions

To demonstrate how the EC flux measurement at Tiksi is affected by surface heterogeneity, we calculated the footprint-weighted averages of the surface attributes LAI, terrain elevation and TWI using Eq. (2) and the data illustrated in Figs. 1b–d as the continuous variable  $X$ , while Eq. (4) was used for the footprint-weighted LCC areas of the nine classes shown in Fig. 1a. For this demonstration, we defined three flow situations in terms of the variables that affect the footprint in a given  $\theta$ , i.e.,  
15  $U$ ,  $u_*$ ,  $L^{-1}$  and  $\sigma_v$  (Table 2). These cases represent differing stability conditions, for which typical parameter combinations were derived from the measurement data employed in this study. The  $U$ – $u_*$ – $L^{-1}$  combination was constrained by  $z_0 = 0.01$  m as calculated from the MOS profile of the horizontal wind speed (Pasquill and Smith, 1983). For lateral wind velocity fluctuations, which only affect turbulent diffusion in the crosswind direction, we used the scaling  $\sigma_v/u_* = 2.3$ , ~~which~~ This corresponds to the median of our data; ~~and~~, for simplicity, ~~this~~ was adopted here for all stabilities.

## 20 2.3 Statistical model

### 2.3.12 Land cover class aggregation and upscaling of CH<sub>4</sub> fluxes

We hypothesize that mean CH<sub>4</sub> fluxes can be determined for LCC groups, each composed of LCCs of similar expected source/sink capacity. This grouping was based on the documented vegetation and soil characteristics, reported in detail by Mikola et al. (2018) and Nyman (2015), and summarized here in Sect. 2.1.4. In addition, we utilized the TWI map and  
25 defined areas of potentially wet soils as those with TWI > 4 (Fig. 1d). Using these data and syntheses of CH<sub>4</sub> production and fluxes in similar ecosystems (Olefeldt et al., 2013; Nicolini et al., 2013; Turetsky et al., 2014; Lau et al., 2015; Petrescu et al., 2015; Treat et al., 2015) as background information, we defined four aggregated classes (Table 3, Fig. 2), for which the LCC group-specific fluxes were determined with the statistical model described below ~~in~~ (Sect. 2.3.2).

30 The data sources listed above suggest that wet fens typically are strong CH<sub>4</sub> emitters, and thus the pixels of the wet fen LCC with TWI > 4 were selected for the first LCC group (“Strong source”; Table 3). We also assumed that the pixels of the

graminoid tundra LCC in the potentially wet locations should be included in this category as the graminoids at the site are dominated by aerenchymatous *Carex* spp. and *Eriophorum* spp. (e.g., *E. vaginatum*), i.e., plants known to be associated with substantial CH<sub>4</sub> emissions. ~~Other~~ The drier fens within the study area likely act as weaker emitters, so these were combined into another LCC group (“Moderate source”), together with the bodies of freshwater (water LCC above the sea level). The ~~syntheses cited above~~ previous data also justify an assumption that mineral soils, i.e., here the bare ground and lichen tundra LCCs, act as weak CH<sub>4</sub> sinks (“Sink”). The proportional areas of these three LCC groups were used as the explanatory variables in the regression model. ~~(Eq. 7)~~. The remaining pixels were allocated to the fourth group consisting of the LCCs that either are expected to have a very small CH<sub>4</sub> flux on average or cover only a limited area in flux footprints (“Neutral”). This group is included as an intercept in the regression model, and we hypothesize that its estimated value is not statistically different from zero.

The CH<sub>4</sub> fluxes determined for the aggregated LCCs defined above were upscaled by a simple mosaic approach, i.e., by areal weighting of the group-specific fluxes. To illustrate how the upscaled flux depends on land cover heterogeneity at different spatial scales, the upscaling was performed for different sub-domains as a function of the distance from the EC tower, and also for a larger area of 35.8 km<sup>2</sup> (Fig. S2 in the Supplement).

~~To investigate the temporal trend of the fluxes, we performed the statistical modelling and upscaling separately for weekly periods in addition to the full eight week data set. These results also shed light on the performance of the statistical method when the number of input data is limited and the coverage of different wind direction may be incomplete.~~

### 2.3.21 Model formulation and validation

Assuming that the CH<sub>4</sub> flux does not vary among the LCC-map pixels attributed to a certain LCC, we applied Eq. (4) and expressed each flux measurement as a weighted arithmetic mean of the LCC-specific fluxes  $F_j$ ,  $j = 1 \dots N$  (number of LCCs),

$$\langle F \rangle = \sum_{j=1}^N \langle \Lambda \rangle_j F_j, \quad (6)$$

where these fluxes are unknown, and the weights  $\langle \Lambda \rangle_j$  (Eq. 3) are the fractional areas of the corresponding LCCs. Assuming further that the LCC-specific fluxes remain constant within a data set of  $M$  (~~=911 in the full data set~~) observations but the proportional LCC areas vary with the temporally changing footprint, we obtained a set of linear algebraic equations, from which a solution could be sought for  $F_j$ . We applied this idea by first defining aggregated LCC groups according to the expected CH<sub>4</sub> source/sink capacity of each LCC, ~~which procedure is detailed in~~ (Sect. 2.3.12), and formulated a linear regression problem as

$$\mathbf{Aq} = \mathbf{m} + \mathbf{e}, \quad (7)$$

where the matrix  $\mathbf{A}$  [ $M \times (N_A + 1)$ ] consists of the proportional LCC areas of the aggregated LCCs for each observation,  $\mathbf{q}$  [ $(N_A + 1) \times 1$ ] is a vector of the unknown parameters,  $\mathbf{m}$  [ $M \times 1$ ] denotes the measurement vector, and  $\mathbf{e}$  [ $M \times 1$ ] is the error term.  $N_A$  (= 3 here) denotes the number of those aggregated LCCs whose proportional area was included as an explanatory variable. This does not cover all the LCCs, and we included an intercept term in this regression equation so as to represent the remaining LCCs and the proportion of footprint extending beyond the study area; i.e., we did not scale the sum of  $\langle \Lambda \rangle_j$  to 100 %.

We estimated  $\mathbf{q}$  with the ordinary least square (OLS) estimator. Before calculating the standard errors of these estimates, we tested the model residuals for heteroskedasticity and serial correlation. Heteroskedasticity was tested with the White test that is based on an auxiliary regression, where squared residuals are regressed on original explanatory variables and their squares and cross products, and the inference is based on a Lagrange multiplier (LM) test statistic (Greene, 2012). Serial correlation was tested with the Breusch–Godfrey test, which is based on a similar LM principle where the OLS residuals are regressed on the original explanatory variables augmented by lagged residuals. If heteroskedasticity and serial correlation could not be ruled out, the standard errors for the model parameters were calculated with the Newey–West estimator, which is a robust estimator for the asymptotic covariance matrix of the OLS estimator (Greene, 2012). This would result in wider confidence intervals than the traditional OLS-based standard errors. We assume that these confidence intervals reflect the overall uncertainty emerging from measurement data, LCC classification and footprint modelling; therefore no “bottom-up” error analysis addressing individual error sources was attempted.

The agreement between the model and the observations was evaluated on the basis of the coefficient of determination ( $R^2$ ), root mean squared error (RMSE) and mean absolute error (MAE). The agreement was also examined as a function of wind direction, to verify that we can replicate the pronounced directional dependency of the observed  $\text{CH}_4$  fluxes (Aurela et al., 2015). The performance of the statistical model against independent data was assessed with 10-fold cross-validation (James et al., 2013). ~~Assuming that model residuals represent the maximum measurement error, a conservative estimate for the~~ The random error of the measured mean  $\text{CH}_4$  flux was estimated as  $\text{RMSE} \sigma / \sqrt{M}$ , where  $\sigma$  is the standard deviation of flux and  $M = 911$ . To minimize the wind direction dependency of fluxes,  $\sigma$  was calculated relative to a varying mean obtained from the data binned as a function of wind direction into 50 groups of similar size.

To investigate the temporal trend of the fluxes, we performed the statistical modelling and upscaling separately for weekly periods in addition to the full eight-week data set. These results also shed light on the performance of the statistical method when the number of input data is limited and the coverage of different wind directions may be incomplete.

### ~~2.3.2 Land cover class aggregation and upscaling of CH<sub>4</sub> fluxes~~

~~We hypothesize that mean CH<sub>4</sub> fluxes can be determined for LCC groups, each composed of LCCs of similar expected source/sink capacity. This grouping was based on the documented vegetation and soil characteristics, reported in detail by Mikola et al. (2018) and Nyman (2015), and summarized here in Sect. 2.1.4. In addition, we utilized the TWI map and defined areas of potentially wet soils as those with TWI > 4 (Fig. 1d). Using these data and syntheses of CH<sub>4</sub> production and fluxes in similar ecosystems (Olefeldt et al., 2013; Nicolini et al., 2013; Turetsky et al., 2014; Lau et al., 2015; Petrescu et al., 2015; Treat et al., 2015) as background information, we defined four aggregated classes (Table 3, Fig. 2), for which the LCC group specific fluxes were determined with the statistical model described in Sect. 2.3.1.~~

~~The data sources listed above suggest that wet fens typically are strong CH<sub>4</sub> emitters, and thus the pixels of the wet fen LCC with TWI > 4 were selected for the first LCC group (“Strong source”). We also assumed that the pixels of the graminoid tundra LCC in the potentially wet locations should be included in this category as the graminoids at the site are dominated by aerenchymatous *Carex* spp. and *Eriophorum* spp. (e.g., *E. vaginatum*), i.e., plants known to be associated with substantial CH<sub>4</sub> emissions. Other fens likely act as weaker emitters, so these were combined into another LCC group (“Moderate source”), together with the bodies of freshwater (water LCC above the sea level). The previous data also justify an assumption that mineral soils, i.e., here the bare ground and lichen tundra LCCs, act as weak CH<sub>4</sub> sinks (“Sink”). The proportional areas of these three LCC groups were used as the explanatory variables in the regression model (Eq. 7). The remaining pixels were allocated to the fourth group consisting of the LCCs that either are expected to have a very small CH<sub>4</sub> flux on average or cover only a limited area in flux footprints (“Neutral”). This group is included as an intercept in the regression model, and we hypothesize that its estimated value is not statistically different from zero.~~

~~The CH<sub>4</sub> fluxes determined for the aggregated LCCs defined above were upscaled by a simple mosaic approach, i.e., by areal weighting of the group specific fluxes. To illustrate how the upscaled flux depends on land cover heterogeneity at different spatial scales, the upscaling was performed for different sub-domains as a function of the distance from the EC tower, and also for a larger area of 35.8 km<sup>2</sup> (Fig. S2 in the Supplement).~~

~~To investigate the temporal trend of the fluxes, we performed the statistical modelling and upscaling separately for weekly periods in addition to the full eight week data set. These results also shed light on the performance of the statistical method when the number of input data is limited and the coverage of different wind direction may be incomplete.~~

### 3 Results and discussion

#### 3.1 Demonstrating surface heterogeneity

Our footprint analysis shows that those surface elements that had the greatest influence on the EC measurements at Tiksi were typically located within a distance of 10–200 m (Table S1 in the Supplement). However, the actual range depended strongly on atmospheric stability, as expected (Horst and Weil, 1992). The distance of maximal influence in a single footprint varied from 18 to 35 m depending on stability, and the estimated far end of the source area ranged from 200 to 3500 m for the 90 % flux contribution, for instance. The 1.4 km radius of the circle centred at the EC tower, which defines our primary study area, was selected to result in a 95 % footprint coverage within this area in the neutral case. About 15 % of the footprint calculated for the stable flow example extended beyond the limits of this area, while in the unstable case 99.7 % of the footprint was confined to the target circle (Fig. 3).

The variation of the footprint-weighted LCC contributions, calculated with Eq. (4), as a function of wind direction demonstrates how the heterogeneity inherent in tundra landscape manifests itself in the EC measurement data (Fig. 3; see also Fig. S3 in the Supplement). As is obvious from the LCC map (Fig. 1a), the distribution of contributing LCCs varied a lot among different wind directions (Fig. 3). In the neutral case, for example, there were seven different LCCs dominating at least in one sector. Turbulent mixing also played a substantial role in the magnitude of relative LCC contributions, as the weighting of longer distances increases with increasing stability. In some directions, the contribution of the most common LCCs was highly sensitive to atmospheric stability. In the north-east-to-east sector, for example, the relatively small dry fen patch located within a few tens of metres from the EC tower (Fig. 1a) contributed 45 % in the unstable case, but only 13 % in the stable case (Fig. 3). Similarly, the relative importance of the extensive bare-ground area between the west and the north-east strongly depended on atmospheric stability.

The footprint-weighted surface characteristics, calculated with Eq. (2) for the cases detailed in Table 2, further demonstrate the landscape heterogeneity-induced variations. The effective LAI originating from the footprint-weighting of the LAI map showed a strong dependency on wind direction: in the neutral case, for example,  $\langle \text{LAI} \rangle$  ranged from 0.19 to 0.64  $\text{m}^2 \text{m}^{-2}$  (Fig. 4a). In the unstable case, the direction dependency was similar; however,  $\langle \text{LAI} \rangle$  was up to 0.12  $\text{m}^2 \text{m}^{-2}$  lower than in neutral conditions due to the dominance of bare ground in the vicinity of the EC tower in the north-western sector (Fig. 1a). As averaged over all directions, here assumed equally frequent,  $\langle \text{LAI} \rangle$  was in all stability cases somewhat higher than the arithmetic areal average (Fig. 4a). Due to the directional variations in  $\langle \text{LAI} \rangle$ , the maximum sensor location bias ( $\Delta_{\text{LAI}}$ , Eq. 5) may exceed 90 % in the direction of the maximum  $\langle \text{LAI} \rangle$ .

Based on a corresponding footprint-weighting, an effective mean value could also be determined for terrain elevation (Fig. 4b). This shows that, even though the topographic variability within the flux footprint was small, slightly different terrain

elevation patterns are associated with each flux measurement depending on both wind direction and stability. The sensor location bias for elevation was negative in almost all flow conditions, as the elevation is on average lower within the area that typically dominates the flux footprint (Figs. 1b and 4b). The area of predominantly bare ground was also apparent in the effective TWI (Fig. 4c). In the east-to-south sector, the differences between the stability classes are due to the higher TWI values determined along the coast (Fig. 1d) that gain in importance in stable conditions. Between the south-west and the north-west, in contrast,  $\langle \text{TWI} \rangle$  was higher in unstable conditions, which results from the more pronounced influence of the brook running nearby the EC tower. The footprint-weighted TWI averaged over all directions was, in all cases, close to the arithmetic area average, with the magnitude of the corresponding  $\Delta_{\text{TWI}}^{\text{sensor location bias}}$  being lower than 30 % (Fig. 4c).

In addition to the examples presented above, we demonstrated the heterogeneity of the Tiksi landscape by calculating the mean LAI and LCC contributions from the time series of EC measurements adopted for the present analysis. Fig. 1a shows the footprint climatology for the growing season 2014, depicted as the smallest bounded region containing the surface elements that contribute to EC measurements by a certain fraction (Eq. S1 in the Supplement). This source area is clearly asymmetric, and comparison with the data in Table S1 (in the Supplement) indicates that the source area is more limited than the corresponding area in typical neutral conditions; i.e., it effectively reflects slightly unstable conditions. Weighting the LAI distribution by the mean footprint resulted in a bias of  $\Delta_{\text{LAI}} = 20.2$  %. For comparison, this is much larger than the bias in the normalized vegetation difference index (NDVI) estimated for EC sites in northern China: at the 1 km<sup>2</sup> scale,  $\Delta_{\text{NDVI}}$  bias ranged from -6.9 to 4.2 % at eight sites with low vegetation, and even at a land model scale of ~300 km<sup>2</sup> the mean absolute  $\Delta_{\text{NDVI}}$  bias was not more than 6.5 % (Wang et al., 2016). Notwithstanding such a high degree of agreement, one of the sites was considered “disturbed”. In another study, the EC measurements at two sites with an  $\Delta_{\text{NDVI}}$  bias of less than 4 % reported for the 1 km<sup>2</sup> scale were considered unbiased, while a bias  $\Delta_{\text{NDVI}}$  of 28 % determined for a grassland site was judged as problematic; the mean NDVI, and hence  $\Delta_{\text{NDVI}}$ , was very similar up to the maximum scale of 4 km<sup>2</sup> investigated (Kim et al., 2006).

For most of the LCCs at Tiksi, the field of view of the EC sensors averaged over the growing season clearly differed from the areal coverage of the LCCs within the study area (Table 4; see also Fig. S4 (in the Supplement) for the effect of wind direction and stability). Here we have excluded the large marine areas, which have a minor weight in the EC data. The difference is still largest for the water LCC, as the freshwater bodies are concentrated on the fringes of the study area, and for the flood meadow category with a limited coverage. However, there were also major differences among the dominating terrestrial classes, such as shrub tundra and wet fen: the surface elements attributed to these LCCs contributed to the EC observations less (by 40 %) than their total areal coverage would suggest.

If the areal LCC proportions were calculated within the non-circular area defined by the 90 % cumulative footprint (Fig. 1a), some of these proportions changed dramatically (Table 4). We also included in the comparison the LCC distributions for a



35.8 km<sup>2</sup> area (Fig. S2 in the Supplement). Compared to this, the study area has a similar coverage of fens, bare ground and lichen tundra, whereas the water and shrub tundra LCCs are under-represented and bogs and graminoid tundra over-represented. Overall, these results demonstrate the multiscale heterogeneity of the site and indicate that here the representativeness cannot be described as a proportional coverage of a single target LCC in the footprint climatology, as is the case for most EC sites (Göckede et al., 2008).

### 3.2 Land cover group-specific CH<sub>4</sub> fluxes

The parameters of the regression model introduced in Sect. 2.3.2~~1~~ were estimated with OLS for the LCC aggregation presented in Sect. 2.3.1~~2~~. As this produced model residuals that exhibited both heteroscedasticity and autocorrelation (White LM test statistic  $MR^2 = 92 > \chi_{0.99(9)}^2$ , Breusch–Godfrey LM test statistic  $(M - 1)R^2 = 117 > \chi_{0.99(1)}^2$ ), the confidence intervals were based on the Newey–West estimator. Even when these (larger) confidence intervals were introduced, all the estimated parameters except for the constant, i.e., those representing aggregated LCCs with expected CH<sub>4</sub> exchange, proved to be statistically different from zero ( $p < 0.05$ ; Table 5). The results were also in perfect accord with our qualitative hypothesis on CH<sub>4</sub> flux variability among the LCCs: the model could differentiate between the high emitters, moderate emitters and sinks without any explicit prior information on this pattern. Concerning the quantitative differences, Treat et al. (2018) reported the same degree of spatial variation (standard deviation/mean = 155 %) in the modelled annual CH<sub>4</sub> fluxes on low Arctic tundra, highly heterogeneous similarly to Tiksi, and showed that the differences among LCCs clearly dominate over the interannual variation in the regional CH<sub>4</sub> fluxes.

The temporal variation of the estimated 30 min ecosystem-scale CH<sub>4</sub> fluxes was consistent with observations, even though it is obvious that the full range of variability, most notably the peak values, could not be reproduced ( $R^2 = 0.797$ , RMSE = 0.0994 μg CH<sub>4</sub> m<sup>-2</sup> s<sup>-1</sup>, MAE = 0.0686 μg CH<sub>4</sub> m<sup>-2</sup> s<sup>-1</sup>; Fig. S5 in the Supplement). However, part of this variation arose from measurement noise, and in this context it is crucial that the mean fluxes were modelled accurately also when considering the strong wind direction dependence of observations (Fig. 5). Estimated from the ~~binned~~-mean fluxes of binned data shown in Fig. 5, the variance related to wind direction accounted for up to 80 % of the total variance of measured fluxes. This dependence, obviously generated by the systematic LCC variations within the flux footprint (Fig. 3), is a key pattern in this data set and must be taken into consideration when calculating representative CH<sub>4</sub> balances (Aurela et al., 2015). The model residuals differed significantly ( $p < 0.05$ ) from zero only in a narrow southeastern wind sector, where the model slightly overestimated the fluxes. The 10-fold cross-validation statistics show that the model performed against independent data only marginally worse than the fit to the full data set ( $R^2 = 0.794$ , RMSE = 0.1000 μg CH<sub>4</sub> m<sup>-2</sup> s<sup>-1</sup>, MAE = 0.0691 μg CH<sub>4</sub> m<sup>-2</sup> s<sup>-1</sup>).

Forbrich et al. (2011) have shown that the footprint variations dominate the short-term (hourly to daily) variations in the CH<sub>4</sub> flux on a boreal fen with a pronounced flark–lawn–hummock structure, while soil temperature only explains the seasonal trend. As 80 % of the CH<sub>4</sub> flux variance at Tiksi was explained by the variation in the proportions of the LCCs contributing to the measurement, we can expect a similar pattern, i.e., a limited role of other environmental controls in the short-term variability (30 min data). The linear correlation between CH<sub>4</sub> flux and soil temperature (at 10 cm depth) was indeed weak ( $R^2 = 0.101$ ) and did not get any stronger for an exponential fit or if one considered the model residual, i.e. the unexplained part of observation. For  $u_*$ , this correlation was even weaker ( $R^2 = 0.053$ );  $u_*$  acts as a measure of turbulence that affects surface diffusion and ebullition and has been found to explain a major part of the CH<sub>4</sub> flux variance observed on polygonal tundra (Sachs et al., 2008). Our results also contrasted with the findings of Parmentier et al. (2011) who, similarly to our study, observed a major effect of wind direction on the CH<sub>4</sub> flux measured on Siberian tundra but were also able to relate the short-term flux variation to environmental variables, including atmospheric stability. In that study, however, the LCC proportions were not used as an explanatory factor, but the data were grouped according to the wind sector characterized by qualitative soil wetness (“wet”, “dry” and “mixed”), and environmental responses were determined separately for these groups. On the other hand, Tagesson et al. (2012) found that the only significant factor controlling the CH<sub>4</sub> flux on a wet tundra ecosystem in north-east Greenland was the relative contribution of fen areas, indicating that the controls are site-specific and that any turbulence-related dependency may partly reflect footprint variations, in addition to the actual control of surface exchange processes.

Chamber-based CH<sub>4</sub> flux measurements would constitute the most logical means for validating the estimated LCC-specific fluxes. As explained in Sect. 2.1.2, some chamber data were available for the period of the EC data but their temporal and spatial coverage were limited. Despite the limitations, these measurements lend ~~the~~ support to our EC-based results shown in Table 5: the two wet fen plots were strong CH<sub>4</sub> emitters with observed fluxes of 0.56 and 3.8  $\mu\text{g CH}_4 \text{ m}^{-2} \text{ s}^{-1}$ , while the mean CH<sub>4</sub> emission from dry fen plots ranged from 0.06 to 0.67  $\mu\text{g CH}_4 \text{ m}^{-2} \text{ s}^{-1}$  (mean 0.25  $\mu\text{g CH}_4 \text{ m}^{-2} \text{ s}^{-1}$ ) (Vähä, 2016). The LCC group-specific fluxes (Table 5) were also in accordance with the extensive synthesis of chamber-based CH<sub>4</sub> flux measurements across permafrost zones conducted by Olefeldt et al. (2013). Their database indicates that the mean flux at peatland sites during the growing season ranges from 0.03  $\mu\text{g CH}_4 \text{ m}^{-2} \text{ s}^{-1}$  on dry tundra to 0.75  $\mu\text{g CH}_4 \text{ m}^{-2} \text{ s}^{-1}$  on wet tundra (medians of site-specific fluxes), while the mean flux at the sites classified as permafrost fen is within 0.48–1.70  $\mu\text{g CH}_4 \text{ m}^{-2} \text{ s}^{-1}$  at 50 % of the sites. The micrometeorological measurements that integrate over the heterogeneity of tundra landscape typically show lower CH<sub>4</sub> fluxes. For example, Sachs et al. (2008) and Wille et al. (2008) measured a mean emission of 0.22  $\mu\text{g CH}_4 \text{ m}^{-2} \text{ s}^{-1}$  from polygonal tundra in the Lena River delta in July–August (in 2004 and 2006), which is close to our mean flux (0.21  $\mu\text{g CH}_4 \text{ m}^{-2} \text{ s}^{-1}$  in July–August 2014). Seven other comparable Arctic tundra sites in Siberia, Alaska and Greenland had a mean summer flux within the range of 0.13–1.05  $\mu\text{g CH}_4 \text{ m}^{-2} \text{ s}^{-1}$  (Fan et al., 1992; Friberg et al., 2000; Zona et al., 2009; Parmentier et al., 2011; Tagesson et al., 2012; Castro-Morales et al., 2018). These data also show that variation among sites can be much larger than the interannual variation at a site.

The sink efficiency estimated for the mineral soil LCCs at Tiksi ( $-0.131 \pm 0.042 \mu\text{g CH}_4 \text{ m}^{-2} \text{ s}^{-1}$ , 95 % confidence interval) seems high in comparison to previous data (Turetsky et al., 2014; Lau et al., 2015; Jørgensen et al., 2015; D’Imperio et al., 2017). However, this estimate is consistent with the measured EC fluxes and thus not an artefact of the modelling procedure.

5 This can be observed by inspecting the cases in which the proportion of the assumed sink LCCs in the flux footprint exceeds 80 % (within the wind direction sector of 330–360°). By ignoring the other LCCs, we obtained an apparent mean  $\text{CH}_4$  flux of  $-0.109 \mu\text{g CH}_4 \text{ m}^{-2} \text{ s}^{-1}$  for these cases, while the corresponding modelled (for all LCCs) and measured fluxes were  $-0.093$  and  $-0.094 \mu\text{g CH}_4 \text{ m}^{-2} \text{ s}^{-1}$ , respectively. Furthermore, the chamber measurements conducted on bare ground at the site in summer 2014 yielded a consistent mean of  $-0.12 \mu\text{g CH}_4 \text{ m}^{-2} \text{ s}^{-1}$  (Vähä, 2016).

10

So far, our discussion has been based on fluxes averaged over the whole study period of eight weeks. The weekly resolved LCC group-specific fluxes, however, indicate that there was temporal variation in  $\text{CH}_4$  emissions that was not generated by footprint dynamics (Fig. 6). Most notably, the drier fens (dry fen LCC, and wet fen LCC with a low TWI) showed only weak emissions in the beginning of the period. The maximum emissions occurred during the two-week period around mid-August (9–22 August); these emissions were on average  $0.44 \pm 0.14 \mu\text{g CH}_4 \text{ m}^{-2} \text{ s}^{-1}$  for the “Moderate source” LCC group and  $1.00 \pm 0.10 \mu\text{g CH}_4 \text{ m}^{-2} \text{ s}^{-1}$  for the “Strong source” LCC group. The weekly averages of model residuals during the whole study period were positively correlated with the corresponding soil temperatures, but the correlation was not statistically significant ( $R^2 = 0.444$ ,  $p = 0.102$ ). However, the maximum emissions occurred when soil temperatures were highest, ca. 5 °C (at 10 cm depth), in 9–22 August. During this period, the LAI of vascular plants on the fens and graminoid tundra was still high, even though already declining on the fens (Juutinen et al., 2017). The positive correlation between the vascular LAI of graminoid tundra and the weekly model residuals ( $R^2 = 0.556$ ,  $p = 0.054$ ) points to the role of both primary production and plant-mediated  $\text{CH}_4$  transport, associated with the close relationship between LAI and the maximum photosynthesis rate (Laurila et al., 2001; Street et al., 2007) and the dominance of aerenchymatous plants (Bridgham et al., 2013). However, the depth of the active layer also increased during the study period in some soils, especially in dry fens, but

20 the data are too limited for statistical analysis of this effect (Mikola et al., 2018).

25

### 3.3 Upscaled $\text{CH}_4$ fluxes

By upscaling the mean  $\text{CH}_4$  fluxes estimated for the LCC groups, we estimated the effect of the EC tower location on the spatial representativeness of the mean  $\text{CH}_4$  flux observed during the growing season of 2014 ( $0.208 \mu\text{g CH}_4 \text{ m}^{-2} \text{ s}^{-1}$ ). In other words, adopting the data shown in Table 5 as a reference for the  $\text{CH}_4$  flux averaged over the study area, we could calculate

30 the sensor location bias for  $\text{CH}_4$  flux (Fig. 5) similarly to the results shown in Sect. 3.1 for LAI, terrain elevation, TWI and LCC proportions. As the relative area of the coastal waters is significant within the study area but minor in the average flux footprint (Fig. 1, Table 4), these areas were excluded from the upscaling domain.

Calculating the sensor location bias for CH<sub>4</sub> flux equals to a linear transformation of the observed fluxes. Thus the pronounced directional dependence of CH<sub>4</sub> fluxes translates into an equally pronounced variation in this bias estimate, which ranged approximately from -200 to 400 % for individual data points and from -170 to 230 % on average (Fig. 5). The bias was smallest in eastern and western wind directions. However, the effective LCC composition is very different in these directions, with a much smaller coverage of fens in the west (Fig. 3).

The areally averaged CH<sub>4</sub> flux depended on the upscaling domain in a non-monotonous manner (Fig. 7). The uncertainty of the mean measured CH<sub>4</sub> flux, ~~which was estimated from the model residuals~~ (Sect. 2.3.21), was small (0.007 μg CH<sub>4</sub> m<sup>-2</sup> s<sup>-1</sup>) due to a large number of observations and was ignored in Fig. 7b. Defining the reference area as a function of the radius of a circular area centred at the EC tower, the magnitude of sensor location bias was less than 10 % for the distances of ca. 640–1350 m. Acknowledging the statistical uncertainty in the upscaled fluxes, determined from the LCC group-specific uncertainty estimates (Table 5), the measured mean flux was within the 95 % confidence interval for distances larger than ca. 600 m. For the primary study area, the mean bias during the growing season was 13.9 % and the corresponding 95 % confidence interval was [-0.3 %, 32.9 %] (Table 6). While formally the overestimation of EC measurements of the CH<sub>4</sub> flux averaged over the study area was not statistically significant ( $p > 0.05$ ), the estimated sensor location bias would be lower if the study area were originally defined by a radius of 800–1000 m (Fig. 7). Here we do not suggest that the study area should be defined *post hoc* but advocate a footprint-based analysis to assess the representativeness of measurements at different spatial scales. Adopting the regional upscaling area of 35.8 km<sup>2</sup> as the reference ~~for~~ results in a sensor bias of 30 % [12 %, 55 %] for the CH<sub>4</sub> flux (Table 6).

Even though the coverage of our nine basic LCCs clearly differed from their footprint-weighted contributions (Table 4), the four LCC groups aggregated according to the assumed CH<sub>4</sub> emission potential of LCCs covered areas rather similar to those within the original study domain (Table 6). Within the regional upscaling area of 35.8 km<sup>2</sup>, the strong emitters were less common, but the total flux was only 13 % lower than within the original study area. On the other hand, freshwater bodies occupy a larger relative area (Table 4). These were included here in the “Moderate source” LCC group, but the actual emissions from these ecosystems could not be estimated as their total area within the flux footprint is minute. Nevertheless, there is increasing evidence that Arctic lakes and ponds emit significant amounts of CH<sub>4</sub> (Wik et al., 2016). At all scales, it was necessary to allow for the sink areas that play a significant role in the upscaled balance. However, the agreement of CH<sub>4</sub> fluxes between different scales may be considered somewhat fortuitous and implies little about carbon dioxide and other scalar fluxes that have different spatial patterns.

### 3.4 Methodological issues

Our results obviously depend on the quality of the land cover classification. The LCC accuracy assessment indicates that especially the flood meadow LCC is poorly classified (Mikola et al., 2018); however, this LCC only appears along the brook

and has a very limited coverage. More importantly, the dry fen, wet fen and graminoid tundra pixels may be partly mixed up. The field data and multivariate data analysis of Mikola et al. (2018) indicate that the variation in plant functional type composition within these LCCs indeed overlap, which impairs the classification of the “Strong source” and “Moderate source” LCC groups and effectively precludes modelling that resolves individual LCCs. On the other hand, the large areas of  
5 bare ground and lichen tundra with low organic soil content, i.e., the assumed CH<sub>4</sub> sink areas, can be identified reliably (Mikola et al., 2018).

Despite the uncertainties, the land cover classification allowed us to meaningfully group the surface elements according to their CH<sub>4</sub> exchange potential. This relationship shows that the LCC reflects the integrated effect of a range of processes that  
10 control net production and efflux of CH<sub>4</sub>, such as the availability of substrates and gas transport routes (Davidson et al., 2016, 2017). Thus a vegetation classification based on VHSR satellite imagery provided us with a straightforward means of upscaling the average LCC group-specific fluxes. As the predominant part of CH<sub>4</sub> flux variance resulted from the varying contributions of different LCCs, we did not consider additional environmental controls. Such simplicity is welcome since statistically robust EC-based flux estimates for scales exceeding the flux footprint would require spatial replication with  
15 multiple EC towers (Hill et al., 2017). Our approach serves as an alternative to a common method of deriving LCC-specific data from (a typically more limited set of) flux chamber measurements and upscaling these either directly (e.g., Schneider et al., 2009; Davidson et al., 2017) or by first modelling their temporal variation (e.g., Marushchak et al., 2016). Matthes et al. (2014) showed that more nuanced insights into the spatial drivers can be achieved by the use of multiple EC towers and periodic remote sensing images and by examination of both the abundance and spatial fractal structure of vegetation.

20  
Even though the KM model constitutes an appropriate tool for describing turbulent transport over an aerodynamically smooth surface such as tundra, any footprint estimate involves both structural and input-related modelling uncertainties. The KM model has been tested by Kljun et al. (2003), Marcolla and Cescatti (2005), Neftel et al. (2008) and Arriga et al. (2017) against experimental data and more complex footprint models. All these studies conclude that the KM model performs well,  
25 but we note here that there may be a tendency for too smooth footprint distributions in the along-wind direction. As pointed out in Sect. 2.3.1, we did not try to explicitly estimate the errors related to the flux footprints but assumed that the confidence intervals determined for the LCC group-specific fluxes reflect the overall uncertainty contained in any data employed in the statistical model. Because of this approach, the uncertainty of the results shown in Figs. 3 and 4 could not be quantified. Overestimation of footprint distribution in larger distances would mean that the contribution of graminoid tundra might be  
30 slightly underestimated and that of shrub tundra overestimated as the proportions of these LCCs have a rather systematic dependency on the distance from the EC mast. If the overall LCC heterogeneity of a site became more apparent when viewing it as a function of distance rather than direction, our statistical method would be more dependent on the footprint model and the results would probably be more uncertain.

We obtained statistically significant estimates for the LCC group-specific fluxes when employing the whole data set of eight weeks, but the performance of the model was observed to deteriorate as the number of data was reduced. This can be observed from the weekly results (Fig. 6), in which the confidence intervals are temporally varying and larger than those for the whole data set; in some cases, the results were not consistent with the original flux hypotheses (at the chosen significance level). As wind direction is the primary control of the flux footprint, and consequently the LCC proportions associated with EC measurements (Fig. 3), it is necessary that the variation in wind directions during each period sufficiently covers all the relevant LCCs. This obviously depends on the degree and nature of LCC heterogeneity at the site in question. In our weekly results for Tiksi, the directional coverage was clearly incomplete during 16–22 August 2014, when there were few observations for the sector extending from the north-west to the south-east, leading to uncertain flux estimates for that particular period (Fig. 6). Nevertheless, the LCC group-specific fluxes estimated on a weekly basis improved the overall model performance during the whole study period ( $R^2 = 0.836$ ,  $RMSE = 0.0894 \mu\text{g CH}_4 \text{ m}^{-2} \text{ s}^{-1}$ ,  $MAE = 0.0619 \mu\text{g CH}_4 \text{ m}^{-2} \text{ s}^{-1}$ ).

While the weekly results indicated that there is temporal variation in the LCC group-specific fluxes, the longer-term upscaling was rather insensitive to temporal resolution of these data. The weekly values produced an upscaled flux of  $0.162 \pm 0.063 \mu\text{g CH}_4 \text{ m}^{-2} \text{ s}^{-1}$  for the original study area, i.e., only slightly lower (by 11 %) but much more uncertain estimate than the one obtained for the whole data set (Table 6).

We suggest that estimation of LCC-specific fluxes, accomplished here with a regression model, provides a new avenue to filling the inevitable gaps in the measurement data time series. This proposition is supported by the good out-of-sample validation statistics obtained (Sect. 3.2), as holding the validation data out during parameter estimation is equivalent to generating missing data that need to be gap-filled. This kind of an approach is potentially applicable to those data gaps that are related to the gas concentration measurement, for example due to malfunctioning of the gas analyser, i.e., gaps that appear in the  $\text{CH}_4$  flux data but not in the momentum and sensible heat fluxes.

Another methodological implication of our results concerns the definition of a study area. It is customary to report a “site description” that documents the key ecological characteristics of the area of interest. Within a homogeneous environment, collating the necessary site data is straightforward in terms of statistical representativeness because the outcome is insensitive to the spatial sampling design. Furthermore, the representativeness of EC measurements can be simply assessed by considering the coverage of a single target LCC within the flux footprints. In heterogeneous environments, however, there is a risk for a serious mismatch between the EC flux measurements and the site data, even in cases of an unbiased description of the study area. Our results show that the land cover type composition sampled by the EC measurement was significantly different from the actual LCC coverage within our study area, which as such was originally chosen to be consistent with the dimensions of a typical flux footprint and considered characteristic of the landscape.

## 4 Conclusions

The eddy covariance flux measurement technique is commonly considered to have an advantageous spatial averaging property, sometimes to the extent that it is assumed to “provide an accurate integration of the overall flux from the [heterogeneous] ecosystem” (Turner and Chapin III, 2006). However, this notion is limited and potentially misleading as a universal premise, since this integration process involves differential weighting within a temporally varying flux footprint, a well-known but frequently overlooked feature of EC measurements, which we in the present study demonstrated and quantified for a heterogeneous tundra site in northeastern Russia. The CH<sub>4</sub> fluxes measured at Tiksi were highly variable due to the variation in vegetation composition and soil wetness within the landscape around the EC tower. During summer 2014, the bias of observations with respect to the upscaled flux varied strongly with wind direction, ranging from –170 to 230 % on average.

By combining VHSR satellite imagery and footprint modelling, we could statistically estimate the contribution of the main land cover types to EC measurements. Methane emissions mainly originated from wet fen and graminoid tundra patches in locations with topography-enhanced soil wetness, where conditions are favourable for CH<sub>4</sub> production and efflux (mean flux 1.0 μg CH<sub>4</sub> m<sup>-2</sup> s<sup>-1</sup> during the two-week peak period). Another noteworthy feature is that the areas of bare soil and lichen tundra acted as strong CH<sub>4</sub> sinks (–0.13 μg CH<sub>4</sub> m<sup>-2</sup> s<sup>-1</sup> during the summer). Despite the ecosystem heterogeneity and directional variations in the point-to-area representativeness of EC measurements, the mean CH<sub>4</sub> flux measured during this season can be considered unbiased, and even more so if the present area of interest were halved, i.e., considered to extend up to 1 km from the EC tower. On the other hand, the measured fluxes overestimate the regional (35.8 km<sup>2</sup>) balance by 30 %.

Even though the EC-sampled LCC distribution proved to be representative in terms of the mean CH<sub>4</sub> flux during a growing season, the small-scale heterogeneity at the site was so high as to result in rather unfavourable representativeness metrics for key land cover features such as LAI and LCC fractions. This suggests that it would generally be beneficial to present a more integrated site and flux data description than what has been considered standard, i.e., to also include data on footprint-weighted surface attributes and point-to-area representativeness.

In a follow-up study, we will investigate longer-term CH<sub>4</sub> flux data from Tiksi to better understand the seasonal and interannual variations and their environmental controls. These data will also make it possible to further assess the statistical method suggested here, including its use as a gap-filling tool. Furthermore, we anticipate that flux sites with more than one EC tower provide new opportunities for the estimation of LCC-specific fluxes (e.g., Matthes et al., 2014; Hill et al., 2017); more advanced inverse modelling techniques should be explored for this.

## **Acknowledgements**

This study was financially supported by the Academy of Finland, projects “Greenhouse gas, aerosol and albedo variations in the changing Arctic” (project no. 269095), “Carbon balance under changing processes of Arctic and subarctic cryosphere” (project no. 285630), “Constraining uncertainties in the permafrost-climate feedback” (project no. 291736) and “Carbon dynamics across Arctic landscape gradients: past, present and future” (project no. 296888); the European Commission, FP7 project “Changing permafrost in the Arctic and its global effects in the 21st century (PAGE21, project no. 282700)”; and the Nordic Council of Ministers, DEFROST Nordic Centre of Excellence within NordForsk.



## References

- AARI: Archive of Tiksi standard meteorological observations (1932–2016), Russian Federal Service for Hydrometeorology and Environmental Monitoring, St Petersburg, Russia, [http://www.aari.ru/resources/d0024/archive/description\\_e.html](http://www.aari.ru/resources/d0024/archive/description_e.html), last access: 13 September, 2018.
- 5 Amiro, B. D.: Footprint climatologies for evapotranspiration in a boreal catchment, *Agr. Forest Meteorol.*, 90, 195–201, 1998.
- Arriga, N., Rannik, Ü, Aubinet, M., Carrara, A., Vesala, T., and Papale, D.: Experimental validation of footprint models for eddy covariance CO<sub>2</sub> flux measurements above grassland by means of natural and artificial tracers, *Agr. Forest Meteorol.*, 242, 75–84, 2017.
- 10 Asner, G. P., Scurlock, J. M. O., and Hicke, J. A.: Global synthesis of leaf area observations: implications for ecological and remote sensing studies, *Glob. Ecol. Biogeogr.*, 12, 191–205, 2003.
- Aubinet, M., Vesala, T., and Papale, D. (Eds.): *Eddy Covariance: A Practical Guide to Measurement and Data*, Springer Science+Business Media B.V., Dordrecht, 2012.
- Aurela, M., Lohila, A., Tuovinen, J.-P., Hatakka, J., Riutta, T., and Laurila, T.: Carbon dioxide exchange on a northern  
15 boreal fen, *Boreal Environ. Res.*, 14, 699–710, 2009.
- Aurela, M., Laurila, T., Tuovinen, J.-P., Hatakka, J., Linkosalmi, M., Virtanen, T., Mikola, J., Asmi, E., Ivakhov, V., Kondratyev, V., Uttal, T., and Makshtas, A.: CH<sub>4</sub> and CO<sub>2</sub> exchange on permafrost tundra in Tiksi, Siberia, in: *Proceedings of the 1st Pan-Eurasian Experiment (PEEX) Conference and the 5th PEEX Meeting*, ed: Kulmala, M., Zilitinkevich, S., Lappalainen, H. K., Kyrö, E.-M., and Kontkanen, J., Report Series in Aerosol Science, 163, Helsinki, Finland, 60–62, 2015.
- 20 Böhner, J. and Selige, T.: Spatial prediction of soil attributes using terrain analysis and climate regionalisation, in *SAGA – Analysis and Modelling Applications*, ed: Böhner, J., McCloy, K. R., and Strobl, J., Göttinger Geographische Abhandlungen, 115, University of Göttingen, Germany, 13–28, 2006.
- Bridgman, S. D., Cadillo-Quiroz, H., Keller, J. K., and Zhuang, Q.: Methane emissions from wetlands: biogeochemical, microbial, and modeling perspectives from local to global scales, *Glob. Change Biol.*, 19, 1325–1346, 2013.
- 25 Budishchev, A., Mi, Y., van Huissteden, J., Beletti-Marchesini, L., Schaepman-Strup, G., Parmentier, F. J. W., Fratini, G., Gallagher, A., Maximov, T. C., and Dolman, A. J.: Evaluation of a plot-scale emission model using eddy covariance observations and footprint modelling, *Biogeosciences*, 11, 4651–4664, 2014.
- Castro-Morales, K., Kleinen, T., Kaiser, S., Zaehle, S., Kittler, F., Kwon, M. J., Beer, C., and Göckede, M.: Year-round simulated methane emissions from a permafrost ecosystem in Northeast Siberia, *Biogeosciences*, 15, 2691–2722, 2018.

- Chen, B., Black, T. A., Coops, N. C., Hilker, T., Trofymow, J. A., and Morgenstern, K.: Assessing tower flux footprint climatology and scaling between remotely sensed and eddy covariance measurements, *Bound.-Lay. Meteorol.*, 130, 137–167, 2009.
- Davidson, S. J., Sloan, V. L., Phoenix, G. K., Wagner, R., Fisher, J. P., Oechel, W. C., and Zona, D.: Vegetation type dominates the spatial variability in CH<sub>4</sub> emissions across multiple arctic tundra landscapes, *Ecosystems*, 19, 1116–1132, 2016.
- Davidson, S. J., Santos, M. J., Sloan, V. L., Reuss-Schmidt, K., Phoenix, G. K., Oechel, W. C., and Zona, D.: Upscaling CH<sub>4</sub> fluxes using high-resolution imagery in Arctic tundra ecosystems, *Remote Sens.*, 9, 1227, 2017.
- D’Imperio, L., Nielsen, C. S., Westergaard-Nielsen, A., Michelsen, A., and Elberling, B.: Methane oxidation in contrasting soil types: responses to experimental warming with implication for landscape-integrated CH<sub>4</sub> budget, *Glob. Change Biol.*, 23, 966–976, 2017.
- Fan, S. M., Wofsy, S. C., Bakwin, P. S., Jacob, D. J., Anderson, S. M., Kebackian, P. L., McManus, J. B., Kolb, C. E., and Fitzjarrald, D. R.: Micrometeorological measurements of CH<sub>4</sub> and CO<sub>2</sub> exchange between the atmosphere and subarctic tundra, *J. Geophys. Res.*, 97, 16627–16643, 1992.
- Foken, T. and Wichura, B.: Tools for quality assessment of surface-based flux measurements, *Agr. Forest Meteorol.*, 78, 83–105, 1996.
- Forbrich, I., Kutzbach, L., Wille, C., Becker, T., Wu, J., and Wilmking, M.: Cross-evaluation of measurements of peatland methane emissions on microform and ecosystem scales using high-resolution landcover classification and source weight modelling, *Agr. Forest Meteorol.*, 151, 864–874, 2011.
- Friborg, T., Christensen, T. R., Hansen, B. U., Nordstroem, C., and Soegaard, H.: Trace gas exchange in a high-arctic valley 2. Landscape CH<sub>4</sub> fluxes measured and model using eddy correlation data, *Global Biogeochem. Cy.*, 14, 715–723, 2000.
- Göckede, M., Markkanen, T., Hasager, C. B., and Foken, T.: Update of a footprint-based approach for the characterisation of complex measurement sites, *Bound.-Lay. Meteorol.*, 118, 635–655, 2006.
- Göckede, M., Foken, T., Aubinet, M., Aurela, M., Banza, J., Bernhofer, C., Bonnefond, J. M., Brunet, Y., Carrara, A., Clement, R., Dellwik, E., Elbers, J., Eugster, W., Fuhrer, J., Granier, A., Grünwald, T., Heinesch, B., Janssens, I. A., Knohl, A., Kooble, R., Laurila, T., Longdoz, B., Manca, G., Marek, M., Markkanen, T., Mateus, J., Matteucci, G., Mauder, M., Migliavacca, M., Minerbi, S., Moncrieff, J., Montagnani, L., Moors, E., Ourcival, J.-M., Papale, D., Pereira, J., Pilegaard, K., Pita, G., Rambal, S., Rebmann, C., Rodrigues, A., Rotenberg, E., Sanz, M. J., Pedlak, P., Seufert, G., Siebicke, L., Soussana, J. F., Valentini, R., Vesala, T., Verbeeck, H., and Yakir, D.: Quality control of CarboEurope flux data – Part 1: Coupling footprint analyses with flux data quality assessment to evaluate sites in forest ecosystems, *Biogeosciences*, 5, 433–450, 2008.

- Greene, W. H.: *Econometric Analysis*, 7th Ed., Pearson Education Ltd., Harlow, UK, 2012.
- Heikkinen, J. E. P., Maljanen, M., Aurela, M., Hargreaves, K. J., and Martikainen, P. J.: Carbon dioxide and methane dynamics in a sub-Arctic peatland in northern Finland, *Polar Res.*, 21, 49–62, 2002.
- Hill, T., Chocholet, M., and Clement, R.: The case for increasing the statistical power of eddy covariance ecosystem studies: why, where and how? *Glob. Change Biol.*, 23, 2154–2165, 2017.
- Horst, T. W. and Weil, J. C.: How far is far enough?: The fetch requirements for micrometeorological measurements of surface fluxes, *J. Atmos. Ocean Tech.*, 11, 1018–1025, 1994.
- James, G., Witten, D., Hastie, T., and Tibshirani, R.: *An Introduction to Statistical Learning with Applications in R*, Springer Science+Business Media, Inc., New York, 2013.
- 10 Jørgensen, C. J., Lund Johansen, K. M., Westergaard-Nielsen, A., and Elberling, B.: Net regional methane sink in High Arctic soils of northeast Greenland, *Nat. Geosci.*, 8, 20–23, 2015.
- Juutinen, S., Virtanen, T., Kondratyev, V., Laurila, T., Linkosalmi, M., Mikola, J., Nyman, J., Räsänen, A., Tuovinen, J.-P., and Aurela, M.: Spatial variation and seasonal dynamics of leaf-area index in the arctic tundra – implications for linking ground observations and satellite images, *Environ. Res. Lett.*, 12, 095002, 2017.
- 15 Kim, J., Guo, Q., Baldocchi, D. D., Leclerc, M. Y., Xu, L., and Schmid, H. P.: Upscaling fluxes from tower to landscape: Overlaying flux footprints on high-resolution (IKONOS) images of vegetation cover, *Agr. Forest Meteorol.*, 136, 132–146, 2006.
- Kljun, N., Kormann, R., Rotach, M. W., and Meixner, F. X.: Comparison of the Lagrangian footprint model LPDM-B with an analytical footprint model, *Bound.-Lay. Meteorol.*, 106, 349–355, 2003.
- 20 Kormann, R. and Meixner, F. X.: An analytical footprint model for non-neutral stratification, *Bound.-Lay. Meteorol.*, 99, 207–224, 2001.
- Lai, D. Y. F.: Methane dynamics in northern peatlands: A review, *Pedosphere*, 19, 409–421, 2009.
- Lau, M. C. Y., Stackhouse, B. T., Layton, A. C., Chauhan, A., Vishnivetskaya, T. A., Chourey, K., Ronholm, J., Mykytczuk, N. C. S., Bennett, P. C., Lamarche-Gagnon, G., Burton, N., Pollard, W. H., Omelon, C. R., Medvigy, D. M., Hettich, R. L.,
- 25 Pfiffner, S. M., Whyte, L. G., and Onstott, T. C.: An active atmospheric methane sink in high Arctic mineral cryosols, *ISME J.*, 9, 1880–1891, 2015.
- Laurila, T., Soegaard, H., Lloyd, C. R., Aurela, M., Tuovinen, J.-P., and Nordstroem, C.: Seasonal variations of net CO<sub>2</sub> exchange in European Arctic ecosystems, *Theor. Appl. Climatol.*, 70, 183–201, 2001.

- Laurila, T., Tuovinen, J.-P., Lohila, A., Hatakka, J., Aurela, M., Thum, T., Pihlatie, M., Rinne, J., and Vesala, T.: Measuring methane emissions from a landfill using a cost-effective micrometeorological method, *Geophys. Res. Lett.*, 32, L19808, 2005.
- Leclerc, M. Y. and Foken, T.: *Footprints in Micrometeorology and Ecology*, Springer-Verlag, Berlin, 2014.
- 5 Leclerc, M. Y. and Thurtell, G. W.: Footprint prediction of scalar fluxes using a Markovian analysis, *Bound.-Lay. Meteorol.*, 52, 247–258, 1990.
- Livingston, G. P. and Hutchinson, G. L.: Enclosure-based measurement of trace gas exchange: applications and sources of error, in: *Biogenic Trace Gases: Measuring Emissions from Soil and Water*, ed: Matson, P. A. and Harriss, R. C., Blackwell Science Ltd., Oxford, UK, 14–51, 1995.
- 10 Marcolla, B. and Cescatti, A.: Experimental analysis of flux footprint in varying conditions in an alpine meadow, *Agr. Forest Meteorol.*, 135, 291–301, 2005.
- Marushchak, M. E., Kiepe, I., Biasi, C., Elsakov, V., Friborg, T., Johansson, T., Soegaard, H., Virtanen, T., and Martikainen, P. J.: Carbon dioxide balance of subarctic tundra from plot to regional scales, *Biogeosciences*, 10, 437–452, 2013.
- Marushchak, M. E., Friborg, T., Biasi, C., Herbst, M., Johansson, T., Kiepe, I., Liimatainen, M., Lind, S. E., Martikainen, P. J., Virtanen, T., Soegaard, H., and Shurpali, N. J.: Methane dynamics in the subarctic tundra: combining stable isotope analyses, plot- and ecosystem-scale flux measurements, *Biogeosciences* 13, 597–608, 2016.
- 15 Matthes, J. H., Sturtevant, C., Verfaillie, J., Knox, S., and Baldocchi, D.: Parsing the variability in CH<sub>4</sub> flux at spatially heterogeneous wetland: Integrating multiple eddy covariance towers with high-resolution flux footprint analysis, *J. Geophys. Res.- Biogeo.*, 119, 1322–1339, 2014.
- 20 McGuire, A. D., Christensen, T. R., Hayes, D., Heroult, A., Euskirchen, E., Kimball, J. S., Koven, C., Lafleur, P., Miller, P. A., Oechel, W., Peylin, P., Williams, M., and Yi, Y.: An assessment of the carbon balance of Arctic tundra: comparison among observations, process models, and atmospheric inversions, *Biogeosciences*, 9, 3185–3204, 2012.
- Mikola, J., Virtanen, T., Linkosalmi, M., Vähä, E., Nyman, J., Postanogova, O., Räsänen, A., Kotze, D. J., Laurila, T., Juutinen, S., Kondratyev, V., and Aurela, M.: Spatial variation and linkages of soil and vegetation in the Siberian Arctic tundra – coupling field observations with remote sensing data, *Biogeosciences*, 15, 2781–2801, 2018.
- 25 Nappo, C. J., Caneill, J. Y., Furman, R. W., Gifford, F. A., Kaimal, J. C., Kramer, M. L., Lockhart, T. J., Pendergast, M. M., Pielke, R. A., Randerson, D., Shreffler, J. H., and Wyngaard, J. C.: The workshop on the representativeness of meteorological observations, June 1981, Boulder, Colo., *B. Am. Meteorol. Soc.*, 63, 761–764, 1982.
- Neftel, A., Spirig, C., and Ammann, C.: Application and test of a simple tool for operational footprint evaluations, *Environ. Pollut.*, 152, 644–652, 2008.
- 30

- Nicolini, G., Castaldi, S., Fratini, G., and Valentini, R.: A literature overview of micrometeorological CH<sub>4</sub> and N<sub>2</sub>O flux measurements in terrestrial ecosystems, *Atmos. Environ.*, 81, 311–319, 2013.
- Nyman, J.: The composition and phenological development of the vegetation and its impact on carbon fluxes in the Siberian tundra, M.Sc. Thesis, Department of Environmental Sciences, University of Helsinki, Finland, 2015.
- 5 Olefeldt, D., Turetsky, M. R., Crill, P. M., and McGuire, A. D.: Environmental and physical controls on northern terrestrial methane emissions across permafrost zones, *Glob. Change Biol.*, 19, 589–603, 2013.
- Parmentier, F. J. W., van Huissteden, J., van der Molen, M. K., Schaepman-Strup, G., Karsanaev, S. A., Maximov, T. C., and Dolman, A. J.: Spatial and temporal dynamics in eddy covariance observations of methane fluxes at a tundra site in northeastern Siberia, *J. Geophys. Res.*, 116, G03016, 2011.
- 10 Pasquill, F. and Smith, F. B.: *Atmospheric Diffusion*, 3rd Ed., Ellis Horwood Ltd., Chichester, UK, 1983.
- Petrescu, A. M. R., Lohila, A., Tuovinen, J.-P., Baldocchi, D. D., Desai, A. R., Roulet, N. T., Vesala, T., Dolman, A. J., Oechel, W. C., Marcolla, B., Friborg, T., Rinne, J., Matthes, J. H., Merbold, L., Meijide, A., Kiely, G., Sottocornola, M., Sachs, T., Zona, D., Varlagin, A., Lai, D. Y. F., Veenendaal, E., Parmentier, F.-J. W., Skiba, U., Lund, M., Hensen, A., van Huissteden, J., Flanagan, L. B., Shurpali, N. J., Grünwald, T., Humphreys, E. R., Jackowicz-Korczyński, M., Aurela, M. A.,
- 15 Laurila, T., Grüning, C., Corradi, C. A. R., Schrier-Uijl, A. P., Christensen, T. R., Tamstorf, M. P., Mastepanov, M., Martikainen, P. J., Verma, S. B., Bernhofer, C., and Cescatti, A.: The uncertain climate footprint of wetlands under human pressure, *P. Natl. Acad. Sci. USA*, 112, 4594–4599, 2015.
- Rebmann, C., Göckede, M., Foken, T., Aubinet, M., Aurela, M., Berbigier, P., Bernhofer, C., Buchmann, N., Carrara, A., Cescatti, A., Ceulemans, R., Clement, R., Elbers, J. A., Granier, A., Grünwald, T., Guyon, D., Havránková, K., Heinesch, B.,
- 20 Knohl, A., Laurila, T., Longdoz, B., Marcolla, B., Markkanen, T., Miglietta, F., Moncrieff, J., Montagnani, L., Moors, E., Nardino, M., Ourcival, J.-M., Rambal, S., Rannik, Ü, Rotenberg, E., Sedlak, P., Unterhuber, G., Vesala, T., and Yakir, D.: Quality analysis applied on eddy covariance measurements at complex sites using footprint modelling, *Theor. Appl. Climatol.*, 80, 121–141, 2005.
- ~~Riutta, T., Laine, J., Aurela, M., Rinne, J., Vesala, T., Laurila, T., Haapanala, S., Pihlatie, M., and Tuittila, E. S.: Spatial variation in plant community functions regulates carbon gas dynamics in a boreal fen ecosystem, *Tellus, B* 59, 838–852, 2007.~~
- Sachs, T., Wille, C., Boike, J., and Kutzbach, L.: Environmental controls on ecosystem-scale CH<sub>4</sub> emission from polygonal tundra in the Lena River Delta, Siberia, *J. Geophys. Res.*, 113, G00A03, 2008.
- Sachs, T., Giebels, M., Boike, J., and Kutzbach, L.: Environmental controls on CH<sub>4</sub> emission from polygonal tundra on the
- 30 microsite scale in the Lena river delta, Siberia, *Glob. Change Biol.*, 16, 3096–3110, 2010.

- Saunois, M., Jackson, R. B., Bousquet, P., Poulter, B., and Canadell, J. G.: The growing role of methane in anthropogenic climate change, *Environ. Res. Lett.*, 11, 120207, 2016.
- Schmid, H. P.: Footprint modeling for vegetation atmosphere exchange studies: a review and perspective, *Agr. Forest Meteorol.*, 113, 159–183, 2002.
- 5 Schmid, H. P. and Lloyd, C. R.: Spatial representativeness and the location bias of flux footprints over inhomogeneous areas, *Agr. Forest Meteorol.*, 93, 195–209, 1999.
- Schuur, E. A. G., McGuire, A. D., Schädel, C., Grosse, G., Harden, J. W., Hayes, D. J., Hugelius, G., Koven, C. D., Kuhry, P., Lawrence, D. M., Natali, S. M., Olefeldt, D., Romanovsky, V. E., Schaefer, K., Turetsky, M. R., Treat, C. C., and Vonk, J. E.: Climate change and the permafrost carbon feedback, *Nature*, 520, 171–179, 2015.
- 10 Schneider, J., Grosse, G., and Wagner, D.: Land cover classification of tundra environments in the Arctic Lena Delta based on Landsat 7 ETM+ data and its application for upscaling of methane emissions, *Remote Sens. Environ.*, 113, 380–391, 2009.
- Stow, D. A., Hope, A., McGuire, D., Verbyla, D., Gamon, J., Huemmrich, F., Houston, S., Racine, C., Sturm, M., Tape, K., Hinzman, L., Yoshikawa, K., Tweedie, C., Noyle, B., Silapaswan, C., Douglas, D., Griffith, B., Jia, G., Epstein, H., Walker, D., Daeschner, S., Petersen, A., Zhou, L., and Myneni, R.: Remote sensing of vegetation and land-cover change in Arctic Tundra Ecosystems, *Remote Sens. Environ.*, 89, 281–308, 2004.
- 15 Stoy, P. C., Williams, M., Evans, J. G., Prieto-Blanco, A., Disney, M., Hill, T. C., Ward, H. C., Wade, T. J., and Street, L. E.: Upscaling tundra CO<sub>2</sub> exchange from chamber to eddy covariance tower, *Arct. Antarct. Alp. Res.*, 45, 275–284, 2013.
- Street, L. E., Shaver, G. R., Williams, M., and Van Wijk, M. T.: What is relationship between changes in canopy leaf area and changes in photosynthetic CO<sub>2</sub> flux in arctic ecosystems?, *J. Ecol.*, 95, 139–150, 2007.
- 20 Tagesson, T., Mölder, M., Mastepanov, M., Sigsgaard, C., Tamstorf, M. P., Lund, M., Falk, J. M., Lindroth, A., Christensen, T. R., and Ström, L.: Land-atmosphere exchange of methane from soil thawing to soil freezing in a high-Arctic wet tundra ecosystem, *Glob. Change Biol.*, 18, 1928–1940, 2012.
- Treat, C. C., Natali, S. M., Ernakovich, J., Iversen, C. M., Lupascu, M., McGuire, A. D., Norby, R. J., Chowdhury, T. R., Richter, A., Šantrůčková, H., Schädel, C., Schuur, E. A. G., Sloan, V. L., Turetsky, M. R., and Waldrop, M. P.: A pan-Arctic synthesis of CH<sub>4</sub> and CO<sub>2</sub> production from anoxic soil incubations, *Glob. Change Biol.*, 21, 2787–2803, 2015.
- 25 Treat, C. C., Marushchak, M. E., Voigt, C., Zhang, Y., Tan, Z., Zhuang, Q., Virtanen, T. A., Räsänen, A., Biasi, C., Hugelius, G., Kaverin, D., Miller, P. A., Stendel, M., Romanovsky, V., Rivkin, F., Martikainen, P. J., and Shurpali, N. J.: Tundra landscape heterogeneity, not inter-annual variability, controls the decadal regional carbon balance in the Western Russian Arctic, *Glob. Change Biol.*, [24, 5188–5204doi:10.1111/geb.14421](https://doi.org/10.1111/geb.14421), in press, 2018.

- Tuovinen, J.-P., Aurela, M., and Laurila, T.: Resistances to ozone deposition to a flark fen in the northern aapa mire zone, *J. Geophys. Res.*, 103, 16953–16966, 1998.
- Turetsky, M. R., Kotowska, A., Bubier, J., Dise, N. B., Crill, P., Hornibrook, E. R. C., Minkkinen, K., Moore, T. R., Myers-Smith, I. H., Nykänen, H., Olefeldt, D., Rinne, J., Saarnio, S., Shurpali, N., Tuittila, E.-S., Waddington, J. M., White, J. R.,  
 5 Wickland, K. P., and Wilkening, M.: A synthesis of methane emissions from 71 northern, temperate, and subtropical wetlands, *Glob. Change Biol.*, 20, 2183–2197, 2014.
- Turner, M. G. and Chapin III, F. S.: Causes and consequences of spatial heterogeneity in ecosystem function, in: *Ecosystem Function in Heterogeneous Landscapes*, ed: Lovett, G. M., Jones, C. G., Turner, M. G., and Weathers, K. C., Springer Science+Business Media, Inc., New York, 9–30, 2006.
- 10 Uttal, T., Starkweather, S., Drummond, J. R., Vihma, T., Makshtas, A. P., Darby, L. S., Burkhart, J. F., Cox, C. J., Schmeisser, L. N., Haiden, T., Maturilli, M., Shupe, M. D., de Boer, G., Saha, A., Grachev, A. A., Crepinsek, S. M., Bruhwiler, L., Goodison, B., McArthur, B., Walden, V. P., Dlugokencky, E. J., Persson, P. O. G., Lesins, G., Laurila, T., Ogren, J. A., Stone, R., Long, C. N., Sharma, S., Massling, A., Turner, D. D., Stanitski, D. M., Asmi, E., Aurela, M., Skov, H., Eleftheriadis, K., Virkkula, A., Platt, A., Førlund, E. J., Iijima, Y., Nielsen, I. E., Bergin, M. H., Candlish, L., Zimov, N.,  
 15 S., Zimov, S. A., O'Neill, N. T., Fogal, P. F., Kivi, R., Konopleva-Akish, E. A., Verlinde, J., Kustov, V. Y., Vasel, B., Ivakhov, V. M., Viisanen, Y., and Intrieri, J. M.: International Arctic Systems for Observing the Atmosphere (IASOA): An International Polar Year Legacy Consortium, *B. Am. Meteorol. Soc.*, 97, 1034–1056, 2016.
- Vähä, E.: Kasvillisuus- ja maaperämuuttujien välinen yhteys ja niiden merkitys hiilidioksidin ja metaanin vaihdossa arktisen tundraekosysteemin ja ilmakehän välillä [The relationship between vegetation and soil variables and their importance in the  
 20 carbon dioxide and methane exchange between an Arctic tundra ecosystem and the atmosphere], M.Sc. Thesis, Department of Environmental Sciences, University of Helsinki, Finland, 2016.
- Virkkala, A.-M., Virtanen, T., Lehtonen, A., Rinne, J., and Luoto, M.: The current state of CO<sub>2</sub> flux chamber studies in the Arctic tundra: a review, *Prog. Phys. Geog.*, 42, 162–184, 2017.
- Virtanen, T. and Ek, M.: The fragmented nature of tundra landscape, *Int. J. Appl. Earth Obs.*, 27, 4–12, 2014.
- 25 Wang, H., Jia, G., Zhang, A., and Miao, C.: Assessment of spatial representativeness of eddy covariance flux data from flux tower to regional grid, *Remote Sens.*, 8, 742, 2016.
- Whalen, S. C. and Reeburgh, W. S.: Consumption of atmospheric methane by tundra soils, *Nature*, 346, 160–162, 1990.
- Wik, M., Varner, R. K., Walter Anthony, K., MacIntyre, S., and Bastviken, D.: Climate-sensitive northern lakes and ponds are critical components of methane release, *Nat. Geosci.*, 9, 99–106, 2016.

Wille, C., Kutzbach, L., Sachs, T., Wagner, D., and Pfeiffer, E-M.: Methane emission from Siperian arctic polygonal tundra: eddy covariance measurements and modeling, *Glob. Change Biol.*, 14, 1395–1408, 2008.

Yu, L., Wang, H., Wang, G., Song, W., Huang, Y., Li, S.-G., Liang, Y., Tang, Y., and He, J.-S.: A comparison of methane emission measurements using eddy covariance and manual and automated chamber-based techniques in Tibetan Plateau alpine wetland, *Environ. Pollut.*, 181, 81–90, 2013.

Zona, D., Oechel, W. C., Kochendorfer, J., Paw U, K. T., Salyuk, A. N., Olivas, P. C., Oberbauer, S. F., and Lipson, D. A.: Methane fluxes during the initiation of a large-scale water table manipulation experiment in the Alaskan Arctic tundra, *Global Biogeochem. Cy.*, 23, GB2013, 2009.



Table 1. Land cover classes and their dominating vegetation and other characteristics, derived from Juutinen et al. (2017) and Mikola et al. (2018).

Class	Peat layer	Mosses and lichens	Vascular plants	Other
Wet fen	yes	sparse wet brown moss cover	sedge-dominated	high water table, water pools
Dry fen	yes	dense <i>Sphagnum</i> cover, some wet brown mosses	some sedges and dwarf shrubs	water table below moss layer
Bog	yes	<i>Sphagnum</i> -dominated	dwarf shrubs, <i>Betula nana</i>	hummock-hollow surface pattern
Graminoid tundra	no	some feather mosses	graminoid-dominated; other vascular plants may occur	
Flood meadow	no	some wet brown mosses, no <i>Sphagnum</i>	graminoid-dominated; herbs, willows	brookside spring flooding area
Shrub tundra	no	feather moss cover, no <i>Sphagnum</i> ; some lichens	dwarf shrubs, <i>Betula nana</i>	
Lichen tundra	no	lichen-dominated; some feather mosses	some herbs and dwarf shrubs	alternates with bare ground
Bare ground	no			non-vegetated
Water	no			sea, freshwater bodies

Table 2. Flow conditions assumed for the example calculations.

Case	$L^{-1}$ (m <sup>-1</sup> )	$u_*$ (m s <sup>-1</sup> )	$\sigma_v$ (m s <sup>-1</sup> )	$U$ (m s <sup>-1</sup> )
Unstable	-0.2	0.15	0.35	1.8
Neutral	0	0.40	0.92	5.7
Stable	0.1	0.10	0.23	1.8

5

Table 3. Aggregated land cover classes for the regression model.

LCC group description	LCCs included
Strong source	Wet fen, TWI > 4 Graminoid tundra, TWI > 4
Moderate source	Wet fen, TWI ≤ 4 Dry fen Water, above sea level
Sink	Bare ground Lichen tundra
Neutral	Other

5 | Table 4. Proportions (%) of different land cover classes as weighted by the mean footprint function during the growing season (“Weighted”) and their areal coverages within the study area (“Area”), within the source area defined by the 90 % cumulative footprint (“Area, 90 %”, Fig. 1a), and within a 35.8 km<sup>2</sup> region (“Region”, Fig. S2 in the Supplement). The marine areas are excluded, and the integrated footprint within the study area is scaled to 100 %.

Land cover class	Weighted	Area	Area, 90 %	Region
Wet fen	9.0	17.7	15.1	16.4
Dry fen	17.0	12.8	10.3	11.6
Bog	17.8	12.8	23.0	9.1
Graminoid tundra	11.7	6.6	11.6	3.4
Flood meadow	3.3	0.7	1.4	0.4
Shrub tundra	12.8	21.1	18.2	27.4
Lichen tundra	15.1	12.4	10.9	11.1
Bare ground	13.0	13.6	8.0	15.3
Water	0.2	2.3	1.4	5.3
Total	100.0	100.0	100.0	100.0

10 | Table 5. Estimated CH<sub>4</sub> fluxes for the aggregated land cover classes.

LCC group description	CH <sub>4</sub> flux (μg CH <sub>4</sub> m <sup>-2</sup> s <sup>-1</sup> )	95 % confidence interval (μg CH <sub>4</sub> m <sup>-2</sup> s <sup>-1</sup> )
Strong source	0.949	[0.871, 1.028]
Moderate source	0.264	[0.180, 0.348]
Sink	-0.131	[-0.172, -0.089]
Neutral	-0.007	[-0.035, 0.021]

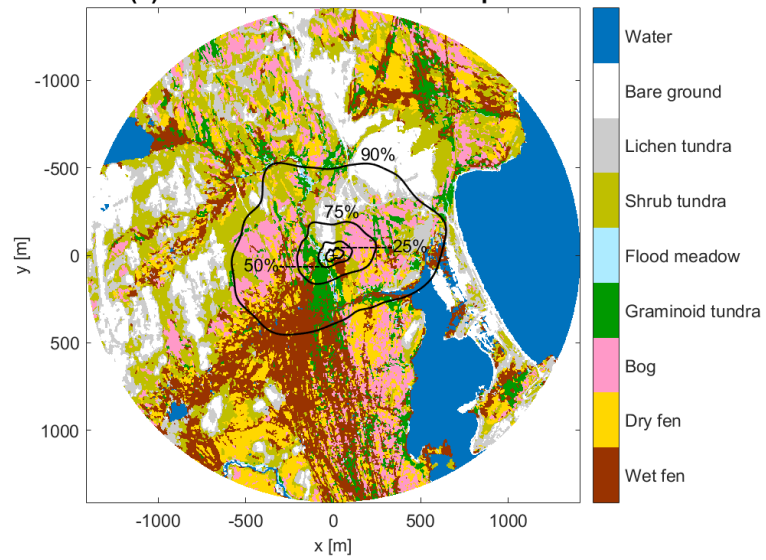
Table 6. Upscaling of CH<sub>4</sub> fluxes ( $\mu\text{g CH}_4 \text{ m}^{-2} \text{ s}^{-1}$ ) based on the LCC group-specific flux data shown in Table 5.

LCC group	Study area <sup>a</sup> (6.3 km <sup>2</sup> )		Region <sup>a</sup> (35.8 km <sup>2</sup> )	
	Coverage <sup>b</sup> (%)	Flux <sup>c</sup>	Coverage (%)	Flux
Strong source	17.7	0.168 (91.8 %)	15.1	0.144 (89.8 %)
Moderate source	19.5	0.052 (28.3 %)	20.3	0.054 (33.5 %)
Sink	26.0	-0.034 (-18.6 %)	26.4	-0.035 (-21.6 %)
Neutral	36.8	-0.003 (-1.4 %)	38.1	-0.003 (-1.7 %)
Upscaled flux <sup>d</sup>		0.183 [0.156, 0.209]		0.160 [0.134, 0.186]

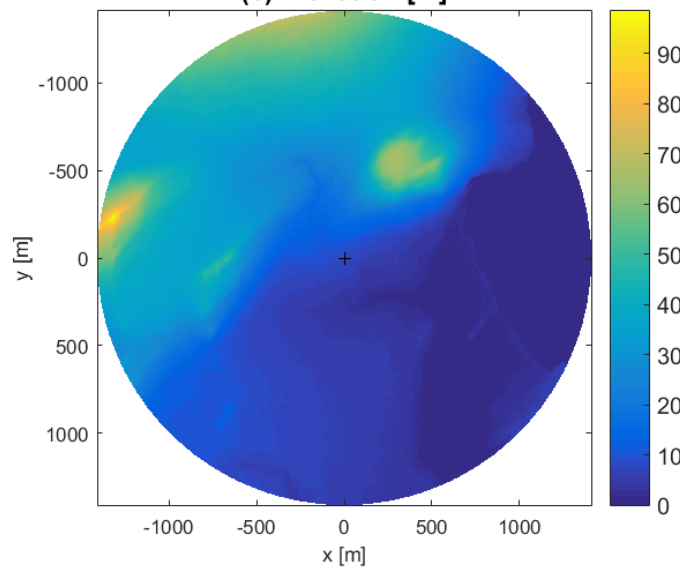
5 <sup>a</sup> “Study area” refers to the circle with a radius of 1.4 km centred at the EC mast; “Region” is shown in Fig. S2 (in the Supplement).

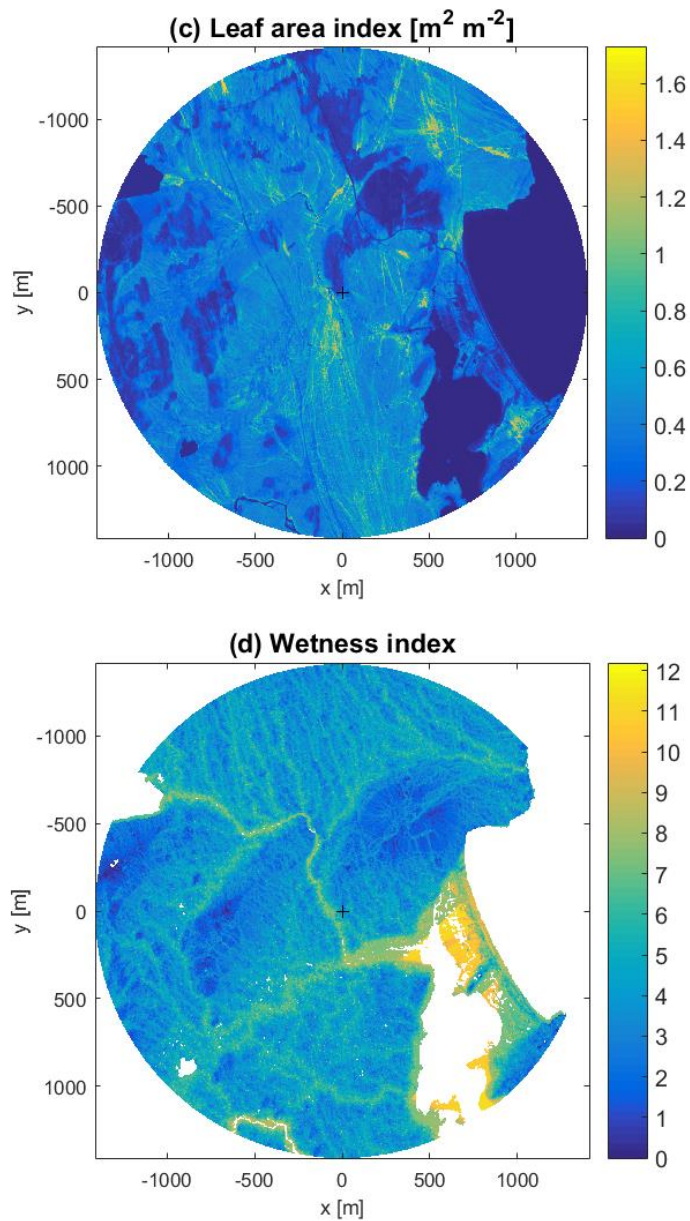
<sup>b</sup> Marine areas are excluded from upscaling. <sup>c</sup> Calculated as LCC group-specific flux  $\times$  relative coverage. The value in parentheses equals this flux divided by the upscaled flux. <sup>d</sup> The values in square brackets indicate the 95 % confidence interval.

**(a) Land cover and mean footprint**



**(b) Elevation [m]**





5 Figure 1. Land cover classes and the mean cumulative footprint during the growing season of 2014 (a), maximum leaf area index (on 12 August 2012) (b), terrain elevation (c) and topographic wetness index for terrestrial surfaces (d). The isophlets in (a) indicate the areas with a 25, 50, 75 and 90 % contribution to the measured flux (only the further distance visible). The plus sign indicates the location of the EC tower.

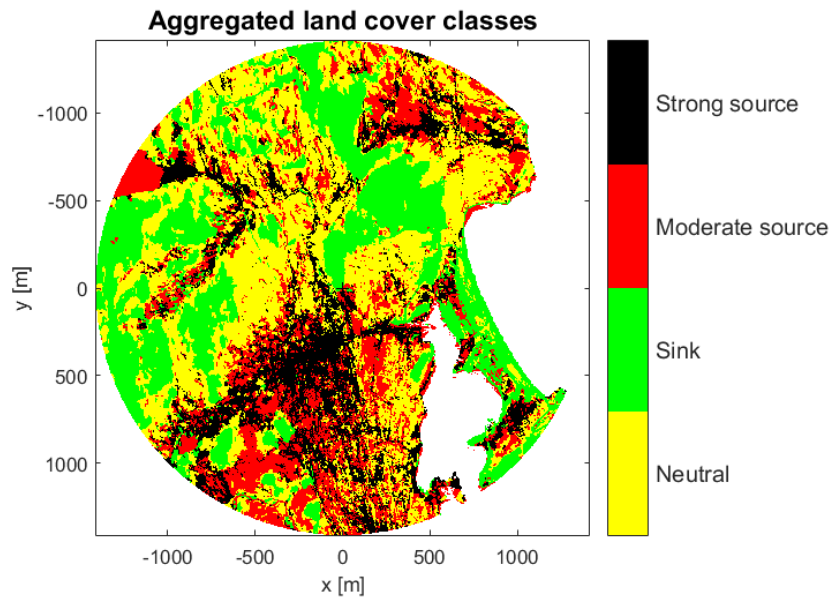
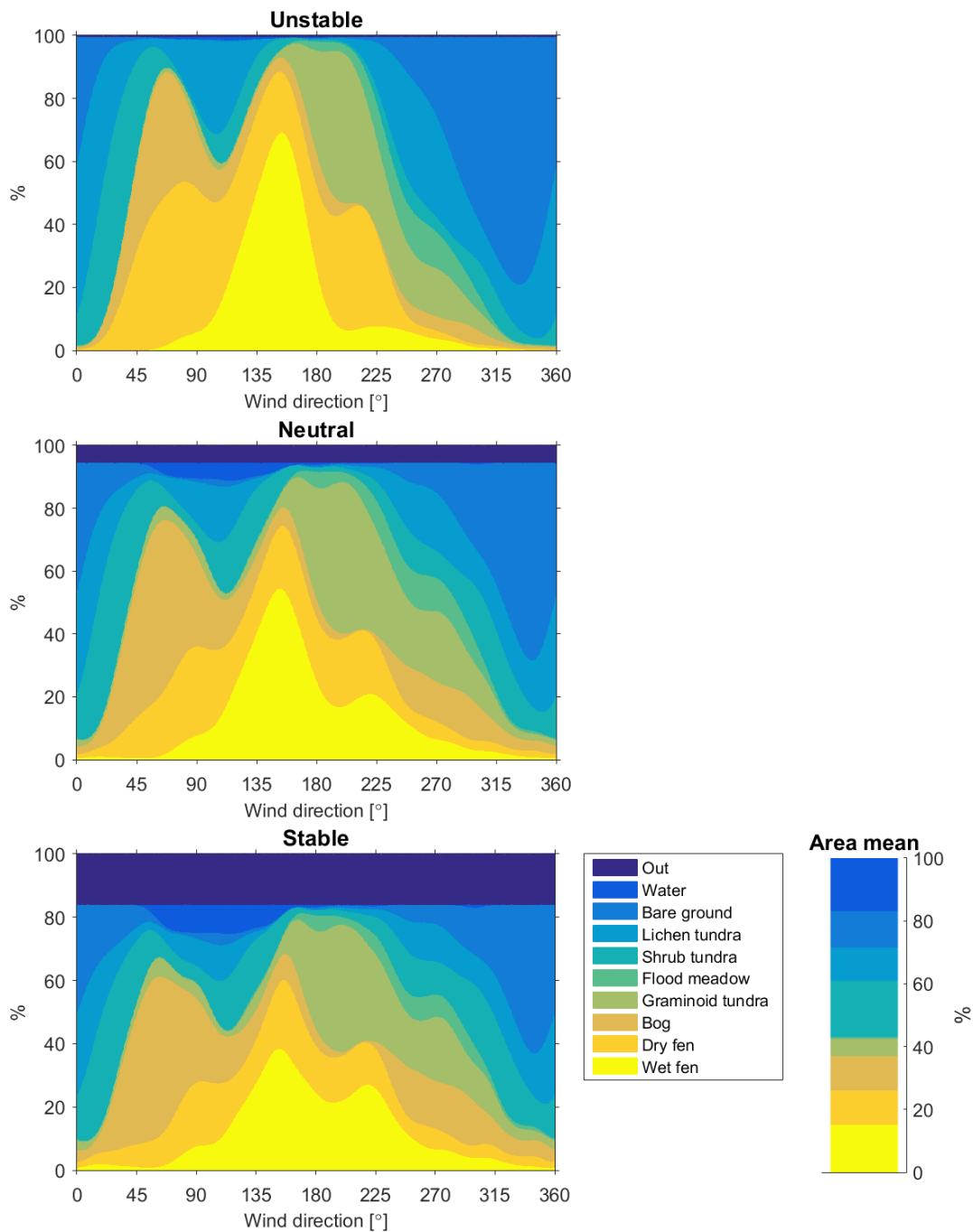


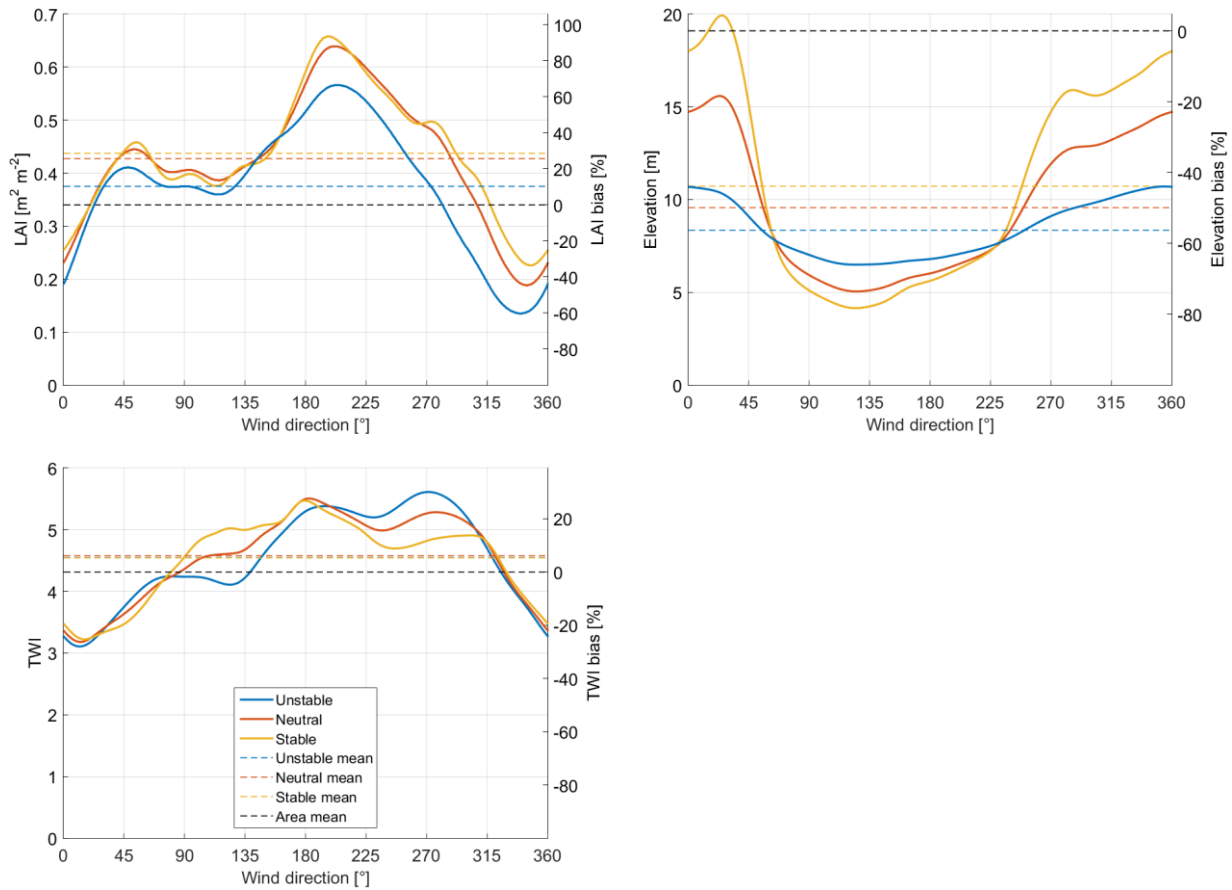
Figure 2. Distribution of the aggregated land cover classes (excluding marine areas).

5



5 Figure 3. Proportion of different land cover classes in the flux footprint as a function of wind direction for the three flow condition cases specified in Table 2. The rightmost panel shows the relative coverage of these classes within the study area (%).





5

Figure 4. The footprint-weighted and areally averaged leaf area index (a), terrain elevation (b) and topographic wetness index (c) as a function of wind direction for the three flow condition cases specified in Table 2. The right-hand ordinate indicates the corresponding sensor location bias.

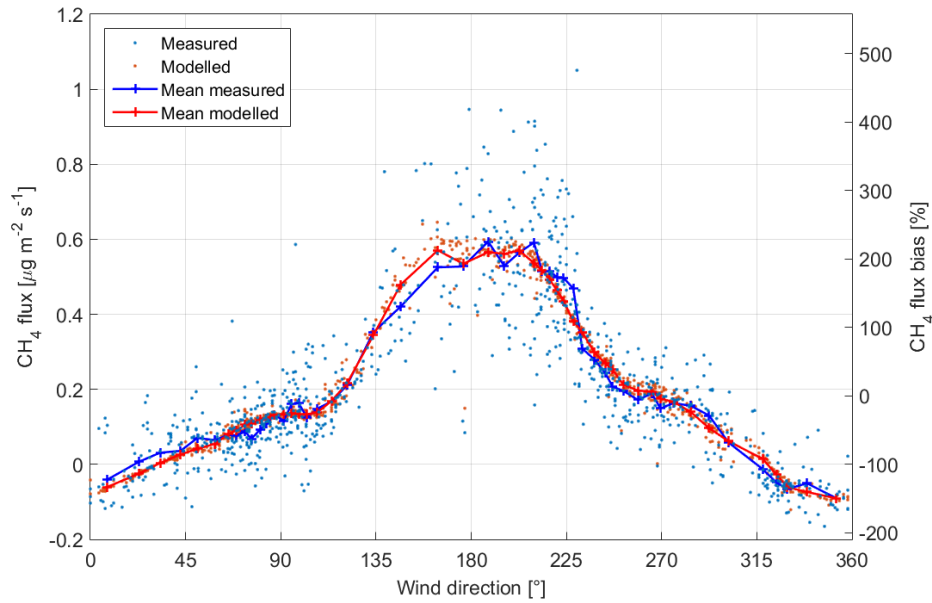


Figure 5. Measured and modelled  $\text{CH}_4$  fluxes as a function of wind direction (left axis). The averaged data were calculated in 50 direction classes. The right axis indicates the sensor location bias of the measured data shown (both individual points and the mean) with respect to the mean upscaled flux within the study area ( $0.183 \mu\text{g CH}_4 \text{ m}^{-2} \text{ s}^{-1}$ ).

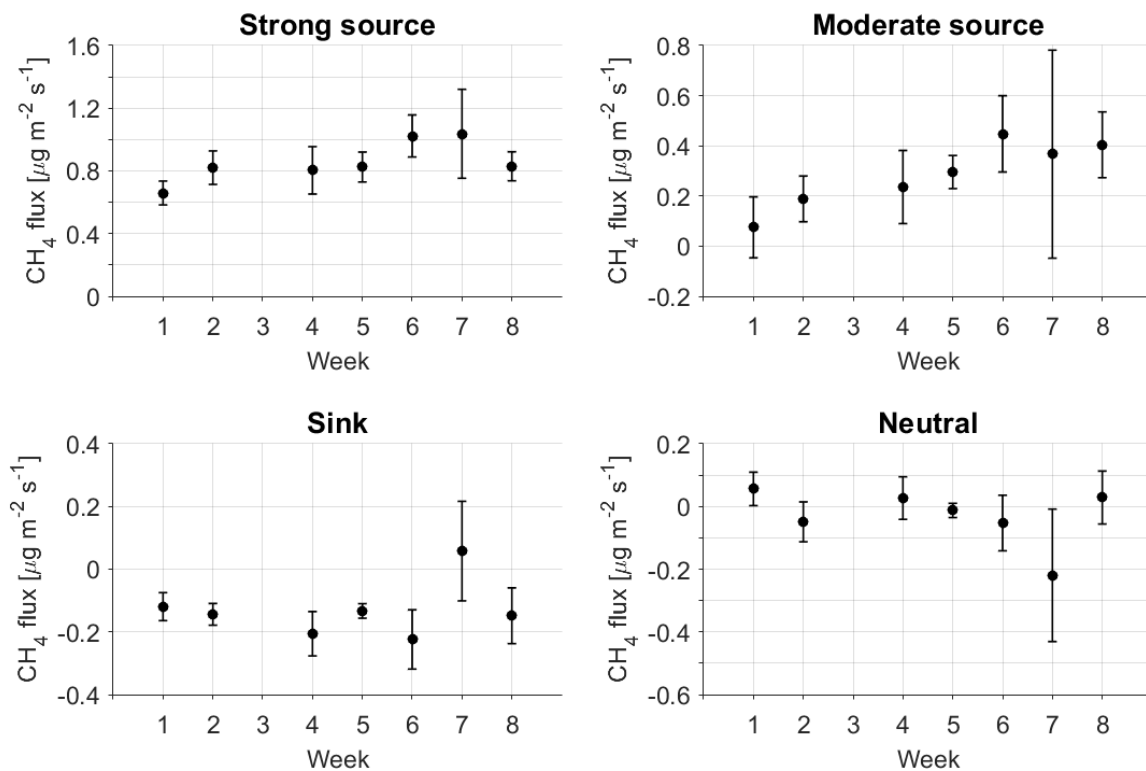


Figure 6. Estimates of the LCC group-specific fluxes calculated from weekly data (1 = 5–11 July; 2 = 12–18 July; 3 = 19–25 July, data missing; 4 = 26 July –1 August; 5 = 2–8 August; 6 = 9–15 August; 7 = 16–22 August; 8 = 23–29 August). The vertical bars indicate the 95 % confidence intervals.

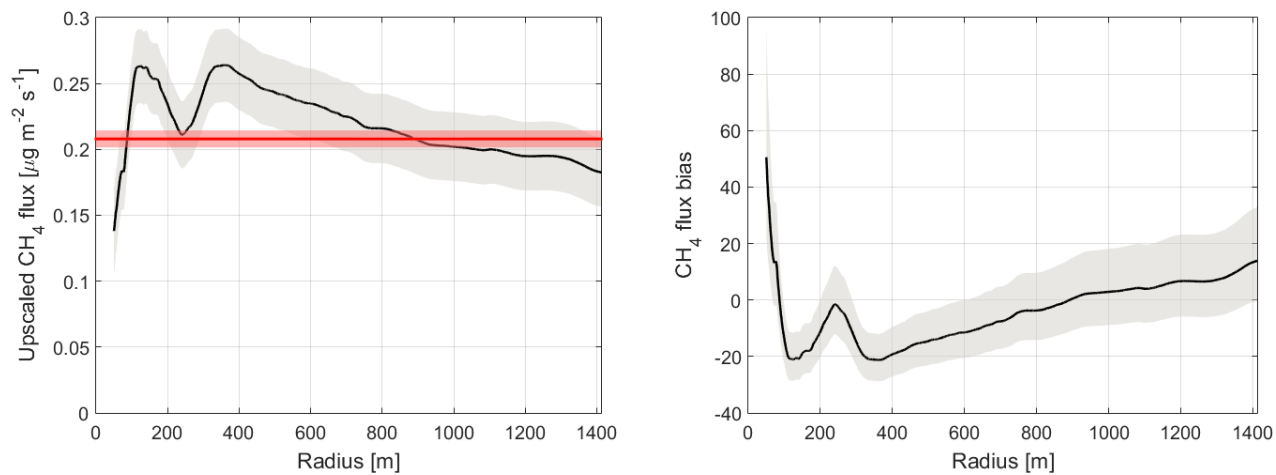


Figure 7. Upscaled CH<sub>4</sub> flux within a circular area as a function of the distance from the EC tower (left); and the  
 5 corresponding sensor location bias according to Eq. (5) (right). The red line indicates the mean measured flux. The shaded  
 areas represent the 95 % confidence intervals.